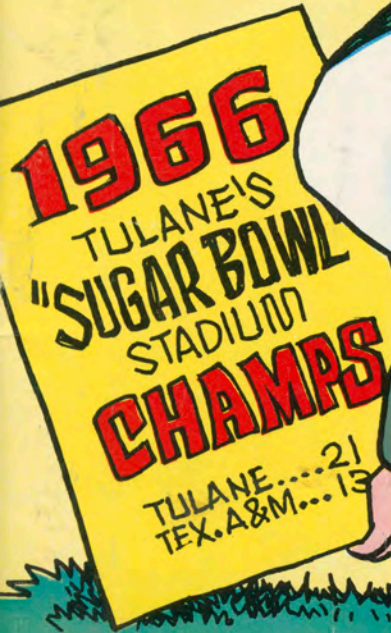




WE GOT GROUND RULES, AGGIE!



# TULANE

Big New Record Section, 32-36  
Tulane Player Photos, 19-24  
Tonight's Game, 3  
Educational Economy, 14  
Freshman Team Picture, 55

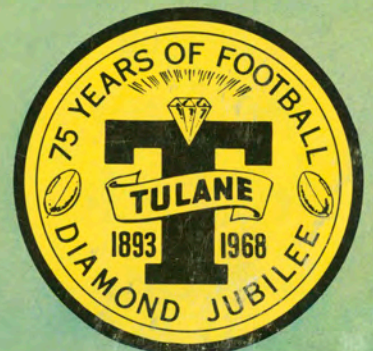
Price  
**50**  
Cents

Here Comes the Judge, 25  
Aggie Player Photos, 39-41  
Wave Words, 37  
Sure Hands McColl, 53  
Where Were the Fish? 42-44

Saturday, September 28, 1968 — 7:30 p. m.

## TEXAS A&M GAME

Tulane Stadium — TULANE UNIVERSITY — New Orleans, La.





**When the play gets rough and tough  
reach for the brew that's smooth and mellow**



# TOUCHDOWN!

TULANE FOOTBALL MAGAZINE  
AND OFFICIAL GAME PROGRAM

Vol. 1, No. 1, Saturday, September 28, 1968, New Orleans, La.

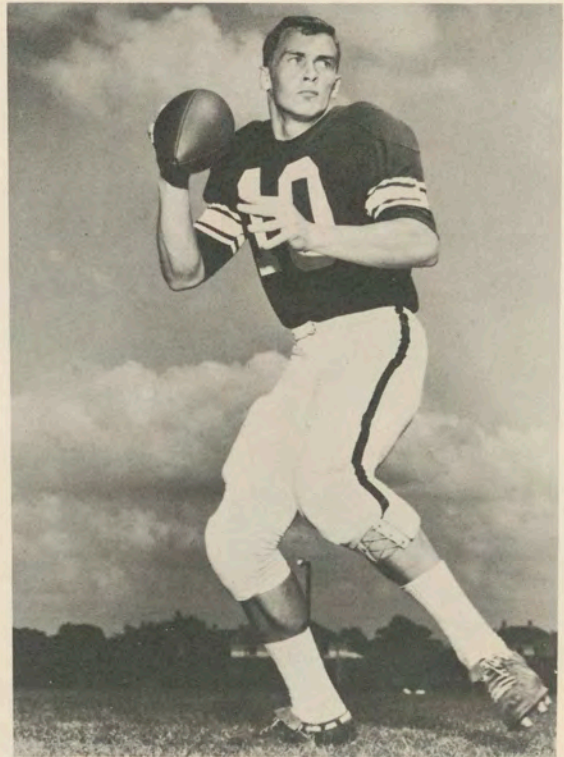
Published by  
TULANE UNIVERSITY ATHLETIC DEPT.

Edited by  
BILL CURL, Sports Information Dir.

Photos by  
Armand Bertin, Tulane Univ.; Jim Laughead  
Photography, Dallas, Tex.; Leon Trice Photo-  
graphy, New Orleans; Pedro's Art Studio,  
New Orleans. Covers by John Chase;  
Printing by Molenaar Printing Company.



ERNIE PARKER, TULANE DEFENSIVE END



EDD HARGETT, TEXAS A & M QUARTERBACK

## CONTENTS

All-Americans .....	16
Athletic Staff .....	15
Basketball .....	49
Cam-Pix .....	42-44
Concession Prices .....	12
Cover Story .....	13
Do You Remember .....	25
Football Staff .....	17
Freshman Football .....	55
Future Schedules .....	46
Lineups .....	28-29
Next Home Opponents .....	56
Opponents .....	38
Penalties .....	51
Player Photos, Tulane .....	19-24
Player Photos, Opponents .....	39-41
Records .....	32-36
Road Trips .....	10
Roster, Tulane .....	26
Roster, Opponents .....	31
Songs and Cheers .....	7
Stadium Information .....	8, 46
Statistics .....	4
Ticket Order Blank .....	56
Tonight's Game .....	3
Tulane University .....	2, 9



## 1968 Green Wave Scores and Schedule

Houston 54 .....	Tulane 7
Sept. 28—*TEXAS A & M .....	Home - 7:30
Oct. 5—*TAMPA .....	Home - 7:30
Oct. 12—FLORIDA .....	Gainesville, Fla.
Oct. 19—†BOSTON COL. .....	Home - 2:00
Oct. 26—GEORGIA TECH .....	Atlanta, Ga.
Nov. 2—VANDERBILT .....	Nashville, Tenn.
Nov. 9—*TULSA .....	Home - 7:30
Nov. 16—VIRGINIA .....	Charlottesville, Va.
Nov. 23—*LA. STATE .....	Home - 7:30

\*Night Games

†Homecoming

# Tulane and the Community . . .



**Dr. Longenecker**

TULANE UNIVERSITY is an integral part of the New Orleans community.

The university's primary roles of education, research and service are largely focused on this area, affording opportunities for thousands of students of all ages to advance academically, contributing to the increase of knowledge, and providing a wide variety of community services, ranging from the upgrading of elementary education to the delivery of health services.

The university's programs and its calendar of events cover almost every aspect of life and make possible frequent interaction between the university family and its neighbors.

This gathering tonight is but one manifestation of this, offering not only recreation for thousands of persons but also a chance for visitors to see the obvious signs of Tulane's progress and to exchange views with students, faculty and staff about the university's mission and its impact on the community.

Athletic events bring visitors to the campus throughout the year.

And there are many other occasions.

Stage performances, concerts, lectures.

And, also, throughout the year, conferences, seminars and major conventions of scientific, professional and business organizations which attract to the campus not only persons from this area but visitors from many distant points.

Tulane, in fact, has become a core of many community interests—in art and the performing arts, in health and medicine, in science, law, engineering, architecture, business and education, to name but a few.

For whatever stimulus it does provide, Tulane is rewarded amply through the stimulation it, in turn, receives from the participation in its activities of so many from outside the university.

For the public's participation in all of these functions provide the leavening ingredient needed to enable Tulane to continue to improve in the accomplishment of its missions.



**Dr. Clarence Scheps, Executive Vice President**

# Angry Wave, Aggies to Tangle Tonight

Tulane and Texas A & M, two angry football teams, will tangle tonight in Tulane Stadium.

Coach Gene Stallings' Aggies are angry over a narrow 13-12 loss to LSU last week in Baton Rouge. The defeat snapped the nation's longest winning streak of seven victories for the defending Southwest Conference and Cotton Bowl Champions.

Tulane is angry over a 54-7 shiner inflicted by Houston after the Green Wave made a tight scrap of it for the first 40 minutes. "We're a much bet-

Senior Chuck Loftin, Bankston's most likely replacement in the backfield, suffered an eye injury last week but is expected to be ready. If not, sophomores Harold Sisk and David Richard will handle the fullback duties for the Green Wave.

Texas A & M rides on the strong arm of Edd Hargett and the strong leg of Steve O'Neal.

Hargett, a two-year veteran who is one of the top returning quarterbacks in the nation this fall, passed for 220 yards last week against La. State. Meanwhile, O'Neal punted nine times for a re-sounding 47.4 average.

A wide-open battle is anticipated tonight, with both teams featuring explosive offenses operating from wide formations.

Texas A & M leads in the rivalry, nine games to five, but Tulane owns the latest scalp. Pittman's first Tulane team scored a 21-13 win over the Aggies two years ago in New Orleans.

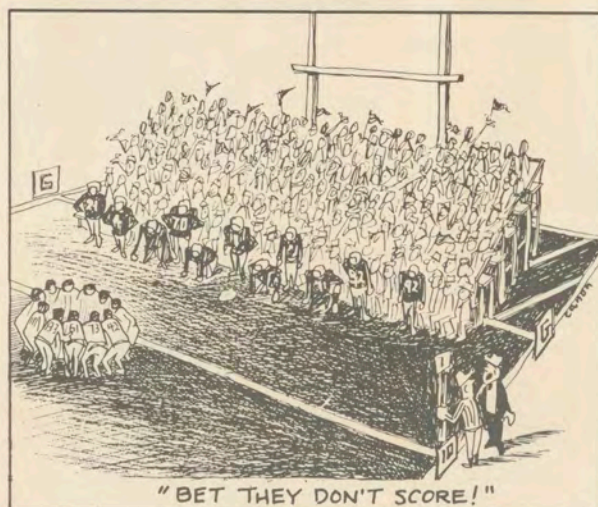
## At Halftime Tonight . . .

The Biloxi High School Band of Biloxi, Miss., will perform for tonight's halftime show. The band has been featured in Mardi Gras parades, the Senior Bowl, and the Gator Bowl, and has appeared on CBS-TV and NBC-TV. Band members are bedecked in colorful Indian style uniforms designed especially for the BHS band from descriptions of the clothing worn by the Biloxi Indians. Band personnel include Director Marion Carpenter, Drum Major Barry Lambert, Head Majorette Andrea Gillich, and Featurette Amy Dellenger.

ter ball club than that," growled Head Coach Jim Pittman.

The Wave had an open date last Saturday, so both teams have an 0-1 record going into tonight's contest.

Tulane will be without the services of its All-American fullback candidate, 222-pound senior Warren Bankston. Bankston underwent surgery last week for a muscle tear in his lower right leg and is out of action indefinitely.



# Scouting Report

## TEXAS A & M

### One-Game Totals

#### Rushing Figures

Player	Times	Net Yds.	TD's	Avg.
Larry Stegent	13	48	0	3.7
Javier Vela	4	11	0	2.8
Dave Elmendorf	4	10	0	2.5
Bob Long	2	.4	0	2.0
Edd Hargett	9	-27	0	---

#### Passing Figures

Player	Att.	Comp.	Int.	TD's	Yds.	Pct.
Edd Hargett	28	13	1	1	220	46.4
Bob Long	1	0	1	0	0	---

#### Receiving Figures

Player	Caught	Yards	TD's
Bob Long	3	50	1
Barney Harris	3	49	0
Larry Stegent	3	31	0
Jimmy Adams	2	58	0
Dave Elmendorf	1	13	0

#### Punting Figures

Player	No.	Yards	Avg.
Steve O'Neal	9	427	47.4

#### Scoring Figures

Player	TD's	XPA-XPM	FGA-FGM	Pts.
Bob Long	1	0-0	1-0	6
Charley Riggs	0	1-1	1-1	4
Team*	0	0-0	0-0	2

\*—Safety

### Texas A & M Scores, Schedule

Louisiana State 13, A & M 12	
Sept. 28	At Tulane (N)
Oct. 5	At Florida State (N)
Oct. 12	Texas Tech (N)
Oct. 19	T. C. U. (N)
Oct. 26	At Baylor (N)
Nov. 2	Arkansas
Nov. 9	At S. M. U.
Nov. 16	Rice
Nov. 28	At Texas

# Statistics of Tonight's Foes

## TULANE

### One-Game Totals

#### Rushing Figures

Player	Times	Net Yds.	TD's	Avg.
Ken Sanders	5	21	0	4.2
Jim Trahan	3	16	0	5.3
Mike Farnell	3	11	0	3.7
Duke Chappuis	7	9	0	1.3
Jack Laborde	3	6	0	2.0
Warren Bankston	6	5	0	0.9
Wayne Francingues	18	-8	1	---

#### Passing Figures

Player	Att.	Comp.	Int.	TD's	Yds.	Pct.
Wayne Francingues	17	8	3	0	115	.471
Ken Sanders	3	1	0	0	7	.333
Jack Laborde	1	0	1	0	0	.000

#### Receiving Figures

Player	Caught	Yards	TD's
Nick Pizzolatto	3	46	0
Warren Bankston	2	33	0
Jack Laborde	1	21	0
Mike Farnell	1	11	0
Jim Trahan	1	7	0
John Autenreith	1	4	0

#### Punting Figures

Player	No.	Yards	Avg.
Ken Sanders	9	372	41.4

#### Scoring Figures

Player	TD's	XPA-XPM	FGA-FGM	Pts.
Wayne Francingues	1	0-0	0-0	6
Bart Bookatz	0	1-1	0-0	1

### SERIES RECORD: Texas A & M Leads, 9-5

1899	A & M, 22-0	1912	A & M, 41-0	1932	Tulane, 26-14
1902	A & M, 17-5	1917	A & M, 35-0	1933	A & M, 13-6
1906	A & M, 18-0	1929	Tulane, 13-10	1939	A & M, 14-13
1907	A & M, 18-6	1930	Tulane, 19-9	1966	Tulane, 21-13
1910	A & M, 17-0	1931	Tulane, 7-0	1968	?? ?? ? ?

*The Fabulous*  
**FONTAINEBLEAU**

**MOTOR HOTEL**

**Dedicated to Pleasure and Fun**



*Empire*  
ROOM

**FOR RELAXED DINING  
AND FINE FOOD**

For delicious Continental and Creole foods impeccably served in glittering splendor

*Chandelle*  
LOUNGE

**FOR AN INTIMATE AND  
ENCHANTING EVENING**

Cocktail hour 5 to 7. Complimentary hors d'oeuvres, dancing, entertainment. Name bands nightly

*Fontaine*  
COFFEE SHOP

**FOR EXCELLENT FOOD  
QUICKLY SERVED**

A favorite meeting place. Open at 6 a.m. Delicious food, popular prices.

**494 LUXURY ROOMS**

**LARGEST SWIMMING POOL IN TOWN**—separate high diving pool, separate wading pool for children.

**OUTDOOR POOL SIDE LOUNGE** with table service  
Convenient to shopping, business area, French Quarter

**SPECIAL ATTENTION TO PARTIES AND CONVENTIONS**  
A private room for every function with special complimentary services.

**FONTAINEBLEAU**  
MOTOR HOTEL

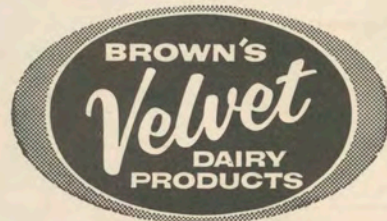
**4040 TULANE AVE.**

**HU 6-6111**

**ENJOY**

**MR. BROWN'S**

Old Fashioned



Ice Cream and  
Dairy Products

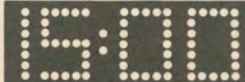
**Brown's Velvet Dairy Products, Inc.**

1300 Baronne Street  
New Orleans, La. 70113

SAVE AT

**IOB**

INTERNATIONAL  
CITY BANK



**the bank  
that doesn't watch  
the clock**

Sure, you've got to watch the clock to enjoy the game. We just don't believe in watching it while we work.

**That's why ICB is the All Day Bank.** Open when you can get there . . . from 8 a.m. till 6 p.m. and till 10 at night at our downtown Sidewalk Service Window. Get with the Pro-Team in banking. Open your ICB Checking Account—almost any time.



MEMBER F. D. I. C.

**INTERNATIONAL CITY BANK**  
AND TRUST COMPANY

DOWNTOWN OFFICE—321 ST. CHARLES AT UNION  
UNIVERSITY OFFICE—FRERET AT JEFFERSON AVE.  
WEST BANK OFFICE—2140 GEN. DE GAULLE DRIVE  
NEW ORLEANS, LA. 70130



**GET REAL ACTION... Uncola**  
**7-UP YOUR THIRST AWAY**

BEFORE OR AFTER THE GAME.....

**OUTRIGGER**

BAR & LOUNGE

- ★ Spectacular exotic drinks!
- ★ Palate pleasing Polynesian tid-bits!
- ★ All your cocktail favorites!

OPEN FROM 9 A. M.



Sheraton-Charles Hotel  
NEW ORLEANS





# Spirit at Tulane

## Alma Mater

We praise thee for thy past, O Alma Mater!  
Thy hand hath done its work full faithfully.  
The incense of thy spirit hath ascended  
And filled America from sea to sea.

### CHORUS—

Olive Green and Blue, we love thee  
Pledge we now our fealty true  
Where the trees are ever greenest,  
Where the skies are purest blue.  
Hear us now, O Tulane, hear us  
As we proudly sing to thee!  
Take from us our hearts' devotion!  
Thine we are, and thine shall be!



## Hullabaloo

A one, a two,  
A helluva hullabaloo,  
A Hu-la-ba-loo Ray-Ray!  
Hu-la-ba-loo Ray-Ray!  
Hoo-Ray! Hoo-Ray!  
Vars, vars, tee-ay!  
Tee-ay! Tee-ay!  
Vars, vars, tee-ay!  
Tulane!

## Roll, Green Wave

Here's a song for the Olive and the Blue.  
Here's a cheer for the team that's tried and true.  
Here's a pledge of loyalty to thee,  
O, Tulane Varsity.

Here's to the Greenbacks that never will say die,  
And here's to the hearts that are true  
To the men of Tulane, who are fighting for  
her name,

For the Olive and the Blue.

Roll, Green Wave, Roll them down the field.  
Hold, Green Wave, that line must never yield.  
When those Greenbacks charge through the line  
They're bound for victory.

Hail, Green Wave, For you we give a cheer.  
Hail, Green Wave, For you we have no fear.  
So ev'ry man in ev'ry play,  
And then we'll win that game today.  
Hurrah for old Tulane!

*(Chant to be used on second chorus)*

Roll, Green Wave, Roll, Roll Green Wave  
Hold Wave, Hold Wave, Hold, Green Wave.

Go— go— go get the tigers

Go win, go win, go win from the tigers.

Fight, fight, fight for T. U.

T. U., T. U., the Olive and the Blue,

T — — U — — Rah, Rah, Rah, Tulane.





## Cuisine...par excellence!

Both French and Creole cooking. Cited by HOLIDAY for 15 consecutive years as a "local favorite dining spot."

Open daily from eleven 'til eleven - except Mondays. Located in the heart of the Garden District at Washington and Coliseum.

*Commander's Palace*  
TWinbrook 1-7240 Since 1880



### THE MARK OF DELICIOUS FOOD

COMPLETE CATERING SERVICES  
AVAILABLE

Wedding Receptions - Parties  
Buffets - Banquets - Picnics

CONSULT US - AT NO OBLIGATION

866-0523

831-3471

## STADIUM INFORMATION

### First Aid

--- First aid stations are located under the East and West stands at ground level.

### Telephones

--- Public pay telephones are located at ground level on North, East, South and West sides.

### Rest Rooms

--- Rest rooms are located under North, East, South and West stands at ground level and under North, East and West upper deck sections.

### Lost and Found

--- Lost and found office is located inside stadium at Southwest corner, ground level.

## PAN-AMERICAN FILMS

Producers of 16 mm Industrial, Educational and Special Events  
Motion Pictures

Editing, Titling and Color Film Duplicating - Sound Recording

Producers of the Sugar Bowl Movies in Color and Sound Since 1945

**Bell & Howell**

Motion Picture Equipment Dealers

822-24 NORTH RAMPART STREET

522-5364

# Tulane



## University



**Robert Sharp Hall, Men's Residence Housing Tulane Athletes**

Tulane University is an educational institution deeply rooted in the past and reaching toward the future.

Founded in 1834 as the Medical College of Louisiana, Tulane today offers undergraduate programs in 30 areas of study, masters' degrees in 43 fields and the doctor of philosophy degree in 33 disciplines.

Courses are offered in the College of Arts and Sciences, Newcomb College (the coordinate college for women), and University College (the evening division); in the Schools of Architecture, Engineering, Law, Medicine, Public Health and Tropical Medicine, and Social Work; in the Graduate School, the Graduate School of Business Administration, the Summer School, the Center for Teacher Education and at several research institutes.

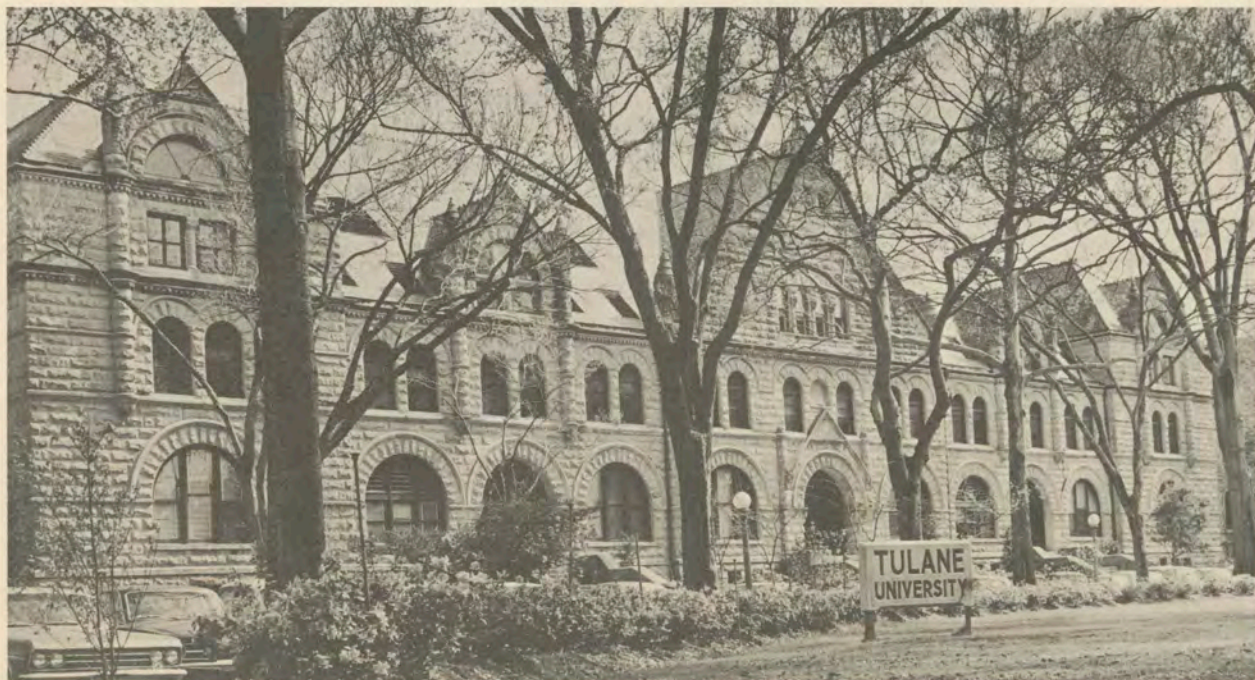
The interest in tropical medicine—the Medical College of Louisiana was founded to combat epidemics of yellow fever and other tropical diseases—is the one cord that runs throughout the University's history, even as its interests expanded with its development as part of the University of Louisiana in 1847, and with its emergence,

finally, as the Tulane University of Louisiana in 1884, after a generous gift from Paul Tulane had established the Tulane Educational Fund. The Fund's administrators used the gift to reorganize the University as a private, non-sectarian institution bearing Tulane's name.

Today Tulane's President, Dr. Herbert E. Longenecker, directs the operation of a cosmopolitan community whose faculty (650 full-time, 500 part-time) and students (6,000 full-time, 2,000 part-time) represent every state and 60 foreign countries.

By far the major portion of the University's activities are centered at the main campus, a 100-acre site in uptown New Orleans. Scholars also pursue their interests at the downtown Medical School campus; at the Delta Regional Primate Research Center in Covington, La., 35 miles from the main campus; at the International Center for Medical Research and training at Cali, Colombia, and at the University's newest campus—the F. Edw. Hebert Center, across the Mississippi River from downtown New Orleans, a development devoted to scientific research.

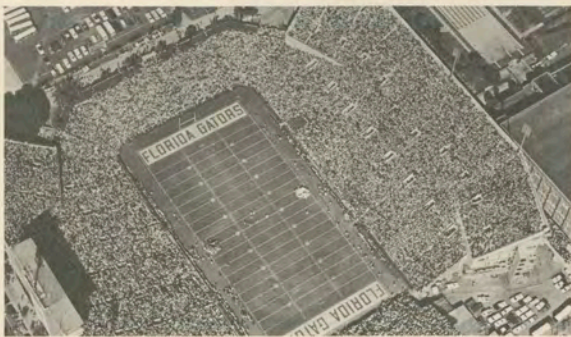
**Gibson Hall, the Administration Building**



# Where the Wave Will Play . . .



**HOUSTON — Astrodome (46,000)**



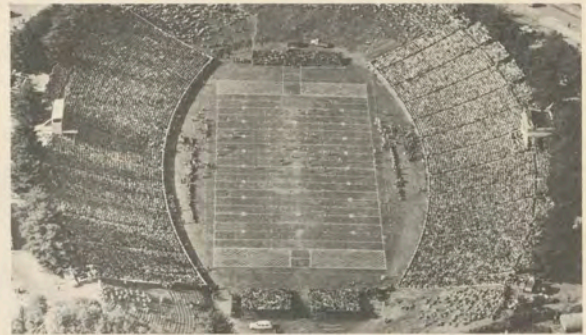
**FLORIDA — Florida Field (59,890)**



**GA. TECH — Grant Field (59,809)**



**VANDERBILT — Dudley Field (34,000)**



**VIRGINIA — Scott Stadium (26,000)**

## Where the Wave Will Stay . . .

Houston Game (Sept. 14)	..... Towers Hotel, Houston, Tex.
Florida Game (Oct. 12)	..... Ramada Inn, Gainesville, Fla.
Ga. Tech Game (Oct. 26)	..... Riviera Motor Hotel, Atlanta, Ga.
Vanderbilt Game (Nov. 2)	..... Capitol Park Inn, Nashville, Tenn.
Virginia Game (Nov. 16)	..... Mt. Vernon Hotel, Charlottesville, Va.

Since 1842,  
our greatest  
pleasure  
has been that of  
serving you...  
our customers.

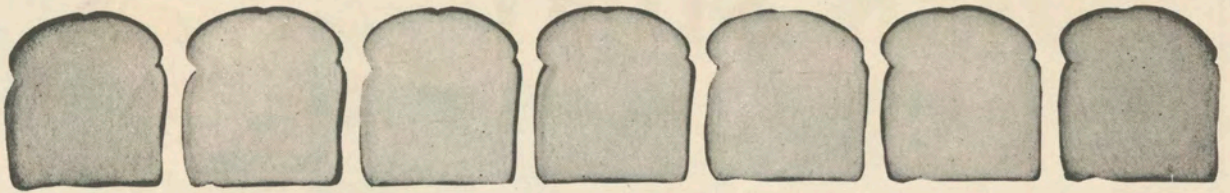


H O L M E S

H O L M E S

NEW ORLEANS

BATON ROUGE



# No holes in the Sunbeam line!

Batter Whipped Bread

Brown 'n' Serve Rolls

Hamburger Buns

Raisin Bread

Hot Dog Rolls

Whole Wheat Bread

Sweet Rolls

Rite Diet Bread

*Those on the go—go Sunbeam*

**HOLSUM** *Sunbeam* **BREAD**

## Official Concession Prices at Tulane Stadium

### FOOD AND BEVERAGE

BEER .....	.50
SOFT DRINKS .....	.25
COFFEE .....	.15
HOT DOGS .....	.35
HAMBURGERS .....	.50
PEANUTS .....	.25
POPCORN .....	.25
COTTON CANDY .....	.20

### CIGARETTES

AT MACHINES ON GROUND LEVEL..... .40

### NOVELTIES

BADGES .....	.50, .75, and \$1.00
PENNANTS .....	1.00
PORKY HATS, Felt W/Tulane Patch.....	1.50
CREW HATS .....	2.50
BANKS .....	1.50
LICENSE PLATES .....	1.25
TISSUE SHAKERS .....	.50
BOBBLE HEAD FOOTBALL DOLLS.....	2.00
COWBELLS .....	.50
TULANE BUTTON, 3½" W/Green Wave Emblem.....	.50
PLUSH TIGER, 9".....	3.00
RAIN BONNETS .....	.50
RAIN COATS, PLASTIC.....	2.00

# COVER STORY

Our Credential Committee (of one) recognizes no 1967 credentials of this delegation from Texas. Instead, the delegation in Tulane Stadium is governed by a 1966 ruling (21 to 13), and the committee (of one) here indicates it's the only ruling under which the Aggies can be set down — or perhaps we should say be up-set down.



The Green Wave's official cover artist is WDSU-TV Editorial Cartoonist John Chase. See his Editorial Cartoons in color, weekdays in BREAKFAST EDITION (6:30-7 A.M.) and at 6:15 and 10:15 P.M. on WDSU-TV, Channel 6.

**WDSU-TV—First In The Nation With Daily Editorial Cartoons In Color!**



## Three Great French Restaurants await you

*(individually owned)*

### Antoine's

*Since 1840*

713 St. Louis Street • 529-5696  
12 Noon to 9 P.M. • Closed Sundays  
ROY L. ALCIATORE, Prop.

### Broussard's

*Napoleon Patio*

819 Conti Street • 523-4800  
12 Noon to 10:30 P.M. • Closed Wednesdays  
H. W. (Bill) HESLIN, SR., Manager

### ARNAUD'S

*Carnival Room*

813 Bienville Street • 523-5433  
11 A.M. to 12:30 A.M. Past Midnight Daily  
GERMAINE WELLS, Owner

Famous for  
**FINE FOOD and DRINK**

### More Mileage from Higher Education Dollars

by ROBERT N. KELSO

*Tulane University Educational Reports*

Many U. S. colleges and universities, including some heavily-endowed private institutions, are operating in the red and their deficits threaten to mount year by year.

They are caught between relentlessly expanding costs—estimated to be rising 14 per cent annually—and lagging revenues, chiefly from tuition, voluntary gifts and government grants.

Tuition charges already have been raised to a level difficult for many students to meet. Voluntary giving has slacked off during the past two academic years. And the U. S. House of Representatives recently cut \$92.5 million from administration budget requests to support higher education.

A commercial enterprise facing this kind of money squeeze would give its entire operation a hard look, hunting for ways to cut costs, increase productivity, and boost net income.

Colleges and universities, as non-profit enterprises for the advancement of learning, find it extremely difficult to slash existing programs or reduce their largest expense item: faculty salaries.

But are they getting full mileage out of revenues available to them?

A research team from the Tulane University Graduate School of Business Administration says most colleges and universities lack adequate accounting and cost-evaluation procedures to answer this important question.

The Tulane group recently completed a nationwide study on "University Cost Structure and Behavior," financed by a grant from the National Science Foundation.

Members of the group concluded that most university accounting methods "tend to be thoroughly unsuited" to serve as a basis for "decision-making, planning, control, and evaluation" of university activities.

Dr. Peter A. Firmin, dean of the Tulane Graduate School of Business Administration and head of the research team, says typical university accounting systems are not geared to facilitate decision-making "because they break things down into specific funds, automatically locked into specific purposes, and generally focus the administrator's attention only on uncommitted revenues.

"They rarely give the whole financial picture in one piece.

"As a result, the typical university administrator often doesn't know the total revenue available to his institution,

or the total operating cost of any department or school. How is he going to know whether any particular program justifies itself, if he doesn't know the total cost?"

The Tulane research findings also indicate that most schools simply do not gather enough cost information—suitable for automatic data processing—to help administrators evaluate programs and plan for the future.

A major facet of the study was construction of a simplified computer "model," designed for comparison of inter-departmental costs, and to predict total costs over a four-year period on the basis of anticipated enrollment.

Working with Dr. Firmin on the project were Dr. Seymour S. Goodman, associate professor of economics; Dr. James J. Linn, associate professor of accounting; and Thomas E. Hendricks, research assistant; all of the Tulane Graduate Business School faculty.

A king-size obstacle to cost-cutting in higher education, the researchers found, is that manpower costs (faculty and staff salaries) rise in direct proportion to any increase in enrollment.

"Universities cannot save money by growing larger and creating larger class-sizes per professor," Dr. Firmin emphasizes.

"Even in the very largest universities (the University of Michigan was one of those studied), we find that—above the freshman and sophomore level—professors are still teaching classes of 15, 20 or 25 students."

Closed-circuit television instruction, shown to be capable of teaching classes of 1,000 or 2,000, doesn't materially reduce faculty costs, Dr. Firmin adds.

"They still break up these huge sections once or twice a week to teach groups of 20 to 25 students, and each group has a monitor or teaching assistant. You wind up with the same scale of teaching costs.

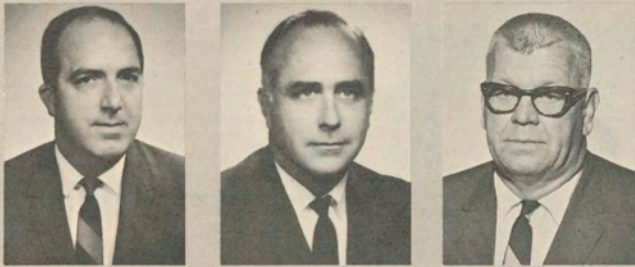
"When manpower costs become excessive in industry, they bring in heavy capital and replace people by machinery. Universities haven't found a way to do this."

Faced with a built-in expense item of such proportions, Dr. Firmin stresses, colleges and universities should develop better standards of effectiveness, "so they can find out how good a job they're doing, and how much it costs to do it."





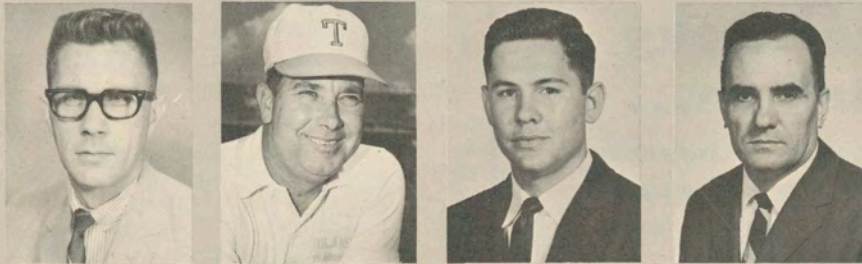
**Dr. Rix N. Yard**  
Dir. of Athletics



From Left — Buddy de Monsabert, Athletic Business Manager; Dr. Harvey Jessup, Executive Assistant to the Athletic Director; Dr. Hugh Rankin, Faculty Chairman of Athletics.



Bill Curl (Left), Information Dir.; Joe Nicholson, Ass't to Athletic Business Mgr.



From Left — Dr. Peter Riehl, Team Physician; Bubba Porche, Head Trainer; Al Miller, Ass't Trainer; Troy Phillips, Equipment Mgr.



Nolan Chaix (Left),  
Supervisor of Grounds;  
Mac McKinney, Stadium Guard

## ATHLETIC STAFF

## TULANE... A GO-GET-EM TEAM



ALEC GIFFORD



BUDDY DILIBERTO

THE GO-GET-EM NEWS TEAM

6:00pm and 11:00pm  
WEEKDAYS

**12**  
WVUE  
NEW ORLEANS

## A Proud Heritage — Tulane's All-Americans

1925—Charles Flournoy, back  
1929—Willis Banker, back  
1930—Jerry Dalrymple, end  
1931—Jerry Dalrymple, end  
1931—Don Zimmerman, back  
1932—Don Zimmerman, back  
1934—Claude Simons, Jr., back  
1939—Ralph Wenzel, end  
1939—Harley McCollum, tackle  
1940—Tommy O'Boyle, guard  
1941—Ernie Blandin, tackle  
1943—Lester Gatewood, center  
1944—W. A. Jones, back  
1948—Paul Lea, tackle  
1949—Eddie Price, back  
1950—Jerome Helluin, tackle  
1955—Tony Sardisco, guard  
1960—Tommy Mason, back  
1967—Bobby Duhon, back



ROCKY GRAIANO

**“It’s me, Rocky  
talkin’, an...**

I doan talk too good, bud I make a lodda sense. Da men ad Gentilly Dodge are price fightin' like never before . . . see 'em 'an save—tell 'em da Rock sents ya!

**SOMEBODY UP DERE LIKES ME,  
AND SOMEBODY AT**

**GENTILLY DODGE**

**LIKES YOU...”**

6101 CHEF MENTEUR HIGHWAY (U.S. 90 EAST)  
OPEN TIL 9:00 P.M. 242-6644

## The Olde College Inn

(Since 1933)

The Uptown  
Family Restaurant

3016 South Carrollton Avenue



**Jim Pittman**  
Head Coach



**Pap Morris (Left),**  
offense; **Frank**  
**Young,** defense

## FOOTBALL STAFF

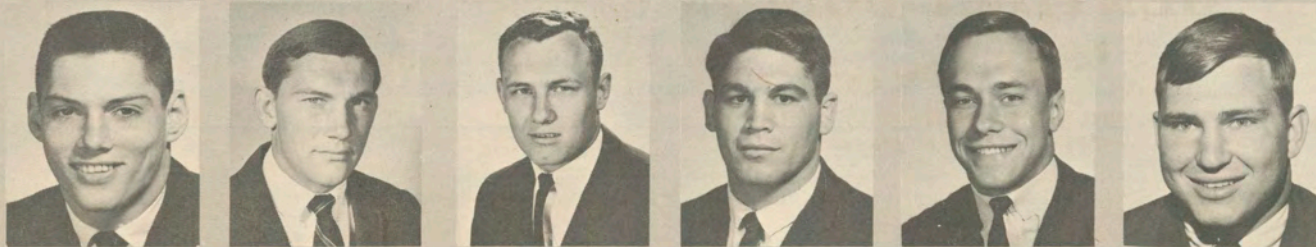


From Left — Joe Clark, offense; Billy Tohill, defense; Gary Kinchen, defense; Marv Kristynik, offense.



**Joe Blaylock (left),**  
Freshmen; **Jack Orsley,**  
Recruiting Director

From Left — Freshman Assistants Lou Campomenosi, Jerry Colquette, Jim Darnley, Vic Eumont, Jim Jancik, Schott Mumme.



# BITE...TEAM...BITE!



## Hold that Whopper at **BURGER KING**

Ready for you in 60 seconds along with crisper new French Fries, creamy shakes, cokes, not to mention Whalers, burgers, franks, etc.



## After the game stop at **BURGER KING**<sup>®</sup>

**In Metairie**  
3735 Airline Highway  
916 Veterans Highway  
6900 Veterans Highway

**Gretna**  
78 Westbank Expressway  
**Gentilly**  
4050 Chef Menteur

**Marrero**  
3950 Westbank Expressway  
**Chalmette**  
110 East Goodchildren St.

**New Orleans** 2423 South Carrollton Ave. • 6332 Elysian Fields Ave. • 1700 St. Charles St.



# Green Wave



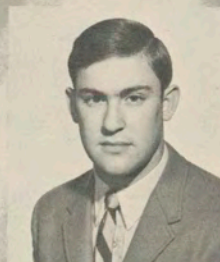
**Warren  
Bankston**



**Tom  
Barrows**



**Rodney  
Bazer**



**Bart  
Bookatz**



**Steve  
Boyd**



**Chas.  
Browning**



**Brad  
Calhoun**

# Green Wave



**Duke  
Chappuis**



**Howard  
Culp**



**Bryan  
Duck**



**Duke  
Duffee**



**Mike  
Farnell**



**Calvin  
Fox**



**Wayne  
Francingues**



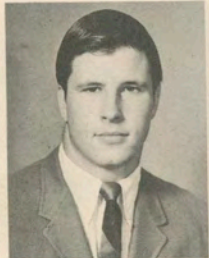
**Maurice  
Gartman**



**Joe  
Gendron**



**Johnny  
Gill**



**Bart  
Graves**



**Phil  
Greco**



**Roger  
Green**

# Green Wave



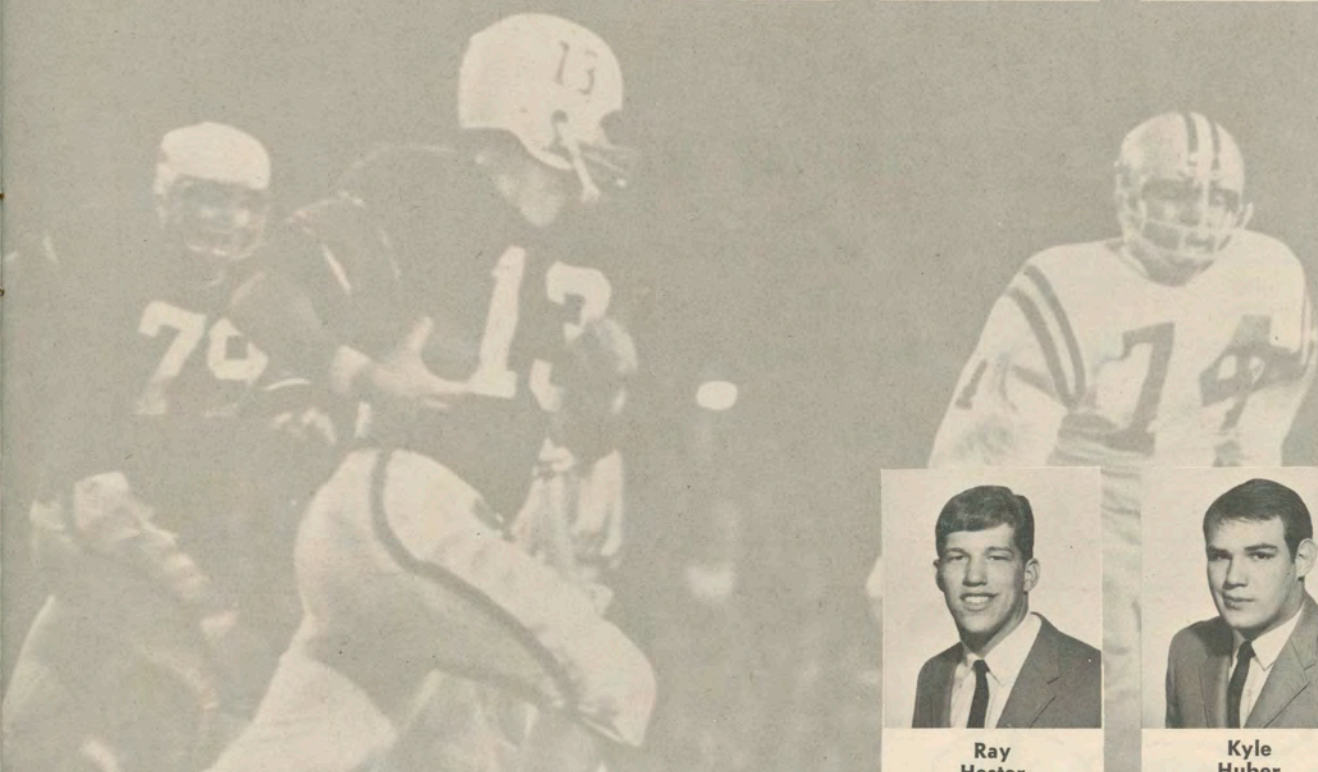
**Ed  
Gross**



**Scott  
Haber**



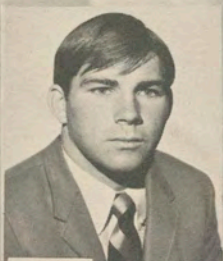
**John  
Haines**



**Ray  
Hester**



**Kyle  
Huber**



**Sid  
Jones**



**Barney  
King**



**Ricky  
Kingrea**



**Jack  
Laborde**



**Chuck  
Loftin**



**Dennis  
McAfee**



**Larry  
Mickal**



**Mack  
Miller**



**ED SLATTEN**  
*invites*  
*all his friends*  
*to visit him*  
*at*



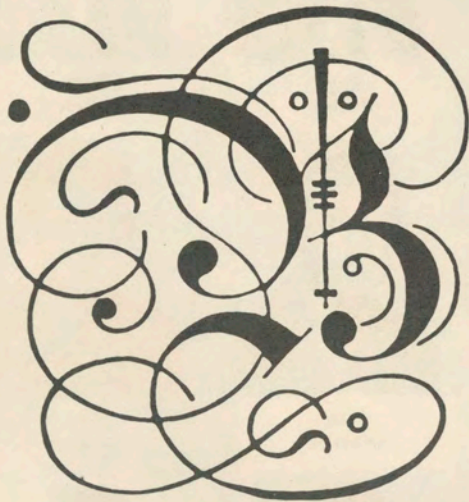
## **ECONOMY MOTORS**

Phone 367-6700

1115 Westbank Expressway

Gretna, La. 70053

***“GOOD LUCK, GREEN WAVE”***



**Best of luck**

**TULANE  
GREEN WAVE**

*Breeding Concessions*

TULANE-SUGAR BOWL STADIUM



# Green Wave



**Howard  
Moore**



**John  
Mueller**



**John  
Onofrio**



**Ernie  
Parker**



**Sonny  
Pisarich**



**Nick  
Pizzolatto**



**Dick  
Redd**



**Dave  
Richard**



**Ken  
Sanders**



**Sam  
Scelfo**



**Roger  
Schramm**



**Jim  
Shepherd**



**Lonnie  
Sibley**



**Harold  
Sisk**

# Green Wave



**Dean  
Smith**



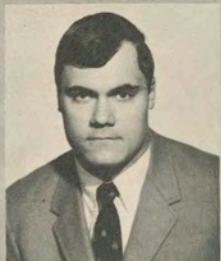
**John  
Snell**



**Butch  
Spencer**



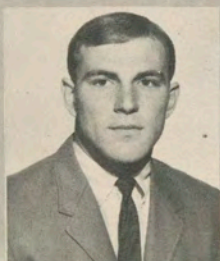
**Steve  
Stark**



**Larry  
Stone**



**Mike  
Tolle**



**Jim  
Trahan**



**Mike  
Walker**



**Jim  
Wallace**



**Mason  
Webster**



**Tom  
Wright**



**Jimmy  
Yarter**

**BERGERON**  
wants your business . . .

they'll trade to get it,  
and work hard  
to keep it!

**BERGERON**  
**Plymouth**

AUTHORIZED DEALER  
CHRYSLER  
MOTORS CORPORATION

3525 VETERANS AT LAKESIDE • 888-2131



*Sunday Dinner*  
*Seven Days*  
*a Week*  
**Kentucky Fried**  
**Chicken®**

2529 WILLIAMS BLVD. • 2814 JEFFERSON HWY.

**Do You Remember? . . . . . THIS GREEN WAVE STAR OF THE 30's**

One of Tulane's all-time great defensive backs, this ex-Green Wave gridder was a stand-out in the 1940 Sugar Bowl game against Texas A & M.

Tulane football teams during his career posted a 20-7-2 record and lost a squeazer to A & M in the sixth renewal of the annual New Year's Day classic, 14-13.

He intercepted a pass, punted twice for a 45-yard average and rushed for 42 yards in the heartbreaking loss to the Aggies.

He is a graduate of the Tulane School of Law, and is currently a United States District Judge.

Among his teammates were former Wave Head Coach Tommy O'Boyle, All Americans Ernie Blandin, Harvey McCollum and Ralph Wenzel, and Harold "Moon" Mullin, color man on the Green Wave football network.

**Answer on Page 56**



# 1968 TULANE ROSTER

Name (Number) \_\_\_\_\_ Position, Height, Weight  
Class \_\_\_\_\_ Home Town (High School), H. S. Coach

**\* BANKSTON, Warren (19)** \_\_\_\_\_ **FB, 6-4, 222**  
Senior \_\_\_\_\_ Hammond (Hammond), Glenn Brady

**BARROWS, Tom (57)** \_\_\_\_\_ **DT, 6-4, 218**  
Junior \_\_\_\_\_ Homewood, Ill. (Homewood), James Arneberg

**BAZER, Rodney (51)** \_\_\_\_\_ **LB, 5-11, 187**  
Sophomore \_\_\_\_\_ New Iberia (New Iberia), Faize Mahfouz

**BOOKATZ, Bart (27)** \_\_\_\_\_ **PK, 5-11, 191**  
Sophomore \_\_\_\_\_ Dallas, Tex. (St. Mark's), Bill Rippetoe

**BOYD, Steve (78)** \_\_\_\_\_ **DE, 6-2, 215**  
Junior \_\_\_\_\_ Clovis, N. Mex. (Clovis), Steve Graham

**\* BROWNING, Charles (74)** \_\_\_\_\_ **DT, 6-1, 210**  
Junior \_\_\_\_\_ Baton Rouge (Baton Rouge), Ray Porter

**\* CALHOUN, Brad (12)** \_\_\_\_\_ **SAF, 6-2, 182**  
Junior \_\_\_\_\_ Chickasaw, Ala. (Vigor), Glenn Yancy

**CHAPPUIS, Duke (48)** \_\_\_\_\_ **TB, 5-11, 176**  
Sophomore \_\_\_\_\_ Metairie (De La Salle), Leemon McHenry

**CULP, Howard (63)** \_\_\_\_\_ **SG, 6-0, 208**  
Sophomore \_\_\_\_\_ Harrah, Okla. (Lufkin, Tex.), Gile Akridge

**DE WITT, Charles (62)** \_\_\_\_\_ **SG, 6-1, 212**  
Sophomore \_\_\_\_\_ Houston, Tex. (Memorial), Chas. Churchill

**DUCK, Bryan (61)** \_\_\_\_\_ **LB, 6-1, 180**  
Sophomore \_\_\_\_\_ Purvis, Miss. (Purvis), Latrelle Williams

**DUFFEE, Duke (68)** \_\_\_\_\_ **SG, 6-2, 187**  
Junior \_\_\_\_\_ Marrero (West Jefferson), Dick Preis

**FARNELL, Mike (22)** \_\_\_\_\_ **WB, 5-11, 174**  
Sophomore \_\_\_\_\_ Mobile, Ala. (McGill), A. J. Conlin

**FOX, Calvin (53)** \_\_\_\_\_ **WT, 6-2, 225**  
Senior \_\_\_\_\_ Waco, Tex. (Derby, Wichita, Kan.), Bruce Bierig

**\* FRANCINGUES, Wayne (10)** \_\_\_\_\_ **QB, 5-11, 180**  
Junior \_\_\_\_\_ Metairie (Jesuit), Ken Tarzetti

**\* GARTMAN, Maurice (37)** \_\_\_\_\_ **LB, 6-0, 182**  
Junior \_\_\_\_\_ Semmes, Ala. (Montgomery), Chas. Leverett

**GENDRON, Joe (89)** \_\_\_\_\_ **DE, 6-1, 194**  
Sophomore \_\_\_\_\_ Watertown, N. Y. (Carthage Cen.), Ed Decker

**GILL, Johnny (26)** \_\_\_\_\_ **CB, 5-11, 173**  
Sophomore \_\_\_\_\_ Slidell (Slidell), George Thomas

**GRAVES, Bart (70)** \_\_\_\_\_ **DT, 6-4, 218**  
Sophomore \_\_\_\_\_ Marshall, Tex. (Marshall), Ralph Brooks

**GRECO, Phil (28)** \_\_\_\_\_ **CB, 6-1, 183**  
Junior \_\_\_\_\_ Leland, Miss. (Leland), Ben Ruscoe

**GREEN, Roger (45)** \_\_\_\_\_ **CB, 6-0, 178**  
Senior \_\_\_\_\_ Houston, Tex. (Lee), Gilbert Bartosh

**GROSS, Ed (72)** \_\_\_\_\_ **ST, 6-0, 205**  
Junior \_\_\_\_\_ Joppa, Md. (Bel Air), Al Cesky

**\* HABER, Scott (81)** \_\_\_\_\_ **DE, 6-2, 215**  
Junior \_\_\_\_\_ Houston, Tex. (Bellaire), Mickey Sullivan

**HAINES, John (54)** \_\_\_\_\_ **C, 6-1, 185**  
Junior \_\_\_\_\_ Theodore, Ala. (Theodore), C. A. Douglas

**HESTER, Ray (56)** \_\_\_\_\_ **LB, 6-2, 203**  
Sophomore \_\_\_\_\_ New Orleans (Holy Cross), John Kalbacher

**HUBER, Kyle (60)** \_\_\_\_\_ **WG, 6-0, 196**  
Sophomore \_\_\_\_\_ Pt. Arthur, Tex. (Jefferson), C. E. Underwood

**\* JONES, Sid (66)** \_\_\_\_\_ **WG, 5-11, 195**  
Junior \_\_\_\_\_ Lake Charles (Landry), Karl Blanchard

**KING, Barney (47)** \_\_\_\_\_ **TB, 5-10, 181**  
Junior \_\_\_\_\_ Cliftonville, Miss. (Noxubee City), A. J. Kilpatrick

**KINGREA, Ricky (32)** \_\_\_\_\_ **LB, 6-0, 217**  
Sophomore \_\_\_\_\_ Baton Rouge (Baton Rouge), Leon McGraw

**LABORDE, Jack (42)** \_\_\_\_\_ **TB, 6-0, 192**  
Sophomore \_\_\_\_\_ New Orleans (Jesuit), Ray Coates

**\* LOFTIN, Chuck (44)** \_\_\_\_\_ **FB, 5-11, 192**  
Senior \_\_\_\_\_ Midland, Tex. (Lee), Joe Newbill

Name (Number) \_\_\_\_\_ Position, Height, Weight  
Class \_\_\_\_\_ Home Town (High School), H. S. Coach

**\* McAFEE, Dennis (59)** \_\_\_\_\_ **C, 6-0, 201**  
Junior \_\_\_\_\_ Baytown, Tex. (Lee), Pete Sultis

**\*\* MICKAL, Larry (75)** \_\_\_\_\_ **WT, 6-2, 222**  
Senior \_\_\_\_\_ Metairie (De La Salle), Leemon McHenry

**MILLER, Mack (88)** \_\_\_\_\_ **DE, 6-0, 183**  
Sophomore \_\_\_\_\_ Basile (Basile), Leslie Smith

**\*\* MOORE, Howard (50) Co-Capt.** \_\_\_\_\_ **C, 6-1, 215**  
Senior \_\_\_\_\_ Dallas, Tex. (Bryan Adams), Bob Cowsar

**MUELLER, John (25)** \_\_\_\_\_ **WB, 5-10, 170**  
Junior \_\_\_\_\_ Leawood, Kan. (Shawnee Mis. E.), Arch Unruh

**ONOFRIO, John (41)** \_\_\_\_\_ **SAF, 5-10, 170**  
Sophomore \_\_\_\_\_ Columbia, Mo. (David Hickman), Robert Roark

**\*\* PARKER, Ernie (83) Co-Capt.** \_\_\_\_\_ **DE, 6-1, 215**  
Senior \_\_\_\_\_ Hackberry (Hackberry), John Debarg

**PISARICH, Sonny (84)** \_\_\_\_\_ **SE, 5-10, 185**  
Junior \_\_\_\_\_ Biloxi, Miss. (Notre Dame), Chas. Hegwood

**\*\* PIZZOLATTO, Nick (87)** \_\_\_\_\_ **WE, 6-0, 215**  
Senior \_\_\_\_\_ Jennings (Jennings), Ed Harrelson

**REDD, Dick (49)** \_\_\_\_\_ **SAF, 6-0, 175**  
Sophomore \_\_\_\_\_ Beaumont, Tex. (Beaumont), Darrell Shaver

**RICHARD, Dave (20)** \_\_\_\_\_ **WB, 5-10, 173**  
Sophomore \_\_\_\_\_ Lutchter (Lutchter), Ellis Roussel

**SANDERS, Ken (15)** \_\_\_\_\_ **QB, 6-0, 180**  
Sophomore \_\_\_\_\_ Baton Rouge (Lee), Winton Turner

**SCELFO, Sam (67)** \_\_\_\_\_ **MG, 5-11, 202**  
Sophomore \_\_\_\_\_ New Iberia (New Iberia), Faize Mahfouz

**SCHRAMM, Roger (86)** \_\_\_\_\_ **WE, 6-2, 182**  
Sophomore \_\_\_\_\_ Houston, Tex. (Lamar), Ken Pridgeon

**SHEPHERD, Jim (79)** \_\_\_\_\_ **DE, 6-5, 232**  
Sophomore \_\_\_\_\_ Lake Providence (L. Prov.), Pete Mangum

**SIBLEY, Lonnie (71)** \_\_\_\_\_ **WT, 6-2, 208**  
Sophomore \_\_\_\_\_ Shreveport (Fair Park), Roy Wilson

**SISK, Harold (31)** \_\_\_\_\_ **FB, 5-11, 200**  
Sophomore \_\_\_\_\_ Beaumont, Tex. (Forest Pk.), W. B. Drennan

**\* SMITH, Dean (76)** \_\_\_\_\_ **ST, 6-0, 210**  
Senior \_\_\_\_\_ Dickinson, Tex. (Dickinson), Bernard Callendar

**\*\* SNELL, John (73)** \_\_\_\_\_ **DT, 6-2, 206**  
Senior \_\_\_\_\_ Groves, Tex. (Port Neches), Kenneth Watson

**SPENCER, Butch (85)** \_\_\_\_\_ **SE, 6-2, 187**  
Sophomore \_\_\_\_\_ Farmerville (Farmerville), Chiles Carpenter

**STARK, Steve (24)** \_\_\_\_\_ **SAF, 6-0, 178**  
Sophomore \_\_\_\_\_ Franklin (Franklin), Dan Brumfield

**STONE, Larry (52)** \_\_\_\_\_ **WG, 6-3, 193**  
Junior \_\_\_\_\_ Springhill (Springhill), Travis Farrar

**TOLLE, Mike (65)** \_\_\_\_\_ **MG, 5-9, 209**  
Junior \_\_\_\_\_ Baton Rouge (Lee), Winton Turner

**\*\* TRAHAN, Jim (29)** \_\_\_\_\_ **WB, 5-11, 180**  
Senior \_\_\_\_\_ Houma (Terrebonne), Frank Spruiell

**WALKER, Mike (77)** \_\_\_\_\_ **DT, 6-2, 205**  
Sophomore \_\_\_\_\_ Sulphur (Sulphur), Shannon Suarez

**\*\* WALLACE, Jim (55)** \_\_\_\_\_ **LB, 6-1, 190**  
Senior \_\_\_\_\_ Bowling Green, Ky. (Bowl'g Gr'n), Jim Pickens

**WEBSTER, Mason (23)** \_\_\_\_\_ **WB, 5-11, 173**  
Senior \_\_\_\_\_ Metairie (De La Salle), Leemon McHenry

**\* WRIGHT, Tom (80)** \_\_\_\_\_ **WE, 6-3, 190**  
Senior \_\_\_\_\_ Sulphur, Springs, Tex. (S. Sp'g.), Johnny Dobson

**\* YARTER, Jimmy (40)** \_\_\_\_\_ **CB, 5-11, 175**  
Junior \_\_\_\_\_ Bellaire, Tex. (Bellaire), Mickey Sullivan

\*—Denotes varsity letters earned.

POSITIONS: C—center, CB—cornerback, DE—def. end, DT—def. tackle, FB—fullback, LB—linebacker, MG—middle guard, PK—place kicker, QB—quarterback, SAF—safety, SE—strong end, SG—strong guard, ST—strong tackle, TB—tailback, WB—wingback, WE—weak end, WG—weak guard, WT—weak tackle.

ADDITIONAL DATA ON JUNIOR COLLEGE PLAYERS. Name (Junior College, Location) Coach.  
HOWARD CULP (Northeast Oklahoma A & M, Miami, Okla.), Chuck Bowman. BART GRAVES (Northeast Oklahoma A & M, Miami, Okla.), Chuck Bowman. PHIL GRECO (Mississippi Delta, Moorehead, Miss.), Jim Randall. ED GROSS (Harford, Bel Air, Md.), Jack Call. BARNEY KING (East Mississippi, Scooba, Miss.), Bob Sullivan. SONNY PISARICH (Perkinston, Wiggins, Miss.), George Sekul.

## Tulane's Backfield:



Quarterback . .



Tailback . .



Fullback . .



Wingback . .

## Durham's Backfield:



Squareback . .



Beetleback . .



Bigback . .



Fastback . .



AUTHORIZED VOLKSWAGON SALES & SERVICE

"NEW ORLEANS LARGEST"

3101 Tulane Ave.

486-5981

Service: Monday - Friday — 7:00 A.M. - Midnite



**PROBABLE STARTING LINEUPS**

**TEXAS A & M**

**Offense —**

Pos.	No.	Name
WE	88	JIMMY ADAMS
WT	64	JIM PARKER
WG	59	GARY GRUBEN
C	56	JACK KOVAR
SG	58	CARL GOUGH
ST	75	TOM BUCKMAN
SE	15	BARNEY HARRIS
QB	10	EDD HARGETT
TB	25	LARRY STEGENT
WB	42	BOB LONG
FB	36	DAVE ELMENDORF

**Defense —**

Pos.	No.	Name
LE	40	JIM PIPER
LT	74	ROLF KRUEGER
MG	67	LYNN ODOM
RT	70	HARVEY ASCHENBECK
RE	89	MIKE DeNIRO
ROV.	23	IVAN JONES
LLB	55	BILL HOBBS
RLB	60	BUSTER ADAMI
LHB	11	CURLEY HALLMAN
RHB	33	ROSS BRUPBACHER
SAF.	81	TOMMY MAXWELL

**Texas A & M Numbers**

10	Edd Hargett, QB	53	Rusty Stallings, WG
11	Curley Hallman, DHB	54	Mike Stinson, C
12	Charlie Riggs, QB	55	Bill Hobbs, LB
14	Rocky Self, QB	56	Jack Kovar, C
15	Barney Harris, WB	57	Gary Kitchens, WT
16	Leroy Hauerland, DE	58	Carl Gough, SG
17	Robert Stansberry, QB	59	Gary Gruben, WG
18	Steve O'Neal, Punter	60	Buster Adami, LB
19	Jimmy Sheffield, QB	62	Tommy Deaton, WG
20	Kyle Gary, QB	63	Jim Segrest, SG
21	Johnny Weaver, TB	64	Jim Parker, WG
22	Tom Sooy, DHB	65	Allan Hanson, SE
23	Ivan Jones, ROVER	66	Ronald Reagan, SG
24	Javier Vela, FB	67	Lynn Odom, MG
25	Larry Stegent, TB	68	Steve Mullen, WG
26	Jerry Campbell, DE	70	Harvey Aschenbeck, DT
27	Wendell Housley, FB	71	Mark Thomas, ST
28	Arthur Coley, SAF	72	Mike Fields, ST
31	Bill Seely, WB	73	George Resley, MG
33	Ross Brupbacher, DHB	74	Rolf Krueger, DT
35	Phil McAnelly, FB	75	Tom Buckman, SE
36	Dave Elmendorf, DHB	76	Jim Kazmierski, ST
37	Lee Hitt, DHB	77	Mike Tighe, DT
39	John Turney, DHB	78	Andy Philley, DT
40	Jim Piper, DE	79	Dale Watts, DT
41	Marc Black, TB-FB	81	Tommy Maxwell, WE-Sf
42	Bob Long, WB	83	Mitch Robertson, WE
43	Randy Maddox, LB	84	Doug Valois, SE
45	Jack Whitmore, SE-DHB	85	Gaddy Wells, SE
46	Andy Tewell, LB	86	Sammy Williams, WE
48	Gary Armbruster, FB	88	Jimmy Adams, WE
50	Benny DeWitt, C	89	Mike DeNiro, DE
51	Mike Caswell, WT	93	James Reynolds, LB
52	Waymond Lightfoot, C	94	Roy Kirkpatrick, SE

**TULANE**

**Offense —**

Pos.	No.	Name
WE	87	NICK PIZZOLATTO
WT	75	LARRY MICKAL
WG	60	KYLE HUBER
C	50	HOWARD MOORE
SG	63	HOWARD CULP
ST	76	DEAN SMITH
SE	80	TOM WRIGHT
QB	10	WAYNE FRANCINGUES
TB	48	DUKE CHAPPUIS
WB	29	JIM TRAHAN
FB	31	HAROLD SISK

**Defense —**

Pos.	No.	Name
LE	81	SCOTT HABER
LT	73	JOHN SNELL
MG	67	SAM SCELFO
RT	77	MIKE WALKER
RE	89	JOE GENDRON
LLB	32	RICKY KINGREA
RLB	56	RAY HESTER
LCB	12	BRAD CALHOUN
RCB	45	ROGER GREEN
LS	28	PHIL GRECO
RS	49	DICK REDD

**Tulane Numbers**

10	Wayne Francingues, QB	56	Ray Hester, LB
12	Brad Calhoun, SAF	57	Tom Barrows, DT
15	Ken Sanders, QB	59	Dennis McAfee, C
19	Warren Bankston, FB	60	Kyle Huber, WG
20	Dave Richard, WB	61	Bryan Duck, LB
22	Mike Farnell, WB	62	Charles DeWitt, SG
23	Mason Webster, WB	63	Howard Culp, SG
25	John Mueller, WB	65	Mike Tolle, MG
27	Bart Bookatz, PK	66	Sid Jones, WG
28	Phil Greco, CB	67	Sam Scelfo, MG
29	Jim Trahan, WB	68	Duke Duffee, SG
31	Harold Sisk, FB	70	Bart Graves, DT
32	Ricky Kingrea, LB	71	Lonnie Sibley, WT
36	Steve Stark, SAF	72	Ed Gross, ST
37	Maurice Gartman, LB	73	John Snell, DT
38	Johnny Gill, CB	74	Charles Browning, DT
40	Jimmy Yarter, CB	75	Larry Mickal, WT
41	John Onofrio, SAF	76	Dean Smith, ST
42	Jack Laborde, TB	77	Mike Walker, DT
44	Chuck Loftin, FB	78	Steve Boyd, DE
45	Roger Green, CB	79	Jim Shepherd, DE
47	Barney King, TB	80	Tom Wright, WE
48	Duke Chappuis, TB	81	Scott Haber, DE
49	Dick Redd, SAF	83	Ernie Parker, DE
50	Howard Moore, C	84	Sonny Pisarich, SE
51	Rodney Bazer, LB	85	Butch Spencer, SE
52	Larry Stone, WG	86	Roger Schramm, WE
53	Calvin Fox, WT	87	Nick Pizzolatto, WE
54	John Haines, C	88	Mack Miller, DE
55	Jim Wallace, LB	89	Joe Gendron, DE

**Coke has the taste you never get tired of.**



# May the Stars always shine on our Greenies

But *weather* it does—or doesn't—you'll know it ahead of time if you watch Al Duckworth and the Weather daily on Channel 4.

Al Duckworth is a pro, a graduate meteorologist with a practiced weather eye focused on New Orleans and the entire Louisiana-Mississippi Gulf Coast. And his new Channel 4 Weather Center is the most professionally equipped facility to be found in any television station in America.

So don't just talk about the weather...do something about it. Watch Al Duckworth and the Weather, everyday, several times a day, on Channel 4.



**AL DUCKWORTH**  
and the  
**WEATHER!**



# 1968 TEXAS A & M UNIVERSITY ROSTER

Name (Number) Class	Position, Height, Weight Home Town (High School)	Name (Number) Class	Position, Height, Weight Home Town (High School)
ADAMI, Buster (60) Junior	LB, 6-0, 204 Freer, Tex.	* LONG, Bob (42) Senior	WB, 6-0, 181 Paris, Tex.
ADAMS, Jimmy (88) Junior	WE, 6-2, 186 Houston (Waltrip)	MADDOX, Randy (43) Sophomore	LB, 6-2, 208 Houston (Westbury)
ARMBRISTER, Gary (48) Sophomore	FB, 5-10, 197 Houston (Waltrip)	MAXWELL, Tommy (81) Senior	WE-SAF, 6-2, 192 Houston (Jones)
ASCHENBECK, Harvey (70) Senior	DT, 6-2, 205 Bellville, Tex.	MULLEN, Steve (68) Junior	WG, 6-2, 206 Brownsville, Tex.
BLACK, Marc (41) Sophomore	TB-FB, 6-2, 198 Arlington, Va. (NMMI)	McANELLY, Phil (35) Junior	FB, 6-1, 193 Hondo, Tex.
* BRUPBACHER, Ross (33) Junior	DHB, 6-3, 201 Lafayette, La.	ODOM, Lynn (67) Junior	MG, 5-10, 205 Corsicana, Tex.
BUCKMAN, Tom (80) Senior	SE, 6-4, 216 Fort Worth (Amon Carter)	* O'NEAL, Steve (18) Senior	PUNTER, 6-3, 182 Hearne, Tex.
** CAMPBELL, Jerry (26) Senior	DE, 5-9, 187 Center, Tex.	PARKER, Jim (64) Sophomore	WG, 6-1, 198 Gonzales, Tex.
CASWELL, Mike (51) Junior	WT, 6-3, 206 Houston (Smiley)	PHILLEY, Andy (78) Sophomore	DT, 6-4, 235 Temple, Tex.
COLE, Ronald (29) Sophomore	MG, 5-11, 193 Paris, Tex.	* PIPER, Jim (40) Junior	DE, 6-0, 192 Brownwood, Tex.
* COOLEY, Arthur (28) Junior	SAF, 5-9, 170 Victoria, Tex.	RESLEY, George (87) Senior	MG, 6-6, 253 Fort Stockton, Tex.
DEATON, Tommy (62) Sophomore	WG, 5-11, 185 Dallas (Bryan-Adams)	REYNOLDS, James (93) Junior	LB, 5-11, 176 LaMarque, Tex.
DeNIRO, Mike (89) Sophomore	DE, 6-0, 205 Youngstown, Ohio	* RIGGS, Charlie (12) Senior	QB, 5-8, 160 Galena Park, Tex.
DeWITT, Benny (50) Sophomore	C, 6-4, 228 Nacogdoches, Tex.	ROBERTSON, Mitch (83) Sophomore	WE, 6-2, 198 Abilene (Coper)
ELMENDORF, Dave (36) Sophomore	DHB, 6-1, 194 Houston (Westbury)	SEELY, Bill (31) Junior	WB, 5-7, 162 Brownwood, Tex.
FIELDS, Mike (72) Sophomore	ST, 6-3, 219 Texarkana (Liberty-Eylan), Tex.	SEGREST, Jim (63) Sophomore	SG, 6-1, 200 Lafayette, La.
GARY, Kyle (20) Sophomore	QB, 5-11, 158 Dallas (Bryan Adams)	SELF, Rocky (14) Sophomore	QB, 6-1, 170 San Antonio (MacArthur)
GOUGH, Carl (58) Junior	SG, 6-2, 199 College Station (A & M Consolidated)	SHEFFIELD, Jimmy (19) Sophomore	QB, 6-0, 170 Houston (Waltrip)
GRUBEN, Gary (59) Sophomore	WG, 5-10, 198 Tulia, Tex.	* SOOY, Tom (22) Junior	DHB, 5-11, 177 Baytown (Lee)
** HALLMAN, Curley (11) Senior	DHB, 6-1, 180 Northport, Ala.	STANSBERRY, Robert (17) Sophomore	QB, 6-1, 186 Eden, Tex.
HANSON, Allan (65) Sophomore	SE, 6-3, 218 Kemah, Tex.	STALLINGS, Rusty (53) Sophomore	WG, 6-1, 197 Midland (Lee)
** HARGETT, Edd (10) Senior	QB, 6-0, 190 Marietta (Linden-Kildare)	* STEGENT, Larry (25) Junior	TB, 6-1, 194 Houston (St. Thomas)
* HARRIS, Barney (15) Junior	WB, 6-2, 190 San Antonio (MacArthur)	STINSON, Mike (54) Sophomore	C, 6-2, 200 Fort Worth (Arlington Hgts.)
* HAUERLAND, Leroy (16) Senior	DE, 5-10, 171 Seely, Tex.	TEWELL, Andy (46) Sophomore	LB, 6-2, 193 Austin (McCallum)
HITT, Lee (37) Sophomore	DHB, 6-2, 166 Fort Worth (Arlington Hgts.)	THOMAS, Mark (71) Junior	ST, 6-2, 195 Weatherford, Tex.
HOBBS, Bill (55) Senior	LB, 6-1, 215 Amarillo (Tascosa)	TIGHE, Mike (77) Sophomore	DT, 6-2, 218 San Antonio (Lee)
** HOUSLEY, Wendell (27) Senior	FB, 6-2, 203 Richardson, Tex.	TURNEY, John (39) Junior	DHB, 5-10, 158 Dublin, Tex.
** JONES, Ivan (23) Senior	ROVER, 5-11, 185 Houston (Waltrip)	VALOIS, Doug (84) Junior	SE, 6-0, 205 Amarillo (Tascosa)
KAZMIERSKI, Jim (76) Senior	ST, 6-2, 210 Pasadena (South Houston)	* VELA, Javier (24) Junior	FB, 6-0, 188 Kerville (Tivy)
KIRKPATRICK, Roy (94) Sophomore	SE, 6-1, 197 Tyler (Lee)	WATTS, Dale (79) Sophomore	DT, 6-5, 202 Lawton, Okla. (Eisenhower)
KITCHENS, Gary (57) Junior	WT, 6-3, 214 Tyler (Tyler)	WEAVER, Johnny (21) Sophomore	TB, 6-0, 180 Gatesville, Tex.
KOVAR, Jack (56) Junior	C, 6-1, 194 Houston (Jones)	* WELLS, Gaddy (29) Junior	SE, 6-2, 178 Liberty, Tex.
KRUEGER, Rolf (74) Senior	DT, 6-4, 243 Bryan (S. F. Austin), Tex.	WHITMORE, Jack (45) Junior	SE-DHB, 6-0, 177 Houston (Westbury)
LIGHTFOOT, Waymond (52) Sophomore	C, 6-0, 201 San Antonio (MacArthur)	WILLIAMS, Sammy (86) Junior	WE, 5-11, 166 Houston (Wheatley)

\*—Denotes varsity letters earned.



# All-Time Tulane Football Records

Compiled by Steve Boda, Jr.

Editor's Note: Steve Boda, Jr., a statistical hobbyist in New York City, has spent the past summer researching Tulane's all-time football records. Tulane is indebted to him for his valuable contribution to her colorful football history. The records are based on official statistics filed with the National Collegiate Sports Services, the service bureau of the NCAA, beginning with the 1937 season, and pre-1937 performances have been verified through responsible research. Thanks are also due to Larry Klein and his staff at the NCSS for their co-operation in this project. Research for the pre-1937 period continues and additional marks will be included in future editions.

## Individual - Single Game Records

### RUSHING

- Most Rushing Attempts**  
43 Bill Banker vs. Mississippi, 1927
- Most Net Yards Gained**  
238 Eddie Price vs. Navy, 1949
- Highest Average Gain Per Rush (Min. 8 Rushes)**  
15.0 Jimmy Hodgins vs. Sewanee, 1931 (180 yards on 12 rushes)

### FORWARD PASSING

- Most Passes Attempted**  
37 Dave East vs. Florida, 1965
- Most Passes Completed**  
20 Ted Miller vs. Tennessee, 1962
- Most Passes Had Intercepted**  
5 Pete Clement vs. LSU, 1952
- Highest Percentage of Passes Completed (Min. 10 Attempts)**  
90.9% Richie Petitbon vs. Texas, 1958 (10 of 11)
- Most Passes Attempted Without Interception**  
28 Joe Ernst vs. Vanderbilt, 1950
- Most Yards Gained**  
292 Joe Ernst vs. Navy, 1950
- Most Touchdown Passes**  
5 Fred Dempsey vs. Louisiana College, 1952

### TOTAL OFFENSE

(Rushing and Passing Combined)

- Most Rushing and Passing Plays**  
46 Phil Nugent vs. Texas Tech, 1960
- Most Yards Gained Rushing and Passing**  
294 Joe Ernst vs. Navy, 1950
- Highest Average Gain Per Play (Min. 15 Plays)**  
12.1 Pete Johns vs. Cincinnati, 1966

### PASSING RECEIVING

- Most Passes Caught**  
10 Joe Shinn vs. Navy, 1950
- Most Yards Gained**  
152 Joe Shinn vs. Navy, 1950
- Highest Average Gain Per Reception (Min. 5 Caught)**  
20.8 W. C. McElhannon vs. Holy Cross, 1951 (5 for 104 yards)
- Most Touchdown Passes Caught**  
3 Ed Heider vs. LSU, 1945  
3 Marty Comer, vs. Vanderbilt, 1942
- Most Consecutive Passes Caught for Touchdowns**  
4 Marty Comer vs. North Carolina (1) and Vanderbilt (3), 1942

### PASS INTERCEPTIONS

- Most Passes Intercepted**  
4 Jimmy Glisson vs. Virginia, 1949
- Most Yards Gained**  
91 Fred Wilcox vs. Mississippi, 1954
- Most Touchdowns Scored**  
2 Ernest Crouch vs. SMU, 1945

### PUNTING

- Most Punts**  
20 Bucky Bryan vs. Georgia Tech, 1933
- Most Yards**  
654 Bucky Bryan vs. Georgia Tech, 1933
- Highest Average Per Punt (Min. 5 Punts)**  
48.0 Charles Flournoy vs. Miss. State, 1925 (9 punts for 432 yards)

### PUNT RETURNS

- Most Punt Returns**  
8 Floyd Roberts vs. LSU, 1933
- Most Yards Gained**  
130 Lester Lautenschlaeger vs. Louisiana College, 1925
- Highest Average Per Punt Return (Min. 3 Returns)**  
39.7 Max McGee vs. Santa Clara, 1952 (119 yards on 3 returns)

- Most Touchdowns Scored**  
2 Lester Lautenschlaeger vs. Louisiana College, 1925

### KICKOFF RETURNS

- Most Kickoff Returns**  
6 Carl Crowder vs. LSU, 1965
- Most Yards Gained**  
127 Tommy Mason vs. Texas Tech, 1960
- Highest Average Per Kickoff Return (Min. 3 Returns)**  
31.0 Terry Terrebone vs. Mississippi, 1959 (124 yards on 4 returns)
- Most Touchdowns Scored**  
(No player with more than 1)

### TOTAL KICK RETURNS

(Punt and Kickoff Returns Combined)

- Most Kick Returns**  
9 Don Zimmerman vs. Georgia Tech, 1932 (6 punts and 3 kickoffs)
- Most Yards Gained**  
176 Floyd Roberts vs. LSU, 1933 (100 on punt returns, 76 on kickoff returns)

### ALL-PURPOSE RUNNING

(Includes all plays and gains from Rushing, Pass Receiving, Interception Returns, Punt Returns and Kickoff Returns)

- Most Plays**  
36 Don Zimmerman vs. Georgia Tech, 1932 (27 rushes, 6 punt returns, 3 kickoff returns)
- Most Yards Gained**  
289 Eddie Price vs. Navy, 1949 (238 rushing, 3 pass receiving, 48 punt returns)

### TOTAL PERFORMANCE

(Includes all gains from Rushing, Passing, Pass Receiving, Interception Returns, Punt Returns and Kickoff Returns; Plays include Punts and Points After Attempts)

- Most Total Plays**  
52 Don Zimmerman vs. Georgia Tech, 1932 (27 rushes, 7 passes, 9 punts, 6 punt returns, 3 kickoff returns)
- Most Total Yards Gained**  
338 Don Zimmerman vs. Georgia Tech, 1932 (109 rushing, 74 passing, 98 punt returns, 57 kickoff returns)

### SCORING

- Most Touchdowns Scored**  
4 Lou Thomas vs. North Carolina, 1941  
4 Billy Payne vs. Mississippi College, 1937  
4 Bill Banker vs. La. Normal, 1928, Miss. State, 1928 and Auburn, 1929  
4 Charles Flournoy vs. Louisiana Tech, 1925  
4 Lester Lautenschlaeger vs. Louisiana College, 1925
- Most PATs Attempted by Kicking**  
9 Tommy Comeaux vs. Louisiana College, 1950  
9 Carl Woodward vs. Centenary, 1914
- Most PATs Scored by Kicking**  
8 Tommy Comeaux vs. Louisiana College, 1950
- Most 2-Point Attempts**  
2 Richie Petitbon vs. Texas, 1958
- Most Field Goals Attempted**  
3 Uwe Pontius vs. Virginia, 1966  
3 Uwe Pontius vs. Georgia Tech, 1965
- Most Field Goals Scored**  
(No player with more than 2)
- Most Total Points Scored**  
31 Charles Flournoy vs. Louisiana Tech, 1925 (4 TDs, 4 PATs, 1 FG)

FROM SANDLOT  
TO THE PROS

NEW ORLEANS' ONLY  
COMPLETE

## TEAM SUPPLIERS

FABULOUS SELECTION  
OF EQUIPMENT FOR

Football — Baseball  
Basketball — Track  
Soccer and Other  
Team Sports

EVERYTHING FOR EVERY  
SPORT and RECREATION

EVERYTHING FOR

Golf . . . Tennis . . . Archery  
Bowling . . . Hunting . . .  
Fishing . . . Camping  
COMPLETE SELECTION OF  
TOYS . . .



3604 SO. CARROLLTON AVE.  
at PALM ST.

PHONE  
488-2686

LOUISIANA'S LARGEST  
YOUR  
SPECIALISTS  
IN SPORTS

**Security**  
SPORTING GOODS

You'll know the difference  
between a Cadillac and other  
fine cars, the first time you  
take the wheel of a new  
Cadillac

●  
LET US DEMONSTRATE  
FOR YOU!

●  
**PONTCHARTRAIN**  
MOTOR CO., INC.  
Baronne at Girod

## RUSHING

## Individual — Season Records

### Most Rushing Attempts

188 Eddie Price, 1948  
183 Bill Banker, 1928  
171 Eddie Price, 1949

### Most Net Yards Gained

1178 Eddie Price, 1948  
1137 Eddie Price, 1949  
981 Bill Banker, 1928

### Highest Average Gain Per Rush (Min. 75 Rushes)

6.8 Harold Waggoner, 1950 (663 yards on 98 rushes)  
6.6 Eddie Price, 1949 (1137 yards on 171 rushes)

### Most Touchdowns Scored by Rushing

16 Charles Flournoy, 1925  
15 Bill Banker, 1928

## FORWARD PASSING

### Most Passes Attempted

192 Dave East, 1964  
151 Bobby Duhon, 1965

### Most Passes Completed

85 Dave East, 1964  
69 Joe Ernst, 1950

### Most Passes Had Intercepted

15 Pete Clement, 1952  
14 Ernest Crouch, 1945

### Highest Percentage of Passes Completed (Min. 75 Attempts)

55.7% Joe Ernst, 1949 (49 of 88)  
53.9% Joe Ernst, 1950 (69 of 128)

### Lowest Percentage of Passes Had Intercepted (Min. 75 Attempts)

4.8% Jack Domingue, 1961 (5 of 104)  
4.9% Ted Miller, 1962 (5 of 103)  
4.9% Joe Ernst, 1948 (6 of 123)

### Most Yards Gained

990 Joe Ernst, 1950  
844 Dave East, 1964

### Most Yards Gained Per Pass Attempt (Min. 75 Attempts)

7.7 Joe Ernst, 1950 (990 yards on 128 attempts)  
6.6 Joe Ernst, 1948 (809 yards on 123 attempts)

### Most Yards Gained Per Pass Completion (Min. 45 Completions)

14.3 Joe Ernst, 1950 (990 yards on 69 completions)  
14.2 Joe Ernst, 1948 (809 yards on 57 completions)

### Most Touchdown Passes

8 Joe Ernst, 1950  
6 By 6 players

## TOTAL OFFENSE

(Rushing and Passing Combined)

### Most Rushing and Passing Plays

277 Bobby Duhon, 1966 (151 rushes, 126 passes)  
275 Dave East, 1964 (83 rushes, 192 passes)

### Most Yards Gained Rushing and Passing

1459 Don Zimmerman, 1931 (899 rushing, 560 passing)  
1325 Bobby Duhon, 1966 (748 rushing, 577 passing)

### Highest Average Gain Per Play (Min. 125 Plays)

6.8 Lou Thomas, 1941 (861 yards on 126 plays)  
6.6 Eddie Price, 1949 (1137 yards on 171 plays)

### Most Points Responsible For (Points Scored and Points Passed For)

129 Bill Banker, 1929 (scored 99, passed for 30)  
128 Charles Flournoy, 1925 (scored 128)  
124 Bill Banker, 1928 (scored 124)

## PASS RECEIVING

### Most Passes Caught

39 Clem Dellenger, 1962  
36 Jerry Colquette, 1965

### Most Yards Gained

484 W. C. McElhannon, 1951  
466 Jerry Colquette, 1965

### Highest Average Gain Per Reception (Min. 15 Caught)

18.6 Dick Sheffield, 1948 (316 yards on 17 receptions)  
16.2 Walt McDonald, 1942 (437 yards on 27 receptions)

### Most Touchdown Passes Caught

6 Marty Comer, 1942  
5 Tommy Mason, 1960

## PASS INTERCEPTIONS

### Most Passes Intercepted

9 Jimmy Glisson, 1949  
8 Lester Kennedy, 1951

### Most Yards Gained

141 Jimmy Glisson, 1949  
135 Bobby Jones, 1950

### Highest Average Gain Per Interception (Min. 3 Interceptions)

39.3 Charlie Daigle, 1951 (118 yards on 3 interceptions)  
33.8 Bobby Jones, 1950 (135 yards on 4 interceptions)

### Most Touchdowns Scored

2 Ernest Crouch, 1945

## PUNTING

### Most Punts

71 Dave East, 1963  
69 Dave East, 1965

### Most Yards

2719 Dave East, 1965  
2556 Dave East, 1963

### Highest Average Per Punt (Min. 25 Punts)

44.5 Stan Nyhan, 1939 (38 punts for 1692 yards)  
40.3 John Caruso, 1954 (33 punts for 1329 yards)

## Individual — Season Records, Cont'd

### PUNT RETURNS

#### Most Punt Returns

27 Don Zimmerman, 1931  
26 Don Zimmerman, 1930

#### Most Yards Gained

359 Don Zimmerman, 1932  
302 Don Zimmerman, 1931

#### Highest Average Per Punt Return (Min. 10 Returns)

14.6 Bubber Ely, 1940 (160 yards on 11 returns)  
14.1 Dub Jones, 1944 (226 yards on 16 returns)

#### Most Touchdowns Scored

2 Lester Lautenschlaeger, 1925

### KICKOFF RETURNS

#### Most Kickoff Returns

21 Jim Trahan, 1966  
21 Jerry Graves, 1962

#### Most Yards Gained

513 Jerry Graves, 1962  
424 Jim Trahan, 1966

#### Highest Average Per Kickoff Return (Min. 5 Returns)

38.2 Bobby Kellogg, 1939 (229 yards on 6 returns)  
27.6 Richie Petitbon, 1958 (276 yards on 10 returns)

#### Most Touchdowns Scored

(No player with more than 1)

### TOTAL KICK RETURNS

(Punt and Kickoff Returns Combined)

#### Most Kick Returns

32 Don Zimmerman, 1932 (26 punts, 6 kickoffs)  
30 Jerry Graves, 1962 (9 punts, 21 kickoffs)

#### Most Yards Gained

572 Jerry Graves, 1962 (59 punt returns, 513 kickoff returns)  
518 Don Zimmerman, 1932 (359 punt returns, 159 kickoff returns)

#### Highest Average Per Kick Return (Min. 15 Returns)

20.7 Max McGee, 1952 (352 yards on 17 returns)  
20.2 Jim Trahan, 1966 (424 yards on 21 returns)

### ALL-PURPOSE RUNNING

(Includes all plays and gains from Rushing, Pass Receiving, Interception Returns, Punt Returns and Kickoff Returns)

#### Most Plays

208 Bill Banker, 1928 (183 rushes, 4 receptions, 2 interceptions, 13 punt returns, 6 kickoff returns)  
197 Eddie Price, 1948 (188 rushes, 2 receptions, 7 kickoff returns)

#### Most Yards Gained

1475 Tommy Mason, 1960 (673 rushing, 376 receiving, 13 interception returns, 99 punt returns, 314 kickoff returns)  
1395 Bill Banker, 1928 (981 rushing, 123 receiving, 62 interception returns, 112 punt returns, 117 kickoff returns)

### TOTAL PERFORMANCE

(Includes all gains from Rushing, Passing, Pass Receiving, Interception Returns, Punt Returns and Kickoff Returns; Plays include Punts and Point-After Attempts)

#### Most Total Plays

338 Dave East, 1964 (83 rushes, 192 passes, 61 punts, 2 point-after attempts)  
300 Bill Banker, 1928 (183 rushes, 8 passes, 4 receptions, 2 interception returns, 63 punts, 13 punt returns, 6 kickoff returns, 21 PATs)

#### Most Total Yards Gained

1885 Don Zimmerman, 1931 (899 rushing, 560 passing, 24 receiving, 100 interception returns, 302 punt returns)  
1475 Tommy Mason, 1960 (673 rushing, 376 receiving, 13 interception returns, 99 punt returns, 314 kickoff returns)

### SCORING

#### Most Touchdowns Scored

19 Charles Flournoy, 1925  
18 Bill Banker, 1928

#### Most Points—After Attempted by Kicking

37 Tommy Comeaux, 1950  
37 Euel Davis, 1949

#### Most Points—After Scored by Kicking

32 Tommy Comeaux, 1950  
29 Euel Davis, 1949

#### Highest Percentage Made (Min. 15 Made)

94.7% Uwe Pontius, 1966 (18 of 19)  
86.5% Tommy Comeaux, 1950 (32 of 37)

#### Most 2-Point Attempts

5 Ted Miller, 1962

#### Most 2-Point Attempts Scored

2 Ted Miller, 1962

#### Most Field Goals Attempted

11 Uwe Pontius, 1967 and 1966

#### Most Field Goals Scored

7 Uwe Pontius, 1967 and 1966

#### Most Points Scored by Kicking

39 Uwe Pontius, 1966 (7 FGs, 18 PATs)

#### Most Total Points Scored

128 Charles Flournoy, 1925 (19 TDs, 11 PATs, 1 FG)  
124 Bill Banker, 1928 (18 TDs, 6 PATs)  
99 Bill Banker, 1929 (13 TDs, 21 PATs)

## Team Records

### Single Game — Offense

#### RUSHING

Most Rushes—89 vs. Auburn, 1929  
Most Net Yards Gained—638 vs. Mississippi College, 1937  
Highest Average Per Rush—9.5 vs. Mississippi College, 1937 (638 yard on 67 rushes)  
Most Touchdowns Scored by Rushing—15 vs. SW Louisiana, 1912

#### FORWARD PASSING

Most Passes Attempted—42 vs. Florida, 1965  
Most Passes Completed—24 vs. Tennessee, 1962  
Most Passes Had Intercepted—5 vs. Auburn, 1954; LSU, 1953; LSU, 1952; LSU, 1949; SMU, 1943  
Highest Percentage Completed (Min. 10 Attempts)—85.7% vs. Louisiana College, 1952 (completed 12 of 14 attempts)  
Most Passes Attempted Without Interception—38 vs. LSU, 1967  
Most Yards Gained—298 vs. Navy, 1950  
Most Touchdown Passes—5 vs. Louisiana College, 1952; Louisiana College, 1950

#### TOTAL OFFENSE

(Rushing and Passing Combined)

Most Rushing and Passing Plays—101 vs. Auburn, 1929 (89 rushes, 12 passes)  
Most Yards Gained Rushing and Passing—722 vs. Mississippi College, 1937 (638 rushing, 84 passing)

#### TOTAL YARDAGE

(Includes all yardage from Rushing, Passing and all Returns)

Most Total Yards Gained—964 vs. Mississippi College, 1937 (638 rushing, 84 passing, 38 punt returns, 204 kickoff returns)

#### INTERCEPTIONS

Most Passes Intercepted—6 vs. SMU, 1945; Mississippi State, 1931  
Most Yards Returned—113 vs. SMU, 1945  
Most Touchdowns Scored—2 vs. SMU, 1945

#### PUNTING

Most Punts—21 vs. Georgia Tech, 1933  
Most Yards—709 vs. Georgia Tech, 1933  
Highest Punting Average (Min. 5 Punts)—46.0 vs. SMU, 1945 (14 punts for 644 yards)

#### PUNT RETURNS

Most Punt Returns—11 vs. Rice, 1943  
Most Yards Returned—145 vs. Maryland, 1933  
Highest Average Per Return (Min. 5 Returns)—27.2 vs. Auburn, 1952 (136 yards on 4 returns)  
Most Touchdowns Scored—3 vs. Louisiana College, 1925

#### KICKOFF RETURNS

Most Kickoff Returns—10 vs. LSU, 1961  
Most Yards Returned—219 vs. Mississippi, 1959  
Highest Average Per Return (Min. 3 Returns)—40.8 vs. Mississippi College, 1937 (204 yards on 5 returns)  
Most Touchdowns Scored—2 vs. North Carolina, 1941

#### SCORING

Most Touchdowns—15 vs. SW Louisiana, 1912  
Most PATs Made by Kicking—10 vs. Centenary, 1914  
Most 2-Point Attempts—3 vs. Texas, 1958  
Most Points Scored—95 vs. SW Louisiana, 1912  
Most Points Scored One Quarter—37 vs. SW Louisiana, 1920 (4th Quarter)

#### FIRST DOWNS

Most First Downs by Rushing—32 vs. Louisiana Normal, 1928  
Most First Downs by Passing—13 vs. Vanderbilt, 1967; Tennessee, 1962; Virginia, 1950  
Most First Downs by Penalty—4 vs. Mississippi, 1964  
Most Total First Downs—35 vs. Louisiana Normal, 1928

#### PENALTIES

Most Penalties Against—17 vs. Mississippi State, 1962; Texas Tech, 1958  
Most Yards Penalized—175 vs. Mississippi State, 1962

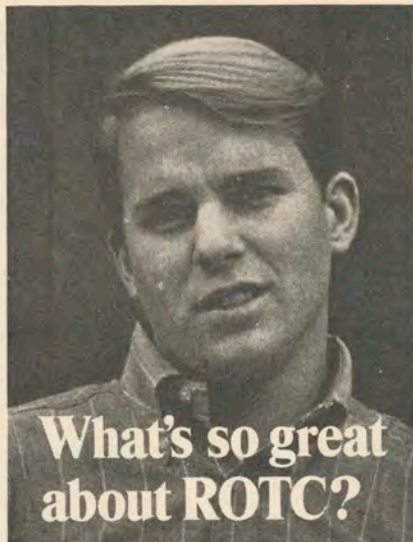
#### FUMBLES

Most Fumbles—11 vs. Georgia Tech, 1945  
Most Fumbles Lost—8 vs. Florida, 1945

## All-Time Career Leaders

### RUSHING

Player, Years Played	Rushes	Yards	Avg.
Eddie Price, 1946-49	514	3095	6.0
Bill Banker, 1927-29	515	2516	4.9
Don Zimmerman, 1930-32	428	2369	5.5
Ronny Quillman, 1954-56	340	1402	4.1
Max McGee, 1951-53	314	1395	4.4



Check 'em.

**Great opportunity.** You earn a commission while you earn your college degree. Graduate—you start at the top. Fulfill your military obligation as an Army officer. With officer's pay. Officer's privileges.

**Great advantages.** Employers prefer a college graduate with service as an officer. Pay more to get him. Because he's a trained, experienced leader. Can handle heavier responsibilities.

**Great success.** From the 5% of college men who had ROTC training have come 24% of our state governors, 28% of executives earning \$100,000 to \$325,000 per year, 10% of Congress, 15% of our ambassadors.

**Great guys.** ROTC men are campus leaders—in ROTC, athletics, extracurricular activities. And they do better scholastically than non-ROTC students.

**Great extras.** \$50 per month in junior and senior years. Scholarships for outstanding students. Free flight training at over 125 colleges. Extra social activities—military balls, honor societies, bands, rifle teams.

Any way you look at it, there's a lot more going for you when you're in ROTC.

Your future, your decision . . .  
choose **Army ROTC.**

Army ROTC CP 69  
 P.O. Box 12703  
 Philadelphia, Pa. 19134

I want to know more about Army ROTC.  
 Send me your free brochure.

Name \_\_\_\_\_ Age \_\_\_\_\_

Address \_\_\_\_\_

City \_\_\_\_\_

State \_\_\_\_\_ Zip \_\_\_\_\_

## All-Time Career Leaders, Cont'd

### FORWARD PASSING (Ranked on Completions)

Player, Years Played	Att.	Comp.	Int.	Pct.	Yards	TDP
Bobby Duhon, 1965-67	421	187	35	44.4	2137	13
Joe Ernst, 1948-50	339	175	23	51.6	2374	18
Pete Clement, 1951-53	313	142	38	45.4	1625	11
Dave East, 1963-65	306	131	22	43.0	1297	4
Phil Nugent, 1958-60	286	123	26	43.0	1479	10

### TOTAL OFFENSE (Rushing and Passing)

Player, Years Played	Plays	Yards Gained			Avg.
		Rush	Pass	Total	
Bobby Duhon, 1965-67	813	1262	2137	3399	4.2
Don Zimmerman, 1930-32	569	2369	924	3293	5.8
Eddie Price, 1946-49	514	3095	0	3095	6.0
Bill Banker, 1927-29	549	2516	235	2751	5.0
Lou Thomas, 1940-42	384	1212	988	2200	5.7

### PASS RECEIVING

Player, Years Played	No.	Yards	Avg.	TD
W. C. McElhannon, 1950-52	68	954	14.0	5
Lanis O'Steen, 1964-66	65	750	11.5	5
Clem Dellenger, 1961-63	56	593	10.6	3
Eddie Bravo, 1951-54	55	618	11.2	2
Jerry Colquette, 1964-66	48	592	12.3	2

### INTERCEPTIONS

Player, Years Played	No.	Yards
Don Zimmerman, 1930-32	12	145
Ellsworth Kingery, 1949-51	12	60
Bobby Jones, 1947-50	10	268
Lou Thomas, 1940-42	10	151
Homer Dedeaux, 1947-50	10	118

### PUNTING (Minimum of 60 Punts)

Player, Years Played	No.	Yards	Avg.
Stan Nyhan, 1937-39	121	4905	40.5
Lloyd Pye, 1966-67	82	3204	39.1
Euel Davis, 1948-49	63	2448	38.9
Dave East, 1963-65	201	7660	38.1
Joe Renfro, 1942-44	76	2848	37.5

### PUNT RETURNS

Player, Years Played	No.	Yards	Avg.
Don Zimmerman, 1930-32	72	951	13.2
Lou Thomas, 1940-42	45	443	9.8
Bill Banker, 1927-29	48	411	8.6
George Kinek, 1947-50	31	394	12.7
Dub Jones, 1943-44	31	329	10.6

### KICKOFF RETURNS

Player, Years Played	No.	Yards	Avg.
Jerry Graves, 1962-64	40	994	24.9
Jim Trahan, 1966-67 (still active)	38	787	20.7
Max McGee, 1951-53	36	766	21.3
Tommy Mason, 1958-60	28	601	21.5
Eddie Price, 1946-49	27	537	19.9

### TOTAL KICK RETURNS

(Punt and Kickoff Returns Combined)

Player, Years Played	No.	Yards	Avg.
Jerry Graves, 1962-64	73	1216	16.7
Don Zimmerman, 1930-32	81	1195	14.8
Max McGee, 1951-53	48	925	19.8
Jim Trahan, 1966-67 (still active)	42	846	20.1
Tommy Mason, 1958-60	52	829	15.9

### ALL-PURPOSE RUNNING

(Includes all plays and gains from Rushing, Pass Receiving, Interception Returns, Punt Returns and Kickoff Returns)

Player, Years Played	Plays	Yards
Don Zimmerman, 1930-32	525	3733
Eddie Price, 1946-49	551	3686
Bill Banker, 1927-29	597	3639
Max McGee, 1951-53	397	2754
Tommy Mason, 1958-60	324	2403

### TOTAL PERFORMANCE

(Includes all gains from Rushing, Passing, Pass Receiving, Interception Returns, Punt Returns and Kickoff Returns; Plays include Punts and Punts and Point-After Attempts)

Player, Years Played	Plays	Yards
Don Zimmerman, 1930-32	764	4657
Bill Banker, 1927-29	783	3864
Eddie Price, 1946-49	560	3826
Bobby Duhon, 1965-67	817	3436
Lou Thomas, 1940-42	478	3080

### SCORING

Player, Years Played	TD	XPts.	FG	Pts.
Bill Banker, 1927-29	37	37	0	259
Eddie Price, 1946-49	31	0	0	186
Don Zimmerman, 1930-32	26	21	0	177
Charles Flournoy, 1923-25	25	15	1	168
Nollie Felts, 1930-32	20	3	0	123

**Team Records**  
**Season — Offense**

**RUSHING**

Most Rushes—649 (1940)  
Most Net Yards Gained—2999 (1931)  
Highest Average Per Rush—5.4 (1944—2074 yards on 385 rushes)  
Highest Average Yards Per Game—296.3 (1944—2074 yards in 7 games)  
Most Touchdowns Scored by Rushing—39 (1931)

**FORWARD PASSING**

Most Passes Attempted—255 (1965)  
Most Passes Completed—106 (1962)  
Most Passes Had Intercepted—26 (1958)  
Highest Percentage Completed—52.6% (1949—72 of 137)  
Lowest Percentage Had Intercepted—4.7% (1948—7 of 149)  
Most Yards Gained—1400 (1950)  
Most Touchdown Passes—14 (1950)  
Highest Average Gain Per Attempt—6.9 (1950—1400 yards on 203 attempts)  
Highest Average Gain Per Completion—19.8 (1938—357 yards on 18 completions)  
Highest Average Yards Per Game—155.6 (1950—1400 yards in 9 games)

**TOTAL OFFENSE**

Most Rushing and Passing Plays—768 (1931)  
Most Yards Gained Rushing and Passing—3908 (1931)  
Highest Average Per Play—5.4 (1950—3277 yards on 605 plays)  
Highest Average Yards Per Game—364.1 (1950—3277 yards in 9 games)  
Most Touchdowns Scored by Rushing and Passing—47 (1931)

**PASS INTERCEPTIONS**

Most Passes Intercepted—27 (1949)  
Most Yards Gained—381 (1931)  
Highest Average Per Return—22.9 (1960—252 yards on 11 interceptions)  
Most Touchdowns Scored—3 (1955 and 1946)

**PUNTING**

Most Punts—100 (1931)  
Fewest Punts—44 (1967)  
Highest Punting Average—41.3 (1939—79 punts for 3262 yards)  
Most Punts Had Blocked—3 (1946 and 1940)

**PUNT RETURNS**

Most Punt Returns—44 (1931)  
Most Yards Gained—505 (1939)  
Highest Average Per Return—14.7 (1944—293 on 20 returns)  
Most Touchdowns Scored—2 (1958 and 1925)

**KICKOFF RETURNS**

Most Kickoff Returns—51 (1962)  
Most Yards Gained—1045 (1962)  
Highest Average Per Return—32.1 (1941—610 yards on 19 returns)  
Most Touchdowns Scored—2 (1941)

**SCORING**

Most Touchdowns—51 (1931)  
Most Points-After Attempted by Kicking—51 (1931)  
Most Points-After Made by Kicking—32 (1950 and 1931)  
Highest Percentage Made by Kicking—94.7 (1966—18 of 19)  
Most 2-Point Attempts—7 (1958)  
Most 2-Point Attempts Made—3 (1962 and 1958)  
Most Field Goals Attempted—11 (1967 and 1966)  
Most Field Goals Scored—7 (1967 and 1966)  
Most Safeties—3 (1950)  
Most Points Scored—338 (1931)

**FIRST DOWNS**

Most First Downs by Rushing—176 (1931)  
Most First Downs by Passing—68 (1950)  
Most First Downs by Penalty—17 (1960)  
Most Total First Downs—211 (1931)

**PENALTIES**

Most Penalties Against—65 (1941)  
Most Yards Penalized—600 (1931)  
Most Yards Penalized Per Game—60.8 (1941—547 yards in 9 games)

**FUMBLES**

Most Fumbles—46 (1954)  
Fewest Fumbles—16 (1946 and 1943)  
Most Fumbles Lost—27 (1954)  
Fewest Fumbles Lost—6 (1946)

**Team Records**  
**Single Game — Defense**

**RUSHING**

Fewest Rushes Allowed—15 by Louisiana Normal, 1929  
Fewest Net Yards Allowed—Minus 54 by North Carolina, 1941  
Lowest Average Per Rush—Minus 1.9 by North Carolina, 1941 (Minus 54 yards on 28 rushes)

**PASS DEFENSE**

Fewest Pass Attempts Allowed—3 by Alabama, 1959  
Fewest Pass Completions Allowed—0 Many times. Last: by Vanderbilt, 1961  
Lowest Percentage Completed (Min. 10 Attempts)—05.0% by Miss. State, 1948 (1 of 20)  
Fewest Yards Allowed—Minus 2 by Auburn, 1947 (completed 1 of 6)

**TOTAL DEFENSE**

Fewest Rushing and Passing Plays Allowed—30 by Louisiana Normal, 1929  
Fewest Rushing and Passing Yards Allowed—7 by Mississippi College, 1937  
Lowest Average Per Play—.016 by Mississippi College, 1937 (7 yards on 43 plays)

**PUNTING**

Most Times Opponent Forced to Punt—17 by Kentucky, 1932  
Lowest Average Per Punt (Min. 5 Punts)—21.8 by Miss. State, 1931 (239 yards on 11 punts)

**FIRST DOWNS**

Fewest Total First Downs Allowed—1 by Auburn, 1941 and Kentucky, 1932

**Team Records**  
**Season — Defense**

**RUSHING**

Fewest Rushes Allowed—243 (1943—6 games)  
Fewest Rushes Allowed Per Game—31.9 (1939—287 rushes in 9 games)  
Lowest Average Per Rush—1.7 (1931—603 yards on 372 rushes)  
Lowest Average Yards Per Game—54.8 (1931—603 yards in 11 games)  
Fewest Touchdowns Allowed by Rushing (Min. 6-game schedule)—1 (1930)

**PASS DEFENSE**

Fewest Pass Attempts Allowed—94 (1957)  
Fewest Pass Completions Allowed—33 (1957)  
Most Passes Opponents Had Intercepted—27 (1949)  
Lowest Percentage Completed—31.9% (1931—37 of 116)  
Fewest Yards Allowed—413 (1957)  
Fewest Touchdowns Allowed by Passing (Min. 6-game schedule)—1 (1930)  
Lowest Average Yards Per Game—38.5 (1931—423 yards in 11 games)

**TOTAL DEFENSE**

Fewest Rushing and Passing Plays Allowed—368 (1943—6 games)  
Fewest Rushing and Passing Plays Allowed Per Game—44.4 (1931—488 in 11 games)  
Lowest Average Per Play—2.1 (1931—1026 yards on 488 plays)  
Lowest Average Yards Per Game—93.3 (1931—1026 yards in 11 games)  
Fewest Touchdowns Allowed Rushing and Passing (Min. 6-game schedule)—2 (1930)

**PASS INTERCEPTIONS**

Fewest Passes Opponents Intercepted—4 (1939)  
Fewest Yards Gained—2 (1939)  
Lowest Average Per Return—0.5 (1939—2 yards on 4 returns)

**SCORING**

(Records based on a minimum 6-game schedule)

Fewest Touchdowns Allowed—3 (1901)  
Fewest Points-After Made—2 (1908 and 1901)  
\*Fewest Points Allowed—19 (1901)  
(\*—Fewer points allowed in less than 6-game schedules: 0 (1900—5 games); 5 (1905—1 game); 16 (1916—4 games); 18 (1896—4 games)

**FIRST DOWNS**

Fewest First Downs Allowed by Rushing—35 (1931)  
Fewest First Downs Allowed by Passing—17 (1931)  
Fewest Total First Downs Allowed—55 (1931)

# Wave Words

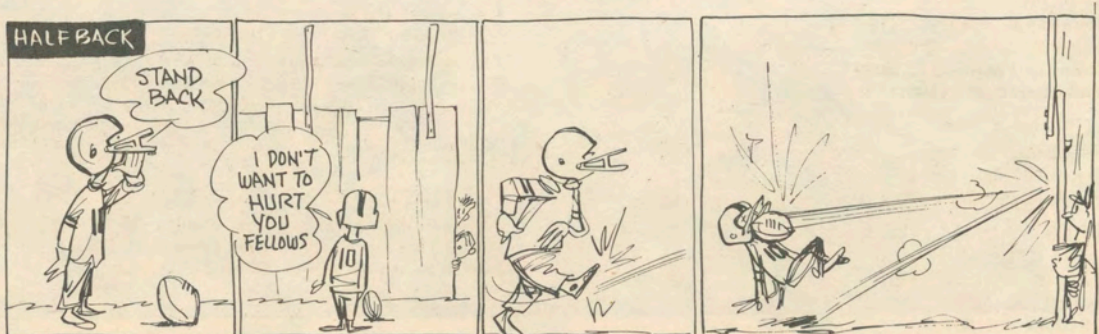
Unscramble the last names of these Tulane football players to reveal the message for this week.

Hint: The Players are All Sophomores.

- |                   |     |     |     |     |     |     |
|-------------------|-----|-----|-----|-----|-----|-----|
| 1. Mike KRWAEL    | ___ | ○   | ___ | ___ | ___ | ___ |
| 2. Sam FOLECS     | ___ | ___ | ___ | ○   | ___ | ___ |
| 3. David HDRACH   | ___ | ○   | ___ | ___ | ___ | ___ |
| 4. Charles TWIDET | ___ | ○   | ___ | ___ | ___ | ___ |
| 5. Ken DEANSRR    | ___ | ___ | ○   | ___ | ___ | ___ |
| 6. Duke SPPHCUAI  | ___ | ___ | ○   | ___ | ___ | ___ |
| 7. Steve RSKAT    | ___ | ○   | ___ | ___ | ___ | ___ |
| 8. Rick GAKRNIE   | ___ | ___ | ___ | ___ | ○   | ___ |
| 9. Bart KOBZOTA   | ___ | ___ | ___ | ___ | ○   | ___ |
| 10. Roger MARCHMS | ___ | ___ | ○   | ___ | ___ | ___ |
| 11. Mike ELRAFLN  | ___ | ___ | ___ | ___ | ○   | ___ |
| 12. Rodney ARZEB  | ___ | ○   | ___ | ___ | ___ | ___ |
| 13. Bart VEGARS   | ○   | ___ | ___ | ___ | ___ | ___ |
| 14. Johnny LIGL   | ○   | ___ | ___ | ___ | ___ | ___ |
| 15. Harold KISS   | ___ | ○   | ___ | ___ | ___ | ___ |
| 16. Jack BALEDRO  | ___ | ___ | ___ | ___ | ___ | ○   |
| 17. Ray TSRHEE    | ___ | ___ | ○   | ___ | ___ | ___ |

Print Answer Here: \_\_\_\_\_

(Answer on Page 56)





**GENE STALLINGS**  
Head Football Coach  
Athletic Director

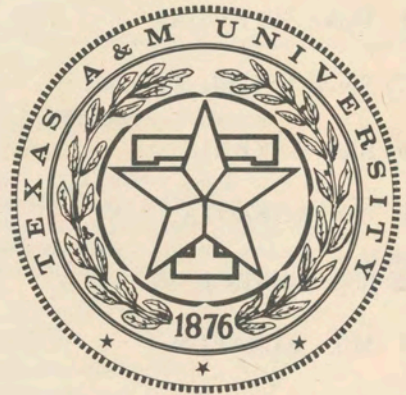
# TEXAS A&M



**EARL RUDDER**  
President  
Texas A & M University



**MARVIN TATE**  
Associate Athletic Dir.



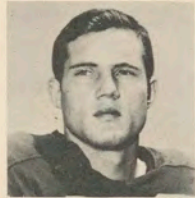
**TEXAS A & M COACHING STAFF**—(Left to right) Trainer Billy Pickard, assistants Lide Huggins, Jake Helms, Dee Powell, Bud Moore; head coach Gene Stallings; assistant head coach Elmer Smith; assistants Ralph Smith, Jack Hurlbut, Don Watson and Loyd Taylor.



**Texas A & M**  
**Olin B. Teague**  
**Research Center**



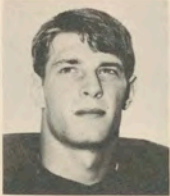
**Buster  
Adami**



**Jimmy  
Adams**



**Harvey  
Aschenbeck**



**Ross  
Brupbacher**



**Tom  
Buckman**



**Jerry  
Campbell**



**Mike  
Caswell**



**Mike  
DeNiro**



**Dave  
Elmendorf**



**Mike  
Fields**



**Lynn  
Fister**



**Carl  
Gough**



**Curley  
Hallman**



**Edd  
Hargett**



**Barney  
Harris**





Leroy Hauerland



Bill Hobbs



Wendell Houseley



Ivan Jones



Roy Kirkpatrick



Gary Kitchens



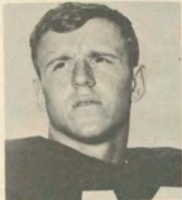
Jack Kovar



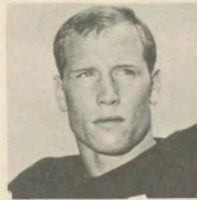
Rolf Krueger



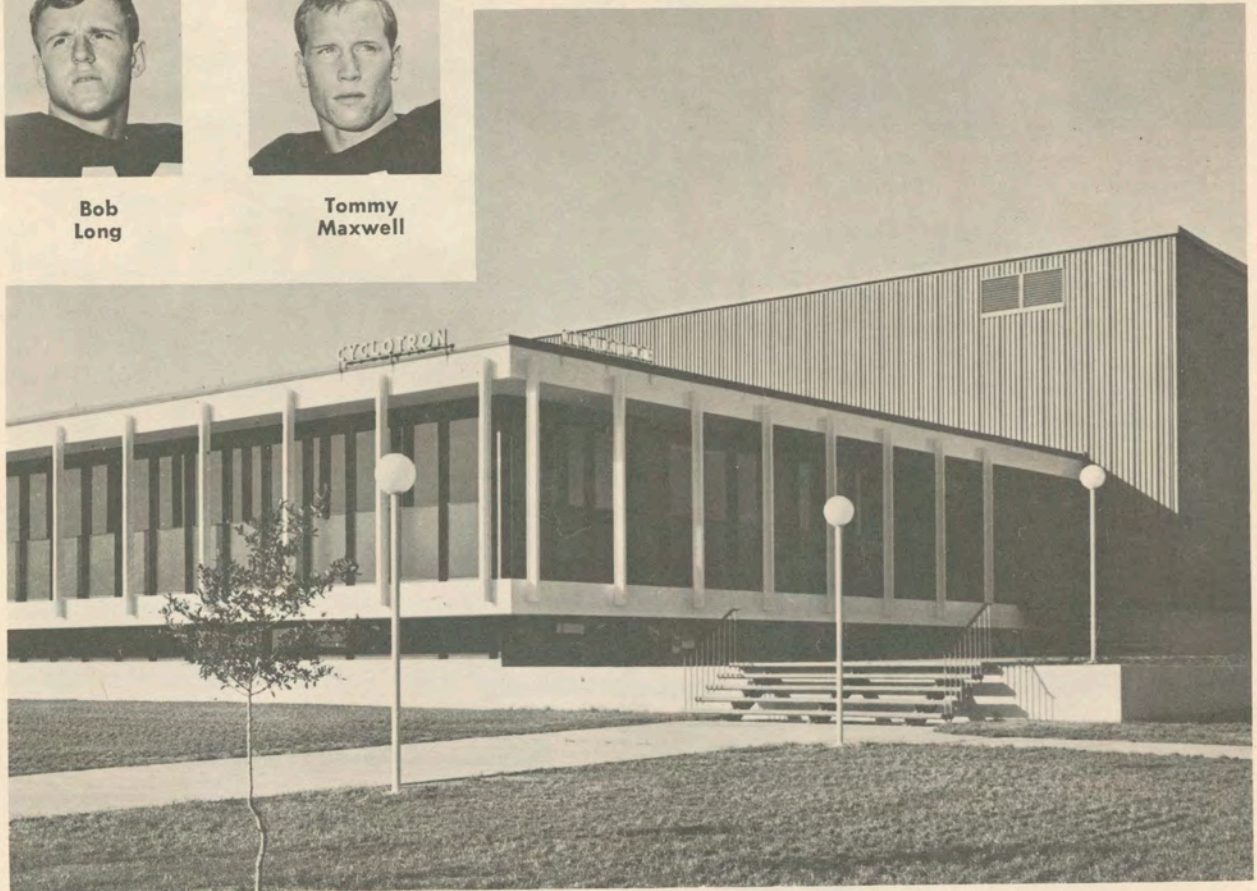
Waymond Lightfoot



Bob Long



Tommy Maxwell



Lynn Odom



Steve O'Neal



Jim Parker

## Texas A & M Cyclotron Complex



**Jim  
Piper**



**Charlie  
Riggs**

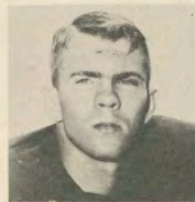


**Bill  
Seely**

# Texas A & M Aerial View



**Tom  
Sooy**



**Rusty  
Stallings**



**Robert  
Stansberry**



**Larry  
Stegent**



**Mike  
Stinson**



**Mark  
Thomas**



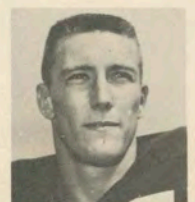
**Javier  
Vela**



**Johnny  
Weaver**



**Gaddy  
Wells**



**Jack  
Whitmore**

## GONE FISHIN'

Featuring the Annual Football  
Staff Fishing Trip

**Cam-pix**

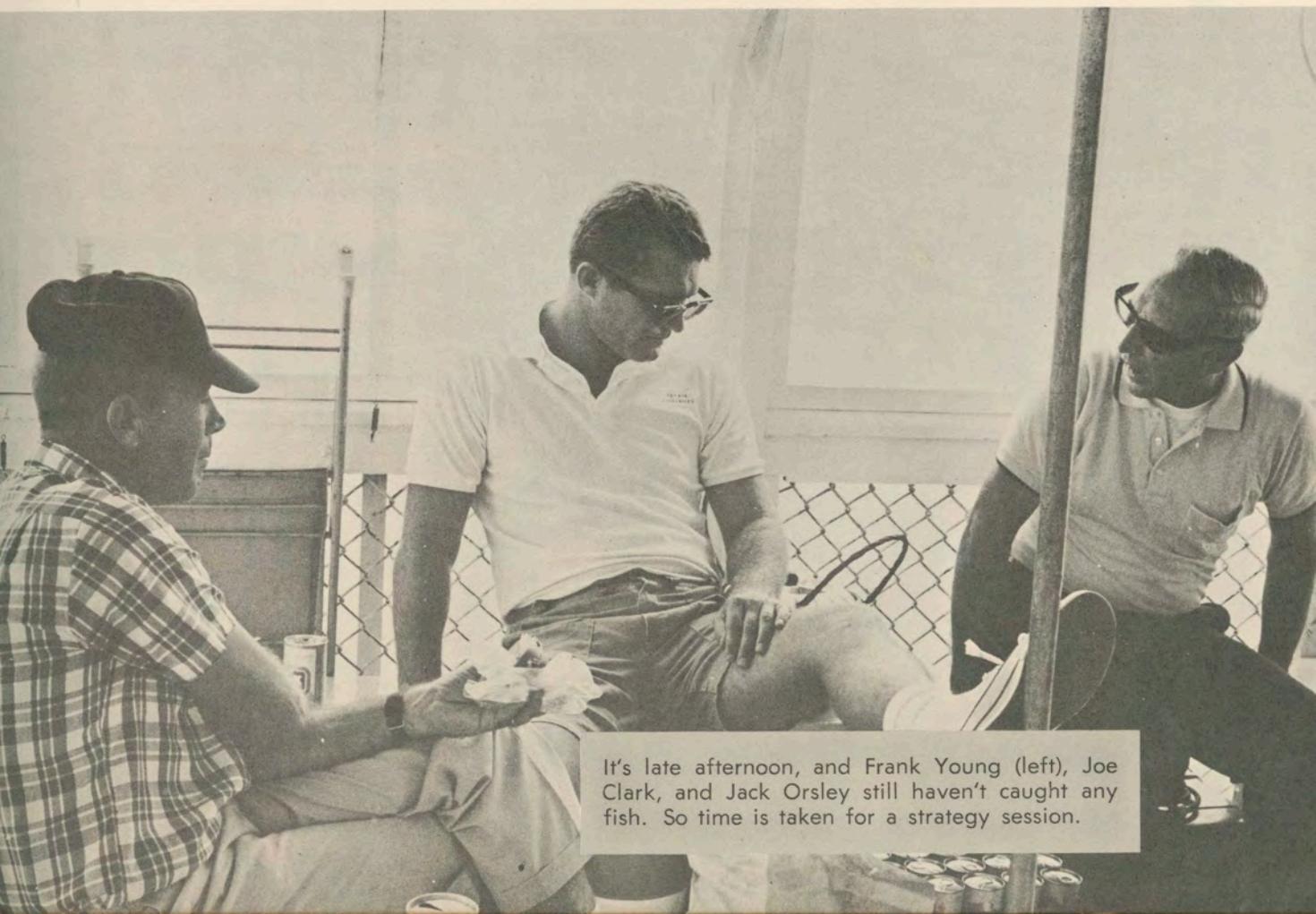


From left, First Mate Bill Adams, Jim Pittman, Buddy deMonsabert, and Joe Blaylock relax while the Briny Marlin heads out into the Gulf, where the big ones are supposed to be.





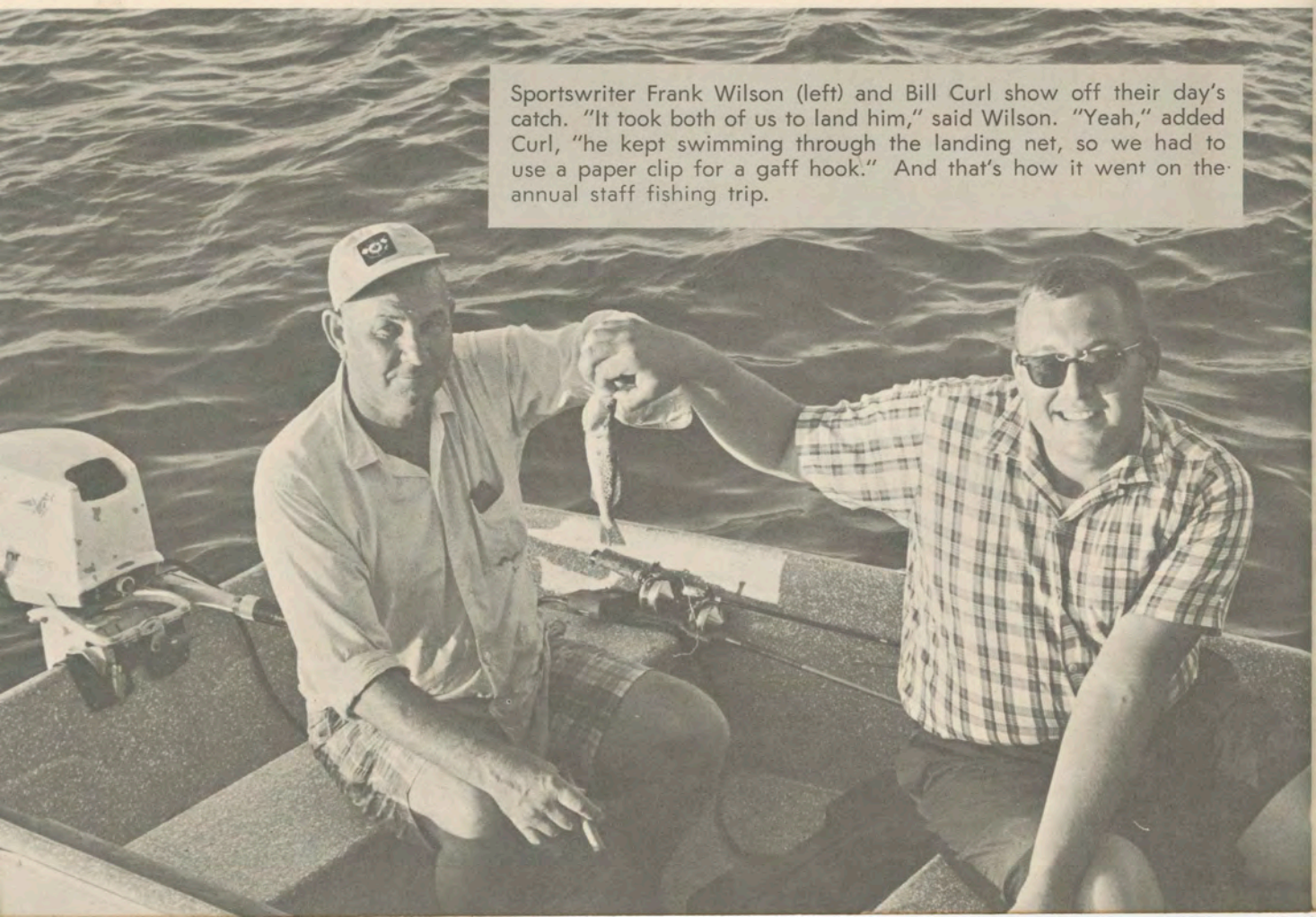
It's early morning, and Joe Clark, on board the Queen Mary, looks back at the Briny Marlin and the Doris M, other members of the fleet. There is an air of anticipation . . . .



It's late afternoon, and Frank Young (left), Joe Clark, and Jack Orsley still haven't caught any fish. So time is taken for a strategy session.



But not everybody had a no-hitter, as Jim Pittman (center) and Bill Adams (right) show, while L. A. Koennen, skipper of the Briny Marlin, looks on.



Sportswriter Frank Wilson (left) and Bill Curl show off their day's catch. "It took both of us to land him," said Wilson. "Yeah," added Curl, "he kept swimming through the landing net, so we had to use a paper clip for a gaff hook." And that's how it went on the annual staff fishing trip.

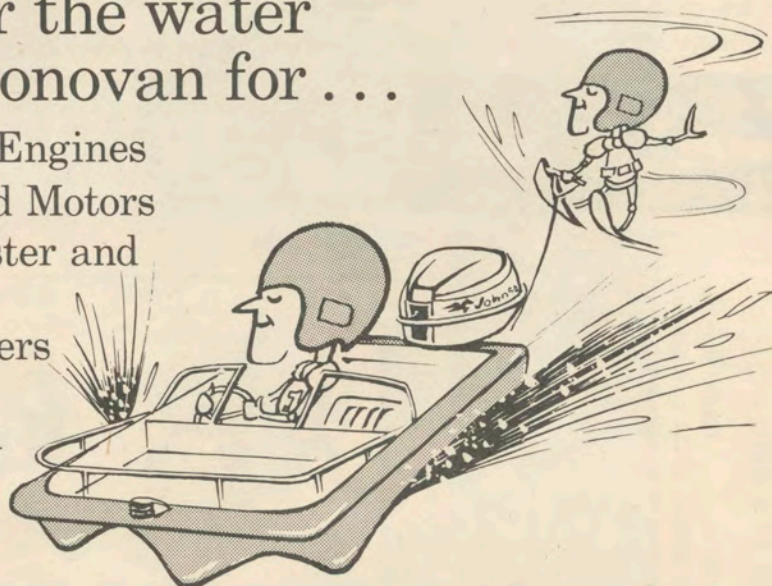
# Texaco's new Sky Chief Gasoline can drive down the cost of driving.

"I'll try a gallon."

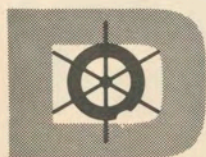


Don't go near the water 'til you see Donovan for . . .

- Chrysler Marine Engines
- Johnson Outboard Motors
- Larson, Glassmaster and Duracraft Boats
- Little Dude Trailers
- And Complete Anchor-to-Ensign Marine Supplies



Tune in WDSU Radio Fishing Facts 5:55 am, 6:55 am and 5:35 pm Monday through Friday



**DONOVAN** BOAT SUPPLIES  
INC.

THE "BIG D" FOR BOATING

1018 BARONNE ST. / 529-5731 OPEN 8 a.m. to 5 p.m., Plenty of FREE PARKING in our lot. Enter on Carondelet St.

# How you can "join" America's Olympic Team



You can be there at the Mexico City Olympic Games as a welcome contributor to the Olympic Fund. And be proud of it!

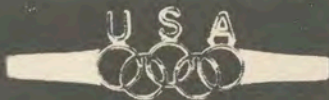
Training, transportation, housing and equipping America's top competitors in the Olympic Games is a major financial task. Because the United States Team is maintained almost entirely by public subscription, without government subsidy of any sort, the interest and support of every American is needed to reach the \$3,500,000 goal.

If you haven't already done so, "join" in the Olympic movement now. Fill out the attached coupon, with your check for \$5.00 or more and mail — today. In acknowledgment, the United States Olympic Committee will send you the handsome men's tie bar (by Danté) illustrated below. Or, if you prefer, you may select a women's bar pin with safety catch of the same design. For a \$10.00 contribution, you will receive two gifts of your choice.

make checks payable to:

**U.S. OLYMPIC COMMITTEE**

All Contributions are Tax Deductible



Actual Size

UNITED STATES OLYMPIC COMMITTEE

BOX 1000  
MOUNT VERNON, NEW YORK 10551

Gentlemen:

Enclosed is my check for \$ \_\_\_\_\_. Please send me the gift checked. (Two gifts for a \$10 contribution.)

Men's Tie Bar

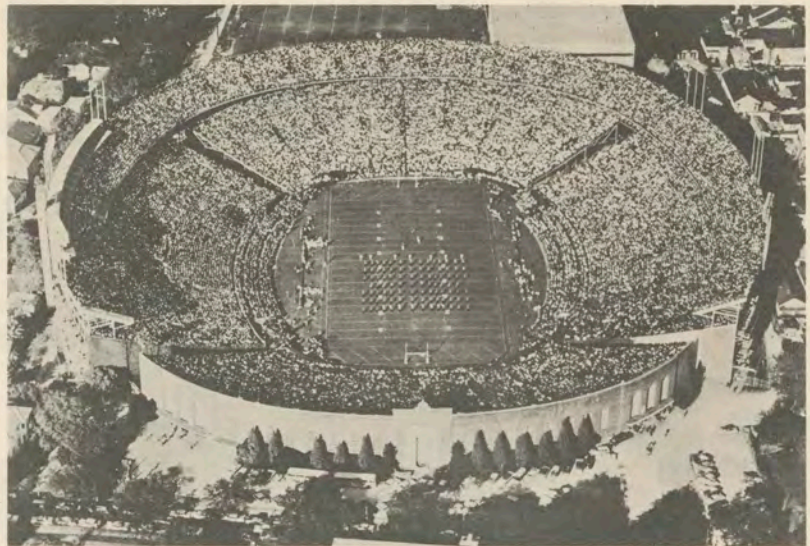
Women's Bar Pin

Name \_\_\_\_\_

Address \_\_\_\_\_

City \_\_\_\_\_ State \_\_\_\_\_ ZIP \_\_\_\_\_

Make checks payable to: U.S. Olympic Committee.  
Your contribution is tax deductible.



## TULANE STADIUM

One of the finest college football facilities in the nation, Tulane Stadium is the world's largest steel stadium. It is located on the Northeastern end of the campus, on the site of the old Etienne de Bore plantation where Sugar was first granulated in this country.

Tulane Stadium was dedicated October 23, 1926, with East and West side stands seating some 35,000. Much of the enlargement and improvement since then has been due to the efforts of the New Orleans Mid-Winter Sports Association, sponsor of the Sugar Bowl Classic. In 1937, 14,000 North Stand seats were erected. The upper deck was added in 1939, boosting the capacity to 69,000. Then in 1947, the bowl was enlarged to its present capacity of 80,985.

Tulane added floodlights in 1957. Other improvements have included permanent box seats, portal seats, press box elevator, and photographer's ramp. Two new scoreboards were added for the 1967 season.

The press box, which has been voted among the nation's best by the Football Writer's Association, is 240 feet long and seats 254.



# The University Shop®

143 BARONNE / AT THE GASLIGHT  
NEW ORLEANS

Serving the College Man's Needs  
in the Finest Traditional Wearing  
Apparel for 20 Years.

® Trademark reg. in U. S. Pat. Office

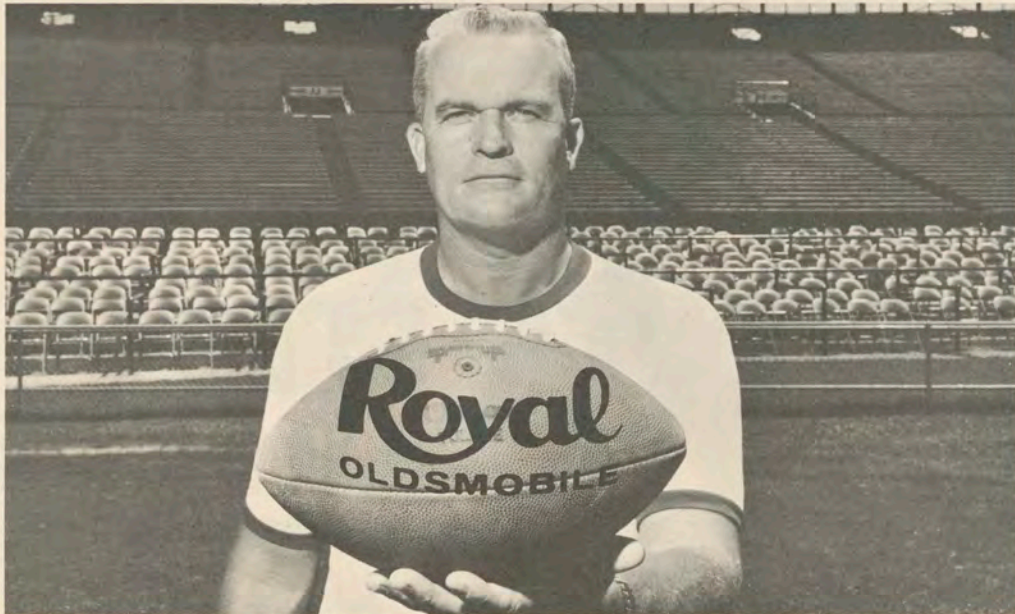
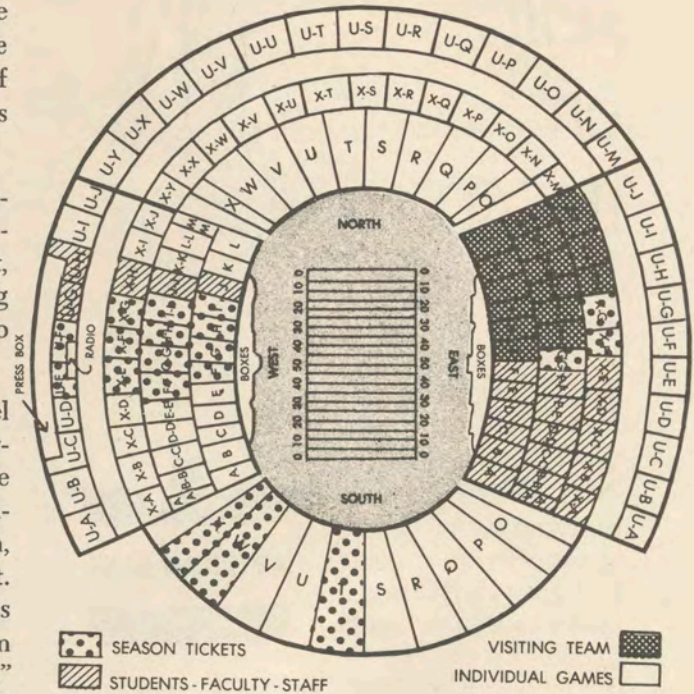
# The Sugar Bowl

One of the nation's great football classics is the annual Sugar Bowl game played in Tulane Stadium on New Year's Day. Founded in the depths of depression, it stands today as one of the most unique amateur athletic achievements in the history of American sports.

While the annual football game is the highlight, the New Orleans Mid-Winter Sports Association also sponsors a basketball tournament, tennis tournament, track meet and regatta during Sugar Bowl week. Thousands of visitors flock to the Crescent City for the festivities.

The idea was first presented in 1927 by Colonel James M. Thomson, publisher of the old New Orleans Item, and sports editor Fred Digby. The first game was held on January 1, 1935, with Tulane defeating Temple, 20-14. From its inception, the group has been free of political entanglement. Under the charter, it was stipulated that it was to be a "voluntary, non-profit civic organization whose members serve without remuneration." Every Sugar Bowler buys his own tickets to all events.

## Stadium Diagram

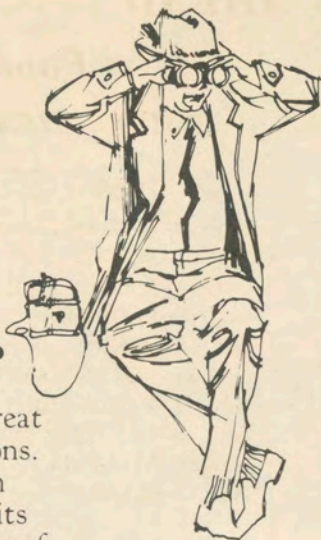


# There's a dealership in town that doesn't play games.

The dealership that's different



a  
 seat  
 on  
 the 50...



... commands a great view in all directions. National American Bank is beginning its second half century of continuous service to New Orleans.

Building on 50 years of experience, progress and growth, National American is *the bank to help you to a better life in New Orleans.*



Member F.D.I.C.

ROLL ON GREEN WAVE



THE THIRST SLAKER

WORLD'S LARGEST TAPE LIBRARY



STEREO UNITS FOR AUTOMOBILE, HOME OR BOAT - - - - 19.95  
 CARTRIDGES FROM 99¢ — FROM WORLD'S LARGEST CARTRIDGE LIBRARY

TAPE CITY, U. S. A.

4230 Veterans Memorial Hwy.  
 Metairie, La. — 888-2505

6237 South Claiborne Ave.  
 New Orleans, La. — 861-3645

# LOOKING AHEAD

## Basketball



Coach Ralph Pedersen

Tulane will have a tougher team and a tougher schedule in 1968-69. Coach Ralph Pedersen's fifth Tulane squad will be built around three veterans, all of whom have been starters since their sophomore year. The three leading scorers last season, they are Johnny Arthurs, 6-4 forward from New Orleans; Terry Habig, 6-2 guard from Auburn, Ind.; and Bill Fitzgerald, 6-4 forward from New Orleans.

Two terrific recruits from the Freshman team will bolster the squad—6-8 center John Sutter, who set a Freshman record with 27.5 points per game and will add needed height and improve already good scoring ability; and Harold Sylvester, 6-6 jumping jack from New Orleans, Tulane's first negro cager whose forte is rebounding and defense.

### TENTATIVE 1968-69 VARSITY BASKETBALL ROSTER

Name	Pos.	Ht.	Wt.	Yr.	Ltr.	Avg.	Hometown
Johnny Arthurs	f	6-4	195	Sr.	2	19.4	New Orleans
Mike Billingsley	g	6-1	170	So.	0	13.6°	Ft. Worth, Tex.
Rick Carlson	f-c	6-5	215	Sr.	2	1.7	Bradenton, Fla.
George Ferguson	f	6-6	190	So.	0	9.2°	Ft. Worth, Tex.
Bill Fitzgerald	f	6-4	190	Sr.	2	13.7	New Orleans
Terry Habig	g	6-2	180	Sr.	2	17.2	Auburn, Ind.
Mike Henry	g	5-10	165	So.	0	11.9°	Natchitoches, La.
Stan Kwiatkowski	f	6-4	170	So.	0	2.5°	Barber's Pt., Hawaii
Drew Madar	g	6-0	160	Sr.	1	6.2	Ft. Worth, Tex.
Joel Miller	g	6-3	180	Sr.	2	4.9	Middlebury, Ind.
Ned Reese	g	6-0	170	Jr.	1	2.6	Elmhurst, Ill.
Dennis Riddle	c	6-7	220	Jr.	1	2.5	Madison, Wis.
Greg Robers	c	6-7	205	Jr.	1	1.3	Ft. Wayne, Ind.
Don Simmons	f-c	6-6	185	Sr.	2	4.4	Columbia, Mo.
Bob Spurck	g-f	6-3	180	Sr.	2	6.5	Ft. Worth, Tex.
John Sutter	f	6-8	190	So.	0	27.5°	Marion, Ind.
Harold Sylvester	c	6-6	200	So.	0	18.6°	New Orleans
Mitch Urbanski	c	6-6	205	Sr.	2	3.5	Kenosha, Wis.

°Scoring average on Freshman team.

### 1968-69 BASKETBALL SCHEDULE

Mon. Dec. 2	NORTHERN MICHIGAN	New Orleans
Sat. Dec. 7	BAYLOR	New Orleans
Mon. Dec. 9	RICE	New Orleans
Wed. Dec. 11	TEXAS	New Orleans
Sat. Dec. 14	Louisiana State	Baton Rouge, La.
Mon. Dec. 16	TEXAS TECH	New Orleans
Wed. Dec. 18	Missouri	Columbia, Mo.
Thur. Dec. 19	Illinois	Champaign, Ill.
Thur.-Mon. Dec. 26-30	33rd Annual All-College Tournament at Oklahoma City, Okla. (Tulane, Univ. of Pacific, Duquesne, LSU, Oklahoma City, St. Bonaventure, Texas A&M, Wyoming)	
Fri. Jan. 3	Cal (Santa Barbara)	Santa Barbara, Cal.
Sat. Jan. 4	U.C.L.A.	Los Angeles, Cal.
Wed. Jan. 8	FLORIDA STATE	New Orleans
Sat. Jan. 11	KENT STATE	New Orleans
Thur. Jan. 16	Miami	Miami, Fla.
Sat. Jan. 18	Florida State	Tallahassee, Fla.
Sat. Feb. 1	PITTSBURGH	New Orleans
Sat. Feb. 8	AIR FORCE	New Orleans
Mon. Feb. 10	LOUISIANA STATE	New Orleans
Sat. Feb. 15	Georgia Tech	Atlanta, Ga.
Mon. Feb. 17	Chicago	Chicago, Ill.
Mon. Feb. 24	Virginia Tech	Blacksburg, Va.
Wed. Feb. 26	Marquette	Milwaukee, Wis.
Sat. Mar. 1	GEORGIA TECH	New Orleans
Mon. Mar. 3	VALPARAISO	New Orleans

Capital letters indicate home games.



## Football

### FUTURE WAVE SCHEDULES

#### 1969

Sept. 20—at Georgia  
 Sept. 27—W. VIRGINIA  
 Oct. 4—at Boston Coll.  
 Oct. 11—FLORIDA  
 Oct. 18—at Pittsburgh  
 Oct. 25—NOTRE DAME  
 Nov. 1—VANDERBILT  
 Nov. 8—GA. TECH  
 Nov. 15—VIRGINIA  
 Nov. 22—at LSU

#### 1970

Sept. 19—GEORGIA  
 Sept. 26—at Illinois  
 Oct. 3—at Cincinnati  
 Oct. 10—at Air Force  
 Oct. 17—N. CAROLINA  
 Oct. 24—at Ga. Tech  
 Oct. 31—at Vanderbilt  
 Nov. 7—MIAMI (FLA.)  
 Nov. 14—Open Date  
 Nov. 21—N. C. STATE  
 Nov. 28—LSU

#### 1971

Sept. 18—at Georgia  
 Sept. 25—at Rice  
 Oct. 2—WM. & MARY  
 Oct. 9—at N. Carolina  
 Oct. 16—PITTSBURGH  
 Oct. 23—GA. TECH  
 Oct. 30—VANDERBILT  
 Nov. 6—OHIO UNIV.  
 Nov. 13—at Notre Dame  
 Nov. 20—Open Date  
 Nov. 27—at LSU

The  
 Finest in  
 Monogramming



fraternity men, sorority women  
 come in and browse

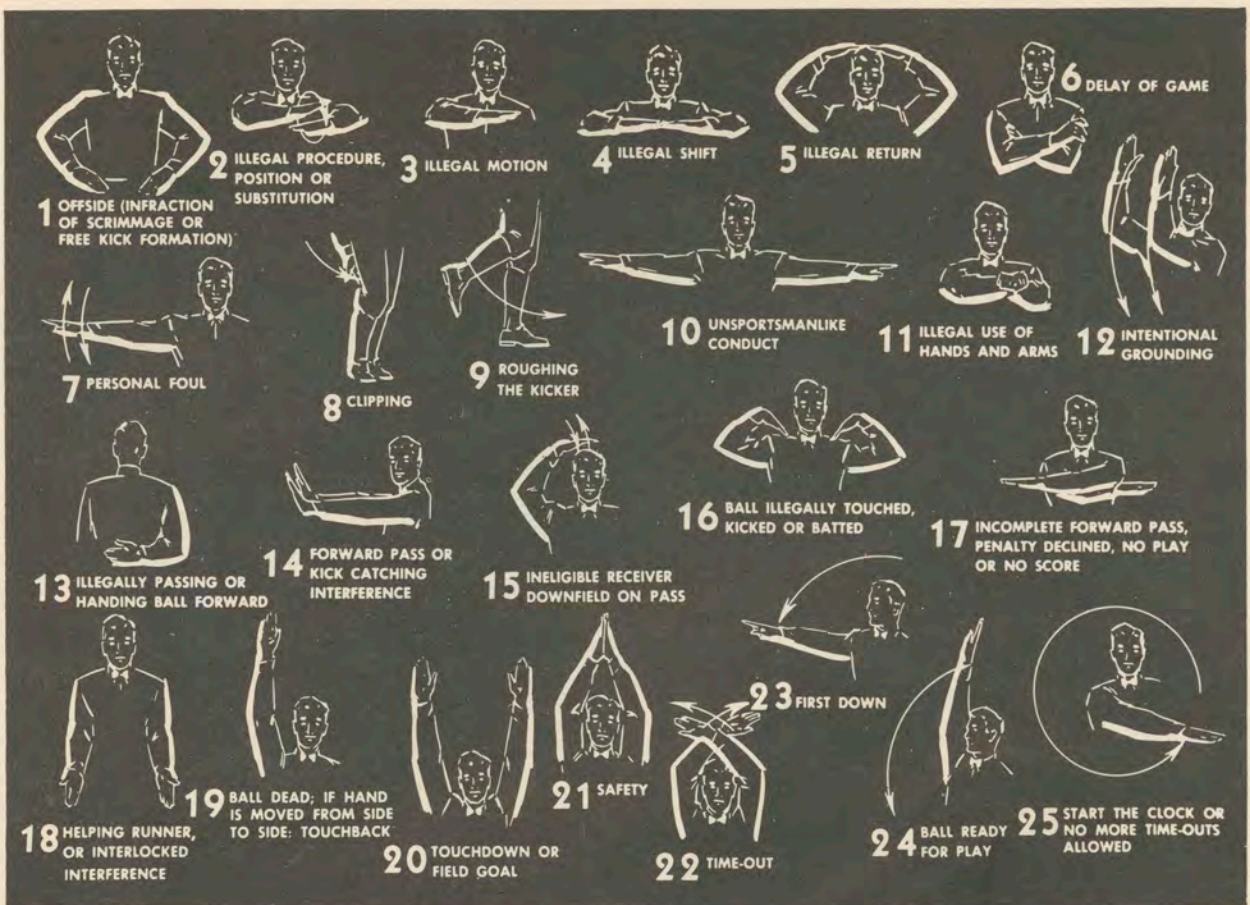
Mel's  
 Monograms

3150 CALHOUN  
 JUST OFF S. CLAIBORNE  
 NEW ORLEANS, LA.

*Made by the little deep south  
brewery that would rather be best  
than biggest*



DIXIE BREWING COMPANY, INC., NEW ORLEANS, LOUISIANA



## PENALTIES

**1. OFFSIDE** by either team; Violation of scrimmage or free kick formation; Encroachment on neutral zone—Loss of Five Yards.

**2. ILLEGAL PROCEDURE, POSITION OR SUBSTITUTION**—Putting ball in play before Referee signals "Ready-for-Play;" Failure to complete substitution before play starts; Player out of bounds when scrimmage begins; Failure to maintain proper alignment of offensive team when ball is snapped; False start or simulating start of a play; Taking more than two steps after Fair Catch is made; Player on line receiving snap—Loss of Five Yards.

**3. ILLEGAL MOTION**—Offensive player illegally in motion when ball is snapped—Loss of Five Yards.

**4. ILLEGAL SHIFT**—Failure to stop one full second following shift—Loss of Five Yards.

**5. ILLEGAL RETURN** of ineligible substitute—Loss of 15 yards.

**6. DELAY OF GAME**—Consuming more than 25 seconds in putting the ball in play after it is declared ready for play; Interrupting the 25-second count for any reason other than a free or excess time out granted by

Referee; Failure to remove injured player for whom excess time out was granted—Loss of Five Yards. Team not ready to play at start of either half—Loss of 15 Yards.

**7. PERSONAL FOUL**—Tackling or blocking defensive player who has made fair catch; Piling on; Hurdling; Grasping face mask of opponent; Tackling player out of bounds, or running into player obviously out of play; Striking an opponent with fist, forearm, elbow or locked hands; Kicking or kneeing—Loss of 15 Yards. (Flagrant offenders will be disqualified).

**8. CLIPPING**—Loss of 15 yards.

**9. ROUGHING THE KICKER** or holder—Loss of 15 Yards.

**10. UNSPORTSMANLIKE CONDUCT**—Violation of rules during intermission; Illegal return of suspended player; Coaching from side lines; Invalid signal for Fair Catch; Persons illegally on field—Loss of 15 Yards. (Flagrant offenders will be disqualified).

**11. ILLEGAL USE OF HANDS AND ARMS** by offensive or defensive player—Loss of 15 Yards.

**12. INTENTIONAL GROUNDING** of forward pass—Loss of Five Yards from spot of pass Plus Loss of Down.

**13. ILLEGALLY PASSING OR HANDING BALL FORWARD**—Loss of Five Yards from spot of foul Plus Loss of Down.

**14. FORWARD PASS OR KICK CATCHING INTERFERENCE**—Interference with opportunity of player of receiving team to catch a kick—Loss of 15 Yards. Interference by member of offensive team with defensive player making pass interception—Loss of 15 Yards Plus Loss of Down. Interference by defensive team on forward pass—Passing Team's Ball at Spot of Foul and First Down.

**15. INELIGIBLE RECEIVER DOWNFIELD ON PASS**—Loss of 15 Yards.

**16. BALL ILLEGALLY TOUCHED, KICKED OR BATTED**—Forward pass being touched by ineligible receiver beyond the line of scrimmage—Loss of 15 Yards from Spot of Preceding Down and Loss of a Down. Eligible pass receiver going out of bounds and later touching a forward pass—Loss of Down.

**17. PENALTY DECLINED**; Incomplete forward pass; No play or no score.

**18. CRAWLING** by runner—Loss of Five Yards. Interlocked Interference—Loss of 15 yards.

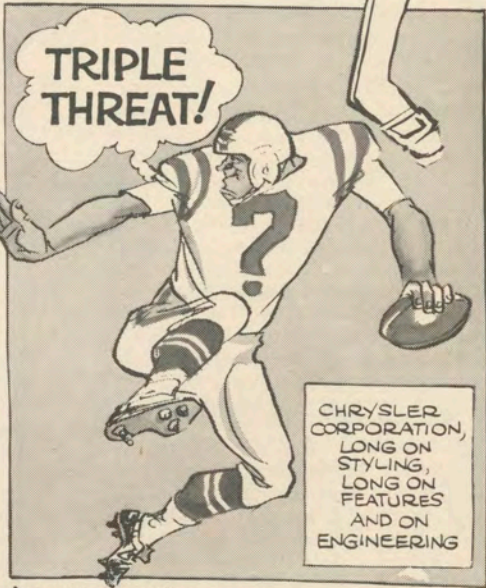


BEFORE YOU BUY, SEE YOUR CHRYSLER-PLYMOUTH OR DODGE DEALER.

...BE THE CENTER OF ATTENTION IN A NEW CAR FROM CHRYSLER CORPORATION!



WHAT A LINE!  
PLYMOUTH, DODGE, CHRYSLER, IMPERIAL, SIMCA OR SUNBEAM



CHRYSLER CORPORATION, LONG ON STYLING, LONG ON FEATURES AND ON ENGINEERING

Plymouth • Dodge • Chrysler • Imperial • Dodge Trucks • Simca • Sunbeam

SEE THE AFL IN ACTION EACH WEEK ON NBC-TV.



**CHRYSLER CORPORATION**

# SURE HANDS McCOLL

by RUBE SAMUELSEN



**"H**E HAS the surest hands I have ever seen. If he got anywhere near the football, he'd catch it to complete a pass. He was aggressive, fought like a tiger and had a tremendous desire to help others."

That was Clark Shaughnessy, the veteran coach of more than half a century, saluting Bill McColl, former Stanford football player, now Dr. William Frazer McColl, Orthopedic surgeon.

In 1950 and 1951, Dr. McColl was an All-American end at Stanford. During the next decade, he combined a pro career with intensive medical studies as well as internship. Today he has his private practice in West Covina, Calif.

But his finest achievement involved none of these things.

From 1962 to 1964, between his gridiron days and the time he tacked up his shingle, Dr. McColl served as a medical missionary in Korea, under the aegis of two Chicago Presbyterian churches. Using those same "sure" hands there, he ministered without salary to the crippled, the leprosy and the deformed. He took his entire family—his wife Barbara and six children, all under the age of seven—to Taegu with him. Of deep religious conviction, the tall, husky surgeon interspersed his medical diagnosis with assurances from the Great Book.

"In a country where medicine is frustrated by tradition, prejudice and ignorance," Dr. McColl observes, "it is difficult to function unless convinced your duty is to serve God. Until I became a medical missionary, the words of Grantland Rice hadn't struck home. As Rice emphasized, it is not whether you win or lose, but how you play that really is the essence of the way the Great Scorer expects one to live his life."

How well Dr. McColl "played" is reflected by some of his experiences in Korea. He operated between eight and ten times a week, mostly on reconstruction cases, to correct severe physical handicaps. They concerned crippled orphans, leprosy cases and adults felled by tuberculosis of the joints. Frequently he paid the bill out of his own pocket when the patient couldn't afford the fees.

Besides surgery, Dr. McColl's other medical ministrations were many. There was the case of . . . but let him tell it:

"One day, when driving my family through a village near Sin Chun in the southern tip of Korea, I saw a group of women wailing near the roadside. Wailing is the eerie sound of the mourning for the dead which occurs in primitive cultures. I stopped our car and saw a woman holding an eight-year-old boy who was blue, frothing at the mouth and had stopped breathing. After cleansing his mouth, I started mouth-to-mouth resuscitation. Gradually the boy began to breathe. I literally had the feeling that I had brought him back from the dead. Putting the boy and his mother in the back of our car, we headed for the nearest hospital, 100 miles away."

Mrs. McColl, who worked devotedly with her husband, especially in his religious phase, tells of another experience.

"Just as we were driving out of the hospital grounds, this day," she began, "Bill saw a cute teen-age girl walking with a drop foot and considerable limp. In a minute's time, he was out of the car, into the hospital and back again with a Korean doctor who could interpret for him. At Bill's request, the girl returned with her father the next day for an examina-

tion. Upon recovery after the surgery, she sent Bill a letter in her best English, telling how grateful she was to him and to God 'for the new stream of hope in my life.'"

Sure hands and a desire to help others . . .

The leprosy touched Dr. McColl deeply. He puts it simply, saying: "I doubt if any group of people have given me more satisfaction in treating, or to whom Christ has meant more, than people afflicted with leprosy." Compounding the meaning is the surgeon's compassion, as well, for the homeless (in Taegu alone there are 80 orphanages), not to mention the myriad amputees, resulting from children stepping on land mines and grenades, cruel reminders of the Korean War.

While the eight McColls did not suffer hardships, comforts were in short supply. Water was rationed at times, electricity was frequently unavailable and the lack of sufficient refrigeration compelled rigid diet changes. Such items as dried squid, octopus and seaweed were among the entrees. But the McColls did have their own garden, plowed by an ox.

"Oh, for a good hamburger!" Mrs. McColl wrote, jokingly, to a friend at the time.

**Appreciation of the Korean people for the six-four, 240-pound griddler turned medical missionary was expressed by Kim In, Governor of Kyongsang Pukto Province, in behalf of its 4,000,000 inhabitants. Cited he: "Dr. William McColl, in promoting friendship between the peoples of the United States and the Republic of Korea, gave the joy of new life to hundreds of poor people, both physically and economically."**

Upon his return in 1964, Dr. McColl was named one of the nation's ten outstanding young men under 35 by the United States Jaycees.

One of the key influences—perhaps the most significant—upon the humanitarian-griddler's life was McColl's mother, obviously a most unusual person. Esther Anna McColl died last year, and her son gave a moving eulogy at her funeral. In part, Dr. McColl said:

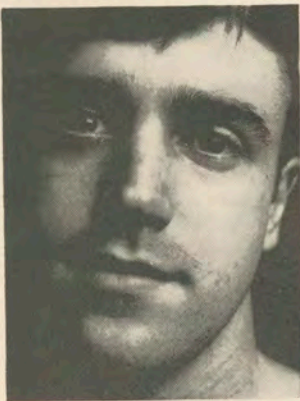
"My mother is the only really mature person I have ever known. Greatness is determined by the things you try to do, for the people you try to serve. Maturity occurs when a man or woman becomes the person God intended them to be. My mother was both great and mature. Within limits of her strength, she thought only of how she could serve. I'm glad that I realized this. She rejoiced in the accomplishments and good fortune of those about her, with even more enthusiasm than in any of her own."

Like mother, like son.

# Break your beard in right.

Right now your beard is in the formative stage.

You can shave it with a razor blade like your father does. And each time you do your beard will grow back a little more difficult. Until one day shaving's no longer a chore. It's an agony.



Look no further than your father's face for proof.

But fortunately, you're catching your beard at an early age. You can break it in to be just as shaveable 10 and 20 years from now as it is today.

With a REMINGTON® shaver.

And if you think the kind of shave we're selling won't be close enough for you, you're wrong.

Our new blades are sharper than anything that's been in an electric shaver before. And there's a dial that lets you adjust them for your skin and beard.

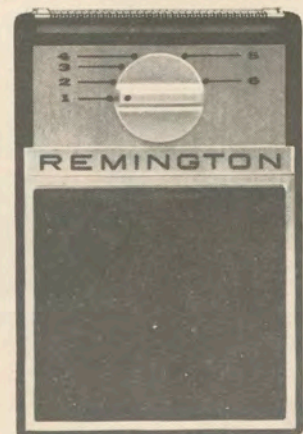
What's more, you can dial a REMINGTON electric shaver into a sideburn trimmer.

Admittedly, it costs more to buy our electric shaver than a razor and some blades.

But it's a good investment.

These next few years will determine how you and your beard will get along for the rest of your lives. †

SPERRY RAND™ ©1969, SPERRY RAND CORP.



**REMINGTON**  
ELECTRIC SHAVER DIVISION, BRIDGEPORT, CONNECTICUT.

# 1968 Tulane Freshman Football Team



**ROW I (Left to Right)**—Anthony Fontana (29), Ronnie Guzman (52), Robert Kershaw (11), Jimmy Lawrence (77), Tom Edwards (54), Buddy Porta (89), John McLeod (64), David Hebert (23), Butch Bailess (78).  
**ROW II**—Bob Marshall (20), Dennis Crain (21), Jerry Chamberlain (69), Alan Crawford (32), Scott Heape (25), Bobby Gordon (50), Paul Ellis (10), Jim Batey (40), Randy Buck (30) Joel Bullard (24), Ed Smith (27), Bob Motchkavitz (66), Steven Thomas (60), Ronnie Corn (44), Coach Jim Jancik, Coach Lou Campomenosi.  
**ROW III**—Coach Joe Blaylock, Coach Jim Darnley, Steve Barrios (81), Alex Lopresto (80), Art Ledet (31), Mike Paulson (83), Harold Marshall (57), Alfred Mansour (74), Carl Richardson (86), Bob Waldron (73), Charles Hendler (72), Jim Thompson (51), Joe Young (84), Lee Hamilton (82), Al Delhomme (75), Rusty Lachaussee (12), Robert Levy (76), Coach Vic Eumont.  
**ROW IV**—Jim Atkins (55), Jimmy San Martin (14), Mike Fruge (79), Peter Day (63), Ronnie Tanner (58), Maxie LeBlanc (19), Bruce Grimes (22), Michael Valls (37), Alfred Diggs (88), Calvin Hargrave (47), Michael Doucet (62), Tony Stephens (33), Steve Hotard (53), Mike Landry (85), Raymond Commander (70).

## — Frosh Roster —

Player, Position, Weight Home Town (High School)

Jim ATKINS—LB, 180..... Beaumont, Tex. (Forest Park)  
 Butch BAILESS—T, 215..... Vicksburg, Miss. (H. V. Cooper)  
 Steve BARRIOS—E, 170..... Gretna (West Jefferson)

Jim BATEY—TB, 180..... Franklin (Franklin)  
 Randy BUCK—FB, 205..... Bay Minette, Ala. (Baldwin Co.)  
 Joe BULLARD—DHB, 170..... Mobile, Ala. (Univ. Military)

Jerry CHAMBERLAIN—DE, 195..... Washington (Im. Conc.)  
 Raymond COMMANDER—DT, 205..... P. Arthur, Tx. (Austin)  
 Ronnie CORN—TB, 182..... Mobile, Ala. (Murphy)

Dennis CRAIN—WB, 178..... Vicksburg, Miss. (H. V. Cooper)  
 Alan CRAWFORD—FB, 187..... Dallas, Tex. (Bryan Adams)  
 Peter DAY—G, 205..... Houston, Tex. (Memorial)

Al DELHOMME—DT, 220..... New Iberia (New Iberia)  
 A. D. DIGGS—E, 165..... New Orleans (Xavier)  
 Mike DOUCET—G, 210..... Crowley (Crowley)

Tommy EDWARDS—LB, 200..... Opelousas (Im. Concep.)  
 Paul ELLIS—QB, 175..... New Or'ns (Dallas, Tex. Jesuit)  
 Anthony FONTANA—SAF, 181..... Ab'v'le (Vermillion Cath.)

Mike FRUGE—DT, 210..... Crowley (Notre Dame)  
 Bobby GORDON—MG, 218..... Oakdale (Oakdale)  
 Bruce GRIMES—WB, 178..... Pascagoula, Miss. (Pascag'la)

Ronnie GUZMAN—LB, 200..... Lake Charles (L. Charles)  
 Lee HAMILTON—DE, 185..... Houston, Tex. (Memorial)  
 Calvin HARGRAVE—DB, 170..... Crowley (Notre Dame)

Scott HEAPE—WB, 180..... Dallas, Tex. (St. Mark's)  
 David HEBERT—DB, 183..... Thibodaux (Thibodaux)  
 Charles HENDLER—T, 210..... Dallas, Tex. (Jesuit)

Steve HOTARD—MG, 170..... Lake Charles (Lake Charles)  
 Robert KERSHAW—QB, 175..... Little Rock, Ark. (Cath.)  
 Rusty LACHAUSSEE—QB, 180..... Pascagoula, Miss. (P'g'la)

Player, Position, Weight Home Town (High School)

Mike LANDRY—DE, 190..... Lake Charles (Landry)  
 Jimmy LAWRENCE—DT, 215..... Houston, Tex. (Jesse Jones)  
 Maxie LeBLANC—DHB, 180..... Vinton (Vinton)

Art LEDET—FB, 196..... Abbeville (Abbeville)  
 Robert LEVY—T, 210..... Atlanta, Ga. (Druid Hills)  
 Alex LOPRESTO—E, 196..... New Iberia (New Iberia Cath.)

Alfred MANSOUR—DT..... Alexandria (Menard Central)  
 Bob MARSHALL—TB, 187..... Metairie (East Jefferson)  
 Harold MARSHALL—C, 225..... Pasadena, Tex. (S. Rayburn)

John McLEOD—G, 180..... Mobile, Ala. (Semmes Montg'y)  
 Bob MOTCHKAVITZ—G, 190..... Gr. Neck, N.Y. (G. N. Nth.)  
 Mike PAULSON—E, 185..... Dallas, Tex. (Bryan Adams)

Buddy PORTA—DE, 183..... Baton Rouge (Baton Rouge)  
 Carl RICHARDSON—E, 198..... Berwick (Berwick)  
 Jimmy SAN MARTIN—PK..... Tela, Hond. (N. O. Redempt'st)

Ed SMITH—CB, 175..... Eunice (Eunice)  
 Tony STEPHENS—DB, 168..... Lake Charles (LaGrange)  
 Ronnie TANNER—DE, 203..... Semmes, Ala. (Montgomery)

Steven THOMAS—G, 195..... Groves, Tex. (P. Neches Groves)  
 Jim THOMPSON—C, 195..... Dallas, Tex. (Bryan Adams)  
 Michael VALLS—LB, 200..... New Iberia (New Iberia Cath.)

Bob WALDRON—DT, 218..... Shreveport (Byrd)  
 Joe YOUNG—DE, 200..... Houston, Tex. (Smiley)

## 1968 Tulane Freshman Football Schedule

Fri., Oct. 4—Marion (Ala.) Institute..... New Orleans, 7:30 p.m.  
 Thu., Oct. 17—Sou. Miss. Frosh..... Hattiesburg, Miss., 7:30 p.m.  
 Sat., Nov. 2—Air Force Junior Varsity..... Alexandria, La., 7:30 p.m.  
 Sat., Nov. 16—Mississippi State Frosh..... New Orleans, 1:30 p.m.  
 Fri., Nov. 22—Louisiana State Frosh..... Baton Rouge, 7:30 p.m.

— Home Games Played in Tulane Stadium —



## SCHEDULES OF TULANE'S 1968 OPPONENTS

°Denotes Night Game

OPPONENT	SEPT. 14	SEPT. 21	SEPT. 28	OCT. 5	OCT. 12	OCT. 19	OCT. 26	NOV. 2	NOV. 9	NOV. 16	NOV. 23	NOV. 30
HOUSTON Houston, Tex. B. Yeoman	TULANE 54 - 7	TEXAS 20 - 20	Open	(Oct. 4) °Cincinnati	°Oklahoma State	Open	Ole Miss at Jackson	At Georgia	At °Memphis State	°Idaho	°Tulsa	(Nov. 29) °Fla. State at Jax'ville
TEXAS A&M College Station, Tex. G. Stallings		L. S. U. 12 - 13	At °TULANE	At °Florida State	°Texas Tech	°T.C.U.	At °Baylor	Arkansas	At S.M.U.	Rice	Open	(Nov. 28) At Texas
TAMPA Tampa, Fla. F. Curci		SANTA BAR. 18 - 7	°Akron	At °TULANE	At Cincinnati	°Eastern Michigan	°Mississippi State	°Northern Michigan	At East Carolina	°Southern Illinois	°Southern Mississippi	
FLORIDA Gainesville, Fla. R. Graves		AIRE FORCE 23-20	At Florida State	Mississippi State	TULANE	At North Carolina	At Vanderbilt	Auburn	Georgia at Jax'ville	At Kentucky	Open	Miami
BOSTON COLL. Chestnut Hill, Mass. J. Yukica			At Navy	Buffalo	Villanova	At TULANE	Penn State	Open	At Army	V.M.I.	At Mass.	Holy Cross
GEORGIA TECH Atlanta, Ga. B. Carson		T. C. U. 17 - 7	Miami	Clemson	Tennessee	Auburn, at Birmingham	TULANE	At Duke	Navy	At Notre Dame	Open	At Georgia
VANDERBILT Nashville, Tenn. B. Pace		V. M. I. 25 - 12	At Army	°North Carolina	At Alabama	At Georgia	Florida	TULANE	At Kentucky	Open	Davidson at Charlotte	Tennessee
TULSA Tulsa, Okla. G. Dobbs			At Arkansas	°Southern Illinois	At °Louisville	N. Texas State	At Cincinnati	Memphis State	At °TULANE	At Air Force	At °Houston	(Nov. 28) Wichita St.
VIRGINIA Charlottesville, Va. G. Blackburn		PURDUE 6 - 44	V.M.I.	Davidson	At Duke	At N.C. State	At Navy	South Carolina	At North Carolina	TULANE	Maryland	
LA. STATE Baton Rouge, La. C. McClendon		TEX. A & M 13 - 12	At °Rice	°Baylor	(Oct. 11) At °Miami	°Kentucky	°T.C.U.	°Ole Miss	Alabama at B'ham	°Mississippi State	At °TULANE	

**Next Week:**

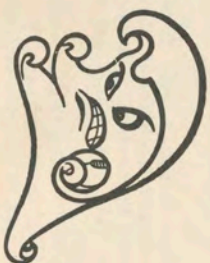
**TULANE**

vs.

**TAMPA**

**Sat. Night — 7:30**

**Tulane Stadium**



**QUIZ ANSWERS**

**DO YOU REMEMBER**

Page 25 . . .

**Fred Cassibry**

**WAVE WORDS — Page 37**

1. Walker; 2. Seelfoy; 3. Richard;
4. DeWitt; 5. Sanders;
6. Chappuis; 7. Stark; 8. Kingrea;
9. Bookatz; 10. Schramm;
11. Farnell; 12. Bazer; 13. Graves;
14. Gill; 15. Sisk; 16. Laborde;
17. Hester.

**SOLUTION:** Alienate the Aggies.

# Olds Vista-Cruiser: Kind of like owning your own stadium.

We didn't start out to build a stadium on wheels. Vista-Cruiser just sort of grew into one. It's bigger this year. Handles like a bigger car. Built on a longer 121-inch wheelbase. Inside, there's more room to stretch out, up and sideways. The

forward-facing third seat lets you see where you're going . . . not where you've been. And there's more room to carry all the stuff you carry . . . on and under the big rear deck. Plus room for even more when

you order the sturdy chrome luggage rack topside. All this, plus a 50-yard-line view of the world outside through the cool, tinted Vista-Roof. Take the whole family along for a test drive in a Vista-Cruiser at your Olds Dealer's. That way you'll have your own cheering section, too.



1968 Vista-Cruiser, in 2- and 3-seat versions, both with all the new GM safety features.

Drive a youngmobile from Oldsmobile



**GM**

MARK OF EXCELLENCE

# The Chevrolet starting line-up for 1969:

(if we don't build the car you want, maybe what you want isn't a car.)

## Chevrolet

Caprice Coupe  
Caprice Sedan

Impala Custom Coupe  
Impala Sport Coupe  
Impala Sport Sedan  
Impala Convertible  
Impala 4-Door Sedan

Bel Air 4-Door Sedan  
Bel Air 2-Door Sedan

Biscayne 4-Door Sedan  
Biscayne 2-Door Sedan

## Chevelle

Malibu Sport Coupe  
Malibu Sport Sedan  
Malibu Convertible  
Malibu 4-Door Sedan

300 Deluxe Sport Coupe  
300 Deluxe Coupe  
300 Deluxe 4-Door Sedan

## Chevrolet Wagons

119" Wheelbase  
Kingswood Estate Wagon  
(2- & 3-seat)  
Kingswood Station Wagon  
(2- & 3-seat)

Townsmen Station Wagon  
(2- & 3-seat)  
Brookwood Station Wagon  
(2-seat)

116" Wheelbase

Concours Estate Wagon  
(2- & 3-seat)

Concours Station Wagon  
(2- & 3-seat)

Greenbrier Station Wagon  
(2- & 3-seat)

Nomad Station Wagon  
(2-seat)

## Camaro

Sport Coupe  
Convertible

## Chevy Nova

Coupe  
Sedan

## Corvair

Monza Sport Coupe  
Monza Convertible  
Corvair 500 Sport Coupe

## Corvette

Coupe  
Convertible

Putting you first, keeps us first.

CHEVROLET