

378.763
G-813

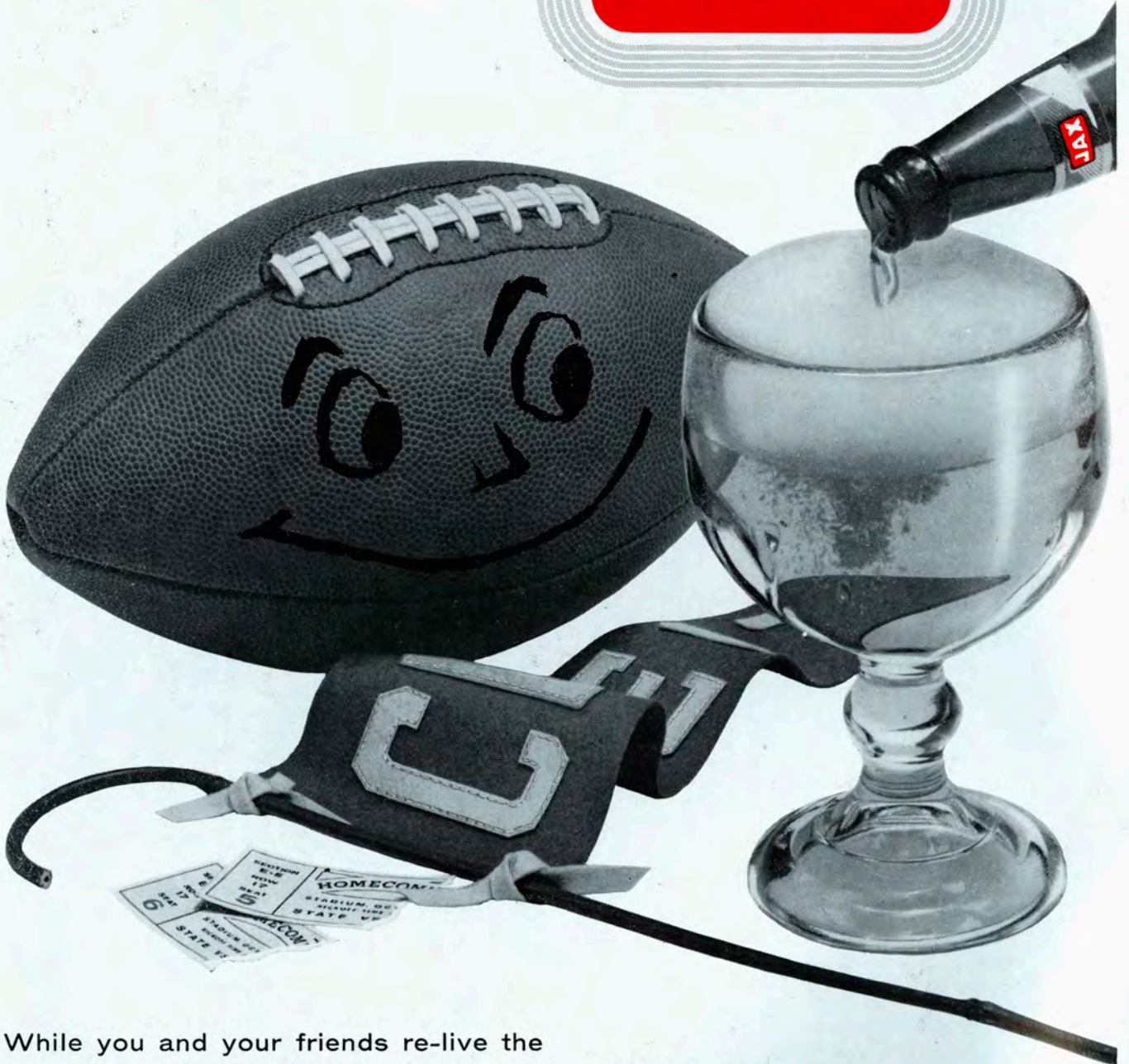


THE FLORIDA GAME

TULANE STADIUM • FRI. SEPT. 18, 1959
SOUVENIR PROGRAM - 50¢

Treat yourself to an adventure in taste...

...real beer taste



While you and your friends re-live the
thrills of today's game, enjoy mellow JAX Beer
—**real beer taste**, for sure



Jackson Brewing Company, New Orleans, Louisiana

Famous for
**FINE FOOD
 and DRINK**



*Enjoy the Specialties of These
 Noted Restaurants:*

ANTOINE'S

.. Since 1840

713 St. Louis St. • **M**Agnolia 2554

12 Noon to 9 P.M. Closed Sundays

ARNAUD'S

.. Carnival Room

813 Bienville St. • **M**Agnolia 5433

11 A.M. to 12:30 A.M. Daily

BROUSSARD'S

.. Napoleon Patio

819 Conti St. • **M**Agnolia 4800

11:30 A.M. to 11:30 P.M.

Closed Wednesdays.

After the Game



enjoy an
*enchanted
 evening..*

Make up a party after the game and enjoy a delightful dinner at the **BALI HA'I**, New Orleans' most exotic restaurant! Here in this lovely Polynesian Paradise you can enjoy the rare delights of Cantonese Cuisine . . . the taste-tingling thrills of delicious tropical drinks . . . and all the charm of the Pacific Isles.

Reservations Suggested • FA 9859



BALI HA'I

at the beach

Overlooking Beautiful Pontchartrain Beach

TICKET INFORMATION

HOME GAMES (Individual)—\$4.00 Sidelines: \$2.50 South Side.

“FAMILY PLAN” (Unreserved seats in North Stands)—\$2.00 (adults), 50 cents (high school age and under).

GAMES AWAY—(Seats in special Tulane sections)—Miami, \$4.00; Ole Miss, \$4.00; Alabama \$4.00; L.S.U.—A limited supply of end zone seats at \$4.00 may be available after present priorities are expired.

TICKET OFFICES—Tulane Stadium, 6401 Willow Street (Phone UNiversity 1-3661 or UNiversity 1-9381); Werlein's Box Office, 605 Canal Street, (MAGnolia 6201).

MAIL REQUESTS—Include check or money order payable to Tulane University, with 25 cents added for postage and handling. Address: TULANE TICKET OFFICE, 6401 WILLOW STREET, NEW ORLEANS 18, LA.

sports shorts



FIRSTS AND FOREMOST

The first team to charge admission to its football games was Yale. Back in 1872 fans paid 25c to watch Yale meet Columbia.

The first broadcast of a football game was at Texas A. & M. in 1921. It was sent out by dots and dashes. The first standard radio broadcast was from Stagg Field, Chicago on October 28, 1922, when Princeton defeated Chicago 21 to 18.

Knute Rockne developed 89 players who went on to become coaches. Among the best known were Harry Stuhldreher, Jim Crowley, Elmer Layden and Frank Leahy.

The famous Pop Warner received his first coaching salary from Georgia in 1895. They gave him \$35 for a 10-week season.

The first Rose Bowl Game was played on January 1, 1902. Stanford and Michigan were the opponents. Michigan was the victor—49 to 0.

The forward pass was first legalized in 1906.



WHAT DO YOU KNOW ABOUT New Orleans?

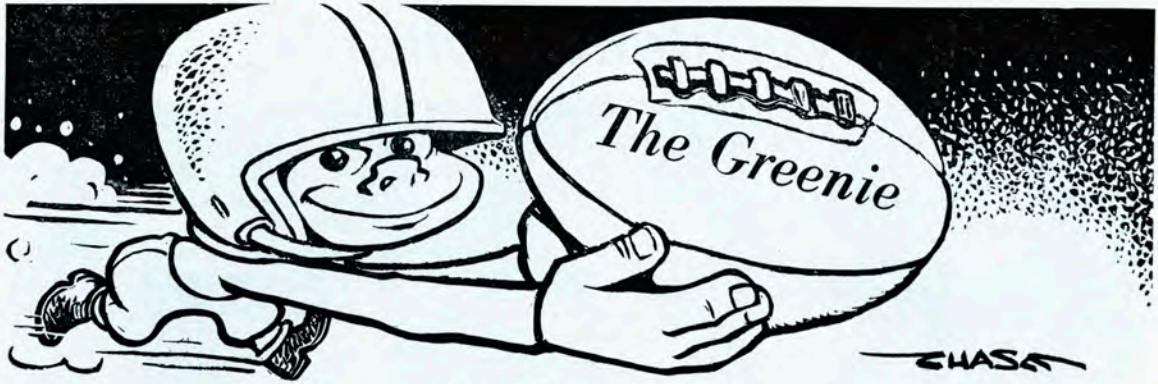
Learn about your city by enrolling
in the *Know New Orleans* Series

- **THE ARCHITECTURE OF NEW ORLEANS.**
Mon., 8 p.m., 10 weeks, starting Sept. 21.
Stanley Thomas Hall, Room 46
- **CREOLES AND NEW ORLEANS CUISINE.**
Wed., 8 p.m., 11 weeks, starting Sept. 23.
Newcomb Hall, Room 100
- **MUSIC AND THEATRE IN NEW ORLEANS.**
Wed., 8 p.m., 10 weeks, starting Sept. 23.
University College Bldg., Room 200
- **THE NEW ORLEANS QUEST FOR HEALTH AND EDUCATION.**
Tues., 8 p.m., 10 weeks, starting Sept. 22.
Newcomb Hall, Room 119
- **FROM OLD NEW ORLEANS TO THE NEW**
Thurs., 8 p.m., 10 weeks, starting Sept. 24.
Newcomb Hall, Room 120
- **THE MISSISSIPPI RIVER, EMPIRE BUILDER.**
Thurs., 8 p.m., 10 weeks, starting Sept. 24.
Univ. College Bldg., Room 200

Enroll at first session of class. For further information, call UN 6-2741

UNIVERSITY COLLEGE

**EVENING DIVISION,
TULANE UNIVERSITY**



LARRY KARL, *Editor*
 Division of Athletics, Tulane University, New Orleans 18, La.

Vol. 29

September 18, 1959

No. 1

Tulane vs. Florida

TONIGHT'S GAME

Coach Andy Pilney's sixth edition of the Green Wave starts off this 1959 grid campaign tackling one of the stronger members of the Southeastern Conference, the University of Florida.

Tulane fans can expect the Wave to throw an improved running game against the Gators. The fine passing attack Tulane boasted in '58 will also be very much in evidence, giving the Pilneymen a more versatile attack.



KARL

The fine passing of '58 (ranked second in team pass yardage last year) is still a big factor what with the return of ends Leo Young (86), Pete Abadie (81) and Bill Brabham (89). Abadie and Young were ranked Nos. two and three in SEC pass receiving in '58. However, doing the pitching tonight will be a pair of comparatively new faces—quarterbacks Phil Nugent (10) and Bobby Cornett (16). Both are excellent passers and handle the Split T variable offense with finesse.

The running attack will count on Tommy Mason (20), Tom McClellan (47), Jeff Bratton (17), Will Ellzey (26), Howard Kisner (35) and Terry Terrebonne (38) to carry the mail behind the experienced, larger-sized forward wall that shows much promise of becoming a staunch defensive unit.

Heading the No. 1 line will be tackles Dave Painter (71) and Joe LeSage (74),

guards Billy Clements (60) and John Di-Vietro (62), center Neal Jones (50), and ends Young (76) on the right side, and either Abadie (81) or Brabham (89), whoever starts on the left side.

That first line will average a hefty 213 pounds. The starting backfield of Nugent at quarterback, Mason and Bratton at halfbacks and McClellan at fullback will average 192 pounds, giving Tulane its largest starting unit in several seasons.

Florida stars to watch tonight are Dave Hudson (87) at right end, one of the better flankmen in the land, Asa Cox (65) a 5-8, 235-pound demon at guard and Bob Milby (41) who operates at fullback.

Tonight's game is the 13th between Tulane and Florida. Tulane has won six games, lost three and three contests ended in a tie.

Next week Tulane travels to Miami. Follow the Wave, by listening to the Green Wave Radio Network. The Greenies will return here to Tulane Stadium Saturday night Oct. 3 to meet Wake Forest.

REMAINING GAMES

HOME

Oct. 3 Wake Forest, Tulane Stad. 8 p.m.
 Oct. 9 Detroit, Tulane Stad. 8 p.m.
 Oct. 24 Georgia Tech, Tulane Stad. 8 p.m.
 Oct. 30 Texas Tech, Tulane Stad. 8 p.m.
 Nov. 14 Vanderbilt, Tulane Stad. 2 p.m.

AWAY

Sept. 25 Miami, Miami, Fla. 8:15 p.m.(EST)
 Oct. 17 Ole Miss, Oxford, Miss. 2 p.m.
 Nov. 7 Alabama, Mobile, Ala. 8 p.m.
 Nov. 21 L.S.U., Baton Rouge, La. 2 p.m.

Tulane Songs

ALMA MATER

We praise thee for thy past, O Alma Mater!
Thy hand hath done its work full faithfully;
The incense of thy spirit hath ascended
And filled America from sea to sea!

We praise thee for thy present, Alma Mater!
Today thy children look to thee for bread!
Thou leadest them to dreams and action
splendid!
The hunger of their souls is richly fed!

We praise thee for thy present, Alma Mater!
The vista of its glory gleameth far!
We shall ever be part of thee, great Mother!
There thou will be where e'er thy children are!

Chorus

Olive Green and Blue, we love thee.
Pledge we now our fealty true
Where the trees are ever greenest,
Where the skies are purest blue.
Hear us now, O Tulane, hear us.
As we proudly sing to thee!
Take from us our heart's devotion!
Thine we are, and thine shall be!

ROLL ON, TULANE

Here's a song for the Olive and the Blue.
Here's a cheer for the team that's tried and true.
Here's a pledge of loyalty to thee.
Oh, Tulane Varsity.

Here's to the Greenbacks that never will say die,
And here's to the hearts that are true
To the men of Tulane who are fighting for her
name,
For the Olive and the Blue.

Chorus

Roll, Green Wave,
Roll them down the field.
Hold, Green Wave,
That line must never yield.
When those Greenbacks charge through the line
They're bound for victory.
Hail, Green Wave,
For you we give a cheer.
Hail, Green Wave,
For you we have no fear.
So ev'ry man in ev'ry play,
And then we'll win that game today.
Hurrah for Old Tulane!

OFFICIAL WATCH
FOR THE



U. S. OLYMPIC
COMMITTEE



OLYMPIC WINTER
GAMES 1960



PAN-AMERICAN
GAMES 1959



NAT'L AERONAUTIC
ASSN.



NAT'L SKI ASSN.



AMERICAN
POWERBOAT ASSN.



NAT'L HORSE
SHOW ASSN.



NAT'L FOOTBALL
LEAGUE



MAJOR LEAGUE
BASEBALL



NAT'L COLLEGIATE
ATHLETIC ASSN.

LONGINES

THE WORLD'S MOST HONORED WATCH

Longines, first watch of sport, is recognized as official for timing world records and international events by all international sports and contest associations. Every Longines watch, for whatever its use, is made to be the best of its kind. For yourself, or as a gift, no other name on a watch means so much as Longines, the world's most honored watch.

OFFICIAL WATCH FOR THE

TULANE GAMES



ILLUSTRATED
Longines Starlight Serenade
"B", elegant 14K gold watch
with 6 diamonds, \$175;
Longines Presidency "E",
14K gold case, \$125.
Other models from \$71.50.
Federal tax included.

LONGINES-WITTNAUER WATCH COMPANY

TULANE UNIVERSITY



DR. RUFUS CARROLLTON HARRIS
President



RICHARD O. BAUMBACH
Director of Athletics



ANTON (ANDY) PILNEY
Head Football Coach

UNIVERSITY OF FLORIDA



DR. J. WAYNE REITZ
President



BOB WOODRUFF
*Director of Athletics and
Head Football Coach*

1959 TULANE GREEN WAVE



Abadie

Andrews

Ary

Barr

Barrios



Brabham

Bratton

Chaisson

Clements

Cornett



Crenshaw

Darre

DiVietro

Edmondson

Ellzey



Gamble

Gonzales

Guillot

Hawley

Heffington



Jones

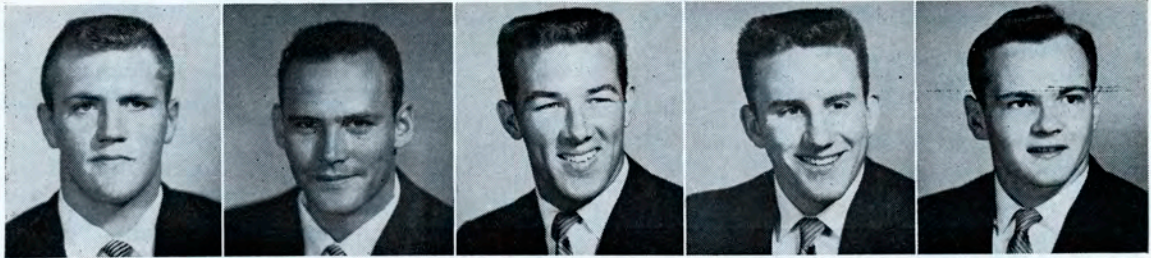
Keever

Kiefer

Kisner

Klock

1959 TULANE GREEN WAVE



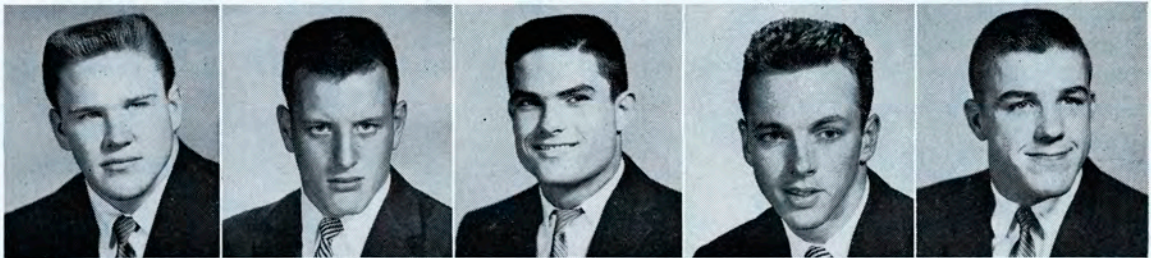
LeSage

Magee

Mason

McLean

McClellan



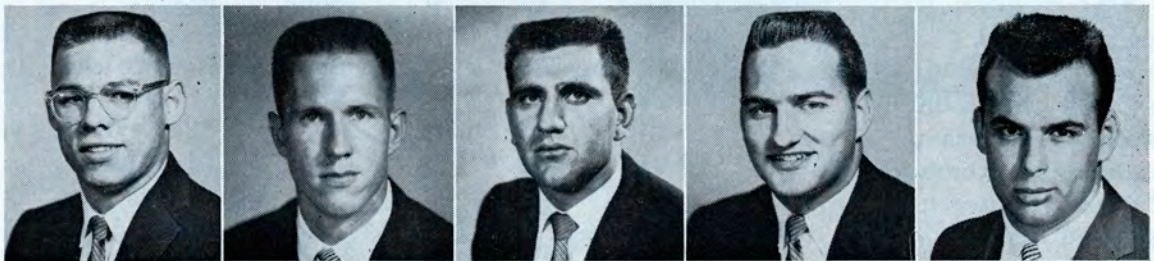
Michie's

Moen

Nugent

Oechsner

Ogilvie



Osteen

Painter

Pizzolato

Price

Rappold



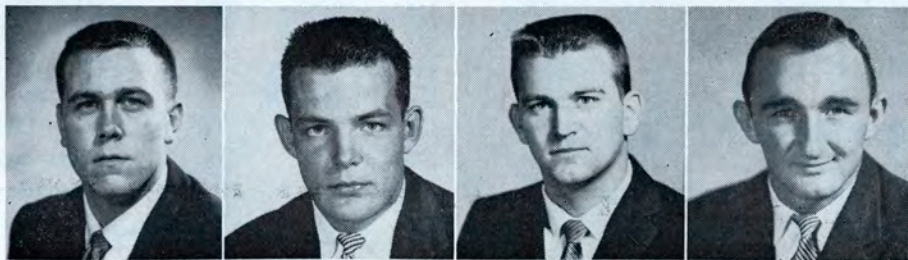
Rawson

Reynolds

Roach

Spinella

Stein



Strange

Terrebonne

Thompson

Young

1959 TULANE ROSTER

No.	Name and Position	Age	Ht.	Wt.	Ltrs.	Class	Hometown
10	Phil Nugent, qb	20	6-1	185	1	Jr.	Lafayette
11	Vance Strange, qb	19	5-10	165	0	Soph.	San Francisco, Cal.
16	Bob Cornett, qb	20	5-10	175	0	Soph.	Hattiesburg, Miss.
17	Jeff Bratton, qb & hb	21	6-1	195	2	Sr.	Camden, Ark.
20	Tommy Mason, hb	20	6-1	191	1	Jr.	Lake Charles
22	Bill Ary, hb	20	5-10	190	0	Soph.	New Orleans
23	Bob Price, hb	20	5-11	194	0	Soph.	Memphis, Tenn.
25	Bill Osteen, hb	20	5-11	185	1	Jr.	Millington, Tenn.
26	Will Ellzey, hb	20	6-0	200	0	Sr.	Metairie
31	George Oechsner, hb	19	5-10	160	0	Soph.	New Orleans
33	James Magee, hb	21	6-0	185	0	Jr.	Morgan City
34	Ned Edmondson, hb	19	6-1	175	0	Soph.	Lake Providence
35	Howard Kisner, hb	19	5-10	161	1	Jr.	Natchez, Miss.
38	Terry Terrebonne, hb	19	5-10	170	0	Soph.	New Orleans
40	Connie Andrews, fb	22	6-1	195	2	Sr.	Magnolia, Ark.
44	Leonard Stein, fb	19	6-0	190	0	Soph.	New Orleans
45	Robert Barrios, fb	19	5-11	181	0	Soph.	New Orleans
47	Tom McClellan, fb	21	6-0	193	1	Sr.	New London, Tex.
50	Neal Jones, c	21	6-2	208	2	Sr.	Baton Rouge
51	John Chaisson, c	19	6-0	195	0	Soph.	Houma
52	Ray Keever, c	19	6-2	188	0	Soph.	Sulphur
53	Nat Kiefer, c	19	6-2	215	0	Soph.	New Orleans
54	Larry Thompson, c	20	6-1	212	0	Soph.	Shreveport
60	Billy Clements, g	21	5-10	203	2	Sr.	Shelbyville, Ky.
61	Butch Crenshaw, g	19	5-10	195	0	Soph.	Alexandria
62	John DiVietro, g	21	6-0	208	2	Sr.	Easton, Pa.
63	David Michiels, g	20	5-11	210	0	Jr.	Alexandria
64	Mel Spinella, g	19	5-11	220	0	Soph.	Berwick
65	Paul Hawley, g	21	5-10	207	1	Sr.	Shreveport
67	George Guillot, g	21	5-10	193	1	Jr.	Shreveport
68	Billy Barr, g	19	6-1	205	0	Soph.	Nashville, Tenn.
69	Charles Ogilvie, g	20	5-11	190	0	Soph.	Memphis, Tenn.
71	David Painter, t	22	6-7	240	2	Sr.	Lake Charles
72	Bill Rawson, t	22	6-1	215	2	Sr.	Oak Park, Ill.
73	Bernard Darre, t	20	6-1	215	1	Jr.	New Orleans
74	Joe LeSage, t	21	6-3	225	1	Jr.	Beaumont, Tex.
75	Tyrone Pizzolato, t	19	6-2	205	0	Soph.	Donaldsonville
76	Ed Reynolds, t	19	6-3	215	0	Soph.	Destrahan
77	Gus Gonzales, t	19	6-1	200	0	Soph.	Wharton, Tex.
78	Bill Klock, t	22	6-1	215	1	Sr.	New Orleans
80	Robert Rappold, e	19	6-3	190	0	Soph.	New Orleans
81	Pete Abadie, e	22	6-3	205	2	Sr.	New Orleans
82	George McLean, e	20	6-1	195	1	Jr.	Magnolia, Ark.
83	Cameron Gamble, e	21	6-1	190	0	Jr.	New Orleans
84	Phil Heffington, e	21	6-3	195	1	Jr.	Shreveport
86	Leo Young, e	21	6-2	195	2	Sr.	Ferriday
87	Clarence Moen, e	19	6-3	195	0	Soph.	Cumberland, Wis.
88	Bill Roach, e	19	6-1	185	0	Soph.	Monroe
89	Bill Brabham, e	20	6-3	210	1	Jr.	Greensburg

The official watch for timing this game is LONGINES—"The world's most honored watch."

"A GOOD DEAL"
DEPENDS ON THE DEALER

Largest Used Foreign-Sports
Car Dealer South

We Buy — Trade — Finance

SERVICE MOTOR CO.
2645 TULANE AVE.

Earle P. Abadie "A. J." Johnson

TUlane 7071

Open 8 A.M. - 9 P.M.

The Sign
of GOODNESS

for 54 Years!



Quality Dairy Products
and
Frozen Foods



the
gourmet's goal

... is realized fully at Brennan's. Beautiful food is imaginatively served with unobtrusive continental graciousness, and in lovely surroundings. Traditional New Orleans delicacies or your own favorites, all done with a memorable Parisian flair. Come and be welcomed, as late as midnight.

Brennan's

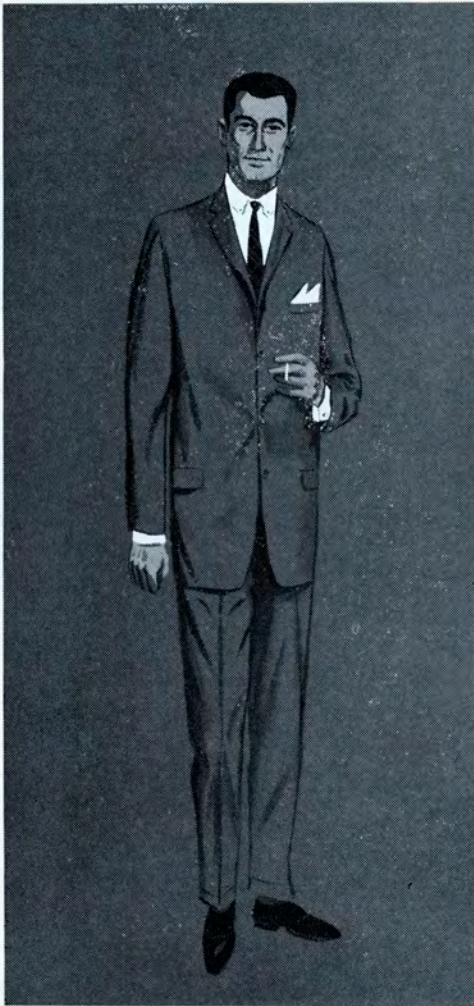
FRENCH RESTAURANT
417 ROYAL ST., NEW ORLEANS

shopping at *Holmes*
SINCE 1842



is traditional

in New Orleans



Styles change . . . but never the place to buy them. In New Orleans, it's *Holmes*, New Orleans' own quality department store. Chances are your grandfather bought his duster and goggles from Holmes—and that your dad got his racoon coat there. Today, Holmes features as always the latest fashions and famous name brands . . . styles for the young, and for the young at heart. And you'll find that Holmes gives you swift, personal attention when you select your wardrobe, on alterations and deliveries. Discover, as so many have, why Orleanians say . . . *there's no place like Holmes.*

D. H. HOLMES NEW ORLEANS • BATON ROUGE

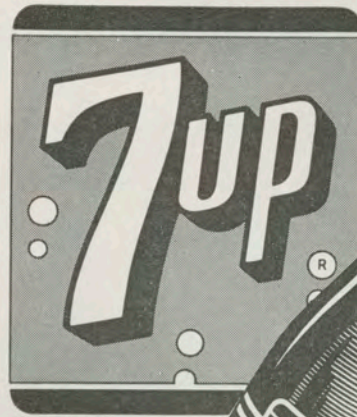
1959 Green Wave Co-Captains



End Leo Young, 6-2, 200-pound two-year letterman senior from Ferriday, is 21 and played 420 minutes in 1958 to lead all ends in time in action. Caught 20 passes last season, third-best pass receiving mark in the Southeastern Conference. His 20 receptions netted 227 yards and he scored one touchdown. Majoring in Business Administration.

Guard Billy Clements, 5-10, 195-pounds, senior, lettered in 1957 and 58. A native of Shelbyville, Kentucky, his 386 minutes of action last year led all Wave guards. An excellent leader, he has good speed and quick reactions, making him suited well for defensive pursuit at which he excels. His major course of study is Education.

*Cheered by
Millions!*



NOTHING DOES IT LIKE SEVEN-UP!

COMPLETE INVESTMENT SERVICES

- *Tax-free Louisiana Municipal Bonds*
- *Trading in all markets –
national exchanges and over-the-counter*
- *Quotations and research on any security*
- *Portfolio appraisals*

Members — New York Stock Exchange
and other national exchanges

HOWARD, WEIL, LABOUISSSE, FRIEDRICH

AND COMPANY

Investment Securities

222 Carondelet St. — Tulane 2711
New Orleans, La.



BRANCHES in Louisiana at MONROE • ALEXANDRIA • LAKE CHARLES • SHREVEPORT • COVINGTON
BRANCHES in Mississippi at JACKSON • NATCHEZ • VICKSBURG

FOOTBALL.

TULANE SELECTS THE ELEVEN FOR TODAY.

At 3 o'clock this afternoon the football eleven from the University of Louisiana, at Baton Rouge, and the team from the Tulane University, of this city, will meet on the field for the first time. Both teams are comparatively new and neither play a very high grade of game. The Baton Rouge eleven has trained its men more on team work and interference, while the Tulane men have been drilled in tackling, falling on the ball, catching a long pass, and in fact all the main points of the game. Team work has not been neglected, however, and the eleven is a very fair one, and in fair trim for a fight.

There are men on the team like Hugh Bayne, Foster, Castenado and Romeyne, whose playing has already won them praise.

Hugh Bayne, when at Yale college, some few months ago, was substitute on the university's champion eleven. He plays a hard game from start to finish, tackles low and very hard and generally disables his man. He has been given the position of left tackle on the team, where he can easily do great damage to his opponents. He is looked upon as one of the men to win. Foster, one of the southern guards, has recently entered the law school of the Tulane University, and was induced to take a position on the eleven. He is in the best of health, and is fully up to the standard in the game. Castenado, the 230 pound center rush, has gotten off almost all of his fat, and now plays a very fast and hard game. The rapidity with which this big fellow gets about the field is remarkable. Romeyne, another heavy weight, is also playing a very good game. He will be a very good man behind the line.

At 4 o'clock the old medical yard was crowded with football players. They had assembled for their last practice. T. L. Bayne, the team coach, arrived a few minutes later and worked his men through a number of new plays they have taken up. One of these has proved very successful, and will be used to-day. The teaming is very good at bucking the center, and rushing the flying wedge. Their half backs are speedy and strong and will do some fine running, if they are given a chance. In any style of play the team will prove hard to defeat. Their strong point is quickness. Not a minute is lost during the time on the field. Immediately after a play the men are in line again and ready for the next signal. The report that the Baton Rouge team was very good on team work has had but little effect upon the local players, and they are fully confident of winning. They realize that they will have to play hard to defeat a team which has had every day in the week to get into condition, and they will play hard from start to finish.

Mr. T. L. Bayne has trained his men in blocking a rush from a wedge in the style that made his team last year famous among local athletes. Castenado will do the blocking and the other heavy men in the rush line will attend to the breaking of the massed eleven.

At the practice game last evening the men played very well. Lewis and Tebault, the two half-backs, were given a chance to do some fine running, and met with every expectation.

When practice was over the men were settled up and told who would play in the first half. This team will be as follows: Potts, right end; Porter, right tackle; Guthrie, right guard; Castenado, center rush; Foster, left guard; Bayne, left tackle; Blakemore, left end; Lombard, quarter-back; Tebault, right half-back; Lewis, left half-back; and Romeyne, full back.

Another football season is opening to-night, and for the first edition of the 1959 Cam-Pix we went to the files of the Times-Picayune to bring fans a glimpse of some of Tulane's outstanding grid games. From the first collegiate encounter with L. S. U. in 1893, won by the Wave 38-0, to the 1958 victory 14-6 over Navy in the Oyster Bowl, Tulane teams have achieved wide recognition. On this page, the 1893 pre-game story appears at right, the result at left and a squad picture below.



© TULANE UNIVERSITY 1959



1. Joor. 2. Sullivan. 3. Johnson. 4. Bowling. 5. Harral. 6. Romeyne. 7. Castenado. 8. Britton. 9. Forsythe. 10. Woods. 11. Lewis. 12. Genella. 13. Eshleman. 14. Dufour. 15. Guthrie. 16. Buchanan. 17. Capt. Lombard. 18. Leon. 19. Von Phul. 20. Potter. 21. Robelot. 22. Blakemore. 23. Potts.

THE TULANE TEAM.

TULANE TACKLES
THE UNIVERSITY TEAM
 Proves Too Fast for the Baton Rouge Boys,
 Though the Latter Give Promise of Formidable Future.



Lombard, Captain Tulane Team.

...the game of the inter-collegiate matches played yesterday afternoon between the ... and the State University eleven. ... it marked the opening of the football season in this city. It was, moreover, ... attempt made in New Orleans to bring ... teams of equal prominence. These ... and made it one of the most memorable ...

OR'WESTERN DOWNED BY TULANE

★★★ SOUTHERN ROMPS TO 38-0 VICTORY OVER WOLVES ★★★

The Invading Greenbacks



How Green Wave Swept to Victory

Play-by-Play Returns Show Greenies Outplayed Northwestern Wildcats

The evidence that Tulane completely outplayed Northwestern and that bad breaks helped the Northwestern get their single touchdown is given in the following play-by-play description.

FIRST QUARTER

Lewis kicked off to Tulane's seven-yard line, and Pat Browne ran the ball back seventy yards. Flournoy gained two yards off tackle and Lautenschlaeger gained a yard around right end. Flournoy then passed into Northwestern's end zone. The ball was brought out to play on the twenty-yard line. White tried two times at the line and gained two yards, and then Gustafson went around Tulane's right end for six yards, going out of bounds. Tulane was penalized five yards for being offside. Gustafson was thrown out for a loss of a yard for a fumble, and Lewis then made four yards to the oak right guard and White passed over.

Lewis passed to Tulane's twenty-five-yard line and Lautenschlaeger returned it eight yards. Northwestern played through tackle for two yards. Lautenschlaeger gained Northwestern's right end for sixteen yards, giving great interference. Time out for Northwestern.

Flournoy gained two yards through tackle. Lautenschlaeger then swung around Northwestern's right end for twelve yards more, getting splendid interference. Tulane was then given a five-yard penalty for offense. On a beautiful pass, Lautenschlaeger to the island, Wilson ran to Northwestern's four-yard line. The Tulane crowd went wild, while Wilson hung over the Northwestern position.

Flournoy was held on an off-tackle block, and then he cranked through Northwestern's left tackle for a touchdown, getting the ball over by six inches. A try at forward pass. Lautenschlaeger to tackle, failed. Score, Tulane 6, Northwestern 0.

Wilson went in for block at left end, Brown, tackle, down, left guard, Lewis, captain and center, back, right guard, Johnson, right tackle, Flournoy, right end, Robinson, quarterback, Gustafson, left half, White, right half, Lewis, fullback.

Flournoy kicked off into the end zone. Gustafson gained a yard through tackle. Robinson was knocked out but quickly struggled up cutting Tulane's line out. Lewis hit center, but gained only two yards. Lewis passed to Tulane's fifty-yard line, and Lautenschlaeger ran it back six yards. Matthews went in for Flournoy. Flournoy gained a yard off tackle. Lautenschlaeger failed to gain around right end. Flournoy then passed to Northwestern's twenty-five-yard line, the ball being grounded.

Gustafson was tackled for a two-yard loss by Harry Gamble around left end. White gained a yard off tackle. Lewis passed to Tulane's fifty-yard line, and Lautenschlaeger punned it thirty-two yards, running out of bounds. Tulane was penalized for officials on the next play. Morgan was held in his tracks. Flournoy gained, sixty-five yards into the end zone. Time out was called.

O GRID FANS

Chicago arrived in Chicago

CHICAGO GRID FANS THRILL AT PLAYING OF GREENIE STARS

(Special to The Times-Picayune)
CHICAGO, Oct. 24.—The band played Dixie at Stagg Field today and the Green Wave of Tulane swept to a spectacular victory over Northwestern, 18 to 7.

More than 15,000 rooters watched the stand of the South against the North and thrilled at the brilliant runs of Flournoy and Captain Lautenschlaeger which sent Tulane out in front in the first quarter and which later brought them from behind in the second quarter to finally win by a comfortable margin.

This is a fighting team from the South and is all and a little bit more than has been said about it in advance press notices.

It outplayed, outgeneraled, and out-fought the Purple Wildcats at every turn and with a small band of 1000 Dixie rooters cheering them, raced up and down the field very much like a true champion.

Northwestern, without the services of its sensational "Moon" Baker, fought gamely but was finally beaten into submission by the sturdy crew from New Orleans.

The Purples' big rally came in the second quarter when two long passes sent them almost the length of the field to finally let White go over for its lone touchdown.

Flournoy, while given splendid assistance by each of his mates from Dixie, particularly the brilliant Lautenschlaeger, made all the Tulane scores.

Tulane, fresh from the swampy bayous of the Southern part of Louisiana, was right at home in the rain soaked field as the teams trotted tort to engage in the warming up exercises, that are as much a preliminary feature of a football game as batting and fielding practice is before a baseball contest. The Southern squad gave evidence of being greatly determined to win and pranced around the turf with plenty of fight evident on their faces.

Although outweighed greatly in the line and even the backfield, the Dixie eleven was ready to give the Purple machine a close struggle.

The fans, of course, were attracted mainly to watch the football battle, but Tulane offered many colorful sidelights for the spectacle.

In the first place, the Southerners' cheers were led by Miss Marian Draper, who danced in the "Folies" in 1923.

She returned to Tulane to study architecture and because of her terpsichorean ability she was chosen head cheerleader over the man candidates.

It was the first time in the history of football on Stagg Field that a girl has led a cheering section.

She was assisted by Miss Elizabeth Heaslip of New Orleans, Misses Gertrude Brady and Rosalie Smith of McComb and a group of enthusiastic girl "rooters" from Tyertown, Hammond and other Southern points, now residing in Chicago.

They swarmed into the reserved seat section colorful in gay winter attire, decked out with Tulane colors and let the pop-eyed world know they were of and from Dixie and were strong for the Dixie footballers.

The yells of the Dixie delegation were interesting, as the broad Southern dialect harmonized with a chorus effect, is somewhat unusual in this vicinity.

The Tulane rooters had the school spirit read about in books but seldom seen. It was good to watch a section of rooters showing wild enthusiasm rather than a keen but slightly dignified interest in the battle going before them.

Several of the Tulane regulars attracted attention from the stands by something more unusual than their gridiron ability.

Lamprecht, who played fullback, is the present national intercollegiate golf champion. It seemed odd to watch a star of such a gentle pastime risking injury on the gridiron.

Then there was Harry Gamble, who joined the ranks of the married men a week ago. His bride was at home listening in as her young husband battled for his alma mater. Peggy Flournoy, left halfback, is French, and certain signals were given in the Gaelic language.

He was the only man on the field who could curse his opponents and have it overlooked by the English speaking officials.

Flournoy was held on an off-tackle block, and then he cranked through Northwestern's left tackle for a touchdown, getting the ball over by six inches. A try at forward pass. Lautenschlaeger to tackle, failed. Score, Tulane 6, Northwestern 0.

Wilson went in for block at left end, Brown, tackle, down, left guard, Lewis, captain and center, back, right guard, Johnson, right tackle, Flournoy, right end, Robinson, quarterback, Gustafson, left half, White, right half, Lewis, fullback.

Flournoy kicked off into the end zone. Gustafson gained a yard through tackle. Robinson was knocked out but quickly struggled up cutting Tulane's line out. Lewis hit center, but gained only two yards. Lewis passed to Tulane's fifty-yard line, and Lautenschlaeger ran it back six yards. Matthews went in for Flournoy. Flournoy gained a yard off tackle. Lautenschlaeger failed to gain around right end. Flournoy then passed to Northwestern's twenty-five-yard line, the ball being grounded.

Gustafson was tackled for a two-yard loss by Harry Gamble around left end. White gained a yard off tackle. Lewis passed to Tulane's fifty-yard line, and Lautenschlaeger punned it thirty-two yards, running out of bounds. Tulane was penalized for officials on the next play. Morgan was held in his tracks. Flournoy gained, sixty-five yards into the end zone. Time out was called.

It has often been said that Tulane earned its place on the national football map when Clark Shaughnessy's 1925 team defeated Northwestern, 18-7 at Stagg Field in Chicago.

GREEN WAVE DOWNS GEORGIA IN HEROIC STRUGGLE, 21 TO 15

**Tulane Advances One Step
Closer to Championship
of South by Victory Over
Bulldogs**

**BANKER, ARMSTRONG
AND SMITH STAR**

**Crowd of 10,000 Sees Con-
test in Drizzling Rain;
1000 New Orleans Fans
Cheer Victory**

By William McG. Keefe
(Sports Editor The Times-Picayune)
Memorial Field, Columbus, Ga.,
Nov. 1.—Where speed, cleverness

and the spectacular filled here to-
day, Tulane's Green Wave filled the
gap with the never-say-die fighting
spirit and a hammer-and-tong style
of warfare and battered out a 21 to 15
victory over the Georgia Bulldogs in
a bloody, gruelling game. Three well-
earned touchdowns for the Green
and a safety and two touchdowns for
Georgia (one touchdown of which
was something of a lucky break)

It was Tulane's ability to come
from behind on two occasions with
an exhibition of indomitable battling
which thrilled the 1000 Orleanians
who made up a part of the rather
disappointing crowd of 10,000. Threat-
ening weather and intermittent driz-
zles no doubt kept down the attend-
ance though the light rains in no
way affected the playing field.

Wave Has Off Day

Compared with the first half of
the game with Georgia Tech, Tu-
lane's showing today constituted an
off day and it certainly is pleasing
to the Tulane followers to know
that the Green Wave got this off day
out of its system and still kept its
place on top of the Southern Con-
ference heap, headed now for the
1929 championship.

All of Tulane's scintillating plays
and clever generalship and most of
Tulane's snap and dash of last Sat-
urday were lacking today, but by
turning into Bulldogs themselves, the
Greenies outfought a dead game,
hard-hitting and rough Georgia team,
and thus finished the job of sweeping
two formidable Georgia elevens out
of its path which leads towards the
title.

While the individual alertness of
Ike Armstrong and Bill Banker
looked best for Tulane on the sur-
face, again it was the never-say-die
spirit of the Tulane line which
formed the bulwarks of success in
either attack or defense for the
Wave.

Line Wins Glory

Bloody and battered, that line, pit-
ted against a courageous, desperate
Bulldog line that was making its
dying effort to remain in the con-
ference race, literally covered itself
with blood and glory. At times the
fierceness of Georgia's desperate at-
tacks made substantial gains but
when the ball was pushed into Tu-
lane's danger zone, that tried and
true line held and it remained for a
long forward pass and a lucky break
to account for Georgia's two touch-
downs, while the alertness of one of
the best ends in the conference

spelled the safety which made up
the rest of Georgia's 15 points.

Vernon Smith, the end who played
such great ball against Yale, again
distinguished himself as the star of
the Bulldogs and Smith was right
close on the heels of Bill Banker
and Ike Armstrong as heroes of the
game.

Smith Makes Safety

It was Smith who tore through
the Tulane line when Banker had
dropped back into the end zone to
punt from the seven-yard line and
who threw Banker for a safety soon
after the game started.

But a blocked punt by Rucker
which gave the ball to Tulane on
Georgia's 25-yard line turned the
Tulane team into an irresistible force
and a terrific bombardment on
Georgia's line was started by Bank-
er and Seeuws and wound up by
Banker ramming center for a touch-
down from the two-yard line.

Coach Bernie Bierman's great undefeated
Southern Conference Champion 1929 team
turned in many outstanding performances,

but many oldtime Wave fans rank the
21-15 victory over Georgia as one of the
highlights of that season.



New Orleans' Finest . . .

In the center of business and social activities, The Roosevelt is designed to afford you the utmost in comfort and convenience. It offers a complete selection of suites and individual accommodations, each with thermostat temperature control. Luxurious convention halls and meeting rooms are available for your business or organization's requirements. And seven dining rooms and taverns provide the finest in food and entertainment.

SEYMOUR WEISS

*President and
Managing Director*

A. C. BELLANDE

Manager

900 ROOMS WITH BATH

MODERATE RATES

The ROOSEVELT

PRIDE OF THE SOUTH

UNIVERSAL TRAVEL CARDS ACCEPTED

HOORAY FOR THE O



THE WORLD CAN'T MAKE A

TULANE

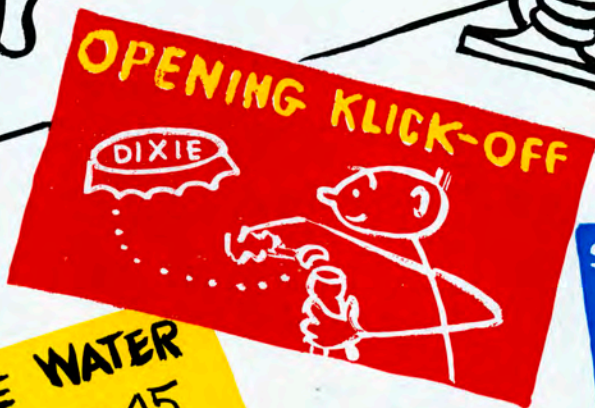
PROBABLE STARTING LINEUP

No.	Name	Position
89	BILLY BRABHAM or	
81	PETE ABADIE	LE
74	JOE LeSAGE	LT
60	BILLY CLEMENTS	LG
50	NEAL JONES or	
54	LARRY THOMPSON	C
62	JOHN DiVIETRO	RG
71	DAVID PAINTER	RT
86	LEO YOUNG	RE
10	PHIL NUGENT	QB
17	JEFF BRATTON	LH
20	TOMMY MASON	RH
47	TOM McCLELLAN	FB

THE GREEN WAVE SQUAD

10 Nugent, qb	47 McClellan, fb	72 Rawson, t
11 Strange, qb	50 Jones, c	73 Darre, t
16 Cornett, qb	51 Chaisson, c	74 LeSage, t
17 Bratton, qb & hb	52 Keever, c	75 Pizzolato, t
20 Mason, hb	53 Kiefer, c	76 Reynolds, t
22 Ary, hb	54 Thompson, c	77 Gonzales, t
23 Price, hb	60 Clements, g	78 Klock, t
25 Osteen, hb	61 Crenshaw, g	80 Rappold, e
26 Ellzey, hb	62 DiVietro, g	81 Abadie, e
31 Oechsner, hb	63 Michiels, g	82 McLean, e
33 Magee, hb	64 Spinella, g	83 Gamble, e
34 Edmondson, hb	65 Hawley, g	84 Heffington, e
35 Kisner, hb	67 Guillot, g	86 Young, e
38 Terrebonne, hb	68 Barr, g	87 Moen, e
40 Andrews, fb	69 Ogilvie, g	88 Roach, e
44 Stein, fb	71 Painter, t	89 Brabham, e
45 Barrios, fb		

LIVE AND BREW



FINER BEER—DIXIE 45

FLORIDA

PROBABLE STARTING LINEUP

No.	Name	Position
89	DAN EDGINGTON	LE
78	DICK BRANTLEY	LT
65	ASA COX	LG
52	BILL HOOD	C
67	LAWRIN GIANNAMORE	RG
77	DANNY ROYAL	RT
87	DAVE HUDSON	RE
16	WAYNE WILLIAMSON	QB
36	BOBBY JOE GREEN	LH
21	DON DEAL	RH
41	BOB MILBY	FB

THE FLORIDA SQUAD

10 J. Jones, qb	46 MacBeth, fb	73 Terrell, lt
12 McVay, qb	47 Lofton, fb	74 O'Steen, lg
14 Batten, qb	48 D. Jones, fb	75 Slack, lt
15 Allen, qb	49 Pickels, lhb	76 Hicks, lt
16 Williamson, qb	52 Hood, c	77 Royal, rt
21 Deal, rhb	57 Causey, c	78 Brantley, lt
22 Dunlop, lhb	58 Wehking, c	79 Collins, rt
24 Butz, lhb	59 Young, c	80 Pracek, re
31 White, lhb	60 Anderson, rg	81 Farmer, re
32 Partin, rhb	62 Mills, rg	82 Arfaras, re
33 Goodman, rhb	63 Norris, lg	83 Hart, le
34 Westbrook, rhb	64 Hays, lg	84 McGriff, le
35 Page, rhb	65 Cox, lg	85 Smith, le
36 Green, lhb	66 Senterfitt, rg	86 Patchen, le
37 DeFiore, rhb	67 Giannamore, lg	87 Hudson, re
41 Milby, fb	69 Camiletti, lg	88 Erwin, re
44 Vargecko, fb	70 Beaver, rt	89 Edgington, re
45 Peace, fb	71 Seals, rt	

OFFICIALS—Charles W. Bowen (Georgia Tech), referee; W. W. Luttrell (Tennessee), umpire; Harry B. Sharp (Tennessee), head linesmen; Ewell Pope, Jr. (Georgia Tech), field judge; William C. Gibson (Georgia Tech), back judge; Daniel J. Lyons (Loyola), ECO.



**The Roosevelt offers
New Orleans Best in Dining and
Entertainment Facilities**

THE EXQUISITE

Blue Room

Presenting the Nation's finest in dance music and entertainment, and famous New Orleans cuisine from a complete menu of dining delights. Star-studded floor shows nightly except Monday, at dinner and supper.

the Fountain Lounge

Open each evening except Tuesday for cocktails from 5. Dance music from 8. Spend an evening of enjoyment in the intimate atmosphere of New Orleans' favorite rendezvous. Luncheon daily from 11. Music by Albert Kirst ensemble.



THE SAZERAC BAR

A New Orleans tradition for over a century. Enjoy your favorite beverages prepared by experts. Ladies invited.

THE SAZERAC COCKTAIL and RAMOS GIN FIZZ

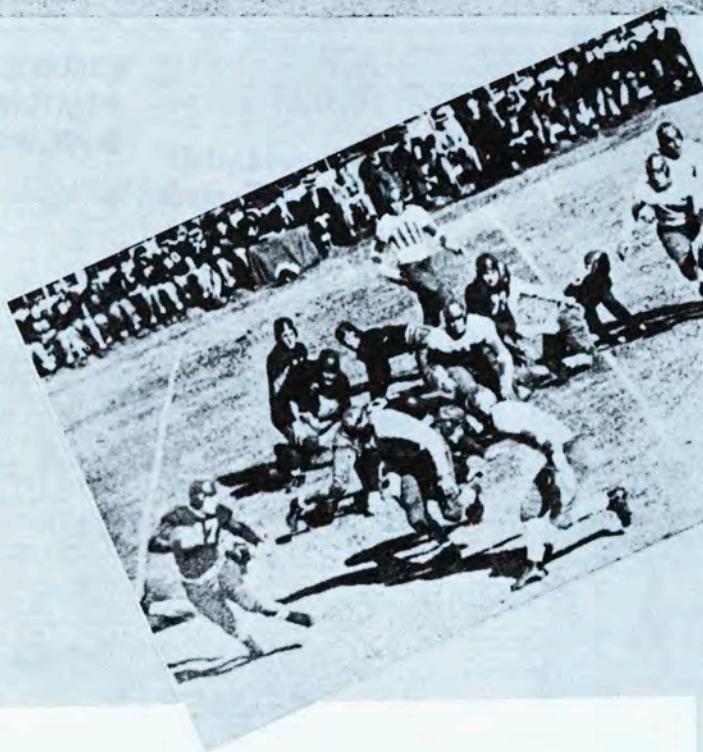
are served, in New Orleans, exclusively in all Roosevelt facilities.



The ROOSEVELT

PRIDE OF THE SOUTH

Green Wave and Tiger Backfield Stars in Action, Dashing Off Good Gains in Nip-and-Tuck Pigskin Conflict



Green Wave Beats L. S. U. 13-12 in Desperate Battle; Gloom Reigns in Tigertown

Simons Turns Defeat Into Victory With 42-Yard Dash for Tulane's Last-Minute Touchdown

By Wm. McG. Keefe
(The Times-Picayune Sports Editor)
Baton Rouge, La., Dec. 1.—The greatest crowd that ever saw a football game in Louisiana watched Tulane's Green Wave down the Louisiana State Tigers, 13 to 12, on Tiger Stadium field here this afternoon in what probably was the most exciting and spectacular game ever played in the history of this annual clash.

More than 31,000 fans, about equally divided on opposite sides of the field in sentiment, yelled themselves hoarse as first one team and then the other held command of the situation until finally, in the last few minutes of play, "Little Monk" Simons of the Green Wave rung down the curtain on his collegiate football career by completing one of the prettiest plays of the season to race 42 yards for the touchdown that turned a 12-to-7 defeat into a glorious 13-to-12 victory over as dauntless a team as ever represented the Old War Skule.

The touchdown, the tumult and the shouting arose just as Abe Mickal, L. S. U.'s 1934 hero, was being carried through the field gates on a stretcher.

Crippled going into the game, Mickal wound up his 1934 season as gloriously in defeat as he had done in any L. S. U. victory wherein he participated 60 full minutes.

Mickal's injuries today made it seem certain he could not get in any more of L. S. U.'s remaining games on schedule this year.

Tulane not only scored first, putting over a touchdown in the opening period, but held a one-point lead at the end of the half though L. S. U. scored a touchdown in the second period. But in the third, the Tigers forged to the front with another touchdown and that one looked like the money play until the Greenies put over their big wallop in the home stretch.

Weather Ideal
Ideal weather conditions, perfect handling of the crowd and a clean, sportsmanlike game between two evenly matched teams made this

Pall of Silence Settles Over Baton Rouge; Breath-Taking Finish of Great Game Stuns Losers

By Meigs O. Frost
(The Times-Picayune Staff Representative)
Baton Rouge, La., Dec. 1.—A megaphone told the whole story. It was a cheerleader's great white megaphone. It lay discarded on the cinder track of the Louisiana State university's stadium here, as the crowd of 30,000 streamed from the field after Tulane's heart-straining 13-12 victory over their ancient foes. It leaned against the front of the box, draped in purple and old gold, the Tiger colors, where had sat United States Senator Huey P. Long, Governor O. K. Allen and others of Senator Long's official family, expecting to see a Tiger victory. On it was painted the one word of command a Tiger cheerleader holds high before his raving cohorts when their team must hear its own signals. The word, in great capital letters, was "silence."

That told the story of Senator Long's sole comment after the game. He had nothing to say about the defeat of his pet ambition to build up an L. S. U. team that could defeat Tulane in open, equal battle. He hurried from the field, silent.

One Lodge of Sorrow
"Silence" was the watchword in Baton Rouge tonight.

Before the game, odds of seven to five and eight to five were offered here that L. S. U. would defeat Tulane; odds of six points favoring L. S. U. were offered freely. Tulane was the underdog. And the underdog chewed the top dog to ribbons. Celebrations, student and townfolk, scheduled for tonight in Baton Rouge turned into one citywide lodge of sorrow.

It was from the special trains rolling homeward to New Orleans that cheers and song sounded; from the thousands of cars that roared southward to New Orleans along the Air Line Highway. Homeward bound Tulane's olive and blue fluttered high. In Baton Rouge the purple and old gold of the Regimented Tigers drooped.

Never in their history of 32 great football battles have Tulane and L. S. U. fought in a more colorful con-

The game that sent Tulane into the inaugural Sugar Bowl game was this 1934 win over L. S. U. by Coach Ted Cox's Green Wave.

Tulane's two performances in the Sugar Bowl were both thrilling contests. The Wave won the first one, 20-14 over Temple, on Jan. 1, 1935 (at right), then dropped a 14-13 decision to Texas A & M on Jan. 1, 1940.

'Little Monk' Closes Career in Blaze of Glory



"Little Monk" Simons, who finished his career as a Tulane football player in a blaze of glory, is shown above as he is dashed down the side line for 43 yards and Tulane's first touchdown Tuesday when Tulane beat Temple, 20-14. "Little Monk" took a lateral from John McDaniel after the latter caught an Owl punt and "Little Monk" set sail for the Temple goal line and scored standing up.

Kimbrough in Role of Star Before 72,000

Price Kicks for Extra Point Which Defeats Mighty Tulane

By Wm. McG. Keeffe

Texas A. & M. still is the No. 1 football team of the nation and John Kimbrough still is one of the greatest football players ever seen on a gridiron in the opinion of a great majority of the 72,000 fans who saw Kimbrough lead the versatile Aggies to a 14-to-13 victory over Tulane Monday afternoon at Tulane Stadium in the greatest Sugar Bowl game in history.

But, in the opinion of probably

STATISTICS

	T.	A.&M.
Number of running and passing plays	57	63
Net yards gained running and passing	193	306
Average per play	3.4	4.8
Yards gained running	196	255
Yards lost running	3	11
Net yards gained running	193	244
Average gain running	3.4	5
Passes attempted	4	15
Passes completed	0	8
Passes incomplete	4	6
Passes intercepted by	1	0
Yardage of passes completed	0	52
First downs running	8	14
First downs passing	0	3
First down penalties	0	1
Total first downs	8	18
Number of punts	11	8
Average length of punts	34	44
Total yardage of punt returns	127	11
Touchdowns	2	2
Other points	1	2
Number of penalties	2	2
Total yardage of penalties	20	30
Fumbles	1	2
Fumbles recovered	3	0
Yardage of kickoff returns	50	69

TULANE

Player	Trials	Yards Gained	Avg.
Butler	11	58	5.3
Kellogg	7	35	5.0
Cassibry	11	41	3.7
Hays	6	17	2.9
Gloden	9	20	2.2
Banker	9	20	2.2

TEXAS A. & M.

Player	Trials	Yards Gained	Avg.
Kimbrough	25	164	6.6
Pugh	2	8	4.0
Moser	7	26	3.7
Price	5	13	2.6
Conatser	8	20	2.5

all of the 72,000 Green Wave fired up No. 2 team little "Jitterbug" but his college yard touchdown his name into the ranks of the greats of the game.

Never a better where; never a never a better a more courage by a powerful opponent who with speed and agility that any football team needs when it encounters a team as mighty as Tulane.

Just one regret was there. And that will be the regret nursed by Pete Mandich who, in playing one of the most brilliant defensive games on this field of great playing, also contributed a bit of thoughtlessness which while it may not have meant as much as a touchdown to the Aggies, came close to being as much.

In the heat of battle (and it was a struggle between gridiron titans), Mandich, in the first quarter forgot himself and, instead of doing what he probably would do nine times out of 10—prevent a rival from hurting himself—heaved Derace Moser head over heels out of bounds after the play had stopped.

Penalty and Touchdown

That brought Tulane a 15-yard penalty to her own one-yard line and brought A. & M. a touchdown a few seconds later when "Jarring John" Kimbrough cracked open the most powerful defense he probably ever encountered and smashed that yard to A. & M.'s first touchdown.

Walemon Price kicked the extra point. To the everlasting fame of Walemon, he also kicked the extra point on the next touchdown A. & M. scored—the boot that kept the game from being a 13-13 tie.

Unable to match the consistent (monotonous, if you will) gains of Kimbrough in spite of a magnificent 76-yard run by Kellogg and a couple of sustained marches, one of which scored a touchdown, Tulane nevertheless gave the Aggies a battle that left little to choose between the

Green Wave Wages Uphill Battle to Defeat Temple in Sugar Bowl Inaugural

Rooters Go Wild When Wearing of Green Pulp Victory Out of What Looked Like Defeat

By Meigs O. Frost

Northern football and Northern weather invaded New Orleans today as the Green Wave and the Orange and Blue of Temple met in the inaugural Sugar Bowl classic by a score of 20-14. The worst adversity a cold wave could start in the benches turned into a glow of victory that would have melted an iceberg bare-handed and drunk the result to coffee.

In the heat of that victory forged out of defeat those Tulane rooters went mad, and the loyal little group of Temple students who had traveled from Philadelphia with their undefeated team, sat stunned. Only a few moments before they had been going mad themselves. But the Temple Owl, padding with a grin in a green Wave if thought a placed barbed point found itself suddenly sunk beneath the surging of a tidal wave.

Staged Amid Color

New Orleans football year started with the great victory won out of defeat against Louisiana State University at Baton Rouge, ended with one of those furious, heart-grIPPING gridiron battles never seen before for years. It was a battle staged amid pomp and circumstance rich in color, flag and spirit for what should be a long line of Sugar Bowl contests.

That game had everything: speed and skill and dash and intelligence and teamwork and individual stars and non-crushing power and the open courage and fighting heart that will not admit defeat until the last whistle blows and thereby no man takes a defeat into triumph. Tulane Tuesday night could lay away the book for a year with head held high and a spring in its step. And if one of those 20,000 spectators had a complaint to make, it wasn't audible.

Who who sits and fancies the game is in the same position as a mosey toward home in a mist. There are just too many of them to hear that quarter Tulane and Temple struggled and neither was able to make a long pass to Hardy.

Harney Mints Fumbles

Then the Mints fumbled the ball on the Philadelphia, with his great teammate, Tom, who was playing with his left arm in a cast, jumped up and touched the ball, deflating it. Hardy jumped, caught it while running backward and then Bill Louderer charged like a mad bull, the very fury of his attack carrying Hardy over the goal line. What a play!

Tulane Overcomes 14-to-0 Lead With Brilliant Attack to Grab Victory Before Crowd of 26,000

By Wm. McG. Keeffe

"Dynamite Dick" Simons certainly did his part for Temple, but "Little Monk" Simons, Barney Mints, Dick Hardy, "Bucky" Bryan and one or two other Tulaneans arose to the heights Tuesday afternoon at Tulane Stadium and rolled the old Green Wave to a glorious 20-to-14 victory in the first Sugar Bowl in history—and a game that 26,000 fans pronounced one of the most thrilling they ever had seen.

Another beneath a 14-to-0 score which Temple ran up early in the first half, the dauntless Greenes of this straggled upstream in a performance that was as clever as it was courageous. In this, the first Sugar Bowl meeting of the North vs. South, those Tulaneans, who were playing their last game for the Green certainly wound up their collegiate careers in a way that not only will give them something to be proud of the rest of their lives, but gave Tulane university and the Sugar Bowl some football history that long will be remembered.

"Little Monk" Never Greater

Standing out as the most brilliant of Tulane's departing stars was "Little Monk" Simons, carrying a wounded shoulder into the last game for Tulane. Had shoulder or no "Little Monk" never was greater. He ran 43 yards for Tulane's first touchdown, which turned a gloomy looking 14-to-0 score into a 14-to-7 count; he pointed superbly against a high wind, he passed and he backed up the Green line like a Spartan. Late in the game he ripped off a 34-yard run that helped send the Greenes down to the field that looked like a certain fourth touchdown, their drive ending on Temple's 20-yard line when the final whistle blew.

Dick Hardy's scoring two of Tulane's touchdowns, put a fitting finish on his collegiate career. One of his touchdowns, Hardy stood right next to Simons' 34-yard run. From that position, Hardy Mints shot a long pass to Hardy.

Ball Deflected

Harney Mints headed the first two touchdowns for the extra points that gave the Greenes a tie game, and

ALABAMA ELEVEN ROLLS TO VICTORY IN ROSE BOWL TIL

'Dixie' Howell Leads Crimson to 29-13 Triumph Over Stanford

By The Associated Press

Aerial sleight of hand met the power on the ground today and 40,000 excited spectators saw Alabama defeat Stanford 29 to 13. The winners from the South go on the greatest exhibition of forward passing seen in the 40 years history of the annual competition, the Rose Bowl. The winners had nothing to match the tremendous drive of the losers, but they took the ball with an accuracy that let the record-breaking crowd—many Stanford players—gasping for breath. The Crimson compiled the amazing record of completing 36 out of 53 attempted passes for a total of 216 yards.

Capacity Crowd

With the exception of one 40-second account for a touchdown by Miller (Dixie) Howell, all the counters were scored or made possible by the astonishingly effective overhead attack.

The capacity crowd, a new record for the Rose Bowl, and the largest attendance of the current football season first marveled and then cheered as Howell threw pass after pass right into the hands of his receivers, principally Don Hutson, Paul Bryant and Jim Angrelchik.

Howell scored two touchdowns, half of his team's total, but it is not merely as a runner he will be remembered in the Rose Bowl. Every Stanford supporter will think of him as a runner, a ball of fire and sudden football death when he stood with a ball poised for flight.

One Interception

To complete a busy day, Howell did some sensational punting. Alabama won the game in a headed second period, a quarter packed with enough action for a dozen football games as Stanford led, by virtue of a first period touchdown when without warning the game exploded.

Continued on Page Eleven

Trotzky Denies Connection With 'Leningrad Plot'

Exile Disclaims Terrorism in Open Letter Given Out at Paris

WAVE ENGULFS REBELS

IN STUNNING 10-3 UPSET

s, 14-0

GENE NEWTON GAME'S HERO

'Mouse' Races 85 Yards
for Greenie Marker

By BILL KEEFE

(The Times-Picayune Sports Editors)
HINDS MEMORIAL STADIUM, JACKSON, Miss., Oct. 20.—Tulane's resourceful and inspired football team rocked and shocked a crowd of 20,000 predominantly Ole Miss fans here Saturday night by socking the unbeaten Ole Miss Rebels 10 to 3 to spring one of the most stunning upsets of the season. An 85-yard run by Gene "Fig" Newton in the third period and a field goal by Emmet Zelenka from the Rebel 25 in the final quarter furnished the points that whipped a desperately fighting Ole Miss team and rubbed out the three-point lead the Rebels opened in the first period when Paige Cothern, dead shot place kicker,



TECH BLASTS AUBURN, 28-7

Menger Leads Point Surge
for 'Jackets

By MERCER BAILEY

ATLANTA, Oct. 20.—Johnny Menger, Georgia Tech's "Mister Clutch" utility man, faked Auburn tacklers out of their shoes on a 60-yard run and an 87-yard put return Saturday and Tech walloped the Plainsmen 28-7 in their traditional football battle.

Menger, a 156-pound senior who can do everything, set up a touchdown with his almost unbelievable 60-yard off tackle sprint to the one to give Tech a 14-7 lead in the second quarter. Then in the third, he made another fantastic run, eluding tackler after tackler and going all the way with a punt.

It was revenge aplenty for Auburn's 14-12 upset victory last year which cost Tech the Southeastern Conference championship. It left the Engineers unbeaten in four starts this season.

Auburn matched Tech's first period score with a fine drive of its own, but the underdog Plains-

STATISTICS

	Auburn	Georgia Tech
First downs	15	14
Rushing yards	121	212
Passing yards	52	31
Passes attempted	18	8
Passes completed	9	4
Passes intercepted by	0	1
Punts	3	1
Punting average	43.7	39.2
Fumbles lost	1	0
Yards penalized	40	53

men were not in the game after Menger and his nimble feet started flying. Auburn's scoring drive covered 77 yards in 15 plays. Sophomore halfback Tommy Lorino, who seems destined for greatness, got the ball in scoring range with a fine 11-yard burst over guard to the Tech five.

A Tech offside penalty moved it to the one and quarterback Howell Tubbs sneaked it across.

Menger, a five-foot, 11-inch quarterback from Augusta, Ga., is another example of the

STATISTICS

	Miss.	Tul.
First downs	13	5
Total rush-pass plays	63	51
Total yards gained (net)	331	177
Net yards rushing	242	177
Passes attempted	14	3
Passes completed	9	0
Yards gained passing	85	0
Passes intercepted by	1	0
Number punts	6	1
Punt average	34.7	27
Yards penalized	115	40
Number fumbles	7	6
Fumbles lost	5	0

booted a field goal from the 11 yard line.

Unwavering defense work and the clever quarterbacking of Newton, as well as his spectacular run, were the chief reasons why the Rebels were stopped but to some extent they beat themselves with penalties, drawing costly setbacks time and again for personal fouls, holding and clipping, and in the fourth quarter the rough play turned into slugging when Gene Higerson was ejected from the game and the Rebs handed another 15 yard penalty.

Ole Miss drew nine penalties for 115 yards; Tulane 4 for 40 yards. And though the Rebels registered 13 first downs to Tulane's five and racked up 331 yards rushing to Tulane's 177, that long run of Newton's and the clutch defensive work of the Greenies proved the undoing of the Rebels and sent Tulane's stock sky-high in the

TULANE TRIPS UP AUBURN 27 TO 13 FOR OLD GRADS



TULANE'S HOME-COMING QUEEN, Miss Anne Roach, Newcomb college senior, is crowned by D. B. H. Chaffe, newly elected president of the Tulane Alumni Association, during half-time ceremonies at the football game Saturday in Tulane Stadium. At right is Midshipman Lt. Cmdr. Carroll J. Campbell, of New Orleans, the queen's escort.

Upset Roaring Climax to Home-coming Festivities

(Details of the Tulane Auburn game will be found on Page 1, Section 6.)

By DON WHITTINGHILL

The home-coming celebration at Tulane university came to a thrilling climax Saturday afternoon with the university's great family of faculty, students, alumni and friends witnessing Tulane's 27-13 victory over Auburn university.

Tulane's huge concrete and steel stadium was a megalom of excitement as the Green Wave outmanned one of the most powerful teams in the Southeastern Conference.

Approximately 35,000 spectators saw Miss Anne Roach of McComb, Miss., crowned queen of the 1955 home-coming, during half-time ceremonies. She was crowned by D. B. H. Chaffe, New Orleans businessman, and newly elected president of the Tulane Alumni Association.

Color was everywhere within the stadium. Tulane's 1000 man Reserve Officers Training Corps representing units of the Army, Navy and Air Force, paraded in neatly pressed khaki and blue service uniforms under the cloudless blue sky.

Tulane's reputation in recent years of being a team capable of big upsets gained much momentum with the 1956 win over Ole Miss, 10-3 (above) and the 1955 victory over Auburn, 27-13 (insert bottom).

Tulane Upsets Navy, 14-6, In Oyster Bowl Thriller

By George McClelland
Virginian-Pilot Sports Writer

NORFOLK—For a Tulane football team they said was "still a year away" time moved forward at a great rate Saturday.

Arriving at Foreman Field for the 12th annual Oyster Bowl very definitely the party of the second part, the Green Wave from New Orleans inundated the Navy, 14-6.

This came as a monstrous surprise. The Naval Academy eleven brought an undefeated record and sixth position in the national ranking into this spectacle. Tulane was a four-time loser, a two-touchdown underdog.

Yet as the sky over the participants and the festive crowd of 32,169 assumed an ever graying cast so did Navy chances.

Petitbon Shows Way

Inspired by Richie Petitbon, a magnificent junior quarterback, Tulane swept 83 yards in 13 plays for a second period touchdown, then 67 yards in 15 for the clinching points in the final quarter.

Petitbon, a 198-pound New Orleanian, registered both times—on runs of seven yards and two feet. Carrying the ball on 18 occasions for 88 yards, completing

two of four passes for 24 yards, defending fiercely and in general carrying the load for 56 minutes this tall, articulate young man emerged the player of the game. For his efforts he received the Mel T. Blassingham award, donated by the Norfolk Sports Club. Joe Tranchini, Petitbon's gifted

The Statistics

	Navy	Tulane
First downs	13	14
Rushing	5	71
Passing	8	2
Penalty	0	1
Times carried	31	57
Rushing yardage	79	214
Passing yardage	165	24
Passes attempted	24	5
Passes completed	14	2
Passes intercepted by	0	2
Yards interceptions return	0	7
Punts	4	4
Punting average	37	37
Yards punts returned	23	14
Yards kickoffs returned	40	23
Fumbles	2	1
Fumbles lost	0	1
Penalties	3	2
Yards penalized	15	20

Score By Periods

Navy 0 6 0 0—6

Tulane 0 7 0 7—14

Scoring

Tulane: Petitbon, 7 run (Kisner, kick)

Navy: Bellino, 25 pass from Tranchini (run failed)

Tulane: Petitbon, 1 run (Kisner kick)

counterpart, passed for the Navy touchdown in the final minute of the first half. Driving the favored team 71 yards in three minutes, the second classmen connected four times. The climactic one covered 25 yards, with Joe Bellino, a yearling halfback, leaping

to make the catch deep in the end zone.

Point Try Fails

Bellino then attempted to sweep right end for the two points which would have given Navy an 8-7 lead at halftime. He was shoved out of bounds at the three. Tulane had tried nothing but two-point conversions in earlier games. Against Navy the Green Wave went for one twice—and both times Howard Kisner, a sophomore halfback, responded with a perfect placement.

Tranchini finished with 10 completions in 19 attempts for 126 yards, a sterling piece of business but one which had to finish second best.

Tulane, too, is endowed with a reputation for passing. Indeed in past games the Green Wave had thrown more than it had run. However, assistant coach Jim Root scouted Navy against Michigan and indicated a ground game would succeed. It did. On neither touchdown drive did the white-shirted southerners go to the air. Instead they swept the flanks on pitchouts and used Petitbon for key third-down yardage up the middle.

It was not all offense. Tulane

alive with a still later drive. This time passes by Jim Maxfield, Tranchini's replacement, moved the Midshipmen from their own 28 to the Tulane 33. Bellino, made three receptions. Pete Van Nort, a first classman at end, caught another. Then Maxfield went for the touchdown, and Tom Mason, a Tulane sophomore, caught the ball in the end zone. At this point 36 seconds remained.

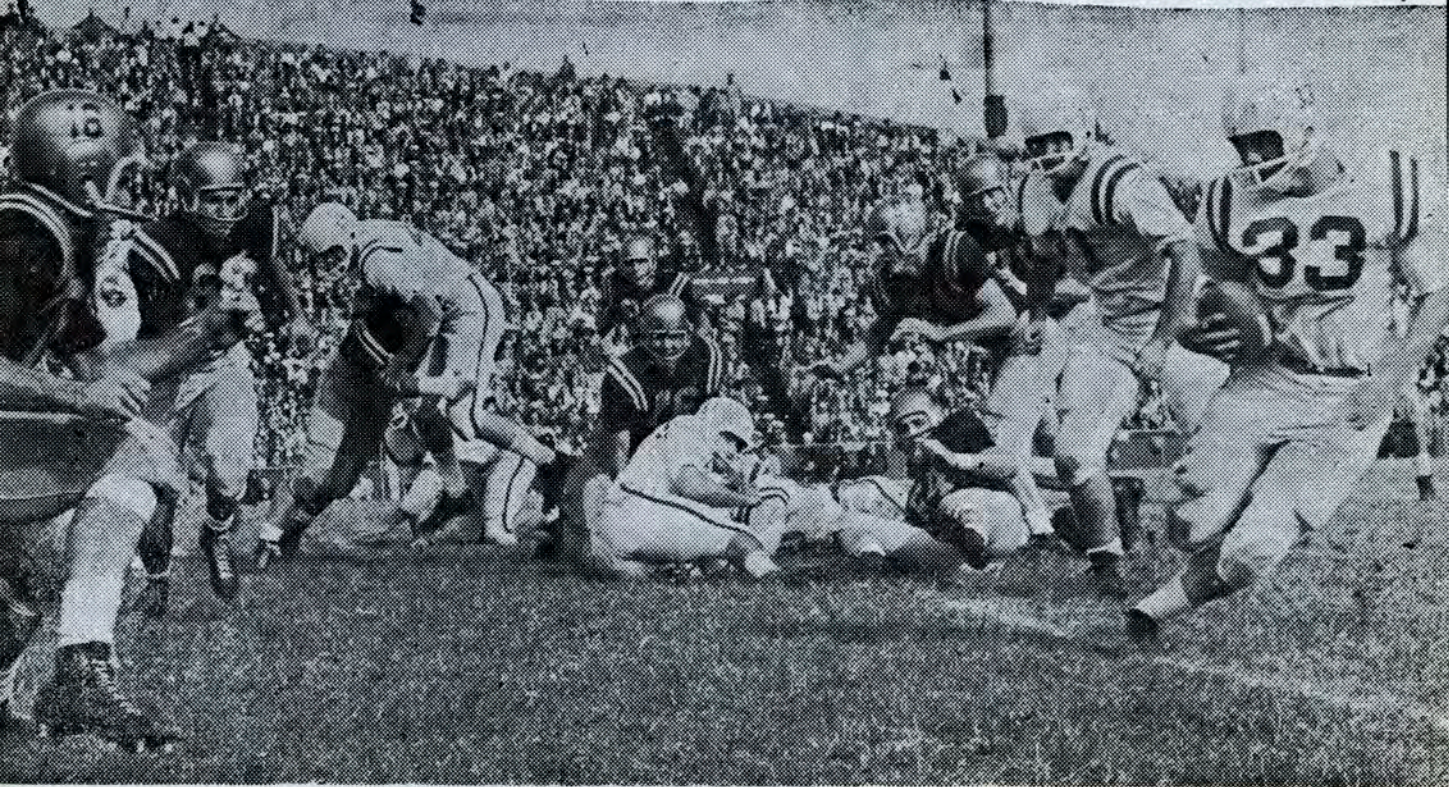
Thus Tulane maintains its unbeaten status versus Navy. The Green Wave owns three victories and a tie against the Midshipmen.

Further, the Academy, committed to the Oyster Bowl through 1962, suffered its first Foreman Field defeat. In 1953 Navy walloped Duke, 40-6. Last year Georgia was beaten, 27-14.

Also broken were two longer streaks. Navy had won six in succession including the Sugar Bowl victory over Rice and had not been beaten in 11 games.

Navy Fights in Air

Faced with a truly aroused foe coach Eddie Erdelatz' detachment made a fight of it because of its passing. Although it was apparent that Tulane meant to keep the upper hand the Midship-



Green Wave Pours Through Leak in Navy Dike

as spotted in MB's

V.I.P. SHOP



*where you'll find moderate
priced clothing and furnish-
ings in good taste for
gentlemen of all ages!*



MAISON BLANCHE

GREATEST STORE SOUTH

Tulane's
All-Americans

ENDS

Jerry Dalrymple (1930-31)*
Ralph Wenzel (1939)

TACKLES

Harley McCollum (1939)
Ernie Blandin (1941)
Paul Lea (1948)
Jerome Helluin (1950)

GUARDS

Tony Sardisco (1955)

CENTERS

Lester Gatewood (1943)

BACKS

"Peggy" Flournoy (1925)
Bill Banker (1929)
Don Zimmerman (1931-32)
Claude Simons, Jr. (1934)
W. A. "Dub" Jones (1944)
Eddie Price (1949)

* National Football Hall of Fame.

Best Wishes To

The Green Wave

For Many Successful
Seasons

~*~

**CHALMETTE LAUNDRY
and CLEANERS**

2801 TULANE AVENUE

For Excellent Work and Repair Service
Call GAlvez 2161

BEFORE OR AFTER THE GAME.....

OUTRIGGER

BAR & LOUNGE

- ★ Spectacular exotic drinks!
- ★ Palate pleasing Polynesian tid-bits!
- ★ All your cocktail favorites!

OPEN FROM 9 A.M.

ENTERTAINMENT FROM 5 P.M.
Nightly except Sunday

sheraton-charles hotel
NEW ORLEANS



HAL'S Commercial Restaurant

834 Gravier Street

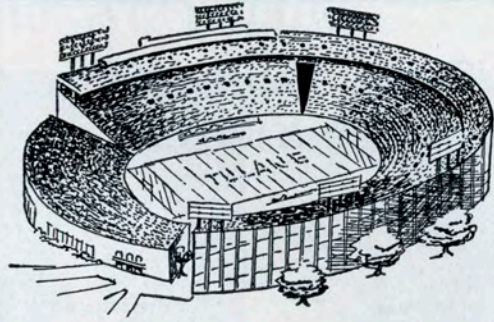
Featuring Delicious

POOR BOYS

Of All Kinds

Tasty Plate Lunches

The Best Coffee and Pie in Town



Tulane Stadium

Tulane Stadium lighted in 1957 at a cost of \$168,000, is famous as the home of Green Wave football teams and of the annual Sugar Bowl Classic, was dedicated 33 years ago this fall with east and west stands seating 35,000. Subsequent enlargements, due in large measure to the efforts of the Sugar Bowlers, have increased the capacity to its present 80,985. The stadium is located on the site of the Etienne de Boré plantation, where sugar was first granulated in this country.

All-America favorite ...ice-cold Coke



"Coke" is a registered trade-mark.

BOTTLED UNDER AUTHORITY OF THE COCA-COLA COMPANY BY
THE LOUISIANA COCA-COLA BOTTLING CO., LTD.

Tulane Printing Office
CAMPUS PRINTERS



PLUM near
 AUDUBON ST.

UNiversity 6-2741
 Ext. 344

DELMONICO
RESTAURANT

ESTABLISHED 1895

1300 ST. CHARLES

JACKSON 5-4937

MAGNOLIA 9307



since 1880
Commander's

Palace
Dining in the Grand Manner

WASHINGTON AVE. at COLISEUM

WILMER A. SIMPSON
 President

EDWIN A. STOUTZ
 Secty-Treas.



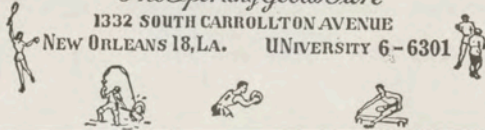
Simpson-Stoutz Sporting Goods Co.

INCORPORATED

The Sporting Goods Store

1332 SOUTH CARROLLTON AVENUE

NEW ORLEANS 18, LA. UNIVERSITY 6-6301



For Your Convenience

PUBLIC TELEPHONES

are located at several positions on the
ground level walkways underneath
both East and West Stands.

PAN-AMERICAN FILMS

Producers of 16 mm Industrial, Educational and Special Events
 Motion Pictures

Editing, Titling and Color Film Duplicating — Sound Recording

Producers of the Sugar Bowl Movies in Color and Sound Since 1945

Bell & Howell

735 POYDRAS STREET

Motion Picture Equipment Dealers

JA 5-4895

Behind The Scene At Tulane



G. J. (Buddy)
deMonsabert
Business Manager



Larry Karl
Assistant to the
Athletic Director
& Sports Information



Dr. Charles Moseley
Team Physician



Miss Ana Steinacher
Ticket Manager

CAGE PROSPECTS BRIGHT

Order Your Season Tickets Now

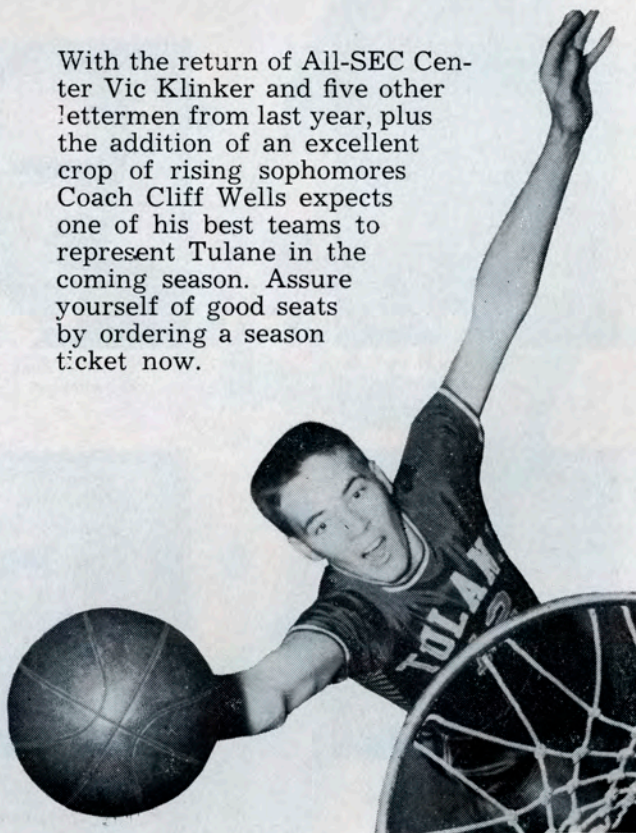
1959-60 HOME BASKETBALL SCHEDULE

- Dec. 1—ALABAMA STATE
- Dec. 3—LA. COLLEGE
- Dec. 5—STETSON UNIV.
- Dec. 7—CENTENARY
- Dec. 18—S. M. U.
- *Dec. 29-30—SUGAR BOWL
- Jan. 2—GEORGIA
- Jan. 4—FLORIDA
- Jan. 16—SPRING HILL
- Jan. 30—OLE MISS
- Feb. 1—MISS. STATE
- Feb. 13—ALABAMA
- Feb. 15—AUBURN
- Mar. 2—L. S. U.

*Tulane Season Ticket Buyers will be assured of opportunity to buy good seats for Sugar Bowl Basketball Tournament.

For tickets or information call Ticket Office, Tulane Stadium, 6401 Willow Street (UNiversity 1-3661 or UNiversity 1-9381)

With the return of All-SEC Center Vic Klinker and five other lettermen from last year, plus the addition of an excellent crop of rising sophomores Coach Cliff Wells expects one of his best teams to represent Tulane in the coming season. Assure yourself of good seats by ordering a season ticket now.



TULANE STAFF



Anton (Andy) Pilney
Head Coach



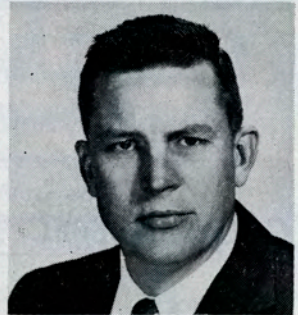
Jack Green
*Assistant
Coach, Line*



Bob Whitman
*Assistant
Coach, Backs*



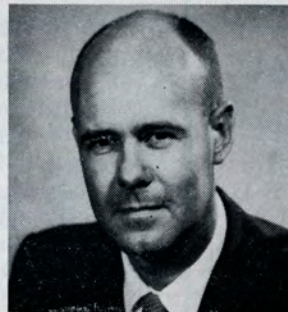
Pete Pihos
*Assistant
Coach, Ends*



Roland Dale
*Assistant
Coach, Line*



Jim Root
*Assistant
Coach, Backs*



Benny Ellender
Freshman Coach



Ray Prats
*Assistant
Freshman Coach*



Dr. James Breen
Academic Counselor



Jack Orsley
*Recruiting
Co-ordinator*



Earl (Bubba) Porche
Trainer



EDDIE PRICE

*Public Relations Director
Regal Beer*

SEC RECORD

1948 —Most yards rushing—1178 yards

TULANE RECORD

1948-49—Only Tulane back to gain more than 1000 yards in season

1949 —Most yards gained in single game—238 yards

1946-49—3095 yards rushing

1948-49—All Conference Back

1949 —All-American Back

PRO RECORD

1951 —Leading Ground Gainer, National Football League—All-Pro Fullback

1952 —All-Pro Fullback

1950-55—All-time N. Y. Giant Ground-gaining record



BILL SVOBODA

*District Manager
Regal Beer*

TULANE RECORD

1948 —Voted best blocking back

1948 —Voted most unselfish player

1949 —Co-captain

1949 —Member College All-Stars

PRO RECORD

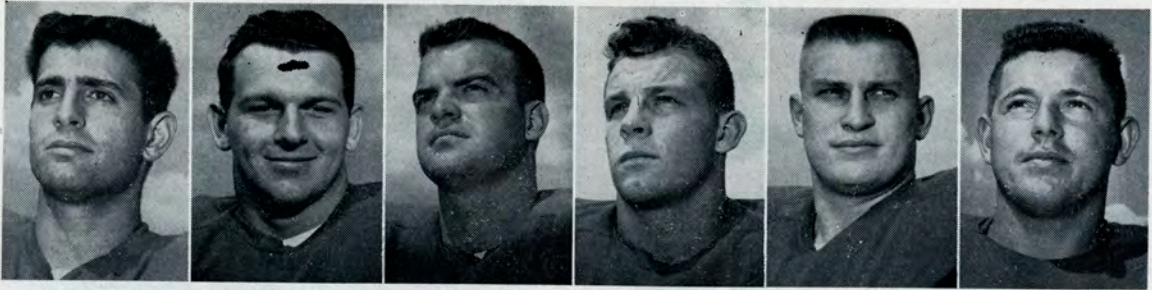
1957 —All-Pro Line-backer

**MEET
3 OLD FRIENDS**

*... now playing on the
same team!*



BETTER TASTE
is your
EXTRA DIVIDEND
in every glass
of REGAL BEER
American Brewing Co.,
New Orleans, La.



Arfaras Beaver Brantley Collins Cox Deal



Dunlop Edgington Giannamore Hicks Hood Hudson

Florida Roster

No.	Name and Position	Age	Ht.	Wt.	Ltrs.	Class	Hometown
10	Jack Jones, qb	1	5-11	182	0	Jr.	Commerce, Okla.
12	Mike McVay, qb	0	6-2	185	0	Soph.	Lake Worth
14	Tom Batten, qb	3	5-11	151	0	Soph.	Miami
15	Dick Allen, qb	24	5-11	175	2	Sr.	Atlanta, Ga.
16	Wayne Williamson, qb	11	6-2	193	2	Sr.	Tampa
20	Jim Eadens, lhb	1	6-1	185	0	Soph.	Sarasota
21	Don Deal, rhb	2	5-9	180	1	Jr.	Corpus Christi, Tex.
22	Scotty Dunlop, lhb	0	6-0	184	0	Soph.	Daytona Beach
23	Ed Braddy, rhb	19	5-10	168	0	Soph.	Ft. Lauderdale
24	Clyde Butz, lhb	12	6-2	190	0	Sr.	Lancaster, Pa.
25	Dave Bludworth, rhb	19	5-8	150	0	Soph.	DeFuniak Springs
31	Paul White, lhb	10	6-0	175	0	Soph.	Bartow
32	Doug Partin, rhb	21	5-9	165	1	Jr.	St. Cloud, Tex.
33	Don Goodman, rhb	7	6-0	190	0	Soph.	Miami
34	Jack Westbrook, rhb	21	5-10	177	1	Sr.	Miami
35	Gene Page, rhb	10	5-11	190	0	Jr.	Tallahassee
36	Bobby Joe Green, lhb	23	5-11	175	1	Sr.	Bartlesville, Okla.
37	Gene DeFlore, rhb	10	5-11	180	0	Soph.	Alletown, Pa.
41	Bob Milby, fb	17	6-0	200	1	Jr.	Ocala
44	Paul Vargecko, fb	19	5-10	185	0	Soph.	Steubenville, Ohio
46	Jon MacBeth, fb	20	5-8	195	1	Jr.	Pensacola
47	Dee Lofton, fb	19	6-1	205	0	Soph.	Fernandina Beach
48	Dickey Jones, fb	18	6-3	215	0	Soph.	Gainesville
49	Clayton Pickels, lhb	21	5-10	185	0	Soph.	Jacksonville
51	Bobby Hosack, c	18	5-8	210	0	Soph.	Miami
52	Bill Hood, c	21	6-1	201	1	Jr.	Lakeland
54	Floyd Dean, lt	19	6-4	220	0	Soph.	Eagle Lake
57	Lee Causey, c	20	6-2	213	0	Soph.	Jacksonville



Jones MacBeth McGriff McVay



Milby



Mills



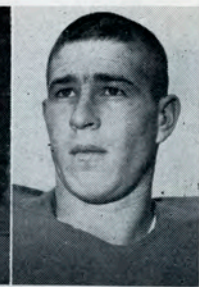
Norris



O'Steen



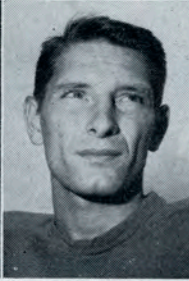
Page



Partin



Patchen



Pracek



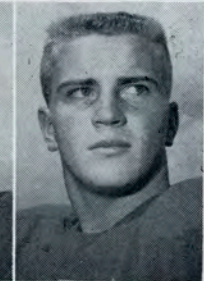
Royal



Senterfitt



Slack



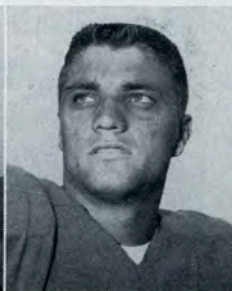
Vargecko

Florida Roster

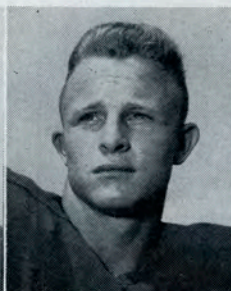
No.	Name and Position	Age	Ht.	Wt.	Ltrs.	Class	Hometown
58	Bob Wehking, c	22	6-4	226	0	Jr.	St. Augustine
59	Jim Young, c	21	5-11	198	0	Soph.	Vero Beach
60	Norman Anderson, rg	19	6-1	205	0	Soph.	Miami
62	Huston Mills, rg	20	6-1	211	0	Soph.	Panama City
63	Ken Norris, lg	20	6-0	215	0	Soph.	Belle Glade
64	Tom Hays, lg	19	6-0	194	0	Soph.	Decatur, Ga.
65	Asa Cox, lg	21	5-8	230	2	Sr.	Gainesville
66	Don Senterfitt, rg	21	5-8	197	0	Soph.	Pensacola
67	Lawrin Giannamore, lg	20	6-1	200	2	Sr.	Steubenville, Ohio
70	Jim Beaver, rt	19	6-1	230	0	Soph.	West Palm Beach
71	Roger Seals, rt	21	6-2	215	0	Jr.	Tampa
73	John Terrell, lt	19	6-1	225	0	Soph.	Wauchula
74	Gene O'Steen, lg	13	6-0	220	0	Soph.	Alachua
75	Ronnie Slack, lt	22	6-2	216	1	Jr.	West Palm Beach
76	L. E. Hicks, lt	19	6-5	250	0	Soph.	Tampa
77	Danny Royal, rt	20	6-1	200	1	Jr.	Camilla, Ga.
78	Dick Brantley, lt	20	5-11	210	2	Sr.	St. Augustine
79	Chet Collins, rt	21	6-1	210	0	Jr.	Bartow
80	Bob Pracek, re	22	6-4	190	0	Sr.	Jeannette, Pa.
81	Henry Farmer, re	20	6-3	185	0	Soph.	Atlanta, Ga.
82	Nick Arfaras, re	20	6-1	205	1	Jr.	Tarpon Springs
83	Bill Hart, le	19	6-2	190	0	Soph.	Miami
84	Perry McGriff, le	22	6-1	185	1	Sr.	Gainesville
85	Tom Smith, le	20	6-2	187	0	Soph.	Atlanta, Ga.
86	Pat Patchen, le	21	6-0	194	1	Jr.	Steubenville, Ohio
87	Dave Hudson (Cap.) re	22	6-1	225	2	Sr.	Pensacola
88	Bobby Erwin, re	23	6-2	196	0	Soph.	Jacksonville
89	Dan Edgington, re	22	6-2	191	2	Sr.	Miami



Wehking



Westbrook



White



Williamson

THEY EQUIP THE GREENIES



From left are Head equipment custodian Troy Phillips and student assistants Rex Rexinger, Doyle Phillips, and Skippy Haller.



CAMERAS

BOLEX, BELL & HOWELL, KODAK,
REVERE, ARGUS, KEYSTONE,
LEICA, POLAROID, ROLLEI,
AIRES, TOPCORN

PROJECTORS

• 8mm • 16mm • 16mm SOUND
35mm SLIDE • 2 1/4 x 2 1/4 REFLEX

PHOTOGRAPHIC ACCESSORIES

Complete Selection



Pay No More!

Official Concession Prices Are:

Soft Drinks 15c; Coffee 15c
Ice Cream Bars 10c
Ice Cream Sandwiches 15c
Hot Dogs 25c; Hamburgers 50c
"Tunies" 40c; Cheese Sandwiches
(American or Swiss) 40c
Cigarettes 35c; Candy Floss 15c
Popcorn 15c Peanuts 15c
Seat Backs 50c

Sales, Service & Rental Headquarters

Johnson
SEA-HORSE MOTORS

DONOVAN
Boat Supplies

1018 BARONNE JA 5-9051

1959 TULANE VARSITY SQUAD



First row, from left; Bernard Darre, Pete Abadie, David Painter, Joe LeSage, Phil Nugent, Neal Jones, Co-Capt. Leo Young, Co-Capt. Billy Clements, Phil Heffington, Bill Brabham, Bill Osteen, John DiVietro, Paul Hawley, and Jeff Bratton.

Second row, from left; Mel Spinella, Will Ellzey, Len Stein, Charles Passman, Ned Edmondson, Charles Ogilvie, Bob Price, Connie Andrews, William Barr, Terry Terrebonne, Bill Ary, Vance Strange, and Larry Thompson.

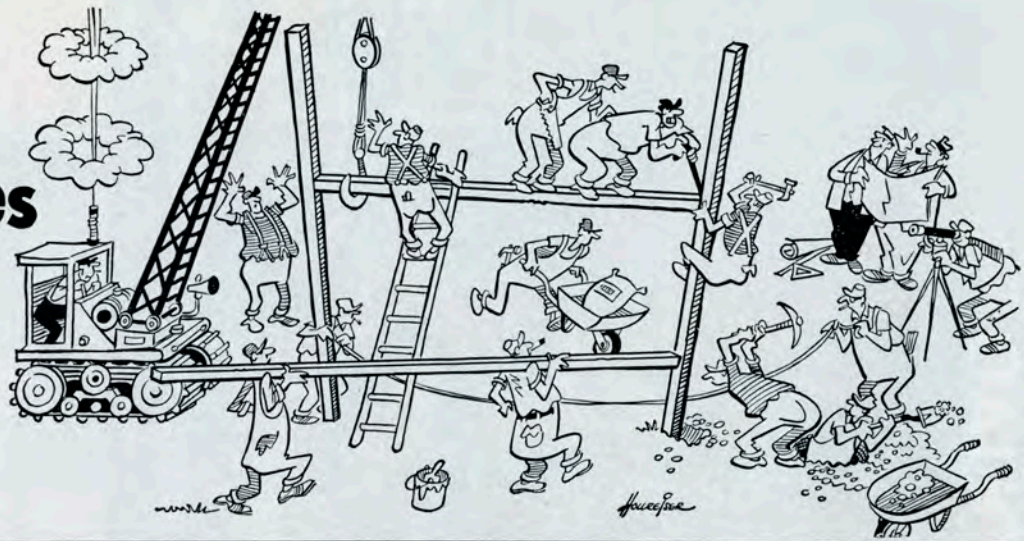
Third row, from left; Bob Cornett, George Oechsner, Nat Kiefer, Dave Michiels, Chris Bunger, Gus Gonzales, George McLean, Fred Dickerson, Tom McClellan, Bob Barrios, Cameron Gamble, and Clarence Moen.

Fourth row, from left; James Magee, Butch Crenshaw, Robert Rappold, Ed Reynolds, Tyrone Pizzolato, John Chaisson, and Ray Kever.

Fifth row, from left; Head Coach Andy Pilney, and assistant coaches Roland Dale, Jack Green, Bob Whitman, Bennie Ellender, Pete Pihos, Jim Root, Don Miller, and Ray Prats.

Missing from picture; Tommy Mason, Howard Kisner, William Roach, George Guillot, Bill Klock, and William Rawson.

rule changes for 1959



"Unless I miss my guess, those goal posts are wider apart this year." Well, you are right, my friend, they are wider apart this year. Last season, and as far back as most of us can remember, they were nineteen feet and two inches across, outside measurement. This season they are twenty-four feet across, outside measurement, or approximately five feet wider. "How come?" The answer is simple: To encourage more field goal attempts and further open up the game of football. There was considerable talk of moving the goal posts up to the goal line, ten yards closer, such as they are in professional football; and everyone knows how important the field goal has become in the "Pro" Game. On the other hand, the Rules Committee of the N. C. A. A. felt in the best interests of safety they had better leave the goal posts on the end line where they have been for many years. The alternative was to widen the distance between the uprights by five feet and in this way encourage more field goal attempts.

There were fewer changes in the rules this year than heretofore, but the following will be most noticed.

1. No distance penalty shall exceed half the distance from the enforcement spot to the offending team's goal line.

As an example of the application of the new rule, let's assume that Team A has the ball on Team B's fifteen-yard line. On the next play, Team B was detected holding Team A's end on the line of scrimmage. The penalty for this foul is fifteen yards, and last year the ball would have been placed on Team B's one yard line after the distance penalty had been marked off. This year the maximum penalty would place the ball on the seven and a half yard line (one half the distance to the goal). The only distance penalty that will place the ball on the one-yard line this year is for a defensive foul committed on the two-yard line.

2. On successful try for point(s) with foul by Team B, Team A has choice of accepting score and penalty

from following kickoff, or declining score and repeating try after penalty.

This is a significant rules change and could penalize Team B severely for a defensive foul on the try for point after a touchdown. As you will recall, the try is now made from the three-yard line and counts two points if it results in what would have been a touchdown, and one point if it results in what would have been a field goal or safety. Let's assume Team A has scored a touchdown and is about to make the try from the three-yard line. They are successful in a field goal attempt, and on the play Team B is offside. Under last year's rule, Team A is awarded one point for the field goal and Team B is penalized five yards on the following kickoff. This year Team A gets a real break as they can elect to take the penalty and repeat the try. In this case, the ball would be placed down on the one and one half yard line and Team A would most likely go for the two points.

3. Substitution rule further liberalized to permit free substitution of one player of each team when game clock is stopped.

Under last year's Substitution Rule, any player could re-enter the game once during the same quarter. In other words, the same player could be in and out of the game eight times during the four quarters. This year the rule has been further liberalized to the extent that one player of either team may go into the game between downs when the clock is stopped, and this does not count as one of his official entries.

4. Number of time outs changed from four to five.

This year each team will be allowed five free time outs without penalty, in each half. Last year the number was reduced from five to four, but now the Rules Committee has decided to allow the same number as in the years prior to 1958.

NEW ORLEANS' FAVORITE MECCA FOR SPORTS FANS



La Chandelle

LOUNGE

... a favored meeting spot, with the individuality and charm of an intimate club. Pleasant entertainment, excellent service.



The Empire

ROOM

... the gourmet's delight. Offers the very finest French and Creole food, superbly served in beautiful period surroundings.



La Fontaine

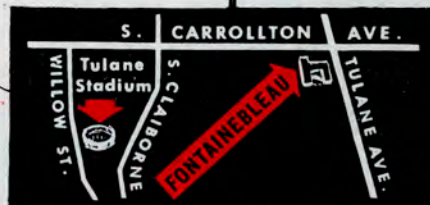
COFFEE SHOP

... for that quick before-or-after-the-game snack. Tasty sandwiches, hot or cold platters, a wide choice of desserts.

Find Your Fun at the FONTAINEBLEAU

New Orleans' newest rendezvous is the beautiful FONTAINEBLEAU, just a few minutes' drive from Tulane Stadium. You'll find good fun, good food and good beverages waiting for you.

Now open, 200 individually air-conditioned rooms. Also, private rooms for after-the-game parties, receptions, conventions and meetings.



FONTAINEBLEAU MOTOR HOTEL

"IN THE HEART OF NEW ORLEANS"

GREATEST GAINER OF THEM ALL

*In the past 12
months more
motorists switched
to Amoco-Gas
than to any other
premium gasoline.*

Why has Amoco-Gas scored the biggest gain in its field? The reasons are as crystal-clear as the gasoline itself. Regardless of the make or model of the car you drive, there's *more for you* at the Amoco-Gas pump.

More gas per gallon because only Amoco-Gas is *all gas*—untainted by lead, untinted by color! More gas means more natural power, more mileage . . . with no lead to foul vital engine parts, corrode mufflers or stain carburetors. Avoid costly repair bills.

**Use clear, white, lead-free
Amoco-Gas for best
performance from your car.**

