

TOUCHDOWN!
TULANE FOOTBALL MAGAZINE
AND OFFICIAL GAME PROGRAM

HERE WE
GO AGAIN!



TULANE

Tulane Player Photos, 19-24
Wave Words, 37
Grass Roots in the City, 14
Basketball Schedule, Roster, 49

Price
50
Cents

L. S. U. Photos, 39-41
Hybrid Computer, 42-44
They're Prettier Anyway, 37
Swimming Schedule, Roster, 53

Saturday, November 23, 1968 — 7:30 p. m.

L.S.U. GAME

Tulane Stadium — TULANE UNIVERSITY — New Orleans, La.





**When the play gets rough and tough
reach for the brew that's smooth and mellow**



TOUCHDOWN!

TULANE FOOTBALL MAGAZINE
AND OFFICIAL GAME PROGRAM

Vol. 1, No. 5

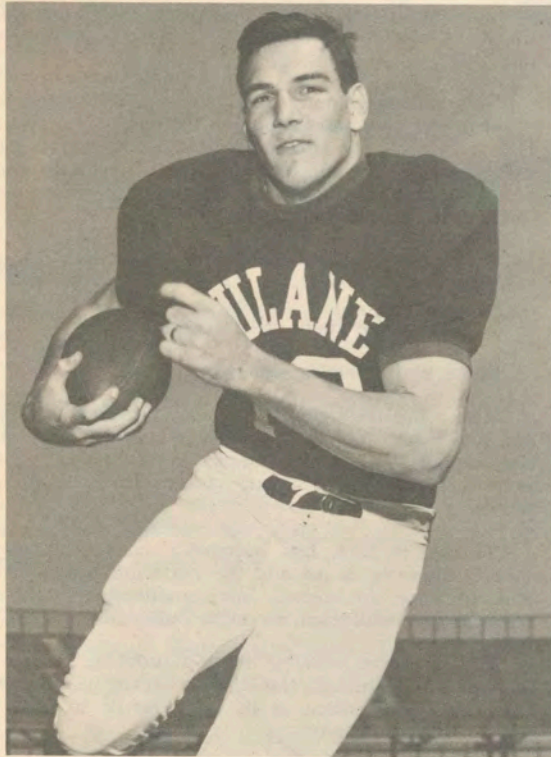
Saturday, November 23, 1968

New Orleans, La.

Published by
TULANE UNIVERSITY ATHLETIC DEPT.

Edited by
BILL CURL, Sports Information Dir.

Photos by
Armand Bertin, Tulane Univ.; Jim Laughead
Photography, Dallas, Tex.; Leon Trice Pho-
tography, New Orleans; Pedro's Art Studio,
New Orleans. Covers by John Chase;
Printing by Molenaar Printing Company.



TULANE FULLBACK WARREN BANKSTON



LA. STATE FULLBACK EDDIE RAY

CONTENTS

| | |
|--------------------------------|--------|
| All-Americans | 16 |
| Athletic Staff | 15 |
| Basketball | 49, 56 |
| Cam-Pix | 42-44 |
| Concession Prices | 12 |
| Cover Story | 13 |
| Do You Remember | 25 |
| Football Staff | 17 |
| Freshman Football | 55 |
| Future Schedules | 46 |
| Lineups | 28-29 |
| Opponents | 38 |
| Penalties | 51 |
| Player Photos, Tulane | 19-24 |
| Player Photos, Opponents | 39-41 |
| Records | 32-36 |
| Road Trips | 10 |
| Roster, Tulane | 26 |
| Roster, Opponents | 31 |
| Songs and Cheers | 7 |
| Stadium Information | 8, 46 |
| Statistics | 4 |
| Tonight's Game | 3 |
| Tulane University | 2, 9 |



1968 Green Wave Scores and Schedule

| | |
|--------------------------|-----------------|
| Houston 54 | Tulane 7 |
| Texas A & M 35 | Tulane 3 |
| Tampa 17 | Tulane 14 |
| Florida 24 | Tulane 3 |
| Tulane 28 | Boston Coll. 14 |
| Georgia Tech 23 | Tulane 19 |
| Vanderbilt 21 | Tulane 7 |
| Tulane 25 | Tulsa 15 |
| Virginia 63 | Tulane 47 |
| Nov. 23—*LA. STATE | Home - 7:30 |

*Night Games

Tulane and the Community . . .



Dr. Longenecker

TULANE UNIVERSITY is an integral part of the New Orleans community.

The university's primary roles of education, research and service are largely focused on this area, affording opportunities for thousands of students of all ages to advance academically, contributing to the increase of knowledge, and providing a wide variety of community services, ranging from the upgrading of elementary education to the delivery of health services.

The university's programs and its calendar of events cover almost every aspect of life and make possible frequent interaction between the university family and its neighbors.

This gathering tonight is but one manifestation of this, offering not only recreation for thousands of persons but also a chance for visitors to see the obvious signs of Tulane's progress and to exchange views with students, faculty and staff about the university's mission and its impact on the community.

Athletic events bring visitors to the campus throughout the year.

And there are many other occasions.

Stage performances, concerts, lectures.

And, also, throughout the year, conferences, seminars and major conventions of scientific, professional and business organizations which attract to the campus not only persons from this area but visitors from many distant points.

Tulane, in fact, has become a core of many community interests—in art and the performing arts, in health and medicine, in science, law, engineering, architecture, business and education, to name but a few.

For whatever stimulus it does provide, Tulane is rewarded amply through the stimulation it, in turn, receives from the participation in its activities of so many from outside the university.

For the public's participation in all of these functions provide the leavening ingredient needed to enable Tulane to continue to improve in the accomplishment of its missions.



Dr. Clarence Scheps, Executive Vice President



*Tonight's
Game*

Tulane, L. S. U. In 66th Meeting Tonight

Tulane and L. S. U. will wind up the 1968 season here tonight as the two old enemies meet for the 66th time.

Louisiana State will again assume the favorite's role, coming in with a 6-3 record contrasted to Tulane's 2-7. The Tigers fared better against their only common opponent, Texas A & M, scoring a 13-12 win over the Aggies, who defeated Tulane 35-3 a week later.

Last week, L. S. U. eked out a 20-16 win over Mississippi State in Baton Rouge while Tulane was outrun at Virginia, 63-47.

Coach Jim Pittman sealed off Tulane's practice sessions this week as the Wave began concentrating on the Tigers. Pittman did the same last year and added a few new wrinkles to the Wave attack. The result was the highest point total against L. S. U. all season—27—but the Tigers still came out on top, 41-27, before a breathless crowd in Baton Rouge.

L. S. U.'s last visit to New Orleans two years ago produced a 21-7 Tiger victory in Pittman's inaugural year at Tulane.

L. S. U. Coach Charles McClendon has a personal 7-0 record against Tulane. L. S. U. has won the last 12 straight and owns 17 wins and two ties in the last 19 meetings to open a wide 39-19-7 edge in the rivalry. Tulane's last win was a 46-0 triumph in 1948.

Tulane's Quarterback Wayne Francingues is

zeroing in on the Wave's all-time total offense record for a single season. Francingues has 1,353 yards to date this season, surpassing Bobby Du-hon's best season total of 1,325 yards running and passing in 1966.

Francingues, a junior from New Orleans, needs just 106 more yards to match Don Zimmerman's 37-year old record of 1,459. Francingues has accounted for 935 yards through the air, placing him within reach of Joe Ernst's all-time passing yardage record of 990 set in 1950.

Last year against L. S. U., Francingues rolled up 131 yards—70 rushing and 61 passing, while operating the Wave's second unit in the shotgun formation. Wave fullback Warren Bankston also had a big day in Baton Rouge. Lining up at tail-back, Bankston ran for 54 yards, passed for 13, and caught five passes for 37 yards against the Tigers.

Bankston, who appears to be back to full speed after an early-season injury, will be one of 12 Tulane seniors playing their last game in a Tulane uniform, tonight.

Also bowing out will be Co-Captains Howard Moore at center and Ernie Parker at defensive end, tackle Calvin Fox, fullback Chuck Loftin, tackle Larry Mickal, end Nick Pizzolatto, tackle Dean Smith, defensive end John Snell, wingback Jim Trahan, cornerback Mason Webster, and of-defensive end Tom Wright.

STATISTICS OF TONIGHT'S FOES

L. S. U.

Nine-Game Totals

Rushing Figures

| Player | Times | Net Yds. | TD's | Avg. |
|----------------|-------|----------|------|------|
| Tommy Allen | 121 | 350 | 4 | 2.9 |
| Kenny Newfield | 69 | 344 | 2 | 5.0 |
| Freddie Haynes | 80 | 274 | 1 | 3.4 |
| Glenn Smith | 52 | 233 | 1 | 4.5 |
| Frank Matte | 39 | 149 | 2 | 3.8 |
| Eddie Ray | 35 | 134 | 0 | 3.8 |
| Jim West | 22 | 107 | 2 | 4.9 |
| Team Totals | 500 | 1,683 | 16 | 3.4 |
| Opponents | 365 | 1,003 | 5 | 2.7 |

Passing Figures

| Player | Att. | Comp. | Int. | TD's | Yds. | Pct. |
|----------------|------|-------|------|------|-------|------|
| Mike Hillman | 97 | 50 | 7 | 4 | 655 | .515 |
| Freddie Haynes | 70 | 40 | 3 | 1 | 497 | .571 |
| Jimmy Gilbert | 26 | 11 | 2 | 0 | 157 | .423 |
| Team Totals | 198 | 102 | 12 | 5 | 1,322 | .515 |
| Opponents | 280 | 133 | 13 | 10 | 1,680 | .475 |

Receiving Figures

| Player | Caught | Yards | TD's |
|----------------|--------|-------|------|
| Tommy Morel | 32 | 461 | 1 |
| Jim West | 15 | 170 | 0 |
| Bob Hamlett | 14 | 186 | 0 |
| Lonny Myles | 10 | 185 | 0 |
| Kenny Newfield | 9 | 96 | 0 |

Punting Figures

| Player | No. | Yards | Avg. |
|--------------|-----|-------|------|
| Eddie Ray | 38 | 1,500 | 39.5 |
| James Earley | 19 | 654 | 34.4 |
| Team Totals | 57 | 2,154 | 37.8 |
| Opponents | 59 | 2,365 | 40.1 |

Scoring Figures

| Player | TD's | XPA-XPM | FGA-FGM | Pts. |
|-----------------|------|---------|---------|------|
| Mark Lumpkin | 1 | 20-18 | 10-4 | 30 |
| Tommy Allen | 5 | 0-0 | 0-0 | 30 |
| Glenn Smith | 2 | 0-0 | 0-0 | 12 |
| Frank Matte | 2 | 0-0 | 0-0 | 12 |
| Kenny Newfield | 2 | 0-0 | 0-0 | 12 |
| Jim West | 2 | 0-0 | 0-0 | 12 |
| Maurice LeBlanc | 2 | 0-0 | 0-0 | 12 |
| Team Totals | 21 | | 10-4 | 156 |
| Opponents | 15 | | 19-9 | 134 |

L. S. U. Results, Schedule

| | |
|----------------|----------------------|
| L. S. U. 13 | Texas A & M 12 |
| L. S. U. 21 | Rice 7 |
| L. S. U. 48 | Baylor 16 |
| Miami 30 | L. S. U. 0 |
| L. S. U. 13 | Kentucky 3 |
| L. S. U. 10 | T. C. U. 7 |
| Mississippi 27 | L. S. U. 24 |
| Alabama 16 | L. S. U. 7 |
| L. S. U. 20 | Mississippi State 16 |
| Nov. 23 | At Tulane |

TULANE

Nine-Game Totals

Rushing Figures

| Player | Times | Net Yds. | TD's | Avg. |
|-------------------|-------|----------|------|------|
| Warren Bankston | 90 | 440 | 3 | 4.9 |
| Wayne Francingues | 143 | 418 | 7 | 2.9 |
| Duke Chappuis | 71 | 306 | 1 | 4.3 |
| Nick Pizzolatto | 52 | 231 | 0 | 4.4 |
| Jack Laborde | 38 | 201 | 3 | 5.3 |
| Barney King | 22 | 125 | 1 | 5.7 |
| Harold Sisk | 18 | 62 | 0 | 3.4 |
| Jim Trahan | 10 | 28 | 0 | 2.8 |
| Team Totals | 463 | 1857 | 16 | 4.0 |
| Opponents | 446 | 2096 | 19 | 4.7 |

Passing Figures

| Player | Att. | Comp. | Int. | TD's | Yds. | Pct. |
|-------------------|------|-------|------|------|------|------|
| Wayne Francingues | 153 | 65 | 11 | 4 | 935 | .425 |
| Jack Laborde | 13 | 2 | 2 | 0 | 18 | .154 |
| Ken Sanders | 9 | 5 | 1 | 0 | 41 | .555 |
| Warren Bankston | 5 | 1 | 1 | 0 | 18 | .200 |
| Team Totals | 181 | 73 | 16 | 4 | 1012 | .404 |
| Opponents | 237 | 121 | 11 | 15 | 1773 | .511 |

Receiving Figures

| Player | Caught | Yards | TD's |
|-----------------|--------|-------|------|
| Sonny Pisarich | 18 | 279 | 2 |
| Jim Trahan | 14 | 216 | 0 |
| Nick Pizzolatto | 10 | 135 | 1 |
| Warren Bankston | 8 | 90 | 0 |
| John Mueller | 5 | 47 | 0 |
| Tom Wright | 4 | 61 | 1 |
| Barney King | 4 | 43 | 0 |
| Sid Jones | 3 | 46 | 0 |
| Chuck Loftin | 2 | 32 | 0 |

Punting Figures

| Player | No. | Yards | Avg. |
|-------------|-----|-------|------|
| Kan Sanders | 55 | 2270 | 41.3 |
| Jim Trahan | 1 | 39 | 39.0 |
| Team Totals | 56 | 2309 | 40.5 |
| Opponents | 45 | 1672 | 37.2 |

Scoring Figures

| Player | TD's | XPA-XPM | FGA-FGM | Pts. |
|-------------------|------|---------|---------|------|
| Wayne Francingues | 7 | 2-1* | 0-0 | 44 |
| Bart Bookatz | 0 | 15-13 | 7-4 | 25 |
| Warren Bankston | 3 | 0-0 | 0-0 | 18 |
| Jack Laborde | 3 | 0-0 | 0-0 | 18 |
| Sonny Pisarich | 2 | 0-0 | 0-0 | 12 |
| Barney King | 1 | 1-1* | 0-0 | 8 |
| Nick Pizzolatto | 1 | 1-1* | 0-0 | 8 |
| Tom Wright | 1 | 1-1* | 0-0 | 8 |
| Duke Chappuis | 1 | 0-0 | 0-0 | 6 |
| Harold Sisk | 1 | 0-0 | 0-0 | 6 |
| Team Totals | 20 | | 7-4 | 153 |
| Opponents | 37 | | 7-4 | 266 |

*—Two-point attempts

SERIES RECORD: L. S. U. has won 39, Tulane has won 19, 7 games were tied.

The Fabulous
FONTAINEBLEAU

MOTOR HOTEL

Dedicated to Pleasure and Fun



**FOR RELAXED DINING
AND FINE FOOD**

For delicious Continental and Creole foods impeccably served in glittering splendor



**FOR AN INTIMATE AND
ENCHANTING EVENING**

Cocktail hour 5 to 7. Complimentary hors d'oeuvres, dancing, entertainment. Name bands nightly



**FOR EXCELLENT FOOD
QUICKLY SERVED**

A favorite meeting place. Open at 6 a.m. Delicious food, popular prices.

494 LUXURY ROOMS

LARGEST SWIMMING POOL IN TOWN—separate high diving pool, separate wading pool for children.

OUTDOOR POOL SIDE LOUNGE with table service

Convenient to shopping, business area, French Quarter

SPECIAL ATTENTION TO PARTIES AND CONVENTIONS

A private room for every function with special complimentary services.



FONTAINEBLEAU

MOTOR HOTEL

4040 TULANE AVE.

HU 6-6111

ENJOY

MR. BROWN'S

Old Fashioned



Ice Cream and
Dairy Products

Brown's Velvet Dairy Products, Inc.

**1300 Baronne Street
New Orleans, La. 70113**

SAVE AT

IOB

INTERNATIONAL
CITY BANK

5:00

**the bank
that doesn't watch
the clock**

Sure, you've got to watch the clock to enjoy the game. We just don't believe in watching it while we work.

That's why ICB is the All Day Bank. Open when you can get there . . . from 8 a.m. till 6 p.m. and till 10 at night at our downtown Sidewalk Service Window. Get with the Pro-Team in banking. Open your ICB Checking Account—almost any time.



MEMBER F. O. I. C.

INTERNATIONAL CITY BANK

AND TRUST COMPANY

DOWNTOWN OFFICE—321 ST. CHARLES AT UNION
UNIVERSITY OFFICE—FRERET AT JEFFERSON AVE
WEST BANK OFFICE—2140 GEN. DE GAULLE DRIVE
NEW ORLEANS, LA. 70130



**GET REAL ACTION... *Uncola*
7-UP YOUR THIRST AWAY**

BEFORE OR AFTER THE GAME.....

OUTRIGGER

BAR & LOUNGE

- ★ Spectacular exotic drinks!
- ★ Palate pleasing Polynesian tid-bits!
- ★ All your cocktail favorites!

OPEN FROM 9 A. M.



Sheraton-Charles Hotel
NEW ORLEANS



Spirit at Tulane

Alma Mater

We praise thee for thy past, O Alma Mater!
Thy hand hath done its work full faithfully.
The incense of thy spirit hath ascended
And filled America from sea to sea.

CHORUS—

Olive Green and Blue, we love thee
Pledge we now our fealty true
Where the trees are ever greenest,
Where the skies are purest blue.
Hear us now, O Tulane, hear us
As we proudly sing to thee!
Take from us our hearts' devotion!
Thine we are, and thine shall be!



Hullabaloo

A one, a two,
A helluva hullabaloo,
A Hu-la-ba-loo Ray-Ray!
Hu-la-ba-loo Ray-Ray!
Hoo-Ray! Hoo-Ray!
Vars, vars, tee-ay!
Tee-ay! Tee-ay!
Vars, vars, tee-ay!
Tulane!

Roll, Green Wave

Here's a song for the Olive and the Blue.
Here's a cheer for the team that's tried and true.
Here's a pledge of loyalty to thee,
O, Tulane Varsity.
Here's to the Greenbacks that never will say die,
And here's to the hearts that are true
To the men of Tulane, who are fighting for
her name,
For the Olive and the Blue.

Roll, Green Wave, Roll them down the field.
Hold, Green Wave, that line must never yield.
When those Greenbacks charge through the line
They're bound for victory.
Hail, Green Wave, For you we give a cheer.
Hail, Green Wave, For you we have no fear.
So ev'ry man in ev'ry play,
And then we'll win that game today.
Hurrah for old Tulane!

(Chant to be used on second chorus)

Roll, Green Wave, Roll, Roll Green Wave
Hold Wave, Hold Wave, Hold, Green Wave.
Go— go— go get the tigers
Go win, go win, go win from the tigers.
Fight, fight, fight for T. U.
T. U., T. U., the Olive and the Blue,
T — U — — Rah, Rah, Rah, Tulane.





Cuisine...par excellence!

Both French and Creole cooking. Cited by HOLIDAY for 15 consecutive years as a "local favorite dining spot."

Open daily from eleven 'til eleven - except Mondays. Located in the heart of the Garden District at Washington and Coliseum.

Commander's Palace

TWinbrook 1-7240

Since 1880



THE MARK OF DELICIOUS FOOD

COMPLETE CATERING SERVICES
AVAILABLE

Wedding Receptions - Parties
Buffets - Banquets - Picnics

CONSULT US - AT NO OBLIGATION

866-0523

831-3471

STADIUM INFORMATION

First Aid

--- First aid stations are located under the East and West stands at ground level.

Telephones

--- Public pay telephones are located at ground level on North, East, South and West sides.

Rest Rooms

--- Rest rooms are located under North, East, South and West stands at ground level and under North, East and West upper deck sections.

Lost and Found

--- Lost and found office is located inside stadium at Southwest corner, ground level.

PAN-AMERICAN FILMS

Producers of 16 mm Industrial, Educational and Special Events
Motion Pictures

Editing, Titling and Color Film Duplicating - Sound Recording

Producers of the Sugar Bowl Movies in Color and Sound Since 1945

Bell & Howell

Motion Picture Equipment Dealers

822-24 NORTH RAMPART STREET

522-5364

Tulane



University



Robert Sharp Hall, Men's Residence Housing Tulane Athletes

Tulane University is an educational institution deeply rooted in the past and reaching toward the future.

Founded in 1834 as the Medical College of Louisiana, Tulane today offers undergraduate programs in 30 areas of study, masters' degrees in 43 fields and the doctor of philosophy degree in 33 disciplines.

Courses are offered in the College of Arts and Sciences, Newcomb College (the coordinate college for women), and University College (the evening division); in the Schools of Architecture, Engineering, Law, Medicine, Public Health and Tropical Medicine, and Social Work; in the Graduate School, the Graduate School of Business Administration, the Summer School, the Center for Teacher Education and at several research institutes.

The interest in tropical medicine—the Medical College of Louisiana was founded to combat epidemics of yellow fever and other tropical diseases—is the one cord that runs throughout the University's history, even as its interests expanded with its development as part of the University of Louisiana in 1847, and with its emergence,

finally, as the Tulane University of Louisiana in 1884, after a generous gift from Paul Tulane had established the Tulane Educational Fund. The Fund's administrators used the gift to reorganize the University as a private, non-sectarian institution bearing Tulane's name.

Today Tulane's President, Dr. Herbert E. Longenecker, directs the operation of a cosmopolitan community whose faculty (650 full-time, 500 part-time) and students (6,000 full-time, 2,000 part-time) represent every state and 60 foreign countries.

By far the major portion of the University's activities are centered at the main campus, a 100-acre site in uptown New Orleans. Scholars also pursue their interests at the downtown Medical School campus; at the Delta Regional Primate Research Center in Covington, La., 35 miles from the main campus; at the International Center for Medical Research and training at Cali, Colombia, and at the University's newest campus—the F. Edw. Hebert Center, across the Mississippi River from downtown New Orleans, a development devoted to scientific research.

Gibson Hall, the Administration Building



Where the Wave Will Play . . .



HOUSTON — Astrodome (46,000)



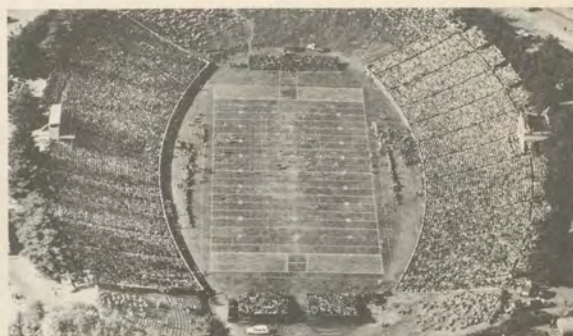
FLORIDA — Florida Field (59,890)



GA. TECH — Grant Field (59,809)



VANDERBILT — Dudley Field (34,000)



VIRGINIA — Scott Stadium (26,000)

Where the Wave Will Stay . . .

| | |
|--------------------------|--|
| Houston Game (Sept. 14) | Towers Hotel, Houston, Tex. |
| Florida Game (Oct. 12) | Ramada Inn, Gainesville, Fla. |
| Ga. Tech Game (Oct. 26) | Riviera Motor Hotel, Atlanta, Ga. |
| Vanderbilt Game (Nov. 2) | Capitol Park Inn, Nashville, Tenn. |
| Virginia Game (Nov. 16) | Mt. Vernon Hotel, Charlottesville, Va. |

Since 1842,
our greatest
pleasure
has been that of
serving you...
our customers.

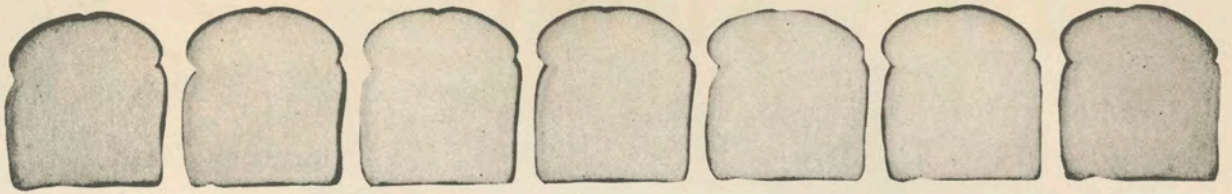


H O L M E S

H O L M E S

NEW ORLEANS

BATON ROUGE



No holes in the Sunbeam line!

Batter Whipped Bread

Brown 'n' Serve Rolls

Hamburger Buns

Raisin Bread

Hot Dog Rolls

Whole Wheat Bread

Sweet Rolls

Rite Diet Bread

Those on the go—go Sunbeam

HOLSUM *Sunbeam* **BREAD**

Official Concession Prices at Tulane Stadium

FOOD AND BEVERAGE

| | |
|--------------------|-----|
| BEER | .50 |
| SOFT DRINKS | .25 |
| COFFEE | .15 |
| HOT DOGS | .35 |
| HAMBURGERS | .50 |
| PEANUTS | .25 |
| POPCORN | .25 |
| COTTON CANDY | .20 |

CIGARETTES

AT MACHINES ON GROUND LEVEL..... .40

NOVELTIES

| | |
|--------------------------------------|----------------------|
| BADGES | .50, .75, and \$1.00 |
| PENNANTS | 1.00 |
| PORKY HATS, Felt W/Tulane Patch..... | 1.50 |
| CREW HATS | 2.50 |
| BANKS | 1.50 |
| LICENSE PLATES | 1.25 |
| TISSUE SHAKERS | .50 |
| BOBBLE HEAD FOOTBALL DOLLS..... | 2.00 |
| COWBELLS | .50 |
| TULANE BUTTON, 3½" | |
| W/Green Wave Emblem..... | .50 |
| PLUSH TIGER, 9"..... | 3.00 |
| RAIN BONNETS | .50 |
| RAIN COATS, PLASTIC..... | 2.00 |

COVER STORY

"Here we go again!" says our philosopher Cover Boy, as he rides the Tiger. Although the last twenty rides have been a little bumpy, this time he plans to help the Tiger beat himself (see picture), which is one way to discourage such critters. All you gotta do is stay on top of him.



The Green Wave's official cover artist is WDSU-TV Editorial Cartoonist John Chase. See his Editorial Cartoons in color, weekdays in BREAKFAST EDITION (6:30-7 A.M.) and at 6:15 and 10:15 P.M. on WDSU-TV, Channel 6.

WDSU-TV—First In The Nation With Daily Editorial Cartoons In Color!



Three Great French Restaurants await you

(individually owned)

Antoine's
Since 1840

713 St. Louis Street • 529-5696
12 Noon to 9 P.M. • Closed Sundays
ROY L. ALCIATORE, Prop.

Broussard's
Napoleon Patio

819 Conti Street • 523-4800
12 Noon to 10:30 P.M. • Closed Wednesdays
H. W. (Bill) HESLIN, SR., Manager

ARNAUD'S
Carnival Room

813 Bienville Street • 523-5433
11 A.M. to 12:30 A.M. Past Midnight Daily
GERMAINE WELLS, Owner

Famous for
FINE FOOD and DRINK

Needed: A Grass Roots Approach to Urban Renewal

ROBERT N. KELSO

Special Writer, Tulane University News Service

Central cities across the nation are dying because most people couldn't care less about what's happening to their environment, according to a Tulane University architect.

Citizens who do care about rotting slums and sterile "renewal" projects which often replace them are frustrated by the sheer weight of government machinery which must be put into motion before anything happens.

This tends to make people believe "there's nothing we can do about it anyway," according to William K. Turner, associate professor of architecture at Tulane.

Professor Turner wonders why central city residents should pay out money in taxes so suburbanites can speed to work on expressways that chop up city real estate and remove large amounts of property from the tax rolls.

But Turner's major concern is public apathy about major urban issues and the destruction of human values in the urban environment. The citizens, in his view, are not solely to blame for this indifference.

He cites these contributing factors:

° Planning groups and governing authorities do a poor communications job in telling people in understandable terms what they envision needs doing, and the best way to accomplish it.

° Communication from the top not only is poor, it frequently is biased. Official announcements tend to stress the advantages of a project, and soft pedal or ignore the possible disadvantages.

Such distortions, intentional or not, stimulate a favorable reaction among citizens who don't bother to question how the project will affect the community as a whole.

At the same time, plans described poorly and in misleading terms draw noisy opposition, make it more difficult to fashion a workable and desirable program.

The Tulane specialist in urban environment also believes that the long time lag, frequently amounting to years, between publicizing feasibility studies and the actual firming up of construction plans causes the public to become discouraged or indifferent.

While acknowledging that many citizens are prejudiced against major change and that others are frustrated in working for community betterment, Professor Turner contends:

"Citizens simply have to become involved in the survival of their central cities if they are to retain any stake in their own destiny.

"The only time left now is for involvement by all the people who live and work and breathe in and around a central city—a citizens' commitment to help solve such problems as housing, employment, transportation and air pollution."

Dallas, Texas, within the past three years has managed to stimulate an unparalleled amount of citizen involvement in planning its future growth pattern and life-style.

This feat was described recently at Tulane by Dr. Bryghte D. Godbold, executive director of the program, "Goals for Dallas." Dr. Godbold spoke at a community leadership forum for the New Orleans area.

"Our approach," he said "was to avoid telling people what planners **thought** should be done, and going directly to small neighborhood gatherings to ask what the people wanted—what kind of city they wanted for themselves and their children 10 years from now."

Professional consultants help the Dallas citizens committees formulate workable plans of action. Participation is genuinely grass roots. For example, suggestions for improving the city's transportation are being formulated by truck and cab drivers.

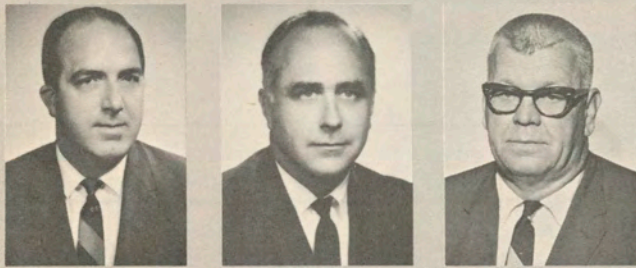
Professor Turner agrees that the "dictatorial approach to urban problems is dead."

"People," he says, "must demand to know what is planned now and for the future, and to know this in a form they can understand.

"Despite controversy, citizens must participate even though they are not always right, or necessarily constructive. Their very involvement sharpens issues for clearer debate, and gives decision makers a better opportunity for evaluation."



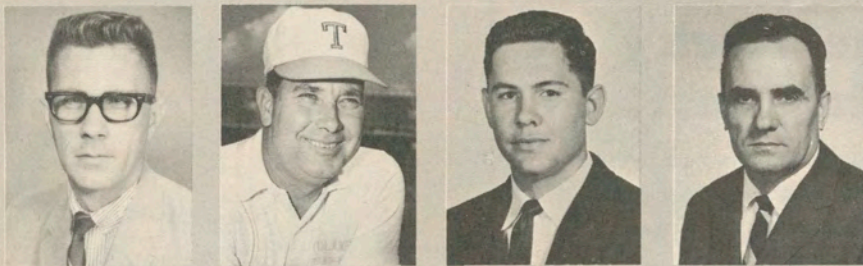
Dr. Rix N. Yard
Dir. of Athletics



From Left — Buddy de Monsabert, Athletic Business Manager; Dr. Harvey Jessup, Executive Assistant to the Athletic Director; Dr. Hugh Rankin, Faculty Chairman of Athletics.



Bill Curl (Left), Information Dir.; Joe Nicholson, Ass't to Athletic Business Mgr.



From Left — Dr. Peter Riehl, Team Physician; Bubba Porche, Head Trainer; Al Miller, Ass't Trainer; Troy Phillips, Equipment Mgr.



Nolan Chaix (Left),
Supervisor of Grounds;
Mac McKinney, Stadium Guard

ATHLETIC STAFF

TULANE... A GO-GET-EM TEAM



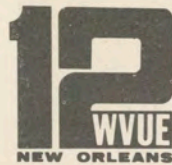
ALEC GIFFORD



BUDDY DILIBERTO

THE GO-GET-EM NEWS TEAM

**6:00pm and 11:00pm
WEEKDAYS**



A Proud Heritage — Tulane's All-Americans

- 1925—Charles Flournoy, back
- 1929—Willis Banker, back
- 1930—Jerry Dalrymple, end
- 1931—Jerry Dalrymple, end
- 1931—Don Zimmerman, back
- 1932—Don Zimmerman, back
- 1934—Claude Simons, Jr., back
- 1939—Ralph Wenzel, end
- 1939—Harley McCollum, tackle
- 1940—Tommy O'Boyle, guard
- 1941—Ernie Blandin, tackle
- 1943—Lester Gatewood, center
- 1944—W. A. Jones, back
- 1948—Paul Lea, tackle
- 1949—Eddie Price, back
- 1950—Jerome Helluin, tackle
- 1955—Tony Sardisco, guard
- 1960—Tommy Mason, back
- 1967—Bobby Duhon, back



ROCKY GRAZIANO

**“It's me, Rocky
talkin', an...**

I doan talk too good, bud I make a lodda sense. Da men ad Gentilly Dodge are price fightin' like never before . . . see 'em 'an save—tell 'em da Rock sents ya!

**SOMEBODY UP DERE LIKES ME,
AND SOMEBODY AT**

GENTILLY DODGE

LIKES YOU . . .”

6101 CHEF MENTEUR HIGHWAY (U.S. 90 EAST)
OPEN TIL 9:00 P.M. 242-6644

The Olde College Inn

(Since 1933)

The Uptown
Family Restaurant

3016 South Carrollton Avenue



Jim Pittman
Head Coach



Pap Morris (Left),
offense; Frank
Young, defense

FOOTBALL STAFF



From Left — Joe Clark, offense; Billy Tohill, defense; Gary Kinchen, defense; Marv Kristynik, offense.



Joe Blaylock (left),
Freshmen; Jack Orsley,
Recruiting Director

From Left — Freshman Assistants Lou Campomenosi, Jerry Colquette, Jim Darnley,
Vic Eumont, Jim Jancik, Schott Mumme.



BITE...TEAM...BITE!



Hold that Whopper at **BURGER KING**

Ready for you in 60 seconds along with crisper new French Fries, creamy shakes, cokes, not to mention Whalers, burgers, franks, etc.



After the game stop at **BURGER KING**[®]

In Metairie

3735 Airline Highway
916 Veterans Highway
6900 Veterans Highway

New Orleans 2423 South Carrollton Ave. • 6332 Elysian Fields Ave. • 1700 St. Charles St.

Gretna

78 Westbank Expressway

Gentilly

4050 Chef Menteur

Marrero

3950 Westbank Expressway

Chalmette

110 East Goodchildren St.



Green Wave



**Warren
Bankston**



**Tom
Barrows**



**Rodney
Bazer**



**Bart
Bookatz**



**Steve
Boyd**



**Chas.
Browning**



**Brad
Calhoun**

Green Wave



Duke
Chappuis



Howard
Culp



Bryan
Duck



Duke
Duffee



Mike
Farnell



Calvin
Fox



Wayne
Francingues



Maurice
Gartman



Joe
Gendron



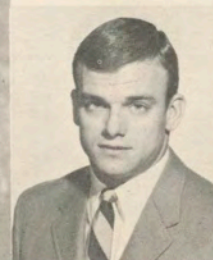
Johnny
Gill



Bart
Graves



Phil
Greco



Roger
Green

Green Wave



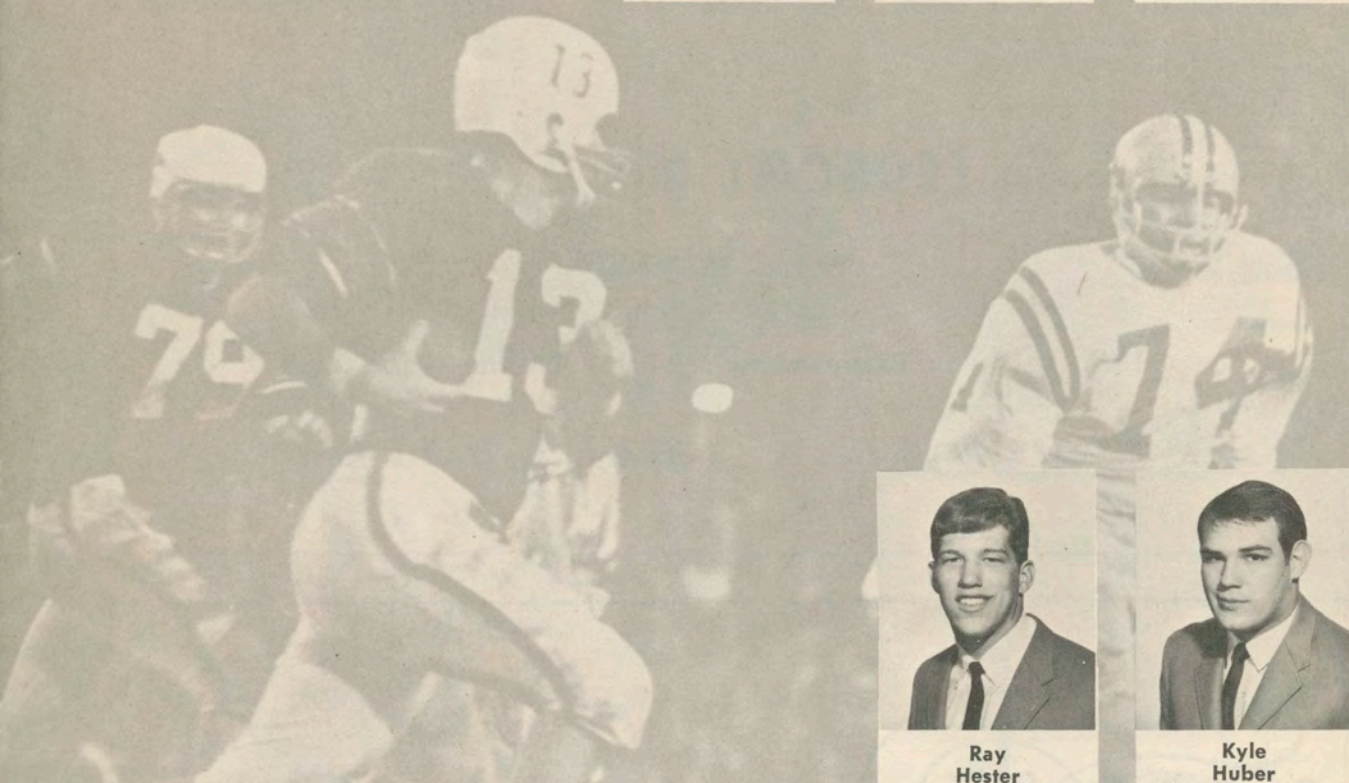
**Chip
DeWitt**



**Ed
Gross**



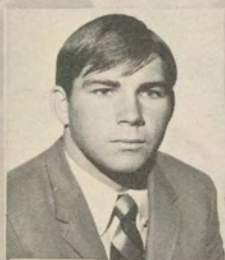
**John
Haines**



**Ray
Hester**



**Kyle
Huber**



**Sid
Jones**



**Barney
King**



**Ricky
Kingrea**



**Jack
Laborde**



**Chuck
Loftin**



**Dennis
McAfee**



**Larry
Mickal**



**Mack
Miller**



ED SLATTEN
invites
all his friends
to visit him
at



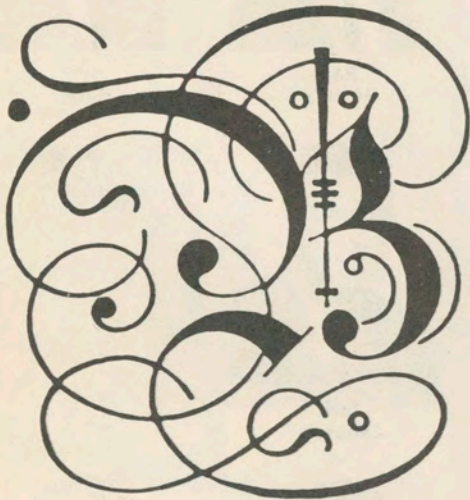
ECONOMY MOTORS

Phone 367-6700

1115 Westbank Expressway

Gretna, La. 70053

“GOOD LUCK, GREEN WAVE”



Best of luck

**TULANE
GREEN WAVE**

Breeding Concessions

TULANE-SUGAR BOWL STADIUM

Green Wave



**Howard
Moore**



**John
Mueller**



**John
Onofrio**



**Ernie
Parker**



**Sonny
Pisarich**



**Nick
Pizzolatto**



**Dick
Redd**



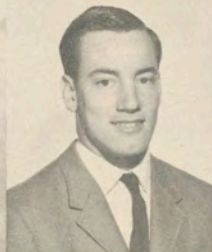
**Dave
Richard**



**Ken
Sanders**



**Sam
Scelfo**



**Roger
Schramm**



**Jim
Shepherd**



**Lonnie
Sibley**



**Harold
Sisk**

Green Wave



**Dean
Smith**



**John
Snell**



**Butch
Spencer**



**Steve
Stark**



**Larry
Stone**



**Mike
Tolle**



**Jim
Trahan**



**Mike
Walker**



**Jim
Wallace**



**Mason
Webster**



**Tom
Wright**



**Jimmy
Yarter**

BERGERON
wants your business . . .
they'll trade to get it,
and work hard
to keep it!

BERGERON
Plymouth

AUTHORIZED DEALER
CHRYSLER
MOTORS CORPORATION

3525 VETERANS AT LAKESIDE • 888-2131



Sunday Dinner
Seven Days
a Week,
Kentucky Fried
Chicken®

2529 WILLIAMS BLVD. • 2814 JEFFERSON HWY.

Do You Remember? FOR GOTOHELLSUGAME

One of Holy Cross High's finest contributions to Tulane football, this grid great from the past is one of the most proficient passers in the Green Wave record book.

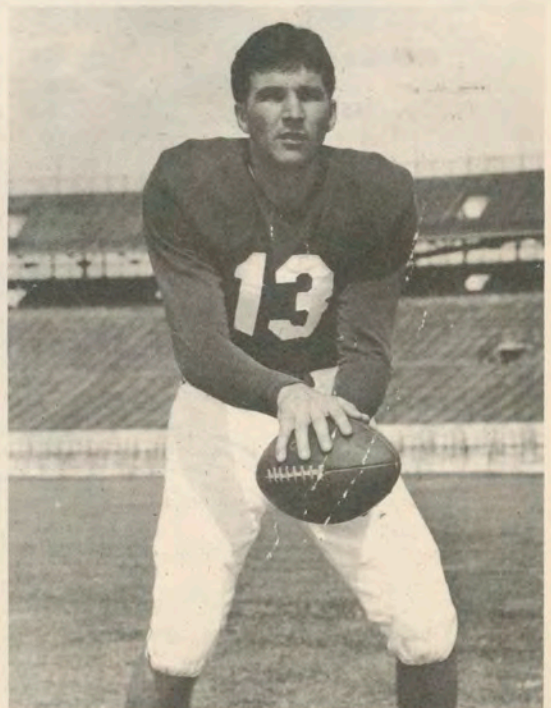
He quarterbacked the Wave to a 22-5-2 record in his three seasons, and earned a bid to play in the 1951 Senior Bowl.

He ranks second only to Bobby Duhon in career completions with 175, and has thrown more touch-down passes (18), gained more yardage (2374) through the airways, and completed a greater percentage of his pass attempts (51.6%) than any other passer in Tulane history.

He is currently head football coach at St. Bernard Senior High.

Included among his teammates were Louisiana State Representative Don Fortier, Chalmette Senior High Coach Bobby Nuss, Abramson Senior High Coach Al Waller, and pro football stars Eddie Price, Don Joyce and Bill Svoboda.

Answer on Page 56



1968 TULANE ROSTER

Name (Number) _____ Position, Height, Weight
Class _____ Home Town (High School), H. S. Coach

****BANKSTON, Warren (19)** _____ **TB, 6-4, 222**
Senior _____ Hammond (Hammond), Glenn Brady

BARROWS, Tom (57) _____ **DT, 6-4, 218**
Junior _____ Homewood, Ill. (Homewood), James Arneberg

BAZER, Rodney (51) _____ **LB, 5-11, 187**
Sophomore _____ New Iberia (New Iberia), Faize Mahfouz

BOOKATZ, Bart (27) _____ **PK, 5-11, 191**
Sophomore _____ Dallas, Tex. (St. Mark's), Bill Rippetoe

BOYD, Steve (78) _____ **DT, 6-2, 215**
Junior _____ Clovis, N. Mex. (Clovis), Steve Graham

***BROWNING, Charles (74)** _____ **DT, 6-1, 210**
Junior _____ Baton Rouge (Baton Rouge), Ray Porter

***CALHOUN, Brad (12)** _____ **CB, 6-2, 182**
Junior _____ Chickasaw, Ala. (Vigor), Glenn Yancy

CHAPPUIS, Duke (48) _____ **TB, 5-11, 176**
Sophomore _____ Metairie (De La Salle), Leemon McHenry

CULP, Howard (63) _____ **SG, 6-0, 208**
Sophomore _____ Harrah, Okla. (Lufkin, Tex.), Gile Akridge

DE WITT, Charles (62) _____ **C, 6-1, 212**
Sophomore _____ Houston, Tex. (Memorial), Chas. Churchill

DUCK, Bryan (61) _____ **DE-LB, 6-1, 180**
Sophomore _____ Purvis, Miss. (Purvis), Latrelle Williams

DUFFEE, Duke (68) _____ **SG, 6-2, 187**
Junior _____ Marrero (West Jefferson), Dick Preis

FARNELL, Mike (22) _____ **WB, 5-11, 174**
Sophomore _____ Mobile, Ala. (McGill), A. J. Conlin

FOX, Calvin (53) _____ **WT, 6-2, 225**
Senior _____ Waco, Tex. (Derby, Wichita, Kan.), Bruce Bierig

***FRANCINGUES, Wayne (10)** _____ **QB, 5-11, 180**
Junior _____ Metairie (Jesusit), Ken Tarzetti

***GARTMAN, Maurice (37)** _____ **LB, 6-0, 182**
Junior _____ Semmes, Ala. (Montgomery), Chas. Leverett

GENDRON, Joe (89) _____ **DE, 6-1, 194**
Sophomore _____ Watertown, N. Y. (Garthage Cen.), Ed Decker

GILL, Johnny (26) _____ **CB, 5-11, 173**
Sophomore _____ Slidell (Slidell), George Thomas

GRAVES, Bart (70) _____ **DE, 6-4, 218**
Sophomore _____ Marshall, Tex. (Marshall), Ralph Brooks

GRECO, Phil (28) _____ **CB, 6-1, 183**
Junior _____ Leland, Miss. (Leland), Ben Ruscoe

GREEN, Roger (45) _____ **CB, 6-0, 178**
Senior _____ Houston, Tex. (Lee), Gilbert Bartosh

GROSS, Ed (72) _____ **ST, 6-0, 205**
Junior _____ Joppa, Md. (Bel Air), Al Cesky

HAINES, John (54) _____ **C, 6-1, 185**
Junior _____ Theodore, Ala. (Theodore), C. A. Douglas

HESTER, Ray (56) _____ **LB, 6-2, 203**
Sophomore _____ New Orleans (Holy Cross), John Kalbacher

HUBER, Kyle (60) _____ **WG, 6-0, 196**
Sophomore _____ Ft. Arthur, Tex. (Jefferson), C. E. Underwood

***JONES, Sid (82)** _____ **WE, 5-11, 195**
Junior _____ Lake Charles (Landry), Karl Blanchard

KING, Barney (47) _____ **TB, 5-10, 181**
Junior _____ Cliftonville, Miss. (Noxubee City), A. J. Kilpatrick

KINGREA, Ricky (32) _____ **LB, 6-0, 217**
Sophomore _____ Baton Rouge (Baton Rouge), Leon McGraw

LABORDE, Jack (42) _____ **QB, TB, 6-0, 192**
Sophomore _____ New Orleans (Jesusit), Ray Coates

****LOFTIN, Chuck (44)** _____ **FB, 5-11, 192**
Senior _____ Midland, Tex. (Lee), Joe Newbill

Name (Number) _____ Position, Height, Weight
Class _____ Home Town (High School), H. S. Coach

***McAFEE, Dennis (59)** _____ **WG, 6-0, 201**
Junior _____ Baytown, Tex. (Lee), Pete Sultis

****MICKAL, Larry (75)** _____ **WT, 6-2, 222**
Senior _____ Metairie (De La Salle), Leemon McHenry

MILLER, Mack (88) _____ **DE, 6-0, 183**
Sophomore _____ Basile (Basile), Leslie Smith

****MOORE, Howard (50) Co-Capt.** _____ **C, 6-1, 215**
Senior _____ Dallas, Tex. (Bryan Adams), Bob Cowsar

MUELLER, John (25) _____ **WB, 5-10, 170**
Junior _____ Leawood, Kan. (Shawnee Mis. E.), Arch Unruh

ONOFRIO, John (41) _____ **SAF, 5-10, 170**
Sophomore _____ Columbia, Mo. (David Hickman), Robert Roark

****PARKER, Ernie (83) Co-Capt.** _____ **DE, 6-1, 215**
Senior _____ Hackberry (Hackberry), John Debarg

PISARICH, Sonny (84) _____ **SE, 5-10, 185**
Junior _____ Biloxi, Miss. (Notre Dame), Chas. Hegwood

***PIZZOLATTO, Nick (30)** _____ **FB, 6-0, 215**
Senior _____ Jennings (Jennings), Ed Harrelson

REDD, Dick (49) _____ **SAF, 6-0, 175**
Sophomore _____ Beaumont, Tex. (Beaumont), Darrell Shaver

RICHARD, Dave (20) _____ **WB, 5-10, 173**
Sophomore _____ Lutcher (Lutcher), Ellis Roussel

SANDERS, Ken (15) _____ **QB, 6-0, 180**
Sophomore _____ Baton Rouge (Lee), Winton Turner

SCELFO, Sam (67) _____ **DT, 5-11, 202**
Sophomore _____ New Iberia (New Iberia), Faize Mahfouz

SCHRAMM, Roger (86) _____ **WE, 6-2, 182**
Sophomore _____ Houston, Tex. (Lamar), Ken Pridgeon

SHEPHERD, Jim (79) _____ **DE, 6-5, 232**
Sophomore _____ Lake Providence (L. Prov.), Pete Mangum

SIBLEY, Lonnie (71) _____ **WT, 6-2, 208**
Sophomore _____ Shreveport (Fair Park), Roy Wilson

SISK, Harold (31) _____ **FB, 5-11, 200**
Sophomore _____ Beaumont, Tex. (Forest Pk.), W. B. Drennan

***SMITH, Dean (76)** _____ **ST, 6-0, 210**
Senior _____ Dickinson, Tex. (Dickinson), Bernard Callendar

***SNELL, John (73)** _____ **MG, 6-2, 206**
Senior _____ Groves, Tex. (Port Neches), Kenneth Watson

SPENCER, Butch (85) _____ **SE, 6-2, 187**
Sophomore _____ Farmerville (Farmerville), Chiles Carpenter

STARK, Steve (24) _____ **SAF, 6-0, 178**
Sophomore _____ Franklin (Franklin), Dan Brumfield

STONE, Larry (52) _____ **WG, 6-3, 193**
Junior _____ Springhill (Springhill), Travis Farrar

TOLLE, Mike (65) _____ **MG, 5-9, 209**
Junior _____ Baton Rouge (Lee), Winton Turner

***TRAHAN, Jim (29)** _____ **WB, 5-11, 180**
Senior _____ Houma (Terrebonne), Frank Spruiell

WALKER, Mike (77) _____ **DT, 6-2, 205**
Sophomore _____ Sulphur (Sulphur), Shannon Suarez

****WALLACE, Jim (55)** _____ **LB, 6-1, 190**
Senior _____ Bowling Green, Ky. (Bowl'g Gr'n), Jim Pickens

WEBSTER, Mason (81) _____ **WE, 5-11, 173**
Senior _____ Metairie (De La Salle), Leemon McHenry

***WRIGHT, Tom (80)** _____ **WE, 6-3, 190**
Senior _____ Sulphur, Springs, Tex. (S. Sp'g.), Johnny Dobson

***YARTER, Jimmy (40)** _____ **SAF, 5-11, 175**
Junior _____ Bellaire, Tex. (Bellaire), Mickey Sullivan

o—Denotes varsity letters earned.

POSITIONS: C—center, CB—cornerback, DE—def. end, DT—def. tackle, FB—fullback, LB—linebacker, MG—middle guard, PK—place kicker, QB—quarterback, SAF—safety, SE—strong end, SG—strong guard, ST—strong tackle, TB—tailback, WB—wingback, WE—weak end, WG—weak guard, WT—weak tackle.

ADDITIONAL DATA ON JUNIOR COLLEGE PLAYERS. Name (Junior College, Location) Coach.
HOWARD CULP (Northeast Oklahoma A & M, Miami, Okla.), Chuck Bowman. BART GRAVES (Northeast Oklahoma A & M, Miami, Okla.), Chuck Bowman. PHIL GRECO (Mississippi Delta, Moorehead, Miss.), Jim Randall. ED GROSS (Harford, Bel Air, Md.), Jack Call. BARNEY KING (East Mississippi, Scooba, Miss.), Bob Sullivan. SONNY PISARICH (Perkinston, Wiggins, Miss.), George Sekul.

Tulane's Backfield:



Quarterback ..



Tailback ..



Fullback ..



Wingback ..

Durham's Backfield:



Squareback ..



Beetleback ..



Bigback ..



Fastback ..



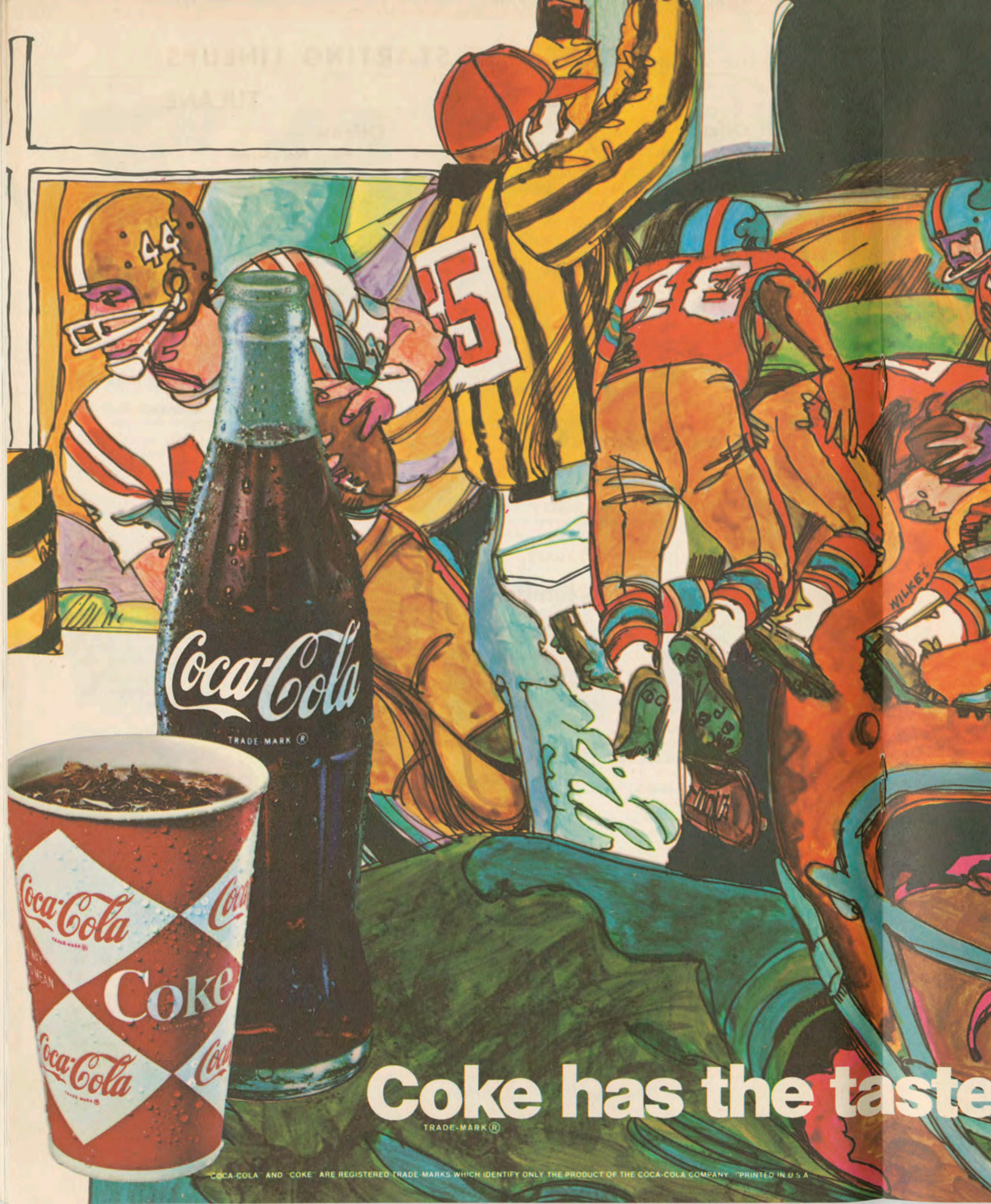
AUTHORIZED VOLKSWAGON SALES & SERVICE

"NEW ORLEANS LARGEST"

3101 Tulane Ave.

486-5981

Service: Monday - Friday — 7:00 A.M. - Midnite



PROBABLE STARTING LINEUPS

L. S. U.

Offense —

| Pos. | No. | Name |
|------|-----|---------------------|
| SE | 80 | TOMMY MOREL |
| LT | 78 | JOE REDING |
| LG | 60 | TONY RUSSELL |
| C | 54 | GODFREY ZAUNBRECHER |
| RG | 69 | JERRY GUILLOT |
| RT | 75 | BILL FORTIER |
| TE | 81 | BOB HAMLETT |
| QB | 13 | MIKE HILLMAN |
| TB | 31 | TOMMY ALLEN |
| SB | 23 | JIM WEST |
| FB | 36 | KENNY NEWFIELD |

Defense —

| Pos. | No. | Name |
|------|-----|------------------|
| LE | 62 | MICKEY CHRISTIAN |
| LT | 73 | JOHN SAGE |
| LLB | 53 | RICKI OWENS |
| MG | 65 | FRED MICHAELSON |
| RLB | 45 | MIKE ANDERSON |
| RT | 58 | CARLOS RABB |
| RE | 88 | TOMMY YOUNGBLOOD |
| BW | 39 | JAMES EARLEY |
| LHB | 32 | BARTON FRYE |
| RHB | 27 | GERRY KENT |
| SAF | 10 | JAMES LAMBERT |

L. S. U. Numbers

| | |
|---------------------------|--------------------------|
| 10 James Lambert, S | 56 John McCann, OG |
| 12 Jimmy Gilbert, QB | 58 Carlos Rabb, DT |
| 13 Mike Hillman, QB | 60 Tony Russell, OG |
| 15 Bill Norsworthy, DB | 61 Bobby Joe King, DT |
| 17 Steve Polozola, DB | 62 Mickey Christian, DE |
| 18 Buddy Lee, QB | 64 Jimmy Barrilleaux, OG |
| 19 Don Addison, BW | 65 Fred Michaelson, MG |
| 23 Jim West, SB | 67 Billy Loftin, DT |
| 24 Maurice LeBlanc, TB-SB | 69 Jerry Guillot, OG |
| 25 Mark Lumpkin, TB-K | 71 Donnie Bozeman, DT |
| 26 Glenn Smith, TB | 72 Steve Martin, OG |
| 27 Gerry Kent, DB | 73 John Sage, DT |
| 29 Frank Matte, SB-TB | 74 Larry McCaskill, OT |
| 30 Craig Burns, S | 75 Bill Fortier, OT |
| 31 Tommy Allen, TB | 76 Mike Wright, OT |
| 32 Barton Frye, DB | 78 Joe Reding, OT |
| 36 Kenny Newfield, FB | 79 Robert Ryder, OT |
| 39 James Earley, BW | 80 Tommy Morel, SE |
| 40 Milton Plitt, LB | 81 Bob Hamlett, TE |
| 43 Eddie Ray, FB | 83 Randy Toms, TE |
| 44 E. J. Daigle, K | 84 Darrell Hicks, K |
| 45 Mike Anderson, LB | 85 Bill Stober, TE |
| 46 Bill Thomason, LB | 86 Buddy Millican, DE |
| 47 Chaille Percy, FB | 88 Tommy Youngblood, DE |
| 49 Harold Stephens, DE | 90 Lonny Myles, SE |
| 51 Robert McSherry, C | 91 Greg Gonda, DE |
| 53 Ricki Owens, LB | 93 Arthur Davis, MG |
| 54 Godfrey Zaunbrecher, C | |

TULANE

Offense —

| Pos. | No. | Name |
|------|-----|-------------------|
| WE | 87 | NICK PIZZOLATTO |
| WT | 75 | LARRY MICKAL |
| WG | 60 | KYLE HUBER |
| C | 50 | HOWARD MOORE |
| SG | 68 | DUKE DUFFEE |
| ST | 76 | DEAN SMITH |
| SE | 84 | SONNY PISARICH |
| QB | 10 | WAYNE FRANCINGUES |
| TB | 47 | BARNEY KING |
| WB | 29 | JIM TRAHAN |
| FB | 19 | WARREN BANKSTON |

Defense —

| Pos. | No. | Name |
|------|-----|------------------|
| LE | 83 | ERNIE PARKER |
| LT | 74 | CHARLES BROWNING |
| MG | 65 | MIKE TOLLE |
| RT | 77 | MIKE WALKER |
| RE | 73 | JOHN SNELL |
| LLB | 32 | RICKY KINGREA |
| RLB | 56 | RAY HESTER |
| LCB | 12 | BRAD CALHOUN |
| RCB | 45 | ROGER GREEN |
| LS | 40 | JIMMY YARTER |
| RS | 49 | DICK REDD |

Tulane Numbers

| | |
|--------------------------|-------------------------|
| 10 Wayne Francingues, QB | 56 Ray Hester, LB |
| 12 Brad Calhoun, CB | 57 Tom Barrows, DT |
| 15 Ken Sanders, QB | 59 Dennis McAfee, WG |
| 19 Warren Bankston, FB | 60 Kyle Huber, WG |
| 20 David Richard, TB | 61 Bryan Duck, LB |
| 22 Mike Farnell, WB | 62 Chip DeWitt, WT |
| 23 Mason Webster, CB | 63 Howard Culp, SG |
| 24 Steve Stark, SAF | 65 Mike Tolle, MG |
| 25 John Mueller, WB | 67 Sam Scelfo, DT |
| 26 Johnny Gill, CB | 68 Duke Duffee, SG |
| 27 Bart Bookatz, PK | 70 Bart Graves, DE |
| 28 Phil Greco, CB | 71 Lonnie Sibley, ST |
| 29 Jim Trahan, WB | 72 Ed Gross, MG |
| 31 Harold Sisk, FB | 73 John Snell, DE |
| 32 Ricky Kingrea, LB | 74 Charles Browning, DT |
| 37 Maurice Gartman, LB | 75 Larry Mickal, WT |
| 40 Jimmy Yarter, SAF | 76 Dean Smith, ST |
| 41 John Onofrio, SAF | 77 Mike Walker, DT |
| 42 Jack Laborde, QB-TB | 78 Steve Boyd, DT |
| 44 Chuck Loftin, FB | 79 Jim Shepherd, DT |
| 45 Roger Green, CB | 80 Tom Wright, WE |
| 47 Barney King, TB | 82 Sid Jones, SE |
| 48 Duke Chappuis, TB | 83 Ernie Parker, DE |
| 49 Dick Redd, SAF | 84 Sonny Pisarich, SE |
| 50 Howard Moore, C | 85 Butch Spencer, WE |
| 51 Rodney Bazer, MG | 86 Roger Schramm, SE |
| 52 Larry Stone, ST | 87 Nick Pizzolatto, WE |
| 53 Calvin Fox, WT | 88 Mack Miller, DE |
| 54 John Haines, C | 89 Joe Gendron, DE |
| 55 Jim Wallace, DE | |

Coke has the taste you never get tired of.



May the Stars always shine on our Greenies

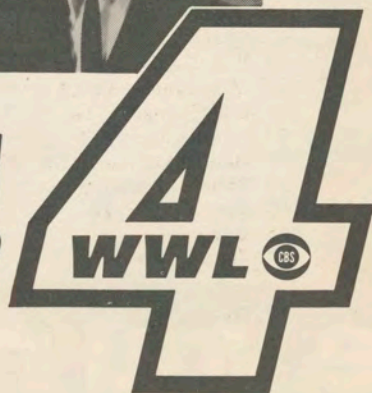
But *weather* it does—or doesn't—you'll know it ahead of time if you watch Al Duckworth and the Weather daily on Channel 4.

Al Duckworth is a pro, a graduate meteorologist with a practiced weather eye focused on New Orleans and the entire Louisiana-Mississippi Gulf Coast. And his new Channel 4 Weather Center is the most professionally equipped facility to be found in any television station in America.

So don't just talk about the weather... do something about it. Watch Al Duckworth and the Weather, everyday, several times a day, on Channel 4.



AL DUCKWORTH
and the
WEATHER!



1968 L. S. U. ROSTER

Name (Number) _____ Position, Height, Weight
Class _____ Home Town (High School)

ADDISON, Don (19) _____ **BW, 6-0, 170**
Sophomore _____ Springhill, La. (Springhill)

***ALLEN, Tommy (31)** _____ **TB, 5-11, 185**
Senior _____ DeRidder, La. (De Ridder)

ANDERSON, Mike (45) _____ **LB, 6-3, 215**
Sophomore _____ Baton Rouge, La. (Lee)

BARRILLEAUX, Jimmy (64) _____ **OG, 5-11, 225**
Sophomore _____ Amite, La. (Amite)

***BOZEMAN, Donnie (71)** _____ **DT, 6-3, 200**
Junior _____ Baton Rouge, La. (Istrouma)

BURNS, Craig (30) _____ **S, 5-11, 170**
Sophomore _____ Baton Rouge, La. (Baton Rouge)

***CHRISTIAN, Mickey (62)** _____ **DE, 6-0, 195**
Senior _____ Magnolia, Ark.

DAIGLE, E. J. (44) _____ **KS, 6-0, 185**
Sophomore _____ Baton Rouge, La. (Istrouma)

DAVIS, Arthur (93) _____ **MG, 5-11, 185**
Sophomore _____ Sulphur, La.

EARLEY, James (39) _____ **BW, 6-0, 175**
Sophomore _____ Jonesboro, La.

***FORTIER, Bill (75)** _____ **OT, 6-3, 240**
Senior _____ Jackson, Miss. (Murray)

***FRYE, Barton (32)** _____ **DB, 5-11, 175**
Senior _____ Baton Rouge, La. (University)

***GILBERT, Jimmy (12)** _____ **QB, 6-0, 180**
Junior _____ Bastrop, La.

GONDA, Greg (91) _____ **DE, 6-2, 205**
Sophomore _____ Woodville, Miss.

***GUILLOT, Jerry (69)** _____ **OG, 6-0, 210**
Senior _____ Thibodaux, La.

***HAMLETT, Bob (81)** _____ **TE, 6-3, 220**
Senior _____ Bossier City, La.

HICKS, Darrell (84) _____ **SE, 6-4, 205**
Sophomore _____ Buckeye, La.

***HILLMAN, Mike (13)** _____ **QB, 6-0, 180**
Junior _____ Lockport, La.

***KENT, Gerry (27)** _____ **DB, 5-10, 170**
Senior _____ Jackson, Miss. (Murray)

KING, Bobby Joe (61) _____ **DT, 6-0, 205**
Sophomore _____ Shreveport, La. (Fair Park)

***LAMBERT, James (10)** _____ **S, 6-0, 170**
Senior _____ Canton, Miss.

LeBLANC, Maurice (24) _____ **SB, 6-2, 180**
Senior _____ Lafayette, La.

LEE, Buddy (18) _____ **QB, 6-4, 205**
Sophomore _____ Zachary, La.

***LOFTIN, Billy (67)** _____ **DT, 6-0, 220**
Senior _____ DeRidder, La.

LUMPKIN, Mark (25) _____ **KS, 5-11, 195**
Sophomore _____ Lake Charles, La.

MARTIN, Steve (72) _____ **OG, 6-3, 215**
Sophomore _____ Houston, Texas (St. Thomas)

***MATTE, Frank (29)** _____ **TD, 5-8, 180**
Senior _____ Jennings, La.

MILLICAN, Buddy (86) _____ **DE, 6-0, 190**
Sophomore _____ Baton Rouge, La. (Istrouma)

Name (Number) _____ Position, Height, Weight
Class _____ Home Town (High School)

***MICHAELSON, Fred (65)** _____ **MG, 6-0, 195**
Junior _____ Foley, Ala.

***MOREL, Tommy (80)** _____ **SE, 6-2, 185**
Senior _____ New Orleans, La. (Jesuit)

***MYLES, Lonny (90)** _____ **SE, 6-1, 190**
Junior _____ Franklinton, La.

McCANN, John (56) _____ **OG, 6-1, 200**
Sophomore _____ Baton Rouge, La.

***McCASKILL, Larry (74)** _____ **OT, 6-3, 225**
Junior _____ Baton Rouge, La. (Central)

***McSHERRY, Robert (51)** _____ **C, 6-2, 190**
Junior _____ Monroe, La. (Neville)

***NEWFIELD, Kenny (36)** _____ **FB, 6-2, 190**
Senior _____ New Orleans, La. (St. Aloysius)

***NORSWORTHY, Bill (15)** _____ **DB, 5-10, 180**
Sophomore _____ New Orleans, La. (Fortier)

***OWENS, Ricki (53)** _____ **LB, 5-11, 185**
Junior _____ Homer, La.

PERCY, Chaille (47) _____ **FB, 5-9, 180**
Junior _____ Baton Rouge, La. (Broadmoor)

PLITT, Milton (40) _____ **LB, 6-2, 175**
Sophomore _____ Woodville, Miss.

***POLOZOLA, Steve (17)** _____ **DB, 6-2, 170**
Junior _____ Baton Rouge, La. (Catholic)

***RABB, Carlos (58)** _____ **DT, 5-11, 230**
Senior _____ Ferriday, La.

***RAY, Eddie (43)** _____ **FB, 6-2, 220**
Junior _____ Vicksburg, Miss. (St. Aloysius)

***REDING, Joe (78)** _____ **OT, 6-2, 215**
Senior _____ Bossier City, La.

***RUSSELL, Tony (60)** _____ **OG, 6-1, 200**
Junior _____ Tallulah, La.

RYDER, Robert (79) _____ **OT, 6-2, 215**
Junior _____ Alexandria, La. (Bolton)

SAGE, John (73) _____ **DT, 6-3, 220**
Sophomore _____ Houston, Texas (St. Thomas)

***SMITH, Glenn (26)** _____ **TB, 5-11, 185**
Junior _____ New Orleans, La. (Holy Cross)

***STEPHENS, Harold (49)** _____ **DE, 6-1, 190**
Senior _____ Baton Rouge, La. (Lee)

***STOBER, Bill (85)** _____ **TE, 6-4, 190**
Junior _____ Rockford, Ohio

***THOMASON, Bill (46)** _____ **LB, 6-0, 190**
Junior _____ Sulphur, La.

TOMS, Randy (83) _____ **TE, 6-4, 215**
Sophomore _____ Hodge, La.

***WEST, Jim (23)** _____ **SB, 6-0, 170**
Junior _____ Bossier City, La.

WRIGHT, Mike (76) _____ **OT, 6-4, 205**
Sophomore _____ Sulphur, La.

***YOUNGBLOOD, Tommy (88)** _____ **DE, 6-3, 195**
Junior _____ Shreveport, La.

***ZAUNBRECHER, Godfrey (54)** _____ **C, 6-2, 215**
Junior _____ Crowley, La. (St. Michaels)

*—Denotes varsity letters earned.

All-Time Tulane Football Records

Compiled by Steve Boda, Jr.

Editor's Note: Steve Boda, Jr., a statistical hobbyist in New York City, has spent the past summer researching Tulane's all-time football records. Tulane is indebted to him for his valuable contribution to her colorful football history. The records are based on official statistics filed with the National Collegiate Sports Services, the service bureau of the NCAA, beginning with the 1937 season, and pre-1937 performances have been verified through responsible research. Thanks are also due to Larry Klein and his staff at the NCSS for their co-operation in this project. Research for the pre-1937 period continues and additional marks will be included in future editions.

Individual — Single Game Records

RUSHING

- Most Rushing Attempts**
43 Bill Banker vs. Mississippi, 1927
- Most Net Yards Gained**
238 Eddie Price vs. Navy, 1949
- Highest Average Gain Per Rush (Min. 8 Rushes)**
15.0 Jimmy Hodgins vs. Sewanee, 1931 (180 yards on 12 rushes)

FORWARD PASSING

- Most Passes Attempted**
37 Dave East vs. Florida, 1965
- Most Passes Completed**
20 Ted Miller vs. Tennessee, 1962
- Most Passes Had Intercepted**
5 Pete Clement vs. LSU, 1952
- Highest Percentage of Passes Completed (Min. 10 Attempts)**
90.9% Richie Petitbon vs. Texas, 1958 (10 of 11)
- Most Passes Attempted Without Interception**
28 Joe Ernst vs. Vanderbilt, 1950
- Most Yards Gained**
292 Joe Ernst vs. Navy, 1950
- Most Touchdown Passes**
5 Fred Dempsey vs. Louisiana College, 1952

TOTAL OFFENSE (Rushing and Passing Combined)

- Most Rushing and Passing Plays**
46 Phil Nugent vs. Texas Tech, 1960
- Most Yards Gained Rushing and Passing**
294 Joe Ernst vs. Navy, 1950
- Highest Average Gain Per Play (Min. 15 Plays)**
12.1 Pete Johns vs. Cincinnati, 1966

PASSING RECEIVING

- Most Passes Caught**
10 Joe Shinn vs. Navy, 1950
- Most Yards Gained**
152 Joe Shinn vs. Navy, 1950
- Highest Average Gain Per Reception (Min. 5 Caught)**
20.8 W. C. McElhannon vs. Holy Cross, 1951 (5 for 104 yards)
- Most Touchdown Passes Caught**
3 Ed Heider vs. LSU, 1945
3 Marty Comer, vs. Vanderbilt, 1942
- Most Consecutive Passes Caught for Touchdowns**
4 Marty Comer vs. North Carolina (1) and Vanderbilt (3), 1942

PASS INTERCEPTIONS

- Most Passes Intercepted**
4 Jimmy Glisson vs. Virginia, 1949
- Most Yards Gained**
91 Fred Wilcox vs. Mississippi, 1954
- Most Touchdowns Scored**
2 Ernest Crouch vs. SMU, 1945

PUNTING

- Most Punts**
20 Bucky Bryan vs. Georgia Tech, 1933
- Most Yards**
654 Bucky Bryan vs. Georgia Tech, 1933
- Highest Average Per Punt (Min. 5 Punts)**
48.0 Charles Flournoy vs. Miss. State, 1925 (9 punts for 432 yards)

PUNT RETURNS

- Most Punt Returns**
8 Floyd Roberts vs. LSU, 1933
- Most Yards Gained**
130 Lester Lautenschlaeger vs. Louisiana College, 1925
- Highest Average Per Punt Return (Min. 3 Returns)**
39.7 Max McGee vs. Santa Clara, 1952 (119 yards on 3 returns)
- Most Touchdowns Scored**
2 Lester Lautenschlaeger vs. Louisiana College, 1925

KICKOFF RETURNS

- Most Kickoff Returns**
6 Carl Crowder vs. LSU, 1965
- Most Yards Gained**
127 Tommy Mason vs. Texas Tech, 1960
- Highest Average Per Kickoff Return (Min. 3 Returns)**
31.0 Terry Terrebone vs. Mississippi, 1959 (124 yards on 4 returns)
- Most Touchdowns Scored**
(No player with more than 1)

TOTAL KICK RETURNS

- (Punt and Kickoff Returns Combined)
- Most Kick Returns**
9 Don Zimmerman vs. Georgia Tech, 1932 (6 punts and 3 kickoffs)
- Most Yards Gained**
176 Floyd Roberts vs. LSU, 1933 (100 on punt returns, 76 on kickoff returns)

ALL-PURPOSE RUNNING

(Includes all plays and gains from Rushing, Pass Receiving, Interception Returns, Punt Returns and Kickoff Returns)

- Most Plays**
36 Don Zimmerman vs. Georgia Tech, 1932 (27 rushes, 6 punt returns, 3 kickoff returns)
- Most Yards Gained**
289 Eddie Price vs. Navy, 1949 (238 rushing, 3 pass receiving, 48 punt returns)

TOTAL PERFORMANCE

(Includes all gains from Rushing, Passing, Pass Receiving, Interception Returns, Punt Returns and Kickoff Returns; Plays include Punts and Points After Attempts)

- Most Total Plays**
52 Don Zimmerman vs. Georgia Tech, 1932 (27 rushes, 7 passes, 9 punts, 6 punt returns, 3 kickoff returns)
- Most Total Yards Gained**
338 Don Zimmerman vs. Georgia Tech, 1932 (109 rushing, 74 passing, 98 punt returns, 57 kickoff returns)

SCORING

- Most Touchdowns Scored**
4 Lou Thomas vs. North Carolina, 1941
4 Billy Payne vs. Mississippi College, 1937
4 Bill Banker vs. La. Normal, 1928, Miss. State, 1928 and Auburn, 1929
4 Charles Flournoy vs. Louisiana Tech, 1925
4 Lester Lautenschlaeger vs. Louisiana College, 1925
- Most PATs Attempted by Kicking**
9 Tommy Comeaux vs. Louisiana College, 1950
9 Carl Woodward vs. Centenary, 1914
- Most PATs Scored by Kicking**
8 Tommy Comeaux vs. Louisiana College, 1950
- Most 2-Point Attempts**
2 Richie Petitbon vs. Texas, 1958
- Most Field Goals Attempted**
3 Uwe Pontius vs. Virginia, 1966
3 Uwe Pontius vs. Georgia Tech, 1965
- Most Field Goals Scored**
(No player with more than 2)
- Most Total Points Scored**
31 Charles Flournoy vs. Louisiana Tech, 1925 (4 TDs, 4 PATs, 1 FG)

FROM SANDLOT
TO THE PROS

NEW ORLEANS' ONLY
COMPLETE

TEAM SUPPLIERS

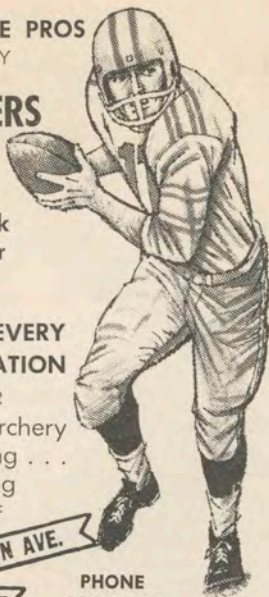
FABULOUS SELECTION
OF EQUIPMENT FOR

Football — Baseball
Basketball — Track
Soccer and Other
Team Sports

EVERYTHING FOR EVERY
SPORT and RECREATION

EVERYTHING FOR

Golf . . . Tennis . . . Archery
Bowling . . . Hunting . . .
Fishing . . . Camping
COMPLETE SELECTION OF
TOYS . . .



3604 SO. CARROLLTON AVE.
at PALM ST.

PHONE
488-2686

LOUISIANA'S LARGEST
YOUR
SPECIALISTS
IN SPORTS

Security
SPORTING GOODS

You'll know the difference
between a Cadillac and other
fine cars, the first time you
take the wheel of a new
Cadillac

●
LET US DEMONSTRATE
FOR YOU!
●

**PONTCHARTRAIN
MOTOR CO., INC.**

Baronne at Girod

RUSHING

Most Rushing Attempts
188 Eddie Price, 1948
183 Bill Banker, 1928
171 Eddie Price, 1949

Most Net Yards Gained
1178 Eddie Price, 1948
1137 Eddie Price, 1949
981 Bill Banker, 1928

Highest Average Gain Per Rush (Min. 75 Rushes)
6.8 Harold Waggoner, 1950 (663 yards on 98 rushes)
6.6 Eddie Price, 1949 (1137 yards on 171 rushes)

Most Touchdowns Scored by Rushing
16 Charles Flournoy, 1925
15 Bill Banker, 1928

Individual — Season Records

FORWARD PASSING

Most Passes Attempted
192 Dave East, 1964
151 Bobby Duhon, 1965

Most Passes Completed
85 Dave East, 1964
69 Joe Ernst, 1950

Most Passes Had Intercepted
15 Pete Clement, 1952
14 Ernest Crouch, 1945

Highest Percentage of Passes Completed (Min. 75 Attempts)
55.7% Joe Ernst, 1949 (49 of 88)
53.9% Joe Ernst, 1950 (69 of 128)

Lowest Percentage of Passes Had Intercepted (Min. 75 Attempts)
4.8% Jack Domingue, 1961 (5 of 104)
4.9% Ted Miller, 1962 (5 of 103)
4.9% Joe Ernst, 1948 (6 of 123)

Most Yards Gained
990 Joe Ernst, 1950
844 Dave East, 1964

Most Yards Gained Per Pass Attempt (Min. 75 Attempts)
7.7 Joe Ernst, 1950 (990 yards on 128 attempts)
6.6 Joe Ernst, 1948 (809 yards on 123 attempts)

Most Yards Gained Per Pass Completion (Min. 45 Completions)
14.3 Joe Ernst, 1950 (990 yards on 69 completions)
14.2 Joe Ernst, 1948 (809 yards on 57 completions)

Most Touchdown Passes
8 Joe Ernst, 1950
6 By 6 players

TOTAL OFFENSE

(Rushing and Passing Combined)

Most Rushing and Passing Plays
277 Bobby Duhon, 1966 (151 rushes, 126 passes)
275 Dave East, 1964 (83 rushes, 192 passes)

Most Yards Gained Rushing and Passing
1459 Don Zimmerman, 1931 (899 rushing, 560 passing)
1325 Bobby Duhon, 1966 (748 rushing, 577 passing)

Highest Average Gain Per Play (Min. 125 Plays)
6.8 Lou Thomas, 1941 (861 yards on 126 plays)
6.6 Eddie Price, 1949 (1137 yards on 171 plays)

Most Points Responsible For (Points Scored and Points Passed For)
129 Bill Banker, 1929 (scored 99, passed for 30)
128 Charles Flournoy, 1925 (scored 128)
124 Bill Banker, 1928 (scored 124)

PASS RECEIVING

Most Passes Caught
39 Clem Dellenger, 1962
36 Jerry Colquette, 1965

Most Yards Gained
484 W. C. McElhannon, 1951
466 Jerry Colquette, 1965

Highest Average Gain Per Reception (Min. 15 Caught)
18.6 Dick Sheffield, 1948 (316 yards on 17 receptions)
16.2 Walt McDonald, 1942 (437 yards on 27 receptions)

Most Touchdown Passes Caught
6 Marty Comer, 1942
5 Tommy Mason, 1960

PASS INTERCEPTIONS

Most Passes Intercepted
9 Jimmy Glisson, 1949
8 Lester Kennedy, 1951

Most Yards Gained
141 Jimmy Glisson, 1949
135 Bobby Jones, 1950

Highest Average Gain Per Interception (Min. 3 Interceptions)
39.3 Charlie Daigle, 1951 (118 yards on 3 interceptions)
33.8 Bobby Jones, 1950 (135 yards on 4 interceptions)
Most Touchdowns Scored
2 Ernest Crouch, 1945

PUNTING

Most Punts
71 Dave East, 1963
69 Dave East, 1965

Most Yards
*2719 Dave East, 1965
2556 Dave East, 1963

Highest Average Per Punt (Min. 25 Punts)
44.5 Stan Nyhan, 1939 (38 punts for 1692 yards)
40.3 John Caruso, 1954 (33 punts for 1329 yards)

Individual — Season Records, Cont'd

PUNT RETURNS

Most Punt Returns

27 Don Zimmerman, 1931
26 Don Zimmerman, 1930

Most Yards Gained

359 Don Zimmerman, 1932
302 Don Zimmerman, 1931

Highest Average Per Punt Return (Min. 10 Returns)

14.6 Bubber Ely, 1940 (160 yards on 11 returns)
14.1 Dub Jones, 1944 (226 yards on 16 returns)

Most Touchdowns Scored

2 Lester Lautenschlaeger, 1925

KICKOFF RETURNS

Most Kickoff Returns

21 Jim Trahan, 1966
21 Jerry Graves, 1962

Most Yards Gained

513 Jerry Graves, 1962
424 Jim Trahan, 1966

Highest Average Per Kickoff Return (Min. 5 Returns)

38.2 Bobby Kellogg, 1939 (229 yards on 6 returns)
27.6 Richie Petitbon, 1958 (276 yards on 10 returns)

Most Touchdowns Scored

(No player with more than 1)

TOTAL KICK RETURNS

(Punt and Kickoff Returns Combined)

Most Kick Returns

32 Don Zimmerman, 1932 (26 punts, 6 kickoffs)
30 Jerry Graves, 1962 (9 punts, 21 kickoffs)

Most Yards Gained

572 Jerry Graves, 1962 (59 punt returns, 513 kickoff returns)
518 Don Zimmerman, 1932 (359 punt returns, 159 kickoff returns)

Highest Average Per Kick Return (Min. 15 Returns)

20.7 Max McGee, 1952 (352 yards on 17 returns)
20.2 Jim Trahan, 1966 (424 yards on 21 returns)

ALL-PURPOSE RUNNING

(Includes all plays and gains from Rushing, Pass Receiving, Interception Returns, Punt Returns and Kickoff Returns)

Most Plays

208 Bill Banker, 1928 (183 rushes, 4 receptions, 2 interceptions, 13 punt returns, 6 kickoff returns)
197 Eddie Price, 1948 (188 rushes, 2 receptions, 7 kickoff returns)

Most Yards Gained

1475 Tommy Mason, 1960 (673 rushing, 376 receiving, 13 interception returns, 99 punt returns, 314 kickoff returns)
1395 Bill Banker, 1928 (981 rushing, 123 receiving, 62 interception returns, 112 punt returns, 117 kickoff returns)

TOTAL PERFORMANCE

(Includes all gains from Rushing, Passing, Pass Receiving, Interception Returns, Punt Returns and Kickoff Returns; Plays include Punts and Point-After Attempts)

Most Total Plays

338 Dave East, 1964 (83 rushes, 192 passes, 61 punts, 2 point-after attempts)
300 Bill Banker, 1928 (183 rushes, 8 passes, 4 receptions, 2 interception returns, 63 punts, 13 punt returns, 6 kickoff returns, 21 PATs)

Most Total Yards Gained

1885 Don Zimmerman, 1931 (899 rushing, 560 passing, 24 receiving, 100 interception returns, 302 punt returns)
1475 Tommy Mason, 1960 (673 rushing, 376 receiving, 13 interception returns, 99 punt returns, 314 kickoff returns)

SCORING

Most Touchdowns Scored

19 Charles Flournoy, 1925
18 Bill Banker, 1928

Most Points—After Attempted by Kicking

37 Tommy Comeaux, 1950
37 Euel Davis, 1949

Most Points—After Scored by Kicking

32 Tommy Comeaux, 1950
29 Euel Davis, 1949

Highest Percentage Made (Min. 15 Made)

94.7% Uwe Pontius, 1966 (18 of 19)
86.5% Tommy Comeaux, 1950 (32 of 37)

Most 2-Point Attempts

5 Ted Miller, 1962

Most 2-Point Attempts Scored

2 Ted Miller, 1962

Most Field Goals Attempted

11 Uwe Pontius, 1967 and 1966

Most Field Goals Scored

7 Uwe Pontius, 1967 and 1966

Most Points Scored by Kicking

39 Uwe Pontius, 1966 (7 FGs, 18 PATs)

Most Total Points Scored

128 Charles Flournoy, 1925 (19 TDs, 11 PATs, 1 FG)
124 Bill Banker, 1928 (18 TDs, 6 PATs)
99 Bill Banker, 1929 (13 TDs, 21 PATs)

Team Records Single Game — Offense

RUSHING

Most Rushes—89 vs. Auburn, 1929

Most Net Yards Gained—638 vs. Mississippi College, 1937

Highest Average Per Rush—9.5 vs. Mississippi College, 1937 (638 yard on 67 rushes)

Most Touchdowns Scored by Rushing—15 vs. SW Louisiana, 1912

FORWARD PASSING

Most Passes Attempted—42 vs. Florida, 1965

Most Passes Completed—24 vs. Tennessee, 1962

Most Passes Had Intercepted—5 vs. Auburn, 1954; LSU, 1953; LSU, 1952; LSU, 1949; SMU, 1943

Highest Percentage Completed (Min. 10 Attempts)—85.7% vs. Louisiana College, 1952 (completed 12 of 14 attempts)

Most Passes Attempted Without Interception—38 vs. LSU, 1967

Most Yards Gained—298 vs. Navy, 1950

Most Touchdown Passes—5 vs. Louisiana College, 1952; Louisiana College, 1950

TOTAL OFFENSE

(Rushing and Passing Combined)

Most Rushing and Passing Plays—101 vs. Auburn, 1929 (89 rushes, 12 passes)

Most Yards Gained Rushing and Passing—722 vs. Mississippi College, 1937 (638 rushing, 84 passing)

TOTAL YARDAGE

(Includes all yardage from Rushing, Passing and all Returns)

Most Total Yards Gained—964 vs. Mississippi College, 1937 (638 rushing, 84 passing, 38 punt returns, 204 kickoff returns)

INTERCEPTIONS

Most Passes Intercepted—6 vs. SMU, 1945; Mississippi State, 1931

Most Yards Returned—113 vs. SMU, 1945

Most Touchdowns Scored—2 vs. SMU, 1945

PUNTING

Most Punts—21 vs. Georgia Tech, 1933

Most Yards—709 vs. Georgia Tech, 1933

Highest Punting Average (Min. 5 Punts)—46.0 vs. SMU, 1945 (14 punts for 644 yards)

PUNT RETURNS

Most Punt Returns—11 vs. Rice, 1943

Most Yards Returned—145 vs. Maryland, 1933

Highest Average Per Return (Min. 5 Returns)—27.2 vs. Auburn, 1952 (136 yards on 4 returns)

Most Touchdowns Scored—3 vs. Louisiana College, 1925

KICKOFF RETURNS

Most Kickoff Returns—10 vs. LSU, 1961

Most Yards Returned—219 vs. Mississippi, 1959

Highest Average Per Return (Min. 3 Returns)—40.8 vs. Mississippi College, 1937 (204 yards on 5 returns)

Most Touchdowns Scored—2 vs. North Carolina, 1941

SCORING

Most Touchdowns—15 vs. SW Louisiana, 1912

Most PATs Made by Kicking—10 vs. Centenary, 1914

Most 2-Point Attempts—3 vs. Texas, 1958

Most Points Scored—95 vs. SW Louisiana, 1912

Most Points Scored One Quarter—37 vs. SW Louisiana, 1920 (4th Quarter)

FIRST DOWNS

Most First Downs by Rushing—32 vs. Louisiana Normal, 1928

Most First Downs by Passing—13 vs. Vanderbilt, 1967; Tennessee, 1962; Virginia, 1950

Most First Downs by Penalty—4 vs. Mississippi, 1964

Most Total First Downs—35 vs. Louisiana Normal, 1928

PENALTIES

Most Penalties Against—17 vs. Mississippi State, 1962; Texas Tech, 1958

Most Yards Penalized—175 vs. Mississippi State, 1962

FUMBLES

Most Fumbles—11 vs. Georgia Tech, 1945

Most Fumbles Lost—8 vs. Florida, 1945

All-Time Career Leaders

RUSHING

| Player, Years Played | Rushes | Yards | Avg. |
|-------------------------|--------|-------|------|
| Eddie Price, 1946-49 | 514 | 3095 | 6.0 |
| Bill Banker, 1927-29 | 515 | 2516 | 4.9 |
| Don Zimmerman, 1930-32 | 428 | 2369 | 5.5 |
| Ronny Quillian, 1954-56 | 340 | 1402 | 4.1 |
| Max McGee, 1951-53 | 314 | 1395 | 4.4 |



Check 'em.

Great opportunity. You earn a commission while you earn your college degree. Graduate —you start at the top. Fulfill your military obligation as an Army officer. With officer's pay. Officer's privileges.

Great advantages. Employers prefer a college graduate with service as an officer. Pay more to get him. Because he's a trained, experienced leader. Can handle heavier responsibilities.

Great success. From the 5% of college men who had ROTC training have come 24% of our state governors, 28% of executives earning \$100,000 to \$325,000 per year, 10% of Congress, 15% of our ambassadors.

Great guys. ROTC men are campus leaders—in ROTC, athletics, extracurricular activities. And they do better scholastically than non-ROTC students.

Great extras. \$50 per month in junior and senior years. Scholarships for outstanding students. Free flight training at over 125 colleges. Extra social activities—military balls, honor societies, bands, rifle teams.

Any way you look at it, there's a lot more going for you when you're in ROTC.

Your future, your decision . . .
choose **Army ROTC.**

Army ROTC CP 69
 P.O. Box 12703
 Philadelphia, Pa. 19134

I want to know more about Army ROTC.
 Send me your free brochure.

Name _____ Age _____

Address _____

City _____

State _____ Zip _____

All-Time Career Leaders, Cont'd

FORWARD PASSING (Ranked on Completions)

| Player, Years Played | Att. | Comp. | Int. | Pct. | Yards | TDP |
|-----------------------|------|-------|------|------|-------|-----|
| Bobby Duhon, 1965-67 | 421 | 187 | 35 | 44.4 | 2137 | 13 |
| Joe Ernst, 1948-50 | 339 | 175 | 23 | 51.6 | 2374 | 18 |
| Pete Clement, 1951-53 | 313 | 142 | 38 | 45.4 | 1625 | 11 |
| Dave East, 1963-65 | 306 | 131 | 22 | 43.0 | 1297 | 4 |
| Phil Nugent, 1958-60 | 286 | 123 | 26 | 43.0 | 1479 | 10 |

TOTAL OFFENSE (Rushing and Passing)

| Player, Years Played | Plays | Yards Gained | | | |
|------------------------|-------|--------------|------|-------|------|
| | | Rush | Pass | Total | Avg. |
| Bobby Duhon, 1965-67 | 813 | 1262 | 2137 | 3399 | 4.2 |
| Don Zimmerman, 1930-32 | 569 | 2369 | 924 | 3293 | 5.8 |
| Eddie Price, 1946-49 | 514 | 3095 | 0 | 3095 | 6.0 |
| Bill Banker, 1927-29 | 549 | 2516 | 235 | 2751 | 5.0 |
| Lou Thomas, 1940-42 | 384 | 1212 | 988 | 2200 | 5.7 |

PASS RECEIVING

| Player, Years Played | No. | Yards | Avg. | TD |
|---------------------------|-----|-------|------|----|
| W. C. McElhannon, 1950-52 | 68 | 954 | 14.0 | 5 |
| Lanis O'Steen, 1964-66 | 65 | 750 | 11.5 | 5 |
| Clem Dellenger, 1961-63 | 56 | 593 | 10.6 | 3 |
| Eddie Bravo, 1951-54 | 55 | 618 | 11.2 | 2 |
| Jerry Colquette, 1964-66 | 48 | 592 | 12.3 | 2 |

INTERCEPTIONS

| Player, Years Played | No. | Yards |
|----------------------------|-----|-------|
| Don Zimmerman, 1930-32 | 12 | 145 |
| Ellsworth Kingery, 1949-51 | 12 | 60 |
| Bobby Jones, 1947-50 | 10 | 268 |
| Lou Thomas, 1940-42 | 10 | 151 |
| Homer Dedeaux, 1947-50 | 10 | 118 |

PUNTING (Minimum of 60 Punts)

| Player, Years Played | No. | Yards | Avg. |
|----------------------|-----|-------|------|
| Stan Nyhan, 1937-39 | 121 | 4905 | 40.5 |
| Lloyd Pye, 1966-67 | 82 | 3204 | 39.1 |
| Euel Davis, 1948-49 | 63 | 2448 | 38.9 |
| Dave East, 1963-65 | 201 | 7660 | 38.1 |
| Joe Renfro, 1942-44 | 76 | 2848 | 37.5 |

PUNT RETURNS

| Player, Years Played | No. | Yards | Avg. |
|------------------------|-----|-------|------|
| Don Zimmerman, 1930-32 | 72 | 951 | 13.2 |
| Lou Thomas, 1940-42 | 45 | 443 | 9.8 |
| Bill Banker, 1927-29 | 48 | 411 | 8.6 |
| George Kinek, 1947-50 | 31 | 394 | 12.7 |
| Dub Jones, 1943-44 | 31 | 329 | 10.6 |

KICKOFF RETURNS

| Player, Years Played | No. | Yards | Avg. |
|------------------------------------|-----|-------|------|
| Jerry Graves, 1962-64 | 40 | 994 | 24.9 |
| Jim Trahan, 1966-67 (still active) | 38 | 787 | 20.7 |
| Max McGee, 1951-53 | 36 | 766 | 21.3 |
| Tommy Mason, 1958-60 | 28 | 601 | 21.5 |
| Eddie Price, 1946-49 | 27 | 537 | 19.9 |

TOTAL KICK RETURNS (Punt and Kickoff Returns Combined)

| Player, Years Played | No. | Yards | Avg. |
|------------------------------------|-----|-------|------|
| Jerry Graves, 1962-64 | 73 | 1216 | 16.7 |
| Don Zimmerman, 1930-32 | 81 | 1195 | 14.8 |
| Max McGee, 1951-53 | 48 | 925 | 19.8 |
| Jim Trahan, 1966-67 (still active) | 42 | 846 | 20.1 |
| Tommy Mason, 1958-60 | 52 | 829 | 15.9 |

ALL-PURPOSE RUNNING

(Includes all plays and gains from Rushing, Pass Receiving, Interception Returns, Punt Returns and Kickoff Returns)

| Player, Years Played | Plays | Yards |
|------------------------|-------|-------|
| Don Zimmerman, 1930-32 | 525 | 3733 |
| Eddie Price, 1946-49 | 551 | 3686 |
| Bill Banker, 1927-29 | 597 | 3639 |
| Max McGee, 1951-53 | 397 | 2754 |
| Tommy Mason, 1958-60 | 324 | 2403 |

TOTAL PERFORMANCE

(Includes all gains from Rushing, Passing, Pass Receiving, Interception Returns, Punt Returns and Kickoff Returns; Plays include Punts and Punts and Point-After Attempts)

| Player, Years Played | Plays | Yards |
|------------------------|-------|-------|
| Don Zimmerman, 1930-32 | 764 | 4657 |
| Bill Banker, 1927-29 | 783 | 3864 |
| Eddie Price, 1946-49 | 560 | 3826 |
| Bobby Duhon, 1965-67 | 817 | 3436 |
| Lou Thomas, 1940-42 | 478 | 3080 |

SCORING

| Player, Years Played | TD | XPts. | FG | Pts. |
|---------------------------|----|-------|----|------|
| Bill Banker, 1927-29 | 37 | 37 | 0 | 259 |
| Eddie Price, 1946-49 | 31 | 0 | 0 | 186 |
| Don Zimmerman, 1930-32 | 26 | 21 | 0 | 177 |
| Charles Flournoy, 1923-25 | 25 | 15 | 1 | 168 |
| Nollie Felts, 1930-32 | 20 | 3 | 0 | 123 |

Team Records
Season — Offense

RUSHING

Most Rushes—649 (1940)
Most Net Yards Gained—2999 (1931)
Highest Average Per Rush—5.4 (1944—2074 yards on 385 rushes)
Highest Average Yards Per Game—296.3 (1944—2074 yards in 7 games)
Most Touchdowns Scored by Rushing—39 (1931)

FORWARD PASSING

Most Passes Attempted—255 (1965)
Most Passes Completed—106 (1962)
Most Passes Had Intercepted—26 (1958)
Highest Percentage Completed—52.6% (1949—72 of 137)
Lowest Percentage Had Intercepted—4.7% (1948—7 of 149)
Most Yards Gained—1400 (1950)
Most Touchdown Passes—14 (1950)
Highest Average Gain Per Attempt—6.9 (1950—1400 yards on 203 attempts)
Highest Average Gain Per Completion—19.8 (1938—357 yards on 18 completions)
Highest Average Yards Per Game—155.6 (1950—1400 yards in 9 games)

TOTAL OFFENSE

Most Rushing and Passing Plays—768 (1931)
Most Yards Gained Rushing and Passing—3908 (1931)
Highest Average Per Play—5.4 (1950—3277 yards on 605 plays)
Highest Average Yards Per Game—364.1 (1950—3277 yards in 9 games)
Most Touchdowns Scored by Rushing and Passing—47 (1931)

PASS INTERCEPTIONS

Most Passes Intercepted—27 (1949)
Most Yards Gained—381 (1931)
Highest Average Per Return—22.9 (1960—252 yards on 11 interceptions)
Most Touchdowns Scored—3 (1955 and 1946)

PUNTING

Most Punts—100 (1931)
Fewest Punts—44 (1967)
Highest Punting Average—41.3 (1939—79 punts for 3262 yards)
Most Punts Had Blocked—3 (1946 and 1940)

PUNT RETURNS

Most Punt Returns—44 (1931)
Most Yards Gained—505 (1939)
Highest Average Per Return—14.7 (1944—293 on 20 returns)
Most Touchdowns Scored—2 (1958 and 1925)

KICKOFF RETURNS

Most Kickoff Returns—51 (1962)
Most Yards Gained—1045 (1962)
Highest Average Per Return—32.1 (1941—610 yards on 19 returns)
Most Touchdowns Scored—2 (1941)

SCORING

Most Touchdowns—51 (1931)
Most Points-After Attempted by Kicking—51 (1931)
Most Points-After Made by Kicking—32 (1950 and 1931)
Highest Percentage Made by Kicking—94.7 (1966—18 of 19)
Most 2-Point Attempts—7 (1958)
Most 2-Point Attempts Made—3 (1962 and 1958)
Most Field Goals Attempted—11 (1967 and 1966)
Most Field Goals Scored—7 (1967 and 1966)
Most Safeties—3 (1950)
Most Points Scored—338 (1931)

FIRST DOWNS

Most First Downs by Rushing—176 (1931)
Most First Downs by Passing—68 (1950)
Most First Downs by Penalty—17 (1960)
Most Total First Downs—211 (1931)

PENALTIES

Most Penalties Against—65 (1941)
Most Yards Penalized—600 (1931)
Most Yards Penalized Per Game—60.8 (1941—547 yards in 9 games)

FUMBLES

Most Fumbles—46 (1954)
Fewest Fumbles—16 (1946 and 1943)
Most Fumbles Lost—27 (1954)
Fewest Fumbles Lost—6 (1946)

Team Records
Single Game — Defense

RUSHING

Fewest Rushes Allowed—15 by Louisiana Normal, 1929
Fewest Net Yards Allowed—Minus 54 by North Carolina, 1941
Lowest Average Per Rush—Minus 1.9 by North Carolina, 1941 (Minus 54 yards on 28 rushes)

PASS DEFENSE

Fewest Pass Attempts Allowed—3 by Alabama, 1959
Fewest Pass Completions Allowed—0 Many times. Last: by Vanderbilt, 1961
Lowest Percentage Completed (Min. 10 Attempts)—05.0% by Miss. State, 1948 (1 of 20)
Fewest Yards Allowed—Minus 2 by Auburn, 1947 (completed 1 of 6)

TOTAL DEFENSE

Fewest Rushing and Passing Plays Allowed—30 by Louisiana Normal, 1929
Fewest Rushing and Passing Yards Allowed—7 by Mississippi College, 1937
Lowest Average Per Play—.016 by Mississippi College, 1937 (7 yards on 43 plays)

PUNTING

Most Times Opponent Forced to Punt—17 by Kentucky, 1932
Lowest Average Per Punt (Min. 5 Punts)—21.8 by Miss. State, 1931 (239 yards on 11 punts)

FIRST DOWNS

Fewest Total First Downs Allowed—1 by Auburn, 1941 and Kentucky, 1932

Team Records
Season — Defense

RUSHING

Fewest Rushes Allowed—243 (1943—6 games)
Fewest Rushes Allowed Per Game—31.9 (1939—287 rushes in 9 games)
Lowest Average Per Rush—1.7 (1931—603 yards on 372 rushes)
Lowest Average Yards Per Game—54.8 (1931—603 yards in 11 games)
Fewest Touchdowns Allowed by Rushing (Min. 6-game schedule)—1 (1930)

PASS DEFENSE

Fewest Pass Attempts Allowed—94 (1957)
Fewest Pass Completions Allowed—33 (1957)
Most Passes Opponents Had Intercepted—27 (1949)
Lowest Percentage Completed—31.9% (1931—37 of 116)
Fewest Yards Allowed—413 (1957)
Fewest Touchdowns Allowed by Passing (Min. 6-game schedule)—1 (1930)
Lowest Average Yards Per Game—38.5 (1931—423 yards in 11 games)

TOTAL DEFENSE

Fewest Rushing and Passing Plays Allowed—368 (1943—6 games)
Fewest Rushing and Passing Plays Allowed Per Game—44.4 (1931—488 in 11 games)
Lowest Average Per Play—2.1 (1931—1026 yards on 488 plays)
Lowest Average Yards Per Game—93.3 (1931—1026 yards in 11 games)
Fewest Touchdowns Allowed Rushing and Passing (Min. 6-game schedule)—2 (1930)

PASS INTERCEPTIONS

Fewest Passes Opponents Intercepted—4 (1939)
Fewest Yards Gained—2 (1939)
Lowest Average Per Return—0.5 (1939—2 yards on 4 returns)

SCORING

(Records based on a minimum 6-game schedule)
Fewest Touchdowns Allowed—3 (1901)
Fewest Points-After Made—2 (1908 and 1901)
Fewest Points Allowed—19 (1901)
(°—Fewer points allowed in less than 6-game schedules: 0 (1900—5 games); 5 (1905—1 game); 16 (1916—4 games); 18 (1896—4 games))

FIRST DOWNS

Fewest First Downs Allowed by Rushing—35 (1931)
Fewest First Downs Allowed by Passing—17 (1931)
Fewest Total First Downs Allowed—55 (1931)

Wave Words

Unscramble the last names of these Tulane football players to reveal the message for this week.

1. Nick OOPZATLIZT
2. John FOOONIR
3. Bart ZABOOTK
4. Ricky RANKIGE
5. Jack RALEBOD
6. Dean TMSHI
7. Jimmy RATHAN
8. Jimmy RATYRE
9. Chuck FLINTO
10. Duke SHIPUPAC
11. Tom THRIWG
12. Kyle RUBHE
13. Joe RDGOENN
14. Wayne SUNGFARCINE

_____ ○ _____

_____ ○ _____

_____ ○ _____

_____ ○ _____

_____ ○ _____

_____ ○ _____

_____ ○ _____

_____ ○ _____

_____ ○ _____

_____ ○ _____

_____ ○ _____

_____ ○ _____

_____ ○ _____

_____ ○ _____

_____ ○ _____

_____ ○ _____

Write Answer Here: _____

(Answer on Page 56)

Coaching the Coaches . . .



Seated (Left to Right) — JoAnne Morris, Judy Clark, Jane Pittman, Barbara Darnley, Jeanette Campomenosi, Opal Blaylock. Standing — Nanny Kinchen, Betty Kristynik, Bobbie Jean Tohill, Phyllis Eumont, Nancy Colquette.



Dr. John A. Hunter
President



Carl Maddox
Athletic Director



Charles McClendon
Head Coach



LA. STATE



LA. STATE FOOTBALL STAFF — Bottom (L to R) — Dave McCarty, Charles Pevey, Craig Randall, Mel Didier, Doug Hamley. Top — Bill Beall, Jim Collier, Charles McClendon, Pop Strange, Jack Doland.



Don Addison



Tommy Allen



Mike Anderson



Donnie Bozeman



Mickey Christian

LA. STATE



Arthur Davis



James Earley



Bill Fortier



TIGER STADIUM



Barton Frye



Jimmy Gilbert



Jerry Guillot



Bob Hamlett



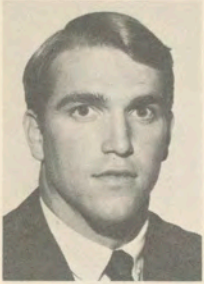
Fred Haynes



Mike Hillman



Gerry Kent



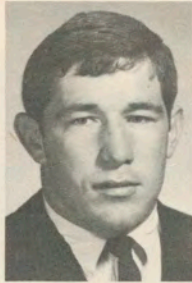
James Lambert



Maurice LeBlanc



Buddy Lee



Billy Loftin



Steve Martin



Frank Matte



John McCann



Larry McCaskill



Robert McSherry



Fred Michaelson



Buddy Millican



Tommy Morel



LA. STATE



**Lonny
Myles**



**Kenny
Newfield**



**Bill
Norsworthy**



**Milton
Plitt**



**Carlos
Rabb**



**Eddie
Ray**



**Joe
Redding**



**Tony
Russell**



**John
Sage**



**Glenn
Smith**



**Bill
Stober**



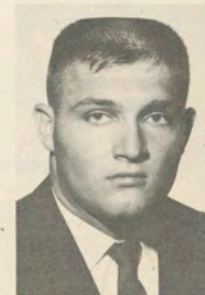
**Bill
Thomason**



**Jim
West**



**Tommy
Youngblood**



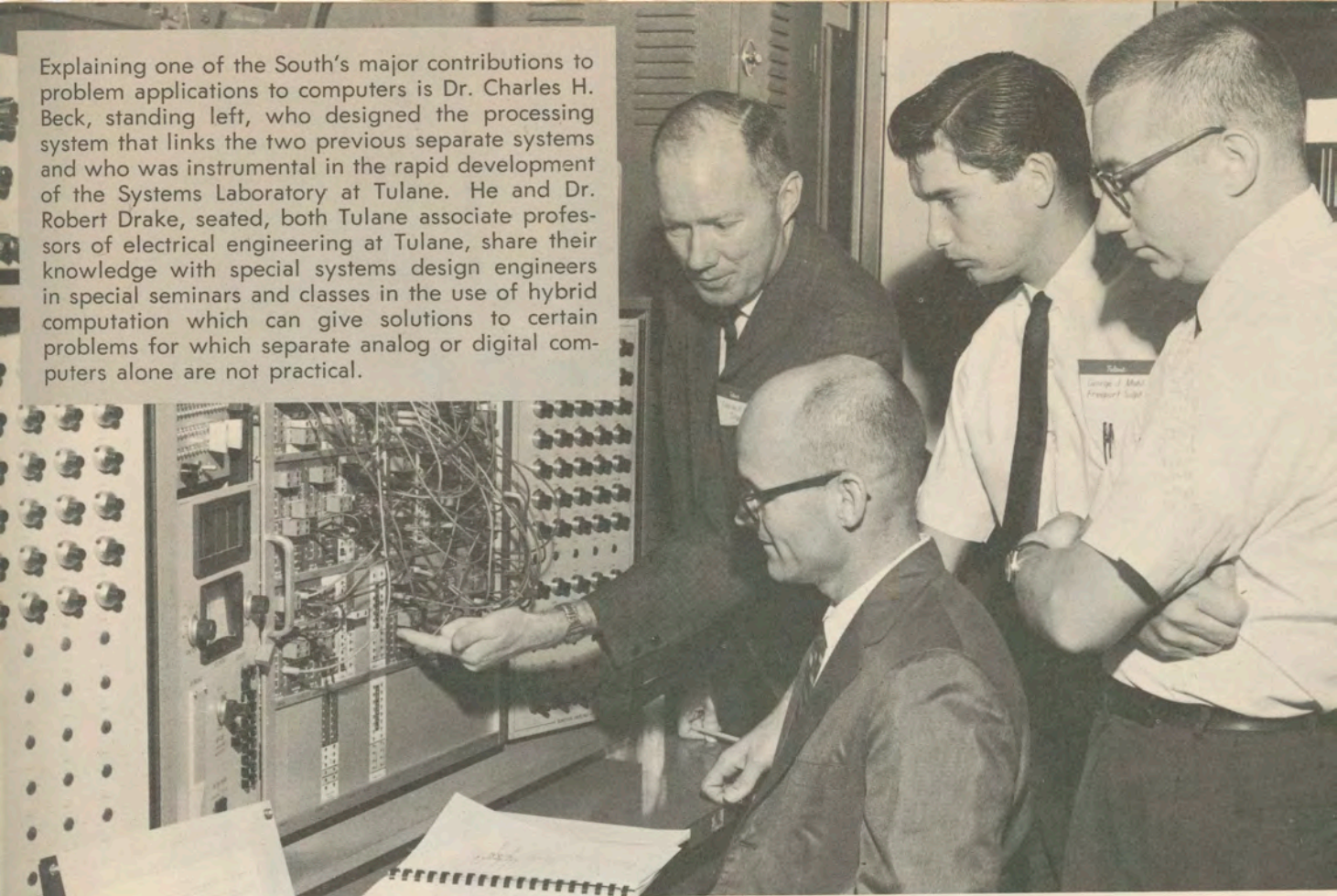
**Godfrey
Zaunbrecher**



cam-pix

Computing our recent progress in scientific research at Tulane University—we're off and running with the first university operating hybrid computer in the Gulf South area. Although digital and analog computers have been used separately in problems of aerospace, biomedicine, the petrochemical industry, and in engineering, business administration and other interdisciplinary research study, the hybrid computer, pictured above, is the first in this part of the United States to combine both systems to provide answers to engineering and scientific problems. Dr. Daniel Vliet, professor of electrical engineering at Tulane, is shown checking work of graduate student Ming H. Kuo of Taiwan and Jerry D. Hill, engineering student from New Orleans.

Explaining one of the South's major contributions to problem applications to computers is Dr. Charles H. Beck, standing left, who designed the processing system that links the two previous separate systems and who was instrumental in the rapid development of the Systems Laboratory at Tulane. He and Dr. Robert Drake, seated, both Tulane associate professors of electrical engineering at Tulane, share their knowledge with special systems design engineers in special seminars and classes in the use of hybrid computation which can give solutions to certain problems for which separate analog or digital computers alone are not practical.



Robert Rood, right, research assistant in electrical engineering, points to the machine that is the link between the analog and the digital computer, allowing both to "talk to each other." He explains to engineers from industry in a special seminar that the hybrid computer is the link that combines the precision of the digital system and the high speed of the analog system.



The Systems Laboratory is available to undergraduate students, graduate students, and any research specialists, who may attend classes, seminars, or do special problems under direction of the laboratory's staff. Dr. Drake, center, explains to senior engineering students Jacob H. Alford of New Orleans, extreme left, and James Bru, Mobile, Ala., "Dr. Beck's utilization of hard-earned and expensive equipment and the charting system, with his research work, has won for Tulane an enviable position."

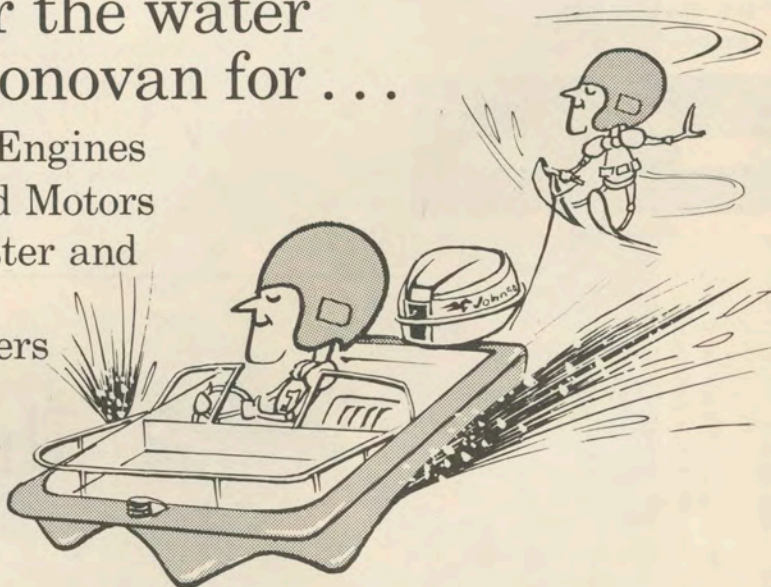
Texaco's new Sky Chief Gasoline can drive down the cost of driving.

"I'll try a gallon."



Don't go near the water 'til you see Donovan for . . .

- Chrysler Marine Engines
- Johnson Outboard Motors
- Larson, Glassmaster and Duracraft Boats
- Little Dude Trailers
- And Complete Anchor-to-Ensign Marine Supplies



Tune in WDSU Radio Fishing Facts 5:55 am, 6:55 am and 5:35 pm Monday through Friday



DONOVAN BOAT SUPPLIES
INC.

THE "BIG D" FOR BOATING

1018 BARONNE ST. / 529-5731 OPEN 8 a. m. to 5 p. m., Plenty of FREE PARKING in our lot. Enter on Carondelet St.

How you can "join" America's Olympic Team



You can be there at the Mexico City Olympic Games as a welcome contributor to the Olympic Fund. And be proud of it!

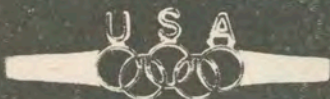
Training, transportation, housing and equipping America's top competitors in the Olympic Games is a major financial task. Because the United States Team is maintained almost entirely by public subscription, without government subsidy of any sort, the interest and support of every American is needed to reach the \$3,500,000 goal.

If you haven't already done so, "join" in the Olympic movement now. Fill out the attached coupon, with your check for \$5.00 or more and mail — today. In acknowledgment, the United States Olympic Committee will send you the handsome men's tie bar (by Danté) illustrated below. Or, if you prefer, you may select a women's bar pin with safety catch of the same design. For a \$10.00 contribution, you will receive two gifts of your choice.

make checks payable to:

U.S. OLYMPIC COMMITTEE

All Contributions are Tax Deductible



Actual Size

UNITED STATES OLYMPIC COMMITTEE

BOX 1000

MOUNT VERNON, NEW YORK 10551

Gentlemen: Enclosed is my check for \$ _____. Please send me the gift checked. (Two gifts for a \$10 contribution.)

Men's Tie Bar

Women's Bar Pin

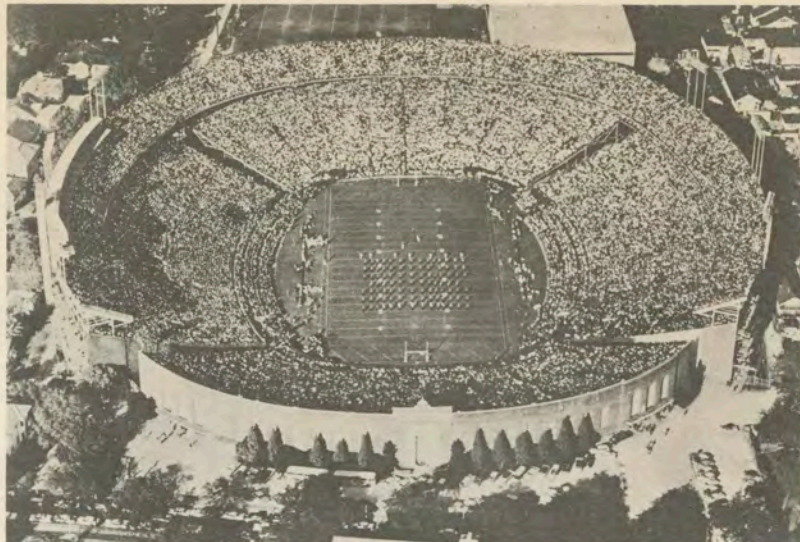
Name _____

Address _____

City _____ State _____ ZIP _____

Make checks payable to: U.S. Olympic Committee.

Your contribution is tax deductible.



TULANE STADIUM

One of the finest college football facilities in the nation, Tulane Stadium is the world's largest steel stadium. It is located on the Northeastern end of the campus, on the site of the old Etienne de Bore plantation where Sugar was first granulated in this country.

Tulane Stadium was dedicated October 23, 1926, with East and West side stands seating some 35,000. Much of the enlargement and improvement since then has been due to the efforts of the New Orleans Mid-Winter Sports Association, sponsor of the Sugar Bowl Classic. In 1937, 14,000 North Stand seats were erected. The upper deck was added in 1939, boosting the capacity to 69,000. Then in 1947, the bowl was enlarged to its present capacity of 80,985.

Tulane added floodlights in 1957. Other improvements have included permanent box seats, portal seats, press box elevator, and photographer's ramp. Two new scoreboards were added for the 1967 season.

The press box, which has been voted among the nation's best by the Football Writer's Association, is 240 feet long and seats 254.



The
University
Shop®

143 BARONNE / AT THE GASLIGHT
NEW ORLEANS

Serving the College Man's Needs
in the Finest Traditional Wearing
Apparel for 20 Years.

® Trademark reg. in U. S. Pat. Office

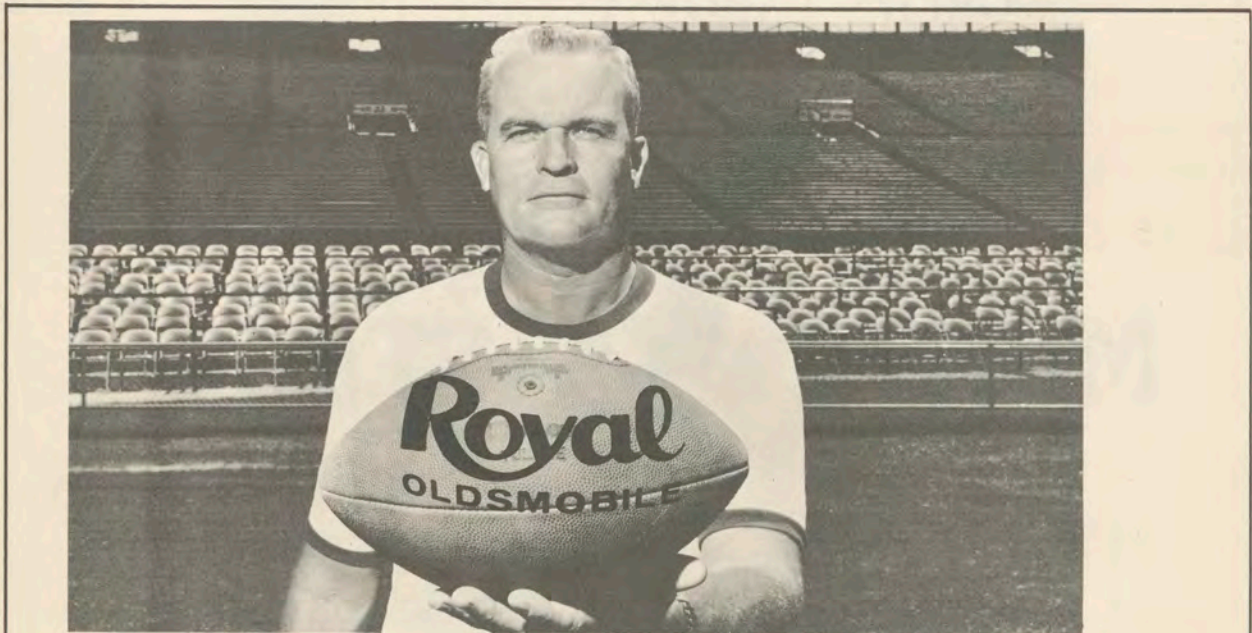
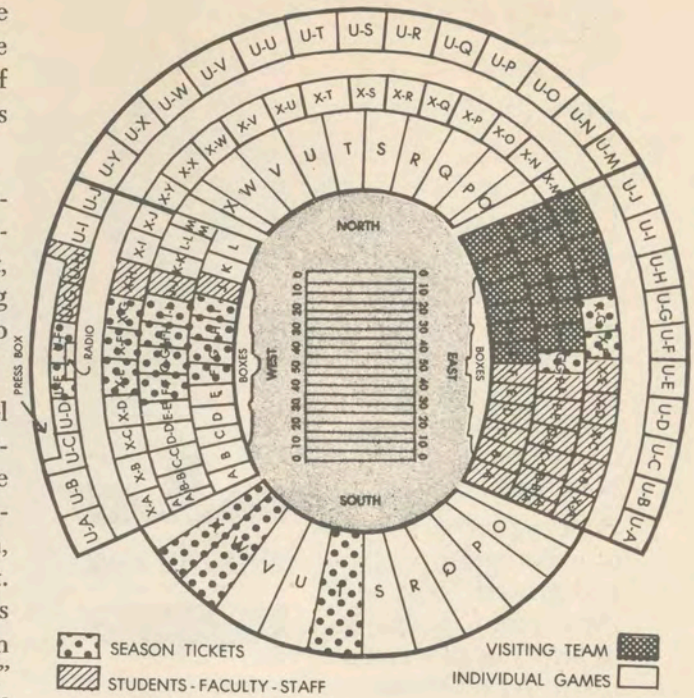
The Sugar Bowl

One of the nation's great football classics is the annual Sugar Bowl game played in Tulane Stadium on New Year's Day. Founded in the depths of depression, it stands today as one of the most unique amateur athletic achievements in the history of American sports.

While the annual football game is the highlight, the New Orleans Mid-Winter Sports Association also sponsors a basketball tournament, tennis tournament, track meet and regatta during Sugar Bowl week. Thousands of visitors flock to the Crescent City for the festivities.

The idea was first presented in 1927 by Colonel James M. Thomson, publisher of the old New Orleans Item, and sports editor Fred Digby. The first game was held on January 1, 1935, with Tulane defeating Temple, 20-14. From its inception, the group has been free of political entanglement. Under the charter, it was stipulated that it was to be a "voluntary, non-profit civic organization whose members serve without remuneration." Every Sugar Bowler buys his own tickets to all events.

Stadium Diagram



There's a dealership in town that doesn't play games.

The dealership that's different

a
seat
on
the 50...



... commands a great view in all directions. National American Bank is beginning its second half century of continuous service to New Orleans.

Building on 50 years of experience, progress and growth, National American is *the bank* to help you to a better life in New Orleans.



Member F.D.I.C.

ROLL ON GREEN WAVE



THE THIRST SLAKER

WORLD'S LARGEST TAPE LIBRARY



STEREO UNITS FOR AUTOMOBILE, HOME OR BOAT - - - - 19.95
CARTRIDGES FROM 99¢ - FROM WORLD'S LARGEST CARTRIDGE LIBRARY

TAPE CITY, U. S. A.

4230 Veterans Memorial Hwy.
Metairie, La. - 888-2505

6237 South Claiborne Ave.
New Orleans, La. - 861-3645

LOOKING AHEAD

Basketball



Coach Ralph Pedersen

Tulane will have a tougher team and a tougher schedule in 1968-69. Coach Ralph Pedersen's fifth Tulane squad will be built around three veterans, all of whom have been starters since their sophomore year. The three leading scorers last season, they are Johnny Arthurs, 6-4 forward from New Orleans; Terry Habig, 6-2 guard from Auburn, Ind.; and Bill Fitzgerald, 6-4 forward from New Orleans.

Two terrific recruits from the Freshman team will bolster the squad—6-8 center John Sutter, who set a Freshman record with 27.5 points per game and will add needed height and improve already good scoring ability; and Harold Sylvester, 6-6 jumping jack from New Orleans, Tulane's first negro cager whose forte is rebounding and defense.

TENTATIVE 1968-69 VARSITY BASKETBALL ROSTER

| Name | Pos. | Ht. | Wt. | Yr. | Ltr. | Avg. | Hometown |
|------------------|------|------|-----|-----|------|-------|----------------------|
| Johnny Arthurs | f | 6-4 | 195 | Sr. | 2 | 19.4 | New Orleans |
| Mike Billingsley | g | 6-1 | 170 | So. | 0 | 13.6° | Ft. Worth, Tex. |
| Rick Carlson | f-c | 6-5 | 215 | Sr. | 2 | 1.7 | Bradenton, Fla. |
| George Ferguson | f | 6-6 | 190 | So. | 0 | 9.2° | Ft. Worth, Tex. |
| Bill Fitzgerald | f | 6-4 | 190 | Sr. | 2 | 13.7 | New Orleans |
| Terry Habig | g | 6-2 | 180 | Sr. | 2 | 17.2 | Auburn, Ind. |
| Mike Henry | g | 5-10 | 165 | So. | 0 | 11.9° | Natchitoches, La. |
| Stan Kwiatkowski | f | 6-4 | 170 | So. | 0 | 2.5° | Barber's Pt., Hawaii |
| Drew Madar | g | 6-0 | 160 | Sr. | 1 | 6.2 | Ft. Worth, Tex. |
| Joel Miller | g | 6-3 | 180 | Sr. | 2 | 4.9 | Middlebury, Ind. |
| Ned Reese | g | 6-0 | 170 | Jr. | 1 | 2.6 | Elmhurst, Ill. |
| Dennis Riddle | c | 6-7 | 220 | Jr. | 1 | 2.5 | Madison, Wis. |
| Greg Robers | c | 6-7 | 205 | Jr. | 1 | 1.3 | Ft. Wayne, Ind. |
| Don Simmons | f-c | 6-6 | 185 | Sr. | 2 | 4.4 | Columbia, Mo. |
| Bob Spurck | g-f | 6-3 | 180 | Sr. | 2 | 6.5 | Ft. Worth, Tex. |
| John Sutter | f | 6-8 | 190 | So. | 0 | 27.5° | Marion, Ind. |
| Harold Sylvester | c | 6-6 | 200 | So. | 0 | 18.6° | New Orleans |
| Mitch Urbanski | c | 6-6 | 205 | Sr. | 2 | 3.5 | Kenosha, Wis. |

*Scoring average on Freshman team.

1968-69 BASKETBALL SCHEDULE

| | | |
|-----------------------|--|---------------------|
| Mon. Dec. 2 | NORTHERN MICHIGAN | New Orleans |
| Sat. Dec. 7 | BAYLOR | New Orleans |
| Mon. Dec. 9 | RICE | New Orleans |
| Wed. Dec. 11 | TEXAS | New Orleans |
| Sat. Dec. 14 | Louisiana State | Baton Rouge, La. |
| Mon. Dec. 16 | TEXAS TECH | New Orleans |
| Wed. Dec. 18 | Missouri | Columbia, Mo. |
| Thur. Dec. 19 | Illinois | Champaign, Ill. |
| Thur.-Mon. Dec. 26-30 | 33rd Annual All-College Tournament at Oklahoma City, Okla. (Tulane, Univ. of Pacific, Duquesne, LSU, Oklahoma City, St. Bonaventure, Texas A&M, Wyoming) | |
| Fri. Jan. 3 | Cal (Santa Barbara) | Santa Barbara, Cal. |
| Sat. Jan. 4 | U.C.L.A. | Los Angeles, Cal. |
| Wed. Jan. 8 | FLORIDA STATE | New Orleans |
| Sat. Jan. 11 | KENT STATE | New Orleans |
| Thur. Jan. 16 | Miami | Miami, Fla. |
| Sat. Jan. 18 | Florida State | Tallahassee, Fla. |
| Sat. Feb. 1 | PITTSBURGH | New Orleans |
| Sat. Feb. 8 | AIR FORCE | New Orleans |
| Mon. Feb. 10 | LOUISIANA STATE | New Orleans |
| Sat. Feb. 15 | Georgia Tech | Atlanta, Ga. |
| Mon. Feb. 17 | Chicago | Chicago, Ill. |
| Mon. Feb. 24 | Virginia Tech | Blacksburg, Va. |
| Wed. Feb. 26 | Marquette | Milwaukee, Wis. |
| Sat. Mar. 1 | GEORGIA TECH | New Orleans |
| Mon. Mar. 3 | VALPARAISO | New Orleans |

Capital letters indicate home games.



Football

FUTURE WAVE SCHEDULES

1969

Sept. 20—at Georgia
 Sept. 27—W. VIRGINIA
 Oct. 4—at Boston Coll.
 Oct. 11—FLORIDA
 Oct. 18—at Pittsburgh
 Oct. 25—NOTRE DAME
 Nov. 1—VANDERBILT
 Nov. 8—GA. TECH
 Nov. 15—VIRGINIA
 Nov. 22—at LSU

1970

Sept. 19—GEORGIA
 Sept. 26—at Illinois
 Oct. 3—at Cincinnati
 Oct. 10—at Air Force
 Oct. 17—N. CAROLINA
 Oct. 24—at Ga. Tech
 Oct. 31—at Vanderbilt
 Nov. 7—MIAMI (FLA.)
 Nov. 14—Open Date
 Nov. 21—N. C. STATE
 Nov. 28—LSU

1971

Sept. 18—at Georgia
 Sept. 25—at Rice
 Oct. 2—WM. & MARY
 Oct. 9—at N. Carolina
 Oct. 16—PITTSBURGH
 Oct. 23—GA. TECH
 Oct. 30—VANDERBILT
 Nov. 6—OHIO UNIV.
 Nov. 13—at Notre Dame
 Nov. 20—Open Date
 Nov. 27—at LSU

The
 Finest in
 Monogramming



fraternity men, sorority women
 come in and browse

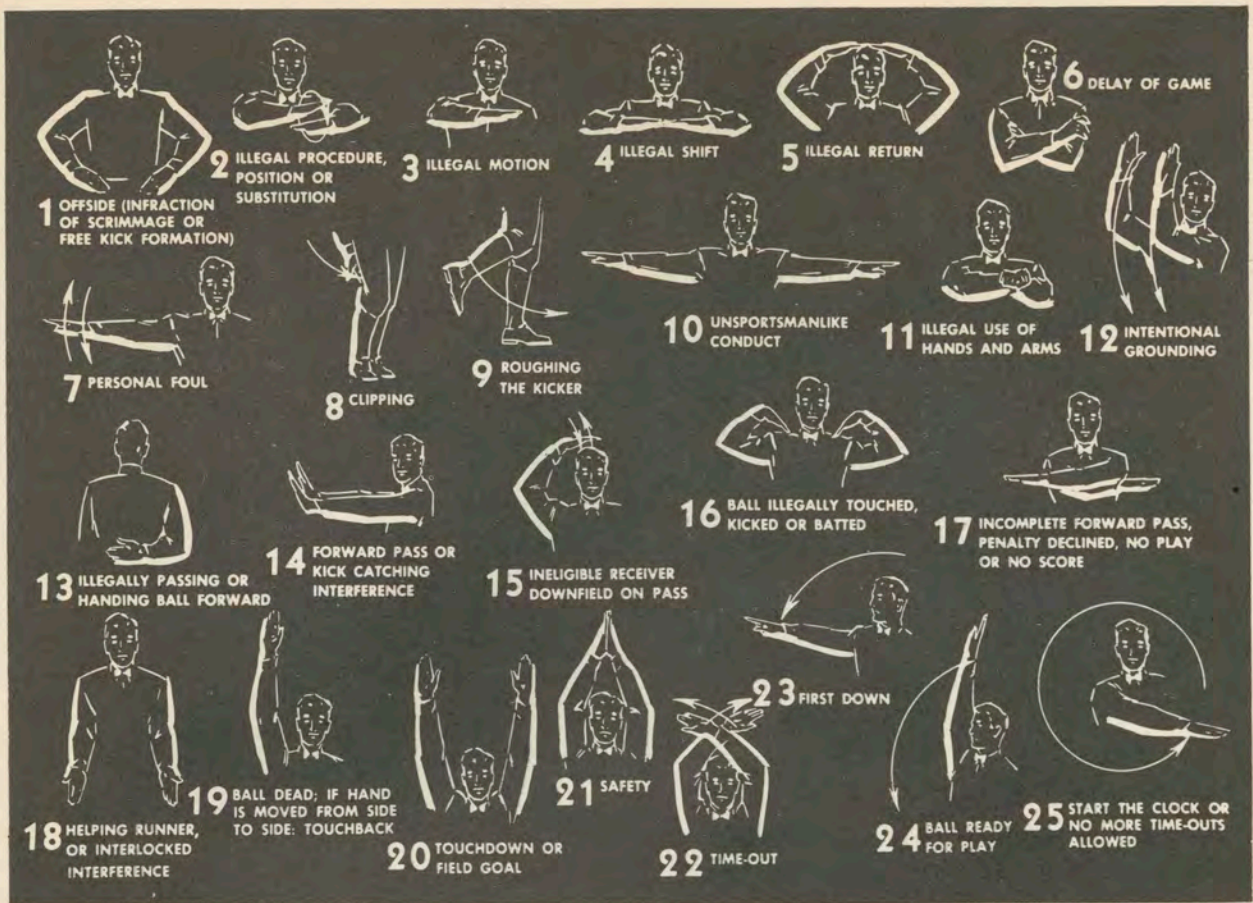
Mel's
 Monograms

3150 CALHOUN
 JUST OFF S. CLAIBORNE
 NEW ORLEANS, LA.

*Made by the little deep south
brewery that would rather be best
than biggest*



DIXIE BREWING COMPANY, INC., NEW ORLEANS, LOUISIANA



PENALTIES

1. OFFSIDE by either team; Violation of scrimmage or free kick formation; Encroachment on neutral zone—Loss of Five Yards.

2. ILLEGAL PROCEDURE, POSITION OR SUBSTITUTION—Putting ball in play before Referee signals "Ready-for-Play;" Failure to complete substitution before play starts; Player out of bounds when scrimmage begins; Failure to maintain proper alignment of offensive team when ball is snapped; False start or simulating start of a play; Taking more than two steps after Fair Catch is made; Player on line receiving snap—Loss of Five Yards.

3. ILLEGAL MOTION—Offensive player illegally in motion when ball is snapped—Loss of Five Yards.

4. ILLEGAL SHIFT—Failure to stop one full second following shift—Loss of Five Yards.

5. ILLEGAL RETURN of ineligible substitute—Loss of 15 yards.

6. DELAY OF GAME—Consuming more than 25 seconds in putting the ball in play after it is declared ready for play; Interrupting the 25-second count for any reason other than a free or excess time out granted by

Referee; Failure to remove injured player for whom excess time out was granted—Loss of Five Yards. Team not ready to play at start of either half—Loss of 15 Yards.

7. PERSONAL FOUL—Tackling or blocking defensive player who has made fair catch; Piling on; Hurdling; Grasping face mask of opponent; Tackling player out of bounds, or running into player obviously out of play; Striking an opponent with fist, forearm, elbow or locked hands; Kicking or kneeling—Loss of 15 Yards. (Flagrant offenders will be disqualified).

8. CLIPPING—Loss of 15 yards.

9. ROUGHING THE KICKER or holder—Loss of 15 Yards.

10. UNSPORTSMANLIKE CONDUCT—Violation of rules during intermission; Illegal return of suspended player; Coaching from side lines; Invalid signal for Fair Catch; Persons illegally on field—Loss of 15 Yards. (Flagrant offenders will be disqualified).

11. ILLEGAL USE OF HANDS AND ARMS by offensive or defensive player—Loss of 15 Yards.

12. INTENTIONAL GROUNDING of forward pass—Loss of Five Yards from spot of pass Plus Loss of Down.

13. ILLEGALLY PASSING OR HANDING BALL FORWARD—Loss of Five Yards from spot of foul Plus Loss of Down.

14. FORWARD PASS OR KICK CATCHING INTERFERENCE—Interference with opportunity of player of receiving team to catch a kick—Loss of 15 Yards. Interference by member of offensive team with defensive player making pass interception—Loss of 15 Yards Plus Loss of Down. Interference by defensive team on forward pass—Passing Team's Ball at Spot of Foul and First Down.

15. INELIGIBLE RECEIVER DOWNFIELD ON PASS—Loss of 15 Yards.

16. BALL ILLEGALLY TOUCHED, KICKED OR BATTED—Forward pass being touched by ineligible receiver beyond the line of scrimmage—Loss of 15 Yards from Spot of Preceding Down and Loss of a Down. Eligible pass receiver going out of bounds and later touching a forward pass—Loss of Down.

17. PENALTY DECLINED; Incomplete forward pass; No play or no score.

18. CRAWLING by runner—Loss of Five Yards. Interlocked Interference—Loss of 15 yards.

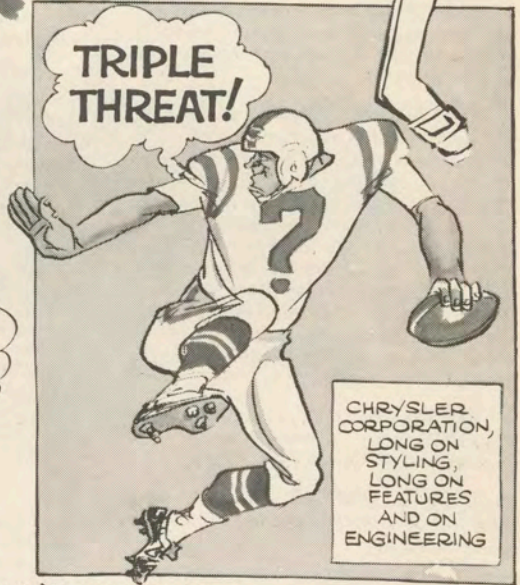


BEFORE YOU BUY, SEE YOUR CHRYSLER-PLYMOUTH OR DODGE DEALER.

...BE THE CENTER OF ATTENTION IN A NEW CAR FROM CHRYSLER CORPORATION!



WHAT A LINE!
PLYMOUTH, DODGE, CHRYSLER, IMPERIAL, SIMCA OR SUNBEAM



CHRYSLER CORPORATION, LONG ON STYLING, LONG ON FEATURES AND ON ENGINEERING

Plymouth • Dodge • Chrysler • Imperial • Dodge Trucks • Simca • Sunbeam

SEE THE AFL IN ACTION EACH WEEK ON NBC-TV.



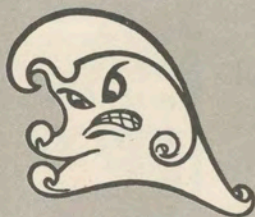
CHRYSLER CORPORATION

1968-69

Tulane Swimming



Co-Captains John Rouquette (left)
and Bob Bresnahan



Schedule

| Date | Opponent | Site |
|---------------|--------------------------|-------------------|
| Sat. Dec. 14 | Evansville, La. State | New Orleans |
| Sat. Jan. 11 | Alabama, La. State | New Orleans |
| Fri. Jan. 31 | Vanderbilt | Nashville, Tenn. |
| Sat. Feb. 1 | Louisville | Louisville, Ky. |
| Mon. Feb. 3 | Tennessee | Knoxville, Tenn. |
| Tue. Feb. 4 | Eastern Kentucky | Richmond, Ky. |
| Fri. Feb. 7 | Rice | Houston, Tex. |
| Sat. Feb. 8 | Southern Methodist | Dallas, Tex. |
| Sat. Feb. 22 | South Florida, La. State | New Orleans |
| Sat. Mar. 1 | Georgia Tech, La. State | New Orleans |
| Sat. Mar. 8 | Independ't Championships | Tallahassee, Fla. |
| Fri. Mar. 14 | Florida State | New Orleans |
| Mar. 27-28-29 | N.C.A.A. Championships | Bloomington, Ind. |

Roster

| Name — Class | Home Town | Event |
|-------------------------|-----------------------|-------------------------|
| Abbott, Dana—Fr. | Miami, Fla. | Freestyle; Butterfly |
| *Bresnahan, Bob—Jr. | Meridian, Miss. | Freestyle |
| Bryant, Nancy—Fr. | Sebring, Fla. | Breaststroke; I-M |
| Franklin, Thom—Fr. | New Orleans | Backstroke; I-M |
| Geraci, Margaret—So. | Fort Meyers, Fla. | Freestyle; Backstroke |
| Goldstein, Sandee—Fr. | Sarasota, Fla. | Backstroke |
| Harvey, Jim—Fr. | New Orleans | Backstroke |
| Kakalia, Clifton—Fr. | Kailua, Hawaii | Diver |
| Kauffman, Scott—Fr. | Darien, Conn. | Freestyle |
| *McKeever, Bruce—Jr. | Winnetka, Ill. | Freestyle; I-M |
| Mersman, Dick—So. | St. Louis, Mo. | Breaststroke |
| Milne, Sam—Fr. | Albuquerque, N. M. | Freestyle; I-M |
| Offner, Alan—Sr. | New Orleans | Butterfly; Freestyle |
| Palmgren, Muriel—So. | New Orleans | Freestyle |
| Peterson, Craig—Fr. | New Orleans | Freestyle; Butterfly |
| Phillips, Bill—Fr. | New Orleans | Freestyle |
| Rankin, John—Fr. | Keokuk, Iowa | Breaststroke |
| Raymond, Dan—Fr. | Fort Lauderdale, Fla. | Diver |
| *Rouquette, John—Sr. | New Orleans | Breaststroke |
| Smith, James—Fr. | Los Altos, Calif. | Breaststroke; Freestyle |
| Weidner, Bill—Fr. | New Orleans | Backstroke; I-M |
| *Williams, Douglass—Jr. | Eustis, Fla. | Diver |
| Yearwood, John—Sr. | New Orleans | Freestyle |

*—Indicates varsity letters earned.

Co-Captains: Bob Bresnahan and John Rouquette.
Head Coach: Paul Clifford

Break your beard in right.

Right now your beard is in the formative stage.

You can shave it with a razor blade like your father does. And each time you do your beard will grow back a little more difficult. Until one day shaving's no longer a chore. It's an agony.



Look no further than your father's face for proof.

But fortunately, you're catching your beard at an early age. You can break it in to be just as shaveable 10 and 20 years from now as it is today.

With a REMINGTON® shaver.

And if you think the kind of shave we're selling won't be close enough for you, you're wrong.

Our new blades are sharper than anything that's been in an electric shaver before. And there's a dial that lets you adjust them for your skin and beard.

What's more, you can dial a REMINGTON electric shaver into a sideburn trimmer.

Admittedly, it costs more to buy our electric shaver than a razor and some blades.

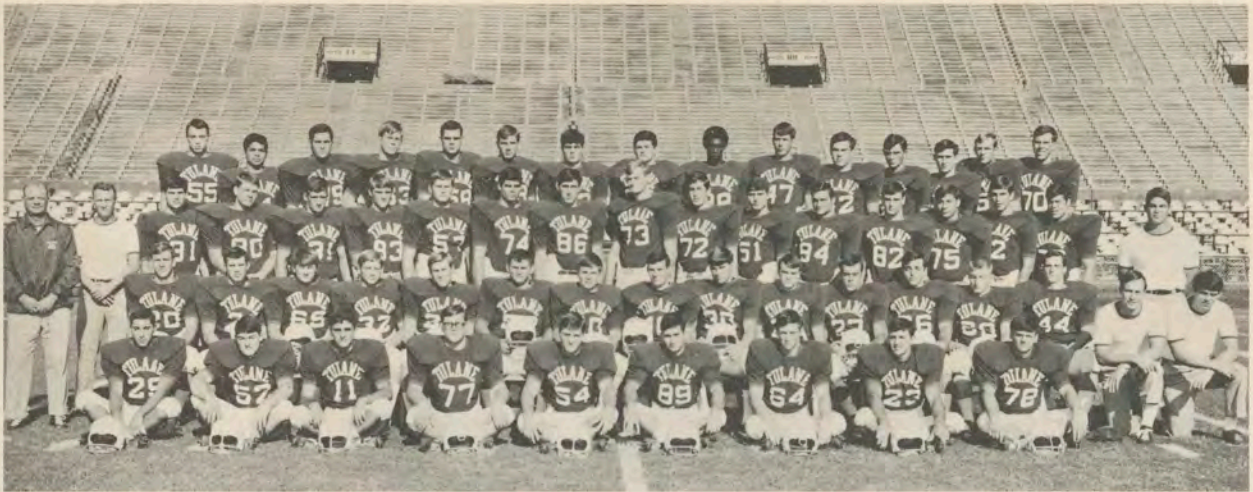
But it's a good investment.

These next few years will determine how you and your beard will get along for the rest of your lives. †SPERRY RAND™ ©1968, SPERRY RAND CORP.



REMINGTON
ELECTRIC SHAVERS DIVISION, BRIDGEPORT, CONNECTICUT.

1968 Tulane Freshman Football Team



ROW I (Left to Right)—Anthony Fontana (29), Ronnie Guzman (52), Robert Kershaw (11), Jimmy Lawrence (77), Tom Edwards (54), Buddy Porta (89), John McLeod (64), David Hebert (23), Butch Bailless (78).
ROW II—Bob Marshall (20), Dennis Crain (21), Jerry Chamberlain (69), Alan Crawford (32), Scott Heape (25), Bobby Gordon (50), Paul Ellis (10), Jim Batey (40), Randy Buck (30), Joel Bullard (24), Ed Smith (27), Bob Motchkavitz (66), Steven Thomas (60), Ronnie Corn (44), Coach Jim Jancik, Coach Lou Campomenosi.
ROW III—Coach Joe Blaylock, Coach Jim Darnley, Steve Barrios (81), Alex Lopresto (80), Art Ledet (31), Mike Paulson (83), Harold Marshall (57), Alfred Mansour (74), Carl Richardson (86), Bob Waldron (73), Charles Hendler (72), Jim Thompson (51), Joe Young (84), Lee Hamilton (82), Al Delhomme (75), Rusty Lachaussee (12), Robert Levy (76), Coach Vic Eumont.
ROW IV—Jim Atkins (55), Jimmy San Martin (14), Mike Fruge (79), Peter Day (63), Ronnie Tanner (58), Maxie LeBlanc (19), Bruce Grimes (22), Michael Valls (37), Alfred Diggs (88), Calvin Hargrave (47), Michael Doucet (62), Tony Stephens (33), Steve Hotard (53), Mike Landry (85), Raymond Commander (70).

— Frosh Roster —

Player, Position, Weight Home Town (High School)

Jim ATKINS—LB, 180..... Beaumont, Tex. (Forest Park)
 Butch BAILESS—T, 215..... Vicksburg, Miss. (H. V. Cooper)
 Steve BARRIOS—E, 170..... Gretna (West Jefferson)

Jim BATEY—TB, 180..... Franklin (Franklin)
 Randy BUCK—FB, 205..... Bay Minette, Ala. (Baldwin Co.)
 Joe BULLARD—DHB, 170..... Mobile, Ala. (Univ. Military)

Jerry CHAMBERLAIN—DE, 195..... Washington (Im. Conc.)
 Raymond COMMANDER—DT, 205..... P. Arthur, Tx. (Austin)
 Ronnie CORN—TB, 182..... Mobile, Ala. (Murphy)

Dennis CRAIN—WB, 178..... Vicksburg, Miss. (H. V. Cooper)
 Alan CRAWFORD—FB, 187..... Dallas, Tex. (Bryan Adams)
 Peter DAY—G, 205..... Houston, Tex. (Memorial)

Al DELHOMME—DT, 220..... New Iberia (New Iberia)
 A. D. DIGGS—E, 165..... New Orleans (Xavier)
 Mike DOUCET—G, 210..... Crowley (Crowley)

Tommy EDWARDS—LB, 200..... Opelousas (Im. Concep.)
 Paul ELLIS—QB, 175..... New Orln's (Dallas, Tex. Jesuit)
 Anthony FONTANA—SAF, 181..... Ab'v'le (Vermillion Cath.)

Mike FRUGE—DT, 210..... Crowley (Notre Dame)
 Bobby GORDON—MG, 218..... Oakdale (Oakdale)
 Bruce GRIMES—WB, 178..... Pascagoula, Miss. (Pascag'la)

Ronnie GUZMAN—LB, 200..... Lake Charles (L. Charles)
 Lee HAMILTON—DE, 185..... Houston, Tex. (Memorial)
 Calvin HARGRAVE—DB, 170..... Crowley (Notre Dame)

Scott HEAPE—WB, 180..... Dallas, Tex. (St. Mark's)
 David HEBERT—DB, 183..... Thibodaux (Thibodaux)
 Charles HENDLER—T, 210..... Dallas, Tex. (Jesuit)

Steve HOTARD—MG, 170..... Lake Charles (Lake Charles)
 Robert KERSHAW—QB, 175..... Little Rock, Ark. (Cath.)
 Rusty LACHAUSSEE—QB, 180..... Pascagoula, Miss. (P'g'la)

Player, Position, Weight Home Town (High School)

Mike LANDRY—DE, 190..... Lake Charles (Landry)
 Jimmy LAWRENCE—DT, 215..... Houston, Tex. (Jesse Jones)
 Maxie LeBLANC—DHB, 180..... Vinton (Vinton)

Art LEDET—FB, 196..... Abbeville (Abbeville)
 Robert LEVY—T, 210..... Atlanta, Ga. (Druid Hills)
 Alex LOPRESTO—E, 196..... New Iberia (New Iberia Cath.)

Alfred MANSOUR—DT..... Alexandria (Menard Central)
 Bob MARSHALL—TB, 187..... Metairie (East Jefferson)
 Harold MARSHALL—C, 225..... Pasadena, Tex. (S. Rayburn)

John McLEOD—G, 180..... Mobile, Ala. (Semmes Montg'y)
 Bob MOTCHKAVITZ—G, 190..... Gr. Neck, N.Y. (G. N. Nth.)
 Mike PAULSON—E, 185..... Dallas, Tex. (Bryan Adams)

Buddy PORTA—DE, 183..... Baton Rouge (Baton Rouge)
 Carl RICHARDSON—E, 198..... Berwick (Berwick)
 Jimmy SAN MARTIN—PK..... Tela, Hond. (N. O. Redempt'st)

Ed SMITH—CB, 175..... Eunice (Eunice)
 Tony STEPHENS—DB, 168..... Lake Charles (LaGrange)
 Ronnie TANNER—DE, 203..... Semmes, Ala. (Montgomery)

Steven THOMAS—G, 195..... Groves, Tex. (P. Neches Groves)
 Jim THOMPSON—C, 195..... Dallas, Tex. (Bryan Adams)
 Michael VALLS—LB, 200..... New Iberia (New Iberia Cath.)

Bob WALDRON—DT, 218..... Shreveport (Byrd)
 Joe YOUNG—DE, 200..... Houston, Tex. (Smiley)

1968 Tulane Freshman Football Schedule

Marion (Ala.) Institute 22, Tulane Frosh 15..... (Home)
 Tulane Frosh 26, Southern Mississippi Frosh 0..... (Away)
 Tulane Frosh 21, Air Force J. V. 7..... (Away)
 Sat., Nov. 16—Mississippi State Frosh..... New Orleans, 1:30 p.m.
 Fri., Nov. 22—Louisiana State Frosh..... Baton Rouge, 7:30 p.m.

— Home Games Played in Tulane Stadium —

SCHEDULES OF TULANE'S 1968 OPPONENTS

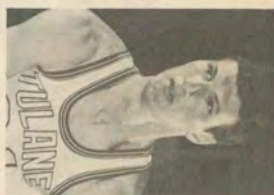
°Denotes Night Game

| OPPONENT | SEPT. 14 | SEPT. 21 | SEPT. 28 | OCT. 5 | OCT. 12 | OCT. 19 | OCT. 26 | NOV. 2 | NOV. 9 | NOV. 16 | NOV. 23 | NOV. 30 |
|---|------------------|-----------------------|---------------------|-----------------------------------|------------------------|------------------------|-----------------------|-----------------------|---------------------|----------------------|--------------------------|--|
| HOUSTON Houston, Tex. B. Yeoman | TULANE 54 - 7 | TEXAS 20 - 20 | | (Oct. 4) CINCINNATI 71 - 33 | OKLA. ST. 17 - 21 | Open | OLE MISS 29 - 7 | GEORGIA 10 - 10 | MEMP. ST. 27 - 7 | IDAHO 77 - 3 | °Tulsa | (Nov. 29) °Fla. State at Jax'ville |
| TEXAS A&M College Station, Tex. G. Stallings | | L. S. U. 12 - 13 | TULANE 35 - 3 | FLA. ST. 14 - 20 | TEX. TECH 16 - 21 | °TCU 27 - 7 | °BAYLOR 9 - 10 | ARKANSAS 22 - 25 | S. M. U. 23 - 36 | RICE 24 - 14 | Open | (Nov. 28) At Texas |
| TAMPA Tampa, Fla. F. Curci | | SANTA BAR. 18 - 7 | AKRON 24 - 9 | TULANE 17 - 14 | CINCIN'TI 28 - 31 | °East Mich. 21 - 0 | °MISS. ST. 25 - 17 | °N. MICH. 22 - 19 | E. CARO. 14 - 7 | SOU. ILL. 0 - 23 | °Southern Mississippi | |
| FLORIDA Gainesville, Fla. R. Graves | | AIR FORCE 23 - 20 | FLA. ST. 9 - 3 | MISS. ST. 31 - 14 | TULANE 24 - 3 | N. CARO. 7 - 22 | VANDERB'T 14 - 14 | AUBURN 13 - 24 | GEORGIA 0 - 51 | KENTUCKY 16 - 14 | Open | Miami |
| BOSTON COLL. Chestnut Hill, Mass. J. Yukica | | | NAVY 49 - 15 | BUFFALO 31 - 12 | VILLANOVA 28 - 15 | TULANE 14 - 28 | PENN ST. 0 - 24 | Open | ARMY 25 - 58 | V. M. I. 45 - 13 | At Mass. | Holy Cross |
| GEORGIA TECH Atlanta, Ga. B. Carson | | T. C. U. 17 - 7 | MIAMI 7 - 10 | CLEMSON 24 - 21 | TENN. 7 - 24 | AUBURN 21 - 20 | TULANE 23 - 19 | DUKE 30 - 46 | NAVY 15 - 55 | N. DAME 6 - 34 | Open | At Georgia |
| VANDERBILT Nashville, Tenn. B. Pace | | V. M. I. 25 - 12 | ARMY 17 - 13 | N. CARO. 7 - 8 | ALABAMA 7 - 31 | GEORGIA 6 - 32 | FLORIDA 14 - 14 | TULANE 21 - 7 | KENTUCKY 6 - 0 | | Davidson at Charlotte | Tennessee |
| TULSA Tulsa, Okla. G. Dobbs | | | ARKANSAS 13 - 56 | SOU. ILL. 20 - 3 | LOUISV'LE 7 - 16 | N. TEX. ST. 17 - 20 | CINCIN'TI 34 - 27 | MEM. ST. 6 - 32 | TULANE 15 - 25 | AIR FORCE 8 - 28 | At °Houston | (Nov. 28) Wichita St. |
| VIRGINIA Charlottesville, Va. G. Blackburn | | PURDUE 6 - 44 | V. M. I. 47 - 0 | DAVIDSON 41 - 14 | DUKE 50 - 20 | N. C. STATE 0 - 19 | NAVY 24 - 0 | S. CARO. 28 - 49 | N. CARO. 45 - 6 | TULANE 63 - 47 | Maryland | |
| LA. STATE Baton Rouge, La. C. McClendon | | TEX. A & M 13 - 12 | RICE 21 - 7 | BAYLOR 48 - 16 | MIAMI (Fla.) 0 - 30 | °KENT'KY 13 - 3 | °T. C. U. 10 - 7 | °OLE MISS. 24 - 27 | ALABAMA 7 - 16 | MISS. ST. 20 - 16 | At °TULANE | |

Three Good Reasons

← 1

Johnny
Arthurs



2 →

Terry
Habig



← 3

Bill
Fitzgerald



Why YOU Should Be In Tulane Gym Dec. 2

(Complete Schedule on Page 49)

QUIZ ANSWERS:

Do You Remember

Page 25 —

JOE ERNST

Wave Words, Page 37:

1. Pizzolatto; 2. Onofrio; 3. Bookatz;
4. Kingrea; 5. Laborde; 6. Smith;
7. Trahan; 8. Yarter; 9. Loftin;
10. Chappuis; 11. Wright; 12. Huber;
13. Gendon; 14. Francingues.

ANSWER: TOTAL THE TIGERS

Oldsmobile recreates a scene from the classic movies.



Olds Delta 88 Royale: The bold and the beautiful.

Meet our new top-of-the-line 88. Big-car room and ride on a longer 124-inch wheelbase. Vinyl roof, pin-striping, fender louvers, big Rocket 455 V-8 and much more, standard. All for little more than you'd pay for an ordinary car! **Escape from the ordinary.**



Z/28 Camaro



Putting you first vaaarrrrrrroooooooooo

keeps us first.



*Special offer from the Chevrolet Sports Art Collection:
18" x 24" prints of four Arthur Friberg paintings
portraying the 100 years of college football:
(1) The First Game; (2) Knute Rockne—The Coach;*

*(3) Howell to Hutson—The Passing Game; (4) O.J. Runs for Daylight.
Send \$3.00 in cash, check or money order to L. G. Balfour
Company, P.O. Box 11608. Salt Lake City, Utah 84111.*