

TULANE

Tulane Player Photos, 19-24

Humpty Dumpty Words, 14

Coaches' Wives, 41

Keeping High Talent Manpower, 37

Price
50
Cents

Tulsa Officials and Photos, 38-39

Wave Words, 53

Project Opportunity, 42-44

Photos of Sports Art Collection, 40-41

Saturday, November 9, 1968 — 7:30 p. m.

TULSA GAME

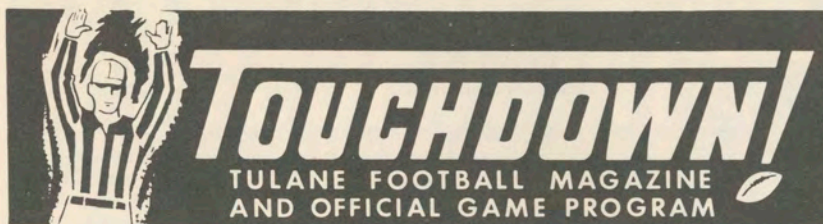
Tulane Stadium — TULANE UNIVERSITY — New Orleans, La.





**When the play gets rough and tough
reach for the brew that's smooth and mellow**

JACKSON BREWING CO., NEW ORLEANS, LA.

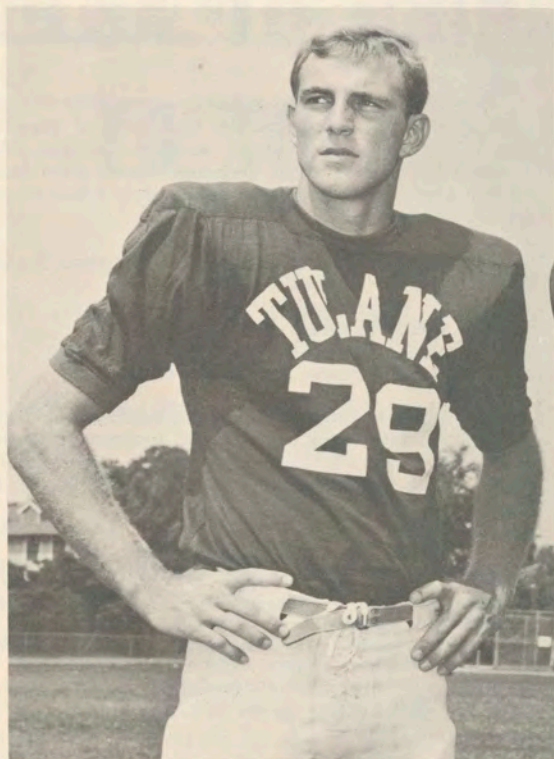


Vol. 1, No. 4 Saturday, November 9, 1968 New Orleans, La.

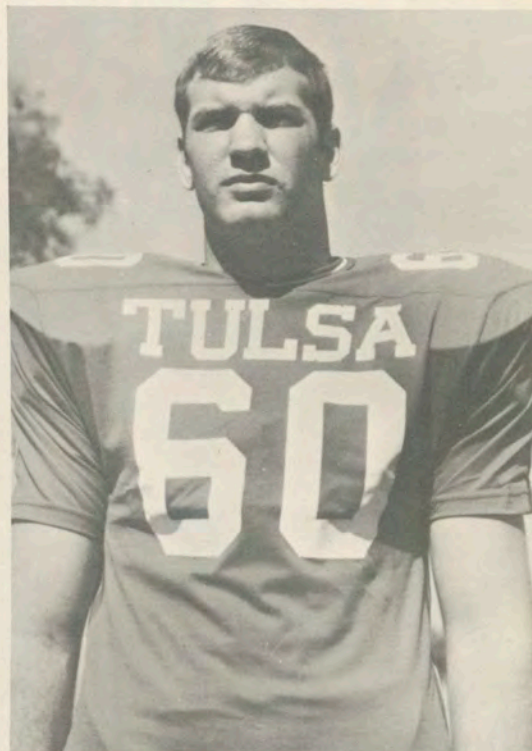
Published by
TULANE UNIVERSITY ATHLETIC DEPT.

Edited by
BILL CURL, Sports Information Dir.

Photos by
Armand Bertin, Tulane Univ.; Jim Laughead
Photography, Dallas, Tex.; Leon Trice Photo-
graphy, New Orleans; Pedro's Art Studio,
New Orleans. Covers by John Chase;
Printing by Molenaar Printing Company.



TULANE WINGBACK JIM TRAHAN



TULSA GUARD BILL REMPE

CONTENTS

All-Americans	16
Athletic Staff	15
Basketball	49
Cam-Pix	42-44
Concession Prices	12
Cover Story	13
Do You Remember	25
Football Staff	17
Freshman Football	55
Future Schedules	46
Lineups	28-29
Opponents	38
Penalties	51
Player Photos, Tulane	19-24
Records	32-36
Road Trips	10
Roster, Tulane	26
Roster, Opponents	31
Songs and Cheers	7
Stadium Information	8, 46
Statistics	4
Tonight's Game	3
Tulane University	2, 9



1968 Green Wave Scores and Schedule

Houston 54	Tulane 7
Texas A & M 35	Tulane 3
Tampa 17	Tulane 14
Florida 24	Tulane 3
Tulane 28	Boston Coll. 14
Georgia Tech 23	Tulane 19
Vanderbilt 21	Tulane 7
Nov. 9—*TULSA	Home - 7:30
Nov. 16—VIRGINIA	Charlottesville, Va.
Nov. 23—*LA. STATE	Home - 7:30

*Night Games

Tulane and the Community . . .



Dr. Longenecker

TULANE UNIVERSITY is an integral part of the New Orleans community.

The university's primary roles of education, research and service are largely focused on this area, affording opportunities for thousands of students of all ages to advance academically, contributing to the increase of knowledge, and providing a wide variety of community services, ranging from the upgrading of elementary education to the delivery of health services.

The university's programs and its calendar of events cover almost every aspect of life and make possible frequent interaction between the university family and its neighbors.

This gathering tonight is but one manifestation of this, offering not only recreation for thousands of persons but also a chance for visitors to see the obvious signs of Tulane's progress and to exchange views with students, faculty and staff about the university's mission and its impact on the community.

Athletic events bring visitors to the campus throughout the year.

And there are many other occasions.

Stage performances, concerts, lectures.

And, also, throughout the year, conferences, seminars and major conventions of scientific, professional and business organizations which attract to the campus not only persons from this area but visitors from many distant points.

Tulane, in fact, has become a core of many community interests—in art and the performing arts, in health and medicine, in science, law, engineering, architecture, business and education, to name but a few.

For whatever stimulus it does provide, Tulane is rewarded amply through the stimulation it, in turn, receives from the participation in its activities of so many from outside the university.

For the public's participation in all of these functions provide the leavening ingredient needed to enable Tulane to continue to improve in the accomplishment of its missions.



Dr. Clarence Scheps, Executive Vice President

TULSA TO BRING AERIAL SHOW TO TULANE STADIUM TONIGHT

Tulsa's Golden Hurricane will bring its high-gearred aerial attack to Tulane Stadium tonight for a 7:30 p. m. meeting with the Green Wave.

Coach Glenn Dobbs' team ranked third among the NCAA's best passing outfits last week with an average of 282.0 aerial yards per game. That figure fell off a shade after last week's 32-6 loss to Memphis State, played in a torrential down-pour, but Tulsa is still well up among the top 10 passing teams, now sporting a 277.5 average.

Mike Stripling, Tulsa's 6-2, 221-pound senior quarterback, ranked 13 in the nation in total offense through the first five games. Stripling also stood 15th in forward passing and now has 111 completions in 233 attempts for 1,369 yards and six TD's. Stripling's total offense figure is now 1,479 yards.

Harry Wood, a senior split end, is Stripling's favorite target. Wood hauled in 43 passes for 694 yards in the first six contests to bring his career reception total to 116.

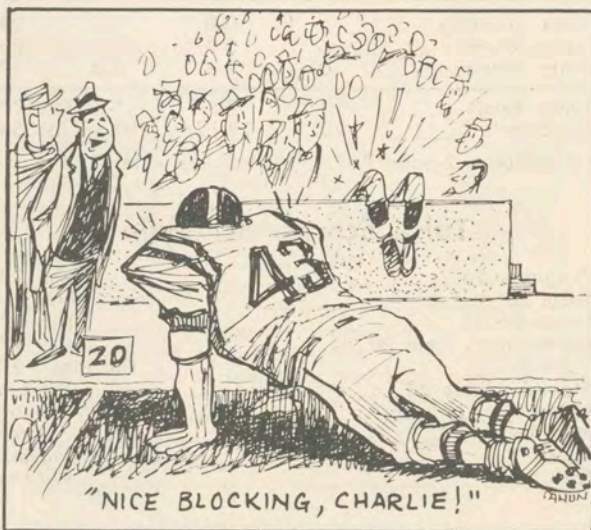
Tulane's quarterback Wayne Francingues will be gunning for the 1,000 yard mark tonight. Francingues has 885 yards of total offense to date—638 through the air and 247 on the ground.

Both teams will be trying to get back into the

win column. Tulsa has a 2-4 mark after its loss to Memphis State, with wins of 20-3 over Southern Illinois and 34-27 over Cincinnati on the plus side.

Tulane, a 21-7 Homecoming victim of Vanderbilt last week, stands 1-6 with a 28-14 win over Boston College as its lone credit.

The Green Wave will be on the road at Virginia next Saturday, then will return home Saturday night, November 23, for the season's finale against arch-rival LSU.



STATISTICS OF TONIGHT'S FOES

TULSA

Six-Game Totals

Rushing Figures

Player	Times	Net Yds.	TD's	Avg.
Mike Stripling	73	110	4	1.5
Cee Ellison	32	99	0	3.1
Joe Fitzgerald	26	75	0	2.9
Jack Osmer	25	63	0	2.5
Team Totals	232	383	5	1.7
Opponents	294	722	7	2.4

Passing Figures

Player	Att.	Comp.	Int.	TD's	Yds.	Pct.
Mike Stripling	233	111	11	6	1369	.476
John Dobbs	22	15	2	0	155	.681
Team Totals	277	136	13	6	1665	.490
Opponents	141	62	7	7	1017	.439

Receiving Figures

Player	Caught	Yards	TD's
Harry Wood	43	694	4
Jerry McArtor	18	191	1
Joe Pitsoia	17	243	0
Vic Prather	14	99	1
Joe Fitzgerald	13	104	0
Alan Drover	10	104	0

Punting Figures

Player	No.	Yards	Avg.
Brant Conley	38	1415	37.2
Team Totals	40	1415	35.4
Opponents	42	1633	38.9

Scoring Figures

Player	TD's	XPA-XPM	FGA-FGM	Pts.
Mike Stripling	4	0-0	0-0	24
Harry Wood	4	0-0	0-0	24
Doug Wyatt	0	9-8	5-3	17

Team Totals	13	9-8	5-3	(a) 97
Opponents	20	19-17	10-5	(b) 154

(a)—Includes 2-point PAT. (b)—Includes safety.

Tulsa Scores, Schedule

Arkansas 56	Tulsa 13
Tulsa 20	Southern Illinois 3
Louisville 16	Tulsa 7
North Texas State 20	Tulsa 17
Tulsa 34	Cincinnati 27
Memphis State 32	Tulsa 6
Nov. 9	At Tulane
Nov. 16	At Air Force
Nov. 23	At Houston
Nov. 28	Wichita

TULANE

Seven-Game Totals

Rushing Figures

Player	Times	Net Yds.	TD's	Avg.
Warren Bankston	62	299	1	4.7
Duke Chappuis	60	251	1	4.2
Wayne Francingues	116	247	5	2.1
Nick Pizzolatto	52	233	0	4.4
Jack Laborde	21	115	1	5.5
Barney King	9	50	1	5.6
Harold Sisk	16	49	0	3.1
Jim Trahan	10	28	0	2.8
Team Totals	364	1324	9	3.7
Opponents	349	1656	14	4.8

Passing Figures

Player	Att.	Comp.	Int.	TD's	Yds.	Pct.
Wayne Francingues	108	48	9	2	638	.444
Ken Sanders	9	5	1	0	41	.555
Warren Bankston	5	1	1	0	18	.200
Team Totals	131	54	14	2	697	.412
Opponents	170	85	11	14	1270	.500

Receiving Figures

Player	Caught	Yards	TD's
Sonny Pisarich	17	254	2
Jim Trahan	10	110	0
Nick Pizzolatto	7	71	0
Warren Bankston	4	52	0
Tom Wright	3	42	0
Barney King	3	31	0
John Mueller	2	33	0
Chuck Loftin	2	32	0

Punting Figures

Player	No.	Yards	Avg.
Ken Sanders	46	1877	40.8
Team Totals	46	1877	40.8
Opponents	35	1317	37.6

Scoring Figures

Player	TD's	XPA-XPM	FGA-FGM	Pts.
Wayne Francingues	5	0-0	0-0	30
Bart Bookatz	0	11-9	5-2	15
Sonny Pisarich	2	0-0	0-0	12
Duke Chappuis	1	0-0	0-0	6
Warren Bankston	1	0-0	0-0	6
Barney King	1	0-0	0-0	6
Jack Laborde	1	0-0	0-0	6
Team Totals	11	11-9	5-2	81
Opponents	26	25-23	6-3	188

SERIES RECORD: First Game Between Tulane and Tulsa

The Fabulous
FONTAINEBLEAU

MOTOR HOTEL

Dedicated to Pleasure and Fun



**FOR RELAXED DINING
AND FINE FOOD**

For delicious Continental and Creole foods impeccably served in glittering splendor



**FOR AN INTIMATE AND
ENCHANTING EVENING**

Cocktail hour 5 to 7. Complimentary hors d'oeuvres, dancing, entertainment. Name bands nightly



**FOR EXCELLENT FOOD
QUICKLY SERVED**

A favorite meeting place. Open at 6 a.m. Delicious food, popular prices.

494 LUXURY ROOMS

LARGEST SWIMMING POOL IN TOWN—separate high diving pool, separate wading pool for children.

OUTDOOR POOL SIDE LOUNGE with table service

Convenient to shopping, business area, French Quarter

SPECIAL ATTENTION TO PARTIES AND CONVENTIONS
A private room for every function with special complimentary services.



FONTAINEBLEAU

MOTOR HOTEL

4040 TULANE AVE.

HU 6-6111

ENJOY

MR. BROWN'S

Old Fashioned



**Ice Cream and
Dairy Products**

Brown's Velvet Dairy Products, Inc.

1300 Baronne Street

New Orleans, La. 70113

SAVE AT

IOB

INTERNATIONAL
CITY BANK

5:00

**the bank
that doesn't watch
the clock**

Sure, you've got to watch the clock to enjoy the game. We just don't believe in watching it while we work.

That's why ICB is the All Day Bank. Open when you can get there . . . from 8 a.m. till 6 p.m. and till 10 at night at our downtown Sidewalk Service Window. Get with the Pro-Team in banking. Open your ICB Checking Account—almost any time.



INTERNATIONAL CITY BANK
AND TRUST COMPANY

DOWNTOWN OFFICE—321 ST. CHARLES AT UNION
UNIVERSITY OFFICE—FRERET AT JEFFERSON AVE
WEST BANK OFFICE—2140 GEN. DE GAULLE DRIVE
NEW ORLEANS, LA. 70130



GET REAL ACTION... The Uncola
7-UP YOUR THIRST AWAY

BEFORE OR AFTER THE GAME.....

OUTRIGGER

BAR & LOUNGE

- ★ Spectacular exotic drinks!
- ★ Palate pleasing Polynesian tid-bits!
- ★ All your cocktail favorites!

OPEN FROM 9 A.M.



Sheraton-Charles Hotel
 NEW ORLEANS



Spirit at Tulane

Alma Mater

We praise thee for thy past, O Alma Mater!
Thy hand hath done its work full faithfully.
The incense of thy spirit hath ascended
And filled America from sea to sea.

CHORUS—

Olive Green and Blue, we love thee
Pledge we now our fealty true
Where the trees are ever greenest,
Where the skies are purest blue.
Hear us now, O Tulane, hear us
As we proudly sing to thee!
Take from us our hearts' devotion!
Thine we are, and thine shall be!



Hullabaloo

A one, a two,
A helluva hullabaloo,
A Hu-la-ba-loo Ray-Ray!
Hu-la-ba-loo Ray-Ray!
Hoo-Ray! Hoo-Ray!
Vars, vars, tee-ay!
Tee-ay! Tee-ay!
Vars, vars, tee-ay!
Tulane!

Roll, Green Wave

Here's a song for the Olive and the Blue.
Here's a cheer for the team that's tried and true.
Here's a pledge of loyalty to thee,
O, Tulane Varsity.

Here's to the Greenbacks that never will say die,
And here's to the hearts that are true
To the men of Tulane, who are fighting for
her name,
For the Olive and the Blue.

Roll, Green Wave, Roll them down the field.
Hold, Green Wave, that line must never yield.
When those Greenbacks charge through the line
They're bound for victory.

Hail, Green Wave, For you we give a cheer.
Hail, Green Wave, For you we have no fear.
So ev'ry man in ev'ry play,
And then we'll win that game today.
Hurrah for old Tulane!

(Chant to be used on second chorus)

Roll, Green Wave, Roll, Roll Green Wave
Hold Wave, Hold Wave, Hold, Green Wave.
Go— go— go get the tigers
Go win, go win, go win from the tigers.
Fight, fight, fight for T. U.
T. U., T. U., the Olive and the Blue,
T — — U — — Rah, Rah, Rah, Tulane.





Cuisine...par excellence!

Both French and Creole cooking. Cited by HOLIDAY for 15 consecutive years as a 'local favorite dining spot.'

Open daily from eleven 'til eleven - except Mondays. Located in the heart of the Garden District at Washington and Coliseum.

Commander's Palace
TWINBROOK 1-7240 Since 1880



THE MARK OF DELICIOUS FOOD

COMPLETE CATERING SERVICES
AVAILABLE

Wedding Receptions — Parties
Buffets — Banquets — Picnics

CONSULT US — AT NO OBLIGATION

866-0523

831-3471

STADIUM INFORMATION

First Aid

--- First aid stations are located under the East and West stands at ground level.

Telephones

--- Public pay telephones are located at ground level on North, East, South and West sides.

Rest Rooms

--- Rest rooms are located under North, East, South and West stands at ground level and under North, East and West upper deck sections.

Lost and Found

--- Lost and found office is located inside stadium at Southwest corner, ground level.

PAN-AMERICAN FILMS

Producers of 16 mm Industrial, Educational and Special Events
Motion Pictures

Editing, Titling and Color Film Duplicating — Sound Recording

Producers of the Sugar Bowl Movies in Color and Sound Since 1945

Bell & Howell
Motion Picture Equipment Dealers

822-24 NORTH RAMPART STREET
522-5364

Tulane



University



Robert Sharp Hall, Men's Residence Housing Tulane Athletes

Tulane University is an educational institution deeply rooted in the past and reaching toward the future.

Founded in 1834 as the Medical College of Louisiana, Tulane today offers undergraduate programs in 30 areas of study, masters' degrees in 43 fields and the doctor of philosophy degree in 33 disciplines.

Courses are offered in the College of Arts and Sciences, Newcomb College (the coordinate college for women), and University College (the evening division); in the Schools of Architecture, Engineering, Law, Medicine, Public Health and Tropical Medicine, and Social Work; in the Graduate School, the Graduate School of Business Administration, the Summer School, the Center for Teacher Education and at several research institutes.

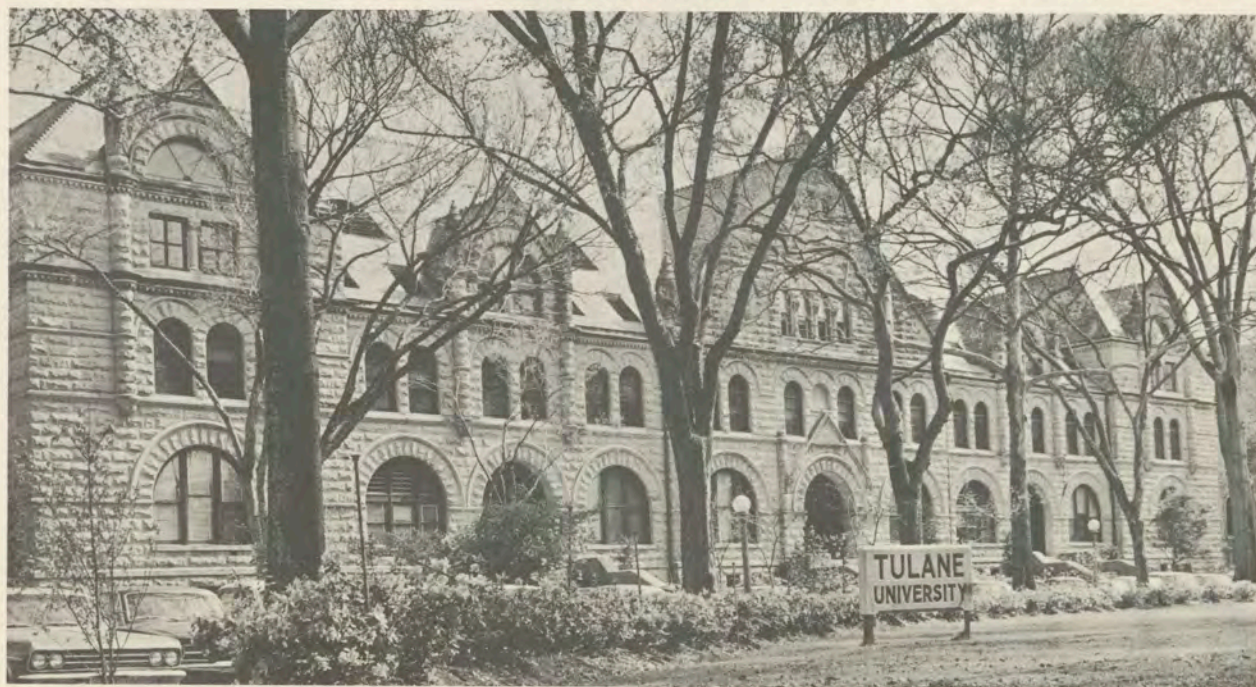
The interest in tropical medicine—the Medical College of Louisiana was founded to combat epidemics of yellow fever and other tropical diseases—is the one cord that runs throughout the University's history, even as its interests expanded with its development as part of the University of Louisiana in 1847, and with its emergence,

finally, as the Tulane University of Louisiana in 1884, after a generous gift from Paul Tulane had established the Tulane Educational Fund. The Fund's administrators used the gift to reorganize the University as a private, non-sectarian institution bearing Tulane's name.

Today Tulane's President, Dr. Herbert E. Longenecker, directs the operation of a cosmopolitan community whose faculty (650 full-time, 500 part-time) and students (6,000 full-time, 2,000 part-time) represent every state and 60 foreign countries.

By far the major portion of the University's activities are centered at the main campus, a 100-acre site in uptown New Orleans. Scholars also pursue their interests at the downtown Medical School campus; at the Delta Regional Primate Research Center in Covington, La., 35 miles from the main campus; at the International Center for Medical Research and training at Cali, Colombia, and at the University's newest campus—the F. Edw. Hebert Center, across the Mississippi River from downtown New Orleans, a development devoted to scientific research.

Gibson Hall, the Administration Building



Where the Wave Will Play . . .



HOUSTON — Astrodome (46,000)



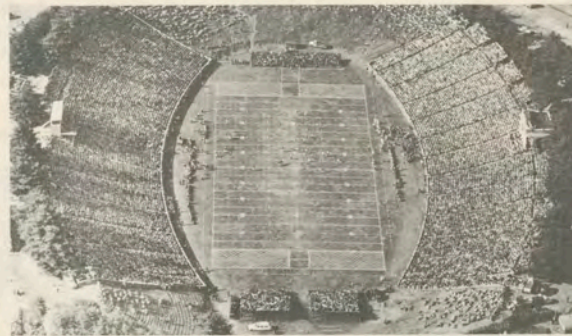
FLORIDA — Florida Field (59,890)



GA. TECH — Grant Field (59,809)



VANDERBILT — Dudley Field (34,000)



VIRGINIA — Scott Stadium (26,000)

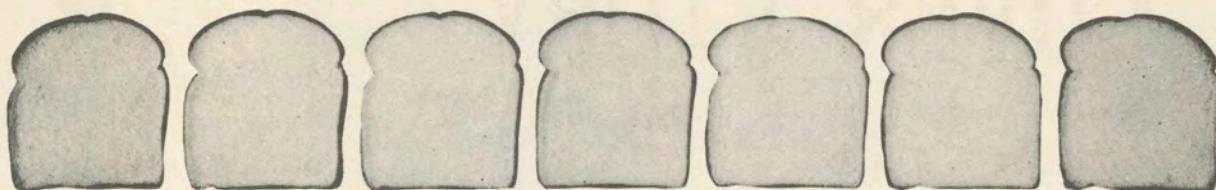
Where the Wave Will Stay . . .

Houston Game (Sept. 14)	Towers Hotel, Houston, Tex.
Florida Game (Oct. 12)	Ramada Inn, Gainesville, Fla.
Ga. Tech Game (Oct. 26)	Riviera Motor Hotel, Atlanta, Ga.
Vanderbilt Game (Nov. 2)	Capitol Park Inn, Nashville, Tenn.
Virginia Game (Nov. 16)	Mt. Vernon Hotel, Charlottesville, Va.

Since 1842,
our greatest
pleasure
has been that of
serving you ...
our customers.



HOLMES
NEW ORLEANS BATON ROUGE



No holes in the Sunbeam line!

Batter Whipped Bread

Hamburger Buns

Hot Dog Rolls

Sweet Rolls

Brown 'n' Serve Rolls

Raisin Bread

Whole Wheat Bread

Rite Diet Bread

Those on the go—go Sunbeam

HOLSUM *Sunbeam* **BREAD**

Official Concession Prices at Tulane Stadium

FOOD AND BEVERAGE

BEER50
SOFT DRINKS25
COFFEE15
HOT DOGS35
HAMBURGERS50
PEANUTS25
POPCORN25
COTTON CANDY20

CIGARETTES

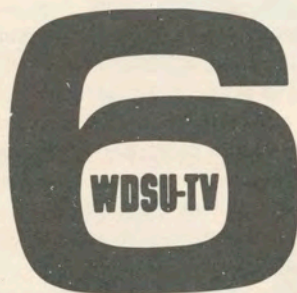
AT MACHINES ON GROUND LEVEL..... 40

NOVELTIES

BADGES50, .75, and \$1.00
PENNANTS	1.00
PORKY HATS, Felt W/Tulane Patch.....	1.50
CREW HATS	2.50
BANKS	1.50
LICENSE PLATES	1.25
TISSUE SHAKERS50
BOBBLE HEAD FOOTBALL DOLLS.....	2.00
COWBELLS50
TULANE BUTTON, 3½"	
W/Green Wave Emblem.....	.50
PLUSH TIGER, 9".....	3.00
RAIN BONNETS50
RAIN COATS, PLASTIC.....	2.00

COVER STORY

Heavens to Betsy! As every resident knows the best way to treat a hurricane is to board him out. Here the Greenie—Tulane's star boarder for twenty years—makes no exception of the Golden (14K) Hurricane from Tulsa. With boards, he's got the fellow practically **floored**.



The Green Wave's official cover artist is WDSU-TV Editorial Cartoonist John Chase. See his Editorial Cartoons in color, week-days in BREAKFAST EDITION (6:30-7 A.M.) and at 6:15 and 10:15 P.M. on WDSU-TV, Channel 6.

WDSU-TV—First In The Nation With Daily Editorial Cartoons In Color!



Three Great French Restaurants await you

(individually owned)

Antoine's
Since 1840

713 St. Louis Street • 529-5696
12 Noon to 9 P.M. • Closed Sundays
ROY L. ALCIATORE, Prop.

Broussard's
Napoleon Patio

819 Conti Street • 523-4800
12 Noon to 10:30 P.M. • Closed Wednesdays
H. W. (Bill) HESLIN, SR., Manager

ARNAUD'S
Carnival Room

813 Bienville Street • 523-5433
11 A.M. to 12:30 A.M. Past Midnight Daily
GERMAINE WELLS, Owner

Famous for
FINE FOOD and DRINK

HUMPTY-DUMPTY WORDS

by BOB TALBERT



WHEN OLD Humpty-Dumpty ("Alice in Wonderland") r'ared back and said "When I use a word it means just what I choose it to mean—neither more nor less"—I get the feeling that a lot of football coaches nowadays have been taking lessons from 'ol Hump.

These locker-room lads have a knack of phrasing answers that has even politicians drooling over the way football coaches give that old bush a beating. Coaches lead the league in issue-avoiding, punch-pulling and angle-shooting.

But with a little practice, a lot of ESP, and an inherited gift for out-and-out mind-reading, one can readily understand every word uttered by any football coach in any section of the country. Let me show you what I mean. I will begin with the coach's statement and then follow it with *REAL* meaning in parenthesis:

"I have only one desire for this team—and that's to make this a game of fun for the boys." ("And just as soon as I can get rid of Texas, Alabama and Southern Cal some nut AD put on our schedule, we'll play Rose Poly, Slippery Rock and Middlesaps—truly FUN teams.")

"This team plays for breaks." ("We're so slow and inept we have to hope we'll get referees to match.")

"We have been handicapped this

season by an accident-prone team." ("These guys are so dainty they ought to be playing in aprons. They check in the infirmary with nose-bleeds or dandruff. They're such a bunch of hypochondriacs they put the tackling dummy in the whirlpool bath.")

"I look for our quarterback to take his place among the all-time statistic leaders." ("Yeah, all the statistics on the minus side. Career lost yards. Season fumbles. Single game signal flubs and balls eaten. He's made our own All-Opponent team three years running. He doesn't play football, he hoards it. Ask him to pass the catsup and he goes to one knee.")

"Man, you really heard some hitting out there today." ("Unfortunately, most of it was our guys hitting the ground and getting knocked on their rears.")

"Listen, all this team needs is one more good running back." ("Then we'd have a total of one.")

"We'll move the ball on anybody." ("Unfortunately, toward our own goal line—and occasionally laterally.")

"There isn't one single reason this team can't win the conference title." ("To be exact, there are 11 of them.")

"They pulled some new offensive and defensive moves on us." ("They blocked and tackled.")

"We simply made too many mistakes out there. ("Like scheduling them in the first place. Compared to our schedule, the Christians vs. Lions was a tossup.")

"I'll have to wait until I see the films." ("And I hope the drug store doesn't return them for six weeks and by that time maybe everyone will have forgotten.")

"It's hard for me to single out any one boy as the star." ("I wish you'd have asked about the goat, the dunce, most stupid, etc.")

I think you're beginning to catch on to this thing by now, aren't you? That's excellent. And just so the coaches won't think I'm picking on them, I've got an idea of how they can up-grade the practice of giving out quotes. Each staff should include a resident psychologist-psychiatrist who could give out the following intellectual, learned explanations and quotes (with the meaning in parenthesis):

"Our squad seems to have difficulty with Me-You relationships." ("There's dissension on the squad.")

"Our flanker seems to have an indifferant grasp of time-space relationships." ("He can't catch a pass.")

"He shows some difficulty with abstract concepts." ("He can't tell his right from his left.")

"We are reacting negatively to the success values of the rest of the culture." ("We're in the middle of a heckuva losing streak.")

"Our offensive linemen are slow to achieve inter-personal relationships with their peer group." ("They can't block.")

"The players we need must react negatively and anti-socially to outside stimulus." ("They'll hit back.")

"On that play, the halfback showed a confused set of time-space conceptualities and spatial disorientation." ("The jerk ran the wrong way.")

"Our backs appear to be under-motivated." ("They're afraid to get tackled.")

"As we always say, there are times you have to philosophize on the probability curve on the victory-defeat scale." ("You can't win 'em all.")



Dr. Rix N. Yard
Dir. of Athletics



From Left — Buddy de Monsabert, Athletic Business Manager; Dr. Harvey Jessup, Executive Assistant to the Athletic Director; Dr. Hugh Rankin, Faculty Chairman of Athletics.



Bill Curl (Left), Information Dir.; Joe Nicholson, Ass't to Athletic Business Mgr.



From Left — Dr. Peter Riehl, Team Physician; Bubba Porche, Head Trainer; Al Miller, Ass't Trainer; Troy Phillips, Equipment Mgr.



Nolan Chaix (Left),
Supervisor of Grounds;
Mac McKinney, Stadium Guard

ATHLETIC STAFF

TULANE... A GO-GET-EM TEAM



ALEC GIFFORD



BUDDY DILIBERTO

THE GO-GET-EM NEWS TEAM

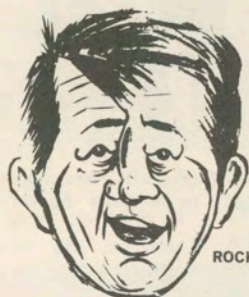
6:00pm and 11:00pm

WEEKDAYS

12
WVUE
NEW ORLEANS

A Proud Heritage — Tulane's All-Americans

1925—Charles Flournoy, back
1929—Willis Banker, back
1930—Jerry Dalrymple, end
1931—Jerry Dalrymple, end
1931—Don Zimmerman, back
1932—Don Zimmerman, back
1934—Claude Simons, Jr., back
1939—Ralph Wenzel, end
1939—Harley McCollum, tackle
1940—Tommy O'Boyle, guard
1941—Ernie Blandin, tackle
1943—Lester Gatewood, center
1944—W. A. Jones, back
1948—Paul Lea, tackle
1949—Eddie Price, back
1950—Jerome Helluin, tackle
1955—Tony Sardisco, guard
1960—Tommy Mason, back
1967—Bobby Duhon, back



ROCKY GRAZIANO

**"It's me, Rocky
talkin', an..."**

I doan talk too good, bud I make a loddasense. Da men ad Gentilly Dodge are price fightin' like never before . . . see 'em 'an save—tell 'em da Rock sents ya!

**SOMEBODY UP DERE LIKES ME,
AND SOMEBODY AT**

GENTILLY DODGE

LIKES YOU..."

6101 CHEF MENTEUR HIGHWAY (U.S. 90 EAST)
OPEN TIL 9:00 P.M. 242-6644

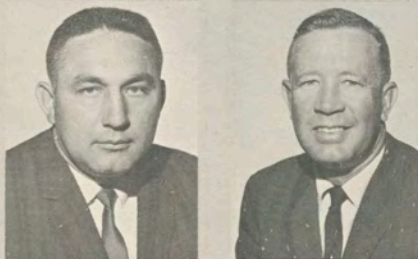
Ye Olde College Inn

(Since 1933)

The Uptown
Family Restaurant

3016 South Carrollton Avenue

Pap Morris (Left),
offense; Frank
Young, defense



Jim Pittman
Head Coach

FOOTBALL STAFF

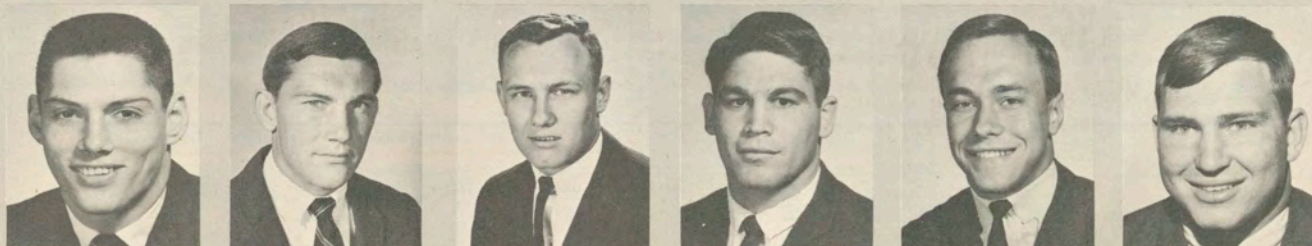


From Left — Joe Clark, offense; Billy Tohill, defense; Gary Kinchen, defense; Marv Kristynik, offense.



Joe Blaylock (left),
Freshmen; Jack Orsley,
Recruiting Director

From Left — Freshman Assistants Lou Campomenosi, Jerry Colquette, Jim Darnley,
Vic Eumont, Jim Jancik, Schott Mumme.



BITE...TEAM...BITE!



Hold that Whopper at **BURGER KING**

Ready for you in 60 seconds along with crisper new French Fries, creamy shakes, cokes, not to mention Whalers, burgers, franks, etc.



After the game stop at **BURGER KING®**

In Metairie

3735 Airline Highway
916 Veterans Highway
6900 Veterans Highway

Gretna

78 Westbank Expressway

Gentilly

4050 Chef Menteur

Marrero

3950 Westbank Expressway

Chalmette

110 East Goodchildren St.

New Orleans 2423 South Carrollton Ave. • 6332 Elysian Fields Ave. • 1700 St. Charles St.



Green Wave



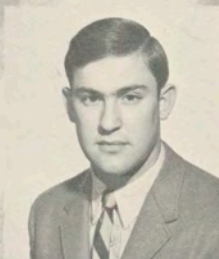
**Warren
Bankston**



**Tom
Barrows**



**Rodney
Bazer**



**Bart
Bookatz**



**Steve
Boyd**



**Chas.
Browning**



**Brad
Calhoun**

Green Wave



**Duke
Chappuis**



**Howard
Culp**



**Bryan
Duck**



**Duke
Duffee**



**Mike
Farnell**



**Calvin
Fox**



**Wayne
Francingues**



**Maurice
Gartman**



**Joe
Gendron**



**Johnny
Gill**



**Bart
Graves**



**Phil
Greco**



**Roger
Green**

Green Wave



**Chip
DeWitt**



**Ed
Gross**



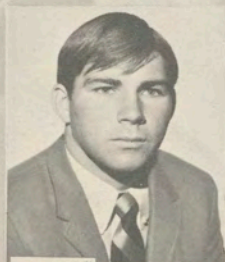
**John
Haines**



**Ray
Hester**



**Kyle
Huber**



**Sid
Jones**



**Barney
King**



**Ricky
Kingrea**



**Jack
Laborde**



**Chuck
Loftin**



**Dennis
McAfee**



**Larry
Mickal**



**Mack
Miller**



ED SLATTEN
invites
all his friends
to visit him
at



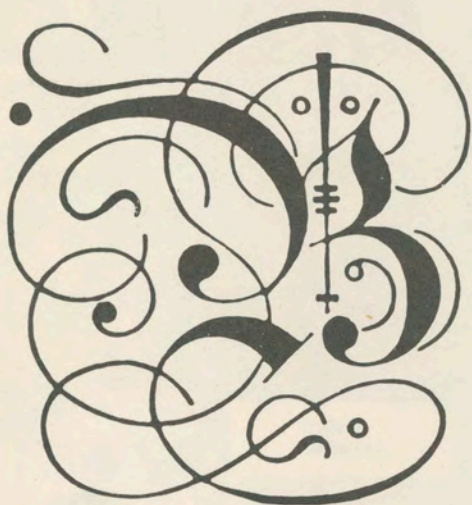
ECONOMY MOTORS

Phone 367-6700

1115 Westbank Expressway

Gretna, La. 70053

“GOOD LUCK, GREEN WAVE”



est of luck

**TULANE
 GREEN WAVE**

Breeding Concessions

TULANE-SUGAR BOWL STADIUM

Green Wave



**Howard
Moore**



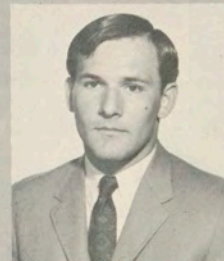
**John
Mueller**



**John
Onofrio**



**Ernie
Parker**



**Sonny
Pisarich**



**Nick
Pizzolatto**



**Dick
Redd**



**Dave
Richard**



**Ken
Sanders**



**Sam
Scelfo**



**Roger
Schramm**



**Jim
Shepherd**



**Lonnie
Sibley**



**Harold
Sisk**

Green Wave



Dean
Smith



John
Snell



Butch
Spencer



Steve
Stark



Larry
Stone



Mike
Tolle



Jim
Trahan



Mike
Walker



Jim
Wallace



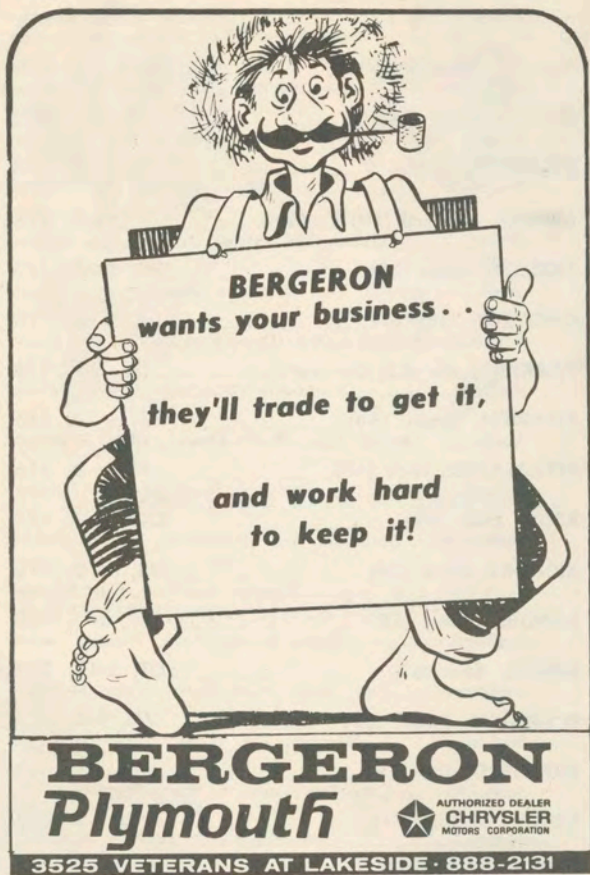
Mason
Webster



Tom
Wright



Jimmy
Yarter



BERGERON
wants your business . . .
they'll trade to get it,
and work hard
to keep it!

BERGERON
Plymouth

AUTHORIZED DEALER
CHRYSLER
MOTORS CORPORATION

3525 VETERANS AT LAKESIDE • 888-2131



Sunday Dinner Seven Days a Week, Kentucky Fried Chicken®

2529 WILLIAMS BLVD. • 2814 JEFFERSON HWY.

Do You Remember? THIS TULANE STAR OF THE 30's

One of Tulane's most versatile All-Americans, this grid great from the early 1930's still holds 17 records in the Green Wave record book.

He ranks as the greatest ground gainer in Tulane history, accumulating a total of 4657 yards on rushes, passes, receptions and interception, punt and kick-off returns.

He holds the Total Offense mark for a season with 1459 yards, holds the highest yards gained per pass completion thrown mark with a 14.9 yard average per completion, and is tied for most career interceptions with 12 steals.

Tulane teams he played on compiled an admirable 25-3-1 record in his three seasons.

His teammates included Hall of Famers Jerry Dalrymple and Claude "Monk" Simons, Jr., former Tulane Head Coach Lowell "Red" Dawson, and Richard Bankston, father of Tulane tailback Warren Bankston.

Answer on Page 56



1968 TULANE ROSTER

Name (Number)	Position	Height	Weight
Class	Home Town (High School), H. S. Coach		
**BANKSTON, Warren (19)	TB, 6-4, 222		
Senior	Hammond (Hammond), Glenn Brady		
BARROWS, Tom (57)	DT, 6-4, 218		
Junior	Homewood, Ill. (Homewood), James Arneberg		
BAZER, Rodney (51)	LB, 5-11, 187		
Sophomore	New Iberia (New Iberia), Faize Mahfouz		
BOOKATZ, Bart (27)	PK, 5-11, 191		
Sophomore	Dallas, Tex. (St. Mark's), Bill Rippetoe		
BOYD, Steve (78)	DT, 6-2, 215		
Junior	Clovis, N. Mex. (Clovis), Steve Graham		
*BROWNING, Charles (74)	DT, 6-1, 210		
Junior	Baton Rouge (Baton Rouge), Ray Porter		
*CALHOUN, Brad (12)	CB, 6-2, 182		
Junior	Chickasaw, Ala. (Vigor), Glenn Yancy		
CHAPPUIS, Duke (48)	TB, 5-11, 176		
Sophomore	Metairie (De La Salle), Leemon McHenry		
CULP, Howard (63)	SG, 6-0, 208		
Sophomore	Harrah, Okla. (Lufkin, Tex.), Gile Akridge		
DE WITT, Charles (62)	C, 6-1, 212		
Sophomore	Houston, Tex. (Memorial), Chas. Churchill		
DUCK, Bryan (61)	DE-LB, 6-1, 180		
Sophomore	Purvis, Miss. (Purvis), Latrelle Williams		
DUFFEE, Duke (68)	SG, 6-2, 187		
Junior	Marrero (West Jefferson), Dick Preis		
FARNELL, Mike (22)	WB, 5-11, 174		
Sophomore	Mobile, Ala. (McGill), A. J. Conlin		
FOX, Calvin (53)	WT, 6-2, 225		
Senior	Waco, Tex. (Derby, Wichita, Kan.), Bruce Bierig		
*FRANCINGUES, Wayne (10)	QB, 5-11, 180		
Junior	Metairie (Jesuit), Ken Tarzetti		
*GARTMAN, Maurice (37)	LB, 6-0, 182		
Junior	Semmes, Ala. (Montgomery), Chas. Leverett		
GENDRON, Joe (89)	DE, 6-1, 194		
Sophomore	Watertown, N. Y. (Carthage Cen.), Ed Decker		
GILL, Johnny (26)	CB, 5-11, 173		
Sophomore	Slidell (Slidell), George Thomas		
GRAVES, Bart (70)	DE, 6-4, 218		
Sophomore	Marshall, Tex. (Marshall), Ralph Brooks		
GRECO, Phil (28)	CB, 6-1, 183		
Junior	Leland, Miss. (Leland), Ben Ruscoe		
GREEN, Roger (45)	CB, 6-0, 178		
Senior	Houston, Tex. (Lee), Gilbert Bartosh		
GROSS, Ed (72)	ST, 6-0, 205		
Junior	Joppa, Md. (Bel Air), Al Cesky		
HAINES, John (54)	C, 6-1, 185		
Junior	Theodore, Ala. (Theodore), C. A. Douglas		
HESTER, Ray (56)	LB, 6-2, 203		
Sophomore	New Orleans (Holy Cross), John Kalbacher		
HUBER, Kyle (60)	WG, 6-0, 196		
Sophomore	Pt. Arthur, Tex. (Jefferson), C. E. Underwood		
*JONES, Sid (82)	WE, 5-11, 195		
Junior	Lake Charles (Landry), Karl Blanchard		
KING, Barney (47)	TB, 5-10, 181		
Junior	Cliftonville, Miss. (Noxubee City), A. J. Kilpatrick		
KINGREA, Ricky (32)	LB, 6-0, 217		
Sophomore	Baton Rouge (Baton Rouge), Leon McGraw		
LABORDE, Jack (42)	QB-TB, 6-0, 192		
Sophomore	New Orleans (Jesuit), Ray Coates		
**LOFTIN, Chuck (44)	FB, 5-11, 192		
Senior	Midland, Tex. (Lee), Joe Newbill		

ADDITIONAL DATA ON JUNIOR COLLEGE PLAYERS. Name (Junior College, Location) Coach.
 HOWARD CULP (Northeast Oklahoma A & M, Miami, Okla.), Chuck Bowman. BART GRAVES (Northeast Oklahoma A & M, Miami, Okla.), Chuck Bowman. PHIL GRECO (Mississippi Delta, Moorehead, Miss.), Jim Randall. ED GROSS (Harford, Bel Air, Md.), Jack Call. BARNEY KING (East Mississippi, Scooba, Miss.), Bob Sullivan. SONNY PISARICH (Perkinson, Wiggins, Miss.), George Sekul.

Name (Number)	Position	Height	Weight
Class	Home Town (High School), H. S. Coach		
*McAFEE, Dennis (59)	WG, 6-0, 201		
Junior	Baytown, Tex. (Lee), Pete Sultis		
**MICKAL, Larry (75)	WT, 6-2, 222		
Senior	Metairie (De La Salle), Leemon McHenry		
MILLER, Mack (88)	DE, 6-0, 183		
Sophomore	Basile (Basile), Leslie Smith		
*MOORE, Howard (50) Co-Capt.	C, 6-1, 215		
Senior	Dallas, Tex. (Bryan Adams), Bob Cowsar		
MUELLER, John (25)	WB, 5-10, 170		
Junior	Leawood, Kan. (Shawnee Mis. E.), Arch Unruh		
ONOFRIO, John (41)	SAF, 5-10, 170		
Sophomore	Columbia, Mo. (David Hickman), Robert Roark		
**PARKER, Ernie (83) Co-Capt.	DE, 6-1, 215		
Senior	Hackberry (Hackberry), John Debag		
PISARICH, Sonny (84)	SE, 5-10, 185		
Junior	Biloxi, Miss. (Notre Dame), Chas. Hegwood		
*PIZZOLATTO, Nick (30)	FB, 6-0, 215		
Senior	Jennings (Jennings), Ed Harrelson		
REDD, Dick (49)	SAF, 6-0, 175		
Sophomore	Beaumont, Tex. (Beaumont), Darrell Shaver		
RICHARD, Dave (20)	WB, 5-10, 173		
Sophomore	Lutcher (Lutcher), Ellis Roussel		
SANDERS, Ken (15)	QB, 6-0, 180		
Sophomore	Baton Rouge (Lee), Winton Turner		
SCELFO, Sam (67)	DT, 5-11, 202		
Sophomore	New Iberia (New Iberia), Faize Mahfouz		
SCHRAMM, Roger (86)	WE, 6-2, 182		
Sophomore	Houston, Tex. (Lamar), Ken Pridgeon		
SHEPHERD, Jim (79)	DE, 6-5, 232		
Sophomore	Lake Providence (L. Prov.), Pete Mangum		
SIBLEY, Lonnie (71)	WT, 6-2, 208		
Sophomore	Shreveport (Fair Park), Roy Wilson		
SISK, Harold (31)	FB, 5-11, 200		
Sophomore	Beaumont, Tex. (Forest Pk.), W. B. Drennan		
*SMITH, Dean (76)	ST, 6-0, 210		
Senior	Dickinson, Tex. (Dickinson), Bernard Callendar		
**SNELL, John (73)	MG, 6-2, 206		
Senior	Groves, Tex. (Port Neches), Kenneth Watson		
SPENCER, Butch (85)	SE, 6-2, 187		
Sophomore	Farmerville (Farmerville), Chiles Carpenter		
STARK, Steve (24)	SAF, 6-0, 178		
Sophomore	Franklin (Franklin), Dan Brumfield		
STONE, Larry (52)	WG, 6-3, 193		
Junior	Springhill (Springhill), Travis Farrar		
TOLLE, Mike (65)	MG, 5-9, 209		
Junior	Baton Rouge (Lee), Winton Turner		
*TRAHAN, Jim (29)	WB, 5-11, 180		
Senior	Houma (Terrebonne), Frank Spruiell		
WALKER, Mike (77)	DT, 6-2, 205		
Sophomore	Sulphur (Sulphur), Shannon Suarez		
**WALLACE, Jim (55)	LB, 6-1, 190		
Senior	Bowling Green, Ky. (Bowling Gr'n), Jim Pickens		
WEBSTER, Mason (81)	WE, 5-11, 173		
Senior	Metairie (De La Salle), Leemon McHenry		
*WRIGHT, Tom (80)	WE, 6-3, 190		
Senior	Sulphur, Springs, Tex. (S. Sp'g.), Johnny Dobson		
*YARTER, Jimmy (40)	SAF, 5-11, 175		
Junior	Bellaire, Tex. (Bellaire), Mickey Sullivan		

*-Denotes varsity letters earned.

POSITIONS: C-center, CB-cornerback, DE-def. end, DT-def. tackle, FB-fullback, LB-linebacker, MG-middle guard, PK-place kicker, QB-quarterback, SAF-safety, SE-strong end, SG-strong guard, ST-strong tackle, TB-tailback, WB-wingback, WE-weak end, WG-weak guard, WT-weak tackle.

Tulane's Backfield:



Quarterback . .



Tailback . .



Fullback . .



Wingback . .

Durham's Backfield:



Squareback . .



Beetleback . .



Bigback . .



Fastback . .



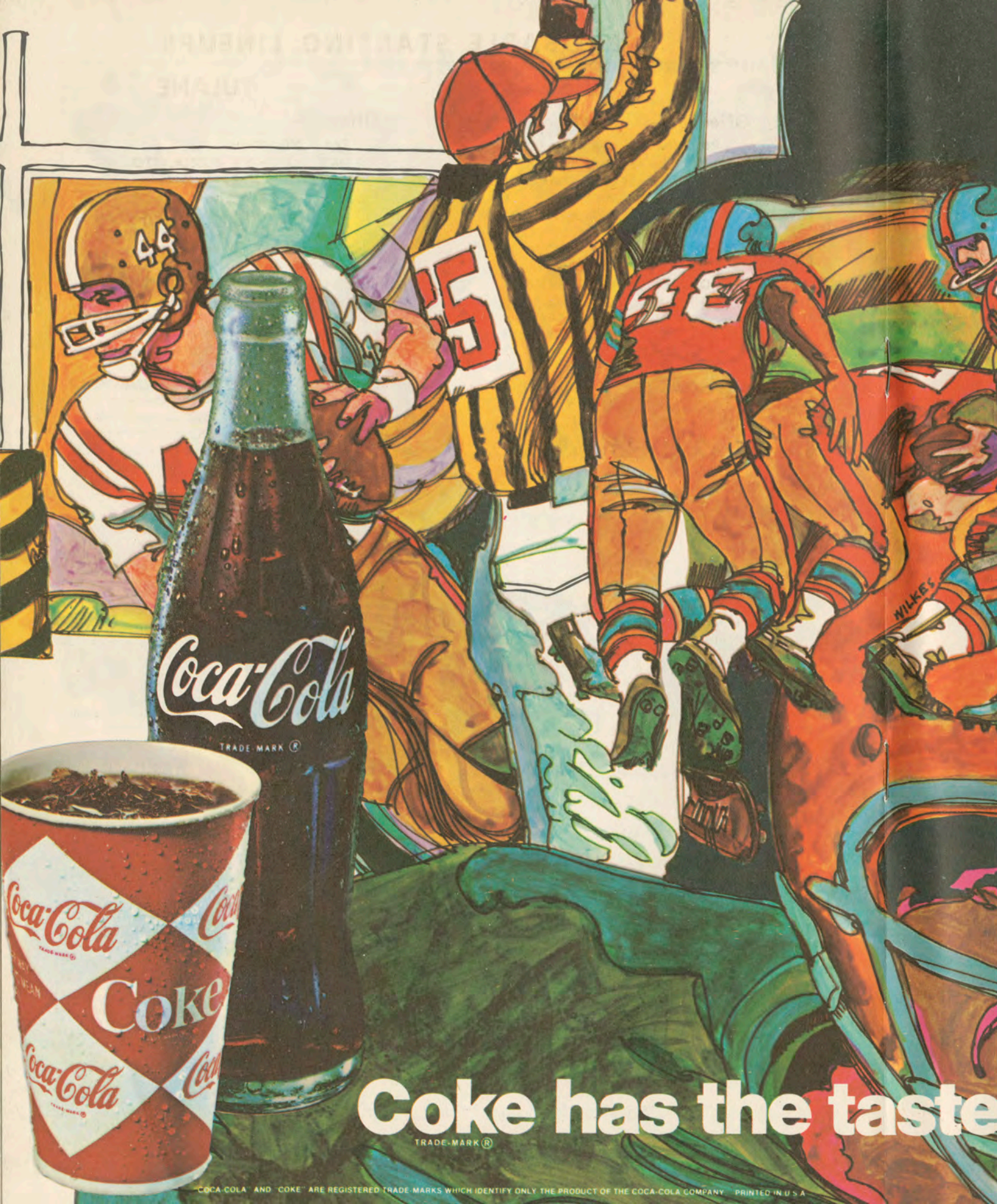
AUTHORIZED VOLKSWAGON SALES & SERVICE

"NEW ORLEANS LARGEST"

3101 Tulane Ave.

486-5981

Service: Monday - Friday — 7:00 A.M. - Midnite



PROBABLE STARTING LINEUPS

TULSA

Offense —

Pos.	No.	Name
SE	23	HARRY WOOD
WT	78	BERNIE BOTHEROYD
WG	60	BILL REMPE
C	55	CHUCK REYNOLDS
SG	62	DICK MILLER
ST	77	FRANK GRIMM
TE	89	ALAN DROVER
QB	12	MIKE STRIPLING
TB	19	JOE FITZGERALD
FB	34	JACK OSMER
WB	25	JOE PISTOIA

Defense —

LE	61	SMILEY ELMORE
LT	73	DENNIS KEMP
RT	76	STEVE BLOOM
RE	83	DOUG MACAULEY
LLB	84	ROBBIE NICHOLS
RLB	52	JIM FIDDLER
MLB	66	LUKE BLAIR
RC	24	RON CAMBIANO
LC	44	RON ALLFORD
LS	27	DOUG WYATT
RS	26	GARY BERCHTOLD

Tulsa Numbers

11 Jay Monaghan, QB	58 Dick Blanchard, LB
12 Mike Stripling, QB	60 Bill Rempe, OG
13 Bob Rice, P	61 Smiley Elmore, LB
14 John Beaton, DB	62 Dick Miller, OG
16 John Dobbs, QB	63 Tony Rasmussen, OG
18 Winston Phillips, OE	65 Fred Johnson, C
19 Joe Fitzgerald, TB	66 Luke Blair, LB
21 Miller McCalmon, DB	67 John Dorsey, OG
23 Harry Wood, OE	69 Jim Mitchell, OT
24 Ron Cambiano, DB	71 Andy Ciesielski, OT
25 Joe Pistoia, FL	72 Ed Brown, DE
26 Gary Berchtold, DB	73 Dennis Kemp, DT
27 Doug Wyatt, DB	74 Fred Hoffman, OG
29 Jerry McArtor, FL	75 Jim Bereolos, DT
30 Tom Arnold, LB	76 Steve Bloom, DT
32 Bob Murphy, LB	77 Frank Grimm, DT
33 Cee Ellison, FB	78 Bernie Botheroyd, OT
34 Jack Osmer, FB	79 Mario Oliva, OT
38 John Lassiter, FB	80 Lindsay Anthony, LB
40 Vic Prather, TB	82 David Moss, OE
42 Tom Sawyer, TB	83 Doug Macauley, DE
44 Ron Allford, DB	84 Robbie Nichols, LB
46 Ron Witherspoon, TB	85 Jerry Moeller, OE
47 Don Migl, DB	86 Mike Burkett, OE
48 Les Rogers, TB	87 Brant Conley, FB-K
50 Kelly Bryson, C	88 Warren Henderson, FL
52 Jim Fiddler, LB	89 Alan Drover, OE
55 Chuck Reynolds, C	

TULANE

Offense —

Pos.	No.	Name
WE	87	NICK PIZZOLATTO
WT	75	LARRY MICKAL
WG	60	KYLE HUBER
C	50	HOWARD MOORE
SG	68	DUKE DUFFEE
ST	76	DEAN SMITH
SE	84	SONNY PISARICH
QB	10	WAYNE FRANCINGUES
TB	47	BARNEY KING
WB	29	JIM TRAHAN
FB	19	WARREN BANKSTON

Defense —

LE	83	ERNIE PARKER
LT	74	CHARLES BROWNING
MG	65	MIKE TOLLE
RT	77	MIKE WALKER
RE	73	JOHN SNELL
LLB	32	RICKY KINGREA
RLB	56	RAY HESTER
LCB	12	BRAD CALHOUN
RCB	45	ROGER GREEN
LS	40	JIMMY YARTER
RS	49	DICK REDD

Tulane Numbers

10 Wayne Francingues, QB	56 Ray Hester, LB
12 Brad Calhoun, CB	57 Tom Barrows, DT
15 Ken Sanders, QB	59 Dennis McAfee, WG
19 Warren Bankston, FB	60 Kyle Huber, WG
20 David Richard, TB	61 Bryan Duck, LB
22 Mike Farnell, WB	62 Chip DeWitt, WT
23 Mason Webster, CB	63 Howard Culp, SG
24 Steve Stark, SAF	65 Mike Tolle, MG
25 John Mueller, WB	67 Sam Scelfo, DT
26 Johnny Gill, CB	68 Duke Duffee, SG
27 Bart Bookatz, PK	70 Bart Graves, DE
28 Phil Greco, CB	71 Lonnie Sibley, ST
29 Jim Trahan, WB	72 Ed Gross, MG
31 Harold Sisk, FB	73 John Snell, DE
32 Ricky Kingrea, LB	74 Charles Browning, DT
37 Maurice Gartman, LB	75 Larry Mickal, WT
40 Jimmy Yarter, SAF	76 Dean Smith, ST
41 John Onofrio, SAF	77 Mike Walker, DT
42 Jack Laborde, QB-TB	78 Steve Boyd, DT
44 Chuck Loftin, FB	79 Jim Shepherd, DT
45 Roger Green, CB	80 Tom Wright, WE
47 Barney King, TB	82 Sid Jones, SE
48 Duke Chappuis, TB	83 Ernie Parker, DE
49 Dick Redd, SAF	84 Sonny Pisarich, SE
50 Howard Moore, C	85 Butch Spencer, WE
51 Rodney Bazer, MG	86 Roger Schramm, SE
52 Larry Stone, ST	87 Nick Pizzolatto, WE
53 Calvin Fox, WT	88 Mack Miller, DE
54 John Haines, C	89 Joe Gendron, DE
55 Jim Wallace, DE	

Coke has the taste you never get tired of.



May the Stars always shine on our Greenies

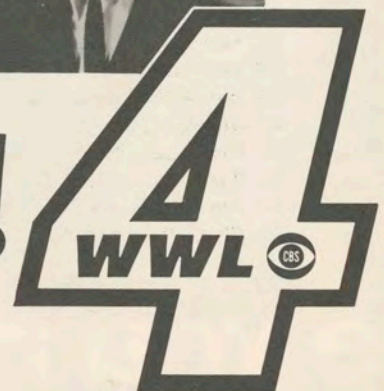
But *weather* it does—or doesn't—you'll know it ahead of time if you watch Al Duckworth and the Weather daily on Channel 4.

Al Duckworth is a pro, a graduate meteorologist with a practiced weather eye focused on New Orleans and the entire Louisiana-Mississippi Gulf Coast. And his new Channel 4 Weather Center is the most professionally equipped facility to be found in any television station in America.

So don't just talk about the weather...do something about it. Watch Al Duckworth and the Weather, everyday, several times a day, on Channel 4.



AL DUCKWORTH and the WEATHER!



1968 UNIVERSITY OF TULSA ROSTER

Name (Number) _____ Position, Height, Weight
Class _____ Home Town, Prep Coach

***ALLFORD, Ronnie (44)** _____ **DB, 6-0, 185**
Junior _____ McAlester, Okla., Warner Eales

ANTHONY, Lindsay (80) _____ **LB, 6-3, 214**
Sophomore _____ Galena Park, Tex., Jesse Sadler

ARNOLD, Tom (30) _____ **LB, 6-0, 195**
Sophomore _____ Tulsa (Rogers), Bill Eubanks

BEATON, John (14) _____ **DB, 6-2, 201**
Sophomore _____ Vancouver, B. C. Can., Bob DeJulius

***BERCHTOLD, Gary (26)** _____ **DB, 5-10, 187**
Senior _____ Fontana, Calif., Russ Young

BEREOLOS, Jim (75) _____ **DT, 6-1, 228**
Junior _____ Tulsa (Rogers), Chuck Boyle

BLAIR, Luke (66) _____ **LB, 6-1, 228**
Sophomore _____ Houston, Texas, Andrew Patterson

BLANCHARD, Dick (58) _____ **LB, 6-3, 200**
Sophomore _____ Matteson, Ill., Ron Stark

BLOOM, Steve (76) _____ **DT, 6-6, 281**
Junior _____ Revere, Mass., Silvio Cella

BOTHEROYD, Bernie (78) _____ **OT, 6-4, 240**
Junior _____ Melrose Park, Ill., Frank Mariam

****BROWN, Ed (72)** _____ **DE, 6-6, 219**
Senior _____ Chambersburg, Pa., Robert Kinderman

BRYSON, Kelly (50) _____ **C, 6-5, 232**
Sophomore _____ Broken Arrow, Okla., Lee Snider

BURKETT, Mike (86) _____ **OE, 6-4, 205**
Junior _____ Amarillo, Texas, Burl Bartlett

***CAMBIANO, Ron (24)** _____ **DB, 6-1, 191**
Senior _____ Ontario, Calif., John Whitman

CIESIELSKI, Andy (71) _____ **OT, 6-2, 240**
Junior _____ Los Angeles, Calif., Dean Dill

****CONLEY, Brant (87)** _____ **FB-K, 6-3, 234**
Senior _____ Birmingham, Mich., Carl Lemle

DOBBS, John (16) _____ **QB, 6-2, 198**
Sophomore _____ Tulsa (Memorial), Francis Wheeler

DORSEY, John (67) _____ **OG, 5-11, 240**
Junior _____ Cincinnati, Ohio, Franklin Shands

DROVER, Alan (89) _____ **OE, 6-2, 206**
Junior _____ Revere, Mass., Tom Cella

****ELLISON, Cee (33)** _____ **FB, 6-1, 223**
Senior _____ Niles, Ohio, Tony Mayson

ELMORE, Smiley (61) _____ **LB, 6-2, 230**
Senior _____ Houston, Texas, Ron Botcham

***FIDDLER, Jim (52)** _____ **LB, 6-4, 196**
Junior _____ Tyler, Texas, Paul Branum

***FITZGERALD, Joe (19)** _____ **TB, 6-0, 190**
Senior _____ Big Sandy, Texas, Jack Duvall

****GRIMM, Frank (77)** _____ **DT, 6-3, 234**
Senior _____ Philadelphia, Pa., Bill Brannan

HENDERSON, Warren (88) _____ **FL, 6-0, 181**
Junior _____ Ardmore, Okla., Tip Jackson

HOFFMAN, Fred (74) _____ **OG, 6-3, 232**
Sophomore _____ Geary, Oklahoma, Dick Powell

JOHNSON, Fred (65) _____ **C, 6-6, 260**
Sophomore _____ Raceland, Kentucky, James Conley

Name (Number) _____ Position, Height, Weight
Class _____ Home Town, Prep Coach

KEMP, Dennis (73) _____ **DT, 6-2, 260**
Junior _____ Canoga Park, Calif., Gerry Perry

***MACAULEY, Doug (83)** _____ **DE, 6-6, 220**
Junior _____ Philadelphia, Pa., Charles Martin

McARTOR, Jerry (29) _____ **FL, 6-0, 174**
Junior _____ Pryor, Okla., Noel Thompson

McCALMON, Miller (21) _____ **DB, 6-1, 180**
Junior _____ Denver, Colo., Greg Browning

***MIGL, Don (47)** _____ **DB, 6-0, 195**
Senior _____ Galena Park, Tex., Paul Smith

***MILLER, Dick (62)** _____ **OG, 6-2, 224**
Senior _____ Tulsa (Webster), Harold Beisel

MITCHELL, Jim (69) _____ **OT, 6-2, 230**
Junior _____ Corpus Christi, Tex., Dan Purcell

MOELLER, Jerry (85) _____ **OE, 6-4, 217**
Sophomore _____ Holdenville, Okla., Don Farris

MONAGHAN, Jay (11) _____ **QB, 6-2, 187**
Sophomore _____ Evanston, Ill., Murney Lazier

MOSS, David (82) _____ **OE, 5-9, 166**
Junior _____ Odessa, Texas, Jim Payne

***MURPHY, Bob (32)** _____ **LB, 6-4, 205**
Junior _____ Midwest City, Okla., Jim Darnell

****NICHOLS, Robbie (84)** _____ **LB, 6-3, 212**
Senior _____ Cleveland, Okla., Faye O'Dell

OLIVA, Mario (79) _____ **OT, 6-1, 265**
Sophomore _____ Melrose Park, Ill., Frank Mariani

OSMER, Jack (38) _____ **FB, 6-1, 194**
Sophomore _____ San Jose, Calif., John Hanna

PHILLIPS, Winston (18) _____ **OE, 6-1, 188**
Senior _____ Los Angeles, Calif., Frank Nobbe

PITSOIA, Joe (25) _____ **FL, 5-11, 183**
Junior _____ Brooklyn, New York, Tom Harrell

***PRATHER, Vic (40)** _____ **TB, 6-1, 190**
Junior _____ Tulsa (Rogers), Chuck Boyle

RASMUSSEN, Tony (63) _____ **OG, 6-1, 227**
Senior _____ Chicago, Illinois, Ernie Wickstrom

REMPE, Bill (60) _____ **OG, 6-3, 228**
Sophomore _____ Moore, Oklahoma, Bob Vance

****REYNOLDS, Chuck (55)** _____ **C, 6-3, 240**
Senior _____ Ft. Worth, Texas, Homer Leudiker

RICE, Bob (13) _____ **P, 6-0, 175**
Sophomore _____ Ponca City, Okla., Bill Currens

ROGERS, Les (41) _____ **TB, 5-10, 190**
Sophomore _____ Tulsa (McLain), Chuck Bowman

SAWYER, Tom (42) _____ **TB, 5-9, 196**
Sophomore _____ Mattoon, Illinois, Chuck Oyler

****STRIPLING, Mike (12)** _____ **QB, 6-2, 221**
Senior _____ Holdenville, Okla., Don Farris

WITHERSPOON, Ron (46) _____ **TB, 5-10, 179**
Junior _____ Ferris, Texas, Darrell Cooper

****WOOD, Harry (23)** _____ **OE, 5-11, 164**
Senior _____ Tulsa (Memorial), Bob Riddle

***WYATT, Doug (27)** _____ **DB, 6-1, 188**
Junior _____ Tyler, Texas, Johnny Stidger

*—Denotes varsity letters earned.

All-Time Tulane Football Records

Compiled by Steve Boda, Jr.

Editor's Note: Steve Boda, Jr., a statistical hobbyist in New York City, has spent the past summer researching Tulane's all-time football records. Tulane is indebted to him for his valuable contribution to her colorful football history. The records are based on official statistics filed with the National Collegiate Sports Services, the service bureau of the NCAA, beginning with the 1937 season, and pre-1937 performances have been verified through responsible research. Thanks are also due to Larry Klein and his staff at the NCSS for their co-operation in this project. Research for the pre-1937 period continues and additional marks will be included in future editions.

Individual — Single Game Records

RUSHING

- Most Rushing Attempts**
43 Bill Banker vs. Mississippi, 1927
- Most Net Yards Gained**
238 Eddie Price vs. Navy, 1949
- Highest Average Gain Per Rush (Min. 8 Rushes)**
15.0 Jimmy Hodgins vs. Sewanee, 1931 (180 yards on 12 rushes)

FORWARD PASSING

- Most Passes Attempted**
37 Dave East vs. Florida, 1965
- Most Passes Completed**
20 Ted Miller vs. Tennessee, 1962
- Most Passes Had Intercepted**
5 Pete Clement vs. LSU, 1952
- Highest Percentage of Passes Completed (Min. 10 Attempts)**
90.9% Richie Petitbon vs. Texas, 1958 (10 of 11)
- Most Passes Attempted Without Interception**
28 Joe Ernst vs. Vanderbilt, 1950
- Most Yards Gained**
292 Joe Ernst vs. Navy, 1950
- Most Touchdown Passes**
5 Fred Dempsey vs. Louisiana College, 1952

TOTAL OFFENSE

(Rushing and Passing Combined)

- Most Rushing and Passing Plays**
46 Phil Nugent vs. Texas Tech, 1960
- Most Yards Gained Rushing and Passing**
294 Joe Ernst vs. Navy, 1950
- Highest Average Gain Per Play (Min. 15 Plays)**
12.1 Pete Johns vs. Cincinnati, 1966

PASSING RECEIVING

- Most Passes Caught**
10 Joe Shinn vs. Navy, 1950
- Most Yards Gained**
152 Joe Shinn vs. Navy, 1950
- Highest Average Gain Per Reception (Min. 5 Caught)**
20.8 W. C. McElhannon vs. Holy Cross, 1951 (5 for 104 yards)
- Most Touchdown Passes Caught**
3 Ed Heider vs. LSU, 1945
3 Marty Comer, vs. Vanderbilt, 1942
- Most Consecutive Passes Caught for Touchdowns**
4 Marty Comer vs. North Carolina (1) and Vanderbilt (3), 1942

PASS INTERCEPTIONS

- Most Passes Intercepted**
4 Jimmy Glisson vs. Virginia, 1949
- Most Yards Gained**
91 Fred Wilcox vs. Mississippi, 1954
- Most Touchdowns Scored**
2 Ernest Crouch vs. SMU, 1945

PUNTING

- Most Punts**
20 Bucky Bryan vs. Georgia Tech, 1933
- Most Yards**
654 Bucky Bryan vs. Georgia Tech, 1933
- Highest Average Per Punt (Min. 5 Punts)**
48.0 Charles Flournoy vs. Miss. State, 1925 (9 punts for 432 yards)

PUNT RETURNS

- Most Punt Returns**
8 Floyd Roberts vs. LSU, 1933
- Most Yards Gained**
130 Lester Lautenschlaeger vs. Louisiana College, 1925
- Highest Average Per Punt Return (Min. 3 Returns)**
39.7 Max McGee vs. Santa Clara, 1952 (119 yards on 3 returns)
- Most Touchdowns Scored**
2 Lester Lautenschlaeger vs. Louisiana College, 1925

KICKOFF RETURNS

- Most Kickoff Returns**
6 Carl Crowder vs. LSU, 1965
- Most Yards Gained**
127 Tommy Mason vs. Texas Tech, 1960
- Highest Average Per Kickoff Return (Min. 3 Returns)**
31.0 Terry Terrebone vs. Mississippi, 1959 (124 yards on 4 returns)
- Most Touchdowns Scored**
(No player with more than 1)

TOTAL KICK RETURNS

(Punt and Kickoff Returns Combined)

- Most Kick Returns**
9 Don Zimmerman vs. Georgia Tech, 1932 (6 punts and 3 kickoffs)
- Most Yards Gained**
176 Floyd Roberts vs. LSU, 1933 (100 on punt returns, 76 on kickoff returns)

ALL-PURPOSE RUNNING

(Includes all plays and gains from Rushing, Pass Receiving, Interception Returns, Punt Returns and Kickoff Returns)

- Most Plays**
36 Don Zimmerman vs. Georgia Tech, 1932 (27 rushes, 6 punt returns, 3 kickoff returns)
- Most Yards Gained**
289 Eddie Price vs. Navy, 1949 (238 rushing, 3 pass receiving, 48 punt returns)

TOTAL PERFORMANCE

(Includes all gains from Rushing, Passing, Pass Receiving, Interception Returns, Punt Returns and Kickoff Returns; Plays include Punts and Points After Attempts)

- Most Total Plays**
52 Don Zimmerman vs. Georgia Tech, 1932 (27 rushes, 7 passes, 9 punts, 6 punt returns, 3 kickoff returns)
- Most Total Yards Gained**
338 Don Zimmerman vs. Georgia Tech, 1932 (109 rushing, 74 passing, 98 punt returns, 57 kickoff returns)

SCORING

- Most Touchdowns Scored**
4 Lou Thomas vs. North Carolina, 1941
4 Billy Payne vs. Mississippi College, 1937
4 Bill Banker vs. La. Normal, 1928, Miss. State, 1928 and Auburn, 1929
4 Charles Flournoy vs. Louisiana Tech, 1925
4 Lester Lautenschlaeger vs. Louisiana College, 1925
- Most PATs Attempted by Kicking**
9 Tommy Comeaux vs. Louisiana College, 1950
9 Carl Woodward vs. Centenary, 1914
- Most PATs Scored by Kicking**
8 Tommy Comeaux vs. Louisiana College, 1950
- Most 2-Point Attempts**
2 Richie Petitbon vs. Texas, 1958
- Most Field Goals Attempted**
3 Uwe Pontius vs. Virginia, 1966
3 Uwe Pontius vs. Georgia Tech, 1965
- Most Field Goals Scored**
(No player with more than 2)
- Most Total Points Scored**
31 Charles Flournoy vs. Louisiana Tech, 1925 (4 TDs, 4 PATs, 1 FG)

FROM SANDLOT TO THE PROS

NEW ORLEANS' ONLY
COMPLETE

TEAM SUPPLIERS

FABULOUS SELECTION
OF EQUIPMENT FOR

Football — Baseball
Basketball — Track
Soccer and Other
Team Sports

EVERYTHING FOR EVERY SPORT and RECREATION

EVERYTHING FOR
Golf . . . Tennis . . . Archery
Bowling . . . Hunting . . .
Fishing . . . Camping
COMPLETE SELECTION OF
TOYS . . .



You'll know the difference
between a Cadillac and other
fine cars, the first time you
take the wheel of a new
Cadillac

LET US DEMONSTRATE
FOR YOU!

PONTCHARTRAIN
MOTOR CO., INC.

Baronne at Girod

RUSHING

Most Rushing Attempts
188 Eddie Price, 1948
183 Bill Banker, 1928
171 Eddie Price, 1949
Most Net Yards Gained
1178 Eddie Price, 1948
1137 Eddie Price, 1949
981 Bill Banker, 1928
Highest Average Gain Per Rush (Min. 75 Rushes)
6.8 Harold Waggoner, 1950 (663 yards on 98 rushes)
6.6 Eddie Price, 1949 (1137 yards on 171 rushes)
Most Touchdowns Scored by Rushing
16 Charles Flournoy, 1925
15 Bill Banker, 1928

FORWARD PASSING

Most Passes Attempted
192 Dave East, 1964
151 Bobby Duhon, 1965
Most Passes Completed
85 Dave East, 1964
69 Joe Ernst, 1950
Most Passes Had Intercepted
15 Pete Clement, 1952
14 Ernest Crouch, 1945
Highest Percentage of Passes Completed (Min. 75 Attempts)
55.7% Joe Ernst, 1949 (49 of 88)
53.9% Joe Ernst, 1950 (69 of 128)
Lowest Percentage of Passes Had Intercepted (Min. 75 Attempts)
4.8% Jack Domingue, 1961 (5 of 104)
4.9% Ted Miller, 1962 (5 of 103)
4.9% Joe Ernst, 1948 (6 of 123)
Most Yards Gained
990 Joe Ernst, 1950
844 Dave East, 1964
Most Yards Gained Per Pass Attempt (Min. 75 Attempts)
7.7 Joe Ernst, 1950 (990 yards on 128 attempts)
6.6 Joe Ernst, 1948 (809 yards on 123 attempts)
Most Yards Gained Per Pass Completion (Min. 45 Completions)
14.3 Joe Ernst, 1950 (990 yards on 69 completions)
14.2 Joe Ernst, 1948 (809 yards on 57 completions)
Most Touchdown Passes
8 Joe Ernst, 1950
6 By 6 players

TOTAL OFFENSE

(Rushing and Passing Combined)
Most Rushing and Passing Plays
277 Bobby Duhon, 1966 (151 rushes, 126 passes)
275 Dave East, 1964 (83 rushes, 192 passes)
Most Yards Gained Rushing and Passing
1459 Don Zimmerman, 1931 (899 rushing, 560 passing)
1325 Bobby Duhon, 1966 (748 rushing, 577 passing)
Highest Average Gain Per Play (Min. 125 Plays)
6.8 Lou Thomas, 1941 (861 yards on 126 plays)
6.6 Eddie Price, 1949 (1137 yards on 171 plays)
Most Points Responsible For (Points Scored and Points Passed For)
129 Bill Banker, 1929 (scored 99, passed for 30)
128 Charles Flournoy, 1925 (scored 128)
124 Bill Banker, 1928 (scored 124)

PASS RECEIVING

Most Passes Caught
39 Clem Dellenger, 1962
36 Jerry Colquette, 1965
Most Yards Gained
484 W. C. McElhannon, 1951
466 Jerry Colquette, 1965
Highest Average Gain Per Reception (Min. 15 Caught)
18.6 Dick Sheffield, 1948 (316 yards on 17 receptions)
16.2 Walt McDonald, 1942 (437 yards on 27 receptions)
Most Touchdown Passes Caught
6 Marty Comer, 1942
5 Tommy Mason, 1960

PASS INTERCEPTIONS

Most Passes Intercepted
9 Jimmy Glisson, 1949
8 Lester Kennedy, 1951
Most Yards Gained
141 Jimmy Glisson, 1949
135 Bobby Jones, 1950
Highest Average Gain Per Interception (Min. 3 Interceptions)
39.3 Charlie Daigle, 1951 (118 yards on 3 interceptions)
33.8 Bobby Jones, 1950 (135 yards on 4 interceptions)
Most Touchdowns Scored
2 Ernest Crouch, 1945

PUNTING

Most Punts
71 Dave East, 1963
69 Dave East, 1965
Most Yards
2719 Dave East, 1965
2556 Dave East, 1963
Highest Average Per Punt (Min. 25 Punts)
44.5 Stan Nyhan, 1939 (38 punts for 1692 yards)
40.3 John Caruso, 1954 (33 punts for 1329 yards)

Individual — Season Records

Individual — Season Records, Cont'd

PUNT RETURNS

Most Punt Returns

27 Don Zimmerman, 1931
26 Don Zimmerman, 1930

Most Yards Gained

359 Don Zimmerman, 1932
302 Don Zimmerman, 1931

Highest Average Per Punt Return (Min. 10 Returns)

14.6 Bubber Ely, 1940 (160 yards on 11 returns)
14.1 Dub Jones, 1944 (226 yards on 16 returns)

Most Touchdowns Scored

2 Lester Lautenschlaeger, 1925

KICKOFF RETURNS

Most Kickoff Returns

21 Jim Trahan, 1966
21 Jerry Graves, 1962

Most Yards Gained

513 Jerry Graves, 1962
424 Jim Trahan, 1966

Highest Average Per Kickoff Return (Min. 5 Returns)

38.2 Bobby Kellogg, 1939 (229 yards on 6 returns)
27.6 Richie Petitbon, 1958 (276 yards on 10 returns)

Most Touchdowns Scored

(No player with more than 1)

TOTAL KICK RETURNS

(Punt and Kickoff Returns Combined)

Most Kick Returns

32 Don Zimmerman, 1932 (26 punts, 6 kickoffs)
30 Jerry Graves, 1962 (9 punts, 21 kickoffs)

Most Yards Gained

572 Jerry Graves, 1962 (59 punt returns, 513 kickoff returns)
518 Don Zimmerman, 1932 (359 punt returns, 159 kickoff returns)

Highest Average Per Kick Return (Min. 15 Returns)

20.7 Max McGee, 1952 (352 yards on 17 returns)
20.2 Jim Trahan, 1966 (424 yards on 21 returns)

ALL-PURPOSE RUNNING

(Includes all plays and gains from Rushing, Pass Receiving, Interception Returns, Punt Returns and Kickoff Returns)

Most Plays

208 Bill Banker, 1928 (183 rushes, 4 receptions, 2 interceptions, 13 punt returns, 6 kickoff returns)

197 Eddie Price, 1948 (188 rushes, 2 receptions, 7 kickoff returns)

Most Yards Gained

1475 Tommy Mason, 1960 (673 rushing, 376 receiving, 13 interception returns, 99 punt returns, 314 kickoff returns)
1395 Bill Banker, 1928 (981 rushing, 123 receiving, 62 interception returns, 112 punt returns, 117 kickoff returns)

TOTAL PERFORMANCE

(Includes all gains from Rushing, Passing, Pass Receiving, Interception Returns, Punt Returns and Kickoff Returns; Plays include Punts and Point-After Attempts)

Most Total Plays

338 Dave East, 1964 (83 rushes, 192 passes, 61 punts, 2 point-after attempts)

300 Bill Banker, 1928 (183 rushes, 8 passes, 4 receptions, 2 interception returns, 63 punts, 13 punt returns, 6 kickoff returns, 21 PATs)

Most Total Yards Gained

1885 Don Zimmerman, 1931 (899 rushing, 560 passing, 24 receiving, 100 interception returns, 302 punt returns)
1475 Tommy Mason, 1960 (673 rushing, 376 receiving, 13 interception returns, 99 punt returns, 314 kickoff returns)

SCORING

Most Touchdowns Scored

19 Charles Flournoy, 1925
18 Bill Banker, 1928

Most Points—After Attempted by Kicking

37 Tommy Comeaux, 1950
37 Euel Davis, 1949

Most Points—After Scored by Kicking

32 Tommy Comeaux, 1950
29 Euel Davis, 1949

Highest Percentage Made (Min. 15 Made)

94.7% Uwe Pontius, 1966 (18 of 19)
86.5% Tommy Comeaux, 1950 (32 of 37)

Most 2-Point Attempts

5 Ted Miller, 1962

Most 2-Point Attempts Scored

2 Ted Miller, 1962

Most Field Goals Attempted

11 Uwe Pontius, 1967 and 1966

Most Field Goals Scored

7 Uwe Pontius, 1967 and 1966

Most Points Scored by Kicking

39 Uwe Pontius, 1966 (7 FGs, 18 PATs)

Most Total Points Scored

128 Charles Flournoy, 1925 (19 TDs, 11 PATs, 1 FG)
124 Bill Banker, 1928 (18 TDs, 6 PATs)
99 Bill Banker, 1929 (13 TDs, 21 PATs)

Team Records Single Game — Offense

RUSHING

Most Rushes—89 vs. Auburn, 1929

Most Net Yards Gained—638 vs. Mississippi College, 1937

Highest Average Per Rush—9.5 vs. Mississippi College, 1937 (638 yard on 67 rushes)

Most Touchdowns Scored by Rushing—15 vs. SW Louisiana, 1912

FORWARD PASSING

Most Passes Attempted—42 vs. Florida, 1965

Most Passes Completed—24 vs. Tennessee, 1962

Most Passes Had Intercepted—5 vs. Auburn, 1954; LSU, 1953; LSU, 1952; LSU, 1949; SMU, 1943

Highest Percentage Completed (Min. 10 Attempts)—85.7% vs. Louisiana College, 1952 (completed 12 of 14 attempts)

Most Passes Attempted Without Interception—38 vs. LSU, 1967

Most Yards Gained—298 vs. Navy, 1950

Most Touchdown Passes—5 vs. Louisiana College, 1952; Louisiana College, 1950

TOTAL OFFENSE

(Rushing and Passing Combined)

Most Rushing and Passing Plays—101 vs. Auburn, 1929 (89 rushes, 12 passes)

Most Yards Gained Rushing and Passing—722 vs. Mississippi College, 1937 (638 rushing, 84 passing)

TOTAL YARDAGE

(Includes all yardage from Rushing, Passing and all Returns)

Most Total Yards Gained—964 vs. Mississippi College, 1937 (638 rushing, 84 passing, 38 punt returns, 204 kickoff returns)

INTERCEPTIONS

Most Passes Intercepted—6 vs. SMU, 1945; Mississippi State, 1931

Most Yards Returned—113 vs. SMU, 1945

Most Touchdowns Scored—2 vs. SMU, 1945

PUNTING

Most Punts—21 vs. Georgia Tech, 1933

Most Yards—709 vs. Georgia Tech, 1933

Highest Punting Average (Min. 5 Punts)—46.0 vs. SMU, 1945 (14 punts for 644 yards)

PUNT RETURNS

Most Punt Returns—11 vs. Rice, 1943

Most Yards Returned—145 vs. Maryland, 1933

Highest Average Per Punt Return (Min. 5 Returns)—27.2 vs. Auburn, 1952 (136 yards on 4 returns)

Most Touchdowns Scored—3 vs. Louisiana College, 1925

KICKOFF RETURNS

Most Kickoff Returns—10 vs. LSU, 1961

Most Yards Returned—219 vs. Mississippi, 1959

Highest Average Per Return (Min. 3 Returns)—40.8 vs. Mississippi College, 1937 (204 yards on 5 returns)

Most Touchdowns Scored—2 vs. North Carolina, 1941

SCORING

Most Touchdowns—15 vs. SW Louisiana, 1912

Most PATs Made by Kicking—10 vs. Centenary, 1914

Most 2-Point Attempts—3 vs. Texas, 1958

Most Points Scored—95 vs. SW Louisiana, 1912

Most Points Scored One Quarter—37 vs. SW Louisiana, 1920 (4th Quarter)

FIRST DOWNS

Most First Downs by Rushing—32 vs. Louisiana Normal, 1928

Most First Downs by Passing—13 vs. Vanderbilt, 1967; Tennessee, 1962; Virginia, 1950

Most First Downs by Penalty—4 vs. Mississippi, 1964

Most Total First Downs—35 vs. Louisiana Normal, 1928

PENALTIES

Most Penalties Against—17 vs. Mississippi State, 1962; Texas Tech, 1958

Most Yards Penalized—175 vs. Mississippi State, 1962

FUMBLES

Most Fumbles—11 vs. Georgia Tech, 1945

Most Fumbles Lost—8 vs. Florida, 1945

All-Time Career Leaders

RUSHING

Player, Years Played	Rushes	Yards	Avg.
Eddie Price, 1946-49	514	3095	6.0
Bill Banker, 1927-29	515	2516	4.9
Don Zimmerman, 1930-32	428	2369	5.5
Ronny Quillian, 1954-56	340	1402	4.1
Max McGee, 1951-53	314	1395	4.4



What's so great about ROTC?

Check 'em.

☐ **Great opportunity.** You earn a commission while you earn your college degree. Graduate—you start at the top. Fulfill your military obligation as an Army officer. With officer's pay. Officer's privileges.

☐ **Great advantages.** Employers prefer a college graduate with service as an officer. Pay more to get him. Because he's a trained, experienced leader. Can handle heavier responsibilities.

☐ **Great success.** From the 5% of college men who had ROTC training have come 24% of our state governors, 28% of executives earning \$100,000 to \$325,000 per year, 10% of Congress, 15% of our ambassadors.

☐ **Great guys.** ROTC men are campus leaders—in ROTC, athletics, extracurricular activities. And they do better scholastically than non-ROTC students.

☐ **Great extras.** \$50 per month in junior and senior years. Scholarships for outstanding students. Free flight training at over 125 colleges. Extra social activities—military balls, honor societies, bands, rifle teams.

Any way you look at it, there's a lot more going for you when you're in ROTC.

Your future, your decision . . .
choose **Army ROTC.**

Army ROTC
P.O. Box 12703
Philadelphia, Pa. 19134

CP 69

I want to know more about Army ROTC.
Send me your free brochure.

Name _____ Age _____

Address _____

City _____

State _____ Zip _____

All-Time Career Leaders, Cont'd

FORWARD PASSING (Ranked on Completions)

Player, Years Played	Att.	Comp.	Int.	Pct.	Yards	TDP
Bobby Duhon, 1965-67	421	187	35	44.4	2137	13
Joe Ernst, 1948-50	339	175	23	51.6	2374	18
Pete Clement, 1951-53	313	142	38	45.4	1625	11
Dave East, 1963-65	306	131	22	43.0	1297	4
Phil Nugent, 1958-60	286	123	26	43.0	1479	10

TOTAL OFFENSE (Rushing and Passing)

Player, Years Played	Plays		Yards Gained			
	Rush	Pass	Total	Avg.		
Bobby Duhon, 1965-67	813	1262	2137	3399	4.2	
Don Zimmerman, 1930-32	569	2369	924	3293	5.8	
Eddie Price, 1946-49	514	3095	0	3095	6.0	
Bill Banker, 1927-29	549	2516	235	2751	5.0	
Lou Thomas, 1940-42	384	1212	988	2200	5.7	

PASS RECEIVING

Player, Years Played	No.	Yards	Avg.	TD
W. C. McElhannon, 1950-52	68	954	14.0	5
Lanis O'Steen, 1964-66	65	750	11.5	5
Clem Dellenger, 1961-63	56	593	10.6	3
Eddie Bravo, 1951-54	55	618	11.2	2
Jerry Colquette, 1964-66	48	592	12.3	2

INTERCEPTIONS

Player, Years Played	No.	Yards
Don Zimmerman, 1930-32	12	145
Elkworth Kingery, 1949-51	12	60
Bobby Jones, 1947-50	10	268
Lou Thomas, 1940-42	10	151
Homer Dedeaux, 1947-50	10	118

PUNTING (Minimum of 60 Punts)

Player, Years Played	No.	Yards	Avg.
Stan Nyhan, 1937-39	121	4905	40.5
Lloyd Pye, 1966-67	82	3204	39.1
Euel Davis, 1948-49	63	2448	38.9
Dave East, 1963-65	201	7660	38.1
Joe Renfro, 1942-44	76	2848	37.5

PUNT RETURNS

Player, Years Played	No.	Yards	Avg.
Don Zimmerman, 1930-32	72	951	13.2
Lou Thomas, 1940-42	45	443	9.8
Bill Banker, 1927-29	48	411	8.6
George Kineke, 1947-50	31	394	12.7
Dub Jones, 1943-44	31	329	10.6

KICKOFF RETURNS

Player, Years Played	No.	Yards	Avg.
Jerry Graves, 1962-64	40	994	24.9
Jim Trahan, 1966-67 (still active)	38	787	20.7
Max McGee, 1951-53	36	766	21.3
Tommy Mason, 1958-60	28	601	21.5
Eddie Price, 1946-49	27	537	19.9

TOTAL KICK RETURNS (Punt and Kickoff Returns Combined)

Player, Years Played	No.	Yards	Avg.
Jerry Graves, 1962-64	73	1216	16.7
Don Zimmerman, 1930-32	81	1195	14.8
Max McGee, 1951-58	48	925	19.8
Jim Trahan, 1966-67 (still active)	42	846	20.1
Tommy Mason, 1958-60	52	829	15.9

ALL-PURPOSE RUNNING

(Includes all plays and gains from Rushing, Pass Receiving, Interception Returns, Punt Returns and Kickoff Returns)

Player, Years Played	Plays	Yards
Don Zimmerman, 1930-32	525	3733
Eddie Price, 1946-49	551	3686
Bill Banker, 1927-29	597	3639
Max McGee, 1951-53	397	2754
Tommy Mason, 1958-60	324	2403

TOTAL PERFORMANCE

(Includes all gains from Rushing, Passing, Pass Receiving, Interception Returns, Punt Returns and Kickoff Returns; Plays include Punts and Punts and Point-After Attempts)

Player, Years Played	Plays	Yards
Don Zimmerman, 1930-32	764	4657
Bill Banker, 1927-29	783	3864
Eddie Price, 1946-49	560	3826
Bobby Duhon, 1965-67	817	3436
Lou Thomas, 1940-42	478	3080

SCORING

Player, Years Played	TD	XPts.	FG	Pts.
Bill Banker, 1927-29	37	37	0	259
Eddie Price, 1946-49	31	0	0	186
Don Zimmerman, 1930-32	26	21	0	177
Charles Flournoy, 1923-25	25	15	1	168
Nollie Felts, 1930-32	20	3	0	123

Team Records Season — Offense

RUSHING

Most Rushes—649 (1940)
Most Net Yards Gained—2999 (1931)
Highest Average Per Rush—5.4 (1944—2074 yards on 385 rushes)
Highest Average Yards Per Game—296.3 (1944—2074 yards in 7 games)
Most Touchdowns Scored by Rushing—39 (1931)

FORWARD PASSING

Most Passes Attempted—255 (1965)
Most Passes Completed—106 (1962)
Most Passes Had Intercepted—26 (1958)
Highest Percentage Completed—52.6% (1949—72 of 137)
Lowest Percentage Had Intercepted—4.7% (1948—7 of 149)
Most Yards Gained—1400 (1950)
Most Touchdown Passes—14 (1950)
Highest Average Gain Per Attempt—6.9 (1950—1400 yards on 203 attempts)
Highest Average Gain Per Completion—19.8 (1938—357 yards on 18 completions)
Highest Average Yards Per Game—155.6 (1950—1400 yards in 9 games)

TOTAL OFFENSE

Most Rushing and Passing Plays—768 (1931)
Most Yards Gained Rushing and Passing—3908 (1931)
Highest Average Per Play—5.4 (1950—3277 yards on 605 plays)
Highest Average Yards Per Game—364.1 (1950—3277 yards in 9 games)
Most Touchdowns Scored by Rushing and Passing—47 (1931)

PASS INTERCEPTIONS

Most Passes Intercepted—27 (1949)
Most Yards Gained—381 (1931)
Highest Average Per Return—22.9 (1960—252 yards on 11 interceptions)
Most Touchdowns Scored—3 (1955 and 1946)

PUNTING

Most Punts—100 (1931)
Fewest Punts—44 (1967)
Highest Punting Average—41.3 (1939—79 punts for 3262 yards)
Most Punts Had Blocked—3 (1946 and 1940)

PUNT RETURNS

Most Punt Returns—44 (1931)
Most Yards Gained—505 (1939)
Highest Average Per Return—14.7 (1944—293 on 20 returns)
Most Touchdowns Scored—2 (1958 and 1925)

KICKOFF RETURNS

Most Kickoff Returns—51 (1962)
Most Yards Gained—1045 (1962)
Highest Average Per Return—32.1 (1941—610 yards on 19 returns)
Most Touchdowns Scored—2 (1941)

SCORING

Most Touchdowns—51 (1931)
Most Points-After Attempted by Kicking—51 (1931)
Most Points-After Made by Kicking—32 (1950 and 1931)
Highest Percentage Made by Kicking—94.7 (1966—18 of 19)
Most 2-Point Attempts—7 (1958)
Most 2-Point Attempts Made—3 (1962 and 1958)
Most Field Goals Attempted—11 (1967 and 1966)
Most Field Goals Scored—7 (1967 and 1966)
Most Safeties—3 (1950)
Most Points Scored—338 (1931)

FIRST DOWNS

Most First Downs by Rushing—176 (1931)
Most First Downs by Passing—68 (1950)
Most First Downs by Penalty—17 (1960)
Most Total First Downs—211 (1931)

PENALTIES

Most Penalties Against—65 (1941)
Most Yards Penalized—600 (1931)
Most Yards Penalized Per Game—60.8 (1941—547 yards in 9 games)

FUMBLES

Most Fumbles—46 (1954)
Fewest Fumbles—16 (1946 and 1943)
Most Fumbles Lost—27 (1954)
Fewest Fumbles Lost—6 (1946)

Team Records Single Game — Defense

RUSHING

Fewest Rushes Allowed—15 by Louisiana Normal, 1929
Fewest Net Yards Allowed—Minus 54 by North Carolina, 1941
Lowest Average Per Rush—Minus 1.9 by North Carolina, 1941 (Minus 54 yards on 28 rushes)

PASS DEFENSE

Fewest Pass Attempts Allowed—3 by Alabama, 1959
Fewest Pass Completions Allowed—0 Many times. Last: by Vanderbilt, 1961
Lowest Percentage Completed (Min. 10 Attempts)—05.0% by Miss. State, 1948 (1 of 20)
Fewest Yards Allowed—Minus 2 by Auburn, 1947 (completed 1 of 6)

TOTAL DEFENSE

Fewest Rushing and Passing Plays Allowed—30 by Louisiana Normal, 1929
Fewest Rushing and Passing Yards Allowed—7 by Mississippi College, 1937
Lowest Average Per Play—.016 by Mississippi College, 1937 (7 yards on 43 plays)

PUNTING

Most Times Opponent Forced to Punt—17 by Kentucky, 1932
Lowest Average Per Punt (Min. 5 Punts)—21.8 by Miss. State, 1931 (239 yards on 11 punts)

FIRST DOWNS

Fewest Total First Downs Allowed—1 by Auburn, 1941 and Kentucky, 1932

Team Records Season — Defense

RUSHING

Fewest Rushes Allowed—243 (1943—6 games)
Fewest Rushes Allowed Per Game—31.9 (1939—287 rushes in 9 games)
Lowest Average Per Rush—1.7 (1931—603 yards on 372 rushes)
Lowest Average Yards Per Game—54.8 (1931—603 yards in 11 games)
Fewest Touchdowns Allowed by Rushing (Min. 6-game schedule)—1 (1930)

PASS DEFENSE

Fewest Pass Attempts Allowed—94 (1957)
Fewest Pass Completions Allowed—33 (1957)
Most Passes Opponents Had Intercepted—27 (1949)
Lowest Percentage Completed—31.9% (1931—37 of 116)
Fewest Yards Allowed—413 (1957)
Fewest Touchdowns Allowed by Passing (Min. 6-game schedule)—1 (1930)
Lowest Average Yards Per Game—38.5 (1931—423 yards in 11 games)

TOTAL DEFENSE

Fewest Rushing and Passing Plays Allowed—368 (1943—6 games)
Fewest Rushing and Passing Plays Allowed Per Game—44.4 (1931—488 in 11 games)
Lowest Average Per Play—2.1 (1931—1026 yards on 488 plays)
Lowest Average Yards Per Game—93.3 (1931—1026 yards in 11 games)
Fewest Touchdowns Allowed Rushing and Passing (Min. 6-game schedule)—2 (1930)

PASS INTERCEPTIONS

Fewest Passes Opponents Intercepted—4 (1939)
Fewest Yards Gained—2 (1939)
Lowest Average Per Return—0.5 (1939—2 yards on 4 returns)

SCORING

(Records based on a minimum 6-game schedule)
Fewest Touchdowns Allowed—3 (1901)
Fewest Points-After Made—2 (1908 and 1901)
*Fewest Points Allowed—19 (1901)
(*—Fewer points allowed in less than 6-game schedules: 0 (1900—5 games); 5 (1905—1 game); 16 (1916—4 games); 18 (1896—4 games)

FIRST DOWNS

Fewest First Downs Allowed by Rushing—35 (1931)
Fewest First Downs Allowed by Passing—17 (1931)
Fewest Total First Downs Allowed—55 (1931)

Keeping High Talent Manpower

ROBERT N. KELSO

Special Writer, Tulane University News Service

Hundreds of U. S. business firms face a manpower problem money won't cure—a shortage of high talent managers and professionals.

Demand for highly-skilled personnel has soared as a result of the knowledge explosion and rapid expansion of the American economy.

The phenomenal production of new knowledge forces business organizations to change products, operations, and management approaches swiftly to keep pace with new developments, or lose ground to more flexible competitors.

In the tightening market for professional talent—scientists, engineers, managers, and technical salesmen—offering fatter salaries cannot be depended on to lure away high caliber personnel from successful competitors.

The rivals already have taken great pains to keep such employees satisfied with substantial paychecks, an armory of fringe benefits, opportunities for advancement, and a stimulating atmosphere in which to work.

A Tulane University manpower planning consultant advises companies that consider themselves shorthanded on talent to take a closer look at men already on their payroll.

They may find, says Dr. Eric W. Vetter, that their establishments have become "Dullsville" to good people going stale on jobs which no longer offer real challenge.

"A lot of businessmen—particularly at middle management levels—are today's 'turned off' generation," Dr. Vetter argues. "They are not getting any zest out of their jobs, even though they perform them well, because they have learned to handle the assignment with one hand behind their back.

"This is the company's fault. It has failed to plan for effective use of its manpower—to get men into positions that will interest them, and to offer fresh challenge before boredom sets in."

Dr. Vetter, who is associate professor of management in the Tulane Graduate School of Business Administration, is the author of a recent book, "Manpower Planning for High Talent Personnel," published by the Bureau of Industrial Relations of the Graduate School of Business Administration, University of Michigan.

Changing social attitudes toward work and plentiful job opportunities for skilled persons, Dr. Vetter says, have loosened dependency ties which once helped bind individuals to their employers.

"Work for many people is no longer just a means of making a living," he contends. "They're looking for things that have relevance to them as individuals. They

want a challenging and interesting job which is motivating in itself, not just the paycheck.

"If the job doesn't offer this kind of personal satisfaction, you can expect the talented person to quit and get another job he believes will provide it."

Job-switching is particularly easy for highly-trained professionals whose departure may leave gaping holes in the organization structure.

Dr. Vetter believes that placing such individuals in jobs that "make sense to themselves, as well as the company" can be accomplished by sophisticated manpower planning.

Such planning requires substantial lead-time to recruit college "hires" aiming toward middle management, and to develop more experienced personnel who can fill positions of higher responsibility as the company develops.

The trick, says Dr. Vetter, is to have "the right man in the right job at the right time." This means a good deal more than ensuring there are enough warm bodies around when the need arises."

Manpower planning, of sorts, has been on the scene for a number of years, the Tulane management specialist says, but it usually has been done in bits and pieces never fitted accurately into the entire mosaic of company operations.

"Even when a company decides where it ought to be five years from now on manpower, it must correlate this with financial plans, shifts of management emphasis, and other important factors, in a total systems analysis," he emphasizes.

Dr. Vetter concedes that planning for manpower never will be able to achieve the same precision as planning for production, because "we're dealing with human beings, rather than widgets or ball bearings."

But he argues that, even with less precision, manpower planning will have greater effectiveness if it is carried out with a total systems approach.

A number of large corporations, including American Telephone and Telegraph, Xerox, and du Pont are investing a great deal of time and effort in an attempt to make better use of their management and professional manpower, Dr. Vetter notes.

But the planning area getting too little attention in most companies, he says, is the human equation.

"We need to find more about the individual's attitude toward his work, toward particular job assignments, and toward his future opportunities in the company for really effective manpower utilization," he emphasizes.



DR. PASCHAL TWYMAN
President

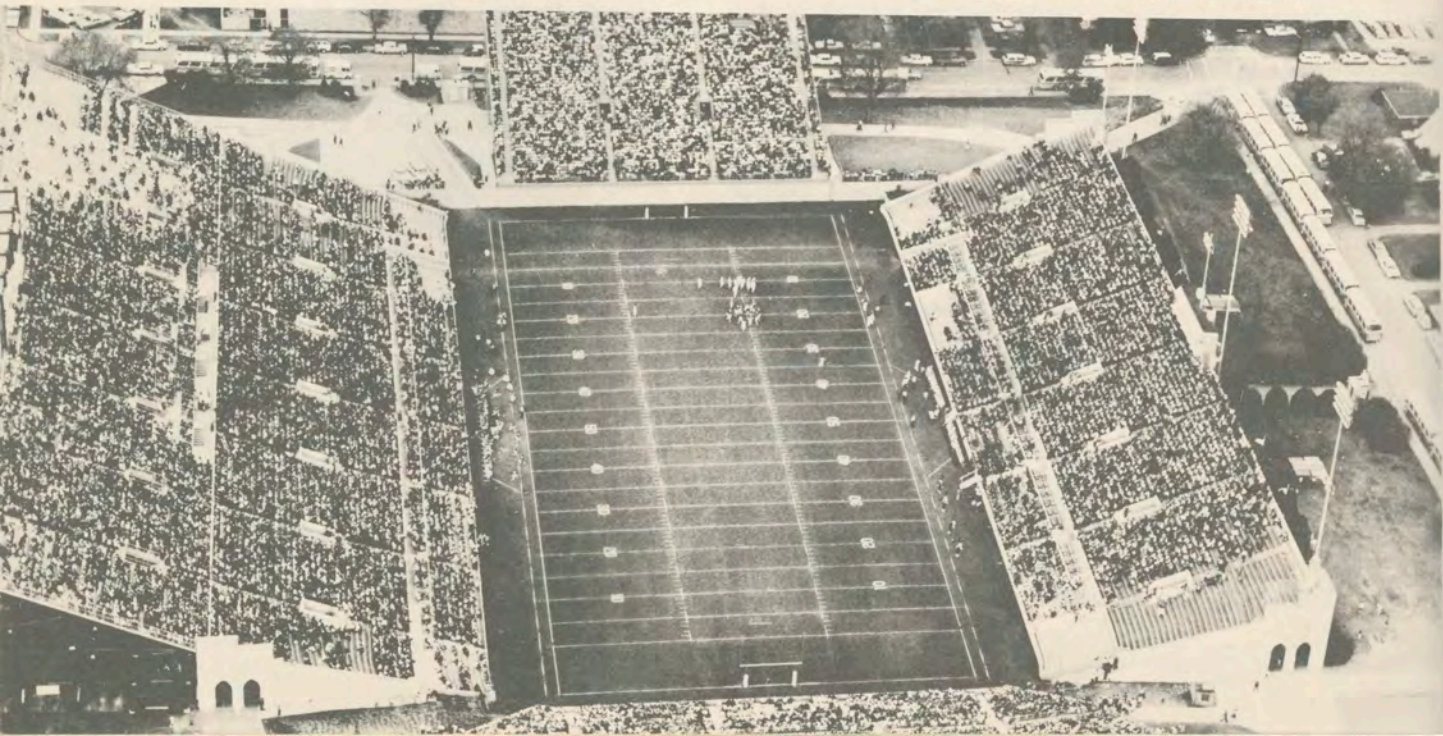


Coach Glenn Dobbs (kneeling) with his staff—(from left) Francis Wheeler, Garry Porterfield, Ben Davis, Gene Shell, Chuck Boyle.

University of Tulsa

Tulsa, Oklahoma

Skelly Stadium, Home of the Golden Hurricanes



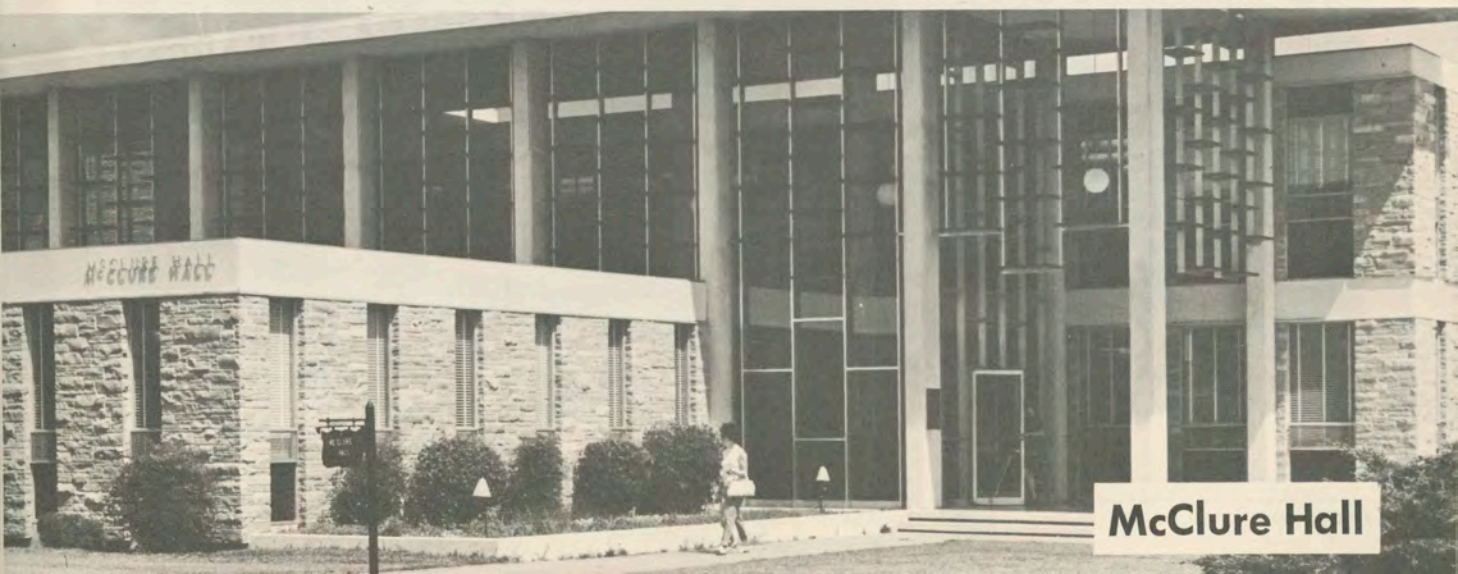
Tulsa Campus Scenes



Mabee Gym



Kendall Hall



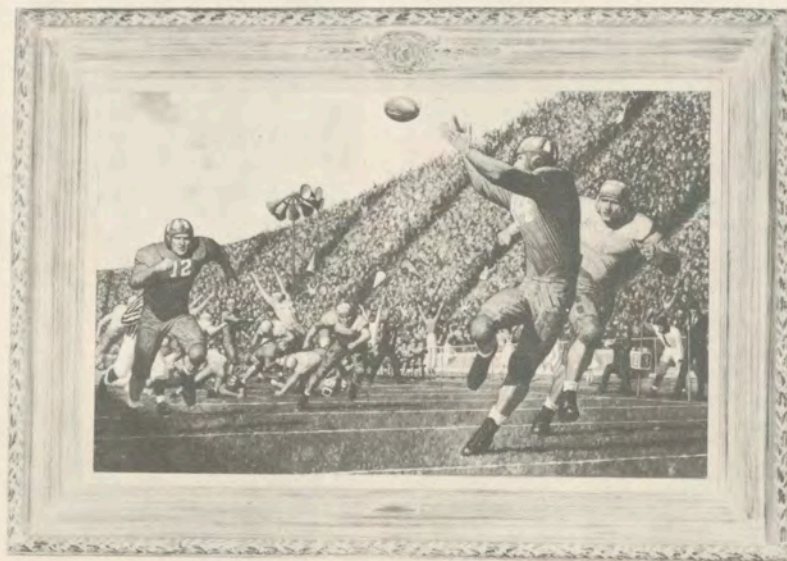
McClure Hall



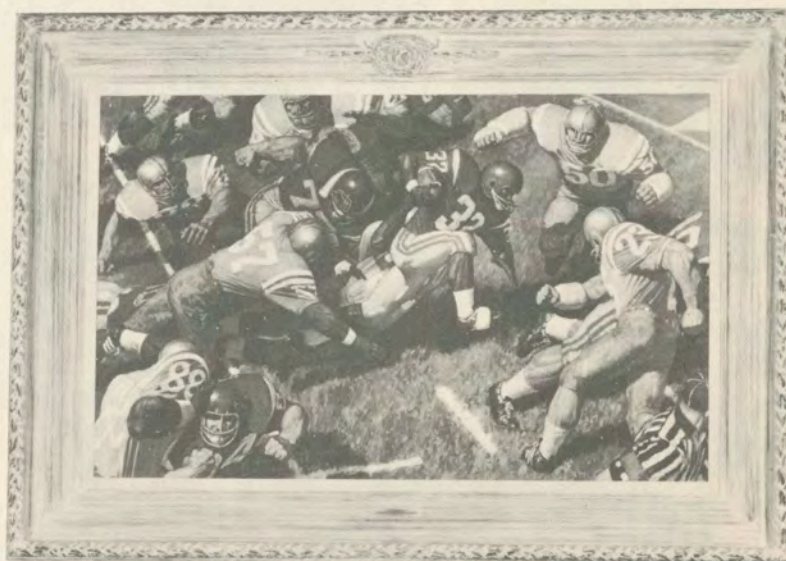
The First Game



Knute Rockne —The Coach



Howell to Hutson —The Passing Game



O. J. Runs For Daylight —The Modern Game

... honoring College Football's 100th Season

Shown on the opposite page are photos of the four paintings commissioned by the Chevrolet Motor Division to help commemorate the 1969 Centennial of college football.

Together the paintings constitute Chevrolet's Sports Art Collection. They will be sent throughout the country during the next two years for display at football gatherings. Eventually, they will be housed in the National Football Foundation and Hall of Fame, New Brunswick, N. J.

They are the only series of paintings ever done to trace the development of college football—from the first game to the great coaches, to the development of the passing game, to the modern game with its speed, fierce pursuit and finesse. Chev-

rolet commissioned noted American artist Arnold Friberg to create the historic quartet.

They are being offered in four colors, suitable for framing, via an article in the September issue of READERS DIGEST. The size of each of the lithographed reproductions is 18 x 24 inches, the price is \$3. Also a 2¾ inch bronze Centennial medallion is available at \$6, a smaller 1½ inch collector's coin is \$2, a silver coin the same size is \$8, and a 12-inch LP record, featuring 19 famous college songs and the new official NCAA March, is available for \$1.

All may be purchased through L. G. Balfour Co., P. O. Box 11608, Salt Lake City, Utah 84111.

Coaching the Coaches . . .



Seated (Left to Right) — JoAnne Morris, Judy Clark, Jane Pittman, Barbara Darnley, Jeanette Campomenosi, Opal Blaylock. Standing — Nanny Kinchen, Betty Kristynik, Bobbie Jean Tohill, Phyllis Eumont, Nancy Colquette.

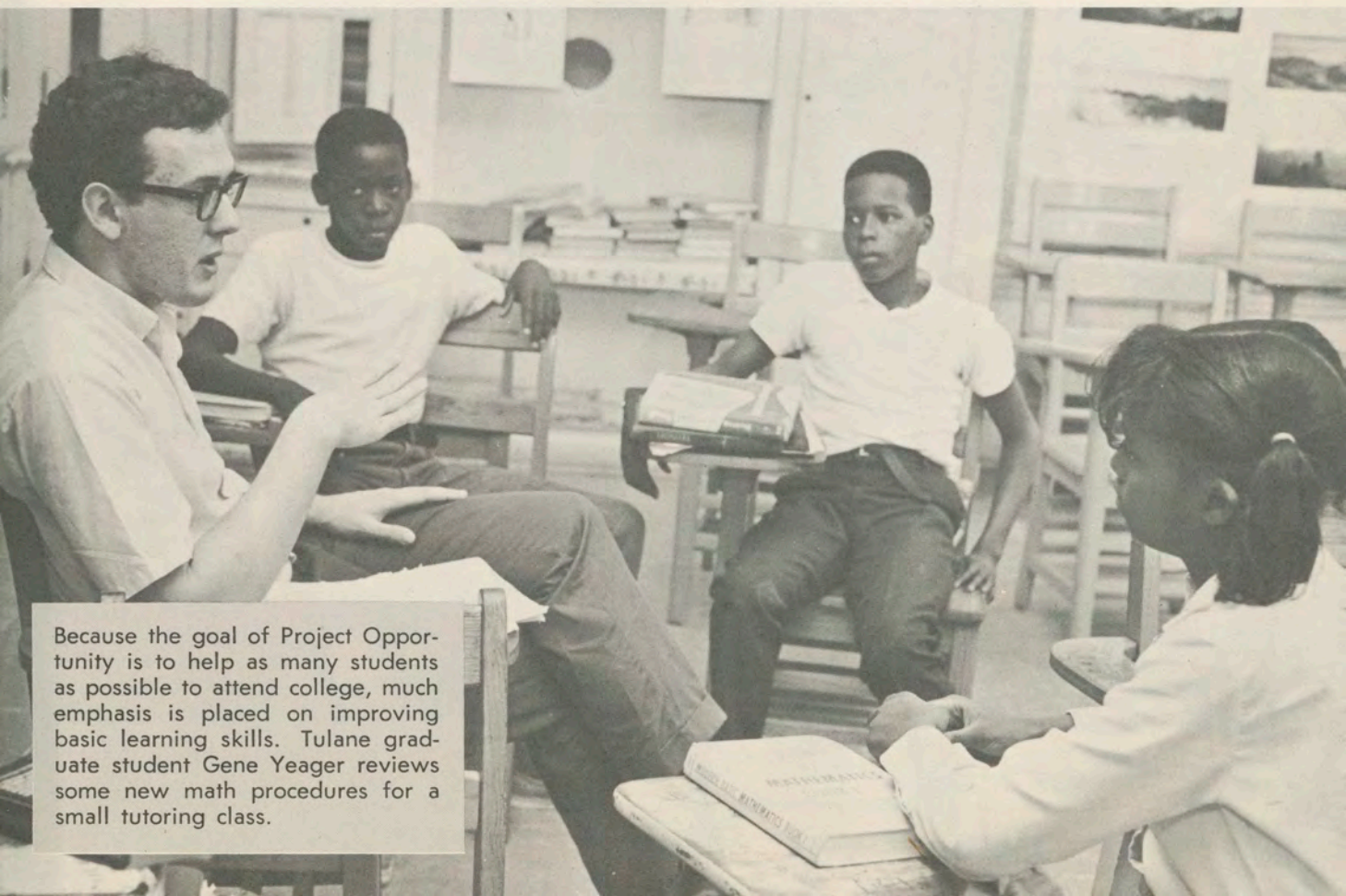
cam-pix

Approximately 150 Tulane University students have returned to the classroom this fall in more ways than one. These Tulane and Newcomb undergraduates and graduate students will be both students and teachers—students in classes on the Tulane campus and “teachers” at the J. B. Priestley Junior High School and Alcee Fortier High School. After regular school hours the **Project Opportunity** volunteers teach special interest classes in art, drama, science, mathematics and English; tutor students in any subjects in which they need help; and accompany students to cultural activities such as to Delgado Museum and to plays at the Repertory Theatre.

Individual tutoring sessions with quiet conversations, such as this one on the steps of Priestley Junior High School, help the students in self-expression. Newcomb sophomore Karen Manemann discusses a novel that both girls have enjoyed.

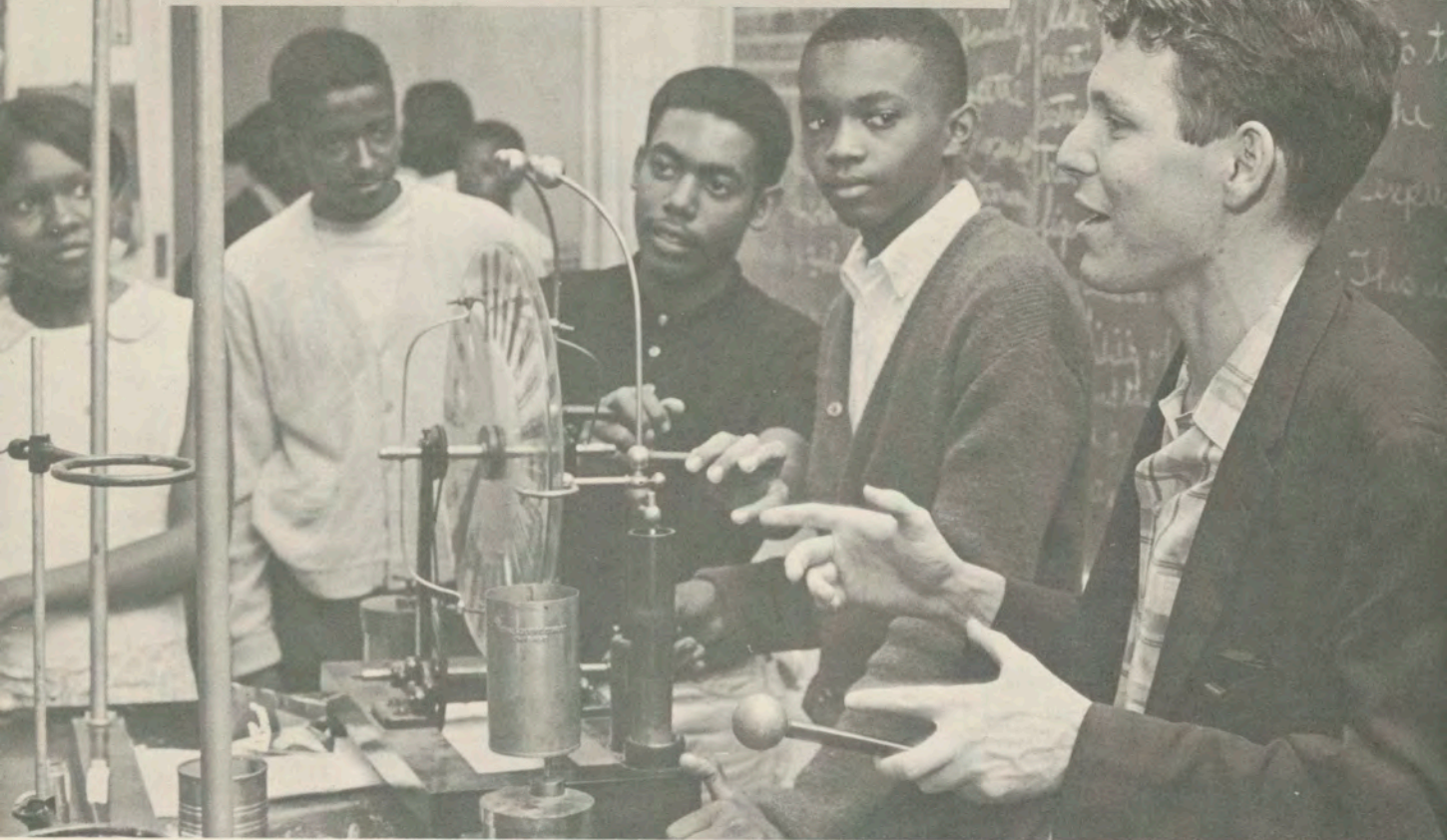


1968 Tulane graduate T. W. Newmann offers suggestions to a drama class for an improvised play. Only the basic plot of the play is set up before hand and then the students are encouraged to interpret their parts as the play progresses. Newcomb 1968 graduate Barbara Edin assists in one of the most popular classes.



Because the goal of Project Opportunity is to help as many students as possible to attend college, much emphasis is placed on improving basic learning skills. Tulane graduate student Gene Yeager reviews some new math procedures for a small tutoring class.

To stimulate the students' interests in science, Roy Dubourg, Tulane graduate student in physics, demonstrates how electricity is generated, and then supervises the students as they perform the experiments themselves.



Field trips to cultural activities play an important part in keeping the students interested in Project Opportunity. After attending the comedy "Tartuffe" at the Repertory Theatre, the students chat backstage with Repertory stars Herbert Nelson (left) and Dillon Evans.

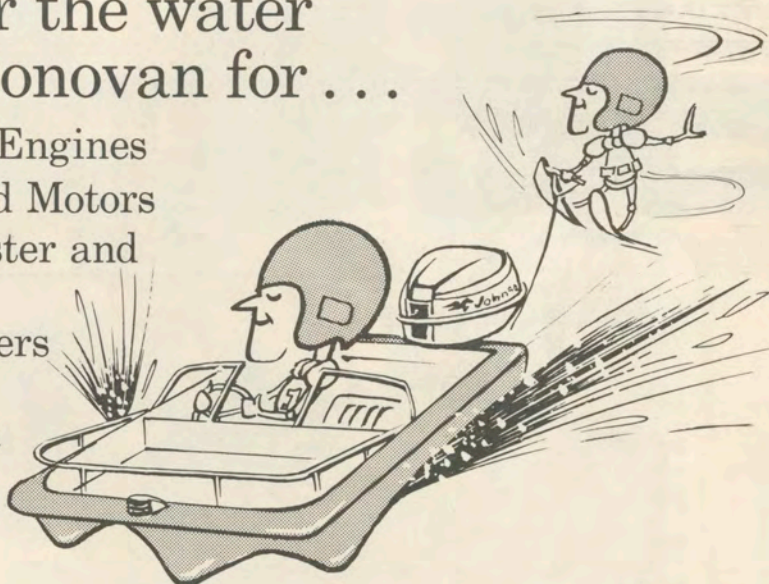
Texaco's new Sky Chief Gasoline can drive down the cost of driving.

"I'll try a gallon."

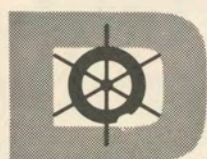


Don't go near the water
'til you see Donovan for ...

- Chrysler Marine Engines
- Johnson Outboard Motors
- Larson, Glassmaster and Duracraft Boats
- Little Dude Trailers
- And Complete Anchor-to-Ensign Marine Supplies



Tune in WDSU Radio Fishing Facts 5:55 am, 6:55 am and 5:35 pm Monday through Friday



DONOVAN BOAT SUPPLIES
INC.

THE "BIG D" FOR BOATING

1018 BARONNE ST. / 529-5731 OPEN 8 a.m. to 5 p.m., Plenty of FREE PARKING in our lot. Enter on Carondelet St.

How you can "join" America's Olympic Team



You can be there at the Mexico City Olympic Games as a welcome contributor to the Olympic Fund. And be proud of it!

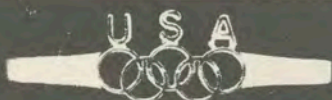
Training, transportation, housing and equipping America's top competitors in the Olympic Games is a major financial task. Because the United States Team is maintained almost entirely by public subscription, without government subsidy of any sort, the interest and support of every American is needed to reach the \$3,500,000 goal.

If you haven't already done so, "join" in the Olympic movement now. Fill out the attached coupon, with your check for \$5.00 or more and mail — today. In acknowledgment, the United States Olympic Committee will send you the handsome men's tie bar (by Danté) illustrated below. Or, if you prefer, you may select a women's bar pin with safety catch of the same design. For a \$10.00 contribution, you will receive two gifts of your choice.

make checks payable to:

U.S. OLYMPIC COMMITTEE

All Contributions are Tax Deductible



Actual Size

UNITED STATES OLYMPIC COMMITTEE

BOX 1000

MOUNT VERNON, NEW YORK 10551

Gentlemen: Enclosed is my check for \$_____. Please send me the gift checked. (Two gifts for a \$10 contribution.)

☐ Men's Tie Bar

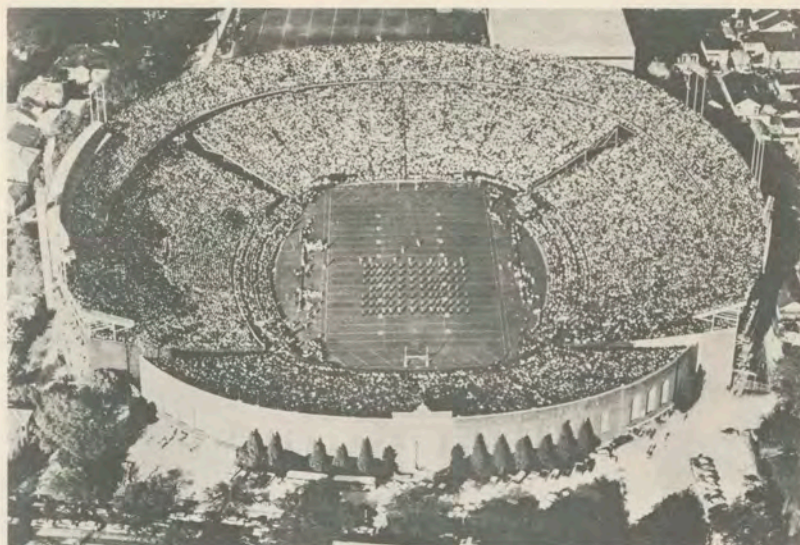
☐ Women's Bar Pin

Name _____

Address _____

City _____ State _____ ZIP _____

Make checks payable to: U.S. Olympic Committee.
Your contribution is tax deductible.



TULANE STADIUM

One of the finest college football facilities in the nation, Tulane Stadium is the world's largest steel stadium. It is located on the Northeastern end of the campus, on the site of the old Etienne de Bore plantation where Sugar was first granulated in this country.

Tulane Stadium was dedicated October 23, 1926, with East and West side stands seating some 35,000. Much of the enlargement and improvement since then has been due to the efforts of the New Orleans Mid-Winter Sports Association, sponsor of the Sugar Bowl Classic. In 1937, 14,000 North Stand seats were erected. The upper deck was added in 1939, boosting the capacity to 69,000. Then in 1947, the bowl was enlarged to its present capacity of 80,985.

Tulane added floodlights in 1957. Other improvements have included permanent box seats, portal seats, press box elevator, and photographer's ramp. Two new scoreboards were added for the 1967 season.

The press box, which has been voted among the nation's best by the Football Writer's Association, is 240 feet long and seats 254.



The University Shop®

143 BARONNE / AT THE GASLIGHT
NEW ORLEANS

Serving the College Man's Needs
in the Finest Traditional Wearing
Apparel for 20 Years.

® Trademark reg. in U. S. Pat. Office

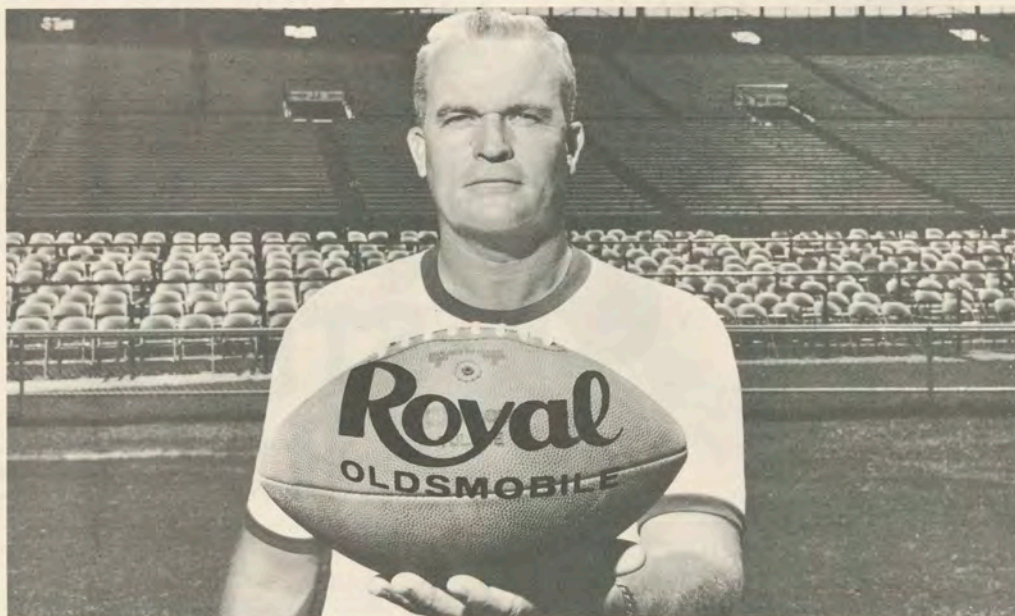
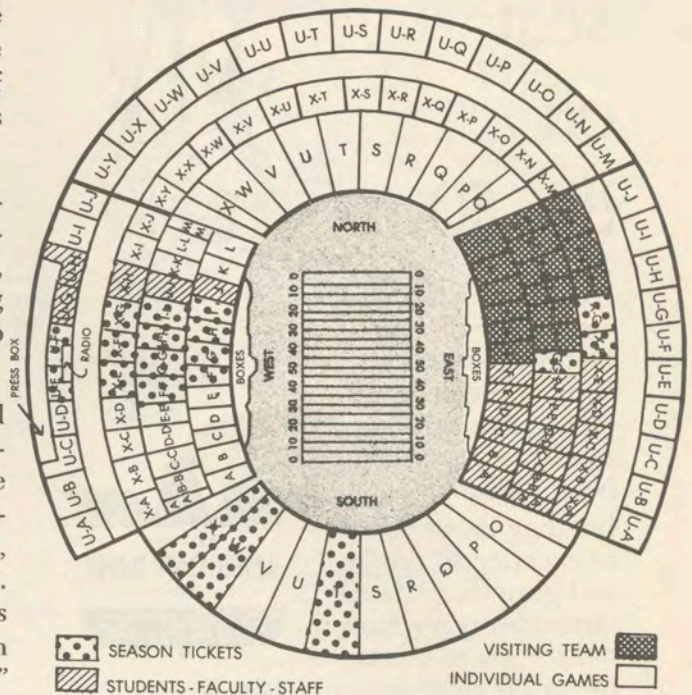
The Sugar Bowl

One of the nation's great football classics is the annual Sugar Bowl game played in Tulane Stadium on New Year's Day. Founded in the depths of depression, it stands today as one of the most unique amateur athletic achievements in the history of American sports.

While the annual football game is the highlight, the New Orleans Mid-Winter Sports Association also sponsors a basketball tournament, tennis tournament, track meet and regatta during Sugar Bowl week. Thousands of visitors flock to the Crescent City for the festivities.

The idea was first presented in 1927 by Colonel James M. Thomson, publisher of the old New Orleans Item, and sports editor Fred Digby. The first game was held on January 1, 1935, with Tulane defeating Temple, 20-14. From its inception, the group has been free of political entanglement. Under the charter, it was stipulated that it was to be a "voluntary, non-profit civic organization whose members serve without remuneration." Every Sugar Bowler buys his own tickets to all events.

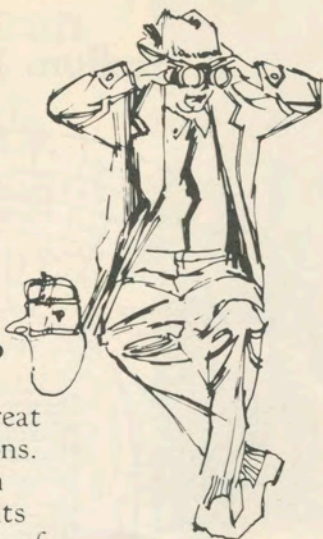
Stadium Diagram



There's a dealership in town that doesn't play games.

The dealership that's different

a
seat
on
the 50...



... commands a great view in all directions. National American Bank is beginning its second half century of continuous service to New Orleans.

Building on 50 years of experience, progress and growth, National American is *the bank* to help you to a better life in New Orleans.



Member F.D.I.C.

ROLL ON GREEN WAVE



THE THIRST SLAKER

WORLD'S LARGEST TAPE LIBRARY



STEREO UNITS FOR AUTOMOBILE, HOME OR BOAT - - - 19.95
CARTRIDGES FROM 99¢ — FROM WORLD'S LARGEST CARTRIDGE LIBRARY

TAPE CITY, U. S. A.

4230 Veterans Memorial Hwy.
Metairie, La. — 888-2505

6237 South Claiborne Ave.
New Orleans, La. — 861-3645

LOOKING AHEAD

Basketball



Coach Ralph Pedersen

Tulane will have a tougher team and a tougher schedule in 1968-69. Coach Ralph Pedersen's fifth Tulane squad will be built around three veterans, all of whom have been starters since their sophomore year. The three leading scorers last season, they are Johnny Arthurs, 6-4 forward from New Orleans; Terry Habig, 6-2 guard from Auburn, Ind.; and Bill Fitzgerald, 6-4 forward from New Orleans.

Two terrific recruits from the Freshman team will bolster the squad—6-8 center John Sutter, who set a Freshman record with 27.5 points per game and will add needed height and improve already good scoring ability; and Harold Sylvester, 6-6 jumping jack from New Orleans, Tulane's first negro cager whose forte is rebounding and defense.

TENTATIVE 1968-69 VARSITY BASKETBALL ROSTER

Name	Pos.	Ht.	Wt.	Yr.	Ltr.	Avg.	Hometown
Johnny Arthurs	f	6-4	195	Sr.	2	19.4	New Orleans
Mike Billingsley	g	6-1	170	So.	0	13.6°	Ft. Worth, Tex.
Rick Carlson	f-c	6-5	215	Sr.	2	1.7	Bradenton, Fla.
George Ferguson	f	6-6	190	So.	0	9.2°	Ft. Worth, Tex.
Bill Fitzgerald	f	6-4	190	Sr.	2	13.7	New Orleans
Terry Habig	g	6-2	180	Sr.	2	17.2	Auburn, Ind.
Mike Henry	g	5-10	165	So.	0	11.9°	Natchitoches, La.
Stan Kwiatkowski	f	6-4	170	So.	0	2.5°	Barber's Pt., Hawaii
Drew Madar	g	6-0	160	Sr.	1	6.2	Ft. Worth, Tex.
Joel Miller	g	6-3	180	Sr.	2	4.9	Middlebury, Ind.
Ned Reese	g	6-0	170	Jr.	1	2.6	Elmhurst, Ill.
Dennis Riddle	c	6-7	220	Jr.	1	2.5	Madison, Wis.
Greg Robers	c	6-7	205	Jr.	1	1.3	Ft. Wayne, Ind.
Don Simmons	f-c	6-6	185	Sr.	2	4.4	Columbia, Mo.
Bob Spurck	g-f	6-3	180	Sr.	2	6.5	Ft. Worth, Tex.
John Sutter	f	6-8	190	So.	0	27.5°	Marion, Ind.
Harold Sylvester	c	6-6	200	So.	0	18.6°	New Orleans
Mitch Urbanski	c	6-6	205	Sr.	2	3.5	Kenosha, Wis.

*Scoring average on Freshman team.

1968-69 BASKETBALL SCHEDULE

Mon. Dec. 2	NORTHERN MICHIGAN	New Orleans
Sat. Dec. 7	BAYLOR	New Orleans
Mon. Dec. 9	RICE	New Orleans
Wed. Dec. 11	TEXAS	New Orleans
Sat. Dec. 14	Louisiana State	Baton Rouge, La.
Mon. Dec. 16	TEXAS TECH	New Orleans
Wed. Dec. 18	Missouri	Columbia, Mo.
Thur. Dec. 19	Illinois	Champaign, Ill.
Thur.-Mon. Dec. 26-30	33rd Annual All-College Tournament at Oklahoma City, Okla. (Tulane, Univ. of Pacific, Duquesne, LSU, Oklahoma City, St. Bonaventure, Texas A&M, Wyoming)	
Fri. Jan. 3	Cal (Santa Barbara)	Santa Barbara, Cal.
Sat. Jan. 4	U.C.L.A.	Los Angeles, Cal.
Wed. Jan. 8	FLORIDA STATE	New Orleans
Sat. Jan. 11	KENT STATE	New Orleans
Thur. Jan. 16	Miami	Miami, Fla.
Sat. Jan. 18	Florida State	Tallahassee, Fla.
Sat. Feb. 1	PITTSBURGH	New Orleans
Sat. Feb. 8	AIR FORCE	New Orleans
Mon. Feb. 10	LOUISIANA STATE	New Orleans
Sat. Feb. 15	Georgia Tech	Atlanta, Ga.
Mon. Feb. 17	Chicago	Chicago, Ill.
Mon. Feb. 24	Virginia Tech	Blacksburg, Va.
Wed. Feb. 26	Marquette	Milwaukee, Wis.
Sat. Mar. 1	GEORGIA TECH	New Orleans
Mon. Mar. 3	VALPARAISO	New Orleans

Capital letters indicate home games.



Football

FUTURE WAVE SCHEDULES

1969

Sept. 20—at Georgia
Sept. 27—W. VIRGINIA
Oct. 4—at Boston Coll.
Oct. 11—FLORIDA
Oct. 18—at Pittsburgh
Oct. 25—NOTRE DAME
Nov. 1—VANDERBILT
Nov. 8—GA. TECH
Nov. 15—VIRGINIA
Nov. 22—at LSU

1970

Sept. 19—GEORGIA
Sept. 26—at Illinois
Oct. 3—at Cincinnati
Oct. 10—at Air Force
Oct. 17—N. CAROLINA
Oct. 24—at Ga. Tech
Oct. 31—at Vanderbilt
Nov. 7—MIAMI (FLA.)
Nov. 14—Open Date
Nov. 21—N. C. STATE
Nov. 28—LSU

1971

Sept. 18—at Georgia
Sept. 25—at Rice
Oct. 2—WM. & MARY
Oct. 9—at N. Carolina
Oct. 16—PITTSBURGH
Oct. 23—GA. TECH
Oct. 30—VANDERBILT
Nov. 6—OHIO UNIV.
Nov. 13—at Notre Dame
Nov. 20—Open Date
Nov. 27—at LSU

The
Finest in
Monogramming



fraternity men, sorority women
come in and browse

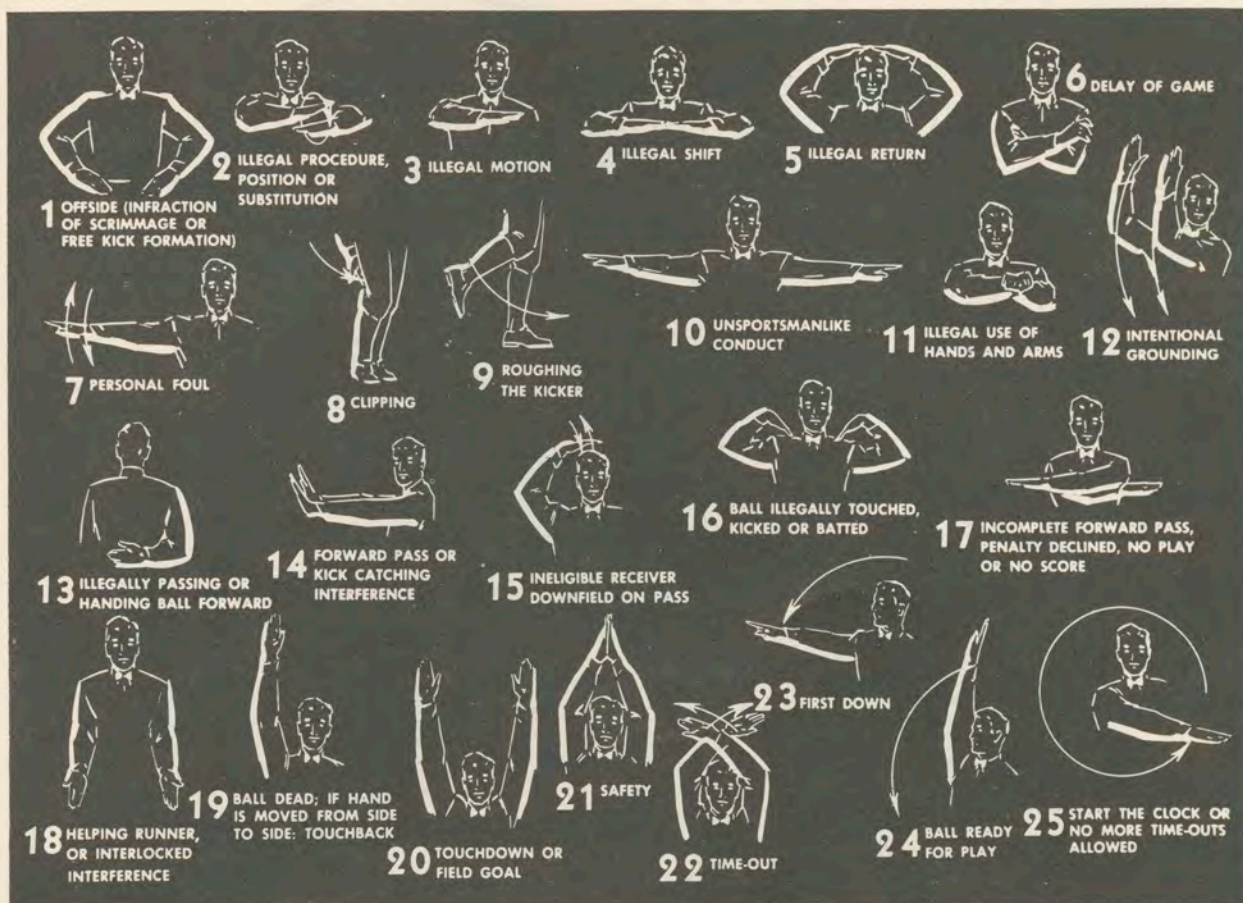
Mel's
Monograms

3150 CALHOUN
JUST OFF S. CLAIBORNE
NEW ORLEANS, LA.

*Made by the little deep south
brewery that would rather be best
than biggest*



DIXIE BREWING COMPANY, INC., NEW ORLEANS, LOUISIANA



PENALTIES

1. OFFSIDE by either team; Violation of scrimmage or free kick formation; Encroachment on neutral zone—Loss of Five Yards.

2. ILLEGAL PROCEDURE, POSITION OR SUBSTITUTION—Putting ball in play before Referee signals "Ready-for-Play;" Failure to complete substitution before play starts; Player out of bounds when scrimmage begins; Failure to maintain proper alignment of offensive team when ball is snapped; False start or simulating start of a play; Taking more than two steps after Fair Catch is made; Player on line receiving snap—Loss of Five Yards.

3. ILLEGAL MOTION—Offensive player illegally in motion when ball is snapped—Loss of Five Yards.

4. ILLEGAL SHIFT—Failure to stop one full second following shift—Loss of Five Yards.

5. ILLEGAL RETURN of ineligible substitute—Loss of 15 yards.

6. DELAY OF GAME—Consuming more than 25 seconds in putting the ball in play after it is declared ready for play; Interrupting the 25-second count for any reason other than a free or excess time out granted by

Referee; Failure to remove injured player for whom excess time out was granted—Loss of Five Yards. Team not ready to play at start of either half—Loss of 15 Yards.

7. PERSONAL FOUL—Tackling or blocking defensive player who has made fair catch; Piling on; Hurdling; Grasping face mask of opponent; Tackling player out of bounds, or running into player obviously out of play; Striking an opponent with fist, forearm, elbow or locked hands; Kicking or kneeling—Loss of 15 Yards. (Flagrant offenders will be disqualified).

8. CLIPPING—Loss of 15 yards.

9. ROUGHING THE KICKER or holder—Loss of 15 Yards.

10. UNSPORTSMANLIKE CONDUCT—Violation of rules during intermission; Illegal return of suspended player; Coaching from side lines; Invalid signal for Fair Catch; Persons illegally on field—Loss of 15 Yards. (Flagrant offenders will be disqualified).

11. ILLEGAL USE OF HANDS AND ARMS by offensive or defensive player—Loss of 15 Yards.

12. INTENTIONAL GROUNDING of forward pass—Loss of Five Yards from spot of pass Plus Loss of Down.

13. ILLEGALLY PASSING OR HANDING BALL FORWARD—Loss of Five Yards from spot of foul Plus Loss of Down.

14. FORWARD PASS OR KICK CATCHING INTERFERENCE—Interference with opportunity of player of receiving team to catch a kick—Loss of 15 Yards. Interference by member of offensive team with defensive player making pass interception—Loss of 15 Yards Plus Loss of Down. Interference by defensive team on forward pass—Passing Team's Ball at Spot of Foul and First Down.

15. INELIGIBLE RECEIVER DOWNFIELD ON PASS—Loss of 15 Yards.

16. BALL ILLEGALLY TOUCHED, KICKED OR BATTED—Forward pass being touched by ineligible receiver beyond the line of scrimmage—Loss of 15 Yards from Spot of Preceding Down and Loss of a Down. Eligible pass receiver going out of bounds and later touching a forward pass—Loss of Down.

17. PENALTY DECLINED; Incomplete forward pass; No play or no score.

18. CRAWLING by runner—Loss of Five Yards. Interlocked Interference—Loss of 15 yards.



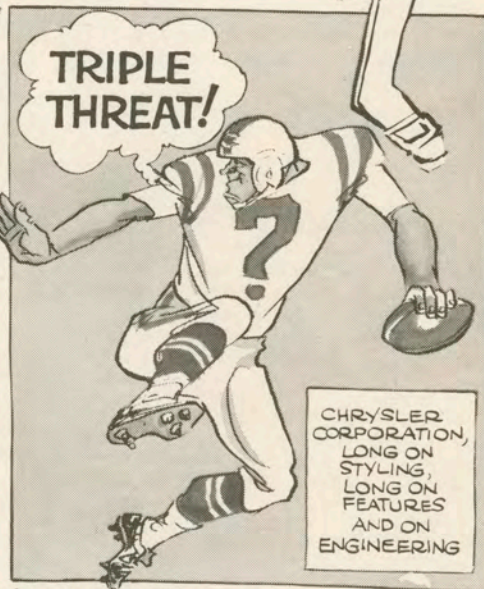
BEFORE YOU
BUY, SEE YOUR
CHRYSLER-
PLYMOUTH
OR DODGE
DEALER.



...BE THE CENTER
OF ATTENTION
IN A NEW CAR
FROM CHRYSLER
CORPORATION!



WHAT A
LINE!
PLYMOUTH, DODGE,
CHRYSLER,
IMPERIAL,
SIMCA OR
SUNBEAM



CHRYSLER
CORPORATION,
LONG ON
STYLING,
LONG ON
FEATURES
AND ON
ENGINEERING

Plymouth • Dodge • Chrysler • Imperial • Dodge Trucks • Simca • Sunbeam

SEE THE AFL IN ACTION EACH WEEK ON NBC-TV.



CHRYSLER
CORPORATION

Wave Words

Catch the clues and dash your answers down the field of football terms.

1. Type of pin	G	S _ _ _ _ Y	G
2. Deodorant	5	R _ _ _ _ A _ _	5
3. Eligible bachelor	10	_ _ I _ _ T _ _	10
4. Change for a dollar	15	Q _ _ _ _ _ C _	15
5. Irritated male deer	20	C _ _ _ _ U _ _	20
6. Frankenstein	25	_ _ N _ _ _	25
7. Dater's indiscretion	30	_ _ _ S	30
8. Mother-in-law's visit	35	P _ _ _ L _ _	35
9. Pop top tab	40	_ U _ _ _ P _ _ _ R	40
10. Inebriated receiver	45	_ _ _ T _ _ D	45
11. An uncalled play	50	_ _ M _ L _	50
12. Digital command by co-ed	45	H _ N _ O _ _	45
13. Beer joint	40	_ I _ E	40
14. Love triangle	35	I _ _ R _ _ T _ _ _	35
15. Lying on your back or stomach	30	_ F _ S _ _ _	30
16. Area for falsies	25	F _ A _ Z _ _ _	25
17. Ulysses S. to the rescue	20	G _ _ _ _ - N - A _ _	20
18. Quarterback with two dates	15	O _ T _ _ _ _ _ Y	15
19. Barbershop tactics	10	_ _ _ P P _ _ _	10
20. Chip off the old	5	_ L _ _ _	5
21. To feel a duck	G	_ _ _ _ H _ _ W _	G

(Answers on Page 56)

Break your beard in right.

Right now your beard is in the formative stage.

You can shave it with a razor blade like your father does. And each time you do your beard will grow back a little more difficult. Until one day shaving's no longer a chore. It's an agony.



Look no further than your father's face for proof.

But fortunately, you're catching your beard at an early age. You can break it in to be just as shaveable 10 and 20 years from now as it is today.

With a REMINGTON® shaver.

And if you think the kind of shave we're selling won't be close enough for you, you're wrong.

Our new blades are sharper than anything that's been in an electric shaver before. And there's a dial that lets you adjust them for your skin and beard.

What's more, you can dial a REMINGTON electric shaver into a sideburn trimmer.

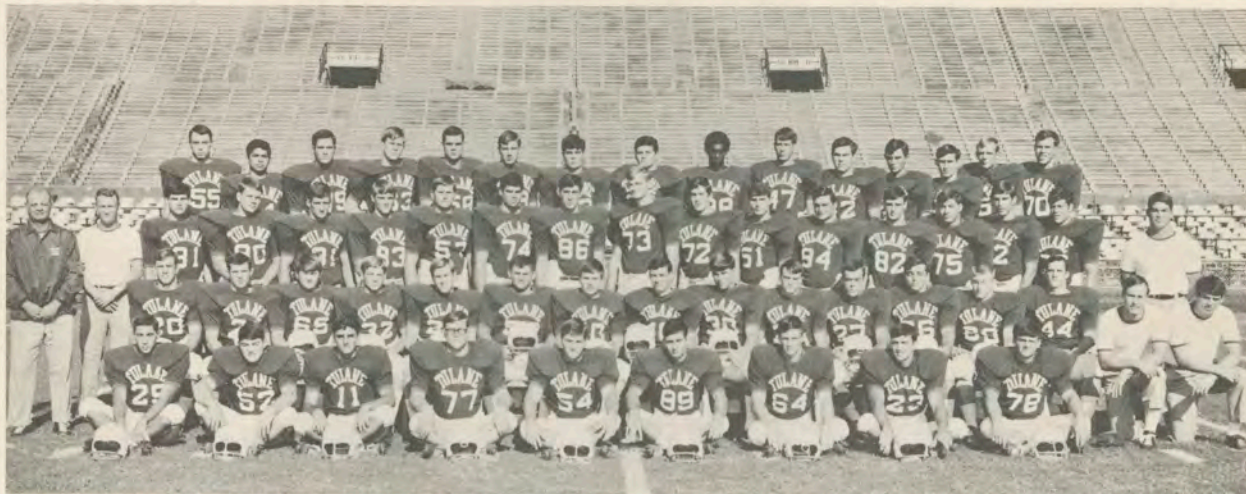
Admittedly, it costs more to buy our electric shaver than a razor and some blades.

But it's a good investment.

These next few years will determine how you and your beard will get along for the rest of your lives. ⁺SPERRY RAND™ ©1969, SPERRY RAND CORP.



1968 Tulane Freshman Football Team



ROW I (Left to Right)—Anthony Fontana (29), Ronnie Guzman (52), Robert Kershaw (11), Jimmy Lawrence (77), Tom Edwards (54), Buddy Porta (89), John McLeod (64), David Hebert (23), Butch Bailess (78).
ROW II—Bob Marshall (20), Dennis Crain (21), Jerry Chamberlain (69), Alan Crawford (32), Scott Heape (25), Bobby Gordon (50), Paul Ellis (10), Jim Batey (40), Randy Buck (30), Joel Bullard (24), Ed Smith (27), Bob Motchkavitz (66), Steven Thomas (60), Ronnie Corn (44), Coach Jim Jancik, Coach Lou Campomenosi.
ROW III—Coach Joe Blaylock, Coach Jim Darnley, Steve Barrios (81), Alex Lopresto (80), Art Ledet (31), Mike Paulson (83), Harold Marshall (57), Alfred Mansour (74), Carl Richardson (86), Bob Waldron (73), Charles Hendler (72), Jim Thompson (51), Joe Young (84), Lee Hamilton (82), Al Delhomme (75), Rusty Lachaussee (12), Robert Levy (76), Coach Vic Eumont.
ROW IV—Jim Atkins (55), Jimmy San Martin (14), Mike Fruge (79), Peter Day (63), Ronnie Tanner (58), Maxie LeBlanc (19), Bruce Grimes (22), Michael Valls (37), Alfred Diggs (88), Calvin Hargrave (47), Michael Doucet (62), Tony Stephens (33), Steve Hotard (53), Mike Landry (85), Raymond Commander (70).

— Frosh Roster —

Player, Position, Weight	Home Town (High School)
Jim ATKINS—LB, 180	Beaumont, Tex. (Forest Park)
Butch BAILESS—T, 215	Vicksburg, Miss. (H. V. Cooper)
Steve BARRIOS—E, 170	Gretna (West Jefferson)

Jim BATEY—TB, 180	Franklin (Franklin)
Randy BUCK—FB, 205	Bay Minette, Ala. (Baldwin Co.)
Joe BULLARD—DHB, 170	Mobile, Ala. (Univ. Military)

Jerry CHAMBERLAIN—DE, 195	Washington (Im. Conc.)
Raymond COMMANDER—DT, 205	P. Arthur, Tx. (Austin)
Ronnie CORN—TB, 182	Mobile, Ala. (Murphy)

Dennis CRAIN—WB, 178	Vicksburg, Miss. (H. V. Cooper)
Alan CRAWFORD—FB, 187	Dallas, Tex. (Bryan Adams)
Peter DAY—G, 205	Houston, Tex. (Memorial)

Al DELHOMME—DT, 220	New Iberia (New Iberia)
A. D. DIGGS—E, 165	New Orleans (Xavier)
Mike DOUCET—G, 210	Crowley (Crowley)

Tommy EDWARDS—LB, 200	Opelousas (Im. Concep.)
Paul ELLIS—QB, 175	New Orl'ns (Dallas, Tex. Jesuit)
Anthony FONTANA—SAF, 181	Ab'v'le (Vermillion Cath.)

Mike FRUGE—DT, 210	Crowley (Notre Dame)
Bobby GORDON—MG, 218	Oakdale (Oakdale)
Bruce GRIMES—WB, 178	Pascagoula, Miss. (Pascag'la)

Ronnie GUZMAN—LB, 200	Lake Charles (L. Charles)
Lee HAMILTON—DE, 185	Houston, Tex. (Memorial)
Calvin HARGRAVE—DB, 170	Crowley (Notre Dame)

Scott HEAPE—WB, 180	Dallas, Tex. (St. Mark's)
David HEBERT—DB, 183	Thibodaux (Thibodaux)
Charles HENDLER—T, 210	Dallas, Tex. (Jesuit)

Steve HOTARD—MG, 170	Lake Charles (Lake Charles)
Robert KERSHAW—QB, 175	Little Rock, Ark. (Cath.)
Rusty LACHAUSSEE—QB, 180	Pascagoula, Miss. (P'g'la)

Player, Position, Weight	Home Town (High School)
Mike LANDRY—DE, 190	Lake Charles (Landry)
Jimmy LAWRENCE—DT, 215	Houston, Tex. (Jesse Jones)
Maxie LeBLANC—DHB, 180	Vinton (Vinton)

Art LEDET—FB, 196	Abbeville (Abbeville)
Robert LEVY—T, 210	Atlanta, Ga. (Druid Hills)
Alex LOPRESTO—E, 196	New Iberia (New Iberia Cath.)

Alfred MANSOUR—DT	Alexandria (Menard Central)
Bob MARSHALL—TB, 187	Metairie (East Jefferson)
Harold MARSHALL—C, 225	Pasadena, Tex. (S. Rayburn)

John McLEOD—G, 180	Mobile, Ala. (Semmes Montg'y)
Bob MOTCHKAVITZ—G, 190	Gr. Neck, N.Y. (G. N. Nth.)
Mike PAULSON—E, 185	Dallas, Tex. (Bryan Adams)

Buddy PORTA—DE, 183	Baton Rouge (Baton Rouge)
Carl RICHARDSON—E, 198	Berwick (Berwick)
Jimmy SAN MARTIN—PK	Tela, Hond. (N. O. Redempt'st)

Ed SMITH—CB, 175	Eunice (Eunice)
Tony STEPHENS—DB, 168	Lake Charles (LaGrange)
Ronnie TANNER—DE, 203	Semmes, Ala. (Montgomery)

Steven THOMAS—G, 195	Groves, Tex. (P. Neches Groves)
Jim THOMPSON—C, 195	Dallas, Tex. (Bryan Adams)
Michael VALLS—LB, 200	New Iberia (New Iberia Cath.)

Bob WALDRON—DT, 218	Shreveport (Byrd)
Joe YOUNG—DE, 200	Houston, Tex. (Smiley)

1968 Tulane Freshman Football Schedule

Marion (Ala.) Institute 22, Tulane Frosh 15	(Home)
Tulane Frosh 26, Southern Mississippi Frosh 0	(Away)
Tulane Frosh 21, Air Force J. V. 7	(Away)
Sat., Nov. 16—Mississippi State Frosh	New Orleans, 1:30 p.m.
Fri., Nov. 22—Louisiana State Frosh	Baton Rouge, 7:30 p.m.

— Home Games Played in Tulane Stadium —

SCHEDULES OF TULANE'S 1968 OPPONENTS

* Denotes Night Game

OPPONENT	SEPT. 14	SEPT. 21	SEPT. 28	OCT. 5	OCT. 12	OCT. 19	OCT. 26	NOV. 2	NOV. 9	NOV. 16	NOV. 23	NOV. 30
HOUSTON Houston, Tex. B. Yeoman	TULANE 54 - 7	TEXAS 20 - 20		(Oct. 4) CINCINNATI 71 - 33	OKLA. ST. 17 - 21	Open	OLE MISS 29 - 7	GEORGIA 10 - 10	At *Memphis State	Idaho	*Tulsa	(Nov. 29) *Fla. State at Jax'ville
TEXAS A&M College Station, Tex. G. Stallings		L. S. U. 12 - 19	TULANE 35 - 3	FLA. ST. 14 - 20	TEX. TECH 16 - 21	*TCU 27 - 7	*BAYLOR 9 - 10	ARKANSAS 22 - 25	At S.M.U.	Rice	Open	(Nov. 28) At Texas
TAMPA Tampa, Fla. F. Curci		SANTA BAR. 18 - 7	AKRON 24 - 9	TULANE 17 - 14	CINCIN'TI 28 - 31	*East Mich. 21 - 0	*MISS. ST. 25 - 17	*N. MICH. 22 - 19	At East Carolina	*Southern Illinois	*Southern Mississippi	
FLORIDA Gainesville, Fla. R. Graves		AIR FORCE 23 - 20	FLA. ST. 9 - 3	MISS. ST. 31 - 14	TULANE 24 - 3	N. CARO. 7 - 22	VANDERB'T 14 - 14	AUBURN 13 - 24	Georgia at Jax'ville	At Kentucky	Open	Miami
BOSTON COLL. Chestnut Hill, Mass. J. Yukica			NAVY 49 - 15	BUFFALO 31 - 12	VILLANOVA 28 - 15	TULANE 14 - 28	PENN ST. 0 - 24	Open	At Army	V.M.I.	At Mass.	Holy Cross
GEORGIA TECH Atlanta, Ga. B. Carson		T. C. U. 17 - 7	MIAMI 7 - 10	CLEMSON 24 - 21	TENN. 7 - 24	AUBURN 21 - 20	TULANE 23 - 19	DUKE 30 - 46	Navy	At Notre Dame	Open	At Georgia
VANDERBILT Nashville, Tenn. B. Pace		V. M. I. 25 - 12	ARMY 17 - 13	N. CARO. 7 - 8	ALABAMA 7 - 31	GEORGIA 6 - 32	FLORIDA 14 - 14	TULANE 21 - 7	At Kentucky	Open	Davidson at Charlotte	Tennessee
TULSA Tulsa, Okla. G. Dobbs			ARKANSAS 13 - 56	SOU. ILL. 20 - 3	LOUISV'LE 7 - 16	N. TEX. ST. 17 - 20	CINCIN'TI 34 - 27	MEM. ST. 6 - 32	At TULANE	At Air Force	At Houston	(Nov. 28) Wichita St.
VIRGINIA Charlottesville, Va. C. Blackburn		PURDUE 6 - 44	V. M. I. 47 - 0	DAVIDSON 41 - 14	DUKE 50 - 20	N. C. STATE 0 - 19	NAVY 24 - 0	S. CARO. 28 - 49	At North Carolina	TULANE	Maryland	
LA. STATE Baton Rouge, La. C. McClendon		TEX. A & M 13 - 12	RICE 21 - 7	BAYLOR 48 - 16	MIAMI (Fla.) 0 - 30	*KENT'KY 13 - 3	*T. C. U. 10 - 7	*OLE MISS 24 - 27	Alabama at B'ham	*Mississippi State	At TULANE	

Of Special Interest To the College Football Fan:

TULANE FOOTBALL HIGHLIGHTS

A half-hour of filmed action from the previous day's Tulane game is televised by WDSU-TV, Channel 6, Sundays at 10 a. m., with Bruce Miller doing the commentary.

GREEN WAVE REPORT

A special radio program featuring Tulane football is broadcast by WDSU Monday through Friday at 8:50 a. m. and at 4:40 p. m. The show features WDSU's Lynn Cole and members of the Green Wave coaching staff and team.

TULANE FOOTBALL PRESS GUIDE

The fact-filled 1968 Press-Radio-TV Guide is available at the Stadium Ticket Office, 6401 Willow Street. Price: One Dollar per copy.

TULANE FOOTBALL NETWORK

Tulane's radio network again features Bruce Miller on the play-by-play and Moon Mullin doing the color. WDSU in New Orleans is the origination station. All 10 games will be carried by KSYL in Alexandria; WIBR in Baton Rouge; KKKW in Lafayette; KLOU in Lake Charles; KLIC in Monroe; and KEEL in Shreveport. In addition, KMRC, Morgan City will carry nine games; and WIKC in Bogalusa and WBGS in Slidell will carry five contests.

NCAA FOOTBALL HIGHLIGHTS

Highlights of the previous day's top college games will be featured on this one-hour show, carried in New Orleans on WVUE-TV at 1 p. m. Sundays.

LS AND YOU

"The Fighting Tigers," Peter Finney's colorful history of LSU football, includes interesting stories and sidelights of the Tulane-LSU rivalry. Available at local book stores or from the LSU Press, Baton Rouge. Price: \$7.85 per copy.

QUIZ ANSWERS

DO YOU REMEMBER

Page 25 . . .

DON ZIMMERMAN

WAVE WORDS, Page 53:

1. Safety; 2. Right Guard; 3. Fair Catch;
4. Quarterback; 5. Cross Buck; 6. Monster; 7. Pass; 8. Penalty; 9. Quick Open-
10. Tight End; 11. Fumble; 12. Hand Off; 13. Dive; 14. Interception; 15. Off-
16. Flat Zone; 17. Grand-in-Aid;
18. Option Play; 19. Clipping; 20. Block;
21. Touchdown.

Oldsmobile recreates a scene from the classic movies.



Olds Delta 88 Royale: The bold and the beautiful.

Meet our new top-of-the-line 88. Big-car room and ride on a longer 124-inch wheelbase. Vinyl roof, pin-striping, fender louvers, big Rocket 455 V-8 and much more, standard. All for little more than you'd pay for an ordinary car! **Escape from the ordinary.**



Z/28 Camaro



Putting you first vaaarrrrrrrooooooooooomm

keeps us first.



*Special offer from the Chevrolet Sports Art Collection:
18" x 24" prints of four Arthur Friberg paintings
portraying the 100 years of college football:
(1) The First Game; (2) Knute Rockne—The Coach;*

*(3) Howell to Hutson—The Passing Game; (4) O.J. Runs for Daylight.
Send \$3.00 in cash, check or money order to L. G. Balfour
Company, P.O. Box 11608. Salt Lake City, Utah 84111.*