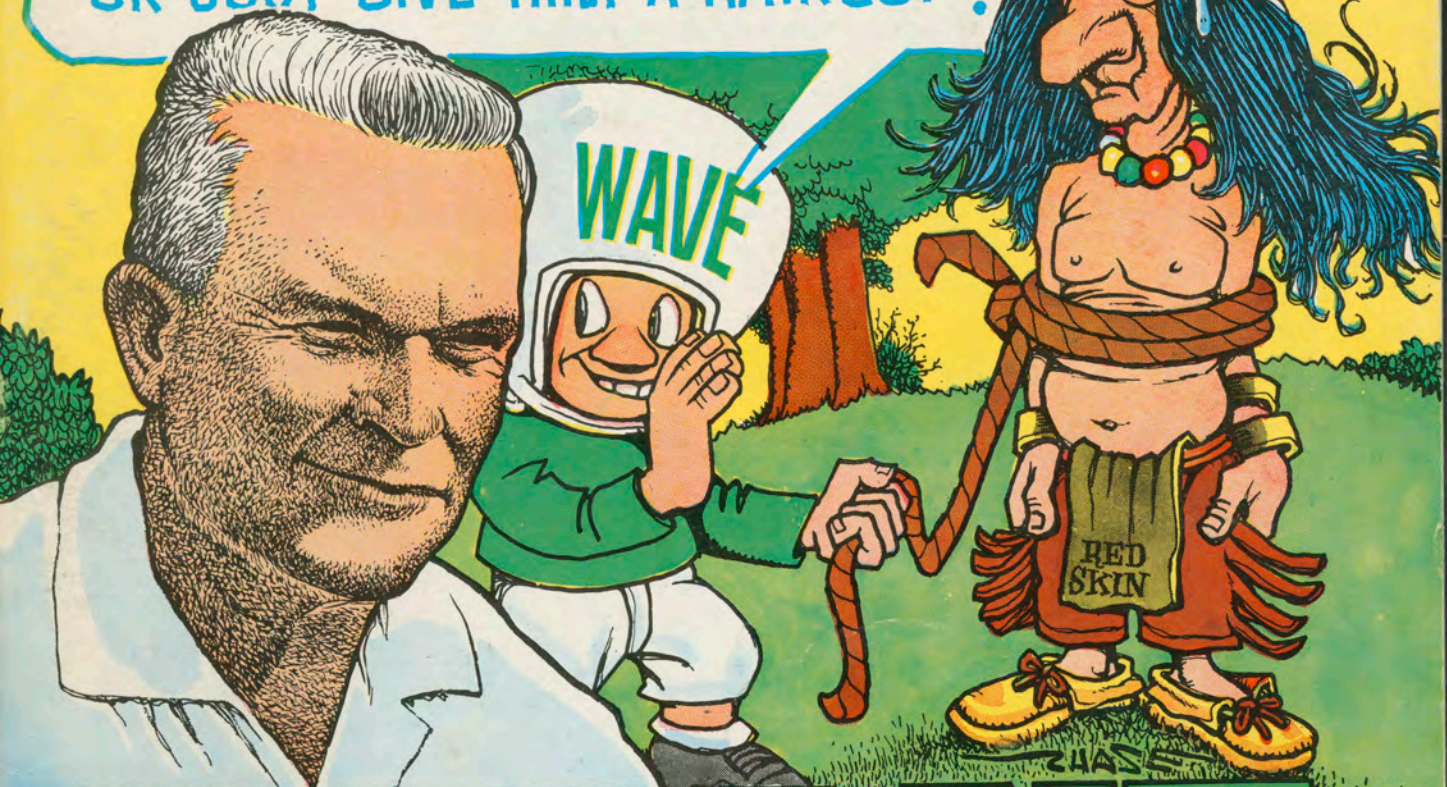


PS'ST, COACH - DO WE SCALP HIM,  
OR JUST GIVE HIM A HAIRCUT ?



# TULANE

OFFICIAL SOUVENIR FOOTBALL PROGRAM - - - 50 Cents

## MIAMI (O.) GAME

Saturday, September 23, 1967 - 7:30 p. m.

*Do You Remember This Former Tulane Athlete?*

- Page 25

*Shock Story About Children Who Find Learning Is Fun*

- Page 42

*Mascots and Monikers; New Game of College Knowledge*

- Page 37

*New Official Team Photo of the 1967 Green Wave Varsity*

- Page 55

*A Referee in Trouble; the Lighter Side of the Whistle*

- Page 54

Tulane Stadium . . . . . New Orleans, La.



**Football and Jax:  
hot sports action  
and a cold Mellow Brew-  
Yours at every game!**



Jackson Brewing Co., New Orleans, La.



# TULANE GRIDIRON NEWS

Published by the Tulane University Athletic Department, New Orleans, La.

Editor — Bill Curl, Sports Information Director

Photos by Armand Bertin, Tulane University; Jim Laughead Photography, Dallas, Tex.; Leon Trice Photography, New Orleans; Pedro's Art Studio, New Orleans. Covers by John Chase; Printing by Molenaar Printing Company.

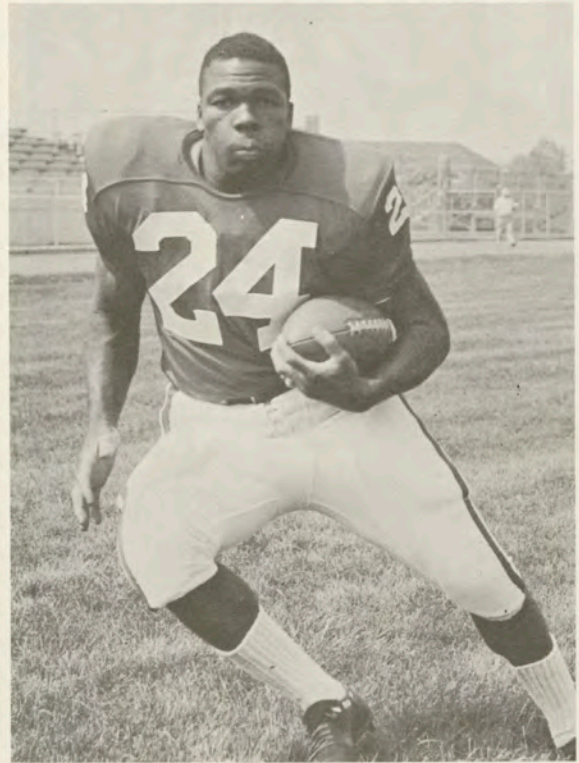
Vol. 37

Saturday, September 23, 1967

No. 1



JIM WRIGHT, TULANE TACKLE



AL MOORE, MIAMI HALFBACK

## Contents

Basketball Preview .....	49
Cam-Pix .....	42-44
Campus Map .....	35
Co-Captains .....	23
Concession Prices .....	12
Cover Story .....	13
Do You Remember .....	25
Freshman Roster, Schedule .....	55
Freshman Team Picture .....	55
Future Schedules .....	46
LINEUPS .....	28-29
Opponent's Information .....	4, 38
Opponent's Player Pictures .....	39-41
OPPONENT'S ROSTER .....	31
Penalties .....	51
Records .....	32
Road Trips .....	10
Songs and Cheers .....	7
Stadium Information .....	8, 46
Statistics, both teams .....	4
Sugar Bowl .....	47
Ticket Order Blank .....	56
Tonight's Game .....	3
Tulane Player Pictures .....	16-20
TULANE ROSTER .....	26
Tulane Staff Pictures .....	15
Tulane Staff Picture .....	55
Tulane University Data .....	9



## 1967 Green Wave Schedule

Sept. 23—MIAMI (OHIO) .....	Here
Sept. 30—North Carolina .....	Chapel Hill
Oct. 6—Miami (Fla.) .....	Miami
Oct. 14—FLORIDA .....	Here
Oct. 21—AIR FORCE .....	Here
Oct. 28—*GEORGIA TECH .....	Here
Nov. 4—VANDERBILT .....	Here
Nov. 11—Tennessee .....	Knoxville
Nov. 18—VIRGINIA .....	Here
Nov. 25—L. S. U. ....	Baton Rouge

\*Homecoming Game

— Home Games Start at 7:30 P. M. —



# Tulane and the Community . . .



**Dr. Longenecker**

TULANE UNIVERSITY is an integral part of the New Orleans community.

The university's primary roles of education, research and service are largely focused on this area, affording opportunities for thousands of students of all ages to advance academically, contributing to the increase of knowledge, and providing a wide variety of community services, ranging from the upgrading of elementary education to the delivery of health services.

The university's programs and its calendar of events cover almost every aspect of life and make possible frequent interaction between the university family and its neighbors.

This gathering tonight is but one manifestation of this, offering not only recreation for thousands of persons but also a chance for visitors to see the obvious signs of Tulane's progress and to exchange views with students, faculty and staff about the university's mission and its impact on the community.

Athletic events bring visitors to the campus throughout the year.

And there are many other occasions.

Stage performances, concerts, lectures.

And, also, throughout the year, conferences, seminars and major conventions of scientific, professional and business organizations which attract to the campus not only persons from this area but visitors from many distant points.

Tulane, in fact, has become a core of many community interests—in art and the performing arts, in health and medicine, in science, law, engineering, architecture, business and education, to name but a few.

For whatever stimulus it does provide, Tulane is rewarded amply through the stimulation it, in turn, receives from the participation in its activities of so many from outside the university.

For the public's participation in all of these functions provide the leavening ingredient needed to enable Tulane to continue to improve in the accomplishment of its missions.



**Dr. Clarence Scheps, Executive Vice President**



# Riled-Up Redskins Move In To Help Kick Off Pittman's Second Season Tonight

By BILL CURL, *Director*

Sports Information Office, Tulane University

---

## *Tonight's . . . . . . Game*

---

A win-hungry bunch from Miami of Ohio will move into Tulane Stadium tonight to provide the opposition for Tulane's season opener as Coach Jim Pittman embarks on his second season. The kickoff is set for 7:30 p. m., Central Daylight Time.

Pittman earned several votes for "Coach of the Year" last fall when he brought Tulane its first winner in a decade on his first try. The Green Wave genius has most of the manpower back from that 5-4-1 team, not the least of whom is quarterback Bobby Duhon.

Duhon gained All-American notice in most of the pre-season polls. The dazzler from Abbeville, La., sets sail on his senior season needing just 751 yards of total offense to become Tulane's all-time top ground-gainer.

Pittman has 15 of last year's 22 starters on hand—eight on offense and seven on defense. Regulars returning on offense are Duhon, wing-back Jim Trahan, end Nick Pizzolatto, tackles Jim Wright and Don Dembinski, guards Mike Cammarata and Larry Mickal, and center Howard Moore. Veteran defenders are safety Jim Jancik, halfbacks Dennis Krauss and Lou Campomenosi, linebacker Ernie Parker, end Bruce Guidry, tackle Schott Mumme, and guard Vic Eumont. Duhon and Jancik are co-captains of the 1967 squad.

Miami comes in with a winning tradition wounded by a 24-14 loss to Western Michigan Saturday in a showdown between last year's co-

champions of the Mid-American Conference. The Redskins outgained WMU, however, and Miami was in the thick of things until the Broncos put it out of reach with less than three minutes left in the game.

Miami hasn't had a losing season since 1942, and the Redskins have a 168-52-9 record over that 24-year stretch. Redskin coaches during that period include Sid Gillman, now boss of the San Diego Chargers, Virginia's Bob Blackburn, Ohio State's Woody Hayes, Notre Dame's Ara Parseghian, and Indiana's John Pont. Coach Glenn "Bo" Schembechler is now in his fifth year at Miami, and Schembechler's first four teams lost a total of only 10 games.

Tonight's crowd is expected to be the largest for a Wave home opener since 1960, when 42,000 watched Tulane tangle with Alabama. The biggest bunch since then was 24,446 for the 1962 inaugural with Stanford.

The Green Wave will be on the road for the next two weekends, facing North Carolina in Chapel Hill next Saturday afternoon, and Miami (Fla.) in the Orange Bowl Friday night, Oct. 6. Both games will be carried live on WDSU radio and other stations on the Tulane Football Network, and the North Carolina game will be televised on WVUE television.

After the two road tilts, the Wave will be home for four straight home encounters, as Florida, Air Force, Georgia Tech, and Vanderbilt all visit Tulane Stadium.

For your halftime entertainment at tonight's game, Tulane presents the Stardusters Drum and Bugle Corps of Arabi, La., national champions in their field.



# Scouting Report: Statistics Tell The Story

## MIAMI

### One-Game Totals

#### Rushing Leaders

Player	Times	NYG	TDs	Avg.
Don Wade .....	19	57	1	3.0
Kent Thompson .....	16	46	0	2.9
Al Moore .....	9	42	0	4.7
Miami .....	57	190	1	3.3
Opp. ....	48	227	0	4.7

#### Passing Leaders

Player	Att.	Comp.	Int.	TD	Yds.	Pct.
Kent Thompson ..	23	6	1	1	135	26.1
Miami .....	23	6	1	1	135	26.1
Opp. ....	9	4	0	2	86	44.4

#### Receiving Leaders

Player	Caught	TDs	Yards
Gary Arthur .....	2	31	0
Gaylord Cleaves .....	2	23	0
Jim Shaw .....	1	72	1
Tim Fortney .....	1	9	0

#### Punting Leaders

Player	No.	Yards	Avg.
Jim Shaw .....	8	357	44.6

#### Scoring Leaders

Player	TD	PAT	FG	Pts.
Don Wade .....	1	0	0	6
Jim Shaw .....	1	0	0	6
Al Moore .....	0	2	0	2

### 1966 Miami Results (9-1)

Miami 20, Indiana 10  
 Miami 27, Xavier 3  
 Miami 26, W. Michigan 9  
 Miami 7, Kent State 0  
 Miami 12, Marshall 0  
 Miami 33, Ohio Univ. 13  
 Bowling Green 17, Miami 14  
 Miami 24, Toledo 12  
 Miami 38, Dayton 6  
 Miami 28, Cincinnati 8

### 1967 Redskin Results, Schedule

Western Michigan 24, Miami 14  
 Sept. 23 ..... At Tulane (N)  
 Sept. 30 ..... Xavier  
 Oct. 7 ..... At Kent State  
 Oct. 14 ..... Marshall  
 Oct. 21 ..... Ohio University  
 Oct. 28 ..... At Bowling Green  
 Nov. 4 ..... Toledo  
 Nov. 11 ..... At Dayton  
 Nov. 18 ..... At Cincinnati

## TULANE

### Final 1966 Figures

#### Rushing Leaders

Player	Times	NYG	TDs	Avg.
*Bobby Duhon .....	151	748	8	5.0
Pete Johns .....	118	518	1	4.4
*Jim Trahan .....	50	324	2	6.5
Mike Findley .....	60	251	0	4.2
*Warren Bankston .....	54	232	0	4.3
*Tim Coughlin .....	32	144	1	4.5
*Chuck Loftin .....	31	85	2	2.7

#### Passing Leaders

Player	Att.	Comp.	Int.	TD	Yds.	Pct.
*Bobby Duhon ..	126	56	12	2	577	44.4
*Warren Bankston	42	17	5	2	165	40.5

#### Leading Pass Receivers

Player	Caught	TDs	Yards
Lanis O'Steen .....	21	2	240
Pete Johns .....	10	0	86
*Jim Trahan .....	8	0	96
Jerry Colquette .....	8	0	81
*Chuck Loftin .....	8	0	42
*Nick Pizzolatto .....	7	1	69

#### Punting Leaders

Player	No.	Yards	Avg.
*Lloyd Pye .....	38	1,461	38.4
Mike Findley .....	12	393	32.8
*Tim Coughlin .....	4	157	39.3

#### Scoring Leaders

Player	TD	PAT	FG	Pts.
*Bobby Duhon .....	8	0	0	48
*Uwe Pontius .....	0	18	7	39
*Chuck Loftin .....	2	0	0	12
Lanis O'Steen .....	2	0	0	12
*Jim Trahan .....	2	0	0	12

\*Players Returning in 1967

### 1966 Tulane Results (5-4-1)

Tulane 13, Virginia Tech 0  
 Tulane 21, Texas A & M 13  
 Stanford 33, Tulane 14  
 Tulane 20, Virginia 6  
 Tulane 28, Cincinnati 21  
 Georgia Tech 35, Tulane 17  
 Tulane 13, Vanderbilt 12  
 Tulane 10, Miami (Fla.) 10  
 Florida 31, Tulane 10  
 LSU 21, Tulane 7

(1967 Schedule on Page 1)

**SERIES DATA: First meeting between Miami and Tulane**



*The Fabulous*  
**FONTAINEBLEAU**

**MOTOR HOTEL**

**Dedicated to Pleasure and Fun**



**FOR RELAXED DINING  
 AND FINE FOOD**

For delicious Continental and Creole foods impeccably served in glittering splendor



**FOR AN INTIMATE AND  
 ENCHANTING EVENING**

Cocktail hour 5 to 7. Complimentary hors d'oeuvres, dancing, entertainment. Name bands nightly



**FOR EXCELLENT FOOD  
 QUICKLY SERVED**

A favorite meeting place. Open at 6 a.m. Delicious food, popular prices.

**494 LUXURY ROOMS**

**LARGEST SWIMMING POOL IN TOWN**—separate high diving pool, separate wading pool for children.

**OUTDOOR POOL SIDE LOUNGE** with table service

Convenient to shopping, business area, French Quarter

**SPECIAL ATTENTION TO PARTIES AND CONVENTIONS**

A private room for every function with special complimentary services.



**4040 TULANE AVE.**

**HU 6-6111**

*Famous for*  
**FINE FOOD**  
 and  
**DRINK**



Enjoy the Specialties of These  
 Noted Restaurants

**ANTOINE'S**

... Since 1840

**713 St. Louis St.**

**529-5696**

12 Noon to 9 P. M. Closed Sundays

**ARNAUD'S**

... Carnival Room

**813 Bienville St.**

**523-5433**

Open Daily from 11 A. M. to 12:30 A. M.

After Midnight

**BROUSSARD'S**

... Napoleon Patio

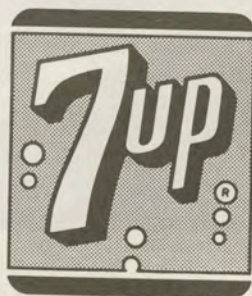
**819 Conti St.**

**523-4800**

12 Noon to 11 P. M.

Closed Wednesdays





**GET REAL ACTION...  
7-UP YOUR THIRST AWAY**

---

BEFORE OR AFTER THE GAME.....

## **OUTRIGGER**

**BAR & LOUNGE**

- ★ Spectacular exotic drinks!
- ★ Palate pleasing Polynesian tid-bits!
- ★ All your cocktail favorites!

OPEN FROM 9 A. M.

ENTERTAINMENT FROM 5 P. M.

Nightly except Sunday

**Sheraton-Charles Hotel**

NEW ORLEANS





# Spirit at Tulane

## Alma Mater

We praise thee for thy past, O Alma Mater!  
Thy hand hath done its work full faithfully.  
The incense of thy spirit hath ascended  
And filled America from sea to sea.

### CHORUS—

Olive Green and Blue, we love thee  
Pledge we now our fealty true  
Where the trees are ever greenest,  
Where the skies are purest blue.  
Hear us now, O Tulane, hear us  
As we proudly sing to thee!  
Take from us our hearts' devotion!  
Thine we are, and thine shall be!



## Hullabaloo

A one, a two,  
A helluva hullabaloo,  
A Hu-la-ba-loo Ray-Ray!  
Hu-la-ba-loo Ray-Ray!  
Hoo-Ray! Hoo-Ray!  
Vars, vars, tee-ay!  
Tee-ay! Tee-ay!  
Vars, vars, tee-ay!  
Tulane!

## Roll, Green Wave

Here's a song for the Olive and the Blue.  
Here's a cheer for the team that's tried and true.  
Here's a pledge of loyalty to thee,  
O, Tulane Varsity.  
Here's to the Greenbacks that never will say die,  
And here's to the hearts that are true  
To the men of Tulane, who are fighting for  
her name,  
For the Olive and the Blue.

Roll, Green Wave, Roll them down the field.  
Hold, Green Wave, that line must never yield.  
When those Greenbacks charge through the line  
They're bound for victory.  
Hail, Green Wave, For you we give a cheer.  
Hail, Green Wave, For you we have no fear.  
So ev'ry man in ev'ry play,  
And then we'll win that game today.  
Hurrah for old Tulane!

*(Chant to be used on second chorus)*

Roll, Green Wave, Roll, Roll Green Wave  
Hold Wave, Hold Wave, Hold, Green Wave.  
Go— go— go get the tigers  
Go win, go win, go win from the tigers.  
Fight, fight, fight for T. U.  
T. U., T. U., the Olive and the Blue,  
T — — U — — Rah, Rah, Rah, Tulane.







## Cuisine... par excellence!

Both French and Creole cooking. Cited by HOLIDAY for 15 consecutive years as a "local favorite dining spot."

Open daily from eleven 'til eleven - except Mondays. Located in the heart of the Garden District at Washington and Coliseum.

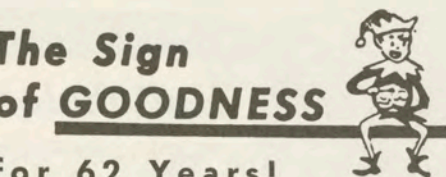
# Commander's Palace

TWinbrook 1-7240

Since 1880

### The Sign of GOODNESS

for 62 Years!



Quality Dairy Products  
and  
Frozen Foods

## STADIUM INFORMATION

### First Aid

--- First aid stations are located under the East and West stands at ground level.

### Telephones

--- Public pay telephones are located at ground level on North, East, South and West sides.

### Rest Rooms

--- Rest rooms are located under North, East, South and West stands at ground level and under North, East and West upper deck sections.

### Lost and Found

--- Lost and found office is located inside stadium at Southwest corner, ground level.

## PAN-AMERICAN FILMS

Producers of 16 mm Industrial, Educational and Special Events  
Motion Pictures

Editing, Titling and Color Film Duplicating — Sound Recording

Producers of the Sugar Bowl Movies in Color and Sound Since 1945

**Bell & Howell**

Motion Picture Equipment Dealers

822-24 NORTH RAMPART STREET  
522-5364



# Tulane



## University



**Robert Sharp Hall, Men's Residence Housing Tulane Athletes**

Tulane University is an educational institution deeply rooted in the past and reaching toward the future.

Founded in 1834 as the Medical College of Louisiana, Tulane today offers undergraduate programs in 30 areas of study, masters' degrees in 43 fields and the doctor of philosophy degree in 33 disciplines.

Courses are offered in the College of Arts and Sciences, Newcomb College (the coordinate college for women), and University College (the evening division); in the Schools of Architecture, Engineering, Law, Medicine, Public Health and Tropical Medicine, and Social Work; in the Graduate School, the Graduate School of Business Administration, the Summer School, the Center for Teacher Education and at several research institutes.

The interest in tropical medicine—the Medical College of Louisiana was founded to combat epidemics of yellow fever and other tropical diseases—is the one cord that runs throughout the University's history, even as its interests expanded with its development as part of the University of Louisiana in 1847, and with its emergence,

finally, as the Tulane University of Louisiana in 1884, after a generous gift from Paul Tulane had established the Tulane Educational Fund. The Fund's administrators used the gift to reorganize the University as a private, non-sectarian institution bearing Tulane's name.

Today Tulane's President, Dr. Herbert E. Longenecker, directs the operation of a cosmopolitan community whose faculty (650 full-time, 500 part-time) and students (6,000 full-time, 2,000 part-time) represent every state and 60 foreign countries.

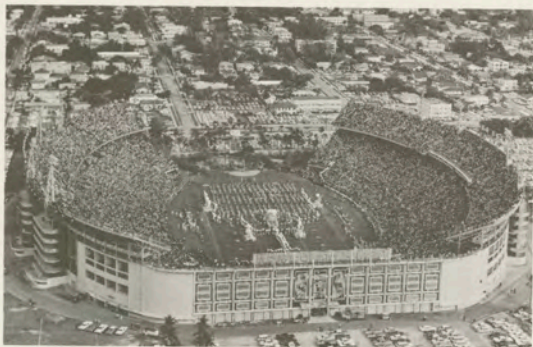
By far the major portion of the University's activities are centered at the main campus, a 100-acre site in uptown New Orleans. Scholars also pursue their interests at the downtown Medical School campus; at the Delta Regional Primate Research Center in Covington, La., 35 miles from the main campus; at the International Center for Medical Research and training at Cali, Colombia, and at the University's newest campus—the F. Edw. Hebert Center, across the Mississippi River from downtown New Orleans, a development devoted to scientific research.

### **Gibson Hall, the Administration Building**

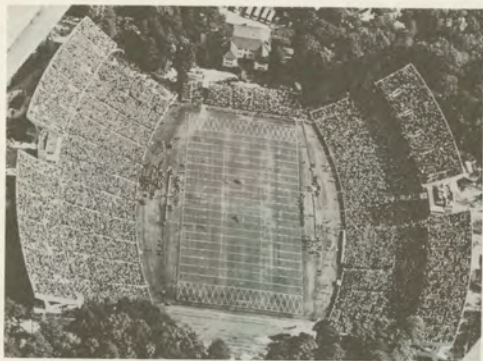




## Where the Wave Will Play . . .



**MIAMI, FLA.**  
Orange Bowl (75,000)



**N. CAROLINA**  
Kenan Stadium (45,500)



**TENNESSEE**  
Neyland Stadium (54,000)



**L. S. U.**  
Tiger Stadium (67,510)

## Where the Wave Will Stay . . .

North Carolina Game (Sept. 30)

**UNIVERSITY MOTEL, Chapel Hill**

Miami Game (Oct. 6)

**HOLIDAY INN, Coral Gables**

Tennessee Game (Nov. 11)

**ANDREW JOHNSON HOTEL, Knoxville**



Since 1842,  
our greatest  
pleasure  
has been that of  
serving you . . .  
our customers.



H O L M E S

H O L M E S

NEW ORLEANS

BATON ROUGE





**THE MARK  
OF DELCIOUS FOOD**

COMPLETE CATERING SERVICES  
AVAILABLE

Wedding Receptions — Parties  
Buffets — Banquets — Picnics

CONSULT US — AT NO OBLIGATION

522-4314

488-6114



TERRIFIC for: PEP RALLIES, rides through the PARK, SIGHTSEEING the FRENCH QUARTER — YES, see BOYCE for one of the 3 BEST . . . HONDA-TRIUMPH-BMW . . . BOYCE also has the BEST SERVICE and PARTS department.

— TWO LOCATIONS —

**Boyce Marine**  
2025 N. Broad  
New Orleans  
949-4496

**Boyce-Honda-Triumph**  
4000 4th Street  
Marrero, La.  
341-3433

**Official Concession Prices at Tulane Stadium**

**FOOD AND BEVERAGE**

BEER .....	50¢
SOFT DRINKS .....	25¢
COFFEE .....	15¢
HOT DOGS .....	35¢
HAMBURGERS .....	50¢
PEANUTS .....	15¢
POPCORN .....	25¢
COTTON CANDY .....	20¢

**CIGARETTES**

AT MACHINES ON GROUND LEVEL.....40¢

**NOVELTIES**

BADGES .....	50¢, 75¢ and \$1.00
PENNANTS .....	\$1.00
STADIUM HORNS .....	\$1.00
PORKY HATS, Felt W/Tulane Patch.....	\$1.50
CAMPUS CAP .....	\$1.00
GOLF CAP W/Tulane Patch.....	\$2.00
LICENSE PLATES .....	\$1.25
TISSUE SHAKERS .....	35¢
MEGAPHONES .....	25¢
BOBBLE HEAD FOOTBALL DOLLS.....	\$1.00
TELESCOPES .....	50¢
COWBELLS .....	50¢
TULANE BUTTON, 3½"	
W/Green Wave Emblem.....	50¢
PLUSH TIGER, 9".....	\$3.00
RAIN BONNETS .....	50¢
RAIN COATS, PLASTIC.....	\$2.00





**DR. RIX N. YARD**  
*Director of Athletics*



**JIM PITTMAN**  
*Head Football Coach*

# TULANE

## ATHLETIC STAFF



**Dr. Harvey Jessup**  
*Asst. to Athletic Director*



**G. J. deMonsabert**  
*Business Manager of Athletics*



**Dr. Paul Trickett**  
*Director of Athletic Medicine*



**Dr. Hugh Rankin**  
*Faculty Chairman of Athletics*



**Tom "Pap" Morris**  
*Offensive Line Coach*



**Joe Blaylock**  
*Offensive Backfield Coach*



**Frank Young**  
*Defensive Line Coach*



**Billy Tohill**  
*Defensive Backfield Coach*



**Joe Clark**  
*Offensive End Coach*



**Pat Culpepper**  
*Linebacker, Defensive End Coach*



**Jack O'Leary**  
*Freshman Coach*



**Jack Orsley**  
*Recruiting Director*



**Bill Curl**  
*Sports Info. Dir.*



**Bubba Porche**  
*Head Trainer*



**Al Miller**  
*Assistant Trainer*



**Nolan Chaix**  
*Supervisor of Grounds*

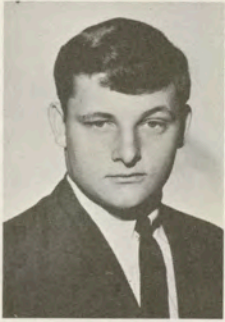


**Troy Phillips**  
*Equipment Mgr.*



**Mac McKinney**  
*Stadium Guard*





**Ricky Adams**



**John Anderson**



**Paul Arnold**



**Warren Bankston**



**Tom Barrows**



**Bart Bookatz**

# TULANE GREEN WAVE



**Steve Boyd**



**Charles Browning**



*Caroline Richardson Women's Dining Hall*



**Brad Calhoun**



**Mike Cammarata**



**Lou Campomenosi**



**Tim Coughlin**



**Jim Darnley**



**Bob Dawson**





**Dan Dembinski**



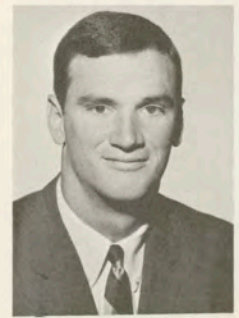
**Duke Duffee**



**Bobby Duhon**



**Vic Eumont**



**Turk Evans**



**Mike Fitzpatrick**

# TULANE GREEN WAVE



**Calvin Fox**



**Wayne Francingues**



*Entrance to Newcomb College*



**Bill Frey**



**Maurice Gartman**



**Roger Green**



**Bruce Guidry**



**Scott Haber**



**John Haines**





Steve Hartnett



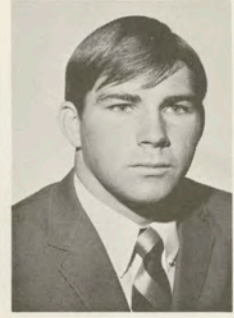
Pat Jacobs



Jim Jancik



Kent Jenkins



Sid Jones

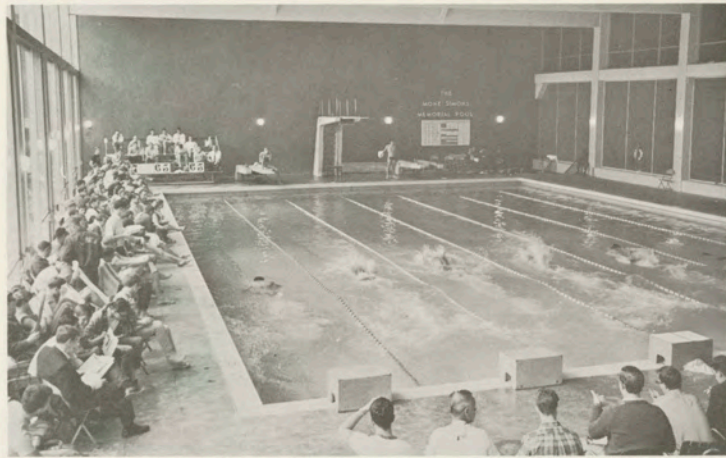


Mark Kirkland

# TULANE GREEN WAVE



Dennis Krauss



*Monk Simons Memorial Pool*



Chuck Loftin



Dennis McAfee



Larry Mickal



Jeff Miles



Howard Moore



John Mueller





Schott Mumme



Tom Nosewicz



John Onofrio



Ernie Parker



Nick Pizzolatto



Uwe Pontius

# TULANE GREEN WAVE



Lloyd Pye



Rick Redd



*Howard-Tilton Memorial Library*



Mike Reed



Steve Shaw



Dean Smith



Derald Smith



Don Smith



John Snell





**Mike Sontag**



**Jim Spring**



**Dick Stafford**



**Larry Stone**



**Ken Tanana**

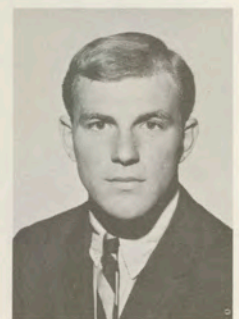
# TULANE GREEN WAVE



*School of Social Work*



**Mike Tolle**



**Jim Trahan**



**Jim Wallace**



**Mason Webster**



**Jim Wright**



**Tom Wright**



**Jimmy Yarter**



# BITE...TEAM...BITE!



## Hold that Whopper at **BURGER KING**

Ready for you in 60 seconds along with crisper new French Fries, creamy shakes, cokes, not to mention Whalers, burgers, franks, etc.



## After the game stop at **BURGER KING**<sup>®</sup>

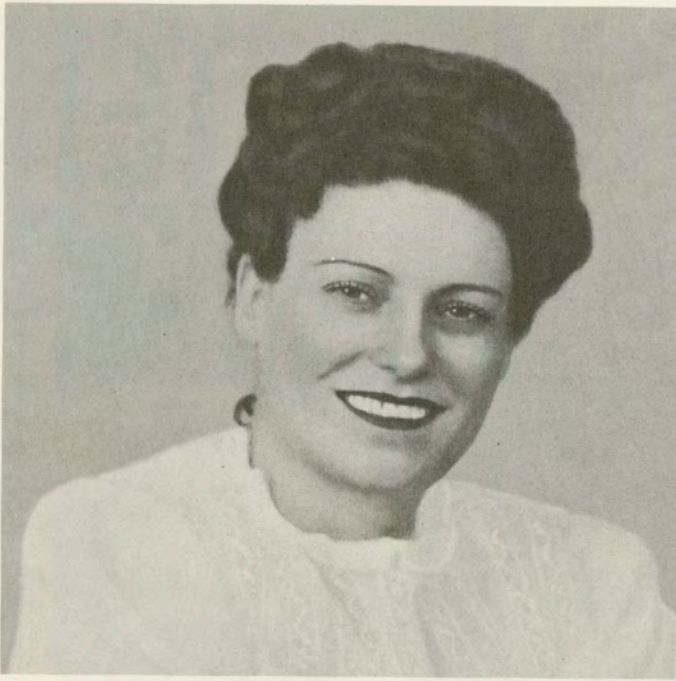
**In Metairie**  
3735 Airline Highway  
916 Veterans Highway  
6900 Veterans Highway

**Gretna**  
78 Westbank Expressway  
**Gentilly**  
4050 Chef Menteur

**Marrero**  
3950 Westbank Expressway  
**New Orleans**  
2423 South Carrollton Ave.







MRS. PHILLIPS

# PHILLIPS RESTAURANT

*For Over  
25 Years  
One of Tulane's  
Biggest Supporters*

## After the Game...

... Plan to stop by Phillips Restaurant at Cherokee and Maple Streets. It's a fun place to meet and enjoy delicious home-cooked pizza, spaghetti, and draft beer. It's always pizza time at Phillips with numerous varieties of pizza. And Mrs. Phillips makes her meat balls and spaghetti "just like mamma used to make" ... So after the game, visit

### PHILLIPS RESTAURANT AND PIZZA HOUSE

#### Cherokee at Maple

Owned by MRS. ROSE PHILLIPS

Managed by MRS. JULES BLASS



# 1967 Green Wave Captains



**BOBBY DUHON**

Genuine All-American candidate who ranked second among nation's quarterbacks last fall in rushing . . . standout on Wave baseball team, and has attracted attention of pro scouts from both sports . . . psychology major from Abbeville, La.



**JIM JANCIK**

One of the finest defensive backs in the South . . . 2nd Team Academic All-American in 1966 . . . outstanding leader who is also an honor student . . . cousin to Houston Oiler back Bobby Jancik . . . Biology major from Caldwell, Texas.

**TWO**  
*World-Famous  
Beverages*



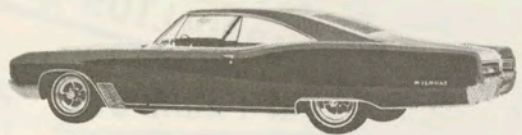
**Canada Dry Bottling Co.**

3636 Broadway

New Orleans, La.



For '68  
**Newest  
Buick  
Yet !**



— SALES —  
— SERVICE —  
— PARTS —

**COLONIAL BUICK, INC.**

3941 Bienville . . . 486-6564



**1** ST IN  
NEW CAR  
SALES IN  
NEW ORLEANS



**GARRARD-MILNER**

Carrollton at Tulane Ave.

488-2601

\* **EVERYTHING FOR EVERY SPORT AND RECREATION . . \***

ATHLETIC  
AND TEAM  
EQUIPMENT



SOUTH'S LARGEST  
SELECTION OF  
SHOES  
FOR ALL  
SPORTS!

South's Largest Selection of Golf Equipment!

EVERYTHING FOR \*  
TENNIS • BOWLING  
ARCHERY • FENCING  
HAND BALL  
AND OTHER SPORTS  
COMPLETE  
TROPHY SELECTION..

FABULOUS SELECTION OF  
GUNS • HUNTING EQUIP.  
FISHING & CAMPING GEAR



DISCOUNT  
HEADQUARTERS  
TOYS • GAMES • DOLLS  
BICYCLES • TRAINS!  
at BIG SAVINGS!

**3604 SO. CARROLLTON AVE.**  
at **PALM ST.**

OPEN DAILY 9:30 A.M.-6 P.M.  
THURSDAY 9:30 A.M.-8:30 P.M.

PHONE 488-2686

LOUISIANA'S LARGEST  
**YOUR  
SPECIALISTS**  
IN SPORTS

**ecwity**  
SPORTING GOODS



**BERGERON**  
wants your business . . .  
they'll trade to get it,  
and work hard  
to keep it!

**BERGERON**  
**Plymouth** AUTHORIZED DEALER  
**CHRYSLER**  
MOTORS CORPORATION  
3525 VETERANS AT LAKESIDE · 888-2131

# GO ON, CHICKEN OUT!

It's the sensible thing to do. Convenient, tasty, economical, delicious. The wife-saving solution to those occasions when there just isn't enough time to cook and clean up after, when you're going out, expecting company or best of all when you have that overwhelming craving for delicious, fried chicken. In less time than it takes to tell about it you can serve your family a complete meal from PANN'S KENTUCKY FRIED CHICKEN.

**PANN'S**  
**Kentucky Fried Chicken**  
2814 JEFFERSON HWY. · 2529 WILLIAMS BLVD.

## Do You Remember? . . . . . This Green Wave Star of the 1930's

One of Tulane's outstanding all-around athletes, this man capped his Green Wave football career by earning All-America honors in 1934 as a halfback.

He led the 1934 squad to a 9-1 regular season record and a bid to participate in the first Sugar Bowl game. He was destined to serve the Sugar Bowl as President from 1958-1960. But on January 1, 1935, he served only Tulane—and he served her well—ripping off an 85-yard touchdown run to lead the Wave to a 20-14 victory over Temple University in the inaugural Classic.

A four-sport letterman during his college days, he proved his versatility in the coaching field by tutoring Tulane football, basketball and baseball teams during the 1940's and served as Athletic Director from 1945 until 1947.

Some of his teammates during the early 1930's include Richard Bankston, father of Wave quarterback Warren Bankston; Noel Loftin, father of Wave tailback Chuck Loftin; Ernie Gould, an executive with the New Orleans Recreation Department; and Harold G. "Hoss" Memtsas, one of the outstanding high school football coaches in the New Orleans area.

His father, who served as head trainer at Tulane from 1921 until 1943, is a charter member of the Helms Foundation Athletic Trainers Hall of Fame. Do you remember his name?



**Answer on  
Page 56**



# 1967 TULANE ROSTER

Name (Number)	Position	Height	Weight
Class _____ Home Town (High School), H. S. Coach			
<b>ADAMS, RICKY (58)</b>	<b>ST</b>	<b>6-1</b>	<b>230</b>
Sophomore Bogalusa (Bogalusa), Lewis Murray			
<b>*ANDERSON, JOHN (64)</b>	<b>WG</b>	<b>5-11</b>	<b>200</b>
Junior Homer (Homer), Bobby Hudson			
<b>*ARNOLD, PAUL (31)</b>	<b>FB</b>	<b>6-0</b>	<b>180</b>
Senior Monterrey, Mex. (N. Mex. Mil.), Marshall Brown			
<b>*BANKSTON, WARREN (19)</b>	<b>QB</b>	<b>6-4</b>	<b>220</b>
Junior Hammond (Hammond), Glenn Brady			
<b>BARROWS, TOM (57)</b>	<b>WG</b>	<b>6-4</b>	<b>210</b>
Junior Elmwood, Ill. (Homewood), James Arneberg			
<b>BOOKATZ, BART (27)</b>	<b>PK</b>	<b>5-11</b>	<b>190</b>
Sophomore Dallas, Tex. (St. Mark's), Bill Rippetoe			
<b>BOYD, STEVE (78)</b>	<b>DT</b>	<b>6-2</b>	<b>195</b>
Sophomore Clovis, N. Mex. (Clovis), Steve Graham			
<b>BROWNING, CHARLES (74)</b>	<b>DT</b>	<b>6-1</b>	<b>210</b>
Sophomore Baton Rouge (Baton Rouge), Ray Porter			
<b>CALHOUN, BRAD (12)</b>	<b>SAF.</b>	<b>6-2</b>	<b>180</b>
Sophomore Chickasaw, Ala. (Vigor), _____			
<b>**CAMMARATA, MIKE (60)</b>	<b>WG</b>	<b>5-11</b>	<b>210</b>
Senior New Orleans (St. Aloysius), Bill Arms			
<b>**CAMPOMENOSI, LOU (22)</b>	<b>DHB</b>	<b>5-11</b>	<b>175</b>
Senior Charleston, S. C. (Bishop England), Ronald Hanna			
<b>**COUGHLIN, TIM (35)</b>	<b>FB</b>	<b>6-1</b>	<b>190</b>
Senior Dayton, O. (Oakwood), Edward Wisocki			
<b>**DARNLEY, JIM (23)</b>	<b>WB</b>	<b>5-9</b>	<b>170</b>
Senior Theodore, Ala. (Theodore), C. A. Douglas			
<b>DAWSON, BOB (15)</b>	<b>LB</b>	<b>6-0</b>	<b>180</b>
Junior Scottsboro, Ala. (Scottsboro), John Meadows			
<b>**DEMBINSKI, DAN (72)</b>	<b>ST</b>	<b>6-4</b>	<b>215</b>
Senior Chicago, Ill. (St. Patrick), Fred Dempsey			
<b>DUFFEE, DUKE (70)</b>	<b>SG</b>	<b>6-2</b>	<b>190</b>
Sophomore Harvey (West Jefferson), Dick Preis			
<b>**DUHON, BOBBY (13)</b>	<b>QB</b>	<b>6-0</b>	<b>185</b>
Senior Abbeville (Abbeville), Sam Scelfo			
<b>**EUMONT, VIC (63)</b>	<b>DG</b>	<b>5-11</b>	<b>200</b>
Senior Chalmette (Holy Cross), John Kalbacher			
<b>EVANS, TURK (84)</b>	<b>WE</b>	<b>6-2</b>	<b>185</b>
Junior Lexington, Ky. (Lafayette), John Snowden			
<b>FOX, CALVIN (67)</b>	<b>DG</b>	<b>6-2</b>	<b>210</b>
Junior Wichita, Kan. (Derby), Bruce Bierig			
<b>FRANCINGUES, WAYNE (10)</b>	<b>TB</b>	<b>5-11</b>	<b>180</b>
Sophomore Metairie (Jesuit), Ken Tarzetti			
<b>FREY, BILL (83)</b>	<b>WE</b>	<b>6-1</b>	<b>180</b>
Sophomore Mobile, Ala. (McGill), A. J. Conlin			
<b>GARTMAN, MAURICE (37)</b>	<b>LB</b>	<b>6-0</b>	<b>175</b>
Sophomore Semmes, Ala. (Montgomery), Charles Leverett			
<b>GREEN, ROGER (45)</b>	<b>DHB</b>	<b>6-0</b>	<b>175</b>
Junior Houston, Tex. (Lee), Gilbert Bartosh			
<b>*GUIDRY, BRUCE (39)</b>	<b>DE</b>	<b>5-11</b>	<b>195</b>
Senior Houma (Terrebonne), Frank Spruiell			
<b>HABER, SCOTT (81)</b>	<b>DE</b>	<b>6-2</b>	<b>200</b>
Sophomore Houston, Tex. (Bellaire), Mickey Sullivan			
<b>HAINES, JOHN (54)</b>	<b>C</b>	<b>6-1</b>	<b>185</b>
Sophomore Theodore, Ala. (Theodore), C. A. Douglas			
<b>*HARTNETT, STEVE (69)</b>	<b>DG</b>	<b>6-1</b>	<b>215</b>
Junior New Orleans (Warren Easton), Earl Hubley			
<b>JACOBS, PAT (24)</b>	<b>WE</b>	<b>5-11</b>	<b>160</b>
Sophomore Dallas, Tex. (St. Mark's), Bill Rippetoe			
<b>**JANCIK, JIM (14)</b>	<b>SAF</b>	<b>6-0</b>	<b>175</b>
Senior Caldwell, Tex. (Caldwell), Max Webb			
<b>JENKINS, KENT (11)</b>	<b>QB</b>	<b>5-10</b>	<b>170</b>
Sophomore Bogalusa (Bogalusa), Lewis Murray			
<b>JONES, SID (88)</b>	<b>SE</b>	<b>5-11</b>	<b>195</b>
Sophomore Lake Charles (Landry), Karl Blanchard			
<b>KIRKLAND, MARK (32)</b>	<b>FB</b>	<b>5-11</b>	<b>185</b>
Sophomore Baytown, Tex. (Lee), Pete Sultis			

Name (Number)	Position	Height	Weight
Class _____ Home Town (High School), H. S. Coach			
<b>**KRAUSS, DENNIS (21)</b>	<b>DHB</b>	<b>5-11</b>	<b>180</b>
Senior Wickliffe, O. (Wickliffe), Ed Logan			
<b>*LOFTIN, CHUCK (44)</b>	<b>TB</b>	<b>5-11</b>	<b>180</b>
Junior Midland, Tex. (Lee), Joe Newbill			
<b>McAFEE, DENNIS (38)</b>	<b>LB</b>	<b>6-0</b>	<b>185</b>
Sophomore Baytown, Tex. (Lee), Pete Sultis			
<b>*MICKAL, LARRY (68)</b>	<b>SG</b>	<b>6-2</b>	<b>215</b>
Junior New Orleans (De La Salle), Leemon McHenry			
<b>MILES, JEFF (59)</b>	<b>DT</b>	<b>6-1</b>	<b>205</b>
Junior Crowley (Crowley), James Griffin			
<b>*MOORE, HOWARD (50)</b>	<b>OC</b>	<b>6-1</b>	<b>210</b>
Junior Dallas, Tex. (Bryan Adams), Bob Cowsar			
<b>MUELLER, JOHN (25)</b>	<b>WB</b>	<b>5-10</b>	<b>170</b>
Sophomore Shawnee Mission, Kan. (East), Arch Unruh			
<b>MUMME, SCHOTT (75)</b>	<b>DT</b>	<b>6-1</b>	<b>195</b>
Senior New Orleans (De La Salle), Leemon McHenry			
<b>NOSEWICZ, TOM (77)</b>	<b>WT</b>	<b>6-6</b>	<b>235</b>
Senior Detroit, Mich. (U. of Detroit), Jim Leary			
<b>ONOFRIO, JOHN (28)</b>	<b>SAF</b>	<b>5-10</b>	<b>170</b>
Sophomore Columbia, Mo. (David Hickman), Robert Roark			
<b>*PARKER, ERNIE (33)</b>	<b>LB</b>	<b>6-1</b>	<b>205</b>
Junior Hackberry (Hackberry), John Debarg			
<b>*PIZZOLATTO, NICK (87)</b>	<b>WE</b>	<b>6-0</b>	<b>200</b>
Junior Jennings (Jennings), Ed Harrelson			
<b>**PONTIUS, UWE (56)</b>	<b>PK</b>	<b>6-2</b>	<b>205</b>
Senior Oklahoma City, Okla. (Putnam City), did not play			
<b>*PYE, LLOYD (47)</b>	<b>TB</b>	<b>5-11</b>	<b>175</b>
Junior Roseland (Amite), Jack Pope			
<b>REDD, RICHARD (49)</b>	<b>DHB</b>	<b>6-0</b>	<b>165</b>
Sophomore Beaumont, Tex. (Beaumont), Darrell Shaver			
<b>REED, MIKE (89)</b>	<b>DE</b>	<b>6-4</b>	<b>195</b>
Sophomore Wichita, Kan. (Southeast), Marvin Vandever			
<b>SHAW, STEVE (62)</b>	<b>DG</b>	<b>6-0</b>	<b>210</b>
Sophomore Houston, Tex. (Austin), Bill Cook			
<b>SMITH, DEAN (76)</b>	<b>ST</b>	<b>6-0</b>	<b>205</b>
Junior Dickinson, Tex. (Dickinson), Bernard Callendar			
<b>SMITH, DERALD (30)</b>	<b>LB</b>	<b>6-0</b>	<b>200</b>
Sophomore Alexandria (Bolton), Billy Jarrell			
<b>*SMITH, DON (34)</b>	<b>LB</b>	<b>5-11</b>	<b>190</b>
Senior Jena (Jena), Clyde Thompson			
<b>*SNELL, JOHN (73)</b>	<b>DT</b>	<b>6-2</b>	<b>205</b>
Junior Groves, Tex. (Port Neches), Kenneth Watson			
<b>*SONTAG, MIKE (61)</b>	<b>WG</b>	<b>6-1</b>	<b>195</b>
Senior Miami, Fla. (Palmetto), Gene Gibson			
<b>**SPRING, JIM (53)</b>	<b>OC</b>	<b>6-0</b>	<b>190</b>
Senior Denham Springs (Denham Springs), Charles Borde			
<b>STAFFORD, DICK (26)</b>	<b>SAF</b>	<b>5-10</b>	<b>160</b>
Sophomore Ft. Sill, Okla. (Lawton), Don Jimerson			
<b>STONE, LARRY (52)</b>	<b>DG</b>	<b>6-3</b>	<b>200</b>
Sophomore Springhill (Springhill), Travis Farrar			
<b>TANANA, KEN (85)</b>	<b>SE</b>	<b>6-5</b>	<b>215</b>
Junior Detroit, Mich. (Benedictine), John Cullen			
<b>TOLLE, MIKE (65)</b>	<b>DG</b>	<b>5-9</b>	<b>200</b>
Sophomore Baton Rouge (Lee), Winton Turner			
<b>*TRAHAN, JIM (29)</b>	<b>WB</b>	<b>5-11</b>	<b>170</b>
Junior Houma (Terrebonne), Frank Spruiell			
<b>*WALLACE, JIM (55)</b>	<b>DE</b>	<b>6-1</b>	<b>185</b>
Junior Bowling Green, Ky. (Bowling G.), Jim Pickens			
<b>WEBSTER, MASON (86)</b>	<b>DHB</b>	<b>5-11</b>	<b>165</b>
Junior New Orleans (De La Salle), Leemon McHenry			
<b>**WRIGHT, JIM (79)</b>	<b>WT</b>	<b>6-4</b>	<b>230</b>
Senior Paducah, Ky. (Tilghman), Ed Rutledge			
<b>*WRIGHT, TOM (80)</b>	<b>SE</b>	<b>6-3</b>	<b>185</b>
Junior Sulphur Springs, Tex. (S. Springs), Johnny Dobson			
<b>YARTER, JIMMY (40)</b>	<b>TB</b>	<b>5-11</b>	<b>175</b>
Sophomore Houston, Tex. (Bellaire), Mickey Sullivan			

\*—Denotes varsity letters earned.



See Your **TEXACO DEALER**



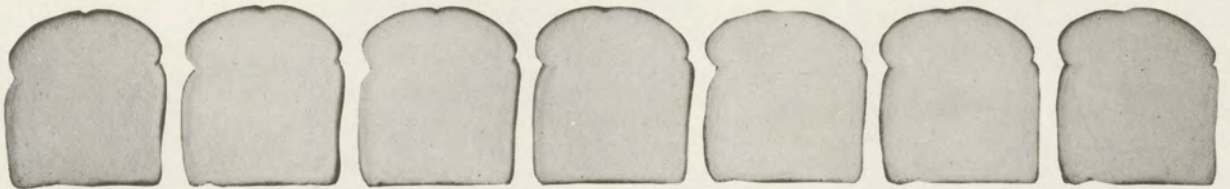
# Only

\$12.00 VALUE

SELLS FOR ONLY \$5.98

# Texaco

# has it!



## No holes in the Sunbeam line!

Batter Whipped Bread

Brown 'n' Serve Rolls

Hamburger Buns

Raisin Bread

Hot Dog Rolls

Whole Wheat Bread

Sweet Rolls

Rite Diet Bread

*Those on the go—go Sunbeam*

**HOLSUM** *Sunbeam* **BREAD**





Coca-Cola... served at the training centers of the United States Olympic Team.

**Coke has the ta**  
TRADE-MARK ®



# PROBABLE STARTING LINEUPS

## MIAMI

### Offense —

Pos.	No.	Name
SE	83	GAYLORD CLEAVES
LT	72	JEFF BAUGHMAN
LG	67	LARRY HARRIS
C	56	PAUL KRASULA
RG	68	DAVE TSALOFF
RT	79	RON BASH
TE	81	GARY ARTHUR
QB	10	KENT THOMPSON
TB	22	BOB GLOVER
WB	23	JIM SHAW
FB	32	DON WADE

### Defense —

Pos.	No.	Name
LE	84	MERV NUGENT
LT	78	KEN ROOT
MG	62	LARRY DRAPER
RT	76	ED JOHNSON
RE	80	RON BUTCHER
LLB	30	BOB RIEBER
RLB	60	BOB BABICH
A	46	BOB THOMAS
LHB	45	JOHN AULT
RHB	26	DICK BORON
S	25	BOB SMITH

## Redskin Numbers

10 Kent Thompson, QB	53 Marty Torgler, C
11 Joe Minotti, QB	54 Jim Shanahan, LB
14 Mike Harp, A	55 Dick Shambo, LB
15 Jeff Lieberman, QB	56 Paul Krasula, C
17 Jerry Lewis, QB	57 Don Waggoner, LB
20 Al Campbell, FB	58 Harold Eighme, C
21 Dan Gerhardt, A	60 Bob Babich, LB
22 Bob Glover, TB	61 John Collier, OG
23 Jim Shaw, WB	62 Larry Draper, MG
24 Al Moore, TB	63 Ted Pechaitis, DT
25 Bob Smith, S	64 Jim Grywalski, OG
26 Dick Boron, DHB	65 Bob Young, OG
27 Keith Logan, DHB	66 Mike Connerton, OG
28 Jim Baylor, S	67 Larry Harris, OG
29 Ray Yerg, WB	68 Dave Tsaloff, OG
30 Bob Rieber, LB	69 Jerry Studer, DT
32 Don Wade, FB	70 Tom Pechaitis, MG
33 Cleveland Dickerson, FB	71 Steve Wyatt, OT
34 Larry Holstein, A	72 Jeff Baughman, OT
36 John Tuggle, DHB	73 Dave Hutchins, OT
37 Tom Pannanen, DT	74 Errol Kahoun, DT
38 Mike Walters, OT	76 Ed Johnson, DT
39 Dave Kergaard, OT	77 Chuck Gilford, DT
41 Bill Leftwich, WB	78 Ken Root, DT
43 Bill Oldershaw, S	79 Ron Bash, OT
44 Walter Barnes, TB	80 Ron Butcher, DE
45 John Ault, DHB	81 Gary Arthur, TE
46 Bob Thomas, A	82 Ron Core, LB
47 Paul Schroder, DHB	83 Gaylord Cleaves, SE
49 Tim Admonius, OG	84 Merv Nugent, DE
50 Ken Kempf, C	85 Bob Coode, OT
51 Bob Priddy, LB	86 George Muckle, DE
52 Greg Ware, MG	87 Tim Fortney, SE
	89 Houston Love, TE

## TULANE

### Offense —

Pos.	No.	Name
WE	87	NICK PIZZOLATTO
WT	79	JIM WRIGHT
WG	60	MIKE CAMMARATA
C	50	HOWARD MOORE
SG	68	LARRY MICKAL
ST	72	DAN DEMBINSKI
SE	88	SID JONES
QB	13	BOBBY DUHON
WB	29	JIM TRAHAN
FB	35	TIM COUGHLIN
TB	44	CHUCK LOFTIN

### Defense —

Pos.	No.	Name
LE	81	SCOTT HABER
LT	73	JOHN SNELL
LG	69	STEVE HARTNETT
RG	63	VIC EUMONT
RT	75	SCHOTT MUMME
RE	39	BRUCE GUIDRY
LLB	37	MAURICE GARTMAN
RLB	33	ERNIE PARKER
LHB	21	DENNIS KRAUSS
RHB	22	LOU CAMPOMENOSI
SAF	14	JIM JANCIK

## Tulane Numbers

10 Wayne Francingues, TB	53 Jim Spring, C
11 Kent Jenkins, QB	54 John Haines, C
12 Brad Calhoun, SAF	55 Jim Wallace, DE
13 Bobby Duhon, QB	56 Uwe Pontius, PK
14 Jim Jancik, SAF	57 Tom Barrows, WG
15 Bob Dawson, LB	58 Ricky Adams, ST
19 Warren Bankston, QB	59 Jeff Miles, DT
21 Dennis Krauss, DHB	60 Mike Cammarata, WG
22 Lou Campomenosi, DHB	61 Mike Sontag, WG
23 Jim Darnley, WB	62 Steve Shaw, DG
24 Pat Jacobs, WE	63 Vic Eumont, DG
25 John Mueller, WB	64 John Anderson, WG
26 Dick Stafford, SAF	65 Mike Tolle, DG
27 Bart Bookatz, PK	67 Calvin Fox, DG
28 John Onofrio, SAF	68 Larry Mickal, SG
29 Jim Trahan, WB	69 Steve Hartnett, DG
30 Derald Smith, LB	70 Duke Duffee, SG
31 Paul Arnold, FB	72 Dan Dembinski, ST
32 Mark Kirkland, FB	73 John Snell, DT
33 Ernie Parker, LB	74 Charles Browning, DT
34 Don Smith, LB	75 Schott Mumme, DT
35 Tim Coughlin, FB	76 Dean Smith, ST
37 Maurice Gartman, LB	77 Tom Nosewicz, WT
38 Dennis McAfee, LB	78 Steve Boyd, DT
39 Bruce Guidry, DE	79 Jim Wright, WT
40 Jimmy Yarter, DHB	80 Tom Wright, SE
44 Chuck Loftin, TB	81 Scott Haber, DE
45 Roger Green, DHB	83 Bill Frey, WE
47 Lloyd Pye, TB	84 Turk Evans, WE
49 Richard Redd, DHB	85 Ken Tanana, SE
50 Howard Moore, C	86 Mason Webster, DHB
52 Larry Stone, DG	87 Nick Pizzolatto, WE
	88 Sid Jones, SE
	89 Mike Reed, DE

ste you never get tired of.



**WARREN  
TAYLOR  
SAYS**



**ALL FORDS  
COME FROM  
FORD ---**

**it's the dealer that  
makes the difference**

**Go Greenies**



**WARREN TAYLORS'  
CANAL**

**1801 CANAL at CLAIBORNE**



**524-8181**



# 1967 MIAMI ROSTER

Name (Number)	Position, Height, Weight	Home Town (High School)
ADMONIUS, TIM (49)	OG, 6-2, 205	Alliance (Alliance)
ALEXANDER, TED (57)	OG, 5-11, 211	Middletown (Middletown)
ARTHUR, GARY (81)	TE, 6-5, 220	Dayton (Chaminade)
**AULT, JOHN (45)	DHB, 6-2, 186	Findlay (Findlay)
*BABICH, BOB (60)	LB, 6-2, 222	Campbell (Memorial)
BARNES, WALTER (44)	TB, 5-10, 191	Cincinnati (Withdraw)
**BASH, RON (79)	OT, 6-2, 217	Findlay (Findlay)
**BAUGHMAN, JEFF (72)	TE-OT, 6-1, 202	Lancaster (Lancaster)
BAYLOR, JIM (28)	S, 5-10, 175	Cleveland (Glenville)
*BORON, DICK (26)	DHB, 5-11, 187	Shadyside (Bellaire St. John)
*BOWSER, GIL (85)	DE, 6-2, 206	Lima (Shawnee)
*BUTCHER, RON (80)	DE, 6-1, 211	Cleveland (Glenville)
CAMPBELL, AL (20)	FB, 6-0, 193	Elyria (Senior)
*CLEAVES, GAYLORD (83)	SE, 5-11, 186	Lima (Shawnee)
COLLIER, JOHN (61)	OT, 6-0, 216	Cleveland (Shaker Heights)
*CONNERTON, MIKE (66)	OG, 5-11, 197	Cincinnati (Roger Bacon)
COODE, BOB (75)	OT, 6-1, 207	Euclid (Euclid)
*CORE, RON (82)	LB-DE, 6-2, 194	Lima (Shawnee)
DICKERSON, CLEVELAND (33)	FB, 6-2, 207	Sandusky (Sandusky)
DRAPER, LARRY (62)	MG, 5-10, 209	Cleveland (Glenville)
EIGHME, HAROLD (58)	C, 6-2, 202	Bridgeport (Bridgeport)
FORTNEY, TIM (87)	SE, 6-1, 193	St. Mary's (St. Mary's)
**GERHARDT, DAN (21)	A, 5-8, 176	Mt. Sterling (Mt. Sterling)
GILFORD, CHUCK (77)	DT, 6-2, 237	Cincinnati (Princeton)
*GLOVER, BOB (22)	TB, 5-9, 163	Blacklick (Gahanna Lincoln)
*GRYWALSKI, JIM (64)	OG, 5-10, 209	Canton (Central Catholic)
HARP, MIKE (14)	A, 5-10, 185	Toledo (Whitmer)
HARRIS, LARRY (67)	OG, 6-0, 208	Cincinnati (Purcell)
HOLSTEIN, LARRY (34)	A, 6-1, 185	Hamilton (Catholic)
HUTCHINS, DAVE (73)	OT, 6-3, 234	Vandalia (Butler)
JOHNSON, ED (76)	DT, 5-11, 228	Toledo (Bowsher)
*KAHOUN, ERROL (74)	DT, 6-3, 239	Coshocton (Three Rivers)
KEMPF, KEN (50)	C, 6-1, 210	Coshocton (Coshocton)
KERGAARD, DAVE (39)	OT, 5-11, 214	Rocky River (Rocky River)
**KRASULA, PAUL (56)	C, 6-3, 224	Toledo (Central Catholic)

Name (Number)	Position, Height, Weight	Home Town (High School)
LEFTWICH, BILL (41)	WB, 5-10, 169	Plain City (Jonathan Alder)
LEWIS, JERRY (17)	QB, 6-0, 174	North Chicago, Ill. (North Chicago)
LIEBERMAN, JEFF (15)	QB, 6-1, 164	Cleveland (Heights)
LOGAN, KEITH (27)	S, 6-0, 183	North Royalton (Root)
LOVE, HOUSTON (89)	TE, 6-2, 183	Elyria (Elyria)
*MINOTTI, JOE (11)	QB, 5-11, 190	Youngstown (Cardinal Mooney)
**MOORE, AL (24)	TB, 5-11, 184	Cincinnati (Central)
MUCKLE, GEORGE (86)	DE, 6-0, 182	Steubenville (Catholic)
NUGENT, MERV (84)	DE, 6-0, 186	New London (New London)
OLDERSHAW, BILL (43)	DHB, 6-1, 182	Farmington, Mich. (North)
PANNANEN, TOM (37)	DT, 6-2, 226	Arcadia (Arcadia)
PECHAITIS, TED (63)	MG, 6-2, 211	Vermilion (Firelands)
PECHAITIS, TOM (70)	OT, 6-2, 213	Vermilion (Firelands)
PRIDDY, BOB (51)	LB, 5-9, 184	Lima (Shawnee)
*RIEBER, BOB (30)	LB, 6-0, 187	Massapequa, N. Y. (Massapequa)
ROOT, KEN (78)	DT, 6-3, 228	Cincinnati (Princeton)
SCHRODER, PAUL (47)	DHB, 6-0, 176	Cincinnati (McNicholas)
SHAMBO, DICK (55)	LB, 5-10, 170	Wyoming (Wyoming)
SHANAHAN, JIM (54)	LB, 6-0, 191	Columbus (Watterson)
**SHAW, JIM (23)	WB, 5-11, 192	Youngstown (Ursuline)
*SMITH, BOB (25)	S, 6-1, 171	Cincinnati (Hughes)
STUDER, JERRY (69)	DT, 6-2, 216	Ottawa (Ottawa-Glandorf)
*THOMAS, BOB (46)	A, 6-1, 183	Wadsworth (Wadsworth)
THOMPSON, KENT (10)	QB, 5-11, 171	Covington (Covington)
TORGLER, MARTY (53)	C, 6-0, 202	Toledo (Woodward)
**TSALOFF, DAVE (68)	OG, 6-1, 220	Cuyahoga Falls (St. Vincent)
TUGGLE, JOHN (36)	DHB, 6-1, 172	Eaton (Eaton)
WADE, DON (32)	FB, 6-1, 203	Huntington, W. Va. (Huntington)
WAGGONER, DON (59)	LB, 5-11, 206	Elida (Lima Central Catholic)
WALTERS, MIKE (38)	OT, 6-2, 210	Hamilton (Catholic)
*WARE, GREG (52)	MG, 5-10, 207	Pittsburgh, Pa. (Rocky River)
WYATT, STEVE (71)	OT, 6-4, 228	Washington C. H. (Middletown)
YERG, RAY (29)	WB, 5-6, 173	Fairborn (Fairborn)
YOUNG, BOB (65)	OG, 5-11, 204	Zanesville (Zanesville)

\*Denotes number of letters won. A—Apache (Monster back).



# The Record Book

## TEAM GAME

Most total offense—772 yards by 1937 team against Mississippi College.  
Most yards rushing—638 yards by 1937 team against Mississippi College.  
Most yards passing—298 yards by 1950 team against Navy.  
Most passes attempted—42 by 1965 team against Florida.  
Most passes completed—24 by 1962 team against Tennessee.  
Most touchdown passes—5 by 1952 team against Louisiana College.  
Most points scored—95 against Southwestern Louisiana (now USL) by 1912 team.

## INDIVIDUAL GAME

Leading rusher—Eddie Price, 238 yards on 22 carries against Navy in 1949.  
Leading passer—Joe Ernst, 292 yards on 18 completions in 32 attempts against Navy in 1950; Ted Miller, 258 yards on 20 completions of 30 attempts against Tennessee in 1962.  
Most scoring passes—Fred Dempsey, 5 against La. College in 1952.  
Leading scorer—Bill Banker, 28 points against Auburn in 1950.  
Most passes caught—Joe Shinn, 10 against Navy in 1950.  
Most yardage on passes caught—Joe Shinn, 152 against Georgia Tech in 1952.  
Longest kickoff return—Howard Bryan, 100 yards, against Georgia Tech in 1933;  
Bobby Kellogg, 100 yards against Ole Miss in 1939;  
Lou Thomas, 100 yards, against North Carolina in 1941;  
Eddie Price, 100 yards, against Alabama in 1947.  
Longest punt return—Jimmy Glisson, 89 yards, against L.S.U. in 1948;  
Tommy Warner, 89 yards, against Virginia Tech in 1957.  
Longest touchdown run from scrimmage—Harry Robinson, 89 yards, against S.M.U. in 1944.  
Longest scoring pass play—Bill Bonar to George Kinck, 76 yards, against Notre Dame in 1949.  
Longest runback of interception to score—Fred Wilcox, 91 yards, against Ole Miss in 1954.  
Longest punt—O. J. Key, 87 yards counting roll, against Florida in 1946.  
Field goal—Don Bright, 53 yards, against Duke in 1964.

## TEAM SEASON

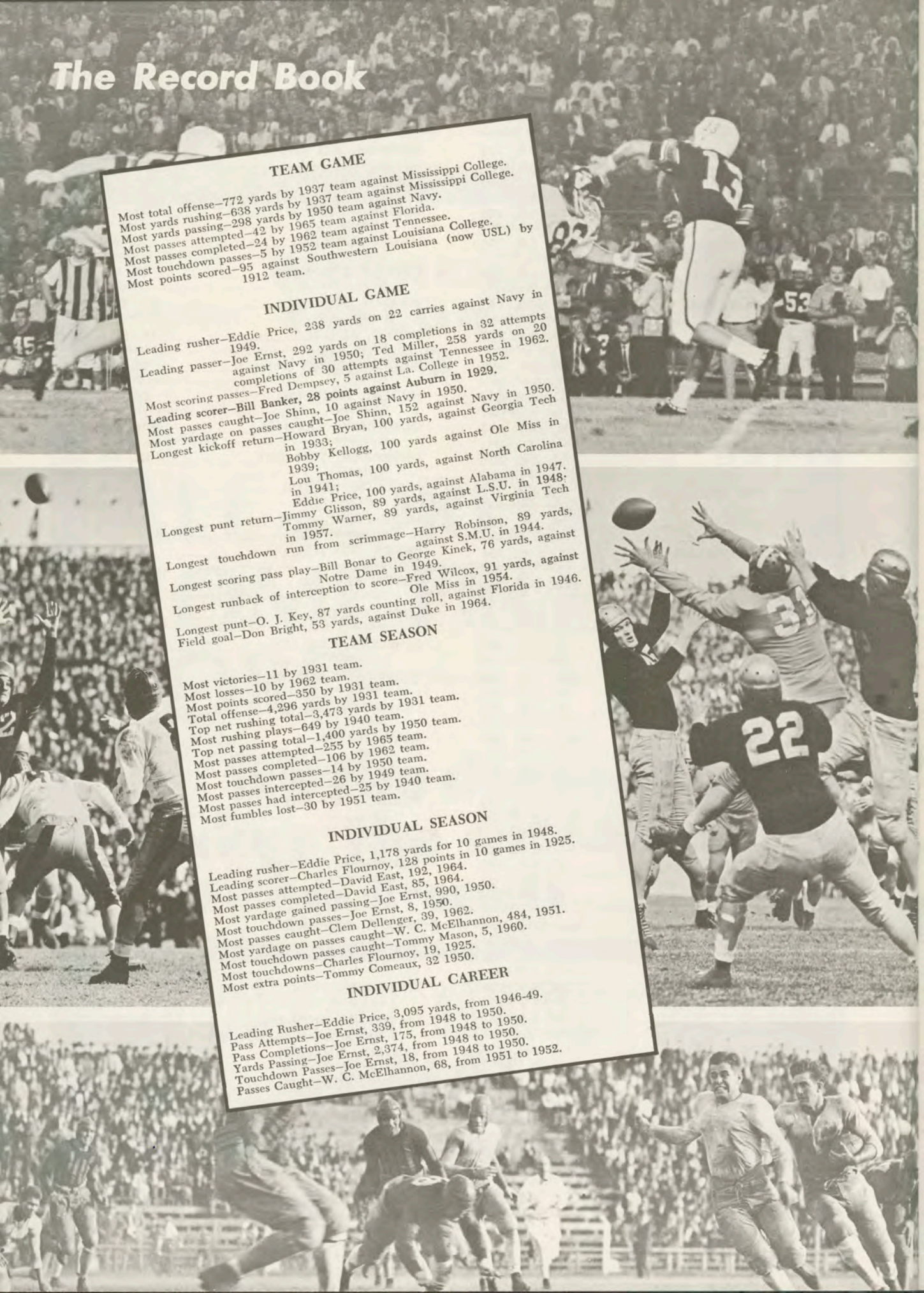
Most victories—11 by 1931 team.  
Most losses—10 by 1962 team.  
Most points scored—350 by 1931 team.  
Total offense—4,296 yards by 1931 team.  
Top net rushing total—3,473 yards by 1931 team.  
Most rushing plays—649 by 1940 team.  
Top net passing total—1,400 yards by 1950 team.  
Most passes attempted—255 by 1965 team.  
Most passes completed—106 by 1962 team.  
Most touchdown passes—14 by 1950 team.  
Most passes intercepted—26 by 1949 team.  
Most passes had intercepted—25 by 1940 team.  
Most fumbles lost—30 by 1951 team.

## INDIVIDUAL SEASON

Leading rusher—Eddie Price, 1,178 yards for 10 games in 1948.  
Leading scorer—Charles Flournoy, 128 points in 10 games in 1925.  
Most passes attempted—David East, 192, 1964.  
Most passes completed—David East, 85, 1964.  
Most yardage gained passing—Joe Ernst, 990, 1950.  
Most touchdown passes—Joe Ernst, 8, 1950.  
Most yardage on passes caught—Clem Dellenger, 39, 1962.  
Most passes caught—W. C. McElhannon, 484, 1951.  
Most touchdown passes caught—Tommy Mason, 5, 1960.  
Most touchdowns—Charles Flournoy, 19, 1925.  
Most touchdowns—Charles Flournoy, 19, 1925.  
Most extra points—Tommy Comeaux, 32 1950.

## INDIVIDUAL CAREER

Leading Rusher—Eddie Price, 3,095 yards, from 1946-49.  
Pass Attempts—Joe Ernst, 339, from 1948 to 1950.  
Pass Completions—Joe Ernst, 175, from 1948 to 1950.  
Yards Passing—Joe Ernst, 2,374, from 1948 to 1950.  
Touchdown Passes—Joe Ernst, 18, from 1948 to 1950.  
Passes Caught—W. C. McElhannon, 68, from 1951 to 1952.





# It all adds up

... to excitement ... to action ... to the  
most professional sports coverage on  
New Orleans television:

Sports Director Hap Glaudi, witty, sharp,  
knowledgeable + Paul Hornung, one of the  
greatest pros of all time + Saints' Head  
Coach Tom Fears, the voice from the top +  
Woody Van Dyke, who calls 'em  
as he sees 'em.

Yes, it all adds up to the most exciting  
sports season in years. Don't  
miss a minute of it ...

Watch all 4 on 4 ... the station  
of the Saints!





# LOOK...



Your Money Now Earns

# 6 $\frac{1}{4}$ %

INTEREST

COMPUTED DAILY—COMPOUNDED QUARTERLY

EACH ACCOUNT INSURED  
UP TO

# \$25,000

By Savings Guaranty Corp.

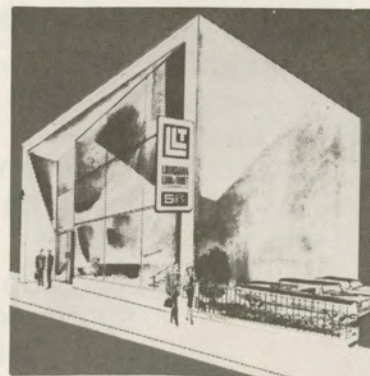
A company doing business in Louisiana  
under the authority of, and supervised by  
the Louisiana Insurance Commissioner.



This seal is your guarantee  
of maximum safety and  
security for your invested  
dollars.

No need to tie up your money in C. D.'s or Time Certificates in order to earn the highest available interest. LL&T offers a big  $6\frac{1}{4}$ % interest computed daily and compounded quarterly, and you may withdraw your funds at any time without prior notice and still receive the full interest accrued as of the date of withdrawal. Funds received by the 20th of each month earn interest from the 1st. Good things start to happen the day you start investing at LL&T!

HOURS 8:30 to 5 P.M.  
MON. - THURS.  
8:30 to 7 P.M. FRI.



## LOUISIANA LOAN & THRIFT

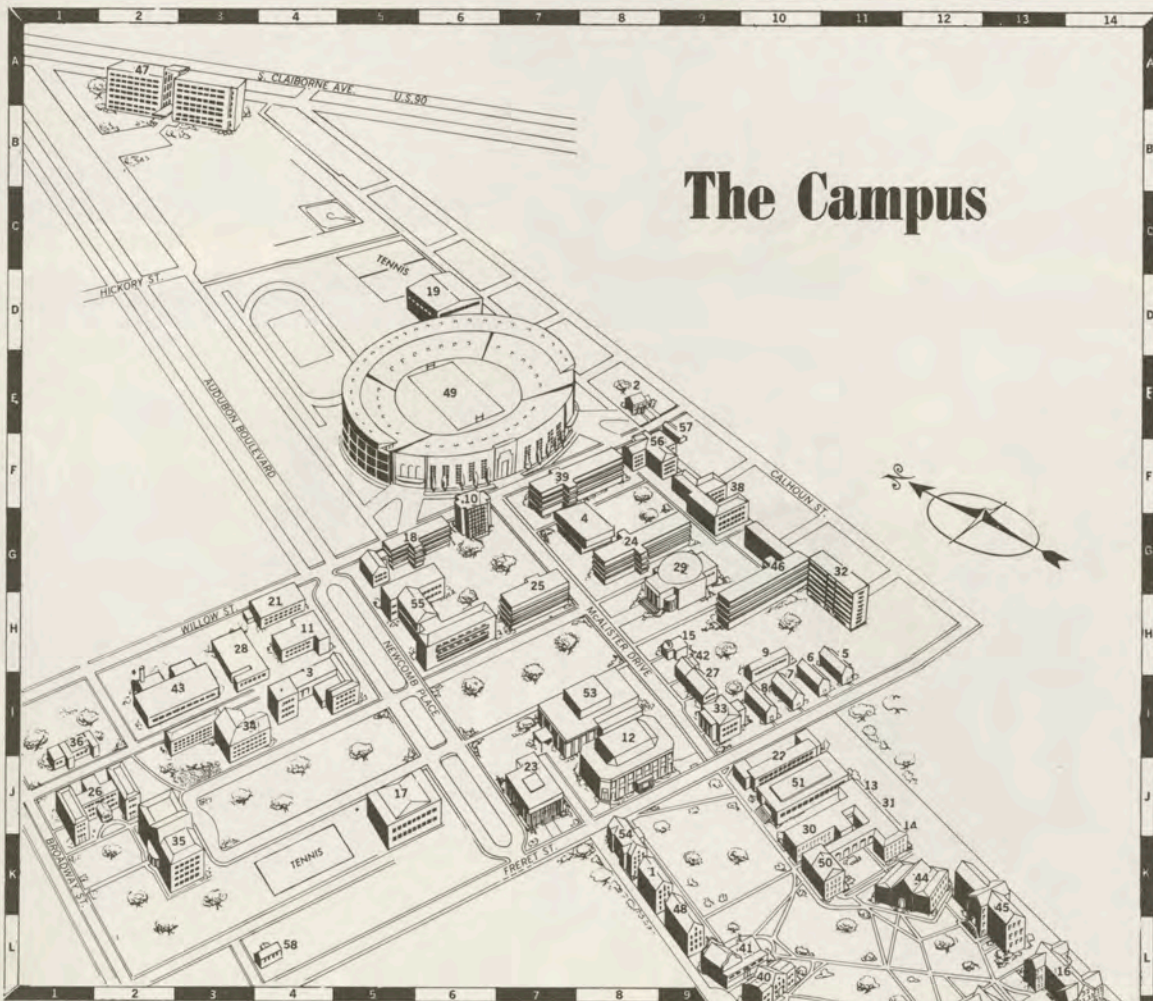
1305 TULANE AVENUE (Opposite the Main Public Library) Phone: 522-9517

FREE PARKING On Our Private Lot



# Welcome to Tulane...

To our guests who are visiting Tulane for the first time, we extend a cordial welcome. We hope you will take advantage of this opportunity to visit the rest of our campus. Have a pleasant stay, and return soon and often to the home of the Green Wave.

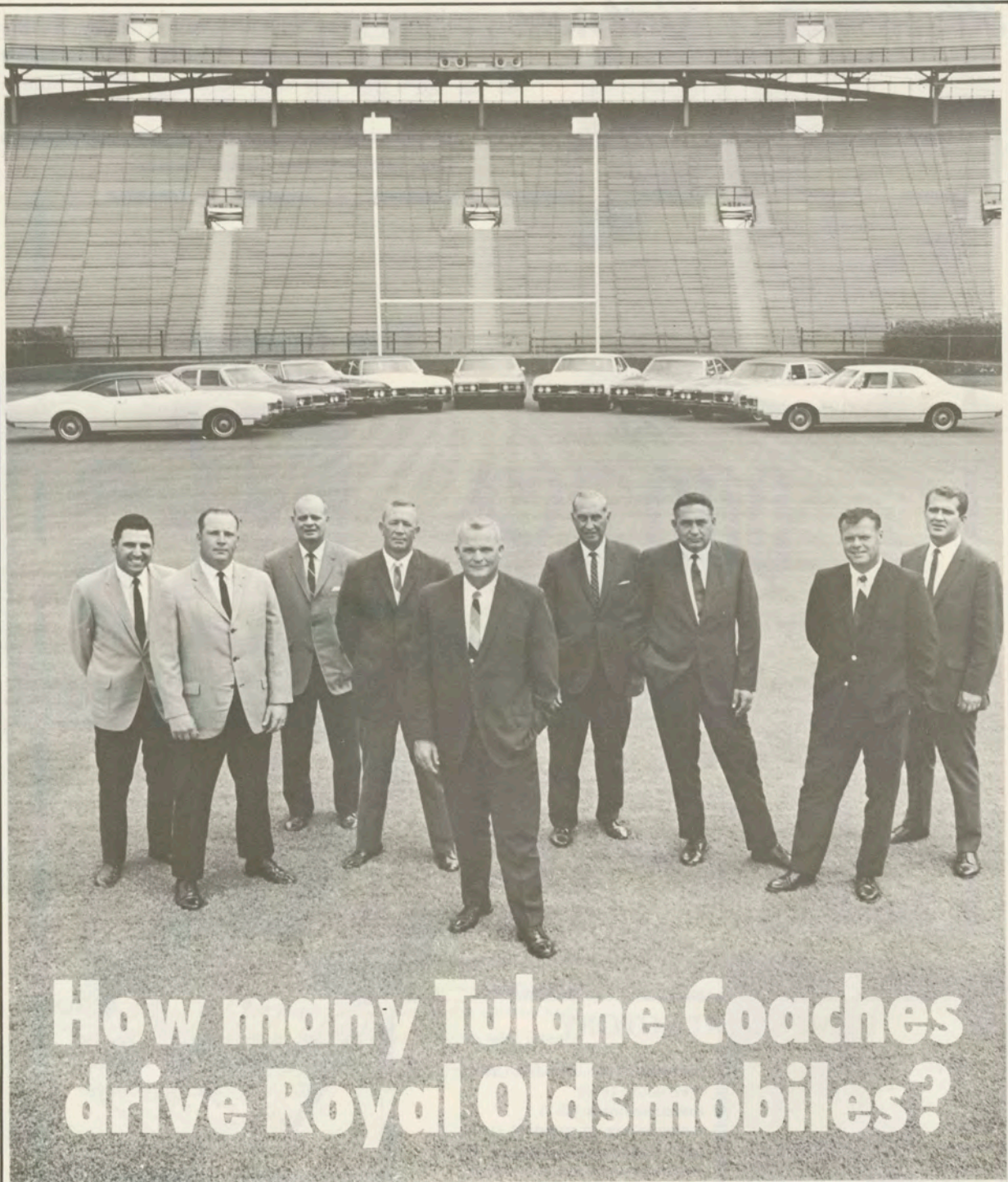


## The Campus

### CAMPUS DIRECTORY

- |                                   |   |                                    |
|-----------------------------------|---|------------------------------------|
| 1 ALCEE FORTIER HALL (K-8)        | 23 HOWARD-TILTON MEMORIAL LIBRARY (J-7) | 45 RICHARDSON MEMORIAL (K-13)      |
| 2 ALUMNI HOUSE (E-8)              | 24 IRBY HOUSE (G-8)                     | 46 ROBERT SHARP HALL (G-10)        |
| 3 ART BUILDING (I-4)              | 25 JOHNSTON HOUSE (G-7)                 | 47 ROSEN HOUSE (A-2)               |
| 4 BRUFF COMMONS (G-8)             | 26 JOSEPHINE LOUISE HOUSE (J-1)         | 48 SOCIAL WORK (K-9)               |
| 5 BUILDING 21 (H-11)              | 27 MAIN TELEPHONE EXCHANGE (I-9)        | 49 STADIUM (E-6)                   |
| 6 BUILDING 23 (H-10)              | 28 MAINTENANCE WORK SHOP (H-3)          | 50 STANLEY THOMAS HALL (K-11)      |
| 7 BUILDING 25 (I-10)              | 29 MCALISTER AUDITORIUM (G-9)           | 51 THEATRE AND SPEECH BLDG. (J-10) |
| 8 BUILDING 27 (I-10)              | 30 MECHANICAL ENGINEERING (J-10)        | 52 TILTON MEMORIAL HALL (N-11)     |
| 9 BUILDING 29 (H-10)              | 31 MECHANICAL ENGINEERING LABS. (J-11)  | 53 UNIVERSITY CENTER (I-8)         |
| 10 BUTLER HOUSE (F-6)             | 32 MONROE HALL (G-11)                   | 54 UNIVERSITY COLLEGE (K-8)        |
| 11 CAROLINE RICHARDSON HALL (H-4) | 33 NAVY BUILDING (I-9)                  | 55 WARREN HOUSE (H-6)              |
| 12 CENTRAL BUILDING (I-8)         | 34 NEWCOMB GYMNASIUM (I-3)              | 56 ZEMURRAY HALL (F-8)             |
| 13 CHEMICAL ENGINEERING (J-11)    | 35 NEWCOMB HALL (K-2)                   |                                    |
| 14 CIVIL ENGINEERING (K-11)       | 36 NEWCOMB NURSERY SCHOOL (I-1)         |                                    |
| 15 CUNNINGHAM OBSERVATORY (H-9)   | 37 NORMAN MAYER MEMORIAL BLDG. (M-10)   |                                    |
| 16 DINWIDDIE HALL (L-14)          | 38 PATERSON HOUSE (F-9)                 |                                    |
| 17 DIXON HALL (J-5)               | 39 PHELPS HOUSE (F-7)                   |                                    |
| 18 DORIS HALL (G-5)               | 40 PHYSICS BUILDING (L-10)              |                                    |
| 19 FAVROT FIELD HOUSE (D-6)       | 41 PHYSICS ANNEX (L-10)                 |                                    |
| 20 GIBSON HALL (M-12)             | 42 PLAYHOUSE (H-9)                      |                                    |
| 21 HEALTH SERVICE (H-4)           | 43 POWER HOUSE (I-2)                    |                                    |
| 22 HISTORY BUILDING (J-10)        | 44 RICHARDSON CHEMISTRY (K-12)          |                                    |





**How many Tulane Coaches  
drive Royal Oldsmobiles?**

**(All 9 of them)**



**Veterans & Causeway**

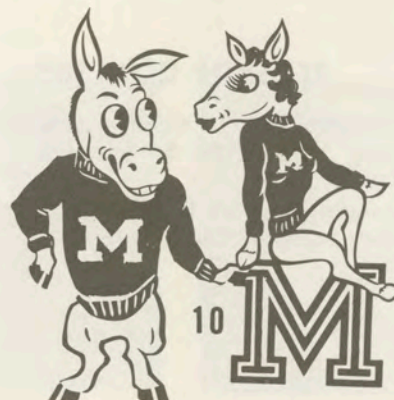
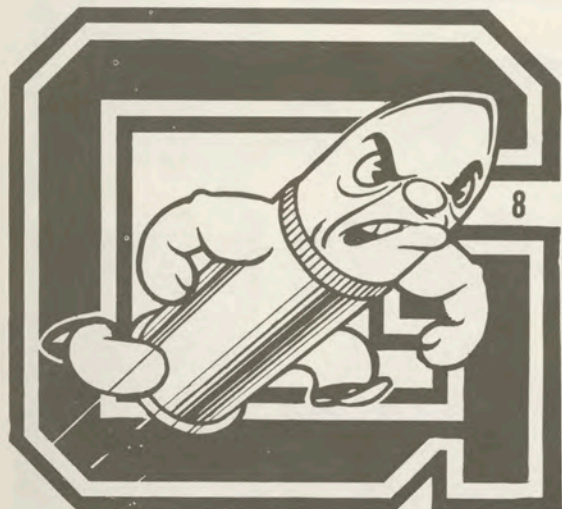
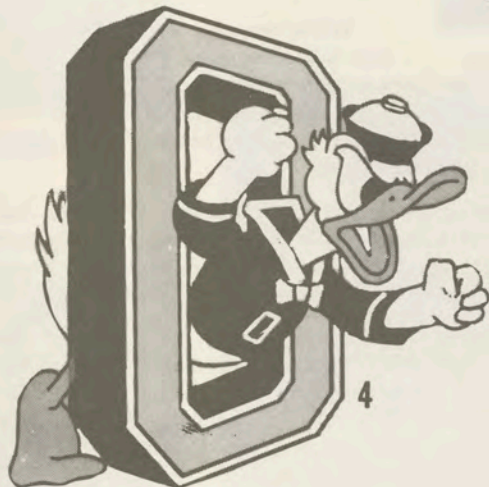
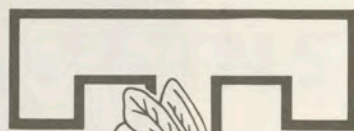


# MASCOTS and MONICKERS

A mascot is a person, animal or object used to bring good luck. Name the college football teams which have these mascots as nicknames.



FIGHTING 'GATORS



Answers on page 56.

GAME 1

© KARL W. KLAGES 1967





# MIAMI UNIVERSITY

Oxford, Ohio



**Dr. Phillip R. Shriver**  
*President*



**Richard Shrider**  
*Athletic Director*

## REDSKIN COACHES

**Kneeling (left to right) — Joe Galat, Jerry Hanlon, Bo Schembechler, Jim Young.**

**Standing — Dick Hunter, Larry Smith, Gary Moeller, Chuck Stobart.**

## Miami University . . .

THE SECOND OLDEST state institution of higher learning west of the Allegheny Mountains, Miami University was founded in 1809.

Located in the village of Oxford in southwestern Ohio, Miami is approximately 35 miles northwest of Cincinnati. Eighty major buildings on a rolling, wooded campus of 700 acres serve the 11,500 students on the Oxford campus.



**Bo Schembechler**  
*Head Coach*

In continuing its tradition of a liberal education, Miami is organized under one college and five schools, including the College of Arts and Science and the Schools of Education, Business Administration, Fine Arts, Applied Science and the Graduate School.

While retaining a rich heritage, Miami also is keeping pace with the modern pressure of higher education. Ten projects are underway on the Oxford campus and three residence halls, a dining hall, a classroom building and a library recently have been completed.

Most expensive of the current projects is John D. Millett Assembly Hall, being built at a cost of more than \$7.5 million. The Assembly Hall will seat 9,200 persons for home basketball games and is projected for completion by December of 1968.

the sports world, Miami is known as the Cradle of Coaches. On the list of former Miami coaches and athletes are Jack Faulkner of the New Orleans Saints; Ara Parseghian, Notre Dame; John Pont, Indiana; Weeb Ewbank, New York Jets; Paul Dietzel, South Carolina and former Louisiana State coach; Carm Cozza, Yale; Earl (Red) Blaik, former Army coach; Ed Biles, Xavier (O.), and Paul Brown, former Cleveland Browns coach.







**Ted Alexander**



**Gary Arthur**



**John Ault**



**Bob Babich**



**Walter Barnes**



**Ron Bash**

# MIAMI REDSKINS



**Jeff Baughman**



*McCracken Hall, Women's Residence Hall*



**Dick Boron**



**Gil Bowsher**



**Ron Butcher**



**Al Campbell**



**Gaylord Cleaves**



**John Collier**



**Mike Connerton**





**Ron Core**



**Larry Draper**



**Tim Fortney**



**Bob Glover**



**Jim Grywalski**

# MIAMI REDSKINS



**Mike Harp**



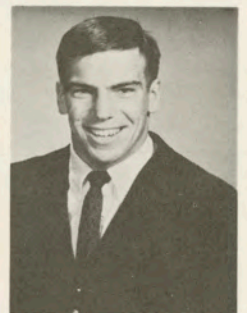
**Larry Harris**



*Proposed Millett Assembly Hall*



**Dave Hutchins**



**Errol Kahoun**



**Dave Kergaard**



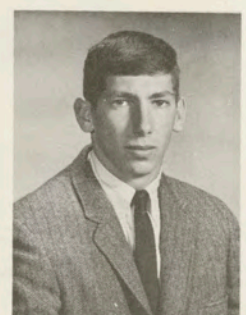
**Paul Krasula**



**Bill Leftwich**



**Jerry Lewis**



**Jeff Lieberman**

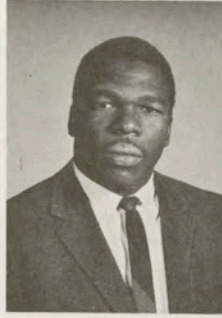




**Keith Logan**



**Joe Minotti**



**Al Moore**



**Ted Pechaitis**



**Tom Pechaitis**

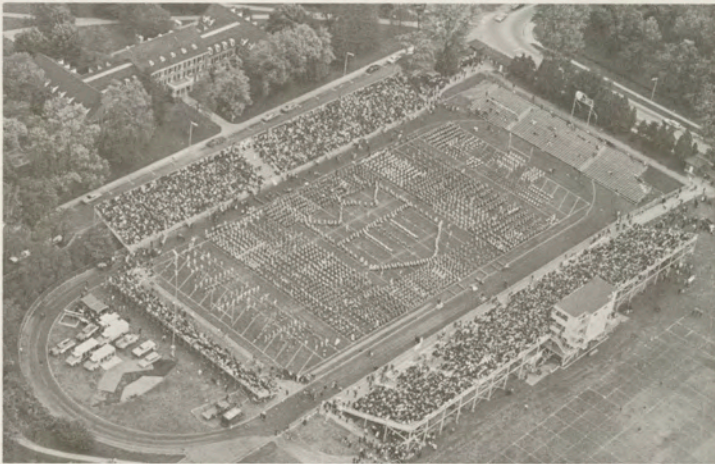


**Bob Rieber**

# MIAMI REDSKINS



**Jim Shanahan**



*Miami Field – Home of the Redskins*



**Jim Shaw**



**Bob Smith**



**Bob Thomas**



**Kent Thompson**



**Dave Tsaloff**



**Don Wade**



**Greg Ware**



# CaM-pix



There is more to being a university faculty member than full commitment to teaching and research, according to Dr. Daniel H. Vliet, professor of electrical engineering at Tulane. Equally challenging and important is the responsibility to stimulate interest and help develop talent in children who will be tomorrow's college students. Here Dr. Vliet, who has provided batteries of fun for batteries of boys this summer, instructs his son, Daniel, Jr., how to make a battery out of a lemon, nails and wires.





Dr. Vliet explains to a group of elementary school children various projects they can conduct with batteries, wires, car headlights, old automobile horns they can honk, nails they can magnetize, and rotating fans. Clockwise, Dr. Vliet's students are Sidney Baudier, III, Verne Streckfus, Daniel H. Vliet, Jr., Davis Hawn and Ward Ripley. There just may be a future electrical engineer in the group.



Keenly interested in electrical things that move, the boys have learned from Dr. Vliet the importance of reading library books and other publications on the subject before spending their allowance on equipment they do not understand. The Tulane professor encourages parents to encourage special interests in certain children whose talents may lie in subjects which elementary schools do not have time to foster.





Sidney Baudier, III, and Davis Hawn use old speakers to make new ways to communicate with each other—from room to room and house to house. They have learned from Dr. Vliet, who has devoted hours of his spare time and talent to their instruction, that a specialist in the field cares about their knowledge of electricity and cares about making them better students for tomorrow's world. As Dr. Vliet explains: "Engineering is a profession of discovery, of imagination and of creative ability which abounds in many young boys."



You'll know the difference  
between a Cadillac and other  
fine cars, the first time you  
take the wheel of a new  
Cadillac

•  
LET US DEMONSTRATE  
FOR YOU!  
•

**PONTCHARTRAIN  
MOTOR CO., INC.**  
Baronne at Girod

PH-482-9377



*The Bistro Lounge*  
4061 Tulane Ave.  
*"Where the nicest people meet"*

4061 Tulane Ave.



little dude

**DURACRAFT**

JOHNSON MOTORS

*Elassmaster*



1018 BARONNE

PHONE 529-5731

**DONOVAN  
Boat Supplies**





**MAKE  
EVERY YARD  
COUNT...  
DOUBLE!**

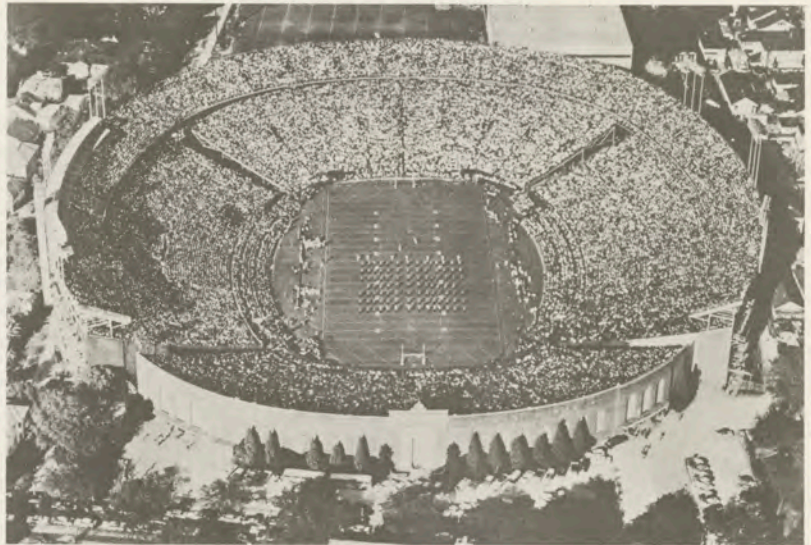
Double because you'll be earning a commission while you earn your college degree.

All it takes is a few hours a week and a six-week summer camp. It's that easy in Army ROTC.

Whether you plan a civilian or a military career, Army ROTC gives you the kind of training and experience you need to motivate, organize and lead men. You'll learn them all in Army ROTC.

Get the details from your Professor of Military Science at any ROTC college.

Your future, your decision... choose **Army ROTC.**



**TULANE STADIUM**

One of the finest college football facilities in the nation, Tulane Stadium is the world's largest steel stadium. It is located on the Northeastern end of the campus, on the site of the old Etienne de Bore plantation where Sugar was first granulated in this country.

Tulane Stadium was dedicated October 23, 1926, with East and West side stands seating some 35,000. Much of the enlargement and improvement since then has been due to the efforts of the New Orleans Mid-Winter Sports Association, sponsor of the Sugar Bowl Classic. In 1937, 14,000 North Stand seats were erected. The upper deck was added in 1939, boosting the capacity to 69,000. Then in 1947, the bowl was enlarged to its present capacity of 80,985.

Tulane added floodlights in 1957. Other improvements have included permanent box seats, portal seats, press box elevator, and photographer's ramp. Two new scoreboards will be added for the 1967 season.

The press box, which has been voted among the nation's best by the Football Writer's Association, is 240 feet long and seats 254.

Auburn edged Tulane, 2-0, in the inaugural game in 1926. Tulane won the first Sugar Bowl game on Jan. 1, 1935, downing Temple, 20-14, in a game highlighted by an 85-yard TD run by the Wave's Claude "Little Monk" Simons.

**FUTURE WAVE SCHEDULES**

**1968**

- Sept. 21—At Houston
- Sept. 28—Texas A&M
- Oct. 5—Tampa
- Oct. 12—At Florida
- Oct. 19—Boston College
- Oct. 26—At Georgia Tech
- Nov. 2—At Vanderbilt
- Nov. 9—Tulsa
- Nov. 16—At Virginia
- Nov. 23—LSU

**1969**

- Sept. 20—At Georgia
- Sept. 27—West Virginia
- Oct. 4—At Boston College
- Oct. 11—Florida
- Oct. 18—At Pittsburgh
- Oct. 25—Notre Dame
- Nov. 1—Vanderbilt
- Nov. 8—Georgia Tech
- Nov. 15—Virginia
- Nov. 22—At LSU



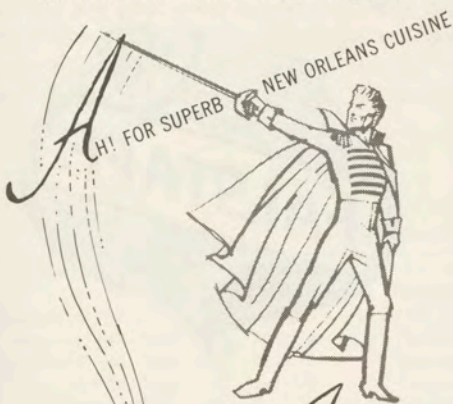
## The Sugar Bowl

One of the nation's great football classics is the annual Sugar Bowl game played in Tulane Stadium on New Year's Day. Founded in the depths of depression, it stands today as one of the most unique amateur athletic achievements in the history of American sports.

While the annual football game is the highlight, the New Orleans Mid-Winter Sports Association also sponsors a basketball tournament, tennis tournament, track meet and regatta during Sugar Bowl week. Thousands of visitors flock to the Crescent City for the festivities.

The idea was first presented in 1927 by Colonel James M. Thomson, publisher of the old New Orleans Item, and sports editor Fred Digby. The first game was held on January 1, 1935, with Tulane defeating Temple, 20-14. From its inception, the group has been free of political entanglement. Under the charter, it was stipulated that it was to be a "voluntary, non-profit civic organization whose members serve without remuneration." Every Sugar Bowler buys his own tickets to all events.

**COME AS LATE AS  
MIDNIGHT  
AFTER THE GAME !**  
(as late as 10:30 other nights)



*The Andrew Jackson*  
**RESTAURANT**

221 ROYAL ST., Opposite MONTELEONE HOTEL  
For Reservations, 529-2603

Use **SURE-PINE** and **SURE-KLEAN**

*they're the cleanest products around*



Use SURE-PINE all through the house, and you'll agree that it's the SURE way to clean, disinfect and deodorize. SURE-PINE is the fragrant disinfectant with hundreds of uses—quick, safe and dependable. You'll love the job it does, and the clean-smelling aftermath of its real pine scent. Get genuine SURE-PINE today. You'll never be without it once you try it.



SURE-KLEAN, in the distinctive, unbreakable plastic bottle, is the bleach that does more—does it better! SURE-KLEAN is laboratory tested and proven to give you the whitest wash ever—to remove stains, even scorch and mildew. Safe for nylons, too. SURE-KLEAN cleanses, deodorizes, disinfects. Keep it handy for the laundry, kitchen and bath. Next time you clean, try the very nicest bleach—SURE-KLEAN.

**SURE-PINE and SURE-KLEAN**

Quality Products of *The UDDO Company*

General Offices - New Orleans 3, La.  
JOSEPH F. UDDO, Owner



# Roll on Green Waves!

*Where your driving  
takes a turn  
for the best...  
at the Sign of  
the Orange Disc*



Gulf Oil Corporation



*The cleaners that care  
about the care of your  
clothes.*

*21 shops in New Orleans  
to serve you.*



the great  
American  
Sport!

*Ride the Wide Track  
Winning Streak*



**JEFFERSON MOTOR CO.**

*Your West Bank Pontiac Dealer*

4TH ST. & BARATARIA BLVD.

MARRERO, LA.

341-5626

## ROLL ON GREEN WAVE



*The Choicest Product  
of the Brewers Art*



# LOOKING AHEAD: BASKETBALL

By GAYLE PATRICK LETULLE

With four starters from last year's talented run and shoot gang back for another assault on enemy nets, Tulane's young cagers figure to continue the steady improvement they showed en route to a 14-10 slate last winter.

Engineer of Tulane's return to winning basketball is Ralph Pedersen, former Tulane cage star and assistant coach. "Pete" took over the top job after the Wave had a disastrous 1-22 record in 1963-64, and brought respectability back to the program in just three years.

After a dismal 1-4 start last season, Pedersen revamped his starting lineup to include four sophomores, the tallest standing 6-4, and the youngsters rolled to a 13-6 record over the last 19 games, including victories over Yale, Davidson, NYU, Georgia Tech and archrival LSU.

Led by the now-departed Al Andrews, Pedersen's Kiddie Korps ranked fifth in the nation in field goal percentage (hitting 50.2% as a team) and seventh in the nation in team offense (scoring 88.4 points per game).

Andrews, who ranks second on Tulane's All-Time scoring list, will be hard to replace. But the Wave has four double figure scorers, a starter from the 1965-66 season who was injured last season, last season's No. Six man, and a promising crop of freshmen and transfers back to make the battle for starting jobs rather interesting.

Heir apparent to the scoring crown worn by Andrews for the past three seasons is forward Johnny Arthurs, a 6-4 Junior from New Orleans who bucketed an average of 15.4 points an outing last fall, second only to Andrews among Wave scorers. A fine pro prospect, Arthurs was also a standout on Tulane's baseball team last spring.

Playmaker, Terry Habig, an honor student in Tulane's School of Engineering, followed Arthurs in scoring with a 14.0 average. Habig, a 6-2 Junior from Auburn, Ind., topped the Wave in both assists and free throw percentage last winter.

Junior Bill Fitzgerald bucketed 13.3 points per game last season and was generally considered the Wave's top defensive ballplayer. A tremendous competitor, Fitzgerald led Tulane's baseball team in hitting last spring with a .339 batting average and was chosen the diamond team's MVP while only a Sophomore.

Six-foot-five-inch Dan Moeser, one of only two seniors on the 1967-68 squad, was Tulane's leading rebounder last fall. The Stroughton, Wis. native, who averaged 12.6 points per game, also topped the Wave in field goal percentage, hitting on 53.5% of his shots from the floor.

The other senior, Mitch Urbanski, was a regular last season before being sidelined after the Wave's second game. The return of the 6-5 Kenosha, Wis. native, who was a starter as a sophomore, should take some of the rebounding pressure off of Moeser.

Urbanski's stiffest competitor for a starting job figures to be lanky Bob Spurck, a 6-4 hustler from Fort Worth who averaged 7.0 points and 4.3 rebounds per game last winter.

Dennis Riddle, a promising 6-8 transfer from the Air Force Academy, and Junior lettermen Rick Carlson and Don Simmons are top front court candidates, while Soph Ned Reese, who had 102 assists in 16 frosh contests, Junior letterman Joel Miller, and Drew Madar, a Junior College All-American last season, will be vying for backcourt jobs.

Coach Pedersen and assistant Tom Nissalke will be looking for improvement defensively and on the boards to go with the returning nucleus of one of the nation's top offensive ball clubs when pre-season drills open this fall. If they find it, the sky's the limit.



**Coach  
Ralph Pedersen**

## VARSITY ROSTER

Name	Pos.	No.	Ht.	Wt.	Yr.	Ltr.	Avg.	Hometown
Johnny Arthurs	f	31	6-4	190	Jr.	1	15.4	New Orleans
Rick Carlson	c	25	6-5	210	Jr.	1	1.9	Bradenton, Fla.
Billy Fitzgerald	f	42	6-4	190	Jr.	1	13.3	New Orleans
Terry Habig	g	43	6-2	180	Jr.	1	14.0	Auburn, Ind.
Al Kralovansky	f	44	6-6	195	So.	0		Plymouth, Ind.
Drew Madar	g †	5	6-0	175	Jr.	0		Temple, Tex.
Joel Miller	g *	23	6-3	185	Jr.	1	2.1	Middlebury, Ind.
Dan Moeser	f	24	6-5	200	Sr.	2	12.6	Stoughton, Wis.
Ned Reese	g	14	6-0	180	So	0		Elmhurst, Ill.
Dennis Riddle	c	35	6-8	205	So	0		Madison, Wis.
Greg Robers	c	21	6-7	200	So	0		Ft. Wayne, Ind.
Don Simmons	c	54	6-6	190	Jr.	1	1.2	Columbia, Mo.
Bob Spurck	f	45	6-3	180	Jr.	1	7.0	Fort Worth, Tex.
Mitch Urbanski	c *	22	6-5	190	Jr	1		Kenosha, Wis.

† Junior College Transfer. \* Injured during 1966-67 Season. No.—Uniform Number. Ltr.—Varsity Letters Earned. Avg.—1966-67 Scoring Average.

## SCHEDULE

Dec. 2	SOUTHWESTERN OF MEMPHIS
Dec. 5	FLORIDA SOUTHERN
Dec. 9	At Baylor
Dec. 11	At Rice
Dec. 16	PURDUE
Dec. 18	DENVER
Dec. 20	DARMOOUTH
Dec. 27-28	Mobile Classic at Mobile
Jan. 6	At Georgia Tech
Jan. 11	LOUISIANA STATE
Jan. 25	At Kent State
Jan. 27	At Pittsburgh
Feb. 2	MISSOURI
Feb. 3	MIAMI (FLA.)
Feb. 6	At Louisiana College
Feb. 10	AIR FORCE
Feb. 15	At New York University
Feb. 17	CHICAGO
Feb. 21	At Louisiana State
Feb. 24	At Davidson
Feb. 26	At Stetson
Mar. 2	GEORGIA TECH
Mar. 4	VIRGINIA TECH

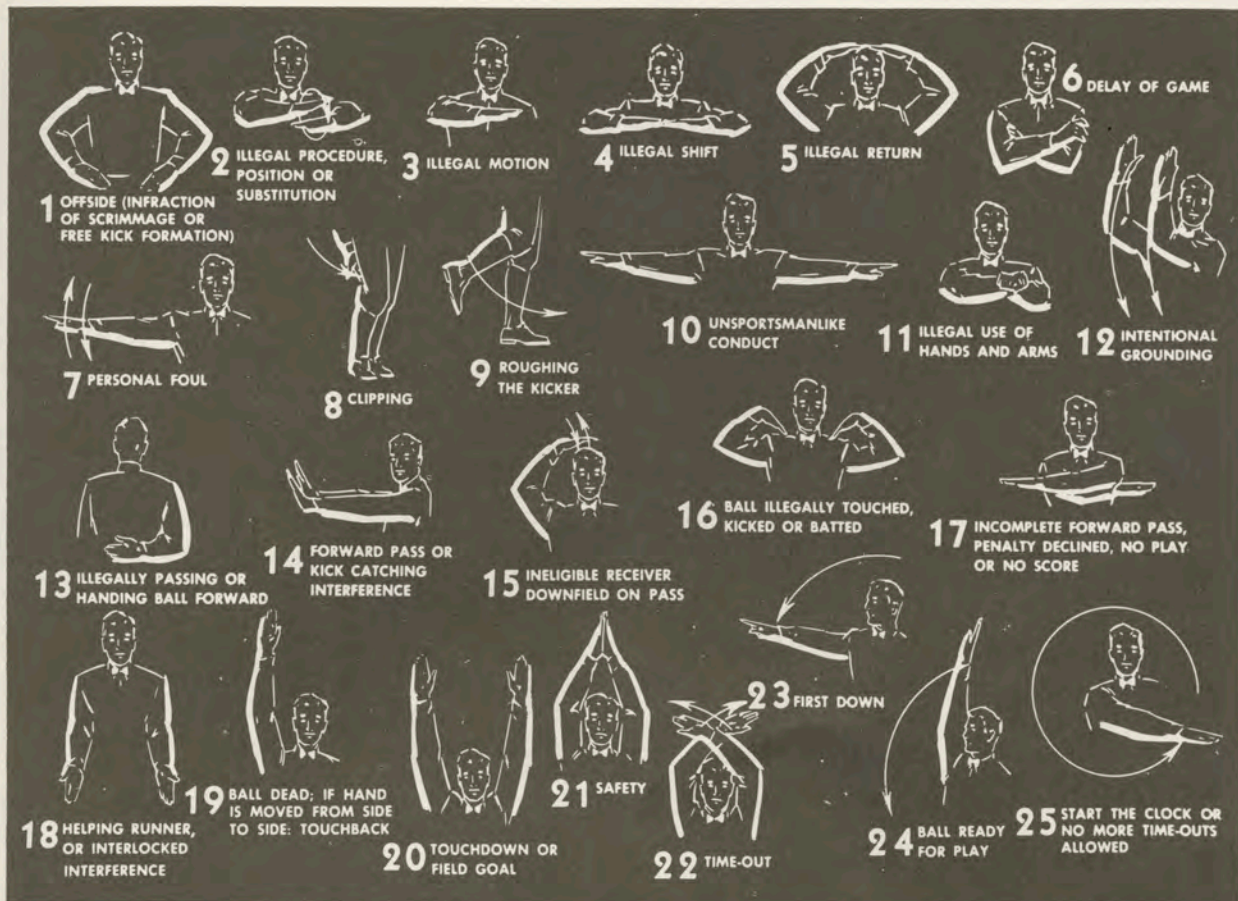


*Made by the little deep south  
brewery that would rather be best  
than biggest*



DIXIE BREWING COMPANY, INC., NEW ORLEANS, LOUISIANA





## PENALTIES

**1. OFFSIDE** by either team; Violation of scrimmage or free kick formation; Encroachment on neutral zone—Loss of Five Yards.

**2. ILLEGAL PROCEDURE, POSITION OR SUBSTITUTION**—Putting ball in play before Referee signals "Ready-for-Play;" Failure to complete substitution before play starts; Player out of bounds when scrimmage begins; Failure to maintain proper alignment of offensive team when ball is snapped; False start or simulating start of a play; Taking more than two steps after Fair Catch is made; Player on line receiving snap—Loss of Five Yards.

**3. ILLEGAL MOTION**—Offensive player illegally in motion when ball is snapped—Loss of Five Yards.

**4. ILLEGAL SHIFT**—Failure to stop one full second following shift—Loss of Five Yards.

**5. ILLEGAL RETURN** of ineligible substitute—Loss of 15 yards.

**6. DELAY OF GAME**—Consuming more than 25 seconds in putting the ball in play after it is declared ready for play; Interrupting the 25-second count for any reason other than a free or excess time out granted by

Referee; Failure to remove injured player for whom excess time out was granted—Loss of Five Yards. Team not ready to play at start of either half—Loss of 15 Yards.

**7. PERSONAL FOUL**—Tackling or blocking defensive player who has made fair catch; Piling on; Hurdling; Grasping face mask of opponent; Tackling player out of bounds, or running into player obviously out of play; Striking an opponent with fist, forearm, elbow or locked hands; Kicking or kneeling—Loss of 15 Yards. (Flagrant offenders will be disqualified).

**8. CLIPPING**—Loss of 15 yards.

**9. ROUGHING THE KICKER** or holder—Loss of 15 Yards.

**10. UNSPORTSMANLIKE CONDUCT**—Violation of rules during intermission; Illegal return of suspended player; Coaching from side lines; Invalid signal for Fair Catch; Persons illegally on field—Loss of 15 Yards. (Flagrant offenders will be disqualified).

**11. ILLEGAL USE OF HANDS AND ARMS** by offensive or defensive player—Loss of 15 Yards.

**12. INTENTIONAL GROUNDING** of forward pass—Loss of Five Yards from spot of pass Plus Loss of Down.

**13. ILLEGALLY PASSING OR HANDING BALL FORWARD**—Loss of Five Yards from spot of foul Plus Loss of Down.

**14. FORWARD PASS OR KICK CATCHING INTERFERENCE**—Interference with opportunity of player of receiving team to catch a kick—Loss of 15 Yards. Interference by member of offensive team with defensive player making pass interception—Loss of 15 Yards Plus Loss of Down. Interference by defensive team on forward pass—Passing Team's Ball at Spot of Foul and First Down.

**15. INELIGIBLE RECEIVER DOWNFIELD ON PASS**—Loss of 15 Yards.

**16. BALL ILLEGALLY TOUCHED, KICKED OR BATTED**—Forward pass being touched by ineligible receiver beyond the line of scrimmage—Loss of 15 Yards from Spot of Preceding Down and Loss of a Down. Eligible pass receiver going out of bounds and later touching a forward pass—Loss of Down.

**17. PENALTY DECLINED**; Incomplete forward pass; No play or no score.

**18. CRAWLING** by runner—Loss of Five Yards. Interlocked Interference—Loss of 15 yards.



24 HOUR DELIVERY

CONVERT ANY UNFURNISHED APARTMENT INTO A FURNISHED APARTMENT DECORATED TO YOUR TASTE

1 BEDROOM APARTMENT from \$25.00 MONTHLY



## RENT NEW FURNITURE



## WEINER'S

120 HUEY P. LONG AVENUE GRETNA, LOUISIANA  
366-4141

## INTERNATIONAL THEATRE RESTAURANT

The French Quarter's newest and most beautiful restaurant. Superb cuisine in an incomparable atmosphere.



## ENTERTAINMENT WHILE YOU DINE

Under the artistic culinary supervision of

*Chef De Cuisine Alvin*

May we suggest — selected from our new menu:

Filet Mignon • Pompano En Paillote

Veal Scalopine • Coq Au Vin

Sirloin Tips Flambe

Beef Stroganoff • Long Island Duckling  
and many other specialties

All dinners

**6**

courses of dining  
delight which  
start from

**\$3.00**

## DANCING



Presenting nightly  
the I.T.R. Trio  
Dancing — 7 to 12 P.M.



Call for reservations  
Open daily 6 p.m.-12 p.m.  
Fri. & Sat. 6 p.m.-1 a.m.  
Closed Tues.



International  
Theatre Restaurant

524-1336  
215 Bourbon Street





## 256 Receive Degrees at Summer Graduation

Tulane University awarded 256 degrees during summer graduation exercises August 26, including 64 doctor of philosophy degrees—the largest number to be conferred during summer graduation exercises in the 133-year history of the University.

Receiving the Ph.D. degrees were graduate students from 24 states and six foreign countries who completed their doctoral studies in 22 specialized fields, ranging from biochemistry to English to theatre.

The 64 degrees brought the total of Ph.D. degrees awarded by Tulane this year to 130, the highest number granted by the university in a single year. Sixty-six doctor of philosophy degrees were awarded May 29 during the university's commencement exercises.

Included in the record number of summer doctoral graduates was the presentation of the first doctor of philosophy degree in paleontology to Mrs. Emily H. Vokes of New Orleans and the awarding of the first doctor of philosophy degrees in civil engineering to Engelbert W. Fritschi of Freiburg, West Germany, and David P. Gustafson of Hancock, Michigan.

In addition to the 64 Ph.D. degrees, 93 master's degrees and 99 bachelor's degrees were presented during the summer graduation exercises. They also represented record numbers for candidates for degrees from the Tulane Summer School.

The doctor of philosophy degree is the highest degree the university awards.

Also receiving degrees during summer graduation exercises were 48 students of University College, evening division of the University. This represented the largest number of University College students to receive degrees at a summer graduation.

The University awarded 1,275 degrees in May. This figure, when added to the 256 degrees presented this summer, brings the number of degrees awarded by the University in 1967 to 1,531.

Addressing the University's summer graduation exercises, Dr. Charles D. Hounshell, dean of Newcomb College, warned that liberal arts colleges may be committing suicide unless a change on the part of current and future faculty members takes place in a revitalization process.

Dean Hounshell said teachers must focus on the education of the student, rather than the teaching of the subject.

"Certainly the college professor must be a specialist and engage in professional scholarship in his discipline," Dr. Hounshell said. "He must also plan to increase research and professional preparation of potential scholars.

"But, as a college faculty member he must make his specialty meaningful to the undergraduate student and plan with his colleagues to improve the liberal education program if colleges are to continue to exist at all."

Dean Hounshell said liberal education must wrestle continuously now with the problem of providing a program that is relevant to:

- (1) The functioning of man as citizen.
- (2) The development of the student as a human being and not just as a specialist.
- (3) Consideration of what subjects are appropriate for liberal arts.

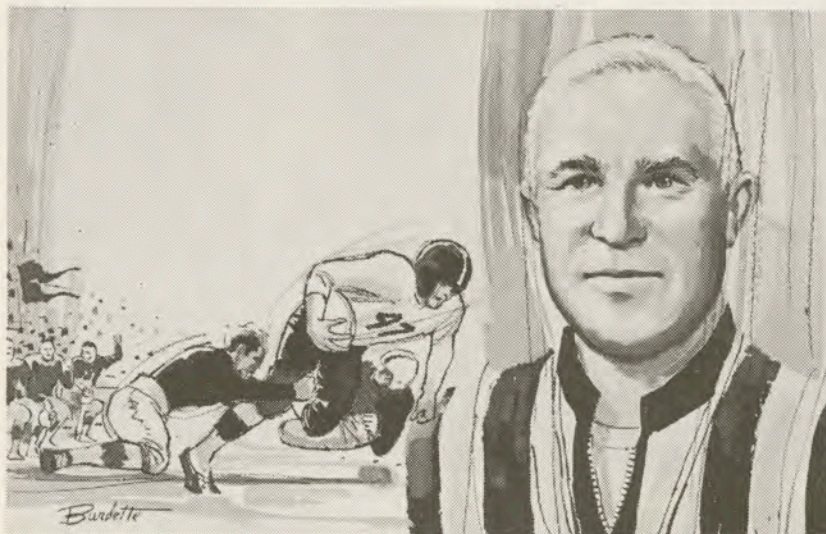
Dr. Hounshell emphasized that the liberal arts college "is not yet dead. But as secondary schools add to their curriculum and graduate schools admit students after fewer numbers of undergraduate years, the college will lose its main objective of developing each individual student as a human being."



# A Referee in Trouble

by CLIFFORD H. SHAW

Retired Southwest Conference Official, as told to Orville Henry



**A** REFEREE in trouble has to rely on common sense and a smile.

I'll never forget the first time a touchdown was awarded a ball-carrier loose in the open who was felled by an opponent who came off the opposing bench to make the illegal tackle at the sideline.

It was an explosive moment. Rice was playing Alabama in the 1954 Cotton Bowl and the score was tied 6-6 in the second quarter. Seventy-five thousand fans jammed the Dallas bowl and millions more were watching on national television.

Rice had the ball back on its 5. Dickie Moegle, Rice's All-American back, with one of the quick moves for which he was famous darted into the open down the right sideline. A radio announcer whom I shall not identify described the play as follows:

"Moegle takes a pitchout in the end zone. He's almost trapped—no!—he's back to the 5, the 10, the 15. He cuts suddenly to the right sideline. Now he's in the open! He's past the 20, the 30, the 40! He's loose for a touchdown! He's . . ." (several seconds of silence).

Then the announcer, in plain hearing of his whole radio audience, muttered softly, meekly and incredulously to himself, "Where the hell did he come from?"

The "he" was Tommie Lewis, Alabama fullback. As Moegle passed the 'Bama bench, Lewis was charged so high emotionally that he jumped onto the field and leveled Moegle with a

body block. Jack Freeman, the head-linesman, called the infraction. Lewis was easily detected because he wasn't wearing a helmet when he struck Moegle.

As referee, I had to act fast. There was a rule on the books that said if a play be interfered with by some act palpably unfair and not elsewhere prohibited in the rules, "the referee may make such ruling as in his judgment justice may require."

I ruled a 95-yard touchdown for Moegle. The situation was helped magnificently when on the try for extra point, each Rice player, before lining up, stepped across the scrimmage line and shook hands with an Alabama player.

At its next meeting, the national rules committee backed up my improvisation by incorporating it in the rules.

My most embarrassing moment as a referee happened in a Thanksgiving game between Texas and Texas A&M played in a light drizzle. I had stuffed my pockets full of towels so the players could use them in the huddles to dry their hands. This left no room in my pockets for my red flag so I would simply throw one of the towels to indicate infractions.

The Texas quarterback faded with the ball, trying to retreat into the pocket to throw a forward pass. I detected a foul by one of the offensive guards. I threw the towel just as the passer was getting set to look for his receivers. The wind spread the towel out flat, like a magic carpet, and it settled over the passer's head, blind-

ing him temporarily. The defense was on him.

He reacted courageously. Throwing off the towel, he tucked the ball under his arm, ran a right end sweep and gained 12 yards. Even an official couldn't foul it up for him. But for a long time I had nightmares wondering what I would have done had he been tackled with the towel over his face, or if he had fumbled, or if a dozen other things had happened.

Another time when I was refereeing a Baylor game at Waco, I threw a red flag for an illegal use of the hands penalty and followed the play, a sweep, to its conclusion on the sideline. Looking around for my red flag, I saw an amazing sight.

One of Baylor's bear cub mascots had slipped out of its chained collar, dashed onto the field, grabbed the red flag and was ambling towards the end zone with it, tossing it into the air, batting it with a forepaw, then grabbing it and continuing its trip to the goal.

The fans broke up in laughter and of course to inflict the penalty we had to guess at the spot of the foul.

My most heartwarming moment as an official occurred in a Texas-Texas A&M game at Austin. A Texas drive had reached the Cadet 30-yard line and on fourth down the Longhorns carried the ball almost to the point needed for a first down. We called for the chain to make the measurement. As I dropped to one knee to get a better view of the chain stake and the end of the ball, I realized somebody else was helping me make the decision.

A small boy, possibly nine or ten years old, had come onto the field and stretched himself out full-length on his stomach with his nose three feet from the ball.

I got down with him, put one arm around his shoulders, and together we looked at this thing that involved about one-fourth inch. We talked it over and both decided it was a first down and he returned to the stands. The fans laughed extravagantly over the enthusiasm of one small boy. Because of it, a lot of people went home happier that day.

I'll close with a Colorado-Kansas State game. I had just disqualified a big, rugged end. His captain was disenchanted with him and as he walked away with him to the bench, I heard the captain say, "Come back and apologize to the referee."

"Tell the referee to go to hell," the end growled and kept walking.

The captain came back to me. "Mr. Referee, he said to tell you he was sorry."

"Yes, I heard him," I replied and we both enjoyed a good laugh.



# 1967 Tulane Freshman Football Team



**FRONT ROW (Left to Right)**—Coach Jerry Colquette, Coach Don Capretz, Gordon Roy (16), Bryan Duck (82), David Richard (21), Lowell Schexnayder (60), Kenny Sanders (13), Joe Gendron (85), Rodney Bazer (61), Roger Schramm (84).  
**SECOND ROW**—Manager Dean Taylor, Rick Kingrea (34), Jack Laborde (10), Ray Hester (51), Duke Chappuis (41), John Autenreith (86), Francis Daigle (20), Tommy Cascio (50), Sam Scelfo (64), Randy Albers (24), Coach Jack O'Leary.  
**THIRD ROW**—Mack Miller (83), Carl Tatum (52), Bruce Jackson (35), Harold Sisk (40), Steve Spomer (53), Mike Walker (73), Chip DeWitt (70), Lonnie Sibley (71).  
**FOURTH ROW**—John Carter (75), Earl Robinson (62), Brian Robinson (32), Jack Bedwell (63), Paul Shirley (31), Jimmy Shepherd (72), Steve Stark (43), Mike Farnell (42), Gerald Boudreaux (77).  
**FIFTH ROW**—Bob Hendon (48), Don Fortier (27), Albert Low (76), Johnny Gill (22), Jim White (11), Butch Spencer (89), Jim Koontz (79).

## — Frosh Roster —

No.	Name, Pos., Wt.	Home Town (High School)	No.	Name, Pos., Wt.	Home Town (High School)
10	Jack LABORDE—B, 180	New Orleans (Jesuit)	63	Jack BEDWELL—G, 180	Thibodaux (Thibodaux)
12	Jim WHITE—B, 180	Homer (Homer)	64	Sam SCELFO—G, 195	New Iberia (New Iberia)
13	Ken SANDERS—B, 175	Baton Rouge (Lee)	70	Charles DE WITT—T, 200	Houston, Tex. (Memorial)
16	Gordon ROY—B, 180	Mansura (Marksville)	71	Lonnie SIBLEY—T, 195	Shreveport (Fair Park)
20	Francis DAIGLE—B, 185	Lake Charles (L. Charles)	72	Jim SHEPHERD—T, 220	Lake Providence (L. Prov.)
21	David RICHARD—B, 170	Lutcher (Lutcher)	73	Mike WALKER—T, 190	Sulphur (Sulphur)
22	Johnny GILL—B, 175	Slidell (Sidell)	75	John CARTER—T, 215	Kinder (Kinder)
24	Randy ALBERS—E, 165	Dundas, Minn. (Northville)	76	Albert LOW—T, 210	Houston, Tex. (St. John's Sch.)
27	Don FORTIER—B, 170	New Orleans (Nicholls)	77	Gerald BOUDREAUX—T, 220	Thibodaux (Thibod'x)
31	Paul SHIRLEY—B, 185	DeRidder (DeRidder)	79	Jim KOONTZ—T, 215	Hobbs, N. Mex. (Hobbs)
32	Brian ROBINSON—B, 190	Dallas, Tex. (Jesuit)	82	Bryan DUCK—E, 180	Purvis, Miss. (Purvis)
34	Ricky KINGREA—B, 190	Baton Rouge (B. Rouge)	83	Mack MILLER—E, 190	Basile (Basile)
35	Bruce JACKSON—B, 210	Ruston (Ruston)	84	Roger SCHRAMM—E, 180	Houston, Tex. (Lamar)
40	Harold SISK—B, 195	Beaumont, Tex. (Forest Park)	85	Joe GENDRON—E, 180	Watertown, N. Y. (Carthage)
41	Duke CHAPPUIS—B, 180	New Orleans (De La Salle)	86	John AUTENREITH—E, 195	N. O. (Newman)
42	Mike FARNELL—B, 170	Mobile, Ala. (McGill)	87	John McCARRON—E, 165	Pensacola, Fla. (Catholic)
43	Steve STARK—B, 170	Franklin (Franklin)	89	Butch SPENCER—E, 180	Farmerville (Farmerville)
48	Bob HENDON—B, 160	Lubbock, Tex. (Lubbock)	Head Freshman Coach — JACK O'LEARY.		
50	Tom CASCIO—C, 175	Shreveport (Jesuit)	Assistants — JERRY COLQUETTE, DON CAPRETZ.		
51	Ray HESTER—C, 200	New Orleans (Holy Cross)	<b>Frosh Schedule</b>		
52	Carl TATUM—G, 195	Montgomery, Ala. (Catholic)	Saturday, Sept. 30—Marion Institute at Marion, Ala.		
53	Steve SPOMER—C, 190	Cairo, Ill. (Cairo)	Friday, Oct. 13—SOUTHERN MISSISSIPPI FROSH, HERE, 7:30 P. M.		
60	Lowell SCHEXNAYDER—G, 175	Gramercy (Lutcher)	Friday, Oct. 20—Air Force Reserves, Alexandria, 3:00 P. M.		
61	Rodney BAZER—G, 195	New Iberia (New Iberia)	Friday, Nov. 24—LOUISIANA STATE FROSH, HERE, 7:30 P. M.		
62	Earl ROBINSON—G, 190	Homer (Jesuit)			



# Next Home Opponent—FLORIDA—Saturday, Oct. 14, 7:30 p. m.



**Ray Graves**

Florida will be the next foe to face the Green Wave in Tulane Stadium, three weeks from tonight. Coach Ray Graves hopes his Gators will continue the momentum from their fine 9-2 record in 1966, capped by a 27-12 conquering of Georgia Tech in the Orange Bowl. Florida broke loose from a 10-10 halftime tie to down Tulane, 31-10, at Florida Field last year. Some 17 lettermen are gone from that Gator team, including sensational Steve Spurrier. But with seasoned performers like tailback Larry Smith and flanker Richard Trapp in the lineup, Florida is a formidable foe for anybody.

NAME (PLEASE PRINT)  ADDRESS  CITY & STATE	<b>TULANE</b> <b>1967 FOOTBALL</b> <b>Application</b> <b>INDIVIDUAL GAMES</b> <b>AT HOME</b>	LEAVE BLANK   
--	--	-------------------------

Circle	Price of Tickets Desired	Leave Blank	No. Tickets	Box Seats	Side Reserved	FAMILY PLAN		Amount
						Adults	Youths	
	<b>FLORIDA</b>	<b>Oct. 14</b>		<b>\$6.00</b>	<b>\$5.00</b>	<b>\$3.00</b>	<b>\$1.00</b>	
	<b>AIR FORCE</b>	<b>Oct. 21</b>		<b>\$6.00</b>	<b>\$5.00</b>	<b>\$3.00</b>	<b>\$1.00</b>	
	<b>GA. TECH</b>	<b>Oct. 28</b>		<b>\$6.00</b>	<b>\$5.00</b>	<b>\$3.00</b>	<b>\$1.00</b>	
	<b>VANDERBILT</b>	<b>Nov. 4</b>		<b>\$6.00</b>	<b>\$5.00</b>	<b>\$3.00</b>	<b>\$1.00</b>	
	<b>VIRGINIA</b>	<b>Nov. 18</b>		<b>\$6.00</b>	<b>\$5.00</b>	<b>\$3.00</b>	<b>\$1.00</b>	

Make Check Payable to: TULANE UNIVERSITY  
 & mail to: Tulane Stadium Ticket Office  
 6401 Willow Street  
 New Orleans, La. 70118

Postage & Handling .50  
 TOTAL ENCLOSED

PREFERENCE    LOW     MEDIUM     HIGH

**ORDERS MUST BE IN MAIL AT LEAST FIVE DAYS BEFORE GAME.**

**Answer to DO YOU REMEMBER, page 25: Claude "Little Monk" Simons.**

**Answers to MASCOTS and MONIKERS, page 27:**

1. University of Florida Fighting 'Gators
2. Purdue University Boilermakers
3. Rice University Owls
4. University of Oregon Ducks
5. Georgia Tech Yellow Jackets
6. University of Kansas Jayhawkers
7. Auburn University Tigers
8. Gettysburg College Bullets
9. Mississippi State University Bulldogs
10. Muhlenberg College Mules

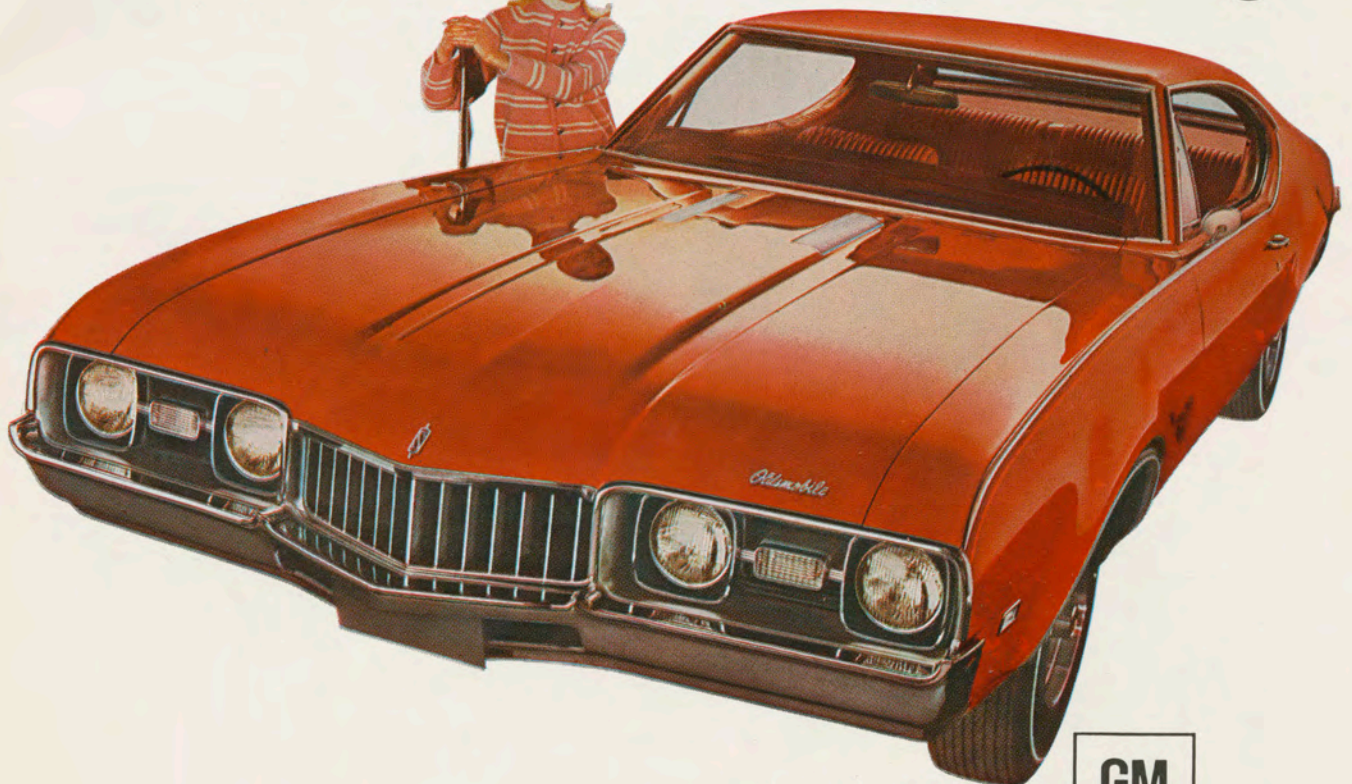
**SCOREBOARD**

4 correct	. . .	Fair
5-6 correct	. . .	Average
7 correct	. . .	Good
8-9 correct	. . .	Excellent
10 correct	. . .	Perfect



# The '68 "youngmobiles" from Oldsmobile are here.

Drive one Monday morning.

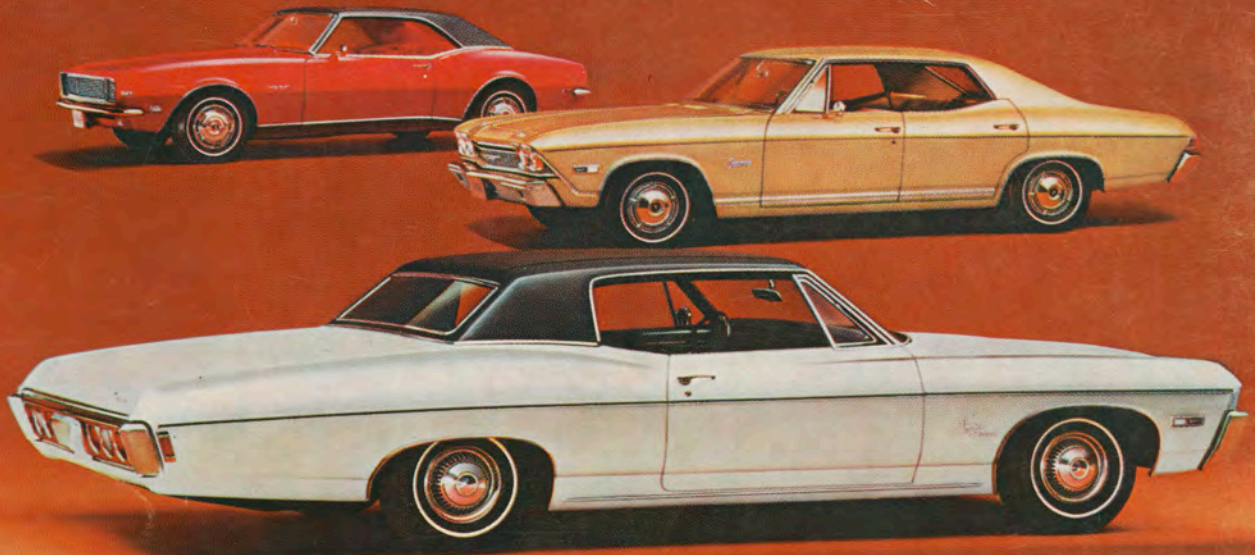


Cutlass S Holiday Coupe  
at your nearest Oldsmobile Dealer's.





New Chevrolet Impala, foreground. Chevelle Concours, top right. Camaro, "The Hugger," top left.



# '68 Chevrolets

Dramatic!  
Distinctive!  
Daringly new!

Expect a lot of never-befores and nice-to-haves from Chevrolet for 1968. You can count on nothing being newer. Formal and fastback roof lines. Elegant new interiors with exciting colors, fabrics, and easy-to-reach instruments. Concealed headlights, Hide-A-Way windshield wipers, and refreshing Astro Ventilation, available on many models.

#### NEW SILENT RIDE.

More effective body and engine mounts, quieter exhaust systems, and further improved shock absorbers. The result? Every new Chevrolet rides incredibly smooth and silent.

#### NEW MODELS, TOO.

Like the elegant Impala Custom Coupe and rugged new Chevelle Nomad Station Wagons. For the serious sports fan, there's the completely re-styled Corvette Sting Ray, and the Chevelle SS 396 with long-hood short-deck styling and a wider wheel

stance to make it cling to the road better. Camaro, "The Hugger," features Astro Ventilation, and special hood on all SS models. What's more, there's a larger 307-cubic-inch V8 standard on Chevrolet, Chevelle and Chevy II models for '68. On most automatic transmission models, there's even a built-in heater that warms air en route to the carburetor and increases engine efficiency during cold weather. The new GM exhaust emission control is standard.

#### PROVED SAFETY FEATURES.

The famous proved GM-developed energy absorbing steering column and many other popular safety items are back again. Plus new features like energy absorbing front seat backs, safety armrests that shield door handles, side marker lights, and seat belts for all passenger positions. Be smart. Be sure. Buy now at your Chevrolet dealer's.

#### Free! Get Chevrolet's 60-page College Football Handbook

Chevrolet's College Football Handbook contains a complete run-down on all the top teams, plus action photographs and inside stories by famous sports commentators. You'll also find the schedules and line-ups of all 33 NCAA games to be televised this fall. It's yours for the asking at your Chevrolet dealer's.

