

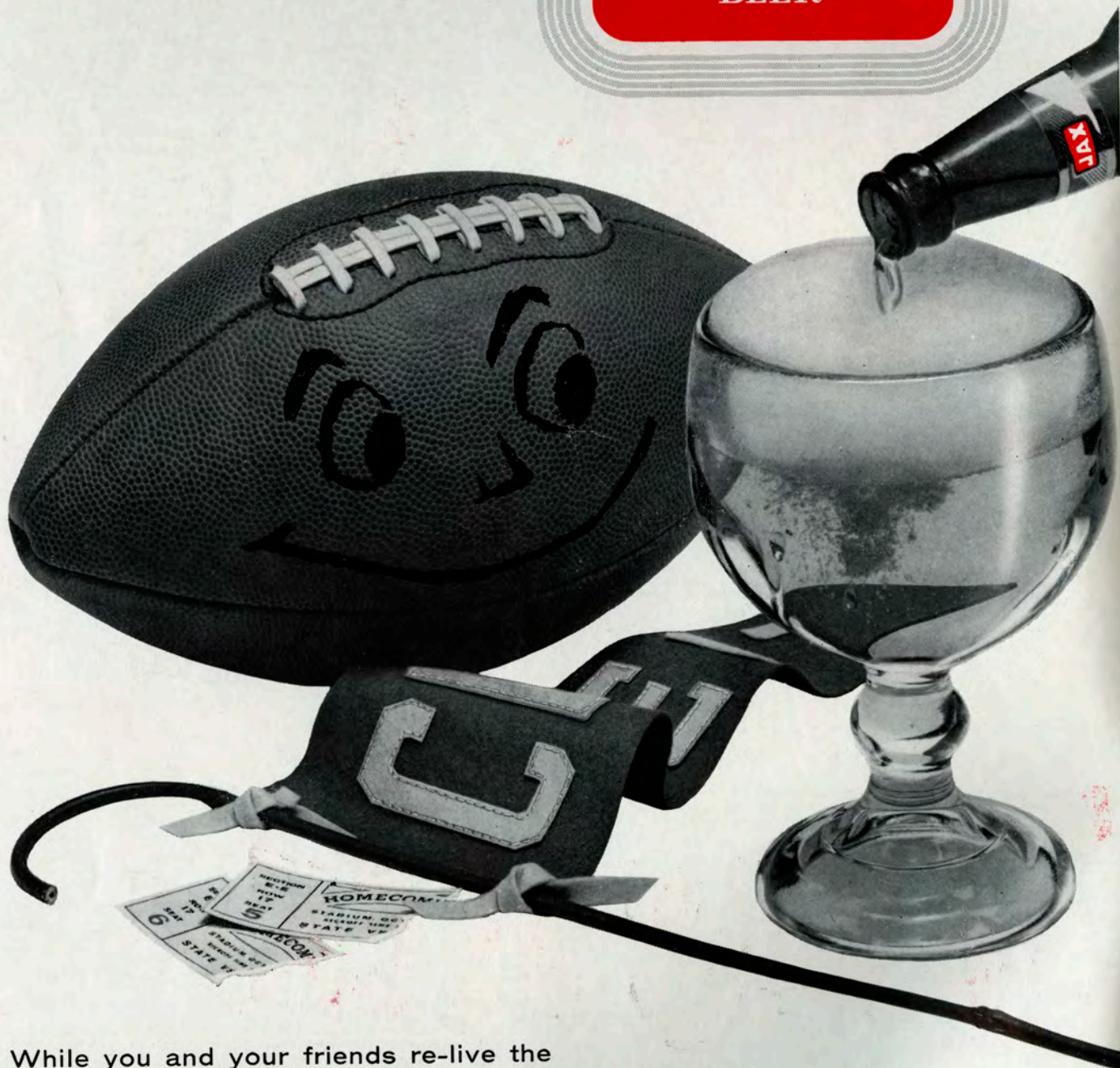


TEXAS TECH GAME

TULANE STADIUM • FRI. OCT. 30, 1959
SOUVENIR PROGRAM - 50¢

Treat yourself to an adventure in taste...

...real beer taste



While you and your friends re-live the
thrills of today's game, enjoy mellow JAX Beer
—**real beer taste**, for sure



Jackson Brewing Company, New Orleans, Louisiana

Famous for
**FINE FOOD
 and DRINK**



*Enjoy the Specialties of These
 Noted Restaurants:*

ANTOINE'S

. . . Since 1840

713 St. Louis St. • **MAGNOLIA 2554**

12 Noon to 9 P.M. Closed Sundays

ARNAUD'S

. . . Carnival Room

813 Bienville St. • **MAGNOLIA 5433**

11 A.M. to 12:30 A.M. Daily

BROUSSARD'S

. . . Napoleon Patio

819 Conti St. • **MAGNOLIA 4800**

11:30 A.M. to 11:30 P.M.

Closed Wednesdays.

After the Game



enjoy an
*enchanted
 evening..*

Make up a party after the game and enjoy a delightful dinner at the **BALI HA'I**, New Orleans' most exotic restaurant! Here in this lovely Polynesian Paradise you can enjoy the rare delights of Cantonese Cuisine . . . the taste-tingling thrills of delicious tropical drinks . . . and all the charm of the Pacific Isles.

Reservations Suggested • FA 9859



BALI HA'I
 at the beach

Overlooking Beautiful Pontchartrain Beach

TICKET INFORMATION

HOME GAMES (Individual)—\$4.00 Sidelines: \$2.50 South Side.

"FAMILY PLAN" (Unreserved seats in North Stands)—\$2.00 (adults), 50 cents (high school age and under).

GAMES AWAY—(Seats in special Tulane sections) — Alabama \$4.00; L.S.U. — A limited supply at \$5.00 and \$4.00 is still available.

TICKET OFFICES—Tulane Stadium, 6401 Willow Street (Phone UNIVERSITY 1-3661 or UNIVERSITY 1-9381); Werlein's Box Office, 605 Canal Street, (MAGNOLIA 6201).

MAIL REQUESTS—Include check or money order payable to Tulane University, with 25 cents added for postage and handling. Address: TULANE TICKET OFFICE, 6401 WILLOW STREET, NEW ORLEANS 18, LA.



"Let's count them—I get 45 feet!"

Tulane—An International University

Tonight, the City of New Orleans climaxes its celebration of International Week, with the final event appropriately taking place at Tulane University—the half-time show, featuring a parade of international beauties and selection of "Miss International Week."

The University is distinctively international in its own right. Pictorially, this global role is outlined in the CAM-PIX section of this program.

Filling that international role is a responsibility which is met by faculty, alumni and students.

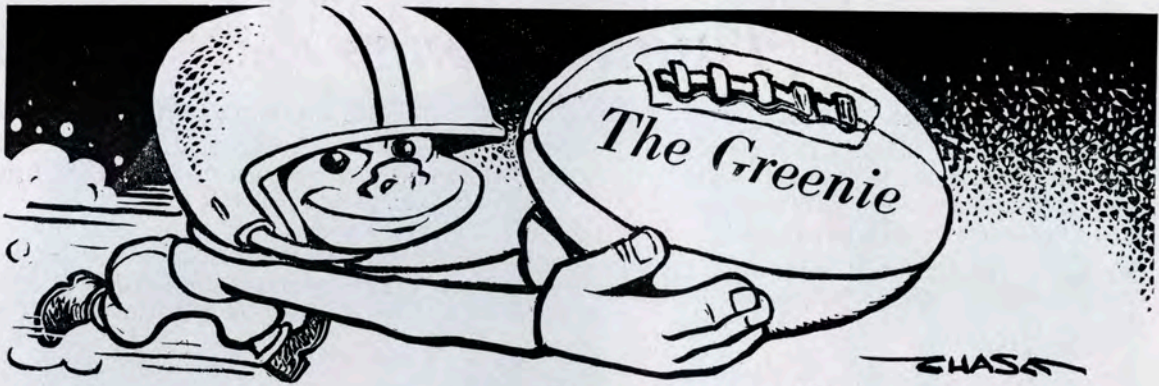
Faculty members teach a wide range of courses in languages, political science, history and other fields, thus increasing knowledge of world events. In addition, the faculty representatives of many lands, serve both permanently and temporarily at Tulane. Fulltime Tulane faculty members also journey to other nations to teach and study, thus adding even more to international exchange of ideas and learning.

Faculty members also contribute to the fulfillment of Tulane's international obligations

by participating in continuing activities, such as exploration by the Middle American Research Institute and studies by the American Universities Field Staff.

Alumni of Tulane include natives of many countries and U. S.-born people who now reside in foreign lands. As the alumni of today represent many foreign countries, so do the alumni of tomorrow—today's students. At the same time, through such programs as the Tulane-Newcomb Junior Year Abroad Program, U. S. students from the University have the opportunity to study in other lands.

Throughout the academic year, international cooperation at Tulane is fostered through an organized program for foreign students, headed by a special faculty advisor and conducted in cooperation with the Institute of International Education. Activities of this program include the designation of "sponsoring families," which act as hosts to individual foreign students at family parties and dinners, week-end trips out of New Orleans, special holiday parties and many other activities.



LARRY KARL, *Editor*
 Division of Athletics, Tulane University, New Orleans 18, La.

Vol. 29

October 30, 1959

No. 5

Tulane vs. Texas Tech

TONIGHT'S GAME

Tulane and Texas Tech, both victims of heart-breaking 21-13 defeats last week, square off here tonight hungry for victory and an exciting contest should result.

While Tulane was treating last week's homecoming crowd here with an excellent performance against Georgia Tech, the



KARL

Red Raiders of Texas Tech were battling SMU in an offensive battle that wound up with SMU winning 21-13 with a fourth quarter barrage.

The Wave handed Texas Tech a 27-0 here last year in the first game played between the teams. A repeat of that would be tough to accomplish in view of the great improvement shown this year by the Raiders.

Three outstanding members of the Texas Tech team to watch tonight are No. 55, center E. J. Holub, No. 21, quarterback Ken Talkington and No. 82, end Jerry Selfridge. Holub, picked on several pre-season All-America teams, has been an outstanding defensive star in early season games.

Tulane with excellent effort from many players last week turned in its best game of the year despite the loss. Particularly outstanding were Tommy Mason No. 20, Phil Nugent No. 10, Terry Terrebonne No.

38, George Guillot No. 67, John DiVietro No. 62, Bernard Darre No. 73, Joe LeSage No. 74, Leo Young No. 86, and Cameron Gamble No. 83.

Halftime ceremonies tonight include a parade of 30 young ladies one of whom will be selected Miss International Week. The halftime show is just one of the many ways that Tulane is participating in New Orleans' International Week. For further details on the halftime ceremonies see page 36.

Following tonight's game, the Wave travels to Mobile next week to meet Alabama. The Tulane-Alabama game will be played at 8 p.m. in Ladd Stadium, Mobile as the second game of a doubleheader. In the afternoon game Mississippi Southern meets North Carolina State. If you can't travel with the team, don't forget to listen to the broadcast of the action on the Green Wave network.

Tulane will return home November 14 for an afternoon game with Vanderbilt. Tickets for that game are now available at either the Stadium Ticket Office under the East stands, or at Werlein's Box Office, 605 Canal Street.

REMAINING GAMES

HOME

Nov. 14 Vanderbilt, Tulane Stad. 2 p.m.

AWAY

Nov. 7 Alabama, Mobile, Ala. 8 p.m.

Nov. 21 L.S.U., Baton Rouge, La. 2 p.m.

Tulane Songs

ALMA MATER

We praise thee for thy past, O Alma Mater!
Thy hand hath done its work full faithfully;
The incense of thy spirit hath ascended
And filled America from sea to sea!

We praise thee for thy present, Alma Mater!
Today thy children look to thee for bread!
Thou leadest them to dreams and action
splendid!

The hunger of their souls is richly fed!

We praise thee for thy ^{future} present, Alma Mater!
The vista of its glory gleameth far!
We shall ever be part of thee, great Mother!
There thou will be where e'er thy children are!

Chorus

Olive Green and Blue, we love thee.
Pledge we now our fealty true
Where the trees are ever greenest,
Where the skies are purest blue.
Hear us now, O Tulane, hear us.
As we proudly sing to thee!
Take from us our heart's devotion!
Thine we are, and thine shall be!

ROLL ON, TULANE

Here's a song for the Olive and the Blue.
Here's a cheer for the team that's tried and true.
Here's a pledge of loyalty to thee.
Oh, Tulane Varsity.

Here's to the Greenbacks that never will say die,
And here's to the hearts that are true
To the men of Tulane who are fighting for her
name,
For the Olive and the Blue.

Chorus

Roll, Green Wave,
Roll them down the field.
Hold, Green Wave,
That line must never yield.
When those Greenbacks charge through the line
They're bound for victory.
Hail, Green Wave,
For you we give a cheer.
Hail, Green Wave,
For you we have no fear.
So ev'ry man in ev'ry play,
And then we'll win that game today.
Hurrah for Old Tulane!

OFFICIAL WATCH FOR THE



U. S. OLYMPIC
COMMITTEE



OLYMPIC WINTER
GAMES 1960



PAN-AMERICAN
GAMES 1959



NAT'L AERONAUTIC
ASSN.



NAT'L
SKI ASSN.



AMERICAN
POWERBOAT ASSN.



NAT'L HORSE
SHOW ASSN.



NAT'L FOOTBALL
LEAGUE



MAJOR LEAGUE
BASEBALL



NAT'L COLLEGIATE
ATHLETIC ASSN.

LONGINES

THE WORLD'S MOST HONORED WATCH

Longines, first watch of sport, is recognized as official for timing world records and international events by all international sports and contest associations. Every Longines watch, for whatever its use, is made to be the best of its kind. For yourself, or as a gift, no other name on a watch means so much as Longines, the world's most honored watch.

OFFICIAL WATCH FOR THE
TULANE GAMES



ILLUSTRATED
Longines Starlight Serenade
"B", elegant 14 K gold watch
with 6 diamonds, \$175;
Longines Presidency "E",
14 K gold case, \$125.
Other models from \$71.50.
Federal tax included.

LONGINES-WITTNAUER WATCH COMPANY

TULANE UNIVERSITY



DR. RUFUS CARROLLTON HARRIS
President



RICHARD O. BAUMBACH
Director of Athletics



ANTON (ANDY) PILNEY
Head Football Coach



TEXAS TECH

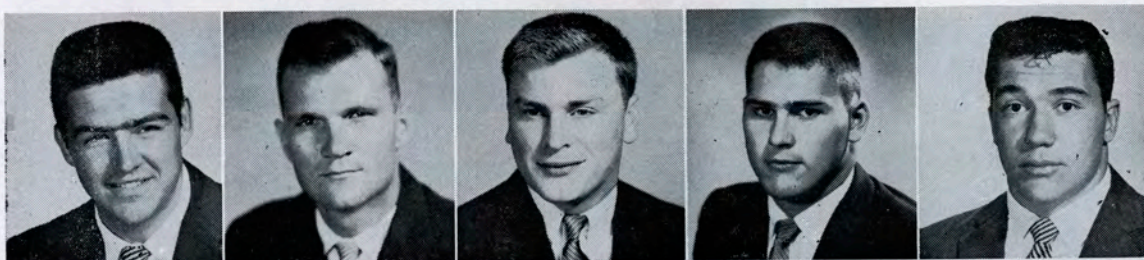


DR. R. G. GOODWIN
Acting President



DEWITT WEAVER
Head Coach & Athletic Director

1959 TULANE GREEN WAVE



Abadie

Andrews

Ary

Barr

Barrios



Brabham

Bratton

Chaisson

Clements

Cornett



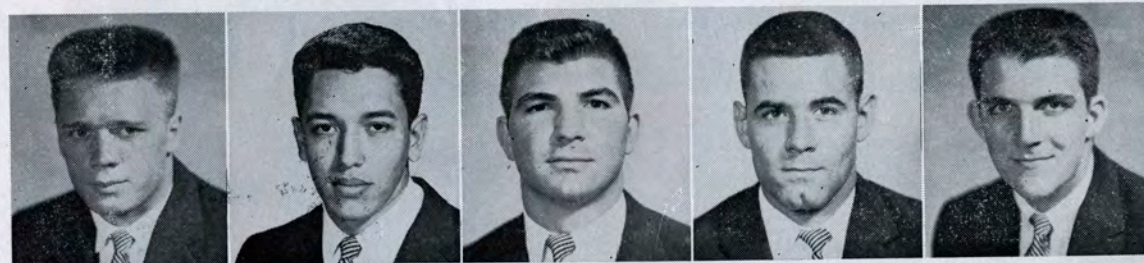
Crenshaw

Darre

DiVietro

Edmondson

Ellzey



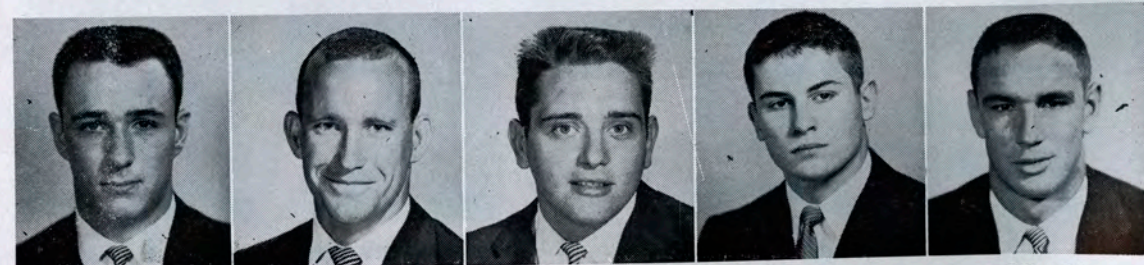
Gamble

Gonzales

Guillot

Hawley

Heffington



Jones

Keever

Kiefer

Kisner

Klock

1959 TULANE GREEN WAVE



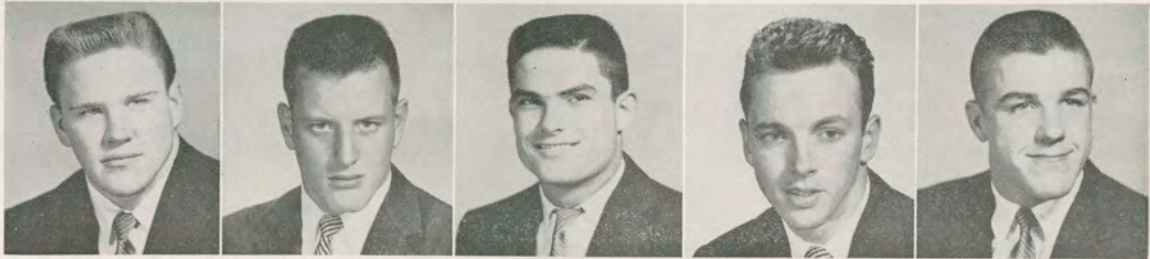
LeSage

Magee

Mason

McLean

McClellan



Michiels

Moen

Nugent

Oechsner

Ogilvie



Osteen

Painter

Pizzolato

Price

Rappold



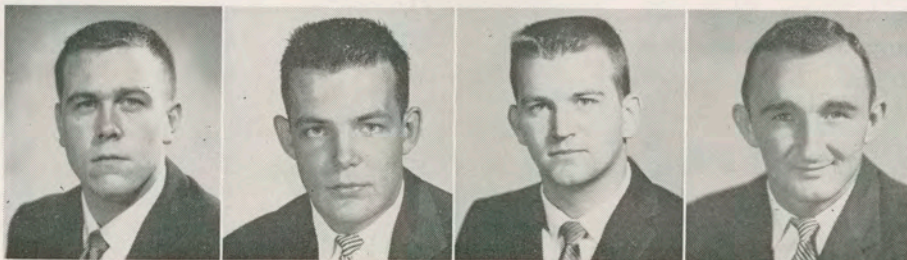
Rawson

Reynolds

Roach

Spinella

Stein



Strange

Terrebonne

Thompson

Young

1959 TULANE ROSTER

No.	Name and Position	Age	Ht.	Wt.	Ltrs.	Class	Hometown
10	Phil Nugent, qb	20	6-1	185	1	Jr.	Lafayette
11	Vance Strange, qb	19	5-10	165	0	Soph.	San Francisco, Cal.
16	Bob Cornett, qb	20	5-10	175	0	Soph.	Hattiesburg, Miss.
17	Jeff Bratton, qb & hb	21	6-1	195	2	Sr.	Camden, Ark.
20	Tommy Mason, hb	20	6-1	191	1	Jr.	Lake Charles
22	Bill Ary, hb	20	5-10	190	0	Soph.	New Orleans
23	Bob Price, hb	20	5-11	194	0	Soph.	Memphis, Tenn.
25	Bill Osteen, hb	20	5-11	185	1	Jr.	Millington, Tenn.
26	Will Ellzey, hb	20	6-0	200	0	Sr.	Metairie
31	George Oechsner, hb	19	5-10	160	0	Soph.	New Orleans
33	James Magee, hb	21	6-0	185	0	Jr.	Morgan City
34	Ned Edmondson, hb	19	6-1	175	0	Soph.	Lake Providence
35	Howard Kisner, hb	19	5-10	161	1	Jr.	Natchez, Miss.
38	Terry Terrebonne, hb	19	5-10	170	0	Soph.	New Orleans
40	Connie Andrews, fb	22	6-1	195	2	Sr.	Magnolia, Ark.
44	Leonard Stein, fb	19	6-0	190	0	Soph.	New Orleans
45	Robert Barrios, fb	19	5-11	181	0	Soph.	New Orleans
47	Tom McClellan, fb	21	6-0	193	1	Sr.	New London, Tex.
50	Neal Jones, c	21	6-2	208	2	Sr.	Baton Rouge
51	John Chaisson, c	19	6-0	195	0	Soph.	Houma
52	Ray Keever, c	19	6-2	188	0	Soph.	Sulphur
53	Nat Kiefer, c	19	6-2	215	0	Soph.	New Orleans
54	Larry Thompson, c	20	6-1	212	0	Soph.	Shreveport
60	Billy Clements, g	21	5-10	203	2	Sr.	Shelbyville, Ky.
61	Butch Crenshaw, g	19	5-10	195	0	Soph.	Alexandria
62	John DiVietro, g	21	6-0	208	2	Sr.	Easton, Pa.
63	David Michiels, g	20	5-11	210	0	Jr.	Alexandria
64	Mel Spinella, g	19	5-11	220	0	Soph.	Berwick
65	Paul Hawley, g	21	5-10	207	1	Sr.	Shreveport
67	George Guillot, g	21	5-10	193	1	Jr.	Shreveport
68	Billy Barr, g	19	6-1	205	0	Soph.	Nashville, Tenn.
69	Charles Ogilvie, g	20	5-11	190	0	Soph.	Memphis, Tenn.
71	David Painter, t	22	6-7	240	2	Sr.	Lake Charles
72	Bill Rawson, t	22	6-1	215	2	Sr.	Oak Park, Ill.
73	Bernard Darre, t	20	6-1	215	1	Jr.	New Orleans
74	Joe LeSage, t	21	6-3	225	1	Jr.	Beaumont, Tex.
75	Tyrone Pizzolato, t	19	6-2	205	0	Soph.	Donaldsonville
76	Ed Reynolds, t	19	6-3	215	0	Soph.	Destrahan
77	Gus Gonzales, t	19	6-1	200	0	Soph.	Wharton, Tex.
78	Bill Klock, t	22	6-1	215	1	Sr.	New Orleans
80	Robert Rappold, e	19	6-3	190	0	Soph.	New Orleans
81	Pete Abadie, e	22	6-3	205	2	Sr.	New Orleans
82	George McLean, e	20	6-1	195	1	Jr.	Magnolia, Ark.
83	Cameron Gamble, e	21	6-1	190	0	Jr.	New Orleans
84	Phil Heffington, e	21	6-3	195	1	Jr.	Shreveport
86	Leo Young, e	21	6-2	195	2	Sr.	Ferriday
87	Clarence Moen, e	19	6-3	195	0	Soph.	Cumberland, Wis.
88	Bill Roach, e	19	6-1	185	0	Soph.	Monroe
89	Bill Brabham, e	20	6-3	210	1	Jr.	Greensburg

The official watch for timing this game is LONGINES—"The world's most honored watch."

"A GOOD DEAL"

DEPENDS ON THE DEALER

Largest Used Foreign-Sports
Car Dealer South

We Buy — Trade — Finance

SERVICE MOTOR CO.
2645 TULANE AVE.

Earle P. Abadie "A. J." Johnson

TUlane 7071

Open 8 A.M. - 9 P.M.

**The Sign
of GOODNESS**

for 54 Years!



**Quality Dairy Products
and
Frozen Foods**



**the
gourmet's goal**

... is realized fully at Brennan's. Beautiful food is imaginatively served with unobtrusive continental graciousness, and in lovely surroundings. Traditional New Orleans delicacies or your own favorites, all done with a memorable Parisian flair. Come and be welcomed, as late as midnight.

Brennan's

FRENCH RESTAURANT
417 ROYAL ST., NEW ORLEANS

shopping at

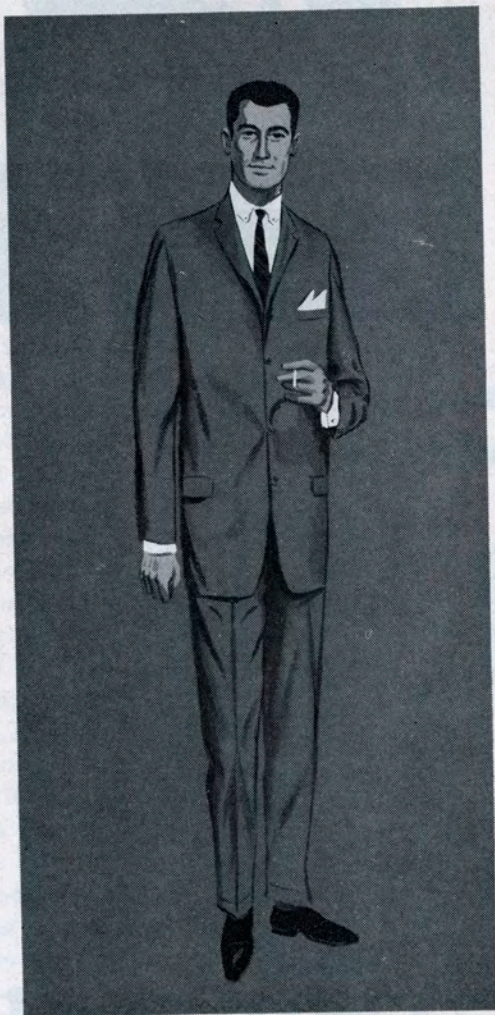
Holmes

SINCE 1842



is traditional

in New Orleans



Styles change . . . but never the place to buy them. In New Orleans, it's *Holmes*, New Orleans' own quality department store. Chances are your grandfather bought his duster and goggles from *Holmes*—and that your dad got his racoon coat there. Today, *Holmes* features as always the latest fashions and famous name brands . . . styles for the young, and for the young at heart. And you'll find that *Holmes* gives you swift, personal attention when you select your wardrobe, on alterations and deliveries. Discover, as so many have, why Orleanians say . . . *there's no place like Holmes.*

D. H. HOLMES

NEW ORLEANS • BATON ROUGE

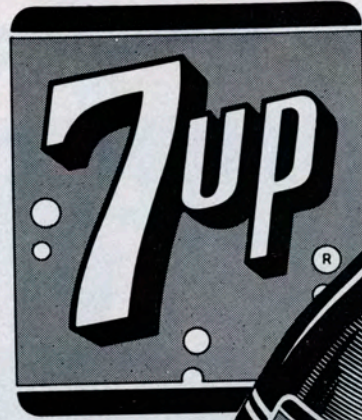
1959 Green Wave Co-Captains



End Leo Young, 6-2, 200-pound two-year letterman senior from Ferriday, is 21 and played 420 minutes in 1958 to lead all ends in time in action. Caught 20 passes last season, third-best pass receiving mark in the Southeastern Conference. His 20 receptions netted 227 yards and he scored one touchdown. Majoring in Business Administration.

Guard Billy Clements, 5-10, 195-pounds, senior, lettered in 1957 and 58. A native of Shelbyville, Kentucky, his 386 minutes of action last year led all Wave guards. An excellent leader, he has good speed and quick reactions, making him suited well for defensive pursuit at which he excels. His major course of study is Education.

*Cheered by
Millions!*



NOTHING DOES IT LIKE SEVEN-UP!

COMPLETE INVESTMENT SERVICES

- *Tax-free Louisiana Municipal Bonds*
- *Trading in all markets –
national exchanges and over-the-counter*
- *Quotations and research on any security*
- *Portfolio appraisals*

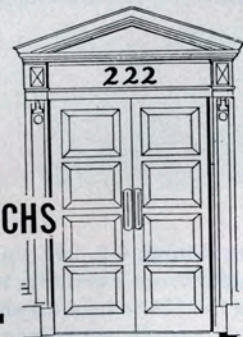
Members — New York Stock Exchange
and other national exchanges

HOWARD, WEIL, LABOUISSÉ, FRIEDRICHS

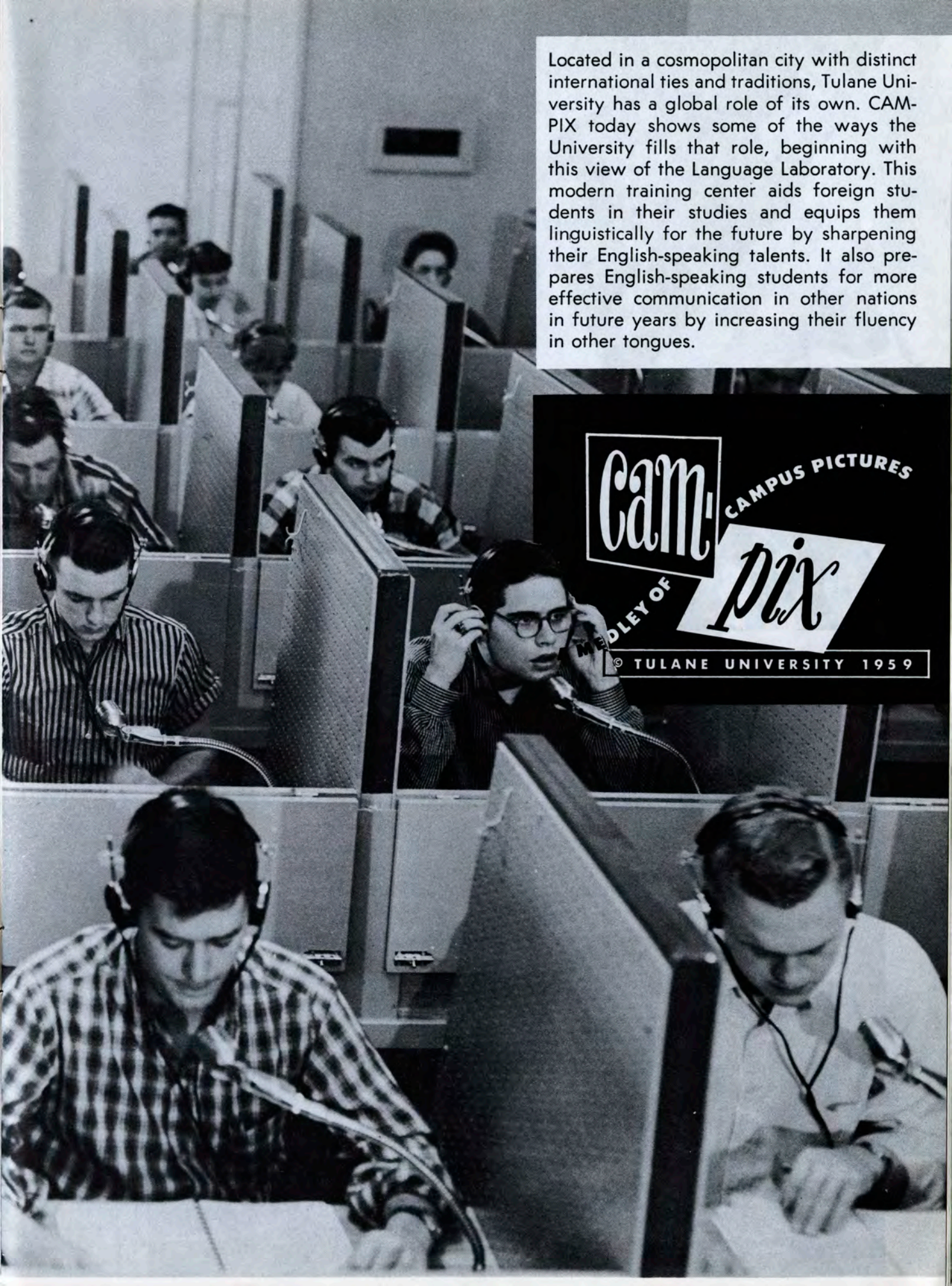
AND COMPANY

Investment Securities

222 Carondelet St. — TULANE 2711
New Orleans, La.



BRANCHES in Louisiana at MONROE • ALEXANDRIA • LAKE CHARLES • SHREVEPORT • COVINGTON
BRANCHES in Mississippi at JACKSON • NATCHEZ • VICKSBURG



Located in a cosmopolitan city with distinct international ties and traditions, Tulane University has a global role of its own. CAM-PIX today shows some of the ways the University fills that role, beginning with this view of the Language Laboratory. This modern training center aids foreign students in their studies and equips them linguistically for the future by sharpening their English-speaking talents. It also prepares English-speaking students for more effective communication in other nations in future years by increasing their fluency in other tongues.

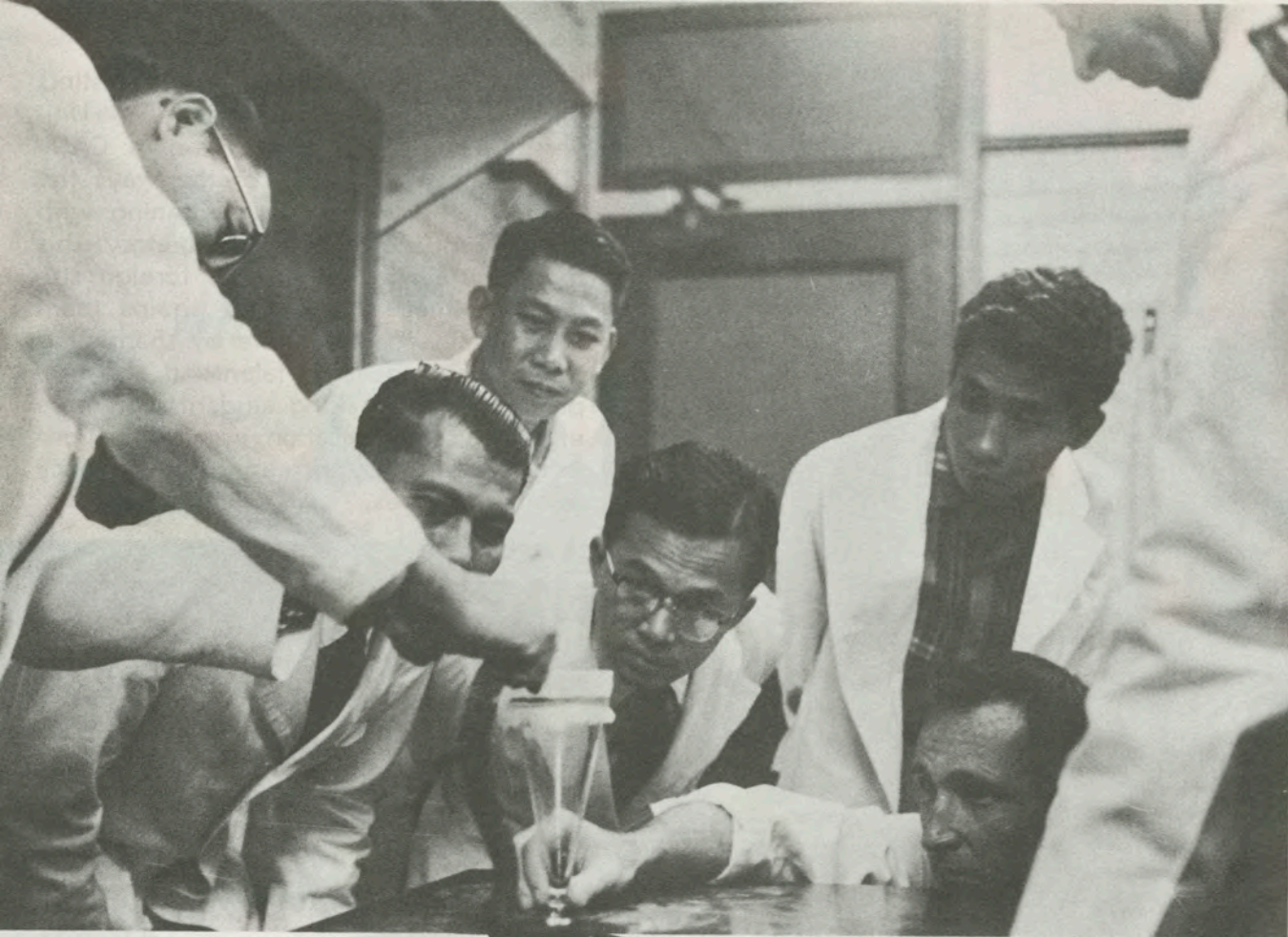
Cam

CAMPUS PICTURES

PIX

COLLEGE OF

© TULANE UNIVERSITY 1959



National boundaries do not limit the Tulane student body. Each year it includes more than 300 students from 60 foreign nations and territories, such as the group above, shown observing a demonstration of snake-milking at the School of Medicine. In addition, a number of outstanding U. S. students from Tulane, like the two pictured below in England, study annually in universities of foreign countries through Tulane-Newcomb Junior Year Abroad program.





Tulane graduates today reside in every state in the Union, every country in the Western Hemisphere, and many other lands. Here, School of Medicine alumni are shown a special map which pinpoints the Tulane medical graduates in the Americas.



Many Tulane faculty members engage in world-wide exchange of ideas and learning. Special activities for this purpose include the Institute of Comparative Law, directed by Dr. Ferdinand F. Stone (above), which is devoted to studies and instruction relating the great legal systems of the world. International links at Newcomb College include (from left, below) Egydio de Castro e Silva, who brings a Pan American flavor to the music world of New Orleans from his native Brazil; and Dr. Donald Robertson, a New Jerseyite who has spent several years in Mexico studying the rich architectural and artistic heritage.





New Orleans' Finest . . .

In the center of business and social activities, The Roosevelt is designed to afford you the utmost in comfort and convenience. It offers a complete selection of suites and individual accommodations, each with thermostat temperature control. Luxurious convention halls and meeting rooms are available for your business or organization's requirements. And seven dining rooms and taverns provide the finest in food and entertainment.

900 ROOMS WITH BATH
MODERATE RATES

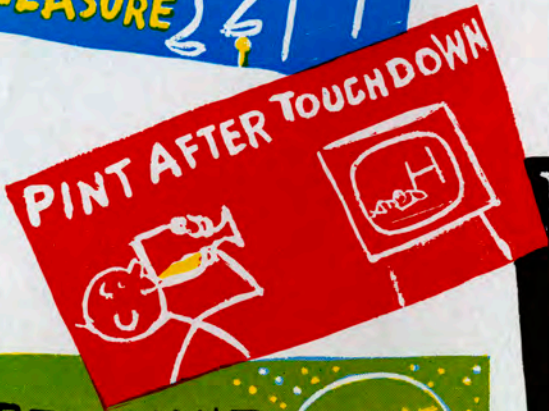
SEYMOUR WEISS
*President and
Managing Director*

A. C. BELLANDE
Manager

The **ROOSEVELT**

PRIDE OF THE SOUTH
UNIVERSAL TRAVEL CARDS ACCEPTED

HOORAY FOR THE O



THE WORLD CAN'T MAKE A

TULANE

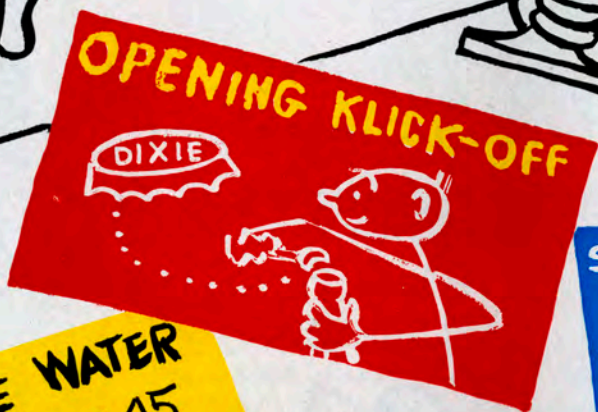
PROBABLE STARTING LINEUP

No.	Name	Position
89	BILL BRABHAM	LE
74	JOE LeSAGE	LT
67	GEORGE GUILLOT	LG
50	NEAL JONES	C
62	JOHN DiVIETRO	RG
73	BERNARD DARRE	RT
86	LEO YOUNG	RE
10	PHIL NUGENT	QB
38	TERRY TERREBONNE	LH
17	JEFF BRATTON	RH
47	TOM McCLELLAN	FB

THE GREEN WAVE SQUAD

10 Nugent, qb	47 McClellan, fb	72 Rawson, t
11 Strange, qb	50 Jones, c	73 Darre, t
16 Cornett, qb	51 Chaisson, c	74 LeSage, t
17 Bratton, qb & hb	52 Keever, c	75 Pizzolato, t
20 Mason, hb	53 Kiefer, c	76 Reynolds, t
22 Ary, hb	54 Thompson, c	77 Gonzales, t
23 Price, hb	60 Clements, g	78 Klock, t
25 Osteen, hb	61 Crenshaw, g	80 Rappold, e
26 Ellzey, hb	62 DiVietro, g	81 Abadie, e
31 Oechsner, hb	63 Michiels, g	82 McLean, e
33 Magee, hb	64 Spinella, g	83 Gamble, e
34 Edmondson, hb	65 Hawley, g	84 Heffington, e
35 Kisner, hb	67 Guillot, g	86 Young, e
38 Terrebonne, hb	68 Barr, g	87 Moen, e
40 Andrews, fb	69 Ogilvie, g	88 Roach, e
44 Stein, fb	71 Painter, t	89 Brabham, e
45 Barrios, fb		

LIVE AND BREW



FINER BEER—DIXIE 45

TEXAS TECH


PROBABLE STARTING LINEUP

No.	Name	Position
85	MIKE SEAY	TE
82	JERRY SELFRIDGE	LT
68	FRED WEAVER	LG
55	E. J. HOLUB	C
60	JERE MOHON	RG
73	BOBBY CLINE	RT
87	DON WAYWOOD	SE
21	KEN TALKINGTON	QB
23	DAN GURLEY	SHB
25	DICK POLSON	HB
89	DICK STAFFORD	FB

THE TEXAS TECH SQUAD

10. Sudbury, qb	45 Rice, R., hb	75 Elliott, rt
20 Turner, B., shb	50 Wiles, c	76 Holmes, rt
21 Talkington, qb	52 Turnbow, c	78 Stafford, R., lt
23 Gurley, shb	55 Holub, c	79 Meyer, lt
25 Polson, hb	60 Mohon, rg	80 Pace, te
27 Wilson, se	61 Mitchell, lg	82 Selfridge, lt
28 Tidwell, se	63 Adams, rg	83 Brock, se
30 Amerson, qb	64 Rice, C., rg	85 Seay, te
31 Fraser, fb	68 Weaver, lg	86 Turner, T., c
33 Gatlin, fb	72 Robinson, lg	87 Waygood, se
42 Williams, hb	73 Cline, rt	88 Strickland, te
43 Hodges, shb	74 Mullins, lt	89 Stafford, D., fb
44 Barron, hb		

OFFICIALS—Thomas P. Bell (Kentucky), referee; Bailey McElreath (Centenary), umpire; Robert S. Caldwell (Mississippi St.), head linesmen; Clifford Domingue (Texas A&M), field judge; Nel Searcy (Wake Forest), back judge; Paul V. Hicks (Memphis St), ECO.



**The Roosevelt offers
New Orleans Best in Dining and
Entertainment Facilities**

THE EXQUISITE

Blue Room

Presenting the Nation's finest in dance music and entertainment, and famous New Orleans cuisine from a complete menu of dining delights. Star-studded floor shows nightly except Monday, at dinner and supper.

the Fountain Lounge

Open each evening except Tuesday for cocktails from 5. Dance music from 8. Spend an evening of enjoyment in the intimate atmosphere of New Orleans' favorite rendezvous. Luncheon daily from 11. Music by Albert Kirst ensemble.



THE SAZERAC BAR

A New Orleans tradition for over a century. Enjoy your favorite beverages prepared by experts. Ladies invited.

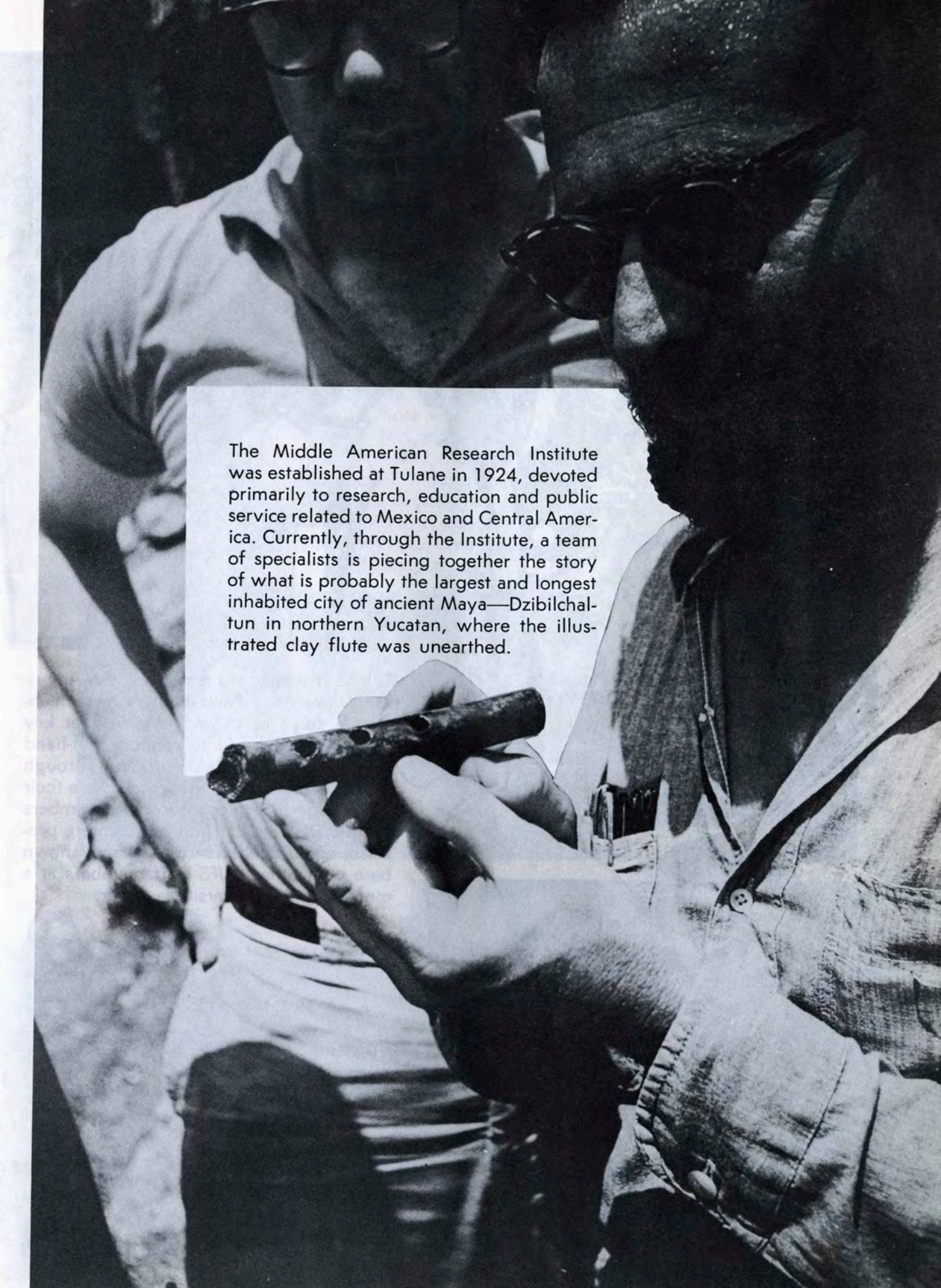
THE SAZERAC COCKTAIL and RAMOS GIN FIZZ

are served, in New Orleans, exclusively in all Roosevelt facilities.



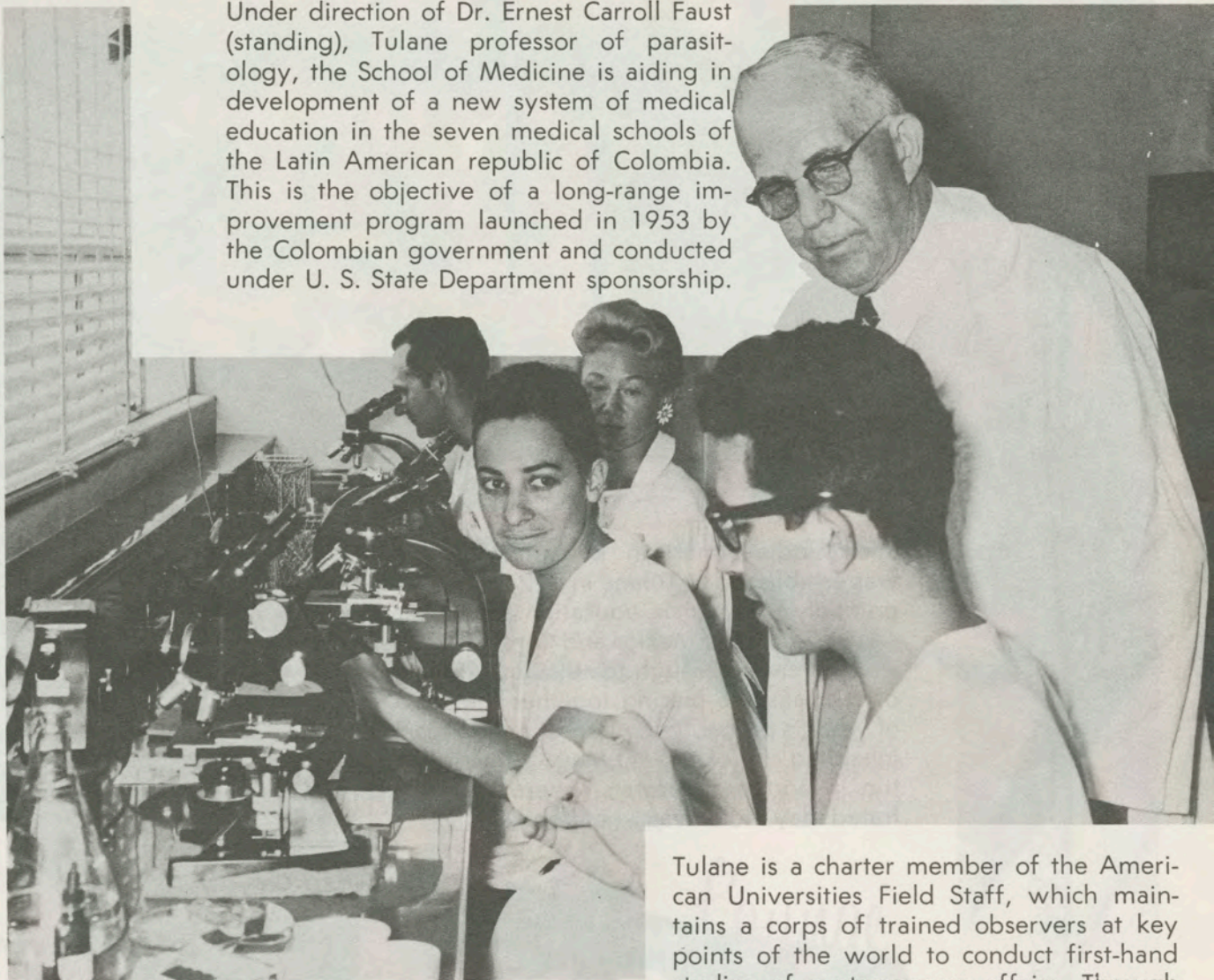
The ROOSEVELT

PRIDE OF THE SOUTH

A black and white photograph showing a man in the foreground wearing a dark cap and glasses, intently examining a long, cylindrical clay flute. He is holding the flute with both hands, looking closely at its surface. In the background, another person is partially visible, looking towards the same object. The scene appears to be outdoors, possibly at an archaeological site. A white text box is overlaid on the image, providing context about the Middle American Research Institute and the discovery of the flute.

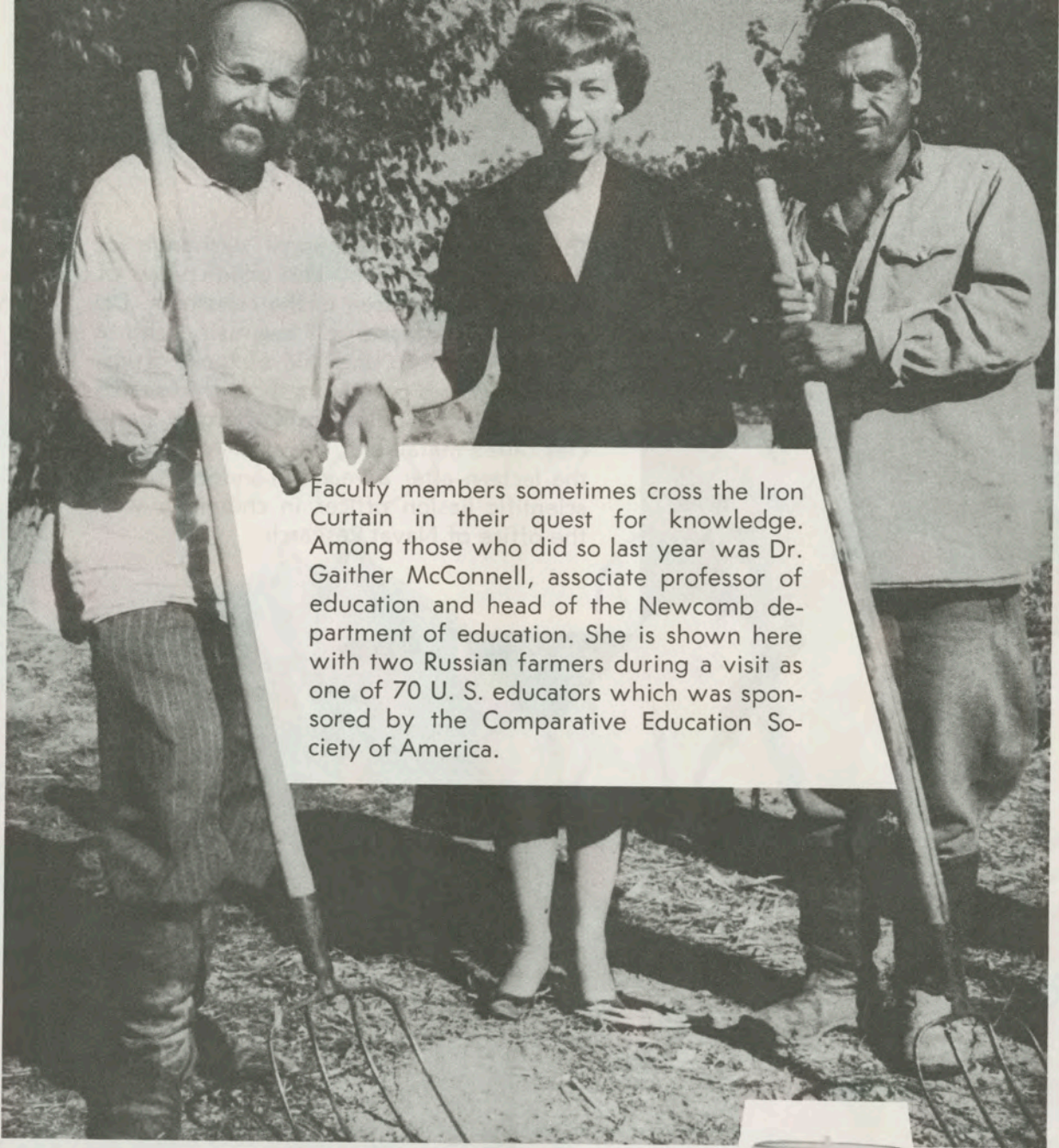
The Middle American Research Institute was established at Tulane in 1924, devoted primarily to research, education and public service related to Mexico and Central America. Currently, through the Institute, a team of specialists is piecing together the story of what is probably the largest and longest inhabited city of ancient Maya—Dzibilchaltun in northern Yucatan, where the illustrated clay flute was unearthed.

Under direction of Dr. Ernest Carroll Faust (standing), Tulane professor of parasitology, the School of Medicine is aiding in development of a new system of medical education in the seven medical schools of the Latin American republic of Colombia. This is the objective of a long-range improvement program launched in 1953 by the Colombian government and conducted under U. S. State Department sponsorship.



Tulane is a charter member of the American Universities Field Staff, which maintains a corps of trained observers at key points of the world to conduct first-hand studies of contemporary affairs. Through reports and personal visits, they share their knowledge in this country. Staff members include Dr. Kalman H. Silvert (center), professor of political science at Tulane, shown here with other AUFS staff members at a meeting at the University last year.

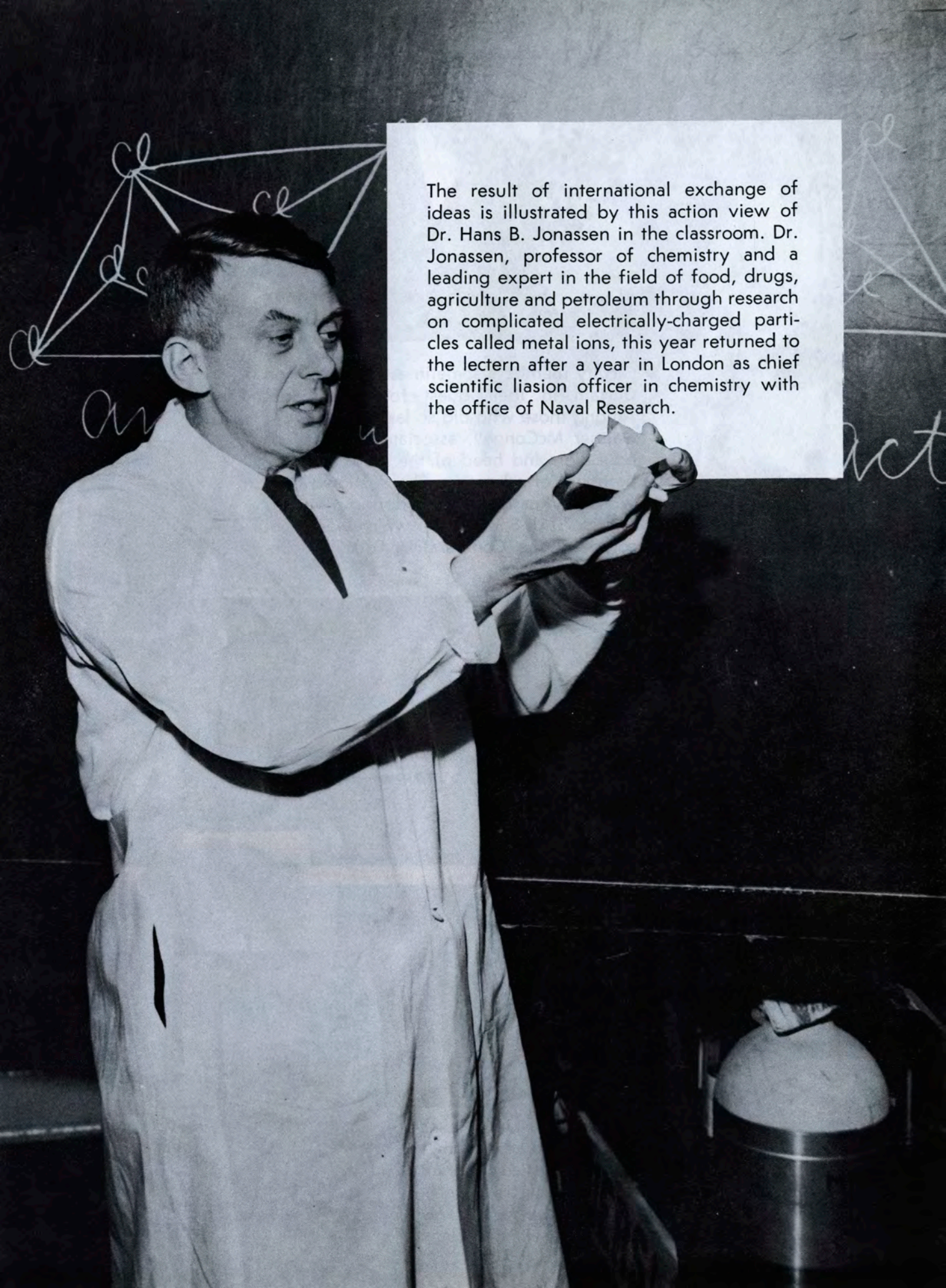




Faculty members sometimes cross the Iron Curtain in their quest for knowledge. Among those who did so last year was Dr. Gaither McConnell, associate professor of education and head of the Newcomb department of education. She is shown here with two Russian farmers during a visit as one of 70 U. S. educators which was sponsored by the Comparative Education Society of America.



The University also brings to New Orleans the leading educational figures of other nations, such as the noted British historian Arnold J. Toynbee (second from left), shown here as he was interviewed by newspapermen during a visit to Tulane in 1958.



The result of international exchange of ideas is illustrated by this action view of Dr. Hans B. Jonassen in the classroom. Dr. Jonassen, professor of chemistry and a leading expert in the field of food, drugs, agriculture and petroleum through research on complicated electrically-charged particles called metal ions, this year returned to the lectern after a year in London as chief scientific liaison officer in chemistry with the office of Naval Research.

as spotted in MB's

V.I.P. SHOP



*where you'll find moderate
priced clothing and furnish-
ings in good taste for
gentlemen of all ages!*



MAISON BLANCHE

GREATEST STORE SOUTH

Tulane's
All-Americans

ENDS

Jerry Dalrymple (1930-31)*
Ralph Wenzel (1939)

TACKLES

Harley McCollum (1939)
Ernie Blandin (1941)
Paul Lea (1948)
Jerome Helluin (1950)

GUARDS

Tony Sardisco (1955)

CENTERS

Lester Gatewood (1943)

BACKS

"Peggy" Flournoy (1925)
Bill Banker (1929)
Don Zimmerman (1931-32)
Claude Simons, Jr. (1934)
W. A. "Dub" Jones (1944)
Eddie Price (1949)

* National Football Hall of Fame.

Best Wishes To

The Green Wave

For Many Successful
Seasons

~

**CHALMETTE LAUNDRY
and CLEANERS**

2801 TULANE AVENUE

For Excellent Work and Repair Service
Call GAlvez 2161

BEFORE OR AFTER THE GAME.....

OUTRIGGER

BAR & LOUNGE

- ★ Spectacular exotic drinks!
- ★ Palate pleasing Polynesian tid-bits!
- ★ All your cocktail favorites!

OPEN FROM 9 A.M.

ENTERTAINMENT FROM 5 P.M.
Nightly except Sunday

sheraton-charles hotel
NEW ORLEANS



HAL'S Commercial Restaurant

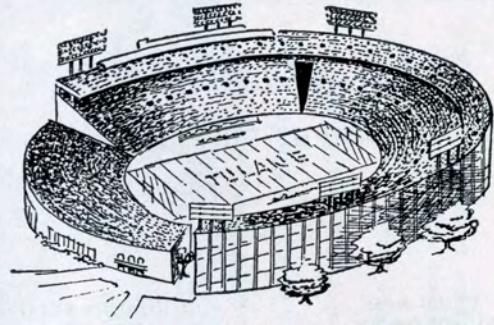
834 Gravier Street

Featuring Delicious

POOR BOYS
Of All Kinds

Tasty Plate Lunches

The Best Coffee and Pie in Town



Tulane Stadium

Tulane Stadium lighted in 1957 at a cost of \$168,000, is famous as the home of Green Wave football teams and of the annual Sugar Bowl Classic, was dedicated 33 years ago this fall with east and west stands seating 35,000. Subsequent enlargements, due in large measure to the efforts of the Sugar Bowlers, have increased the capacity to its present 80,985. The stadium is located on the site of the Etienne de Boré plantation, where sugar was first granulated in this country.

**All-America favorite
...ice-cold Coke**



"Coke" is a registered trade-mark.

BOTTLED UNDER AUTHORITY OF THE COCA-COLA COMPANY BY
THE LOUISIANA COCA-COLA BOTTLING CO., LTD.

Tulane Printing Office

CAMPUS PRINTERS



PLUM near
AUDUBON ST.

UNiversity 6-2741
Ext. 344

DELMONICO

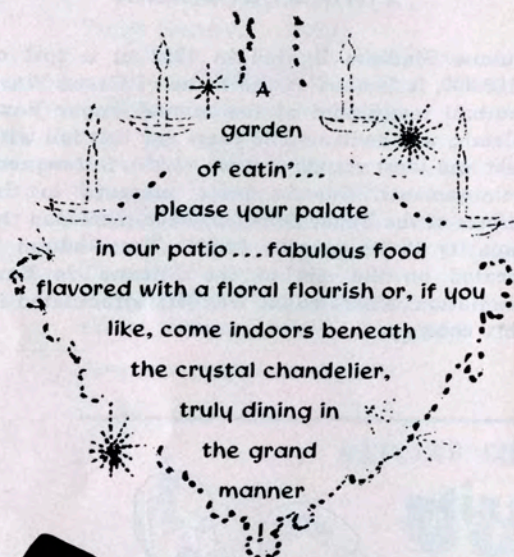
RESTAURANT

ESTABLISHED 1895

1300 ST. CHARLES

JACKSON 5-4937

MAGNOLIA 9307



since 1880
Commander's

Palace
Dining in the Grand Manner

WASHINGTON AVE. at COLISEUM

WILMER A. SIMPSON
President

EDWIN A. STOUTZ
Secty-Treas.

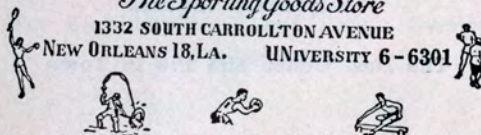


Simpson-Stoutz Sporting Goods Co.

INCORPORATED

The Sporting Goods Store

1332 SOUTH CARROLLTON AVENUE
NEW ORLEANS 18, LA. UNIVERSITY 6-6301



For Your Convenience

PUBLIC TELEPHONES

are located at several positions on the ground level walkways underneath both East and West Stands.

PAN-AMERICAN FILMS

Producers of 16 mm Industrial, Educational and Special Events
Motion Pictures

Editing, Titling and Color Film Duplicating — Sound Recording

Producers of the Sugar Bowl Movies in Color and Sound Since 1945

Bell & Howell

735 POYDRAS STREET

Motion Picture Equipment Dealers

JA 5-4895

1959 TULANE VARSITY SQUAD



First row, from left; Bernard Darre, Pete Abadie, David Painter, Joe LeSage, Phil Nugent, Neal Jones, Co-Capt. Leo Young, Co-Capt. Billy Clements, Phil Heffington, Bill Brabham, Bill Osteen, John DiVietro, Paul Hawley, and Jeff Bratton.

Second row, from left; Mel Spinella, Will Ellzey, Len Stein, Charles Passman, Ned Edmondson, Charles Ogilvie, Bob Price, Connie Andrews, William Barr, Terry Terrebonne, Bill Ary, Vance Strange, and Larry Thompson.

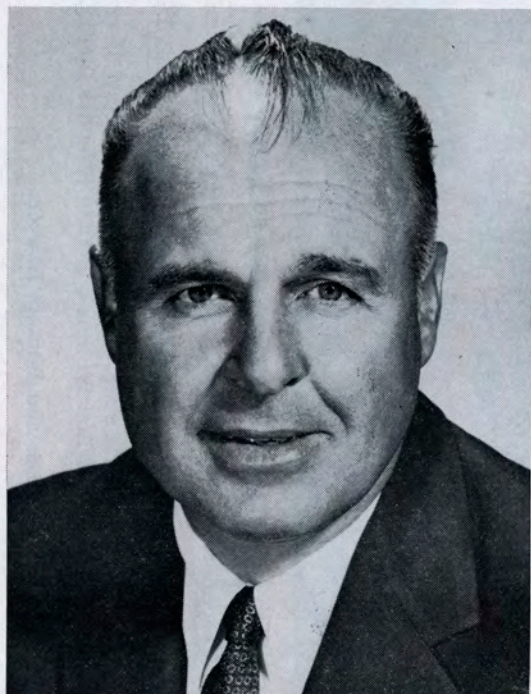
Third row, from left; Bob Cornett, George Oechsner, Nat Kiefer, Dave Michiels, Chris Bunger, Gus Gonzales, George McLean, Fred Dickerson, Tom McClellan, Bob Barrios, Cameron Gamble, and Clarence Moen.

Fourth row, from left; James Magee, Butch Crenshaw, Robert Rappold, Ed Reynolds, Tyrone Pizzolato, John Chaisson, and Ray Keever.

Fifth row, from left; Head Coach Andy Pilney, and assistant coaches Roland Dale, Jack Green, Bob Whitman, Bennie Ellender, Pete Pihos, Jim Root, Don Miller, and Ray Prats.

Missing from picture; Tommy Mason, Howard Kisner, William Roach, George Guillot, Bill Klock, and William Rawson.

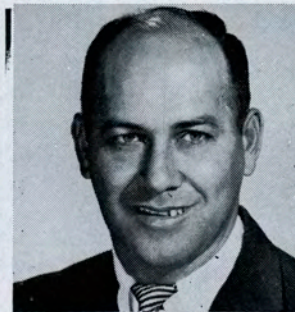
TULANE STAFF



Anton (Andy) Pilney
Head Coach



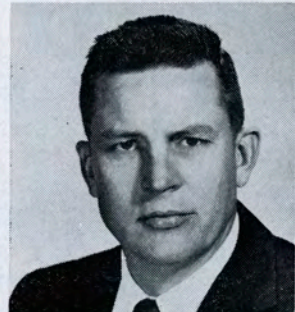
Jack Green
*Assistant
Coach, Line*



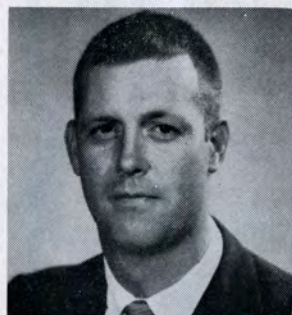
Bob Whitman
*Assistant
Coach, Backs*



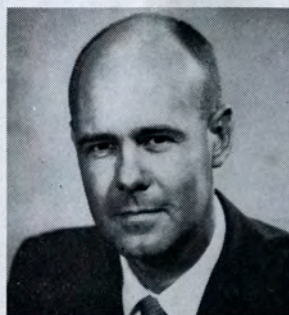
Pete Pihos
*Assistant
Coach, Ends*



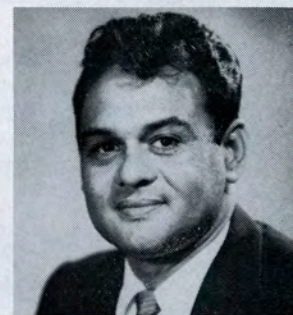
Roland Dale
*Assistant
Coach, Line*



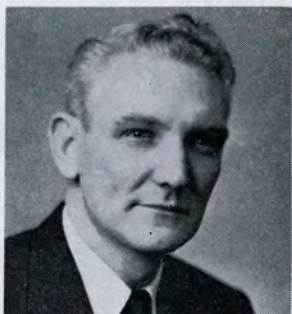
Jim Root
*Assistant
Coach, Backs*



Benny Ellender
Freshman Coach



Ray Prats
*Assistant
Freshman Coach*



Dr. James Breen
Academic Counselor



Jack Orsley
*Recruiting
Co-ordinator*



Earl (Bubba) Porche
Trainer



EDDIE PRICE

*Public Relations Director
Regal Beer*

SEC RECORD

1948 —Most yards rushing—1178 yards

TULANE RECORD

1948-49—Only Tulane back to gain more than 1000 yards in season

1949 —Most yards gained in single game—238 yards

1946-49—3095 yards rushing

1948-49—All Conference Back

1949 —All-American Back

PRO RECORD

1951 —Leading Ground Gainer, National Football League—All-Pro Fullback

1952 —All-Pro Fullback

1950-55—All-time N. Y. Giant Ground-gaining record



BILL SVOBODA

*District Manager
Regal Beer*

TULANE RECORD

1948 —Voted best blocking back

1948 —Voted most unselfish player

1949 —Co-captain

1949 —Member College All-Stars

PRO RECORD

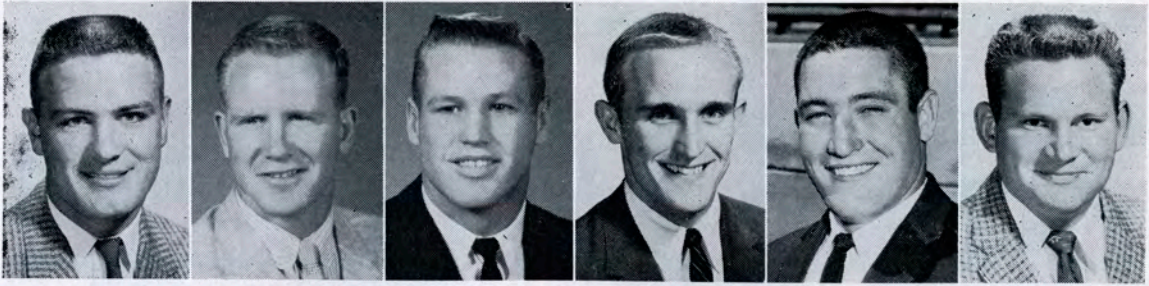
1957 —All-Pro Line-backer

MEET 3 OLD FRIENDS

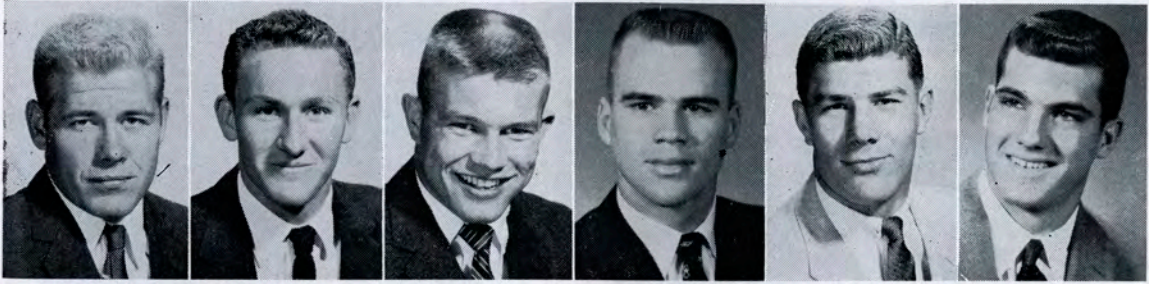
*.... now playing on the
same team!*



BETTER TASTE
is your
EXTRA DIVIDEND
in every glass
of REGAL BEER
American Brewing Co.,
New Orleans, La.



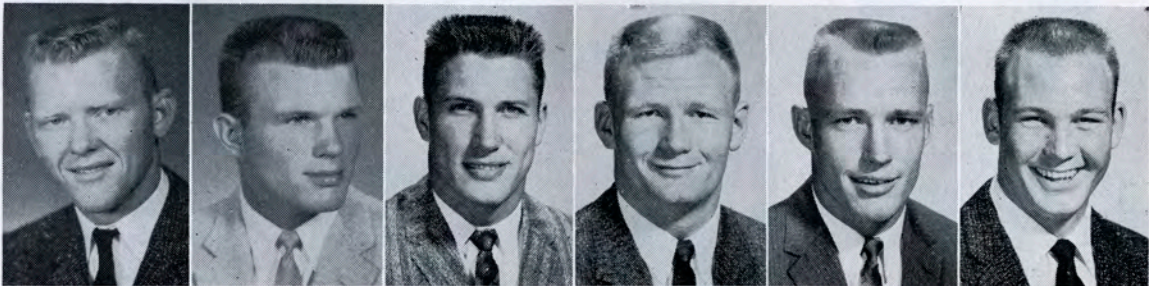
Adams Amerson Barron Brock Cline Elliott



Fraser Gatlin Gurley Hodges Holub Meyer

Texas Tech Roster

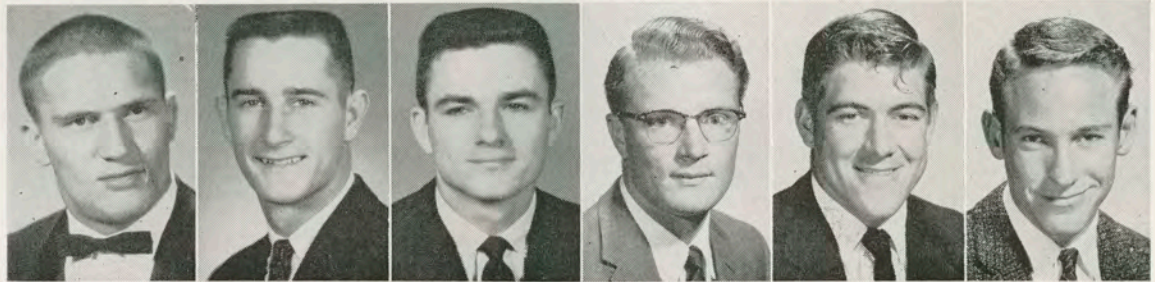
No.	Name and Position	Age	Ht.	Wt.	Ltrs.	Class	Hometown
10	John Sudbury, qb	19	5-10	155	0	Soph.	Amarillo
20	Bake Turner, shb	19	5-10	165	0	Soph.	Alpine
21	Ken Talkington, qb	19	6-0	165	1	Sr.	Tyler
23	Dan Gurley, shb	19	5-10	170	1	Jr.	Fort Worth
25	Dick Polson, hb	19	5-11	175	0	Soph.	Amarillo
27	Virgil Wilson, se	19	6-2	160	0	Soph.	Hamlin
28	Carey Tidwell, se	19	5-11	170	0	Soph.	Meridian
30	Glen Amerson, qb	20	6-1	182	1	Jr.	Munday
31	George Fraser, fb	19	6-0	195	0	Soph.	Llano
33	Carl Gatlin, fb	18	6-1	188	0	Soph.	Waco
42	Jimmy Williams, hb	20	5-10	165	0	Jr.	Sudan
43	Gerald Hodges, shb	20	5-10	165	0	Jr.	Dallas
44	Mickie Barron, hb	21	5-11	175	1	Sr.	Childress
45	Ronnie Rice, hb	21	5-11	180	2	Sr.	Lefors
50	Jackie Wiles, c	20	5-11	165	0	Jr.	Levelland
52	Bill Turnbow, c	21	6-2	181	2	Sr.	Burkburnett
55	E. J. Holub, c	21	6-4	210	1	Jr.	Lubbock
60	Jere Mohon, rg	20	5-8	185	1	Jr.	Panhandle
61	Kelly Mitchell, lg	19	6-2	190	0	Soph.	Hobart, Okla.



Mitchell Mohon Mullins Pace Polson Rice, C.



Rice, R. Robinson Seay Selfridge Stafford, D. Stafford, R.



Strickland Sudbury Talkington Tidwell Turnbow Turner, B.

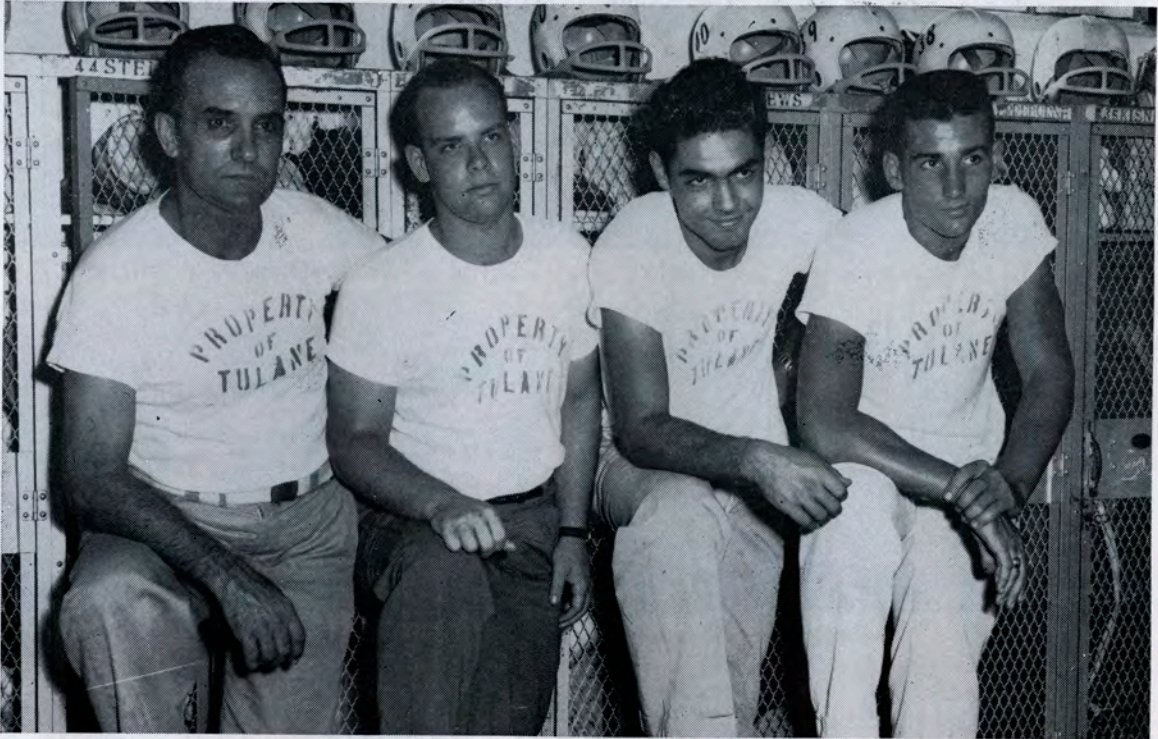
Texas Tech Roster

No.	Name and Position	Age	Ht.	Wt.	Ltrs.	Class	Hometown
63	Blake Adams, rg	19	6-0	180	0	Soph.	Monahans
65	Charles Rice, rg	19	6-0	192	0	Soph.	Amarillo
68	Fred Weaver, lg	20	6-1	190	1	Jr.	Cooper
72	Dale Robinson, lg	21	6-4	185	0	Jr.	Stamford
73	Bobby Cline, rt	21	6-1	215	1	Jr.	Belton
74	Larry Mullins, lt	13	6-3	200	0	Soph.	Snyder
75	James Elliott, rt	19	6-0	210	0	Soph.	Decatur
76	Pat Holmes, rt	19	6-5	235	0	Soph.	Del Rio
78	Richard Stafford, lt	19	6-4	230	0	Soph.	Matador
79	Robert Meyer, lt	20	6-2	200	0	Jr.	San Antonio
80	Tommy Pace, te	20	6-4	200	0	Soph.	Amarillo
82	Jerry Selfridge, lt	21	6-1	210	2	Sr.	Borger
83	James Brock, se	20	6-2	190	1	Jr.	Fort Worth
85	Mike Seay, te	20	6-1	180	0	Jr.	Andrews
86	Tommy Turner, c	20	6-1	180	0	Jr.	Garland
87	Don Waygood, te	23	6-2	170	2	Jr.	Sundown
88	Ed Strickland, te	22	6-0	178	0	Jr.	Pampa
89	Dick Stafford, te	22	6-2	190	0	Jr.	Temple



Turner, T. Waygood Weaver Wiles Williams Wilson

THEY EQUIP THE GREENIES



From left are Head equipment custodian Troy Phillips and student assistants Rex Rexinger, Doyle Phillips, and Skippy Haller.



CAMERAS

BOLEX, BELL & HOWELL, KODAK,
REVERE, ARGUS, KEYSTONE,
LEICA, POLAROID, ROLLEI,
AIRES, TOPCORN

PROJECTORS

• 8mm • 16mm • 16mm SOUND
35mm SLIDE • 2 1/4 x 2 1/4 REFLEX

PHOTOGRAPHIC ACCESSORIES

Complete Selection



Pay No More!

Official Concession Prices Are:

Soft Drinks 15c; Coffee 15c
Ice Cream Bars 10c
Ice Cream Sandwiches 15c
Hot Dogs 25c; Hamburgers 50c
"Tunies" 40c; Cheese Sandwiches
(American or Swiss) 40c
Cigarettes 35c; Candy Floss 15c
Popcorn 15c Peanuts 15c
Seat Backs 50c

Behind The Scene At Tulane



G. J. (Buddy)
deMonsabert
Business Manager

Larry Karl
Assistant to the
Athletic Director
& Sports Information

Dr. Charles Moseley
Team Physician

Miss Ana Steinacher
Ticket Manager

CAGE PROSPECTS BRIGHT

Order Your Season Tickets Now

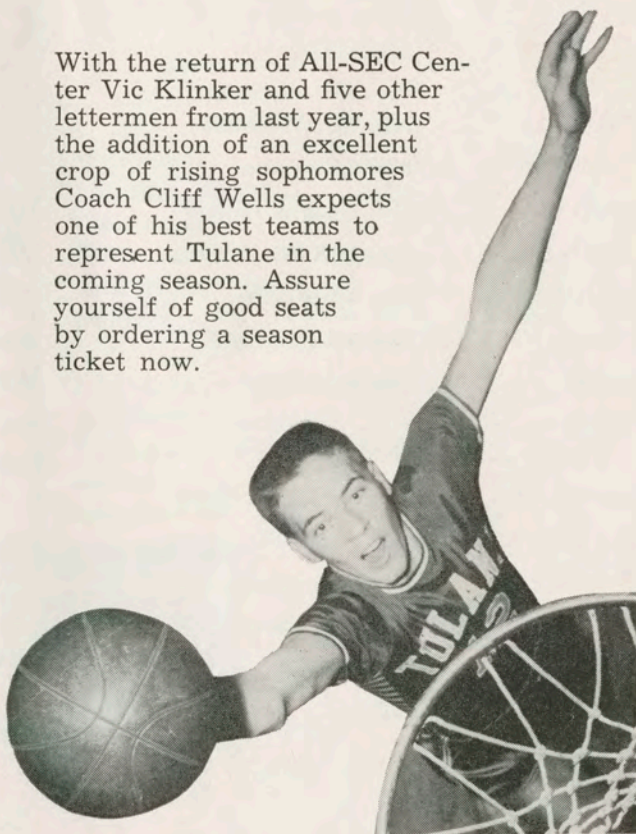
1959-60 HOME BASKETBALL SCHEDULE

Dec. 1—ALABAMA STATE
Dec. 3—LA. COLLEGE
Dec. 5—STETSON UNIV.
Dec. 7—CENTENARY
Dec. 18—S. M. U.
*Dec. 29-30—SUGAR BOWL
Jan. 2—GEORGIA
Jan. 4—FLORIDA
Jan. 16—SPRING HILL
Jan. 30—OLE MISS
Feb. 1—MISS. STATE
Feb. 13—ALABAMA
Feb. 15—AUBURN
Mar. 2—L. S. U.

*Tulane Season Ticket Buyers will be assured of opportunity to buy good seats for Sugar Bowl Basketball Tournament.

For tickets or information call Ticket Office, Tulane Stadium, 6401 Willow Street (UNiversity 1-3661 or UNiversity 1-9381)

With the return of All-SEC Center Vic Klinker and five other lettermen from last year, plus the addition of an excellent crop of rising sophomores Coach Cliff Wells expects one of his best teams to represent Tulane in the coming season. Assure yourself of good seats by ordering a season ticket now.



Tonight's International Week Program

Tulane, a truly international educational institution, with students from fifty-three foreign countries and alumni in seventy-three foreign countries—virtually every part of the world—is happy to take part in the observance of International Week here in the city of New Orleans.

Tonight at halftime fans will witness a parade of twenty-eight foreign beauties representing twenty-eight of the countries which have consulates in the United States. Also in the parade is a representative of the United States. Miss International Week will be chosen by lot during the ceremonies and will be crowned by Mr. C. C. Walther, General Chairman of New Orleans International Week.

Members of the Miss International Week court and the countries which they represent are listed below.

AUSTRIA	Miss Karin Teichman	HONDURAS	Miss Maria Isobel Herrera
BOLIVIA	Miss Ethel Pacheco	ITALY	Miss Loredana Bucci
CANADA	Miss Elizabeth Howard	JAPAN	Miss Akiko Funatsu
CHINA	Miss Julia Gen-Ho Cheng	MEXICO	Miss Sylvia Patron
COLUMBIA	Miss Sylvia Beltran	THE NETHERLANDS	Miss Gladys Duval
COSTA RICA	Miss Sonia Povedano	NICARAGUA	Miss Carmen Recalde
CUBA	Miss Luisa Alka	NORWAY	Miss Carolyn Werner
DOMINICAN REPUBLIC	Miss Olga Vega	PANAMA	Miss Mariela Garrido
ECUADOR	Miss Margot Vandensen	PHILIPPINE REPUBLIC	Miss Fenita Astilla
EL SALVADOR	Miss Maria Gladys Canton	SPAIN	Miss Blance Santiago
FRANCE	Miss Denise Baillet	THAILAND	Miss Sumali Lapcharoen
GERMANY	Miss Evelyn Soehnke	UNITED KINGDOM	Miss Carol Laurent
GREECE	Miss Connie Pappas	VENEZUELA	Miss Christa Torrero
GUATEMALA	Miss Maria del Carmen deLeon	YUGOSLAVIA	Miss Maria Terese Reichard
	UNITED STATES — Miss Charlene Podas		

NEW ORLEANS' FAVORITE MECCA FOR SPORTS FANS



La Chandelle

LOUNGE

... a favored meeting spot, with the individuality and charm of an intimate club. Pleasant entertainment, excellent service.



The Empire

ROOM

... the gourmet's delight. Offers the very finest French and Creole food, superbly served in beautiful period surroundings.



La Fontaine

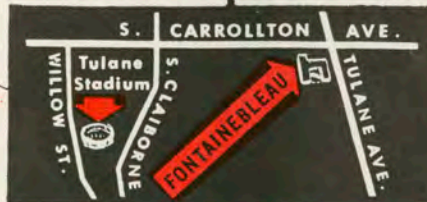
COFFEE SHOP

... for that quick before-or-after-the-game snack. Tasty sandwiches, hot or cold platters, a wide choice of desserts.

Find Your Fun at the FONTAINEBLEAU

New Orleans' newest rendezvous is the beautiful FONTAINEBLEAU, just a few minutes' drive from Tulane Stadium. You'll find good fun, good food and good beverages waiting for you.

Now open, 200 individually air-conditioned rooms. Also, private rooms for after-the-game parties, receptions, conventions and meetings.



FONTAINEBLEAU MOTOR HOTEL

"IN THE HEART OF NEW ORLEANS"

GREATEST GAINER OF THEM ALL

In the past 12 months more motorists switched to Amoco-Gas than to any other premium gasoline.

Why has Amoco-Gas scored the biggest gain in its field? The reasons are as crystal-clear as the gasoline itself. Regardless of the make or model of the car you drive, there's *more for you* at the Amoco-Gas pump.

More gas per gallon because only Amoco-Gas is *all gas*—untainted by lead, untinted by color! More gas means more natural power, more mileage . . . with no lead to foul vital engine parts, corrode mufflers or stain carburetors. Avoid costly repair bills.

Use clear, white, lead-free Amoco-Gas for best performance from your car.

