

OFFICIAL SOUVENIR FOOTBALL PROGRAM - - - 50 Cents

Saturday, October 28, 1967 - 7:30 p. m.

HOMECOMING 1967

WELCOME HOME ALUMNI!

GEORGIA TECH GAME

Tulane Stadium - - Tulane University - - New Orleans, La.

**Football and Jax:
hot sports action
and a cold Mellow Brew-
Yours at every game!**



Jackson Brewing Co., New Orleans, La.

TULANE GRIDIRON NEWS

Published by the Tulane University Athletic Department, New Orleans, La.

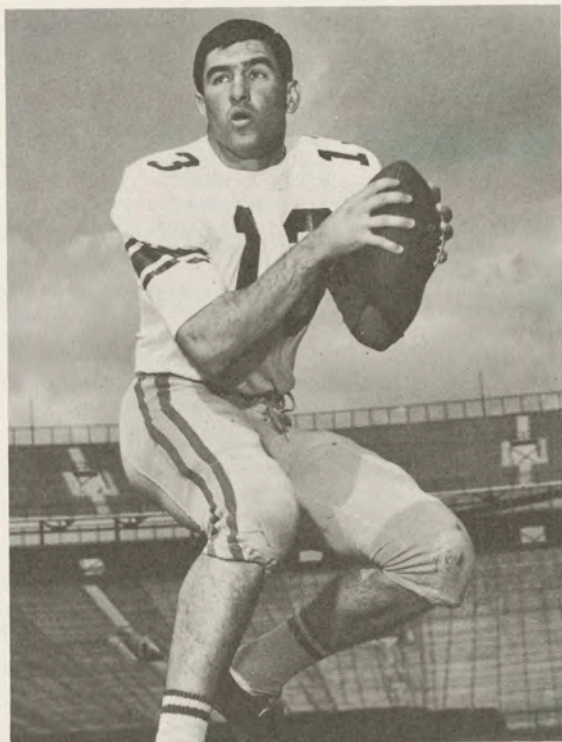
Editor — Bill Curl, Sports Information Director

Photos by Armand Bertin, Tulane University; Jim Laughead Photography, Dallas, Tex.; Leon Trice Photography, New Orleans; Pedro's Art Studio, New Orleans. Covers by John Chase; Printing by Molenaar Printing Company.

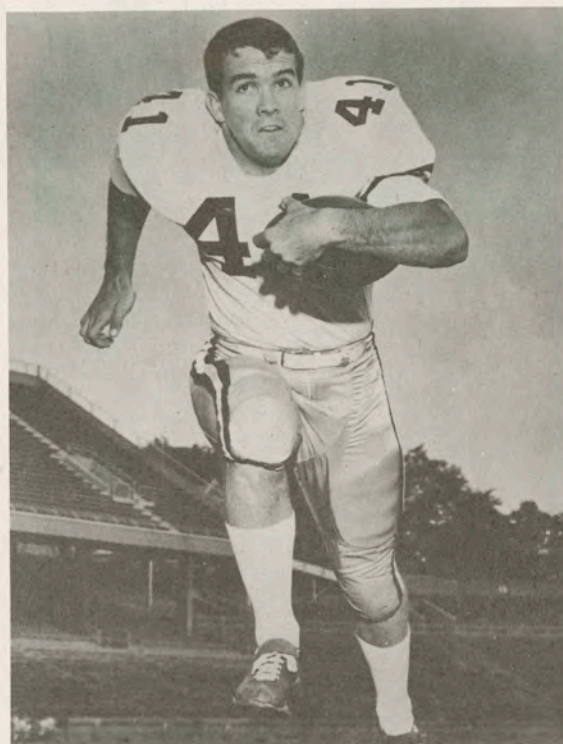
Vol. 37

Saturday, October 28, 1967

No. 4



BOBBY DUHON, TULANE QUARTERBACK



LENNY SNOW, GEORGIA TECH TAILBACK

Contents

Basketball Preview	49
Cam-Pix	42-44
Campus Map	35
Co-Captains	23
Concession Prices	12
Cover Story	13
Do You Remember	25
Freshman Roster, Schedule	55
Freshman Team Picture	55
Future Schedules	46
LINEUPS	28-29
Opponent's Information	4, 38
Opponent's Player Pictures	39-41
OPPONENT'S ROSTER	31
Penalties	51
Records	32
Road Trips	10
Songs and Cheers	7
Stadium Information	8, 46
Statistics, both teams	4
Sugar Bowl	47
Ticket Order Blank	56
Tonight's Game	3
Tulane Player Pictures	16-20
TULANE ROSTER	26
Tulane Staff Pictures	15
Tulane University Data	9



1967 Green Wave Scores and Schedule

Miami (Ohio) 14	Tulane 3
Tulane 36	North Carolina 11
Miami (Fla.) 34	Tulane 14
Florida 35	Tulane 0
Air Force 13	Tulane 10
Oct. 28—*GEORGIA TECH	Here
Nov. 4—VANDERBILT	Here
Nov. 11—Tennessee	Knoxville
Nov. 18—VIRGINIA	Here
Nov. 25—L. S. U.	Baton Rouge

*Homecoming Game

— Home Games Start at 7:30 P. M. —

Tulane and the Community . . .



Dr. Longenecker

TULANE UNIVERSITY is an integral part of the New Orleans community.

The university's primary roles of education, research and service are largely focused on this area, affording opportunities for thousands of students of all ages to advance academically, contributing to the increase of knowledge, and providing a wide variety of community services, ranging from the upgrading of elementary education to the delivery of health services.

The university's programs and its calendar of events cover almost every aspect of life and make possible frequent interaction between the university family and its neighbors.

This gathering tonight is but one manifestation of this, offering not only recreation for thousands of persons but also a chance for visitors to see the obvious signs of Tulane's progress and to exchange views with students, faculty and staff about the university's mission and its impact on the community.

Athletic events bring visitors to the campus throughout the year.

And there are many other occasions.

Stage performances, concerts, lectures.

And, also, throughout the year, conferences, seminars and major conventions of scientific, professional and business organizations which attract to the campus not only persons from this area but visitors from many distant points.

Tulane, in fact, has become a core of many community interests—in art and the performing arts, in health and medicine, in science, law, engineering, architecture, business and education, to name but a few.

For whatever stimulus it does provide, Tulane is rewarded amply through the stimulation it, in turn, receives from the participation in its activities of so many from outside the university.

For the public's participation in all of these functions provide the leavening ingredient needed to enable Tulane to continue to improve in the accomplishment of its missions.



Dr. Clarence Scheps, Executive Vice President

Tulane, Tech Both Bidding to Get Back On Victory Track

By BILL CURL, *Director*

Sports Information Office, Tulane University

Tonight's Game

Two unhappy ancient rivals will collide tonight as Georgia Tech comes in for Tulane's Homecoming Game.

After opening with three straight wins, the Yellow Jackets have dropped their last two contests. Tulane, meanwhile, has lost three in a row to sink its record to 1-4.

Tech opened the campaign, its first under Coach Bud Carson, with wins of 17-10 over Vanderbilt, 24-7 over TCU, and 10-0 over Clemson. But the Jackets were then jolted 24-13 by tough Tennessee, and last week Auburn stung Tech right in its Grant Field lair, 28-10.

Injuries have hampered the Yellow Jackets. Tech's top two quarterbacks, Kim King and Larry Good, were sidelined last week.

Tulane's worst injury problem has been to its pride. After a disappointing 14-3 loss to Miami of Ohio in the opener, the Wave snapped back with an impressive 36-11 triumph at North Carolina.

But in the three weeks since, Tulane has been unable to regain the consistency it showed against the Tar Heels, as Miami, Fla. (34-14), Florida (35-0), and Air Force (13-10) have all taken their turn. A few signs were there last week, but Air Force pulled it out with a field goal in the final minute of play.

Tulane will also be trying to snap a personal 14-game losing streak in the rivalry with Tech. This will be the 33rd meeting between the two old rivals. Since winning the 1916 inaugural by a 45-0 count, Tech has had the best of it with 24 wins to eight for the Green Wave. Tulane's last win was a 10-0 whitewash back in 1949.

Tech took a 35-17 win last year in Atlanta en route to the Orange Bowl. Most of the principal figures in that game will be back tonight to have at it again.

Tailback Lenny Snow scored two of the Jackets' touchdowns, and defensive back Bill Eastman ran back an interception 99 yards to break the game open. Both will be in action tonight.

Tulane quarterback Bobby Duhon had the biggest day of his career to date last year against Tech, when he rolled up 228 yards—more ground than any entire team had garnered against the Jackets' defense.

Despite Duhon's efforts, Tech converted a few Tulane errors into points on the scoreboard and got away with the win. Coach Jim Pittman's team will be out to change things tonight.

T "N" T Tulane 'n' Tech INDEPENDENT'S DAY Homecoming Color

PRE-GAME . . .

Featuring Bands from Georgia Tech, Tulane, and Broadmoor High School.

Capt. Howard de Laoreal will be presented a plaque on behalf of Tulane's 400 Navy ROTC graduates who participated in Naval assaults during World War II.

Charles F. Baird, Under-Secretary of the Navy, a guest of Tulane President Herbert E. Longenecker, will be introduced, as the University recognizes Navy Week and the 25th anniversary of Navy ROTC.

Father Bernard Grehan, a graduate in the Tulane NROTC Unit of 1942, will give the Invocation.

The National Anthem will be sung by Broadway performer and Tulane graduate Jack Dabdoub.

HALFTIME . . .

Fireworks, both ground and aerial displays, will be presented with the compliments of the Jackson Brewing Company of New Orleans.

Navy personnel will be introduced, and the field will be lined by approximately 2,000 sailors from the Aircraft Carrier "Lexington" and the Amphibious Transport "La Salle."

Judge Fred J. Cassibry, Homecoming committee chairman, will introduce the newly elected President of the Tulane Alumni Association, Dr. James J. Hicks, a graduate of the Medical Class of 1944.

Dr. Hicks will crown Miss Gay Yellen, the 1967 Homecoming Queen. (Photos of Miss Yellen and Homecoming activities are featured in this week's Cam-Pix on pages 42-44.)

Scouting Report: Statistics Tell The Story

GEORGIA TECH Five-Game Totals

Rushing Leaders

Player	Times	NYG	TDs	Avg.
Lenny Snow	71	237	1	3.3
Larry Good	38	146	1	3.3
Doc Harvin	35	83	0	2.4
Kim King	34	63	2	1.9
Jim Person	17	32	0	1.9
Georgia Tech	219	575	4	2.6
Opponents	242	792	6	3.3

Passing Leaders

Player	Att.	Comp.	Int.	TD	Yds.	Pct.
Kim King	53	31	2	2	398	58.5
Larry Good	48	21	3	2	258	43.8
Jim Person	13	6	1	1	95	46.2
Bobby McKinnon	7	2	1	0	26	28.6
Georgia Tech	121	59	7	5	777	48.8
Opponents	106	47	7	3	639	44.3

Leading Pass Receivers

Player	Caught	TDs	Yards
John Sias	18	3	422
Steve Almond	17	2	148
Joel Stevenson	8	0	81
Lenny Snow	7	0	37
Percy Helmer	6	0	61

Punting Leaders

Player	No.	Yards	Avg.
Tommy Chapman	38	1472	38.7
Lenny Snow	2	94	46.5
Georgia Tech	40	1566	39.1
Opponents	38	1489	39.2

Scoring Leaders

Player	TD	PAT	FG	Pts.
Tommy Carmichael	0	8	4	20
John Sias	3	0	0	18
Kim King	2	0	0	12
Steve Almond	2	0	0	12
Georgia Tech	9	8	4	74
Opponents	9	9	2	69

1967 Yellow Jacket Results & Schedule

Sept. 23—(A) Georgia Tech 17, Vanderbilt 10
Sept. 30—(H) Georgia Tech 24, TCU 7
Oct. 7—(H) Georgia Tech 10, Clemson 0
Oct. 14—(A) Tennessee 24, Georgia Tech 13
Oct. 21—(H) Auburn 28, Georgia Tech 10
Oct. 28—(A) Tulane
Nov. 4—(H) Duke
Nov. 10—(A) Miami, Fla.
Nov. 18—(H) Notre Dame
Nov. 25—(H) Georgia

TULANE Five-Game Totals

Rushing Leaders

Player	Times	NYG	TDs	Avg.
Duhon	60	189	2	3.2
Loftin	56	189	1	3.4
Coughlin	35	127	0	3.6
Trahan	14	74	1	5.3
Arnold	16	73	0	4.6
Francingues	16	68	0	4.3
Yarter	14	68	0	4.9
Bankston	28	61	0	2.2
Tulane	251	901	5	3.6
Opponents	282	1153	10	4.1

Passing Leaders

Player	Att.	Comp.	Int.	TD	Yds.	Pct.
Duhon	44	20	6	2	214	45.5
Bankston	16	8	2	0	87	50.0
Tulane	62	28	8	2	301	45.2
Opponents	88	46	7	3	474	52.3

Leading Pass Receivers

Player	Caught	TDs	Yards
Pizzolatto	10	0	118
Trahan	6	0	53
Jones	5	1	59
Loftin	2	1	30
Yarter	2	0	8

Punting Leaders

Player	No.	Yards	Avg.
Pye	21	858	40.9
Tulane	21	858	40.9
Opponents	25	803	32.1

Scoring Leaders

Player	TDs	XPA-XPM	FGA-FGM	Pts.
Pontius	0	8-6	5-3	15
Duhon	2	0-0	0-0	12
Loftin	2	0-0	0-0	12
Darnley	1	0-0	0-0	6
Guidry	1	0-0	0-0	6
Jones	1	0-0	0-0	6
Trahan	1	0-0	0-0	6
Tulane	8	8-6	5-3	63
Opponents	14	14-14	5-3	107

SERIES DATA: Tulane has won 8, lost 24, tied 0

1966—Tech 35-17	1959—Tech 21-13	1949—Tulane 10-0	1934—Tulane 20-12	1927—Tulane 6-3
1965—Tech 13-10	1958—Tech 14-0	1948—Tech 13-7	1933—Tulane 7-0	1926—Tech 9-6
1964—Tech 7-6	1957—Tech 20-13	1947—Tech 20-0	1932—Tulane 20-14	1917—Tech 48-0
1963—Tech 17-3	1956—Tech 40-0	1946—Tech 35-7	1931—Tulane 33-0	1916—Tech 45-0
1962—Tech 42-12	1954—Tech 29-0	1945—Tech 41-7	1930—Tulane 28-0	
1961—Tech 25-0	1953—Tech 27-13	1944—Tech 34-7	1929—Tulane 20-14	
1960—Tech 14-6	1952—Tech 14-0	1943—Tech 33-0	1928—Tech 12-0	

The Fabulous
FONTAINEBLEAU

MOTOR HOTEL
 Dedicated to Pleasure and Fun



**FOR RELAXED DINING
 AND FINE FOOD**

For delicious Continental and Creole foods impeccably served in glittering splendor

Empire
 ROOM

**FOR AN INTIMATE AND
 ENCHANTING EVENING**

Cocktail hour 5 to 7. Complimentary hors d'oeuvres, dancing, entertainment. Name bands nightly

Chandelle
 LOUNGE

**FOR EXCELLENT FOOD
 QUICKLY SERVED**

A favorite meeting place. Open at 6 a.m. Delicious food, popular prices.

Fontaine
 COFFEE SHOP

494 LUXURY ROOMS

LARGEST SWIMMING POOL IN TOWN—separate high diving pool, separate wading pool for children.

OUTDOOR POOL SIDE LOUNGE with table service
 Convenient to shopping, business area, French Quarter

SPECIAL ATTENTION TO PARTIES AND CONVENTIONS
 A private room for every function with special complimentary services.



FONTAINEBLEAU
MOTOR HOTEL

4040 TULANE AVE.

HU 6-6111

Famous for
FINE FOOD
 and
DRINK



Enjoy the Specialties of These
 Noted Restaurants

ANTOINE'S

... Since 1840

713 St. Louis St.

529-5696

12 Noon to 9 P. M. Closed Sundays

ARNAUD'S

... Carnival Room

813 Bienville St.

523-5433

Open Daily from 11 A. M. to 12:30 A. M.
 After Midnight

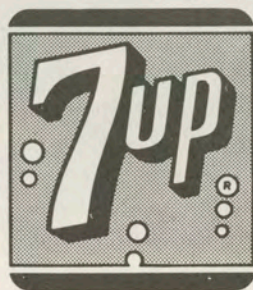
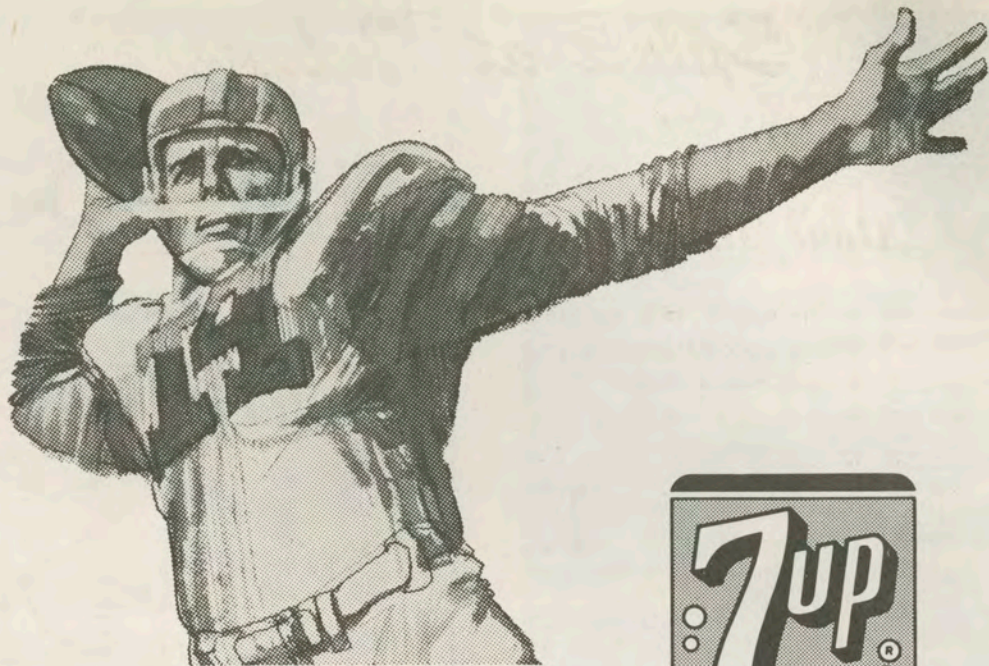
BROUSSARD'S

... Napoleon Patio

819 Conti St.

523-4800

12 Noon to 11 P. M.
 Closed Wednesdays



GET REAL ACTION...
7-UP YOUR THIRST AWAY

BEFORE OR AFTER THE GAME.....

OUTRIGGER

BAR & LOUNGE

- ★ Spectacular exotic drinks!
- ★ Palate pleasing Polynesian tid-bits!
- ★ All your cocktail favorites!

OPEN FROM 9 A. M.

ENTERTAINMENT FROM 5 P. M.

Nightly except Sunday

Sheraton-Charles Hotel

NEW ORLEANS



Spirit at Tulane

Alma Mater

We praise thee for thy past, O Alma Mater!
Thy hand hath done its work full faithfully.
The incense of thy spirit hath ascended
And filled America from sea to sea.

CHORUS—

Olive Green and Blue, we love thee
Pledge we now our fealty true
Where the trees are ever greenest,
Where the skies are purest blue.
Hear us now, O Tulane, hear us
As we proudly sing to thee!
Take from us our hearts' devotion!
Thine we are, and thine shall be!



Hullabaloo

A one, a two,
A helluva hullabaloo,
A Hu-la-ba-loo Ray-Ray!
Hu-la-ba-loo Ray-Ray!
Hoo-Ray! Hoo-Ray!
Vars, vars, tee-ay!
Tee-ay! Tee-ay!
Vars, vars, tee-ay!
Tulane!

Roll, Green Wave

Here's a song for the Olive and the Blue.
Here's a cheer for the team that's tried and true.
Here's a pledge of loyalty to thee,
O, Tulane Varsity.
Here's to the Greenbacks that never will say die,
And here's to the hearts that are true
To the men of Tulane, who are fighting for
her name,
For the Olive and the Blue.
Roll, Green Wave, Roll them down the field.
Hold, Green Wave, that line must never yield.
When those Greenbacks charge through the line
They're bound for victory.
Hail, Green Wave, For you we give a cheer.
Hail, Green Wave, For you we have no fear.
So ev'ry man in ev'ry play,
And then we'll win that game today.
Hurrah for old Tulane!

(Chant to be used on second chorus)

Roll, Green Wave, Roll, Roll Green Wave
Hold Wave, Hold Wave, Hold, Green Wave.
Go— go— go get the tigers
Go win, go win, go win from the tigers.
Fight, fight, fight for T. U.
T. U., T. U., the Olive and the Blue,
T — — U — — Rah, Rah, Rah, Tulane.





Cuisine...par excellence!

Both French and Creole cooking. Cited by HOLIDAY for 15 consecutive years as a "local favorite dining spot."

Open daily from eleven 'til eleven—except Mondays. Located in the heart of the Garden District at Washington and Coliseum.

Commander's Palace
TWinbrook 1-7240 Since 1880

The Sign
of **GOODNESS**

for 62 Years!



Quality Dairy Products
and
Frozen Foods

STADIUM INFORMATION

First Aid

--- First aid stations are located under the East and West stands at ground level.

Telephones

--- Public pay telephones are located at ground level on North, East, South and West sides.

Rest Rooms

--- Rest rooms are located under North, East, South and West stands at ground level and under North, East and West upper deck sections.

Lost and Found

--- Lost and found office is located inside stadium at Southwest corner, ground level.

PAN-AMERICAN FILMS

Producers of 16 mm Industrial, Educational and Special Events
Motion Pictures

Editing, Titling and Color Film Duplicating — Sound Recording

Producers of the Sugar Bowl Movies in Color and Sound Since 1945

Bell & Howell
Motion Picture Equipment Dealers

822-24 NORTH RAMPART STREET
522-5364

Tulane



University



Robert Sharp Hall, Men's Residence Housing Tulane Athletes

Tulane University is an educational institution deeply rooted in the past and reaching toward the future.

Founded in 1834 as the Medical College of Louisiana, Tulane today offers undergraduate programs in 30 areas of study, masters' degrees in 43 fields and the doctor of philosophy degree in 33 disciplines.

Courses are offered in the College of Arts and Sciences, Newcomb College (the coordinate college for women), and University College (the evening division); in the Schools of Architecture, Engineering, Law, Medicine, Public Health and Tropical Medicine, and Social Work; in the Graduate School, the Graduate School of Business Administration, the Summer School, the Center for Teacher Education and at several research institutes.

The interest in tropical medicine—the Medical College of Louisiana was founded to combat epidemics of yellow fever and other tropical diseases—is the one cord that runs throughout the University's history, even as its interests expanded with its development as part of the University of Louisiana in 1847, and with its emergence,

finally, as the Tulane University of Louisiana in 1884, after a generous gift from Paul Tulane had established the Tulane Educational Fund. The Fund's administrators used the gift to reorganize the University as a private, non-sectarian institution bearing Tulane's name.

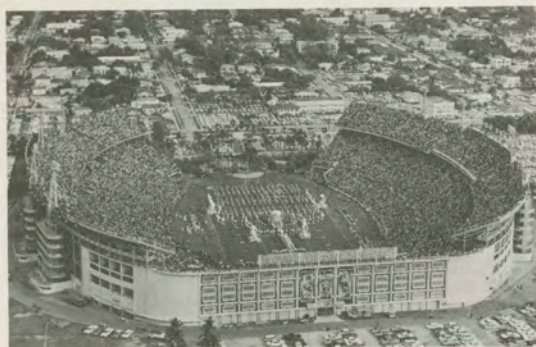
Today Tulane's President, Dr. Herbert E. Longenecker, directs the operation of a cosmopolitan community whose faculty (650 full-time, 500 part-time) and students (6,000 full-time, 2,000 part-time) represent every state and 60 foreign countries.

By far the major portion of the University's activities are centered at the main campus, a 100-acre site in uptown New Orleans. Scholars also pursue their interests at the downtown Medical School campus; at the Delta Regional Primate Research Center in Covington, La., 35 miles from the main campus; at the International Center for Medical Research and training at Cali, Colombia, and at the University's newest campus—the F. Edw. Hebert Center, across the Mississippi River from downtown New Orleans, a development devoted to scientific research.

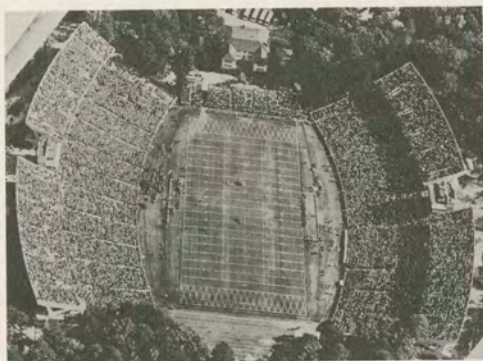
Gibson Hall, the Administration Building



Where the Wave Will Play . . .



MIAMI, FLA.
Orange Bowl (75,000)



N. CAROLINA
Kenan Stadium (45,500)



TENNESSEE
Neyland Stadium (54,000)



L. S. U.
Tiger Stadium (67,510)

Where the Wave Will Stay . . .

North Carolina Game (Sept. 30)

UNIVERSITY MOTEL, Chapel Hill

Miami Game (Oct. 6)

HOLIDAY INN, Coral Gables

Tennessee Game (Nov. 11)

ANDREW JOHNSON HOTEL, Knoxville

Since 1842,
our greatest
pleasure
has been that of
serving you...
our customers.



H O L M E S

H O L M E S

NEW ORLEANS

BATON ROUGE



THE MARK OF DELICIOUS FOOD

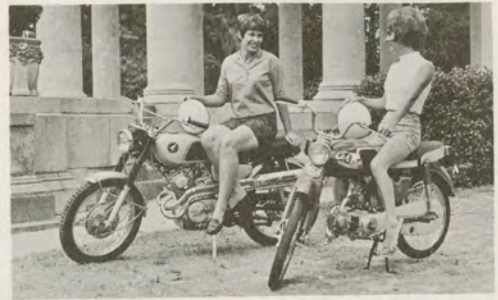
COMPLETE CATERING SERVICES
AVAILABLE

Wedding Receptions — Parties
Buffets — Banquets — Picnics

CONSULT US — AT NO OBLIGATION

522-4314

488-6114



TERRIFIC for: PEP RALLIES, rides through the PARK, SIGHTSEEING the FRENCH QUARTER — YES, see BOYCE for one of the 3 BEST . . . HONDA-TRIUMPH-BMW . . . BOYCE also has the BEST SERVICE and PARTS department.

— TWO LOCATIONS —

Boyce Marine
2025 N. Broad
New Orleans
949-4496

Boyce-Honda-Triumph
4000 4th Street
Marrero, La.
341-3433

Official Concession Prices at Tulane Stadium

FOOD AND BEVERAGE

BEER	50¢
SOFT DRINKS	25¢
COFFEE	15¢
HOT DOGS	35¢
HAMBURGERS	50¢
PEANUTS	15¢
POPCORN	25¢
COTTON CANDY	20¢

CIGARETTES

AT MACHINES ON GROUND LEVEL.....40¢

NOVELTIES

BADGES	50¢, 75¢ and \$1.00
PENNANTS	\$1.00
STADIUM HORNS	\$1.00
PORKY HATS, Felt W/Tulane Patch	\$1.50
CAMPUS CAP	\$1.00
GOLF CAP W/Tulane Patch	\$2.00
LICENSE PLATES	\$1.25
TISSUE SHAKERS	35¢
MEGAPHONES	25¢
BOBBLE HEAD FOOTBALL DOLLS	\$1.00
TELESCOPES	50¢
COWBELLS	50¢
TULANE BUTTON, 3½"	
W/Green Wave Emblem	50¢
PLUSH TIGER, 9"	\$3.00
RAIN BONNETS	50¢
RAIN COATS, PLASTIC	\$2.00

COVER STORY

Wave fans who attended the 1949 Tulane-Tech game will remember the Greenie welcomed the Rambling Wreck to the end of the line. Tulane won the game, after losing seven previous decisions to the Engineers. Inasmuch as the Wave hasn't beat Tech since, it makes nothing but sense to set the same scene and await the same score. In 1949 it was Tulane 18-0.



The Green Wave's official cover artist is WDSU-TV Editorial Cartoonist John Chase. See his Editorial Cartoons in color, week-days at 6:15 and 10:15 P.M. on WDSU-TV, Channel 6.

WDSU-TV—*First In The Nation With Daily Editorial Cartoons In Color!*

FREE TULANE GLASSES



... Handsome, 10-oz. tumblers with a picture of Coach Jim Pittman and his staff, with the 1967 Green Wave football schedule, given away with each purchase of 10 gallons or more.

Get Yours Now At

JACK DOUSSAN SHELL STATION

2900 Gentilly Blvd. — New Orleans

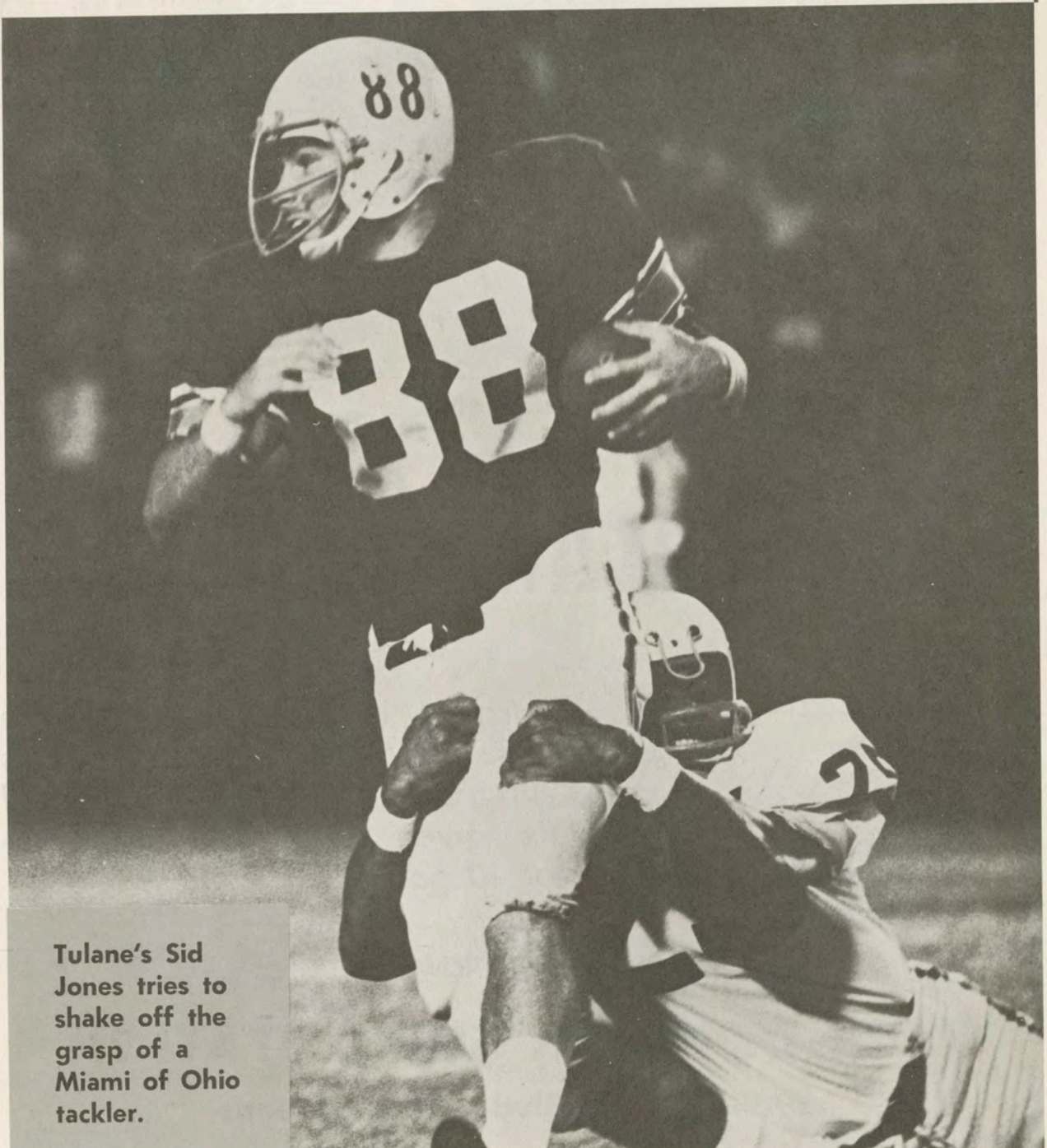


TULANE FOOTBALL HI-LITES

Coach JIM PITTMAN & BUDDY DILIBERTO
SUNDAYS 12 NOON
In Color



See BUDDY DILIBERTO with SPORTS: MON. thru FRI. 4:30pm & 11pm



Tulane's Sid Jones tries to shake off the grasp of a Miami of Ohio tackler.



DR. RIX N. YARD
Director of Athletics



JIM PITTMAN
Head Football Coach

TULANE

ATHLETIC STAFF



Dr. Harvey Jessup
Asst. to Athletic Director



G. J. deMonsabert
Business Manager of Athletics



Dr. Paul Trickett
Director of Athletic Medicine



Dr. Hugh Rankin
Faculty Chairman of Athletics



Tom "Pap" Morris
Offensive Line Coach



Joe Blaylock
Offensive Backfield Coach



Frank Young
Defensive Line Coach



Billy Tohill
Defensive Backfield Coach



Joe Clark
Offensive End Coach



Pat Culpepper
Linebacker, Defensive End Coach



Jack O'Leary
Freshman Coach



Jack Orsley
Recruiting Director



Bill Curl
Sports Info. Dir.



Bubba Porche
Head Trainer



Al Miller
Assistant Trainer



Nolan Chaix
Supervisor of Grounds



Troy Phillips
Equipment Mgr.



Mac McKinney
Stadium Guard



Ricky Adams



John Anderson



Paul Arnold

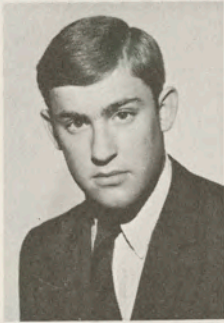


Warren Bankston

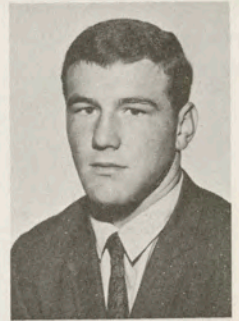


Tom Barrows

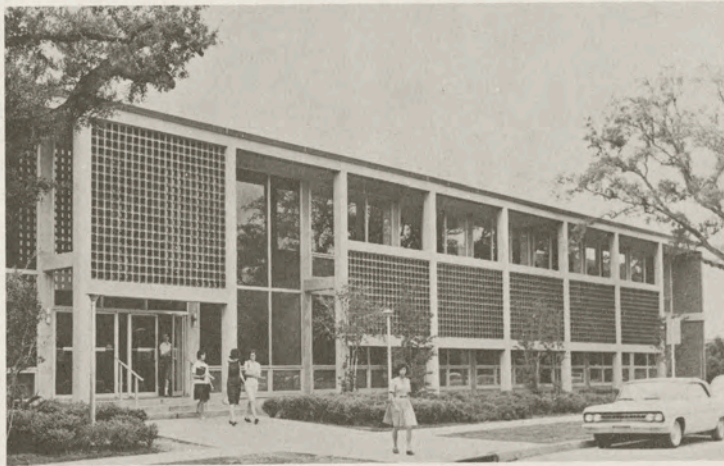
TULANE GREEN WAVE



Bart Bookatz



Steve Boyd



Caroline Richardson Women's Dining Hall



Charles Browning



Brad Calhoun



Mike Cammarata



Lou Campomenosi



Tim Coughlin



Jim Darnley



Bob Dawson



Dan Dembinski



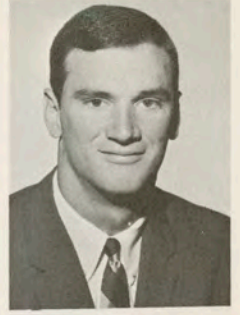
Duke Duffee



Bobby Duhon



Vic Eumont



Turk Evans



Mike Fitzpatrick

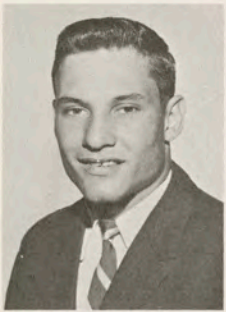
TULANE GREEN WAVE



Calvin Fox



Entrance to Newcomb College



Wayne Francingues



Bill Frey



Maurice Gartman



Roger Green



Bruce Guidry



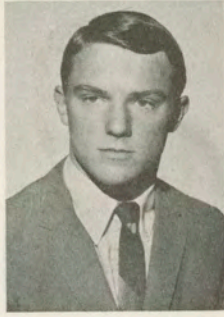
Scott Haber



John Haines



Steve Hartnett



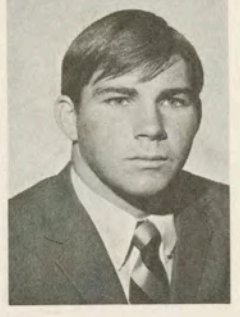
Pat Jacobs



Jim Jancik



Kent Jenkins



Sid Jones

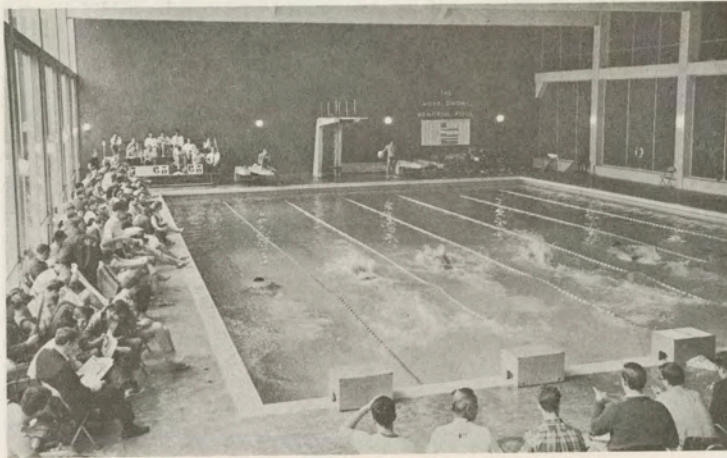


Mark Kirkland

TULANE GREEN WAVE



Dennis Krauss



Monk Simons Memorial Pool



Chuck Loftin



Dennis McAfee



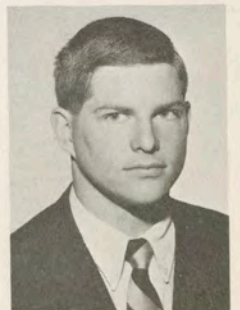
Larry Mickal



Jeff Miles



Howard Moore



John Mueller



Schott Mumme



Tom Nosewicz



John Onofrio



Ernie Parker



Nick Pizzolatto



Uwe Pontius

TULANE GREEN WAVE



Lloyd Pye



Rick Redd



Howard-Tilton Memorial Library



Mike Reed



Steve Shaw



Dean Smith



Derald Smith



Don Smith



John Snell



Mike Sontag



Jim Spring



Dick Stafford



Larry Stone



Ken Tanana

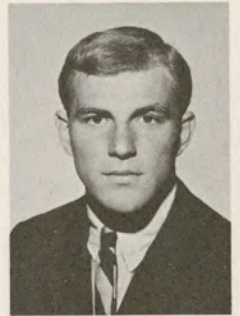
TULANE GREEN WAVE



School of Social Work



Mike Tolle



Jim Trahan



Jim Wallace



Mason Webster



Jim Wright



Tom Wright



Jimmy Yarter

BITE...TEAM...BITE!



Hold that Whopper at **BURGER KING**

Ready for you in 60 seconds along with crisper new French Fries, creamy shakes, cokes, not to mention Whalers, burgers, franks, etc.



After the game stop at **BURGER KING**®

In Metairie

3735 Airline Highway
916 Veterans Highway
6900 Veterans Highway

Gretna

78 Westbank Expressway
Gentilly
4050 Chef Mentour

Marrero

3950 Westbank Expressway
New Orleans
2423 South Carrollton Ave.





MRS. PHILLIPS

PHILLIPS RESTAURANT

For Over

25 Years

One of Tulane's

Biggest Supporters

After the Game...

. . . . Plan to stop by Phillips Restaurant at Cherokee and Maple Streets. It's a fun place to meet and enjoy delicious home-cooked pizza, spaghetti, and draft beer. It's always pizza time at Phillips with numerous varieties of pizza. And Mrs. Phillips makes her meat balls and spaghetti "just like mamma used to make" . . . So after the game, visit

PHILLIPS RESTAURANT AND PIZZA HOUSE

Cherokee at Maple

Owned by MRS. ROSE PHILLIPS

Managed by MRS. JULES BLASS

1967 Green Wave Captains



BOBBY DUHON

Genuine All-American candidate who ranked second among nation's quarterbacks last fall in rushing . . . standout on Wave baseball team, and has attracted attention of pro scouts from both sports . . . psychology major from Abbeville, La.



JIM JANCIK

One of the finest defensive backs in the South . . . 2nd Team Academic All-American in 1966 . . . outstanding leader who is also an honor student . . . cousin to Houston Oiler back Bobby Jancik . . . Biology major from Caldwell, Texas.

TWO
*World-Famous
Beverages*



Canada Dry Bottling Co.
3636 Broadway New Orleans, La.



**For '68
Newest
Buick
Yet !**



— SALES —
— SERVICE —
— PARTS —

COLONIAL BUICK, INC.
3941 Bienville . . . 486-6564



1ST IN
NEW CAR
SALES IN
NEW ORLEANS

GARRARD-MILNER

Carrollton at Tulane Ave.

488-2601

* EVERYTHING FOR EVERY SPORT AND RECREATION... *

ATHLETIC
AND TEAM
EQUIPMENT

SOUTH'S LARGEST
SELECTION OF
SHOES
FOR ALL
SPORTS!



South's Largest Selection of Golf Equipment!

EVERYTHING FOR *
TENNIS - BOWLING
ARCHERY - FENCING
HAND BALL
AND OTHER SPORTS
COMPLETE
SELECTION...

FABULOUS SELECTION OF
GUNS - HUNTING EQUIP.
FISHING & CAMPING GEAR



DISCOUNT
HEADQUARTERS
TOYS - GAMES - DOLLS
BICYCLES - TRAINS!
at BIG SAVINGS!

*
3604 SO. CARROLLTON AVE.
at PALM ST.

OPEN DAILY 9:30 A.M. - 6 P.M.
THURSDAY 9:30 A.M. - 8:30 P.M.

PHONE 488-2686

LOUISIANA'S LARGEST
YOUR
SPECIALISTS
IN SPORTS

equity
SPORTING GOODS

GO ON, CHICKEN OUT!

It's the sensible thing to do. Convenient, tasty, economical, delicious. The wife-saving solution to those occasions when there just isn't enough time to cook and clean up after, when you're going out, expecting company or best of all when you have that overwhelming craving for delicious, fried chicken. In less time than it takes to tell about it you can serve your family a complete meal from PANN'S KENTUCKY FRIED CHICKEN.

PANN'S Kentucky Fried Chicken

2814 JEFFERSON HWY. • 2529 WILLIAMS BLVD.

Do You Remember? The Former Tulane Star of the 1940's

One of the greatest running backs ever to come out of the State of Louisiana, this fine athlete is the only Tulane ball carrier ever to rush for more than 1000 yards in one season. (He did it twice!)

He gained a total of 3,095 yards in a Green Wave uniform, and still holds the Tulane career total offense record even though he did not complete a pass in his college career.

He was an All-SEC fullback two years in a row, and copped All-America honors in 1949. He was selected to play in the Blue-Gray Game and the Senior Bowl, and scored a touchdown in each game.

He played professionally for the New York Giants, and led the NFL in rushing in 1951 with 971 yards.

A few of his teammates include former pro stars Bill Svoboda and Don Joyce; State Representative Don Fortier; Dick Preis, Head Football Coach at West Jefferson High; and Joe Ernst, Head Football Coach at St. Bernard High.



**Answer on
Page 56**

1967 TULANE ROSTER

Name (Number)	Position	Height	Weight	Home Town (High School), H. S. Coach
ADAMS, RICKY (58)	ST	6-1	230	Bogalusa (Bogalusa), Lewis Murray
*ANDERSON, JOHN (64)	WG	5-11	200	Homer (Homer), Bobby Hudson
*ARNOLD, PAUL (31)	FB	6-0	180	Monterrey, Mex. (N. Mex. Mil.), Marshall Brown
*BANKSTON, WARREN (19)	QB	6-4	220	Hammond (Hammond), Glenn Brady
BARROWS, TOM (57)	WG	6-4	210	Elmwood, Ill. (Homewood), James Arneberg
BOOKATZ, BART (27)	PK	5-11	190	Dallas, Tex. (St. Mark's), Bill Rippettoe
BOYD, STEVE (78)	DT	6-2	195	Clovis, N. Mex. (Clovis), Steve Graham
BROWNING, CHARLES (74)	DT	6-1	210	Baton Rouge (Baton Rouge), Ray Porter
CALHOUN, BRAD (12)	SAF.	6-2	180	Chickasaw, Ala. (Vigor),
**CAMMARATA, MIKE (60)	WG	5-11	210	New Orleans (St. Aloysius), Bill Arms
**CAMPOMENOSI, LOU (22)	DHB	5-11	175	Charleston, S. C. (Bishop England), Ronald Hanna
**COUGHLIN, TIM (35)	FB	6-1	190	Dayton, O. (Oakwood), Edward Wisocki
**DARNLEY, JIM (23)	WB	5-9	170	Theodore, Ala. (Theodore), C. A. Douglas
DAWSON, BOB (15)	LB	6-0	180	Scottsboro, Ala. (Scottsboro), John Meadows
**DEMBINSKI, DAN (72)	ST	6-4	215	Chicago, Ill. (St. Patrick), Fred Dempsey
DUFFEE, DUKE (70)	SG	6-2	190	Harvey (West Jefferson), Dick Preis
**DUHON, BOBBY (13)	QB	6-0	185	Abbeville (Abbeville), Sam Scelfo
**EUMONT, VIC (63)	DG	5-11	200	Chalmette (Holy Cross), John Kalbacher
EVANS, TURK (84)	WE	6-2	185	Lexington, Ky. (Lafayette), John Snowden
FOX, CALVIN (67)	DG	6-2	210	Wichita, Kan. (Derby), Bruce Bierig
FRANCINGUES, WAYNE (10)	TB	5-11	180	Metairie (Jesuit), Ken Tarzetti
FREY, BILL (83)	WE	6-1	180	Mobile, Ala. (McGill), A. J. Conlin
GARTMAN, MAURICE (37)	LB	6-0	175	Semmes, Ala. (Montgomery), Charles Leverett
GREEN, ROGER (45)	DHB	6-0	175	Houston, Tex. (Lee), Gilbert Bartosh
*GUIDRY, BRUCE (39)	DE	5-11	195	Houma (Terrebonne), Frank Spruiell
HABER, SCOTT (81)	DE	6-2	200	Houston, Tex. (Bell.ire), Mickey Sullivan
HAINES, JOHN (54)	C	6-1	185	Theodore, Ala. (Theodore), C. A. Douglas
*HARTNETT, STEVE (69)	DG	6-1	215	New Orleans (Warren Easton), Earl Hubley
JACOBS, PAT (24)	WE	5-11	160	Dallas, Tex. (St. Mark's), Bill Rippettoe
**JANCIK, JIM (14)	SAF	6-0	175	Caldwell, Tex. (Caldwell), Max Webb
JENKINS, KENT (11)	QB	5-10	170	Bogalusa (Bogalusa), Lewis Murray
JONES, SID (88)	SE	5-11	195	Lake Charles (Landry), Karl Blanchard
KIRKLAND, MARK (32)	FB	5-11	185	Baytown, Tex. (Lee), Pete Sultis
Name (Number)	Position	Height	Weight	Home Town (High School), H. S. Coach
**KRAUSS, DENNIS (21)	DHB	5-11	180	Wickliffe, O. (Wickliffe), Ed Logan
*LOFTIN, CHUCK (44)	TB	5-11	180	Midland, Tex. (Lee), Joe Newbill
McAFEE, DENNIS (38)	LB	6-0	185	Baytown, Tex. (Lee), Pete Sultis
*MICKAL, LARRY (68)	SG	6-2	215	New Orleans (De La Salle), Leemon McHenry
MILES, JEFF (59)	DT	6-1	205	Crowley (Crowley), James Griffin
*MOORE, HOWARD (50)	OC	6-1	210	Dallas, Tex. (Bryan Adams), Bob Cowsar
MUELLER, JOHN (25)	WB	5-10	170	Shawnee Mission, Kan. (East), Arch Unruh
MUMME, SCHOTT (75)	DT	6-1	195	New Orleans (De La Salle), Leemon McHenry
NOSEWICZ, TOM (77)	WT	6-6	235	Detroit, Mich. (U. of Detroit), Jim Leary
ONOFRIO, JOHN (41)	SAF	5-10	170	Columbia, Mo. (David Hickman), Robert Roark
*PARKER, ERNIE (33)	LB	6-1	205	Hackberry (Hackberry), John Debarg
*PIZZOLATTO, NICK (87)	WE	6-0	200	Jennings (Jennings), Ed Harrelson
**PONTIUS, UWE (56)	PK	6-2	205	Oklahoma City, Okla. (Putnam City), did not play
*PYE, LLOYD (47)	TB	5-11	175	Roseland (Amite), Jack Pope
REDD, RICHARD (49)	DHB	6-0	165	Beaumont, Tex. (Beaumont), Darrell Shaver
REED, MIKE (89)	DE	6-4	195	Wichita, Kan. (Southeast), Marvin Vandever
SHAW, STEVE (62)	DG	6-0	210	Houston, Tex. (Austin), Bill Cook
SMITH, DEAN (76)	ST	6-0	205	Dickinson, Tex. (Dickinson), Bernard Callendar
SMITH, DERALD (30)	LB	6-0	200	Alexandria (Bolton), Billy Jarrell
*SMITH, DON (34)	LB	5-11	190	Jena (Jena), Clyde Thompson
*SNELL, JOHN (73)	DT	6-2	205	Groves, Tex. (Port Neches), Kenneth Watson
*SONTAG, MIKE (61)	WG	6-1	195	Miami, Fla. (Palmetto), Gene Gibson
**SPRING, JIM (53)	OC	6-0	190	Denham Springs (Denham Springs), Charles Borde
STAFFORD, DICK (26)	SAF	5-10	160	Ft. Sill, Okla. (Lawton), Don Jimerson
STONE, LARRY (52)	DG	6-3	200	Springhill (Springhill), Travis Farrar
TANANA, KEN (85)	SE	6-5	215	Detroit, Mich. (Benedictine), John Cullen
TOLLE, MIKE (65)	DG	5-9	200	Baton Rouge (Lee), Winton Turner
*TRAHAN, JIM (29)	WB	5-11	170	Houma (Terrebonne), Frank Spruiell
*WALLACE, JIM (55)	DE	6-1	185	Bowling Green, Ky. (Bowling G.), Jim Pickens
WEBSTER, MASON (86)	DHB	5-11	165	New Orleans (De La Salle), Leemon McHenry
**WRIGHT, JIM (79)	WT	6-4	230	Paducah, Ky. (Tilghman), Ed Rutledge
*WRIGHT, TOM (80)	SE	6-3	185	Sulphur Springs, Tex. (S. Springs), Johnny Dobson
YARTER, JIMMY (40)	TB	5-11	175	Houston, Tex. (Bellaire), Mickey Sullivan

*-Denotes varsity letters earned.

See Your **TEXACO** DEALER



Only

\$12.00 VALUE

SELLS FOR ONLY \$5.98

Texaco

has it!



No holes in the Sunbeam line!

Batter Whipped Bread

Brown 'n' Serve Rolls

Hamburger Buns

Raisin Bread

Hot Dog Rolls

Whole Wheat Bread

Sweet Rolls

Rite Diet Bread

Those on the go—go Sunbeam

HOLSUM *Sunbeam* **BREAD**



Coca-Cola... served at the training centers of the United States Olympic Team.

Coke has the ta
TRADE-MARK ®

PROBABLE STARTING LINEUPS

GEORGIA TECH

Offense —

Pos.	No.	Name
SE	89	JOEL STEVENSON
LT	64	RICK NELSON
LG	63	JOE VITUNIC
C	55	BILLY KIDD
RG	77	LAMAR MELVIN
RT	76	JIM PENLEY
TE	86	STEVE ALMOND
QB	35	BILL EASTMAN
FB	23	DOC HARVIN
TB	41	LENNY SNOW
FL	21	JOHN SIAS

Defense —

Pos.	No.	Name
LE	92	TOMMY CARLISLE
LT	70	JOHN LAGANA
RT	71	MIKE ASHMORE
RE	94	CHRIS DENNEY
LLB	53	CLAUDE SHOOK
MLB	50	RANDALL EDMUNDS
RLB	93	ERIC WILCOX
Wrecker	39	DAVE BARBER
LHB	31	JOE BILL FAITH
RHB	35	BILL EASTMAN
SAF	34	BILL KINARD

Ga. Tech Numbers

10 Larry Good, QB	53 Claude Shook, LB
14 Dave Stroyan, QB	54 Galin Mumford, OT-C
15 Bobby McKinnon, QB	55 Billy Kidd, C
18 Kim King, QB	56 Ricky Wolfe, LB
20 Johnny Duncan, PK-P	58 Steve DeBardelaben, LB
21 John Sias, FL	61 Tim Eubanks, OG
22 Percy Helmer, SE-FL	62 Larry Davidson, OG
23 Doc Harvin, FB	63 Joe Vitunic, OG
26 Tommy Chapman, FL-P	64 Rick Nelson, OT
27 Dee Turner, DH	65 Harold Clifford, OG-OT
28 David Polk, FS	67 Mike Bradley, LB
29 Tommy Carmichael, PK	70 John Lagana, DT
30 Doug Dale, TW-DH	71 Mike Ashmore, DT
31 Joe Bill Faith, DH	72 Terry Story, OT
32 Greg Wilkes, DH	74 Jim Taylor, DT
33 Bill Wallace, FS-TW	76 Jim Penley, OT
34 Bill Kinard, FS	77 Lamar Melvin, OG
35 Bill Eastman DH-QB	79 Bob Seamon, DT
36 Jim Kiltie, FB	81 Al Gerhardt, TE
38 Jerry Paul DH	84 Ed Anderson, TE
39 David Barber, TW	86 Steve Almond, TE
41 Lenny Snow, TB	87 Larry Williams, SE-FL
42 Tash Van Dora, TW	89 Joel Stevenson, SE-TE
43 Jimmy Brown, TB-SE	90 Alan Glisson, DE
44 John Weaver, FB	92 Tommy Carlisle, DE
46 Bain Culton, FB	93 Eric Wilcox, LB
47 Dennis James, TB	94 Chris Denny, DE
48 Johnny Tullis, TB	97 Rick Black, DT-DE
49 Kenny Bounds, TW	98 Danny Adams, DE
50 Randall Edmunds, LB	
51 John Collins, C	

TULANE

Offense —

Pos.	No.	Name
WE	87	NICK PIZZOLATTO
WT	79	JIM WRIGHT
WG	60	MIKE CAMMARATA
C	50	HOWARD MOORE
SG	68	LARRY MICKAL
ST	72	DAN DEMBINSKI
SE	80	TOM WRIGHT
QB	13	BOBBY DUHON
WB	29	JIM TRAHAN
FB	35	TIM COUGHLIN
TB	44	CHUCK LOFTIN

Defense —

Pos.	No.	Name
LE	81	SCOTT HABER
LT	73	JOHN SNELL
MG	63	VIC EUMONT
RT	69	STEVE HARTNETT
RE	75	SCHOTT MUMME
LLB	38	DENNIS McAFEE
RLB	33	ERNIE PARKER
Rover	39	BRUCE GUIDRY
LHB	21	DENNIS KRAUSS
RHB	22	LOU CAMPOMENOSI
SAF	14	JIM JANCIK

Tulane Numbers

10 Wayne Francingues, TB	52 Larry Stone, DG
11 Kent Jenkins, QB	53 Jim Spring, C
12 Brad Calhoun, SAF	54 John Haines, C
13 Bobby Duhon, QB	55 Jim Wallace, DE
14 Jim Jancik, SAF	56 Uwe Pontius, PK
15 Bob Dawson, LB	58 Ricky Adams, ST
19 Warren Bankston, QB	60 Mike Cammarata, WG
21 Dennis Krauss, DHB	61 Mike Sontag, DE
22 Lou Campomenosi, DHB	62 Steve Shaw, DG
23 Jim Darnley, WB	63 Vic Eumont, DG
24 Pat Jacobs, WE	64 John Anderson, WG
25 John Mueller, WB	65 Mike Tolle, DG
26 Dick Stafford, SAF	67 Calvin Fox, DG
27 Bart Bookatz, PK	68 Larry Mickal, SG
29 Jim Trahan, WB	69 Steve Hartnett, DG
31 Paul Arnold, FB	70 Duke Duffee, SG
32 Mark Kirkland, FB	72 Dan Dembinski, ST
33 Ernie Parker, LB	73 John Snell, DT
34 Don Smith, LB	74 Charles Browning, DT
35 Tim Coughlin, FB	75 Schott Mumme, DT
37 Maurice Gartman, LB	76 Dean Smith, ST
38 Dennis McAfee, LB	77 Tom Nosewicz, WT
39 Bruce Guidry, DE	78 Steve Boyd, DT
40 Jimmy Yarter, TB	79 Jim Wright, WT
41 John Onofrio, SAF	80 Tom Wright, SE
44 Chuck Loftin, TB	81 Scott Haber, DE
45 Roger Green, DHB	83 Bill Frey, WE
47 Lloyd Pye, TB	84 Turk Evans, WE
49 Richard Redd, DHB	85 Ken Tanana, SE
50 Howard Moore, C	86 Mason Webster, DE
	87 Nick Pizzolatto, WE
	88 Sid Jones, SE

ste you never get tired of.

**WARREN
TAYLOR
SAYS**



**ALL FORDS
COME FROM
FORD ---**

**it's the dealer that
makes the difference**

Go Greenies



**WARREN TAYLORS'
CANAL**

1801 CANAL at CLAIBORNE



524-8181

1967 GEORGIA TECH ROSTER

Name (Number) Class	Position, Home Town (High School)	Height, Weight	Name (Number) Class	Position, Home Town (High School)	Height, Weight
* ADAMS, DANNY (98) Junior	DE, Forsyth, Ga. (Mary Persons)	6-0, 202	* KIDD, BILLY (55) Junior	C, Hartwell, Ga. (Hart County)	6-1, 215
** ALMOND, STEVE (86) Senior	TE, Decatur, Ga. (Avondale)	6-1, 203	* KILTIE, JIM (36) Senior	FB, Miami, Fla. (Southwest)	5-10, 184
ANDERSON, ED (84) Junior	TE, Nashville, Tenn. (M. B. A.)	6-1, 194	* KINARD, BILL (34) Junior	FS, Atlanta, Ga. (Brown)	5-10, 172
** ASHMORE, MIKE (71) Senior	DT, Scottsboro, Ala. (Scottsboro)	6-0, 200	** KING, KIM (18) Senior	QB, Atlanta, Ga. (Brown)	6-1, 199
** BARBER, DAVID (39) Senior	TW, Waycross, Ga. (Waycross)	6-1, 195	** LAGANA, JOHN (70) Senior	DT, Charlotte, N. C. (East Mecklenburg)	6-1, 226
BLACK, RICK (97) Junior	DE-DT, Avondale, Ga. (Avondale)	6-3, 221	McKINNON, BOBBY (15) Junior	QB, Pompano Beach, Fla. (Pompano Beach)	5-11, 184
BOUNDS, KENNY (49) Sophomore	TW-F, Valdosta, Ga. (Valdosta)	6-2, 191	* MELVIN, LAMAR (77) Senior	OG, Atlanta, Ga. (Brown)	6-0, 212
BRADLEY, MIKE (67) Sophomore	LB, Memphis, Tenn. (White Station)	6-0, 219	MUMFORD, GALIN (54) Junior	OT-C, Brunswick, Ga. (Glynn Academy)	6-5, 237
* BROWN, JIMMY (73) Senior	TB-SE, Chattanooga, Tenn. (Baylor)	5-8, 169	** NELSON, RICK (64) Senior	OT, Daytona Beach, Fla. (Seabreeze)	6-1, 205
* CARLISLE, TOMMY (92) Senior	DE, Decatur, Ga. (Avondale)	6-1, 204	PAUL, JERRY (38) Junior	DH, Flowery Branch, Ga. (South Hall)	5-9, 170
** CARMICHAEL, TOMMY (29) Senior	PK, Jackson, Ga. (Jackson)	5-9, 179	** PENLEY JIM (76) Senior	OT, Chattanooga, Tenn. (Baylor)	6-4, 219
CHAPMAN, TOMMY (26) Junior	FL-P, Atlanta, Ga. (Westminster)	5-11, 185	POLK, DAVID (28) Junior	FS, Jackson, Ga. (Jackson)	5-10, 179
* CLIFFORD, HAROLD (65) Junior	OG-T, Orlando, Fla. (Colonial)	5-10, 219	* SEAMON, BOB (79) Junior	DT, Marietta, Ga. (Marietta)	6-3, 224
* COLLINS, JOHN (51) Junior	C, Thomasville, Ga. (Thomasville)	6-1, 201	** SHOOK, CLAUDE (53) Senior	LB, Charleston, Miss. (East Tallahatchie)	6-0, 208
* CULTON, BAIN (46) Junior	FB, Tallahassee, Fla. (Leon)	6-2, 191	* SIAS, JOHN (21) Junior	FL, Winter Park, Fla. (Winter Park)	6-0, 192
* DALE, DOUG (30) Junior	TW-DH, Columbus, Miss. (S. D. Lee)	5-10, 187	** SNOW, LENNY (41) Senior	TB, Daytona Beach, Fla. (Mainland)	6-0, 194
DAVIDSON, LARRY (62) Junior	OG, Coral Gables, Fla. (Coral Gables)	5-11, 210	* STEVENSON, JOEL (89) Junior	SE-TE, Montgomery, Ala. (R. E. Lee)	6-1, 208
DeBARDELABEN, STEVE (58) Sophomore	LB, Decatur, Ga. (Southwest DeKalb)	5-11, 183	STROYAN, DAVE (14) Junior	QB, OT, Newport News, Va. (Ferguson)	6-1, 181
** DENNEY, CHRIS (94) Senior	DE, Birmingham, Ala. (Ramsay)	5-9, 193	* STORY, TERRY (72) Junior	OT, Lake Wales, Fla. (Lake Wales)	6-3, 221
DUNCAN, JOHNNY (20) Junior	PK-P, Hokes Bluff, Ark. (Hokes Bluff)	5-9, 198	TAYLOR, JIM (74) Junior	DT, Atlanta, Ga. (Dykes)	6-0, 207
** EASTMAN, BILL (35) Senior	QB-DHB, Columbus, Miss. (S. D. Lee)	5-9, 162	TULLOS, JOHNNY (48) Junior	TB, Brunswick, Ga. (Glynn Academy)	5-9, 176
** EDMUNDS, RANDALL (50) Senior	LB, Lincolnton, Ga. (Lincolnton)	6-2, 219	** TURNER, DEE (27) Senior	DH, Lincolnton, Ga. (Lincolnton)	5-9, 158
EUBANKS, TIM (61) Junior	OG, Atlanta, Ga. (Brown)	5-11, 216	VAN DORA, TASH (42) Junior	TW, Brunswick, Ga. (Glynn Academy)	5-10, 179
FAITH, JOE BILL (31) Sophomore	DH-QB, Dalton, Ga. (Dalton)	5-8, 162	VITUNIC, JOE (63) Sophomore	OG, Pittsburgh, Pa. (North Hills)	5-11, 203
** GERHARDT, AL (81) Senior	TE, Macon, Ga. (Lanier)	6-6, 214	* WALLACE, BILL (33) Junior	FS-TW, Marietta, Ga. (Sprayberry)	5-10, 174
** GLISSON, ALAN (90) Senior	DE, Ocala, Fla. (Ocala)	5-10, 218	* WEAVER, JOHN (44) Junior	FB, Jacksonville, Fla. (Forest)	6-1, 199
* GOOD, LARRY (10) Junior	QB, Camilla, Ga. (Mitchell County)	6-2, 192	* WILCOX, ERIC (93) Junior	LB, Tyler, Tex. (R. E. Lee)	5-10, 208
** HARVIN, DOC (23) Senior	FB, Sumter, S. C. (Edmunds)	6-0, 191	WILKES, GREG (32) Sophomore	DH, Lyons, Ga. (Lyons)	6-0, 163
HELMER, PERCY (22) Sophomore	SE, Atlanta, Ga. (North Springs)	6-0, 169	WILLIAMS, LARRY (87) Sophomore	SE-FL, Lake Wales, Fla. (Lake Wales)	5-11, 173
JAMES, DENNIS (47) Junior	TB, Tallahassee, Fla. (Leon)	5-9, 185	WOLFE, RICKY (56) Sophomore	LB, LaGrange, Ga. (LaGrange)	5-11, 207

*-Denotes varsity letters earned.

The Record Book

TEAM GAME

Most total offense—772 yards by 1937 team against Mississippi College.
Most yards rushing—638 yards by 1937 team against Mississippi College.
Most yards passing—298 yards by 1950 team against Navy.
Most passes attempted—42 by 1965 team against Florida.
Most passes completed—24 by 1962 team against Tennessee.
Most touchdown passes—5 by 1952 team against Louisiana College.
Most points scored—95 against Southwestern Louisiana (now USL) by 1912 team.

INDIVIDUAL GAME

Leading rusher—Eddie Price, 238 yards on 22 carries against Navy in 1949.
Leading passer—Joe Ernst, 292 yards on 18 completions in 32 attempts against Navy in 1950; Ted Miller, 258 yards on 20 completions of 30 attempts against Tennessee in 1952.
Most scoring passes—Fred Dempsey, 5 against La. College in 1952.
Leading scorer—Bill Banker, 28 points against Auburn in 1929.
Most passes caught—Joe Shimm, 10 against Navy in 1950.
Most yardage on passes caught—Joe Shimm, 152 against Navy in 1950.
Longest kickoff return—Howard Bryan, 100 yards, against Georgia Tech in 1933;
Bobby Kellogg, 100 yards against Ole Miss in 1939;
Lou Thomas, 100 yards, against North Carolina in 1941;
Eddie Price, 100 yards, against Alabama in 1947.
Longest punt return—Jimmy Glisson, 89 yards, against L.S.U. in 1948.
Tommy Warner, 89 yards, against Virginia Tech in 1957.
Longest touchdown run from scrimmage—Harry Robinson, 89 yards, against S.M.U. in 1944.
Longest scoring pass play—Bill Bonar to George Kinck, 76 yards, against Notre Dame in 1949.
Longest runback of interception to score—Fred Wilcox, 91 yards, against Ole Miss in 1954.
Longest punt—O. J. Key, 87 yards counting roll, against Florida in 1946.
Field goal—Don Bright, 53 yards, against Duke in 1964.

TEAM SEASON

Most victories—11 by 1931 team.
Most losses—10 by 1962 team.
Most points scored—350 by 1931 team.
Total offense—4,296 yards by 1931 team.
Top net rushing total—3,473 yards by 1931 team.
Most rushing plays—649 by 1940 team.
Top net passing total—1,400 yards by 1950 team.
Most passes attempted—255 by 1965 team.
Most passes completed—106 by 1962 team.
Most touchdown passes—14 by 1950 team.
Most passes intercepted—26 by 1949 team.
Most passes had intercepted—25 by 1940 team.
Most fumbles lost—30 by 1951 team.

INDIVIDUAL SEASON

Leading rusher—Eddie Price, 1,178 yards for 10 games in 1948.
Leading scorer—Charles Flournoy, 128 points in 10 games in 1925.
Most passes attempted—David East, 192, 1964.
Most passes completed—David East, 85, 1964.
Most yardage gained passing—Joe Ernst, 990, 1950.
Most touchdown passes—Joe Ernst, 8, 1950.
Most passes caught—Clem Dellenger, 39, 1962.
Most yardage on passes caught—W. C. McElhannon, 484, 1951.
Most touchdown passes caught—Tommy Mason, 5, 1960.
Most touchdowns—Charles Flournoy, 19, 1925.
Most touchdowns—Tommy Comeaux, 32, 1950.

INDIVIDUAL CAREER

Leading Rusher—Eddie Price, 3,095 yards, from 1946-49.
Pass Attempts—Joe Ernst, 339, from 1948 to 1950.
Pass Completions—Joe Ernst, 175, from 1948 to 1950.
Yards Passing—Joe Ernst, 2,374, from 1948 to 1950.
Touchdown Passes—Joe Ernst, 18, from 1948 to 1950.
Passes Caught—W. C. McElhannon, 68, from 1951 to 1952.

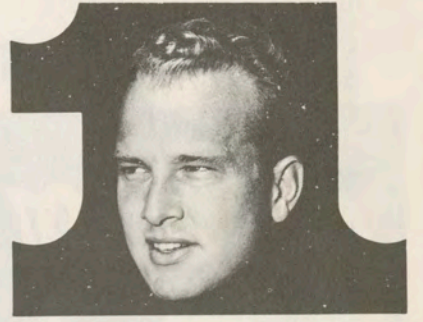
It all adds up

... to excitement ... to action ... to the
most professional sports coverage on
New Orleans television:

Sports Director Hap Glaudi, witty, sharp,
knowledgeable + Paul Hornung, one of the
greatest pros of all time + Saints' Head
Coach Tom Fears, the voice from the top +
Woody Van Dyke, who calls 'em
as he sees 'em.

Yes, it all adds up to the most exciting
sports season in years. Don't
miss a minute of it ...

Watch all 4 on 4 ... the station
of the Saints!



LOOK...



Your Money Now Earns

6 $\frac{1}{4}$ %

INTEREST

COMPUTED DAILY—COMPOUNDED QUARTERLY

EACH ACCOUNT INSURED
UP TO

\$25,000

By Savings Guaranty Corp.

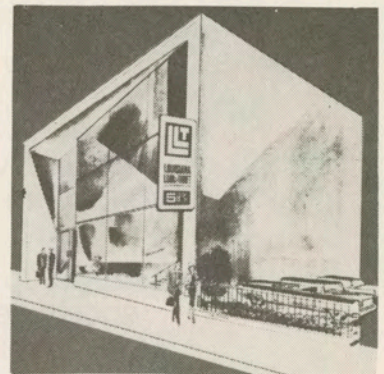
A company doing business in Louisiana
under the authority of, and supervised by
the Louisiana Insurance Commissioner.



This seal is your guarantee
of maximum safety and
security for your invested
dollars.

No need to tie up your money in C. D.'s or Time Certificates in order to earn the highest available interest. LL&T offers a big 6 $\frac{1}{4}$ % interest computed daily and compounded quarterly, and you may withdraw your funds at any time without prior notice and still receive the full interest accrued as of the date of withdrawal. Funds received by the 20th of each month earn interest from the 1st. Good things start to happen the day you start investing at LL&T!

HOURS 8:30 to 5 P.M.
MON. - THURS.
8:30 to 7 P.M. FRI.



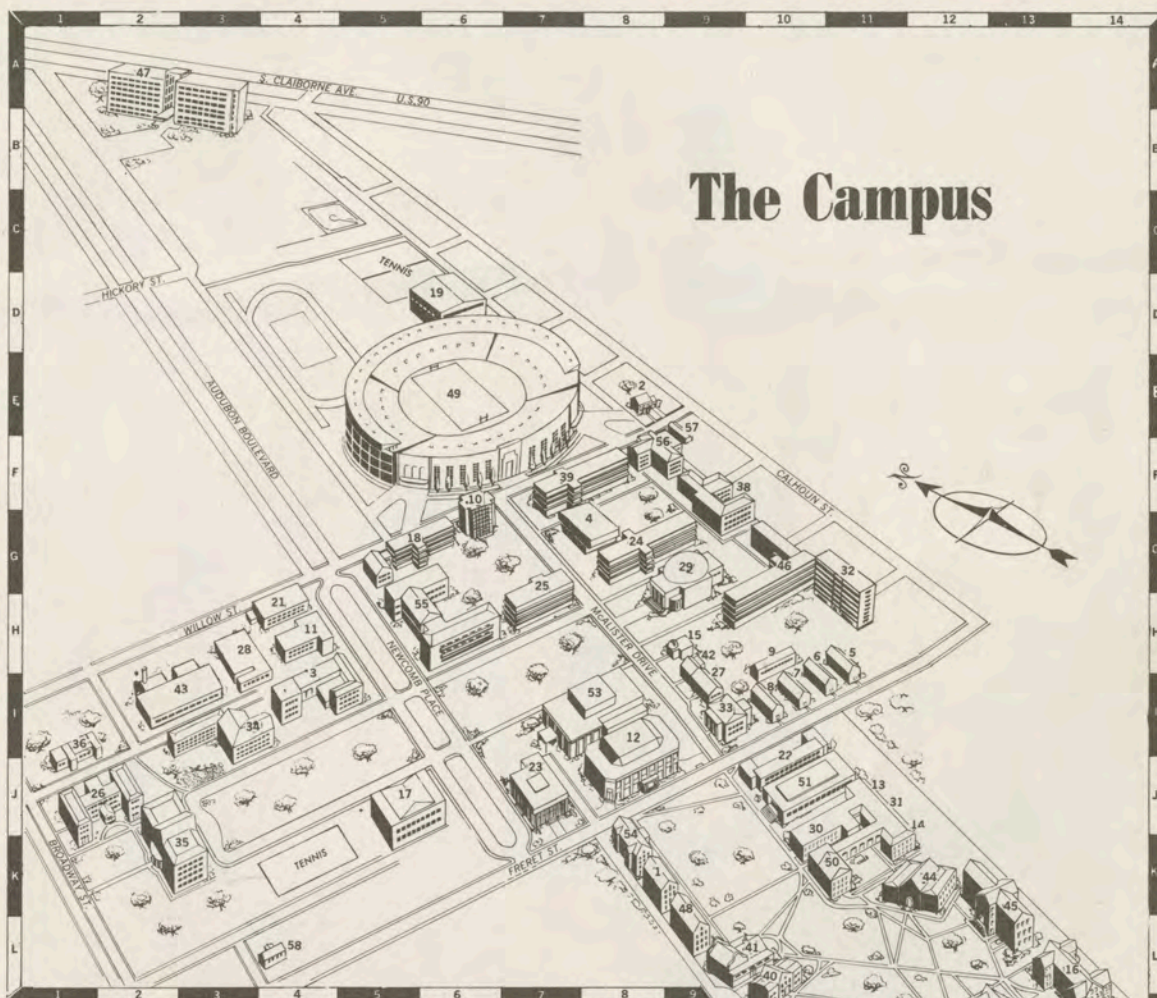
LOUISIANA LOAN & THRIFT

1305 TULANE AVENUE (Opposite the Main Public Library) Phone: 522-9517

FREE PARKING On Our Private Lot

Welcome to Tulane...

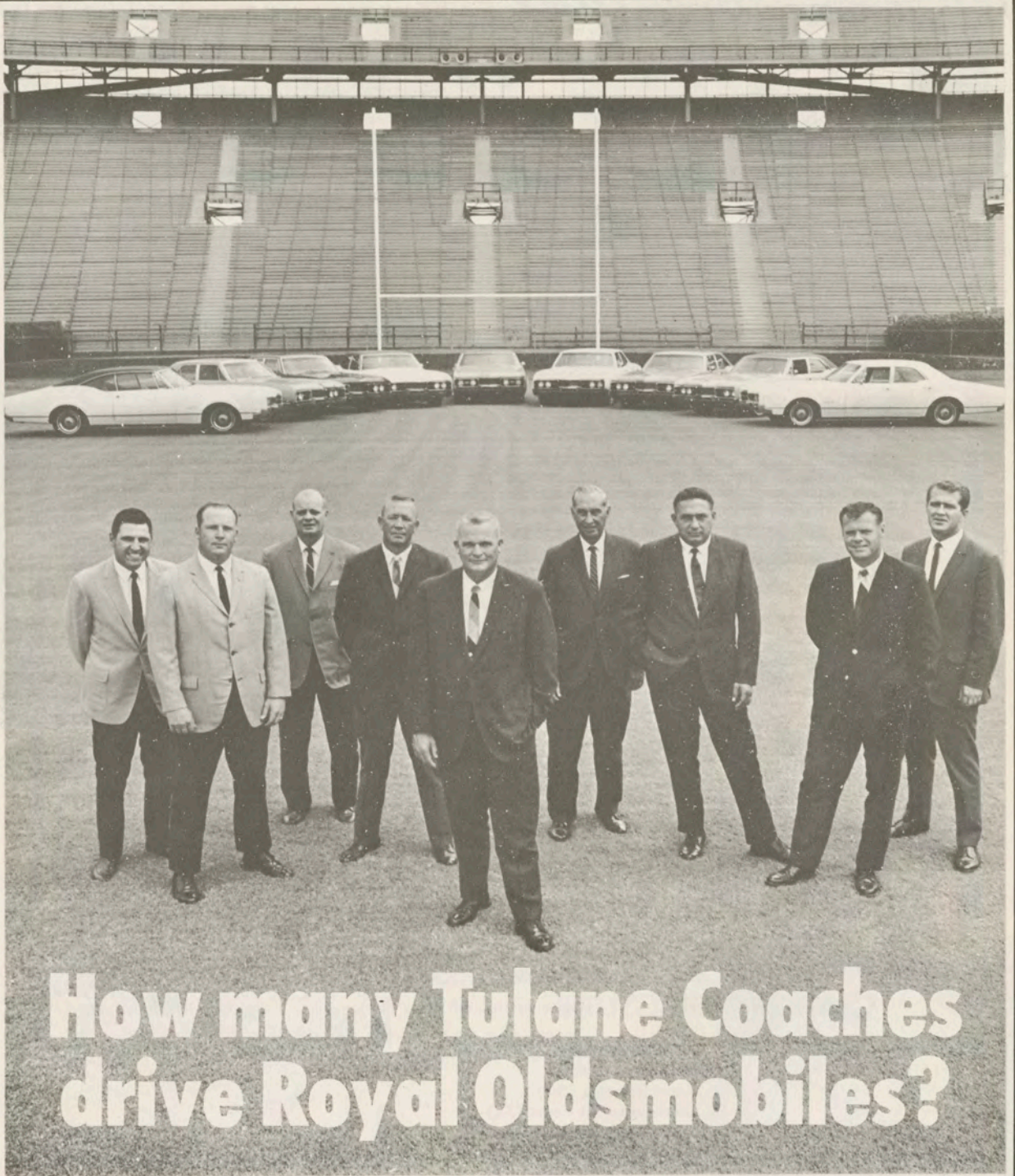
To our guests who are visiting Tulane for the first time, we extend a cordial welcome. We hope you will take advantage of this opportunity to visit the rest of our campus. Have a pleasant stay, and return soon and often to the home of the Green Wave.



The Campus

CAMPUS DIRECTORY

- | | | |
|-----------------------------------|---|------------------------------------|
| 1 ALCEE FORTIER HALL (K-8) | 23 HOWARD-TILTON MEMORIAL LIBRARY (J-7) | 45 RICHARDSON MEMORIAL (K-13) |
| 2 ALUMNI HOUSE (E-8) | 24 IRBY HOUSE (G-8) | 46 ROBERT SHARP HALL (G-10) |
| 3 ART BUILDING (I-4) | 25 JOHNSTON HOUSE (G-7) | 47 ROSEN HOUSE (A-2) |
| 4 BRUFF COMMONS (G-8) | 26 JOSEPHINE LOUISE HOUSE (J-1) | 48 SOCIAL WORK (K-9) |
| 5 BUILDING 21 (H-11) | 27 MAIN TELEPHONE EXCHANGE (I-9) | 49 STADIUM (E-6) |
| 6 BUILDING 23 (H-10) | 28 MAINTENANCE WORK SHOP (H-3) | 50 STANLEY THOMAS HALL (K-11) |
| 7 BUILDING 25 (I-10) | 29 MCALISTER AUDITORIUM (G-9) | 51 THEATRE AND SPEECH BLDG. (J-10) |
| 8 BUILDING 27 (I-10) | 30 MECHANICAL ENGINEERING (J-10) | 52 TILTON MEMORIAL HALL (N-11) |
| 9 BUILDING 29 (H-10) | 31 MECHANICAL ENGINEERING LABS. (J-11) | 53 UNIVERSITY CENTER (I-8) |
| 10 BUTLER HOUSE (F-6) | 32 MONROE HALL (G-11) | 54 UNIVERSITY COLLEGE (K-8) |
| 11 CAROLINE RICHARDSON HALL (H-4) | 33 NAVY BUILDING (I-9) | 55 WARREN HOUSE (H-6) |
| 12 CENTRAL BUILDING (I-8) | 34 NEWCOMB GYMNASIUM (I-3) | 56 ZEMURRAY HALL (F-8) |
| 13 CHEMICAL ENGINEERING (J-11) | 35 NEWCOMB HALL (K-2) | |
| 14 CIVIL ENGINEERING (K-11) | 36 NEWCOMB NURSERY SCHOOL (I-1) | |
| 15 CUNNINGHAM OBSERVATORY (H-9) | 37 NORMAN MAYER MEMORIAL BLDG. (M-10) | |
| 16 DINWIDDIE HALL (L-14) | 38 PATERSON HOUSE (F-9) | |
| 17 DIXON HALL (J-5) | 39 PHELPS HOUSE (F-7) | |
| 18 DORIS HALL (G-5) | 40 PHYSICS BUILDING (L-10) | |
| 19 FAVROT FIELD HOUSE (D-6) | 41 PHYSICS ANNEX (L-10) | |
| 20 GIBSON HALL (M-12) | 42 PLAYHOUSE (H-9) | |
| 21 HEALTH SERVICE (H-4) | 43 POWER HOUSE (I-2) | |
| 22 HISTORY BUILDING (J-10) | 44 RICHARDSON CHEMISTRY (K-12) | |



**How many Tulane Coaches
drive Royal Oldsmobiles?**

(All 9 of them)



Veterans & Causeway

MASCOTS and MONICKERS

A mascot is a person, animal or object used to bring good luck. Name the college football teams which have these mascots as nicknames.



Answers on page 56.

GAME 4

C KARL W. KLAGES 1967



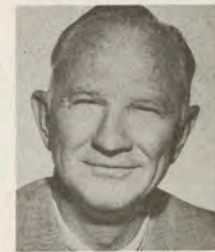
Georgia Institute of Technology

Atlanta, Georgia

The first class of 129 students (128 of them were from Georgia) entered Georgia Tech in 1888 to pursue Bachelor of Science degrees in Mechanical Engineering. At the present time approximately 7,600 students (39 states and 65 foreign countries now furnish Tech with students) are studying for undergraduate and graduate degrees in the 18 different schools of the Institute. The original 5-acre campus with its two buildings has expanded to a modern 180-acre campus dotted with 100 buildings.

Over 130 acres of this land have been acquired during the past 20 years. During this same period, 30 new buildings were constructed. And, over the same time span, extensive additions were made to several campus structures including the administration and research buildings and the football stadium. Tech, under the direction of Dr. Edwin D. Harrison, Tech's sixth president, is now in the midst of the largest building program in its history. Fifteen buildings now under construction or in the planning stage are valued at over \$25,000,000. Two urban renewal programs will add over 60 more acres to the campus in the next few years.

Paralleling Georgia Tech's growth as the leading technological institution of the South, has been the growth of its research program which has made the Institute the South's largest industrial and engineering research agency. Last year, Georgia Tech had a research volume of over \$8,000,000.



**Dr. Edwin D.
Harrison**
President

Leon "Bud" Carson
Football Coach

R. L. "Bobby" Dodd
Athletic Director



TECH TUTORS (Left to Right) — Lewis Woodruff, George Barclay, Jack Griffin, Dub Fesperman, Head Coach Bud Carson, Dick Bestwick, Bob Thallman, Richard Bell.



Danny Adams



Steve Almond



Mike Ashmore



David Barber



Rick Black



Ken Bonifay

GEORGIA TECH YELLOW JACKETS



Mike Bradley



Grant Field, Home of the Yellow Jackets



Jimmy Brown



Tommy Carlisle



Tommy Carmichael



Tommy Chapman



Harold Clifford



John Collins



Bain Culton



Doug Dale



Larry Davidson



Steve DeBardelaben



Chris Denney



Bill Eastman

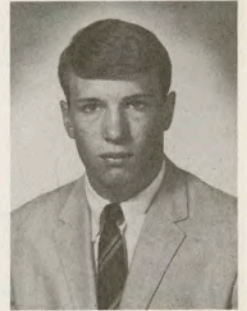


Randall Edmunds



Van Leer Electrical Engineering Bldg.

**G
A
.
T
E
C
H**



Larry Good



Doc Harvin



Dennis James



Billy Kidd



Bill Kinard



Kim King



John Lagana



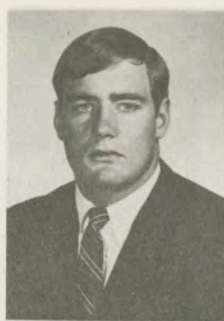
Lamar Melvin



Rick Nelson



Jerry Paul



Jim Penley



Claude Shook



John Sias



Lenny Snow

G
A
·
T
E
C
H



Administration Building



Gene Spiotta



Joel Stevenson



Terry Story



Dee Turner



Joe Vitunic



John Weaver



Eric Wilcox



Tim Woodall

cam-pix

**The 1967
Homecoming
Queen . . .**



GAY YELLEN
Houston, Texas



JEAN COOPER
Huntington, N. Y.
MAID OF HONOR

**. . . And
Her Court**

PAM BREEN
New Orleans



MEG BURNS
Bellaire, Texas

EMILY CLARK
Clarksdale, Miss.



KITTY CLARK
New Orleans

SUSAN TODD
Atlanta, Ga.



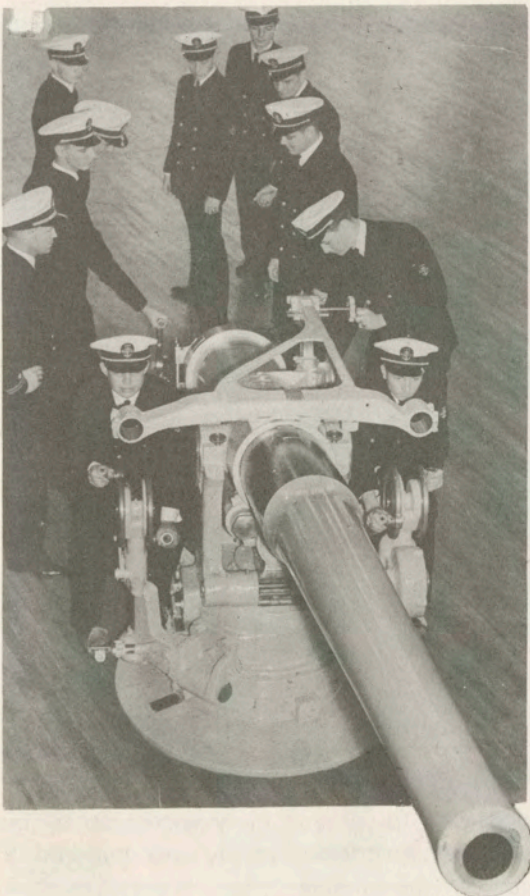


DR. JAMES J. HICKS
Birmingham, Ala.
Medical Class of 1944
Incoming President,
Tulane Alumni Association

JUDGE FRED J. CASSIBRY
New Orleans
Arts & Science Class of 1941,
Law Class of 1943
General Chairman,
1967 Tulane Homecoming



DOUGLASS V. FRERET
New Orleans
Architecture Class of 1925
Retiring President,
Tulane Alumni Association



An alumni salute goes to the first graduates of the Naval Reserve Officers Training Corps program at Tulane, who recently celebrated their silver anniversary. The NROTC program began at Tulane in 1938 as the seventh such university program in the nation, and the first NROTC graduates were commissioned in 1942.



High school students (left) listening attentively to a Tulane faculty member speaking at a Tulane Educational Conference, and Dr. Joseph Beasley, medical school faculty member, speaking at one of the conferences sponsored annually by the Tulane Alumni Association throughout the nation. The Alumni Association works closely with the Tulane Admissions office to interest students in the University, its faculty and their ideas.



Freshmen children of Tulane alumni parents at the annual Second Generation Party sponsored by the Tulane Alumni Association. Each year children of alumni who enter the University are honored at a special party, which doubles as a surprise reunion for many of the parents.

You'll know the difference
between a Cadillac and other
fine cars, the first time you
take the wheel of a new
Cadillac

•
LET US DEMONSTRATE
FOR YOU!
•

**PONTCHARTRAIN
MOTOR CO., INC.**
Baronne at Girod

PH-482-9377



The Bistro Lounge
4061 Tulane Ave.
"Where the nicest people meet"

4061 Tulane Ave.



little dude

DURACRAFT

JOHNSON MOTORS

Flammaster



1018 BARONNE

PHONE 529-5731

**DONOVAN
Boat Supplies**



**MAKE
EVERY YARD
COUNT...
DOUBLE!**

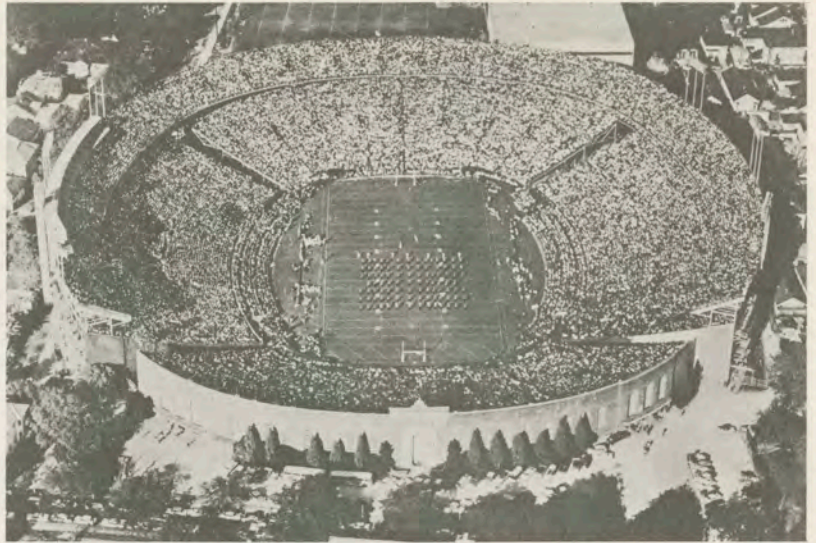
Double because you'll be earning a commission while you earn your college degree.

All it takes is a few hours a week and a six-week summer camp. It's that easy in Army ROTC.

Whether you plan a civilian or a military career, Army ROTC gives you the kind of training and experience you need to motivate, organize and lead men. You'll learn them all in Army ROTC.

Get the details from your Professor of Military Science at any ROTC college.

Your future, your decision... choose **Army ROTC**.



TULANE STADIUM

One of the finest college football facilities in the nation, Tulane Stadium is the world's largest steel stadium. It is located on the Northeastern end of the campus, on the site of the old Etienne de Bore plantation where Sugar was first granulated in this country.

Tulane Stadium was dedicated October 23, 1926, with East and West side stands seating some 35,000. Much of the enlargement and improvement since then has been due to the efforts of the New Orleans Mid-Winter Sports Association, sponsor of the Sugar Bowl Classic. In 1937, 14,000 North Stand seats were erected. The upper deck was added in 1939, boosting the capacity to 69,000. Then in 1947, the bowl was enlarged to its present capacity of 80,985.

Tulane added floodlights in 1957. Other improvements have included permanent box seats, portal seats, press box elevator, and photographer's ramp. Two new scoreboards will be added for the 1967 season.

The press box, which has been voted among the nation's best by the Football Writer's Association, is 240 feet long and seats 254.

Auburn edged Tulane, 2-0, in the inaugural game in 1926. Tulane won the first Sugar Bowl game on Jan. 1, 1935, downing Temple, 20-14, in a game highlighted by an 85-yard TD run by the Wave's Claude "Little Monk" Simons.

FUTURE WAVE SCHEDULES

1968

Sept. 21—At Houston
 Sept. 28—Texas A&M
 Oct. 5—Tampa
 Oct. 12—At Florida
 Oct. 19—Boston College
 Oct. 26—At Georgia Tech
 Nov. 2—At Vanderbilt
 Nov. 9—Tulsa
 Nov. 16—At Virginia
 Nov. 23—LSU

1969

Sept. 20—At Georgia
 Sept. 27—West Virginia
 Oct. 4—At Boston College
 Oct. 11—Florida
 Oct. 18—At Pittsburgh
 Oct. 25—Notre Dame
 Nov. 1—Vanderbilt
 Nov. 8—Georgia Tech
 Nov. 15—Virginia
 Nov. 22—At LSU

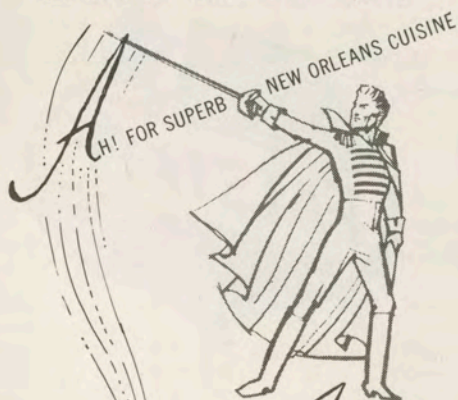
The Sugar Bowl

One of the nation's great football classics is the annual Sugar Bowl game played in Tulane Stadium on New Year's Day. Founded in the depths of depression, it stands today as one of the most unique amateur athletic achievements in the history of American sports.

While the annual football game is the highlight, the New Orleans Mid-Winter Sports Association also sponsors a basketball tournament, tennis tournament, track meet and regatta during Sugar Bowl week. Thousands of visitors flock to the Crescent City for the festivities.

The idea was first presented in 1927 by Colonel James M. Thomson, publisher of the old New Orleans Item, and sports editor Fred Digby. The first game was held on January 1, 1935, with Tulane defeating Temple, 20-14. From its inception, the group has been free of political entanglement. Under the charter, it was stipulated that it was to be a "voluntary, non-profit civic organization whose members serve without remuneration." Every Sugar Bowler buys his own tickets to all events.

**COME AS LATE AS
MIDNIGHT
AFTER THE GAME!**
(as late as 10:30 other nights)



The Andrew Jackson
RESTAURANT

221 ROYAL ST., Opposite MONTELEONE HOTEL
For Reservations, 529-2603

Use **SURE-PINE** and **SURE-KLEAN**

they're the cleanest products around



Use SURE-PINE all through the house, and you'll agree that it's the SURE way to clean, disinfect and deodorize. SURE-PINE is the fragrant disinfectant with hundreds of uses—quick, safe and dependable. You'll love the job it does, and the clean-smelling aftermath of its real pine scent. Get genuine SURE-PINE today. You'll never be without it once you try it.



SURE-KLEAN, in the distinctive, unbreakable plastic bottle, is the bleach that does more—does it better! SURE-KLEAN is laboratory tested and proven to give you the whitest wash ever—to remove stains, even scorch and mildew. Safe for nylons, too. SURE-KLEAN cleanses, deodorizes, disinfects. Keep it handy for the laundry, kitchen and bath. Next time you clean, try the very nicest bleach—SURE-KLEAN.

SURE-PINE and SURE-KLEAN

Quality Products of *The UDDO Company*

General Offices - New Orleans 3, La.
JOSEPH F. UDDO, Owner

Roll on Green Waves!

*Where your driving
takes a turn
for the best...
at the Sign of
the Orange Disc*



Gulf Oil Corporation



the great
American
Sport!

*Ride the Wide Track
Winning Streak*



JEFFERSON MOTOR CO.

Your West Bank Pontiac Dealer

4TH ST. & BARATARIA BLVD.

MARRERO, LA.

341-5626



*The cleaners that care
about the care of your
clothes.*

*21 shops in New Orleans
to serve you.*

ROLL ON GREEN WAVE



*The Choicest Product
of the Brewers Art*

LOOKING AHEAD: BASKETBALL

By GAYLE PATRICK LETULLE

With four starters from last year's talented run and shoot gang back for another assault on enemy nets, Tulane's young cagers figure to continue the steady improvement they showed en route to a 14-10 slate last winter.

Engineer of Tulane's return to winning basketball is Ralph Pedersen, former Tulane cage star and assistant coach. "Pete" took over the top job after the Wave had a disastrous 1-22 record in 1963-64, and brought respectability back to the program in just three years.

After a dismal 1-4 start last season, Pedersen revamped his starting lineup to include four sophomores, the tallest standing 6-4, and the youngsters rolled to a 13-6 record over the last 19 games, including victories over Yale, Davidson, NYU, Georgia Tech and archrival LSU.

Led by the now-departed Al Andrews, Pedersen's Kiddie Korps ranked fifth in the nation in field goal percentage (hitting 50.2% as a team) and seventh in the nation in team offense (scoring 88.4 points per game).

Andrews, who ranks second on Tulane's All-Time scoring list, will be hard to replace. But the Wave has four double figure scorers, a starter from the 1965-66 season who was injured last season, last season's No. Six man, and a promising crop of freshmen and transfers back to make the battle for starting jobs rather interesting.

Heir apparent to the scoring crown worn by Andrews for the past three seasons is forward Johnny Arthurs, a 6-4 Junior from New Orleans who bucketed an average of 15.4 points an outing last fall, second only to Andrews among Wave scorers. A fine pro prospect, Arthurs was also a standout on Tulane's baseball team last spring.

Playmaker, Terry Habig, an honor student in Tulane's School of Engineering, followed Arthurs in scoring with a 14.0 average. Habig, a 6-2 Junior from Auburn, Ind., topped the Wave in both assists and free throw percentage last winter.

Junior Bill Fitzgerald bucketed 13.3 points per game last season and was generally considered the Wave's top defensive ballplayer. A tremendous competitor, Fitzgerald led Tulane's baseball team in hitting last spring with a .339 batting average and was chosen the diamond team's MVP while only a Sophomore.

Six-foot-five-inch Dan Moeser, one of only two seniors on the 1967-68 squad, was Tulane's leading rebounder last fall. The Stroughton, Wis. native, who averaged 12.6 points per game, also topped the Wave in field goal percentage, hitting on 53.5% of his shots from the floor.

The other senior, Mitch Urbanski, was a regular last season before being sidelined after the Wave's second game. The return of the 6-5 Kenosha, Wis. native, who was a starter as a sophomore, should take some of the rebounding pressure off of Moeser.

Urbanski's stiffest competitor for a starting job figures to be lanky Bob Spurck, a 6-4 hustler from Fort Worth who averaged 7.0 points and 4.3 rebounds per game last winter.

Dennis Riddle, a promising 6-8 transfer from the Air Force Academy, and Junior lettermen Rick Carlson and Don Simmons are top front court candidates, while Soph Ned Reese, who had 102 assists in 16 frosh contests, Junior letterman Joel Miller, and Drew Madar, a Junior College All-American last season, will be vying for backcourt jobs.

Coach Pedersen and assistant Tom Nissalke will be looking for improvement defensively and on the boards to go with the returning nucleus of one of the nation's top offensive ball clubs when pre-season drills open this fall. If they find it, the sky's the limit.



Coach
Ralph Pedersen

VARSITY ROSTER

Name	Pos.	No.	Ht.	Wt.	Yr.	Ltr.	Avg.	Hometown
Johnny Arthurs	f	31	6-4	190	Jr.	1	15.4	New Orleans
Rick Carlson	c	25	6-5	210	Jr.	1	1.9	Bradenton, Fla.
Billy Fitzgerald	f	42	6-4	190	Jr.	1	13.3	New Orleans
Terry Habig	g	43	6-2	180	Jr.	1	14.0	Auburn, Ind.
Al Kralovansky	f	44	6-6	195	So.	0		Plymouth, Ind.
Drew Madar	g †	5	6-0	175	Jr.	0		Temple, Tex.
Joel Miller	g *	23	6-3	185	Jr.	1	2.1	Middlebury, Ind.
Dan Moeser	f	24	6-5	200	Sr.	2	12.6	Stoughton, Wis.
Ned Reese	g	14	6-0	180	So	0		Elmhurst, Ill.
Dennis Riddle	c	35	6-8	205	So	0		Madison, Wis.
Greg Robers	c	21	6-7	200	So	0		Ft. Wayne, Ind.
Don Simmons	c	54	6-6	190	Jr.	1	1.2	Columbia, Mo.
Bob Spurck	f	45	6-3	180	Jr.	1	7.0	Fort Worth, Tex.
Mitch Urbanski	c *	22	6-5	190	Jr	1		Kenosha, Wis.

† Junior College Transfer. * Injured during 1966-67 Season. No.—Uniform Number. Ltr.—Varsity Letters Earned. Avg.—1966-67 Scoring Average.

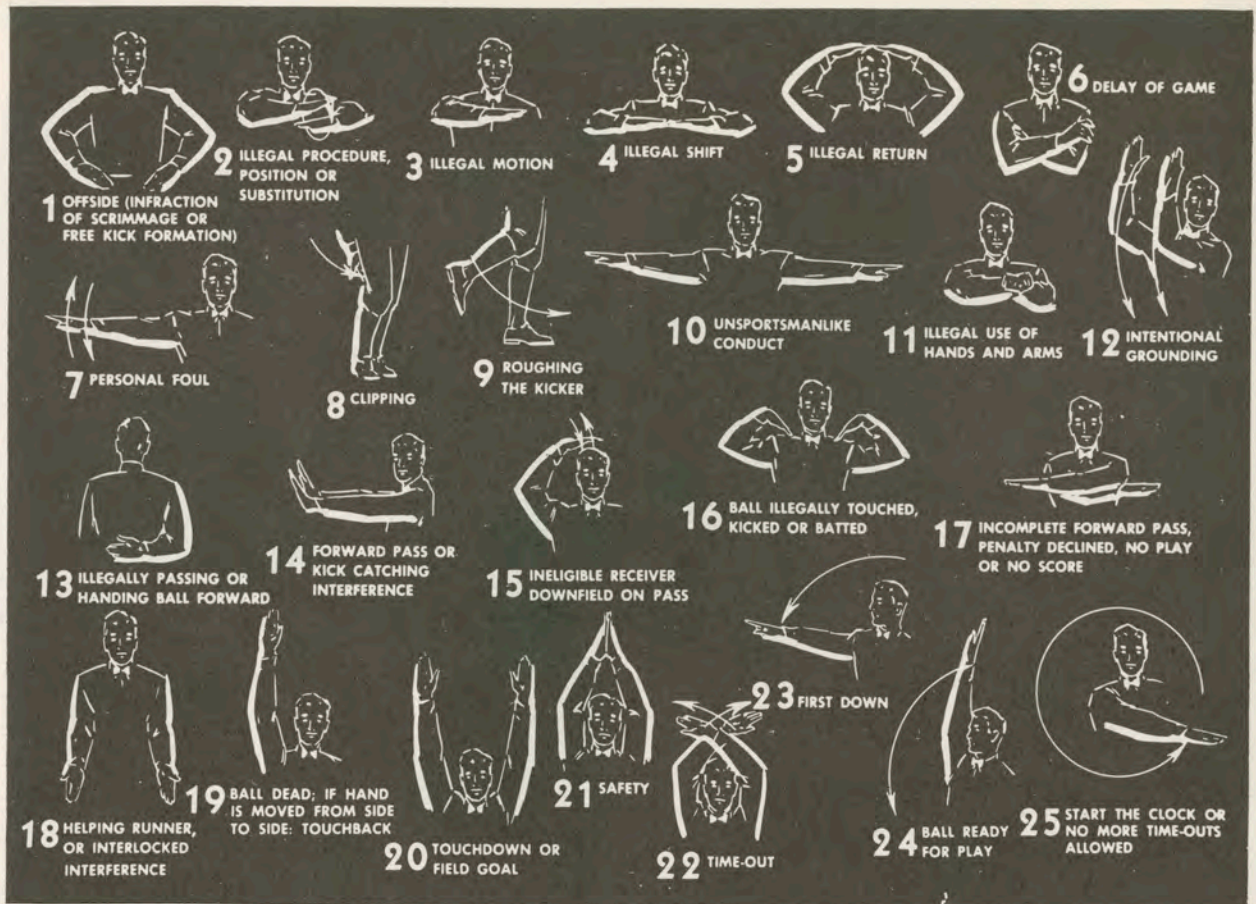
SCHEDULE

Dec. 2	SOUTHWESTERN OF MEMPHIS
Dec. 5	FLORIDA SOUTHERN
Dec. 9	At Baylor
Dec. 11	At Rice
Dec. 16	PURDUE
Dec. 18	DENVER
Dec. 20	DARMOUTH
Dec. 27-28	Mobile Classic at Mobile
Jan. 6	At Georgia Tech
Jan. 11	LOUISIANA STATE
Jan. 25	At Kent State
Jan. 27	At Pittsburgh
Feb. 2	MISSOURI
Feb. 3	MIAMI (FLA.)
Feb. 6	At Louisiana College
Feb. 10	AIR FORCE
Feb. 15	At New York University
Feb. 17	CHICAGO
Feb. 21	At Louisiana State
Feb. 24	At Davidson
Feb. 26	At Stetson
Mar. 2	GEORGIA TECH
Mar. 4	VIRGINIA TECH

*Made by the little deep south
brewery that would rather be best
than biggest*



DIXIE BREWING COMPANY, INC., NEW ORLEANS, LOUISIANA



PENALTIES

1. OFFSIDE by either team; Violation of scrimmage or free kick formation; Encroachment on neutral zone—Loss of Five Yards.

2. ILLEGAL PROCEDURE, POSITION OR SUBSTITUTION—Putting ball in play before Referee signals "Ready-for-Play;" Failure to complete substitution before play starts; Player out of bounds when scrimmage begins; Failure to maintain proper alignment of offensive team when ball is snapped; False start or simulating start of a play; Taking more than two steps after Fair Catch is made; Player on line receiving snap—Loss of Five Yards.

3. ILLEGAL MOTION—Offensive player illegally in motion when ball is snapped—Loss of Five Yards.

4. ILLEGAL SHIFT—Failure to stop one full second following shift—Loss of Five Yards.

5. ILLEGAL RETURN of ineligible substitute—Loss of 15 yards.

6. DELAY OF GAME—Consuming more than 25 seconds in putting the ball in play after it is declared ready for play; Interrupting the 25-second count for any reason other than a free or excess time out granted by

Referee; Failure to remove injured player for whom excess time out was granted—Loss of Five Yards. Team not ready to play at start of either half—Loss of 15 Yards.

7. PERSONAL FOUL—Tackling or blocking defensive player who has made fair catch; Piling on; Hurdling; Grasping face mask of opponent; Tackling player out of bounds, or running into player obviously out of play; Striking an opponent with fist, forearm, elbow or locked hands; Kicking or kneeling—Loss of 15 Yards. (Flagrant offenders will be disqualified).

8. CLIPPING—Loss of 15 yards.

9. ROUGHING THE KICKER or holder—Loss of 15 Yards.

10. UNSPORTSMANLIKE CONDUCT—Violation of rules during intermission; Illegal return of suspended player; Coaching from side lines; Invalid signal for Fair Catch; Persons illegally on field—Loss of 15 Yards. (Flagrant offenders will be disqualified).

11. ILLEGAL USE OF HANDS AND ARMS by offensive or defensive player—Loss of 15 Yards.

12. INTENTIONAL GROUNDING of forward pass—Loss of Five Yards from spot of pass Plus Loss of Down.

13. ILLEGALLY PASSING OR HANDING BALL FORWARD—Loss of Five Yards from spot of foul Plus Loss of Down.

14. FORWARD PASS OR KICK CATCHING INTERFERENCE—Interference with opportunity of player of receiving team to catch a kick—Loss of 15 Yards. Interference by member of offensive team with defensive player making pass interception—Loss of 15 Yards Plus Loss of Down. Interference by defensive team on forward pass—Passing Team's Ball at Spot of Foul and First Down.

15. INELIGIBLE RECEIVER DOWNFIELD ON PASS—Loss of 15 Yards.

16. BALL ILLEGALLY TOUCHED, KICKED OR BATTED—Forward pass being touched by ineligible receiver beyond the line of scrimmage—Loss of 15 Yards from Spot of Preceding Down and Loss of a Down. Eligible pass receiver going out of bounds and later touching a forward pass—Loss of Down.

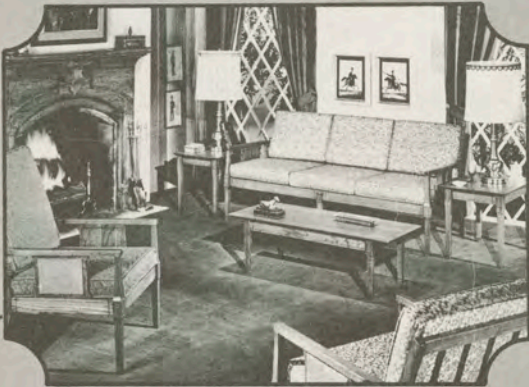
17. PENALTY DECLINED; Incomplete forward pass; No play or no score.

18. CRAWLING by runner—Loss of Five Yards. Interlocked Interference—Loss of 15 yards.

24 HOUR DELIVERY

CONVERT ANY UNFURNISHED APARTMENT INTO A
FURNISHED APARTMENT DECORATED TO YOUR TASTE

1 BEDROOM APARTMENT from \$25.00 MONTHLY



**RENT NEW
FURNITURE**



WEINER'S

120 HUEY P. LONG AVENUE GRETNA, LOUISIANA
366-4141

INTERNATIONAL THEATRE RESTAURANT

The French Quarter's
newest and most beautiful
restaurant. Superb cuisine
in an incomparable atmos-
phere.



**ENTERTAINMENT WHILE
YOU DINE**

Under the artistic culinary supervision of

Chef De Cuisine Alvin

May we suggest — selected from our new menu:

Filet Mignon • Pompano En Paillote

Veal Scalopine • Coq Au Vin

Sirloin Tips Flambe

Beef Stroganoff • Long Island Duckling

and many other specialties

All dinners

6

courses of dining
delight which
start from

\$3.00

DANCING



Presenting nightly
the I.T.R. Trio
Dancing — 7 to 12 P.M.

Call for reservations
Open daily 6 p.m.-12 p.m.
Fri. & Sat. 6 p.m.-1 a.m.
Closed Tues.



**International
Theatre Restaurant**

524-1336
215 Bourbon Street

Deciding How To Decide...

..Mathematically

By Adelaide Hawn, News Editor, Tulane University News Service

Sometimes you just flip a coin to decide what to do. Other times you might want more information before making up your mind.

Example: Suppose you are planning a backyard barbecue party and you may want to decide to call the weather bureau to get predictions for the day of the party.

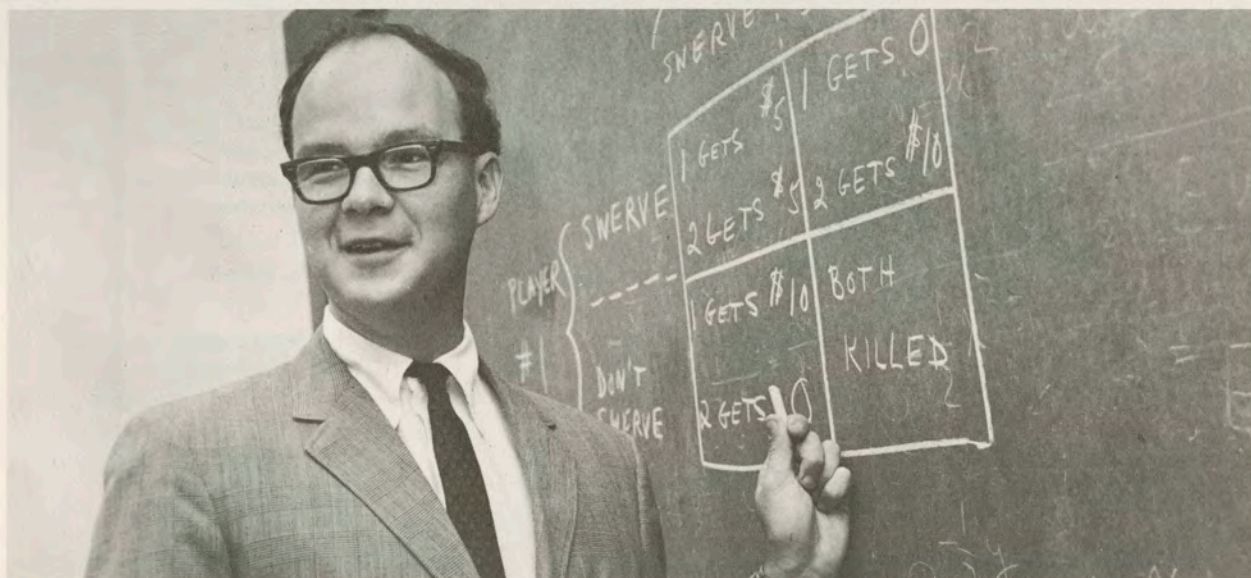
This is a simple decision-making game you play with yourself.

But if you're in business or in government, you may be concerned with decisions that involve other people — in problems of production and pricing or of crisis diplomacy. In this event, decision-making involves the important factor of getting valuable advance information in order to make the most profitable decision or to obtain the most advantageous position in a given situation.

Another example: You are selling a product at a certain price and your neighboring competitor raises the price on his similar product. Do you go along with his price raise or do you keep your product at its current price, hoping to gain some of his customers? Or do you meet his price but increase your sales or advertising force?

Is your responsibility solely to your customer? Or do you also consider your stockholders' role?

(Continued on Page 54)



Dr. Irving H. LaValle

Deciding How To Decide (continued)

For the past several years a faculty member in the Tulane University Graduate School of Business Administration has been working on various decision-making games from the standpoint of the value of gaining advance information—the worth of a given piece of information to decision-makers in light of their major objectives and their present information.

He is Dr. Irving H. LaValle, assistant professor of management science. One of his games is called “chicken,” named for the teen-age driving game of racing down the middle of the road and seeing which car will swerve first to avoid a collision.

He selected the name “chicken,” he says, because the decision facing each of the drivers is similar in many respects to decisions involving the keen competition in business, politics, and national defense. The teen-age driving game captures the essential features of these more useful decision situations.

Once these essential features have been identified, the game may be abstracted mathematically for purposes of analysis. Then mathematics may be brought to bear upon each player’s choice of action and his opportunities to acquire information as to what his opponent will do.

“Chicken” is a game between the decision-maker and a competitor. It’s a two-player situation in which each player has two possible actions and where the profit of each player is determined both by his choice of action and by his opponent’s choice.

The advance information which a player might obtain could be current data on a product’s sales appeal, on the pricing plans of a competitor, or even on the information possessed by the competitor. In applications of “chicken” to crisis diplomacy, knowing what the competitor knows is often highly useful in deciding whether to bluff, back down, or take a middle course.

Dr. LaValle’s own contribution to the analysis of “chicken” and similar games is a theory in which a given player must first express his judgments regarding what his opponent will do. Then the theory will tell him, first, what advance information he should try to obtain and at what price, and second, what course of action to adopt once he has received the information he succeeds in purchasing, if any.

Dr. LaValle is quick to point out that the mathematics in no way supplants the decision-maker or relieves him of the responsibility of careful judgment.

In the game approach, the decision-maker’s first judgment must always be concerned with whether the particular game in question takes into account the essential features of the decision—and he must also estimate the courses of action of his competitors and express his preference for the various possible outcomes of the game. Once all these decisions have been made, then the mathematics can tell him which information to get and what he should do once he has received the information.

Decision and game theory is not a panacea, Dr. LaValle says, “but its advantages are twofold:

“First, it forces the decision-maker to think very hard about the structure of his decision problem. And secondly, it ensures that he will take the best course of action in light of his judgments and preferences.”

1967 Tulane Freshman Football Team



FRONT ROW (Left to Right)—Coach Jerry Colquette, Coach Don Capretz, Gordon Roy (16), Bryan Duck (82), David Richard (21), Lowell Schexnayder (60), Kenny Sanders (13), Joe Gendron (85), Rodney Bazer (61), Roger Schramm (84).

SECOND ROW—Manager Dean Taylor, Rick Kingrea (34), Jack Laborde (10), Ray Hester (51), Duke Chappuis (41), John Autenreith (86), Francis Daigle (20), Tommy Cascio (50), Sam Scelfo (64), Randy Albers (24), Coach Jack O'Leary.

THIRD ROW—Mack Miller (83), Carl Tatum (52), Bruce Jackson (35), Harold Sisk (40), Steve Spomer (53), Mike Walker (73), Chip DeWitt (70), Lonnie Sibley (71).

FOURTH ROW—John Carter (75), Earl Robinson (62), Brian Robinson (32), Jack Bedwell (63), Paul Shirley (31), Jimmy Shepherd (72), Steve Stark (43), Mike Farnell (42), Gerald Boudreaux (77).

FIFTH ROW—Bob Hendon (48), Don Fortier (27), Albert Low (76), Johnny Gill (22), Jim White (11), Butch Spencer (89), Jim Koontz (79).

— Frosh Roster —

No.	Name, Pos., Wt.	Home Town (High School)
10	Jack LABORDE—B, 180	New Orleans (Jesuit)
13	Ken SANDERS—B, 175	Baton Rouge (Lee)
16	Gordon ROY—B, 180	Mansura (Marksville)
20	Francis DAIGLE—B, 185	Lake Charles (L. Charles)
21	David RICHARD—B, 170	Lutcher (Lutcher)
22	Johnny GILL—B, 175	Slidell (Sidell)
24	Randy ALBERS—E, 165	Dundas, Minn. (Northville)
27	Don FORTIER—B, 170	New Orleans (Nicholls)
31	Paul SHIRLEY—B, 185	DeRidder (DeRidder)
32	Brian ROBINSON—B, 190	Dallas, Tex. (Jesuit)
34	Ricky KINGREA—B, 190	Baton Rouge (B. Rouge)
35	Bruce JACKSON—B, 210	Ruston (Ruston)
40	Harold SISK—B, 195	Beaumont, Tex. (Forest Park)
41	Duke CHAPPUIS—B, 180	New Orleans (De La Salle)
42	Mike FARNELL—B, 170	Mobile, Ala. (McGill)
43	Steve STARK—B, 170	Franklin (Franklin)
48	Bob HENDON—B, 160	Lubbock, Tex. (Lubbock)
50	Tom CASCIO—C, 175	Shreveport (Jesuit)
51	Ray HESTER—C, 200	New Orleans (Holy Cross)
52	Carl TATUM—G, 195	Montgomery, Ala. (Catholic)
53	Steve SPOMER—C, 190	Cairo, Ill. (Cairo)
60	Lowell SCHEXNAYDER—G, 175	Gramercy (Lutcher)
61	Rodney BAZER—G, 195	New Iberia (New Iberia)
62	Earl ROBINSON—G, 190	Homer (Jesuit)

No.	Name, Pos., Wt.	Home Town (High School)
63	Jack BEDWELL—G, 180	Thibodaux (Thibodaux)
64	Sam SCELFO—G, 195	New Iberia (New Iberia)
70	Charles DE WITT—T, 200	Houston, Tex. (Memorial)
71	Lonnie SIBLEY—T, 195	Shreveport (Fair Park)
72	Jim SHEPHERD—T, 220	Lake Providence (L. Prov.)
73	Mike WALKER—T, 190	Sulphur (Sulphur)
75	John CARTER—T, 215	Kinder (Kinder)
76	Albert LOW—T, 210	Houston, Tex. (St. John's Sch.)
77	Gerald BOUDREAUX—T, 220	Thibodaux (Thibod'x)
82	Bryan DUCK—E, 180	Purvis, Miss. (Purvis)
83	Mack MILLER—E, 190	Basile (Basile)
84	Roger SCHRAMM—E, 180	Houston, Tex. (Lamar)
85	Joe GENDRON—E, 180	Watertown, N. Y. (Carthage)
86	John AUTENREITH—E, 195	N. O. (Newman)
89	Butch SPENCER—E, 180	Farmerville (Farmerville)

Head Freshman Coach — JACK O'LEARY.

Assistants — JERRY COLQUETTE, DON CAPRETZ.

Frosh Schedule, Results

Sept. 30	Marion Institute 33, Billow 27
Oct. 13	Southern Miss. Frosh 18, Billow 7
Oct. 20	Air Force Reserves 7, Billow 3
Friday, Nov. 24	LOUISIANA STATE FROSH, HERE, 7:30 P. M.

The '68 "youngmobiles" from Oldsmobile are here.

Drive one Monday morning.



Cutlass S Holiday Coupe
at your nearest Oldsmobile Dealer's.





Foreground: Chevelle SS 396. Camaro SS, top right. Corvette Sting Ray, top left.



Our Sports Department

A look of bold innovation and the feel of competitive excitement set Chevrolet sport models apart from the pack for '68.

Revolutionary styling.

Looking like a dream car come to life, the '68 Corvette Sting Ray is an astonishingly beautiful new sports car. It's nearly seven inches longer and two inches lower. Startling new features include Hide-A-Way windshield wipers concealed beneath a power-operated cowl panel, rear deck spoiler, high-backed bucket seats and push-type door opening buttons.

Great performers, too.

Quieter and smoother riding this year, Chevelle and Camaro,

"The Hugger," offer new sports car-type performance—better handling, big engines. Camaro SS has a bulging striped hood that covers your choice of either a 350- or 396-cubic-inch V8. Chevelle SS 396 for '68 has completely new styling, a wider tread, shorter wheelbase, and a twin-domed hood.

More engine efficiency.

Standard on many models with automatic transmission is an ingenious carburetor heater that gives you increased efficiency in cold weather. Standard, also, is a new GM exhaust emission control.

New ventilation system.

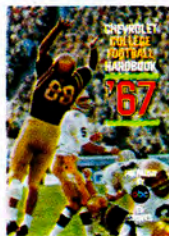
Astro Ventilation, a brand-new system of bringing in outside air, comes on Corvette, Camaro and the Caprice Coupe, and is available on many other models.

Proved safety features.

All Chevrolet safety features are continued and you get many new ones such as energy-absorbing front seat backs and side marker lights for '68. Be smart. Be sure. Buy now at your Chevrolet dealer's.

Free!

Get Chevrolet's 60-page College Football Handbook



Chevrolet's College Football Handbook contains a complete rundown on all the top teams, plus action photographs and inside looks by famous sports commentators. You'll also find the schedules and line-ups of all 33 NCAA games to be televised this fall. It's yours for the asking at your Chevrolet dealer's.

'68 Chevrolets

