

THE ALABAMA GAME

TULANE STADIUM - SEPT. 24, 1960

SOUVENIR PROGRAM - 50¢

After the game, refresh with the Real Beer Taste of **JAX**

Cool off with mellow JAX. It's Premium Brewed from 100% Natural Ingredients to give you that famous Real Beer Taste. Old Grad or BMOC, once you try JAX you'll just never again be completely satisfied with any other beer.

SAY, HOW DO I KNOW
YOU'RE NOT A MAN IN A
KANGAROO SUIT?

YOU DON'T! HOW
DO I KNOW YOU'RE
NOT A KANGAROO IN
A FOOTBALL SUIT?



Famous for
**FINE FOOD
 and DRINK**



*Enjoy the Specialties of These
 Noted Restaurants:*

ANTOINE'S

. . . Since 1840

713 St. Louis St. • MAgnolia 2554

12 Noon to 9 P.M. Closed Sundays

ARNAUD'S

. . . Carnival Room

813 Bienville St. • MAgnolia 5433

11 A.M. to 12:30 A.M. Daily

BROUSSARD'S

. . . Napoleon Patio

819 Conti St. • MAgnolia 4800

11:30 A.M. to 11:30 P.M.

Closed Wednesdays.

TICKET INFORMATION

HOME GAMES (Individual)—Alabama, Ole Miss and William & Mary, \$4.00 Sidelines; \$2.50 South End. For LSU game, \$5.00 Sidelines; \$4.00 South End.

"FAMILY PLAN" (Unreserved seats in North Stands)—Alabama, Ole Miss and William & Mary, \$2.00 (adults), 50 cents (high school age and under). For LSU game, \$3.50 (adults), \$1.50 (high school age and under).

GAMES AWAY—(Seats in special Tulane sections)—Rice \$4, Georgia Tech \$5, Texas Tech \$4, Florida \$4, Vanderbilt \$4.

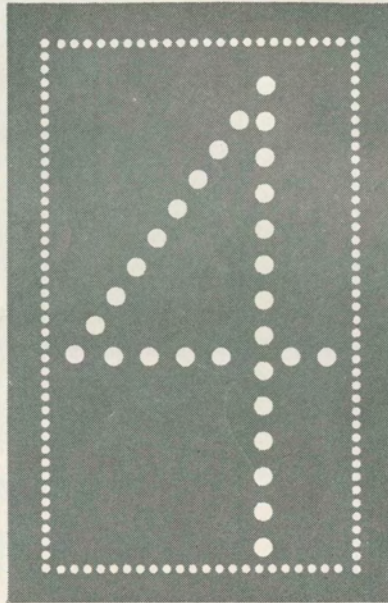
TICKET OFFICES—Tulane Stadium, 6401 Willow Street (Phone UNIVERSITY 1-3661 or UNIVERSITY 1-9381); Werlein's Box Office, 605 Canal (MAGnolia 6201).

MAIL REQUESTS—Include check or money order payable to Tulane University, with 25 cents added for postage and handling. Address: TULANE UNIVERSITY, 6401 WILLOW STREET, NEW ORLEANS 18, LOUISIANA.



"Stop calling me 'coachie'."

Now...



great stores
to serve you

HOLMES



Whenever you shop, in New Orleans or Baton Rouge . . . you'll find Holmes has a great team of downtown and suburban stores with the winning score in customer satisfaction.

Holmes Canal Street—in the heart of downtown New Orleans

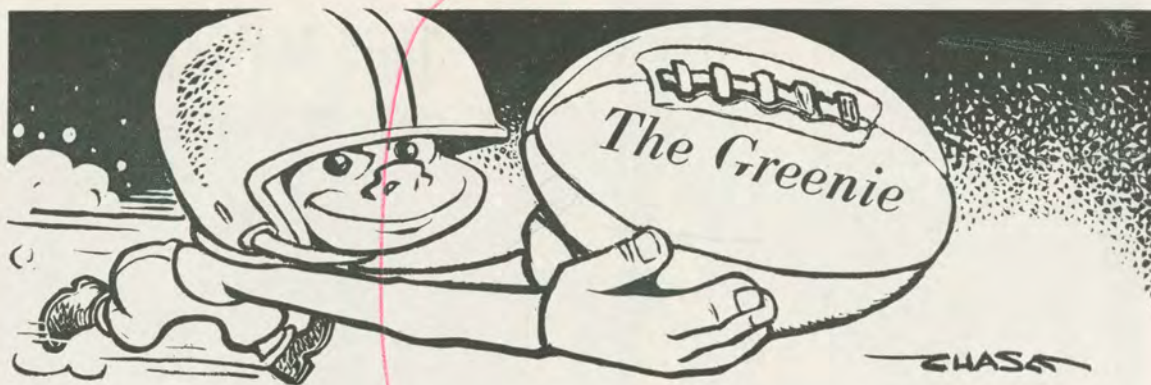
Holmes Lakeside — the ultimate in suburban shopping, Veterans at Causeway

Holmes Baton Rouge—downtown in the state's capitol city

Holmes Delmont Village—in suburban Baton Rouge

LOUISIANA'S QUALITY DEPARTMENT STORES

October 15, 1960



CHARLEY THORNTON, Editor

Division of Athletics, Tulane University, New Orleans 18, La.

Vol. 30

September 24, 1960

No. 1

Tulane vs ~~Alabama~~ ^{Mississippi}

BOTH TEAMS UNDEFEATED

Tulane gets down to the serious matter of Southeastern Conference action tonight when Bear Bryant's Alabama Crimson Tide moves in. Both clubs carry undefeated records into the struggle.

The Tide rolled past defending champion Georgia 21-6 last Saturday to show it means business in the 1960 title chase while Tulane upset California 7-3 in a defensive melee that left Wave supporters gasping for breath after several crucial goal line stands.



THORNTON

A Green Wave victory tonight would throw the SEC race into a jumbled tie, depending upon the outcome of other conference games. A win for 'Bama would put it top the heap for the second week in a row.

Offensively Tulane looked adequate in the win over Cal, but it left you with the opinion that the Greenies are going to move the football a lot this season. Poor field position and a scrambling defensive game contained the Wave offense in the opener, although Tommy Mason impressed the West Coast press that he has all the tools needed to qualify as an All-American. He was voted the game's outstanding back.

It was on defense that the Wave stole the show. Limiting the highly-touted California offense to only 69 yards on the ground and 87 in the air, the Wave looked as though it won't be as easy to score upon this season.

Guard Dave Michiels, ends Bill Roach, Pat McLean and Jim Evans, tackles Bernie Darre, Ernie Colquette and Joe LeSage, plus center

Larry Thompson assisted by some fine secondary defense, completely contained the Golden Bears' offense.

Alabama brings to town one of the nation's finest defensive clubs, and the promise of a fine offense this year. Little Billy Richardson was the star of the Georgia win. He was joined by the running of Tommy White, the passing of quarterback Bobby Skelton and the running of quarterback Pat Trammell in upsetting the Bulldogs.

Guard Billy Neighbors anchors a big, stubborn 'Bama line, that has both size and experience.

A special halftime treat tonight will be the appearance of the fine University of Alabama band, which is said to be one of the nation's top collegiate bands.

SEC SCOREBOARD

LAST WEEK'S RESULTS

Tulane 7, California 3
Alabama 21, Georgia 6
Ga. Tech 23, Kentucky 13
Florida 30, Geo. Washington 7
LSU 9, Texas A&M 0
Ole Miss 42, Houston 0

TODAY'S SLATE

Alabama at Tulane
Tennessee at Auburn
Florida State at Florida
Georgia at Vanderbilt
Georgia Tech at Rice
Kentucky at Ole Miss
Houston at Miss. State


 Recommended by
 HOLIDAY Magazine as
**LOCAL
 FAVORITE
 DINING SPOT**
**Commander's
 Palace**


WASHINGTON
 AT COLISEUM
 For Reservations
 TWinbrook 1-7240
 DAILY 11 A.M.
 'TIL MIDNIGHT

Since
 1880

DELMONICO
 RESTAURANT
 ESTABLISHED 1895
 1300 ST. CHARLES
 JACKSON 5-4937 MAGNOLIA 9307

WILMER A. SIMPSON EDWIN A. STOUTZ
 President Secty-Treas.


Simpson-Stoutz Sporting Goods Co.
 INCORPORATED
The Sporting Goods Store
 1332 SOUTH CARROLLTON AVENUE
 NEW ORLEANS 18, LA. UNIVERSITY 6-6301



OFFICIAL WATCH
 FOR THE



U. S. OLYMPIC
 COMMITTEE



OLYMPIC, WINTER
 GAMES 1960



PAN-AMERICAN
 GAMES 1959



NAT'L AERONAUTIC
 ASSN.



NAT'L
 SKI ASSN.



AMERICAN
 POWERBOAT ASSN.



NAT'L HORSE
 SHOW ASSN.



NAT'L FOOTBALL
 LEAGUE



MAJOR LEAGUE
 BASEBALL



NAT'L COLLEGIATE
 ATHLETIC ASSN.

LONGINES

THE WORLD'S MOST HONORED WATCH

Longines, first watch of sport, is recognized as official for timing world records and international events by all international sports and contest associations. Every Longines watch, for whatever its use, is made to be the best of its kind. For yourself, or as a gift, no other name on a watch means so much as Longines, the world's most honored watch.

OFFICIAL WATCH FOR THE

TULANE GAMES



ILLUSTRATED
 Longines Starlight Serenade
 "B", elegant 14 K gold watch
 with 6 diamonds, \$175;
 Longines Presidency "E",
 14 K gold case, \$125.
 Other models from \$71.50.
 Federal tax included.

LONGINES-WITTNAUER WATCH COMPANY

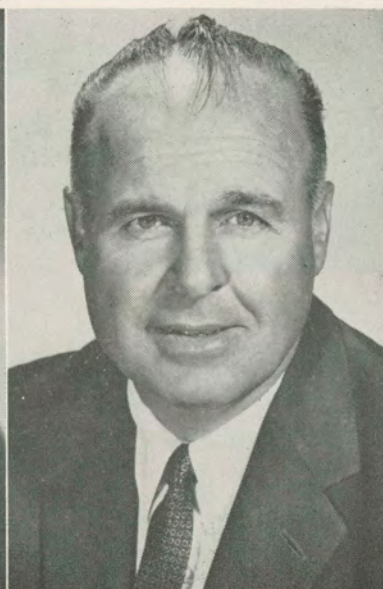
TULANE UNIVERSITY



DR. HERBERT E. LONGENECKER
President



RICHARD O. BAUMBACH
Director of Athletics



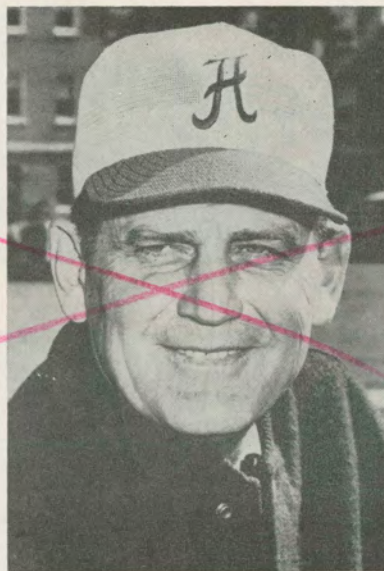
ANTON (ANDY) PILNEY
Head Football Coach



UNIVERSITY OF ~~ALABAMA~~



DR. FRANK A. ROSE
President



PAUL (BEAR) BRYANT
Alabama Head Coach

1960 TULANE GREEN WAVE



Ary

Barnes

Bjerke

Bunger

Camp



Chaisson

Colon

Colquette

Crenshaw

Culp



Darre

Dominique

Edmondson

Gamble

Gonzales



Holcombe

Kever

Kellum

Kiefer

Kisner



Lasseigne

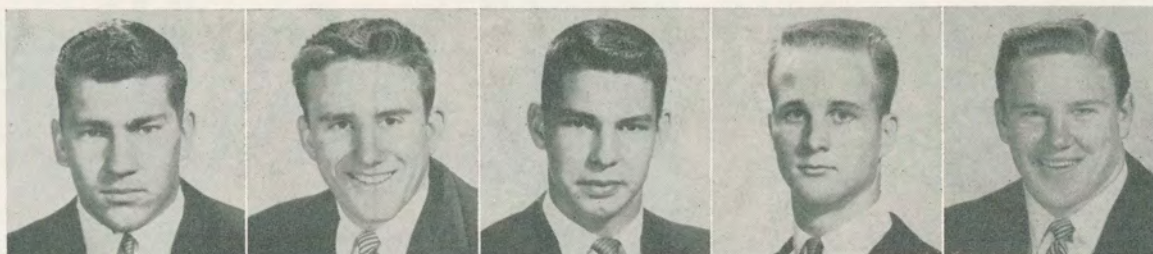
LeSage

Lyons

Mason

Matoian

1960 TULANE GREEN WAVE



McAfee

McLean

Melton

Meyer

Michiels



Miller

Moen

Nugent

Odom

Oechsner



Osteen

Price

Rappold

Raymond

Reynolds



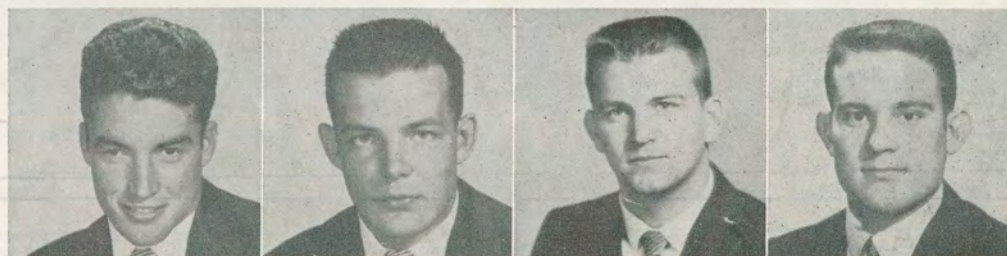
Rizzo

Roach

Rush

Schaller

Schoonmaker



Stein

Terrebonne

Thompson

Thornton

1960 TULANE ROSTER

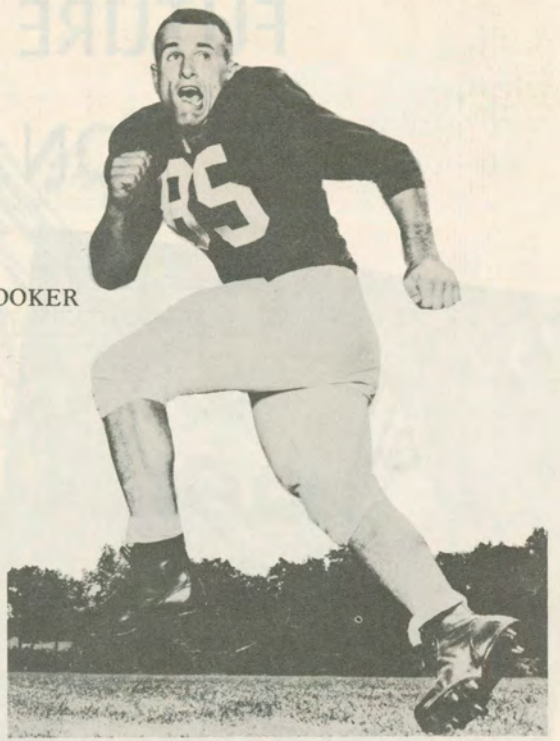
No.	Name and Position	Age	Ht.	Wt.	Ltrs.	Class	Hometown
10	Phil Nugent, qb	21	6-1	185	2	Sr.	Lafayette
11	Jack Dominique, qb	19	6-0	190	0	Soph.	Lafayette
12	Ted Miller, qb	19	6-0	175	0	Soph.	Gulfport, Miss.
14	Ron Melton, qb	19	6-1	175	0	Soph.	Newton, Miss.
20	Tom Mason, hb	21	6-1	190	2	Sr.	Lake Charles
21	George Oechsner, hb	20	5-10	165	0	Soph.	New Orleans
22	Sammy Camp, hb	19	6-1	195	0	Soph.	Homer
23	Howard Kisner, hb	20	5-10	160	2	Sr.	Natchez, Miss.
25	Durham Barnes, hb	19	5-11	170	0	Soph.	Wildwood, Fla.
29	Hubert Odom, hb	19	6-0	175	0	Soph.	Lafayette
32	Bill Osteen, hb	21	5-11	180	2	Sr.	Millington, Tenn.
33	Bob Price, hb	21	5-11	194	0	Jr.	Memphis, Tenn.
34	Ned Edmondson, hb	20	6-1	180	0	Soph.	Lake Providence
35	Adrian Colon, hb	18	6-0	190	0	Soph.	New Orleans
38	Terry Terrebonne, hb	20	6-0	174	1	Jr.	New Orleans
40	Gordon Rush, fb	19	6-0	195	0	Soph.	Baton Rouge
42	Stan Catoire, fb	24	5-10	195	0	Soph.	New Orleans
43	Bill Ary, fb	21	5-10	205	1	Jr.	New Orleans
44	Leonard Stein, fb	20	6-0	195	0	Jr.	New Orleans
47	Jerry Raymond, fb	20	6-1	195	0	Soph.	Maywood, Ill.
50	James Schoonmaker, c	18	6-3	212	0	Soph.	Baton Rouge
51	John Chaisson, c	20	6-0	205	1	Jr.	Houma
52	Chris Schaller, c	19	5-11	200	0	Jr.	Barrington, Ill.
53	Nat Kiefer, c	20	6-2	197	0	Soph.	New Orleans
54	Larry Thompson, c	21	6-1	229	1	Jr.	Shreveport
55 - 56	Ton Thornton, c	20	6-0	195	0	Soph.	Baytown, Tex.
57	Ray Keever, c	20	6-2	198	0	Soph.	Sulphur
60	Gus Gonzales, g	20	6-1	218	1	Jr.	Wharton, Tex.
61	Butch Crenshaw, g	20	5-11	208	0	Soph.	Alexandria
62	Glenn Holcombe, g	19	6-2	207	0	Soph.	Houma
63	Dave Michiels, g	21	5-11	215	1	Sr.	Alexandria
64	Grant Lyons, g	19	5-11	190	0	Soph.	Port Arthur, Tex.
65	Mike Matoian, g	19	5-10	190	0	Soph.	Chicago, Ill.
66	Truls Bjerke, g	19	5-11	195	0	Soph.	New Orleans
67	Don Miller, g	20	6-3	195	0	Soph.	Scarsdale, N. Y.
68	Larry Culp, g	19	6-2	198	0	Soph.	Memphis, Tenn.
69	Chris Bunger, g	20	6-0	200	0	Soph.	New Milford, Conn.
70	Ed Reynolds, t	20	6-3	240	0	Soph.	Destrahan
71	Ernest Colquette, t	19	6-2	205	0	Soph.	DeRidder
72	Ray Rizzo, t	19	6-4	225	0	Soph.	New Orleans
73	Bernard Darre, t	21	6-1	224	2	Sr.	New Orleans
74	Joe LeSage, t	21	6-1	230	2	Sr.	Beaumont, Tex.
75	Pete Golden, t	18	6-1	210	0	Soph.	Oakdale
76	Bill Kellum, t	20	6-4	200	0	Soph.	Houma
78	Bill Meyer, g	19	5-11	190	0	Soph.	Jackson, Miss.
79	Carl McAfee, g	19	5-11	200	0	Soph.	Baytown, Tex.
80	Bob Rappold, e	20	6-3	195	0	Soph.	New Orleans
81	Joe Lasseigne, e	19	6-4	218	0	Soph.	Ville Platte
82	Pat McLean, e	20	6-1	198	1	Sr.	Magnolia, Ark.
83	Cameron Gamble, e	22	6-1	190	1	Sr.	New Orleans
87	Clarence Moen, e	20	6-3	190	0	Soph.	Cumberland, Wis.
88	Bill Roache, e	20	6-1	180	1	Jr.	Monroe
89	James Evans, e	18	6-3	233	0	Soph.	New Orleans

The official watch for timing this game is LONGINES—"The world's most honored watch."

Change

'BAMA BAD MEN

END TOMMY BROOKER



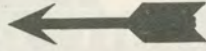
QUARTERBACK PAT TRAMMELL



GUARD BILLY NEIGHBORS



BEEF UP FRONT - These three Tulane tackles represent a lot of beef in the Wave forward wall. Kneeling at left is senior Joe LeSage of Beaumont, Texas, with senior Bernard Darre of New Orleans (73) at right. Standing is sophomore Ed Reynolds of Destrehan, one of the most promising linemen on the squad. Reynolds scales in at 244 pounds, the biggest Wave player. LeSage is a 230-pounder and Darre a solid 224-pounds.

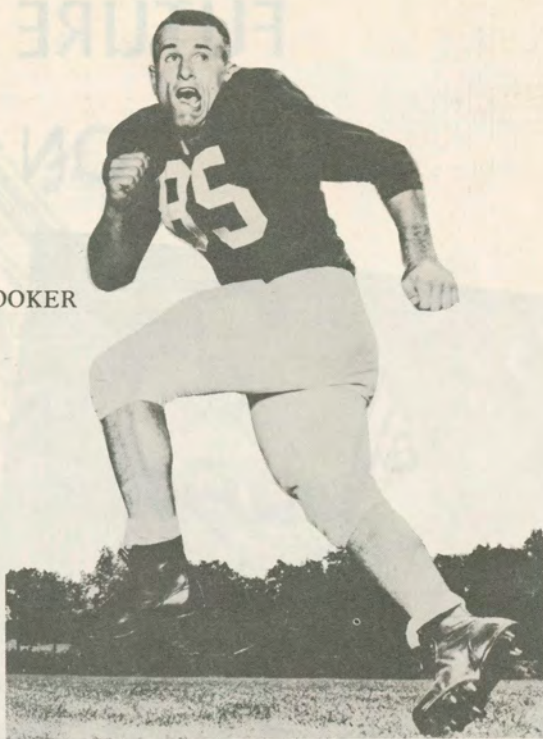


TULANE'S probable starting backfield for tonight's game will consist of left halfback Tommy Mason (20) of Lake Charles, fullback Lenny Stein (44) of New Orleans, quarterback Phil Nugent (10) of Lafayette, and right halfback Terry Terrebonne (38) of New Orleans. These four backs represent one of the finest Greenie quartets in recent years.



'BAMA BAD MEN

END TOMMY BROOKER



QUARTERBACK PAT TRAMMELL



GUARD BILLY NEIGHBORS

FUTURE OPPONENTS ON DISPLAY



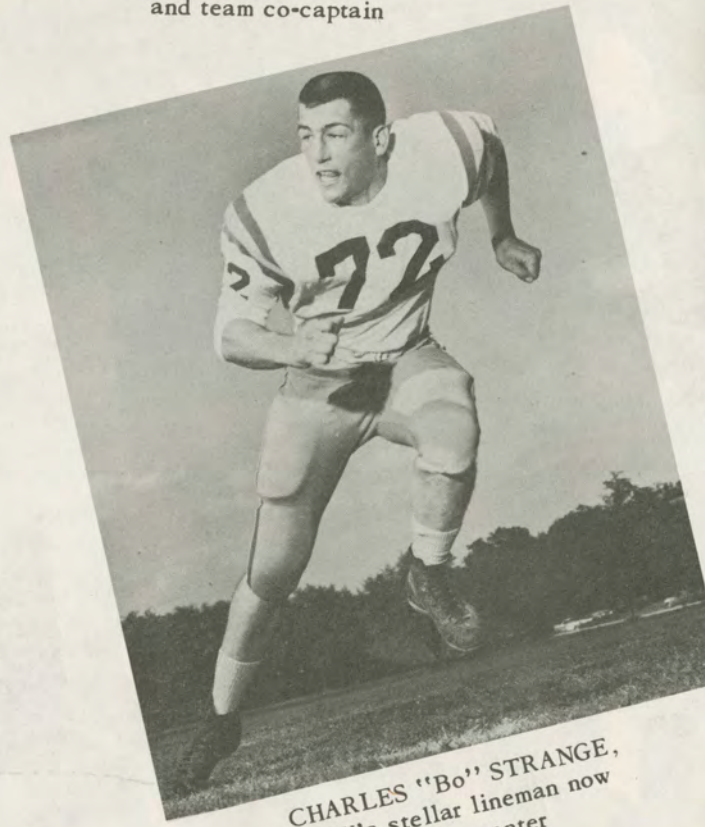
LSU End
MICKEY MANGHAM



WAYNE WOOLWINE,
William and Mary guard
and team co-captain



JIM PORACH,
William and Mary halfback
and team co-captain



CHARLES "Bo" STRANGE,
LSU's stellar lineman now
playing center



New Orleans' Finest . . .

In the center of business and social activities, The Roosevelt is designed to afford you the utmost in comfort and convenience. It offers a complete selection of suites and individual accommodations, each with thermostat temperature control. Luxurious convention halls and meeting rooms are available for your business or organization's requirements. And seven dining rooms and taverns provide the finest in food and entertainment.

900 ROOMS WITH BATH
MODERATE RATES

SEYMOUR WEISS

*President and
Managing Director*

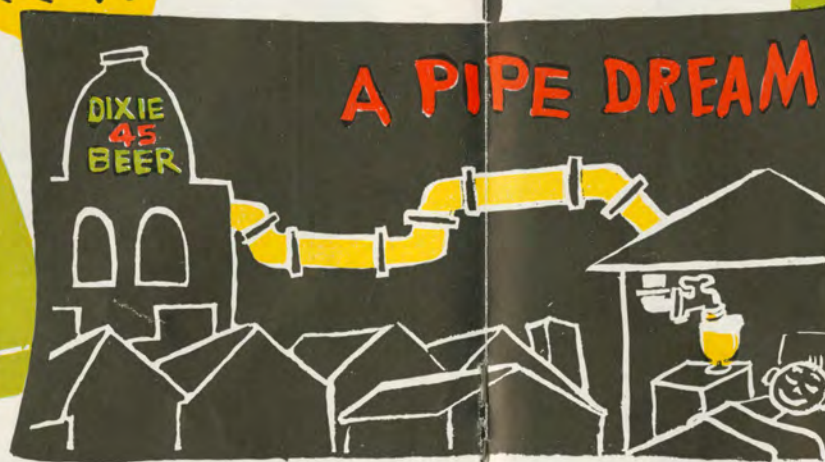
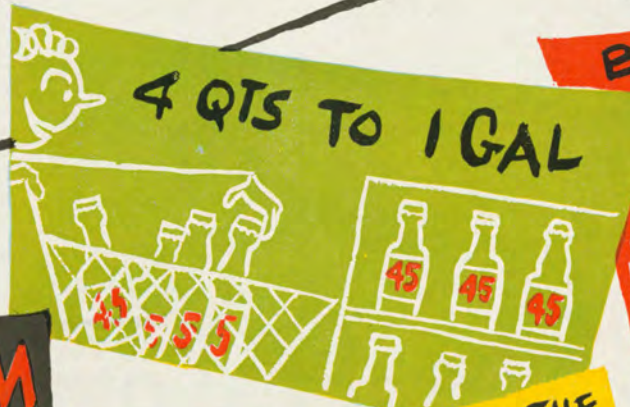
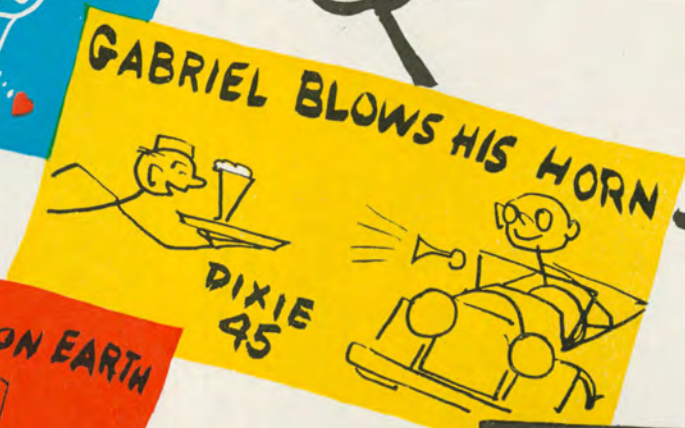
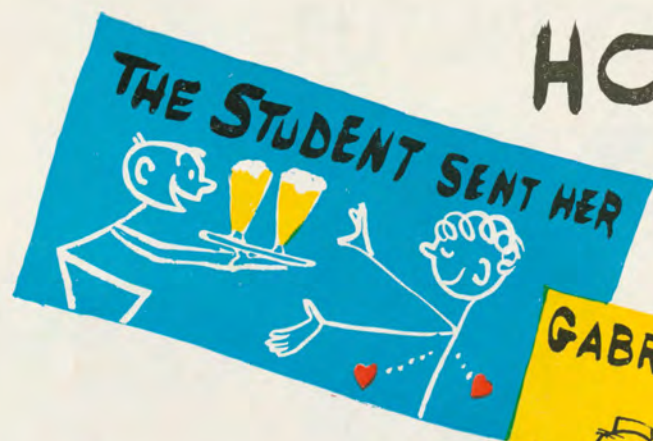
A. C. BELLANDE

Manager

The ROOSEVELT

PRIDE OF THE SOUTH
UNIVERSAL TRAVEL CARDS ACCEPTED

HOORAY FOR THE OLIVE AND BREW



THE WORLD CAN'T BREW A FINER BEER - DIXIE 45

TULANE

PROBABLE STARTING LINEUP

No.	Name	Position
83	CAMERON GAMBLE	LE
74	JOE LeSAGE	LT
63	DAVE MICHIELS	LG
54	LARRY THOMPSON	C
60	GUS GONZALES	RG
73	BERNARD DARRE	RT
82	PAT McLEAN	RE
10	PHIL NUGENT	QB
20	TOMMY MASON	LH
38	TERRY TERREBONNE	RH
44	LENNY STEIN	FB

THE GREEN WAVE SQUAD

10 Nugent, qb	44 Stein, fb	69 Bungler, lg
11 Dominique, qb	47 Raymond, fb	70 Reynolds, lt
12 T. Miller, qb	50 Schoonmaker, c	71 Colquette, rt
14 Melton, qb	51 Chaisson, c	72 Rizzo, lt
20 Mason, lhb	52 Schaller, c	73 Darre, rt
21 Oechsner, lhb	53 Kiefer, c	74 LeSage, lt
22 Camp, lhb	54 Thompson, c	75 Golden, lt
23 Kisner, rhb	55 Thornton, c	76 Kellum, rt
25 Barnes, lhb	56 Kever, c	78 Meyer, lg
29 Odom, rhb	60 Gonzales, rg	79 McAfee, rg
32 Osteen, fb	61 Crenshaw, rg	80 Rappold, le
33 Price, rhb	62 Holcombe, lg	81 Lasseigne, re
34 Edmondson, rhb	63 Michiels, lg	82 McLean, re
35 Celon, rhb	64 Lyons, lg	83 Gamble, le
38 Terrebonne, rhb	65 Matoian, rg	87 Moen, re
40 Rush, fb	66 Bjerke, rg	88 Roach, le
42 Catoire, fb	67 D. Miller, rg	89 Evans, le
43 Ary, fb	68 Culp, rt	

ALABAMA

PROBABLE STARTING LINEUP



No.	Name	Position
85	BILL RICE	LE
60	GARY PHILLIPS	LT
62	JACK RUTLEDGE	LG
52	JOHN O'LINGER	C
63	BILLY NEIGHBORS	RG
75	BOBBY BOYLSTON	RT
81	TOMMY BROOKER	RE
12	PAT TRAMMELL	QB
40	LEON FULLER	LH
21	TOMMY WHITE	RH
35	BILLY RICHARDSON	FB

THE ALABAMA SQUAD

11 Skelton, qb	41 Davis, lh	70 Burleson, c
12 Trammell, qb	42 Oliver, lh	71 O'Dell, rt
14 Piper, qb	44 Abruzzese, lh	72 Bible, rg
15 Moore, M., qb	45 Clark, fb	74 Ingram, lt
16 Bailey, qb	51 Cook, c	75 Boylston, rt
17 Culwell, qb	52 O'Linger, c	76 Marceaux, rt
20 Wilson, rh	53 Moseley, c	78 Beard, lt
21 White, rh	54 Jordan, c	79 Crenshaw, rt
24 Martin, rh	56 Pettee, c	80 Spruiell, le
25 Fracchia, lh	60 Phillips, lt	81 Brooker, re
28 Rich, rh	61 Sharpe, lg	82 Ronsonet, re
30 Johnson, rh	62 Rutledge, lg	83 Box, re
31 Wesley, lh	63 Neighbors, rg	84 Battle, le
32 Holt, lh	64 Bailey, le	85 Rice, le
35 Richardson, fb	65 Sisia, lg	86 Wilkins, le
36 Stapp, fb	66 Wilson, rg	87 Moore, B., re
37 Rankin, fb	68 Holsomback, rg	88 Bell, le
40 Fuller, rh	69 Pell, lg	89 Coon, re

OFFICIALS—E. D. Cavette (Southwestern), referee; Cliff Norvell (Southwestern), umpire; N. M. Cavette (Ga. Tech), linesman; Jack Griffith (Georgia), field judge; William C. Gibson (Ga. Tech), back judge; Russell H. Lyons (Illinois), ECO.

Correction



**The Roosevelt offers
New Orleans Best in Dining and
Entertainment Facilities**

THE EXQUISITE *Blue Room*

Presenting the Nation's finest in dance music and entertainment, and famous New Orleans cuisine from a complete menu of dining delights. Star-studded floor shows nightly except Monday, at dinner and supper.

the Fountain Lounge

Open each evening except Tuesday for cocktails from 5. Dance music from 8. Spend an evening of enjoyment in the intimate atmosphere of New Orleans' favorite rendezvous. Luncheon daily from 11. Music by Albert Kirst ensemble.



THE SAZERAC BAR

A New Orleans tradition for over a century. Enjoy your favorite beverages prepared by experts. Ladies invited.

**THE SAZERAC
COCKTAIL and
RAMOS GIN FIZZ**

are served, in New Orleans, exclusively in all Roosevelt facilities.



The **ROOSEVELT**
PRIDE OF THE SOUTH



Second section of today's Cam-pix is devoted to the Tulane Day Camp. More than 800 boys and girls attended this summer, all getting as much into the swing of camp activities as Frank Morgan Bell, shown here. At the right is catcher Charles Englander.

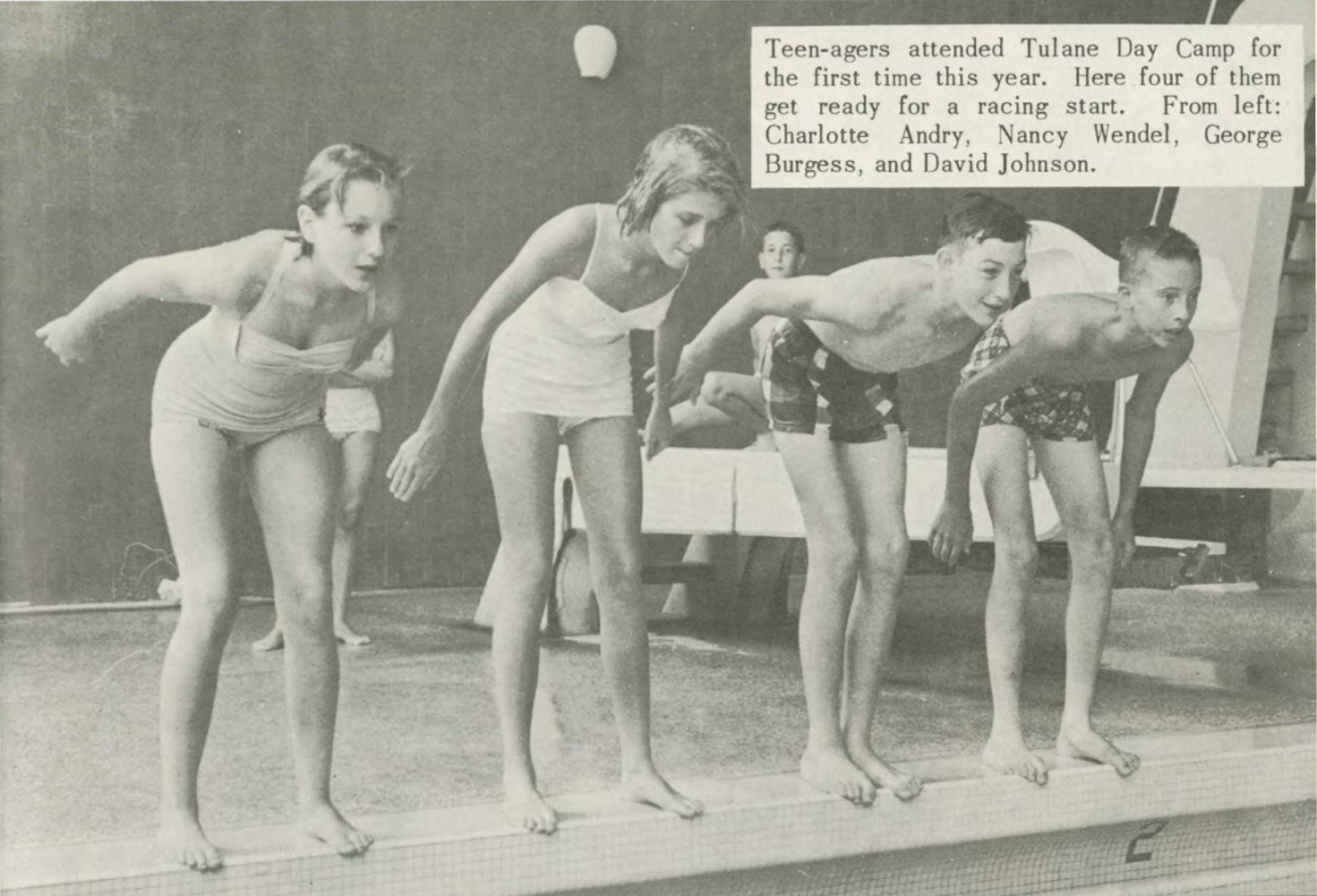


Counselor Jack Dardis, left, gives a lesson in kicking to a group of young swimmers. Facilities of the University Center, including the Monk Simons Memorial swimming pool, were used for Day Camp.



One of the more popular indoor games was "gym scooter." These girls demonstrate their skills - and laughs - as they scoot across the floor.

Teen-agers attended Tulane Day Camp for the first time this year. Here four of them get ready for a racing start. From left: Charlotte Andry, Nancy Wendel, George Burgess, and David Johnson.



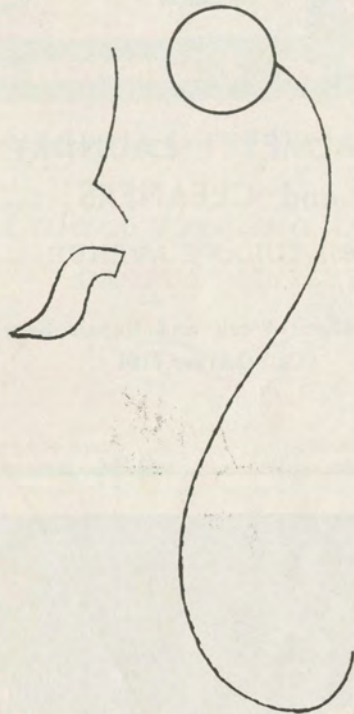
The teen-age camp program included dancing. Learning a new step from Counselor Patricia Bryan is camper Richard Alders.



Camp ended on a happy note with presentation of awards to outstanding campers. Here Assistant Director Ralph Pedersen hands a trophy to Randy Casserleigh while Randy's brother Henry looks on. At far left is Michael Miller.

MB's Mr. V. I. P.
predicts . . .
you'll be going
"traditional"
this fall

. . . . and you'll be going to the Maison Blanche V. I. P. Shop for your traditional favorites, because it is rapidly becoming the mecca for well-dressed young-men-about-town. And, well it should . . . for here not only do you see a splendid variety of the clothing you prefer (at prices keyed to your budgets), but also the furnishings—so that you can purchase all you need—all that's traditionally new—in one easy stop.



*V. I. P. Shop,
MB First Floor*



Best Wishes To

The Green Wave

For Many Successful
Seasons

o

CHALMETTE LAUNDRY
and CLEANERS

2801 TULANE AVENUE

For Excellent Work and Repair Service
Call GAlvez 2161

The Sign
of **GOODNESS**

for 55 Years!



Quality Dairy Products
and
Frozen Foods

Brennan's
FRENCH RESTAURANT

417 ROYAL ST.

the
gourmet's goal

is realized at
Brennan's. Excellent
food is served with
continental gracious-
ness in old world
surroundings. Come
as late as midnight.

LUNCHTIME COCKTAILS
Martini or Old Fashioned
25c

BUY YOUR CHEVROLET FROM PERSIA

MIKE PERSIA

CHEVROLET

OUR GOAL TO SERVE YOU

ALWAYS OPEN FOR SERVICE


WE NEVER CLOSE

ENTIRE 300 BLOCK N. RAMPART In downtown NEW ORLEANS Dial 523-7101

JOSEF'S

Complete Range
of Students' Clothes
Featuring
McGregor Sportswear
634 S. Carrollton UN 1-8741

Tulane Printing Office
CAMPUS PRINTERS



PLUM near
AUDUBON ST. UNiversity 6-2741
Ext. 344

All-America favorite
...ice-cold Coke



"Coke" is a registered trade-mark.

BOTTLED UNDER AUTHORITY OF THE COCA-COLA COMPANY BY
THE LOUISIANA COCA-COLA BOTTLING CO., LTD.

Tulane Songs

ALMA MATER

We praise thee for thy past, O Alma Mater!
Thy hand hath done its work full faithfully;
The incense of thy spirit hath ascended
And filled America from sea to sea!

We praise thee for thy present, Alma Mater!
Today thy children look to thee for bread!
Thou ledest them to dreams and action
splendid!

The hunger of their souls is richly fed!

We praise thee for thy present, Alma Mater!
The vista of its glory gleameth far!
We shall ever be part of thee, great Mother!
There thou will be where e'er thy children are!

Chorus

Olive Green and Blue, we love thee.
Pledge we now our fealty true
Where the trees are ever greenest,
Where the skies are purest blue.
Hear us now, O Tulane, hear us.
As we proudly sing to thee!
Take from us our heart's devotion!
Thine we are, and thine shall be!

ROLL ON, TULANE

Here's a song for the Olive and the Blue.
Here's a cheer for the team that's tried and true.
Here's a pledge of loyalty to thee.
Oh, Tulane Varsity.
Here's to the Greenbacks that never will say die,
And here's to the hearts that are true
To the men of Tulane who are fighting for her
name,
For the Olive and the Blue.

Chorus

Roll, Green Wave,
Roll them down the field.
Hold, Green Wave,
That line must never yield.
When those Greenbacks charge through the line
They're bound for victory.
Hail, Green Wave,
For you we give a cheer.
Hail, Green Wave,
For you we have no fear.
So ev'ry man in ev'ry play,
And then we'll win that game today.
Hurrah for Old Tulane!

HAL'S Commercial Restaurant

834 Gravier Street

Featuring Delicious

POOR BOYS
Of All Kinds

Tasty Plate Lunches

The Best Coffee and Pie in Town

PAN-AMERICAN FILMS

Producers of 16 mm Industrial, Educational and Special Events
Motion Pictures

Editing, Titling and Color Film Duplicating — Sound Recording

Producers of the Sugar Bowl Movies in Color and Sound Since 1945

Bell & Howell

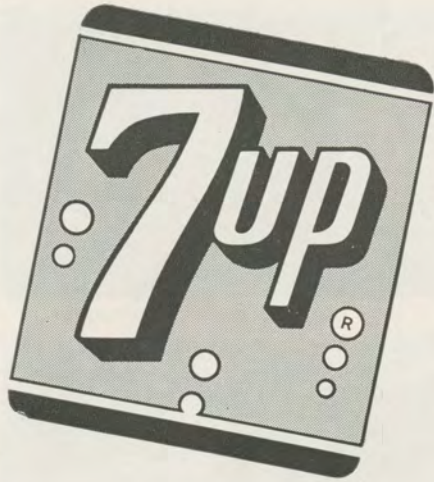
735 POYDRAS STREET

Motion Picture Equipment Dealers

JA 2-5364

~~The official watch for timing this game is LONGINES—"The world's most honored watch."~~

Change



*Scores high
when you're dry...*



**fresh, clean
taste!**

NOTHING DOES IT LIKE SEVEN-UP!

BEFORE OR AFTER THE GAME.....

OUTRIGGER

BAR & LOUNGE

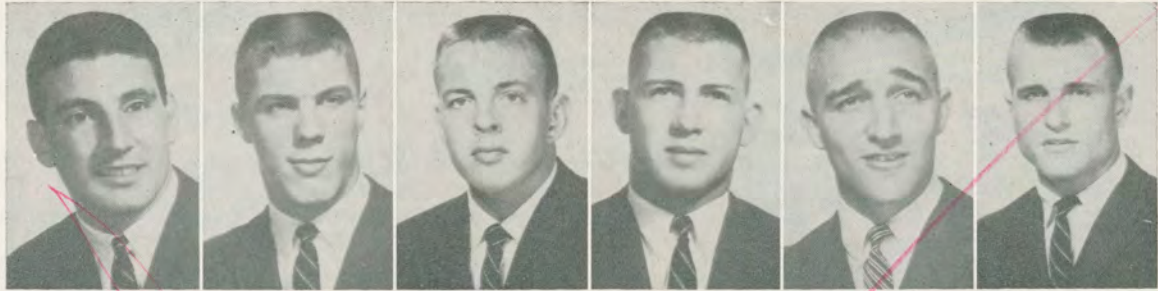
- ★ Spectacular exotic drinks!
- ★ Palate pleasing Polynesian tid-bits!
- ★ All your cocktail favorites!

OPEN FROM 9 A.M.

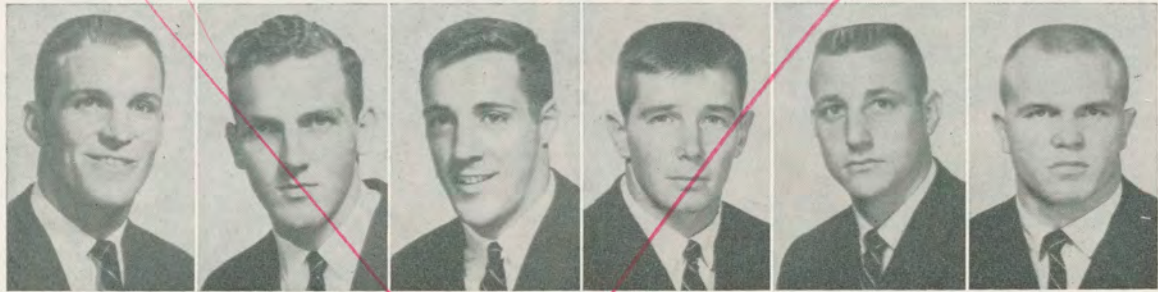
ENTERTAINMENT FROM 5 P.M.
Nightly except Sunday

Sheraton-Charles Hotel
NEW ORLEANS





Abruzzese Battle Bell Bible Boylston Brooker



Clark Culwell Fracchia Fuller Holsomback Holt

Alabama Roster

No.	Name and Position	Age	Ht.	Wt.	Ltrs.	Class	Hometown
11	Bobby Skelton, qb	21	5-11	170	2	Sr.	Pell City, Ala.
12	Pat Trammell, qb	19	6-2	195	1	Jr.	Scottsboro, Ala.
14	Billy Piper, qb	19	5-11	165	0	Soph.	Poplar Bluff, Mo.
15	Mal Moore, qb	20	6-2	175	0	Jr.	Dozier, Ala.
16	Ken Bailey, qb	19	6-0	175	0	Soph.	Gordo, Ala.
17	Ingram Culwell, qb	19	6-1	187	0	Soph.	Tuscaloosa, Ala.
20	Butch Wilson, rh	18	6-2	195	0	Soph.	Hueytown, Ala.
21	Tommy White, rh	21	5-10	169	2	Sr.	West Blocton, Ala.
24	Gary Martin, rh	19	5-10	175	0	Soph.	Dothan, Ala.
25	Mike Fracchia, lh	18	6-1	185	0	Soph.	Memphis, Tenn.
28	Jerry Rich, rh	21	5-10	172	1	Jr.	Attalla, Ala.
30	Cornell Johnson, rh	22	6-0	188	1	Sr.	High Point, N. C.
31	Buddy Wesley, lb	21	5-10	168	2	Sr.	Talladega, Ala.
32	Darwin Holt, lb	22	5-10	172	0	Jr.	Gainesville, Tex.
35	Billy Richardson, fb	19	5-10	168	1	Jr.	Jasper, Ala.
36	Laurien Stapp, fb	21	5-11	175	2	Sr.	Birmingham, Ala.
37	Carlton Rankin, fb	19	6-0	184	0	Soph.	Piedmont, Ala.
40	Leon Fuller, rh	22	5-9	160	1	Sr.	Nederland, Tex.
41	Ronnie Davis, lh	20	6-0	154	0	Jr.	Gordo, Ala.
42	Bill Oliver, lh	20	5-11	165	0	Jr.	Livingston, Ala.
44	Ray Abruzzese, lh	22	6-1	188	0	Jr.	Philadelphia, Pa.
45	Cotton Clark, fb	19	6-1	185	0	Soph.	Kansas, Ala.
51	Elbert Cook, lb	20	5-11	175	0	Soph.	Jacksonville, Ala.
52	John O'Linger, c	21	6-0	185	1	Jr.	Scottsboro, Ala.
53	Elliott Moseley, c	22	6-0	197	0	Sr.	Selma, Ala.
54	Lee Roy Jordan, c	19	6-2	198	0	Soph.	Excell, Ala.
56	Bob Pettee, c	19	6-1	182	0	Soph.	Bradenton, Fla.



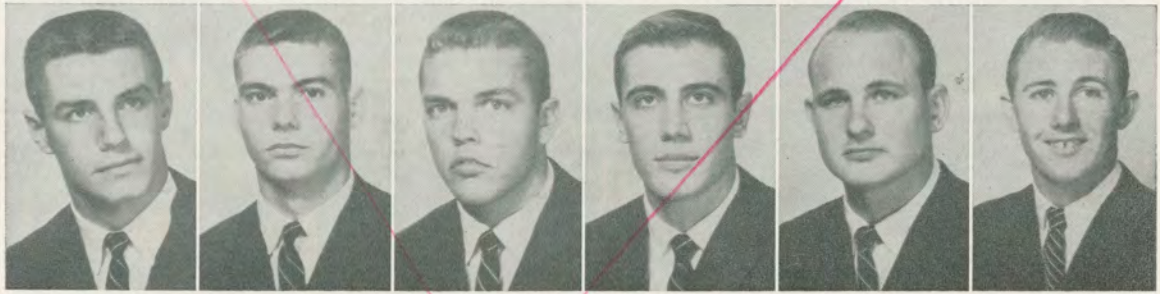
Ingram Johnson Jordan Martin Moore Neighbors

The official watch for timing this game is LONGINES—"The world's most honored watch."

Charge



O'Dell O'Linger Pettee Phillips Piper Rankin



Rice Rich Richardson Ronsonet Rutledge Skelton

Alabama Roster

No.	Name and Position	Age	Ht.	Wt.	Ltrs.	Class	Hometown
60	Gary Phillips, lt	21	5-11	182	2	Sr.	Dothan, Ala.
61	James Sharpe, lg	20	5-11	180	0	Soph.	Montgomery, Ala.
62	Jack Rutledge, lg	21	5-11	188	1	Jr.	Birmingham, Ala.
63	Billy Neighbors, rg	20	5-11	216	1	Jr.	Northport, Ala.
64	Don Bailey, le	20	6-2	190	0	Soph.	Tuscaloosa, Ala.
65	Joe Sisia, lg	20	6-1	241	0	Soph.	Clark, N. J.
66	Jimmy Wilson, rg	20	5-11	185	0	Soph.	Haleyville, Ala.
68	Roy Holsomback, rg	22	6-3	201	1	Sr.	West Blocton, Ala.
69	Charles Pell, lg	19	5-11	189	0	Soph.	Albertville, Ala.
70	Glenn Burleson, c	19	6-0	185	0	Soph.	Pine Hill, Ala.
71	Richard O'Dell, rt	20	6-2	195	1	Jr.	Lincoln, Ala.
72	Tom Bible, rg	19	6-2	190	0	Soph.	Piedmont, Ala.
74	Jerry Ingram, lt	21	6-1	204	0	Jr.	Opelika, Ala.
75	Bobby Boylston, rt	21	6-3	192	1	Sr.	Atlanta, Ga.
76	Freddie Marceaux, rt	20	6-3	195	0	Soph.	Bayou La Batre, Ala.
78	Kenny Beard, lt	19	6-1	210	0	Soph.	Hueytown, Ala.
79	Curtis Crenshaw, rt	20	6-2	190	0	Jr.	Mobile, Ala.
80	Jerry Spruiell, le	22	6-2	185	0	Sr.	Pell City, Ala.
81	Tommy Brooker, re	20	6-2	206	1	Jr.	Demopolis, Ala.
82	Worbie Ronsonet, re	22	6-1	190	2	Sr.	Biloxi, Miss.
83	Jimmy Box, re	19	6-2	185	0	Soph.	Sheffield, Ala.
84	Bill Battle, le	18	6-2	188	0	Soph.	Birmingham, Ala.
85	Bill Rice, le	19	6-5	195	1	Jr.	Troy, Ala.
86	Red Wilkins, le	19	6-3	200	0	Jr.	Bay Minette, Ala.
87	Bud Moore, re	20	6-2	192	2	Sr.	Birmingham, Ala.
88	Stanley Bell, le	20	6-2	178	1	Jr.	W. Anniston, Ala.
89	Tom Coon, re	19	6-2	192	0	Soph.	Selma, Ala.



Stapp Trammell Wesley White Wilson

The official watch for timing this game is LONGINES—"The world's most honored watch."

Chavez

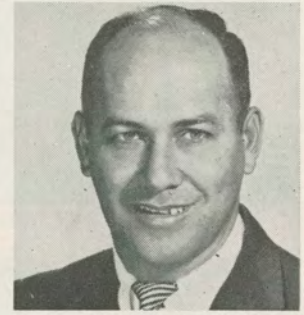
TULANE STAFF



Anton (Andy) Pilney
Head Coach



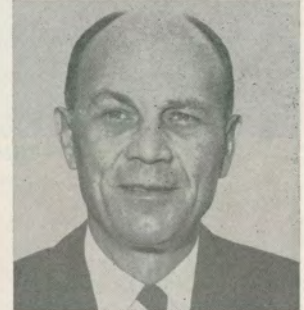
George Barclay
Assistant
Coach, Line



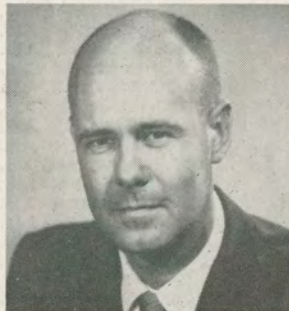
Bob Whitman
Assistant
Coach, Backs



Pete Pihos
Assistant
Coach, Ends



Al Kawal
Assistant
Coach, Line



Benny Ellender
Assistant
Coach, Backs



Joe Blaylock
Freshman Coach



Ray Prats
Assistant
Freshman Coach



Dr. James Breen
Academic Counselor



Jack Orsley
Recruiting
Co-ordinator



Earl (Bubba) Porche
Trainer

Stal
BACKFIELD

Behind The Scene At Tulane



G.J. (Buddy) deMonsabert
Business Manager



Charley Thornton
Sports Publicity



Dr. Charles Moseley
Team Physician



Miss Ana Steinacher
Ticket Manager

1960-61 HOME SCHEDULE

- Dec. 1—Southwestern of Memphis
- Dec. 3—Texas Wesleyan
- Dec. 5—Louisiana College
- Dec. 10—Texas University
- Dec. 12—Rice University
- Dec. 29-30—Sugar Bowl Tournament
- Jan. 13—Tennessee University
- Jan. 14—Kentucky University
- Feb. 1—Southeastern Louisiana
- Feb. 11—Vanderbilt University
- Feb. 13—Georgia Tech
- Feb. 25—Mississippi University
- Feb. 27—Mississippi State
- Mar. 3—L. S. U.



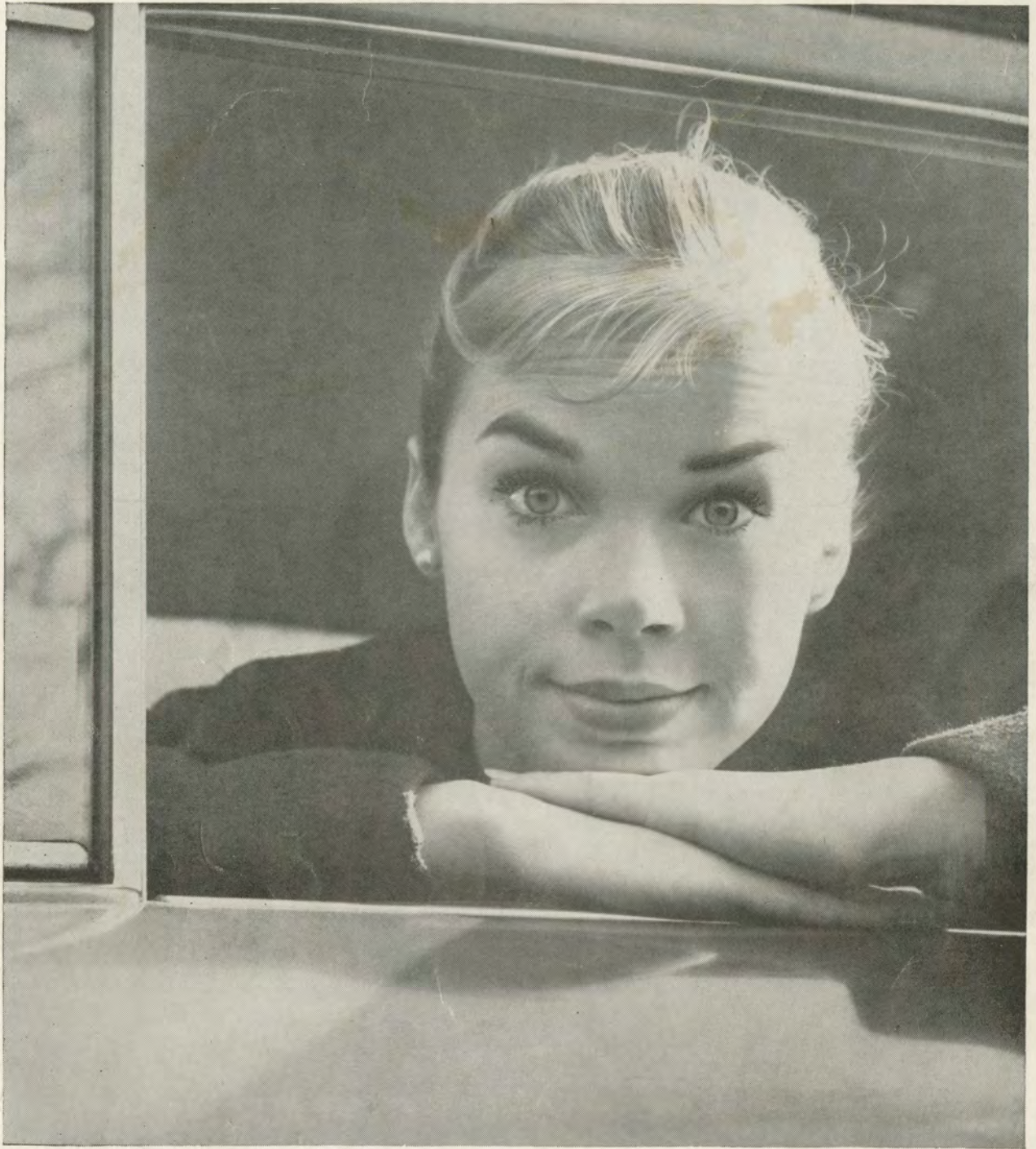
TULANE BASKETBALL PROSPECTS BRIGHT

Coach Cliff Wells ranks as one of the nation's top basketball coaches, with 229 victories and 132 losses in 15 years as head coach at Tulane.

This year's Wave cage team could be one of Cliff's finest. Four lettermen return, including sophomore sensation of last year—big Jack Ardon, a 6-9 center. Ardon was named the SEC Soph-of-the-Year after his brilliant play last season.

Other lettermen back are Gus Wenzel (6-5), Bob March (5-9) and Rex Krider (6-0). Sophs Dale Gott, and Jim Kerwin are expected to add strength. Squadmen Gary Lindboe (6-0), Dale Cloak (6-4), Richie Berger (6-5), Norm Delph (6-1), and Jerry Varland (6-0) will also be back.

and L.V. MCGINTY



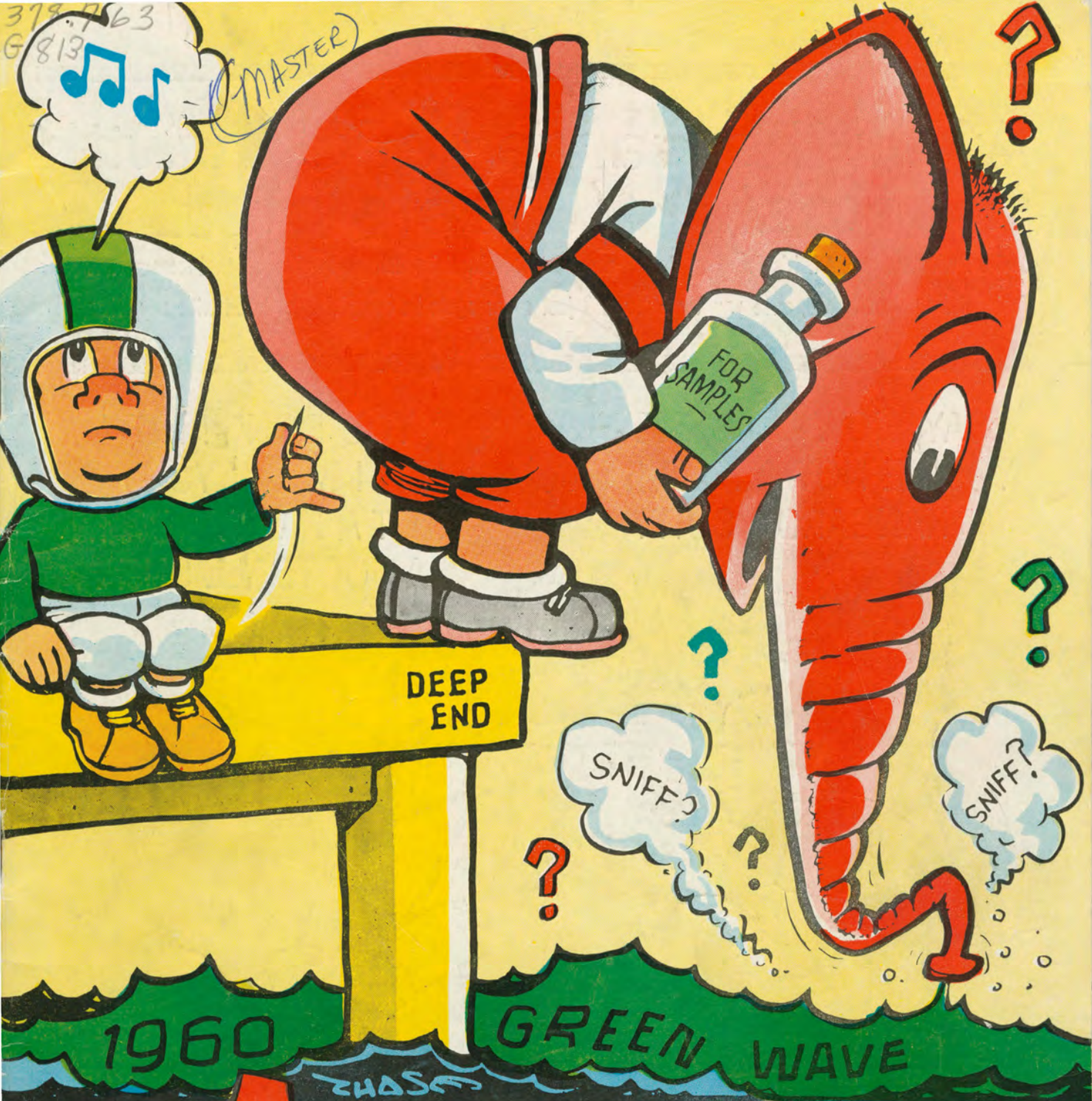
“Daddy put his foot down!”

“Last week, I had the car filled with a different gas—and what a lecture I got! Daddy put his foot down. Seems he never uses anything but Amoco-Gas, because it’s the gas that has no lead in it. He says that lead in gas fouls up the engine . . . but that unleaded Amoco-Gas keeps engine parts clean and trouble-free. I’m convinced! Fact is, I can’t imagine why anyone would buy anything but Amoco-Gas.” AND NEITHER DO WE!



AMERICAN OIL COMPANY

Economy starts here



THE ALABAMA GAME

TULANE STADIUM - SEPT. 24, 1960

SOUVENIR PROGRAM - 50¢