

378,763
G 813



THE OLE MISS GAME

TULANE STADIUM • FRI. OCT. 18, 1957
SOUVENIR PROGRAM -- 50¢

Famous for
**FINE FOOD
 and DRINK**



*Enjoy the Specialties of These
 Noted Restaurants:*

ANTOINE'S

. . . Since 1840

713 St. Louis • RAYmond 2554

12 Noon to 9 P.M. Closed Sundays

ARNAUD'S

. . . Carnival Room

813 Bienville St. • MAgNolia 5433

11 A.M. to 12:30 A.M. Daily

BROUSSARD'S

. . . Napoleon Patio

819 Conti St. • MAgNolia 4800

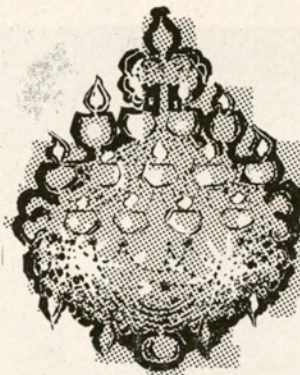
11:30 A.M. to 11:30 P.M.

Closed Wednesdays.

**The Sign
 of GOODNESS
 for 52 Years!**



**Quality Dairy Products
 and
 Frozen Foods**



**the grand
 manner**

in every city there is one restaurant that is traditionally known for its delicious food and gracious service — for dining in the grand manner — in New Orleans it's Commander's Palace.

member of the diner's club
 open 11 a.m. 'til midnight daily



Washington at Coliseum

Call TW 1-5733 - TW 1-7240

"A GOOD DEAL"

DEPENDS ON THE DEALER

Largest Used Foreign-Sports
Car Dealer South

We Buy — Trade — Finance

SERVICE MOTOR CO.
2645 TULANE AVE.

Earle P. Abadie
Buddy Orange "A. J." Johnson

TUlane 7071

Open 8 A.M. - 9 P.M.

The Lights

Speak

Another Good Job

by

NOLA ELECTRIC

824 BARONNE

Call RA-1201



before or after the game—

Dinner at Brennan's

You've read about Brennan's in national magazines . . . now come and see why the food rates raves from top columnists. Drop in for dinner before or after the games, or for late supper. Come as late as midnight.

Brennan's

FRENCH RESTAURANT
417 ROYAL ST., NEW ORLEANS



LARRY KARL, *Editor*

Division of Athletics, Tulane University, New Orleans 18, La.

National Advertising Representative: Spencer Advertising Company, Inc., 271 Madison Avenue, New York, N. Y.

Vol. 27

October 18, 1957

No. 3

Tulane vs. Ole Miss

For many fans, tonight's game is one of the top highlights of the 1957 grid season as it brings together two old-line foes in the continuation of a series that began back in 1893.

For newcomers to the Tulane-Ole Miss series, the game presents the first glimpse at a longstanding South-eastern Conference series and an opportunity to enjoy the all out contest that usually results from a rivalry such as this.



KARL

It will be a stern test for Coach Andy Pilney and his Greenies. Can they repeat last year's upset? The Wave won that one 10-3 on a rain-sodden field at Jackson, when quarterback Gene Newton scampered 86 yards for a touchdown and now-graduated Emmett Zelenka booted the extra point and a field goal.

Can the Wave roll in other than flood conditions, is the question to be answered tonight—depending of course on weather conditions at game time.

Ole Miss, to be sure, is a formidable opponent but Pilney's lads in recent years have often leaped to great heights when the opposition was of high caliber.

Tulane leads in the series with Ole Miss as the Wave has won 24 while losing 13. Last year's victory was the first since 1948

and the current crop of Greenies would like to start a string of their own.

Newton (12) is back directing the Tulane offense. Such workhorses as Claude (Boo) Mason (20) and Tommy Warner (33) getting backfield support from talented newcomer Connie Andrews (10) and Richie Petitbon (17) will operate behind a small but hard-hitting line lead by John DiVietro (62) Charlie Hansen (70), Don Lockwood (77), Pete Abadie (81) and Will Billon (80).

Coach John Vaught brings a determined squad here for tonight's game. Heading the list of Rebel stars to watch are veteran starters Gene Hickerson (79), Don Williams (80) and Jackie Simpson (68). A new crop of backfield starters includes quarterback Ray Brown (15), halfbacks Leroy Reed (23) and Billy Lott (31) and Bill Hurst (42) at fullback.

REMAINING 1957 SCHEDULE

Oct. 26—Ga. Tech, Homecoming	8 P.M.
Nov. 2—Miss. State, Jackson	2 P.M.
Nov. 9—Alabama, Mobile	2 P.M.
Nov. 16—Army, West Point	2 P.M.
Nov. 30—L.S.U., Baton Rouge	2 P.M.

(All games C.S.T.)

TICKET OFFICES

Stadium, 6401 Willow St. UNiversity 1-3661
Werleins, 605 Canal St. MAgnolia 6201



on campus
and
around
the town

. . . wherever smart men gather and the talk might turn to clothes, you'll hear them say, "I get my things at Maison Blanche". Which isn't too surprising . . . because more people buy more merchandise at MB than any place in New Orleans.

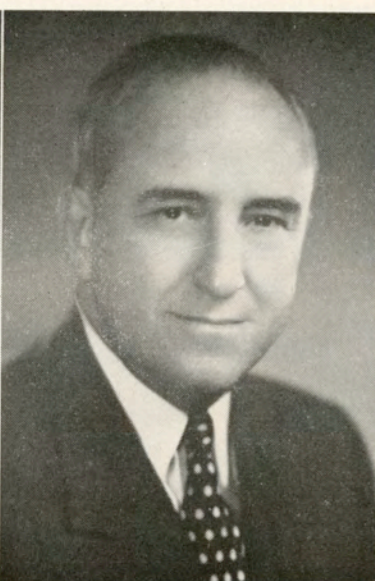
*Store for Men,
MB First Floor*

MAISON BLANCHE
Store For **m**en

TULANE UNIVERSITY



DR. RUFUS CARROLLTON HARRIS
President



RICHARD O. BAUMBACH
Director of Athletics



ANTON (ANDY) PILNEY
Head Football Coach

UNIVERSITY OF MISSISSIPPI



DR. JOHN D. WILLIAMS
Chancellor

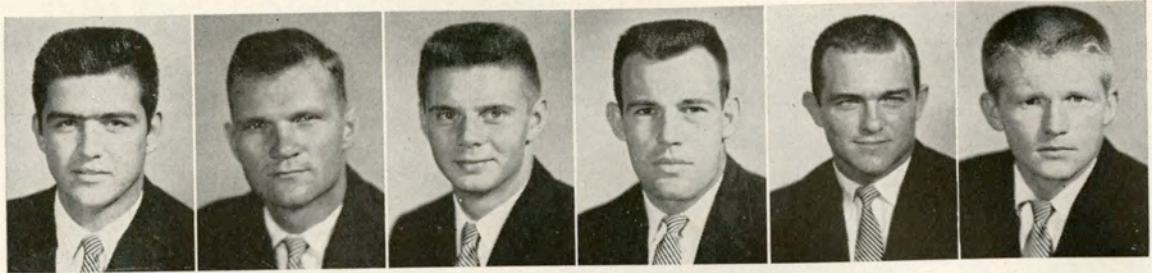


C. M. (TAD) SMITH
Director of Athletics

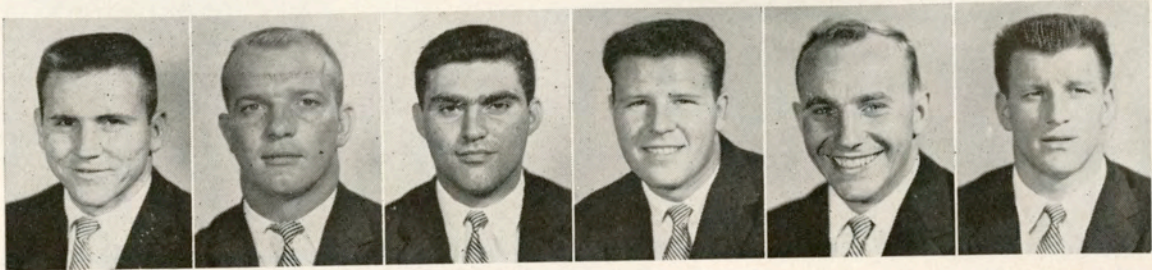


JOHN H. VAUGHT
Head Coach

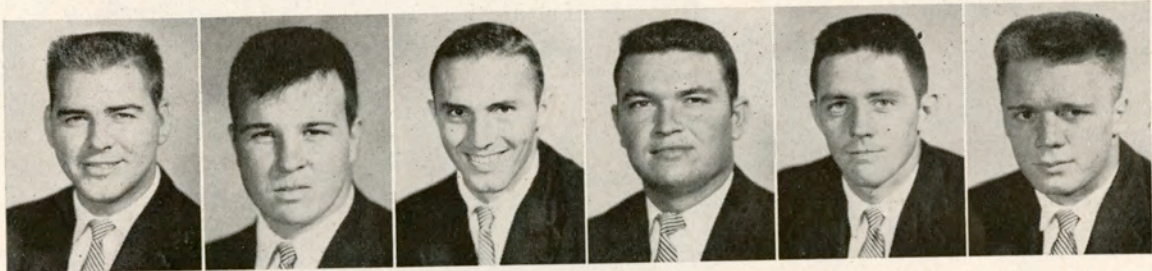
1957 TULANE GREEN WAVE



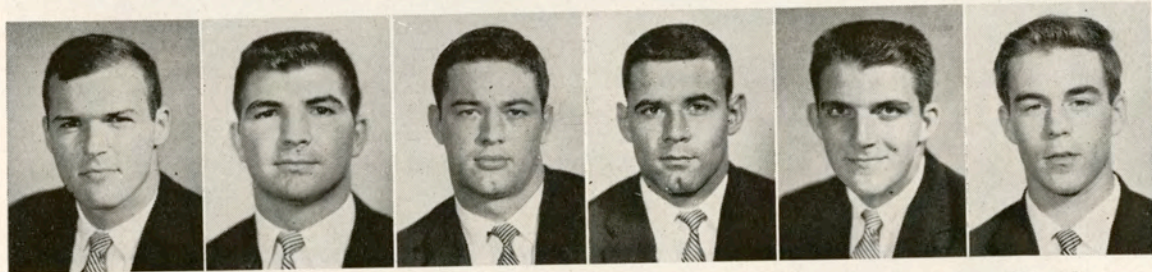
Abadie Andrews Arms Billon Blount Bratton



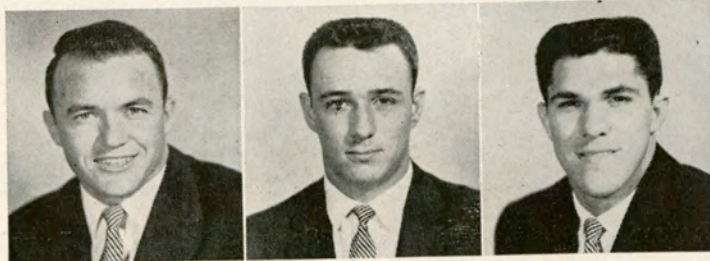
Burleson Clements Cotros Darré Dickerson DiVietro



Dupin Egan Ellzey Emerson Fleming Gamble



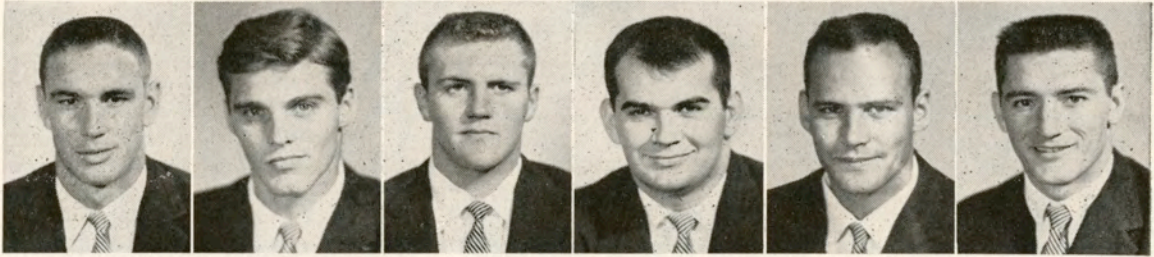
Gibbons Guillot Hansen Hawley Heffington Hendee



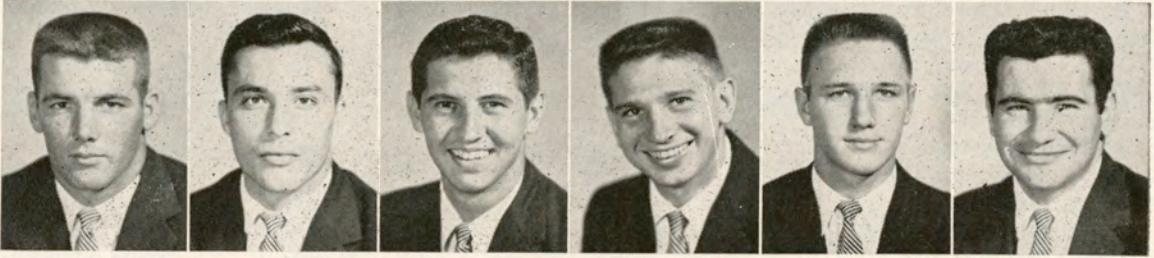
Jester Jones Kepper



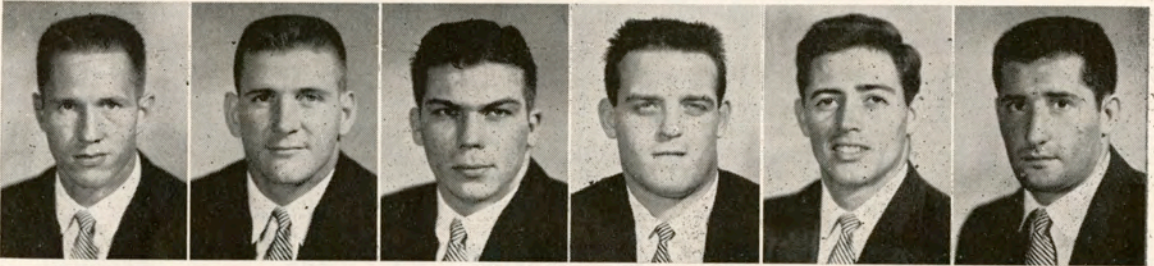
1957 TULANE GREEN WAVE



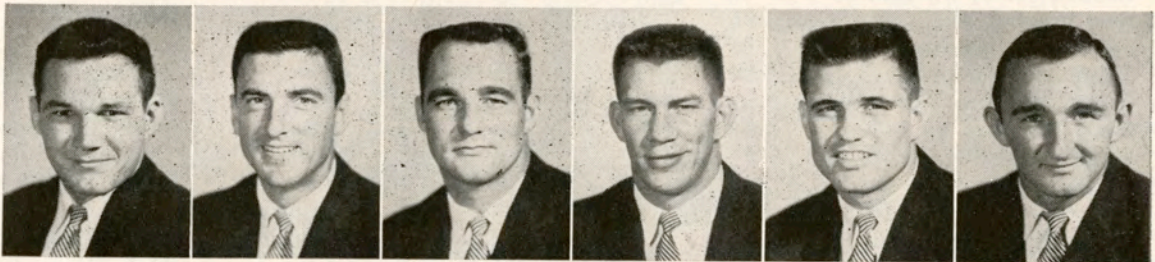
Klock Legendre LeSage Lockwood Magee Marcel



Mason Montgomery Musial Newton Nielsen Nolan



Painter Passman Petitbon Rawson Riley Siciliano



Sweeney Tarzetti Tyler Walker Warner Young



Duncan
Ass't. Trainer

McCreary
Ass't. Trainer

Williamson
Student Mgr.



TULANE ROSTER—1957

No.	Name and Pos.	Age	Hgt.	Wgt.	Ltrs.	Class	Hometown
81	Pete Abadie, re	20	6-3	190	0	Jr.	New Orleans
40	Connie Andrews, fb	20	6-1	187	0	Jr.	Magnolia, Ark.
29	John Arms, qb	18	6-2	188	0	Soph.	New Orleans
80	Will Billon, re	21	6-2	200	2	Sr.	New Orleans
69	Jim Blount, lg	20	5-8	190	1	Jr.	Groves, Texas
41	Jeff Bratton, fb	20	6-	190	0	Jr.	Camden, Ark.
65	Connie Burleson, rg	19	6-	198	0	Soph.	Lake Charles
60	Bill Clements, rg	19	5-8	195	0	Soph.	Shelbyville, Ky.
71	Charles Cotros, rt	20	6-3	212	0	Jr.	Memphis, Tenn.
73	Bernard Darre, lt	17	6-1	198	0	Soph.	New Orleans
32	Fred Dickerson, lh	19	5-9	170	0	Soph.	Antioch, Calif.
62	John DiVietro, rg	20	5-10	190	0	Jr.	Easton, Pa.
64	Ted Dupin, lg	20	5-11	190	0	Soph.	Lake Charles
76	Dan Egan, lt	20	6-2	215	0	Jr.	New Orleans
26	Will Ellzey, rh	18	6-	180	0	Soph.	Metairie
68	D. A. Emerson, lg	22	5-11	192	0	Sr.	Marshall, Texas
34	King Fleming, lh	21	6-	175	0	Jr.	Lake Charles
83	Cameron Gamble, re	19	6-1	185	0	Soph.	New Orleans
45	Jack Gibbons, fb	19	5-11	188	0	Jr.	New Orleans
67	George Guillot, rg	19	5-10	185	0	Soph.	Shreveport
70	Charles Hansen, rt	21	6-3	220	2	Sr.	Lake Charles
54	Paul Hawley, c	19	5-10	200	0	Jr.	Shreveport
89	Phil Heffington, re	19	6-3	190	0	Soph.	Shreveport
97	Bill Hendee, rt	19	6-3	190	0	Jr.	Lansing, Mich.
23	Virgil Jester, rh	22	5-11	175	2	Sr.	Springhill
50	Neal Jones, c	19	6-2	195	0	Soph.	Baton Rouge
63	Jimmy Kepper, c	19	5-11	190	0	Soph.	Baton Rouge
78	Bill Klock, c	20	6-1	210	0	Jr.	New Orleans
39	Jimmy Legendre, rh	20	6-	180	0	Soph.	New Orleans
74	Joe LeSage, lt	19	6-4	214	0	Soph.	Beaumont, Texas
77	Don Lockwood, lt	20	6-	210	0	Jr.	Beaumont, Texas
38	James Magee, lh	19	6-	186	0	Soph.	Morgan City
20	Claude (Boo) Mason, rh	20	5-10	160	1	Jr.	Lake Charles
43	Roy Marcel, fb	21	5-10	178	2	Sr.	Houma
82	Jack Montgomery, le	21	6-1	195	2	Sr.	Springhill
85	John Musial, le	20	6-2	180	0	Jr.	Plymouth, Pa.
12	Gene Newton, qb	22	5-10	160	2	Sr.	Shreveport
59	Jens Nielsen, rg	19	6-	180	0	Soph.	New Orleans
79	Tom Nolan, rt	21	6-	210	0	Jr.	Baton Rouge
84	David Painter, le	20	6-7	220	0	Jr.	Lake Charles
42	Charles Passman, fb	19	5-9	185	0	Soph.	Franklinton
17	Richard Petitbon, qb	19	6-3	197	0	Soph.	New Orleans
72	Bill Rawson, rt	21	6-1	215	0	Soph.	Oak Park, Ill.
88	Ronnie Riley, re	21	6-2	185	1*	Sr.	Baton Rouge
87	Frank Siciliano, le	19	6-2	205	0	Soph.	Brooklyn, N. Y.
11	Carlton Sweeney, qb	19	5-8	155	0	Soph.	Lake Charles
25	Gene Tarzetti, rh	25	6-	175	1	Jr.	DeLisle, Miss.
53	Benny Ray Tyler, c	22	6-	193	2	Sr.	Springhill
61	James Walker, lg	21	6-1	195	0	Sr.	Bourg
33	Tommy Warner, lh	22	6-	165	3*	Sr.	New Orleans
86	Leo Young, le	20	6-2	190	0	Jr.	Ferriday

* Lettered in '55, missed '56 season due to injuries.

TULANE GAMES ON RADIO!

.....

Complete Broadcasts
of all games

with

TED ANDREWS
DeALTON NEHER

WDSU

1280 on your dial

Originating Station
For The Greenie Network

.....

Brought to you by



YOUR TEXACO DEALER



... the best friend
your car
has ever had!

DAN'S SERVICE STATION	801 South Rampart at Julia	RA-2284
VIOLET SERVICE STATION	Violet, Louisiana	5-9713
BILL'S TEXACO SERVICE	5401 St. Claude	CR-9454
JAKIE'S TEXACO SERVICE	North Broad and Esplanade	AU-3546
P. & M. TEXACO SERVICECENTER	1139 North Rampart	CA-5255 or MA-0989
PHILIBERT TEXACO SERVICE	2046 Gentilly Blvd.	CR-9233
KIRN'S TEXACO SERVICE	4237 Paris Avenue	FA-9220
O'SHAUGHNESSY SERVICE, INC.	Airline Highway-Metairie	VE-3-5577
ST. CHARLES SERVICE	7701 Maple, corner Adams	UN-1-9574-75
MARTIN & HOFFMAN TEXACO	4250 Washington Ave.	UN-6-1013
ALBERT'S SERVICE STATION	301 N. Carrollton Ave.	AU-9235
SIDNEY'S TEXACO SERVICE	Marrero, Louisiana	FI-1-1222
AL'S TEXACO SERVICE	4740 Canal Street	AU-5055
NICK'S TEXACO SERVICE	1301 Airline Hwy.	Kenner 71-3851
CABALI TEXACO SERVICE	4327 Jefferson Hwy.	VE-5-1118

Oldsmobile

Cadillac

Authorized

SALES - SERVICE - PARTS

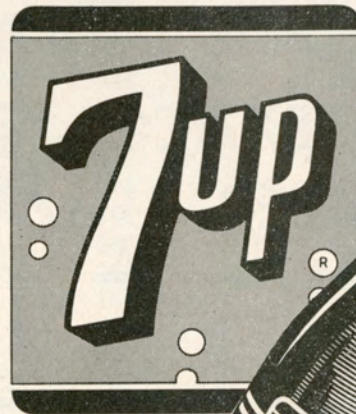
Complete Repair Service

PONTCHARTRAIN MOTOR CO.

701 BARONNE

Five Minutes From Leading Hotels

*Cheered by
Millions!*



NOTHING DOES IT LIKE SEVEN-UP!



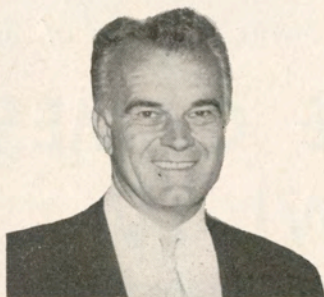
The Swan Room

NEW ORLEANS' SMARTEST SUPPER CLUB
PROUDLY PRESENTS

THE FINEST IN
FOOD AND SERVICE

THE BEST IN
ENTERTAINMENT

SHOWS: 8 and 12 p. m.
FOR RESERVATIONS
CALL MA 3341



MUSIC BY
Nick Stuart's
ORCHESTRA

also enjoy the

Carousel Lounge

FEATURING THE FASCINATING
REVOLVING BAR
BOBBY BROCKMAN AT THE PIANO



THE NEW
HOTEL MONTELEONE

WE ACCEPT UNIVERSAL TRAVEL CARDS

TULANE FOOTBALL STAFF



GREEN WAVE STAFF—From Left, Head Coach Andy Pilney, Bob Whitman (backs), Jack Green, (line), Ray Prats (freshmen), Earl (Bubba) Porche (trainer), Mike Karmazin (line), Stan Kottemann (freshmen), John Mazur (backs) and Homer Dedeaux (assistant to the athletic director.)

SUNDAY AFTERNOONS

See complete Motion Pictures of all

TULANE GAMES

WWL-TV

Channel 4

*See every play – enjoy every thrill of both
Out-of-town and Home Games*

Brought to you by your Big Down-Town Pontiac Dealer



"TRADER JOE"

PARETTI

336 DRYADES • Canal 8866

PONTIAC

OPEN
EVERY
NIGHT
'TIL 10

time for Living



More than anything else, a KitchenAid dishwasher brings you the precious gift of *time*. You have time to be a part of things—family fun and friends-after-the-game—secure in the knowledge that all's well in the kitchen.


Indeed, your dishes could not be in better care. Your KitchenAid is produced by Hobart—another way of saying it's *the finest made*. You'll see the evidence everywhere you turn: The new Timed Spray Cycle that "warms up" tableware and dishwasher interior, clears plumbing lines of cold water before the wash action starts. The easy-rolling, cushion-coated racks that take the guess out of loading. The revolving power wash system that leaves your

tableware *hospital-clean*. The separate blower that dries even fine crystal to perfection.

Yet—wonder of convenience—Hobart has contrived to work all these features into the *standard cabinet width*; you don't give up space you sorely need. By all means, see the new KitchenAid by Hobart. You'll find just the model to go with your kitchen, as surely as it goes with your way of life. And see the new food preparer and the electric coffee mill—they're KitchenAid, too!

See the new KitchenAid! Write The Hobart Manufacturing Co., KitchenAid Home Dishwasher Division, Dept. CFP, Troy, Ohio. In Canada: 175 George Street, Toronto, 2.

time for a KitchenAid®

The Finest Made...by 

The World's Largest Manufacturer of Food, Kitchen and Dishwashing Machines

From kickoff to the final gun,

with **Cracker Jack**®

it's twice the fun!

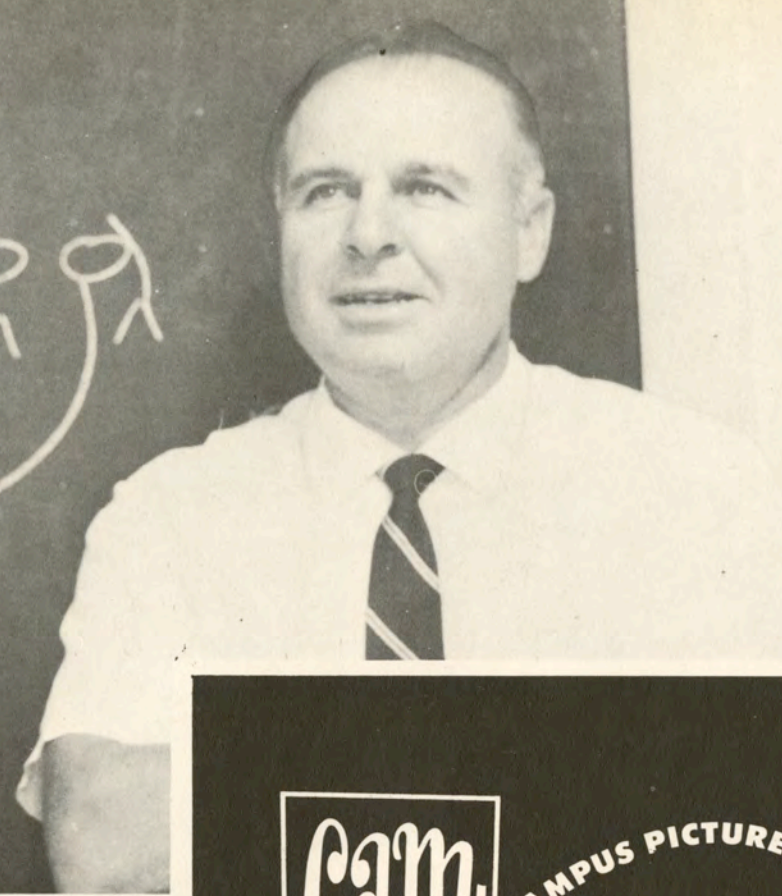
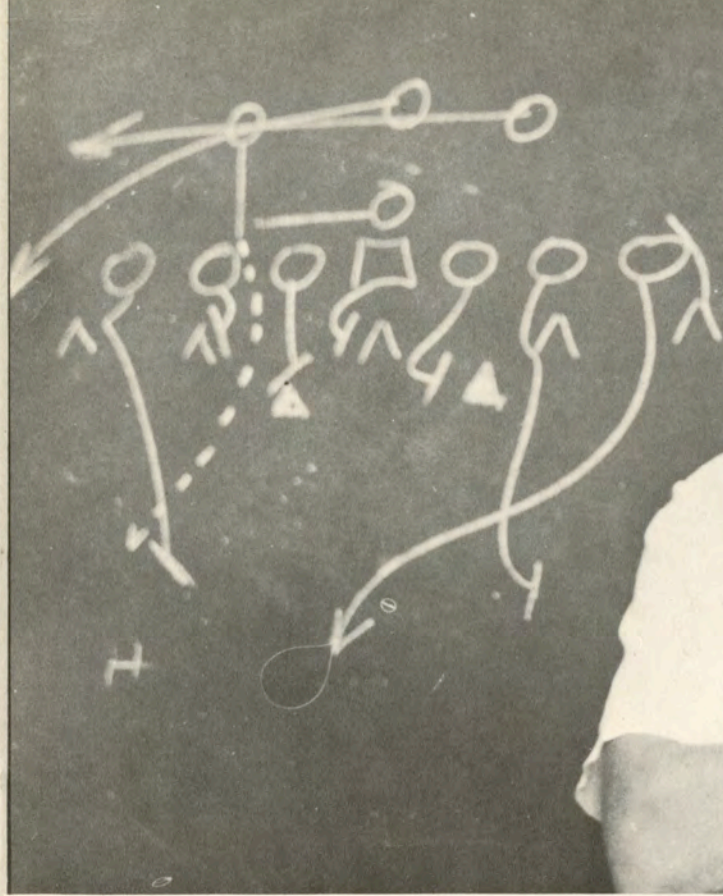


Fresh and Crunchy
with **LOTS MORE** peanuts

QUALITY
PROTECTED WITH
REYNOLDS WRAP
ALUMINUM
PACKAGING

Try **NEW** **Cracker Jack**® **Today**

ON SALE IN THE STADIUM



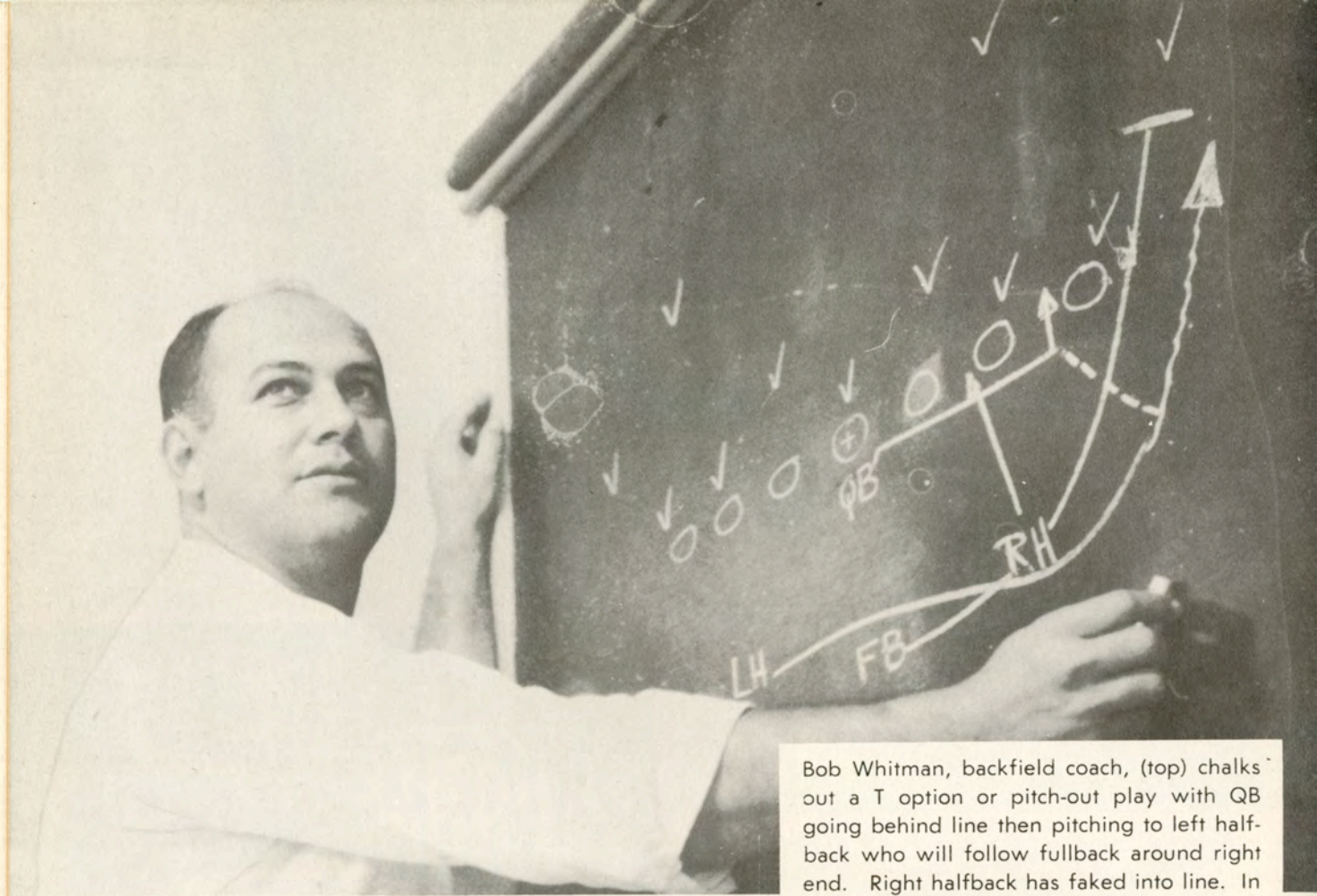
Cam! CAMPUS PICTURES

A MEDLEY OF **pix**

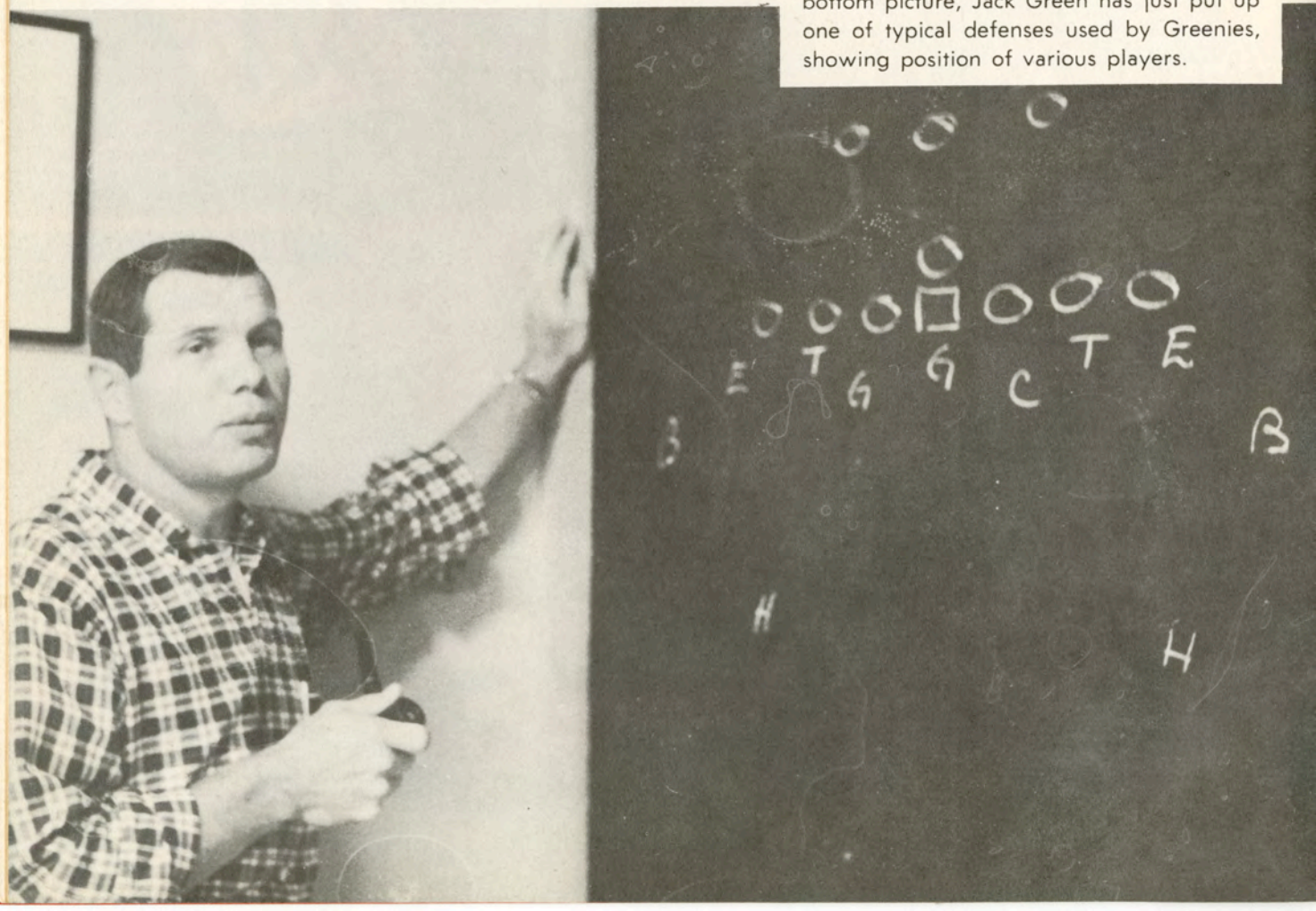
© TULANE UNIVERSITY 1957

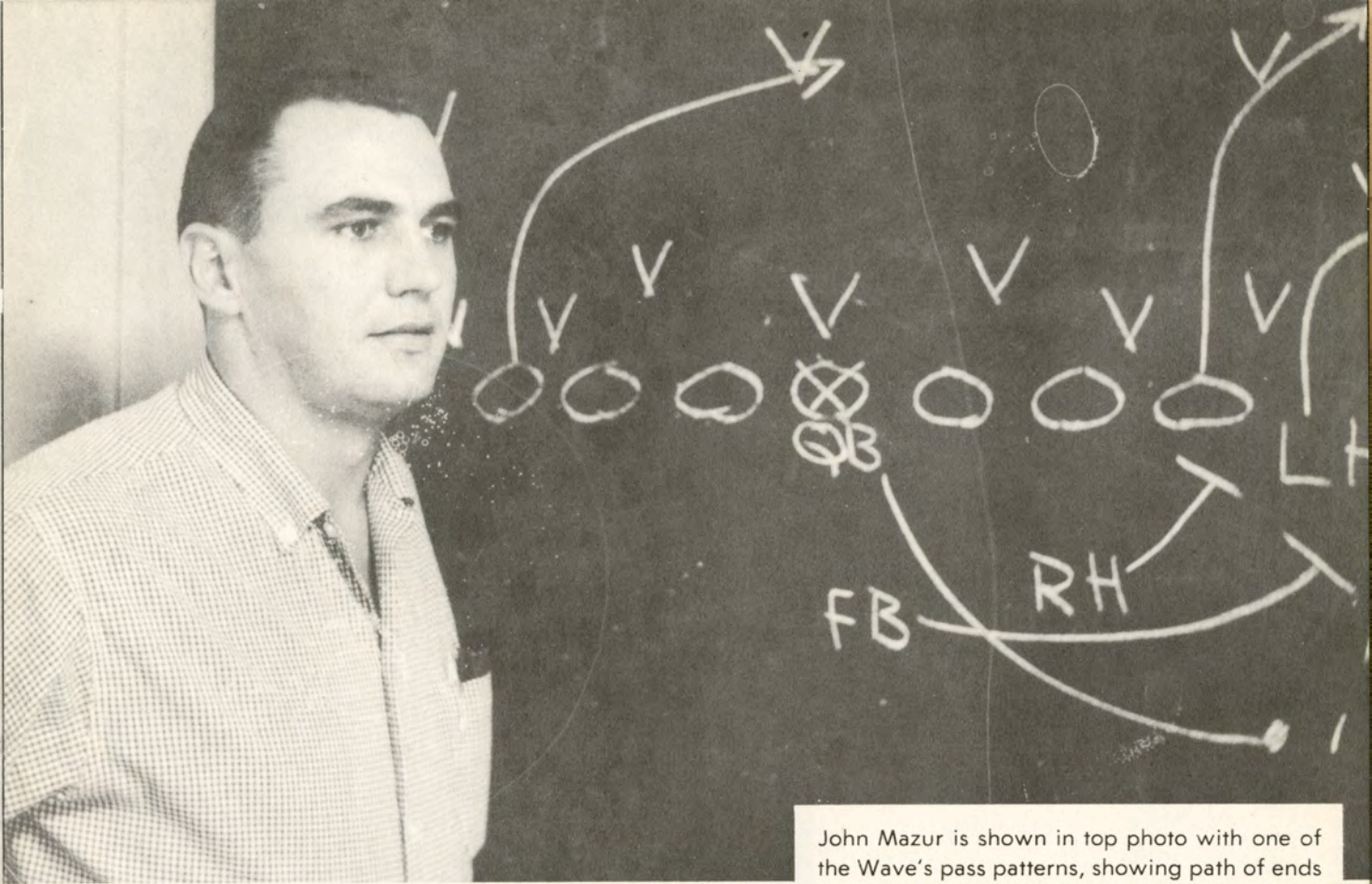


Tulane's head football coach Andy Pilney (top) is in his fourth season as head man of the Green Wave. His staff, consisting of (left to right) Jack Green, John Mazur, Bob Whitman, Mike Karmazin and Stan Kottman, is shown below during one of the daily meetings the coaches hold to discuss strategy and plan workouts. The staff is shown on succeeding pages with some basic T formations used by the Greenies.

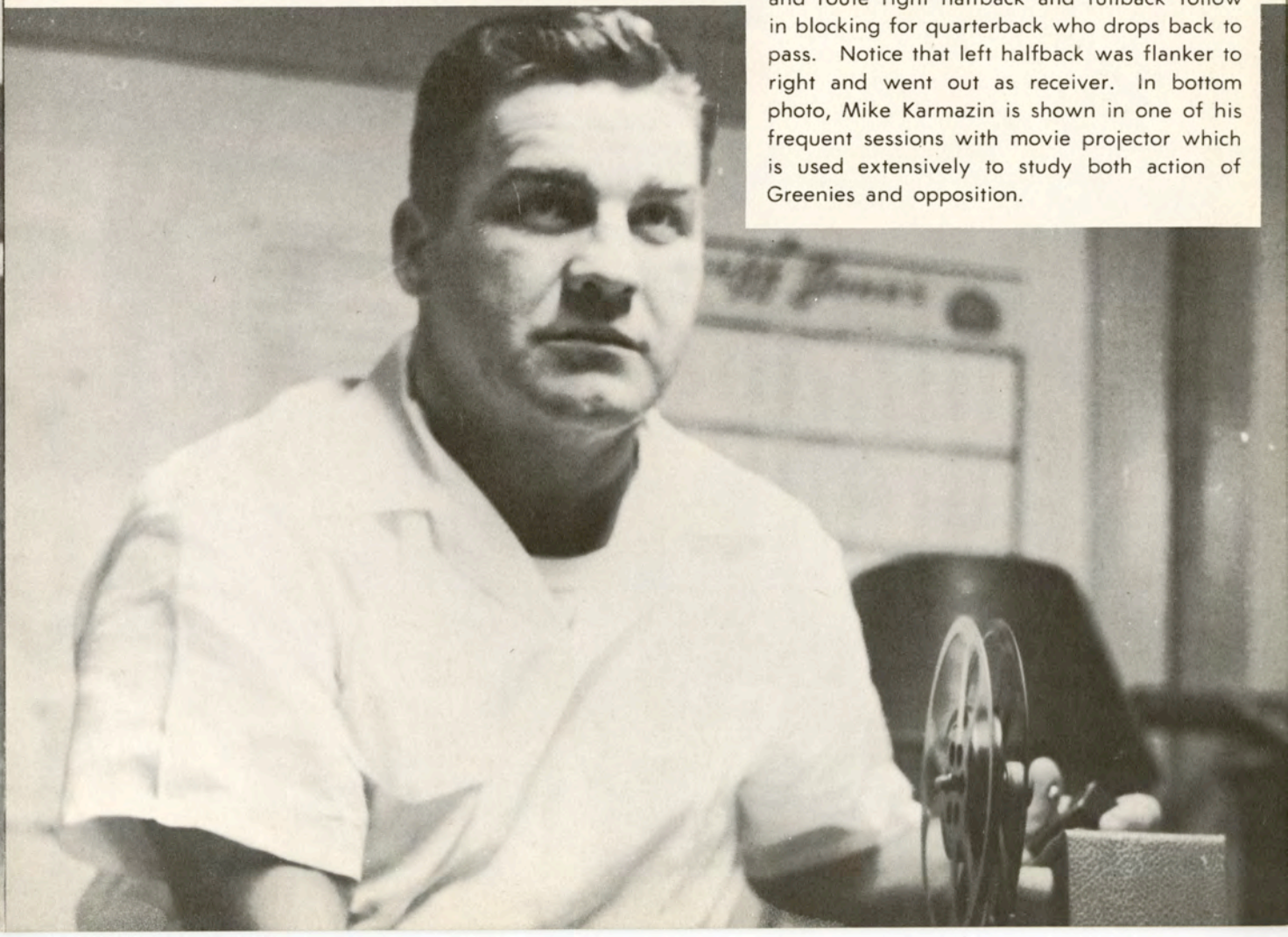


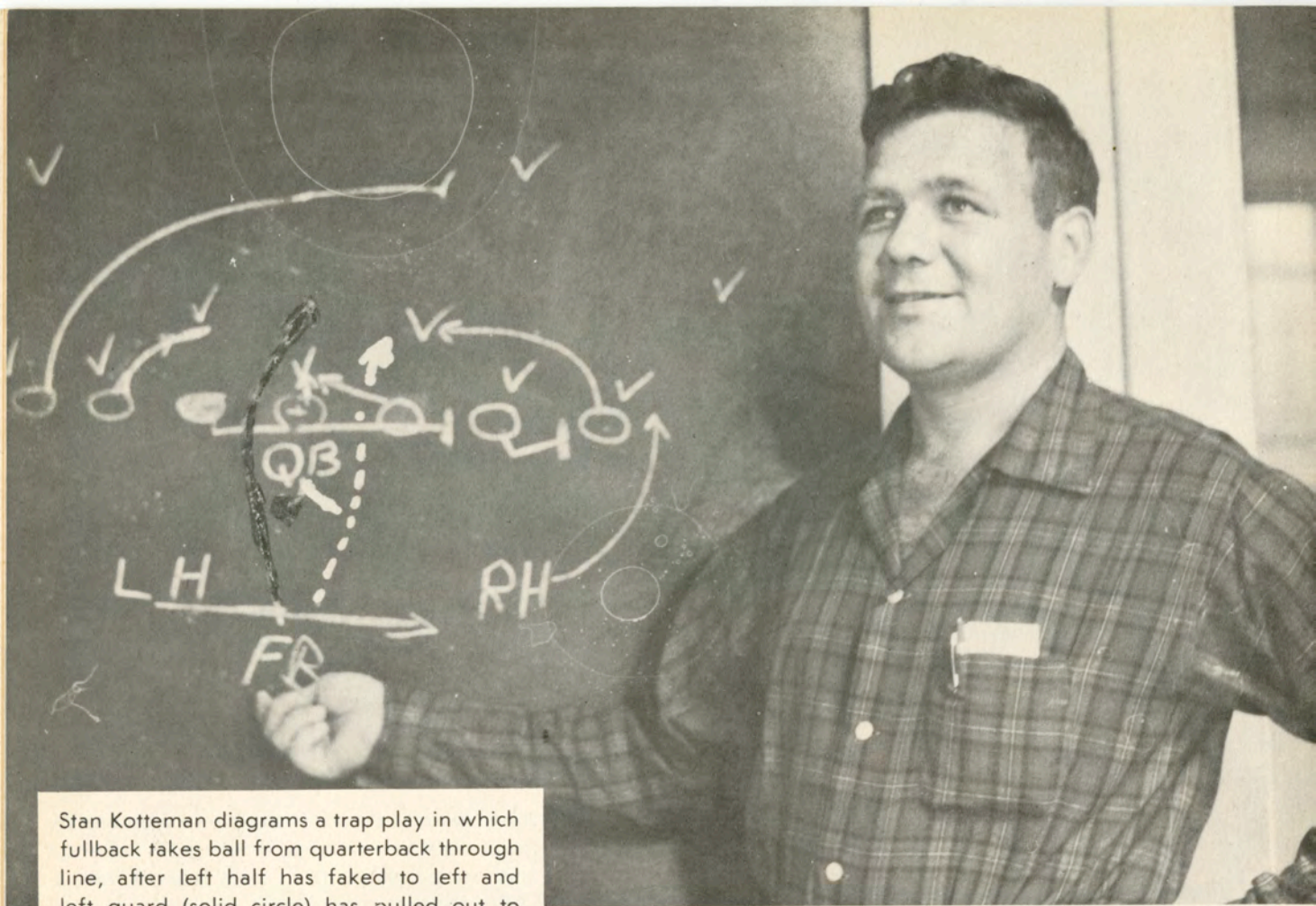
Bob Whitman, backfield coach, (top) chalks out a T option or pitch-out play with QB going behind line then pitching to left halfback who will follow fullback around right end. Right halfback has faked into line. In bottom picture, Jack Green has just put up one of typical defenses used by Greenies, showing position of various players.





John Mazur is shown in top photo with one of the Wave's pass patterns, showing path of ends and route right halfback and fullback follow in blocking for quarterback who drops back to pass. Notice that left halfback was flanker to right and went out as receiver. In bottom photo, Mike Karmazin is shown in one of his frequent sessions with movie projector which is used extensively to study both action of Greenies and opposition.



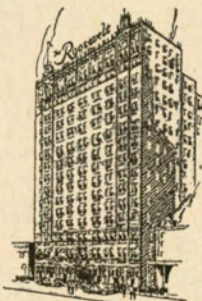


Stan Kotteman diagrams a trap play in which fullback takes ball from quarterback through line, after left half has faked to left and left guard (solid circle) has pulled out to block. In bottom photo, assistant freshman coach, Ray Prats makes a point to defensive frosh group during daily practice workout.



New Orleans' Finest

In America's Most Interesting City



THE ROOSEVELT is located in the heart of Romantic old New Orleans. It is in the center of business and social activities and is close to the Theatre, Shopping, French Quarter, and Business Districts . . . You will like the tasteful luxury and home-like atmosphere of this modern hotel where the traditions of Southern Hospitality are maintained the year 'round.

**900 ROOMS WITH BATH
MODERATE RATES**

SEYMOUR WEISS, *President and Managing Director*
A. C. BELLANDE, *Manager*

Visit

The Famous Sazerac Bar

Home of the Original Sazerac Cocktail

After 106 Years Ladies Are Now Cordially Invited

The
ROOSEVELT

"Pride of the South"

Live Modern...smoke modern L&M

Hey Dad, light into that Live Modern flavor!

I'm way ahead of you Son!
L&M wins for taste and flavor!

...box or handy pack ...
Either way you win today with L&M

TULANE

PROBABLE STARTING LINEUP

No.	Name	Position
82	JACK MONTGOMERY	LE
or 81	PETE ABADIE	LE
77	DON LOCKWOOD	LT
69	JIM BLOUNT	LG
53	BENNY RAY TYLER	C
62	JOHN DIVIETRO	RG
70	CHARLES HANSEN	RT
80	WILL BILLON	RE
12	GENE NEWTON	QB
33	TOMMY WARNER	LH
20	CLAUDE (BOO) MASON	RH
43	ROY MARCEL	FB

THE GREEN WAVE SQUAD

11 Sweeney, qb	45 Gibbons, fb	73 Darré, lt
12 Newton, qb	50 Jones, c	74 LeSage, lt
17 Petitbon, qb	53 Tyler, c	76 Egan, lt
20 Mason, rh	54 Hawley, c	77 Lockwood, lt
23 Jester, rh	59 Nielsen, rg	78 Klock, c
25 Tarzetti, rh	60 Clements, rg	79 Nolan, rt
26 Ellzey, rh	61 Walker, lg	80 Billon, re
29 Arms, qb	62 DiVietro, rg	81 Abadie, re
32 Dickerson, lh	63 Kepper, c	82 Montgomery, le
33 Warner, lh	64 Dupin, lg	83 Gamble, re
34 Fleming, lh	65 Burluson, rg	84 Painter, le
38 Magee, lh	67 Guillot, rg	85 Musial, le
39 Legendre, rh	68 Emerson, lg	86 Young, le
40 Andrews, fb	69 Blount, lg	87 Siciliano, le
41 Bratton, fb	70 Hansen, rt	88 Riley, re
42 Passman, fb	71 Cotros, rt	89 Hefington, re
43 Marcel, fb	72 Rawson, rt	97 Hendee, rt

OLE MISS


PROBABLE STARTING LINEUP

No.	Name	Position
82	BILLY TEMPLETON	LE
75	WAYNE WEST	LT
68	JACKIE SIMPSON	LG
51	MILTON CRAIN	C
61	WILLIE HICKERSON	RG
79	GENE HICKERSON	RT
80	DON WILLIAMS	RE
15	RAY BROWN	QB
23	LEROY REED	LH
31	BILLY LOTT	RH
42	BILL HURST	FB

OLE MISS SQUAD

10. Franklin, qb	42 Hurst, fb	71 Smith, lt
15 Brown, qb	43 Partridge, fb	73 Winston, lt-rt
16 Brewer, qb	50 Terry, c	74 Sanders, rt
19 Fritchie, qb	51 Crain, c	75 West, lt
30 Rittman, lh	52 Alford, c	76 Khayat, rt
22 Blair, lh	53 Pruett, c	78 Owens, lt
23 Reed, lh	54 Green, c	79. G. Hickerson, rt
24 Hall, lh	60 Spears, rg	80 Williams, re
25 Champion, rh	61 Hickerson, rg	81 Brewer, le
30 Lovelace, rh	62 Kempinska, rg	82 Templeton, le
31 Lott, rh	63 Terrell, lg	83 Barkley, le
32 Woodruff, rh	64 Churchwell, rg	84 Burke, le
33 Taylor, rh, lh	65 Keenan, lg	85 Jenkins, le
34 Caldwell, rh	67 Cooper, lg	86 Cavin, re
40 Kirk, fb	68 Simpson, lg	87 Gregory, re
41 Flowers, fb	70 Roberson, lt	88 Grantham, re

OFFICIALS—Referee, T. G. Kain (Georgia); Umpire, W. W. Luttrell (Tennessee); Head Linesman, Harry B. Sharp (Tennessee); Field Judge, Preston K. Watts (Memphis State); Back Judge, Sam W. Bartholomew (Vanderbilt); E.C.O., Gordon Pettus (Alabama).



The Roosevelt Hotel Offers
New Orleans' Most Diversified Program
of
Music and Entertainment

in the FOUNTAIN LOUNGE

AT LUNCHEON we invite you to listen to the sweet strains of the Gypsy Ensemble. For COCKTAILS and DANCING, alternating nightly from five o'clock until two the next morning is the Society Music of two of America's outstanding combinations.

in the BLUE ROOM

Each evening, for DINNER and SUPPER DANCING is presented one of the Nation's famous orchestras . . . Featured also in the Blue Room Floor Shows at Dinner and Supper, are celebrated stars from radio, stage, screen and TV.

*New Orleans' most discriminating audience choose
The Roosevelt for their relaxation and entertainment*

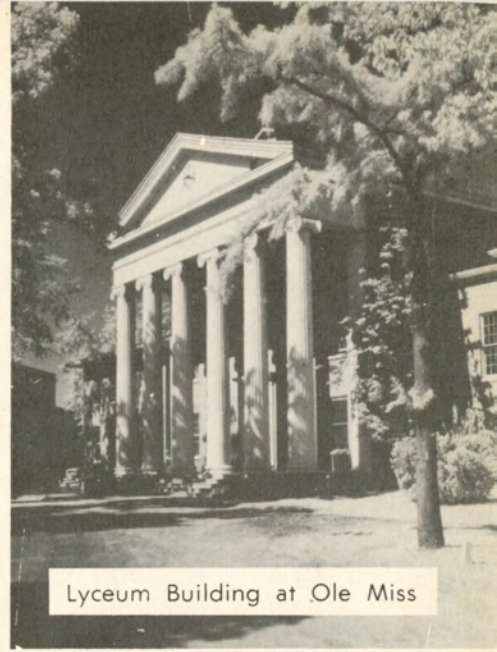
The
ROOSEVELT
"Pride of the South"

These Stars Are Coming Soon

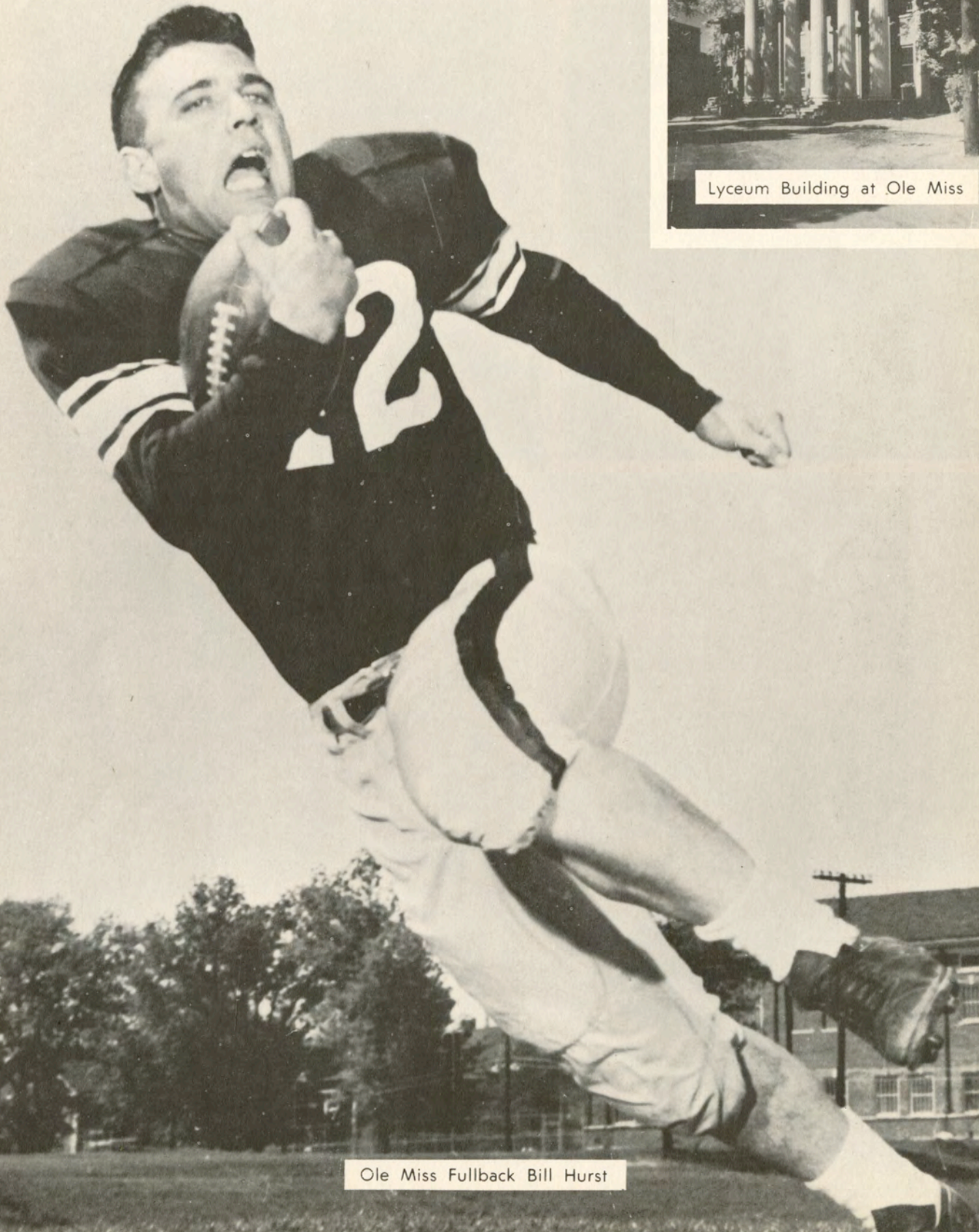
Next Week, Ole Miss vs. Tulane

Here in Tulane-Sugar Bowl Stadium

Friday Night, Oct. 11, 8 p.m.



Lyceum Building at Ole Miss



Ole Miss Fullback Bill Hurst

Ole Miss will also bring standout performers in tackle Gene Hickerson (at left) and quarterback Raymond Brown (below). Both are senior members of the Rebel squad and should provide the Greenies with many interesting moments.





And Then It Is Homecoming

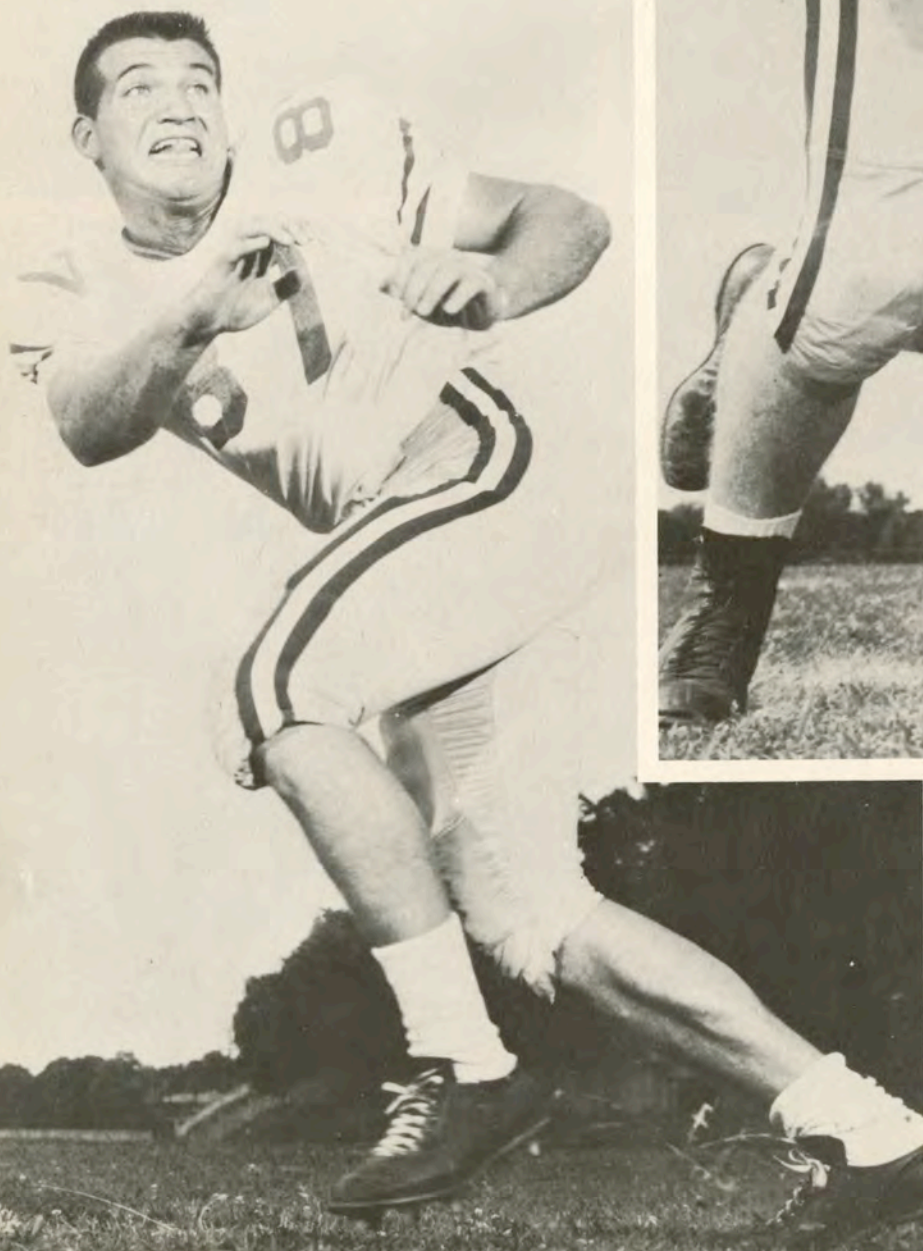
Georgia Tech vs. Tulane

Saturday Night, Oct. 26, 8 p.m.

Georgia Tech center All-America and team captain Don Stephenson (above) paces the Yellowjacket line. Halfback Stan Flowers at right is one of Tech's standout backs.



Other top-rated Georgia Tech players who will be in action here Oct. 26, are end Jerry Nabors No. 87, and guard Leon Askew No. 67. The Georgia Tech game will be the final home game for the Green Wave.



Announcing Two Great all NEW

Lady Sunbeam

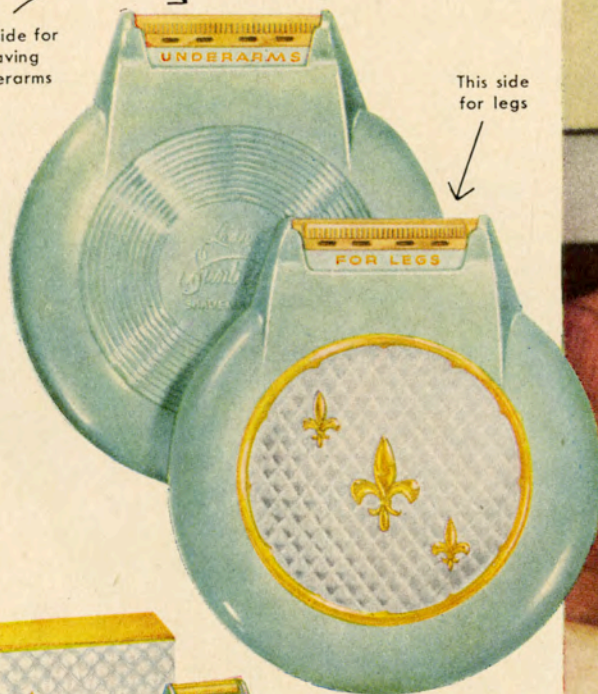
SHAVEMASTERS

Each with the NEW exclusive MICRO-TWIN Head and "compact" shape



This side for shaving underarms

This side for legs



Only the LADY SUNBEAM has the "compact" shape and the new precision MICRO-TWIN shaving head. One side for shaving legs close, clean and smooth and the other side for shaving tender underarms. Ends muss and fuss, nicks and cuts of soap and blade. Only the New LADY SUNBEAM gives you all three: New precision MICRO-TWIN head . . . New Quiet Motor . . . two New beautiful models, each in six lovely colors.



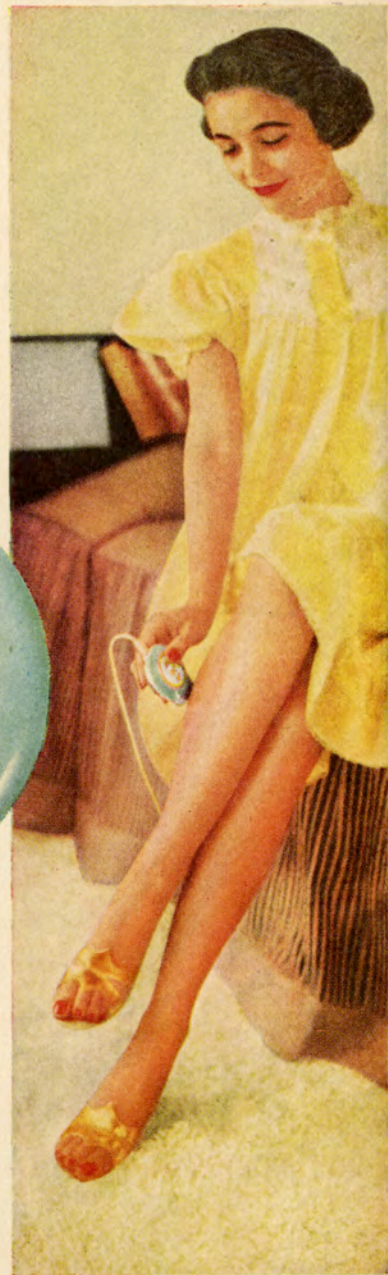
Lady Sunbeam Deluxe in French Door Case



Fleur-de-lis design in pedestal base case

Lady Sunbeam

ELECTRIC
from \$15⁹⁵*



EMERALD GREEN

PETAL PINK

VELVET BLACK

ERMINE WHITE

IMPERIAL YELLOW

RIVIERA BLUE

See the Lady Sunbeam demonstrated on Sunbeam sponsored NCAA Football Games and on the Perry Como Show over NBC-TV, also on Premiere Performance.



*Manufacturer's recommended retail or Fair Trade price.

Look for the MARK OF QUALITY

Sunbeam
THE BEST ELECTRIC APPLIANCES MADE

AT YOUR DEALER

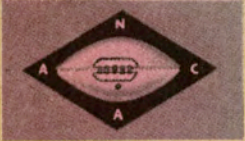
©S.C.

©SUNBEAM, LADY SUNBEAM, MICRO-TWIN

LONGINES
is official timing
watch for
sports associations
the world over
including:



U.S. OLYMPIC COMMITTEE



NATIONAL COLLEGIATE
ATHLETIC ASSOCIATION



NATIONAL AERONAUTIC
ASSOCIATION



AMERICAN POWERBOAT
ASSOCIATION



NATIONAL HORSE SHOW
ASSOCIATION



NATIONAL SKI ASSN.



NATIONAL FOOTBALL
LEAGUE



MAJOR LEAGUE BASEBALL



OLYMPIC WINTER GAMES
1960

OFFICIAL WATCH FOR TIMING THIS GAME

Longines

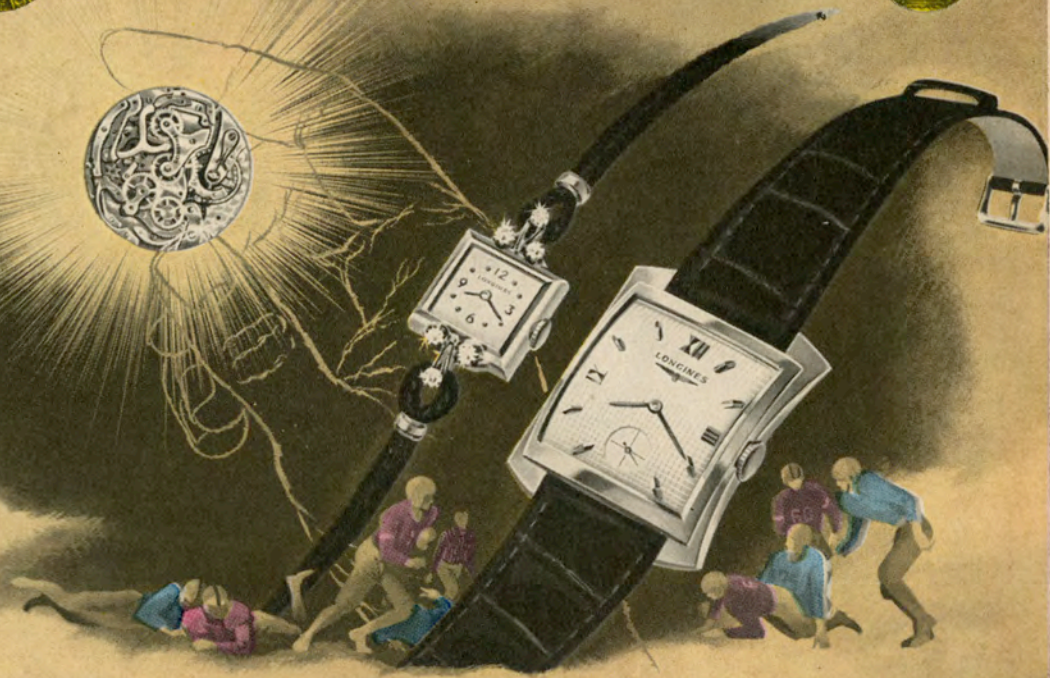
THE WORLD'S *Most Honored* WATCH

10 WORLD'S FAIR GRAND PRIZES • 28 GOLD MEDALS

HIGHEST OBSERVATORY HONORS FOR ACCURACY

OFFICIAL WATCH FOR CHAMPIONSHIP SPORTS

THE FIRST WATCH OF AVIATION AND EXPLORATION



LONGINES HONORS YOUR TIME

The pre-eminence of Longines in sports timing results from those inbuilt qualities of accuracy and dependability which have made Longines *the world's most honored watch*. These are the identical qualities which have won for Longines the highest honors to which a watchmaker can aspire

—including ten world's fair grand prizes, 28 gold medals, highest observatory awards for accuracy. A Longines watch will honor *your time*. And, among Longines' 300 fine watch models there is the perfect style and type *for you*. Your Longines-Wittnauer Jeweler will be *honored* to serve you.

Illustrated—Longines Starlight Serenade L-J 6, elegant 14K gold watch with 6 diamonds, \$175;

Longines Presidency "E", 14K gold case, \$125. Other models from \$71.50. Federal tax included.

Longines-Wittnauer Watch Company

SINCE 1866 MAKER OF WATCHES OF THE HIGHEST CHARACTER

HAL'S Commercial Restaurant

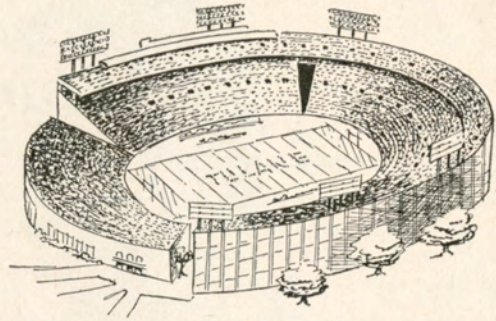
834 Gravier Street

•
Featuring Delicious

POOR BOYS
Of All Kinds

•
Tasty Plate Lunches

The Best Coffee and Pie in Town



Tulane Stadium

Tulane Stadium, lighted this year at a cost of \$168,000, is famous as the home of Green Wave football teams and of the annual Sugar Bowl Classic, was dedicated 31 years ago this fall with east and west stands seating 35,000. Subsequent enlargements, due in large measure to the efforts of the Sugar Bowlers, have increased the capacity to its present 80,985. The stadium is located on the site of the Etienne de Boré plantation, where sugar was first granulated in this country.



COMPLETE YACHT SUPPLIES

SALES AND SERVICE

DONOVAN BOAT SUPPLIES

NEW ORLEANS, LA.

1018 BARONNE ST.

RAYmond 9051

FREE PARKING

Tulane Songs

ALMA MATER

We praise thee for thy past, O Alma Mater!
Thy hand hath done its work full faithfully;
The incense of thy spirit hath ascended
And filled America from sea to sea!

We praise thee for they present, Alma Mater!
Today thy children look to thee for bread!
Thou ledest them to dreams and action
splendid!
The hunger of their souls is richly fed!

We praise thee for thy future, Alma Mater!
The vista of its glory gleameth far!
We shall ever be part of thee, great Mother!
There thou will be where e'er thy children are!

Chorus

Olive Green and Blue, we love thee.
Pledge we now our fealty true
Where the trees are ever greenest,
Where the skies are purest blue.
Hear us now, O Tulane, hear us.
As we proudly sing to thee!
Take from us our heart's devotion!
Thine we are, and thine shall be!

ROLL ON, TULANE

Here's a song for the Olive and the Blue.
Here's a cheer for the team that's tried and true.
Here's a pledge of loyalty to thee.
Oh, Tulane Varsity.
Here's to the Greenbacks that never will say die,
And here's to the hearts that are true
To the men of Tulane who are fighting for her
name,
For the Olive and the Blue.

Chorus

Roll, Green Wave,
Roll them down the field.
Hold, Green Wave,
That line must never yield.
When those Greenbacks charge through the line
They're bound for victory.
Hail, Green Wave,
For you we give a cheer.
Hail, Green Wave,
For you we have no fear.
So ev'ry man in ev'ry play,
And then we'll win that game today.
Hurrah for Old Tulane!

the Bread of Champions...



EXTRA VITAMINS... EXTRA MILK PROTEIN... EXTRA MINERALS

man who made "the first team"

Hickey-Freeman

On the field you can identify the players by the numbers they wear. In life, too, you know a man by his clothes. Hickey-Freeman suits . . . master works, cut from rich fabrics . . . are worn by men who have earned their places on achievement's "first team." If you belong there . . . you belong in a Hickey-Freeman. from **125.00**

men's clothing • second floor

ONLY AT

Godchaux's



*Tulane's
All-Americans*

ENDS

Jerry Dalrymple (1930-31)*
Ralph Wenzel (1939)

TACKLES

Harley McCollum (1939)
Ernie Blandin (1941)
Paul Lea (1948)
Jerome Helluin (1950)

GUARDS

Tony Sardisco (1955)

CENTERS

Lester Gatewood (1943)

BACKS

"Peggy" Flournoy (1925)
Bill Banker (1929)
Don Zimmerman (1931-32)
Claude Simons, Jr. (1934)
W. A. "Dub" Jones (1944)
Eddie Price (1949)

* National Football Hall of Fame.

Best Wishes To

The Green Wave

For Many Successful
Seasons



**CHALMETTE LAUNDRY
and CLEANERS**
2801 TULANE AVENUE

For Excellent Work and Rapid Service
Call GALvez 2161

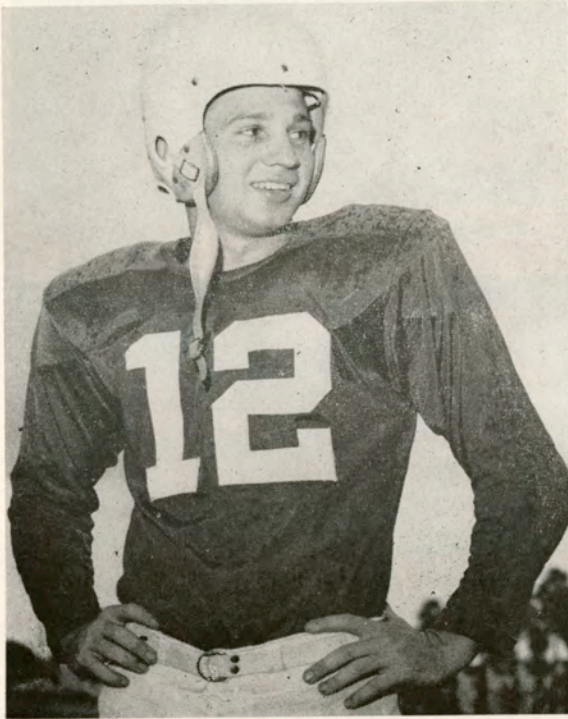
Mossy Motors, Inc.

1331 S. Broad St.

CAnal 2431

"Your Friendly Oldsmobile Dealer"

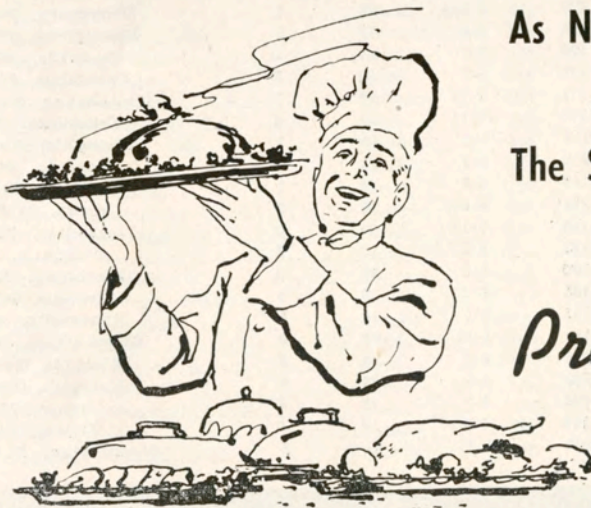
1957 GREEN WAVE CO-CAPTAINS



GENE NEWTON



JACK MONTGOMERY



As NEW as

Night Football . . .

The ST. CHARLES HOTEL

Famous For Foods

INTRODUCES THE

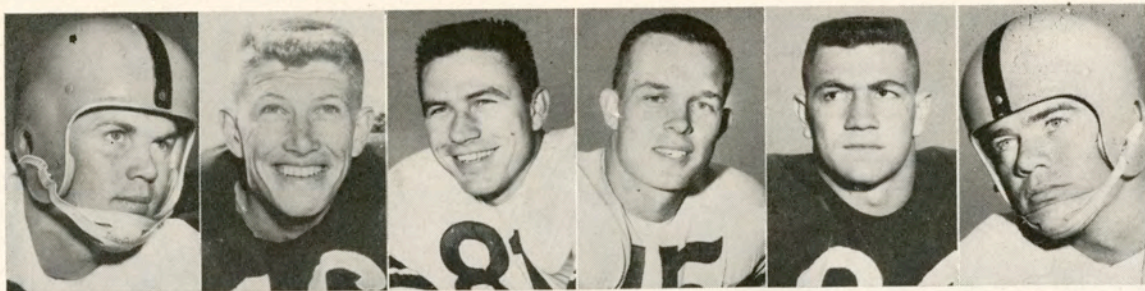
Pre-Game Buffet

5 to 7:30 P. M.

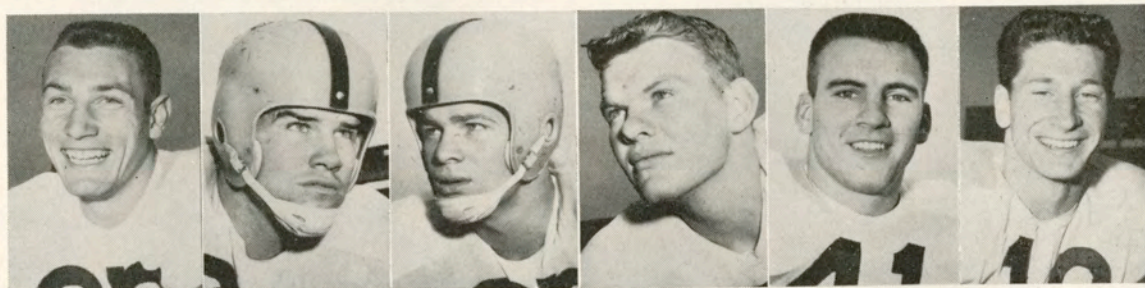
Every Game Night

SPECIAL BUS TRANSPORTATION FOR DINNER GUESTS
ST. CHARLES HOTEL TO TULANE STADIUM AND RETURN

Meet Your Family And Friends — At The St. Charles



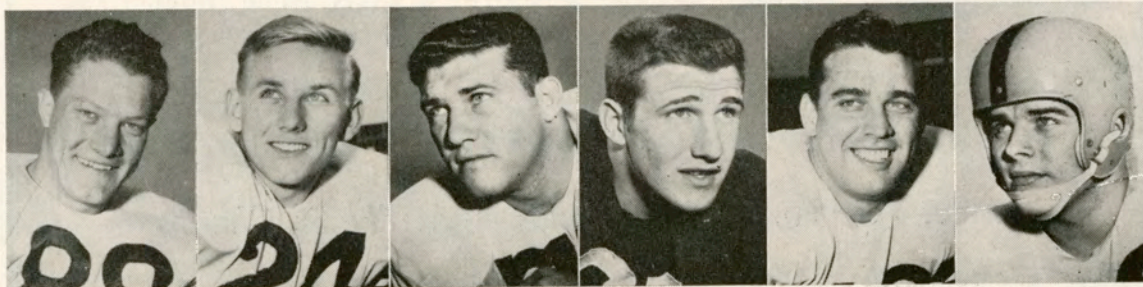
Barkley B. Brewer J. Brewer Brown Burke Cavin



Champion Churchwell Cooper Crain Flowers Franklin

Ole Miss Roster

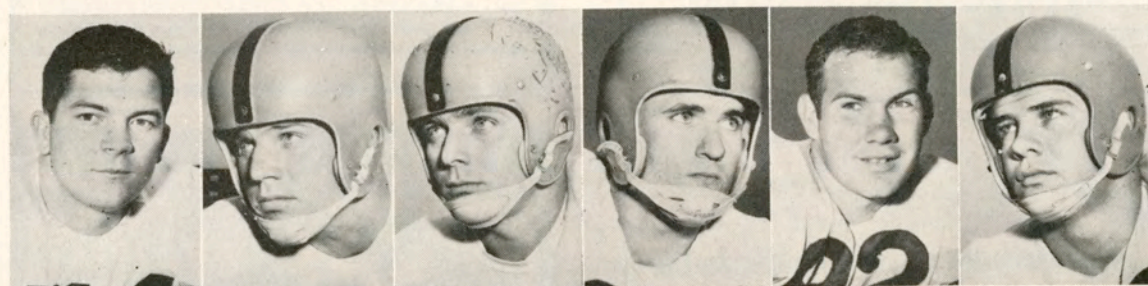
No.	Players	Pos.	Class	WT.	HT.	Age	No. Ltrs.	Hometown
52	Warner Alford, c		Soph.	180	6-0	19	0	McComb, Miss.
83	Don Barkley, le		Senior	187	6-2	21	1	Belzoni, Miss.
84	Charles Burke, le		Senior	190	6-0	22	1	Natchez, Miss.
81	Johnny Brewer, le		Soph.	200	6-3½	20	0	Vicksburg, Miss.
22	George Blair, lhb		Soph.	185	6-0	19	0	Pascagoula, Miss.
15	Raymond Brown, qb		Senior	190	6-1	21	2	Greenville, Miss.
16	Billy Brewer, qb		Soph.	177	6-0	23	0	Columbus, Miss.
25	Jimmy Champion, rhb		Soph.	175	5-10	20	0	Whitehaven, Tenn.
34	Bill Caldwell, lhb		Soph.	175	5-11	21	0	Trussville, Ala.
51	Milton Crain, c		Junior	215	6-5	19	1	Memphis, Tenn.
64	Hanson Churchwell, rg		Junior	230	6-0	21	0	Lucedale, Miss.
67	Harold Cooper, lg		Junior	195	6-0	20	1	Bolivar, Tenn.
86	Jack Cavin, re		Soph.	210	6-1½	20	0	Crosby, Miss.
10	Bobby Franklin, qb		Soph.	165	5-10	21	0	Clarksdale, Miss.
19	Don Fritchie, qb		Soph.	185	6-0	20	0	Slidell, La.
41	Charles Flowers, fb		Soph.	190	6-0	20	0	Marianna, Ark.
88	Larry Grantham, re		Soph.	195	6-0	19	0	Gatesville, Miss.
54	Allen Green, c		Soph.	195	6-1	19	0	Hanceville, Ala.
87	George Gregory, re		Soph.	190	6-½	20	0	Birmingham, Ala.
79	Gene Hickerson, rt		Senior	225	6-2	22	2	Memphis, Tenn.
61	Willie Hickerson, rg		Junior	200	6-0	20	0	Memphis, Tenn.
42	Bill Hurst, fb		Senior	200	6-0	23	2	Bruce, Miss.
24	James Hall, lhb		Soph.	165	5-9	19	0	Tupelo, Miss.
85	Warren Jenkins, le		Junior	190	6-1	21	0	Washington, D. C.



Grantham Hall G. Hickerson W. Hickerson Hurst Kempinska



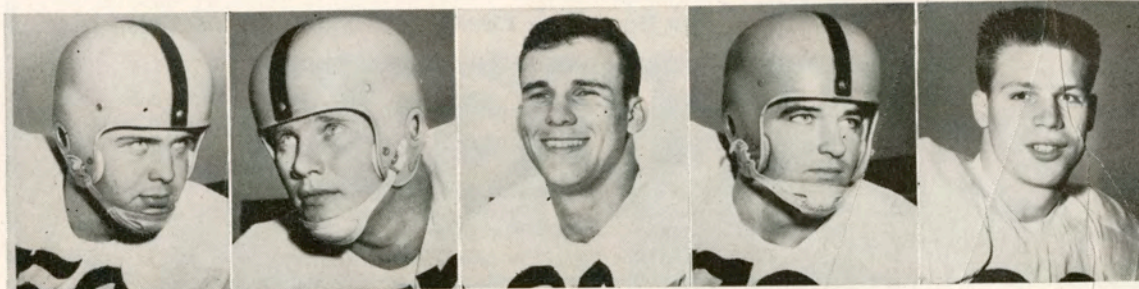
Khayat Kirk Lott Lovelace Pruett Reed



Sanders Simpson Smith Taylor Templeton Terrell

Ole Miss Roster

No.	Players	Pos.	Class	WT.	HT.	Age	No. Ltrs.	Hometown
76	Robert Khayat,	rt	Soph.	210	6-2	19	0	Moss Point, Miss.
65	Jack Keenan,	lg	Soph.	205	5-11	20	0	Humboldt, Tenn.
62	Charles Kempinska,	rg	Soph.	205	5-11½	18	0	Natchez, Miss.
40	Ken Kirk,	fb	Soph.	195	6-1	19	0	Tupelo, Miss.
30	Kent Lovelace,	rhb	Junior	185	5-11	21	0	Indianola, Miss.
31	Billy Lott,	rhb	Senior	190	6-1	22	2	Sumrall, Miss.
78	Robert Owens,	lt	Soph.	210	6-2	19	0	Charleston, Miss.
53	Billy Pruett,	c	Senior	200	6-2	20	2	Greenwood, Miss.
43	Dewey Partridge,	fb	Soph.	183	5-11	20	0	Philadelphia, Miss.
20	Billy Rittman,	lhb	Soph.	176	5-11	20	0	Stuttgart, Ark.
23	Leroy Reed,	lhb	Senior	185	6-0	21	2	Belboni, Miss.
70	Sher Roberson,	lt	Soph.	210	6-1	19	0	Clarksdale, Miss.
60	James Spears,	rg	Soph.	208	6-0	20	0	Philadelphia, Miss.
68	Jackie Simpson,	lg	Senior	202	6-0	21	2	Memphis, Tenn.
74	Aubrey Sanders,	rt	Soph.	210	6-2	20	0	Picayune, Miss.
71	Rudolph Smith,	lt	Junior	216	6-2	21	1	Philadelphia, Miss.
33	Tommy Taylor,	rhb-lhb	Junior	178	5-11	20	1	Jackson, Miss.
82	Billy Templeton,	le	Junior	198	6-3	21	1	Utica, Miss.
50	Decker Terry,	c	Soph.	190	6-½	20	0	Greenville, Miss.
63	Marvin Terrell,	lg	Soph.	198	6-0	19	0	Indianola, Miss.
75	Wayne West,	lt	Senior	215	6-2½	22	2	New Albany, Miss.
32	Cowboy Woodruff,	rhb	Senior	177	5-10½	19	0	Batesville, Miss.
80	Don Williams,	re	Senior	205	6-1	20	2	Drew, Miss.
73	Lowell Winston,	lt-rt	Junior	210	6-2	21	0	Memphis, Tenn.



Terry West Williams Winston Woodruff

A Great Name in Clothing

SCHWOBILT
CLOTHES REG. U.S. PAT. OFF.

"SUITS THE SOUTH"

For Your Convenience

FIRST AID STATIONS

are located at the Northwest
and Southeast corners of the Stadium

WILMER A. SIMPSON
President

EDWIN A. STOUTZ
Secty-Treas.



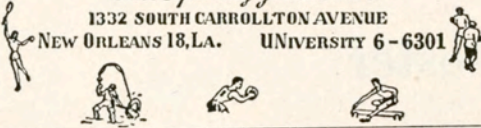
Simpson-Stoutz Sporting Goods Co.

INCORPORATED

The Sporting Goods Store

1332 SOUTH CARROLLTON AVENUE

NEW ORLEANS 18, LA. UNIVERSITY 6-6301



DELMONICO
RESTAURANT

ESTABLISHED 1895

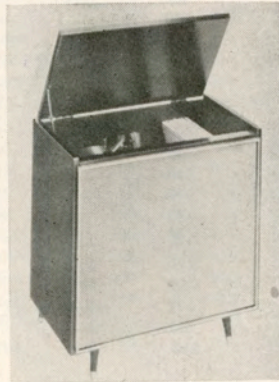
1300 ST. CHARLES

RAYmond 4937

MAGnolia 9307

**Come To Weiner's For The Latest
In Decca Hi-Fidelity**

ALSO SEE OUR
COMPLETE SELECTION
OF DECCA AND CORAL
ALBUMS



The Douglas — \$159.95

Available in Mahogany
Blonde, Walnut
or Fruitwood

Latest 4-Speed
Changer With Automatic
Shut-off Feature After Last
Record Has Played

WEINER'S

Telephone FOrEst 6-4141
120 HUEY P. LONG
GRETNA, LA.

Telephone FOrEst 6-3535
137 - 139 DELARONDE
ALGIERS, LA.

Tulane Printing Office

CAMPUS PRINTERS



PLUM near
AUDUBON ST.

UNiversity 6-2741
Ext. 344

Beat Household Pests!

Let
**MILLER
THE
KILLER**
Carry the Ball



COMPLETE TERMITE CONTROL SERVICE

4812 PRYTANIA
TW 9-6361

A & M Pest Control

THE BEACON RESTAURANT and STEAK HOUSE

Napoleon at So. Claiborne Aves.

★ ★ ★

Nine Course Dinners
Served Nightly

STEAKS OF ANY KIND

VIC LaROCCA

FAST SERVICE ON PROCESSING OF
16 MM BLACK AND WHITE
MOTION PICTURE FILM
COLOR OR B&W
DUPLICATING

Producers of 16 mm
Educational, Industrial and Special Events
Motion Pictures

PAN-AMERICAN FILMS

735 POYDRAS ST.
New Orleans

Ticket Information

HOME GAMES (individual) — \$4.00,
sidelines; \$2.50, South Side.

“FAMILY PLAN” (Unreserved seats in
North stands—\$2.00 (adults), \$.50 high
school age and under).

GAMES AWAY (Seats in special Tulane
sections)—\$3.50, Texas; \$3.50, Marquette;
\$4.00, Miss. State; \$3.75, Alabama; \$5.00,
L.S.U.

TICKET OFFICES—Tulane Stadium,
6401 Willow Street (UNiversity 1-3661 and
UNiversity 1-9381); Werlein's Box Office,
605 Canal Street (MAGnolia 6201).

MAIL REQUESTS—Include check or
money order payable to Tulane Univer-
sity, with 25 cents added for postage and
handling. Address: TULANE TICKET
OFFICE, 6401 WILLOW STREET, New
ORLEANS 18, La.



PEARCE FORD'S
HI-LO PLAN

“...good as an
extra point”

PEARCE FORD, INC.
1995 GENTILLY
4143 GENTILLY
We Trade Your Way!



"Sorry, wrong number!"

Bellevue



"Coach says they can't fit the game in this afternoon!"

B. G. ...

"South's Largest Camera Store"

Expert Film Color
 Developing Black & White

Gus Mayer
 CO. LTD.
 CANAL ST. GENTILLY

Tax-Free Municipal Bonds
Local Investment Securities

CALL OR WRITE

HOWARD, WEIL, LABOUISSSE, FRIEDRICHS
 AND COMPANY
Investment Securities
 222 Carondelet St. — TULANE 2711
 NEW ORLEANS, LOUISIANA

MONROE • ALEXANDRIA • LAKE CHARLES • COVINGTON • NATCHEZ

BEHIND THE SCENE AT TULANE



G. J. (BUDDY) DEMONSABERT
Business Manager of Athletics

MRS. MARGUERITE ZEHNER
Ticket Manager

DR. LLOYD KUHN
Team Physician



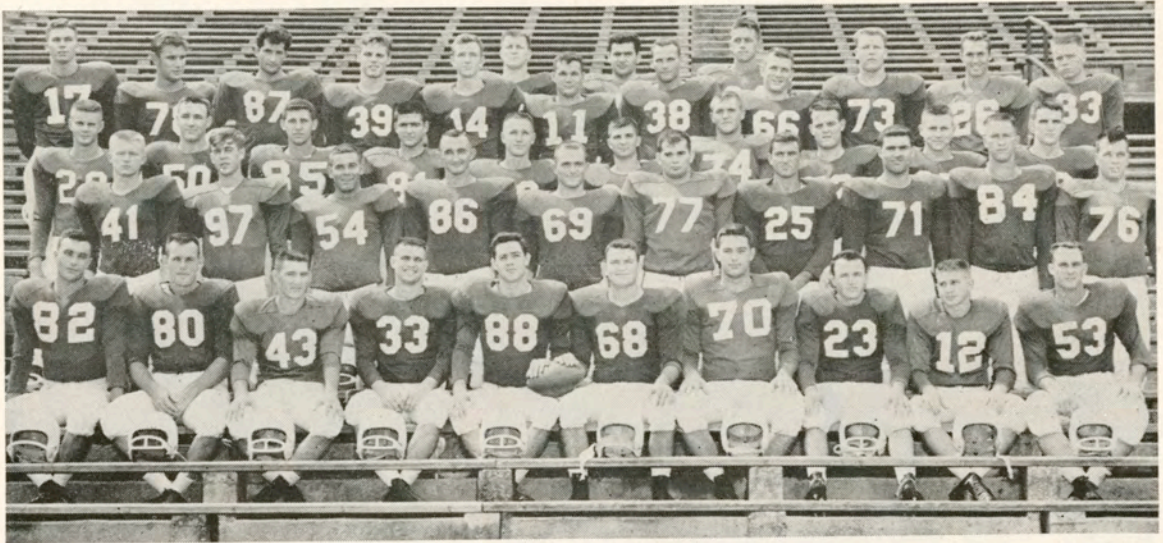
SEE THE MOVIES
OF ALL
TULANE GAMES
SUNDAY AFTERNOONS
WWL-TV CHANNEL **4**

BROUGHT TO YOU BY
DIXIE 45 BEER
BRAND

DIXIE BREWING CO., INC. • NEW ORLEANS



1957 TULANE GREEN WAVE SQUAD



Front row (l-r) J. Montgomery, W. Billon, R. Marcel, T. Warner, R. Riley, D. A. Emerson, C. Hansen, V. Jester, G. Newton, B. Tyler. Second Row: J. Bratton, B. Hendez, P. Hawley, L. Young, J. Blount, D. Lockwood, G. Tazetti, C. Cotros, D. Painter, D. Egan. Third Row: J. Arms, N. Jones, J. Musial, P. Abadie, J. Nielsen, G. Guillot, J. LeSage, B. Rawson, C. Burluson, P. Heffington. Fourth Row: R. Petitbon, B. Klock, F. Siciliano, J. Legendre, R. Baumbach, C. Sweeney, J. Magee, C. Passman, B. Darré, W. Ellzey, C. Gamble. Fifth Row: J. DiVietro, T. Nolan, K. Fleming. Missing from picture: C. Mason, F. Dickerson, C. Andrews, B. Clements, J. Walker, J. Kepper, T. Dupin.

**All-America favorite
...ice-cold Coke**



"Coke" is a registered trade-mark.

BOTTLED UNDER AUTHORITY OF THE COCA-COLA COMPANY BY
THE LOUISIANA COCA-COLA BOTTLING CO., LTD.

shopping

at *Holmes*

is traditional in New Orleans



slacks

jackets

sport coats

toppers

Come in . . . and you'll cheer for the HOLMES Team! Outstanding quality and a truly friendly atmosphere make HOLMES the favorite shopping place of New Orleanians.

HOLMES features the latest in men's styles and furnishings—world-famous labels, from sports clothes to evening attire.

Whenever you're downtown in New Orleans, make it a point to shop at HOLMES . . .

before the game
... dine at **HOLMES**

May we suggest a wonderful way to start the evening . . . a delicious seafood dinner in HOLMES' beautiful air-conditioned restaurant—then on to the game! HOLMES features special seafood dinners on Friday nights and moderate prices prevail.



New filter-tip **OASIS** with soothing menthol mist!

Smokers who
know
now smoke
the big "O"



© Liggett & Myers Tobacco Co.

Freshest new taste in smoking!

- Menthol Mist does *more for you, soothes . . .* improves the flavor, too!
- Oasis' filter works just right, easy-drawing . . . and *pure white!*
- And for a *fresher* smoke each light, Oasis' box is *flavor-tight!*

P.S. Oasis tastes *fresh while you smoke . . .* fresh after smoking, too.

O' FLAVOR!

O' FRESHNESS!

OASIS
FILTERS