

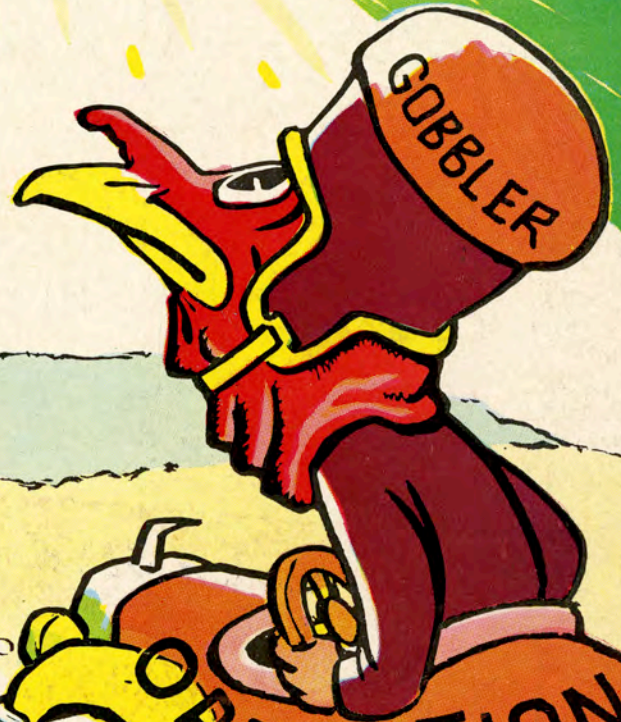
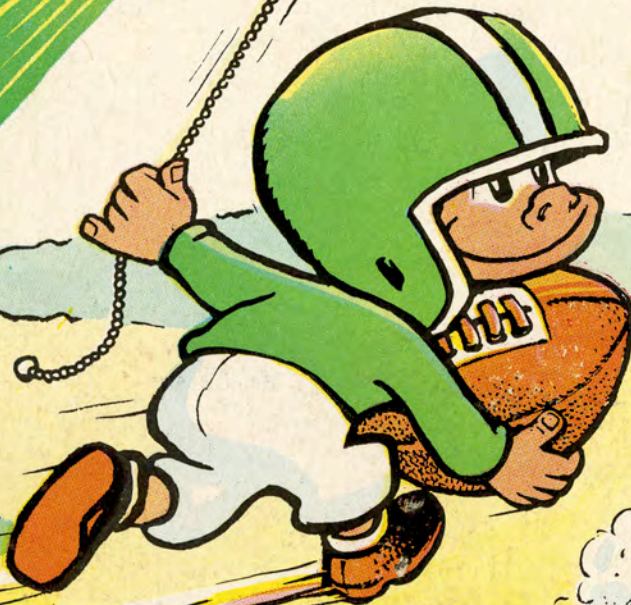
GREENIE

GO

STOP

LIGHTS

CLICK!



ZHASE

THE VIRGINIA TECH GAME

TULANE STADIUM • FRI, SEPT. 20, 1957

SOUVENIR PROGRAM -- 50¢

JAX

Official 1957 Signals and Penalties



Intentional Grounding
—5 yds. Also loss of down



Illegal Procedure, Position, or Substitution
—5 yds.



*Personal Foul
—15 yds. Also possible to expel player



Roughing the Kicker or Holder
—15 yds.



Illegal use of Hands and Arms
—15 yds.



Start the Clock or No More Time-Outs Allowed



*Delay of Game
—5 yds. or 15 yds.



Offside (Infraction of scrimmage or free kick formation)
—5 yds.



*Unsportsmanlike Conduct
—15 yds. Also possible to expel player



*Forward Pass or Kick Catching Interference—Offended team's ball at spot of foul; 15 yds. Also loss of down



Ineligible Receiver Down Field on Pass
—15 yds. Also loss of down



*Ball Illegally Touched, Kicked, or Batted—5 yds. or 15 yds. Also loss of down or offended team's ball at-spot of foul



Incomplete Forward Pass, Penalty Declined, No Play, or No Score



Crawling—5 yds. Helping the Runner, or Interlocked Interference—15 yds.



Illegally Passing or Handing Ball Forward
—5 yds. Also loss of down



Ball Dead: If Hand is Moved from Side to Side Touchback



Illegal Motion
—5 yds.



Safety



Illegal Shift
—15 yds.



Time-Out



Illegal Return
—15 yds.



Clipping
—15 yds.



Touchdown or Field Goal



Ball Ready-for-Play



First Down

*Variable penalty, Referee's Decision

Another **JAX** service to sports lovers . . .
Sports, weather and newscasts
every day from all these stations!

KDAY KOB-TV KFDA-TV KFDD-TV KMID-TV KTXL-TV KWTX-TV KTBC-TV KPRC-TV KENS-TV KRIS-TV KSIX-TV KGBT-TV KVOO-TV WKY-TV KVSQ-TV WTOK-TV KSLA-TV WLBT-TV WBAP-TV KLTV-TV KALB-TV WAFB-TV WALA-TV WEAR-TV WJDM-TV KRLD-TV WDSU-TV KLFY-TV KGUL-TV

Tune in . . and join the millions from coast to coast who say,

"Hello Mellow **JAX**
you're the beer for me."



JACKSON BREWING COMPANY,
New Orleans, La.

Famous for

FINE FOOD and DRINK



Enjoy the Specialties of These
Noted Restaurants:

ANTOINE'S

... Since 1840

713 St. Louis • RAYmond 2554

12 Noon to 9 P.M. Closed Sundays

ARNAUD'S

... Carnival Room

813 Bienville St. • MAgnoLia 5433

11 A.M. to 12:30 A.M. Daily

BROUSSARD'S

... Napoleon Patio

819 Conti St. • MAgnoLia 4800

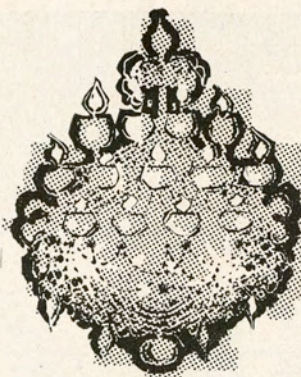
11:30 A.M. to 11:30 P.M.

Closed Wednesdays.

The Sign
of **GOODNESS**
for 52 Years!



Quality Dairy Products
and
Frozen Foods



the grand
manner

in every city there
is one restaurant
that is traditionally
known for its de-
licious food and
gracious service —
for dining in the
grand manner — in
New Orleans it's
Commander's Pal-
ace.

member of the diner's club
open 11 a.m. 'til midnight daily

Commander's
 **Palace**

Washington at Coliseum

Call TW 1-5733 - TW 1-7240

"A GOOD DEAL"

DEPENDS ON THE DEALER

Largest Used Foreign-Sports
· Car Dealer South

We Buy — Trade — Finance

SERVICE MOTOR CO.
2645 TULANE AVE.

Earle P. Abadie
Buddy Orange "A. J." Johnson

TUlane 7071

Open 8 A.M. - 9 P.M.

*The Lights
Speak*

Another Good Job

by

NOLA ELECTRIC

824 BARONNE

Call RA-1201



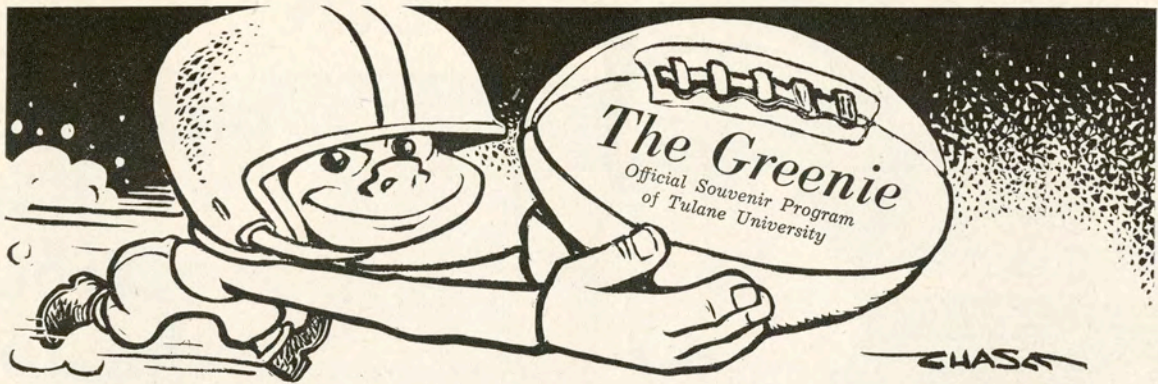
before or after the game—

Dinner at Brennan's

You've read about Brennan's in national magazines . . . now come and see why the food rates raves from top columnists. Drop in for dinner before or after the games, or for late supper. Come as late as midnight.

Brennan's

FRENCH RESTAURANT
417 ROYAL ST., NEW ORLEANS



LARRY KARL, *Editor*

Division of Athletics, Tulane University, New Orleans 18, La.

National Advertising Representative: Spencer Advertising Company, Inc., 271 Madison Avenue, New York, N. Y.

Vol. 27

September 20, 1957

No. 1

Tulane Vs. Virginia Tech

Tonight's game begins a new era in Tulane football history as the Green Wave will be playing under lights for the first time in Tulane-Sugar Bowl Stadium.

The bright arcs will not be the only thing new, however, since most of the Greenies who will take the field for the opening whistle will be new as starters.



KARL

With a crop of new faces in his No. 1 unit, Coach Andy Pilney starts his fourth campaign as head coach. This season defies prediction, since starters are back at only three positions, and lettermen on

the squad number 13.

A good first eleven with inexperience in reserve is the Tulane picture as the Wave takes on Virginia Tech here tonight.

For Greenie fans there are several home boys to watch with more than casual interest. Leading the list of home stars are co-captains Gene "The Mouse" Newton (12) at quarterback and Jack Montgomery (82) at left end. At the right flank, veteran Will Billon (80) is back for his third season and halfbacks will be such established players as Claude (Boo) Mason (20), Virgil Jester (23) and Tommy Warner (33) who lettered in 1953, '54 and '55 but missed last season due to injuries. In the middle of the Wave's new line, John DiVietro (62), Benny Ray Tyler (53) and Jim Blount (69) bear watching. There

are other top calibre boys, who have given indication that with experience the Wave may roll with authority.

Virginia Tech, coached by Frank Moseley, goes against Tulane for the second time. Last year, the Gobblers, from Blacksburg, Va., fought a down-to-the-wire battle before being defeated 21-14 by the Greenies. Virginia Tech went on to post a 7-2-1 season and copped co-championship honors in the Southern Conference.

Among the host of veteran gridders on the Tech squad are four lettermen quarterbacks headed by Jimmy Lugar (10) (All-Conference '56). At fullbacks, Bobby Conner (33) is the one to watch. Other top players are end Carroll Dale (84), halfbacks Ray England (43) and Corbin Bailey (49). The Virginians too, are rebuilding the middle of their line, but their nucleus of split T veterans is an imposing foundation upon which to build.

1957 SCHEDULE

Sept. 20—Va. Tech, Home	8 P.M.
Sept. 28—Texas, Austin	8 P.M.
Oct. 5—Marquette, Milwaukee	8 P.M.
Oct. 11—Georgia, home	8 P.M.
Oct. 18—Ole Miss, Home	8 P.M.
Oct. 26—Ga. Tech, Homecoming	8 P.M.
Nov. 2—Miss. State, Jackson	2 P.M.
Nov. 9—Alabama, Mobile	2 P.M.
Nov. 16—Army, Home	2 P.M.
Nov. 30—L.S.U., Baton Rouge	2 P.M.

(All games C.S.T.)

TICKET OFFICES


Stadium, 6401 Willow St. UNiversity 1-3661
Werleins, 605 Canal St. MAgnolia 6201



on campus
and
around
the town

. . . wherever smart men gather and the talk might turn to clothes, you'll hear them say, "I get my things at Maison Blanche". Which isn't too surprising . . . because more people buy more merchandise at MB than any place in New Orleans. †

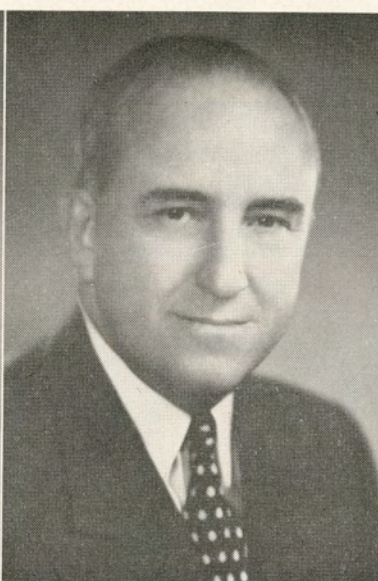
Store for Men,
MB First Floor

MAISON BLANCHE
—Store For—  men

TULANE UNIVERSITY



DR. RUFUS CARROLLTON HARRIS
President



RICHARD O. BAUMBACH
Director of Athletics



ANTON (ANDY) PILNEY
Head Football Coach

VIRGINIA TECH

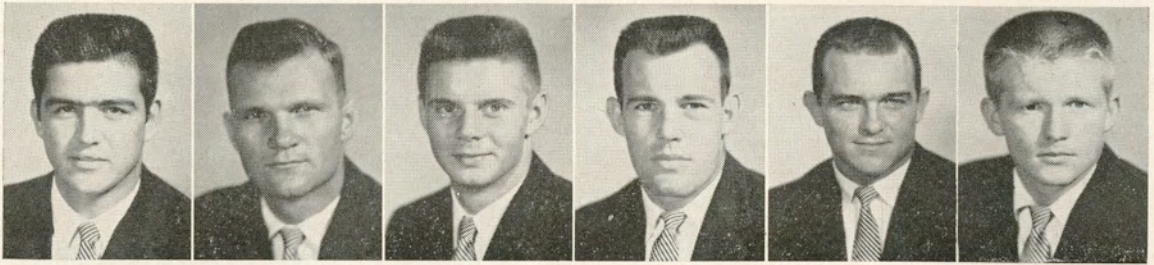


DR. WALTER NEWMAN
President



FRANK MOSELEY
*Athletic Director and Head
Football Coach*

1957 TULANE GREEN WAVE



Abadie

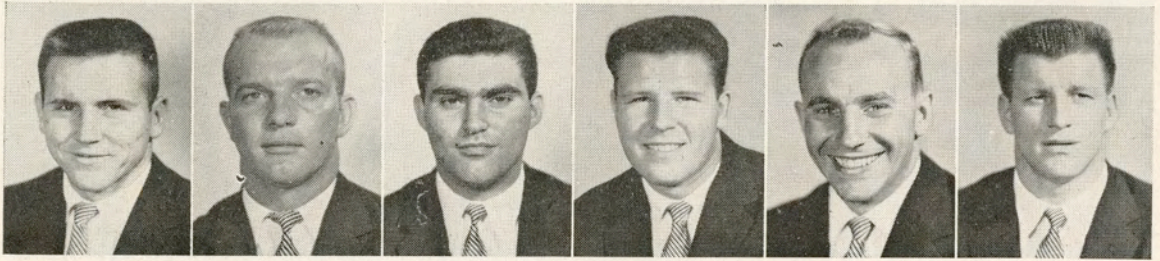
Andrews

Arms

Billon

Blount

Bratton



Burleson

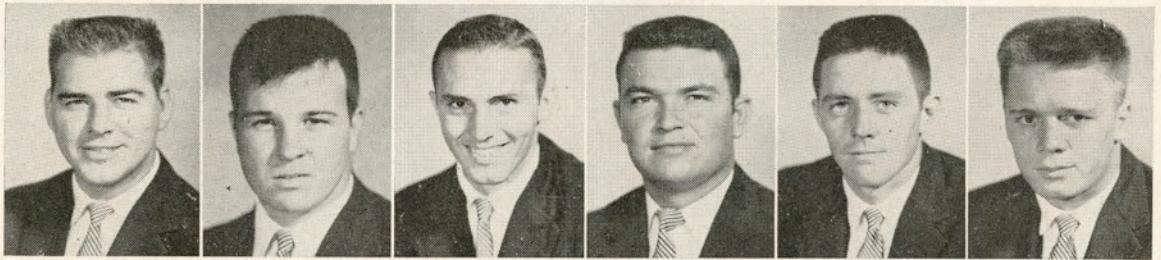
Clements

Cotros

Darré

Dickerson

DiVietro



Dupin

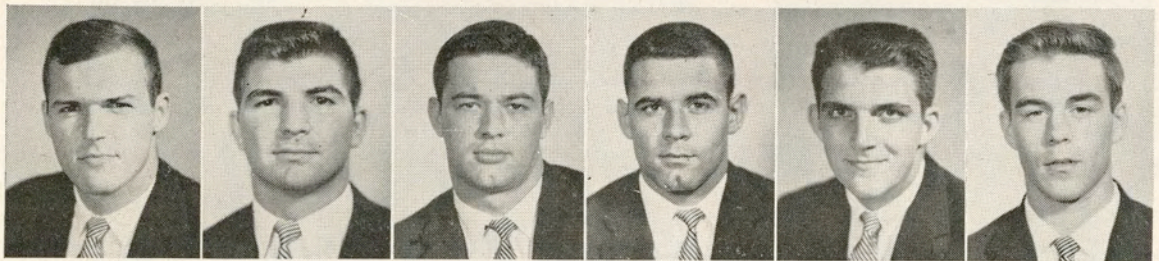
Egan

Ellzey

Emerson

Fleming

Gamble



Gibbons

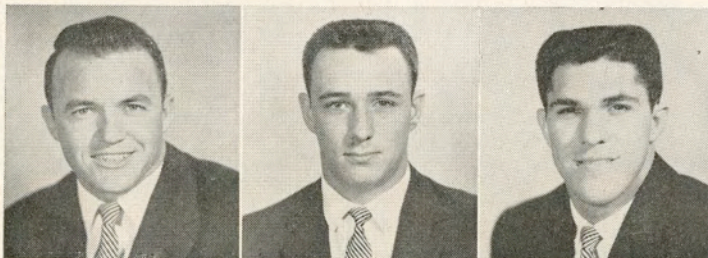
Guillot

Hansen

Hawley

Heffington

Hendee



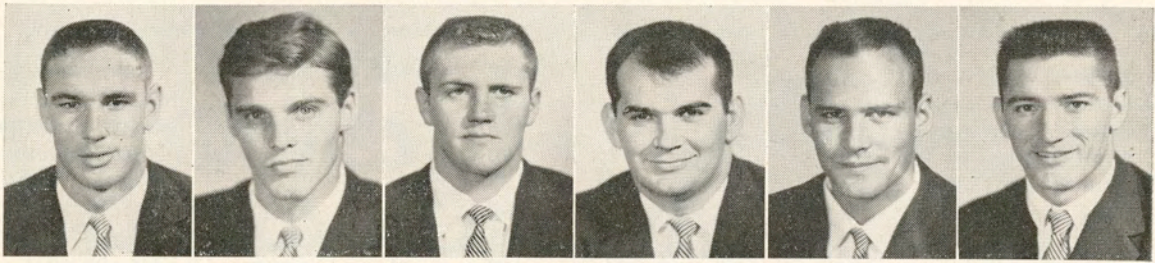
Jester

Jones

Kepper



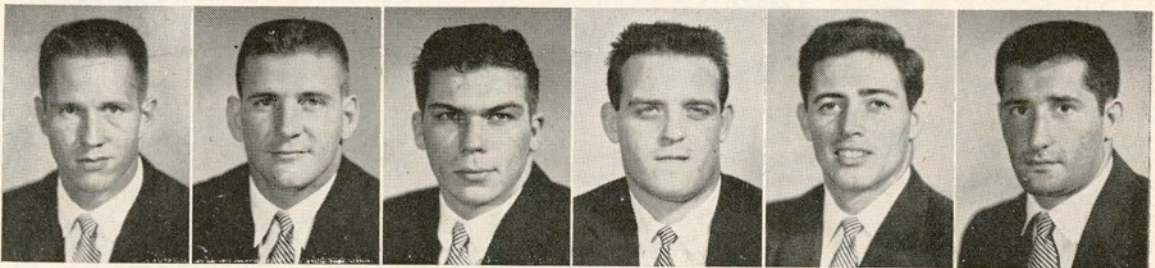
1957 TULANE GREEN WAVE



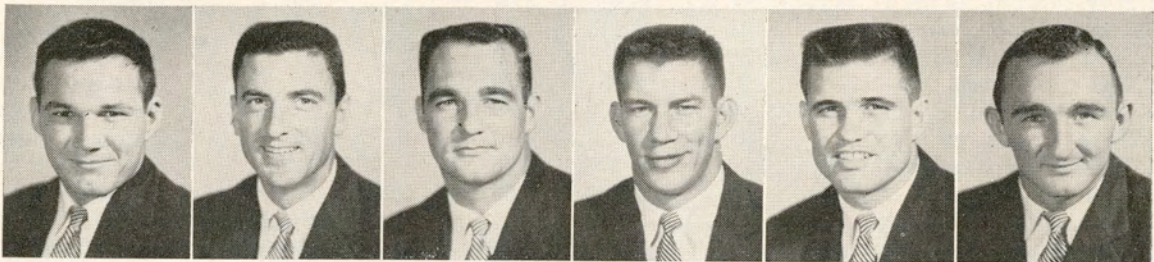
Klock Legendre LeSage Lockwood Magee Marcel



Mason Montgomery Musial Newton Nielsen Nolan



Painter Passman Petitbon Rawson Riley Siciliano



Sweeney Tarzetti Tyler Walker Warner Young



Duncan McCreary Williamson
Ass't. Trainer Ass't. Trainer Student Mgr.



TULANE ROSTER—1957

No.	Name and Pos.	Age	Hgt.	Wgt.	Ltrs.	Class	Hometown
81	Pete Abadie, re	20	6-3	190	0	Jr.	New Orleans
40	Connie Andrews, fb	20	6-1	187	0	Jr.	Magnolia, Ark.
29	John Arms, qb	18	6-2	188	0	Soph.	New Orleans
80	Will Billon, re	21	6-2	200	2	Sr.	New Orleans
69	Jim Blount, lg	20	5-8	190	1	Jr.	Groves, Texas
41	Jeff Bratton, fb	20	6-	190	0	Jr.	Camden, Ark.
65	Connie Burleson, rg	19	6-	198	0	Soph.	Lake Charles
60	Bill Clements, rg	19	5-8	195	0	Soph.	Shelbyville, Ky.
71	Charles Cotros, rt	20	6-3	212	0	Jr.	Memphis, Tenn.
73	Bernard Darre, lt	17	6-1	198	0	Soph.	New Orleans
32	Fred Dickerson, lh	19	5-9	170	0	Soph.	Antioch, Calif.
62	John DiVietro, rg	20	5-10	190	0	Jr.	Easton, Pa.
64	Ted Dupin, lg	20	5-11	190	0	Soph.	Lake Charles
76	Dan Egan, lt	20	6-2	215	0	Jr.	New Orleans
26	Will Ellzey, rh	18	6-	180	0	Soph.	Metairie
68	D. A. Emerson, lg	22	5-11	192	0	Sr.	Marshall, Texas
34	King Fleming, lh	21	6-	175	0	Jr.	Lake Charles
83	Cameron Gamble, re	19	6-1	185	0	Soph.	New Orleans
45	Jack Gibbons, fb	19	5-11	188	0	Jr.	New Orleans
67	George Guillot, rg	19	5-10	185	0	Soph.	Shreveport
70	Charles Hansen, rt	21	6-3	220	2	Sr.	Lake Charles
54	Paul Hawley, c	19	5-10	200	0	Jr.	Shreveport
89	Phil Heffington, re	19	6-3	190	0	Soph.	Shreveport
97	Bill Hendee, rt	19	6-3	190	0	Jr.	Lansing, Mich.
23	Virgil Jester, rh	22	5-11	175	2	Sr.	Springhill
50	Neal Jones, c	19	6-2	195	0	Soph.	Baton Rouge
63	Jimmy Kepper, c	19	5-11	190	0	Soph.	Baton Rouge
78	Bill Klock, c	20	6-1	210	0	Jr.	New Orleans
39	Jimmy Legendre, rh	20	6-	180	0	Soph.	New Orleans
74	Joe LeSage, lt	19	6-4	214	0	Soph.	Beaumont, Texas
77	Don Lockwood, lt	20	6-	210	0	Jr.	Beaumont, Texas
38	James Magee, lh	19	6-	186	0	Soph.	Morgan City
20	Claude (Boo) Mason, rh	20	5-10	160	1	Jr.	Lake Charles
43	Roy Marcel, fb	21	5-10	178	2	Sr.	Houma
82	Jack Montgomery, le	21	6-1	195	2	Sr.	Springhill
85	John Musial, le	20	6-2	180	0	Jr.	Plymouth, Pa.
12	Gene Newton, qb	22	5-10	160	2	Sr.	Shreveport
59	Jens Nielsen, rg	19	6-	180	0	Soph.	New Orleans
79	Tom Nolan, rt	21	6-	210	0	Jr.	Baton Rouge
84	David Painter, le	20	6-7	220	0	Jr.	Lake Charles
42	Charles Passman, fb	19	5-9	185	0	Soph.	Franklinton
17	Richard Petitbon, qb	19	6-3	197	0	Soph.	New Orleans
72	Bill Rawson, rt	21	6-1	215	0	Soph.	Oak Park, Ill.
88	Ronnie Riley, re	21	6-2	185	1*	Sr.	Baton Rouge
87	Frank Siciliano, le	19	6-2	205	0	Soph.	Brooklyn, N. Y.
11	Carlton Sweeney, qb	19	5-8	155	0	Soph.	Lake Charles
25	Gene Tarzetti, rh	25	6-	175	1	Jr.	DeLisle, Miss.
53	Benny Ray Tyler, c	22	6-	193	2	Sr.	Springhill
61	James Walker, lg	21	6-1	195	0	Sr.	Bourg
33	Tommy Warner, lh	22	6-	165	3*	Sr.	New Orleans
86	Leo Young, le	20	6-2	190	0	Jr.	Ferriday

* Lettered in '55, missed '56 season due to injuries.

TULANE GAMES ON RADIO!

.....

Complete Broadcasts
of all games
with

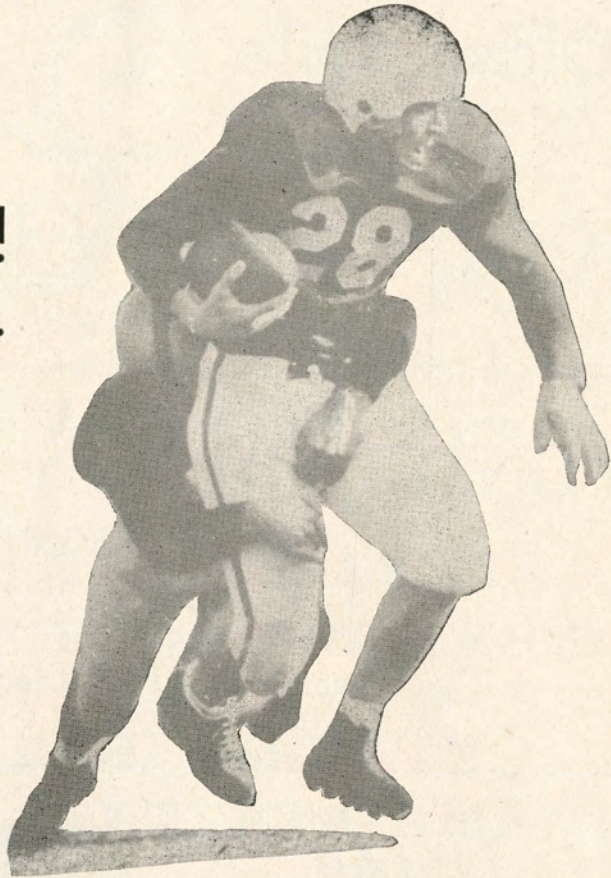
TED ANDREWS
DeALTON NEHER

WDSU

1280 on your dial
Originating Station
For The Greenie Network

.....

Brought to you by



YOUR TEXACO DEALER



... the best friend
your car
has ever had!

DAN'S SERVICE STATION	801 South Rampart at Julia	RA-2284
VIOLET SERVICE STATION	Violet, Louisiana	5-9713
BILL'S TEXACO SERVICE	5401 St. Claude	CR-9454
JAKIE'S TEXACO SERVICE	North Broad and Esplanade	AU-3546
P. & M. TEXACO SERVICECENTER	1139 North Rampart	CA-5255 or MA-0989
PHILIBERT TEXACO SERVICE	2046 Gentilly Blvd.	CR-9233
KIRN'S TEXACO SERVICE	4237 Paris Avenue	FA-9220
O'SHAUGHNESSY SERVICE, INC.	Airline Highway-Metairie	VE-3-5577
ST. CHARLES SERVICE	7701 Maple, corner Adams	UN-1-9574-75
MARTIN & HOFFMAN TEXACO	4250 Washington Ave.	UN-6-1013
ALBERT'S SERVICE STATION	301 N. Carrollton Ave.	AU-9235
SIDNEY'S TEXACO SERVICE	Marrero, Louisiana	FI-1-1222
AL'S TEXACO SERVICE	4740 Canal Street	AU-5055
NICK'S TEXACO SERVICE	1301 Airline Hwy.	Kenner 71-3851
CABALI TEXACO SERVICE	4327 Jefferson Hwy.	VE-5-1118

Oldsmobile

Cadillac

Authorized

SALES - SERVICE - PARTS

Complete Repair Service

PONTCHARTRAIN MOTOR CO.

701 BARONNE

Five Minutes From Leading Hotels

*Cheered by
Millions!*



NOTHING DOES IT LIKE SEVEN-UP!



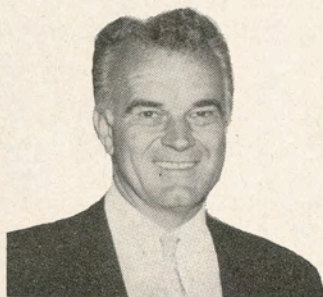
Swan Room

NEW ORLEANS' SMARTEST SUPPER CLUB
PROUDLY PRESENTS

**THE FINEST IN
FOOD AND SERVICE**

**THE BEST IN
ENTERTAINMENT**

SHOWS: 8 and 12 p. m.
FOR RESERVATIONS
CALL MA 3341



MUSIC BY

Nick Stuart's

ORCHESTRA

also enjoy the

Carousel Lounge

FEATURING THE FASCINATING
REVOLVING BAR
BOBBY BROCKMAN AT THE PIANO



**THE NEW
HOTEL MONTELEONE**

WE ACCEPT UNIVERSAL TRAVEL CARDS

TULANE FOOTBALL STAFF



GREEN WAVE STAFF—From Left, Head Coach Andy Pilney, Bob Whitman (backs), Jack Green, (line), Ray Prats (freshmen), Earl (Bubba) Porche (trainer), Mike Karmazin (line), Stan Kottemann (freshmen), John Mazur (backs) and Homer Dedeaux (assistant to the athletic director.)

SUNDAY AFTERNOONS

See complete Motion Pictures of all

TULANE GAMES

WWL-TV

Channel 4

*See every play — enjoy every thrill of both
Out-of-town and Home Games*

Brought to you by your Big Down-Town Pontiac Dealer



"TRADER JOE"

PARETTI

336 DRYADES • CANal 8866

PONTIAC

OPEN
EVERY
NIGHT
'TIL 10

LONGINES
is official timing
watch for
sports associations
the world over
including:

OFFICIAL WATCH FOR TIMING THIS GAME

Longines

THE WORLD'S *Most Honored* WATCH

10 WORLD'S FAIR GRAND PRIZES • 28 GOLD MEDALS

HIGHEST OBSERVATORY HONORS FOR ACCURACY

OFFICIAL WATCH FOR CHAMPIONSHIP SPORTS

THE FIRST WATCH OF AVIATION AND EXPLORATION



U.S. OLYMPIC COMMITTEE



NATIONAL COLLEGIATE
ATHLETIC ASSOCIATION



NATIONAL AERONAUTIC
ASSOCIATION



AMERICAN POWERBOAT
ASSOCIATION



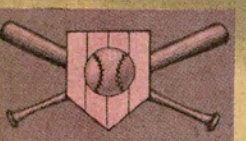
NATIONAL HORSE SHOW
ASSOCIATION



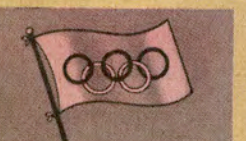
NATIONAL SKI ASSN.



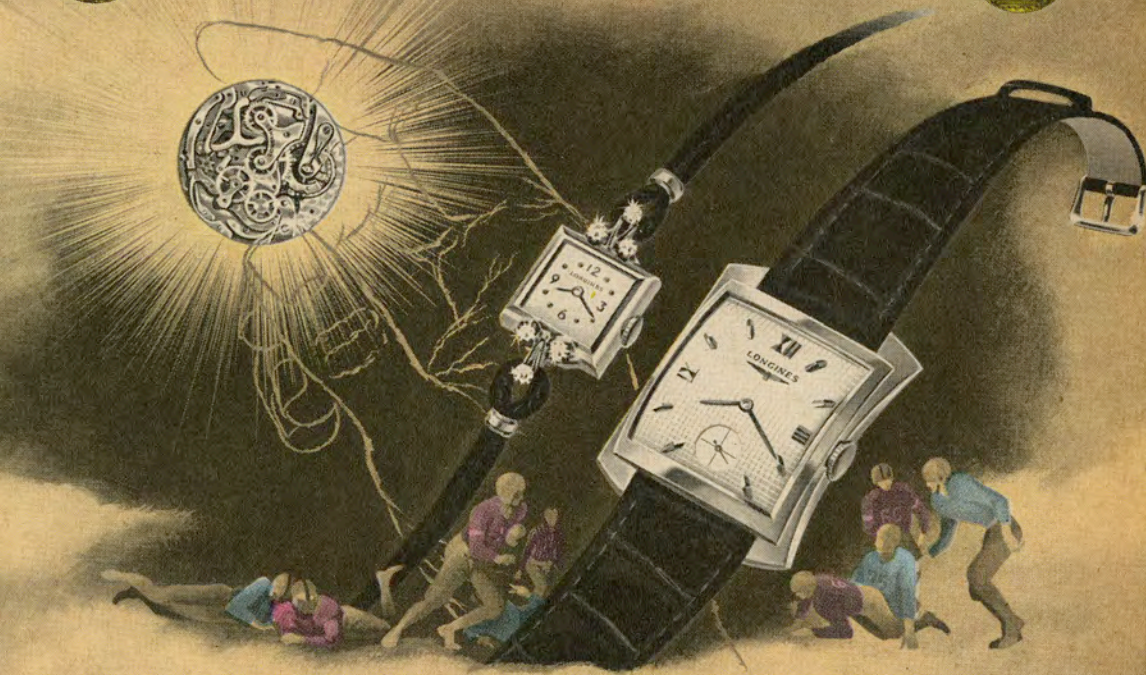
NATIONAL FOOTBALL
LEAGUE



MAJOR LEAGUE BASEBALL



OLYMPIC WINTER GAMES
1960



LONGINES HONORS YOUR TIME

The pre-eminence of Longines in sports timing results from those inbuilt qualities of accuracy and dependability which have made Longines *the world's most honored watch*. These are the identical qualities which have won for Longines the highest honors to which a watchmaker can aspire

—including ten world's fair grand prizes, 28 gold medals, highest observatory awards for accuracy. A Longines watch will honor *your time*. And, among Longines' 300 fine watch models there is the perfect style and type *for you*. Your Longines-Wittnauer Jeweler will be *honored* to serve you.

Illustrated—Longines Starlight Serenade L-J 6, elegant 14K gold watch with 6 diamonds, \$175;

Longines Presidency "E", 14K gold case, \$125. Other models from \$71.50. Federal tax included.

Longines-Wittnauer Watch Company

SINCE 1866 MAKER OF WATCHES OF THE HIGHEST CHARACTER

New **BLADE-ELECTRIC**

Shaves Close as a Safety Razor with Electric Speed and Convenience

an exclusive advantage with the

Sunbeam

HOLLOW GROUND*
BLADE-ELECTRIC
SHAVEMASTER
RAZOR

Actually shaves *below the beard line* because the big, smooth head flattens skin mounds and pops whiskers high. There's nothing between the blade and the base of each whisker, and you shave with a gentle, circular motion that gives your face a healthy, youthful glow. Remember, SHAVEMASTER is the only electric shaver with a real hollow ground* double edge blade powered by a 16-bar armature-type motor.

**ASK YOUR DEALER ABOUT A
FREE 14-DAY HOME TRIAL!**

*HOLLOW GROUND
DOUBLE EDGE BLADE
IS SELF-SHARPENING



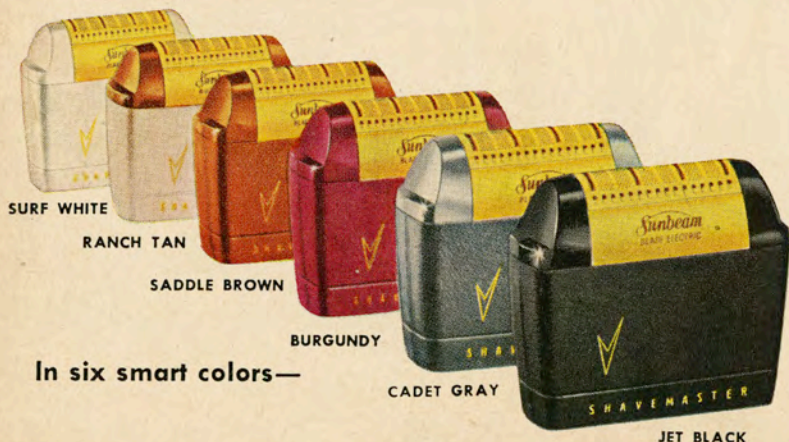
Look for the **MARK OF QUALITY**

SEE YOUR **Sunbeam** DEALER

©S. C. ©SUNBEAM, SHAVEMASTER,



See the SHAVEMASTER demonstrated on SUNBEAM sponsored NCAA Football and the PERRY COMO SHOW over NBC-TV, also on PREMIERE PERFORMANCE.



SURF WHITE

RANCH TAN

SADDLE BROWN

BURGUNDY

CADET GRAY

JET BLACK

In six smart colors—

Cam

CAMPUS PICTURES

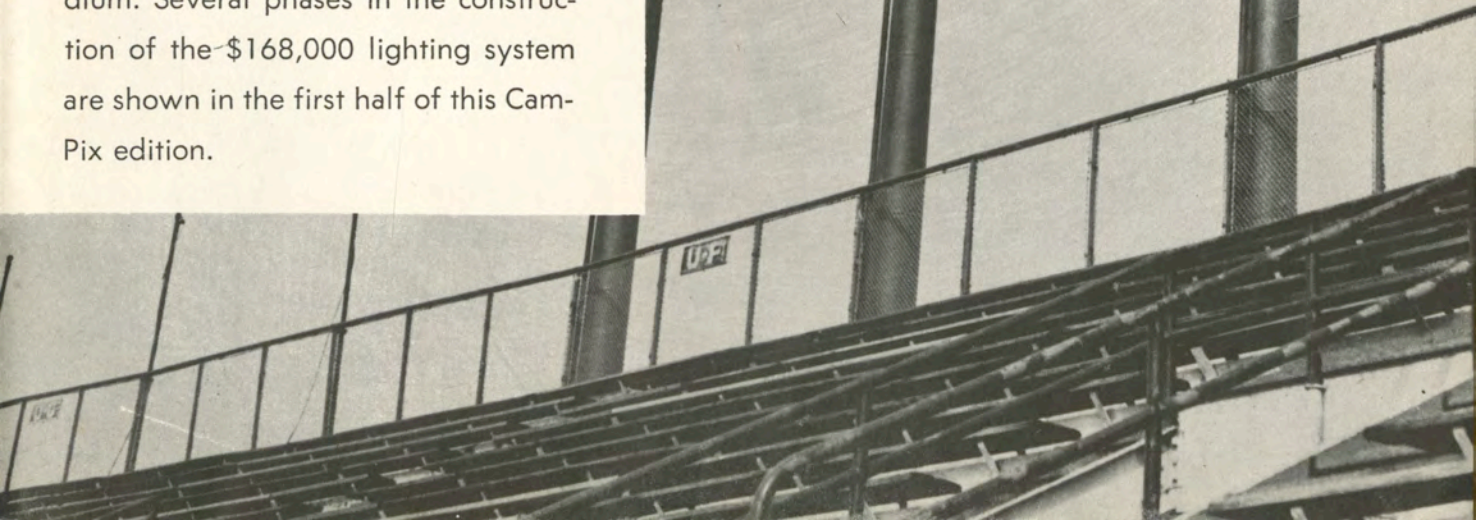
Pix

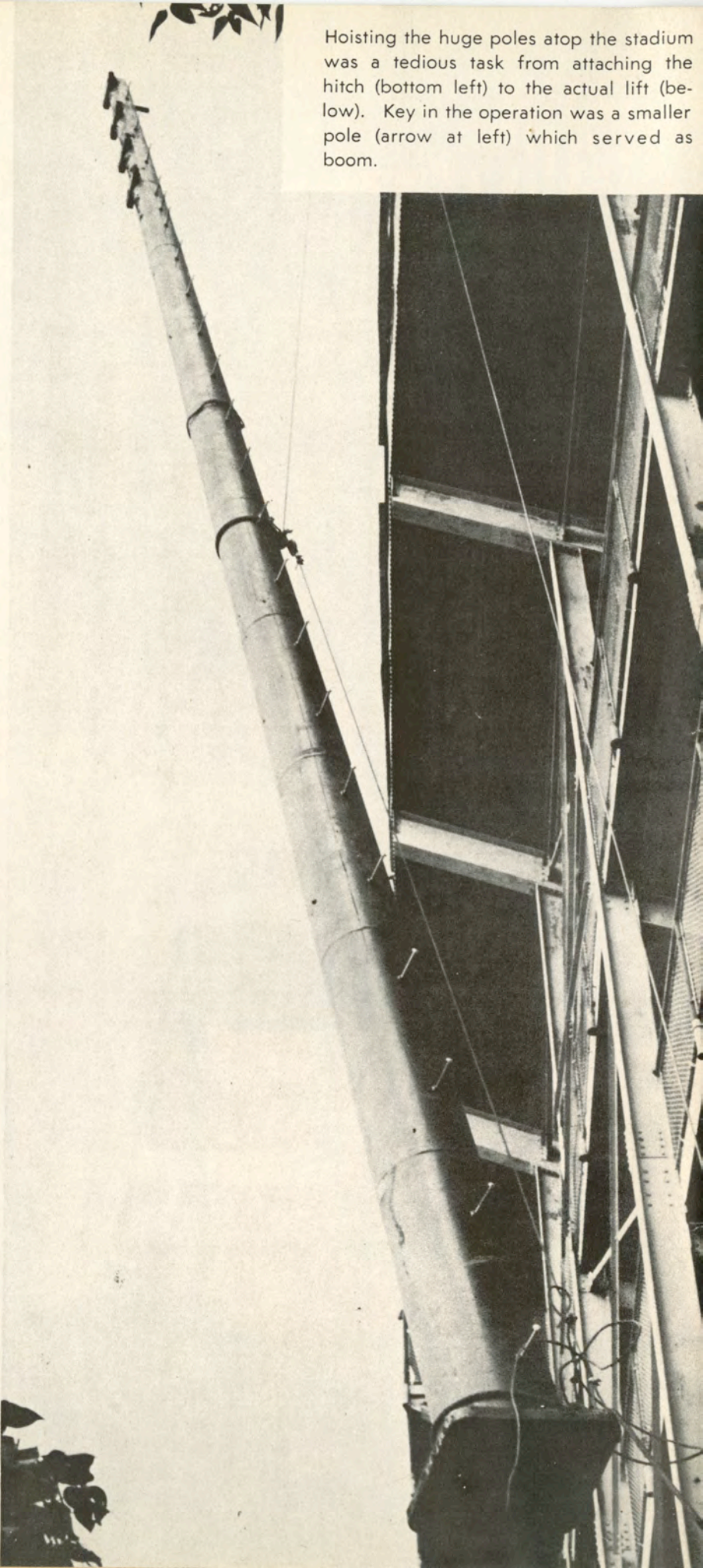
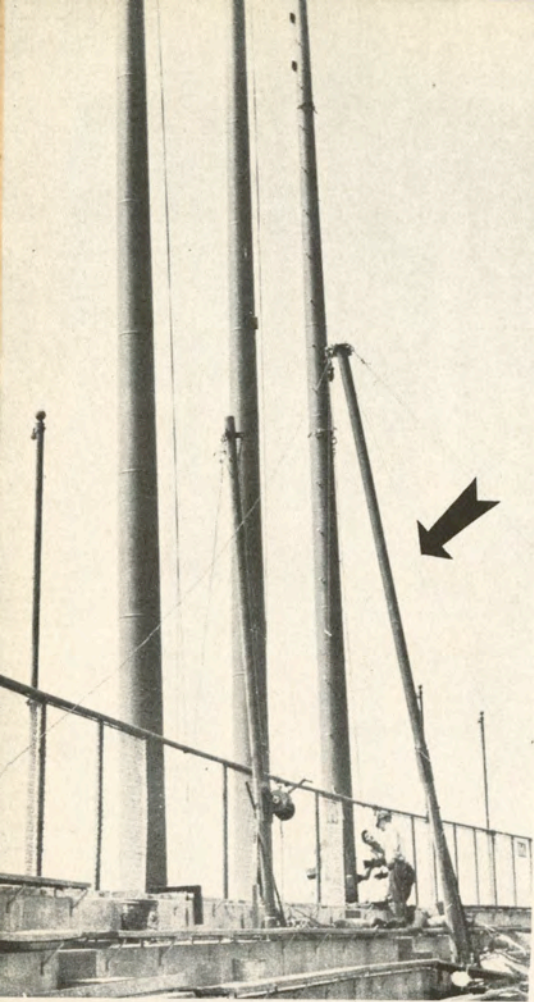
A MEDLEY OF

© TULANE UNIVERSITY 1957



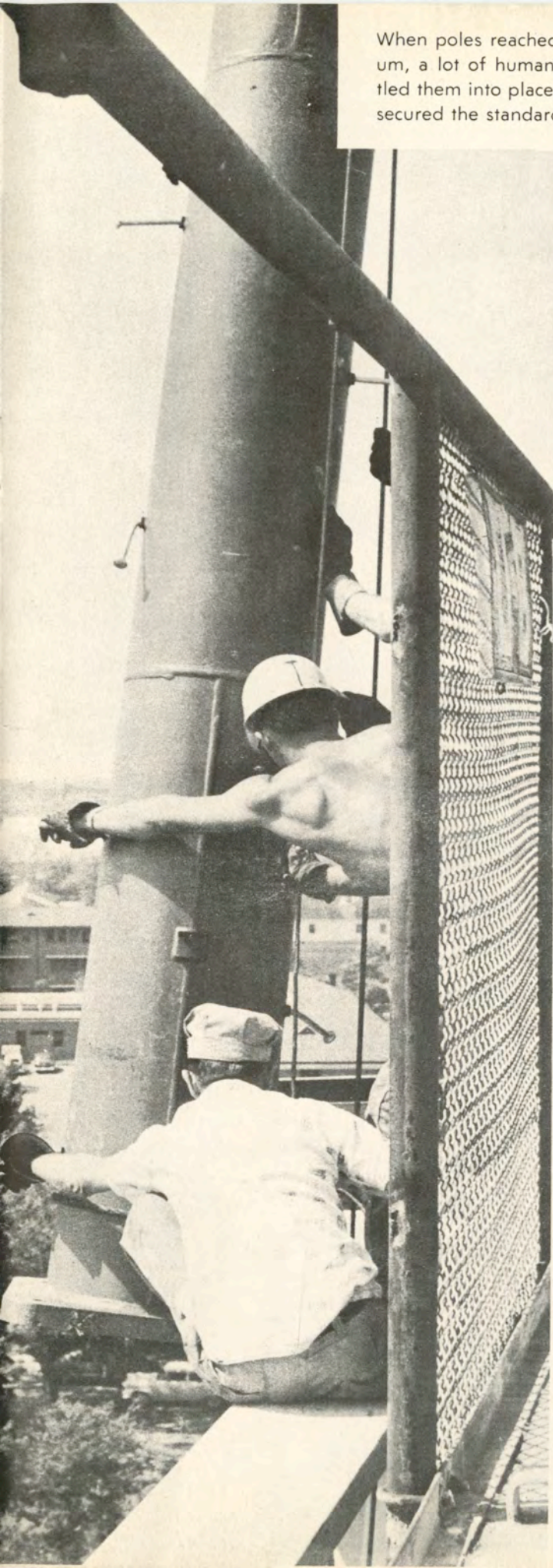
Tonight's game is the first in history under lights in Tulane-Sugar Bowl Stadium. Several phases in the construction of the \$168,000 lighting system are shown in the first half of this Cam-Pix edition.



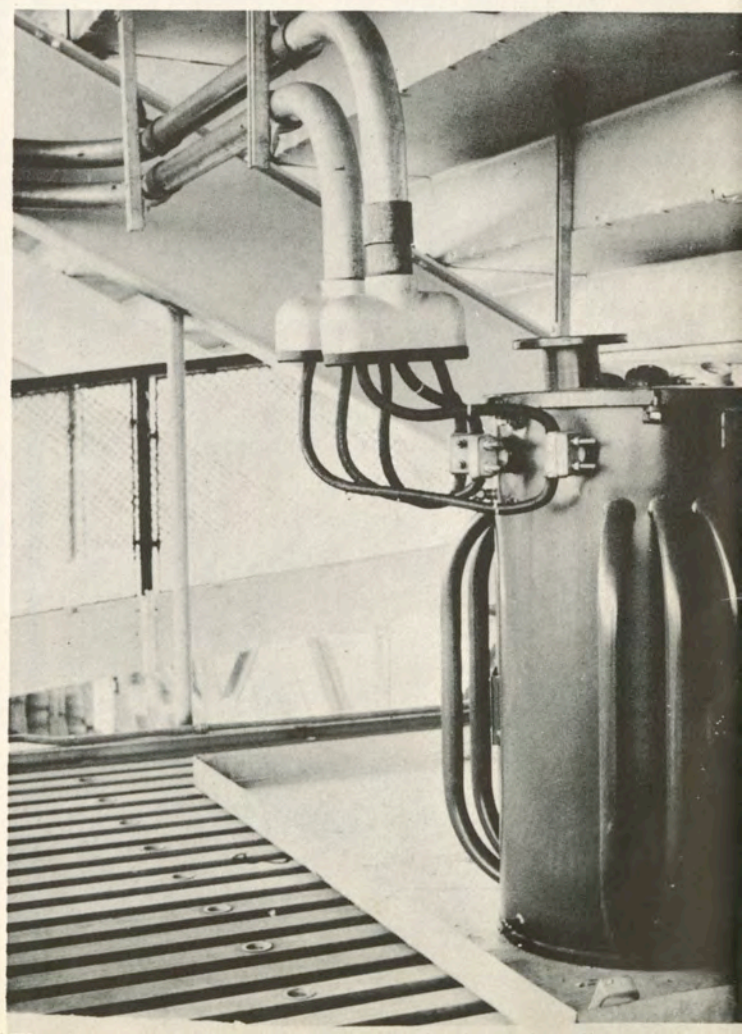
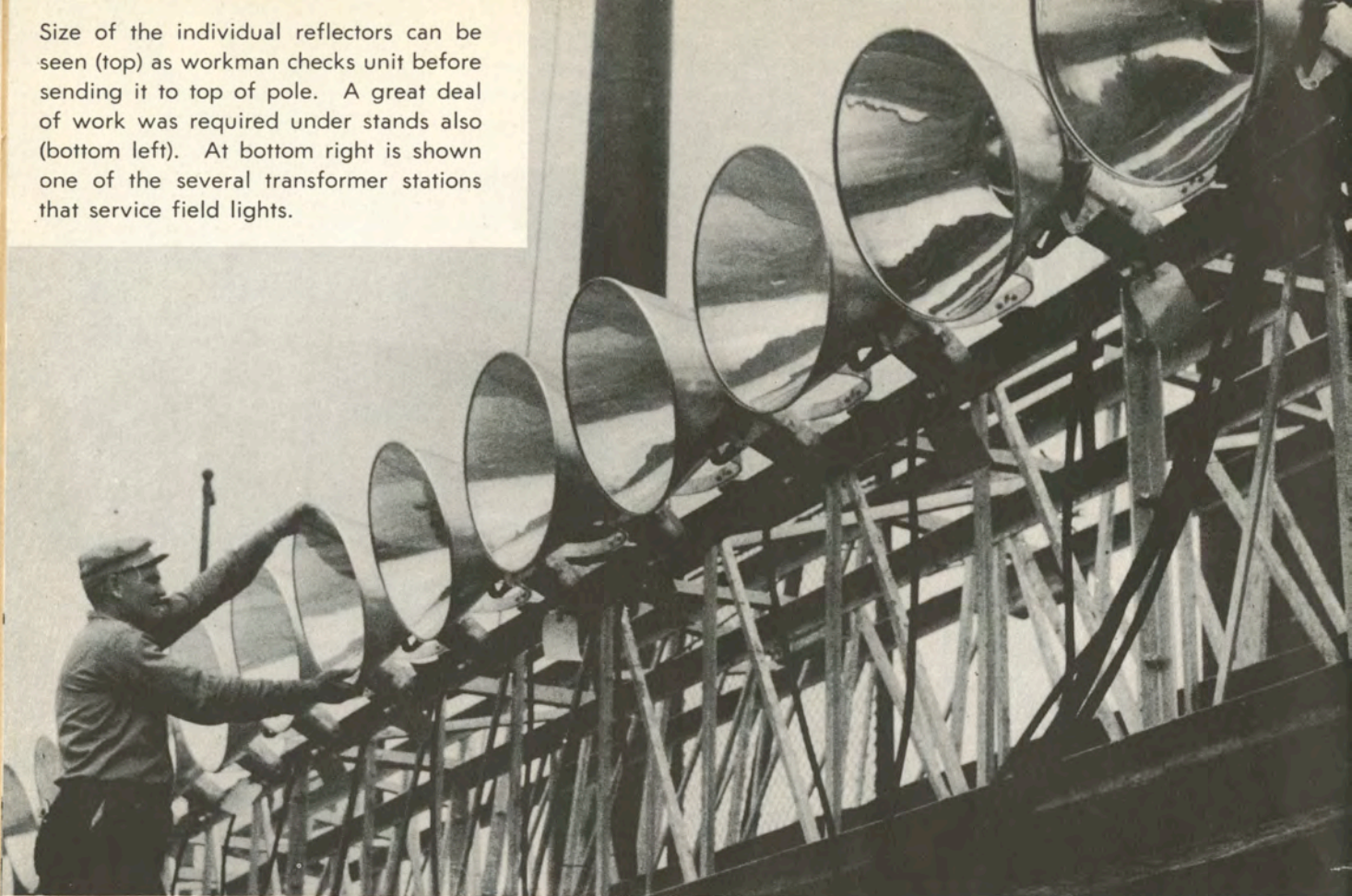


Hoisting the huge poles atop the stadium was a tedious task from attaching the hitch (bottom left) to the actual lift (below). Key in the operation was a smaller pole (arrow at left) which served as boom.

When poles reached the top of the stadium, a lot of human muscle power wrestled them into place (left) then huge bolts secured the standard (right).

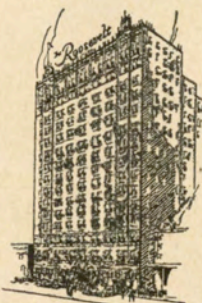


Size of the individual reflectors can be seen (top) as workman checks unit before sending it to top of pole. A great deal of work was required under stands also (bottom left). At bottom right is shown one of the several transformer stations that service field lights.



New Orleans' Finest

In America's Most Interesting City



THE ROOSEVELT is located in the heart of Romantic old New Orleans. It is in the center of business and social activities and is close to the Theatre, Shopping, French Quarter, and Business Districts . . . You will like the tasteful luxury and home-like atmosphere of this modern hotel where the traditions of Southern Hospitality are maintained the year 'round.

900 ROOMS WITH BATH

MODERATE RATES

SEYMOUR WEISS, *President and Managing Director*
A. C. BELLANDE, *Manager*

Visit

The Famous Sazerac Bar

Home of the Original Sazerac Cocktail

After 106 Years Ladies Are Now Cordially Invited

The
ROOSEVELT

"Pride of the South"

Live Modern...smoke modern L&M

Hey Dad, light into that Live Modern flavor!

I'm way ahead of you Son!
L&M wins for taste and flavor!

...box or handy pack...
Either way you win today with L&M

TULANE

PROBABLE STARTING LINEUP

No.	Name	Position
82	JACK MONTGOMERY	LE
77	DON LOCKWOOD	LT
69	JIM BLOUNT	LG
53	BENNY RAY TYLER	C
62	JOHN DiVIETRO	RG
70	CHARLES HANSEN	RT
80	WILL BILLON	RE
12	GENE NEWTON	QB
33	TOMMY WARNER	LH
20	CLAUDE (BOO) MASON	RH
43	ROY MARCEL	FB

THE GREEN WAVE SQUAD

11 Sweeney, qb	45 Gibbons, fb	73 Darré, lt
12 Newton, qb	50 Jones, c	74 LeSage, lt
17 Petitbon, qb	53 Tyler, c	76 Egan, lt
20 Mason, rh	54 Hawley, c	77 Lockwood, lt
23 Jester, rh	59 Nielsen, rg	78 Klock, c
25 Tarzetti, rh	60 Clements, rg	79 Nolan, rt
26 Ellzey, rh	61 Walker, lg	80 Billon, re
29 Arms, qb	62 DiVietro, rg	81 Abadie, re
32 Dickerson, lh	63 Kepper, c	82 Montgomery, le
33 Warner, lh	64 Dupin, lg	83 Gamble, re
34 Fleming, lh	65 Burleson, rg	84 Painter, le
38 Magee, lh	67 Guillot, rg	85 Musial, le
39 Legendre, rh	68 Emerson, lg	86 Young, le
40 Andrews, fb	69 Blount, lg	87 Siciliano, le
41 Bratton, fb	70 Hansen, rt	88 Riley, re
42 Passman, fb	71 Cotros, rt	89 Heffington, re
43 Marcel, fb	72 Rawson, rt	97 Hendee, rt

VIRGINIA TECH

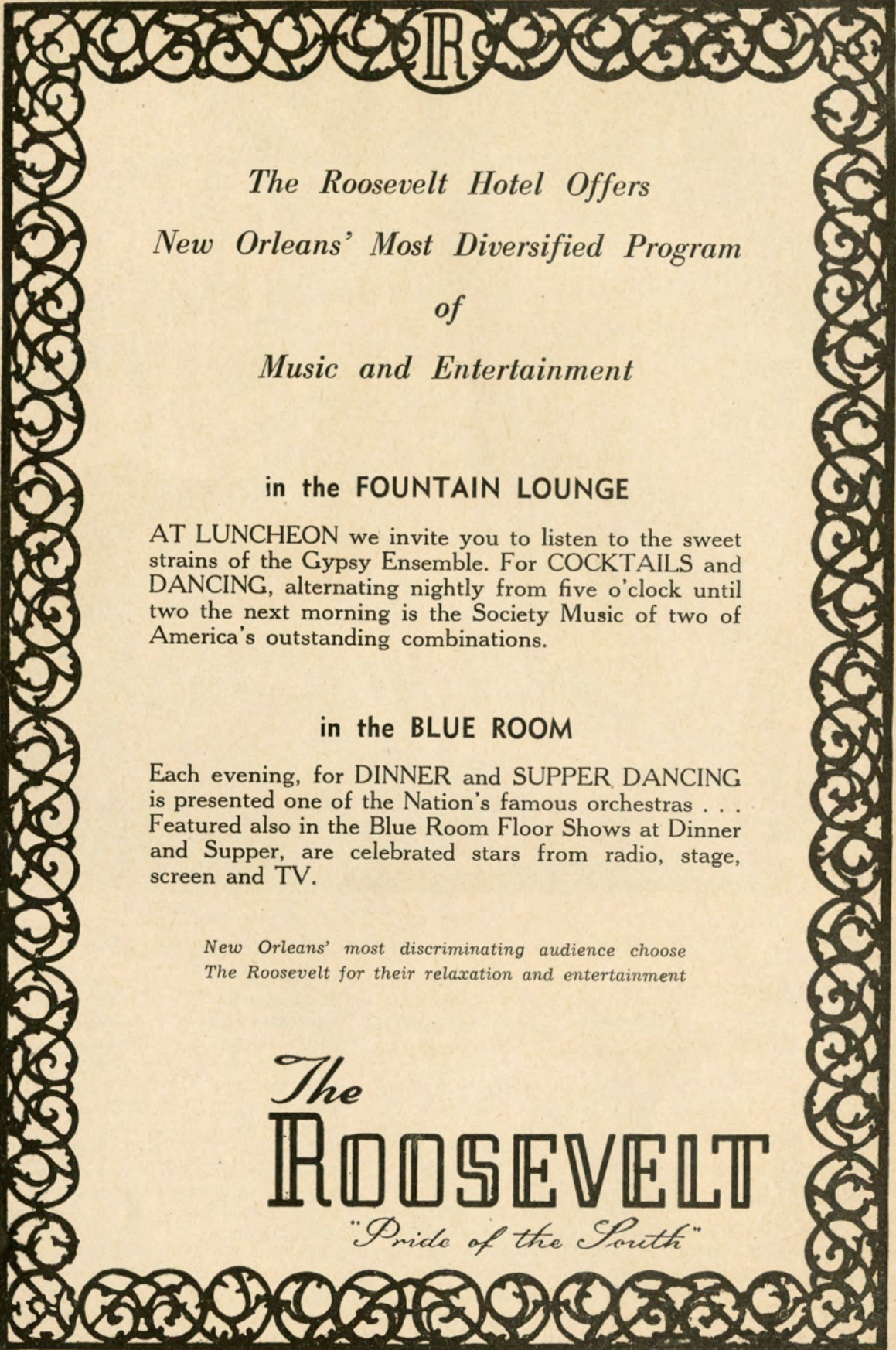
PROBABLE STARTING LINEUP

No.	Name	Position
84	CARROLL DALE	LE
75	RUSSELL MOON	LT
69	PAT CARPENITO	LG
53	FRANK WEBSTER	C
65	BEN SCHMIDT	RG
77	JIM BURKS	RT
83	JOHN MOODY	RE
10	JIMMY LUGAR	QB
40	CORBIN BAILEY	LH
43	RAY ENGLAND	RH
33	BOBBY CONNER	FB

VIRGINIA TECH'S SQUAD

10 Lugar, qb	41 Betz, hb	70 McCubbin, t
12 Holsclaw, qb	42 Shaffer, hb	72 Royals, t
13 Cranwell, qb	43 England, hb	73 Bartrug, t
14 McCoy, qb	44 Hunter, hb	74 Mangum, t
21 Snead, hb	45 Ringer, hb	75 Moon, t
22 Pugh, hb	50 Mihalas, c	77 Burks, t
23 Frazee, hb	51 Stephens, c	80 Brinkley, e
24 Blankenship, hb	52 Randall, c	81 Byrd, e
25 Whitesell, hb	53 Webster, c	82 Herndon, e
30 Sebest, fb	60 Wheeler, g	83 Moody, e
31 Kosko, fb	64 Holsclaw, g	84 Dale, e
32 Eastman, fb	65 Schmidt, g	86 Story, e
33 Conner, fb	69 Carpenito, g	87 Tilling, e
40 Bailey, hb		

OFFICIALS—Referee: Russel H. Lyons (Illinois); Umpire: G. K. Husser (Catawba); Head Linesman: James C. Armistead (Vanderbilt); Field Judge: Stan Huffman (Marshall); Back Judge: Paul V. Hicks (Memphis State); E. C. O.: Charles W. Erdmann (L.S.U.).



The Roosevelt Hotel Offers
New Orleans' Most Diversified Program
of
Music and Entertainment

in the FOUNTAIN LOUNGE

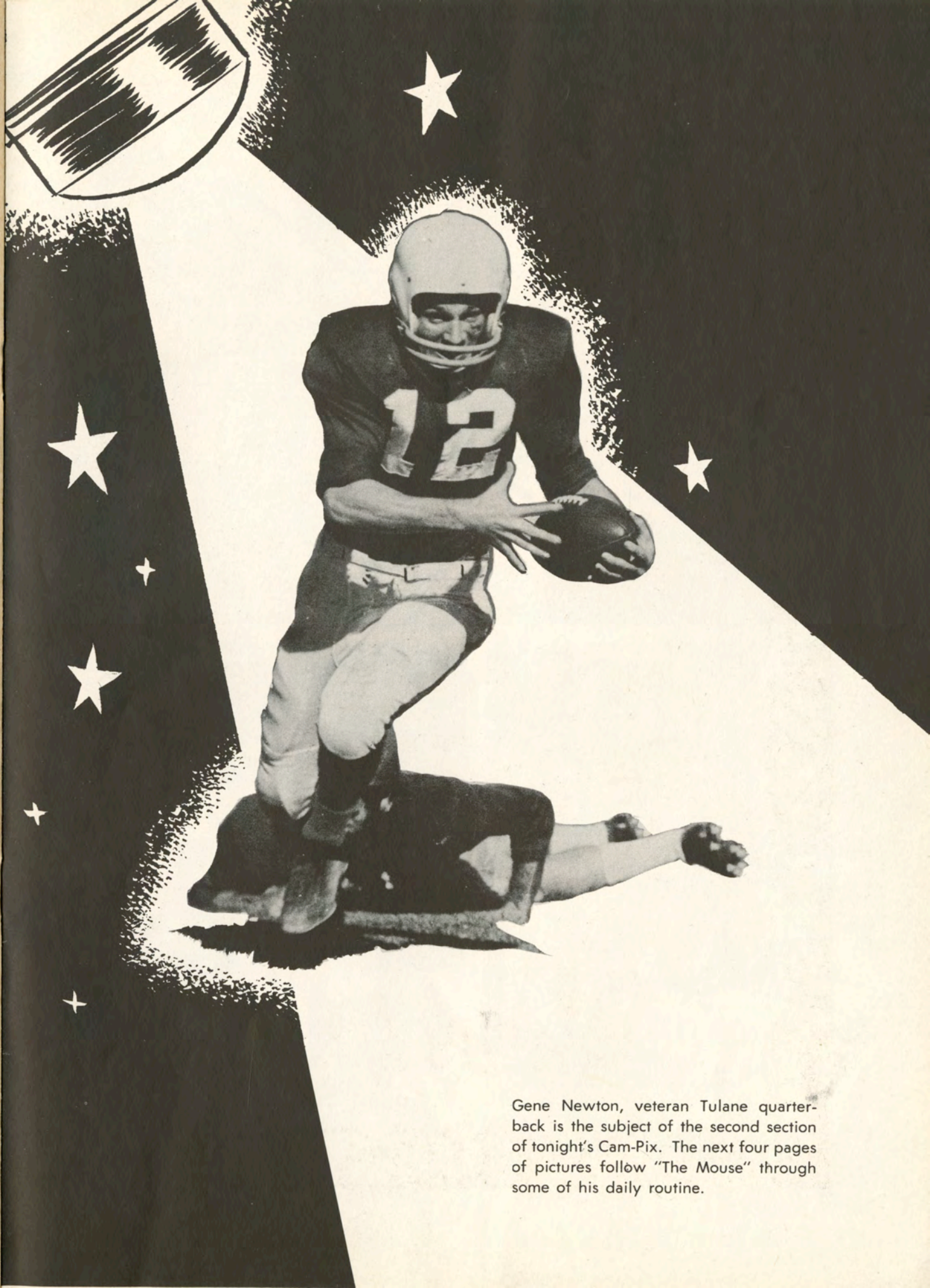
AT LUNCHEON we invite you to listen to the sweet strains of the Gypsy Ensemble. For COCKTAILS and DANCING, alternating nightly from five o'clock until two the next morning is the Society Music of two of America's outstanding combinations.

in the BLUE ROOM

Each evening, for DINNER and SUPPER DANCING is presented one of the Nation's famous orchestras . . . Featured also in the Blue Room Floor Shows at Dinner and Supper, are celebrated stars from radio, stage, screen and TV.

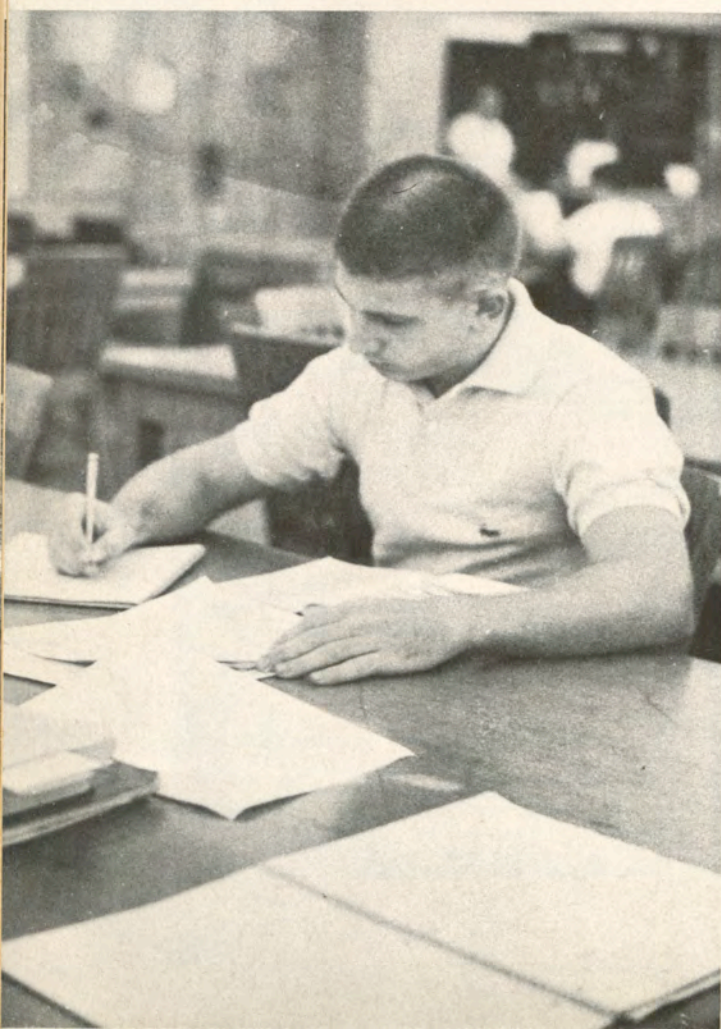
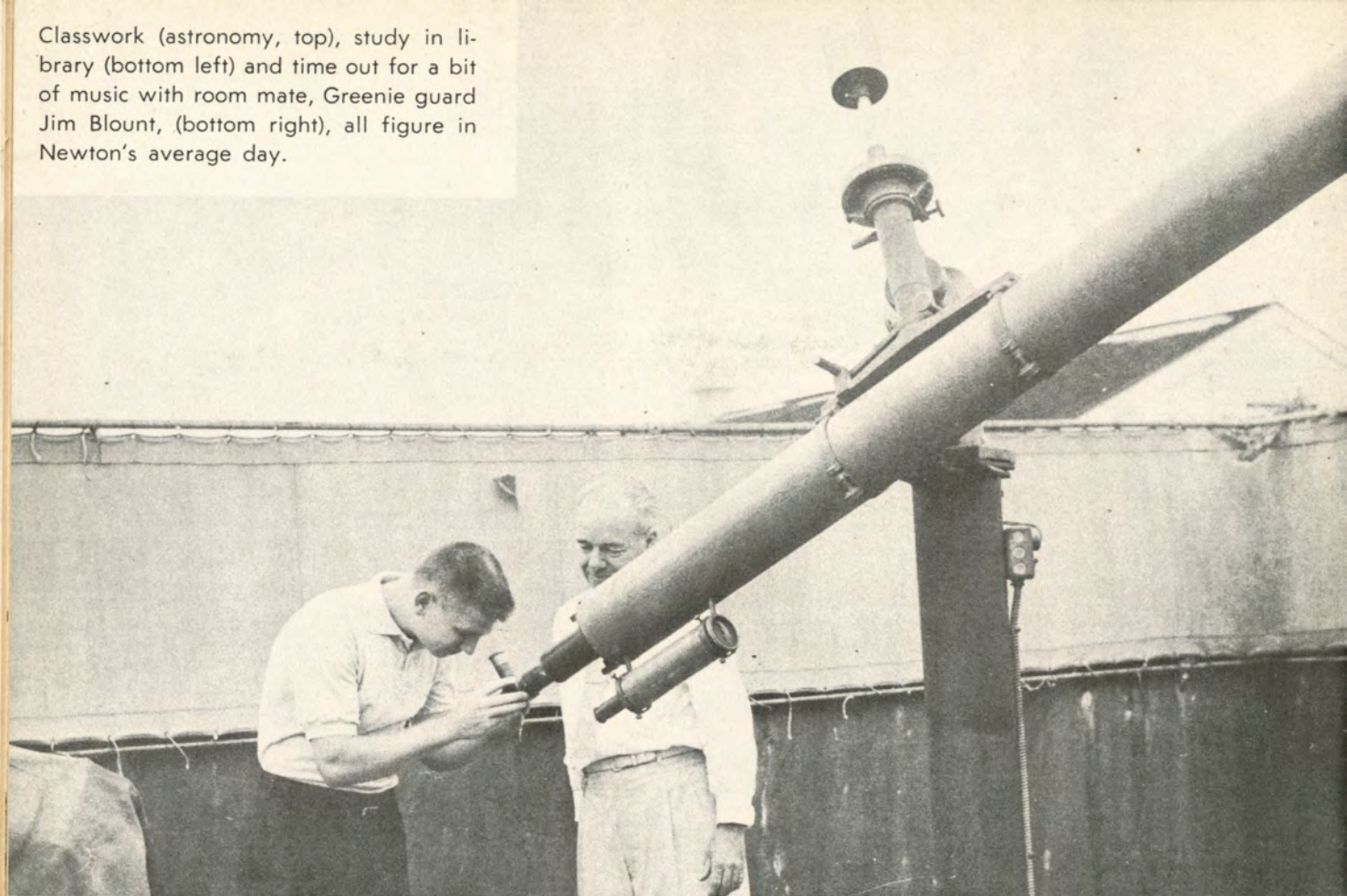
*New Orleans' most discriminating audience choose
The Roosevelt for their relaxation and entertainment*

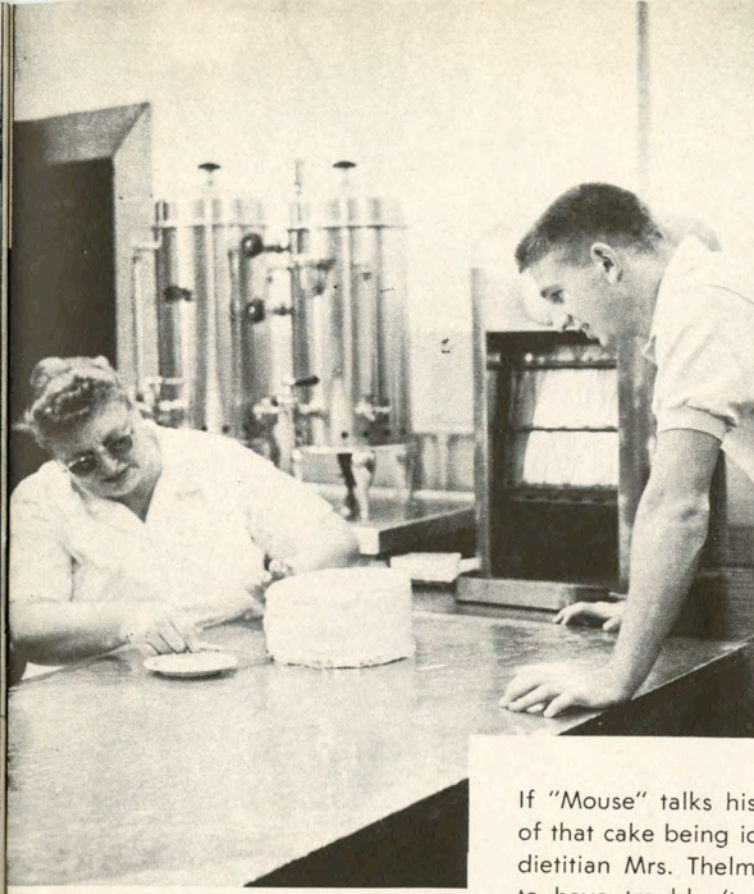
The
ROOSEVELT
"Pride of the South"



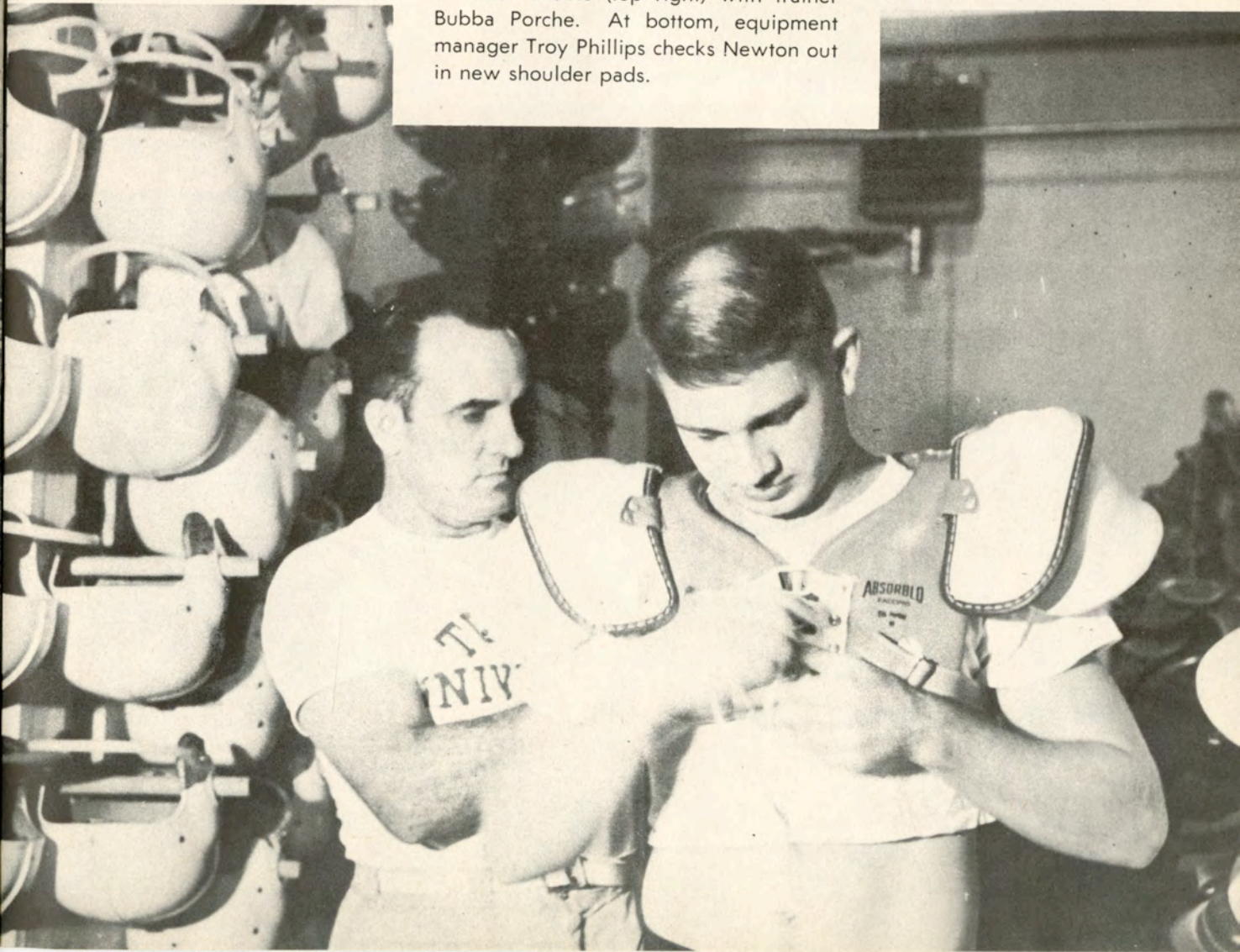
Gene Newton, veteran Tulane quarterback is the subject of the second section of tonight's Cam-Pix. The next four pages of pictures follow "The Mouse" through some of his daily routine.

Classwork (astronomy, top), study in library (bottom left) and time out for a bit of music with room mate, Greenie guard Jim Blount, (bottom right), all figure in Newton's average day.



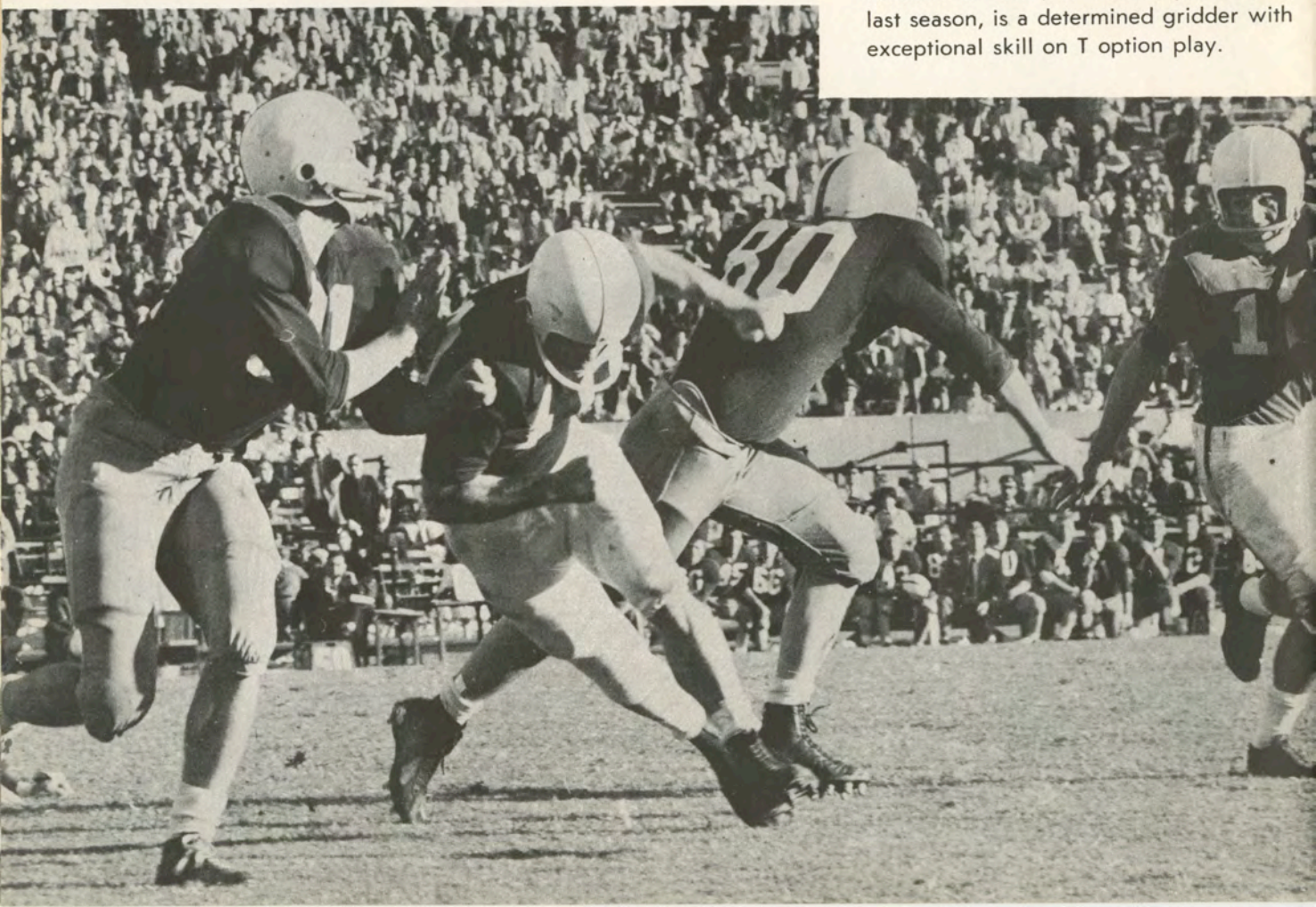


If "Mouse" talks his way into too much of that cake being iced (top left) by team dietitian Mrs. Thelma Hearty, he's liable to have trouble (top right) with trainer Bubba Porche. At bottom, equipment manager Troy Phillips checks Newton out in new shoulder pads.





Discussing plays and strategy with head coach Andy Pilney (top) is a daily ritual. Newton at work, in bottom photo from last season, is a determined gridder with exceptional skill on T option play.



From kickoff to the final gun,
with **Cracker Jack**®
it's twice the fun!



Fresh and Crunchy
with **LOTS MORE** peanuts

Try **NEW** **Cracker Jack**® **Today**

ON SALE IN THE STADIUM

time for Living



More than anything else, a KitchenAid dishwasher brings you the precious gift of *time*. You have time to be a part of things—family fun and friends-after-the-game—secure in the knowledge that all's well in the kitchen.


Indeed, your dishes could not be in better care. Your KitchenAid is produced by Hobart—another way of saying it's *the finest made*. You'll see the evidence everywhere you turn: The new Timed Spray Cycle that "warms up" tableware and dishwasher interior, clears plumbing lines of cold water before the wash action starts. The easy-rolling, cushion-coated racks that take the guess out of loading. The revolving power wash system that leaves your

tableware *hospital-clean*. The separate blower that dries even fine crystal to perfection.

Yet—wonder of convenience—Hobart has contrived to work all these features into the *standard cabinet width*; you don't give up space you sorely need. By all means, see the new KitchenAid by Hobart. You'll find just the model to go with your kitchen, as surely as it goes with your way of life. And see the new food preparer and the electric coffee mill—they're KitchenAid, too!

See the new KitchenAid! Write The Hobart Manufacturing Co., KitchenAid Home Dishwasher Division, Dept. CFP, Troy, Ohio. In Canada: 175 George Street, Toronto, 2.

time for a KitchenAid®

The Finest Made...by 

The World's Largest Manufacturer of Food, Kitchen and Dishwashing Machines

HAL'S Commercial Restaurant

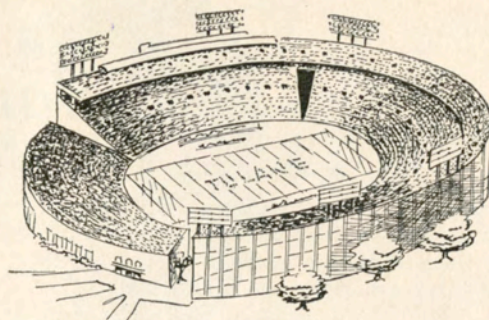
834 Gravier Street

•
Featuring Delicious

POOR BOYS
Of All Kinds

•
Tasty Plate Lunches

The Best Coffee and Pie in Town



Tulane Stadium

Tulane Stadium, lighted this year at a cost of \$168,000, is famous as the home of Green Wave football teams and of the annual Sugar Bowl Classic, was dedicated 31 years ago this fall with east and west stands seating 35,000. Subsequent enlargements, due in large measure to the efforts of the Sugar Bowlers, have increased the capacity to its present 80,985. The stadium is located on the site of the Etienne de Boré plantation, where sugar was first granulated in this country.



COMPLETE YACHT SUPPLIES

SALES AND SERVICE

DONOVAN BOAT SUPPLIES

NEW ORLEANS, LA.

1018 BARONNE ST.

RAYMOND 9051

FREE PARKING

Tulane Songs

ALMA MATER

We praise thee for thy past, O Alma Mater!
Thy hand hath done its work full faithfully;
The incense of thy spirit hath ascended
And filled America from sea to sea!

We praise thee for they present, Alma Mater!
Today thy children look to thee for bread!
Thou leadeest them to dreams and action
splendid!
The hunger of their souls is richly fed!

We praise thee for thy future, Alma Mater!
The vista of its glory gleameth far!
We shall ever be part of thee, great Mother!
There thou will be where e'er thy children are!

Chorus

Olive Green and Blue, we love thee.
Pledge we now our fealty true
Where the trees are ever greenest,
Where the skies are purest blue.
Hear us now, O Tulane, hear us.
As we proudly sing to thee!
Take from us our heart's devotion!
Thine we are, and thine shall be!

ROLL ON, TULANE

Here's a song for the Olive and the Blue.
Here's a cheer for the team that's tried and true.
Here's a pledge of loyalty to thee.
Oh, Tulane Varsity.
Here's to the Greenbacks that never will say die,
And here's to the hearts that are true
To the men of Tulane who are fighting for her
name,
For the Olive and the Blue.

Chorus

Roll, Green Wave,
Roll them down the field.
Hold, Green Wave,
That line must never yield.
When those Greenbacks charge through the line
They're bound for victory.
Hail, Green Wave,
For you we give a cheer.
Hail, Green Wave,
For you we have no fear.
So ev'ry man in ev'ry play,
And then we'll win that game today.
Hurrah for Old Tulane!

the Bread of Champions...



EXTRA VITAMINS... EXTRA MILK PROTEIN... EXTRA MINERALS

man who made "the first team"

Hickey-Freeman

On the field you can identify the players by the numbers they wear. In life, too, you know a man by his clothes. Hickey-Freeman suits . . . master works, cut from rich fabrics . . . are worn by men who have earned their places on achievement's "first team." If you belong there . . . you belong in a Hickey-Freeman. from **125.00**

men's clothing • second floor

ONLY AT

Godchaux's



*Tulane's
All-Americans*

ENDS

Jerry Dalrymple (1930-31)*
Ralph Wenzel (1939)

TACKLES

Harley McCollum (1939)
Ernie Blandin (1941)
Paul Lea (1948)
Jerome Helluin (1950)

GUARDS

Tony Sardisco (1955)

CENTERS

Lester Gatewood (1943)

BACKS

"Peggy" Flournoy (1925)
Bill Banker (1929)
Don Zimmerman (1931-32)
Claude Simons, Jr. (1934)
W. A. "Dub" Jones (1944)
Eddie Price (1949)

* National Football Hall of Fame.

Best Wishes To

The Green Wave

For Many Successful
Seasons

~

**CHALMETTE LAUNDRY
and CLEANERS
2801 TULANE AVENUE**

For Excellent Work and Rapid Service
Call GAlvez 2161

Mossy Motors, Inc.

1331 S. Broad St.

CAnal 2431

"Your Friendly Oldsmobile Dealer"

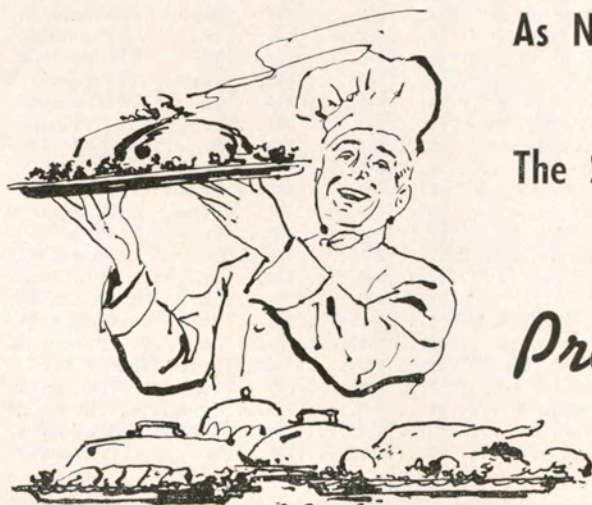
1957 GREEN WAVE CO-CAPTAINS



GENE NEWTON



JACK MONTGOMERY



As NEW as
Night Football . . .

The ST. CHARLES HOTEL
Famous For Foods

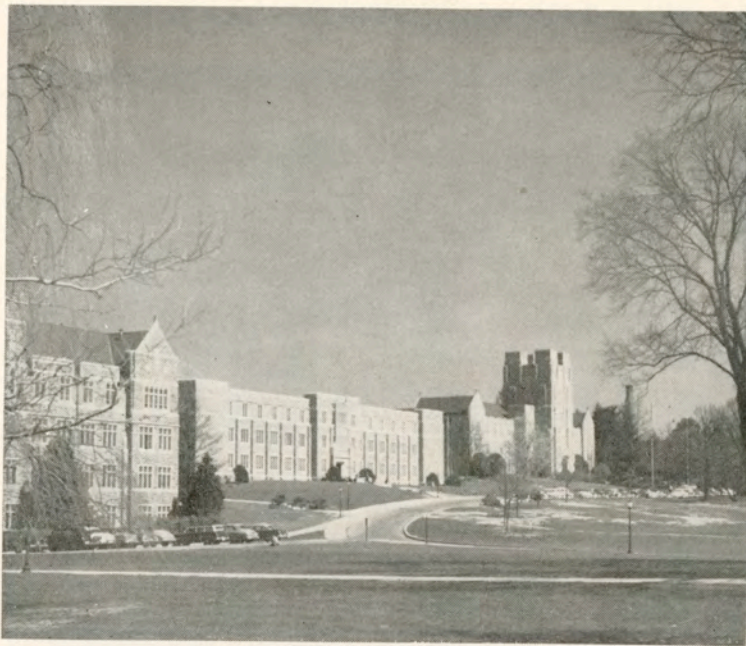
INTRODUCES THE

Pre-Game Buffet

5 to 7:30 P. M.
Every Game Night

SPECIAL BUS TRANSPORTATION FOR DINNER GUESTS
ST. CHARLES HOTEL TO TULANE STADIUM AND RETURN

Meet Your Family And Friends — At The St. Charles



A View of Virginia Tech Campus



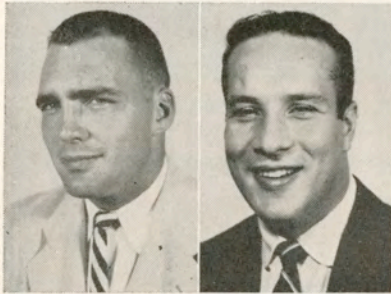
Brinkley

Byrd



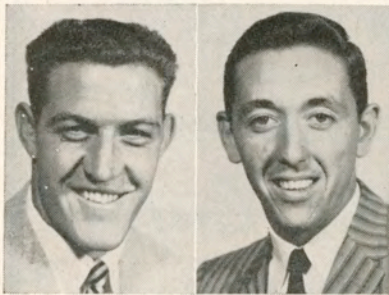
Bailey

Bartug



Burks

Carpenito

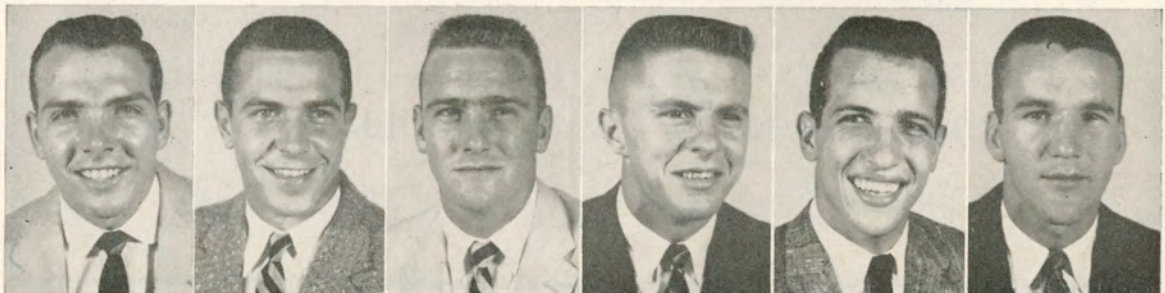


Conner

Cranwell

Virginia Tech

No.	Name	Pos.	Age	Ht.	Wgt.	Class	Hometown
40	Bailey, Crbin, hb	hb	22	5-10	170	Sr.	Roanoke, Va.
	Barnette, Clyde, qb	qb	19	6-0	165	Soph.	Norfolk, Va.
73	Bartrug, Ed., t	t	19	6-1	200	Soph.	Charleston, W. Va.
41	Betz, Tommy, hb	hb	20	5-8	163	Soph.	Norfolk, Va.
24	Blackenship, qb	qb	19	6-2	183	Soph.	Bluefield, W. Va.
80	Brinkley, Ed., e	e	22	6-1	180	Jr.	Roanoke, Va.
77	Burks, Jim, t	t	25	6-4	225	Jr.	Bedford, Va.
81	Byrd, Ken, e	e	19	6-2	185	Soph.	Durham, N. C.
61	Carpenito, Pat, g	g	22	6-0	210	Sr.	Portsmouth, Va.
33	Conner, Bobby, fb	fb	21	6-0	202	Sr.	Vinton, Va.
13	Cranwell, Billy, qb	qb	23	6-0	170	Sr.	Richlands, Va.
84	Dale, Carroll, e	e	19	6-2	198	Soph.	Wise, Va.
32	Eastman, Frank, qb	qb	21	6-0	185	Soph.	Richmond, Va.
	Eaton, Bill, c	c	19	6-2	201	Soph.	Salsbury, N. C.
43	England, Ray, hb	hb	22	5-10	185	Sr.	Hopewell, Va.
23	Fraze, Barry, hb	hb	22	5-10	173	Sr.	Richmond, Va.
82	Herndon, John, e	e	22	6-2	195	Sr.	Tocca, Ga.
12	Holsclaw, Billy, qb	qb	21	6-0	170	Jr.	Charleston, W. Va.
64	Holsclaw, Duncan, g	g	19	5-11	202	Soph.	Charleston, W. Va.
	Hubard, John, qb	qb	23	5-10	165	Sr.	Farmville, Va.
44	Hunter, Bill, hb	hb	19	5-9	165	Soph.	Johnson City, Tenn.
	Jones, Harold, t	t	20	5-11	208	Soph.	Madison, Va.
	Koenig, Walt, t	t	19	6-3	195	Soph.	Erwin, Tenn.
31	Kosko, Jim, fb	fb	20	6-3	195	Soph.	Duquesne, Pa.
10	Lugar, Jimmy, qb	qb	22	5-10	180	Sr.	Roanoke, Va.



Dale

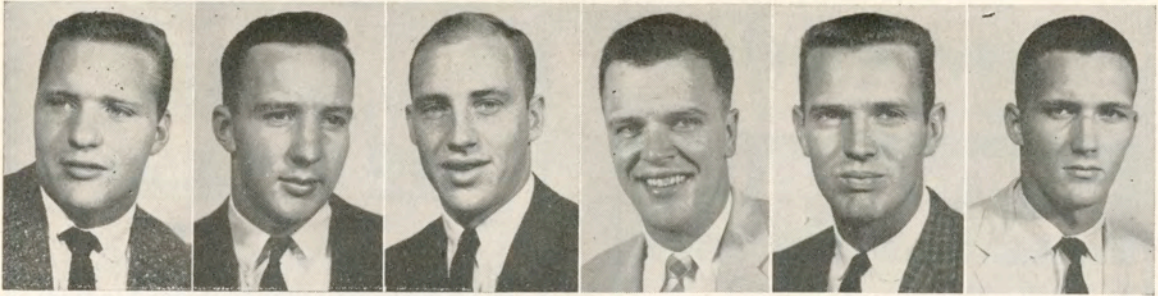
Eastman

England

Fraze

Herndon

Holsclaw, B.



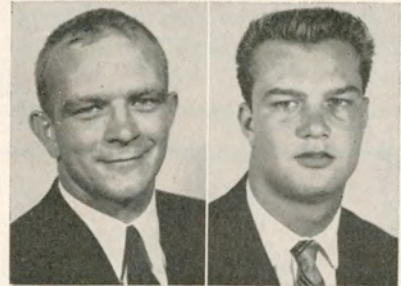
Holsclaw, D. Hunter Lugar Mangum McCoy McGinnis



Mihalas Moody Moon Pugh Randall Royals

Virginia Tech

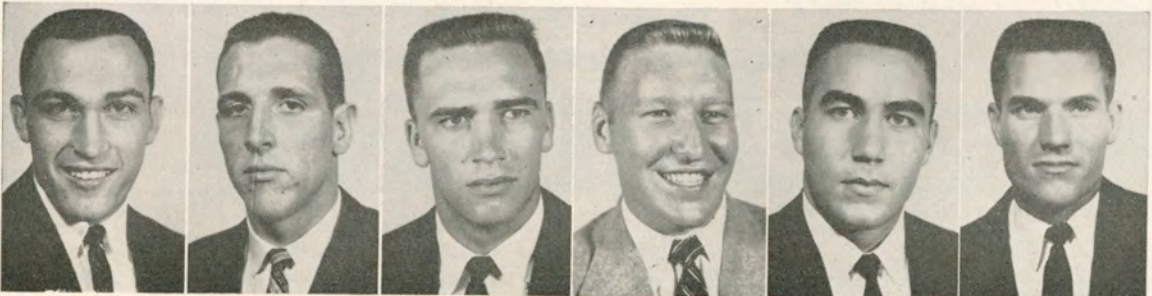
No.	Name	Pos.	Age	Ht.	Wgt.	Class	Hometown
74	Mangum, Bob	t	22	6-2	203	Jr.	Warwick, Va.
14	McCoy, Bob	qb	21	6-2	180	Jr.	Fredericksburg, Va.
70	McCubbin, Julian	t	22	6-5	235	Soph.	Charleston, W. Va.
	McGinnis, Bill	t	19	6-3	195	Soph.	Charleston, W. Va.
	McPeak, Don	hb	20	5-9	180	Soph.	Roanoke, Va.
50	Mihalas, Nick	c	20	6-1	210	Sr.	Norfolk, Va.
83	Moody, John	e	24	5-9	178	Sr.	Richmond, Va.
75	Moon, Russell	t	22	6-2	240	Sr.	Roanoke, Va.
	Parrish, Harry	fb	19	5-11	180	Soph.	Briston, Va.
22	Pugh, Alger	hb	20	6-0	175	Soph.	Fredericksburg, Va.
52	Randall, Jim	c	24	6-0	205	Sr.	Warwick, R. I.
45	Ringer, Dick	hb	20	5-9	161	Jr.	Hagerstown, Md.
72	Royals, Doug	t	22	6-1	205	Jr.	Hampton, Va.
30	Sebest, Al	fb	20	6-0	190	Jr.	Duquesne, Pa.
65	Schmidt, Ben	g	22	6-0	190	Sr.	Pittsburgh, Pa.
42	Shaffer, Sam	hb	20	5-10	175	Soph.	Williamsport, Pa.
21	Snead, Dickie	hb	19	6-0	169	Soph.	Covington, Va.
51	Stephens, Chuck	fb	18	5-11	185	Soph.	Roanoke, Va.
86	Story, Bill	e	19	6-4	205	Soph.	So. Norfolk, Va.
87	Tilling, Billy	e	21	6-1	195	Jr.	Norfolk, Va.
	Vaught, Don	hb	19	6-0	173	Soph.	Roanoke, Va.
53	Webster, Frank	c	22	6-1	210	Sr.	Portsmouth, Va.
60	Wheeler, Ken	g	18	6-0	196	Soph.	Panama Canal Zone
25	Whitesell, Jay	hb	19	6-1	178	Jr.	Waynesboro, Va.
	Zittrain, Brian	t	19	6-2	190	Soph.	Virginia Beach, Va.



Schmidt Sebest



Shaffer Snead



Stephens Story Tilling Webster Wheeler Whitesell

A Great Name in Clothing

SCHWOBILT
CLOTHES REG. U.S. PAT. OFF.

"SUITS THE SOUTH"

For Your Convenience

FIRST AID STATIONS

are located at the Northwest
and Southeast corners of the Stadium

WILMER A. SIMPSON
President

EDWIN A. STOUTZ
Secty-Treas.



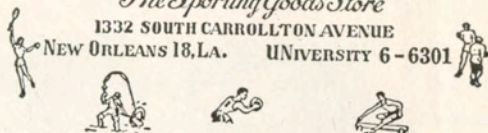
Simpson-Stoutz Sporting Goods Co.

INCORPORATED

The Sporting Goods Store

1332 SOUTH CARROLLTON AVENUE

NEW ORLEANS 18, LA. UNIVERSITY 6-6301



DELMONICO
RESTAURANT

ESTABLISHED 1895

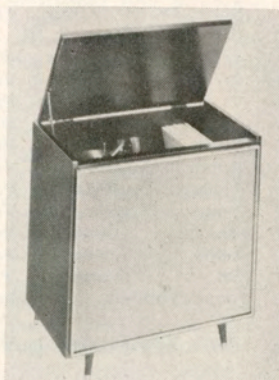
1300 ST. CHARLES

RAYmond 4937

MAGnolia 9307

**Come To Weiner's For The Latest
In Decca Hi-Fidelity**

ALSO SEE OUR
COMPLETE SELECTION
OF DECCA AND CORAL
ALBUMS



The Douglas — \$159.95

Available in Mahogany
Blonde, Walnut
or Fruitwood

Latest 4-Speed
Changer With Automatic
Shut-off Feature After Last
Record Has Played

WEINER'S

Telephone FOREst 6-4141
120 HUEY P. LONG
GRETNA, LA.

Telephone FOREst 6-3535
137 - 139 DELARONDE
ALGIERS, LA.

Tulane Printing Office

CAMPUS PRINTERS



PLUM near
AUDUBON ST.

UNiversity 6-2741
Ext. 344

Beat Household Pests!

Let
**MILLER
THE
KILLER**
Carry the Ball



COMPLETE TERMITE CONTROL SERVICE

4812 PRYTANIA
TW 9-6361

A & M Pest Control

THE BEACON RESTAURANT and STEAK HOUSE

Napoleon at So. Claiborne Aves.

★ ★ ★

Nine Course Dinners
Served Nightly

STEAKS OF ANY KIND

VIC LaROCCA

FAST SERVICE ON PROCESSING OF
16 MM BLACK AND WHITE
MOTION PICTURE FILM
COLOR OR B&W
DUPLICATING

Producers of 16 mm
Educational, Industrial and Special Events
Motion Pictures

PAN-AMERICAN FILMS

735 POYDRAS ST.

New Orleans

Ticket Information

HOME GAMES (individual) — \$4.00, sidelines; \$2.50, South Side.

“FAMILY PLAN” (Unreserved seats in North stands—\$2.00 (adults), \$.50 high school age and under).

GAMES AWAY (Seats in special Tulane sections)—\$3.50, Texas; \$3.50, Marquette; \$4.00, Miss. State; \$3.75, Alabama; \$5.00, L.S.U.

TICKET OFFICES—Tulane Stadium, 6401 Willow Street (UNiversity 1-3661 and UNiversity 1-9381); Werlein's Box Office, 605 Canal Street (MAGNOLIA 6201).

MAIL REQUESTS—Include check or money order payable to Tulane University, with 25 cents added for postage and handling. Address: TULANE TICKET OFFICE, 6401 WILLOW STREET, New ORLEANS 18, La.



**PEARCE FORD'S
HI-LO PLAN**


“...good as an
extra point”

PEARCE FORD, INC.
1995 GENTILLY
4143 GENTILLY
We Trade Your Way!




"It was a perfectly executed eighty-yard touchdown run, but I called backfield in motion just for the fun of it."

"South's Largest Camera Store"



BENNETT'S
THE PHOTOGRAPHIC STORE
322 BARDINE ST.
Opposite Public Service

<i>Expert</i>	Film Developing	Color and Black & White
---------------	--------------------	-------------------------------

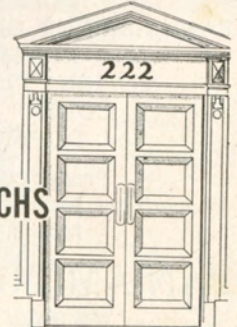


Gus Mayer
CO. LTD.
CANAL ST. GENTILLY

Tax-Free Municipal Bonds
Local Investment Securities

CALL
OR
WRITE

HOWARD, WEIL, LABOUISSÉ, FRIEDRICHS
AND COMPANY
Investment Securities
222 Carondelet St. — TULANE 2711
NEW ORLEANS, LOUISIANA



MONROE * ALEXANDRIA * LAKE CHARLES * COVINGTON * NATCHEZ

BEHIND THE SCENE AT TULANE



G. J. (BUDDY) DEMONSABERT
Business Manager of Athletics



MRS. MARGUERITE ZEHNER
Ticket Manager



DR. LLOYD KUHN
Team Physician

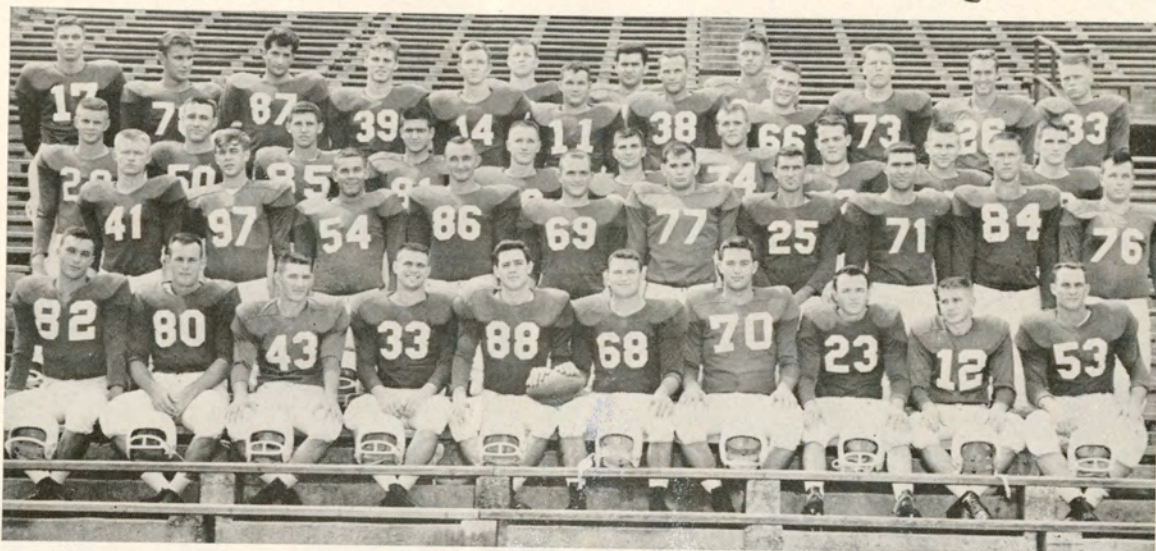


SEE THE MOVIES
OF ALL
TULANE GAMES
SUNDAY AFTERNOONS
WWL-TV CHANNEL **4**

BROUGHT TO YOU BY
DIXIE 45 BEER
DIXIE BREWING CO., INC. • NEW ORLEANS



1957 TULANE GREEN WAVE SQUAD



Front row (l-r) J. Montgomery, W. Billon, R. Marcel, T. Warner, R. Riley, D. A. Emerson, C. Hansen, V. Jester, G. Newton, B. Tyler. Second Row: J. Bratton, B. Hende, P. Hawley, L. Young, J. Blount, D. Lockwood, G. Tarzetti, C. Cotros, D. Painter, D. Egan. Third Row: J. Arms, N. Jones, J. Musial, P. Abadie, J. Nielsen, G. Guillot, J. LeSage, B. Rawson, C. Burselon, P. Heffington. Fourth Row: R. Petitbon, B. Klock, F. Siciliano, J. Legendre, R. Baumbach, C. Sweeney, J. Magee, C. Passman, B. Darré, W. Ellzey, C. Gamble. Fifth Row: J. DiVietro, T. Nolan, K. Fleming. Missing from picture: C. Mason, F. Dickerson, C. Andrews, B. Clements, J. Walker, J. Kepper, T. Dupin.

**All-America favorite
...ice-cold Coke**



"Coke" is a registered trade-mark.



BOTTLED UNDER AUTHORITY OF THE COCA-COLA COMPANY BY
THE LOUISIANA COCA-COLA BOTTLING CO., LTD.

shopping

at *Holmes*

is traditional in New Orleans



slacks

jackets

sport coats

toppers

Come in . . . and you'll cheer for the HOLMES Team! Outstanding quality and a truly friendly atmosphere make HOLMES the favorite shopping place of New Orleanians.

HOLMES features the latest in men's styles and furnishings—world-famous labels, from sports clothes to evening attire.

Whenever you're downtown in New Orleans, make it a point to shop at HOLMES . . .

before the game

. . . dine at HOLMES

May we suggest a wonderful way to start the evening . . . a delicious seafood dinner in HOLMES' beautiful air-conditioned restaurant—then on to the game! HOLMES features special seafood dinners on Friday nights and moderate prices prevail.



LIKE YOUR PLEASURE **BIG?**

*MORE FULL-FLAVORED
SATISFACTION... FROM THE
WORLD'S BEST TOBACCOS!*

*PLUS KING-SIZE
FILTER ACTION!*

*A BETTER TOBACCO
FILTER BECAUSE IT'S
PACKED SMOOTHER
BY ACCU-RAY!*

*SO HAVE YOUR FUN AND MILDNESS, TOO!
SMOKE FOR REAL... SMOKE CHESTERFIELD
—KING OR REGAL REGULAR*

CHESTERFIELD KING HAS EVERYTHING!

© Liggett & Myers Tobacco Co.