



# THE **NAVY** GAME

TULANE STADIUM • OCT. 13, 1956

SOUVENIR PROGRAM — 25¢





Offside (Infraction of scrimmage or free kick formation) —5 yds.



Illegal Procedure, Position, or Substitution —5 yds.



Illegal Motion —5 yds.



Illegal Shift —15 yds.



Illegal Return —15 yds.



\*Delay of Game —5 yds. or 15 yds.



\*Personal Foul —15 yds. Also possible to expel player



Clipping —15 yds.



Roughing the Kicker or Holder —15 yds.



\*Unsportsmanlike Conduct —15 yds. Also possible to expel player



Illegal use of Hands and Arms —15 yds.



Intentional Grounding —5 yds. Also loss of down



Illegally Passing or Handing Ball Forward —5 yds. Also loss of down



\*Forward Pass or Kick Catching Interference—Offended team's ball at spot of foul; 15 yds. Also loss of down



Ineligible Receiver Down Field on Pass —15 yds. Also loss of down



\*Ball Illegally Touched, Kicked, or Batted—5 yds. or 15 yds. Also loss of down or offended team's ball at-spot of foul



Incomplete Forward Pass, Penalty Declined, No Play, or No Score



Crawling—5 yds. Helping the Runner, or Interlocked Interference —15 yds.



Ball Dead; If Hand is Moved from Side to Side: Touchback



Touchdown or Field Goal



Safety



Time-Out



First Down



Ball Ready-for-Play

# Life looks brighter

when you know what's going on!

STUDY THESE OFFICIAL 1956 SIGNALS AND PENALTIES



Start the Clock or No More Time-Outs Allowed

Enjoy  
**JAX FAMOUS SPORTS  
AND NEWS PROGRAMS**

every day on TV  
throughout JAXland  
See your local paper for  
times and stations

\*Variable penalty, Referee's Decision  
Signals and Penalties  
brought to you by the



JACKSON BREWING COMPANY,  
New Orleans, La.

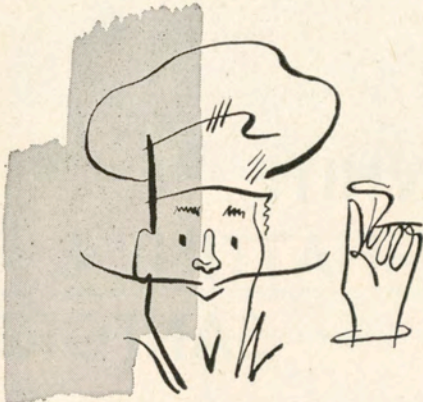
any way you  
look at it...



Life looks brighter with **JAX**



*Famous for*  
**FINE FOOD  
 and DRINK**



*Enjoy the Specialties of These  
 Noted Restaurants:*

**ANTOINE'S**

*.. Since 1840*

713 St. Louis • RAYmond 2554

12 Noon to 9 P. M. Closed Sundays.

**ARNAUD'S**

*.. Carnival Room*

813 Bienville St. • MAgnoIia 5433

11 A. M. to 12:30 A. M. Daily

**BROUSSARD'S**

*.. Napoleon Patio*

819 Conti St. • MAgnoIia 4800

11:30 A. M. to 11:30 P. M.  
 Closed Wednesdays.

FOR GOOD HEALTH



*The Finest Quality  
 Ice Cream and  
 Dairy Products*



**SOUTHWICK**  
 Soft construction,  
 natural shoulders,  
 easy lines.

*A man depends on many  
 things for success, and  
 notably among these is the  
 fact that success and a well  
 dressed appearance go hand  
 in hand.*

*Our "exclusive" specialty  
 is the supremely comfort-  
 able, casually distinctive  
 SOUTHWICK suit—con-  
 structed with soft shoulders  
 and natural lines without  
 excess padding and canvas  
 stiffening. We are proud  
 to show you our SOUTH-  
 WICK suits.*

EXCLUSIVE WITH

**Terry & Juden Co.,  
 LIMITED**

*Fine Apparel for Men for 70 Years*  
 CLOTHING HABERDASHERY  
 UNIFORMS

135 Carondelet Street

CAnal 7771



25 YEARS OF  
INVESTMENT  
SERVICE

**Scharff & Jones**  
INCORPORATED

Telephone Tulane 0161  
219 Carondelet St.  
NEW ORLEANS, LA.

*Tax-Free  
Municipal Bonds  
Local Stocks*

—  
Inquiries Invited  
—

**WHITE,  
HATTIER, &  
SANFORD**

Whitney Bldg.

New Orleans



### 3 New Orleans traditions

**BREAKFAST AT BRENNAN'S:** Done magnificently in the old plantation manner, and served at any hour.

**LUNCHEON AT BRENNAN'S:** Served overlooking a beautiful patio, with a menu full of happy surprises.

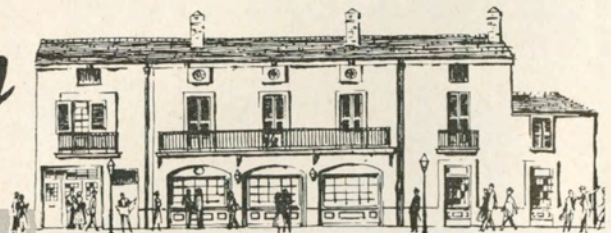
**LUNCHTIME COCKTAILS:** Martini or Old Fashioned, 25c

**DINNER AT BRENNAN'S** The famous specially priced early dinner menu is now served until closing, along with the nationally famous a la carte menu.

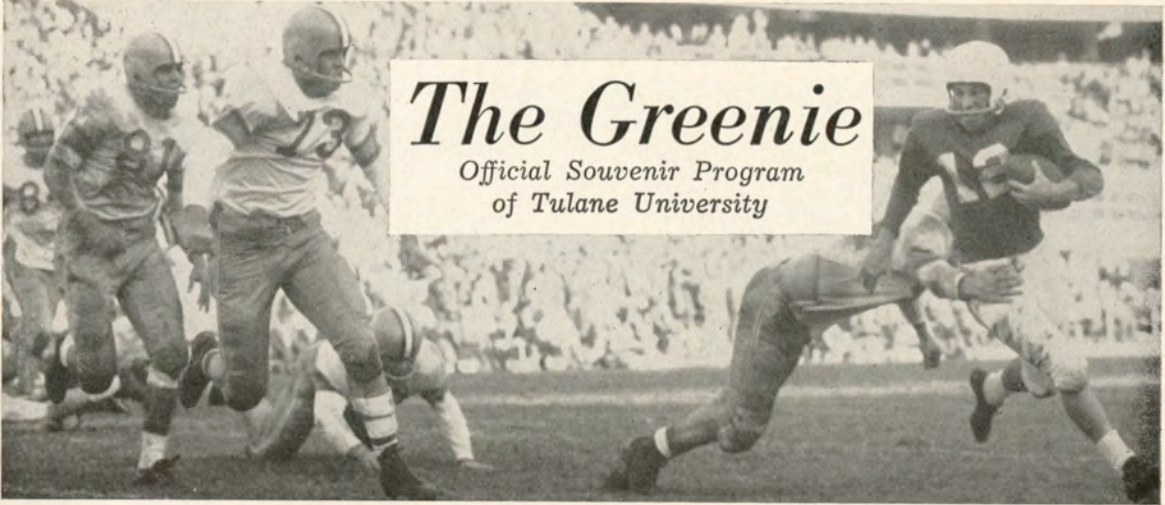
COME AS LATE AS  
MIDNIGHT

**Brennan's**

FRENCH RESTAURANT  
417 ROYAL ST., NEW ORLEANS







# The Greenie

Official Souvenir Program  
of Tulane University

EDDIE ALLEN, *Editor*

Division of Athletics, Tulane University, New Orleans 18, La.

National Advertising Representative: Spencer Advertising Company, Inc., 271 Madison Avenue, New York, N. Y.

Vol. 26

October 13, 1956

No. 3

## Tulane vs. Navy

When the U.S. Naval Academy's football team comes to Tulane-Sugar Bowl Stadium, important things may be expected to happen. Twice before the Midshipmen have cruised into the big bowl and on each occasion have provided a bright page in New Orleans' sports history.

On November 5, 1949 the Middies were visitors on the Green Wave homecoming day. Tulane All-American Eddie Price came up with one of his great performances, gaining 238 yards rushing and scoring three touchdowns. But Navy's ace passer, Bob Zastrow, had himself quite an afternoon, too, and one of the most thrilling encounters ever closed in a 21-21 tie before an audience of some 70,000.

The following season the Greenies decisively settled the tabled issue, 27-0, at Baltimore as quarterback Joe Ernst torpedoed the Navy with 18 pass completions good for 292 yards.

However, when the Middies next played in New Orleans they put on a show that surpassed the previous one, at least from the standpoint of the Blue and Gold. They met Ole Miss' favored Southeastern Conference champions in the 1955 Sugar Bowl game and routed the Rebels, 21-0.

That was a fine Navy team and so is the current one. Despite heavy graduation losses, the future admirals are ranked

among the leading eastern powers. Coach Eddie Erdelatz is proud of such standouts as center Wilson Whitmire (58), halfback Ned Oldham (27) and quarterback Tom Forrestal (18).

Navy comes into today's game with previous victories over William and Mary and Cornell.

The Greenies may have paid a heavy price in injuries for last week's 20-13 triumph over Northwestern of the Big Ten at Evanston. But the victory was made noteworthy by the performance of sophomores who showed distinct signs of being the Tulane stars of the future.

### 1956 TULANE SCHEDULE

Tulane 21; Virginia Tech 14

Tulane 6; Texas 7

Tulane 20; Northwestern 13

Oct. 13—Navy, home ..... 2:00 p.m.

Oct. 20—Ole Miss, Jackson ... 8:00 p.m.

Oct. 27—Georgia Tech, Atlanta 1:00 p.m.

Nov. 3—Miss. State, home .... 2:00 p.m.

Nov. 10—Alabama, ..... 2:00 p.m.

Homecoming

Nov. 17—Vanderbilt, Nashville 2:00 p.m.

Dec. 1—L.S.U., home ..... 2:00 p.m.

(All times C.S.T.).

#### TICKET OFFICES

Stadium, 6401 Willow — WALnut 0656  
Werlein's, 605 Canal — MAgnolia 6201



shopping

at *Holmes*

is traditional in New Orleans



**slacks**

**jackets**

**sport coats**

**toppers**

Come in . . . and you'll cheer for the HOLMES Team! Outstanding quality and a truly friendly atmosphere make HOLMES the favorite shopping place of New Orleanians.

HOLMES features the latest in men's styles and furnishings—world-famous labels, from sports clothes to evening attire.

Whenever you're downtown in New Orleans, make it a point to shop at HOLMES . . .

before and after the game

**. . . dine at HOLMES**

The beautiful air-conditioned restaurant at HOLMES features real New Orleans cuisine . . . Pompano, Shrimp, and other delicious seafoods and meats. It's so convenient, too—right downtown.

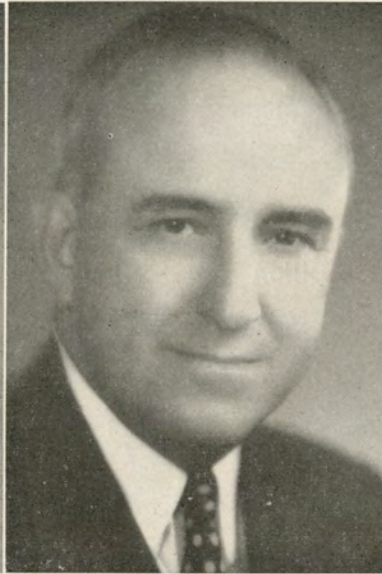




# TULANE UNIVERSITY



DR. RUFUS CARROLLTON HARRIS  
*President*



RICHARD O. BAUMBACH  
*Director of Athletics*



ANTON (ANDY) PILNEY  
*Head Football Coach*

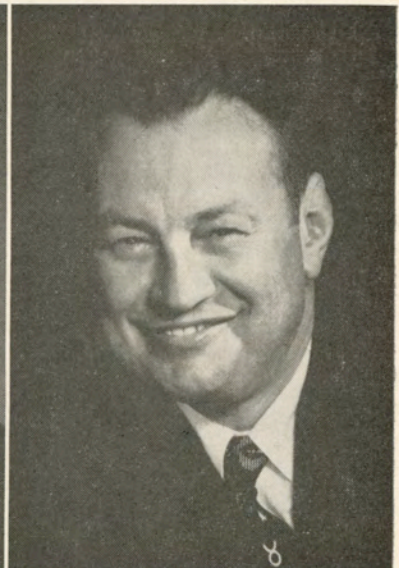
## NAVY



REAR ADMIRAL  
WILLIAM R. SMEDBERG, III  
*Superintendent*



CAPTAIN  
C. ELLIOTT LOUGHLIN  
*Director of Athletics*



EDWARD J. ERDELATZ  
*Head Football Coach*



# TULANE GREEN WAVE



Abadie



Andrews



Billon



Blount



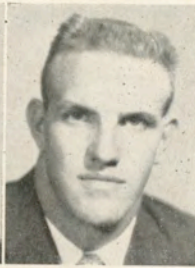
Borne



Bratton



Burkes



Carroll



Caruso



Casshie



Cavallino



Denby



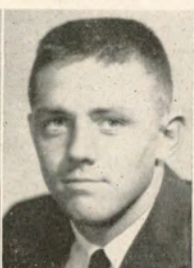
DiVietro



Egan



Emerson



Fleming



Hansen



Hawley



Hendee



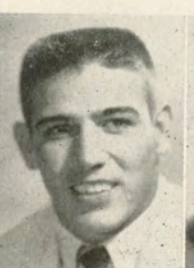
Hof



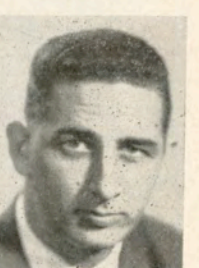
Jester



Jones



Kelly



Khayat



Klung



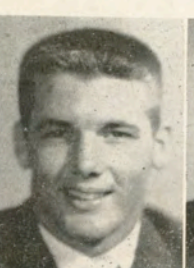
Lockwood



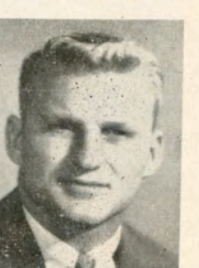
Mackey



Marcel



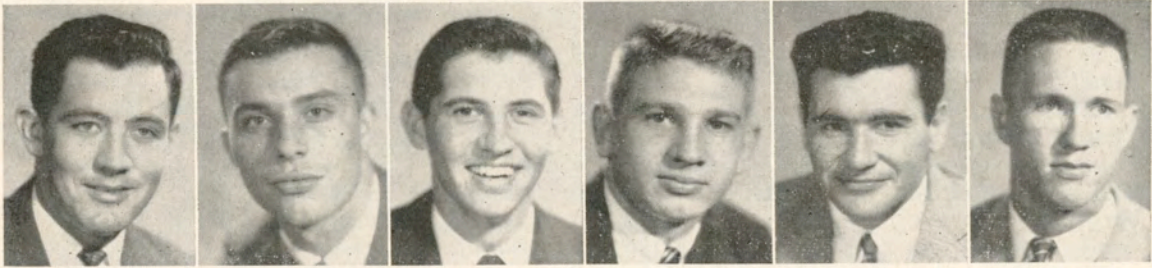
Mason



McCoy



# TULANE GREEN WAVE



Miller

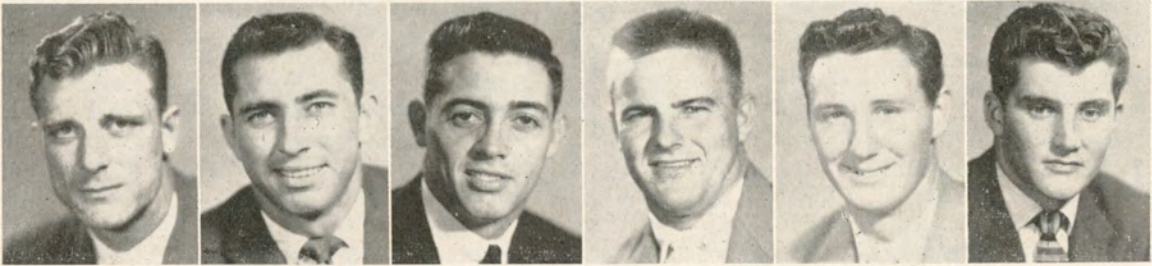
Montgomery

Musial

Newton

Nolan

Painter



Quillian

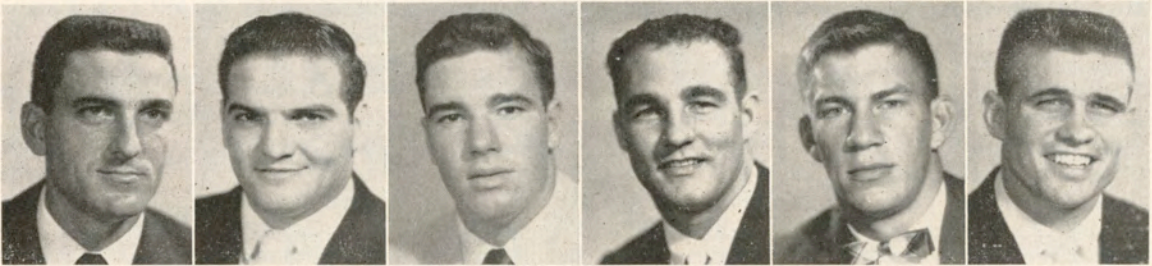
Reginelli

Riley

Schexnayder

Senac

Stockstill



Tarzetti

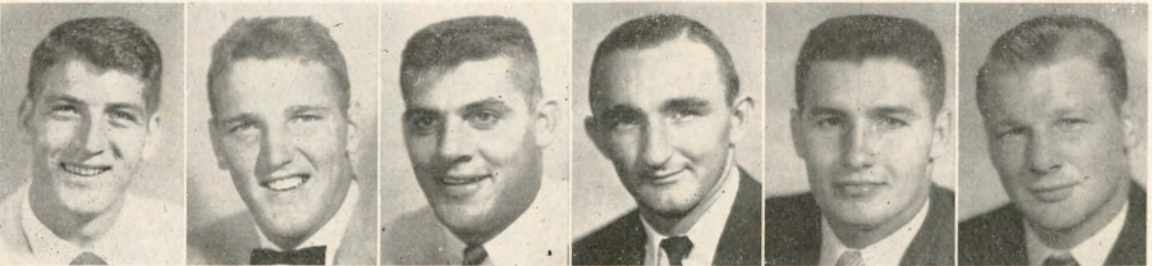
Troxclair

Truax

Tyler

Walker

Warner



Waters

Wilcox

Wilson

Young

Zelenka

Zimmerle



Hudson

Lorio

Klock

Hughes

Ross



# TULANE ROSTER-1956

| No. | Player                  | Age | Hgt. | Wgt. | L'trs. | Class | Home              | High School     |
|-----|-------------------------|-----|------|------|--------|-------|-------------------|-----------------|
| 11  | John Caruso, qb         | 21  | 5-10 | 162  | 2      | Sr.   | New Orleans       | St. Stanislaus  |
| 12  | Gene Newton, qb         | 21  | 5-10 | 160  | 1      | Jr.   | Shreveport        | Byrd            |
| 14  | Tony Casshie, qb        | 20  | 6-1  | 160  | 0      | Jr.   | Dillonvale, Ohio  | Public          |
| 15  | Ronald Riley, qb        | 20  | 6-2  | 175  | 1      | Jr.   | Baton Rouge       | Istrouma        |
| 17  | Fred Wilcox, qb         | 22  | 6-1  | 185  | 1      | Sr.   | Harahan           | Kenner          |
| 20  | Claude Mason, rh        | 19  | 5-10 | 160  | 0      | Soph. | Lake Charles      | Lake Charles    |
| 21  | Tony Reginelli, rh      | 22  | 5-11 | 175  | 1      | Sr.   | Shaw, Miss.       | Shaw            |
| 22  | Richard Denby, rh       | 20  | 5-9  | 158  | 0      | Soph. | Luzerne, Pa.      | Luzerne         |
| 23  | Virgil Jester, rh       | 21  | 5-11 | 175  | 1      | Jr.   | Springhill        | Springhill      |
| 25  | Gene Tarzetti, lh       | 24  | 6-0  | 175  | 0      | Soph. | DeLisle, Miss.    | Pass Christian  |
| 26  | J. V. Burkes, qb        | 20  | 6-0  | 160  | 0      | Jr.   | New Orleans       | Slidell         |
| 29  | Jeff Bratton, rh        | 19  | 6-0  | 180  | 0      | Soph. | Camden, Ark.      | Camden          |
| 31  | Marshall Stockstill, rh | 19  | 6-0  | 170  | 0      | Soph. | New Iberia        | New Iberia      |
| 32  | Willie Hof, lh          | 22  | 5-10 | 144  | 2      | Sr.   | Kenner            | Kenner          |
| 33  | Tommy Warner, lh        | 21  | 6-0  | 165  | 3      | Sr.   | New Orleans       | Redemptorist    |
| 34  | King Fleming, lh        | 20  | 6-0  | 175  | 0      | Soph. | Lake Charles      | LaGrange        |
| 35  | Rene Lorio, lh          | 19  | 6-2½ | 170  | 0      | Soph. | New Orleans       | De La Salle     |
| 38  | Allen Borne, lh         | 21  | 5-8  | 170  | 1      | Sr.   | New Orleans       | Riverside (Ga.) |
| 40  | Ronny Quillian, fb      | 21  | 6-1  | 190  | 2      | Sr.   | Baton Rouge       | Baton Rouge     |
| 41  | Walter Kelly, fb        | 20  | 6-1½ | 190  | 0      | Soph. | New Orleans       | De La Salle     |
| 43  | Roy Marcel, fb          | 20  | 5-10 | 178  | 1      | Jr.   | Houma             | Terrebonne      |
| 45  | Connie Andrews, fb      | 19  | 6-1  | 180  | 0      | Soph. | Magnolia, Ark.    | Magnolia        |
| 47  | Jimmy McCoy, fb         | 19  | 5-9  | 178  | 0      | Soph. | Memphis, Tenn.    | Central         |
| 50  | Donald Miller, c        | 22  | 5-10 | 195  | 2      | Sr.   | Baton Rouge       | Baton Rouge     |
| 51  | Ronald Ross, c          | 20  | 6-2  | 200  | 0      | Soph. | Shreveport        | Fair Park       |
| 52  | John DiVietro, lg       | 19  | 5-10 | 185  | 0      | Soph. | Easton, Pa.       | Easton          |
| 53  | Benny Tyler, c          | 21  | 6-0  | 193  | 1      | Jr.   | Springhill        | Springhill      |
| 54  | Ronald Senac, c         | 22  | 6-1½ | 192  | 1      | Jr.   | New Orleans       | St. Aloysius    |
| 57  | Jim Wilson, c           | 21  | 6-1  | 195  | 1      | Jr.   | Montgomery, Ala.  | Lanier          |
| 59  | Bill Hughes, lt         | 20  | 6-0  | 200  | 0      | Soph. | New Orleans       | Holy Cross      |
| 61  | James Walker, lg        | 20  | 6-1  | 195  | 0      | Jr.   | Bourg             | Terrebonne      |
| 62  | Jim Zimmerle, rg        | 22  | 5-8  | 190  | 2      | Sr.   | Baton Rouge       | Catholic        |
| 63  | Wilbur Troxclair, lg    | 22  | 5-6½ | 190  | 2      | Sr.   | New Orleans       | Fortier         |
| 64  | Bill Klock, lt          | 19  | 6-1  | 210  | 0      | Soph. | New Orleans       | De La Salle     |
| 65  | Russell Carroll, rg     | 20  | 5-11 | 200  | 0      | Soph. | New Orleans       | Jesuit          |
| 66  | Roy Klung, rg           | 20  | 5-11 | 190  | 0      | Soph. | New Orleans       | Easton          |
| 67  | Paul Hawley, rg         | 18  | 5-10 | 200  | 0      | Soph. | Shreveport        | Byrd            |
| 68  | D. A. Emerson, lg       | 21  | 5-11 | 192  | 0      | Jr.   | Marshall, Tex.    | Marshall        |
| 69  | Jim Blount, lg          | 19  | 5-8  | 190  | 0      | Soph. | Groves, Tex.      | Port Neches     |
| 70  | Charles Hansen, rt      | 20  | 6-3  | 216  | 1      | Jr.   | Lake Charles      | LaGrange        |
| 71  | Charles Cotros, lt      | 19  | 6-3  | 210  | 0      | Soph. | Memphis, Tenn.    | Humes           |
| 72  | Dalton Truax, lt        | 21  | 6-2  | 225  | 2      | Sr.   | New Orleans       | Holy Cross      |
| 73  | Marvin Cavallino, lt    | 19  | 6-3  | 212  | 0      | Soph. | New Orleans       | Holy Cross      |
| 74  | Emmett Zelenka, rt      | 20  | 5-11 | 210  | 2      | Sr.   | New Orleans       | Fortier         |
| 75  | Irv Schexnayder, rg     | 21  | 5-10 | 207  | 1      | Sr.   | Welcome           | Catholic        |
| 76  | Dan Egan, lt            | 19  | 6-2  | 210  | 0      | Soph. | New Orleans       | Easton          |
| 77  | Donald Lockwood, lt     | 19  | 6-0  | 203  | 0      | Soph. | Beaumont, Tex.    | South Park      |
| 78  | Bobby Hudson, lt        | 19  | 6-3  | 210  | 0      | Soph. | Minden            | Minden          |
| 79  | Tom Nolan, rt           | 20  | 6-0  | 205  | 0      | Soph. | Baton Rouge       | Catholic        |
| 80  | Will Billon, re         | 20  | 6-2  | 200  | 1      | Jr.   | New Orleans       | Jesuit          |
| 81  | Pete Abadie, re         | 19  | 6-3  | 190  | 0      | Soph. | New Orleans       | Behrman         |
| 82  | Jack Montgomery, re     | 20  | 6-1  | 190  | 1      | Jr.   | Springhill        | Springhill      |
| 84  | David Painter, re       | 19  | 6-7  | 220  | 0      | Soph. | Lake Charles      | Lake Charles    |
| 85  | Charles Mackey, le      | 21  | 6-4  | 205  | 1      | Jr.   | Lake Charles      | Lake Charles    |
| 86  | Leo Young, le           | 19  | 6-2½ | 190  | 0      | Soph. | Ferriday          | Ferriday        |
| 87  | Eddie Khayat, le        | 21  | 6-3  | 205  | 1      | Sr.   | Moss Point, Miss. | Moss Point      |
| 89  | Bruce Waters, le        | 21  | 6-1  | 189  | 0      | Sr.   | Century, Fla.     | Piedmont, Ala.  |
| 93  | John Musial, re         | 19  | 6-2  | 180  | 0      | Soph. | Plymouth, Pa.     | Plymouth        |
| 97  | Bill Hendee, rt         | 18  | 6-3  | 190  | 0      | Soph. | Lansing, Mich.    | Jackson, Miss.  |

MANAGERS: Sam Williamson, Springhill; Courtney Russo, New Orleans; Bob Garcia, Jacksonville, Fla.; Fritz Parham, New Orleans.



# TULANE GAMES ON RADIO!

.....

Complete broadcasts  
of all games  
with  
TED ANDREWS - JOHN KENT

**WDSU**  
1280 on your dial

.....

Brought to you by



## YOUR TEXACO DEALER



... the best friend  
your car  
has ever had!

|                                      |                                       |           |
|--------------------------------------|---------------------------------------|-----------|
| AL'S TEXACO SERVICE .....            | Canal & Bernadotte St. ....           | AU 5055   |
| ALBERT'S SERVICE STATION .....       | 301 No. Carrollton Ave. ....          | AU 9235   |
| EDDIE FISCHER TEXACO SERVICE .....   | 3000 Metairie Road .....              | VE 3-9114 |
| GOGARTY TEXACO SERVICE .....         | 706 Metairie Road .....               | VE 5-7961 |
| GUILLOT TEXACO SERVICE .....         | 4938 Freret Street .....              | UP 9238   |
| HALE & WEBER TEXACO SERVICE .....    | 5107 Airline Hwy., Jeff. Parish ..... | VE 3-7172 |
| HOFFMAN TEXACO SERVICE .....         | 3820 Jefferson Hwy. ....              | VE 3-7892 |
| JAKIE'S TEXACO SERVICE .....         | 2549 Esplanade Ave. ....              | AU 3546   |
| KIRN'S TEXACO SERVICE .....          | 4237 Paris Avenue .....               | FR 9604   |
| LARRY'S TEXACO SERVICE .....         | E. View Dr. & Gentilly .....          | FR 9264   |
| NICK'S TEXACO SERVICE .....          | 1301 Airline Hwy., Kenner .....       | 21-7-8894 |
| O'SHAUGHNESSY SERVICE, INC. #3 ..... | 101 Airline Hwy., Metairie .....      | VE 3-5577 |
| PHILIBERT'S TEXACO SERVICE .....     | 2946 Gentilly Blvd. ....              | CR 9233   |
| ST. CHARLES SERVICE .....            | 7701 Maple Street .....               | WA 4101   |
| SCHOENHARDT TEXACO SERVICE .....     | 4301 So. Claiborne Ave. ....          | TW 5-9561 |



# TULANE FOOTBALL STAFF



**GREEN WAVE STAFF**—From left, seated: Bob Whitman (backs), Head Coach Andy Pilney, Mike Karmazin (line) and Jack Green (line). Standing: John Mazur (backs), Ray Prats (freshmen), Stan Kottemann (freshmen), Homer Dedeaux (assistant to the athletic director) and Earl (Bubba) Porche (trainer).



U.S. OLYMPIC COMMITTEE



AMERICAN AUTOMOBILE ASS'N



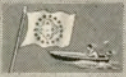
AMATEUR ATHLETIC UNION



NAT'L COLLEGIATE ATHLETIC ASS'N



NAT'L AERONAUTIC ASS'N



AMERICAN POWER BOAT ASS'N



NAT'L HORSE SHOW ASS'N

# Longines

THE WORLD'S MOST HONORED WATCH

*Official Watch for the*

**TULANE GAMES**

Quality leader among the finest watches of the world is Longines—winner of 10 World's Fair Grand Prizes and 28 Gold Medals for excellence and elegance, highest Observatory Honors for accuracy.

*Of special interest to sportsmen is a series of highly efficient Longines Automatic Watches employing an exclusive self-winding principle. They are shock-resistant, anti-magnetic, with unbreakable mainsprings; many are waterproof\*. These outstanding Longines watches are priced from \$75 to \$195.*

*\*as long as crystal, back and stem are intact.*



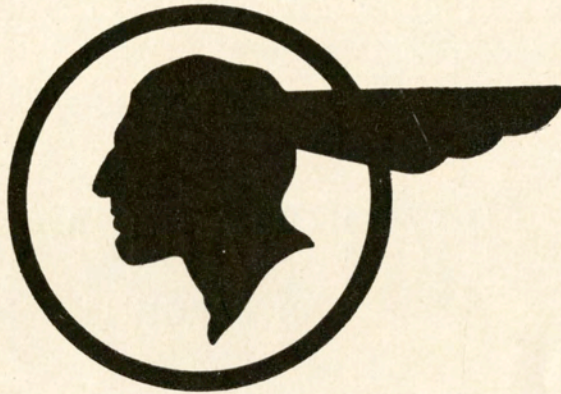
Longines  
Oslo Automatic.  
14K gold waterproof\* case.  
Sweep second hand. \$195.

SOLD AND SERVICED  
BY MORE THAN  
4000 LEADING JEWELERS WHO  
PROUDLY DISPLAY THIS EMBLEM





FOR THE SWEETEST DEAL ON AN AUTOMOBILE!



COMPLIMENTS  
OF

**PATTISON PONTIAC  
CO., INC.**

---

SALES and SERVICE

---

2120 CANAL STREET

TUlane 5252



**Oldsmobile**

**Cadillac**

*Authorized*

**SALES - SERVICE - PARTS**

*Complete Repair Service*

**PONTCHARTRAIN MOTOR CO.**

**701 BARONNE**

*Five Minutes From Leading Hotels*

# TWO LANE FORMATION





Cam

CAMPUS PICTURES

A MEDLEY OF

PIX

© TULANE UNIVERSITY 1956

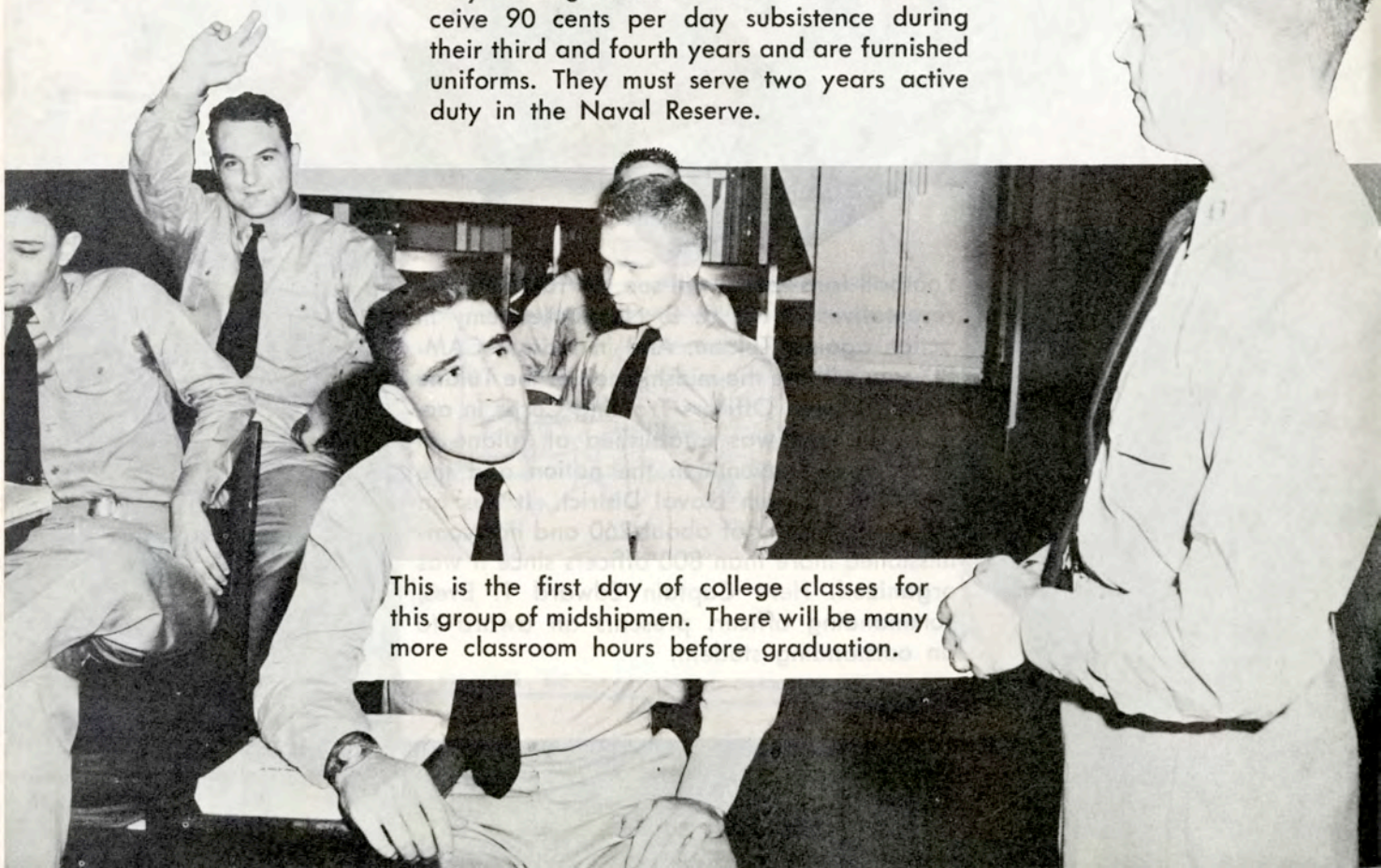


Football fans today will see the football representatives of the U. S. Naval Academy in action against Tulane. And in today's CAM-PIX you will see the midshipmen of the Tulane Naval Reserve Officers Training Corps in action. The unit was established at Tulane in 1938 as the seventh in the nation and the first in the Eighth Naval District. It has an enrollment today of about 260 and has commissioned more than 800 officers since it was organized. Here Captain Edward T. Eves, commanding officer, presents an award to an outstanding student.



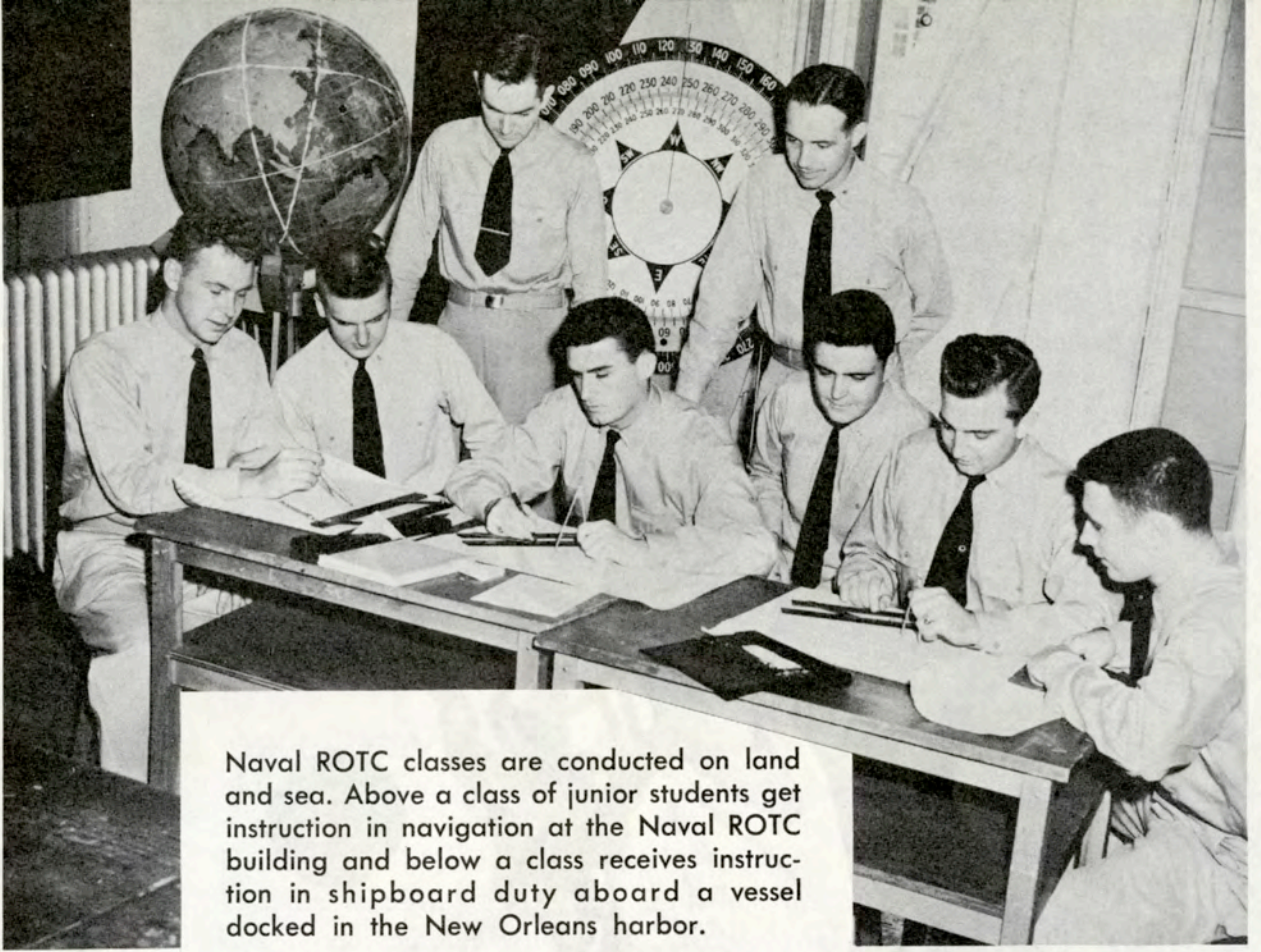


Naval training at Tulane begins with the swearing in of recruits in both the regular and contract programs. The regular program receives candidates from a national competitive examination. They receive tuition, fees, books, uniforms and \$50 monthly while in school and must serve three years on active duty after graduation. Contract students receive 90 cents per day subsistence during their third and fourth years and are furnished uniforms. They must serve two years active duty in the Naval Reserve.

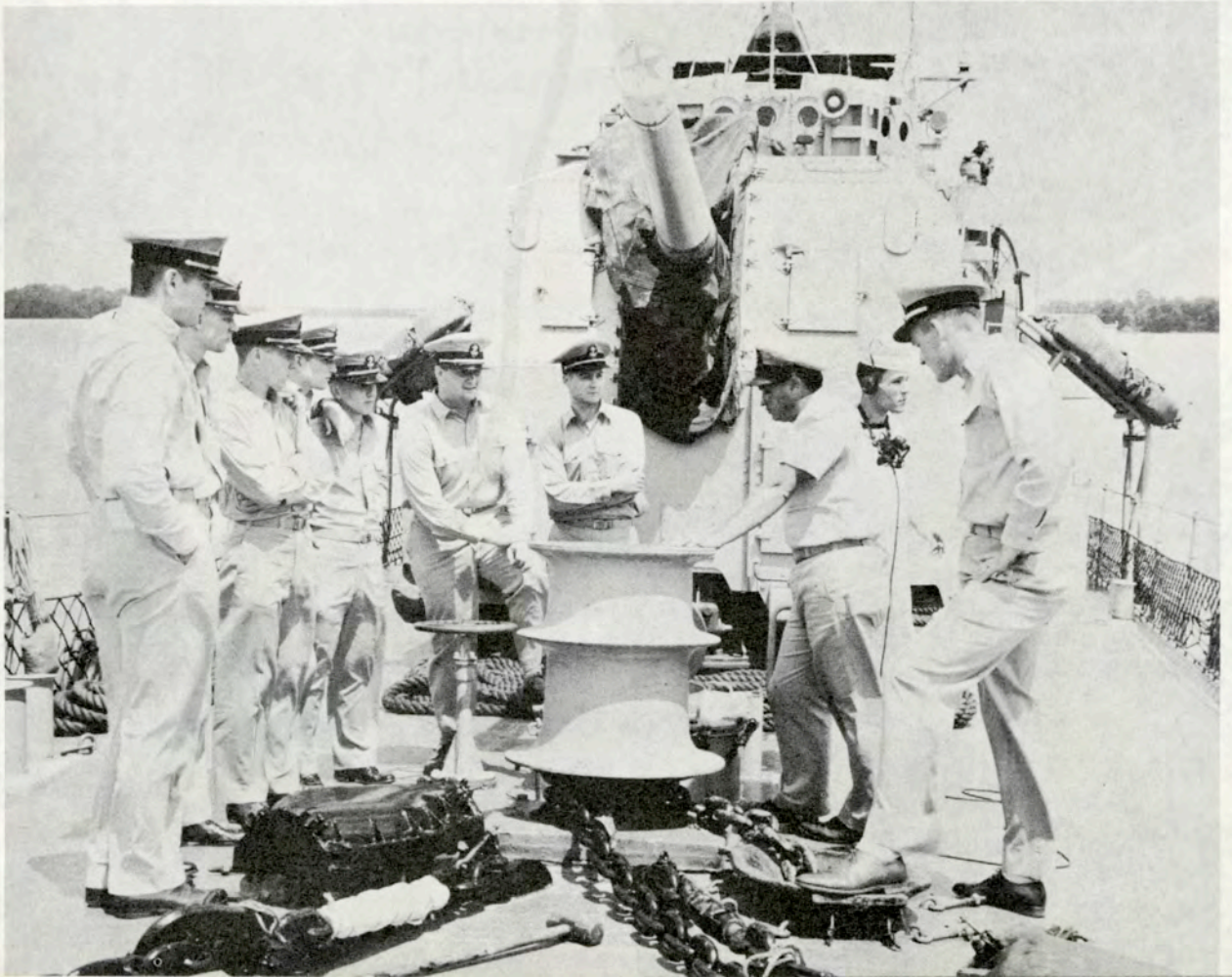


This is the first day of college classes for this group of midshipmen. There will be many more classroom hours before graduation.



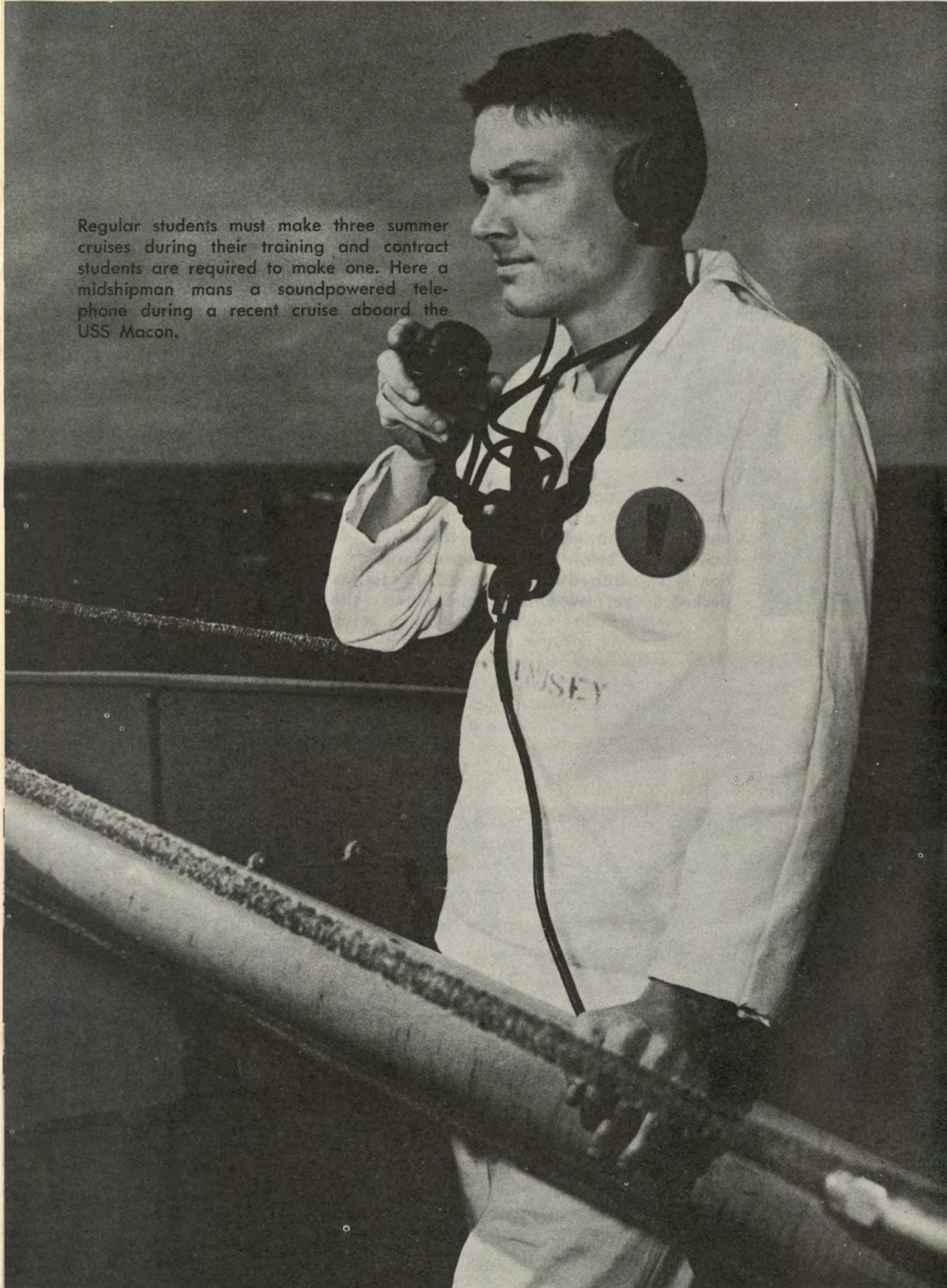


Naval ROTC classes are conducted on land and sea. Above a class of junior students get instruction in navigation at the Naval ROTC building and below a class receives instruction in shipboard duty aboard a vessel docked in the New Orleans harbor.





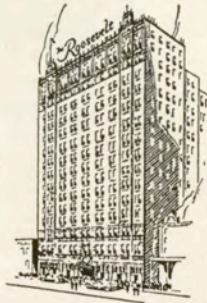
Regular students must make three summer cruises during their training and contract students are required to make one. Here a midshipman mans a soundpowered telephone during a recent cruise aboard the USS Macon.





# *New Orleans' Finest*

In America's Most Interesting City



THE ROOSEVELT is located in the heart of Romantic old New Orleans. It is in the center of business and social activities and is close to the Theatre, Shopping, French Quarter, and Business Districts . . . You will like the tasteful luxury and home-like atmosphere of this modern hotel where the traditions of Southern Hospitality are maintained the year 'round.

**900 ROOMS WITH BATH  
MODERATE RATES**

SEYMOUR WEISS, *President and Managing Director*  
A. C. BELLANDE, *Manager*

*Visit*

*The Famous Sazerac Bar*

*Home of the Original Sazerac Cocktail*

After 105 Years Ladies Are Now Cordially Invited

*The*  
**ROOSEVELT**

*"Pride of the South"*



Live **M**odern, Boy...Smoke **LM!**

My Chesterfields *Satisfy* the Most!



## TULANE

### PROBABLE STARTING LINEUP

| No. | Name             | Position |
|-----|------------------|----------|
| 85  | CHARLES MACKEY   | LE       |
| 72  | DALTON TRUAX     | LT       |
| 63  | WILBUR TROXCLAIR | LG       |
| 50  | DONALD MILLER    | C        |
| 62  | JIM ZIMMERLE     | RG       |
| 74  | EMMETT ZELENKA   | RT       |
| 80  | WILL BILLON      | RE       |
| 12  | GENE NEWTON      | QB       |
| 32  | WILLIE HOF       | LH       |
| 23  | VIRGIL JESTER    | RH       |
| 40  | RONNY QUILLIAN   | FB       |

### THE GREEN WAVE SQUAD

|                   |                  |                    |
|-------------------|------------------|--------------------|
| 11 Caruso, qb     | 43 Marcel, fb    | 71 Cotros, lt      |
| 12 Newton, qb     | 45 Andrews, fb   | 72 Truax, lt       |
| 14 Casshie, qb    | 47 McCoy, fb     | 73 Cavallino, lt   |
| 15 Riley, qb      | 50 Miller, c     | 74 Zelenka, rt     |
| 17 Wilcox, qb     | 51 Ross, c       | 75 Schexnayder, rg |
| 20 Mason, rh      | 52 DiVietro, lg  | 76 Egan, lt        |
| 21 Reginelli, rh  | 53 Tyler, c      | 77 Lockwood, lt    |
| 22 Denby, rh      | 54 Senac, c      | 78 Hudson, lt      |
| 23 Jester, rh     | 57 Wilson, c     | 79 Nolan, rt       |
| 25 Tarzetti, lh   | 59 Hughes, lt    | 80 Billon, re      |
| 26 Burkes, qb     | 61 Walker, lg    | 81 Abadie, re      |
| 29 Bratton, rh    | 62 Zimmerle, rg  | 82 Montgomery, re  |
| 31 Stockstill, rh | 63 Troxclair, lg | 84 Painter, re     |
| 32 Hof, lh        | 64 Klock, lt     | 85 Mackey, le      |
| 33 Warner, lh     | 65 Carroll, rg   | 86 Young, le       |
| 34 Fleming, lh    | 66 Klung, rg     | 87 Khayat, le      |
| 35 Lorio, lh      | 67 Hawley, rg    | 89 Waters, le      |
| 38 Borne, lh      | 68 Emerson, lg   | 93 Musial, re      |
| 40 Quillian, fb   | 69 Blount, lg    | 97 Hendee, rt      |
| 41 Kelly, fb      | 70 Hansen, rt    |                    |

## NAVY

### PROBABLE STARTING LINEUP


| No. | Name              | Position |
|-----|-------------------|----------|
| 87  | WAYNE McKEE       | LE       |
| 76  | TONY ANTHONY      | LT       |
| 61  | ANTHONY STREMIC   | LG       |
| 58  | WILSON WHITMIRE   | C        |
| 67  | JAMES HOWER       | RG       |
| 71  | ROBERT REIFSNYDER | RT       |
| 81  | EARLE SMITH       | RE       |
| 18  | THOMAS FORRESTAL  | QB       |
| 27  | NED OLDHAM        | LH       |
| 47  | PAUL GOBER        | RH       |
| 44  | RICHARD DAGAMPAT  | FB       |

### THE MIDDIE ROSTER

|                  |                   |                  |
|------------------|-------------------|------------------|
| 15 Flood, qb     | 47 Gober, rb      | 70 Martinez, t   |
| 16 Prahalis, qb  | 48 Russell, hb    | 71 Reifsnyder, t |
| 18 Forrestal, qb | 49 Jahn, hb       | 72 Meisel, t     |
| 21 Slafkosky, hb | 52 McElwee, c     | 75 Warren, t     |
| 22 Brence, hb    | 56 Witzmann, c    | 76 Anthony, t    |
| 24 Burchett, hb  | 58 Whitmire, c    | 81 Smith, e      |
| 25 Malynn, hb    | 60 Chomicz, g     | 84 Kanuch, e     |
| 27 Oldham, hb    | 61 Stremic, g     | 86 Jokanovich, e |
| 33 Wellborn, fb  | 63 Fritzingler, g | 87 McKee, e      |
| 34 Hurst, hb     | 64 Boyle, g       | 88 McHugh, e     |
| 38 Monto, fb     | 67 Hower, g       | 89 Ruth, e       |
| 44 Dagampat, fb  | 69 Caldwell, g    |                  |

GAME OFFICIALS: E. D. (Red) Cavette (Southwestern), referee; Irwin Weiss (New Jersey), umpire; Ed Copeland (Oglethorpe), head linesman; Ray Barbuti (Syracuse), field judge; John Raine (Georgia Tech), back judge; Charles Erdmann (L.S.U.), electric clock operator.





*The Roosevelt Hotel Offers*  
*New Orleans' Most Diversified Program*  
*of*  
*Music and Entertainment*

**in the FOUNTAIN LOUNGE**

AT LUNCHEON we invite you to listen to the sweet strains of the Gypsy Ensemble. For COCKTAILS and DANCING, alternating nightly from five o'clock until two the next morning is the Society Music of two of America's outstanding combinations.

**in the BLUE ROOM**

Each evening, for DINNER and SUPPER DANCING is presented one of the Nation's famous orchestras . . . Featured also in the Blue Room Floor Shows at Dinner and Supper, are celebrated stars from radio, stage, screen and TV.

*New Orleans' most discriminating audience choose  
The Roosevelt for their relaxation and entertainment*

*The*  
**ROOSEVELT**  
*"Pride of the South"*





Each year the company commander of the unit which wins the inter-company drill competition, selects a Color Girl, who presents the colors of the United States and of the unit to the winning commander. The winning company carries the colors at the head of the unit at all functions the next year.





Inspections, reviews and parades are very much a part of Navy life at Tulane (ABOVE). And just to keep the record straight, there are two other ROTC units at the University, Army and Air Force. An honor guard of high-ranking ROTC students of the three units welcome a visiting dignitary (BELOW).







But life is not all work and study. There is a bit of social life, too, like a recent Naval ROTC formal ball which is shown here.





Graduation from the Naval ROTC at Tulane means a bachelor's degree, a commission, and the admiration of a girl friend who in many cases becomes the new officer's first mate shortly after graduation.



HAL'S  
Barbecue Drive-Inn

5801 CHEF MENTEUR  
HIGHWAY

•  
*Featuring Barbecue  
and Poor Boy Sandwiches  
of All Kinds*

•  
OUR FRIED CHICKEN  
IS GOLDEN BROWN  
AND MILK-FED

Best Wishes To

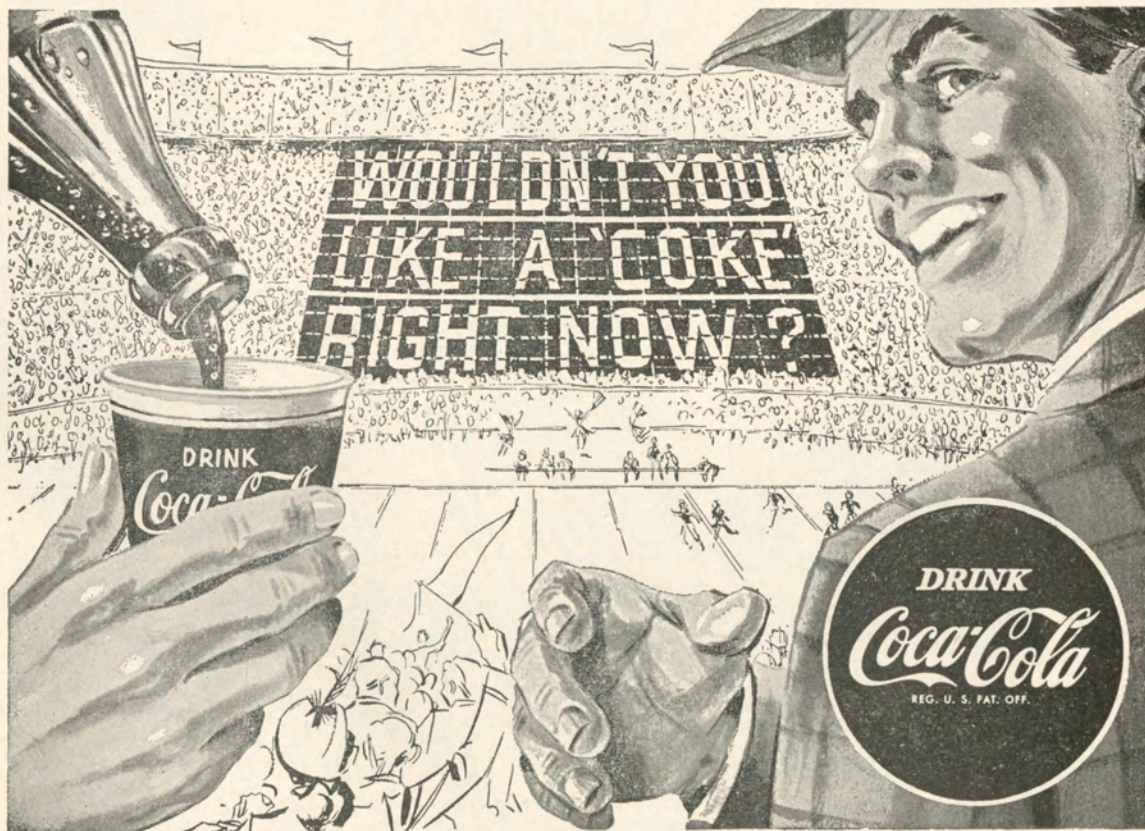
*The Green Wave*

For Many Successful  
Seasons



CHALMETTE LAUNDRY  
and CLEANERS  
2801 TULANE AVENUE

For Excellent Work and Rapid Service  
Call GALvez 2161





# Tulane Songs

## ALMA MATER

We praise thee for thy past, O Alma Mater!  
Thy hand hath done its work full faithfully;  
The incense of thy spirit hath ascended  
And filled America from sea to sea!

We praise thee for they present, Alma Mater!  
Today thy children look to thee for bread!  
Thou leadest them to dreams and action  
splendid!  
The hunger of their souls is richly fed!

We praise thee for thy future, Alma Mater!  
The vista of its glory gleameth far!  
We shall ever be part of thee, great Mother!  
There thou will be where e'er thy children are!

### Chorus

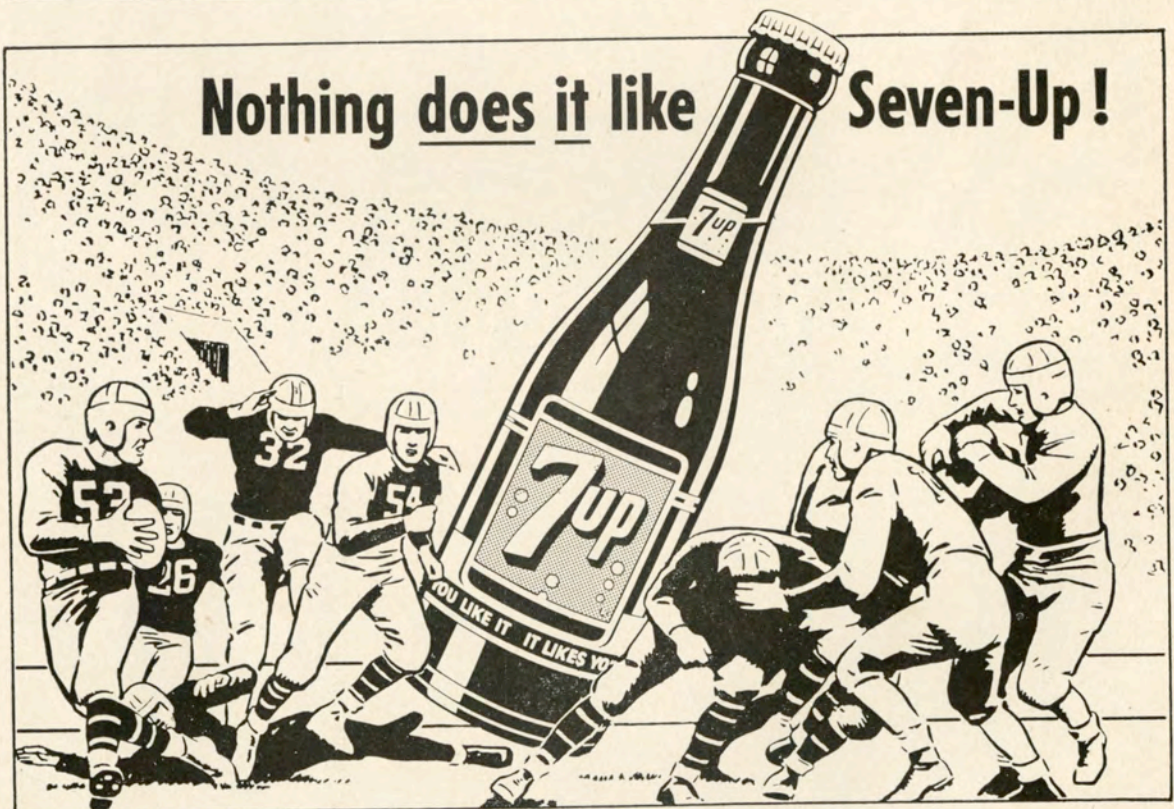
Olive Green and Blue, we love thee.  
Pledge we now our fealty true  
Where the trees are ever greenest,  
Where the skies are purest blue.  
Hear us now, O Tulane, hear us.  
As we proudly sing to thee!  
Take from us our heart's devotion!  
Thine we are, and thine shall be!

## ROLL ON, TULANE

Here's a song for the Olive and the Blue.  
Here's a cheer for the team that's tried and true.  
Here's a pledge of loyalty to thee.  
Oh, Tulane Varsity.  
Here's to the Greenbacks that never will say die,  
And here's to the hearts that are true  
To the men of Tulane who are fighting for her  
name,  
For the Olive and the Blue.

### Chorus

Roll, Green Wave,  
Roll them down the field.  
Hold, Green Wave,  
That line must never yield.  
When those Greenbacks charge through the line  
They're bound for victory.  
Hail, Green Wave,  
For you we give a cheer.  
Hail, Green Wave,  
For you we have no fear.  
So ev'ry man in ev'ry play,  
And then we'll win that game today.  
Hurrah for Old Tulane!







*on campus  
and  
around  
the town*

- Lebow Clothes
- Hickok accessories
- MacGregor Sportswear
- Arrow shirts
- Pleetway pajamas

more people buy more merchandise  
at Maison Blanche  
than any place else in New Orleans

**MAISON BLANCHE**

GREATEST STORE SOUTH

Young New Orleans Center,  
MB Fifth Floor  
and  
Store-for-Men, MB First Floor



## *Tulane's All-Americans*

### ENDS

Jerry Dalrymple (1930-31)\*  
Ralph Wenzel (1939)

### TACKLES

Harley McCollum (1939)  
Ernie Blandin (1941)  
Paul Lea (1948)  
Jerome Helluin (1950)

### GUARDS

Tony Sardisco (1955)

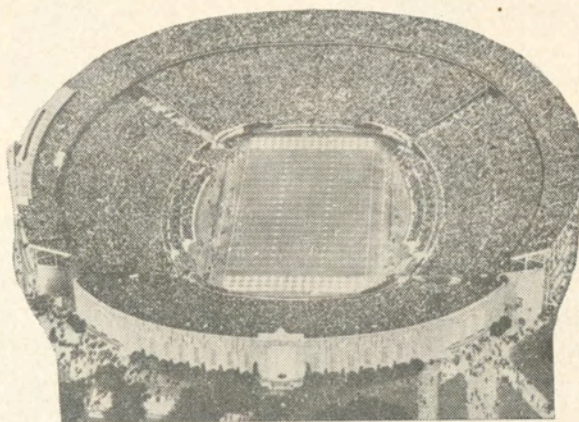
### CENTERS

Lester Gatewood (1943)

### BACKS

"Peggy" Flournoy (1925)  
Bill Banker (1929)  
Don Zimmerman (1931-32)  
Claude Simons, Jr. (1934)  
W. A. "Dub" Jones (1944)  
Eddie Price (1949)

\* National Football Hall of Fame.



## *Tulane Stadium*

Tulane Stadium, famous as the home of Green Wave football teams and of the annual Sugar Bowl Classic, was dedicated 30 years ago this fall with east and west stands seating 35,000. Subsequent enlargements, due in large measure to the efforts of the Sugar Bowlers, have increased the capacity to its present 80,985. The stadium is located on the site of the Etienne de Boré plantation, where sugar was first granulated in this country.

CLOTHES **DO** MAKE  
A DIFFERENCE.  
MANY A MAN  
COMES OFF SECOND BEST  
BECAUSE HE WASN'T  
DRESSED WELL  
IN THE FIRST PLACE.

~  
**KELLER-ZANDER**

**814 CANAL STREET**

*Men's - Women's*

*Finest Apparel - Right Fashions*

ENJOY . . .

SOFT SHELL  
TURTLE  
STEW

only at

***Commander's  
Palace***

Since 1880

Restaurant and Patio

*"One of  
New Orleans'  
Finest"*

WASHINGTON corner COLISEUM

TWinbrook 1-5733



man who made "the first team"

## Hickey-Freeman

On the field you can identify the players by the numbers they wear. In life, too, you know a man by his clothes. Hickey-Freeman suits . . . master works, cut from rich fabrics . . . are worn by men who have earned their places on achievement's "first team." If you belong there . . . you belong in a Hickey-Freeman. from 125.00

men's clothing • second floor

ONLY AT

*Godchaux's*





# NAVY MIDSHIPMEN



Anthony



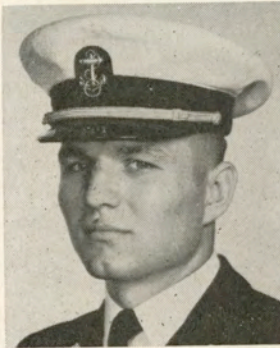
Boyle



Burchett



Caldwell



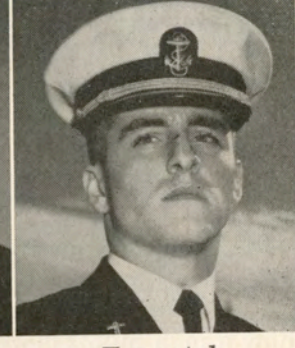
Chomicz



Dagampat



Flood



Forrestal



Gober



Fritzinger



Helweg



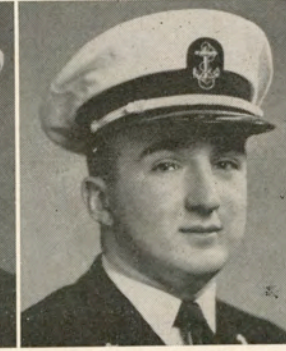
Hower



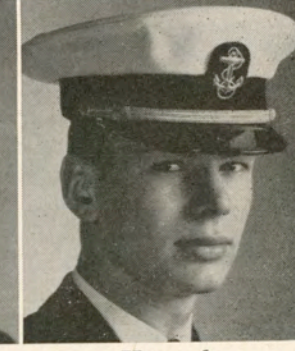
Hurst



Jahn



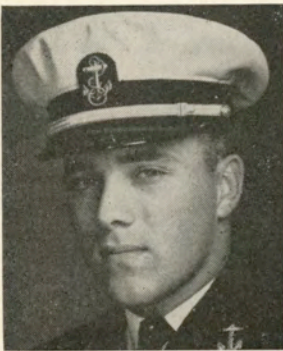
Jkanovich



Kanuch



# NAVY MIDSHIPMEN



Malynn



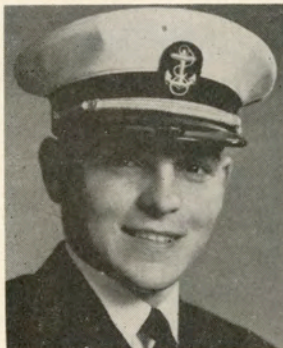
McElwee



McHugh



McKee



Martinez



Meisel



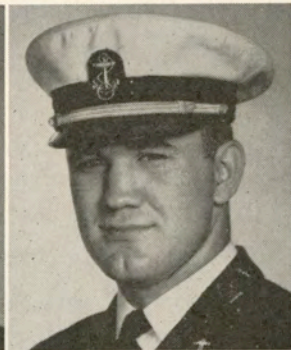
Monto



Oldham



Prahalis



Reifsnyder



Smith



Ruth



Stremic



Wellborn



Warren



Whitmire



Witzmann

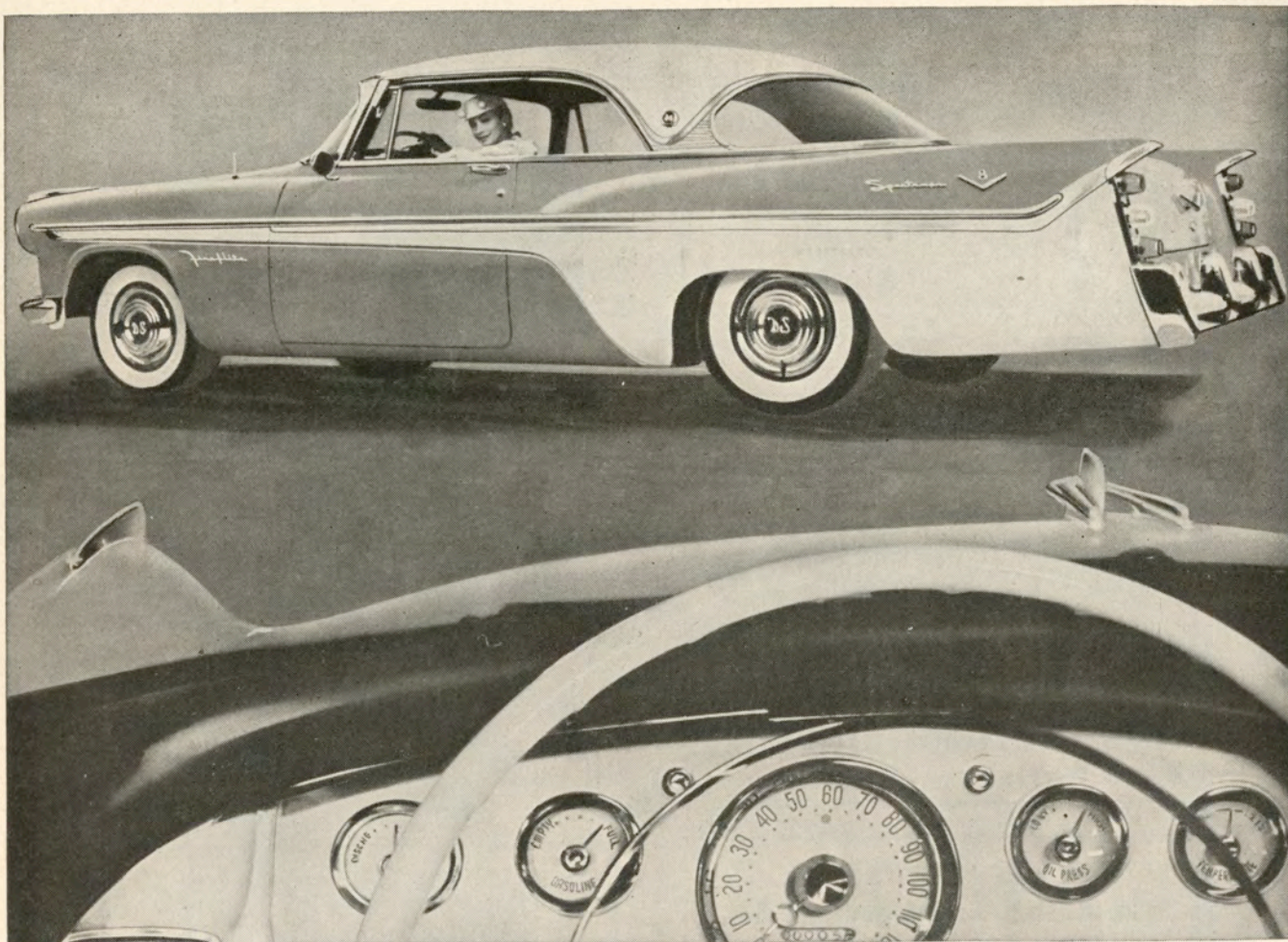


# NAVY ROSTER

| No. | Player                      | Class | Age | Wgt. | Hgt. | Home                    |
|-----|-----------------------------|-------|-----|------|------|-------------------------|
| 12  | Baker, Ronald E., qb        | '57   | 23  | 177  | 5-10 | Lock Haven, Pa.         |
| 15  | Flood, T. Patrick, qb       | '58   | 21  | 167  | 6-0  | Tucson, Ariz.           |
| 16  | Prahalis, C. P. Gus, qb     | '57   | 22  | 179  | 5-10 | Pottsville, Pa.         |
| 18  | Forrestal, Thomas P., qb    | '58   | 19  | 178  | 5-11 | Cleveland, O.           |
| 21  | Slafkosky, Alexander R., hb | '58   | 19  | 177  | 6-0  | Allentown, Pa.          |
| 22  | Brence, Ronald E., hb       | '58   | 21  | 155  | 5-6  | Lloydell, Pa.           |
| 24  | *Burchett, Chester W., hb   | '57   | 21  | 159  | 5-10 | Baytown, Tex.           |
| 25  | *Malynn, Edward E., hb      | '57   | 22  | 171  | 5-8  | Oakland, Cal.           |
| 27  | *Oldham, Edwin W., hb       | '58   | 20  | 179  | 5-10 | Cuyahoga Falls, O.      |
| 30  | Daniels, Shane P., fb       | '58   | 21  | 190  | 6-1  | Mariemont, O.           |
| 33  | Wellborn, Raymond B., fb    | '59   | 20  | 183  | 6-1  | Houston, Tex.           |
| 34  | Hurst, Harry H., hb         | '58   | 21  | 176  | 6-0  | Paulsboro, N. J.        |
| 38  | *Monto, O. Vincent, fb      | '57   | 21  | 203  | 5-11 | Wilkes Barre, Pa.       |
| 44  | Dagampat, Richard M., fb    | '59   | 21  | 165  | 5-8  | Los Angeles, Cal.       |
| 47  | *Gober, Paul D., hb         | '57   | 22  | 164  | 5-9  | Buck Run, Pa.           |
| 48  | Russell, John W., hb        | '57   | 21  | 174  | 5-9  | Oakland, Cal.           |
| 49  | Jahn, Donald R., hb         | '57   | 21  | 193  | 6-2  | Millbrae, Cal.          |
| 52  | McElwee, Robert T., c       | '57   | 20  | 185  | 6-0  | Erlton, N. J.           |
| 56  | Witzmann, John H., c        | '58   | 20  | 204  | 6-0  | New York, N. Y.         |
| 58  | *Whitmire, Wilson R., c     | '57   | 22  | 198  | 6-2  | Coronado, Cal.          |
| 60  | Chomicz, Donald J., g       | '59   | 20  | 180  | 6-0  | Detroit, Mich.          |
| 61  | *Stremic, Anthony W., g     | '58   | 21  | 205  | 5-11 | Glenside, Pa.           |
| 63  | Fritzinger, George R., g    | '59   | 18  | 193  | 5-10 | Wilkes Barre, Pa.       |
| 64  | Boyle, Charles P. III, g    | '58   | 21  | 201  | 5-11 | Philadelphia, Pa.       |
| 67  | *Hower, James J., g         | '57   | 22  | 206  | 6-0  | Chicago, Ill.           |
| 69  | Caldwell, Robert K., g      | '58   | 19  | 191  | 5-11 | Walton, Ky.             |
| 70  | Martinez, James R., t       | '58   | 21  | 213  | 6-3  | Frackville, Pa.         |
| 71  | Reifsynder, Robert H., t    | '59   | 19  | 226  | 6-2  | Rockville Centre, N. Y. |
| 72  | Meisel, William J., t       | '58   | 22  | 196  | 6-2  | Manchester, N. H.       |
| 73  | Helweg, Otto J., t          | '58   | 20  | 198  | 6-2  | Watervliet, Mich.       |
| 75  | Warren, George F., t        | '57   | 23  | 201  | 6-1  | Jacksonville, Fla.      |
| 76  | Anthony, Anthony A., t      | '58   | 21  | 218  | 6-1  | Erie, Pa.               |
| 81  | *Smith, W. Earle, e         | '57   | 22  | 185  | 6-1  | Mobile, Ala.            |
| 84  | Kanuch, John S., e          | '59   | 20  | 175  | 6-2  | Lansford, Pa.           |
| 86  | *Jokanovich, Peter, e       | '58   | 20  | 200  | 5-11 | Los Angeles, Cal.       |
| 87  | McKee, Wayne H., e          | '58   | 20  | 192  | 6-1  | Pittsburgh, Pa.         |
| 88  | McHugh, John T., e          | '57   | 22  | 196  | 6-1  | Sharon, Pa.             |
| 89  | Ruth, John C., e            | '58   | 21  | 197  | 6-0  | Lebanon, Pa.            |

(\* Returning Lettermen)





Fireflite Sportsman in Crimson with contrasting Surf White emphasizes the beauty of De Soto Flight Sweep styling

New push-button driving...

## DE SOTO

You're looking at the smartest, easiest way ever invented to drive a car. In the glamorous '56 De Soto you simply touch a button and GO! No lever . . . no nose-to-the-wheel squinting to select the driving range. Never before a car so responsive and agile in city driving . . . safer, more comfortable at super-highway speeds. New 255 hp engine with high torque take-off . . . new super-highway brakes . . . Full-Time Power Steering\* . . . new Flight Sweep styling. See and drive the dramatic **1956 De Soto—for the super-highway age!**

\*Optional

TRY YOUR HAND at De Soto push-button driving. Buttons are at your fingertips—and to the left, out of the reach of children. Positive mechanical control. Absolutely foolproof. Try it at your De Soto dealer's. De Soto Division, Chrysler Corporation.

DRIVE A DE SOTO  
BEFORE YOU DECIDE!

De Soto dealers present GROUCHO MARX in "You Bet Your Life" on NBC radio and TV.

2

SEE YOUR NEAREST DE SOTO-PLYMOUTH DEALER



*Gus Mayer*  
 CO. LTD.  
 CANAL ST. GENTILLY

**Beat Household Pests!**

Let

'Miller the Killer'  
 Carry the Ball

(Denny Miller, that is)

Call for free estimates

**A&M Pest Control Service**

4823 Perrier . . . . . TW 1-5818



*Bob Row*

"For you folks who came in late, Big Ed Williams will re-run his eighty eight yard gallop!"

Visit . . .

**The Beacon Restaurant and Bar**  
 Napoleon at South Claiborne

**LaRocca's Restaurant and Lounge**  
 540 Robert E. Lee Blvd.



Specialties:  
 Steak, Chicken, Dinners



VIC and ROY LARocca, Your Hosts

FAST SERVICE ON PROCESSING OF  
 16 MM BLACK AND WHITE  
 MOTION PICTURE FILM  
 COLOR OR B&W  
 DUPLICATING

Producers of 16 mm  
 Educational, Industrial and Special Events  
 Motion Pictures

**PAN-AMERICAN FILMS**  
 735 POYDRAS ST.  
 New Orleans

*Tulane Printing Office*

CAMPUS PRINTERS



GIBSON HALL

UNiversity 6-2741  
 Ext. 344

*A Great Name in Clothing*

**SCHWOBI**  
 CLOTHES REG. U.S. PAT. OFF.

**"SUITS THE SOUTH"**



# 1956 CAPTAINS

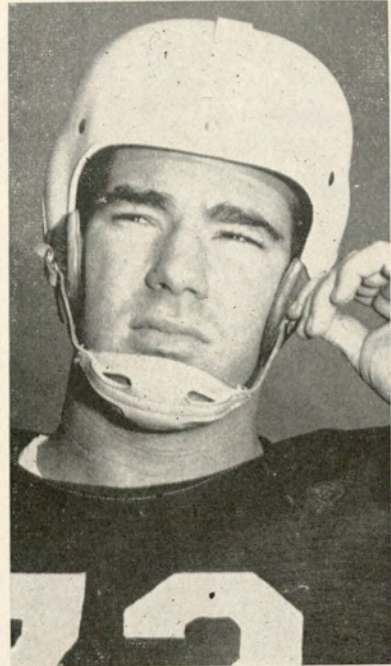


Ronny Quillian



Don Miller

G  
R  
E  
E  
N  
  
W  
A  
V  
E



Dalton Truax

## DELMONICO

RESTAURANT

ESTABLISHED 1895

1300 ST. CHARLES

RAYmond 4937

MAGnolia 9307

WILMER A. SIMPSON  
President

EDWIN A. STOUTZ  
Secty-Treas.

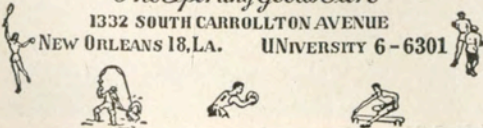


**Simpson-Stoutz Sporting Goods Co.**

INCORPORATED

*The Sporting Goods Store*

1332 SOUTH CARROLLTON AVENUE  
NEW ORLEANS 18, LA. UNIVERSITY 6-6301



"Where New Orleans Shops For Fun"

5 Great Stores To Serve You

Sporting  
Goods

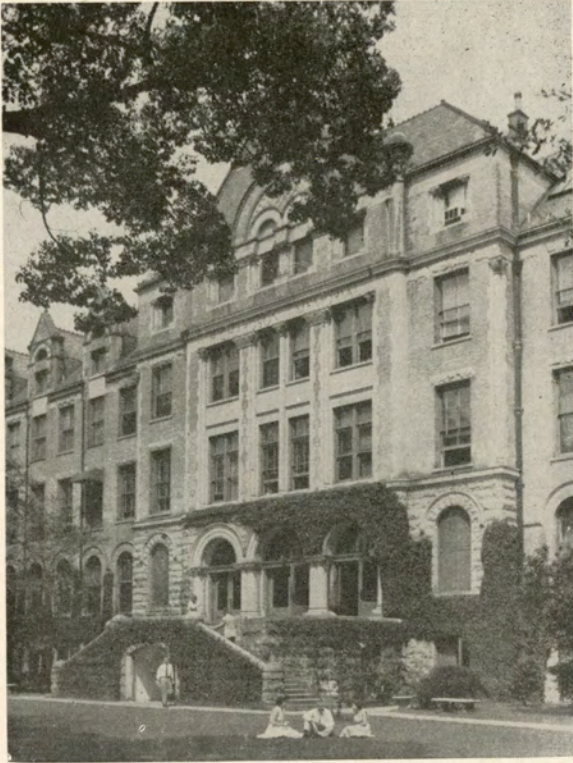
Toys



|            |                     |         |      |
|------------|---------------------|---------|------|
| Cameras    | 2506 Jeff. Hwy.     | CA 0811 | Guns |
| and        | 3604 S. Carrollton  | AU 4253 |      |
| Photograph | 3145 Gentilly Blvd. | CR 5644 |      |
| Equipment  | 8137 Palm St.       | AU 7741 |      |

South's Largest Stock of Boats, Motors,  
Trailers and Marine Equipment





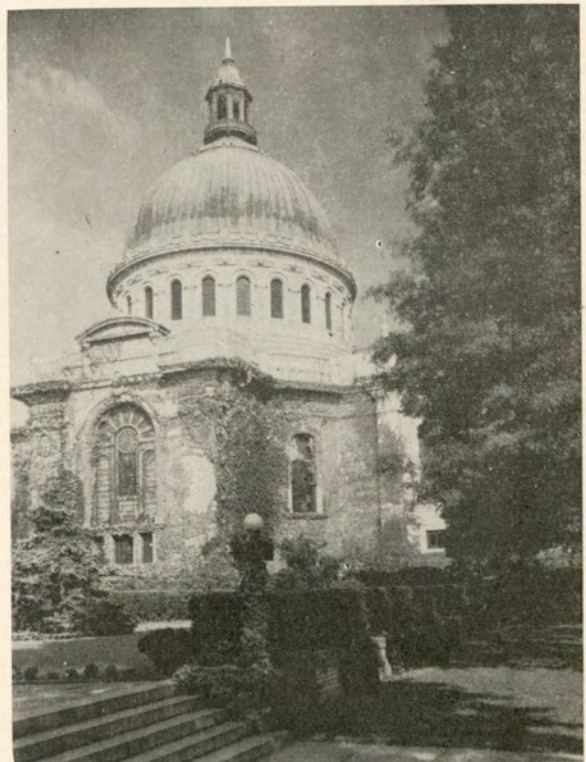
*Richardson Memorial  
Building*

TULANE  
UNIVERSITY



*Naval Academy  
Chapel*

UNITED STATES  
NAVAL ACADEMY



Official U. S. Navy Photograph

---

The official watch for timing today's game is Longines — "The World's Most Honored Watch"





## How to gain 52,800 yards ( per tankful of gas )

**EASY-FLOWING**, multi-grade Super Permalube reduces "engine drag" like no other motor oil made. By conserving power with every piston stroke, it saves gasoline by the gallon — up to two gallons of gas in a tankful.

**WILL SUPER PERMALUBE** Motor Oil save gas in *your* car? Pan-Am guarantees it. It's *got* to save gas in your car, or you get your money back.

**AND SAVING FUEL** is only half the story. Super Permalube gives

you the most complete engine lubrication you can buy. Keeps your engine clean and young and powerful. Keeps it out of the repair shop — eager for the road. Change to the *modern* motor oil — Super Permalube — at Pan-Am.

Change to  
Super Permalube  
Motor Oil at



the sign you trust

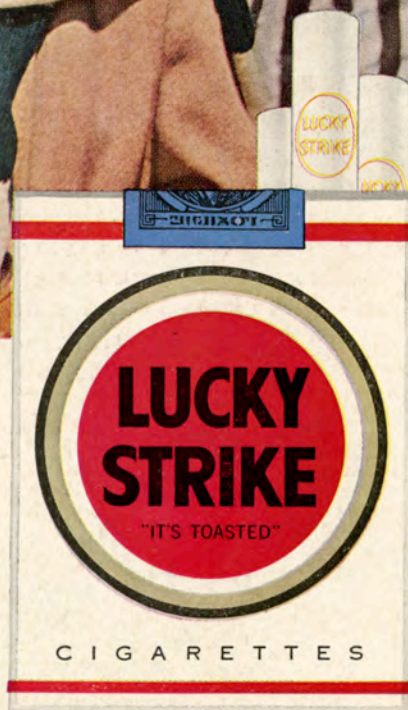


# Light up a Lucky— *it's light-up time!*



# Luckies Taste Better

*Cleaner, Fresher, Smoother!*



**"IT'S  
TOASTED"  
to taste  
better!**