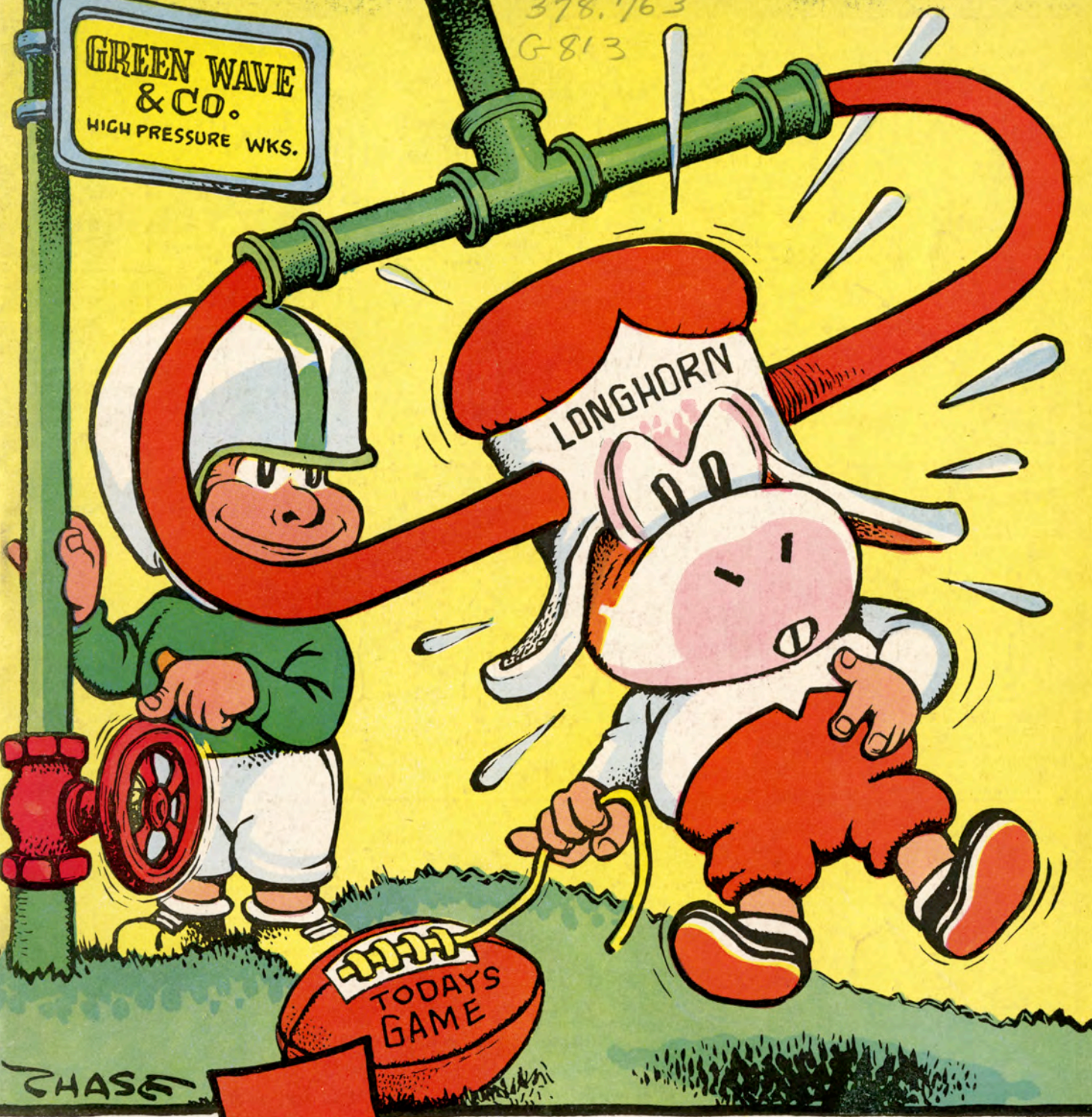


378.763  
G-813

GREEN WAVE  
& CO.  
HIGH PRESSURE WKS.



CHASE

# THE TEXAS GAME

TULANE STADIUM • SEPT. 29, 1956

SOUVENIR PROGRAM - 25¢





Offside (Infraction of scrimmage or free kick formation) —5 yds.



Illegal Procedure, Position, or Substitution —5 yds.



Illegal Motion —5 yds.



Illegal Shift —15 yds.



Illegal Return —15 yds.



\*Delay of Game —5 yds. or 15 yds.



\*Personal Foul —15 yds. Also possible to expel player



Clipping —15 yds.



Roughing the Kicker or Holder —15 yds.



\*Unsportsmanlike Conduct —15 yds. Also possible to expel player



Illegal use of Hands and Arms —15 yds.



Intentional Grounding —5 yds. Also loss of down



Illegally Passing or Handing Ball Forward —5 yds. Also loss of down



\*Forward Pass or Kick Catching Interference—Offended team's ball at spot of foul; 15 yds. Also loss of down



Ineligible Receiver Down Field on Pass —15 yds. Also loss of down



\*Ball Illegally Touched, Kicked, or Batted—5 yds. or 15 yds. Also loss of down or offended team's ball at-spot of foul



Incomplete Forward Pass, Penalty Declined, No Play, or No Score



Crawling—5 yds. Helping the Runner, or Interlocked Interference —15 yds.



Ball Dead; If Hand is Moved from Side to Side: Touchback



Touchdown or Field Goal



Safety



Time-Out



First Down



Ball Ready-for-Play

# Life looks brighter

when you know what's going on!

**STUDY THESE OFFICIAL 1956 SIGNALS AND PENALTIES**



Start the Clock or No More Time-Outs Allowed

**Enjoy  
JAX FAMOUS SPORTS  
AND NEWS PROGRAMS**

every day on TV  
throughout JAXland  
See your local paper for  
times and stations

\*Variable penalty, Referee's Decision  
Signals and Penalties  
brought to you by the



JACKSON BREWING COMPANY,  
New Orleans, La.

any way you  
look at it...



Life looks brighter with **JAX**



*Famous for*  
**FINE FOOD**  
 and **DRINK**



*Enjoy the Specialties of These  
 Noted Restaurants:*

**ANTOINE'S**

*.. Since 1840*

713 St. Louis • RAYmond 2554

12 Noon to 9 P. M. Closed Sundays.

**ARNAUD'S**

*.. Carnival Room*

813 Bienville St. • MAgnoIia 5433

11 A. M. to 12:30 A. M. Daily

**BROUSSARD'S**

*.. Napoleon Patio*

819 Conti St. • MAgnoIia 4800

11:30 A. M. to 11:30 P. M.  
 Closed Wednesdays.

FOR GOOD HEALTH



*The Finest Quality  
 Ice Cream and  
 Dairy Products*



**SOUTHWICK**  
 Soft construction,  
 natural shoulders,  
 easy lines.

*A man depends on many  
 things for success, and  
 notably among these is the  
 fact that success and a well  
 dressed appearance go hand  
 in hand.*

*Our "exclusive" specialty  
 is the supremely comfort-  
 able, casually distinctive  
 SOUTHWICK suit—con-  
 structed with soft shoulders  
 and natural lines without  
 excess padding and canvas  
 stiffening. We are proud  
 to show you our SOUTH-  
 WICK suits.*

EXCLUSIVE WITH

**Terry & Juden Co.,**

LIMITED

*Fine Apparel for Men for 70 Years*

CLOTHING HABERDASHERY

UNIFORMS

135 Carondelet Street

CAnal 7771



25 YEARS OF  
INVESTMENT  
SERVICE

**Scharff & Jones**  
INCORPORATED

Telephone Tulane 0161  
219 Carondelet St.  
NEW ORLEANS, LA.

*Tax-Free  
Municipal Bonds  
Local Stocks*

—  
Inquiries Invited  
—

**WHITE,  
HATTIER, &  
SANFORD**

Whitney Bldg.

New Orleans



### 3 New Orleans traditions

**BREAKFAST AT BRENNAN'S:** Done magnificently in the old plantation manner, and served at any hour.

**LUNCHEON AT BRENNAN'S:** Served overlooking a beautiful patio, with a menu full of happy surprises.

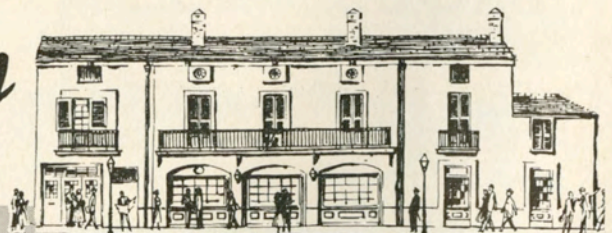
**LUNCHTIME COCKTAILS:** Martini or Old Fashioned, 25c

**DINNER AT BRENNAN'S** The famous specially priced early dinner menu is now served until closing, along with the nationally famous a la carte menu.

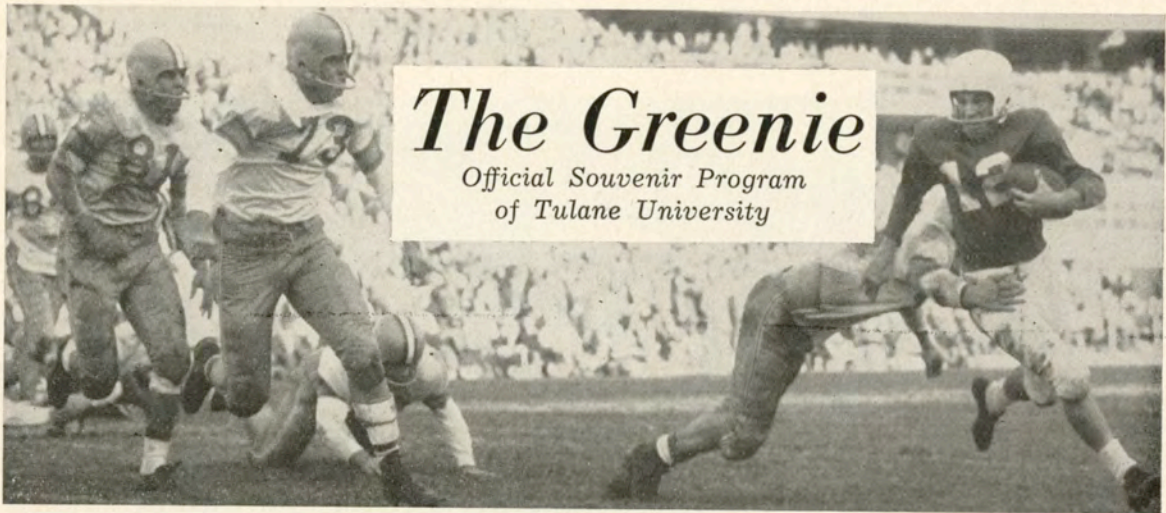
COME AS LATE AS  
MIDNIGHT

**Brennan's**

FRENCH RESTAURANT  
417 ROYAL ST., NEW ORLEANS







# The Greenie

Official Souvenir Program  
of Tulane University

EDDIE ALLEN, *Editor*

Division of Athletics, Tulane University, New Orleans 18, La.

National Advertising Representative: Spencer Advertising Company, Inc., 271 Madison Avenue, New York, N. Y.

Vol. 26

September 29, 1956

No. 2

## Tulane vs. Texas

Last season Tulane's football team "found itself" against Texas. While the Longhorns claimed the long end of a 35-21 score at Austin, the game added greatly to Greenie confidence and no doubt was the foundation for successes later. Today Texas will play Tulane again in a contest marking the first time the Steers and the Wave have met in this almost 30-year-old stadium.

While the big "T's" have crossed 10 times previously, all except the 1955 game were back in football's formative years. Texas leads, 8-1-1, in the rivalry which was resumed last September after a 32-season lapse. Tulane last triumphed over the Lone Star stagers by 28-16 in 1908.

It is expected that better balance will make Texas even tougher than in '55, which they closed with a 21-6 win over Texas A. & M. that compared in size with Tulane's earlier upset of Auburn. Coach Eddie Price's Longhorns will display a multiple offense based on the split T with some unbalanced line and direct snap variations.

Passing was the big Texas weapon last year and may be again. Quarterback Joe Clements (28), who threw for three touchdowns and scored another himself against Tulane at Austin, is being pressed for his job by Vince Matthews (25). Halfback

Walt Fondren (24) is compared with S.M.U. great Doak Walker by some Southwest critics. In the line guard Garland Kennon (76) and center Louis Del Homme (50) are ranking all-conference candidates.

While Tulane conquered Virginia Tech, 21-14, last week on three touchdown passes by Gene Newton (12), Texas absorbed a 44-20 defeat from powerful Southern California. Other Greenie offensive heroes against Tech included end Will Billon (80), fullback Ronny Quillian (40), left halfback Willie Hof (32) and right half Virgil Jester (23).

### 1956 TULANE SCHEDULE

Tulane 21; Virginia Tech 14	
Sept. 29—Texas, home	2:00 p.m.
Oct. 6—Northwestern, Evanston	12:30 p.m.
Oct. 13—Navy, home	2:00 p.m.
Oct. 20—Ole Miss, Jackson	8:00 p.m.
Oct. 27—Georgia Tech, Atlanta	1:00 p.m.
Nov. 3—Miss. State, home	2:00 p.m.
Nov. 10—Alabama, Homecoming	2:00 p.m.
Nov. 17—Vanderbilt, Nashville	2:00 p.m.
Dec. 1—L.S.U., home	2:00 p.m.
(All times C.S.T.)	

#### TICKET OFFICES

Stadium, 6401 Willow — WALnut 0656  
Werlein's, 605 Canal — MAGnolia 6201



shopping

at *Holmes*

is traditional in New Orleans



**slacks**

**jackets**

**sport coats**

**toppers**

Come in . . . and you'll cheer for the HOLMES Team! Outstanding quality and a truly friendly atmosphere make HOLMES the favorite shopping place of New Orleanians.

HOLMES features the latest in men's styles and furnishings—world-famous labels, from sports clothes to evening attire.

Whenever you're downtown in New Orleans, make it a point to shop at HOLMES . . .

before and after the game

**. . . dine at HOLMES**

The beautiful air-conditioned restaurant at HOLMES features real New Orleans cuisine . . . Pompano, Shrimp, and other delicious sea-foods and meats. It's so convenient, too—right downtown.





# TULANE UNIVERSITY



DR. RUFUS CARROLLTON HARRIS  
*President*

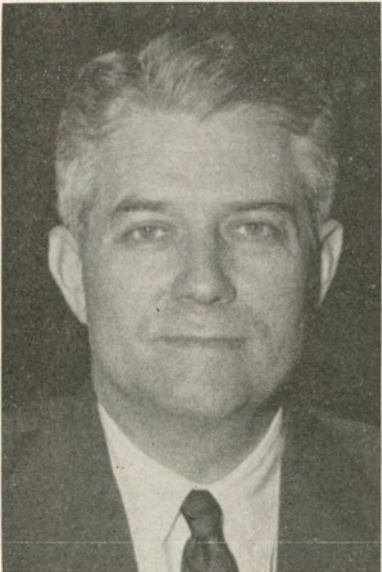


RICHARD O. BAUMBACH  
*Director of Athletics*

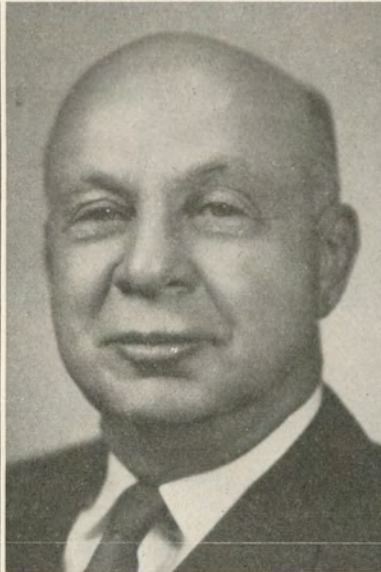


ANTON (ANDY) PILNEY  
*Head Football Coach*

# UNIVERSITY OF TEXAS



DR. LOGAN WILSON  
*President*



D. X. BIBLE  
*Director of Athletics*



EDWIN PRICE  
*Head Football Coach*



# TULANE GREEN WAVE



Abadie



Andrews



Billon



Blount



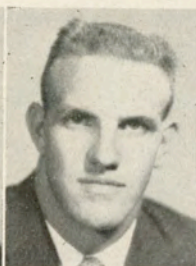
Borne



Bratton



Burkes



Carroll



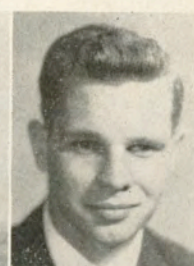
Caruso



Casshie



Cavallino



Denby



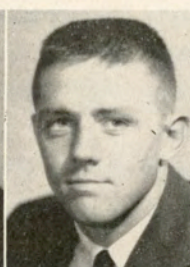
DiVietro



Egan



Emerson



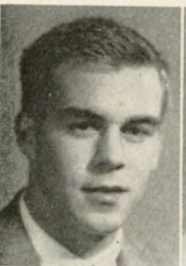
Fleming



Hansen



Hawley



Hendee



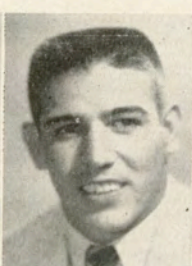
Hof



Jester



Jones



Kelly



Khayat



Klung



Lockwood



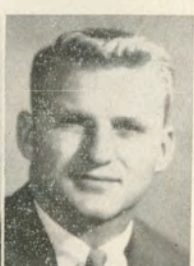
Mackey



Marcel



Mason



McCoy



# TULANE GAMES ON RADIO!

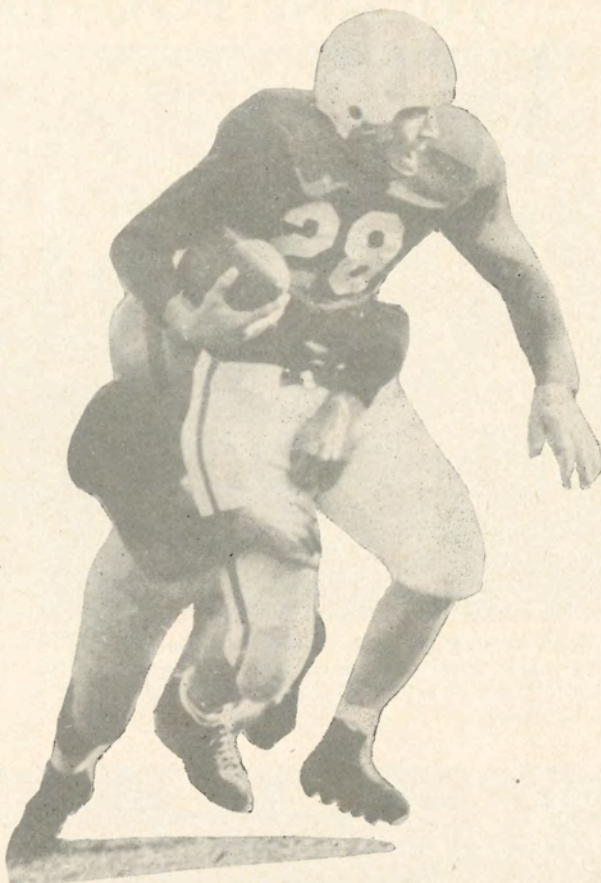
.....

Complete broadcasts  
of all games  
with  
TED ANDREWS - JOHN KENT

**WDSU**  
1280 on your dial

.....

Brought to you by



## YOUR TEXACO DEALER



... the best friend  
your car  
has ever had!

AL'S TEXACO SERVICE .....	Canal & Bernadotte St. ....	AU 5055
ALBERT'S SERVICE STATION .....	301 No. Carrollton Ave. ....	AU 9235
EDDIE FISCHER TEXACO SERVICE .....	3000 Metairie Road .....	VE 3-9114
GOGARTY TEXACO SERVICE .....	706 Metairie Road .....	VE 5-7961
GUILLOT TEXACO SERVICE .....	4938 Freret Street .....	UP 9238
HALE & WEBER TEXACO SERVICE .....	5107 Airline Hwy., Jeff. Parish .....	VE 3-7172
HOFFMAN TEXACO SERVICE .....	3820 Jefferson Hwy. ....	VE 3-7892
JAKIE'S TEXACO SERVICE .....	2549 Esplanade Ave. ....	AU 3546
KIRN'S TEXACO SERVICE .....	4237 Paris Avenue .....	FR 9604
LARRY'S TEXACO SERVICE .....	E. View Dr. & Gentilly .....	FR 9264
NICK'S TEXACO SERVICE .....	1301 Airline Hwy., Kenner .....	21-7-8894
O'SHAUGHNESSY SERVICE, INC. #3 .....	101 Airline Hwy., Metairie .....	VE 3-5577
PHILIBERT'S TEXACO SERVICE .....	2946 Gentilly Blvd. ....	CR 9233
ST. CHARLES SERVICE .....	7701 Maple Street .....	WA 4101
SCHOENHARDT TEXACO SERVICE .....	4301 So. Claiborne Ave. ....	TW 5-9561



# TULANE FOOTBALL STAFF



**GREEN WAVE STAFF**—From left, seated: Bob Whitman (backs), Head Coach Andy Pilney, Mike Karmazin (line) and Jack Green (line). Standing: John Mazur (backs), Ray Prats (freshmen), Stan Kottemann (freshmen), Homer Dedeaux (assistant to the athletic director) and Earl (Bubba) Porche (trainer).



U. S. OLYMPIC COMMITTEE



AMERICAN AUTOMOBILE ASS'N



AMATEUR ATHLETIC UNION



NAT'L COLLEGIATE ATHLETIC ASS'N



NAT'L AERONAUTIC ASS'N



AMERICAN POWER BOAT ASS'N



NAT'L HORSE SHOW ASS'N

# Longines

THE WORLD'S MOST HONORED WATCH

*Official Watch for the*

**TULANE GAMES**

Quality leader among the finest watches of the world is Longines—winner of 10 World's Fair Grand Prizes and 28 Gold Medals for excellence and elegance, highest Observatory Honors for accuracy.

*Of special interest to sportsmen* is a series of highly efficient Longines Automatic Watches employing an exclusive self-winding principle. They are shock-resistant, anti-magnetic, with unbreakable mainsprings; many are waterproof\*. These outstanding Longines watches are priced from \$75 to \$195.

\*as long as crystal, back and stem are intact.



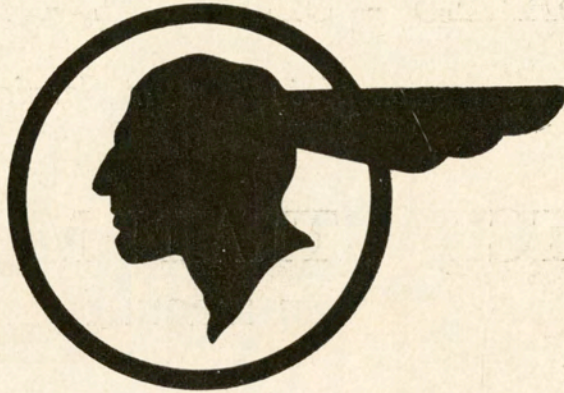
Longines  
Oslo Automatic.  
14K gold waterproof\* case.  
Sweep second hand. \$195.

SOLD AND SERVICED  
BY MORE THAN  
4000 LEADING JEWELERS WHO  
PROUDLY DISPLAY THIS EMBLEM





FOR THE SWEETEST DEAL ON AN AUTOMOBILE!



COMPLIMENTS  
OF

**PATTISON PONTIAC  
CO., INC.**

SALES and SERVICE

2120 CANAL STREET

TUlane 5252



Oldsmobile

Cadillac

*Authorized*

SALES - SERVICE - PARTS

*Complete Repair Service*

PONTCHARTRAIN MOTOR CO.

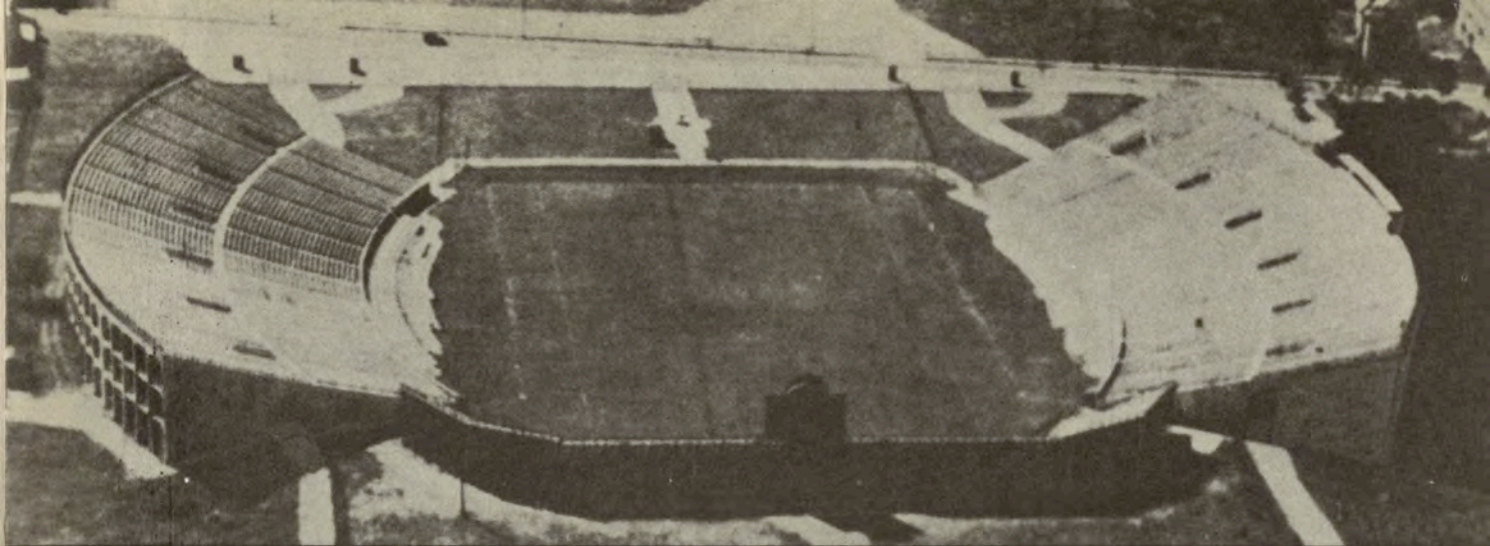
701 BARONNE

*Five Minutes From Leading Hotels*

# TWO LANE FORMATION







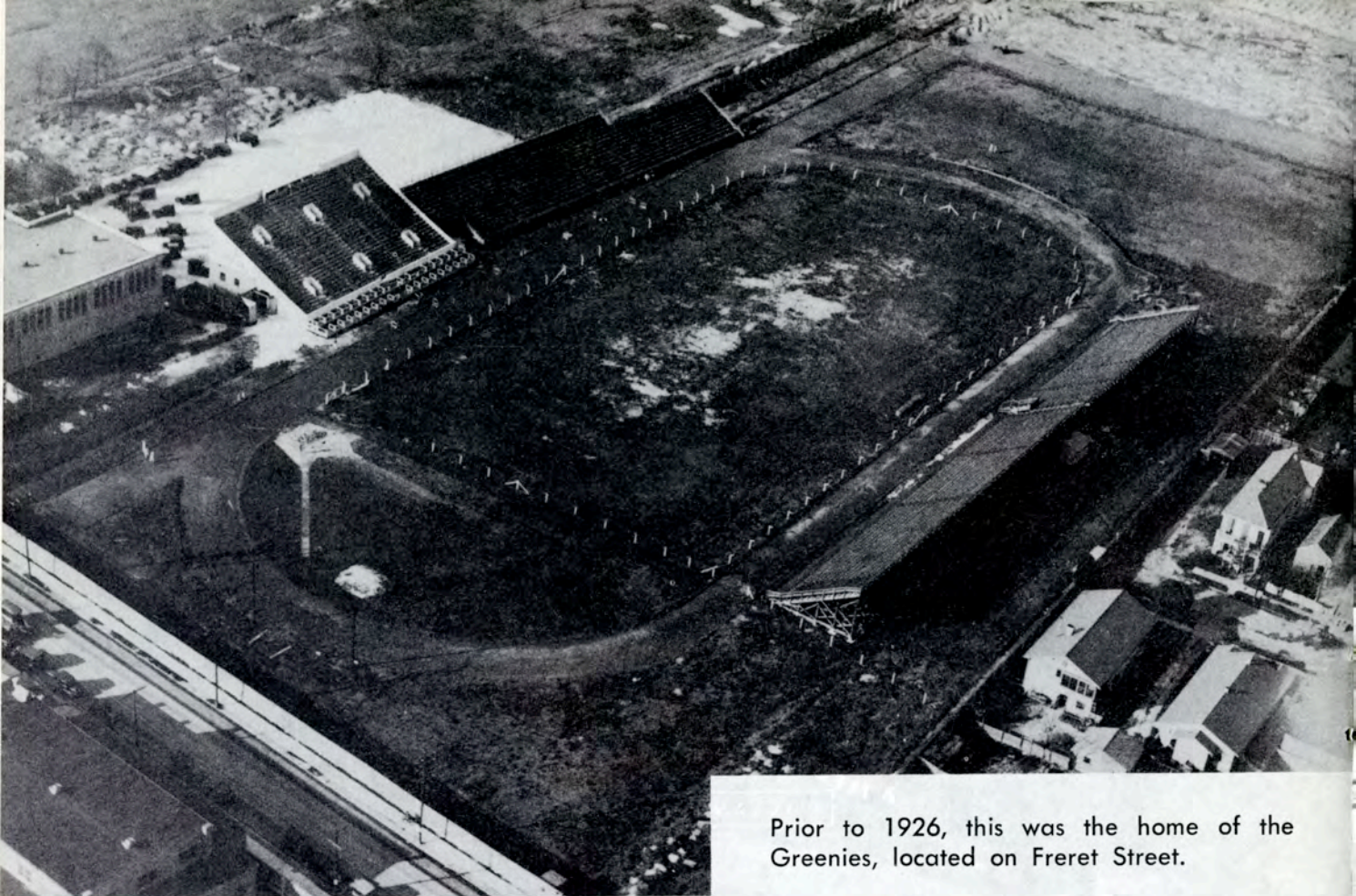
**Cam** CAMPUS PICTURES  
A MEDLEY OF **pix**  
© TULANE UNIVERSITY 1956



Tulane-Sugar Bowl Stadium will be 30 years old next month and, as these pictures show, there have been some changes made in that time. The top scene shows the stadium as it appeared shortly after its dedication in 1926.

Below is the stadium of today, with a seating capacity of 80,985. Next year, it is planned, the picture may be altered again with the installation of lights.





Prior to 1926, this was the home of the Greenies, located on Freret Street.

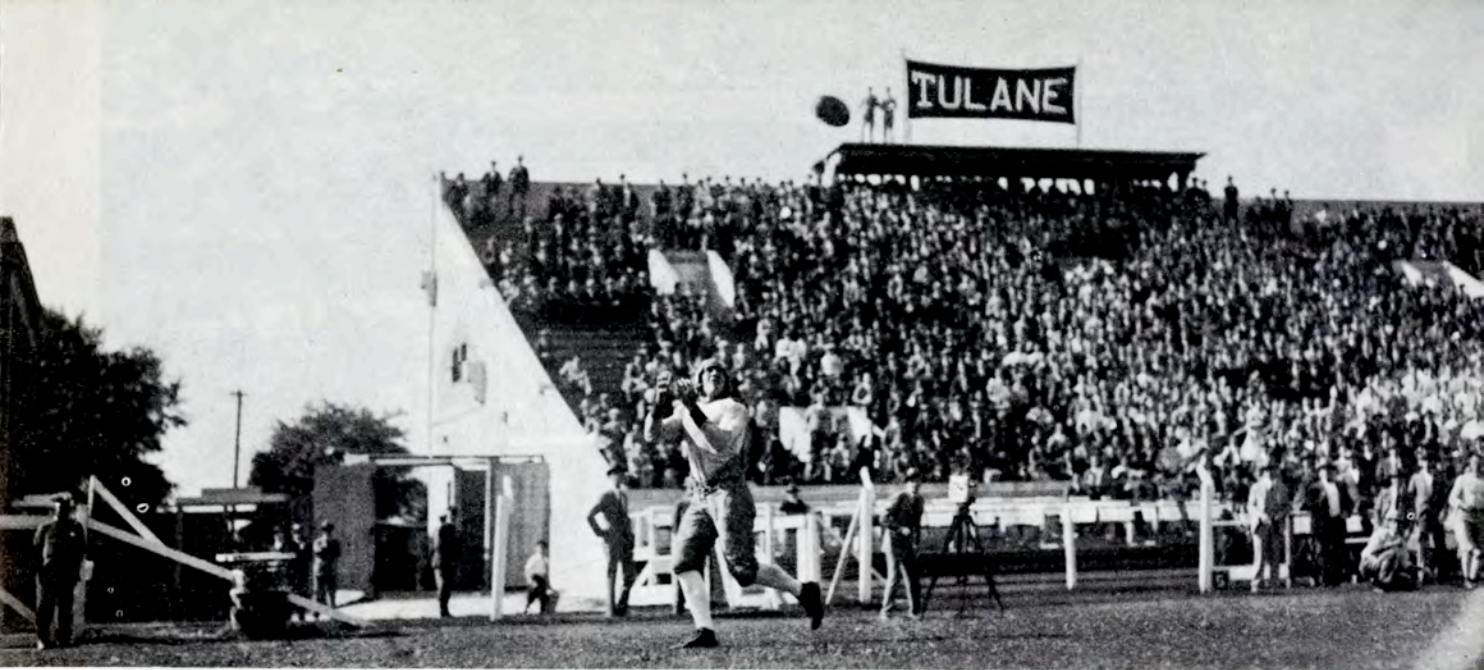


Here, in the old stadium, the Vanderbilt-Tulane meeting of 1924 was the first Tulane game to be broadcast over radio. The announcers had the best of sideline seats.

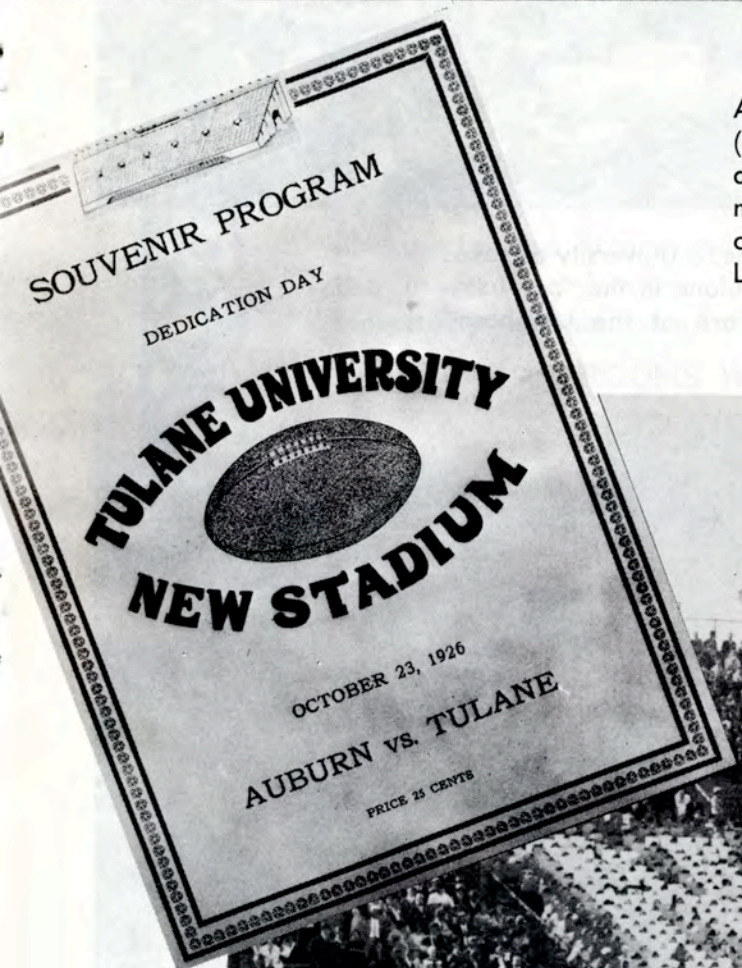


WILBUR WILLIAMS & CO., FT. SMITH, ARK.





A Tulane pass receiver waits in the clear (above) in the old stadium. Below, shortly after the opening of the new stadium, bands, marchers and a card section pep up the crowd at halftime. (Preceding photos by Leon Trice.)







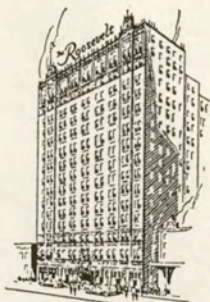
Today, for the first time, a University of Texas football team plays Tulane in the "new" stadium. These scenes are of the Longhorns' campus at Austin.





# *New Orleans' Finest*

In America's Most Interesting City



THE ROOSEVELT is located in the heart of Romantic old New Orleans. It is in the center of business and social activities and is close to the Theatre, Shopping, French Quarter, and Business Districts . . . You will like the tasteful luxury and home-like atmosphere of this modern hotel where the traditions of Southern Hospitality are maintained the year 'round.

**900 ROOMS WITH BATH  
MODERATE RATES**

SEYMOUR WEISS, *President and Managing Director*  
A. C. BELLANDE, *Manager*

*Visit*

*The Famous Sazerac Bar*

*Home of the Original Sazerac Cocktail*

After 105 Years Ladies Are Now Cordially Invited

*The*  
**ROOSEVELT**

*"Pride of the South"*



Live Modern, Boy...Smoke **L&M!**

My Chesterfields *Satisfy* the Most!



## TULANE

### PROBABLE STARTING LINEUP

No.	Name	Position
85	CHARLES MACKEY	LE
72	DALTON TRUAX	LT
63	WILBUR TROXCLAIR	LG
50	DONALD MILLER	C
62	JIM ZIMMERLE	RG
74	EMMETT ZELENKA	RT
80	WILL BILLON	RE
12	GENE NEWTON	QB
33	TOMMY WARNER	LH
23	VIRGIL JESTER	RH
40	RONNY QUILLIAN	FB

## THE GREEN WAVE SQUAD

11 Caruso, qb	42 Jones, fb	70 Hansen, rt
12 Newton, qb	43 Marcel, fb	71 Cotros, lt
14 Casshie, qb	45 Andrews, fb	72 Truax, lt
15 Riley, qb	47 McCoy, fb	73 Cavallino, lt
17 Wilcox, qb	50 Miller, c	74 Zelenka, rt
20 Mason, rh	51 Ross, c	75 Schexnayder, rg
21 Reginelli, rh	52 DiVietro, lg	76 Egan, lt
22 Denby, rh	53 Tyler, c	77 Lockwood, rt
23 Jester, rh	54 Senac, c	78 Hudson, lt
25 Tarzetti, lh	57 Wilson, c	79 Nolan, rt
26 Burkes, lh	59 Hughes, c	80 Billon, re
29 Bratton, rh	61 Walker, lg	81 Abadie, re
31 Stockstill, rh	62 Zimmerle, rg	82 Montgomery, re
32 Hof, lh	63 Troxclair, lg	84 Painter, re
33 Warner, lh	64 Klock, lt	85 Mackey, le
34 Fleming, lh	65 Carroll, rg	86 Young, le
35 Lorio, lh	66 Klung, rg	87 Khayat, le
38 Borne, lh	67 Hawley, rg	89 Waters, le
40 Quillian, fb	68 Emerson, lg	93 Musial, re
41 Kelly, fb	69 Blount, lg	97 Hendee, rt

## TEXAS

### PROBABLE STARTING LINEUP

No.	Name	Position
86	JOE LOSACK	LE
79	J. T. SEAHOLM	LT
76	GARLAND KENNON	LG
50	LOUIS DEL HOMME	C
66	BILL CARRICO	RG
75	WILL WYMAN	RT
89	BILL GERMANY	RE
28	JOE CLEMENTS	QB
24	WALTER FONDREN	LH
30	MICKEY SMITH	RH
33	WAYNE WASH	FB

## THE LONGHORN SQUAD

11 Watson, rh	43 Johnson, lh	70 Wes Wyman, t
14 Brindley, rh	44 Hobbs, lh	71 Uecker, t
15 Welch, fb	50 Del Homme, c	72 Padgett, t
18 Wylie, rh	52 Hunt, c	74 Stolhandske, t
19 Moritz, rh	53 Lee, c-g	75 Will Wyman, t
20 Moffat, qb	54 Robinson, c-g	76 Kennon, g
21 Woods, qb	55 Parkhurst, c	77 Larpenter, t
34 Fondren, lh	56 Horst, c	78 Baker, t
25 Matthews, qb	60 Winter, g	79 Seaholm, t
26 Castleberry, qb	61 Wells, g	81 Trant, e
28 Clements, qb	62 Wilson, c	82 Myers, e
30 Smith, rh	63 Williams, g	83 Shaw, e
31 Maroney, fb	64 Fitts, g	84 Baumgarten, e
32 Elam, fb	65 Lowrey, g	85 Bryant, e
33 Wash, fb	66 Carrico, g	86 Losack, e
34 Twardowski, fb	67 Coulter, g-t	88 Ernst, e
35 Bednarski, fb	68 Dreymla, g	89 Germany, e
42 Branch, lh	69 Long, g	

GAME OFFICIALS: E. D. (Red) Cavette (Southwestern, referee); Taylor Wilkins (Texas A & M), umpire; James Armistead (Vanderbilt), head linesman; John Morrow (Texas A. & M.), field judge; Morris Katz (Georgia Tech), back judge; Russell Lyons (Illinois), clock operator.





R

*The Roosevelt Hotel Offers*  
*New Orleans' Most Diversified Program*  
*of*  
*Music and Entertainment*

**in the FOUNTAIN LOUNGE**

AT LUNCHEON we invite you to listen to the sweet strains of the Gypsy Ensemble. For COCKTAILS and DANCING, alternating nightly from five o'clock until two the next morning is the Society Music of two of America's outstanding combinations.

**in the BLUE ROOM**

Each evening, for DINNER and SUPPER DANCING is presented one of the Nation's famous orchestras . . . Featured also in the Blue Room Floor Shows at Dinner and Supper, are celebrated stars from radio, stage, screen and TV.

*New Orleans' most discriminating audience choose  
The Roosevelt for their relaxation and entertainment*

*The*  
**ROOSEVELT**

*"Pride of the South"*



This section of today's CAM-PIX features Tulane's Speech and Hearing Center, which is dedicated to problems of speech and the deaf. In this picture the Center's nursery school teacher, using visual and kinesthetic cues, makes a "puh" sound for two little deaf children, whose other senses must be made more highly developed to make up for loss of hearing.







Speech pathologist records speech of a small patient with an articulation problem (ABOVE) and a little deaf nursery school student listens to the amplified sounds he is making into microphone (BELOW).







Audiologist tests patient's hearing to determine her ability to hear pure tones. (ABOVE). Patients who have had their larynx (voice box) removed are taught to learn to talk again by using their esophagus. They swallow air, force it out, and learn to control it to form sounds and words. Dr. Jeannette Laguaite, educational director of the Center, shows a class of laryngectomees the role of the esophagus in their new speech. (BELOW).





Three pupils here are able to hear sounds amplified by special equipment. They have partial hearing defects. Offices of the Center are in the Hutchinson Memorial Medical Building.





HAL'S  
Barbecue Drive-Inn

5801 CHEF MENTEUR  
HIGHWAY

•  
*Featuring Barbecue  
and Poor Boy Sandwiches  
of All Kinds*

•  
OUR FRIED CHICKEN  
IS GOLDEN BROWN  
AND MILK-FED

Best Wishes To

*The Green Wave*

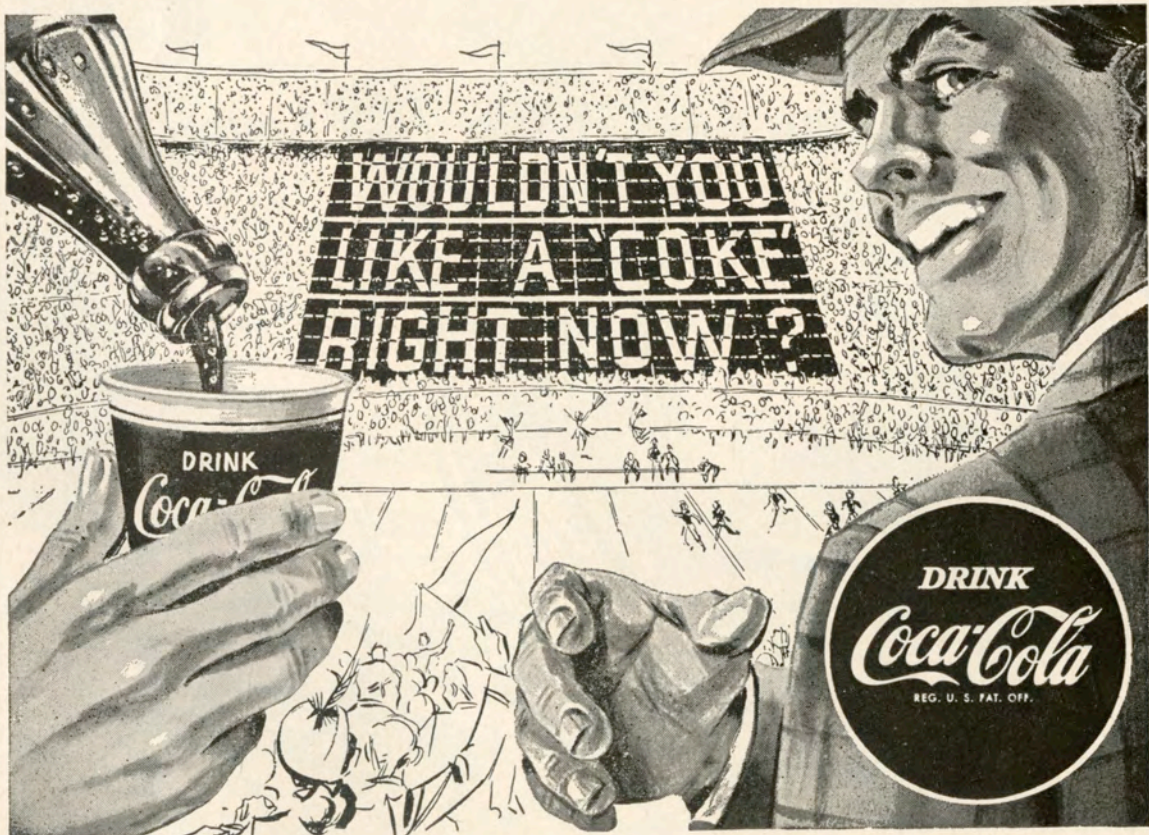
For Many Successful  
Seasons



CHALMETTE LAUNDRY  
and CLEANERS

2801 TULANE AVENUE

For Excellent Work and Rapid Service  
Call GAlvez 2161





# Tulane Songs

## ALMA MATER

We praise thee for thy past, O Alma Mater!  
Thy hand hath done its work full faithfully;  
The incense of thy spirit hath ascended  
And filled America from sea to sea!

We praise thee for they present, Alma Mater!  
Today thy children look to thee for bread!  
Thou leadest them to dreams and action  
splendid!

The hunger of their souls is richly fed!

We praise thee for thy future, Alma Mater!  
The vista of its glory gleameth far!  
We shall ever be part of thee, great Mother!  
There thou will be where e'er thy children are!

### Chorus

Olive Green and Blue, we love thee.  
Pledge we now our fealty true  
Where the trees are ever greenest,  
Where the skies are purest blue.  
Hear us now, O Tulane, hear us.  
As we proudly sing to thee!  
Take from us our heart's devotion!  
Thine we are, and thine shall be!

## ROLL ON, TULANE

Here's a song for the Olive and the Blue.  
Here's a cheer for the team that's tried and true.  
Here's a pledge of loyalty to thee.

Oh, Tulane Varsity.

Here's to the Greenbacks that never will say die,  
And here's to the hearts that are true  
To the men of Tulane who are fighting for her  
name,

For the Olive and the Blue.

### Chorus

Roll, Green Wave,  
Roll them down the field.  
Hold, Green Wave,  
That line must never yield.  
When those Greenbacks charge through the line  
They're bound for victory.  
Hail, Green Wave,  
For you we give a cheer.  
Hail, Green Wave,  
For you we have no fear.  
So ev'ry man in ev'ry play,  
And then we'll win that game today.  
Hurrah for Old Tulane!







*on campus  
and  
around  
the town*

- Lebow Clothes
- Hickok accessories
- MacGregor Sportswear
- Arrow shirts
- Pleetway pajamas

more people buy more merchandise  
at Maison Blanche  
than any place else in New Orleans

**MAISON BLANCHE**  
GREATEST STORE SOUTH

Young New Orleans Center,  
MB Fifth Floor  
and  
Store-for-Men, MB First Floor



*Tulane's  
All-Americans*

**ENDS**

Jerry Dalrymple (1930-31)\*  
Ralph Wenzel (1939)

**TACKLES**

Harley McCollum (1939)  
Ernie Blandin (1941)  
Paul Lea (1948)  
Jerome Helluin (1950)

**GUARDS**

Tony Sardisco (1955)

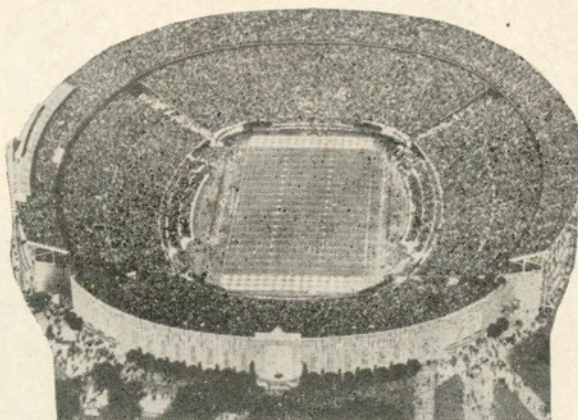
**CENTERS**

Lester Gatewood (1943)

**BACKS**

"Peggy" Flournoy (1925)  
Bill Banker (1929)  
Don Zimmerman (1931-32)  
Claude Simons, Jr. (1934)  
W. A. "Dub" Jones (1944)  
Eddie Price (1949)

\* National Football Hall of Fame.



*Tulane Stadium*

Tulane Stadium, famous as the home of Green Wave football teams and of the annual Sugar Bowl Classic, was dedicated 30 years ago this fall with east and west stands seating 35,000. Subsequent enlargements, due in large measure to the efforts of the Sugar Bowlers, have increased the capacity to its present 80,985. The stadium is located on the site of the Etienne de Boré plantation, where sugar was first granulated in this country.

CLOTHES **DO** MAKE  
A DIFFERENCE.  
MANY A MAN  
COMES OFF SECOND-BEST  
BECAUSE HE WASN'T  
DRESSED WELL  
IN THE FIRST PLACE.



**KELLER-ZANDER**  
814 CANAL STREET

Men's - Women's  
*Finest Apparel - Right Fashions*

ENJOY . . .

SOFT SHELL  
TURTLE  
STEW

only at

*Commander's  
Palace*

Since 1880

Restaurant and Patio

*"One of  
New Orleans'  
Finest"*

WASHINGTON corner COLISEUM  
TWinbrook 1-5733



man who made "the first team"

## Hickey-Freeman

On the field you can identify the players by the numbers they wear. In life, too, you know a man by his clothes. Hickey-Freeman suits . . . master works, cut from rich fabrics . . . are worn by men who have earned their places on achievement's "first team." If you belong there . . . you belong in a Hickey-Freeman.  
from 125.00

men's clothing • second floor

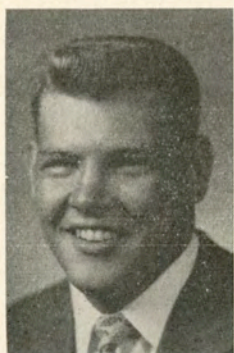
ONLY AT

*Godchaux's*





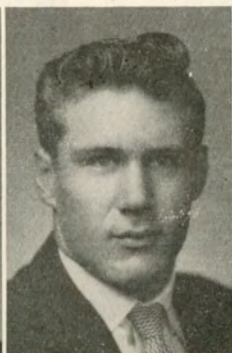
# TEXAS



Baker



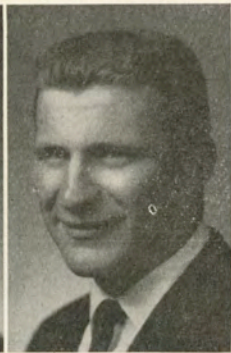
Baumgarten



Branch



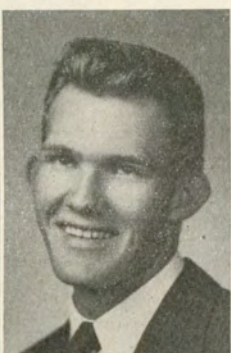
Bryant



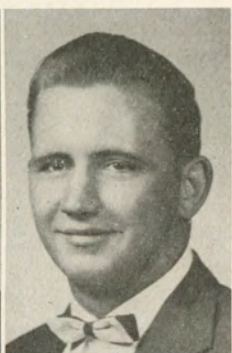
Carrico



Castleberry



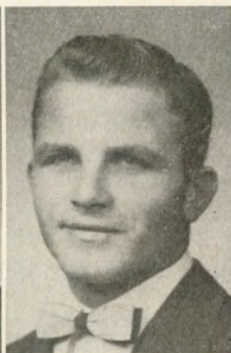
Clements



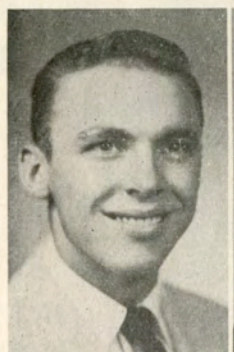
Del Homme



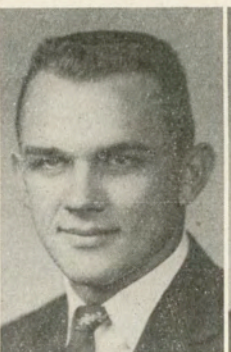
Dreymla



Elam



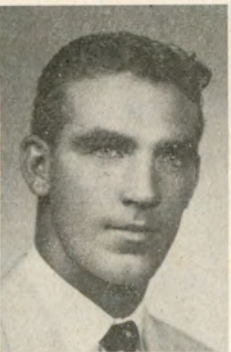
Ernst



Fitts



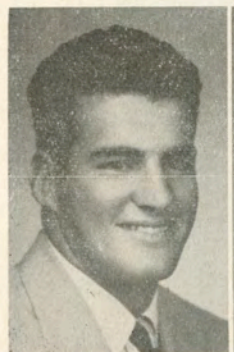
Fondren



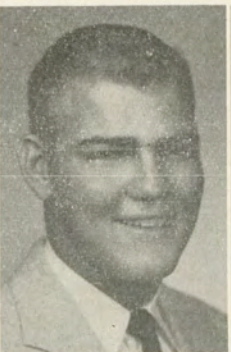
Germany



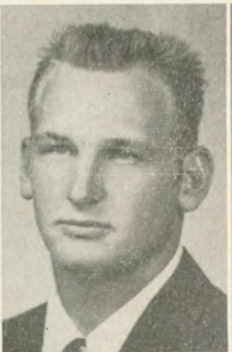
Hobbs



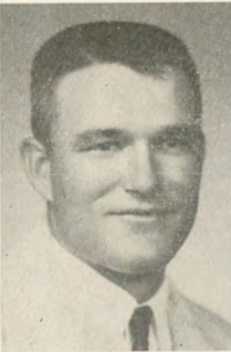
Kennon



Larpenter



Lee



Losack



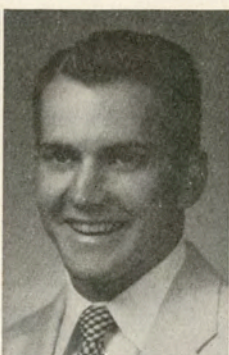
Lowrey



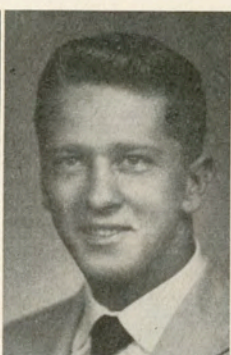
# TEXAS



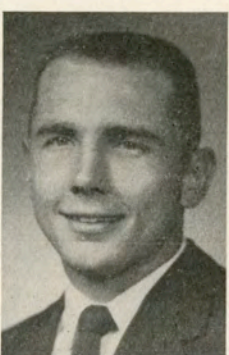
Maroney



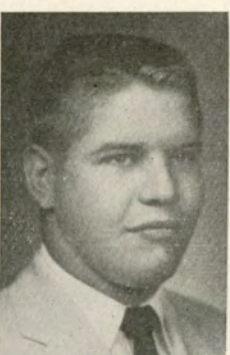
Matthews



Moffatt



Myers



Padgett



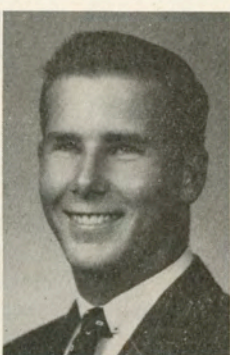
Parkhurst



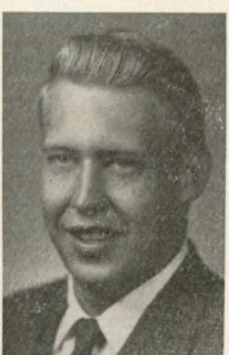
Seaholm



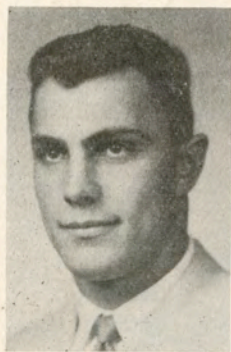
Shaw



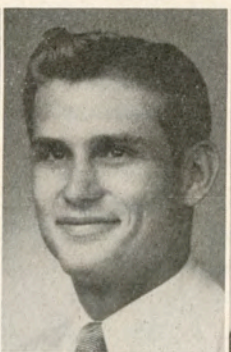
Stolhandske



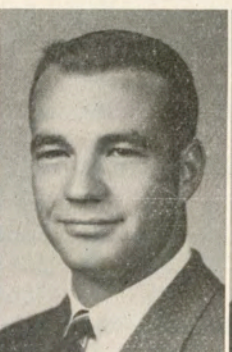
Smith



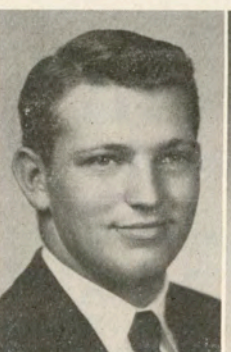
Trant



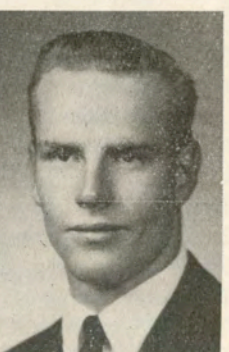
Watson



Welch



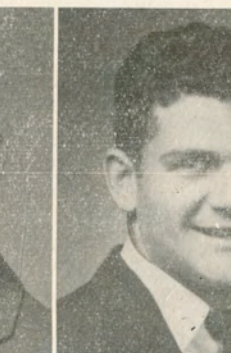
Wash



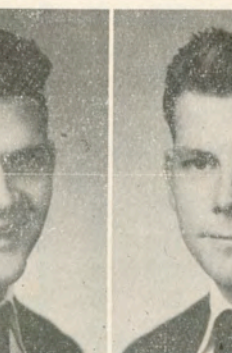
Wilson



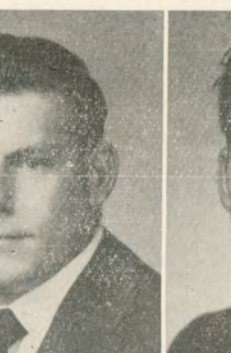
Winter



Wylie



Wes Wyman



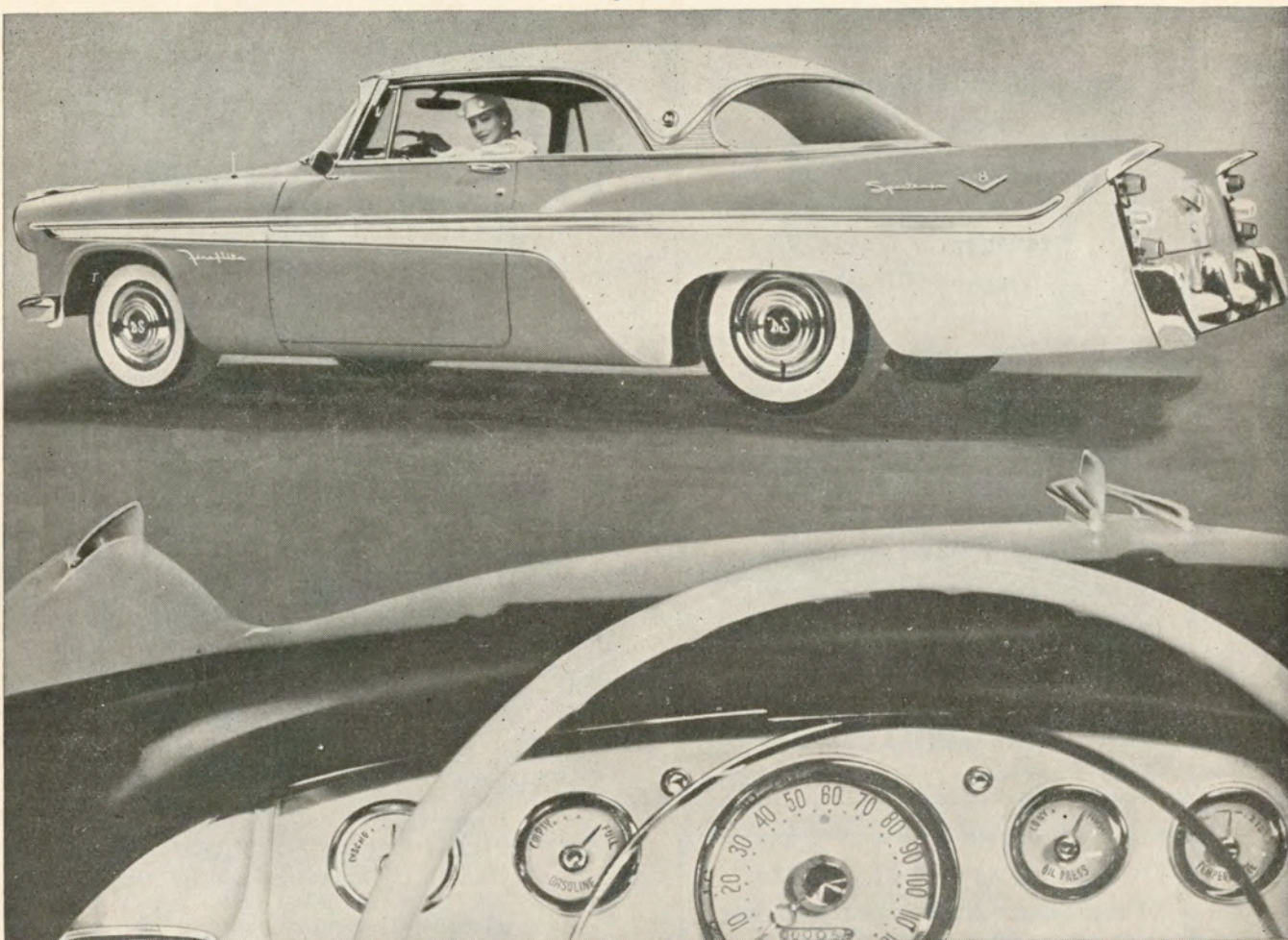
Will Wyman



# TEXAS ROSTER

No.	Name and Position	Age	Hgt.	Wgt.	L'rs.	Class	High School	Home
11	Jimmy Watson, rhb	20	5-10	160	0	Soph.	Graham	Graham
14	Bethea Brindley, rhb	20	5-8	175	0	Soph.	Houston	Austin
15	Jimmy Welch, fb	20	5-10	185	1	Jr.	Labbock	Lubbock
18	Carl Wylie, rhb	19	5-10	170	0	Soph.	LaMarque	LaMarque
19	Eldon Moritz, rhb	20	6-1	200	0	Soph.	Stamford	Stamford
20	James Moffatt, qb	20	6-1	175	0	Soph.	Texarkana	Texarkana
21	Richard Woods, qb	20	5-11	170	0	Soph.	Daingerfield	Daingerfield
24	Walter Fondren, lhb	20	5-11	170	1	Jr.	Houston	Lamar
25	Vince Matthews, qb	19	6-1	180	0	Soph.	Houston	Austin
26	LaNoal Castleberry, qb	19	5-11	175	0	Soph.	Childress	Childress
28	Joe Clements, qb	20	6-3	175	1	Jr.	Huntsville	Huntsville
30	Mickey Smith, rhb	20	5-9	170	1	Jr.	Houston	Lamar
31	Don Maroney, fb	22	6-0	185	1	Sr.	Wichita Falls	Wichita Falls
32	Johnny Elam, fb	20	5-10	185	0	Jr.	Luling	Luling
33	Wayne Wash, fb	20	6-2	200	1	Jr.	Stamford	Stamford
34	Ray Twardowski, fb	21	6-0	195	0	Jr.	East Bernard	East Bernard
35	Fred Bednarski, fb	19	6-0	175	0	Soph.	Austin	Travis
42	Clair Branch, lhb	19	6-1	195	0	Soph.	Gaston	Gaston
43	Gerald Johnson, lhb	19	5-10	170	0	Soph.	San Saba	San Saba
44	Jack Hobbs, lhb	22	5-11	165	0	Soph.	Corsicana	Corsicana
50	Louis Del Homme, c	21	6-1	200	1	Jr.	Baytown	Baytown
52	Jimmy Hunt, c	20	5-11	180	0	Soph.	Ft. Worth	Poly
53	Robert E. Lee, c-g	20	5-10	195	1	Jr.	Texarkana	Texarkana
54	Barry Robinson, c-g	19	6-0	190	0	Soph.	Meridian	Meridian
55	Arlis Parkhurst, c	19	6-2	205	0	Soph.	Colorado City	Colorado City
56	Don Horst, c	23	5-11	200	0	Jr.	Cuero	Cuero
60	Joe Winter, g	19	6-0	190	0	Soph.	Waco	Waco
61	Mike Wells, g	21	5-10	190	0	Jr.	Houston	San Jacinto
62	Don Wilson, c	20	6-3	190	1	Jr.	Houston	Lamar
63	Joe Williams, g	19	5-10	200	0	Soph.	Sulphur Springs	Sulphur Springs
64	George Fitts, g	19	6-0	185	0	Soph.	Linden	Linden
65	Dicky Lowrey, g	22	5-10	185	1	Sr.	Lubbock	Lubbock
66	Bill Carrico, g	19	5-11	210	0	Soph.	Denton	Denton
67	James Coulter, g-t	20	6-2	210	0	Soph.	Houston	Lamar
68	Fred Dreymla, g	19	5-9	190	0	Soph.	Houston	Austin
69	Houston Long, g	19	5-11	185	0	Soph.	Junction	Junction
70	Wes Wyman, t	20	5-10	200	1	Jr.	Austin	McCallum
71	Kermit Uecker, t	20	6-2	200	0	Soph.	Boerne	Boerne
72	J. B. Padgett, t	19	6-0	190	0	Soph.	Colorado City	Colorado City
74	Bill Stolhandske, t	19	6-0	205	0	Soph.	Baytown	Baytown
75	Will Wyman, t	20	5-11	200	1	Jr.	Austin	McCallum
76	Garland Kennon, g	20	6-2	215	1	Jr.	Center	Center
77	Carl Larpenter, t	20	6-3	210	0	Soph.	Port Arthur	Port Arthur
78	Charles Baker, t	20	6-4	210	0	Jr.	Austin	Austin
79	J. T. Seaholm, t	24	6-4	210	1	Jr.	Austin	Austin
81	Mike Trant, e	21	6-0	190	2	Sr.	Tyler	Tyler
82	Danny Myers, e	19	6-0	190	0	Soph.	Waco	Waco
83	Chris Shaw, e	21	6-1	190	0	Soph.	San Antonio	Brackenridge
84	Sonny Baumgarten, e	20	6-2	200	0	Soph.	Houston	Lamar
85	Bob Bryant, e	19	6-4	205	0	Soph.	Plainview	Plainview
86	Joe Losack, e	22	6-1	190	0	Sr.	East Bernard	East Bernard
88	Allen Ernst, e	21	6-2	180	1	Sr.	Temple	Temple
89	Bill Germany, e	20	6-3	195	1	Jr.	Freeport	Freeport





Fireflite Sportsman in Crimson with contrasting Surf White emphasizes the beauty of De Soto Flight Sweep styling

New push-button driving...

## DE SOTO

TRY YOUR HAND at De Soto push-button driving. Buttons are at your fingertips—and to the left, out of the reach of children. Positive mechanical control. Absolutely foolproof. Try it at your De Soto dealer's. De Soto Division, Chrysler Corporation.

You're looking at the smartest, easiest way ever invented to drive a car. In the glamorous '56 De Soto you simply touch a button and GO! No lever . . . no nose-to-the-wheel squinting to select the driving range. Never before a car so responsive and agile in city driving . . . safer, more comfortable at super-highway speeds. New 255 hp engine with high torque take-off . . . new super-highway brakes . . . Full-Time Power Steering\* . . . new Flight Sweep styling. See and drive the dramatic **1956 De Soto—for the super-highway age!**

\*Optional

DRIVE A DE SOTO  
BEFORE YOU DECIDE!

De Soto dealers present GROUCHO MARX in "You Bet Your Life" on NBC radio and TV.



SEE YOUR NEAREST DE SOTO-PLYMOUTH DEALER



**Gus Mayer**  
 CO. LTD.  
 CANAL ST. GENTILLY

**Beat Household Pests!**

Let  
 'Miller the Killer'  
 Carry the Ball  
 (Denny Miller, that is)



Call for free estimates  
**A&M Pest Control Service**  
 4823 Perrier . . . . . TW 1-5818



Visit . . .

**The Beacon Restaurant and Bar**  
 Napoleon at South Claiborne

**LaRocca's Restaurant and Lounge**  
 540 Robert E. Lee Blvd.

Specialties:  
 Steak, Chicken, Dinners

VIC and ROY LAROCCA, Your Hosts

FAST SERVICE ON PROCESSING OF  
 16 MM BLACK AND WHITE  
 MOTION PICTURE FILM  
 COLOR OR B&W  
 DUPLICATING

Producers of 16 mm  
 Educational, Industrial and Special Events  
 Motion Pictures

**PAN-AMERICAN FILMS**  
 735 POYDRAS ST.  
 New Orleans

*Tulane Printing Office*

CAMPUS PRINTERS



GIBSON HALL

UNiversity 6-2741  
 Ext. 344

*A Great Name in Clothing*

**SCHWOBILT**  
 CLOTHES REG. U.S. PAT. OFF.

**"SUITS THE SOUTH"**



# 1956 CAPTAINS

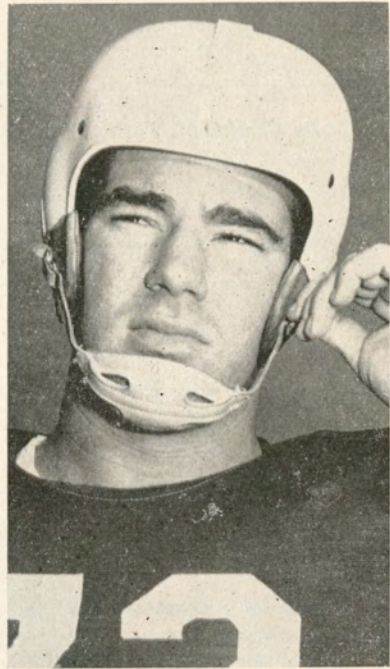


Ronny Quillian



Don Miller

G  
R  
E  
E  
N  
  
W  
A  
V  
E



Dalton Truax

## DELMONICO RESTAURANT

ESTABLISHED 1895

1300 ST. CHARLES

RAYmond 4937

MAGnolia 9307

WILMER A. SIMPSON  
President

EDWIN A. STOUTZ  
Secty-Treas.



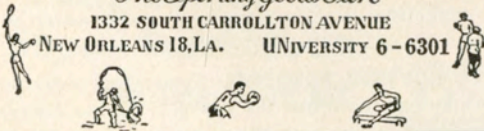
### Simpson-Stoutz Sporting Goods Co.

INCORPORATED

*The Sporting Goods Store*

1332 SOUTH CARROLLTON AVENUE

NEW ORLEANS 18, LA. UNIVERSITY 6-6301



"Where New Orleans Shops For Fun"

5 Great Stores To Serve You

Sporting  
Goods

Toys



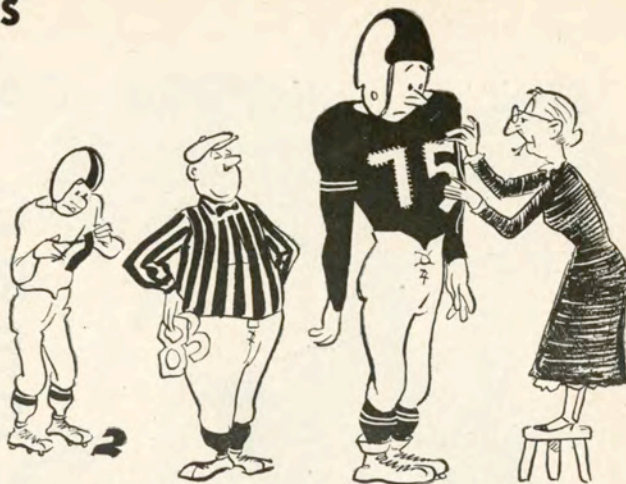
Cameras	139 S. Rampart	CA 0811	Guns
and	2706 Jeff. Hwy.	VE 3-7107	
Photograph	3504 S. Carrollton	AU 4253	
Equipment	3145 Gentilly Blvd.	CR 5644	
	8137 Palm St.	AU 7741	

South's Largest Stock of Boats, Motors,  
Trailers and Marine Equipment



# 1956 FOOTBALL RULES CHANGES

By Charles W. Tucker, Jr.



We are happy to report that if you understood the football rules last year you will have no difficulty with them this year.

The Rules Committee of the N.C.A.A. is continuing its policy of holding changes to a minimum and constantly working toward standardization of the Rules for the best interests of all concerned.

There are a number of refinements and editorial changes for the sake of clarification, but very few changes of major significance. One of the principal changes this year is to reinstate the rule covering eligible pass receivers to its former status. Last year, if a center, guard or tackle was in an end position, he was not eligible to receive a forward pass when a teammate was behind him or outside of him. This year the rule says, "Any player in an end position on the line of scrimmage may receive a forward pass", so we are right back where we started.

Other changes are as follows:

**GAME CLOCK STARTS ON KICK-OFF WHEN BALL IS LEGALLY TOUCHED:** In the past the game clock has always started when the kicker's foot made contact with the ball. Now the game clock will not start until the ball has been legally touched.

In the past it would have been possible for the kicking team in the closing seconds of the game with a small lead to protect to run the game clock out by kicking the ball out of bounds or by illegally recovering it before the defensive team had a chance to get possession of the ball. This change will eliminate the possibility of the kicking team taking advantage of such a situation in the future.

**CLIPPING AND BLOCKING REDEFINED:** Clipping was formerly defined as, "blocking an opponent, other than the runner, from behind." This year clipping is defined as, "running or diving into the back, or throwing the body across the back of the leg or legs of an opponent not carrying the ball."

Blocking was formerly defined as, "obstructing a player with the body." This year blocking is defined as, "obstructing an opponent by contacting him with any part of the blocker's body."

**ASSISTING RUNNER IN GAINING FORWARD PROGRESS REDEFINED.** For many years, there has been a 15 yard penalty for a teammate helping the ball carrier by pulling, pushing, or lifting him from the ground. This rule has been

further strengthened this year by the addition of the phrase, "or charging into the Runner to assist him in gaining forward progress."

**TIME OUT TO REPLACE JERSEYS OR PADS CHARGED TO TEAM UNLESS EQUIPMENT IS DANGEROUS TO OTHER PLAYERS:** In the past, if a jersey was torn so that the number was illegible or pads were not held in proper position, the referee could give that team a time-out and charge himself. Under this ruling the tear-away jersey became a very popular item for obtaining free time-outs. No more! This year the referee will not allow a free time-out unless, in his opinion, the equipment has definitely become dangerous to other players.

**PROCEDURE FOR GETTING A KICKING TEE ONTO THE FIELD:** It has always been a moot question as to whether or not it was "coaching from the sidelines" when a kicking tee was thrown onto the field. The rules make it very clear this year as to what the procedure should be. If the game clock is stopped and a tee is thrown onto the field, this is legal. If the game clock is running and a tee is thrown onto the field this will be considered as "coaching from the sidelines" unless an official is notified that a tee was being requested.

**LEGAL USE OF HANDS OR ARMS AFTER A FORWARD PASS HAS BEEN TOUCHED:** When a legal forward pass has been thrown, defensive players have the same rights as eligible offensive players to catch the ball, but no player shall deliberately interfere with the other's opportunity to catch the ball. Once the ball has been touched, the complexion of things changes and any eligible receiver who has a reasonable chance to make the catch may use his hands or arms to push an opponent out of the way.

**NUMBERING SYSTEM:** The Rules Committee has further recommended the following numbering of players for the convenience of spectators, coaches and officials:

Backs	10-49
Centers	50-59
Guards	60-69
Tackles	70-79
Ends	80-89

Such numbering of players makes it much easier to follow the game.

**RUBBER COVERED FOOTBALL:** For several years the Rules Committee has permitted the use of a rubber covered football provided it was mutually agreed upon by the two contesting teams. This year either team may elect to use a rubber covered ball while on the offense.





## How to gain 52,800 yards ( per tankful of gas )

**EASY-FLOWING**, multi-grade Super Permalube reduces "engine drag" like no other motor oil made. By conserving power with every piston stroke, it saves gasoline by the gallon — up to two gallons of gas in a tankful.

**WILL SUPER PERMALUBE** Motor Oil save gas in *your* car? Pan-Am guarantees it. It's *got* to save gas in your car, or you get your money back.

**AND SAVING FUEL** is only half the story. Super Permalube gives

you the most complete engine lubrication you can buy. Keeps your engine clean and young and powerful. Keeps it out of the repair shop — eager for the road. Change to the *modern* motor oil — Super Permalube — at Pan-Am.

Change to  
Super Permalube  
Motor Oil at



the sign you trust



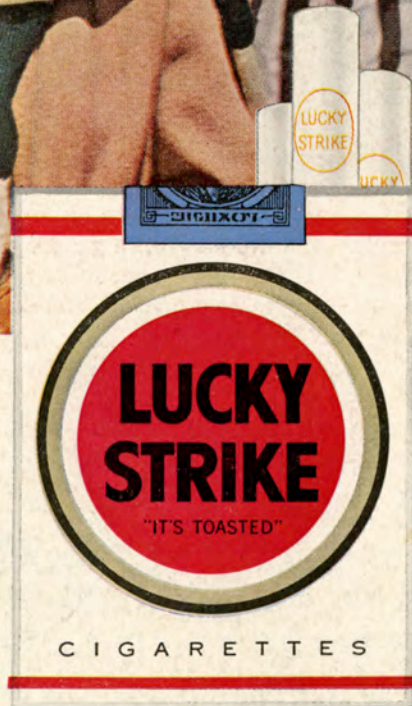
# Light up a Lucky—

*it's light-up time!*



# Luckies Taste Better

*Cleaner, Fresher, Smoother!*



**"IT'S  
TOASTED"**  
to taste  
better!