



The GA. TECH Game

Souvenir Program 25c

Tulane Stadium -- October 10, 1953

Get the right idea...

about what's going on!

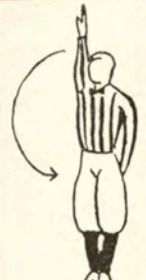
OFFICIAL 1953 SIGNALS WITH PENALTIES



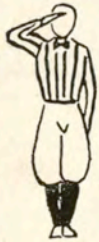
Offside
-5 yds.



Illegal Position
or Procedure
-5 yds.



Ball
ready-for-play



Roughness and
Piling On-15 yds.



*Personal Foul-
15 yds., also possible
to expel player



*Delay of Game-
5 yds., or 15 yds.



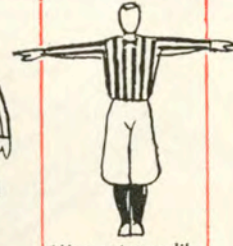
Clipping-15 yds.



Illegal Motion-
5 yds.; or Illegal
Shift-15 yds.



Roughing the
Kicker-15 yds.



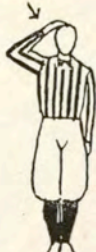
*Unsportsman-like
Conduct-15 yds.,
also possible
to expel player



Defensive
Holding-15 yds.



Illegal Use
of Hands and
Arms-15 yds.



Ineligible Receiver
Down Field on Pass
-15 yds., also
loss of down



Illegally Passing
Ball Forward-5yds.
also loss of down.
Illegally Handing
Ball Forward-5 yds.



*Forward Pass or
Kick Catching
Interference-
offended team's ball
at spot of foul



Intentional
Grounding
-5 yds., also
loss of down



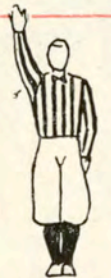
*Ball Illegally
Touched, Kicked or
Batted-5 or 15 yds.,
also loss of down or
offended team's ball
at spot of foul



Incomplete
Forward Pass;
Penalty Declined;
No Play or Score



Crawling-5yds.;
Helping Runner or
Interlocked interfe-
rence-15 yds.



Ball Dead;
if hand is moved
from side to side:
Touchback



Touchdown or
Field Goal



Safety



Time-Out



First Down



Start the Clock
or No More
Time-Outs
Allowed



TUNE IN
JAX "World of Sports"
ON WDSU-TV

Monday thru Friday 6:15 P. M.

THE BIG JAX DOUBLE HEADER—
"Weather and World of Sports" with Nash Roberts
and Mel Leavitt (Paul Kalman's "Outdoors in Louisiana," Thursdays)

ON WWL RADIO

Monday thru Saturday 5:35 P. M.—"World of Sports" with Bill Brengel

Get the light idea!

Drink JAX

The Sportsman's Beverage



*Variable penalty, Referee's Decision

Jackson Brewing Company, New Orleans, La.

Famous for
**FINE FOOD
and DRINK**



*Enjoy the Specialties of These Noted
Restaurants:*

ANTOINE'S

713 St. Louis St. • RAYmond 2554

ARNAUD'S

813 Bienville St. • MAgnoIia 5433

BROUSSARD'S

819 Conti St. • MAgnoIia 4800

KOLB'S

125 St. Charles St. • RAYmond 5034

LA LOUISIANE

725 Iberville St. • RAYmond 3384



613 RUE ROYAL • 614 RUE BOURBON
VIEUX CARRE • NOUVELLE ORLEANS

"Your Specialists In Sports"

Johnny Lynch's

SPORTS, Inc.

FORMERLY DUNLAP SPORTING
GOODS CO., INC.

*Complete Equipment
For All Sports*

308 ST. CHARLES ST.
New Orleans 12, La. MAgnoIia 5891



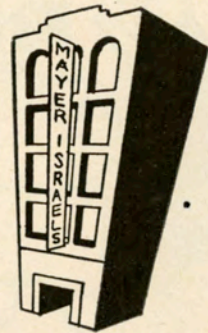
for over 60 years

the store of fashion and value

... of courtesy and friendly

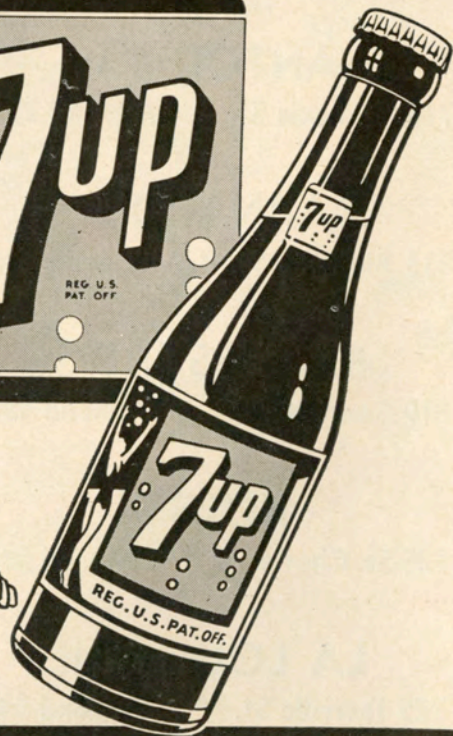
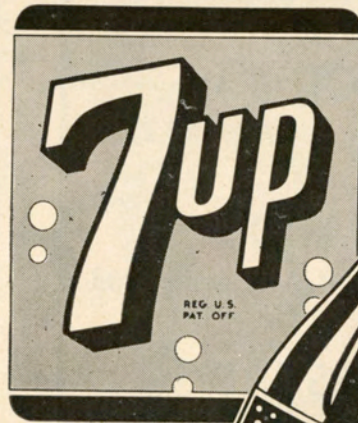
interest ... for all

the family

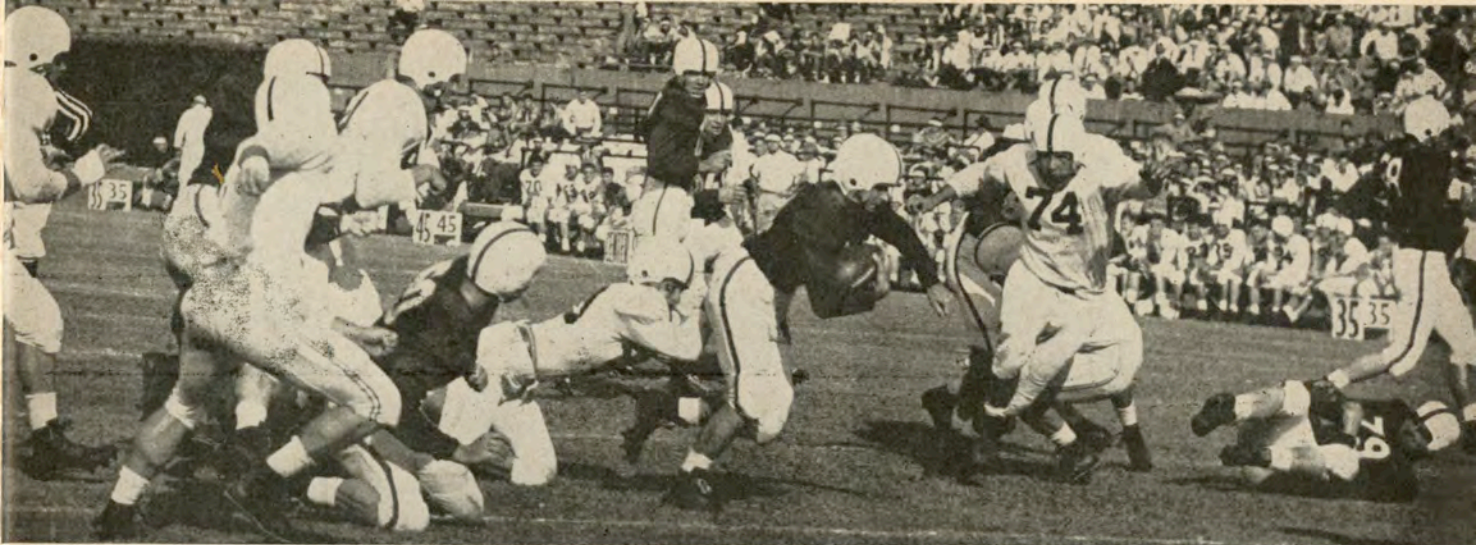


MAYER ISRAEL'S

*Cheered by
Millions!*



SOLD ONLY IN THE GREEN BOTTLE



The Greenie

Official Souvenir Football Program of Tulane University

EDDIE ALLEN, Editor

National Advertising Representatives: Football Publications, Inc., 370 Lexington Avenue, New York, N. Y.

Vol. 23

October 10, 1953

No. 2

Sugar Bowl Day

Today's game is dedicated specifically to the charter members of the New Orleans Mid-Winter Sports Association. It is a salute, generally, to all those sportsmen, players and institutions who through the past 20 years have made the Sugar Bowl Classic one of the great events in athletics.

It is a game that, most appropriately, pairs the first and the most recent Sugar Bowl champions. It will end with Georgia Tech's having extended its lustrous streak of consecutive contests without defeat to 30—or with the rebounding Greenies of Tulane having scored a resounding upset.

This is the Sugar Bowl's 20th birthday party, the climax of a two-day celebration sponsored by 40 civic and educational institutions of New Orleans and Louisiana.

According to form, the biggest portion of the competitors' cake will be claimed by Georgia Tech. Not since bowing to Alabama in November, 1950, have Coach Bobby Dodd's Yellowjackets been beaten. Only ties with Duke, 14-14 in 1950, and with Florida, 0-0 two weeks ago, mar the expanse of their last 29 starts.

The men of Atlanta return to New Orleans with many of the same stars that con-

quered Ole Miss last January 1. Included are Halfback Leon Hardeman (11), who was named the most outstanding player of the 1953 Sugar Bowl; running mates Billy Teas (9) and Glenn Turner (31); and such All-American line candidates as Sam Hensley (48) and Larry Morris (47).

Despite the fact the Rambling Wreck has totaled just six points in the past two weeks (edging S.M.U., 6-4, last Saturday), the assignment of taking them may be the season's hardest for Coach Raymond (Bear) Wolf's Tulane Wave. No touchdown has been counted against Tech this fall. The Greenies are coming back from a pair of hard-to-swallow losses as visitors to Georgia and

Michigan. They are now prepared for the big challenge with a pair of senior field generals, Pete Clement (17) and Ray Weidenbacher (14), who have been effectively alternating in the quarterback slot. Lester Kennedy (47), Max McGee (25) and Ronnie Kent (31) are other names underlined on the Tech scouting charts. Up front, determination is making up for a lack of depth.

This is a dedication game—and the Wave would like to dedicate it secondarily to the 1935 Sugar Bowl champs. They'll try.

1953 TULANE SCHEDULE

Sept. 19—Tulane 54; Citadel 6
 Sept. 26—Tulane 14; Georgia 16
 Oct. 3—Tulane 7; Michigan 26
 Oct. 10—Georgia Tech, home
 Oct. 17—Ole Miss, home
 Oct. 24—Auburn, Mobile
 Oct. 31—Army, home
 Nov. 7—Miss. State, home
 Nov. 14—Vanderbilt, home
 Nov. 28—L.S.U., Baton Rouge

LUCKIES TASTE BETTER!

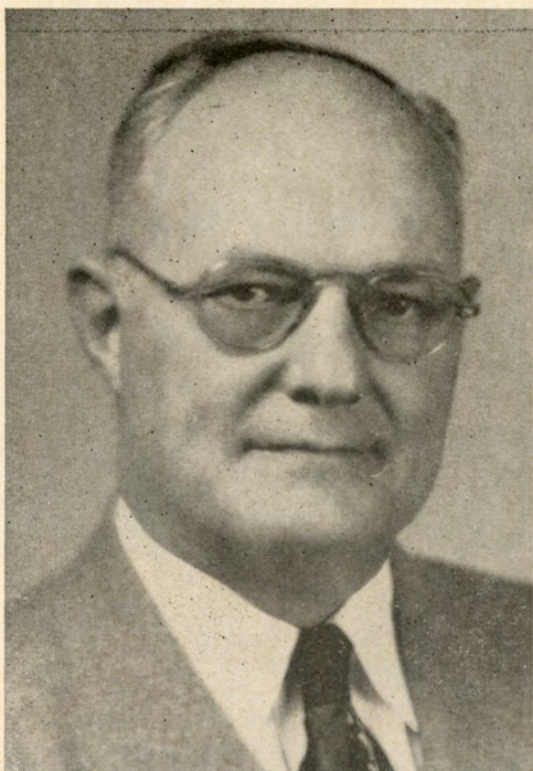
Cleaner, Fresher,
Smoother!

Be Happy

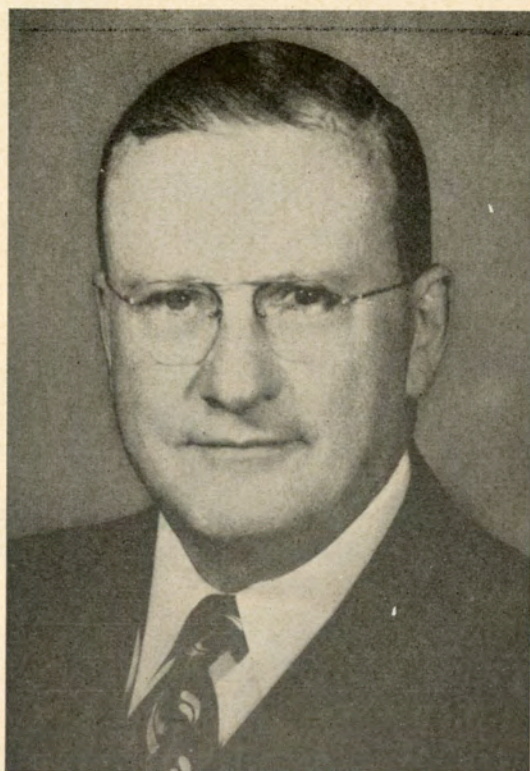
GO LUCKY!



© COPR., THE AMERICAN TOBACCO COMPANY



DR. BLAKE R. VAN LEER
President
Georgia Institute of Technology



DR. RUFUS CARROLLTON HARRIS
President
Tulane University



GREEN WAVE COACHES: Bob Whitman, Gene Harlow, Andy Pilney, Raymond Wolf (head coach), Dennis Vinzant, Stanley Kottemann.



Raymond Wolf, Head Coach



Boudreaux



Bravo



Burnthorne



Burke



Camp



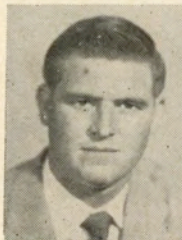
Chauvin



Clement



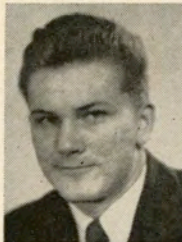
Coates



Conley



Cutler



Cummins



Duvigneaud



Ford



Gunther



Hawkins



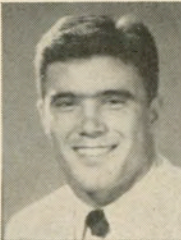
Harrison



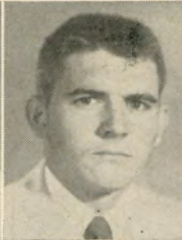
Hymel



Kennedy



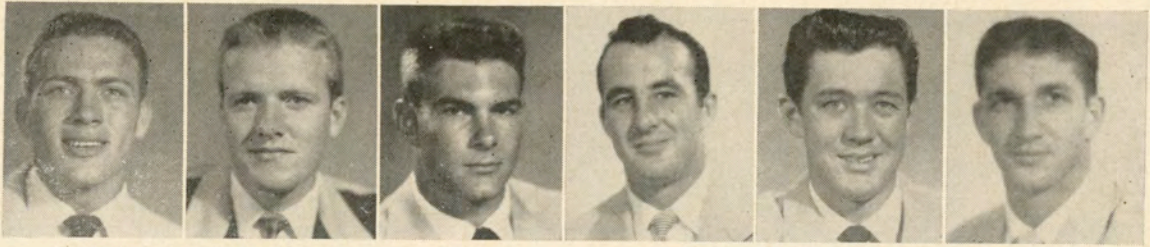
Kent



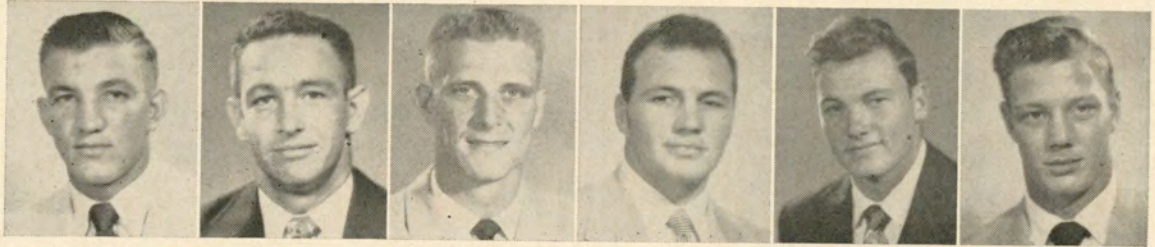
Kimball

Tulane

| No. | Name | Age | Ht. | Wgt. | Ltrs. | Class | Hometown |
|-----|----------------------|-----|-------|------|-------|-------|--------------------|
| 10 | Bruce Waters, qb | 18 | 6-1 | 175 | 0 | Fr. | Century, Fla. |
| 14 | Ray Weidenbacher, qb | 21 | 6-0 | 165 | 2 | Sr. | New Orleans |
| 16 | Don Ladner, qb | 18 | 6-1 | 185 | 0 | Fr. | Poplarville, Miss. |
| 17 | Pete Clement, qb | 23 | 5-11½ | 175 | 2 | Sr. | Reserve, La. |
| 18 | John Caruso, qb | 18 | 5-10 | 160 | 0 | Fr. | New Orleans |
| 19 | Pete Evans, rhb | 18 | 5-8 | 180 | 0 | Fr. | Annapolis, Md. |
| 21 | Otis Gilmore, rhb | 19 | 6-1 | 179 | 0 | Soph. | New Orleans |
| 22 | Wayne Wall, lhb | 22 | 6-0 | 175 | 1 | Sr. | Texarkana, Tex. |
| 23 | Willie Hof, rhb | 19 | 5-10 | 145 | 0 | Fr. | Kenner, La. |
| 25 | Max McGee, rhb | 21 | 6-3 | 195 | 2 | Sr. | Longview, Tex. |
| 26 | Tom Warner, lhb | 17 | 6-0 | 165 | 0 | Fr. | New Orleans |
| 28 | Johnny Berke, rhb | 18 | 5-10 | 180 | 0 | Fr. | Dallas, Tex. |
| 29 | Clyde Connell, rt | 18 | 6-1 | 205 | 0 | Soph. | Ruston, La. |
| 31 | Ronnie Kent, fb | 21 | 5-8 | 180 | 2 | Sr. | Metairie, La. |
| 33 | Bob Saia, rhb | 21 | 5-11 | 180 | 1 | Soph. | New Orleans |
| 34 | Tony Reginelli, fb | 19 | 5-11 | 175 | 0 | Fr. | Shaw, Miss. |
| 35 | Ronnie Quillian, fb | 18 | 6-2 | 195 | 0 | Fr. | Baton Rouge, La. |
| 36 | Marvin McCreary, fb | 18 | 6-2 | 200 | 0 | Fr. | Neosho, Mo. |
| 38 | E. J. Chauvin, fb | 20 | 5-11 | 185 | 1 | Soph. | Bourg, La. |
| 39 | Pete Morere, qb | 18 | 6-1 | 180 | 0 | Fr. | New Orleans |
| 40 | Ray Hymel, rhb | 21 | 5-9 | 175 | 0 | Jr. | Reserve, La. |
| 41 | Fred Wilcox, re | 18 | 6-0 | 175 | 0 | Fr. | Kenner, La. |
| 42 | Willie Harrison, rhb | 19 | 5-10 | 166 | 0 | Fr. | New Orleans |
| 43 | Robert Kimball, lhb | 19 | 5-9 | 150 | 0 | Fr. | Houma, La. |
| 44 | Jim Partridge, lhb | 21 | 5-11 | 175 | 1 | Jr. | Mobile, Ala. |
| 45 | Allen Borne, lhb | 18 | 5-8 | 170 | 0 | Fr. | New Orleans |
| 47 | Lester Kennedy, lhb | 22 | 5-10 | 170 | 2 | Sr. | New Orleans |
| 50 | Paul Rushing, c | 20 | 6-3 | 190 | 2 | Sr. | San Benito, Tex. |
| 51 | Earl Burke, rt | 21 | 6-1½ | 205 | 2 | Sr. | New Orleans |
| 52 | Emmett Zelenka, rt | 17 | 5-10½ | 197 | 0 | Fr. | New Orleans |
| 53 | James Wilson, c | 18 | 6-1 | 195 | 0 | Fr. | Montgomery, Ala. |
| 54 | Ronald Senac, c | 18 | 6-1½ | 182 | 0 | Fr. | New Orleans |
| 55 | Charles Camp, c | 23 | 5-11 | 205 | 2 | Sr. | Petal, Miss. |
| 56 | Joseph Mahoney, c | 19 | 6-1 | 201 | 0 | Fr. | New Orleans |
| 57 | James McBunch, rg | 18 | 6-0 | 181 | 0 | Fr. | Baton Rouge, La. |
| 59 | Donald Gunther, lg | 19 | 5-9 | 190 | 0 | Fr. | New Orleans |



Ladner Mahoney McCool McGee Miller Partridge



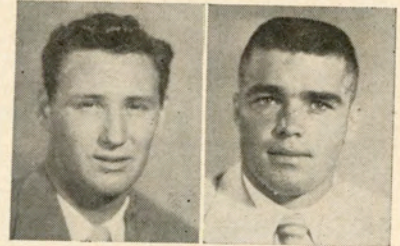
Pittman Price Quillian A. Robelot W. Robelot Rushing

Tulane

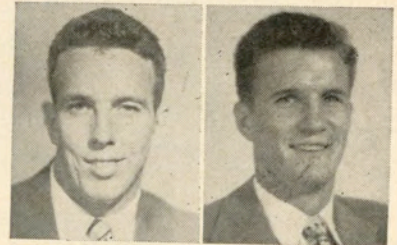
| No. | Name | Age | Ht. | Wgt. | Ltrs. | Class | Hometown |
|-----|-----------------------|-----|-------|------|-------|-------|--------------------|
| 60 | Bryan Burnthorne, rt | 20 | 6-1 | 200 | 1 | Soph. | Amite, La. |
| 61 | Don Miller, rg | 19 | 5-10 | 190 | 0 | Fr. | Baton Rouge, La. |
| 62 | Al Robelot (Capt.) rg | 21 | 5-10 | 200 | 2 | Sr. | New Orleans |
| 63 | James McLaughlin, lg | 19 | 6-3½ | 203 | 0 | Soph. | Port Arthur, Tex. |
| 64 | Tony Sardisco, lg | 20 | 6-2 | 200 | 1 | Soph. | Bossier City, La. |
| 65 | Robert Arnoult, lg | 17 | 5-10 | 190 | 0 | Fr. | New Orleans |
| 66 | James Shoultz, lg | 19 | 5-9 | 190 | 0 | Soph. | Covington, La. |
| 67 | Wilbur Troxclair, rg | 19 | 5-6½ | 190 | 0 | Fr. | New Orleans |
| 68 | Austin Wilson, rg | 19 | 6-2 | 195 | 0 | Soph. | New Orleans |
| 69 | Doug Woodruff, lg | 20 | 6-0 | 191 | 0 | Jr. | Lockport, La. |
| 70 | Charlie Coates, le | 20 | 6-3 | 200 | 2 | Jr. | New Orleans |
| 71 | Irv. Schexnayder, rg | 18 | 5-10 | 195 | 0 | Fr. | Welcome, La. |
| 72 | Dalton Truax, rt | 18 | 6-2 | 215 | 0 | Fr. | New Orleans |
| 73 | Harold Hawkins, rt | 20 | 6-2 | 210 | 1 | Soph. | Shreveport, La. |
| 74 | Bill Spollen, lt | 22 | 6-2 | 220 | 2 | Sr. | College Pt., N.Y. |
| 75 | Tommy Ford, lt | 20 | 6-3 | 200 | 0 | Jr. | Apalachicola, Fla. |
| 76 | Walter Robelot, rt | 19 | 5-11 | 200 | 0 | Soph. | New Orleans |
| 77 | Charles Tucker, le | 17 | 6-0 | 200 | 0 | Fr. | Poplarville, Miss. |
| 78 | Louis Godwin, rt | 19 | 6-1 | 193 | 0 | Jr. | Pensacola, Fla. |
| 79 | George Cummins, lt | 22 | 6-1½ | 225 | 2 | Sr. | New Orleans |
| 80 | Ray Price, re | 22 | 6-2 | 200 | 1 | Jr. | New Orleans |
| 82 | Eddie Bravo, re | 21 | 5-11 | 180 | 2 | Jr. | New Orleans |
| 83 | Charles Pittman, le | 21 | 6-0 | 185 | 2 | Jr. | New Orleans |
| 84 | Harry Duvigneaud, le | 20 | 6-0 | 187 | 0 | Jr. | New Orleans |
| 85 | Roy Ford, re | 20 | 6-0 | 180 | 0 | Fr. | Boutte, La. |
| 86 | Bill Vickrey, re | 20 | 6-4 | 192 | 1 | Jr. | Pensacola, Fla. |
| 87 | Ed McCool, rg | 20 | 6-1 | 185 | 1 | Jr. | Jackson, Miss. |
| 88 | Wilber Conley, le | 21 | 6-1 | 185 | 0 | Soph. | Memphis, Tenn. |
| 89 | Ray Thompson, re | 21 | 6-2 | 180 | 2 | Sr. | Jena, La. |
| 91 | Robert Hobbs, le | 21 | 6-3 | 201 | 0 | Sr. | Hartford, Ark. |
| 92 | Joe Rowe, rt | 19 | 6-1½ | 203 | 0 | Soph. | Texarkana, |
| 93 | Haydn Cutler, lg | 17 | 5-11½ | 210 | 0 | Fr. | Monroe, La. |
| 94 | John Lester, rg | 17 | 6-0 | 195 | 0 | Fr. | Batesville, Miss. |
| 95 | Donald Boudreaux, lt | 19 | 6-2 | 224 | 0 | Fr. | Houma, La. |
| 96 | Richard Gueldner, rt | 19 | 6-3 | 260 | 0 | Fr. | New Orleans |
| 97 | Dave McMurray, c | 19 | 6-2 | 209 | 0 | Jr. | Hapeville, Ga. |



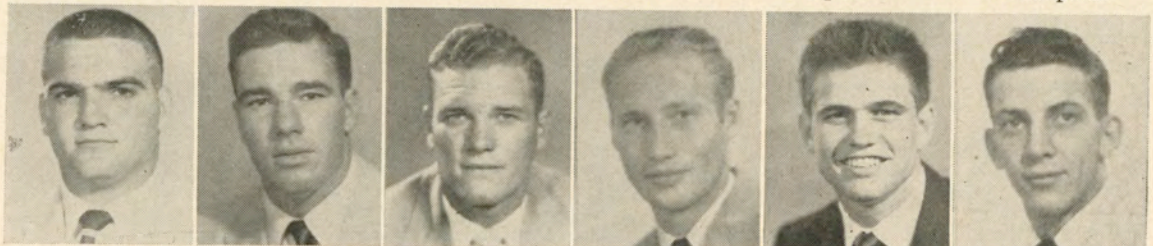
Saia Sardisco



Senac Shoultz



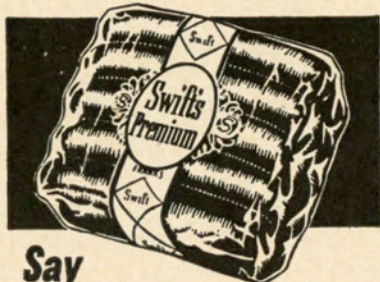
Spollen Thompson



Troxclair Truax Vickrey Wall Warner Weidenbacher

Why Rush Home Before the Game?
Treat Yourself to a
Swift's Premium Frankfurter Sandwich

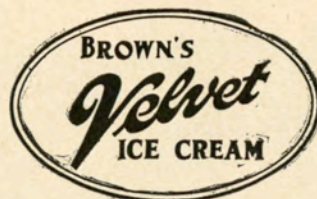
The meat **INSIDE** makes
the difference!



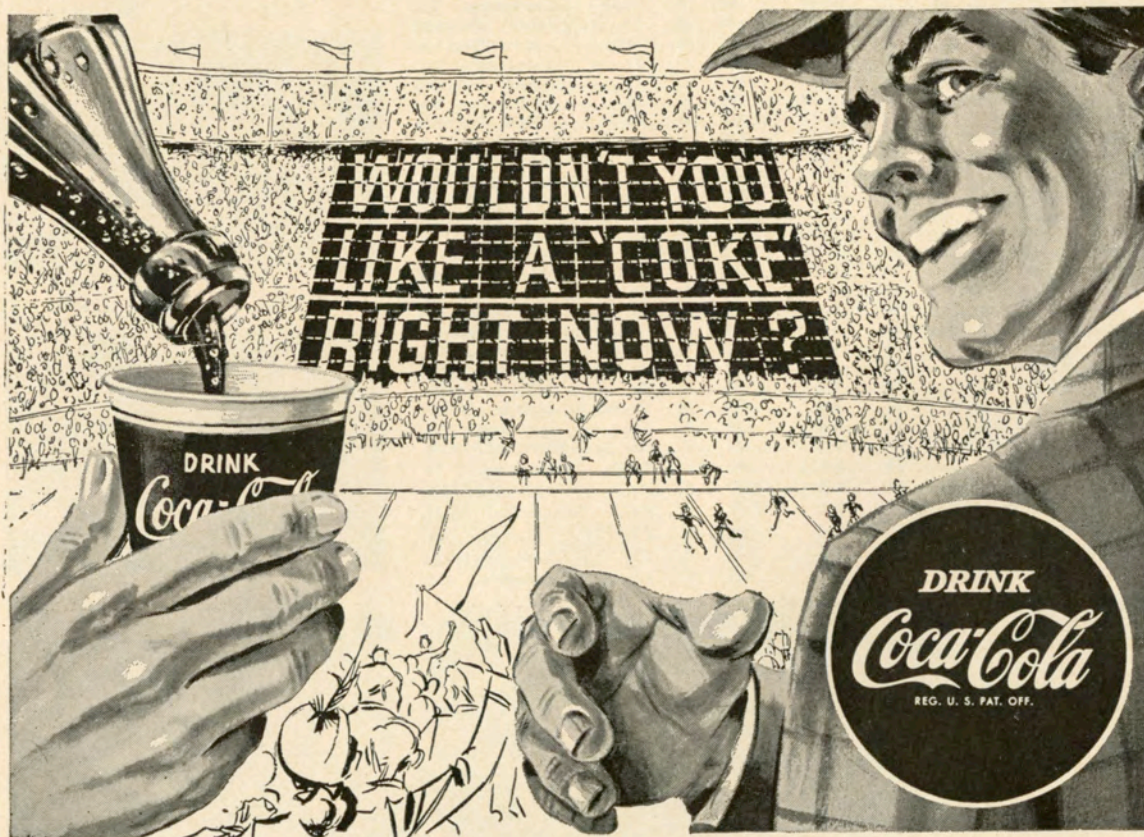
Say
Swift's...and be sure!

Served Exclusively at Tulane Stadium
HAROLD BREEDING & SON
Concessionaires

TEMPTING, NOURISHING



It's a Favorite With
Everyone !!

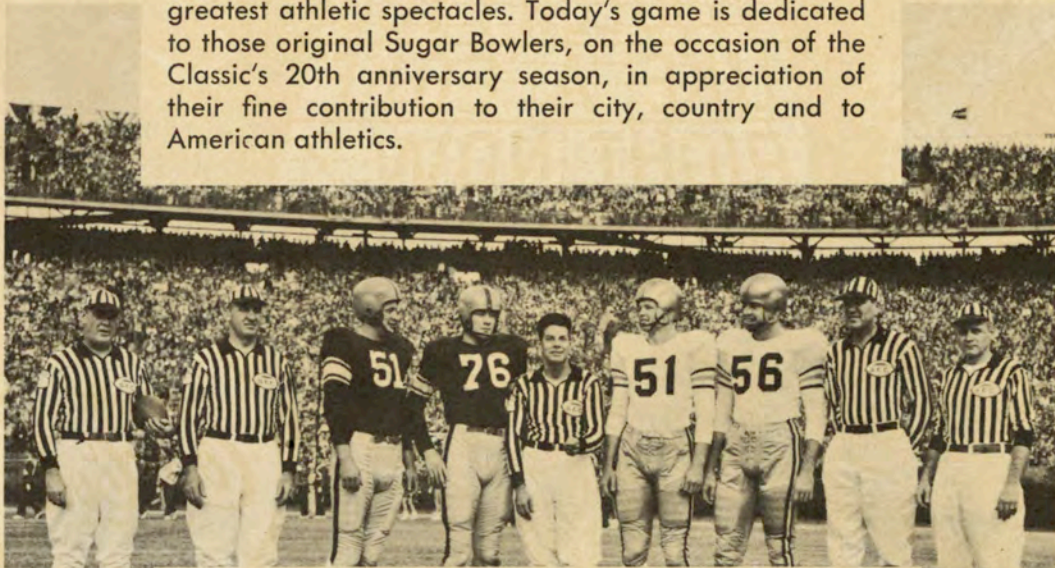


1934 SUGAR BOWL 1953

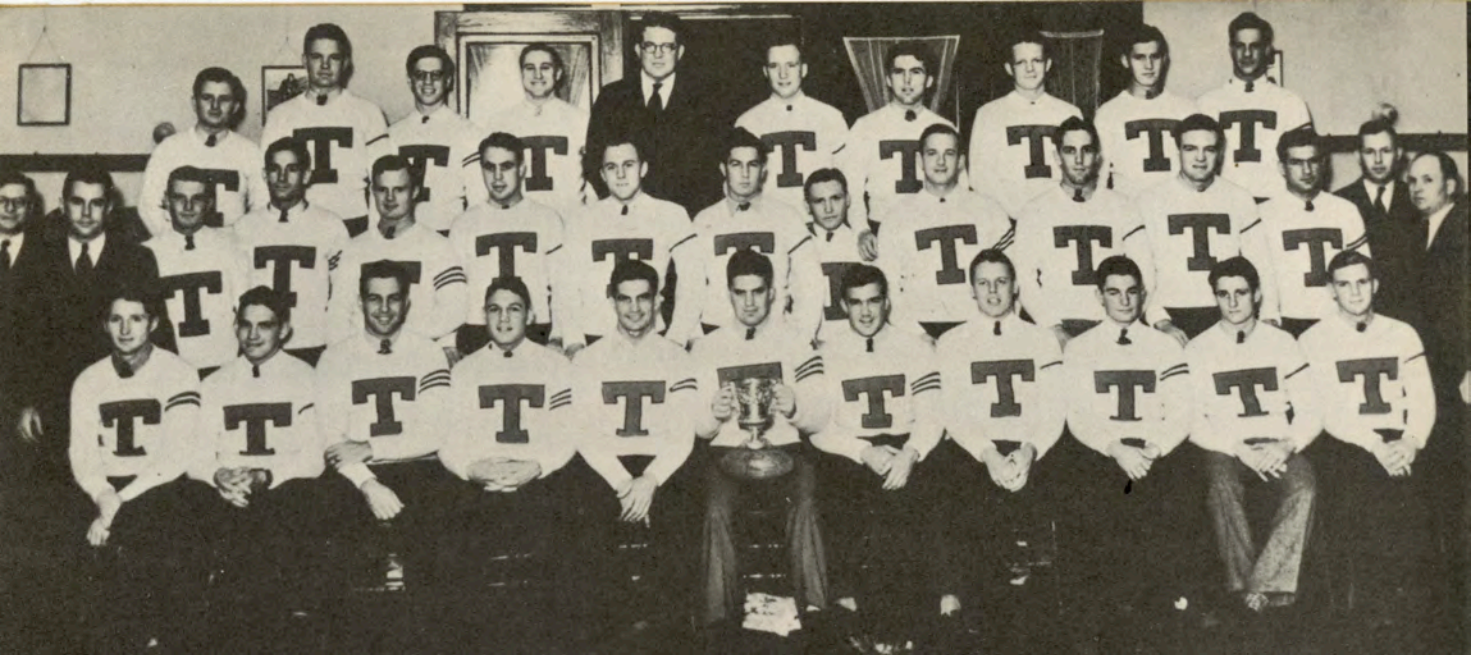
Cam
A MEDLEY OF
pix
CAMPUS PICTURES
© TULANE UNIVERSITY 1953

Through the far-sighted initiative of local sportsmen, the New Orleans Mid-Winter Sports Association was formed in 1934 as a non-profit civic organization. This group fathered the annual Sugar Bowl Classic, which quickly attained recognition as one of the country's greatest athletic spectacles. Today's game is dedicated to those original Sugar Bowlers, on the occasion of the Classic's 20th anniversary season, in appreciation of their fine contribution to their city, country and to American athletics.

(Photos by Leon Trice)

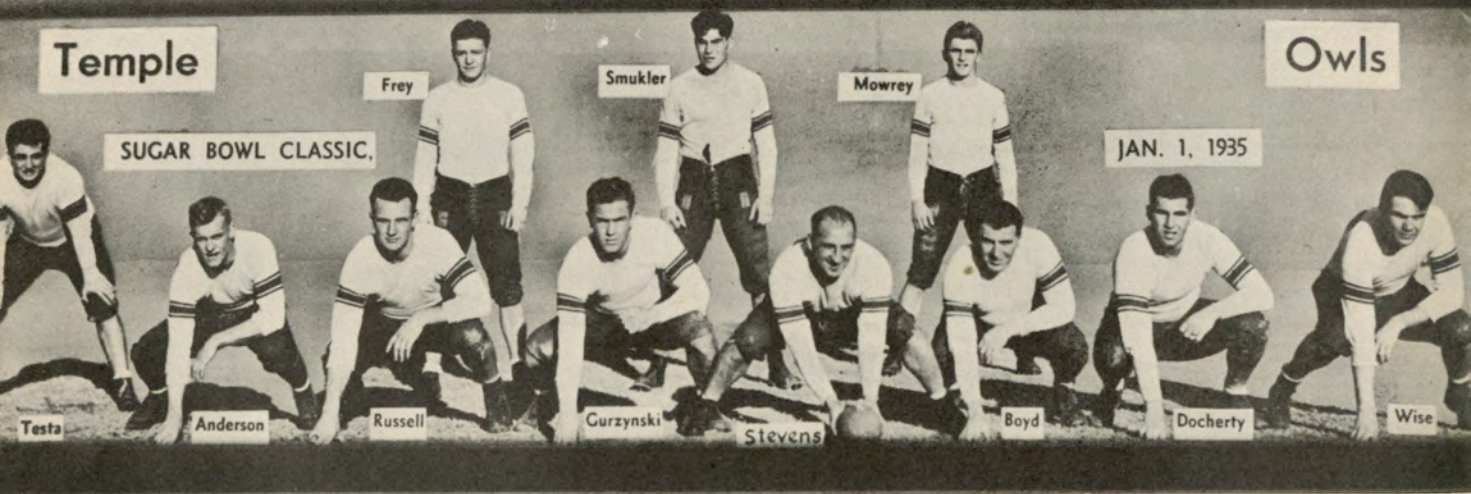
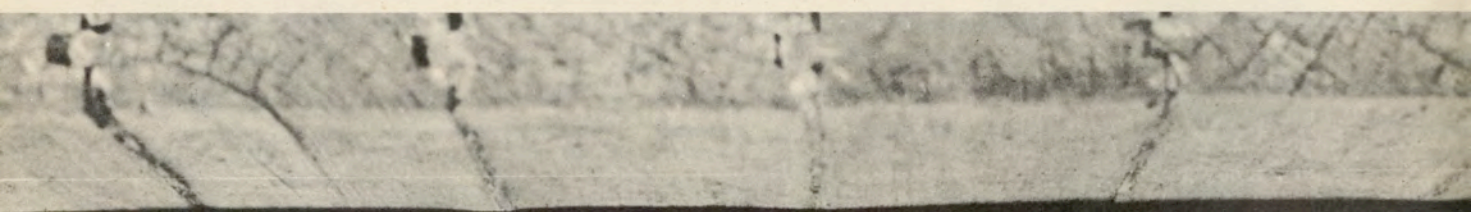


Captains of the Ole Miss and Georgia Tech teams pose with the officials before the 19th annual Sugar Bowl game, January 1, 1953. Rebels: Jim Ingram (51) and Kline Gilbert (76). Yellowjackets: George Miller (51) and Hal Miller (56).



TULANE GREENIES
 (Winners, Inaugural Sugar Bowl Classic January 1, 1935;
 Score, Tulane 20, Temple, 14)

First champions of the Sugar Bowl, the Tulane Greenies of Coach Ted Cox took a stirring 20-14 struggle from Pop Warner's Temple Owls on January 1, 1935. Some saw the thrilling game as another War Between the States with a somewhat more satisfactory (to Southerners) conclusion. Thus the Classic was born.



Temple

Owls

SUGAR BOWL CLASSIC,

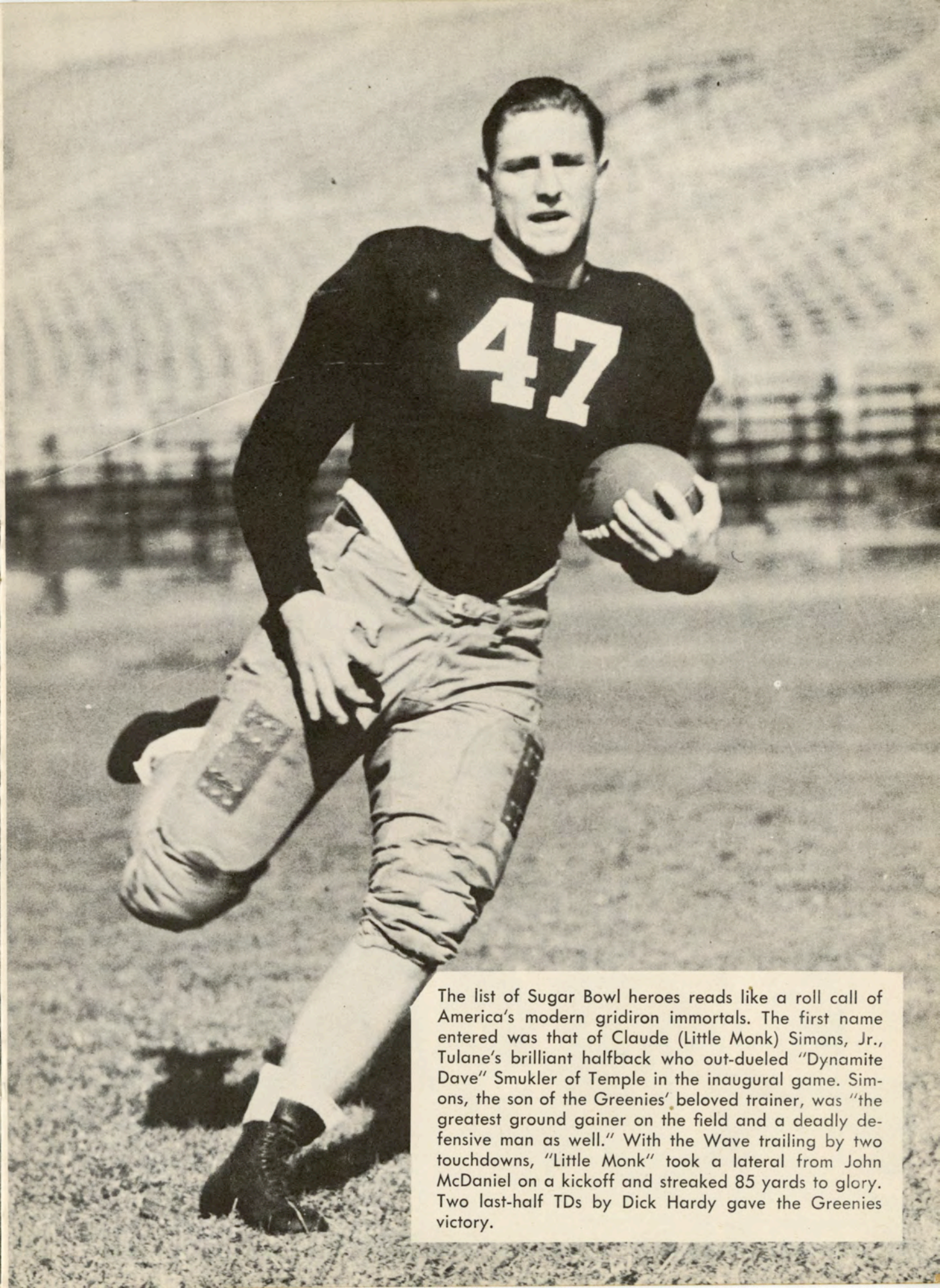
JAN. 1, 1935

Testa Anderson Russell Curzynski Stevens Boyd Docherty Wise

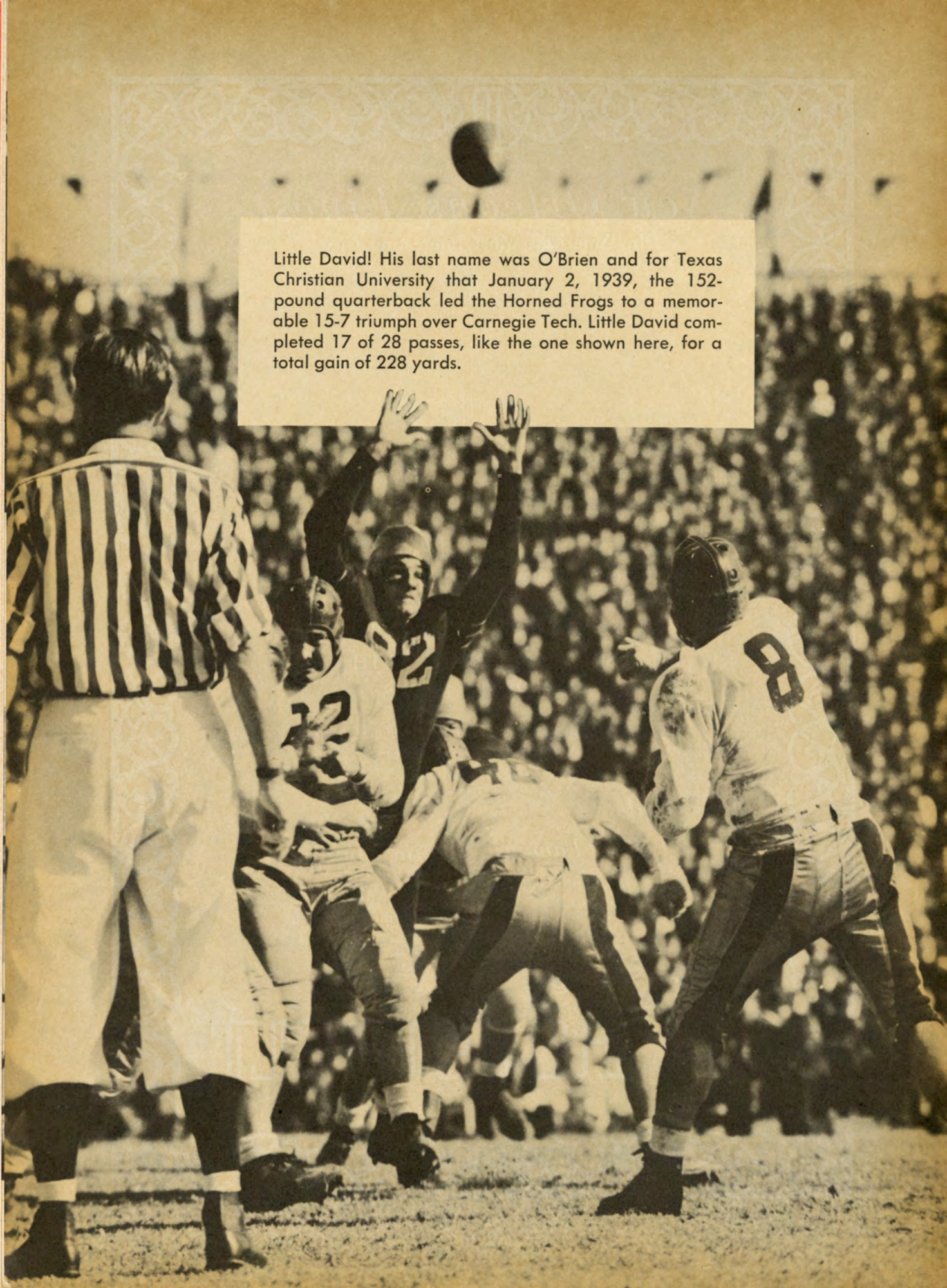
Frey

Smukler

Mowrey



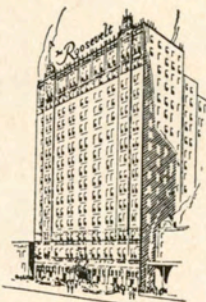
The list of Sugar Bowl heroes reads like a roll call of America's modern gridiron immortals. The first name entered was that of Claude (Little Monk) Simons, Jr., Tulane's brilliant halfback who out-dueled "Dynamite Dave" Smukler of Temple in the inaugural game. Simons, the son of the Greenies' beloved trainer, was "the greatest ground gainer on the field and a deadly defensive man as well." With the Wave trailing by two touchdowns, "Little Monk" took a lateral from John McDaniel on a kickoff and streaked 85 yards to glory. Two last-half TDs by Dick Hardy gave the Greenies victory.



Little David! His last name was O'Brien and for Texas Christian University that January 2, 1939, the 152-pound quarterback led the Horned Frogs to a memorable 15-7 triumph over Carnegie Tech. Little David completed 17 of 28 passes, like the one shown here, for a total gain of 228 yards.

New Orleans' Finest

In America's Most Interesting City



THE ROOSEVELT is located in the heart of Romantic old New Orleans. It is in the center of business and social activities and is close to the Theatre, Shopping, French Quarter, and Business Districts . . . You will like the tasteful luxury and home-like atmosphere of this modern hotel where the traditions of Southern Hospitality are maintained the year 'round.

**800 ROOMS WITH BATH
MODERATE RATES**

SEYMOUR WEISS, *President and Managing Director*
A. C. BELLANDE, *Manager*

Visit

The Famous Sazerac Bar

Home of the Original Sazerac Cocktail

After 102 Years Ladies Are Now Cordially Invited

The
ROOSEVELT

"Pride of the South"

DRINK REGAL BEER

Enjoy the finest-tasting beer
you ever drank regardless
of brand name or price



GEORGIA TECH

PROBABLE STARTING LINEUP

| LE | LT | LG | C | RG | RT | RE |
|-----------------------|------------|--------------|------------------|-----------------|---------------|------------|
| Hensley 48 | Frey 57 | Brooks 26 | L. Morris 47 | O. Vereen 33 | Sherman 32 | Hair 55 |
| QB Rodgers 29 | | | | | | |
| LHB Hardeman 11 | | | RHB Teas 9 | | | |
| FB Turner 31 | | | | | | |

SQUAD ROSTER

| | | | |
|---------------------|------------------|--------------------|-------------------|
| 9 Teas, rh | 27 Grant, qb | 43 Jones, re | 57 Frey, lt |
| 10 Menger, qb | 28 Trainer, re | 44 Humphreys, fb | 58 T. Gossage, lt |
| 11 Hardeman, lh | 29 Rodgers, qb | 45 Eddy, fb | 59 Phenix, lt |
| 12 Ruffin, rh | 30 Brannon, lh | 46 Carlen, c | 61 Christy, lt |
| 13 Huff, re | 31 Turner, fb | 47 L. Morris, c | 62 E. Gossage, lg |
| 14 Cochran, lh | 32 Sherman, rt | 48 Hensley, le | 63 Willoch, rg |
| 15 J. L. Morris, rh | 33 O. Vereen, rg | 49 Webster, le | 64 C. Vereen, lt |
| 17 Volkert, rh | 34 Roberts, fb | 50 Givens, rt | 65 Davis, re |
| 18 Brigman, qb | 35 Inman, c | 51 J. M. Morris, c | 66 Bennett, le |
| 20 Gilliland, rh | 36 Mansfield, rg | 52 Durham, le | 67 Daugherty, lt |
| 21 Rotenberry, lh | 37 Mitchell, qb | 53 Shoemaker, lg | 74 Epperson, lg |
| 23 Morrison, lh | 38 Joe Hall, rh | 54 Juhan, re | 75 Summer, c |
| 24 Hunsinger, fb | 40 Goss, c | 55 Hair, re | 76 Moore, lg |
| 25 Owen, fb | 41 Fulcher, rg | 56 Miller, rt | 78 Sims, lt |
| 26 Brooks, lg | 42 Carithers, rg | | |

Game Officials—Cavette, Referee; Russell, Umpire; Cope-land, Head Linesman; Clark, Field Judge; Lyons, Electric Clock Operator.

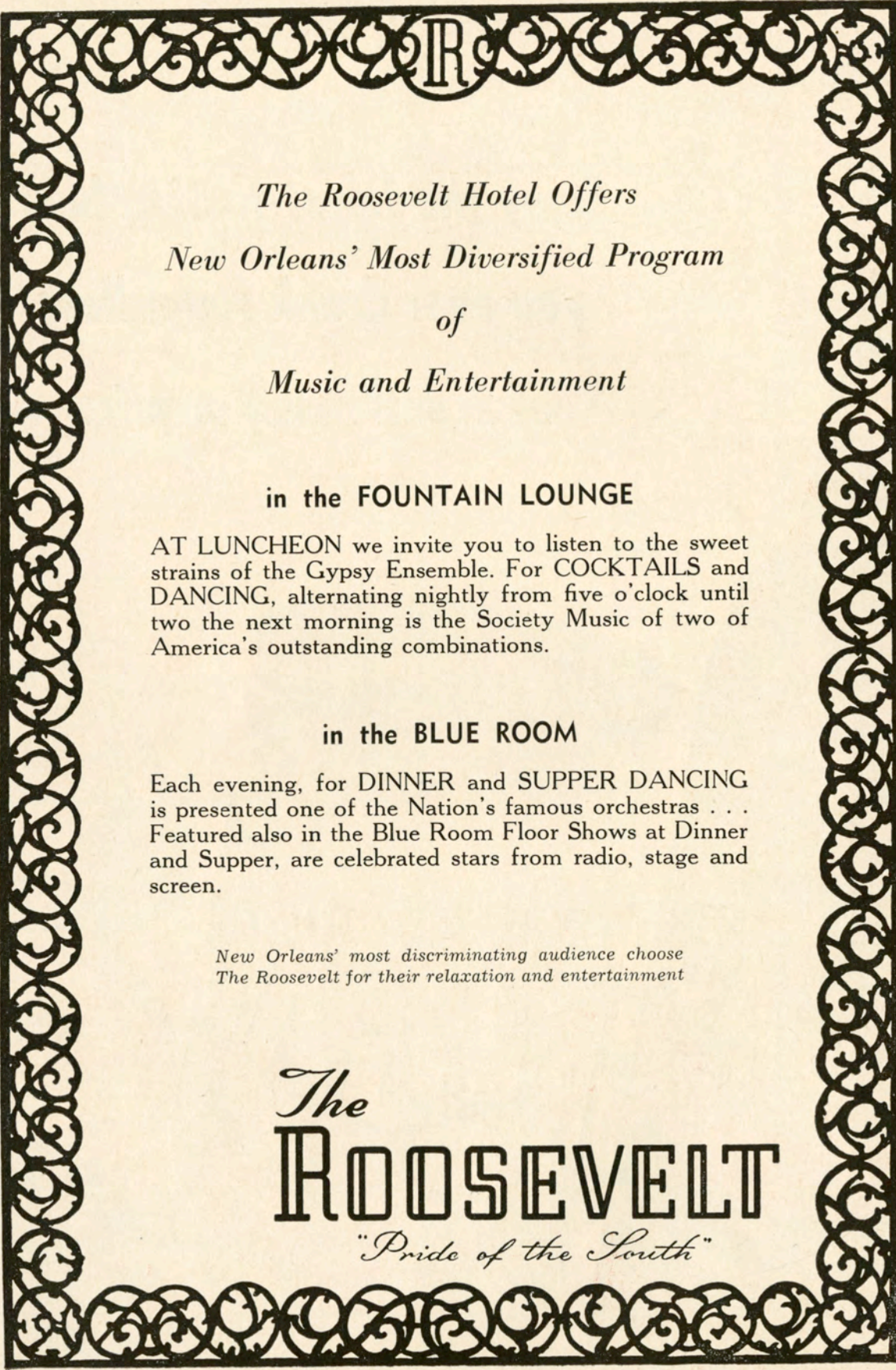
TULANE

PROBABLE STARTING LINEUP

| LE | LT | LG | C | RG | RT | RE |
|----------------------|---------------|----------------|--------------------|-------------|-----------------|-------------|
| Pittman 83 | Cummins 79 | Sardisco 64 | Camp 55 | Burke 51 | B'nthorne 60 | Bravo 82 |
| QB Clement 17 | | | | | | |
| LHB Kennedy 47 | | | RHB McGee 25 | | | |
| FB Kent 31 | | | | | | |

SQUAD ROSTER

| | | | |
|------------------|------------------|-------------------|------------------|
| 10 Waters, qb | 38 Chauvin, fb | 60 Burnthorne, rt | 78 Godwin, rt |
| 14 W'bacher, qb | 39 Morere, qb | 61 Miller, rg | 79 Cummins, lt |
| 16 Ladner, qb | 40 Hymel, rh | 62 A. Robelot, rg | 80 Price, re |
| 17 Clement, qb | 41 Wilcox, re | 63 M'L'ghlin, lg | 82 Bravo, re |
| 18 Caruso, qb | 42 Harrison, rh | 64 Sardisco, lg | 83 Pittman, le |
| 19 Evans, rh | 43 Kimball, lh | 65 Arnoult, lg | 84 D'vign'd, le |
| 21 Gilmore, rh | 44 Partridge, lh | 66 Shoultz, lg | 85 R.Ford, re |
| 22 Wall, lh | 45 Borne, lh | 67 Troxclair, lg | 86 Vickery, re |
| 23 Hof, rh | 47 Kennedy, lh | 68 A. Wilson, rg | 87 McCool, rg |
| 25 McGee, rh | 50 Rushing, c | 69 Woodruff, lg | 88 Conley, le |
| 26 Warner, lh | 51 Burke, rg | 70 Coates, le | 89 Thompson, re |
| 28 Berke, rh | 52 Zelenka, rt | 71 Schexn'der, rg | 91 Hobbs, le |
| 29 Connell, rt | 53 J. Wilson, c | 72 Truax, rt | 92 Rowe, rt |
| 31 Kent, fb | 54 Senac, c | 73 Hawkins, rt | 93 Cutler, lg |
| 33 Saia, rh | 55 Camp, c | 74 Spollen, lt | 94 Lester, rg |
| 34 Reginelli, fb | 56 Mahoney, c | 75 T. Ford, lt | 95 Boudreaux, lt |
| 35 Quillian, fb | 57 McBunch, rg | 76 W. Robelot, rt | 96 Guelndner, rt |
| 36 McCreary, fb | 59 Gunther, lg | 77 Tucker, le | 97 McMurray, c |



The Roosevelt Hotel Offers
New Orleans' Most Diversified Program
of
Music and Entertainment

in the FOUNTAIN LOUNGE

AT LUNCHEON we invite you to listen to the sweet strains of the Gypsy Ensemble. For COCKTAILS and DANCING, alternating nightly from five o'clock until two the next morning is the Society Music of two of America's outstanding combinations.

in the BLUE ROOM

Each evening, for DINNER and SUPPER DANCING is presented one of the Nation's famous orchestras . . . Featured also in the Blue Room Floor Shows at Dinner and Supper, are celebrated stars from radio, stage and screen.

*New Orleans' most discriminating audience choose
The Roosevelt for their relaxation and entertainment*

The
ROOSEVELT

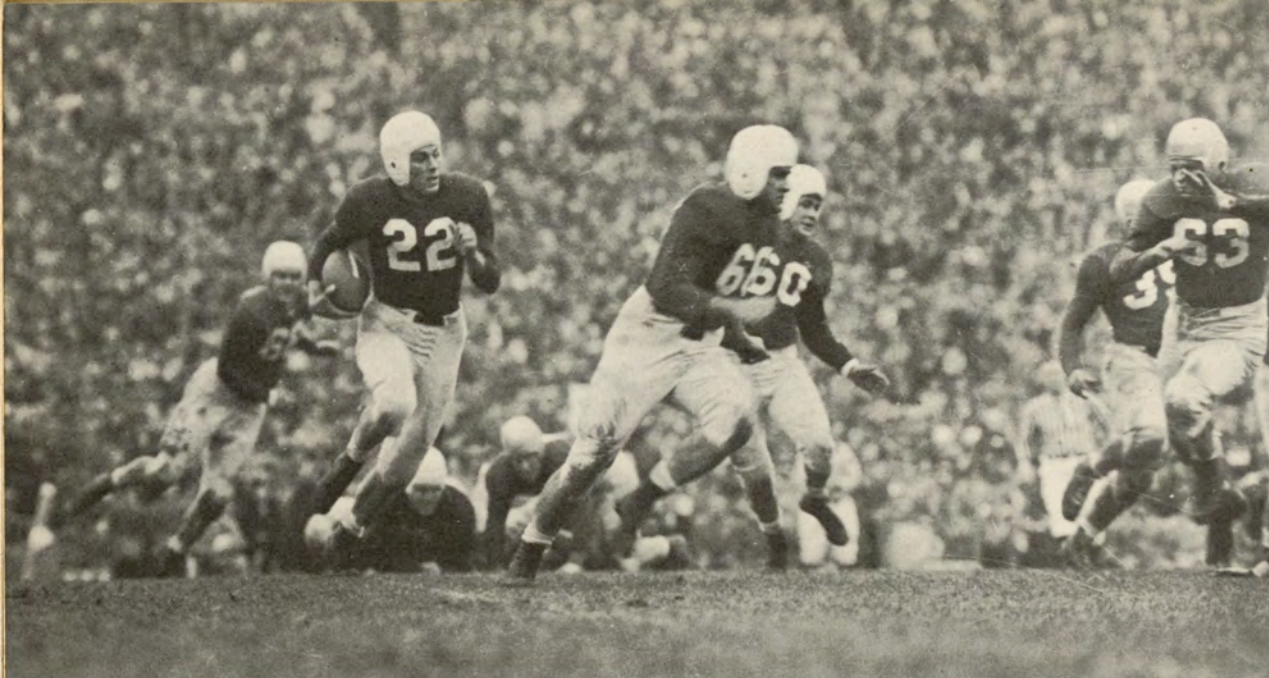
"Pride of the South"



This spectacular action picture came from a game that was just that sensational. Boston College's "Cinderella" team (in dark jerseys) is shown in the process of its upset 19-13 win over Tennessee in the seventh Sugar Bowl game, January 1, 1941. The B. C. player at far right was the man of the hour, Charlie O'Rourke.

Tulane's second appearance in the Sugar Bowl, 1940, saw the Greenies drop a 14-13 pulse-pounder to the Texas Aggies. The day's highlight for the Wave was a 75-yard touchdown run by Robert (Jitterbug) Kellogg, depicted here. But Jarrin' John Kimbrough of A. & M., plus a payoff extra point in the last quarter, won for the Texans.





The 1947 Classic was a contest between Georgia and North Carolina and the two great Charlies—Trippi and Justice. Here Carolina's "Choo Choo" Justice turns end for a good gain. In the end, however, it was Georgia on the strength of three last-half touchdowns, 20-10.

Yet another in the procession of Sugar Bowl immortals—Vito (Babe) Parilli of Kentucky lopes past Oklahoma tacklers in the battle which ended the Sooners' two-year Classic winning streak on January 1, 1951. The Wildcats' crashing play forced the National Champions into disastrous fumbles and a final 13-7 setback.





Surrounded by Ole Miss Rebels, Georgia Tech's Leon Hardeman (11) slashes over for a touchdown in the Yellowjackets' 24-7 victory of January 1, 1953. Did Hardeman's knee touch before he went into the end zone? That one will always be debated. Frustrated defenders include Charles Montgomery (71), Bob Adams (82) and Henry Linton (72).



All is not sweat and tears at the Sugar Bowl. There is time for pleasure, too. Above, Coach Jim Tatum (right) of Maryland's champion 1952 Terrapins joins with Dean N. W. Dougherty of Tennessee in preparation of Cafe Brulot Diabolique for guests at the New Year's Eve dinner at Antoine's. Below, players and their ladies are shown at the traditional post-game dinner dance.



Be Sure To Watch
HIGHLIGHTS

OF ALL

**TULANE and L. S. U.
FOOTBALL GAMES**

Televised Every Sunday

5:30 to 6:00 p. m.

WDSU-TV (Channel 6)

Sponsored by

D. H. HOLMES CO.

LIMITED

New Orleans' Quality Department Store

and

MOTOROLA TV

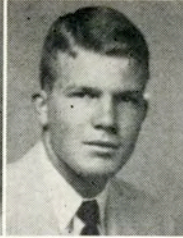
With NEW Double-Power Picture



Bobby Dodd, Head Coach



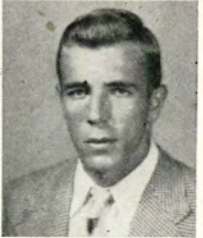
Anderson



Brannon



Brigman



Brooks



Carlen



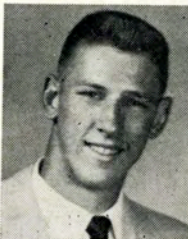
Cochran



Daughertz



Davis



Durham



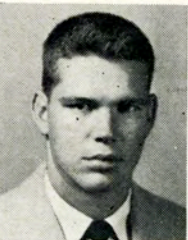
Frey



Fulcher



Gilliland



Goss



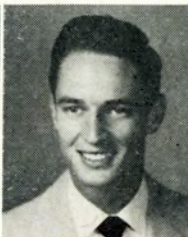
E. Gossage

Georgia Tech

| No. | Name | Position | Age | Ht. | Wgt. | Ltrs. | Class | Hometown |
|-----|------------------|----------|-----|------|------|-------|--------|-------------------|
| 9 | Bill Teas | rh | 21 | 5-11 | 162 | 1 | Jr. | Andrews, N. C. |
| 10 | Johnny Menger | qb | 18 | 5-11 | 155 | 0 | Fresh. | Augusta, Ga. |
| 11 | Leon Hardeman | lh | 21 | 5-6 | 172 | 2 | Sr. | LaFayette, Ga. |
| 12 | Larry Ruffin | rh | 20 | 5-11 | 168 | 2 | Jr. | West Point, Ga. |
| 13 | Charlie Huff | re | 20 | 6-1 | 170 | 0 | Soph. | Decatur, Ga. |
| 14 | Stan Cochran | lh | 18 | 5-11 | 176 | 0 | Soph. | Atlanta, Ga. |
| 15 | James L. Morris | rh | 21 | 5-11 | 160 | 1 | Jr. | Marietta, Ga. |
| 17 | George Volkert | rh | 19 | 5-11 | 175 | 0 | Fresh. | Nashville, Tenn. |
| 18 | Bill Brigman | qb | 21 | 6-0 | 178 | 1 | Jr. | Brunswick, Ga. |
| 20 | Bobby Gilliland | rh | 21 | 5-7 | 142 | 1 | Sr. | Rome, Ga. |
| 21 | Paul Rotenberry | lh | 18 | 5-8 | 165 | 0 | Fresh. | Roanoke, Va. |
| 23 | Mot Jon Morrison | lh | 20 | 5-11 | 173 | 0 | Soph. | Atlanta, Ga. |
| 24 | Johnny Hunsinger | fb | 22 | 5-9 | 179 | 0 | Jr. | Atlanta, Ga. |
| 25 | Ken Owen | fb | 18 | 6-0 | 180 | 0 | Fresh. | Salisbury, N. C. |
| 26 | Franklin Brooks | lg | 19 | 5-11 | 193 | 1 | Soph. | Atlanta, Ga. |
| 27 | Burton Grant | qb | 19 | 6-0 | 180 | 0 | Soph. | Wilmington, N. C. |
| 28 | Cecil Trainer | re | 22 | 5-11 | 162 | 2 | Sr. | Atlanta, Ga. |
| 29 | Pepper Rodgers | qb | 21 | 5-10 | 168 | 2 | Sr. | Atlanta, Ga. |
| 30 | Charlie Brannon | lh | 22 | 5-11 | 162 | 2 | Sr. | Atlanta, Ga. |
| 31 | Glenn Turner | fb | 21 | 5-11 | 197 | 2 | Sr. | Talladega, Ala. |
| 32 | Bob Sherman | rt | 21 | 6-0 | 190 | 2 | Sr. | Brunswick, Ga. |
| 33 | Orville Vereen | rg | 21 | 5-11 | 188 | 2 | Sr. | Miami, Fla. |
| 34 | Linwood Roberts | fb | 20 | 5-11 | 190 | 0 | Jr. | Brunswick, Ga. |
| 35 | Dick Inman | c | 22 | 6-1 | 202 | 2 | Sr. | LaFayette, Ga. |
| 36 | Tommy Mansfield | rg | 18 | 5-10 | 190 | 0 | Fresh. | Albany, Ga. |
| 37 | Wade Mitchell | qb | 18 | 6-3 | 181 | 0 | Fresh. | Atlanta, Ga. |
| 38 | Joe Hall | rh | 21 | 6-1 | 177 | 1 | Sr. | Columbus, Ga. |
| 40 | Harry Goss | c | 20 | 5-11 | 192 | 1 | Sr. | Atlanta, Ga. |
| 41 | Bill Fulcher | rg | 19 | 5-10 | 185 | 0 | Soph. | Augusta, Ga. |



T. Gossage



Grant



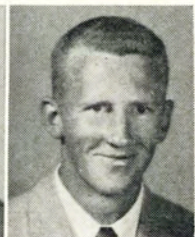
Hair



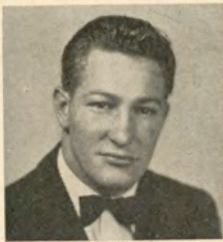
Hall



Hardeman



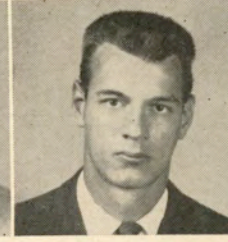
Hensley



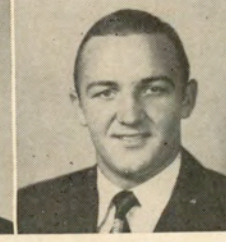
Hunsinger



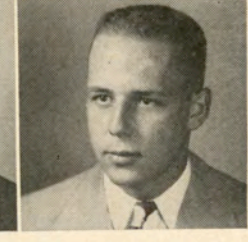
Holland



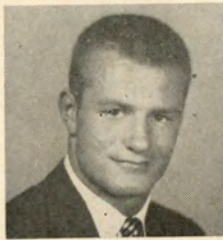
Humphreys



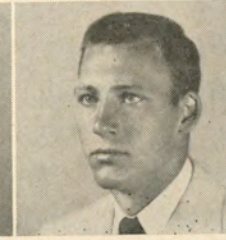
Inman



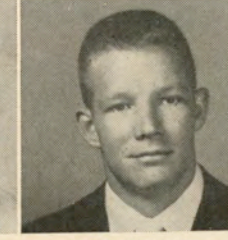
Jones



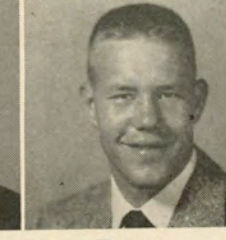
L. Morris



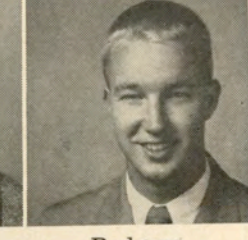
J. L. Morris



J. M. Morris



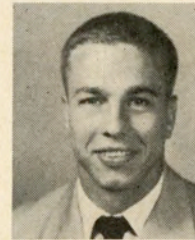
Perry



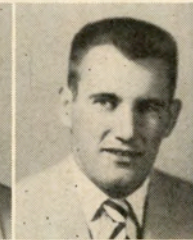
Rodgers

Georgia Tech

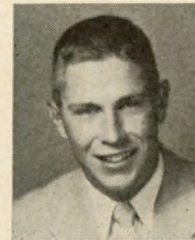
| No. | Name | Position | Age | Ht. | Wgt. | Ltrs. | Class | Hometown |
|-----|----------------------|----------|-----|------|------|-------|--------|---------------------|
| 42 | Ed Carithers, rg | | 22 | 5-10 | 210 | 2 | Sr. | Atlanta, Ga. |
| 43 | Buddy Jones, re | | 20 | 6-0 | 183 | 1 | Jr. | Marietta, Ga. |
| 44 | Geo. Humphreys, fb | | 20 | 6-1 | 182 | 1 | Jr. | Whitwell, Tenn. |
| 45 | Paul Eddy, fb | | 20 | 5-11 | 187 | 0 | Soph. | Atlanta, Ga. |
| 46 | Jimmy Carlen, c | | 20 | 6-2 | 210 | 0 | Jr. | Cookeville, Tenn. |
| 47 | Larry Morris, c | | 19 | 6-0 | 202 | 2 | Jr. | Decatur, Ga. |
| 48 | Sam Hensley, le | | 21 | 6-0 | 191 | 2 | Sr. | Smyrna, Ga. |
| 49 | Frank Webster, le | | 20 | 6-2 | 194 | 0 | Jr. | Atlanta, Ga. |
| 50 | Frank Givens, rt | | 21 | 6-2 | 230 | 2 | Sr. | Decatur, Ga. |
| 51 | Jimmy M. Morris, c | | 19 | 6-2 | 191 | 0 | Soph. | Vicksburg, Miss. |
| 52 | Jimmy Durham, le | | 20 | 6-3 | 183 | 1 | Sr. | Talladega, Ala. |
| 53 | Jake Shoemaker, lg | | 21 | 5-10 | 201 | 1 | Jr. | Chattanooga, Tenn. |
| 54 | Bob Juhan, re | | 18 | 6-2 | 194 | 0 | Fresh. | Atlanta, Ga. |
| 55 | Henry Hair, re | | 22 | 6-3 | 203 | 1 | Jr. | Atlanta, Ga. |
| 56 | Don Miller, rt | | 19 | 6-3 | 205 | 0 | Fresh. | Kingsport, Tenn. |
| 57 | Roger Frey, lt | | 22 | 6-1 | 219 | 1 | Jr. | Bethlehem, Pa. |
| 58 | Tommy Gossage, lt | | 19 | 6-2 | 203 | 0 | Soph. | Marietta, Ga. |
| 59 | Rees Phenix, lt | | 19 | 6-4 | 211 | 1 | Jr. | Miami, Fla. |
| 61 | Frank Christy, lt | | 18 | 6-1 | 200 | 0 | Fresh. | Bessemer, Ala. |
| 62 | Ed Gossage, lg | | 22 | 6-3 | 200 | 2 | Sr. | Nashville, Tenn. |
| 63 | Ray Willoch, rg | | 20 | 5-11 | 182 | 0 | Jr. | Webster Groves, Mo. |
| 64 | Carl Vereen, lt | | 17 | 6-6 | 225 | 0 | Fresh. | Miami, Fla. |
| 65 | Dave Davis, re | | 22 | 6-4 | 203 | 2 | Sr. | Roanoke, Va. |
| 66 | Bill Sennett, le | | 21 | 6-1 | 178 | 0 | Sr. | Alcoa, Tenn. |
| 67 | Ben Daugherty, lt | | 20 | 6-3 | 213 | 1 | Jr. | Bowling Green, Ky. |
| 74 | Bernard Epperson, lg | | 20 | 6-0 | 193 | 0 | Soph. | Chat'n'oga, Tenn. |
| 75 | Jim Summer, c | | 20 | 6-1 | 185 | 0 | Soph. | Oak Ridge, Tenn. |
| 76 | Joe Moore, lg | | 20 | 6-1 | 193 | 0 | Soph. | Thomaston, Ga. |
| 78 | Leland Sims, lt | | 19 | 6-1 | 210 | 0 | Fresh. | Monroe, La. |



Ruffin



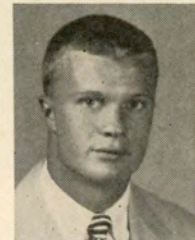
Sennett



Sherman



Shoemaker



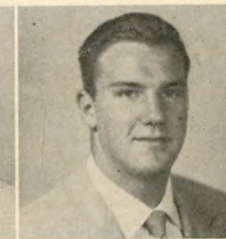
Teas



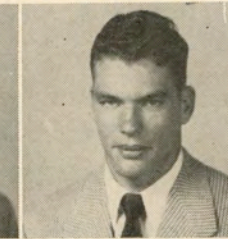
Theodocion



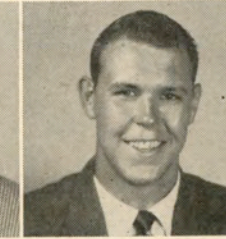
Trainer



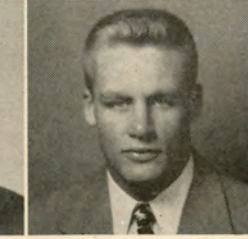
Turner



Vereen



Webster



Willoch

they're strictly "first team" . . .

Hickey-Freeman

scotspride tweeds

When you own an imported Scotspride suit—customized by Hickey-Freeman—you're strictly "All-American"—style-wise, fabric-wise, fashion-wise.

120.00

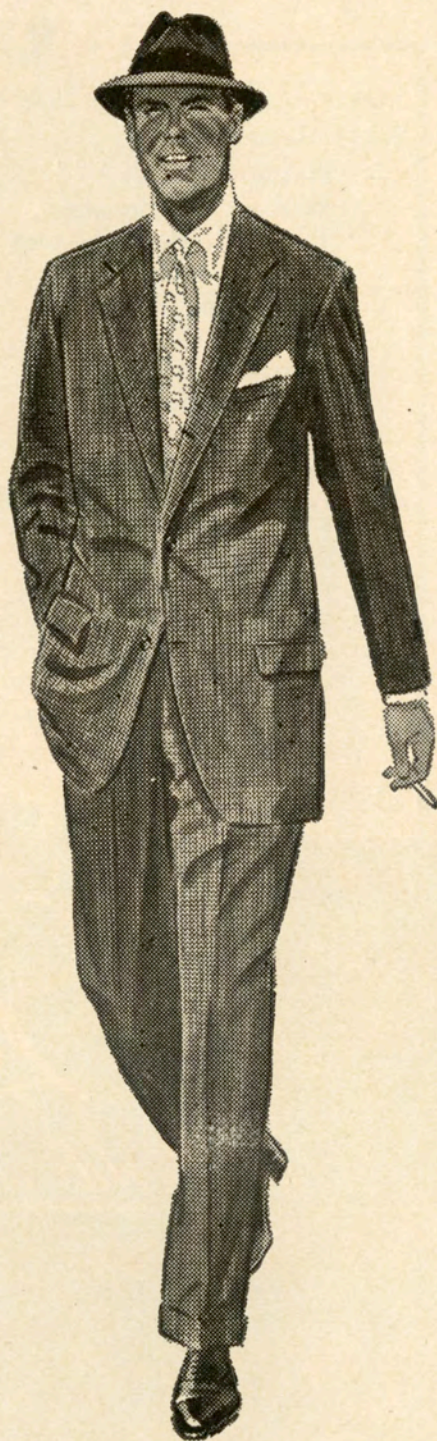
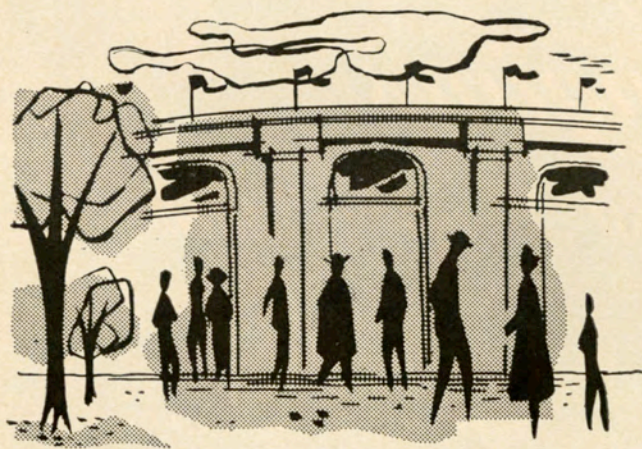


men's clothing • second floor

ONLY AT *Godcharn's*

the home of fashion . .

PORTER'S for clothes of distinction — latest and most popular styles for forging ahead in the business field and taking the lead in the social sphere. Stop in at Porter's today — where more and more New Orleans men buy their clothes — and shop in the pleasant and genial atmosphere of New Orleans most popular men's store.



Porter's

So conveniently located at Carondelet and Gravier

Saluting . . .

Charter members of the New Orleans Mid-Winter Sports Association, fathers of the Sugar Bowl Classic:

Ralph J. Barry
Herbert A. Benson
Jacob H. Bodenheimer
M. P. Boebinger
George E. Butler
John R. Conniff
Sam Corenswet
Joe M. Cousins
Jos. B. David
Paul E. DeBlanc
L. diBenedetto
Fred Digby
Jos. Dresner
P. K. Ewing
Harry W. Fletcher
A. N. Goldberg
Bernie J. Grenroad
Henry J. Jumonville*
Warren V. Miller*

A. B. Nicholas
John Niehaus
Herbert Paillet
Irwin F. Poche
F. D. "Hap" Reilly
W. P. Rovira*
Frank V. Schaub
George E. Schneider
Leo J. Schoeny
W. Raleigh Schwarz*
W. A. Simpson, Jr.
E. Allan Smuck
Walter L. Snider
Clarence H. Strauss*
Albert Wachenheim, Jr.
Douglas S. Watters
Frederick J. Wolfe
Charles C. Zatarain

* Deceased.

OFFICIAL WATCH FOR THIS GAME



Longines



The World's Most Honored Watch



LONGINES WATCHES ARE OFFICIAL
FOR TIMING
CHAMPIONSHIP SPORTS IN ALL
FIELDS THROUGHOUT THE WORLD

*Product of
Longines-Wittnauer Watch Company*

...the point is ...

for

TOP

SCORES

WATCH

TULANE!

for

TOP

VALUES

WATCH

MAISON BLANCHE

GREATEST STORE SOUTH

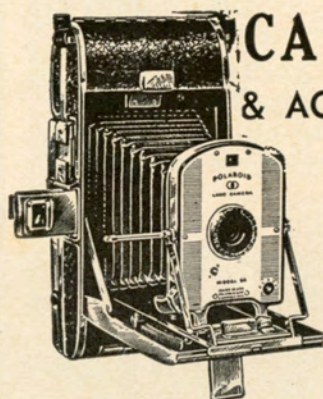
Tickets?

Tickets for future home games, priced at \$4.00, \$2.50 and \$2.00, are available at:

Stadium Ticket Office, 6401 Willow St.
Telephone WALnut 0656
Downtown Office, 317 Baronne St.
Telephone TULane 2660

BENNETT'S

POLAROID HEADQUARTERS!



CAMERAS & ACCESSORIES

Snap it Now!
Take out the
finished print
1 minute later

- No Chemicals
- No Fluids
- No Washing

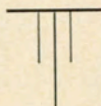
\$5.00 Down
\$8.00 a Month

only \$89.75
Incl. Fed. Tax



Tulane Printing Office

CAMPUS PRINTERS



GIBSON HALL

UNiversity 2741
Ext. 344

A Great Name in Clothing

SCHWOBILT
CLOTHES REG. U.S. PAT. OFF.

"SUITS THE SOUTH"

Gluck's Restaurant



124 Royal Street



- Good Food
- Moderate Prices
- Cocktail Bar

Auto Painting and Repairing Co., Inc.

Gas, Oil



24-Hour Emergency Service



Esso, Goodyear Products

1725 Dufossat Street JACKSON 4801

The official watch for timing today's game is Longines — "The World's Most Honored Watch"

only a few yards to go...



Broadmoor Simmons Service
Washington & Broad
UNiversity 3644



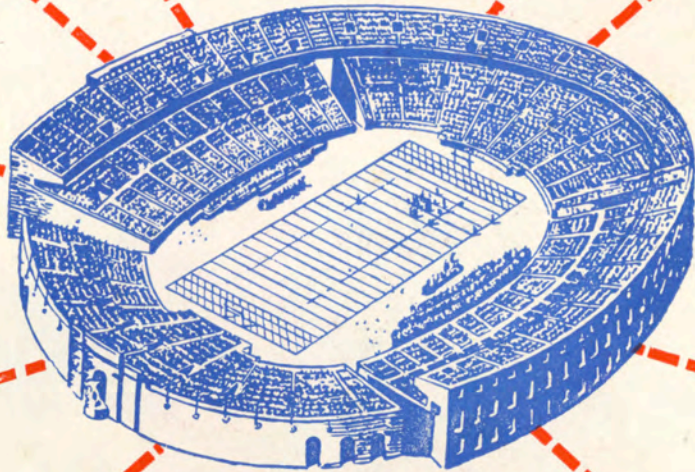
Rebardo's Service Station
Carrollton & Claiborne
WAlnut 0950



Kerne's Service Station
Cathoun & Miro
UNiversity 2829



Elm Super Service
7329 Freret
WAlnut 9108



George's Circle Service Station
1024 St. Charles Avenue
MAGnolia 1925



Henry Clay Service Station
Laurel & Henry Clay
JACKson 9750



Jefferson Plaza Service Station
2950 Jefferson Highway
TEmple 7632



Fern & St. Charles Service Station
WAlnut 9318



The Streamliner
1779 Airline Highway
TEmple 9291



Canal & Carrollton Service Station
GAlvez 9472

to a PAN-AM STATION



(Other Pan-Am Stations conveniently located in all parts of the City.)

CAMEL

America's most popular cigarette!



*So Mild -
So Flavorful!*