

Souvenir Program
25 cents



The S'EASTERN LA. Game

Tulane Stadium -- November 24, 1951

Time Out...

Here are the official 1951 signals—



Offside

Illegal Position or Procedure



Ball ready-for-play



Roughness and Piling On



Illegal Motion or Shift



Delay of Game



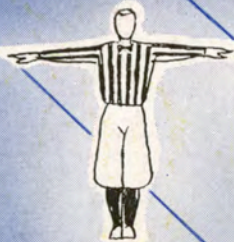
Personal Foul



Clipping



Roughing the Kicker



Unsportsman-like Conduct



Defensive Holding



Illegal Use of Hands and Arms



Intentional Grounding



Illegally Passing or Handing Ball Forward



Forward Pass or Kick Catching Interference



Ineligible Receiver Down Field on Pass



Ball Illegally Touched, Kicked or Batted



Incomplete Forward Pass; Penalty Declined No Play or No Score



Crawling; Helping the Runner or Interlocked Interference



Ball Dead If hand is moved from side to side: Touchback



Touchdown or Field Goal



Safety



Time-Out



First Down



Start the Clock or No More Time-Outs Allowed

Listen to
"World of Sports"

WDSU-TV

RECORD MOMENTS IN SPORTS

Mondays, 7:45 p. m.

OUTDOORS IN LOUISIANA

Thursdays, 7:45 p. m.

SPORTSCHOLAR

Fridays, 8:30 p. m.

WWL—BILL BRENGEL

Mondays through Saturdays, 5:35 p. m.



JACKSON BREWING COMPANY, NEW ORLEANS, LA.



And when you take **Time Out...**

Drink

JAX

The Sportsman's Beverage

Famous for
**FINE FOOD
and DRINK**



*Enjoy the Specialties of These Noted
Restaurants:*

ANTOINE'S

713 St. Louis St. • RAYmond 2554

ARNAUD'S

813 Bienville St. • MAgnoIia 5433

BROUSSARD'S

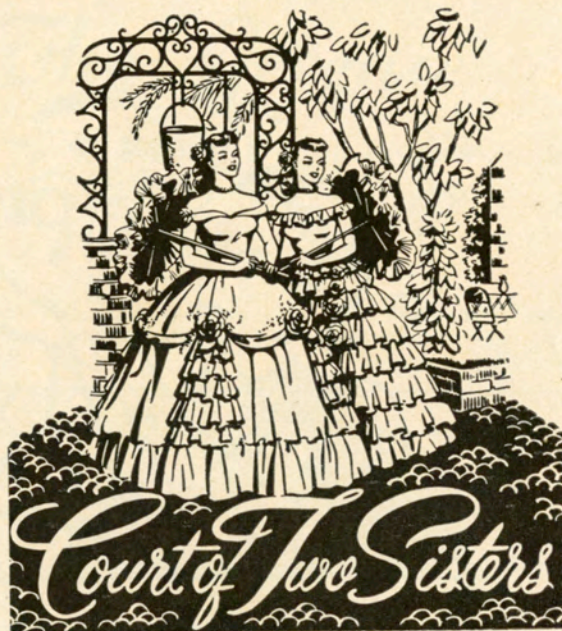
819 Conti St. • MAgnoIia 4800

KOLB'S

125 St. Charles St. • RAYmond 5034

LA LOUISIANE

725 Iberville St. • RAYmond 3384



613 RUE ROYAL • 614 RUE BOURBON
VIEUX CARRE • NOUVELLE ORLEANS

"Your Specialists In Sports"

Johnny Lynch's

SPORTS, Inc.

FORMERLY DUNLAP SPORTING
GOODS CO., INC.

*Complete Equipment
For All Sports*

308 ST. CHARLES ST.
New Orleans 12, La. MAgnoIia 5891

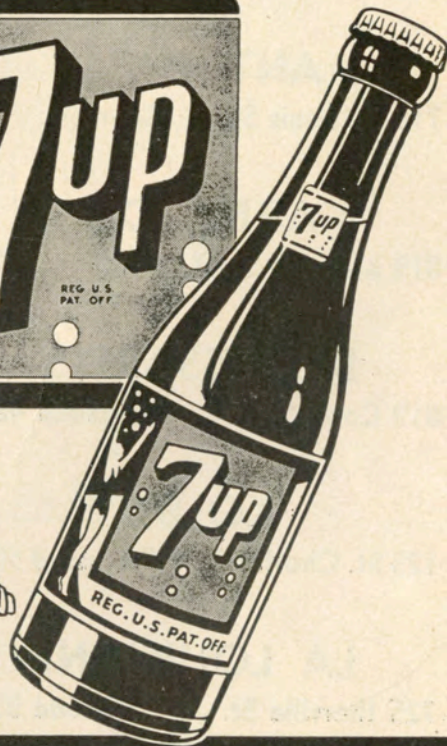
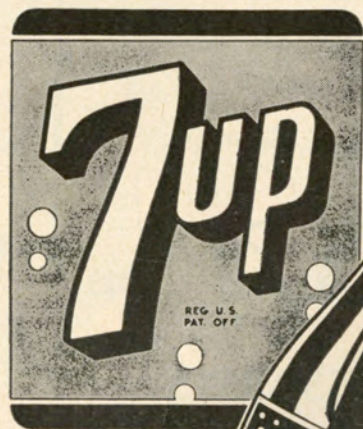
"It Pays To Play"



SEEN AT ALL THE GAMES...
OUTSTANDING FASHIONS
FOR THE ENTIRE FAMILY FROM

MAYER ISRAEL'S

*Cheered by
Millions!*



YOU LIKE IT - IT LIKES YOU



The Greenie

Official Souvenir Football Program
of Tulane University

ANDY ROGERS, Editor

National Advertising Representatives Football Publications, Inc.
370 Lexington Avenue, New York, N. Y.

Vol. 21

November 24, 1951

No. 7

TODAY'S GAME

One of the choicest teams in the Gulf States Conference comes into Tulane Stadium today with no more intent than to upset Tulane's Greenies in their own baliwick and seek to produce the biggest reversal of form during the 1951 football season.

This day and time no football team can be taken lightly and Stanley Galloway's team has given plenty of indication that it is capable enough around the Gulf States circuit. Now it tries its hand at Southeastern Conference competition.

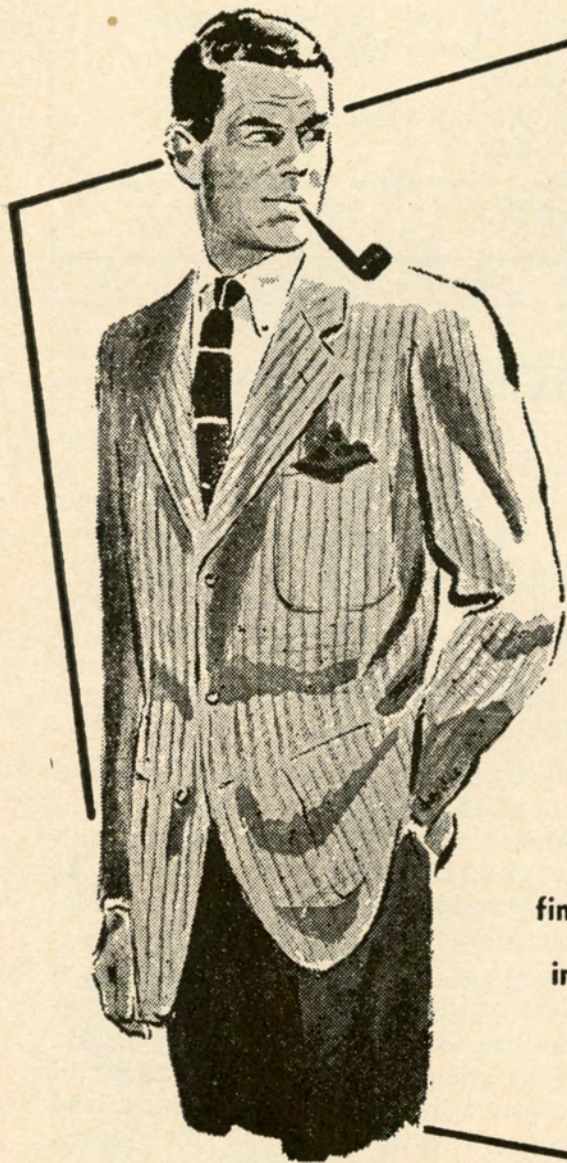
The Lions thumped seven opponents this year with all the gusto of a bass drummer in a Ringling Brothers circus. Among the victims are Northeast Louisiana College, 33-0; Louisiana College, 7-6; S. L. I., 14-0; Northwestern, 33-14; Louisiana Tech, 19-7; McNeese, 9-6; and Alabama State, 71-0.

The only losses were to Mississippi Southern, 35-6; and Stephen F. Austin College, 14-6, a school that should be familiar to Tulane Coach Henry Frnka. That's where he graduated in 1926, where he still maintains an active interest, and where his friend and former co-worker, Ray Morrisson, now coaches.

The Lions will offer Ed Welch, a 165-pound speedster from Bogalusa, La., as their chief threat. Welch has rolled up 468 yards so far this season and is one of the top runners on the S. L. C. eleven. Hubert Polk, the conference's leading punt returner, also is to be reckoned with, along with speedster Ridley Boudreaux.

The rejuvenated Greenies, who exhibited more poise against Vanderbilt than at any time this season, will try to improve it against the Lions. The Wave

(Continued on page 24)



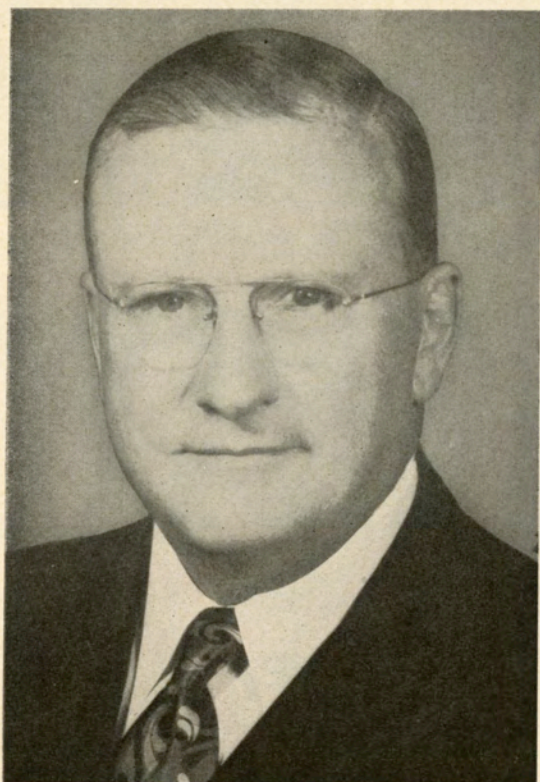
HANDSOME IS . . .

as handsome dresses

From college student to business executive—
men are judged by the clothes they wear!
Men who wear clothes with a Porter's label
are recognized as men with good taste. At
Porter's you'll find famous name brands in
everything from shirts to suits . . . you'll
find exceptionally courteous service . . . you'll shop
in an atmosphere that's pleasant and genial . . .

Porter's

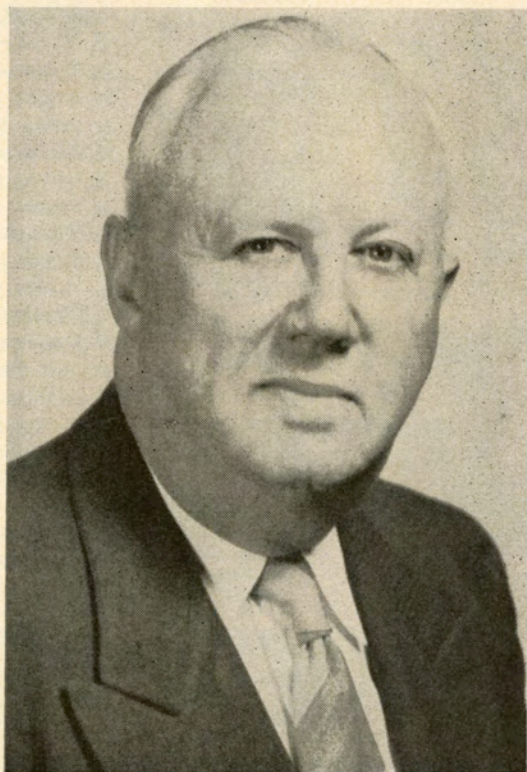
Carondelet at Gravier

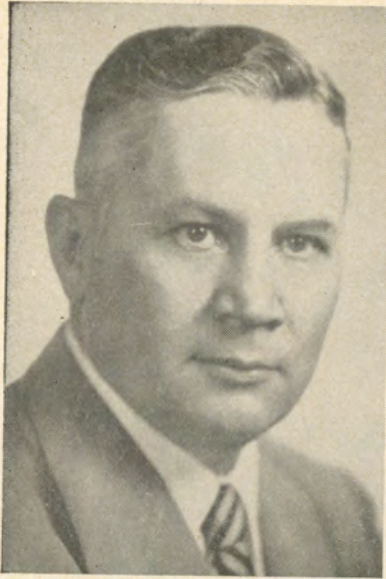


Dr. Rufus Carrollton Harris
President, Tulane University



Dr. Gladney J. Tinsley
President
Southeastern Louisiana College





Henry Frnka
Head Coach



T. Comeaux
guard



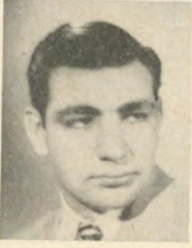
E. Petroski
tackle



M. McLean
end



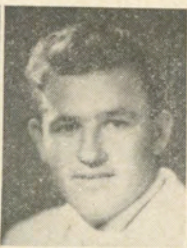
D. Brignac
back



A. Kleinschmidt
guard



D. Fugler
tackle



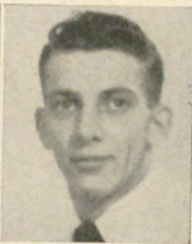
B. Nuss
guard



G. Rey
tackle



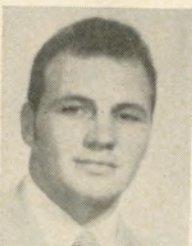
F. Kibodeaux
end



R. Weidenbacher
back



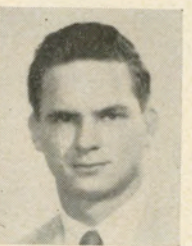
R. Hobbs
end



A. Robelot
center



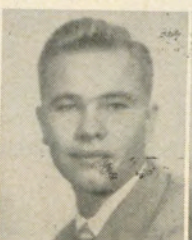
G. Cummins
guard



P. Hazel
tackle



C. Camp
center



J. Huggins
center



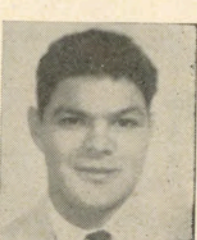
J. Helluin
tackle



W. Wall
back



L. Kennedy
back



E. Bravo
end

TULANE

No.	Name	Age	Ht.	Wgt.	Ltrs.	Class	Hometown
12	Dempsey, Fred, qb	22	5-11	189	0	Jr.	Chicago, Ill.
14	Kennedy, Lester, qb	19	5-11	160	0	So.	New Orleans, La.
15	Batson, Alvis, fb	22	6-1	190	0	Jr.	Houston, Tex.
16	Watson, Donald, qb	19	6-3	170	0	So.	Osceola, Ark.
17	Clement, Pete, qb	19	5-10	165	0	So.	Reserve, La.
21	Brignac, Donald, rhb	21	5-9½	181	1	Jr.	Lutcher, La.
23	Weidenbacher, R., rhb	19	6-0	160	0	So.	New Orleans, La.
24	Kingery, E'worth, rhb	22	5-11	178	2	Sr.	Lake Charles, La.
28	Bailey, Roy, rhb	22	5-10	180	0	Jr.	Richmond, Va.
33	Daigle, Charles, fb	24	5-9	179	2	Sr.	Baton Rouge, La.
35	Partridge, James, rhb	19	5-11	185	0	So.	Mobile, Ala.
38	Pratka, Henry, lhb	23	6-1½	185	0	Jr.	Kilgore, Tex.
40	McGee, Max, lhb	19	6-3	191	0	So.	White Oak, Tex.
41	Kent, Ronnie, fb	20	5-10	180	1	Jr.	New Orleans, La.
42	Doyle, Cecil, fb	23	6-0	178	0	Jr.	DeRidder, La.
43	Hymel, Ray, lhb	20	5-9	158	0	Fr.	Reserve, La.
44	Wall, Wayne, fb	19	5-10	164	0	So.	Texarkana, Tex.
45	L'schlaeger, L., lhb	19	5-8	160	0	Fr.	New Orleans, La.
46	Saia, Bob, fb	20	6-0	190	0	Fr.	New Orleans, La.
50	Rushing, Paul, c	19	6-2	180	0	So.	San Benito, Tex.
51	Burke, Earl, c	20	6-0	193	0	So.	New Orleans, La.
53	Robelot, Alfred, c	19	5-10	200	0	So.	New Orleans, La.
55	Camp, Charles, c	20	5-11	203	0	So.	Petal, Miss.
56	Coates, Charley, le	18	6-3	195	0	Fr.	New Orleans, La.
57	Huggins, James, c	19	6-1	205	0	Jr.	White Oak, Tex.
60	Cummins, George, rg	20	6-2	235	0	So.	New Orleans, La.



J. Davis
end

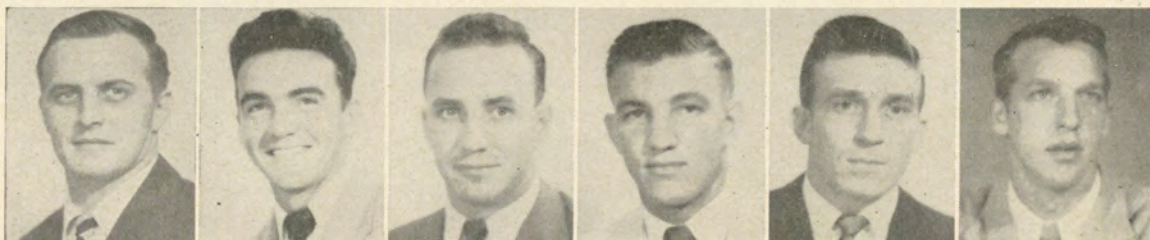
H. Shea
end

W. McElhannon
end

L. Teeuws
tackle

C. Doyle
back

P. Rushing
center



G. Rogas
tackle

P. Clement
back

H. Pratkan
back

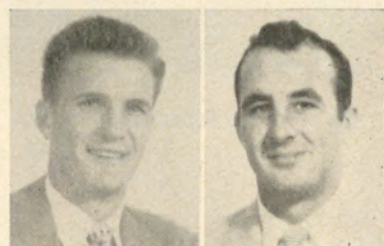
C. Pittman
end

R. Bailey
back

E. Kingery
back

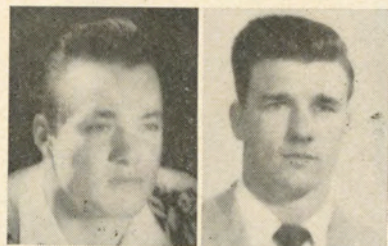
TULANE

No.	Name	Age	Ht.	Wgt.	Ltrs.	Class	Hometown
62	Kleinschmidt, Art,	rg 25	5-11	220	2	Sr.	New Orleans, La.
63	Nuss, Bobby,	lg 21	5-10	196	0	Jr.	New Orleans, La.
65	Comeaux, Tommy,	lg 21	6-1	205	1	Jr.	Port Arthur, Tex.
67	Johnston, Jimmy,	rg 21	5-11	204	1	Jr.	New Orleans, La.
68	Behrend, Weldon,	lg 22	6-0	204	1	Sr.	San Angelo, Tex.
69	Spollen, Bill,	rg 20	6-4	223	0	So.	College Point, N. Y.
71	Petroski, Edward,	lt 21	6-3	225	0	Jr.	Sunderland Mass.
72	Housepian, Mike,	lg 20	6-1	220	0	Jr.	Chicago, Ill.
73	Zapalac, Martin,	lt 20	6-2	225	0	So.	Waco, Tex.
74	Fugler, Dick,	rt 20	6-3	227	2	Sr.	White Oak, Tex.
75	Teeuws, Len,	lt 22	6-5	220	0	Jr.	Oak Park, Ill.
76	Rogas, Gene,	rt 22	6-2	198	0	Jr.	Port Arthur, Tex.
77	Rey, George,	rt 20	6-0	210	0	Jr.	New Orleans, La.
78	Helluin, Jerome,	lt 22	6-2	284	2	Sr.	Houma, La.
79	Hazel, Patrick,	rt 18	6-11/2	196	0	So.	White Oak, Tex.
80	McLean, Mike,	le 21	6-0	184	1	Sr.	Magnolia, Ark.
81	Shea, Harold,	le 21	6-2	180	0	So.	New Orleans, La.
82	Kirkpatrick, Gale,	re 21	6-2	207	1	Sr.	Waukegan, Ill.
83	Pittman, Charles,	re 20	6-0	180	0	Fr.	New Orleans, La.
84	Kibodeaux, Ferdie,	re 23	6-2	190	1	Sr.	Jennings, La.
85	McElhannon, W. C.,	le 20	6-1	175	0	Jr.	San Benito, Tex.
86	Hobbs, Robert,	re 19	6-3	201	0	So.	Hartford, Ark.
87	Davis, J. V.,	re 21	6-3	196	0	Jr.	McCamey, Tex.
88	Pounders, Law'nce,	le 18	6-1	162	0	Fr.	Bossier City, La.
89	Thompson, Ray,	le 20	6-2	173	0	So.	Jena, La.
90	Bowman, Marcus,	re 21	6-0	194	0	Jr.	Galveston, Tex.
91	Bravo, Edward,	le 19	5-11	175	0	Fr.	New Orleans, La.



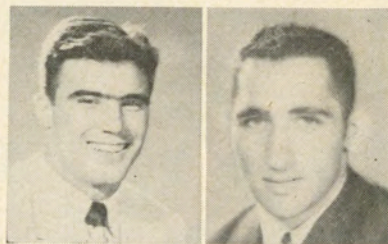
R. Thompson
end

M. McGee
back



G. Kirkpatrick
end

E. Burke
center



R. Kent
back

M. Housepian
guard



A. Batson
back

J. Johnston
guard

C. Daigle
back

F. Dempsey
back

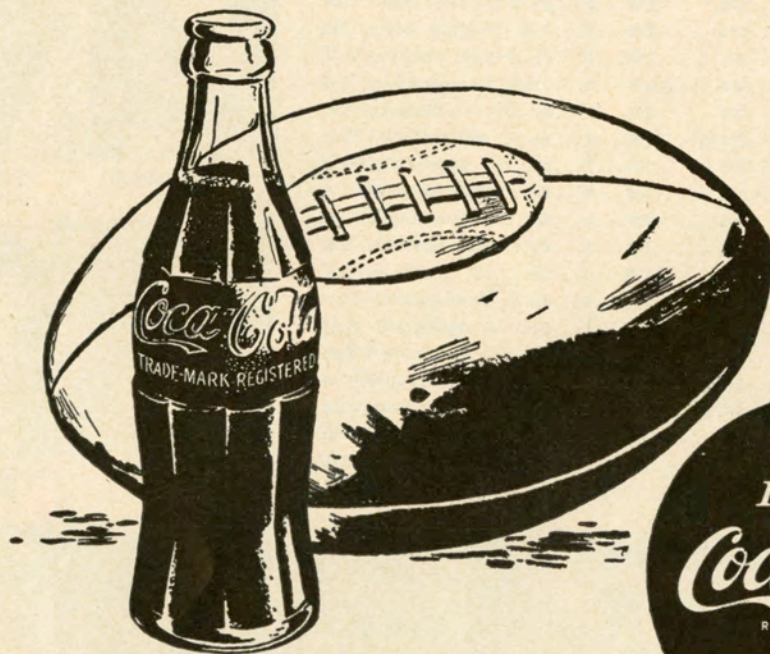
M. Zapalac
tackle

W. Behrend
guard



TULANE COACHING STAFF—Raymond Wolf, Dennis Vinzant, Head Coach Henry Frnka, Andy Pilney, W. A. McElreath, Winlon Knowles (left to right).

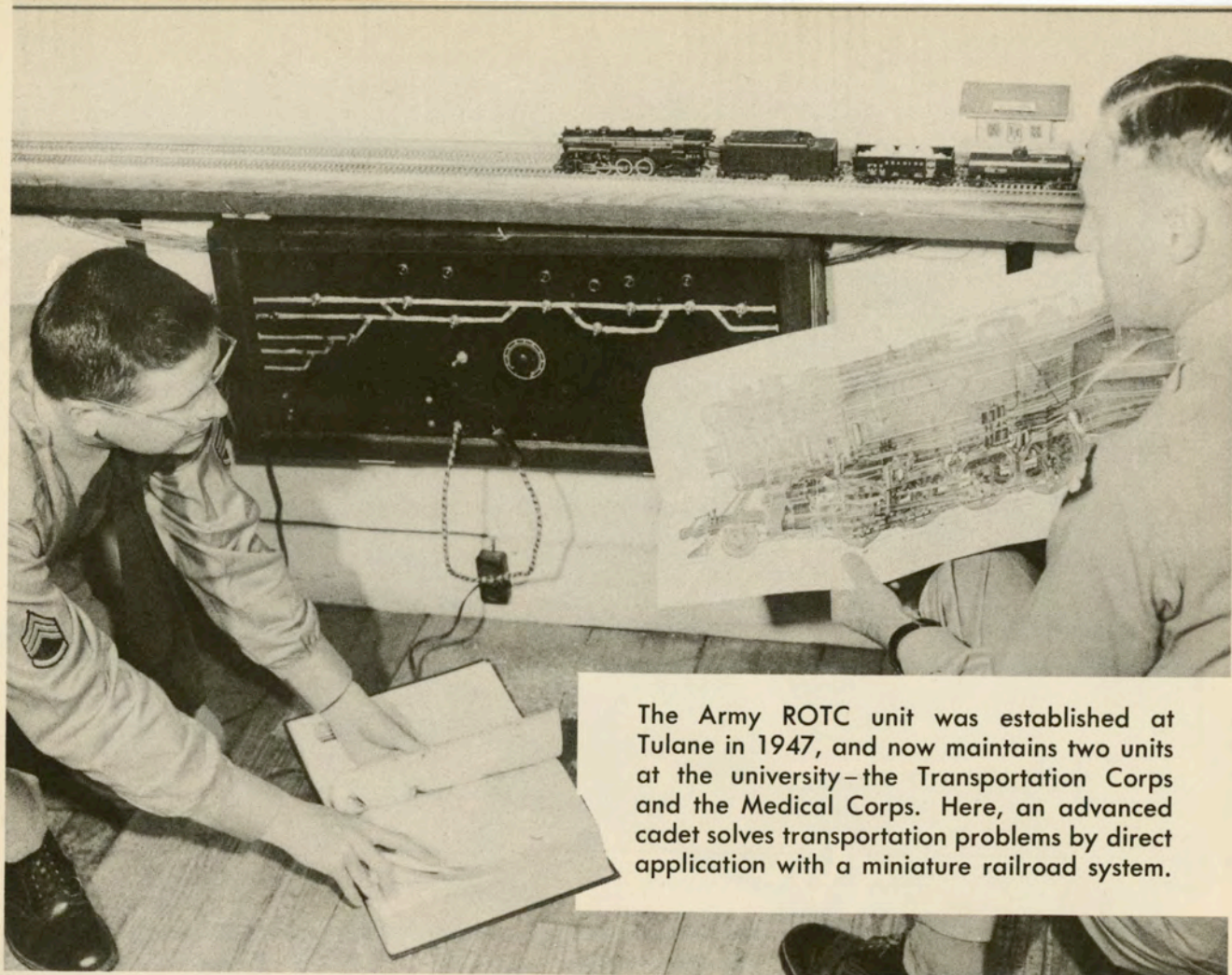
Time out... Have a Coke



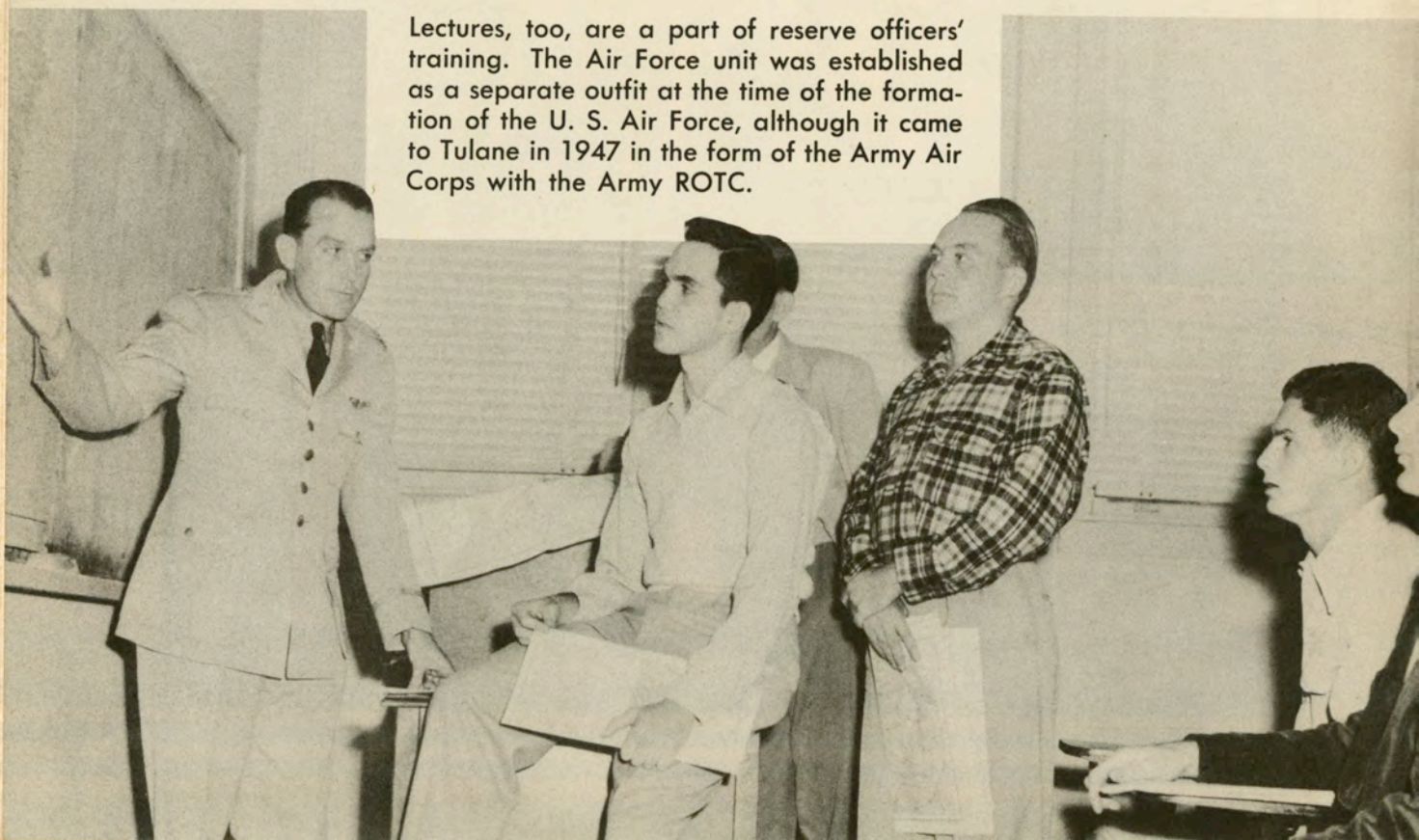


Cam! CAMPUS PICTURES
pix
A MEDLEY OF
© TULANE UNIVERSITY 1951

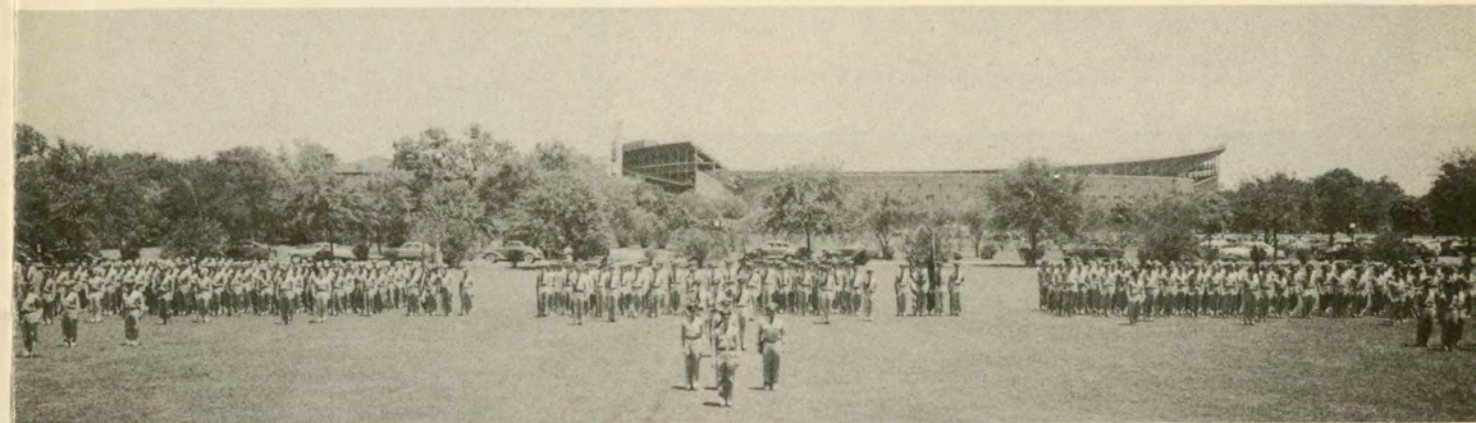
Tulane University's ROTC units are a familiar sight to New Orleanians through their participation in downtown parades and campus ceremonies. Tulane is the only private university in the South with ROTC units for all three branches of the U. S. armed forces. This is the color guard of the Naval unit, established on the Tulane campus in 1938 as one of eight units in the country.



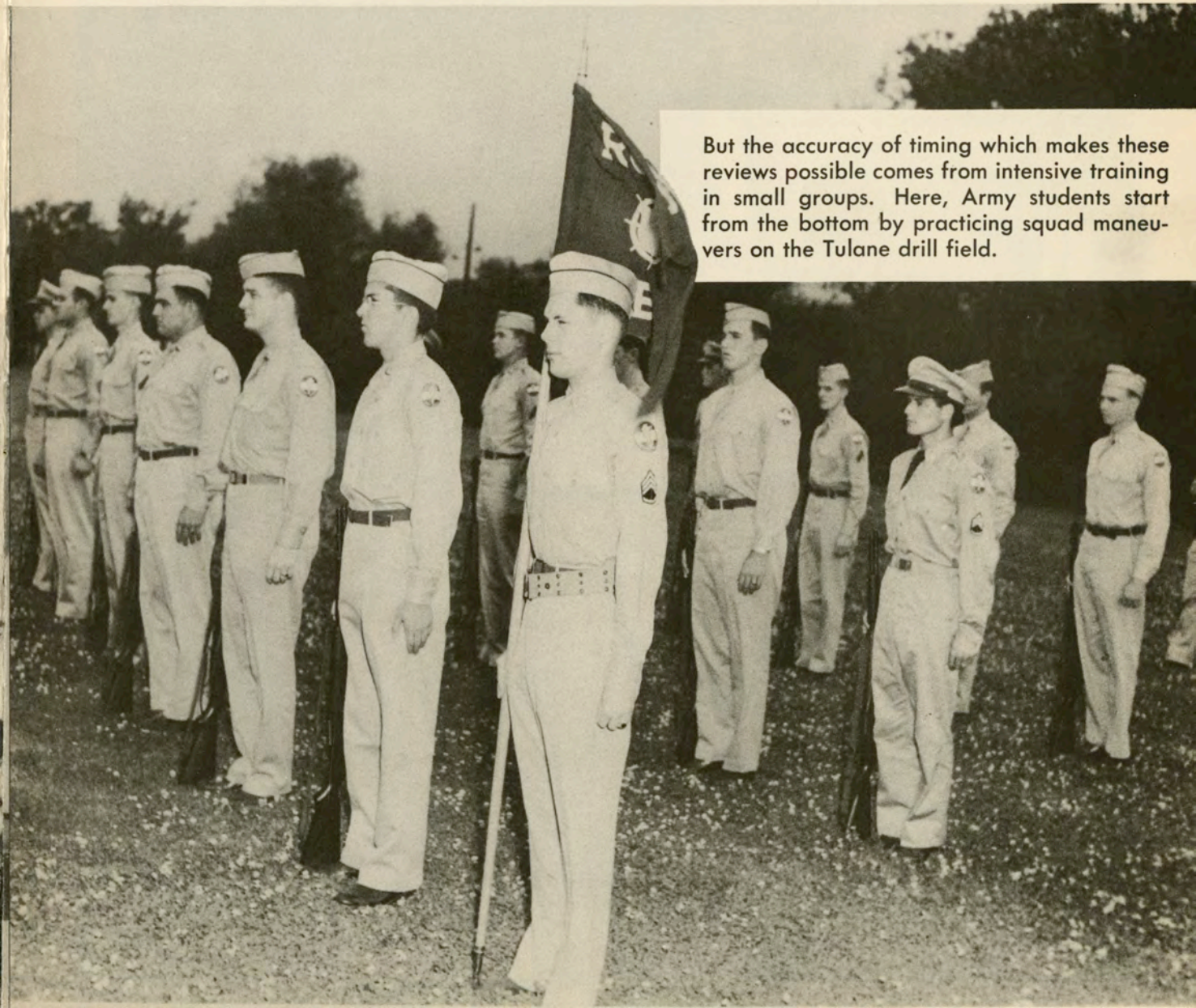
The Army ROTC unit was established at Tulane in 1947, and now maintains two units at the university—the Transportation Corps and the Medical Corps. Here, an advanced cadet solves transportation problems by direct application with a miniature railroad system.



Lectures, too, are a part of reserve officers' training. The Air Force unit was established as a separate outfit at the time of the formation of the U. S. Air Force, although it came to Tulane in 1947 in the form of the Army Air Corps with the Army ROTC.

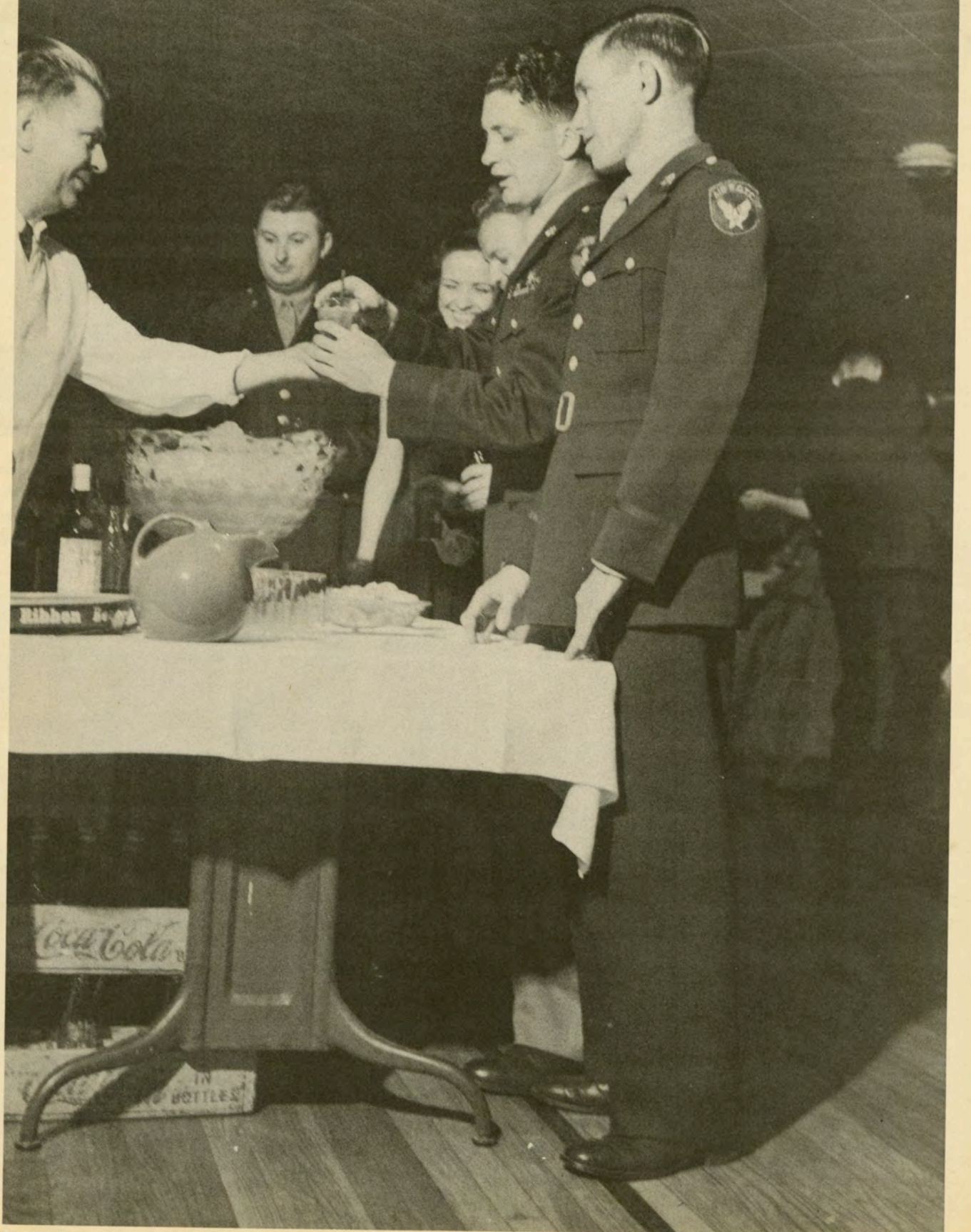


Several times during the year cooperation among services is demonstrated at Tulane when the three units join for a mass parade and review.



But the accuracy of timing which makes these reviews possible comes from intensive training in small groups. Here, Army students start from the bottom by practicing squad maneuvers on the Tulane drill field.

Relaxation for the future officers comes annually with the military ball, sponsored by the national military honor society of Scabbard and Blade.



PLAY

the

FAVORITE

MORE PEOPLE each year watch the GREEN WAVE
roll on!

MORE PEOPLE buy more merchandise at Maison Blanche
than anywhere else in New Orleans . . . and value is
the reason why!

MAISON BLANCHE
GREATEST STORE SOUTH

Corner Dauphine and Canal Streets

TOUCHDOWN!

The NEW REGAL
is the best-tasting beer on the market today!
"HAVE YOU SWITCHED YET?"

... that Regal Feelin'!

TULANE

PROBABLE STARTING LINEUP

LE	LT	LG	C	RG	RT	RE
Mc'El'non 85	Helluin 78	Behrend 68	Burke 51	Johnston 67	Fugler 74	K'b'deaux 84

QB
Clement
17

LHB
McGee
40

RHB
Weidenbacher
23

FB
Kent
41

SQUAD ROSTER

12 Dempsey, qb	42 Doyle, fb	65 Comeaux, lg	81 Shea, le
14 Kennedy, qb	43 Hymel, lhb	67 Johnston, rg	82 Kirkpatrick, re
15 Batson, fb	44 Wall, fb	68 Behrend, lg	83 Pittman, re
16 Watson, qb	45 L'laeger, lhb	69 Spollen, rg	84 Kibodeaux, re
17 Clement, qb	46 Saia, lhb	71 Petroski, lt	85 M'Elhannon, e
21 Brignac, rhb	50 Rushing, c	72 Housepian, lg	86 Hobbs, re
23 W'bacher, rhb	51 Burke, c	73 Zapalac, lt	87 Davis, re
24 Kingery, rhb	53 Robelot, c	74 Fugler, rt	88 Pounders, le
28 Bailey, rhb	55 Camp, c	75 Teeuws, lt	89 Thompson, le
33 Daigle, fb	56 Coates, e	76 Rogas, rt	90 Bowman, re
35 Partridge, rhb	57 Huggins, c	77 Rey, rt	91 Bravo, le
38 Pratkan, lhb	60 Cummins, rg	78 Helluin, lt	
40 McGee, lhb	62 Kl'inschm'dt, g	79 Hazel, rt	
41 Kent, fb	63 Nuss, lg	80 McLean, le	

SOUTHEASTERN LOUISIANA

PROBABLE STARTING LINEUP

LE	LT	LG	C	RG	RT	RE
Thomas 34-73	Stone 61-91	Johnston 56-86	Andrew, W. 54-89	Andrew, J. 64-94	Callery 55-97	Polk 32-74

QB
Holcomb
40-63

LH
Chaney
24-55

RH
Campos
27-59

FB
Shuff
88-62

SQUAD ROSTER

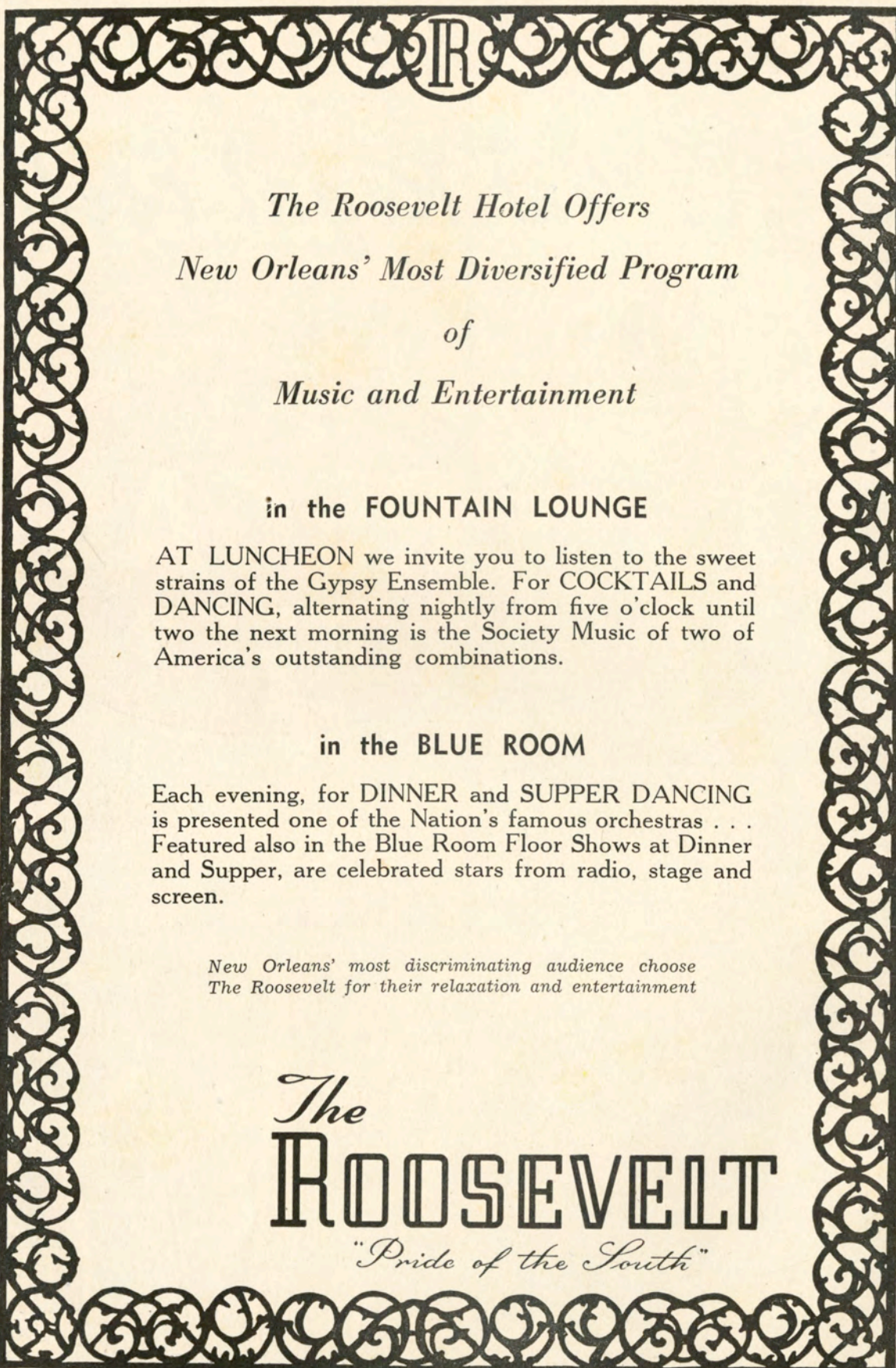
White Green	White Green	White Green
26-50 Johnson, b	37-68 Locascio, e	63-85 Tarleton, g
41-51 McDaniel, b	23-69 Villars, b	56-86 Johnston, g
77-54 Boudreaux, b	44-71 Lee, e	51-87 Bates, e
24-55 Chaney, b	99-72 Lambert, b	88 Suarez, g
20-56 Billings, b	34-73 Thomas, e	54-89 Andrew, W., c
28-57 Carlisle, b	32-74 Polk, e	43-90 Menezes, t
27-59 Campos, b	38-76 Penton, e	61-91 Stone, t
39-60 Welch, b	48-77 Scogin, b	53-92 Bates, t
88-62 Shuff, b	78 Bourgeois, e	64-94 Andrew, J., g
40-63 Holcomb, b	42-80 Martin, c	62-95 Lucia, J., t
33-64 Lucia, V., g	52-70 Ledet, c	47-96 Morse, g
29-65 Richards, b	57-82 Robertson, t	55-97 Callery, e
22-67 Woodward, b	58-84 Anzalone, g	60-98 Keaton, t

OFFICIALS

Referee—Fred Walters, (Mississippi State)
Umpire—W. H. (Boots) Chambless (Auburn)
Linesman—Pete Gracey (Vanderbilt)
Judge—H. W. (Cotton) Clark (Vanderbilt)
Clock Operator—Charles H. Armstrong (Mississippi State)



REGAL
BEER



The Roosevelt Hotel Offers
New Orleans' Most Diversified Program
of
Music and Entertainment

in the FOUNTAIN LOUNGE

AT LUNCHEON we invite you to listen to the sweet strains of the Gypsy Ensemble. For COCKTAILS and DANCING, alternating nightly from five o'clock until two the next morning is the Society Music of two of America's outstanding combinations.

in the BLUE ROOM

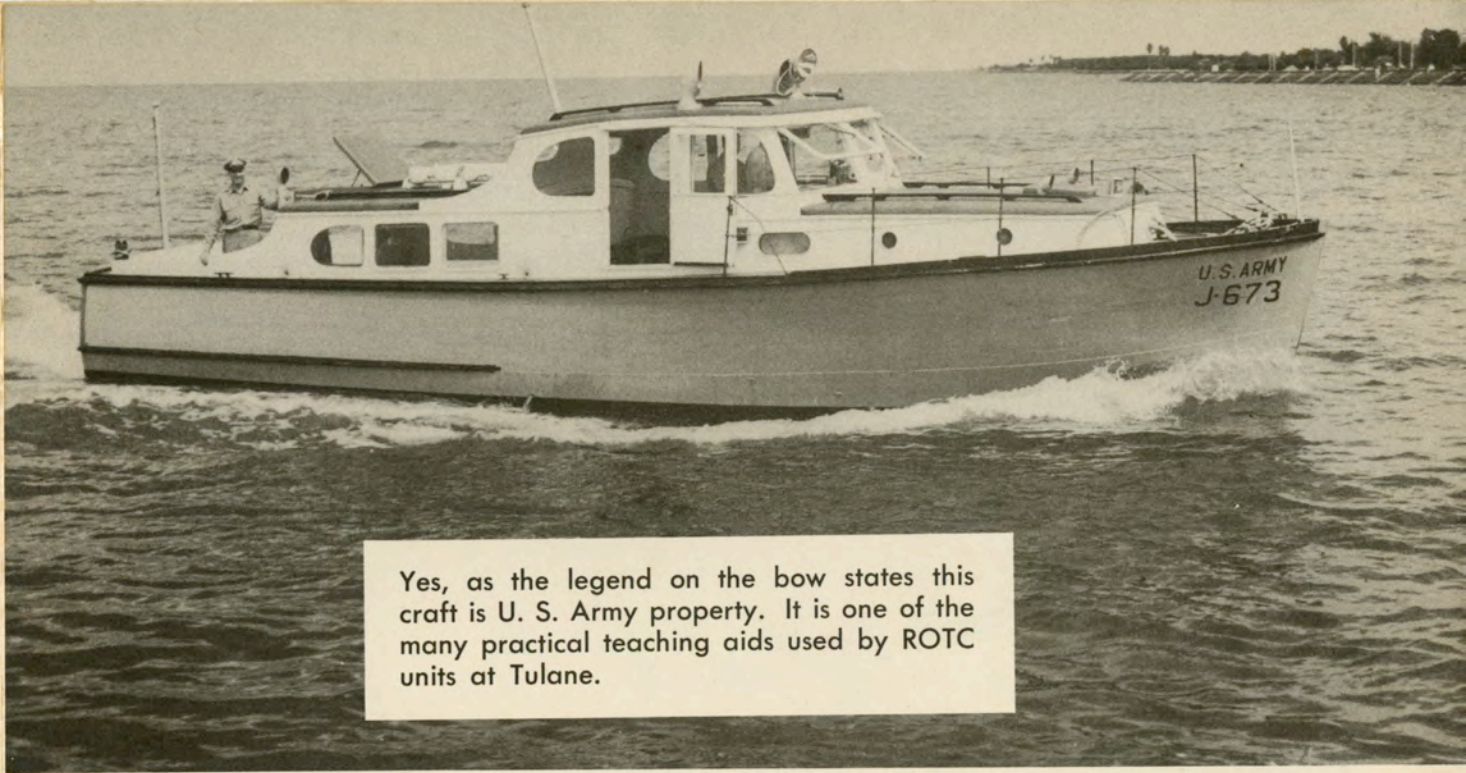
Each evening, for DINNER and SUPPER DANCING is presented one of the Nation's famous orchestras . . . Featured also in the Blue Room Floor Shows at Dinner and Supper, are celebrated stars from radio, stage and screen.

*New Orleans' most discriminating audience choose
The Roosevelt for their relaxation and entertainment*

The
ROOSEVELT
"Pride of the South"

With the Marines on hand Naval students are sure to learn the essentials of straight shooting.





Yes, as the legend on the bow states this craft is U. S. Army property. It is one of the many practical teaching aids used by ROTC units at Tulane.



Another sea scene, but this time it's really the Navy. On summer cruises, where midshipmen learn the Navy way, such scenes as this are typical.



At Tulane's Homecoming football game, queen and court are escorted to their place of honor by leading ROTC students.



Student officers are chosen each year by the different units to run things on the drill field. Here, the Air Force's senior cadet lieutenant colonel receives the congratulations of his superior officer.



Miss Marion Andrus of New Orleans, first color girl for the Naval unit, set the pattern for the future in 1949. The color girl is selected each year by the midshipmen commander of the Navy's leading battalion at Tulane.

**Be Happy -
Go Lucky!**

EILEEN WILSON, Lucky Star of TV and Radio, says:

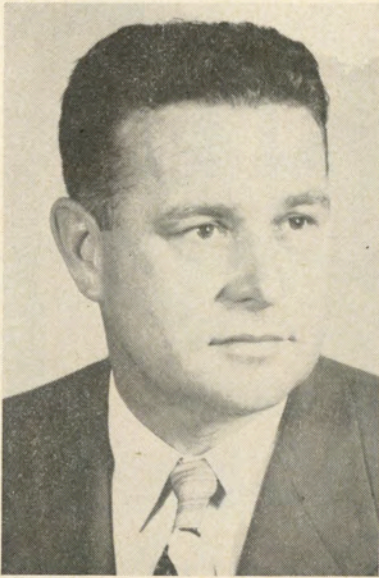
**At football games I love to cheer
"Go team!" and "Hip Hooray!"
But for a better taste I shout,
"Go Lucky Strike today!"**

(Luckies taste better than any other cigarette!)



**LUCKIES TASTE BETTER
THAN ANY OTHER CIGARETTE !**

**L.S./M.F.T.-
Lucky Strike Means Fine Tobacco**



Stanley Galloway
Head Coach



B. Callery
end



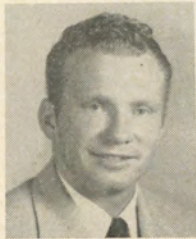
R. Boudreaux
back



G. Holcmob
back



R. Morse
guard



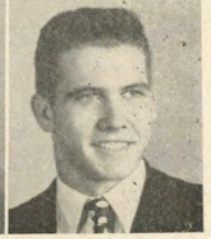
J. Chaney
back



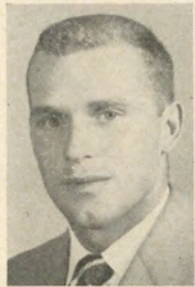
J. Scogin
back



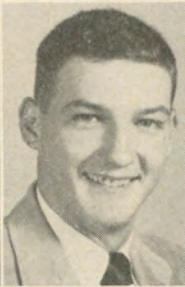
E. Shuff
back



G. Stone
tackle



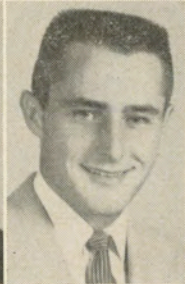
B. Woodward
back



C. Bourgeois
end



L. Thomas
end



J. Johnson
back

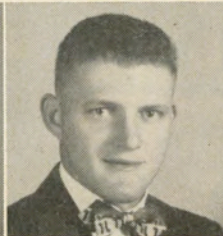
White
Green

SOUTHEASTERN LA.

Nos.	Name	Age	Ht.	Wgt.	Class	Hometown
26-50	Johnson, Joe, b	20	5-10	150	So.	Headland, Ala.
41-51	McDaniel, Ernest, b	19	5-11	160	Fr.	Baton Rouge, La.
77-54	Boudreaux, R., b	21	5-9	147	Jr.	New Orleans, La.
24-55	Chaney, F. O., b	22	5-7	155	Jr.	Baton Rouge, La.
20-56	Billings, R., b	22	6-8	140	Sr.	Bogalusa, La.
28-57	Carlisle, Louis, b	23	5-9	160	Jr.	McComb, Miss.
27-59	Campos, Lou, b	21	5-8½	155	Sr.	New Orleans, La.
39-60	Welch, Ed, b	20	6-0	165	Fr.	Bogalusa, La.
88-62	Shuff, Elden, b	19	5-9	155	Fr.	Eunice, La.
40-63	Holcomb, Gary, b	22	5-11	165	Sr.	Bogalusa, La.
33-64	Lucia, V., g	19	5-10	160	So.	Norco, La.
29-65	Richards, Jack, b	21	5-10	160	Sr.	Ocean Springs, Miss.
22-67	Woodward, Bob, b	21	5-10	165	Jr.	Louisville, Ky.
37-68	Locascio, S., e	18	5-11	165	Fr.	Hammond, La.
23-69	Villars, L., b	19	5-9½	170	Fr.	New Orleans, La.
44-71	Lee, Donald, e	20	6-1	170	Fr.	Bogalusa, La.
99-72	Lambert, Donald, b	20	5-10	175	So.	Goodhope, La.
34-73	Thomas, Vaughn, e	21	6-0½	185	Jr.	Bogalusa, La.
32-74	Polk, Hubert, e	20	6-0	173	Jr.	Clinton, La.



V. Lucia
guard



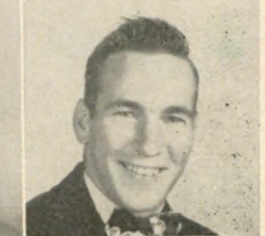
R. Ledet
center



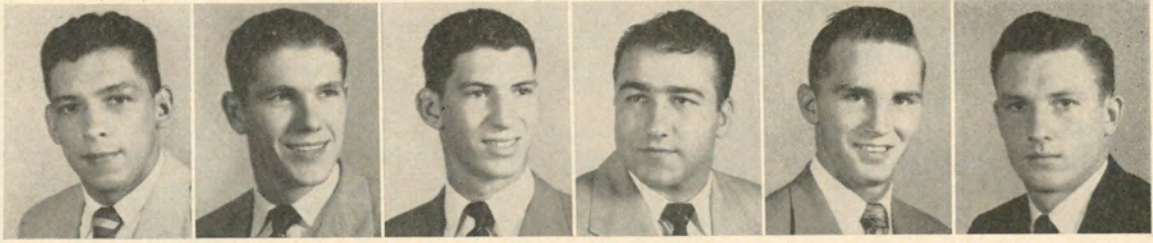
T. Johnston
guard



L. Anzalone
guard



L. Carlisle
back



L. Campos
back

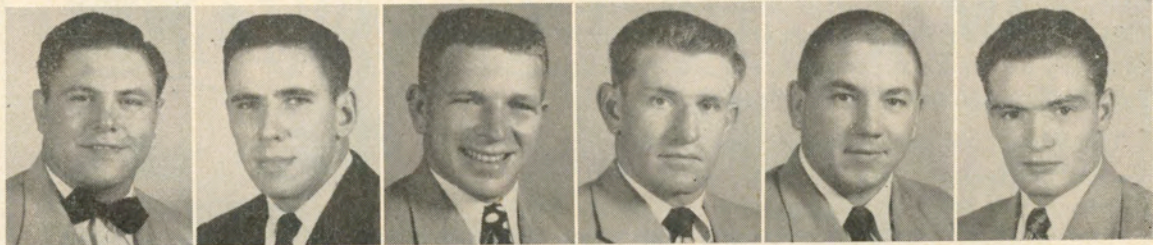
D. Lee
end

S. Locascio
end

R. Menezes
tackle

C. McDaniel
back

T. Penton
end



J. Lucia
tackle

D. Lambert
back

D. Bates (Dale)
end

J. Andrew
guard

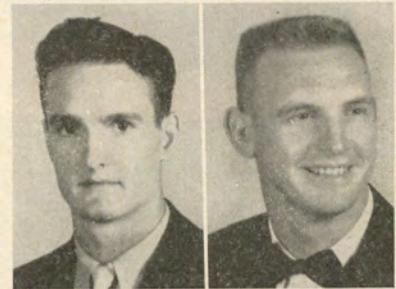
N. Suarez
guard

J. Richards
back

White
Green

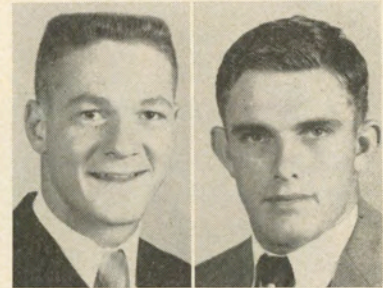
SOUTHEASTERN LA.

Nos.	Name	Age	Ht.	Wgt.	Class	Hometown
38-76	Penton, Theo, e	22	6-0	160	So.	Bogalusa, La.
48-77	Scogin, Jerry, b	19	5-9	182	Fr.	Slidell, La.
78	Bourgeois, C. P., e	18	5-10	160	Fr.	Baton Rouge, La.
42-80	Martin, C. M., c	20	5-11 $\frac{1}{2}$	170	Jr.	Enterprise, Ala.
52-70	Ledet, Rodney, c	21	6-0	180	Sr.	Bogalusa, La.
57-82	Robertson, B., t	18	6-2	190	Fr.	Bogalusa, La.
58-84	Anzalone, L., g	19	5-11	190	Fr.	Independence, La.
63-85	Tarleton, Frank, g	23	5-10 $\frac{1}{2}$	175	Jr.	Fulton, Ala.
56-86	Johnston, Titus, g	18	5-7	175	Fr.	Bogalusa, La.
51-87	Bates, Dale, e	19	5-11	195	Fr.	Bogalusa, La.
88	Suarez, Noel, g	18	5-7	185	Fr.	Chalmette, La.
54-89	Andrew, Walt, c	20	6-2	200	Jr.	Mayport, Fla.
43-90	Menezes, Robert, t	24	5-7	190	Sr.	E. Taunton, Mass.
61-91	Stone, Gerald, t	17	6-2 $\frac{1}{2}$	195	Fr.	Sun, La.
53-92	Bates, Donald, t	21	6-0	180	Sr.	Bogalusa, La.
64-94	Andrew, Joe, g	22	5-9	180	Jr.	Mayport, Fla.
62-95	Lucia, Joe, t	20	5-8 $\frac{1}{2}$	230	So.	Norco, La.
47-96	Morse, Robert, g	24	6-0	200	Sr.	Ponchatoula, La.
55-97	Callery, Bill, e	21	5-11	185	Jr.	New Orleans, La.
60-98	Keaton, Jim, t	22	6-4	195	Sr.	Rio, La.



E. Welch
back

J. Keaton
tackle



D. Bates
guard

W. Andrew
center



R. Billings
back

B. Robertson
tackle

H. Polk
end

C. Martin
center

F. Tarleton
guard

Today's Game

(Continued from page 3)

made its longest touchdown march in many a day when it went 73 yards in 12 plays against the Commodores.

Fred Dempsey, the chunky Chicagoite, stepped in to guide the Greenies, who chewed up yardage with ease. On a heavy turf, Roy Bailey and Max McGee and Bob Saia ripped through the line and if the field is heavy again today, will once more be called upon for that assignment.

The Wave line, which saw Jerome Helluin and Dick Fugler performing double duty work, will seek to improve Saturday in an attempt to get ready for the tangle with L. S. U.'s Tigers next Saturday. Like most football games, the Tulane-Vanderbilt fray was decided up front and the Greenie forwards are going to have to operate in the same manner next week if they have any hopes for success against Gus Tinsley's crew.

Help Fight TB



Buy Christmas Seals

OFFICIAL WATCH FOR THIS GAME



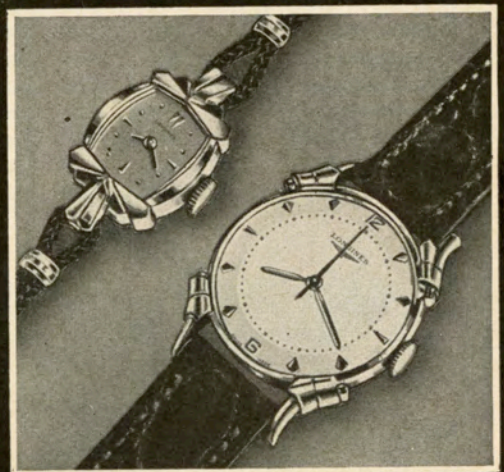
Longines



The World's Most Honored Watch

ACCEPTED AS OFFICIAL WATCH
FOR TIMING
CHAMPIONSHIP SPORTS EVENTS
IN ALL FIELDS ALL OVER THE WORLD

*Product of
Longines-Wittnauer Watch Company*

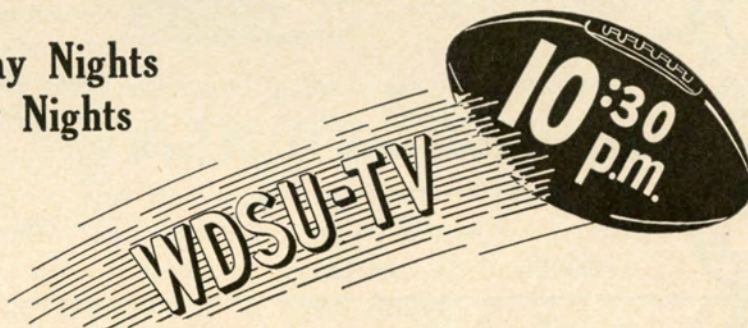


★ ★ ★ *Holmes Exclusive* ★ ★ ★

through cooperation of Tulane University and L.S.U.
Holmes has exclusive rights to telecast both home
and out-of-town games.

SEE THE TULANE AND L. S. U. GAMES ON TELEVISION

TULANE—Monday Nights
L. S. U.—Tuesday Nights



● **HOLMES RESTAURANT**

**AFTER THE GAME DINE IN HOLMES RESTAURANT . . . CONTINUE
YOUR FOOTBALL FESTIVITIES MAKE UP A PARTY**
enjoy the adventure of fine New Orleans food! Cherished French dishes
expertly prepared by famous Creole Chefs as well as traditional Cuisine.

● **MEN'S STORE**

Holmes features nationally known
brand names and the smart fash-
ions for men.

● **SPORTING GOODS**

Holmes can out-fit you with the
finest in Sporting Equipment.

There's no place like

Holmes

NOW AVAILABLE

Season Tickets

for the

1951-52 Tulane Basketball Season



Uptown
Tulane Stadium Ticket
Office
6401 Willow Street

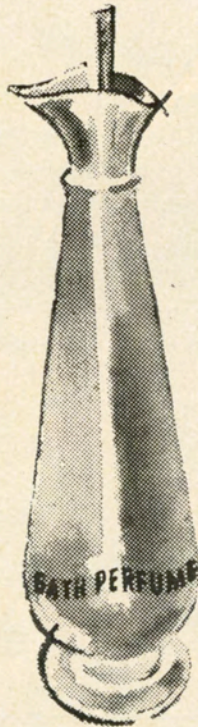
Downtown
N. O. P. S. I. Bldg.
317 Baronne

Prices: \$22.00 (sidelines); \$15.00 (end)

(Includes Federal, State and
City Taxes)

Yes season tickets for the 1951-52 basketball season are now on sale at Tulane's two ticket offices. They will remain on sale until December 3, after which all remaining seats will be sold on an individual game basis. See the Wave meet such opponents as Cornell, Texas, Rice, Alabama and L.S.U. at Tulane gymnasium. Get your tickets **NOW**.

Faberge's



BATH PERFUME . . . A NEW LUXURY

A bathing ritual created to pamper and flatter your skin with a silky baby texture . . . to leave a long lingering fragrance. Delightful before or after bathing . . . on your hair. In Aphrodisia, Woodhue, Tigress, Act IV.

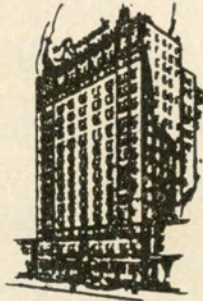
3.75 and 6.50
plus tax

toiletries • first floor

Godchaux's

New Orleans Finest

In America's Most Interesting City



THE ROOSEVELT is located in the heart of Romantic old New Orleans. It is in the center of business and social activities and is close to the Theatre, Shopping, French Quarter, and Business Districts . . . You will like the tasteful luxury and home-like atmosphere of this modern hotel where the traditions of Southern Hospitality are maintained the year 'round.

**800 ROOMS WITH BATH
MODERATE RATES**

SEYMOUR WEISS, *President and Managing Director*
J. U. JORDY, *Manager*

Visit

The Famous Sazerac Bar

Home of the Original Sazerac Cocktail

After 100 Years Ladies Are Now Cordially Invited.

The
ROOSEVELT

"Pride of the South"

TULANE SONGS

ALMA MATER

We praise thee for thy past, O Alma Mater!
Thy hand hath done its work full faithfully;
The incense of thy spirit hath ascended
And filled America from sea to sea!

We praise thee for thy present, Alma Mater!
Today thy children look to thee for bread!
Thou leadest them to dreams and action
splendid!
The hunger of their souls is richly fed!

We praise thee for thy future, Alma Mater!
The vista of its glory gleameth far!
We shall ever be part of thee, great Mother!
There thou will be where e'er thy children are!

Chorus

Olive Green and Blue, we love thee.
Pledge we now our fealty true.
There the trees are ever greenest,
Where the skies are purest blue.
Hear us now, O Tulane, hear us.
As we proudly sing to thee!
Take from us our heart's devotion!
Thine we are, and thine shall be!

ROLL ON, TULANE

Here's a song for the Olive and the Blue.
Here's a cheer for the team that's tried and true.
Here a pledge of loyalty to thee,
Oh, Tulane Varsity.
Here's to the Greenbacks that never will say die,
And here's to the hearts that are true
To the men of Tulane, who are fighting for her
name,
For the Olive and the Blue.

Chorus

Roll, Green Wave,
Roll them down the field.
Hold, Green Wave,
That line must never yield.
When those Greenbacks charge through the line
They're bound for victory.
Hail, Green Wave,
For you we give a cheer.
Hail Green Wave,
For you we have no fear.
So ev'ry man in ev'ry play,
And then we'll win that game today.
Hurrah for Old Tulane.

A Great Name in Clothing

SCHWOBILT
CLOTHES REG. U.S. PAT. OFF.

"SUITS THE SOUTH"

THIS PROGRAM PRINTED

by

TULANE UNIVERSITY PRESS

Campus Printers

GIBSON
HALL

UNiversity 2741
Ext. 344

TEMPTING, NOURISHING



*It's a Favorite With
Everyone !!*

The Official Watch for Timing Today's Game is Longines — "The World's Most Honored Watch"

only a few yards to go...



(Other Pan-Am Stations conveniently located in all parts of the City.)

America's most
popular cigarette



FLAVOR

MILDNESS

