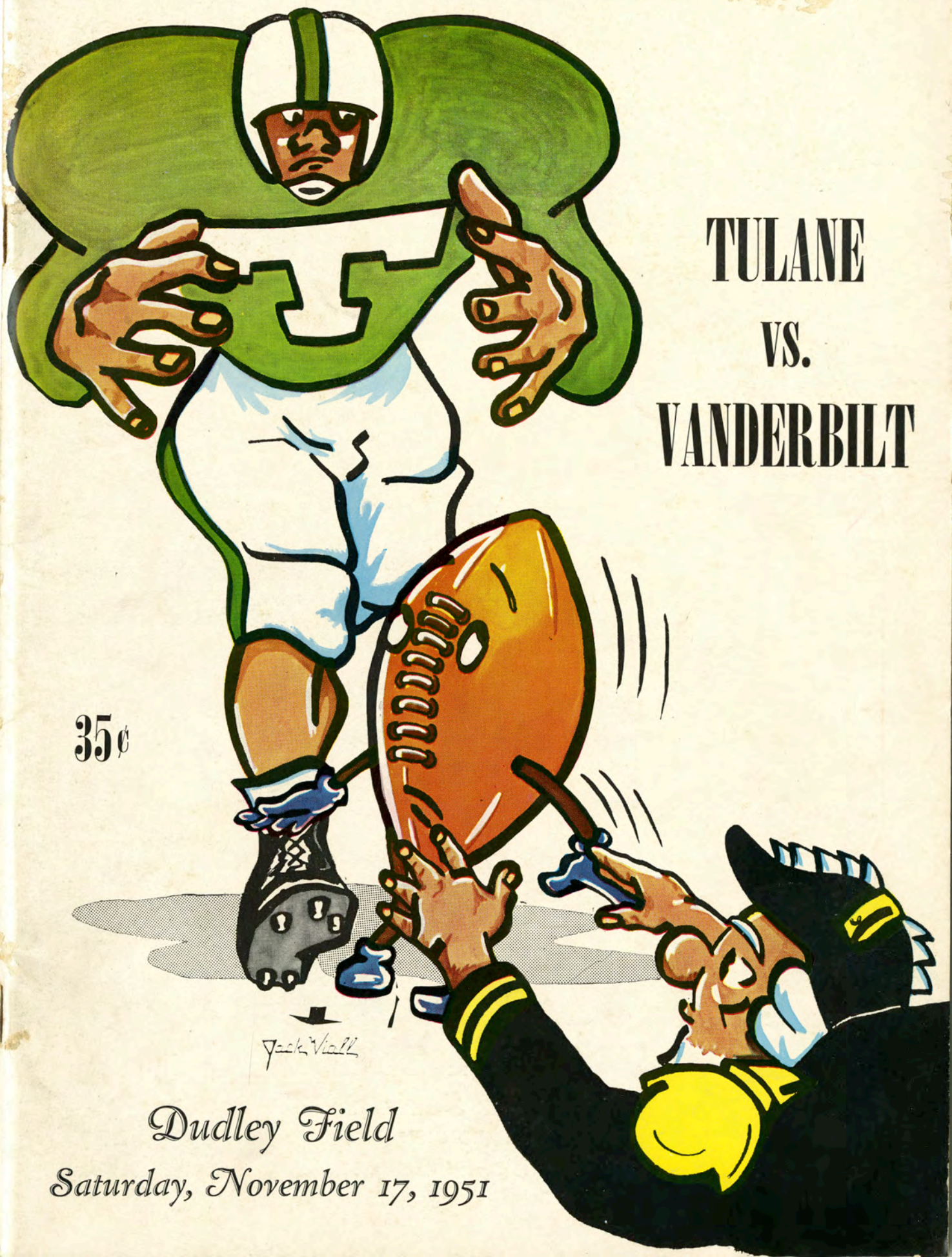


**TULANE**  
**VS.**  
**VANDERBILT**

35¢

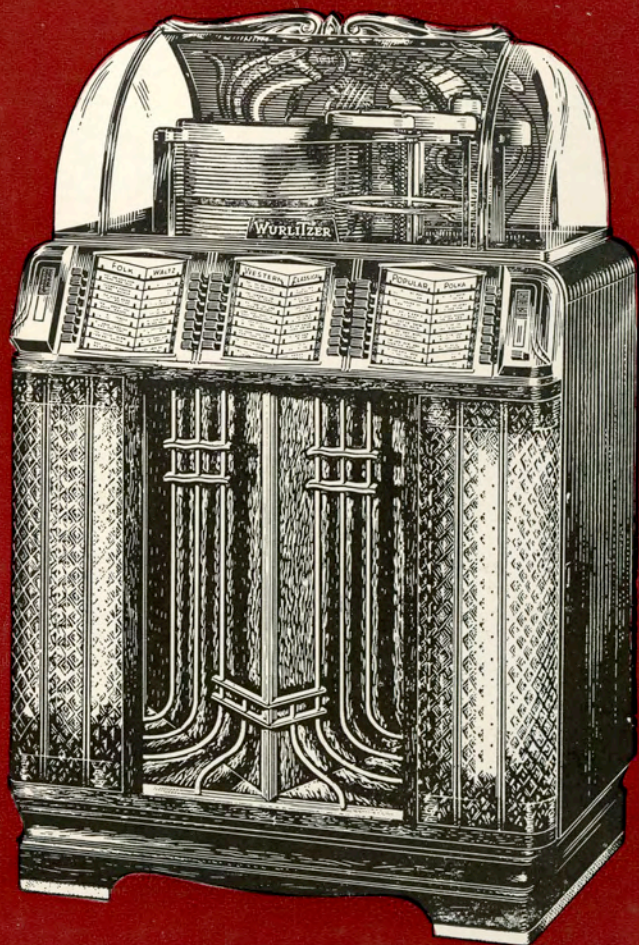
Jack Viall

*Dudley Field*  
*Saturday, November 17, 1951*





# JIMMIE CLAXTON



## AMUSEMENT MACHINES

**Phone 4-3489**

**24-Hour Service**

LICENSED BONDSMAN

Call 6-0124, 413 Second Avenue, North



HICKEY-FREEMAN CLOTHES

*Darvitt's*

GOOD CLOTHES

Sixth at Union

*Style*

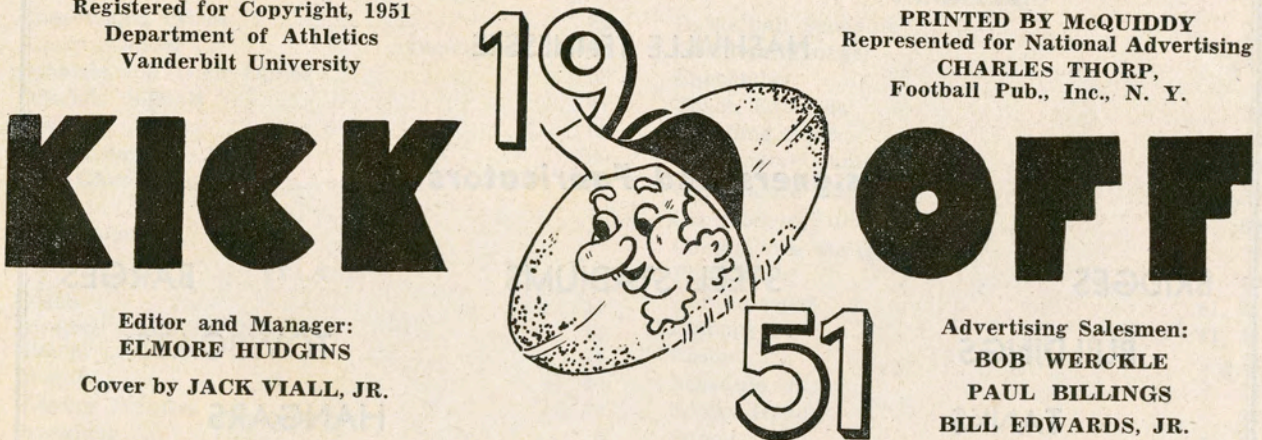
*Quality*

*Value*

*Official Football Program of Vanderbilt University*

Registered for Copyright, 1951  
Department of Athletics  
Vanderbilt University

PRINTED BY McQUIDDY  
Represented for National Advertising  
CHARLES THORP,  
Football Pub., Inc., N. Y.



Editor and Manager:  
ELMORE HUDGINS  
Cover by JACK VIAL, JR.

Advertising Salesmen:  
BOB WERCKLE  
PAUL BILLINGS  
BILL EDWARDS, JR.

"THE OFFICIAL WATCH FOR TIMING THE GAME IS LONGINES—  
THE WORLD'S MOST HONORED WATCH"

WILSON-QUICK PHARMACY

*Prescription Specialists*

708 CHURCH 6-3176

DELIVERY SERVICE

NASHVILLE SURGICAL SUPPLY CO., Inc.

1911 CHURCH 5-4567

*Established 1914*

FULL LINE OF SICK ROOM SUPPLIES—A COMPLETE LINE  
OF DRUGS, SUNDRIES, TOILET GOODS

Hospital Beds—Rolling Chairs to Rent



## **FRED B. CASSETTY COAL CO.**

*"It's Crazy with the Heat"*

COMPLETE HEATING SERVICE  
COAL—FURNACES—STOKERS

816 Fourth Avenue, North  
Telephone 5-2714

## **KLEEN RITE CLEANERS**

*"Cleaning That Is Dependable"*

MODERN DRIVE-IN

1711 Broadway

# **NASHVILLE BRIDGE COMPANY**

NASHVILLE TENNESSEE

***Designers and Fabricators of***

BRIDGES

STEEL STADIUMS

BARGES

BUILDINGS

TOWBOATS

TANKS

HANGARS

GALVANIZED TOWERS

## **CRAIG-MORRIS GLASS CO.**

*"Glass for Every Purpose"*

1814 Church Street

Phone 42-4255

## **A. J. SMITH CO.**

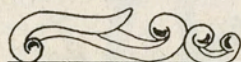
LUMBER & BUILDERS SUPPLIES



3100 Charlotte Avenue  
NASHVILLE, TENN.

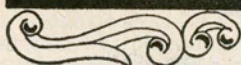


*Always Request . . .*



**Meadow Gold**

*Ice  
cream*



THE PREFERRED ICE CREAM

## *Table of Contents*

### GENERAL INFORMATION

|                            |                   |
|----------------------------|-------------------|
| Concessions Prices         | 33                |
| Lucky Number               | Inside Back Cover |
| Officials and Their Duties | 58                |
| Officials' Signals         | 47                |
| Penalties                  | 65                |
| Rest Rooms                 | 80                |
| Rule Changes for 1951      | 35                |
| Stadium                    | 52                |
| Telephones                 | 80                |

### TULANE

|                              |        |
|------------------------------|--------|
| Coach                        | 11     |
| Director of Public Relations | 11     |
| History                      | 75     |
| Lineups                      | 41, 44 |
| Players' Pictures            | 8, 68  |
| President                    | 6      |
| Roster                       | 73     |
| Squad                        | 43     |
| Welcome                      | 5      |

### VANDERBILT

|                               |                    |
|-------------------------------|--------------------|
| Basketball Schedule           | 23                 |
| Business Manager              | 27                 |
| Chancellor                    | 6                  |
| Coach Edwards                 | 36                 |
| Coaching Staff                | 30                 |
| Commodore Captains            | 9                  |
| Commodore Ends                | 67                 |
| Commodore Fullbacks           | 82                 |
| Commodore Halfbacks           | 77                 |
| Fight Song                    | 49                 |
| Game Scenes                   | 61, 71             |
| Lineups                       | 41, 44             |
| Roster                        | 12                 |
| Schedule                      | 56                 |
| School History                | 28                 |
| Squad                         | 42, 50             |
| Team's History                | 55                 |
| This Is Vanderbilt            | 79                 |
| Thumbnail Sketches of Players | 15, 17, 18, 21, 56 |

## **B. & W. CAFETERIA**

222 SIXTH AVENUE, NORTH

FOOD FOR THE WHOLE FAMILY



*John Cheadle*



# Be Happy- Go Lucky!

EILEEN WILSON, Lucky Star of TV and Radio, says:

**At** football games I love to cheer  
"Go team!" and "Hip Hooray!"  
But for a better taste I shout,  
"Go Lucky Strike today!"  
(Luckies taste better than any other cigarette!)



**LUCKIES TASTE BETTER  
THAN ANY OTHER CIGARETTE !**

**L.S./M.F.T.-  
Lucky Strike Means Fine Tobacco**

COPR., THE AMERICAN TOBACCO COMPANY





# WELCOME to Dudley Field!

## Green Wave of Tulane

### THE COMMODORES SO FAR

#### Vanderbilt 22, Middle Tennessee 7

Bill Wade's passes to Ted Kirkland set up a TD and Bob Taylor and Bob Werckle blocked successive punts to give Vandy a 9-0 lead, then Bob Hines intercepted a pitchout and traveled 66 yards to the back-breaking touchdown. Jim DeMain did a fine job in directing the Vandy offense for the last 3 quarters and scored the 3rd TD after R. C. Allen had gained 30 yards of the 33-yard drive.

#### Vanderbilt 14, Auburn 24

The Auburn team was truly a Tiger. The Commodore grabbed him by the tail and couldn't turn him loose as hepped-up Homer Williams and Ralph Hattaway fought and scratched their way to victory. After Auburn took a 14-0 lead Bill Wade brought the Commodores up even by hitting Ben Roderick with 3 successive passes for one TD and tossing in the flat to John Dodd who ran 55 yards to the 4 from where Newman scored. But Auburn kept driving and the Commodores kept fumbling and the Tigers won.

#### Vanderbilt 22, Alabama 20

The Commodores did an about-face to upset Alabama, rated a 3-touchdown favorite. Dick Foster gained 104 yards rushing, scored 2 TD's, kicked an extra point and the game winning field goal from 39 yards out. R. C. Allen gained 94 yards rushing and Bill Wade hit on 14 of 21 passes, Roderick snaring 6, as the whole team blocked, ran and tackled like demons. Marlow and Melton kept the Crimson Tide in the ball game as Alabama led 7-0 and 13-12 before the Commodores broke ahead. Bob Taylor, Don Gleisner, Malcolm Cook, Wimpy Golden and Bob Farris were defensive standouts for Vanderbilt.

#### Vanderbilt 34, Ole Miss 20

Vanderbilt came from behind (7-20) to score 27 points in the 4th quarter and beat the Rebels 34-20.

Bill Wade was the backbone of the comeback. He passed to Roy Duncan, who ran 52 yards to score one TD; he passed to Roderick 3 times, then ran 16 yards to score the tying marker; and he passed to Roderick and Duncan to set up another before Bob Farris intercepted an Ole Miss pass and rambled 67 yards to the 4th TD of that fire-breathing quarter.

Wade gained 240 yards passing with 17 completions in 32 attempts, Roderick catching 8 of them for 106 yards gained. Foster scored 2 TD's and kicked 4 extra points to tie Marlow for the SEC lead in scoring. Golden, Farris, Hawkins, Hall and Werckle were defensive giants as Ole Miss backs Lear, Boykin and Muirhead gave them a real test.

#### Vanderbilt 13, Florida 33

At Florida's Homecoming the Commodores could not retain the fine edge attained the two previous weeks and Florida, led by Haywood Sullivan, outsharped them in the 2nd quarter. Wade was a noble figure, even in defeat. He led the way to a TD in just 4 plays to start the game (2 running plays and passes to Kirkland and Roderick, who scored); and he set up another with passes to Roderick and Kirkland, Dodd scoring from the 5.

Hall, Lakos, Cheadle, Farris and Tom Robinson fought to the last on defense, but to no avail.

#### Vanderbilt 7, Georgia Tech 8

Undefeated Georgia Tech squeezed out a one-point win over the courageous Commodores in Dudley Field's worst mud on a blocked punt and a safety. Tech's Captain, Lamar Wheat, blocked Foster's 1st punt and Turner scored from the 2 at just 2:17. Later, Foster, attempting to punt from the end zone, received a high pass from center, had to try to run the ball out, and was thrown for the safety. Vandy's

TD came with just 8 seconds left when Ted Kirkland made a superb catch of Wade's pass into the end zone after Philpot had recovered a Tech fumble. Werckle played the full 60 minutes, Bob Taylor blocked a FG attempt, and Cheadle took a pass away from Tech's Buck Martin in the end zone to highlight this defensive apex of the Commodores which saw them stop the Jackets at the 11, the 8, the 4, and twice at the 2.

#### Vanderbilt 19, Chattanooga 14

"Kangaroo" Ted Kirkland leaped high to snag 3 Bill Wade passes for touchdowns in the first quarter, enough to contain a Moccasin which threatened all afternoon. Buck Stamps scored both Chattanooga TD's on line plunges. Wimpy Golden, Don Wade and Don Gleisner were defensive standouts in holding a potent Ledyard-led air attack in check.

#### Vanderbilt 20, Louisiana State 13

The Commodores tore into the Tigers for a victory at Baton Rouge for the first time since 1902. The Tiger meat was sweet in this bruising defensive battle which had all the scoring take place in the 1st half. Captain Werckle again went the route (60 minutes), Mickey Lakos tackled with punishing power, Farris and Billings were fierce. The 3 TD's were all on Wade's aeriels. Bill hit Foster who ran 58, Roderick who spun into the end zone, and Roy Duncan who out-jumped two defenders in the end zone when the count was 13-13.

### VANDERBILT vs. TULANE

#### Tulane Tips

|                            |                               |
|----------------------------|-------------------------------|
| Location . . . New Orleans | Conference . . . Southeastern |
| Colors . . . Green & White | Nickname . . . Green Wave     |
| Coach . . . Henry Frnka    | Publicist . . . Andy Rogers   |

#### The Rivalry

The Commodores have not been able to hold the Green Wave completely in check since 1928. Of the eleven meetings between the two teams Vanderbilt has won 4, Tulane 6 and there was one tie, but all the Vandy victories came before the SEC was created. Since the 6-6 tie in 1932 it has been Tulane all the way, 4 wins to 0.

The Green Wave is just as big and just as aggressive, though not as experienced, as they were in crushing the Commodores last year 35-6. Vanderbilt defenses will have to be built up to floodtide level to enclose the running of Ronnie Kent and Soph Max McGee, especially with Soph QB Pete Clement passing like a veteran. Guard Jerome Helluin, the hugest football player in the conference, leads a line of hefty Greenies who look on the Commodores as white meat.

Bill Wade's passing may prove the best defense against Tulane; it's a cinch Vanderbilt's best chance is to keep the ball, and keep it moving. John Dodd may give the Greenies some trouble with hard running while Bob Taylor and Bob Hines may be expected to harass the Tulane offense at every opportunity.

### THE COVER

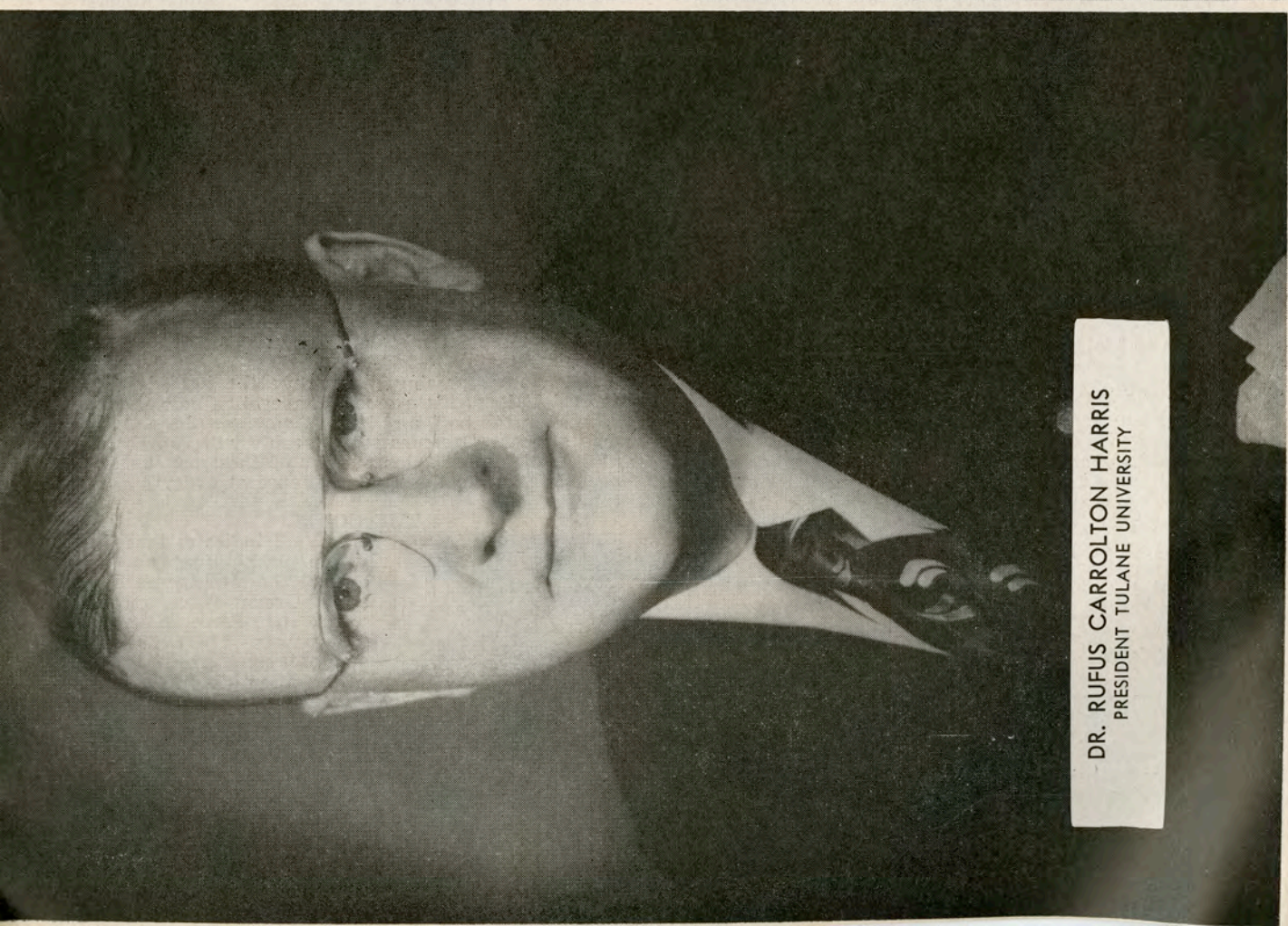


Jack Viall indicates that the li'l ole pigskin fears for its life out there today as Tulane's Green Wave moves toward it in fierce and awesome power. The Ole Commodore is coming in from the corner, attempting a protective recovery. Whether the Commodore can grab that game ball or not is the big question, but anyway the li'l pigskin bounces it's going to be in for a rough afternoon.





B. HARVIE BRANSCOMB  
CHANCELLOR OF VANDERBILT UNIVERSITY



DR. RUFUS CARROLTON HARRIS  
PRESIDENT TULANE UNIVERSITY



*Compliments of*

# **EQUITABLE Securities Corporation**

NASHVILLE  
NEW YORK  
DALLAS  
KNOXVILLE  
BIRMINGHAM  
NEW ORLEANS  
MEMPHIS  
HARTFORD  
GREENSBORO  
ATLANTA  
JACKSON, MISS.

Telephone 6-7171

Teletype NY 190



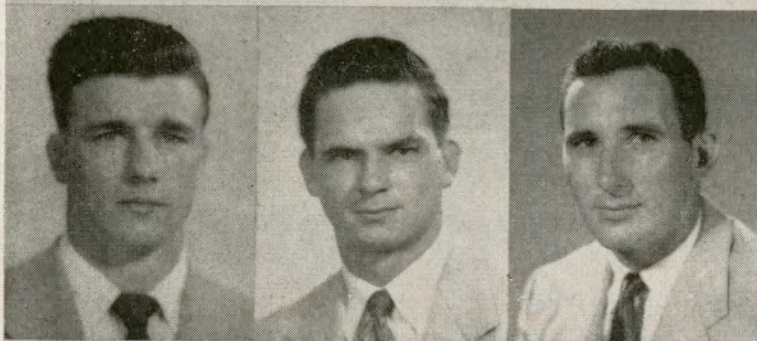
322 UNION STREET

NASHVILLE 3, TENNESSEE



# *Tulane*

## LINEMEN



E. BURKE - C

P. HAZEL - T

C. SOMEAUX - G



P. RUSHING - C

J. HELLUIM - C

C. CAMP - C



*Gibson Hall*



R. ROBELOT - C

L. LEWIS - T

D. TUGLER - T

A. KLEINSCHMIDT - G

B. MUSS - G



J. JOHNSTON - G

G. ROGERS - T

W. BEHREND - G

M. HOUSEPIEN - G

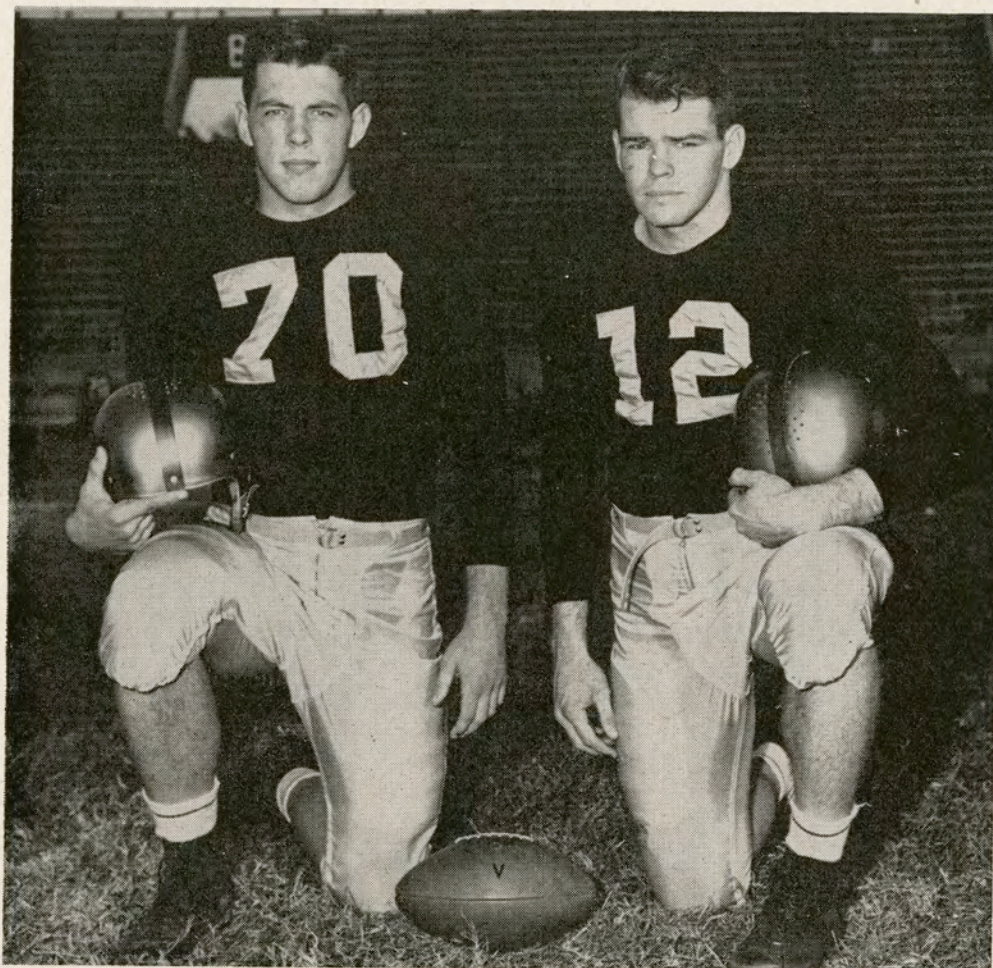
G. RAY - T



---

---

## *Captains of the Commodores*



### **BOB WERCKLE, Captain**

Robert Eugene Werckle has turned back the "slings and arrows of outrageous fortune" in a most heroic manner to gain that apex of athletic achievement which young boys dream about most, Captain of his college football team. Bob was a big open-faced kid from "up north" (Teaneck, N. J.) who took a lot of ribbing while trying for a tackle post on the Vanderbilt team of 1947 as a Freshman. But he made the squad, played, even blocked a punt before the season was out, and earned his letter.

Bob learned a lot in Spring practice the next year and was looking forward to regular varsity action that Fall when he broke his leg in scrimmage two weeks before the season opened. His leg was in a cast until November. In 1949 September practice the same story—other leg. But Werckle didn't give up; he fought the fracture as if he were wrestling an opposing lineman. He refused to stay in the hospital, or in the cast, and Coach Edwards allowed him to test his leg in Vanderbilt's seventh game of the season. He played in the remaining games, and became a starter against Tennessee. In 1950 Bob saw more game-time action than any other Commodore, 10½ minutes more per contest, and he earned All-South honors (INS team) in the all-star voting.

When Bob Werckle, a Brooklyn born boy of German, French, Irish and Swedish ancestry, was chosen Captain of the Commodores by his teammates his acknowledgment of the honor to the group attending the football team's annual banquet was as straightforward as his head-on tackling. He said, "Vanderbilt is the greatest thing that ever happened to me. I felt like a stranger, a Yankee stranger, when I first came here, but I guess I've been reconstructed."

### **BILL WADE, Alternate Captain**

Bill Wade, Senior Quarterback and outstanding player of the 1951 Commodores, is a coach's dream come true of the ideal American boy developing the qualities of leadership so needed throughout our nation today. Bill has always been a boy of strong character; he is intelligent, courageous, religious, completely selfless, and wholly dedicated to the success of this Vanderbilt football team.

Bill's father, W. J. (Pink) Wade, Sr., now Chancellor of the Davidson County Court, was Captain of the 1921 Commodores. He was an outstanding fullback in 1920, but in order to strengthen the team in his Senior year he shifted into the line, played the unglorified position of guard, and led Vanderbilt to an undefeated season. Bill is the same type ball player, maybe more so. He can pass the ball accurately farther than any other college player in the country. On many teams that's all the Quarterback need do, pass. But Vanderbilt needs ball carriers, so Bill runs; she needs punters, Bill kicks; she needs blockers, Bill racks 'em; she needs tacklers who hit hard and sure, Bill plays safety.

If the game could be decided as battles in the Trojan wars occasionally were—by one soldier from each army meeting in the open field between the camps and fighting to the death—Bill Wade would not only seek the assignment of bearing the Gold and Black into battle each Saturday, he'd bring the victory back.



# WSM-TV

*The finest in television . . .  
The finest in televised sports!*

## SEE VANDERBILT'S FOOTBALL GAMES

*On Film*

**SUNDAY AFTERNOONS -- 5:00 TO 6:00**

October 28 — Vanderbilt - Georgia Tech  
November 4 — Vanderbilt - Chattanooga  
November 11 — Vanderbilt - L. S. U.  
November 18 — Vanderbilt - Tulane  
November 25 — Vanderbilt - Memphis State  
December 2 — Vanderbilt - Tennessee

### *Other Fall Sports Highlights . . .*

- Seven College football games from NBC Saturday afternoons.
- Nine professional football games Sunday afternoons.
- The World Series — as it happens.
- Friday night boxing matches from Madison Square Garden.
- Greatest fight of the century on film.
- Wrestling from Hollywood — on film.
- Rose Bowl football game from NBC.

TOMORROW . . .

**See this game again . . .**

**on official Vanderbilt film . . .**

**as telecast by . . . . .**

# WSM-TV



*Tulane Athletic Administrators*



HENRY FRNKA, Head Football Coach



HORACE RENEGAR, Director of Public Relations





# Life and Casualty

## Insurance Company of Tennessee

PAUL MOUNTCASTLE, PRES.

HOME OFFICE: NASHVILLE

### 1951 VANDERBILT SQUAD

| No.                    |                          | Age. | Hgt. | Wgt. | Class | Home Town           |
|------------------------|--------------------------|------|------|------|-------|---------------------|
| <b>LEFT ENDS</b>       |                          |      |      |      |       |                     |
| 84                     | *KIRKLAND, Ted           | 21   | 6-5  | 196  | Senr. | Marianna, Fla.      |
| 86                     | *COOK, Malcolm           | 20   | 6-2  | 188  | Junr. | Evansville, Ind.    |
| 80                     | TAYLOR, Bob              | 21   | 6-1  | 185  | Junr. | Princeton, Ky.      |
| 89                     | BROWN, Harold            | 19   | 6-1  | 195  | Frsh. | Memphis, Tenn.      |
| <b>LEFT TACKLES</b>    |                          |      |      |      |       |                     |
| 77                     | *DARNELL, Alex           | 22   | 6-2  | 213  | Senr. | Clarksville, Tenn.  |
| 75                     | *BILLINGS, Paul          | 20   | 6-4  | 217  | Junr. | Birmingham, Ala.    |
| 72                     | ROBERTS, Ken             | 18   | 6-4  | 227  | Soph. | Kingsport, Tenn.    |
| 73                     | WATSON, Buck             | 18   | 6-3  | 215  | Frsh. | Ft. Payne, Ala.     |
| <b>LEFT GUARDS</b>     |                          |      |      |      |       |                     |
| 67                     | *PHILPOT, Dick           | 21   | 6-1  | 195  | Senr. | Cedartown, Ga.      |
| 64                     | *TAYLOR, Landon          | 23   | 6-2  | 175  | Junr. | Johnson City, Tenn. |
| 65                     | HALL, John               | 18   | 5-10 | 180  | Frsh. | Knoxville, Tenn.    |
| <b>CENTERS</b>         |                          |      |      |      |       |                     |
| 52                     | *WADE, Don (also Guard)  | 20   | 6-2  | 193  | Junr. | Nashville, Tenn.    |
| 54                     | *GOLDEN, Wimpy           | 21   | 6-1  | 185  | Junr. | Memphis, Tenn.      |
| 53                     | FARRIS, Bob              | 19   | 6-2  | 195  | Soph. | Montgomery, Ala.    |
| 50                     | STONE, Larry             | 18   | 6-1  | 200  | Soph. | Robstown, Texas     |
| 55                     | PAPUCHIS, Jason          | 18   | 6-1  | 175  | Frsh. | Nashville, Tenn.    |
| <b>RIGHT GUARDS</b>    |                          |      |      |      |       |                     |
| 68                     | *KEESE, Lanar            | 24   | 6-2  | 205  | Senr. | Birmingham, Ala.    |
| 60                     | *CHEADLE, John           | 21   | 6-1  | 205  | Junr. | Dallas, Texas       |
| 63                     | NOVAK, Andy              | 20   | 5-11 | 195  | Soph. | Lisbon, Ohio        |
| 66                     | GOODALL, Bobby           | 20   | 5-11 | 185  | Frsh. | Gallatin, Tenn.     |
| <b>RIGHT TACKLES</b>   |                          |      |      |      |       |                     |
| 70                     | ***WERCKLE, Bob (Capt.)  | 22   | 6-3  | 215  | Senr. | Teaneck, N. J.      |
| 76                     | *ROBINSON, Tom           | 20   | 6-3  | 215  | Junr. | Franklin, Tenn.     |
| 74                     | FERGUSON, Morris         | 19   | 6-2  | 200  | Soph. | Nashville, Tenn.    |
| 78                     | WADDEY, Walter           | 18   | 6-2  | 200  | Frsh. | Memphis, Tenn.      |
| <b>RIGHT ENDS</b>      |                          |      |      |      |       |                     |
| 83                     | *RODERICK, Ben           | 20   | 6-0  | 195  | Junr. | Massillon, Ohio     |
| 82                     | HINES, Bob               | 20   | 6-0  | 183  | Junr. | Knoxville, Tenn.    |
| 87                     | HAWKINS, Charley         | 19   | 6-3  | 195  | Soph. | Nashville, Tenn.    |
| 88                     | MIRON, Jack              | 18   | 6-3  | 195  | Frsh. | Chattanooga, Tenn.  |
| <b>QUARTERBACKS</b>    |                          |      |      |      |       |                     |
| 12                     | *WADE, Bill (Alt. Capt.) | 21   | 6-2  | 202  | Senr. | Nashville, Tenn.    |
| 14                     | SHELTON, Tex             | 20   | 6-2  | 198  | Junr. | Ft. Worth, Texas    |
| 13                     | DEMAIN, Jim              | 19   | 5-11 | 177  | Soph. | Youngstown, Ohio    |
| 10                     | HOLMES, Jimmy            | 18   | 5-10 | 165  | Frsh. | Pine Bluff, Ark.    |
| <b>LEFT HALFBACKS</b>  |                          |      |      |      |       |                     |
| 23                     | *FOSTER, Dick            | 20   | 5-9  | 174  | Junr. | Memphis, Tenn.      |
| 22                     | *FAILS, Terry            | 20   | 6-2  | 188  | Junr. | Dallas, Texas       |
| 24                     | LOVELACE, Jim            | 21   | 5-10 | 174  | Junr. | Florence, Ala.      |
| 20                     | EDWARDS, Bill            | 19   | 5-9  | 165  | Soph. | Nashville, Tenn.    |
| 25                     | EWASHKO, Jake            | 19   | 6-0  | 185  | Frsh. | Youngstown, Ohio    |
| 30                     | GLEISNER, Don            | 21   | 6-0  | 170  | Frsh. | Elyria, Ohio        |
| <b>RIGHT HALFBACKS</b> |                          |      |      |      |       |                     |
| 26                     | CAPPELLETTI, Bob         | 18   | 5-8  | 160  | Frsh. | Elkhart, Ind.       |
| 32                     | *LAKOS, Mickey           | 19   | 6-0  | 185  | Junr. | Mobile, Ala.        |
| 34                     | DRASH, Allan             | 20   | 5-9  | 178  | Junr. | Birmingham, Ala.    |
| 33                     | DUNCAN, Roy              | 20   | 6-0  | 179  | Soph. | Kingsport, Tenn.    |
| 36                     | BYERS, Danny             | 18   | 5-11 | 170  | Frsh. | Greenville, S. C.   |
| 35                     | DUNCAN, Billy            | 19   | 6-2  | 176  | Frsh. | Chattanooga, Tenn.  |
| <b>FULLBACKS</b>       |                          |      |      |      |       |                     |
| 44                     | *ALLEN, R. C.            | 19   | 6-0  | 180  | Junr. | Blytheville, Ark.   |
| 42                     | NEWMAN, Chuck            | 19   | 6-0  | 188  | Soph. | Cookeville, Tenn.   |
| 43                     | DODD, John               | 19   | 6-1  | 180  | Soph. | LaGrange, Ga.       |
| 40                     | RAY, Jimmy               | 18   | 5-10 | 185  | Frsh. | Nashville, Tenn.    |
| 45                     | HENLEY, Bill             | 19   | 6-0  | 170  | Soph. | Appalachia, Va.     |

\*Denotes Varsity Football Letters Won.

Plan  
a

COLLEGE  
EDUCATION  
For  
Your  
Children





---

---

*Another . . .*

**AMERICAN OIL CO. FIRST!**



*Why be satisfied with anything except the best?*

*Yours*

*Earl and Jommie Pentecost*

**PENTECOST SHELL SERVICE**

**WEST END AT NATCHEZ TRACE**

**24-Hour Service**



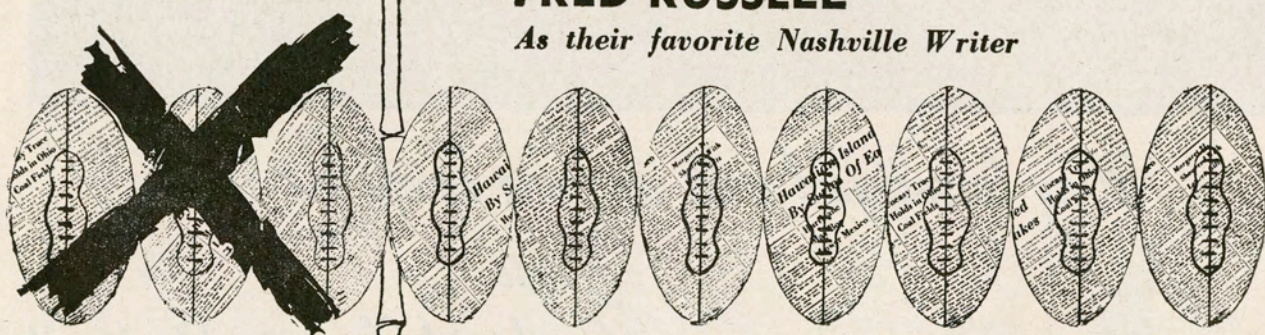
\* **7**

**out of 10**

**FANS  
PREFER  
BANNER SPORTS**

with  
**FRED RUSSELL**

*As their favorite Nashville Writer*



**Nashville**  **Banner.**

\*Proved by independent  
surveys of football, basket-  
ball, and baseball crowds.

**TOPS IN SPORTS**



# Thumbnail Sketches of the Commodore Candidates

## LEFT ENDS

**COOK, Malcolm**—One of the main reasons for Coach Edwards' decision to junk the platoon system with this 1951 football team is the ability and durability of rangy Malcolm Cook. Mal won a starting post last year at right end on the offensive team, and earned double duty laurels by playing safety on defense. He saw more game action than any other 1950 Vandy Soph (average of 31 minutes per contest), and though apparently not in a class with Bucky Curtis as a receiver he caught 13 passes good for 258 yards and 2 TD's. Cook placed 13th in the SEC among Ends in yardage gained, and there are only two returning for 1951 play who ranked ahead of him. He is attempting to fill Bucky Curtis' shoes in accepting the switch to left end, and on defense he is sharing the safety position with Bill Wade.

Junior . . . 20 . . . 6-2 . . . Evansville, Ind. . . . Reitz Memorial HS . . . Captain of his team . . . Kiwanis Award winner . . . Freshman basketball and Freshman Track (the 440) at Vandy . . . "B" Student . . . Bus. Ad. major . . . Marine ROTC, at Parris Island this past summer.

**TAYLOR, Robert Campbell (Bob)**—This boy Bob Taylor, whom many observers feared was too small for SEC football, especially as an end, has fought his way through one season with the Freshman team, one season with the "B" team, and one season on the varsity bench to become the Commodores' best defensive flankman. Taylor came to Vanderbilt in the Fall of 1948 weighing 165; each season he has gained both in experience and weight, and he always had the desire. With 185 pounds now and a headfull of sense, Bob will cause opposing offenses plenty of trouble this year.

Junior (in football eligibility) . . . 21 . . . 6-1 . . . 185 . . . Princeton, Ky. . . McCallie School, alternate captain his Senior year there . . . Bus. Ad. and Economics at Vandy . . . Vice-president of his fraternity (SAE) . . . Vice-president of the Student Christian Assn. . . . Son of Rumsey Taylor, SEC official.

**KIRKLAND, Joseph Theodore, Jr. (Ted)**—Kirkland has been playing both offense and defense, and not quite first-string at either, for two varsity seasons. As a Sophomore in 1949 most of his game action was on defense, but last year he subbed for Bucky Curtis occasionally on offense as well as defense, and as a Senior this season his work will be primarily the offense. Ted is fighting it out with Cook for the starting spot. He caught 2 TD passes last year, eight catches altogether, good for 144 yards. At 6-5 Kirkland is tall enough for effective receiving, but he can jump too, which makes him an easier target.

Senior . . . 21 . . . 6-5 . . . 196 . . . Marianna, Fla. HS . . . Studying Business Administration and Political Science at Vandy . . . 2-year letterman . . . Played Freshman basketball . . . Navy ROTC.

**BROWN, Harold**—Brown is a well-muscled, hard-hitting Freshman who can catch a pass and run well enough to gain ground after receiving. He won High School all-American honors while starring on Memphis Central's team last year. In the East-West HS all-American game August 15th Harold fractured his collarbone, so he is out of heavy contact work until October.

Frosh . . . 19 . . . 6-1 . . . 195 . . . Memphis . . . Central HS . . . Engineering student.

## RIGHT ENDS

**RODERICK, Benjamin A., Jr. (Ben)**—Roderick is from a football family, his father having been an outstanding fullback at Columbia University and later with the famous old Canton Bulldogs. Ben was all-Ohio at Massillon, a starter on Vandy's 1949 Freshman team, No. 2 offensive left end on the 1950 varsity and appears to be a starter for 1951. Roderick is not tall for an end, even six feet, but he is power-

ful and doesn't mind scrapping for the ball. He caught 9 passes for 122 yards last year.

Junior . . . 20 . . . 6 . . . 195 . . . Canton, Ohio . . . Massillon HS . . . Dash man on HS track team . . . Pre-Law student . . . Marine reserve.

**HINES, Robert Eugene (Bob)**—Hines likes to hit. He'd tackle a truck, if necessary, to pile up an opposing play. Not big, but chock-full of desire this East Tennessee boy teams with Bob Taylor as regular defensive ends. That is a notable accomplishment, for in 1950 Bob's game time action was less than the amount required to earn a letter.

Junior . . . 20 (on Nov. 18) . . . 6 . . . 180 . . . Knoxville, Tenn. . . . Young HS . . . Captained Young football and basketball teams . . . Marine Reserve . . . Studying Business Administration.

**HAWKINS, Charles Winstead, Jr. (Charley)**—Son of the 1926-27-28 Commodore tackle of the same name, Little Charley may be an even better football prospect than Big Charley. He is seeing varsity action on both offense and defense in his Sophomore season. Little Charley works hard whether tackling, blocking or stretching for a pass—and at 6-3, 195 he has plenty of inches and pounds to work with.

Soph . . . 19 . . . 6-3 . . . 195 . . . Nashville . . . Montgomery Bell Academy . . . Captained MBA's football, basketball and baseball teams as Senior . . . 4-letterman in each sport . . . Bus. Ad. major . . . English Literature a favorite study, however . . . Navy ROTC.

**MIRON, John Paul (Jack)**—Miron was an outstanding End at Notre Dame HS in Chattanooga last year, and after mid-year graduation he learned fast enough in Vanderbilt Spring practice sessions to earn a place on the varsity. Jack came fast in September practice and may team with Erwin Jones as second set of defensive ends.

Freshman . . . 18 . . . 6-3 . . . 195 . . . Escanaba, Mich. . . . Son of the Sheriff . . . All-Tennessee at Notre Dame HS at Chattanooga 1950 . . . Captained basketball team . . . First baseman on baseball team there . . . Business Administration major.

## LEFT TACKLES

**BILLINGS, Paul Barrett**—Billings is a big, strong boy who can take a lot of punishment and still hit the ball carrier a hefty lick. Earned his first "V" last year subbing for Captain Russ Faulkinberry on both offense and defense. A starter now, Paul plays both phases again this year, and may be called on for 60-minute duty any game.

Junior . . . 20 . . . 6-4 . . . 217 . . . Birmingham, Ala. . . . Shades Valley HS . . . All-Alabama for 2 years . . . 4 letters in football, basketball and baseball . . . Academic.

**DARNELL, Alex Whitefield (Showboat)**—Darnell is both strong and aggressive, but he has been susceptible to injuries ever since he entered Vanderbilt. He spent his Freshman year (1947) on the "B" team, then earned a letter the next season, he missed 1949 completely with injuries and most of 1950, but recovered in time to play some good football late in the season. Alex stayed out of Spring practice and healed well for this season; at times he has been very impressive in September practice, and if he can go injury-free for a decent length of time this Fall Darnell will play some commendable tackle.

Senior . . . 22 . . . 6-2 . . . 213 . . . Clarksville, Tenn. HS . . . Law School student.

**ROBERTS, Kenneth Lewis (Mo)**—This East Tennessee boy is the biggest player on the Vanderbilt team. Six feet, five inches tall and looking very trim at 227 pounds instead of the 240 he carried last Spring, Roberts has the size to become an outstanding tackle. Lack of experience handicaps the big boy just now. He is only 18 years old and has played only one year

(Continued on page 17)



# dry clothes the modern way

WITH A

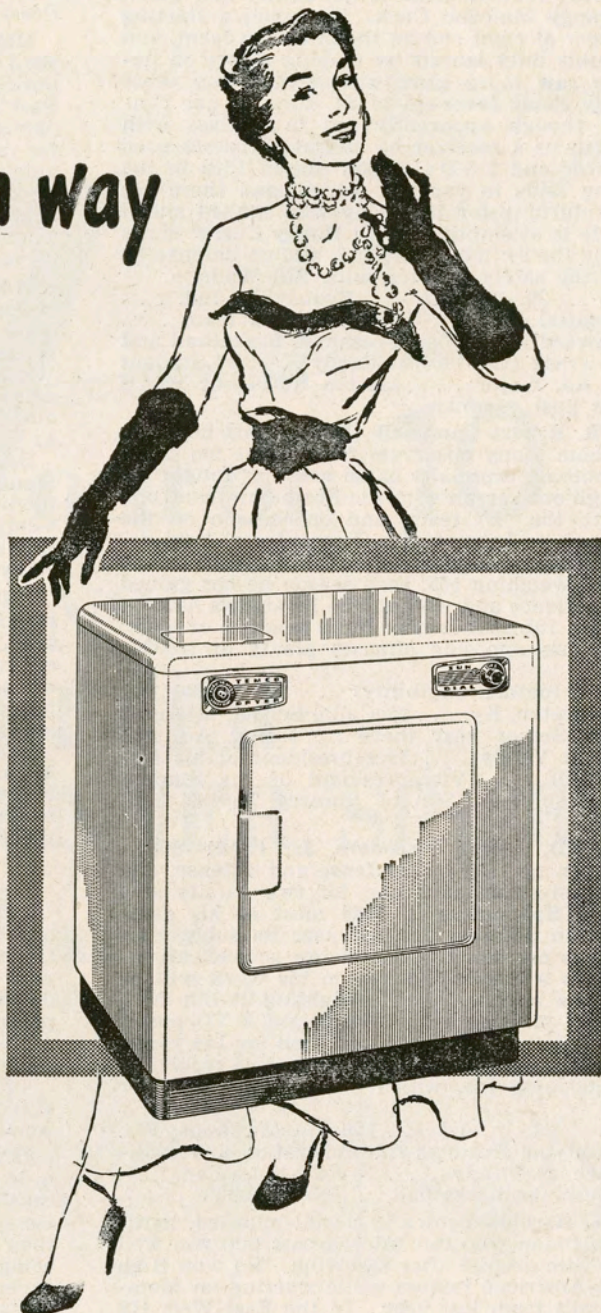
## **TEMCO** automatic gas **CLOTHES DRYER**

Here's the final step in freeing yourself from washday drudgery. The TEMCO Automatic Gas Clothes Dryer with the Magic Sun Dial simplifies clothes drying to two easy steps.

- 1. Drop the wash into that extra large drying basket.**
- 2. Dial the degree of dryness you want and forget your wash.**

That's all. Your TEMCO Automatic Dryer takes over, delivers the freshest, brightest wash you ever saw at just the degree of dryness you ordered.

Learn all the features . . . See the TEMCO Automatic Gas Clothes Dryer demonstrated without obligation at



## **TEMCO, INC.**

NASHVILLE 9, TENNESSEE



## THUMBNAIL SKETCHES

(Continued from page 15)

of high school football and missed part of his Freshman season at Vandy with injuries.

Soph. . . . 18 . . . 6-5 . . . 227 . . . Kingsport, Tenn.  
 . . . Dobyns-Bennett HS . . . Lettered in Basketball  
 and Track there . . . Studying Chemistry . . . "B"  
 plus student.

**WATSON, Herman, Jr. (Buck)**—Buck Watson took the coaches' eyes the first day of September practice when he put his shoulder to the charging sled with power that threatened to tear the machine apart. He has held their attention ever since with his eagerness to work and learn, and it was very soon decided that Watson will play Southeastern Conference football in his Freshman year. From the Sand Mountain section of Alabama, Buck is one of the largest boys on the Commodore squad, and perhaps the strongest of all.

Freshman . . . 18 . . . 6-3 . . . 215 . . . Fort Payne, Ala. . . . DeKalb County HS . . . All-Alabama in 1950 . . . Earned 2 Basketball and 3 Baseball letters . . . Son of Herman Watson, Birmingham-Southern tackle of 1925-6-7.

### RIGHT TACKLES

**WERCKLE, Robert Eugene (Bob)**—Captain Werckle is the workhorse of the Vanderbilt squad, perhaps the steadiest worker of the conference. In 1950, after having missed almost two full seasons with not one, but two, broken legs (alternating fractures), Big Bob played an average of 10½ minutes more per game than any other Commodore. And he wasn't just marking time either; has speed and power and general heads-up play won him a spot on the INS All-South team. Werckle this year will lead the squad in Vanderbilt's reconversion to a double-duty team. If the team does well in the attempt watch for Werckle among the All-American candidates.

Senior . . . 22 . . . 6-3 . . . 215 . . . Teaneck, N. J. HS . . . Voted Teaneck's outstanding athlete for 1946-7 . . . 2 Baseball letters and 3 Basketball there . . . Law student . . . Marine reserve . . . Born in Brooklyn . . . Ancestry is German-French-Irish-Swedish.

**ROBINSON, Thomas Michael, Jr. (Butch)**—Butch Robinson is a big, burly boy strong enough to put the bear hug on a ball carrier trying to break past his tackle post. A regular with the 1949 Freshman, Butch earned his first "V" last year as understudy to Captain Werckle. Robinson is not expected to oust Werckle as starter, but with a year's varsity experience is now better set to relieve in more crucial moments.

Junior . . . 20 . . . 6-3 . . . 215 . . . Franklin, Tenn. . . . Battle Ground Academy . . . 2 letters each in Basketball and Baseball at BGA . . . Heavyweight on Vandy's wrestling team . . . Marine Reserve . . . Bus. Ad. major, Political Science minor.

**FERGUSON, Morris Dean (Morrie)**—Ferguson played some pretty good tackle with the Freshman team last year, and, though not a flashy performer, has had some good days in Spring and September practice. He'll see varsity action in important games this year.

Sophomore . . . 19 . . . 6-2 . . . 200 . . . Nashville . . . Montgomery Bell Academy . . . Prep school Basketball player and Golfer . . . Good student . . . Pre-Medical.

**WADDEY, Walter Orum (Walt)**—Walter is the son of Frank Waddey, outstanding End on Georgia Tech's Rose Bowl team of 1930, and the fine lines of a thoroed football player are obvious in him even as a yearling. He has size, speed, a quickness for learning, and a willingness to mix it that is warming to a coach's heart. Waddey's regular position is tackle, but he may play quite a lot at defensive guard.

Freshman . . . 18 . . . 6-2 . . . 200 . . . Memphis . . . Central HS . . . Co-captain of his team . . . Trackman too (discus and sprints) . . . HS honor student . . . Pre-Law student.

## LEFT GUARDS

**PHILPOT, Richard H. (Dick)**—Philpot is one of only 4 players on the Vanderbilt team of two full years of varsity experience. He saw quite a bit of action as a Sophomore in 1949, then became a starter for 1950. Figured for plenty of double duty, Dick could prove an outstanding guard in this, his Senior year. He is quick on defense and can keep on his feet after throwing a hard block.

Senior . . . 21 . . . 6-1 . . . 195 . . . Cedartown, Ga. HS . . . Married this past Winter . . . Marine Reserve . . . Bus. Ad. major, History minor . . . Plans to become a salesman.

**TAYLOR, Landon Carter**—Landon, a grandson of former Governor of Tennessee Alf Taylor, is quite a maneuverer in the offensive line. He hits a hard, effective block, and is one of the better interferers for a ball carrier. Landon played with the 1948 Freshman team, spent 1949 on the "B" team, then moved up to the varsity last year and won his first "V".

Junior . . . 24 (on Oct. 2) . . . 6 . . . 175 . . . Johnson City, Tenn. . . . Science Hill HS . . . Army veteran . . . Geology major . . . Married . . . Father of 3 boys . . . Future profession, Geologist.

**HALL, John Richard**—An East Tennessee boy who was born in Texas, John Hall, despite the handicap of lack of weight for the position, earned himself a shot at a varsity guard spot by the simple procedure of mauling the varsity linemen in scrimmage as a greenshirt. If he continues to hit like that Hall will see plenty of action this season.

Freshman . . . 18 . . . 5-9 . . . 180 . . . Knoxville, Tenn. . . . City HS . . . Co-captain of his team . . . Engineering Student.

### RIGHT GUARDS

**CHEADLE, John Roaten**—John Cheadle is a Texas boy who grew up after coming to Vanderbilt. As a Freshman in 1948 he tried to play at tackle, in '49 on the "B" he shifted between tackle and guard, then last year he made the change to guard complete and was a defensive regular by season's end. Cheadle kept coming throughout Spring practice (was nominated by the coaching staff as the squad's most improved player), and for 1951 is a solid starter, offense as well as defense. Big enough now, at 205, John takes advantage of unusual strength in his forearms to manhandle backs and opposing linemen.

Junior . . . 21 (on Sept. 25) . . . 6-1 . . . 205 . . . Dallas, Texas . . . Wilson HS . . . National Honor Society . . . Studying Civil Engineering . . . Alternate to Vandy Honor Council.

**KEESE, V. Lanar**—Keese is another boy who has shifted from tackle to guard since his Freshman season. Lanar was a starter on the '48 Frosh team and earned a letter as sub tackle with the '49 varsity. Shifted to guard in Spring of 1950 he looked better than ever, but missed practically all of the regular season with injuries. Back for another try in his Senior year Lanar looks like a good bet to see considerable defensive action.

Senior . . . 24 . . . 6-2 . . . 205 . . . Birmingham, Ala. . . . West End HS . . . Captain of his team . . . Navy veteran . . . Married in Summer of 1950 . . . Bus. Ad. major.

**NOVAK, Andrew Michael (Andy)**—Novak as a regular on last year's Freshman team gave the varsity linemen a lot of trouble on many scrimmage days. He transferred easily in Spring practice, and in September began pushing Cheadle for a starting spot. A broad-shouldered boy with powerful legs and an ability for keeping his feet, Andy is certain to prove important to this 1951 team.

Sophomore . . . 20 . . . 5-11 . . . 195 . . . Lisbon, Ohio HS . . . Rated 3rd scholastically in his graduating class . . . Basketball and Baseball letterman also there . . . Engineering.

**GOODALL, Bobby**—Goodall is a Gallatin, Tenn. boy who played both fullback and guard in prep school and was outstanding at either spot. At Vander-

(Continued on page 18)



## THUMBNAIL SKETCHES

(Continued from page 17)

bill Bobby is doing all right in the heavier work at guard and will see varsity action there.

Freshman . . . 20 . . . 5-11 . . . 185 . . . Gallatin, Tenn. . . . Columbia Military Academy . . . Captain of his team . . . 3-year letterman in both Baseball and Basketball . . . Pre-Law student.

### CENTERS

**FARRIS, Robert Gordon (Bob)**—Bob Farris is a future Commodore great. He's already a fine ball player; he loves to block and tackle, and he has the natural instinct for diagnosing a play which a great linebacker must have. Bob's campus appearance belies his gridiron ferocity; he is a fair-skinned, blonde-haired boy with clear brown eyes, a gentlemanly aspect and good grades. He was all-Alabama for 2 years, captain and outstanding player on last year's Freshman team, and this year is a solid varsity starter on both offense and defense. Veteran Commodore observers rate Farris the finest center prospect at Vanderbilt since Carl Hinkle, 1937 all-American. (And some pretty fair centers have worn the Gold and Black since 1937—Bob Gude, AP all-SEC in 1940 and 1941; John Clark, AP all-SEC in 1948 and big Charley Hoover.) Farris is probably the SEC's best Sophomore lineman.

Soph . . . 19 . . . 6-1 . . . 195 . . . Montgomery, Ala. . . . Sidney Lanier HS . . . Captain of his team . . . Winner of sportsmanship award . . . 3-letter Trackman . . . Pre-Medical student.

**WADE, Charles Donelson (Don)**—Bill Wade's little brother Don is quite a ball player himself. He played only one season of high school football, but came along fast as a Vandy Freshman in 1949, then last year became the regular left side linebacker. This season Don will come toward filling the well of inexperience at guard besides seeing linebacker duty. A cool, intelligent lad who hits a hard lick without a lot of waste motion, Don is very important to this team.

Junior . . . (20 on Oct. 30) . . . 6-2 . . . 190 . . . Nashville . . . Montgomery Bell Prep . . . Son of W. J. Wade, Sr., captain of the 1921 Commodores . . . Valedictorian of his graduating class . . . "A" student at Vandy . . . Treasurer for Student Christian Assn. . . . Secretary of his Fraternity.

**GOLDEN, Winfred Lewis (Wimpy)**—Golden played some good ball for the Commodores last year after having spent the previous season on the "B" team. He is light for a linebacker, but a smart player and a very steady offensive man. Wimpy prevented an Ole Miss TD last year from the Vandy 1-yard line by diving between the center's legs to cause and cover a fumble at the hand-off.

Junior . . . 21 . . . 6-1 . . . 185 . . . Memphis . . . Central HS . . . Co-captain of his team . . . Memphis' best all-around athlete, 1947-48 . . . Economics major, Psychology minor . . . Hustler staff . . . Student Christian Assn.

**STONE, Lawrence Anderson (Larry)**—A hard-hitting Texas boy is Larry Stone, another Sophomore center capable of playing a lot of varsity ball. Both a blocker and a linebacker, Stone is not discouraged by the aspect of playing behind Farris; in fact, on many days he gives Bob a pretty good battle.

Sophomore . . . 18 . . . 6-1 . . . 200 . . . Robstown, Texas HS . . . Lettered in Basketball, Track and Baseball . . . Pre-Medical student.

**PAPUCHIS, Jason**—Papuchis, a Nashville Freshman trying for the team at Tackle, has shown such promise in linebacking that Coach Edwards has shifted him to Center. Tall and beanpole thin (6-1 and only 175 lbs.), Jason is one of the lightest boys on the squad, but he's awfully hard to get out of a play.

Freshman . . . 18 . . . 6-1 . . . 175 . . . Nashville . . . Howard HS . . . Captain of his team . . . 2-year Basketball letterman . . . Academic.

## QUARTERBACKS

**WADE, William James, Jr. (Bill)**—Bill Wade for 1951 is the model American boy all grown up. A high school tailback of exceptional ability, Wade came to Vanderbilt with a Freshman class that contained fewer football players than any other post-war class and almost single-handedly led that team to a successful season. The victories included a 19-13 win over Parilli and the Kentucky Freshmen. In moving up to the varsity in 1949, Bill was handicapped by the first-season switch to the "T" and an unprecedented amount of national publicity for a Sophomore. Because he was not first-string in '49 many fans thought Bill flopped. But he didn't, he was learning; and in 1950 Wade began to show what he could do. As a Junior Bill became the most effective passer in Vanderbilt history by gaining 1,596 yards and 16 TD's throwing the ball. The yardage total was 4th highest in the nation, the TD total 3rd, and his average gain per completion the best among major passers. Vanderbilt averaged 9.02 yards every time Wade threw the ball last year, and 21 yards every time the pass was caught. Bill's steady improvement in other phases of football is cropping up too. He is the strongest power runner on the team, the best punter, the best pass defense man, and he hits a mighty tough tackle. Bill is now back in his normal element, an outstanding leader on a team of mostly average ball players. He is the type who in the closing minutes of a close ball game can take a spent but courageous team on his shoulders and carry them to victory. Wade does the passing and the power running; he does the punting and plays safety. Don't sell this big, earnest boy short—nor the Vanderbilt team when he has them shouldered.

Senior . . . 21 (on Oct. 4) . . . 6-2 . . . 202 . . . Nashville . . . Montgomery Bell . . . Son of "Pink" Wade, 1921 Commodore captain . . . Navy ROTC award winner . . . Pres. of his Freshman class . . . Vice-Pres. "V" Club . . . Vice-Pres. SCA . . . Member of OKD, Jr. Bar, student Senate . . . Alternate Captain of the Commodores.

**SHELTON, James (Tex)**—Shelton is a Texas boy who really stands tall in the saddle. Six feet two, and 198 pounds, he can kick a football far and high and can throw a pass hard and true. Tex played Freshman football at Vanderbilt in 1949. T-Quarterbacked the team, but he developed sugar diabetes and returned to Texas. He began studying at Kilgore Junior College, then decided to play football anyway. He starred at quarterback for Kilgore last year, graduated and came back to Vandy.

Junior . . . 20 . . . 6-2 . . . 198 . . . Fort Worth, Texas . . . Pre-Religion student.

**DeMAIN, James H., Jr. (Jim)**—A Sophomore who fakes, hands off and handles the team in general like a veteran, DeMain is a top-grade clutch player. Jim is not as good a passer as Bill Wade or Jim Shelton, but he is steady, cool under fire, and he will see considerable action.

Sophomore . . . 19 . . . 5-11 . . . 177 . . . Youngstown, Ohio . . . East HS . . . Chemistry major, Spanish minor . . . Student Christian Assn.

**HOLMES, James Edward (Jimmy)**—This Freshman Holmes can throw that football well. He has poise, good passing form, and intelligence; he is expected to prove a fine quarterback for the future. Small and light, but hardy enough.

Freshman . . . 18 . . . 5-10 . . . 165 . . . Pine Bluff, Ark. HS . . . Captain of his team . . . All-Southern selection . . . "A" student . . . Mechanical Engineering major.

### LEFT HALFBACKS

**FOSTER, Richard H. (Dick)**—Foster is a chug-chug runner, not really fast for a halfback, but he has drive and can push on past the ordinary tackler. He scrapped with Burton and Fails for the starting spot at LH last year, finally winning out and giving a

(Continued on page 21)



## **NASHVILLE SPORTING GOODS COMPANY**

178-180 Eighth Avenue, North

Telephones 6-1547—6-1381

NORB ACKERMANN

## **TENNESSEE EQUIPMENT AND SUPPLY COMPANY**

116 2nd Avenue, North

Nashville, Tennessee

Tel. 6-1464

*Distributors of all Types of Quality  
School Equipment and Supplies*

# *Sealtest* **MILK**

*Is served at Kissam Hall, as well  
as in thousands of Nashville homes.*

Get Tru-li-Pure Sealtest Homogenized Vitamin "D" Milk—the soft curd milk at your grocer's or have it delivered to your home by

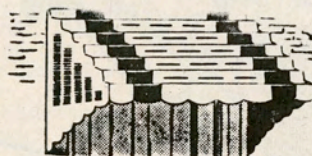
## **NASHVILLE PURE MILK COMPANY**

Phone 5-6451

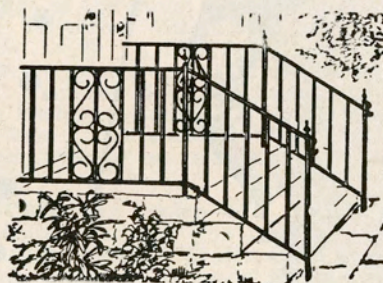
*Serving this community  
for almost half a century.*

*For Your Winter Protection*

**PERMA-SHADE ALUMINUM  
AWNINGS**



**AND PRE-KUT  
ORNAMENTAL IRON  
VENETIAN BLINDS**



**NASHVILLE TENT & AWNING  
COMPANY**

*"For Floral Protection"*

## **Kelly Lish FLOWERS**

513 UNION

Phones: Day, 4-3596—Night, 9-6705

*Flowers by Wire*

*Everybody Goes to*

## **JOE'S DRIVE-IN**

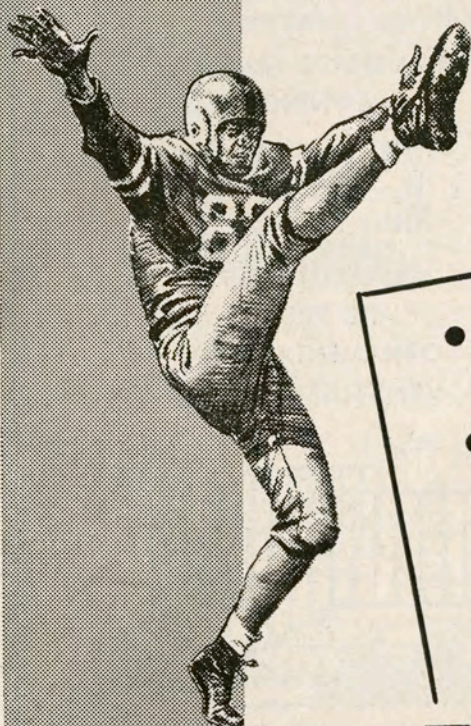
**Delicious Sandwiches  
and Soft Drinks**

4000 HILLSBORO ROAD



# *There's No Substitute* for THE NASHVILLE TENNESSEAN *Sports Section*

Complete, Accurate, Colorful  
**FOOTBALL  
COVERAGE**



- One of the Nation's Finest Sports Staffs headed by **RAYMOND JOHNSON**
- The "Long Tom" and Machinegun Cameras
- Complete Services of AP, UP and INS Wire Services
- AP Wirephotos
- Football NEWS While It's Still NEWS

*Always FIRST with*  
*STORIES, PHOTOS and DETAILS of*  
*PREP, COLLEGIATE and PRO GAMES*

●  
Early Sunday Edition on Sale  
Saturday Night



**THE NASHVILLE TENNESSEAN**  
*First in SPORTS, too!*



## THUMBNAIL SKETCHES

(Continued from page 18)

fine performance in the Tennessee game. Dick is a good punt-returner (he averaged 12.7 yards on 7 attempts last year), and this year he has added punting and place-kicking to his gametime duties.

Junior . . . 20 . . . 5-9 . . . 174 . . . Memphis . . . Central HS . . . Played HS football at Charlotte, N. C. in 1947 . . . Licensed pilot . . . Sharp dresser . . . Bus. Adm. major . . . Marine ROTC.

**FAILS, Terrence Neil (Terry)**—Fails played some fine football last year as a Sophomore, but his exceptional performances were outnumbered by the ordinary ones, so he lost out in the race for regular LH to Foster. At times Terry is the hardest running back on the team, and he is an ace pass receiver on occasion; when he achieves steadiness at his best playing level he will be an outstanding back.

Junior . . . 20 . . . 6-2 . . . 188 . . . Born in Washington, D. C., prepped at Univ. City HS in St. Louis, has lived in Pensacola, Fla. and Dallas, Texas since enrolling at Vanderbilt . . . Athlete-of-the-Year in St. Louis 1948 . . . Frosh numerals in both Basketball and Track . . . Bus. Adm. major, Math minor . . . Son of retired Naval officer.

**LOVELACE, James Robert (Jim)**—Lovelace is a short, swift back who would just as soon burst head-on into the line as skirt the end. Jim saw limited service last year as a Sophomore, and he is determined to dig in there and earn himself a letter this time.

Junior . . . 21 (on Sept. 30) . . . 5-10 . . . 170 . . . Florence, Ala. . . Coffee HS . . . Alt. Capt. of his team . . . North Alabama's MV in 1948 . . . Bus. Ad. major, Chemistry minor . . . Marine ROTC.

**EDWARDS, William A. (Little Bill)**—Little Bill Edwards, son of the Head Coach, played guard throughout high school, but because of his lack of size (only 5-9 and 165) he switched to halfback last year as Freshman. Fair speed and a lot of grit, he'll see action at defensive half.

Soph . . . 19 . . . 5-9 . . . 165 . . . Nashville . . . Montgomery Bell Academy . . . Played 2 years at Shaker Heights HS in Cleveland, Ohio before moving to Nashville . . . English major, History minor.

**CAPPELLETTI, Robert Anthony (Bob)**—A Freshman speedster from Coach Terlep's hometown of Elkhart, Ind., Cappelletti is a fine prospect for the type player this team needs most, a real breakaway runner. Bob is small, but he has unusually powerful legs and the poise of a top-flight ball player. May play some safety and return punts as well as being used on offense.

Freshman . . . 18 . . . 5-8 . . . 160 . . . Elkhart, Ind. HS . . . His team's high scorer 2 years . . . MV award . . . 3-year letterman Basketball and Track . . . Civil Engineering.

**EWASHKO, Frank (Jake)**—Ewashko is a fairly fast and very aggressive Freshman who would just as soon play defense as offense. Jake does a pretty good job of knocking down passes and he can hang

a pretty hard tackle on a back who breaks past the scrimmage line.

Freshman . . . 19 . . . 6 . . . 185 . . . Youngstown, Ohio . . . Rayen HS . . . Captain of his team . . . President of "R" club . . . Basketball Captain . . . Ran 440, mile and mile relay; relay team was undefeated . . . Mathematics major.

## RIGHT HALFBACKS

**LAKOS, Theodore Michael (Mickey)**—Lakos is the boy who fought his way forward last year to become first-string defensive halfback as a Sophomore without having played Freshman football. This Spring Mickey kept coming and moved into the No. 1 slot on offense too. Lakos is a good hard runner who likes the rough going; he'll probably play more offense than defense this year, but he is definitely a double duty boy. Some seven pounds heavier than a year ago, Mickey is now a hard man to handle.

Junior . . . 19 . . . 6 . . . 185 . . . Mobile, Ala. . . . Riverside MA . . . 3-year letterman there . . . SO on Basketball and Boxing teams . . . Pre-Law student . . . "B" plus average . . . SCA cabinet member.

**GLEISNER, Don Allen (Birdie)**—Gleisner was No. 3 quarterback on the 1950 team, but with Bill Wade playing 9/10 of the offense he made a serious study of defensive halfbacking in order to see some action. Birdie didn't play enough to rate a "V" last year, but he saved one game for the Commodores by intercepting an Ole Miss pass late in the 4th quarter when the Rebels had driven 62 yards in 5 plays. Don has a lot of desire; he may be the team's top defensive halfback this season.

Junior . . . 21 . . . 6 . . . 175 . . . Elyria, Ohio HS . . . Quarterbacked the Ohio 1947 championship team with Janowicz and Curcillo as halfbacks . . . Good student . . . Bus. Adm. major, Political Science minor.

**DRASH, Allan Lee**—Allan is the fastest runner on the Vanderbilt team, and at times the hardest. As a sophomore he was often a threat, but never seemed to be able to break away for that long TD trip. For 1951 he is a more polished runner, can take better advantage of the initial blocking, and he may point for that TD corner with more potency.

Junior . . . 20 . . . 5-9 . . . 178 . . . Born in Clarksville, Tenn., now lives in Birmingham, Ala. . . . At Ramsay Tech led B'ham backs in scoring 1948 . . . Son of Methodist minister . . . Dashman on Vandy Track team . . . Pre-Med student . . . Held highest scholastic average on team last year, 2.78. (3.00 is perfect.)

**DUNCAN, Roy Lester**—Roy Duncan is a Sophomore expected to help the 1951 team considerably. First-string with the 1950 Freshmen and good enough the previous year at Kingsport to win nominations for All-Tennessee, his power and drive may push him past players of more experience toward a starting post before the season is out. Besides power running, Roy can punt and he also plays a good defensive game.

Sophomore . . . 20 . . . 6 . . . 179 . . . Kingsport,

(Continued on page 56)

## McQUIDDY PRINTING COMPANY

*Where Printing Is an Art*

110 Seventh Avenue, North  
NASHVILLE, TENNESSEE

Telephone 6-8106



NASHVILLE'S PROGRESSIVE COLLECTION MEDIUM

# Tennessee ADJUSTMENT SERVICE



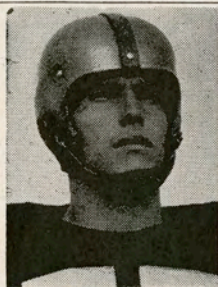
PHONE 5-7301

NASHVILLE

*Third National Bank Building*

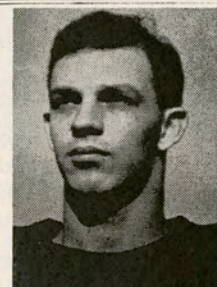
COLLECTIONS

ADJUSTMENTS



Paul Billings

R. C. Allen

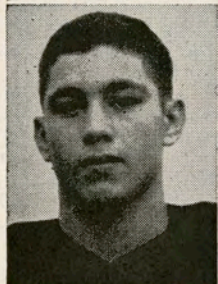


## Dix

DISTINCTIVE CLOTHES *for* MEN

204 TWENTY-FIRST AVENUE, SOUTH

*"Across from Vandy Campus"*



Mickey Lakos

Landon Taylor



... in bottles and in cartons

GRADE A MILK

Pasteurized—Homogenized

Jersey Farms Milk Service

Phone 6-4655

825 Eighth Avenue, South



# VANDERBILT BASKETBALL

## Season Ticket Application

Please send me \_\_\_\_\_ 1951-52 season basketball tickets at: \$19.80 ( ), \$17.60 ( ), \$15.00.

Enclosed is money order ( ), check ( ), cash ( ) amounting to \_\_\_\_\_ plus 50c mailing fee.

Name \_\_\_\_\_

Address \_\_\_\_\_

City \_\_\_\_\_ State \_\_\_\_\_

Vanderbilt alumnus? \_\_\_\_\_

Remittance in full must accompany order.

Checks should be made to VANDERBILT UNIVERSITY.

Mail all orders to: Basketball Ticket Manager, Vanderbilt Athletic Dept., 223 Twenty-sixth Ave., S., Nashville 5, Tennessee.

SEASON TICKETS on general sale November 26th at VANDERBILT ATHLETIC OFFICE. Purchasers of 1950-51 tickets have their regular seats reserved only until Nov. 24th.

New season ticket prices offer 11 home games instead of 10 for \$19.80 instead of \$20.00. That price is for reserved theater-type sideline seats. Reserved bleacher-type sideline seats are available at \$17.60, and reserved end zone seats may be purchased at \$15.00. Mail your order NOW!

Vanderbilt home games will be played in the Lipscomb Gym.



The 1951 Southeastern Conference Tournament Basketball Champions.

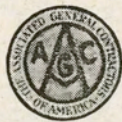
## 1951-52 VANDERBILT UNIVERSITY BASKETBALL SCHEDULE

| Date          | Opponent               | Place            | 1950-51 Results V. Op. |
|---------------|------------------------|------------------|------------------------|
| Sat., Dec. 1  | Bradley                | Peoria           | —                      |
| Tue., Dec. 4  | Middle Tennessee       | Nashville        | 58-45                  |
| Thu., Dec. 6  | Lipscomb               | Nashville        | 71-69x                 |
| Sat., Dec. 8  | Sewanee                | Sewanee          | 63-44                  |
| Mon., Dec. 17 | Texas Tech             | Nashville        | —                      |
| Thu., Dec. 20 | Rice                   | Nashville        | —                      |
| Sat., Dec. 22 | St. John's             | Madison Sq. Gdn. | —                      |
| Wed., Dec. 26 | Cotton Bowl Tournament |                  |                        |
| Thu., Dec. 27 | (Texas, Rice, Baylor,  | (Texas)          | 49-55a                 |
| Fri., Dec. 28 | Arkansas, Texas A & M, | Dallas (Tulsa)   | 56-49a                 |
| Sat., Dec. 29 | SMU, TCU & Vanderbilt) | (Baylor)         | 54-53a                 |
| Sat., Jan. 5  | Tennessee              | Nashville        | 58-57                  |
| Mon., Jan. 7  | Louisiana State        | Nashville        | 69-61                  |
| Sat., Jan. 12 | Auburn                 | Auburn           | 61-51                  |
| Mon., Jan. 14 | Alabama                | Tuscaloosa       | 49-35                  |
| Sat., Jan. 19 | Florida                | Gainesville      | 81-64                  |
| Tue., Jan. 22 | Tennessee              | Knoxville        | 59-61                  |
| Mon., Jan. 28 | Kentucky               | Nashville        | 49-74                  |
| Thu., Jan. 31 | Lipscomb               | Nashville        | 57-59                  |
| Sat., Feb. 2  | Georgia Tech           | Nashville        | 65-47                  |
| Mon., Feb. 4  | Mississippi            | Nashville        | 70-63                  |
| Sat., Feb. 9  | Mississippi State      | Nashville        | 63-60                  |
| Mon., Feb. 11 | Tulane                 | Nashville        | 55-90                  |
| Sat., Feb. 16 | Georgia                | Athens           | 69-57                  |
| Mon., Feb. 18 | Georgia Tech           | Atlanta          | 69-67                  |
| Thu., Feb. 21 | Kentucky               | Lexington        | 57-89                  |
| Thu., Feb. 28 | Southeastern           | (Tenn.)          | 88-52                  |
| Fri., Feb. 29 | Conference             | (Ga.)            | 70-60                  |
| Sat., Mar. 1  | Tournament             | (LSU)            | 75-63                  |
|               |                        | (Ky.)            | 61-57                  |

x—Overtime

a—All-College Tournament Scores.





## FOSTER & CREIGHTON COMPANY

**General Contractors**

*Nashville 3, Tennessee*

*One of America's  
finest coffees*



AT YOUR NEIGHBORHOOD GROCER

*Flowers . . .*

*Harrison Bros.*  
**FLORISTS**

On Sixth Avenue



## Football Techniques

*Illustrated by Jim Moore, \$1.50*  
Formerly player-manager, Providence  
Steam Rollers

### THE METHODIST BOOK STORE

810 Broadway Telephone 42-1621  
Nashville 2, Tenn.

## POPS-RITE POPCORN

*Pops Best*

*Tastes Best*

*It's from Blevins' Famous*  
**POPCORN VILLAGE**  
NASHVILLE, TENN.

# Kroger

LIVE BETTER FOR LESS

## For Fifty Years ....



### A CAMPUS CUSTOM AFTER THE GAME !

## Belle-Camp CHOCOLATES

## COLONY CLEANERS AND LAUNDERERS

*"Quality in Every Detail"*

West End at Natchez Trace  
Phone 7-1126

## OTTENVILLE TIRE CO.

TWENTY-FIRST AND GRAND  
AVENUES

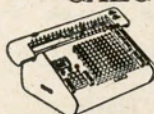
Phone 7-1820

ESSO  
SERVICE

ROAD  
SERVICE



# Friden *fully-automatic* CALCULATORS



THE THINKING  
MACHINE OF  
AMERICAN BUSINESS

Friden does more automatically  
**SALES • SERVICE • RENTALS**

**PHONE 5-8035**

**FRIDEN CALCULATING  
MACHINE AGENCY**

921 Church St.  
NASHVILLE 3, TENN.

## HERBRICK & LAWRENCE

LIGHTING FIXTURES

PLUMBING AND ELECTRIC SUPPLIES

417 Union Street

Phone 6-5141

712

Church St.



**READY TO WEAR  
SPORTSWEAR  
MILLINERY**

James F. Holt, *President*  
Warren O. Lamb, *Vice-President*  
James F. Holt, Jr., *Secretary-Treasurer*

Phones: 42-2606, 42-2607

**W. F. Holt & Sons**

*General Contractors and Builders*

1531 Demonbreun Street  
NASHVILLE 3, TENNESSEE

## REAL ESTATE LOANS

*Apartment—Residential  
Business Properties*

Unlimited Amounts—Long Term  
Low Interest Rates

**FIRST MORTGAGE CO.**

410 Union Street

E. E. MURREY, *President*  
W. L. WHITAKER, *Treasurer*  
FLOYD H. ADAMS, *Secretary*

*Four Good Places To Eat*

**JIFFY**

2018 Broad Street

**JIFFY**

1805 Church St.

**CAMPUS GRILL**

416 21st Ave., South

**HALE LUNCHEONETTE**

2825 West End

*Free Parking Space While at Game*



# Grace's

## A Shop for Ladies

219 6th Avenue, North

Belle Meade Theatre Building

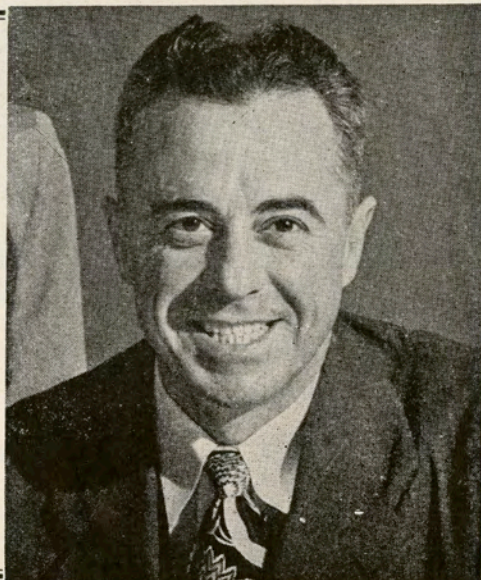
NASHVILLE, TENNESSEE

### ERNEST H. (HERC) ALLEY

#### Business Manager of Athletics

This is Herc Alley's 4th year as Business Manager of Vanderbilt's Athletic Department. Before assuming those duties he coached the Commodore Ends in 1940-1-2 and 1946-7 and he also coached the undefeated informal team of 1943. Herc handles the Track team too, and last year he did a bang-up job in emergency for varsity football by coaching the Ends once more after regular office hours.

Alley was a top-notch End at Tennessee, serving as Captain of Neyland's 1928 team. He earned his B.S. there and later an M.S. at L. S. U. Herc is from Chattanooga originally, is 47 years old, married to the former Miss Thelma Roberts of Flora, Miss., and has 3 children—Bob 13, Carolyn 8, and Tom 5.



## M. T. GOSSETT COMPANY, INC.

**Carrier**

*Air Conditioning—Refrigeration*

*Heating and Ventilating Equipment—Mill Supplies*

*Motors—Pumping Machinery—Power Plant Specialties*

Phone 4-7551

1205 CHURCH STREET

NASHVILLE 3, TENNESSEE





## *Vanderbilt University*

Location.....Nashville, Tenn.  
 Enrollment.....2,935 Co-Educational  
 Chancellor.....Harvie Branscomb, M.A., (Ox.) Ph.D.  
 Vice-Chancellor.....Charles Madison Sarratt, M.A.  
 Athletic Committee Chairman.....Dean Fred J. Lewis

Vanderbilt University was established in 1873 and named for Commodore Cornelius Vanderbilt, whose first donation of \$500,000 was dedicated "to strengthening the ties that should exist between all sections of our common country."

The university began full operation in 1875 with four general departments: Academic, Biblical, Law and Medicine. Engineering was introduced in 1880 and the School of Nursing was established in 1925.

Bishop Holland N. McTyeire of the Methodist Episcopal Church, South, was the guiding genius of the University in its formative years, and Landon C. Garland his competent collaborator. Dr. Garland became the first Chancellor of the University, serving until 1893.

In the seventy-eight years since its founding there have been only four Chancellors of Vanderbilt University. Dr. James Hampton Kirkland succeeded Chancellor Garland in 1893 and served forty-four years. At his retirement in July, 1938, Oliver Cromwell Carmichael was elected Chancellor. Carmichael directed the growth of the University until February, 1946, when he resigned to become head of the Carnegie Foundation. Dean of Students Charles Madison Sarratt was made Vice-Chancellor and served with the powers of Chancellor for the interim period to September 1, 1946, when Dr. Bennett Harvie Branscomb, Dean of the School of Divinity

at Duke University, became Vanderbilt's fourth Chancellor.

Under Chancellor Kirkland's guidance Vanderbilt grew from a small denominational school of meager resources to a large University controlled by an independent and self-perpetuating Board of Trust. He lifted the scholastic requirements in such manner as led to the raising of accreditation standards of colleges and universities throughout the nation.

Chancellors Carmichael and Branscomb have continued progress in the same theme, with added coordination and centralization processes, and have seen the total assets of the University increase from \$30,000,000 in 1938 to more than \$46,000,000 in 1950. Projects of physical improvement recently completed are a new Engineering building and a 6,000 seat addition to the football stadium including a modern pressbox. A huge Memorial Gymnasium and a Men's Quadrangle (of which 3 dormitories are already in use) are current projects.

Under Chancellor Branscomb the University has moved forward in the field of international education with the establishment of a Brazilian Institute and with official on-the-spot studies of European rehabilitation problems.

Enrollment for Vanderbilt Fall term of 1951-52 is approximately 2,935 students distributed among the seven colleges of the university in this manner: Arts and Science 1,600, Engineering 500, Graduate 230, Medicine 205, Law 175, Nursing 125, and Religion 100. The male-female ratio in the College of Arts and Science is four to one.





## **TENSULATE MINERAL WOOL INSULATION**

In batt and granulated form

## **TENSULATE PERLITE**

Lightweight building aggregate  
for plaster and concrete

# **TENNESSEE**

## **PRODUCTS & CHEMICAL**

*Corporation*

NASHVILLE, TENNESSEE

PRODUCERS OF: Fuels, Aromatic Chemicals, Agricultural Chemicals, Wood Chemicals, Metallurgical Products, Tensulate Building Products.

PLANTS: Chattanooga — Rockwood — Nashville — Whitwell — Wrigley — North Little Rock, Ark. — Wichita, Kan.

*Best Wishes*

## **WASHINGTON MANUFACTURING CO.**

NASHVILLE, TENNESSEE

•  
WASHINGTON "DEE CEE"  
WORK CLOTHES

•  
"GUYMONT" and "DEER CREEK"  
SPORT SHIRTS

•  
*Quality Fabrics—Tailored to Give the  
Utmost in Style, Comfort and Service*

## **Southern States Paving Co.**

*Paving, Asphalt, Plant-mix Gravel or  
Stone Surfaces for Driveways,  
Parking Lots and Subdivisions*

**FREE ESTIMATES**

900 44th Ave., N.  
NASHVILLE, TENNESSEE  
Phone 8-1100



# 1951 Vanderbilt University Football Coaching Staff

Edwards

Cochran

Terlep

Clark

Ray

Belichick

Jenkins



**STEPHEN N. (STEVE) BELICHICK**  
Pass Defense

Steve was an outstanding fullback under Bill Edwards both at Western Reserve and with the Detroit Lions just before World War II. He entered the Navy in 1942, played some football at Great Lakes and coached some at Southwestern Louisiana before seeing action in the Atlantic and later Okinawa.

Belichick was Head Coach of football and basketball at Hiram (Ohio) College when Edwards invited him to Vanderbilt in 1949. His on-field responsibility is the defensive backfield.

Struthers, Ohio is Steve's hometown, he is 32 years old, holds an A.B. degree in Economics, a Master's in Physical Education and has been married to a girl he met at Hiram, the former Miss Jeanette Munn of West Palm Beach, Fla., since August, 1950.

**JOHN H. CLARK, JR.**  
Guard Coach

Clark, the captain and all-conference center (AP) of Vanderbilt's 1948 team, has been either a player or coach with the Commodores ever since the Fall of 1942, except for his 3½ years of Navy service.

John worked with the varsity guards and centers in 1949, then took the Freshman entire team in 1950. This year he is working with the guards and centers again. A native of Memphis, and a Navy flyer, John is 28 years old, married to the former Miss Ruth Long of Memphis, and the father of two children, Allan 4 and Deborah Ruth 1.

**BUFORD G. (BABY) RAY**  
Tackle Coach

The giant Ray (6-6 and 245 lbs.), popularly called "Baby," was an outstanding Vanderbilt tackle in 1935-6-7. In professional football he was a regular with the Green Bay Packers for 11 years and was selected an all-pro tackle three seasons. He retired from the pro game and began his coaching career in the Fall of 1949 with the Commodore Freshmen. Last year "Baby" worked with the varsity guards and centers and this season his responsibility is the tackles.

Ray is a native of Nashville, and he played high school football at Central High School before matriculating at Vanderbilt. He was a top student and won ODK honors as well as being one of the most popular persons on the campus. "Baby" is 36 years old, married to his high school sweetheart, the former Miss Jane Burns of Nashville, and has 3 children, Don 9, Christy 6 and Susan 3.

**GEORGE R. TERLEP**  
Backfield Coach and First Assistant

George Terlep who quarterbacked at Notre Dame with Bertelli and Lujack in 1943 and 1944 directs the development of the Commodore backs. After 3 years of Navy service George played 3 seasons of professional football, 1946 and 1947 with the Buffalo Bills and 1948 with the Championship Cleveland Browns, before stepping into coaching. While in training at Great Lakes he quarterbacked the Paul Brown powerhouse which smashed Notre Dame 39-7. Terlep actually began his coaching career under Paul Brown in '48, but worked at it full time first in 1949 as backfield coach at the University of South Carolina. For 1950 Rex Enright made George first assistant at S. C., then during July of this past Summer Coach Edwards persuaded him to come to Vanderbilt.

George continued his studies at Notre Dame between professional football seasons after the war and graduated *cum laude* in 1948, his degree being the B.S. in Business Administration. He is 28 years old and is married to the former Miss Alma Marie Robinson of his hometown, Elkhart, Ind. They have two children—Cynthia Kay 3, and Robert Michael, born only this past August.

**PAUL W. COCHRAN**  
End Coach

Paul Cochran has 8 years of college coaching experience and 4½ years Navy duty in both the Atlantic and Pacific, though only 34 years old. Paul played his football at Oklahoma A. and M. in 1936-37-38, working at End, Fullback and Center. In his Senior year he was captain of his team and all-conference center, despite a chronic knee injury.

After graduation in 1939 Paul coached the Aggie Freshmen for 2 seasons, then went to Cameron State (Okla.) as Head Coach. He coached at Cameron the season of 1941, was taken into service for 4½ years, and then returned to Cameron for the 1946 season. Cochran accepted the backfield coaching job at Centenary for '47 and then transferred to Southwestern Louisiana for 1948 and '49 as first assistant. He came to Vanderbilt in the Spring of 1950, replacing "Red" Cumisky who entered business in Ohio.

Cochran worked with the quarterbacks last year. This year he works the Ends, on both offense and defense. Paul was born in Stephenville, Texas, but claims Ardmore, Okla., as his hometown. He is married to his high school sweetheart, the former Miss Muriel Robinson of Ardmore, and they have a daughter, Karen Kay 4.



*Compliments of*

## AL'S TAVERN

John J. Rotier, Prop.

2413 Elliston Place

## H. E. PARMER CO.

801-7 FIFTH AVE., N.

SHEET METAL WORK  
FURNACE REPAIRING

6-4687

*At Mallernee's*  
*the Difference*  
*is* **QUALITY**

OXFORD CLOTHES

CAVANAGH HATS

BAKER CLOTHES

*. . . for the well dressed man*

**Mallernee's**

ON SIXTH AVENUE

## BINKS RESTAURANT

BINKS BUSHMIAER

1311 Twenty-first Avenue, South  
Nashville, Tennessee

*Fine Foods*

***Blazer Bros***  
**EXPERT RUG CLEANERS**

*Nashville's Pioneer Rug Cleaning Family*

*For complete selection of  
floor coverings, visit  
our modern showroom*



## Johnson Cleaners and Launderers

Main Office and Plant  
Twenty-ninth at West End  
Phone 7-2216

CONVENIENTLY LOCATED BRANCH  
OFFICES AND CITY-WIDE  
DELIVERY SERVICE

*Bachelor Bundle Laundry*

## JOSEPH FRANK & SON

NASHVILLE'S LARGEST SELECTION  
OF WELL-KNOWN BRANDS  
IN MEN'S SPORTSWEAR  
AND CLOTHING

209 Sixth Ave., N. through to Capitol Blvd.

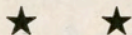


*A Product of*

# NASHVILLE COAL CO., Inc.

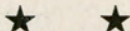
STAHLMAN BUILDING

**Wholesale Distributors**



**INDUSTRIAL TRACTOR  
& EQUIPMENT COMPANY, INC.**

CITY OFFICE 800-824 SIXTH AVENUE, NORTH  
NASHVILLE 3, TENNESSEE



HEATING

TELEVISION

**WHITE  
APPLIANCE CO.**

2716 West End Ave.  
(7-1208)

A MOUNTAIN OF GOOD WILL

IRON FIREMAN

WESTINGHOUSE



**GUARANTY MORTGAGE  
COMPANY**  
*of Nashville*

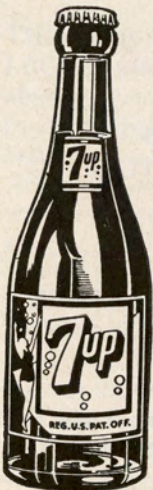
**MORTGAGE LOANS**

**"REALTORS"**

329 UNION STREET  
NASHVILLE 3, TENNESSEE



*Bill Wade*



**CONCESSION PRICES**

*All Sales Over 14c, a 1c Sales Tax*

|                  |     |
|------------------|-----|
| Red Hots .....   | 20c |
| Coca-Cola .....  | 10c |
| 7-Up .....       | 10c |
| Canada Dry ..... | 10c |
| Dr. Pepper ..... | 10c |
| Peanuts .....    | 10c |
| Popcorn .....    | 10c |
| Ice Cream .....  | 10c |
| Programs .....   | 35c |

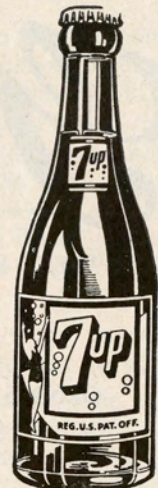
*Please report any overcharge to Bob Polk, Concession Manager*

**LUCKY NUMBER**

A Zenith Portable Radio  
given away at each game.

*See inside  
back cover*

**PERIOD  
FURNITURE CO.  
ADVERTISEMENT**



NOTE: All venders have uniform numbers. Any complaints can only be rectified when having the exact uniform number.

**Tom Harrison**

*... Flowers . . .*

WEST END AT TWENTY-FIRST



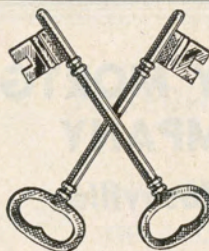
## ALFRED D. SHARP & CO.

INVESTMENT SECURITIES

Third National Bank Building

Nashville, Tennessee

Phone 5-3197



NASHVILLE, TENN.

221 6th Ave., No.

ATLANTA, GA.

239 Peachtree

*Cross Keys  
Restaurants*

*Say It With Flowers*

**Geny's**

*Three Stores*

WEST END AT TWENTIETH



GENY'S DOWN TOWN SHOP

Sixth and Union



HILLSBORO FLOWER MARKET

1708 Twenty-First Avenue, South

## CUTTERS EXCHANGE

901 Demonbreun

- DESKS—Wood and Metal
- CHAIRS—Wood and Metal
- STEEL SHELVING
- FILING CABINETS
- STORAGE CABINETS
- FLUORESCENT FIXTURES
- CHROME OFFICE FURNITURE
- FANS—All Types
- NUMBERING MACHINES
- OFFICE SAFES
- LIBERAL TRADE-IN ALLOWANCES
- HEATING
- AIR CONDITIONING

One of the Most Complete Lines  
of Equipment in the South

VISIT OUR DISPLAY ROOMS  
AIR CONDITIONED  
OPEN SATURDAYS—FREE PARKING

CALL

**5-5661 Thru 5-5667**

## MARTIN A. HAYES & COMPANY

INSURANCE and BONDS



COMMERCE UNION BANK BUILDING

## HILLSBORO PHARMACY

(Hoppe)

(Daniel)

1705 Twenty-First Avenue, South

Phone 7-5465





## 1951 FOOTBALL RULE CHANGES

by Charles W. Tucker, Jr.

**FOOTBALL'S** development, from its early beginnings to the fast-moving, colorful spectacle it is today, has necessitated annual rules changes to meet the various situations which occur.

This year there are no new basic rules. There are merely alterations to improve the present ones. One

rule which was dropped last year has now been put back in the book.

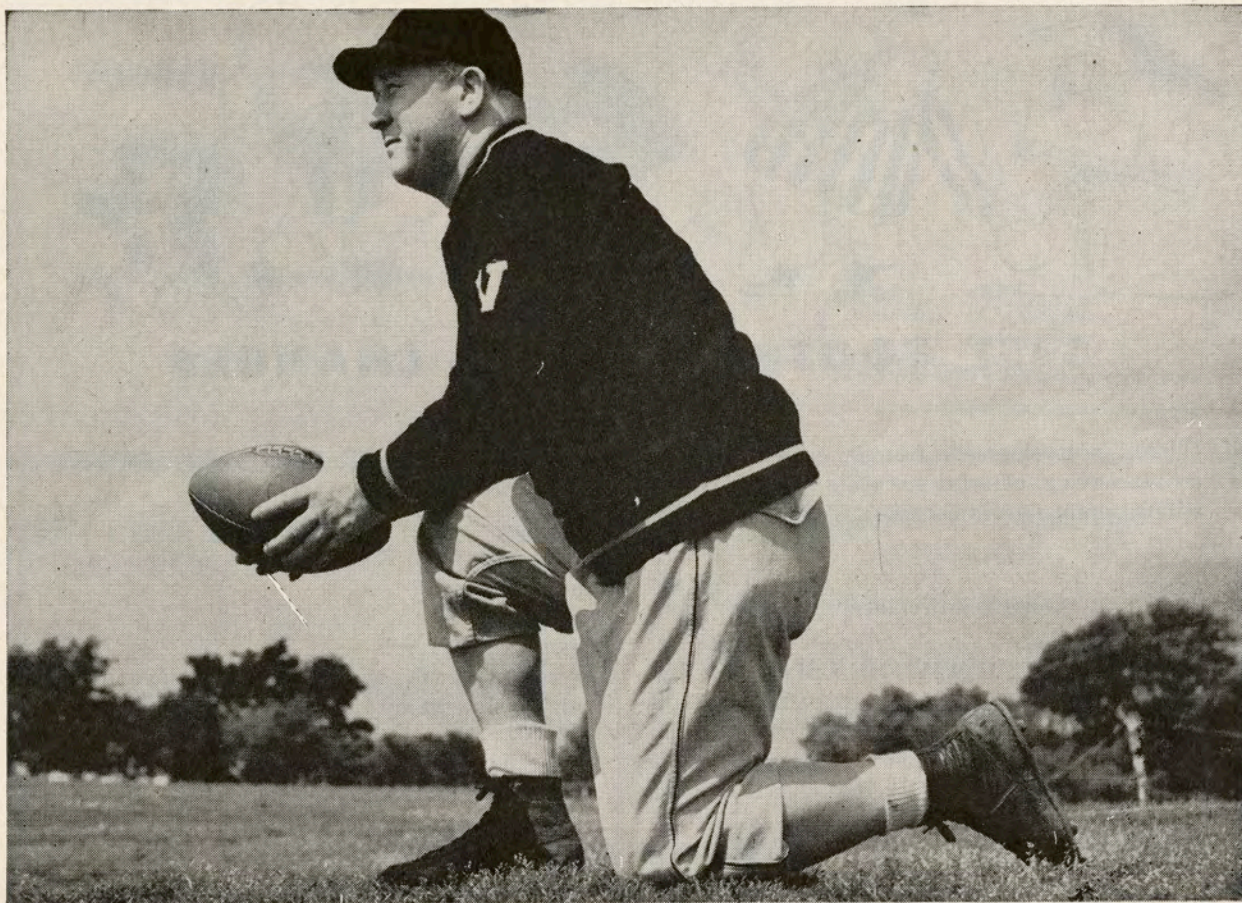
The five changes listed below will bring you up to date on the 1951 Rules Book. Read them over and enjoy the game!

1. **THE FAIR CATCH WILL BE USED BY COLLEGES AGAIN THIS YEAR.** After a year's absence from the Rules Book, the Committee has found it advisable to reinstate the fair catch, in the best interest of protecting the receiving back from vicious down field tackles. This rule has been rewritten and simplified to facilitate its administration by officials. There is no longer the requirement that the player stop within two steps after the catch. The rule is now simple and clear. It merely states, "When a player makes a fair catch, the ball becomes dead where caught and shall belong to the receiving team at the spot where that player first touched it." The signal for a fair catch remains the same; the player making the catch shall raise one hand clearly above his head and wave it from side to side. Under the old rule, the team making the fair catch had the option of putting the ball in play by a free kick or scrimmage. This option is now deleted and the ball must be put in play from scrimmage.
2. **PENALTY FOR ILLEGAL SHIFT NOW REDUCED TO FIVE YARDS.** For several years there has been a very fine distinction between a man illegally in motion and an illegal shift. The penalty for the former being five yards and the latter fifteen yards. Because of the fact that these two violations of the rules were so closely related, and many times confused, the Committee decided to make the penalty for each the same, which is a great step toward consistency and conformity in the rules.
3. **VIOLATION OF SUBSTITUTION RULE NO LONGER PENALIZED AS DELAY-OF-GAME.** One of the most confusing things in football from a spectator's point of view has been eliminated. How often have you seen the defensive team run in a substitute when the ball was ready-for-play, but before the offensive team had even lined up over the ball. The Referee would blow his whistle and step off five yards against the defensive

team. The public address system would announce to the stands that the defensive team was being penalized for delay of game. Now you know and I know, that the game was not delayed by that substitution. Actually, it was a violation of the substitution rule as substitutions cannot be made once the ball is ready-for-play. However, last year any violation of the substitution rule was called illegal delay. This year it will be properly penalized as a violation of the substitution rule.

4. **BALL SHALL NOT BE PUT IN PLAY UNTIL REFEREE SIGNALS READY-FOR-PLAY.** No more will the offensive team be able to pull that old surprise play of lining up on the ball and, without signals or huddle, snap it while the defensive team is still picking itself up off the field. This year the ball must be declared ready-for-play by the Referee before it can be put in play. The Referee will signal ready-for-play by extending his right arm aloft and bringing it down to his side.
5. **STARTING THE CLOCK.** There is one change in the timing of a game this year that will be significant. Last year after any time out, free time out or excess time out, the clock was started as soon as the ball was ready-for-play. Quite often toward the end of a period, with only a few seconds left to play, the team in possession of the ball, trailing by a slight margin, would ask for one of its free times out, just to kill the clock and assure itself of one more play. The Referee would grant the time out, but as soon as the time was up and the Referee had declared the ball ready-for-play, the clock would start and usually run out before the team could put the ball in play. This seemed to work an injustice upon a team which had conserved its times out all during the game for just such an occasion. This year, the Rules Committee has decided that after a free time out has been granted, the clock shall not start until the ball is actually put in play.





## *William M. (Bill) Edwards*

**Director of Athletics and Head Football  
Coach at VANDERBILT UNIVERSITY**

Bill Edwards was born in Massillon, Ohio, probably the nation's most fertile hotbed of football activity. He was center and captain of the 1926 state high school championship team at Massillon, which was quarterbacked by Paul Brown now coach of the professional champions, the Cleveland Browns.

Both Big Bill and Little Paul turned down scholarships at huge Ohio State to continue football and pursue their general education at smaller colleges. Brown transferred to Miami while Edwards chose Wittenberg at Springfield, Ohio. Edwards made line-backing history at Wittenberg, made all-conference for 3 years and captained the team in both his Junior and Senior seasons before graduating with a B.S. in Education in 1931.

Edwards coached the high school team at Springfield for a year, then the team at Fostoria, Ohio before Sam Willaman, Head Coach at Western Reserve, chose him as an assistant in 1934. Willaman died the next year, and Edwards was appointed head coach. During the six years following Big Bill's teams won 49, lost 6 and tied 2. Three of those Western Reserve teams were undefeated, and the last one whipped Arizona State 28-13 in the 1941 Sun Bowl game. It was the Cleveland school's most prosperous era.

The Detroit Lions grabbed Edwards then and he advanced the team from the cellar of the National Pro League to 3rd place in 1941. After that season he entered the Navy for four years and attained the rank of Lt. Commander. On leaving the Navy, Edwards tried to stay away from coaching by entering the sales field of an athletic equipment business in Cleveland, but when Paul Brown called on him for some help with the Browns' linemen Big Bill was back into full-time coaching before he knew it. He coached the tackles for Paul Brown during the two undefeated seasons of 1947 and 1948, and then came to Vanderbilt in February of 1949 to replace Red Sanders who had transferred to UCLA.

Edwards introduced the "T" formation to Vanderbilt and his 1949 team won five while losing five (4 and 4 in conference games) to place 7th in the SEC. In 1950 his Commodores again placed 7th in SEC play with a 3-4 record, but they won 7 games overall, and even led the conference until mid-October.

Coach Edwards is 46 years old, married to his college sweetheart, the former Miss Dorothy Alger of Wilmot, Ohio, and has three children—Bill 19, Jane 17 and Mary 9.



*No Matter Where You're Staying . . .  
Welcome*

Members of  
**NASHVILLE HOTEL  
ASSOCIATION**

|                      |  |
|----------------------|--|
| ALLEN.....           | Sam Allen, <i>Manager</i>                |
| ANDREW JACKSON.....  | Leon Womble, <i>Manager</i>              |
| ANSLEY.....          | F. A. Wilson, <i>Manager</i>             |
| CLARKSTON.....       | Walter Dearman, <i>Manager</i>           |
| HERMITAGE.....       | Ed Doty, <i>Manager</i>                  |
| JAMES ROBERTSON..... | George Thomas, <i>Manager</i>            |
| MAXWELL HOUSE.....   | Frank M. (Pete) Woods, <i>Manager</i>    |
| MEMORIAL HOTEL.....  | Wm. (Bill) Pritchett, <i>Manager</i>     |
| NOEL.....            | Ben Bass, <i>Manager</i>                 |
| SAM DAVIS.....       | J. W. Pritchett, <i>Manager-Director</i> |
| SAVOY.....           | Fred Johnson, <i>Owner-Manager</i>       |
| TULANE.....          | Royal Coats, <i>Manager</i>              |

NASHVILLE, TENNESSEE



---

---

# ***Dr·Pepper***



Captain Bob Werckle, End Malcolm Cook and Center Bob Farris relax after the game with Dr. Pepper.

*Athletes know . . . .*

*Nothing* PICKS YOU UP LIKE **DR. PEPPER**



# CAPITOL *Engraving* COMPANY

The South's Foremost College Annual Engravers

807 CLARK PLACE

TELEPHONE 6-5652

## *Commodore Champions*

During the 30 years that Vanderbilt was a member of the Southern Intercollegiate Athletic Association (S.I.A.A.), from 1893 through 1922, the Commodores' record was worthy of a claim to the championship no less than 17 times. Thrice in the nineties, 1893, '94, and '97; then from 1901 straight through 1908; knocked off by Sewanee in 1909, then back on top for 1910, '11 and '12; slipped in 1913 and '14, then won out again in '15; missed out during the war years, then were undefeated in both 1921 and '22.

William J. (Cap) Keller (Vanderbilt Medical student) was Coach and Captain of the 1893 team, Henry W. Thornton (Pennsylvania) coached the 1894 group (and was paid for it, to set a precedent), Robert Acton (Harvard, worked them in 1901 and 1902, and then J. R. Henry (Chicago) for 1903 be-

fore dynamic Dan McGugin moved in from Michigan in 1904 for 30 years of top-flight tutoring.

In the old Southern Intercollegiate Conference (now called the Southern Conference), of which Vanderbilt was a member from 1923 through 1932, however, the Commodores were champions outright in 1923 and tied Georgia Tech and Tennessee for the honor in 1927. Dan McGugin was head coach throughout this period.

Vanderbilt has not won a Southeastern Conference football championship since the league began operating in 1933. The closest the Commodores have come to winning the crown was in 1935 when Ray Morrison's team won five games and lost one within the conference. L.S.U., who beat Vanderbilt 7 to 2 that season, was undefeated in five games of SEC play.



## *Wilson WR is Top Choice with Coaches and Players Everywhere*

The famed Wilson WR long has been the favorite ball on the nation's gridirons—top choice with leading school, college and pro teams. That's because this great ball is designed for the faster, wide-open game of today—with specially tanned leather that insures better ball handling.

*It's Wilson Today in Sports Equipment*



# Painting



## Skilled Craftsmen

- INTERIOR, EXTERIOR CONTRACTING
- SPRAY PAINTING—INDUSTRIAL, RESIDENTIAL
- CONCRETE RESTORATION, STEAM CLEANING

*Member of Painting and Decoration Contractors of America*

**LET US ADVISE YOU ON YOUR PAINTING**

*We are Equipped to Render a Higher Type of Service to  
the Better Homes and Offices*

Phones 42-6586, 42-6587

1009 Pearl Street

## HAROLD W. MOORE & SON

# RENT-A-CAR

FOR BUSINESS OR PLEASURE

*All Latest Deluxe Models*  
Chevrolets — Fords — Plymouths

RENT BY HOUR, DAY, WEEK, YEAR  
RADIO EQUIPPED IF DESIRED  
CONVERTIBLES AND STATION WAGONS  
AUTOMATIC TRANSMISSIONS

ALL TYPE TRUCKS

*Moving Vans — Commercial Vans*  
*Flatbed Stakes — Pickups — Panels*

Rented by Hour, Day, Week  
We Also Lease by Year  
One Truck or a Fleet

# CAPITOL

*car and truck rental co.*

**217 7th Ave. No. (Next to YWCA) 5-4147**



DRINK

*Coca-Cola*

*add Zest*

## VANDERBILT LINE-UP (OFFENSE)

### BY POSITION

| LE          | LT          | LG            | C         | RG            | RT          | RE          |
|-------------|-------------|---------------|-----------|---------------|-------------|-------------|
| 84-Kirkland | 77-Darnell  | 52-Wade, D.   | 50-Stone  | 63-Novak      | 70-Werckle  | 83-Roderick |
| 86-Cook     | 75-Billings | 67-Philpot    | 53-Farris | 64-Taylor, L. | 76-Robinson | 87-Hawkins  |
|             | 72-Roberts  | 64-Taylor, L. | 54-Golden |               | 72-Roberts  |             |

### QB

12-Wade, B  
13-DeMain  
10-Holmes  
14-Shelton

### LH

23-Foster  
40-Ray  
22-Fails  
26-Cappelletti

### FB

44-Allen  
43-Dodd  
42-Newman  
40-Ray

### RH

33-Duncan, R.  
32-Lakos  
36-Byers  
34-Drash

## TULANE LINE-UP (DEFENSE)

### BY POSITION

| LE           | LT          | LG              | RG         | RT           | RE             |
|--------------|-------------|-----------------|------------|--------------|----------------|
| 84-Kibodeaux | 74-Fugler   | 62-Kleinschmidt | 78-Helluin | 72-Housepian | 82-Kirkpatrick |
| 90-Bowman    | 71-Petroski | 65-Comeaux      | 69-Spollen | 75-Teeuws    | 89-Thompson    |
| 88-Pounders  | 73-Zapalac  | 67-Johnston     | 60-Cummins | 77-Rey       | 90-Bowman      |

### LB

53-Robelot  
83-Pittman  
21-Brignac

### LB

55-Camp  
42-Doyle  
21-Brignac

### LH

33-Daigle  
17-Clement  
44-Wall

### S

14-Kennedy  
40-McGee  
23-Weidenbacher

### RH

24-Kingery  
15-Batson  
44-Wall

THE COCA-COLA BOTTLING WORKS, 1527 Church Street, Nashville, Tenn.



# OFFICIALS

Referee—E. D. (Red) Cavette (Southwestern)  
 Umpire—W. W. (Pop) Patterson (Auburn)  
 Linesman—R. S. Caldwell (Miss. State)  
 Judge—W. R. (Bill) Bentley (Georgia)  
 Clock Operator—Paul Sprayberry (Georgia Tech)

## Vanderbilt Squad

| No.             | Name            | Age | Ht.   | Wt. |
|-----------------|-----------------|-----|-------|-----|
| QUARTERBACKS    |                 |     |       |     |
| 10              | Holmes '55      | 18  | 5'10" | 165 |
| 12              | Wade, B. '52    | 21  | 6'2"  | 202 |
| 13              | DeMain '54      | 19  | 5'11" | 177 |
| 14              | Shelton '53     | 20  | 6'2"  | 198 |
| LEFT HALFBACKS  |                 |     |       |     |
| 20              | Edwards '54     | 19  | 5'9"  | 165 |
| 22              | Fails '53       | 20  | 6'2"  | 188 |
| 23              | Foster '53      | 20  | 5'9"  | 174 |
| 24              | Lovelace '53    | 21  | 5'10" | 174 |
| 25              | Ewashko '55     | 19  | 6'0"  | 185 |
| 26              | Cappelletti '55 | 18  | 5'8"  | 160 |
| RIGHT HALFBACKS |                 |     |       |     |
| 30              | Gleisner '53    | 21  | 6'0"  | 170 |
| 32              | Lakos '53       | 19  | 6'0"  | 185 |
| 33              | Duncan, R. '54  | 20  | 6'0"  | 179 |
| 34              | Drash '53       | 20  | 5'9"  | 178 |
| 35              | Duncan, B. '55  | 19  | 6'2"  | 176 |
| 36              | Byers '55       | 18  | 5'11" | 170 |
| FULLBACKS       |                 |     |       |     |
| 40              | Ray '55         | 18  | 5'10" | 185 |
| 42              | Newman '54      | 19  | 6'0"  | 188 |
| 43              | Dodd '54        | 19  | 6'1"  | 180 |
| 44              | Allen '53       | 19  | 6'0"  | 180 |
| 45              | Henley '54      | 19  | 6'0"  | 172 |
| CENTERS         |                 |     |       |     |
| 50              | Stone '54       | 18  | 6'1"  | 200 |
| 52              | Wade, D. '53    | 20  | 6'2"  | 193 |
| 53              | Farris '54      | 19  | 6'2"  | 195 |
| 54              | Golden '53      | 21  | 6'1"  | 185 |
| 55              | Papuchis '55    | 18  | 6'1"  | 175 |
| GUARDS          |                 |     |       |     |
| 60              | Cheadle '53     | 21  | 6'1"  | 205 |
| 63              | Novak '54       | 20  | 5'11" | 195 |
| 64              | Taylor, L. '53  | 23  | 6'2"  | 175 |
| 65              | Hall '55        | 18  | 5'10" | 180 |
| 66              | Goodall '55     | 20  | 5'11" | 185 |
| 67              | Philpot '52     | 21  | 6'1"  | 195 |
| 68              | Keese '52       | 24  | 6'2"  | 205 |
| TACKLES         |                 |     |       |     |
| 70              | Werckle '52     | 22  | 6'3"  | 215 |
| 72              | Roberts '54     | 18  | 6'4"  | 227 |
| 73              | Watson '55      | 18  | 6'3"  | 215 |
| 74              | Ferguson '54    | 19  | 6'2"  | 200 |
| 75              | Billings '53    | 20  | 6'4"  | 217 |
| 76              | Robinson '53    | 20  | 6'3"  | 215 |
| 77              | Darnell '52     | 22  | 6'2"  | 213 |
| 78              | Waddey '55      | 18  | 6'2"  | 200 |
| ENDS            |                 |     |       |     |
| 80              | Taylor, B. '53  | 21  | 6'1"  | 185 |
| 82              | Hines '53       | 20  | 6'0"  | 180 |
| 83              | Roderick '53    | 20  | 6'0"  | 195 |
| 84              | Kirkland '52    | 21  | 6'5"  | 196 |
| 86              | Cook '53        | 20  | 6'2"  | 188 |
| 87              | Hawkins '54     | 19  | 6'3"  | 195 |
| 88              | Miron '55       | 18  | 6'2"  | 195 |

SCIENCE  
 DISCOVERED IT  
 YOU CAN  
 PROVE IT-

"NO UNPLEASANT  
 AFTER-TASTE"

WHEN YOU SMOKE

CHESTERFIELD

MORE COLLEGE MEN AND WOMEN BUY  
 CHESTERFIELD THAN ANY OTHER CIGARETTE

# OFFICIALS

Referee—E. D. (Red) Cavette (Southwestern)  
 Umpire—W. W. (Pop) Patterson (Auburn)  
 Linesman—R. S. Caldwell (Miss. State)  
 Judge—W. R. (Bill) Bentley (Georgia)  
 Clock Operator—Paul Sprayberry (Georgia Tech)

## Tulane Squad

| No. | Name               | Pos. | Age | Ht.  | Wt. | Class |
|-----|--------------------|------|-----|------|-----|-------|
| 12  | Dempsey, Fred      | QB   | 22  | 5-11 | 189 | Jr.   |
| 14  | Kennedy, Lester    | QB   | 19  | 5-11 | 160 | Soph. |
| 15  | Batson, Alvis      | FB   | 22  | 6-1  | 190 | Jr.   |
| 17  | Clement, Pete      | QB   | 19  | 5-10 | 165 | Soph. |
| 21  | Brignac, Donald    | RHB  | 21  | 5-9½ | 181 | Jr.   |
| 23  | Weidenbacher, R.   | RHB  | 19  | 6-0  | 160 | Soph. |
| 24  | Kingery, Ellsworth | RHB  | 22  | 5-11 | 178 | Sr.   |
| 28  | Bailey, Roy        | RHB  | 22  | 5-10 | 180 | Jr.   |
| 33  | Daigle, Charles    | FB   | 24  | 5-9  | 179 | Sr.   |
| 38  | Pratka, Henry      | LHB  | 23  | 6-1½ | 185 | Jr.   |
| 40  | McGee, Max         | LHB  | 19  | 6-3  | 191 | Soph. |
| 41  | Kent, Ronnie       | FB   | 20  | 5-10 | 180 | Jr.   |
| 42  | Doyle, Cecil       | FB   | 23  | 6-0  | 178 | Jr.   |
| 43  | Hymel, Ray         | LHB  | 20  | 5-9  | 158 | Fr.   |
| 44  | Wall, Wayne        | FB   | 19  | 5-10 | 164 | Soph. |
| 46  | Saia, Bob          | FB   | 20  | 6-0  | 190 | Fr.   |
| 50  | Rushing, Paul      | C    | 19  | 6-2  | 180 | Soph. |
| 51  | Burke, Earl        | C    | 20  | 6-0  | 193 | Soph. |
| 53  | Robelot, Alfred    | C    | 19  | 5-10 | 200 | Soph. |
| 55  | Camp, Charles      | C    | 20  | 5-11 | 203 | Soph. |
| 56  | Coates, Charley    | LE   | 18  | 6-3  | 195 | Fr.   |
| 60  | Cummins, George    | RG   | 20  | 6-2  | 235 | Soph. |
| 62  | Kleinschmidt, Art  | RG   | 25  | 5-11 | 220 | Sr.   |
| 63  | Nuss, Bobby        | LG   | 21  | 5-10 | 196 | Jr.   |
| 65  | Comeaux, Tommy     | LG   | 21  | 6-1  | 205 | Jr.   |
| 67  | Johnston, Jimmy    | RG   | 21  | 5-11 | 204 | Jr.   |
| 68  | Behrend, Weldon    | LG   | 22  | 6-0  | 204 | Sr.   |
| 69  | Spollen, Bill      | RG   | 20  | 6-4  | 223 | Soph. |
| 71  | Petroski, Edward   | LT   | 21  | 6-3  | 225 | Jr.   |
| 72  | Housepian, Mike    | LG   | 20  | 6-1  | 220 | Jr.   |
| 73  | Zapalac, Martin    | LT   | 20  | 6-2  | 225 | Soph. |
| 74  | Fugler, Dick       | RT   | 20  | 6-3  | 227 | Sr.   |
| 75  | Teeuws, Len        | LT   | 22  | 6-5  | 220 | Jr.   |
| 76  | Rogas, Gene        | RT   | 22  | 6-2  | 198 | Jr.   |
| 77  | Rey, George        | RT   | 20  | 6-0  | 210 | Jr.   |
| 78  | Helluin, Jerome    | LT   | 22  | 6-2  | 284 | Sr.   |
| 79  | Hazel, Patrick     | RT   | 18  | 6-1½ | 196 | Soph. |
| 81  | Shea, Harold       | LE   | 21  | 6-2  | 180 | Soph. |
| 82  | Kirkpatrick, Gale  | RE   | 21  | 6-2  | 207 | Sr.   |
| 83  | Pittman, Charles   | RE   | 20  | 6-0  | 180 | Fr.   |
| 84  | Kibodeaux, Ferdie  | RE   | 23  | 6-2  | 190 | Sr.   |
| 85  | McElhannon, W. C.  | LE   | 20  | 6-1  | 175 | Jr.   |
| 87  | Davis, J. V.       | RE   | 21  | 6-3  | 196 | Jr.   |
| 88  | Pounders, Lawrence | LE   | 18  | 6-1  | 162 | Fr.   |
| 89  | Thompson, Ray      | LE   | 20  | 6-2  | 173 | Soph. |
| 91  | Bravo, Edward      | LE   | 19  | 5-11 | 175 | Fr.   |



DRINK

*Coca-Cola*

*add Zest*

## TULANE LINE-UP (OFFENSE)

### BY POSITION

| LE            | LT         | LG           | C          | RG              | RT         | RE           |
|---------------|------------|--------------|------------|-----------------|------------|--------------|
| 85-McElhannon | 75-Teeuws  | 68-Behrend   | 51-Burke   | 67-Johnston     | 79-Hazel   | 84-Kibodeaux |
| 89-Thompson   | 78-Helluin | 63-Nuss      | 57-Huggins | 62-Kleinschmidt | 74-Fugler  | 91-Bravo     |
| 81-Shea       | 73-Zapalac | 72-Housepian | 50-Rushing | 60-Cummins      | 53-Robelot | 83-Pittman   |

### QB

12-Dempsey  
17-Clement  
14-Kennedy

### LH

40-McGee  
43-Hymel  
44-Wall

### FB

41-Kent  
46-Saia  
15-Batson

### RH

23-Weidenbacher  
28-Bailey  
24-Kingery

## VANDERBILT LINE-UP (DEFENSE)

### BY POSITION

| LE            | LT          | LG         | RG         | RT          | RE          |
|---------------|-------------|------------|------------|-------------|-------------|
| 80-Taylor, B. | 75-Billings | 67-Philpot | 68-Keese   | 70-Werckle  | 82-Hines    |
| 88-Miron      | 72-Roberts  | 52-D. Wade | 63-Novak   | 72-Roberts  | 87-Hawkins  |
| 86-Cook       | 73-Watson   | 65-Hall    | 66-Goodall | 76-Robinson | 83-Roderick |

### LB

54-Golden  
42-Newman  
43-Dodd

### LB

53-Farris  
50-Stone  
55-Papuchis

### LH

32-Lakos  
25-Ewashko  
20-Edwards

### RH

44-Allen  
45-Henley  
35-Duncan, B.

### S

30-Gleisner  
86-Cook  
34-Drash

THE COCA-COLA BOTTLING WORKS, 1527 Church Street, Nashville, Tenn.





# SOUTHERN BEER CO.

1000 Fourth Avenue, North

Nashville, Phone 5-5765

**Cook's**  
GOLDBLUME  
THE BEST **BEER** ON EARTH



TWENTY-FIRST AND CAPERS AVENUES



*Compliments of*

**McDOWELL**  
GENERAL TIRE CO.

"Passenger Tire Headquarters"

15th and Broad

Phone 5-6464

*Glenn*  
*Bainbridge*

**FIT FOR A  
KING  
COFFEE**

**FAVORITE FOR  
OVER 53 YRS.**



SOLD ONLY AT H. G. HILL STORES

**TENNESSEE GLASS CO.**

Second Avenue and Church

6-5634

*Auto Glass Installed*

*Compliments of*

**DRAUGHON'S  
BUSINESS COLLEGE**





Ted Kirkland

For the Best of Everything . . .

IT'S STILL

# The Brass Rail Stables

Printer's Alley

Between 3rd and 4th off Union

STEAKS

CHOPS

CHICKEN

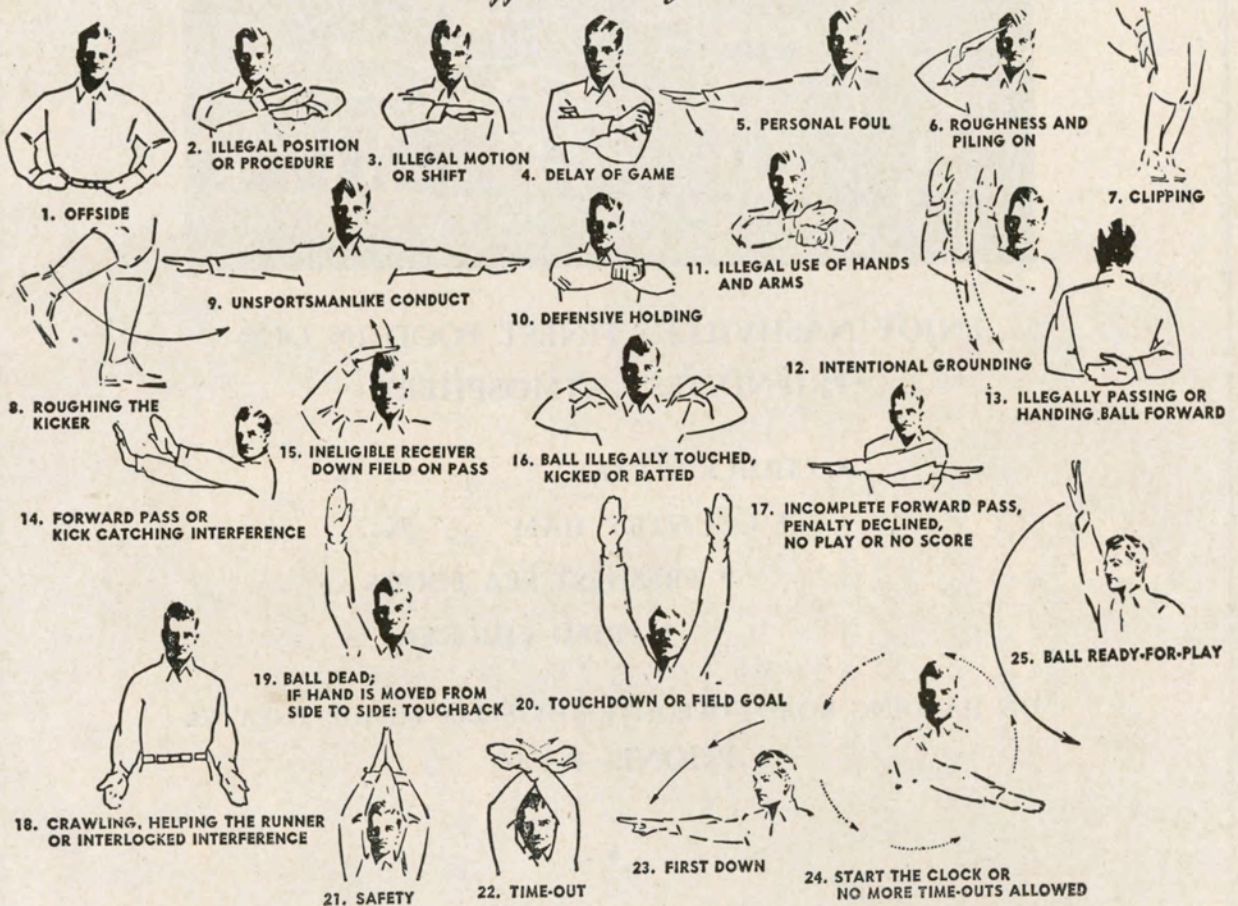
SEA FOOD

Room for Private Parties

Phone 6-9525

HELEN NOLAN

## Officials' Signals



NEIL PARTS REBUILDERS

Shock Absorbers, Clutch Pressure  
Assemblies Rebuilt and Guaranteed

Auto, Truck, Tractor, and Diesel Cylinder  
Heads Exchanged or Reconditioned

*Build with Brick*



# JIMMY KELLY'S

## 216



ENJOY NASHVILLE'S FINEST FOOD IN OUR  
FRIENDLIEST ATMOSPHERE

- CHOICE STEAKS
- COUNTRY HAM
- FRESHEST SEA FOODS
- FRIED CHICKEN

ON HARDING ROAD—OPPOSITE THE BELLE MEADE THEATRE  
PHONE—8-3090

*Before and After the Game Visit*

## 216 DINNER CLUB

*Serving Luncheon and Dinner*

STEAKS — CHICKENS — COUNTRY HAM

216 EIGHTH AVENUE, NORTH

PHONE 6-9862



# When Vandy Starts to Fight

(The Dynamite Song)

Words and Music by  
FRANCIS CRAIG  
(Class of '24)



Dy - na - mite, Dy na - mite, When

VAN - DY starts to fight.

Down the field with blood to yield, If

need be, save the shield. If

victory's won, when battle's done, Then

VAN - DY'S name will rise in fame. But

Win or lose, The Fates will choose, And VAN - DY'S

game will be the same. Dy na

mite, Dy na mite, When VAN - DY

starts to fight fight



# 1951 Vanderbilt Varsity Squad



Front row, from left—Tom Robinson, Landon Taylor, Allan Drash, R. C. Allen, Dick Foster, Mickey Lakos, Jim Lovelace, Captain Bob Werckle, Bill Wade, Lanar Keese, Dick Philpot, John Cheadle, Larry Stone, Bob Taylor and Bob Hines. Second row—Ken Roberts, Walter Waddey, Erwin Jones, Bob Cappelletti, Bobby Goodall, Doug Holt, Roy Duncan, Tex Shelton, Jim DeMain, Frank Ewashko, Andy Novak, Jimmy Ray, Ben Roderick, Terry Falls, Ted Kirkland, Malcolm Cook, Charley Hawkins, Alex Darnell. Third row—Bill Edwards, Don Bailey, Danny Byers, Roy Keathley, Bob Kettlehut, Dick Kasper, Billy Duncan, Bob Farris, Jimmy Holmes, Jason Papuchis, Jack Miron, Paul Billings, John Dodd, Wimpy Golden, Don Wade, Chuck Newman, Jimmy Stevens, Buck Watson, Earl McCaslin, and Morris Ferguson.



## FREE . . . to Lovers of Fine Food!

*"The Story of Warner's Southern  
Spice Round"*

If you've ever eaten luscious, taste-tantalizing Southern SPICE ROUND, you'll want this lovely book that tells its history. If you've NEVER tasted this Tennessee Taste Treat, this FREE booklet will tell you What It Is, How It's Made, and How Delightful It Is To Taste. Write for your free copy today.

**ALEX WARNER & SON**

Phone 5-3139

36-V City Market, Nashville, Tenn.

Phone 6-8177

*The*

**DRAKE HOTEL COURTS**

*Four Minutes South of Nashville on  
Highway 41-70S*

420 Murfreesboro Road

Nashville, Tenn.

**Brings Every Station  
Closer!**

**Arvin**  
**DUAL-POWER TV RADIO**

*Visible Value    Velvet Voice*

**Makes Every Picture  
Clearer!**

*Distributed by*

**MOORE-HANDLEY HARDWARE  
CO., INC.**

492-98 Craighead Street

Nashville 1, Tennessee

Established 1882

**Football's  
Famous  
Favorite!**



**THERE IS NO SUBSTITUTE FOR  
THE "KNOW-HOW" BUILT  
INTO EVERY R5 FOOTBALL!**

The 1951  
Rawlings R5  
Football is the  
result of almost 53  
years of improving  
the leather football.  
Thru the years,  
improvement after  
improvement has been  
made until the R5 Football  
that will see action in  
1951 is the finest football  
that can be made.

**RAWLINGS MANUFACTURING CO.**

*"The Finest In The Field"*

ST. LOUIS 3, MO.

**Cumberland River Sand  
Company**

*Incorporated*

**SPECIFICATION SAND  
AND GRAVEL**

ELEVATOR AND YARDS

10 Fatherland St.

Nashville, Tenn.

*Compliments of*

**HOME FEDERAL**

SAVINGS AND LOAN ASSOCIATION

308 Union Street

Telephone 42-6343



Established 1911

TELEPHONE  
5-6404



Office and Plant  
214  
WOODLAND  
STREET

*Carpets Layed, Cleaned, Sized and Repaired  
Upholstering Cleaned*

NASHVILLE, TENNESSEE

## *The Stadium*

Dudley Field is the oldest football stadium in the Southeastern Conference. Built two blocks south of the main campus in 1922, the horseshoe-shaped, concrete-tiered structure was the most magnificent stadium in the South at that time.

On October 14, in a game with the University of Michigan, football power of the North, it was dedicated to and named for Dr. William L. Dudley, Dean of the Vanderbilt Medical College from 1895 to his death in 1914.

Dr. Dudley had been the one outstanding academic leader in Southern football, had organized the Southern Intercollegiate Athletic Association in 1893, had been a chief advocate of the change in scoring which allowed touchdowns more points than field goals, was known to those who were carrying

on in his footsteps as "the father of clean athletics."

Professor Charles S. Brown, President of the Vanderbilt Athletic Association (1920-25), the body which had planned the new stadium since 1920, read these lines at the dedication ceremony: "To William Lofland Dudley( dean of Southern athletics, scholar, gentleman, and friend, this ground is dedicated and, as Dudley Field, is consecrated to the use of Vanderbilt and her sons forever."

In November of 1948 plans were announced for enlarging the seating capacity, and during the summer of 1949 the West Side addition was installed. The new construction, all pre-fabricated steel with redwood seats, increases the capacity by 5,500 and includes a modern press box. Present capacity is 27,901.

## *Fifty Short Years*

"Fifty long years!" says the pessimist.

"Fifty short years!"—That's the way it's said by the optimists, the young in spirit. That's the way we say it here.

We are just finishing our first half century this year, . . all under our original management. We've done very well up to now, and we're headed for bigger things in the years ahead.

**THE NATIONAL LIFE AND ACCIDENT INSURANCE CO.**  
NASHVILLE, TENNESSEE



*Best Wishes from*

## THE NASHVILLE BASEBALL CLUB

THEO L. MURRAY, President  
LARRY GILBERT, Vice-President  
J. M. FLANIGEN, Sec.-Treas.  
C. M. GILBERT, Asst. Gen. Mgr.

## COLLEGE PHARMACY

J. R. FORD  
1305 Hillsboro Road  
Nashville, Tenn.

C. J. SHELTON  
Phone 7-1312

*Drugs—Toilet Articles—Quality Service*

THOS. P. STEPHENS, PRESIDENT

# Humbrecht, Langlois & Johnson Company

MANUFACTURERS OF FINE WOODWORK



VISIT OUR BEAUTIFUL DISPLAY ROOM

FEATURING

Beautiful Weldwood and Ponderosa Pine Paneling  
in many Species and Finishes

- Plywood
- Cabinets
- Sash
- Frames
- Moulding
- Awning Windows
- Storm Windows
- Roddiscraft Doors
- Mengel Flush Doors
- Weldwood Fire-Resistant Door
- Micarta Sink Tops
- Interior Trim
- Better Bilt Garage Doors
- Various Items of Fine Woodwork

212-220 SHELBY AVENUE

PHONE 6-3696

## HERMITAGE LAUNDRY

*The Home of*  
QUALITY AND SANITATION

●  
Phone 6-1184

## RIDE

*YELLOW or JOLLY Cabs to*  
*the Football Game*

●  
PHONE 6-0101



formula  
for  
finesse . . .

*B*UYERS OF PHOTO-ENGRAV-  
ING who demand the finest in re-  
production of photographic and  
art subjects rely on the skill and  
integrity of . . .

*Gulbenk*  
ENGRAVING COMPANY  
NASHVILLE

N  
A  
T  
HATS CAPS  
L  
E  
Y

SPORTING GOODS  
and

HARDWARE

•  
KEITH-SIMMONS

UNION STREET

CHARLIE WELLS

says

*Drink Blatz or Stag Beer*

*Ambrose Printing Co.*

162 Fourth Avenue, North

NASHVILLE, TENNESSEE

B. H. STIEF JEWELRY  
CO.

*Jewelers of Distinction to People of  
Discrimination Since 1858*

214-16 Sixth Avenue, North





*Jones*



*Sanders*



*McGugin*



*Morrison*



*Edwards*

## *The Team's History*

Nickname—Commodores  
School Song—Alma Mater  
Stadium—Dudley Field

Colors—Black and Gold  
Fight Song—Dynamite  
Capacity—27,901

Football arrived at Vanderbilt in November of 1890 in the form of a challenge from the University of Nashville. The student body with the full sanction, indeed the outright encouragement, of Dr. William L. Dudley, president of the Athletic Association, accepted the challenge. Elliott H. Jones was appointed captain and coach, a team was organized, and on Thanksgiving Day a tart 40 to 0 defeat was handed the challengers.

In 1891 Vanderbilt played four football engagements, filling home and home agreements with the University of the South at Sewanee and with George Washington University at St. Louis. The schedule was extended to eight games in '92 and formal football became a fixture at the institution.

After the season of 1892, Elliott Jones' last year, William J. (Cap) Keller was chosen captain and coach. The 1893 team won six games while losing only one and laid claim to the Southern Championship.

In 1894 the school hired a regular salaried coach, Sir Henry Thornton, from the University of Pennsylvania, later knighted in the British Empire. Thornton was followed in the coaching post by Charles L. Upton, also of Pennsylvania, Robert Acton of Harvard, James L. Crane of Princeton, Walter H. Watkins, also of Princeton, and J. R. Henry of Chicago before the immortal Dan McGugin came to Vanderbilt from Michigan in 1904.

Coach McGugin made the Commodores supreme in the South and rounded out 30 years of inspiring teaching with 13 championships, even 200 victories against 57 losses and 18 ties, and saw his teams score 6,812 points against their opponents, 1,692.

Dan McGugin's immediate successor was his greatest quarterback, Ray Morrison. Morrison, coaching the seasons of 1935-39, replaced grand old Dan's punt pass, and prayer system with an aerial circus that flashed brilliantly across the Southern horizon, winning acclaim too in the East, and missing the Rose Bowl by only a field goal in '37 before losing effectiveness.

H. R. (Red) Sanders, who played under McGugin in 1924-26, returned as Head Coach in 1940 when Morrison moved to Temple. His application of the single wing system pushed the Commodores to national prominence in 1941 and again in 1948 before he transferred to UCLA. Sanders coached the seasons of 1940, '41, '42, '46, '47, and '48. While he was in the Navy football was discontinued (formally) for the 1943 and '44 seasons and in 1945 was re-opened with Doby Bartling (Mississippi) Acting Head Coach.

William M. Edwards (Wittenberg, '31), known throughout Midwestern and professional football as "Big Bill," was chosen to succeed Sanders in 1949. He introduced the T formation to Vanderbilt and in his first season won 5 and lost 5. His 1950 team won 7 and lost 4 as the T-based passing attack, spearheaded by the Bill Wade-Bucky Curtis combination gained more yardage (1,628) than any previous Commodore air attack.



## THUMBNAIL SKETCHES

Tenn. . . . Dobyns-Bennett HS . . . Basketball and Baseball letterman . . . Pre-Medical student.

**BYERS, Daniel Lee (Danny)**—Danny Boy Byers was the outstanding high school back of South Carolina last year and he may move right into a varsity spot in SEC football. He's fast, a fair blocker, and a boy who's willing to learn. Byers will be a ball player, perhaps before this season is out.

Freshman . . . 18 . . . 5-11 . . . 170 . . . Greenville, S. C. . . . Parker HS . . . "B" student there . . . Track letterman (dashes) . . . Studying Electrical Engineering.

**DUNCAN, William Erastus, Jr. (Billy)**—Bill Duncan (no relation to Roy) is a tall slender Freshman being groomed for pass defense duty. He's agile and aggressive and may see considerable action during this first season. A blocking back in prep school, Billy doesn't mind mixing it up.

Freshman . . . 19 . . . 6-2 . . . 176 . . . Signal Mountain, Tenn. . . . Baylor School . . . Track and Basketball letterman . . . Bus. Adm. major, Geology minor.

## FULLBACKS

**ALLEN, Rives Calvin, Jr. (R. C.)**—R. C. Allen, the Arkansas Traveler of Vanderbilt's backfield, bursts through the line with an amazing amount of power for his 180 pounds. He's plenty rough as a pass defense man too. In 1950 Allen played only in the shadow of Tabor and Davidson as far as ball-carrying was concerned, but he became the first-string defensive right halfback. For 1951 he's scheduled to be a double-duty performer.

Junior . . . 20 (on Nov. 3) . . . 6 . . . 180 . . .

Blytheville, Ark. HS . . . Team captain and high scorer . . . "B" student at Vandy . . . Psychology is favorite study . . . President of Sophomore class . . . Lists Betsy Ross among ancestors . . . Marine ROTC.

**NEWMAN, Charles B. (Chuck)**—This Sophomore, Newman, is giving Allen a scrap right down the wire for the starting nod at fullback. Not as fast as R. C., but bigger and more powerful, Chuck is a heck of a hard boy to bring down. Definitely a number one man on defense, he backs the line with vicious back-breaking tackles. Newman is a double-duty man even in his first varsity season.

Sophomore . . . 19 . . . 6 . . . 188 . . . Cookeville, Tenn. . . . Central HS . . . Lettered 4 years in High School . . . Studying Social Science . . . Future profession, the FBI.

**DODD, John Spear, Jr.**—John Dodd is fast developing into a real fullback. He has drive, desire, and more speed than is easily apparent. Dodd reminds Commodore followers of Jim Tabor when he takes a pitchout and cuts downfield at full speed. He adds noticeably to the Vanderbilt running game and does all right as a linebacker too.

Sophomore . . . 19 . . . 6-1 . . . 180 . . . LaGrange, Ga. HS . . . Co-captain and high scorer of his team . . . Track dashman . . . Pre-Medical student.

**RAY, Jimmy**—Jimmy Ray, nephew to "Baby" Ray, Tackle Coach of the Commodores, is a fine Freshman prospect. Short, stocky, and carrying tremendous leg power Jimmy runs with a high rate of effectiveness. Definitely a varsityman in his first season, he has made it a four-man race for that fullback post.

Freshman . . . 18 . . . 5-10 . . . 185 . . . Nashville . . . Montgomery Bell Academy . . . Fine baseball player . . . Academic.

## 1951--Vanderbilt University Football Schedule--1951

|                                     |    |             |
|-------------------------------------|----|-------------|
| Sept. 22—Middle Tenn. . . . .       | at | Nashville   |
| *Sept. 29—Auburn . . . . .          | at | Auburn      |
| *Oct. 6—Alabama . . . . .           | at | Nashville   |
| *Oct. 13—Ole Miss . . . . .         | at | Memphis     |
| *Oct. 20—Florida . . . . .          | at | Gainesville |
| H*Oct. 27—Georgia Tech . . . . .    | at | Nashville   |
| Nov. 3—Chattanooga . . . . .        | at | Nashville   |
| N*Nov. 10—Louisiana State . . . . . | at | Baton Rouge |
| *Nov. 17—Tulane . . . . .           | at | Nashville   |
| Nov. 24—Memphis State . . . . .     | at | Nashville   |
| *Dec. 1—Tennessee . . . . .         | at | Knoxville   |

\*Conference

N—Night

H—Homecoming

All home games start at 2:00 p.m. (CST)



*The Home  
of the Original  
Steak and Biscuits*

*Ireland's*

AT THE EDGE  
OF THE CAMPUS  
204 21st Ave., S.

## *Theo. Tafel Co.*

**Physicians and Hospital Supplies**

TENNESSEE'S OLDEST SURGICAL  
SUPPLY HOUSE

*Serving the Doctor for Over 60 Years*

153 Fourth Avenue, North

Phone 5-6658

NASHVILLE 3, TENNESSEE

ALDEN H. SMITH '27

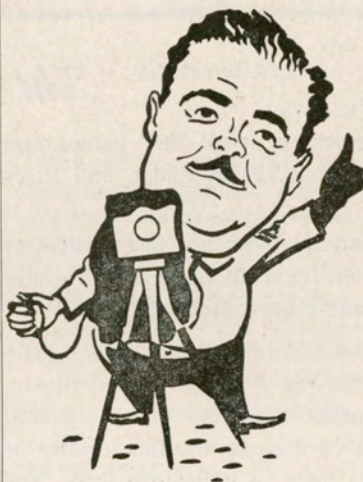
ARTHUR D. REED '26

JOE THOMPSON, JR. '41

*Chartered Life Underwriters*

**NORTHWESTERN  
MUTUAL LIFE**

**HOLD IT!!!**



*for your every  
photographic  
need (including  
the  
photographer)*

SEE BOB GRANNIS AT

**HILLSBORO CAMERA SHOP**

4105 HILLSBORO ROAD

8-5380

8-7851



**S T . B E R N A R D**  
**WASHED COAL**

Try a load next time you order!

**ST. BERNARD COAL COMPANY**

**"Since 1870"**

Phone 6-3101

Office: Arcade



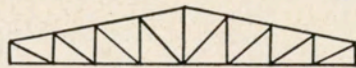
# ENGLERT ENGINEERING COMPANY

805 6th Avenue, North

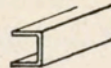
Nashville, Tennessee

## STRUCTURAL STEEL

TRUSSES



CHANNELS



BEAMS



FLAT BARS



ANGLES



General Machine Repair Work

Miscellaneous and Ornamental Iron

### *The Officials*

The five officials working at all SEC games are: Referee, Umpire, Linesman, Field Judge and Electric Clock Operator.

The Referee has general oversight and control of the game. His decision upon all matters, not under the jurisdiction of some other official, is final.

The Referee carries a whistle and his position during scrimmage is behind the team with the ball.

The Umpire has jurisdiction over the equipment, conduct and positions of the players and legality of substitutes. He has a horn to indicate a foul. His position during scrimmage is behind the defensive team.

The Linesman works under the supervision of the Referee. His duties are to watch for tripping after

a kick or forward pass, encroachment upon the neutral zone and players off side. He marks the position of the ball, and checks the numbers of downs. His position is on or near the sidelines.

The Field Judge aids the Referee in decisions involving possession of the ball, interference in connection with catching, securing or possession of the ball beyond the line of scrimmage. His position is from 20 to 30 yards behind the team on the defense and towards the side of the field opposite the Linesman.

The Electric Clock Operator starts and stops the scoreboard clock, the official timepiece for the game, on proper signal from the Referee.

## PITTSBURGH PAINTS

*Paint Right with Color Dynamics!*  
*Paint Best with Pittsburgh Paints*

**HENRY HARDWARE CO.**

2914 West End

Phone 7-3993

**FELTS HARDWARE STORE**

2204 Hillsboro at Blair

Phone 8-0626



# SOUTHEAST TRACTOR & EQUIPMENT CO.

Distributors

TENNESSEE

KENTUCKY

for

## FERGUSON TRACTORS

## FERGUSON SYSTEM IMPLEMENTS

Only the Ferguson System gives you all five of these big advantages:

1. Penetration without excessive implement weight.
2. Both fingertip and automatic hydraulic depth control.
3. Traction without excessive built-in weight.
4. Keeps the tractor's front end down.
5. Automatically protects both implement and tractor when the implement strikes an objection.

P. O. Box 778

Phone 7-3395

Nashville, Tennessee

*"The World's Most Copied Tractor"*

### MISS OLA BELLE WEST

**Ticket Manager**



Petite, industrious Miss West began her work in the ticket office as a seasonal assistant in 1939. She acquired increased responsibilities each year and in the summer of 1947 when Mrs. Rubene Bragg resigned in order to accept a position in the Registrar's office, Ola Belle was asked to take charge of ticket sales.

1951 is Miss West's fifth year of personal headache in trying to stretch the tickets to accommodate all the applicants. She is a native of Nashville, attended Hume-Fogg High School and Peabody College, and was a regular employee of the Bursar's Office before transferring to the Athletic Department.

### ELMORE (Scoop) HUDGINS

**Publicist**



Hudgins is handling the Commodore statistics, photos, programs and news releases for his sixth football season, 1951 being the third on a full-time basis. "Scoop" came to Vanderbilt from Chattanooga, had a year of academic work before World War II, spent 4 years in the Air Force (stateside and India), then on returning to school in April of 1946, began working with sports publicity part time.

Elmore's degree from Vanderbilt is B.A.; he is a member of the Football Writers Assn. and a charter member of the SEC Sports Publicity Assn.

# UNIVERSAL TIRE & APPLIANCE CO., INC.

*Cold Rubber Tires by*

# DAYTON

RECAPPING — ROAD SERVICE

1201 Demonbreun St.

Phone 6-6105



FOR FINE FURNITURE

SEE



Sol Komisar, V. '41

## PEOPLES Furniture Co., Inc.

112-114 THIRD AVE., N.



404-406 BROAD ST.



Max Komisar



Reuben Komisar  
V. '33

## REUBENS Co., Inc.

168-170 THIRD AVE., N.  
AND 189 THIRD AVE., N.

*The Komisars Support the  
Commodores*



# Vandy 20-LSU 13

IN TIGER STADIUM AT BATON ROUGE FOR THE FIRST TIME SINCE 1902

All-America candidate Bill Wade threw touch-down passes to Dick Foster (58 yds.), Ben Roderick (16 yds.) and Roy Duncan (21 yds.) for the victory margin.

All-America candidate Bob Werckle played the full 60 minutes for the second straight time in conference play, and was outstanding all the way.



Vanderbilt's outstanding defensive guard, John Cheadle, is helped from the battlefield by Trainer Joe Worden and Assistant Equipment Manager Jack Whiteaker after examination by Dr. Brandt (Pinky) Lipscomb. Cheadle's badly twisted knee will keep him out of the lineup for 2 weeks.



Commodore R. C. Allen gains 5 yards through the snarling Tiger line in the first quarter. LSU's linebacker West trying for the tackle, Vandy's Ben Roderick (83) coming in to block.

The victory brought joy unrestrained to the hearts of the battle-scarred Commodores. Sophomore Fullback John Dodd (43), who averaged 5.4 yards in 16 carries through the Tigers' mid-section, and Junior linebacker Wimpy Golden (54), who played every minute of defense, head for the dressing room with Coach Edwards. In the background are Freshman Jake Ewashko and Coach John Clark.



Tennessee Photos by Joe Radis





Plan NOW—

to attend the annual

# THANKSGIVING DAY FOOTBALL GAME

Dudley Field, Nov. 22, 2:00

This thrilling contest between the two outstanding teams of the Nashville Interscholastic League is played each year for the special benefit of the

## CHILDREN'S PHYSICAL THERAPY CLINIC of Vanderbilt Hospital

Under the sponsorship of the Nashville Junior Chamber of Commerce and the Coaches of the Interscholastic League.

|                |              |                     |              |          |              |
|----------------|--------------|---------------------|--------------|----------|--------------|
| RESERVED SEATS | ..... \$2.00 | GEN. ADM.           | ..... \$1.00 | CHILDREN | ..... \$0.60 |
|                |              | (pre-game purchase) |              |          |              |

Get Advance tickets in the JCC office at the YMCA building  
or from Slick Welsh at Mallernee's





*for those extra points!*

- Ruggedly smart Scotch Grain
- Weather-sealed storm welt
- Easy-on Moccasin comfort



**Jarman** SHOE STORE  
218 SIXTH AVE. N.

## Greer's Restaurant

Good Food Served in a  
Friendly Atmosphere



*Dick Foster*

*Choice of the Commodores  
For Sunday's Evening Meal*

21st & Garland

**DRINK C.V.**

*It Hits the Spot*







Ben Roderick

AFTER THE GAME

*visit the*

# *Copia Dinner Club*

*Nashville's Smartest*

MEMPHIS HIGHWAY



*Extra Rich! Extra Good!*  
*That's*

## **VELVET ICE CREAM**

Made by Rock City Ice Cream Company in the South's newest and finest plant.  
At the soda fountain and at home, you'll enjoy VELVET in all its delicious flavors.  
Next time, be sure it's VELVET ICE CREAM, the cream of creams.

## **ROCK CITY ICE CREAM CO., INC.**

602 McGAVOCK STREET

NASHVILLE 3, TENN.

### **RHODES, INC.**

316 Union Street  
Nashville, Tenn.

COMPLETE HOUSE FURNISHERS

*Serving the South Since 1875*

**ruby english**  
521 UNION STREET  
NASHVILLE 3, TENN.



*Style Champions in Any Stadium*

# Varsity - Town Clothes

PACEMAKERS FOR SMART AMERICA

Varsity-Town Suits

\$45 ● \$63

Varsity-Town Toppers

\$40 ● \$65

## PETWAY - REAVIS CO.

424-426 Church Street

### *Penalties*

**Loss of 5 Yards:** Violation of scrimmage positions, kickoff formation, neutral zone, attempt to draw opponents off side, illegal tackling, illegal lateral pass, illegal use of hands and arms on defense, crawling, running into kicker, offsides, delaying game, interference before ball is put into play, out of bounds when ball is put in play.

**Loss of 15 Yards:** Clipping, tackling out of bounds, tripping, hurdling, illegal shift, forward pass beyond line of scrimmage touched by an ineligible player, illegal interference by passing team, interfering with attempt to make fair catch, roughing kicker, tackling player who has made fair catch, interlocked interference, illegal use of hands or arms by offensive team, piling on, running or diving into player obviously out of play, unsportsmanlike conduct, illegally going on field, kneeling, intentionally grounding a pass, slugging.

**Loss of a Down:** Illegal lateral pass, illegal forward pass, intentionally grounding a pass (also carries 15 yard penalty), illegal interference by passing team (also carries 15 yard penalty), incomplete forward pass.

**Loss of Ball:** Failure to advance 10 yards in four downs, illegal interference on pass by team on defense, batting free ball forward, kicking free ball, offensive player on kickoff going out of bounds recovering ball.

**Loss of Half Distance:** Foul inside one yard line.

**Disqualification:** Flagrant, unsportsmanlike conduct, slugging, kicking, kneeling, striking on head, neck or face with the heel or back or side of hand, wrist or forearm, flagrant roughing of kicker.

*Serving the Mid-South for More Than a Century with Smart Fashionable*

MEN'S, STUDENTS' AND BOYS' APPAREL  
MISSES' READY-TO-WEAR  
SPORTING GOODS AND ATHLETIC APPAREL  
CAMERAS AND PHOTOGRAPHIC SUPPLIES

1843



1951

*Everything for Correct Sports, Campus, Street, and Formal Wear*



*Meet Me at Melfi's!*

*Italian and American Foods  
Steaks . . . Chops . . . Chicken*

Division Street at Twenty-first Ave., S.

**WE BAG IT  
YOU WAG IT**

**"HARRY'S"**

**1604 Charlotte Avenue**



**LYNN MEADE  
SERVICE STATION**

**CHARLTON ENGLISH**  
*Proprietor*

Harding Road

8-4141

*Compliments of*

**C. F. Rule  
Construction Co.**

**GENERAL CONTRACTORS**

217-13th Ave., N.

Phone 5-2723

Nashville, Tennessee

SEE THE NEW

***Executone***

**INTERCOM**

*Designed for Your Particular Needs*

**SAM WINN, Authorized Distributor**

**Executone  
Speaker Systems Co.**

6th and Main St.

Phone 42-1838

**Barrick**

*Jewelers*

**13 Arcade  
Nashville**



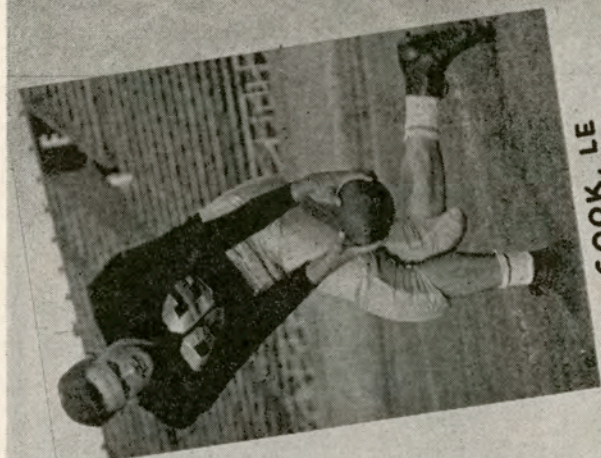
# COMMODORE ENDS



C. HAWKINS, RE TED KIRKLAND, LE



BEN RODERICK, RE



M. COOK, LE

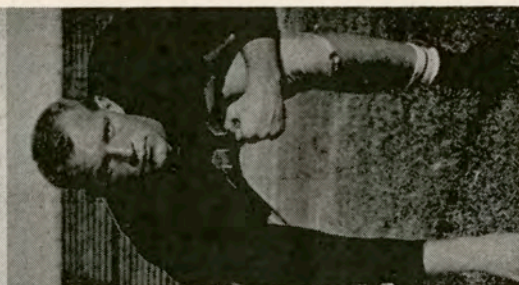


BOB HINES, RE, DEF.



BOB TAYLOR, LE, DEF.

From tackle to sideline their bastion, from goal to goal their gamut; durable on defense, agile on offense; the Greyhounds of the gridiron... the ENDS.



J. MIRON, LE



# *Tulane*

## BACKS AND ENDS



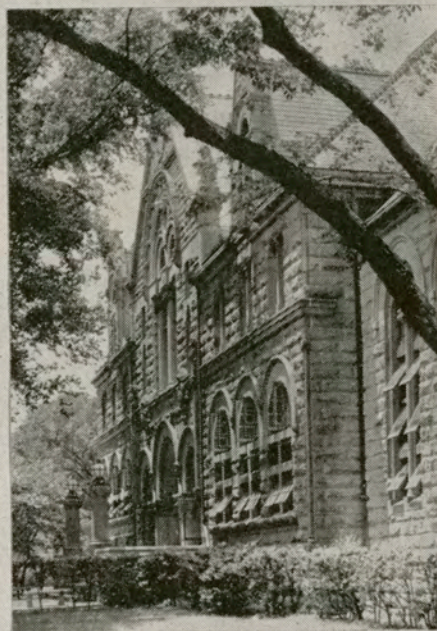
**McLEAN-E**



**KIRKPATRICK-E**



**KENNEDY-B**



*Jilton Hall*



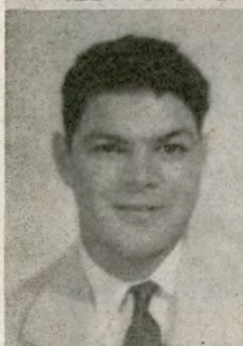
**KEBODEAUX-E**



**DAIGLE-B**



**DEMPSEY-B**



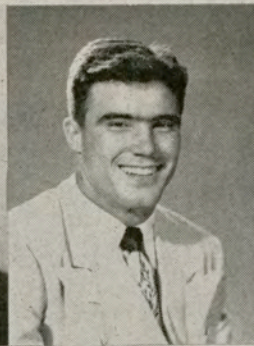
**BRAVO-E**



**McELHANNON-B**



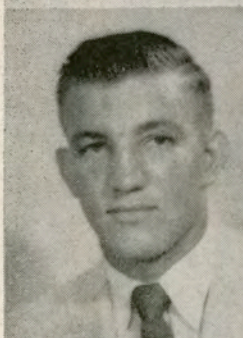
**BAILEY-B**



**KENT-B**



**WEIDENBACKER-B**



**PITTMAN-E**



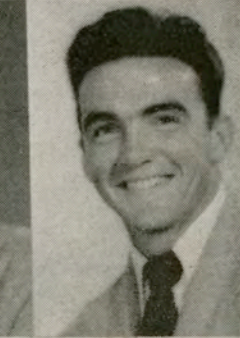
**SHEA-E**



**Mc GEE-B**



**KINGERY-B**



**CLEMENT-B**



portraits  
of  
distinction  
by

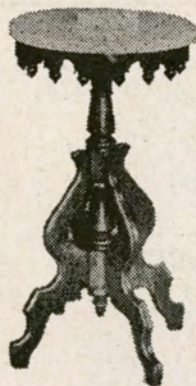
walden s. fabry

*phone 42-5683*

FOR APPOINTMENT

STUDIOS:

149 SEVENTH AVENUE, NORTH



*Tear Drop Table*  
29.95

White marble top—15" dia.  
Base of solid American wild  
cherry or black walnut.

HARLEY HOLT'S  
CHARM HOUSE  
317-19 Broad

### Qualified Service

On Printing and Binding of College  
Theses—Alumnus Publication  
and Catalogs

**PARTHENON PRESS**



OFFICIAL WATCH FOR THIS GAME



*Longines*



*The World's Most Honored Watch*

ACCEPTED AS OFFICIAL WATCH  
FOR TIMING  
CHAMPIONSHIP SPORTS EVENTS  
IN ALL FIELDS ALL OVER THE WORLD

*Product of*  
*Longines-Wittnauer Watch Company*



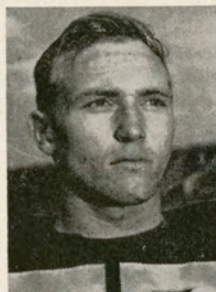


## McKAY-CAMERON CO.

*China, Glass, Silver—Cooking Utensils  
Complete Equipment*

SCHOOLS — COLLEGES  
HOTELS — RESTAURANTS

212 Third Avenue, North  
Phone 4-0579



*Alex Darnell*

## MARCHETTI'S RESTAURANT

19th at West End



*Italian Spaghetti*

*Distributors of*

GRADE A FOOD PRODUCTS

### ANDERSON

---

### FISH & OYSTER CO.

*Incorporated*



QUICK FROZEN

*Frozen Fruits—Vegetables*

412-414 Broad Street

## SCHEFFER'S LUMBER — MILLWORK

*"Be Satisfied"*

Telephones 6-5164—6-5165

First Avenue, North and Taylor Street

QUALITY COAL

COLD STORAGE

## ATLANTIC ICE & COAL CO.

916 Fourth Avenue, North  
NASHVILLE, TENNESSEE

Phone 6-4661

Pure Taste-Free Ice  
Air-Conditioned Refrigerators

## AMERICAN LEGION

POST NO. 5

CLUB HOUSE

118 Ninth Avenue, South

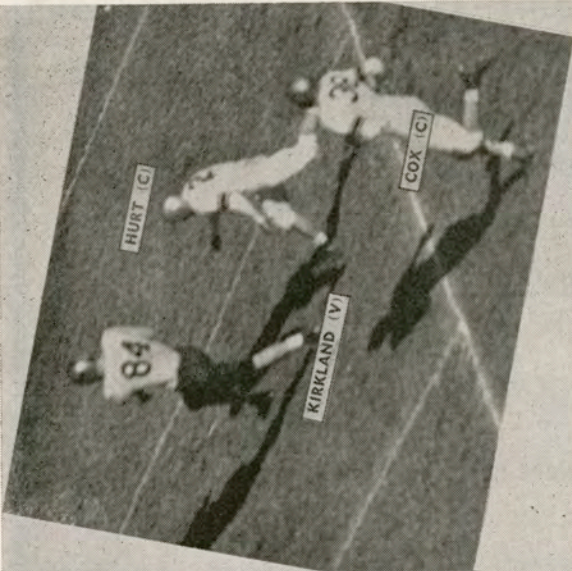
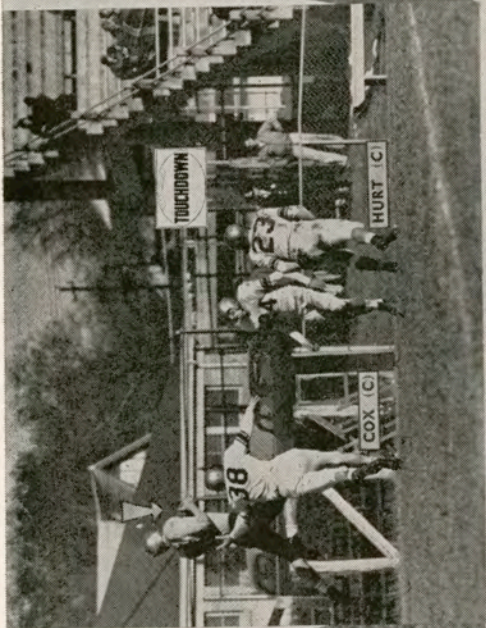
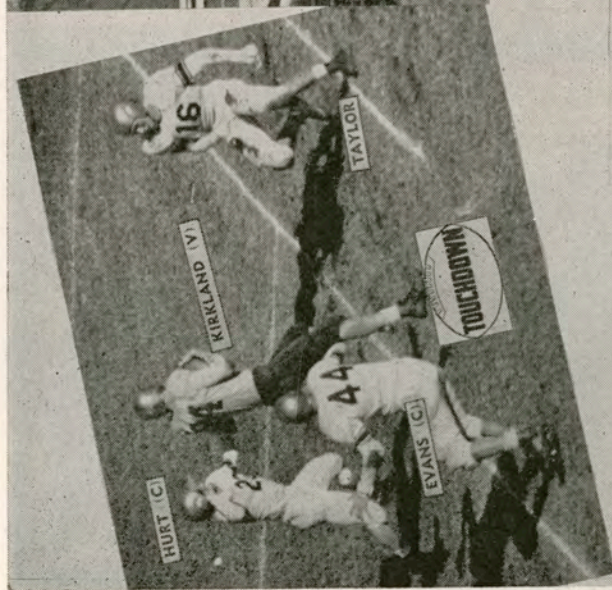
*Compliments of*

## E. K. HARDISON SEED CO.

*Seeds, Fertilizers and Insecticides*

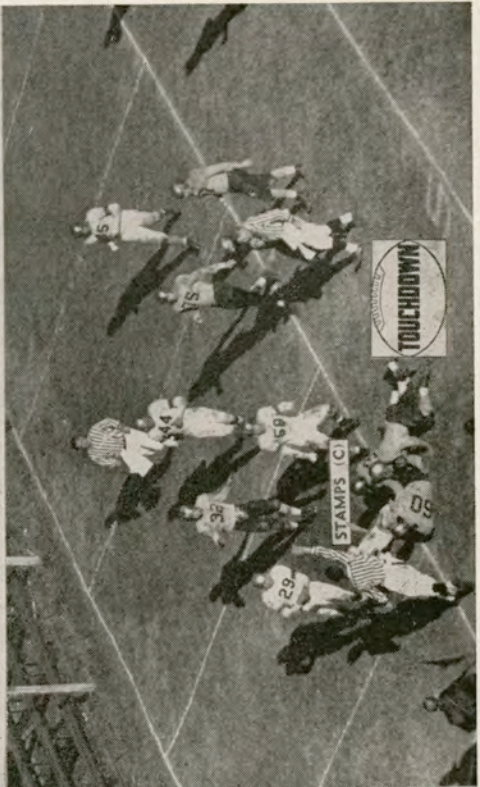
NASHVILLE, TENN.





## Vanderbilt 19, Chattanooga 14

As Ted Kirkland's 3 great catches of Bill Wade's touchdown passes prove stronger than Buck Stamps' 2 TD charges through the line.





**WELCOME!**



# CUMBERLAND OIL COMPANY

John Fenner Cummins, President

Distributors of Socony-Vacuum Products

DRIVE IN AT YOUR

CUMBERLAND  
OIL CO.  
DEALER

**Locally Owned—Internationally Known**

**One of The South's Largest Independent Petroleum Marketers**



**CATERPILLAR**

DIESEL ENGINES • TRACTORS  
MOTOR GRADERS • EARTHMOVING EQUIPMENT

REG. U. S. PAT. OFF.

THOMPSON & GREEN MACHINERY CO.

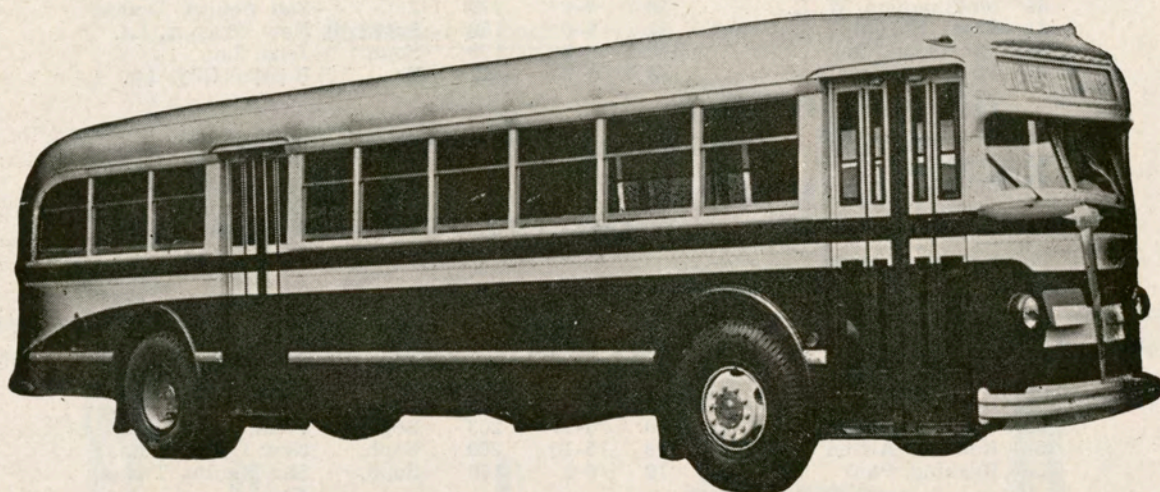
**Thompson & Green Machinery Co., Inc. Nashville, Tennessee**



# TULANE 1951 FOOTBALL ROSTER

| No.                    | Name               | Age | Ht.  | Wt. | Class | Hometown             |
|------------------------|--------------------|-----|------|-----|-------|----------------------|
| <b>LEFT ENDS</b>       |                    |     |      |     |       |                      |
| 91                     | Bravo, Edward      | 19  | 5-11 | 175 | Fr.   | New Orleans, La.     |
| 56                     | Coates, Charley    | 18  | 6-3  | 195 | Fr.   | New Orleans, La.     |
| 85                     | McElhannon, W. C.  | 20  | 6-1  | 175 | Jr.   | San Benito, Texas    |
| 81                     | Shea, Harold       | 21  | 6-2  | 180 | Soph. | New Orleans, La.     |
| 89                     | Thompson, Ray      | 20  | 6-2  | 173 | Soph. | Jena, La.            |
| 88                     | Pounders, Lawrence | 18  | 6-1  | 162 | Fr.   | Bossier City, La.    |
| <b>LEFT TACKLES</b>    |                    |     |      |     |       |                      |
| 78                     | Helluin, Jerome    | 22  | 6-2  | 284 | Sr.   | Houma, La.           |
| 72                     | Housepian, Mike    | 20  | 6-1  | 220 | Jr.   | Chicago, Ill.        |
| 71                     | Petroski, Edward   | 21  | 6-2  | 225 | Jr.   | Sunderland, Mass.    |
| 75                     | Teeuws, Len        | 22  | 6-5  | 220 | Jr.   | Oak Park, Ill.       |
| 73                     | Zapalac, Martin    | 20  | 6-2  | 225 | Jr.   | Waco, Texas          |
| <b>LEFT GUARDS</b>     |                    |     |      |     |       |                      |
| 63                     | Behrend, Weldon    | 22  | 6-0  | 204 | Sr.   | San Angelo, Texas    |
| 65                     | Comeaux, Tommy     | 21  | 6-1  | 205 | Jr.   | Port Arthur, Texas   |
| 63                     | Nuss, Bobby        | 21  | 5-10 | 196 | Jr.   | New Orleans, La.     |
| <b>CENTERS</b>         |                    |     |      |     |       |                      |
| 51                     | Burke, Earl        | 20  | 6-0  | 193 | Soph. | New Orleans, La.     |
| 55                     | Camp, Charles      | 20  | 5-11 | 203 | Soph. | Petal, Miss.         |
| 53                     | Robelot, Alfred    | 19  | 5-10 | 200 | Soph. | New Orleans, La.     |
| 50                     | Rushing, Paul      | 19  | 6-2  | 180 | Soph. | San Benito, Texas    |
| <b>RIGHT GUARDS</b>    |                    |     |      |     |       |                      |
| 60                     | Cummins, George    | 20  | 6-2  | 222 | Soph. | New Orleans, La.     |
| 67                     | Johnston, Jimmy    | 21  | 5-11 | 204 | Jr.   | New Orleans, La.     |
| 62                     | Kleinschmidt, Art  | 25  | 5-11 | 220 | Sr.   | New Orleans, La.     |
| 69                     | Spollen, Bill      | 20  | 6-4  | 223 | Soph. | College Point, N. Y. |
| <b>RIGHT TACKLES</b>   |                    |     |      |     |       |                      |
| 74                     | Fugler, Dick       | 20  | 6-3  | 227 | Sr.   | White Oak, Texas     |
| 79                     | Hazel, Patrick     | 17  | 6-1½ | 196 | Soph. | White Oak, Texas     |
| 77                     | Rey, George        | 20  | 6-0  | 210 | Jr.   | New Orleans, La.     |
| 76                     | Rogas, Gene        | 22  | 6-2  | 198 | Jr.   | Port Arthur, Texas   |
| <b>RIGHT ENDS</b>      |                    |     |      |     |       |                      |
| 87                     | Davis, J. V.       | 21  | 6-3  | 196 | Jr.   | McCamey, Texas       |
| 84                     | Kibodeaux, Ferdie  | 23  | 6-2  | 190 | Sr.   | Jennings, La.        |
| 82                     | Kirkpatrick, Gale  | 21  | 6-2  | 207 | Sr.   | Waukegan, Ill.       |
| 83                     | Pittman, Charles   | 20  | 6-0  | 180 | Fr.   | New Orleans, La.     |
| <b>QUARTERBACKS</b>    |                    |     |      |     |       |                      |
| 17                     | Clement, Pete      | 19  | 5-10 | 165 | Soph. | Reserve, La.         |
| 12                     | Dempsey, Fred      | 22  | 5-11 | 189 | Jr.   | Chicago, Ill.        |
| 14                     | Kennedy, Lester    | 19  | 5-11 | 160 | Soph. | New Orleans, La.     |
| <b>LEFT HALFBACKS</b>  |                    |     |      |     |       |                      |
| 40                     | McGee, Max         | 19  | 6-3  | 191 | Soph. | White Oak, Texas     |
| 43                     | Hymel, Ray         | 20  | 5-9  | 158 | Fr.   | Reserve, La.         |
| 44                     | Wall, Wayne        | 19  | 5-10 | 164 | Soph. | Texarkana, Texas     |
| <b>RIGHT HALFBACKS</b> |                    |     |      |     |       |                      |
| 28                     | Bailey, Roy        | 22  | 5-10 | 180 | Jr.   | Richmond, Va.        |
| 15                     | Batson, Alvis      | 22  | 6-1  | 190 | Jr.   | Houston, Texas       |
| 21                     | Brignac, Donald    | 21  | 5-9½ | 181 | Jr.   | Lutcher, La.         |
| 24                     | Kingery, Ellsworth | 22  | 5-11 | 178 | Sr.   | Lake Charles, La.    |
| 23                     | Weidenbacher, R.   | 19  | 6-0  | 160 | Soph. | New Orleans, La.     |
| <b>FULLBACKS</b>       |                    |     |      |     |       |                      |
| 33                     | Daigle, Charles    | 24  | 5-9  | 179 | Sr.   | Baton Rouge, La.     |
| 42                     | Doyle, Cecil       | 23  | 6-0  | 178 | Jr.   | DeRidder, La.        |
| 41                     | Kent, Ronnie       | 20  | 5-10 | 180 | Jr.   | New Orleans, La.     |
| 38                     | Pratka, Henry      | 23  | 6-1½ | 185 | Jr.   | Kilgore, Texas       |
| 46                     | Saia, Bob          | 20  | 6-0  | 190 | Fr.   | New Orleans, La.     |





## AVOID PARKING AND TRAFFIC RIDE THE BUS

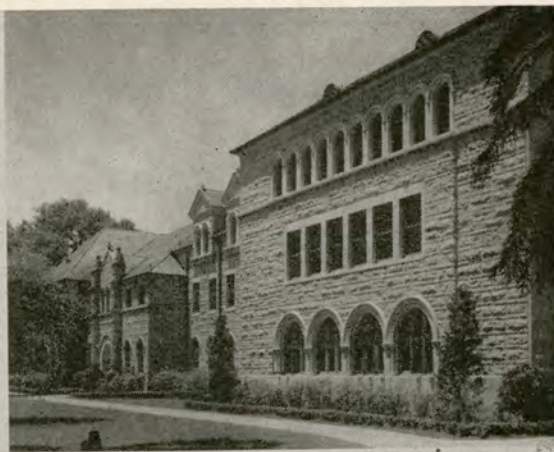
To the game, to the office or to the stores, it's smart to ride the bus. Why worry with traffic woes and parking difficulties when you can ride the bus cheaply, safely and conveniently? Southern Coach Lines, Inc., running on frequent schedules, maintains modern transit vehicles manned by courteous operators.

From anywhere in Nashville to everywhere in Nashville, Southern Coach Lines, Inc., is happy to serve you.

And don't forget our charter service for special occasions—just call 5-4526.

# Southern Coach Lines, Inc.





## *History of Tulane*

Tulane had its beginning in 1834 when seven young physicians banded together to found a medical college in New Orleans. Yellow fever and cholera were the twin curses of the city in that period and a determination on the group's part to combat the diseases more successfully led to the establishment of the college.

This institution was to grow into the University of Louisiana and subsequently into the privately endowed, non-sectarian Tulane University of today.

Its first classes, which were given in human anatomy, were taught in a downtown church and its president was an Episcopal clergyman, the Reverend Francis Lister Hawks, rector of Christ Church.

The University received its name from Mr. Paul Tulane, of Princeton, N. J., who made his fortune in and around New Orleans and who bequeathed \$1,000,000 to the institution in 1882. His gift, made at a time when the South was financially bankrupt as a result of the War Between the States, provided a revenue which revived a virtually moribund institution. Through his gift, a reorganization of the University was completed. It was separated from the state and its affairs were entrusted to a self-perpetuating board of administrators.

The institution in 1836 awarded the first degree in medicine ever given in the South. Although it began with a scientific tradition, the liberal arts were not long neglected. The College of Arts and Sciences

had its inception in 1847, the same year that the law school began as a department of the University. In 1858, there was established a department for the training of business men. Although its life was relatively short, it is regarded as the forerunner of the growth of professional colleges of commerce and business administration in the United States. The College of Commerce and Business Administration was not formally inaugurated until 1914.

In 1885, the Graduate School, then known as the Department of Philosophy, conferred its first doctor's degree. In rapid succession, there followed the Graduate School of Medicine, the College of Engineering, the College of Commerce and Business Administration, the School of Social Work, the Middle American Research Institute, University College, and later the School of Architecture.

The campus of a hundred acres, with its imposing buildings, is located on St. Charles Avenue facing Audubon Park, one of the most beautiful in the South and the sixth largest in the United States. Most of the departments of the University are located on the uptown campus. However, third and fourth-year medical students, as well as the students of graduate medicine, are taught in the Hutchinson Memorial Building on Tulane Avenue, adjacent to the Charity Hospital. In this building are conducted also the out-patient clinics of the School of Medicine.



Compliments of

**BROADWAY DISCOUNT  
CORPORATION**

901 CHURCH STREET

**STERCHI'S**

NASHVILLE'S LARGEST  
FURNITURE STORE

411 BROADWAY

*Zanini's*  
**RESTAURANT**

**FOOD AT ITS BEST**

223 CAPITOL BLVD., PHONE 5-4345

*Recommended by Duncan Hines*

**SMOKING  
PLEASURE?**

*La Fendrich's  
Get it!*



SMOKE

**LA FENDRICH**

**EVEREADY LETTER  
and  
ADVERTISING SERVICE**

Letterheads — Statements

Ruled Office Forms

Direct Mail—Sales Copy

Multigraphing — Mimeographing

Photo-offset Printing

732 Commerce Street

6-5813



# VANDERBILT RIGHT HALFBACKS

They pass, they punt, they run, they receive;  
And if their twisting hips and flying feet cross not the final white stripe,  
In determination they regroup to defend against enemy passes  
Or to strike him with solid tackles in the open field.  
Speed and skill, finesse and fortitude:  
These are characteristics of the men  
To whom possession of the ball  
Is most often entrusted . . .  
The HALFBACKS.



ROY DUNCAN



MICKEY LAKOS



DANNY BYERS



ALLAN DRASH



DON GLEISNER



BILLY DUNCAN



IT PAYS TO LOOK WELL  
**COLLEGE BEAUTY  
AND BARBER SHOP**

*Air Conditioned*  
404 Twenty-first Avenue, South  
Opposite Engineering Building  
Phone 7-9204

**ROBERT E. LEE**  
**Household Movers**

6-6964  
1109 Eighth Avenue, South

*Nashville  
Electrotype  
Company*

123 13th Ave. N.  
**NASHVILLE, TENNESSEE**

*Compliments of*

**Coles and Waller**  
**Happy Day Laundry**  
**Sanders Manufacturing Co.**



BEST WISHES

*from*

**SOUTHEASTERN**  
MOTOR TRUCK LINES

**UNIVERSITY PHARMACY**

2005 BROAD ST.  
5-3241 PHONES 5-8619  
*FREE Motorcycle Delivery*  
PRESCRIPTIONS SODA FOUNTAIN



# *this is* **VANDERBILT**



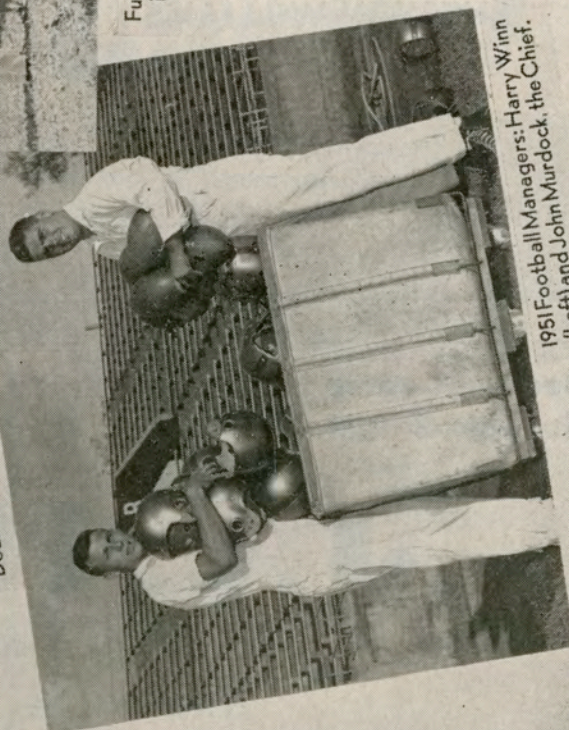
Dr. John B. Youmans  
Dean of the School of Medicine



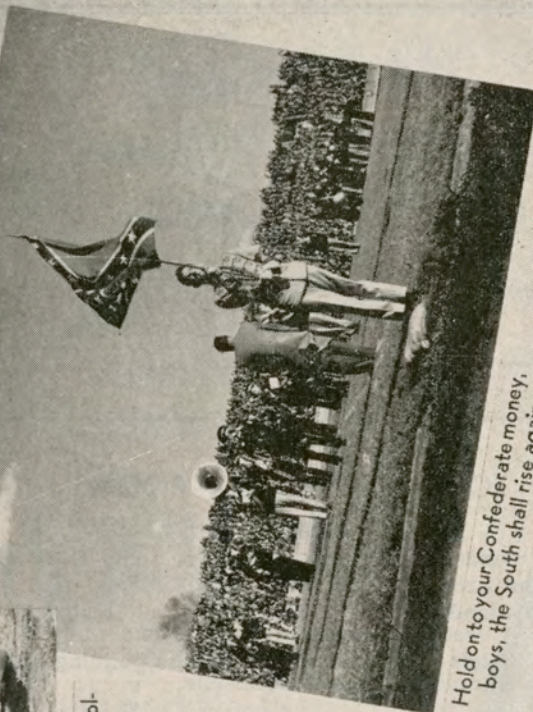
Miss Julia Hereford  
Dean of the School of Nursing



Future navy brass practices apple polishing with one of the Golden Girls.



1951 Football Managers: Harry Winn  
(Left) and John Murdock, the Chief.



Hold on to your Confederate money, boys, the South shall rise again.





ON HARDING ROAD

Now Featuring Hot Corned Beef—  
Home-Baked Ham

"And of Course Our Delicious Hot Dogs"

See Us or Call Us for Parties, Picnics

8-9194

## LOCATION OF REST ROOMS

### WOMEN'S

**East Stands**—enter from ramp B or ramp C

**Student Section**—enter from ramp F

**South Stands**—building at ground level located between entrances to ramp O and ramp P

**West Stands**—enter from ramp T; also building near entrance to ramp P accessible.

### MEN'S

Buildings are at ground level beneath **East, West and South Stands**.

Facilities beneath **East Stands** between ramp B and ramp C are available to patrons in **North Stands**.

## TELEPHONES

There are Public Telephones in the **WOMEN'S** Rest Rooms on the **West Side**, and in the **MEN'S** Rest Rooms on the **East Side**.

Doctors who may be called during the game must register for a Public Address Number at the Athletic Office **before noon**.

Compliments of

THE  
**SHERWIN-WILLIAMS**  
COMPANY

Two Stores

"To serve your paint  
and wallpaper needs"

1721 - 21st Ave., S.  
7-4306

222 4th Ave., N.  
6-1157

**DRUGS, LUNCHES, and  
FOUNTAIN SERVICE**

*Gifts for All Occasions . . .*

2800 WEST END AVENUE  
1813 HILLSBORO ROAD  
219 PUBLIC SQUARE  
401 PUBLIC SQUARE

**WARNER  
DRUG COMPANY**

**See this game again and every Vanderbilt football game,  
Sunday 5 P.M. WSM-TV.**

# JAMISON

*Bedding Furniture Since 1883*

**NASHVILLE, TENNESSEE**



## BILLY TRABUE SERVICE

MOTOR TUNE-UP

BRAKE SERVICE



*Everything for Your Car*



1205 Twenty-first Avenue, South

Phone 7-0873

## AMERICAN

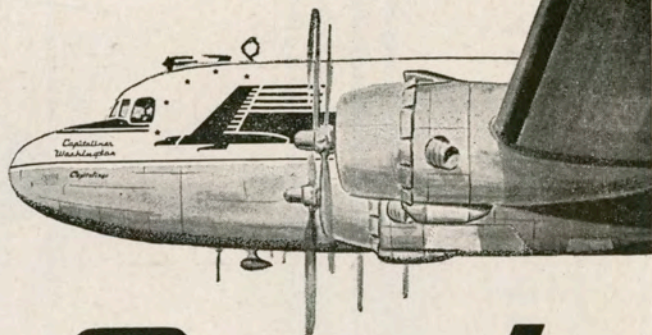
**Laundry—Cleaners**

**5-6503**

*"The American Way Is the Best Way"*

# Top teams fly with *Capital*

Capital, one of the nation's major scheduled airlines, has carried more athletic teams than any other airline in the world. Coaches know that Capital's Special Flight Service saves travel time and eliminates travel fatigue. Players know that Capital's 24 years of experience assures them of fast, comfortable trips.



# Capital

**AIRLINES**

### TEAMS THAT HAVE FLOWN WITH CAPITAL

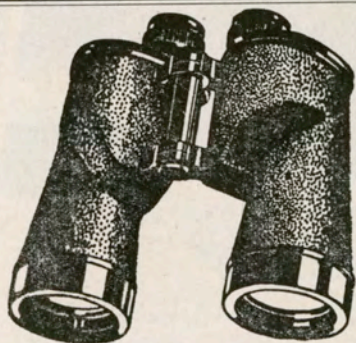
University of Alabama  
Boston College  
Boston University  
Dartmouth College  
Duke University  
University of Illinois  
University of Kentucky

Louisiana State University  
University of Maryland  
Michigan State College  
University of Minnesota  
North Carolina State College  
University of North Carolina  
University of Notre Dame

Ohio State University  
Pennsylvania State College  
University of Pittsburgh  
Purdue University  
University of Tennessee  
Tulane University  
United States Naval Academy

Vanderbilt University  
University of Virginia  
Wake Forest College  
University of West Virginia  
The College of William and Mary  
University of Wisconsin  
Chicago Cardinals

Cleveland Browns  
Detroit Lions  
Green Bay Packers  
New York Yankees  
Philadelphia Eagles  
Pittsburgh Steelers  
Washington Redskins



FOLLOW EVERY  
PLAY With  
Bausch and Lomb  
BINOCULARS  
FIELD GLASSES  
SPORT GLASSES

*We have good in-  
expensive ones as  
well as the very  
finest.*

**DURY'S**

420 Union Street

"TABLE-TEST" EGGS

ARE CACKLE FRESH AND  
GOVERNMENT INSPECTED

**ALLOWAY BROS. CO.**

*Distributors*



## COMMODORE FULLBACKS

Speed and power he must have for running and a bruising ability for blocking; though he now runs to the outside with skill and swiftness, his prime duty is still the original one of striking the enemy fortress at dead center and pushing forward for the vital yard that yields a first down, the FULLBACK.



R.C. ALLEN



CHUCK NEWMAN



JIMMY RAY



BILL HENLEY



JOHN DODD



JOHN S. BRANSFORD, V. U. '29  
VERNON SHARP, JR., V. U. '28  
DUDLEY BRANSFORD, V. U. '33

**BRANSFORD, SHARP & CO.**

*General Insurance*

421 Union Street

5-7721



*Oman*  
**CONSTRUCTION CO.**

NASHVILLE, TENN.

DICK SAYS,

FOR A WINNER

ALWAYS

*Pick*

LAY'S POTATO CHIPS



*Dick Philpot*

**H. W. LAY & CO., INC.**

**DIXIE DRIVE-IT-YOURSELF  
SYSTEM**

*Offers*

Complete Truck and Passenger Car Rental  
Service



Buy Your Transportation by the Mile  
Phone 6-1112 121 Seventh Avenue, North

**RED TOP AND  
CHECKER  
CABS**

**4-1611**

Every Cab Equipped With 2-Way Radio

*A Safe Ride in a Clean Cab*

**RED TOP CAB CO.**

*Dependable Quick Service*

307 DEMONBREUN

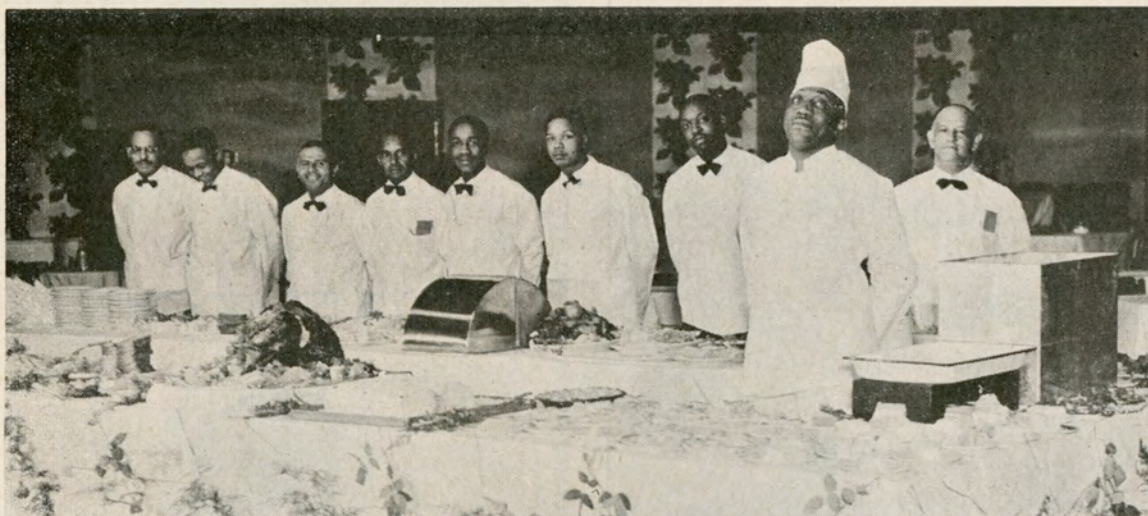


*"For a Full Evening of Pleasure"*

OUR THURSDAY AND SUNDAY EVENING

# SMORGASBORD

Serving 7 P.M. to 9 P.M.



ALL YOU CAN EAT  
WITH DANCING AND FLOOR SHOW

**\$3<sup>00</sup>**

NO COVER CHARGE TO SMORGASBORD GUESTS

*Club Plantation*

*"The Showplace of the South"*

MURFREESBORO ROAD

PHONE 6-8952

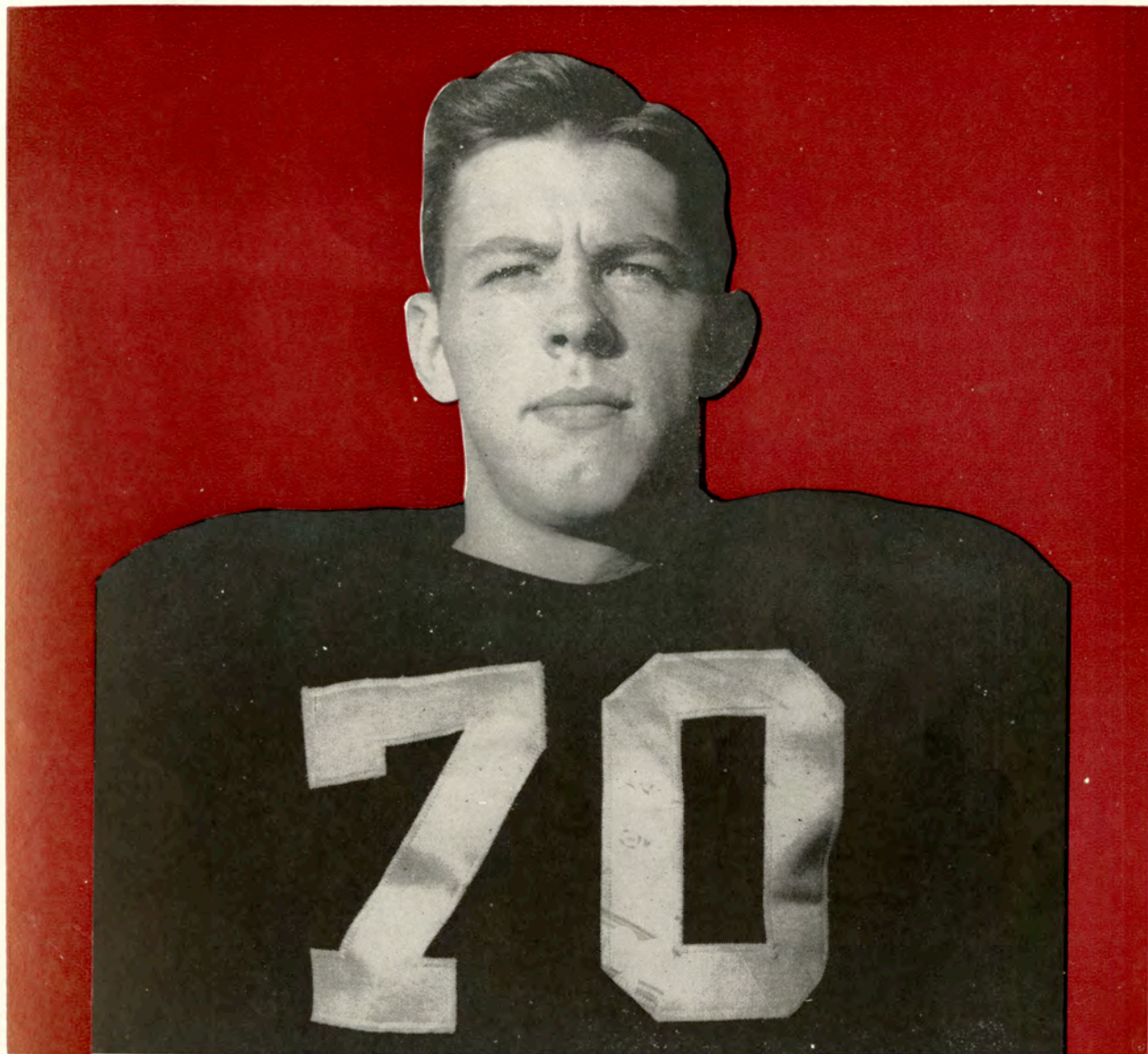


Fowler Furniture Co.

FINE FURNITURE

4104 HILLSBORO ROAD • NASHVILLE, TENNESSEE

Nº 10062



*Bob Werckle, Captain of the Commodores*

**Period** *furniture company*  
"Distinctive  
Furniture"



2415 WEST END AVE.  
PHONE 7-1508

•  
STORE HOURS  
9 A.M. TO 6 P.M.



America's most  
popular cigarette



**FLAVOR**

**MILDNESS**

