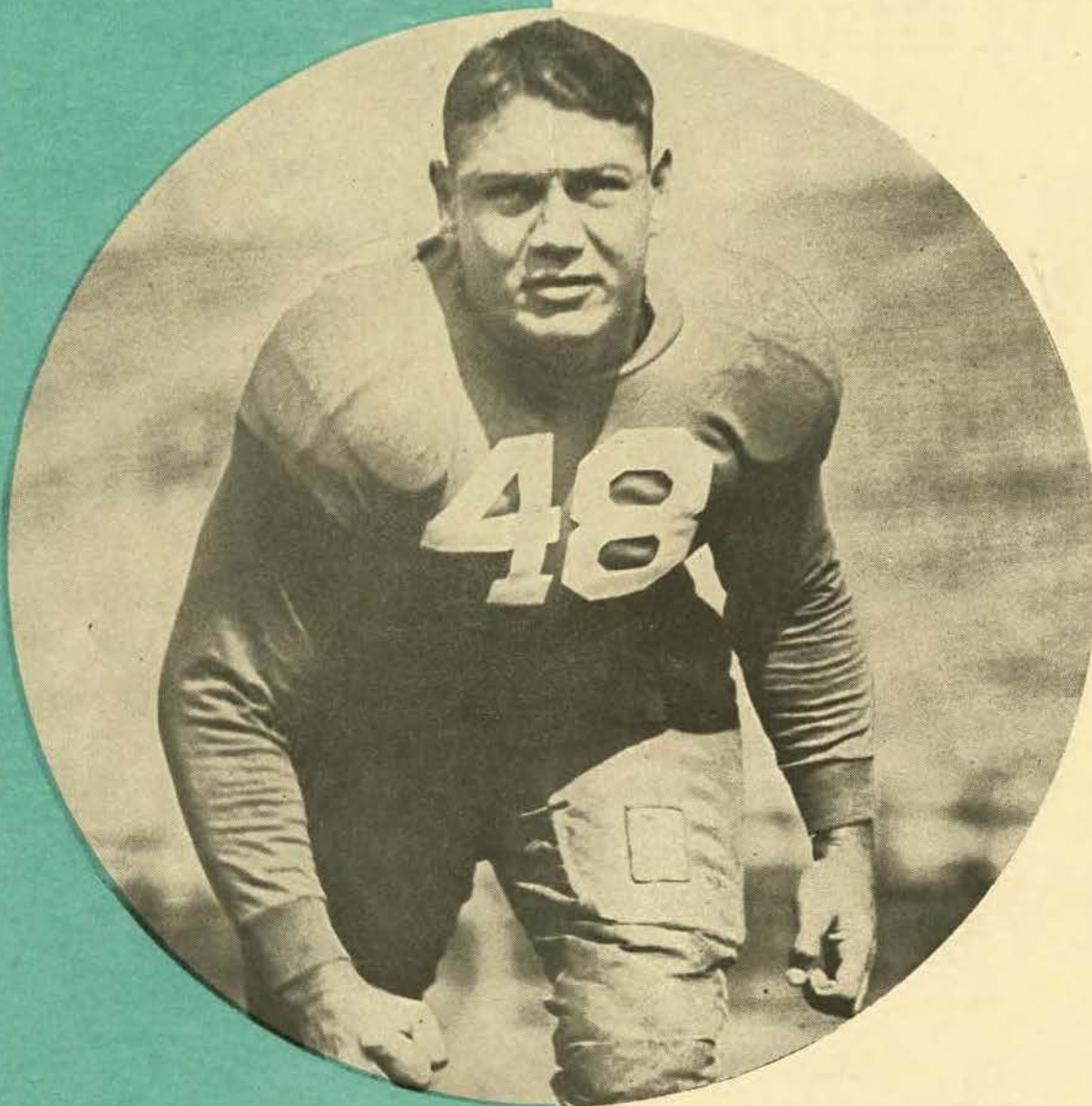
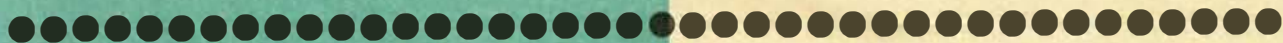


THE GREENIE



Georgia Tech vs. Tulane



Saturday, October 27, 1934

TULANE STADIUM

Price 25c

The
**Tulane University of
Louisiana**

NEW ORLEANS

●

The University Embraces the Following Departments:

The College of Arts and Sciences

The H. Sophie Newcomb Memorial College for Women

The College of Engineering

The Graduate School

The College of Law

The School of Medicine

The Graduate School of Medicine

The College of Commerce and Business Administration

The Courses for Teachers

The Department of Middle American Research

The School of Social Work

The Summer Schools

For Catalogue Address:

**Registrar of the
Tulane University of Louisiana**

GIBSON HALL, NEW ORLEANS

GEORGIA TECH

VS.

TULANE



AMERICAN FOOTBALL
1934 SEASON

TULANE STADIUM

Saturday, October 27, 1934
2:30 p. m.

CONTENTS

Cover Design—Featuring Homer Robinson	Cover
Title Page	3
Georgia Tech Photos	4
“WIND AND WATER”	5
Gridiron Roundup	6
Mr. George G. Westfeldt	9
Sketch of Coach Cox	11
Tulane Photos	12
The Line-Ups	14-15
Tulane Photos	17
The Rosters	18
Alma Mater	20
Tulane Photos	21
Farrel Thomas Photo	22
Football Cartoon by Foster Baird	23
Dr. Hardy H. Smith	24
“Time Out”	25
Tulane’s Victory Song	26

The Greenie

Vol. 4

No. 4

Copyright, 1934. Tulane Athletic Council. (Note: The contents of this program are copyrighted and may be reprinted only with permission of the publishers).

Official Souvenir Program of Tulane University
Published for Each Home Game.

Georgia Tech



R.A. BEARD, JR.
Guard



C. B. PRESTON
Center



"SUNDIAL" MARTIN
Star Halfback



W.M. MCKAY
Fullback



"HOOT" GIBSON *End*



Wind and Water

This battle of the elements—Tulane's Green Wave and Georgia Tech's Golden Tornado—is renewed today for the eleventh time with the honors all even over a period of ten games.

Tech won the first five games, starting in 1916 and 1917 and resuming in 1926. Tulane has won the past five.

Championship teams and hopes have figured in seven of the past ten battles, which may or may not be a reason that none ended in a tie. It certainly was the case in at least four of the games where one team or the other smashed through to decisive victories.

The Tornado started the blasting with a 45 to 0 victory in 1916. The bombardment was continued in 1917 with a 48 to 0 triumph. Incidentally Tech was Southern champion in both of those years.

There was no title angle or hopes when the teams resumed relations in 1926. Tulane had graduated most of the great 1925 team and Tech had been upset before the two teams met. Tech slipped over a 9 to 6 victory. Tech won again in 1927, 13 to 6, but that was the year that the Tornado was unbeaten and champions of the Southern Conference. Again, in 1928, Tech won, 12 to 0, and Tech again was unbeaten and likewise untied. That Tech team went to the Rose Bowl to beat California, 8 to 7.

The title changed hands in 1929 with Tulane mounting to the glory seat and for the first time Tech bowed before the Waves. Tulane won, 20 to 14. In 1930, Tulane was co-champion with Alabama and drowned the Engineers, 28 to 0. The Greenies, in 1931, swept through eleven games and Tech was just another one. The score was 33 to 0. The Greenies went on to the Arroyo Seco, that deep gully that guards the Rose Bowl, where they lost in a gallant stand before the greatest of all Pacific Coast Champions—the Trojans of Southern Cal. The count was 21 to 12, lest you forget.

In 1932, there was no title hopes at stake and none in 1933. Tulane won both years. It was 20 to 14 in 1932 and 7 to 0 in 1933.

This year, however, the Green is again a title hope. Unbeaten and untied, Tulane hopes to go through with an unsullied record.

These Tech-Tulane games have likewise been featured with the exploits of great heroes. Naturally enough with championships so commonly at stake.

Joe Guyon and Everett Strupper, that great combination of blocking, running and scoring stood out for Tech in those 1916 and 1917 games. In 1926, neither team had a great star and neither traveled very far along the glory road.

But, in 1927, three sophomores rode to fame. Warner Mizell and Stumpy Thomason were in there starring for Tech and Bill Banker, later to become renowned as the "Blond Blizzard," was beginning his career for Tulane.

The same three dominated the field in 1928. Then in 1929, plus these three, new stars were added to the firmament. It was Jerry Dalrymple's sophomore year. And Jack Holland was at the other end. And Loyd (Preacher) Roberts was all-Southern center for Tulane.

With Banker, Thomason and Mizell gone from the picture in 1930, Roberts, Dalrymple and Holland, along with the sophomores, Don Zimmerman, Francis Payne, Nollie Felts and Wop Glover came into their own.

This same list of stars dominated the 1931 game.

Then, in 1932, Don Zimmerman strode high and wide without his supporting cast.

Bucky Bryan, another sophomore, stole the show in 1933 with his 101-yard return of a kick-off along with Barney Mintz's great blocking.

THE GRIDIRON ROUNDUP

Having survived last Saturday's swing by picking ten winners out of an even dozen "toss up affairs," your Demon Dopester has grown bolder. He has volunteered to go further out on the limb and saw the end off. Knowing the Dopester as we do, we are just a little afraid that he may saw the limb apart between himself and the main trunk. He's like that.

At any rate, we reproduce the Old Demon's dopey drippings:

'BAMA-GEORGIA—Eenie, meenie, miney, mo! If you grab Young Boozer don't let him go! Eenie, meenie——. (This is a sure fire formula for experting the close ones. All of the best Master Minds use it.) 'Bama gets the call. The experts may take the fall.

AUBURN-KENTUCKY—Can the Plainsmen keep traveling, losing and gaining strength? That's the question. There's a lot of angles to this game. Chet Wynne coached at Auburn with success for the past few years. He is now attempting to perform similar miracles at Kentucky. Jack Meagher, another Notre Dame man, is attempting to put Auburn back on "tops" with all new material. Both teams are coming and both coaches want to win this one. The Blue Grass country is very pretty at this time of the year. Idle Hour Farm makes the trip worthwhile even if you drop a ball game. We're inclined to sing "My Old Kentucky Home" and let you draw your own conclusions.

FLORIDA-MARYLAND—They get tougher and tougher. Maryland dog-gone near dry-docked the Navy. Yet the Navy still rules the Waves, having beaten Columbia, the Gem of the Ocean. (That is all the Waves except the Green Wave and Crimson Tide). Florida has lost just one—that to the Greenies. "Maryland, My Maryland," is another nice song but a song won't win this one. We'll take Billy Chase and his pass catching Crocodiles.

L. S. U.-VANDY—We'll string with Biff Jones and his Tigers. Until they lose one, we see no reason to switch at this junction. The Commodores, too, are unbeaten but the Bayou Boys get a firm vote to turn the trick.

TENNESSEE-DUKE—The further down the list you travel, the harder they come. Wallace Wade has a lot of guns at Durham and the men to man 'em. Major Bob Neyland uses military tactics, too, to out-flank them. We won't be surprised at a

Vol victory in the slightest. Yet there's nothing to do but to string with the general who has the guns and the men to man 'em. Don't forget though that Andrew Jackson with a handful of men, few guns and a lot of cotton bales, turned back old Pakenham.

ARMY-YALE—Old Eli showed a surprising offensive last Saturday in blasting Brown. Yet, we doubt they can bomb the Army. We nod toward the so-far unscored upon Cadets.

NAVY-PENN—A firm vote for the Tars to take this one.

PRINCETON-CORNELL—Fritz Crisler's boys in a walk despite their let-down of last week. Poor Gil Dobie has a lot to weep over this fall.

HARVARD-DARTMOUTH—We take the Hanover boys to continue their winning ways and Harvard to take another on the chin.

HOLY CROSS-COLGATE—This is the feature battle of the East Saturday. The Crusaders haven't been tested even and took Harvard in stride. Colgate is one of the best in the country despite the 10 to 7 loss to Ohio State last Saturday at Columbus. Holy Cross, not having been beaten, will be the favorite but the Crusaders haven't met any such opposition as the Red Raiders struck last week. We give Andy Kerr's team the glance.

FORDHAM-S. M. U.—Here's another big tough one. The Mustangs and the Rams. "When she comes, she'll be coming round the mountain!" That's the battle cry of the Dallas Mustangs. We'll take Ray Morrison and his "unwinding huddlers" despite the long train ride.

MINNESOTA-IOWA—The Gophers to gallop on.

NOTRE DAME-WISCONSIN—A firm vote for South Bend.

TEXAS-RICE—One of the hardest of the day. Rice by an eyelash.

CAL-WASHINGTON—The big battle of the day on the Pacific slopes. The Huskies are rated as the best in years but we look for Bill Ingram to overcome 'em.

PAINTS **BERN** GLASS



“EVERYTHING IN THE PAINT AND GLASS LINE”

David Bernhardt Paint Co.
Limited

317-319-321-323 Camp Street
New Orleans, La.

RAYmond 5279-5270

TICKETS

TULANE
vs.
OLE MISS.

Saturday, Nov. 3

On Sale
221 Baronne Street
RAYmond 7397

Thoroughly Capable
FIELD GLASSES

Bring every move
in the game right
up close with
these!



Lowest price
for field
glasses of
equal power
and vision.

1.00

Equipped with 4-power lenses. Carrying strap.
A man-size bargain!

Sports Dept.—Third Floor

MAISON BLANCHE

O'Shea...

A name synonymous with
the best in athletic knitted
goods from Coast to
Coast. Tulane's Green
Wave and every other
leading institution uses
O'Shea goods.

Ask any coach—he will
tell you that O'Shea is
the best.

O'SHEA KNITTING MILLS
2414 N. Sacramento Ave.
Chicago, Illinois



HEADQUARTERS
IN NEW ORLEANS.

The *Roosevelt*
"Pride of the South"

BE SURE
TO VISIT

THE
BLUE
ROOM
IN *The Roosevelt*

ROOM
with
BATH

3⁰⁰
UP

Gas. "Pat" O'Shaughnessy, Mgr.

Open from 10 to 2

Dance and Dine

Entertainment

Circular
Bar

Under One Management

Football fans from every where meet at The Bienville. If you come once, you'll come again and again to this well-appointed hotel located on fashionable St. Charles Avenue overlooking Lee Circle.

2⁰⁰
UP

When you enter The Bienville, the home like atmosphere bids you we come. You'll like its handsome suites and the cheerful service that only a well-trained staff can give. Even the most modest budget can afford The Bienville.

The
"at Lee
Circle"

Bienville



GEORGE G. WESTFELDT.

President of the Tulane Athletic Council. Mr. Westfeldt, who played football on Green Wave teams back in the era before championships were an annual "dream," has always maintained his active interest in everything pertaining to Tulane athletics and the best interests of the University. He welcomes the old grads back "home" today to the modern Green Wave athletic plant.



DUNLAP HATS

*Have all the Snap and Dash the Well-Dressed College
Man Demands*

Three Favorite Styles:

"The University"

"The Metropolitan"

"The Sport"

5.00

HOLMES MEN'S STORE—Bourbon Street Entrance

HOLMES

CANAL...DAUPHINE...BOURBON...IBERVILLE STREETS



TED COX

Head Man of the Green Wave. Coach Cox is now directing the Greenies through the third campaign since he became head coach, succeeding Bernie Bierman, "Grey Eagle of the Great North Country."

TULANE



DOCTOR
WILBUR C.
SMITH

DIRECTOR OF
ATHLETICS



"LITTLE
MONK"
SIMONS

HALFBACK



LESTER LAUTENSCHLAEGER
BACKFIELD COACH



JOHN
McDANIEL
QUARTERBACK



GEORGE
TESSIER
GUARD



BOB TESSIER
TACKLE

LAWN MOWER
SHARPENING AND
REPAIR SERVICE

by Skilled Workmen
Parts for all makes

COMPLETE LINE OF NEW
HAND AND POWER
LAWN MOWERS

Telephone RAYmond 3694

SOUTHERN SPECIALTY
SALES CO., Inc.

1728 Carondelet Street



They're
Something to Sing About!
Collegiate Suits \$19.75 + \$25.
Mayer Israel's

New Orleans Corrugated Box Co.
INCORPORATED

●
GAYLORD
CORRUGATED
SHIPPING CONTAINERS

●
Telephone RAYmond 4258
New Orleans, La.

BROWN'S
Velvet
Ice Cream

●
Sold in the Stadium
at All Home Games!

●
NEW ORLEANS ICE CREAM CO.
1320-1322 Baronne Street

As thousands cheer



—They Satisfy

TULANE SQUAD

TED COX, Coach

- | | |
|--------------------|-------------------|
| 15 Tull, c | 54 Brownson, q b |
| 19 Saint, e | 55 Smither, g |
| 20 Hail, e | 56 Mintz, h b |
| 24 Flettrich, f b | 57 McDaniel, q b |
| 25 McIlhenny, g | 58 Ott, q b |
| 26 Daly, t | 59 Memtas, e |
| 28 Dombourian, g | 60 Gould, c |
| 32 Giovanni, q b | 61 Bryan, h b |
| 34 Cooley, g | 62 Tessier, G., g |
| 35 Dalovisio, e | 63 Monk, g |
| 36 Hillyer, e | 64 Bruno, f b |
| 37 Eddy, t | 65 Hardy, e |
| 38 Henderson, h b | 66 Loftin, N., c |
| 39 Nichols, h b | 67 Freese, c |
| 40 Kyle, e | 68 Armstrong, g |
| 41 Andrews, f b | 69 Tessier, R., t |
| 42 Thomas, h b | 70 Simon, g |
| 43 Johnson, h b | 71 Linam, f b |
| 44 Schneidau, e | 72 Poitevent, g |
| 45 Clark, e | 73 Ary, t |
| 46 Loftin, J., f b | 74 Moss, t |
| 47 Simons, h b | 75 Lodrigues, f b |
| 48 Robinson, c | 76 Pace, t |
| 49 Page, h b | 77 Rau, q b |
| 50 Odom, h b | 78 Sanders, g |
| 51 Preisser, e | 79 Sinnott, t |
| 52 Stroble, t | 80 Thames, h b |
| 53 Evans, g | |

GEORGIA TECH SQUAD

WILLIAM A. ALEXANDER, Coach

- | | |
|------------------|---------------------|
| 1 Moore, q b | 19 McKinley, h b |
| 2 Gibson, e | 20 Hays, h b |
| 3 Perkerson, h b | 21 Brittain, t |
| 4 Arias, q b | 22 Boulware, e |
| 5 Thurpe, f b | 23 Lindsey, t |
| 6 Roberts, q b | 24 Dean, t |
| 7 Katz, e | 25 Gardner, t |
| 8 Ferguson, h b | 26 Preston, c |
| 9 Boyd, q b | 27 Lyons, c |
| 10 Thompson, e | 28 Beard, g |
| 11 Martin, h b | 29 Warner, g |
| 12 McKay, f b | 30 Williams, t |
| 13 Chance, t | 31 Phillips, f b |
| 14 Sackett, e | 32 Shaw, c |
| 15 Smith, t | 33 Wilcox, J. B., g |
| 16 Stacy, e | 34 Eubanks, t |
| 17 Street, h b | 35 Fitzsimons, g |
| 18 Ponder, e | 36 Wilcox, E. D., g |

Georgia Tech vs. Tulane

THE STARTING LINEUPS

(Subject to Change by Coaches)

TULANE		GEORGIA TECH	
No.	Name	Position	Name No.
51	Preisser	L. E. R.	Gibson 2
69	Tessier, R.	L. T. R.	Dean 24
70	Simon	L. G. R.	Wilcox, J. 33
48	Robinson	C.	Lyons 27
62	Tessier, G.	R. G. L.	Wilcox, E. D. 36
73	Ary	R. T. L.	Williams, C. W. 30
40	Kyle	R. E. L.	Katz 7
57	McDaniel	Q. B.	Roberts 6
56	Mintz	L. H. R.	Perkerson 3
47	Simons	R. H. L.	Martin 11
46	Loftin	F. B.	Phillips 31

OFFICIALS

- Referee—W. M. Campbell (Tennessee)
 Umpire—H. Moriarty (Mt. St. Mary's)
 Head Linesman—Wilson Collins (Vanderbilt)
 Field Judge—Clark Pearce (Alabama)

J. C. QUINETTE
The Floral Shop

●
 We Supply Flowers for Campus Occasions

●
 1345 Lowerline St. at Willow

Phone WALnut 0451

*Just Five Blocks up Willow Street from
 the Stadium*



Gus is a swell fullback. Nice fellow, too. But it's too bad about his sports clothes.

If he'd only make a few deft selections at Spalding's*, Gus would be a 100%.

*Right now Spalding's is featuring a variety of slacks ... and a brilliant array of accessories, including many worthwhile contributions to your tie-rack ... and shirt drawer.

A. G. Spalding & Bros.
 130 Carondelet St.

RAMELLI,
Inc.

RAYmond 6188-6189

●
 WASHING POWDERS,
 LAUNDRY AND
 DRY CLEANERS SUPPLIES

CHEMICALS—ALKALIS

●
COAL and COKE

The Thinking Fellow Calls a Yellow

TO AND FROM GAMES

35c

ANYWHERE WITHIN CITY

(Outlying Points Excepted)

FIVE can ride for the price of ONE—
 Club together!

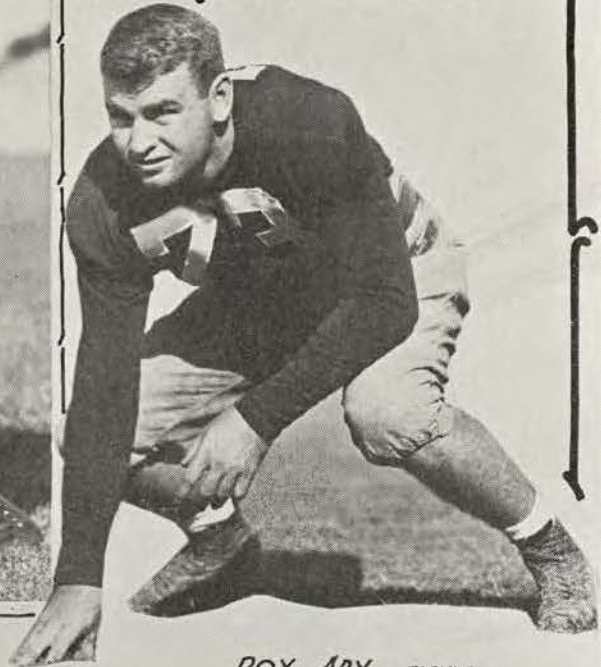
Phone
 RAYmond 3311

TOYE BROS.
YELLOW CABS

TULANE



HAROLD
MENTZER
END



ROY ARY TACKLE



BOB SIMON TACKLE



DICK HARDY END

TULANE ROSTER

No.	PLAYER—	HOME—	POS.	WT.
15	Tull, Porter	New Orleans	C	175
19	Saint, Archie	New Orleans	E	168
20	Hall, Thos. (Whitey)	New Orleans	E	178
24	Flettrich, Albert	New Orleans	FB	194
25	McIlhenny, Paul	New Orleans	G	185
26	Daly, William	New Orleans	T	190
28	Dombourian, Azad	New Orleans	G	205
32	Giovanni, Milton	Lake Charles, La.	QB	187
34	Cooley, David	Slidell, La.	G	190
35	Dalovisio, Pete	Lake Charles, La.	E	180
36	Hillyer, H. H.	New Orleans	E	160
37	Eddy, Chas.	New Orleans	T	183
38	Henderson, James	Clarksdale, Miss.	HB	154
39	Nichols, William	Orlando, Fla.	HB	170
40	Kyle, Charles	New Orleans	E	170
41	Andrews, John	New Orleans	FB	191
42	Thomas, Farrel	Ft. Smith, Ark.	HB	171
43	Johnson, Douglas	New Orleans	HB	172
44	Schneidau, Hughes	New Orleans	E	185
45	Clark, Gus	Macon, Ga.	E	180
46	Loftin, Capt. Jos.	Baton Rouge, La.	FB	198
47	Simons, Claude, Jr.	New Orleans	HB	190
48	Robinson, Homer	Lake Charles, La.	C	186
49	Page, Richard	New Orleans	HB	170
50	Odom, Troy	Oakdale, La.	HB	172
51	Preisser, Frederick	New Orleans	E	170
52	Stroble, Bunny	Covington, La.	T	184
53	Evans, Bernard	Memphis, Tenn.	G	191
54	Brownson, Bradley	New Orleans	QB	176
55	Smither, Charles	New Orleans	G	196
56	Mintz, Barney	New Orleans	HB	176
57	McDaniel, John	Camden, Ark.	QB	194
58	Ott, Wiltz	Osyka, Miss.	QB	176
59	Memtsas, Harold	New Orleans	E	170
60	Gould, Ernest	New Orleans	C	180
61	Bryan, Howard (Bucky)	Shreveport, La.	HB	167
62	Tessier, George	New Orleans	G	193
63	Monk, Marion	New Orleans	G	180
64	Bruno, John	New Orleans	FB	173
65	Hardy, Dick	Hattiesburg, Miss.	E	191
66	Loftin, Noel	Baton Rouge, La.	C	193
67	Freese, Sam	Wheeling, W. Va.	C	190
68	Armstrong, Woodrow	Big Spring, Texas	G	210
69	Tessier, Robt.	New Orleans	T	228
70	Simon, Robt.	New Orleans	G	186
71	Linam, Albert (Tex)	Bay St. Louis, Miss.	FB	180
72	Poitevent, Ed.	New Orleans	G	201
73	Ary, Roy	Stigler, Okla.	T	200
74	Moss, William	Montgomery, Ala.	T	198
75	Lodrigues, Stanley	New Orleans	FB	178
76	Pacc, David	Monroe, La.	T	185
77	Rau, Howard	Covington, La.	QB	171
78	Sanders, Hadley	Memphis, Tenn.	G	170
79	Sinnott, Chas.	Springfield, Ill.	T	192
80	Thames, Louis	Natalbany, La.	HB	167

GEORGIA TECH ROSTER

No.	PLAYER—	HOME—	POS.	WT.
1	Moore, J. S.	Atlanta, Ga.	QB	147
2	Gibson, E. H.	Atlanta, Ga.	E	176
3	Perkerson, J. G.	Atlanta, Ga.	HB	157
4	Arias, M. R.	Panama, R. P.	QB	145
5	Tharpe, E. S.	Moultrie, Ga.	FB	164
6	Roberts, C. H.	Atlanta, Ga.	QB	136
7	Katz, M.	Atlanta, Ga.	E	170
8	Ferguson, J.	Albany, Ga.	HB	170
9	Boyd, A. M.	Atlanta, Ga.	QB	165
10	Thompson, O. H.	Atlanta, Ga.	E	170
11	Martin, W. S.	Richburg, S. C.	HB	180
12	McKay, W. W.	Durham, N. C.	FB	175
13	Chance, B. M.	Floral, Ala.	T	195
14	Sackett, G. W.	New York, N. Y.	E	180
15	Smitb, O. D.	Atlanta, Ga.	T	181
16	Stacy, G. T.	Atlanta, Ga.	E	181
17	Street, W. O.	Atlanta, Ga.	HB	174
18	Ponder, J. G.	Canton, Ga.	E	177
19	McKinley, J. E.	Decatur, Ga.	HB	156
20	Hays, L. C.	Atlanta, Ga.	HB	159
21	Brittain, J. F.	Birmingham, Ala.	T	172
22	Boulware, H. B.	Jacksonville, Fla.	E	175
23	Lindsey, J. B.	Irwinton, Ga.	T	195
24	Dean, N. C.	Meridian, Miss.	T	195
25	Gardner, W. H.	Atlanta, Ga.	T	180
26	Preston, C. B.	Atlanta, Ga.	C	203
27	Lyons, W. V.	Ball Ground, Ga.	C	208
28	Beard, R. A., Jr.	Atlanta, Ga.	C	174
29	Warner, R. J.	Hickory, N. C.	G	180
30	Williams, C. W.	Little Rock, Ark.	T	210
31	Phillips, D. J.	Waynesville, N. C.	FB	200
32	Shaw, C. F.	Memphis, Tenn.	C	190
33	Wilcox, J. R.	Tyler, Texas	G	183
34	Eubanks, R. W.	Macon, Ga.	T	204
35	Fitzsimons, J. M.	Atlanta, Ga.	G	196
38	Wilcox, E. D.	Tyler, Texas	G	185

Simons Headed for Glory Land



Claude (Monk) Simons, Jr., Tulane's sensational triple threat halfback is shown here as he sold out last Saturday against Georgia for 33 yards and the winning touchdown. He also kicked the extra point that later proved the deciding margin.



MR. MOTORIST: Should you find tire, battery or mechanical trouble with your car after the game, the Freret Service Stations will come to your aid immediately. **THREE STATIONS TO SERVE YOU.**



FRERET SERVICE STATIONS

Fern and Maple
WAluut 6447

Broadway and Pritchard
WAlnut 2400

Freret and Robert
UPtown 5060

TULANE ALMA MATER
(Sing as the Band Plays)

I

We praise thee for thy past, ● Alma Mater!
Thy hand hath done its work full faithfully!
The incense of thy spirit hath ascended
And filled America from sea to sea!

II

We praise thee for thy present, Alma Mater!
Today thy Children look to thee for bread!
Thou ledest them to dreams and actions splendid!
The hunger of their soul is richly fed!

III

We praise thee for thy future, Alma Mater!
The vista of its glory gleameth far!
We ever shall be part of thee, great Mother!
There thou wilt be where e'er thy children are!

CHORUS

Olive, Green and Blue, we love thee!
Pledge we now our fealty true
Where the trees are ever greenest,
Where the skies are purest blue!
Hear us now, O Tulane, hear us!
As we proudly sing to thee!
Take from us our hearts' devotion!
Thine we are, and thine shall be!

“Time Out”

DRINK—

Coca-Cola
TRADE MARK
REG. U.S. PAT. OFF.

PAUSE--

RELAX--

REFRESH YOURSELF

TULANE



**JOE
LOFTIN**

FULL BACK.



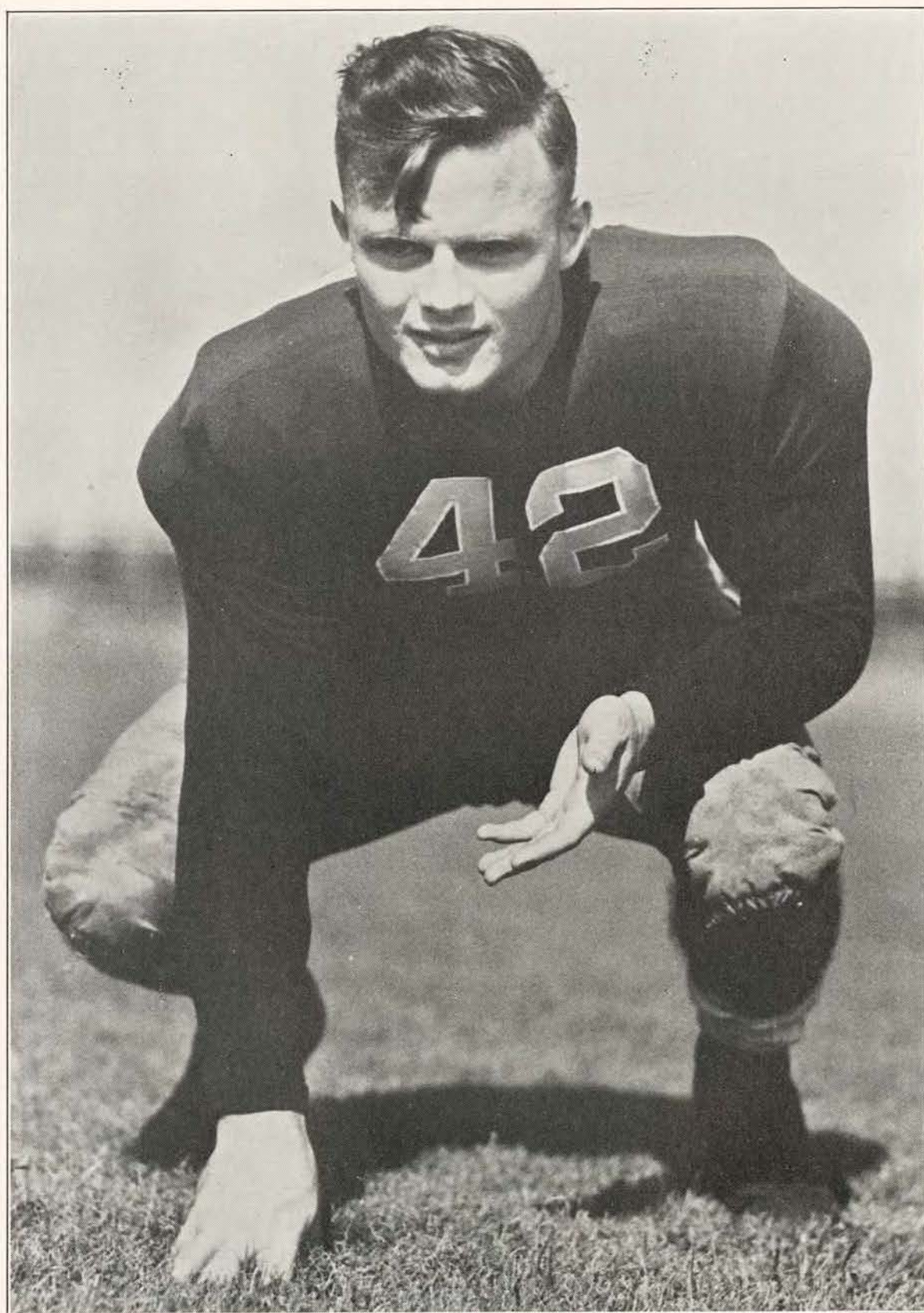
**STANLEY
LODRIGUES**
FULL BACK.

**LOUIS
THAMES**

HALF BACK.



LEFTY BROWNSON
QUARTERBACK.



FARREL THOMAS

Tulane's speedy right halfback.

Thomas is one of the finest ball carrying backs in the country. He is a senior on the Wave team this year.

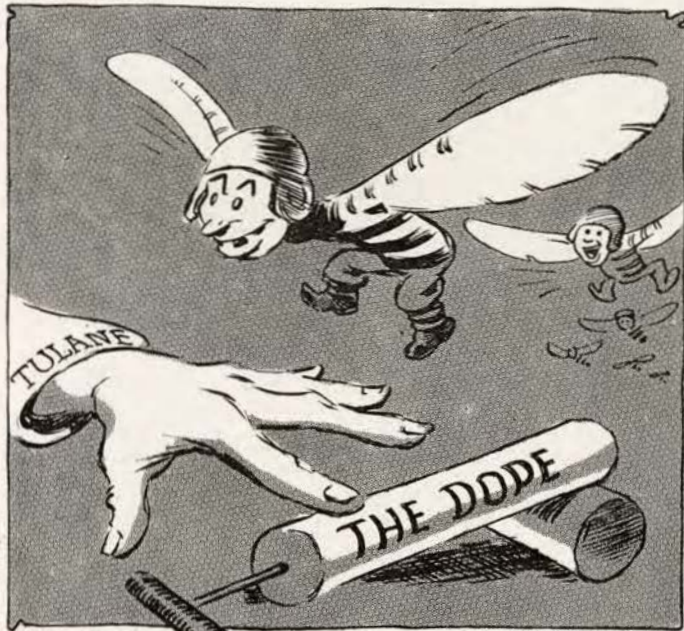
OULD TO BE AN EXCITING
Homecoming ~



~ AS WAVEMEN BUCK
 THAT GOLDEN TORNADO!



FOR THE FIRST TIME THIS
 SEASON THE GREENIES ARE
 CONFRONTED WITH TEAM
 USING "WARNER SYSTEM"



QUICK! HENRY ~
 YELLOWJACKETS!

SPIRIT IN THE 7th DEGREE



AN ALUMNUS FORGETS HIMSELF
 WHILE READING FOOTBALL CHART



PA SHOWS
 JUNIOR HOW
 THEY DID THE
 "FLYING WEDGE"
 BACK WHEN
 MEN WERE MEN



FOSTER
 BAIRD -



DR. HARDY HORACE SMITH,

of Fort Smith, Ark., a loyal alumnus, who was honored at the 1934 Tulane Homecoming by Induction into Omicron Delta Kappa, national honorary fraternity. Beginning this year, the O. D. K., will annually honor some outstanding alumnus for his untiring efforts in behalf of the University. Our salute to Dr. Smith.

TIME OUT

Mother: "Mary, did you give William half your apple?"

Mary: "No ma'am I didn't. Eve has been criticised for that little performance ever since it occurred."

•••

"Say, mom, was baby sent down from heaven?"

"Yes, son."

"I guess they like quiet up there, hah, mom?"

•••

"Love is like a photograph plate; it has to be developed in the dark."

•••

"Water polo is a brutal sport."

"Yeah, but croquet is more wicket."

•••

Shorty says gentlemen may prefer blondes, but he thinks the fact that blondes know what gentlemen prefer has a lot to do with it.

•••

The professor who sent his wife to the bank and kissed his money goodbye wasn't so absent-minded at that.

Officer: "What are the outskirts of a camp?"

Rookie: "Where the wimmen ain't allowed."

•••

A certain aged negro in Georgia was asked what he thought of the depression. "Well", replied the gentleman of color, "de depression ain't nuthin' but a go'f game. All it takes to overcome it is three putts. Put you' faith in Gawd, put you' Ford in de garage, and put you' women in de fields."

•••

A homely girl gets on a man's nerves but pretty ones sit on his lap.

•••

"Why are you in the Air Force now? I thought you were in the cavalry."

"I got transferred."

"Why was that?"

"Well, after an airplane throws you out, it doesn't usually walk over and bite you."

•••

"Do you like olives?"

"Olive's what?"

1934 Tulane Football Schedule

Sept. 29—Tulane 41, Chattanooga 0.

Oct. 6—Tulane 13, Auburn 0.

Oct. 13—Tulane 28, Florida 12.

Oct. 20—Tulane 7, Georgia 6.

Oct. 27—Georgia Tech at New Orleans

Nov. 3—University of Mississippi at New Orleans

Nov. 10—Colgate at New York

Nov. 17—Kentucky at Lexington, Ky.

Nov. 24—Sewanee at New Orleans

Dec. 1—Louisiana State at Baton Rouge, La.

Policeman: "How did the accident happen?"

Motorist: "My wife fell asleep in the back seat."

•••

Joe: "I'm in an awful predicament."

Moe: "What's the trouble?"

Joe: "I've lost my glasses and I can't look for them until I've found them."

•••

Teacher: "I have went; that's wrong, isn't it?"

Pupil: "Yes, marn."

Teacher: "Why is it?"

Pupil: "Because you ain't went yet."

"You're not living at your brother's house any more?"

"No, I stayed five weeks and then discovered that they had no bath tub in the house."

•••

Tom: "I took a salesgirl out last night and stole a kiss."

Jim: "What did she say?"

Tom: "Will that be all?"

•••

Freshman: "How much does it cost to send a telegram?"

Telegraph Clerk: "Where to?"

Freshman: "To Dorothy."

TULANE'S SONG OF VICTORY. -

FROM EV'RY HILL AND MOUNTAIN, FROM RIVER LAKE AND SEA, FROM FOREST GLADE AND FOUNTAIN, WE

MODERATO.

HEAR THE SONG OF VICTORY, OUR VOICES NOW ASCENDING ON WINGS OF LOVE ARISE, WITH

JOYFUL ANTHEMS BLENDING IN PRAISE THAT NEVER DIES. THEN HAIL TU-LANE OUR

♩ CODA.

GREAT OLD VAR-SI-TY - AND PROUD-LY REIGN O'ER THIS LAND OF THE FREE, THEN

HAIL TU-LANE WE'LL SING THIS GLAD REFRAIN, AND SOUND THE GLORIOUS PRAISES OF OUR

OWN TU-LANE - FROM DAL SEGNO THEN HAIL TU-LANE MAY VICTRY CROWN THY DAYS.

♩ CODA. ALLARGANDO -

ff

WORDS BY H. W. MUSIC BY HENRY WEHRMANN -

a Winner!



FOR BETTER PHOTO- ENGRAVING

CRESCENT CITY

**HALFTONES
LINE ETCHINGS
COLOR PLATES**

*Artists
and
Engravers*



ENGRAVING CO.

Chris Eichhorn, Mró

**424 CAMP STREET
NEW ORLEANS, L.A.**

**TELEPHONE
MAIN 4186**

W. W. HALL

Save the Coupons

from each pound of this delicious coffee
and receive your choice of

More Than 100 Gifts



"Unexcelled for 44 Years"

American Coffee Co., Inc., New Orleans, La.



HAUSMANN, Inc.

•
New Orleans'
Leading Jewelers

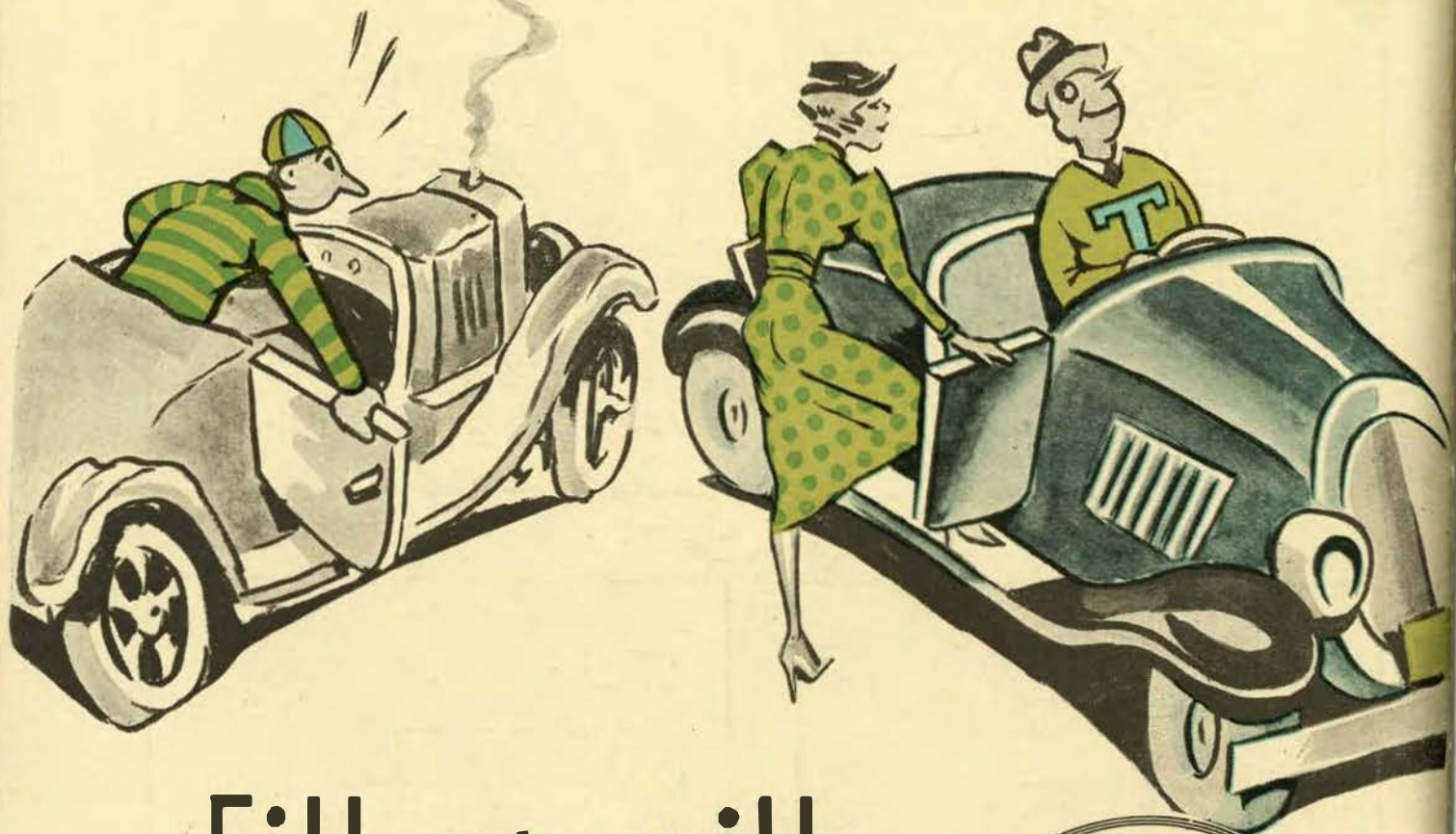
•
*Special Department for College
and Fraternal Jewelry*

The SMOKE HOUSE

220 Varieties Place
(In rear of Cotton Exchange)

•
*"Where football is played before
and after the game."*

KEEP UP TO DATE
WITH PAN-AM



Fill up with
ORANGE

**PAN-AM
GASOLINE**



ANTI-KNOCK . MORE MILEAGE . NO EXTRA COST