



TULANE vs. CLEMSON

NOVEMBER 17, 1945

Souvenir Program..... 25¢

THESE ARE THE OFFICIAL 1945 Signals



OFF-SIDE
Hands on and off hips—repeat several times.



ILLEGAL POSITION OR PROCEDURE
Hands revolving in front of chest.



ILLEGAL MOTION OR SHIFT
Horizontal arc with either hand.



ILLEGAL DELAY OR EXTRA TIME OUT
Folded arms.



ILLEGAL USE OF HANDS OR ARMS
Grasping one wrist.



UNSPORTSMANLIKE CONDUCT
Arms outstretched, palms down.



SAFETY
Palms together overhead.



INTENTIONAL GROUNDING
Both hands over right shoulder then down hard and forward.



FORWARD PASS OR FAIR CATCH INTERFERENCE
Pushing arms forward, palm vertical.



BALL ILLEGALLY TOUCHED, KICKED OR BATTED
Lapping both shoulders with finger tips.



INCOMPLETE FORWARD PASS; PENALTY DECLINED, NO PLAY OR NO SCORE
Hands rapidly criss-crossed in horizontal plane.



BALL DEAD
One arm aloft, open hand. If hand is closed, TOUCHBACK.



UNNECESSARY ROUGHNESS
Military salute. **CLIPPING**
Salute followed by slapping back of knee with hand. **RUNNING INTO OR ROUGHING KICKER**
Salute followed by swinging leg to simulate a punt.



CRAWLING; HELPING THE RUNNER OR INTERLOCKED INTERFERENCE
Pushing movement with hands below waist.



TIME-OUT
Hands rapidly criss-crossed overhead.



START THE CLOCK OR NO MORE TIME-OUTS ALLOWED
Full arm circles to simulate winding a clock.

FIRST DOWN
Vigorous throwing motion concluded with outstretched arm pointing toward offensive goal.



TOUCHDOWN OR FIELD GOAL
Both arms aloft and held rigid.



ILLEGAL FORWARD PASS
Waving hand behind back.



Listen to "Time Out" WITH JOHNNY LYNCH Thursdays 5:15-5:30 P.M. WNL

And for Your Time Out



JACKSON BREWING COMPANY NEW ORLEANS, LA.

DRINK **JAX** BEST BEER IN TOWN

THE GREENIE

Vol. 15

NOVEMBER 17, 1945

No. 6

Official Souvenir Football Program of Tulane University, Published for Each Home Game

National Advertising Representative, Football Publications, 370 Lexington, New York City.

ANDY ROGERS, *Editor*

CAROL HART, *Associate Editor*

Homecoming, 1945

Tulane university, for the first time in four years, will hold a peacetime homecoming celebration next Friday and Saturday and, as it should be, the occasion will be dedicated to the Tulane alumni and students who have served in the armed forces and thereby made it possible.

The program will open Friday with registration at the Student Center from 2:00 to 7:00 p. m. Also included on the program, from 2:00 to 5:00 p. m., will be a series of campus tours starting from the Student Center.

At 7:30 p. m. Friday, a campus night show will be conducted in McAlister Auditorium, and will be followed by a bonfire and pep rally at the Track Stadium. From 9:30 p. m. to 1:30 a. m. the Alumni will hold their annual dance at the New Orleans Country Club.

A second registration for late arrivals will be held from 9:30 to 11:00 a. m. Saturday at the Student Center while at 10:00 a. m. a cup will be awarded the fraternity for the best house decoration. The annual meeting of the Tulane Alumni Association will be held at 11:00 a. m. and will be followed at noon by a luncheon in the Student Center.

Pre-game activities will start at 1:30 p. m. at Tulane Stadium with the kickoff for the Tulane-Notre Dame game scheduled at 2:15 p. m. The various fraternity houses will hold open house after the game and from 8:30 p. m. to 12:30 a. m., the student body will have its homecoming dance at the Tulane Room of the Jung Hotel to conclude the celebration.

* * *

Tigers vs. Greenies

Coach Frank Howard's ever potent Tigers from Clemson College make their sixth appearance against Tulane's Green Wave this afternoon in an inter-sectional contest that, if it follows a nine-year trend, will be jam-packed with thrills.

This South Carolina eleven from the Southern Conference, first under Coach Jess Neely and now under Frank Howard, always produces one of the finest grid efforts when facing the Greenies, despite the fact that the Wave holds a four to one edge in victories.

The series between Clemson and Tulane began in 1936 when the Wave earned a one-touchdown

7-0 decision over the Tigers, then under Neely. The following year, in what was probably the most thrilling battle of the series, the Tigers scored their lone victory on a 13-10 count.

In 1939, two grid giants battled to a virtual standstill, the Greenies tallying but a one-point, 7-6 victory. The Wave rolled right on into the Sugar Bowl against Texas A. and M. and Neely piloted his Tigers into the Cotton Bowl.

The Wave continued its mastery the next season, punching over a 13-0 victory. It wasn't until last year that the two clubs met again, and then the game turned into a high-scoring affair, with the Greenies coming out on top of a 36-20 thriller in the mud.

Howard, this season, brings an eleven to Tulane with a record of four victories, one tie and two losses on its record. The Wave's record, meanwhile, includes two wins, three losses and one tie.

LOST ARTICLES

Lost articles should be turned in at Room 18 near the North end of the West Side, Tulane Stadium. Room 18 is located near the foot of Ramp 6. For telephone information regarding lost and found articles, call WAlnut 5754.

WHY BE IRRITATED?

ARMY

Old Gold CIGARETTES

-LIGHT AN OLD GOLD

Apple Honey helps guard O.Gs. from Cigarette Dryness

The Roosevelt

New Orleans' Finest

In America's Most Interesting City



THE ROOSEVELT is located in the heart of Romantic old New Orleans. It is in the center of business and social activities and is close to the Theatre, Shopping, French Quarter, and Business Districts . . . You will like the tasteful luxury and home-like atmosphere of this modern hotel where the traditions of Southern Hospitality are maintained the year 'round.

800 ROOMS WITH BATH

MODERATE RATES



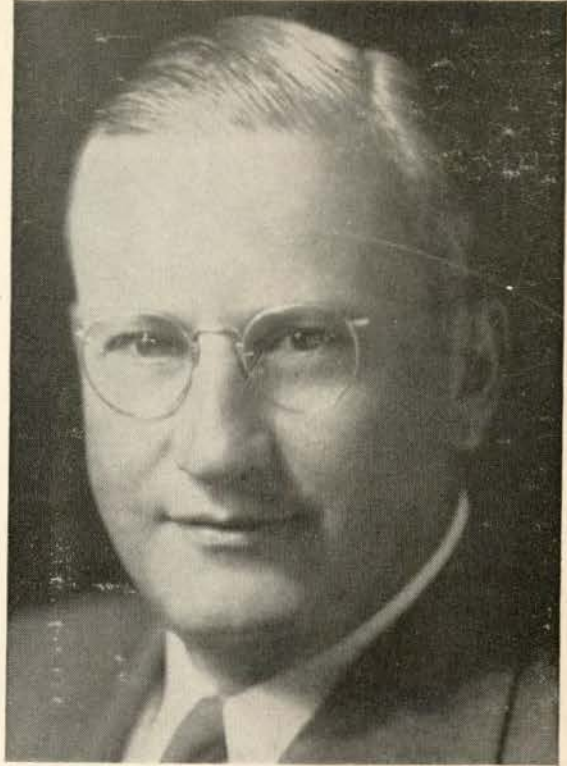
The Roosevelt
"The Pride of the South"



PRESIDENT

RUFUS C. HARRIS

TULANE UNIVERSITY



COACH

CLAUDE SIMONS

TULANE UNIVERSITY



Famous for
FINE FOOD
and **DRINK**



TONIGHT — enjoy specialties of these noted restaurants:

ANTOINE'S

713 St. Louis St.

ARNAUD'S

813 Bienville St.

BROUSSARD'S

819 Conti St.

KOLB'S

125 St. Charles St.

LA LOUISIANE

725 Iberville St.

Shop With Confidence



You can't go wrong with your choice when it comes from Mayer Israel's. For over 50 years, the words Mayer Israel's and fine fashions have been synonymous — signifying only the finest in quality.

Shop with confidence at Mayer Israel's—the store of fine fashions for men, women and children.



Mayer Israel's

714 Canal Street



RICHARD HOOT
HALFBACK



JAMES LEE
FULLBACK



WALTER FERGERSON
FULLBACK



JACK COUNCE
HALFBACK



GEORGE
ROBINSON
TACKLE



LEROY
SCHNEIDER
TACKLE



WILLIAM
LEAHEY
QUARTERBACK



GASTON BOURGEOIS
GUARD



JIMMY LASSETTER
END



MARVIN MCCAIN
HALFBACK



HUGH BOWERS
CENTER



WILLIAM REYNOLDS
HALFBACK

TULANE

1945



TWEEDS ARE COLLEGIATE!



ALL WOOL SUITS

Smartly tailored suits in both single and double-breasted styles. New fall colors. Full size range.

32.50

Other Tweeds . . 27.50 -- 35.00

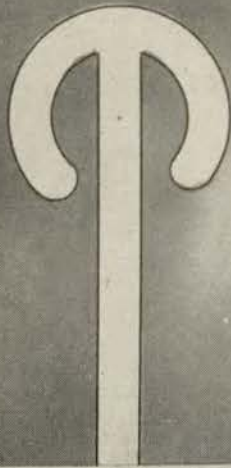
- Smart Herringbones!
- Fancy Diagonals!
- Plain Donegals!

● Men's Clothing,
MB First Floor

Maison Blanche

GREATEST STORE SOUTH

Pulane



ERNEST CROUCH
QUARTERBACK



RAY ARTHUR
QUARTERBACK



LARRY McDONALD
END



DAVID RIDEOUT
HALFBACK



JOE YOUNG
HALFBACK



ROBERT SHIRLEY
END



TONY CASH
END



WILLIAM WATKINS
END



ROBERT LOGAN
TACKLE



ELLIOTT IGLEHEART
GUARD



ROY BAILEY
END



JOHN FRANK
GUARD

Greenies

Penalties

- 1 Taking more than three times out during either half
- 2 Illegal delay of game
- 3 Failure of substitute to report to umpire
- 4 Violation of kick-off formation

LOSS OF FIVE YARDS

- 5 Failure to maintain proper alignment of offensive team before ball is snapped. Also, backfield man illegally in motion
- 6 Offside by either team, or encroachment on neutral zone
- 7 Attempt to draw opponents offside

- 8 Taking more than two steps with ball after signaling for fair catch
- 9 Illegal use of hands and arms by defensive players
- 10 Flying block or flying tackle
- 11 Player in motion less than 5 yards behind line of scrimmage.
- 12 Crawling by the runner

LOSS OF FIFTEEN YARDS

- 13 Team not ready to play at scheduled time
- 14 Substitute communicating with teammates before ball is put in play
- 15 Illegal substitution (player also suspended from game)
- 16 Failure to stop at least one second on shift play
- 17 Forward pass by member of team which did not put ball in play

- 18 Forward pass touched by ineligible player
- 19 Intentional grounding of forward pass
- 20 Interference by member of passing team with defensive player eligible for pass
- 21 Interference with fair-catch or tackling player before ball is caught

- 22 Illegal use of hands and arms by offensive players
- 23 Defensive player striking opponent above shoulders
- 24 Roughing the kicker
- 25 Piling up, hurdling, clipping
- 26 Tackling player out of bounds
- 27 Coaching from the sidelines
- 28 Illegal interference with defense by passing team

OTHER PENALTIES

- 29 Striking, kneeling, or kicking opponent—half the distance to the goal and disqualification of offending player
- 30 Foul within one yard line—half the distance to the goal

- 31 Interference by defensive team on forward pass—first down for passing team at spot of foul
- 32 Flagrant roughing of kicker—disqualification, plus fifteen yards

- 33 Flagrant unsportsmanlike conduct—disqualification, plus fifteen yards
- 34 Forward pass touched by ineligible player on or behind line of scrimmage—loss of down

JOHNNY CALLS 'EM SIGNALS & PENALTIES

Holding. (Penalty—by offense, 15 yards; by defense, 5 yards.)

Player illegally in motion. (Penalty, 5 yards. If from shift or huddle, 15 yards.)

Time out.

Unsportsmanlike conduct. (Penalty—15 yards.) For flagrant, unsportsmanlike conduct—15 yard penalty and disqualification.

Offside or violation of kick-off formation. (Penalty, 5 yards.)

Illegal touching of kicked ball inside opponent's 10-yard line—touchback.

Unnecessary roughness, illegal defensive use of the hands, clipping, running into or roughing the kicker. (Penalty, 15 yards.)

Score—touchdown, field goal, or conversion.

Delay of game or extra time-outs. (Penalty, 5 yards.)

Interference with forward pass, pass touching ineligible player, or "screening" pass receiver. (If penalty on offense, when interference occurs beyond line of scrimmage, 15 yards and loss of down; on or behind line of scrimmage, loss of down only. Interference by defense, ball to offense on spot of foul as first down.)

Penalty refused, incomplete pass, missed field goal or conversion, both sides offside, etc.

Illegal formation or position of one or more players. (Penalty—5 yards from where ball was put in play.)

Illegal forward pass.


Safety.

Intentional grounding of forward pass. (Penalty—loss of down and 15 yard penalty from spot of preceding down.)

Crawling or pushing. 5 yds.; helping ball carrier, 15 yards.

CALL FOR PHILIP MORRIS

AMERICA'S FINEST CIGARETTE



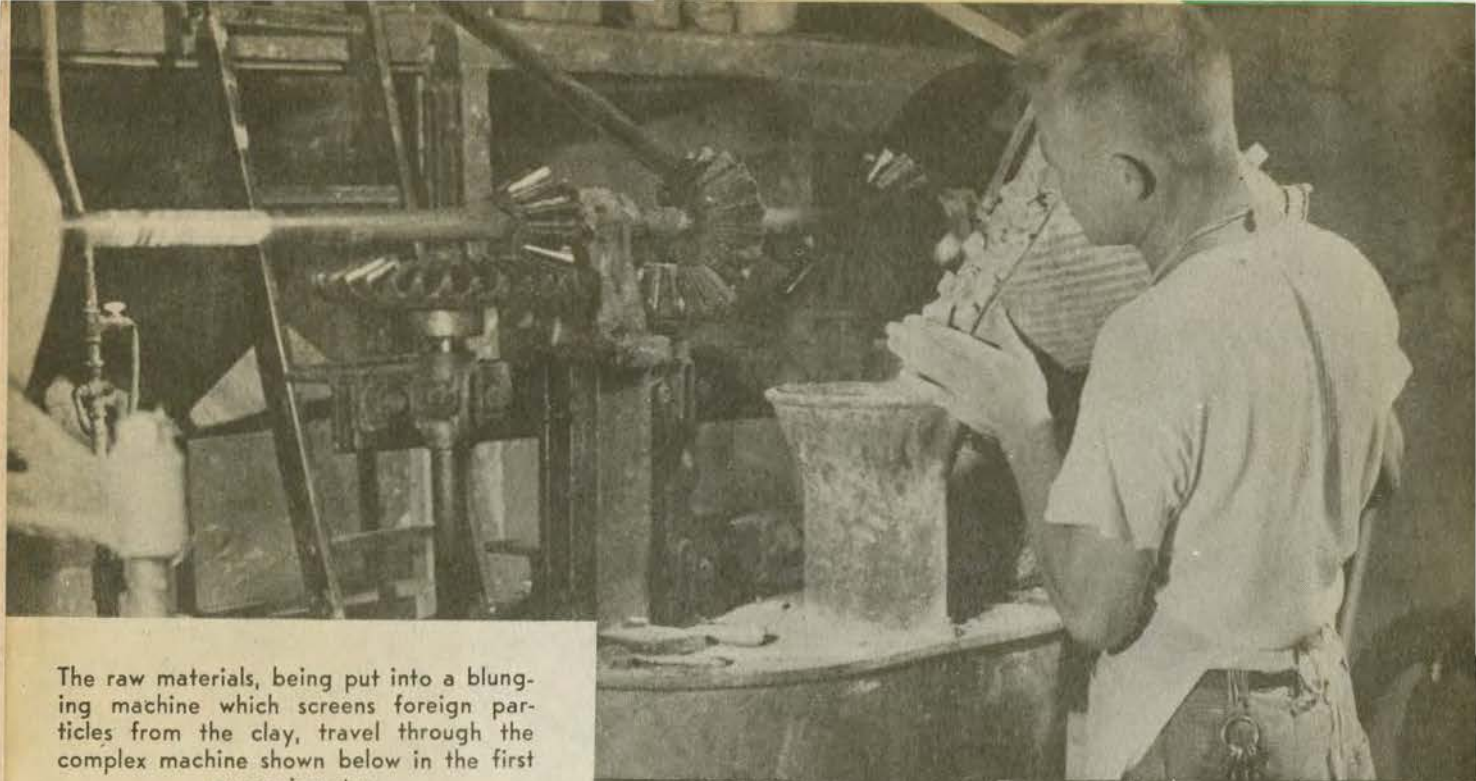
The ceramics department of the Newcomb Guild falls into the range of the Cam-Pix cameraman who sets out to discover how ceramic wares are made. The Guild, a part of the Newcomb Art School of Tulane University, is famed for its fine pottery, and markets its products in all parts of the country.

CAM-PIX

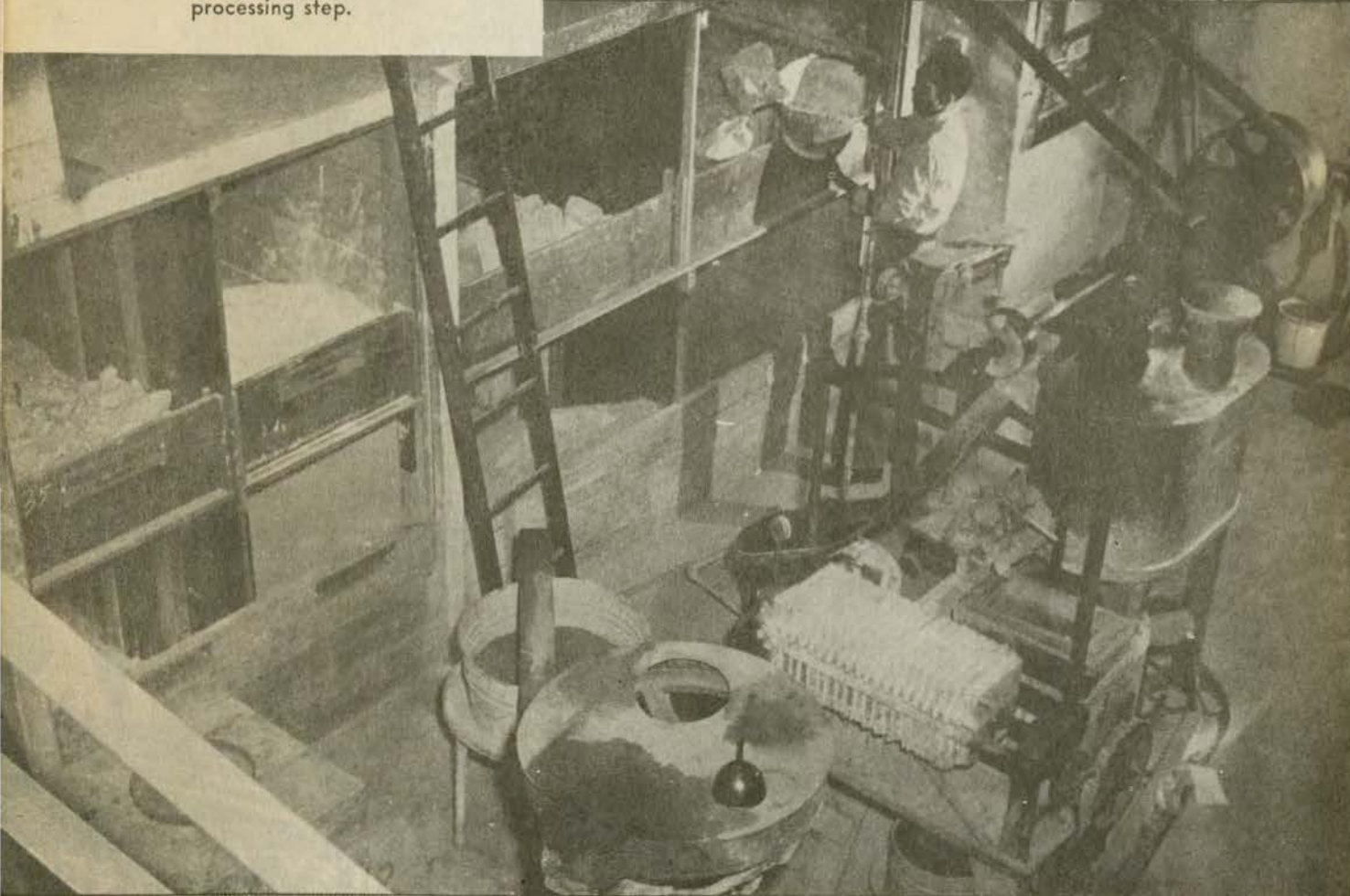
**A MEDLEY OF
CAMPUS PICTURES**

WETZEL
PHOTOGRAPHY

★
© 1945 BY HORACE RENEGAR



The raw materials, being put into a blunging machine which screens foreign particles from the clay, travel through the complex machine shown below in the first processing step.



STYLEPARK HATS

*be HEADED right
with a STYLEPARK HAT from*

Porter's



Below, the clay is further prepared for handling as it is formed into cylinders in the pugging machine. At right, it is stored in a wet cellar for further use.



RAINFAIR
STORM

COATS
take the weather.



give the style . . . from

Porter's



From a small square, above, the clay is centered on the potter's wheel, a swiftly revolving disc, is formed into any number of shapes and then is left to harden.



WHERE IS PORTER'S?

ACROSS THE
STREET FROM
THE COTTON
EXCHANGE

AROUND THE
CORNER
FROM THE
ST. CHARLES
HOTEL

OPPOSITE THE HIBERNIA
NATIONAL BANK AND
IN THE SAME BLOCK
WITH THE AMERICAN
BANK-ASK ANYBODY!

Porter's

CARONDELET COR. GRAVIER

This Program Printed

by

TULANE UNIVERSITY PRESS

Printing Department of Tulane University



CAMPUS PRINTERS

Basement, Gibson Hall
Phone WALnut 0082

*Cover printed on recently installed
automatic press*

AT THE GAME

and

AFTER THE GAME

ENJOY



“Time Out”

DRINK—

Coca-Cola

PAUSE—

RELAX—

REFRESH YOURSELF

Good Old
REGAL
 BEER



TULANE

STARTING LINEUP

LE	LT	LG	C	RG	RT	RE
Bailey 32	Ferguson 43	Brinker 44	Bowers 14	Bourgeois 38	Schneider 45	Lassetter 31

		QB				
		Crouch 20			RHB	
	LHB				Counce 33	
	Hoot 23		FB			
			Chavez 23			

SQUAD LIST

10 Arthur, b	27 Rowland, t	43 Ferguson, t
11 Lee, b	28 Robertson, b	44 Brinker, g
12 Rideout, b	29 Reynolds, b	45 Schneider, t
14 Bowers, c	30 Cash, e	50 Watkins, e
15 Leahey, b	31 Lassetter, e	57 Carney, e
16 Levonian, b	32 Bailey, e	58 Shirley, e
17 Landry, b	33 Counce, b	65 Johnson, t
18 Young, b	34 Logan, t	70 McEvers, c
19 McDonald, e	35 Woodiel, g	73 Yearly, b
20 Crouch, b	36 Robinson, t	80 Ellender, e
21 Seybold, g	37 Carter, g	85 Greer, g
22 Hoot, b	38 Bourgeois, g	86 Paxton, t
23 Chavez, b	39 Igleheart, g	88 Oswald, g
24 Timken, t	40 Stolen, c	96 Bondio, t
25 McCain, b	41 Frank, c	
26 Banowetz, b	42 Bie, c	

OFFICIALS
 Referee—K. C. Gerard (Illinois)
 Umpire—Cliff Norvell (Memphis)

CLEMSON

STARTING LINEUP

LE	LT	LG	C	RG	RT	RE
Clark 32	Turner 51	Sultis 45	Jenkins 46	Woods 75	Cagle 69	Freeman 49

		QB				
		Cumbie 23			RHB	
	LHB				Poe 68	
	Butler 77		FB			
			Reynolds 53			

SQUAD LIST

22 Quinn, fb	50 Butz, e	75 Woods, g
23 Cumbie, qb	51 Turner, t	77 Butler, lh
24 Gage, lh	52 Alford, fb	78 Phillips, lh
28 Connelly, e	53 Reynolds, fb	79 Miller, hb
29 Hough, qb	59 Davis, g	80 Cloud, e
32 Clark, e	62 Rushton, c	81 Pruitt, rh
33 Cleveland, c	63 Cox, lh	82 Clanton, g
41 Sullivan, rh	68 Poe, rh	83 Kroger, g
45 Sultis, g	69 Cagle, t	84 Patton, t
46 Jenkins, c	70 Saunders, t	85 Moor, qb
48 Banks, t	73 Marvin, qb	87 Doyal, e
49 Freeman, e	74 Dier, e	88 Wiggs, t

OFFICIALS
 Head Linesman—B. W. Hackney (North Carolina)
 Field Judge—Harry Mout (Armour)

Prince of Golden Beers

D Equipment for all sports...

U

*Specialists in all types of
school athletic
supplies*

N

L

A

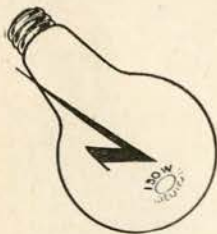
P

Sporting Goods Co.
(JOHNNY LYNCH'S)
138 Carondelet Street
MAGNOLIA 5891



*Better Printers
in New Orleans*

150 WATTS IS RIGHT HERE



You'll get more pleasure out of winter evenings at home when congenial friends call to play a few rubbers of bridge or other games if you use enough light. See that your bridge lamps contain 150-watt bulbs for comfortable seeing. Give your family and guests the protection and cheer of better light in your home.



NEW ORLEANS **Public Service**



Professor Robert Feild, director of the Newcomb Art School, carefully examines the wares to select only the best for further processing.

Below, is the laboratory where ceramic chemicals are weighed according to precise formulas developed by the guild.



You pay no more  for **Porter's**
DEPENDABILITY!



Above, the glazing process is shown which gives the wares their final texture and decorative coloring.

Not a surrealistic artist's dream, but pyrometric cones which are used to indicate temperatures of the kiln where heat up to 2000 degrees is attained.



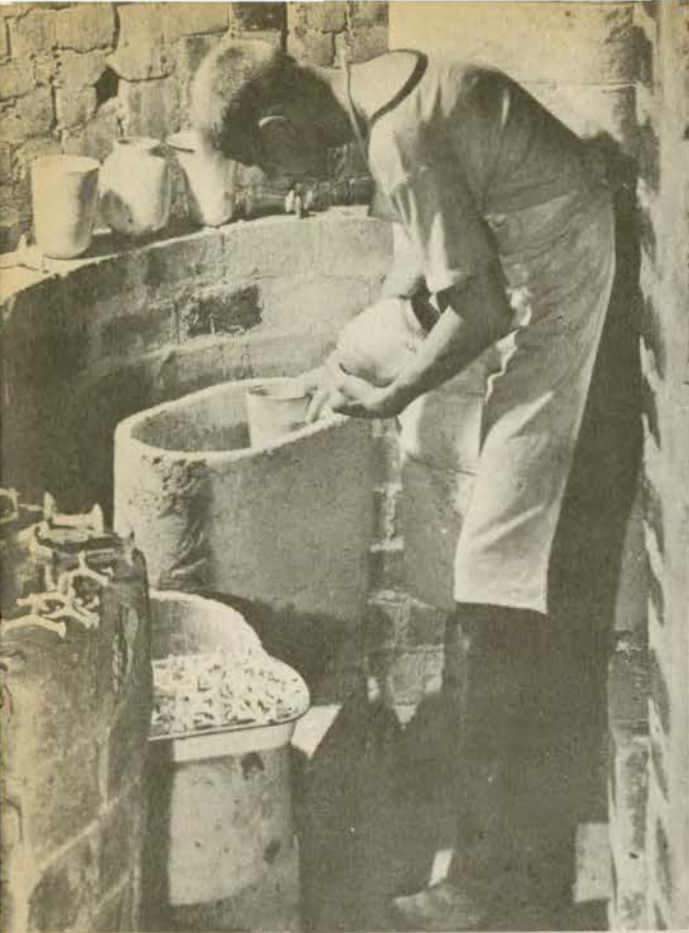
DURABLE
ALL WOOL
SUITS



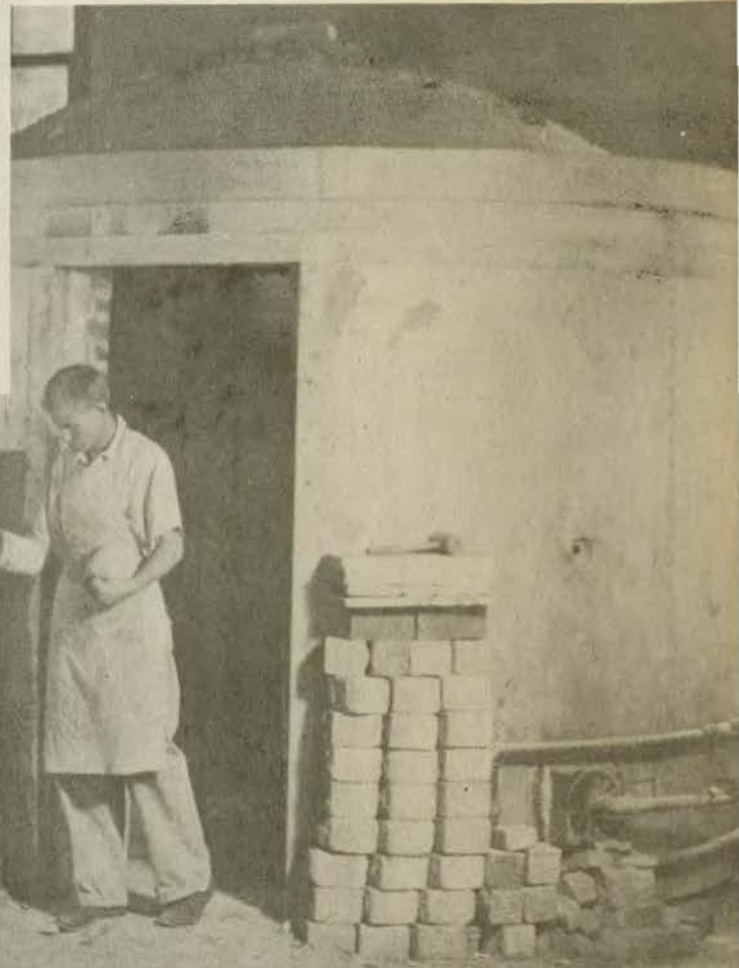
100%
THAT'S
ME!

AND I
CAN
TAKE IT!

\$35 from
Porter's



The pottery is removed from the kiln after firing to complete the ceramic process which develops raw materials into beautifully designed and durable earthenware products.



**Nunn Bush
SHOES**



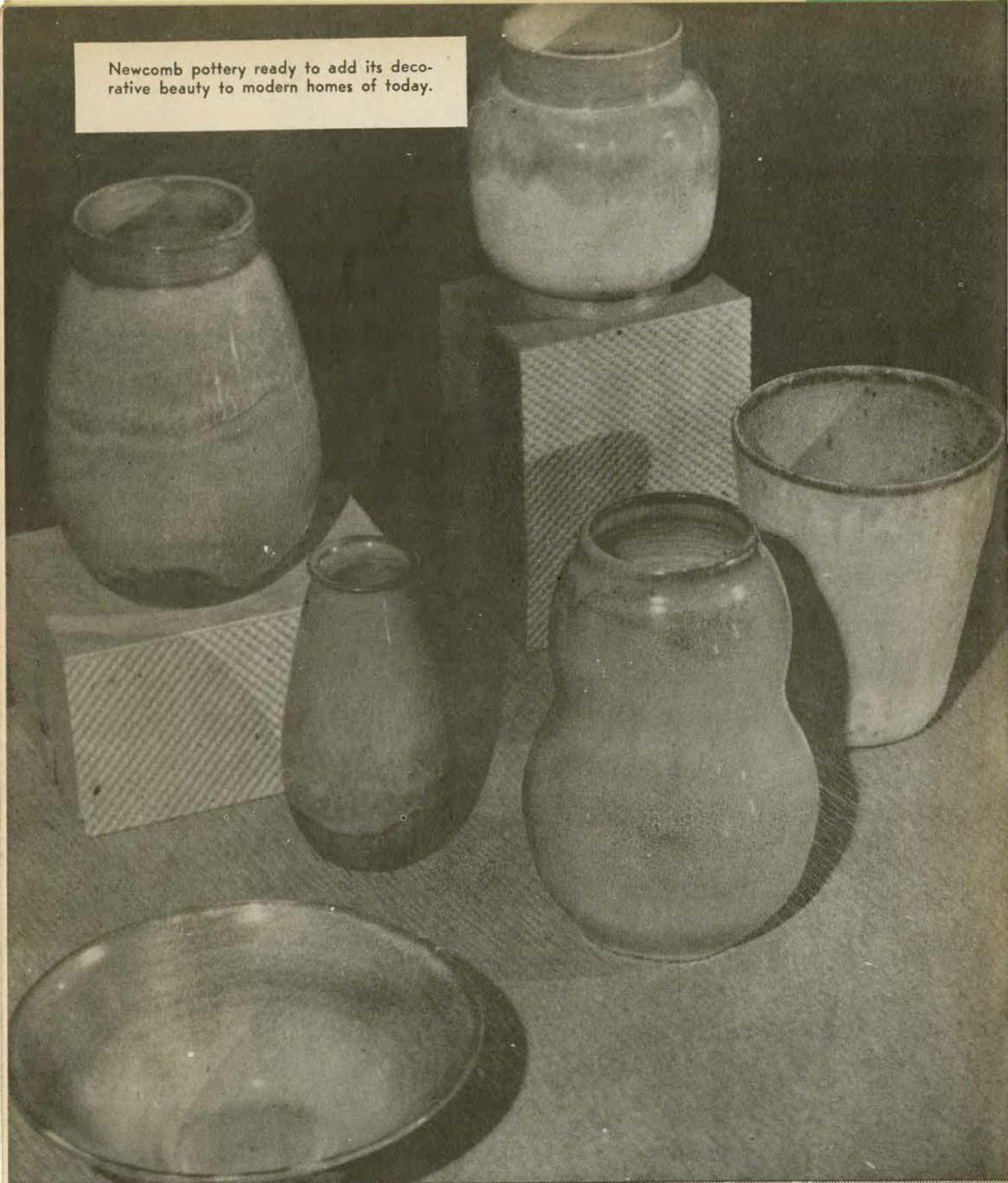
FOOT
COMFORT



MILES OF WEAR

at
Porter's

Newcomb pottery ready to add its decorative beauty to modern homes of today.



Nunn Bush
SHOES



2 FEET
OF COMFORT
AND STYLE

Porter's
from ..

Ellis F. Robert, Inc.

formerly BROADMOOR NURSERY

NURSERY

FLORIST

LANDSCAPING



GENERAL

HOUSE

RÉPAIRS

for

COMPLETE HOME MAINTENANCE

Phone Ra. 9104

where good things
need not be expensive
... and inexpensive
things have to be good



105 YEARS OF FINE APPAREL FOR
MEN, WOMEN AND CHILDREN

Godchaux's

A WINNER!



PIGSKIN ROUNDUP

L. S. U. vs. GEORGIA TECH—Already tottering on the brink, either The Bengal or The Wreck should be bowl "un-conscious" after this. Too bad, Mr. Moore, too bad.

* * *

NOTRE DAME vs. NORTHWESTERN — The Irish score their last victory in the North before trying "greenie pastures" in the South.

* * *

ARMY vs. PENNSYLVANIA—For the Cadets, the last act before "The Philadelphia Story" opens. And for them, an easy victory, too.

* * *

WISCONSIN vs. NAVY—The same holds true for the Middies.

* * *

ST. MARY'S vs. U. C. L. A.—The Gallopin' Gaels may be slowed to a canter but it's not likely.

* * *

ALABAMA vs. VANDERBILT—Harry Gilmer and Company take the second of three breathers before coming to Mississippi State.

AUBURN vs. GEORGIA—In reality, Kuykendall vs. Trippi. Trippi by a nose.

* * *

INDIANA vs. PITTSBURGH—This is definitely the Hoosiers' year. Clark Shaughnessy and his "T" style Panthers aren't likely to topple the cart.

* * *

PURDUE vs. MICHIGAN — The Boilermakers may boil but they'll scarcely get hot enough to take this one.

* * *

TEXAS A. AND M. vs. RICE—Hullabaloo in Houston. The Owls may spring a surprise.

* * *

CORNELL vs. DARTMOUTH—A clash of Red and Green, with the latter predominant.

* * *

The little roundup—Tulsa over Baylor . . . California over Oregon . . . Temple over Holy Cross . . . Ohio State over Illinois . . . Minnesota over Iowa . . . Columbia over Princeton . . . Florida over Presbyterian . . . Oklahoma over Missouri. (Andy Rogers)

Official timing watch for the



TULANE-CLEMSON FOOTBALL GAME

Longines

The World's Most Honored Watch

winner of 10 world's fair grand prizes,

28 gold medals, and more honors for

accuracy than any other timepiece



Product of Longines-Wittnauer Watch Co.

The Roosevelt

The Roosevelt Hotel Offers
New Orleans' Most Diversified Program
of
Music and Entertainment

in the FOUNTAIN LOUNGE

At LUNCHEON we invite you to listen to the sweet strains of the Gypsy Ensemble. For COCKTAILS and DANCING, alternately nightly from five o'clock until two the next morning is one of Latin America's noted Rhumba bands and the Society Music of one of America's outstanding combinations.

in the BLUE ROOM

Each evening, for DINNER and SUPPER DANCING, is presented one of the Nation's famous orchestras . . . Featured also in the Blue Room Floor Shows at Dinner and Supper, are celebrated stars from radio, stage and screen.

*New Orleans' most discriminating audiences choose the Roosevelt
for their relaxation and entertainment*



The Roosevelt
"The Pride of the South"

Clemson



ALTON CUMBIE
BACKS



GIL RUSHTON
CENTER



JIM REYNOLDS
BACKS



MILTON WIGGS
TACKLE



JAMES SULTIS
GUARD



DEWEY QUINN
BACKS



MAVIS CAGLE
TACKLE



SAM BUTZ, END



JUD DAVIS, GUARD



BILLY POE
BACKS



THE RECORDS

TULANE

October 6—Tulane 6, Florida 6
 October 13—Tulane 7, Rice 13
 October 20—Tulane 14, Auburn 20
 October 27—Tulane 19, S. M. U. 7
 November 3—Tulane 14, Mississippi State 13.
 November 10—Tulane 7, Georgia Tech 41
 November 17—Clemson at New Orleans
 November 24—Notre Dame at New Orleans
 December 1—L. S. U. at New Orleans



CLEMSON

September 22—Clemson 76, Presbyterian 0.
 September 29—Clemson 0, Georgia 20
 October 6—Clemson 13, North Carolina State 0
 October 17—Clemson 7, Pensacola NAS 6.
 October 25—Clemson 0, South Carolina 0
 November 2—Clemson 6, Miami 7
 November 10—Clemson 35, V. P. I. 0
 November 17—Tulane at New Orleans
 November 24—Georgia Tech at Atlanta
 December 1—Wake Forest at Clemson



W. L.
Douglas Shoes
 W. L. DOUGLAS SHOE CO., BROCKTON 15, MASS.
 218 ST. CHARLES STREET

HAUSMANN

NEW ORLEANS'
 LEADING JEWELERS



Special Department for College
 and
 Fraternal Jewelry

*The Thinking Fellow
 Rides a Yellow*



TOYE BROS.



YELLOW CABS

W S M B

1350 Kilocycles



NEW ORLEANS' OUTLET FOR
 THE N B C NETWORK



IF YOU CAN'T ATTEND ALL OF
 THE TULANE GAMES, LISTEN
 TO HARRY ARTHUR'S VIVID
 DESCRIPTION OF THEM
 ON W S M B.

Clemson



CAROL
COX
BACKS



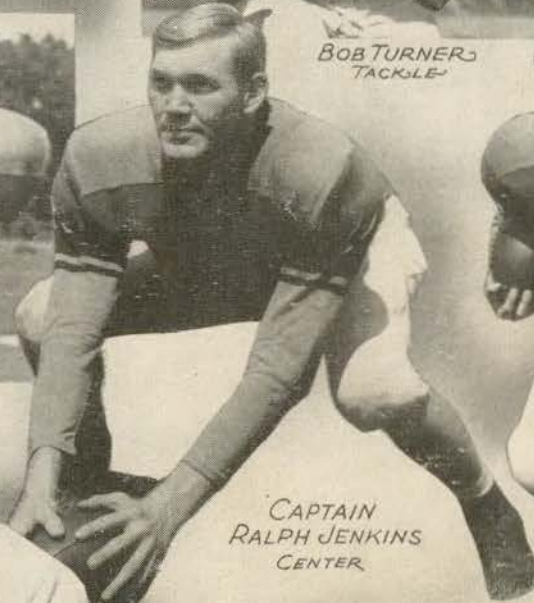
BOB TURNER
TACKLE



JIMMY
PHILLIPS
BACKS



BO SAUNDERS
TACKLE



CAPTAIN
RALPH JENKINS
CENTER



BOBBY
GAGE
BACKS



JOHN
MOORER
BACKS



EDDIS
FREEMAN, END



FOOTSIE WOODS; GUARD

TULANE ROSTER

No.	Name and Position	Weight	Height	Hometown	Status
10	Ray Arthur, qb	160	5-8	New Orleans, La.	Civ.
11	James Lee, fb	165	5-11	Memphis, Tenn.	Civ.
12	David Rideout, hb	165	5-10	Henderson, Ky.	Civ.
14	Hugh Bowers, c	179	5-10 1/2	Port LaVaca, Tex.	Navy
15	William Leahy, qb	170	6-1	Kensselaer, N. Y.	Navy
16	Harry Levonian, b	165	5-8	Racine, Wis.	Civ.
17	George Landry, qb	190	6-1	Port Arthur, Tex.	Vet.
18	Joe Young, hb	170	5-11	New Orleans, La.	Civ.
19	Larry McDonald, e	172	6-	Struthers, Ohio	Civ.
20	Ernest Crouch, qb	155	5-10	Sulphur, La.	Civ.
21	Jack Seybold, g	185	5-9	New Orleans, La.	Civ.
22	Richard Hoot, hb	180	5-11 1/2	Swarthmore, Pa.	Navy
23	Joe Chavez, hb	172	5-9	Los Angeles, Cal.	Navy
24	Clayton Timken, t	185	6-	New Orleans, La.	Vet.
25	Marvin McCain, qb	193	6-	New Orleans, La.	Civ.
26	David Banowitz, fb	184	5-10	New Orleans, La.	Civ.
27	David Rowland, t	202	6-2	Hot Springs, Ark.	Navy
28	Bill Robertson, fb	175	5-11	Piggott, Ark.	Civ.
29	William Reynolds, hb	175	5-11	Birmingham, Ala.	Navy
30	Tony Cash, e	195	6-1 1/2	New Orleans, La.	Vet.
31	James Lassetter, e	170	6-1 1/2	Whitehaven, Tenn.	Civ.
32	Roy Bailey, e	180	6-	Sulphur, La.	Civ.
33	Jack Counce, hb	183	6-	New Orleans, La.	Civ.
34	Robert Logan, t	195	6-3	Dennison, Iowa	Navy
36	George Robinson, t	195	6-	Homer, La.	Vet.
37	William Carter, g	180	5-11	Irvington, N. Y.	Navy
38	Gaston Bourgeois, g	205	5-11 1/2	Lutcher, La.	Civ.
39	Elliott Igleheart, g	200	5-10	Shelbyville, Ky.	Civ.
40	Al Stolen, c	200	6-1	Duluth, Minn.	Vet.
41	John Frank, g	202	5-10	New Orleans, La.	Civ.
42	James Bie, c	170	6-	Racine, Wis.	Civ.
43	Walter Ferguson, t	190	5-11	Okeene, Okla.	Navy
44	Alvin Brinker, g	200	6-	New Orleans, La.	Civ.
45	Leroy Schneider, t	230	6-	Baltimore, Md.	Vet.
50	William Watkins, e	185	6-	Heena, Ark.	Navy
57	Hugh Carney, e	165	5-11	Texarkana, Ark.	Civ.
58	Robert Shirley, e	185	6-1	Vicksburg, Miss.	Vet.
65	Caver Johnson, t	215	5-11	Atlanta, Tex.	Vet.
70	William McEvers, c	195	6-3	Hillsboro, Tex.	Civ.
73	Jim Yeary, hb	160	6-	Ripley, Tenn.	Vet.
80	Vaughn Ellender, e	175	5-11	Sulphur, La.	Civ.
85	Pete Greer, g	230	5-8	Memphis, Tenn.	Civ.
86	Bernard Paxton, t	230	6-3	Birmingham, Ala.	Civ.
88	Billy Oswald, t	185	6-	Memphis, Tenn.	Civ.
96	Sal Bondio, t	215	6-3	New Orleans, La.	Vet.

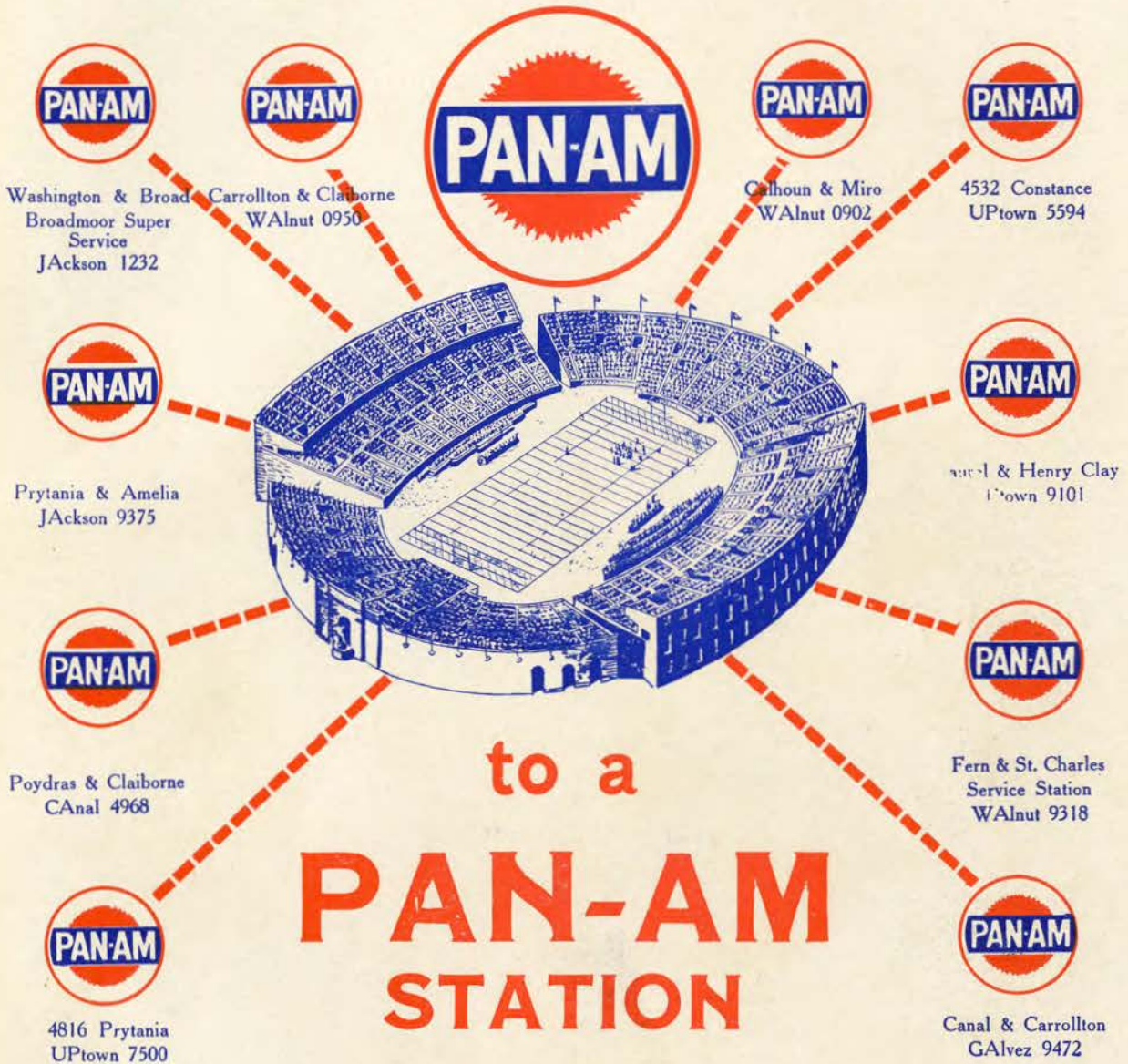


CLEMSON ROSTER

No.	Name and Position	Weight	Height	Hometown	Class
22	Deycey Quinn, fb	180	6-	Peizer, S. C.	Jr.
23	Alton Cumbie, qb	195	6-	Lyons, Ga.	Jr.
24	Bobby Gage, lb	162	5-11	Anderson, S. C.	Fr.
28	Joe Connelly, e	175	6-	Morganton, N. C.	Fr.
29	Jim Hough, qb	185	6-	Kershaw, S. C.	Soph.
32	Chip Clark, e	175	6-2	Lexington, N. C.	Jr.
33	Olin Cleveland, e	220	5-9	Anderson, S. C.	Soph.
41	Hank Sullivan, rh	180	5-11	Gaffney, S. C.	Jr.
45	James Sultis, g	205	5-8	Memphis, Tenn.	Fr.
46	Ralph Jenkins, e	194	6-3	Newport, Tenn.	Jr.
48	Jack Banks, t	195	6-4	Augusta, Ga.	Fr.
49	Eddis Freeman, e	160	5-11	Greenville, S. C.	Jr.
50	Sam Butz, e	170	6-1	Jacksonville, Fla.	Fr.
51	Bob Turner, t	215	6-1	Mission, Tex.	Fr.
52	Hugh Alford, fb	220	6-1	Hartwell, Ga.	Jr.
53	Jim Reynolds, fb	180	6-1	Johnstown, Pa.	Fr.
59	Jud Davis, g	185	6-1	Denmark, S. C.	Soph.
62	Guilford Rushton, e	165	5-9	Greenville, S. C.	Fr.
63	Carol Cox, lb	165	5-8	Camden, S. C.	Fr.
68	Billy Poe, rh	170	6-	Greenville, S. C.	Jr.
69	Mavis Cagle, t	190	6-1	Andrews, S. C.	Soph.
70	Francis Saunders, t	200	6-	Aulander, N. C.	Jr.
73	Bob Marvin, qb	175	6-	Fort Mills, S. C.	Fr.
74	Clinton Dier, e	160	5-11	Charleston, S. C.	Fr.
75	Marion Woods, g	210	6-2	Greenville, S. C.	Jr.
77	Marion Butler, lb	170	5-10	Greenville, S. C.	Sr.
78	Jimmy Phillips, lb	165	5-11	Raleigh, N. C.	Fr.
79	James Miller, hb	159	5-8	Irwin, Tenn.	Fr.
80	Paul Cloud, e	170	6-1	Kingsport, Tenn.	Fr.
81	June Pruitt, rh	175	6-1	Greer, S. C.	Fr.
82	Ray Clanton, g	195	6-1	Darlington, S. C.	Fr.
83	Bob Kroger, g	175	5-8	Buffalo, N. Y.	Fr.
84	Bob Patton, t	190	6-1	Gray Court, S. C.	Soph.
85	John Moorer, qb	182	5-9	St. George, S. C.	Soph.
87	George Doyal, e	215	6-4	Buffalo, N. Y.	Fr.
88	Milton Wiggs, t	185	6-1	Fayetteville, N. C.	Soph.

The Official Watch for Timing All Tulane Games is a Longines—"The World's Most Honored Watch"

only a few yards to go . . .



(Other Pan-Am Stations conveniently located
in all parts of the City.)



Lucky Man . . . Pretty date,
two good seats, and clothes from
The Men's Store of
D. H. HOLMES CO., LTD.