

AUBURN vs. TULANE

Greenie

OCTOBER
7, 1939

PRICE 25c



HOME LOANS

to

BUY...BUILD...REPAIR...

Your Home

Liberal Terms

Low Interest Rates

OFFICERS

J. D. Byrne, President
A. E. Thouron, Vice-President
J. E. McMahon, Vice-President
Chas. A. Nehlig, Vice-President
Jacob Schaaf, Secretary-Treasurer
J. Zach Spearing, Attorney
Chas. F. Buck, Jr., Attorney
Bernard Titcher, Jr., Notary
Frank W. Magne, Notary
Roger P. Sharp, Bldg. Expert

DIRECTORS

Herman T. Bartels	Frank W. Hart
Chas. B. Bernius	Hunter C. Leake
H. C. Bernius	Frank W. Magne
H. V. Boubede	J. E. McMahon
Chas. F. Buck, Jr.	Chas. A. Nehlig
J. D. Byrne	R. Olivier
Frank G. Costley	Henry P. Pfeffer
E. J. Engelbracht	Jacob Schaaf
A. Percy Generes	J. Zach Spearing
W. W. Sutcliffe, Jr.	
H. L. Swift	
George P. Thompson	
A. E. Thouron	
Bernard Titcher, Jr.	
B. Werner	



EQUITABLE MUTUAL

HOMESTEAD ASSOCIATION

"Home Financing Since 1885"

511 Carondelet Street

Phone Raymond 3405

THE GREENIE

Vol. 9

OCTOBER 7, 1939

No. 2

HORACE RENEGAR.....EDITOR
Official Souvenir Football Program of Tulane University, Published for Each Home Game.

CONTENTS

Auburn Pictures	5
Tulane Pictures	7
Pigskin Roundup.....	9
Campus Camera (16 page section)	11-30
The Lineups.....	Center
Tulane Pictures.....	32
Alma Mater.....	34
Tulane Pictures.....	37
The Rosters.....	38

A SALUTE

The Advertising Club of New Orleans deserves the thanks of the entire community for its efforts in interesting more out-of-town football fans in the Tulane schedule, thus bringing them to New Orleans for the games. A special Tulane football committee, appointed by Arthur Radlauer, president of the club, to carry out this civic program, has worked tirelessly and unselfishly to make our neighboring cities more "Tulane football minded." Our salute to the Advertising Club and particularly to the individual committeemen, Moise Bloch, Herbert Kenny, P. J. Rinderle, A. J. Jarrall, Ned Gill, Elmer Doerries, Earle Owings, Beverly Brown, Robert Kottwitz, Kenneth Rotharmel, Jack Zaring, Gar Moore, and Mr. Radlauer.

"SATISFACTION ASSURED; WE SERVE OUR PURPOSE"
City
CLEANERS & DYERS

Hats, Gloves, and Accessories Cleaned
to Your Complete Satisfaction.

Sample Color Dyeing

Uptown 5486 4112 S. Claiborne

3437 Prytania St. Uptown 0598

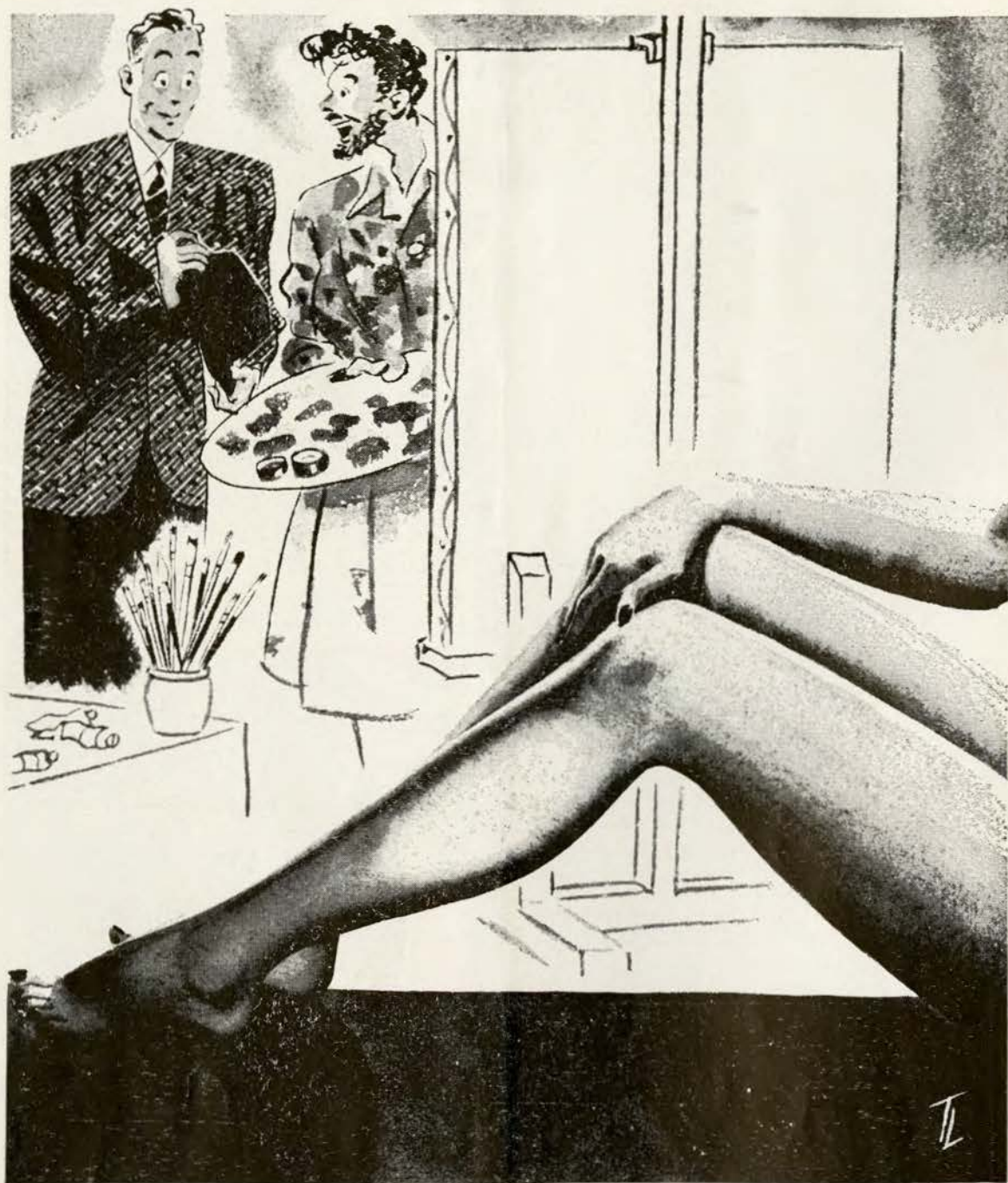


"HE TOOK UP REFEREEING
FOR HIS HEALTH BUT
HAD TO BUY A BICYCLE
AT *Sears* TO STAY
HEALTHY !



Sears
FEIBLEMAN'S

The Sears, Roebuck & Co. Store in New Orleans
"WHERE THE YOUNG CROWD SHOPS"



"But man, you just ought to see her dressed—everything from Godchaux's!"

★ The interested visitor wears a Hollywood-styled diagonal tweed 3-button jacket (\$20), Covert slacks (\$7.95), the Knox Vagabond hat (\$5). And that just shows you what Godchaux's can do for a man's appearance without even slightly unbalancing his budget.

AUBURN

JACK MEAGHER
Head FOOT BALL Coach
and
Athletic Director



*Line
Coach
DELL
MORGAN*



*NICK
ARDILLO
Guard*



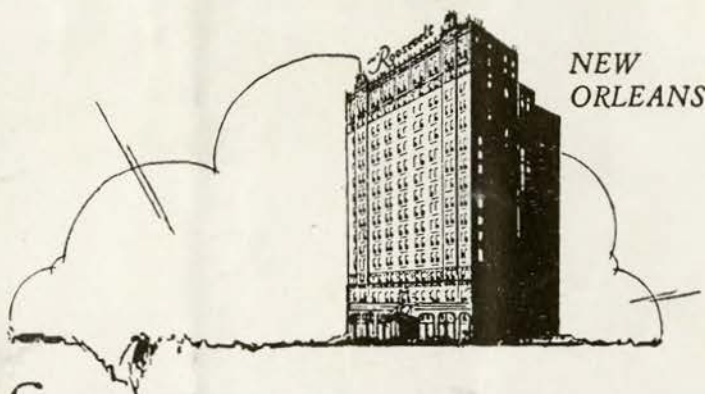
*GARTH
THORPE
Guard*



*Capt. MILTON HOWELL
Guard*



*Francis
RIDDLE
Halfback*



Setting a standard in HOTEL ACCOMMODATIONS

Leadership always carries with it the obligation to be more, to do more and give more.

As applied to The Roosevelt, New Orleans, leadership means a completely equipped hotel where the traveler finds refinements and luxuries that add so much to the comfort and pleasure of his stay. It means better accommodations and service, and finer food for the dollars you spend. 800 rooms with bath. Moderate rates.

Write or Wire Reservations

JAS. PAT O'SHAUGHNESSY, V.-P. & Gen. Mgr.

Order Pralines by Mail

Full halves of selected Louisiana Pecans in a luscious layer of pure Louisiana Cane Sugar. New Orleans' famous Candy, made from the recipe of the Old Plantation Mammy. Two attractive gift boxes.



Souvenir Cotton Bala Package, 10 Pralines for \$1.75. Postage paid. Plantation Mammy Package, 12 Pralines, \$1.50. Postage paid. Send Money Order or personal check with order to The Roosevelt Hotel, New Orleans.



The Roosevelt

HOTEL
"Pride of the South"

ALSO OPERATING HOTEL NEW ORLEANS

Just two blocks from the Shopping, Theatre, Business
and Financial Districts

275 Outside Rooms with Bath

Air conditioned guest rooms—Lobby—Dining room

GEORGE DAWSON, Manager



GROVES, guard



CLAY, guard



McCOLLUM, tackle



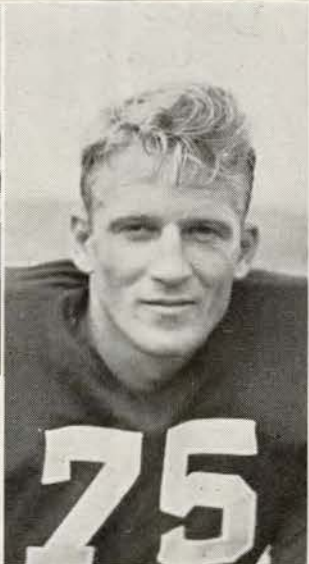
DeFRAITES, end



BANKER, half



KRUEGER, quarter
CAPTAIN



DAILEY, guard
ALT. CAPTAIN



BUTLER, full



WHITE, tackle



HAYS, half



GLODEN, full



BODNEY, end

FRONT

Hawaiian Blue Room

Dance — Dine — Romance

Under Authentic Hawaiian Settings

FEATURING

**Buddy
ROGERS**

And His Orchestra

IN THE NEW SHOW

★ **Lillian Carmen**
"Glamour Girl of Songs"

★ **Marc Bolero**
"Renowned Mimic"

★ **Ruth Daye**
"Dancer"

DINNER

6 to 9 — Show 7:30

SUPPER

10 to 2 — Show 12:15

Phone Buttons MA 2371 — For Reservations

NO COVER CHARGE

The Roosevelt
HOTEL
"Pride of the South"

Pigskin Roundup

ALABAMA - FORDHAM—Two of Rockne's famous disciples, Frank Thomas and Jim Crowley, get together here. Two great teams with the result likely to go either way. Strictly on a hunch, Alabama.

GEORGIA TECH-NOTRE DAME—Bill Alexander frequently fools all the wise guys. Nevertheless, Notre Dame.

DUKE-COLGATE—Andy Kerr's magic failed last week and isn't likely to be any more effective today. The Blue Devils by two touchdowns.

FLORIDA-MISS. STATE—The Maroons to win their second in a row. 'Gators shy on experience under a new system.

LOUISIANA - HOLY CROSS—The Tigers may get going at Worcester but the Crusaders seem to have a bit too much for 'em.

V. P. I.-NORTH CAROLINA—The Tar heels to show their speed and versatility once again.

OHIO STATE - MISSOURI—The Buckeyes.

VANDY-KENTUCKY—Riding the Kentucky dark horse, apparently the finest football steed the Bluegrass has produced since 1923.

WISCONSIN - TEXAS — The Badgers with something to spare.

YALE-COLUMBIA—Lou Little's inexperienced team worry Yale. Eli gets the nod.

MINNESOTA-NEBRASKA—Another in the long string of Gopher-Cornhusker feuds. Bernie Bierman's boys to beat Biff's bigger ones.

N. C. STATE - CLEMSON — Anything may happen here. Clemson on a half spinner.

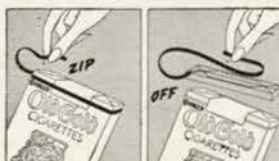
TEMPLE - CARNEGIE TECH — The plaid without too much difficulty.

SOUTHERN CAL. - WASH STATE—Close but Southern Cal gets any edge in sight before the game.

ZIP!
and it's open!

Old Gold's amazing
New "ZIP-TOP" Pack
Opens quick as a wink!
You get *fresh*
Double-Mellow Old Golds
In a flash! Try
The "ZIP-TOP" Pack *today!*

O.G.'s new "ZIP-TOP" pack
FRESH Cigarettes in a FLASH!



Copyright, 1969, by P. Lorillard Co.

Now . . . **DOUBLE "CELLOPHANE"**
opens **DOUBLE QUICK** . . . 2 Jackets sliced in 1 ZIP!

HAUSMANN
INCORPORATED

NEW ORLEANS'
LEADING JEWELERS

• ■ •

*Special Department for College
and
Fraternal Jewelry*

FOR ATHLETIC
EQUIPMENT



A. G. Spalding & Bros.
517 Canal Street

The Thinking Fellow Calls a Yellow
TO AND FROM GAMES

40c

ANYWHERE WITHIN CITY
(Outlying Points Excepted)

FIVE can ride for the price of ONE—
Club together!

Phone RAYmond 3311

TOYE BROS.

YELLOW CABS

Stop!
Look!
Listen!

There's a 7-Up Boy right
down in front of you! Call
him now and Fresh-Up

With



CAMPUS CAMERA

COPYRIGHT 1939 BY SOUTHEASTERN FOOTBALL PROGRAM ASSOCIATION

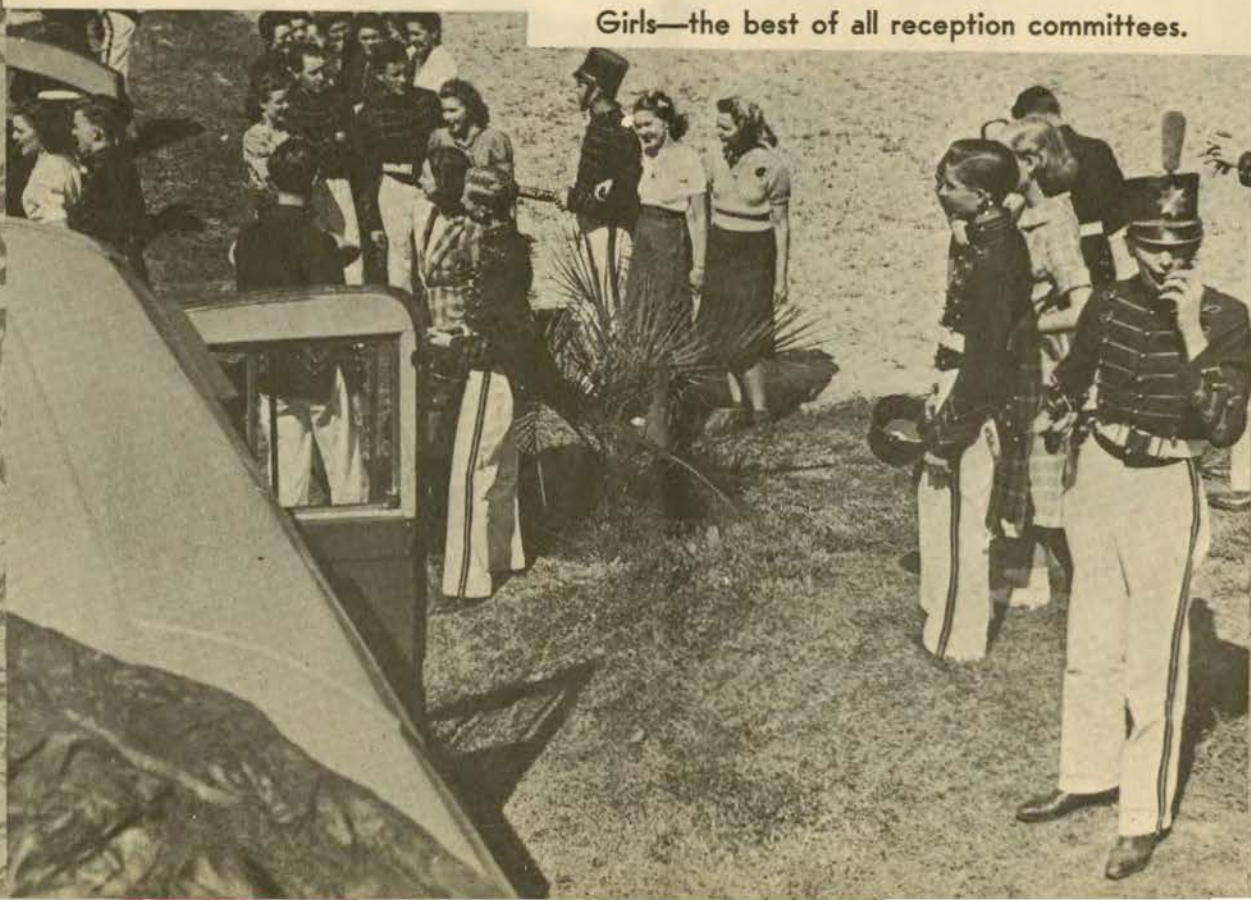




On the buses, off they go, shouting "Tally-Ho".

"Tally-ho" shout the 70 members of the University of Florida Band when they reach the high spot of the annual concert season . . . their trip to Tallahassee for a concert before Florida State College for Women's 1,800 girls.

Girls—the best of all reception committees.





Arm in arm they stroll for a little pre-concert relaxation.

The University of Florida is one of the only two state universities that is non-coeducational. Minus coeds, it gets mighty lonesome for the university's 3,400 boys, so the day of the band concert is much anticipated . . . and, need we say, thoroughly enjoyed.

And then . . . the concert

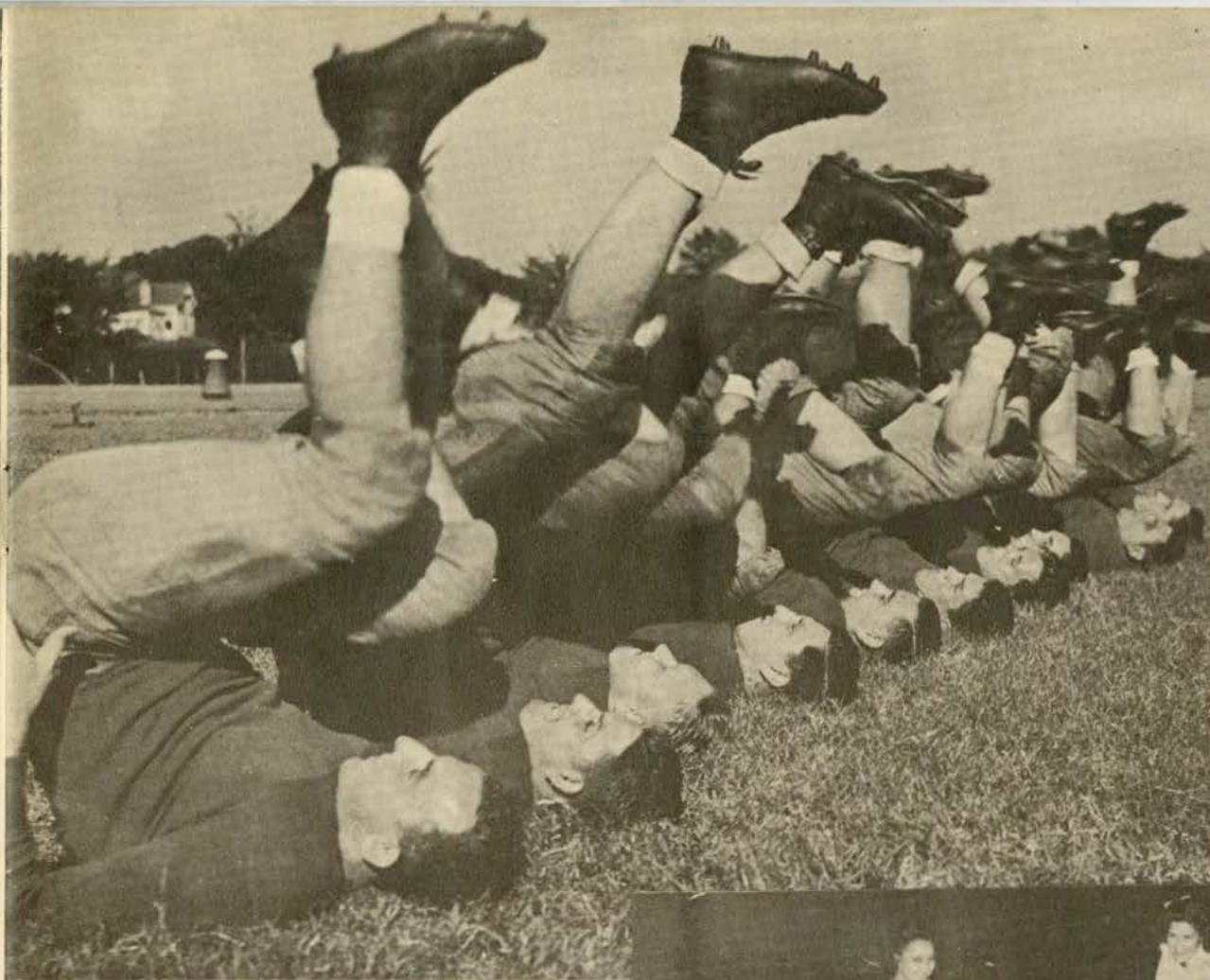




And then . . . a sun bath on the greensward.

End of a perfect day . . . the banquet that followed.





L
E
G
S

AT ALABAMA

●

and

L
E
G
S

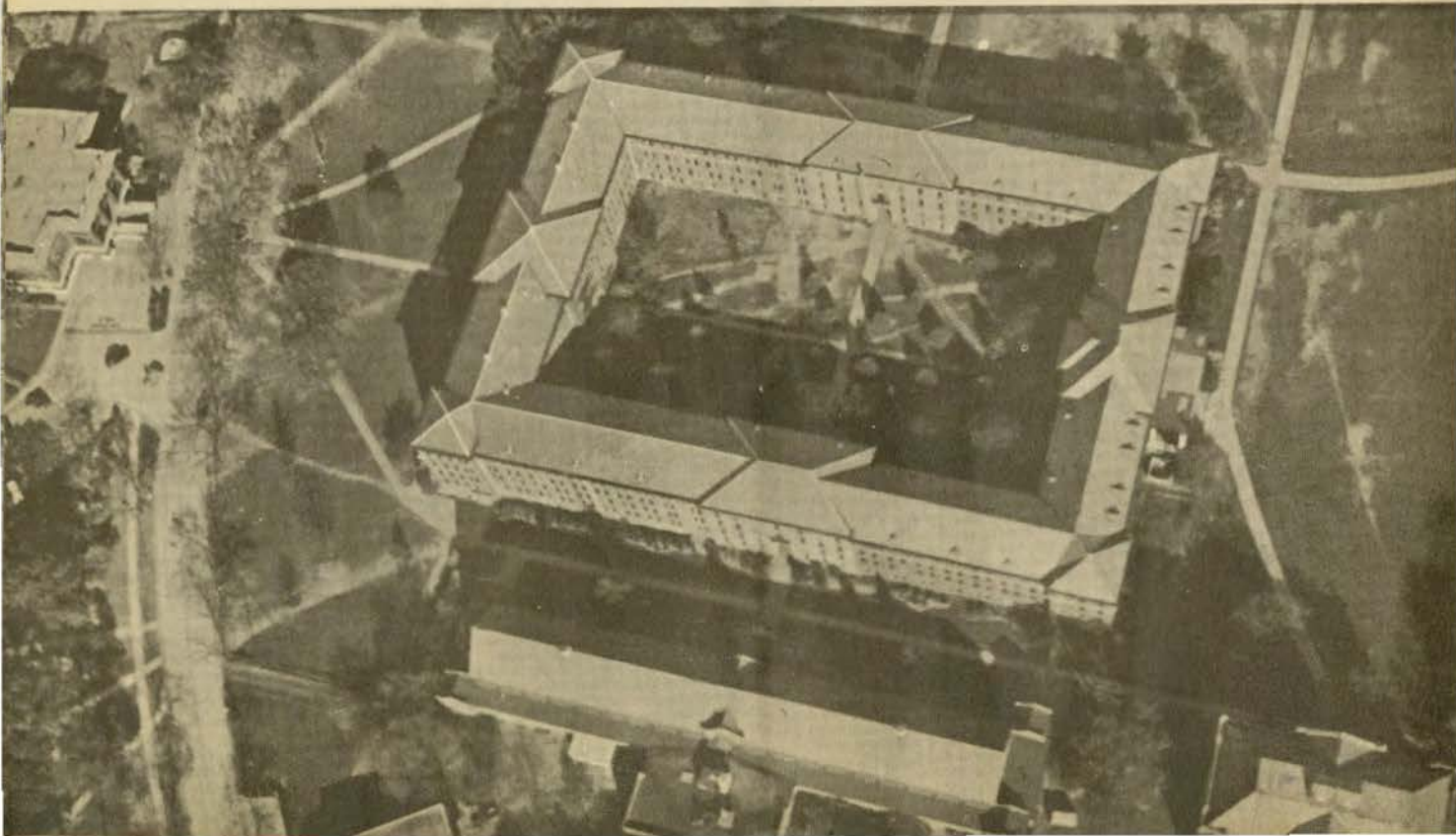
AT TENNESSEE





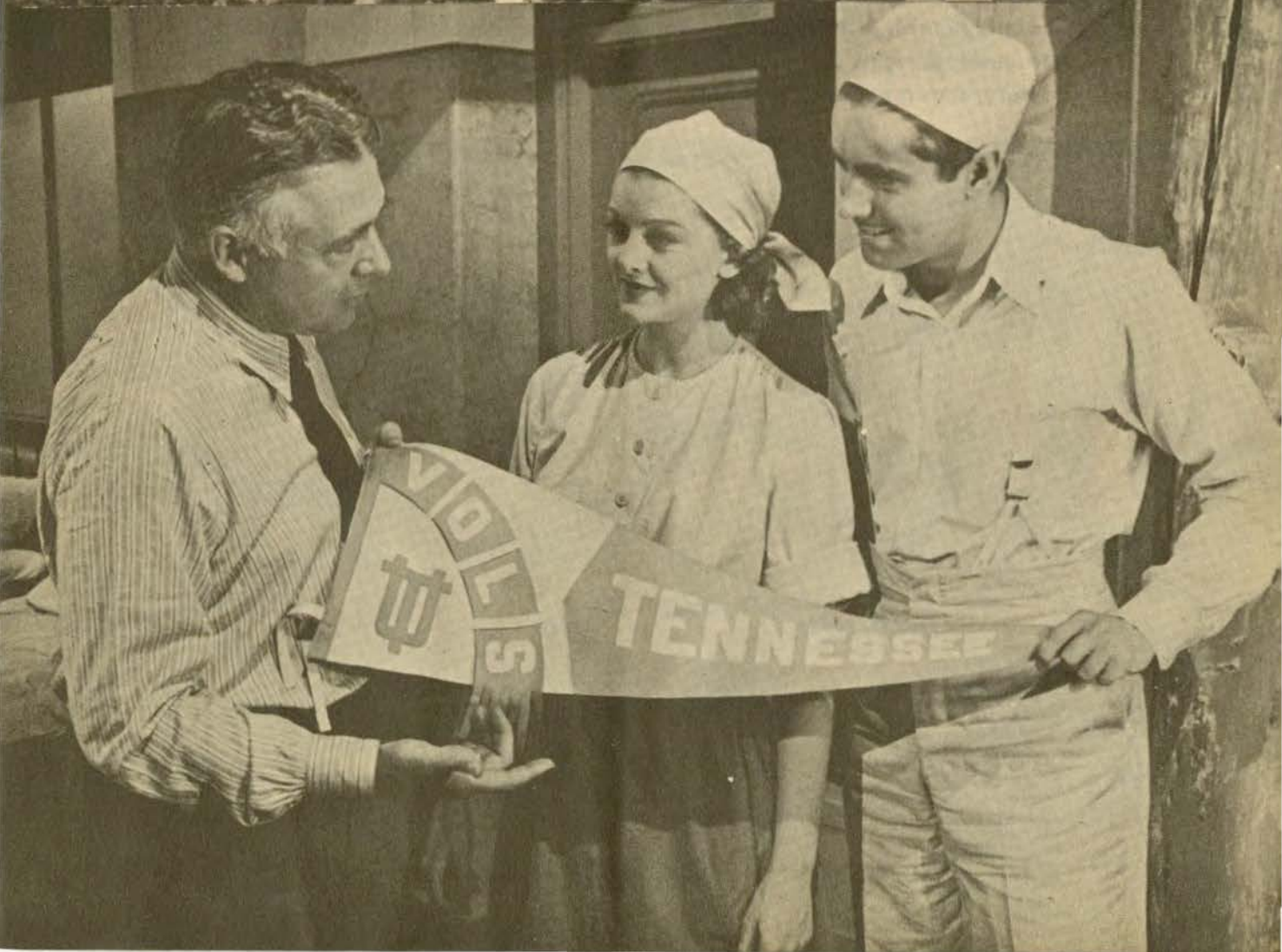
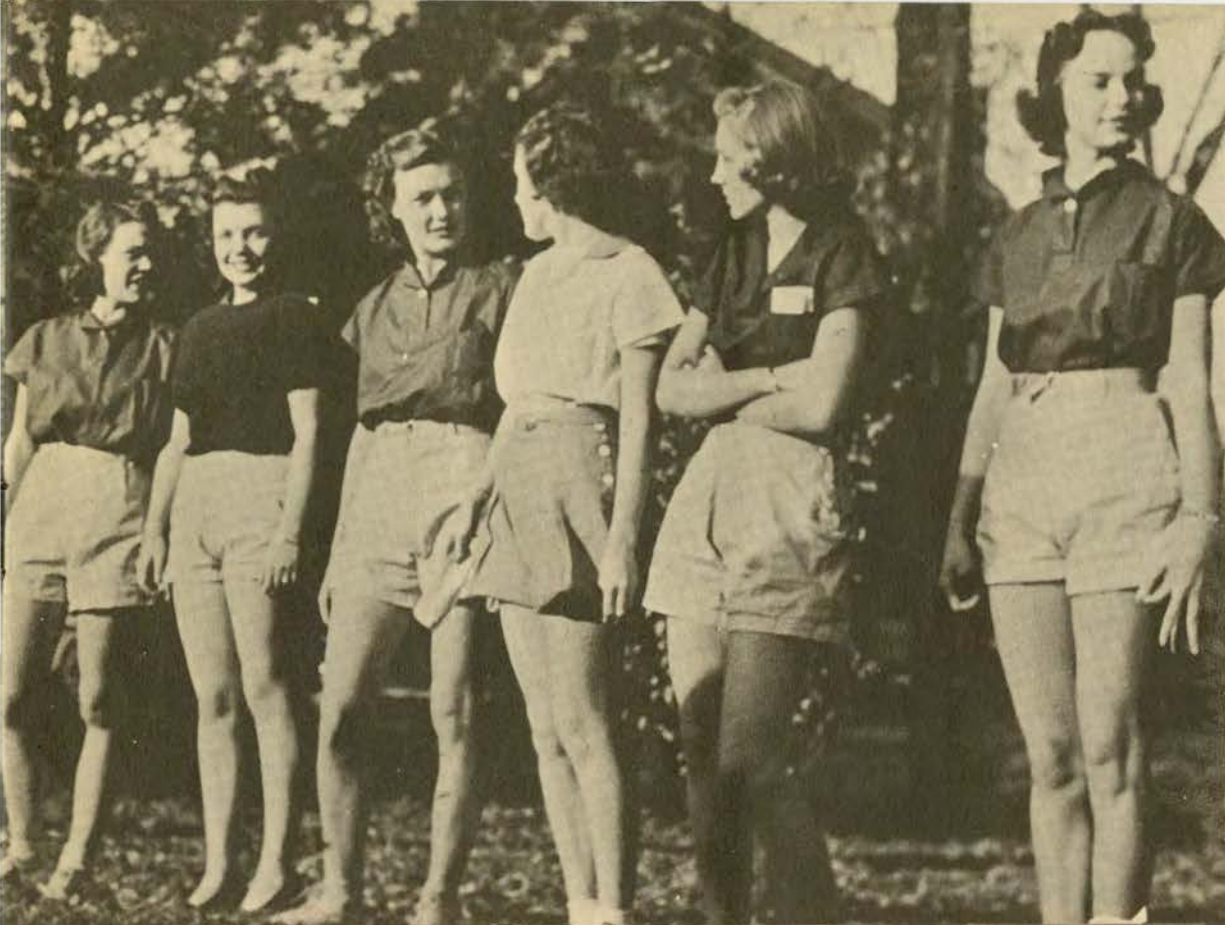
Miss Empress Hooper, lovely Miss. State coed.

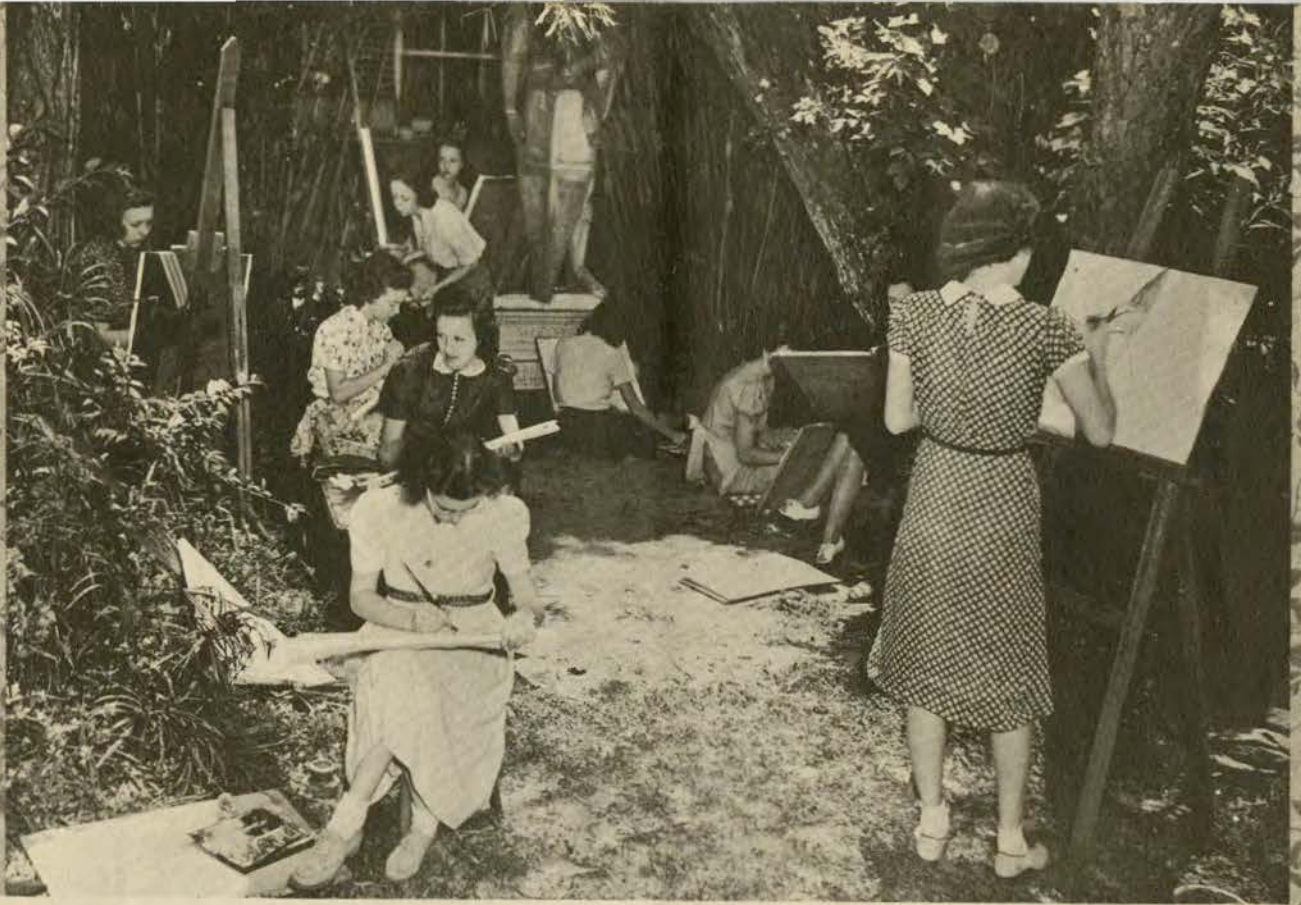
Largest dormitory in the world, housing 1,536 Miss. State students
shown in air view.



A Beauty Line-up
at Tennessee

Below—Clarence Brown, Hollywood film director and Tennessee alumnus takes time out with Tyrone Power and Myrna Loy to talk football. It's easy to see Mr. Brown is thinking first of his favorite Volunteers.





The arts flourish at Newcomb College of Tulane University. With brush and easel, the girls sketch in surroundings of natural beauty. Newcomb pottery, shown below, is internationally famous.



Mayer Israel's

YOUR Goal *for* Fall!

Suits

3-button Coats
5-button Vests
Drape Styles
Tweeds are GOOD
Cheviots are back

Overcoats

Fleecy Topcoatings
Rich Colorings
Lighter Weight
Raglans GOOD
Box-backs GOOD

The line-up above leads right to YOUR goal—correct clothing to wear comfortably the winter through at moderate prices—

\$25

\$35

\$45

Mayer Israel's



“Time Out”

DRINK—

Coca-Cola

TRADE MARK
REGISTERED

PAUSE—

RELAX—

REFRESH YOURSELF

TULANE

LE	LT	LG	C	RG	RT	RE
Bodney	White	Dailey	Flower	O'Boyle	McCollum	Wenzel
52	76	75	66	77	71	74

QB
Nyhan
50

LHB
Kellogg
60

RHB
Banker
18

FB
Gloden
49

SQUAD LIST

Lowell Dawson, Coach

No.	No.	No.
18 Banker, h b	45 Grush, q b	67 Brekke, t
24 Sims, h b	46 Thibaut, f b	68 English, e
25 Glass, T., q b	47 Hays, h b	69 Groves, g
27 Krobert, c	48 Marmillion, h b	70 Clay, g
28 Dwyer, g	49 Gloden, f b	71 McCollum, t
29 Wolbrette, g	50 Nyhan, q b	72 Bentz, t
30 Block, c	51 Sauer, f b	73 DeFraites, e
31 Owens, g	52 Bodney, e	74 Wenzel, e
32 Burwick, g	53 Jaubert, t	75 Dailey, g
34 Rexer, e	54 Micelle, e	76 White, t
35 Dufour, t	55 Hickey, g	77 O'Boyle, g
36 Stern, f b	56 Mullin, e	78 Golomb, e
37 Vanzant, e	57 Smith, h b	79 Blandin, t
38 Abrams, g	58 Eason, q b	80 Johnson, c
39 Thomas, g	59 Slayton, h b	82 Glass, R., h b
40 Ely, h b	60 Kellogg, h b	84 Mandich, c
41 Collins, c	61 Cassibry, h b	85 Tittle, q b
42 McCarron, e	63 Brinkman, e	87 Comer, e
43 Butler, f b	65 Gentling, g	96 Kirchem, t
44 Krueger, q b	66 Flower, c	

OFFICIALS

Linesman..... Jess W. Hair, Louisiana Tech
Field Judge..... H. G. Mouat, Armour

AUBURN

LE	LT	LG	C	RG	RT	RE
Cremer	M'Eachern	Mills	Morgan	Howell	Bulger	Pearson
29	22	28	31	10	70	42

QB
McMahan
27

LHB
McGowen
15

RHB
Happer
39

FB
Haynsworth
48

SQUAD LIST

Jack Meagher, Coach

10 Howell, g	31 Morgan, c	52 Buckner, q b
11 Sims, q b	32 Carmichael, f b	54 Mims, h b
12 Faulk, e	33 Maddox, c	55 Ardillo, g
15 McGowen, h b	35 Wendling, h b	56 Burns, c
16 Lamb, e	36 Fairchild, c	57 Deal, f b
17 Crimmins, t	38 Mauldin, e	58 Thorpe, g
18 Wolff, t	39 Happer, h b	59 Kenmore, h b
19 Morris, t	40 McGehee, e	60 Wise, g
21 Chandler, g	42 Pearson, e	62 Cantrell, f b
22 M'Eachern, t	43 Samford, e	64 McCarty, h b
24 Crietzberg, c	44 Cordell, t	65 Dean, f b
25 Johnson, e	45 Chalkley, t	66 Cheatham, q b
26 Ellis, h b	47 Nichols, t	68 Fowler, q b
27 McMahan, q b	48 Haynsworth, f b	70 Bulger, t
28 Mills, g	49 Riddle, h b	71 Bartlett, f b
29 Cremer, e	50 McNair, h b	72 Irby, h b
30 LeNoir, e	51 Costellos, g	

OFFICIALS

Referee..... J. D. Thomason, Georgia
Umpire..... Julius E. Burghard, Miss. College



light up with

Chesterfield
They Satisfy

Enjoy

A Famous
New Orleans
Dish Tonight!

*Prepared by these world famous
New Orleans Restaurants*

•
ANTOINE'S
713 St. Louis St.

•
ARNAUD'S
813 Bienville St.

•
BROUSSARD'S
819 Conti St.

•
KOLB'S
125 St. Charles St.

•
GOOD FOOD, well cooked and faultlessly served
by trained help are the standards that have
won and kept world-wide fame for these
fine New Orleans Restaurants.

"Pep them up" by TELEGRAPH



Send
PEP MESSAGES
by
WESTERN UNION
20¢ LOCALLY **25¢** TO ANY WESTERN
UNION POINT IN U. S.

THE PROOF OF

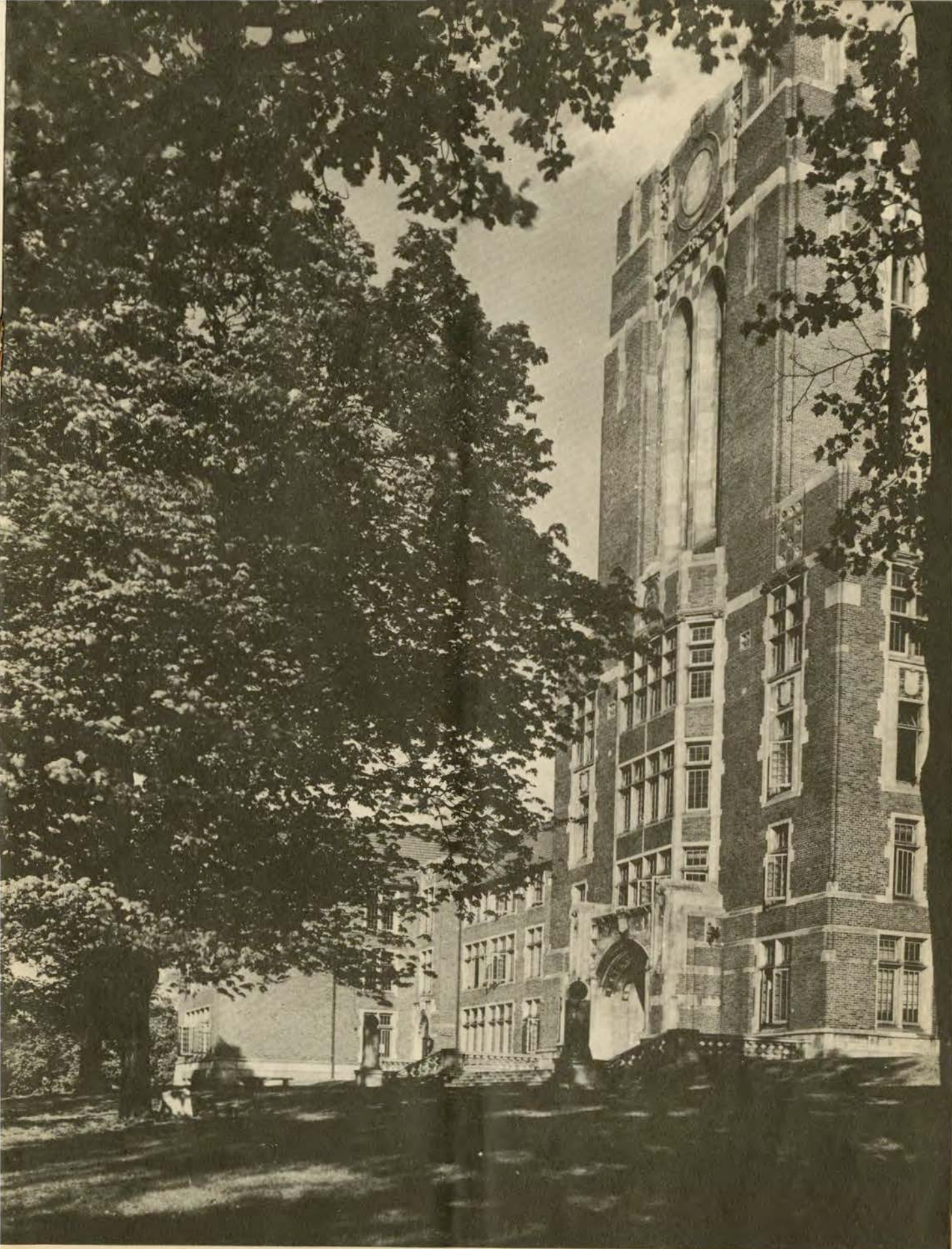
GOOD ICE CREAM

IS IN THE EATING

BROWN'S

Velvet
ICE CREAM
MADE BY NEW ORLEANS ICE CREAM CO.

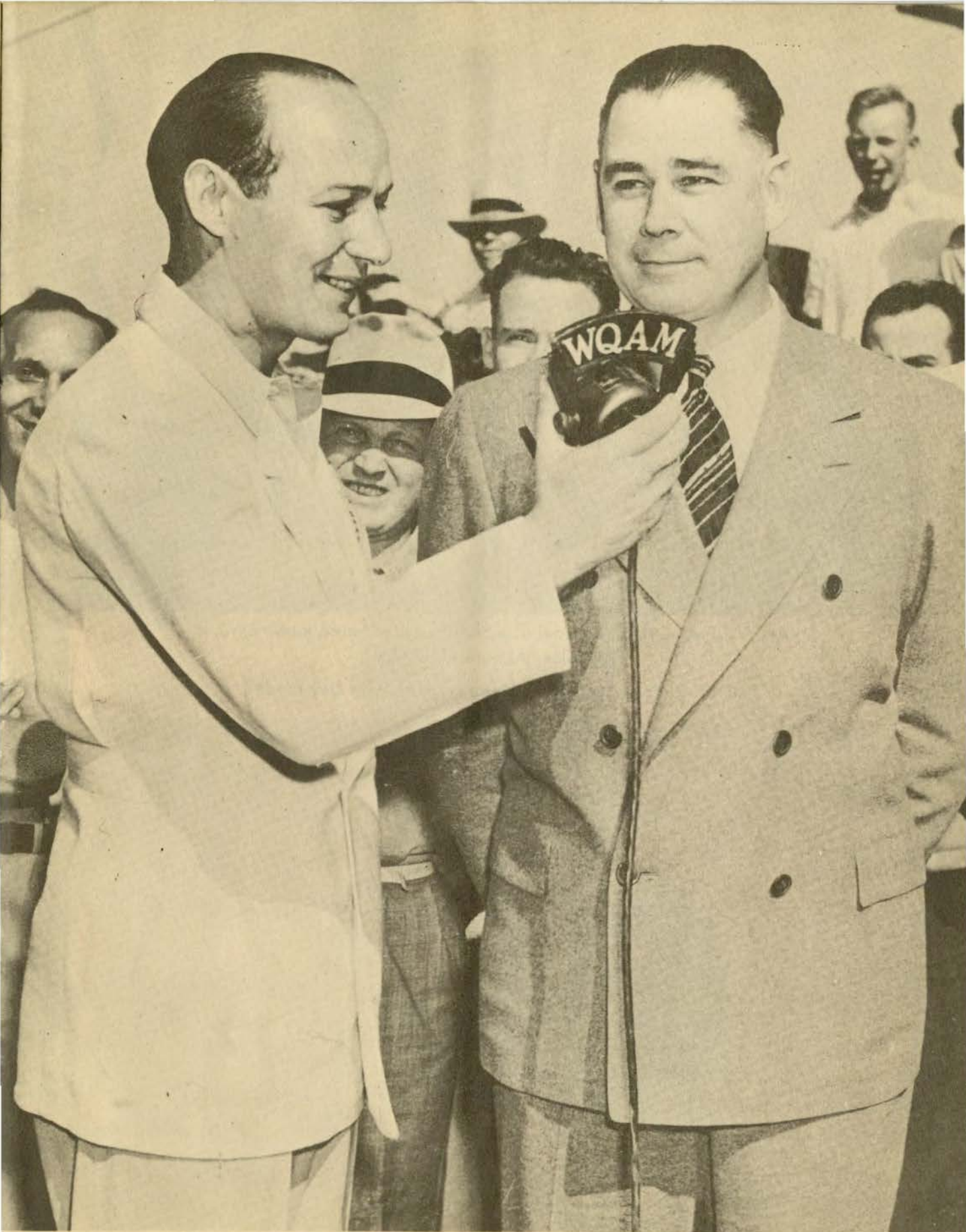
SOLD EVERYWHERE



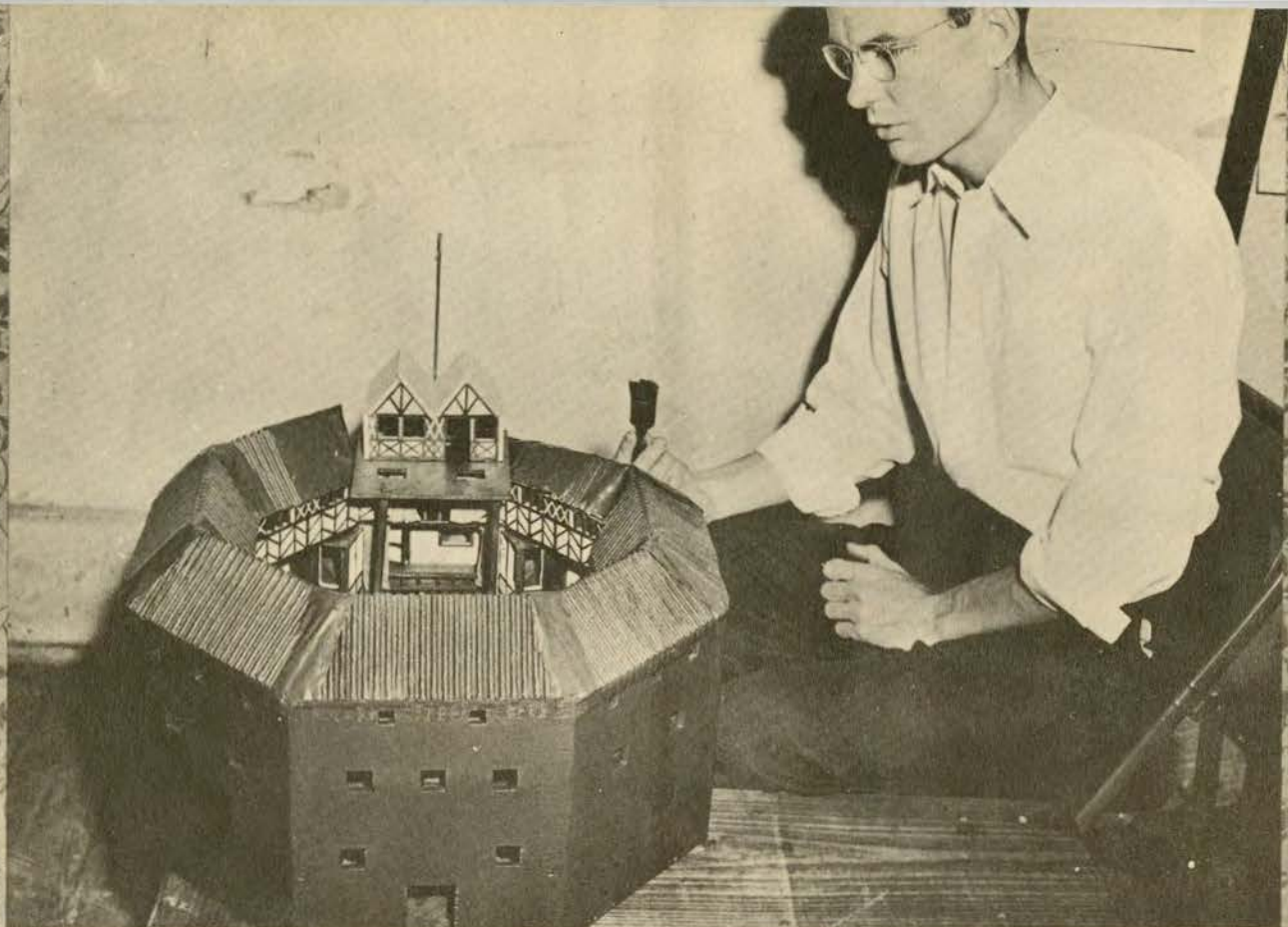
The Towers at the University of Tennessee



Miss Katherine Metzger of Tulane's Beauty Court

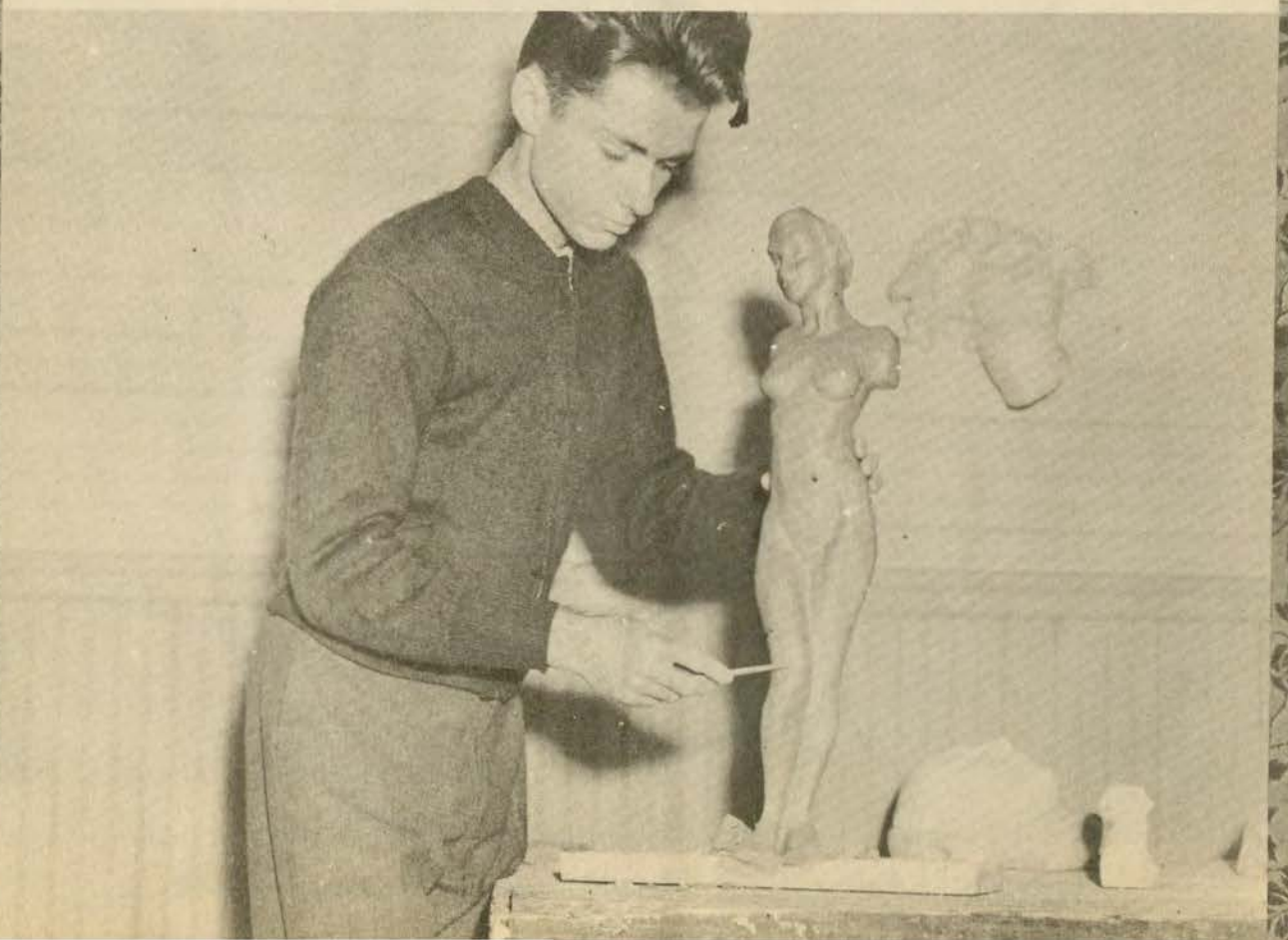


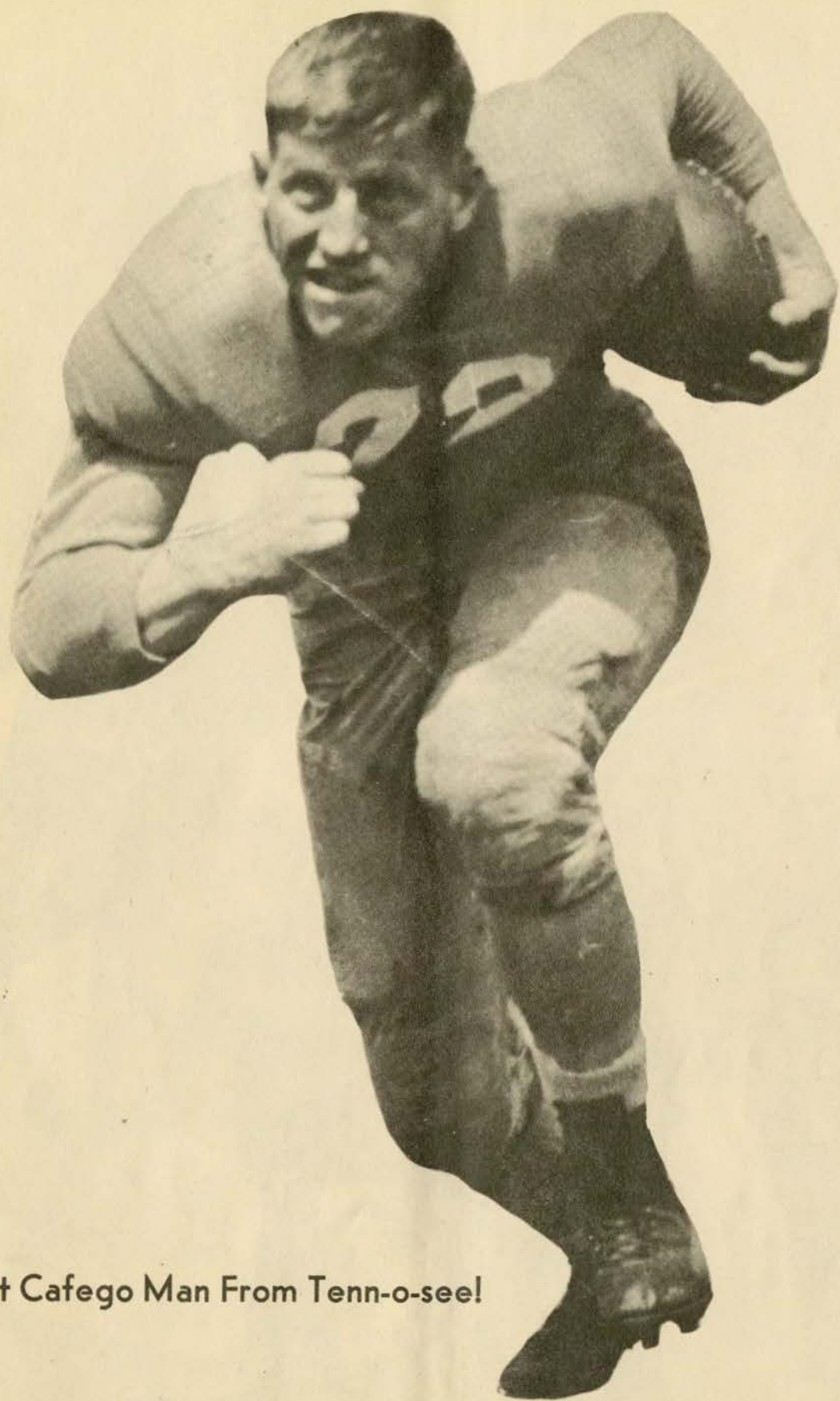
Ted Husing presents Tennessee's Head Football Coach, Major Bob Neyland, Over the "Mike."



SHADES OF AVON! A model of a Shakesperean house made by J. H. Wheeler, Auburn student.

Paul M. Rudolph, another Auburn student, with clay model.





That Cafego Man From Tenn-o-see!



Say! Is chemistry really that much fun? These Auburn students seem "to just love that lab period."



Tulane's Naval R. O. T. C. Presents the Colors

Secluded Comfort in Our New

•

STORE for MEN

•

We've just been remodeled, repainted and given the works! Can we help it if we're pretty proud of ourselves now? We have the most modern, most convenient shop in the South . . . we think! . . . but visit us and judge for yourself!

•

STREET FLOOR

Maison Blanche

GREATEST STORE SOUTH

FOOTBALL



KELLOGG, half



CASSIBRY, half



FLOWER, center



BREKKE, tackle



O'BOYLE, guard



COLOMB, end



HICKEY, guard



BRINKMAN, end



KIRCHEM, tackle



NYHAN, quarter



SAUER, full



WENZEL, end

Always a Winning Line-Up
IN
HOLMES MEN'S STORE

40						40
50						50
40	MANHATTAN SHIRTS	MANSCO UNDERWEAR	PHOENIX SOCKS	WESTMINSTER SOCKS	TOWNE SHIRTS	40
30	WORSTED-TEX SUITS				KNIT-TEX TOPCOATS	30
20	STETSON HATS					20
10	STACY-ADAMS SHOES				UNIVERSAL PAJAMAS	10
G	ALLIGATOR RAINCOATS					G

⊗ [LUNCH AND DINE IN
HOLMES RESTAURANT] ⊗

D. H. HOLMES CO.
LIMITED

W S M B

(1320 KC)

●

Bill Brengel Says:

“Good afternoon, ladies and gentlemen. Will you be one of the many thousands who attend the Tulane-Fordham Game next week and try for a new attendance record at the newly enlarged Stadium?

If not, W S M B will bring the game to you wherever you are. Tune in at 1:45, W S M B, 1320 Kilocycles, thru the courtesy of Louisiana Coca-Cola Bottling Co.”

●

W S M B

(NBC RED NETWORK)

ALMA MATER

*Sing these words as Tulane's Alma Mater
is played*

I.

We praise thee for thy past, O Alma Mater!
Thy hand hath done its work full faithfully!
The incense of thy spirit hath ascended
And filled America from sea to sea!

II.

We praise thee for thy present, Alma Mater!
Today thy Children look to thee for bread!
Thou leadest them to dreams and actions
splendid!
The hunger of their souls is richly fed!

III.

We praise thee for thy future, Alma Mater!
The vista of its glory gleameth far!
We ever shall be part of thee, great Mother!
There thou wilt be where e'er thy children
are!

CHORUS:

Olive Green and Blue, we love thee!
Pledge we now our fealty true
Where the trees are ever greenest,
Where the skies are purest blue!
Hear us now, O Tulane, hear us!
As we proudly sing to thee!
Take from us our hearts' devotion!
Thine we are, and thine shall be!

La Louisiane

FAMOUS FRENCH
RESTAURANT

Established 1881

La Louisiane is the most enjoyable place to dine in New Orleans; it is the center of social and business activity. La Louisiane has been famous for fifty-seven years for its many special dishes which are truly representative of the best French and Creole cooking.

Available for

Feature and Sorority Dances, Banquets
and other Social Functions.

725 IBERVILLE ST.
Between Royal and Bourbon
Telephone MAgnolia 4664



A Campus Favorite

look them over.

Jarman
SHOES FOR MEN

Most Styles
\$5 to \$750

Whether it's a Dutch Boy Klomp or an Antique Finish calfskin, you'll find them "tops" with upper classmen . . . and you'll find them only at Labiche's. They're campus favorites from September until June.

Get Your FREE Football Map—at Labiche's

Get your Jarman Football Map (in colors). It gives you the who, where and why of American football—at a glance. No obligation . . . just call at the store for yours.

LABICHE'S

THREE ELEVEN BARONNE STREET

D Equipment for all sports...

U Specialists in all types of
school athletic
supplies

N

L

A

P

Sporting Goods Co., Inc.

138 Carondelet Street
MAgnolia 5891

"SNAP!"
you've got it

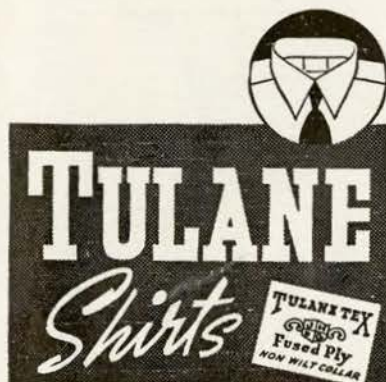


\$1.00
1.25 - 1.50 - 1.65

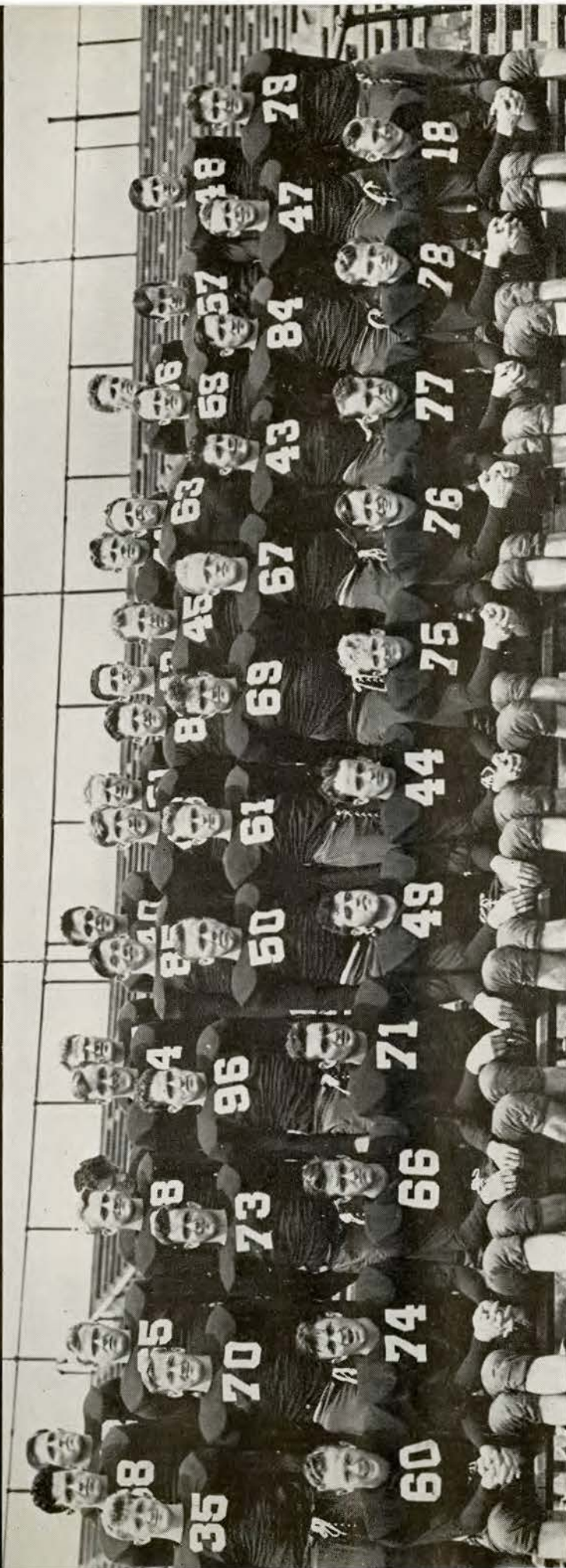
Top favorites with men for years, Tulane Shirts set the pace in style, comfort and value. They are unusually durable, and are suited for sports, business, or campus wear

Candidly—Tulane Shirts “Click” with men who want a better fit, greater comfort and longer wear... These popular shirts are made of Sanforized and pre-shrunk fabrics. They have the famous, perfectly-pointed Tulane-Tex, non-wilt collar, and correct sleeve lengths.

Specify Tulane Shirts.



TULANE



UNIVERSITY
SQUAD



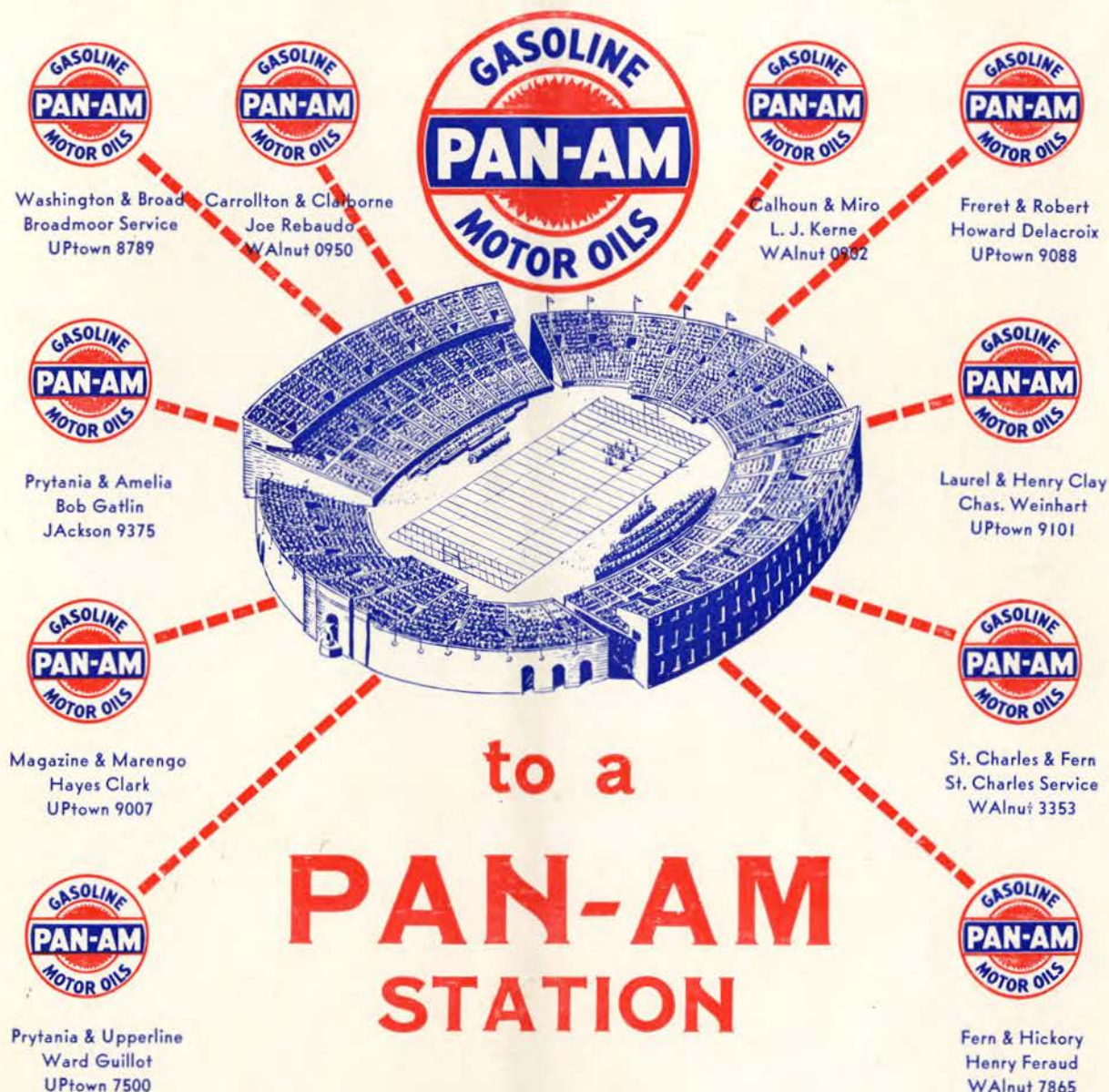
TULANE ROSTER

No.	PLAYER—	HOME TOWN—	Position	Wt.	Year on Varsity
18	Banker, Burton "Buddy"	Lake Charles, La.	HB	187	3
24	Sims, John	Delhi, La.	HB	188	1
25	Glass, Tom	New Orleans, La.	QB	193	1
27	Krobert, Bernard	Beaver Dam, Wisc.	C	190	1
28	Dwyer, James	New Orleans, La.	G	190	1
29	Wolbrette, Henri	Shreveport, La.	G	207	1
30	Block, Charles	Gary, Ind.	C	197	1
31	Owens, John	New Orleans, La.	G	203	1
32	Burwick, Norman	Port Arthur, Texas	G	200	1
34	Rexer, Freeman	Houston, Texas	E	185	1
35	Dufour, Charles	Shreveport, La.	T	206	1
36	Stern, Leonard	Camden, Ark.	FB	193	1
37	Vanzant, Joseph	Houston, Texas	E	173	1
38	Abrams, John	New Orleans, La.	G	177	1
39	Thomas, Manuel	Wheeling, W. Va.	G	188	1
40	Ely, James	Shaw, Miss.	HB	187	1
41	Collins, Reynolds "Rip"	Baton Rouge, La.	C	223	1
42	McCarron, Joseph	New Orleans, La.	E	188	1
43	Butler, Monette	Oak Grove, La.	FB	173	3
44	Krueger, Paul (Capt.)	Gary, Ind.	QB	169	3
45	Grush, Robert	New Orleans, La.	QB	185	1
46	Thibaut, James	New Orleans, La.	FB	195	1
47	Hays, Harry	San Angelo, Texas	HB	166	2
48	Marmillion, Norman	Ponchatoula, La.	HB	170	2
49	Gloden, Fred	Dubuque, Iowa	FB	186	2
50	Nyhan, Stan	Waterloo, Iowa	QB	183	3
51	Sauer, Leonard	Kildare, Okla.	FB	183	3
52	Bodney, Albert "Al"	Gary, Ind.	E	186	2
53	Jaubert, Warren	New Orleans, La.	T	200	3
54	Micelle, John	Lake Charles, La.	E	180	1
55	Hickey, W. "Cy"	New Orleans, La.	G	175	2
56	Mullin, Harold "Moon"	Bogalusa, La.	E	195	1
57	Smith, St. John	New Orleans, La.	HB	167	1
58	Eason, Henry	New Orleans, La.	QB	170	1
59	Slayton, Nelson	Memphis, Tenn.	HB	176	1
60	Kellogg, Bob	Wynne, Ark.	HB	165	2
61	Cassibry, Fred	Gulfport, Miss.	HB	191	2
63	Brinkman, William	New Orleans, La.	E	191	2
65	Gentling, Phil	Rochester, Minn.	G	177	1
66	Flower, Henry	New Orleans, La.	C	193	2
67	Brekke, Fred	New Richmond, Wisc.	T	211	2
68	English, Gordon	Midland, Texas	E	200	1
69	Groves, Claude	Ft. Smith, Ark.	G	217	2
70	Clay, George	Meridian, Miss.	G	208	2
71	McCollum, Harley	Stillwell, Okla.	T	235	2
72	Bentz, Roman	Horicon, Wisc.	T	230	1
73	DeFraites, Emanuel	New Orleans, La.	E	180	2
74	Wenzel, Ralph	Tucker, Ark.	E	212	3
75	Dailey, Carl (Alt. Capt.)	Balboa, C. Z.	G	185	3
76	White, Millard	Arkansas City, Kans.	T	212	3
77	O'Boyle, Tom	Gary, Ind.	G	209	2
78	Golomb, C. "Pete"	Oshkosh, Wisc.	E	207	2
79	Blandin, E. "Ernie"	Keighley, Kas.	T	235	1
80	Johnson, Owen	Peru, Ind.	C	205	1
82	Glass, Bob	Massillon, Ohio	HB	193	1
84	Mandich, Peter	Gary, Ind.	C	193	1
85	Tittle, Jack	Marshall, Texas	QB	200	1
87	Comer, Martin	Gary, Ind.	E	197	1
96	Kirchem, W. "Bill"	New Orleans, La.	T	215	3

AUBURN ROSTER

No.	PLAYER—	HOME TOWN—	Position	Wt.	Year on Varsity
10	Howell, Milton	Bessemer, Ala.	G	185	3
11	Sims, Jim	Moulton, Ala.	QB	179	1
12	Faulk, Teedy	Selma, Ala.	E	170	1
15	McGowen, Dick	Empire, Ala.	HB	185	2
16	Lamb, Herbert	Tallahassee, Fla.	E	186	1
17	Crimmins, Francis	East Falls Church, Va.	T	192	1
18	Woff, George	Atlanta, Ga.	T	205	3
19	Morris, Max	Blountsville, Ala.	T	193	1
21	Chandler, Walter	Columbus, Ga.	G	190	2
22	MacEachern, Gordon	Haverhill, Mass.	T	207	2
24	Chrietzborg, Abb	Auburn, Ala.	C	179	2
25	Johnson, Steve	Palos, Ala.	E	169	1
26	Ellis, Paul	Atlanta, Ga.	HB	148	1
27	McMahan, Buddy	Tusculumbia, Ala.	QB	175	1
28	Mills, Ernest	Columbus, Ga.	G	190	2
29	Cremer, Theo	Birmingham, Ala.	E	190	1
30	LeNoir, Jim	Butler, Ala.	E	175	2
31	Morgan, Malvern	Lanett, Ala.	C	190	3
32	Marmichael, Dan	Montgomery, Ala.	FB	175	1
33	Maddox, Hugh	Douglas, Ga.	C	190	1
35	Wendling, Bud	Birmingham, Ala.	HB	170	2
36	Fairchild, Getty	Anniston, Ala.	C	190	3
38	Mauldin, Jesse	Hartwell, Ga.	E	190	1
39	Happer, Carl	Birmingham, Ala.	HB	160	2
40	McGehee, Babe	Auburn, Ala.	E	175	2
42	Pearson, Gus	Birmingham, Ala.	E	178	2
43	Samford, James	Montgomery, Ala.	E	172	1
44	Cordell, Joe	Hartwell, Ga.	T	210	1
45	Chalkley, John	Americus, Ga.	T	198	1
47	Nichols, Bill	Sylacauga, Ala.	T	199	3
48	Haynsworth, Chas.	Birmingham, Ala.	FB	185	3
49	Riddle, Francis	Talladega, Ala.	HB	158	3
50	McNair, Woodie	Union Springs, Ala.	HB	149	1
51	Costillos, Vic	Birmingham, Ala.	G	171	1
52	Buckner, Frank	Gallion, Ala.	QB	155	2
54	Mims, Bill	Hayneville, Ala.	HB	172	3
55	Ardillo, Nick	Amite, La.	G	180	1
56	Burns, Howard	Ensley, Ala.	C	180	1
57	Deal, Rufus	Tuscaloosa, Ala.	FB	195	1
58	Thorpe, Garth	Aiken, S. C.	G	210	3
59	Kenmore, George	Americus, Ga.	HB	152	2
60	Wise, Wallace	Clayton, Ala.	G	195	2
62	Cantrell, Geter	Lanett, Ala.	FB	178	3
64	McCarty, Fred	Moultrie, Ga.	HB	152	1
65	Dean, Ross	Auburn, Ala.	FB	185	2
66	Cheatham, Lloyd	Nauvoo, Ala.	QB	186	1
68	Fowler, Julian	Pell City, Ala.	QB	167	3
70	Bulger, Chester	Rumford, Me.	T	215	2
71	Bartlett, Frank	Collinsville, Ala.	FB	173	1
72	Irby, Ty	Eufaula, Ala.	HB	171	1

only a few yards to go...



to a

**PAN-AM
STATION**



(Other Pan-Am Stations conveniently located
in all parts of the City.)

Camel

**— MORE PLEASURE
PER PUFF — MORE PUFFS PER PACK**

**PENNY
FOR PENNY
YOUR BEST
CIGARETTE
BUY**



Copyright, 1939, R. J. Reynolds Tobacco Company, Winston-Salem, N. C.



**Long-Burning
Costlier Tobaccos**

**By burning 25% slower than the average
of the 15 other of the largest-selling
brands tested—slower than *any* of them—
CAMELS give a smoking *plus* equal to**

***5 EXTRA SMOKES
PER PACK***