



Tulane vs. S. M. U.

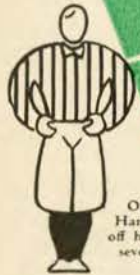
OCTOBER 23, 1943

The Greenie

Price 25¢

Ray

THESE ARE THE OFFICIAL 1943 Signals



OFF-SIDE
Hands on and off hips—repeat several times.



ILLEGAL POSITION OR PROCEDURE
Hands revolving in front of chest.



ILLEGAL MOTION OR SHIFT
Horizontal arc with either hand.



ILLEGAL DELAY OR EXTRA TIME OUT
Folded arms.



ILLEGAL USE OF HANDS OR ARMS
Grasping one wrist.



UNSPORTSMANLIKE CONDUCT
Arms outstretched, palms down.



SAFETY
Palms together overhead.



INTENTIONAL GROUNDING
Both hands over right shoulder then down hard and forward.



FORWARD PASS OR FAIR CATCH INTERFERENCE
Pushing arms forward, palm vertical.



BALL ILLEGALLY TOUCHED, KICKED OR BATTED
Tapping both shoulders with finger tips.



INCOMPLETE FORWARD PASS: PENALTY DECLINED; NO PLAY OR NO SCORE
Hands rapidly criss-crossed in horizontal plane.



UNNECESSARY ROUGHNESS
Military salute.
CLIPPING
Salute followed by slapping back of knee with hand.
RUNNING INTO OR ROUGHING KICKER
Salute followed by swinging leg to simulate a punt.



BALL DEAD
One arm aloft, open hand. If hand is closed, TOUCHBACK.



CRAWLING: HELPING THE RUNNER OR INTERLOCKED INTERFERENCE
Pushing movement with hands below waist.



TIME-OUT
Hands rapidly criss-crossed overhead.



FIRST DOWN
Vigorous throwing motion concluded with outstretched arm pointing toward offensive goal.



START THE CLOCK OR NO MORE TIME-OUTS ALLOWED
Full arm circles to simulate winding a clock.



TOUCHDOWN OR FIELD GOAL
Both arms aloft and hold rigid.

ILLEGAL FORWARD PASS
Waving hand behind back.



Listen to
"Time Out"
WITH
JOHNNY LYNCH

WNOE MONDAYS
9:00-9:15 P.M.

And for Your
Time Out



JACKSON BREWING COMPANY
NEW ORLEANS, LA.

DRINK **JAX**
BEST BEER IN TOWN

THE GREENIE

Vol. 13

OCTOBER 23, 1943

No. 2

Official Souvenir Football Program of Tulane University, Published for Each Home Game.

National Advertising Representative, Football Publications, 370 Lexington, New York City.

Alumni of Tulane University, living in New Orleans, will inaugurate an intensive "double-barreled" campaign on November 9 to aid the war effort, Louis Rosen, chairman of the Tulane alumni war committee, has announced.

The drive will be directed toward adding additional Tulanians to the blood donor list of the American Red Cross and to obtaining more enlistments from the alumni ranks for the coast guard volunteer port security force, Mr. Rosen said.

Vice-chairmen of the war committee are Harry Gamble, Jr., representing the coast guard phase of the campaign, and Clifford F. Favrot, representing the blood bank phase. Working with the chairmen will be three officers of the Tulane Alumni Association, Richard Baumbach, Lester Lautenschlaeger, and E. Claggett Upton, Mr. Rosen announced.

Lieutenant Commander Garner Tullis, an alumnus of Tulane, who is in charge of the entire coast guard volunteer port security program in New Orleans, and Mr. Favrot, head of the blood bank, have met already with the alumni officers to aid in mapping the campaign.

The campaign will be opened at 8:00 p. m., November 9, when approximately 400 alumni, representing the full field force for the offensive, will assemble at Dixon Hall for final instructions, Mr. Rosen said.

Coordinators for the campaign are Herman Stolley, representing the college of arts and sciences; Arthur Radlauer, college of commerce and business administration; Dr. Oliver Deichman, dentistry; Julian Barlett, engineering; David W. Godat, graduate school; Leonard Oppenheim, law; Dr. E. L. King, medicine; Mrs. E. W. Beck, Jr., Newcomb; Eugene Bergeret, pharmacy; Miss Bertha Schuermann, social work; Miss Edna Mae Stroble, division for teachers.

The campaign is the third conducted by the alumni war committee. Shortly after Pearl Harbor a Tulane war bond drive was held, actually the first announced and begun in New Orleans after the war started. In July, 1942, the committee also sponsored a "show-boat party" for navy relief.

Another NEW has been Added !



Apple "Honey"

Now Protects Old Gold Freshness

Lowest The results of impartial tests as published by Reader's Digest in July of last year, when figured in percentages, show that Old Gold was:

- 14% LOWER** in nicotine
- 10% LOWER** in throat-irritating tars and resins

than the average of the 6 other brands tested.



Old Gold
CIGARETTES

Phone WALnut 0082



Tulane University Press

Printing Department of Tulane University



CAMPUS PRINTERS
BASEMENT, GIBSON HALL



Established 1895

New Orleans

W S M B

1350 Kilocycles

NEW ORLEANS' OUTLET FOR
THE N B C NETWORK



IF YOU CAN'T ATTEND THE
TULANE GAMES, TURN TO
W S M B FOR THEM.

Buy More War Bonds



*Perhaps you won't be
wearing a uniform—
then the best suit for
these times is a*

KUPPENHEIMER

Lasting QUALITY and
careful tailoring to take the
hard wear of these busy
days and give you the com-
fortable satisfaction y o u
need for greater efficiency.

\$55 to \$65

Mayer Israel's

◆ ◆ S. M. U. ◆ ◆



OLIN GIBBONS *BACK* IVAN CUNNINGHAM *BACK* GENE McCLINTOCKS *BACK* JACK ELLIOTT *TACKLE*



GENE WILSON *END* BILLY GIPSON *FULLBACK* JENE HOLT *TACKLE* WARREN SMITH *TACKLE*



EDWIN "RED" CLOUD *CENTER* PAUL VINSANT *GUARD* CHARLES OTTINGER *END* HERBERT FERRILL *GUARD*

... the Fourth Quarter ends the Game. but *Play Continues* at The ROOSEVELT!



HOTEL ROOSEVELT is New Orleans' finest and largest. The center of Social and Business Activities . . . After each game, football fans gather here to enjoy themselves and score another touchdown.

BLUE ROOM

Will Osborne and his orchestra with floor show at dinner and supper.

FOUNTAIN LOUNGE

Continuous music and entertainment from 5 p. m. until 2 a. m. featuring Danny Dean and his Society Band. Docita and her Rhumba Orchestra. Phil Gully and his songs at the piano.

COFFEE SHOP

DINNER in a quiet, comfortable atmosphere from six until ten o'clock . . . Prices are moderate. The Coffee Shop is also open for Breakfast and Luncheon . . .

THE ROOSEVELT

PULANE



TOM BALL
QUARTERBACK



ED. PECHON
HALFBACK



JIM SHIVER
HALFBACK



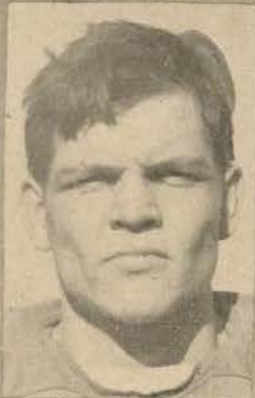
JIM LITTLE
FULLBACK



ELLIOTT IGLEHEART
GUARD



HINTON ADDKISON
GUARD



TOM KANE
GUARD



WARREN JAHNCKE
END



FRED CHAPLAIN
END



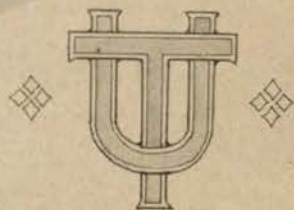
BILL ROSS
CENTER



GEORGE HEDGECOCK
GUARD



FRED LORIO
END



Famous for



FINE FOOD



and **DRINK**

TONIGHT—enjoy specialties
of these noted restaurants:

ANTOINE'S

713 St. Louis St.

ARNAUD'S

813 Bienville St.

BROUSSARD'S

819 Conti St.

KOLB'S

125 St. Charles St.



**To you who are such good sports
in the face of inconvenience**

We wish we could give you back the extra few minutes you must allow to get where you're going on street car or bus these days . . . but the war makes rush-hour riding a "jam session" for true.

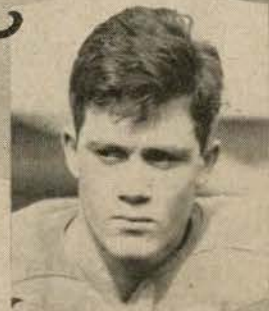
The bigger the crowd the longer it takes: more change to be made, more transfers to be used, more stops to be made for more people getting on and off.

Some folks tell us we've done a good job in handling added thousands of war-worker passengers. We couldn't have done it without your help.

Many of you have changed your working hours to move out of the way of peak-time traffic. Shoppers with bundles try to avoid the evening rush. Students crossing town hasten to get home before 5. Most of you have accepted the inconvenience of wartime transit with a grin instead of a grouch. You have helped to keep a vital service rolling.

NEW ORLEANS *Public Service*

Tulane



LEONARD FINLEY
QUARTERBACK



CHARLES JAMES
HALFBACK



MANUEL BLUM
HALFBACK



WALLY SCHMITZ
QUARTERBACK



LESTER GATEWOOD
CENTER



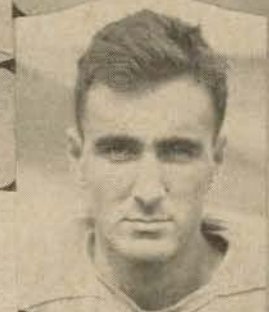
BOBBY JAMES
FULLBACK



BEN ELLENDER
HALFBACK



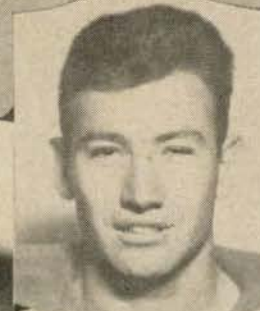
JOE RENFROES
HALFBACKS



KENNETH TARZOTTI
END



HOWARD MCAFEE
TACKLE



ALLAN ZOLLIFFER
TACKLE



HUGH TAYLOR
END



AUBREY BAILEY
END



AT THE GAME
and
AFTER THE GAME

ENJOY



D Equipment for all sports...

U Specialists in all types of
school athletic
supplies

N

L

A

P Sporting Goods Co., Inc.

138 Carondelet Street
MAGNOLIA 5891

Stop!
Look!
Listen!

There's a 7-Up Boy right
down in front of you! Call
him now and Fresh-Up

With





Cam-pit
a medley of
CAMPUS
PICTURES

BY HORACE REHIGAR



**Nunn Bush
SHOES**



FOOT
COMFORT



MILES OF WEAR

at
Porter's



Cheers with a military motif—Naval students and Newcomb girls are working together this year for that old Green Wave—they are, left to right, in the top left picture, Al Robinson, Betty-Blaine Lyle, Bob Murray, Ida May Hayden and Jimmy McConnell.



Good Grooming
A-HEAD



with
STYLEPARK HATS
from *Porter's*



More than twenty years ago the first girl cheerleader in the United States made her debut at Tulane. . . . She was (top) Rosa Hart, a Newcomb graduate of 1921 . . . Midway between the first and the latest girl cheerleaders, whose pictures appear on preceding pages, were the three Newcombites who posed for the cheering pictures below. Left to right, Edna Angle, New Orleans, May V. Hendrick, Shreveport, and Amy Smith, Clarksdale, Miss.



You pay no more
for



Porter's DEPENDABILITY!

The Driving Spirit...

Pouring out the red, sweet wine of youth—giving up the years to be—they drive on to victory . . . the spirit taking over when the flesh is weak—so that we can enjoy the luxury of life . . . the American way of life, replete with its Liberties, its Freedoms and its Equality of Rights.

Can anything we at home do . . . any sacrifice we make—compare with the supreme effort our fighting men are making every second, every minute, every hour, every day?

One thing we can do . . . only one, and that is keep our brave and stalwart fighters fully equipped with the world's best implements of war. Your continuous purchases of WAR BONDS and STAMPS will see to that!

BUY
WAR BONDS and STAMPS

Godchaux's

Since 1840—for fine apparel



**The official football
timing watch for**

TULANE-S. M. U.

Longines
THE WORLD'S MOST HONORED WATCH



For more than three-quarters of a century, Longines Watches have been made to a high standard of timekeeping excellence. A Longines Chronometer, fifty years ago, was the first factory made timepiece to win an observatory accuracy award. Thousands of certificates for accuracy have since been awarded to Longines timepieces by observatories here and abroad. Recently in competition at a great government observatory, a series of Longines *strap watches* won first place for precision. LONGINES-WITNAUER WATCH CO., INC., New York, Montreal, Geneva.

Longines-Wittnauer Watches



ON THE FIELDS OF FRIENDLY STRIFE
 ARE SOWN THE SEEDS
 WHICH ON OTHER FIELDS
 IN OTHER YEARS
 WILL BEAR THE FRUITS OF VICTORY

★ ★ ★ ★



TULANE

			FB Jackson 52			
RHB Renfro 12			QB Finley 22		LHB W. A. Jones 38	
RE Olsen 41	RT Roseman 71	RG McMillan 21	C Kirchenheuter 20	LG Bourgeois 30	LT G. Jones 72	LE Tarzetti 54

SQUAD LIST

10 Ellender, b	37 Shiver, b	52 Jackson, b	71 Roseman, t
11 Schmitz, b	38 Jones, W. A., b	54 Tarzetti, e	72 Jones, G. E., t
12 Renfro, b	40 Little, b	60 Bailey, e	73 Zollicoffer, t
20 Kirchenheuter, c	41 Olsen, e	61 Chaplain, e	74 Jahncke, e
21 McMillan, g	42 Pechon, b	62 Kane, g	75 McAfee, t
22 Finley, b	45 James, R., b	64 Lennox, g	80 Lorio, e
30 Bourgeois, g	46 Blum, b	65 Harris, t	82 Ross, c
31 Hedgecock, g	50 Gatewood, c	66 Igleheart, g	85 Addikison, g
32 Athas, b	51 James, C., b	69 Taylor, e	88 Ball, b

OFFICIALS

Referee
 "Buck" Cheeves (Georgia)
 Umpire
 Rosco Minton (Rice)

On Every Field It's Chesterfield

S. M. U.

			FB Allen 15			
RHB Walling 23			QB McClintock 20		LHB L. Parker 17	
RE Croft 86	RT Pool 72	RG Hill 65	C Cloud 54	LG B. Shaw 68	LT Holt 71	LE Levy 83



SQUAD LIST

12 Redman, b	40 Kendrick, b	65 Hill, g	77 Langford, t
14 Cox, b	42 Stewart, b	66 Collier, g	80 Wilson, e
15 Allen, b	43 Squires, b	67 Ferrill, g	81 Ottinger, e
16 Gibbons, B., b	44 Shaw, W., b	68 Shaw, Billy, g	82 Johnson, e
17 Parker, L., b	52 Noble, c	69 Harkey, g	83 Levy, e
20 McClintock, b	53 Frazier, c	70 Smith, W., t	85 Cheney, e
21 Cunningham, b	54 Cloud, c	71 Holt, t	86 Croft, e
22 Gibbons, O., b	55 Basham, c	72 Pool, t	88 Smith, B., e
23 Walling, b	60 Vinsant, g	73 Elliott, t	89 Donnelly, e
32 Gipson, b	61 Connor, g	74 Colwick, t	90 Mims, e
33 Loughborough, b	62 Brannen, g	75 Meletio, t	91 Lewis, e
37 Philips, g	64 Parker, G., g	76 Holloway, t	

OFFICIALS

Head Linesman
 George C. Gardner (Georgia Tech)
 Field Judge
 Charles Y. Swartz (Texas)

JOHNNIE "Calls" THE SIGNALS!

 Crawling or pushing. 5 yards; helping ball carrier, 15 yards.	 Holding. (Penalty—by offense, 15 yards; by defense, 5 yards.)	 Delay of game or extra time-outs. (Penalty, 5 yards.)	 Player illegally in motion. (Penalty, 5 yards. If from shift or hurdle, 15 yards.)	 Interference with forward pass, or pass touching ineligible player. (Penalty: if interference by offense, 15 yards; otherwise, ball goes to opponents at point of foul.)	 Illegal forward pass.
 Safety.	 Penalty refused, incomplete pass, missed field goal or conversion, both sides offside, etc.	 Unnecessary roughness, illegal defensive use of the hands, clipping, running into or roughing the kicker. (Penalty, 15 yards.)	 Score—touchdown, field goal, or conversion.	 Offside or violation of kick-off formation. (Penalty, 5 yards.)	 Time out.

ESTABLISHED OVER 80 YEARS
PHILIP MORRIS & Co. Ltd.
SPECIAL
LONDON, W.

FOR TRUE SMOKING PLEASURE
Call for **PHILIP MORRIS**

Penalties

LOSS OF FIVE YARDS

- 1 Taking more than three times out during either half
- 2 Illegal delay of game
- 3 Failure of substitute to report to umpire
- 4 Violation of kick-off formation
- 5 Failure to maintain proper alignment of offensive team before ball is snapped. Also, backfield man illegally in motion
- 6 Offside by either team, or encroachment on neutral zone
- 7 Attempt to draw opponents offside
- 8 Taking more than two steps with ball after signaling for fair catch
- 9 Illegal use of hands and arms by defensive players
- 10 Flying block or flying tackle
- 11 Running into kicker
- 12 Crawling by the runner

LOSS OF FIFTEEN YARDS

- 13 Team not ready to play at scheduled time
- 14 Substitute communicating with teammates before ball is put in play
- 15 Illegal substitution (player also suspended from game)
- 16 Failure to stop at least one second on shift play
- 17 Forward pass by member of team which did not put ball in play
- 18 Forward pass touched by ineligible player
- 19 Intentional grounding of forward pass
- 20 Interference by member of passing team with defensive player eligible for pass
- 21 Interference with fair-catch or tackling player before ball is caught
- 22 Illegal use of hands and arms by offensive players
- 23 Defensive player striking opponent above shoulders
- 24 Roughing the kicker
- 25 Piling up, hurdling, clipping
- 26 Tackling player out of bounds
- 27 Coaching from the sidelines
- 28 Illegal interference with defense by passing team

OTHER PENALTIES

- 29 Striking, kneeling, or kicking opponent—half the distance to the goal and disqualification of offending player
- 30 Foul within one yard line—half the distance to the goal
- 31 Interference by defensive team on forward pass—first down for passing team at spot or foul
- 32 Flagrant roughing of kicker—disqualification, plus fifteen yards
- 33 Flagrant unsportsmanlike conduct—disqualification, plus fifteen yards
- 34 Forward pass touched by ineligible player on or behind line of scrimmage—loss of down

In memory of days at Tulane
long gone by, we present—

The Tulane Album

Contributions of Tulane pictures for this section will be welcomed and returned to the donor if desired. Address them to the Department of Public Relations, Room 216, Gibson Hall.

Above, the home of Mrs. Josephine Louise Newcomb, founder of Newcomb college, at 1224 Fourth, near the old Washington street campus. Below, the Tulane exhibition booth at the state fair of 1899 in Ruston, Louisiana. The man on the bicycle is Ellsworth Woodward, former head of the Newcomb art school.



WHERE
IS
PORTER'S?
HUH P



ACROSS THE
STREET FROM
THE COTTON
EXCHANGE..



AROUND THE
CORNER FROM
THE ST. CHARLES
HOTEL ..



OPPOSITE THE HIBERNIA
NATIONAL BANK AND
IN THE SAME BLOCK
WITH THE
AMERICAN BANK

ASK ANYBODY!



EVERYTHING MEN WEAR

Porter's

CARONDELET COR. GRAVIER STS.

...and of more than twenty years ago . . . Recognize Dr. Marten ten Hoer in civilian suit and hat? Or Ellis Robbert, now director of maintenance, sixth from left? Or Dr. Michael DeBakey, sixteenth from left?



Note Bruff Commons, even then the old Tulane bookstore, in the background at left; the Y.M.C.A. hut, a leftover of Camp Martin on the Tulane campus during the first World War at right. The overseas caps on members of the band were also from the days of the Student Army Training Corps.

...RABLE
...WOOL
...SUITS



\$35 from
Porter's

keep dry on WETTEST DAYS

RAINFAIR STORMCOATS

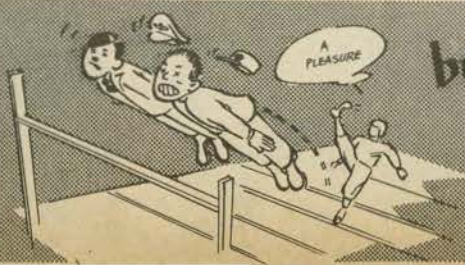




Above, the Newcomb chapel on Washington Avenue.
A close-up of the chapel altar, below.



SCORE
VICTORY
over the **AXIS!**



buy more
WAR BONDS and STAMPS
Porter's



OUR ARMED SERVICE UNIFORM CENTRE

Everything you need from head to toe has been assembled in this one department. Conveniently arranged displays for easy selection . . . a time-saving feature you'll appreciate. And because we realize that the fit of your uniform is so important we give particular attention to fitting you perfectly. We maintain our own staff of expert tailors who make any necessary alterations with record speed.



★ ★ ★ ★ ★ ★ ★ ★ ★

Maison Blanche

GREATEST STORE SOUTH

ARMED SERVICE CENTER

★ A. E. S. ★ WAVES ★ SPARS ★ ARMY & NAVY NURSES ★ N. U. S.

New Orleans' Finest

In America's Most Interesting City

●

THE ROOSEVELT is located in the heart of Romantic old New Orleans. It is the center of business and social activities and is close to the Theatre, Shopping, French Quarter, and Business Districts . . . You will like the tasteful luxury and home-like atmosphere of this modern hotel where the traditions of Southern Hospitality are maintained the year 'round.

●



"Pride of the South"

THE ROOSEVELT

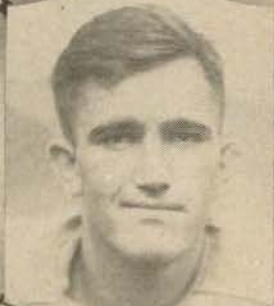
Tulane



ALEX ATHAS
HALFBACK



WM. A. JONES
HALFBACK



FRED ROSEMAN
TACKLE



JAMES HARRIS
TACKLE



RAY OLSEN
END



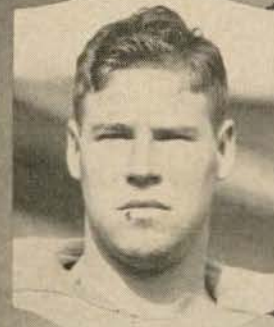
GASTON BOURGEOIS
GUARD



ED. LENNOX
GUARD



GEORGE E. JONES
TACKLE



JIM JACKSON
FULLBACK



DAN KIRCHENHEUTER
CENTER



EMILE MACMILLAN
CENTER



ROBERT PATTERSON
GUARD



1943 TULANE FOOTBALL
SCHEDULE

- Oct. 2—Memphis Naval Air Tech at N. O.
Oct. 9—Rice at Houston
Oct. 23—Southern Methodist Univ. at N. O.
Oct. 30—Georgia Preflight at N. O.
Nov. 13—Georgia Tech at N. O.
Nov. 20—Louisiana State University at N. O.
-

(Tickets for all games on sale at: Tulane Football Ticket Office, 221 Baronne Street, New Orleans. All October games at New Orleans start at 3:30 p. m.; November games at 3:00 p. m.)



*Better Printers
in New Orleans*

“Time Out”

DRINK—

Coca-Cola
TRADE MARK
REGISTERED

PAUSE—

RELAX—

REFRESH YOURSELF

PIGSKIN ROUNDUP

NAVY-GEORGIA TECH—The Engineers from Atlanta are due to spring a major surprise one of these Saturdays, a real old-fashioned stomp as it were. This may be it. For the Five Star Special, Georgia Tech.

* * *

ARMY-YALE—West Point is another team with too many guns. West Point and Notre Dame might well be called the "arsenals of football" this year. Yale will be able to do very little about it.

* * *

GEO. PREFLIGHT-N.C. PREFLIGHT—The Georgia Preflight team appears to be gaining momentum. They should be ready for this one.

* * *

INDIANA-WISCONSIN — Not much to choose. A flip of the wrist and it's the Hoosiers.

* * *

PURDUE-IOWA—Purdue is potentially one of the nation's best. Iowa won't bother the Boilermakers.

* * *

OHIO STATE-NORTHWESTERN—When they're up, they're up; when they're down, they're down. Northwestern.

* * *

SOUTHERN CAL-COLLEGE OF THE PACIFIC—Here is one of the big games of the year on the Pacific coast. The 81-year old Stagg, "grand old man football" is back with a team capable of challenging any of them. Still the choice goes to the Trojans, unscored upon now in four games.

MINNESOTA-MICHIGAN — Minnesota has beaten Michigan nine years in a row. Michigan is out to redeem itself. Minnesota is still capable of taking care of itself in any company, however.

* * *

COLGATE-CORNELL—The Big Red over the Red Raider.

* * *

NOTRE DAME-ILLINOIS—You guess.

* * *

L.S.U.-GEORGIA—The Bayou Bengal.

* * *

WAKE FOREST-V.M.I.—The Deacons.

* * *

T.C.U.-OKLAHOMA A.&M.—The Horned Frogs.

* * *

PENN-COLUMBIA—The Quakers.

* * *

Many of the teams are idle today. Among those resting this week are Brown, Dartmouth, Holy Cross, Princeton, Duke, North Carolina, Arkansas, Texas A. & M., and Virginia. Only in the Middle West is everybody playing. All Western Conference teams are playing this week-end.

CHRISTMAS GIFTS

to service men in the

NAVY and MARINES

must be mailed by Oct. 31

Will you help to conjure up a joyful look, a gorgeous "they-care-for-me" feeling, on the face and in the heart of a certain man in the service overseas. Then don't delay—come in and learn about our parcel suggestions. We've prepared combinations that will really tickle the man who gets them, practical gifts that conform to postal regulations in size and weight, gifts of the finest quality available for the finest fighting force ever—Uncle Sam's!

- Remember! The deadline for the Boys in Blue is Oct. 31.
- Remember! Gifts must weigh not more than 5 pounds, must not exceed 15 inches in length or 36 inches in length and girth combined.

D. H. HOLMES CO.

LIMITED

For More Than 100 Years—The Best Place to Shop

SONGS AND YELLS

ROLL ON, TULANE

ten Hoor and Goldstein

Roll, Green Wave,
Roll them down the field.
Hold, Green Wave,
That line must never yield.
When those Greenbacks charge through the line
They're bound for victory.
Hail, Green Wave, for you
We have no fear.
Hail, Green Wave, for you we give a cheer
And ev'ry man in ev'ry play
And then we'll win that game today.
Hurrah for Old Tulane!

Hullabaloo

Hullabaloo! Ray! Ray!
Hullabaloo! Ray! Ray!
Hooray! Hooray!
Vars, Vars, T.A.A.
T.A.A! T.A.A!
Vars, Vars, T.A.A!
TULANE!!!

* * *

ALMA MATER

*Sing these words as Tulane's Alma Mater
is played*

I.

We praise thee for thy past, O Alma Mater!
Thy hand hath done its work full faithfully!
The incense of thy spirit hath ascended
And filled America from sea to sea.

II.

We praise thee for thy present, Alma Mater!
Today thy Children look to thee for bread!
Thou leadest them to dreams and actions splendid!
The hunger of their souls is richly fed!

III.

We praise thee for thy future, Alma Mater!
The vista of its glory gleameth far!
We ever shall be part of thee, great Mother!
There thou wilt be where e'er thy children are!

CHORUS:

Olive Green and Blue, we love thee!
Pledge we now our fealty true
Where the trees are ever greenest,
Where the skies are purest blue!
Hear us now, O Tulane, hear us!
As we proudly sing to thee!
Take from us our hearts' devotion!
Thine we are, and thine shall be!

HAUSMANN INCORPORATED

NEW ORLEANS'
LEADING JEWELERS

• • •

*Special Department for College
and
Fraternal Jewelry*

The Thinking Fellow Calls a Yellow

~

Phone RAYmond 3311

~

TOYE BROS.

YELLOW CABS



TULANE ROSTER

No.	Name	Position	Weight	Home	Previous School
10	Ben Ellender	LHB	180	Sulphur, La.	Tulane
11	Wally Schmitz	QB	165	New Orleans, La.	Tulane
12	Joe Renfroe	RHB	208	Fort Meyers, Fla.	Tulane
20	Dan Kirchenheuter	C	185	New Orleans, La.	Freshman
21	Emile McMillan	G	172	New Orleans, La.	Tulane
22	Leonard Finley	QB	171	New Orleans, La.	Tulane
30	Gaston Bourgeois	G	170	Lutcher, La.	Freshman
31	George Hedgecock	G	185	Shreveport, La.	L. S. U.
32	Alex Athas	RHB	160	New Orleans, La.	Tulane
37	James Shiver	LHB	158	Valdosta, Ga.	Auburn
38	Bill Jones	LHB	180	Kuston, La.	L. S. U.
40	James Little	FB	180	Amarillo, Texas	W. Texas Teachers
41	Ray Olsen	E	180	New Orleans, La.	Tulane
42	Ed Pechon	RHB	160	New Orleans, La.	S. L. I.
45	Bobby James	FB	178	New Orleans, La.	Tulane
46	Manuel Blum	RHB	143	Houston, Texas	Texas Univ.
50	Lester Gatewood	C	187	Waco, Texas	Baylor
51	Charles James	RHB	185	Houston, Texas	Houston Univ.
52	Jim Jackson	FB	185	Bryan, Texas	Baylor
54	Kenneth Tarzetti	E	193	DeLisle, Miss.	Perkinson Jr. College
60	Aubrey Bailey	E	185	Livingston, Texas	Baylor
61	Fred Chaplain	E	162	New Orleans, La.	Freshman
62	Tom Kane	G	192	Kearny, N. J.	Freshman
64	Ed. Lennox	G	178	New Orleans, La.	Freshman
65	James Harris	T	200	Macon, Miss.	Mississippi State
66	Elliott Igleheart	G	190	Shelbyville, Ky.	Freshman
69	Hugh Taylor	E	188	Wynne, Ark.	Northeast Jr. College
71	Fred Roseman	T	200	Sulphur, La.	Tulane
72	George E. Jones	T	199	Trenton, Tenn.	Vanderbilt
73	Allan Zollicoffer	T	195	Hubbard, Texas	Texas Jr. C.
74	Warren Jahncke	E	175	New Orleans, La.	Tulane
75	Howard McAfee	T	220	New Orleans, La.	Tulane
80	Ferd Lorio	E	172	New Orleans, La.	Tulane
82	Bill Ross	C	183	St. Pleasant, Tenn.	Battle Ground Ac'd'y
85	Hindon Addkison	G	162	Hickory, Miss.	East Central Jr. College
88	Tom Ball	QB	170	Amarillo, Texas	Schreiner Inst.



S. M. U. ROSTER

No.	Name	Position	Weight	Home	Previous School
12	Dave Redman	RHB	175	Dallas, Texas	High School
14	L. B. Cox	QB	163	Ozona, Texas	High School
15	C. D. Allen	FB	185	Fort Worth, Texas	IVL SMU
16	Billy Gibbons	RHB	150	Dallas, Texas	High School
17	Lloyd Parker	RHB	155	Raymondville, Texas	High School
20	Milton McClintock	RHB	165	Dallas, Texas	High School
21	Leon Cunningham	QB	171	Arlington, Texas	High School
22	Olin Gibbons	LHB	165	Dallas, Texas	High School
23	Billy Walling	FB	175	Thornton, Texas	High School
32	Billy Gipson	FB	175	Gilmer, Texas	Kilgore Junior
33	H. A. Loughborough	FB	155	Dallas, Texas	None
37	Wendell Phillips	G	170	San Antonio, Texas	High School
40	Jimmie Kendrick	LHB	152	Dallas, Texas	High School
42	Bob Stewart	LHB	155	Dallas, Texas	Kemper
43	Bill Squires	LHB	180	El Paso, Texas	F—SMU
44	Wayne Shaw	LHB	175	Athens, Texas	IL SMU
52	Jim Noble	C	160	Rock Springs, Texas	High School
53	J. C. Frazier	C	175	Bryan, Texas	High School
54	Ed Cloud	C	201	Bryan, Texas	18 SMU
55	Joe Basham	C	157	Moran, Texas	High School
60	Paul A. Vinsant	G	160	Fort Worth, Texas	High School
61	J. H. Connor	G	165	Pasadena, Texas	
62	C. A. Brannen	G	154	Groveton, Texas	High School
64	Glyn Parker	G	180	Corpus Christi, Texas	High School
65	Claud Hill	G	187	Goose Creek, Texas	High School
66	J. W. Collier	G	160	Fort Worth, Texas	High School
67	Herbert Ferrill	G	170	Grand Prairie, Texas	NTAC
68	Billy Shaw	G	198	Big Spring, Texas	IL Hardin-Simmons
69	Jack Harkey	G	170	Dallas, Texas	High School
70	Warren Smith	T	205	Webber, Kansas	
71	Jene A. Holt	T	197	Dawson, Texas	F A&M
72	J. L. Pool	T	190	Ennis, Texas	High School
73	Jack Elliott	T	241	Dallas, Texas	High School
74	J. T. Colwick	T	200	Durant, Oklahoma	High School
75	James T. Meletio	T	190	Dallas, Texas	High School
76	Bob Holloway	T	180	Arlington, Texas	High School
77	T. R. Langford	T	185	Kilgore, Texas	Kilgore Junior
80	Eugene Wilson	E	170	Troup, Texas	High School
81	Charles Ottinger	E	175	Batesville, Arkansas	None
82	Tom L. Johnson	E	177	Beaumont, Texas	IVL Baylor
83	Samuel Levy	E	148	New York City	None
85	John A. Cheney	E	165	Durant, Oklahoma	
86	Abe Croft	E	183	Houston, Texas	18 SMU
88	Bruce Smith	E	172	Troup, Texas	High School
89	Jim Donnelly	E	170	Bell, California	
90	Mack Mims	E	155	El Paso, Texas	High School
91	Charles N. Lewis	E	160	Deweyville, Texas	

The Official Watch for Timing All Tulane Games is a Longines—"The World's Most Honored Watch"

only a few yards to go . . .



(Other Pan-Am Stations conveniently located
in all parts of the City.)

HOME LOANS

TO BUY . . .

REFINANCE . . . REPAIR

Your Home

Liberal Terms

Low Interest Rates

OFFICERS

J. D. Byrne, President
A. E. Thouron, Vice-President
J. E. McMahon, Vice-President
Chas. A. Nehlig, Vice-President
Jacob Schaaf, Secretary-Treasurer
Chas. F. Buck, Jr., Attorney
Bernard Titche, Jr., Notary
Frank W. Magne, Notary
Roger P. Sharp, Bldg. Expert

DIRECTORS

Herman T. Bartels	Frank W. Hart
H. V. Boubede	Hunter C. Leake
Chas. F. Buck, Jr.	Frank W. Magne
J. D. Byrne	J. E. McMahon
Frank G. Costley	Chas. A. Nehlig
E. J. Engelbracht	R. Oliver
A. Percy Generes	Henry P. Pfeffer
Stephen L. Guice	Jacob Schaaf
W. W. Sutcliffe, Jr.	
H. L. Swift	
George P. Thompson	
A. E. Thouron	
Bernard Titche, Jr.	



EQUITABLE MUTUAL HOMESTEAD ASSOCIATION

"Home Financing Since 1885"

511 Carondelet Street

Phone Raymond 3405