

Tulane vs. Georgia Preflight

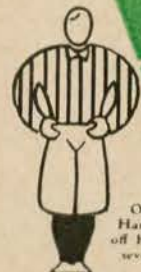
OCTOBER 30, 1943

The Greenie

Price 25¢



THESE ARE THE OFFICIAL 1943 Signals



OFF-SIDE
Hands on and off hips—repeat several times.



ILLEGAL POSITION OR PROCEDURE
Hands revolving in front of chest.



ILLEGAL MOTION OR SHIFT
Horizontal arc with either hand.



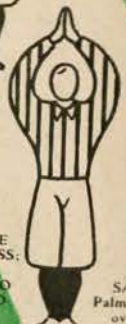
ILLEGAL DELAY OR EXTRA TIME OUT
Folded arms.



ILLEGAL USE OF HANDS OR ARMS
Grasping one wrist.



UNSPORTSMANLIKE CONDUCT
Arms outstretched, palms down.



SAFETY
Palms together overhead.



INCOMPLETE FORWARD PASS; PENALTY DECLINED; NO PLAY OR NO SCORE
Hands rapidly criss-crossed in horizontal plane.



BALL ILLEGALLY TOUCHED, KICKED OR BATTED
Tapping both shoulders with finger tips.



INTENTIONAL GROUNDING
Both hands over right shoulder then down hard and forward.



FORWARD PASS OR FAIR CATCH INTERFERENCE
Pushing arms forward, palm vertical.



BALL DEAD
One arm aloft, open hand. If hand is closed, TOUCHBACK.



UNNECESSARY ROUGHNESS
Military salute. CLIPPING: Salute followed by slapping back of knee with hand. RUNNING INTO OR ROUGHING KICKER: Salute followed by swinging leg to simulate a punt.



TIME OUT
Hands rapidly criss-crossed overhead.



CRAWLING; HELPING THE RUNNER OR INTERLOCKED INTERFERENCE
Pushing movement with hands below waist.



TOUCHDOWN OR FIELD GOAL
Both arms aloft and held rigid.



ILLEGAL FORWARD PASS
Waving hand behind back.



FIRST DOWN
Vigorous throwing motion concluded with outstretched arm pointing toward offensive goal.



START THE CLOCK OR NO MORE TIME-OUTS ALLOWED
Full arm circle to simulate winding a clock.



Listen to "Time Out" WITH **JOHNNY LYNCH** RADIO STATIONS **WDSU & WNOE** THURSDAYS 7:30 - 7:45 p.m.

And for Your **Time Out**



JACKSON BREWING COMPANY NEW ORLEANS, LA.

DRINK **JAX** BEST BEER IN TOWN

THE GREENIE

Vol. 13

OCTOBER 30, 1943

No. 3

Official Souvenir Football Program of Tulane University, Published for Each Home Game.

National Advertising Representative, Football Publications, 370 Lexington, New York City.

THE SKYCRACKERS

The Skycrackers are composed of enlisted men of the Navy, Marine Corps, and Coast Guard, virtually all of them training to become aviation pilots in one of the three services.

The team is coached by Lieut. Rex Enright, USNR, whose last civilian occupation was athletic director and head football coach at the University of South Carolina. His assistant coaches are Lt. (jg) George T. Barclay, former line coach at Dartmouth College, and Ensigns Anton "Andy" Pilney and William H. "Bud" Kerr, both assistant coaches at Washington University, St. Louis, prior to the war.

The Skycrackers defeated Daniel Field of Augusta, Ga., 19 to 13 in their opening game at Athens. A week later they were overpowered by Georgia Tech 35 to 7. They then drubbed Newberry (S.C.) College 53 to 0. Last Saturday (October 23) they won from the Chapel Hill Navy Preflight School at Chapel Hill, N. C.

Naval aviation cadets are graduated by classes every two weeks from the Athens base. This causes a continuous turnover of players and creates a coaching problem that is a challenge to the ingenuity and teaching ability of Lieutenant Enright and his staff.

Lieutenant Enright starred three seasons in both football and basketball at Notre Dame, from which he was graduated in 1926. He played two seasons with the Green Bay Packers of the National Football League and

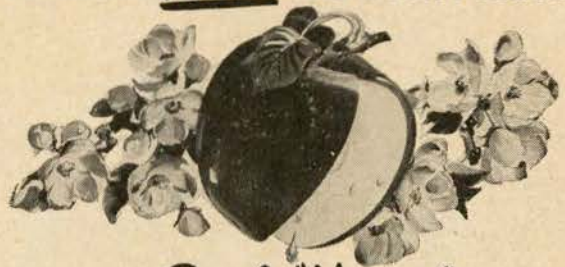
later served as assistant coach at the Universities of North Carolina and Georgia before being chosen by South Carolina to build the Gamecocks into a big-time gridiron organization.

* * *

PARDON, PLEASE

As this issue of The Greenie goes to press, there is some uncertainty concerning the complete rosters of the two teams. Detachment orders for personnel members of the teams makes it improbable that either will be able to "field" a team consisting mostly of players who have been in the previous games. The printing of the program was held up 24 hours beyond the usual "deadline" with the hope that The Greenie could provide you with an accurate roster. There may be last minute changes which will affect the rosters. If the roster is incomplete it is due to a factor beyond the control of the coaches.

Another **NEW** has been Added!



Apple "Honey"

Now Protects Old Gold **Freshness**

Lowest

The results of impartial tests as published by Reader's Digest in July of last year, when figured in percentages, show that Old Gold was:

14% LOWER in nicotine

10% LOWER in throat-irritating tars and resins

than the average of the 6 other brands tested



Old Gold
CIGARETTES

Phone WALnut 0082



Tulane University Press

Printing Department of Tulane University



CAMPUS PRINTERS
BASEMENT, GIBSON HALL



Established 1895

New Orleans

W S M B

1350 Kilocycles

NEW ORLEANS' OUTLET FOR
THE N B C NETWORK



IF YOU CAN'T ATTEND THE
TULANE GAMES, TURN TO
W S M B FOR THEM.

Buy More War Bonds



*Perhaps you won't be
wearing a uniform—
then the best suit for
these times is a*

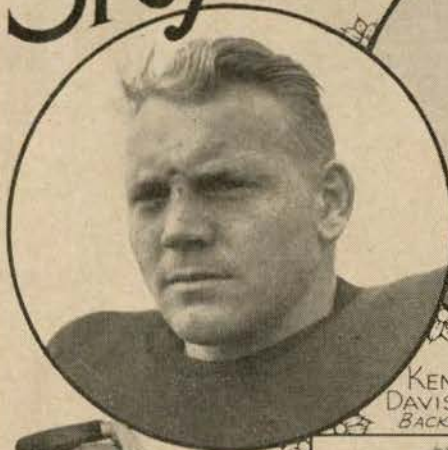
KUPPENHEIMER

Lasting QUALITY and
careful tailoring to take the
hard wear of these busy
days and give you the com-
fortable satisfaction y o u
need for greater efficiency.

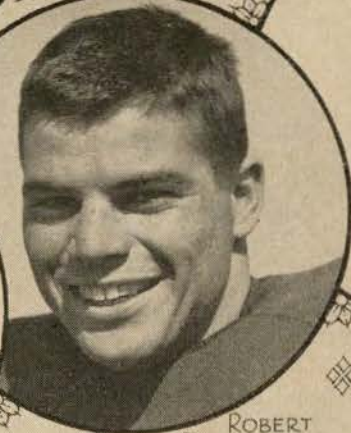
\$55 to \$65

Mayer Israel's

Georgia SkyCrackers



KENNETH DAVIS
BACK



ROBERT RAMSEY
BACK



MARLIN "PAT" HARDER
BACK



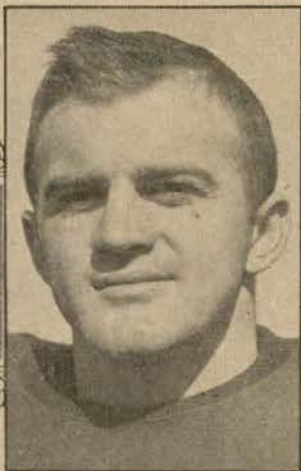
ZEALAND THIGPEN
BACK



CHARLES PALMER
CENTER



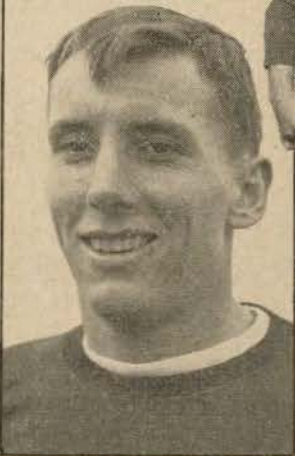
STEPHEN FILIPAWICZ
BACKS



JOE DENMAN
GUARD



CARROLL KNUDSON
GUARD



ELMORE RAVENSBURG
END



JAMES HALE
TACKLE



ADOLPH CRESCENZI
TACKLE

... the Fourth Quarter ends the Game. but

Play Continues at The ROOSEVELT!



HOTEL ROOSEVELT is New Orleans' finest and largest. The center of Social and Business Activities . . . After each game, football fans gather here to enjoy themselves and score another touchdown.

BLUE ROOM

Will Osborne and his orchestra with floor show at dinner and supper.

FOUNTAIN LOUNGE

Continuous music and entertainment from 5 p. m. until 2 a. m. featuring Danny Dean and his Society Band. Dacita and her Rhumba Orchestra.

COFFEE SHOP

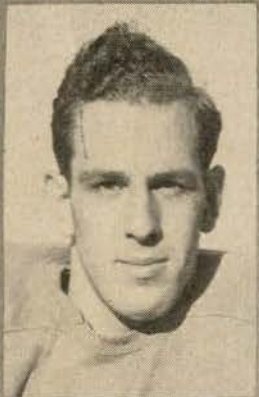
DINNER in a quiet, comfortable atmosphere from six until ten o'clock . . . Prices are moderate. The Coffee Shop is also open for Breakfast and Luncheon . . .

THE ROOSEVELT

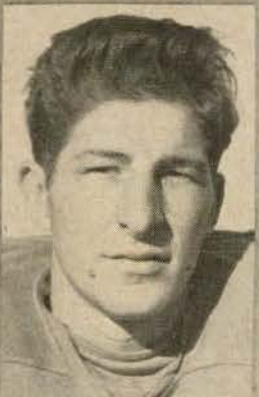
PULANE



JIM LITTLE
FULLBACK



WARREN JAHNCKE
END



FRED LORIO
END



JIM SHIVER
HALFBACK



TOM KANE
GUARD



GEORGE HEDGECOCK
GUARD



ED. PECHON
HALFBACK



HINTON ADDKISON
GUARD



BILL ROSS
CENTER



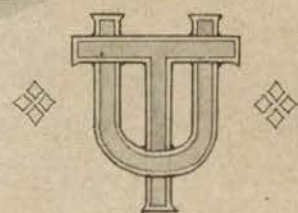
TOM BALL
QUARTERBACK



ELLIOTT IGLEHEART
GUARD



FRED CHAPLAIN
END



Famous for



FINE FOOD



and **DRINK**

TONIGHT—enjoy specialties
of these noted restaurants:

ANTOINE'S

713 St. Louis St.

ARNAUD'S

813 Bienville St.

BROUSSARD'S

819 Conti St.

KOLB'S

125 St. Charles St.



**To you who are such good sports
in the face of inconvenience**

We wish we could give you back the extra few minutes you must allow to get where you're going on street car or bus these days . . . but the war makes rush-hour riding a "jam session" for true.

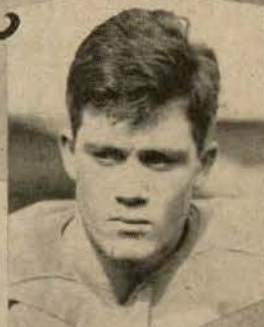
The bigger the crowd the longer it takes: more change to be made, more transfers to be used, more stops to be made for more people getting on and off.

Some folks tell us we've done a good job in handling added thousands of war-worker passengers. We couldn't have done it without your help.

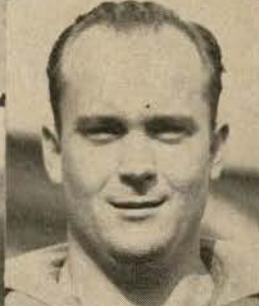
Many of you have changed your working hours to move out of the way of peak-time traffic. Shoppers with bundles try to avoid the evening rush. Students crossing town hasten to get home before 5. Most of you have accepted the inconvenience of wartime transit with a grin instead of a grouch. You have helped to keep a vital service rolling.

NEW ORLEANS *Public Service*

Tulane



LEONARD FINLEY
QUARTERBACK



CHARLES JAMES
HALFBACK



LESTER GATEWOOD
CENTER



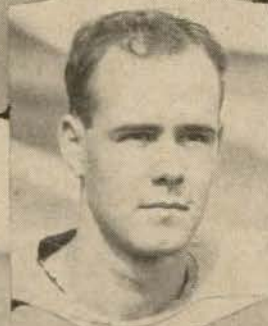
MANUEL BLUM
HALFBACK



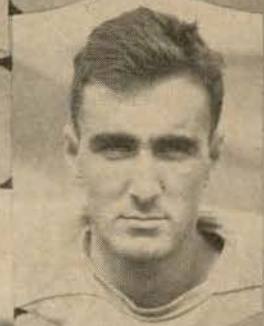
BOBBY JAMES
FULLBACK



WALLY SCHMITZ
QUARTERBACK



BEN ELLENDER
HALFBACK



KENNETH TARZOTTI
END



JOE RENFROES
HALFBACKS



HOWARD MCAFEE
TACKLE



ALLAN ZOLLIFFER
TACKLE



AUBREY BAILEY
END



HUGH TAYLOR
END



AT THE GAME
and
AFTER THE GAME

ENJOY



D Equipment for all sports...

*Specialists in all types of
school athletic
supplies*

**U
N
L
A
P**

Sporting Goods Co., Inc.

138 Carondelet Street
MAGnolia 5891

Stop!
Look!
Listen!

There's a 7-Up Boy right
down in front of you! Call
him now and Fresh-Up

With



MIDDLE AMERICAN RESEARCH INSTITUTE
TULANE UNIVERSITY

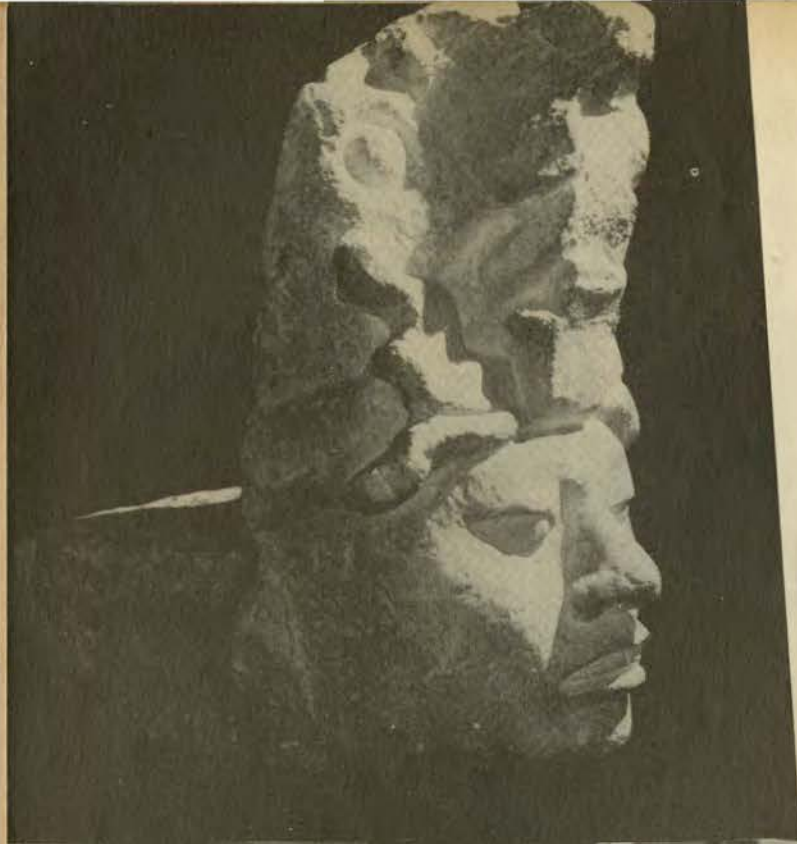
Cam-pix

a medley of
CAMPUS
PICTURES

GIORGIO MOSCA STATIONS



This Cam-Pix is dedicated to Tulane's internationally known Middle American Research Institute, and all pictures were made in the Institute museum. Above, Barbara Wilhite and Rodolfo Chacon, in costumes from the museum's collection, enter through the reproduction of the Temple of the Sun.



A stone head on exhibit
at the museum.

Assisted by Nan Byrne, Marion Byrne and Carter Ernst, Kathryn Balmer winds herself in six yards of hand-dyed, hand-loomed skirt worn by the Indian women of Guatemala.



**Nunn Bush
SHOES**



FOOT
COMFORT



MILES OF WEAR

at
Porter's



Carter Ernst in a chic number from Compalapa, Guatemala. The museum's collection of Guatemalan costumes is famous.

Good Grooming
A-HEAD



with
STYLEPARK HATS
from Porter's



Felix Estrada Orantes, consul general of Guatemala, with Newcomb girls in costumes of his country.

You pay no more for **Porter's** DEPENDABILITY!



The Driving Spirit...

Pouring out the red, sweet wine of youth—giving up the years to be—they drive on to victory . . . the spirit taking over when the flesh is weak—so that we can enjoy the luxury of life . . . the American way of life, replete with its Liberties, its Freedoms and its Equality of Rights.

Can anything we at home do . . . any sacrifice we make—compare with the supreme effort our fighting men are making every second, every minute, every hour, every day?

One thing we can do . . . only one, and that is keep our brave and stalwart fighters fully equipped with the world's best implements of war. Your continuous purchases of WAR BONDS and STAMPS will see to that!

BUY
WAR BONDS and STAMPS

Godchaux's

Since 1840—for fine apparel



**The official football
timing watch for**

TULANE-GEORGIA PREFLIGHT

Longines
THE WORLD'S MOST HONORED WATCH



For more than three-quarters of a century, Longines Watches have been made to a high standard of timekeeping excellence. A Longines Chronometer, fifty years ago, was the first factory made timepiece to win an observatory accuracy award. Thousands of certificates for accuracy have since been awarded to Longines timepieces by observatories here and abroad. Recently in competition at a great government observatory, a series of Longines *strap watches* won first place for precision. LONGINES-WITTNAUER WATCH CO., INC., New York, Montreal, Geneva.

Longines-Wittnauer Watches



**ON THE FIELDS OF FRIENDLY STRIFE
 ARE SOWN THE SEEDS
 WHICH ON OTHER FIELDS
 IN OTHER YEARS
 WILL BEAR THE FRUITS OF VICTORY**

★ ★ ★ ★

TULANE

	RHB Renfro 12		FB R. James 45		LHB W. A. Jones 38	
			QB Finley 22			
RE Olsen 41	RT Roseman 71	RG McMillan 21	C Kirschenheuter 20	LG Bourgeois 30	LT G. Jones 72	LE Tarzetti 54

SQUAD LIST

10 Ellender, b	32 Athas, b	54 Tarzetti, e	71 Roseman, t
11 Schmitz, b	37 Shiver, b	60 Bailey, e	72 Jones, G. E., t
12 Renfro, b	38 Jones, W. A., b	61 Chaplain, e	73 Zollicoffer, t
20 Kirschenheuter, c	40 Little, b	62 Kane, g	74 Jahncke, e
21 McMillan, g	41 Olsen, e	64 Lennox, g	75 McAfee, t
22 Finley, b	42 Pechon, b	65 Harris, t	80 Lorio, e
29 Eason, t	45 James, R., b	66 Igleheart, g	82 Ross, c
30 Bourgeois, g	50 Gatewood, c	69 Taylor, e	83 Edwards, b
31 Hedgecock, g	52 Jackson, b	70 Jones, C., t	85 Addkison, g

OFFICIALS

Referee: Johnny Lynch (Holy Cross) Umpire: J. E. Burghard (Mississippi College)

On Every Field It's Chesterfield

GEORGIA PREFLIGHT

	RHB Harmon 12		FB Randall 30		LHB Nolte 16	
			QB Lewis 24			
RE Tiller 77	RT Drawdy 62	RG Davidsmeyer 50	C G. Walker 69	LG A. Walker 59	LT Hale 73	LE Shepherd 67

SQUAD LIST

10 Moessmer, b	33 Ramsey, b	53 Stults, g	71 Knudson, g
12 Harmon, b	34 Denman, g	54 Dreisbach, e	73 Hale, t
13 Scritchfield, b	35 Robinson, t	55 Decareau, e	75 Garbark, b
14 Byars, b	39 Sutton, c	57 Ravensberg, e	76 Davis, b
15 Bouchard, c	40 Hoequist, b	59 Walker, A., g	77 Tiller, e
16 Nolte, b	41 O'Dell, e	62 Drawdy, t	78 Filipowicz, b
17 Schwab, b	42 Donovan, t	63 Avirett, e	79 Hudson, b
19 Chase, b	45 Fagan, e	64 Wooddall, e	81 Follin, c
20 Camferdam, b	46 Felly, t	65 Luka, t	82 Carroll, t
21 Athans, b	47 Brooks, e	66 Edmiston, t	83 Crescenzi, t
23 Mohler, b	48 LaPlante, g	67 Shepherd, e	84 Palmer, c
24 Lewis, b	50 Davidsmeyer, g	68 Clarke, t	86 Harder, b
26 Thigpen, b	51 Duval, g	69 Walker, G., c	87 Fredette, b
30 Randall, b	52 Lindholm, g	70 McCool, t	88 McFarland, t

OFFICIALS

Head Linesman: George C. Gardner (Georgia Tech) Field Judge: J. S. Vaughn (Mississippi State)

JOHNNIE "Calls" THE SIGNALS!

					
Crawling or pushing, 5 yards; helping ball carrier, 15 yards.	Holding. (Penalty—by offense, 15 yards; by defense, 5 yards.)	Delay of game or extra time-outs. (Penalty, 5 yards.)	Player illegally in motion. (Penalty, 5 yards. If from shift or huddle, 15 yards.)	Interference with forward pass, or pass touching ineligible player. (Penalty, if interference by offense, 15 yards; otherwise, ball goes to opponents at point of foul.)	Illegal forward pass.
					
Safety.	Penalty refused, incomplete pass, missed field goal or conversion, both sides offside, etc.	Unnecessary roughness, illegal defensive use of the hands, clipping, running into or roughing the kicker. (Penalty, 15 yards.)	Score—touchdown, field goal, or conversion.	Offside or violation of kick-off formation. (Penalty, 5 yards.)	Time out.



FOR TRUE SMOKING PLEASURE
Call for **PHILIP MORRIS**

Penalties

LOSS OF FIVE YARDS

- 1 Taking more than three times out during either half
- 2 Illegal delay of game
- 3 Failure of substitute to report to umpire
- 4 Violation of kick-off formation
- 5 Failure to maintain proper alignment of offensive team before ball is snapped. Also, backfield man illegally in motion
- 6 Offside by either team, or encroachment on neutral zone
- 7 Attempt to draw opponents offside
- 8 Taking more than two steps with ball after signaling for fair catch
- 9 Illegal use of hands and arms by defensive players
- 10 Flying block or flying tackle
- 11 Running into kicker
- 12 Crawling by the runner

LOSS OF FIFTEEN YARDS

- 13 Team not ready to play at scheduled time
- 14 Substitute communicating with teammates before ball is put in play
- 15 Illegal substitution (player also suspended from game)
- 16 Failure to stop at least one second on shift play
- 17 Forward pass by member of team which did not put ball in play
- 18 Forward pass touched by ineligible player
- 19 Intentional grounding of forward pass
- 20 Interference by member of passing team with defensive player eligible for pass
- 21 Interference with fair-catch or tackling player before ball is caught
- 22 Illegal use of hands and arms by offensive players
- 23 Defensive player striking opponent above shoulders
- 24 Roughing the kicker
- 25 Piling up, hurdling, clipping
- 26 Tackling player out of bounds
- 27 Coaching from the sidelines
- 28 Illegal interference with defense by passing team

OTHER PENALTIES

- 29 Striking, kneeling, or kicking opponent—half the distance to the goal and disqualification of offending player
- 30 Foul within one yard line—half the distance to the goal
- 31 Interference by defensive team on forward pass—first down for passing team at spot or foul
- 32 Flagrant roughing of kicker—disqualification, plus fifteen yards
- 33 Flagrant unsportsmanlike conduct—disqualification, plus fifteen yards
- 34 Forward pass touched by ineligible player on or behind line of scrimmage—loss of down



Pouring water from a native earthen jar into a gourd drinking cup, Marion Byrne and Mark Sackett refresh themselves in true Indian fashion.

WHERE IS PORTER'S?
HUH P



ACROSS THE STREET FROM THE COTTON EXCHANGE..



AROUND THE CORNER FROM THE ST. CHARLES HOTEL..



OPPOSITE THE HIBERNIA NATIONAL BANK AND IN THE SAME BLOCK WITH THE AMERICAN BANK

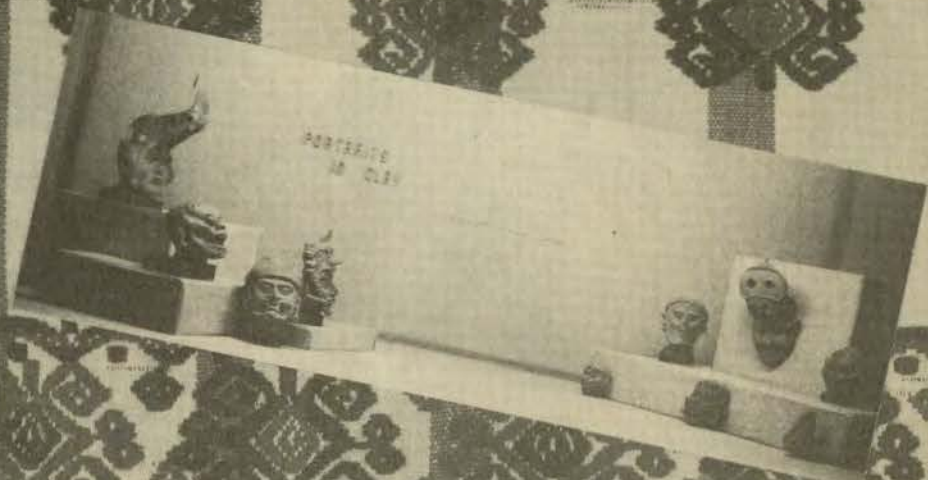
ASK ANYBODY!



EVERYTHING MEN WEAR

Porter's

CARONDELET COR. GRAVIER STS.



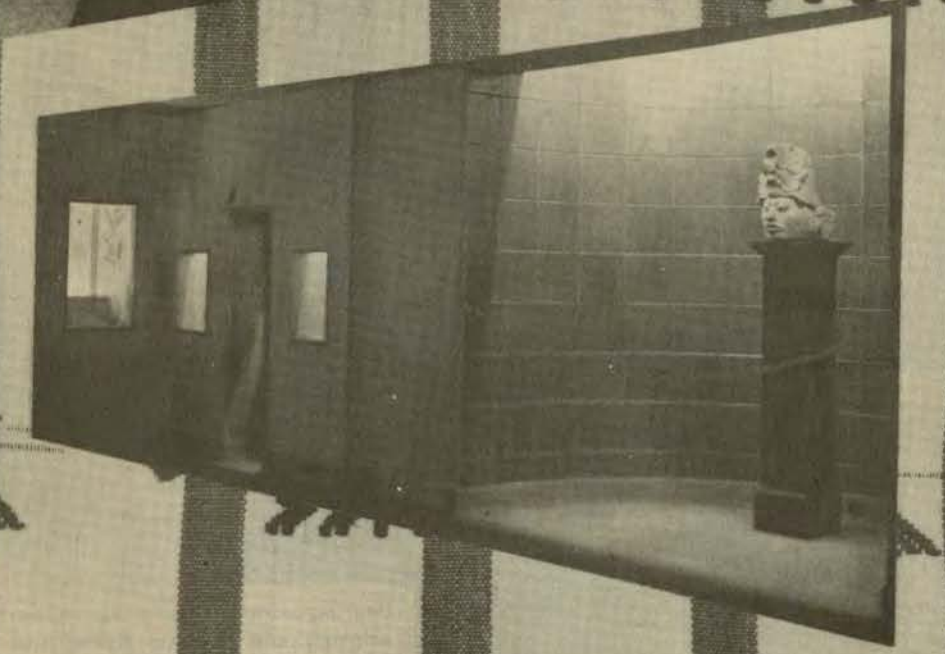
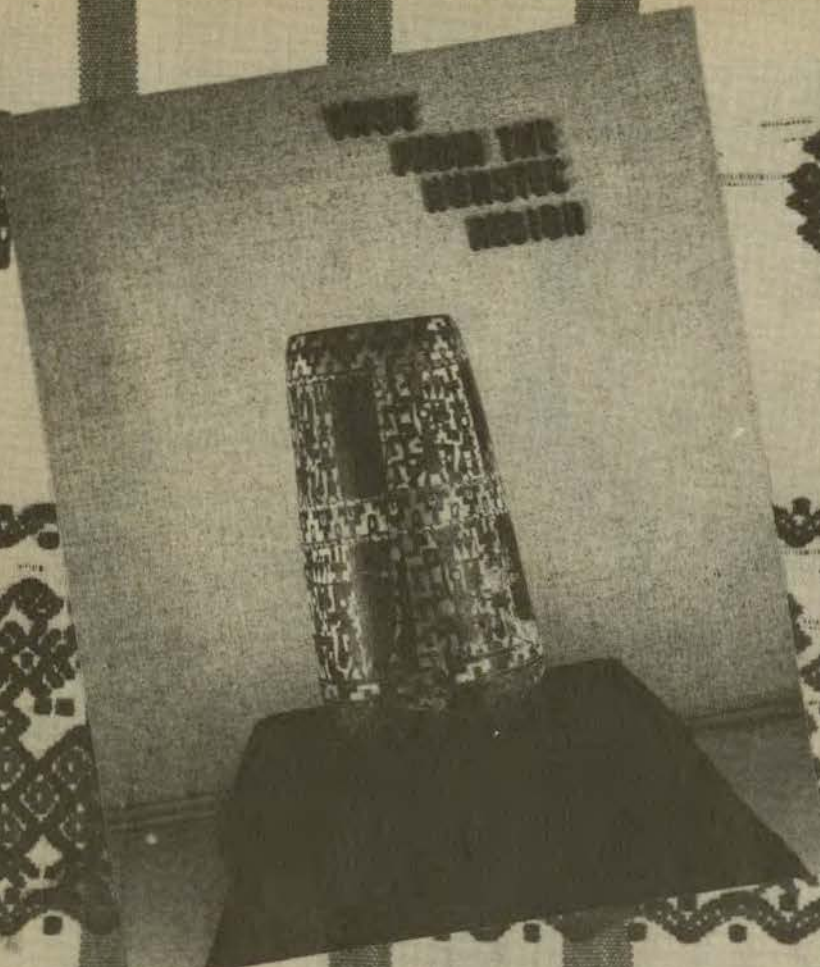
On these two pages are photographs of museum exhibits. Background for the pages is a hand-woven textile from Guatemala, from the museum's collection.

keep dry on WETTEST DAYS

RAINFAIR STORMCOATS



from
Porter's



DURABLE
ALL WOOL
SUITS



100%
THAT'S
ME!

AND I
CAN
TAKE IT!

\$35 from
Porter's



The costume is authentic Guatemalan Indian—but the expression belongs strictly to themselves. Cala Sue Reid with Mark Sackett.

SCORE
VICTORY
over the **AXIS!**



buy more
WAR BONDS and **STAMPS**
Porter's

DORIS DODSON'S
FOR JUNIORS

ALL A GLITTER

*A Two-Piecer with Plenty of
Campus Know-How*

Such fun to wear everywhere you go . . . to classes, football games and dates. You'll love the gold button trim, the streamlined dirndl skirt, the side closing and the adorable baby neckline. Red, Dream Blue or Luggage in sizes 9 to 15. **12.98**

DAYTIME DRESS SHOP
SECOND FLOOR

Maison Blanche
GREATEST STORE SOUTH



New Orleans' Finest

In America's Most Interesting City

●

THE ROOSEVELT is located in the heart of Romantic old New Orleans. It is the center of business and social activities and is close to the Theatre, Shopping, French Quarter, and Business Districts . . . You will like the tasteful luxury and home-like atmosphere of this modern hotel where the traditions of Southern Hospitality are maintained the year 'round.

●



"Pride of the South"

THE ROOSEVELT

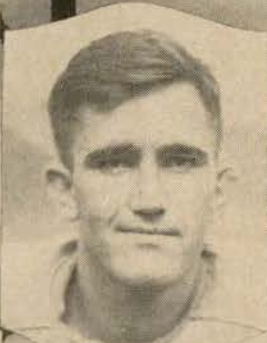
Tulane



ALEX ATHAS
HALFBACK



WM. A. JONES
HALFBACK



FRED ROSEMAN
TACKLE



JAMES HARRIS
TACKLE



RAY OLSEN
END



GASTON BOURGEOIS
GUARD



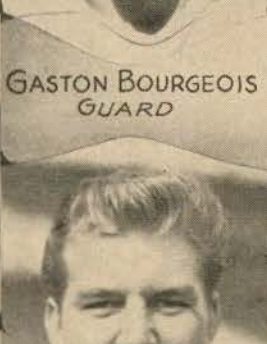
ED. LENNOX
GUARD



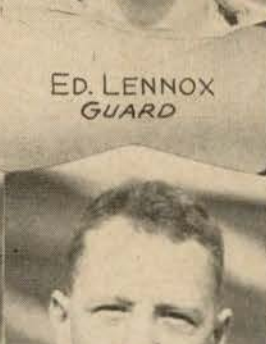
GEORGE E. JONES
TACKLE



JIM JACKSON
FULLBACK



DAN KIRCHENHEUTER
CENTER



EMILE MACMILLAN
CENTER



ROBERT PATTERSON
GUARD



1943 TULANE FOOTBALL
SCHEDULE

- Oct. 2—Memphis Naval Air Tech at N. O.
Oct. 9—Rice at Houston
Oct. 23—Southern Methodist Univ. at N. O.
Oct. 30—Georgia Preflight at N. O.
Nov. 13—Georgia Tech at N. O.
Nov. 20—Louisiana State University at N. O.
-

(Tickets for all games on sale at: Tulane
Football Ticket Office, 221 Baronne Street,
New Orleans. All October games at New
Orleans start at 3:30 p. m.; November games
at 3:00 p. m.)



*Better Printers
in New Orleans*

“Time Out”

DRINK—

Coca-Cola
TRADE MARK
REG. U.S. PAT. OFF.

PAUSE—

RELAX—

REFRESH YOURSELF

PIGSKIN ROUNDUP

GEORGIA TECH-DUKE—Even the Rambling Wreck is expendable. After jousts with Notre Dame and Navy, the last brush as late as Saturday night of last week, it's doubtful that Coach Alex's lads can stand up to this formidable demand. Duke by a couple.

* * *

ARMY-PENN—The Cadets in five games have scored 211 points to 7 for the combined opposition. Penn has scored 202 in five with 28 tallied by its adversaries. Both teams are unbeaten, untied. They play today at Philadelphia with a capacity crowd at Franklin Field. Penn beat Yale, 41 to 7; Army dunked the Elis, 39 to 7. Penn took Columbia apart, 33 to 0; Army maimed the same team, 52 to 0. The Army gets the nod.

* * *

NOTRE DAME-NAVY—With 80,000 in the Cleveland municipal stadium today for the "kill," the Ramblers of South Bend tangle with the Middies of Annapolis. Notre Dame has accumulated 228 points in five matinees compared with 25 for the other side. Navy has pranced 133 over compared with 40 against. The Irish definitely have a wide edge. It's Bertelli's swan song for the Irish. Bertelli practically amounts to a one-man "Irish Navy."

* * *

MINNESOTA-NORTHWESTERN—Each once-beaten, the Gophers and the Wildeats claw it out at Evanston. Minnesota, still off balance from the Michigan debacle, is not likely to be up. Northwestern by one.

SOUTHERN CAL-CALIFORNIA—The Trojans have scored 80 points in five games, their opponents none. Rose Bowl bound, they won't be deterred by the Bear of Berkeley. The game is at Los Angeles and should put another 75,000 into the Coliseum.

* * *

ARKANSAS-TEXAS A.&M.—The Aggies to get moving again.

* * *

MICHIGAN-ILLINOIS—Poor Illini.

* * *

BROWN-PRINCETON—Tiger Rag!

* * *

L.S.U.-T.C.U.—Neither team has scored a touchdown against the other in too many years to remember. In a series marked by 3-2 and 3-0 games, L.S.U. to break the ice.

* * *

COLGATE-HOLY CROSS—The Crusaders.

* * *

CORNELL-COLUMBIA—The Big Red to fan the thin Blue.

* * *

NORTH CAROLINA-N. C. STATE—The Tar Heels.

* * *

CLEMSON-WAKE FOREST—The Deacons.

★ QUALITY . . .

The United States Navy Air Corps' Grumann-Avenger is, like all of the Navy's equipment, of highest quality. Heavily gunned and battle-tested, no plane is more feared by our enemies.

★ RELIABILITY . . .

Not alone do the men of the Navy rate our salute. But the women's corps, the WAVES; spirited young American women who work in many phases of the Navy's work, releasing men to fight.

★ DEPENDABILITY . . .

The lives of the Navy pilots and the planes that they fly depend on the skill and knowledge of the carrier deck officer. Carefully and painstakingly trained, each to do his own job, our dependability is well placed.



FOR MORE THAN 100 YEARS—
THE BEST PLACE TO SHOP

SONGS AND YELLS

ROLL ON, TULANE

ten Hoor and Goldstein

Roll, Green Wave,
Roll them down the field.
Hold, Green Wave,
That line must never yield.
When those Greenbacks charge through the line
They're bound for victory.
Hail, Green Wave, for you
We have no fear.
Hail, Green Wave, for you we give a cheer
And ev'ry man in ev'ry play
And then we'll win that game today.
Hurrah for Old Tulane!

Hullabaloo

Hullabaloo! Ray! Ray!
Hullabaloo! Ray! Ray!
Hooray! Hooray!
Vars, Vars, T.A.A.
T.A.A.! T.A.A.!
Vars, Vars, T.A.A.!
TULANE!!!

* * *

ALMA MATER

*Sing these words as Tulane's Alma Mater
is played*

I.

We praise thee for thy past, O Alma Mater!
Thy hand hath done its work full faithfully!
The incense of thy spirit hath ascended
And filled America from sea to sea.

II.

We praise thee for thy present, Alma Mater!
Today thy Children look to thee for bread!
Thou ledest them to dreams and actions splendid!
The hunger of their souls is richly fed!

III.

We praise thee for thy future, Alma Mater!
The vista of its glory gleameth far!
We ever shall be part of thee, great Mother!
There thou wilt be where e'er thy children are!

CHORUS:

Olive Green and Blue, we love thee!
Pledge we now our fealty true
Where the trees are ever greenest,
Where the skies are purest blue!
Hear us now, O Tulane, hear us!
As we proudly sing to thee!
Take from us our hearts' devotion!
Thine we are, and thine shall be!

HAUSMANN INCORPORATED

NEW ORLEANS'
LEADING JEWELERS

• • •

*Special Department for College
and
Fraternal Jewelry*

The Thinking Fellow Calls a Yellow

• • •

Phone RAYmond 3311

• • •

TOYE BROS.

YELLOW CABS

Words...millions
of them...speed war
ideas into action over
the nation's vital
telegraph network

*"These wires carry
fighting words,
Mister!"*



TULANE ROSTER

No.	Name	Position	Weight	Home	Previous School
10	Ben Ellender	LHB	180	Sulphur, La.	Tulane
11	Wally Schmitz	QB	165	New Orleans, La.	Tulane
12	Joe Kenfroe	RHB	208	Fort Meyers, Fla.	Tulane
20	Dan Kirschenheuter	C	185	New Orleans, La.	Freshman
21	Emile McMillan	G	172	New Orleans, La.	Tulane
22	Leonard Finley	QB	171	New Orleans, La.	Tulane
29	Bill Eason	T	185	New Orleans, La.	Tulane
30	Gaston Bourgeois	G	170	Latcher, La.	Freshman
31	George Hedgecock	G	185	Shreveport, La.	L. S. U.
32	Alex Athas	RHB	160	New Orleans, La.	Tulane
37	James Shiver	LHB	158	Valdosta, Ga.	Auburn
38	Bill Jones	LHB	180	Ruston, La.	L. S. U.
40	James Little	FB	180	Amarillo, Texas	W. Texas Teachers
41	Ray Olsen	E	180	New Orleans, La.	Tulane
42	Ed Pechon	RHB	160	New Orleans, La.	S. L. I.
45	Bobby James	FB	178	New Orleans, La.	Tulane
50	Lester Gatewood	C	187	Waco, Texas	Baylor
52	Jim Jackson	FB	185	Bryan, Texas	Baylor
54	Kenneth Tarzetti	E	193	DeLisle, Miss.	Perkinson Jr. College
60	Aubrey Bailey	E	185	Livingston, Texas	Baylor
61	Fred Chaplain	E	162	New Orleans, La.	Freshman
62	Tom Kane	G	192	Kearny, N. J.	Freshman
64	Ed Lennox	G	178	New Orleans, La.	Freshman
65	James Harris	T	200	Macon, Miss.	Mississippi State
66	Elliott Igleheart	G	190	Shelbyville, Ky.	Freshman
69	Hugh Taylor	E	188	Wynne, Ark.	Northeast Jr. College
70	Curtis Jones	T	190	Benton, Ark.	Tulane
71	Fred Roseman	T	200	Sulphur, La.	Tulane
72	George E. Jones	T	199	Trenton, Tenn.	Vanderbilt
73	Allan Zollieffer	T	195	Hubbard, Texas	Texas Jr. C.
74	Warren Jahneke	E	175	New Orleans, La.	Tulane
75	Howard McAfee	T	220	New Orleans, La.	Tulane
80	Ferd Lorio	E	172	New Orleans, La.	Tulane
82	Bill Ross	C	183	Mt. Pleasant, Tenn.	Battle Ground Ac'd'y
83	Bill Edwards	FB	185	New Orleans, La.	Freshman
85	Hindon Addkison	G	162	Hickory, Miss.	East Central Jr. College

GEORGIA PREFLIGHT ROSTER

10	Wallace Moessmer	B	150	Clayton, Missouri	Washington U.
12	Norwood Harmon	B	145	Hattiesburg, Miss.	Hattiesburg Hi.
13	John Scritchfield	B	156	El Dorado, Ark.	Arkansas A. & M.
14	Hardin Byars	B	150	Rome, Georgia	Darlington School
15	Jean Boucharde	B	183	Greenwood, R. I.	Apponang (R.I.) Hi.
16	Carl Nolte	B	165	Washington, D.C.	Anacostia (D.C.) Hi.
17	Richard Schwab	B	157	Washington, D. C.	Woodrow Wilson Hi.
19	Dale Chase	B	170	San Angelo, Texas	San Angelo Hi.
20	Edward Camferdam	B	155	Memphis, Tennessee	Technical Hi.
21	Nicholas Athans	B	165	Roxbury, Massachusetts	Memorial Hi.
23	Robert Mohler	B	170	Ocean Springs, Miss.	Ocean Springs Hi.
24	Richard Lewis	B	188	Paris, Illinois	Paris Hi.
26	Zealand Thigpen	B	175	Russellville, Arkansas	Arkansas Tech
30	James Randall	B	177	Fort Myers, Florida	Fort Myers Hi.
33	Robert Ramsey	B	195	Dallas, Texas	Southern Methodist U.
34	Joe Denman	G	180	Lufkin, Texas	Lufkin Hi.
35	William Robinson	T	210	Lancaster, Pennsylvania	Stevens Trade
39	Donald Sutton	C	170	Indianapolis, Indiana	Shortridge Hi.
40	Oscar Hoequist	B	165	Orlando, Florida	Orlando Hi.
41	Johnnie O'Dell	E	165	Kildav, Ky.	Western Ky. Teachers
42	Daniel Donavan	T	182	Andover, Massachusetts	Punchard Hi.
45	Seals Fagan	E	170	Palm Beach, Fla.	W. Palm Beach Fla. Hi.
46	Alfred Felly	T	165	Madison, Wisconsin	West Hi.
47	Fuller Brooks	E	185	Columbus, Georgia	Columbus Hi.
48	Bernard LaPlante	G	175	Fergus Falls, Minn.	Fergus Falls Hi.
50	Orville Davidsmeyer	G	159	Downers Grove, Illinois	Iowa U.
51	Alfred Duval	G	159	Saratoga Sp'gs, N.Y.	Ill. Wesleyan Frosh
52	Kenneth Lindholm	G	180	Hope, Idaho	St. Cloud Minn. Teachers
53	Max Stults	G	171	Gainesville, Florida	Gainesville Hi.
54	Carl Dreisbach	E	185	Louisville, Kentucky	Xavier Hi.
55	John Decareau	E	190	Lynn, Massachusetts	English Hi.
57	Elmore Ravensberg	E	170	Bellevue, Kentucky	Xavier U.
59	Aubrey Walker	G	190	Handley, W. Virginia	Richmond U.
62	Erna Drawdy	T	190	Orangeburg, S. C.	No Experience
63	Thomas Avirett	E	175	Birmingham, Alabama	Phillips Hi.
64	Raymond Wooddall	E	171	Midland, Pennsylvania	Tennessee U.
65	Earl Luka	T	170	Atlanta, Georgia	Tech Hi.
66	Arthur Edmiston	T	210	Memphis, Tennessee	Catholic Hi.
67	William Shepherd	E	180	Irrington, Va.	Fork Union (Va.) Mil. A.
68	Murrie Clarke	T	195	Syracuse, Kansas	Syracuse Hi.
69	Grover Walker	C	180	Jacksonville, Texas	Texas Aggie Frosh
70	William McCool	T	190	Cambridge, Massachusetts	Latin Hi.
71	Carroll Knudson	G	178	Cranfills Gap, Texas	Cranfills Gap Hi.
73	James Hale	T	205	Okmulgee, Oklahoma	Oklahoma U. Frosh
75	George Garbark	B	195	Pittsburgh, Penn.	Edgewood (Penn) Hi.
76	Kenneth Davis	B	206	Perry, New York	Cornell U.
77	Warren Tiller	E	170	Orlando, Florida	Senior Hi.
78	Stephen Filipowicz	B	195	Keeltmont, Penn.	Fordham U.
79	William Hudson	B	176	Cullman, Alabama	County Hi.
81	Dwight Follin	C	180	Kent, Ohio	Roosevelt Hi.
82	Ralph Carroll	T	190	Atlanta, Georgia	Boys' Hi.
83	Adolph Creseenzi	T	210	New York, New York	Fordham U.
84	Charles Palmer	C	218	Stonington, Conn.	Green Mt. Jr. College
86	Marlin Harder	B	200	Milwaukee, Wisconsin	Wisconsin U.
87	William Fredette	B	195	South Norwalk, Conn.	Norwalk Hi.
88	Ralph McFarland	T	185	Alexandria, Louisiana	La. State Normal

The Official Watch for Timing All Tulane Games is a Longines—"The World's Most Honored Watch"

only a few yards to go . . .



(Other Pan-Am Stations conveniently located
in all parts of the City.)

HOME LOANS

TO BUY . . .

REFINANCE . . . REPAIR

Your Home

Liberal Terms

Low Interest Rates

OFFICERS

J. D. Byrne, President
A. E. Thouron, Vice-President
J. E. McMahon, Vice-President
Chas. A. Nehlig, Vice-President
Jacob Schaaf, Secretary-Treasurer
Chas. F. Buck, Jr., Attorney
Bernard Titche, Jr., Notary
Frank W. Magne, Notary
Roger P. Sharp, Bldg. Expert

DIRECTORS

Herman T. Bartels
H. V. Boubede
Chas. F. Buck, Jr.
J. D. Byrne
Frank G. Costley
E. J. Engelbracht
A. Percy Generes
Stephen L. Guice
Frank W. Hart
Hunter C. Leake
Frank W. Magne
J. E. McMahon
Chas. A. Nehlig
R. Oliver
Henry P. Pfeffer
Jacob Schaaf
W. W. Sutcliffe, Jr.
H. L. Swift
George P. Thompson
A. E. Thouron
Bernard Titche, Jr.



EQUITABLE MUTUAL

HOMESTEAD ASSOCIATION

"Home Financing Since 1885"

511 Carondelet Street

Phone Raymond 3405