



# TULANE vs. FLORIDA

OCTOBER 6, 1945

*Souvenir Program..... 25¢*

# THESE ARE THE OFFICIAL 1945 Signals



**OFF-SIDE**  
Hands on and off hips—repeat several times.



**ILLEGAL POSITION OR PROCEDURE**  
Hands revolving in front of chest.



**ILLEGAL MOTION OR SHIFT**  
Horizontal arc with either hand.



**ILLEGAL DELAY OR EXTRA TIME OUT**  
Folded arms.



**ILLEGAL USE OF HANDS OR ARMS**  
Grasping one wrist.



**UNSPORTS-MANLIKE CONDUCT**  
Arms outstretched, palms down.



**SAFETY**  
Palms together overhead.



**INTENTIONAL GROUNDING**  
Both hands over right shoulder then down hard and forward.



**FORWARD PASS OR FAIR CATCH INTERFERENCE**  
Pushing arms forward, palm vertical.



**BALL ILLEGALLY TOUCHED, KICKED OR BATTED**  
Tapping both shoulders with finger tips.



**INCOMPLETE FORWARD PASS: PENALTY DECLINED, NO PLAY OR NO SCORE**  
Hands rapidly criss-crossed in horizontal plane.



**BALL DEAD**  
One arm aloft, open hand. If hand is closed, TOUCHBACK.



**UNNECESSARY ROUGHNESS**  
Military salute. **CLIPPING**  
Salute followed by slapping back of knee with hand. **RUNNING INTO OR ROUGHING KICKER**  
Salute followed by swinging leg to simulate a punt.



**CRAWLING; HELPING THE RUNNER OR INTERLOCKED INTERFERENCE**  
Pushing movement with hands below waist.



**TIME-OUT**  
Hands rapidly criss-crossed overhead.



**TOUCHDOWN OR FIELD GOAL**  
Both arms aloft and held rigid.



**ILLEGAL FORWARD PASS**  
Waving hand behind back.



**FIRST DOWN**  
Vigorous throwing motion concluded with outstretched arm pointing toward offensive goal.



**START THE CLOCK OR NO MORE TIME-OUTS ALLOWED**  
Full arm circles to simulate winding a clock.



Listen to "Time Out" WITH JOHNNY LYNCH

WVWL Thursdays 5:15-5:30 P.M.

And for Your Time Out



JACKSON BREWING COMPANY  
NEW ORLEANS, LA.

DRINK **JAX** BEST BEER IN TOWN

# THE GREENIE

Vol. 15      OCTOBER 6, 1945      No. 1

Official Souvenir Football Program of Tulane University, Published for Each Home Game

National Advertising Representative, Football Publications, 370 Lexington, New York City.

ANDY ROGERS, *Editor*

CAROL HART, *Associate Editor*

## TULANE'S DEBUT

Tulane university is happy to welcome the University of Florida's Fighting 'Gators who are making their first appearance since 1935 on a Green Wave schedule.

The Floridans, coached by Tom Lieb, help Tulane open its finest nine-game football schedule in fifty-two winters, since the Wave took up the sport back in the 'Nineties.

Since the start of football at Tulane, the Green Wave and the 'Gators have met seven times, this year marking the eighth renewal of a series which began in 1915.

Only once after that opening tussle when the Floridans earned a 14-7 victory, has a 'Gator eleven been able to overcome the Green Wave. That was in 1922 when Tulane came out on the short end of a 27-6 count. Greenie teams have managed to win five of the seven games played to date.

Today's engagement should provide a quick test for the young Tulane team. The 'Gators, with two games already under their belts, should be at their best playing strength while the Wave is embarking on as rugged a pigskin course as any team in the nation.

On the Wave schedule are five Southeastern Conference clashes, including today's engagement. Next on the conference slate is Auburn, followed by Mississippi State, Georgia Tech and Louisiana State.

A pair of Southwest Conference foes, Rice and Southern Methodist also have been picked to meet the Wave, while Clemson College, a member of the Southern Conference, and the University of Notre Dame, one of the nation's most famous independent teams, round out the schedule.

As the whistle today sounds the start of the first peacetime pigskin parade since 1941, with travel and other restrictions off for the first time in four seasons, the Green Wave will have an opportunity to entertain weekly thousands of local and out-of-town football enthusiasts. And it is not being too optimistic to expect that all-time attendance records will fall or come dangerously close to it.

## INTRODUCING . . . .

The engagement today between Florida and Tulane serves to inaugurate many things, among them being a nine-game schedule for the Wave, eight of which are at home; Coach Claude (Monk) Simons' first year at Tulane as a coach in peacetime; and the appearance of a Green-clad eleven running from a "T" formation.

But it will also mark the appearance of an individual. He is "The Greenie", who makes his debut on the cover of this football program.

A gremlin-like person with a red, pug-nose and a streak of devilment in him, the Greenie is a carefree individual who, through his pranks, will try to help the Wave stop the Nation's toughest football opposition for seven more Saturdays.

The origin of his name is obvious. He is simply the kid brother and mascot of all Green Wave elevens, in caricature.

We join his creator, Cartoonist John Chase, in hoping you like him.

WHY BE IRRITATED?

ARMY

Old Gold CIGARETTES

-LIGHT AN  
**OLD GOLD**

Apple Honey helps guard O.Gs.  
from Cigarette Dryness

*The Roosevelt*

## *New Orleans' Finest*

In America's Most Interesting City



THE ROOSEVELT is located in the heart of Romantic old New Orleans. It is in the center of business and social activities and is close to the Theatre, Shopping, French Quarter, and Business Districts . . . You will like the tasteful luxury and home-like atmosphere of this modern hotel where the traditions of Southern Hospitality are maintained the year 'round.

**800 ROOMS WITH BATH**

**MODERATE RATES**



*The Roosevelt*  
"The Pride of the South"

# FLORIDA

TOM LIEB  
Head Coach



PERCY BEARD  
Acting Athletic  
Director  
and  
Track Coach



## PLAYERS



Top—GLENN ODHAM  
Bottom—BRADY HALL

HENRY BROWN  
EARL SCARBOROUGH

BILL GILMARTIN  
J. L. SMITH

VIRGIL DINGMAN  
ED ROYAL

*Famous for*  
**FINE FOOD**  
and **DRINK**



TONIGHT — enjoy specialties of these noted restaurants:

**ANTOINE'S**  
713 St. Louis St.

**ARNAUD'S**  
813 Bienville St.

**BROUSSARD'S**  
819 Conti St.

**KOLB'S**  
125 St. Charles St.

**LA LOUISIANE**  
725 Iberville St.

*Shop With Confidence*



You can't go wrong with your choice when it comes from Mayer Israel's. For over 50 years, the words Mayer Israel's and fine fashions have been synonymous — signifying only the finest in quality.

Shop with confidence at Mayer Israel's—the store of fine fashions for men, women and children.



**Mayer Israel's**

714 Canal Street



*Top*—JACK WHITE  
*Bottom*—JOE CHESSER

PAUL MORTELLARO  
OTTIS MOONEY

E. B. SAPP  
KENNETH HAMILTON

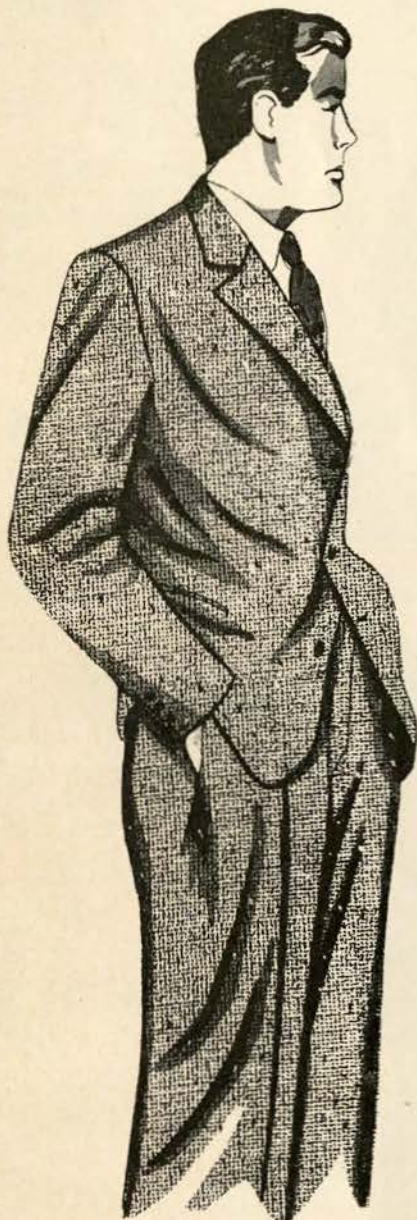


*Top*—FRED HOGAN  
*Bottom*—BRUCE MARTIN

HORACE DREW  
TOM VANGELAS

BILL DUPREE  
DON DAVIDSON

# TWEEDS ARE COLLEGIATE!



## ALL WOOL SUITS

Smartly tailored suits in both single and double-breasted styles. New fall colors. Full size range.

**32.50**

Other Tweeds . . 27.50 -- 35.00

- Smart Herringbones!
- Fancy Diagonals!
- Plain Donegals!

● Men's Clothing,  
MB First Floor

# Maison Blanche

GREATEST STORE SOUTH



# PIGSKIN ROUNDUP

**NAVY VS. DUKE**—Wherein little Clyde Scott & Company raise—not tobacco—but “cain” at Durham. The Navy—but not with ease.

\* \* \*

**ARMY VS. WAKE FOREST**—Davis !! Blanchard !! McWilliams !! The Deacons may be tough, but not THAT tough.

\* \* \*

**ALABAMA VS. LOUISVILLE STATE**—Frank (The Brains) Thomas and Harry (The Pass) Gilmer should paint Baton (The Town) Rouge with crimson.

\* \* \*

**ARKANSAS VS. T. C. U.**—Glen Rose is herding his unpredictable Razorbacks toward a championship. This could be his first mis-step, but it's not likely.

\* \* \*

**AUBURN VS. MISSISSIPPI STATE** — Carl Voyles speaking: “Now you take those Maroons . . . ” He's got 'em. He'll take 'em.

\* \* \*

**GEORGIA TECH VS. NOTRE DAME**—Provided the Irish get over their “fumblitis”, Mr. Dancewicz and his crew will be chanting “Veni, vidi, vici.”

**ILLINOIS VS. INDIANA** — Ho hum. The Hoosiers, but just on a hunch.

\* \* \*

**MINNESOTA VS. NEBRASKA**—Old Bernie is back, and the Cornhuskers are going to be sor-r-r-e-eeee.

\* \* \*

**MICHIGAN VS. NORTHWESTERN**—A glance at the records: Indiana 13, Michigan 7; Indiana 7, Northwestern 7. And so . . . the Wolverines.

\* \* \*

**WISCONSIN VS. PURDUE**—With a little assistance from the coin—Purdue.

\* \* \*

**SOUTHERN CALIFORNIA VS. ST. MARY'S PRE-FLIGHT**—Those bowl-minded Bears just don't let you down.

(Andy Rogers)

## LOST ARTICLES

Lost articles should be turned in at Room 18 near the North end of the West Side, Tulane Stadium. Room 18 is located near the foot of Ramp 6. For telephone information regarding lost and found articles, call WAlut 5754.

*Official timing watch for the*

TULANE-FLORIDA FOOTBALL GAME

*Longines*

*The World's Most Honored Watch*  
*winner of 10 world's fair grand prizes,*  
*28 gold medals, and more honors for*  
*accuracy than any other timepiece*

*Product of Longines-Wittnauer Watch Co.*

# Penalties

## LOSS OF FIVE YARDS

- 1 Taking more than three times out during either half
- 2 Illegal delay of game
- 3 Failure of substitute to report to umpire
- 4 Violation of kick-off formation
- 5 Failure to maintain proper alignment of offensive team before ball is snapped. Also, backfield man illegally in motion
- 6 Offside by either team, or encroachment on neutral zone
- 7 Attempt to draw opponents offside
- 8 Taking more than two steps with ball after signaling for fair catch
- 9 Illegal use of hands and arms by defensive players
- 10 Flying block or flying tackle
- 11 Player in motion less than 5 yards behind line of scrimmage.
- 12 Crawling by the runner

## LOSS OF FIFTEEN YARDS

- 13 Team not ready to play at scheduled time
- 14 Substitute communicating with teammates before ball is put in play
- 15 Illegal substitution (player also suspended from game)
- 16 Failure to stop at least one second on shift play
- 17 Forward pass by member of team which did not put ball in play
- 18 Forward pass touched by ineligible player
- 19 Intentional grounding of forward pass
- 20 Interference by member of passing team with defensive player eligible for pass
- 21 Interference with fair-catch or tackling player before ball is caught
- 22 Illegal use of hands and arms by offensive players
- 23 Defensive player striking opponent above shoulders
- 24 Roughing the kicker
- 25 Piling up, hurdling, clipping
- 26 Tackling player out of bounds
- 27 Coaching from the sidelines
- 28 Illegal interference with defense by passing team

## OTHER PENALTIES

- 29 Striking, kneeling, or kicking opponent—half the distance to the goal and disqualification of offending player
- 30 Foul within one yard line—half the distance to the goal
- 31 Interference by defensive team on forward pass—first down for passing team at spot of foul
- 32 Flagrant roughing of kicker—disqualification, plus fifteen yards
- 33 Flagrant unsportsmanlike conduct—disqualification, plus fifteen yards
- 34 Forward pass touched by ineligible player on or behind line of scrimmage—loss of down

JOHNNY CALLS 'EM

# SIGNALS & PENALTIES

**Holding.** (Penalty—by offense, 15 yards; by defense, 5 yards.)

**Player illegally in motion.** (Penalty, 5 yards. If from shift or huddle, 15 yards.)

**Time out.**

**Unsportsmanlike conduct.** (Penalty—15 yards.) For flagrant, unsportsmanlike conduct—15 yard penalty and disqualification.

**Offside or violation of kick-off formation.** (Penalty, 5 yards.)

**Illegal touching of kicked ball inside opponent's 10-yard line—touchback.**

**Unnecessary roughness, illegal use of the hands, clipping, running into or roughing the kicker.** (Penalty, 15 yards.)

**Score—touchdown, field goal, or conversion.**

**Delay of game or extra time-outs.** (Penalty, 5 yards.)

**Interference with forward pass, pass touching ineligible player, or "screening" pass receiver.** (If penalty on offense, when interference occurs beyond line of scrimmage, 15 yards and loss of down; on or behind line of scrimmage, loss of down only. Interference by defense, ball to offense on spot of foul as first down.)

**Penalty refused, incomplete pass, missed field goal or conversion, both sides offside, etc.**

**Illegal formation or position of one or more players.** (Penalty—5 yards from where ball was put in play.)

**Illegal forward pass.**

**Safety.**

**Intentional grounding of forward pass.** (Penalty—loss of down and 15 yard penalty from spot of preceding down.)

**Crawling or pushing, 5 yds.; helping ball carrier, 15 yards.**

**CALL FOR PHILIP MORRIS**  
**AMERICA'S FINEST CIGARETTE**

# CAM-PIX

A MEDLEY OF  
CAMPUS PICTURES

★  
© 1945 BY HORACE REMEGAR





●  
The Cam-Pix man had a  
discerning eye for  
beauty as he snapped  
the shutter twice with  
pleasing results  
●



keep dry on WETTEST DAYS

**RAINFAIR STORMCOATS**



from  
**Porter's**

●  
In keeping with the  
swing to sports styles  
is this Newcombite  
●

●  
Pigtails are just as  
good now as they were in  
mamma's undergraduate days  
●



**Nunn Bush**  
**SHOES**



FOOT  
COMFORT



MILES OF WEAR

at  
**Porter's**



●  
"Eyes right,"  
said the photographer  
and these pretties  
followed orders  
●



DURABLE  
ALL WOOL  
SUITS



\$35 from  
**Porter's**

*This Program Printed*

*by*

**TULANE UNIVERSITY PRESS**

*Printing Department of Tulane University*



**CAMPUS PRINTERS**

Basement, Gibson Hall  
Phone WALnut 0082

*Cover printed on recently installed  
automatic press*

**AT THE GAME**

and

**AFTER THE GAME**

**ENJOY**



**“Time Out”**

**DRINK—**

**Coca-Cola**  
TRADE MARK

**PAUSE—**

**RELAX—**

**REFRESH YOURSELF**

*Good Old*  
**REGAL**  
 BEER



**TULANE**

STARTING LINEUP

LE	LT	LG	C	RG	RT	RE
Lassetter 31	Robinson 36	Frank 41	Bowers 14	Bourgeois 38	Schneider 45	McDonald 19

LHB Reynolds 29	QB Arthur 10	RHB McCain 25
	FB Ferguson 43	

SQUAD LIST

10 Arthur, b	26 Banowetz, b	40 Stolen, c
11 Lee, b	27 Rowland, t	41 Frank, g
12 Rideout, b	29 Reynolds, b	42 Kappel, t
14 Bowers, c	30 Cash, c	43 Ferguson, b
15 Leahey, b	31 Lassetter, c	44 Brinker, g
18 Young, b	32 Bailey, e	45 Schneider, t
19 McDonald, c	33 Counce, b	46 Wilkins, c
20 Crouch, b	34 Logan, t	49 Terrell, g
21 Seybold, g	35 Woodiel, t	50 Watkins, c
22 Hoot, b	36 Robinson, t	58 Shirley, c
23 Chavez, b	37 Carter, g	65 Johnson, t
24 Timken, t	38 Bourgeois, g	80 Ellender, c
25 McCain, b	39 Igleheart, g	

OFFICIALS  
 Umpire—Rumsey Taylor (Georgetown)  
 Referee—E. D. Cavette (Memphis, Tenn.)

**FLORIDA**

STARTING LINEUP

LE	LT	LG	C	RG	RT	RE
Mooney 30	White 13	Hamilton 19	Gilbert 17	Drew 23	Sapp 37	Chesser 26

LHB Dupree 7	QB Williams 2	RHB Vangelas 6
	FB Hogan 5	

SQUAD LIST

1 Carter, b	18 Billings, c	35 Odham, g
2 Williams, b	19 Hamilton, g	36 Ball, c
3 Carte, b	20 Pharr, g	37 Sapp, t
4 Wright, b	21 Martin, g	38 Miller, t
5 Hogan, b	22 Land, c	39 Favata, t
6 Vangelas, b	23 Drew, g	40 Mortellaro, t
7 Dupree, b	24 Hall, e	41 Curry, b
8 Gilmarin, b	25 Kristain, g	42 Harden, c
9 Smith, b	26 Chesser, e	43 Melear, g
10 Occhuizzi, b	27 Brown, t	47 Ryerson, c
11 Sklodewski, b	28 Kuss, e	48 Testa, b
12 Bracwell, b	29 Goldberg, t	49 Anderson, b
13 White, t	30 Mooney, e	50 Davidson, b
14 Dingman, b	31 S. Keliy, t	51 Cawthon, b
15 Campbell, b	32 J. Keliy, t	52 Atkins, b
16 Scarborough, b	33 Royal, g	54 Vaughn, e
17 Gilbert, c	34 Leigh, t	

OFFICIALS  
 Head Linesman—G. C. Gardener (Georgia Tech)  
 Field Judge—Harry G. Mouat (Armour)

*Prince of Golden Beers*



**D** Equipment for all sports...

**U** Specialists in all types of  
school athletic  
supplies

**N**

**L**

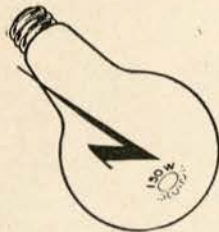
**A**

**P** Sporting Goods Co.  
(JOHNNY LYNCH'S)  
138 Carondelet Street  
MAGNOLIA 5891



*Better Printers  
in New Orleans*

**150 WATTS IS RIGHT HERE**



You'll get more pleasure out of winter evenings at home when congenial friends call to play a few rubbers of bridge or other games if you use enough light. See that your bridge lamps contain 150-watt bulbs for comfortable seeing. Give your family and guests the protection and cheer of better light in your home.



NEW ORLEANS *Public Service*

●  
Taking part in extra-  
curricular activity  
●



●  
"File" Show  
●



WHERE  
IS  
PORTER'S?  
HUH?



ACROSS THE  
STREET FROM  
THE COTTON  
EXCHANGE..



AROUND THE  
CORNER FROM  
THE ST. CHARLES  
HOTEL...



OPPOSITE THE HIBERNIA  
NATIONAL BANK AND  
IN THE SAME BLOCK  
WITH THE  
AMERICAN BANK

ASK ANYBODY!



EVERYTHING MEN WEAR

*Porter's*

CARONDELET COR. GRAVIER STS.

●  
Grill Work  
●



●  
Pert 'n' Plaid  
●



Good Grooming  
**A-HEAD**



with  
**STYLEPARK HATS**  
from Porter's



●  
Salt 'n' Sugar  
●

●  
Double or Nothin'  
●



You pay no more  
for



**Porter's** DEPENDABILITY!

●  
Doodling Damsels  
●



●  
'Nuff Said!!  
●



keep dry on WETTEST DAYS


RAINFAIR STORMCOATS



from  
**Porter's**

# Ellis F. Robert, Inc.

formerly BROADMOOR NURSERY

NURSERY		GENERAL
FLORIST		HOUSE
LANDSCAPING		REPAIRS

for  
COMPLETE HOME MAINTENANCE

Phone Pa. 9104

where good things  
need not be expensive  
... and inexpensive  
things have to be good



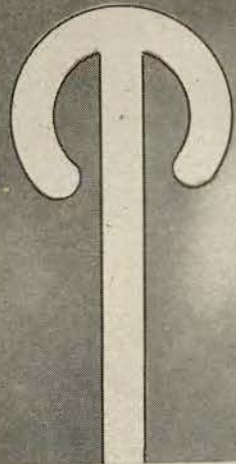
105 YEARS OF FINE APPAREL FOR  
MEN, WOMEN AND CHILDREN

**Godchaux's**

**A WINNER!**



# Pulane



ERNEST CROUCH  
QUARTERBACK



RAY ARTHUR  
QUARTERBACK



LARRY McDONALD  
END



JOE YOUNG  
HALFBACK



DAVID RIDEOUT  
HALFBACK



VERNON KAPPEL  
TACKLE



TONY CASH  
END



ROBERT LOGAN  
TACKLE



WILLIAM WATKINS  
END



ELLIOTT  
IGLEHEART  
GUARD



JOHN  
FRANK  
GUARD



ROY BAILEY  
END

# Greenjies



# *The Roosevelt*

*The Roosevelt Hotel Offers*  
*New Orleans' Most Diversified Program*  
*of*  
*Music and Entertainment*

**in the FOUNTAIN LOUNGE**

At LUNCHEON we invite you to listen to the sweet strains of the Gypsy Ensemble. For COCKTAILS and DANCING, alternately nightly from five o'clock until two the next morning is one of Latin America's noted Rhumba bands and the Society Music of one of America's outstanding combinations.

**in the BLUE ROOM**

Each evening, for DINNER and SUPPER DANCING, is presented one of the Nation's famous orchestras . . . Featured also in the Blue Room Floor Shows at Dinner and Supper, are celebrated stars from radio, stage and screen.

*New Orleans' most discriminating audiences choose the Roosevelt  
for their relaxation and entertainment*



*The Roosevelt*  
*"The Pride of the South"*



RICHARD HOOT  
HALFBACK



JAMES LEE  
FULLBACK



WALTER FERGUSON  
FULLBACK



JACK COUNCE  
HALFBACK



GEORGE  
ROBINSON  
TACKLE



LEROY  
SCHNEIDER  
TACKLE



WILLIAM  
LEAHEY  
QUARTERBACK



GASTON BOURGEOIS  
GUARD



JIMMY LASSETTER  
END



MARVIN MCCAIN  
HALFBACK



HUGH BOWERS  
CENTER



WILLIAM REYNOLDS  
HALFBACK

T  
U  
L  
A  
N  
E

1  
9  
4  
5

# THE SCHEDULES

## TULANE



Oct. 6—Florida at New Orleans  
Oct. 13—Rice at Houston  
Oct. 20—Auburn at New Orleans  
Oct. 27—S.M.U. at New Orleans  
Nov. 3—Miss. State at New Orleans  
Nov. 10—Georgia Tech at New Orleans  
Nov. 17—Clemson at New Orleans  
Nov. 24—Notre Dame at New Orleans  
Dec. 1—L. S. U. at New Orleans

## FLORIDA



Sept. 22—Florida 31, Camp Blanding 2  
Sept. 29—Florida 26, Ole Miss 13  
Oct. 6—Tulane at New Orleans  
Oct. 13—Vanderbilt at Gainesville  
Oct. 19—Miami at Miami  
Oct. 27—S.L.I. at Gainesville  
Nov. 3—Auburn at Auburn  
Nov. 10—Georgia at Jacksonville  
Nov. 17—Presbyterian at Gainesville

### HAUSMANN

NEW ORLEANS'  
LEADING JEWELERS



Special Department for College  
and  
Fraternal Jewelry

*The Thinking Fellow  
Rides a Yellow*



TOYE BROS.



YELLOW CABS

 **WSMB** 

*1350 Kilocycles*



NEW ORLEANS' OUTLET FOR  
THE N B C NETWORK



IF YOU CAN'T ATTEND ALL OF  
THE TULANE GAMES, LISTEN  
TO HARRY ARTHUR'S VIVID  
DESCRIPTION OF THEM  
ON W S M B.

# TULANE



*JOE CHAVEZ*  
HALFBACK



*DAVE ROWLAND*  
TACKLE



*CLAYTON TIMKEN*  
TACKLE



*BILL ROBERTSON*  
FULLBACK



*AL STOLEN*  
CENTER



*JACK SEYBOLD*  
GUARD



*HAROLD TERRELL*  
GUARD



*BILLY WOODIEL*  
TACKLE



*ALVIN BRINKER*  
GUARD



*WILLIAM CARTER*  
GUARD

# TULANE ROSTER

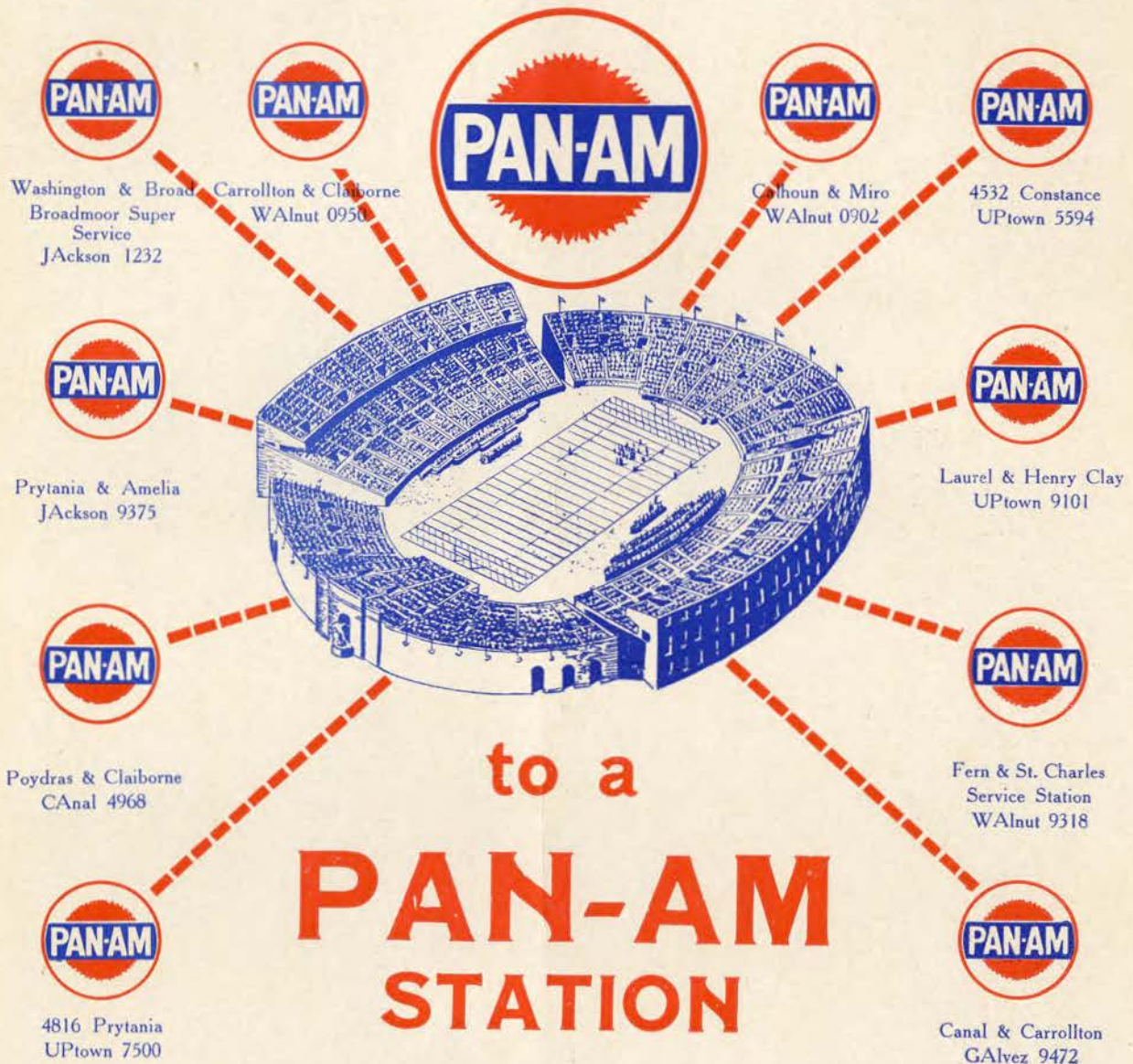
No.	Name and Position	Weight	Height	Hometown	Status
10	Ray Arthur, qb	160	5-8	New Orleans, La.	Civ.
11	James Lee, fb	165	5-11	Memphis, Tenn.	Civ.
12	David Rideout, hb	165	5-10	Henderson, Ky.	Civ.
14	Hugh Bowers, c	179	5-10 1/2	Port LaVaca, Tex.	Navy
15	William Leahy, qb	170	6-1	Rensselaer, N. Y.	Navy
18	Joe Young, hb	170	5-11	New Orleans, La.	Civ.
19	Larry McDonald, e	172	6-	Struthers, Ohio	Civ.
20	Ernest Crouch, qb	155	5-10	Sulphur, La.	Civ.
21	Jack Seybold, g	185	5-9	New Orleans, La.	Civ.
22	Richard Hoot, hb	180	5-11 1/2	Swarthmore, Pa.	Navy
23	Joe Chavez, hb	172	5-9	Los Angeles, Cal.	Navy
24	Clayton Timken, t	185	6-	New Orleans, La.	Vet.
25	Marvin McCain, hb	193	6-	New Orleans, La.	Civ.
26	David Banowitz, fb	184	5-10	New Orleans, La.	Civ.
27	David Rowland, t	202	6-2	Hot Springs, Ark.	Navy
29	William Reynolds, hb	175	5-11	Birmingham, Ala.	Navy
30	Tony Cash, e	195	6-1 1/2	New Orleans, La.	Vet.
31	James Lassetter, e	170	6-1 1/2	Whitehaven, Tenn.	Civ.
32	Roy Bailey, e	180	6-	Sulphur, La.	Civ.
33	Jack Counce, hb	183	6-	New Orleans, La.	Civ.
34	Robert Logan, t	195	6-3	Dennison, Iowa	Navy
35	William Woodiel, t	185	6-	Little Rock, Ark.	Civ.
36	George Robinson, t	195	6-	Homer, La.	Vet.
37	William Carter, g	180	5-11	Irvington, N. Y.	Navy
38	Gaston Bourgeois, g	205	5-11 1/2	Lutcher, La.	Civ.
39	Elliott Igleheart, g	200	5-10	Shelbyville, Ky.	Civ.
40	Al Stolen, c	200	6-1	Duluth, Minn.	Vet.
41	John Frank, g	202	5-10	New Orleans, La.	Civ.
42	Vernon Kappel, t	193	6-1	Buffalo, N. Y.	Vet.
43	Walter Ferguson, fb	190	5-11	Okeene, Okla.	Navy
44	Alvin Brinker, g	200	6-	New Orleans, La.	Civ.
45	Leroy Schneider, t	230	6-	Baltimore, Md.	Vet.
46	Tom Wilkins, e	178	6-2	McComb, Miss.	Civ.
49	Harold Terrell, g	197	5-11	Port Arthur, Tex.	Vet.
50	William Watkins, e	185	6-1	Helena, Ark.	Navy
58	Robert Shirley, e	185	6-1	Vicksburg, Miss.	Vet.
65	Caver Johnson, t	215	5-11	Atlanta, Tex.	Vet.
80	Vaughn Ellender, e	175	5-11	Sulphur, La.	Civ.



# FLORIDA ROSTER

No.	Name and Position	Weight	Height	Hometown	Class
1	Alfred B. Carter, b	160	5-10	Miami, Fla.	Fr.
2	Angus Williams, b	150	5-10	Miami, Fla.	Fr.
3	Buddy Carte, b	170	5-10	Tampa, Fla.	Soph.
4	Weldon Wright, b	170	5-10	Tampa, Fla.	Fr.
5	Fred Hogan, b	170	5-10 1/2	Daytona Beach, Fla.	Fr.
6	Tom Vangelas, b	170	5-10	Paterson, N. J.	Fr.
7	L. B. (Junior) Dupree, b	165	5-11	St. Petersburg, Fla.	Fr.
8	Bill Gilmartin, b	165	5-10	Newark, N. J.	Soph.
9	J. L. Smith, b	165	5-8 1/2	Gainesville, Fla.	Soph.
10	Tony Occinuzzi, b	165	5-10	Paterson, N. J.	Fr.
11	Ziggy Sklodowski, b	165	5-9	Paterson, N. J.	Fr.
12	Richard Bracewell, b	175	5-10 1/2	Jacksonville, Fla.	Fr.
13	Jack White, t	200	6-0	Paris, Tex.	Soph.
14	Virgil Dingman, b	160	5-8	Jacksonville, Fla.	Fr.
15	Claude Campbell, b	152	5-10	Fort Myers, Fla.	Fr.
16	Earl Searbrough, b	160	5-9	Jacksonville, Fla.	Fr.
17	John Gilbert, e	175	5-10	Miami, Fla.	Fr.
18	Jim Billings, e	165	5-10	Miami, Fla.	Fr.
19	Ken Hamilton, g	190	5-10	Daytona Beach, Fla.	Soph.
20	George Pharr, g	165	5-7	Jacksonville, Fla.	Fr.
21	Bruce Martin, g	185	5-10	Gainesville, Fla.	Fr.
22	W. R. Land, c	207	6-4	Milton, Fla.	Fr.
23	Horace Drew, g	180	5-7	Jacksonville, Fla.	Fr.
24	Brady Hall, e	165	5-11	Bradenton, Fla.	Soph.
25	Frank Kristain, g	170	5-10	Rutherford, N. J.	Fr.
26	Joe Chesser, e	190	6-0	Quincy, Fla.	Soph.
27	Henry Brown, t	185	5-11	Clearwater, Fla.	Fr.
28	Fred Kuss, e	175	6-0	Minneapolis, Minn.	Fr.
29	Harold Goldberg, t	200	6-0	St. Petersburg, Fla.	Fr.
30	Ottis Mooney, e	190	6-1	Winter Park, Fla.	Soph.
31	Scott Kelly, t	195	6-0	Quincy, Fla.	Fb.
32	John Kelly, t	206	6-1	Minneapolis, Minn.	Fr.
33	Ed Royal, g	185	5-8	Sarasota, Fla.	Fr.
34	O'iney Leigh, t	200	6-2	Wildwood, Fla.	Fr.
35	Glenn Odham, g	192	6-0	Sanford, Fla.	Soph.
36	Charles Ball, e	195	6-0	Hollywood, Fla.	Fr.
37	E. B. Saop, t	236	6-2	Gainesville, Fla.	Soph.
38	Hugo Miller, t	195	6-2	West Palm Beach, Fla.	Soph.
39	John Favata, t	210	6-0	Tampa, Fla.	Fr.
40	Paul Mortellaro, t	220	5-11 1/2	Tampa, Fla.	Soph.
41	John Curry, b	170	5-9	Buffalo, N. Y.	Fr.
42	M. C. Harden, e	162	6-1	Jacksonville, Fla.	Fr.
43	Dick Melear, g	180	5-11	Miami, Fla.	Fr.
47	Norman Ryerson, e	180	6-0	Los Angeles, Calif.	Fr.
48	Nick Testa, b	170	5-9	Bronx, N. Y.	Fr.
49	Charles Anderson, b	150	5-10	Jacksonville, Fla.	Fr.
50	Don Davidson, b	171	6-1 1/2	Jacksonville, Fla.	Fr.
51	Donald (Duck) Cawthon, b	163	5-10	Gainesville, Fla.	Fr.
52	Elmer Atkins, b	175	6-0	Orlando, Fla.	Fr.
54	Sidny Vaughn, e	170	6-0	St. Petersburg, Fla.	Fr.

only a few yards to go . . .



(Other Pan-Am Stations conveniently located  
in all parts of the City.)



**Lucky Man . . .** Pretty date,  
two good seats, and clothes from  
**The Men's Store of**  
**D. H. HOLMES CO., LTD.**