



TULANE vs. AUBURN

OCTOBER 19, 1946

SOUVENIR PROGRAM — TWENTY-FIVE CENTS

THESE ARE THE OFFICIAL 1946 Signals



OFF-SIDE
Hands on and off hips—repeat several times.



ILLEGAL POSITION OR PROCEDURE
Hands revolving in front of chest.



ILLEGAL MOTION OR SHIFT
Horizontal arc with either hand.



ILLEGAL DELAY OR EXTRA TIME OUT
Folded arms.



ILLEGAL USE OF HANDS OR ARMS
Grasping one wrist.



UNSPORTSMANLIKE CONDUCT
Arms outstretched, palms down.



SAFETY
Palms together overhead.



INCOMPLETE FORWARD PASS; PENALTY DECLINED; NO PLAY OR NO SCORE
Hands rapidly criss-crossed in horizontal plane.



BALL ILLEGALLY TOUCHED, KICKED OR BATTED
Tapping both shoulders with finger tips.



INTENTIONAL GROUNDING
Both hands over right shoulder then down hard and forward.



FORWARD PASS OR FAIR CATCH INTERFERENCE
Pushing arms forward, palm vertical.



TIME-OUT
Hands rapidly criss-crossed overhead.



CRAWLING; HELPING THE RUNNER OR INTERLOCKED INTERFERENCE
Pushing movement with hands below waist.



BALL DEAD
One arm aloft, open hand. If hand is closed, TOUCHBACK.



UNNECESSARY ROUGHNESS
Military salute. CLIPPING
Salute followed by slapping back of knee with hand. RUNNING INTO OR ROUGHING KICKER
Salute followed by swinging leg to simulate a punt.



ILLEGAL FORWARD PASS
Waving hand behind back.



TOUCHDOWN OR FIELD GOAL
Both arms aloft and held rigid.



FIRST DOWN
Vigorous throwing motion concluded with outstretched arm pointing toward offensive goal.



START THE CLOCK OR NO MORE TIME-OUTS ALLOWED
Full arm circles to simulate winding a clock.



Listen to "Time Out" WITH JOHNNY LYNCH
WWL Wednesdays 6:30-6:45 P.M.

And for Your Time Out



JACKSON BREWING COMPANY
NEW ORLEANS, LA.

DRINK **JAX** BEST BEER IN TOWN



And if you guys don't keep your eyes off those clothes from Godchaux's we'll never make a single touchdown.

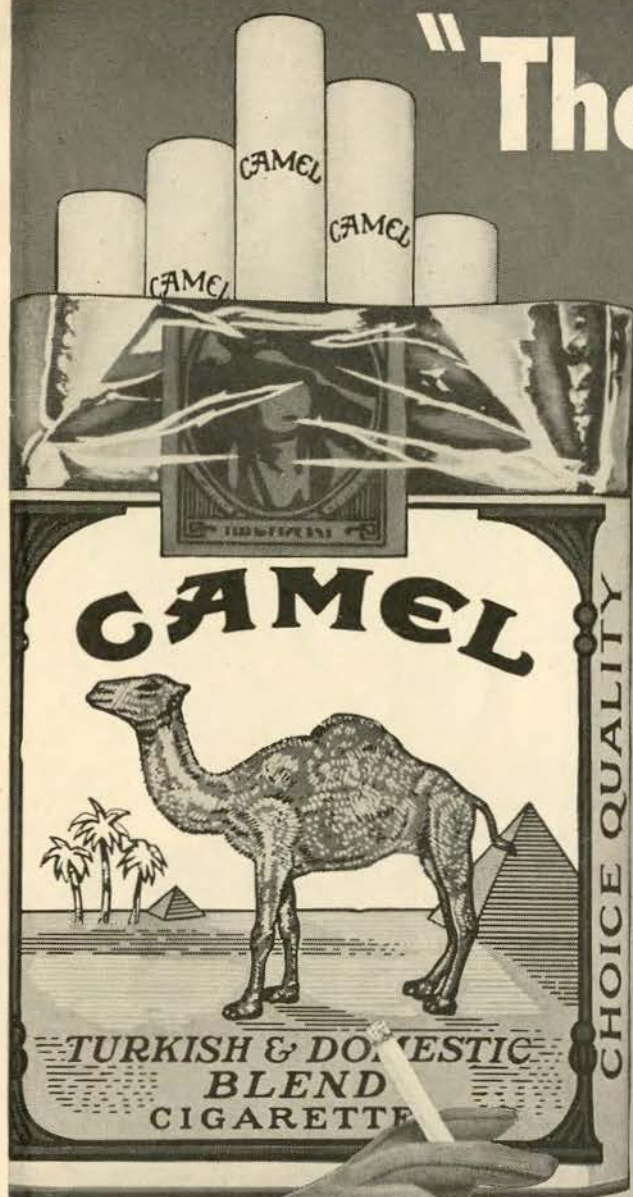
Godchaux's

SINCE 1840



FINE APPAREL FOR MEN, WOMEN, AND CHILDREN.

"They suit me
to a T"



THE GREENIE



Vol. 16

OCTOBER 19, 1946

No. 4

Official Souvenir Football Program of Tulane University, Published for Each Home Game
National Advertising Representative, Football Publications, 370 Lexington, New York, N. Y.

ANDY ROGERS, *Editor*

CAROL HART, *Associate Editor*

TULANE-AUBURN

Tulane university and Alabama Polytechnic Institute renew today a rivalry that is the third oldest in Green Wave football history.

The meeting of the Green Wave and the Auburn Tigers marks the 27th of a series which began in 1902. Only the number of Tulane-L.S.U. games exceeds the 26 which the Wave and Tigers have played in the past while Mississippi State is tied with Auburn in number of games played, though it played Tulane a year before the Plainsmen did.

That 1902 inaugural tussle established a pattern which has been followed on three other occasions. It ended in a scoreless deadlock as did the games played in 1936, 1937 and 1938. Two other meetings also ended in tie scores which means that six of 26 contests have failed to produce a winner. In 1923 and 1927, Auburn and Tulane dueled to 6-6 ties.

Auburn won the initial victory of the series when it scored a lopsided 33-0 victory over Tulane in the second encounter played in 1911.

Then in 1921, Tulane and Auburn began an uninterrupted series of yearly contests which continued for over 20 years. After missing a single year, 1943, the rivalry began anew in 1944 and today's battle marks game No. 27 in the Tulane-Auburn "feud."

The Wave-Tiger series is especially noted for its closeness and the hotly contested games it has produced. The Green Wave,

however, holds an 11-9 edge in games won with six in the tie column.

Season after season the Plainsmen have come up with brilliant play against the Green Wave and at times have won when least expected to. Their ability to produce upsets has won the respect of teams throughout the conference and a game with Auburn is never considered one to "look over."

The Plainsmen, unbeaten in three games so far this season, are making their Southeastern Conference debut against the Green Wave today. After five consecutive S.E.C. battles against Tulane, Georgia Tech, Vanderbilt, Mississippi State and Georgia, the Tigers play Clemson, winding up the season against Florida.

Auburn is coached by Carl Voyles, former Oklahoma A. and M. star, who first coached under Bob Zuppke at Illinois and later under Wallace Wade of Duke University. The Plainsmen are exponents of an "A" formation which is used in the National Professional League by the New York Giants, but also do some of their offensive maneuvers from the single wingback system.

Among the most thrilling of the Auburn-Tulane battles was the 1944, 16-13, Tulane victory which came on a last-minute field goal, and today the undefeated Tigers powered by one of the nation's leading offensive stars should produce a game in keeping with the traditional Wave-Plainsmen pattern.

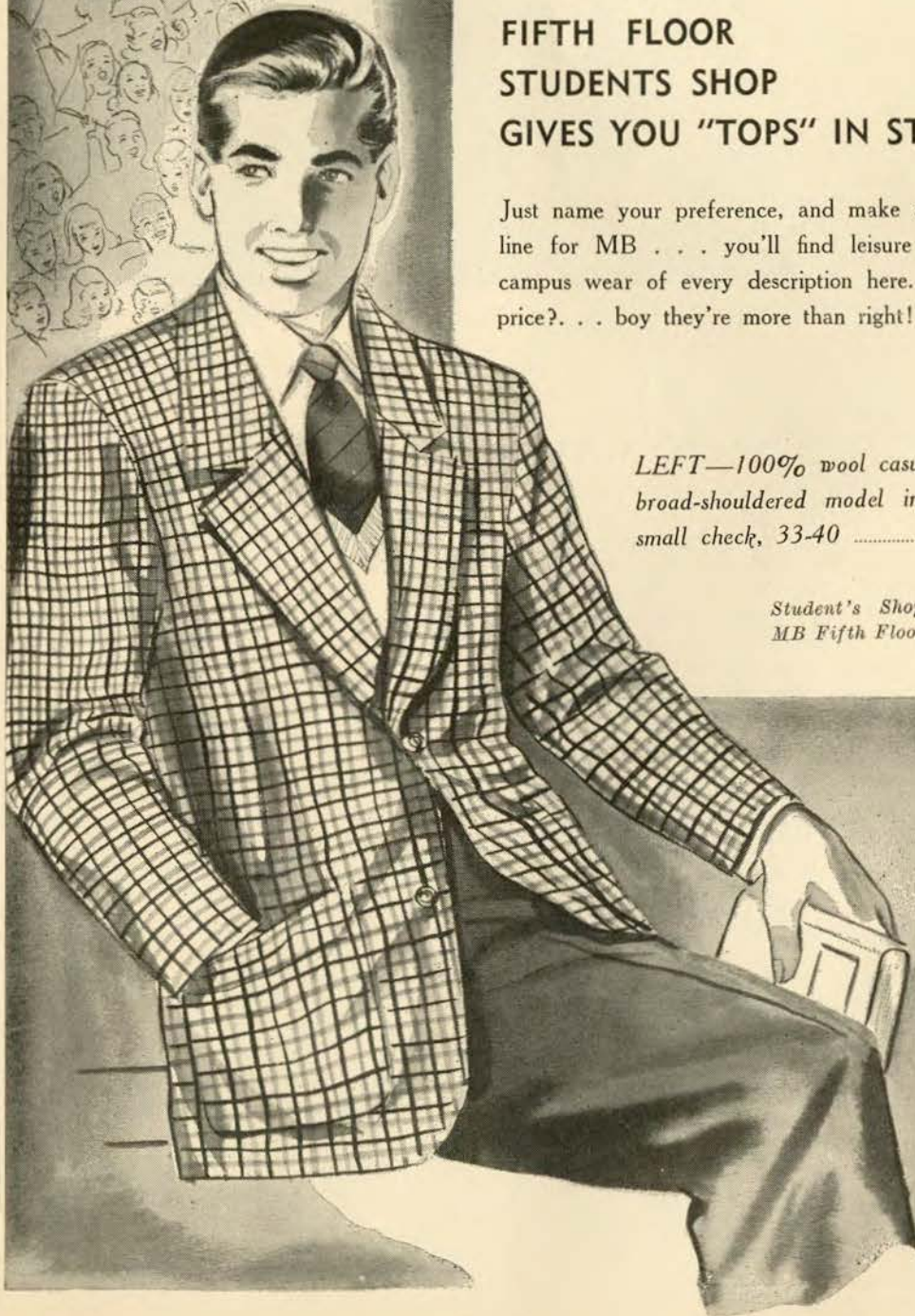
Maison Blanche
GREATEST STORE SOUTH

FIFTH FLOOR
STUDENTS SHOP
GIVES YOU "TOPS" IN STYLE

Just name your preference, and make a "B" line for MB . . . you'll find leisure coats, campus wear of every description here. The price? . . . boy they're more than right!

LEFT—100% wool casual coat, broad-shouldered model in smart, small check, 33-40 22.50

*Student's Shop
MB Fifth Floor*



TULANE SONGS

ALMA MATER

We praise thee for thy past, O Alma Mater!
Thy hand hath done its work full faithfully!
The incense of thy spirit hath ascended
And filled America from sea to sea!

We praise thee for thy present, Alma Mater!
Today thy children look to thee for bread!
Thou ledest them to dreams and actions splendid!
The hunger of their souls is richly fed!

We praise thee for thy future, Alma Mater!
The vista of its glory gleameth far!
We shall ever be part of thee, great Mother!
There thou will be where e'er thy children are!

Chorus

Olive Green and Blue, we love thee.
Pledge we now our fealty true.
Where the trees are ever greenest,
Where the skies are purest blue.
Hear us now, O Tulane, hear us.
As we proudly sing to thee!
Take from us our hearts' devotion!
Thine we are, and thine shall be!

ROLL ON, TULANE

Here's a song for the Olive and the Blue.
Here's a cheer for the team that's tried and true.
Here a pledge of loyalty to thee,
Oh, Tulane Varsity.
Here's to the Greenbacks that never will say die,
And here's to the hearts that are true
To the men of Tulane, who are fighting for her name,
For the Olive and the Blue.

Chorus

Roll, Green Wave,
Roll them down the field.
Hold, Green Wave,
That line must never yield.
When those Greenbacks charge through the line
They're bound for victory.
Hail, Green Wave,
For you we give a cheer.
Hail Green Wave,
For you we have no fear.
So ev'ry man in ev'ry play,
And then we'll win that game today.
Hurrah for Old Tulane.

TULANE FIGHT SONG

Green Wave, Green Wave,
Hats off to thee,
Fight, fight, fight for our victory
Shout to the skies
The Green Wave war cry.
The bravest we'll defy.
Hold that line for Olive and Blue
We will cheer for you.
So fight, fight, Old Green Wave
Right on to victory.

Shop with Confidence at Mayer Israel's



You can't go wrong with
your choice when it comes
from Mayer Israel's.

For over 50 years, the
words Mayer Israel's and
fine fashions have been
synonymous — signifying
only the finest in quality.



*Apparel for men, women
and children.*

Mayer Israel's



Henry Frnka
Head Coach



R. Arthur
halfback



M. Balen
guard



G. Bourgeois
guard



J. Brignac
quarterback



L. Finley
quarterback



D. Fortier
halfback



R. Franz
tackle



E. Heider
end

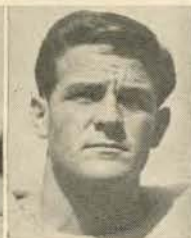
TULANE

(This Roster Copyrighted by Tulane University)

No.	Name and Position	Age	Ht.	Wt.	Home Town
25	Al Waller, hb	20	5-10	165	New Orleans
26	Ray Arthur, hb	21	5-8	145	New Orleans
27	Don Fortier, hb	24	5-10	172	New Orleans
28	J. W. Thompson, fb	19	5-11	179	Odessa, Tex.
29	Florian Seal, hb	23	5-11	175	New Orleans
31	Marvin McCain, hb	21	6-	190	New Orleans
32	Bennie Ellender, hb	21	6-2	187	Sulphur, La.
33	Richard Hoot, hb	21	6-	181	Swarthmore, Pa.
34	John Wasieleski, e	21	6-	180	Shamokin, Pa.
35	Alvin Brinker, g	19	6-	205	New Orleans
36	Dan Kirschenheuter, c	20	6-	190	New Orleans
37	Olton Hebert, c	22	5-11	190	New Iberia, La.
38	Gaston Bourgeois, g	19	5-11	199	Lutcher, La.
39	Elliott Igleheart, g	21	5-10	190	Shebyville, Ky.
40	Harold Riggs, e	21	6-4	179	Port Arthur, Tex.
41	Hoyt Moncrief, fb	21	6-	197	Monroe, La.
42	Paul Bienz, hb	21	5-8	170	Fort Wayne, Ind.
43	Johnny Campora, hb	23	5-10	175	New Orleans
44	Jim Keeton, hb	21	5-10	185	Enid, Okla.
45	Ed Price, fb	21	5-11	190	New Orleans
46	Bob James, c	23	5-10	180	New Orleans
47	Rex Partridge, e	19	5-10	170	Odessa, Tex.
48	Leonard Finley, qb	23	6-	180	New Orleans
49	Ed Heider, e	19	6-2	178	New Orleans
50	Joe Chavez, fb	25	5-9	165	Los Angeles, Calif.
51	Julian Brignac, qb	24	5-10	185	Lutcher, La.
52	Leroy Schneider, t	23	6-	215	Baltimore, Md.
53	Larry Rice, c	24	6-2	205	Gulfport, Miss.
54	Stanley Kottemann, c	21	5-11	200	New Orleans
55	Bill Hornick, t	27	6-1	205	La Belle, Pa.
56	Bob Franz, t	21	6-1	185	Crystal Lake, Ill.
57	Emile O'Brien, e	23	5-11	180	New Orleans
58	Jay Rowland, t	25	6-1	210	Hot Springs, Ark.
59	Ken Tarzetti, e	21	6-4	190	DeLisle, Miss.
60	Mike Balen, g	23	6-	201	Sawyerville, Ill.
61	Ed Deramee, g	21	5-10	196	Thibodaux, La.
62	Ray Olsen, e	23	6-2	190	New Orleans



J. Keeton
quarterback



O. J. Key
halfback



S. Kottemann
center



M. McCain
halfback



H. Moncrief
fullback



R. Nutt
quarterback



A. Porter
end



E. Price
fullback



L. Rice
center



J. Rowland
tackle



L. Schneider
tackle



F. Seal
halfback



A. Brinker
guard



J. Campora
halfback



A. Demma
guard



E. Deramee
guard



S. Edwards
end



B. Ellender
halfback



D. Holm
guard



W. Hornick
tackle



R. Hoot
halfback



E. Igleheart
guard



R. James
center



T. Kane
tackle

TULANE

(This Roster Copyrighted by Tulane University)

No.	Name and Position	Age	Ht.	Wt.	Home Town
63	Arthur Porter, e	24	6-1	210	New Orleans
64	Fred Millhuff, e	20	6-1	195	Portsmouth, Ohio
65	Sherwood Cuyler, e	25	6-2	195	New Orleans
66	Bill Maginnis, g	24	6-2	210	New Orleans
67	O. J. Key, hb	25	6-1	195	New Orleans
68	Al Demma, g	18	5-11	200	New Orleans
69	Sammy Edwards, e	21	6-3	190	New Orleans
70	Darwood Holm, g	22	6-	210	Eau Claire, Wis.
71	Walter Villars, t	18	6-1	205	New Orleans
72	Charles Barras, t	21	6-1	225	New Orleans
73	Vic Klein, t	25	6-2	210	New Orleans
74	Tom Kane, t	21	6-1	200	Kearny, N. J.
75	Orval Baker, fb	20	6-	206	Pocatello, Idaho
76	Johnny Sims, fb	27	6-1	198	Delhi, La.
77	Cliff Van Meter, hb	19	6-1	193	Henryetta, Okla.
78	Dick McMurray, t	19	6-2	200	New Orleans
79	Tom Heintz, t	23	6-2	250	Milwaukee, Wis.
80	Charles Johnson, g	17	6-	200	Pascagoula, Miss.
81	Joe Ernst, hb	18	6-	170	New Orleans
82	Jack Counce, hb	19	5-11	180	New Orleans
83	Bill Barnidge, t	19	6-1	193	Shreveport, La.
84	Joe Stevens, fb	22	5-11	190	Gary, Ind.
85	Dick Howard, e	18	6-	190	Gary, Ind.
86	Herbert Schene, hb	21	6-1	175	McAllister, Okla.
87	John Johnson, e	19	5-10	175	New Orleans
88	Bill Svoboda, fb	19	5-11	195	Bonham, Tex.
89	Merle Weaver, g	20	6-	198	Harlingen, Tex.
90	David Rowland, t	19	6-2	205	Hot Springs, Ark.
91	John Miechowicz, g	18	5-11	175	Chicago, Ill.
92	Rainey Brown, g	19	5-11	205	New Orleans
93	Bernard Crumpton, g	23	5-9	200	Jacksonville, Fla.
94	John Tessier, t	22	6-1	206	New Orleans, La.
95	Clemon Bounds, t	19	6-3	199	Pascagoula, Miss.
96	Melvin Leierer, t	19	6-3	190	Enid, Okla.
97	Howard McAfee, t	24	6-4	260	New Orleans
98	Jim Leierer, qb	21	6-1	195	Enid, Okla.
99	Richard Nutt, qb	21	5-11	180	Marshall, Tex.



D. Kirschenheuter
center



V. Klein
tackle



W. Maginnis
guard



F. Millhuff
end



E. O'Brien
end



R. Olsen
end



J. Sims
fullback



K. Tarzetti
end



J. W. Thompson
fullback



C. Van Meter
halfback



W. Villars
tackle



A. Waller
halfback

A WINNER!



TULANE CHEERS

KILL

Scream! (Drawn out)
Kill! Kill! Kill!

T. U. YELL

T - U
L - A
Nnnnn E!
Fight! Fight! Fight!

GREEN WAVE

R-o-o-ll On!
Gre-e-e-n Wave!
R-o-o-ll On!
Gre-e-e-n Wave!
R-o-o-ll On!
Green Wave!

LOCOMOTIVE

T- U- L- A- N- E-
T- U- L- A- N- E-
T- U- L- A- N- E-
RAH!
T - u - u - LANE!

HULLABALOO

Hu- la- ba- loo Ray-Ray!
Hu- la- ba- loo Ray-Ray!
Hoo-Ray! Hoo-Ray!
Vars, Vars, tee-ay!
Tee-ay! Tee-ay!
Vars, vars, tee-ay!
Tulane!

YEA, TEAM

Yea Team Fight!
Ray Team Fight!
Yea Team!
Ray Team!
FIGHT! FIGHT!
FIGHT!

VICTORY

V-I-C-T-O-R-Y
Victory! Victory!
That's our cry.

ECHO

Cheerleaders:	T
Crowd!	T
Cheerleaders:	U
Crowd!	U
Cheerleaders:	L
Crowd!	L
Cheerleaders:	A
Crowd!	A
Cheerleaders:	N
Crowd!	N
Cheerleaders:	E
Crowd!	E
All: T-u-u-lane!	
	FIGHT!

The Roosevelt

The Roosevelt Hotel Offers
New Orleans' Most Diversified Program
of
Music and Entertainment

in the FOUNTAIN LOUNGE

At LUNCHEON we invite you to listen to the sweet strains of the Gypsy Ensemble. For COCKTAILS and DANCING, alternating nightly from five o'clock until two the next morning is one of Latin America's noted Rhumba bands and the Society Music of one of America's outstanding combinations.

in the BLUE ROOM

Each evening, for DINNER and SUPPER DANCING, is presented one of the Nation's famous orchestras . . . Featured also in the Blue Room Floor Shows at Dinner and Supper, are celebrated stars from radio, stage and screen.

*New Orleans' most discriminating audiences choose The Roosevelt
for their relaxation and entertainment*



The Roosevelt
"The Pride of the South"



*Out-of-this-world**
ADLER'S gift galleries



**Very down-to-earth prices*

ADLER'S New Orleans' Fine Jewelers • 722 Canal Street



CAM-PIX
A MEDLEY OF CAMPUS PICTURES

© By Horace Renegar 1946

School opens—

And brings to Tulane vaccination lines . . .



ADVISORY COMMITTEE
ARTS AND SCIENCES
SCIENTIFIC MEDICAL

Newcomb freshmen . . .
Registration formalities . . .





Cheerleaders' election . . .

Street dances . . .





Fraternity hay rides . . .



Winter formals.

This Program Printed

by

TULANE UNIVERSITY PRESS

Printing Department of Tulane University



CAMPUS PRINTERS

Basement
Gibson Hall

Phone
WAlnut 0082

AT THE GAME

and

AFTER THE GAME

ENJOY



“Time Out”

DRINK—

Coca-Cola

PAUSE—

RELAX—

REFRESH YOURSELF

Good Old
REGAL
 BEER



TULANE

STARTING LINEUP

LE Olsen 62	LT Tessier 94	LG Deramee 61	C Rice 53	RG Bourgeois 38	RT Klein 73	RE Tarzetti 59
			QB Finley 48			
	LHB Key 67		FB Price 45		RHB Campora 43	

SQUAD LIST

25 Waller, hb	45 Price, fb	63 Porter, e	81 Ernst, hb
26 Arthur, hb	46 James, c	64 Millhuff, e	82 Counce, hb
27 Fortier, hb	47 Partridge, e	65 Cuyler, e	83 Barnidge, t
28 Thompson, fb	48 Finley, qb	66 Maginnis, g	84 Stevens, fb
29 Seal, hb	49 Heider, e	67 Key, hb	85 Howard, e
31 McCain, hb	50 Chavez, qb	68 Demma, g	86 Schene, hb
32 Eliender, hb	51 Brignac, qb	69 Edwards, e	87 J. Johnson, e
33 Hoot, hb	52 Schneider, t	70 Holm, g	88 Svoboda, fb
34 Wasieleski, e	53 Rice, c	71 Villars, t	89 Weaver, g
35 Brinker, g	54 Kottmann, c	72 Barras, t	90 D. Rowland, t
36 Kirsch't'r, c	55 Hornick, t	73 Klein, t	91 M'chowicz, g
37 Hebert, c	56 Franz, t	74 Kane, t	92 Brown, g
38 Bourgeois, g	57 O'Brien, e	75 Baker, fb	93 Crumpton, g
39 Igleheart, g	58 J. Rowland, t	76 Sims, fb	94 Tessier, t
40 Riggs, e	59 Tarzetti, e	77 V. Meter, hb	95 Bounds, t
41 Moncrief, fb	60 Balen, g	78 McMurray, t	96 M. Leierer, t
42 Bienz, hb	61 Deramee, g	79 Heintz, t	97 McAfee, t
43 Campora, hb	62 Olsen, e	80 C. Johnson, t	98 J. Leierer, qb
44 Keeton, hb			99 Nutt, qb

AUBURN

STARTING LINEUP

LE Faulk 12*-12†	LT Lannom 18-18	LG Rose 62-27	C Pharr 57-35	RG Fulmer 15-15	RT C'nelius 32-29	RE M'C'kin 55-56
			QB Gendusa 54-54			
	LHB Tidwell 11-11		FB Gafford 37-36		RHB Kovacic 28-33	

SQUAD LIST

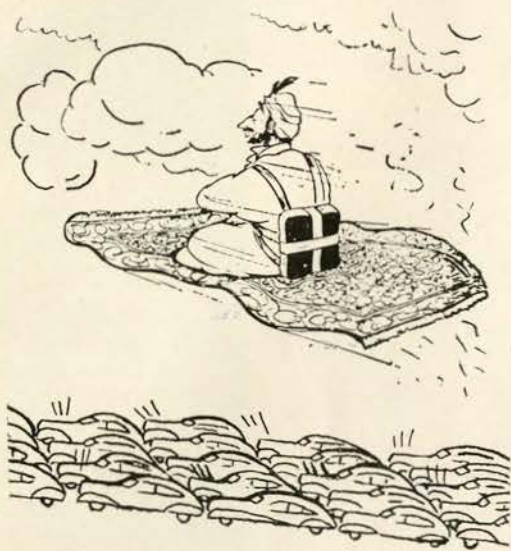
11* 11† Tidwell, hb	31 30 Lucia, hb	50 50 Ball, hb
12 12 Faulk, e	32 29 Cornelius, t	51 25 Cannon, t
14 14 Sisco, e	35 39 McHenry, qb	52 38 Bearden, g
15 15 Fulmer, g	34 16 Harper, t	54 54 Gendusa, qb
16 41 Hepler, g	37 36 Gafford, hb	55 56 McClurkin, e
17 17 P'stone, g	38 28 Inman, hb	56 55 Russell, fb
18 18 Lannom, g	40 40 Hayes, t	57 35 Pharr, c
19 19 Douglas, e	42 43 Pyburn, qb	58 58 Adcock, t
20 70 Snell, t	43 45 Bryant, hb	60 44 Wilson, hb
21 21 Fletcher, e	45 10 McKinney, c	62 27 Rose, g
22 22 Cochran, fb	46 37 Smalley, g	65 65 Langner, qb
25 20 Reeser, fb	47 47 Brause, fb	66 62 Shiver, hb
26 23 Vason, hb	48 48 Naylor, g	67 67 Mitchell, t
27 26 Hewlett, hb	49 46 Waddail, e	68 24 Trapani, e
28 33 Kovacic, hb		70 49 McDaniel, qb
29 42 Younginer, g		72 68 Williams, e

*Orange Jersey Numbers †Blue Jersey Numbers

OFFICIALS

Referee—Buck Cheves (Georgia)
 Umpire—W. D. Barfield (Princeton)
 Linesman—F. O. Waddey (Georgia Tech)
 Field Judge—J. T. Slate (A. A. C.)
 Clock Operator—Russell Lyons (Illinois)

Prince of Golden Beers



Magic Carpets

Solved a Lot of Problems

In the days of Aladdin's lamp and magic carpets, getting to football games would have been a cinch. But today when so many drivers make a mad last minute dash to beat the kickoff, it takes the patience of Job to stand the blare of horns and snailpace driving of thousands of cars.

Magic carpet or no, you can save yourself the wear and tear of "trafic-ache" by riding the safe, smooth way—*Go by Street Car or Bus.* No parking problems for you! No need to leave before the game's over to make a quick getaway! The S. Claiborne car, the Freret car and the Broadway bus take you to the stadium and home again in *comfort.*



"It Pays To Play"

*Johnny
Lynch's*

DUNLAP SPORTING GOODS CO.

*Specialists in all types of
athletic equipment*

138 CARONDELET ST.
MAGNOLIA 5891

HAUSMANN

NEW ORLEANS'
LEADING JEWELERS

Special Department for College
and
Fraternal Jewelry

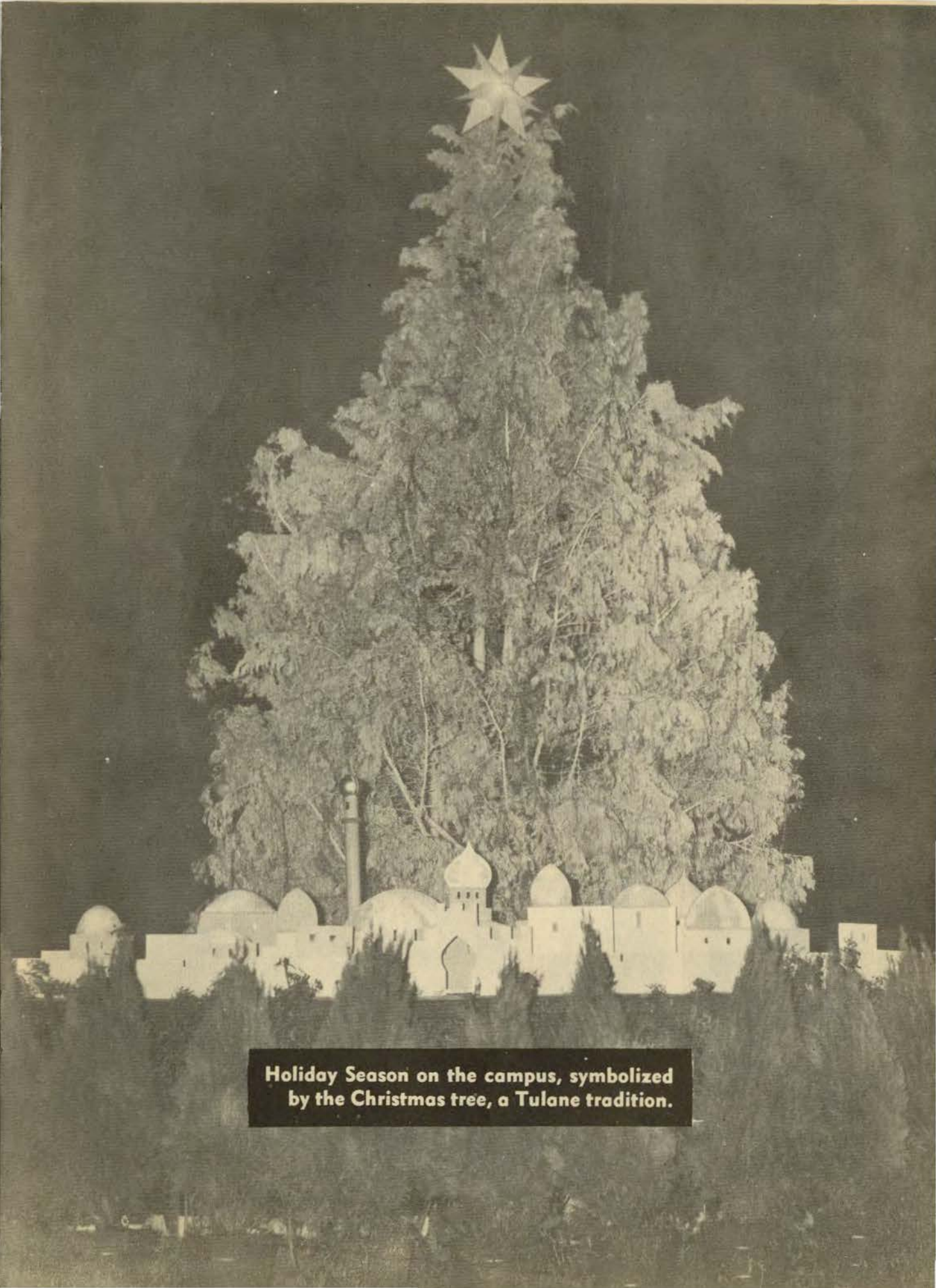
*The Thinking Fellow
Rides a Yellow*



TOYE BROS.



YELLOW CABS



Holiday Season on the campus, symbolized by the Christmas tree, a Tulane tradition.



Spring on the campus means Mardi Gras parties . . .



Easter Sunrise services . . .

And Newcomb's May Day celebration.





Graduation—the end of the college year.

Porter's

Carondelet at Gravier

EVERYTHING
MEN WEAR

SEEN AT ALL
THE GAMES . . .

- *Suits by Porter's*
- *Shirts by Porter's*
- *Hats by Porter's*
- *Shoes by Porter's*
- *Accessories by Porter's*

in short—

Style by Porter's

The Roosevelt

New Orleans' Finest

In America's Most Interesting City



THE ROOSEVELT is located in the heart of Romantic old New Orleans. It is in the center of business and social activities and is close to the Theatre, Shopping, French Quarter, and Business Districts . . . You will like the tasteful luxury and home-like atmosphere of this modern hotel where the traditions of Southern Hospitality are maintained the year 'round.

800 ROOMS WITH BATH

MODERATE RATES



The Roosevelt
"The Pride of the South"

THE SCHEDULES

TULANE

Sept. 28—Tulane 6, Alabama 7
Oct. 5—Tulane 27, Florida 13
Oct. 12—Tulane 6, Rice 25
Oct. 19—Auburn at New Orleans
Oct. 26—Mississippi State at New Orleans
Nov. 2—Open Date
Nov. 9—Clemson at New Orleans
Nov. 16—Georgia Tech at Atlanta
Nov. 23—Notre Dame at New Orleans
(Homecoming)
Nov. 30—L. S. U. at Baton Rouge
*Dec. 21—Southern Cal at New Orleans

* Game subject to cancellation if either team receives and accepts a bowl invitation.

AUBURN

Sept. 28—Auburn 13, Miss. Southern 12
Oct. 5—Auburn 26, Furman 6
Oct. 12—Auburn 27, St. Louis 7
Oct. 19—Tulane at New Orleans
Oct. 26—Georgia Tech at Atlanta
Nov. 2—Vanderbilt at Montgomery
Nov. 9—Mississippi State at Birmingham
Nov. 16—Georgia at Columbus, Ga.
Nov. 23—Clemson at Montgomery
Nov. 30—Florida at Gainesville, Fla.

Official timing watch for the

TULANE-AUBURN FOOTBALL GAME

Longines

The World's Most Honored Watch
winner of 10 world's fair grand prizes,
28 gold medals, and more honors for
accuracy than any other timepiece



Product of Longines-Wittnauer Watch Co.



FAMOUS FOR

FINE FOOD and DRINK

TONIGHT — Enjoy specialties of these noted restaurants:

ANTOINE'S

713 St. Louis St.

ARNAUD'S

813 Bienville St.

BROUSSARD'S

819 Conti St.

KOLB'S

125 St. Charles St.

LA LOUISIANE

725 Iberville St.

THE WEEK AHEAD

An "explosive" Mississippi State College eleven is expected to provide plenty of fireworks next Saturday afternoon in the Tulane Green Wave's fifth home showing and its fourth Southeastern Conference contest.

The Allyn McKeen Maroon team is one loaded with stars and some have said that it has the greatest collection of backfield talent of any team in the conference.

Tom "Shorty" McWilliams, much talked about tailback, is No. 1 of the Mississippi crew of aces, though there are rabbit-like Harper Davis, Graham "Bomber" Bramlett, Billy "Spooky" Murphy and Billy Hildebrand in addition to the former West Point regular for Tulane fans to see next week.

The Maroons should be pretty close to tops in precision by the time they get to the Green Wave. Aside from their loss to L.S.U., the Statemen already have polished off a couple of victories and will have four games under their belt when they play the Green Wave.

They're a team with dynamite in every backfield position. At tailback, even McWilliams is having difficulty staying in the game with Murphy and a newcomer by the name of "Eagle" Matulich around. At wingback, Davis is having to split his playing time with Bramlett. The Maroon quarterback and fullback posts too are well manned by good runners which means that touchdown runs can be reeled off from every position.

Tulane fans will see the Tennessee style single wingback offense as learned by Coach McKeen from the Volunteers' Colonel Bob Neyland. Among its variations is the play of the quarterback who faces neither the line of scrimmage nor his tailback, but the sidelines and handles the ball sometimes, as in the "T" formation, on a direct hand-off from the center.

The Maroons have a high powered running game that has produced plenty of yardage and which managed to score a touchdown on the ground through L.S.U.'s stout forward wall. The Statemen also can pass with Murphy and McWilliams sharing the pitching honors to all-conference end Hildebrand and others.

It'll be Reel No. 5 and Mississippi State for Tulane and New Orleans football fans next week.

THE OLD ABSINTHE HOUSE

BOURBON AT BIENVILLE

● *Pianistics*
By Pichon



● *Owen Brennan,*
Prop.

The old Absinthe House, now in its third century in the historic French Quarter, offers itself nightly as a fitting climax to any special occasion.

WSMB

1350 Kilocycles



NEW ORLEANS' OUTLET FOR
THE N B C NETWORK



IF YOU CAN'T ATTEND ALL OF
THE TULANE GAMES, LISTEN
TO THE ACCURATE, RAPID-
FIRE BROADCAST ON
W S M B.

The light of your life!



Enjoy a Treat . . .
instead of a Treatment



Carl Voyles
Head Coach



Jimmy Rose
guard



Wayne Hepler
guard



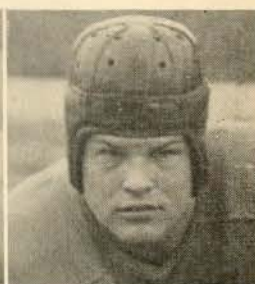
Don Brause
fullback



McCoy Hewlett
halfback



Holly Mitchell
tackle



Charles Langner
quarterback



Phillip Poundstone
Guard



Bert Trapani
end



Hamp Vason
halfback



Bill Wilson
halfback

AUBURN

Orange Blue

No.	No.	Name and Position	Age	Ht.	Weight
11	11	Travis Tidwell, hb	21	5-9	175
12	12	Teedie Faulk, e	27	6-1	181
14	14	Carl Sisco, e	18	6-2	189
15	15	Floyd Fulmer, g	21	6-0	187
16	41	Wayne Hepler, g	20	5-7	181
17	17	Phillip Poundstone, g	22	5-9	208
18	18	Harold Lannom, g	20	6-1	205
19	19	Andrew Douglas, e	22	5-11	185
20	10	Denvard Snell, t	23	6-2	257
21	21	Carl Fletcher, e	24	6-0	182
22	22	Bull Cochran, fb	22	6-0	198
25	20	Al Reeser, fb	18	5-9	161
26	23	Hamp Vason, hb	17	6-0	184
27	26	McCoy Hewlett, hb	25	5-11	173
28	33	Al Kovacic, hb	20	5-10	165
29	42	Floyd Younginer, g	23	5-10	190
31	30	Tom Lucia, hb	19	5-9	160
32	29	Jack Cornelius, t	25	5-11	200
34	16	Charles Harper, t	21	6-4	213
35	39	John McHenry, qb	24	5-8	186
37	36	Freddie Gafford, hb	22	5-10	154
38	28	Russell Inman, hb	18	5-10	185
40	40	Dick Hayes, t	19	6-1	203



Jim Pharr
center



Tom McKinney
center



Hal Herring
quarterback



Bill Waddail
end



Carl Copeland
quarterback



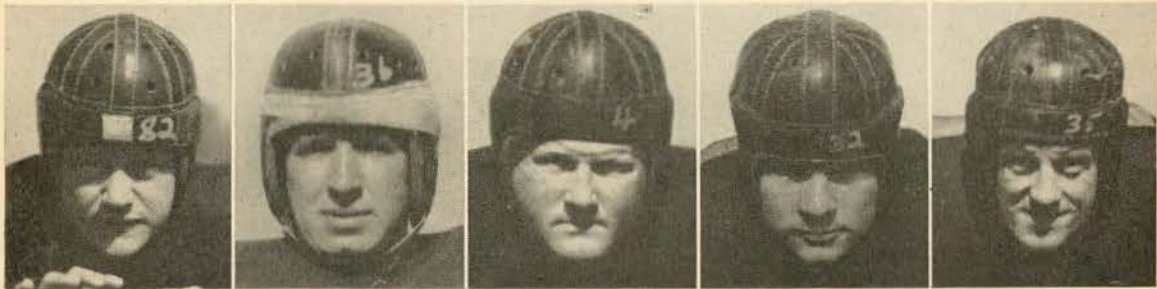
Buddy Bryant
halfback

Ray Williams
end

Erskine Russell
fullback

Floyd Fulmer
guard

Andrew Douglas
center



Teddie Faulk
end

John Adcock
tackle

Denvard Snell
tackle

Al Reeser
fullback

Gerald Naylor
guard

AUBURN

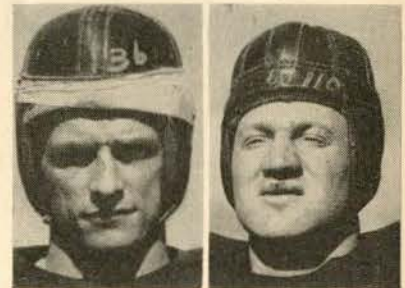
Orange Blue

No.	No.	Name and Position	Age	Ht.	Weight
42	43	Ralph Pyburn, qb	20	6-0	194
43	45	Buddy Bryant, hb	22	5-11	188
45	10	Tom McKinney, e	25	6-5	218
46	37	Harley Smalley, g	24	5-11	205
47	47	Don Brause, fb	23	5-8	176
48	48	Gerald Naylor, g	24	5-11	178
49	46	Bill Waddail, e	20	6-3	185
50	50	Bill Ball, hb	20	5-8	157
51	25	Bob Cannon, t	22	5-11	197
52	38	Paul Bearden, g	19	6-0	176
54	54	Babe Gendusa, qb	22	5-9	177
55	56	Sam McClurkin, e	23	6-1	175
56	55	Erskine Russell, fb	20	6-0	190
57	35	Jim Pharr, e	25	6-3	184
58	58	John Adcock, t	22	6-3	217
60	44	Bill Wilson, hb	21	5-11	182
62	27	Jimmy Rose, g	23	5-8	182
65	65	Charles Langner, qb	21	5-7	181
66	62	Jim Shiver, hb	23	6-0	160
67	67	Holly Mitchell, t	25	5-9	170
68	24	Bert Trapani, e	25	5-9	170
70	49	Jim McDaniel, qb	19	5-9	180
72	68	Ray Williams, e	21	6-2	177



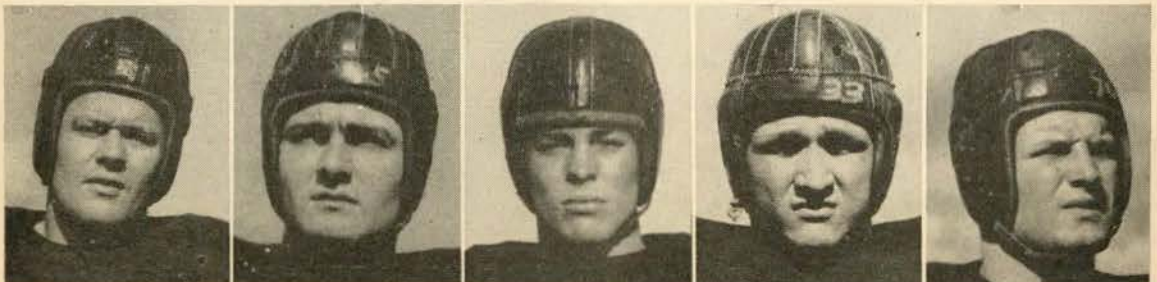
Fred Gafford
halfback

Travis Tidwell
halfback



Sam McClurkin
end

Carl Fletcher
end



Floyd Younginer
guard

Paul Bearden
guard

Charles Harper
tackle

Harold Lannom
guard

Billy Ball
halfback

PIGSKIN ROUNDUP

Alabama vs Tennessee—Herein Gilmer and Company supply the answer to the "Volunteer Mystery Stories."

* * *

Army vs Columbia—Not even the Lions' Roar will top the shouting over the Blanchard-Davis serial thriller.

* * *

Texas vs Arkansas — Bible's cowboys will hogtie the Razorbacks to continue their rodeo roundup.

* * *

Michigan vs Northwestern — The Michigan might to wallop Waldorf's Wildcats.

* * *

L.S.U. vs Georgia Tech—The Bengals will "dood it", Dodd notwithstanding.

* * *

Kentucky vs Vanderbilt — Bryant's boys to bring to an end the Commodores' smooth sailing streak.

* * *

UCLA vs California—The "Battle of the Bears" in which the Los Angeles specie prevails over that of Berkeley.

* * *

Wisconsin vs Illinois—Two "up and down" teams meet in a Western toughie. A question of who's the highest and it could be the Badgers.

* * *

Pennsylvania vs Virginia — The Quakers won't waste any brotherly love on the Southern Cavaliers.

Georgia vs Oklahoma A. & M.—No reason for the Georgians not to have the Aggies' number a la Texas and S.M.U. especially with the titanic Trippi.

* * *

S.M.U. vs Rice — The Mustangs won't exactly thrive on this Rice diet. A vote for Neely's loudly hooting Owls.

* * *

Navy vs North Carolina — Snavelly will show his Tar Heels to the Tars.

* * *

Purdue vs Ohio State—Both down for the count last week, the Buckeyes should be up quickest to get the duke here what with the Boilermakers still suffering from Irish fever.

* * *

Southern California vs Washington—In which the behemoth Huskies demonstrate a thing or two to the Trojans.

* * *

Yale vs Cornell—The Eli off form, but beware of a Big Red revolution.

* * *

Oklahoma vs Kansas State — The Sooners shouldn't have too much trouble with the Kansans.

* * *

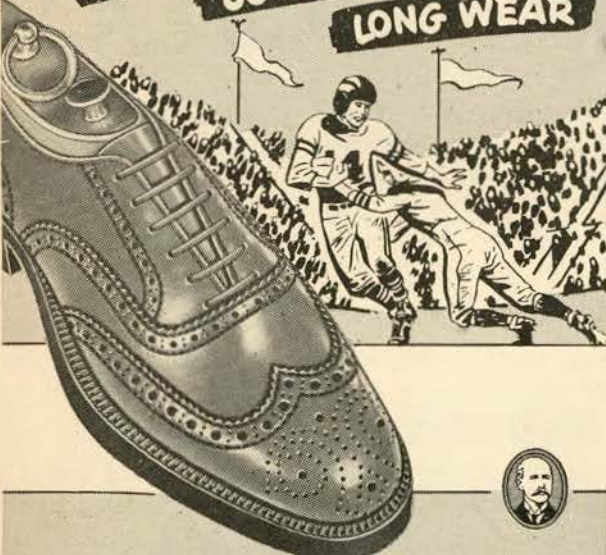
Once-overs — Miami over Florida; Texas Tech over Baylor; Tulsa over Detroit; Indiana over Iowa.

—Carol Hart.


AUBURN-TULANE SERIES

1902—Tulane 0, Auburn 0.
1910—Tulane 0, Auburn 33.
1921—Tulane 0, Auburn 14.
1922—Tulane 0, Auburn 19.
1923—Tulane 6, Auburn 6.
1924—Tulane 14, Auburn 6.
1925—Tulane 13, Auburn 0.
1926—Tulane 0, Auburn 2.
1927—Tulane 6, Auburn 6.
1928—Tulane 13, Auburn 12.
1929—Tulane 52, Auburn 0.
1930—Tulane 21, Auburn 0.
1931—Tulane 27, Auburn 0.
1932—Tulane 7, Auburn 19.
1933—Tulane 7, Auburn 13.
1934—Tulane 13, Auburn 0.
1934—Tulane 13, Auburn 0.
1935—Tulane 0, Auburn 10.
1936—Tulane 0, Auburn 0.
1937—Tulane 0, Auburn 0.
1938—Tulane 0, Auburn 0.
1939—Tulane 12, Auburn 0.
1940—Tulane 14, Auburn 20.
1941—Tulane 32, Auburn 0.
1942—Tulane 13, Auburn 27.
1944—Tulane 16, Auburn 13.
1945—Tulane 14, Auburn 20.

"TRIPLE THREAT" APPEAL
STYLE
COMFORT
LONG WEAR



W. L. Douglas Shoes
W. L. DOUGLAS SHOE CO., BROCKTON 15, MASS.



218 ST. CHARLES STREET, NEW ORLEANS
Stores in Principal Cities—Good Dealers Everywhere

AN EXCELLENT
PLACE
TO
EAT



- Lunch
- Dinner
- A-La-Carte

French and Creole
Cuisine



*Our policy is adopted for your pleasure
and convenience*



11 a. m. to 11 p. m.
Daily



BOURBON at BIENVILLE



Everything in FLOWERS!

From seedling, bulb and plant to the most beautiful fresh cut flowers and corsages here you will find everything in flowers.

CUT FLOWERS For every occasion; for sentiment and for remembrance. We specialize in weddings, parties, home and church decoration, and all festive events. Distinctive corsages are a "specialty of the house."

LANDSCAPING From drawing board to perfect garden setting, from plan to planting we offer a landscape gardening service on a scientific basis. All sketches and designs executed by a Graduate Landscape Architect.

CAMELLIAS AZALEAS trees, vines, evergreens, ornamental shrubs, and potted plants for your own garden. Over 150 varieties of healthy, sturdy camellias, representing the cream of the southern nursery stock are always on hand.

Ellis F. Robbert, Inc.

1221 S. Broad

RAYmond 9104

"Flowers are Important"

only a few yards to go . . .



(Other Pan-Am Stations conveniently located
in all parts of the City.)



There's No Place Like

HOLMES

New Orleans' Quality Department Store

NO TRIP TO NEW ORLEANS IS COMPLETE WITHOUT A VISIT TO HOLMES