

Tulane vs. Auburn

OCTOBER 21, 1944

The Greenie

Price 25¢



THESE ARE THE OFFICIAL 1944 Signals



OFF-SIDE
Hands on and off hips—repeat several times.



ILLEGAL POSITION OR PROCEDURE
Hands revolving in front of chest.



ILLEGAL MOTION OR SHIFT
Horizontal arc with either hand.



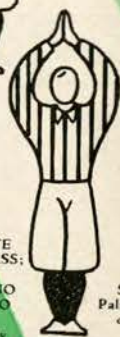
ILLEGAL DELAY OR EXTRA TIME OUT
Folded arms.



ILLEGAL USE OF HANDS OR ARMS
Grasping one wrist.



UNSPORTSMANLIKE CONDUCT
Arms outstretched, palms down.



SAFETY
Palms together overhead.



INTENTIONAL GROUNDING
Both hands over right shoulder then down hard and forward.



TIME-OUT
Hands rapidly criss-crossed overhead.



CRAWLING: HELPING THE RUNNER OR INTERLOCKED INTERFERENCE
Pushing movement with hands below waist.



BALL DEAD
One arm aloft, open hand. If hand is closed, TOUCHBACK.



UNNECESSARY ROUGHNESS
Military salute. **CLIPPING**
Salute followed by slapping back of knee with hand. **RUNNING INTO OR ROUGHING KICKER**
Salute followed by swinging leg to simulate a punt.



ILLEGAL FORWARD PASS
Waving hand behind back.



FIRST DOWN
Vigorous throwing motion concluded with outstretched arm pointing toward offensive goal.



START THE CLOCK OR NO MORE TIME-OUTS ALLOWED
Full arm circles to simulate winding a clock.



TOUCHDOWN OR FIELD GOAL
Both arms aloft and held rigid.



Listen to
"Time Out"
WITH
JOHNNY LYNCH
WWL Thursdays
5:15-5:30 P.M.

And for Your
Time Out



JACKSON BREWING COMPANY
NEW ORLEANS, LA.

DRINK **JAX**
BEST BEER IN TOWN

THE GREENIE

Vol. 14

OCTOBER 21, 1944

No. 2

Official Souvenir Football Program of Tulane University, Published for Each Home Game.

National Advertising Representative, Football Publications, 370 Lexington, New York City

IN MEMORIAM

Today's football game is dedicated to the memory of one who typified the highest ideals of Tulane athletics, to a man whose leadership and character left an imprint for good upon every man with whom he came in contact and that number includes virtually every Tulane student of the past twenty years.

The life of Mr. Monk, who was trainer of Tulane teams from 1921 until the time of his death a year ago, reminds us of the eternal verities of friendship and character and the nobility of the soul.

He was a man of simple speech, a man forthright in action, unswerving in the case of right. He was the living proof that noblesse oblige is unpatented. His was the aristocracy of warmth of heart and an anxiety for the development of the best in himself and his fellows.

One might almost have called him a reactionary, so demanding was he of the disciplines of life, so exacting was he in living up to the ideals in which he believed. That he would fight—even literally if necessary—for his ideals none who knew him doubted.

Although possessing little formal education, he was never at a loss for words when espousing a cause in which he believed, regardless of his surroundings. He had the respect of the erudite and the unlettered alike, his philosophy being picturesquely phrased by many of his own specially coined expressions such as "Let them eat stinkweed if they want; that doesn't mean I have to eat stinkweed" which was his way of telling a lad that he shouldn't permit himself to follow bad leadership.

When he wanted to put over a point of training to straighten out a recalcitrant student, he would often become garrulous in training room chatter about "pamby-amby" as he described the youngsters who demurred at paying the training price. His vivid description of the "pamby-amby" was such a scornful thing that every student shuddered at the thought of being so classified by Mr. Monk.

His understanding of human nature was almost clairvoyant. He knew when to be silent, piercing, praising, jocular, whimsical or whatever he sensed that circumstances called for to straighten one out.

He could "josh" a student into the "formative habits" that he so wanted to "inculcate" in more ways than any man we ever knew.

And the letters that have reached his family and friends from all parts of the world, from his "boys" in every theater of war attest to the fact that Mr. Monk was a man among men in this or any other age.



CLAUDE "MONK" SIMONS

*The FRESHER
The BETTER!*



**APPLE "HONEY" HELPS KEEP
OLD GOLDS FRESH!**

• A mist of Apple "Honey" is sprayed on Old Gold's fine tobaccos to help hold in the natural freshness.



The Roosevelt

New Orleans' Finest

In America's Most Interesting City



THE ROOSEVELT is located in the heart of Romantic old New Orleans. It is in the center of business and social activities and is close to the Theatre, Shopping, French Quarter, and Business Districts . . . You will like the tasteful luxury and home-like atmosphere of this modern hotel where the traditions of Southern Hospitality are maintained the year 'round.

800 ROOMS WITH BATH

MODERATE RATES



The Roosevelt
"The Pride of the South"

CARL
VOYLES
HEAD
COACH



BILLY
BALL
HALFBACK

A U B U R N



CO-CAPTAIN
TEX
WARRINGTON
CENTER



HAROLD
WATKINS
HALFBACK



CURTIS
KUYKENDALL
BACK



HERB
HAWKINS
HALFBACK



RUSSELL
INMAN
FULLBACK

Famous for
FINE FOOD
and **DRINK**



TONIGHT — enjoy specialties of these noted restaurants:

ANTOINE'S

713 St. Louis St.

ARNAUD'S

813 Bienville St.

BROUSSARD'S

819 Conti St.

KOLB'S

125 St. Charles St.

An Investment in Good Appearance



There is something about this suit that makes it look smarter, feel better, wear longer . . . and that something is

KUPPENHEIMER QUALITY

FROM \$55 TO \$65

For Discriminating Men

Mayer Israel's

714 Canal St.

"Monk" Simons Memorial Committee

October 21, 1944.

Dear Fellow Football-Fan:

"MONK" won't be on the Field this season, the first time in 25 years. Yes, in person he won't be there, but can you deny that that spirit of his to win, to fight on, to give your all, won't be there? Sure it will be there. Tulane men have learned from MONK how to carry on in "his way"—all over the world today MONK's boys are carrying on in "his way."

Tulanians everywhere want to pay their respects to MONK'S memory. So the Alumni Association has dedicated this Alumni Day Game as the **MONK SIMONS MEMORIAL GAME**. Tulanians, and other friends of Monk Simons today will observe a minute of silence in his memory just prior to the start of the Game, 3:29-3:30 p. m., Central War Time.

Further, the week of October 21-28 following this game has been dedicated as the **MONK SIMONS SWIMMING POOL REALIZATION WEEK**. During this week

we will complete the campaign for funds which was postponed for the summer months. Perhaps you have not yet contributed to the **MONK SIMONS MEMORIAL FUND**? Well, here is your opportunity to help us build a **POOL** in memory of MONK. Just fill out the blank below, attach a check and mail them to the Tulane Alumni Association, Tulane University, New Orleans 15, La. Any contribution, however large or small, will be sincerely appreciated and is a deductible Income Tax Item.

Your contribution will memorialize a great Champ and also fulfill a long-felt need of Tulane University for a swimming pool for our young Americans of tomorrow.

To the many who contributed to the Fund last spring and to those who will contribute to the Fund during **REALIZATION WEEK** we extend our sincere appreciation.

Sincerely,

DICK BAUMBACH

Tulane Alumni Association.

"MONK" SIMONS MEMORIAL FUND

Date.....

**TULANE UNIVERSITY
TULANE ALUMNI ASSOCIATION
NEW ORLEANS 15, LA.**

In consideration of the proposed Memorial honoring the late "Monk" Simons, I/We do hereby contribute the sum of

..... Dollars (\$.....)

.....
DONOR

Greetings, "Green Waves"! Welcome "Tigers"!



STUDENT TWEEDS

\$30.00

Definitely collegiate . . . grays and browns in all wool herringbones and diagonals. Suit includes matching vest. Sizes 33 to 42.

- *For Spectator Sports!*
- *For Classtime!*
- *For Campus Informals!*

Men's Clothing, MB First Floor

Maison Blanche

GREATEST STORE SOUTH

The Auburn-Tulane Series



Tulane and Auburn met for the first time in football in 1902. The game resulted in a scoreless tie. The teams didn't play again until 1921 and since that time they haven't missed a year except in 1943 when the Plainsmen failed to field a team due to the war.

In the 23 games played, Tulane has won nine games, Auburn has won eight and six have resulted in ties. Of the tie games, four were scoreless draws. There was a three-year span, 1936 to 1938 inclusive, that neither dented the other's armor.

The record by years:

1902, Tulane 0, Auburn 0; 1921, Tulane 0, Auburn 14; 1922, Tulane 0, Auburn 19; 1923, Tulane 6, Auburn 6; 1924, Tulane 14, Auburn 6; 1925, Tulane 13, Auburn 0; 1926, Tulane 0, Auburn 2; 1927, Tulane 6, Auburn 6; 1928, Tulane 13, Auburn, 12; 1929, Tulane 52, Auburn 0; 1930, Tulane 21, Auburn 0; 1931, Tulane 27, Auburn 0; 1932, Tulane 7, Auburn 19; 1933, Tulane 7, Auburn 13; 1934, Tulane 13, Auburn 0; 1935, Tulane 0, Auburn 10; 1936, Tulane 0, Auburn 0; 1937, Tulane 0, Auburn 0; 1938, Tulane 0, Auburn 0; 1939, Tulane 12, Auburn 0; 1940, Tulane 14, Auburn 20; 1941, Tulane 32, Auburn 0; 1942, Tulane 13, Auburn 27.

* * *

The Plainsmen are playing today under the direction of their new head coach, Carl Voyles. Voyles played his

football at Oklahoma A. & M. and made quite a name for himself as coach at Willaim and Mary before Auburn enticed him away from Williamsburg.

* * *

A peek at Auburn's 52-year record in football reveals that in 391 games played, 151 of the Plainsmen opponents failed to score. Over that period of years, Auburn has won 218 games, lost 142 and tied 31. Auburn scored 6180 points against 3284 for the opposition.

* * *

The 1944 schedules:

AUBURN

Sept. 29 Howard at Montgomery
Oct. 7 Ft. Benning 4th Infantry at Auburn
Oct. 14 Georgia Tech at Atlanta
Oct. 21 Tulane at New Orleans
Nov. 4 Presbyterian at Auburn
Nov. 11 Miss. State at Birmingham
Nov. 18 Georgia at Columbus, Ga.
Nov. 24 Miami U. at Miami

TULANE

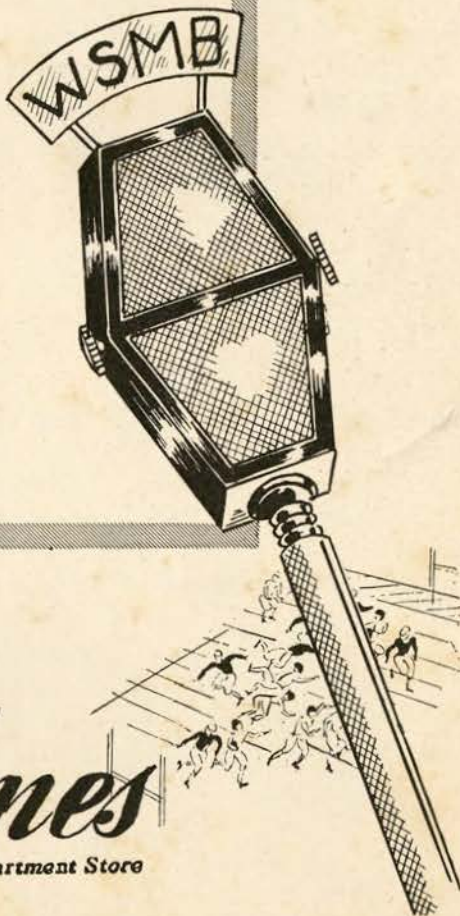
Oct. 7 Notre Dame at South Bend
Oct. 14 Rice at New Orleans
Oct. 21 Auburn at New Orleans
Oct. 28 S. M. U. at New Orleans
Nov. 11 Georgia Tech at Atlanta
Nov. 18 Clemson at New Orleans
Dec. 2 L. S. U. at Baton Rouge

HOLMES FOOTBALL BROADCASTS

Listen In!

WSMB—9:45 to 10:00 p.m.
Every Friday Night

Each Friday night during the football season, from 9:45 to 10:00 P. M., Holmes will present Mr. Horace Renegar with interesting football facts and figures. Mr. Renegar is Vice-President of the American College Publicity Association and enjoys the confidence of football coaches and sports authorities throughout the United States.



A New Series of Holmes
Football Broadcasts
Every Friday Night
9:45 to 10:00 P. M. WSMB

Holmes
New Orleans' Quality Department Store

Cam-pix

medley of

CAMPUS
PICTURES

© 1934 BY HORACE KATZ

presents

Sherwood's HIT P

QUEEN

US BANN

sept



Miss Deirdre Crager, stage manager for the Tulane University Theatre play, "The Queen's Husband," touches up the "billboard" for the eighth season's opening production.



The Crager sisters, Gretchen (left) and Deirdre (right) getting ready for a paint job.

WHERE IS PORTER'S?
HUH?



ACROSS THE STREET FROM THE COTTON EXCHANGE..




AROUND THE CORNER FROM THE ST. CHARLES HOTEL ...



OPPOSITE THE HIBERNIA NATIONAL BANK AND IN THE SAME BLOCK WITH THE AMERICAN BANK

ASK ANYBODY!

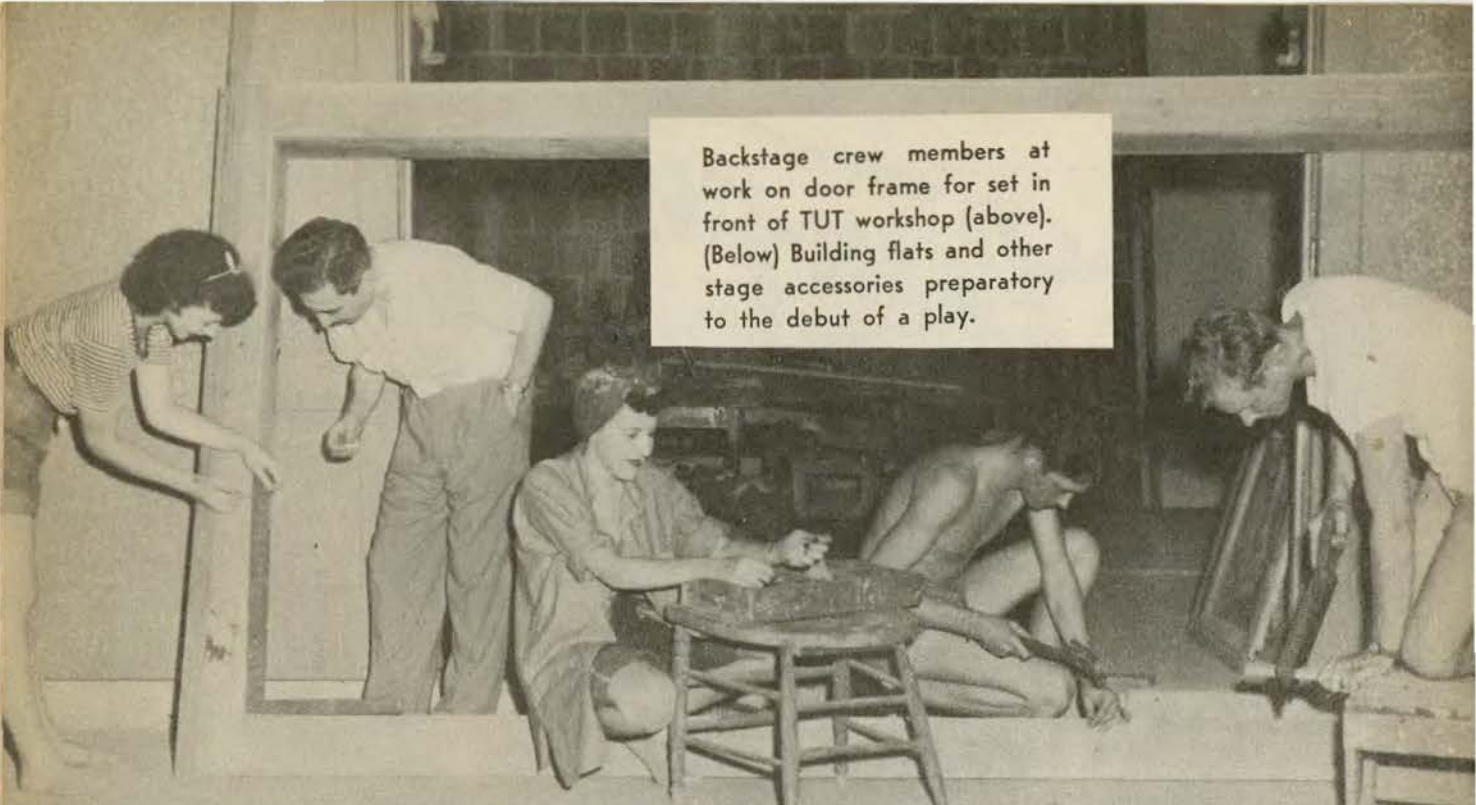


EVERYTHING MEN WEAR

Porter's


CARONDELET COR. GRAVIER STS.

Backstage crew members at work on door frame for set in front of TUT workshop (above). (Below) Building flats and other stage accessories preparatory to the debut of a play.



You pay no more for **Porter's** DEPENDABILITY!

ANY MORE?  NO NO NO 



DR. MONROE LIPPMAN
under whose direction the
Tulane University Theatre
has achieved national recognition.

DURABLE
ALL WOOL
SUITS



100%
THAT'S
ME!

AND I
CAN
TAKE IT!

\$35 from
Porter's

Established 1895

Phone WALnut 0082

TULANE UNIVERSITY PRESS

Printing Department of Tulane University



CAMPUS PRINTERS

~

Basement, Gibson Hall

New Orleans



*Better Printers
in New Orleans*

“Time Out”

DRINK—

Coca-Cola

TRADE MARK
REGISTERED

PAUSE—

RELAX—

REFRESH YOURSELF

RIGHT COMBINATION * WORLD'S BEST TOBACCOS**



TULANE

LE Molloy 21	LT Schneider 32	LG Igleheart 31	Hofman 44	Bourgeois 30	RT Roseman 35	RE Olsen 20
LHB Jones 16	FB Finley 22	RB Robinson 15	SQUAD LIST			
10 Frank, g	11 Schmitz, b	12 Renfro, b	13 Loker, e	14 Ellender, b	15 Robinson, b	16 W. A. Jones, b
17 Logan, e	18 Pechon, b	19 Timken, t	20 Olsen, e	21 Molloy, e	22 Finley, b	23 Barousse, c
24 Tournillon, c	25 McCain, b	26 Curtis Jones, t	27 Corn, b	28 Miller, K., e	29 Reynolds, g	30 Bourgeois, g
31 Igleheart, t	32 Schneider, t	33 Angulo, t	34 Kane, t	35 Roseman, t	36 Miller, W., g	37 Muller, t
38 Holsted, e	39 Marshall, g	40 Arthur, b	41 Dewes, e	42 Cuccia, g	43 Randall, b	44 Hofman, c
45 Killeen, b	46 Landry, b	47 Melton, b	48 Lewis, e	49 Terrell, g	50 Addkison, g	51 Craig, g
52 Fergerson, t	53 Heffron, c	54 Chetta, b	55 Piper, b	56 Van Geffen, g	57 L. C. Jones, b	

OFFICIALS
Umpire—J. E. Burghard (Mississippi College)
Referee—Buck Cheeves (Georgia)



AUBURN

LE Garner 40	LT Snell 44	LG Dupuy 10	Warrington 25	Hoffman 14	RG Wozniak 57	RT Moss 34	RE Moss 34
LHB Ball 50	FB Owens 19	RB Inman 48	SQUAD LIST				
10 Dupuy, g	11 Grubbs, b	14 Hoffman, g	15 Bowles, b	19 Owens, b	20 Kuykendall, b	21 Courson, t	22 Lang, b
24 Hawkins, b	25 Warrington, c	27 Smith, b	28 Watkins, b	29 Hattaway, b	30 Trotman, b	32 McKelvey, b	34 Moss, e
35 Beattie, e	38 Barton, b	39 West, e	40 Garner, e	42 Harwell, e	43 Hillegass, g	44 Snell, t	45 Autry, t
46 Sims, t	47 Silverberg, t	48 Inman, b	49 Galbreath, b	50 Ball, b	51 Swindell, b	53 McDaniel, b	
54 Harris, g	55 Stringer, t	56 Cahoon, g	57 Wozniak, t	58 Barker, g	61 Grimes, e	62 Shelby, e	63 Calhoun, c
65 Crump, c	66 Sanders, b	67 Trapam, e	68 Balwin, b	70 Herron, t	71 Wilson, g	72 Smally, b	

OFFICIALS
Head Linesman—Luke Woodall (Georgia)
Field Judge—T. L. Johnson (Georgia Tech)

On the Campus

It's CHESTERFIELD

AT THE GAME
and
AFTER THE GAME

ENJOY



D Equipment for all sports...

U Specialists in all types of
school athletic
supplies

N

L

A

P

Sporting Goods Co., Inc.

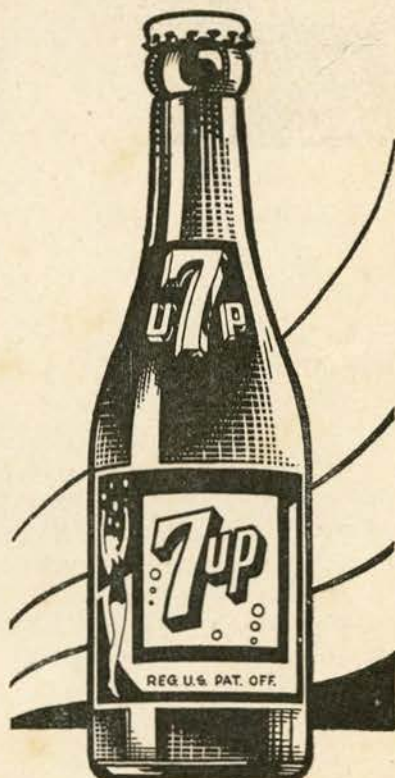
138 Carondelet Street

MAgnolia 5891

Stop!
Look!
Listen!

There's a 7-Up Boy right
down in front of you! Call
him now and Fresh-Up

With





The call of grease paint.

Organized in the fall of 1937, the Tulane University Theatre brought into unity a group of previously existing dramatic clubs on the Tulane and Newcomb campuses under the direction of Dr. Monroe Lippman. To date, twenty-six major productions have been done. Offerings have included comedy, tragedy, farce, melodrama, fantasy, mystery, and romantic plays and have ranged from the classics to contemporary popular successes. TUT has played to audiences in military camps and bases and has given war benefit performances for a Bond Drive, American Theatre Wing War Service and the Navy Relief Fund. Membership is open to all students of every college in the university, in addition to faculty and staff. Acceptable work on two of every three plays is the basis for membership.

Good Grooming
A-HEAD



with
STYLEPARK HATS
from *Porter's*



Rehearsal in progress.



TUT collegiate group
"on the air."

keep dry on WETTEST DAYS

RAINFAIR STORMCOATS



from
Porter's

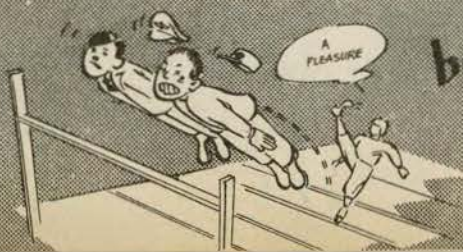


The controls for the lighting system for the stage in Dixon Hall.



Making use of the workshop's tool chest

SCORE
VICTORY
over the **AXIS!**



buy *more*
WAR BONDS and **STAMPS**
Porter's



Miss Betty Blain Lyle and Thom Collens, TUT veterans, in a feuding scene from "My Sister Eileen."

**Nunn Bush
SHOES**



**FOOT
COMFORT**



MILES OF WEAR

at
Porter's

SONGS AND YELLS

ROLL ON, TULANE

ten Hoor and Goldstein

Roll, Green Wave,
Roll them down the field.
Hold, Green Wave,
That line must never yield.
When those Greenbacks charge through the line
They're bound for victory.
Hail, Green Wave, for you
We have no fear.
Hail, Green Wave, for you we give a cheer
And ev'ry man in ev'ry play
And then we'll win that game today.
Hurrah for Old Tulane!

Hullabaloo

Hullabaloo! Ray! Ray!
Hullabaloo! Ray! Ray!
Hooray! Hooray!
Vars, Vars, T.A.A.
T.A.A! T.A.A!
Vars, Vars, T.A.A!
TULANE!!!

ALMA MATER

*Sing these words as Tulane's Alma Mater
is played*

I.
We praise thee for thy past, O Alma Mater!
Thy hand hath done 'ts work full faithfully!
The incense of thy spirit hath ascended
And filled America from sea to sea.

II.
We praise thee for thy present, Alma Mater!
Today thy Children look to thee for bread!
Thou ledest them to dreams and actions splendid!
The hunger of their souls is richly fed!

III.
We praise thee for thy future, Alma Mater!
The vista of its glory gleameth far!
We ever shall be part of thee, great Mother!
There thou wilt be where e'er thy children are!

CHORUS:

Olive Green and Blue, we love thee!
Pledge we now our fealty true
Where the trees are ever greenest,
Where the skies are purest blue!
Hear us now, O Tulane, hear us!
As we proudly sing to thee!
Take from us our hearts' devotion!
Thine we are, and thine shall be!

Official Timing Watch

TULANE-AUBURN FOOTBALL GAME

Longines

the World's Most Honored Watch

*winner of 10 world's fair grand
prizes and 28 gold medal awards*

Product of Longines-Wittnauer Watch Co.



LEONARD FINLEY
QUARTERBACK



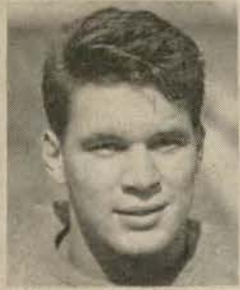
RAY ARTHUR
HALFBACK



WILLIAM A. JONES
HALFBACK



JOE RENFROE
HALFBACK



HARRY ROBINSON
FULLBACK



KENNETH MULLER
TACKLE



GASTON BOURGEOIS
GUARD



WALMSLEY LOKER
END

T
L
C
A
N
E



FRED ROSEMAN
TACKLE



ELLIOT INGLEHEART
GUARD

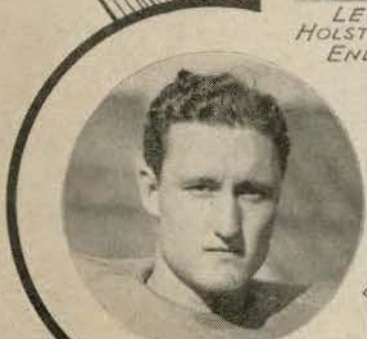


LEON
HOLSTEAD
END



TOM
KANE
TACKLE

D
R
W
I
Z
-
L
I
S



RAY OLSEN-
END



EDWIN HOFMAN
CENTER



SAM MOLLOY-
END

The Game Isn't Over 'Til The Last Whistle Blows

Many a game is won in the last second of play . . . the war isn't over 'til the last battle is won! But, feeling sure of victory, it is so easy for us here at home to think our responsibility is over . . . our duty done. IT ISN'T! Until the last shot has been fired we must stand fast behind the man behind the gun!

**BUY MORE WAR
BONDS AND STAMPS**

Godehaux's

104 years of fine apparel



Remember Your First Job? . . .

Sure you felt strange—it was all so new and unfamiliar. Everything you'd learn in school seemed to have as little bearing on what went on as last week's weather forecast.

Chances are the motorman who brought you to town this morning, or the conductor who gave you your transfer, or the bus operator who had to do both, was experiencing something of that same feeling. For since the war hundreds of new operators have replaced those who have entered the armed services. Even with the careful training they are given—much of it “on the platform”, as the saying goes,—there's always the first time when they go out on their own.

Your patience and friendliness have made it easier for them. You've remembered your first job, and overlooked the shortcomings of inexperience.

The spirit of tolerance will help keep vital transportation service going for the duration.

NEW ORLEANS *Public Service*

The Roosevelt

*The Roosevelt Hotel Offers
New Orleans' Most Diversified Program
of
Music and Entertainment*

IN THE FOUNTAIN LOUNGE

At LUNCHEON we invite you to listen to the sweet strains of the Gypsy Ensemble. For COCKTAILS and DANCING, alternately nightly from five o'clock until two the next morning is one of Latin America's noted Rhumba bands and the Society Music of one of America's outstanding combinations.

IN THE BLUE ROOM

Each evening, for DINNER and SUPPER DANCING, is presented one of the Nations famous orchestra . . . Featured also in the Blue Room Floor Shows at Dinner and Supper, are celebrated stars from radio, stage and screen.

*New Orleans' most discriminating audiences choose the Roosevelt for their
war-time relaxation and entertainment*



The Roosevelt
"The Pride of the South"

Pigskin Roundup

Record to date: Winners, 14; losers, 1; ties, 0. Pct. .934.

* * *

The old corraler had such a big week in forecasting for October 14 that he is a bit over-anxious to try his hand once again. The only miscue last week was in calling the winner of the L. S. U.-Texas A. & M. game. He was on the "nose" in all others, among them calling such toughies as Colgate-Cornell, Texas-Oklahoma, Georgia-Kentucky, Minnesota-Missouri, not to mention Yale-Columbia, Cal-College of the Pacific, Illinois-Iowa, Michigan-Northwestern, and Ohio State-Wisconsin.

* * *

So primed and cocked, here 'tis:

ALABAMA-TENNESSEE — Both have wound up their civilian teams for this one. In a battle royal, Alabama.

* * *

TEXAS-ARKANSAS—The Longhorns are roving the range.

* * *

INDIANA - NORTHWESTERN — The Hoosiers, one of the great teams of the nation, to give the Wildcat its fourth spanking in as many weeks.

* * *

KENTUCKY-V. M. I. — The Lexington 'Cats are better than their record would indicate. They should win this one.

* * *

L. S. U.-MISSISSIPPI STATE—The Maroons seem to have the edge.

WAKE FOREST- N. C. STATE — The Deacons are really Demons once more after many lean years. They should knock State over to keep their record unblemished.

* * *

NOTRE DAME-WISCONSIN—This one will be a bit rougher for the Irish, maybe the toughest yet, but the Badgers can't stop McKeever's boys.

* * *

OHIO STATE-GREAT LAKES—The big game of the day in the U. S. A. Neither has had to open up yet. Great Lakes to shade the Buckeyes.

* * *

COLGATE-PENN STATE—Not up to par, but the Red Raiders anyway.

* * *

ILLINOIS-PITT — Illinois to add to Shaughnessy's woe.

* * *

RICE-S. M. U.—Close. The Mustangs get the nod.

* * *

GEORGIA TECH-NAVAL ACADEMY—The Engineers to beat the pride of Annapolis.



WALLY SCHMITZ
QUARTERBACK



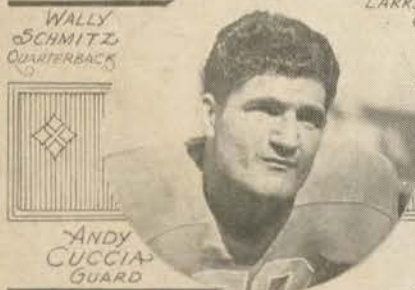
LARRY BAROUSSE
CENTER



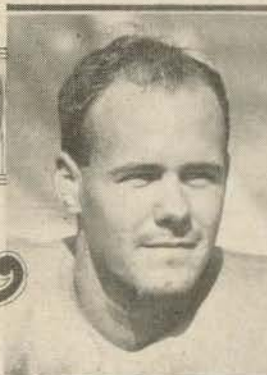
JAMES CORN
FULLBACKS



BILL REYNOLDS
HALFBACK



ANDY CUCCIA
GUARD



BENNIE ELLENDER
HALFBACK



HENRY ANGULO
TACKLE



MARVIS MOSELEY
TACKLE

TULANE



CURTIS JONES
TACKLE



CLAYTON TIMKEN
TACKLE



ALVIN DEWS
END



PRESTON CRAIG
GUARD



BOB MARSHALL
GUARD



JOHN FRANKO
GUARD



BOB LOGAN
END

GREENIE NOTES

SINCE 1915 Tulane football teams have played only under the leadership of six head coaches. Clark Shaughnessy, a University of Minnesota alumnus and now head coach at the University of Pittsburgh, headed the Green Wave football staff from 1915 through 1926, with the exception of one intervening year when he resigned to enter business. Myron Fuller served as head coach that year, 1921. Bernie Bierman, also a Minnesota alumnus and former assistant to Shaughnessy at Tulane, succeeded to the head coaching position in 1927 and continued in that capacity through 1931, when he returned to his alma mater as head coach. Bierman is now head coach at the University of Minnesota. Tex Cox, a Bierman assistant at Tulane, and like Shaughnessy and Bierman, a Minnesota graduate, succeeded Bernie. He served as head coach through 1935, when Lowell P. "Red" Dawson, a Tulane alumnus, became head of the football staff. In 1942, Claude "Little Monk" Simons, Jr., took over the reins as head coach after Dawson accepted a position at the University of Minnesota. Simons, only son of the immortal

"Big Monk," graduated from Tulane in 1935 and took over the athletic directorship at Transylvania University, from where he returned to his alma mater.

The highest score ever made by Tulane was that Southwestern Louisiana Institute of Lafayette, La., in 1912, 95-0.

Tulane's longest winning streak was in 1930-31, 18 successive triumphs starting the third Saturday of the 1930 season and ending with the Rose Bowl defeat, January 1, 1932. The second longest streak was in 1924-25-26, when the Green Wave went through 15 games without defeat, but two of the games ended in ties.

* * *

Tulane University has one of the country's largest naval training units in the V-12 program for supplying officers to the fleet. Captain Forrest U. Lake, Retired, is the commanding officer of the unit which was begun in 1943 and has a personnel of 1164 men. President Rufus C. Harris of Tulane is on the advisory board to President Roosevelt on schools in the navy program.

HAUSMANN

NEW ORLEANS'
LEADING JEWELERS



Special Department for College
and
Fraternal Jewelry

*The Thinking Fellow
Rides a Yellow*



TOYE BROS.



YELLOW CABS

W S M B

1350 Kilocycles



NEW ORLEANS' OUTLET FOR
THE N B C NETWORK



IF YOU CAN'T ATTEND THE
TULANE GAMES, TURN TO
W S M B FOR THEM.

TULANE ROSTER

No.	Name and Position	Weight	Height	Hometown	Status
10	John Frank, g.	189	5-9	New Orleans, La.	Civ.
11	Wally Schmitz, qb.	178	5-10 $\frac{3}{4}$	New Orleans, La.	V-12
12	Joe Renfro, rlb.	203	6-1 $\frac{1}{2}$	Fort Myers, Fla.	Civ.
13	Walmsley Loker, e.	175	6-2	New Orleans, La.	Civ.
14	Ben Ellender, lhb.	175	6-1 $\frac{3}{4}$	Sulphur, La.	V-12
15	Harry Robinson, fb.	185	5-10	Chattanooga, Tenn.	V-12
16	William A. Jones, lhb.	185	6-2	Ruston, La.	V-12
17	Robert Logan, e.	194	6-3 $\frac{1}{2}$	Dennison, Iowa	V-12
18	Ernest Pechon, rlb.	175	5-9	New Orleans, La.	V-12
19	Clayton Timken, t.	186	6-0	New Orleans, La.	Civ.
20	Ray Olsen, e.	182	6-2	New Orleans, La.	V-12
21	Sam Molloy, e.	188	5-11	Eden, Texas	V-12
22	Leonard Finley, qb.	180	5-10	New Orleans, La.	V-12
23	Larry Barousse, c.	182	6-0	New Orleans, La.	Civ.
24	Octave Tournillon, e.	188	6-2 $\frac{1}{2}$	New Orleans, La.	Civ.
25	Marvin McCain, fb.	185	6-0	New Orleans, La.	Civ.
26	Curtis Jones, t.	182	6-3	Benton, Arkansas	Civ.
27	James Corn, fb.	184	5-11 $\frac{1}{2}$	Cleveland, Tenn.	V-12
28	Kenneth Miller, e.	189	6-1	New Orleans, La.	V-12
29	William Reynolds, rlb.	166	5-11	Birmingham, Ala.	V-12
30	Gaston Bourgeois, g.	195	5-11 $\frac{1}{2}$	Lutcher, La.	Civ.
31	Elliott Igleheart, g.	196	5-10	Shelbyville, Ky.	Civ.
32	Leroy Schneider, t.	225	6-0	Baltimore, Md.	Civ.
33	Henry Angulo, t.	223	6-0	Tampa, Florida	Civ.
34	Tom Kane, t.	195	6-0	Kearney, N. J.	V-12
35	Fred Roseman, t.	198	6-2	Plaquemines, La.	V-12
36	William Miller, g.	195	5-11	Baton Rouge, La.	V-12
37	Kenneth Muller, t.	186	6-2	New Orleans, La.	V-12
38	Leon Holsted, e.	205	6-3	N. Little Rock, Ark.	Civ.
39	Robert Marshall, g.	190	5-9	San Antonio, Texas	V-12
40	Ray Arthur, lhb.	145	5-8 $\frac{1}{2}$	New Orleans, La.	Civ.
41	Alvin Dews, e.	143	5-9	Hattiesburg, Miss.	V-12
42	Andrew Cuccia, g.	160	5-8 $\frac{1}{2}$	New Orleans, La.	Civ.
43	James Randall, b.	158	5-10	Jackson, Miss.	V-12
44	Edwin Hofman, e.	155	5-7	Memphis, Tenn.	V-12
45	Joseph Killeen, qb.	165	5-9	New Orleans, La.	Civ.
46	George Landry, lhb.	175	5-11	Baton Rouge, La.	V-12
47	Buster Melton, lhb.	180	5-10	Tyler, Texas	V-12
48	Leo Lewis, e.	175	6-0	Lisbon, La.	V-12
49	Harold Terrell, g.	184	5-11	Port Arthur, Texas	Civ.
50	Hindon Addkison, g.	160	5-10	Hickory, Miss.	V-12
51	Preston Craig, g.	175	6-0	Portsmouth, Va.	V-12
53	Walter Ferguson, t.	190	5-10 $\frac{1}{2}$	Okeene, Oklahoma	V-12
54	Gordon Heffron, e.	180	5-11	New Orleans, La.	V-12
56	Anthony Chetta, lhb.	170	5-9 $\frac{1}{2}$	New Orleans, La.	Civ.
57	Mike Piper, rlb.	175	5-10 $\frac{1}{2}$	New Orleans, La.	Civ.
58	Eugene Van Geffen, g.	165	5-10 $\frac{1}{2}$	New Orleans, La.	Civ.
59	L. C. Jones, qb.	175	6-0	Wharton, Texas	V-12

AUBURN ROSTER

No.	Name and Position	Weight	Height	Hometown	Class
10	Burke Dupuy, g.	175	5-9	Birmingham, Alabama	Soph.
11	Clifford Grubbs, b.	160	5-9	Auburn, Alabama	Fr.
14	Ralph Hoffman, g.	226	5-11	Fairhope, Alabama	Fr.
15	Billy Bowles, b.	172	6-0	Tallassee, Alabama	Fr.
19	Hunter Owens, b.	205	6-1	Mt. Pleasant, Tenn.	Senior
20	Curtis Kuykendall, b.	157	5-10	Sallis, Mississippi	Sr.
21	Leland Courson, t.	205	6-0	Troy, Alabama	Fr.
22	Nolan Lang, b.	197	6-10	Waycross, Georgia	Fr.
24	Herbert Hawkins, b.	164	5-11	Georgiana, Alabama	Fr.
25	"Tex" Warrington, e.	200	6-2	Dover, Delaware	Sr.
27	John Smith, b.	176	5-11	Glencoe, Alabama	Fr.
28	Harold Watkins, b.	165	5-11	Columbus, Georgia	Soph.
29	Dan Hattaway, b.	166	5-9	Troy, Alabama	Fr.
30	Bubber Trotman, b.	166	5-8	Troy, Alabama	Fr.
32	Ross McKelvey, b.	165	5-10	Toronto, Ontario	Fr.
34	Ben Moss, e.	163	6-1	Eastonville, Georgia	Jr.
35	Don Beattie, e.	150	5-10	McKeesport, Pennsylvania	Fr.
38	Coker Barton, b.	180	6-0	Birmingham, Alabama	Fr.
39	Harold West, e.	172	6-0	Piedmont, Alabama	Fr.
40	L. C. Garner, e.	178	5-11	Bessemer, Alabama	Fr.
42	Everett Harwell, e.	181	6-0	Birmingham, Alabama	Jr.
43	Alvin Hillegass, g.	159	5-10	McKeesport, Pennsylvania	Fr.
44	Denvard Snell, t.	271	6-3	Dothan, Alabama	Fr.
45	Max Autry, t.	199	6-0	Greenville, Alabama	Fr.
46	Derwood Sims, t.	179	6-0	Phoenix City, Alabama	Fr.
47	Arnold Silverberg, t.	179	5-10	Jacksonville, Florida	Jr.
48	Russell Inman, b.	185	5-10	Birmingham, Alabama	Fr.
49	Scott Galbreath, b.	155	5-8	Natchez, Mississippi	Jr.
50	Billy Ball, b.	147	5-7	Winston-Salem, N. C.	Fr.
51	Sam Swindell, b.	170	6-0	Richmond, Virginia	Fr.
53	James McDaniel, b.	180	5-9	Birmingham, Alabama	Fr.
54	Ralph Harris, g.	169	5-9	Lucien, Mississippi	Fr.
55	Raymond Stringer, t.	209	5-11	Highland Home, Alabama	Soph.
56	Jack Cahoon, g.	182	6-0	Gadsden, Alabama	Fr.
57	Joe Wozniak, t.	208	6-0	Shenandoah Heights, Pa.	Fr.
58	Harold Barker, g.	189	6-1	Turtle Creek, W. Va.	Fr.
61	Don Grimes, e.	165	5-10	Columbus, Georgia	Fr.
62	Bill Shelby, e.	162	5-9	Florence, Alabama	Fr.
63	Howard Calhoun, e.	171	5-10	Hueytown, Alabama	Fr.
65	Charles Crump, e.	180	6-0	Birmingham, Alabama	Fr.
66	Chuck Sanders, b.	189	5-10	Brazil, Indiana	Soph.
67	Reid Trapam, e.	160	5-9	Savannah, Georgia	Fr.
68	Louis Balwin, b.	143	5-8	Winston-Salem, N. C.	Fr.
70	Paul Herron, t.	235	5-10	Sturgis, Kentucky	Soph.
71	Karow Wilson, g.	165	5-9	Dothan, Alabama	Fr.
72	Fraire Smalley, b.	160	5-10	Dublin, Georgia	Jr.

The Official Watch for Timing All Tulane Games is a Longines—"The World's Most Honored Watch"

only a few yards to go . . .



to a
**PAN-AM
STATION**



(Other Pan-Am Stations conveniently located
in all parts of the City.)

HOME LOANS

TO BUY...

REFINANCE... REPAIR

Your Home

Liberal Terms

Low Interest Rates

OFFICERS

J. D. Byrne, President
A. E. Thouron, Vice-President
J. E. McMahon, Vice-President
Chas. A. Nehlig, Vice-President
Jacob Schaaf, Secretary-Treasurer
Chas. F. Buck, Jr., Attorney
Bernard Titche, Jr., Notary
Frank W. Magne, Notary
Roger P. Sharp, Bldg. Expert

DIRECTORS

Herman T. Bartels
Chas. F. Buck, Jr.
J. D. Byrne
Frank G. Costley
E. J. Engelbracht
A. Percy Generes
Stephen L. Guice
Frank W. Hart
Hunter C. Leake
Frank W. Magne
J. E. McMahon
Chas. A. Nehlig
R. Oliver
Henry P. Pfeffer
Jacob Schaaf
W. W. Sutcliffe, Jr.
H. L. Swift
George P. Thompson
A. E. Thouron
Bernard Titche, Jr.



EQUITABLE MUTUAL

HOMESTEAD ASSOCIATION

"Home Financing Since 1885"

511 Carondelet Street

Phone Raymond 3405