

The Greenie

TULANE vs. RICE

OCTOBER 10, 1942 • Price 25¢



THE STAR-SPANGLED BANNER

O — say can you see, by the dawn's early light, What so proud — ly we hailed at the
 On the shore dim — ly seen thru the mists of the deep, Where the foe's haugh — ty host in dread
 O — thus be it ever, when — free men shall stand, Be — tween their lov'd homes and the

twi — light's last gleam — ing? Whose broad strips and bright stars, thru the per — i — lous fight, O'er the
 sil — ence re — pos — es, What is that which the breeze, O'er the tow — er — ing land, As it
 wars des — o — la — tion! Blest with vic — tory and peace, may the heav'n re — cued land Praise the

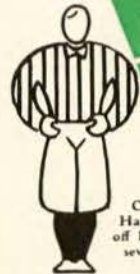
ram — parts we watch'd were so gal — lant — ly stream — ing? And the rock — ets' red glare, the bombs
 fit — ful — ly blows, half — con — ceals, half — dis — clos — es? Now it catch — es the gleam of the
 Pow'r that hath made and pre — served us a na — tion! Then — con — quer we must, when our

burst — ing in air, Gave proof thru the night that our flag was still there, O — so, does that
 morn — ing's first beam in full glo — ry re — flected now — shines on the stream, 'Tis the Star — Spang — led
 cause it is just, And — this be our mot — to: "In God is our trust!" And the Star — Spang — led

Star — Spang — led Ban — ner — yet — wave O'er the land — of the free and the home of the brave!
 Ban — ner, O long may it wave O'er the land — of the free and the home of the brave!
 Ban — ner in tri — umph shall wave O'er the land — of the free and the home of the brave!

Ray

THESE ARE THE OFFICIAL 1942 Signals



OFF-SIDE
Hands on and off hips—repeat several times.



ILLEGAL POSITION OR PROCEDURE
Hands revolving in front of chest.



ILLEGAL MOTION OR SHIFT
Horizontal arc with either hand.



ILLEGAL DELAY OR EXTRA TIME OUT
Folded arms.



ILLEGAL USE OF HANDS OR ARMS
Grasping one wrist.



UNSPORTSMANLIKE CONDUCT
Arms outstretched, palms down.



SAFETY
Palms together overhead.



INTENTIONAL GROUNDING
Both hands over right shoulder then down hard and forward.



FORWARD PASS OR FAIR CATCH INTERFERENCE
Pushing arms forward, palm vertical.



BALL ILLEGALLY TOUCHED, KICKED OR BATTED
Lapping both shoulders with finger tips.



INCOMPLETE FORWARD PASS; PENALTY DECLINED; NO PLAY OR NO SCORE
Hands rapidly criss-crossed in horizontal plane.



BALL DEAD
One arm aloft, open hand. If hand is closed, TOUCHBACK.



CRAWLING; HELPING THE RUNNER OR INTERLOCKED INTERFERENCE
Pushing movement with hands below waist.



UNNECESSARY ROUGHNESS
Military salute. CLIPPING: Salute followed by slapping back of knee with hand. RUNNING INTO OR ROUGHING KICKER: Salute followed by swinging leg to simulate a punt.



TOUCHDOWN OR FIELD GOAL
Both arms aloft and held rigid.



ILLEGAL FORWARD PASS
Waving hand behind back.



FIRST DOWN
Vigorous throwing motion concluded with outstretched arm pointing toward offensive goal.



START THE CLOCK OR NO MORE TIME-OUTS ALLOWED
Full arm circles to simulate winding a clock.



Listen to
"Time Out"
WITH
JOHNNY LYNCH

WSMB MONDAYS
9:30-9:45 P.M.

And for Your
Time Out



JACKSON BREWING COMPANY
NEW ORLEANS, LA.

DRINK **JAX**
BEST BEER IN TOWN

THE GREENIE

Vol. 12

OCTOBER 10, 1942

No. 2

Official Souvenir Football Program of Tulane University, Published for Each Home Game.

National Advertising Representative, Football Publications, 370 Lexington, New York City.

This is Jess Neely's fourth visit to Tulane. His 1938 Clemson team stemmed the Green Wave 13-10 but lost the 1939 game to Tulane's Sugar Bowl team, 7-6. His Rice team suffered a 15-6 defeat at the hands of the Greenies in 1940.

Last year, Rice handed the Wave its first defeat of the season. The Owls won at Houston 10-9 to tie the Tulane-Rice series. Each team has won three games and the 1920 clash was a scoreless tie.

Rice plays an eleven game schedule this fall and all except the Tulane, North Carolina and Arkansas games are scheduled at Rice Field.

Rice is a co-educational institution with an enrollment of 1350.

Rice has only played football for 14 years and won the Southwestern Conference championships in 1934 and 1937. The Owls played in the 1938 Cotton Bowl game and downed Whizzer White and Colorado, 28-14.

Rice Institute was founded by the late William Marsh Rice who died in 1900 before his plan for the school materialized. Dr. Edgar Lovett is president and has been since 1912 when the doors of the school were first opened. Rice is located on a 300-acre campus in

Houston's South End, bordered by the city's main thoroughfare. Rice is non-sectarian.

Next week, Tulane travels to Athens, Ga., to play the undefeated, untied, Georgia Bulldogs. Georgia has a strong offense built around All-American Frank Sinkwich. Last fall, Georgia led the nation's teams in ground gaining with 3940 yards in 11 games. On the other hand, Tulane allowed nine opponents only 661 yards or an average of 1.8 yards per play.

The Green Wave returns home on October 24 to play the North Carolina Tarheels. The Greenies will play Vanderbilt, Miss. State, and Ga. Air Cadets at home before closing their season on Thanksgiving Day at Baton Rouge against Louisiana State.

Compare

**YOUR BRAND WITH
OLD GOLD**

- ★ **lowest in Nicotine**
- ★ **lowest in Irritating Tars
and Resins**

AS SHOWN BY READER'S DIGEST TESTS



THE smoke of Old Gold *lowest* in nicotine! Old Gold *lowest* in throat-irritating tars and resins. That's what impartial, scientific Reader's Digest tests showed. But no laboratory can show you how delightful today's Old Golds *taste!* Get *New Old Golds!*

P. Lorillard Company, Established 1760

Tickets for
Tulane-North Carolina
Game

Tulane Stadium
October 24

Now on Sale

221 Baronne Street

\$1.50 and \$2.85 for Reserved Seats

W S M B

1350 Kilocycles

New Orleans' outlet for
the NBC Red
Network

●
If you can't attend the
Tulane games, turn to
W S M B for them.

Buy
War
Bonds



*next to the AWVS uniform—
the suit for these times is a—*

Companion
Suit

Goodlooking and SO practical . . .
trim tweed suit with full length
matching coat. You'll always feel
well dressed in these smart team-
mates.

16.⁹⁵ ea.

Mayer Israel's

RICE OWLS



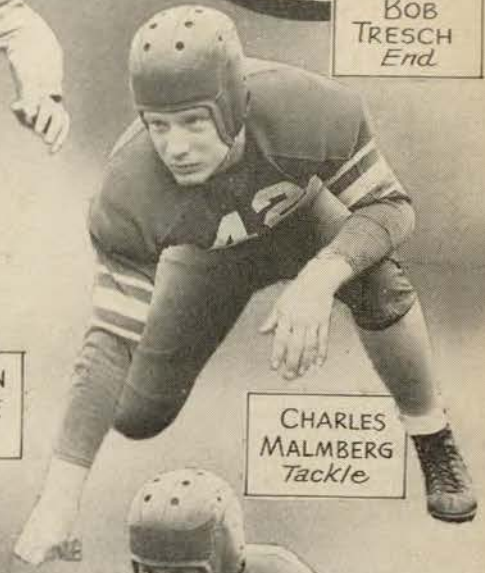
CAPTAIN
BOB
TRESCH
End



COACH
JESS
NEELY



WELDON
HUMBLE
Guard



CHARLES
MALMBERG
Tackle



TED
BRANNON
Tackle



DICK
DWELLE
Fullback



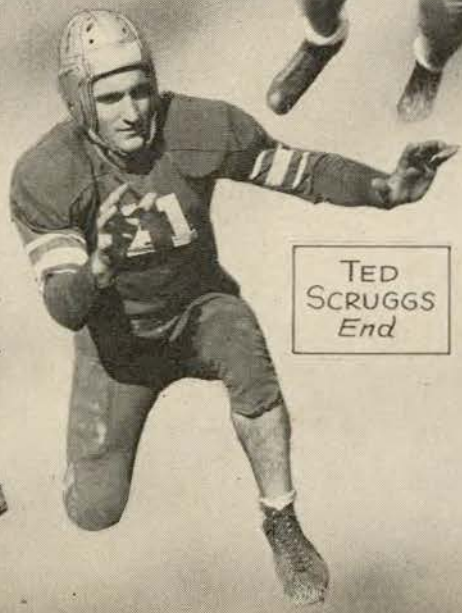
STONE
QUILLIAN
Guard



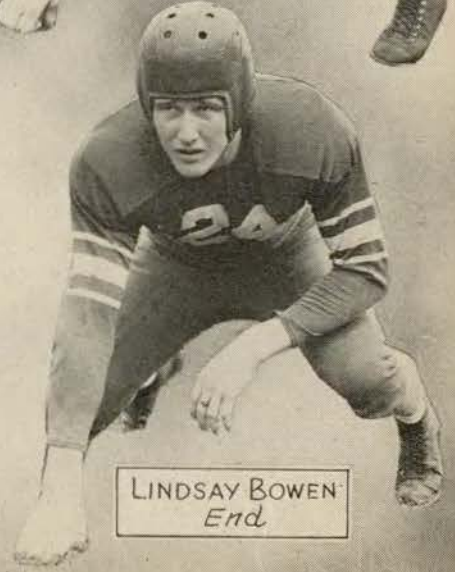
BILL
BLACKBURN
Center



JIM
NALL
Back



TED
SCRUGGS
End



LINDSAY BOWEN
End

... the Fourth Quarter ends the Game. but

Play Continues at The ROOSEVELT!



HOTEL ROOSEVELT is New Orleans' finest and largest. The center of Social and Business Activities . . . After each game, football fans gather here to enjoy themselves and score another touchdown.

BLUE ROOM

Frankie Masters and his orchestra. Nightly with these stars direct from Broadway—Chandra-Kaly and his dancers—Doc Marcus—Marlyn Stewart—Edith Lambot—Phylis Myles—Billy Lowe. Shows, 7:30, 12:15.

FOUNTAIN LOUNGE

Continuous music and entertainment from 5 p. m. until 2 a. m. featuring Herb Sherry and his Society Band. Manuel Ovando and his Rhumba Band. Paul Sutton and his Musical Scrap Book.

COFFEE SHOP

DINNER in a quiet, comfortable atmosphere from six until ten o'clock . . . Prices begin at eighty-five cents. The Coffee Shop is also open for Breakfast and Luncheon . . .

THE ROOSEVELT

TULANE



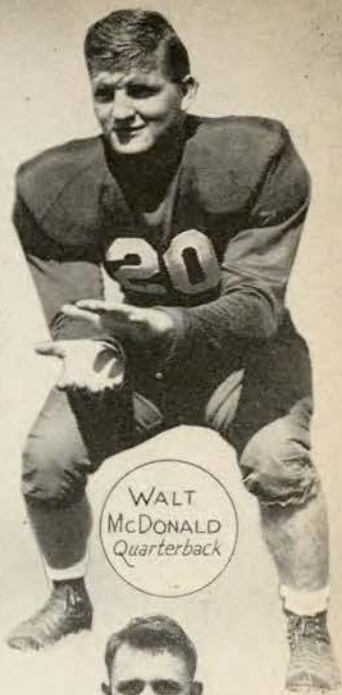
AL
STOLEN
Center



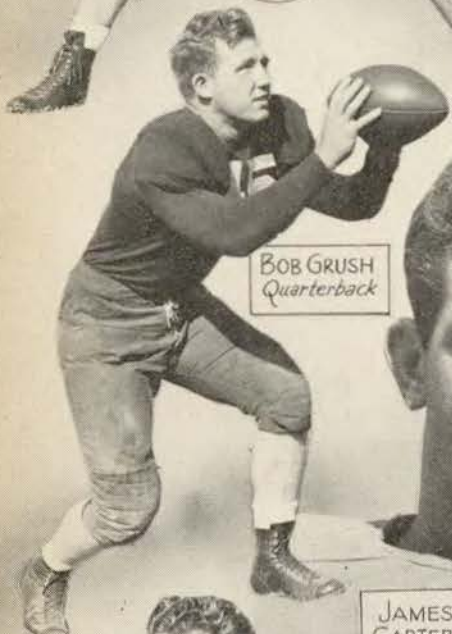
BERNARD
PRACKO
Fullback



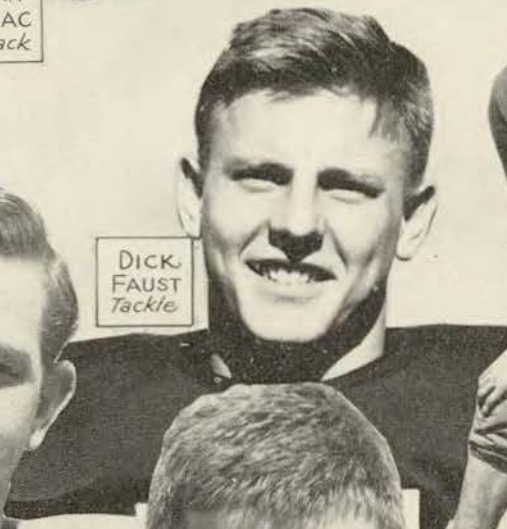
JULIAN
BRIGNAC
Fullback



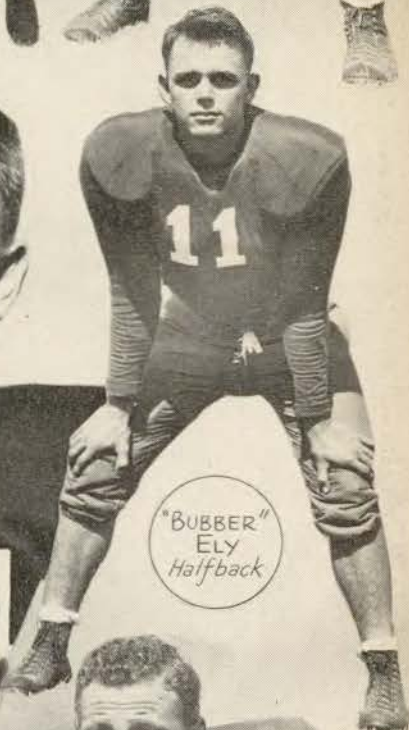
WALT
MCDONALD
Quarterback



BOB
GRUSH
Quarterback



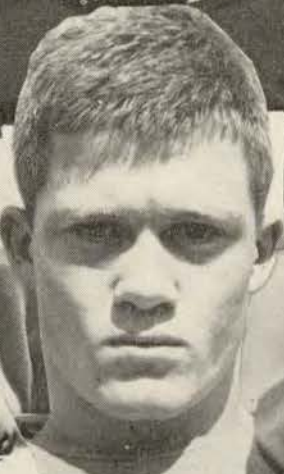
DICK
FAUST
Tackle



"BUBBER"
ELY
Halfback



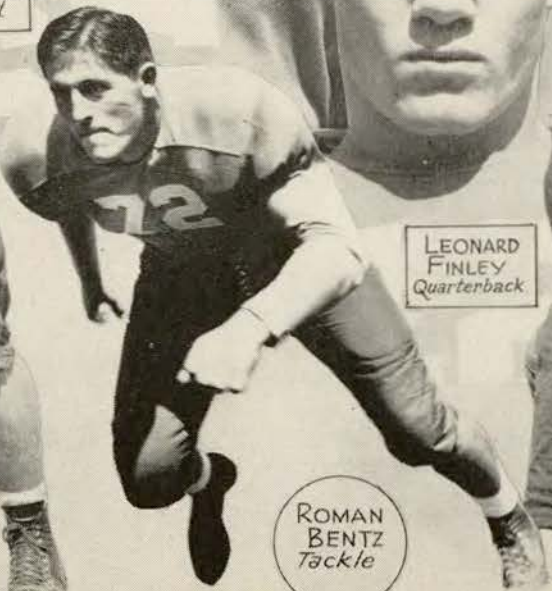
JAMES
CARTER
Guard



LEONARD
FINLEY
Quarterback



MARTY
COMER
End



ROMAN
BENTZ
Tackle



JAY
ROWLAND
End



Memo to
THE MAN ON A STRAP

We're sorry you were crowded but these days you know there are more people than ever before who depend on the street cars and buses to take them where they want to go.

Staggered working hours will help a lot to spread rush hour travel. Other changes, too, may be necessary as more people turn to public transportation.

Transit is a war industry . . . to keep it rolling is everyone's concern.

Here's how you can help:

Have the exact fare ready.

Move away from the entrance of street cars or buses to avoid congestion or delay.

Don't overcrowd vehicles — wait for the next one.

Avoid rush hours whenever possible. Try to arrange shopping, recreation and social calls at other than peak periods.

NEW ORLEANS PUBLIC SERVICE INC.

1942
Tulane Football Schedule



Sept. 26—Southern California at Los Angeles
Oct. 3—Auburn at New Orleans
Oct. 10—Rice at New Orleans
Oct. 17—Georgia at Athens, Ga.
Oct. 24—North Carolina at New Orleans
Oct. 31—Vanderbilt at New Orleans
Nov. 7—Mississippi State at N.O. (Homecoming)
Nov. 14—Georgia Naval Aviators at New Orleans
Nov. 26—L. S. U. at Baton Rouge

HAUSMANN
INCORPORATED

NEW ORLEANS'
LEADING JEWELERS



*Special Department for College
and
Fraternal Jewelry*

*The Thinking Fellow
Calls a Yellow*



Phone RAYmond 3311



TOYE BROS.
YELLOW CABS

PIGSKIN ROUNDUP

By ED BALDINGER

ALABAMA-Pensacola Cadets—The Tide will continue to roll on.

Brown-COLUMBIA — This is the Lions' year to roar.

CORNELL-Army — We'll still stick with the Big Red despite last week's defeat.

GA. NAVAL CADETS-Duke—The Cadets are undefeated and Duke lost its opener. One for the Cadets.

Florida-AUBURN — The Plainsmen are too strong for the green 'Gator line.

F O R D H A M-No. Carolina — The Rams to bounce back.

GEORGIA-Ole Miss — Until something better comes along, Georgia gets our vote.

GA. TECH-Chattanooga—The Engineers are good this year and will win this one without much trouble.

Kentucky-V A N D E R B I L T—The Commodores have one of the best teams in the Southeastern Conference.

L. S. U.-Miss. State — Two good teams battle at Baton Rouge and the game may end in a tie.

IOWA CADETS-Michigan — The Cadets downed Minnesota and get a trembling nod over the undefeated Wolverines.

Illinois-MINN. — The Gophers lost last week and won't lose again for a long time to come.

OHIO ST.-So. Cal.—The Buckeyes have too much scoring ability for the westerners.

Yale-PENN—Old Eli won't win this one.

GREAT LAKES-Pitt — The sailors will win after a tough game.

Purdue-NORTHWESTERN — The Wildcats pulled an upset last week and are too strong for Purdue.

T. C. U.-Kansas—The Horned Frogs will win this one.

Oklahoma-TEXAS — Still good despite one defeat.

NOTRE DAME-Stanford—The Irish haven't won a game yet. This will be their first victory.



AT THE GAME
and
AFTER THE GAME
ENJOY



D Equipment for all sports...

U

*Specialists in all types of
school athletic
supplies*

N

L

A

P

Sporting Goods Co., Inc.

138 Carondelet Street
MAGNOLIA 5891

Stop!
Look!
Listen!

There's a 7-Up Boy right
down in front of you! Call
him now and Fresh-Up

With



Cam-pix

a medley of
**CAMPUS
PICTURES**

© 1942 BY HORACE RENEGAR



WETZEL
PRINTING

ROLL ON! GREEN WAVE!



They've got jive, they've got swing—those Greenie beauties who are leading Tulane cheers this year. Both Newcomb students—



STYLEPARK HATS

*be HEADED right
with a STYLEPARK HAT from*

Porter's



Jitterbug Idamay Hayden was introduced to fans last year, while Betty-Blaine Lyle is making her cheering debut this fall.

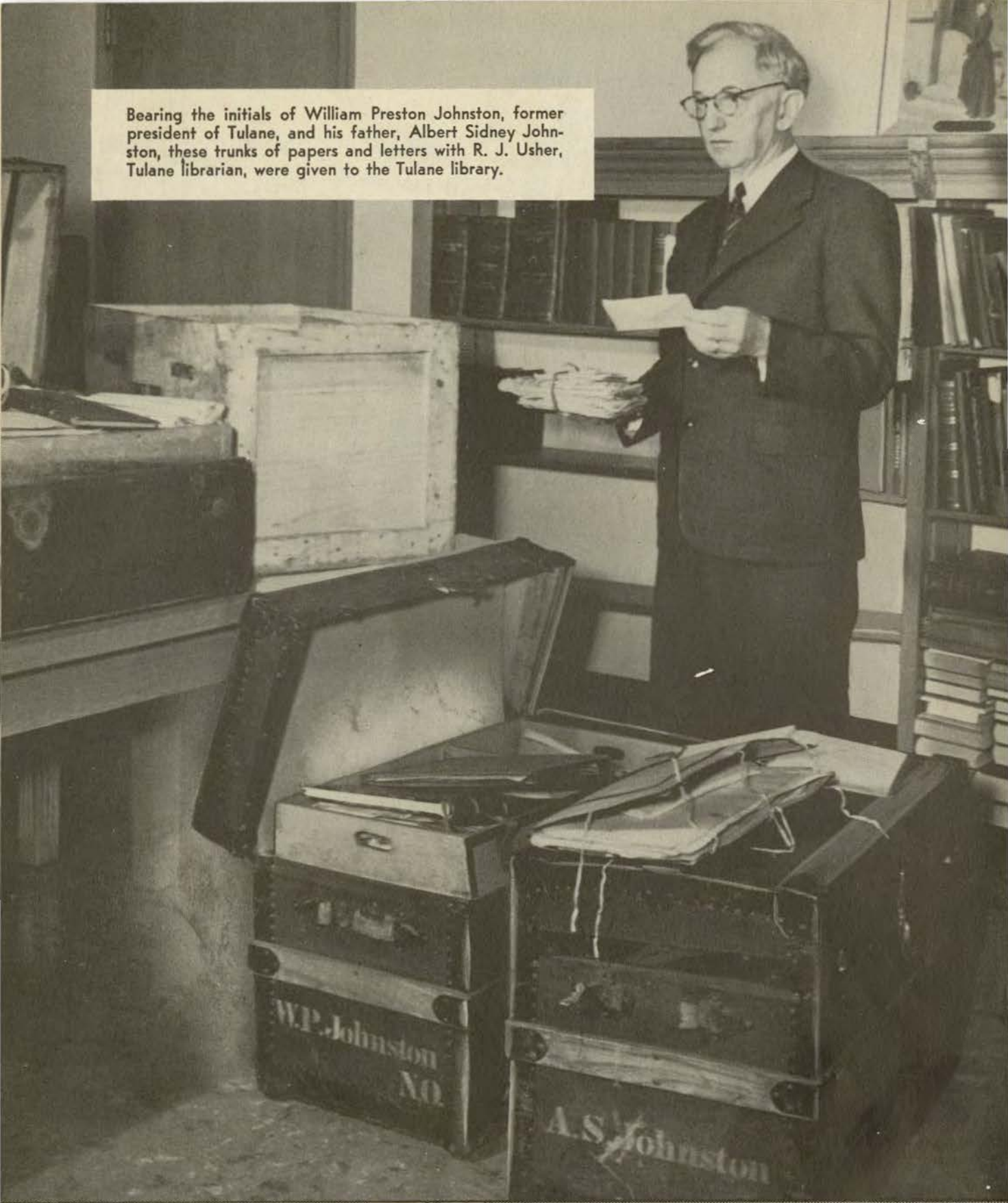
You pay no more



for

Porter's
DEPENDABILITY!

Bearing the initials of William Preston Johnston, former president of Tulane, and his father, Albert Sidney Johnston, these trunks of papers and letters with R. J. Usher, Tulane librarian, were given to the Tulane library.



Wm Bush
SHOES



2 FEET
OF COMFORT
AND STYLE

Porter's

from ..

Famous for



CUISINE and



CELLARS

TONIGHT—enjoy specialties of these noted restaurants:

ANTOINE'S

713 St. Louis St.

ARNAUD'S

813 Bienville St.

BROUSSARD'S

819 Conti St.

KOLB'S

125 St. Charles St.

The official football
timing watch for

TULANE - RICE

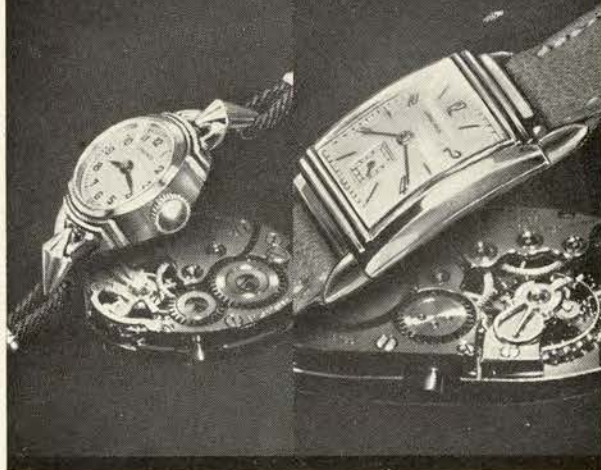
Longines

THE WORLD'S MOST HONORED WATCH

Longines, official football timing watch for this game, is the sports world's most honored watch. For many years Longines Watches have timed the principal championship football, track, basketball, swimming, auto racing, aviation, ski, bobsledding, rodeo, and other sports events. For the 1940 Olympics Longines was selected as exclusive official watch; an honor which was repeated by the Organization Committee for the first Pan-American Sporting Games.

Other Longines honors include 10 world's fair grand prizes, 28 gold medals, and more acknowledgments of accuracy than have been won by any other timepiece. Throughout the world, no other name on a watch means so much as Longines, *the world's most honored watch.*

*The beating heart of every Longines Watch
the Longines "Observatory Movement"*



The skill, experience, and workmanship necessary for the construction of Longines Watches for precision timing, aviation, and navigation, are reflected in the greater accuracy of every Longines Watch at any price. And every Longines Watch contains the Longines "Observatory Movement" world-honored for greater accuracy and long life. Longines jewelers also sell the Wittnauer Watch, a companion line of moderate price, product of—Longines-Wittnauer Watch Company, 580 Fifth Avenue, New York, N. Y.

*REG. U. S. PAT. OFF.

It's all the GO CHESTERFIELD

Smokers cheer for the cigarette that really performs... gives them a Milder smoke... cheers them with its Cooler, Better Taste—

— that's CHESTERFIELD



TULANE

			FB Pracko 32		LH Thomas 42	
	RH Ely 11		QB McDonald 20			
RE Comer 82	RT Bentz 72	RG Holm 64	C Stolen 52	LG Faust 74	LT Tessier 62	LE Porter 30

SQUAD LIST

- | | | |
|-----------------|----------------|---------------|
| 10 Brignac, f | 45 Fortier, hb | 71 Lennox, t |
| 11 Ely, h | 46 Campora, hb | 72 Bentz, t |
| 12 Renfro, h | 50 Young, c | 73 Balen, t |
| 20 McDonald, q | 51 Rice, c | 74 Faust, g |
| 21 Grush, q | 52 Stolen, c | 75 McAfee, t |
| 22 Finley, q | 54 Herbert, c | 80 Jones, e |
| 29 Maginnis, g | 60 Tetek, g | 81 Rowland, e |
| 30 Porter, e | 61 Green, g | 82 Comer, e |
| 31 Jackson, c-q | 62 Tessier, t | 83 Jahncke, e |
| 32 Pracko, f | 64 Holm, g | 84 White, e |
| 37 McFaul, h | 65 Carter, g | 85 Cies, e |
| 38 Pittman, f | 66 Rhea, t | 86 Holland, e |
| 40 Key, h | 68 Garbark, t | 88 O'Brien, e |
| 41 Fischer, h | 69 Deramee, g | 96 Eyrich, g |
| 42 Thomas, h | 70 Heintz, t | |

OFFICIALS

- Referee
T. G. Kain (Georgia)
- Umpire
Howard A. Allen (Morningside)

RICE

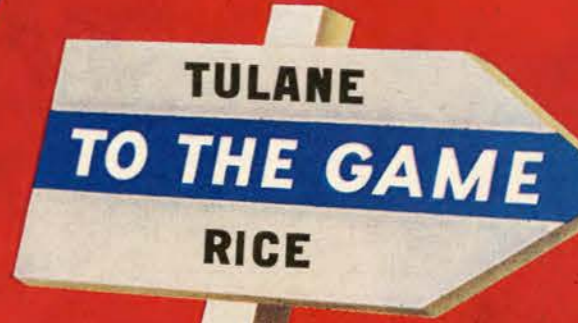
			FB Dwelle 30		LHB Eickenberg 49	
	RHB Jacob 45		QB Nall 24			
RE Scruggs 86	RT Armstrong 76	RG Humble 60	C Blackburn 51	LG Quillian 67	LT Brannon 75	LE Williams 85

SQUAD LIST

- | | | |
|-----------------|------------------|------------------|
| 12 Fooshee, hb | 46 Dickinson, qb | 72 Andrews, t |
| 14 Ely, hb | 49 Eikenberg, qb | 73 Bowen, t |
| 15 Perkins, hb | 50 Wragg, c | 74 Spruill, t |
| 16 Buckley, hb | 51 Blackburn, c | 75 Brannon, t |
| 19 Odom, hb | 54 Dearmore, c | 76 Armstrong, t |
| 20 Sultis, hb | 56 Bennett, c | 78 Nawlin, t |
| 23 Shirocky, hb | 60 Humble, g | 79 Whitlow, t |
| 24 Nall, hb | 64 Magee, g | 81 Lloyd, e |
| 30 Dwelle, fb | 65 McVicker, g | 83 Tresch, e |
| 36 Stephens, fb | 66 Lunday, g | 84 McLaughlin, e |
| 39 Cain, fb | 67 Quillian, g | 85 Williams, e |
| 41 Prosser, qb | 70 Malmberg, t | 86 Scruggs, e |
| 43 Willard, qb | 71 Armstrong, t | 89 McClellan, e |
| 45 Jacob, qb | | |

OFFICIALS

- Field Judge
Harry G. Mouat (Armour)
- Head Linesman
George C. Gardner (Georgia Tech)



JOHNNIE "Calls" THE SIGNALS!



Crawling or pushing. 5 yards; helping ball carrier, 15 yards.



Holding. (Penalty—by offense, 15 yards; by defense, 5 yards.)



Delay of game or extra time-outs. (Penalty, 5 yards.)



Player illegally in motion. (Penalty, 5 yards. If from shift or huddle, 15 yards.)



Interference with forward pass, or pass touching ineligible player. (Penalty, if interference by offense, 15 yards; otherwise, ball goes to opponents at point of foul.)



Illegal forward pass.



Safety.



Penalty refused, incomplete pass, missed field goal or conversion, both sides offside, etc.



Unnecessary roughness, illegal defensive use of the hands, clipping, running into or roughing the kicker. (Penalty, 15 yards.)



Score—touchdown, field goal, or conversion.



Offside or violation of kick-off formation. (Penalty, 5 yards.)



Time out.



FOR TRUE SMOKING PLEASURE
Call for **PHILIP MORRIS**

Penalties

LOSS OF FIVE YARDS

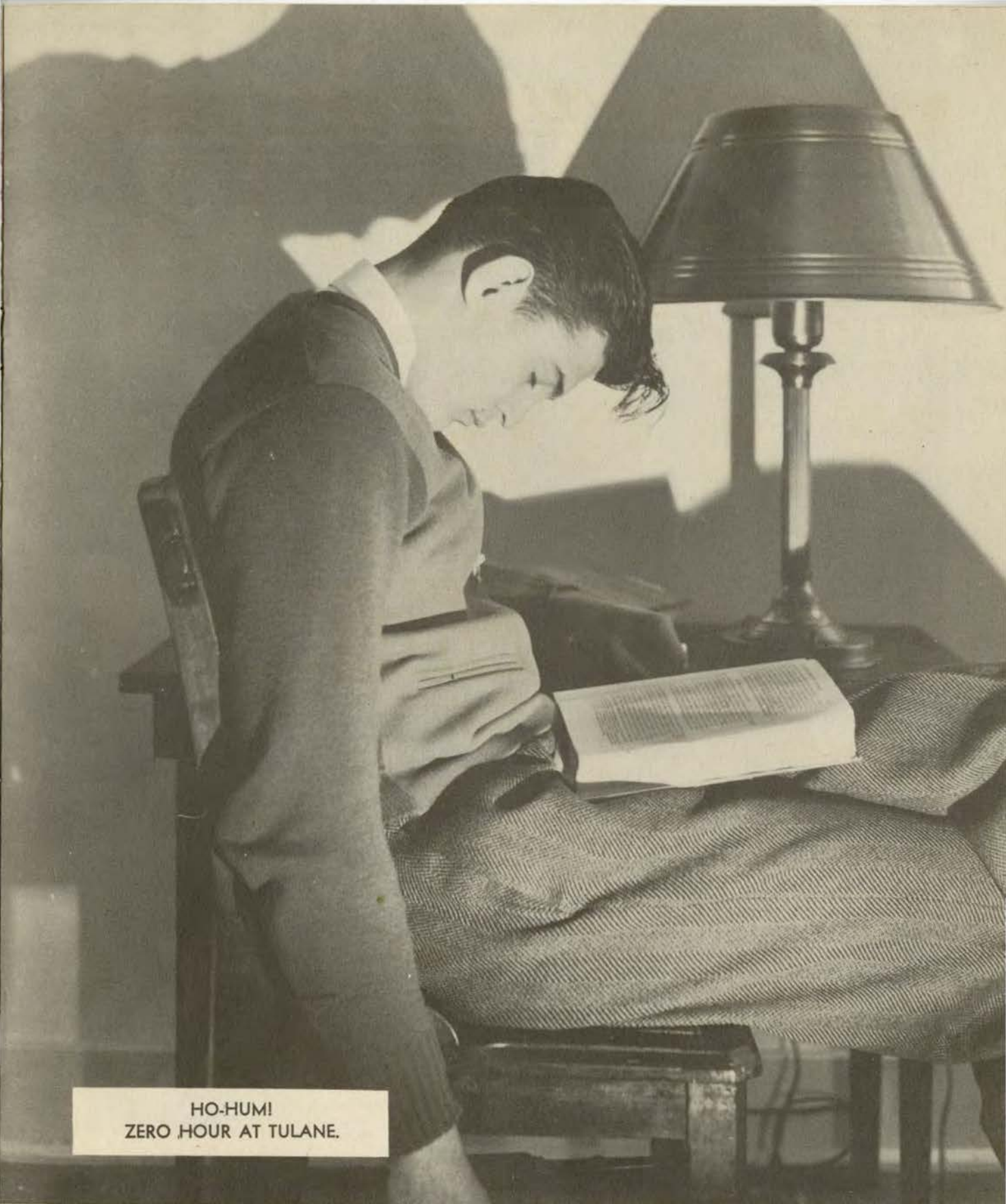
- 1 Taking more than three times out during either half
- 2 Illegal delay of game
- 3 Failure of substitute to report to umpire
- 4 Violation of kick-off formation
- 5 Failure to maintain proper alignment of offensive team before ball is snapped. Also, backfield man illegally in motion
- 6 Offside by either team, or encroachment on neutral zone.
- 7 Attempt to draw opponents offside
- 8 Taking more than two steps with ball after signaling for fair catch
- 9 Illegal use of hands and arms by defensive players
- 10 Flying block or flying tackle
- 11 Running into kicker
- 12 Crawling by the runner

LOSS OF FIFTEEN YARDS

- 13 Team not ready to play at scheduled time
- 14 Substitute communicating with teammates before ball is put in play
- 15 Illegal substitution (player also suspended from game)
- 16 Failure to stop at least one second on shift play
- 17 Forward pass by member of team which did not put ball in play
- 18 Forward pass touched by ineligible player
- 19 Intentional grounding of forward pass
- 20 Interference by member of passing team with defensive player eligible for pass
- 21 Interference with fair-catch or tackling player before ball is caught
- 22 Illegal use of hands and arms by offensive players
- 23 Defensive player striking opponent above shoulders
- 24 Roughing the kicker
- 25 Piling up, hurdling, clipping
- 26 Tackling player out of bounds
- 27 Coaching from the sidelines
- 28 Illegal interference with defense by passing team

OTHER PENALTIES

- 29 Striking, kneeing, or kicking opponent—half the distance to the goal and disqualification of offending player
- 30 Foul within one yard line—half the distance to the goal
- 31 Interference by defensive team on forward pass—first down for passing team at spot or foul
- 32 Flagrant roughing of kicker—disqualification, plus fifteen yards
- 33 Flagrant unsportsmanlike conduct—disqualification, plus fifteen yards
- 34 Forward pass touched by ineligible player on or behind line of scrimmage—loss of down



HO-HUM!
ZERO HOUR AT TULANE.

DURABLE
for the duration



Suits
\$25⁰⁰

Porter's



Tulane's advance guard who defeated the Rice "team" via the air waves Sunday over the "Quiz of the Two Cities" program. Left to right, the students are Miss Eleanor Crouch, Ed Baldinger, Miss Moonyeen Marion, and Jimmy Erwin.

Miss Jeannette Rusovich, of the Tulane school of social work, in her native Yugoslavian dress.

RAINFAIR
STORM COATS
take the weather.



give the style . . . from

Porter's



Above the treetops Newcomb girls learn ballet

tackle the
AXIS



Buy **WAR BONDS and STAMPS!**
Porter's



Prescribed during exams—coffee on the steps
of the Tulane student center.

WHERE IS PORTER'S?

ACROSS THE
STREET FROM
THE COTTON
EXCHANGE

AROUND THE
CORNER
FROM THE
ST. CHARLES
HOTEL

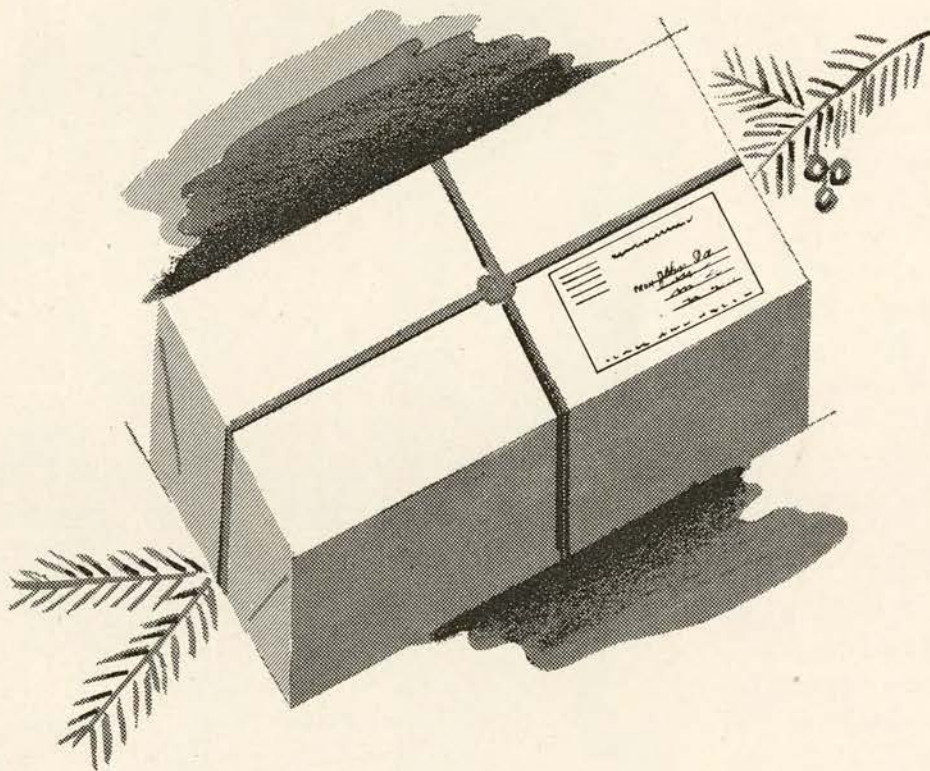
OPPOSITE THE HIBERNIA
NATIONAL BANK AND
IN THE SAME BLOCK
WITH THE AMERICAN
BANK—ASK ANYBODY!

Porter's

CARONDELET COR. GRAVIER

*NOW is the time to Select and Send
Christmas Gifts to Men Overseas*

REMEMBER all gifts must be mailed
between now and October 31st for Christmas delivery!



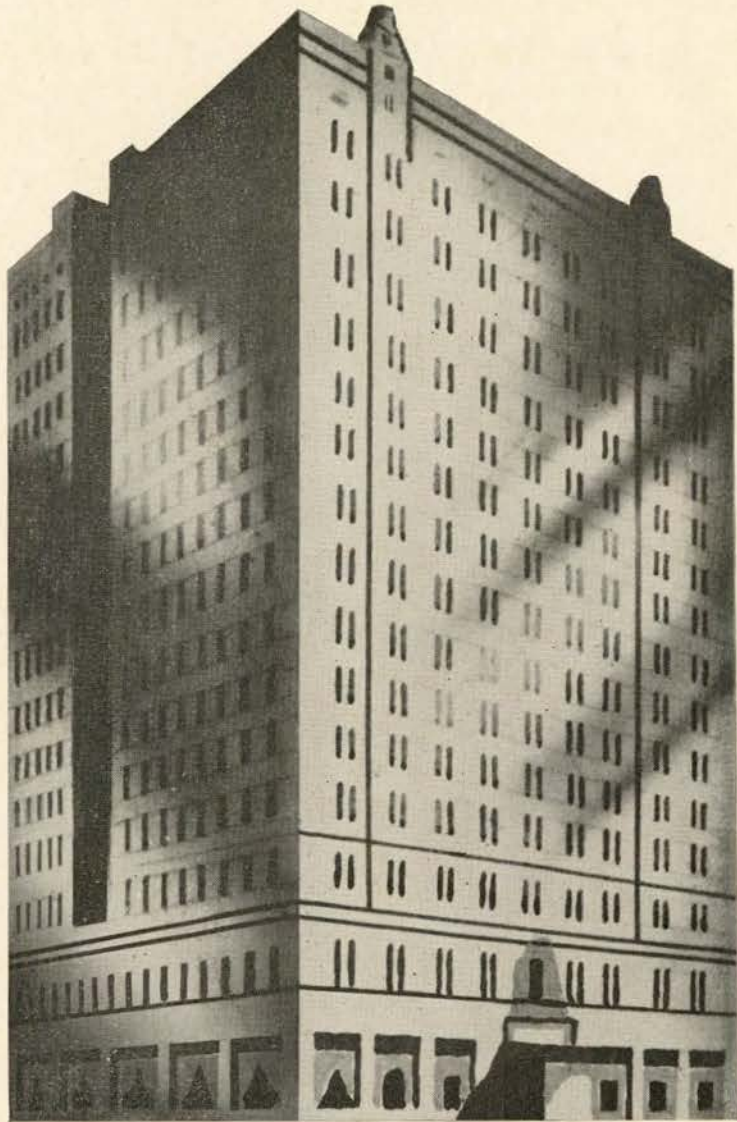
There are regulations for sending Christmas gifts overseas this year, and Maison Blanche knows them all! Remember, only one package a week may be mailed to any one man overseas. So order NOW, so your gifts will get there in time for Christmas Day itself! You can mail them yourself, of course, (after you have bought them at our Service Canteen) or simply leave the whole thing to us. There are sensible and practical and just-the-kind of gifts galore at our Service Canteen, Street Floor.

Maison Blanche

New Orleans' Finest

In America's Most Interesting City

HOTEL ROOSEVELT is located in the heart of Romantic old New Orleans. It is the center of business and social activities and is close to the Theatre, Shopping, French Quarter, and Business Districts . . . You will like the tasteful luxury and home-like atmosphere of this modern hotel where the traditions of Southern Hospitality are maintained the year 'round.



"Pride of the South"

THE ROOSEVELT

SHORT PUNTS

Rice, Georgia and Vanderbilt are the only opponents remaining on the Green Wave schedule with unblemished records. The Georgia Naval Aviators have only a tie as the result of their 14-14 deadlock with the North Carolina Naval Aviators last week.

The Mississippi State game on November 7 is the Homecoming game this year. The Maroons were conference champions last year but lost their first conference game this year to Alabama. The Tide and Greenies are not scheduled for the first time in seven years.

Tulane has four conference games yet to play. They travel to Athens next week-end to play the highly touted Georgia Bulldogs. After the Carolina game, the Wave plays Vanderbilt, Mississippi State and Louisiana State.

Claude "Little Monk" Simons, Jr., is the 25th head coach at Tulane since the Greenies began playing football in 1893. Clark D. Shaughnessy served the longest time, 1915 to 1926, except for 1921.

* * *

NOTICE

Physicians who are expecting telephone calls during the game should register at the special table under the West side stands before each game. In case of an emergency call, they will be paged by number of the public address system rather than by name.

"Funny thing,
freedom
ain't free.
But whatever
you pay for it—
it's WORTH it!"

—Bing Crosby

We've been in business more than a hundred years, and we have never offered our friends a finer investment than

U. S. WAR BONDS and STAMPS

Buy Them Regularly

at

GODCHAUX'S

SONGS AND YELLS

ROLL ON, TULANE

ten Hoor and Goldstein

Roll, Green Wave,
Roll them down the field.
Hold, Green Wave,
That line must never yield.
When those Greenbacks charge through the line
They're bound for victory.
Hail, Green Wave, for you
We have no fear.
Hail, Green Wave, for you we give a cheer
And ev'ry man in ev'ry play
And then we'll win that game today.
Hurrah for Old Tulane!

Hullabaloo

Hullabaloo! Ray! Ray!
Hullabaloo! Ray! Ray!
Hooray! Hooray!
Vars, Vars, T.A.A.
T.A.A.! T.A.A.!!
Vars, Vars, T.A.A.!!
TULANE!!!

ALMA MATER

*Sing these words as Tulane's Alma Mater
is played*

I.

We praise thee for thy past, O Alma Mater!
Thy hand hath done its work full faithfully!
The incense of thy spirit hath ascended
And filled America from sea to sea

II.

We praise thee for thy present, Alma Mater!
Today thy Children look to thee for bread!
Thou ledest them to dreams and actions splendid!
The hunger of their souls is richly fed!

III.

We praise thee for thy future, Alma Mater!
The vista of its glory gleameth far!
We ever shall be part of thee, great Mother!
There thou wilt be where e'er thy children are!

CHORUS:

Olive Green and Blue, we love thee!
Pledge we now our fealty true
Where the trees are ever greenest,
Where the skies are purest blue!
Hear us now, O Tulane, hear us!
As we proudly sing to thee!
Take from us our hearts' devotion!
Thine we are, and thine shall be!

"Time Out"

DRINK—



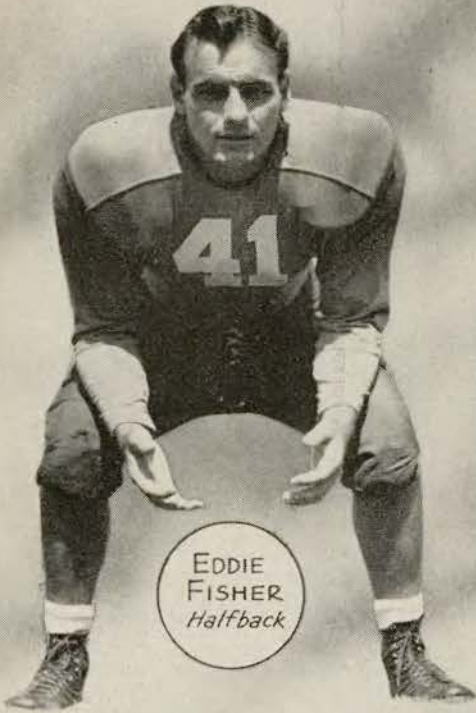
TRADE MARK
REG. U.S. PAT. OFF.

PAUSE—

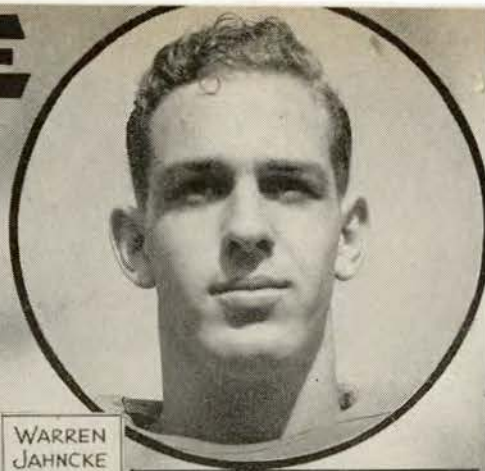
RELAX—

REFRESH YOURSELF

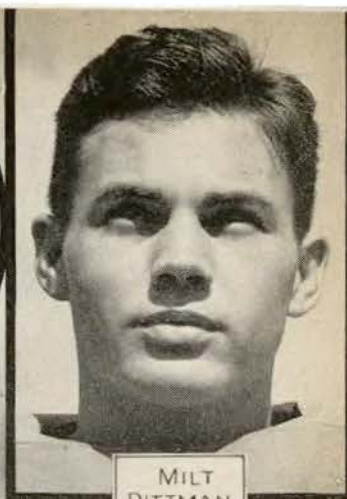
TULANE



EDDIE FISHER
Halfback



WARREN JAHNCKE
END



MILT PITTMAN
FULLBACK



BERNARD TETEK
Guard



MILTON HOLLAND
End



DARWOOD HOLM
Guard



HOWARD McAFEE
Tackle



CURTIS JONES
End



OLTON HEBERT
Center



MIKE BALEN
End



TOM HEINTZ
Tackle



ARTHUR PORTER
End



Always a Winning Line-Up

IN

HOLMES MEN'S STORE

A diagram of a store floor plan with a grid. The vertical axis is labeled with 40, 50, 40, 30, 20, 10, and G from top to bottom. A horizontal line is drawn at the 40 level. A solid black dot is located at the top center of the grid. Below the 40 line, the store is divided into sections with the following labels:

MANHATTAN SHIRTS	MANSCO UNDERWEAR	PHOENIX SOCKS	WESTMINISTER SOCKS	PIONEER BELTS
WORSTED-TEX SUITS				KNIT-TEX TOPCOATS
		MALLORY HATS		
BOSTONIANS SHOES				MANHATTAN PAJAMAS
		ALLIGATOR RAINCOATS		

At the bottom center of the grid, there is a simple line drawing of a rectangular structure with a horizontal bar across the top, possibly representing a counter or a display case.

⊗ [LUNCH AND DINE IN] ⊗
[HOLMES RESTAURANT]

D. H. HOLMES CO.

LIMITED

New Orleans Quality Department Store—Old in Traditions—Young in Ideas

TULANE



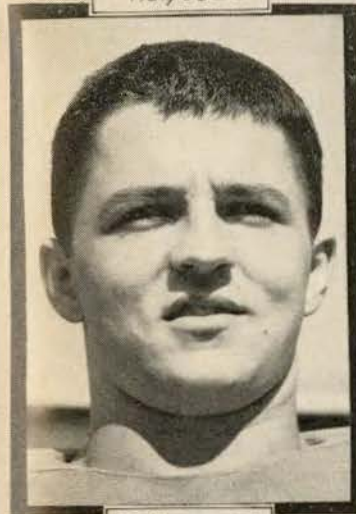
JOE RENFRO
Halfback



TOM LENNOX
Tackle



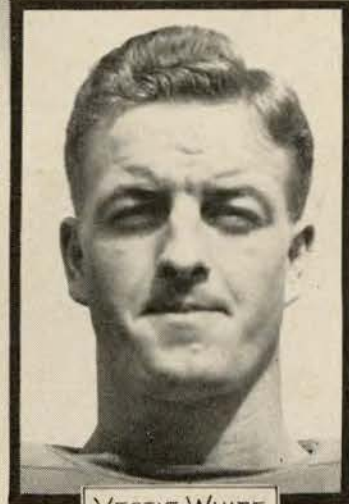
LOU THOMAS
Halfback



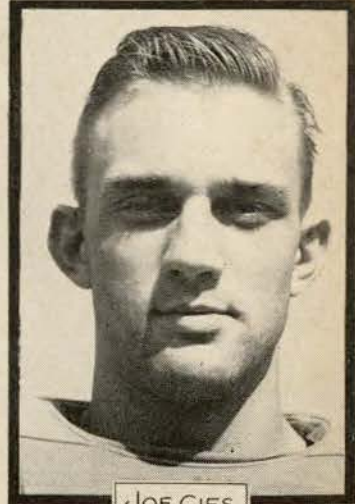
ED DERAMEE
Guard



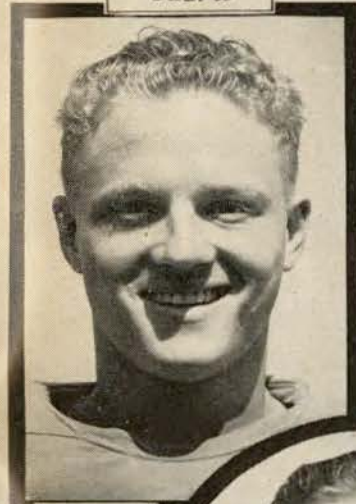
CLAYRENCE EYRICH
Guard



VESTIE WHITE
End



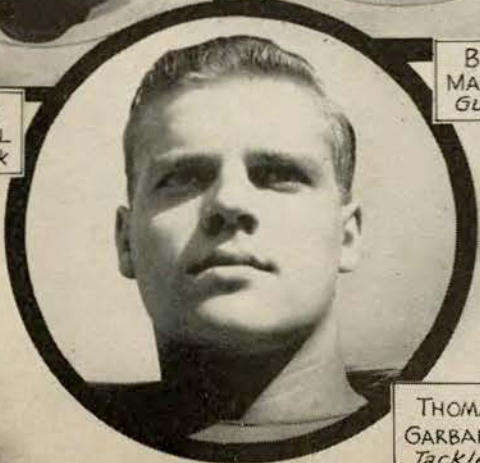
JOE CIES
End



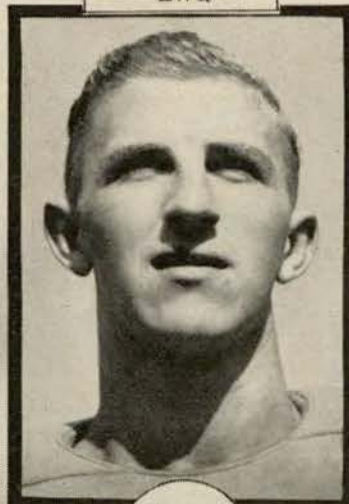
LOUIS MCFAUL
Halfback



BILL MAGINNIS
Guard



THOMAS GARBARK
Tackle



JOHN TESSIER
Tackle



O.J. KEY
Halfback

TULANE ROSTER

No.	PLAYER	HOME TOWN	Position	Wgt.	Yrs. on Varsity
10	Brignac, Julian	Luteher, La.	FB	178	2
11	Ely, James	Shaw, Miss.	HB	194	3
12	Renfro, Joe	Ft. Myers, Fla.	HB	205	1
20	McDonald, Walter	Struthers, Ohio	QB	203	3
21	Grush, Robert	New Orleans, La.	QB	185	3
22	Finley, Leonard	New Orleans, La.	QB	170	1
29	Maginnis, William	New Orleans, La.	G	197	3
30	Porter, Arthur	New Orleans, La.	E	205	1
31	Jackson, Jack	Monroe, La.	C-Q	180	0
32	Pracko, Bernard	Tarentum, Pa.	FB	180	3
37	McFaul, Louis	New Orleans, La.	HB	170	1
38	Pittman, Milton	Plain Dealing, La.	FB	185	1
40	Key, O. J.	New Orleans, La.	HB	195	1
41	Fischer, Ed.	New Orleans, La.	HB	170	1
42	Thomas, Lou	New Orleans, La.	HB	186	3
45	Fortier, Don	New Orleans, La.	HB	168	0
46	Campora, John	New Orleans, La.	HB	170	0
50	Young, Don	North Little Rock, Ark.	C	185	0
51	Rice, Lawrence	Gulfport, Miss.	C	204	2
52	Stolen, Al	Eau Claire, Wis.	C	194	2
54	Hebert, Olton	New Iberia, La.	C	185	1
60	Tetek, Bernard	Gary, Indiana	G	175	1
61	Green, Jack	Shelbyville, Kan.	G	185	0
62	Tessier, John	New Orleans, La.	T	195	1
64	Holm, Darwood	Eau Claire, Wis.	G	205	1
65	Carter, James	Shreveport, La.	G	205	1
66	Rhea, Creighton	Jonesboro, Ark.	T	210	3
68	Garbark, Thomas	Edgewood, Pa.	T	199	3
69	Deramee, Ed.	Thibodaux, La.	G	203	1
70	Heintz, Tom	Hartford, Wis.	T	235	1
71	Lennox, Thomas	New Orleans, La.	T	220	1
72	Bentz, Roman	Horicon, Wis.	T	214	3
73	Balen, Mike	Sawyer, Ill.	T	205	1
74	Faust, Richard	New Orleans, La.	G	206	3
75	McAfee, Howard	New Orleans, La.	T	228	2
80	Jones, Curtis	Benton, Ark.	E	187	1
81	Rowland, Jay	Hot Springs, Ark.	E	205	2
82	Comer, Martin	Gary, Indiana	E	201	3
83	Jahncke, Warren	New Orleans, La.	E	175	1
84	White, Vestie	Arkansas City, Kansas	E	180	1
85	Cies, Joseph	Carlinville, Ill.	E	195	2
86	Holland, Milton	Shreveport, La.	E	187	2
88	O'Brien, Emile	New Orleans, La.	E	180	0
96	Eyrich, Clarence	Natchez, Miss.	G	230	2

RICE ROSTER

No.	PLAYER	HOME TOWN	Position	Wgt.	Yrs. on Varsity
12	Fooshee, J. B.	Houston, Texas	HB	160	1
14	Ely, Bud	Electra, Texas	HB	172	2
15	Perkins, Bob	Port Arthur, Texas	HB	180	1
16	Buckley, Vincent	New Orleans, La.	HB	147	1
19	Odom, Pete	Sherman, Texas	HB	175	1
20	Sultis, Pete	Dallas, Texas	HB	188	1
23	Shirocky, Frank	Smithville, Texas	HB	168	1
24	Nall, James	Dallas, Texas	HB	185	2
30	Dwelle, Dick	Dallas, Texas	FB	185	3
36	Stephens, Don	Ft. Worth, Texas	FB	185	2
39	Cain, Edgar	Breckenridge, Texas	FB	193	1
41	Prosser, Earl	Texas City, Texas	QB	172	1
43	Willard, Billy	Wortham, Texas	QB	165	1
45	Jacob, Fred	Robstown, Texas	QB	165	1
46	Dickinson, J. C.	Luling, Texas	QB	190	3
49	Eikenberg, Virgil	Boling, Texas	QB	197	1
50	Wragg, Hugh	Breckenridge, Texas	C	168	1
51	Blackburn, Bill	Houston, Texas	C	205	2
54	Dearmore, Jack	Ft. Worth, Texas	C	193	3
56	Bennett, Bill	Ft. Worth, Texas	C	178	1
60	Humble, Weldon	San Antonio, Texas	G	200	2
64	Magee, J. W.	Robstown, Texas	G	190	1
65	McVicker, J. E.	Plainview, Texas	G	187	1
66	Lunday, D. B.	El Campo, Texas	G	191	1
67	Quillian, Stone	San Antonio, Texas	G	178	3
70	Malmberg, Charles	Ft. Worth, Texas	T	195	2
71	Armstrong, Henry	Wichita Falls, Texas	T	200	1
72	Andrews, Doyle	Ennis, Texas	T	200	1
73	Bowen, Lindsay	McKinney, Texas	T	204	2
74	Spruill, James	Dublin, Texas	T	210	1
75	Brannon, Ted	Longview, Texas	T	200	3
76	Armstrong, George	Wichita Falls, Texas	T	190	3
78	Nawlin, Bob	Dallas, Texas	T	198	2
79	Whitlow, Fulton	Wichita Falls, Texas	T	195	1
81	Lloyd, Harold	Silsbee, Texas	E	188	1
83	Tresch, Bob	Cleveland, Ohio	E	190	3
84	McLaughlin, Gayle	Electra, Texas	E	180	2
85	Williams, Windell	Midland, Texas	E	190	1
86	Seruggs, Ted	Houston, Texas	E	188	2
89	McClellan, Alvin	Graham, Texas	E	182	1

The Official Watch for Timing All Tulane Games is a Longines—"The World's Most Honored Watch"

only a few yards to go . . .



to a

PAN-AM STATION



(Other Pan-Am Stations conveniently located
in all parts of the City.)

THEY'RE Milder
ALL WAYS —

THEY DON'T TIRE
MY TASTE —

**THERE'S NOTHING LIKE
A CAMEL!**



**FOR
STEADY
PLEASURE**

Camel

the cigarette of Costlier Tobaccos



R. J. Reynolds Tobacco Company
Winston-Salem, North Carolina