

V. 15, no. 5



TULANE vs. GEORGIA TECH

NOVEMBER 10, 1945

Souvenir Program..... 25¢

THESE ARE THE OFFICIAL 1945 Signals



OFF-SIDE
Hands on and off hips—repeat several times.



ILLEGAL POSITION OR PROCEDURE
Hands revolving in front of chest.



ILLEGAL MOTION OR SHIFT
Horizontal arm with either hand.



ILLEGAL DELAY OR EXTRA TIME OUT
Folded arms.



ILLEGAL USE OF HANDS OR ARMS
Grasping one wrist.



UNSPORTSMANLIKE CONDUCT
Arms outstretched, palms down.



SAFETY
Palms together overhead.



INTENTIONAL GROUNDING
Both hands over right shoulder then down, hard and forward.



FORWARD PASS OR FAIR CATCH INTERFERENCE
Pushing arms forward, palm vertical.



BALL ILLEGALLY TOUCHED, KICKED OR BATTED
Tapping both shoulders with finger tips.



INCOMPLETE FORWARD PASS; PENALTY DECLINED, NO PLAY OR NO SCORE
Hands rapidly criss-crossed in horizontal plane.



BALL DEAD
One arm aloft, open hand. If hand is closed, TOUCHBACK.



UNNECESSARY ROUGHNESS
Military salute. CLIPPING: Salute followed by slapping back of knee with hand. RUNNING INTO OR ROUGHING KICKER: Salute followed by swinging leg to simulate a punt.



TIME-OUT
Hands rapidly criss-crossed overhead.



FIRST DOWN
Vigorous throwing motion concluded with outstretched arm pointing toward offensive goal.



START THE CLOCK OR NO MORE TIME-OUTS ALLOWED
Full arm circles to simulate winding a clock.



TOUCHDOWN OR FIELD GOAL
Both arms aloft and held rigid.



ILLEGAL FORWARD PASS
Waving hand behind back.



Listen to
"Time Out"
WITH
JOHNNY LYNCH
WWL Thursdays
5:15-5:30 P.M.

And for Your
Time Out



JACKSON BREWING COMPANY
NEW ORLEANS, LA.

DRINK

JAX

BEST BEER IN TOWN

THE GREENIE

Vol. 15

NOVEMBER 10, 1945

No. 5

Official Souvenir Football Program of Tulane University, Published for Each Home Game

National Advertising Representative, Football Publications, 370 Lexington, New York City.

ANDY ROGERS, *Editor*

CAROL HART, *Associate Editor*

Wave-Yellowjacket History

The always formidable Yellowjackets of the Georgia School of Technology today visit Tulane for the 14th meeting of these two Southeastern Conference schools.

For the first time since 1917, the 'Jackets will be under a new pilot. He is Coach Robert (Bobby) Dodd, who took over the reins at Tech from W. A. Alexander this season after "Alex" had led this SEC foe for 25 years.

When Tulane began its football relations with Georgia Tech in 1916, the Yellowjackets were coached by John Heisman. Heisman was succeeded by Alexander in 1920 but it wasn't until 1926 that the young mentor had a shot at the Green Wave.

The closeness of the rivalry that exists between the Wave and the 'Jackets is easily shown in the record books. A quick glance reveals the Tech men hold seven victories in the 13 games played, and all but two of these, the ones in 1916 and 1917, have been scored by Alexander-coached teams.

Surprisingly enough, the triumphs seem to run in cycles. Georgia Tech won the first five games played, stretching these victories over a period from 1916 to 1928. Included in the string are scores of 45-0, 48-0, 9-6, 13-6, and 12-0. Tulane took over in 1929 and went undefeated against the Yellowjackets until 1943, chalking up margins of 20-14, 28-0, 33-0, 20-14, 7-0, and 20-12, for a one game edge in the series.

But in 1943, the Tech club again took over. It was this eleven, led by the famed Eddie Porkop, that scored a 33-0 victory over Tulane and went on to play in the Sugar Bowl. Last year, the Atlantans ran up a 34-7 triumph and if the previous precedent continues, the 'Jackets could continue their domination for the next five meetings.

This season, the Tech crew has a three and three record. The Yellowjackets have whipped North Carolina, Howard College and Auburn but have

bowed before such mighty gridiron foes as Notre Dame, Navy and Duke.

Tulane's youthful Wave, meanwhile, has just begun rounding into shape. After a slow start which saw them tie Florida and then lose to Rice and Auburn, the Greenies found their stride and produced a 19-6 upset over Southern Methodist and a 14-13 win over previously unbeaten Mississippi State.

The win over the Maroons was one of the major surprises of the season and if the Greenies can continue, this 1945 team may go down in the record book as the most "upset-minded" of all Tulane teams.

LOST ARTICLES

Lost articles should be turned in at Room 18 near the North end of the West Side, Tulane Stadium. Room 18 is located near the foot of Ramp 6. For telephone information regarding lost and found articles, call WALnut 5754.

WHY BE IRRITATED?

ARMY

Old Gold CIGARETTES

-LIGHT AN
OLD GOLD

Apple Honey helps guard O.Gs.
from Cigarette Dryness

The Roosevelt

New Orleans' Finest

In America's Most Interesting City



THE ROOSEVELT is located in the heart of Romantic old New Orleans. It is in the center of business and social activities and is close to the Theatre, Shopping, French Quarter, and Business Districts . . . You will like the tasteful luxury and home-like atmosphere of this modern hotel where the traditions of Southern Hospitality are maintained the year 'round.

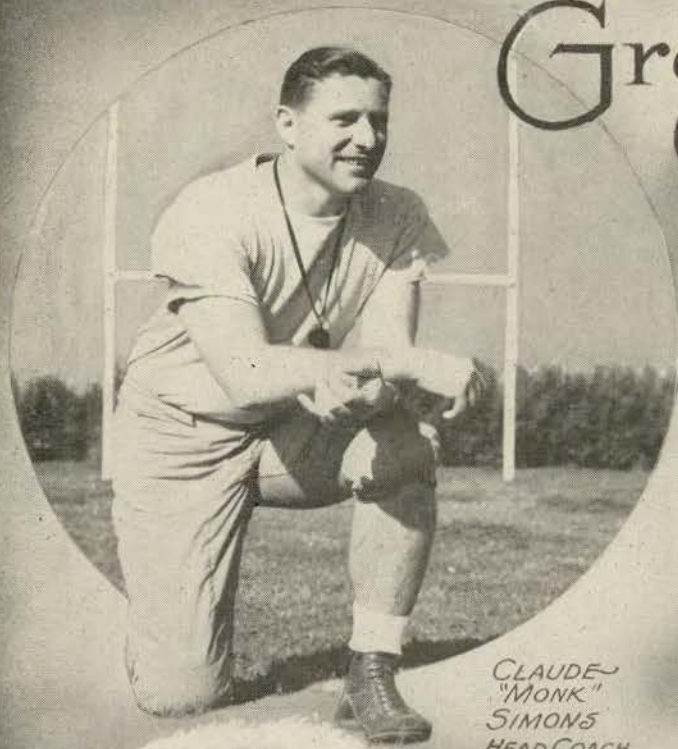
800 ROOMS WITH BATH

MODERATE RATES



The Roosevelt
"The Pride of the South"

Green Wave Coaches



CLAUDE
"MONK"
SIMONS
HEAD COACH



WERNER "DUTCH" LUCHSINGER
TRAINER.



MUREL
NEMECEK
BACKFIELD
COACH.



TOMMY O'BOYLE
ASST. LINE COACH



TATE "PINEY" PAGE
LINE COACH



VERNON "LEFTY" HAYNES
END COACH

Famous for
FINE FOOD
and **DRINK**



TONIGHT — enjoy specialties of these noted restaurants:

ANTOINE'S

713 St. Louis St.

ARNAUD'S

813 Bienville St.

BROUSSARD'S

819 Conti St.

KOLB'S

125 St. Charles St.

LA LOUISIANE

725 Iberville St.

Shop With Confidence



You can't go wrong with your choice when it comes from Mayer Israel's. For over 50 years, the words Mayer Israel's and fine fashions have been synonymous — signifying only the finest in quality.

Shop with confidence at Mayer Israel's—the store of fine fashions for men, women and children.



Mayer Israel's

714 Canal Street



RICHARD HOOT
HALFBACK



JAMES LEE
FULLBACK



WALTER FERGERSON
FULLBACK



JACK COUNCE
HALFBACK



GEORGE
ROBINSON
TACKLE



LEROY
SCHNEIDER
TACKLE



WILLIAM
LEAHEY
QUARTEBACK



GASTON BOURGEOIS
GUARD



JIMMY LASSETTER
END



MARVIN MCCAIN
HALFBACK



HUGH BOWERS
CENTER



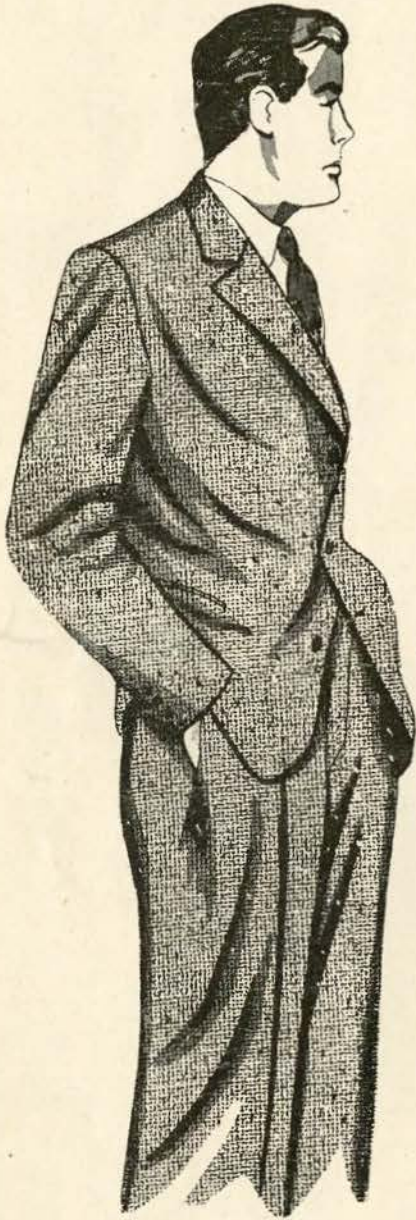
WILLIAM REYNOLDS
HALFBACK

TULANE

1945



TWEEDS ARE COLLEGIATE!



ALL WOOL SUITS

Smartly tailored suits in both single and double-breasted styles. New fall colors. Full size range.

32.50

Other Tweeds . . 27.50 -- 35.00

- Smart Herringbones!
- Fancy Diagonals!
- Plain Donegals!

● Men's Clothing,
MB First Floor

Maison Blanche

GREATEST STORE SOUTH

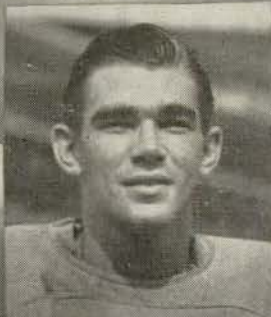
Pulane



ERNEST CROUCH
QUARTERBACK



RAY ARTHUR
QUARTERBACK



JOE YOUNG
HALFBACK



LARRY McDONALD
END



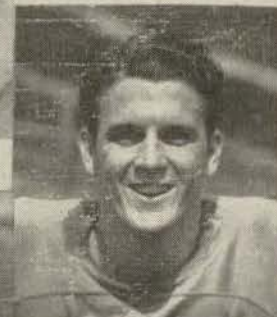
DAVID RIDEOUT
HALFBACK



ROBERT SHIRLEY
END



ROBERT LOGAN
TACKLE



TONY CASH
END



WILLIAM WATKINS
END



ELLIOTT
IGLEHEART
GUARD



JOHN
FRANK
GUARD



ROY BAILEY
END

Greenies

Penalties

LOSS OF FIVE YARDS

- 1 Taking more than three times out during either half
- 2 Illegal delay of game
- 3 Failure of substitute to report to umpire
- 4 Violation of kick-off formation
- 5 Failure to maintain proper alignment of offensive team before ball is snapped. Also, backfield man illegally in motion
- 6 Offside by either team, or encroachment on neutral zone
- 7 Attempt to draw opponents offside
- 8 Taking more than two steps with ball after signaling for fair catch
- 9 Illegal use of hands and arms by defensive players
- 10 Flying block or flying tackle
- 11 Player in motion less than 5 yards behind line of scrimmage.
- 12 Crawling by the runner

LOSS OF FIFTEEN YARDS

- 13 Team not ready to play at scheduled time
- 14 Substitute communicating with teammates before ball is put in play
- 15 Illegal substitution (player also suspended from game)
- 16 Failure to stop at least one second on shift play
- 17 Forward pass by member of team which did not put ball in play
- 18 Forward pass touched by ineligible player
- 19 Intentional grounding of forward pass
- 20 Interference by member of passing team with defensive player eligible for pass
- 21 Interference with fair-catch or tackling player before ball is caught
- 22 Illegal use of hands and arms by offensive players
- 23 Defensive player striking opponent above shoulders
- 24 Roughing the kicker
- 25 Piling up, hurdling, clipping
- 26 Tackling player out of bounds
- 27 Coaching from the sidelines
- 28 Illegal interference with defense by passing team

OTHER PENALTIES

- 29 Striking, kneeling, or kicking opponent—half the distance to the goal and disqualification of offending player
- 30 Foul within one yard line—half the distance to the goal
- 31 Interference by defensive team on forward pass—first down for passing team at spot of foul
- 32 Flagrant roughing of kicker—disqualification, plus fifteen yards
- 33 Flagrant unsportsmanlike conduct—disqualification, plus fifteen yards
- 34 Forward pass touched by ineligible player on or behind line of scrimmage—loss of down

JOHNNY CALLS 'EM SIGNALS & PENALTIES

Holding. (Penalty—by offense, 15 yards; by defense, 5 yards.)

Player illegally in motion. (Penalty, 5 yards. If from shift or huddle, 15 yards.)

Time out.

Unsportsmanlike conduct. (Penalty—15 yards.) For flagrant unsportsmanlike conduct—15 yard penalty and disqualification.

Offside or violation of kick-off formation. (Penalty, 5 yards.)

Illegal touching of kicked ball inside opponent's 10-yard line—touchback.

Unnecessary roughness, illegal defensive use of the hands, clipping, running into or roughing the kicker. (Penalty, 15 yards.)

Score—touchdown, field goal, or conversion.

Delay of game or extra time-outs. (Penalty, 5 yards.)

Interference with forward pass, pass touching ineligible player, or "screening" pass receiver. (If penalty on offense, when interference occurs beyond line of scrimmage, 15 yards and loss of down; on or behind line of scrimmage, loss of down only. Interference by defense, ball to offense on spot of foul as first down.)

Penalty refused, incomplete pass, missed field goal or conversion, both sides offside, etc.

Illegal formation or position of one or more players. (Penalty—5 yards from where ball was put in play.)

Illegal forward pass.

Safety.

Intentional grounding of forward pass. (Penalty—loss of down and 15 yard penalty from spot of preceding down.)

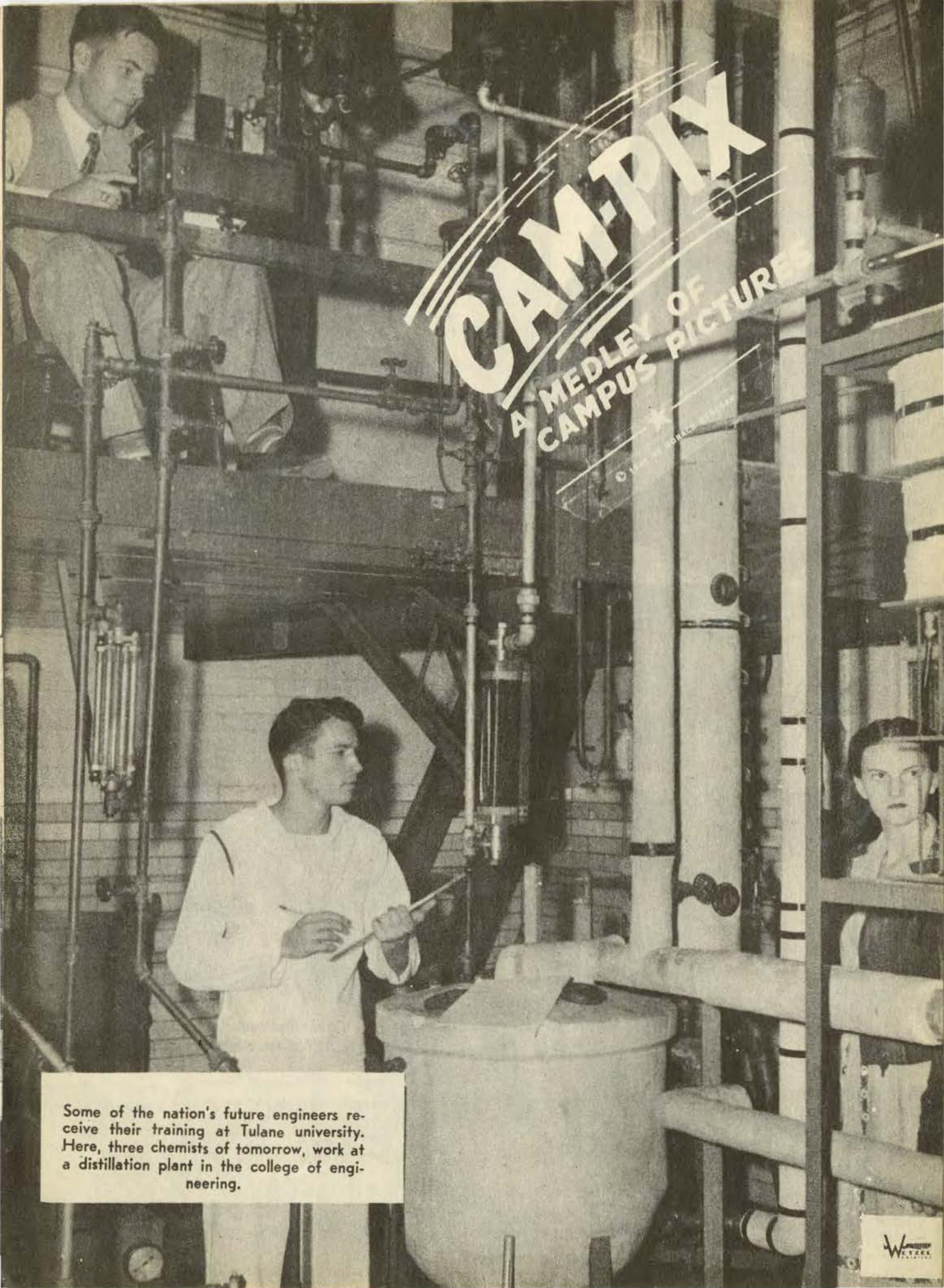
Crawling or pushing. 5 yds.; helping ball carrier, 15 yards.

CALL FOR PHILIP MORRIS

AMERICA'S FINEST CIGARETTE

CAMPPIX

A MEDLEY OF
CAMPUS PICTURES



Some of the nation's future engineers receive their training at Tulane university. Here, three chemists of tomorrow, work at a distillation plant in the college of engineering.



The art of leveling is learned in the civil engineering department, as demonstrated by two Naval trainees at the left.

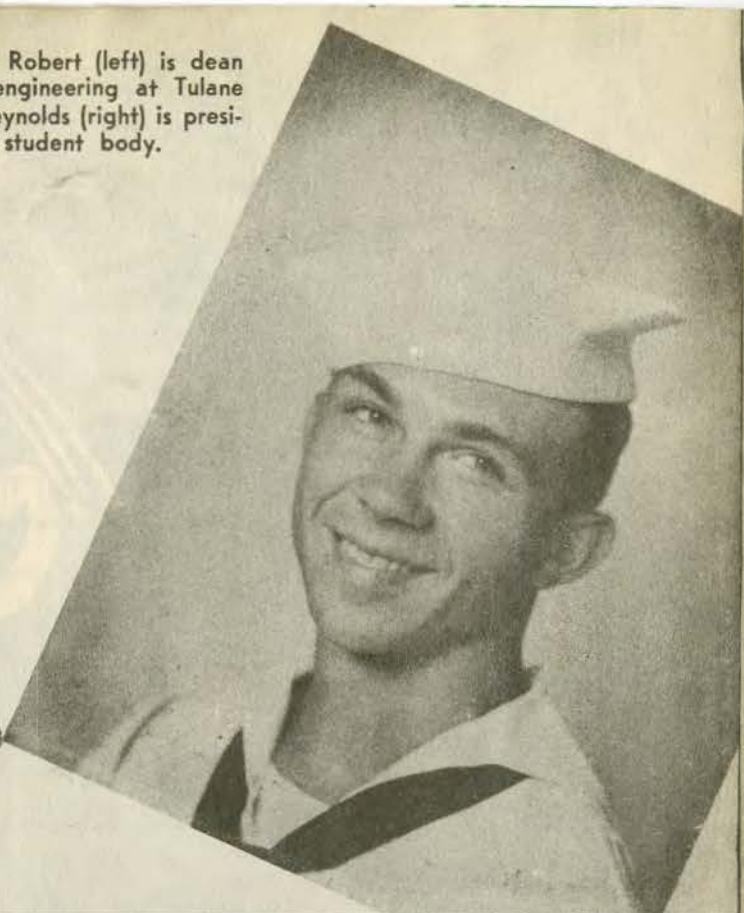
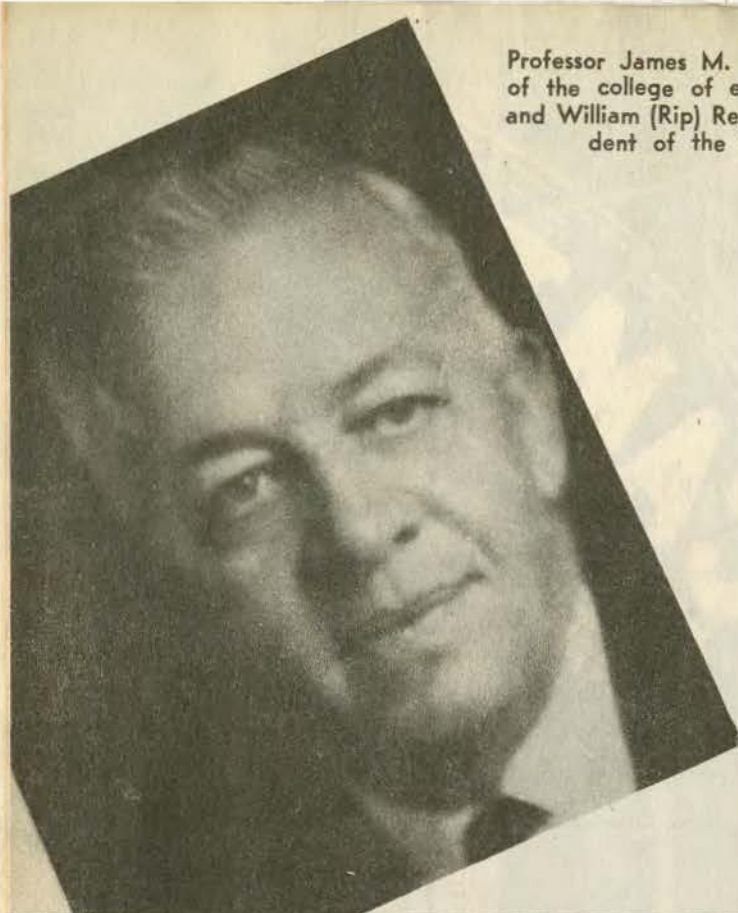
At the bottom, students operate a model of a pump built especially for Tulane by the New Orleans Sewerage and Water Board. The pump is the same type used to drain New Orleans of water in time of storm.



STYLEPARK HATS
Go HEADED right
with a STYLEPARK HAT from


Porter's

Professor James M. Robert (left) is dean of the college of engineering at Tulane and William (Rip) Reynolds (right) is president of the student body.




In the electronics laboratory, these students analyze waves in a radio transmitter.


Nunn Bush
SHOES



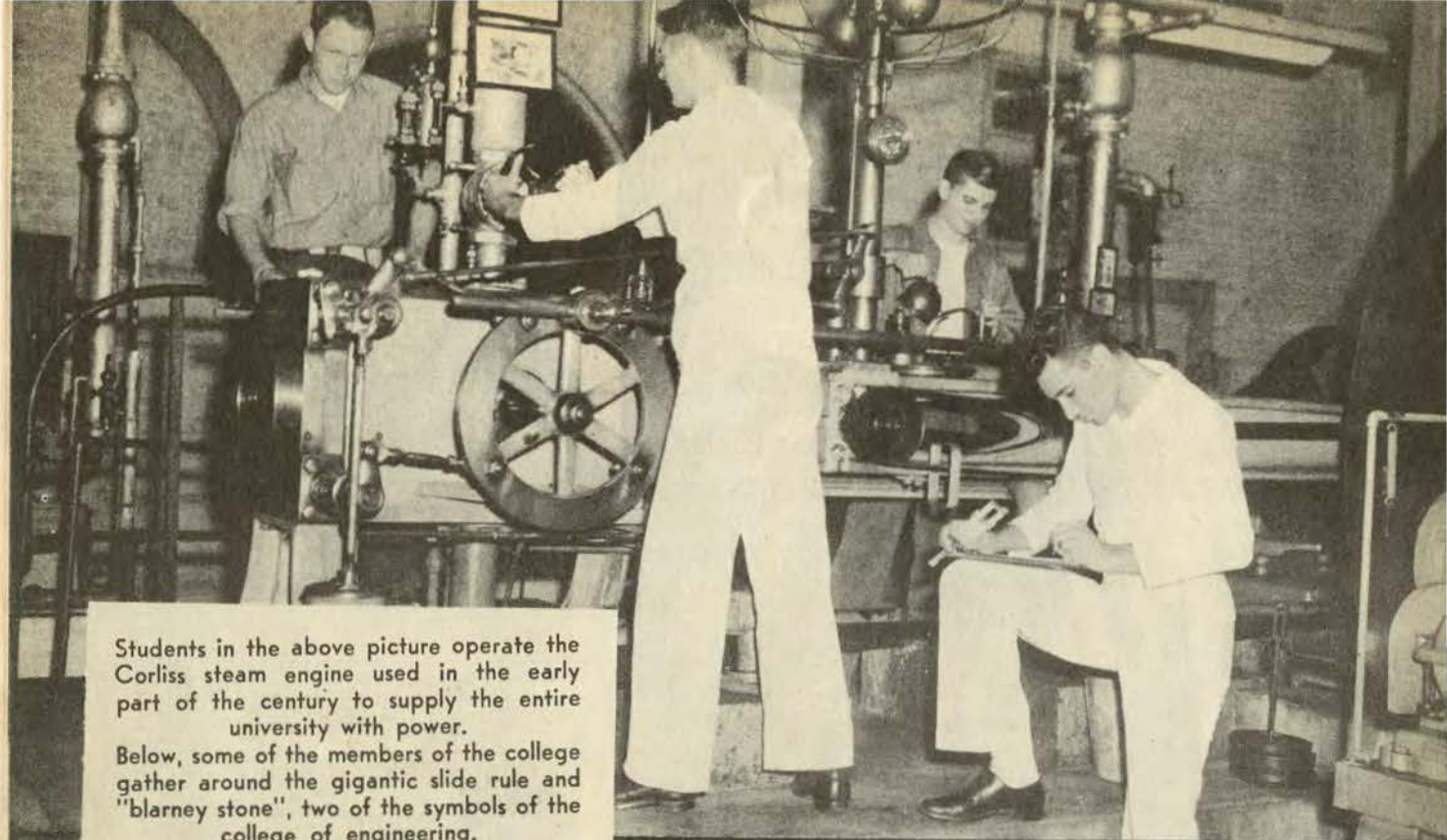
FOOT COMFORT



MILES OF WEAR



at
Porter's



Students in the above picture operate the Corliss steam engine used in the early part of the century to supply the entire university with power. Below, some of the members of the college gather around the gigantic slide rule and "blarney stone", two of the symbols of the college of engineering.



Nunn Bush
SHOES



2 FEET
OF COMFORT
AND STYLE

Porter's
from ..

This Program Printed

by

TULANE UNIVERSITY PRESS

Printing Department of Tulane University



CAMPUS PRINTERS

Basement, Gibson Hall
Phone WALnut 0082

*Cover printed on recently installed
automatic press*

AT THE GAME

and

AFTER THE GAME

ENJOY



“Time Out”

DRINK—

Coca-Cola

PAUSE—

RELAX—

REFRESH YOURSELF

Good Old
REGAL
 BEER



TULANE

LE	LT	LG	C	RG	RT	RE
Bailey 32	Robinson 36	Brinker 44	Bowers 14	Bourgeois 38	Schneider 45	Lassette 31

LHB
Hoot
23

QB
Crouch
20

RHB
Counce
33

FB
Chavez
23

- SQUAD LIST**
- 10 Arthur, b
 - 11 Lee, b
 - 12 Rideout, b
 - 14 Bowers, c
 - 15 Leahey, b
 - 16 Levonian, b
 - 18 Young, b
 - 19 McDonald, e
 - 20 Crouch, b
 - 21 Seybold, g
 - 22 Hoot, b
 - 23 Chavez, b
 - 24 Timken, t
 - 25 McCain, b
 - 26 Banowetz, b

- 27 Rowland, t
- 28 Robertson, b
- 29 Reynolds, b
- 30 Cash, e
- 31 Lassetter, e
- 32 Bailey, e
- 33 Counce, b
- 34 Logan, t
- 35 Woodiel, g
- 36 Robinson, t
- 37 Carter, g
- 38 Bourgeois, g
- 39 Igleheart, g
- 40 Stolen, c
- 41 Frank, g

- 42 Bie, c
- 43 Ferguson, t
- 44 Brinker, g
- 45 Schneider, t
- 50 Watkins, e
- 57 Carney, e
- 58 Shirley, e
- 65 Johnson, t
- 70 McEvers, c
- 80 Ellender, e
- 85 Greer, g
- 86 Paxton, t
- 88 Oswald, g
- 96 Bondio, t

OFFICIALS
 Referee—T. G. Kain (Georgia)
 Umpire—Rumsey Taylor (Georgetown)

GEORGIA TECH

LE	LT	LG	C	RG	RT	RE
Busbin 34	Davis 57	Doyal 44	Duke 53	Hills 49	Gaines 56	Kilzer 32

LHB
Mathews
12

QE
Holtsinger
35

RHB
Peek
13

FB
McIntosh
30

- SQUAD LIST**
- 11 Williams, rh
 - 12 Mathews, lh
 - 13 Peek, rh
 - 14 Basing, lh
 - 15 Crawford, e
 - 18 Houck, rh
 - 21 McKinney, g
 - 23 Olson, rh
 - 24 Ferguson, qb
 - 25 Franklin, g
 - 26 Brodnax, e
 - 27 Blake, qb
 - 28 Mitchell, e

- 29 Nolan, c
- 30 McIntosh, fb
- 31 Clay, e
- 32 Kilzer, e
- 34 Busbin, e
- 35 Holtsinger, qb
- 36 Basler, fb
- 37 Kelly, lh
- 39 Camp, t
- 40 Luck, lh
- 42 Keller, fb
- 44 Doyal, g
- 47 Kyker, e

- 48 Thompson, g
- 49 Hills, g
- 50 Stamper, g
- 51 Glenn, t
- 52 Gosset, t
- 53 Duke
- 54 Aton, t
- 55 Helms, e
- 56 Gaines, t
- 57 Davis, t
- 58 Barron, c
- 59 O'Kelly, c

OFFICIALS
 Head Linesman—M. M. O'Sullivan (A.A.C.)
 Field Judge—Harry Mouat (Armour)

Prince of Golden Beers

D Equipment for all sports...

U Specialists in all types of
school athletic
supplies

N

L

A

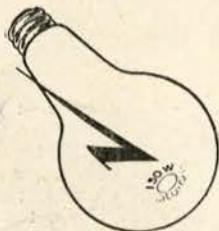
P Sporting Goods Co.
(JOHNNY LYNCH'S)

138 Carondelet Street
MAGNOLIA 5891



*Better Printers
in New Orleans*

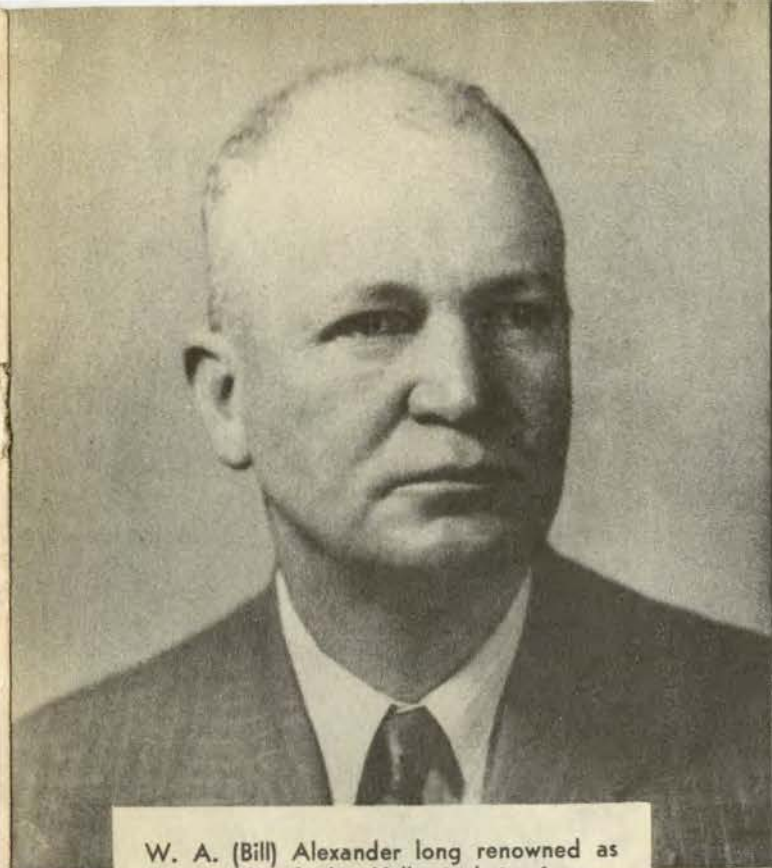
150 WATTS IS RIGHT HERE



You'll get more pleasure out of winter evenings at home when congenial friends call to play a few rubbers of bridge or other games if you use enough light. See that your bridge lamps contain 150-watt bulbs for comfortable seeing. Give your family and guests the protection and cheer of better light in your home.



NEW ORLEANS *Public Service*



W. A. (Bill) Alexander long renowned as the coach of the Yellowjackets, is now athletic director at Georgia Tech.



The Georgia School of Technology, one of the nation's most famous engineering schools, is headed by Dr. Blake R. Van Leer.



This is the massive dining hall used by students at Georgia Tech.

RAINFAIR

STORM

COATS

take the weather...



give the style . . . from

Porter's



Home of the aeronautics division of Georgia Tech is located in this Daniel Guggenheim School of Aeronautics.

You pay no more  for

Porter's
DEPENDABILITY!



Much of the research work at Tech is conducted in this building.



And here is one of the busiest spots on the Tech campus—the library.

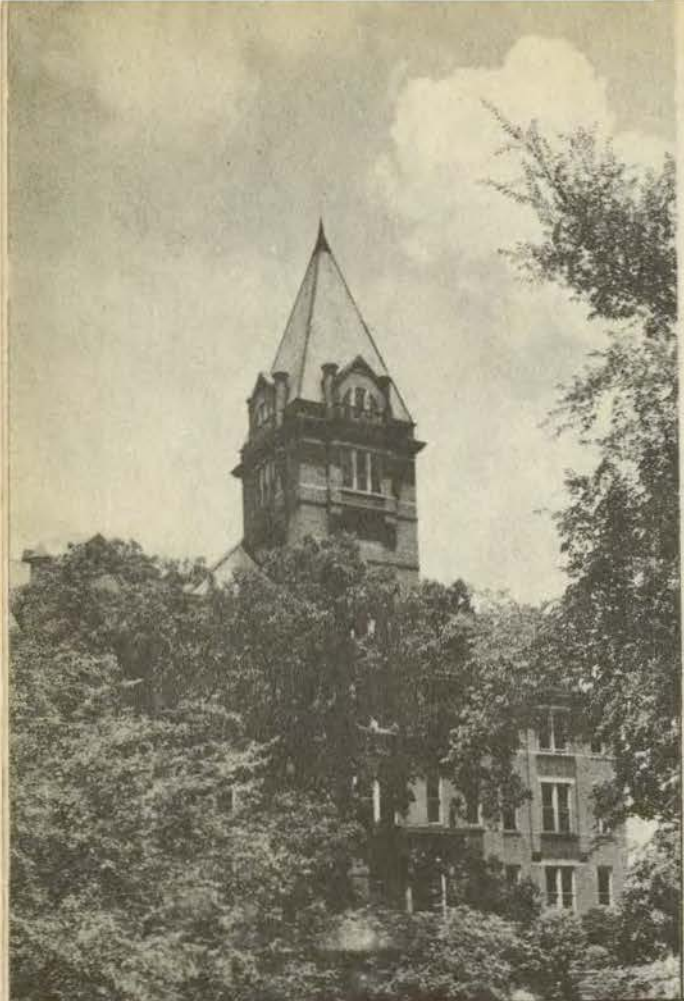
DURABLE
ALL WOOL
SUITS



100%
THAT'S
ME!

AND I
CAN
TAKE IT!

35 from
Porter's



At left is shown one of the academic buildings at Georgia Tech and below the school's gymnasium and auditorium.



WHERE IS PORTER'S?

ACROSS THE STREET FROM THE COTTON EXCHANGE

AROUND THE CORNER FROM THE ST. CHARLES HOTEL

OPPOSITE THE HIBERNIA NATIONAL BANK AND IN THE SAME BLOCK WITH THE AMERICAN BANK - ASK ANYBODY!

Porter's

CARONDELET COR. GRAVIER

Ellis F. Robert, Inc.

formerly BROADMOOR NURSERY

NURSERY

FLORIST

LANDSCAPING



GENERAL

HOUSE

REPAIRS

for

COMPLETE HOME MAINTENANCE

Phone Pa. 9104

where good things
need not be expensive
... and inexpensive
things have to be good



105 YEARS OF FINE APPAREL FOR
MEN, WOMEN AND CHILDREN

Godchaux's

A WINNER!



PIGSKIN ROUNDUP

NOTRE DAME vs. ARMY—The Cadets have a "dream team" and here's where it becomes a nightmare—for the Irish.

* * *

MISSISSIPPI STATE vs. LOUISIANA STATE—And once more, a full house (Kingery, Knight, Coates, Sandifer and Tittle) beats a pair (Robinson and Davis).

* * *

BAYLOR vs. TEXAS—The Longhorns but it won't be a stampede.

* * *

CALIFORNIA vs. SOUTHERN CAL—A repeat performance of a September 29 attraction with the Trojans again in the starring role.

* * *

GEORGIA vs. FLORIDA—Twinkle-toed Trippi and that's that.

* * *

INDIANA vs. MINNESOTA—For Bernie, a win at last after two straight defeats.

TENNESSEE vs. MISSISSIPPI — Massacre in Memphis, Vol version.

* * *

NORTHWESTERN vs. WISCONSIN—Massacre in Madison, Wildeat version.

* * *

OHIO STATE vs. PITTSBURGH—The Buckeyes keep bucking.

* * *

ARKANSAS vs. RICE—And the Owls keep 'owling. (Silly, eh?)

* * *

SOUTHERN METHODIST vs. TEXAS A. & M.—A 50-50 proposition. The Aggies.

* * *

Thither and yon—Auburn to bump S. L. I. . . . Penn to stop Columbia . . . Duke to lick North Carolina State . . . Illinois to drop Iowa . . . Tulsa to trip Oklahoma A. and M. . . . T. C. U. to whip Texas Tech . . . Washington State to upset Oregon . . . Vanderbilt to topple Chattanooga . . . Colgate to block Cornell . . . Dartmouth to wallop Princeton . . . Yale to check Brown.

(Andy Rogers)

Official timing watch for the



TULANE-GEORGIA TECH FOOTBALL GAME

Longines

*The World's Most Honored Watch
winner of 10 world's fair grand prizes,
28 gold medals, and more honors for
accuracy than any other timepiece*



Product of Longines-Wittnauer Watch Co.

The Roosevelt

The Roosevelt Hotel Offers
New Orleans' Most Diversified Program
of
Music and Entertainment

in the FOUNTAIN LOUNGE

At LUNCHEON we invite you to listen to the sweet strains of the Gypsy Ensemble. For COCKTAILS and DANCING, alternately nightly from five o'clock until two the next morning is one of Latin America's noted Rhumba bands and the Society Music of one of America's outstanding combinations.

in the BLUE ROOM

Each evening, for DINNER and SUPPER DANCING, is presented one of the Nation's famous orchestras . . . Featured also in the Blue Room Floor Shows at Dinner and Supper, are celebrated stars from radio, stage and screen.

*New Orleans' most discriminating audiences choose the Roosevelt
for their relaxation and entertainment*

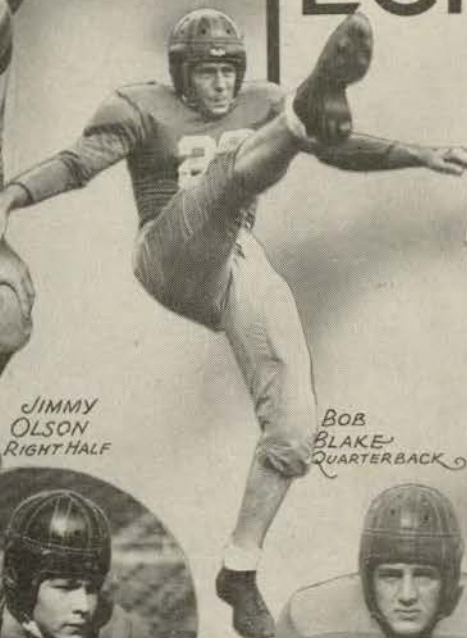


The Roosevelt
"The Pride of the South"

GEORGIA TECH



*JIMMY
OLSON
RIGHT HALF*



*BOB
BLAKE
QUARTERBACK*



*CAPTAIN
PAUL DUKE
CENTER*



*BUCK
DOYAL
GUARD*



*JOE BASLER
FULLBACK*



*JACK GLENN
TACKLE*



*CLEABORNE
O'KELLY
CENTER*



*BILLY CAMP
TACKLE*



*MAL STAMPER
GUARD*



*BILL BUSBIN
END*



*DAN KYKER
END*

THE RECORDS

TULANE

October 6—Tulane 6, Florida 6
 October 13—Tulane 7, Rice 13
 October 20—Tulane 14, Auburn 20
 October 27—Tulane 19, S. M. U. 7
 November 3—Tulane 14, Mississippi State 13.
 November 10—Georgia Tech at New Orleans
 November 17—Clemson at New Orleans
 November 24—Notre Dame at New Orleans
 December 1—L. S. U. at New Orleans



GEORGIA TECH

September 29—Georgia Tech 20, North Carolina 14
 October 6—Georgia Tech 7, Notre Dame 40
 October 13—Georgia Tech 43, Howard 0
 October 20—Georgia Tech 6, Navy 20
 October 27—Georgia Tech 20, Auburn 7
 November 3—Georgia Tech 6, Duke 14
 November 10—Tulane at New Orleans
 November 17—L.S.U. at Atlanta
 November 24—Clemson at Atlanta
 December 1—Georgia at Atlanta



W. L.  Shoes
 W. L. DOUGLAS SHOE CO., BROCKTON 15, MASS.
 218 ST. CHARLES STREET

HAUSMANN

NEW ORLEANS'
 LEADING JEWELERS

Special Department for College
 and
 Fraternal Jewelry

*The Thinking Fellow
 Rides a Yellow*

TOYE BROS.

YELLOW CABS

WSMB

1350 Kilocycles



NEW ORLEANS' OUTLET FOR
 THE N B C NETWORK



IF YOU CAN'T ATTEND ALL OF
 THE TULANE GAMES, LISTEN
 TO HARRY ARTHUR'S VIVID
 DESCRIPTION OF THEM
 ON W S M B.

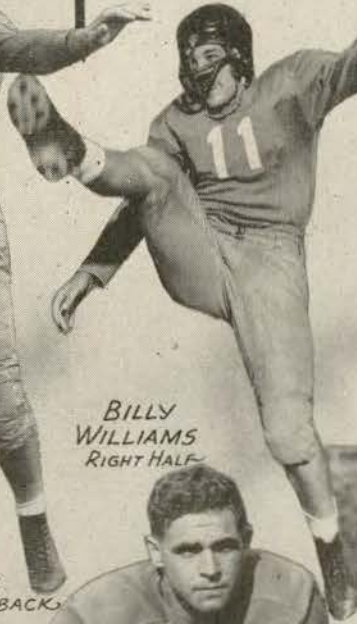
GEORGIA TECH



GEORGE
MATHEWS
LEFT HALF



BILLY
WILLIAMS
RIGHT HALF



ED
HOLSINGER
QUARTERBACK



JIM LUCK
LEFT HALF



BOB
MITCHELL
END



GEORGE
HILLS
GUARD



JOHNNY
MCINTOSH
FULLBACK



HOWARD GOSSETT
TACKLE



BOB DAVIS TACKLE



WALTER FRANKLIN, GUARD



WALTER KILZER END

TULANE ROSTER

No.	Name and Position	Weight	Height	Hometown	Status
10	Ray Arthur, qb	160	5-8	New Orleans, La.	Civ.
11	James Lee, fb	165	5-11	Memphis, Tenn.	Civ.
12	David Rideout, hb	165	5-10	Henderson, Ky.	Civ.
14	Hugh Bowers, c	179	5-10 1/2	Port LaVaca, Tex.	Navy
15	William Leahey, qb	170	6-1	Rensselaer, N. Y.	Navy
16	Harry Levonian, b	165	5-8	Racine, Wis.	Civ.
18	Joe Young, hb	170	5-11	New Orleans, La.	Civ.
19	Larry McDonald, e	172	6-	Struthers, Ohio	Civ.
20	Ernest Crouch, qb	155	5-10	Sulphur, La.	Civ.
21	Jack Seybold, g	185	5-9	New Orleans, La.	Civ.
22	Richard Hoot, hb	180	5-11 1/2	Swarthmore, Pa.	Navy
23	Joe Chavez, hb	172	5-9	Los Angeles, Cal.	Navy
24	Clayton Timken, t	185	6-	New Orleans, La.	Vet.
25	Marvin McCain, qb	193	6-	New Orleans, La.	Civ.
26	David Banowetz, fb	184	5-10	New Orleans, La.	Civ.
27	David Rowland, t	202	6-2	Hot Springs, Ark.	Navy
28	Bill Robertson, fb	175	5-11	Piggott, Ark.	Civ.
29	William Reynolds, hb	175	5-11	Birmingham, Ala.	Navy
30	Tony Cash, e	195	6-1 1/2	New Orleans, La.	Vet.
31	James Lassetter, e	170	6-1 1/2	Whitehaven, Tenn.	Civ.
32	Roy Bailey, e	180	6-	Sulphur, La.	Civ.
33	Jack Connce, hb	183	6-	New Orleans, La.	Civ.
34	Robert Logan, t	195	6-3	Dennison, Iowa	Navy
35	William Woodiel, g	185	6-	Little Rock, Ark.	Civ.
36	George Robinson, t	195	6-	Homer, La.	Vet.
37	William Carter, g	180	5-11	Irvington, N. Y.	Navy
38	Gaston Bourgeois, g	205	5-11 1/2	Lutcher, La.	Civ.
39	Elliott Igleheart, t	200	5-10	Shelbyville, Ky.	Civ.
40	Al Stolen, c	200	6-1	Duluth, Minn.	Vet.
41	John Frank, g	202	5-10	New Orleans, La.	Civ.
42	James Bie, e	170	6-	Racine, Wis.	Civ.
43	Walter Ferguson, t	190	5-11	Okeene, Okla.	Navy
44	Alvin Brinker, g	200	6-	New Orleans, La.	Civ.
45	Leroy Schneider, t	230	6-	Baltimore, Md.	Vet.
50	William Watkins, e	185	6-	Helena, Ark.	Navy
57	Hugh Carney, e	165	5-11	Texarkana, Ark.	Civ.
58	Robert Shirley, e	185	6-1	Vicksburg, Miss.	Vet.
65	Caver Johnson, t	215	5-11	Atlanta, Tex.	Vet.
70	William McEvers, e	195	6-3	Hillsboro, Tex.	Civ.
80	Vaughn Ellender, c	175	5-11	Sulphur, La.	Civ.
85	Pete Greer, g	230	5-8	Memphis, Tenn.	Civ.
86	Bernard Paxton, t	230	6-3	Birmingham, Ala.	Civ.
88	Billy Oswald, t	185	6-	Memphis, Tenn.	Civ.
96	Sal Bondio, t	215	6-3	New Orleans, La.	Vet.

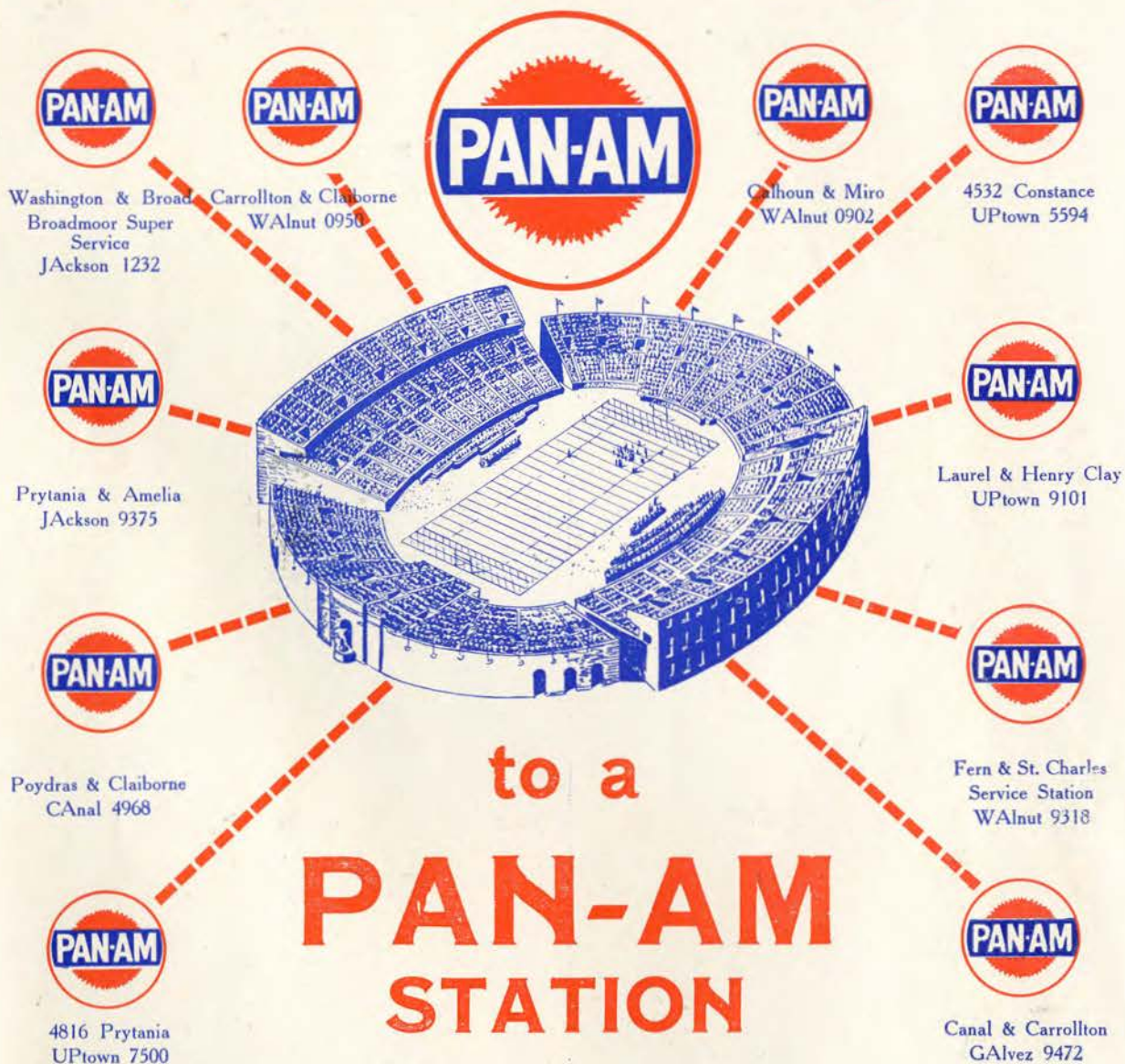


GEORGIA TECH ROSTER

No.	Name and Position	Weight	Height	Hometown	Class
11	Billy Williams, rh	170	5-11	Dallas, Tex.	Jr.
12	George Mathews, lh	160	5-11	Columbus, Ga.	Jr.
13	Jack Peek, rh	158	5-7	Atlanta, Ga.	Soph.
14	Albert Lansing, lh	140	5-7	McComb, Miss.	Fresh.
15	Jack Crawford, e	170	6-	Americus, Ga.	Sr.
18	John Houck, rh	150	5-9	Harrisburg, Pa.	Sr.
21	Hays McKinney, g	185	5-7	Gadsden, Ala.	Fresh.
23	Jimmy Olson, rh	185	6-	Daytona Beach, Fla.	Fresh.
24	Don Ferguson, qb	170	5-10	Sherwood, Tenn.	Fresh.
25	Walter Franklin, g	190	6-	Savannah, Ga.	Jr.
26	George Brodnax, e	170	6-1	Atlanta, Ga.	Fresh.
27	Bob Blake, qb	165	5-11	Savannah, Ga.	Fresh.
28	Bob Mitchell, e	185	5-11	Miami, Fla.	Sr.
29	Jim Nolan, c	210	6-8	Macon, Ga.	Fresh.
30	Johnny McIntosh, fb	175	5-10	New Cumberland, W. Va.	Sr.
31	Gordon Clay, ee	180	5-10	Atlanta, Ga.	Fresh.
32	Walter Kilzer, e	170	6-	Humbolt, Tenn.	Sr.
34	Bill Busbin, e	180	5-11	Atlanta, Ga.	Jr.
35	Ed Holtsinger, qb	185	6-	Jacksonville, Fla.	Sr.
36	Joe Basler, fb	170	5-7	Wilkes Barre, Pa.	Sr.
37	Joe Kelly, lh	155	5-7	Atlanta, Ga.	Soph.
39	Billy Camp, t	203	6-2	Atlanta, Ga.	Soph.
40	Jim Luck, lh	185	5-11	Americus, Ga.	Jr.
42	Spencer Keller, fb	170	5-10	Statesville, N. C.	Fresh.
44	Buck Doyal, g	190	6-3	Atlanta, Ga.	Soph.
47	Dan Kyker, e	190	6-	Knoxville, Tenn.	Sr.
48	Larry Thompson, g	185	6-	Glennville, Ga.	Sr.
49	George Hills, g	200	6-	Jacksonville, Fla.	Sr.
50	Mall Stamper, g	190	6-	Detroit, Mich.	Sr.
51	Jack Glenn, t	225	6-3	Winston-Salem, N. C.	Sr.
52	Howard Gosset, t	211	6-2	Atlanta, Ga.	Soph.
53	Paul Duke, e	205	6-1	Atlanta, Ga.	Sr.
54	Bert Aton, t	210	6-4	Louisville, Ky.	Fresh.
55	Jack Helms, e	210	6-4	Charlotte, N. C.	Sr.
56	Deane Gaines, t	210	6-1	Decatur, Ga.	Sr.
57	Bob Davis, t	215	6-4	Columbus, Ga.	Jr.
58	George Barron, c	194	5-11	Philadelphia, Pa.	Sr.
59	Cleaborne O'Kelly, c	180	6-3	Tulsa, Okla.	Sr.

The Official Watch for Timing All Tulane Games is a Longines—"The World's Most Honored Watch"

only a few yards to go . . .



(Other Pan-Am Stations conveniently located
in all parts of the City.)



Lucky Man . . . Pretty date,
two good seats, and clothes from
The Men's Store of
D. H. HOLMES CO., LTD.