

Tulane vs. Rice

OCTOBER 14, 1944

The Greenie

Price 25¢



THESE ARE THE OFFICIAL 1944 Signals



OFF-SIDE
Hands on and off hips—repeat several times.



ILLEGAL POSITION OR PROCEDURE
Hands revolving in front of chest.



ILLEGAL MOTION OR SHIFT
Horizontal arc with either hand.



ILLEGAL DELAY OR EXTRA-TIME OUT
Folded arms.



ILLEGAL USE OF HANDS OR ARMS
Grasping one wrist.



UNSPORTSMANLIKE CONDUCT
Arms outstretched, palms down.



SAFETY
Palms together overhead.



INTENTIONAL GROUNDING
Both hands over right shoulder then down hard and forward.



FORWARD PASS OR FAIR CATCH INTERFERENCE
Pushing arms forward, palm vertical.



BALL ILLEGALLY TOUCHED, KICKED OR BATTED
Tapping both shoulders with finger tips.



INCOMPLETE FORWARD PASS; PENALTY DECLINED, NO PLAY OR NO SCORE
Hands rapidly criss-crossed in horizontal plane.



BALL DEAD
One arm aloft, open hand. If hand is closed, TOUCHBACK.



UNNECESSARY ROUGHNESS
Military salute. CLIPPING

Salute followed by slapping back of knee with hand.
RUNNING INTO OR ROUGHING KICKER
Salute followed by swinging leg to simulate a punt.



TIME-OUT
Hands rapidly criss-crossed overhead.



CRAWLING; HELPING THE RUNNER OR INTERLOCKED INTERFERENCE
Pushing movement with hands below waist.



TOUCHDOWN OR FIELD GOAL
Both arms aloft and held rigid.



ILLEGAL FORWARD PASS
Waving hand behind back.



FIRST DOWN
Vigorous throwing motion concluded with outstretched arm pointing toward offensive goal.



START THE CLOCK OR NO MORE TIME-OUTS ALLOWED
Full arm circles to simulate winding a clock.



Listen to "Time Out" WITH JOHNNY LYNCH

WWL Thursdays 5:15-5:30 P.M.

And for Your Time Out

MR. S. J. MASTRONI
19 GOLDEN STREET
NEWARK, N.J.
07103



JACKSON BREWING COMPANY
NEW ORLEANS, LA.

Sam J. Mastroni
529 1/2 Hess St.
Morgantown, WV 26505

DRINK **JAX** BEST BEER IN TOWN

THE GREENIE

Vol. 14

OCTOBER 14, 1944

No. 1

Official Souvenir Football Program of Tulane University, Published for Each Home Game.

National Advertising Representative, Football Publications, 370 Lexington, New York City

WAVE COACHES

Claude Simons, Jr., familiarly known to football fans as "Little Monk," is now in his third year as chief of the Wave football staff.

The son of the immortal Monk—Tulane's trainer in athletics from 1921 until the time of his death in November, 1943—Little Monk literally grew up in the Greenie tradition. As a lad, he was a constant companion of his daddy in the gymnasium and stadium almost from his earliest walking days. When he graduated from the Newman School in New Orleans, where he was a star athlete, Little Monk matriculated at Tulane. That was in the fall of 1931. When he graduated in June, 1935, he had established an intercollegiate athletic record equaled by only two Greenies. He had lettered in four varsity sports, football, basketball, track and baseball. And he had led the parade in each. In football he made many all-American halfback selections in 1934, leading his team to a co-inaugural Sugar Bowl game. He scored in every game of that season. Individually, his markers won most of the games. He was one of the greatest punters in Southern history. Weighing better than 190 pounds he was a blocker without superior.

Offered pro football and baseball contracts upon graduation, he declined and chose coaching as a career. He began at Transylvania College at Lexington, Ky., where he was athletic director and head coach. From the fall of 1935 until he returned to his alma mater as varsity basketball coach and assistant freshman football coach in 1938, he led Transy's teams. Back at Tulane, his basketball teams were respected and his coaching and scouting was a valuable asset to Coach "Red" Dawson, the Greenie head man. When Glenn Seidel left the staff as backfield coach in the spring of 1940, Little Monk moved up a peg and when Dawson left in the spring of 1942, Simons was the logical choice to succeed him.

He lost no time in proving the merit of the selection. In his head coaching debut, he took the Greenies to Los Angeles for their first game. The opponent was Southern Cal, a team highly regarded on the Pacific Coast. At the half, Little Monk's Greenies had the Trojans 27 to 0 and he coasted with reserves the rest of the way for an easy victory.

An inspiring leader, he is very close to his "boys". He works as hard on the practice field almost as they do. He goes through the grass drills with them but discontinued scrimmaging with his

players as far back as his Transylvania days when he broke a leg.

Little Monk is married and is the father of two children, Chipmonk, age 5, and Sandy, 2.

Monk is a native of New Orleans, as was his father and paternal grandfather.

* * *

Charlie Rucker, assistant football coach, starred on the Tulane teams of 1927, 1928, 1929. He was Greenie captain in 1928 and an all-Southern tackle in 1929. A native of Pine Bluff, Ark., he has been one of the mainstays of the Greenie scouting and coaching staff since 1935.

* * *

Cromwell Tate "Piney" Page, varsity line coach of the Greenies, played his football at Tulane, lettering as a tackle in 1933. For the past several years he was athletic director and head coach in football at Transylvania college, having succeeded Simons when the latter returned to Tulane. Page is a native of Arkansas.

* * *

Vernon "Lefty" Haynes, end coach, is none other than the shaggy lion of Tulane's 1931 Rose Bowl team, one of the greatest pass snagging ends of Wave history. He not only coaches ends, he is also a member of the math faculty of the college of arts and sciences. Haynes is from Lake Village, Ark.

*The FRESHER
The BETTER!*



APPLE "HONEY" HELPS KEEP OLD GOLDS FRESH!

• A mist of Apple "Honey" is sprayed on Old Gold's fine tobaccos to help hold in the natural freshness.



The Roosevelt

New Orleans' Finest

In America's Most Interesting City



THE ROOSEVELT is located in the heart of Romantic old New Orleans. It is in the center of business and social activities and is close to the Theatre, Shopping, French Quarter, and Business Districts . . . You will like the tasteful luxury and home-like atmosphere of this modern hotel where the traditions of Southern Hospitality are maintained the year 'round.

800 ROOMS WITH BATH

MODERATE RATES



The Roosevelt
"The Pride of the South"

RICE OWLS



FREDDIE BRECHTEL
BACK



FRANK LAWRENCE



HAROLD TATE
CENTER



BOB SMITH
END



DAVID PARRISH
BACK



TRUMAN WRIGHT
TACKLE



BOB TURNER
TACKLE



CARL RUSS
BACK



BUCKS SHEFFIELD
BACK



BILL SCRUGGS
BACK



CHOLLY HOWARD
TACKLE



GEORGE WALMSLEY
BACK



JESS NEELY
HEAD COACH



JOE VAN METER
GUARD



BOB ZELSMAN
TACKLE



JOHNNIE COX
GUARD

Famous for
FINE FOOD
and **DRINK**



TONIGHT—enjoy specialties of these noted restaurants:

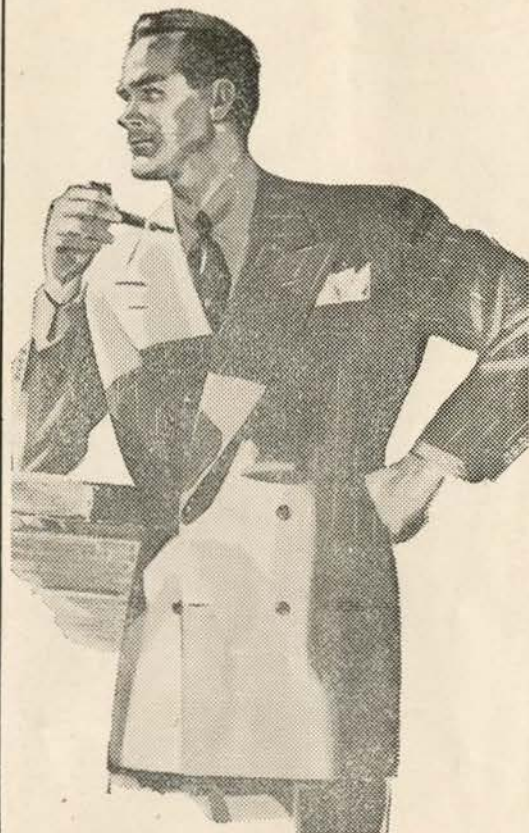
ANTOINE'S
713 St. Louis St.

ARNAUD'S
813 Bienville St.

BROUSSARD'S
819 Conti St.

KOLB'S
125 St. Charles St.

An Investment in Good Appearance



There is something about this suit that makes it look smarter, feel better, wear longer . . . and that something is

KUPPENHEIMER QUALITY
FROM \$55 TO \$65

For Discriminating Men

Mayer Israel's
714 Canal St.



LEONARD FINLEY
QUARTERBACK



RAY ARTHUR
HALFBACK



WILLIAM A. JONES
HALFBACK



JOE RENFROE
HALFBACK



HARRY ROBINSON
FULLBACK



KENNETH MULLER
TACKLE



GASTON BOURGEOIS
GUARD



WALMSLEY LOKER
END

H
I
C
K
L
E
Y



FRED ROSEMAN
TACKLE



ELLIOT INGLEHEART
GUARD

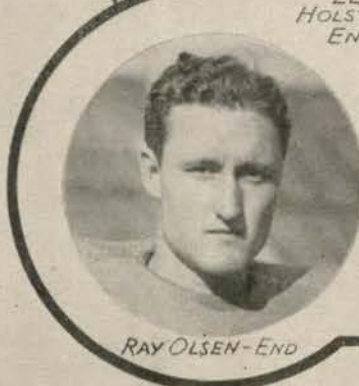


LEON
HOLSTEAD
END



TOM
KANE
TACKLE

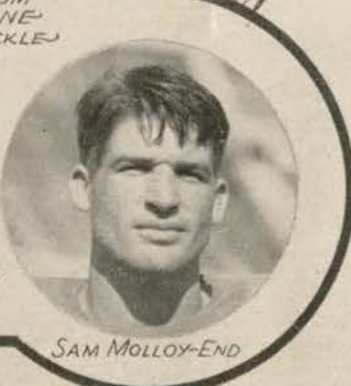
D
R
U
M
M
E
R



RAY OLSEN- END



EDWIN HOFMAN
CENTER



SAM MOLLOY- END

Greetings, "Green Waves"! Welcome "Owls"!



STUDENT TWEEDS

\$30.00

Definitely collegiate . . . grays and browns in all wool herringbones and diagonals. Suit includes matching vest. Sizes 33 to 42.

- *For Spectator Sports!*
- *For Classtime!*
- *For Campus Informals!*

Men's Clothing, MB First Floor

Maison Blanche

GREATEST STORE SOUTH



WALLY SCHMITZ
QUARTERBACK



LARRY BAROUSSE
CENTER



JAMES CORN
FULLBACKS



BILL REYNOLDS
HALFBACK



ANDY CUCCIA
GUARD



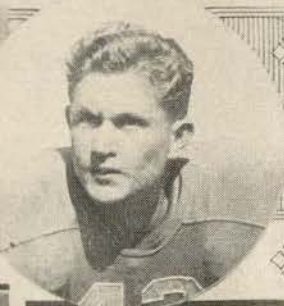
BENNIE ELLENDER
HALFBACKS



HENRY ANGULO
TACKLE



MARVIS MOSELEY
TACKLE



CLAYTON TIMKEN
TACKLE



ALVIN DEWS
END



CURTIS JONES
TACKLE



BOB MARSHALL
GUARD



JOHN FRANKS
GUARD



BOB LOGAN
END

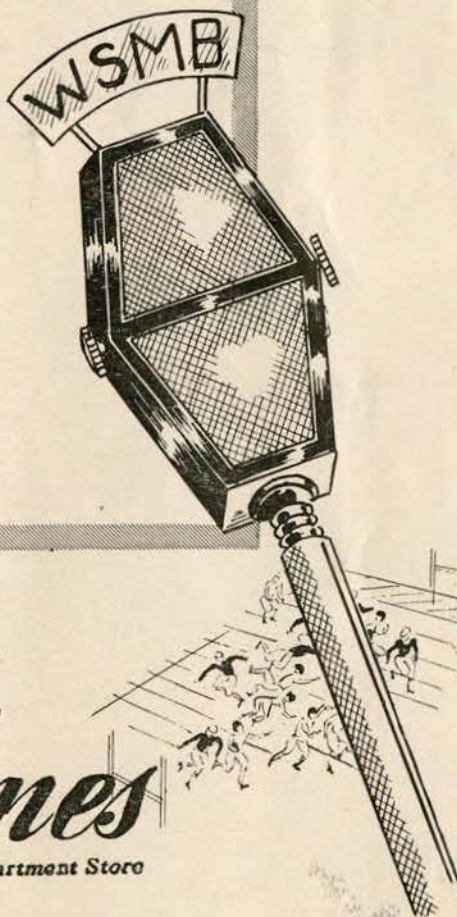
TULANE

HOLMES FOOTBALL BROADCASTS

Listen In!

**WSMB—9:45 to 10:00 p.m.
Every Friday Night**

Each Friday night during the football season, from 9:45 to 10:00 P. M., Holmes will present Mr. Horace Renegar with interesting football facts and figures. Mr. Renegar is Vice-President of the American College Publicity Association and enjoys the confidence of football coaches and sports authorities throughout the United States.



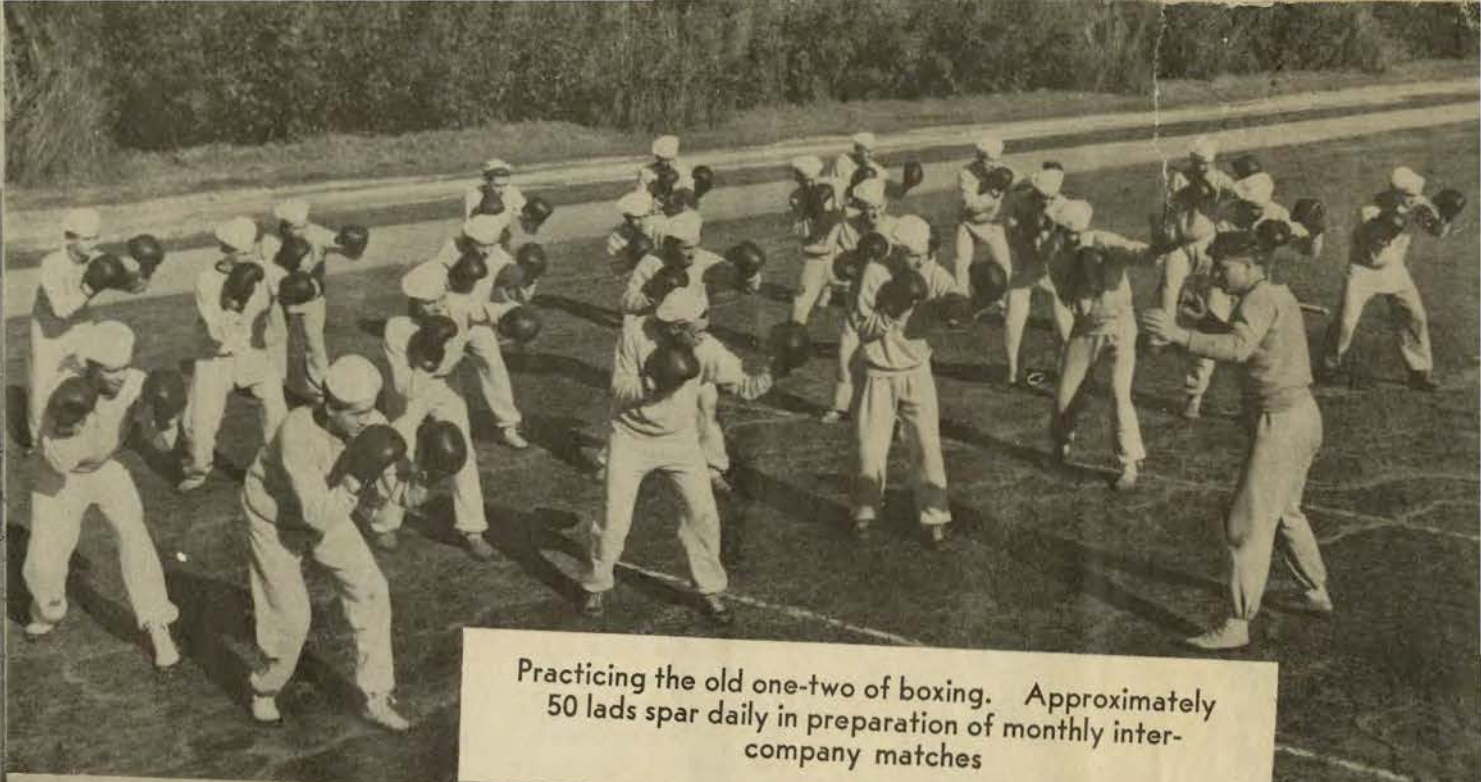
**A New Series of Holmes
Football Broadcasts
Every Friday Night
9:45 to 10:00 P. M. WSMB**

Holmes
New Orleans' Quality Department Store

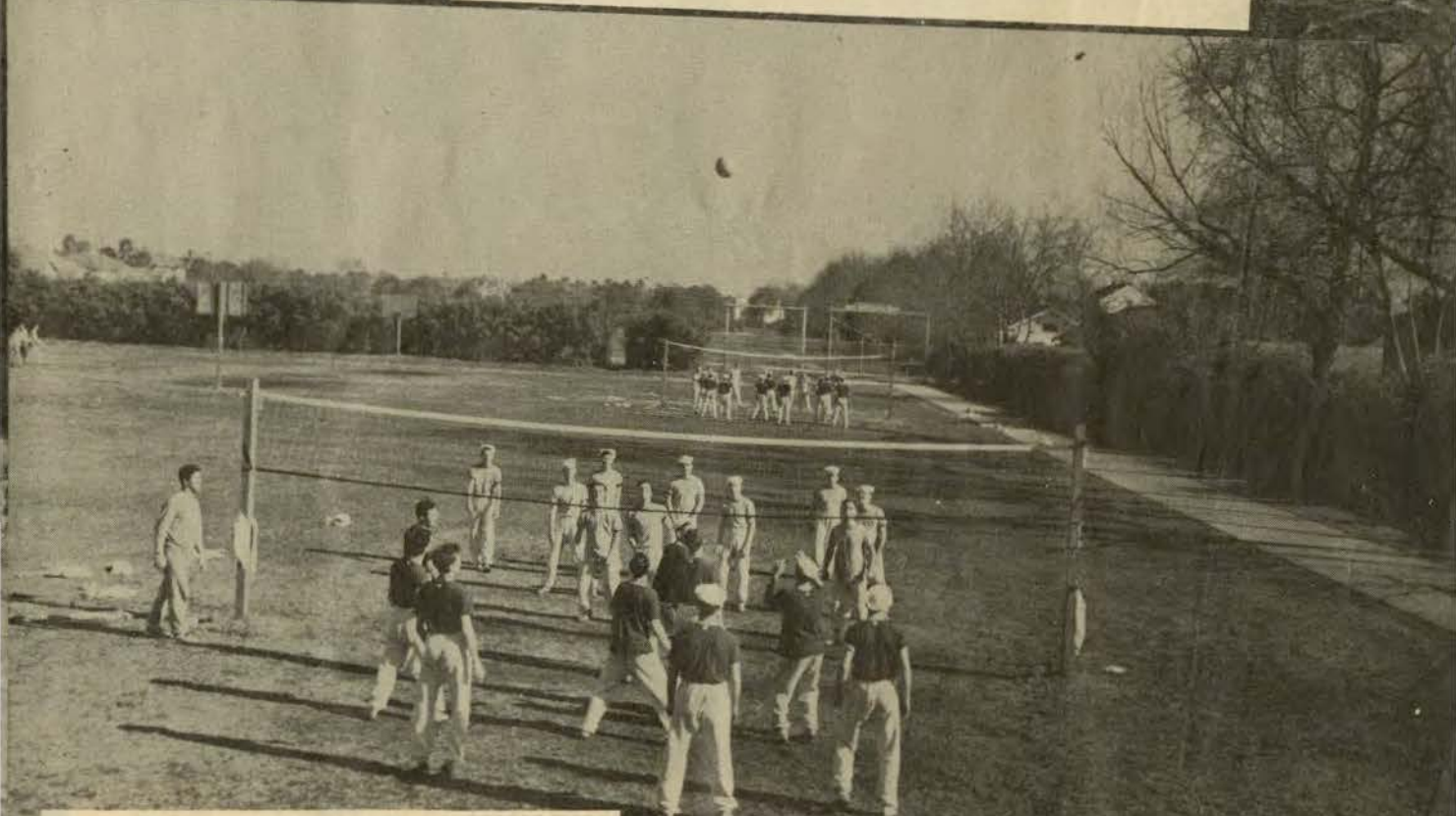


Cam-pix
a medley of
**CAMPUS
PICTURES**
EDITED BY HORACE PINEGAR

Wartime Tulane university speeds up its physical training program with a series of physical fitness tests and a variety of games and sports equipping students for service with the armed forces. Above, students exercise with twelve pound medicine balls



Practicing the old one-two of boxing. Approximately 50 lads spar daily in preparation of monthly inter-company matches



Volley ball, a popular game included in the sports roster

WHERE IS PORTER'S?
HUH?

ACROSS THE STREET FROM THE COTTON EXCHANGE..

AROUND THE CORNER FROM THE ST. CHARLES HOTEL ..

OPPOSITE THE HIBERNIA NATIONAL BANK AND IN THE SAME BLOCK WITH THE AMERICAN BANK

ASK ANYBODY!

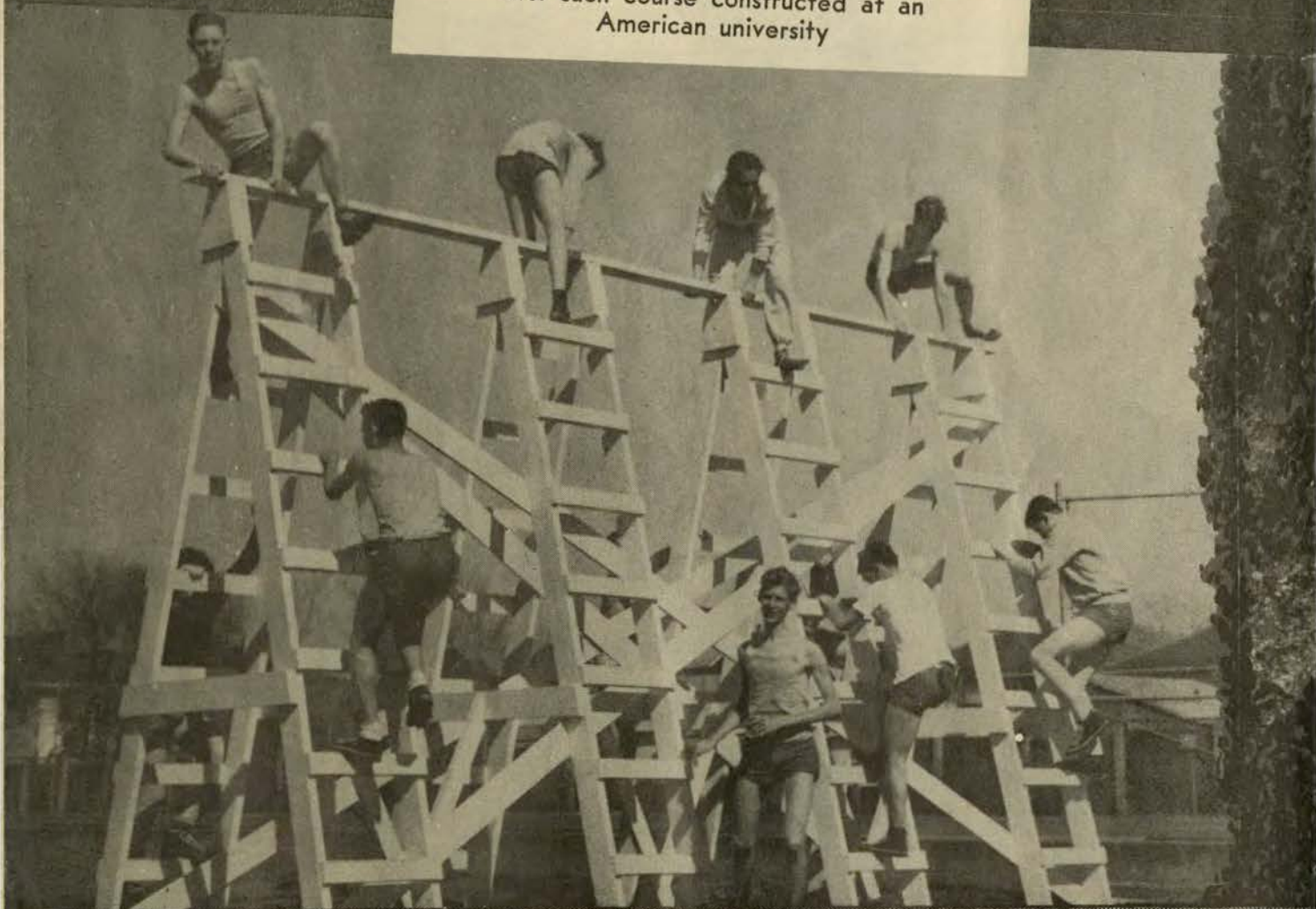
EVERYTHING MEN WEAR

Porter's

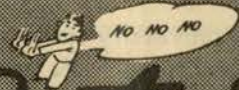
CARONDELET COR. GRAVIER STS.

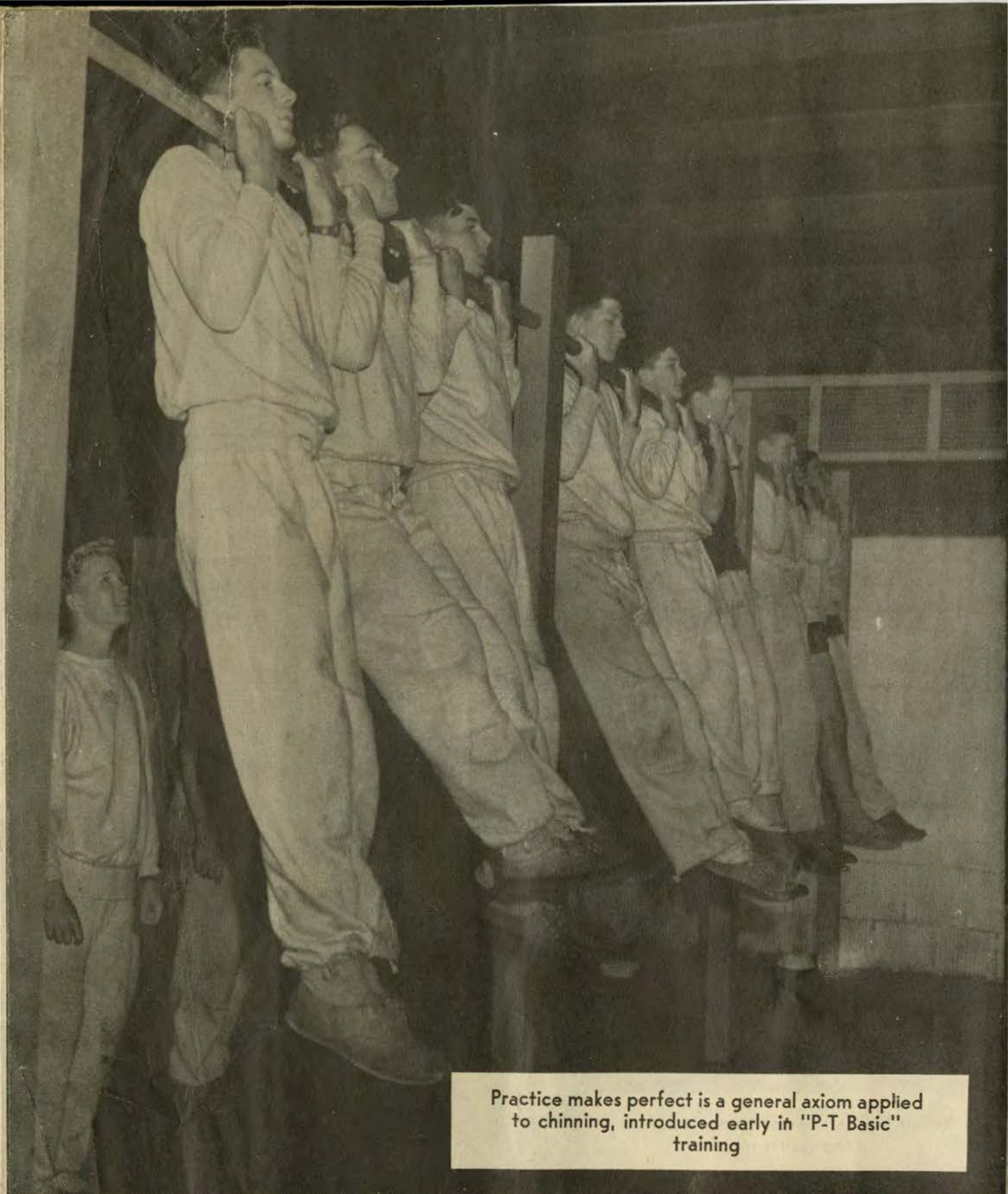


Obstacle course at Tulane, believed to be the first such course constructed at an American university



You pay no more for **Porter's** DEPENDABILITY!





Practice makes perfect is a general axiom applied to chinning, introduced early in "P-T Basic" training

DURABLE
ALL WOOL
SUITS



100%
THAT'S
ME!

AND I
CAN
TAKE IT!

\$35 from
Porter's

Established 1895

Phone WALnut 0082

TULANE UNIVERSITY PRESS

Printing Department of Tulane University



CAMPUS PRINTERS

3

Basement, Gibson Hall

New Orleans



*Better Printers
in New Orleans*

“Time Out”

DRINK—

Coca-Cola

TRADE MARK
REG. U.S. PAT. OFF.

PAUSE—

RELAX—

REFRESH YOURSELF

RIGHT COMBINATION *** WORLD'S BEST TOBACCOS



TULANE

LE Molloy 21	LT Schneider 32	LG Igleheart 31	Starting Lineup C Hofman 44	RG Bourgeois 30	RT Roseman 35	RE Olsen 20
LHB Jones 16	QB Finley 22	FB Robinson 15	SQUAD LIST			
10 Frank, g	11 Schmitz, b	12 Renfro, b	13 Loker, e	14 Ellender, b	15 Robinson, b	16 W. A. Jones, b
17 Logan, e	18 Pechon, b	19 Timken, t	20 Olsen, e	21 Molloy, e	22 Finley, b	23 Barousse, c
24 Tournillon, c	25 McCain, b	26 Curtis Jones, t	29 Reynolds, b	30 Bourgeois, g	31 Igleheart, g	32 Schneider, t
33 Angulo, t	34 Kane, t	35 Roseman, t	36 Miller, g	37 Muller, t	38 Holsted, e	39 Marshall, g
40 Arthur, b	41 Dew, e	42 Cuccia, g	44 Hofman, c	45 Killeen, b	46 Landry, b	47 Melton, b
48 Lewis, e	49 Terrell, g	50 Addkison, g	51 Craig, g	52 Moseley, t	53 Ferguson, t	56 Chetta, b
57 Piper, b	58 Van Geffen, g	59 L. C. Jones, b	OFFICIALS			
Umpire—T. M. Hart (San Antonio, Texas)						
Referee—A. Bell (Vanderbilt)						

CHESTERFIELD

CIGARETTES

LIGGETT & MYERS TOBACCO CO.

RICE

LE Bradbeer 85	LT Howard 76	LG Cox 65	Starting Lineup C Tate 50	RG Nichols 60	RT Zelsman 78-80	RE Miner 86
LHB Walmsley 44-10	QB Lawrence 20-23	FB Sheffield 49-42	SQUAD LIST			
White Gray	White Gray	White Gray				
10-44 Walmsley, b	51 Chrisman, c	75 Martin, t				
11-17 Coffey, b	60 Nichols, g	76 Howard, t				
16 Bolton, b	61 Hanson, g	80-78 Zelsman, t				
19-36 Nemir, b	63 Myers, g	81 Grininger, e				
23-20 Lawrence, b	66 Cox, g	82 Allen, e				
25-14 Scruggs, b	67 VanMeter, g	83 Smith, e				
30 Russ, b	68-56 Perry, c	84 Franklin, e				
42-49 Sheffield, b	71-65 Towns, g	85 Bradbeer, e				
45 Mason, b	72-70 Wright, t	86 Miner, e				
46 Parrish, b	73 Davenport, c	87 Looper, e				
49-15 Brechtel, b	74 Turner, t	89 Malseed, e				
50 Tate, c						
OFFICIALS						
Head Linesman—G. M. Phillips (Georgia Tech)						
Field Judge—R. Fischer (San Antonio, Texas)						

On the Campus

IT'S CHESTERFIELD

AT THE GAME
and
AFTER THE GAME
ENJOY



D Equipment for all sports...

U *Specialists in all types of
school athletic
supplies*

N

L

A

P

Sporting Goods Co., Inc.

138 Carondelet Street
MAGnolia 5891

Stop!
Look!
Listen!

There's a 7-Up Boy right
down in front of you! Call
him now and Fresh-Up

With



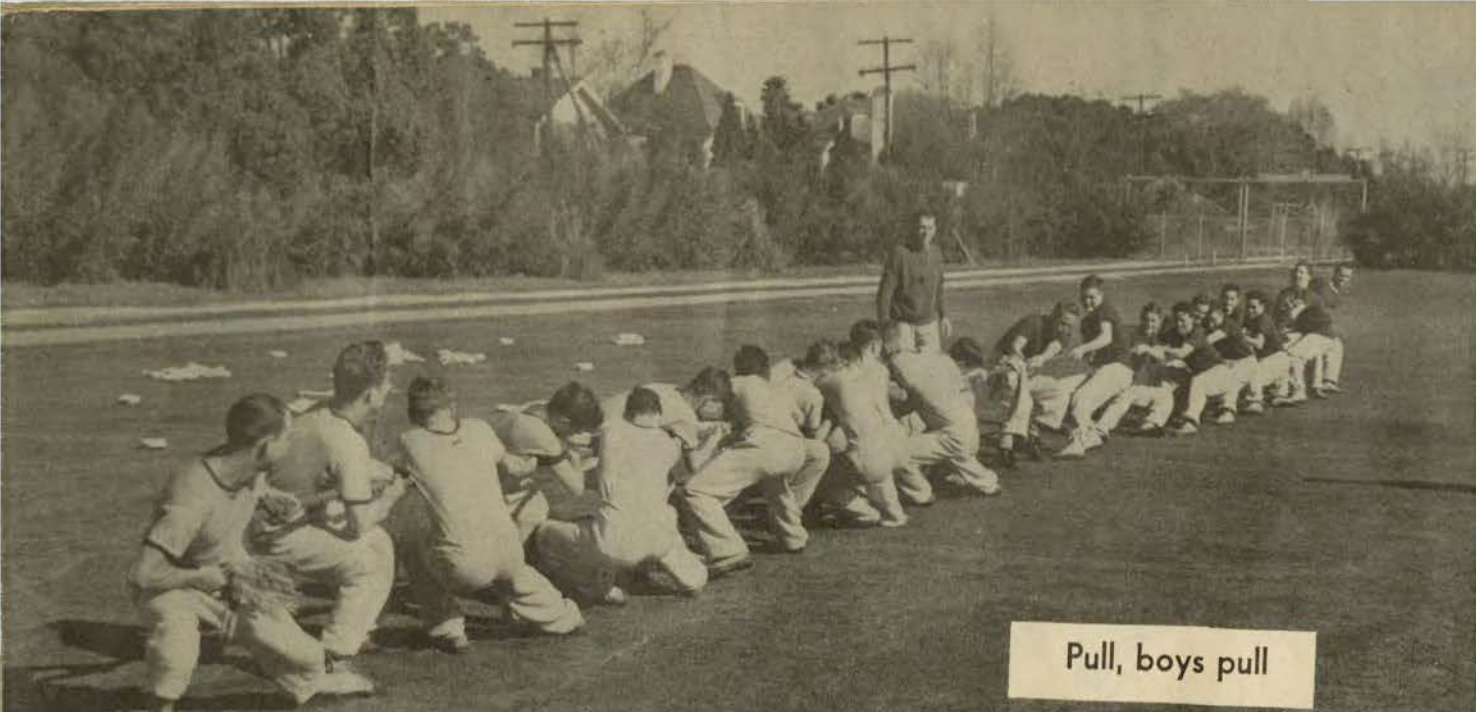


Tumblers hit the mat under the Tulane stadium

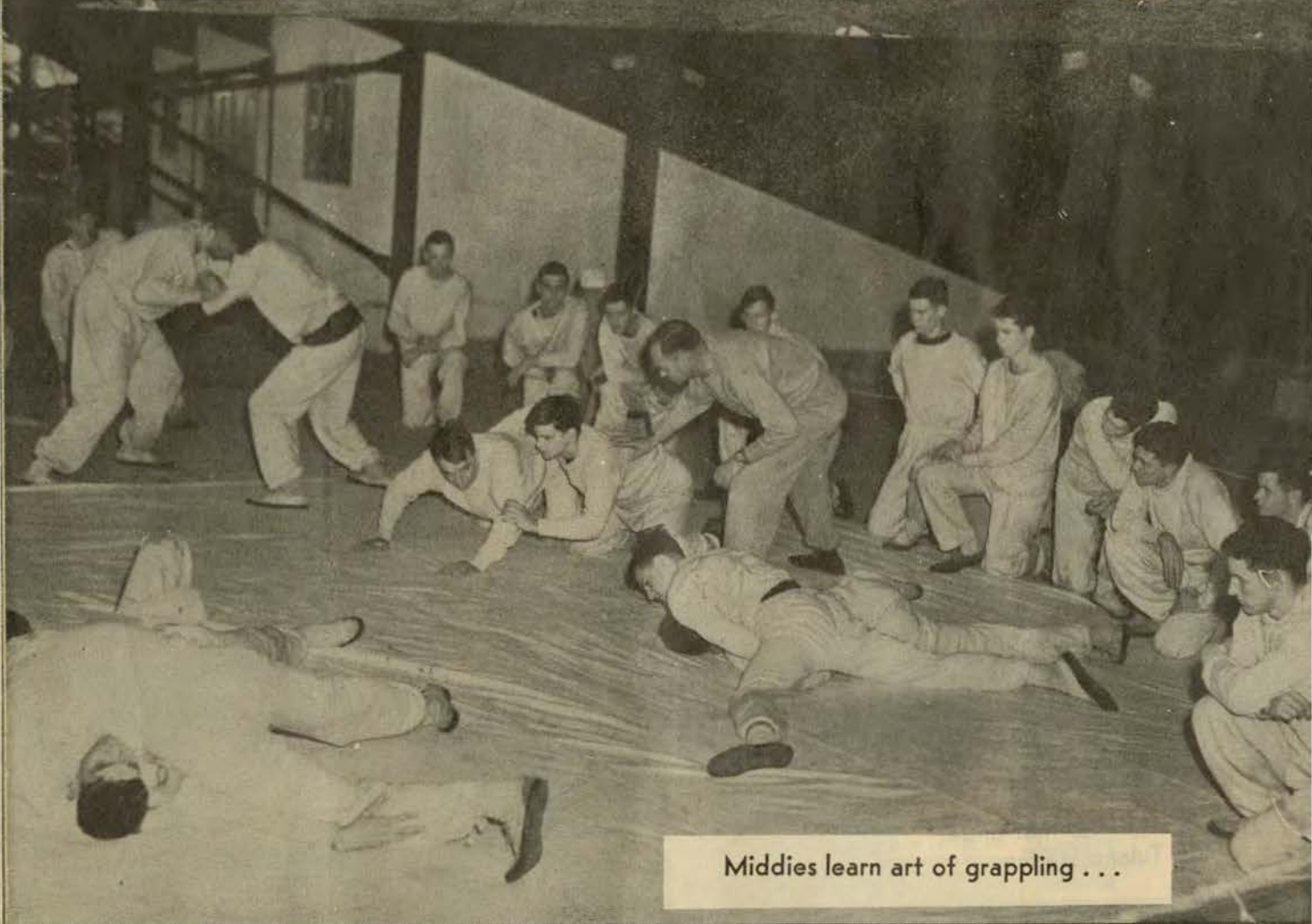
Good Grooming
A-HEAD



with
STYLEPARK HATS
from *Porter's*



Pull, boys pull



Middies learn art of grappling . . .

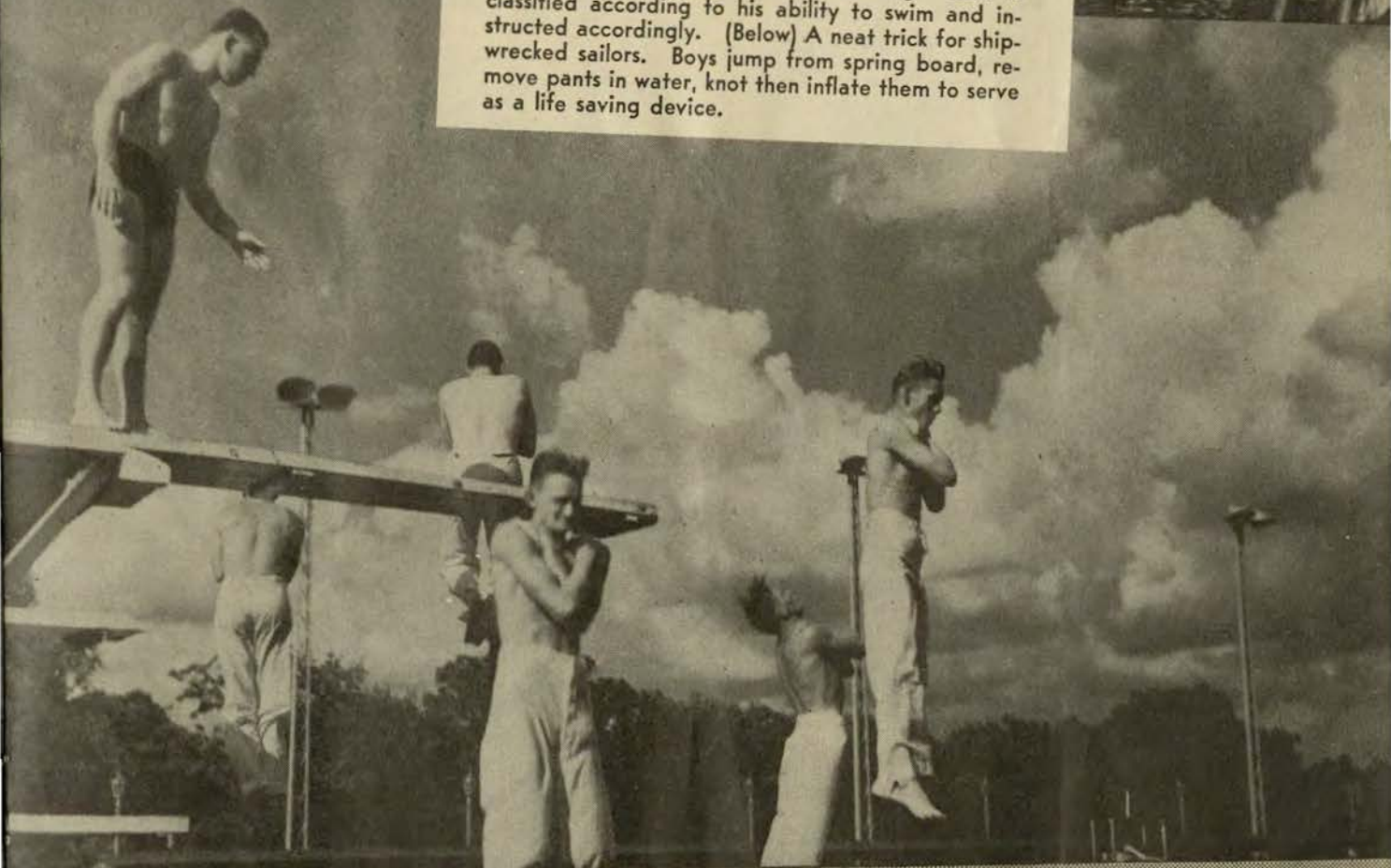
SCORE
VICTORY
over the *AXIS!*



buy *more*
WAR BONDS and STAMPS
Porter's



Every young tar must master swimming. Each is classified according to his ability to swim and instructed accordingly. (Below) A neat trick for shipwrecked sailors. Boys jump from spring board, remove pants in water, knot then inflate them to serve as a life saving device.



keep dry on WETTEST DAYS

RAINFAIR STORMCOATS



from
Porter's



Maintenance class conducted on the out-door courts where five different sports are played

Nunn Bush
SHOES



FOOT
COMFORT



MILES OF WEAR

at
Porter's

SONGS AND YELLS

ROLL ON, TULANE

ten Hoor and Goldstein

Roll, Green Wave,
Roll them down the field.
Hold, Green Wave,
That line must never yield.
When those Greenbacks charge through the line
They're bound for victory.
Hail, Green Wave, for you
We have no fear.
Hail, Green Wave, for you we give a cheer
And ev'ry man in ev'ry play
And then we'll win that game today.
Hurrah for Old Tulane!

Hullabaloo

Hullabaloo! Ray! Ray!
Hullabaloo! Ray! Ray!
Hooray! Hooray!
Vars, Vars, T.A.A.
T.A.A.! T.A.A.!

Vars, Vars, T.A.A.!

TULANE!!!

ALMA MATER

*Sing these words as Tulane's Alma Mater
is played*

I.

We praise thee for thy past, O Alma Mater!
Thy hand hath done its work full faithfully!
The incense of thy spirit hath ascended
And filled America from sea to sea.

II.

We praise thee for thy present, Alma Mater!
Today thy Children look to thee for bread!
Thou ledest them to dreams and actions splendid!
The hunger of their souls is richly fed!

III.

We praise thee for thy future, Alma Mater!
The vista of its glory gleameth far!
We ever shall be part of thee, great Mother!
There thou wilt be where e'er thy children are!

CHORUS:

Olive Green and Blue, we love thee!
Pledge we now our fealty true
Where the trees are ever greenest,
Where the skies are purest blue!
Hear us now, O Tulane, hear us!
As we proudly sing to thee!
Take from us our hearts' devotion!
Thine we are, and thine shall be!

Official Timing Watch

TULANE-RICE FOOTBALL GAME

Longines

the World's Most Honored Watch

*winner of 10 world's fair grand
prizes and 28 gold medal awards*



Product of Longines-Wittnauer Watch Co.

The Rice-Tulane Series



Tulane and Rice met for the first time in football in 1916, 23 years after football had been instituted at Tulane.

In that span, the Greenies have won five, lost three and tied one.

The record by years:

1916, Tulane 13, Rice 23; 1917, Tulane 0, Rice 16; 1920, Tulane 0, Rice 0; 1921, Tulane 7, Rice 6; 1938, Tulane 26, Rice 17; 1940, Tulane 15, Rice 6; 1941, Tulane 9, Rice 10; 1942, Tulane 18, Rice 7; 1943, Tulane 33, Rice 0.

* * *

The game today brings together two of the South's ablest coaches, Jess C. Neely of Rice and Claude "Monk" Simons, Jr. of Tulane.

Jess, an alumnus of Vanderbilt, is well known to New Orleans. A few years ago he brought three fine Clemson teams to New Orleans, playing the Greenies in the period when "Red" Dawson's elevens were among the strongest in the nation, winning one

of them from Tulane and losing two close decisions.

Monk, a Tulane alumnus, has sent his own teams against Jess' Rice teams for the past two years, winning both games.

The schedules:

RICE

- Sept. 23 Galveston A. A. F. at Houston.
- Sept. 30 Randolph Field at Houston
- Oct. 7 L. S. U. at Houston
- Oct. 14 Tulane at New Orleans
- Oct. 21 S. M. U. at Houston
- Oct. 28 Texas U. at Houston
- Nov. 4 Texas Tech at Houston
- Nov. 11 Arkansas at Fayetteville
- Nov. 18 Texas A. & M. at Houston
- Nov. 25 Texas Christian at Houston
- Dec. 2 Southwestern (Texas) at Houston

TULANE

- Oct. 7 Notre Dame at South Bend
- Oct. 14 Rice at New Orleans
- Oct. 21 Auburn at New Orleans
- Oct. 28 S. M. U. at New Orleans
- Nov. 11 Georgia Tech at Atlanta
- Nov. 18 Clemson at New Orleans
- Dec. 2 L. S. U. at Baton Rouge

The Game Isn't Over 'Til The Last Whistle Blows

Many a game is won in the last second of play . . . the war isn't over 'til the last battle is won! But, feeling sure of victory, it is so easy for us here at home to think our responsibility is over . . . our duty done. IT ISN'T! Until the last shot has been fired we must stand fast behind the man behind the gun!

**BUY MORE WAR
BONDS AND STAMPS**

Godeaux's

104 years of fine apparel



Remember Your First Job? . . .

Sure you felt strange—it was all so new and unfamiliar. Everything you'd learn in school seemed to have as little bearing on what went on as last week's weather forecast.

Chances are the motorman who brought you to town this morning or the conductor who gave you your transfer, or the bus operator who had to do both, was experiencing something of that same feeling. For since the war hundreds of new operators have replaced those who have entered the armed services. Even with the careful training they are given—much of it “on the platform”, as the saying goes,—there's always the first time when they go out on their own.

Your patience and friendliness have made it easier for them. You've remembered your first job, and overlooked the shortcomings of inexperience.

The spirit of tolerance will help keep vital transportation service going for the duration.

NEW ORLEANS *Public Service*

The Roosevelt

*The Roosevelt Hotel Offers
New Orleans' Most Diversified Program
of
Music and Entertainment*

IN THE FOUNTAIN LOUNGE

At LUNCHEON we invite you to listen to the sweet strains of the Gypsy Ensemble. For COCKTAILS and DANCING, alternately nightly from five o'clock until two the next morning is one of Latin America's noted Rhumba bands and the Society Music of one of America's outstanding combinations.

IN THE BLUE ROOM

Each evening, for DINNER and SUPPER DANCING, is presented one of the Nations famous orchestra . . . Featured also in the Blue Room Floor Shows at Dinner and Supper, are celebrated stars from radio, stage and screen.

*New Orleans' most discriminating audiences choose the Roosevelt for their
war-time relaxation and entertainment*



The Roosevelt
"The Pride of the South"

Pigskin Roundup

AUBURN-GEORGIA TECH—The Engineers have Bowl Visions again. Auburn won't be able to handle what may be a better Tech team than the Sugar Bowl winners of last year.

* * *

CALIFORNIA-COLLEGE OF THE PACIFIC—Mr. Stagg may go to town. It'll be that close. But, the odds are on the Bears and so the Bears we take.

* * *

COLGATE-CORNELL—A study in red. Both teams below par. Colgate.

* * *

YALE-COLUMBIA—A study in blue. Columbia seems to be on the mend. Yale, nevertheless.

* * *

NOTRE DAME-DARTMOUTH—A study in green. But the Irish with Kelly and Maggioli will be too much for Dartmouth in County Cork, beg pardon, in Boston.

* * *

GEORGIA-KENTUCKY — The Bulldogs by a nip.

* * *

ILLINOIS-IOWA—Illini to get back in the winning column.

INDIANA-NEBRASKA — The Hoosiers may be the team of the year. They'll take Nebraska in stride.

* * *

L. S. U.-TEXAS A. & M.—The Tiger to get going.

* * *

MICHIGAN-NORTHWESTERN—A third defeat in a row for the Evanston Wildcat.

* * *

MINNESOTA-MISSOURI—The Gophers to make it 2 and 2 for the season.

* * *

MISS. STATE-ARK. A. & M.—The Maroons of Starkville but they may be pushed.

* * *

OHIO STATE-WISCONSIN—The Buckeyes will beat the Badgers. But Gerard, a kicking, passing youngster from Madison may give 'em a few thrills.

* * *

OKLAHOMA-TEXAS — If the Longhorns are recovered from that Randolph Field bouncing, they should win this one.

* * *

S.M.U.-RANDOLPH FIELD—The Mustangs get theirs today, good and proper. What a prospect.

Thumbnails on Wave Lettermen



Joe Renfro—Home, Fort Myers, Fla. Only two-letterman on the squad. Is a senior in Arts and Sciences. Made All-Southeastern Conference last year as halfback. Can run, pass and punt, but latter is his specialty. Is a civilian, 4-F. Weighs 203. Is 6-1½.

Leonard Finley—Home, New Orleans. Senior in Engineering. Is President of the Tulane Student Body and an active campus worker as well as an outstanding student. For two years won New Orleans' Quarterback Club award for scholarship. Fine blocking back and pass catcher. Graduate of Jesuit High. In V-12. Weighs 180. Is 5-10.

Ernie Pechon—Home, New Orleans. Engineering junior. Graduate of St. Aloysius. Attended S.L.I. in freshman year. Saw lots of action last year as wingback, and should see more this season. In V-12 unit. Weighs 175. Is 5-9.

Wally Schmitz—Home, New Orleans. Arts and Sciences Junior. Graduate of Jesuit High. In R.O.T.C. Weighs 178. Is 5-10.

Bennie Ellender—Home, Sulphur, La. In College of Arts and Sciences. Good runner, better passer. Was starter last season until put out with sprained ankle. Ready to go now. In V-12 unit. Weighs 175. Is 6-2.

W. A. "Dub" Jones—Home, Ruston, La. Engineering student. Was All-State high school player. Attended L.S.U. as freshman, but transferred in V-12 unit. Was "find" of

last season and should be even faster this year. Triple Threat. Weighs 185. Is 6-2.

Harry Robinson — Home, Chattanooga, Tenn. In Arts and Sciences. Transferred in V-12 unit from Vanderbilt, where last season he led their "informal" team in scoring. Hard running fullback. Weighs 185. Is 5-10.

Tom Kane—Home, Kearny, N. J. Sophomore in Medical School. Just took up football last season and lettered. In Navy program. Weighs 195. Is 6-0.

Ray Olsen—Home, New Orleans. Member of R.O.T.C. In Arts and Sciences. Graduate of Fortier High. All-S.E.C. at end last season. Good defensive end and pass snagger. Weighs 182. Is 6-2.

Fred Roseman—Home, Plaquemine, La. Prepped at Bossier City High, near Shreveport, La. Engineering Junior. In R.O.T.C. Only returning tackle. Weighs 198. Is 6-2.

Elliott "Ike" Igleheart—Home, Shelbyville, Ky. All-State at quarterback and four letter winner. In Arts and Sciences. Is civilian. Awaiting call to Army Air Corps. Hurt most of last season. Weighs 196. Is 5-10.

Gaston Bourgeois—Home, Lutecher, La. "Baby" of squad. Just 17. Lettered at 16 and made All-S.E.C. honors at 16. Probably youngest ever to win major conference berth. All-State in high school. Is commerce sophomore. Civilian. Weighs 195. Is 5-11½.

RECORD SCORING PLAYS OF ALL TIME

(From Compilations of the Late Parke H. Davis)

IN FOOTBALL the record breakers know no season. They run, they pass, they punt, they drop kick and make field goals today much as they did yesterday. Curiously enough, unlike many other sports, football records are fairly evenly distributed over the years.

Wyllis Terry, playing for Yale against Wesleyan College in 1884, took the ball behind his own goal line and ran for a touch-down. That run of 115 yards constitutes the longest run on record. It was made when the field was 110 yards in length and therefore could not be duplicated today.

In 1937 Al Broga of San Francisco University made an 89 yard punt against Montana. Two years before, Dick Crayne, Iowa full-back, punted 102 yards with the wind at his back in a game against Indiana, but this distance included a long roll after the ball hit the turf.

The record field goal from placement and the record drop kick, oddly enough, are almost for the same distance.

In 1882, Haxall of Princeton in a contest against Yale, place-kicked the ball 65 yards.

Just two years before the United States' entrance into the World War, Mark Payne of Dakota Wesleyan drop-kicker 63 yards. In 1898 Pat O'Dea of Wisconsin drop-kicked 62 yards against Northwestern which stood as the record for many years.

Despite the lack of emphasis today on scores by kicking, the last decade has had its share of great kickers. In 1933 two 50-yard drop kicks were registered by Eubank of Washington State and Cahill of Nevada. In 1924, Pence of Coe drop-kicked 59 yards in a game against Drake,

When it comes to forward passing the record book has always awarded the palm to the throw made by "Brick" Muller of the University of California in the 1920 Rose Bowl game. Muller in that instance threw 70 yards to Brodie Stephens in a game against Ohio State. Recently the claim has been put forward that the longest completed pass was made in 1906. In that year Bradbury Robinson, playing for St. Louis University, was supposed to have made an 87-yard pass that was caught by his team mate, John Schneider.

HAUSMANN

NEW ORLEANS'
LEADING JEWELERS



Special Department for College
and
Fraternal Jewelry

*The Thinking Fellow
Rides a Yellow*

TOYE BROS.

YELLOW CABS

W S M B

1350 Kilocycles



NEW ORLEANS' OUTLET FOR
THE N B C NETWORK



IF YOU CAN'T ATTEND THE
TULANE GAMES, TURN TO
W S M B FOR THEM.

TULANE ROSTER

No.	Name and Position	Weight	Height	Hometown	Status
10	John Frank, g	189	5-9	New Orleans, La.	Civ.
11	Wally Schmitz, qb	178	5-10 3/4	New Orleans, La.	V-12
12	Joe Renfroe, rlb	203	6-1 1/2	Fort Myers, Fla.	Civ.
13	Walmsley Loker, e	175	6-2	New Orleans, La.	Civ.
14	Ben Ellender, lhb	175	6-1 3/4	Sulphur, La.	V-12
15	Harry Robinson, fb	185	5-10	Chattanooga, Tenn.	V-12
16	William A. Jones, lhb	185	6-2	Ruston, La.	V-12
17	Robert Logan, e	194	6-3 1/2	Dennison, Iowa	V-12
18	Ernest Pechon, rlb	175	5-9	New Orleans, La.	V-12
19	Clayton Timken, t	186	6-0	New Orleans, La.	Civ.
20	Ray Olsen, e	182	6-2	New Orleans, La.	V-12
21	Sam Molloy, e	188	5-11	Eden, Texas	V-12
22	Leonard Finley, qb	180	5-10	New Orleans, La.	V-12
23	Larry Barousse, e	182	6-0	New Orleans, La.	Civ.
24	Octave Tournillon, e	188	6-2 1/2	New Orleans, La.	Civ.
25	Marvin McCain, fb	185	6-0	New Orleans, La.	Civ.
26	Curtis Jones, t	182	6-3	Benton, Arkansas	Civ.
28	Kenneth Miller, e	189	6-1	New Orleans, La.	V-12
29	William Reynolds, rlb	166	5-11	Birmingham, Ala.	V-12
30	Gaston Bourgeois, g	195	5-11 1/2	Lutcher, La.	Civ.
31	Elliott Igleheart, g	196	5-10	Shelbyville, Ky.	Civ.
32	Leroy Schneider, t	225	6-0	Baltimore, Md.	Civ.
33	Henry Angulo, t	223	6-0	Tampa, Florida	Civ.
34	Tom Kane, t	195	6-0	Kearney, N. J.	V-12
35	Fred Roseman, t	198	6-2	Plaquemines, La.	V-12
36	William Miller, g	195	5-11	Baton Rouge, La.	V-12
37	Kenneth Muller, t	186	6-2	New Orleans, La.	V-12
38	Leon Holsted, e	205	6-3	N. Little Rock, Ark.	Civ.
39	Robert Marshall, g	190	5-9	San Antonio, Texas	V-12
40	Ray Arthur, lhb	145	5-8 1/2	New Orleans, La.	Civ.
41	Alvin Dews, e	145	5-9	Hattiesburg, Miss.	V-12
42	Andrew Cuccia, g	160	5-8 1/2	New Orleans, La.	Civ.
44	Edwin Hofman, e	155	5-7	Memphis, Tenn.	V-12
45	Joseph Killeen, qb	165	5-9	New Orleans, La.	Civ.
46	George Landry, lhb	175	5-11	Baton Rouge, La.	V-12
47	Buster Melton, lhb	180	5-10	Tyler, Texas	V-12
48	Leo Lewis, e	175	6-0	Lisbon, La.	V-12
49	Harold Terrell, g	184	5-11	Port Arthur, Texas	Civ.
50	Hindon Addikison, g	160	5-10	Hickory, Miss.	V-12
51	Preston Craig, g	175	6-0	Portsmouth, Va.	V-12
52	Marvis Moseley, t	187	6-1	Ben Wheeler, Texas	V-12
53	Walter Fergerson, t	190	5-10 1/2	Okeene, Oklahoma	V-12
56	Anthony Chetta, lhb	170	5-9 1/2	New Orleans, La.	Civ.
57	Mike Piper, rlb	175	5-10 1/2	New Orleans, La.	Civ.
58	Eugene Van Geffen, g	165	5-10 1/2	New Orleans, La.	Civ.
59	L. C. Jones, qb	175	6-0	Wharton, Texas	V-12

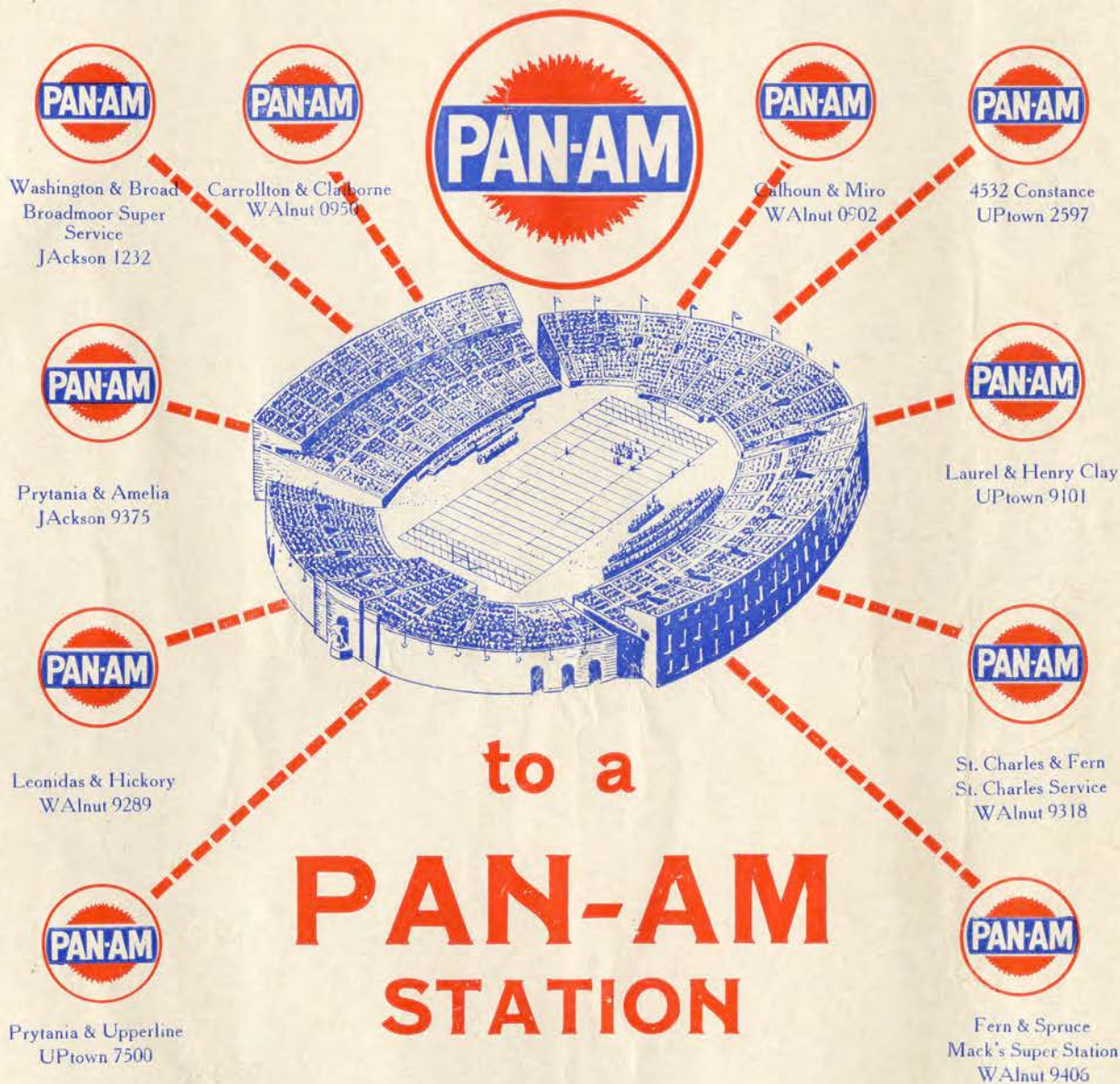


RICE ROSTER

Gray White		No.	Name and Position	Weight	Height	Hometown	Class
44	10	George Walmsley, b	153	5-8	Baytown, Texas	Fr.	
17	11	Walter Coffey, b	180	6-0	Houston, Texas	Fr.	
	16	M. G. Bolton, b	150	5-9	Houston, Texas	Soph.	
36	19	Bob Nemir, b	185	5-10	Navasota, Texas	Soph.	
20	23	Frank Lawrence, b	180	5-11	Gladewater, Texas	Jr.	
14	25	Bill Scruggs, b	146	5-9	Houston, Texas	Jr.	
30	30	Carl Russ, b	177	6-0	Houston, Texas	Fr.	
49	42	Bucky Sheffield, b	200	6-2	Paris, Texas	Jr.	
45	45	Jess Mason, b	165	5-11	Boling, Texas	Fr.	
46	46	Davis Parrish, b	180	6-1	Whitewright, Texas	Jr.	
15	49	Freddie Brechtel, b	160	5-10	New Orleans, La.	Fr.	
50	50	Harold Tate, e	180	5-11	Jacksboro, Texas	Soph.	
51	51	Dan Chrisman, e	195	6-2	Nacona, Texas	Fr.	
60	60	H. J. Nichols, g	196	5-11	Houston, Texas	Jr.	
61	61	Chris Hansen, g	205	6-2	Houston, Texas	Soph.	
63	63	Bruce Myers, g	175	5-7	Santa Monica, Cal.	Soph.	
66	66	Johnnie Cox, g	175	5-11	Junction, Texas	Jr.	
67	67	Joe VanMeter, g	185	5-10	Indianapolis, Ind.	Soph.	
56	68	Ernest Perry, e	180	6-0	Navasota, Texas	Fr.	
65	71	Milam Towns, g	187	5-10	Monroe, La.	Fr.	
70	72	Truman Wright, t	215	6-1	Houston, Texas	Fr.	
73	73	Dan Davenport, e	230	6-8	San Antonio, Texas	Fr.	
74	74	Bob Turner, t	225	6-0	Mission, Texas	Fr.	
75	75	Jim Martin, t	225	6-3	Cleburne, Texas	Fr.	
76	76	Cholly Howard, t	205	6-1	Corpus Christi, Texas	Fr.	
78	80	Bob Zelsman, t	200	6-0	Amarillo, Texas	Soph.	
81	81	George Grininger, e	175	5-11	Wichita Falls, Texas	Jr.	
	82	Frank Allen, e	158	6-0	Houston, Texas	Fr.	
83	83	Bob Smith, e	173	6-1	Houston, Texas	Jr.	
84	84	Bruce Franklin, e	204	6-0	Madisonville, Tenn.	Fr.	
85	85	Bruce Bradbeer, e	180	6-1	San Diego, Calif.	Soph.	
86	86	George Miner, e	174	6-1	Lake Charles, La.	Fr.	
87	87	Kenneth Looper, e	165	6-2	Cleburne, Texas	Fr.	
89	89	Bill Malseed, e	162	6-1	Los Angeles, Calif.	Soph.	

The Official Watch for Timing All Tulane Games is a Longines—"The World's Most Honored Watch"

only a few yards to go . . .



(Other Pan-Am Stations conveniently located
in all parts of the City.)

HOME LOANS

TO BUY...

REFINANCE... REPAIR

Your Home

Liberal Terms

Low Interest Rates

OFFICERS

J. D. Byrne, President
A. E. Thouron, Vice-President
J. E. McMahon, Vice-President
Chas. A. Nehlig, Vice-President
Jacob Schaaf, Secretary-Treasurer
Chas. F. Buck, Jr., Attorney
Bernard Titche, Jr., Notary
Frank W. Magne, Notary
Roger P. Sharp, Bldg. Expert

DIRECTORS

Herman T. Bartels
Chas. F. Buck, Jr.
J. D. Byrne
Frank G. Costley
E. J. Engelbracht
A. Percy Generes
Stephen L. Guice
Frank W. Hart
Hunter C. Leake
Frank W. Magne
J. E. McMahon
Chas. A. Nehlig
E. Oliver
Henry P. Pfeffer
Jacob Schaaf
W. W. Sutcliffe, Jr.
H. L. Swift
George P. Thompson
A. E. Thouron
Bernard Titche, Jr.



EQUITABLE MUTUAL

HOMESTEAD ASSOCIATION

"Home Financing Since 1885"

511 Carondelet Street

Phone Raymond 3405