

SOUVENIR PROGRAM

TULANE
vs
AUBURN

2:30 P. M.
NOVEMBER 5, 1927

HOWARD-TILTON
MEMORIAL LIBRARY

TULANE UNIVERSITY



—Photo by Trice

GENE McCARROL steps into the limelight. Here we see the speedy Tulane back breezing thru the powerful Georgia defense.

Price 25¢



THE TULANE UNIVERSITY OF LOUISIANA

NEW ORLEANS



The University embraces the Following Departments:

The College of Arts and Sciences
The H. Sophie Newcomb College for Women
The College of Engineering
The Graduate School
The College of Law
The School of Medicine
The School of Pharmacy
The School of Dentistry (Senior year only)
The College of Commerce and Business Administration
The Course for Teachers
The School of Social Work
The Night School of Electrical Engineering
The Night School of Architecture
The Summer Schools

For Catalogue Address:

Registrar of the Tulane University of Louisiana

Gibson Hall, New Orleans

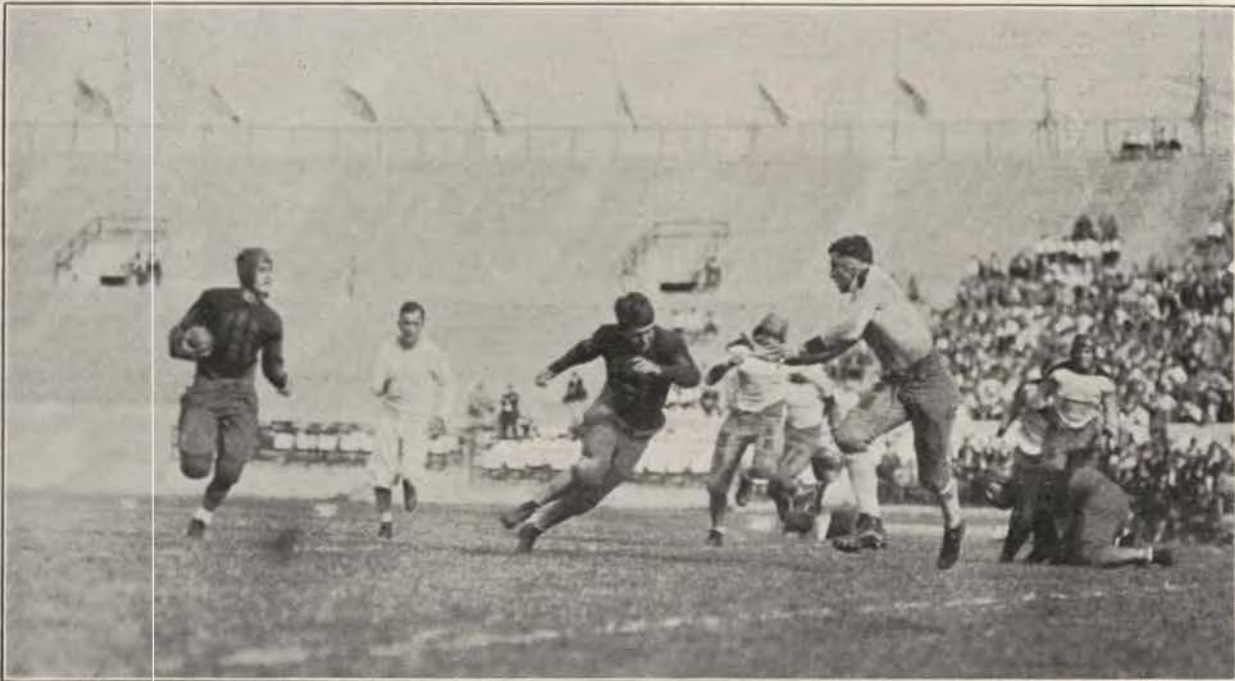
AT THE GEORGIA GAME



SPONSORS OF THE GEORGIA GAME

—Photo by Trice.

The fairest of the fair looked on while The Green Wave's Eleven manfully struggled against the overwhelming attack of the Bulldogs.



PAT BROWNE—Tulane's fighting captain and end, attempts to stop a Bulldog play around his terminal.

—Photo by Trice.

ALMA MATER

Sing these words as Tulane's Alma Mater is played

I

We praise thee for thy past, O Alma Mater!
Thy hand hath done its work full faithfully!
The incense of thy spirit hath ascended
And filled America from sea to sea!

II

We praise thee for thy present, Alma Mater!
Today thy Children look to thee for bread!
Thou leadest them to dreams and actions
splendid!
The hunger of their soul is richly fed!



III

We praise thee for thy future, Alma Mater!
The vista of its glory gleameth far!
We ever shall be part of thee, great Mother!
There thou wilt be where e'er thy children are!

CHORUS

Olive Green and Blue, we love thee!
Pledge we now our fealty true
Where the trees are ever greenest,
Where the skies are purest blue!
Hear us now, O Tulane, hear us!
As we proudly sing to thee!
Take from us our hearts' devotion!
Thine we are, and thine shall be!

Two Trouser Fall Suits

Just Right for College Men embody all the new styles features, straight lines broadnotch lapels, set in pockets and a nicety of tailoring they'll like. Models are two button and come in a wide range of fabrics and patterns.

\$25.00 and Up

Marks Isaacs Co.
711 to 725 CANAL STREET

Guy L. Deano, Pres. Geo. R. Beltmeyer
Active Vice-Pres.

J. U. Sutor
Secy.-Treas.

VICTORY GASOLINE
"TRUE TO ITS NAME"

Vocoline Motor Oils



OFFICES:

738 PERDIDO STREET
AND
ST. CLAUDE and MEHLE
AVENUES
TELEPHONES:
HEMLOCK 3343-2748
MAIN 1578

Coleman E. Adler

For

**DISTINCTIVE
JEWELRY**

THE NEW

Hotel Monteleone

J. D. KENNEY, Manager
A. F. Spatafora, Ass't. Mgr.

European Plan.

STRICTLY FIRST CLASS
ROYAL and IBERVILLE STREETS



MENVILLE

Since his great plunging in the Auburn game of 1925, Johnny Menville, fullback who once played with Jesuits High School, has been a fixture in the Tulane backfield. His last season of college football is a banner one.

Menville is one of the best backs on the Greenie squad. He can buck the line with the best of them, as well as punt and drop kick. Watch Johnny today and see him make those gains thru the Tiger line!

Between Halves

The side lines come in for their share of attention. Comments and criticism are exchanged. Dont court adverse remarks about your appearance. Be sure you are suitably and correctly attired for the game.



Maison Blanche

Greatest Store South



McCARROL

Gene McCarrol may well be termed the backfield "find" of the season. This fellow saw little action in the early games of the season, but came into his own against Vanderbilt two weeks back. Used at fullback all during the game, McCarrol tore thru the Commodores for many nice gains.

He is a streak of lightning. More than that, he's an intelligent runner, knows how to pick his spots and is excellent at cutting back after knifing the tackles.



Established 1878

Victory Barber Shop

VIC TUJAGUE—TONY MACALUSO

Proprietors

725 Common Street

Opp. St. Charles Hotel

Phone Main 7578

New Orleans. La.

BUICK AUTOMOBILES

SALES—SERVICE

GLENNY-BUICK CO., Inc.

822-832 HOWARD AVE.

1018-1026 BARONNE ST.

BEAT AUBURN!

Without a doubt the team that will buck the Auburn Tiger today will be in excellent mental and physical condition, and with a new confidence that they are going to play the brand of football that cannot be defeated.

This new spirit is due to the fact that the Greenies realize they have a chance to finish with an even, or .500, record for the season if they can sweep the remaining three games on their schedule. And that's what they are shooting at. Watch them go!

Their opponent today—Auburn—is a mediocre outfit this year. They have had their troubles from the start of the season and are yet to score a victory. After consecutive defeats at the hands of Stetson, Clemson, Florida, L. S. U. and Georgia, the Tigers pulled themselves together and held Howard College to a 9-9 tie last week. They, too, are getting ready for a stirring finish, so the game today should be a hummer.



CAPT. PATTERSON
Center—Auburn



Rent a New Car and
You Drive It

ALL MODELS

Special Attention to
College Men

**U-Drive-It Car
Company**

Phone Jackson 5297

711 Baronne St.



TOUCHDOWNS/GOALS!

"STANDARD" PETROLEUM
PRODUCTS

Score on all points and against
all opposition. An unbeat-
able team
Captained by

"STANDARD" GASOLINE

And Field Managed by

**"STANDARD"
MOTOR OIL**



Standard Oil Company of La.

ROAD SERVICE

BATTERY SERVICE

College Service Station

H. A. CHRISTENBERRY, Prop.

LIBERTY GAS AND OILS

"EVERYTHING FOR AUTOMOBILES"

Convenient to All Colleges

5101 FRERET STREET

Cor. Soniat St.

PHONE UPTOWN 1190



Diamonds

Watches

\$25.00 up

Jewelry

Use Our Club Plan

HEREFORD - TURCAN, INC.

JEWELRY AND GIFT SHOP

218 BARONNE ST.

Headquarters for Bulova Strap Watches.

TULANE

- 3. Blake
- 4. Lodrigues
- 6. Harper
- 7. Lessell
- 8. McGehe
- 9. Menville
- 10. Al Stoessel
- 11. Pizzano
- 12. Browne
- 14. Walker
- 15. Maier
- 17. McCarrol
- 18. Banker
- 19. Flynn
- 20. Hooper
- 21. Butaud
- 22. Baumbach
- 23. Floyd
- 24. Ford
- 25. Evans
- 26. Whatley
- 28. Jones
- 29. Hardie
- 30. Rucker
- 31. O'Pry
- 32. Eskridge
- 33. Kirchmeier
- 34. Oelkers
- 36. Walls
- 37. Spiess
- Sentell
- Fischer
- Ellis
- Trunslar
- Lemann
- Andrews

Mayer Israel & Co.



Fine Feathers

Fine feathers don't make fine birds—nor do fine fabrics make fine suits. But when rich fabrics are tailored in the inimitable Mayer Israel way, you have about as fine clothing as can be.

Collegiate models in one and two trouser styles, especially featured at—

\$35

OFFICIALS TODAY'S GAME

Referee—HARRY B. SPRINGER (Penn.)
 Umpire—L. S. ERWIN (Drake).
 Head-Linesman—ARTHUR L. HUTCHINS (V. P. I.)
 Field Judge—CAPT. J. B. BOATWRIGHT (Virginia).

Today's Tulane line-up will include

- Browne _____ Ends
- Ford _____
- Stoessel _____ Tackles
- Rucker _____
- Butaud _____ Guards
- Eskridge _____
- Bill Maier _____ Center
- Pizzano _____ Quarterback
- Menville _____ Halfbacks
- Banker _____
- McCarrol _____ Fullback

For any last minute changes in the line-up and substitutions during the game refer to roster of players and their respective numbers.



HOLMES

Has Tulane Colors in Ribbons, Badges and Pennants

Also Boxed Candy and Noise Makers

—After the Game—
 You'll Enjoy Dinner in Holmes Restaurant

D. H. HOLMES CO.

LIMITED

For 85 Years—The Best Place to Shop



VICTORY PREDICTED FOR TULANE OVER AUBURN TO-DAY.



—Photo by Trice.

Georgia started the game by kicking off to Tulane. Banker received for Tulane and is seen returning the ball. Browne, Pizzano and Menville, are clearing the way for the "Blonde Blizzard."



RUCKER
Tackle—Tulane

Coach Bierman thinks a who'e lot of this fighting tackle from Pine Bluff, Ark. Rucker is seen in the play all the time. He is brainy as well as fast. Rucker tips the scales at 190 lbs., and is 6 ft. 3 in. tall.

SPONSORS FOR TODAY'S GAME

- Mrs. Walter S. Stern
- Mrs. Carl Woodward
- Mrs. Larz Jones
- Mrs. Chotard Eustis
- Mrs. Lucien Lyons, Jr.
- Mrs. J. A. Badger
- Mrs. Jeff Feibleman
- Mrs. Malcolm Brown
- Mrs. Chas. Bloom
- Mrs. Garner Tull's
- Mrs. James Reilly
- Mrs. Henry Thomas

PROBABLE LINE UP

| TULANE | | AUBURN | |
|----------------|----------------|---------------|----|
| 24. Ford | Right End | Ingram | 36 |
| 30. Rucker | Right Tackle | Cunningham | 57 |
| 32. Eskr'dge | Right Guard | Howard | 45 |
| 15. Maier | Center | Patterson (c) | 1 |
| 21. Butaud | Left Guard | Andress | 48 |
| 10. Stoessel | Left Tackle | Carter | 58 |
| 12. Browne (c) | Left End | Dubose | |
| 11. Pizzano | Quarterback | Hodges | 31 |
| 18. Banker | Left Halfback | Hartselle | 34 |
| 9. Menville | Right Halfback | Ellis | 20 |
| 8. McCarrol | Fullback | Shotts | 21 |

THE SCORE

| Quarters | 1 | 2 | 3 | 4 | Final |
|----------|---|---|---|---|-------|
| TULANE | | | | | |
| AUBURN | | | | | |

The Intra-conference games scheduled today are as follows:

- Tulane vs. Auburn.
- Alabama vs. Kentucky.
- Florida vs. Georgia.
- Tennessee vs. Sewanee
- V. P. I. vs. South Carolina.
- Washington & Lee vs. Virginia.
- Louisiana State vs. Ole Miss.
- V. M. I. vs. North Carolina.



RODRIGUES
Halfback—Tulane

Roy hasn't been in the game very much this year, but when he does get in he adds yardage to the Green Wave's credit. Those who saw him play against Vanderbilt admit that despite his 150 lbs., he handled his position in the backfield like a veteran.

ONE WEEK AGO

Approximately nine thousand spectators, the largest crowd of the season, saw the Tulane Greenies lose to the Georgia Bulldogs last Saturday afternoon by a score of 31 to 0. They saw those hard-fighting Greenbacks go down in defeat before one of the greatest football machines that has ever performed on a local field.

Captain Pat Browne played a wonderful game for the Green. He backed up the line in fine style and was down under punts with plenty of speed. Johnny Menville, used at end on defense, did fine work too. Bill banker got away for several nice gains but he was a marked man. The Bulldogs watched him darn close. Gene McCarrol and Dick Baumbach acquitted themselves handsomely.

(Continued on Page 12)



BOLTON SHOTTS
Fullback—Auburn



Come to
Spalding's - -
Athletic Headquarters

Spalding's are the world's largest producers and sellers of athletic goods—their leadership has been won not by mere price appeal, but by inherent quality.

Buy only Spalding equipment and know what every seasoned sportsman knows—that your game won't suffer because of equipment that is short of Spalding perfection.

A. G. Spalding & Bros
130 Carondelet St., New Orleans

JAHNCKE SERVICE INC.

Concrete & Building
MATERIALS

Dredging—Towing
Barges

814 Howard Ave.
Since 1872

JACKSON 4600

MEDICAL BOOKS

We carry all text-books recommended in the Medical, Dental and Pharmacy Departments of Tulane. Call at our Store, or phone your needs.

J. A. MAJORS CO.

Phone Main 3252
1301 TULANE AVE.

We're Expecting You



Newcomb Pharmacy

Broadway & St. Charles Ave.

AUBURN

1. Paterson
2. Ward
6. Crawford
7. Granger
8. Pearce
11. Snider
15. Densmore
17. Cospier
13. Callahan
19. Taylor
20. Ellis
21. Shotts
23. Crawford
25. Burns
27. Hoffman
30. Turner
31. Hodges
34. Hartselle
35. Mosley
36. Ingram
37. Fisher
38. Holtzclaw
39. Leach
41. H. Long
42. Adams
43. Burt
44. Pearce
45. Howard
48. Andress
49. Robinson
50. Spinks
51. Gregory
52. G. Long
53. Bouge
57. Cunningham
58. Carter
59. Garner
- Dubose
- Scarborough
- Sellers
- Chambers

PORTER'S
Kerry-Keith
SUITS AND OVERCOATS

Will be seen at every Tulane game—and in greater numbers every game—because the college man is quick to see the good-taste which is deftly combined with finest fabric in these correctly styled garments. 2-trousers.

\$45

Porter Clothing Co.

Carondelet and Gravier

The Auburn Tigers are expected to use the following players in their initial lineup:

- Dubose
- Ingram
- Carter
- Cunningham
- Andress
- Howard
- Paterson
- Shotts
- Hodges
- Crawford
- Ellis
- Ends
- Tackles
- Guards
- Center
- Fullback
- Quarterback
- Halfbacks

The Tulane Athletic Association requests that parties occupying Boxes be seated during the plays to allow those in the rear to have full vision of the field.

GULF STATES REALTY CO., Inc.
 OWNERS AND SELLERS OF BRIDGEDALE
 802-804 Poydras Main 2390
 Main 2921



ONE WEEK AGO

(Continued from Page 10)

Superior reserve strength again told on the Greenies. The Georgia coach kept shooting new backs at the Greenies all through the contest and Coach Bernie Bierman was forced to use every available Tulane reserve in order to combat with the fresh Bulldog backs. But, of course, the visitors were far better than the Greenie subs.

Georgia scored a touchdown in the first few minutes of play and added two more in both the second and fourth periods. In the third quarter, however, the Greenies made a great stand and held the Bulldogs scoreless. Once they held Georgia for four downs on the one-yard line.

Georgia's two great ends, Shiver and Nash, lived up to everything that had been said about them. They played great ball on the defense.



GRANGER
Fullback—Auburn

TULANIANS!--

Everybody's Welcome.

HEAR the play by play returns of the Green Wave's road games at—

College Pharmacy

STATE AND FRERET

LESLIE D. ISRAEL

ROBERT F. LYNESS

Phones Walnut 3772-9235
and 9154

Steam Heated
Excellent Music

MECCA THEATER

Entertainment with
Distinctive Service

Adams Street, Near Maple

Especially Selected Programs Exhibiting only the best Photoplays Produced.

The Mecca is under the personal supervision and management of Mr. and Mrs. Heiderich.

Spend Your Evenings
With Us

Tulane's Gridiron
fertilized with

Armour's Lawn and Garden Grower

Beautiful Tulane Field
was fertilized with
Armour's Lawn and Garden Grower

DRINK

Coca-Cola

IN BOTTLES

"The Thinking Fellow Calls A Yellow"

Jackson
5300



Safety---Courtesy---Comfort---Service



ESKRIDGE
Guard—Tulane



BUTAUD
Guard—Tulane



Clothes designed for
University Men
Exclusively

Braeburn Suits, \$40
Charter House, \$45, \$50
Here Exclusively

Godechaux's
Canal near Baronne



BAUMBACH
Halfback—Tulane



HOOPER
Fullback—Tulane

TULANE SCHEDULE

October 1—Ole Miss 6; Tulane 19.
October 8—Georgia Tech 13; Tulane 6.
October 15—Mississippi A. & M. 13; Tulane 6.
October 22—Vanderbilt 32; Tulane 0.
October 29—Georgia 31; Tulane 0.
November 5—Auburn at Tulane Stadium.
November 12—Sewanee at Tulane Stadium.
November 24—L. S. U. at Baton Rouge.



THE ROOSEVELT

*New Orleans largest, Finest and most friendly Hotel.
We are specially prepared to handle Banquets, Weddings
and other social functions.*

THE BIENVILLE HOTEL

*Ideal location offers every comfort with superior service
and excellent Restaurant facilities.*



IMPORTANT CHANGES IN FOOTBALL RULES

1. GOAL POSTS.—The goal posts have been moved from the goal line to the end line.
2. DELAYING GAME.—A delay of more than 30 seconds in putting the ball in play after it is ready for play, or a team remaining more than 15 seconds in a huddle, may be considered as prima facie evidence of intentional delay of the game.

The captain may now claim time out only three times in each half instead of four times, as formerly.

3. SHIFT PLAYS.—In all shift or huddle plays the players must come to an absolute stop and remain stationary in their positions and without movement of the feet or swaying of the body for a period of approximately one second. This period may be conveniently measured by rapidly counting "1-2-3-4." In case of doubt the penalty shall be enforced. The penalty for violation has increased from 5 to 15 yards.

4. FUMBLING PUNTS.—When a punt is fumbled before the receiver gains possession of the ball, it is a free

ball and any one is eligible to recover the ball for his side. However, the side that kicked the ball can not advance the fumbled punt by picking it up and running with it, but must take it at the point recovered.

5. INCOMPLETE BACKWARD PASS.—Any player may at any time hand or throw the ball in any direction except toward his opponents' goal. If any such pass made on first, second or third down strikes the ground within the field of play the ball is dead. It shall belong to the side which made the pass at the point where it strikes the ground. On fourth down the ball shall go to the opponents at the same point, unless the required distance has been made. The pass from the snapper back to put the ball in play is excepted from this rule.

Woodward, Wight & Co., Ltd.



Largest General Supply
House South Since 1867



Howard Ave., Constance and
Joseph Street

BROADWAY PHARMACY



H. C. Richards
Proprietor



Broadway and Maple

MAin 4185

MAin 4186



The Best
PHOTO-ENGRAVERS

IN THE SOUTH

FOR OVER TWENTY YEARS
MAKING HALFTONES, ZINC
ETCHINGS & COLOR PLATES

GRELLE-EGERTON ENGRAVING CO.
628-630 POYDRAS ST.



DESERVED ACCLAMATION

Just as the Green Wave, rolling
over all opponents, brings cheers
from the crowd, so does

TULANE COFFEE
win the acclaim of those who recog-
nize superior quality

TULANE
PURE
COFFEE

One of American Coffee Company Products
RICHARD G. DROWN, Gen'l. Mgr.

LOUISIANA PRINTING COMPANY

Official Printers
TULANE
Football Program
"THERE'S A REASON"



Just Phone Jackson 5396
OR
Call at 921-27 Lafayette Street



BANKER

Halfback—Tulane
Bill Banker—
slowed up for two
weeks in the touch-
down sense — will
have a chance to in-
crease his pointage
against Auburn Sat-
urday.

The Plainsmen
have been scored up-
on by every team

TEAMWORK



The brain and brawn and courage of eleven Tulanians, co-ordinated into a fighting machine, battle for the glory of old T. U. It requires all of these attributes to spell success, to write victory on the scoreboard.

Similarly it requires brain and brawn, and courage and teamwork on the part of the 4,320 members of the Public Service team, to win and hold esteem through giving dependable electric, gas and street railway service every hour night and day.

**New Orleans Public
Service, Inc.**

from Stetson to Howard. Banker has scored upon every team except Vandy and Georgia. He couldn't get loose against the Commodores and the Bulldogs.

The blonde speedster is due to break loose again. He is an eternal threat. His flashing heels are potential poison to any line.

In the Georgia game, he showed to excellent advantage, spinning out of the grasp of tackler after tackler.

Though but a Soph. Banker is in line for an All-Southern berth. His consistent ground-gaining, his indefatigable labors upon defense and his brilliance in returning punts and kick-off make him one of the out standing backs in Dixie.

DO YOU KNOW THAT.....

"Peggy" Flournoy led the individual scorers of the country in 1925?

Members of the 1900 team were the first to be awarded official "T" sweaters?

A pass from Moore to George enabled Tulane to tie Alabama, 5-5, in 1909?

Johnny Wight ran the kick-off back 96 yards against Southwestern in 1920?

OFFICE TOILET SUPPLY CO.,

Ltd.

509 S. PETERS ST.

TOWELS AND LINENS

SUPPLIED AT NOMINAL
RENTAL CHARGE

BREEN'S DRUG STORE

NATHANIEL BREEN, Prop.

Opposite Charity Hospital

Phone Main 9177

Tulane Ave. at Villere

THE SCORE BOARD

Watch It Carefully For Complete Information

Often only the officials and captains know what a certain penalty is for. We have sketched out the following to inform you. Each penalty is numbered below. When a penalty is inflicted the number of that penalty will be hung on the score board, and light will appear opposite the name of player carrying the ball or receiving a pass.

Please understand violations of rules are rarely intentional. They usually come from over-anxiousness, excitement and most often from the highly technical character of the present game.

PENALTIES

| Pen. No. | OFFENSE | Penalty | Pen. No. | OFFENSE | Penalty |
|-------------------------|--|---------|---|--|---------|
| 1. | Offside--in advance of line of scrimmage and on the kick-off or on free kick | 5 yds. | 21. | If a man on defense holds a player of the side with the ball | 5 yds. |
| 2. | Holding or illegal use of hands or arms. The team with the ball, except the man carrying the ball may not use hands or arms to block out or keep off opponents | 15 yds. | 22. | If a team takes out time more than three times in one half without substituting a player | 5 yds. |
| 3. | Clipping--Cutting a man down from the rear away from the play | 25 yds. | 23. | For delaying the game | 5 yds. |
| 4. | Players must come to an absolute stop for a period of approximately one second in all shifts and "huddle" plays | 15 yds. | 24. | Crawling--The man with ball may not crawl or try to advance after being tackled and thrown | 5 yds. |
| LOSS OF A "DOWN" | | | 25. | Hurdling--Man with ball may not jump over a man still on his feet | 15 yds. |
| 5. | For second and third incomplete passes in any one series of downs and | 5 yds. | 26. | Unnecessary roughness or unfair play | 15 yds. |
| 6. | Interference by side making forward pass, prior to fourth down, also | 15 yds. | 27. | Tripping with feet, tackling out of bounds, etc. | 15 yds. |
| 7. | Intentionally throwing forward pass to ground, prior to fourth down, also | 15 yds. | 28. | If center feints to snap ball and does not | 5 yds. |
| LOSS OF BALL | | | 29. | Unsportsmanlike conduct, talking back to officials or abusive language | 15 yds. |
| 8. | Ball kicked out of bounds, unless touched, etc. | | 30. | The ball or the center may not be interfered with until ball is passed | 5 yds. |
| 9. | Interference by side making forward pass, fourth down--Loss of ball at point 15 yards back of previous down. | | 31. | A substitute must report to referee or umpire. Penalty for not reporting | 5 yds. |
| 10. | Interference by defensive side in case of forward pass--Loss of ball to the offended side at the spot of the foul, the ensuing down to be first down. | | 32. | The team with the ball must have seven men on the line of scrimmage when the ball is snapped | 5 yds. |
| 11. | Illegal or incomplete forward pass--fourth down. | | 33. | The center or the man on either side of him may not carry ball until it has been handled by someone else on the team | 5 yds. |
| 12. | Intentionally throwing forward pass to ground, fourth down--Loss of ball and also | 15 yds. | 34. | Player out of bounds when ball is snapped | 5 yds. |
| 13. | Failure to advance ball 10 yards in four downs. | | 35. | If a player leaves the field while time is out or during intermission without permission of officials | 15 yds. |
| 14. | No man on team with ball may be in motion when ball is snapped, except one man may be in motion toward his own goal or toward side line | 5 yds. | 36. | No one on bench or sidelines may coach or instruct anyone in the game | 15 yds. |
| 15. | Piling on a player after the whistle | 15 yds. | 37. | There is a penalty for persons coming on field of play and for more than one representative in case of injury and for anyone on bench or inside enclosure standing or walking along side lines | 15 yds. |
| 16. | The kicker may not be tackled or knocked down after kicking | 15 yds. | 38. | Team delaying start of game or start of second half forfeits option and is penalized | 25 yds. |
| 17. | The man carrying the ball may not be pushed or pulled by any of his teammates | 15 yds. | LOSS OF HALF THE DISTANCE TO THE GOAL LINE | | |
| 18. | Interference with player making fair catch or throwing player who has made fair catch | 15 yds. | 39. | A player may be substituted only once in each half--for illegal return, team is penalized as above and player is suspended for remainder of the game. | |
| 19. | Player making more than two steps after fair catch | 5 yds. | 40. | Striking, kneeling, kicking, etc.--Player is disqualified for remainder of game, and team is penalized as above. | |
| 20. | If a substitute coming in says anything to any teammate until a play has been made his team is penalized | 15 yds. | 41. | Foul within one yard line or behind goal line by defensive side. | |