

# SOUVENIR PROGRAM

**TULANE**

**VS**

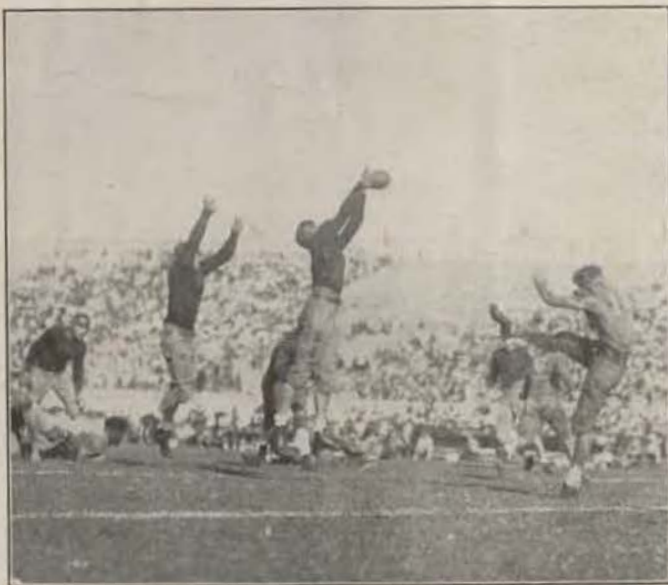
**MILLSAPS**

**2:30 P. M.**

**NOVEMBER 3, 1928**

HOWARD-TILTON  
MEMORIAL LIBRARY

TULANE UNIVERSITY



—Photo by Leon Trice

**BILL BANKER**—the Green Wave's kicker, found Vanderbilt the hardest team to kick against this season. Here is shown the first punt of the game for Banker, and the wide-awake cameraman caught Abernathy just as he jumped up and partially blocked the kick. The big Vandy end had Bill rushed all afternoon.

**price  
25¢**



TOM  
BURKE



# THE TULANE UNIVERSITY OF LOUISIANA

NEW ORLEANS



**The University embraces the Following Departments:**

The College of Arts and Sciences  
The H. Sophie Newcomb College for Women  
The College of Engineering  
The Graduate School  
The College of Law  
The School of Medicine  
The Graduate School of Medicine  
The School of Pharmacy  
The College of Commerce and Business Administration  
The Course for Teachers  
The School of Social Work  
The Night School of Electrical Engineering  
The Night School of Architecture  
The Summer Schools

For Catalogue Address:

**Registrar of the Tulane University of Louisiana**

Gibson Hall, New Orleans

## WAVE HAS GREAT BACKFIELD

**A**s was freely predicted before the season got under way, Tulane's backfield is the sensation of the Southern Conference.

Considered in many quarters throughout the land one of the best halfbacks on the gridiron today and easily candidate for All-American, "Blondy Bill" Banker leads the line-crashing, end-slashing, and player-smashing of this quartet of backs, widely known as the "blond backfield."

Billy can crash the line with the best of them; he can skirt around the ends and slash in-



SEEUWS

side the ends with the ability equalled by few backs in the country today, and he can smash the best of plays that come anywhere in his direction.

He is, in short, a football marvel, possessing all the qualities of a true All-American backfield star.

Banker goes on in big games like Tennyson's brook. He's always in there fighting and is in every play; yet he comes out just as fresh and courageous as ever. Backs and linemen of other teams spot him out, pound on him and try their level best to snuff out this "blizzard," terror of the gridiron. But he can't be stopped, nay, he can't even be ruffled.



BANKER

Billy stands through sixty minutes of every game, takes the worst punishment of any player on the team and invariably comes out of the thick of the fight with colors flying. He's a threat at all times, even the last minute of the most gruelling game. Abernathy and Armistead of Vanderbilt sought Bill out the first thing after the whistle blew and gave the Greenie star the highest kind of praises for courageousness and extended warm congratulations to the hero for his won-



HOOPER

derful exploits. They appreciated his greatness, because they knew, they played against him.

Ford Seeuws is coming into his own, but, sorrowfully, after the biggest part of the campaign has passed. He will be needed, though, in his greatest form for the L. S. U. game and also will be needed against Auburn and Sewanee.

Seeuws ranked with Banker as one of the biggest stars of the Vanderbilt game and he also turned in some brilliant efforts against Georgia. This pair is developing team-work now and for the rest of the sea-



ARMSTRONG

son should run amuck every opponent.

Francis Xavier "Ike" Armstrong is the "brains" of this "blond" combination. Though hurled up against powerful foes and caught in many precarious situations, Ike always brought into play the finest strategy to relieve his men.

Ike is a great little field general and with him at the helm football followers ought to feel confident that the rest of the season will turn out in the best possible manner.

Andrew "Mike" Hooper is the fullback of the "blondes." Though "Mike" didn't stand out as a great offensive back, his play in running interference and backing up the line has been invaluable to the team.



## MEET MILLSAPS

"Goat Hale, once all-Southern halfback who came down here in 1921 with Mississippi College and single-handedly defeated Tulane, returns to do battle with the Green Wave today.

But this time he comes as a football coach and not as a player. He is the mentor of the Majors of Millsaps College of Jackson, Miss., who furnish the opposition for our Greenies today.

The Majors are the second foes on the Tulane schedule of this year who were slated for easy opponents. The other game was the opener with Louisiana Normal which the Wave easily won, 65 to 0. Today the Greenies ought not have any trouble running up a goodly score, but there is no telling what Hale might spring on the Wave this time. Even if the Majors would score with some phenomenal football, it is doubted if they have any kind of chance of winning.

This game and the other so-called set-up—Louisiana College—will afford Billy Banker the oppor-

tunity to run up his scoring record. He is now leading the Conference in points scored and did that against the best in the circuit. With the easier games to come he ought to pile up a tremendous lead and should easily lead the country as high point scorer this year.



Capt Rucker—Tackle  
Tulane

## SOLD IN THE STADIUM

ENJOY THE FOOTBALL

GAMES WITH

A REAL WINNER

BROWN'S  
*Velvet*  
ICE CREAM  
MADE BY NEW ORLEANS ICE CREAM CO.

A REAL WINNER

New Orleans Ice Cream  
Company  
1320 to 1322 BARONNE ST.  
NEW ORLEANS

## FALL SUITS

For the College Men

25.00 to 40.00

Just placed in the cabinets coming direct from some of the foremost makers of Men's Clothes in the country. These Suits and O'Coats are ready for your review.

The Finest Selection that we have ever offered. Every wanted style, fabric, color and pattern included.

*Marks Isaacs Co.*  
711 to 725 CANAL STREET

## Coleman E. Adler

For

DISTINCTIVE  
JEWELRY

THE NEW

## Hotel Monteleone

J. D. KENNEY, Manager

A. F. Spatafora, Ass't. Mgr.

European Plan.

STRICTLY FIRST CLASS

ROYAL and IBERVILLE STREETS

**BAUMBACH**

Here is the boy who will help thrill you as a regular with the Greenies from now on.

Dick Baumbach was hurt in pre-season practice and got into last Saturday's game against Georgia for the first time in regular combat. But maybe he didn't make up for his absence, and how.

He was one of the big stars of the game. He passed, ran the team like a coach, blocked, tackled and last but not least — he plunged the line. Since the loss of Menville, Tulane has been in sore need of a line plunger and Dick seems to be the man for the job.

## Between Halves

The side lines come in for their share of attention. Comments and criticism are exchanged. Don't court adverse remarks about your appearance. Be sure you are suitably and correctly attired for the game.



## Maison Blanche

Greatest Store South

**ESKRIGGE**

One of the fastest, toughest and cleanest line players in the South today is Tatum Eskrigge.

Playing his last year as a Greenie, Eskrigge is just following up his work of the past two seasons, and that is nothing short of brilliant in the first degree.

When you see Banker, Ike or Seewe or any Tulane back plow through the line you seldom see the linemen opening those holes, but old Tatum is one of them in there doing just that, and consider how well he and his mates have been doing it this year. Go to it, Tatum, old boy!



—Photo by Leon Trice

Established 1878

## Victory Barber Shop

VIC TUJAGUE—TONY MACALUSO

Proprietors

725 Common Street

Opp. St. Charles Hotel

Phone Main 7578

New Orleans, La.

## SURGICAL SUPPLY CO., INC.

1531 Tulane Avenue

EVERYTHING FOR THE INVALIDS  
COMFORT

SUPPLIES FOR THE DOCTORS OFFICE

Abdominal Supporters, Elastic Hosiery, Trusses



## WAVE MADE FINE SHOWING

In games played so far Tulane has shown real power as a football team, and the most pessimistic of the critics agree that Tulane had more than an even chance in every one of the games lost and tossed their chances to the four winds.

True it is Tulane lost, but Tulane was far from a badly beaten team in each game. It's no disgrace to the fine record of the team to lose by a touchdown, or lose as the Wave lost. Just a little better share in the breaks in any one of those games or "heads up" football at all moments in every game would have brought down a different tale to this day. Tulane had every game in her grasp but every time it slipped away by the most trifle of margins.

"Only that we could go back and play 'em over again we would show 'em," is the popular quotation among the players, but again they admit they lost to powerful and worthy foes.

Neither one of the major foes, Georgia Tech, Vanderbilt or Georgia, won without a struggle. When Tech emerged victorious she passed the word that Vandy had better look out, and when the Commodores eked through they gave due warning to Georgia who breathes much more freely with the Tulane game as history.



Luchsinger—End  
Tulane

## The 5th Quarter

*after every game  
refresh yourself at*

**STORE NO. 5**

St. Charles Ave. at Broadway

*Katz & Besthoff, Ltd.*

FIVE GOOD DRUG STORES



**TOUCHDOWNS! GOALS!**

### PRODUCTS

Score on all points and against all opposition. An unbeatable team  
Captained by

**"STANDARD" GASOLINE**

And Field Managed by

**"STANDARD"  
MOTOR OIL**



Standard Oil Company of La.

## BUICK AUTOMOBILES

SALES—SERVICE

**GLENNY-BUICK CO., Inc.**

822-832 HOWARD AVE.

1018-1026 BARONNE ST.

Robert L. Cherry, Prop. & Mgr. Revault Cherry, Asst Mgr  
"A Friendly Hotel"

## MARBERC HOTEL

Canal Street's Tallest Building

Centrally Located and Near All Principal Theatres  
Opposite Southern Railway Passenger Station

Corner Canal & Loyola Sts.

300 Rooms—300 Baths

### FIREPROOF

Circulating Ice Water and Ceiling Fans in Every Room  
New Orleans, Louisiana

**TULANE**

2. Jastram
3. McGehee
4. Baumbach
5. Ford
6. Armstrong
7. H. Whatley
8. J. Whatley
9. Yokum
11. Evans
12. Sentell
13. Abernathy
14. McCloskey
15. Seeuws
16. Young
17. Blake
18. Banker
19. Luchsinger
20. Walker
21. J. Holland
22. Massey
24. Anderson
26. Spiess
27. Hooper
28. Eskrigge
29. McCance
30. Mangum
31. Butaud
32. Bodenger
33. Rucker (Capt.)
34. Oelkers
35. Roberts
36. Wall

**IN THE BIG  
LINE-UP**



**CLOTHES**

Here's where CLOTHES tell a story all their own—Miss Newcomb is amazingly popular—her clothes are the last word—and the best dressed man in Tulane stands Ace High with HER—(confidentially) they both shop at Mayer Israel's!

**Mayer Israel & Co.**

New Orleans Collegiate Store

**OFFICIALS TODAY'S GAME**

REFEREE—JIMMIE DEVINE (West Virginia.)  
 UMPIRE—PROF. F. K. BEUTAL (Pittsburgh.)  
 HEAD LINESMAN—LEO SCHWARTZ (Tulane.)  
 FIELD JUDGE—JOHNNY WIGHT (Tulane.)

**Tulane Lineup  
For Today**

J. Holland  
 Roberts  
 Rucker  
 McCance  
 Bodenger  
 Eskrigge  
 Evans  
 Wall  
 Armstrong  
 Jastram  
 Banker  
 Seeuws  
 Hooper  
 Young

Ends  
 Tackles  
 Guards  
 Centers  
 Quarters  
 Halfbacks  
 Fullbacks

**A TOUCHDOWN!**

Stevens University Line Is  
 All of That And More  
**\$35** With Two  
 Trousers

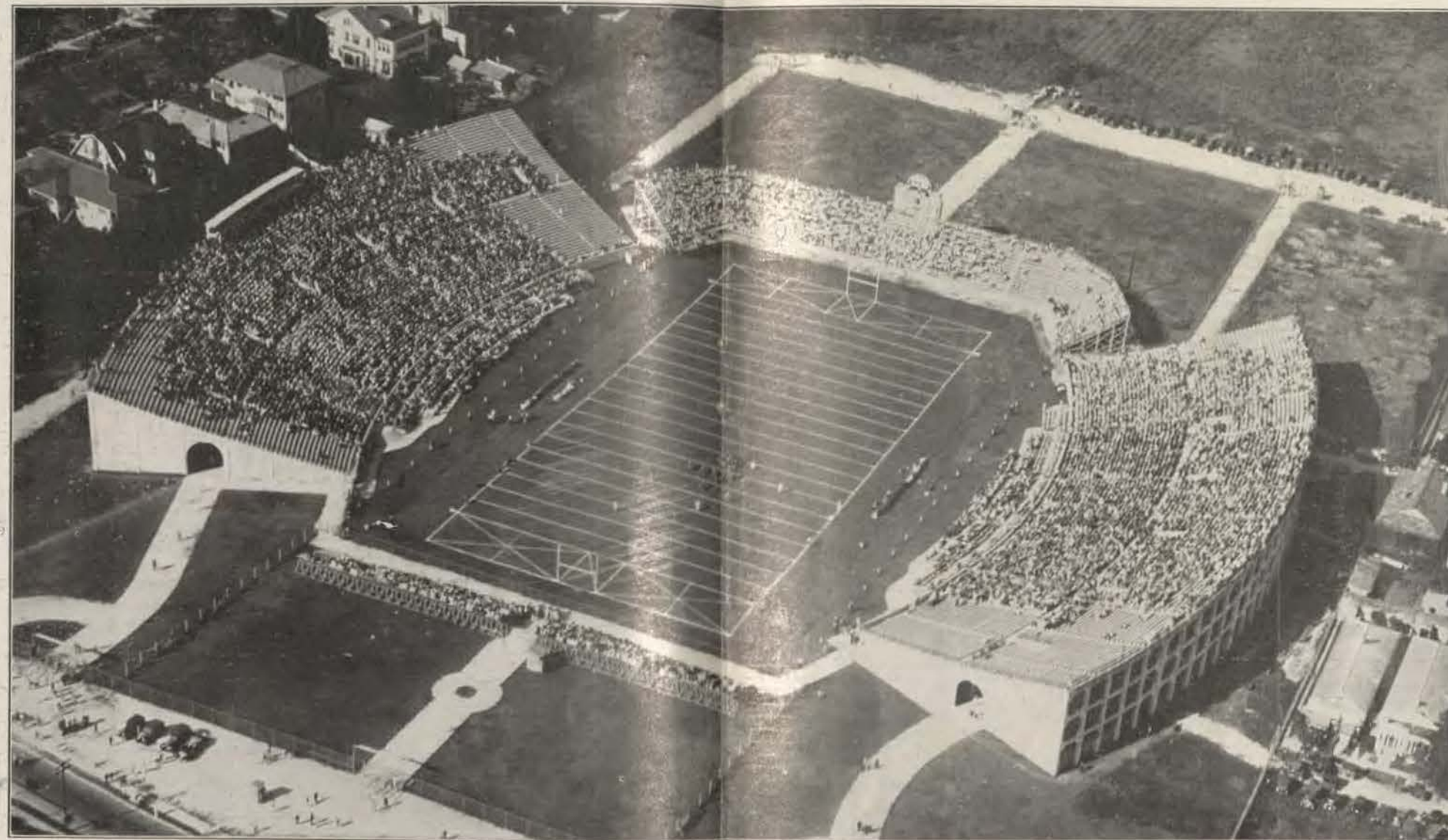
**Stevens**



# BIRD'S EYE VIEW OF TULANE STADIUM



Morris Bodenger has been one of the stars in every game Tulane played this year. It is nothing short of remarkable for a sophomore lineman like Morris to step up from the freshman ranks and take up a varsity position like he has done. He was one of the many reasons why Georgia backs concentrated their attack around the Wave's ends. Invariably Bodenger stops plays dead in his direction. He is due for two more years of such playing.



Here's introducing Lee Young, the boy who has furnished much of the "punch" in Tulane's backfield this year. Young has been playing fullback and has been handling himself very well both on offense and defense. Young is playing his first varsity year since his freshman days back in 1926 when Banker also was a freshie. On that frosh team Young was quarterback and he handled the team very well. Having had such experience, Young might be seen as field general before his three years of play are up.

## TULANE SPONSORS

Mrs. W. V. Howland  
Mrs. Harold Moseley  
Mrs. Malcolm Tuttle  
Mrs. Walter Barnes  
Mrs. B. S. Dixon  
Mrs. Charles Ford  
Mrs. Gordon Heffron  
Miss Gusse Patten  
Miss Hilda St. Martin  
Miss Ida Mae Born  
Miss Elizabeth Malone  
Miss Ruth St. Martin

The finest view ever taken of Tulane Stadium is shown above. It is really a great achievement in modern photography being as clear and real looking a view as possibly could be taken. So distinct are the figures in the photo, one can almost identify the men even though it's a far off view. The Times-Picayune had this photo taken from an airplane during the Tulane-Georgia Tech game. At this instant, Tech was in a huddle and Tulane men can be seen lined up on defense. The picture also gives an idea of the greatness of the crowd at the battle. Look and see if you can find yourself somewhere in the gathering.

—Courtesy The Times-Picayune

## THE SCORE

Quarters	1	2	3	4	Final
TULANE	0	7	7	13	27
MILLSAPS	0	0	0	0	0

## SCHOOL SPONSORS

Miss Ruth Collins  
Miss Audrey Echevabal  
Miss Josephine Granzin  
Miss Claire Little  
Miss Katherine Rosamannon  
Miss Marion Saufley  
Miss Dorothy Rouvllier  
Miss Grace Warner  
Miss Antoinette Spicer  
Miss Inez Monnot  
Miss Rosamind Hartel  
Miss Marie Baker



### FOUR GAMES LEFT

Four games remain for the Greenies before the end of the season. These are with Auburn, Sewanee, Louisiana College and L. S. U. Three stand out. And our Green Wave will have to take all three into account to have what can be said to be a successful season.

Sewanee comes to New Orleans two weeks hence. And Tulane's Homecoming Day looks bright up to this stage of the year. So did the corresponding time last year. And Sewanee beat Tulane. The same applies to Auburn, except with a tie last year.

L. S. U. is undefeated in four games as they go into play against the Arkansas Razorbacks today. The Tigers have not yet had a chance to show their real strength. But Tulane knows that L. S. U. finds strength always before the Thanksgiving game.

Those who thought the season was over after Tulane had lost to Georgia Tech, Vandy and Georgia

in a row are mistaken.

There are three teams left that will give their all to beat Coach Bierman's Green Wave. And Tulane will be compelled to give its all to stem the opposing tide.



Sportsmen—Whatever the Sport You'll find Spalding Equipment Correct

In the Spalding store at 130 Carondelet Street, you'll find a wide and varied stock of athletic goods. And at prices that fit every pocketbook.

Stop in, not necessarily to buy but to see what a real man's store has to offer.

*A. G. Spalding & Bros.*

130 Carondelet St. New Orleans



Evans—Center  
Tulane

### JAHNCKE SERVICE INC.

Concrete & Building  
MATERIALS

Dredging—Towing  
Barges

814 Howard Ave.  
Since 1872

RAYmond 2261

### PEP UP YOUR TEAM!

Use Our Football Equipment

A complete line showing

## "BALDWIN'S"

Camp and Common

Phone MAin 0527

### D. MERCIER'S SONS, INC.

Specializing in

### College Students Clothes

Renowned for Fair Dealing

301 Dauphine St.

New Orleans



## MILLSAPS

- 2. Campbell
- 15. Hale
- 16. Bell
- 17. Cotton
- 19. Sellman
- 23. Mopp
- 24. Welch
- 26. Bonnds
- 28. Miller
- 29. Haining
- 30. McDaniel's
- 32. Rouse
- 33. McManus (cap.)
- 34. Jones
- 36. Kelley
- 37. Bealle
- 38. Holcomb
- 40. Street
- 42. Wright
- 43. Graham
- 44. Boswell
- 45. Maynor



Will be seen at every Tulane game—and in greater numbers every game—because the college man is quick to see the good-taste which is deftly combined with finest fabric in these correctly styled garments. 2-trousers.

\$45

*Porter Clothing Co.*

Carondelet and Gravier

September 29—Tulane 65, Louisiana Normal 0.  
 October 6—Tulane 51—Mississippi Aggies 6.  
 October 13—Tulane 0—Georgia Tech 12.  
 October 20—Tulane 6, Vanderbilt 13.  
 October 27—Tulane 14, Georgia 20.  
 November 3—Tulane vs. Millsaps.  
 November 10—Tulane vs. Auburn.  
 November 17—Tulane vs. Sewanee.  
 November 24—Tulane vs. La. College.  
 November 29—Tulane vs. Louisiana State University.

Millsaps  
Lineup  
For Today

Street	Ends
Bell	
Maynor	Tackles
Graham	
Kelley	Guards
Sellman	
McManus	Centers
Haining	
Hale	Quarters
Welch	
McDaniels	Halfbacks
Miller	
Wright	Fullbacks
Cotton	



## HOLMES

Has Tulane Colors in Ribbons,  
 Badges and Pennants  
 Also Boxed Candy and Noise Makers

—After the Game—  
 You'll Enjoy Dinner in Holmes Restaurant

**D. H. HOLMES CO.**

LIMITED

For 86 Years—The Best Place to Shop





## WATCH THE PLAINSMEN

With a single victory in their favor in the past two years on the gridiron, Auburn's Tigers face Tulane in New Orleans next week.

The experts are telling the Green Wave not to be so sure of beating the Alabama lads. "A passing team," they say, "is this Bohler bunch." And Tulane has shown no great strength in the aerial game since such play is what caused three straight defeats at the hands of Georgia Tech, Vanderbilt and Georgia.

Several experienced men are coming with the Auburnites in hopes of taking the Greenies into camp. Tuxworth, Crawford, Callahan, Peake, and Sellers are first class backfielders and can carry the pigskin for long gains at the most unexpected moments. And then, there is a line that stacks up like a real championship wall.

The Greenies will have to watch their step with the Bohler charges next Saturday. Tulanians will remember that Auburn came to New Orleans last year yet to win a game that season and the best Tulane could do was tie them, 6-6.



Holland—End  
Tulane

## TULANIANS!--

Everybody's Welcome.

HEAR the play by play returns of the Green Wave's road games at—

### College Pharmacy

STATE AND FRERET

LESLIE D. ISRAEL

ROBERT F. LYNESS

Phones WALnut 3772, 9213,  
and 9154

### MEDICAL BOOKS

Students will find a full line of MEDICAL, DENTAL & PHARMACEUTICAL books recommended by teachers of Tulane University.  
**J. A. MAJORS COMPANY**  
1301 Tulane Ave.

Steam Heated  
Excellent Music

## MECCA THEATER

Entertainment with  
Distinctive Service

Adams Street, Near Maple

Especially Selected Programs Exhibiting only the best Photoplays Produced.

The Mecca is under the personal supervision and management of Mr. and Mrs. Heiderich.

Spend Your Evenings  
With Us

### MEDICAL BOOKS

Tulane Belt cuts pass our door—  
all MEDICAL, DENTAL & PHARMACEUTICAL books on hand.  
**J. A. MAJORS CO.**  
1301 Tulane Ave.

DRINK

# Coca-Cola

IN BOTTLES

"The Thinking Fellow Calls A Yellow"

Raymond  
3311



Safety---Courtesy---Comfort---Service



**GAMES ELSE-  
WHERE TODAY**

There aren't any real outstanding games in the South today, most teams taking somewhat of a breathing spell after a hard campaign of a few weeks. The same seems to be the case in other parts of the country as there are not any games particularly outstanding.

Probably the most interest of Tulane followers will be in the annual struggle between L.S.U. and Arkansas at Shreveport today. The Tigers are undefeated this year and are just about reaching the tough part of their schedule. This is the first real test for them this year.

Georgia Tech takes on Oglethorpe in what should be an easy triumph for the Jackets. This game will prepare the Tornado for the Vanderbilt struggle of next Saturday, which will be the biggest game of the Conference season.

Vanderbilt, on the other hand, will not have as easy a foe

**Two Stars on  
Godchaux's Team****Charter House  
Braebury**

*Two Trouser Suits*  
**\$45 up**

**Godchaux's**  
Canal near Baronne

**BOY SCOUTS' DAY**

Boy Scouts and grammar school kids will have their inning at today's game. The athletic association is admitting these to the game free of charge into the East stands and more than 2000 are expected. Incidentally, the Alabama Wisconsin game in the Mid-West is also the "boy scouts" game of the State of Wisconsin. Scouts from all over the State will attend the battle.

as Tech. The Commodores will clash with Kentucky at Nashville. Vandy should win, but there is no telling how the Wildcats may treat the dope, which has been upset quite a bit already this year.

The outstanding games elsewhere today are:

L.S.U. vs. Arkansas at Shreveport.

Georgia Tech vs. Oglethorpe at Atlanta.

Kentucky at Vanderbilt.

Auburn at Georgia. Alabama at Wisconsin.

Sewanee at Florida. Clemson at Ole Miss.

N. C. State at North Carolina.

Carson-Newman at Tennessee.

Washington-Lee at Virginia.

Davidson at V.M.I.

Maryland at V.P.I.

Dartmouth at Yale.

Georgetown at N. Y. U.

Princeton at Ohio. Stanford at S. Calif. State.

Minnesota at North western.

Pennsylvania at Chicago.

**AFTER THE GAME  
THE BIENVILLE ROOF**

Dance to the syncopated rhythm of one of New Orleans most popular orchestras. Dine on the spacious Bienville Roof.

Table d'Hote dinner \$1.25—served from 6 p. m. to 8 p. m.

Dancing—9.30 p. m. to 1 a. m.

Minimum charge 1.00—Make reservations early. Call MAin 4785.

Operated by the Roosevelt Hotel

**THE BIENVILLE**  
NEW ORLEANS



## ALMA MATER

Sing these words as Tulane's Alma Mater is played

I

We praise thee for thy past, O Alma Mater!  
Thy hand hath hone its work full faithfully!  
The incense of thy spirit hath ascended  
And filled America from sea to sea!

II

We praise thee for thy present, Alma Mater!  
Today thy Children look to thee for bread!  
Thou leadeest them to dreams and actions  
splendid!

The hunger of their soul is richly fed!



III

We praise thee for thy  
future, Alma Mater!  
The vista of its glory  
gleameth far!  
We ever shall be part of  
thee, great Mother!  
There thou wilt be where  
e'er thy children are!

### CHORUS

Olive Green and Blue, we  
love thee!  
Pledge we now our fealty  
true  
Where the trees are ever  
greenest,  
Where the skies are  
purest blue!  
Hear us now, O Tulane,  
hear us!  
As we proudly sing to  
thee!  
Take from us our hearts'  
devotion!  
Thine we are, and thine  
shall be!

### Woodward, Wight & Co., Ltd.



Largest General Supply  
House South Since 1867



Howard Ave., Constance and  
Joseph Street

### CLOVERLAND DAIRY PRODUCTS CO., INC

The Best and Safest Milk

Phone WALnut 4471

### BROADWAY PHARMACY



H. C. Richards  
Proprietor



Broadway and Maple

RA.4164

RA.4165

*The Best*  
**PHOTO-ENGRAVERS**

IN THE SOUTH

FOR OVER TWENTY YEARS  
MAKING HALFTONES, ZINC  
ETCHINGS & COLOR PLATES

GRELLE-EGERTON ENGRAVING CO.  
628-630 POYDRAS ST.

### LOUISIANA PRINTING COMPANY

Official Printers  
**TULANE**  
Football Program  
"THERE'S A REASON"



Just Phone Raymond 6875  
OR  
Call at 921-27 Lafayette Street



**NINE TEAMS UNDEFEATED**

As close a race in Southern Conference circles is being waged this year as has been known in the history of the circuit. Witness the battles of Georgia Tech, outstanding eleven and favored to retain its title won in 1927, Vanderbilt, Georgia, Clemson, Tennessee and Florida. Besides these, V.P.I., L.S.U. and Kentucky are undefeated.

Nine undefeated grid machines as they go to war today. Of these, one is sure to fall as Vanderbilt and Kentucky do battle. Both of these elevens are rated highly for top honors and one will rise as the other sinks to the depths. Tulane has sunk to

**THE SPIRIT OF THE GAME**

—As an institution whose fortune is inseparably connected with that of New Orleans, the Public Service family is backing "The Green Wave" heart and soul.

—But aside from that, it's a man's game this football business. In rain, slush, cold; no matter what the odds or cost, the true football player fights on to win the game.

—Similarly, the Public Service game requires men. In storm, rain, cold; no matter what the odds or cost, street cars must move, electric lights must burn, gas must flow—at all times, in all weather. That's a man's game, too, and men who play it can understand the spirit of men who fight out on the grid.

**New Orleans Public  
Service, Inc.**

position number 15 in the conference race. Wins over Auburn, Sewanee and L.S.U. would raise the standing of the Greenies to a place among the first eight or ten, which won't be so bad among 22 teams.

Clemson College stands out for its record on the gridiron up to this time. The Cody ball squad has not been scored upon and has tallied 133 points. A most commendable record.

Florida, the team which Clemson must beat to stand in the conference race at the close of the season, has totaled 179 points against 7 for its opponents to lead the scoring machines in the conference to this time. Tulane is fourth with 136 points scored.

**DO YOU KNOW THAT.....**

The world's first hidden ball trick on the gridiron was worked by Reynolds "Tich" Tichenor and W. M. "Billy" Williams, football stars at Auburn in 1895. Glen Warner, Leland Stanford's famous coach, worked the same trick with his Carlisle Indians two years later.

**Office Towel & Linen Supply**

Ltd.

509 S. PETERS ST.

**TOWELS AND LINENS**

SUPPLIED AT NOMINAL

RENTAL CHARGE

**BREEN'S DRUG STORE**

**Prescriptions Filled at Once  
by Experts.**

Opposite Charity Hospital

Phone Main 9177

Tulane Ave. at Villere



# THE SCORE BOARD

## Watch It Carefully For Complete Information

Often only the officials and captains know what a certain penalty is for. We have sketched out the following to inform you. Each penalty is numbered below. When a penalty is inflicted the number of that penalty will be hung on the score board.

Please understand violations of rules are rarely intentional. They usually come from over-anxiousness, excitement and most often from the highly technical character of the present game.

### PENALTIES

Pen. No.	OFFENSE	Penalty	Pen. No.	OFFENSE	Penalty
1.	Offside—in advance of line of scrimmage and on the kick-off or on free kick	5 yds.	21.	If a man on defense holds a player of the side with the ball	5 yds.
2.	Holding or illegal use of hands or arms. The team with the ball, except the man carrying the ball may not use hands or arms to block out or keep off opponents	15 yds.	22.	If a team takes out time more than three times in one half without substituting a player	5 yds.
3.	Clipping—Cutting a man down from the rear away from the play	25 yds.	23.	For delaying the game	5 yds.
4.	Players must come to an absolute stop for a period of approximately one second in all shifts and "huddle" plays	15 yds.	24.	Crawling—The man with ball may not crawl or try to advance after being tackled and thrown	5 yds.
<b>LOSS OF A "DOWN"</b>			25.	Hurdling—Man with ball may not jump over a man still on his feet	15 yds.
5.	For second and third incomplete passes in any one series of downs and	5 yds.	26.	Unnecessary roughness or unfair play	15 yds.
6.	Interference by side making forward pass, prior to fourth down, also	15 yds.	27.	Tripping with feet, tackling out of bounds, etc.	15 yds.
7.	Intentionally throwing forward pass to ground, prior to fourth down, also	15 yds.	28.	If center feints to snap ball and does not	5 yds.
<b>LOSS OF BALL</b>			29.	Unsportsmanlike conduct, talking back to officials or abusive language	15 yds.
8.	Ball kicked out of bounds, unless touched, etc.		30.	The ball or the center may not be interfered with until ball is passed	5 yds.
9.	Interference by side making forward pass, fourth down—Loss of ball at point 15 yards back of previous down.		31.	A substitute must report to referee or umpire. Penalty for not reporting	5 yds.
10.	Interference by defensive side in case of forward pass—Loss of ball to the offended side at the spot of the foul, the ensuing down to be first down.		32.	The team with the ball must have seven men on the line of scrimmage when the ball is snapped	5 yds.
11.	Illegal or incomplete forward pass—fourth down.		33.	The center or the man on either side of him may not carry ball until it has been handed by someone else on the team	5 yds.
12.	Intentionally throwing forward pass to ground, fourth down—Loss of ball and also	15 yds.	34.	Player out of bounds when ball is snapped	5 yds.
13.	Failure to advance ball 10 yards in four downs.		35.	If a player leaves the field while time is out or during intermission without permission of officials	15 yds.
14.	No man on team with ball may be in motion when ball is snapped, except one man may be in motion toward his own goal or toward side line	5 yds.	36.	No one on bench or sidelines may coach or instruct anyone in the game	15 yds.
15.	Piling on a player after the whistle	15 yds.	37.	There is a penalty for persons coming on field of play and for more than one representative in case of injury and for anyone on bench or inside enclosure standing or walking along side lines	15 yds.
16.	The kicker may not be tackled or knocked down after kicking	15 yds.	38.	Team delaying start of game or start of second half forfeits option and is penalized	25 yds.
17.	The man carrying the ball may not be pushed or pulled by any of his teammates	15 yds.	<b>LOSS OF HALF THE DISTANCE TO THE GOAL LINE</b>		
18.	Interference with player making fair catch or throwing player who has made fair catch	15 yds.	39.	A player may be substituted only once in each half—for illegal return, team is penalized as above and player is suspended for remainder of the game.	
19.	Player making more than two steps after fair catch	5 yds.	40.	Striking, kneeling, kicking, etc.—Player is disqualified for remainder of game, and team is penalized as above.	
20.	If a substitute coming in says anything to any teammate until a play has been made his team is penalized	15 yds.	41.	Foul within one yard line or behind goal line by defensive side.	