

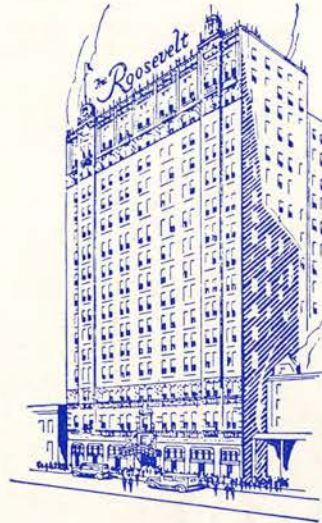
The Greenie

GEORGIA vs. TULANE

NOVEMBER 16, 1940 • PRICE 25¢



WELCOME TO NEW ORLEANS



*We Are Happy to Have so Many Visitors
In Our Midst*

There is one way that your stay here will
be pleasant: Stop at The Roosevelt. A
hotel that exemplifies Southern Hospitality.
The type of hospitality that matches perfectly
the demand and moods of every guest.

800 MODERN ROOMS WITH BATH

Reasonable Rates

Garage in Connection

GEORGE V. RILEY, *Vice-President and General Manager*

The **Roosevelt**
HOTEL
"Pride of the South"

The Greenie

Vol. 10

NOVEMBER 16, 1940

No. 5

HORACE RENEGAR - - - - - EDITOR
Official Souvenir Football Program of Tulane University,
Published for Each Home Game.

National Advertising Representative, Football Publications,
370 Lexington, New York City.

Tulane and Georgia meet in football for the 14th time today. The Bull Dog-Wave series has been one of the most colorful in Dixie rivalry. Each team has won six games, one resulted in a tie. The deadlock occurred in 1919, the year of the first game.

This is the first meeting of Wallace Butts, Georgia coach, and "Red" Dawson, Tulane coach, on the gridiron. It is significant that they bring their teams up to this mid-November game with the experts rating their chances of victory about even.

The record of the series:

1919—Tulane	7, Georgia	7
1927—Tulane	0, Georgia	31
1928—Tulane	14, Georgia	20
1929—Tulane	21, Georgia	15
1930—Tulane	25, Georgia	0
1931—Tulane	20, Georgia	7
1932—Tulane	34, Georgia	25
1933—Tulane	13, Georgia	26
1934—Tulane	7, Georgia	6
1935—Tulane	13, Georgia	26
1936—Tulane	6, Georgia	12
1937—Tulane	6, Georgia	7
1938—Tulane	28, Georgia	6

The Georgia game has figured prominently in every championship schedule Tulane has played since 1927 with the exception of last year. In 1929, the most thrilling game of the year was the Wave's 21 to 15 triumph at Columbus and from there the Greenies went on to an undisputed title.

In 1930, both Greenies and Bull Dogs were title threats until the Wave won in a startling upset, 25 to 0, to go on to a share in the crown with Alabama. It was a clear-cut Tulane title in 1931, made possible by a 20 to 7 decision over Georgia, which took the Bull Dogs out of the race and put the Wave in the Rose Bowl.

Tulane's closest triumph in 1934 as the team charged onward to the Sugar Bowl was a 7 to 6 decision over Georgia. Incidentally, Green's try for the extra point was deflected by the cross bar. It was that close.

No title hopes hang on today's game but a lot of football has been packed in this series without exception.

1940 Schedule

Sept. 28—Boston College at New Orleans
Oct. 5—Auburn at New Orleans
Oct. 12—Fordham at New York
Oct. 19—Rice at New Orleans
Oct. 26—North Carolina at Chapel Hill
Nov. 2—Clemson at New Orleans
Nov. 9—Alabama at Birmingham
Nov. 16—Georgia at New Orleans
Nov. 23—Louisiana Normal at New Orleans
Nov. 30—Louisiana State at Baton Rouge

A Double Sweetheart



Copyright, 1938, by
P. Lorillard Co., Inc.

Flavor-Rich OLD GOLDS' blue-ribbon tobaccos are enriched by a special imported tobacco noted for pleasing aroma and lasting flavor.

The new Flavor-Rich OLD GOLDS
NOW ON SALE EVERYWHERE



be a siren - - Thanksgiving!

Your formal must certainly make you the "Belle of the Party". Sophisticated, new and young . . . chiffons, crepes, taffetas, all with gleaming trimming touches . . . sure to shine brightly at gay Thanksgiving dances.

7.95 to 29.75

Mayer Israel's

La Louisiane

FAMOUS FRENCH
RESTAURANT

Established 1881

La Louisiane is the most enjoyable place to dine in New Orleans; it is the center of social and business activity. La Louisiane has been famous for fifty-seven years for its many special dishes which are truly representative of the best French and Creole cooking.

Available for

Feature and Sorority Dances, Banquets
and other Social Functions.

725 IBERVILLE ST.

Between Royal and Bourbon

Telephone MAgnolia 4664

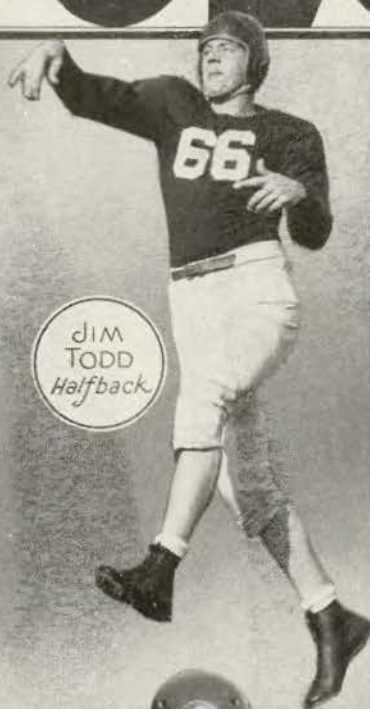
"Pep them up" by TELEGRAPH



Send
PEP MESSAGES
by
WESTERN UNION

20¢ LOCALLY **25¢** TO ANY WESTERN
UNION POINT IN U. S.

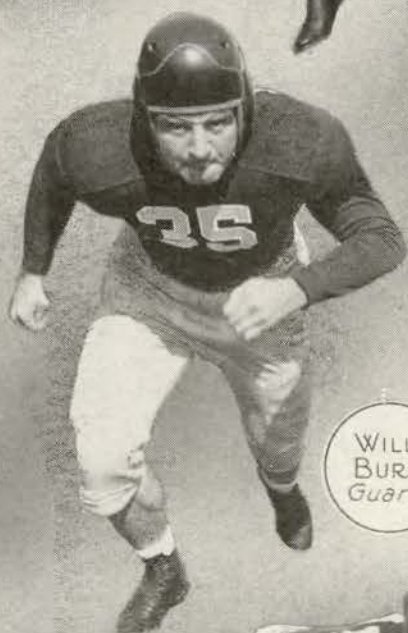
GEORGIA Bulldogs



JIM
TODD
Halfback



HEAD
COACH
WALLACE
BUTTS



WINFRED
GOODMAN
Guard



BROOKER
BLANTON
Halfback



CARL GRATE *End*

WILL
BURT
Guard



MORRIS
PHELPS
End



STEVE HUGHES
Center



OLIVER HAWK *End*

T O N I G H T

IN THE NEW
BLUE ROOM

ART JARRETT

With His Famous Dance Band
And a Sensational Show

DINNER FROM \$1.50

Two Shows Nightly—7:30 and 12:15
Matinee Show Saturday and Sunday 4:15



in the

FOUNTAIN LOUNGE

Dance to the Music of
HAROLD NAGEL
AND HIS ORCHESTRA

See the Famous Conga-Line at the Champagne Hour
Presented by the Arthur Murray Dance Instructors
Nightly at 11 O'clock

NO COVER—NO MINIMUM



GEORGE V. RILEY, *Vice-Pres. and Gen. Manager*

The **Roosevelt**
HOTEL
"Pride of the South"


FOOTBALL



CLAUDE "MONK" SIMONS
TRAINER



PETER
MAILHES
ASSISTANT
COACH



DR. WILBUR
C.
SMITH
ATHLETIC
DIRECTOR



LOWELL
"RED"
DAWSON
HEAD
FOOTBALL
COACH



GLENN
E.
SEIDEL
ASSISTANT
COACH



WILLIAM BEVAN
ASSISTANT COACH



Eleven men will receive this emblem for outstanding football this year. Every year— Jarman leads the field in style, comfort and wear!



New wing tip in "Dixie Tan," for either semi-sport or business.



Be sure to see this full straight tip brogue in Jarman's "Cortez Brown."



Dressy, comfortable semi-sport moccasin in the popular "American Tan."

\$5 TO \$6⁸⁵
MOST STYLES

Jarman
SHOES FOR MEN

EXCLUSIVELY IN NEW ORLEANS AT

LABICHE'S

311 BARONNE STREET

ALMA MATER

Sing these words as Tulane's Alma Mater is played

I.

We praise thee for thy past, O Alma Mater!
Thy hand hath done its work full faithfully!
The incense of thy spirit hath ascended
And filled America from sea to sea!

II.

We praise thee for thy present, Alma Mater!
Today thy Children look to thee for bread!
Thou leadest them to dreams and actions
splendid!
The hunger of their souls is richly fed!

III.

We praise thee for thy future, Alma Mater!
The vista of its glory gleameth far!
We ever shall be part of thee, great Mother!
There thou wilt be where e'er thy children
are!

CHORUS:

Olive Green and Blue, we love thee!
Pledge we now our fealty true
Where the trees are ever greenest,
Where the skies are purest blue!
Hear us now, O Tulane, hear us!
As we proudly sing to thee!
Take from us our hearts' devotion!
Thine we are, and thine shall be!

*The Thinking Fellow
Calls a Yellow*

•
Phone RAYmond 3311

•
TOYE BROS.
YELLOW CABS

A Homecoming Message from President Harris



DR. RUFUS CARROLLTON HARRIS



To the Graduates and Former Students of Tulane University:

The University welcomes you back to the campus and wishes for you a happy reunion with University life. In these days of uncertainty, of war, of fear and hate, an escape into the past is a pleasant interlude which relieves tension induced by the times. It is our sincere hope that this homecoming will afford you such escape, that it will enable you to relive those relatively carefree days of your college life, and that you will go away refreshed by the experience. It is also our hope that in your visit to the campus you will sense something of the manner and spirit of Tulane University in meeting its responsibilities to this generation of University students.

Rufus C. Harris

W S M B

occupies a 50-yard line seat at all Tulane football games to bring you Bill Brengel and his colorful play-by-play account of every happening

For those unfortunate enough to miss the game, W S M B invites you to tune in for quick, accurate details.

•

W S M B

(1320 KC)

*The Red Network
of the National Broadcasting Company*

**DON'T JUST
STAND THERE!**

GO ON DOWN AND
OPEN US A CHARGE
ACCOUNT AT
GODCHAUX'S





CAM-PIX

A MEDLEY OF
CAMPUS PICTURES



© 1940 BY HORACE RENEGAN

DO YOU REMEMBER?

Alfred W. "Brother" Brown, Tulane's first halfback to gain national fame. Brown's career ended in a blaze of glory with the 1924 season.





Although Tulane began intercollegiate football in 1893, its first victory of national import was scored in 1924 when Brown and mates beat mighty Vanderbilt, flanked by two all-America end men, Bomar and Wakefield. Here's the triumph as it was recorded that day.



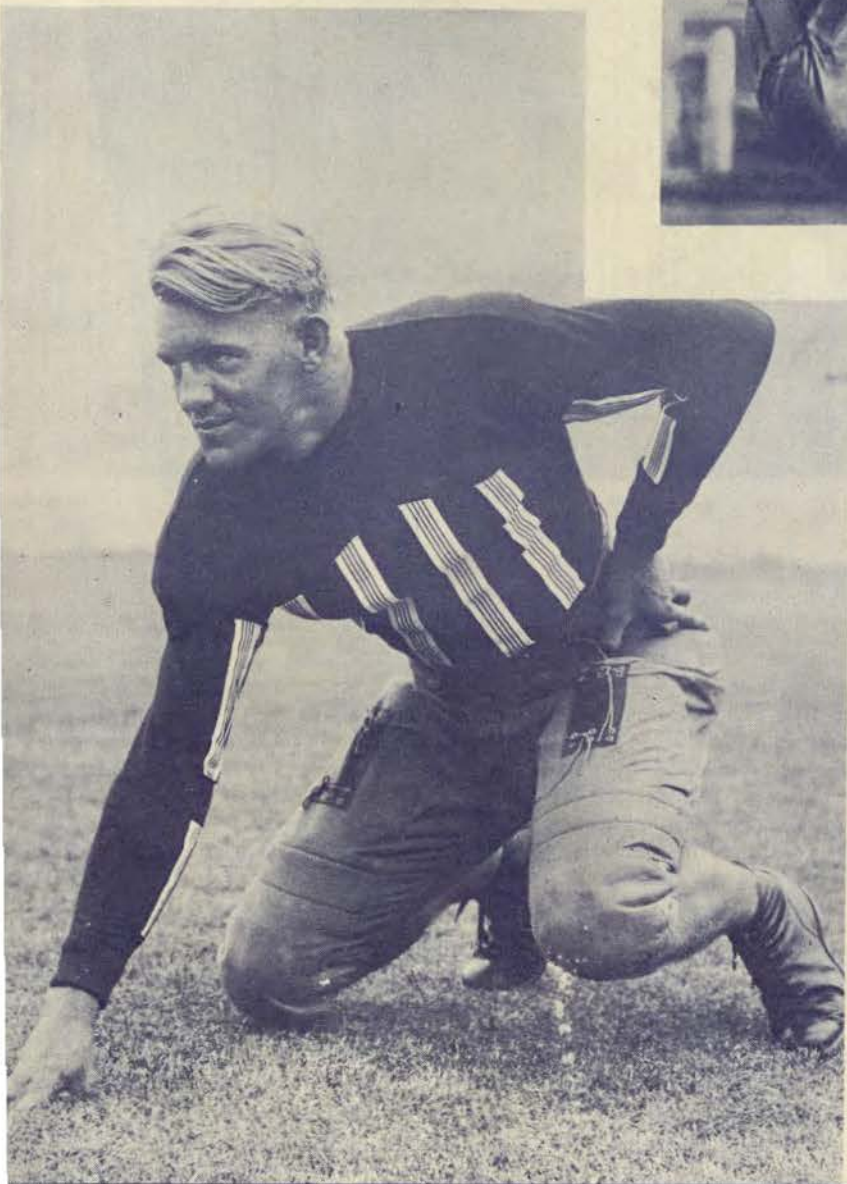
"There goes Brown!" they yelled as "Brother" scampered. Milton "Irish" Levy, famous Greenie guard, is on the far right. The Waveman with clenched fist is Horace "Hoss" Talbot, one of the greatest of all Tulane tackles.



Lester Lautenschlaeger, Tulane's quarterback who was all-Southern field general a year later and one of the greatest passers the Wave has ever boasted, is shown running interference for Brown. Note the determination on Les' face and the almost pensive expression of "Brother." Also note absence of headguards.

ANY LIST OF PIGSKIN GREATS, players who led the Green Wave to heights never before known in the long history of Greenie football, would be incomplete without the names of Charles Priestly Flournoy, Willis Burton Banker, Gerald Dalrymple, Lowell Potter Dawson and Donald Gordon Zimmerman.

Flournoy, the super back of Tulane's great 1925 team, greatest punter perhaps the South has ever seen, led his mates to national title heights by beating Northwestern's mighty Purple at Chicago, 18 to 7, and on through an unbeaten season. "Peggy," as he was known to football's children, was all-American back of 1925.



Billy Banker, "the blond blizzard," "the iron horse," and immortal of countless football battles with a nom de guerre for every deed of greatness was the un-helmeted star of Tulane's 1929 championship team. An all-America halfback of that year, Bill never wore a headguard or called a time out during his career. His classic march against Georgia's Bulldogs in 1929 will be told in story probably as long as Greenies play the game. He marched 80 yards—3 to 5 at a clip—in a one man drive to beat Georgia that day, 21 to 15, at Columbus, Ga.



Swank THE COLLEGIATE JEWELRY AT.

Porter's



Don Zimmerman, left; "Red" Dawson, center; Jerry Dalrymple, right. Zimmerman was known from coast to coast as "The Flying Dutchman," a legend previously made famous by Tulane's Lautenschlaeger in 1925. Don passed, punted and ran to all-America fame in 1932, his senior year. In 1930 he helped spark the Greenies to championship. A great all-round athlete, he prepped at Lake Charles as did Bill Banker. Dawson quarterbacked the Wave to a co-championship with Alabama in 1930 and to the Rose Bowl in 1931. One of the keenest strategists Dixie football has ever seen, he was Bernie Bierman's ace field general at Tulane. Jerry Dalrymple, whom Greenies swear to be the best end of all time anywhere, finished his football career as captain of the great 1931 team. Jerry was unanimous all-America end in 1931 and virtually unanimous choice in 1930, the only player from the South ever to enjoy that distinction. Critics who saw him play all declared him the greatest defensive end they had ever seen.

Westminister
Hosiery JUST LIKE
COLLEGE MEN
WANT AT..

Porter's

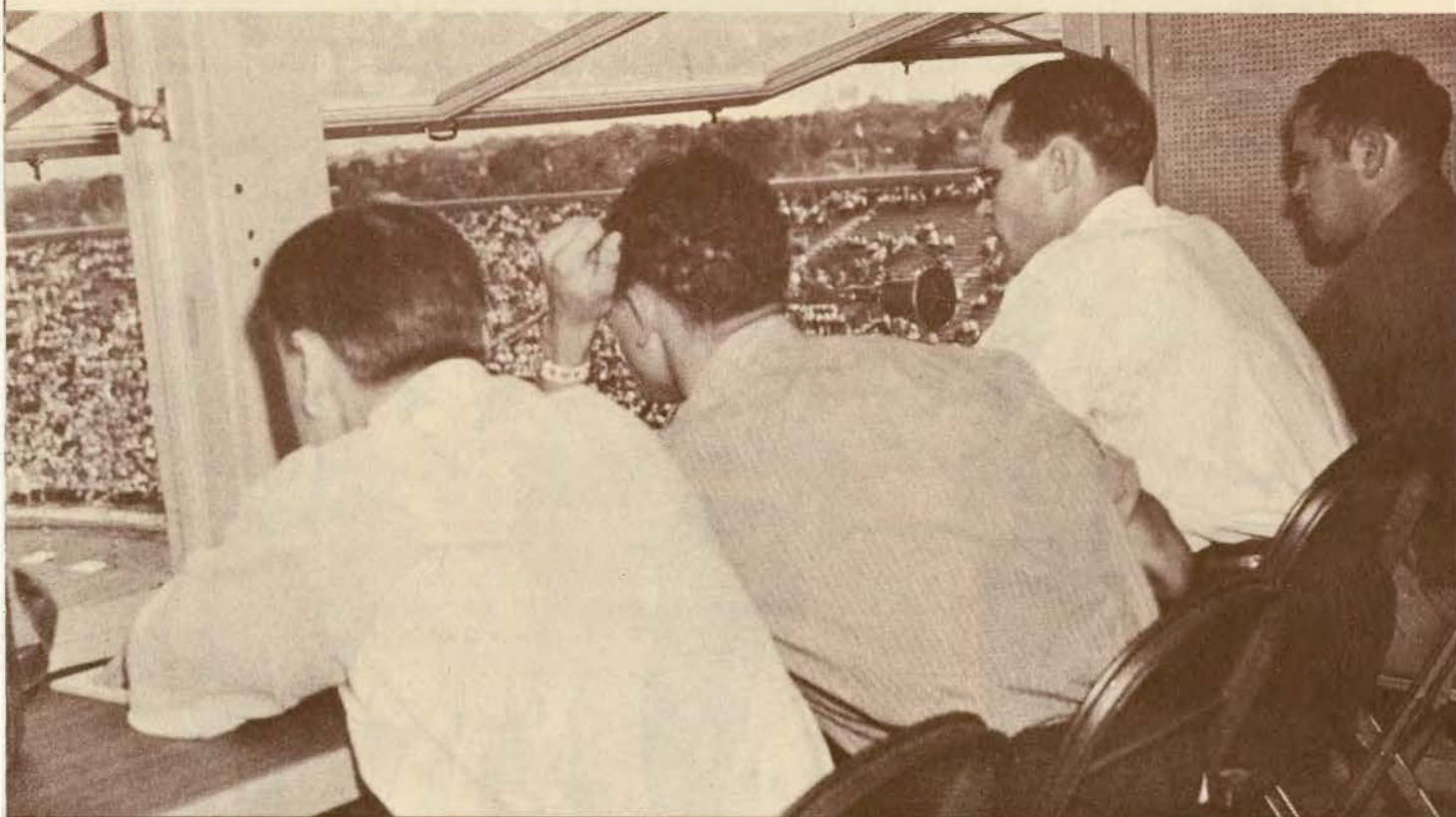


Cheerleaders of yesteryear and now . . . Top, "Greenback" yell-leaders of 1924 are shown leading the student cheers. (Note the paper megaphone the student in the foreground has improvised from a program.) Marian Draper, a student in architecture was the girl cheerleader. She was the first coed leader in U. S. colleges. Below, the Greenie cheerleaders of 1940 in action! Note the pretty heads of the Newcomb girls in front of them contrasted with the skull caps of the frosh of 1924.





Here's the first Tulane broadcast. It was the occasion of the Wave-Vandy game in 1924. The late Clyde Randall was the principal announcer. He is shown behind the station WCAG identification sign. Next to him is Jules Lazard, Alphonse Levy, and the end man is our old friend "Doc" Richards. Below, the broadcast of a 1940 Tulane football game from the insulated special WSMB booth high atop the great stadium, overlooking the 73,000 seats. The man in white shirt on the right is WSMB's ace announcer, Bill Brengel.



Nunn-Bush  **SHOES Give Foot Comfort and Style Rightness...** **Porter's**

AT THE GAME
and
AFTER THE GAME
ENJOY



D Equipment for all sports...

U Specialists in all types of
school athletic
supplies

N
L
A
P

Sporting Goods Co., Inc.

138 Carondelet Street
MAGNOLIA 5891

The official watch for timing all **TULANE** FOOTBALL GAMES IS *Longines*

THE WORLD'S MOST HONORED WATCH

Longines Watches, selected as official watch by the 1940 Olympic Committee, is also official watch for timing the football games for more than 100 leading colleges; timed 20 of the leading track meets of 1940 and the major intercollegiate basketball games. Longines is also official watch for the National Professional Football League and was worn by all umpires officiating at American and National League baseball games of 1940 including the World Series. Among the 104 national and international sports and contest bodies for which Longines is official watch are National Aeronautic Association, American Automobile Association, National Power Boat Association, International Federation du Skii, American Lawn Tennis Association, and U. S. Polo Association.

The world-leadership of Longines Watches is further attested by 10 world's fair grand prizes, 28 gold medals and more honors for accuracy than any other timepiece. Truly Longines is . . . the world's most honored watch.

Watches of accuracy and elegance by Longines



The skill, experience and workmanship necessary for the construction of Longines Watches for precision timing, aviation, and navigation is reflected in the greater accuracy of every Longines Watch at any price. Longines-Wittnauer jewelers show Longines personal watches of distinction priced \$40 upward; Wittnauer watches from \$24.75.

LONGINES-WITTNAUER WATCH CO., Inc.
580 FIFTH AVENUE, NEW YORK, N. Y.

Do you SMOKE THE CIGARETTE THAT

Satisfies

THAT'S COOLER... BETTER-TASTING
DEFINITELY Milder

GEORGIA

LE Poschner 41	LT Green 44	LG Burt 35	C Hughes 31	RG Goodman 53	RT Ellenson 30	RE Skipworth 51
----------------------	-------------------	------------------	-------------------	---------------------	----------------------	-----------------------

QB
Nowell
50

LHB
Sinkwich
21

RHB
Davis, L.
64

FB
Kimsey
15

SQUAD LIST

Wallace Butts, Coach

14 Bray, b	32 Grate, e	50 Nowell, b
15 Kimsey, b	33 Hawk, e	51 Skipworth, e
16 Lewis, t	34 Christian, b	53 Goodman, g
19 Blanton, b	35 Burt, g	54 Kluk, b
20 Wilkes, c	36 Jameson, t	56 Powers, b
21 Sinkwich, b	37 Pierce, g	57 Pittman, g
22 Allen, b	38 Horne, g	58 Brown, b
23 Nelson, b	39 Witt, c	59 Posey, t
24 Davis, V., e	40 Ruark, g	60 Passmore, b
25 Dudish, b	41 Poschner, e	61 Guest, g
26 Matthews, b	42 Costa, c	62 McKinney, t
27 Carter, b	43 Burgess, t	63 Phelps, e
28 Malone, e	44 Green, t	64 Davis, L., b
29 Woodruff, b	45 Keuper, b	65 Welch, b
30 Ellenson, t	46 Kuniansky, g	66 Todd, b
31 Hughes, c	47 Keltner, e	67 Bryant, b

OFFICIALS

Linesman.....Frank O. Waddey (Georgia Tech)
Field Judge.....B. Bagley (W. & L.)

TULANE

LE Bodney 52	LT Blandin 79	LG Tittle 85	C Flower 66	RG O'Boyle 77	RT Dufour 35	RE Hornick 75
--------------------	---------------------	--------------------	-------------------	---------------------	--------------------	---------------------

QB
McDonald
70

LHB
L. Thomas
18

RHB
R. Glass
82

FB
Thibaut
46

SQUAD LIST

Lowell Dawson, Coach

15 Bittman, g	44 Allemandi, h b	65 Gentling, g
16 Rhea, C., t	45 Grush, q b	66 Flower, c
17 Walker, h b	46 Thibaut, f b	67 Brekke, t
18 Thomas, L., h b	47 Hays, h b	68 English, e
22 Masur, g	48 Turchin, h b	69 Groves, g
24 Sims, h b	49 Gloden, f b	70 McDonald, q b
25 Glass, T., q b	50 Garbark, c	72 Bentz, t
27 Krobert, c	51 Sauer, f b	73 DeFraithe, e
29 Wolbrette, g	52 Bodney, e	74 Dunkelmann, c
30 Block, c	53 Maginnis, q b	75 Hornick, e
32 Burwick, g	54 Cuyler, e	76 Gordon, t
34 Owens, g	55 Ibert, e	77 O'Boyle, g
35 Dufour, t	56 Mullin, e	78 Golomb, e
36 Stern, f b	57 Smith, h b	79 Blandin, t
37 Vanzant, e	58 Eason, q b	80 Johnson, c
38 Abrams, g	59 Rhea, K., g	82 Glass, R., h b
39 Thomas, M., g	60 Brignac, f b	84 Mandich, c
40 Ely, h b	61 Cassibry, h b	85 Tittle, q b
41 Collins, c	62 Mollere, g	87 Comer, e
42 Faust, t	63 Brinkman, e	96 Maccall, t
43 Pracko, f b		

OFFICIALS

Referee.....Johnnie Lynch (Holy Cross College)
Umpire.....J. E. Burghard (Miss. College)



ENJOY A FAMOUS NEW ORLEANS DISH TONIGHT!

*Prepared by these world famous
New Orleans Restaurants*

ANTOINE'S
713 St. Louis St.

ARNAUD'S
813 Bienville St.

•
BROUSSARD'S
819 Conti St.

•
KOLB'S
125 St. Charles St.

GOOD FOOD, well cooked and faultlessly served by trained help are the standards that have won and kept world-wide fame for these fine New Orleans Restaurants.

“Time Out”

DRINK—

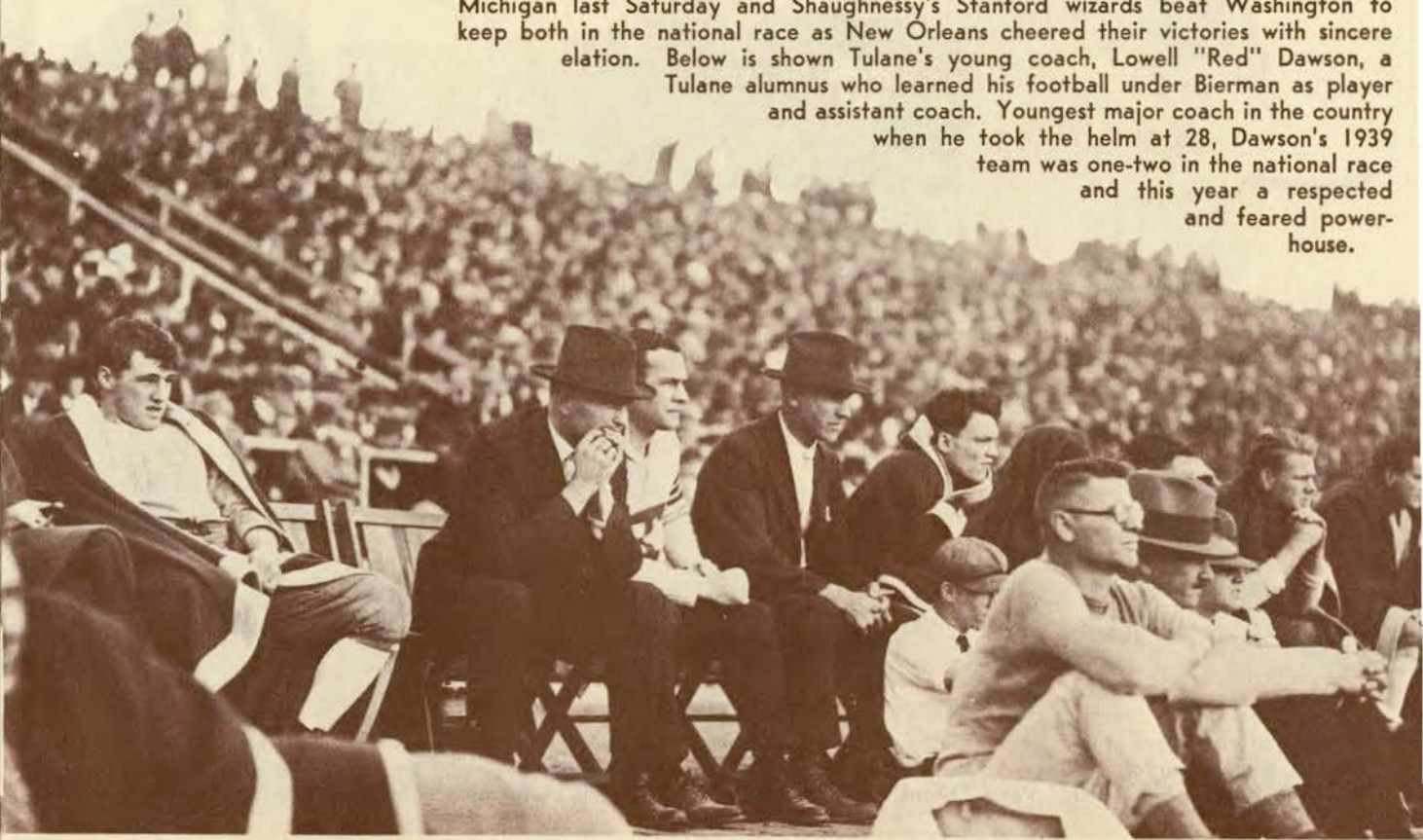
Coca-Cola
TRADE MARK
REG. U.S. PAT. OFF.

PAUSE—

RELAX—

REFRESH YOURSELF

Note the reflection of the coaches then and now. The black coated gentleman on the left, biting a finger nail, is none other than Bernie Bierman, assistant Wave coach and the other equally shadow frocked gentleman is Clark Shaughnessy, the head coach. Both played their football at Minnesota but stepped the ladder to football greatness during long and successful years at Tulane. Bernie's great Minnesota team beat Michigan last Saturday and Shaughnessy's Stanford wizards beat Washington to keep both in the national race as New Orleans cheered their victories with sincere elation. Below is shown Tulane's young coach, Lowell "Red" Dawson, a Tulane alumnus who learned his football under Bierman as player and assistant coach. Youngest major coach in the country when he took the helm at 28, Dawson's 1939 team was one-two in the national race and this year a respected and feared powerhouse.

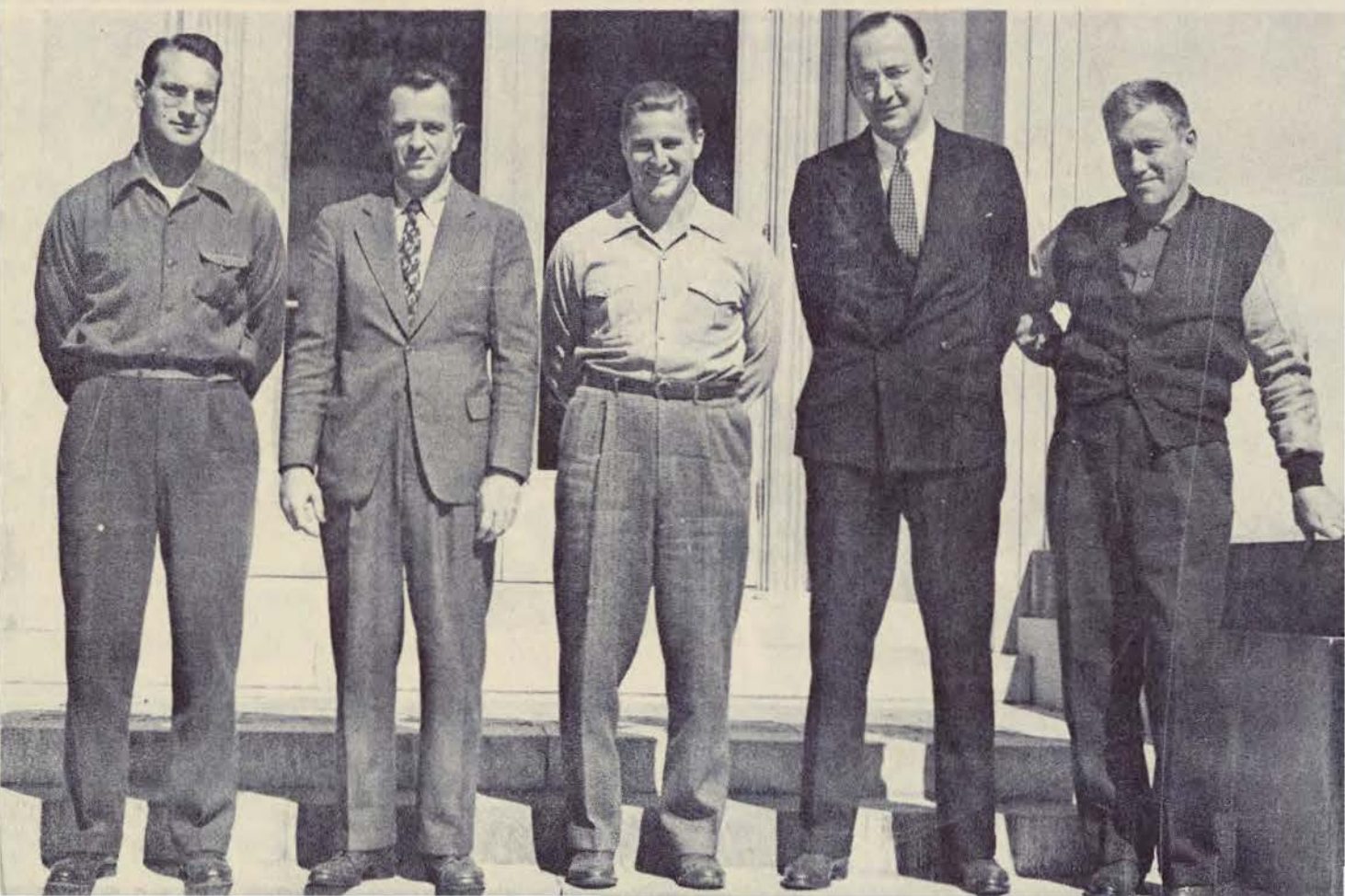


STYLEPARK HATS
*Have the Tulane Schedule
on the inside!*

Porter's

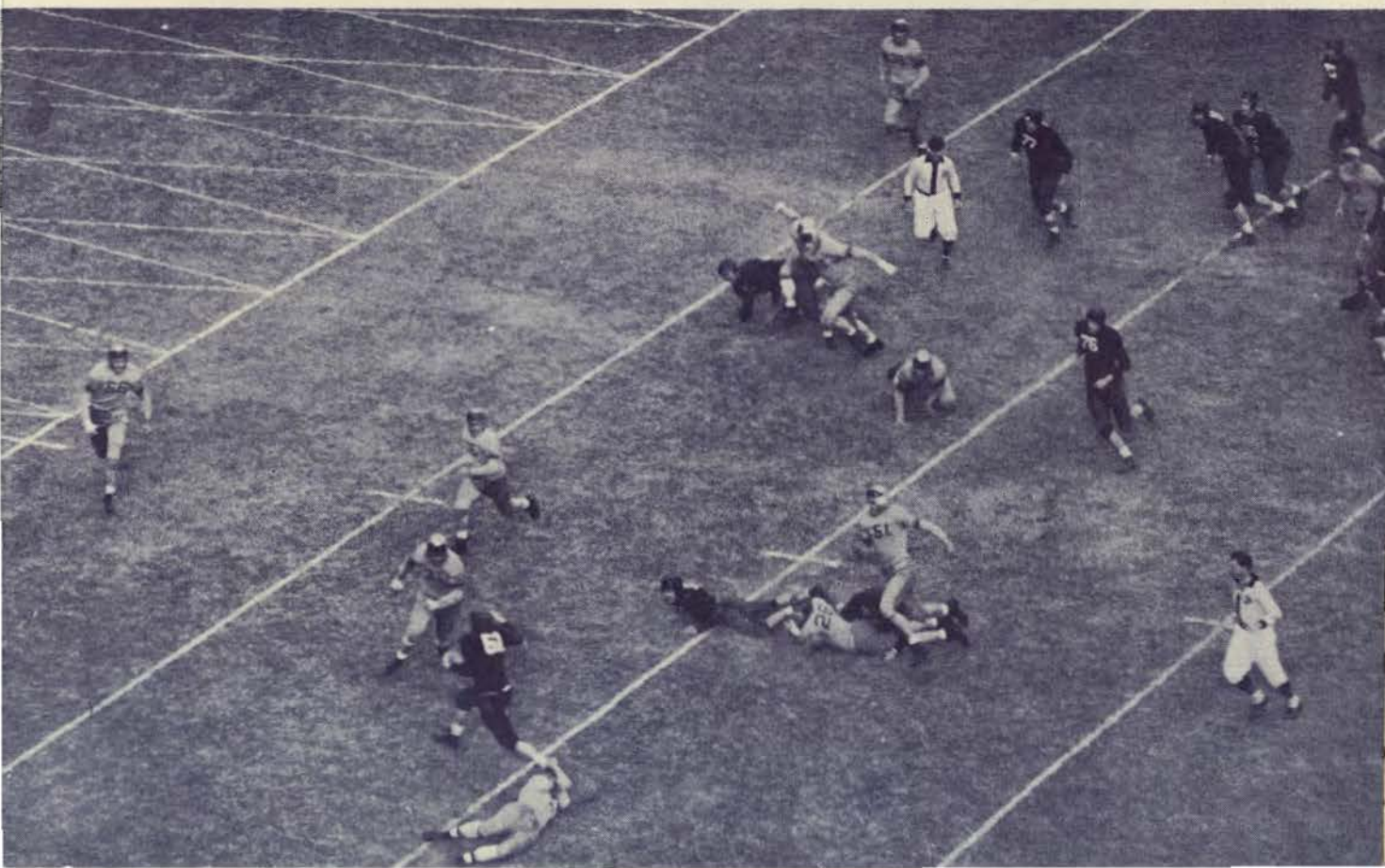


And, speaking of coaching staffs, here's a closer view of them. Top, Shaughnessy's staff at the height of his Tulane career, Clark at left, with Bierman next and Eddie Reed, Joe Killeen, "Monk" Simons, and Dr. Wilbur C. Smith, athletic director. Below is the present football coaching staff, Glenn Seidel, Dawson, "Little Monk" Simons, Charlie Rucker, Bill Bevan. Papa "Monk," Dr. Smith and Peter Mailhes are missing from the picture.





The man who scored the first Tulane touchdown . . . The man who scored the last one . . . and a Greenie scoring one . . . Top, Hugh Bayne, brother of Tulane's first coach, T. L. Bayne, scored the first Greenie t.d. That was in 1893 in the Tulane-L. S. U. game. Mr. Bayne now more or less commutes between his homes at New Haven and New Orleans. He also starred for Yale on the gridiron. Center is photo of Billy Brinkman, the New Orleans boy, who scored the touchdown against Alabama last Saturday when he took a pass from Harry Hays. Below, is a vivid picture of Fred Cassibry's touchdown run against L. S. U. two years ago when the Wave won, 13 to 0.

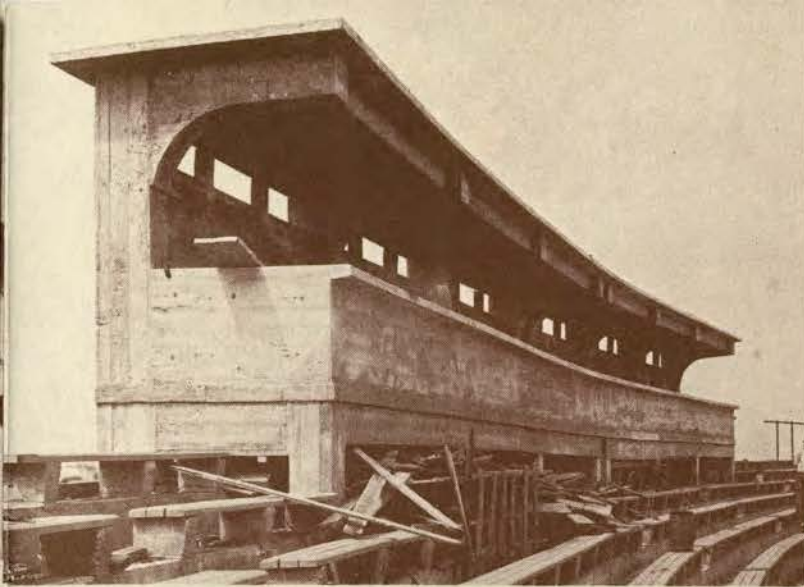




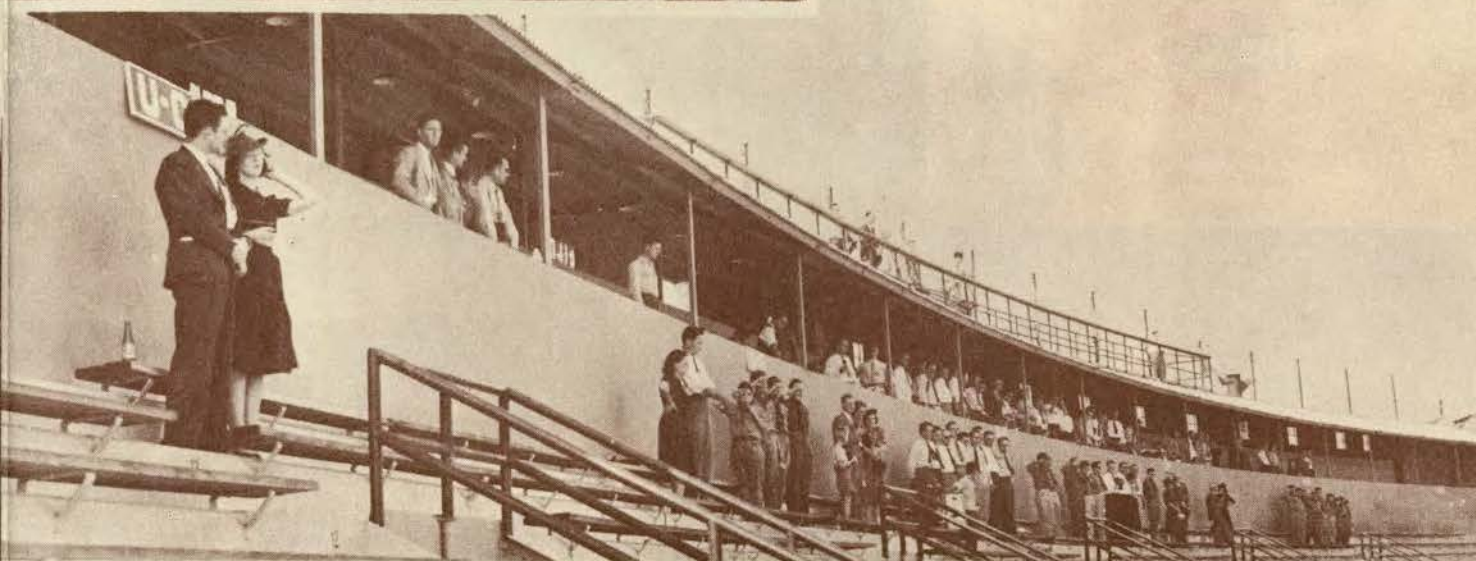
Here are four central figures in today's homecoming spotlight. Left, Walter M. Barnett, Jr., president of the Tulane Alumni Association; George G. Westfeldt, Tulane football letterman, father of Tulane football letterman George, Jr., former president of Tulane Athletic Council and honored at today's Homecoming by induction into Omicron Delta Kappa, national honorary fraternity, in recognition for loyal services rendered his alma mater; Commander James M. Lewis, U. S. N., commanding officer of Tulane naval R. O. T. C. unit which appears in drill formations on field today; T. Hale Boggs, youthful congressman from Louisiana and general manager of Tulane Alumni Association.



TIES Have that Touchdown Look at *Porter's*



Above is shown the press box in the Tulane stadium in 1926 as it was made ready for use for the first time. It was one of the nation's finest for that day, seated 35 men. Below is the press box of today, in use for the first season after another fine press box seating 110 men had been demolished in 1939 to make way for the stadium enlargement. The present press box runs from the 20 yard line to the 20, seats 261 men and has space on top to provide for a hundred movie and news cameramen. Special booths for radio and public address are built separate as will be noted by the WSMB sign.



Alligator THE COACHER COAT
Raincoats PERFECT FOR
 STADIUM WEAR
 at.. **Porter's**

HI DE HO! Boys will be boys . . .
 Bill Banker as the old maestro, Don
 Zimmerman tooting a mean trumpet
 and Ike Armstrong, great little scat-
 back of 1929, rattling the Mexican
 musical "dice." Les Lautenschlaeg-
 er demonstrates what is really a
 mean stiff arm or maybe you'd call
 it a fast "left."



CALLING ALL **TULANIANS** TO SEE THE
Porter's NEWEST IN CORRECT
 APPAREL...



CARONDELT CORNER GRAVIER

There's no need of penalizing yourself by tackling



the tedious task of having dinner at home after the game.



Sidestep this real



interference with

your day's pleasure. Make the enjoyment of dinner tonight

your



goal by



passing the responsibility to

Holmes Restaurant.

Here, within the



reach of all, is the



com-

plete dining service that

makes every meal a snap!



You'll get a real



kick out of having dinner after

the game in the quiet surrounding of this famous Vieux Carré

restaurant. And you'll discover a pleasure that's something to

cheer about!

Holmes Restaurant . . . Separate
Entrance on Bourbon Street in the
Vieux Carré, Just off Canal



HOLMES

New Orleans' Quality Department Store

Dinners

60c 75c 1.00

*Special
Wednesday
Night Dinner
50c*

Open from
8 A. M. to 9 P. M.

NAVAL R. O. T. C.

●

The Naval Reserve Officers' Training Corps, established at Tulane University in the summer of 1938, is designed to provide systematic training and instruction in essential naval subjects in order to further the plan for national defense. Upon completion of the four year's course in Naval Science the graduates are commissioned as Ensigns in the Regular Navy or in the U. S. Naval Reserve. A limited number are also commissioned as Second Lieutenants in the U. S. Marine Corps Reserve.

For drill, the Naval Unit is organized as a Battalion of Infantry, consisting of three companies. Student officers and petty officers are chosen from the two senior classes.

The Naval Unit of Tulane is just starting its third year. It has an enrollment of 216 students, of which there are 48 juniors, 58 sophomores and 110 freshmen. Drills are held every Friday morning between 11:00 a. m. and 12:00 noon.

Enrollment in the Naval R. O. T. C. is entirely voluntary. Selection of students to fill the quota allowed by the Navy Department is made from freshmen who elect to take this course and who are found to be physically qualified for enrollment.

The Naval Unit is Tulane's contribution to the nation's national defense program. On this Homecoming Day the Unit is being paraded with the usual splendid cooperation of Director Morrissey and the Tulane University Band in order to show the alumni of Tulane University just what their alma mater is doing for America.

The staff of the Naval R. O. T. C. is composed of the following officers and chief petty officers:

Commander J. M. Lewis, U. S. Navy, Professor of Naval Science and Tactics.

Lieutenant Commander C. W. Hamill, U. S. Navy (Retired).

Lieutenant Commander W. D. Wright, Jr., U. S. Navy.

Lieutenant J. R. McCormick, U. S. Navy.

Lieutenant J. W. Wintle, U. S. Navy.

Chief Quartermaster T. A. Farrell, U. S. F. R.

Chief Gunners Mate T. B. Bernhardt, U. S. F. R.

Chief Yeoman S. B. Webb, U. S. F. R.

Chief Yeoman W. A. Woods, U. S. F. R.

Play Badminton

KEEP FIT!

It's everybody's game---men, women, boys, girls---year round. Your Spalding dealer will help you get started right. Spalding Badminton equipment is popularly priced.

Play the Spalding J5-V---the football that's tops on the gridiron!



A.G. Spalding & Bros.
DIVISION OF SPALDING SALES CORPORATION

Athletic Equipment

HAUSMANN
INCORPORATED

NEW ORLEANS'
LEADING JEWELERS

• ■ •

*Special Department for College
and
Fraternal Jewelry*

Corsages for To-night---

FLOWERS

For Next Week's Game



2600 St. Charles Avenue
Jackson 2600

Stop!

Look!

Listen!

There's a 7-Up Boy right down in front of you! Call him now and Fresh-Up

With



TULANE



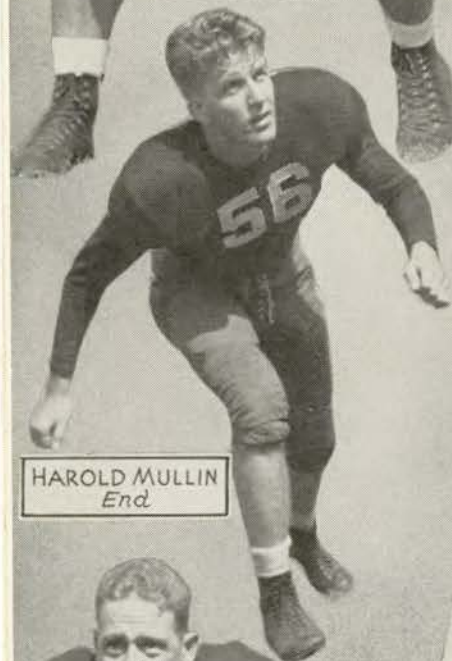
JACK
TITTLE
Quarterback



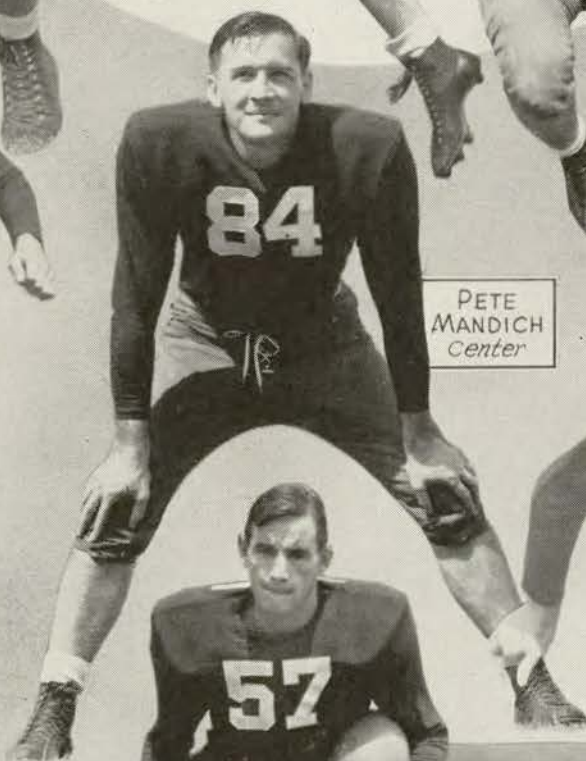
BOB GLASS
Halfback



ERNIE
BLANDIN
Tackle



HAROLD MULLIN
End

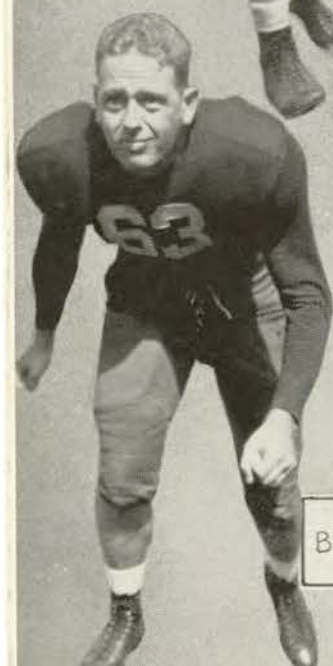


PETE
MANDICH
Center

JIMMY THIBAUT
Fullback



CHARLIE
DUFOUR
Tackle



BILLY
BRINKMAN
End



ST. JOHN
SMITH
Halfback



"RIP" COLLINS
Center



You CAN'T beat

**CLIPPER
CRAFT**

for value at . . . \$25

Clipper Craft suits are *actually* worth \$35! Sounds like a tall one? Well, here's the reason you get them for \$25. 500 stores all over the nation (we're the only one in New Orleans) buy together, assuring the manufacturer in advance of orders. Thus he's able to make suits from finer fabrics with superlative styling and *you* get 'em for \$25!

Clipper Craft Overcoats

—feature the *same* extra features, finer tailoring and better fabrics of Clipper Craft suits. Like the suits, they're real values at

\$25

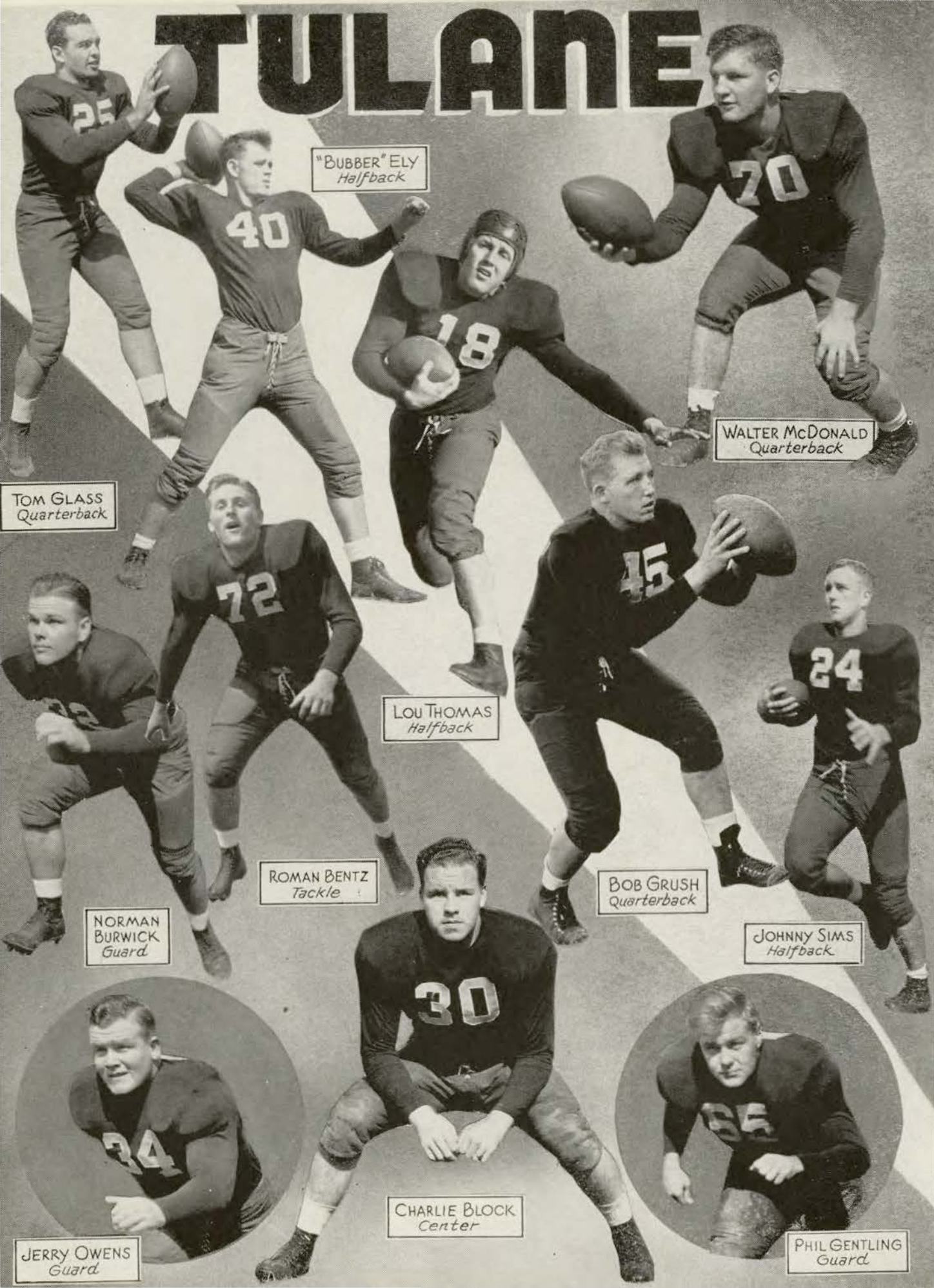
—Store for Men, street floor

Waisan Blanche
GREATEST STORE SOUTH



*Buy on
convenient
Timepay Plan
terms.*

TULANE



"BUBBER" ELY
Halfback

WALTER McDONALD
Quarterback

TOM GLASS
Quarterback

LOU THOMAS
Halfback

ROMAN BENTZ
Tackle

BOB GRUSH
Quarterback

JOHNNY SIMS
Halfback

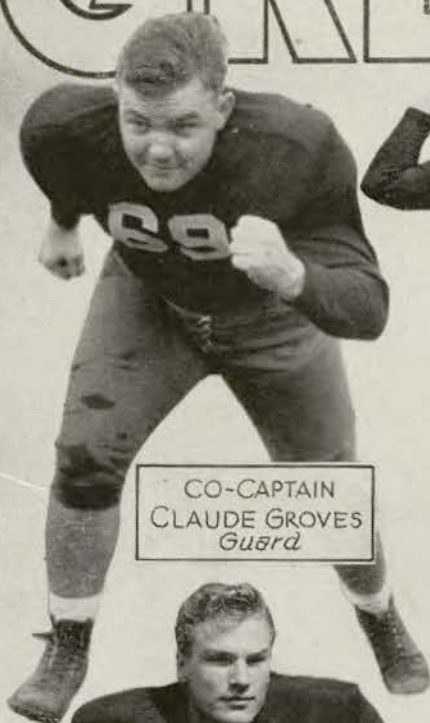
NORMAN
BURWICK
Guard

CHARLIE BLOCK
Center

PHIL GENTLING
Guard

JERRY OWENS
Guard

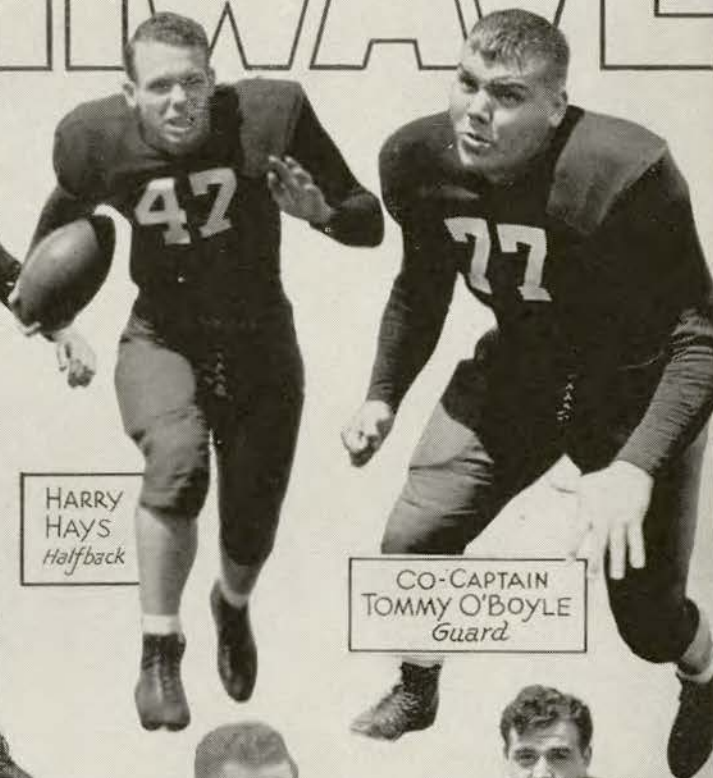
GREENWAVE



CO-CAPTAIN
CLAUDE GROVES
Guard



HARRY
HAYS
Halfback



CO-CAPTAIN
TOMMY O'BOYLE
Guard



FRED
CASSIBRY
Halfback



"FRENCHY"
DEFRAITES
End



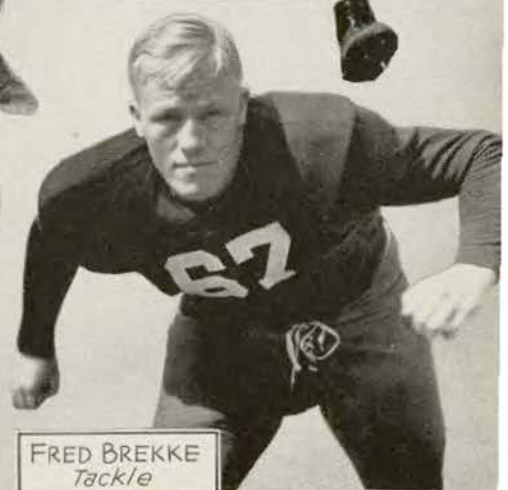
AL BODNEY
End



HENRY FLOWER
Center



LEONARD SAUER
Halfback



FRED BREKKE
Tackle

PETE GOLOMB
End

FRED GLODEN
Fullback

TULANE ROSTER

15-Bittman, Rudolph	New Orleans	G	185	1
16-Rhea, Creighton	Jonesboro, Ark.	T	210	1
17-Walker, Raymond	New Orleans	HB	155	1
18-Thomas, Lou	New Orleans	HB	185	1
22-Masur, Louis	Monroe, La.	G	180	1
24-Sims, John	Delhi, La.	HB	188	2
25-Glass, Thos.	New Orleans	QB	193	2
27-Krobert, Bernard	Beaver Dam, Wisc.	C	190	2
29-Wolbrette, Henri	Shreveport, La.	C	207	1
30-Block, Charles	Gary, Ind.	G	197	1
32-Burwick, Norman	Port Arthur, Texas	G	205	1
34-Owens, John	New Orleans	T	203	2
35-Dufour, Charles	Shreveport, La.	FB	206	1
36-Stern, Leonard	Camden, Ark.	E	193	1
37-Vanzant, Joseph	Houston, Texas	G	173	1
38-Abrams, John	New Orleans	G	177	1
39-Thomas, Manuel	Wheeling, W. Va.	HB	188	1
40-Ely, James	Shaw, Miss.	HB	187	1
41-Collins, Reynolds	Baton Rouge, La.	C	223	2
42-Faust, Richard	New Orleans	T	190	1
43-Pracko, Ben	Tarentum, Pa.	FB	175	1
44-Allemandi, Paul	New Orleans	HB	175	1
45-Grush, Robert	New Orleans	QB	185	1
46-Thibaut, James	New Orleans	FB	195	2
47-Hays, Harry	San Angelo, Texas	HB	166	3
48-Turchin, Robert	Miami, Florida	HB	150	1
49-Gloden, Fred	Dubuque, Iowa	FB	186	3
50-Garbark, Thomas	Edgewood, Pa.	C	195	1
51-Sauer, Leonard	Kildare, Okla.	FB	187	3
52-Bodney, Albert	Garv. Ind.	E	186	3
53-Maginnis, William	New Orleans	QB	180	1
54-Cuyler, Sherwood	Algiers, La.	E	185	1
55-Ibert, John	New Orleans	E	185	2
56-Mullin, Harold	Bogalusa, La.	E	195	2
57-Smith, St. John	New Orleans	HB	167	2
58-Eason, Henry	New Orleans	QB	170	2
59-Rhea, Kermit	Jonesboro, Ark.	G	200	1
60-Brignac, Julian	Lutcher, La.	FB	165	1
61-Cassibry, Fred	Gulfport, Miss.	HB	191	3
62-Mollere, Jules	Ponchatoula, La.	G	190	1
63-Brinkman, William	New Orleans	E	191	2
65-Gentling, Phillip	Rochester, Minn.	C	177	2
66-Flower, Henry	New Orleans	T	193	3
67-Brekke, Fred	New Richmond, Wisc.	T	211	3
68-English, Gordon	Midland, Texas	E	200	1
69-Groves, Claude	Ft. Smith, Ark.	G	217	3
70-McDonald, Walter	Struthers, Ohio	QB	200	1
72-Bentz, Roman	Horicon, Wisc.	T	230	1
73-DeFraites, Emanuel	New Orleans	E	180	3
74-Dunckelman, Lonnie	Natchitoches, La.	C	205	1
75-Hornick, William	LaBelle, Pa.	E	210	1
76-Gordon, Preston	Magee, Miss.	T	200	1
77-O'Boyle, Thos.	Gary, Ind.	G	209	3
78-Golomb, Clarence	Oshkosh, Wisc.	T	207	3
79-Blandin, Ernest	Keighley, Kas.	C	235	2
80-Johnson, Owen	Peru, Ind.	HB	205	1
82-Glass, Robert	Massillon, Ohio	C	193	2
84-Mandich, Peter	Gary, Ind.	QB	193	2
85-Tittle, Jack	Marshall, Texas	E	200	2
87-Comer, Martin	Gary, Ind.	E	197	1
96-MacCall, Alexander	New Orleans	T	210	1

GEORGIA ROSTER

14-Bray, Mel	Athens, Ga.	B	165	1
15-Kimsey, Cliff	Cornelia, Ga.	B	185	2
16-Lewis, Jim	Waynesboro, Ga.	T	190	1
19-Blanton, Brooker	Valdosta, Ga.	B	175	1
20-Wilkes, Marion	Athens, Ga.	C	160	2
21-Sinkwich, Frank	Youngstown, Ohio	B	180	1
22-Allen, Heyward	Birmingham, Ala.	B	155	2
23-Nelson, Curtis	Augusta, Ga.	B	165	2
24-Davis, Van	Elberton, Ga.	E	186	2
25-Dudish, Andy	Breslau, Pa.	B	170	1
26-Matthews, Jack	Macon, Ga.	B	165	3
27-Carter, M. F.	Cordele, Ga.	B	180	2
28-Malone, Tommy	Atlanta, Ga.	E	175	2
29-Woodruff, Lewis	Griffin, Ga.	B	185	2
30-Ellenson, Gene	Miami, Fla.	T	190	1
31-Hughes, Steve	Rome, Ga.	C	185	2
32-Grate, Carl	Greenfield, Ohio	E	210	1
33-Hawk, Oliver	Kingsport, Tenn.	E	180	1
34-Christian, Charles	Memphis, Tenn.	B	175	1
35-Burt, Will	Macon, Ga.	G	190	2
36-Jameson, Joe	Paris, Texas	T	205	3
37-Pierce, Brooks	Trion, Ga.	G	195	1
38-Horne, Everett	Louisville, Ky.	C	195	1
39-Witt, Tommy	Louisville, Ky.	G	180	2
40-Ruark, Walter	Postwick, Ga.	E	188	1
41-Poschner, George	Youngstown, Ohio	C	165	1
42-Costa, Leo	Athens, Ga.	C	190	1
43-Burgess, Herbert	Macon, Ga.	T	185	3
44-Green, Tommy	Macon, Ga.	T	210	2
45-Keuper, Kenneth	Waukesha, Wisc.	B	195	1
46-Kuniansky, Harry	Atlanta, Ga.	E	180	1
47-Keltner, Green	Memphis, Tenn.	E	188	2
50-Nowell, Bobby	Monroe, Ga.	B	185	3
51-Skipworth, James	Columbus, Ga.	E	190	3
53-Goodman, Winfred	Atlanta, Ga.	G	185	2
54-Kluk, Paul	Wilkes-Barre, Pa.	B	180	2
56-Powers, Henry	Griffin, Ga.	B	168	2
57-Pittman, Marvin	Macon, Ga.	G	170	3
58-Brown, Woodrow	Chattanooga, Tenn.	B	175	3
59-Posey, Wyatt	Headland, Ala.	T	185	2
60-Passmore, Homer	Valdosta, Ga.	B	175	1
61-Guest, C. B.	Athens, Ga.	G	205	3
62-McKinney, Lee	Nashville, Tenn.	T	200	3
63-Phelps, Morris	Louisville, Ky.	E	190	1
64-Davis, Lamar	Brunswick, Ga.	B	180	1
65-Welch, Clarence	Macon, Ga.	B	155	2
66-Todd, Jim	Laurens, S. C.	B	180	1
67-Bryant, Cooter	Athens, Ga.	B	170	1

only a few yards to go....



(Other Pan-Am Stations conveniently located
in all parts of the City.)

EXTRA MILDNESS



EXTRA COOLNESS

EXTRA FLAVOR



Copyright, 1940, R. J. Reynolds Tobacco Co., Winston-Salem, N. C.

WITH SLOWER-BURNING

Camels



● In recent laboratory tests, CAMELS burned 25% *slower* than the average of the 15 other of the largest-selling brands tested—*slower* than *any* of them. That means, on the average, a smoking *plus* equal to

5 EXTRA SMOKES PER PACK!

FAST BURNING
— creates hot flat
taste in smoke...
ruins delicate
flavor, aroma...

SLOW BURNING—pro-
tects natural qualities
that mean *mildness*,
thrilling taste, *fragrance*
... a cooler smoke...

