

Tulane vs. Georgia Tech

NOVEMBER 13, 1943

Price 25¢

The Greenie



THESE ARE THE OFFICIAL 1943 Signals



OFF-SIDE
Hands on and off hips—repeat several times.



ILLEGAL POSITION OR PROCEDURE
Hands revolving in front of chest.



ILLEGAL MOTION OR SHIFT
Horizontal arc with either hand.



ILLEGAL DELAY OR EXTRA TIME OUT
Folded arms.



ILLEGAL USE OF HANDS OR ARMS
Grasping one wrist.



UNSPORTSMANLIKE CONDUCT
Arms outstretched, palms down.



SAFETY
Palms together overhead.



INCOMPLETE FORWARD PASS: PENALTY DECLINED; NO PLAY OR NO SCORE
Hands rapidly criss-crossed in horizontal plane.



BALL ILLEGALLY TOUCHED, KICKED OR BATTED
Tapping both shoulders with finger tips.



INTENTIONAL GROUNDING
Both hands over right shoulder then down hard and forward.



FORWARD PASS OR FAIR CATCH INTERFERENCE
Pushing arm forward, palm vertical.



TIME-OUT
Hands rapidly criss-crossed overhead.



CRAWLING: HELPING THE RUNNER OR INTERLOCKED INTERFERENCE
Pushing movement with hands below waist.



BALL DEAD
One arm aloft, open hand. If hand is closed, TOUCHBACK.



UNNECESSARY ROUGHNESS
Military salute. **CLIPPING**
Salute followed by slapping back of knee with hand. **RUNNING INTO OR ROUGHING KICKER**
Salute followed by swinging leg to simulate a punt.



TOUCHDOWN OR FIELD GOAL
Both arms aloft and held rigid.



ILLEGAL FORWARD PASS
Waving hand behind back.



FIRST DOWN
Vigorous throwing motion concluded with outstretched arm pointing toward offensive goal.



START THE CLOCK OR NO MORE TIME-OUTS ALLOWED
Full arm circles to simulate winding a clock.



Listen to
"Time Out"
WITH
JOHNNY LYNCH
RADIO STATIONS **WDSU & WNOE**
THURSDAYS 7:30 - 7:45 p.m.

And for Your
Time Out



JACKSON BREWING COMPANY
NEW ORLEANS, LA.

DRINK **JAX**
BEST BEER IN TOWN

THE GREENIE

Vol. 14 NOVEMBER 13, 1943 No. 4

Official Souvenir Football Program of Tulane University, Published for Each Home Game.

National Advertising Representative, Football Publications, 370 Lexington, New York City.

The Tulane stadium seats 73,000 persons. There are thousands of those seats unoccupied today.

But in the mind of every Tulane football fan there is only one seat unoccupied. It is a seat that can never again be filled.

The holder of the season rights on it, year in and year out since 1920, was a friendly and forceful man who didn't dress quite like anybody else you ever saw at a football game. Or maybe anywhere else. He was a man who, for years, wore baggy green home-made knickers and a white shirt on the afternoons of Tulane football games. He had close-cropped hair, and wore horn-rimmed glasses. Until the early '30's his hair was cut pompadour, as the barbers of that day called a Prussian trim.

His seat is the vacant one on the Tulane players' bench. It wasn't a seat that was used a great deal. The man who held it didn't sit still long enough on a football Saturday afternoon to pick up the dust from it.

He was too busy moving up and down in front of the bench. In and out among the "kids"—as he called the players—checking on a charley-horse here, a bobo there, an ankle now, a shoulder then.

His mind was on the game. But on the game in a different sense to that of any other spectator in the stadium. No man was ever more interested in seeing his side win but no man was ever more concerned about the "kids" who played the game. It was always more than a team on the field to him. There were always eleven "kids" out there. Winning was important, but winning the right way was all that counted with the man.

He expected a man to give everything he had until the last whistle. He spoke as though he had no patience for "namby-pambys" as he sometimes referred to the lads who didn't like to pay the training price. But to him, in real life, he seldom, if ever, came face-to-face with a lad whom he would have classified as a "namby-pamby." He saw something good in every boy. He would chide, cajole, tease, plead, push, lead—there was always a different technique for him—to bring out the best in a boy.

He could parry quick-darted jibes, one moment laughing, the next moment enigmatic, to put a well-planned moral or training point over to the students with whom he came in contact and their number was legion.

He had friendly but sometimes meaningful names for many groups of students, some of which have become almost commonplace in their usage at Tulane. He got many a chuckle out of the nick-names he had for the various fraternity groups.

In his vocabulary the Dekes for example were always the "supermen." The Betas were the "wooglers." The K.A.'s were "red noses." And so on down the line. He was at his best in putting a point over to a rebellious freshman or a back-sliding sophomore by the use of such nick-names.

"I know," he would say to an A.T.O., hemmed in between a campus gathering of lads from other fraternities, "you just heard maybe about how they do things over at the Woogler house . . . I know . . .

Well, don't you go copying those Wooglers or those Red Noses . . . Now if you really want to accomplish things you start copying those Supermen . . . You know the supermen over at the Deke house."

And the Dekes and the K.A.'s and the Betas would exchange flustered grins and chuckles and the ATO would grin. And none would know whether it was the ATO or one of the other group who was being verbally chastised.

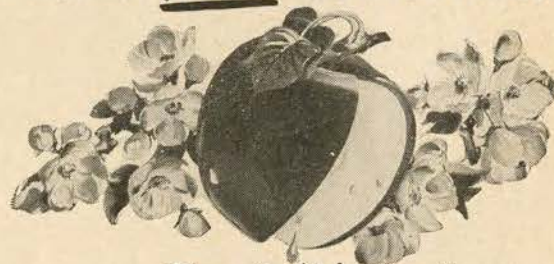
A little incident that illustrates the fighting qualities of the man occurred a few years ago. It was on the trip to Buffalo where the Wave played Colgate. He escorted a party of the "kids"—meaning the whole Tulane football team—on a sight-seeing trip to Niagara Falls. In taking the scenic trip under the falls he bumped unexpectedly and with considerable force into an iron gate which he failed to discern in the semi-darkness of a corridor. So severe was the blow on the head that he lost his balance and fell. Momentarily dazed, he came to his feet swinging his fists.

He returned to the hotel with a rather badly cut forehead. Mrs. Simons was awaiting him. He told her what had happened. But she was never quite able to accept that story. "Imagine Claude telling me that he ran into a gate," she would say. "I always thought it was supposed to be a door." And she would laugh and Mr. Simons—"Mr. Monk"—would laugh.

To say that Claude Simons was a man of character, understanding, dependability, kindness, charity, loyalty and spirit may be trite, but more important, true.

If he is not here today, and who can say that he's not, the world is richer because he was here.

Another **NEW** has been Added!



Apple "Honey"

Now Protects Old Gold *Freshness*

Lowest

The results of impartial tests as published by Reader's Digest in July of last year, when figured in percentages, show that Old Gold was:

14% LOWER in nicotine

10% LOWER in throat-irritating tars and resins

than the average of the 6 other brands tested.



Old Gold
CIGARETTES

Phone WALnut 0082



Tulane University Press

Printing Department of Tulane University



CAMPUS PRINTERS
BASEMENT, GIBSON HALL



Established 1895

New Orleans

W S M B

1350 Kilocycles

NEW ORLEANS' OUTLET FOR
THE N B C NETWORK



IF YOU CAN'T ATTEND THE
TULANE GAMES, TURN TO
W S M B FOR THEM.

Buy More War Bonds



*Perhaps you won't be
wearing a uniform—
then the best suit for
these times is a*

KUPPENHEIMER

Lasting QUALITY and
careful tailoring to take the
hard wear of these busy
days and give you the com-
fortable satisfaction y o u
need for greater efficiency.

\$55 to \$65

Mayer Israel's

Georgia Tech



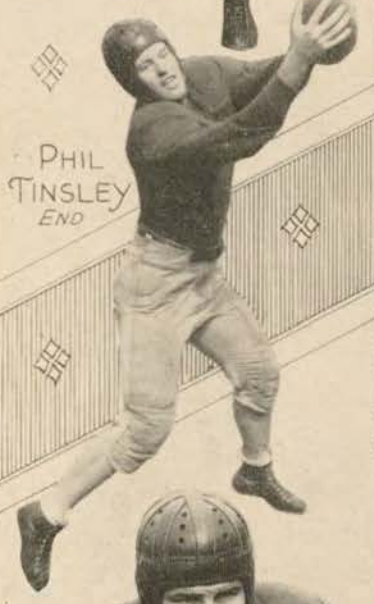
EDDIE PROKOP
HALFBACK



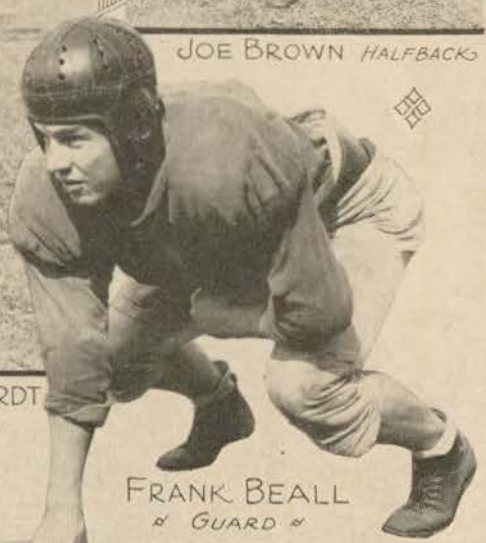
JOE BROWN HALFBACKS



ED SCHARFSCHWERDT
FULLBACK



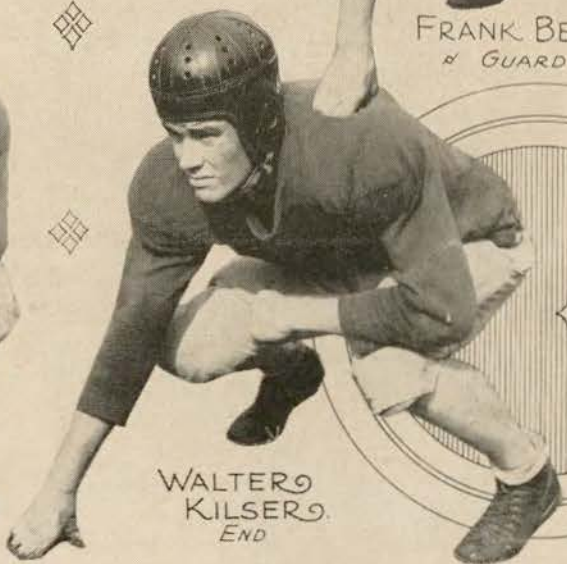
PHIL TINSLEY
END



FRANK BEALL
GUARD



JOHN STEBER GUARD



WALTER KILSER
END

... the Fourth Quarter ends the Game. but Play Continues at The ROOSEVELT!



HOTEL ROOSEVELT is New Orleans' finest and largest. The center of Social and Business Activities . . . After each game, football fans gather here to enjoy themselves and score another touchdown.

BLUE ROOM

Al Donahue and his orchestra with floor show at dinner and supper.

FOUNTAIN LOUNGE

Continuous music and entertainment from 5 p. m. until 2 a. m. featuring Danny Dean and his Society Band. Dacita and her Rhumba Orchestra.

COFFEE SHOP

DINNER in a quiet, comfortable atmosphere from six until ten o'clock . . . Prices are moderate. The Coffee Shop is also open for Breakfast and Luncheon . . .

THE ROOSEVELT

PULANE



JIM LITTLE
FULLBACK



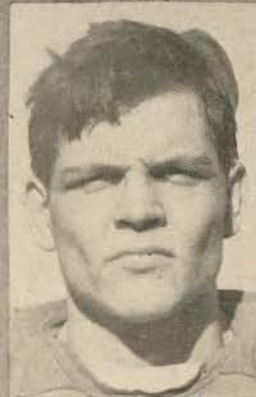
WARREN JAHNCKE
END



FRED LORIO
END



JIM SHIVER
HALFBACK



TOM KANE
GUARD



GEORGE HEDGECOCK
GUARD



ED PECHON
HALFBACK



HINTON ADDKISON
GUARD



BILL ROSS
CENTER



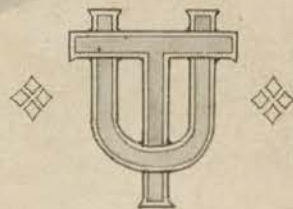
TOM BALL
QUARTERBACK



ELLIOTT IGLEHEART
GUARD



FRED CHAPLAIN
END



Famous for



FINE FOOD



and **DRINK**

TONIGHT—enjoy specialties
of these noted restaurants:

ANTOINE'S

713 St. Louis St.

ARNAUD'S

813 Bienville St.

BROUSSARD'S

819 Conti St.

KOLB'S

125 St. Charles St.



**To you who are such good sports
in the face of inconvenience**

We wish we could give you back the extra few minutes you must allow to get where you're going on street car or bus these days . . . but the war makes rush-hour riding a "jam session" for true.

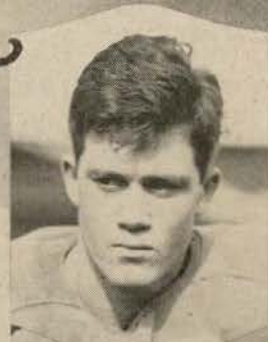
The bigger the crowd the longer it takes: more change to be made, more transfers to be used, more stops to be made for more people getting on and off.

Some folks tell us we've done a good job in handling added thousands of war-worker passengers. We couldn't have done it without your help.

Many of you have changed your working hours to move out of the way of peak-time traffic. Shoppers with bundles try to avoid the evening rush. Students crossing town hasten to get home before 5. Most of you have accepted the inconvenience of wartime transit with a grin instead of a grouch. You have helped to keep a vital service rolling.

NEW ORLEANS *Public Service*

Tulane



LEONARD FINLEY
QUARTERBACK



CHARLES JAMES
HALFBACK



MANUEL BLUM
HALFBACK



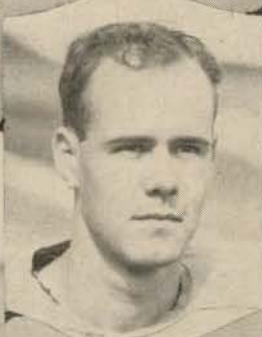
WALLY SCHMITZ
QUARTERBACK



LESTER GATEWOOD
CENTER



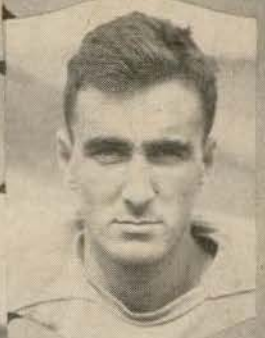
BOBBY JAMES
FULLBACK



BEN ELLENDER
HALFBACK



JOE RENFROES
HALFBACK



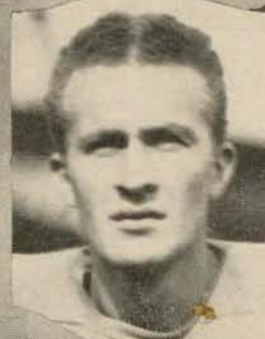
KENNETH TARZOTTI
END



HOWARD McAFEE
TACKLE



ALLAN ZOLLIFFER
TACKLE



HUGH TAYLOR
END



AUBREY BAILEY
END



AT THE GAME
and
AFTER THE GAME

ENJOY



D Equipment for all sports...

U Specialists in all types of
school athletic
supplies

N

L

A

P Sporting Goods Co., Inc.

138 Carondelet Street
MAGNOLIA 5891

Stop!
Look!
Listen!

There's a 7-Up Boy right
down in front of you! Call
him now and Fresh-Up

With





Cam-pix
a medley of
**CAMPUS
PICTURES**

1943 BY HORACE BENEDEK

Art has taken off its top hat at Newcomb School of Art—where students learn it as a part of living, not as a field reserved to museums, galleries and cultural cliques. In this Cam-Pix their activities are shown in candid class room shots.



Bodily positions no less than photographic arrangement are part of the Newcomb art student's studies . . . Artistic kibitzing below.

**Nunn Bush
SHOES**

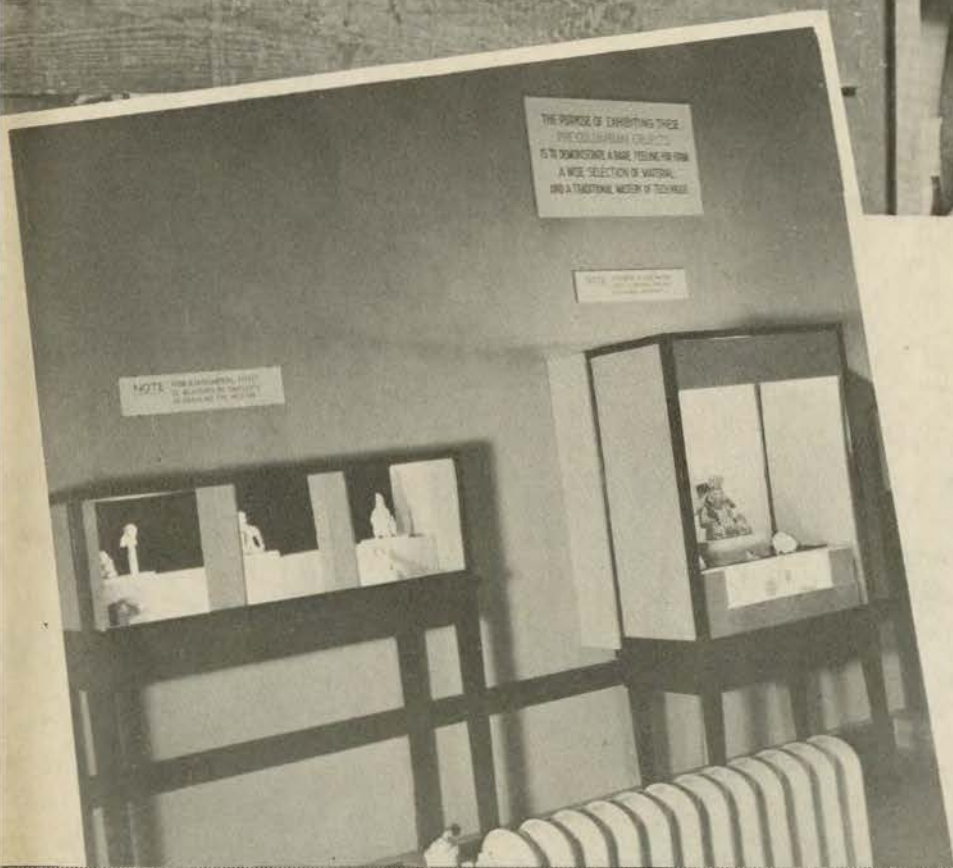


**FOOT
COMFORT**



MILES OF WEAR

at
Porter's

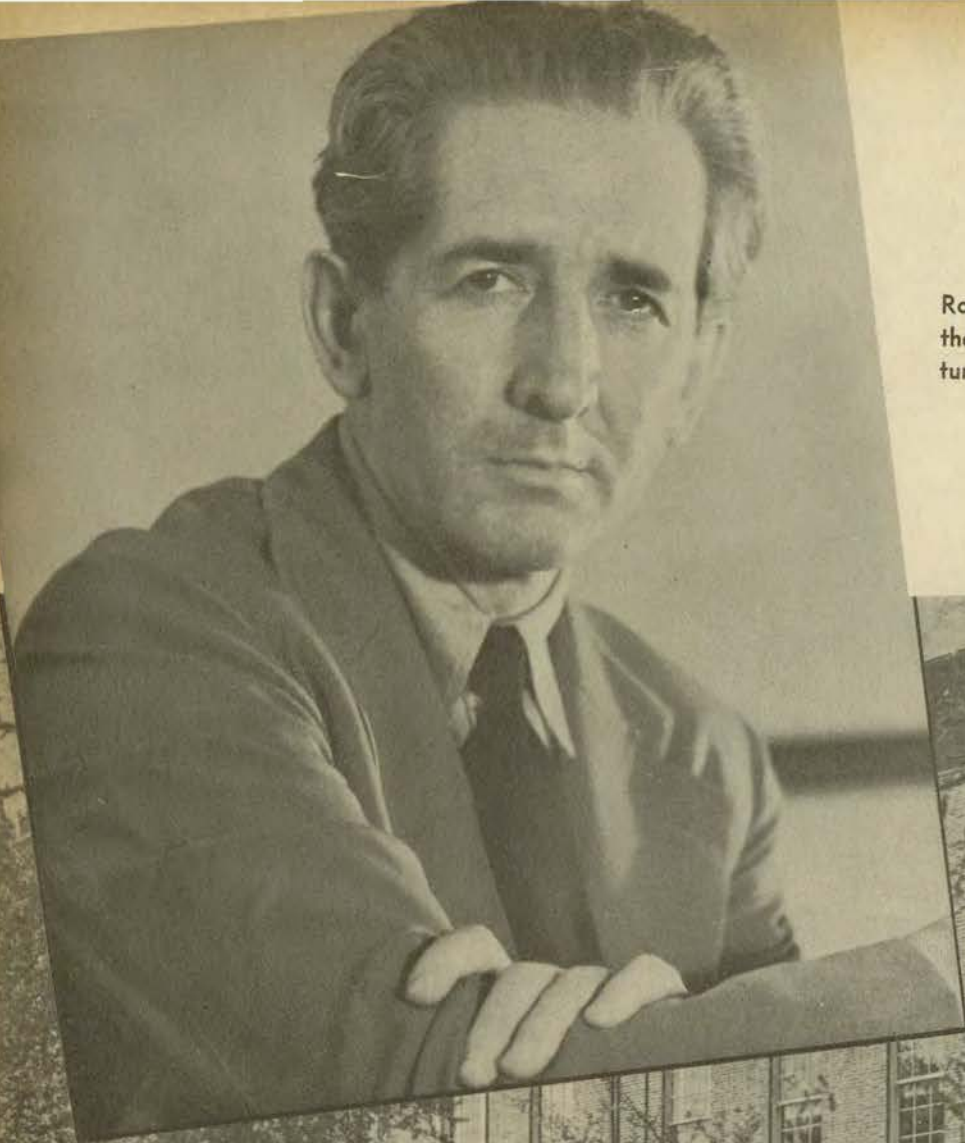


Hammer and saw are as familiar as paint and palette at Newcomb . . . Monthly exhibits are a part of the learning process.

Good Grooming
A-HEAD



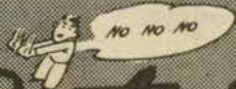
with
STYLEPARK HATS
from Porter's



Robert D. Feild, left, is director of the Newcomb school of art, pictured below.



You pay no more for **Porter's** DEPENDABILITY!



The Driving Spirit...

Pouring out the red, sweet wine of youth—giving up the years to be—they drive on to victory . . . the spirit taking over when the flesh is weak—so that we can enjoy the luxury of life . . . the American way of life, replete with its Liberties, its Freedoms and its Equality of Rights.

Can anything we at home do . . . any sacrifice we make—compare with the supreme effort our fighting men are making every second, every minute, every hour, every day?

One thing we can do . . . only one, and that is keep our brave and stalwart fighters fully equipped with the world's best implements of war. Your continuous purchases of WAR BONDS and STAMPS will see to that!

BUY
WAR BONDS and STAMPS

Godchaux's

Since 1840—for fine apparel



**The official football
timing watch for**

TULANE-GEORGIA TECH

Longines
THE WORLD'S MOST HONORED WATCH



For more than three-quarters of a century, Longines Watches have been made to a high standard of timekeeping excellence. A Longines Chronometer, fifty years ago, was the first factory made timepiece to win an observatory accuracy award. Thousands of certificates for accuracy have since been awarded to Longines timepieces by observatories here and abroad. Recently in competition at a great government observatory, a series of Longines *strap watches* won first place for precision. LONGINES-WITTNAUER WATCH CO., INC., New York, Montreal, Geneva.

Longines-Wittnauer Watches



ON THE FIELDS OF FRIENDLY STRIFE
 ARE SOWN THE SEEDS
 WHICH ON OTHER FIELDS
 IN OTHER YEARS
 WILL BEAR THE FRUITS OF VICTORY

★ ★ ★ ★

TULANE

			FB			
			Jackson			
			52		LHB	
					W. A. Jones	
					38	
			QB			
			Finley			
			22			
RE	RT	RG	C	LG	LT	LE
Olsen	Roseman	Igleheart	Kirschenheuter	Bourgeois	G. Jones	Tarzetti
41	71	66	20	30	72	54

SQUAD LIST

10 Bombet, b	32 Athas, b	52 Jackson, b	70 Jones, C., t
11 Schmitz, b	37 Shiver, b	54 Tarzetti, e	71 Roseman, t
12 Renfroe, b	38 Jones, W. A., b	60 Gilbert, c	72 Jones, G. E., t
20 Kirschenheuter, c	40 Little, b	61 Chaplain, e	73 Carpenter, t
21 McMillan, g	41 Olsen, e	62 Kane, g	74 Jahncke, e
22 Finley, b	42 Pechon, b	64 Lennox, g	75 McAfee, t
29 Thomas, e	45 Robinson, b	65 Harris, t	80 Lorio, e
30 Bourgeois, g	50 Muller, e	66 Igleheart, g	81 Spellman, b
31 Hedgecock, t	51 Marshall, g	69 Taylor, e	82 Ross, c
			85 Miller, g

OFFICIALS

Referee	Umpire
Johnny Lynch (Holy Cross)	Rumsey Taylor (Georgetown College)

On Every Field It's Chesterfield

GEORGIA TECH

			FB			
			Broyles			
			51		LHB	
					Prokop	
					75	
			QB			
			Faulkner			
			65			
RE	RT	RG	C	LG	LT	LE
Wilson	Phillips	Hills	Cummings	Steber	Chambers	Tinsley
82	17	84	20	46	42	25

SQUAD LIST

17 Phillips, t	33 Logan, b	51 Broyles, b	75 Prokop, b
19 Gaston, b	37 Carpenter, b	59 Biel, t	82 Wilson, e
20 Cummings, c	38 Daniel, e	62 Conlon, g	83 Bourne, e
22 Ritter, b	40 Scharfschwerdt, b	63 Furchgott, g	84 Hills, g
25 Tinsley, e	42 Chambers, t	64 Kilzer, e	85 Spoltare, b
27 Lindsey, b	43 Mills, t	65 Faulkner, b	86 Wakefield, b
30 Bowen, g	44 Brown, b	71 Bryan, t	89 Hoover, g
31 Bell, c	46 Steber, g	73 Gaines, t	90 Bridges, e
32 Beall, g	49 Duke, c	74 Dorough, e	

OFFICIALS

Head Linesman	Field Judge
M. M. O'Sullivan (Atlanta Athletic Club)	Harry G. Mouat (Armour)

JOHNNIE "Calls" THE SIGNALS!



FOR TRUE SMOKING PLEASURE
Call for **PHILIP MORRIS**

Penalties

LOSS OF FIVE YARDS

- | | | |
|---|--|---|
| 1 Taking more than three times out during either half | 5 Failure to maintain proper alignment of offensive team before ball is snapped. Also, backfield man illegally in motion | 8 Taking more than two steps with ball after signaling for fair catch |
| 2 Illegal delay of game | 6 Offside by either team, or encroachment on neutral zone | 9 Illegal use of hands and arms by defensive players |
| 3 Failure of substitute to report to umpire | 7 Attempt to draw opponents offside | 10 Flying block or flying tackle |
| 4 Violation of kick-off formation | | 11 Running into kicker |
| | | 12 Crawling by the runner |

LOSS OF FIFTEEN YARDS

- | | | |
|---|---|---|
| 13 Team not ready to play at scheduled time | 18 Forward pass touched by ineligible player | 22 Illegal use of hands and arms by offensive players |
| 14 Substitute communicating with teammates before ball is put in play | 19 Intentional grounding of forward pass | 23 Defensive player striking opponent above shoulders |
| 15 Illegal substitution (player also suspended from game) | 20 Interference by member of passing team with defensive player eligible for pass | 24 Roughing the kicker |
| 16 Failure to stop at least one second on shift play | 21 Interference with fair-catch or tackling player before ball is caught | 25 Piling up, hurdling, clipping |
| 17 Forward pass by member of team which did not put ball in play | | 26 Tackling player out of bounds |
| | | 27 Coaching from the sidelines |
| | | 28 Illegal interference with defense by passing team |

OTHER PENALTIES

- | | | |
|---|---|--|
| 29 Striking, kneeling, or kicking opponent—half the distance to the goal and disqualification of offending player | 31 Interference by defensive team on forward pass—first down for passing team at spot or foul | 33 Flagrant unsportsmanlike conduct—disqualification, plus fifteen yards |
| 30 Foul within one yard line—half the distance to the goal | 32 Flagrant roughing of kicker—disqualification, plus fifteen yards | 34 Forward pass touched by ineligible player on or behind line of scrimmage—loss of down |



Girl at Work—at a jig saw in the school workshop.

WHERE IS PORTER'S?
HUH?



ACROSS THE STREET FROM THE COTTON EXCHANGE..



AROUND THE CORNER FROM THE ST. CHARLES HOTEL...



OPPOSITE THE HIBERNIA NATIONAL BANK AND IN THE SAME BLOCK WITH THE AMERICAN BANK



ASK ANYBODY!

EVERYTHING MEN WEAR

Porter's

CARONDELET COR. GRAVIER STS.



Students, unlike blackboard characters, approach looms with assurance.



**DURABLE
ALL WOOL
SUITS**



100%
THAT'S
ME!

AND I
CAN
TAKE IT!

**\$35 from
Porter's**



Hard working students (above) find relaxation good in student lounge below.



keep dry on WETTEST DAYS

RAINFAIR STORMCOATS



from
Porter's

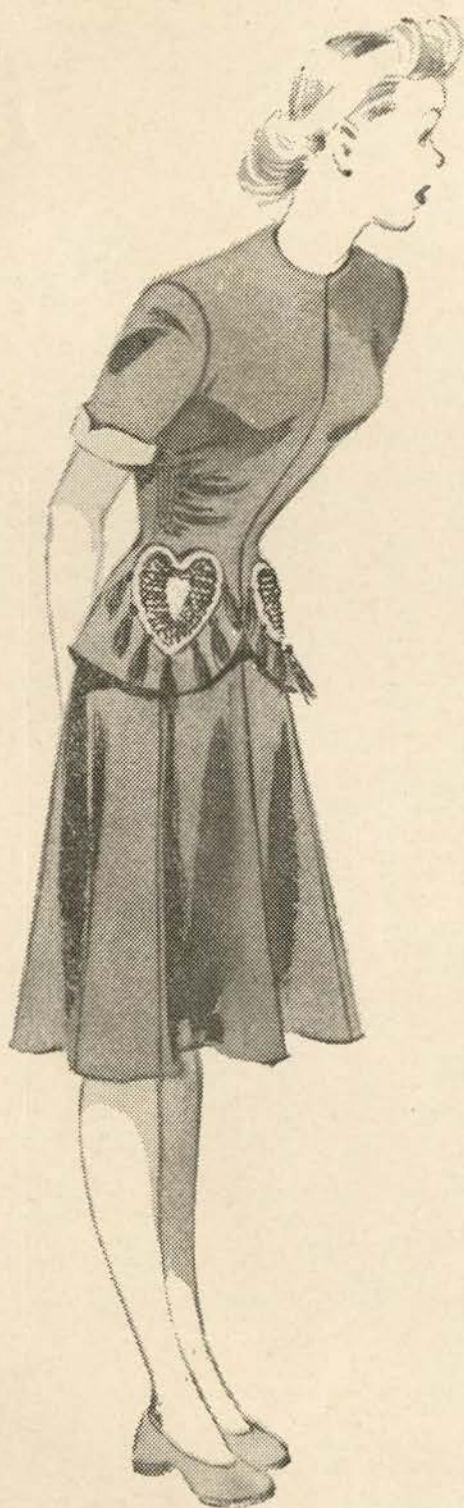


Life drawing is a basic art course.
The model is professional.

SCORE
VICTORY
over the **AXIS!**



buy more
WAR BONDS and STAMPS
Porter's

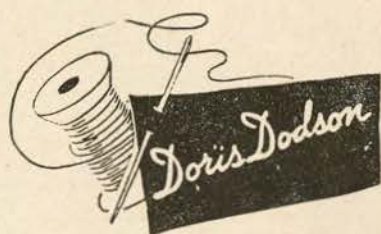


Be His Favorite

PIN UP GIRL

Gay two-piecer by Doris Dodson that's a solid sander if we ever saw one! There's plenty of oomph in its shirred and draped bodice. Hand crocheted tassels trim the velveteen pockets. Also turn-back velveteen cuffs. Fashioned of American Beauty crepe in black with baby blue, turquoise or red trim. Sizes 9 to 15.

12.98



Daytime Dress Shop
Second Floor

Maison Blanche
GREATEST STORE SOUTH

New Orleans' Finest

In America's Most Interesting City

●

THE ROOSEVELT is located in the heart of Romantic old New Orleans. It is the center of business and social activities and is close to the Theatre, Shopping, French Quarter, and Business Districts . . . You will like the tasteful luxury and home-like atmosphere of this modern hotel where the traditions of Southern Hospitality are maintained the year 'round.

●



"Pride of the South"

THE ROOSEVELT

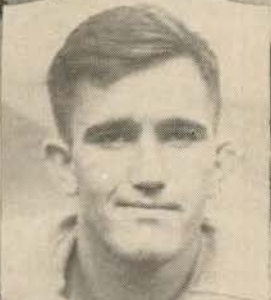
Tulane



ALEX ATHAS
HALFBACK



WM. A. JONES
HALFBACK



FRED ROSEMAN
TACKLE



JAMES HARRIS
TACKLE



RAY OLSEN
END



GASTON BOURGEOIS
GUARD



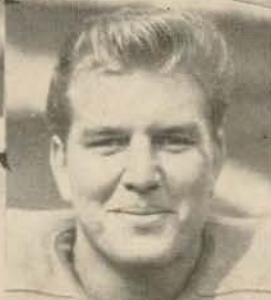
ED. LENNOX
GUARD



GEORGE E. JONES
TACKLE



JIM JACKSON
FULLBACK



DAN KIRCHENHEUTER
CENTER



EMILE MACMILLAN
CENTER



ROBERT PATTERSON
GUARD



1943 TULANE FOOTBALL
SCHEDULE

- Oct. 2—Memphis Naval Air Tech at N. O.
Oct. 9—Rice at Houston
Oct. 23—Southern Methodist Univ. at N. O.
Oct. 30—Georgia Preflight at N. O.
Nov. 13—Georgia Tech at N. O.
Nov. 20—Louisiana State University at N. O.
-

(Tickets for all games on sale at: Tulane Football Ticket Office, 221 Baronne Street, New Orleans. All October games at New Orleans start at 3:30 p. m.; November games at 3:00 p. m.)



*Better Printers
in New Orleans*

“Time Out”

DRINK—

Coca-Cola
TRADE MARK
REG. U.S. PAT. OFF.

PAUSE—

RELAX—

REFRESH YOURSELF

WAVE-JACKET RIVALRY

Tulane renews football relations today with an opponent whom Green Wave fans welcome warmly.

Peculiarly enough Tech and Tulane didn't inaugurate their series until 1916 although both schools have been playing the game since well back into the last century. And since the series started they've usually met during periods when one team was blowing hot and the other cold, never when both were "up" or both "down" as the expression goes.

From 1916 to 1928, Tech won all games—five in all including terrific lashings administered by the great Tornado teams of 1916 and 1917 and that era. The teams didn't meet in the 1924 and 1925 seasons when Clark Shaughnessy was producing his greatest teams. But they were playing in 1929-30-31 when Bernie Bierman had his greatest teams and it was in that span that the Wave began rolling.

A survey of the series shows that Tulane has won six of the games, Tech five.

Those are facts dealing with cold figures. More interesting perhaps are the facts dealing with personalities.

Tech is coached by William A. "Bill" Alexander, one of the great coaches and grand gentlemen of all time in athletics.

In point of service at the same institution as head coach, Coach "Alex" is

first in the nation. Except for the 1916-17 games, all of the Tech teams which Tulane met have been coached by Mr. Alexander. Coach Alex is an alumnus of Georgia Tech.

By the same token, Tulane's coaching personality is in the same tradition. A Tulane alumnus, son of a man actively connected with Tulane athletics over a period of 23 years, Claude Simons, Jr., Wave head man is one of the youngest of the nation's coaches but football wise due to an association with Tulane football since he was old enough to toddle around the Greenie dressing room where his father was trainer.

And so today, we renew an honorable and friendly rivalry. It is with pleasure that we salute and welcome our friends from Georgia Tech.

The series by years:

1916—Tulane	0,	Georgia Tech	45
1917—Tulane	0,	Georgia Tech	48
1926—Tulane	6,	Georgia Tech	9
1927—Tulane	6,	Georgia Tech	13
1928—Tulane	0,	Georgia Tech	12
1929—Tulane	20,	Georgia Tech	14
1930—Tulane	28,	Georgia Tech	0
1931—Tulane	33,	Georgia Tech	0
1932—Tulane	20,	Georgia Tech	14
1933—Tulane	7,	Georgia Tech	0
1934—Tulane	20,	Georgia Tech	12

★ QUALITY . . .

The United States Navy Air Corps' Grumann-Avenger is, like all of the Navy's equipment, of highest quality. Heavily gunned and battle-tested, no plane is more feared by our enemies.

★ RELIABILITY . . .

Not alone do the men of the Navy rate our salute. But the women's corps, the WAVES; spirited young American women who work in many phases of the Navy's work, releasing men to fight.

★ DEPENDABILITY . . .

The lives of the Navy pilots and the planes that they fly depend on the skill and knowledge of the carrier deck officer. Carefully and painstakingly trained, each to do his own job, our dependability is well placed.



FOR MORE THAN 100 YEARS—
THE BEST PLACE TO SHOP

SONGS AND YELLS

ROLL ON, TULANE

ten Hoor and Goldstein

Roll, Green Wave,
Roll them down the field.
Hold, Green Wave,
That line must never yield.
When those Greenbacks charge through the line
They're bound for victory,
Hail, Green Wave, for you
We have no fear.
Hail, Green Wave, for you we give a cheer
And ev'ry man in ev'ry play
And then we'll win that game today.
Hurrah for Old Tulane!

Hullabaloo

Hullabaloo! Ray! Ray!
Hullabaloo! Ray! Ray!
Hooray! Hooray!
Vars, Vars, T.A.A.
T.A.A.! T.A.A.!
Vars, Vars, T.A.A.!
TULANE!!!

* * *

ALMA MATER

*Sing these words as Tulane's Alma Mater
is played*

I.

We praise thee for thy past, O Alma Mater!
Thy hand hath done its work full faithfully!
The incense of thy spirit hath ascended
And filled America from sea to sea.

II.

We praise thee for thy present, Alma Mater!
Today thy Children look to thee for bread!
Thou leadest them to dreams and actions splendid!
The hunger of their souls is richly fed!

III.

We praise thee for thy future, Alma Mater!
The vista of its glory gleameth far!
We ever shall be part of thee, great Mother!
There thou wilt be where e'er thy children are!

CHORUS:

Olive Green and Blue, we love thee!
Pledge we now our fealty true
Where the trees are ever greenest,
Where the skies are purest blue!
Hear us now, O Tulane, hear us!
As we proudly sing to thee!
Take from us our hearts' devotion!
Thine we are, and thine shall be!

HAUSMANN INCORPORATED

NEW ORLEANS'
LEADING JEWELERS

• • •

*Special Department for College
and
Fraternal Jewelry*

The Thinking Fellow Calls a Yellow

∞

Phone RAYmond 3311

∞

TOYE BROS.

YELLOW CABS



TULANE ROSTER

CLAUDE SIMONS, JR., Head Coach

No.	Name	Position	Weight	Home	Previous School
10	Leon Bombet	LHB	160	Baton Rouge, La.	L.S.U.
11	Wally Schmitz	QB	165	New Orleans, La.	Tulane
12	Joe Renfro	RHB	208	Fort Meyers, Fla.	Tulane
20	Dan Kirschenheuter	C	185	New Orleans, La.	Freshman
21	Emile McMillan	G	172	New Orleans, La.	Tulane
22	Leonard Finley	QB	171	New Orleans, La.	Tulane
29	Warren Thomas	E	175	New Orleans, La.	Tulane
30	Gaston Bourgeois	G	170	Lutcher, La.	Freshman
31	George Hedgecock	T	185	Shreveport, La.	L. S. U.
32	Alex Athas	RHB	160	New Orleans, La.	Tulane
37	James Shiver	LHB	158	Valdosta, Ga.	Auburn
38	Bill Jones	LHB	180	Ruston, La.	L. S. U.
40	James Little	QB	180	Amarillo, Texas	W. Texas Teachers
41	Ray Olsen	E	180	New Orleans, La.	Tulane
42	Ed Pechon	RHB	160	New Orleans, La.	S. L. I.
45	Harry "Hurricane" Robinson	FB	160	Chattanooga, Tennessee	Vanderbilt
50	Kenneth Muller	E	185	New Orleans, La.	Perkinson Jr. Col.
51	Curtis Marshall	G	185	San Antonio, Texas	Texas A & M
52	Jim Jackson	FB	185	Bryan, Texas	Baylor
54	Kenneth Tarzetti	E	193	DeLisle, Miss.	Perkinson Jr. College
60	James Gilbert	C	175	Bastrop, La.	Louisiana Tech
61	Fred Chaplain	E	162	New Orleans, La.	Freshman
62	Tom Kane	G	192	Kearny, N. J.	Freshman
64	Ed. Lennox	G	178	New Orleans, La.	Freshman
65	James Harris	T	200	Macon, Miss.	Mississippi State
66	Elliott Igleheart	G	190	Shelbyville, Ky.	Freshman
69	Hugh Taylor	E	188	Wynne, Ark.	Northeast Jr. College
70	Curtis Jones	T	190	Benton, Ark.	Tulane
71	Fred Roseman	T	200	Sulphur, La.	Tulane
73	John Carpenter	T	200	Stephens, Ark.	Arkansas Univ.
74	Warren Jahncke	E	175	New Orleans, La.	Tulane
75	Howard McAfee	T	220	New Orleans, La.	Tulane
80	Ferd Lorio	E	172	New Orleans, La.	Tulane
81	Murtagh Spellman	FB	170	Savannah, Ga.	Springhill College
82	Bill Ross	C	183	Mt. Pleasant, Tenn.	Battle Ground Ac'd'y
85	William Miller	G	185	Baton Rouge, La.	Baton Rouge High



GEORGIA TECH ROSTER

W. A. ALEXANDER, Head Coach

No.	Name	Position	Weight	Home	Previous School
17	Roland Phillips	T	190	Pampa, Texas	
19	Bobby Gaston	HB	165	Atlanta, Georgia	
20	Bob Cummings	C	175	Portland, Tennessee	
22	Tex Ritter	HB	170	Nashville, Tennessee	
25	Phil Tinsley	E	188	Bessemer, Alabama	
27	Jim Lindsey	QB	185	Richlands, Virginia	
30	J. L. Bowen	G	179	East Point, Georgia	
31	John Bell	C	180	Kingsport, Tennessee	
32	Frank Beall	G	170	Atlanta, Georgia	
33	Mickey Logan	HB	150	Savannah, Georgia	
37	Tommy Carpenter	FB	170	Winston-Salem, N. C.	
38	Joe Daniel	E	175	LaGrange, Georgia	
40	Ed Scharfshwerdt	FB	187	Fort Pierce, Florida	
42	Bill Chambers	T	218	Los Angeles, California	
43	Fay Mills	T	210	Tuscumbia, Alabama	
44	Joe Brown	HB	160	Plant City, Florida	
46	John Steber	G	200	Mobile, Alabama	
49	P. A. Duke	C	180	Atlanta, Georgia	
51	Frank Broyles	FB	180	Decatur, Georgia	
59	F. C. Biel	T	190	St. Petersburg, Florida	
62	P. D. Conlon	G	170	Altoona, Pennsylvania	
63	Maurice Furchgott	G	157	Atlanta, Georgia	
64	Walter Kilzer	E	185	Humboldt, Tennessee	
65	Jack Faulkner	QB	160	Jacksonville, Florida	
71	George Bryan	T	192	Chattanooga, Tennessee	
73	H. D. Gaines	T	185	Decatur, Georgia	
74	J. H. Dorough	E	175	Cordele, Georgia	
75	Eddie Prokop	HB	190	Cleveland, Ohio	
82	Joek Wilson	E	185	Miami, Florida	
83	Bill Bourne	E	185	Brunswick, Georgia	
84	George Hills	G	210	Jacksonville, Florida	
85	Art Spoltare	HB	160	Cumberland, Maryland	
86	Martin Wakefield	QB	175	Anniston, Alabama	
89	Charlie Hoover	G	215	Jackson, Tennessee	
90	P. L. Bridges	E	170	Atlanta, Georgia	

The Official Watch for Timing All Tulane Games is a Longines—"The World's Most Honored Watch"

only a few yards to go . . .



(Other Pan-Am Stations conveniently located
in all parts of the City.)

HOME LOANS

TO BUY . . .

REFINANCE . . . REPAIR

Your Home

Liberal Terms

Low Interest Rates

OFFICERS

J. D. Byrne, President
A. E. Thouron, Vice-President
J. E. McMahon, Vice-President
Chas. A. Nehlig, Vice-President
Jacob Schaaf, Secretary-Treasurer
Chas. F. Buck, Jr., Attorney
Bernard Titche, Jr., Notary
Frank W. Magne, Notary
Roger P. Sharp, Bldg. Expert

DIRECTORS

Herman T. Bartels
H. V. Boubede
Chas. F. Buck, Jr.
J. D. Byrne
Frank G. Costley
E. J. Engelbracht
A. Percy Generes
Stephen L. Guice
W. W. Sutcliffe, Jr.
H. L. Swift
George P. Thompson
A. E. Thouron
Bernard Titche, Jr.

Frank W. Hart
Hunter C. Leake
Frank W. Magne
J. E. McMahon
Chas. A. Nehlig
R. Oliver
Henry P. Pfeffer
Jacob Schaaf



EQUITABLE MUTUAL

HOMESTEAD ASSOCIATION

"Home Financing Since 1885"

511 Carondelet Street

Phone Raymond 3405