

# *Souvenir Program*

TULANE UNIVERSITY  
*The Green Wave*

vs.

LOUISIANA POLYTECH  
*The Bull Dogs*

Saturday, September 25, 1926

2:30 P. M.



CLARK D. SHAUGHNESSY  
Tulane's Peerless Coach

HOWARD-TILTON  
MEMORIAL LIBRARY

TULANE UNIVERSITY

NEW STADIUM  
DEDICATION DAY OCTOBER 23, 1926

Tulane vs. Auburn

Publicity Department

## Tulane Athletic Council

New Orleans, La.

September 25, 1926.

"ON TO MISSOURI!!!"

Who's gonna do OUR yelling at Missouri?

"It is of the highest importance that we have some representation in the stands at the Missouri game one week from today."

That's Clark D. Shaughnessy talking. Listen!

"That game against Missouri next Saturday in Columbia is terribly crucial. I dont mean to say it is going to make or break us, but a victory over the Champions of the Missouri Valley will put us on the top of the world and our boys will be carried along with a wonderful spirit through the rest of their games."

Coach is right!

We need you up in those stands at all out-of-town games you can possibly attend. Columbia, Atlanta, New York--but especially Columbia, Mo.

Missouri is officially opening their new Memorial Stadium. You'll see 30,000 fans there yelling for Missouri. We MUST have a gang of our own there for that Big Hullabaloo.

The Missouri Pacific Railroad is getting up a special train with a low rate of \$30.87 round trip. Mr. Paul Jahncke is in charge of arrangements. Already four or five coaches of the train seem assured. Lets make it a solid train.

Make your reservation at the Missouri Pacific Office, 207 St. Charles Street, Phone Main 661.

Come on, gang. Let's "SHOW MISSOURI."

*Joe Killeen,*

Publicity Director.

JLK/HS

# THE TULANE UNIVERSITY OF LOUISIANA

NEW ORLEANS



The University embraces the following departments:—  
The College of Arts and Sciences.  
The H. Sophie Newcomb College for Women.  
The College of Engineering.  
The Graduate School.  
The College of Law.  
The Graduate School of Medicine.  
The School of Pharmacy.  
The School of Dentistry (Junior and Senior Years Only)  
The College of Commerce and Business Administration.  
The Night School of Electrical Engineering.  
The Night School of Architecture.  
The Extension Courses for Teachers.  
The Summer Schools.

FOR INFORMATION ADDRESS:

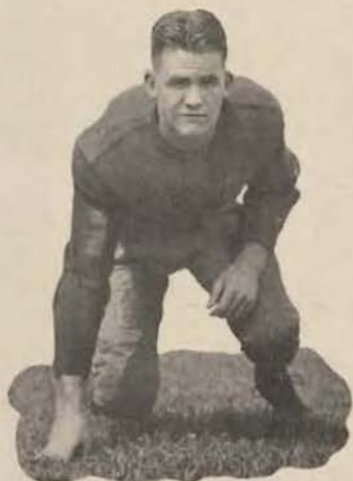
**REGISTRAR OF THE TULANE UNIVERSITY  
OF LOUISIANA**

GIBSON HALL.

NEW ORLEANS, La.

## Green Wave Leaders 1926

---



Harry is the last of the four-year men at Tulane and, from all indications it will be his greatest with the Wave. He is a magnificent terminal considered from any angle. A deadly tackler, a great interferer and a sure shot at receiving forward passes. He is the only married football captain in the United States and the "Missus" is his chief rooter.

## Here's Looking At You

"Hoss" has been a tower of strength in the forward wall of the Green Wave for three seasons. His 190 odd pounds of solid opposition has been the despair of all enemies. "Hoss" has a way of getting in and spearing plays before they get well under way and his ability to scent a fumble and gather it up has made his name known throughout the south. Watch "Hoss" make official all-Southern tackle.



## Today

Tulane begins today what is destined to be another remarkable season. The boys of the present Green Wave have some hard hills to climb if they reach the heights acquired by the elevens of the past two years, but all kinds of confidence is placed in Clark D. Shaughnessy.

With only one defeat in the past two years, the boys have something to shoot at and they will be the mark for every team they meet. It goes without saying that all opposition will try to topple Tulane from her enviable position as a ranking southern team, in order to gain the laurels resulting from the conquest.

Last year's victories over all southern conference opponents, the trouncing of Northwestern in Chicago and the tie game with Missouri, champions of the Missouri Valley Conference, have placed the

Greenies on a pedestal in national football. Can the boys you see out there today live up to the reputation of their predecessors? That's the big question.

Can Shaughnessy replace the brilliant "Peggy" Flournoy, the wily Lautenschlaeger, and the ubiquitous Fred Lamprecht? Can Johnny Menville, Fat Browne, Harvey Wilson, Eddie Morgan and the new comers, fill the gaps? Can the big freshies, Johnny Walls, Russell Butaud, Chilton Kirchner et als. take the place of "Irish" Levy? While on that question, don't overlook Al Stossel and Earl Evans, from the varsity squad of last year.

## Stevens

*The Best Shop in Town*

The Scotch have a quaint old saying that "What is earth in the garden is dirt in the parlor." The big thing, yes the whole thing to correct dress is Appropriateness to Time, Place and Circumstances.

**Dobbs Hats  
Kuppenheimer Clothes  
Martin & Martin Shoes**

The leading football teams of the country are Spalding-equipped — their guarantee of quality.

That same high quality is in all Spalding Athletic goods!



*Catalog Free*

*A. G. Spalding & Bros.*

130 Carondelet St.  
New Orleans



## Coleman E. Adler

*For*

**DISTINCTIVE  
JEWELRY**

## Surgical Supply Co.

1531 Tulane Ave.

Opposite Charity Hospital

Medical Students Supplies

Surgical Instruments

Abdominal Supporters—Elastic Hosiery

Trusses—Crutches—Braces

Invalid Chairs Rented by the Month.

**BULL DOGS**

Louisiana Polytech of Ruston, Louisiana, furnishes the opposition today. The fact that they are bringing a powerful team is something to be thankful for, because the Greenies will need the tough contest to get accustomed to the gruelling games ahead.

Never before has Tulane had such a formidable schedule. Never before were the opportunities brighter to carve a reputation by a successful completion of that schedule.

We meet the cream of the south in Georgia Tech, Sewanee, Auburn, L. S. U., Ole Miss and the Mississippi Aggies. We tackle the twice champions of the middle west in Missouri and perform in the big New York

**We Are Specialists  
In Selling Clothes  
For Men of The  
University**

This year the choice of the Campus will be the Loose, Straight 3-button Coat—preferably in the more mellow shades of brown.

**The Suits Are Here  
At \$45 and More**

**Godechaux's**  
Canal near Baronne

Meet the Gang Down Town,  
in Our College Den—  
Second Floor

town against New York University, which tied Columbia last year. South, Middle-West and East. Plenty of opportunity to shine there.

We should win today's game handily but we will have a battle on our hands. The Bull Dogs come from Ruston, La., which gave the three Talbot Brothers to Tulane. Verily they raise big men up that way. Look over some of the 200 pounders on the field and convince yourself.

The biggest fight, however, will be the scrap to land a first string berth on the Greenie eleven. This is the last opportunity Coach has to select his team before the three big road trips to Columbia, Mo., Atlanta, Georgia, and little ole New York. Watch the boys hustle.



IF IT'S SPORTING GOODS, YOU'LL  
FIND IT AT

**Baldwin's**

Camp, at Common Street

**BUICK AUTOMOBILES**

"The Greatest Buick Ever Built"

SALES—SERVICE

**GLENNY-BUICK CO., Inc.**

822 HOWARD AVE.

## THE NEW STADIUM

Over six thousand friends of Tulane contributed to the fund for the building of the big new concrete stadium which will be dedicated on October 23rd.

The stadium is now complete except for a little polishing here and there and you are invited to take part in the opening ceremonies when Tulane plays the great Auburn football team there four weeks from today.

When hundreds of people could not obtain admission to the big Tulane-Sewanee contest last year it became apparent that demands for seats at our games far exceeded the supply. But when the state championship contest with L. S. U. was transferred to Baton Rouge and drew 25,000 people from all parts of the State, the old stands were obsolete from then on.

It so happened that facts were brought home to the people of our city and state in the same year that Tulane had its greatest success on the gridiron. It was therefore, with pride and gratitude that the people of New Orleans and vicinity decided to show their appreciation in "concrete" form. The beautiful modern arena formed by towering tiers of seats tly rows high, is the monument they have erected to the memory of the 1925 Green Wave, the greatest aggregation of athletes in Tulane's history.

You still have another duty to perform. One thing yet remains to be done in honor of those boys. You must show them how necessary that big stadium is by packing it to the doors on Dedication Day. Four trainloads of rooters journeyed from New Orleans last year to Montgomery to witness the Auburn game, so the tip is out—get your seats early.

### AMES' AL-KE



#### Rubbing Alcohol

PINT, 50 CENTS

ALL STORES

Ames Laboratory, L-46



### TOUCHDOWNS! GOALS!

STANOCOLA PETROLEUM  
PRODUCTS

Score on all points and  
against all opposition. An  
unbeatable team captained  
by Stanocola gasoline and  
Field-Managed by .....

STANOCOLA  
**Polarine**  
The STANDARD Motor Oil

BETTER STICK TO  THE STANDARD

THE NEW

## Hotel Monteleone

J. D. KENNEY, Manager  
A. F. Spatafora, Ass't. Mgr.

European Plan.

STRICTLY FIRST CLASS

ROYAL and IBERVILLE STREETS

## OFFICE TOILET SUPPLY CO.,

Ltd.

509 S. PETERS ST.

TOWELS AND LINENS

SUPPLIED AT A NOMINAL  
RENTAL CHARGE



Yeldell  
Tackle Polytech  
197 pounds

# Mayer Israel

Takes pride and pleasure  
in serving those who  
serve Tulane—

and extends a wish for a  
successful season to "The  
Team", the Scrubs, and  
loyal supporters (both of  
Tulane and Newcomb).

We invite you all to use our store and its  
Specialized Service for Collegians.



Captain Blue Hogg  
Fullback Polytech  
210 pounds

## THE LOUISIANA POLYTECH TEAM.

If those Polytech boys are as heavy as they claim, we are in for a merry afternoon. They are coached by "Gob" Wilson, former assistant coach at L. S. U., so they ought to be well up on the Green Wave football methods.

Captain Blue Hogg is making his last rally against Tulane and his 210 pounds of bone and muscle will shock our forward line on more than one occasion. "Lefty" Boss is another stellar performer in the backfield. Young Mr. Yeldell, pictured above weighs only 197 pounds. He plays tackle for the Bull Dogs. Then there's Levi Davis on the other side; he's a giant, too, not to mention Lowery, 212 pounds, and Henry Hooter, 210 pounds, at the guard positions. Oh, yes, you'll see some fun.



The Roosevelt

When You Say  
**ROOSEVELT**  
OR  
**BIENVILLE**

You Have Said  
The Best New Orleans Affords  
**IN HOTELS**



The Bienville



### Probable Line Up

Louisiana Tech	Position	Tulane
17 Cole	Left End	Gamble (Capt.) 77
		Day 90
34 Yeldell	Left Tackle	Kirchmier 26
		Stoessel 97
30 Harper	Left Guard	Blackledge 19
		Spies 17
7 Pankey	Center	Walls 50
		Palermo 16
20 Hooter	Right Guard	Butaud 44
		Watson 98
36 Davis	Right Tackle	Talbot 22
		Evans 33
23 L. Boss	Right End	"Doc" Wilson 88
		Moss 25
13 Willis	Quarter	Menville 99
		O'Pry 45
33 Hogg (Capt.)	Full Back	H. Wilson 55
		Pizzano 57
28 H. Boss	Left Half	Morgan 21
		Seeuws 15
10 Lowery	Right Half	Browne 66
		Lorio 38

# THE GREAT GREEN WAVE OF 1926



FRONT ROW—D. NORMAN, A. LORIO, M. LEVY, H. WILSON, CAPTAIN L. LAUTENSCHLAEGER, E. HENICAN, J. MENVILLE, H. GAMBLE, T. KILLEEN.  
 MIDDLE ROW—C. D. SHAUGHNESSY, Coach; G. WILSON, E. MORGAN, F. W. BROWNE, P. FLOURNOY, H. TALBOT, B. WIGHT, R. BLACKLEDGE, C. SIMON, Trainer.  
 BACK ROW—LEFT TO RIGHT—J. KILLEEN, Publicity Director; DR. W. C. SMITH, Athletic Director; V. ROBINSON, W. MOSS, A. STOESEL, P. PALERMO, J. ODOM, Manager; A. HAMMOND, Assistant Coach; A. BROWN, Assistant Coach.

### THE SCORE

Quarters	1	2	3	4	Final
TULANE .....					
LA. POLYTECH ..					

Here's the team you're proud of. We do not like to talk about what is past but we just cannot help it. There's too much to be glad about. We have with us here the boys that won their way into the hearts of a nation. Newspapers all over the country have sung their praises. Their pictures have appeared in periodicals in Paris, France, and their glorious undefeated record of 1925 is written in letters of gold into the annals of Tulane football history.

### PRINCIPAL CHANGES IN RULES FOR 1926

**FORWARD PASS.** A penalty of five yards (in addition to the loss of a down) is now imposed in each instance where a team makes more than one **INCOMPLETE** forward pass during the same series of four downs.

**OUT OF BOUNDS.** The ball becomes dead automatically (and no further play can result) whenever it crosses the side line, the side line extended, or the end line.

**AFTED SAFETY.** A team which has scored a safety will now put the ball in play by a kick from its own 20-yard line.

**CRAWLING, ETC.** The definition of crawling has been clarified and the rule against "piling up" has been strengthened so that there can be no possible excuse for further violation of either of these rules.

**ROUGH STUFF.** The rules have been broadened and now prohibit players on defense from striking an opponent in the face with the heel, back or side of the hand.



### *Hotel Desoto*

Commercial and Tourists  
NEW ORLEANS

Absolutely Fire Proof  
Moderate Rates

Headquarters for all  
Southern Colleges

C. A. HARTWELL,  
Mgr.-Director  
J. W. SIMPSON,  
Manager  
J. M. CORE, JR.,  
Asst. Mgr.



Assistant Coach  
"Peggy" Flournoy,  
Tulane's All-American  
Halfback 1925.

## JAHNCKE SERVICE INC.

Concrete & Building  
MATERIALS

at

814 Howard Ave  
Since 1872

Jackson 4600

## MEDICAL BOOKS

We carry all text-books recommended in the Medical, Dental and Pharmacy Departments of Tulane. Call at our Store, or phone your needs.

### J. A. MAJORS CO.

Phone Main 3252  
1301 TULANE AVE.

## WOODWARD, WIGHT & CO., Ltd.

Largest General Suply House  
South Since 1867

HOWARD AVE., CONSTANCE AND  
JOSEPH STREETS



"Cajin" Lorio  
The speed marvel  
from Bayou La-  
fourche



"Doc" Wilson  
Here's an All-South-  
ern end for you.

AFTER THE GAME

REST

—and—

REFRESHMENTS

AT

# KOLB'S

The Restaurant with an Individuality

DINNER MUSIC

DANCING AFTER THEATRE



Coach "Irish" Levy  
He's showing the  
boys how he did it.



"Lester"  
Captain 1925, now  
coach Manual  
Training.

*Our Advertisers  
Helped to Make  
This Better Program*



# HOLMES

Has Tulane Colors in Ribbons  
Badges and Pennants

Also Boxed Candy and Noise Makers

—After the Game—  
You'll Enjoy Dinner in Holmes Restaurant

**D. H. HOLMES CO.**  
LIMITED

For 84 Years—The Best Place to Shop



## THE FRESHMAN TEAM

Head Freshman Coach Arthur Hammond struck the keynote of Tulane's policy regarding the freshman team when he announced that his purpose is to develop material for the varsity and give every boy who comes to Tulane a chance to make good.

This year he has as assistants Fred Lamprecht and "Little Eva" Talbot, the 230 giant tackle of a few years ago.

Lamprecht has played every position on the Tulane team in his four years of service with the Greenies. Fred has even been a center and quarterback and last year he played offensive fullback and defensive tackle. With Hammond directing his attention to the general technique, Talbot with the inside part of the line and Lamprecht with the end and backfield this will make an ideal coaching combination.

The freshman squad is so large, however, that they have divided it up into three sections in order to give every boy the benefit of instruction.

Coach Hammond wants as many more lads to come out as possible. It does not make any difference whether they have had any previous experience or not.

Here's some of the stars developed on the 1925 frosh team: John Walls, Redus Day, Russel Butaud, Queley Walker, Jack Pizzano, Ford Seeuws, Sheldon Blue. They're all varsity men today.

### Freshman Schedule.

Ole Miss. New Orleans  
October 2.

Gulf Coast New Orleans  
October 16.

L. S. U. New Orleans  
October 30.

Preliminary to varsity  
(Ole Miss. game.)

Phones Walnut 3269—2572

## P. BEROT & SONS

CLEANERS

and

DYERS

High Grade Cleaners

In a Clean Up-to-date Plant

8500-8514 Oak St.

1136-1138 Joliet St.

NEW ORLEANS, LA.

*We're Expecting  
You*



Newcomb Pharmacy

Broadway & St. Charles Ave.

## Prep School Season Books

**\$5.00**

Seats in the end zones.

Ticket Office: 205 St. Charles St.

Steam Heated

Excellent Music

## MECCA THEATRE

Entertainment with

Distinctive Service

Adams Street, Near Maple

Especially Selected Programs Exhibiting only the best Photoplays Produced.

The Mecca is under the personal supervision and management of Mr. and Mrs. Heiderich.

Spend Your Evenings  
With Us

## Garfield Market

### Cuevas & Saladino

PROPRIETORS

6038 Garfield St.

Western Meats,  
Fruits, Vegetables, Fish,  
Game, Etc.

Phone Uptown 1651

Phone Uptown 1652

We Cater to Fraternity  
Homes

**THE COACHING STAFF.**

Like Barnum and Bailey used to say, "It's bigger and better than ever"

The first thing the Tulane Athletic Council set out to do after the record making success of the team last fall, was to insure Tulane the best coach in the United States for years to come. Of course, they did not have to go far for their man, so today we have with us again—and we hope—for many years to come, Clark D. Shaughnessy, certainly Dixie's premier football tutor.

The National Collegiate Association, through it's Walter Camp Memorial Committee, elected Shaughnessy one of the eight best known coaches in the United States.

Shaughnessy's perfection of teamwork and nicety of detail play, stunned the hard-boiled sport critics in Chicago. The finish and dispatch of the Tulane deployment and interference which

**The Fall Line Up**

*in the game of dressing well to succeed---*

**College Styles**

**M.-B.-M.-E.-N.-S.-S.-T.-O.-R.-E**

**Street Floor**

**Maison Blanche**

GREATEST STORE SOUTH

bowled Northwestern over like so many nine pins made the scribes gasp as they pounded their typewriters. "Never 'Monk."

before have we seen such a blocking team", they told the world.

Coach's development of "Peggy" Flournoy, "Brother" Brown, Lester Lautenschlaeger, "Irish" Levy, Lyle Richeson and the Legendre Brothers have added to his fame.

Tulane could not get along without "Peggy" and "Irish" so this year we have added them to the coaching staff. "Peggy" is handling a team complete while "Irish" is specializing in line work. He is demonstrating how he used to knife in and pull his Royal Mounted stuff. "Peggy" is also putting out valuable punting pointers to Menville, Browne, Day and Morgan.

Pete Maihles completes the All-Tulane coaching staff and Pete was the greatest Tulane lineman of his day.

A review of the Tulane coaching staff is not complete without special attention to Claude Simons, the well-known "Monk." His success as a trainer of the Tulane team is told in a few words when you know that his team went through the strenuous 1925 season without a serious injury. He has just finished a four-term course in Harvard University in the physical training department.

*"The Thinking Fellow Calls A Yellow"*

Jackson 5300



*Safety---Courtesy--Comfort--Service*

DRINK

**Coca-Cola**

IN BOTTLES

## THREE BIG ROAD TRIPS

After today Tulane has three terribly important trips on the road, on three successive Saturday's: Missouri, Georgia Tech and New York University come in quick succession. The boys on the field will need the inspiration of your presence and the assurance of your cheering in those foreign territories.

**MISSOURI.** Every Tulane alumnus and friend who can possibly do so, should make this trip. So much depends on a good start that we are counting on a big trainload going up on the Missouri Pacific next Thursday, September 30th. You get back Sunday night and have almost a whole day in St. Louis to see the sights or put over that business deal. See details in advertisement on this page, but be there by all means.

**ATLANTA.** That's the Georgia Tech game on October 9th. The great Yellow Jacket team that is always a championship contender. We have been trying to get a crack at them for some time. Now's your chance to see it done. See ad on this page for details.

**NEW YORK.** The bright lights of Broadway are calling you. After the Greenies dispose of Missouri and Georgia Tech, you will want to "see New York". We play New York University in the Yankee Stadium. See details on this page.

### Missouri Trip

Leave N. O. Thursday  
September 30.

Arrive N. O. Sunday,  
October 3rd.

All-day stopover in St. Louis

**ROUND-TRIP FARE**

**\$30.87**

Pullman extra

Reservations going fast now  
at

Missouri Pacific Office,  
St. Charles Hotel Building.

### Atlanta Trip

Tulane vs. Georgia Tech.

Leave N. O. Friday October  
8th, 6 p. m.

Arrive N. O. Sunday, Oct.  
10th, noon.

**ROUND-TRIP FARE**

**\$18.03**

Pullman extra.

Reservations now being  
made.

Louisville & Nashville R. R.,  
St. Charles Hotel Building.

## BROADWAY PHARMACY



*H. C. Richards*  
Proprietor



Broadway and Maple

## M. Carnahan Creamery

2204 CALHOUN ST.

Best Grade Pastuerized Milk and  
and Cream

Cheese in individual molds

Phone Walnut 2216

## New York Trip

Tulane vs. University of New  
York

Leaves N. O. 8 p. m.  
Wednesday, Oct. 13th.

Arrives N. Y. 11:15 a. m.  
Friday, Oct. 15th.

Leaves N. Y. 7:40 p. m.,  
Saturday, Oct. 16th.

Arrives N. O. 8:30 a. m.,  
Monday, October 18th.

**ROUND-TRIP FARE**

**\$56.73**

Pullman extra.

Southern Railway System,  
Terminal Station Building.

**LA. TECH**

- 5. Leckie
- 6. Gallaspy
- 7. Pankey
- 10. Lowrey
- 12. Kimbell
- 13. Willis
- 16. McCasslan
- 17. Cole
- 18. Talbert
- 19. Sharman
- 20. Hooter
- 21. Ratcliff
- 22. Andrews
- 23. L. Boss
- 24. May
- 25. Slay
- 26. Pryor
- 27. Lawrence
- 28. H. Boss
- 29. Robinson
- 30. Harper
- 33. Hogg, Capt.
- 34. Yeldell
- 36. Davis

**The Spirit of the Game**

—As an institution whose fortune is inseparably connected with that of New Orleans, the public scervice family is backing "The Green Wave" heart and soul.

—But aside from that, it's a man's game this football business. In rain, slush, cold; no matter what the odds or cost, the true football player fights on to win the game.

—Similarly, the public service game requires men. In storm, rain, cold; no matter what the odds or cost, street cars must fove, electric lights must burn, gas must flow—at all times, in all weather. That's a man's game, too, and men who play it can understand the spirit of men who fight out on the grid.



**New Orleans Public Service Inc.**

**TULANE**

- 2. Blue
- 8. Blake
- 10. Harper
- 12. Walker
- 15. Seeuus
- 16. Palermo
- 17. Spiess
- 19. Blackledge
- 21. Morgan
- 22. Talbot
- 23. Jannsen
- 24. Stovall
- 25. Moss
- 26. Kirchmier
- 32. Lodriguez
- 33. Evans
- 37. Gomila
- 38. Lorio
- 41. Sentell
- 44. Butaud
- 45. O'Pry
- 50. Walls
- 54. Duren
- 55. H. Wilson
- 57. Pizanno
- 65. Churchill
- 66. Browne
- 72. Collins
- 75. Maier
- 77. Gamble, Capt.
- 79. Hardie
- 80. Armstrong
- 87. Baumbach
- 88. C. Wilson
- 89. Hooper
- 90. Day
- 97. Stoessel
- 98. Watson
- 99. Menville
- 100. Norman

**OFFICIALS TODAY'S GAME.**

"HAP" BARNES, Referee.

"MAYOR" T. SEMMES WALMSLEY, Umpire.

PAUL MALONEY, Headlinesman.

DR. EDMUND L. FAUST, Field Judge.

All former Tulane Captains.

**FOR EACH LADY**

Presenting This Program, We Have Reserved

**"A Taste Box"**

Of

**"Yorkman's Quality Candies"**

**NEWCOMB PHARMACY, INC.**  
BROADWAY AND ST. CHARLES



Greatest Diamond and Watch House South!

**DIAMONDS WATCHES and JEWELRY**

ON CREDIT at Cash Prices

**WHITE BROS.**  
CREDIT JEWELERS and OPTICIANS  
624 Canal Street

# RULES

## SCORING.

Touchdown—6 points.  
Goal from Touchdown—1 point.  
Goal from Field—3 points.

Safety by Opponents—2 points  
Regulation length of periods is 15 minutes.

## OFFICIALS.

The REFEREE has general oversight and control of the game. His position is usually behind the side having possession of the ball. He starts the game, and is the man who sees that the ball is properly put into play every time that time is taken out. He is the authority for the score, and sole judge of forfeiture of the game under the rules. HE IS THE ONLY OFFICIAL TO USE WHISTLE.

It is his duty to see that the men keep their positions, and be on the watch for unfair play.

THE UMPIRE stands behind the defending side. He signals fouls, authorizes substitutions, and watches for any unfair interference with play. Rulings as to off-side come within his province. He is given power to decide whether cleats or other parts of equipment are unnecessarily dangerous.

The HEAD LINESMAN, on the side-lines, with his two assistants, marks distances gained or lost in the progress of play. He designates the position of the ball on each down and watches for off-side play.

The FIELD JUDGE is an assistant to the other officials. He keeps time, and notifies the Captains as to the amount of time left to play. He signals end of game by pistol shot, BUT PLAY CEASES ONLY ON SOUND OF REFEREE'S WHISTLE.

## Summary of the More Important Penalties

Forward pass, more than one incomplete in same series of downs.....	5 yards	Fair catch, taking more than two steps after catch .....	5 yards
Offside .....	5 yards	Leaving field during one minute intermission .....	15 yards
Offside, both sides .....	No penalty	Man going on field without permission .....	15 yards
Illegal use of hands and arms by offense .....	15 yards	More than one man going on field....	15 yards
Holding, etc., by defensive side.....	5 yards	Illegal return to game.....	Half distance to goal and disqualification
Interference with fair catch, etc.....	15 yards	Slugging .....	Half distance to goal and disqualification
Interference with opponents before ball is put in play .....	5 yards	Attempt to draw opponents offside..	5 yards
Taking out time more than three times during a half, etc.....	2 yards	Coaching from sidelines.....	15 yards
Roughing kicker .....	15 yards	Crawling .....	5 yards
Running into kicker.....	5 yards	Delaying in starting game or second half .....	30 yards
Substitute communicating before first play .....	15 yards	Feint to snap ball .....	5 yards
Substitute failing to report.....	5 yards	Hurdling .....	15 yards
Unnecessary roughness, etc .....	15 yards	Illegal tackling .....	5 yards
Delaying game .....	5 yards	Kicking loose ball .....	Loss of ball
Interference on forward pass by defense .....	Loss of ball	Neutral Zone, encroachment on.....	5 yards
Starting forward before ball.....	5 yards	Player out of bounds .....	5 yards
Pushing, pulling, interlocked interference, etc .....	15 yards	Tripping .....	15 yards
Forward passing, intentional throwing to ground .....	10 yards	Unfair play .....	5 yards
		Unsportsmanlike conduct .....	15 yards
		Clipping from behind .....	25 yards