

L 27631  
1916 33  
1115

Souvenir Program

TULANE GREEN WAVE

VS.

MISSOURI TIGERS

CHAMPIONS OF MISSOURI VALLEY

SATURDAY, OCTOBER 3, 1925

TULANE STADIUM



PRICE 25c

HOWARD-TILTON  
MEMORIAL LIBRARY

TULANE UNIVERSITY

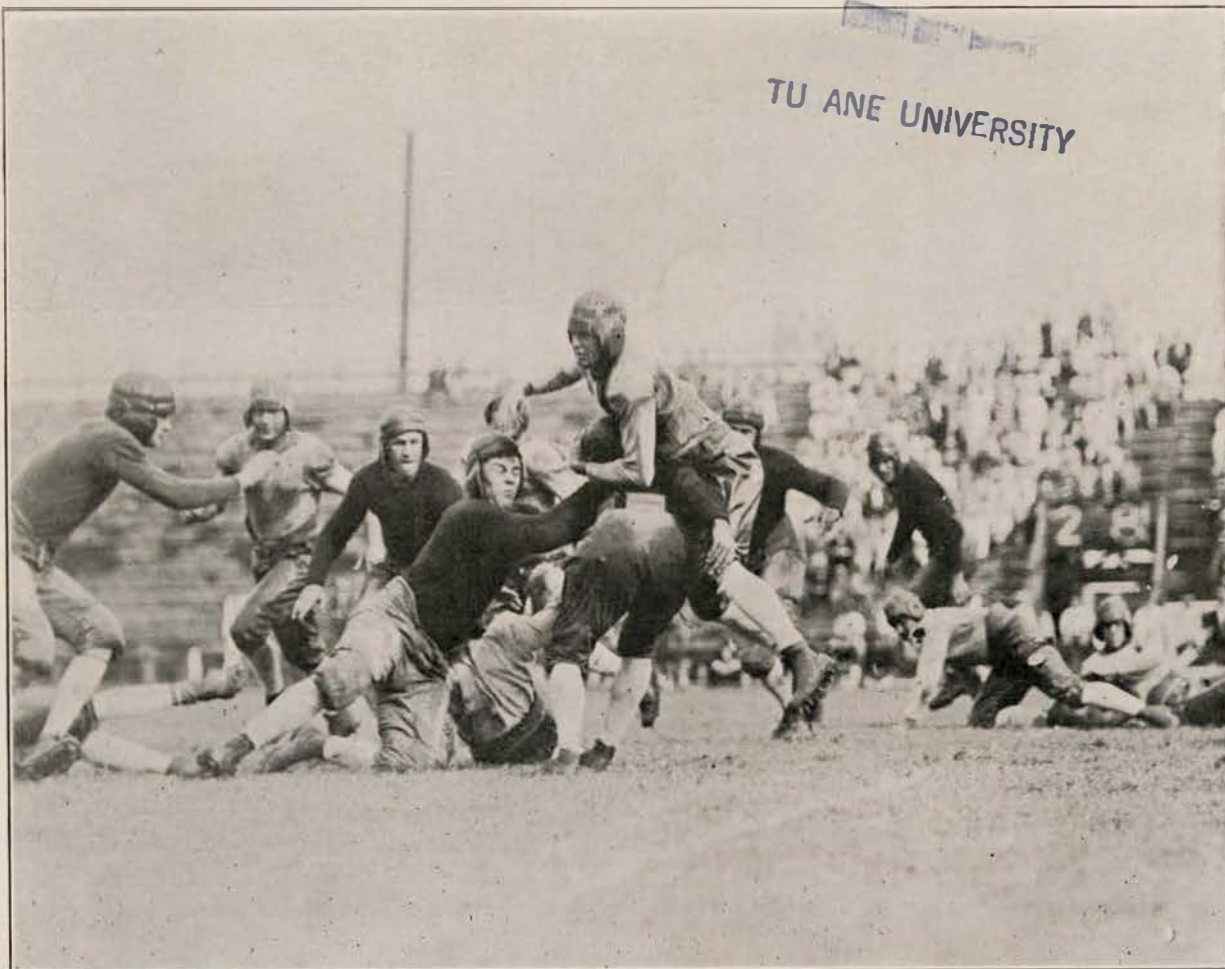
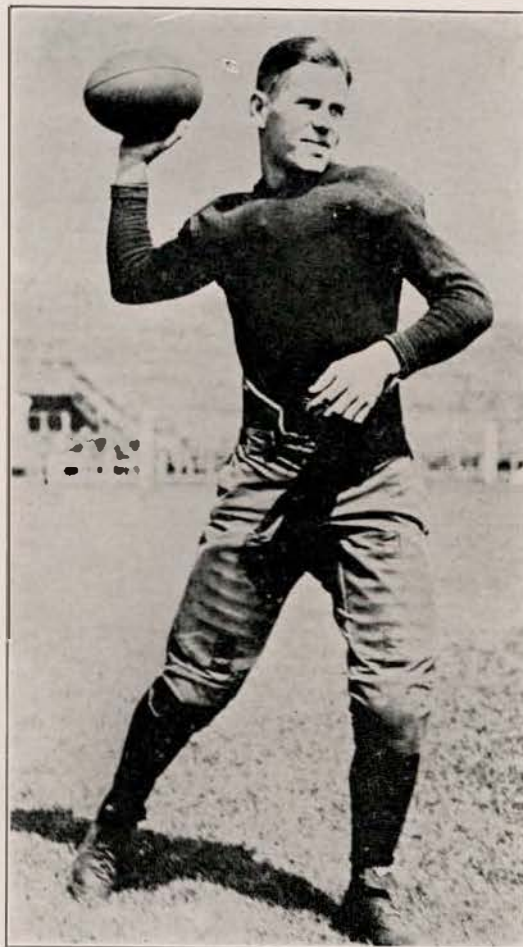


Photo by Sadler

"Peggy" Gaining Through the Louisiana College Line Last Saturday

**Captain Lester Lautenschlaeger**

"Lil Les", the Greenie field general, will have his big chance today to "Show Missouri" just how great a quarterback he is. Last week against Louisiana college Lester scored four touchdowns and showed Tulane followers that this year will be his biggest, fastest, and best since he donned the Tulane jersey for the first time four years ago. This picture shows Lester about to throw one of his short bullet-like passes with which the Tulane team today will twist the tail of the Tiger from Missouri.



**"Peggy" Flournoy**

Far down the field "Peggy" sent the ball just as the camera man snapped him and he'll send them further today whenever Lester has to call on "Peggy's" toe to keep the Mizzou boys away from the Greenie goal line. Flournoy bids fair to have his greatest season this, his last year, and his triple threat stuff today will make the Tigers sit up and take notice. Watch Peggy tear up the Missouri line today and then chalk him up as an All-Southern halfback.



**ANOTHER VIEW OF THE 1924 WAVE.**

Last week we showed a picture of the last Greenie outfit all dolled up in its "Sunday" football paraphernalia, but this shows Shaughnessy's lads just after a hot practice last fall in their "working clothes." As yet no picture of the Greenies has been allowed to be taken, but as soon as we get one we'll shoot it in for the fans.

Seated—Levy, V. Robinson, H. Wilson, Brown, Lautenschlaeger, Palermo, Scrub Coach Killeen.  
 Second row—Craig, Gamble, Odom, Lamprecht, J. Henican, Lorio, Goldsmith.

Third row—Coach Bierman, Coach Shaughnessy, "Doc" Wilson, Wight, Tabot, Hammond, McLean, Flou:ny, Morgan, Freshman Coach Eddie Reed.



## "Show Missouri", Greenies

The toughest early season proposition that Coach Shaughnessy's Greenies have ever been called upon to face will take the field today in the shape of the Missouri Tiger eleven, heavy-weights all, and winners last year of the Missouri Valley Conference championship. And, while Tulane's opponents are rated as hard customers to tame, the Mizzou outfit realizes that it is not down here on a fall jaunt and that when the last long coach pulls out of the Union Station tonight they may be on the painfully short end of the score.

A team of giants will face the Greenies, the Missouri forwards from end to end, averaging nearly 190 pounds, or exactly 15 pounds per man more than the Wave first line of defense.

"Art" Coglizer, 190 pounder whose educated toe enabled Missouri to chalk up a 3-0 verdict over Alonzo Stagg's Chicago outfit, will hold down one of the ends for the Tigers from Columbia, while at the other flank, Bacchus, named for and built like, a Greek god, will use his 195 pound combination of speed and brawn to keep the Greenies from circling his end. Should Missouri get within drop-kicking distance, Coglizer may be called

*(Continued on Page 5.)*

### OPEN ALL NIGHT

New Orleans' Newest and  
Most Modern Drug Store

## WALSDORF'S

Incorporated

### DRUGS - GIFTS

CANAL AT RAMPART

NEW ORLEANS

Phone Main 1124

### AMES



### LABORATORY PRODUCTS

Articles of Merit

Benjamin Dandruff Remedy  
Newcomb Bouquet Cologne  
Perrier Liquid Shampoo  
Special Lilac Vegetal  
Mentholamond Cream  
Ipecac Tooth Paste  
Ipecac Tooth Wash  
Eureka Hair Tonic  
Superior Bay Rum  
Shaving Cream  
Cooling Lotion  
Alno Face Powder  
Alno Cold Cream  
Complexion Soap

Purchase from your Druggist

NEW ORLEANS, LA.

## Coleman E. Adler

for

DISTINCTIVE  
JEWELRY

Phones: Main 9459—M. 9705

## TURCI'S

*Italian Garden Restaurant*

SERVICE A LA CARTE

BANQUETS

TABLE D'HOTE

229 BOURBON ST.

Dancing Every Night 10:30 to 1:30

**"Show Missouri,"**

**Greenies**

*Continued from Page 4*  
back, because with his passing ability he at once becomes a double threat.

Opposing Benny Wight and "Hoss" Talbot at the tackle jobs will be Lindemeyer and Stafford a pair of six-foot linemen who both send the scales up to 195 pounds. This duo is fast and have the experience of many battles tucked under their belts. Studebaker, another 200 pound man in the Missouri retinue, game at tackle in place of Stafford, and his appearance with added bulk will serve to make that "Thin Green Line" look thinner.

The Missouri

***Pardon Us, Newcomb, But---***

Near Your College, In the Town,  
In the Town,

There's A Clothes-Shop  
Close Aroun', Ciose Aroun',  
Where the Guys Who Rate  
With the Flower of the U.

Get Suits and Sweaters,  
Socks and Shoesies Too!

**Godchaux's  
COLLEGE SHOP**

Jimmie Black, Mgr.

7534 Maple St. Wal. 5680

*It Ain't Our Shop, It's Yours*

guards are not slighted when the weight is distributed and Ferguson and Walker, 190 pounders, probable starters in the "middle-of-the-line" places will not feel one whit out of place with the rest of the Titans from the "show me" section of the country.

Center, the one position where the Greenies will outweigh the visitors, will be held down by C. Smith, a mere midget of 167 pounds. Harvey Wilson, who tips in at about 175 will have the edge on this lad.

The Missouri backfield from all reports, will be light and fast. Jackson, a speedy boy, will di-

*Continued on Page 6*

**GAME STARTS**

**AT 2:30 P. M.**

**Davidson Dental Supply Co.**

Inc.

741 Maison Blanche Building

NEW ORLEANS

Branch: Shreveport, La.

*"Say it with Flowers"*



## SHOW MISSOURI GREENIES--Continued

rect the team from quarterback, while Captain Sammy Whiteman, Missouri's best ground-gainer and main cog in a supposed powerful forward pass attack will hold down one of the halves while Stuber, known in Columbia as "Missouri's Red Grange", will be at the other half.

Thomas, big husky and heaviest man in backfield, who is slated to start at fullback against Tulane, is rated as one of the best line-plungers in the Valley conference. Whether this foursome and their running mates, O'Sullivan, Simpson, Tuttle, Moulder and others can break through the Tulane line is the question causing all the excitement today and the biggest crowd in Tulane football history is expected, if weather conditions are favorable, to turn out to learn the answer.

The same team that started the Louisiana College game last week is scheduled to open the fray today although last minute changes by Coach Shaughnessy might shift the eleven around a bit.

In the event Eddie Morgan returns to end in place of Harry Gamble, Johnny Menville or Pat Browne will take Eddie's place in the Tulane backfield. On the other hand should Gamble be kept at end as his great game last Saturday justifies, a shift in the backfield might keep Lamprecht on the sidelines with Menville or Browne in his place. Lamprecht has been working as alternate quarterback all week and should Shaughnessy want three signal callers on tap in Lester, Lorio and Lamprecht, not to mention Ellis Henican who is ready

(Continued on Page 15.)



### Get That Touchdown!

In all sports there comes a time when every ounce of strength and brain power must be put into a play. You *must* have equipment that will not fail. Spalding Equipment is made for hard usage on the athletic field—and never fails—Send for the new Fall and Winter Catalogue of correct materials for all sports in season.



*A. G. Spalding & Bros*

130 Carondelet St., New Orleans

**CONN**  
BAND  
INSTRUMENTS  
WORLD'S LARGEST MANUFACTURERS

Used by Tulane Band Because they are the best

VEGA & PARAMOUNT  
BANJOS

LEEDY & LUDWIG  
DRUMS

**CONN**  
N. O. CO.

123 Carondelet Street

THE NEW

## Hotel Monteleone

J. D. KENNEY, Manager

European Plan.

STRICTLY FIRST CLASS

ROYAL and IBERVILLE STREETS

## OFFICE TOILET SUPPLY CO.,

Ltd.

509 S. PETERS ST.

## TOWELS AND LINENS

SUPPLIED AT A NOMINAL  
RENTAL CHARGE

**MISSOURI**

1. Whiteman, Capt.
2. Swofford
3. O'Sullivan
4. Stafford
5. Thomas
6. Ferguson
7. Bacchus
8. Flammack
9. Edgington
10. Lindenmeyer
11. Walker
12. Richerson
13. Jackson
14. Castle
15. Simpson
17. Eschelman
18. C. Smith
19. Stuber
20. Grantello
21. Gibson
22. Smith
23. Windle
24. Rositsky
25. Casteel
26. Nichols
27. Tarr
28. Clark
29. Neff
30. Studebaker
31. Milligan
32. Miller
33. Coglizer
34. Hicks
35. Moulder
36. Morgan
38. Downing
39. Lawrence

**LOUISIANA  
PRINTING  
COMPANY**



*Official Printers  
TULANE  
Foot Ball Program*

*TULANE  
Hullabaloo*

*TULANE  
Students' Hand Book*

**"THERES A REASON"**

*Just Phone Main 1929  
OR*

*Call at 921-27 Lafayette Street*

**TULANE**

1. Lautenschlaeger
2. Killeen
3. Lorio
5. Moss
6. D. Wilson
7. Gamble
10. Lamprecht
11. Henican
12. Browne
13. Stoessel
14. Evans
15. Flournoy
16. Watson
17. Morgan
18. Duren
19. Robinson
21. Menville
22. Talbot
23. Levy
24. H. Wilson
25. Norman
26. Rosenhouse
27. Blackledge
28. Carre
31. Wight
32. Palermo

**WHO'S WHO IN THE GAME**

Use of the list of numbers of the Greenie and Wildcat squads will furnish the names of any substitutes entering the game.

**BUICK AUTOMOBILES**

SALES—SERVICE

**GLENNY-BUICK CO., Inc.**

822 HOWARD AVE.

*THEY CAN'T BEAT OUR  
TWO PANTS SUITS  
\$35 \$45 \$50 \$65*

Collegiate or Business Styles

*Porter Clothing Co.*

Carondelet and Gravier Streets

PROBABLE LINE-UP

Greenies		Missouri	
No.		No.	
6	"Doc" Wilson ..... Right End	Coglizer 33	
22	Talbot ..... Right Tackle	Studebaker 30	
27	Blackledge ..... Right Guard	Walker 11	
24	H. Wilson ..... Center	C. Smith 18	
23	Levy ..... Left Guard	Ferguson 6	
31	Wight ..... Left Tackle	Lindenmeyer 10	
7	Gamble ..... Left End	Bacchus 1	
1	Lautenschlaeger ..... Quarter	Jackson 13	
17	Morgan ..... Left Half	Whiteman, (Capt.) 1	
15	Flournoy ..... Right Half	Stuber 19	
10	Lamprecht ..... Full Back	Thomas 5	

THE SCORE

1925	1	2	3	4	Final
TULANE .....					
MISSOURI COL. ...					

WILL THE GREENIES HALT THESE HUSKIES?



Richerson  
Guard

"Red" Richerson, who will probably start at guard today against the Greenies tips the balance at 220 pounds. Besides being one of the heaviest of heavy men the Green Wave will roll up against when the whistle starts activities. Richerson is said to be the fastest man on the Missouri eleven. He is a good kicker and, for that reason coupled with his speed the big fellow often is called back to carry the ball and thus creates a triple threat.



Jackson  
Back

Jackson, fleetfooted quarterback of the Tigers will match his wits with those of Captain Lester Lautenschlaeger today when the two field generals send their forces against one another. Jackson is fast, a good line punger and a heady man to call the team signals. Besides that he has somewhat of a reputation as a receiver of forward passes and may be one of the troublesome ones to the Greenies today.



Capt. Whiteman  
Back

Tulane's secondary defense will have its hands full if reports are to be believed, when Captain Whiteman starts flinging passes. Whiteman is a good man at carrying the ball either around the end or in thrusts at the line, but his forte is tossing the ball into the waiting arms of some other of his teammates. Able to throw the ball with equal accuracy and speed with either right or left hand and while on the run. Whiteman makes himself a constant threat to the opposition.



O'Sullivan  
Back

This little 160 pound Mick who can step the hundred in ten flat and who wears his football togs so that even the veriest "duffer" in the grand stand must break down and confess that he looks like a football player, is every bit as good as he looks and the Greenies will be chasing a "Brother" Brown on the opposing side whenever this lad carries the ball. O'Sullivan is a halfback and quarterback and will play against the Wave today in either position.



Tuttle  
Back

Tuttle is another one of the fast shifty backs that Coach Gwinn Henry will rely on to circle the Greenie terminals for good gains. If this boy and any of the other Mizzou backs make many such gains around "Doc" Wilson, Gamble et als., they will be well worth the advance notices which have been streaming in about each and every member of the Champions of the Missouri Valley Conference. Tuttle will probably get into the Tulane game at a halfback berth.

LAST WEEK'S SCORE

1925	1	2	3	4	Final
TULANE .....	20	6	25	26	77
LA. COLLEGE.....	0	0	0	0	0

"SHOW MISSOURI"



*Principal Changes In Rules For 1925*

In Rule VII sec. 1 (a) the winner of the toss has been given another option, viz, the choice of receiving the kick-off in addition to the choice of goal or of receiving the kick-off. The loser of the toss is also given a choice of options.

The forty yard line has again been designated as the mark of the kick-off—Rule VI sec. 1.

The penalty for off-side in the scrimmage line has been changed so that, although under Rule IX Sec. 2, this offense still calls for a loss of five yards, the point to be gained for first down will remain the same unless the distance penalty places the ball in advance of that point.

The penalty under Rule XXI sec. 5, for "clipping" has been made "loss of 25 yards from the spot of the foul."

The most radical change, involving as it does a modification of the long established principles governing "on-side" and "off-side", is that regarding the rights of players following the blocking of a kick which is made from behind the line of scrimmage.

In order to avoid confusion on the part of players and the difficulty which has frequently arisen in the past of determining whether the blocking of a kick had been done by a player of the team on offense or on defense, Rule XVII now permits any player to recover a kicked ball (blocked or otherwise) which does not cross the line of scrimmage. In



**Hotel De Soto**  
Commercial and Tourists  
**NEW ORLEANS**

Absolutely Fire Proof  
Moderate Rates

Headquarters for all  
Southern Colleges

C. A. HARTWELL,  
Mgr.-Director

J. W. STIMPSON,  
Manager

J. M. GORE, JR.,  
Asst. Mgr.



Stuber of Missouri

They call Stuber, halfback of the Mizzou Tigers "Missouri's 'Red' Grange," and he will be in the Tiger line-up today attempting to bring his speed to bear against Clark Shaughnessy's Mighty Green Wave. Besides being a halfback, Stuber may be seen at the quarterback job, relieving Jackson.

**MEDICAL BOOKS**

We carry all text-books recommended in the Medical, Dental and Pharmacy Departments of Tulane. Call at our Store, or phone your needs.

**J. A. MAJORS CO.**

Phone Main 3252

1301 TULANE AVE.

**NOTICE!**

BEFORE THE GAME  
DURING THE GAME  
AFTER THE GAME



*Adonis*

CANDIES

ADONIS CHOCOLATES

There is Nothing Better  
than

Ask Your Dealer



*Coach*  
"BROTHER" BROWN



*Back*  
"FRENCHY" LORIO



*End*  
"DOC" WILSON



*Tackle*  
"HOSS" TALBOT

AFTER THE GAME

REST

—and—

REFRESHMENTS

AT

**KOLB'S**

The Restaurant with an Individuality

DINNER MUSIC

DANCING AFTER THEATRE



Get Your Colors for the Game at Holmes

Also Boxed Candies, Noise Makers, Pennants and  
Miniature Footballs to Take With You  
to Each Game

-:- In Wearing Apparel--The Newest Styles for Men and Women -:-

**D. H. HOLMES CO.**

LIMITED

For 83 Years—The Best Place to Shop

### *Principal Changes In Rules--Continued*

other words, it is to be treated in the same manner as a fumbled ball.

Also to avoid difficulties which have heretofore arisen after a partially blocked kick, the rules now provide that a kick which has been partially blocked or touched BY EITHER SIDE and thereafter crosses the scrimmage line shall be played in the same manner as though the kick had been gotten away clean (with the exception noted in Rule XVIII, Sec. 3, on a try at goal from field).



ELLIS HENICAN,  
Quarterback and Halfback

Ellis will probably make his 1925 debut in the Greenie backfield this afternoon, having been kept on the sidelines last week due to illness.

Phones Walnut 3269—2572

## **P. BEROT & SONS**

**CLEANERS  
and  
DYERS**

High Grade Cleaners

In a Clean Up-to-date Plant

8500-8514 Oak St.

1136-1138 Joliet St.

NEW ORLEANS, LA.

Steam Heated  
Excellent Music

## **MECCA THEATRE**

Adams Street, Near Maple

Especially Selected Programs Exhibiting only the best Photoplays Produced.

The Mecca is under the personal supervision and management of Mr. and Mrs. Heiderich.

Spend Your Evenings  
With Us

*We're Expecting You*



**Newcomb Pharmacy**

Broadway & St. Charles Ave.

## **TERRY & JUDEN CO., LTD.**

141 Carondelet Street

**MEN'S WEAR**

All the Newest Styles for  
Young Men

## **Garfield Market**

**Cuevas & Saladino**  
PROPRIETORS

6038 Garfield St.

Western Meats,  
Fruits, Vegetables, Fish,  
Game, Etc.

Phone Uptown 1651  
Phone Uptown 1652

We Cater to Fraternity  
Homes

**A Week Ago**

A splashing, slashing, swishing Green Wave rolled through the mud with irresistible force and a heavier Louisiana College eleven was rocked in the swell to a 77-0 tune in the season's opener last Saturday.

With almost "unstoppable" drives the Greenies swept down the field time after time, brushing the Pineville boys out of their path and in 60 minutes of wet, sloppy plodding, filled with spectacular runs the Tulane team amassed the highest total of point in the whole South and was second to Cornell in the entire country for the size of its score. The Ithaca institutions piled up 80 points or three more than the Greenies.

Coach Shaughnessy's boys romped in the mud to their hearts content, while some 4500 spectators kept their enthusiasm undampened despite the adverse weather conditions which did not provide much sunshine.

**It's A Great Game  
If You Don't Weaken!**

This game of studying, and playing, and being ever well dressed and ready for the part. There's knowing what's what for every occasion, and New Orleans college men know that! Service in providing these necessities is our game—and Maison Blanche plays that game well, too.

Everything for Sports  
Everything for Wear  
and Novelties for every extra call



Captain Lautenschlaeger, Morgan, Flournoy, Browne, Menville, Lorio and Norman made some beautiful long broken field dashes while the rest of the Tulane offensive handled the ball well, especially Tom Killeen and Fred Lamprecht, the latter also playing a corking good defensive game.

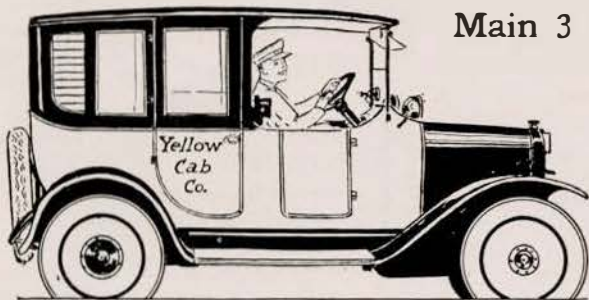
The Tulane line and ends stopped everything that came their way and it is doubtful if the Louisiana outfit totaled ten yards during the whole affair. Levy and Blackledge at guards and Harvey Wilson at center, stopped every Louisiana Wildcat thrust at the middle of the line, while Talbot and Wight piled up the plays as fast as they started. Gamble and "Doc" Wilson at ends, showed worlds of speed in getting under punts and "did their stuff" when ever a rash Wildcat tried to skirt the ends.

The Greenies showed that they are  
*Continued on Page 15.*

*Our Advertisers  
Helped to Make  
This Better Program*

*"The Thinking Fellow Calls A Yellow"*

Main 3



*Safety--Courtesy--Comfort--Service*

DRINK



IN BOTTLES



Coach "Brother" Brown

**What's the Dope?**

For the first time in ages the University of Mississippi will put out a real good outfit, which with Homer Hazel, former Rutgers and all-American backfield man at the helm has gone forward with great strides at the start of the present season. Last Saturday "Ole Miss" defeated the Jonesboro Aggies 53-0, a far bigger score than the Oxford outfit totaled last year.

Today "Ole Miss" plays Texas at Austin and they face their first real test. If Hazel's outfit can hold the Longhorns to a close score or maybe beat them, they will come to New Orleans next week prepared to give Tulane a real fight.

Watch your step, Greenies.

*HELP ENTERTAIN  
MISSOURI  
TONIGHT!*

BIG GYM DANCE

FOR THE

**Missouri and  
Tulane Teams**

Tulane Gym 8 P. M.

*BE THERE*

**BROADWAY  
PHARMACY**



*H. C. Richards*  
Proprietor



**Broadway & Maple**

**"ON TO AUBURN"**

**WITH THE GREENIES**

—  
**Montgomery Oct. 31**

—  
**Let's All Go!**

*Do You Remember?*

—That slushy day in 1913 when Tulane and L. S. U. splashed futilely through the mud to a 0-0 tie?

—When Pete Maibles captained the Greenies and it nearly broke his heart to be taken out of the L. S. U. game up at Baton Rouge?

—When Cajun Legendre stamped around the Tulane lot before he went to Princeton and became one of the greatest ends in the country in 1921?

—When \$2 bills weren't as frequent as they are now and you had to hop the fence to see the game? We sure do, and our conscience never hurt us.

**"Show Missouri,"**

**Greenies**

*Continued from Page 6*

to return to the game, the golf and football star will be probably held in reserve.

Blackledge, playing his first Varsity game last week, showed up to advantage, but Coach Shaughnessy may prefer to shoot a seasoned man at the Missouri bunch and Virgil Robinson, veteran and steady lineman may get the call at the start.

The Tulane team is in the greatest possible shape. But one man, Palermo, on the Varsity squad will be unable to get into the Missouri game should the Tulane coach be forced to call out the reserves. Coupled with this excellent condition the stiff scrimmages with the Frosh



IF ITS FOR THE BABY

—or—

THE WEE TOT UP TO SIX

Go to

**CONWAY'S**

For Daintiness, Smartness and Durability.  
Their Garments Excel

1200 ST. CHARLES AVE.

Phone Jackson 3704

and scrubs throughout the week have put the Tulane defense on edge to battle the Tiger off its feet.

And while the first eleven is in there fighting every inch of the way, "Shorty" Norman, Tom Killeen, Lorio and Menville, Tulane's "pony backfield" will be ready for Coach Shaughnessy to rush in the game when the Greenies are near enough for "Shorty" Norman and his comrades to snake through the Mizzou outfit.

**A Week Ago**

*Continued*

a good set of "mud-ders", the way they kept their feet over the slushy gridiron. Every one of the Greenies except Palermo and Henican broke into the game in liberal doses and the second Varsity with the "ponies" running with the ball fared just as well as the first-string men in keeping the Wildcat as tame as a Maltese kitten.

**HULLABALOO**

Hullabaloo, 'Ray, 'Ray  
Hullabaloo, 'Ray, 'Ray  
Hooray—Hooray  
Varsity, Varsity T. A.  
T. A., T. A.  
Varsity, Varsity T. A.  
Tulane.



"Irish" Levy  
Tulane's Terrible Tarzan.

**Pas Palermo**

The only Greenie on the injured list.

He'll be back in the harness after today's fray and will be rarin' to go.

