

V. 14, no. 4

# Tulane vs. Clemson

NOVEMBER 18, 1944

*The  
Greenie*

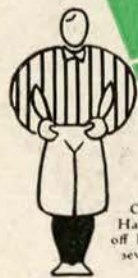
Price 25¢

HOWARD-TILTON  
MEMORIAL LIBRARY

TULANE UNIVERSITY



# THESE ARE THE OFFICIAL 1944 Signals



**OFF-SIDE**  
Hands on and off hips—repeat several times.



**ILLEGAL POSITION OR PROCEDURE**  
Hands revolving in front of chest.



**ILLEGAL MOTION OR SHIFT**  
Horizontal arc with either hand.



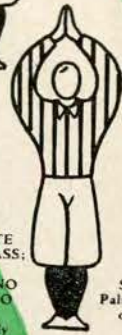
**ILLEGAL DELAY OR EXTRA TIME OUT**  
Folded arms.



**ILLEGAL USE OF HANDS OR ARMS**  
Grasping one wrist.



**UNSPORTSMANLIKE CONDUCT**  
Arms outstretched, palms down.



**SAFETY**  
Palms together overhead.



**INCOMPLETE FORWARD PASS; PENALTY DECLINED; NO PLAY OR NO SCORE**  
Hands rapidly criss-crossed in horizontal plane.



**BALL ILLEGALLY TOUCHED, KICKED OR BATTED**  
Tapping both shoulders with finger tips.



**INTENTIONAL GROUNDING**  
Both hands over right shoulder then down hard and forward.



**FORWARD PASS OR FAIR CATCH INTERFERENCE**  
Pushing arms forward, palm vertical.



**BALL DEAD**  
One arm aloft, open hand. If hand is closed, TOUCHBACK.



**UNNECESSARY ROUGHNESS**  
Military salute. CLIPPING. Salute followed by slapping back of knee with hand. RUNNING INTO OR ROUGHING KICKER. Salute followed by swinging leg to simulate a punt.



**TIME-OUT**  
Hands rapidly criss-crossed overhead.



**CRAWLING; HELPING THE RUNNER OR INTERLOCKED INTERFERENCE**  
Pushing movement with hands below waist.



**TOUCHDOWN OR FIELD GOAL**  
Both arms aloft and held rigid.



**ILLEGAL FORWARD PASS**  
Waving hand behind back.



**FIRST DOWN**  
Vigorous throwing motion concluded with outstretched arm pointing toward offensive goal.



**START THE CLOCK OR NO MORE TIME-OUTS ALLOWED**  
Full arm circles to simulate winding a clock.



Listen to  
**"Time Out"**  
WITH  
**JOHNNY LYNCH**  
WWL Thursdays  
5:15-5:30 P.M.

And for Your  
**Time Out**



JACKSON BREWING COMPANY  
NEW ORLEANS, LA.

DRINK  
**JAX**  
BEST BEER IN TOWN

# THE GREENIE

Vol. 14

NOVEMBER 18, 1944

No. 4

Official Souvenir Football Program of Tulane University, Published for Each Home Game.

National Advertising Representative, Football Publications, 370 Lexington, New York City

Tulane and Clemson meet today for the fifth time on the gridiron. The two institutions inaugurated the series in 1936 when the Wave won a hard fought game, 7 to 0.

That was in "Red" Dawson's first year as head coach. Jess Neely was the single wing master of the Tigers in those days. A year later Clemson turned the tables on the Wave, winning a thriller, 13 to 10.

In 1939, Tulane won, 7 to 6. The Greenies went on that year to the Sugar Bowl and Clemson to the Cotton Bowl. The 1940 score was 13 to 0 for the Greenies, giving them a three to one edge in the short but hotly contested series.

\* \* \*

In case you don't know, Clemson College is a state supported college for men with an enrollment of 1600 students. It is located at Clemson, S. C.

\* \* \*

Frank Howard is the coach. As an assistant of Jess Neely's, he was named head coach in 1940 when Jess went to Rice Institute as head coach.

\* \* \*

Clemson's crack drill corps, one of the finest cadet drill corps in the nation, provided a great thrill for Orleanians on other visits of the Tigers to New Orleans. Except for

wartime transportation difficulties, the corps would have been present today.

\* \* \*

The Clemson colors are Purple and Burnt Orange.

\* \* \*

Coach Howard was a football and baseball star in his playing days at Alabama. He went to Clemson as assistant football coach and varsity track coach in 1931.

\* \* \*

Clemson's football stadium was completed shortly before the war. It is made of reinforced concrete and seats 20,500.

\* \* \*

The Tigers are members of the Southern Conference.

*The FRESHER  
The BETTER!*



## APPLE "HONEY" HELPS KEEP OLD GOLDS FRESH!

• A mist of Apple "Honey" is sprayed on Old Gold's fine tobaccos to help hold in the natural freshness.



# *The Roosevelt*

## *New Orleans' Finest*

In America's Most Interesting City



THE ROOSEVELT is located in the heart of Romantic old New Orleans. It is in the center of business and social activities and is close to the Theatre, Shopping, French Quarter, and Business Districts . . . You will like the tasteful luxury and home-like atmosphere of this modern hotel where the traditions of Southern Hospitality are maintained the year 'round.

800 ROOMS WITH BATH

MODERATE RATES



*The Roosevelt*  
"The Pride of the South"



BILLY POE  
BACKS



JACK MILLER  
BACKS



WATT STEWART  
BACKS

# Jemson



BILLY ROGERS  
BACKS



SID TINSLEY  
BACKS



GEORGE GRAHAM  
END



HENRY OATES  
END



EDDIS FREEMAN  
END



ARTHUR HAGAN  
END



RALPH JENKINS  
CENTER



PHIL PRINCE  
TACKLE



TOM SALISBURY  
GUARD



FRANCIS RICHARDSON  
GUARD



RALPH WILSON  
TACKLE



HARLEY PHILLIPS  
TACKLE

*Famous for*  
**FINE FOOD**  
and **DRINK**



**TONIGHT** — enjoy specialties of these noted restaurants:

**ANTOINE'S**

713 St. Louis St.

**ARNAUD'S**

813 Bienville St.

**BROUSSARD'S**

819 Conti St.

**KOLB'S**

125 St. Charles St.

*An Investment in Good Appearance*



There is something about this suit that makes it look smarter, feel better, wear longer . . . and that something is

**KUPPENHEIMER QUALITY**

**FROM \$55 TO \$65**

For Discriminating Men

**Mayer Israel's**

714 Canal St.

# Pigskin Roundup



**ALABAMA-MISSISSIPPI STATE** — In which the Tuscaloosans will be tomahawked right there on the banks of the Warrior.

\* \* \*

**AUBURN-GEORGIA**—This won't be a ring-a-rosie dance or a game of post-office. Weakly, Georgia.

\* \* \*

**SOU. CAL-CALIFORNIA** — The Trojans move closer to Pasadena.

\* \* \*

**COLGATE-SYRACUSE**—The traditional game for both. Colgate.

\* \* \*

**DUKE - SO. CAROLINA**—The Dukes are in high.

\* \* \*

**GEORGIA TECH—L. S. U.**—The Yellow Jackets can't let down. They won't. Tech by two or three.

\* \* \*

**OHIO STATE—ILLINOIS**—The Columbus bulldozer.

\* \* \*

**IOWA-MINNESOTA**—The Gophers.

**NORTH CAROLINA-YALE** — The Tar Heels are too far below par to worry the Yales.

\* \* \*

**NORTHWESTERN-NOTRE DAME**—The Wildcats haven't won a game this season. The Irish, staggering from that walloping at New York, may run into an awful jolt in this one. Close but Notre Dame.

\* \* \*

**ARMY-PENN**—The Philadelphia Story— but gory.

\* \* \*

**INDIANA-PITT**—Moider at Bloomington.

\* \* \*

**RICE-TEXAS A. & M.**—The blinkin' Owls.

\* \* \*

**TEXAS-TEXAS CHRISTIAN**—The hop-pin' Frogs.

\* \* \*

**ARKANSAS-S. M. U.**—The rootin' Hawgs.

\* \* \*

**TENNESSEE-TEMPLE**—Tennessee is the host but will omit the tea and crumpets.

Greetings, "Green Waves"!  
Welcome "Tigers"!



STUDENT TWEEDS

\$30.00

Definitely collegiate . . . grays and browns in all wool herringbones and diagonals. Suit includes matching vest. Sizes 33 to 42.

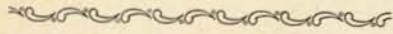
- *For Spectator Sports!*
- *For Classtime!*
- *For Campus Informals!*

*Men's Clothing, MB First Floor*

*Maison Blanche*

GREATEST STORE SOUTH

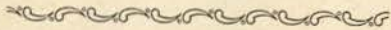




**DR. RUFUS C. HARRIS**

**President**

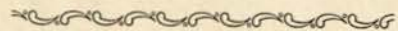
**Tulane University**



**DR. WILBUR C. SMITH**

**Director of Athletics**

**Tulane University**

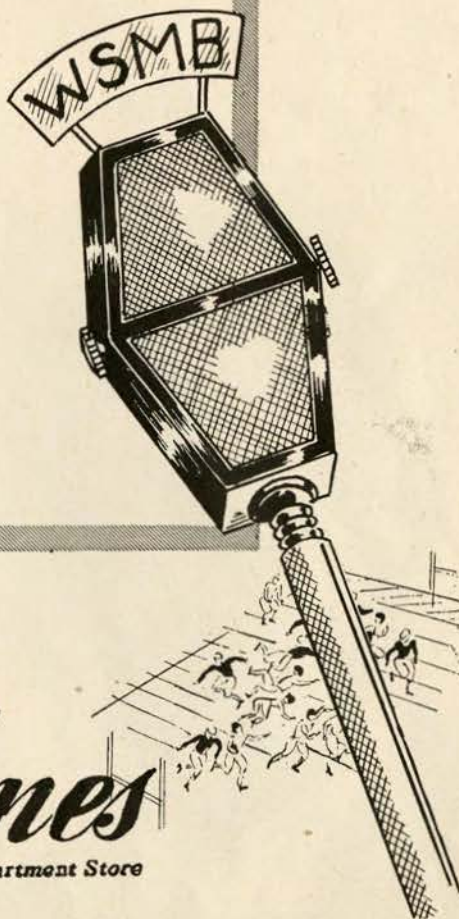


# HOLMES FOOTBALL BROADCASTS

*Listen In!*

WSMB—9:45 to 10:00 p.m.  
Every Friday Night

Each Friday night during the football season, from 9:45 to 10:00 P. M., Holmes will present Mr. Horace Renegar with interesting football facts and figures. Mr. Renegar is Vice-President of the American College Publicity Association and enjoys the confidence of football coaches and sports authorities throughout the United States.




A New Series of Holmes  
Football Broadcasts  
Every Friday Night  
9:45 to 10:00 P. M. WSMB

*Holmes*  
New Orleans' Quality Department Store

# Cam-pic

a medley of  
**CAMPUS  
PICTURES**

©1944, BY HORACE BENEGAR



A home away from home for "Paul" and "Sophie" is the Tulane university student center, built on the order of a columned southern mansion.



"Saddle shoe stomps" are a weekly Friday afternoon event at the student center.



Rain didn't dampen the spirit of these Tulanians en route to the student center for an afternoon of fun.

**SCORE VICTORY over the AXIS!**

buy *more* **WAR BONDS and STAMPS**

*Porter's*



Above, the brass section of the Navy V-12 orchestra, which plays frequently for student center socials held on the spacious lounge floor.



Jitterbug enthusiasts.

keep dry on WETTEST DAYS

**RAINFAIR STORMCOATS**



from  
**Porter's**



Bridge is a popular pastime; tournaments are held at regular intervals.



"Mac's" favorite tunes.

DURABLE  
ALL WOOL  
SUITS



100%  
THAT'S  
ME!

AND I  
CAN  
TAKE IT!

\$35 from  
**Porter's**

Established 1895

Phone WALnut 0082

## TULANE UNIVERSITY PRESS

*Printing Department of Tulane University*



### CAMPUS PRINTERS

co

Basement, Gibson Hall

New Orleans



*Better Printers  
in New Orleans*

# “Time Out”

DRINK—

# Coca-Cola

TRADE MARK  
REG. U.S. PAT. OFF.

PAUSE—

RELAX—

REFRESH YOURSELF

**RIGHT COMBINATION \*\*\* WORLD'S BEST TOBACCO'S**



**TULANE**

LE K. Miller 28	LT Roseman 35	LG Igleheart 31	Starting Lineup C Hofman 44	RG Bourgeois 30	RT Schneider 32	RE Olsen 20
LHB Jones 16	FB Schmitz 11	QB McCain 25	RHB Robinson 15			

**SQUAD LIST**

10 Frank, g	24 Tournillon, c	38 Holsted, e
11 Schmitz, b	25 McCain, b	40 Arthur, b
12 Renfro, b	26 Curtis Jones, t	41 Dews, e
13 Loker, e	27 Corn, b	42 Cuccia, g
14 Bowers, b	28 Miller, K., e	43 Randall, b
15 Robinson, b	29 Reynolds, b	44 Hofman, c
16 W. A. Jones, b	30 Bourgeois, g	45 Killeen, b
18 Pechon, b	31 Igleheart, t	47 Melton, b
19 Timken, t	32 Schneider, t	48 Lewis, e
20 Olsen, e	33 Angulo, t	49 Terrell, g
21 Eiserloh, e	34 Kane, t	51 Craig, g
22 Logan, e	35 Roseman, t	54 Heffron, c
23 Barousse, c	36 Miller, W., g	57 Piper, b

**OFFICIALS**  
 Umpire—J. E. Burghard (Mississippi College)  
 Referee—Buck Cheves (Georgia)



**CLEMSON**

LE Smartt 39	LT Prince 82	LG Richardson 80	Starting Lineup C Jenkins 85	RG Salisbury 87	RT Phillips 88	RE Hagan 85
LHB Tinsley 83	QB Cumbie 84	RHB Stewart 78				
		FB Rogers 79				

**SQUAD LIST**

20 Harrell, b	42 Wilson, e	74 Hamrick, g
25 Tzouvelekas, g	43 Noblitt, c	76 Jones, t
26 Hale, g	44 Ard, g	77 Freeman, e
28 Moorer, b	45 Faile, e	78 Stewart, b
29 Graham, e	47 Senn, t	79 Rogers, b
31 Poulos, b	54 Wiggs, t	80 Richardson, g
32 Parker, b	58 Wilson, t	81 Poe, b
34 Tankersley, b	59 Cagle, t	82 Prince, t
35 Walters, b	65 Hallman, b	83 Tinsley, b
36 Miller, b	66 Patton, t	84 Cumbie, b
38 Roper, b	67 Davis, g	85 Hagan, e
39 Smartt, e	71 McCory, b	86 Jenkins, c
40 Cofer, e	72 Rowell, b	87 Salisbury, g
41 Latto, t	73 Oates, e	88 Phillips, t

**OFFICIALS**  
 Head Linesman—B. W. Hackney, Jr. (North Carolina)  
 Field Judge—Battle Bagley (Washington & Lee)

*On the Campus*

**IT'S CHESTERFIELD**



AT THE GAME  
and  
AFTER THE GAME

ENJOY



**D** Equipment for all sports...

*Specialists in all types of  
school athletic  
supplies*

**U**

**N**

**L**

**A**

**P**

**Sporting Goods Co., Inc.**

138 Carondelet Street

MAgnolia 5891

**Stop!**  
**Look!**  
**Listen!**

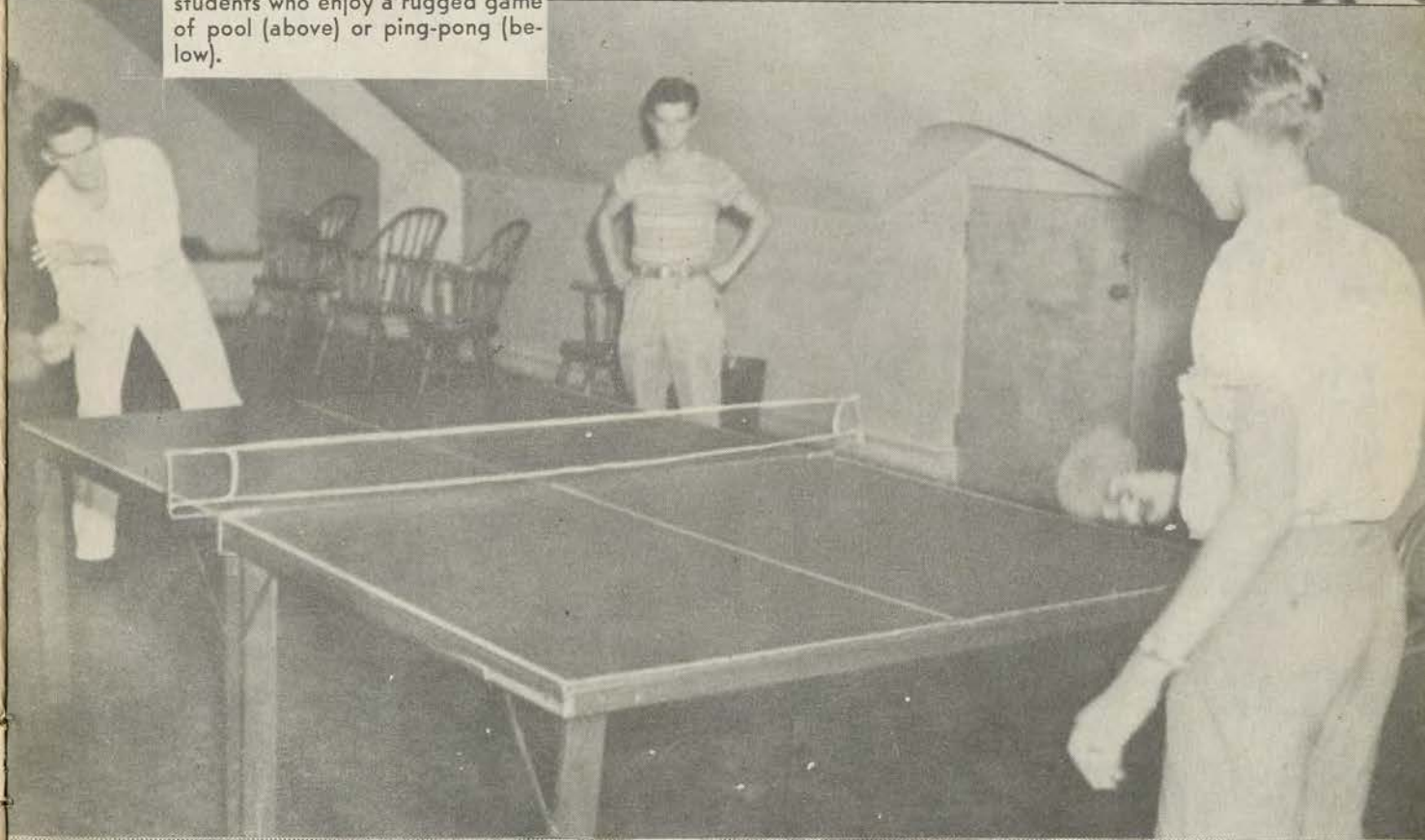
There's a 7-Up Boy right  
down in front of you! Call  
him now and Fresh-Up

With





The third floor offers facilities for students who enjoy a rugged game of pool (above) or ping-pong (below).

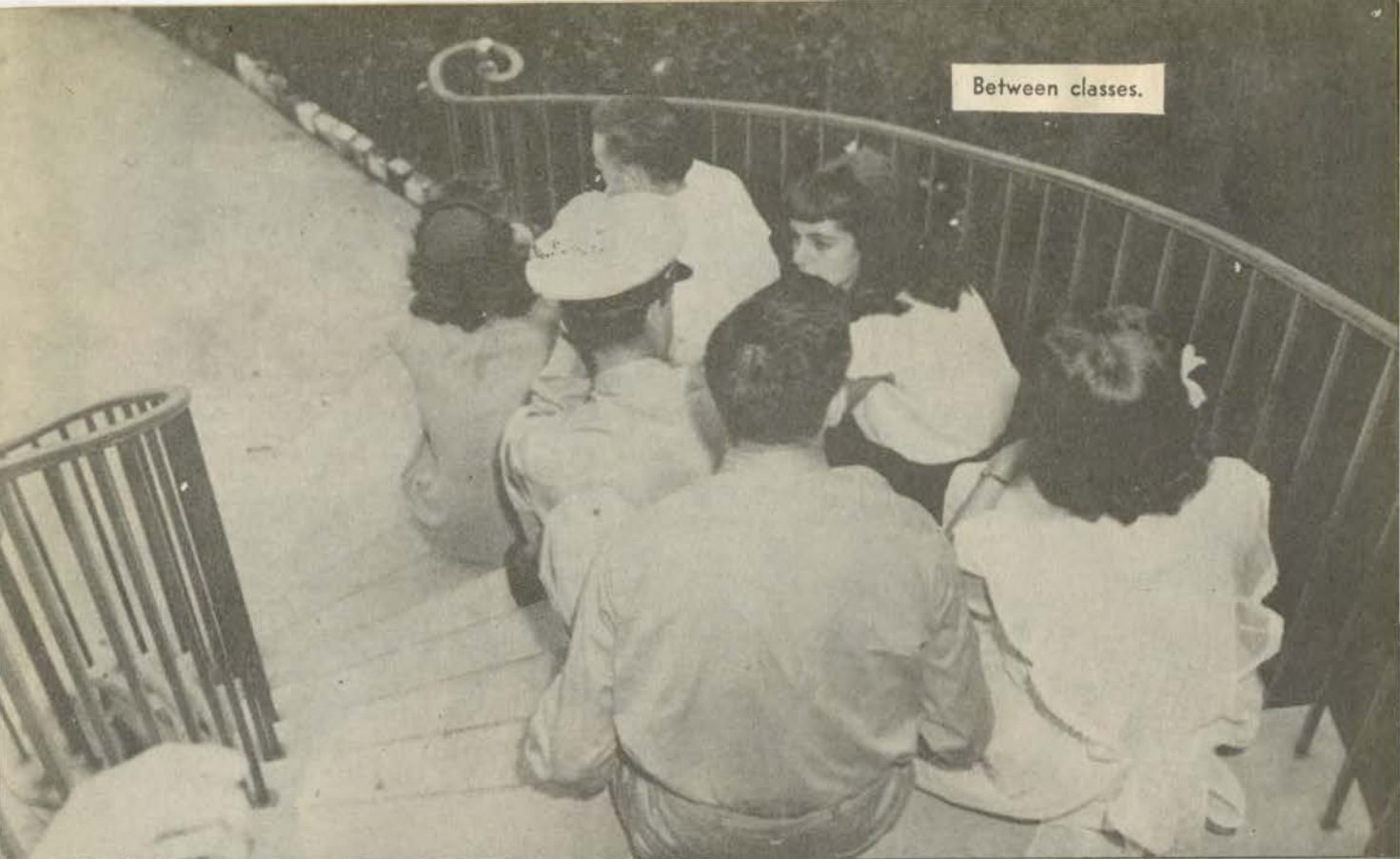


Good Grooming  
**A-HEAD**



with  
**STYLEPARK HATS**  
from *Porter's*

Between classes.



Above, Miss Beatrice M. Field (left), director of student and alumni affairs, examines alumni publication with Lieutenant Shepard F. Perrin, Jr., U.S.N.R. (right), Tulane alumnus, visiting the campus.

WHERE IS PORTER'S?  
HUH?

ACROSS THE STREET FROM THE COTTON EXCHANGE..

AROUND THE CORNER FROM THE ST. CHARLES HOTEL..

OPPOSITE THE HIBERNIA NATIONAL BANK AND IN THE SAME BLOCK WITH THE AMERICAN BANK

ASK ANYBODY!

EVERYTHING MEN WEAR

**Porter's**

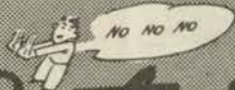
CARONDELET COR. GRAVIER STS.



Above, the Newcomb sewing unit, composed of members of the Newcomb alumnae association, who have altered in the past year over 6000 garments for Tulane's sailors. Below, young tar is being fitted with the utmost care.



You pay no more for **Porter's** DEPENDABILITY!





Above, campus lovelies, who reigned in this year's Alumni Day celebration, grouped around the familiar wicker chair in the student center. They are, first row, left to right, Misses Robin Ahrens, Lilian Hammond (Queen) and Betty McIntosh; second row, left to right, Misses Betty Morphy, Mary Stuart Kellogg, Consuelo Faust and Marion Dear.

**Nunn Bush  
SHOES**



FOOT  
COMFORT



MILES OF WEAR

at  
**Porter's**

## SONGS AND YELLS

### ROLL ON, TULANE

ten Hoor and Goldstein

Roll, Green Wave,  
Roll them down the field.  
Hold, Green Wave,  
That line must never yield.  
When those Greenbacks charge through the line  
They're bound for victory.  
Hail, Green Wave, for you  
We have no fear.  
Hail, Green Wave, for you we give a cheer  
And ev'ry man in ev'ry play  
And then we'll win that game today.  
Hurrah for Old Tulane!

### Hullabaloo

Hullabaloo! Ray! Ray!  
Hullabaloo! Ray! Ray!  
Hooray! Hooray!  
Vars, Vars, T.A.A.  
T.A.A.! T.A.A.!  
Vars, Vars, T.A.A.!  
TULANE!!!

## ALMA MATER

*Sing these words as Tulane's Alma Mater  
is played*

I.

We praise thee for thy past, O Alma Mater!  
Thy hand hath done its work full faithfully!  
The incense of thy spirit hath ascended  
And filled America from sea to sea.

II.

We praise thee for thy present, Alma Mater!  
Today thy Children look to thee for bread!  
Thou leadest them to dreams and actions splendid!  
The hunger of their souls is richly fed!

III.

We praise thee for thy future, Alma Mater!  
The vista of its glory gleameth far!  
We ever shall be part of thee, great Mother!  
There thou wilt be where e'er thy children are!

### CHORUS:

Olive Green and Blue, we love thee!  
Pledge we now our fealty true  
Where the trees are ever greenest,  
Where the skies are purest blue!  
Hear us now, O Tulane, hear us!  
As we proudly sing to thee!  
Take from us our hearts' devotion!  
Thine we are, and thine shall be!

*Official Timing Watch*

TULANE-CLEMSON FOOTBALL GAME

*Longines*

*the World's Most Honored Watch*

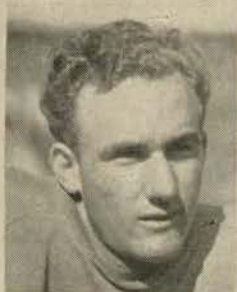
*winner of 10 world's fair grand  
prizes and 28 gold medal awards*



*Product of Longines-Wittnauer Watch Co.*



LEONARD FINLEY  
QUARTERBACK



RAY ARTHUR  
HALFBACK



WILLIAM A. JONES  
HALFBACK



JOE RENFROE  
HALFBACK



HARRY ROBINSON  
FULLBACK



KENNETH MULLER  
TACKLE



GASTON BOURGEOIS  
GUARD



WALMSLEY LOKER  
END

T  
L  
U  
C  
I  
A  
N  
E



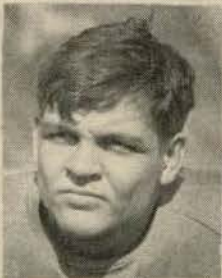
FRED ROSEMAN  
TACKLE



ELLIOT INGLEHEART  
GUARD

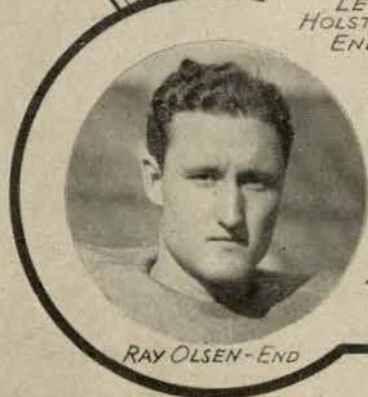


LEON  
HOLSTEAD  
END



TOM  
KANE  
TACKLE

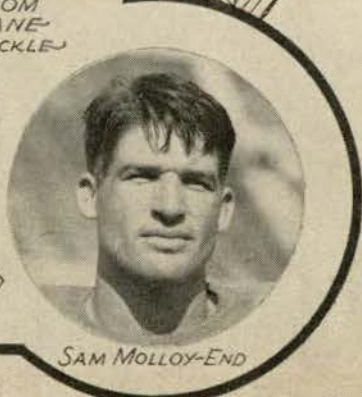
D  
R  
U  
M  
M  
I  
S  
S



RAY OLSEN - END



EDWIN HOFMAN  
CENTER



SAM MOLLOY - END

---

## The Game Isn't Over 'Til The Last Whistle Blows

Many a game is won in the last second of play . . . the war isn't over 'til the last battle is won! But, feeling sure of victory, it is so easy for us here at home to think our responsibility is over . . . our duty done. IT ISN'T! Until the last shot has been fired we must stand fast behind the man behind the gun!

**BUY MORE WAR  
BONDS AND STAMPS**

**Godeaux's**

104 years of fine apparel

---



## Remember Your First Job? . . .

Sure you felt strange—it was all so new and unfamiliar. Everything you'd learn in school seemed to have as little bearing on what went on as last week's weather forecast.

Chances are the motorman who brought you to town this morning, or the conductor who gave you your transfer, or the bus operator who had to do both, was experiencing something of that same feeling. For since the war hundreds of new operators have replaced those who have entered the armed services. Even with the careful training they are given—much of it “on the platform”, as the saying goes,—there's always the first time when they go out on their own.

Your patience and friendliness have made it easier for them. You've remembered your first job, and overlooked the shortcomings of inexperience.

The spirit of tolerance will help keep vital transportation service going for the duration.

NEW ORLEANS *Public Service*



# *The Roosevelt*

*The Roosevelt Hotel Offers  
New Orleans' Most Diversified Program  
of  
Music and Entertainment*

## **IN THE FOUNTAIN LOUNGE**

At LUNCHEON we invite you to listen to the sweet strains of the Gypsy Ensemble. For COCKTAILS and DANCING, alternately nightly from five o'clock until two the next morning is one of Latin America's noted Rhumba bands and the Society Music of one of America's outstanding combinations.

## **IN THE BLUE ROOM**

Each evening, for DINNER and SUPPER DANCING, is presented one of the Nations famous orchestra . . . Featured also in the Blue Room Floor Shows at Dinner and Supper, are celebrated stars from radio, stage and screen.

*New Orleans' most discriminating audiences choose the Roosevelt for their  
war-time relaxation and entertainment*



*The Roosevelt*  
*"The Pride of the South"*



WALLY SCHMITZ  
QUARTERBACK



ANDY CUCCIA  
GUARD



MARVIS MOSELEY  
TACKLE



CLAYTON TIMKEN  
TACKLE



PRESTON CRAIG  
GUARD



LARRY BAROUSSE  
CENTER



BENNIE ELLENDER  
HALFBACKS



BOB MARSHALL  
GUARD



JAMES CORN  
FULLBACKS



ALVIN DEWS  
END



JOHN FRANKO  
GUARD



BILL REYNOLDS  
HALFBACKS



HENRY ANGULO  
TACKLE



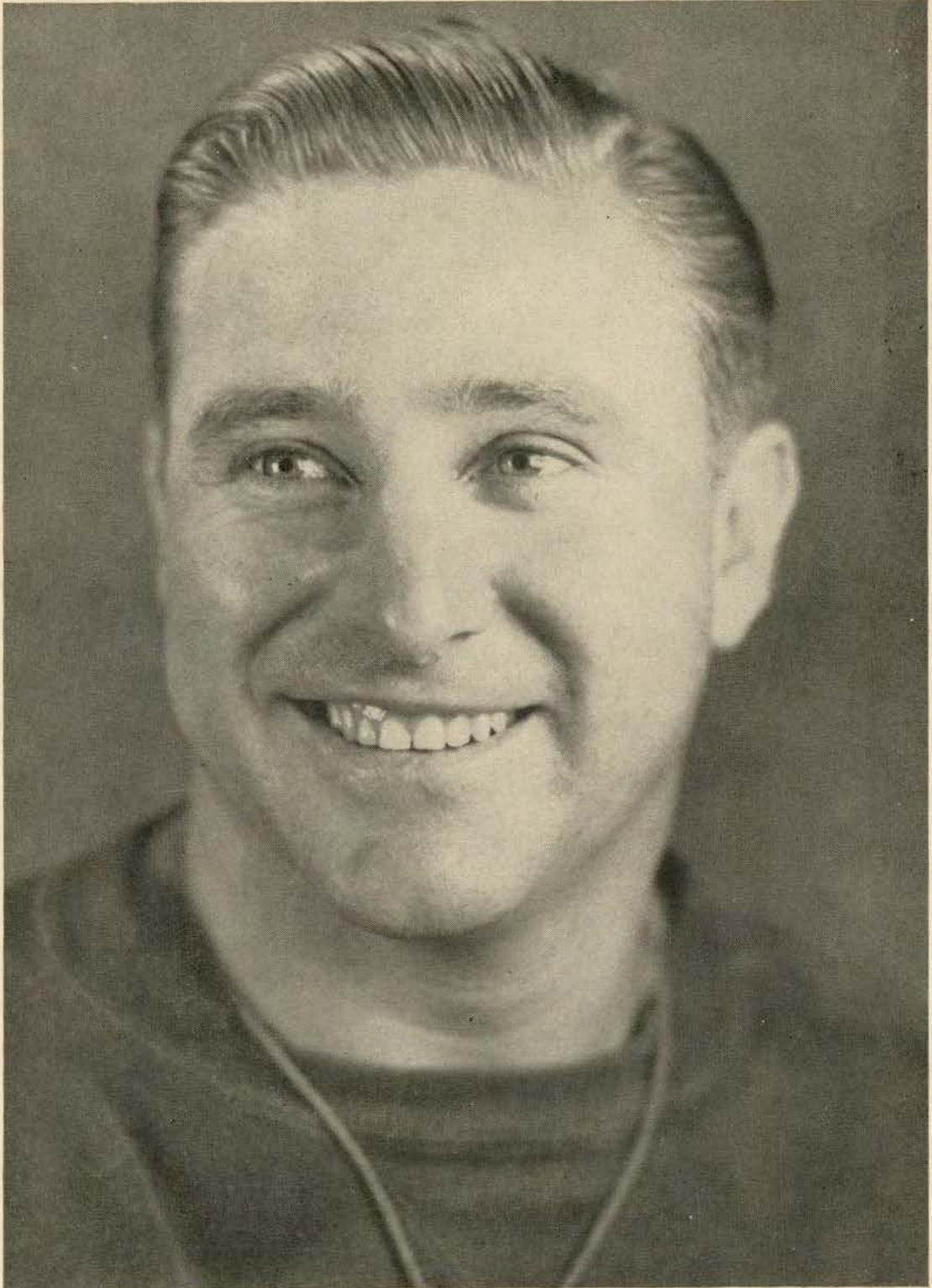
CURTIS JONES  
TACKLE

ALVIN DEWS  
END



BOB LOGAN  
END

# TULANE



**CLAUDE SIMONS, JR.**  
Head Coach of Football, Tulane University

# THE RECORDS



## TULANE

- Oct. 7—Tulane 0, Notre Dame 26  
Oct. 14—Tulane 21, Rice 0  
Oct. 21—Tulane 16, Auburn 13  
Oct. 28—Tulane 27, S. M. U. 7  
Nov. 11—Tulane 7, Georgia Tech 34  
Nov. 18—Clemson at New Orleans  
Dec. 2—L. S. U. at Baton Rouge

## CLEMSON

- Sept. 23—Clemson 34, Presby. 0  
Sept. 30—Clemson 0; Ga. Tech 51  
Oct. 7—Clemson 13, N. C. State 7  
Oct. 19—Clemson 20, South Carolina 13  
Oct. 28—Clemson 7, Tennessee 26  
Nov. 4—Clemson 7, Wake Forest 13  
Nov. 11—Clemson 57, V. M. I. 12  
Nov. 18—Tulane at New Orleans  
Nov. 24—Georgia at Athens

HAUSMANN  
NEW ORLEANS'  
LEADING JEWELERS



Special Department for College  
and  
Fraternal Jewelry

*The Thinking Fellow  
Rides a Yellow*



TOYE BROS.



YELLOW CABS

W S M B

1350 Kilocycles



NEW ORLEANS' OUTLET FOR  
THE N B C NETWORK



IF YOU CAN'T ATTEND THE  
TULANE GAMES, TURN TO  
W S M B FOR THEM.

# TULANE ROSTER

No.	Name and Position	Weight	Height	Hometown	Status
10	John Frank, g.	189	5-9	New Orleans, La.	Civ.
11	Wally Schmitz, qb	178	5-10½	New Orleans, La.	V-12
12	Joe Renfroe, rhb	203	6-1½	Fort Myers, Fla.	Civ.
13	Walmesley Loker, e	175	6-2	New Orleans, La.	Civ.
14	Hugh Bowers, fb	167	5-10	Port La Vaca, Tex.	V-12
15	Harry Robinson, fb	185	5-10	Chattanooga, Tenn.	V-12
16	William A. Jones, lhb	185	6-2	Ruston, La.	V-12
18	Ernest Pechon, rhb	175	5-9	New Orleans, La.	V-12
19	Clayton Timken, t	186	6-0	New Orleans, La.	Civ.
20	Ray Olsen, e	182	6-2	New Orleans, La.	V-12
21	William Eiserloh, e	174	5-11	New Orleans, La.	Civ.
22	Robert Logan, e	194	6-3½	Dennison, Iowa	V-12
23	Larry Barousse, e	182	6-0	New Orleans, La.	Civ.
24	Octave Tournillon, c	188	6-2½	New Orleans, La.	Civ.
25	Marvin McCain, fb	185	6-0	New Orleans, La.	Civ.
26	Curtis Jones, t	182	6-3	Benton, Arkansas	Civ.
27	James Corn, fb	184	5-11½	Cleveland, Tenn.	V-12
28	Kenneth Miller, e	189	6-1	New Orleans, La.	V-12
29	William Reynolds, rhb	166	5-11	Birmingham, Ala.	V-12
30	Gaston Bourgeois, g	195	5-11½	Lutcher, La.	Civ.
31	Elliott Igleheart, g	196	5-10	Shelbyville, Ky.	Civ.
32	Leroy Schneider, t	225	6-0	Baltimore, Md.	Civ.
33	Henry Angulo, t	223	6-0	Tampa, Florida	Civ.
34	Tom Kane, t	195	6-0	Kearney, N. J.	V-12
35	Fred Roseman, t	198	6-2	Plaquemines, La.	V-12
36	William Miller, g	195	5-11	Baton Rouge, La.	V-12
38	Leon Holsted, e	205	6-3	N. Little Rock, Ark.	Civ.
40	Ray Arthur, lhb	145	5-8½	New Orleans, La.	Civ.
41	Alvin Dews, e	143	5-9	Hattiesburg, Miss.	V-12
42	Andrew Cuccia, g	160	5-8½	New Orleans, La.	Civ.
43	James Randall, b	158	5-10	Jackson, Miss.	V-12
44	Edwin Hofman, e	155	5-7	Memphis, Tenn.	V-12
45	Joseph Killeen, qb	165	5-9	New Orleans, La.	Civ.
47	Buster Melton, lhb	180	5-10	Tyler, Texas	V-12
48	Leo Lewis, e	175	6-0	Lisbon, La.	V-12
49	Harold Terrell, g	184	5-11	Port Arthur, Texas	Civ.
51	Preston Craig, g	175	6-0	Portsmouth, Va.	V-12
54	Gordon Heffron, e	180	5-11	New Orleans, La.	V-12
57	Mike Piper, rhb	175	5-10½	New Orleans, La.	Civ.

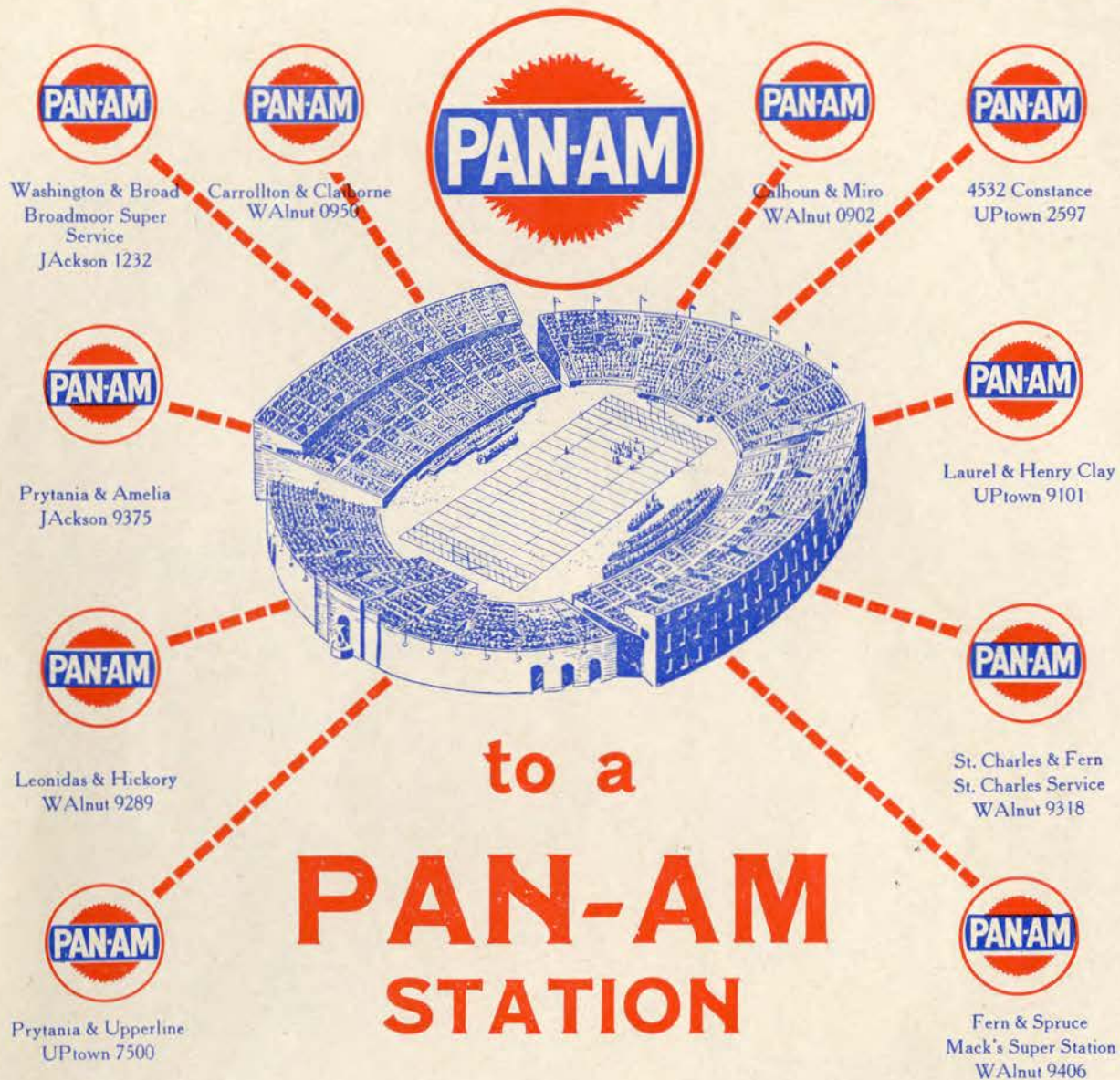


# CLEMSON ROSTER

No.	Name and Position	Weight	Height	Hometown	Class
20	Lanier Harrell, b	160	5-11	Waycross, Georgia	Fr.
25	Tommy Tzouvelekas, g	192	5-9	Greenville, S. C.	Fr.
26	Randy Hale, g	155	5-9	Greenville, S. C.	Fr.
28	John Moorer, b	177	5-10	St. George, S. C.	Fr.
29	George Graham, e	190	6-2	Kenmore, N. Y.	Fr.
31	John Poulos, b	185	6-4	Spartanburg, S. C.	Fr.
32	Boyd Parker, b	163	5-10	Hickory, N. C.	Fr.
34	Ralph Tankersley, b	163	5-10	Toccoa, Georgia	Fr.
35	Gene Walters, b	150	5-10	Columbia, S. C.	Fr.
36	Jack Miller, b	165	5-10	Georgetown, S. C.	Fr.
38	Doug Roper, b	158	5-10	Spartanburg, S. C.	Fr.
39	Bill Smartt, e	175	6-2	McMinnville, Tenn.	Fr.
40	Jack Cofer, e	195	6-1	St. Simon Island, Ga.	Fr.
41	Sam (Louie) Latto, t	215	6-2	Charleston, S. C.	Fr.
42	Harry Wilson, e	195	5-11	Blythewood, S. C.	Fr.
43	Ned Noblitt, e	188	5-11	Marion, N. C.	Fr.
44	Wendell Ard, g	188	5-11	Hemingway, S. C.	Soph.
45	Bailey Falle, e	190	6-	Kershaw, S. C.	Fr.
47	Jerome Senn, t	180	5-9	Columbia, S. C.	Fr.
54	Milton Wiggs, t	185	6-1	Fayetteville, N. C.	Fr.
58	Ralph Wilson, t	197	6-4	Atlanta, Georgia	Fr.
59	Mavis Cagle, t	175	6-1	Andrews, S. C.	Fr.
65	Gene Hallman, b	175	6-	Williston, S. C.	Fr.
66	Bob Patton, t	176	6-1	Gray Court, S. C.	Fr.
67	Judson Davis, g	184	6-1	Norway, S. C.	Fr.
71	Bob McCory, b	175	5-11	Charlotte, N. C.	Fr.
72	Spivey Rowell, b	190	6-1	Andrews, S. C.	Fr.
73	Henry Oates, e	165	6-1	York, S. C.	Fr.
74	Wylie Hamrick, g	185	6-1	Gaffney, S. C.	Fr.
76	Jackson Jones, t	190	6-	Marietta, Georgia	Fr.
77	Eddis Freeman, e	150	5-10	Greenville, S. C.	Soph.
78	Watt Stewart, b	148	5-9	Easley, S. C.	Fr.
79	Bill Rogers, b	160	6-	Lake View, S. C.	Fr.
80	Francis Richardson, g	165	5-10	Greenville, S. C.	Soph.
81	Billy Poe, b	170	6-1	Greenville, S. C.	Jr.
82	Phil Prince, t	190	6-	Erwin, Tennessee	Fr.
83	Sid Tinsley, b	168	5-10	Spartanburg, S. C.	Sr.
84	Alton Cumbie, b	195	6-1	Lyons, Georgia	Jr.
85	Arthur (Slick) Hagan, e	190	6-3	Savannah, Georgia	Fr.
86	Ralph Jenkins, e	187	6-3	Newport, Tennessee	Soph.
87	Tom Salisbury, g	195	6-3	Summerville, S. C.	Soph.
88	Harley (Tiny) Phillips, t	210	6-5	Jesup, Georgia	Jr.

The Official Watch for Timing All Tulane Games is a Longines—"The World's Most Honored Watch"

only a few yards to go . . .



(Other Pan-Am Stations conveniently located  
in all parts of the City.)

C III | 3 | 1 | 4 | 4 | 4  
T 01 | 3 | III | 7 | III | 19  
T 616 | 14 | 61 | 21 | 616 | 35 | 2 | 36  
C 61 | 76 | 15 | 61 | 20 | 20

# HOME LOANS

## TO BUY...

## REFINANCE... REPAIR

### Your Home

**Liberal Terms**

**Low Interest Rates**

**OFFICERS**

- J. D. Byrne, President
- A. E. Thouron, Vice-President
- J. E. McMahon, Vice-President
- Chas. A. Nehlig, Vice-President
- Jacob Schaaf, Secretary-Treasurer
- Chas. F. Buck, Jr., Attorney
- Bernard Titcher, Jr., Notary
- Frank W. Magne, Notary
- Roger P. Sharp, Bldg. Expert

**DIRECTORS**

- Herman T. Bartels
- Chas. F. Buck, Jr.
- J. D. Byrne
- Frank G. Costley
- E. J. Engelbracht
- A. Percy Generes
- Stephen L. Guice
- Frank W. Hart
- Hunter C. Leake
- Frank W. Magne
- J. E. McMahon
- Chas. A. Nehlig
- R. Oliver
- Henry P. Pfeffer
- Jacob Schaaf
- W. W. Sutcliffe, Jr.
- H. L. Swift
- George P. Thompson
- A. E. Thouron
- Bernard Titcher, Jr.



**EQUITABLE MUTUAL**  
**HOMESTEAD ASSOCIATION**  
"Home Financing Since 1885"  
511 Carondelet Street Phone Raymond 3405