



AUBURN vs TULANE

TULANE STADIUM

October 3, 1936

Price 25c

The Tulane University of Louisiana

NEW ORLEANS

The University embraces the following departments:

- The College of Arts and Sciences, including:
Courses in Journalism.
- The H. Sophie Newcomb Memorial College for Women.
- The College of Engineering, including:
The School of Architecture.
- The Graduate School.
- The College of Law.
- The School of Medicine.
- The Graduate School of Medicine.
- The College of Commerce and Business Administration.
- The Courses for Teachers and for the General Public.
- The Department of Middle American Research.
- The School of Social Work.
- The Summer Schools.

For Catalogue Address:

Registrar of the Tulane University of Louisiana
Gibson Hall, New Orleans





Youthful distinction in the finest of French fur felt . . . becoming in its casual carefulness . . . Naivete in swing time.

**lady,
look
around
you**

FROM SMART HEADS

TO SMART TOES

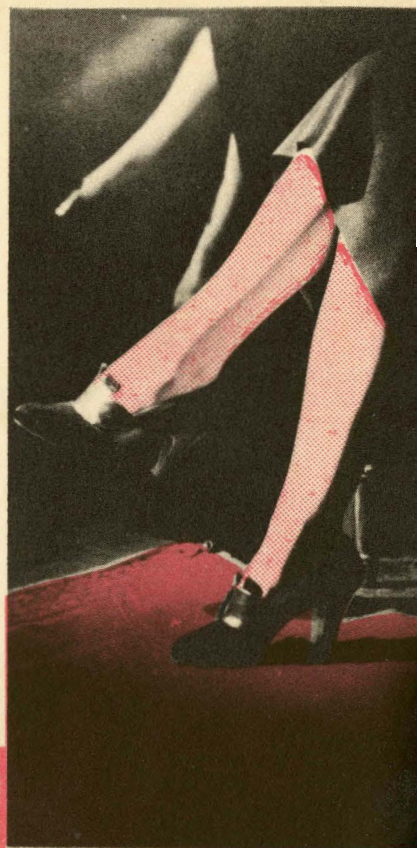
THOSE

Smart

CLOTHES

ARE

Important high heel, belted step-in slipper
fine black suede with matching calf . . . s
button. HAND CRAFTED BY WALK-O



GODCHAUX'S

Clothes . . . good clothes are a vital,
living part of the picture you make . . .
wherever you go . . . whatever you do.
At the club . . . the game . . . at the
more gala goings on . . . your audience
awaits you . . . *to appraise . . . to
admire . . . to applaud.*

★ ★ ★

Your arrival in a GODCHAUX'S
creation inevitably becomes a "grand
entrance" . . . because GODCHAUX'S
knows to perfection fashion's smartest
subtleties . . . and

GODCHAUX'S HAS THE CLOTHES

The Greenie

Vol. 6

OCTOBER 3, 1936

No. 2

HORACE RENEGAR

Editor

Official Souvenir Football Program of Tulane University, Published for Each Home Game

CONTENTS

Editorials	5
Auburn Pictures	6
Auburn Pictures	9
Tulane Pictures	10
Newcomb-Tulane Choir	12
Cartoon	13
"Football Funnyfax"	14
The Line-ups	16-17
Cartoon	19
Feature Article	20
The Rosters	23
Cartoon	25
Tulane Pictures	26
Cartoon	27
Football Article	28

TODAY'S GAME

Tulane's Green Wave and the Plainsmen of Alabama Polytechnic Institute (Auburn to all of us) today meet in a renewal of a football rivalry that dates back to 1902.

These games have always been clean, hard fought and refreshing. Good sportsmanship has been the invariable rule of Auburn-Tulane games, regardless of who has been the winner.

This game today is important to both teams. Neither has been defeated. Yet, the sportsmanship is more important than the score.

* * *

We want to express thanks to Mr. C. H. Turk, President of the Auburn Alumni Dinner Club of New Orleans,

and his energetic club members for their hearty co-operation in every movement for making a success of this game.

They have worked tirelessly to this end.

* * *

Here's a few selections on today's football games over the Conference:

ALABAMA over Clemson.

FLORIDA over Citadel.

GEORGIA over Furman (doubtful).

KENTUCKY over V. M. I.

L. S. U. over Texas (close).

MISS. STATE over Howard.

NORTH CAROLINA over Tennessee.

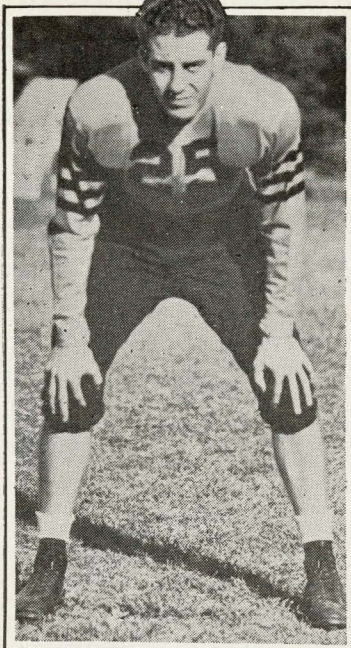
VANDERBILT over Chicago.

* * *

Here's one for the book:

Tulane's Green Wave has eight candidates for the 1936 team who are brothers of former stars and each of the boys is trying for the same position played by the older brother.

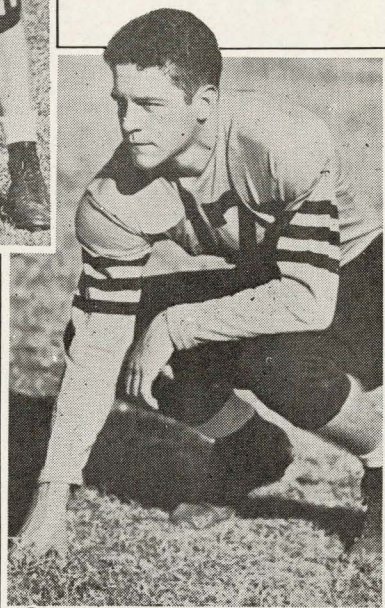
There's Buddy Banker, halfback, brother of all-American Bill Banker of 1929; Cameron Gamble, end, brother of Harry Gamble, great 1925 end; Billy, Tom and Hugh Payne, halfbacks, brothers of Francis Payne, Rose Bowl team back; Ned Richardson, quarterback, brother of Pat Richardson, 1932 quarterback; Miller Upton, tackle, brother of Tick Upton, tackle on the Rose Bowl team; and Noel Loftin, fullback, brother of Captain Joe Loftin, fullback on Tulane's 1934 Sugar Bowl team.



JAMES FENTON

JUNIOR - BACK

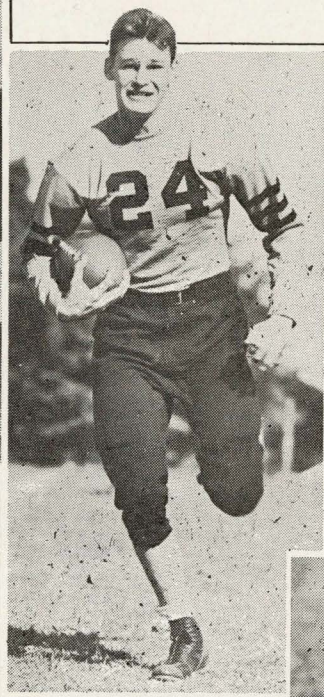
ALABAMA
POLY
AUBURN



JOEL EAVES

SENIOR - END

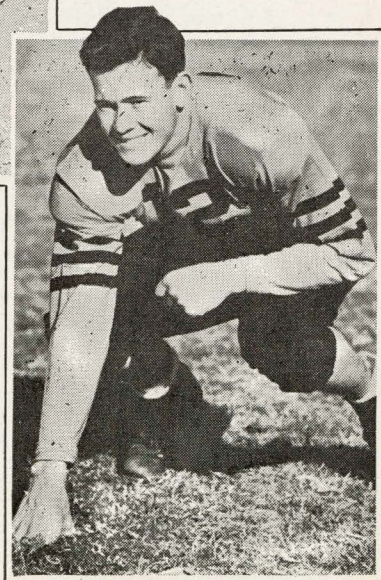
ALABAMA
POLY
AUBURN



**BILL
HITCHCOCK**

JUNIOR - BACK

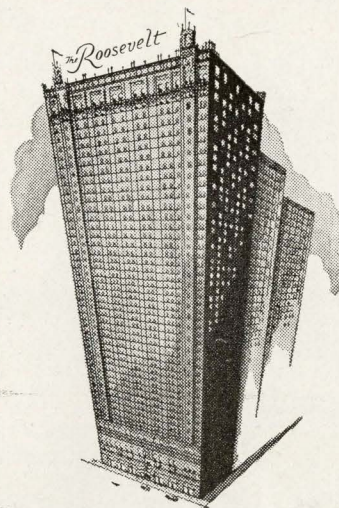
ALABAMA
POLY
AUBURN



HAMP WILLIAMS

SENIOR - END
ALABAMA POLY
AUBURN

SEYMOUR WEISS
President and Managing
Director



Famous FOR NEW ORLEANS Foods

Enjoy the world famous Creole food that is to be had only in old New Orleans.

Here at the Roosevelt you will find Creole food prepared from recipes handed down by famed chefs from generation to generation; and service truly distinctive of New Orleans and the South.

COFFEE SHOP

for Breakfast—Luncheon—Dinner

FOUNTAIN ROOM

for Luncheon and Dinner-Dancing

BLUE ROOM

for Supper-Dancing

Air Conditioned Rooms at Low Cost

Jas. "Pat" O'Shaughnessy
Mgr.

750 ROOMS
WITH BATHS

3⁰⁰
UP



The Roosevelt

"Pride of the South"

ALSO OPERATING

HOTEL NEW ORLEANS

Just two blocks from the Shopping, Theatre, Business and Financial Districts.

275 Outside Rooms with Bath—Rates from \$2.00

Air conditioned guest rooms—Lobby—Dining room

GEORGE DAWSON, Manager

One of
America's Newest and Smartest Creations
in
Dinner and Supper Rooms



COCKTAIL DANSANT
Saturday and Sunday 2:30 to 5:30 O'clock

FEATURING

GUS ARNHEIM
AND HIS SENSATIONAL BAND

ENRICA & NOVELLO
Superb Ballroom Dancers

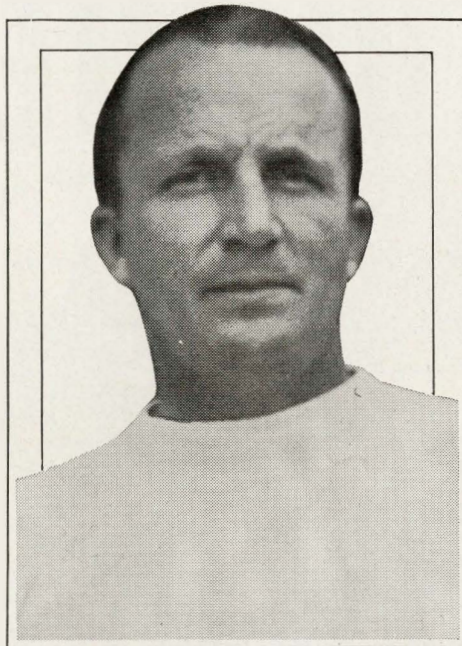
LILA CARMEN
Earl Carroll Singing Star

CHAS. HOFFMAN
Dr. of Deception and His Magic Bar

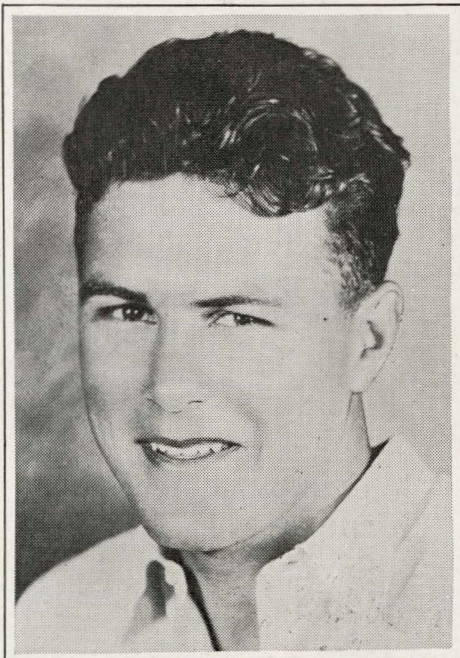
DINNER DANCING
6 to 9 — SHOW 8 O'clock.

SUPPER DANCING
10 to 2 — SHOW 12:15 O'clock.

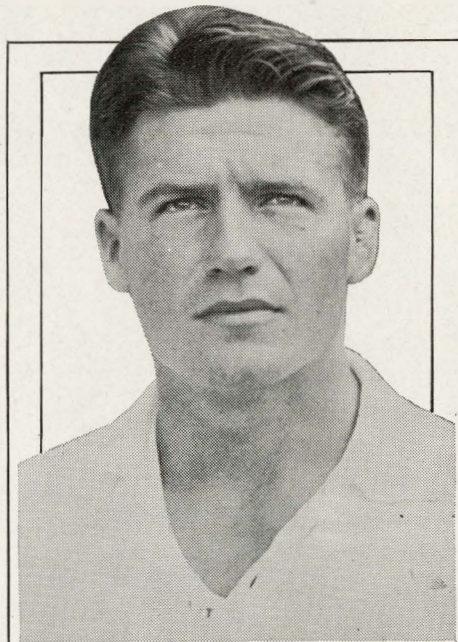
PHONE MAIN 3920 FOR RESERVATIONS



COACH JACK MEAGHER
ALABAMA POLY - AUBURN



CAPTAIN WALTER GILBERT
SENIOR-CENTER - ALABAMA POLY-AUBURN



ALTERNATE-CAPT. FRANK GANTT
SENIOR-GUARD - ALABAMA POLY-AUBURN

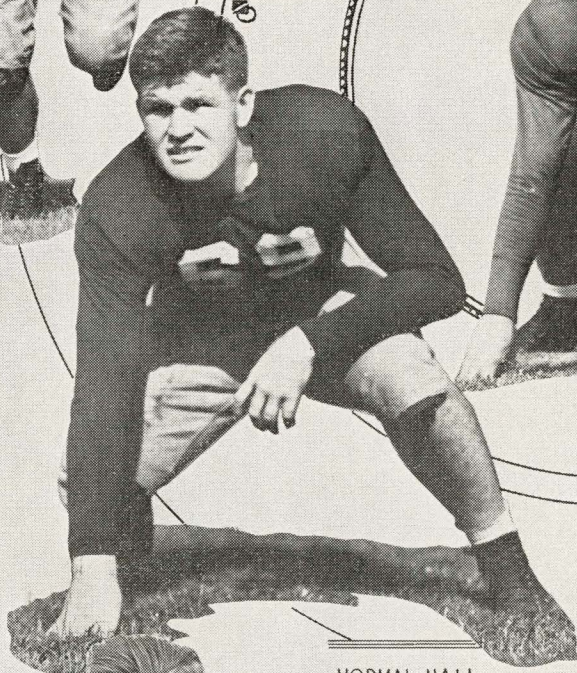
TULANE



NOEL LOFTIN
FULLBACK

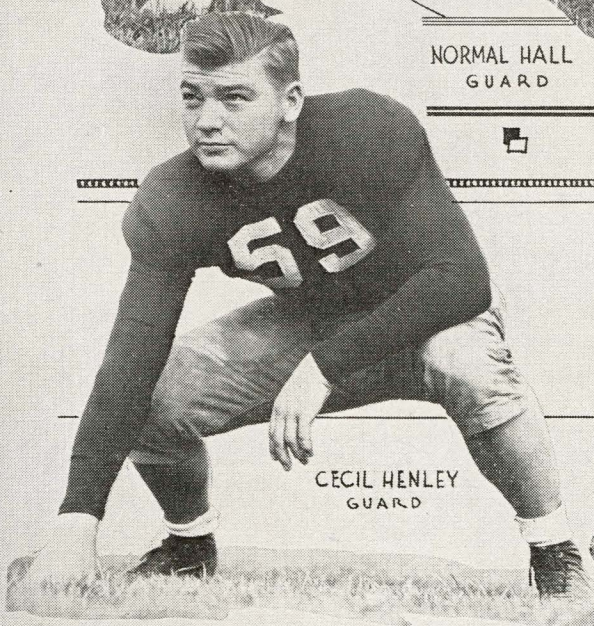


BUCKY BRYAN
HALFBACK

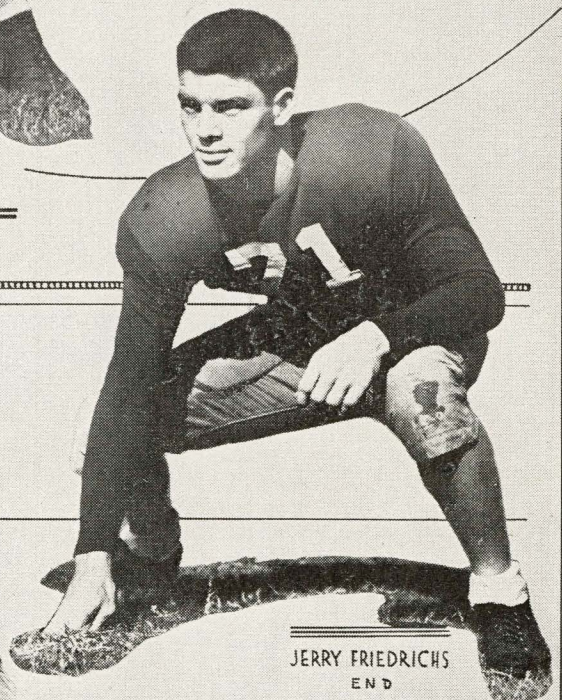


RALF BOND
QUARTERBACK

NORMAL HALL
GUARD



CECIL HENLEY
GUARD



JERRY FRIEDRICHS
END

*Compliments to the
Tulane Green Wave*

FROM

*Kolb's
Restaurant*

AND

The Tyrolean Singers

Fine Foods—Unexcelled Service
and Novel Entertainment Nightly.

125 St. Charles St.
(Near Canal)

The Smart Set

meets at

*Tulane
for Football*

at

*MAYER ISRAEL'S
for Clothes*

The Thinking Fellow Calls a Yellow

TO AND FROM GAMES

35c

ANYWHERE WITHIN CITY
(Outlying Points Excepted)

FIVE can ride for the price of ONE—
Club together!

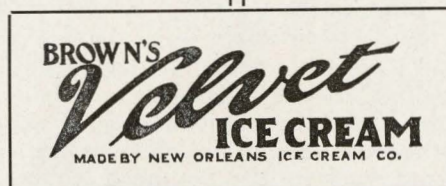
Phone
RAYmond 3311

TOYE BROS.
YELLOW CABS

THE PROOF OF

GOOD ICE CREAM

IS IN THE EATING



SOLD EVERYWHERE

The Newcomb-Tulane A Cappella Choir



Let us present the Newcomb-Tulane A Capella Choir, a musical organization that has brought commendation to the University.

The A Capella Choir is made up of honor members of the Newcomb and Tulane Glee Clubs, which numbers 235 singers. The choir has as its aim the learning and appreciation of the best choral works.

The following statements are indicative of the choir's progress:

Musical America (Apr. 10 issue): "The A Capella Choir of Tulane University and Newcomb College was given a signal honor when it received the invitation to be the sole representative from the Southern section at the recent National Conference of Music Educators in New York.

"This group, conducted by Maynard Klein, active member of the Newcomb College music faculty, consists of thirty voices chosen from the 225 members of the Tulane-Newcomb Glee Club."

Columbia Broadcasting System: "Your broadcast was beautiful and I want you to

know that the Columbia network appreciates very much the program which you gave us. May I say that the fresh voices, the fine musicianship and the excellent diction of your group was unsurpassed by any of the presentations which we had during last week."

Music Educators National Conference: "I am sure that all those hearing your group will agree with me that their work was outstanding with a beauty of ensemble that is seldom heard. No doubt it was inspiring to the members of your choir to appear in the Metropolitan Opera House and sing for the Conference, but it was no less inspirational for the Conference to hear them sing. We are indeed grateful to all those who were responsible in making it possible for the choir to come to New York City."

Southern Conference for Music Education: "Both organizations received high praise for their programs, and you may be assured that they reflected great credit on Tulane University and H. Sophie Newcomb College."

Football Funnyfax

THE FIRST
FORWARD PASS
REQUIRED BOTH
PLAYER AND
BALL BE TOSSED
OVER THE LINE
OF SCRIMMAGE



A POINT
A SECOND FOR 13
SECONDS WAS A
RECORD ES-
TABLISHED BY
FRANK CHRISTENSEN
OF UTAH, - MADE
TOUCHDOWN, KICKED
FOR EXTRA POINT
AND CAUGHT BALL
ON NEXT KICKOFF
AND RAN EIGHTY-
FIVE YARDS

JIM THORPE
NEVER TOOK
TIME OUT

LUPE ZARATE, MCALLEN
TEXAS H. S. WAS
ARMLESS BUT HE
TACKLED 'EM WITH
HIS LEGS.

FLOYD
GATES

DUNLAP

SPORTING GOODS CO., INC.

ATHLETIC SUPPLIES
GOLF TENNIS
SPORT CLOTHING
GUNS AMMUNITION
FISHING TACKLE

DISTRIBUTORS

A. J. REACH, WRIGHT & DITSON CO.

138 Carondelet Street.

MAin 6660

Baumann's

Authorized Dealer for
Tulane Medical Supplies

1402 Tulane Avenue

Did YOU send HER a CORSAGE
to WEAR to the GAME?

We Supply Flowers for Campus Occasions

J. C. QUINETTE The Floral Shop

1345 Lowerline St. at Willow

Phone WALnut 0451

*Just Five Blocks up Willow Street from
the Stadium*

Follow the Team!

The game is always as close
as your easy chair; if you
own an

R. C. A. Radio

40 models to choose from...
priced from \$19.95 to
\$618.00.

No down payment.

Convenient monthly terms.

Waisen Blanche
GREATEST STORE SOUTH

A Tribute to Football

by Grantland Rice

TULANE SQUAD

LOWELL DAWSON, Coach

1 Johnson, B., h b	58 Ott, q b
3 Brechtel, e	59 Henley, g
5 Overdyke, h b	60 Tull, c
8 Eddy, t	61 Bryan, h b
9 Bertucci, h b	62 Graham, f b
24 Brunner, h b	63 Goodell, e
32 Jones, g	64 Hickey, g
35 Dalovisio, e	65 Goll, g
38 Banker, h b	66 Loftin, f b
39 Richardson, q b	67 Gorman, c
40 Payne, T., h b	68 Buckner, g
41 Andrews, f b	69 Hall, g
42 Watermeier, g	70 Avants, c
43 Johnson, D., h b	71 Friedrichs, e
44 Schneidau, e	72 Upton, t
45 Moreau, q b	73 Shattles, t
46 Smith, t	74 Moss, t
47 Flowers, h b	75 Dailey, e
48 LaRocca, e	76 Pace, t
49 Mattis, h b	77 McGrath, g
50 Odom, h b	78 Nussbaum, t
51 Preisser, e	79 Miller, t
52 Dirmann, e	80 Benedict, q b
53 Evans, g	81 Dexheimer, h b
54 Gamble, e	83 Payne, H., h b
55 Smither, g	86 Jaubert, t
56 Bond, q b	96 Kirchem, t
	57 Payne, W., h b

AUBURN SQUAD

JACK MEAGHER, Coach

10 Howell, e	41 Karam, h b
11 Sitz, f b	42 Tipper, h b
12 Williams, e	43 Holman, t
14 Smith, q b	44 Burns, t
15 Whitten, g	45 Russell, t
16 Roton, t	46 Kilgore, f b
17 Eaves, e	47 Nichols, t
18 Wolff, t	48 Crowder, g
19 Weaver, f b	49 Riddle, h b
20 Rodgers, t	50 Blake, h b
21 Loffin, g	51 Heath, f b
22 Gerakitis, f b	52 O'Gwynne, h b
24 Hitchcock, h b	54 Mims, h b
25 Fenton, h b	55 Bagby, c
26 Ellis, h b	56 Burford, e
27 Gillam, g	58 Thorpe, t
28 Sivell, g	59 Cook, q b
29 McCroskey, g	60 McElroy, f b
30 McKissick, e	61 Kelly, h b
31 Morgan, c	62 Cantrell, h b
32 Gantt, g	63 Smith, g
33 Gilbert, c	64 Hart, h b
34 Hamm, e	65 Ferreira, q b
35 Scarborough, h b	66 Walker, h b
36 Stewart, q b	68 Fowler, q b
37 Coleman, h b	69 Foster, q b
38 Antley, c	74 Franke, q b
40 Edwards, h b	75 Lowery, h b

Blocking backs and interference—
Fifty thousand wild adherents—
Tackle thrusts and headlong clashes,
Two yard bucks and dizzy dashes,
Spiral punts and forward passes,
Run the end and hit the line,
Driving on by leg and spine,
Head and shoulder, heart and soul,
Till you fall across the goal.

AUBURN vs. TULANE

THE STARTING LINEUPS

(Subject to Change by Coaches)

AUBURN			TULANE		
No.	Name	Position	Name	No.	
17	Eaves.....	L. E.....	LaRocca	48	
16	Roton.....	L. T.....	Moss	74	
29	McCroskey.....	L. G.....	Buckner	68	
33	Gilbert.....	C.....	Tull	60	
32	Cantt.....	R. G.....	Hall	69	
20	Rodgers.....	R. T.....	Miller	79	
12	Williams.....	R. E.....	Dirmann	52	
35	Scarborough.....	Q. B.....	Bond	56	
24	Hitchcock.....	L. H.....	Bryan	61	
25	Fenton.....	R. H.....	Mattis	49	
46	Kilgore.....	F. B.....	Andrews	41	

OFFICIALS

Referee—Buck Cheeves (Georgia)

Umpire—Walter Powell (Wisconsin)

Head Linesman—G. M. Phillips (Georgia Tech)

Field Judge—Roy Striegel (Tennessee)

© 1936, LIGGETT & MYERS TOBACCO CO.

And another all-star eleven—

T-H-E-Y-S-A-T-I-S-F-Y.

Chesterfield

New Orleans Corrugated Box Co.
INCORPORATED

*Gaylord
Boxes*

Telephone RAYmond 4258
New Orleans, La.

AMERICA'S MOST FAMOUS
FRENCH RESTAURANT

LA LOUISIANE
Established 1881

La Louisiane is the most enjoyable place to dine in New Orleans. For food, of course, and first, but also for the delightful air conditioned environment and pleasing service.

It matters not what your whim may be for food—you can pamper it at La Louisiane.

World famous French Chefs await your order or if it's an American dish you prefer, just as famous American Chefs will prepare the dish you wish to have served.

725 IBERVILLE STREET
Telephone MAin 4664

1840—Antoine's Restaurant—1936

Now in Its 97th Year

ROY L. ALCIATORE, Prop.
717 St. Louis Street

Let me tell you, brother, when you have a famous eating place in New Orleans, it must be some place because they do know how to eat, and what to eat, and hospitality, and when you speak of Antoine's, you have reached the "Z" and "&" in alphabetical praise. Antoine's was founded in 1840 and has never had to resort to a jazz band. Imagine a restaurant existing and making a worldwide reputation on just food. My sombrero is tipped to Jules at Antoine's.

—WILL ROGERS

To Antoine's—Specially Roy, from a Gourmand to a Gourmet.
—Dolores Costello Barrymore.

May I say as everyone has said—"The finest foods in the World."
—Harry Richman.

Antoine cooks, like other cooks think they are cooking.
—Mayor Fiorello LaGuardia.

To Jules—A prince of good fellows, and the king of good cooking.
—Robert L. Ripley.

What Jules can do to oysters and fish and various other things that make up a meal is what the cooks must do to them in heaven.
—Irvin S. Cobb.

I have found a truly great restaurant in North America.
—Prince Louis Ferdinand Hohenzollern.

RAMELLI,
Inc.

RAYmond 6188-6189

WASHING POWDERS,
LAUNDRY AND
DRY CLEANERS SUPPLIES

CHEMICALS—ALKALIS

COAL and COKE



"Of Course He's Eligible. He's in Our Biology Department!"

THE OLDTIMERS

WERE PRETTY GOOD, TOO!

The immortal Charley Brickley of Harvard still holds most of the records for drop-kicking field goals. During the 1913 season, he kicked 13, five of which were against Yale. During his career, Brickley booted 26 field goals.

Only two other varsity men have kicked five in one game. Walter Eckersall of Chicago turned the trick twice, once against Illinois in 1905 and a year later against Nebraska. B. W. Trafford of Harvard, Brickley's predecessor, made five against Cornell in 1890.

The longest field goal from placement was a 65-yard boot which Jim Haxall of Princeton kicked against Yale in 1862. Mark Payne of Dakota Wesleyan holds the drop-kick mark, a 63-yard kick against Northwest Normal in 1915.

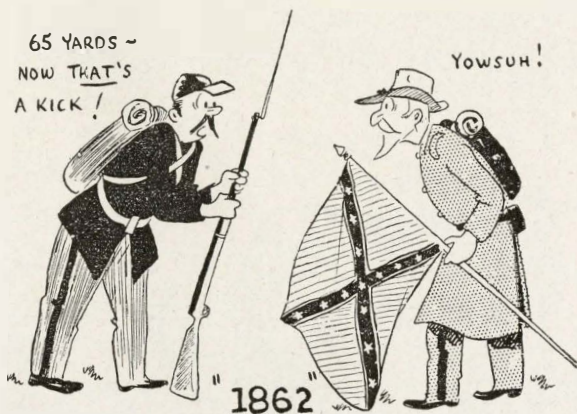
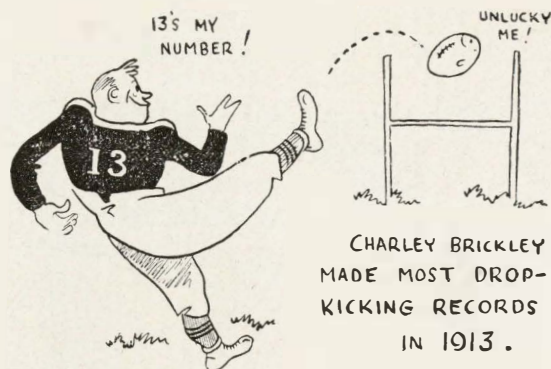
Champion extra point kicker is Arlo Davis of Oklahoma who made 23 in one game against Kingfisher in 1917.

Jim Thorpe of the Carlisle Indians still holds the record for scoring the most points in a season. Jim rolled up 198 in 1912.

Jimmy Leach, something of a modern, of Virginia Military Institute, holds the record for touchdowns in a single season. In 1920, he crossed the goal line 26 times.

The longest run from scrimmage on record was that of Wyllys Terry of Yale who romped 115 yards for a touchdown against Wesleyan in 1884. The run never will be equalled because the field in those days was 110 yards long. Terry started five yards behind his own goal line.

Ed Burke of Mississippi, another comparative modern, holds the record for run-back of a kickoff. Against Alabama in 1931, he returned a kickoff 109 yards to a touchdown.



NOW AT THE

ORPHEUM

A

Mort H. Singer
Theatre



SWEETHEART, DEEDS
WAS EASY! . . . WHAT
MAKES YOU SO SNOOTY?

JEAN ARTHUR
JOEL McCREA

Adventure in Manhattan

REGINALD OWEN • THOMAS MITCHELL • HERMAN BING

Adapted from the story by May Edginton • Directed by Edward Ludwig

A C O L U M B I A P I C T U R E

● EXTRA! FOOTBALL FLASHES! ●

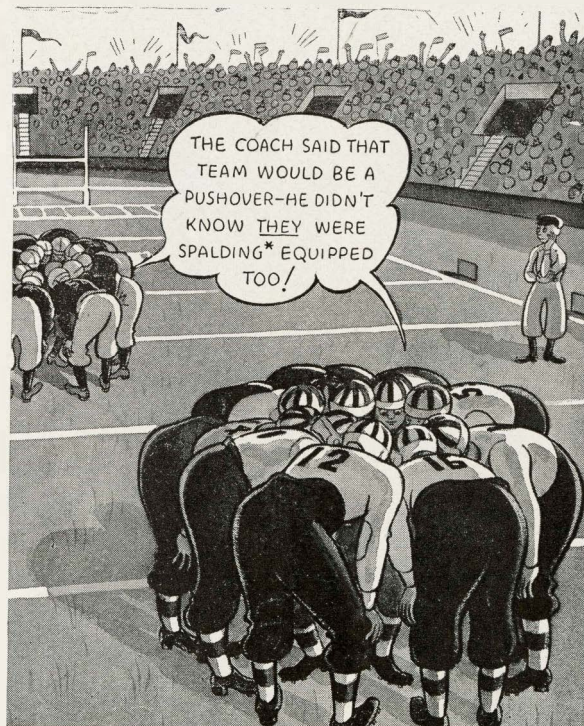
After
The
Game
She'll
Enjoy
This
Show!

Meet at

TONY'S

After
the Game

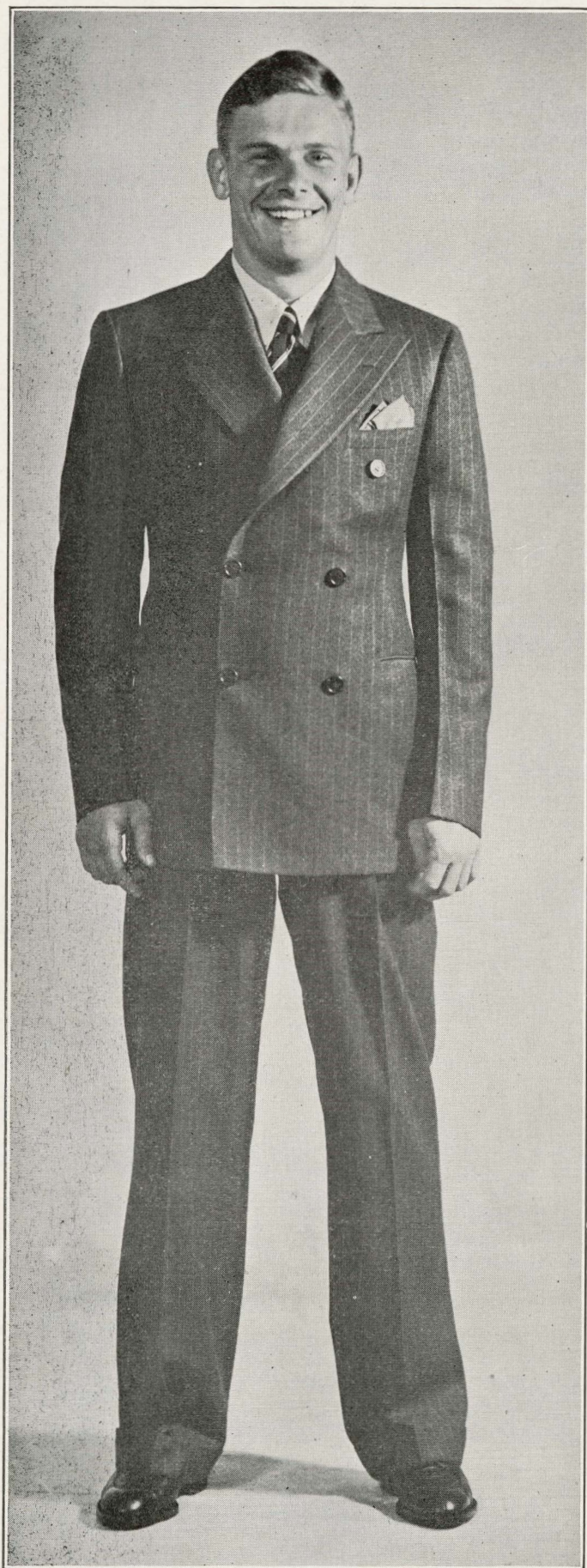
1619 Louisiana Avenue



*A. G. SPALDING & BROS.

134 Carondelet St.

Mfgs. Quality Athletic Goods Since 1876



Posed for D. H. Holmes Co., Ltd., by Doug Johnson



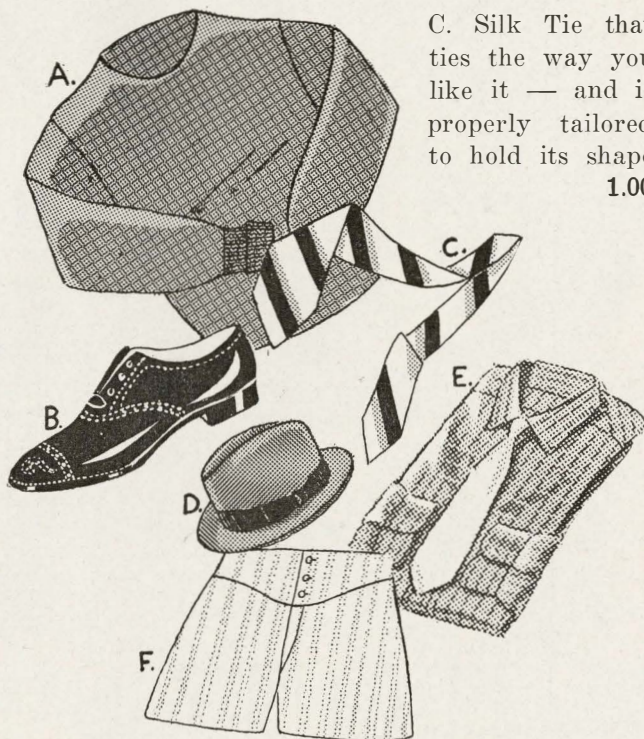
HOLMES

is the place
for these

A. Slipover Sweater for
Campus wear. In light
blue, navy, tan or gray
3.95

B. Good looking Shoes that
can stand wear and tear.
Black kid . . . 6.00

C. Silk Tie that
ties the way you
like it — and is
properly tailored
to hold its shape
1.00



D. Felt Hat, Cut for the College man. This one
is light grey with a black band 5.00

E. Fruit-of-the Loom Shirt in the modern
fashion—Striped for sport and Campus wear
1.65

F. Comfortable Shorts by Manhattan. Neat
Patterns that don't come out in the wash 39c

HOLMES

MEN'S STORE

TULANE ROSTER

No.	PLAYER—	HOME	POS.	WT.	No.	PLAYER—	HOME	POS.	WT.
1—	Johnson, Beverly	New Orleans	HB	160	58—	Ott, Wiltz	Osyka, Miss.	QB	180
3—	Brechtel, Pete	New Orleans	E	165	59—	Henley, Cecil	Rosedale, Miss.	G	180
5—	Overdyke, Don	Shreveport, La.	HB	171	60—	Tull, Porter	New Orleans	C	177
8—	Eddy, Charles	New Orleans	T	187	61—	Bryan, Howard	Shreveport, La.	HB	163
9—	Bertucci, John L.	New Orleans	HB	160	62—	Graham, Louis	New Orleans	FB	181
24—	Brunner, Warren	New Orleans	HB	172	63—	Goodell, Elson	Independence, Kans.	E	175
32—	Jones, Louis	New Orleans	G	202	64—	Hickey, Wm. P.	New Orleans	G	180
35—	Dalovisio, Pete	Lake Charles	E	176	65—	Goll, Carl	New Orleans	G	197
38—	Banker, Buddy	Lake Charles	HB	170	66—	Loftin, Noel	New Orleans	FB	201
39—	Richardson, Ned	Ponchatoula, La.	QB	164	67—	Gorman, Albert	New Orleans	C	185
40—	Payne, Thomas	Winterville, Miss.	HB	170	68—	Buckner, Norman	Marshall, Texas	G	186
41—	Andrews, John	New Orleans	FB	195	69—	Hall, Normal	Sweetwater, Texas	G	192
42—	Watermeier, Dan	New Orleans	G	185	70—	Avants, Mack	Baton Rouge, La.	C	203
43—	Johnson, Douglas	New Orleans	HB	172	71—	Friedrichs, Jerry	New Orleans	E	188
44—	Schneidau, Hughes	New Orleans	E	176	72—	Upton, Miller	New Orleans	T	200
45—	Moreau, James	New Orleans	QB	162	73—	Shattles, Herman	New Orleans	T	196
46—	Smith, Bernie	Clarksdale, Miss.	T	211	74—	Moss, William (Capt.)	New Orleans	T	200
47—	Flowers, Wm.	Big Springs, Tex.	HB	176	75—	Dailey, Carl	Balboa, Panama	E	180
48—	LaRocca, Vic.	New Orleans	E	184	76—	Pace, David	Monroe, La.	T	188
49—	Mattis, William	Oak Grove, La.	HB	183	77—	McGrath, James	Montgomery, Ala.	G	190
50—	Odom, Troy	Oakdale, La.	HB	170	78—	Nussbaum, Ray	New Orleans	T	204
51—	Preisser, Frederick	New Orleans	E	175	79—	Miller, Ray	New Orleans	T	204
52—	Dirmann, John	New Orleans	E	176	80—	Benedict, Calvin	New Orleans	QB	160
53—	Evans, Bernard	Memphis, Tenn.	G	191	81—	Dexheimer, Robt.	Abbeville, La.	HB	170
54—	Gamble, Cameron	New Orleans	E	174	83—	Payne, Hugh	Winterville, Miss.	HB	165
55—	Smither, Charles	New Orleans	G	208	86—	Jaubert, Warren	New Orleans	T	195
56—	Bond, Ralph	New Orleans	QB	184	96—	Kirchem, Wm.	New Orleans	T	203
57—	Payne, Wm.	Winterville, Miss.	HB	171					

AUBURN ROSTER

No.	PLAYER—	HOME—	POS.	WT.
10—	Howell, Milton	Bessemer, Ala.	E	176
11—	Sitz, Pelham	Attalla, Ala.	FB	167
12—	Williams, Hamp	Andalusia, Ala.	E	170
14—	Smith, Osmo	Chattanooga, Tenn.	QB	160
15—	Whitten, Norman	LaGrange, Ga.	G	179
16—	Roton, Herbert	Montgomery, Ala.	T	198
17—	Eaves, Joel	Atlanta, Ga.	E	184
18—	Wolff, George	St. Louis, Mo.	T	205
19—	Weaver, Kermit	Cullman, Ala.	FB	177
20—	Rodgers, Hugh	Langdale, Ala.	T	208
21—	Loftin, Wesley	Athens, Ga.	C	198
22—	Gerakitis, George	Atlanta, Ga.	FB	180
24—	Hitchcock, Billy	Union Springs, Ala.	HB	165
25—	Fenton, Jimmie	Lakeland, Fla.	HB	166
26—	Ellis, Billy	Atlanta, Ga.	HB	157
27—	Gillam, Fred	Chattanooga, Tenn.	G	182
28—	Sivell, Ralph	Chipley, Ga.	G	185
29—	McCroskey, Sam	Birmingham, Ala.	G	190
30—	McKissick, Rex	Equality, Ala.	E	180
31—	Morgan, Malvern	Lanett, Ala.	C	186
32—	Gantt, Frank	Lavonia, Ga.	G	180
33—	Gilbert, Walter	Fairfield, Ala.	C	200
34—	Hamm, Frank	Florence, Ala.	E	184
35—	Scarborough, Sid	Atlanta, Ga.	QB	160
36—	Stewart, Joe	Montgomery, Ala.	QB	185
37—	Coleman, Bob	Tuscumbia, Ala.	HB	157
38—	Antley, Lester	Elmore, S. Car.	C	192
40—	Edwards, Tommie	Montgomery, Ala.	HB	155
41—	Karam, Rabbit	Lake Village, Ark.	HB	170
42—	Tipper, John Paul	Carbon Hill, Ala.	HB	172
43—	Holman, Freddie	Dothan, Ala.	T	196
44—	Burns, Vernon	Frisco City, Ala.	T	193
45—	Russell, Bo	Birmingham, Ala.	T	198
46—	Kilgore, Wilton	Wadley, Ala.	FB	173
47—	Nichols, Bill	Sylacauga, Ala.	T	197
48—	Crowder, Malcolm	Ensley, Ala.	G	185
49—	Riddle, Francis	Talladega, Ala.	HB	157
50—	Blake, Bobbie	Auburn, Ala.	HB	167
51—	Heath, Dutch	Birmingham, Ala.	FB	166
52—	O'Gwynne, Ralph	Selma, Ala.	HB	158
54—	Mims, Bill	Haynesville, Ala.	HB	170
55—	Bagby, Milton	Birmingham, Ala.	C	170
56—	Burford, Oscar	Marion, Ala.	E	174
58—	Thorpe, Garth	Aiken, S. Car.	T	200
59—	Cook, Morris	Phenix City, Ala.	QB	162
60—	McElroy, Floyd	West Blocton, Ala.	FB	177
61—	Kelly, Speck	Tarrant City, Ala.	HB	160
62—	Cantrell, Geter	Lanett, Ala.	HB	160
63—	Smith, Everette	Montgomery, Ala.	G	177
64—	Hart, Lamar	Dothan, Ala.	HB	155
65—	Ferreira, Ted	Fernandina, Fla.	QB	163
66—	Walker, Marion	Dothan, Ala.	HB	160
68—	Fowler, Julian	Pell City, Ala.	QB	160
69—	Foster, Lloyd	Birmingham, Ala.	QB	166
74—	Franke, Gus	Auburn, Ala.	QB	142
75—	Lowery, John	Bessemer, Ala.	HB	172

Tulane Football Schedule 1936

—September 26—
Tulane 7; Ole Miss 6

—October 3—
Auburn at New Orleans

—October 10—
Centenary at New Orleans

—October 17—
Colgate at New York

—October 24—
North Carolina at New Orleans

—October 31—
Louisiana Tech at New Orleans

—November 7—
Alabama at Birmingham

—November 14—
Georgia at New Orleans

—November 21—
Sewanee at New Orleans

—November 28—
L. S. U. at Baton Rouge



SHE: **"FRESH!!"**

HE: **"YOU SAID IT!"**

Copr., 1936, P. Lorillard Co., Inc.

PRIZE CROP TOBACCOS MAKE THEM DOUBLE-MELLOW
2 JACKETS OF "CELLOPHANE" KEEP THEM FACTORY-FRESH

THE BEST SHOP IN TOWN



Stevens

Hart Schaffner & Marx Clothes
710 CANAL STREET

*Authentic
College Styles*

*by
Robert Surrey*

Exclusive Hart Schaffner &
Marx Stylist

—TIRES
—BATTERIES

—RADIOS
—BRAKE LINING

Firestone
Auto Supply and Service Store

Freret and Soniat Streets.

Uptown 5877

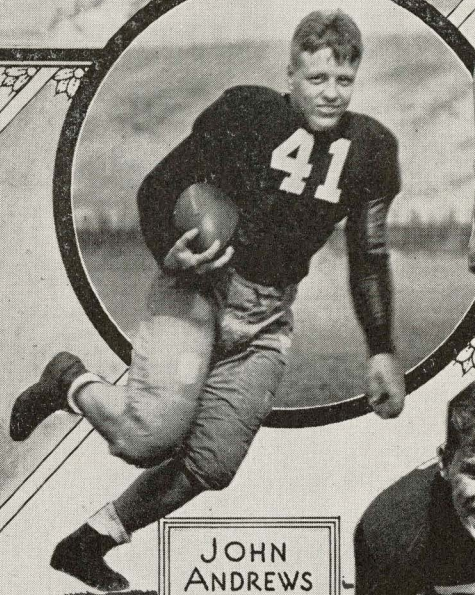


"One of Us Must Be Wrong!"

TULANE



DUB MATTIS
Halfback



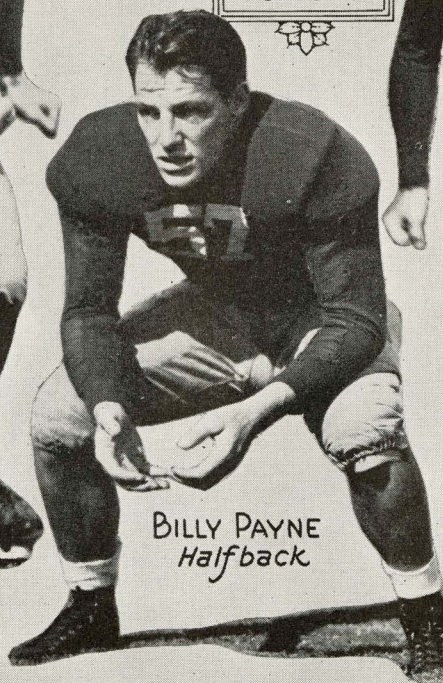
JOHN
ANDREWS
Fullback



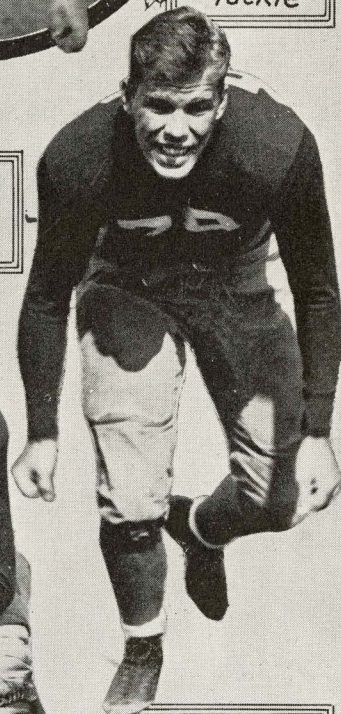
CAPTAIN
BILL MOSS
Tackle



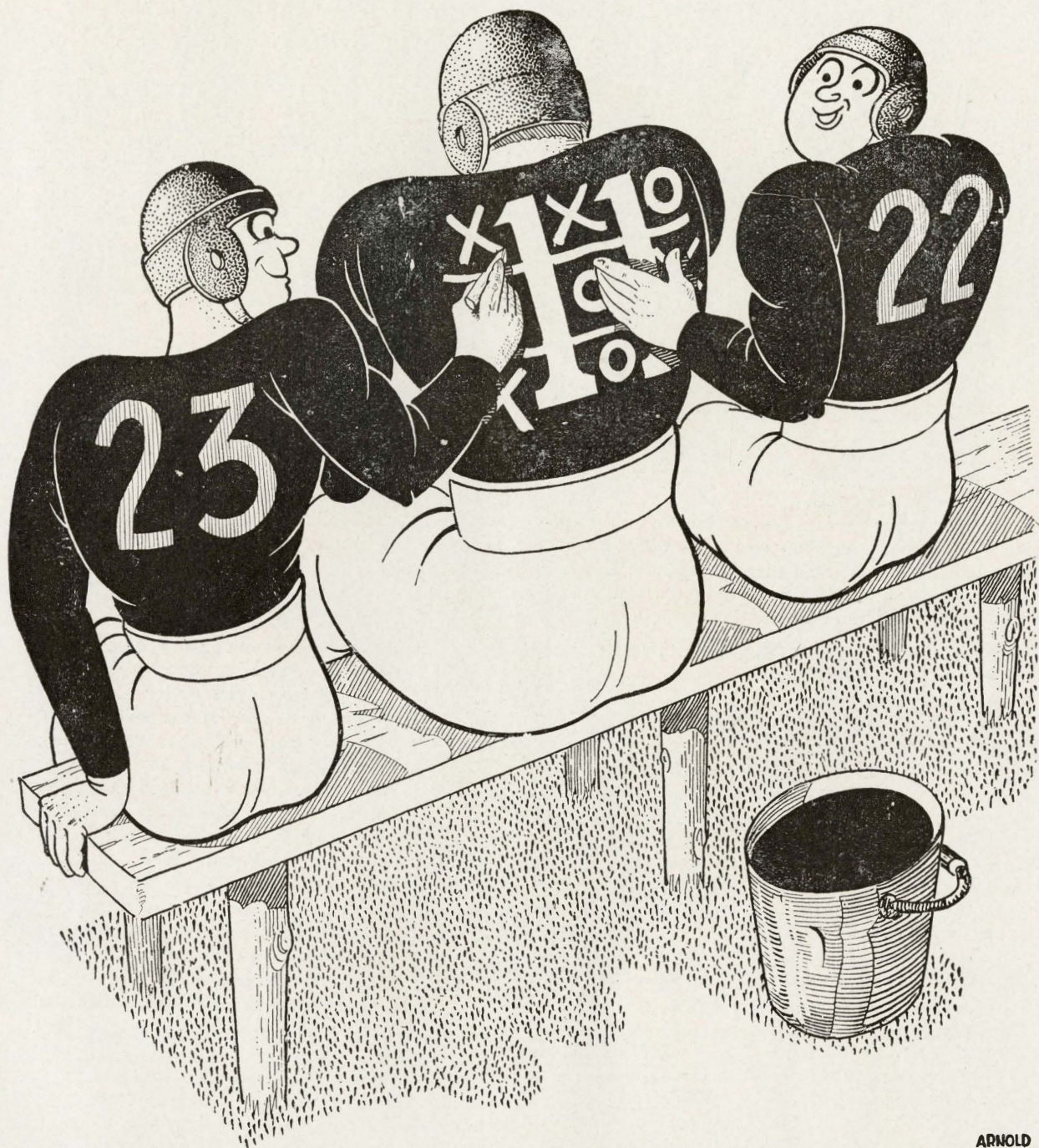
FRED PREISSER, *End*



BILLY PAYNE
Halfback



RAY MILLER
Tackle



"I Hope the Coach Doesn't Send Him in Until Next Quarter!"

ARNOLD
ISEN
BERG



WING BACKS AND UNBALANCED LINES

EDITOR'S NOTE — With the air once more filled with flying pigskins, you'll be hearing the next chapter of the annual debate about football systems. You, the average gridiron fan, probably know as much about the difference between these three major styles of play as you do about life on Mars. So, in an effort to let you get into these debates — if you care to — the first of two clarifying articles is presented below.

Remember when the late Knute Rockne was standing the football world on end with his smashing Notre Dame teams? And then along came Howard Jones' Southern California Trojans to knock the Irish out of the driver's seat?

Or, think back a few years when Barry Wood coined the apt phrase "Monday morning quarterbacks" to apply to that group of ardent fans who replayed Saturday's game the following week.

If you can recall those days you'll remember that a lively debate always developed when someone mentioned football systems. During the Notre Dame era of prosperity under Rockne, the Rockne system was THE system. Then it was the Jones system. And so on down the line.

Coaches, and fans, now realize, however, that a system alone can't make a team. The field is spreading out as coaches use any one of the major styles of play — Jones, Rockne or Warner — along with variations of their own. Even the originators have had to make changes during the past few years.

Take Howard Jones, for example. When he had such men as Ernie Smith, Aaron Rosenberg and Johnny Baker in the Trojan lineup, his system worked perfectly. But when Jones lost the manpower which, along with the system sent U. S. C. to the top of the gridiron heap, he had to revise his style of play.

When entering upon a discussion of the various systems — which we are about to do — it must be born in mind that the system of offense itself is

secondary to schooling the players in the fundamentals of football such as blocking, tackling or timing.

The Rockne System

The type of football which Rockne taught is being played in colleges from coast to coast — passed down to, and improved upon by men who once played under Rockne. He taught his men the one perfect play — which meant nothing more than every man doing his job properly and allowing the ball-carrier to proceed on his merry way. The secret behind this system — and wherever you see a Notre Dame man coaching you'll find it to be true — is grounding the players thoroughly in fundamentals, blocking particularly. That perfect play requires every man to take out a certain opposing player and when you can do this, the ball-carrier has nothing much to worry about.



Knute Rockne

Basically, the Notre Dame formation of attack appears at first glance to be the same as a single wing-back offense. However, the difference is that the back who appears to be a wing is closer in from the end than the average wing-back. With this formation, Rockne used to rake every point in the line. The virtues of the formation are found in the power which it masses, the speed with which it strikes and the ease with which it can negotiate a pass to the ends. However, the success of this system lies in greater perfection of execution, blocking, feinting, and timing.

GODCHAUX'S HAS THE CLOTHES



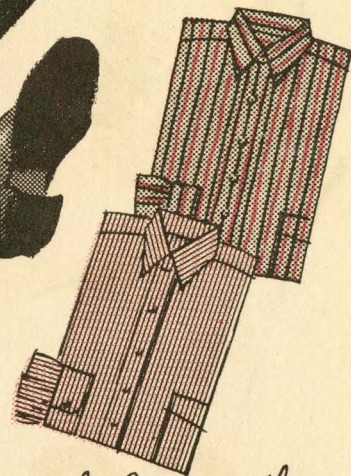
Colorful Regimental stripes in Barathea, a gentleman's silk. Tri-color combinations in almost every color.



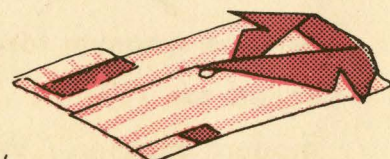
Silk and lisle socks in tri-color combinations to match the ties. With lastex top.



Alligator by Walkover. Correct, casual comfort for business, spectator sports, and campus.



Two shirts by Arrow in the popular form fit model. With the long wearing Arrowset collar.



High quality broadcloth pajamas featuring wide spaced colorful stripes or pastel tones

There's distinction, comfort in this all wool robe. In rich colors with contrasting piping.



The English Coronation influence is definitely expressed in this style right model of Saxony worsted with chalk stripes. Also in the Glen plaids, or dusted stripes. Single or double breasted.

From 29.75



**GODCHAUX'S
HAS THE
CLOTHES**

NEW FACES . . . more youthful faces . . . under the Knox Vagabond below . . . and the Vagabond Prince, left . . . because Knox Vagabond and Vagabond Prince are styled for young men . . . and for men who are eager to stay young.

GODCHAUX'S

Knox, a synonym for quality in hats . . . styled for 1937 . . . made in the most modern manner. Whether in felt, velvet, beaver . . . whether it's sport, town-wear or dress . . . Hats by Knox are perfection in headwear and you will find . . .



KNOX

Exclusively at
GODCHAUX'S



O'Shea...

A name synonymous with the best in athletic knitted goods from Coast to Coast. Tulane's Green Wave and every other leading institution uses O'Shea goods.

Ask any coach—he will tell you that O'Shea is the best.

O'SHEA KNITTING MILLS
2414 N. Sacramento Ave.
Chicago, Illinois

HAUSMANN,

INCORPORATED

NEW ORLEANS'
LEADING JEWELERS



SPECIAL DEPARTMENT FOR COLLEGE
AND FRATERNAL JEWELRY

Time Out

DRINK—

Coca-Cola

TRADE MARK
REG. U.S. PAT. OFF.

PAUSE--

RELAX--

REFRESH YOURSELF

Luckies - a light smoke

OF RICH, RIPE-BODIED TOBACCO - "IT'S TOASTED"



YOU...and a LIGHT SMOKE

It is a Lightness in the smoke that makes people choose Luckies. A rich, clean Lightness in the taste. A smooth Lightness of "feel" in the throat. Puff by puff, a delightful sense of ease. From the choosing of the finest center-leaf tobaccos — to the "Toasting" which removes certain harsh irritants naturally present in all tobacco, every careful measure of Lucky Strike's manufacture is designed to please you more...to offer A Light Smoke of rich, ripe-bodied tobacco,



TRUMAN SPAIN

Southern Methodist tackle • Member of Grantland Rice's All-America Team for 1935 • Home: Breckenridge, Texas • His savage line play helped carry the Mustangs through 13 straight games without defeat.