

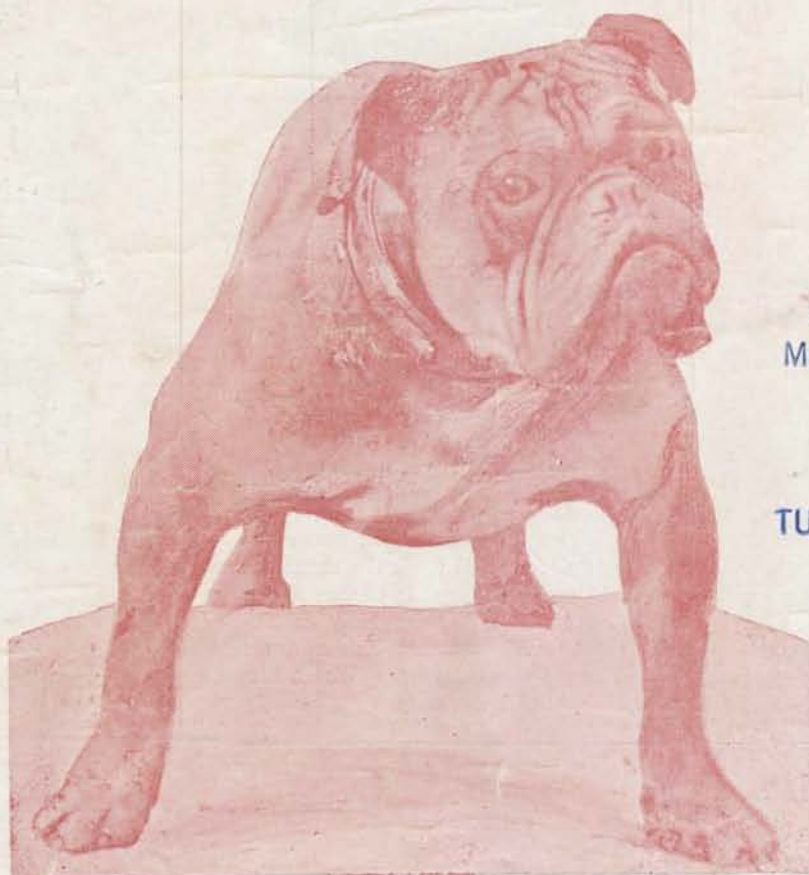
Keep with Tulane souvenir program 1

Dedication Day Souvenir Program

Mississippi A. & M.

VS

Tulane University



HOWARD-TILTON
MEMORIAL LIBRARY

Howard Tilton

TULANE UNIVERSITY

Jackson, Mississippi

October 6, 1928

Kick-Off

2:30 P. M.

Price Twenty-five Cents

COME BACK TO MISSISSIPPI STATE FAIR

OCTOBER 15-20

MAJESTIC

The Home of Talking Pictures

Our Screen Talks and Sings

HEAR AND SEE NOW

“TENDERLOIN”

With

Dolores Costello

and

Conrad Nagel

Accompanied by 75 Piece Orchestra

and

4—GREAT ACTS—4

VITAPHONE

VAUDEVILLE

Including World Famed Artists



CAPT. PICKENS, Left Half
Miss. A. & M.
Weight 170 lbs.

When Gene Chadwick was ruled ineligible it fell upon the shoulders of the Aggie team to choose a new Captain. After carefully considering many of the Aggie team Pickens was selected. Watch him and you'll know why.

CENTURY THE THEATER BEAUTIFUL

NOW SHOWING

“THE PORT of
MISSING GIRLS”

With

BARBARA BEDFORD

and

MALCOLM MacGREGOR

A great story of an unanswered question.

—COMEDY—

“THAT NIGHT”

Century News Events

Century Concert Orchestra

ARMAND COULLET, Director
GLADYS LYLE

at the Console of the Great Organ



JUNG & WULFF New Orleans, La.

Cordials, Cocktails, and Syrups
(Without Alcohol)

We will supply Toasts to the Winner
and Consolation to the Loser

330 SERVICE STATION

West Capitol and Yerger Sts. (Opposite Robnson)
The Station With the Red and White Front

GASOLINE, OILS, TIRES, ACCESSORIES, WASHING,
GREASING
PHONE

JOE W. CRAWFORD, Manager

JACKSON, MISS.

Score With

NE

HI



For Sale on the Grounds



HANCOCK, Assistant Coach

Touchdown!

On every job we print
we make a score.

We cater to college
printing.

This program printed
by us.

Jackson Printing Co.

116 Roach St.
PHONE 43

Hancock is a graduate of University of Iowa. Played on the Iowa teams of 1922, 1923 and 1924 under Howard Jones (Yale) first two years and Ingwersen (Illinois) his last year. Home is Superior, Wis.

Played end on the Iowa team of 1922 that defeated Yale and won the Western Conference championship. Next two years played tackle. All-American selection for tackle at end of 1924 season. Also starred in track at Iowa, and at end of Senior year he was awarded the Conference medal which is given annually to Senior who shows greatest excellency in scholarship and athletics.

Duke and Laseter

HICKEY FREEMAN CLOTHES

DOBBS HATS

JOHNSTON & MURPHY SHOES

222 E. Capitol Street
Where the College Man is Always Pleased

National Alumni Headquarters

THE NEW HOTEL MONTELEONE

600 ROOMS

500 BATHS

EUROPEAN PLAN GARAGE IN CONNECTION

J. D. KENNEY, Manager

A. F. SPATAFORA, Ass't F. Mgr.

NEW ORLEANS, LA.

COMMISSIONERS



Mayor Walter A. Scott



Mr. R.M. Taylor



Mr. A.F. Hawkins

They Helped Do It

WELCOME A. & M.

Jackson feels justly proud today in having as their visitors the Aggie football team and all Aggie supporters. We welcome you back to Jackson, and assure you that the Stadium which we are dedicating today was built with only one purpose and that to promote clean sports in a big way. Again Aggies, we say, Welcome.

GREETINGS TO THE GREEN WAVE AND THEIR FRIENDS

All loyal Mississippians join in extending greetings and homage to our gridiron visitors of the day dedicating the Municipal Football Stadium—to His Excellency Hughey P. Long, Governor of Louisiana, his staff, and the members of the Tulane University football team.

Tulane and Mississippi A. & M. are old and honorable rivals—fitting foemen for the dedication of the Municipal Football Stadium. We welcome the Tulane fans who have come up from New Orleans and other places in Louisiana to cheer their champions. They have a splendid team this year and Mississippi wishes them good luck against all other rivals.

We shall always be glad to see Louisiana fans in the stadium. We shall spare nothing for their comfort. By their loyal support they will help their football team in its efforts to win, making them feel almost as much at home as though they were playing in Louisiana. Through all the years of wholesome football rivalry between Tulane and Mississippi A. & M. we hope these loyal supporters from Louisiana will continue to come to Mississippi with their team and their cheers.

The Louisiana State University plays here Saturday, October 20, against Mississippi A. & M. We shall be happy to see all of today's visitors come for that game, and at the same time enjoy our State Fair.

Jackson is honored in having as their notable guests attending today's game, Hon. Huey P. Long, Governor of Louisiana; Hon. Theo. G. Bilbo, our own Governor; Mayor O'Keef, of New Orleans; Members of the State Legislature. We welcome you.

GENE CHADWICK

The ruling ineligible of Gene Chadwick, captain and star back of the Mississippi Aggies, has been a severe blow to the Aggies' prospects for the coming season. Chadwick, rated as one of the best passers and punters in the Conference, was an integral part of the Aggie offense and defense and the Aggie mentor will have a difficult problem to find someone to fill Chadwick's shoes.

It seems that Chadwick played for two minutes in a game against Florida about three years ago, and according to a Southern Conference ruling, participation in any varsity intercollegiate game, even if it's just for a few minutes, counts as a year of competition against the participant, and no player is allowed to compete for more than three years.

The action of the Aggie athletic authorities in this case is highly commendable, and it is characteristic of the sportsmanship which has always colored the interrelation of the institutions in the Southern Conference. However, it is much to the Aggies' advantage to rule Chadwick ineligible now, rather than to have to forfeit some important game later on in the season.

Besides being an individual star, Chadwick was a leader in whom his teammates had much confidence.

**We're Expecting You
UNION DEPOT SERVICE STATION**

FREE ROAD SERVICE

Corner Mill and Amite Sts. PHONE 840 Jackson, Mississippi

GAS, OILS, ACCESSORIES

The Best For You



**WEIR, Tackle,
Miss. A. & M.
Weight 215 lbs.**



**McELVEEN, Center
Miss. A. & M.
Weight 164 lbs.**



**H. C. WISEMAN, Tackle
Miss. A. & M.
Weight 171 lbs.**

"The Pride of the South"

**The Roosevelt is Headquarters
for all live Football Fans**

**Make Your Reservatons
Early on Football Days**

THE ROOSEVELT

THE NEW STADIUM

**at Jackson is equipped with Circle A. Portable
Bleachers, Supplied by**

MISS. SCHOOL SUPPLY CO.

State Distributors

JACKSON,

MISS.

Write for Particulars

After the Game

DINE AND DANCE

GRISSOM'S TEA ROOM
 Clinton Blvd.—At Overhead Bridge
 CHICKEN, STEAK, SOFT SHELL
 CRABS, FROG DINNERS
 FOR RESERVATION PHONE 9190

ALA CARTE
 SERVICE
 AT
 ALL HOURS

MAIN AND
 PRIVATE
 DINING
 ROOMS

**ETHEREDGE
 CLEANERS**

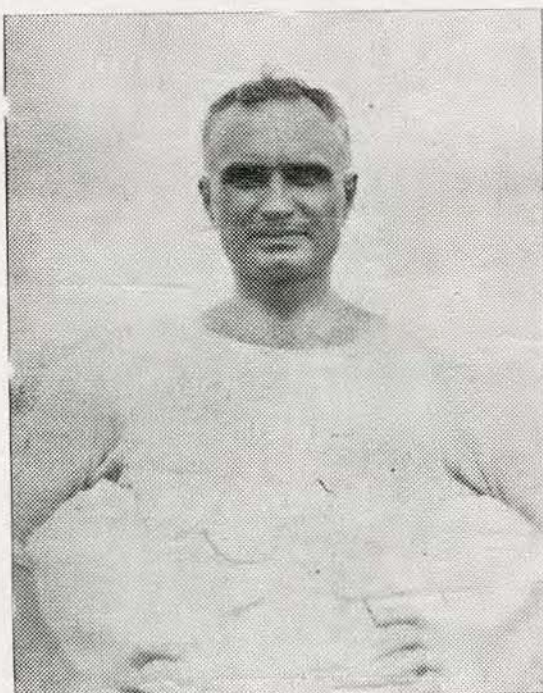
"Dress Well & Succeed"

107 N. State St.

Men's Suits Cleaned & Pressed \$1.00
 Women's Dresses Cleaned

& Pressed \$1.00 and up
 WE CALL FOR AND DELIVER

PHONE 801



Coach Bierman of Tulane University is recognized as one of the greatest in the South. A promoter of not only clean sports but clean sportsmanship.



J. L. ALBRITON

Your Jeweler

Lamar Life Bldg.

PANOLENE
 MOTOR OILS



PANHANDLE
 GASOLINE

A. & M.—Tulane DANCE

SATURDAY EVENING—OCT. 6th
AT THE WOODMAN HALL
(Across from City Hall)

Just a Jackson Dance 'nough Said
8:30 'til 12 Select Script



Welcome A. & M.—Tulane

PHONE 907

BOB NICHOLS TIRE CO.

Ajax Tires and Tubes
Gasoline and Oil

Washing, Greasing, Polishing
and Vulcanizing

PEARL AT LAMAR STREET



CAPT. RUCKER, Tackle
Tulane



PAPPENHEIMER, Quarter
Miss. A. & M.
Weight 159 lbs.



CARLEY, Back
MISS. A. & M.
Weight 165 lbs.

HOW TO CRASH GATE

Inform ticket taker that you are President Coolidge. Gateman will be overwhelmed. Will let you in free.
Tell gateman he is wanted at the box office. Gateman will believe you. Take advantage of his absence.
Play blind man's bluff with gateman. Let him be "it." Blindfold his eyes. Advance under full sail.
Tell gateman a funny story. Gateman will die laughing. Proceed.
Let gateman sample your "inspiration." Will pass out. Pass in.
Inform gateman that his house is on fire. Will dash off. Dash in.
Procure a football. Tell gateman it was kicked over the fence and you are returning it. Will let you in.

HIT 'EM HARD A. & M.

We are 100% for you
Jackson International Co.
Distributors for
International Harvester Co.
Trucks, Tractors Farm Im-
plements

Kuppenheimer
Clothes
Downing-Locke Co.

INTERCONNECTED **ELECTRIC POWER**
--- And SERVICE

To Approximately 175 Mississippi Towns and Communities
 Supplied By

Mississippi Power & Light Company
 "Helping Build Mississippi"



HOPPER, Fullback
 Tulane

If you think you're beaten you are,
 If you think you dare not—you don't,
 If you'd like to win but don't think you can,
 It's almost a cinch you won't.

If you think you'll lose you're lost,
 For out in the world we find,
 Success begins with a fellow's will
 It's all in the state of mind.

Full many a race is lost
 Ere even a step is run,
 Full many a coward fails,
 Ere even his work is begun.

Think big and your deeds will grow,
 Think small and you'll fall behind,
 Think that you can and you will,
 It's all in the state of mind.

Life's battles don't always go
 To the stronger or faster man,
 But sooner or later the man who wins
 Is the man who thinks he can.



SEEUWS, Halfback
 Tulane

TULANE

Tulane's Green Wave makes the trip from New Orleans today to add another contest to the keen rivalry which has existed with A. & M. since 1901.

Ever an important game, this contest always turns out to be one of the most bitterly fought of the season. Today's game should be harder fought as the final outcome has a distinct bearing upon the race for the Southern Conference honors.

The Tulane team this year boasts of having the greatest team in its history, with Capt. Rucker leading a powerful line, consisting of Elmer McCance, a former high school mate of Rucker's of Pine Bluff High School at tackle. Bodenger and Eskrigge at guards, Evens at center and Roberts and Holland at ends. Anderson, Blake, Mangum, Wall, Speirs and Butaud are also first class men and are used regularly in the line. Ford and Luchsinger are steady ends and are called in often. The backs, headed by the "Blonde Flash" Bill Banker at half consist of Armstrong at quarter, Seeuws at the other half and Hopper at full, with Jastram, Young, Massey, Baumbach, Abernathy, J. Whatley, Yokum and H. Whatley, all good men, equal to the occasion.

Tulane's impressive victory over Louisiana Normal of 65-0 last Saturday, showed even the most skeptical that the Green Wave harkens back to that great team of 1924 and that's saying volumes.

JONES SERVICE STATION

For The Best

GASOLINE—MOTOR OILS—
WASHING and GREASING

Road Service

PHONE 1390

Clinton Blvd. near Livingston Park

S. P. McRAE CO.

STYLE-PLUS CLOTHES

STETSON HATS

FLORSHEIM SHOES

JACKSON, MISS.

ALWAYS WELCOME

McIntyres

Drug Store

Edwards Hotel Bldg



E. BROOKS, End
Miss. A. & M.—Weight 156 lbs.



W. D. CHADWICK,
Director of Athletics
Graduate of Marietta College
and University of Michigan.
Head Coach and Director of
Athletics at A. & M. since 1909.
Coached football teams that first
won from L. S. U. in 1910 in a
3-0 game at Columbus, Miss. His
teams also won from L. S. U. in
1911, 1912, and in 1913 played a
0-0 tie.



PITTMAN, Guard
Miss. A. & M.—Weight 177 lbs.

NEW ORLEANS BEST

JUNG HOTEL

When in New Orleans Make
This Your Home

**Mechanical, Electrical and
Wrecker Service**

**We Have Insomnia
WE NEVER SLEEP**

Phone 900

Jackson, Miss.

900

**AUTO
SERVICE
110 E. Pearl St.**

Shoes of Character

The College Girl

See our SWANKY BOOTS

Buckley's
SHOE STORE INC.
JACKSON, MISS.

Majestic Theater Arcade
PHONE 757

WE LOVE TO WASH—
DO YOU?

I. LEHMAN,
MGR.
Jackson
STEAM LAUNDRY Phone 730.
FRENCH DRY CLEANERS

When Clothes Are Dirty Ring Seven-Thirty

Drink

LAKE'S CELERY



GEOGHEGAN, Guard
Miss. A. & M.—Weight 212 lbs.

Teammate of Hancock at Iowa, played varsity halfback 1923, '24, '25. Considered one of the best blockers and defensive backs in the Conference those three years.



DAUBER

Dauber is coaching backfield and coaches track at A. & M. this year. Home is at Iowa City, Iowa. Last year he was backfield coach and coached track at Western Reserve University.



SMITH, Guard
Miss. A. & M.—Weight 205 lbs.

Starred at Iowa in football and track. Captain of Iowa's Conference championship track team of 1926. Holds Conference record in the shot put.

**THE WORLD IS RIGHT AS LONG AS IT
WRITES WITH COLUMBIA PRODUCTS**

Known the World Over for the Best
Results with Any Writing or Duplicating
Machine

Samples and Prices on Request

COLUMBIA

RIBBON & CARBON MFG. CO.,
Distributors Incorporated
COLUMBIA PRODUCTS CO., Inc.
327-29 Audubon Bldg. NEW ORLEANS, LA.

RENT-A-CAR CO., INC.

CHRYSLERS—FORDS—CHEVROLETS
Much Cheaper Than Owning One Yourself

U-DRIVE-IT CAR CO.

Phone 364

124 S. Farish St.

BETTER PRINTING, Inc.

112 N. President Telephone 3044
 Better Printing  Better Business
 JACKSON, MISSISSIPPI

Welcome
PALACE BOWLING ALLEY
 Next To Edwards Hotel
 UPSTAIRS



STORE FOR MEN
 108 West Capitol Street
 JACKSON, MISSISSIPPI

HERE ARE SEVERAL POINTS OF SATISFACTION

You'll get a round of satisfaction from a square meal here. Purest food that ever cheered an eager appetite cooked by a chef who is enthusiastic about cooking.

OLD SOUTHERN CAFETERIA
 JOE U. BOZEMAN, Prop. JOE LOULETTA, Mgr.

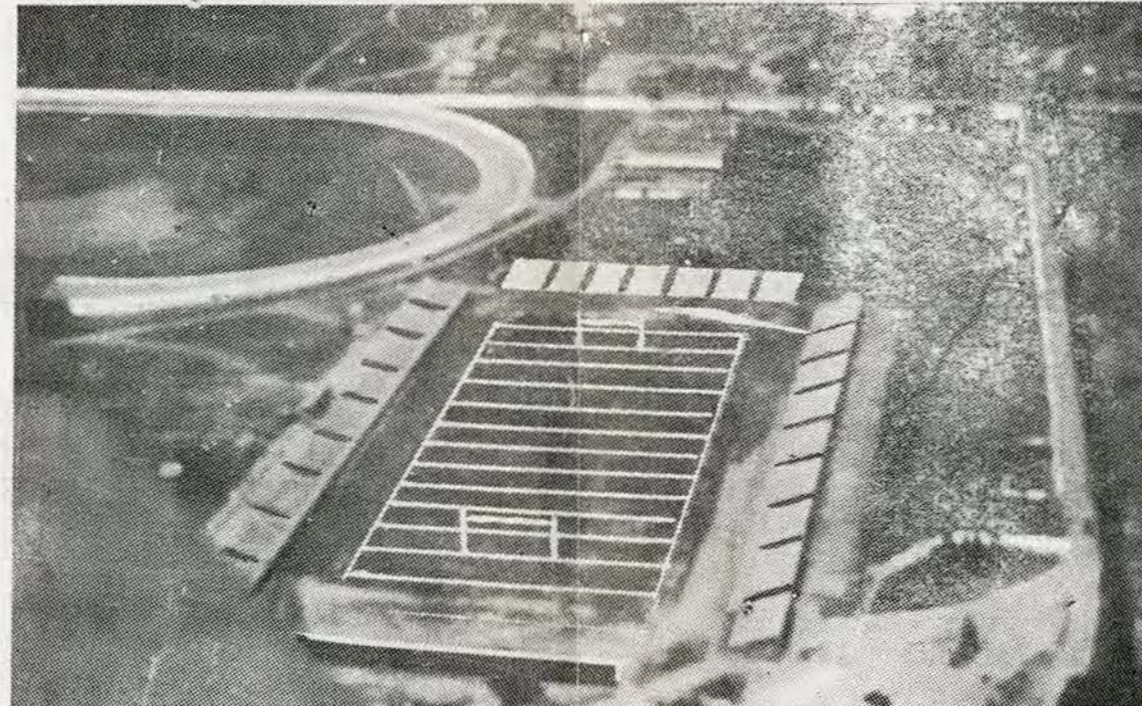
EAT A PIG! PIG STAND

Soft Drinks, Cigarettes, Candy
 C. A. SMITH, Prop.

No. 78—West End No. 79—Terry Road

STARTING LINE-UP A. & M.

- Lewis L. E.
- Geohegan L. T.
- Smith L. G.
- McElveen C
- Pittman R. G.
- Weir R. T.
- Christopher R. E.
- Pappenheimer Q
- Stone R. H.
- Vandevere F.
- Pickens (Capt.) L. H.



STARTING LINE-UP TULANE

- Ford L. E.
- Rucker (Capt.) L. T.
- Bodenger L. G.
- Wall C.
- Roberts R. G.
- McCance R. T.
- Walker R. E.
- Armstrong Q
- Sesuws R. H.
- Hooper F
- Banker L. H.

Quarters	1	2	3	4	FINAL
MISS. AGGIES	0	6	0	0	6
TULANE	7/6, 6	6	7, 7	6, 6	51

HART, SCHAFFNER & MARX University Clothes

MORE
 STYLE



LESS
 COST

Logan Philipps
 108 W. Capitol St.

Day and Night Service Stand—Union Station
 Telephones 1 and 3531

Yellow Cab & Jackson Transfer Co., Inc.

CLOSED CADILLAC SERVICE
 C. B. ETHEREDGE, Pres.
 JACKSON, MISS.

MERRILL'S Fresh Fruit Orange Drink

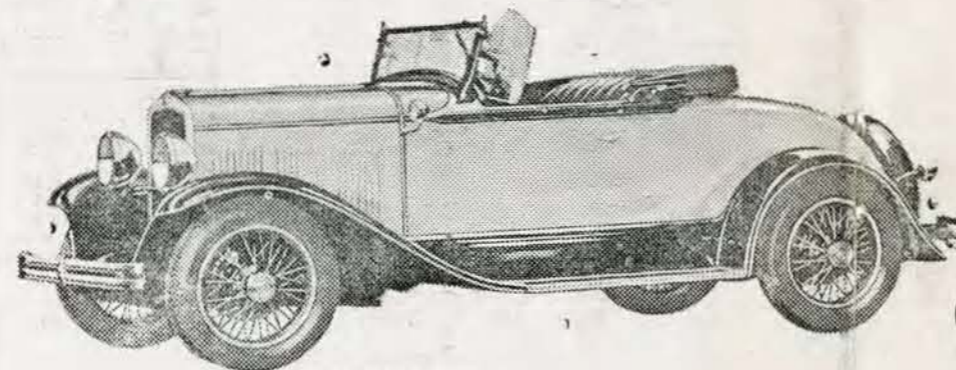
TWO STANDS
 No. 1—210 W. Capitol No. 2—Century Bldg.
 JACKSON, MISS.



8 Million Per Day—
 It Had to Be Good

JACKSON COCA COLA
 BOTTLING CO.

Sweeping the Field



THE SPORT ROADSTER

THE DeSOTO SIX

Product of Chrysler

CAPITAL MOTOR CO.
 L. A. RUNGE, Mgr.
 118 Lamar St. Phone 1046



Crest of
 Hernando DeSoto

JACKSON CAFE
 WE SERVE EVERYTHING IN SEASON
 Cigars, Tobacco and Cigarettes
 T. E. LEWIS, Proprietor
 222 West Capitol Street JACKSON, MISSISSIPPI

**134 TIRE and
 BATTERY SERVICE**
 WHERE QUALITY COUNTS
 No. 1—Terry Road— Phone 134
 No. 2—Gallatin & Monument
 Phone 200
 No. 3—Lamar & Pascagoula Sts
 Phone 189
**NIGHT and DAY
 ROAD SERVICE**

ROBINSON and JULIENNE

GENERAL INSURANCE

PHONE 235

**ALL STANDS FOR NEW STADIUM
BUILT BY US**

WESTERFIELD & WEEKS

Contractors

JACKSON, MISSISSIPPI

FISHER-BUTLER COMPANY

ENGINEERS—CONTRACTORS

**PLUMBING
SPRINKLER-SYSTEMS**

**HEATING
OIL BURNING EQUIPMENT**

219 W. Capitol St.

Phone 1235

JACKSON, MISSISSIPPI

PRINCIPAL CHANGES IN 1928 RULES

The rules governing incompleated backward passes have been so modified that only those passes which have been clearly thrown a distance of approximately two (2) yards through the air before striking the ground, are now dead at the point of recovery. Such passes are defined as protected backward passes.

2. Rule on muffed punt has been amended so that is no longer necessary to draw any distinction between a muffed punt and a fumble. After a ball has been kicked beyond the line of scrimmage it is to be considered a "kicked" ball until it is declared dead by the referee.

3. The traditional rules governing "on-side" and "off-side" still obtain, except that if such a kicked ball is legally recovered by a player of the kicker's side, he may not advance it beyond the point of recovery.

4. On forward passes there can be no interference whatsoever by players of the passer's side who have crossed the line of scrimmage.

Compliments

JEFF G. WALKER,
Special Agent
NEW YORK LIFE INSURANCE CO.

Phone 417

CRESCENT BILLIARD HALL

Tobacco, Cigars, Candies, and Soda

OLIN & SEALE, Props.

119 W. Capitol Street

Jackson, Miss.

Welcome



A. & M. and TULANE

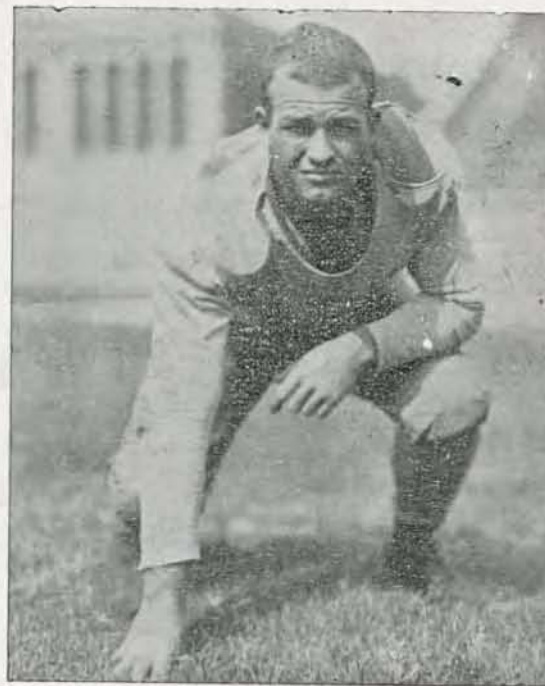
A. & M.

10. McElveen, M.
24. Wiseman, R. C.
27. Weeks, L. A.
19. Smith, O. L.
48. Goeghegan, R. E.
23. Pittman, C.
22. Dickson, A. R.
47. Byrnes, H. E.
46. Crigler, J. H.
7. Phillips, F. M.
44. Weir, J. M.
13. Brooks, J. H.
28. Mathews, M. J.
32. Dabbs, C. N.
25. Wiseman, H. C.
38. Summerous, A. R.
30. Banks, J. P.
26. Christopher, A. C.
21. Ashcroft, W. H.
4. Standifer, C. C.
11. Lewis, H. R.
16. Brooks, E.
8. Lacey, F. H.
3. Pickens, W. H.
12. Stone, H. L.
33. Vandevere
17. Pappenheimer, W. A.
2. Allen, E. R.
6. Carley, G.
34. Burkes, H.
5. Harris, J. C.
1. Bridges, E. A.
14. Moak, H. L.
41. Akin, C. W.

ALABAMA NEXT

A week from today the faithful followers of the A. & M. team will gather with Tuscaluso fans at Starkville to witness the battle between Alabama and A. & M. The game this year will be A. & M's golden opportunity to wipe out the defeat of last year at the hands of the Crimson Tide.

The game last year was close and threw quite a scare into the ranks of the Alabama followers. They are coming to Aggietown with blood in their eyes determined to make it more decisive.



EVANS, Tulane

TULANE

2. Jastram
3. McGehe
4. Baumbach
5. Ford
6. Armstrong
7. H. Whatley
8. J. Whatley
9. Yokum
10. Andrews
11. Evans
13. Abernathy
14. Banker
15. Seeuws
16. Young
17. Blake
19. Luchsinger
20. Walker
21. Holland
22. Massey
24. Anderson
27. Hooper
28. Eskrigge
29. McCance
30. Mangum
31. Butaud
32. Bodenger
33. Rucker
34. Oelkers
35. Roberts
36. Walls

PAST GAMES.

The nineteenth clash between Tulane and Miss. A. & M. will feature the dedication exercises at the new Jackson Municipal Stadium today. A gala program being arranged for the event, with Governor Bilbo of Mississippi and Governor Huey Long of Louisiana as official representatives of their states.

Tulane and the Aggies met at Jackson in 1914, when the Aggies rolled over the Greenies by a 61 to 0 score. It is the only one of their series played in Jackson and is the most decisive victory ever recorded. The series record is 10 victories for Tulane, six for Miss. A. & M. and two tie games.

The series first started in 1901 and ran through 1904. Then came a lapse of three years. In 1908 the games were resumed and the teams met annually until 1914. It was not until 1920 that the teams met again and their series has continued uninterrupted except in 1923.

The Aggies have taken three of the last four games from the Greenbacks, including the last two. In 1926, with Bernie Bierman as coach, they humbled the Green by a 14 to 0 score and in 1927, when Bierman took over coaching at Tulane and John Hancock succeeded Bierman at A. & M., the Aggies trounced their former teacher by a 13 to 6 margin.

The Aggies suffered a severe blow recently when Captain Gene Chadwick was ruled ineligible, but Coach Hancock has gone on trying to find a worthy successor to the Maron star. He has been working Pappenheimer, last year's great running back, at quarter, with Allen, Carley and Bridges and using Captain Waiton Pickens, 'Dutch' Stone and Dallas Vandevere at the other backfield posts.

The line is expected to take care of itself. Though they will be outweighed by Tulane, the difference will be slight and Coach Hancock expects them to make up in speed what they lack in heft.

The Aggies are being especially trained to watch Bill Banker' Tulane's blond flash. The Maroons got a taste of Banker's ball carrying ability last year, when the Greenie star scored a touchdown on the first two plays of the game. He will be a marked man from the start.

The record of previous meetings follow:

Date	A. & M.	Tulane	1912	1913	1914	1920	1921	1922	1924	1925	1926	1927
1901	6	24	24	32	61	0	0	0	14	3	14	13
1902	11	11	11	0	0	0	0	0	23	0	0	0
1903	0	0	0	0	0	0	0	0	0	0	0	0
1904	0	0	0	0	0	0	0	0	0	0	0	0
1908	0	23	23	14	6	6	6	6	6	6	6	6
1909	0	2	2	3	25	25	25	25	25	25	25	25
1910	10	0	0	14	0	0	0	0	0	0	0	0
1911	4	6	6	13	6	6	6	6	6	6	6	6

DON'T FAIL TO SEE A. & M. vs. L. S. U.—OCTOBER 20

Coll-Inn

After the Game

Clinton Blvd. at Overhead Bridge

CATERING TO COLLEGE TRADE

CHICKEN - STEAK - FROG LEG

Dinners a Specialty

MUSIC and DANCING

Service At All Hours

PHONE 2832—

Bullard Fuel & Supply Co.

98% Perfect

New River
COAL
(LONG FLAME)

Coleandor, Red Ash, Warrior River
Kentucky Lump, Coke

Bullard Gas & Oil Co.

Two Stations for Your Convenience
Monument St. West End

PHONE
3 9



MARATHON

MOTOR
OIL

PRODUCTS

GASOLINE

HOW THE "GREEN WAVE" GOT ITS NAME

Perhaps you have wondered how Tulane's teams got the name "Green Wave".

The Jambalaya of 1921 officially gives Edward Earl Sparling (Arts and Science, 1921) credit for dubbing the 'varsity eleven with the rollicking "nom de grid." His original song poem "The Rolling Green Wave" being responsible.



ALLEN, Halfback

Miss. A. & M.—Weight 148 lbs.

9 9 9

TIRE & SERVICE

W. H. Moore D. T. Talmadge
Sc. West and Pascagoula Sts.

DUNLOP TIRES

Free Road Service
Gas—Oils—Accessories
Washing—Greasing

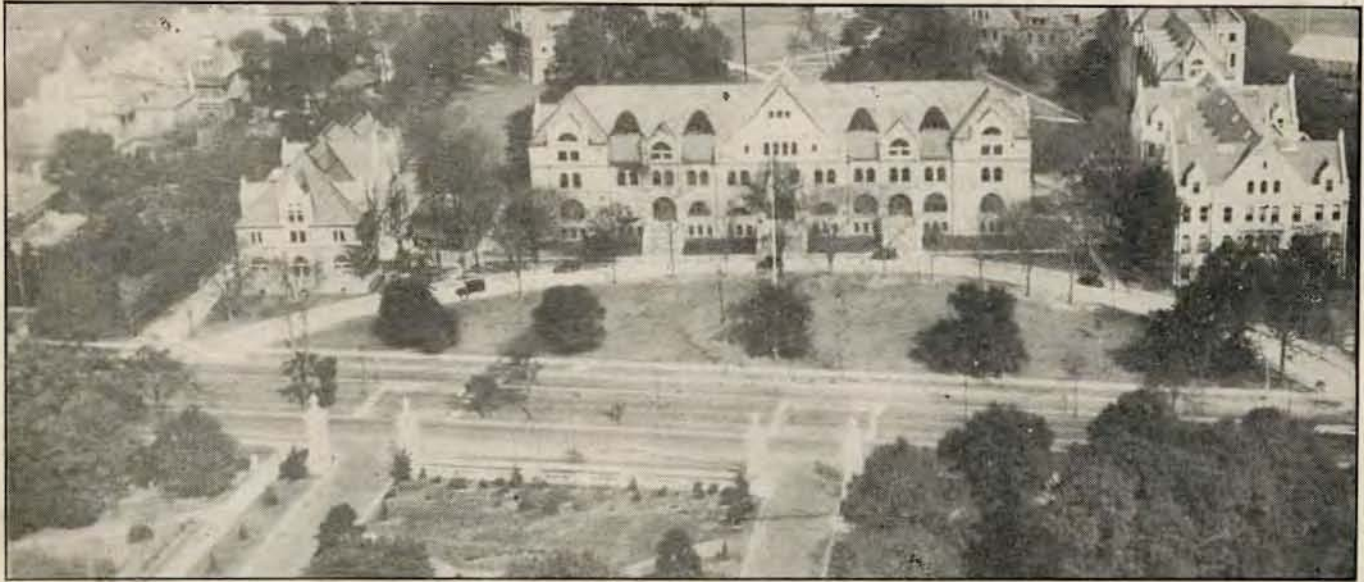
**Automobile Replacement
Parts**



LEWIS, End

Miss. A. & M.—Weight 175 lbs.

TULANE UNIVERSITY

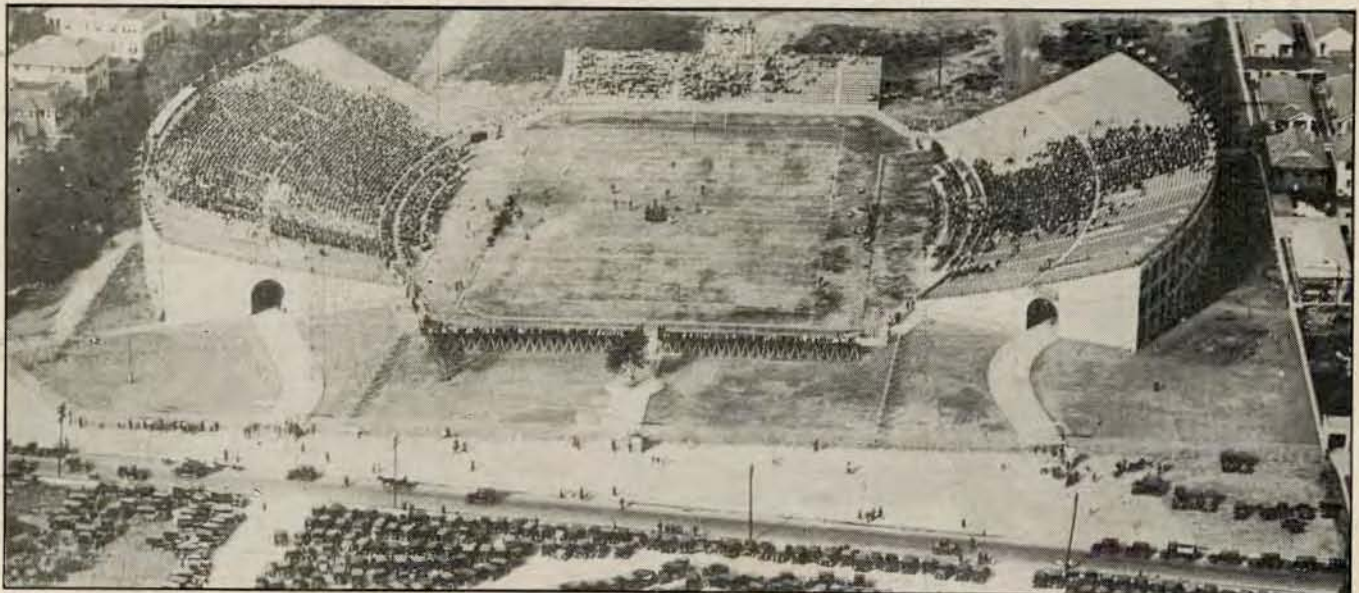


CAMPUS VIEW

From the President of Tulane University

Tulane University congratulates the City of Jackson and its citizens upon the completion of its magnificent new stadium. It is a privilege to participate in the dedication of this stadium. We, of Tulane, hope that this will contribute towards making Jackson a great centre of sport activities commensurate with its influence as one of the great business, social and educational centres of the South.

A. B. DINWIDDIE, President



NEW TULANE STADIUM

"THE GAME"

Tulane's football team makes the trip from New Orleans today to add another contest to the keen and admirable rivalry which has existed with A. & M. since 1901.

They are coming with the memory of that fateful day four years ago when these same Mississippi Aggies, led by Capt. "Speck" Young, shattered Tulane's championship hopes by being the only opponent to defeat the Green Wave.

It seems ages since that memorable day but it still lingers in Tulane's memory—so they are coming today to not only avenge that defeat but the one they received last year at the hands of the boys from Starkville.

The game today will be one of color as it opens the new Jackson Municipal Stadium and the boys from Mississippi will do their utmost to pry open this great day with a victory on its own soil and send the Tulane team home a ripple instead of the wave.



STONE, Halfback
Miss. A. & M.
Weight 165 lbs.



WALKER, Tulane



HARRIS, Halfback
Miss. A. & M.
Weight 145 lbs.

THE BEST SPORT SEAT KNOWN

DIXIE PORTABLE BLEACHERS

Manufactured in Meridian By

THE DIXIE PORTABLE BLEACHER CO.



ESKRIGGE, Tulane



FORD, Tulane



EDWARDS HOTEL

"Mississippi's Best"

300 ROOMS

300 BATHS

Headquarters for all Football and Baseball Teams

EDWARDS HOTEL

JOHN W. WARE, Manager

JACKSON, MISSISSIPPI



J. P. BANKS, Tackle
Miss. A. & M.
Weight 176 lbs.

TULANE

- Oct. 6—Mis. Aggies
- Oct. 13—Georgia Tech
- Oct. 20—Vanderbilt
- Oct. 27—Georgia
- Nov. 3—Millsaps
- Nov. 10—Auburn
- Nov. 17—Sewanee
- Nov. 24—Louisiana Col.
- Nov. 29—L. S. U.



VANDEVERE, Back,
Miss. A. & M.
Weight 190 lbs.

Welcome

A. & M. and TULANE

King & Bridges, Inc

GENERAL

INSURANCE



219 E. Capitol St.

Phone 83



BAUMBACH, Quarter, Tulane

Dick brought himself out into the limelight in the L. S. U. game last year. Sport writers predict he will go great this season.

TWO BIG FOOTBALL ATTRACTIONS FOR MISSISSIPPI STATE FAIR

On Friday, October 19, as a feature of the Mississippi State Fair, two old college rivals will clash in this stadium—Millsaps vs. Mississippi College. The next day, on the closing day of the fair Mississippi A. & M. will play Louisiana State University on this field.

In addition, there will be many other amusements and recreational features of the State Fair, which will be held October 15 to 20. Ringling Bros.-Barnum-Bailey circus, the biggest on earth, will show at the fair on Tuesday, October 16. A one dollar ticket will admit both to the fair grounds and the circus. There also will be the world-famous Johnny Jones shows, the Winter Garden revue, many free acts and free fireworks at night.

SMITH'S RECREATION

"South's Finest Billard Hall"

Where You Get Sports Returns from Everywhere

Two More Big Games You Can't Afford to Miss

Miss. College vs. Millsaps—Oct. 19

A. & M. vs. L. S. U.—Oct. 20

The Score Board

Please understand violations of rules are rarely intentional. They usually come from over-anxiousness, excitement and most often from the highly technical character of the present game

Penalty

Pen. No.	OFFENSE	Penalty	Pen. No.	OFFENSE	Penalty
1.	Offside—in advance of line of scrimmage and on the kick-off or on free kick	5 yds	21.	If a man on defense holds a player of the side with the ball	5 yds
2.	Holding or illegal use of hands or arms. The team with the ball, except the man carrying the ball may not use hands or arms to block out or keep off opponents	15 yds	22.	If a team takes out time more than three times in one half without substituting a player	5 yds
3.	Clipping—Cutting a man down from the rear away from the play	25 yds	23.	For delaying the game	5 yds
4.	Players must come to an absolute stop for a period of approximately one second in all shifts and "huddle" plays	15 yds	24.	Crawling—The man with ball may not crawl or try to advance after being tackled and thrown	5 yds
LOSS OF A "DOWN"			25.	Hurdling—Man with ball may not jump over a man still on his feet	15 yds
5.	For second and third incomplete passes in any one series of downs and	5 yds	26.	Unnecessary roughness or unfair play	15 yds
6.	Interference by side making forward pass, prior to fourth down, also	15 yds	27.	Tripping with feet, tackling out of bounds, etc.	15 yds
7.	Intentionally throwing forward pass to ground, prior to fourth down, also	15 yds	28.	If center feints to snap ball and does not	5 yds
LOSS OF BALL			29.	Unsportsmanlike conduct, talking back to officials or abusive language	15 yds
8.	Ball kicked out of bounds, unless touched, etc.		30.	The ball or the center may not be interfered man still on his feet	15 yds
9.	Interference by side making forward pass, fourth down—Loss of ball at point 15 yards back of previous down.	15 yds	31.	A substitute must report to referee or umpire. Penalty for not reporting	5 yds
10.	Interference by defensive side in case of fourth down—Loss of ball at point 15 yards back of previous down.	15 yds	32.	The team with the ball must have seven men on the line of scrimmage when the ball is snapped	5 yds
11.	Illegal or incomplete forward pass—fourth down.		33.	The center or the man on either side of him may not carry ball until it has been handled by someone else on the team	5 yds
12.	Intentionally throwing forward pass to ground, fourth down—Loss of ball and also	15 yds	34.	Player out of bounds when ball is snapped	5 yds
13.	Failure to advance ball 10 yards in four downs.		35.	If a player leaves the field while time is out or during intermission without permission of officials	15 yds
14.	No man on team with ball may be in motion when ball is snapped, except one man may be in motion toward his own goal or toward side line	5 yds	36.	No one on bench or sidelines may coach or instruct anyone in the game	15 yds
15.	Piling on a player after the whistle	15 yds	37.	There is a penalty for persons coming on field of play and for more than one representative in case of injury and for anyone on bench or inside enclosure standing or walking along side lines	15 yds
16.	The kicker may not be tackled or knocked down after kicking	15 yds	38.	Team delaying start of game or start of second half forfeits option and is penalized	25 yds
17.	The man carrying the ball may not be pushed or pulled by any of his teammates	15 yds	LOSS OF HALF THE DISTANCE TO THE GOAL LINE		
18.	Interference with player making fair catch or throwing player who has made fair catch	15 yds	29.	A player may be substituted only once in each half—for illegal return, team is penalized as above and player is suspended for remainder of the game.	
19.	Player making more than two steps after fair catch	15 yds	40.	Striking, kneeling, kicking, etc.—Player is disqualified for remainder of game, and team is penalized as above.	
20.	Substitute coming in says anything to any teammate until a play has been made his team is penalized	15 yds	41.	Foul within one yard line or behind goal line by defensive side.	

Travel by Bus



PULLMAN OF THE HIGHWAYS

World's Most Modern.

Ice Water, Electric Fans, Lavatories

Daily Service Between Memphis and New Orleans. Connections for St. Louis, Chicago, Detroit and all Eastern and Western Points Daily. The comforts of your own car with no worry at half the price.

CAPITOL STAGES, Inc.

Phone 3037 for Information
214 Mill Street

Jackson, Miss.
