

Nov. 28, 1936

Price 25c



L. S. U. vs TULANE



Don't let 'em make you the football

Everyday life is pretty much of a football game. Don't let 'em make you the football. When you have problems to tackle, unexpected interference to face, or rough-and-tumble clipping to bother you—blow the whistle on yourself for *the pause that refreshes*. Sparkling ice-cold Coca-Cola puts new life in the game and helps you go faster and more smoothly to your goal.



BATON ROUGE COCA-COLA BOTTLING CO.

"It Had to Be Good to Get Where It Is"

PHONE 700



DR. JAMES MONROE SMITH
President, Louisiana State University

El Trelles Cigars

Keep

M
O
V
I
N
G



Great

S
O
U
T
H
E
R
N



OUBRE BROS., INC.

Distributors

BATON ROUGE, LOUISIANA



BEN ENIS
FIRST ASSISTANT
COACH



EMERSON NELSON
LINE COACH
◆ ◆



BERNIE MOORE
HEAD COACH



JOEL HUNT
BACK FIELD COACH



J.B. WHITWORTH
GUARD COACH



MIKE CHAMBERS
TRAINER



THE 1936 TIGER TEAM—33 STRONG

Baton Rouge Sash & Door Works

"The Most Reliable Millwork Manufacturers In The State"

IN KEEPING WITH THE HIGH STANDARD FOR ALL THINGS ESTABLISHED BY THE LOUISIANA STATE UNIVERSITY, MILLWORK WAS FURNISHED BY US FOR THE FOLLOWING BUILDINGS:

Alumni Bldg., O. K. Allen Hall, Highland Hall, Fine Arts Building, Huey P. Long Field House, Annie Boyd Hall, Animal Industry, North Stadium Dormitory, Chemistry Group, Stadium and Stadium Dormitory, Creamery, Sugar House, Hog Barns, Highway Laboratory, Hospital, Laundry, Dairy Barn, Cafeteria, D. K. E. Fraternity House, Cafeteria Manager's Residence, K. A. Fraternity House, Episcopal Center, Animal Pathology Group, LaMaison Francaise, Graduate Women's Dormitory, Addition to Field House.

IF YOU CONTEMPLATE ANY KIND OF BUILDING, WE SHALL BE GLAD TO CONSULT WITH YOU REGARDING ANYTHING IN OUR LINE



HOTEL HEIDELBERG

One of Louisiana's Very Best Hotels

TULANE



DUB MATTIS
Halfback



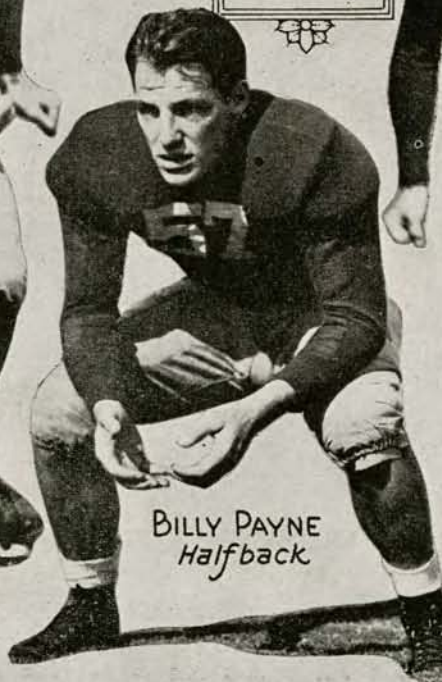
JOHN
ANDREWS
Fullback



CAPTAIN
BILL MOSS
Tackle



FRED PREISSER, *End*



BILLY PAYNE
Halfback



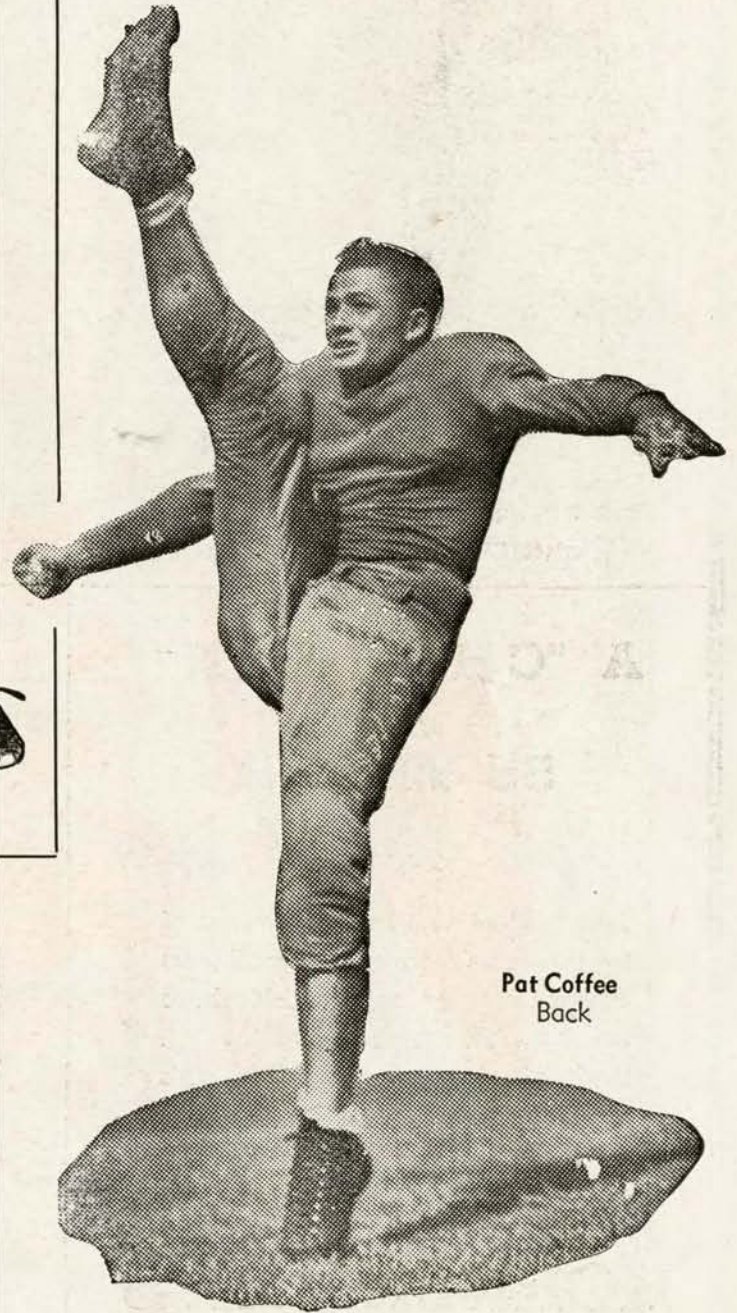
RAY MILLER
Tackle

To make a long story short . .

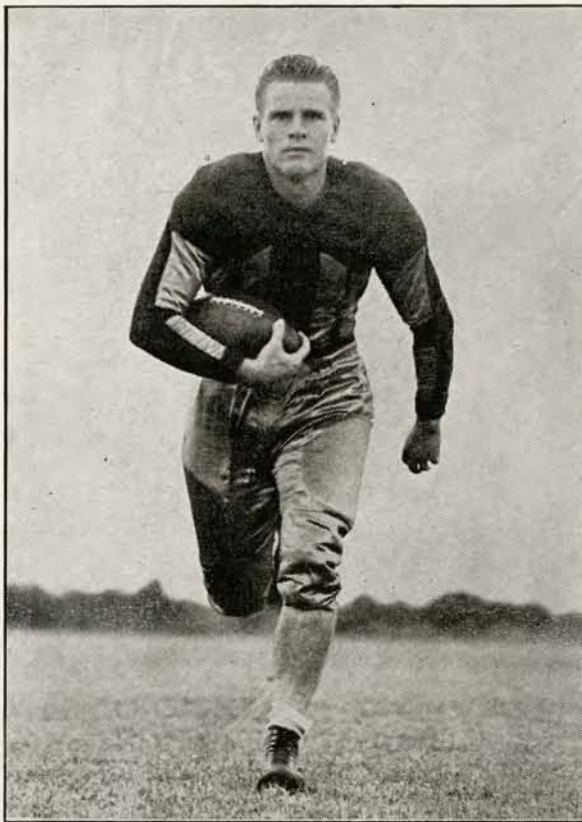
Last year Bernie Moore, with the aid of his able assistants, produced one of the finest football machines in the nation. This great team had power, courage, and a will to win. This is Coach Moore's second year at the helm at L. S. U. and judging from the splendid job he performed last fall, even though a number of star players will be missing, he will no doubt give L. S. U. another team equally as good as 1935's Conference Champions. We take this occasion to wish Bernie Moore, his assistant coaches and every man on the 1936 squad the best of luck and Godspeed.

DALTON'S

Baton Rouge's Leading Department Store



Pat Coffee
Back



ARTHUR MORTON—TAILBACK



LEFTY LESTER—TACKLE

A "CHAMPION"
for
55 YEARS

Since 1880 we have been "Champions of the Furniture Conference." For 55 years we've been known as dependable home furnishers. Quality, style and value . . . that's what trading with Kornmeyer's means to you.

It's THRIFTY to Buy at

KORNMEYER'S

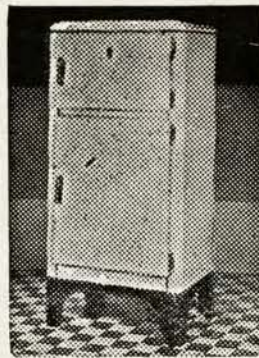
Dependable Home Furnishers Since '80

149 St. Ferdinand Street

For Perfect Refrigeration

USE A

Coolerator
The Air Conditioned Refrigerator



These
Coolerators
Are on
Display
In Our
Showrooms
135 South
Fifteenth
Street

Ice Service, Inc.

WELSH & LEVY

"THE COLLEGE MAN'S STORE"



Men and Young Men of Discriminating Taste Seek Their Apparel From This Exclusive
Men's Store—Baton Rouge's Greatest—These Quality Items Exclusive Here



DOBBS HATS — KUPPENHEIMER CLOTHES — THOMPSON SHOES — FREEMAN SHOES — EDWIN
CLAPP SHOES — BERG HATS — VARSITY TOWN CLOTHES — ARROW SHIRTS — MANHATTAN
SHIRTS — INTERWOVEN SOCKS — CATALINA SWEATERS.



Best Wishes to the Tigers!

RONALDSON & PUCKETT CO., LTD.

WHOLESALE DISTRIBUTORS

TOP

QUALITY



FOOD

PRODUCTS

- Devoe Paints and Varnish Products
- Johns - Manville Roofing and Bldg. Materials

Yea, Tigers!

Of course, you're in trim physically—so we suggest that you keep trim looking when the game is over in Campus Togs or Kirschbaum Clothes. Newest styles, colors. Perfectly tailored.

CAMPUS TOGS and KIRSCHBAUM CLOTHES

the Nation's Finest
Creators for College Men

BATES & THIGPEN

"THE HOME OF GOOD CLOTHES"

350 THIRD STREET



"Three Big Ones
Gang!"

Reddy Kilowatt, your ELECTRICAL servant, says "Dependability is essential to success. That's why those L. S. U. Tigers deserve 3 big ones! Game in and game out they're good, plenty good! Likewise, dependability is a characteristic of the Baton Rouge Electric Company. Year after year they have given this community a dependable Gas, Electric and Transportation service."

Baton Rouge Electric Co.

Phone 2500

327 Florida St.

WATCH OUR TIGERS GO!

GOOD VISION IS ESSENTIAL TO
ENJOY THE GAME

Have Your Eyes Examined
Regularly

DR. A. L. BORDELON
Registered Optometrist

Rider Jewelry Co.

Corner Third and Convention Streets

Visitors Always
Welcome



Wm. Wolf Bakery Incorporated

1504 Florida St.

Phone 627



"Babe" Godfrey



"Hank" Stovall



"Dobie" Reeves



J. B. Luker



Tom Smith



Walter Fleming



John Kent



Walter Sullivan



Jesse Fatherree



Winners of "MOST VALUABLE MAN" Cup are as follows:

1927.....	"Babe" Godfrey
1928.....	"Hank" Stovall
1929.....	"Dobie" Reeves
1930.....	J. B. Luker
1931.....	Tom Smith
1932.....	Walter Fleming
1933.....	John Kent
1934.....	Walter Sullivan
1935.....	Jesse Fatherree
1936.....	???

Watch the Boys and Pick Your Choice for 1936

Cup Donated Annually By

Roberts & Eastland

INCORPORATED

GENERAL INSURANCE

PERCY ROBERTS, '22 — LOWRY EASTLAND, '22

Louisiana National Bank Building

Phone 2343



BILL CRASS—HALFBACK



PAT COFFEE—HALFBACK

100% for the Tigers



Johnny Rogers Service Station

Phone 2800

BATON ROUGE CLOTHING, INC.

151 Third Street

E. A. LABOYE, Manager

—YOUNG MEN'S CLOTHING—

Shoes, Hats, Overcoats, Raincoats

151 Third St.

Baton Rouge, La.



Meeks Lumber

Inc.

Yard and Mill, Jackson, La.

PHONE 4570

196-8 South 14th St.

Baton Rouge, La.

Compliments

Sears Roebuck and Co.

BATON ROUGES MOST COMPLETE
DEPARTMENT STORE



Radios, Furniture, Sporting Goods, Auto Accessories
Men's and Women's Wears, Shoes

TAILORS OF DISTINCTION

Belisle

"Quality Cleaners"

PHONE 567

344 THIRD ST.

Compliments

Baton Rouge Supply Co., Inc.

Wholesale and Retail

BUILDING MATERIALS AND
HARDWARE SPECIALTIES

802-804-806 Main St.

Baton Rouge, La.

PHONES 752 - 753

Compliments of

Baton Rouge Automobile Dealers Association

HIGHLAND MOTORS, Inc.	
OLDSMOBILE	CADILLAC - LA SALLE
MARCHAND AUTO SERVICE	
HUDSON	TERRAPLANE
W. MORTON EVANS, Inc.	
BUICK	PONTIAC
McINNIS CHEVROLET, Inc.	
CHEVROLET	TRUCKS
STANDARD MOTOR CAR CO.	
DODGE	PLYMOUTH
WHITEHEAD MOTOR COMPANY	
FORD	LINCOLN
McCONNELL MOTORS, Inc.	
DE SOTO	PLYMOUTH

LSU



PINKY
ROHM
BACK



MOOSE STEWART
CENTER



PAUL CARROLL
TACKLE



BERNIE
DUMAS
END



EDDIE GATTO
GUARD



BILL MAY
BACK



LAMAR BENNETT
TACKLE

It's ROSENFELD'S

Sophomores, Juniors, Seniors all know our clothes are RIGHT . . . Freshmen can truly pin their hopes for a socially successful year on the costumes they assemble at Rosenfield's! Everything a college man or woman may want is here! The fashions have been selected by people who know the essentials as well as the fads and fancies of the well dressed Collegian . . . drop in anytime and see them!



Your L. S. U. FOOTBALL STICKER is here —
Come and Get Yours — They're Free !

At LOUISIANA STATE . . .



GoldSmith

SPORTS EQUIPMENT

—IS USED AND ENDORSED FOR TEAM USE—

And not only on the football field is GOLDSMITH Athletic Clothing and Equipment deservedly outstanding. For Baseball, Track, Basketball, Tennis, Swimming, Boxing and Golf, the GOLDSMITH line of Athletic Goods, by its durability, correctness and appearance, has won the approval of discriminating coaches, athletes and sportsmen throughout the country.



DISTRIBUTED BY
MAISON BLANCHE CO.

Greatest Store South

New Orleans

Louisiana

Family Finish

Dry Cleaning

Dyeing

COMPLIMENTS OF

PEOPLES LAUNDRY
INCORPORATED



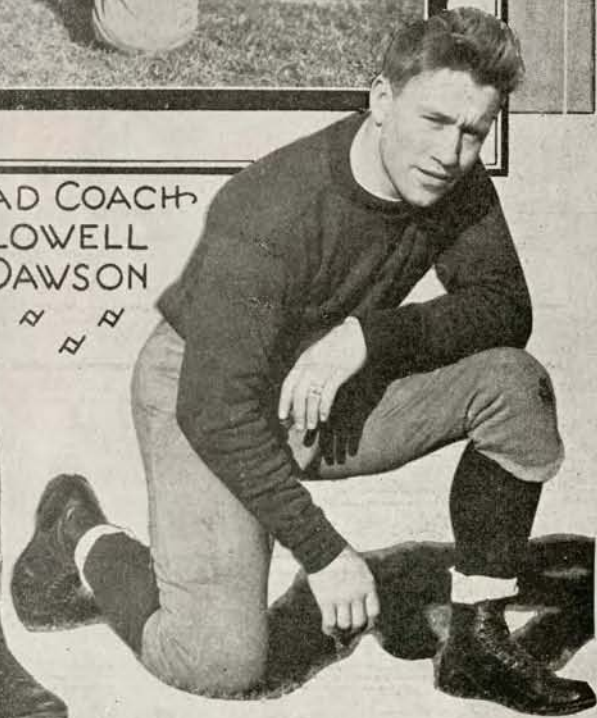
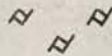
Phone 50

The Official Laundry for L. S. U.

TULANE COACHES



HEAD COACH
LOWELL
DAWSON



BACKFIELD COACH GLENN SEIDEL ~ LINE COACH BILL BEVAN ~

A Tribute to Football

by Grantland Rice

ROSTER

Tulane vs. L. S. U.

Tulane		L. S. U.	
1 Johnson, B., h	58 Ott, q	10 Carroll, t	39 Myers, b
3 Brechtel, e	59 Henley, g	11 Wright, e	40 Chinn, t
5 Overdyke, h	60 Tull, c	12 Darling, e	41 Walker, b
8 Eddy, t	61 Bryan, h	14 Harrist, t	42 Booth, b
9 Bertucci, h	62 Graham, f	15 Gormley, J., e	43 Mihalich, e
24 Brunner, h	63 Goodell, e	16 Reed, b	44 Stewart, c
32 Jones, g	64 Hickey, g	17 Lester, t	45 Staples, b
35 Dalovisio, e	65 Goll, g	18 Myrick, e	46 Campbell, g
38 Banker, h	66 Loftin, f	19 May, b	47 Rohm, b
39 Richardson, q	67 Gorman, c	20 Williamson, c	48 Larsen, b
40 Payne, T., h	68 Buckner, g	21 Strange, t	50 Morton, b
41 Andrews, f	69 Hall, g	22 Matlock, t	51 Knight, c
42 Watermeier, g	70 Avants, c	23 Coffee, b	54 Westbrook, b
43 Johnson, D., h	71 Friedrichs, e	24 Tinsley, G., e	56 Friend, t
44 Schneidau, e	72 Upton, t	25 Farmer, t	57 Schiller, e
45 Moreau, q	73 Shattles, t	26 Gormley, R., c	58 Johnson, b
46 Smith, t	74 Moss, t	27 Ferguson, t	60 Baur, e
47 Flowers, h	75 Dailey, e	28 Phebus, t	63 Tinsley, e
48 LaRocca, e	76 Pace, t	29 Warmbrod, c	66 Milner, b
49 Mattis, h	77 McGrath, g	30 Clark, g	72 Anderson, b
50 Odom, h	78 Nussbaum, t	31 Gatto, g	73 Clasen, g
51 Preisser, e	79 Miller, t	32 Baldwin, g	74 Baten, e
52 Dirmann, e	80 Benedict, q	35 Smith, g	82 Leisk, g
53 Evans, g	81 Dexheimer, h	37 Dumas, e	88 Lemak, b
54 Gamble, e	83 Payne, H., h	38 Crass, b	
55 Smither, g	86 Jaubert, t		
56 Bond, q	96 Kirchem, t		
57 Payne, W., h			

Blocking backs and interference—
 Fifty thousand wild adherents—
 Tackle thrusts and headlong clashes,
 Two yard bucks and dizzy dashes,
 Spiral punts and forward passes,
 Run the end and hit the line,
 Driving on by leg and spine,
 Head and shoulder, heart and soul,
 Till you fall across the goal.

Probable Lineups Tulane vs. L. S. U.

Tulane	POSITION	L. S. U.
44 Schneidau	L. E.	Tinsley 24
74 Moss	L. T.	Strange 21
68 Buckner	L. G.	Leisk 82
60 Tull	Center	Stewart 44
69 Hall	R. G.	Baldwin 32
79 Miller	R. T.	Carroll 10
51 Preisser	R. E.	Dumas 37
66 Loftin	Q. B.	May 19
61 Bryan	L. H.	Milner 66
49 Mattis	R. H.	Coffee 23
41 Andrews	F. B.	Morton 50

OFFICIALS

Referee	Viner (Missouri)
Umpire	Perry (Auburn)
Head Linesman	Severence (Oberlin)
Field Judge	Striegel (Tenn)

And another all-star eleven—

T-H-E-Y-S-A-T-I-S-F-Y-

Chesterfield

PARAMOUNT

WHERE BATON ROUGE MEETS

MIDNITE SHOW TONITE 11:30 P. M.



Romance packed with excitement as two All-American stars battle it out on the gridiron for a girl's love.

Adolph Zukor presents

"ROSE BOWL"

with WILLIAM FRAWLEY
ELEANORE WHITNEY • TOM BROWN
LARRY CRABBE • BENNY BAKER
TERRY RAY • PRISCILLA LAWSON
Directed by Charles Barton • A Paramount Picture

Action scenes actually filmed in the famous Rose Bowl stadium.

WE'RE WITH
THE MIGHTY TIGER TEAM

Baton Rouge
Water Works Co.

Pure Water - - Soft Water

Always Out in Front !

WITH
SHOE STYLES

for College

MEN and WOMEN

First in Style and Quality and always Low in Price
—You'll find the Shoe you're looking for here—



Braun-Kidd Shoe Co.

Roumain Building

Third Street

Don't Say Bread
Say HOLSUM



Baton Rouge
Coffee Mills

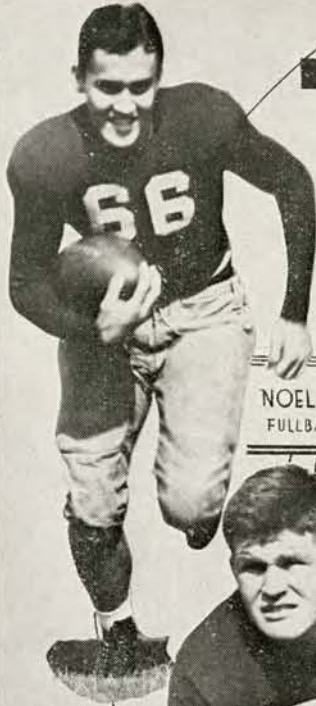
COMMUNITY
COFFEE

"The Coffee With No Regrets"

333 N. 16th Street

Phone 2213

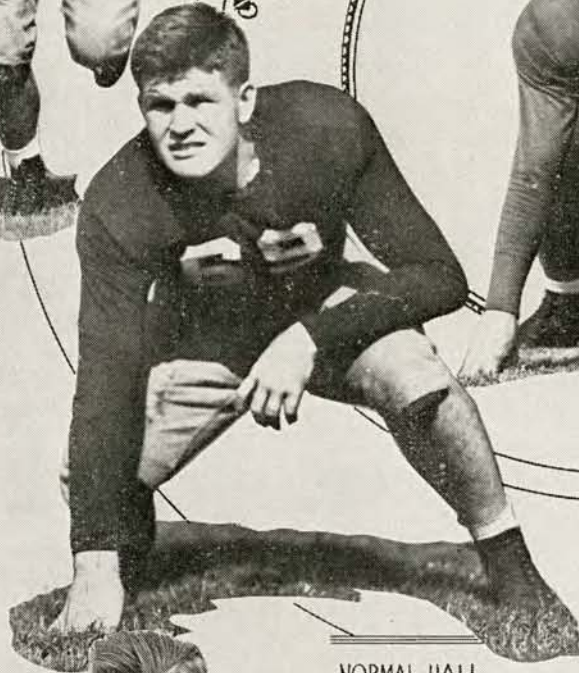
TULANE



NOEL LOFTIN
FULLBACK

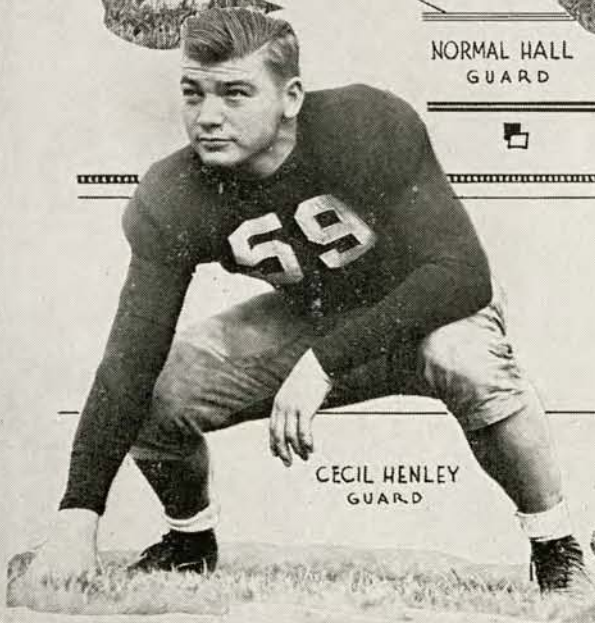


BUCKY BRYAN
HALFBACK

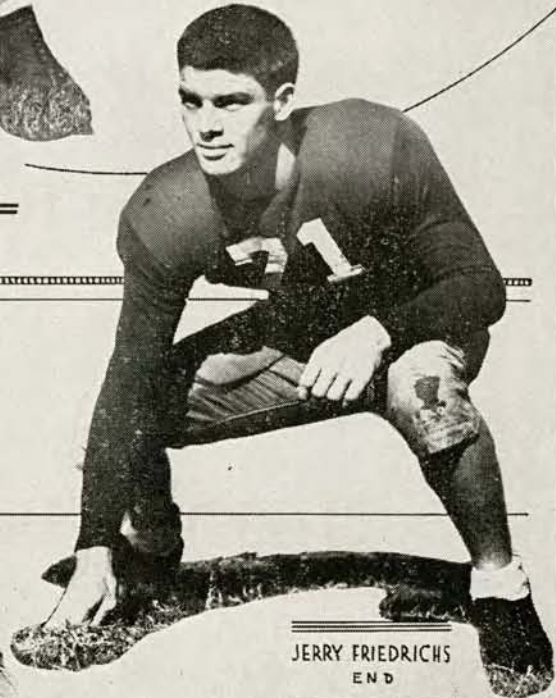


RALF BOND
QUARTERBACK

NORMAL HALL
GUARD



CECIL HENLEY
GUARD



JERRY FRIEDRICHS
END

Rawlings

**THE CHOICE OF L. S. U.
IS THE CHOICE OF DISCRIMINATING
COACHES AND PLAYERS EVERYWHERE**

Correct Design, Finest Quality Materials, Expert Craftsmanship and in addition those plus features Rawlings trademark guarantees a sure athletic equipment that has long been recognized as the standard.

Complete Equipment for

FOOTBALL — BASKETBALL — VOLLEY
SOCCER — GYMNASIUM
BASEBALL — SOFTBALL — TRACK
TENNIS — GOLF

RAWLINGS

MANUFACTURING CO.,
St. Louis - - Missouri

“Eat 'Em Up Tigers”

Hernandez Bakery Products

The Best Cinnamon Rolls and Doughnuts in Town!
High Grade Line of Cakes, Pies and Pastries—
Party Orders Our Specialty.

HERNANDEZ BAKERY

605 MAIN STREET

PHONE 4529



WARDELL LEISK—GUARD



MARVIN BALDWIN—GUARD

for those who appreciate better
Photographs—see

Stefan

when **finer portraits** are made **Stefan** will
make them

STEFAN STUDIOS

113 3rd Street
BATON ROUGE, LA.

Compliments of

**THE MONROE CALCULATING AND ADDING
MACHINE COMPANY**

W. O. HUMPHREYS, District Mgr.

Underwood Elliott Fisher Co.

L. P. Bahan, Manager

Baton Rouge

TIP TOP AVERN

550 MAIN STREET

**LIQUORS
QUICK DELIVERY**

PHONE 9361

A. C. Service, Inc.

Hertz Driveurself System — Parking — Gas
and Oils

Baton Rouge, La.

Phone 666
Louis Aucoin

227 Florida St.
W. H. Crawford

"ALWAYS FOR THE TIGERS"

Air Conditioning
Plumbing - Heating

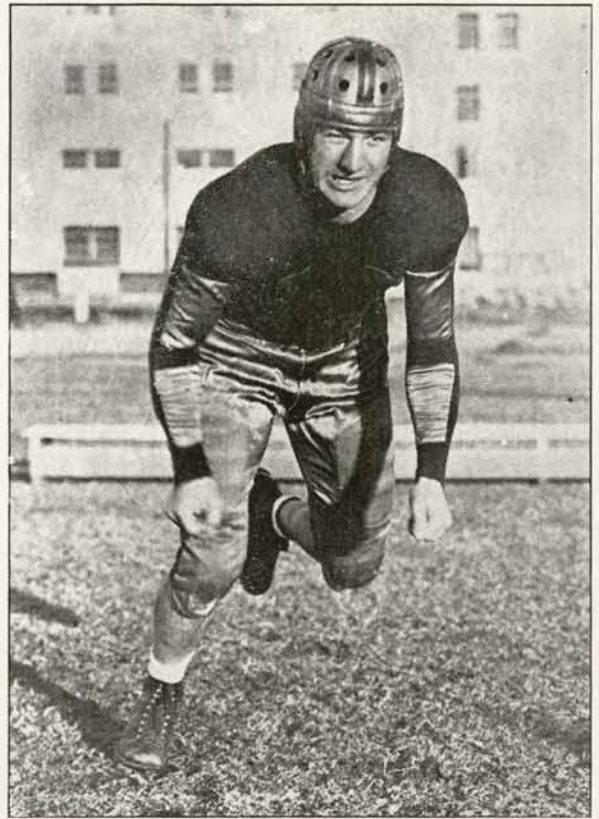


American Heating
And Plumbing Co., Inc.

New Orleans, U. S. A.



GAYNELL TINSLEY—END



JOHN MIHALIC—END

The Varsity Shop

Hart Schaffner & Marx Clothes

Across from Paramount Theatre

Compliments

The Capital BUILDING & LOAN ASSOCIATION

Organized 1909

Oldest Mutual Association in Baton Rouge, La.

J. H. PERCY, President

O. M. THOMPSON, Vice-Pres., Sec-Treas.

COMMERCIAL SECURITIES CO.

Organized 1919

Oldest and Largest Finance Company in this
Section of the State

LOANS AND INVESTMENTS

T. J. SINGLETARY, President

E. F. FLEMING, Chairman,
Board of Directors

309 Church St.

Phones 2250-2251

BATON ROUGE, LA.

100% FOR THE TIGERS

Triangle Service Station

EXIDE & WILLARD BATTERIES
SEIBERLING TIRES

Phone 5500

Blue-Ribbon

PASTEURIZED DAIRY PRODUCTS

"Dependable As The Tigers"



COACH BERNIE H. MOORE

Bring this ad to our plant down by the old State House and be convinced.

A FREE ICE CREAM CONE AWAITS YOU

Void After December 1st



904

—Phones—

1251

Compliments

Co-Operative Produce Company

Handlers of Complete Line

FRESH FRUITS AND VEGETABLES

VIGNES-BOMBET CO., Inc.

Phones 2383-2384

800 St. Phillip Street

Baton Rouge, La.

Wholesale Liquor Department

—Featured Brands—

CENTURY WHISKIES

Stone Haven
Northmoor
Dr. Dick
Invader
Rembrandt
Dixie Dew
Century Club

GINS
Century
Rhythm

UNCLE FELIX'S
California Wines

COOK'S BOTTLED BEER

PABST CANNED BEER

OLD TANKARD ALE

EAGLE BEER

Patronize your local retailer, he can get these for you.

TIGERS!

Clean Up the Conference

FOR QUALITY CLEANING

Leave the Suits to Us

SERVICE CLEANERS & DYERS

PHONE 333

717 MAIN STREET

LSU



BARRETT BOOTH
BACK



BEN FRIEND
TACKLE



DICK GORMLEY
CENTER



JAKE STAPLES
BACK



BASIL MYRICK
END



**DUTCH
RAUSCHENDACH**
BACK



OSCAR MATLOCK - GUARD

HOLD THAT TIGER !

Fresh Up

WITH



7UP



« Keeps You Alkaline »

HELLO TIGERS!



COL. CASTRO CARAZO
Director Band Department

Best Wishes
from
The L. S. U. Band



4 NEW HORMEL SOUPS

CREAM OF MUSHROOM
CREAM OF TOMATO
VEGETABLE - BEEF
NOODLE SOUP

2 LARGE
CANS

29c

What Can Good Printing Do for You?

THE OUTSTANDING THINGS

FIRST, It can—and will—increase your business through well worded, properly displayed and attractively arranged mailing pieces.

SECOND, It can—and will—provide you with stationery and commercial forms that increase your prestige and efficiency in public relations and private enterprise.

J. E. ORTLIEB PRINTING COMPANY

PHONE 203

227 FLORIDA ST.

Best Wishes

FOR

THE MOST SUCCESSFUL SEASON

IN

L. S. U. FOOTBALL HISTORY

Weiss, Dreyfous & Seiferth
Architects

TULANE



TROY
ODOM
HALFBACK
#



CALVIN
BENEDICT
QUARTERBACK



BILL
FLOWERS
HALFBACK



VIC LARocca
END



MILLER
UPTON
TACKLE



JOHN
DIRMANN, END #

F. F. HANSELL & BRO. LTD.

Office, School, Bank and Auditorium Furniture, Books,
Stationery, Office and School Supplies

131 - 133 Carondelet St., New Orleans, La.

We list herewith a few of the Public Buildings we have furnished in whole or part. We can do as well for you, whether it be a one room school or office, or state capitol building.

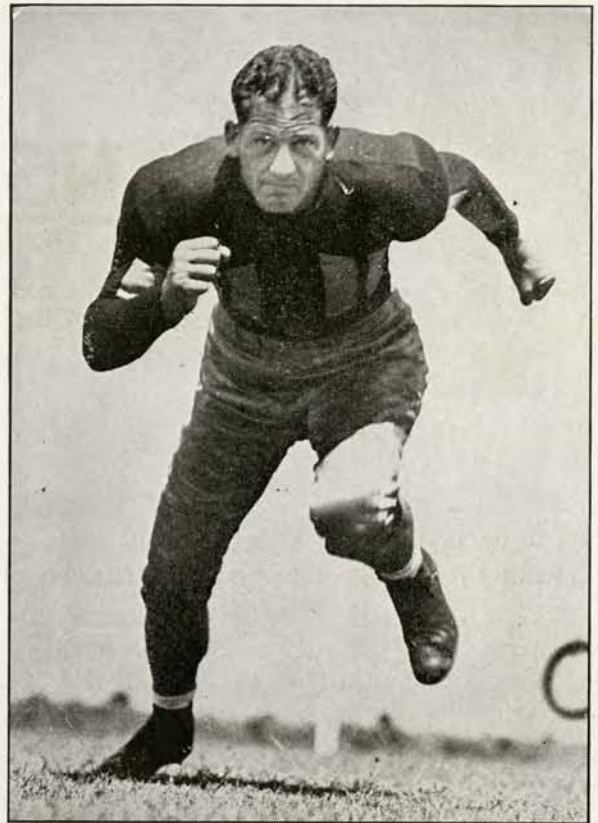
Louisian State Capitol	Baton Rouge, La.
Louisiana National Bank	Baton Rouge, La.
Baton Rouge High School	Baton Rouge, La.
Criminal Courts and Jail Building	New Orleans, La.
American Bank & Trust Co.	New Orleans, La.
New Orleans Public Service Inc.	New Orleans, La.
Milne Boys Home	New Orleans, La.
Dillard University	New Orleans, La.
Hutchinson Memorial-Tulane University	New Orleans, La.
Dept. Middle American Research Tulane University	New Orleans, La.
Bolton High School	Alexandria, La.
C. E. Byrd High School	Shreveport, La.
Lafayette High School	Lafayette, La.
Ouachita High School	Monroe, La.
Lake Charles High School	Lake Charles, La.
Hanson Memorial High School	Franklin, La.
St. Peters High School	New Iberia, La.
U. S. Marine Hospital	Carville, La.
and many others—	

PROMPT SERVICE — HIGH QUALITY — RIGHT PRICES

Everything for the Office and School



JOHN HUGH SMITH—GUARD



CLARENCE STRANGE—TACKLE

WELCOME L. S. U. STUDENTS

MIDDLETON MUSIC SHOP

237 Main Street

SHEET MUSIC OUR SPECIALTY

"WISHING THE TIGERS A
SUCCESSFUL SEASON"

HOLMES & BARNES, Ltd.

Wholesale Cash Grocers

ARMSTRONG SERVICE, Inc.

603 St. Charles Street

Phone 1470

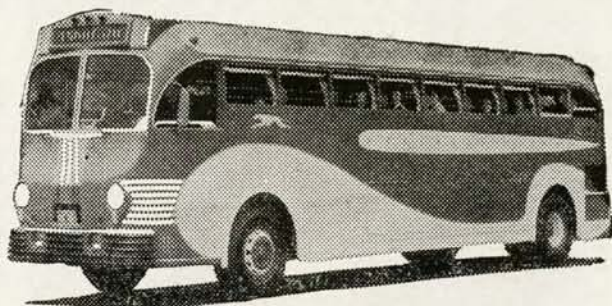
Pelican Inner Spring Mattresses

\$19.95		\$34.95	
	\$23.95		\$39.95
		\$27.95	\$43.95

10 Year Guarantee That — "Springs
Don't Come Thru"

MANUFACTURED BY
CAPITAL BEDDING COMPANY
Baton Rouge

Greyhound Lines



NEW SUPER COACH

5 TRIPS DAILY
Between

Baton Rouge — New Orleans

FREQUENT AND CONVENIENT SCHEDULES
VIA THE SCENIC TRAVEL ROUTES
"Greyhound Serves America"

BUS FARES ARE LOWEST

TECHE GREYHOUND LINES

LAFAYETTE and FLORIDA STREETS PHONE 4836
BATON ROUGE, LA.

Take 'em to a Cleaning Tigers !
That's What We Do



PEERLESS LAUNDRY

Phone 651

1249 N. Boulevard

Best Wishes

L. S. U.



EVANS ELECTRICAL SUPPLY, Inc.

Wholesale Electrical Supplies, Lighting Fixtures,
Fans, etc.

Phones 975 - 976

523 Third St.



The New Orleans Hotel Association is very proud of the Louisiana State University and the record of its football team, and extend best wishes for a most successful season.

—MEMBERS—

Bienville Hotel

J. A. Walton, Mgr.

Hotel De Soto

J. J. Whatey, Mgr.

Hotel Monteleone

A. F. "Tony" Spatafora,
Manager

Hotel New Orleans

Geo. Dawson, Mgr.

Jung Hotel

A. F. Landstreet, Mgr.

La Salle Hotel

Roland Bahan, Proprietor

Pontchartrain Hotel

Lyle Aschaffenberg, Mgr.

The Roosevelt

Jas. Pat O'Shaughnessy
Manager

St. Charles Hotel

J. J. O'Leary, Mgr.

New Orleans Hotel Ass'n.



COTTON MILNER—HALFBACK



ROCK REED—TAILBACK

Terry Juden Company



UNIFORMS



R. O. T. C., Army, Navy, and Hotel

DINING ROOM SUPPLIES And KITCHEN EQUIPMENT

FOR ALL UNIVERSITY BUILDINGS
FURNISHED BY

Loubat Glassware & Cork Company

Show Rooms 510 - 516 Bienville St.,

New Orleans, La.

**CRESCENT
LAUNDRY
INC.**



**And Dry
Cleaning**



**NEXT TO
L. S. U.**



**PHONE
4700**

**"Where Cleaning
Is An Art"**





JAY BERWANGER

Chicago Halfback • Member of Grantland Rice's All-America Team for 1935 • Home: Dubuque, Iowa.
THE football player of 1935 • Defeated Illinois single-handed in farewell appearance on Big Ten gridirons.

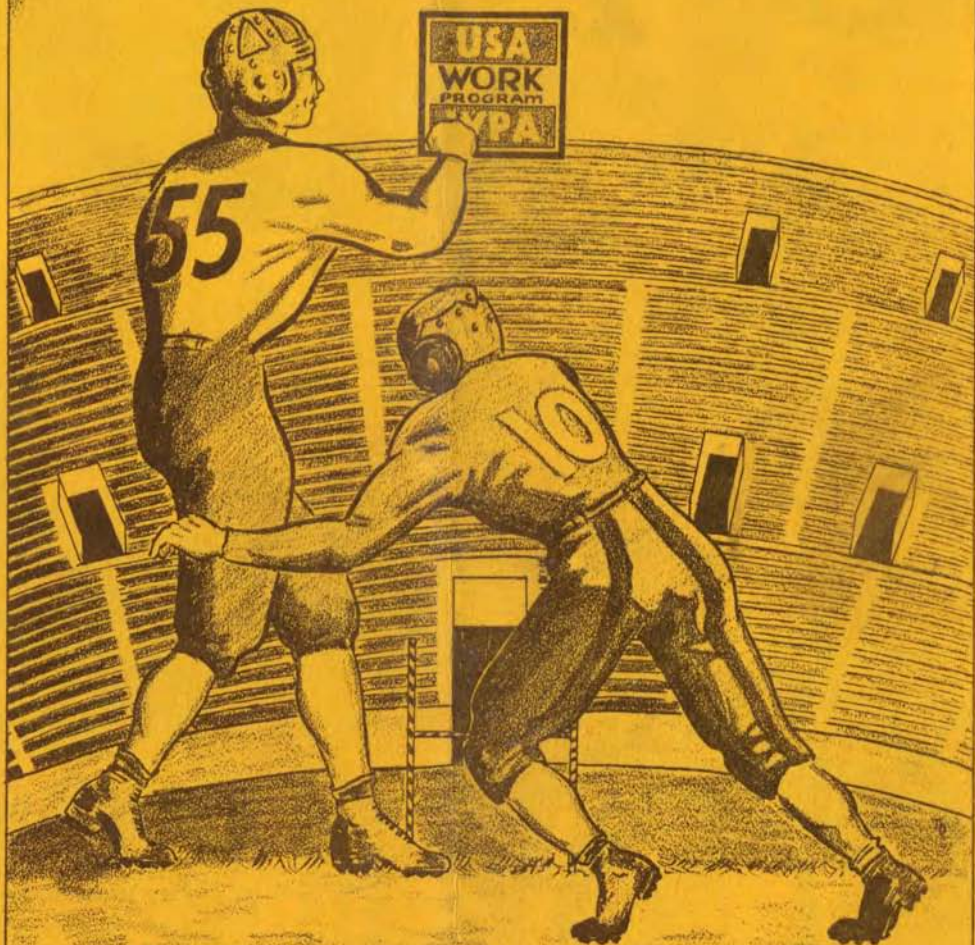
PRIZE - WINNER

Girl . . Dog . . Cigarette — Lucky Strike, of course. For "It's Toasted," a process which is private and exclusive with Lucky Strike Cigarettes, allows delicate throats the full, abiding enjoyment of rich, ripe-bodied tobacco. "Toasting" removes certain harsh irritants present in even the finest tobaccos in their natural state. "Toasting" is *your* throat protection against irritation — against cough. So, for your throat's sake, smoke Luckies.



Luckies - a light smoke
OF RICH, RIPE-BODIED TOBACCO - "IT'S TOASTED"

L.S.U. STADIUM DEDICATION CEREMONY



DR. JAMES M. SMITH, *Chairman*
President, Louisiana State University

HARRY L. HOPKINS
Administrator
Works Progress Administration

JAMES H. CRUTCHER
State Administrator
Works Progress Administration

RICHARD W. LECHE
Governor of Louisiana

JOHN H. OVERTON
United States Senator



DR. SMITH



GOV. LECHÉ



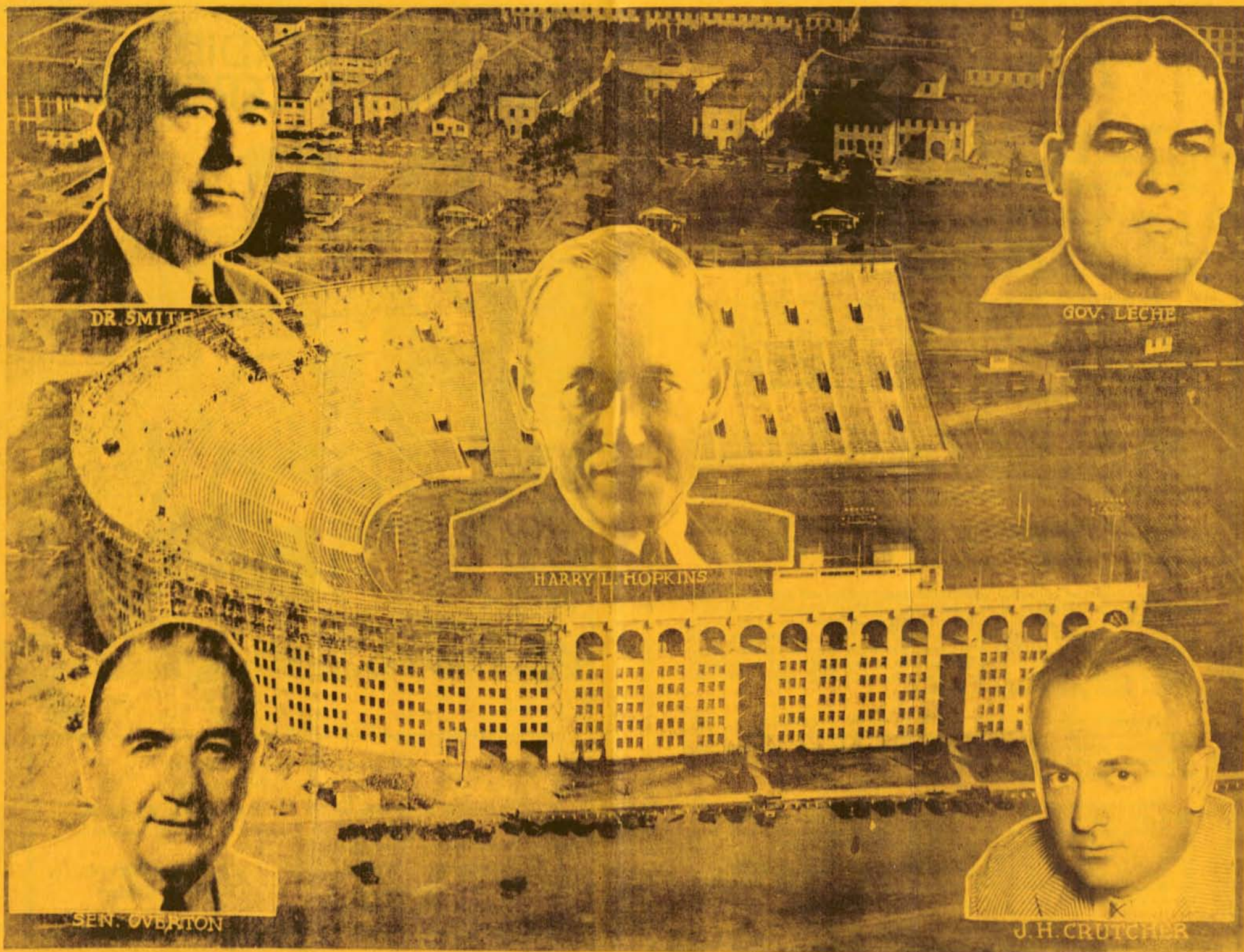
HARRY L. HOPKINS



SEN. OVERTON



J. H. CRUTCHER



The L. S. U. Stadium

The new end-section of the L.S.U. Stadium, built under a WPA project, sponsored by the University, more than doubles the seating capacity of the stadium, and gives L.S.U. the finest horseshoe stadium in the South. It is the second major addition to the structure in recent years, two sections having been added to the side-stands in 1932.

More than 800 WPA workmen and several hundred University employees have labored on the new unit since work began in May, and the efficiency of their workmanship is attested to by the fact that all seats are available for the L.S.U.-Tulane game, despite the fact that original schedules called for the structure to be completed in March of 1937.

The new section, which will house more than 1,200 students in model dormitory rooms on five floors within the structure, was erected at a cost of more than \$700,000. WPA workmen contributed 285,903 man-hours up to the time of the L.S.U.-Tulane game, with the University workmen totalling 119,355 man-hours. The efficiency of the operation has been greatly due to the fine cooperation between the WPA and the University, and to the fact that the sponsors willingly and generously met every obligation which properly fell upon them.

There are 61 rows of seats in the great horseshoe section, providing reserved space for more than 22,000 spectators. The great structure stands 80 feet and nine inches high, with the outside wall measuring 834 feet and six inches. All available space within the structure has been put to use, with the result that there are five floors given over to dormitory rooms and offices, with an additional floor built as a promenade deck.

Each dormitory floor provides 60 large rooms, which will be equipped to accommodate four students each. In addition, the end section will house offices and dressing rooms for the athletic department, and a gymnasium where athletes may train in bad weather.

The amount of materials used in the construction will give graphically an idea of the magnitude of the structure. Fifteen thousand three hundred cubic yards of gravel, 11,900 cubic yards of sand, and 93,500 sacks of cement were used to mix the concrete which forms the massive walls. Eight hundred thousand feet of lumber was built into forms into which the cement was poured, with 40,000 pounds of nails necessary to hold the forms together. Twelve hundred tons of reinforcing steel forms the skeleton which gives strength to the unit.

Concealed within the walls and floors of the end-section are 1,500 linear feet of water mains and 2,100 feet of sewer mains. A total of more than 83,000 pieces of hollow tile was laid by hand by WPA workmen, and carpenters cut and finished 147,400 feet of two-by-four redwood lumber to form the seats in the stadium section.

With the new end-section, the L.S.U. Stadium ranks as one of the finest such structures in the entire nation. It is an example of the hundreds of projects being carried on throughout Louisiana under the Federal Work Program, and it is a valuable permanent public improvement which will benefit the entire State. The L.S.U. stadium might well be taken as a standard of what can be accomplished through the cooperative efforts of the Works Progress Administration and the sponsoring agency, in this case the Louisiana State University.