

# SOUVENIR PROGRAM

TULANE vs. SOUTHWESTERN

HOWARD-TILTON  
MEMORIAL LIBRARY

TULANE UNIVERSITY

price  
25¢



SATURDAY, OCTOBER 19, 1929

2:30 P. M.

TULANE STADIUM

*Score: Tulane 60; Southwestern 0.*

# THE TULANE UNIVERSITY OF LOUISIANA

NEW ORLEANS



**The University embraces the Following Departments:**

The College of Arts and Sciences  
The H. Sophie Newcomb College for Women  
The College of Engineering  
The Graduate School  
The College of Law  
The School of Medicine  
The Graduate School of Medicine  
The School of Pharmacy  
The Dental Clinic  
The College of Commerce and Business Administration  
The Courses for Teachers  
The Department of Middle American Research  
The School of Social Work  
The Summer Schools

For Catalogue Address:

**Registrar of the Tulane University of Louisiana**

Gibson Hall, New Orleans

## THE BATTLE OF THE ELEMENTS

Wind and water clash!  
The battle of the elements!

That is the spectacle 30,000 fans will witness at Tulane Stadium next Saturday when the Golden Tornado of Georgia Tech battles the Green Wave of Tulane!

The greatest football spectacle in New Orleans history—a championship aspiring Greenie team and a determined Georgia Tech team, national champions in 1928 and returning with most of the old stars.

The same Stump Thomason, amazing halfback, who rode with the Tornado to national honors a year ago will be vying with the same Bill Banker, Tulane's wonder halfback, second high point scorer of the nation in 1928.

Warner Mizell, the great triple threat running mate of Thomason will be pitted against little Ike Armstrong, versatile Tulane half. Dick Baumbach will match passes and signal calling with Earl Dunlap, who will long be remembered in New Orleans for his stellar work a year ago.

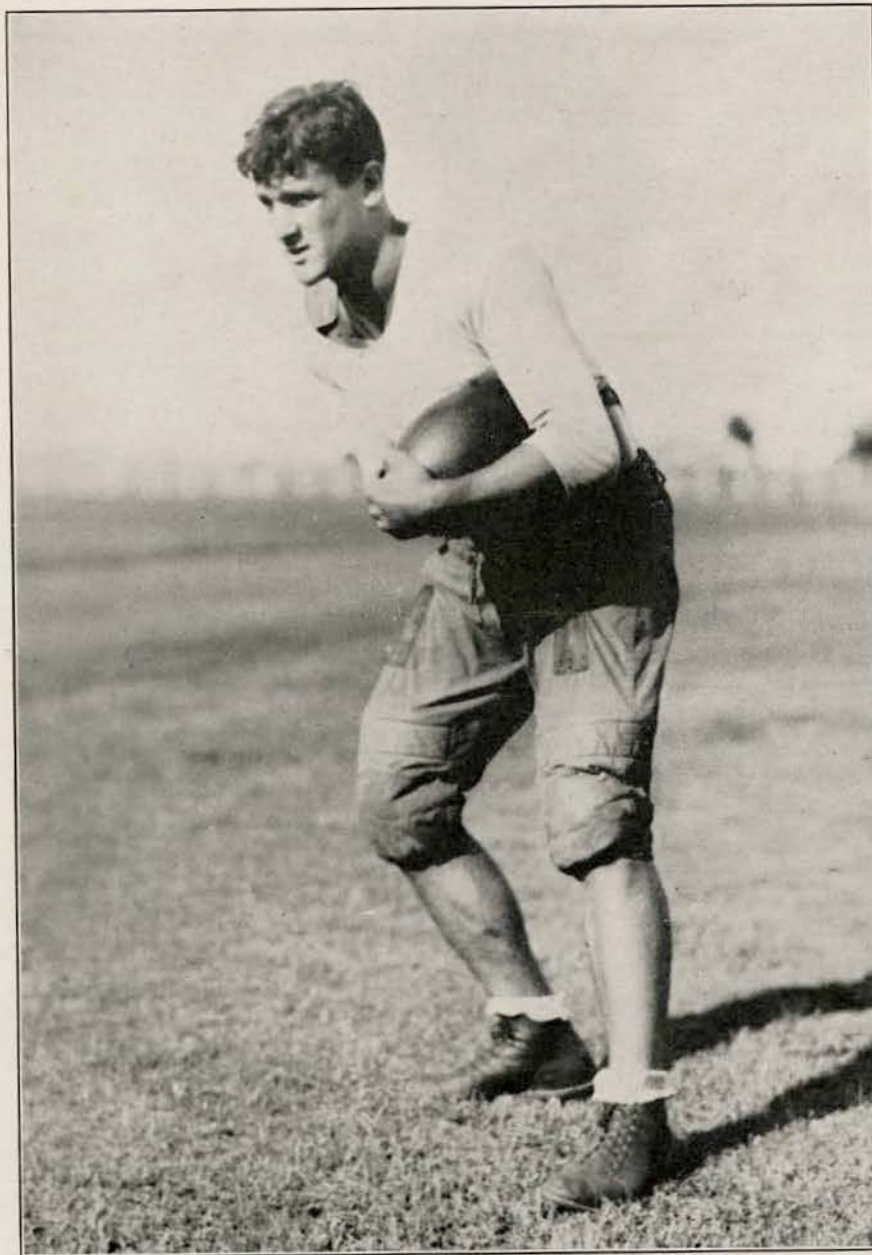
Then, out there in the line will be Tom Jones, sensational end and Dalrymple and Holland, Tulane's crack pair.

Brooks, Rusk and others form Tech's big line while Bodenger, Roberts, McCance, Rucker and others are the mainstays for the Greenies.

And don't forget Sweet Maree of the Tech Jack-ets! The great tackle of a year ago may be in the game at either tackle or fullback but the big thing is, he will be in the game.

Tech is out for honors regardless again. Coach Bill Alexander yet believes the wonder backs of 1928 will reap further glory in 1929.

Coach Bernie Bierman is twinkling with the hope of the greatest honors in history for the Green Wave.



Here is the great Wop Glover, Tulane sophomore and one of the most promising of the young backs in Dixie.

Harry can punt, pass, catch passes and run—and how!  
He may be a star against Georgia Tech.

A Tulane victory will thrill most of the great crowd of 30,000 expected.

Tickets are now limited. On sale since last Monday, a great raft of the seats have already gone and most of them will be sold long before game time.

This section knows its football! The thrill of the greatest battle of the year is in the air!

### PICK-UPS AND FUMBLES

Next week will be a big one in every way. Thousands of visitors will be in New Orleans to see Georgia Tech and Tulane battle. Alumni will be on hand from several states to cheer the Olive team on.

Georgia Tech is bringing the famous "Ramblin' Wreck" band to the Crescent City for the occasion. This outfit, consisting of 80 selected pieces, will give a parade on Canal Street the morning of the game and will be at the Stadium in all of its glory Saturday afternoon.

Atlantans were called on some time ago to contribute money for new uniforms for the band and they do say that the new gold and white outfits will knock one cold.

A big special train is being operated from Atlanta to New Orleans, bringing hundreds of Tech supporters. These, in addition to the additional hundreds in this section who will whoop things up for the Tornado will make them feel at home.

On the other hand, Louisianans will be solidly behind the Green Wave to round out a great spectacle.

Tulane alumni will hold a smoker Friday evening at the New Orleans Athletic Club with hundreds of old grads making merry.

Arthur A. de la Housaye is chairman of the committee on arrangements of the smoker.

Did you know that—Lester Lautenschlaeger, Greenie backfield coach, hasn't seen the Wave in a game this season . . . he is away each Saturday on a scouting trip . . . Ted Cox, another Greenie scout, is the biggest man in the country wearing a number nine shoe? . . . the Greenies have a contract with three more years to run against Texas A. & M.? . . . November 16th is home coming day at Tulane?



### Teamwork Tells ---

From well to your tank, the quality and purity of "Standard" Gasoline and "Standard" Motor Oil are safeguarded by willing hands. Behind them lie the resources and technical skill and experience of one of the world's greatest petroleum organizations. For real performance and all-around satisfaction—stick to "Standard."

STANDARD OIL COMPANY of Louisiana



### SOLD IN THE STADIUM

ENJOY THE FOOTBALL

GAMES WITH

A REAL WINNER



A REAL WINNER

New Orleans Ice Cream Company  
1320 to 1322 BARONNE ST.  
NEW ORLEANS

### BROADWAY PHARMACY

H. C. RICHARDS, Proprietor

Broadway and Maple

THE NEW

### Hotel Monteleone

J. D. KENNEY, Manager  
A. F. Spatafora, Ass't. Mgr.

European Plan.

STRICTLY FIRST CLASS  
ROYAL and IBERVILLE STREETS

**CONFERENCE  
STARS IN  
TABLOID**

Morris Bodenger, Tulane's great guard, is fast becoming the talk of the Southern Conference!

Sports writers who have seen him in action proclaim him as all-Southern material and it would be no surprise to see this young man come in with top honors at the end of the season.

Jack and Jerry are another Tulane pair who are being hailed. Many have compared Holland and Dalrymple as a couple of ends with Shiver and Nash of the great 1927 Georgia team.

Johnny Branch, stubby North Carolina halfback, is the latest backfield sensation of Dixie. This

**The Greatest  
Forward Pass**

Every man cannot "star" on the football field but he can score a touchdown and make the greatest forward in his own personal appearance by wearing one of the famous—

**Style Plus  
Suits**

Shown Exclusively by

**Maison Blanche**

Greatest Store South

lad, who is another Stumpy Thomason, is said to be a wonder whether it be at passing or running.

E. Smith of Georgia is the end who played an important role last week in the Athenians' victory over Yale.

Then, there is a young sophomore by the name of Armin Waugh of Georgia who starred against both Yale and Furman. He first came into his own against Furman and was promoted from second string to first. Now it seems he has won a regular starting berth. Like Thomason of Tech, he won fame in Georgia before going to college. He was the star of the Tech high school eleven for a long while.

Quarters	1	2	3	4	Final
TULANE					
SOUTHWESTERN					

**GEO. J. GLOVER COMPANY, INC.**  
**BUILDING CONSTRUCTION**  
**WHITNEY-CENTRAL BUILDING**  
**NEW ORLEANS, LA.**

## OCTOBER ZEPHYRS

Notre Dame went to the Pacific Coast and played Stanford a few years ago. Beaten, they came home as teams will do, and the ground keeper, and ardent Rambler fan, looked out one of the coaches and asked: "What 'wus' the low down on that game? What lost it?"

"Mental Psychology," returned the coach, "beat us."

"I knew it! I did!" exclaimed the ground keeper, "I told Rock not to use that fellow!"

Coach Dan McGugin of Vanderbilt took the Commodores up to Michigan a few years ago to play his brother-in-law's Wolverines.

Before the game, "Uncle Dan" told the Commodores the game meant more than a victory for Vandy. "It means a victory for the South."

As the story goes, he recited a few Civil war episodes to stir the blood of the Southerners and they went out and held Michigan to a 3 to 0 score.

And as Hurry Up Yost, the brother-in-law later explained, McGugin was of Northern parentage, his ancestors fighting in the Federal army while Yost was a Southerner, his folks fighting with the Confederates.



*After the  
Final Whistle*

A Period of  
Refreshment

at

*Katz & Besthoff, Ltd.*

St. Charles at Broadway

Only the Best

**AFTER THE GAME  
Celebrate!**



**DINE and DANCE UNDER  
THE STARS**

LUNCH  
11:30-2—60c

DINNER  
5-8:30—\$1.25

SUPPER DANCE  
9:30-1:30—\$1.25

**JUNG ROOF**

**BUICK  
MARQUETTE**

SALES—SERVICE

**GLENNY-BUICK CO., Inc.**

DRINK

**Coca-Cola**

IN BOTTLES

**Tulane**

1. Baumbach
3. Haik
4. Dawson
5. Glover
6. Armstrong
7. H. What'ey
8. J. Whatley
9. Haynes
10. Magee
11. Ford
12. McCormick
13. Young
14. Drawe
15. Seeuws
16. Pizzano
17. De Coligny
18. Banker
21. Holland
22. Massey
23. Penney
24. Upton
25. Mangum
26. Bankston
28. Bodenger
29. Dalrymple
30. McCanse
32. Roberts
33. Rucker

# Stars on the College Horizon



## Wear the RIGHT CLOTHES

Tulane and Newcomb stars—whether it be of the gridiron or the dance floor—shine brightest when adorned with Mayer Israel apparel—clothes are bound to be RIGHT when they come front—

**Mayer Israel & Co.**  
New Orleans Collegiate Store

**OFFICIALS FOR TODAY'S GAME**

- Referee—Henry (Kenyon College).  
 Umpire—Tyson (Illinois).  
 Head Linesman—Halligan (Mass. Aggies).  
 Field Judge—Reed (Tu'ane).

**Tulane Lineup For Today**

- |           |           |
|-----------|-----------|
| Da'rymple | Ends      |
| Holland   |           |
| McCanse   | Tackles   |
| Rucker    |           |
| Bodenger  | Guards    |
| Upton     |           |
| Roberts   | Center    |
| Baumbach  | Quarter   |
| Banker    | Halfbacks |
| Armstrong |           |
| Seeuws    | Fullback. |

More College Men Wear  
 Hart Schaffner & Marx Clothes  
 Than Any Other Kind

\$35

\$45

**STEVENS**

710 Canal Street



# THE BIG SHOTS

The powerful looking gentleman in the center of this layout is none other than Stump Thomason. Georgia Tech's veteran triple threat half-back and said to be the only football player living who can "lose 15 yards on a play and bring a cheer from the crowd!"

That statement is no exaggeration. This Stumpy pivots, side-steps, comes to a complete stop, picks up speed with remarkable ability, stiff arms, throws, passes, drop kicks, punts, catches passes, blocks, plays safety and does a few other things such as bouncing out of dangerous tacklers paths and backing up a line when he has nothing else to do.

Stumpy has generally been rated as the greatest of the greats of Tech's backfield.

Now, don't

Three  
ACES

AND

A  
King!



he deceived. This Bill Baker, the Blond Blizzard of Tulane, can hike back a punt as well as the next, knock them loose at safety, pass, punt, run tackles, ends or a broken field, back up a line, take out an end, pave interference or tackle.

And little Ike Armstrong is speed afoot and plenty. He follows interference well, passes, sneaks through a line and breaks up passes.

Ford Seeuws is another back who can back a line, smash a line or run interference.

While the praises of these four are being run, it is not to be forgotten that Tech has Mizell, Dunlap, Marce, Graydon, Faisst and others as backfield stars and Tulane has Glover, Bumbach, Pizzano, Massey, Hugh Whatley, Dawson and more.



**TODAY'S PLAY IN SOUTHERN CONFERENCE**

Georgia Tech against unbeaten Florida. Alabama versus Tennessee and Georgia battling North Carolina hold the spotlight in Southern Conference football today.

The clash of the Alligators and Golden Tornado will be watched with great interest as both teams are unusually strong. Florida is strong enough to take on such teams as Georgia, Harvard and Oregon in addition to Tech—at least their schedule makers thought so when they planned the 1929 card.

Alabama and Tennessee, both unbeaten, are playing at Knoxville.

Georgia invades Chapel Hill for a crack at the Tarheels.

Vanderbilt meet Auburn at Birmingham. Sewanee is host to Cumberland. Kentucky plays Carson-Newman at Lexington. Louisiana State and the Mississippi Aggies battle at Jackson. Duke plays the navy at Annapolis. Virginia tangles with V. M. I., at Charlottesville. Washington and Lee plays West Virginia

at Charleston. V. P. I., takes on William and Mary at Richmond and Maryland matches Galludet at College Park.

It's a big day all along the front!



**SPORTWEAR**

*from an*

**Athletic Family**

Spalding made the first football, the first basket ball, the first tennis ball, the first golf ball ever made in this country. Spalding has been making authentic athletic equipment for 53 years.

Choose your complete sport outfit with the comforting knowledge that everything is exactly right.

*A. G. Spalding & Bros.*

130 Carondelet St.



YOUNG

**JAHNCKE  
SERVICE  
INC.**

**Concrete & Building  
MATERIALS**

**Dredging—Towing  
Barges**

814 Howard Ave.

Since 1872

RAYmond 2261

THE GREEN WAVE IS  
USING BALDWIN'S  
EQUIPMENT

**“BALDWIN'S”**

Camp and Common

*Shoes for Sports---  
Day and Evening*

**Imperial Shoe Store**

Canal and Bourbon

*Largest South*

**Southwestern**

1. Barrouse
2. Rodemacher
3. Cagle
4. Bordelon
5. Bouillard
6. Faulk
7. Bienvenu
8. LeBlanc
9. Gary
10. Brand
11. Roy
12. R. Brown
13. McCullough
14. Vincent
15. Afeman
16. Elliott
17. Kloor
18. O. Rolufs
19. Boulet
20. Picard
21. Doland
22. Saia
23. J. Brown
24. F. Rolufs
25. Verret
26. Gooch
27. Morris
28. Bernard
29. Morgan
30. Ducote

at **PORTER'S**



**THOS. HEATH**  
*Clothes*

MADE WITH MUCH HAND  
WORK. PERSONAL SUPER  
VISION. AND EVERLASTING  
FUSSING WITH DETAILS...

\$45 to \$85

*Porter Clothing Co.*

Carondelet and Gravier Sts.

**Southwestern  
Lineup**

- |            |           |
|------------|-----------|
| Erard      | Ends      |
| LeBlanc    |           |
| F. Rolufs  | Tackles   |
| R. Brown   |           |
| Gooch      | Guards    |
| Boulet     |           |
| Morgan     | Center    |
| Morris     | Quarter   |
| Cagle      | Halfbacks |
| Rodemacher |           |
| Kloor      | Fullback  |

1928 TULANE FOOTBALL RESULTS

- Tulane 65; Louisiana Normal 0.
- Tulane 51; Mississippi A. & M. 6.
- Tulane 0; Georgia Tech 12.
- Tulane 6; Vanderbilt 13.
- Tulane 14; Georgia 20.
- Tulane 27; Millsaps 0.
- Tulane 13; Auburn 12.
- Tulane 41; Sewanee 6.
- Tulane 47; Louisiana College 0.
- Tulane 0; Louisiana State 0.

**Holmes Men's Store Announces**

**The "Big Four" in Men's Suits for Fall and Winter**

"Jack Bradley"  
2-Trouser Prep Suit

**\$25**

"Chatfield"  
2-Trouser Suit

**\$35**

"Worsted-Tex"  
Suits for Men

**\$40**

"Holmcrest"  
Suits for Men

**\$50**

All Out-of-Town Games to  
Be Played by Tulane Will  
Be Broadcast by Holmes  
See Newspapers for More Details

Holmes Men's Store—  
Use Separate Entrance on  
Bourbon St.  
**Holmes**  
NEW ORLEANS  
CANAL STREET MAIN 1000

Tulane 1929 Football Automobile  
Stickers Are Now Ready  
in Holmes Men's Store  
Ask for Yours Today

## GEORGIA IS JUST AROUND THE BEND, FOLKS

It won't be long until the Wave will be rolling toward Columbus, Ga.

Reports from the Georgia city are to the effect that a goodly 15,000 will be in the stands to see the Wave and Bulldogs tie up.

The game is Friday, November 1st, allowing fans to see the Georgia Tech-Notre Dame game in Atlanta the following day.

This marks the first time Tulane and Georgia have clashed in Columbus, heretofore the Bulldogs having played Auburn there.

Columbus welcomed the change.

### LOUISIANA PRINTING COMPANY

*Official Printers*

**TULANE**

*Football Program*

"THERE'S A REASON"

#### BATTERY SERVICE

### Elm Service Station

ELM AND LOWERLINE STS.

AUTO REPAIRS—GENERATORS  
IGNITION WORK

Cars Washed, Stored and Greased  
Crank Cases Drained and Refilled

E. L. MERTZWEILLER, Manager  
Phone Walnut 2992

#### SPONSORS FOR

#### TODAY'S GAME

Mrs. Gustave Westfeldt.

Mrs. Robert Polack.

Miss Jeanne Langhette.

Miss Shirley Stearns.

Mrs. Ernest Riedel.

Mrs. Nathan Seitel.

Mrs. S. S. La Bourisse

Mrs. Delvaille S. Theard.

Miss Gertrude Palfrey

Miss Eleanora Rearnés

Mrs. Foy W. Cordeil.

Miss Clara Mae Beer.

### MECCA THEATER

Adams near Maple Sts.

Steam Heated — Comfortable

The Mecca is under the personal supervision of Mr. and Mrs. Heiderich.

**Vitaphone - Movietone**

**Talking Pictures**

**Best Sound in Town**

### Coleman E. Adler

*For*

**Distinctive**

**Jewelry**

## TULANIANS!

Everybody's Welcome. HEAR the play by play returns of the Green Wave's road games at—

### COLLEGE PHARMACY

STATE AND FRERET

Phones WALnut 3772, 9213, and 9154

LESLIE D. ISRAEL

ROBERT F. LYNESS

*"The Thinking Fellow Calls A Yellow"*

5 and 10c RATE  
PLAN

## YELLOW CAB CO.

*Safety---Courtesy---Comfort---Service*

RAYmond 3311



*SOUTHWESTERN STARS*

Here are a couple of S. L. I's chief threats. "Bugs" Cagle, brother of the famous "Onward Christian" of the Army is said to be one brother who shows signs of following in his brother's footsteps.

Cagle punts, passes, runs, is a shifty broken field man and all-around star.

He made a fine showing against L. S. U., recently. He was married last month to a co-ed at South-

## You Can Lead a Man to College But You Can't Make Him Think

Thinking young men, however—who have vision—and recognize the good things of life, know that Godchaux's clothes are more than just clothes, they're a manner of thinking.

- Suits
- Overcoats
- Hats
- Shoes
- Furnishings

**Godchaux's**  
Canal near Baronne



western and his wife is in the stands today rooting for Southwestern.

Boulet is a capable performer also. He is a fine lineman, opens holes well and is a mainstay of the visitor's forward wall.

Keep an eye on this lad.

Coach Mabley believes the Lafayette boys will give a fine account of themselves. Back a few years ago the Lafayette team held Tulane to a 14 to 0 score.



THE KIDS AT PLAY



THE BIENVILLE

## Football Headquarters

Whenever you are in New Orleans—whether for a football game or for a more extended visit—make your headquarters at the Roosevelt or The Bienville. Modern in every way and conveniently located to any part of the city they will add immense enjoyment to your stay.

*The BIENVILLE*  
*The ROOSEVELT*

New Orleans



THE ROOSEVELT

## ALMA MATER

Sing these words as Tulane's Alma Mater is played

I

We praise thee for thy past, O Alma Mater!  
Thy hand hath done its work full faithfully!  
The incense of thy spirit hath ascended  
And filled America from sea to sea!

II

We praise thee for thy present, Alma Mater!  
Today thy Children look to thee for bread!  
Thou leadest them to dreams and actions  
splendid!  
The hunger of their soul is richly fed!



III

We praise thee for thy future, Alma Mater!  
The vista of its glory gleameth far!  
We ever shall be part of thee, great Mother!  
There thou wilt be where e'er thy children are!

CHORUS

Olive Green and Blue, we love thee!  
Pledge we now our fealty true  
Where the trees are ever greenest,  
Where the skies are purest blue!  
Hear us now, O Tulane, hear us!  
As we proudly sing to thee!  
Take from us our hearts' devotion!  
Thine we are, and thine shall be!

### Breen's Drug Store

We carry the most complete line of Sheaffer Pens and Pencils in New Orleans.

Also Looseleaf Fillers and Binders of all kinds.

Opposite Charity Hospital

Phone Main 9177

Tulane Ave. at Villere

### CLOVERLAND DAIRY PRODUCTS CO., INC

The Best and Safest Milk

Phone WALnut 4471

### Surgical Supply Co., Inc.

1531 Tulane Avenue

EVERYTHING FOR THE INVALID'S COMFORT

SUPPLIES FOR THE DOCTOR'S OFFICE

Abdominal Supporters, Elastic Hosiery, Trusses

### MEDICAL BOOKS

Students will find a full line of Medical, Dental and Pharmaceutical books recommended by teachers of Tulane University.

Tulane Belt Cars Pass Our Door

**J. A. Majors Co.**

1301 Tulane Ave.

**Tricou Jays:**  
738  
GRAVIER STREET

Established 1867

### CLOTHING & FURNISHINGS

FOR STUDENTS

Suits—Hats—O'Coats—Sox—Pajamas

ALBERT de BEN, Pres.

Next to Stock Exchange



CAPT. RUCKER



## The Spirit of the Game

—As an institution whose fortune is inseparably connected with that of New Orleans, the Public Service family is backing "The Green Wave" heart and soul.

—But aside from that, it's a man's game this football business. In rain, slush, cold; no matter what the odds or cost, the true football player fights on to win the game.

—Similarly, the Public Service game requires men. In storm, rain, cold; no matter what the odds or cost, street cars must move, electric lights must burn, gas must flow—at all times, in all weather. That's a man's game, too, and men who play it can understand the spirit of men who fight out on the grid.



ARMSTRONG

New Orleans Public Service Inc.

### THE KIDS PLAY HARD

Dr. Dinwiddie spoke to the children when they came out to the old field the other Saturday morning to take football lessons under old Tulane stars. Here he is shown talking with the boys.



HOLLAND

## TULANE

fulfilling the noble mission of instilling Culture and the appreciation of the Good, the Beautiful—Serving the Mind. You have the Best Wishes of another and an inseparable mission—Serving the Body.

"The Hunger of the Soul is richly fed" at the Alma Mater. But come to Us, when your hunger is Physical.



Solari's

## HAUSMANN, INC.

NEW ORLEANS' LEADING  
JEWELERS

Special Department for College  
and Fraternity Jewelry

# THE SCORE BOARD

## Watch It Carefully For Complete Information

Often only the officials and captains know what a certain penalty is for. We have sketched out the following to inform you. Each penalty is numbered below. When a penalty is inflicted the number of that penalty will be hung on the score board.

Please understand violations of rules are rarely intentional. They usually come from over-anxiousness, excitement and most often from the highly technical character of the present game.

### PENALTIES

Pen. No.	OFFENSE	Penalty	Pen. No.	OFFENSE	Penalty
1.	Offside—in advance of line of scrimmage and on the kick-off or on free kick	5 yds.	21.	If a man on defense holds a player of the side with the ball	5 yds.
2.	Holding or illegal use of hands or arms. The team with the ball, except the man carrying the ball may not use hands or arms to block out or keep off opponents.	15 yds.	22.	If a team takes out time more than three times in one half without substituting a player	5 yds.
3.	Clipping—Cutting a man down from the rear away from the play	25 yds.	23.	For delaying the game	5 yds.
4.	Players must come to an absolute stop for a period of approximately one second in all shifts and "huddle" plays	15 yds.	24.	Crawling—The man with ball may not crawl or try to advance after being tackled and thrown	5 yds.
<b>LOSS OF A "DOWN"</b>			25.	Hurdling—Man with ball may not jump over a man still on his feet	15 yds.
5.	For second and third incomplete passes in any one series of downs and	5 yds.	26.	Unnecessary roughness or unfair play	15 yds.
6.	Interference by side making forward pass, prior to fourth down, also	15 yds.	27.	Tripping with feet, tackling out of bounds, etc.	15 yds.
7.	Intentionally throwing forward pass to ground, prior to fourth down, also	15 yds.	28.	If center feints to snap ball and does not	5 yds.
<b>LOSS OF BALL</b>			29.	Unsportsmanlike conduct, talking back to officials or abusive language	15 yds.
8.	Ball kicked out of bounds, unless touched, etc.		30.	The ball or the center may not be interfered with until ball is passed	5 yds.
9.	Interference by side making forward pass, fourth down—Loss of ball at point 15 yards back of previous down.		31.	A substitute must report to referee or umpire. Penalty for not reporting	5 yds.
10.	Interference by defensive side in case of forward pass—Loss of ball to the offended side at the spot of the foul, the ensuing down to be first down.		32.	The team with the ball must have seven men on the line of scrimmage when the ball is snapped	5 yds.
11.	Illegal or incomplete forward pass—fourth down.		33.	The center or the man on either side of him may not carry ball until it has been handled by someone else on the team	5 yds.
12.	Intentionally throwing forward pass to ground, fourth down—Loss of ball and also	15 yds.	34.	Player out of bounds when ball is snapped	5 yds.
13.	Failure to advance ball 10 yards in four downs.		35.	If a player leaves the field while time is out or during intermission without permission of officials	15 yds.
14.	No man on team with ball may be in motion when ball is snapped, except one man may be in motion toward his own goal or toward side line.	5 yds.	36.	No one on bench or sidelines may coach or instruct anyone in the game	15 yds.
15.	Piling on a player after the whistle	15 yds.	37.	There is a penalty for persons coming on field of play and for more than one representative in case of injury and for anyone on bench or inside enclosure standing or walking along side lines	15 yds.
16.	The kicker may not be tackled or knocked down after kicking	15 yds.	38.	Team delaying start of game or start of second half forfeits option and is penalized	25 yds.
17.	The man carrying the ball may not be pushed or pulled by any of his teammates	15 yds.	<b>LOSS OF HALF THE DISTANCE TO THE GOAL LINE</b>		
18.	Interference with player making fair catch or throwing player who has made fair catch	15 yds.	39.	A player may be substituted only once in each half—for illegal return, team is penalized as above and player is suspended for remainder of the game.	
19.	Player making more than two steps after fair catch	5 yds.	40.	Striking, kneeling, kicking, etc.—Player is disqualified for remainder of game, and team is penalized as above.	
20.	If a substitute coming in says anything to any teammate until a play has been made his team is penalized	15 yds.	41.	Foul within one yard line or behind goal line by defensive side.	