

Souvenir Program

TULANE GREEN WAVE

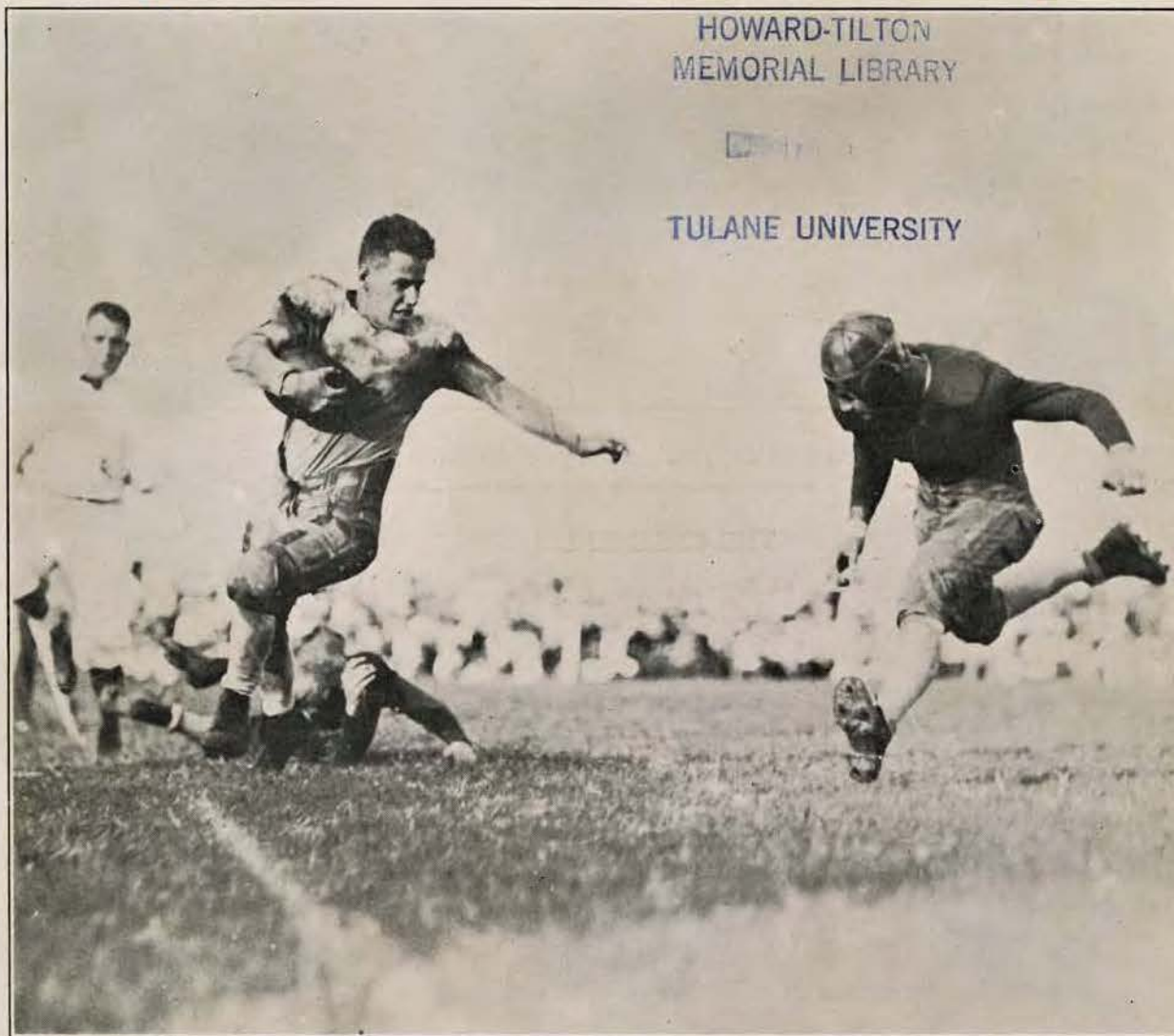
VS.

OLE MISS

SATURDAY, OCTOBER 10, 1925

TULANE STADIUM

PRICE 25c



HOWARD-TILTON
MEMORIAL LIBRARY

TULANE UNIVERSITY

"Les" Slashing off Mizzou's Tackle for a Good Gain

Photo by Sadlier



Casteel of Missouri gaining on an off-tackle play

THE GREENIE SCHEDULE.

- Sept. 26. Tulane (77) vs. Louisiana College (0).
At New Orleans
- Oct. 3. Tulane (6) vs. Missouri (6.)
At New Orleans
- October 10. Tulane (?) vs. "Ole Miss" (?.)
At New Orleans
- October 17. Tulane vs. Miss. Aggies.
At New Orleans
- October 24. Tulane vs. Northwestern.
At Chicago
- October 31. Tulane vs. Auburn.
At Montgomery.
- November 7. Tulane vs. La. Poly.
At New Orleans
- November 14. Tulane vs. Sewanee.
At New Orleans
- November 21. Tulane vs. L. S. U.
At Baton Rouge
- November 26. (Thanksgiving Day.) Tulane vs. Centenary.
At Shreveport.

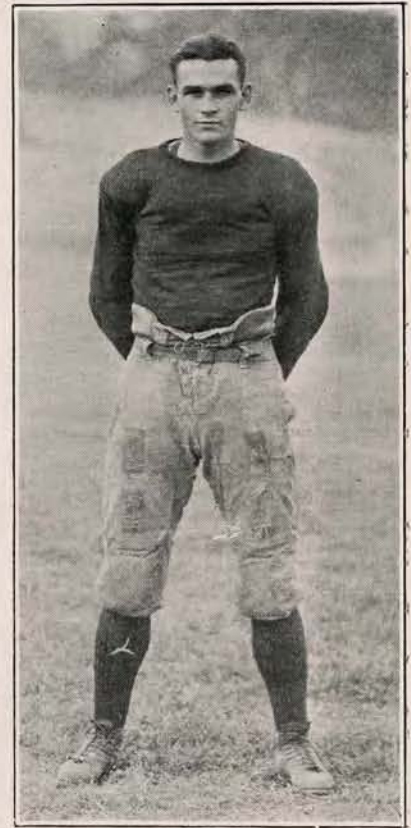
SIX "OLE MISS" STARS



BILES
Back



CAPT. MUSTIN
Back



MARTIN
Back



ALLEN
Back



HEWES
Back



B. DAVIS
Tackle

Roll "Ole Miss"

Homer Hazel, all-American star with Rutgers last year, has done wonders at the University of Mississippi in the few weeks that he has been at the Oxford institution.

"Ole Miss", long a weak sister in Southern football, seemed to take on new life with the arrival of Hazel, and the great football star has moulded the Red and Blue eleven into a real powerful and scoring aggregation.

Smarting under a defeat handed them last week in Austin, Tex., by the Texas Longhorns, after

they had held the "Steers" scoreless during the first half, the "Ole Miss" outfit is out to wipe out the 25-0 beating they took, and at the same time, to even scores with Tulane for past defeats. And the funny thing about it Hazel's lads will, in all probability, furnish Shaughnessy's team a great deal of competition.

The "Ole Miss" game, while considered by many more or less, of a set-up for the Greenies, is very important because it will be the first Conference game for Tulane and also for "Ole Miss". The losing team in Saturday's game will be eliminated from the race for top honors and that's going to make the game all the harder fought.

(Continued on Page 5.)

OPEN ALL NIGHT

New Orleans' Newest and
Most Modern Drug Store

WALSDORF'S

Incorporated

DRUGS - GIFTS

CANAL AT RAMPART

NEW ORLEANS

Phone Main 1124

AMES



LABORATORY PRODUCTS

Articles of Merit

Benjamin Dandruff Remedy
Newcomb Bouquet Cologne
Perrier Liquid Shampoo
Special Lilac Vegetal
Mentholamond Cream
Ipecac Tooth Paste
Ipecac Tooth Wash
Eureka Hair Tonic
Superior Bay Rum
Shaving Cream
Cooling Lotion
Alno Face Powder
Alno Cold Cream
Complexion Soap

Purchase from your Druggist

NEW ORLEANS, LA.

Coleman E. Adler

for

DISTINCTIVE

JEWELRY

Phones: Main 9459—M. 9705

TURCI'S

Italian Garden Restaurant

SERVICE A LA CARTE

BANQUETS

TABLE D'HOTE

229 BOURBON ST.

Dancing Every Night 10:30 to 1:30

Roll "Ole Miss"

Continued from Page 4

There will be little to choose in weights between the two teams. Both Tulane and "Ole Miss" will average in the line, between 172 and 175 pounds and both backfields will average around 168 pounds.

In Johnny Mustin, Martin and Lilly, Hazel has three fast shifty backs, good at hitting the line or circling the ends, while Charlies Allen, "Ole Miss" fullback, packs 180 pounds of brawn to plunge through the Greenie line if his forwards open up holes in the Tulane inner defense.

Coach Shaughnessy will probably

Pardon Us, Newcomb, But---

Near Your College, In the Town,
In the Town,

There's A Clothes-Shop
Close Aroun', Ciose Aroun',

Where the Guys Who Rate
With the Flower of the U.

Get Suits and Sweaters,
Socks and Shoesies Too!

**Godchaux's
COLLEGE SHOP**

Jimmie Black, Mgr.

7534 Maple St. Wal. 5680

It Ain't Our Shop, It's Yours

make several shifts in the Tulane line-up in today's game. It is quite probable that Johnny Menville, former Jesuit and Freshman star back, who distinguished himself in the Louisiana college game, and who has been tearing the Frosh and scrub lines to pieces in daily workouts, will start at one of the halfback positions, along with Flournoy.

Pat Browne and Les Lautenschlaeger will probably complete the Tulane backfield.

Harvey Wilson, may return to fullback for the "Ole Miss" game, to give Watson and Palermo, who rejoined the Greenies early in

Continued on Page 6

GAME STARTS

AT 2:30 P. M.

Davidson Dental Supply Co.

Inc.

741 Maison Blanche Building

NEW ORLEANS

Branch: Shreveport, La.

"Say it with Flowers"



ROLL "OLE MISS" -- *Continued*

the week, a chance to acquire some training in the school of hard knocks.

The Tulane line will be the same as faced the Mizzou Tigers with Gamble and "Doc" Wilson at ends and Talbot and Wight, tackles with "Irish" Levy and Blackledge in the middle of the line. In case Harvey Wilson is not shifted to the backfield he will hold down the pivot job.

Coach Shaughnessy may, however, fool all the rail birds and pull a "Knut Rockne" by sending his second Varsity into the fray at the beginning with the fleet footed "Pony Express" carrying the ball, and then hustle the first string lads into action when occasion requires.

Such tactics will give all members of the Greenies a chance to acquire experience and, at the time it will conserve the Greenie regulars and lessen the possibility of any men being injured for the coming games.

Next week the Wave meets the old and ancient "Mississippi Aggies"—rivals for years, and with Bernie Bierman at the helm of the Starkville bunch the Greenies will face a real struggle. With this and the Northwestern game just beyond the horizon, Shaughnessy is going to take no chance on any of his men being injured for these and the future important games.

"Ole Miss" will appear before a local crowd for the first time in two years. The last time the two teams met was in 1923, at which time the Greenies

Continued on Page 14



Used by Tulane Band Because they are the best

VEGA & PARAMOUNT
BANJOS

LEEDY & LUDWIG
DRUMS

CONN
N. O. CO.

123 Carondelet Street



Get That Touchdown!

In all sports there comes a time when every ounce of strength and brain power must be put into a play. You *must* have equipment that will not fail. Spalding Equipment is made for hard usage on the athletic field—and never fails—Send for the new Fall and Winter Catalogue of correct materials for all sports in season.



A. G. Spalding & Bros

130 Carondelet St., New Orleans

THE NEW

Hotel Monteleone

J. D. KENNEY, Manager

European Plan.

STRICTLY FIRST CLASS

ROYAL and IBERVILLE STREETS

OFFICE TOILET SUPPLY CO.,

Ltd.

509 S. PETERS ST.

TOWELS AND LINENS

SUPPLIED AT A NOMINAL
RENTAL CHARGE

"OLE MISS"

1. Mustin (c)
2. Martin
4. J. Davis
5. Allen
6. Burke
7. Biles
9. Perkins
10. Elmore
12. Eubanks
14. Cuteer
15. B. Davis
16. Thompson
20. Applewhite
22. Lilly
23. Smith
25. Cohen
28. Salloum
29. Enochs
30. Jackson
31. Cook
32. Conner
35. Prince
37. Williamson
40. Baxter
41. Reid

**LOUISIANA
PRINTING
COMPANY**



*Official Printers
TULANE
Foot Ball Program*

*TULANE
Hullabaloo*

*TULANE
Students' Hand Book*

"THERES A REASON"

*Just Phone Main 1929
OR
Call at 921-27 Lafayette Street*

TULANE

1. Lautenschlaeger
2. Killeen
3. Lorio
5. Moss
6. D. Wilson
7. Gamble
9. Palermo
10. Lamprecht
11. Henican
12. Browne
13. Stoessel
14. Evans
15. Flournoy
16. Watson
17. Morgan
18. Duren
19. Robinson
20. Wight
21. Menville
22. Talbot
23. Levy
24. H. Wilson
25. Norman
26. Rosenhouse
27. Blackledge
28. Carre

WHO'S WHO IN THE GAME

Use of the list of numbers of the Greenie and "Ole Miss" squads will furnish the names of any substitutes entering the game.

BUICK AUTOMOBILES

SALES—SERVICE

GLENNY-BUICK CO., Inc.

822 HOWARD AVE.

*THEY CAN'T BEAT OUR
TWO PANTS SUITS*

\$35 \$45 \$50 \$65

Collegiate or Business Styles

Porter Clothing Co.

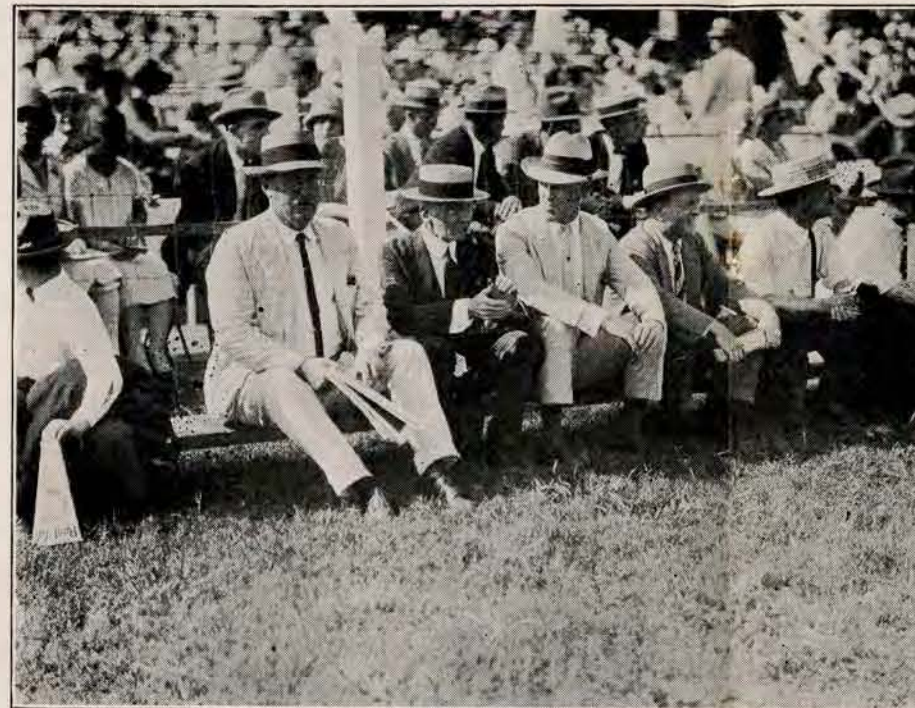
Carondelet and Gravier Streets

PROBABLE LINE-UP

Greenies		"Ole Miss"	
No.		No.	
6	"Doc" Wilson Right End	Cohen 25	
22	Talbot Right Tackle	Smith 23	
27	Blackledge Right Guard	Prince 35	
24	H. Wilson Center	Burke 6	
23	Levy Left Guard	Thompson 16	
20	Wight Left Tackle	Applewhite 20	
7	Gamble Left End	Salloum 28	
1	Lautenschlaeger (c) Quarter	Lilly 22	
21	Menville Left Half	Martin 2	
15	Flournoy Right Half	Mustin (c) 21	
12	Browne Full Back	Allen 5	

THE SCORE

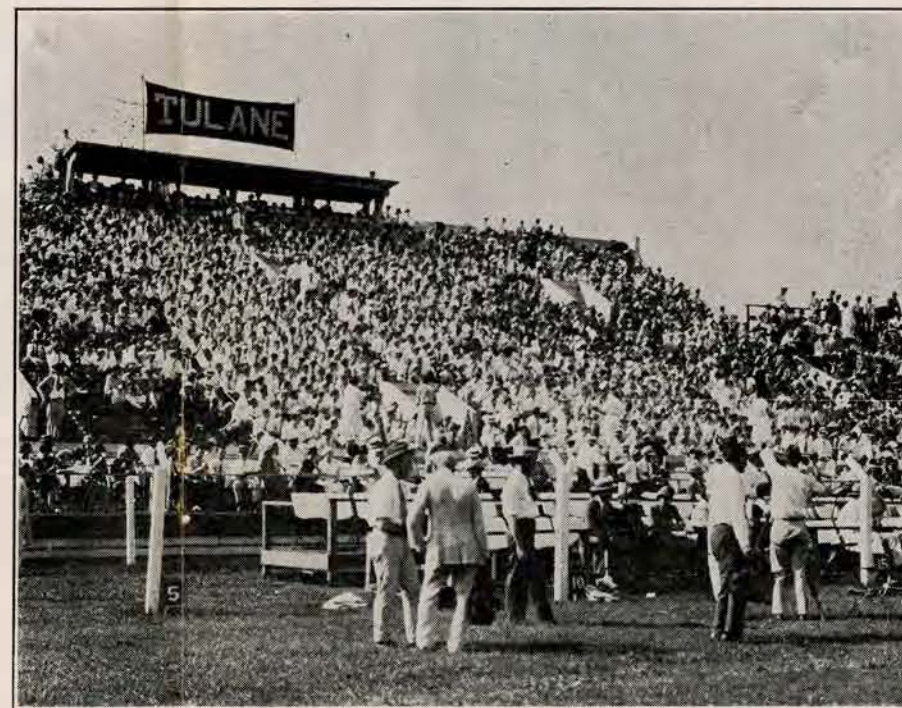
1925	1	2	3	4	Final
TULANE					
"OLE MISS"					



The Faculty Rides the Bench!

President Dinwiddie, Dean Bechtel and "Doc" White didn't know the camera man was watchnig them as they gave the Missouri Giants the once over before the game.

More ardent fans than this astronomy-Latin-history combination could not be found in all Tulane, the trio have not missed a Tulane game in ages.



"Hail! Hail! The Gang's All Here" or at least as much of it as could crowd into the concrete section at the stadium last Saturday when the Greenies held Mizzou to a 6-6 tie.



And Coach Doesn't Know It.

This is one of the few pictures of Clark Shaughnessy extant, and the best part of it this was taken early this week while Clark D. was showing the boys "their stuff." And he doesn't know he's "snapped." Here he is lining the Greenies up preparatory for scrimmage with the scrub team. From left to right are Talbot, Levy, Watson (part of him), Rosenhouse, Carre, "Coach" Duren (left arm), Lamprecht, Menville, Harvey Wilson and Tom Killeen.

LAST WEEK'S SCORE

1925	1	2	3	4	Final
TULANE	0	6	0	0	6
MISSOURI	6	0	0	0	6

WHAT'S THE DOPE?

It's almost a year since Mississippi A. and M. came to New Orleans and threw a monkey wrench in the Tulane works and travelled back to Starkville with a 14-6 victory—the only defeat suffered by the Green Wave last year.

And next week the Aggies will return again, as usual loaded for bear, determined not to let the Greenies even counts for last year's battle.

The Aggies are a much strengthened outfit primarily because Bernie Bierman, who left the Greenie fold last year, became head coach at the Starkville institution.

Bierman was one of the greatest products of the great "Doc" Williams during the hey day of Minnesota in the football world.

For the past two years Bierman had been chief lieutenant and right hand man to Coach Shaughnessy, a former team-mate of his, and the Greenie victories were in no small measure due to the minute details of each and every formation used by opposing elements that Bernie brought back after a scout-

Continued on Page 12



Hotel De Soto Commercial and Tourists NEW ORLEANS

Absolutely Fire Proof
Moderate Rates

Headquarters for all
Southern Colleges

C. A. HARTWELL,
Mgr.-Director
J. W. STIMPSON,
Manager
J. M. GORE, JR.,
Asst. Mgr.



Harvey Wilson



"Hoss" Talbot.

This big tackle blocked Sammy Whiteman's drop kick last week against Missouri and probably saved the day for the Tulane Greenies.

MEDICAL BOOKS

We carry all text-books recommended in the Medical, Dental and Pharmacy Departments of Tulane. Call at our Store, or phone your needs.

J. A. MAJORS CO.

Phone Main 3252

1301 TULANE AVE.

NOTICE!

BEFORE THE GAME
DURING THE GAME
AFTER THE GAME



There is Nothing Better
than

Adonis
CANDIES
ADONIS CHOCOLATES

Ask Your Dealer



"LES"



"IRISH" LEVY



"PEGGY"



BENNY WIGHT

AFTER THE GAME

REST

—and—

REFRESHMENTS

AT

KOLB'S

The Restaurant with an Individuality

DINNER MUSIC

DANCING AFTER THEATRE



Get Your Colors for the Game at Holmes

Also Boxed Candies, Noise Makers, Pennants and
Miniature Footballs to Take With You
to Each Game

-:- In Wearing Apparel--The Newest Styles for Men and Women -:-

D. H. HOLMES CO.

LIMITED

For 83 Years—The Best Place to Shop

WHAT'S THE DOPE*Continued from Page 10*

ing trip and to the close analysis of the offensive play of these elevens.

Bernie knows just about what Tulane will use against the Aggies, having helped to teach most of the men. He knows the Greenies' weaknesses, strength and little peculiarities of play which will prove invaluable to his Aggies when the game starts.

On the other hand Shaughnessy himself will just about know what Bierman will use to a certain degree since both teams will be coached in the same school of football.

First hand information has been brought back to Shaughnessy after each game the Aggies played by his scouts. Last week "Brother" Brown saw the Aggies perform and after the game had a long talk with Bernie Bierman.

While the Greenies and the "Ole Miss" lads are struggling in the sun this afternoon, "Brother" and Joe Killeen, one of the shrewdest quarterbacks in Tulane history, will go up to Starkville to get an eyefull during the Aggie-Ouachita game.

Phones Walnut 3269—2572

P. BEROT & SONS

C L E A N E R S
and
D Y E R S

High Grade Cleaners

In a Clean Up-to-date Plant

8500-8514 Oak St.

1136-1138 Joliet St.

NEW ORLEANS, LA.



Eddie Morgan

Steam Heated
Excellent Music

MECCA THEATRE

Adams Street, Near Maple

Especially Selected Programs Exhibiting only the best Photoplays Produced.

The Mecca is under the personal supervision and management of Mr. and Mrs. Heiderich.

Spend Your Evenings
With Us

We're Expecting You



Newcomb Pharmacy

Broadway & St. Charles Ave.

**TERRY & JUDEN
CO., LTD.**

141 Carondelet Street

MEN'S WEAR

All the Newest Styles for
Young Men

Garfield Market**Cuevas & Saladino**

PROPRIETORS

6038 Garfield St.

Western Meats,
Fruits, Vegetables, Fish,
Game, Etc.

Phone Uptown 1651

Phone Uptown 1652

We Cater to Fraternity
Homes

LAST WEEK

A burning sun—8,500 frantic Tulane fans—a team of giants from Missouri—a thrilling, grueling, game fight—and Tulane's Green Wave made the Tiger from the "show me" state stand in his tracks. The score was 6-6.

Fifteen pounds lighter than the Goliaths from Columbia, Mo., the Greenies fought to the last ditch, against odds in the first half and then came back the second half to play rings around the heavy lads from Missouri.

"Peggy" Flournoy, "Doc" Wilson, Gamble and "Hoss" Talbot. Those were the boys that played the greatest game. It was Flournoy who plunged over for the touchdown which tied the Tigers and it was "Peggy" whose good right toe kept the Mizzou team at a far distance whenever Tulane was forced to give up the ball.

"Doc" Wilson and Gamble streaked down the field like

**It's A Great Game
If You Don't Weaken!**

This game of studying, and playing, and being ever well dressed and ready for the part. There's knowing what's what for every occasion, and New Orleans college men know that! Service in providing these necessities is our game—and Maison Blanche plays that game well, too.

Everything for Sports
Everything for Wear
and Novelties for every extra call

Maison Blanche
GREATEST STORE SOUTH

race horses under punts and dropped the safety man time after time in his tracks. And it was "Hoss" Talbot that broke through the heavy Missouri forwards and lunged in front of Whiteman's drop kick that saved Tulane from being defeated by a field goal.

And while these boys stood out as the greatest players of the day, every other member of the Greenie squad that played did splendid work. "Irish" Levy and Blackledge at guards played well, and Harvey Wilson at center, started his campaign for an all-Southern berth at the pivot job.

Captain "Les" Lautenschlaeger handled the Greenies in fine fashion and ran the ball well on several occasions.

"Little Shorty Norman," one of Tulane's pony express, tore through for several good gains, but the slippery field wasn't to "Shorty's" liking and he found it difficult to keep to his feet.

Continued on Page 15.

*Our Advertisers
Helped to Make
This Better Program*

"The Thinking Fellow Calls A Yellow"

Main 3



Safety--Courtesy--Comfort--Service

DRINK

Coca-Cola

IN BOTTLES



Coach "Brother" Brown

Roll "Ole Miss"*Continued from Page 6*

had little difficulty in capturing the game by a 26-0 score.

But this year the Oxford team is not coming here expecting a licking and hoping to score a moral victory by holding the Greenies to a close score. "Ole Miss" and Hazel are coming here to beat the Tulane outfit and stay in the race for top honors in the Southern Conference. To stay in the conference title race, Tulane also must win. The fur will fly at 2:30 p. m.

P. S.—Our guess is that the Greenies will win by 3 touchdowns. What's yours?

What They Said After the Battle.

Coach Gwinn Henry after the Tulane forwards stopped his Mizzou rushes in the second half: "The line is busy."

Red Grange after Nebraska's line stopped him dead: "Weir, Oh Weir do we go from here."

Knut Rockne, whose Notre Dame "cavalry" made a miserable 69-0 showing against Lombard: "Gid-dap."

Elsewhere Today.

Bama vs. L. S. U. at Baton Rouge. Tulane scouts should get an eye full for the Tigers will have to open up to beat the Southern Champions.

Georgia vs. Yale. Last year Eli got scared out of its boots when Stegman's outfit from Athens barely lost by a 7-6 score. And Georgia has a strong team today, despite its loss last week to Virginia.

Georgia Tech vs. Penn. State. At New York. The Golden Tornado had horse-shoes in its head guards last year when it beat this outfit, but this year Tech looks like it is in the money without any flukes. Tech and 6 points is our guess.

**BROADWAY
PHARMACY**

H. C. Richards
Proprietor

**Broadway & Maple****"ON TO AUBURN"****WITH THE GREENIES****Montgomery Oct. 31****Let's All Go!**

Last Week.

Continued from Page 13

From the time the first of the 8,500 Tulane students, supporters and rooters streamed through the turnstiles, it was evident that a real contest was to be waged on that sun-bathed field.

Missouri made nine first downs to eight for Tulane throughout the game. In the first half the Mizzou lads chalked up every one of their first downs while the Greenies made but two. But Clark Shaughnessy's eagle eye had detected how Missouri was breaking through the Tulane line, and a whispered word to Benny Wight on how to shift for the peculiar off tackle plays of the Tigers and from then on Coach Henry's offense was conspicuous by its absence.

Missouri scored its touchdown on a 30-yard pass from Captain Sammy Whiteman to Coglizer, which placed the ball on Tulane's 3-yard line, and a buck



IF ITS FOR THE BABY

—or—

THE WEE TOT UP TO SIX

Go to

CONWAY'S

For Daintiness, Smartness and Durability,
Their Garments Excel

1200 ST. CHARLES AVE.

Phone Jackson 3704

by Jackson on the next play.

Fighting back doggedly, just as the first period closed, Tulane worked the oval down to Mizzou's 30-yard line. A pass on fourth down soon after the start of the period, thrown by Lautenschlaeger to Gamble ultimately resulted in Tulane's touchdown. Just as Gamble was about to catch the ball, three Missouri backs crashed into him. The referee gave the Greenies the ball on the two-yard line, the point of interference and "Peggy" dived over with the tying touchdown.

Whiteman's drop kick for Missouri's extra point went under the goal post, and Pat Browne's effort to win for the Greenies was blocked by uncoming huskies.

Thrills there were aplenty in the great intersectional game with Missouri's great eleven which copped the Missouri Valley championship last year and which supporters say is on its way to another championship.

HULLABALOO

Hullabaloo, 'Ray, 'Ray
Hullabaloo, 'Ray, 'Ray
Hooray—Hooray
Varsity, Varsity T. A.
T. A., T. A.
Varsity, Varsity T. A.
Tulane.



Virgil Robinson
"Rock of Gibraltar"



Lamprecht
"Versatility Itself"