



TULANE vs. OLE MISS.

OCTOBER 16, 1948

Souvenir Program

Thirty-Five Cents



The Sportsman's Beverage

DRINK **JAX**



JACKSON BREWING CO.
NEW ORLEANS, LA.

Listen to

"TIME OUT" with Johnny Lynch
WWL Thursdays 9:45 to 10 P. M.

"WORLD OF SPORTS"
with Bill Brengel

WWL Mon. thru Sat. 5:35 to 5:45 P. M.



Tulane Stadium

THE GREENIE

*Official Souvenir Football Program
of Tulane University*

Vol. 18
No. 3

CONTENTS

	Page
Editorial	3
The Rebel Offense	5
Tulane Roster	6-7
Cam-Pix	9-12, 17-20
Starting Lineups	14-15
Tulane Yells	21
Ole Miss Roster	22-23
Tulane, Ole Miss Schedules	25
Tulane Songs	26
Pigskin Roundup	27

National
Advertising
Representatives
Football Publi-
cations, Inc
370 Lexington Avenue
New York, N. Y.

Co-Editors,
ANDY ROGERS
BILL JOHNSTON



*That's
The Ticket*

A hard-to-beat team! Your Tulane Football Ticket . . . plus your MB Label-of-Quality!

Now, as always, Maison Blanche has the line-up of the famous labels you want and buy with confidence. No matter what the occasion . . . MB has the right clothes . . . on one of its famous fashion floors.

MAISON BLANCHE
GREATEST STORE SOUTH

ENTER THE CHAMPS

Johnny Vaught and a bulky band from the University of Mississippi thunder into Tulane Stadium today, bent on extending their unbeaten march and laying another claim to the Southeastern Conference championship.

Last year the rebel swept into Tulane with a 10-6 defeat from Vanderbilt's Commodores still fresh in their records. But with Tulane they began a march to their first SEC diadem in the history of Southern football.

Although ahead in first downs, yards from passing, and punting, the Wave was squeezed into submission by some slinky running of one, Charlie Conerly, and some phenomenal pass-snagging by All-America Barney Poole. The count was 27-14 at the final gun.

This season yet another Ole Miss combination, this time one that strikes with the speed of a thunderbolt from the "T" formation, will match magic with Tulane's Green Wave, now in its second year with an all-out "T" attack.

Vaught succumbed to the lure of touchdown gold available in the swift striking system this year and in three appearances has been highly successful. Already on the books are triumphs over Florida, Kentucky and Vanderbilt, three SEC foes who were rated as up-and-comers before the Rebels came along.

A victory over Tulane would boost Rebel stock mightily, but Coach Henry Frnka's double-team system isn't particularly interested in a bullish market in Mississippi. With a 21-14 victory over Alabama, a moral triumph in holding Tech to a 7-13 score, and a 14-0 win over South Carolina to their credit, the Greenies would climb to football heights with a victory.

The Rebel line will be firmly anchored on one end by a member of the Poole clan—Barney. Already nationally famous, Barney Poole is a senior, hefty to the point of 220 pounds or so, experienced like no other Southeastern Conference lineman. His presence makes the starboard side of the Rebel line a stone wall defensively and a constant threat offensively.

Coupled with 225-pound Ken Farragut at the center post, Poole will furnish the Rebels with a front line of mammoth proportions and one that outweighs the Green offensive and defensive lines by several pounds per man.

Thus, once more the quickness of Tulane forwards may be the deciding factor while the speed of Tulane backs, as in every game so

far this year, will add to the scoring potential of the Greenies. Tulane speedsters have kept pace with or surpassed every foe they've run up against this year and it's likely they'll be able to hold their own against the Rebels.

On the shoulders of midget-like Farley Salmon, a 155-pounder who formerly was one of Ole Miss' speed-boys but now devotes his talents to passing, rest the success of the Rebel "T" while Joe Ernst, 30-pounds heavier than his opponent, will guide the offensive destinies of the Green.

The game will be the 30th chapter in one of the oldest football histories in the South. The rivalry dates back to 1893, and is second oldest in collegiate records of Tulane. Only the annual Louisiana State-Tulane game surpasses it in age and that by a matter of days.

Since the beginning, Tulane has won 20 of the 29 games played but hasn't scored a triumph over Ole Miss since 1939. Harry Mehre's 1941 eleven turned the trick, 20-13, and last year the Rebs disappointed a Tulane homecoming crowd, 27-14.

"Your Specialists In Sports"

Johnny Lynch's

SPORTS, INC.

FORMERLY DUNLAP SPORTING
GOODS CO., INC.

Complete Equipment

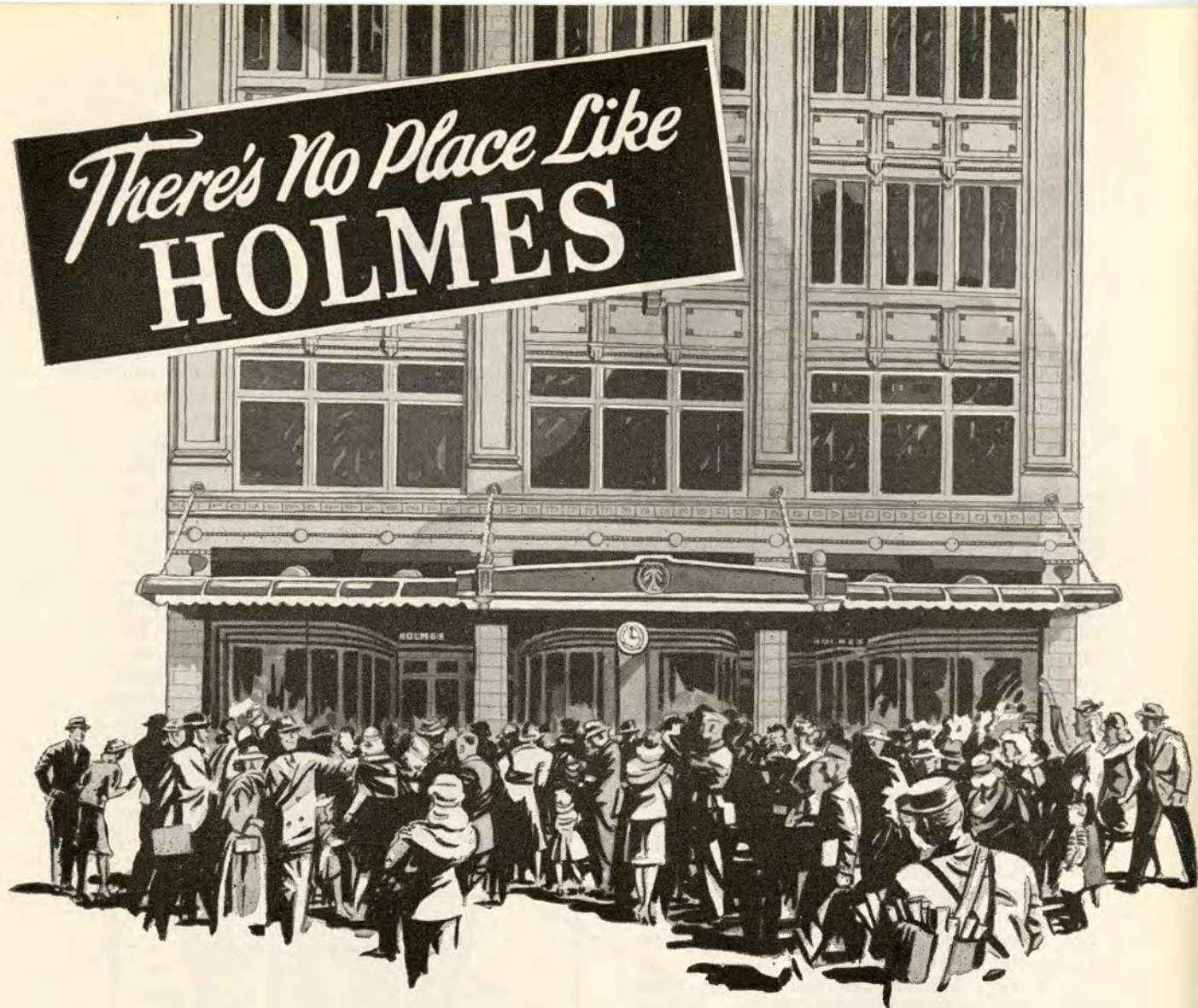
For All Sports

138 CARONDELET ST.

New Orleans 12, La. MAgnolia 5891

"It Pays To Play"

There's No Place Like
HOLMES



"Meet Me Under the Clock at Holmes"

After the game, have dinner in HOLMES RESTAURANT,
in the Vieux Carre — on Bourbon Street just off Canal —
open daily except Sunday from 11 A. M. to 8:30 P. M.
Delicious French and Creole Cuisine served in an atmosphere
of quiet refinement.

D.H.HOLMES CO., Ltd.

NEW ORLEANS' QUALITY DEPARTMENT STORE.

THE REBEL OFFENSE

SYSTEM

Ole Miss will operate with a blend of the Johnny Vaught single wing and the "T" formation, an outline that will initiate action in both systems. Vaught last year tinkered with the conventional Notre Dame box in a change of routines for the shift that kept Charley Conerly at tailback 95 per cent of the time. The same shift pattern will be in effect this season, when the play is to stem from the box instead of the "T".

RUNNING GAME

The Rebel ground game functioned smoothly last year—at times. This year it's a "Choo-Choo" story, or else. That's where the "T" comes in—or ducks out. There's breakaway speed in the shanks and flanks of Blitzler Howell, Bob Wilson, the Salleys, Clayton Blount, Bob Hemphill, Jerry Tiblier, Red Davis and Red Jenkins. Also, the heavyweights, Johnny Dottley, Guy Penny and Jim Whitaker pack speed as well as power.

Last year's figures gave the Reds an efficiency level of 3.73 yards per try on 411 ground plays for a net of 1535 yards. They counted 15 touchdowns via this avenue.

PASSING GAME

Conerly last season completed 145 passes, 133 through the regular season for the total that will stand as the new national college record. He threw 260 through the full route,

232 not including the Delta Bowl deal. Three other left halfbacks—Bill Mustin, Glover and Wilson—tried their hands with 25, completing 14 for 129 yards. Conerly's tosses scored 20 touchdowns, they collaborated for one.

Small wonder, then, that the emphasis this season will shift from passing to running.

However, the Rebs will buy air passageway for normal commitments. And for variety, the passes will be directed from more than one slot. Quarterbacks Mustin, Salmon, Oswalt, Bowen, Choate and Jabour will ticket the throws, will handle bulk of the work in the "T", but Wilson, Blount and Howell are to develop patterns off both formations.

PUNTING GAME

Wilson will assume responsibility for a large share of Rebel punting. Jabour rates second in pre-season sessions. Rebel punting for the past two seasons has been directed at a 40-yard level, with Conerly booting 118 of 150 times during those campaigns for a 41.1-yard average. Wilson should be able to approach that standard.

PUNT RETURNS

Ole Miss last season average 13.5 yards on 42 punt returns. However, almost total absence of a return against Arkansas and LSU did damage to Reb efforts in both contests. In an effort to bolster consistency, the Vaughtmen may turn up with tandem safety men. Otherwise, the left halfbacks will handle opposition punts.

'BRAINS' DEPARTMENT

The Rebel quarterbacks call the plays. Last season Vaught rated Bowen, voted the conference's best blocker by SEC coaches, 'AA-plus' in this chore. The centers align the defensive routines.

EXTRA POINTS

Bobby Oswalt led the conference last year in scoring points from placement, booting accurately on 27 of 39 attempts. He'll be in harness for his junior season with Red Davis in line for "seconds." Farley Salmon will operate as middle man on all placement trials.

Tune In—

THE BIGGEST SHOW IN TOWN

Radio Station WWL

All Tulane Football Games Broadcast
Exclusively Over WWL

870 ON YOUR DIAL
50,000 watts—Clear channel
CBS AFFILIATE

A Great Name in Clothing

SCHWOBILT
CLOTHES REG. U.S. PAT. OFF.

"SUITS THE SOUTH"



Henry Frnka
Head Coach



C. Bounds
tackle



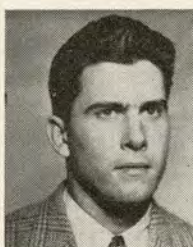
J. Sikora
back



R. Brown
guard



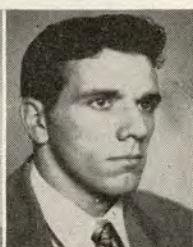
M. Druen
tackle



N. Eggenberger
guard



G. Maddox
center



B. Franz
guard



E. Price
back



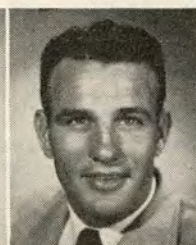
B. Maxwell
back



J. Hickman
back



H. Dedeaux
center



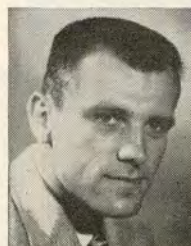
R. Sheffield
end



P. Bienz
back



D. Chassee
end



A. Fleider
end



T. Reising
guard



P. Lea
tackle



E. O'Brien
end



J. Helluin
tackle



W. Villars
tackle

TULANE

No.	Name and Position	Age	Ht.	Wt.	Hometown
10	Jim Keeton, b	23	5-11	172	Enid, Okla.
11	Bill Bonar, b	19	6-1	185	Bellaire, Ohio
12	Don Fortier, b	26	5-9	170	New Orleans
13	Joe Ernst, b	20	6-	185	New Orleans
14	Jimmy Dick, b	19	6-2	170	Tulsa, Okla.
16	Bob Whitman, b	24	5-11	175	New Orleans
20	George Kinek, b	19	6-2 1/2	190	Allentown, Pa.
21	Ray Prats, b	23	5-8	175	New Orleans
23	Bobby Jones, b	19	5-9	170	Houston, Tex.
25	Al Waller, b	22	5-10	165	New Orleans
26	Cliff Van Meter, b	21	6-2	198	Henryetta, Okla.
31	Bill Svoboda, b	21	5-11	200	Bonham, Tex.
32	Johnnie Hickman, b	23	6-1	190	Robert E. Lee, Tex.
35	Harry Hahn, b	20	5-8	185	New Orleans
40	John Sikora, b	22	6-2	185	Gary, Ind.
41	Jimmy Glisson, b	20	5-10	171	Yazoo City, Miss.
42	Paul Bienz, b	23	5-7	170	Fort Wayne, Ind.
43	Bobby Maxwell, b	19	5-8	165	Dallas, Tex.
45	Eddie Price, b	23	5-11	188	New Orleans
50	Homer Dedeaux, c	20	6-2	197	Gulfport, Miss.
51	George Maddox, c	20	6-2	199	Dallas, Tex.
52	Al Crutchfield, c	19	6-1	190	Bristow, Okla.
53	Vernon Vick, c	22	5-11	188	Port Arthur, Tex.
54	Stanley Kottemann, c	23	6-	194	New Orleans
55	Henry Boyles, c	25	6-	203	Magnolia, Ark.
60	Dennis Doyle, g	21	5-11	205	San Angelo, Tex.
61	Harold Headrick, g	19	6-1	203	San Angelo, Tex.



R. Eddy
tackle



D. Doyle
guard



S. Kottelman
center



R. Partridge
end



A. Waller
back



A. Kleinschmidt
guard



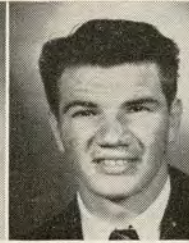
D. Fortier
back



G. Kinek
back



R. Prats
back



D. Joyce
tackle



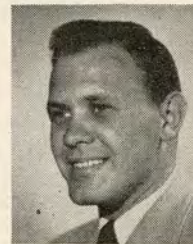
J. Keeton
back



C. Van Meter
back

TULANE

No.	Name and Position	Age	Ht.	Wt.	Hometown
62	Arthur Kleinschmidt, g	22	5-11	209	New Orleans
64	Nick Eggenberger, g	20	6-	195	White Plains, N. Y.
65	Rainey Brown, g	20	5-11	207	New Orleans
66	Bob Franz, g	23	6- 2	198	Crystal Lake, Ill.
67	Vernon Ramke, g	23	6- 1½	208	Port Neches, Tex.
68	Tom Reising, g	19	6- ½	195	Evansville, Ind.
70	Euel Davis, t	26	6- 3	235	Van Buren, Ark.
71	Paul Lea, t	19	6- 2	215	New London, Tex.
72	Max Druen, t	21	6- 2	206	Enid, Okla.
73	Clemon Bounds, t	20	6- 4	215	Pascagoula, Miss.
74	David Rowland, t	21	6- 2	215	Hot Springs, Ark.
75	Walter Villars, t	20	6- 1½	207	New Orleans
76	Dan Rogas, t	23	6- ½	216	Port Arthur, Tex.
77	Don Joyce, t	19	6- ½	205	Stubenville, Ohio
78	Jerome Helluin, t	19	6- 2	280	Donaldsonville, La.
79	Bob Eddy, t	20	6- 2	225	Carthage, Mo.
80	Dick Sheffield, e	24	6- ½	187	Kirbyville, Tex.
81	Rex Partridge, e	21	5- 8	172	Odessa, Tex.
82	Bill Riggs, e	19	6-	185	Tulsa, Okla.
83	Joe Harper, e	19	6- ½	186	Houston, Tex.
84	Ferdie Kibodeaux, e	20	6- 1½	189	Jennings, La.
85	Al Fleider, e	19	6- 2	205	Berwyn, Ill.
86	Emile O'Brien, e	25	6-	194	New Orleans
88	Hank Watkins, e	23	6- 1½	194	Corpus Christi, Tex.
89	Jack Doland, e	20	6-	175	Lake Arthur, La.
90	Dick Chassee, e	19	6- 4	207	Chicago, Ill.
91	Dick Preis, e	20	5-10	170	Metairie, La.



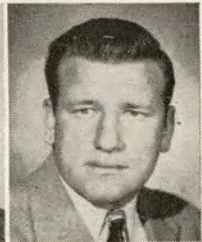
D. Rogas
tackle



R. Jones
back



B. Whitman
back



V. Ramke
guard



D. Rowland
tackle



J. Harper
end



H. Headrick
guard



Euel Davis
tackle



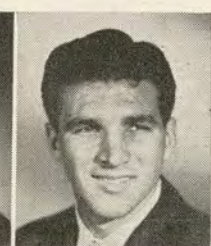
B. Bonar
back



B. Riggs
end

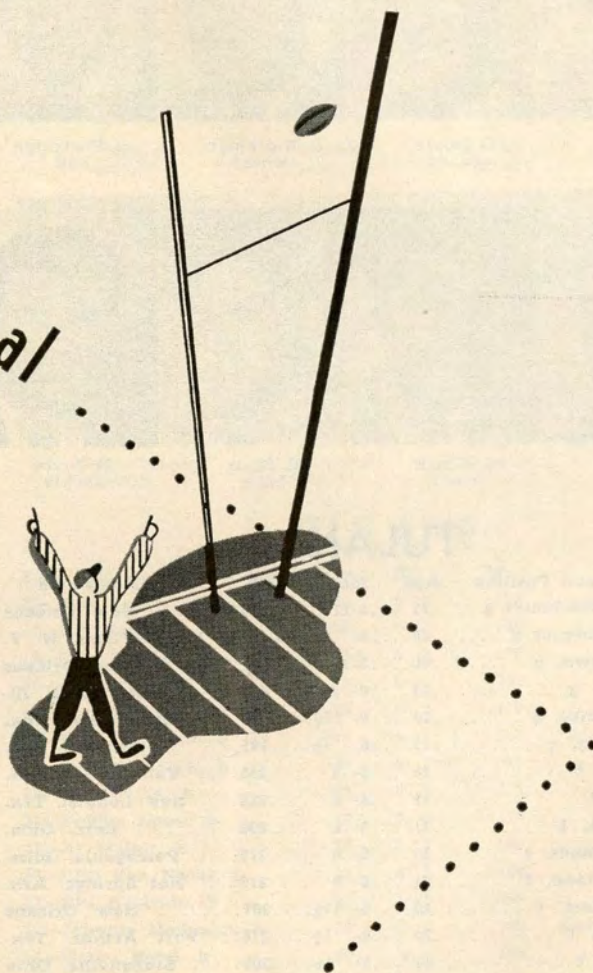


V. Vick
center



J. Ernst
back


our goal



your fullest enjoyment of godchaux's
authentic fashion apparel... distin-
guished by unsurpassed quality
and unchallenged good taste.

Godchaux's

since 1840—fine apparel for men, women, boys and girls



No sailor he—but an Army ROTC cadet at Tulane, on the mast of a TC ship in dock at New Orleans. Tulane has transportation and medical corps units in the Army ROTC, and an Air ROTC unit, also.

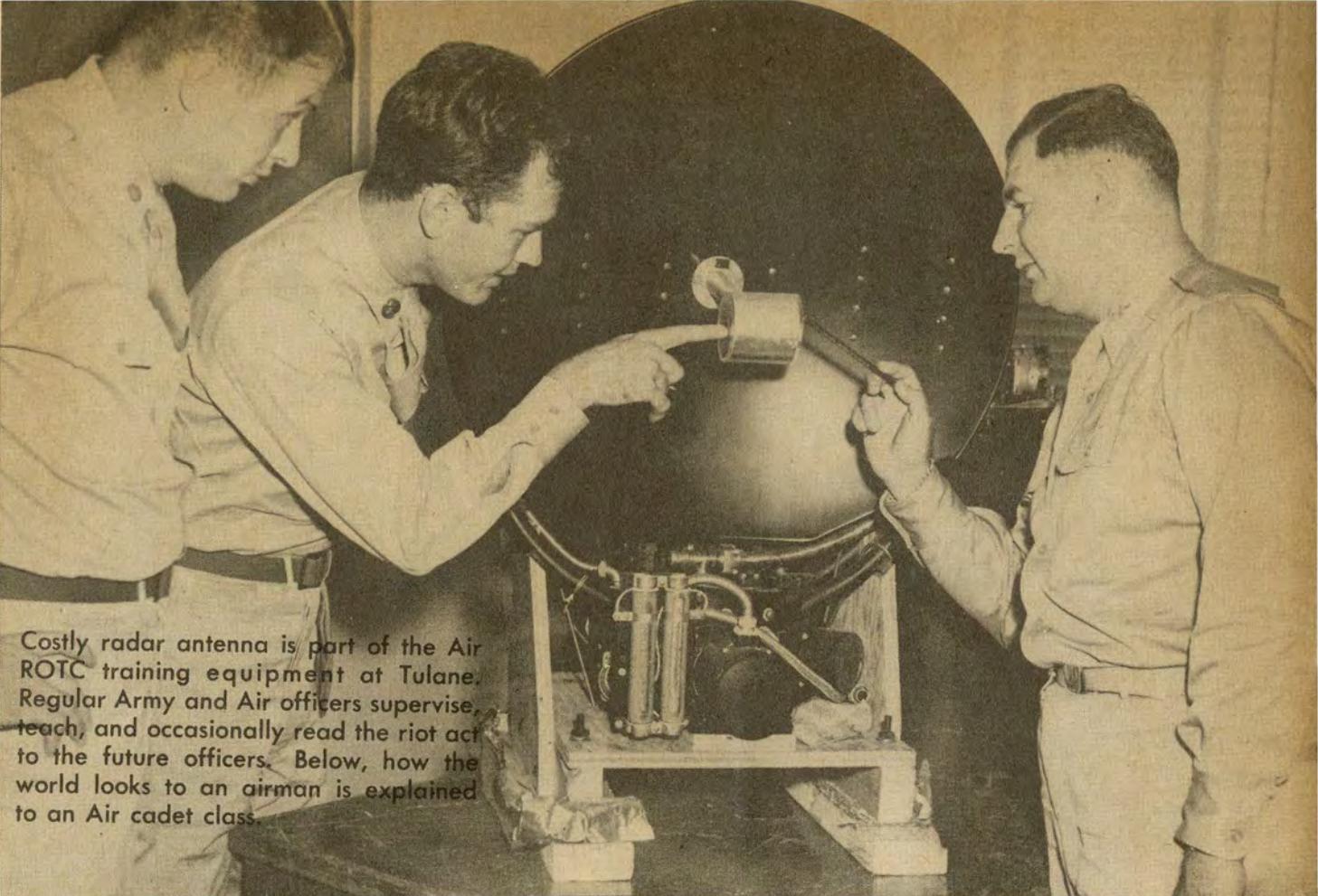
Cam **CAMPUS PICTURES**
pix
A MEDLEY OF

A well-stocked armory furnishes Army and Air cadets at Tulane with Garand rifles, carbines and .45 calibre pistols, as part of their weapons training.

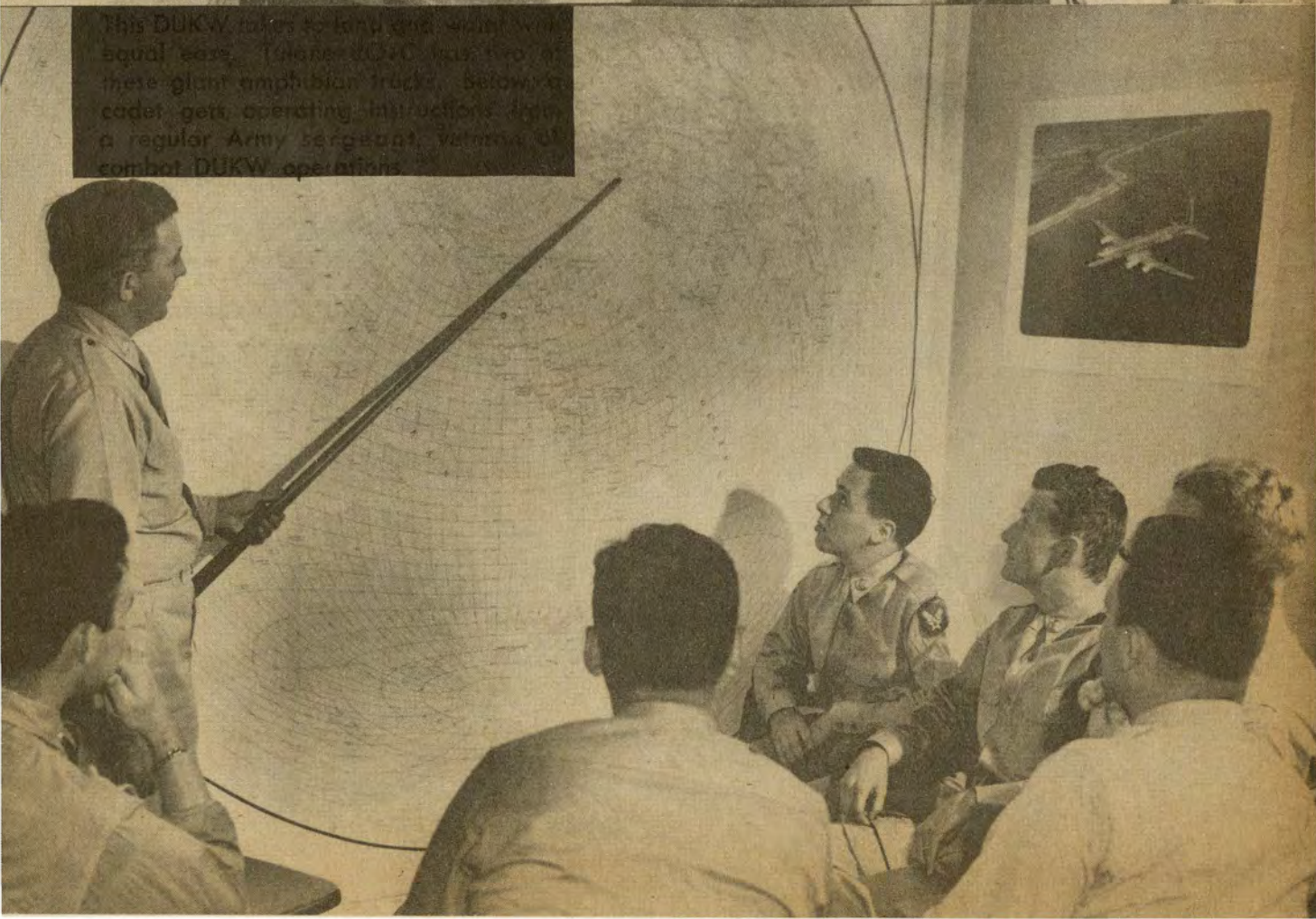


Spit and polish is a part of the officer training for ROTC cadets. Many of them World War II veterans, the cadets are accomplished close order drill experts.





Costly radar antenna is part of the Air ROTC training equipment at Tulane. Regular Army and Air officers supervise, teach, and occasionally read the riot act to the future officers. Below, how the world looks to an airman is explained to an Air cadet class.

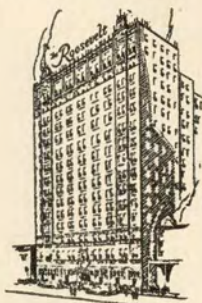


This DUKW takes to land and water with equal ease. There are two of these giant amphibian trucks. Below, a cadet gets operating instructions from a regular Army sergeant, veteran of combat DUKW operations.

The Roosevelt

New Orleans Finest

In America's Most Interesting City



THE ROOSEVELT is located in the heart of Romantic old New Orleans. It is in the center of business and social activities and is close to the Theatre, Shopping, French Quarter, and Business Districts . . . You will like the tasteful luxury and home-like atmosphere of this modern hotel where the traditions of Southern Hospitality are maintained the year 'round.

800 ROOMS WITH BATH

MODERATE RATES

SEYMOUR WEISS, *President and Managing Director*
J. U. JORDY, *Resident Manager*

The Roosevelt
"The Pride of the South"

REGAL BEER

FRIENDLY FLAVOR-NEVER BITTER

TULANE

PROBABLE STARTING LINEUP

LE	LT	LG	C	RG	RT	RE
S'field 80	Druen 72	Brown 65	Dedaux 50	Doyle 60	Rogas 76	O'Brien 86

QB
Keeton
10

LHB
Jones
23

RHB
Svoboda
31

FB
Price
45

SQUAD ROSTER

10 Keeton, qb	40 Sikora, hb	64 Eggenberger, g	79 Eddy, t
11 Bonar, qb	41 Glisson, hb	65 Brown, g	80 Sheffield, e
12 Fortier, hb	42 Biens, fb	66 Franz, g	81 Partridge, e
13 Ernst, qb	43 Maxwell, hb	67 Ramke, g	82 Riggs, e
14 Dick, hb	45 Price, fb	68 Reising, g	83 Harper, e
16 Whitman, qb	50 Dedaux, c	70 Davis, t	84 Kibodeaux, e
20 Kinek, hb	51 Maddox, c	71 Lea, t	85 Fleider, e
21 Prats, hb	52 Crutchfield, c	72 Druen, t	86 O'Brien, e
23 Jones, hb	53 Vick, c	73 Bounds, t	88 Watkins, e
25 Waller, hb	54 Kottemann, c	74 Rowland, t	89 Doland, e
26 Van Meter, hb	55 Boyles, c	75 Villars, t	90 Chassee, e
31 Svoboda, hb	60 Doyle, g	76 Rogas, t	91 Preis, e
32 Hickman, fb	61 Headrick, g	77 Joyce, t	
35 Hahn, fb	62 Kl'nschmidt, g	78 Helluin, t	

OLE MISS

PROBABLE STARTING LINEUP

LE	LT	LG	C	RG	RT	RE
B. Poole 89	Dale 71	P. Poole 61	Farragut 54	Cr'wford 62	Hamley 72	J. Strib'g 84

QB
Salmon
10

LHB
Wilson
41

RHB
Howell
31

FB
Jenkins
23

SQUAD ROSTER

10 Salmon, qb	34 J. Salley, hb	61 P. Poole, g	76 Barfield, t
11 Oswald, qb	35 Davis, hb	62 J. Crawford, g	77 L. Poole, t
14 Choate, qb	41 Wilson, hb	63 Shipley, g	78 Webb, t
15 Jabour, qb	43 Blount, hb	64 Fant, g	79 Strong, t
16 Bowen, qb	44 Hemphill, hb	65 Dickson, g	80 Odom, e
20 Penny, fb	45 D. Salley, hb	66 Peets, g	81 Bishop, e
21 Whitaker, fb	46 Mustin, hb	67 Fuerst, g	82 Taylor, e
22 Buchanan, fb	50 Floyd, c	68 Campbell, g	83 B. Stribling, e
23 Jenkins, fb	51 Bidgood, c	71 Dale, t	84 J. Stribling, e
24 Dottley, fb	52 Crawford, c	72 Hamley, t	85 J. Poole, e
30 Tiblier, hb	54 Farragut, c	73 Mann, t	87 Brazen, e
31 Howell, hb	55 Gerrard, c	74 Clark, t	88 Fletcher, e
33 Shelby, hb	60 O. Crawford, g	75 Pearson, t	89 B. Poole, e

OFFICIALS

Referee—T. G. Kain (Georgia)
Umpire—J. E. Burghard (Mississippi College)
Head Linesman—H. C. Armistead (Vanderbilt)
Field Judge—W. R. Bentley (Georgia)
Clock Operator—R. H. Lyons (Illinois)



TULANE STADIUM

THIS PROGRAM PRINTED

by

TULANE UNIVERSITY PRESS

Printing Department of Tulane University

CAMPUS PRINTERS

BASEMENT
GIBSON HALL

PHONE
WALNUT 1286

HAUSMANN



NEW ORLEANS' LEADING JEWELERS



Special Department for College
and
Fraternal Jewelry

QUALITY

PURITY

FLAVOR



It's Delicious

It's Nutritious

*Seen at all
the games . . .*



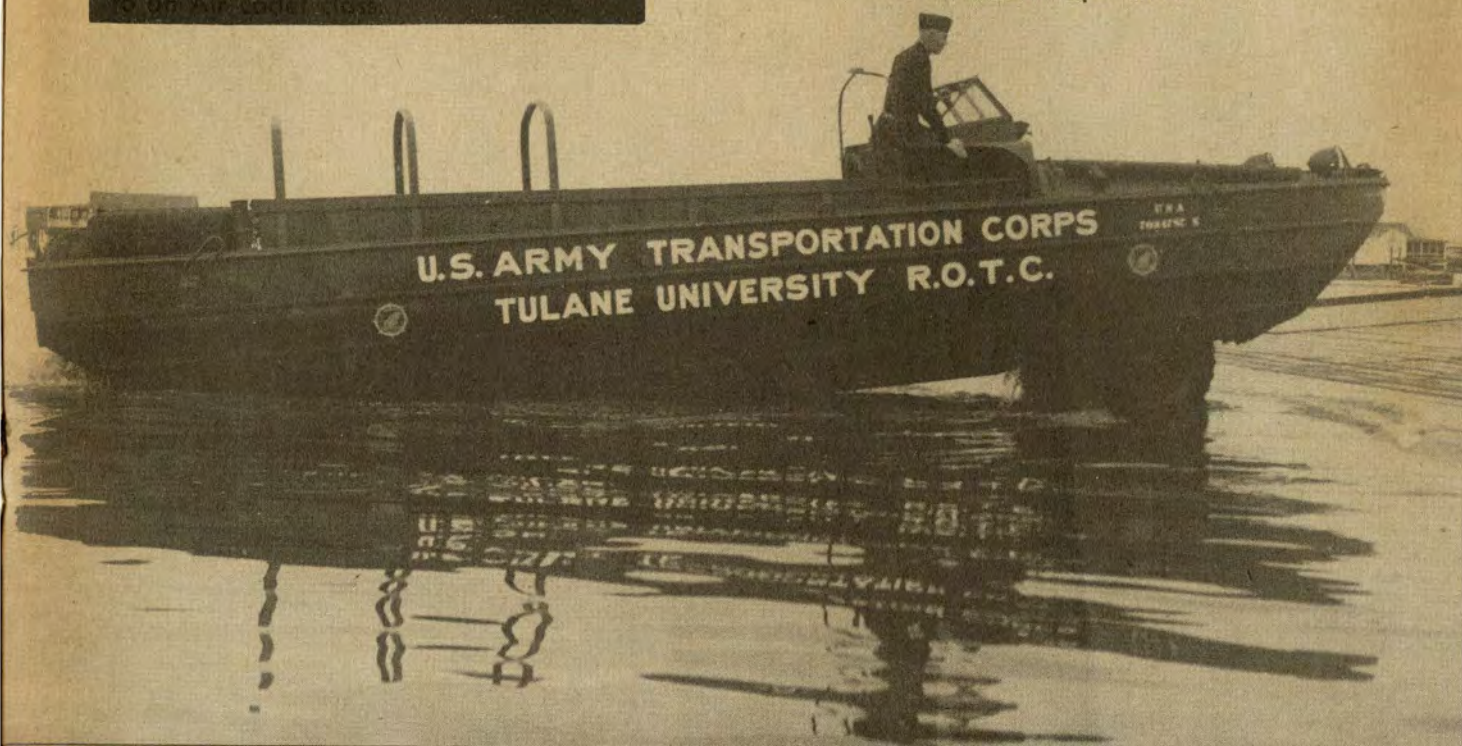
CLOTHES FROM MAYER ISRAEL'S . . .

for over half a century the
store of fine fashions for
men, women and children.

MAYER ISRAEL'S

Costly vector mission is part of the Air ROTC training equipment of Tulane. Regular Army and Air officers supervise, teach, and occasionally lead the ROTC to the future officers. Below, how the world looks to an airman is explained to an Air cadet class.

This DUKW takes to land and water with equal ease. Tulane ROTC has two of these giant amphibian trucks. Below, a cadet gets operating instructions from a regular Army sergeant, veteran of combat DUKW operations.





Maintenance of equipment is a big part of cadets' training, and they learn it on the job, not from books. But in the classroom, problems of motor parking are worked out with realistic models of standard Army vehicles.





Dock equipment like this fork lift is available to cadets at the huge New Orleans Port of Embarkation. Below, a group of TC cadets are given a lecture on Army truck engines.



Every soldier should be a good shot, and a modern indoor rifle range housed under Tulane stadium is shared by Army, Air and Navy ROTC units, where cadets gain proficiency in sharpshooting.



TULANE CHEERS

HULLABALOO

Hu- la- ba- loo Ray-Ray!
Hu- la- ba- loo Ray-Ray!
Hoo-Ray! Hoo-Ray!
Vars, Vars, tee-ay!
Tee-ay! Tee-ay!
Vars, Vars, tee-ay!
Tulane!

KILL

Scream! (Drawn out)
Kill! Kill! Kill!

T. U. YELL

T - U
L - A
Nnnnn E!
Fight! Fight! Fight!

GREEN WAVE

R-o-o-ll On!
Gre-e-e-n Wave!
R-o-o-ll On!
Gre-e-e-n Wave!
R-o-o-ll On!
Gre-e-e-n Wave!

LOCOMOTIVE

T- U- L- A- N- E-
T- U- L- A- N- E-
T- U- L- A- N- E-
RAH!
T - u - u - LANE!

YEA, TEAM

Yea Team Fight!
Yea Team Fight!
Yea Team!
Ray Team!
FIGHT! FIGHT!
FIGHT!

VICTORY

V-I-C-T-O-R-Y
Victory! Victory!
That's our cry.

ECHO

Cheerleaders:	T
Crowd:	T
Cheerleaders:	U
Crowd:	U
Cheerleaders:	L
Crowd:	L
Cheerleaders:	A
Crowd:	A
Cheerleaders:	N
Crowd:	N
Cheerleaders:	E
Crowd:	E
All: T-u-u-lane!	
FIGHT!	



The Official Watch for Timing All Tulane Games is a Longines—"The World's Most Honored Watch"



John Vaught
coach



B. Buchanan
back



K. Farragut
center



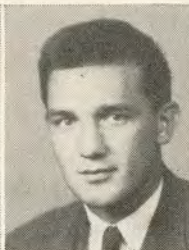
Bob Fuerst
guard



B. Stribling
end



B. Bowen
back



B. Taylor
end



J. Stribling
end



J. Whitaker
back



B. Hamphill
back



B. Wilson
back



D. Howell
back



B. Poole
end



H. Campbell
guard



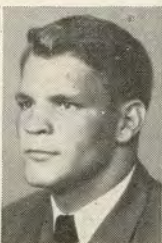
H. Davis
back

OLE MISS

No.	Name and Position	Age	Ht.	Wt.	Hometown
10	Farley Salmon, b	21	5. 8 1/2	155	Clarksdale, Miss.
11	Bobby Oswalt, b	23	5.11	175	Columbia, Miss.
14	Ray Choate, b	20	6. 0	185	Memphis, Tenn.
15	Bobby Jabour, b	26	6. 2	190	Vicksburg, Miss.
16	Buddy Bowen, b	26	5.11 1/2	190	Greenville, Miss.
20	Guy Penny, b	20	6. 1	195	Piedmont, Ala.
21	Jim Whitaker, b	20	6. 1	198	Batesville, Miss.
22	Buck Buchanan, b	25	5.10 1/2	185	Memphis, Tenn.
23	Red Jenkins, b	21	5.11	190	Vernon, Ala.
24	John Dottley, b	20	6. 0	196	McGehee, Ark.
30	Jerry Tiblier, b	21	5.10	180	Jackson, Miss.
31	Dixie Howell, b	24	5.10	180	Talladega, Ala.
33	John Shelby, b	25	5.10 1/2	170	Memphis, Tenn.
34	'J' Salley, b	20	5.11	175	Kingsport, Tenn.
35	Harry Davis, b	19	5.11	175	Moss Point, Miss.
41	Bobby Wilson, b	23	6. 1	170	Piedmont, Ala.
43	Clayton Blount, b	25	5.11	170	Philadelphia, Miss.
44	Bobby Hemphill, b	19	6. 0	175	Winona, Miss.
45	'D' Salley, b	20	5.11	175	Kingsport, Tenn.
46	Billy Mustin, b	22	5.10	165	Canton, Miss.
50	Kin Floyd, c	21	6. 0	198	Vicksburg, Miss.
51	Charles Bidgood, c	22	5.11	185	Meridian, Miss.
52	Al Crawford, c	22	5.10	180	Kingsport, Tenn.
54	Ken Farragut, c	19	6. 4	225	Moss Point, Miss.
55	Bud Gerrard, c	20	6. 1	191	Canton, Miss.
60	Othar Crawford, g	21	6. 0	195	McComb, Miss.



J. Poole
end



J. Crawford
guard



O. Crawford
guard



K. Strong
tackle



B. Poole
guard



J. Odom
end



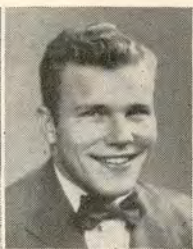
B. Oswalt
back



D. Salley
back



J. Salley
back



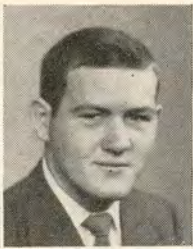
K. Shipley
guard



F. Fant
guard



C. Bidgood
center



K. Barfield
tackle



C. Blount
back



T. Pearson
tackle



E. Jenkins
back



J. Clark
tackle



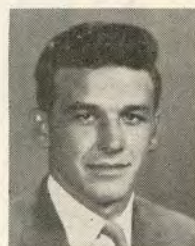
B. Fletcher
end



F. Salmon
back

OLE MISS

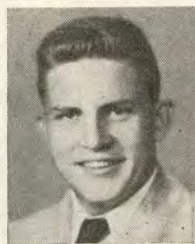
No.	Name and Position	Age	Ht.	Wt.	Hometown
61	Phillip Poole, g	24	6.2	205	Gloster, Miss.
62	Jimmy Crawford, g	21	5.10	202	Memphis, Tenn.
63	Kyle Shipley, g	21	5.10 1/2	193	Kingsport, Tenn.
64	Frank Fant, g	20	5.10	195	Greenwood, Miss.
65	Dick Dickson, g	20	6.0	188	Moss Point, Miss.
66	Bobby Peets, g	21	6.0	195	Jackson, Miss.
67	Bob Fuerst, g	20	6.0	200	N. Little Rock, Ark.
68	Hank Campbell, g	25	6.0	180	Mocksville, N. C.
71	Roland Dale, t	20	6.3	195	Magee, Miss.
72	Doug Hamley, t	23	6.0	202	Lake Providence, La.
73	Ben Mann, t	25	6.2	208	Holly Springs, Miss.
74	Jimmy Clark, t	22	6.0	235	Belzoni, Miss.
75	Babe Pearson, t	18	6.1	207	Clarksdale, Miss.
76	Ken Barfield, t	20	6.2	215	Griffin, Ga.
77	Leslie Poole, t	20	6.0	203	Gloster, Miss.
78	Will Webb, t	23	6.2	215	Canton, Miss.
79	Bill Strong, t	19	6.4	210	Memphis, Tenn.
80	Jack Odom, e	20	6.0	187	Columbus, Miss.
81	C. D. Bishop, e	19	6.1	187	Drew, Miss.
82	Buddy Taylor, e	22	6.2	195	Sylacauga, Ala.
83	Bill Stribling, e	21	6.2	210	Philadelphia, Miss.
84	Jack Stribling, e	25	5.11	180	Philadelphia, Miss.
85	Jackie Poole, e	21	6.1	190	Gloster, Miss.
87	Alf Brazen, e	19	6.2	193	Chicago, Ill.
88	Bob Fletcher, e	20	6.2	200	Elizabethton, Tenn.
89	Barney Poole, e	24	6.3	220	Gloster, Miss.



B. Gerrard
center



D. Hamley
tackle



R. Dale
tackle



B. Peets
guard



W. Webb
tackle



B. Mustin
back



B. Mann
tackle



K. Floyd
center



J. Dottley
back



A. Brazen
end



J. Tiblier
back



B. Jabour
back

At the Game ...



IT'S

Porter's

EVERY TIME!

More and more distinguished New Orleans men are buying their clothes at Porter's!
Why — simply because Porter's selects the latest styles for distinguished men.

Porter's

Carondelet Corner Gravier

WSMB

1350 Kilocycles



NEW ORLEANS' OUTLET FOR
THE N B C NETWORK

SCHEDULES

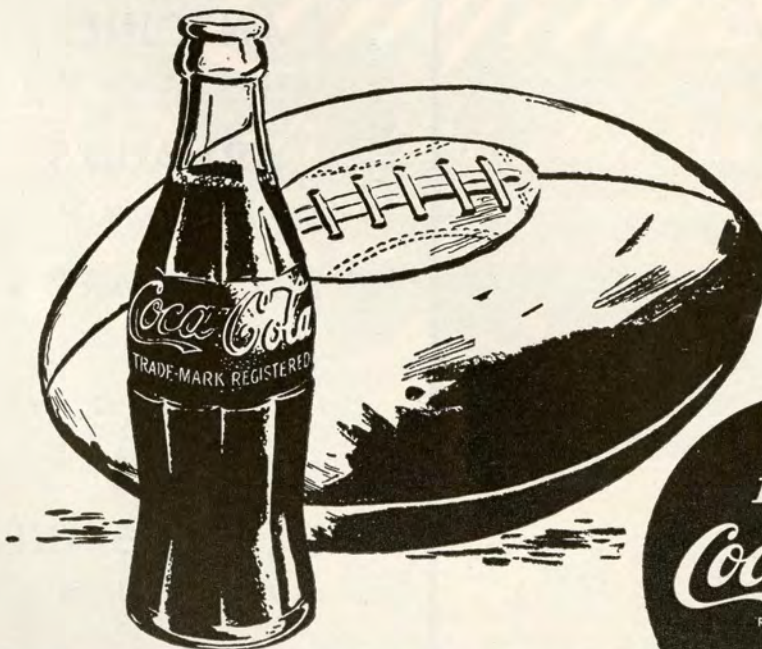
TULANE

21 Alabama 14.
7 Georgia Tech 13.
14 South Carolina 0.
Oct. 16—Ole Miss—New Orleans
Oct. 23—Auburn—New Orleans
Oct. 30—Miss. State—New Orleans (H)
Nov. 6—V.M.I.—New Orleans
Nov. 13—Baylor—New Orleans
Nov. 20—Cincinnati—Cincinnati
Nov. 27—L.S.U.—Baton Rouge
(H)—Homecoming.

OLE MISS

14 Florida O.
20 Kentucky 7.
20 Vanderbilt 7.
Oct. 16—Tulane at New Orleans.
Oct. 23—Boston College at Memphis.
Oct. 30—L.S.U. at Baton Rouge.
Nov. 6—Chattanooga at Chattanooga.
Nov. 13—Tennessee at Memphis.
Nov. 27—Miss. State at Oxford.

Time out... Have a Coke



DRINK
Coca-Cola

REG. U.S. PAT. OFF.

TULANE SONGS



ALMA MATER

We praise thee for thy past, O Alma Mater!
Thy hand hath done its work full faithfully;
The incense of thy spirit hath ascended
And filled America from sea to sea!

We praise thee for thy present, Alma Mater!
Today thy children look to thee for bread!
Thou ledest them to dreams and actions
splendid!
The hunger of their souls is richly fed!

We praise thee for thy future, Alma Mater!
The vista of its glory gleameth far!
We shall ever be part of thee, great Mother!
There thou will be where e'er thy children are!

Chorus

Olive Green and Blue, we love thee.
Pledge we now our fealty true.
Where the trees are ever greenest,
Where the skies are purest blue.
Hear us now, O Tulane, hear us.
As we proudly sing to thee!
Take from us our heart's devotion!
Thine we are, and thine shall be!

ROLL ON, TULANE

Here's a song for the Olive and the Blue.
Here's a cheer for the team that's tried and true.
Here a pledge of loyalty to thee,
Oh, Tulane Varsity.
Here's to the Greenbacks that never will say die,
And here's to the hearts that are true
To the men of Tulane, who are fighting for her
name,
For the Olive and the Blue.

Chorus

Roll, Green Wave,
Roll them down the field.
Hold, Green Wave,
That line must never yield.
When those Greenbacks charge through the line
They're bound for victory.
Hail, Green Wave,
For you we give a cheer.
Hail Green Wave,
For you we have no fear.
So ev'ry man in ev'ry play,
And then we'll win that game today.
Hurrah for Old Tulane.

TULANE FIGHT SONG

Green Wave, Green Wave,
Hats off to thee,
Fight, fight, fight for our victory
Shouts to the skies
The Green Wave war cry.
The bravest we'll defy.
Hold that line for Olive and Blue
We will cheer for you.
So fight, fight, Old Green Wave
Right on to victory.



FAMOUS FOR FINE FOOD and DRINK

TONIGHT—enjoy
specialties of these
noted restaurants:

ANTOINE'S
713 St. Louis St.

ARNAUD'S
813 Bienville St.

BROUSSARD'S
819 Conti St.

KOLB'S
125 St. Charles St.

LA LOUISIANE
725 Iberville St.

PIGSKIN ROUNDUP

Alabama vs. Tennessee—The Crimson Tide, down to a mere ripple in conference play, should find a doormat at last in this one.

Texas vs. Arkansas—The once Thundering Herd has lately become as noisy as a ballerina rehearsal. And yet the potential is there and may rise against the Razorbacks.

Georgia vs. L. S. U.—The Bulldogs have a taste for that feline flavor. And here's where they satiate that hunger again. Georgia.

Army vs. Harvard—Too much heavy artillery. Army.

Missouri vs. Navy—Not enough heavy artillery. Missouri.

Baylor vs. Texas Tech—Not a dark horse but a dark Bear is standing the Southwest on its ear. Just another stepping stone for Baylor's Bruins.

Notre Dame vs. Nebraska—Another chapter in the Irish sweepstakes.

Northwestern vs. Michigan—Bob Voights is sniffing at roses now-a-days, "in preparation",

so he says. Michigan, after a New Year's day visit on the coast, may have some thorns left. But not enough to puncture the Wildcat bubble.

Georgia Tech vs. Auburn—The Plainsmen step in a 'Jacket nest, and won't come out unscratched.

North Carolina vs. North Carolina State—The Choo-Choo chugs on. And so do the Tar Heels.

Kentucky vs. Vanderbilt—The Commodores sight land at last, but there'll be a few reefs in the way.

Minnesota vs. Illinois—A patched-up Gopher should be fully recuperated after that tussle with the Wildcats.

QUICKLY—Villanova over Boston College; Brown over Holy Cross; California over Oregon State; Mississippi State over Cincinnati; Colgate over Dartmouth; Penn over Columbia; Duke over Maryland; Indiana over Ohio State; Oklahoma over Kansas State; Princeton over Rutgers; S.M.U. over Rice; Southern Cal over Oregon; U.C.L.A. over Stanford; Texas A. and M. over T.C.U.

Official timing watch for the

TULANE-OLE MISS FOOTBALL GAME

Longines

The World's Most Honored Watch

ACCEPTED AS OFFICIAL WATCH FOR TIMING CHAMPIONSHIP

SPORTS EVENTS IN ALL FIELDS ALL OVER THE WORLD


10 WORLDS FAIR GRAND PRIZES



28 GOLD MEDALS, HIGHEST ACCURACY AWARDS



SOLD BY MORE THAN 4,000 FINE JEWELERS WHO PROUDLY DISPLAY THIS EMBLEM



The Roosevelt

The Roosevelt Hotel Offers
New Orleans' Most Diversified Program
of

Music and Entertainment

in the FOUNTAIN LOUNGE

At LUNCHEON we invite you to listen to the sweet strains of the Gypsy Ensemble. For COCKTAILS and DANCING, alternating nightly from five o'clock until two the next morning is one of Latin America's noted Rhumba bands and the Society Music of two of America's outstanding combinations.

in the BLUE ROOM

Each evening, for DINNER and SUPPER DANCING, is presented one of the Nation's famous orchestras . . . Featured also in the Blue Room Floor Shows at Dinner and Supper, are celebrated stars from radio, stage and screen.

*New Orleans' most discriminating audience choose
The Roosevelt for their relaxation and entertainment*

The Roosevelt
"The Pride of the South"

only a few yards to go...



(Other Pan-Am Stations conveniently located in all parts of the City.)

Choice of Experience!



CAMELS