



T-WAVE 2005

NS

Tulane University

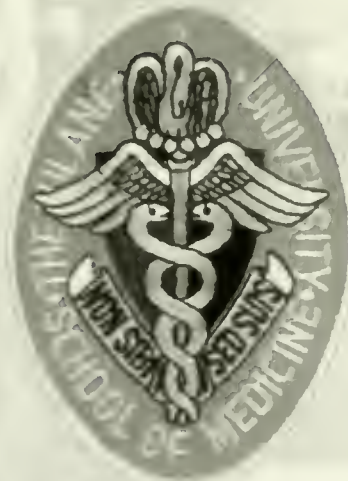


Rudolph Alatas Medical Library

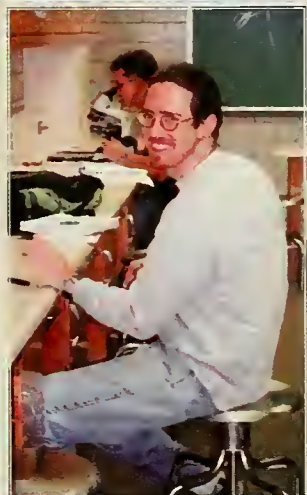
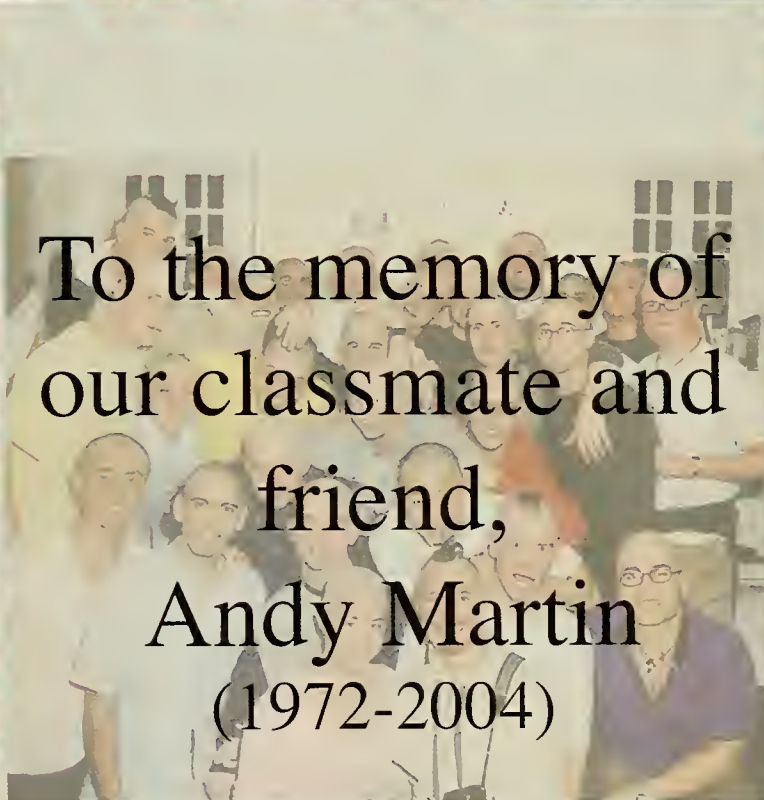


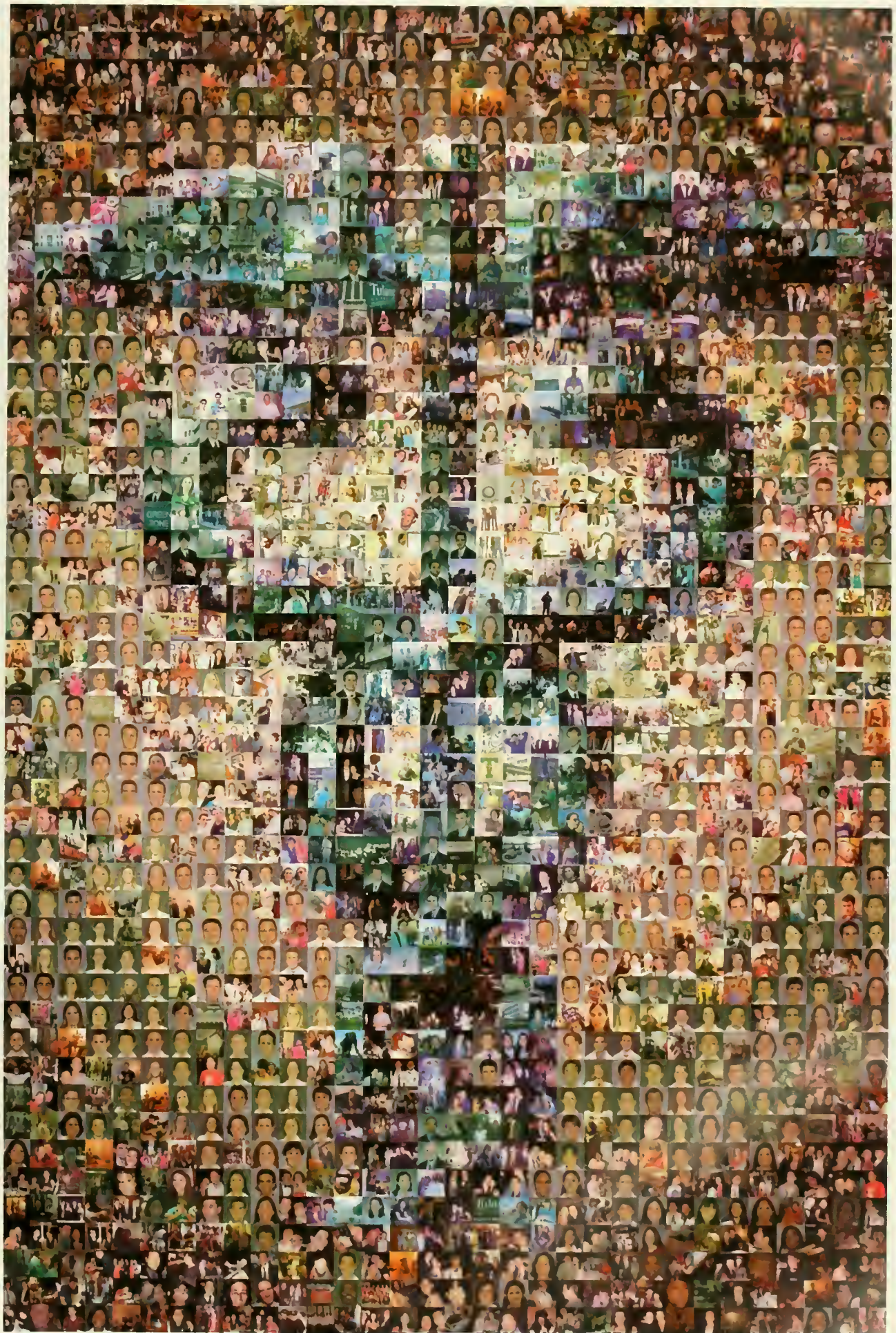


TULANE UNIVERSITY SCHOOL OF MEDICINE



CLASS OF 2005
T-WAVE
VOLUME XIX
NEW ORLEANS, LOUISIANA







Tulane University Medical Center

SCHOOL OF MEDICINE
Office of Admissions SL67
1430 Tulane Avenue
New Orleans, Louisiana 70112-2699
(504) 588-5187 Fax: (504) 988-6735

December 15, 2000

Dear Class of 2005,

I take great pleasure in informing you of your appointment to the first-year medical class at the Tulane University School of Medicine, to enter in August of 2001. I sincerely hope that you will accept our invitation to take your medical training at Tulane and look forward to having you join us.

In order to reserve your place in the class, we must receive, within the next two weeks, written notification of your intent to accept our invitation. At anytime between now and May 15, 2001, we must receive a check, payable to the Tulane Educational Fund, in the amount of \$500; this deposit will be credited against your first tuition billing. Please understand this deposit is non-refundable and should indicate your final decision to attend Tulane University School of Medicine. We ask that should you decide not to attend Tulane, you inform us in writing so that we can maintain an accurate accounting of our class.

I am sure you will understand that your appointment is contingent upon successful completion of the academic program in which you are currently enrolled, and maintenance of the level of academic performance that was part of the basis for your acceptance. A final transcript of your grades must be forwarded to this office as soon as your school year ends.

You will be receiving additional information concerning summer programs, combined-degree programs, and other topics of interest as the year progresses. I and others at the medical school will try to keep you well informed of all important or interesting topics.

On behalf of the students, faculty, and administration at Tulane, I bid you a most enthusiastic welcome. If I can be of service to you in any way, please feel free to call upon me.

Sincerely yours,

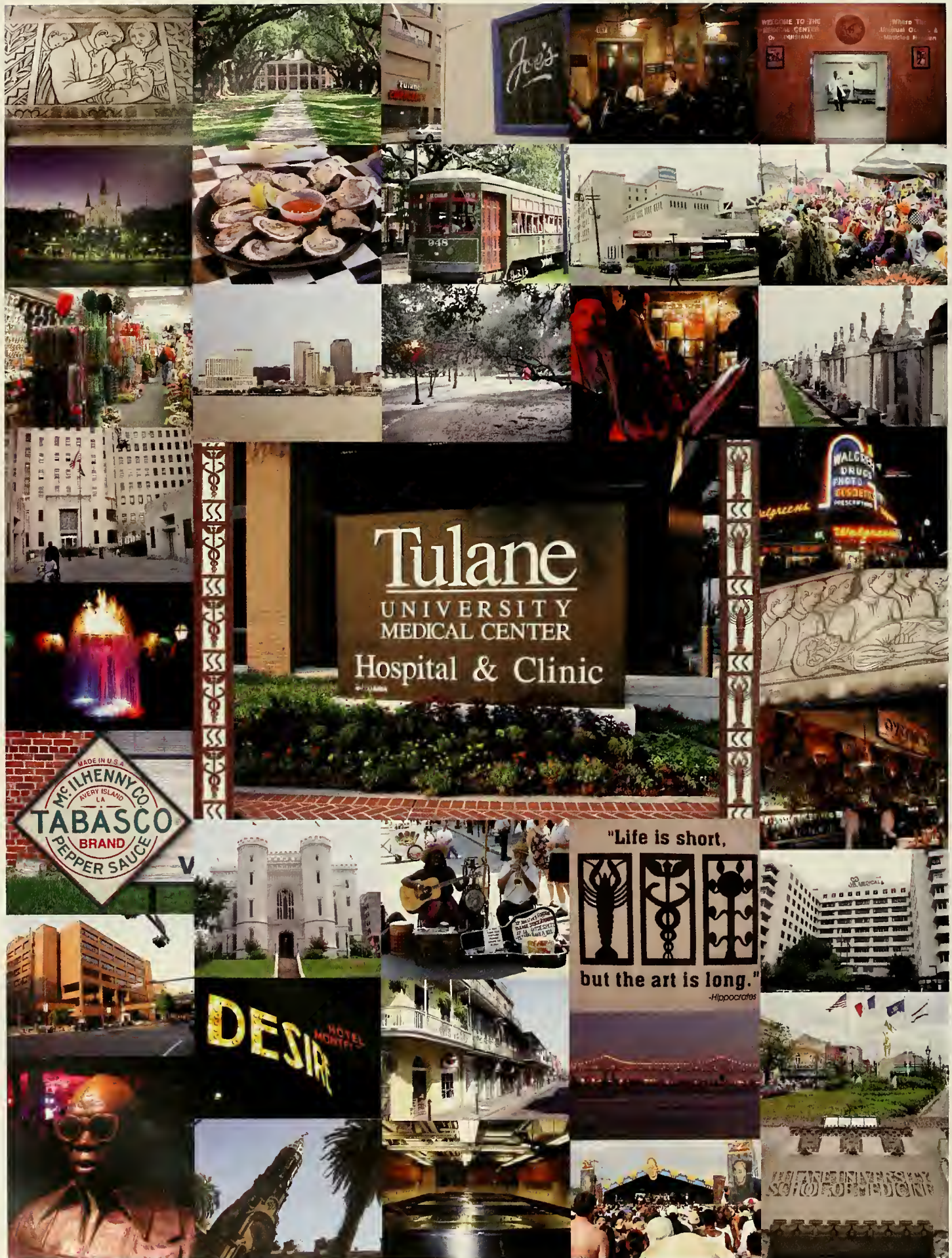
A handwritten signature in black ink, appearing to read "J. C. Pisano".

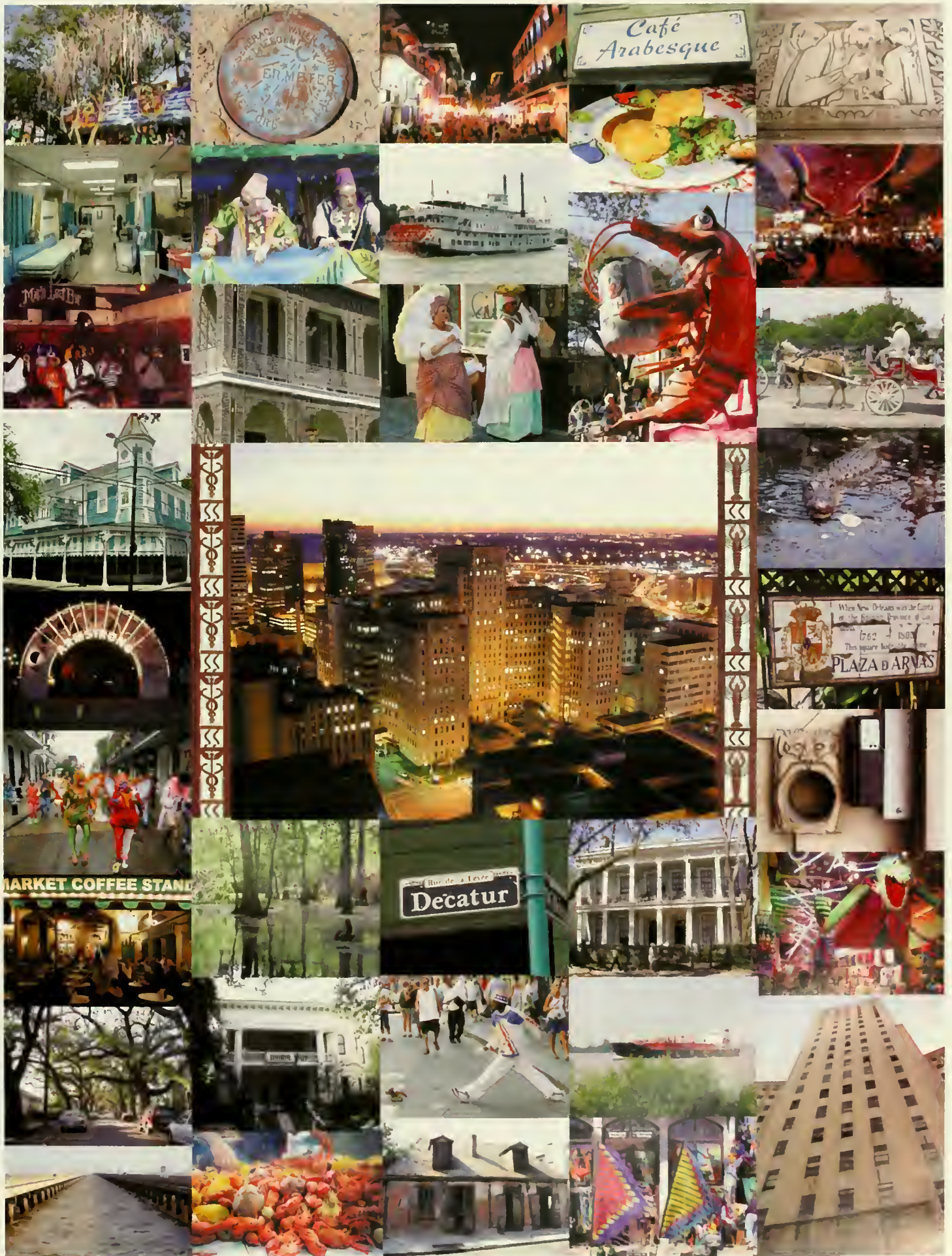
Joseph C. Pisano, Ph.D.
Associate Dean

JCP/kj

THE OATH OF HIPPOCRATES

I swear by Apollo, the physician, and Aesculapius, and Health and All-Heal, and by God and by whatever I hold most sacred, that, according to my ability and judgment, I will keep this Oath and this stipulation—I will look upon those who shall have taught me this Art even as one of my parents. I will share my substance with them, and I will supply their necessities if they be in need. I will regard their offspring in the same footing as my own brethren, and I will teach them this Art, if they shall wish to learn it, without fee or covenant. I will impart a knowledge of the Art by precept, by lecture and by every mode of teaching not only to my own children but to the children of those who have taught me, and to disciples bound by covenant and oath, according to the Law of Medicine, but to none other. The regimen I adopt shall be for the benefit of my patients according to my ability and judgment and I will abstain from whatever is deleterious and mischievous. I will seek to inform my patients fully about their illness and prognosis, and will always remember that the final decision regarding their own life rests with the patient. I will regard my patients always as fellow human beings and will do everything possible to preserve their dignity. With purity and with holiness I will pass my life and practice my Art. Whatsoever things I see or hear concerning the life of men in my attendance, on the sick or even apart therefrom, which ought not to be noised abroad, I will keep silence thereon, counting such things to be sacred secrets. While I continue to keep this Oath unviolated, may it be granted to me to enjoy life and the practice of the Art, respected by all men, in all times. But should I trespass and violate this Oath, may the reverse be my lot.





Administration



Ian L. Taylor, M.D., Ph.D.
*Dean
School of Medicine*



N. Kevin Krane, M.D.
*Vice-Dean of
Academic Affairs*



Kathy Lazarus, M.D.
*Assistant Dean for
Graduate Medical
Education*



Ronald Markert,
Ph.D.
*Director of Office of
Medical Education*



David Robertson
*President
Student Government*



Debby Crane
*President
Class of 2005*



Edward McCoul
*Vice-President
Class of 2005*



Joeseeph Finstein
*Treasurer
Class of 2005*



Wilson Altmeyer
*Secretary
Class of 2005*

Student Affairs



Office of Admissions and Student Affairs

FRONT ROW: Irene Melerine; Barbara K. Beckman, Ph.D., *Assistant Dean for Admissions*; Marc J. Kahn, M.D., *Associate Dean for Student Affairs*; Joseph C. Pisano, Ph.D., *Associate Dean for Admissions*; Jan A. Cooper, M.D., *Assistant Dean for Student Affairs*

BACK ROW: Karen Joia, Kim Melerine, Donna Fasullo, Charlotte Steger, Melissa Riley, Susana Vargas, Dionne Weber, Roz Flowers



Donald J. Owens, Ph.D.
Chaplain



Patricia Schuessler
SEC Secretary



Basic Sciences



Anatomy, Histology & Embryology



Biochemistry



Physiology

Basic Sciences



Pathology



Pharmacology



Microbiology

Clinical Sciences



Internal Medicine



Pediatrics



Family Medicine

Clinical Sciences



Surgery



Obstetrics & Gynecology



Psychiatry & Neurology

Class Sponsors



Dr. Elizabeth Crabtree

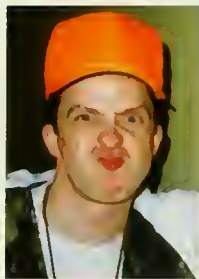
Elizabeth Crabtree-Hartman, MD, is Assistant Professor of Neurology and an Associate Director of the Neurology Residency Training Program at Tulane University Health Sciences Center. She obtained her medical degree at Tulane and then completed her neurology residency training at UCLA Medical Center. She returned to Tulane for her Neurobehavioral Fellowship with Dr. Anne L. Foundas. Her research interests include neurologic underpinnings of psychiatric symptomatology and subcortical neurobehavioral syndromes. She was the recipient of the 2004 Owl Club Award for Best Attending in the Section of Neurology as chosen by students of the class of 2005.

Elma Ireland LeDoux, MD, FACC, is an Associate Professor of Medicine at Tulane University School of Medicine. She also serves as Director of Medical Student Programs in the Department of Medicine and coordinates the longitudinal curriculum in electrocardiography and cardiovascular disease. Dr. LeDoux is a Fellow of the American College of Cardiology and a member of AOA and Clerkship Directors in Internal Medicine. She serves as Attending Staff at VA Medical Center in New Orleans and has won numerous teaching awards since joining the faculty in 1996. A graduate of Tulane Medical School, Dr. LeDoux is a perennial favorite among clinical instructors and holds the record for the most Owl Club Awards over the course of her tenure.



Dr. Elma LeDoux

Alpha Omega Alpha



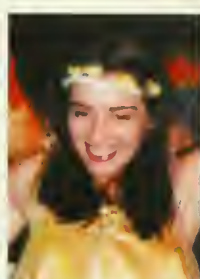
Michael Craig
President



Christina Blass
Vice-President



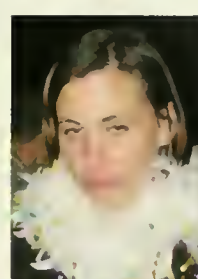
Nader Massarweh



Amber Naresh



Jason Oaks

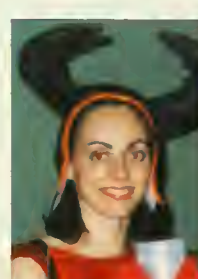


Dena Walsh

Junior AOA



J. Scott Boswell

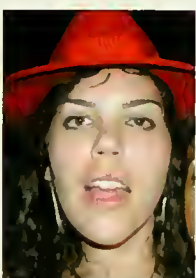


Erin Coakley

Senior AOA



Dominique Cosco



Jessica Galandak



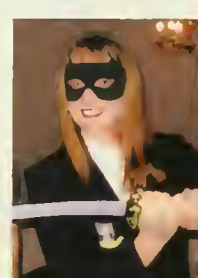
Patrick Gaston



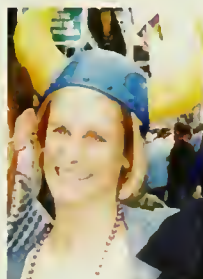
David Greenberg



Matthew Harper



Laura Howard



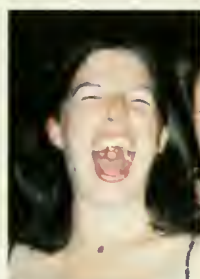
Kristin Janson



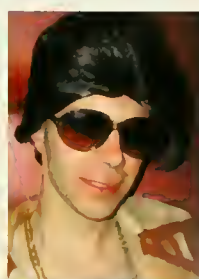
Asha Jayakrishnan



Colleen Johnson



Julienne Lippe



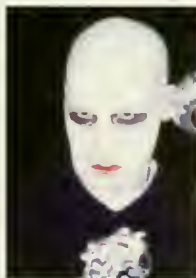
Edward McCoul



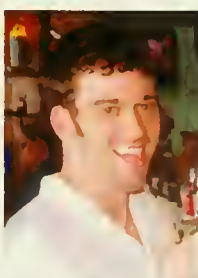
David Melton



Jeffrey Nadig



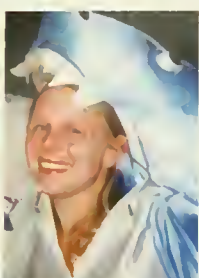
Adam Nicholson



Charles Popkin



Jeremy Reed

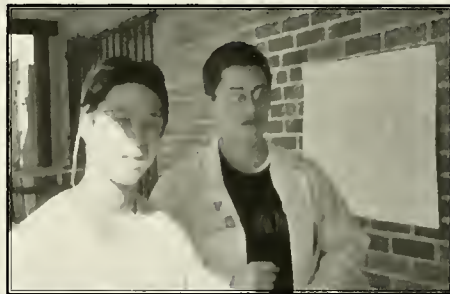


Elizabeth Swanson



Christopher
Willoughby

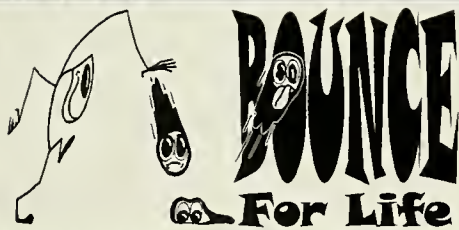
Service Learning



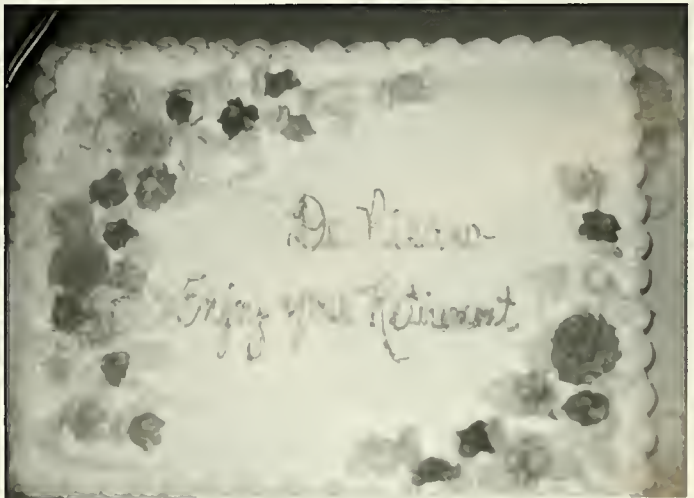
Service Learning



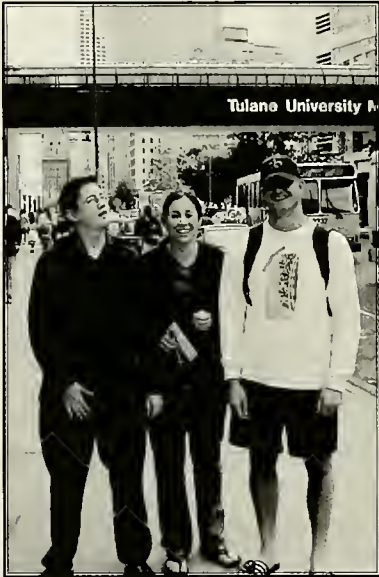
Bounce For Life



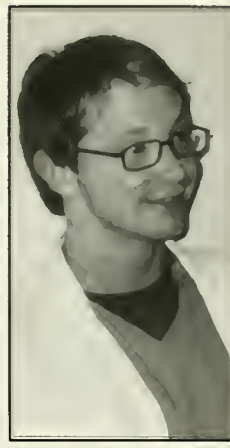
Dr. Pisano Exits



In Class



In Class



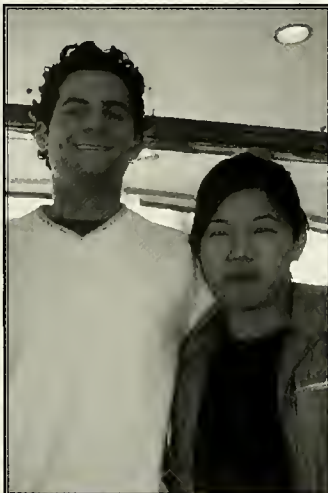
Faces of 2005



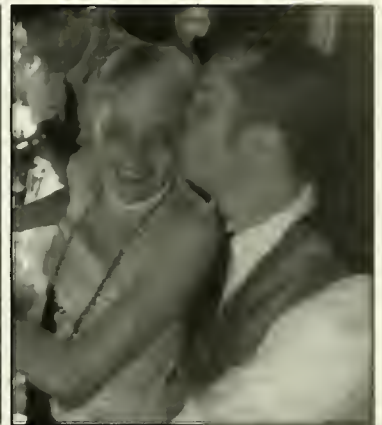
Faces of 2005



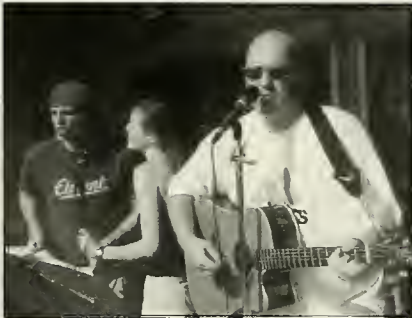
Faces of 2005



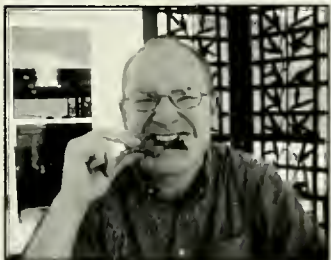
Wedding Bells



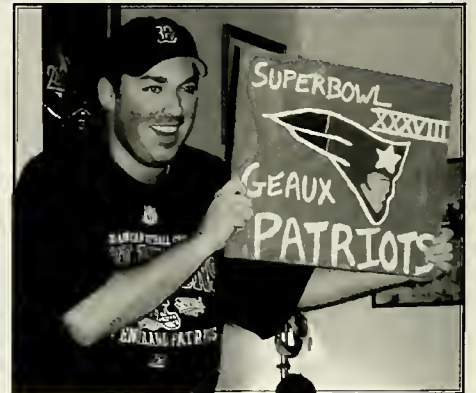
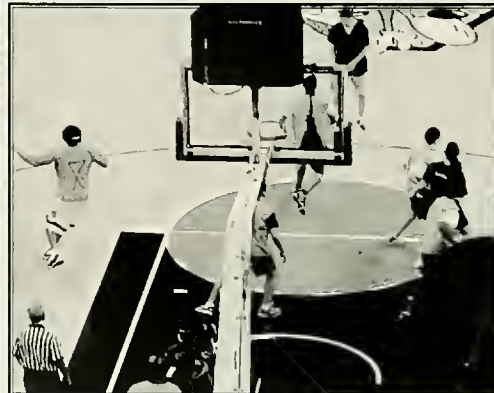
Music Makers



Chowtime!



Sports



Sports



How Flattering...



How Flattering...



Fun In The Sun



Fun In The Sun



Parties



Parties



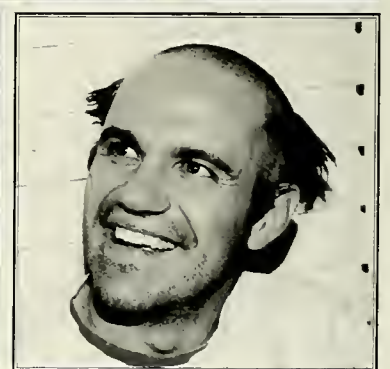
Parties



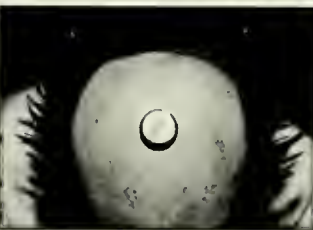
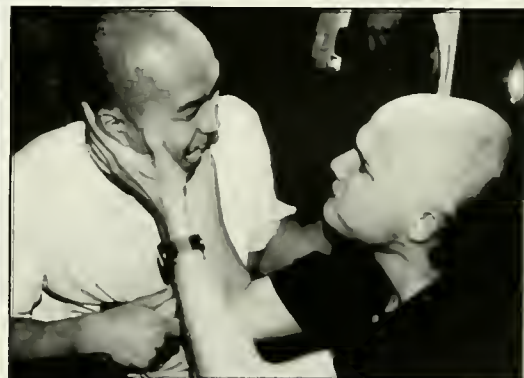
Parties



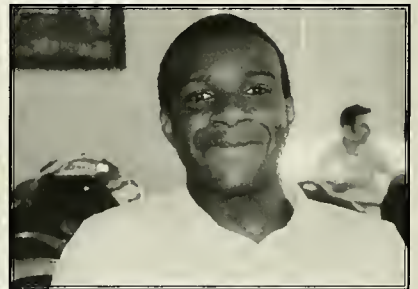
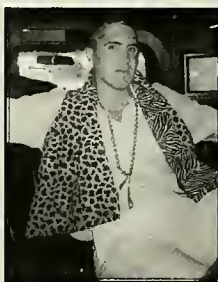
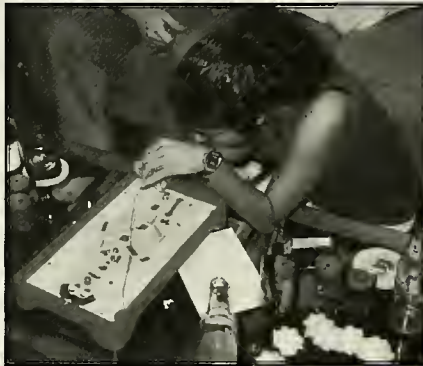
Beer & Baldness



Beer & Baldness



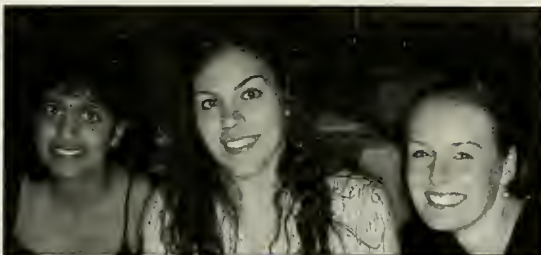
Future MD's???



Future MD's???



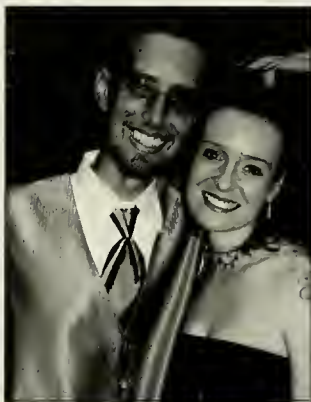
On The Town



On The Town



On The Town



On The Town



Cadaver Ball



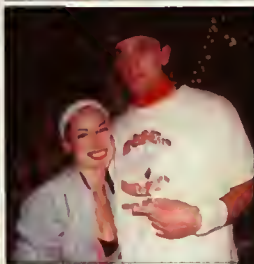
Cadaver Ball



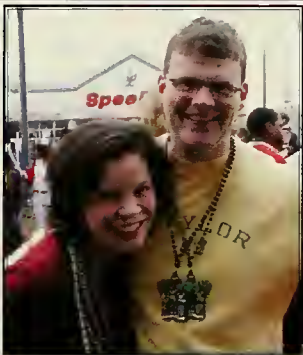
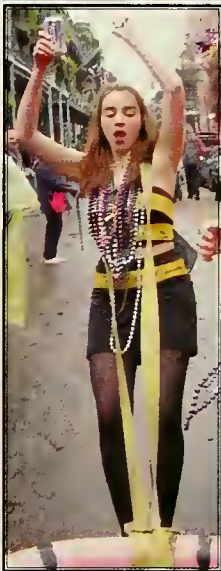
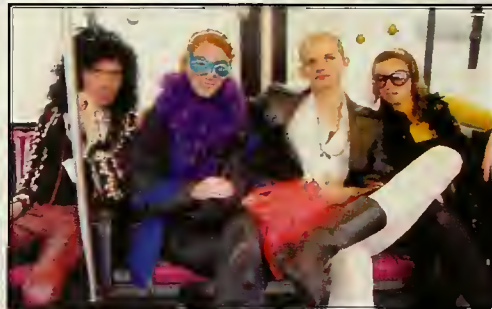
Cadaver Ball



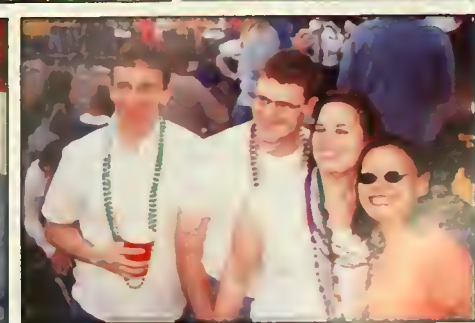
Charity Bowl



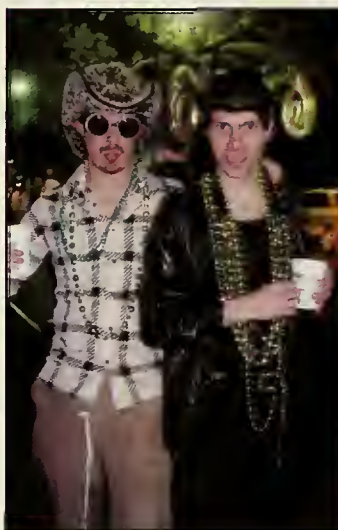
Mardi Gras



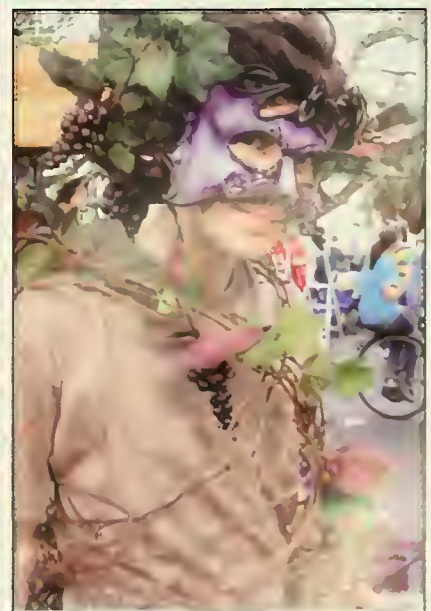
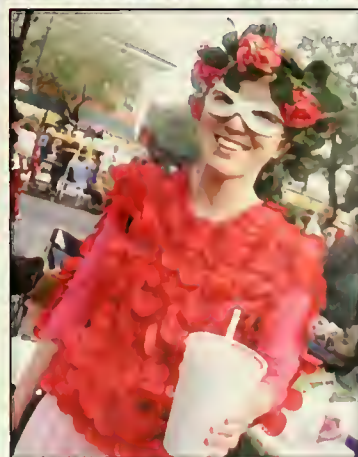
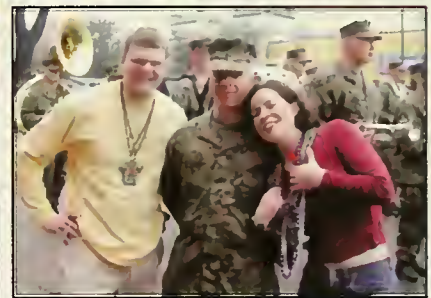
Mardi Gras



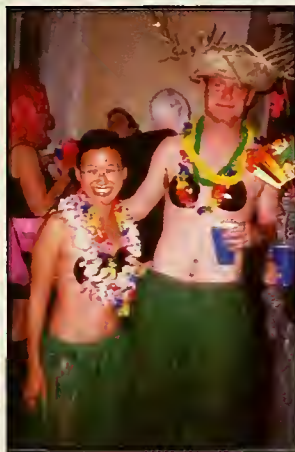
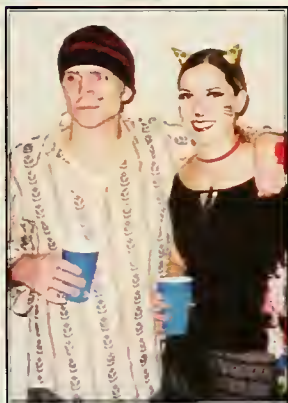
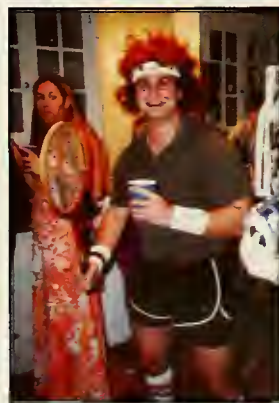
Mardi Gras



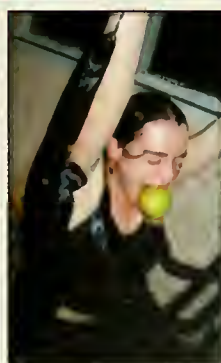
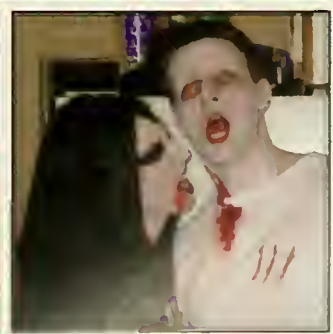
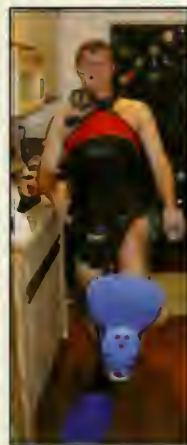
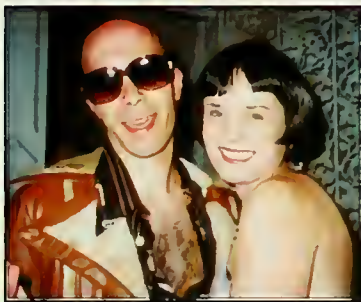
Mardi Gras



Halloween



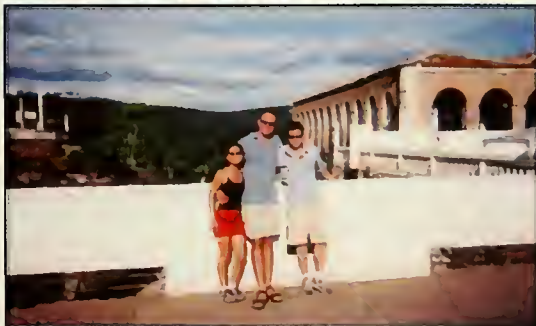
Halloween



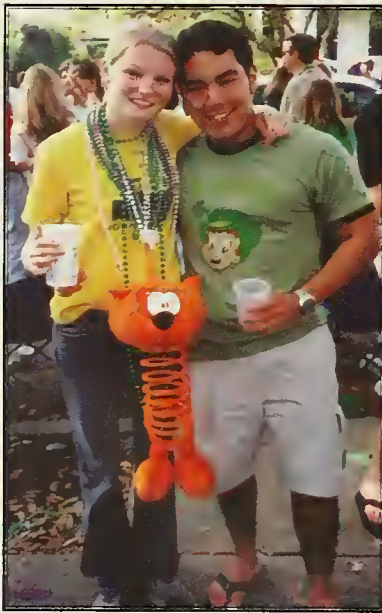
The Places We Go...



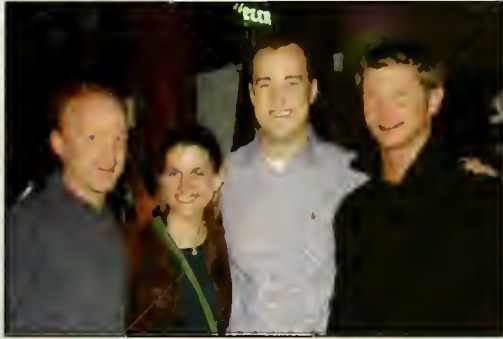
The Places We Go...



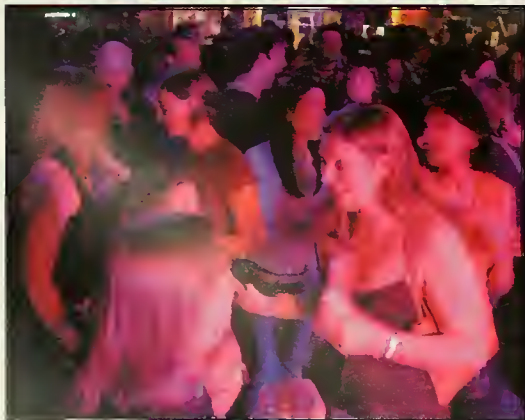
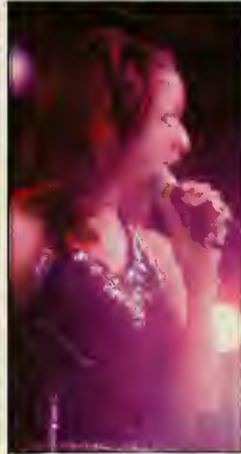
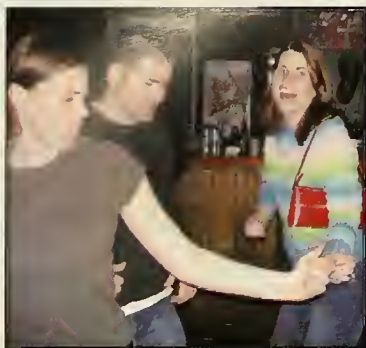
Shades of Green



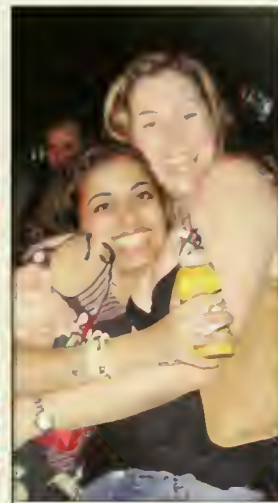
Voodoo Blessings



Pre-Match...



...Celebration



Match Day!



Match Day!



ADAMS, MEREDITH
Transitional
Tulane School of Medicine
New Orleans, LA
Anesthesiology
Johns Hopkins Hospital
Baltimore, MD

ALTMAYER, MARY DENNIS
Medicine Preliminary
Dermatology
Tulane School of Medicine
New Orleans, LA

ALTMAYER, WILSON
Radiology/Diagnostic
Ochsner Clinic Foundation
New Orleans, LA

AMBROSE, CATHERINE
Emergency Medicine
Denver Health MC
Denver, CO

ARNOLD, DANIEL
Internal Medicine
Boston University MC
Boston, MA

AUSTIN, NED
Pathology
Baylor University MC
Dallas, TX

BAARS, JENNIFER
Medicine Pediatrics
Tulane School of Medicine
New Orleans, LA

BANKER, BRIAN
Medicine Pediatrics
Bay State Medical Center
Springfield, MA

BATEMAN, MCKAY
Anesthesiology
Vanderbilt University MC
Nashville, TN

BENSON, DAVID
Surgery-Prelim
UCLA Medical Center
Los Angeles, CA

BERBERIAN, JOHN
Neurological Surgery
Georgetown University
Washington DC

BERKOWITZ, JARED
Medicine Pediatrics
Banner Good Samaritan
Phoenix, AZ

BLASS, CHRISTINA
Otolaryngology
Baylor College of Medicine
Houston, TX

BOMMAKANTI, SATYA
Internal Medicine
Medical College of Wisconsin Affiliated Hosp.
Milwaukee, WI

BOSWELL, JOHN SCOTT
Medicine Preliminary
UC San Francisco
Fresno, CA
Dermatology
University of Texas SW
Dallas, TX

BRIGHAM, NATHANIEL
Family Medicine
Bremerton Naval Hospital
Bremerton, Washington

BUSH, CERISE
Obstetrics/Gynecology
Advocate Lutheran General
Park Ridge, IL

CASH, MICHAEL
Internal Medicine
Tulane School of Medicine
New Orleans, LA

CHENG, LAY HAR
Pediatrics
Emory University SOM
Atlanta, GA

CHRISTIE, HEATHER
Family Practice
Duke University
Durham, NC

COAKLEY, ERIN
Internal Medicine Prelim
Tulane School of Medicine
Radiology/Diagnostic
Jackson Memorial Hospital
Miami, FL

COLEMAN, KYLE
Surgery Preliminary
Ochsner Foundation Clinic
New Orleans, LA
Dermatology
Tulane School of Medicine
New Orleans, LA

COLEMAN, NATHANIEL
Internal Medicine
Tulane School of Medicine
New Orleans, LA

COSCO, DOMINIQUE
Internal Medicine
Emory University SOM
Atlanta, GA

CRAIG, MICHAEL
Medicine Pediatrics
University of NC Hosp
Chapel Hill, NC

CRANE, DEBORAH
Physical Medicine and Rehab
University of Washington
Seattle, WA

CRITTENDEN, STANLEY
Internal Medicine
University of Chicago Hosp
Chicago, IL

DE SIMONE, NICOLE
Obstetrics/Gynecology
Tulane School of Medicine
New Orleans, LA

DEAN, CHARITY
General Surgery
Santa Barbara Cottage Hosp
Santa Barbara, CA

DONEGAN, SHAUN
Internal Medicine
University of Alabama
Birmingham, AL

FARLEY, EDWARD PATRICK
Medicine Preliminary
Radiology/Diagnostic
Dartmouth-Hitchcock MC
Lebanon, NH

FERACHI, DAVID
Orthopaedic Surgery
Tulane School of Medicine
New Orleans, LA

FINSTEIN, JOSEPH
Orthopaedic Research
Hospital of the Univ. of Penn
Philadelphia, PA

FREEHILL, NICOLE
Obstetrics/Gynecology
Thomas Jefferson University
Philadelphia, PA

FREEHILL, MICHAEL
Orthopaedic Surgery
Johns Hopkins Hospital
Baltimore, MD

FRITZ, BRYAN
Anesthesiology
University of Pittsburgh
Pittsburgh, PA

GABLER, SCOTT
Internal Medicine
UC Davis Medical Center
Davis, CA

GALANDAK, JESSICA
Obstetrics/Gynecology
Emory University SOM
Atlanta, GA

GASTON, PATRICK
Internal Medicine
Oregon Health and Science
Portland, OR

GLOTZBACH, JASON
General Surgery
University of NC Hosp
Chapel Hill, NC

GREENBERG, DAVID
General Surgery
University of Tennessee
Memphis, TN

GUILLORY, KEVIN
Family Practice
East Jefferson MC
Metairie, LA

GURSKI, JENNIFER
Urology
Madigan Army MC
Tacoma, WA

HADERLIE, MICHAEL
Internal Medicine
Tulane School of Medicine
New Orleans, LA

HAMEED, FASIH
Family Practice
Sutter Medical Center
Santa Rosa, CA

HANSEN, JAY
Family Practice
Mercy/Mayo Family Prac.
Des Moines, IA

HANSEN, ROSS
Surgery Preliminary
University of Colorado
Denver, CO

HARPER, MATTHEW
General Surgery
George Washington Univ.
Washington DC

HAYES, MOSE TREY
Internal Medicine
Tulane School of Medicine
New Orleans, LA

HEALY, SARA
Pediatrics
Northwestern McGaw
Chicago, IL

HEARD, WENDELL
Orthopaedic Surgery
Tulane School of Medicine
New Orleans, LA

HOWARD, LAURA
Medicine Preliminary
University of California
Irvine, CA
Ophthalmology
University of Arizona
Tucson, AZ

HUANG, WAYNE
Psychiatry
Show-Chwan Memorial
Taiwan

ISENBERG, DEREK
Emergency Medicine
Drexel University COM
Philadelphia, PA

JANSON, KRISTIN
Medicine Preliminary
Brigham & Women's Hosp
Boston, MA
Radiation/Oncology
Johns Hopkins Hospital
Baltimore, MD

JAYAKRISHNAN, ASHA
Obstetrics/Gynecology
Women's & Infants' Hosp
Providence, RI

JOHNSON, COLLEEN
Otolaryngology
SAUSHEC Brooke Army MC
San Antonio, TX

JONES, CECILY
Obstetrics/Gynecology
Tulane School of Medicine
New Orleans, LA

KAWAHARA, CARA
Family Practice
Providence Milwaukee
Milwaukee, OR

KEENE, JAMES HENRY
Medicine Pediatrics
University of Minnesota
Minneapolis, MN

KHAN, ZIA
Psychiatry
Tulane School of Medicine
New Orleans, LA

KHANDEKAR, SAYRA
Internal Medicine
University of Tennessee
Memphis, TN

KIM, DANNY
General Surgery
SAUSHEC Brooke Army MC
San Antonio, TX

KRUMIRICH, ISOLDE
Internal Medicine
Emory University SOM
Atlanta, GA

KULLMAN, GINNY
Transitional
Deaconess Medical Center
Spokane, WA
Ophthalmology
University of Colorado
Denver, CO

KURKJIAN, MELISSA
Medicine Preliminary
Tulane School of Medicine
New Orleans, LA

KWON, EDWARD
General Surgery
Einstein/Montefiore MC
Bronx, NY

LE, KENNETH
Radiology/Diagnostic
Tulane School of Medicine
New Orleans, LA

LEVY, SARA
Emergency Medicine
Temple University Hosp Philadelphia, PA

LEWIS, BRIAN
Internal Medicine
Tulane School of Medicine
New Orleans, LA

LEWIS, KRISTI
Pediatrics
University of NC
Chapel Hill, NC

LIPPE, JULIENNE
Orthopaedic Surgery
Barnes Jewish Hospital
St. Louis, MO

LIU, CHRISTINE
Family Practice
Image Family Practice
Tulsa, OK

MAHIEU, NATALIE
Radiology/Diagnostic
Ochsner Foundation Clinic
New Orleans, LA

MARTIN, EMILY
Pediatrics
LSU School of Medicine
New Orleans, LA

MASSARWEH, NADER
General Surgery
University of Washington
Seattle, WA

MATHISON, CLYDE
Otolaryngology
Emory University
Atlanta, Georgia

MATTHEWS, JOSEPH
Emergency Medicine
SAUSHEC Brooke Army MC
San Antonio, TX

MCCABE, DANIEL
Psychiatry
Duke University MC
Durham, NC

MCCONVILLE, PATRICK
Anesthesiology
Tulane School of Medicine
New Orleans, LA

MCCOUL, EDWARD
Otolaryngology
SUNY-Downstate
Brooklyn, NY

MCDONALD, LUCAS
General Surgery
Balboa Naval MC
San Diego, CA

MELTON, DAVID
Internal Medicine
Hospital of the Univ. of Penn
Philadelphia, PA

METHE, SARAH
Pediatrics
Tripler Army MC
Honolulu, Hawaii

NADIG, JEFFREY
Medicine Preliminary
Tulane School of Medicine
New Orleans, LA
Radiology/Diagnostic
University of Michigan
Ann Arbor, MI

NARESH, AMBER
Obstetrics/Gynecology
University of Pittsburgh
Pittsburgh, PA

NASS, JONATHAN
Internal Medicine
Brown University
Providence, RI

NELSON, ERIC
Medicine Preliminary
Tulane School of Medicine
New Orleans, LA
Anesthesiology
Northwestern McGaw
Chicago, IL

NICHOLSON, ADAM
Urology
University of Minnesota
Minneapolis, MN

NIXON-JUNE, CORTNEY
Obstetrics/Gynecology
George Washington Univ.
Washington DC

NOWFAR, SEPEHR
Urology
Tulane School of Medicine
New Orleans, LA

NWOSU, VICTORIA
Neurology
Medical University of SC
Charleston, SC

OAKS, JASON
Transitional
University of Tennessee
Memphis, TN
Radiology/Diagnostic
Johns Hopkins Hospital
Baltimore, MD

PARIKH, SIMUL
Medicine Preliminary
University of Pittsburgh MC
Pittsburgh, PA

PHOMMACHANH, VIENGSOUK
Otolaryngology
University of South Florida
Tampa, FL

POPKIN, CHARLES
Orthopaedic Surgery
Jackson Memorial Hosp
Miami, FL

PRASANKUMAR, RAHUL
Transitional
St. Vincent's Hospital
Harrison, NY
Emergency Medicine
Lincoln Medical Center
Bronx, NY

QADIR, NIDA
Internal Medicine
NYU School of Medicine
New York, NY

RAMSEY, JOHN
Internal Medicine
Oregon Health & Science
Portland, OR

RAMSEY, MONICA RAU
Internal Medicine
Oregon Health & Science
Portland, OR

REDDICK, MARK
Neurological Surgery
University of Texas SW
Dallas, TX

REED, JEREMY
Otolaryngology
Walter Reed Army MC
Washington, DC

REESE, JAMES
Pediatrics
Thomas Jefferson Dupont
Children's Hospital
Philadelphia, PA

RICHARDSON, MICHAEL
Surgery Preliminary
Ohio State University
Columbus, OH

ROBERTSON, DAVID
Medicine Pediatrics
Bay State Medical Center
Springfield, MA

ROBINSON, CANDACE STEVENS
Emergency Medicine
LSU School of Medicine
New Orleans, LA

ROSENBLUTH, EVAN
Obstetrics/Gynecology
University of Utah
Salt Lake City, UT

ROYBAL, JESSICA
General Surgery
Mt. Sinai Hospital
New York, NY

SALTER, BENJAMIN
Family Practice
University of Wisconsin
Madison, WI

SANGHANI, NEIL
Internal Medicine
Vanderbilt University
Nashville, TN

SAVADOVE, THOMAS
Medicine Preliminary
Graduate Hospital
Philadelphia, PA
Physical Medicine & Rehab
Temple University Hosp
Philadelphia, PA

SEVDY, TRISTAN
Family Practice
Eglin Air Force Base
Ft. Walton Beach, FL

SHANNON, RYAN
Anesthesiology
Tulane School of Medicine
New Orleans, LA

SHATZMILLER, RON
Medicine Preliminary
Tulane School of Medicine
New Orleans, LA
Neurology
University of Southern CA
Los Angeles, CA

SIEMS, COURTNEY
Family Practice
Baylor College of Medicine
Houston, TX

SINGH, SUKHWANT NIKKI
Internal Medicine
Tulane School of Medicine
New Orleans, LA

STELLY, MARCUS
Radiology Diagnostic
Tulane School of Medicine
New Orleans, LA

STEVEN, ANDREW
Radiology Diagnostic
Ochsner Foundation Clinic
New Orleans, LA

STEVENS, ARIANE
Emergency Medicine
LSU School of Medicine
New Orleans, LA

STILLWELL, TERRI
Pediatrics
University of Pittsburgh
Pittsburgh, PA

SWAIN, KATHERINE
Pediatrics
University of Colorado
Denver, CO

SWANSON, ELIZABETH
Transitional
Mayo Graduate SOM
Scottsdale, AZ
Dermatology
Mayo Graduate SOM
Rochester, MN

TAHER, HEATHIER
Emergency Medicine
Resurrection Medical Ctr
Chicago, IL

TOUPS, MARISA
Otolaryngology
University of Alabama
Birmingham, AL

TROZZI, MELISSA
Pediatrics
Rhode Island Hosp.
Providence, RI

TSAI, NANCY
Pediatrics
University of Iowa Hospital
Iowa City, IA

USTAS, LEAH
Psychiatry
University of Iowa Hospital
Iowa City, IA

VAUGHN, AMY
Obstetrics/Gynecology
Tulane School of Medicine
New Orleans, LA

VIATOR, ANDRÉ
Family Medicine
Kenner Regional MC
Kenner, LA

WALSH, DENA
Urology
Vanderbilt University SOM
Nashville, Tennessee

WARD, LUTHER
General Surgery
East Tennessee State
Johnson City, TN

WEED, JONATHAN
Medicine Preliminary
NYU Downtown Hosp
New York, NY
Anesthesiology
Beth Israel Deaconess MC
Boston, MA

WHERRY, CALEN
Surgery Preliminary
Tulane School of Medicine
New Orleans, LA
Flight Surgery
Brooke Air Force Base
San Antonio, TX

WIDMER, KYLE
Internal Medicine
Tulane School of Medicine
New Orleans, LA

WILLIAMS, ROBERT
Family Practice
Ventura County MC
Ventura, CA

WILLOUGHBY, CHRISTOPHER
Emergency Medicine
University Hospital
Cincinnati, OH

WOLF, ALEXANDER
Medicine Preliminary
Brown University
Providence, RI
Anesthesiology
Yale/New Haven Hospital
New Haven, CT

WOLF, EDWARD
Anesthesiology
Tulane School of Medicine
New Orleans, LA

WRANGLÉ, JOHN
Medicine-Primary Care
Emory University SOM
Atlanta, GA

WRENN, DENÉ
Obstetrics/Gynecology
Medical University of SC
Charleston, SC

WYCHERLY, BENJAMIN
Otolaryngology
Georgetown University
Washington DC

YOON, CHRISTINA
Internal Medicine
NYU School of Medicine
New York, NY

ZERINGUE, MICHAEL
Family Practice
John Peter Smith Hospital
Fort Worth, TX


RESIDENCIES BY STATE:

Louisiana 31
Pennsylvania 11
Texas 10
California 7
Georgia, Tennessee, New York 6
Massachusetts, Washington DC, Illinois, North Carolina 5
Colorado, Washington, Florida, Oregon, Maryland 4
Rhode Island, Minnesota, Iowa 3
Arizona, Wisconsin, Ohio, Alabama, South Carolina 2
New Hampshire, Missouri, Oklahoma, Hawaii, Connecticut, Michigan, Utah 1

RESIDENCIES BY SPECIALTY:

Internal Medicine 23
Family Practice 13
General Surgery 11
Obstetrics/Gynecology 11
Pediatrics 10
Anesthesiology 9
Diagnostic Radiology 9
Emergency Medicine 9
Otolaryngology 8
Medicine/Pediatrics 6
Orthopedic Surgery 5
Dermatology 4
Urology 4
Surgery Preliminary 4
Psychiatry 3
Ophthalmology, Neurosurgery, Physical Med & Rehab, Medicine Prelim, Neurology 2
Medicine Primary Care, Radiology Oncology, Ortho Research, Pathology 1

School of Medicine

| | | | | | | | | | |
|--------------|-------------|-------------|-------------|---|-----------|-------------|----------|-------------|-------------|
| | | | | | | | | | |
| Altmeier | Ambrose | Arnold | Austin | Baars | Banker | Bateman | Benson | Barberian | Bergstrom |
| | | | | | | | | | |
| Cheng | Christie | Cookley | Coleman, K. | Coleman, N. | Cosco | Craft | Craig | Crane | Crittenden |
| | | | |  Tulane University | | | | | |
| Gelbard | Glotzbach | Green | Guilory | | | Gupta | Gurski | Haderlie | Hameed |
| | | | | | | | | | |
| Jayakrishnan | Johnson, C. | Johnson, D. | Jones | | | Kandalaft | Kapp | Kawahara | Keene |
| | | | | | | | | | |
| Lewis, K. | Lippe | Liu | Mahieu | Martin | Massarweh | Mathison | Matthews | Mazzola | McCabe |
| | | | | | | | | | |
| Nelson | Newsom | Nicholson | Nixon-June | Nowlar | Nwosu | Oaks | Parikh | Phommachanh | Popkin |
| | | | | | | | | | |
| Roybal | Salter | Sanghani | Savadove | Sevdý | Shannon | Shatzmiller | Siems | Steven | Stevens, A. |
| | | | | | | | | | |
| Trozzi | Tsai | Ustas | Vaughan | Viator | Vo | Ward | Weed | Wherry | Widmer |

Class of 2005

| | | | | | | | | | |
|-------------|------------|------------|-----------|-----------|----------|----------|------------|-----------|-------------|
| | | | | | | | | | |
| Blass | Bommakanli | Bordelon | Boswell | Bourgeois | Brandt | Brigham | Bush | Cash | Charbonneau |
| | | | | | | | | | |
| Donegan | Farley | Finstein | Firth | Fontenot | Freehill | Fritz | Gabler | Galandak | Gaston |
| | | | | | | | | | |
| Hansen, J. | Hansen, R. | Harper | Hayes | Healy | Heard | Howard | Huang | Isenberg | Janson |
| | | | | | | | | | |
| Khan | Khandekar | Kim | Krummrich | Kullman | Kurkjian | Kwon | Le | Levy | Lewis, B. |
| | | | | | | | | | |
| McConville | McCoul | McDonald | Mellon | Methe | Milne | Moore | Nadig | Naresh | Nass |
| | | | | | | | | | |
| Prasankumar | Qadir | Ramsey | Rau | Reddick | Reed | Reese | Richardson | Robertson | Rosenbluth |
| | | | | | | | | | |
| Stevens, C. | Stillwell | Strickland | Strube | Swain | Swanson | Taher | Taylor | Thompson | Toups |
| | | | | | | | | | |
| Williams | Willoughby | Wolf | Worrell | Wrangle | Wrenn | Wycherly | Yiu | Yoon | Zeng |

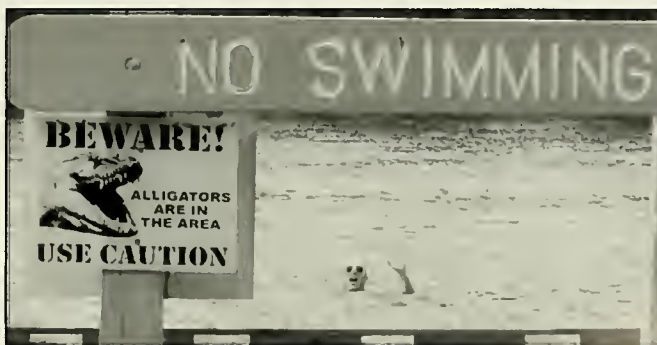
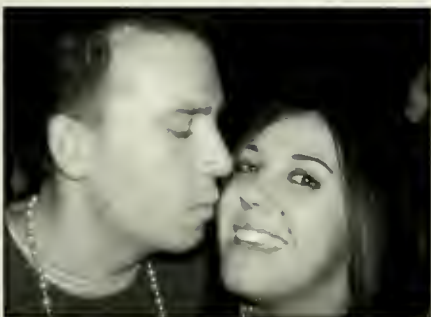


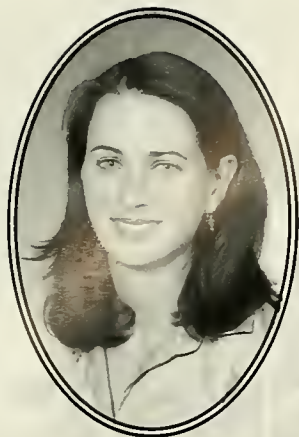
Meredith Adams
Montclair, NJ



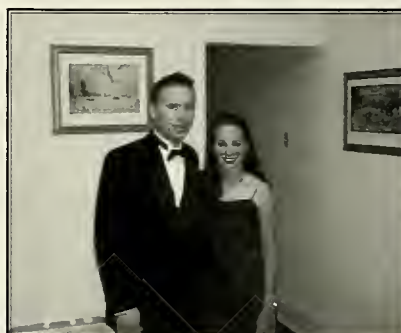


Wilson Altmeyer
Wheeling, WV



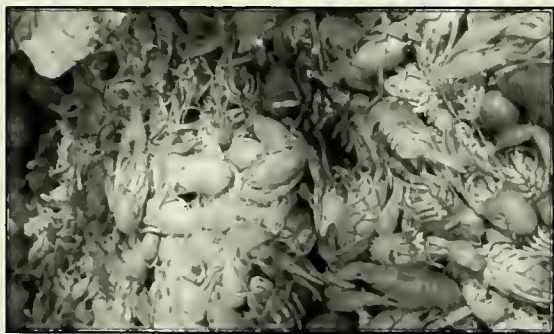


Catherine Ambrose
Milford, MA





Daniel Arnold
Medfield, MA





Ned Austin
Enid, OK





Jennifer Baars
Palos Verdes, CA



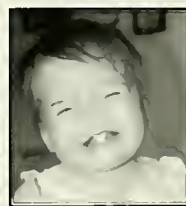


Brian Banker
Sacramento, CA





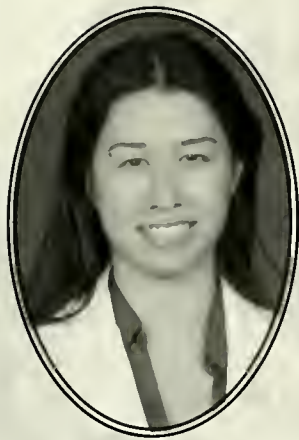
McKay Bateman
Provo, UT





John Berberian
Fresno, CA



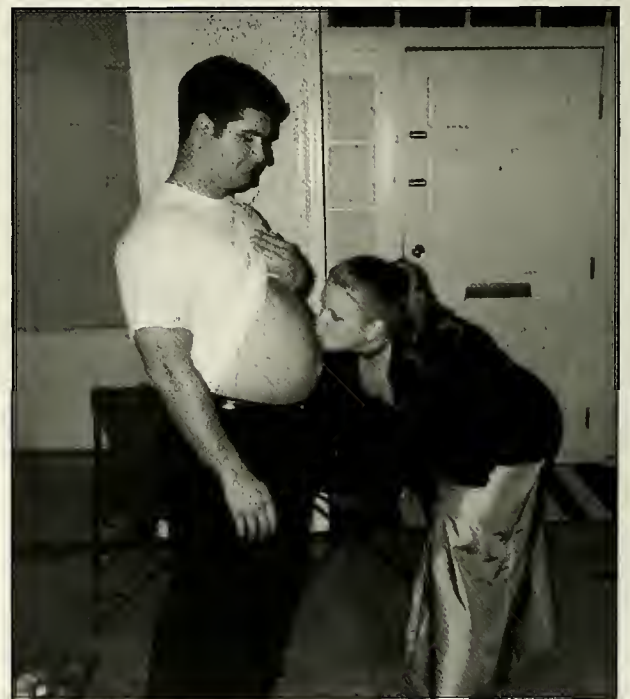


Christina Bergstrom
West Lafayette, IN



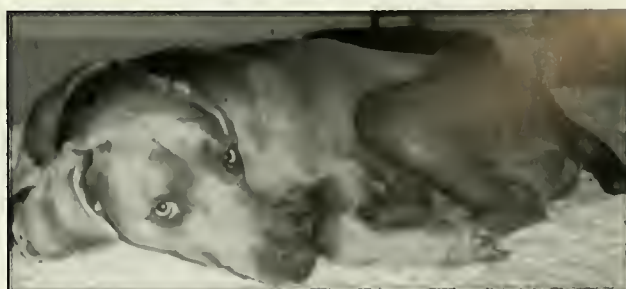


Jared Berkowitz
Scottsdale, AZ



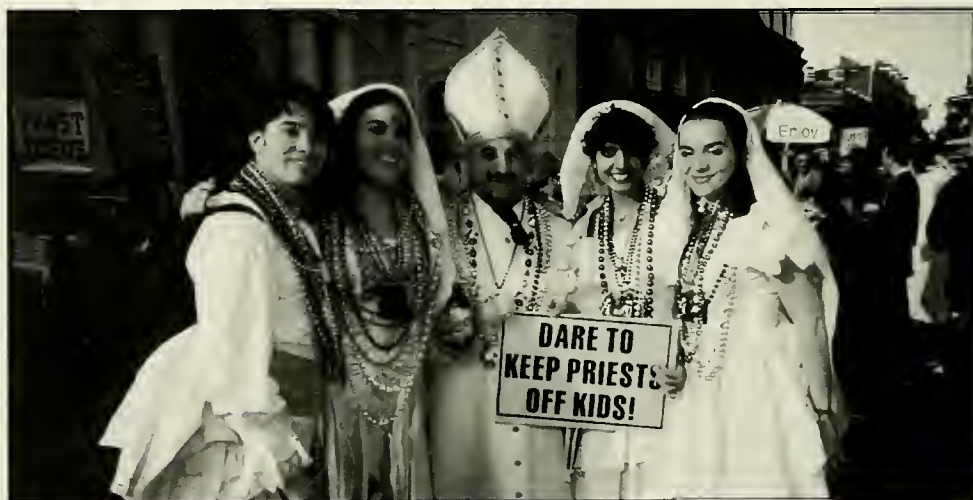


Christina Blass
Ann Arbor, MI



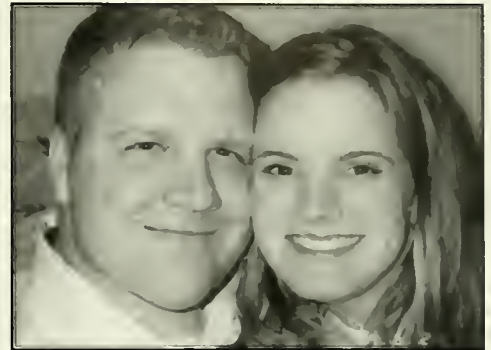


Satya Bommakanti
Osh Kosh, WI





J. Scott Boswell
Fresno, CA





Nathaniel Brigham
Columbia City, IN





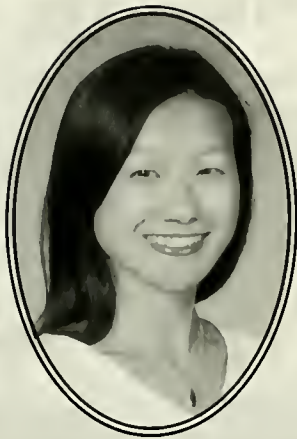
Cerise Bush
Frankfort, IL





Michael Cash
Baton Rouge, LA



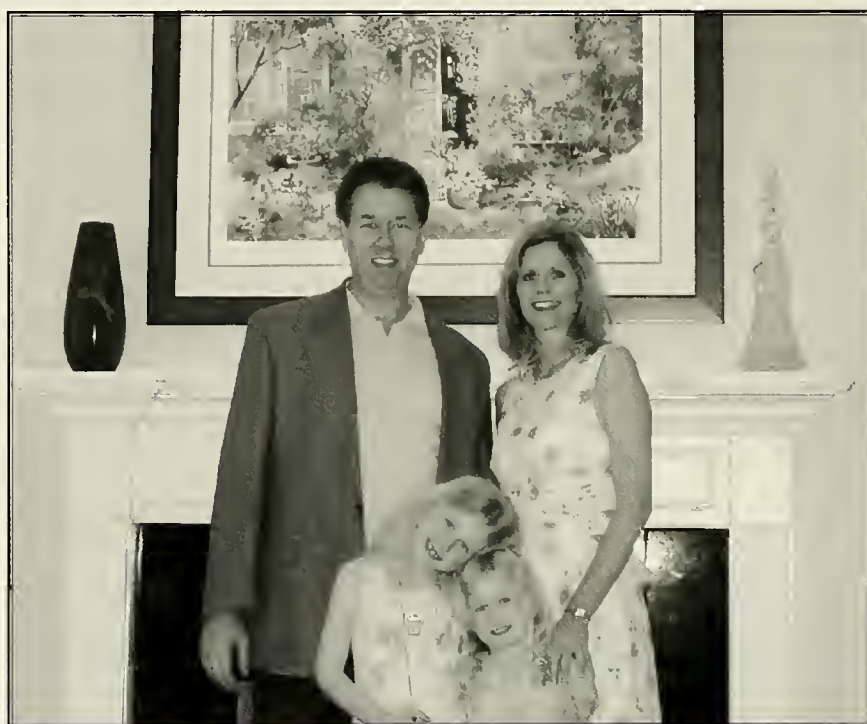
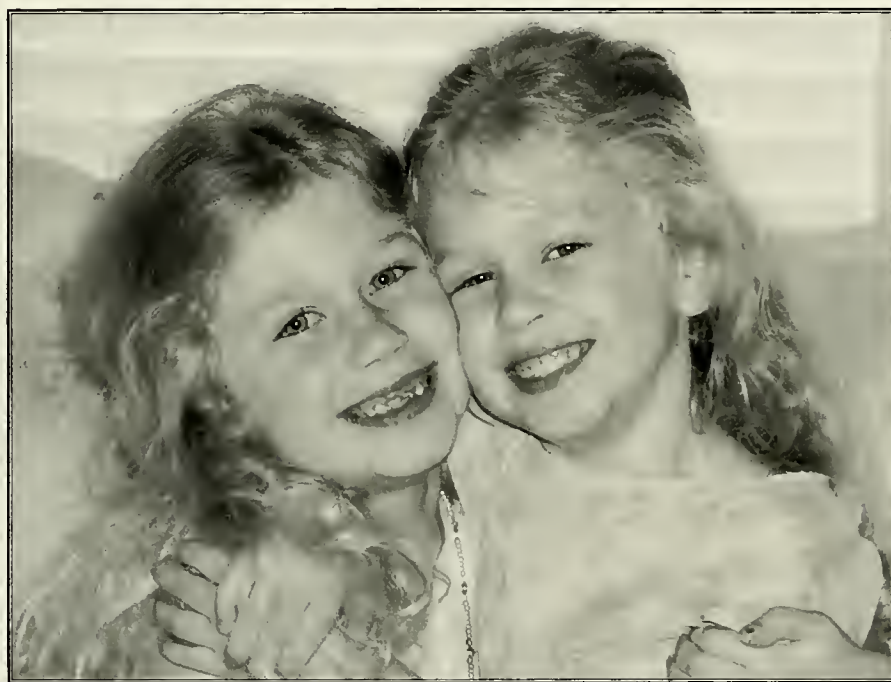


Lay Har Cheng
Oakdale, NY





Heather Christie
Tallahassee, FL



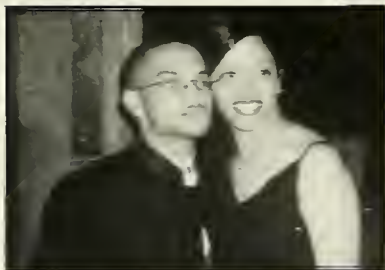


Erin Coakley
New Providence, NJ





Nathaniel Coleman
Church Point, LA





Dominique Cosco



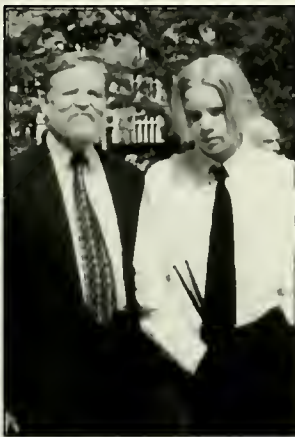


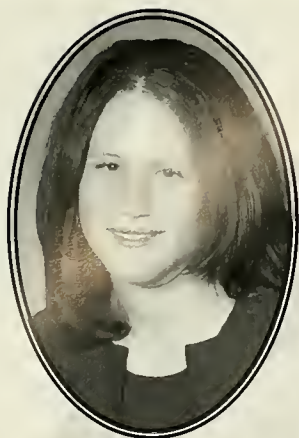
Yancy Craft





Michael Craig
Croton-on-Hudson, NY





Deborah Crane
Federal Way, WA



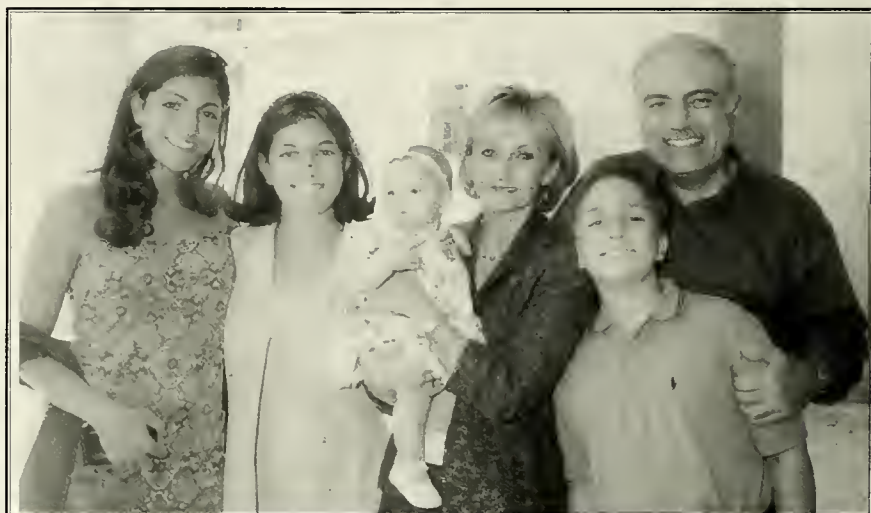


Stanley Crittenden
Haynesville, LA



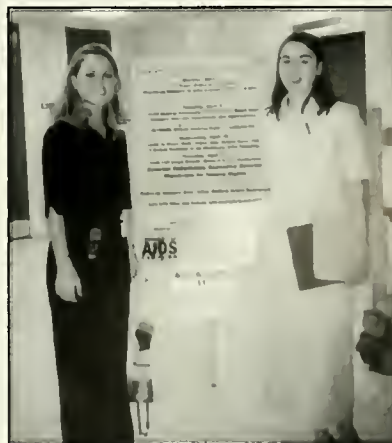


Nicole De Simone
Dallas, TX





Charity Dean
Junction City, OR





Mary Dennis
San Antonio, TX





Shaun Donegan
St. Louis, MO





E. Patrick Farley
Latham, NY





Joseph Finstein
North Easton, MA



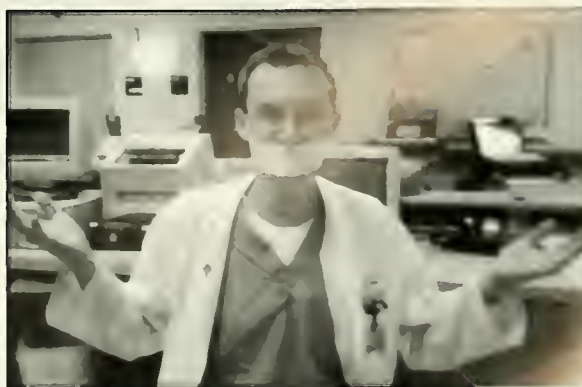


Jacqueline Firth
Yardley, PA





Michael Freehill
Phoenix, AZ





Nicole Freehill
Mandeville, LA





Bryan Fritz
Follansbee, WV



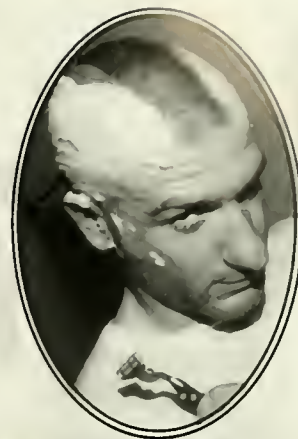


Jessica Galandak
Hainesville, NJ





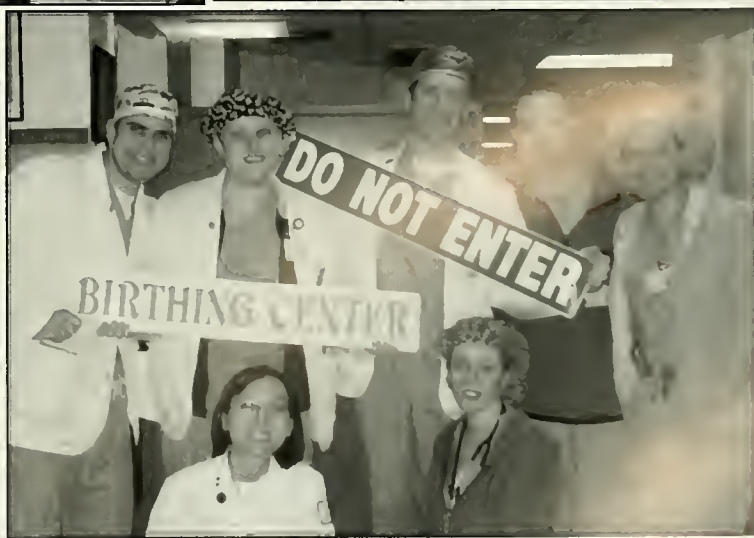
Patrick Gaston
Colorado Springs, CO

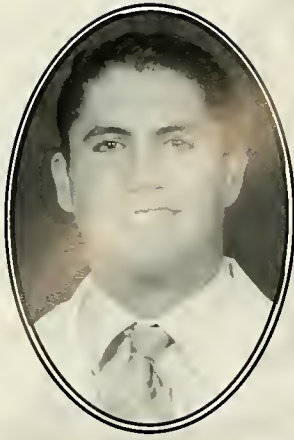


パトリック ガストン

ファイナンス
プランニング アンド アナリシス
アソシエイト マネージャー

日本ゲートウェイ株式会社
〒240-8520
横浜市保土ヶ谷区神戸134番地
横浜ビジネスパークHi-Techセンター
045-338-2417
fax: 045-338-2065
gastopat@gw2k.co.jp





Alexander Gelbard
Los Angeles, CA





Jason Glotzbach
Redlands, CA





David Greenberg
Topeka, KS



"Strength does not come from physical capacity;
it comes from indomitable will." -- Gandhi

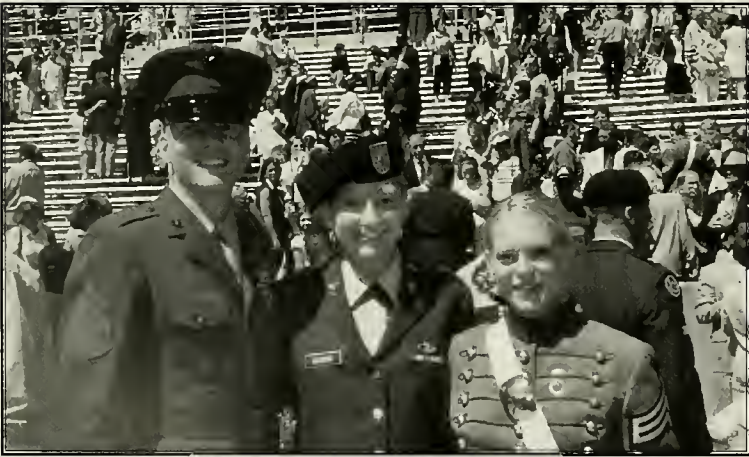


Prashant Gupta
Kaplan, LA



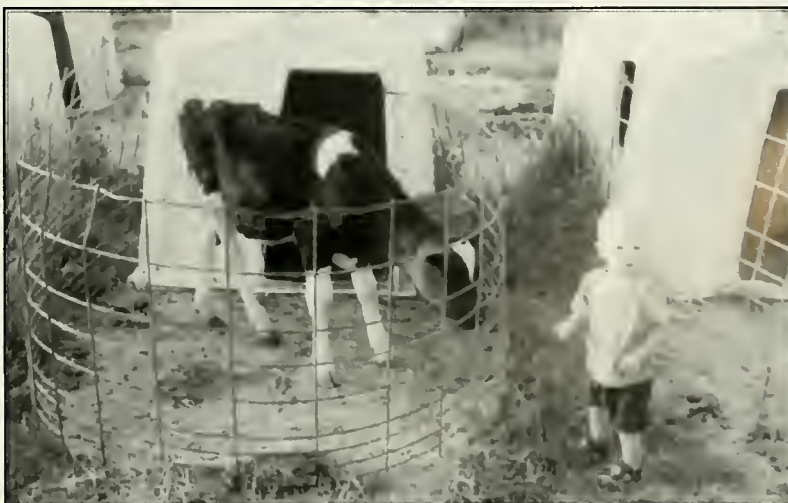
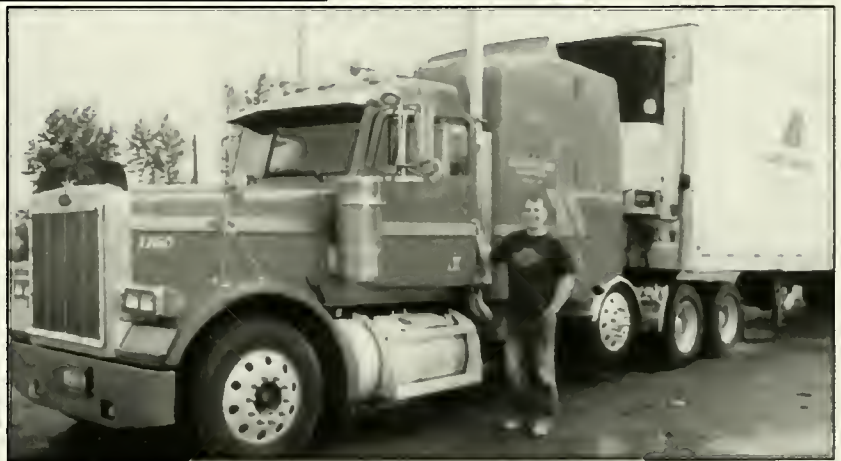


Jennifer Gurski
Pomona, NY





Michael Haderlie
Freedom, WY



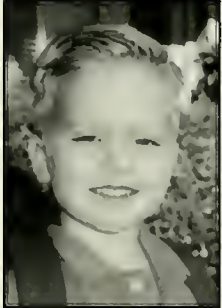
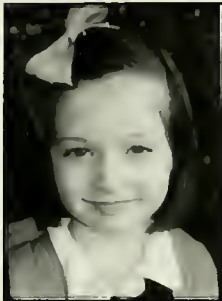


Fasih Hameed
Closter, NJ



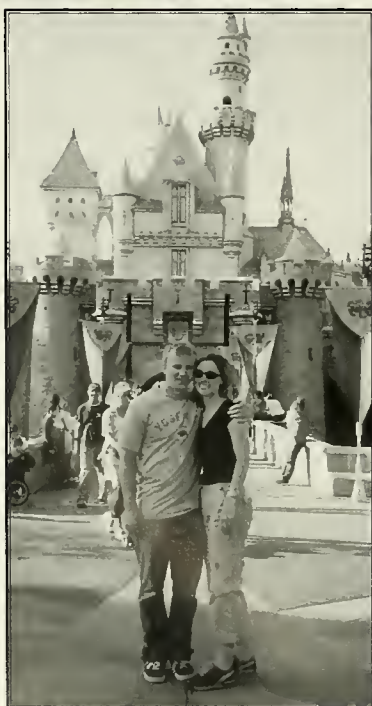
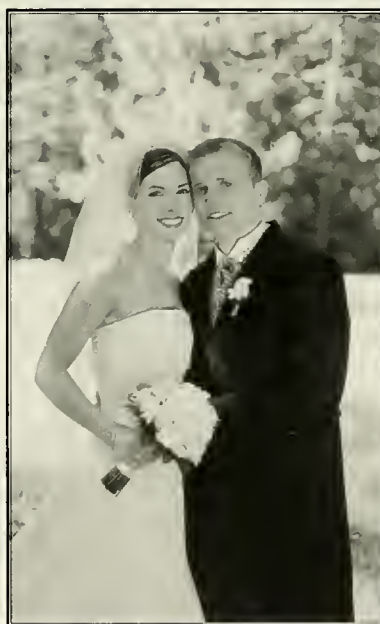


Jay Hansen
Bountiful, UT





Matthew Harper
Orem, UT



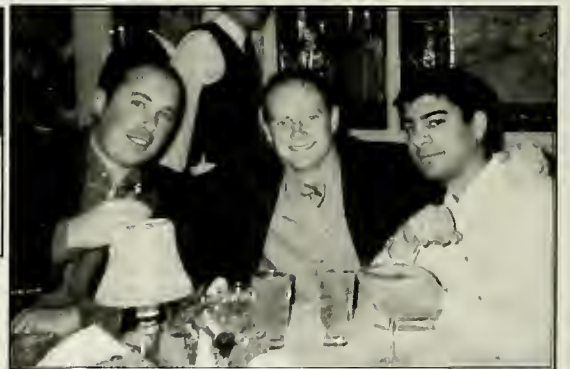
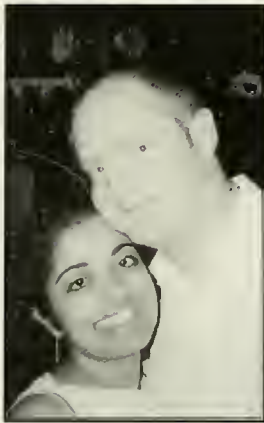


Sara Healy
Aberdeen, SD





Wendell Heard
New Orleans, LA





Laura Howard
Los Banos, CA





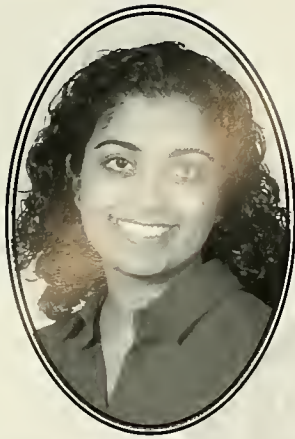
Derek Isenberg
Ridgewood, NJ





Kristin Janson
Lake Forest, IL





Asha Jayakrishnan
New Orleans, LA





Colleen Johnson
Lansing, KS



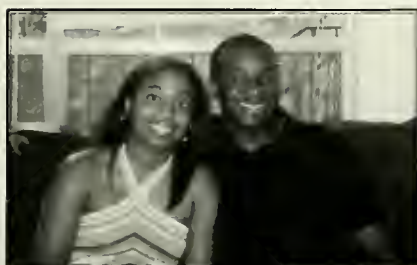


Daniel Johnson
Rockville, MD





Cecily Jones
Buras, LA





Cara Kawahara
Pearl City, HI





Zia Khan
Daytona Beach, FL



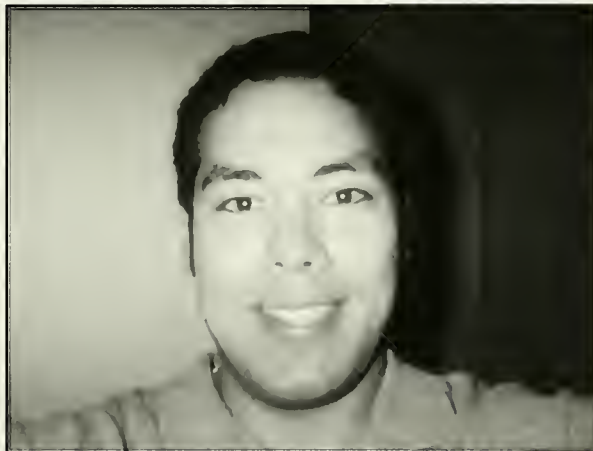


Sayra Khandekar
Memphis, TN





Danny Kim
Bradenton, FL





Ginny Kullman
New Orleans, LA





Melissa Kurkjian
Sharon, MA





Edward Kwon
Poughkeepsie, NY





Sara Levy
Bethesda, MD





Brian Lewis
Manassas, VA



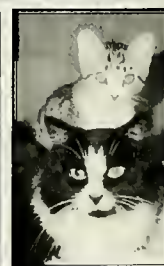
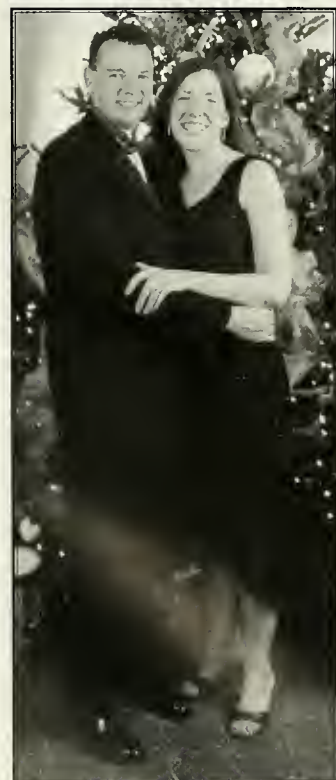


Kristi Lewis
Stockton, CA





Julienne Lippe
Mont Vernon, NH





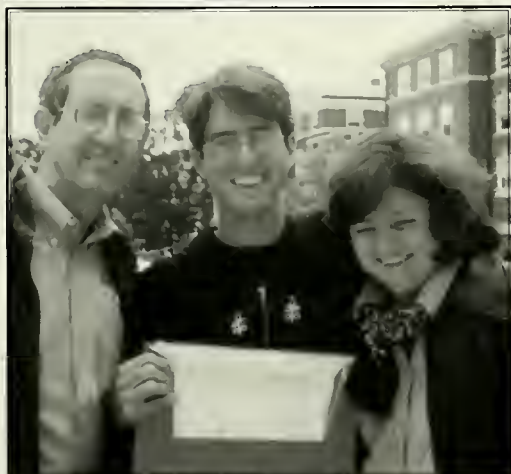


Natalie Mahieu
Kansas City, MO





Andrew Martin
North Hills, CA





Emily Martin
Destrehan, LA





Nader Massarweh
Moraga, CA





Clyde Mathison
Ozark, AL





Joseph Matthews
Dallas, TX





Daniel McCabe
Clarkston, WA





Patrick McConville
Centerville, IA





Edward McCoul
Cambridge, OH





Lucas McDonald
Willits, CA





David Melton
Wakefield, MA





Sarah Methe
Mohnton, PA





Jeffrey Nadig
Saline, MI





Amber Naresh
New Orleans, LA





Jonathan Nass
New Orleans, LA



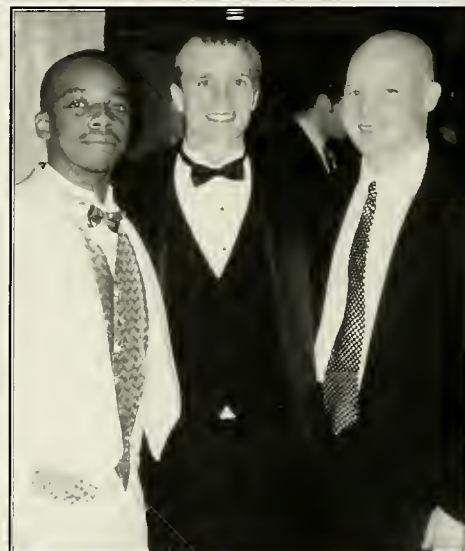


Eric Nelson
Omaha, NE



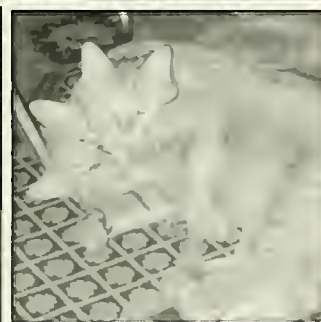
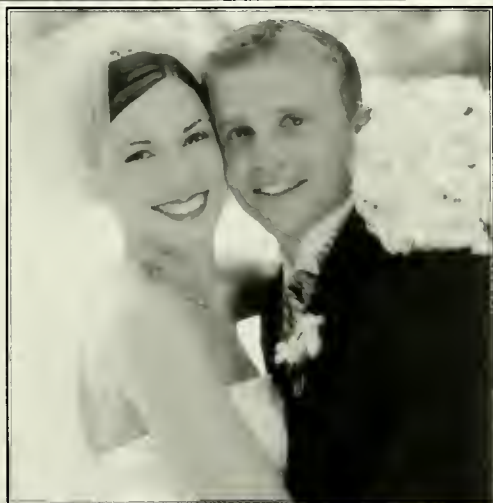
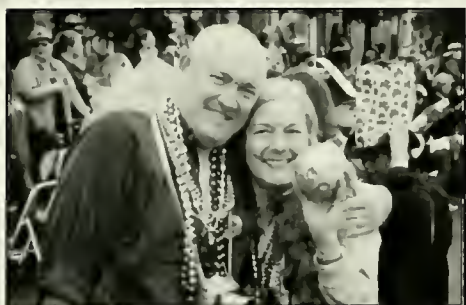


Adam Nicholson
Devils Lake, ND





Cortney Nixon-June
Benicia, CA



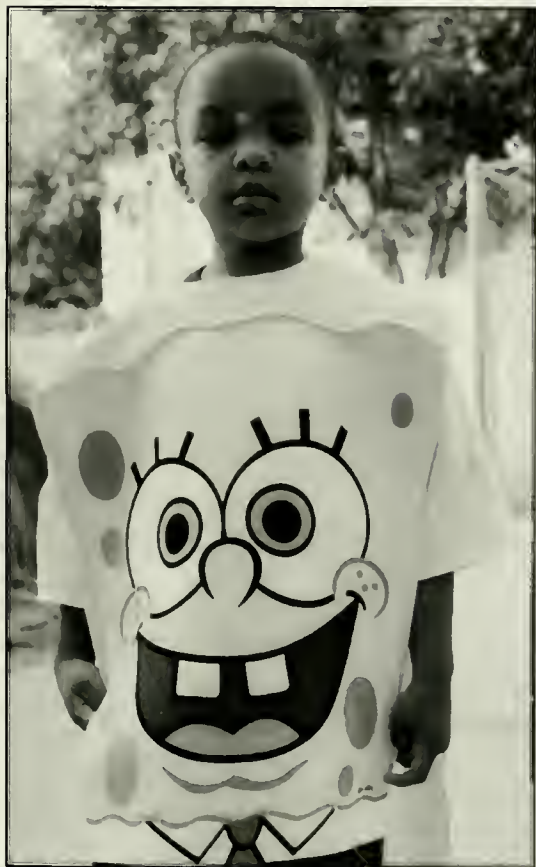


Sepehr Nowfar
Tarzana, CA



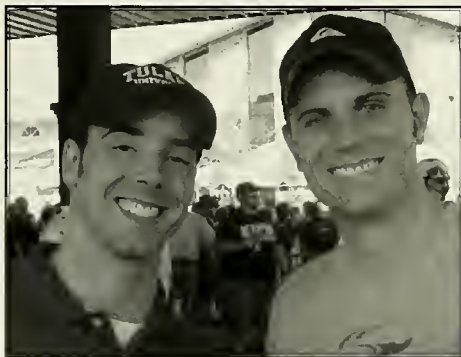


Victoria Nwosu
Jefferson City, MO





Jason Oaks
Pleasant Hill, CA





Simul Parikh
Sterling Heights, MI





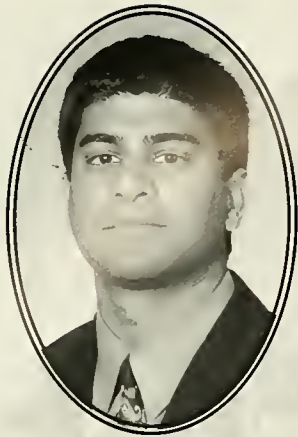
Viengsouk
Phommachanh
St. Petersburg, FL





Charles Popkin
Long Lake, MN



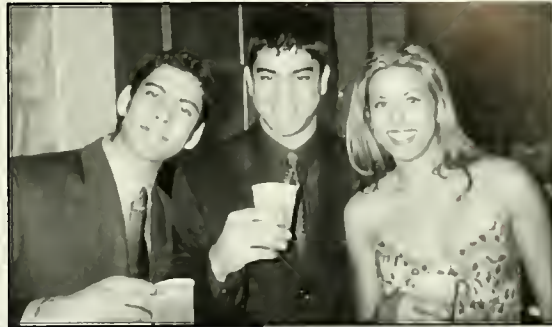


Rahul Prasankumar
Metairie, LA





Nida Qadir
Detroit, MI





John Ramsey
Rochester, NY





Monica Ramsey
San Francisco, CA





Mark Reddick
Bellflower, CA



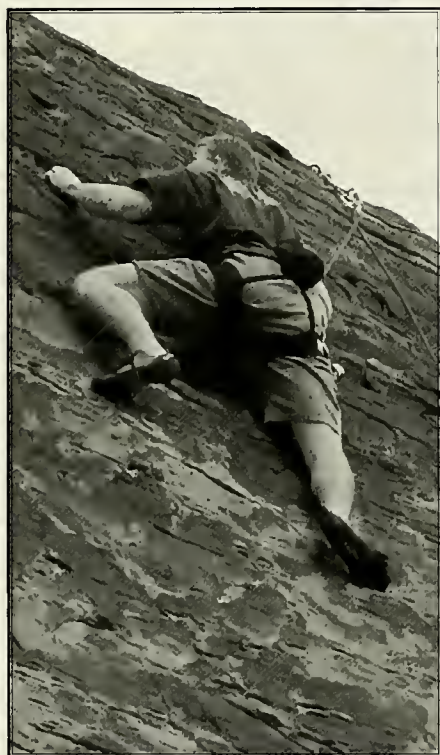


Jeremy Reed
Pineville, LA





Michael Richardson
Ogden, UT





David Robertson
Mandeville, LA





Candace Stevens Robinson
New Orleans, LA





Evan Rosenbluth
Encino, CA





Jessica Roybal
Newark, DE





Benjamin Salter
Boulder, CO





Neil Sanghani
Alexandria, LA



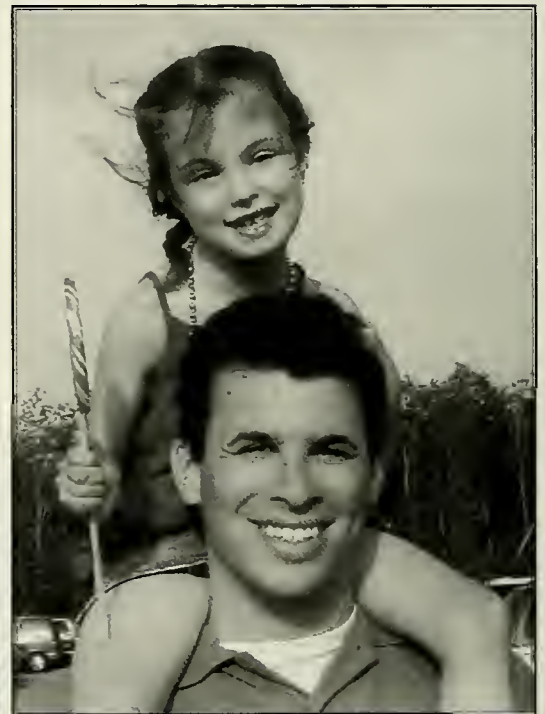


Tristan Sevdy
Peachtree City, GA






Ryan Shannon
Agoura Hills, CA

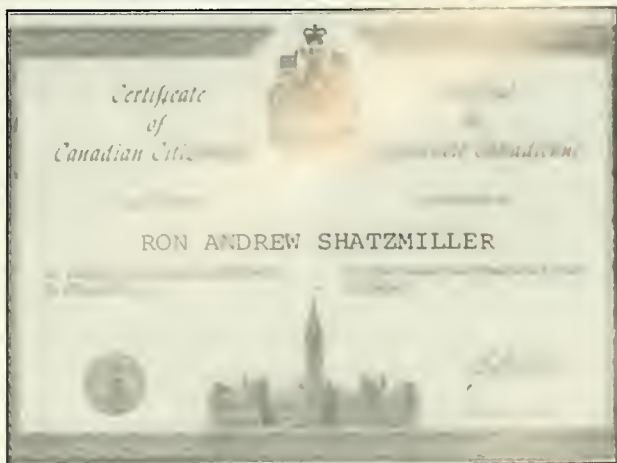




Ron Shatzmiller
Toronto, Canada



| | | | |
|---------------------------------|-----------------|---|--|
| DESCRIPTION | | SIGNALEMENT | |
| DATE OF BIRTH DATE DE NAISSANCE | | | |
| 17 JUNE 1975 | | | |
| SEX - SEXE | HEIGHT - TAILLE | EYES - YEUX | |
| M | 91 | BROWN | |
| VISIBLE MARKS | | SIGNES PARTICULIERS | |
| NONE | | | |
| OTTAWA CANADA | |  RON A. SHATZMILLER | |
| CARD CARTÉ | 2124623 | | |



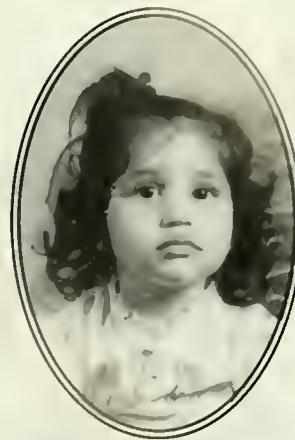


Courtney Siems
St. Louis, MO





Sukhwant Nikki Singh
Bethesda, MD





Andrew Steven
Silver Spring, MD





Ariane Stevens
New Orleans, LA





Terri Stillwell
Sterling, VA





Katie Swain
Hudson, OH





Elizabeth Swanson
Scottsdale, AZ





Heather Taher
San Jose, CA





Melissa Trozzi
Boston, MA



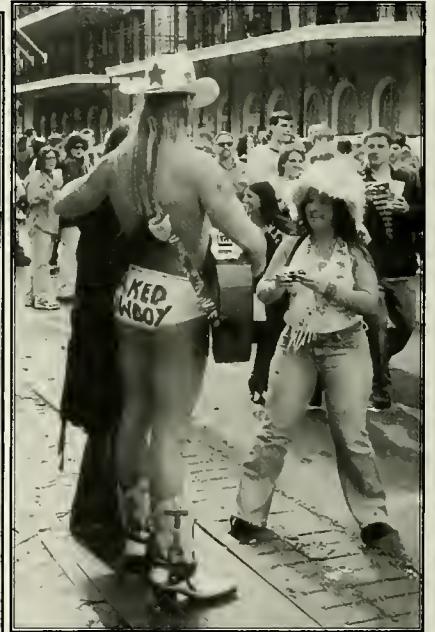


Nancy Tsai
Darien, IL





Leah Ustas
Lombard, IL





Amy Vaughn
Indian Rocks Beach, FL





Andre Viator
New Iberia, LA





Dena Walsh
San Diego, CA





Luther Ward
Tucson, AZ





Jonathan Weed
Natchez, MS



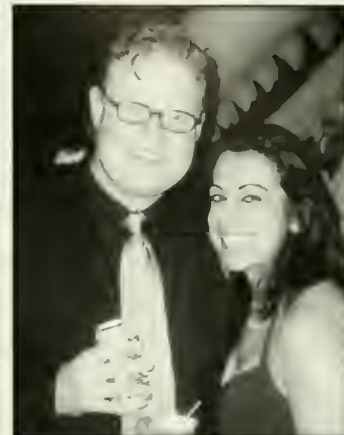


Kyle Widmer
New Orleans, LA



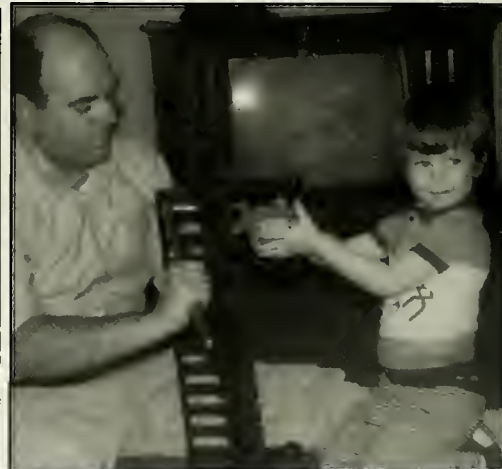
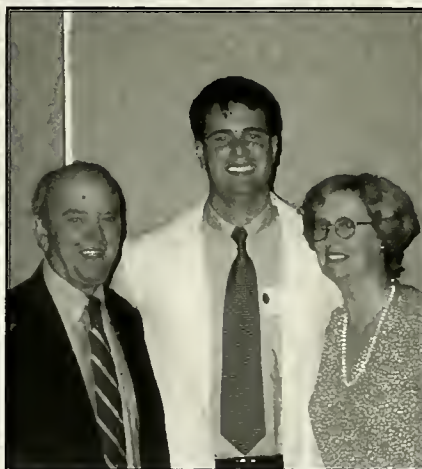


Robert Williams
Mission Viejo, CA





Christopher Willoughby
Durham, NH





Alexander Wolf
Newton, MA





Edward Wolf
San Antonio, TX





John Wrangle
Houston, TX



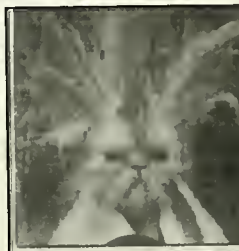


Dené Wrenn
Alexandria, LA





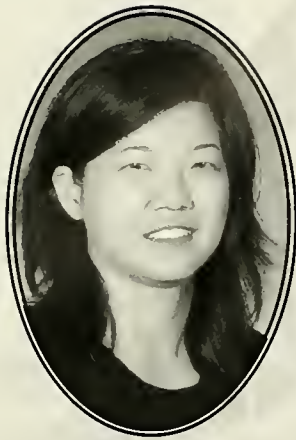
Benjamin Wycherly
Boise, ID



COME WORK
FULL TIME AND
RECEIVE A
SIGN ON BONUS
ALL SHIFTS
AVAILABLE

• Nursing Home • ER • ICU • L&D
• Surgical Centers • Med Surg





Christina Yoon
Los Angeles, CA





Michael Zeringue
Destrehan, LA





David Benson
North Canton, OH



Kyle Coleman
Metairie, LA



David Ferachi
Baton Rouge, LA



Scott Gabler
West Hills, CA



Kevin Guillory
Church Point, LA



Ross Hansen
Yakima, WA



Mose Hayes III
Atlanta, GA



Wayne Huang
Chang Hwa, Taiwan



James Keene
Omaha, NE



Isolde Krummrich
Rockwall, TX



Kenneth Le
Ocean Springs, MS



David Moore
Little Rock, AK



James Reese
Metairie, LA



Thomas Savadove
Portland, ME



Marcus Stelly
Lafayette, LA



Marisa Toups
Lafayette, LA



Chris Voscopoulos
Massapiqua, NY



Maria Voscopoulos
Aliso Viejo, CA

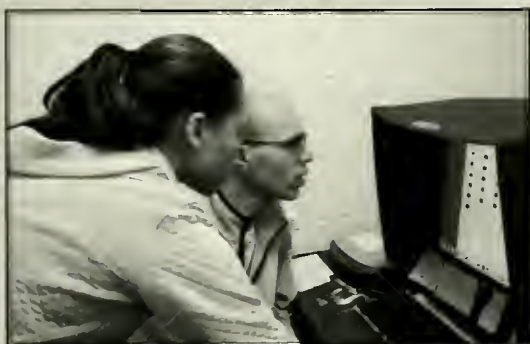


Calen Wherry
Santa Monica, CA



Theo Worrell
Macon, GA

T-Wave Staff



A sincere thanks to all our classmates who contributed to the yearbook.
A very special thank you to Pat Schuessler for her dedication to the yearbook,
Patrick Gaston & SARBA--the mosaic is awesome, Carl--our yearbook hero, and
Charlotte Steger for always willing to help us.
--Meredith Adams, Nicole Freehill, Asha Jayakrishnan, Julie Lippe,
Ed McCoul, & Dené Wrenn



"On behalf of the TUSOM and the
Class of 2005, we would like to give a
big THUMBS UP to the
indefatigable staff of the 2005
T-Wave Yearbook!"

David Benson

***CONGRATULATIONS AND
BEST WISHES
GRANDMA AND GRANDPA
CHERYL AND GARY
DEBBIE
AVA
BRIAN AND MONICA***

Daniel Arnold

A dream fulfilled, as your heart turns twenty seven. Follow your heart and your dreams, and make the most of what God has given. Congratulations.
With Love, Mom and Dad

Jennifer Baars



Dr. Jennifer,

You have always combined intelligence, determination, integrity, and pride with beauty, grace, humor, thoughtfulness, empathy, and love. These qualities along with your deep sense of family and friendship will forever carry you far. Know that "the families" return your love and are so proud of you. Congratulations!

With all our love, Mom and Dad

Jared Berkowitz



Way back when it all began, we knew you'd be a special man. We thought baseball would be your game but medicine will bring you fame. A prouder family there could never be, our love and devotion is endless to thee. Congratulations!

All our love, Mom, Dad, and Grant

Brian Banker

Brian,

We have always been proud of who you are- your character, values, and your personal achievements. But we are especially proud of your choice to become a primary care physician- there's no higher calling in medicine.

Love, Mom & Dad

McKay Bateman

McKay (A.K.A. Daddy),

We consider ourselves two very lucky gals to have you! Medical school has been a great adventure and we're glad to have shared this experience with you. We are so proud of you and excitedly anticipate the road ahead.

We love you, Sara and Mya Lillie

Wilson Altmeyer



**WILSON,
DAD AND I ARE SO PROUD
OF YOUR HARD WORK. YOU
HAVE MADE WISE CHOICES,
I.E. MISS MARY. WE WISH
YOU A WONDERFUL CAREER
IN MEDICINE.**

Nicole DeSimone



Nicole,
Congratulations. We are very proud of you. Your great achievement however is still surpassed by your humility and kindness to others. You are a most wonderful daughter, wife, and friend. In the coming stages of life remember that we will always be there for you.

We love you, Dad, Mom, Mark , Michelle, and Michael

Dominique Cosco



It is with our love, your courage, confidence, and determination that you have reached the goal you have desired. We celebrate with you! "Go confidently in the direction of your dreams! Live the life you've imagined."

-Thoreau

Love, Dad, Mom, and Brianne

Erin Coakley



ERIN:

WHEN YOU FIRST MENTIONED MEDICAL SCHOOL. GRADUATION SEEMED SO FAR AWAY. BUT THROUGH PERSEVERANCE. HARD WORK. GOOD LUCK AND YOUR DOG BELLA. YOU MADE IT. WE KNOW YOU WILL BE A GREAT DOCTOR. WE COULD NOT BE MORE PROUD.

MOM. DAD. KEVIN. JEN. AND LAUREN

Michael Freehill

If one could make up a script for this chapter of your life, it couldn't be finer: from living in New Orleans, and the terrific Tulane experience with fine faculty and fabulous friends, to your wonderful bride. Our boy grew up to be "a man for all seasons." We're so proud and happy for you. Our cup runneth over.
Mom and Dad

Cerise Bush



Congratulations Reesie!

It doesn't seem possible that you're graduating. If we close our eyes we can still see that sweet child that everyone adored. Now you're a woman, still just as sweet, who we greatly admire for your focused determination in achieving this honor.

Love you! Mama and Dad

Jessica Gandalak

Jessica, we were blessed to have you. You smiled from the day you were born. You have always made people smile through your remarkable gifts of humor, intellect, curiosity, modesty, and compassion. The essence of Jessica is your genuine caring about others. You will be an extraordinary healer. We love you!

Shaun Donegan



Dear Shaun:

You are now a Medical School graduate. What a long journey it has been; what obstacles you have encountered and overcome to reach your life-long goal. Our hearts are full of love and happiness, and pride in your strength and character.
Mom, Dad, Meagan, Ryan, Molly, and Claire

Patrick Farley

CONGRATULATIONS! We are very proud of you! We have always admired your intelligence and dedication. We know you have overcome many obstacles to reach this goal. We are so happy for you and we are certain that the best is yet to come.
Love, Mom & Dad

David Ferachi

David...So, you are a doctor! Congratulations on a job well done. You will have success as a physician if you treat your patients with honesty, integrity, dignity, and compassion. Best of luck in your future endeavors. David, you honor me by following in my footsteps as an orthopedic surgeon.
Love, Dad

Bryan Fritz



Believe...in yourself and make the world a healthier place.

Respect...everyone and bring humor to your profession.

You...should enjoy life and never take life too seriously.

Answer...the call to selflessness.

Now...shine with your God given talents and our love.

Your Very Proud Family

Nicole Freehill



Congratulations on achieving your goals. You reached for the stars and captured the not only the stars, but the sun and the moon as well. I am so very proud of you!

Love, Mom

Jennifer Gurski



Jennifer,
The time has gone by too fast. From baby, child, and young woman to wife and doctor! We are proud of your strength of purpose and determination to make this day a reality.

Love, Dad, Mom, Paul & Lauren

Prashant Gupta



Prashant,

The day you were born our world lighted up and that is why we affectionately call you "Sonny Sunshine." You were a very cute and likeable child. We are very proud of your academic and social accomplishments. You are going to be a great doctor. "Good luck" son. Son, sky is the limit, keep going. Life is beautiful, enjoy it. We love you very much and will always be there for you.

Love, Mom and Dad

Kevin Guillory

Congratulations Kevin on a job well done! Through persistence, determination, and prayer you made it. We are proud of you and wish you much success in the future. May God guide your mind, hands, and heart and spirit in the treatment of your patients.

Love, Momma, (Daddy) and family

Fasih Hameed



Happiness lies in the joy of achievement and the thrill of the creative effort

F. D. Roosevelt

With dogged determination, sailing in sometimes choppy seas, you've arrived. Congratulations, Dr. Fasih! We are extremely proud that you are our son and brother. Go, touch some more lives.

Love, Mom, Dad, Faudia, Feroz, and Farah

Asha Jayakrishnan

CONGRATULATIONS ASHA. WE ARE SO PROUD OF YOUR MANY ACCOMPLISHMENTS AND YOUR CREATIVE TALENTS. WE LOVE YOU SO MUCH. MAY GOD BLESS YOU AND GUIDE YOU AS YOU EMBARK ON YOUR MEDICAL CAREER.

LOVE, MOM & DAD, NINA, AND JAY

Kristin Janson



Kristin,

Your graduation is truly a special time in your life and in ours, a time to celebrate the accomplishment of a dream you have worked so hard to realize. You are very compassionate, very gifted, and an absolutely amazing person. Happy graduation. We love you.

Mom, Dad, and Carly

Derek Isenberg



You've come a long way, baby!

Now, go forth and heal!

With l, h&k...m

Colleen Johnson



Colleen,
We are so proud of you! You
have wanted to be a doctor for
as long as we can remember.
You have worked hard over the
last eight years and now you
are a doctor. We Love You!!
Mom and Dad Daze

Cecily Jones



Every father is proud of his children and to have a daughter as determined and dedicated is a blessing. Congratulations Poopsie. God has made you special and has blessed you with great talents. In all thy ways acknowledge Him and He shall direct thy path.
Love, Mom and Dad

Brian Lewis



Congratulations! We are very proud
of you. You are our family's first
doctor. Your consistent effort and
hard work are examples of the can
do attitude you have maintained all
of your life. We love you very much,
and we are so glad that you are our
son.
Dad and Mom

Julie Lippe



From buffed tomboy to big sister to aspiring doctor,
you have always been and continue to be a phenomenal
daughter. We are proud of all you are and of all you
choose to be. Know that you are one "to whom much
has been given." You are blessed with health, wealth and
happiness.
Health to offer others through your skills.
Wealth of knowledge to share with all who seek
it. Happiness to sprinkle about with your infectious
smile.
Your wisdom, ambition, motivation, compassion, and
ingenuity continually amaze us.
We love you. Mom and Dad

Cara Kawahara

*Our Cara,
Girls' Day 1980 held no hint of your
accomplishments. You continue to
surprise and amaze us with your
determination, persistence, and ability
to meet all challenges.
Love and Congratulations!
Mom, Dad, & the Family.
A goal accomplished...the next
adventure begins!*

Natalie Mahieu



You go Gnat! Whether Gnat, Nat,
or Natalie—You've made family
history! We are so proud of and so
happy for YOU!
Much love from your great big
family.

Edward McCoul

I am, we are, so very happy 4U. We
believe in you, have such faith in you.
Proud of you and the persistence/
talent/integrity you've shown. No easy
accomplishment, I know. UR going 2B
an outstanding doctor, Eddie. And
so, heartfelt Congratulations and
Love, Mommy, David, and Daddy

Nader Masserwah



You began this journey by declaring
"ceaseless pursuit" is your contribution
to medicine. Congratulations on climbing
another mountain! If you should tire
during your journey, know that we will
be there with endless love and support,
to help you back on the road.
Love, Dad & Mom, Anthony, and Lori

Joseph Matthews



*"Almighty God! Thou hast chosen in Thy
mercy to watch over the life and death of Thy
creatures. I now apply myself to my profession.
Support me in this great task so that it may
benefit mankind, for without Thy help not even
the least thing will succeed."*

David Melton



Arrows...and clay dinosaurs, exotic menageries, batting practice, Fur Elise, fly fishing, tree stands, South African tribal ceremonies, shark cages, and medical school—all implorations to dream what is possible. Keep believing, and keep exploring. Thank you for giving us this wonderful moment to share.

Love, Mom & Dad

Jeffrey Nadig



Congratulations Jeff!

Remember the thrill of the White Coat Ceremony—medical school begins. Now you are graduating! We are so proud of you !! Your future is exciting and challenging. We know you will be very successful.

Much love to you, Katie and Ella, Mom, Dad, and your entire family.

Adam Nicholson

Wow! You've made it to the end of a long road, and you're about to embark on a wonderful new journey. Keep up the things that got you to this day—your honesty, your sense of fun, your empathetic spirit, and unending drive to meet every challenge. Congratulations!

Luke McDonald



Congratulations, Luke, and to the entire Class of 2005! May the healing hands, skill, caring, and compassion of the Tulane Med Class of '05 have a positive impact that is felt in all the corners of the world for generations to come.

With much love, Dad, Mom, Laura, Gordon, and Jimbo

Jonathan Nass

CONGRATULATIONS JONATHAN AND MELISSA! LIFE'S A JOURNEY. AS ONE ADVENTURE ENDS, ANOTHER BEGINS. GOOD LUCK ON THE NEXT LEG OF THE TRIP.

LOVE, MOM AND DAD, LESLIE, LANCE, LUKE, JARED, & CARRIE

Charlie Popkin

All of us take great pride in your outstanding record of achievement and in the dedication, caring, and warmth that are your very fiber. Congratulations, doctor...we love you!

Mom, Dad, Sara & Lee

Jason Oaks



Jason,

Your family is exceptionally proud that you are our son and brother. Keep learning and teaching as you move forward in your career. We know many will benefit from your knowledge and abilities. Our congratulations to you!

Love, Father, Mother and Sara

Rahul Prasankumar

Congratulations Dr. Rahul Prasankumar! You have always achieved anything you set your mind to, from playing the drums to joining the football team, always following your own path. We remain very proud of you and wish you nothing but the best always!

Love, Dad, Mom, Rohit, Anu, and Sona

Viengsouk Phommachann



Viengsouk,

Twenty-five years ago we were uncertain of our future. You have made great sacrifices and overcome many obstacles to be where you are now. We are proud of who you have become and the accomplishments you have achieved. Congratulations! We love you!

Love, Mom, Dad, and Ruby

David Robertson



David,

Congratulations on becoming a Doctor. Once again you have made us proud of the wonderful person you have become. Thank you for being such a great son.

Love, Mom, Dad & Amy

Ben Salter



Ben:

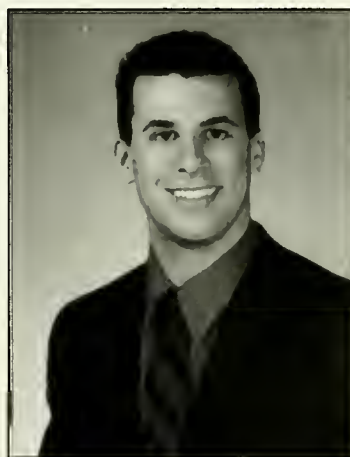
Your future patients will benefit from your dedication, hard work, intelligence; and as important, your warm, kind and thoughtful spirit. May the privilege of caring for others bring you joy, as it did for your Dad. We love you very much.

Mom, Jason, Karen, Terrill, Nana and Papa, Grandma and Grandpa

Mark Reddick

My precious son, Mark. I couldn't be more proud as your mother. It was tough growing up, but just look at how you handled all the obstacles in your way. You will always be my little one. You've grown up to be a fine young man and successful too. How much more could a mother want? I hope you have achieved your goals. Graduating? Not preschool, not elementary, not even high school, but Medical School? Wow. I love you, Mom.

Ryan Shannon



You left home a boy of eighteen determined to find yourself. You stand proudly as a doctor with a beautiful wife, daughter, and a vision of your future. We are all very proud of you Ryan. We cannot wait until your residency is completed and you settle in Southern California to reap your rewards.

Tristan Sevdý



Jeremiah 29:11 "I alone know the plans I have for you, plans to bring you prosperity and not disaster, plans to bring about the future you hope for."

Our Lord Jesus is faithful and trustworthy. We praise Jesus for our answered prayers for you Tristan.

LOVE YOU, Shannon and Zach

Nikki Singh

WELL DONE, NIKKI!
YOUR HARD WORK AND
PERSEVERANCE HAVE PAID OFF...
PITAJI WOULD BE PROUD THAT
ONE OF HIS GRANDCHILDREN
FULFILLED HIS WISH AND BECAME A
PHYSICIAN.
WITH LOVE, MOM, DAD, ANITA,
AND GEETA

Terri Stillwell

We have watched you grow in beauty and wisdom. We are proud of all that you have accomplished; and, we know that you will always be there to help those in need.

May it be said: When the sun sets on your life, you made a difference.

Lisa Swanson

"Medicine is the best of all professions, the most hopeful."

William J. Mayo

The above message is sent with love from Mom and Dad.

Ariane Stevens and Candace Robinson



Ariane and Candace,

Congratulations on successfully completing another wonderful chapter in your lives. As you embark upon new horizons as doctors, I know you will continue to use your talents with exceptional competence and compassion. You have always been a tremendous source of pride and joy and I thank you for being my blessings.

Much success and abundant love, Mama

Amy Vaughn



Dear Amy,

We are so proud to see your childhood dream become reality. And we know that you will be an amazing doctor to many, just as you have been a wonderful daughter, sister, aunt, granddaughter, and frequently family doctor to all of us!

Love, Your Family

Heather Taher

Medicine is a science, but the practice of medicine is an Art. May all your hard work and perseverance bring you happiness and success. You are God's Gift and our joy. No one could be more proud than we are.

Love, Baba and Mom

Leah Ustas

To Leah:

Congratulations on a job well done! Always stay inquisitive, inspired, and dedicated. We know you'll continue to succeed in all your endeavors. You make us proud!

Love, Mom, Dad, and Scott

André Viator



Congratulations André, (Andy), (Dre),
Stephen Viator. It has been a long road, but
you have made it. You were a special little boy
and now, a special young man. We love you
very much, and wish you all the happiness
and rewards that life has to offer.
Love, Mom and Dad

Dené Wrenn



*Dr. Dené Wrenn
We Always Knew You Would Rise to
the Top!
Love, Daddy & Your Family*

Christopher Willoughby



Life is a Journey.
The Memories We Share are There
to Borrow.
"Hang Tough, Tiger"

Edward Wolf



Eddie,
You have always chosen the greatest
challenges and fearlessly given them
the best you had, disappointing no one.
We admire and love you and continue to
support your every endeavor.
Love, Mom and Dad

Dené Wrenn



Dené

*You have always been a bright star,
But now you are Shining Brighter.*

*Love Always,
Granny*

Patrick Farley



**Uncle Pat, Dr. Pat, Husband Pat,
Congratulations on all of your
accomplishments! We are so proud to
be your family.**

**Love, Lisa, Kevin, Andrew, Jason,
Dave, Valerie, Eric, Chris, John, Nicky,
Jeebus, Madigan, Nero, and Tallulah**

Meredith Adams



"LITTLE BY LITTLE, ONE TRAVELS FAR."

J.R.R. TOLKEIN

Under pyramids, through the souk, down the Nile, over Thames, along Ipanema, under Corvacado, around Marrakesh, up Victoria Peak, through Chatuchak market, into temples and palaces, cooking and all the rest. Thank you for sharing life's adventures. Parabéns! What's next?

Love, Richard

Ben Wycherly

**We couldn't believe our EARS,
but our NOSE for news put a lump
in our THROAT when we learned
that our Idaho Spud is going to
Georgetown. We couldn't be more
proud of our graduate. Way to go
Ben!**

Love, Your Family

Candace Stevens Robinson

It's Your Turn to Fly!!!!!!!!!!!!!!

I can't beleive you're not a T1 anymore.

***Congratulations Candace for making it this
far. You've made your Husband & Best
Friend extremely proud (WORDS CAN'T
EXPLAIN) of your past, present, and future
accomplishments.***

Congrats on a Job Well Done!

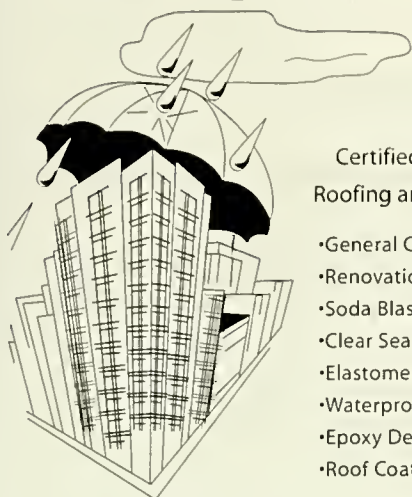
Love, Walt

Congratulations Graduates!

ADVANCE

waterproofing

Established 1952



Certified in all types of
Roofing and Waterproofing

- General Construction
- Renovations
- Soda Blasting
- Clear Sealants
- Elastomeric Coatings
- Waterproof Coatings
- Epoxy Deck Systems
- Roof Coatings

(504)362-1843

FAX (504)365-0055

gregkempton@aol.com

BONDED

FULLY INSURED

Now that you've completed
the medical school process,
it's time to reprocess.



Please remember to reprocess. It will save your
medical institution money and prevent landfill
waste. Look for our teal containers or talk to your
hospital administration.

888.888.3433

www.alliance-medical.com



ALLIANCE
MEDICAL CORPORATION



Since 1924

Bancroft

Congratulations

**Tulane University
School of Medicine
Graduates**



425 Bancroft Boulevard
West Monroe, Louisiana 71292
800-551-4950

Congratulations and Best Wishes to the Class of 2005

from the management and staff of the
Tulane Medical School Cafeteria!

It's been a pleasure to serve you!



ARAMARK
Managed Services, Managed Better.

Æterna Zentaris

Committed To Cure



We wish to congratulate the graduating class of

Tulane University School of Medicine

where we have enjoyed strong collaboration
in endocrinology and oncology with the Tulane
University Health Sciences Center and Nobel
Prize recipient, Dr. Andrew V. Schally.

*We focus on discovering and developing innovative drugs for
the treatment of cancer, endocrine disorders and infectious
diseases.*

www.aeternazentaris.com

Congratulations
Class of 2005 Graduates
from  **ALPHARMA®**
Branded Products Division



the maker of

KADIAN®
Morphine Sulfate Sustained Release Capsules



**Graduating Class of 2005
Tulane University Medical School**

CONGRATULATIONS
on all you have accomplished and
all you hope to achieve in the future.

 **DOAK DERMATOLOGICS**
Our Specialty is DermatologySM
Visit us at www.doakderm.com

**Congratulations, Tulane University
Medical School Graduates!**

For over 25 years, Bryan Corporation has been devoted to providing health care professionals with unique, high quality medical devices and innovative pharmaceuticals.

We look forward to working with you in the future!

For more information, call 1-800-343-7711 or visit our website at www.bryancorp.com


BRYAN
CORPORATION

Connetics Congratulates the
Tulane University Medical
School Class of 2005



connetics®
Connecting Science, Skin and Lives™

Connetics Corporation is a specialty pharmaceutical company focused on the development and commercialization of innovative therapeutics for the dermatology market. Visit us at

www.connetics.com

CHAFFE  McCALL
LLP

Managed Health Care
Tax Law
Hospital Liability Litigation
Antitrust
Health Care Contracting
General Litigation
Labor and Employment Law
Medical Malpractice Law

New Orleans • (504) 585-7000
Baton Rouge • (225) 922-4300

ME

THE MCC GROUP, L.L.C.

A COMPLETE
MECHANICAL,
ELECTRICAL &
PLUMBING CONTRACTOR

CREATIVE SOLUTIONS TO YOUR BUILDING NEEDS

TRUSTED BUSINESS FOR OVER 45 YEARS

PRECONSTRUCTION AND CONSTRUCTION SERVICES

SERVICE AND MAINTENANCE CONTRACTS AVAILABLE

PIPING FABRICATION FACILITIES

3001 17TH STREET METAIRIE, LA 70002 504.833.8291
WWW.MCCGROUP.COM

Congratulations
Tulane Class of 2005!
We wish you the best!



*Delasco is proud to have served the
dermatologic community for 25 years
by offering innovative products,
superior customer service and
a comprehensive new practice
start-up program.*



— Est. 1980 —
DELASCO

VISIT US AT WWW.DELASCO.COM



Offering quality
products
that will
make your
job easier

*Congratulations to the graduates of
Tulane University Medical School*

Trust Hawthorn Pharmaceuticals to provide excellence in professional service and cost-effective unique formulations to treat conditions that you, the physician, will see most.

PRODUCT FAMILIES —————

DYTAN • ICAR • NASOP • UTIRA • XPECT
ATREZA • MEXAR • SUPHERA • MALDEMAR • ZAELIR



www.hawthornrx.com

(888) 455-5253



from **Molecules** *to* **Miracles** *to* **Michael.**

Have you ever hoped for a better medical outcome?

We have.

That's why we are developing unique precision-engineered technologies to create better medicine for respiratory patients.

Our goal is to collaborate with the neonatal medical community in a way that no other corporate partner ever has. Working together, we will redefine the way the world thinks about respiratory critical care medicine.

We are Discovery Labs. We can't wait to show you what happens next.

DiscoveryLabs[™]
Inspired Innovation

© 2005 Discovery Laboratories, Inc. All rights reserved. DSC-600-001-0305

www.discoverylabs.com

EPL

ENERGY PARTNERS, LTD.

Congratulations

Tulane University
School of Medicine
Graduates



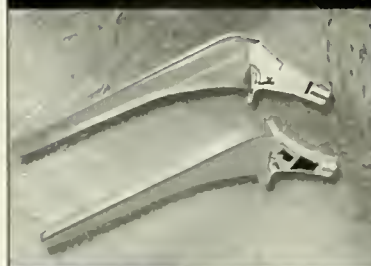
*Committed to New Orleans...
Focused on growth...*

Energy Partners, Ltd. is an independent oil and gas,
exploration and production company.

201 St. Charles Avenue New Orleans, LA 70170
504-569-1875 www.eplweb.com

Exactech Joint Restoration Products

*Improving the quality
of life for individuals
by helping maintain
their activity and
independence.*



Exactech

2320 NW 66th Court
Gainesville, FL 32653
www.exac.com

©2001 Exactech, Inc.



Congratulates

**Tulane University
Medical Center**

First Bank & Trust is a Locally Owned
And Operated Community Bank with
Locations Throughout the Greater New
Orleans Metropolitan Area.

Visit us at www.fbtonline.com

"We're First for You"

Member FDIC / Equal Housing Lender

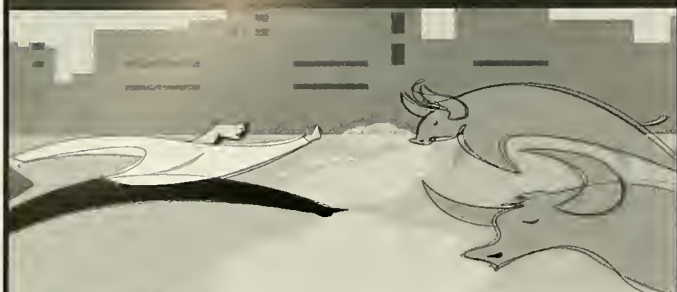


Congratulates the Graduating Class of Tulane University Medical Center

E-Z-EM, Inc., is a
leader in the design
and manufacture
of products for
gastrointestinal
imaging

E-Z-EM, Inc., Lake Success, NY 11542
Tel: 516-333-8230 Fax: 516-333-8278
<http://www.ezem.com>

Meeting each new challenge head-on.



We're right behind you!

A life dedicated to patient care is a life well lived. At Abbott Point-of-Care, we salute your commitment and congratulate you on your accomplishments.

We look forward to your contribution to the health and well-being of others. And we'll be there to support you with the right tools for managing critical patient information, like the i-STAT[®] system for bedside blood analysis.

i-STAT. Answers. Anywhere. Anytime.

i-STAT

Abbott Point-of-Care
Tel: 609.443.9300
www.i-stat.com

Abbott
Point-of-Care

i-STAT[®] is a registered trademark of i-STAT Corporation.

Compliments of

f Fujisawa

Suppliers of

Adenocard[®]
(adenosine)

ADENOSCAN[®]
adenosine

*congratulations to the
class of 2005*



Forest Pharmaceuticals, Inc.

Pharmaceuticals • Therapeutics • Healthcare • Ethicare • Managed Care • Specialty Sales



WHERE DO YOU WANT TO LIVE?

WE UNDERSTAND THAT IT'S NO USE MAKING A GOOD LIVING UNLESS YOU MAKE A GOOD LIFE AS WELL. YOU SHOULD LIVE WHERE YOU WANT TO LIVE. WE'RE POSITIONED TO PLACE YOU NEAR ONE OF OUR MANY FACILITIES ACROSS AMERICA. HCA HOSPITALS ARE LOCATED IN 16 OF THE 20 FASTEST GROWING COMMUNITIES. WE HAVE OPPORTUNITIES IN BIG CITIES AND RURAL AREAS, NEAR SANDY BEACHES AND SKYWARD REACHING MOUNTAINS; WHEREVER YOUR INTERNAL COMPASS POINTS, IT'S LIKELY THAT WE CAN HELP GUIDE YOU TO A DESTINATION THAT WILL MATCH YOUR PREFERENCES.



Michael F. Laiche MBA
Regional Director of Physician Recruitment
(985)542-9934
www.practicewithus.com

Congratulations Class of 2005!

McNeil
Consumer & Specialty Pharmaceuticals



Best wishes in your medical career.



Organon... Making a difference in life.

- Mental Health
- Anesthesia
- Women's Health
 - Fertility
 - Contraception
- Pain Management
- Urology
- Antithrombotics



*Our Strength is People
Our Mission is Health*

ROSELAND • NEW JERSEY 07068
WWW.ORGANONUSA.COM




CONGRATULATIONS! Class of 2005



 **Mission®**
PHARMACAL

Wishing you great success in your medical career.



Inspired by **COMMITMENT**
Grounded in **RESEARCH**
Focused on **EXCELLENCE**

Patients with cancer, and those who treat and care for them, face critical unmet needs. MGI PHARMA, working to become a leader in oncology, strives to fulfill these needs. Our goal is to provide new and effective treatments that enhance and extend lives affected by cancer. We believe our promising pipeline and portfolio of anticancer and supportive care agents is one way we will achieve this goal.

Commitment. Research. Excellence.



P H A R M A

For more information, call 1-800-562-5580 or visit us at www.mgipharma.com

©2003 MGI PHARMA, INC., Bloomington, MN 55437

Congratulations

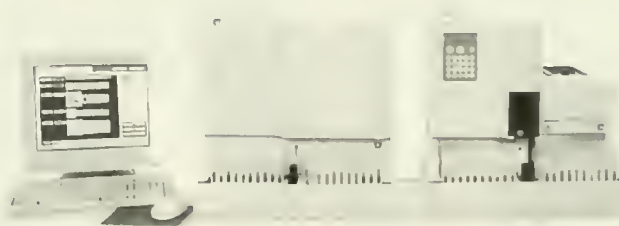
2005
Graduates!



Pharma Services
Science advancing health

iQ[®]₂₀₀

Automated Urinalysis System



PERFORMANCE — Standardized method provides objective, reproducible results

PRODUCTIVITY — No centrifugation, slide prep or transcription errors

SIMPLICITY — Walk-away convenience in a bench-top analyzer

VALUE — Significantly reduces processing time and labor

Iris

Iris Diagnostics

A Division of Iris International, Inc.
Chatsworth, CA 91311
800-776-4747
www.proiris.com

L300-485

CONGRATULATIONS

AND

GOOD LUCK

TO THE

TULANE UNIVERSITY

MEDICAL CENTER

CLASS OF 2005

AND ALUMNI



**LOUISIANA
LOTTERY**
CORPORATION

www.louisianalottery.com

CONGRATULATIONS



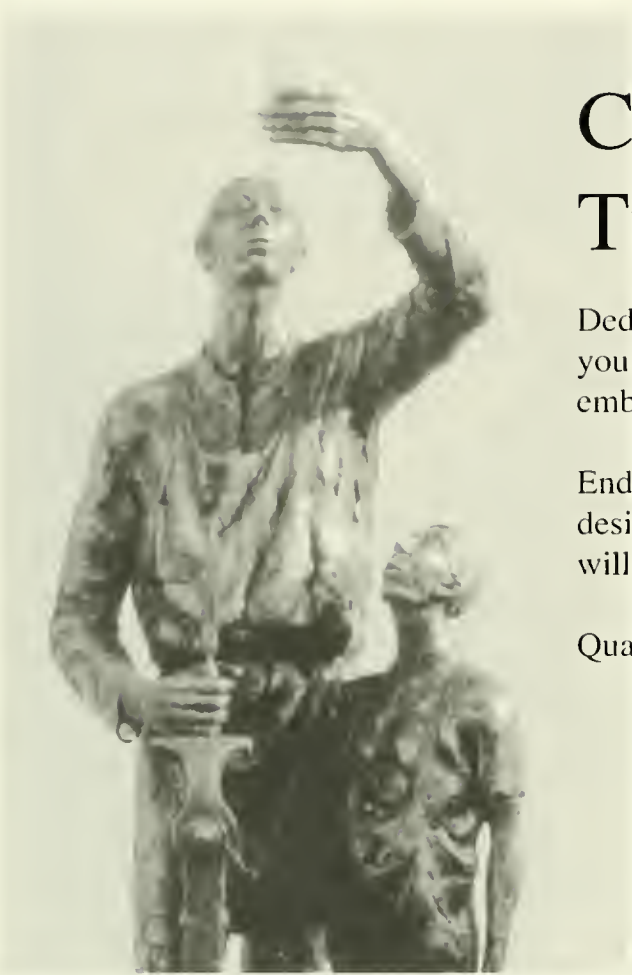
*We take our hat off
to the graduating class
of Tulane University
Medical Center.*

And we welcome you
as a trusted partner
in providing quality
patient care.



©2001 Allergan, Inc., Irvine, CA 92612

www.allergan.com



Congratulations to the Tulane Class of 2005

Dedication to the highest standards of achievement helped you reach your goals. At Karl Storz Endoscopy, we've embraced that same ideal for more than 60 years.

Endoscopy is all we do. Our products prove advanced design, precision craftsmanship, and clinical effectiveness will outlast shortsighted trends.

Quality is not disposable. Call us at (800) 421-0837.



Your career at SMH will prove both challenging and rewarding. Working in a full-service acute care hospital, you'll become well versed in the many services and products we provide to our patients. Slidell has the benefit of a full complement of specialty and sub-specialty physicians to consult and assist in the care of your patients. Your exposure to new ideas and technology from all fields of healthcare will not only give you a greater understanding of our mission, it will also support and enhance your challenges as a physician. Our recent technology investments include: a 16-slice CT scanner, an Image-Guided

Radiation Therapy (IGRT) system, three 4-D ultrasound systems and digital mammography.

While Slidell is a family-oriented community, it is a close neighbor to the bustling city of New Orleans, offering a perfect blend of culture and peacefulness. SMH can assist physicians with building an



independent practice or offer employment within an established group.

We invite you to visit us and find out what Slidell Memorial Hospital has to offer you.

SMH
Slidell Memorial Hospital

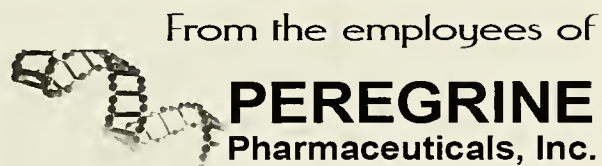
Your Hospital for Life.

Please contact Cheryl Cockrell, Physician Liaison, (985) 649-8509.

Congratulations!
You have already
accomplished much,
and yet, you have
only just begun.
Thank you for
making Welch Allyn
a part of your
success.

WelchAllyn®

Congratulations Tulane University Medical Center Graduates!!



From the employees of

PEREGRINE
Pharmaceuticals, Inc.

Based in Orange County, California, Peregrine Pharmaceuticals is a biopharmaceutical company with a broad portfolio of products under development directed towards the treatment of cancer, viruses, and other diseases to improve the quality of patients' lives.

NASD: PPHM

www.peregrineinc.com
info@peregrineinc.com



stryker

Instruments



Class of 2005

We Salute You

*Perfecting Blood Transfusion Safety
...Now and in The Future.*



- Innovative technologies
- Global commitment
- Comprehensive service and support

PALL Medical

Congratulations
to the
Class
of
2005



Sponsored by

Salix 

PHARMACEUTICALS, INC.
ADVANCING TREATMENT IN GASTROENTEROLOGY

Makers of

COLAZAL[®] Capsules
750mg
(balsalazide disodium)

and

NONSYSTEMIC

Xifaxan[™] 

(rifaximin) tablets 200 mg

CLEAN



MEAN



885-3000 • 3100 LIME STREET
WWW.CADILLACOFMETAIRIE.COM

Plus tax, title and license.

TO THE GRADUATES OF TULANE UNIVERSITY MEDICAL SCHOOL

*Congratulations & Many Years
of Success & Prosperity*

Tulane University Hospital & Clinic congratulates the 2005 Tulane University Medical School graduates and wishes them happiness and success. The faculty, staff and administration are proud of your scholastic and professional accomplishments of the past several years. You are a valuable part of our tradition of providing patients with the best healthcare available.

We hope that Tulane University Hospital & Clinic will continue to be a part of your training and professional life throughout your career. You are our lifeblood, our hope and our future.

Again, congratulations on your achievement and we wish you every success and prosperity for the future. Each and every one of you deserves only the best.

Tulane
UNIVERSITY
HOSPITAL & CLINIC
Minds That Heal

Upsher-Smith Laboratories, Inc.

*Congratulates
the
Class of 2005*



Dr. Andrea Jarma was so impressed by the
Family Practice Residency Program at
East Jefferson General Hospital,

she never left.

EJGH

"I was very fortunate to be offered a
position with the physicians who were
the best teachers I'd ever had.

The doctor-patient relationship is valued here,
and I can make a real difference in my patients' lives.

I couldn't have asked for a better opportunity."

Andrea Jarma, M.D.
Attending Physician and Graduate, Class of 2001

your hospital
your career

East Jefferson General Hospital
Family Practice Residency Program

For more information, call Susan Sansone-Gremillion, Residency Coordinator at 504-883-3722.



People are at the heart of all we do.
RIVER OAKS HEALTH SYSTEM 
River Oaks Hospital and Woman's Hospital
www.riveroakshospital.org / www.womanshospitalms.com

Quest Diagnostics

*Nationally Recognized,
Locally Committed™*

As the nation's leading provider of diagnostic testing, information and services, Quest Diagnostics offers the broadest range of innovative diagnostic services to meet the needs of you and your doctor.

So, when your doctor wants you to have a health related test, count on Quest Diagnostics. With patient service centers in Mississippi, Louisiana and Texas, finding a location convenient to you will never be a problem.

For more information on our services, speak to your physician or visit us at www.questdiagnostics.com.

Quest, Quest Diagnostics, the associated logo and all associated Quest Diagnostics marks are the trademarks of Quest Diagnostics. © 2004 Quest Diagnostics Incorporated. All rights reserved.



*“There is no
education like
adversity!”*

-Benjamin Disraeli

...

*Academic Publication Services
3131 Clark Road, Suite 101
Sarasota, FL 34231*

*Congratulations
Class of 2005 Graduates
from*



the maker of

Nipent[®]
Pentostatin for Injection^{10 mg}

TULANE UNIVERSITY
MEDICAL SCHOOL GRADUATES

*B*ausch & Lomb salutes your scholastic achievements! We are proud to have you join the ranks of numerous professionals who have the highest regard and concern for quality patient care.

At Bausch & Lomb, we have 150 years of experience in the field of vision and eye health care. We are very proud of our name and the quality, integrity and history of innovation associated with it.

We look forward to continuing this tradition with you.

**BAUSCH
& LOMB**

**MAKE IT TO GOAL,
MAKE IT CRESTOR**



In getting patients to LDL-C goal

The leading statins went head-to-head

WHO WON?



As an adjunct to diet

MORE PATIENTS reached updated LDL-C goal with CRESTOR at a low 10-mg dose

than atorvastatin 10 mg, simvastatin 20 mg, and pravastatin 40 mg ^{*1,2}

*In all risk categories combined, 68% of patients treated with CRESTOR 10 mg achieved updated LDL-C goal vs 50% with atorvastatin 10 mg, 56% with simvastatin 20 mg, and 50% with pravastatin 40 mg ($P < .001$). Comparisons shown are with the most commonly prescribed doses.³

LDL-C goal was <160 mg/dL, <130 mg/dL, <100 mg/dL, or <70 mg/dL, depending on individual risk factors.²

Adapted from the STELLAR trial, a 15-arm trial comparing the efficacy and safety of CRESTOR with atorvastatin, simvastatin, and pravastatin in 2240 patients with Type IIa/IIb dyslipidemia.⁴

PROVEN SAFETY similar to other leading statins⁵

○ In preapproval clinical trials and postmarketing experience, CRESTOR has demonstrated a **safety profile consistent with other currently marketed statins^{6,7}**

Important Safety Information

- CRESTOR is indicated as an adjunct to diet to reduce elevated total-C, LDL-C, ApoB, non-HDL-C, and TG levels and to increase HDL-C in patients with primary hypercholesterolemia (heterozygous familial and nonfamilial) and mixed dyslipidemia. The effect of CRESTOR on cardiovascular morbidity and mortality has not been determined; long-term outcome studies are currently under way
- CRESTOR is contraindicated in patients with active liver disease or with unexplained persistent elevations of serum transaminases, in women who are or may become pregnant, and in nursing mothers
- It is recommended that liver function tests be performed before and at 12 weeks following both the initiation of therapy and any elevation of dose, and periodically (eg, semiannually) thereafter
- Patients should be advised to promptly report unexplained muscle pain, tenderness, or weakness, particularly if accompanied by malaise or fever. Discontinue drug if markedly elevated CK levels occur or myopathy is diagnosed or suspected
- Adverse reactions were usually mild and transient; the most frequent adverse events thought to be related to CRESTOR were myalgia (3.3%), constipation (1.4%), asthenia (1.3%), abdominal pain (1.3%), and nausea (1.3%)^{6,8}

Please see brief summary of full Prescribing Information on reverse side of this advertisement.

BRIEF SUMMARY: For full Prescribing Information, see package insert.

INDICATIONS AND USAGE CRESTOR is indicated: 1. as an adjunct to diet to reduce elevated total-C, LDL-C, ApoB, non-HDL-C, and TG levels and to increase HDL-C in patients with primary hypercholesterolemia (heterozygous familial and nonfamilial) and mixed dyslipidemia (Fredrickson Type IIa and IIb); 2. as an adjunct to diet for the treatment of patients with elevated serum TG levels (Fredrickson Type IV); 3. to reduce LDL-C, total-C, and ApoB in patients with homozygous familial hypercholesterolemia as an adjunct to other lipid-lowering treatments (e.g., LDL apheresis) or if such treatments are unavailable.

CONTRAINDICATIONS CRESTOR is contraindicated in patients with a known hypersensitivity to any component of this product. Rosuvastatin is contraindicated in patients with active liver disease or with unexplained persistent elevations of serum transaminases (see WARNINGS, Liver Enzymes). **Pregnancy and Lactation** Atherosclerosis is a chronic process and discontinuation of lipid-lowering drugs during pregnancy should have little impact on the outcome of long-term therapy of primary hypercholesterolemia. Cholesterol and other products of cholesterol biosynthesis are essential components for fetal development (including synthesis of steroids and cell membranes). Since HMG-CoA reductase inhibitors decrease cholesterol synthesis and possibly the synthesis of other biologically active substances derived from cholesterol, they may cause fetal harm when administered to pregnant women. Therefore, HMG-CoA reductase inhibitors are contraindicated during pregnancy and in nursing mothers. ROSUVASTATIN SHOULD BE ADMINISTERED TO WOMEN OF CHILDBEARING AGE ONLY WHEN SUCH PATIENTS ARE HIGHLY UNLIKELY TO CONCEIVE AND HAVE BEEN INFORMED OF THE POTENTIAL HAZARDS. If the patient becomes pregnant while taking this drug, therapy should be discontinued immediately and the patient apprised of the potential hazard to the fetus.

WARNINGS: Liver Enzymes HMG-CoA reductase inhibitors, like some other lipid-lowering therapies, have been associated with biochemical abnormalities of liver function. The incidence of persistent elevations (>3 times the upper limit of normal [ULN]) occurring on 2 or more consecutive occasions in serum transaminases in fixed dose studies was 0.4, 0.0, and 0.1% in patients who received rosuvastatin 5, 10, 20, and 40 mg, respectively. In most cases, the elevations were transient and resolved or improved on continued therapy or after a brief interruption in therapy. There were two cases of jaundice, for which a relationship to rosuvastatin therapy could not be determined, which resolved after discontinuation of therapy. There were no cases of liver failure or irreversible liver disease in these trials. It is recommended that liver function tests be performed before and at 12 weeks following both the initiation of therapy and any elevation of dose, and periodically (e.g., semiannually) thereafter. Liver enzyme changes generally occur in the first 3 months of treatment with rosuvastatin. Patients who develop increased transaminase levels should be monitored until the abnormalities have resolved. Should an increase in ALT or AST of >3 times ULN persist, reduction of dose or withdrawal of rosuvastatin is recommended. Rosuvastatin should be used with caution in patients who consume substantial quantities of alcohol and/or have a history of liver disease (see CLINICAL PHARMACOLOGY, Special Populations, Hepatic Insufficiency). Active liver disease or unexplained persistent transaminase elevations are contraindications to the use of rosuvastatin (see CONTRAINDICATIONS).

Myopathy/Rhabdomyolysis Rare cases of rhabdomyolysis with acute renal failure secondary to myoglobinuria have been reported with rosuvastatin and with other drugs in this class. Uncomplicated myalgia has been reported in rosuvastatin-treated patients (see ADVERSE REACTIONS). Creatine kinase (CK) elevations >10 times upper limit of normal occurred in 0.2% to 0.4% of patients taking rosuvastatin at doses of up to 40 mg in clinical studies. Treatment-related myopathy, defined as muscle aches or muscle weakness in conjunction with increases in CK values >10 times upper limit of normal, was reported in up to 0.1% of patients taking rosuvastatin doses of up to 40 mg in clinical studies. Rare cases of rhabdomyolysis were seen with higher than recommended doses (80 mg) of rosuvastatin in clinical trials. Factors that may predispose patients to myopathy with HMG-CoA reductase inhibitors include advanced age (>65 years), hypothyroidism, and renal insufficiency. The incidence of myopathy increased at doses of rosuvastatin above the recommended dosage range. Consequently, 1. Rosuvastatin should be prescribed with caution in patients with predisposing factors for myopathy, such as, renal impairment (see DOSAGE AND ADMINISTRATION), advanced age, and hypothyroidism. 2. Patients should be advised to promptly report unexplained muscle pain, tenderness, or weakness, particularly if accompanied by malaise or fever. Rosuvastatin therapy should be discontinued if markedly elevated CK levels occur or myopathy is diagnosed or suspected. 3. The risk of myopathy during treatment with rosuvastatin may be increased with concurrent administration of other lipid-lowering therapies or cyclosporine, (see CLINICAL PHARMACOLOGY, Drug Interactions, PRECAUTIONS, Drug Interactions, and DOSAGE AND ADMINISTRATION). The benefit of further alterations in lipid levels by the combined use of rosuvastatin with fibrates or niacin should be carefully weighed against the potential risks of this combination. Combination therapy with rosuvastatin and gemfibrozil should generally be avoided. (See DOSAGE AND ADMINISTRATION and PRECAUTIONS, Drug Interactions). 4. The risk of myopathy during treatment with rosuvastatin may be increased in circumstances which increase rosuvastatin drug levels (see CLINICAL PHARMACOLOGY, Special Populations, Race and Renal Insufficiency, and PRECAUTIONS, General). 5. Rosuvastatin therapy should also be temporarily withheld in any patient with an acute, serious condition suggestive of myopathy or predisposing to the development of renal failure secondary to rhabdomyolysis (e.g., sepsis, hypotension, major surgery, trauma, severe metabolic, endocrine, and electrolyte disorders, or uncontrolled seizures).

PRECAUTIONS: General Before instituting therapy with rosuvastatin, an attempt should be made to control hypercholesterolemia with appropriate diet and exercise, weight reduction in obese patients, and treatment of underlying medical problems (see INDICATIONS AND USAGE). Administration of rosuvastatin 20 mg to patients with severe renal impairment ($CL_{CR} < 30 \text{ mL/min/1.73 m}^2$) resulted in a 3-fold increase in plasma concentrations of rosuvastatin compared with healthy volunteers (see WARNINGS, Myopathy/Rhabdomyolysis and DOSAGE AND ADMINISTRATION). Pharmacokinetic studies show an approximate 2-fold elevation in median exposure in Japanese subjects residing in Japan and in Chinese subjects residing in Singapore compared with Caucasians residing in North America and Europe. The contribution of environmental and genetic factors to the difference observed has not been determined. However, these increases should be considered when making rosuvastatin dosing decisions for patients of Japanese and Chinese ancestry (see WARNINGS, Myopathy/Rhabdomyolysis; CLINICAL PHARMACOLOGY, Special Populations, Race). **Information for Patients** Patients should be advised to report promptly unexplained muscle pain, tenderness, or weakness, particularly if accompanied by malaise or fever. When taking rosuvastatin with an aluminum and magnesium hydroxide combination antacid, the antacid should be taken at least 2 hours after rosuvastatin administration (see CLINICAL PHARMACOLOGY, Drug Interactions). **Laboratory Tests** In the rosuvastatin clinical trial program, distal-positive proteinuria and microscopic hematuria were observed among rosuvastatin-treated patients, predominantly in patients dosed above the recommended dose range (i.e., 80 mg). However, this finding was more frequent in patients taking rosuvastatin 40 mg when compared to lower doses of rosuvastatin or comparator statins, though it was generally transient and was not associated with worsening renal function. Although the clinical significance of this finding is unknown, a dose reduction should be considered for patients on rosuvastatin 40 mg therapy with unexplained persistent proteinuria during routine urinalysis testing. **Drug Interactions: Cyclosporine** When rosuvastatin 10 mg was coadministered with cyclosporine in cardiac transplant patients, rosuvastatin mean C_{max} and mean AUC were increased 11-fold and 7-fold, respectively, compared with healthy volunteers. These

increases are considered to be clinically significant and require special consideration in the dosing of rosuvastatin to patients taking concomitant cyclosporine (see WARNINGS, Myopathy/Rhabdomyolysis, and DOSAGE AND ADMINISTRATION). **Warfarin:** Coadministration of rosuvastatin to patients on stable warfarin therapy resulted in clinically significant rises in INR (>4, baseline 2-3). In patients taking coumatimide anticoagulants and rosuvastatin concomitantly, INR should be determined before starting rosuvastatin and frequently enough during early therapy to ensure that no significant alteration of INR occurs. Once a stable INR time has been documented, INR can be monitored at the intervals usually recommended for patients on coumatimide anticoagulants. If the dose of rosuvastatin is changed, the same procedure should be repeated. Rosuvastatin therapy has not been associated with bleeding or with changes in INR in patients not taking anticoagulants. **Gemfibrozil:** Coadministration of a single rosuvastatin dose to healthy volunteers on gemfibrozil (600 mg twice daily) resulted in a 2.2- and 1.9-fold, respectively, increase in mean C_{max} and mean AUC of rosuvastatin (see DOSAGE AND ADMINISTRATION). **Endocrine Function** Although clinical studies have shown that rosuvastatin alone does not reduce basal plasma cortisol concentration or impair adrenal reserve, caution should be exercised if any HMG-CoA reductase inhibitor or other agent used to lower cholesterol levels is administered concomitantly with drugs that may decrease the levels or activity of endogenous steroid hormones such as ketoconazole, spiroclonidine, and cimetidine. **CNS Toxicity** CNS vascular lesions, characterized by perivascular hemorrhages, edema, and mononuclear cell infiltration of perivascular spaces, have been observed in dogs treated with several other members of this drug class. A chemically similar drug in this class produced dose-dependent optic nerve degeneration (Wallerian degeneration of retinogeniculate fibers) in dogs, at a dose that produced plasma drug levels about 30 times higher than the mean drug level in humans taking the highest recommended dose. Edema, hemorrhage, and partial necrosis in the interstitium of the choroid plexus was observed in a female dog sacrificed moribund at day 24 at 80 mg/kg/day by oral gavage (systemic exposures 100 times the human exposure at 40 mg/day based on AUC comparisons). Corneal opacity was seen in dogs treated for 52 weeks at 6 mg/kg/day by oral gavage (systemic exposures 20 times the



human exposure at 40 mg/day based on AUC comparisons). Systemic exposures 60 times the human exposure at 40 mg/day based on AUC comparisons. Retinal dysplasia and retinal loss were seen in dogs treated for 4 weeks by oral gavage at 80 mg/kg/day (systemic exposures 100 times the human exposure at 40 mg/day based on AUC). Doses <30 mg/kg/day (systemic exposures <60 times the human exposure at 40 mg/day based on AUC comparisons) following treatment up to one year, did not reveal retinal findings. **Carcinogenesis, Mutagenesis, Impairment of Fertility** In a 104-week carcinogenicity study in rats at dose levels of 2, 20, 60, or 80 mg/kg/day by oral gavage, the incidence of uterine stromal polyps was significantly increased in females at 80 mg/kg/day at systemic exposure 20 times the human exposure at 40 mg/day based on AUC. Increased incidence of polyps was not seen at lower doses. In a 107-week carcinogenicity study in mice given 10, 60, 200 mg/kg/day by oral gavage, an increased incidence of hepatocellular adenoma/carcinoma was observed at 200 mg/kg/day at systemic exposures 20 times human exposure at 40 mg/day based on AUC. An increased incidence of hepatocellular tumors was not seen at lower doses. Rosuvastatin was not mutagenic or clastogenic with or without metabolic activation in the Ames test with *Salmonella typhimurium* and *Escherichia coli*; the mouse lymphoma assay; and the chromosomal aberration assay in Chinese hamster lung cells. Rosuvastatin was negative in the *in vivo* mouse micronucleus test. In rat fertility studies with oral gavage doses of 5, 15, 50 mg/kg/day, males were treated for 9 weeks prior to and throughout mating and females were treated 2 weeks prior to mating and throughout mating until gestation day 7. No adverse effect on fertility was observed at 50 mg/kg/day (systemic exposures up to 10 times human exposure at 40 mg/day based on AUC comparisons). In testicles of dogs treated with rosuvastatin at 30 mg/kg/day for one month, spermatid and giant cells were seen. Spermatid giant cells were observed in monkeys after 6-month treatment at 30 mg/kg/day in addition to vacuolation of seminiferous tubular epithelium. Eosinophils in the dog were 20 times and in the monkey 10 times human exposure at 40 mg/day based on body surface area comparisons. Similar findings have been seen with other drugs in this class. **Pregnancy: Pregnancy Category X** See CONTRAINDICATIONS. Rosuvastatin may cause fetal harm when administered to a pregnant woman. Rosuvastatin is contraindicated in women who are or may become pregnant. Safety in pregnant women has not been established. There are no adequate and well-controlled studies of rosuvastatin in pregnant women. Rosuvastatin crosses the placenta and is found in fetal tissue and amniotic fluid at 3% and 20%, respectively, of the maternal plasma concentration on following a single 25 mg/kg oral gavage dose on gestation day 16 in rats. A higher fetal tissue distribution (25% maternal plasma concentration) was observed in rabbits after a single oral gavage dose of 1 mg/kg on gestation day 18. If this drug is administered to a woman with reproductive potential, the patient should be apprised of the potential hazard to a fetus. In female rats given oral gavage doses of 5, 15, 50 mg/kg/day rosuvastatin before mating and continuing through day 7 postcoitus resulted in decreased fetal body weight (female pups) and delayed ossification at the high dose (systemic exposures 10 times human exposure at 40 mg/day based on AUC comparisons). In pregnant rats given oral gavage doses of 2, 20, 50 mg/kg/day from gestation day 7 through lactation day 21 (weaning), decreased pup survival occurred in groups given 50 mg/kg/day, systemic exposures >12 times human exposure at 40 mg/day based on body surface area comparisons. In pregnant rabbits given oral gavage doses of 0.3, 1, 3 mg/kg/day from gestation day 6 to lactation day 18 (weaning), exposures equivalent to human exposure at 40 mg/day based on body surface area comparisons, decreased fetal viability and maternal mortality was observed. Rosuvastatin was not teratogenic in rats at <25 mg/kg/day or in rabbits <3 mg/kg/day (systemic exposures equivalent to human exposure at 40 mg/day based on AUC or body surface area comparison, respectively). **Nursing Mothers** It is not known whether rosuvastatin is excreted in human milk. Studies in lactating rats have demonstrated that rosuvastatin is secreted into breast milk at levels 3 times higher than that obtained in the plasma following oral gavage dosing. Because many drugs are excreted in human milk and because of the potential for serious adverse reactions in nursing infants from rosuvastatin, a decision should be made whether to discontinue nursing or administration of rosuvastatin taking into account the importance of the drug to the lactating woman.

Pediatric Use The safety and effectiveness in pediatric patients have not been established. Treatment experience with rosuvastatin in a pediatric population is limited to 8 patients with homozygous FH. None of these patients was below 8 years of age. **Geriatric Use** Of the 10,275 patients in clinical studies with rosuvastatin, 3,159 (31%) were 65 years and older, and 699 (6.8%) were 75 years and older. The overall frequency of adverse events and types of adverse events were similar in patients above and below 65 years of age. (See WARNINGS, Myopathy/Rhabdomyolysis). The efficacy of rosuvastatin in the geriatric population (>65 years of age) was comparable to the efficacy observed in the non-elderly.

ADVERSE REACTIONS Rosuvastatin is generally well tolerated. Adverse reactions have usually been mild and transient. In clinical studies of 10,275 patients, 3.7% were discontinued due to adverse experiences attributable to rosuvastatin. The most frequent adverse events thought to be related to rosuvastatin were myalgia, constipation, asthenia, abdominal pain, and nausea. **Clinical Adverse Experiences** Adverse experiences, regardless of causality assessment, reported in >2% of patients in placebo-controlled clinical studies of rosuvastatin are shown in Table 1; discontinuations due to adverse events in these studies of up to 12 weeks duration occurred in 3% of patients on rosuvastatin and 5% on placebo.

Table 1. Adverse Events in Placebo-Controlled Studies

| Adverse event | Rosuvastatin N=774 | Placebo N=382 |
|-------------------------|-----------------------|------------------|
| Pharyngitis | 9.0 | 7.6 |
| Headache | 6.5 | 5.0 |
| Diarhea | 3.4 | 2.9 |
| Dyspepsia | 3.4 | 3.1 |
| Nausea | 3.4 | 3.1 |
| Myalgia | 2.8 | 1.3 |
| Asthenia | 2.7 | 2.6 |
| Back pain | 2.6 | 2.4 |
| Flu syndrome | 2.3 | 1.8 |
| Urinary tract infection | 2.3 | 1.6 |
| Rhinitis | 2.2 | 2.1 |
| Sinusitis | 2.0 | 1.8 |

In addition, the following adverse events were reported, regardless of causality assessment, in >1% of 10,275 patients treated with rosuvastatin in clinical studies. The events in *italics* occurred in >2% of these patients. **Body as a Whole:** Abdominal pain, accidental injury, chest pain, infection, pain, pelvic pain, and neck pain. **Cardiovascular System:** Hypertension, angina pectoris, vasodilation, and palpitation. **Digestive System:** Constipation, gastroenteritis, vomiting, flatulence, perioral abscess, and gastritis. **Endocrine:** Diabetes mellitus. **Hemic and Lymphatic System:** Anemia and ecchymosis. **Metabolic and Nutritional Disorders:** Peripheral edema. **Musculoskeletal System:** Arthritis, arthralgia, and pathological fracture. **Nervous System:** Dizziness, insomnia, hypertonia, paresthesia, depression, anxiety, vertigo, and neuropathy. **Respiratory System:** Bronchitis, cough increased, dyspnea, pneumonia, and asthma. **Skin and Appendages:** Rash and pruritus. **Laboratory Abnormalities:** In the rosuvastatin clinical trial program, distal-positive proteinuria and microscopic hematuria were observed among rosuvastatin-treated patients, predominantly in patients dosed above the recommended dose range (i.e., 80 mg). However, this finding was more frequent in patients taking rosuvastatin 40 mg when compared to lower doses of rosuvastatin or comparator statins, though it was generally transient and was not associated with worsening renal function. (See PRECAUTIONS, Laboratory Tests.) Other abnormal laboratory values reported were elevated creatinine phosphokinase, transaminases, hyperglycemia, glutamyl transaminase, alkaline phosphatase, bilirubin, and thyroid function abnormalities. Other adverse events reported less frequently than 1% in the rosuvastatin clinical study program, regardless of causality assessment, included arrhythmia, hepatitis, hypersensitivity reactions (i.e., face edema, thrombocytopenia, leukopenia, vasculolulous rash, urticaria, and angioedema), kidney failure, syncope, myasthenia, myositis, pancreatitis, photosensitivity reaction, myopathy, and rhabdomyolysis.

OVERDOSAGE There is no specific treatment in the event of overdose. In the event of overdose, the patient should be treated symptomatically and supportive measures instituted as required. Hemodialysis does not significantly enhance clearance of rosuvastatin.

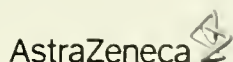
DOSAGE AND ADMINISTRATION The patient should be placed on a standard cholesterol-lowering diet before receiving CRESTOR and should continue on this diet during treatment. CRESTOR can be administered as a single dose at any time of day, with or without food. **Hypercholesterolemia (Heterozygous Familial and Nonfamilial) and Mixed Dyslipidemia (Fredrickson Type IIa and IIb)** The dose range for CRESTOR is 5 to 40 mg once daily. Therapy with CRESTOR should be individualized according to goal of therapy and response. The usual recommended starting dose of CRESTOR is 10 mg once daily. In trial of therapy with 5 mg once daily may be considered for patients requiring less aggressive LDL-C reductions or who have predisposing factors for myopathy (see WARNINGS, Myopathy/Rhabdomyolysis). For patients with marked hypercholesterolemia (LDL-C > 190 mg/dL) and aggressive lipid targets, a 20-mg starting dose may be considered. The 40-mg dose of CRESTOR should be reserved for those patients who have not achieved goal LDL-C at 20 mg (see WARNINGS, Myopathy/Rhabdomyolysis). After initiation and/or upon titration of CRESTOR, lipid levels should be analyzed within 2 to 4 weeks and dosage adjusted accordingly. **Homozygous Familial Hypercholesterolemia** The recommended starting dose of CRESTOR is 20 mg once daily in patients with homozygous FH. The maximum recommended daily dose is 40 mg. CRESTOR should be used in these patients as an adjunct to other lipid-lowering treatments (e.g., LDL apheresis) or if such treatments are unavailable. Response to therapy should be estimated from pre-apheresis LDL-C levels. **Dosage in Patients Taking Cyclosporine** In patients taking cyclosporine, therapy should be limited to CRESTOR 5 mg once daily (see WARNINGS, Myopathy/Rhabdomyolysis, and PRECAUTIONS, Drug Interactions). **Concomitant Lipid-Lowering Therapy** The effect of CRESTOR on LDL-C and triglyceride may be enhanced when used in combination with a bile acid binding resin. If CRESTOR is used in combination with gemfibrozil, the dose of CRESTOR should be limited to 10 mg once daily (see WARNINGS, Myopathy/Rhabdomyolysis, and PRECAUTIONS, Drug Interactions). **Dosage in Patients With Renal Insufficiency** No modification of dosage is necessary for patients with mild to moderate renal insufficiency. For patients with severe renal impairment ($CL_{CR} < 30 \text{ mL/min/1.73 m}^2$) not on hemodialysis, dosing of CRESTOR should be started at 5 mg once daily and not to exceed 10 mg once daily (see PRECAUTIONS, General, and CLINICAL PHARMACOLOGY, Special Populations, Renal Insufficiency).

Rx only

References: 1. Data on file, DA-CRS-13. 2. Grundy SM, Cleeman J, Merz CH, et al. Implications of recent clinical trials for the National Cholesterol Education Program Adult Treatment Panel III guidelines. *Circulation*. 2004;110:227-239. 3. IMS National Prescription Audit: November 2003-October 2004. 4. Jones PH, Davidson MH, Stein EA, et al. Comparison of the efficacy and safety of rosuvastatin versus atorvastatin, simvastatin, and pravastatin across doses (STELLAR trial). *Am J Cardiol*. 2003;95:152-163. 5. Shepherd J, Hunninghake DB, Stein EA, et al. The safety of rosuvastatin. *Am J Cardiol*. 2004;94:682-688. 6. Prescribing information for CRESTOR, AstraZeneca, Wilmington, DE. 7. Rosuvastatin Information Web site. Rosuvastatin Clinical Information-Postmarketing Experience, Safety Information. Available at: <http://www.rosuvastatin-information.com>. Accessed January 19, 2005. 8. Data on file, DA-CRS-01. CRESTOR is a registered trademark of the AstraZeneca group of companies.

Please visit our Web site at www.crestor.com

© AstraZeneca 2005
Licensed from SHIONOGI & CO., LTD., Osaka, Japan
Manufactured by AstraZeneca Pharmaceuticals LP
Wilmington, DE 19380
By IPH Pharmaceuticals, Inc.
Carolina, PR 00984
PGC 630130
224759 2/05



Dedication comes in many forms.

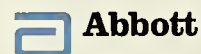


We understand how the dedication of one generation can benefit those that follow.

At Abbott, we're proud to provide products and services that help you deliver the best possible health care to the people of your community.

And we promise we will remain dedicated to our goal of improving health care for the generations that follow.

www.abbott.com



We are pleased to be recognized for our diversity.



Roche

We Innovate Healthcare

From Research to Real Life.

We all dream of doing big things.

Solving important problems.

Making a difference. Improving lives.

*Transforming these dreams
into reality requires ambition,
creativity, and a company like ours to
help put all the elements together.*

Roche is a leader in preventing, diagnosing and treating disease, enhancing the quality of life for everyone. We invest almost \$2 billion a year in innovative research, and our capabilities combine traditional biomedical science with the latest advances in biotechnology, genetics and genomics. Our investment in research has led to the recent introductions of important new medicines for obesity and flu. And our current pipeline includes advances for treating cancer, osteoporosis and hepatitis C.

Few companies possess the global strength in both diagnostics and therapeutics that Roche enjoys. By forging closer links between diagnosis and treatment, we're leading the way to a new dimension in healthcare – individualized medicine. This approach identifies the best treatment for a specific individual.

And since we understand that every individual is unique, we strive to ensure a diverse environment. Roche encourages creativity and embraces differences in talent, education, workstyle, lifestyle and culture.

Obesity, transplant medicine, diabetes, breast cancer, hepatitis, influenza and HIV – just some of the real life issues Roche is focusing on. And providing solutions for.

Visit our global website at www.roche.com or
our U.S. website at www.rocheusa.com.





*Uniquely
Takeda*

CREATING
OPPORTUNITIES
WITH HEALTHCARE
SOLUTIONS

Takeda Pharmaceuticals North America, Inc. is creating opportunities to enhance patient care and provide:

- **A comprehensive approach to research and development.**
- **Resources and services uniquely designed to meet your needs.**
- **Ongoing support for an evolving healthcare environment.**

For more information about healthcare solutions that are uniquely Takeda, please call 1-877-872-3700 or visit our website at www.tpna.com. We look forward to creating a partnership that helps you meet the challenges of healthcare now and in the future.



Uniquely Takeda

World Class Pharmaceuticals For Excellent Patient Care



TRAVATAN[®]
(travoprost ophthalmic solution) 0.004%
www.travatan.com



Patanol[®]
(olopatadine hydrochloride
ophthalmic solution) 0.1%
www.patanol.com



Vigamox[®]
(moxifloxacin HCl ophthalmic solution) 0.5% as base
www.vigamox.com

Congratulations
To The
Tulane University
School of Medicine
Class of
2005!



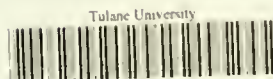


Academic Publication Services

LD 5427 T101 v.2~~4~~ 2005
c.2
T-wave.

*Tulane University
Rudolph Matas Medical Library
1430 Tulane Avenue (SL-86)
New Orleans, LA 70112-2699*

MATAS
COMMONS



R04028 40971

OCT 21 2008

