

SOUVENIR PROGRAM

TULANE
vs
GEORGIA

2:30 P. M.

OCTOBER 29, 1927

HOWARD-TILTON
MEMORIAL LIBRARY

TULANE UNIVERSITY



—Photo by Trice

BILL BANKER—Tulane's star halfback shown in action around Miss Aggies' end. Weir, the opposing tackle is about to stop Banker's advance.

Price 25¢



THE TULANE UNIVERSITY OF LOUISIANA

NEW ORLEANS



The University embraces the Following Departments:

The College of Arts and Sciences
The H. Sophie Newcomb College for Women
The College of Engineering
The Graduate School
The College of Law
The School of Medicine
The School of Pharmacy
The School of Dentistry (Senior year only)
The College of Commerce and Business Administration
The Course for Teachers
The School of Social Work
The Night School of Electrical Engineering
The Night School of Architecture
The Summer Schools

For Catalogue Address:

Registrar of the Tulane University of Louisiana

Gibson Hall, New Orleans

Hail The Conquerors of Yale



McCRARY—Fullback
Georgia

The curtain goes up on Tulane's big headline act of the 1927 gridiron season today when the University of Georgia, conquerors of Yale, comes to grips with the Tulane Greenies. This is the first time Georgia has appeared in New Orleans and the Crescent city joins hands with Tulane in welcoming the Bulldogs into our midst.

The Georgia outfit is one of the strongest contenders for the Southern conference championship this fall. Out of the debris from the 1926 team, which lost fourteen letter-men, Coach George C. (Kid) Woodruff has built a team which has, to date, trampled over Virginia, Yale, Furman and Auburn, rolling up a total of 111 points to their opponents' 13. Their strength consists of two good ends, a speedy and dangerous backfield and a baffling passing game. Their two touchdowns against Yale resulted from passes and a third missed by a few inches.

Captain Ike Shiver and Tom Nash are regarded as the best

end combination in the conference this year. They are ripping, tearing ends who never await a play but go straight into the interference and frequently get their man before he gets up to the scrimmage line. In addition, Shiver can boot a football with the best punters in the South. Shiver and Nash brought the declaration from Tad Jones, Yale coach, that they formed one of the greatest pair of ends ever seen in the New Haven bowl.



LAUTZENHEISER—Tackle
Georgia

The Georgia backfield is big, fast and full of threats. Charlie Fenwick, Virginia line coach, is quoted as saying following the defeat of his team several weeks back: "Georgia has the hardest driving backfield and the deadliest tacklers I ever saw."

The offensive satellite is Fullback Herdis McCrary, a triple-threat man. His powerful line plunging and accurate passing had wrecked havoc on every team he has faced this season. McCrary is another of Georgia's all-Southern candidates. It's going to be a question of whether the Green-

ies forwards can stop the ram-like thrusts of this hefty back. Johnny Broadnax at quarter and Bob McTigue and Roy Estes at halves are the other regular members of the backfield. There are several fine ball carriers available in Frank Dudley, Bobby Hooks, Harvey Hill and Rothstein.

The line is light but aggressive, according to reports. Six of the forwards are left-overs from last year. Here is how they line up from tackle to tackle: Hollis Morris and Stelling, tackles; Gene Smith and Roy Jacobson, guards, and Ike Boland, center. Stelling is a sophomore player who may be replaced by Glenn Lautzenheiser, a veteran who is just recovering from an operation last summer.

Today's game will only be the second between Tulane and Georgia in history. The last time the two teams met, in 1919, they played a 7-7 tie at Athens. Will the Greenies do that good today? Sure they will.



GENE SMITH—Guard
Georgia

THREE OF A KIND

Tigers! Three in a row!

That's the assignment for the Tulane Greenies during the month of November.

With bloodshot eyes and snarling countenance, the Auburn Tiger of the Plains will come next Saturday, hungry for victory. The tiger this year is one of the hungriest animals ever turned out at Auburn, for little food has come his way this season. In fact, the current grid year has been the most disastrous one in footbal history for the Tigers.

For this reason, if for no other, when the Tulane eleven faces Auburn on the stadium field, Coach Bernie Bierman's men will have a difficult task to perform in trimming the Tiger. Battling with the courage of despair, the Alabama Bengal will do its utmost to gain a victory.

(Cont nued on Page 6)

Guy L. Deano, Pres. Geo. R. Beltmeyer
Active Vice-Pres.

J. U. Sulor
Secy.-Treas.

VICTORY GASOLINE

"TRUE TO ITS NAME"

Vocoline Motor Oils



OFFICES:

738 PERDIDO STREET
AND

ST. CLAUDE and MEHLE
AVENUES

TELEPHONES:

HEMLOCK 3343-2748

MAIN 1578



McTIGUE—Halfback
Georgia

Two Trouser Fall Suits

Just Right for College Men
embody all the new styles fea-
tures, straight lines broadnotch
lapels, set in pockets and a nice-
ty of tailoring they'll like. Mod-
els are two button and come in
a wide range of fabrics and pat-
terns.

\$25.00
and Up

Marks & Isaac Co.
711 to 725 CANAL STREET

Coleman E. Adler

For

**DISTINCTIVE
JEWELRY**

THE NEW

Hotel Monteleone

J. D. KENNEY, Manager

A. F. Spatafora, Ass't. Mgr.

European Plan.

STRICTLY FIRST CLASS

ROYAL and IBERVILLE STREETS

ONE YEAR OLD

Today the New Tulane Stadium is a year and a week old.

Last Saturday, a year ago, the massive pile of steel and concrete was dedicated with elaborate ceremonies. Built and paid for by the good people of New Orleans, the stadium now stands as a monument to the football teams that have made Tulane history.

The stadium ranks with the best in the South and Tulanians are proud of it. Increased attendance which taxed the seating capacity of the old stadium made necessary the building of the new stands. Let's hope that increased attendance will force a completion of the ultimate horseshoe shape.

The present seating capacity is 30,000 including the temporary stands at each end of the gridiron. The ultimate capacity is 46,000 persons.

Between Halves

The side lines come in for their share of attention. Comments and criticism are exchanged. Don't court adverse remarks about your appearance. Be sure you are suitably and correctly attired for the game.

**Maison Blanche**

Greatest Store South

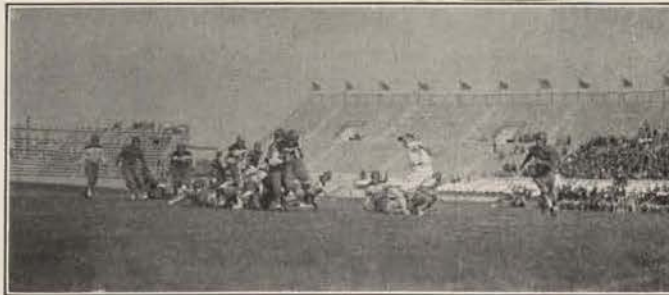
McCRARY

Fleetness, coupled with ability to crash through opposing lines, is making a football hero of Herdis McCrary, University of Georgia fullback. His playing was largely responsible for Georgia's recent 14 to 10 victory over Yale.

Experts hail him as one of the leading candidates for the fullback berth on the All-Southern team this year. He has 197 pounds spread over six feet of height and is exceptionally strong.

McCrary is also a star on the cinderpath. He was one of the best sprinters in the conference last spring.

McCrary hails from Indiana. He is playing his second year on the Bulldog eleven.



Established 1878

Victory Barber Shop

VIC TUJAGUE—TONY MACALUSO

Proprietors

725 Common Street

Opp. St. Charles Hotel

Phone Ma'n 7578

New Orleans, La.

BUICK AUTOMOBILES

SALES—SERVICE

GLENNY-BUICK CO., Inc.

822-832 HOWARD AVE.

1018-1026 BARONNE ST.

THREE OF A KIND

(Continued from Page 4)

Like Tulane, Auburn has been handicapped by lack of veteran material. With only nine letter-men to depend on, Auburn has been having a hard time of it from the start, losing to Stetson, Clemson, Florida, L. S. U. and Georgia in order. Then again they are working under their second head coach of the season, Dave Morey having resigned the job in favor of Boozer Pitts, former player and coach at Auburn.

From present indications, it looks as though the Greenies will win. They have the fighting spirit and determination to avenge that 2-0 defeat handed them by Auburn last season on the occasion of the dedication of the new stadium. Tulane gridders still remember that heart-breaking defeat and the Tigers will have to show unexpected strength to turn back the Greenies this time.

Following Auburn comes the Mountain Tiger from Sewanee, inexperienced but with all its traditional fight; and the Swamp Tiger from Louisiana State, strong and ambitious.

Drown them all, Green Wave.



Rent a New Car and
You Drive It

ALL MODELS

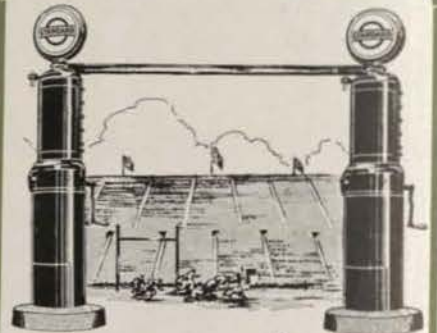
Special Attention to
College Men

**U-Drive-It Car
Company**

Phone Jackson 5297
711 Baronne St.



EUBANKS—Guard
Georgia



TOUCHDOWNS! GOALS!

"STANDARD" PETROLEUM
PRODUCTS

Score on all points and against
all opposition. An unbeatable team

Captained by

"STANDARD" GASOLINE

And Field Managed by

**"STANDARD"
MOTOR OIL**



Standard Oil Company of La.

ROAD SERVICE

BATTERY SERVICE

College Service Station

H. A. CHRISTENBERRY, Prop.

LIBERTY GAS AND OILS

"EVERYTHING FOR AUTOMOBILES"

Convenient to All Colleges

5101 FRERET STREET
Cor. Soniat St.

PHONE UPTOWN 1190



HEREFORD - TURCAN, INC.
JEWELRY AND GIFT SHOP
Headquarters for Bulova Strap Watches.

**Diamonds
Watches
\$25.00 up
Jewelry**

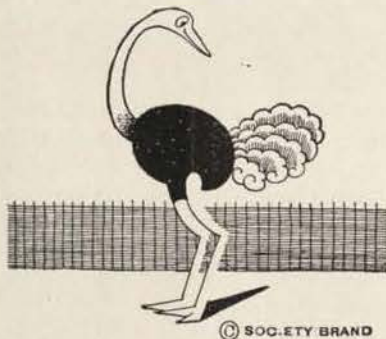
Use Our Club Plan

218 BARONNE ST.

TULANE

3. Blake
4. Lodrigues
6. Harper
7. Lessell
8. McGehe
9. Menville
10. Al Stoessel
11. Pizzano
12. Browne
14. Walker
15. Maier
17. McCarroll
18. Banker
19. Flynn
20. Hooper
21. Butaud
22. Baumbach
23. Floyd
24. Ford
25. Evans
26. Whatley
28. Jones
29. Hardie
30. Rucker
31. O'Pry
32. Eskridge
33. Kirchmeier
34. Oelkers
36. Walls
37. Spiess
Sentell
Fischer
Ellis
Trunslar
Lemann
Andrews

Mayer Israel & Co.



Fine Feathers

Fine feathers don't make fine birds—nor do fine fabrics make fine suits. But when rich fabrics are tailored in the inimitable Mayer Israel way, you have about as fine clothing as can be.

Collegiate models in one and two trouser styles, especially featured at—

\$35

OFFICIALS TODAY'S GAME

Referee—HARRY B. SPRINGER (Pennsylvania)
 Umpire—ARTHUR L. HUTCHINS (V. P. I.)
 Head-Linesman—O. W. SEVERANCE (Alabama)
 Field Judge—CAPTAIN J. R. BOATWRIGHT (Wofford).

Today's Tulane line-up will include

Browne	Ends
Ford	
Kirchmeier	Tackles
Rucker	
Bill Maier	Guards
Oelkers	
Walls	Center
Pizzano	Quarterback
Menville	Halfbacks
Banker	
McCarroll	Fullback

For any last minute changes in the line-up and substitutions during the game refer to roster of players and their respective numbers.



HOLMES

Has Tulane Colors in Ribbons,
Badges and Pennants
Also Boxed Candy and Noise Makers

—After the Game—
You'll Enjoy Dinner in Holmes Restaurant

D. H. HOLMES CO.

LIMITED

For 85 Years—The Best Place to Shop



TULANE'S ELEVEN MEETS STRONG GEORGIA TEAM TO-DAY



JOHNNY BROADNAX—Quarterback
Georgia



BUTAUD
Guard—Tulane



PIZZANO
Quarterback—Tulane



CAPT. BROWN
End—Tulane



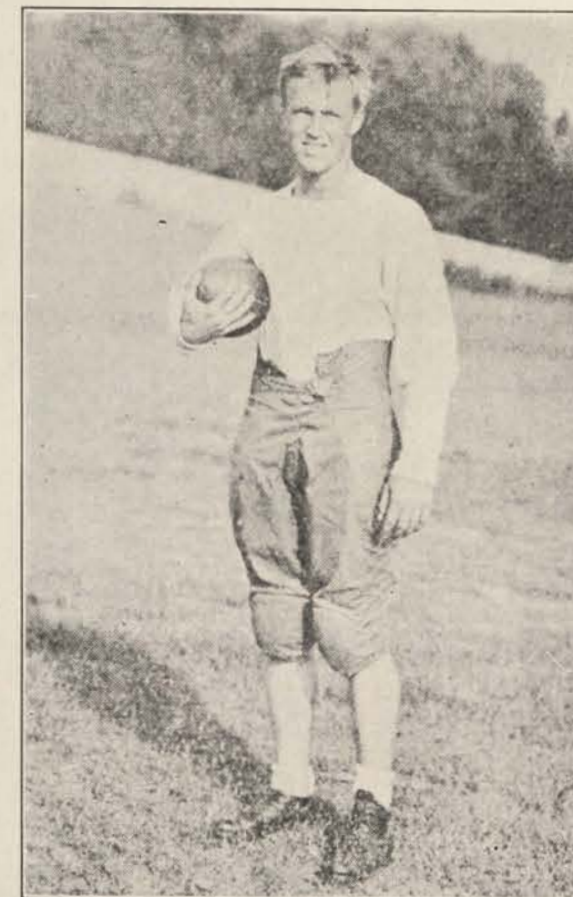
BILL MAIER
Guard—Tulane



BANKER
Halfback—Tulane



OELKERS
Guard—Tulane



FRANK DUDLEY—Halfback
Georgia



JOHNNY MENVILLE
Halfback—Tulane

SPONSORS FOR TODAY'S GAME

Miss Althe Baldwin
Miss Martha Claiborne
Miss Betty Hardie
Miss Adele Jahncke
Miss Josephine Solari
Miss Flora Hardie
Miss Marcelle Coyte
Miss Daisy Glen-Wolfe
Miss May Tupper
Miss Lucille Minor
Miss Betty Watson
Miss Maude Werner

PROBABLE LINE UP

TULANE			GEORGIA		
24. Ford	Right End		Shiver (c)	26	
30. Rucker	Right Tackle		Lautzenheiser	1	
15. Maier	Right Guard		Smith	10	
36. Walls	Center		Boland	18	
34. Oelkers	Left Guard		Jacobson	16	
33. Kirchmeier	Left Tackle		Morris	25	
12. Browne (c)	Left End		Nash	19	
11. Pizzano	Quarterback		Johnson	30	
18. Banker	Left Halfback		Estes	3	
9. Menville	Right Halfback		McTigue	4	
8. McCarol	Fullback		McCrory	12	

THE SCORE

Quarters	1	2	3	4	Final
TULANE					
GEORGIA					

Conference Standing

Team	W	L	T	Pct.
Ga. Tech	3	0	0	1.000
Georgia	2	0	0	1.000
L. S. U.	2	0	0	1.000
Tennessee	2	0	0	1.000
N. C. State	2	0	0	1.000
Vanderbilt	1	0	0	1.000
Wash. & Lee	1	0	0	1.000
Maryland	3	1	0	.750
Florida	2	1	0	.667
Clemson	2	1	0	.667
South Carolina	2	2	0	.500
Alabama	1	1	1	.500
Miss. A. & M.	1	1	0	.500
V. P. I.	1	1	0	.500
Tulane	1	3	0	.250
North Carolina U.	1	3	0	.250
Virginia	1	3	0	.250
Sewanee	0	1	0	.000
Kentucky	0	2	0	.000
Ole Miss	0	2	0	.000
V. M. I.	0	3	0	.000
Auburn	0	4	0	.000



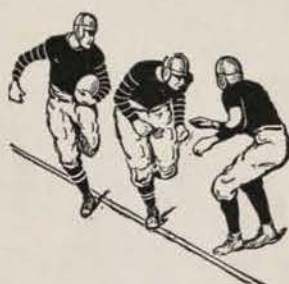
KIRCHMEIER
Tackle—Tulane

VANDY GAME

Playing without the services of Johnny Walls and Charley Rucker, two regular linemen, Tulane suffered its worst defeat in years at the hands of the Vanderbilt Commodores last Saturday at Nashville. The final score was 32 to 0.

The Greenies can gain some comfort in the fact that Vandy gained only three more first downs than they did. Tulane is credited with twelve to the Commodores' 15. This goes to show that Tulane displayed some sort of a sustained attack, even though it was not powerful enough to break through Vandy's defense for a score. Several times the Greenies drove down to within striking distance of the Commodores' goal line, but always some break went against them. Twice forward passes were intercepted by Vandy players in the shadow of the goal posts.

(Continued on Page 12)



Come to
Spalding's - -
Athletic Headquarters

Spalding's are the world's largest producers and sellers of athletic goods—their leadership has been won not by mere price appeal, but by inherent quality.

Buy only Spalding equipment and know what every seasoned sportsman knows—that your game won't suffer because of equipment that is short of Spalding perfection.

A. G. Spalding & Sons

130 Carondelet St., New Orleans



ROY ESTES—Halfback
Georgia

JAHNCKE SERVICE INC.

Concrete & Building
MATERIALS

Dredging—Towing
Barges

814 Howard Ave.

Since 1872

JACKSON 4600

MEDICAL BOOKS

We carry all text-books recommended in the Medical, Dental and Pharmacy Departments of Tulane. Call at our Store, or phone your needs.

J. A. MAJORS CO.

Phone Main 3252

1301 TULANE AVE.

We're Expecting You



Newcomb Pharmacy

Broadway & St. Charles Ave.

GEORGIA
BULLDOGS

1. Lautzenheiser
2. Davidson
3. Estes
4. McTigue
5. Cox
6. Rothstein
7. Cook
8. Broadnax
9. Dudley
10. Y. Smith
11. Buchanan
12. McCrary
13. Bradley
14. Martin
15. Nixon
16. Jacobson
17. Hill
18. Boland
19. Nash
20. Collins
21. Sanford
22. Stewart
23. Stelling
24. Paris
25. Morris
26. Capt. Shiver
27. Palmer
28. Hill, H.
29. Hooks
30. Johnson
31. Greenfield
32. Haley
33. Frisbee
34. Reigle
38. Eubanks

PORTER'S

Kerry-Keith

SUITS AND OVERCOATS

Will be seen at every Tulane game—and in greater numbers every game—because the college man is quick to see the good-taste which is deftly combined with finest fabric in these correctly styled garments. 2-trousers.

\$45

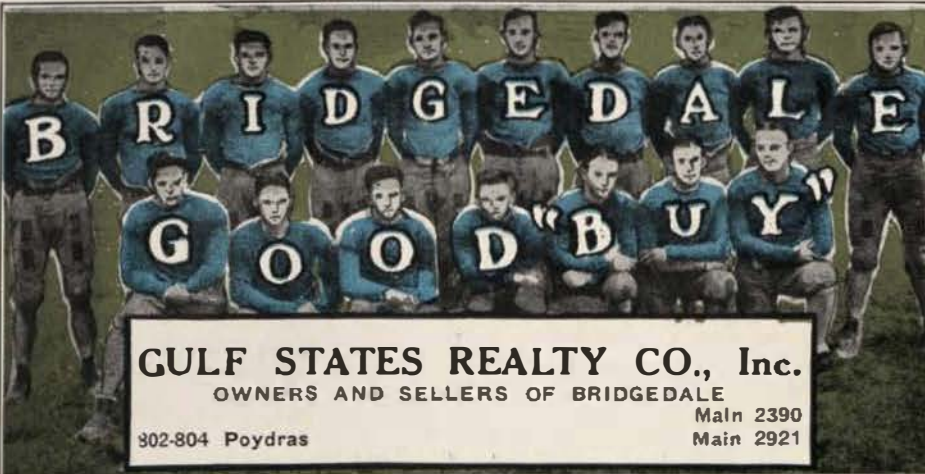
Porter Clothing Co.

Carondelet and Gravier

The Tulane Athletic Association requests that parties occupying Boxes be seated during the plays to allow those in the rear to have full vision of the field.

Today's lineup for the Bulldogs will include:

Nash	Ends
Capt. Shiver	
Lautzenheiser	Tackles
Morris	
Smith	Guards
Jacobson	
Boland	Center
McCrary	Fullback
Johnson	Quarterback
Estes	Halfbacks
McTigue	



GULF STATES REALTY CO., Inc.
OWNERS AND SELLERS OF BRIDGEDALE
302-804 Poydras Main 2390
Main 2921

VANDY GAME

(Continued from Page 10)

Tulane's team continued to show its great fighting ability. Everyone who accompanied the team to the Tennessee metropolis will tell you that the Greenies never ceased fighting, even though the score was overwhelmingly against them. That 1927 Olive and Blue outfit is one fighting bunch. The real difference between Tulane and Vanderbilt was Bill Spears, a speedy, wily triple-threat performer who has a good chance of making the All-American team this fall. He was poison in an open field and his passing was absolutely uncanny.

Spears made three out of three passes in the first half, and made runs of 77 and 80 yards among other things. In all, he just broke the Greenies down by taking an active part in Vandy's first eighteen points. He did not play the second half and it is good that he didn't. No one knows

what the score would have been had he remained in the game. He is an unstoppable back and capable of gaining on any team.

TULANIANS!--

Everybody's Welcome.

HEAR the play by play returns of the Green Wave's road games at—

College Pharmacy

STATE AND FRERET

LESLIE D. ISRAEL

ROBERT F. LYNES

Phones Walnut 3772-9235
and 9154

**Tulane's Gridiron
fertilized with**

Armour's Lawn and Garden Grower



CAPT. SHIVER—End
Georgia

Steam Heated

Excellent Music

MECCA THEATER

Entertainment with

Distinctive Service

Adams Street, Near Maple

Especially Selected Programs Exhibiting only the best Photoplays Produced.

The Mecca is under the personal supervision and management of Mr. and Mrs. Heiderich.

Spend Your Evenings
With Us

**Beautiful Tulane Field
was fertilized with**

Armour's Lawn and Garden Grower

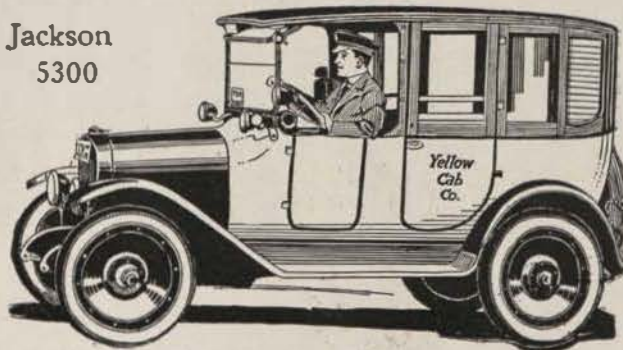
DRINK

Coca-Cola

IN BOTTLES

"The Thinking Fellow Calls A Yellow"

Jackson
5300



Safety---Courtesy---Comfort---Service

CAPTAIN SHIVER
Georgia.

Captain I. M. "Chick" Shiver of Georgia is sure to be placed on the mythical All-Southern team and perhaps receive a few votes for the All-American. Shiver is one of the outstanding ends in the South today, he being a great all-around player and punter.

His Bertillion marks follow: Hair, Blonde; Height, 6 feet; Weight, 180 pounds; Married; Home, Americus, Ga.; Years on team, third; Age, 21.

Shiver is one of few collegiate baseball players who does not care for a major league career. He has received several offers from American and National League clubs but has turned them all down, preferring a business career instead. He is an outfielder and the hardest hitter on the Bulldog club. His average last year was almost .400.



Clothes designed for
University Men
Exclusively

Braebum Suits, \$40
Charter House, \$45, \$50
Here Exclusively

Godechaux's
Canal near Baronne

TOM NASH
Georgia.

This Tom Nash, who plays an end for Georgia, is plenty good, everybody tells you.

And he's game, too. Here's proof:

Early in the game Nash was hurt, and badly. He refused to leave the game, and each time he was hurled painfully to the ground he rose to throw his bruised body in the way of plays coming his way.

"Red" Barnes of 'Bama, seeing Nash "out," shot play after play at him. Yet the Georgia boy, Bulldog to the core, hung on, writes Lawrence Perry, grid expert who was covering the game.

"It was one of the greatest exhibitions of gameness I have ever seen."

"Time and again the Bulldog terminal, nearly broken in half from the pounding he received from the almost murderous interference of the Alabama team, would crawl back to his position only to be swept once more under the Tide attack. Finally the Georgia coaches, realizing his condition rather tardily, removed him from the game."

TULANE SCHEDULE

October 1—Ole Miss 6; Tulane 19.
October 8—Georgia Tech 13; Tulane 6.
October 15—Mississippi A. & M. 13; Tulane 6.
October 22—Vanderbilt 32; Tulane 0.
October 29—Georgia at Tulane Stadium.
November 5—Auburn at Tulane Stadium.
November 12—Sewanee at Tulane Stadium.
November 24—L. S. U. at Baton Rouge.



THE ROOSEVELT

*New Orleans largest, Finest and most friendly Hotel.
We are specially prepared to handle Banquets, Weddings
and other social functions.*

THE BIENVILLE HOTEL

*Ideal location offers every comfort with superior service
and excellent Restaurant facilities.*



IMPORTANT CHANGES IN FOOTBALL RULES

1. **GOAL POSTS.**—The goal posts have been moved from the goal line to the end line.
2. **DELAYING GAME.**—A delay of more than 30 seconds in putting the ball in play after it is ready for play, or a team remaining more than 15 seconds in a huddle, may be considered as prima facie evidence of intentional delay of the game.

The captain may now claim time out only three times in each half instead of four times, as formerly.

3. **SHIFT PLAYS.**—In all shift or huddle plays the players must come to an absolute stop and remain stationary in their positions and without movement of the feet or swaying of the body for a period of approximately one second. This period may be conveniently measured by rapidly counting "1-2-3-4." In case of doubt the penalty shall be enforced. The penalty for violation has increased from 5 to 15 yards.

4. **FUMBLE PUNTS.**—When a punt is fumbled before the receiver gains possession of the ball, it is a free

ball and any one is eligible to recover the ball for his side. However, the side that kicked the ball can not advance the fumbled punt by picking it up and running with it, but must take it at the point recovered.

5. **INCOMPLETE BACKWARD PASS.**—Any player may at any time hand or throw the ball in any direction except toward his opponents' goal. If any such pass made on first, second or third down strikes the ground within the field of play the ball is dead. It shall belong to the side which made the pass at the point where it strikes the ground. On fourth down the ball shall go to the opponents at the same point, unless the required distance has been made. The pass from the snapper back to put the ball in play is excepted from this rule.

Woodward, Wight & Co., Ltd.



Largest General Supply
House South Since 1867



Howard Ave., Constance and
Joseph Street

BROADWAY PHARMACY



H. C. Richards
Proprietor



Broadway and Maple

MAin 4185

MAin 4186



The Best
PHOTO-ENGRAVERS

IN THE SOUTH

FOR OVER TWENTY YEARS
MAKING HALFTONES, ZINC
ETCHINGS & COLOR PLATES

GRELLE-EGERTON ENGRAVING CO.
628-630 POYDRAS ST.



DESERVED ACCLAMATION

Just as the Green Wave, rolling over all opponents, brings cheers from the crowd, so does

TULANE COFFEE

win the acclaim of those who recognize superior quality.

TULANE
PURE
COFFEE

One of American Coffee Company Products
RICHARD C. DROWN, Gen'l. Mgr.

LOUISIANA PRINTING COMPANY

Official Printers
TULANE
Football Program
"THERE'S A REASON"



Just Phone Jackson 5396
OR
Call at 921-27 Lafayette Street

TWO WEEKS AGO

Two weeks ago an elusive young man by the name of W. A. Pappenheimer caused Tulane students and supporters to file out of the stadium in a gloomy mood. All because he had upset the well known dope bucket in leading the Mississippi Aggies to a 13 to 6 victory over Coach Bernie Bierman's Tulane gridders.

This Pappenheimer was a thorn in the side of the Greenies that day. He carried the ball nine times out of ten and each time he carried it well, ripping through the tackles and racing around the ends for gain after gain. And when he wasn't doing the delivery work, he was serving as chief dispatcher in the aerial department.

For three periods Pappenheimer performed thusly and without any success in a scoring way. Those Greenies fought hard. They used up every ounce of strength and turned back the Aggies every time they approached the Tulane

TEAMWORK



The brain and brawn and courage of eleven Tulanians, co-ordinated into a fighting machine, battle for the glory of old T. U. It requires all of these attributes to spell success, to write victory on the scoreboard.

Similarly it requires brain and brawn, and courage and teamwork on the part of the 4,320 members of the Public Service team, to win and hold esteem through giving dependable electric, gas and street railway service every hour night and day.

**New Orleans Public
Service, Inc.**

goal line. But they spent themselves. Tired and battered, they were unable to halt the Aggie charge in the final minutes of play.

An air attack gave the Aggies their first touchdown. They carried it down the field via the air and Chadwick threw a pass to Wells behind the goal line for the first score of the visitors. Chadwick place kicked goal and the score was 7-6 in favor of A. & M.

Soon after the kick-off, Mississippi regained the ball on a punt and they drove down the field from their own 31-yard line. Pappenheimer did most of the gaining on this march and was rewarded by going off right tackle and cutting back over center for nine yards and a touchdown. Chadwick missed the kick for the extra point.

Bill Banker, the "Blonde Blizzard," gave Tulane its touchdown in the first minute of the game when he got loose for thirty-five yards around right end. Menville failed to kick the goal.

DO YOU KNOW THAT.....

Charles L. Eshelman and Hugh M. Krumbhaar are the only men who captained Tulane teams two straight years.

"Chick" Shiver, Georgia's captain, is a married man.

Lester Lautenschlaeger ran 95 yards through the entire North Carolina team for a touchdown in 1922.

Cartwright Eustis, star on Tulane's 1895 team has a son playing on this year's freshman team.

OFFICE TOILET SUPPLY CO.,

Ltd.

509 S. PETERS ST.

TOWELS AND LINENS

SUPPLIED AT NOMINAL

RENTAL CHARGE

BREEN'S DRUG STORE

NATHANIEL BREEN, Prop.

Opposite Charity Hospital

Phone Main 9177

Tulane Ave. at Villere

THE SCORE BOARD

Watch It Carefully For Complete Information

Often only the officials and captains know what a certain penalty is for. We have sketched out the following to inform you. Each penalty is numbered below. When a penalty is inflicted the number of that penalty will be hung on the score board, and light will appear opposite the name of player carrying the ball or receiving a pass.

Please understand violations of rules are rarely intentional. They usually come from over-anxiousness, excitement and most often from the highly technical character of the present game.

PENALTIES

Pen. No.	OFFENSE	Penalty	Pen. No.	OFFENSE	Penalty
1.	Offside—In advance of line of scrimmage and on the kick-off or on free kick	5 yds.	21.	If a man on defense holds a player of the side with the ball	5 yds.
2.	Holding or illegal use of hands or arms. The team with the ball, except the man carrying the ball may not use hands or arms to block out or keep off opponents	15 yds.	22.	If a team takes out time more than three times in one half without substituting a player	5 yds.
3.	Clipping—Cutting a man down from the rear away from the play	25 yds.	23.	For delaying the game	5 yds.
4.	Players must come to an absolute stop for a period of approximately one second in all shifts and "huddle" plays	15 yds.	24.	Crawling—The man with ball may not crawl or try to advance after being tackled and thrown	5 yds.
LOSS OF A "DOWN"			25.	Hurdling—Man with ball may not jump over a man still on his feet	15 yds.
5.	For second and third incomplete passes in any one series of downs and	5 yds.	26.	Unnecessary roughness or unfair play	15 yds.
6.	Interference by side making forward pass, prior to fourth down, also	15 yds.	27.	Tripping with feet, tackling out of bounds, etc.	15 yds.
7.	Intentionally throwing forward pass to ground, prior to fourth down, also	15 yds.	28.	If center feints to snap ball and does not	5 yds.
LOSS OF BALL			29.	Unsportsmanlike conduct, talking back to officials or abusive language	15 yds.
8.	Ball kicked out of bounds, unless touched, etc.		30.	The ball or the center may not be interfered with until ball is passed	5 yds.
9.	Interference by side making forward pass, fourth down—Loss of ball at point 15 yards back of previous down.		31.	A substitute must report to referee or umpire. Penalty for not reporting	5 yds.
10.	Interference by defensive side in case of forward pass—Loss of ball to the offended side at the spot of the foul, the ensuing down to be first down.		32.	The team with the ball must have seven men on the line of scrimmage when the ball is snapped	5 yds.
11.	Illegal or incomplete forward pass—fourth down.		33.	The center or the man on either side of him may not carry ball until it has been handled by someone else on the team	5 yds.
12.	Intentionally throwing forward pass to ground, fourth down—Loss of ball and also	15 yds.	34.	Player out of bounds when ball is snapped	5 yds.
13.	Failure to advance ball 10 yards in four downs.		35.	If a player leaves the field while time is out or during intermission without permission of officials	15 yds.
14.	No man on team with ball may be in motion when ball is snapped, except one man may be in motion toward his own goal or toward side line	5 yds.	36.	No one on bench or sidelines may coach or instruct anyone in the game	15 yds.
15.	Piling on a player after the whistle	15 yds.	37.	There is a penalty for persons coming on field of play and for more than one representative in case of injury and for anyone on bench or inside enclosure standing or walking along side lines	15 yds.
16.	The kicker may not be tackled or knocked down after kicking	15 yds.	38.	Team delaying start of game or start of second half forfeits option and is penalized	25 yds.
17.	The man carrying the ball may not be pushed or pulled by any of his teammates	15 yds.	LOSS OF HALF THE DISTANCE TO THE GOAL LINE		
18.	Interference with player making fair catch or throwing player who has made fair catch	15 yds.	39.	A player may be substituted only once in each half—for illegal return, team is penalized as above and player is suspended for remainder of the game.	
19.	Player making more than two steps after fair catch	5 yds.	40.	Striking, kneeling, kicking, etc.—Player is disqualified for remainder of game, and team is penalized as above.	
20.	If a substitute coming in says anything to any teammate until a play has been made his team is penalized	15 yds.	41.	Foul within one yard line or behind goal line by defensive side.	