

*The Greenie*

# NORTH CAROLINA vs. TULANE

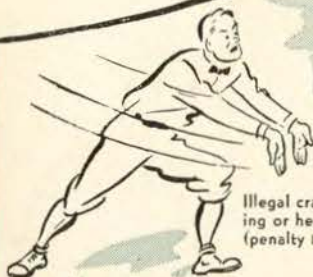
October 18, 1941

Price 25¢





# Official Signals



Illegal crawling, pushing or helping runner (penalty 15 yards).



Off side and violation of kickoff (penalty 5 yards).



Holding (penalty by offense, 15 yards; by defense, 5 yards).



Unnecessary roughness (penalty 15 yards).



Flying block or tackle, penalty refused.



Interference with forward pass . . . (also pass which touches ineligible player).



Penalty refused, incomplete pass, play to be replayed; missed goal, etc. (penalty 5 yards).



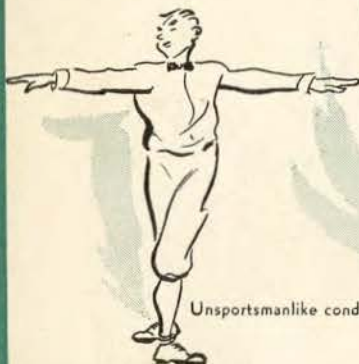
Player illegally in motion (penalty 5 yards; in shift plays 15 yards).



Illegal forward pass.



Illegal touching of a kicked or "free" ball.



Unsportsmanlike conduct.



← A score. Hands together after signal indicates safety; shifting hands in vertical plane above head, time out. Timekeeper answers signal by raising right hand.



Illegal formation or position by one or more players. →



Intentional grounding of pass.

YOUR SIGNAL TO  
*Enjoy Life*

DRINK

**JAX**

BEST BEER IN TOWN

*The Sportsman's Beverage*



JACKSON BREWING CO.  
NEW ORLEANS, LA.



# THE GREENIE

Vol. 11

OCTOBER 18, 1941

No. 3

Official Souvenir Football Program of Tulane University, Published for Each Home Game.

National Advertising Representative, Football Publications, 370 Lexington, New York City.

This week Tulane is host to the Tarheels of the University of North Carolina. In the last three years the margin of difference in the Tulane-North Carolina games has been a grand total of four points. This is a nice example of the kind of games that these two perennial powerhouses play. In those three games Carolina's Jim "Sweet" Lalanne was a powerful factor in the Tarheel's game. In 1938, Warren "Bronco" Brunner led the Green Wave to a 17-14 victory. This was one of the Bronco's greatest games. In 1939, the Tarheels and Tulane battled to a 14-14 deadlock. The 1940 game went to the Wave, 14-13, in the closing minutes.

\* \* \*

Carolina, always star-studded, has brought another strong outfit down this year. Stand-outs among the Carolinas this season are Harry Dunkle, blocking back and co-captain, Carl Suntheimer, the other co-captain and center, Frank O'Hare and Leo LeBlanc, both quarterbacks. LeBlanc, like Lalanne, is a Louisiana boy, hailing from Crowley.

\* \* \*

Last week the Greenies were out-scored by a hard fighting and alert Rice team. The Greenies, however, even in defeat, held up their high average of yardage gained, and still rank high in the nation in this department.

\* \* \*

Next week Tulane will celebrate its Homecoming day meeting the University of Mississippi's Rebels in Tulane Stadium. A fine game and many other activities are promised to the returning alumni, winding up with a big Homecoming dance in the gym Saturday night.

With the current season going into its fourth week, only four of the Southeastern Conference's twelve teams retain unblemished conference records. These four are Tulane, Tennessee, Georgia Tech, and Vanderbilt. Before the season is over it is very probable that all of these teams will have been tied or defeated by some other conference team.

## 1941 Schedule

Sept. 27—Boston College at New Orleans  
Oct. 4—Auburn at New Orleans  
Oct. 11—Rice at Houston  
Oct. 18—North Carolina at New Orleans  
Oct. 25—Ole Miss at New Orleans (Homecoming)  
Nov. 1—Vanderbilt at Nashville  
Nov. 8—Alabama at New Orleans  
Nov. 15—New York University at New York  
Nov. 29—L. S. U. at New Orleans



**Something *NEW*\*  
has been added!**

**W**IN A LETTER for your sweater, and see what something new can do! And remember: Something new has been added to a cigarette, too—to make it even more pleasant!

### \*Latakia

(Pronounced "La-ta kee'-a"), a flavorful tobacco from the Eastern Mediterranean. Carefully blended with other famous tobaccos, Latakia creates an entirely new—even finer Old Gold flavor.





---

## W S M B

occupies a 50-yard line seat at all Tulane football games to bring you Bill Brengel and his colorful play-by-play account of every happening

For those unfortunate enough to miss the game, W S M B invites you to tune in for quick, accurate details.

●

## W S M B

(1320 KC)

*The Red Network  
of the National Broadcasting Company*

---

## LA LOUISIANE

FAMOUS FRENCH  
RESTAURANT

●  
*Established 1881*  
●

La Louisiane is the most enjoyable place to dine in New Orleans; it is the center of social and business activity. La Louisiane has been famous for sixty-one years for its many special dishes which are truly representative of the best French and Creole cooking.

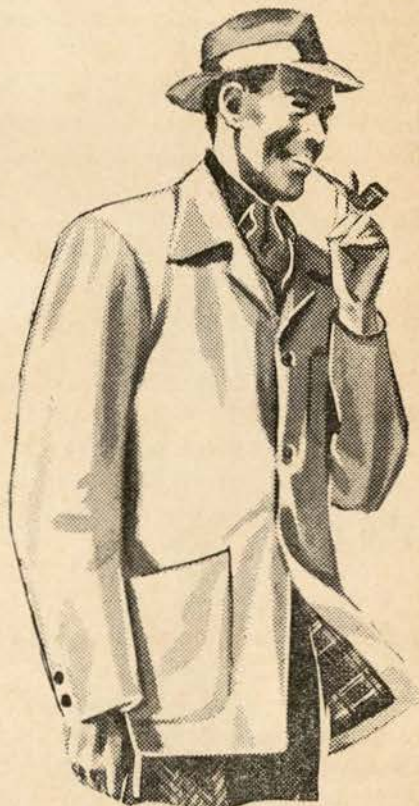
*Available for*

Feature and Sorority Dances, Banquets  
and other Social Functions.

725 IBERVILLE ST.  
Between Royal and Bourbon  
Telephone MAgnolia 4664

---

## Scoop of the week . . . .



Leisure Coats  
*by*

McGregor

THE MORLEY . . . all-wool cloth, with full plaid lining. In camel, amber tan, cashmere tan, covert, airforce blue, golf green. Sizes 36 to 46.

11.95

Mayer Israel's

---





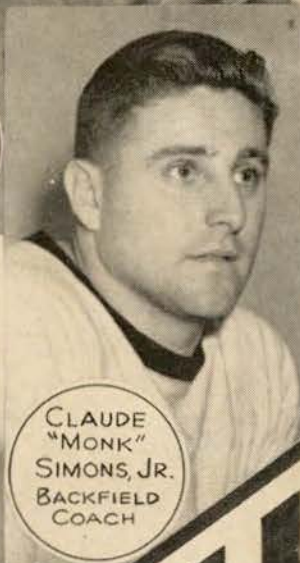
LOWELL  
"RED"  
DAWSON  
HEAD FOOTBALL  
COACH



CLAUDE  
"MONK"  
SIMONS, SR.  
TRAINER



CHARLIE  
RUCKER  
LINE  
COACH



CLAUDE  
"MONK"  
SIMONS, JR.  
BACKFIELD  
COACH



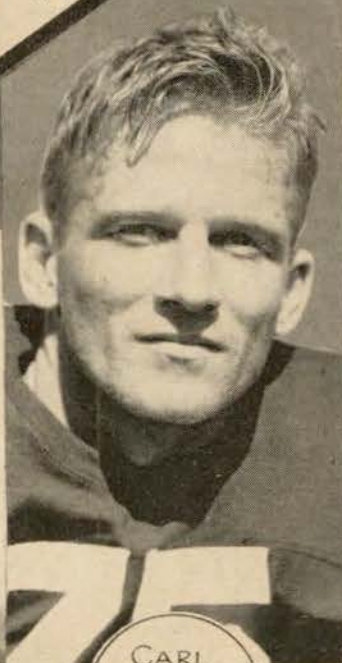
BOBBY KELLOGG  
FRESHMAN COACH



TOMMY O'BOYLE  
ASSISTANT LINE COACH



PETE MAIHLES  
ASSISTANT COACH



CARL  
DAILEY  
ASSISTANT  
FRESHMAN  
COACH



VERNON  
"LEFTY"  
HAYNES  
END  
COACH

**TULANE**





# ... the Fourth Quarter ends the Game. but Play Continues at The ROOSEVELT !



HOTEL ROOSEVELT is New Orleans' finest and largest. The center of Social and Business Activities . . . After each game, football fans gather here to enjoy themselves and score another touchdown.

## BLUE ROOM

Dance and Dine to the inimitable music of CHUCK FOSTER, and His Orchestra, tonight at Dinner and Supper. See famed Broadway stars in a colorful FLOOR SHOW at seven-thirty and again at twelve-thirty.

## FOUNTAIN LOUNGE

MUSIC—DANCING—COCKTAILS from five to seven-thirty and again from ten until one featuring CHARLIE WRIGHT and his orchestra with DAWN ROLAND as featured vocalist . . . Enjoy the Arthur Murray Champagne Hour at eleven-thirty nightly.

## COFFEE SHOP

DINNER in a quiet, comfortable atmosphere from six until ten o'clock . . . Prices begin at eighty-five cents. The Coffee Shop is also open for Breakfast and Luncheon . . .

## THE ROOSEVELT

FAY M. THOMAS, *Executive Vice-President*



# NORTH CAROLINA



CO-CAPT.  
HARRY DUNKLE  
*Blocking back*

CO-CAPT. CARL  
SUNTHEIMER  
*Center*

Frank O'HARA  
*Quarterback*

BILL SIGLER  
*Fullback*

DICK SIECK  
*Tackle*

JOHNNY PECORA  
*Halfback*

PINKY ELLIOT  
*End*

JOE AUSTIN  
*Halfback*





## DON'T SMASH IT.!

LET A CERTIFIED ELECTRIC APPLIANCE  
REPAIR SHOP FIX IT

You needn't put up with half-hearted performance from an electric appliance that could still give many years of smooth, efficient service . . . . Near you is a Certified Electric Appliance Repair Shop equipped to make whatever adjustments are necessary to put your appliance in first-class running order . . . . and so economically too, that you'll begin looking through storage closets for other appliances that can be made "good as new"!

Look for  
This Sign  
in Your  
Neighborhood



*This sign is your guarantee of:*

EFFICIENT WORKMANSHIP  
HIGH GRADE PARTS  
REASONABLE PRICES  
COURTEOUS TREATMENT  
SWIFT SERVICE

With necessary defense priorities creating new civilian shortages every day, it's a wise precaution to take good care of the work-saving, comfort-giving devices that lighten household duties and make life pleasanter for us all.

**NEW ORLEANS PUBLIC SERVICE INC.**

*"When better chickens are fried  
St. Clair's will fry 'em"*

• • •

## ST. CLAIR'S DRIVE INN

3705 S. Carrollton Ave.

Mixed Drinks

-:-

Open All Night

## HAUSMANN INCORPORATED

NEW ORLEANS'  
LEADING JEWELERS

• ■ •

*Special Department for College  
and  
Fraternal Jewelry*

*The Thinking Fellow  
Calls a Yellow*

•

Phone RAYmond 3311

•

TOYE BROS.  
**YELLOW CABS**



# PIGSKIN ROUNDUP

Here's your professor back again picking the weekly winners (?) in a football world that has become slightly cock-eyed. A few guesses:

Tennessee—ALABAMA — the Crimson tide to fool a few people.

Arkansas—TEXAS—Longhorns to roll on.

California—OREGON—strictly on past performances.

Columbia U.—GEORGIA—Bulldogs are good at intersectional victories.

Cornell—NAVY—the Middies seem to be the power of the East.

DARTHMOUTH — Harvard — the Big Green of the East seems to have it.

Davidson—VIRGINIA POLYTECHNIC INSTITUTE—the Gobblins are due.

DUKE—Colgate—not stopping here.

Georgia Tech—VANDERBILT — Commodores get the nod.

LOUISIANA STATE U. — Rice — the professor loves to pick upsets.

MINNESOTA—Pittsburgh—the Golden Gophers by plenty.

MISSISSIPPI—Holy Cross—maybe we've been misled, but still the Rebels.

SANTA CLARA—Michigan State—Buck Shaw has another great team.

TEXAS A & M—Texas Christian—one of those wild West shows where anything can happen, but the Aggies, sparked by Derace Moser, get the nod.

Considerate Travelers

*send daily*

WESTERN UNION

**TOURATE**

TELEGRAMS

to keep the home  
folks posted

only **35¢**

TO ANY WESTERN UNION POINT  
IN THE UNITED STATES











Here's a Shoe  
New Orleans Likes ...

*Pigskin*



For campus or casual wear try a pair of these comfortable new moccasins built of the smartest and toughest leather of the season—Genuine Imported Pigskin.

**Jarman** \$5  
SHOES FOR MEN to \$7.85

*Some Styles Higher*

**LABICHE'S**

311 BARONNE

**The official football  
timing watch for**

**TULANE UNIVERSITY**

*Longines*  
**THE WORLD'S MOST HONORED WATCH**

Longines Watches, appointed official timepiece for this football game, were also used for official timing for the 1941 A.A.U. and I.C.4A Track Championships, the National A.A.U. Men's and Women's Swimming Championships, and many other important sports events. Longines Watches were selected as exclusive official timepiece for the 1940 Olympics. Among many associations which have chosen Longines Watches as official timepiece are National Aeronautic Association, American Automobile Association, and U. S. Polo Association.

Other honors bestowed upon Longines Watches for accuracy and elegance include 10 world's fair grand prizes and 28 gold medal awards. Throughout the world, no other name on a watch means so much as Longines, *The World's Most Honored Watch*.

*Watches of accuracy  
and elegance by Longines*



The skill, experience, and workmanship necessary for the construction of Longines Watches for precision timing, aviation and navigation are reflected in the greater accuracy of every Longines Watch at any price. Longines jewelers show Longines personal watches of distinction from \$40 upward; also Wittnauer Watches from \$24.75, products of—  
Longines-Wittnauer Watch Co., Inc., 580 Fifth Avenue, New York, N. Y.



# CAM-PIX

A MEDLEY OF  
CAMPUS PICTURES

© 1940 BY HORACE RENEGAR

LOUISE NELSON, Newcomb student body president.







●  
Kurt Mislow, German refugee  
who entered Tulane this year.

●  
The interior of the Middle  
American Research Institute.  
●



CALLING ALL **TULANIANS** TO SEE THE  
**Porter's**  **NEWEST IN CORRECT  
 APPAREL...**  
 CARONDELT CORNER GRAVIER



Fernando Alvarado, of Costa Rica, whose grandfather's bust is in the Pan American Union of Washington, D. C.

Newcomb girls in lab session.



Swank THE COLLEGIATE JEWELRY AT.. Porter's



AT THE GAME  
and  
AFTER THE GAME  
ENJOY



**D** Equipment for all sports...

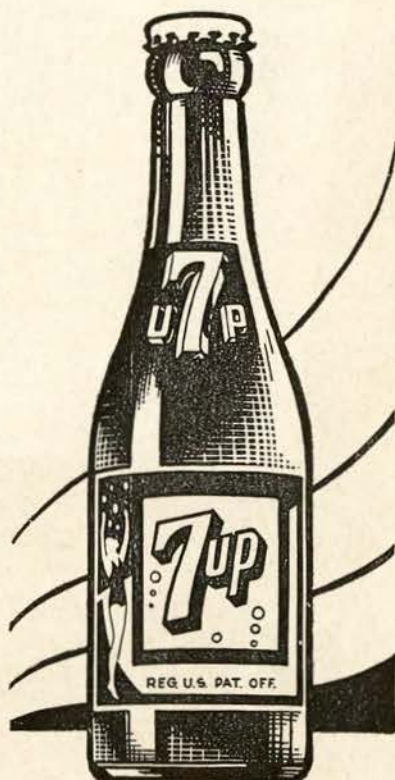
**U** *Specialists in all types of*  
**N** *school athletic*  
**L** *supplies*

**A** .  
**P** **Sporting Goods Co., Inc.**  
138 Carondelet Street  
MAGNOLIA 5891

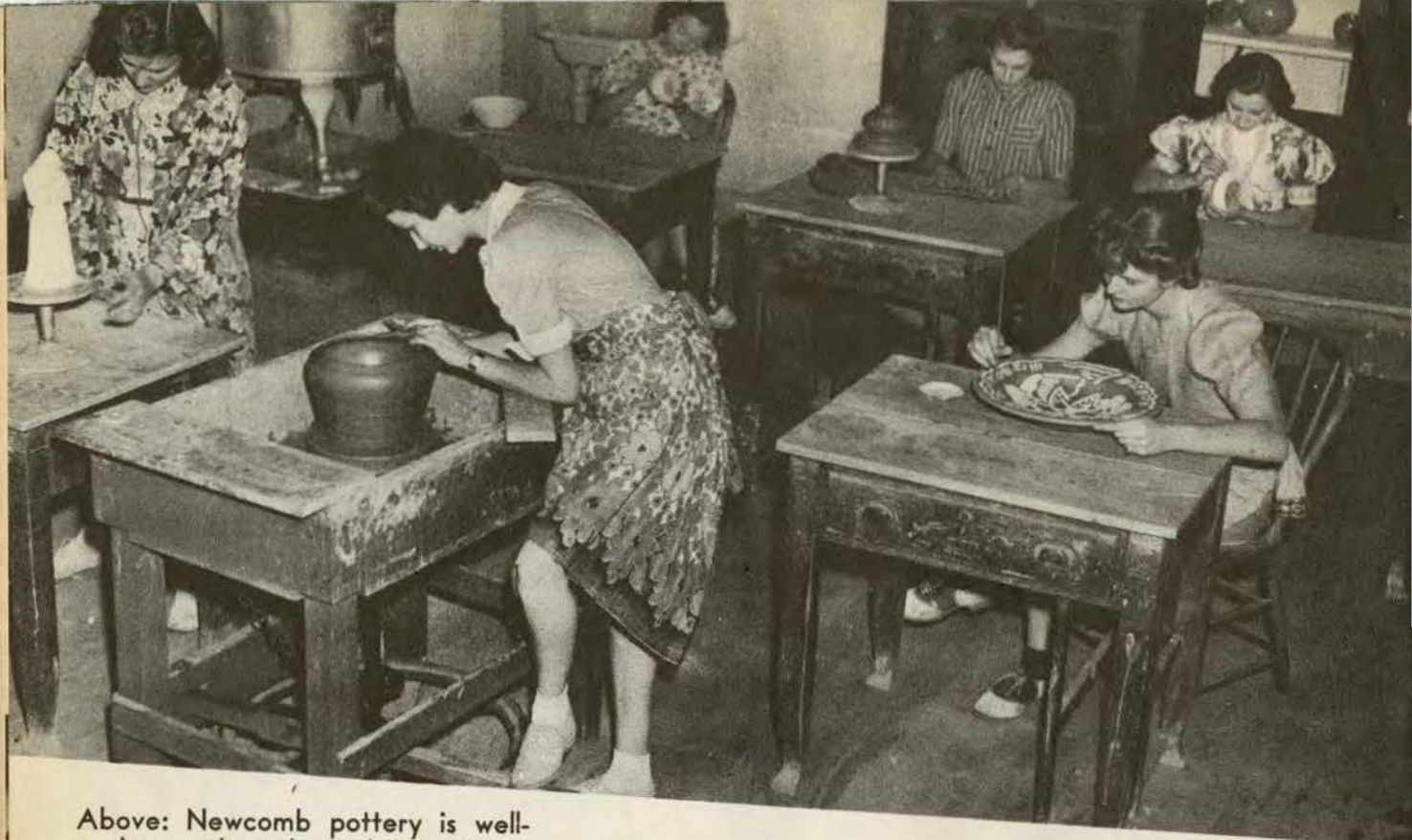
Stop!  
Look!  
Listen!

There's a 7-Up Boy right  
down in front of you! Call  
him now and Fresh-Up

With

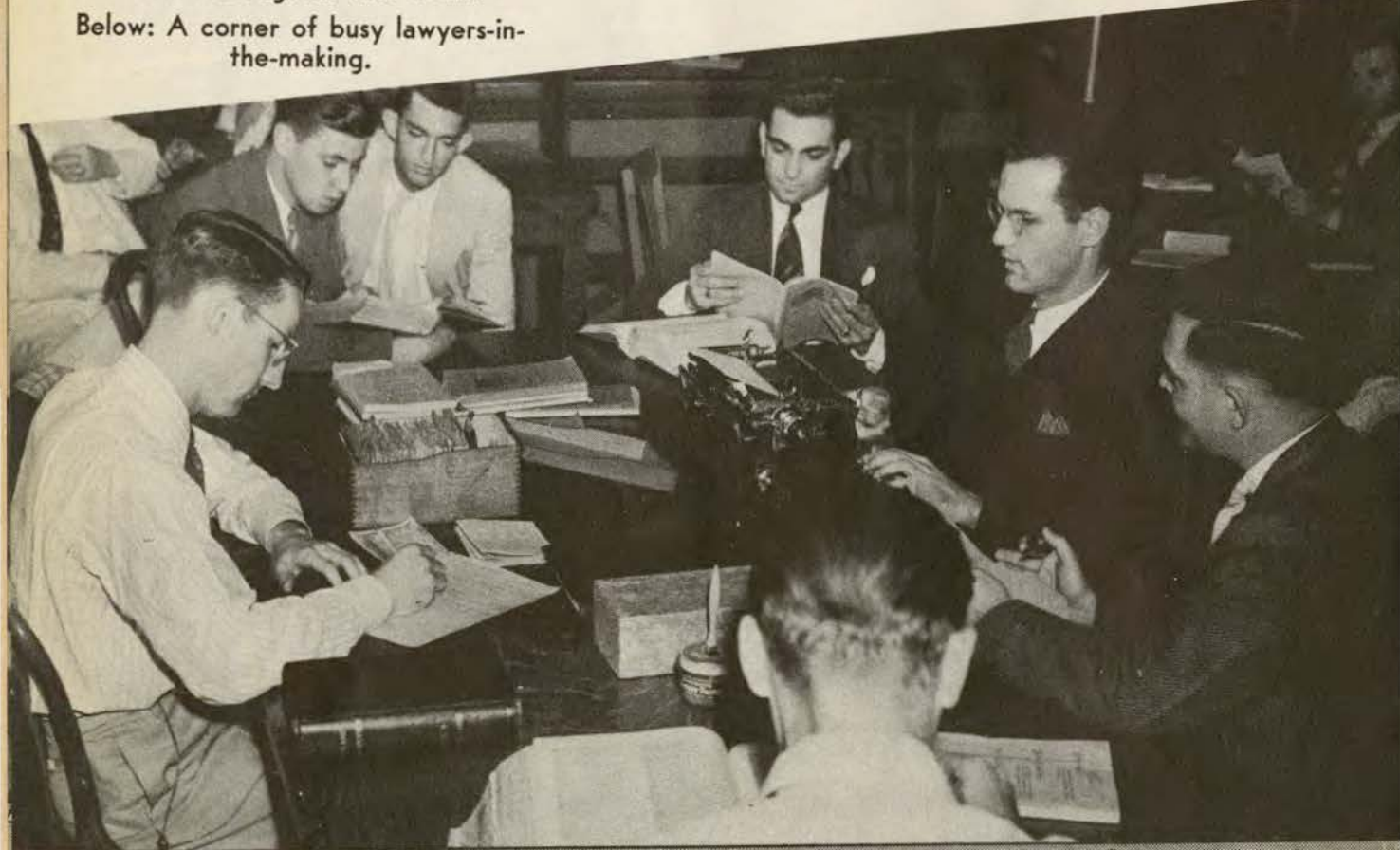






Above: Newcomb pottery is well-known throughout the South.

Below: A corner of busy lawyers-in-the-making.



**TIES** Have that Touchdown Look at *Porter's*



## NORTH CAROLINA

LE English 83  
LT Blandin 71  
LG Tittle 61  
C Mandich 50  
RG Wolbrette 64  
RT McCollum 70  
RE Hornick 80

QB  
Cox or Pecora 41  
12

LHB  
Dunkle or Barksdale 20  
21

FB  
O'Hare or Jordan 40  
32

### SQUAD LIST

Ray Wolf, Coach  
10 Austin, rh  
12 Pecora, rh  
13 Serlich, rh  
15 Corn, rh  
16 Philpott, rh  
20 Dunkle, lh  
21 Barksdale, lh  
23 Gugert, lh  
24 Webb, lh  
30 Sigler, fb  
31 Croom, fb  
32 Jordan, fb  
33 Baker, fb  
40 O'Hare, qb  
41 Cox, qb  
42 LeBlanc, qb

43 Connor, qb  
50 Suntheimer, c  
51 Cooke, c  
52 Benton, c  
53 Wood, c  
60 Faircloth, rg  
61 Nowell, lg  
62 Wolf, rg  
63 Byrum, lg  
64 Gordon, rg  
65 Cheek, lg  
66 Marshall, rg  
69 Ribet, lg  
70 Heymann, rt  
71 Sieck, lt  
72 White, rt

73 Michaels, lt  
74 Lewis, rt  
75 Parker, lt  
76 Nicolls, rt  
77 Graham, lt  
78 Johnston, rt  
81 Elliot, le  
82 Hodges, re  
83 Hussey, le  
84 Richardson, re  
86 Turner, re  
87 Miller, le  
88 Crone, re  
89 Stallings, le

### OFFICIALS

Referee T. G. Kain (Georgia)  
Umpire W. Powell (Wisconsin)

## TULANE

LE English 83  
LT Blandin 71  
LG Tittle 61  
C Mandich 50  
RG Wolbrette 64  
RT McCollum 70  
RE Hornick 80

LHB  
R. Glass 40

FB  
Thibaut 30

RHB  
Brignac 10

### SQUAD LIST

Lowell P. Dawson, Coach

10 Brignac, hb  
11 Ely, hb  
12 Parker, hb  
18 Turchin, hb  
20 McDonald, qb  
21 Grush, qb  
22 Glass, T., qb  
29 Maginnis, qb  
30 Thibaut, fb  
32 Pracko, fb  
37 Sims, hb  
38 Smith, hb  
40 Glass, R., hb  
42 Thomas, L., hb  
44 Walker, hb  
45 Landry, hb  
50 Mandich, c  
51 Rice, c

52 Stolen, c  
53 Walshe, c  
54 Johnson, c  
55 Krobort, c  
56 Thomas, M., g  
60 Barnidge, g  
61 Tittle, g  
62 Rhea, K., g  
63 Bittman, g  
64 Wolbrette, g  
65 Stern, g  
66 Bentz, g  
67 Hindelang, g  
68 Garbark, g  
69 Owens, g  
70 McCollum, t  
71 Blandin, t  
72 Dufour, t

73 Klein, t  
74 Faust, t  
75 McAfee, t  
76 Asbury, t  
77 Mollere, g  
78 Rhea, C., t  
79 Maccall, t  
80 Hornick, e  
81 Rowland, e  
82 Comer, e  
83 English, e  
84 Mullin, e  
85 Cies, e  
86 Holland, e  
88 Vanzant, e  
89 Cuyler, e  
96 Eryich, g

### OFFICIALS

Head Linesman Frank O. Waddey (Ga. Tech)  
Field Judge T. L. Johnson (Ga. Tech)

At all the Games  
**It's CHESTERFIELD**  
They Satisfy





## ENJOY A FAMOUS NEW ORLEANS DISH TONIGHT!

*Prepared by these world famous  
New Orleans Restaurants*

**ANTOINE'S**  
713 St. Louis Street

**ARNAUD'S**  
813 Bienville Street

**BROUSSARD'S**  
819 Conti Street

**KOLB'S**  
125 St. Charles Street

**COURT of the TWO SISTERS**  
615 Royal Street

GOOD FOOD, well cooked and faultlessly served by trained help, has won and kept world-wide fame for these fine New Orleans Restaurants.

## “Time Out”

DRINK—

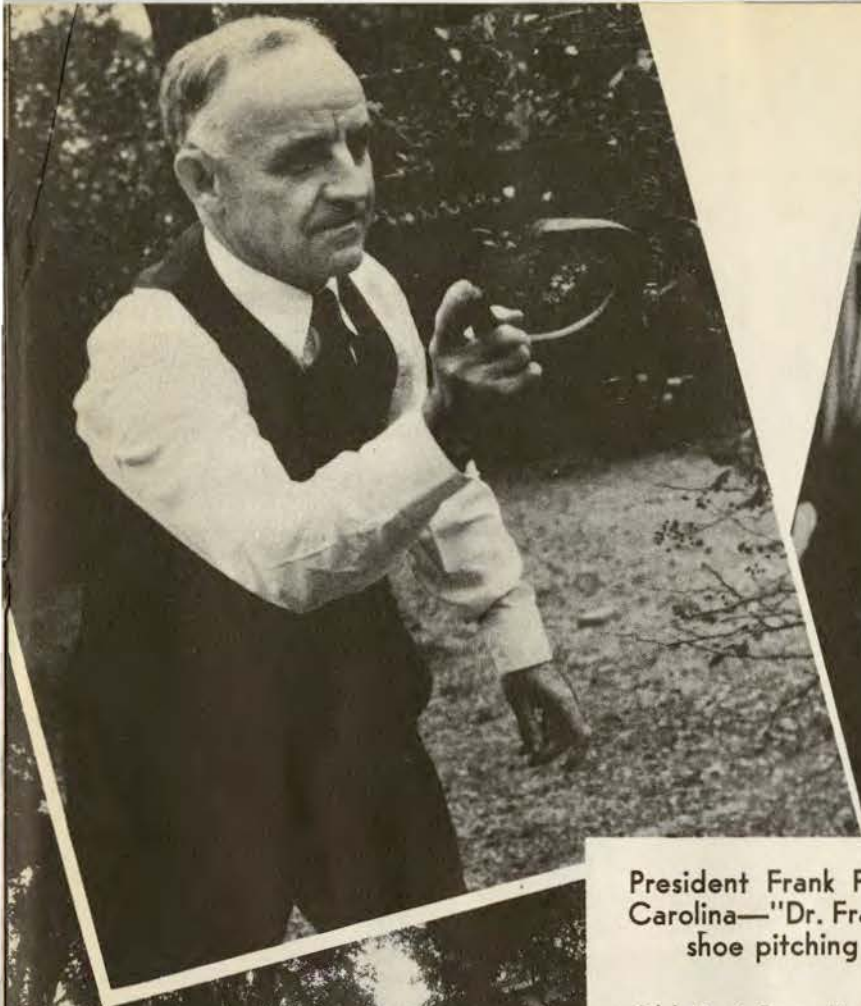
**Coca-Cola**  
TRADE MARK  
REG. U.S. PAT. OFF.

PAUSE—

RELAX—

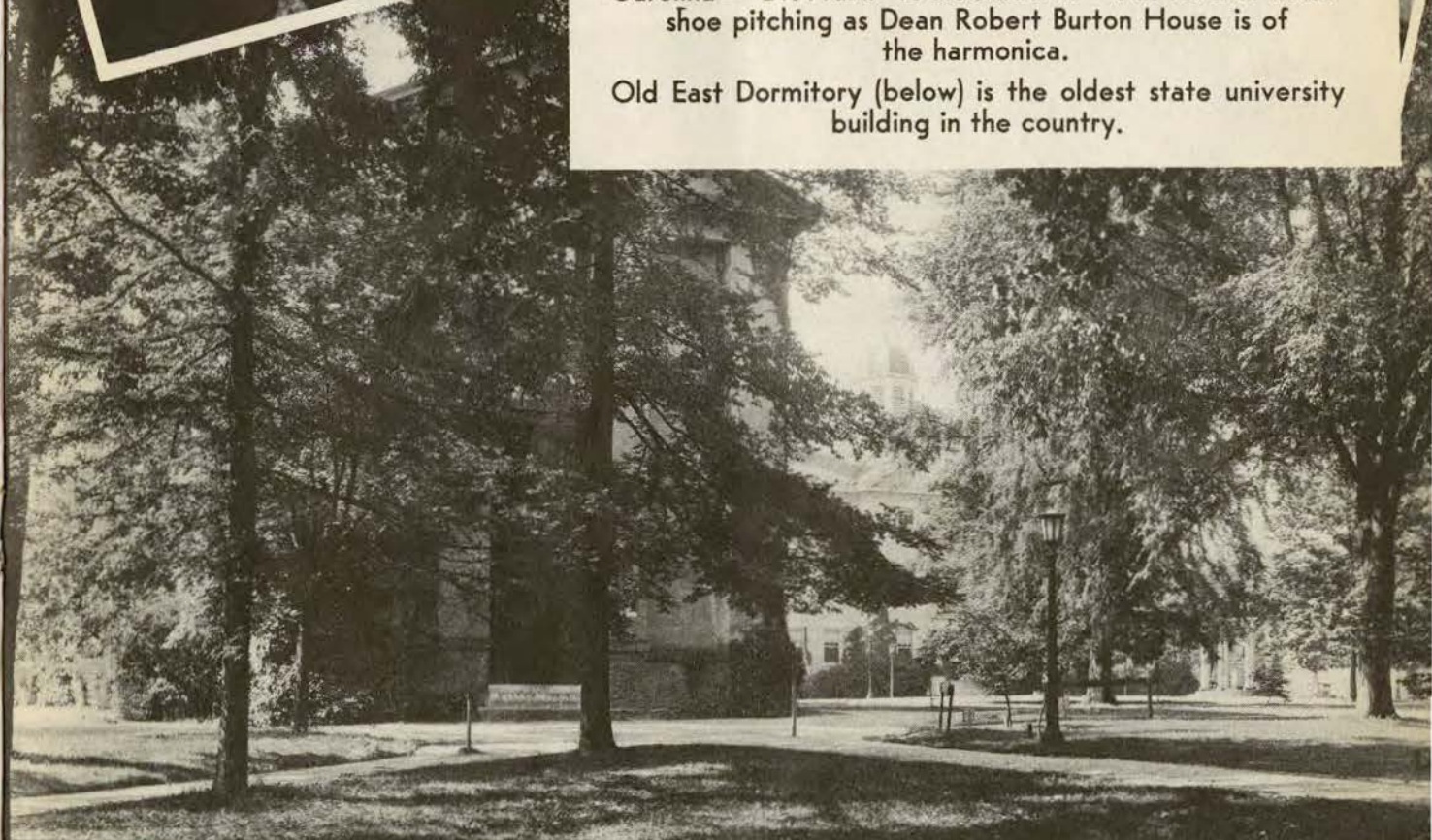
REFRESH YOURSELF





President Frank P. Graham of the University of North Carolina—"Dr. Frank" to his students—is as fond of horseshoe pitching as Dean Robert Burton House is of the harmonica.

Old East Dormitory (below) is the oldest state university building in the country.



**STYLEPARK HATS**  
Have the Tulane Schedule  
on the inside!

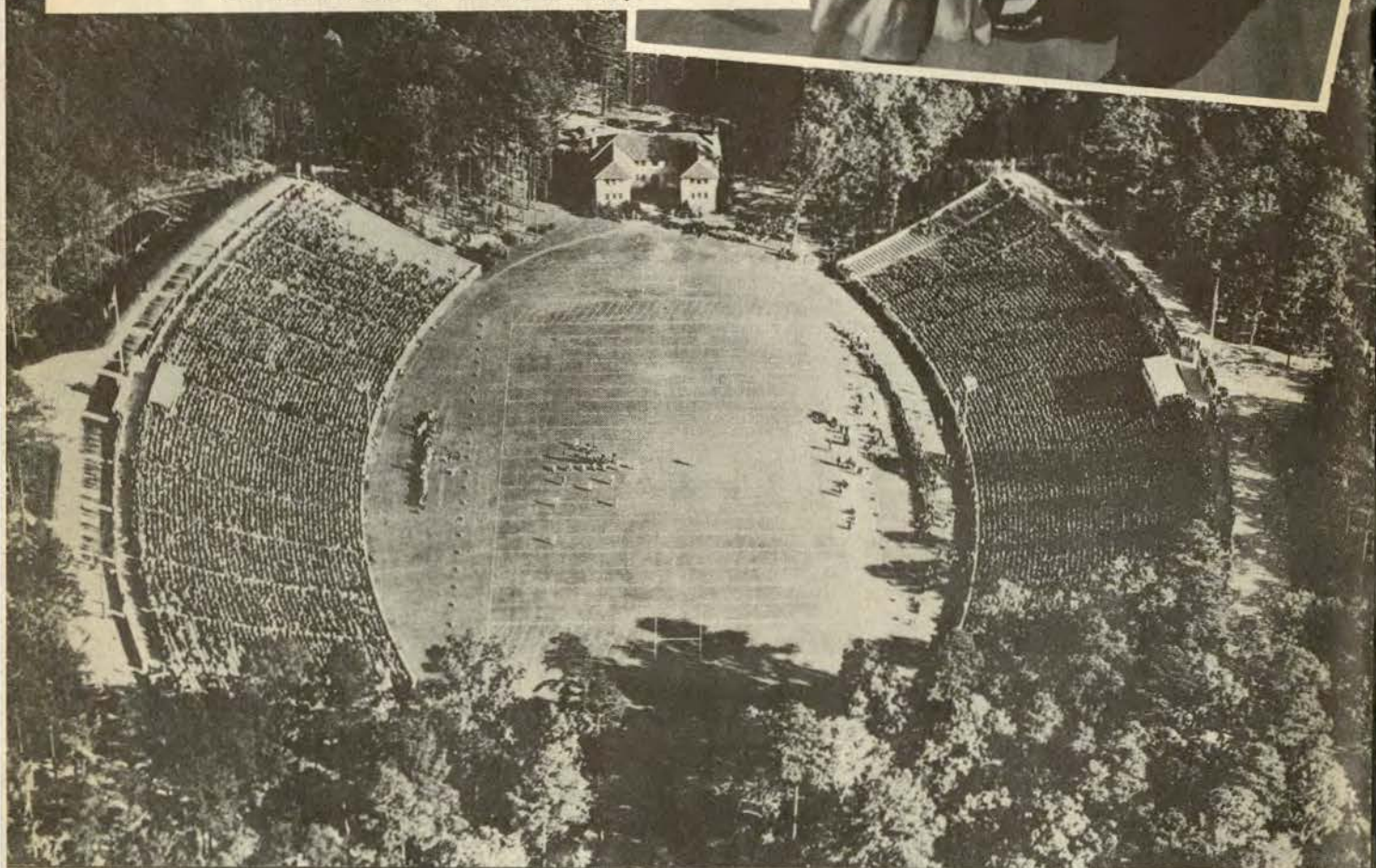
**Porter's**





Romance in a night club—and on a dance floor too. The girl under the heart is Frances Moses of Sweet Briar, with Lawson Turner.

The Tar Heel Stadium, situated in a natural bowl, is one of the most beautiful in the country.



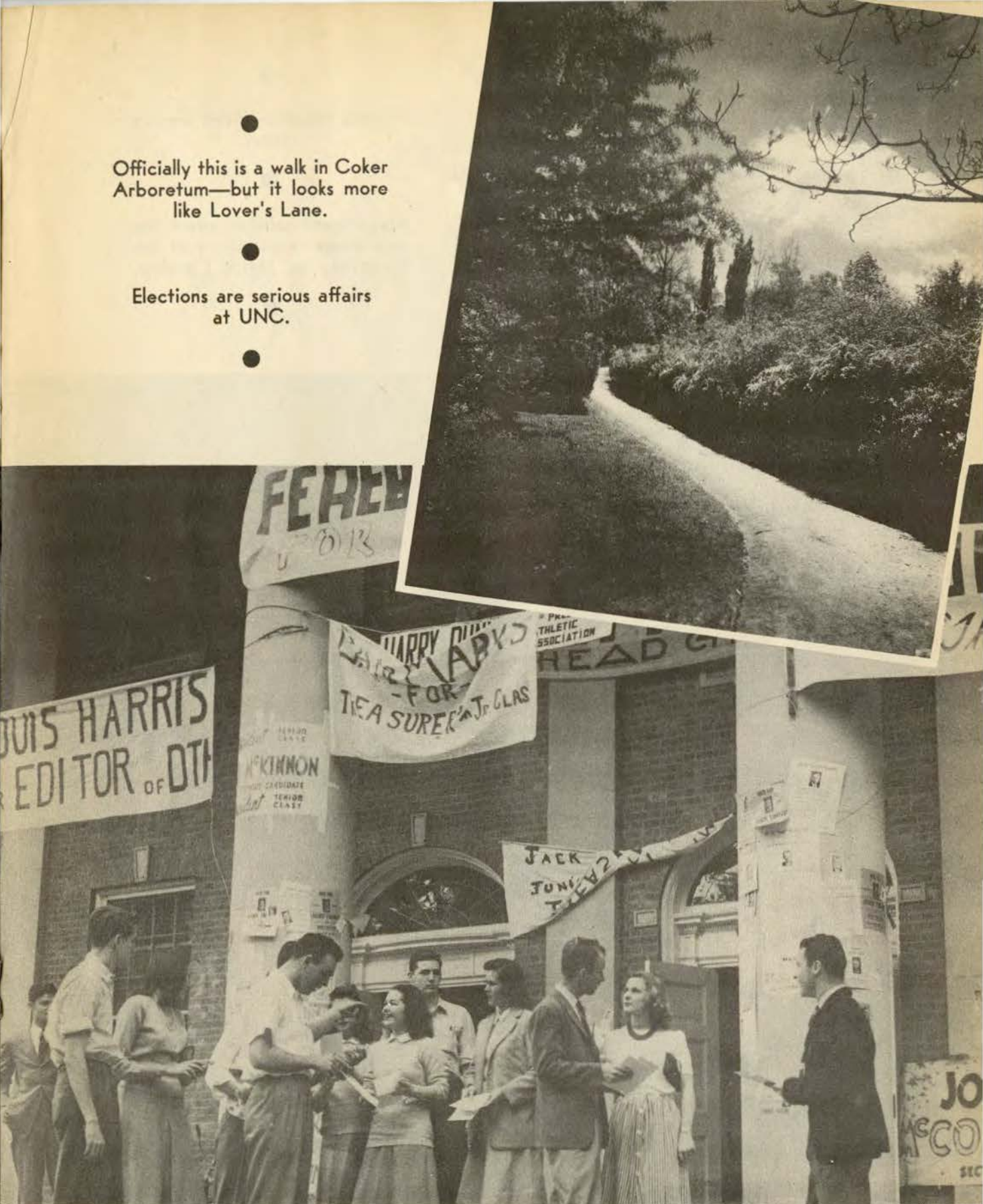
*Westminister*  
*Hosiery* JUST LIKE  
COLLEGE MEN  
WANT AT..

*Porter's*



Officially this is a walk in Coker Arboretum—but it looks more like Lover's Lane.

Elections are serious affairs at UNC.



Nunn-Bush



SHOES Give  
Foot Comfort and  
Style Rightness..

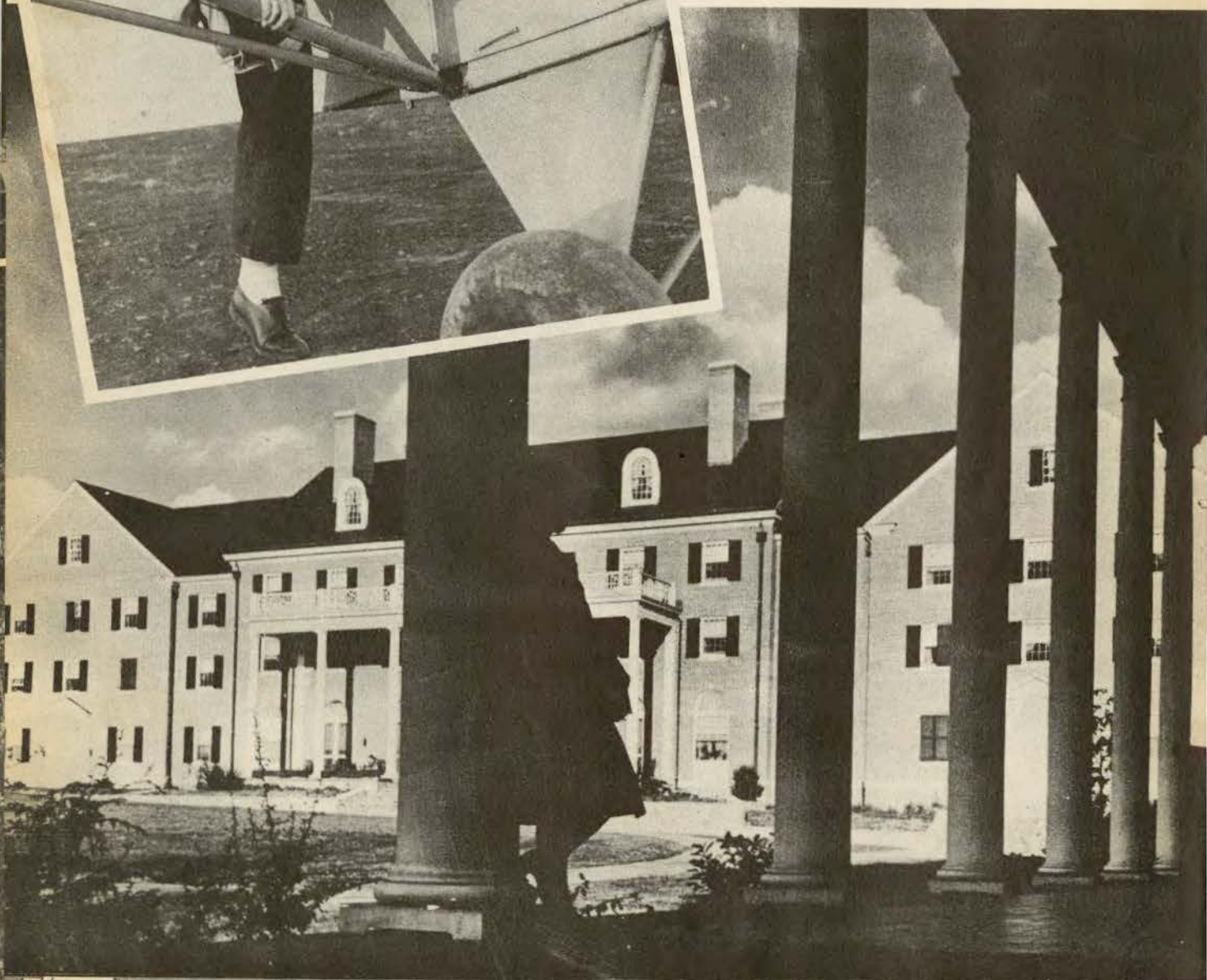
Porter's





●  
Virginia Broome—need we say  
more?  
●

Magnificent columns adorn the  
new women's dormitory at the  
University of North Carolina.  
●



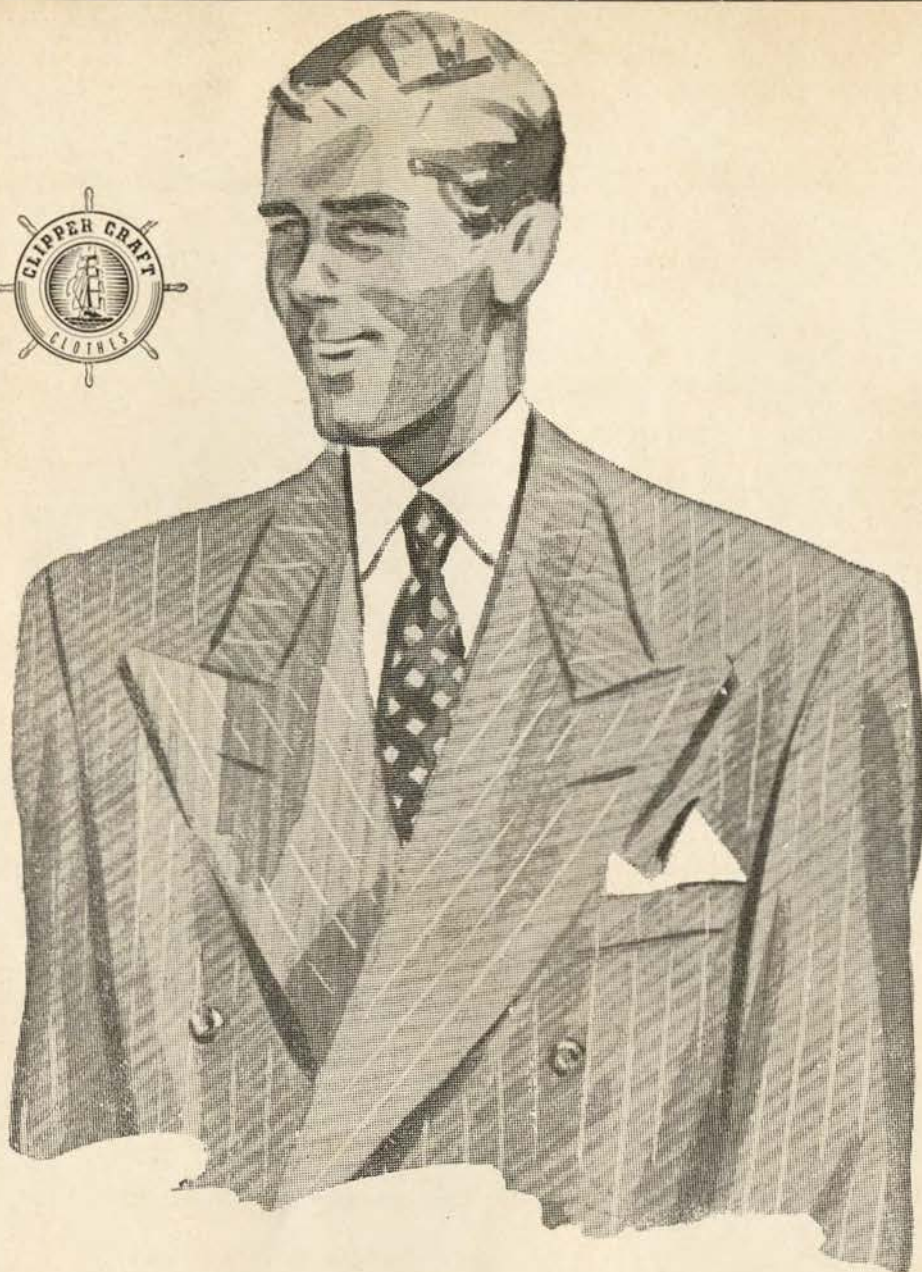
CALLING ALL **TULANIANS** TO SEE THE  
**NEWEST IN CORRECT  
APPAREL...**

**Porter's**



CARONDELT CORNER GRAVIER





AT THE SAME LOW PRICE

**CLIPPER CRAFT**

SUITS AND TOPCOATS

**\$ 25**

*Maison Blanche*

---

---



A little information on North Carolina's coach, Raymond "Bear" Wolf, in regard to the stars he has produced. Beginning with Darrell Lester the big Texas Christian All-American center, who starred in the Sugar Bowl on January 1, 1936, local fans can remember all of Wolf's great stars. After Lester came Andy Bershak, Carolina end, in '37. Then came Steve Maronic, tackle, in '38. After Maronic were Severin, Stirnweiss, and the very well-known Jim "Sweet" Lallanne. Although not all of these boys made a majority of the first team All-Americans, that is still a fine list of stars to turn out in a few years. Look out for this year.

## ALMA MATER

*Sing these words as Tulane's Alma Mater is played*

### I.

We praise thee for thy past, O Alma Mater!  
Thy hand hath done its work full faithfully!  
The incense of thy spirit hath ascended  
And filled America from sea to sea!

### II.

We praise thee for thy present, Alma Mater!  
Today thy Children look to thee for bread!  
Thou leadest them to dreams and actions  
splendid!  
The hunger of their souls is richly fed!

### III.

We praise thee for thy future, Alma Mater!  
The vista of its glory gleameth far!  
We ever shall be part of thee, great Mother!  
There thou wilt be where e'er thy children are!

### CHORUS:

Olive Green and Blue, we love thee!  
Pledge we now our fealty true  
Where the trees are ever greenest,  
Where the skies are purest blue!  
Hear us now, O Tulane, hear us!  
As we proudly sing to thee!  
Take from us our hearts' devotion!  
Thine we are, and thine shall be!

## ON THE AIR



EDDIE REED

Regal Beer has selected Eddie Reed, noted football expert to analyze the pros and cons of Football with you over Station WSMB.

## TUNE IN

### TO REGAL BEER'S FOOTBALL BROADCAST

Hear from an expert just how football strategy spells the difference between victory and defeat.

**WSMB Every Thursday Night, 6:30 p. m.**

**\$10.00 Weekly Prize**

to the person guessing the closest score of selected game.

**\$175.00 in Prizes**

to the best selection of a 5 yr. all star Southeastern Conference Team.

*For details tune into WSMB*

## REGAL BEER

American Brewing Co.

New Orleans

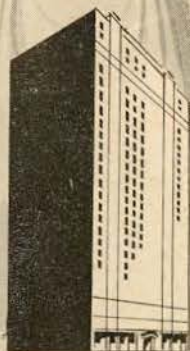




## *New Orleans' Finest*

In America's Most Interesting City

HOTEL ROOSEVELT is located in the heart of Romantic old New Orleans. It is the center of business and social activities and is close to the Theatre, Shopping, French Quarter, and Business Districts . . . You will like the tasteful luxury and home-like atmosphere of this modern hotel where the traditions of Southern Hospitality are maintained the year 'round.



"Pride of the South"

# **HOTEL ROOSEVELT**

Fay M. Thomas, Executive Vice-President



# TULANE



50

CAPTAIN  
PETER  
MANDICH  
CENTER

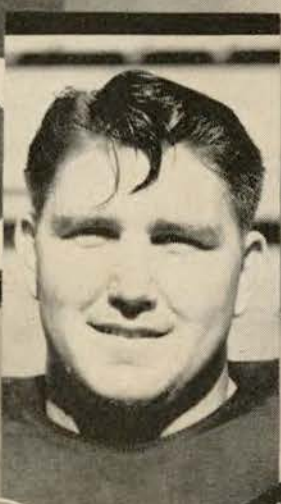


ST. JOHN SMITH  
HALFBACKS



40

ROBERT  
GLASS  
HALFBACK



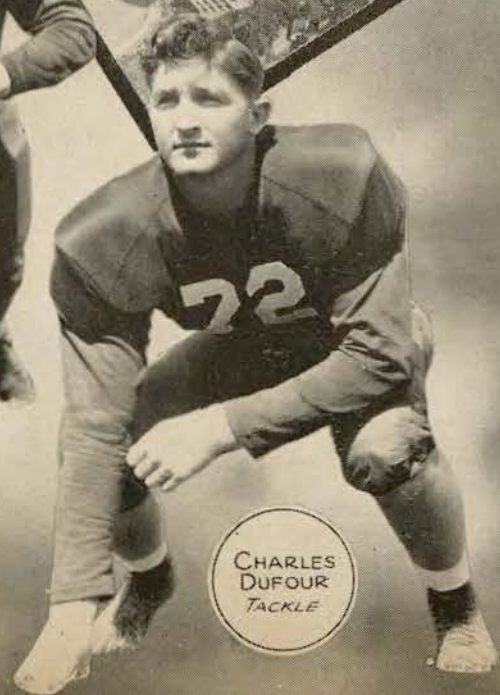
ERNE  
BLANDIN  
TACKLE



HARLEY  
MCCOLLUM  
TACKLE



JACK  
TITTLE  
GUARD



CHARLES  
DUFOUR  
TACKLE



HAROLD  
MULLIN  
END



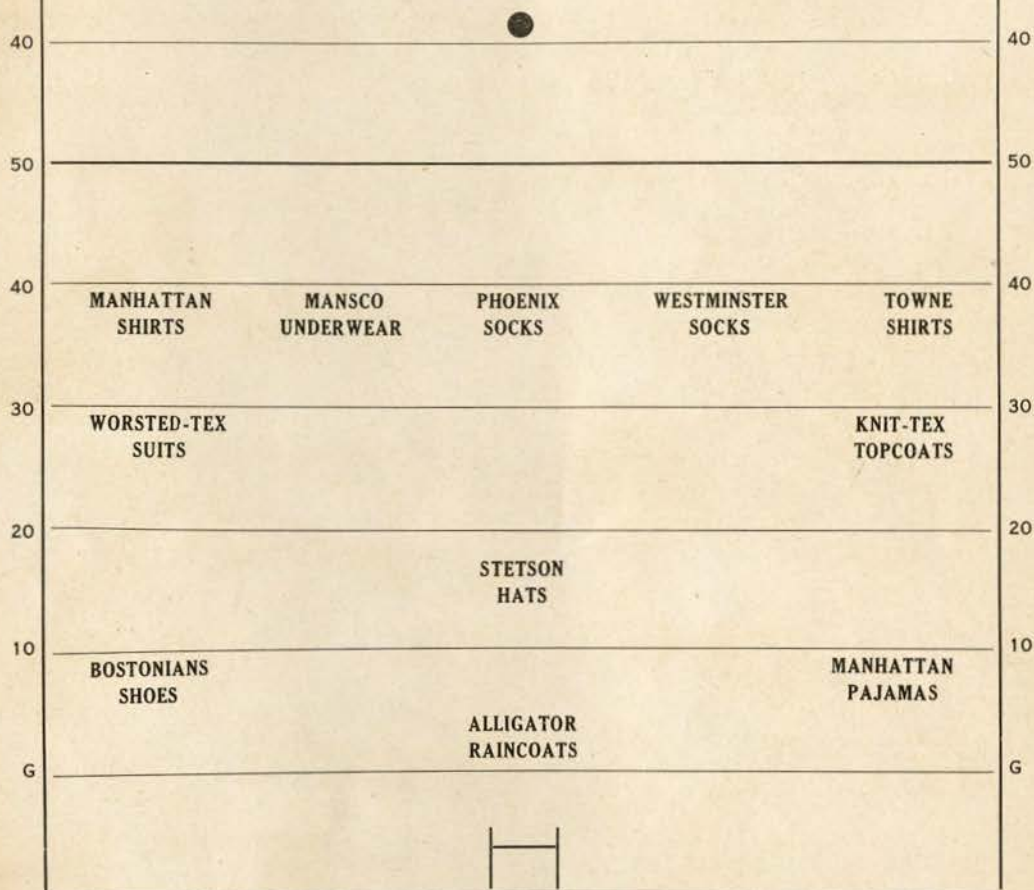
JAMES  
THIBAUT  
FULLBACK



*Always a Winning Line-Up*

IN

# HOLMES MEN'S STORE



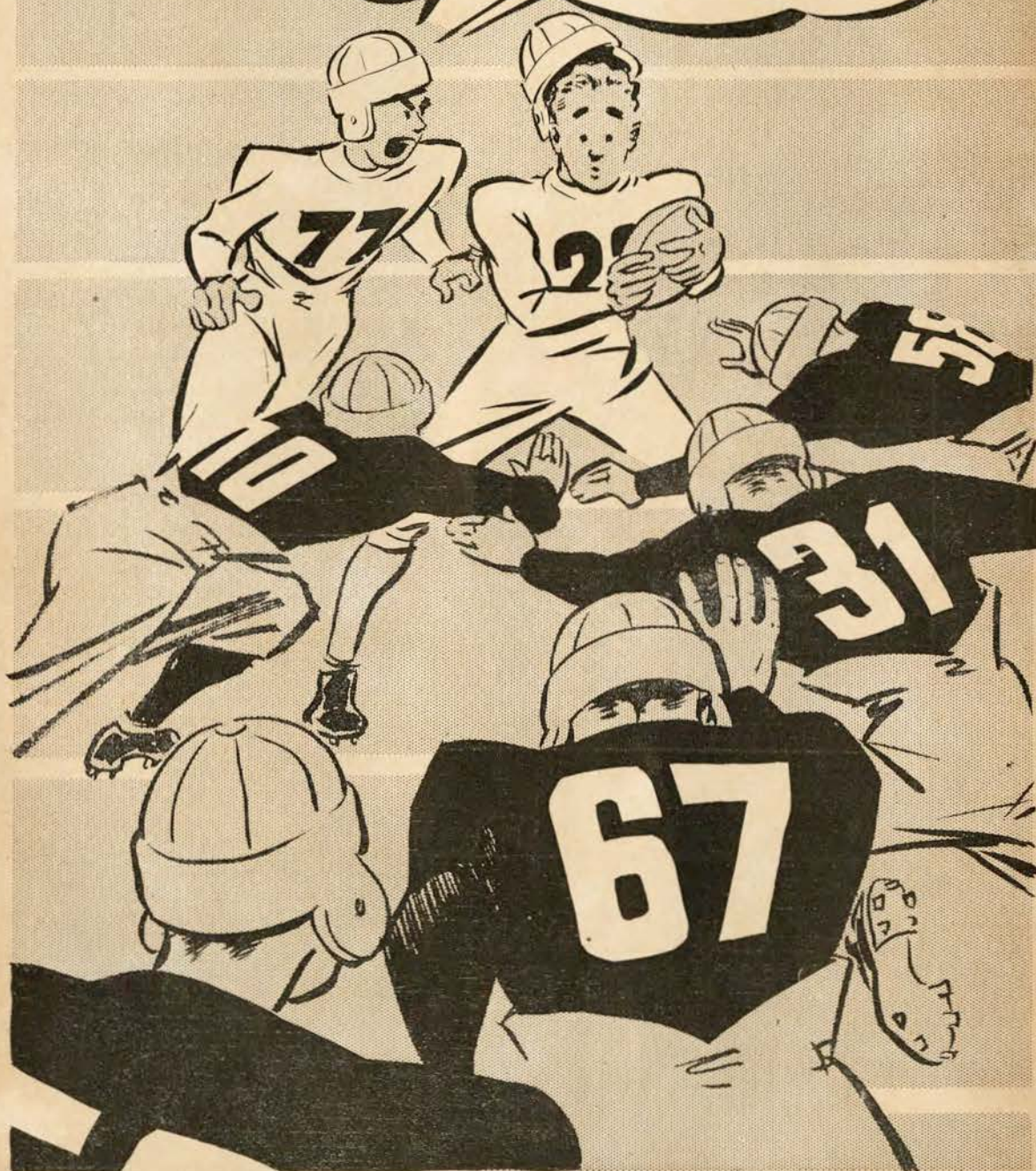
⊗ [ LUNCH AND DINE IN ] ⊗  
HOLMES RESTAURANT

**D. H. HOLMES CO.**  
LIMITED



DON'T LOOK NOW, HORACE, BUT  
ISN'T THE STADIUM COLORFUL  
WITH SO MANY NEW FALL CLOTHES  
FROM

**GODCHAUX'S?**





# TULANE



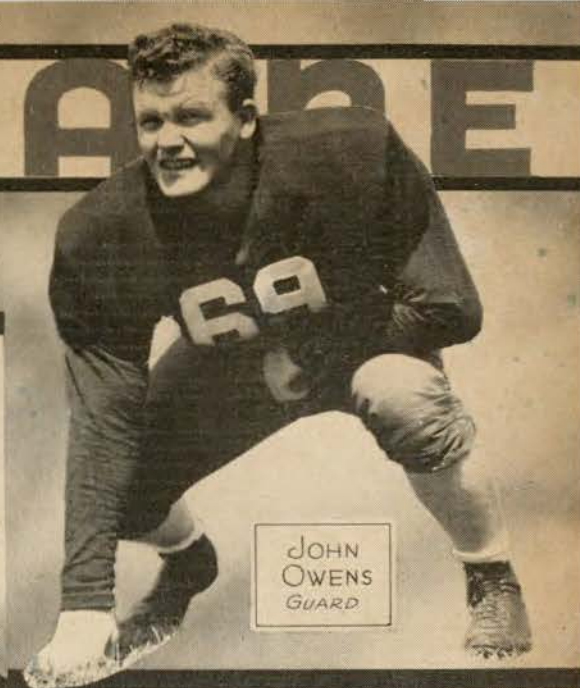
THOMAS  
GLASS  
QUARTERBACK



ROBERT  
GRUSH  
QUARTERBACK



JOHN  
SIMS  
HALFBACK



JOHN  
OWENS  
GUARD



GORDON  
ENGLISH  
END



JAMES  
ELY  
HALFBACK



ROMAN  
BENTZ  
GUARD



WALTER  
MCDONALD  
QUARTERBACK



LOU  
THOMAS  
HALFBACK



HENRI  
WOLBRETTE  
GUARD



WILLIAM  
HORNICK  
END



LEONARD  
STERN  
GUARD





# TULANE ROSTER

No.	PLAYER	HOME TOWN
10	Trignac, Julian	Lutcher, La.
11	Ely, James	Shaw, Miss.
12	Parker, Dallas	Pachuta, Miss.
14	Ford, G. W.	Lake Charles, La.
18	Turchin, Robert	Miami, Fla.
20	McDonald, Walter	Struthers, Ohio
21	Grush, Robert	New Orleans, La.
22	Glass, Thomas	New Orleans, La.
29	Maginnis, William	New Orleans, La.
30	Thibaut, James	New Orleans, La.
32	Pracko, Bernard	Tarentum, Pa.
37	Sims, John	Delhi, La.
38	Smith, St. John	New Orleans, La.
40	Glass, Robert	Massillon, Ohio
42	Thomas, Lou	New Orleans, La.
44	Walker, Raymond	New Orleans, La.
45	Landry, George	Port Arthur, Tex.
50	Mandich, Peter	Gary, Ind.
51	Rice, Lawrence	Gulfpot, Miss.
52	Stelen, Alvin	Eau Claire, Wisc.
53	Walshe, Marion	New Orleans, La.
54	Johnson, Owen	Peru, Ind.
55	Krobert, Bernard	Beaver Dam, Wisc.
56	Thomas, Manuel	Wheeling, W. Va.
59	Earnidge, Leroy	Shreveport, La.
61	Tittle, Jack	Marshall, Tex.
62	Rhea, Kermit	Jonesboro, Ark.
63	Bittman, Rudolph	New Orleans, La.
64	Wolbrette, Henri	Shreveport, La.
65	Stern, Leonard	Camden, Ark.
66	Bentz, Roman	Horicon, Wisc.
67	Hindelang, Paul	Carrollton, Ill.
68	Garbark, Thomas	Edgewood, Pa.
69	Owens, John	New Orleans, La.
70	McCollum, Harley	Stillwater, Okla.
71	Blandin, Ernie	Keighley, Kan.
72	Dufour, Charles	New Orleans, La.
73	Klein, Victor	Erie, Pa.
74	Faust, Richard	New Orleans, La.
75	McAfee, Howard	New Orleans, La.
76	Astury, Stanley	New Orleans, La.
77	Mollere, Jules	Ponchatoula, La.
78	Rhea, Creighton	Jonesboro, Ark.
79	Maccall, Alexander	New Orleans, La.
80	Hornick, William	LaBelle, Pa.
81	Rowland, Jay	Hot Springs, Ark.
82	Comer, Martin	Gary, Ind.
83	English, Gordon	Midland, Tex.
84	Mullin, Harold	Bogalusa, La.
85	Cies, Joseph	Carlinville, Ill.
86	Holland, Milton	Shreveport, La.
88	Vanzant, Joe	Houston, Tex.
89	Cuyler, Sherwood	Algiers, La.
89	Eryich, Clarence	Natchez, Miss.

Position	Wgt.	Yrs. on Varsity
HB	165	2
HB	192	2
HB	183	1
HB	175	1
HB	150	2
QB	200	2
QB	185	2
QB	188	2
QB	196	2
FB	195	3
FB	180	2
HB	189	2
HB	178	3
HB	193	3
HB	185	2
HB	153	2
HB	170	1
C	193	3
C	202	1
C	192	1
C	200	1
C	206	2
C	195	2
C	201	2
G	211	1
G	200	3
G	200	2
G	192	2
G	207	2
G	193	2
G	230	2
G	210	1
G	197	2
G	203	2
T	235	3
T	235	3
T	206	3
T	216	1
T	204	2
T	226	1
T	227	1
G	190	2
T	210	2
T	223	2
E	200	2
E	203	1
E	200	2
E	200	2
E	195	3
E	195	1
E	186	1
E	198	2
E	188	2
G	233	1

# NORTH CAROLINA ROSTER

No.	PLAYER	HOME TOWN
10	Austin, Joe	Dadin, N. C.
12	Pecora, Johnny	Warsaw, N. C.
13	Serlich, Emil	Norfolk, Va.
15	Corn, Lovick	Macon, Ga.
16	Philpott, Hubert	Lexington, N. C.
20	Dunkle, Harry	Lock Haven, Pa.
21	Barksdale, Dave	Whiteville, N. C.
23	Gugert, Fran (Junie)	Chapel Hill, N. C.
24	Webb, Henry (Toby)	Tarboro, N. C.
30	Sigler, Bill	Milwaukee, Wisc.
31	Croom, Clay	Kinston, N. C.
32	Jordan, Raymond	Gastonia, N. C.
33	Fak r, Charlie	Greensboro, N. C.
40	O Hare, Frank	New York City
41	Cox, Hugh (Shot)	Camd-n, S. C.
42	LeBlanc, Leo	Crowley, La.
43	Connor, Roy	Shelby, N. C.
50	Suntheimer, Carl	Hathboro, Pa.
51	Cooke, Mike	Childs, Pa.
52	Benton, Horace (Red)	Wilson, N. C.
53	Wood, John	Wilmington, N. C.
60	Faircloth, Bill	Clinton, N. C.
61	Nowell, Gwynn	Raleigh, N. C.
62	Wolf, Joe	Philadelphia, Pa.
63	Byrum, Tom	Edenton, N. C.
64	Gordon, Charles	Spencer, N. C.
65	Cheek, Emmett	Chapel Hill, N. C.
66	Marshall, Freddie	Beaver Falls, Pa.
69	Ribet, Jim	Valdese, N. C.
70	Haymann, Bob	Highland Park, Ill.
71	Sieck, Dick	New York City
72	White, Dick	Shaker Hts., O.
73	Michaels, Ed.	Far Rockaway, N. Y.
74	Lewis, Wray	Fallston, N. C.
75	Parker, Marshall	Seaboard, N. C.
76	Nicolls, John	Plymouth Meeting, Pa.
77	Graham, Page	Cleveland, N. C.
78	Johnston, Jack	Bradford, Pa.
81	Elliot, John (Pinky)	Charlotte, N. C.
82	Hodges, Howard	Greenville, N. C.
83	Hussey, Jack	High Point, N. C.
84	Richardson, Stewart	Maton, Ga.
86	Turner, Craven	Raleigh, N. C.
87	Miller, John	Philadelphia, Pa.
88	Crone, Jimmy	Goldsboro, N. C.
89	Stallings, Fred	Reidsville, N. C.

Position	Wgt.	Yrs. on Varsity
RH	176	2
RH	165	2
RH	162	1
RH	175	1
RH	146	1
LH	198	3
LH	172	2
LH	170	2
LH	164	2
FB	200	2
FB	172	1
FB	177	1
FB	190	3
QB	172	3
QB	173	1
QB	175	1
QB	187	3
C	203	3
C	187	2
C	188	3
C	182	1
RG	194	3
LG	195	3
RG	187	2
LG	195	1
RG	177	1
LG	191	1
RG	192	2
LG	189	1
RT	206	2
LT	187	3
RT	191	3
LT	219	2
RT	185	2
LT	210	1
RT	198	1
LT	210	2
RT	192	2
LE	188	3
RE	175	2
LE	202	1
RE	180	3
RE	181	1
LE	182	2
RE	175	3
LE	181	3



only a few yards to go . . .



(Other Pan-Am Stations conveniently located  
in all parts of the City.)





THE SMOKE OF SLOWER-BURNING CAMELS CONTAINS

# 28% Less Nicotine

than the average of the 4 other largest-selling cigarettes tested—less than any of them—according to independent scientific tests *of the smoke itself*

BY BURNING 25% SLOWER than the average of the 4 other largest-selling brands tested—slower than any of them—Camels also give you a smoking *plus* equal, on the average, to

**5**  
EXTRA SMOKES  
PER PACK!

R. J. Reynolds Tobacco Company, Winston-Salem, N. C.



# Camel

—THE CIGARETTE  
OF COSTLIER TOBACCOS