

Vol 15, no. 2

HOWARD-TILTON
MEMORIAL LIBRARY

TULANE UNIVERSITY



TULANE vs. AUBURN

OCTOBER 20, 1945

Souvenir Program..... 25¢

THESE ARE THE OFFICIAL 1945 Signals



OFF-SIDE
Hands on and
off hips—repeat
several times.



**ILLEGAL
POSITION OR
PROCEDURE**
Hands revolving
in front of chest.



**ILLEGAL
MOTION
OR SHIFT**
Horizontal arc
with either hand.



**ILLEGAL
DELAY OR
EXTRA TIME
OUT**
Folded arms.



**ILLEGAL USE
OF HANDS
OR ARMS**
Grasping one
wrist.



**UNSPORTS-
MANLIKE
CONDUCT**
Arms out-
stretched, palms
down.



SAFETY
Palms together
overhead.



**INCOMPLETE
FORWARD PASS;
PENALTY
DECLINED; NO
PLAY OR NO
SCORE**
Hands rapidly
criss-crossed in
horizontal plane.



**BALL
ILLEGALLY
TOUCHED,
KICKED OR
BATTED**
Tapping both
shoulders with
finger tips.



**FORWARD
PASS OR FAIR
CATCH IN-
TERFERENCE**
Pushing arms
forward, palm
vertical.



**INTENTIONAL
GROUNDING**
Both hands over
right shoulder
then down hard
and forward.



TIME-OUT
Hands rapidly
criss-crossed
overhead.



**CRAWLING;
HELPING THE
RUNNER OR
INTERLOCKED
INTERFERENCE**
Pushing movement
with hands below
waist.



BALL DEAD
One arm aloft,
open hand.
If hand is closed,
TOUCHBACK



**UNNECESSARY
ROUGHNESS**
Military salute.
CLIPPING
Salute followed
by slapping
back of knee
with hand.
**RUNNING INTO
OR ROUGHING
KICKER**
Salute followed
by swinging leg
to simulate a
punt.



**TOUCHDOWN
OR FIELD
GOAL**
Both arms aloft
and held rigid.



**ILLEGAL FOR-
WARD PASS**
Waving hand
behind back.



FIRST DOWN
Vigorous throwing
motion concluded
with outstretched
arm pointing
toward offensive
goal.



**START THE
CLOCK OR
NO MORE
TIME-OUTS
ALLOWED**
Full arm circles
to simulate
winding a clock.



Listen to
"Time Out"
WITH
JOHNNY LYNCH
WWL Thursdays
5:15-5:30 P.M.

And for Your
Time Out



JACKSON BREWING COMPANY
NEW ORLEANS, LA.

DRINK

JAX

BEST BEER IN TOWN

THE GREENIE

Vol. 15

OCTOBER 20, 1945

No. 2

Official Souvenir Football Program of Tulane University, Published for Each Home Game

National Advertising Representative, Football Publications, 370 Lexington, New York City.

ANDY ROGERS, *Editor*

CAROL HART, *Associate Editor*

Wave-Tiger Series

The third oldest rival of the nine opponents on the Tulane schedule this season is Alabama Polytechnic Institute which today makes its 25th appearance against a Green Wave eleven.

More familiarly known as "Auburn," this foe, over a period of years has become one of the most respected Southeastern Conference elevens and has become known for its oft-played role of "giant killer."

Season after season in the 24-year span already covered, the Tigers have proved formidable opposition for the Green and Blue. Proof of this can be found in a quick glance at the records. Six games, or exactly 25%, have resulted in ties and four of these have been scoreless deadlocks. Of the remaining 18 games, the Greenies have triumphed in 10 and the Tigers in eight.

Auburn Coach Carl Voyles, former end for Oklahoma A. and M. who cut his coaching teeth under Bob Zuppke at Illinois and Wallace Wade of Duke University, brings the 1945 Tigers to Tulane stadium with one victory and two losses to their credit. Voyles is in his second season as head coach and athletic director at Auburn.

Assisting Coach Voyles with the Tigers are Herc Alley of Tennessee; Dan McMullen of Nebraska, Swede Umbach of Oklahoma A. and M.; Tex Warrington and Shot Senn of Auburn and Wilbur Hutsell of Missouri.

The worst defeat ever administered Auburn by the Wave was back in 1929 when a Bernie Bierman juggernaut that went undefeated and untied throughout the season romped to a 52-0 triumph. Outstanding among the Tiger victories is a 19-0 whitewash, applied in 1922.

Auburn has played intercollegiate football since the spring of 1892. The Tigers took part in the first game ever played in the deep South against Georgia. Tulane first had football a year later, in 1893 when the L.S.U. series began.

The all-time record at Auburn shows 222 games won, 146 lost and 31 tied of 399 contests played up to this season. In these games, the Tigers have tallied 6,361 points to 3,421 for their opponents.

The home field for Auburn football games is 65 miles away from the campus, in Montgomery, Alabama. Annually the Tigers play at least one game in Montgomery's Cramton Bowl.

The 1945 Auburn schedule lists games with five Southeastern Conference foes including Tulane.

The Green Wave first faced an Auburn eleven in 1902, the game resulting in a 0-0 deadlock which seemed to set a pattern for many later games. Since that time, here is the way the teams have fared: 1921, Tulane 0, Auburn 14; 1922, Tulane 0, Auburn 19; 1923 Tulane 6, Auburn 6; 1924, Tulane 14, Auburn 6; 1925, Tulane 13, Auburn 0; 1926, Tulane 0, Auburn 2; 1927, Tulane 6, Auburn 6; 1928, Tulane 13, Auburn 12; 1929, Tulane 52, Auburn 0; 1930, Tulane 21, Auburn 0; 1931, Tulane 27, Auburn 0; 1932, Tulane 7, Auburn 19; 1933, Tulane 7, Auburn 13; 1934, Tulane 13, Auburn 0; 1935, Tulane 0, Auburn 10; 1936, Tulane 0, Auburn 0; 1937, Tulane 0, Auburn 0; 1938, Tulane 0, Auburn 0; 1939, Tulane 12, Auburn 0; 1940, Tulane 14, Auburn 20; 1941, Tulane 32, Auburn 0; 1942, Tulane 13, Auburn 27; 1944, Tulane 16, Auburn 13.

Probably the most thrilling Auburn-Tulane tilt was played just last year when it took a last-minute field goal to unknot a 13-13 count. The Wave wound up with a 16-13 victory in what some described as the most exciting game in many a Saturday.

LOST ARTICLES

Lost articles should be turned in at Room 18 near the North end of the West Side, Tulane Stadium. Room 18 is located near the foot of Ramp 6. For telephone information regarding lost and found articles, call Walnut 5754.



WHY BE IRRITATED?

ARMY

Old Gold CIGARETTES

-LIGHT AN OLD GOLD

Apple "Honey" helps guard O.Gs. from Cigarette Dryness

The Roosevelt

New Orleans' Finest

In America's Most Interesting City



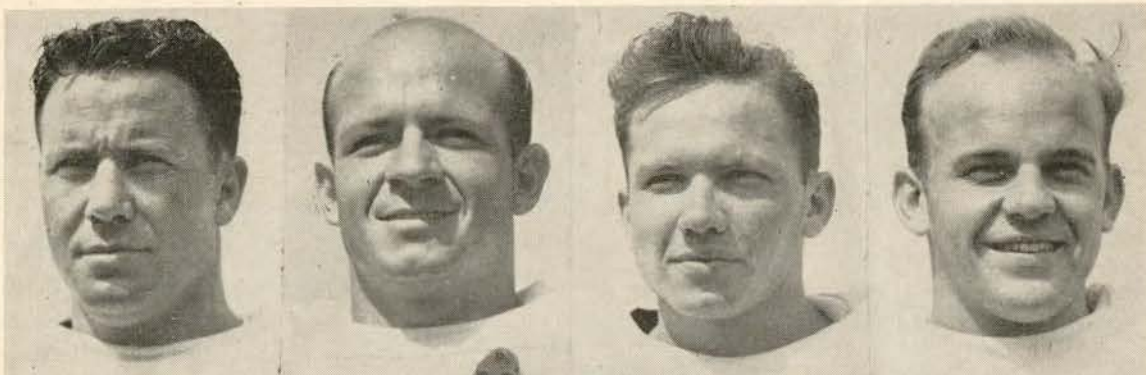
THE ROOSEVELT is located in the heart of Romantic old New Orleans. It is in the center of business and social activities and is close to the Theatre, Shopping, French Quarter, and Business Districts . . . You will like the tasteful luxury and home-like atmosphere of this modern hotel where the traditions of Southern Hospitality are maintained the year 'round.

800 ROOMS WITH BATH

MODERATE RATES



The Roosevelt
"The Pride of the South"



BILL YEAROUT
HALFBACK

DAN
HATAWAY
BACK

NOLAN LANG
FULLBACK

HARLEY SMALLEY
GUARD

Acuburn Tigers



CAPTAIN
CURTIS KUYKENDALL



JIM BURNS
TACKLE

BILL HARRIS
CENTER

ROBERT CANNON
TACKLE

JOHN LIPTAK
END

Famous for
FINE FOOD
and **DRINK**



TONIGHT — enjoy
specialties of these
noted restaurants:

ANTOINE'S
713 St. Louis St.

ARNAUD'S
813 Bienville St.

BROUSSARD'S
819 Conti St.

KOLB'S
125 St. Charles St.

LA LOUISIANE
725 Iberville St.

Shop With Confidence



You can't go wrong with
your choice when it comes
from Mayer Israel's. For
over 50 years, the words
Mayer Israel's and fine
fashions have been syn-
onymous — signifying
only the finest in quality.

Shop with confidence at
Mayer Israel's—the store
of fine fashions for men,
women and children.



Mayer Israel's

714 Canal Street



PAUL BEARDEN
GUARD

BOB SEIBERT
BACK

BILL ABRAHAM
BACK



PASCO GARRAMONE
END

Auburn



BURKE
DUPUY
TACKLE



RED
SNELL
TACKLE



JACK
CAHOON
GUARD



BILL
LAFFOON
GUARD



GENE
NORMAN
FULLBACK



HOWARD
SMYTHE
CENTER



HAROLD WATKINS
FULLBACK



JOHN MOULTON
END

TWEEDS ARE COLLEGIATE!



ALL WOOL SUITS

Smartly tailored suits in both single and double-breasted styles. New fall colors. Full size range.

32.50

Other Tweeds . . 27.50 -- 35.00

- Smart Herringbones!
- Fancy Diagonals!
- Plain Donegals!

● Men's Clothing,
MB First Floor

Maison Blanche

GREATEST STORE SOUTH

PIGSKIN ROUNDUP

TENNESSEE vs. ALABAMA—This should be another of "Frankie's frolics" thanks to Harry Gilmer, but mark it a close one.

* * *

GEORGIA TECH vs. NAVY—Remember 1944? Well, this is '45 and the Middies are dreaming of a nightmarish revenge.

* * *

L. S. U. vs. GEORGIA—With Trippi back, we'll take the Bulldogs. Without him, the Tigers.

* * *

KENTUCKY vs. VANDERBILT—After passing the 'Gator test, the Commodores should be in for some smooth sailing.

* * *

NORTHWESTERN vs. MINNESOTA—Bierman is really "Bernie-ing up" the Big Ten. This will be just another log on the fire.

* * *

NOTRE DAME vs. PITTSBURGH—"Is this 'pick' necessary"?

PURDUE vs. OHIO STATE—Eenie, meenie, meine, moe, the Buckeyes by a "td" or so.

* * *

RICE vs. S. M. U.—After last week, who else but the Owls.

* * *

TEXAS A. & M. vs. T. C. U.—The Aggies to start that long march back.

* * *

ARKANSAS vs. TEXAS—Rose is "rose-y" around the ears after last week. The tinge will probably continue after this.

* * *

ILLINOIS vs. WISCONSIN—The Illini, but we can't tell why.

* * *

The leftovers—Indiana over Iowa . . . Iowa State over Nebraska . . . Holy Cross over Brown . . . Columbia over Colgate . . . Wake Forest over North Carolina State . . . Tulsa over Nevada . . . Mississippi State over Maxwell Field . . .

(Andy Rogers)

Official timing watch for the



TULANE-AUBURN FOOTBALL GAME

Longines

The World's Most Honored Watch
winner of 10 world's fair grand prizes,
28 gold medals, and more honors for
accuracy than any other timepiece



Product of Longines-Wittnauer Watch Co.

Penalties

LOSS OF FIVE YARDS

- 1 Taking more than three times out during either half
- 2 Illegal delay of game
- 3 Failure of substitute to report to umpire
- 4 Violation of kick-off formation
- 5 Failure to maintain proper alignment of offensive team before ball is snapped. Also, backfield man illegally in motion
- 6 Offside by either team, or encroachment on neutral zone
- 7 Attempt to draw opponents offside
- 8 Taking more than two steps with ball after signaling for fair catch
- 9 Illegal use of hands and arms by defensive players
- 10 Flying block or flying tackle
- 11 Player in motion less than 5 yards behind line of scrimmage.
- 12 Crawling by the runner


LOSS OF FIFTEEN YARDS

- 13 Team not ready to play at scheduled time
- 14 Substitute communicating with teammates before ball is put in play
- 15 Illegal substitution (player also suspended from game)
- 16 Failure to stop at least one second on shift play
- 17 Forward pass by member of team which did not put ball in play
- 18 Forward pass touched by ineligible player
- 19 Intentional grounding of forward pass
- 20 Interference by member of passing team with defensive player eligible for pass
- 21 Interference with fair-catch or tackling player before ball is caught
- 22 Illegal use of hands and arms by offensive players
- 23 Defensive player striking opponent above shoulders
- 24 Roughing the kicker
- 25 Piling up, hurdling, clipping
- 26 Tackling player out of bounds
- 27 Coaching from the sidelines
- 28 Illegal interference with defense by passing team


OTHER PENALTIES

- 29 Striking, kneeling, or kicking opponent—half the distance to the goal and disqualification of offending player
- 30 Foul within one yard line—half the distance to the goal
- 31 Interference by defensive team on forward pass—first down for passing team at spot of foul
- 32 Flagrant roughing of kicker—disqualification, plus fifteen yards
- 33 Flagrant unsportsmanlike conduct—disqualification, plus fifteen yards
- 34 Forward pass touched by ineligible player on or behind line of scrimmage—loss of down


JOHNNY CALLS 'EM
SIGNALS & PENALTIES




Holding. (Penalty—by offense, 15 yards; by defense, 5 yards.)




Player illegally in motion. (Penalty, 5 yards. If from shift or huddle, 15 yards.)




Time out.




Unsportsmanlike conduct. (Penalty—15 yards.) For flagrant unsportsmanlike conduct—15 yard penalty and disqualification.




Offside or violation of kick-off formation. (Penalty, 5 yards.)




Illegal touching of kicked ball inside opponent's 10-yard line—touchback.




Unnecessary roughness, illegal defensive use of the hands, clipping, running into or roughing the kicker. (Penalty, 15 yards.)




Score—touchdown, field goal, or conversion.




Delay of game or extra time outs. (Penalty, 5 yards.)



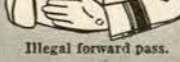
Penalty refused, incomplete pass, missed field goal or conversion, both sides offside, etc.




Illegal formation or position of one or more players. (Penalty—5 yards from where ball was put in play.)




Interference with forward pass, pass touching ineligible player, or "screening" pass receiver. (If penalty on offense, when interference occurs beyond line of scrimmage, 15 yards and loss of down; on or behind line of scrimmage, loss of down only. Interference by defense, ball to offense on spot of foul as first down.)




Illegal forward pass.



Safety.



Intentional grounding of forward pass. (Penalty—loss of down and 15 yard penalty from spot of preceding down.)



Crawling or pushing. 5 yds.; helping ball carrier, 15 yards.

CALL FOR PHILIP MORRIS

AMERICA'S FINEST CIGARETTE



CAM-PIX

A MEDLEY OF
CAMPUS PICTURES



© 1945 BY HORACE RENEGAR

TULANE STADIUM
"Home of the Green Wave"



Beautiful Samford Hall, Auburn's main administration building.

WHERE
IS
PORTER'S?
HUH?



ACROSS THE
STREET FROM
THE COTTON
EXCHANGE..



AROUND THE
CORNER FROM
THE ST. CHARLES
HOTEL ..



OPPOSITE THE HIBERNIA
NATIONAL BANK AND
IN THE SAME BLOCK
WITH THE
AMERICAN BANK

ASK ANYBODY!



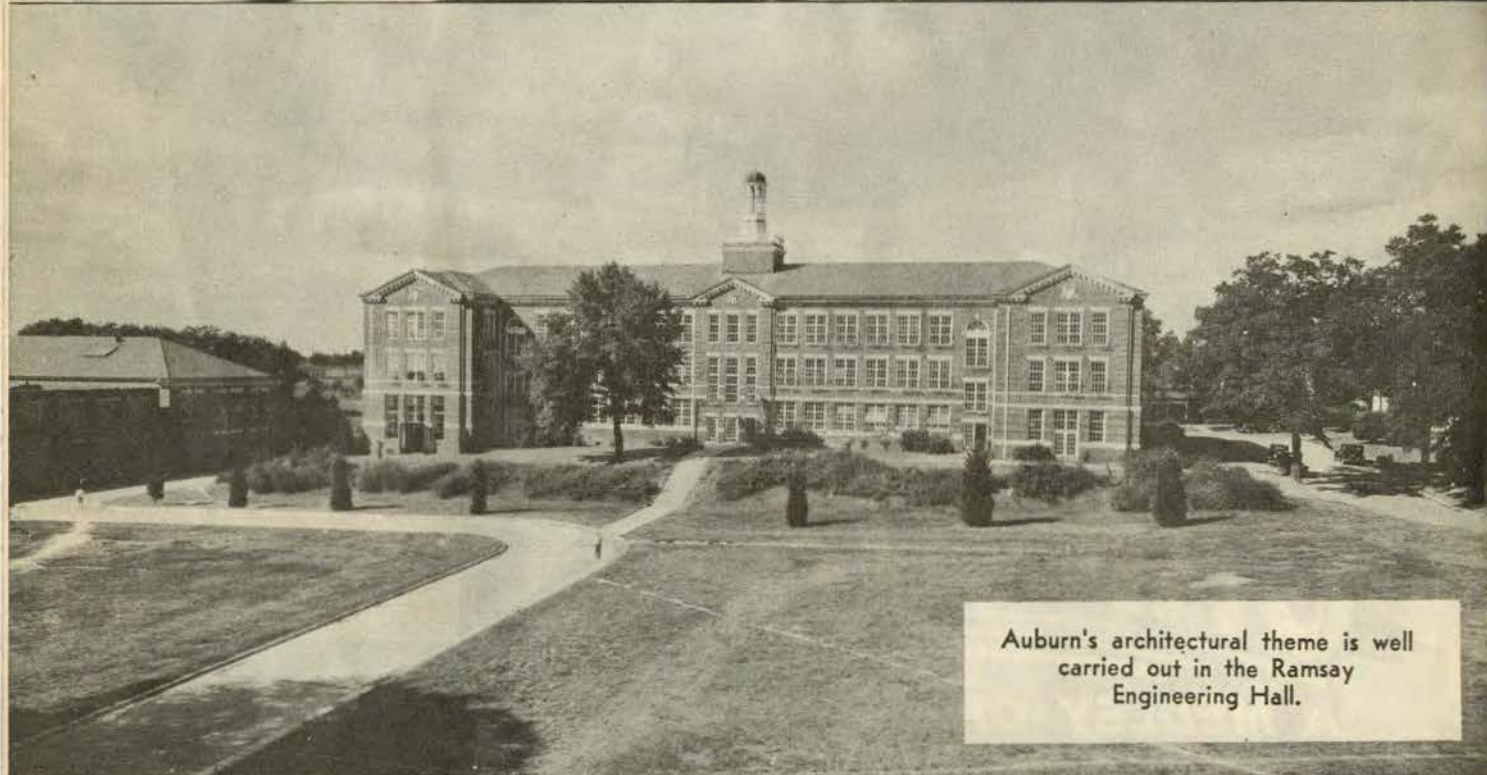
EVERYTHING MEN WEAR

Porter's

CARONDELET COR. GRAYIER STS.



Dr. L. N. Duncan, eminent educator,
President of Alabama Polytechnic
Institute.



Auburn's architectural theme is well
carried out in the Ramsay
Engineering Hall.

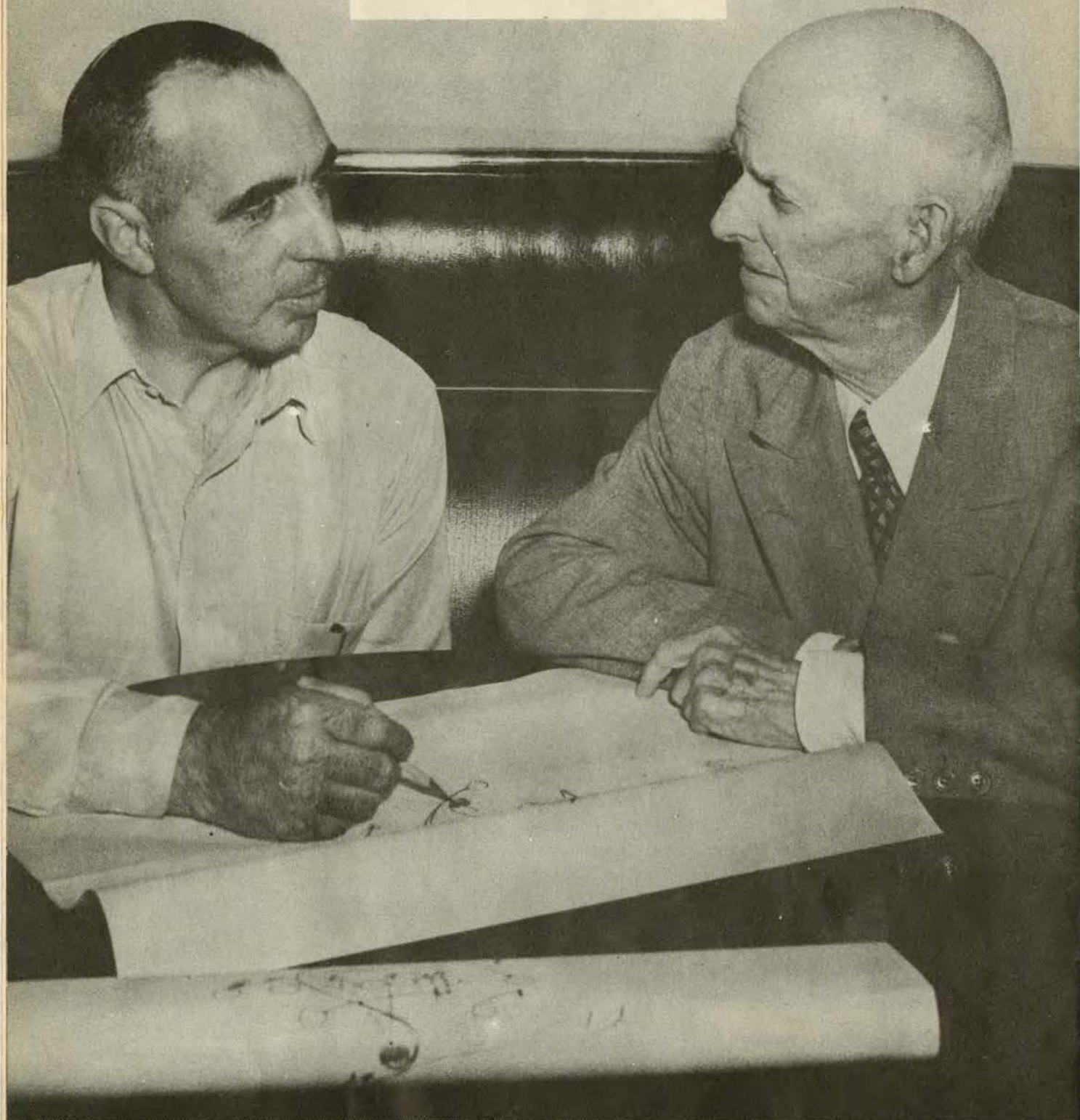
keep dry on WETTEST DAYS

RAINFALL STORMCOATS



from
Porter's

Coach Carl Voyles, left, talks with Auburn's first football mentor, Dr. George Petrie, who was one of the South's first coaches in 1892.



**Nunn Bush
SHOES**



**FOOT
COMFORT**



MILES OF WEAR

at
Porter's

This Program Printed

by

TULANE UNIVERSITY PRESS

Printing Department of Tulane University



CAMPUS PRINTERS

Basement, Gibson Hall
Phone WALnut 0082

*Cover printed on recently installed
automatic press*

AT THE GAME

and

AFTER THE GAME

ENJOY



“Time Out”

DRINK—

Coca-Cola

PAUSE—

RELAX—

REFRESH YOURSELF



TULANE

STARTING LINEUP

LE	LT	LG	C	RG	RT	RE
Lassetter	Robinson	Frank	Bowers	Bourgeois	Schneider	Cash
31	36	41	14	38	45	30

LHB	QB	RHB
Reynolds	Arthur	McCain
29	10	25

FB
Ferguson
43

SQUAD LIST

10 Arthur, b	26 Banowetz, b	39 Igleheart, g
11 Lee, b	27 Rowland, t	40 Stolen, c
12 Rideout, b	28 Robertson, b	41 Frank, g
14 Bowers, c	29 Reynolds, b	42 Bie, c
15 Leahey, b	30 Cash, e	43 Ferguson, b
18 Young, b	31 Lassetter, e	44 Brinker, g
19 McDonald, e	32 Bailey, e	45 Schneider, t
20 Crouch, b	33 Counce, b	49 Terrell, g
21 Seybold, g	34 Logan, t	50 Watkins, e
22 Hoot, b	35 Woodiel, t	58 Shirley, e
23 Chavez, b	36 Robinson, t	65 Johnson, t
24 Timken, t	37 Carter, g	80 Ellender, e
25 McCain, b	38 Bourgeois, g	

OFFICIALS

Umpire—J. E. Burghard (Mississippi State)
Referee—J. J. Lynch (Holy Cross)

AUBURN

STARTING LINEUP

LE	LT	LG	C	RG	RT	RE
Liptak	Burns	Powell	Harris	Smalley	Cannon	McC'kin
41	46	55	47	57	25	56

LHB	QB	RHB
Kuykendall	Cochran	Yearout
20	66	42
	FB	
	Lang	
	22	

SQUAD LIST

10 Dupuy, t	31 Bearden, g	53 Smythe, c
11 Moulton, e	32 Seibert, fb	54 Voyles, e
14 Norman, fb	33 Laney, qb	55 Powell, g
15 Cahoon, g	34 Abraham, hb	56 McClurkin, e
16 Tillery, e	35 Garramone, e	57 Smalley, g
17 Brewer, t	38 Rakel, c	59 Glasscock, b
18 Cooper, g	39 Wommack, b	60 Wilkes, hb
19 Laffoon, g	40 Kennell, e	61 Naylor, c
20 Kuykendall, hb	41 Liptak, e	62 Lambert, b
21 Stringer, t	42 Yearout, hb	63 Calhoun, c
22 Lang, qb	43 Purvis, hb	66 Cochran, fb
24 Reddish, hb	46 Burns, t	67 Poss, g
25 Cannon, g	47 Harris, c	68 Mizerany, hb
27 Norton, b	48 Wilson, t	69 Wilson, g
28 Watkins, fb	49 Aderholt, g	70 Snell, t
29 Hataway, hb	50 Blackburn, hb	72 Trotman, c
30 Gaines, g		

OFFICIALS

Head Linesman—G. M. Phillips (Georgia Tech)
Field Judge—Battle Bagley (Washington and Lee)

Prince of Golden Beers

D
U
N
L
A
P

Equipment for all sports...

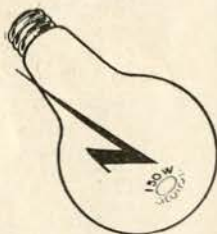
*Specialists in all types of
school athletic
supplies*

Sporting Goods Co.
(JOHNNY LYNCH'S)
138 Carondelet Street
MAGNOLIA 5891



*Better Printers
in New Orleans*

150 WATTS IS RIGHT HERE

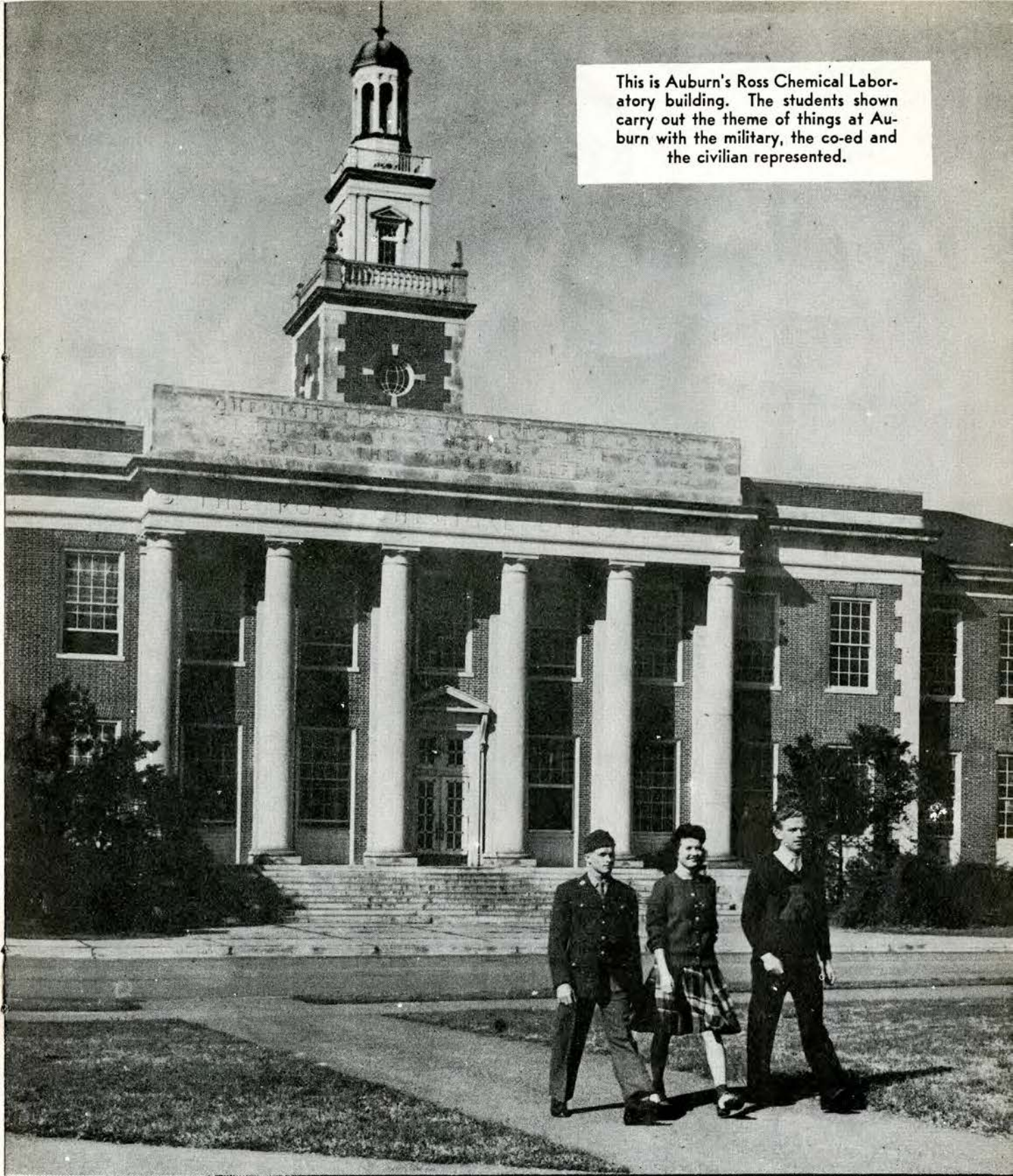


You'll get more pleasure out of winter evenings at home when congenial friends call to play a few rubbers of bridge or other games if you use enough light. See that your bridge lamps contain 150-watt bulbs for comfortable seeing. Give your family and guests the protection and cheer of better light in your home.



NEW ORLEANS **Public Service**

This is Auburn's Ross Chemical Laboratory building. The students shown carry out the theme of things at Auburn with the military, the co-ed and the civilian represented.



DURABLE
ALL WOOL
SUITS



100%
THAT'S
ME!

AND I
CAN
TAKE IT!

\$35 from
Porter's

Above, a Newcomb sorority pantomimes the classic statues on a campus night program with good results.

Below, Tulane students get an authentic version of the hula-hula dance from Mabel Todd, Newcombite whose home is in Hawaii.



**Nunn Bush
SHOES**



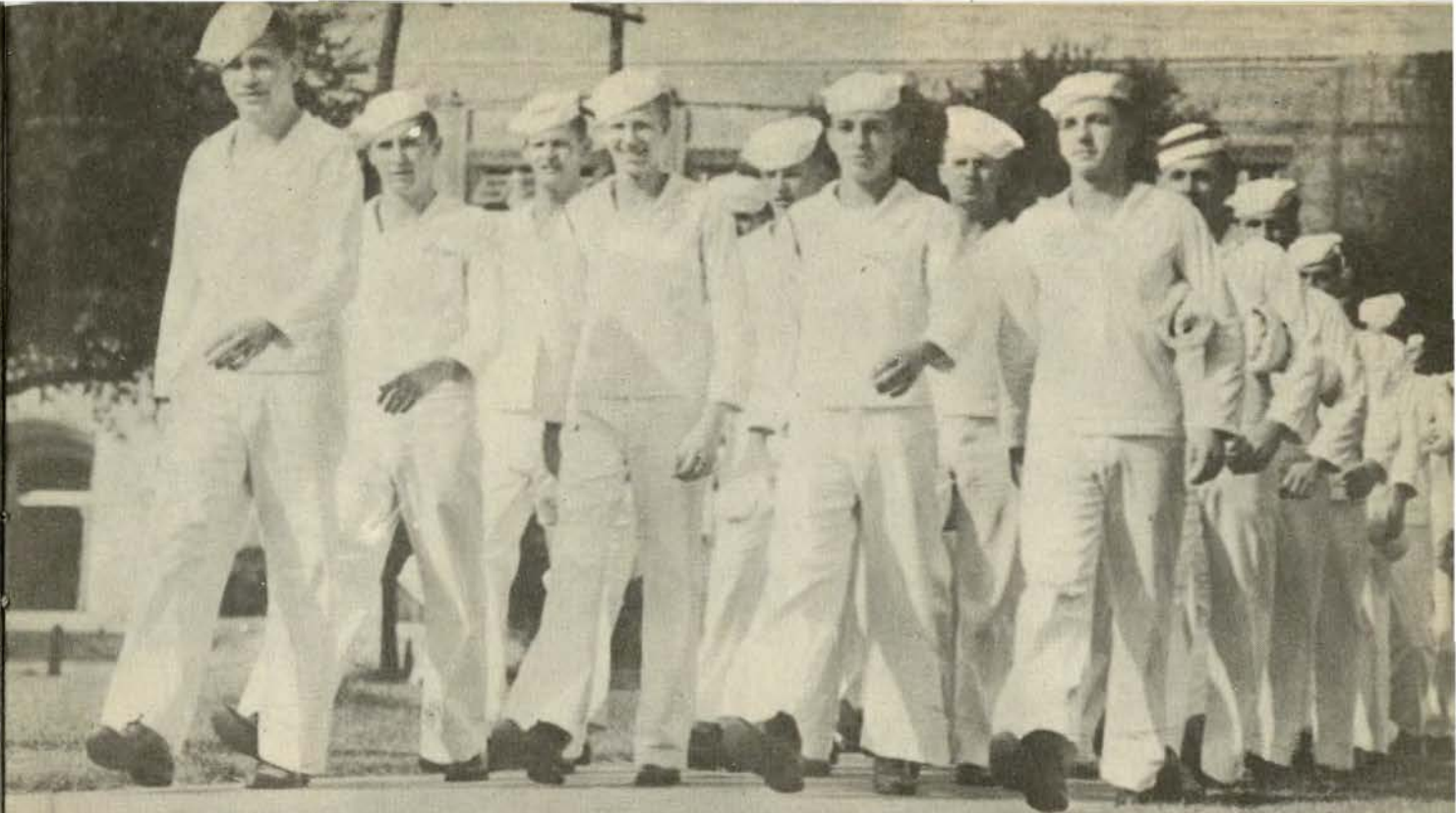
FOOT
COMFORT

+



MILES OF WEAR

at
Porter's



Tulane naval trainees are shown on the march to the Audubon swimming pool for daily summer swimming instruction and are snapped in one of the rough and tumble training drills.

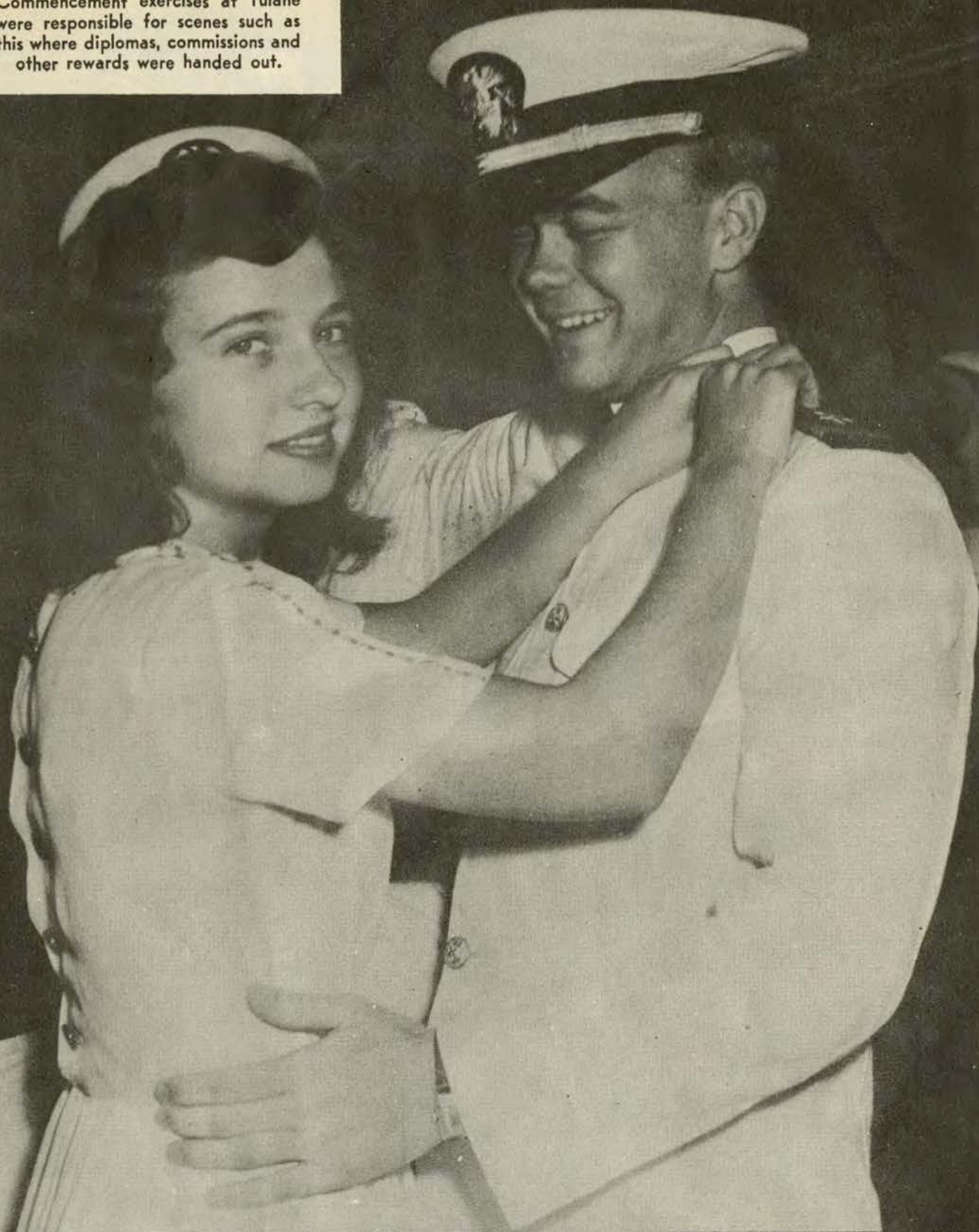


Good Grooming
A-HEAD



with
STYLEPARK HATS
from *Porter's*

Commencement exercises at Tulane were responsible for scenes such as this where diplomas, commissions and other rewards were handed out.



Good Grooming
A-HEAD



with
STYLEPARK HATS
from *Porter's*

Ellis F. Robert, Inc.

formerly BROADMOOR NURSERY

NURSERY

FLORIST

LANDSCAPING



GENERAL

HOUSE

RÉPAIRS

for

COMPLETE HOME MAINTENANCE

Phone Ra. 9104



where good things
need not be expensive
... and inexpensive
things have to be good

105 YEARS OF FINE APPAREL FOR
MEN, WOMEN AND CHILDREN

Godchaux's

A WINNER!





RICHARD HOOT
HALFBACK



JAMES LEE
FULLBACK



WALTER FERGUSON
FULLBACK



JACK COUNCE
HALFBACK



GEORGE
ROBINSON
TACKLE



LEROY
SCHNEIDER
TACKLE



WILLIAM
LEAHEY
QUARTEBACK



GASTON BOURGEOIS
GUARD



JIMMY LASSETTER
END



MARVIN MCCAIN
HALFBACK



HUGH BOWERS
CENTER



WILLIAM REYNOLDS
HALFBACK

T
U
L
A
N
E

1
9
4
5

The Roosevelt

The Roosevelt Hotel Offers
New Orleans' Most Diversified Program
of
Music and Entertainment

in the FOUNTAIN LOUNGE

At LUNCHEON we invite you to listen to the sweet strains of the Gypsy Ensemble. For COCKTAILS and DANCING, alternately nightly from five o'clock until two the next morning is one of Latin America's noted Rhumba bands and the Society Music of one of America's outstanding combinations.

in the BLUE ROOM

Each evening, for DINNER and SUPPER DANCING, is presented one of the Nation's famous orchestras . . . Featured also in the Blue Room Floor Shows at Dinner and Supper, are celebrated stars from radio, stage and screen.

*New Orleans' most discriminating audiences choose the Roosevelt
for their relaxation and entertainment*



The Roosevelt
"The Pride of the South"

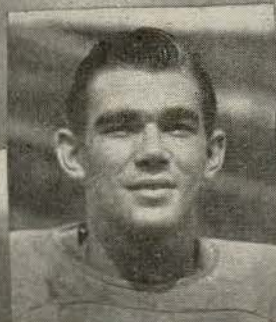
Pulane



ERNEST CROUCH
QUARTERBACK



RAY ARTHUR
QUARTERBACK



JOE YOUNG
HALFBACK



LARRY McDONALD
END



DAVID RIDEOUT
HALFBACK



ROBERT SHIRLEY
END



WILLIAM WATKINS
END



ROBERT LOGAN
TACKLE



TONY CASH
END



ELLIOTT
IGLEHEART
GUARD



ROY BAILEY
END



JOHN
FRANK
GUARD

Greenies

THE SCHEDULES

TULANE

October 6—Tulane 6, Florida 6
 October 13—Tulane 7, Rice 13
 October 20—Auburn at New Orleans
 October 27—S. M. U. at New Orleans
 November 3—Mississippi State at New Orleans
 November 10—Georgia Tech at New Orleans
 November 17—Clemson at New Orleans
 November 24—Notre Dame at New Orleans
 December 1—L. S. U. at New Orleans



AUBURN

September 21—Auburn 38, Howard 0
 September 28—Auburn 0, Maxwell Field 7
 October 6—Auburn 0, Mississippi State 20
 October 20—Tulane at New Orleans
 October 27—Georgia Tech at Atlanta
 November 3—Florida at Auburn
 November 10—S. L. I. at Montgomery
 November 17—Georgia at Columbus, Ga.
 November 24—Louisiana Tech at Auburn
 November 30—Miami at Miami



W. L. Douglas Shoes
 W. L. DOUGLAS SHOE CO., BROCKTON 15, MASS.
 218 ST. CHARLES STREET

HAUSMANN

NEW ORLEANS'
 LEADING JEWELERS



Special Department for College
 and
 Fraternal Jewelry

*The Thinking Fellow
 Rides a Yellow*



TOYE BROS.



YELLOW CABS

WSMB

1350 Kilocycles



NEW ORLEANS' OUTLET FOR
 THE N B C NETWORK



IF YOU CAN'T ATTEND ALL OF
 THE TULANE GAMES, LISTEN
 TO HARRY ARTHUR'S VIVID
 DESCRIPTION OF THEM
 ON W S M B.

TULANE



JOE CHAVEZ
HALFBACK



DAVE ROWLAND
TACKLE



CLAYTON TIMKEN
TACKLE



BILL ROBERTSON
FULLBACK



AL STOLEN
CENTER



JACK SEYBOLD
GUARD



HAROLD TERRELL
GUARD



BILLY WOODIEL
TACKLE



ALVIN BRINKER
GUARD



WILLIAM CARTER
GUARD

TULANE ROSTER

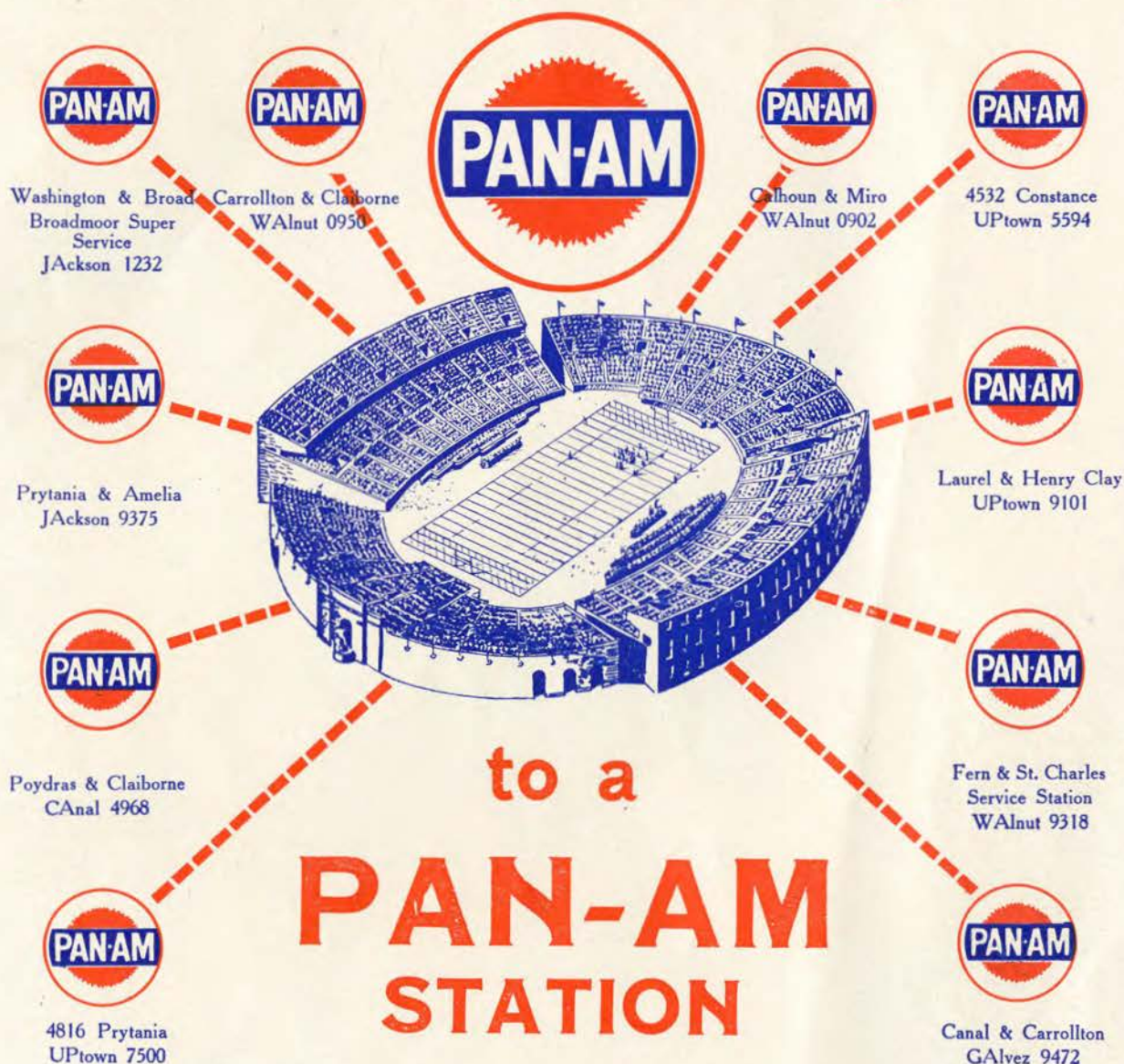
No.	Name and Position	Weight	Height	Hometown	Status
10	Ray Arthur, qb	160	5-8	New Orleans, La.	Civ.
11	James Lee, fb	165	5-11	Memphis, Tenn.	Civ.
12	David Rideout, hb	165	5-10	Henderson, Ky.	Civ.
14	Hugh Bowers, c	179	5-10 1/2	Port LaVaca, Tex.	Navy
15	William Leahy, qb	170	6-1	Rensselaer, N. Y.	Navy
18	Joe Young, hb	170	5-11	New Orleans, La.	Civ.
19	Larry McDonald, e	172	6-	Struthers, Ohio	Civ.
20	Ernest Crouch, qb	155	5-10	Sulphur, La.	Civ.
21	Jack Seybold, g	185	5-9	New Orleans, La.	Civ.
22	Richard Hoot, hb	180	5-11 1/2	Swarthmore, Pa.	Navy
23	Joe Chavez, hb	172	5-9	Los Angeles, Cal.	Navy
24	Clayton Timken, t	185	6-	New Orleans, La.	Vet.
25	Marvin McCain, hb	193	6-	New Orleans, La.	Civ.
26	David Banowetz, fb	184	5-10	New Orleans, La.	Civ.
27	David Rowland, t	202	6-2	Hot Springs, Ark.	Navy
28	Bill Robertson, fb	175	5-11	Piggott, Ark.	Civ.
29	William Reynolds, hb	175	5-11	Birmingham, Ala.	Navy
30	Tony Cash, e	195	6-1 1/2	New Orleans, La.	Vet.
31	James Lassetter, e	170	6-1 1/2	Whitehaven, Tenn.	Civ.
32	Roy Bailey, e	180	6-	Sulphur, La.	Civ.
33	Jack Counce, hb	183	6-	New Orleans, La.	Civ.
34	Robert Logan, t	195	6-3	Dennison, Iowa	Navy
35	William Woodiel, t	185	6-	Little Rock, Ark.	Civ.
36	George Robinson, t	195	6-	Homer, La.	Vet.
37	William Carter, g	180	5-11	Irvington, N. Y.	Navy
38	Gaston Bourgeois, g	205	5-11 1/2	Luteher, La.	Civ.
39	Elliott Igleheart, g	200	5-10	Shelbyville, Ky.	Civ.
40	Al Stolen, e	200	6-1	Duluth, Minn.	Vet.
41	John Frank, g	202	5-10	New Orleans, La.	Civ.
42	James Bie, c	170	6-	Racine, Wis.	Civ.
43	Walter Ferguson, fb	190	5-11	Okeene, Okla.	Navy
44	Alvin Brinker, g	200	6-	New Orleans, La.	Civ.
45	Leroy Schneider, t	230	6-	Baltimore, Md.	Vet.
49	Harold Terrell, g	197	5-11	Port Arthur, Tex.	Vet.
50	William Watkins, e	185	6-	Helena, Ark.	Navy
58	Robert Shirley, e	185	6-1	Vicksburg, Miss.	Vet.
65	Caver Johnson, t	215	5-11	Atlanta, Tex.	Vet.
80	Vaughn Ellender, e	175	5-11	Sulphur, La.	Civ.



AUBURN ROSTER

No.	Name and Position	Weight	Height	Hometown
10	Burke Dupuy, t	185	5-11	Birmingham, Ala.
11	John Moulton, e	165	6-1	Lindale, Ga.
14	Gene Norman, fb	177	6-	Luverne, Ala.
15	Jack Cahoon, g	185	6-2	Gadsden, Ala.
16	Gene Tillery, e	165	6-1	Phenix City, Ala.
17	Hoyt Brewer, t	200	5-11	Addison, Ala.
18	John Cooper, g	185	5-10	Jasper, Ala.
19	Bill Laffoon, g	189	5-10	Ettrick, Va.
20	Curtis Kuykendall, hb	160	5-10	Sallis, Miss.
21	Raymond Stringer, t	214	6-1	Highland Home, Ala.
22	Nolan Lang, qb	190	6-	Waycross, Ga.
24	Cecil Reddish, hb	160	5-10	Jesup, Ga.
25	Bob Cannon, g	195	5-11	Alabama City, Ala.
27	Clarence Norton, b	165	5-11	Clayton, Ala.
28	Harold Watkins, fb	168	6-	Columbus, Ga.
29	Dan Hataway, hb	171	5-8	Troy, Ala.
30	Cecil Gaines, g	160	5-10	Birmingham, Ala.
31	Paul Bearden, g	177	5-11	Gadsden, Ala.
32	Bob Seibert, fb	183	6-1	Lancaster, Ill.
33	Ray Laney, qb	190	5-10	Birmingham, Ala.
34	Bill Abraham, hb	192	5-7	Jeannette, Pa.
35	Pasco Garramone, e	180	5-11	Hazleton, Pa.
38	Paul Rakel, e	188	6-	Albany, Ga.
39	Joe Wommack, b	180	6-	Columbus, Ga.
40	Tommy Kennell, e	170	5-10	Fairfield, Ala.
41	John Liptak, e	175	6-	McKeesport, Pa.
42	Bill Yearout, hb	185	5-10	Birmingham, Ala.
43	Elvis Purvis, hb	151	5-10	Glenville, Ga.
46	Jim Burns, t	200	6-2	Birmingham, Ala.
47	Bill Harris, e	235	6-2	Birmingham, Ala.
48	Herman Wilson, t	197	6-	Lindale, Ga.
49	Warren Aderholt, g	160	5-9	Birmingham, Ala.
50	Harold Blackburn, hb	145	5-7	Auburn, Ala.
53	Howard Smythe, c	174	5-11	Lake Charles, La.
54	Bob Voyles, e	175	6-	Auburn, Ala.
55	Frank Powell, g	181	5-9	Mount Pleasant, Tenn.
56	Sam McClurkin, e	170	6-1	Birmingham, Ala.
57	H. M. Smalley, g	200	5-11	Birmingham, Ala.
59	Gordon Glascock, b	190	5-11	Oneonta, Ala.
60	Don Wilkes, hb	170	5-9	Hartselle, Ala.
61	Gerald Naylor, e	171	5-10	Hueytown, Ala.
62	John Lambert, b	196	5-11	Attalla, Ala.
63	Howard Calhoun, e	185	5-10	Birmingham, Ala.
66	Leon Cochran, b	200	5-11	Birmingham, Ala.
67	Summie Poss, g	190	5-11	Athens, Ga.
68	Eddie Mizerany, b	153	5-9	Birmingham, Ala.
69	Karow Wilson, g	157	5-10	Dothan, Ala.
70	Denvard Snell, t	275	5-2	Dothan, Ala.
72	Bubber Trotman, c	175	5-8	Troy, Ala.

only a few yards to go . . .



(Other Pan-Am Stations conveniently located
in all parts of the City.)



Lucky Man . . . Pretty date,
two good seats, and clothes from
The Men's Store of
D. H. HOLMES CO., LTD.