

1st ANNUAL
SUGAR BOWL *Classic*

NEW
YEAR'S
DAY
1935

NEW
ORLEANS

TEMPLE
— vs. —
TULANE

D
O
SNIDER
II

FRANKLIN PTC. CO.
N.O. LA.

TULANE
STADIUM

OFFICIAL SOUVENIR

PRICE

25¢

COPYRIGHT 1935

SHUSHAN

AIRPORT



*The
World's
Finest*

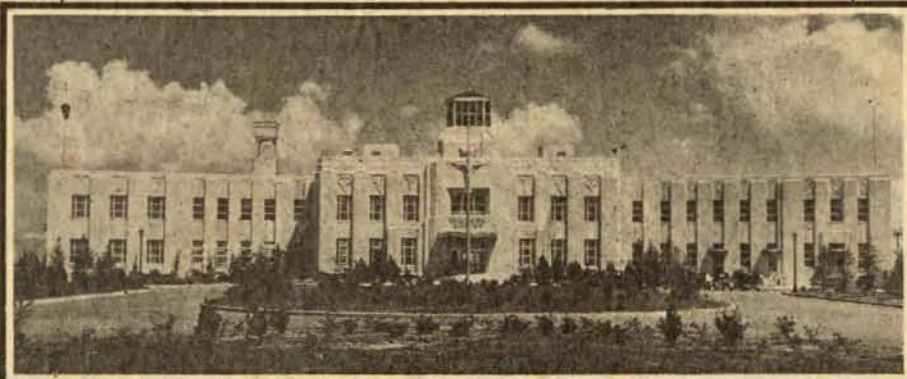


END VIEW ADMINISTRATION BUILDING



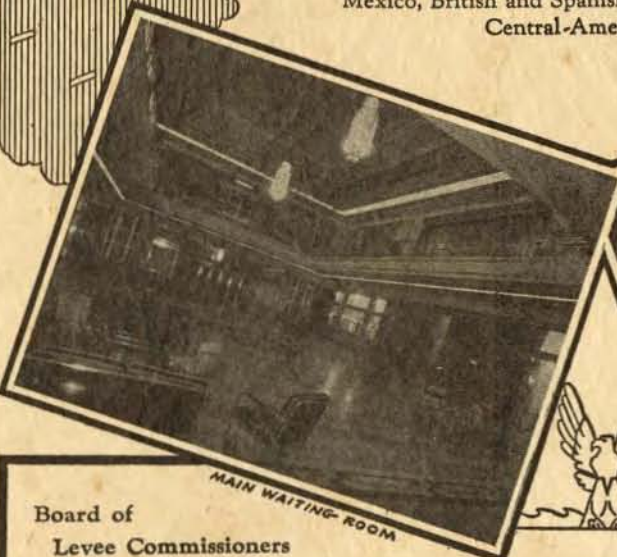
LINDBERG HANGAR

Combination Land and Seaplane Airport—strategically located inland, adaptable for Commercial, Naval and Military purposes



ADMINISTRATION BUILDING

An important link for trans-continental routes, the gateway to Mexico, British and Spanish Honduras, and all other Central-American points



MAIN WAITING ROOM



CAFETERIA

Board of
Levee Commissioners

of the
Orleans Levee District



The Inaugural

SUGAR BOWL CLASSIC

TEMPLE vs. TULANE

New Year's Day 1935

Tulane Stadium . . . NEW ORLEANS . . . 1:30 o'clock p.m.

Under Auspices of

New Orleans Mid-Winter Sports Association

*A voluntary, civic, non-profit organization, whose
officers serve without remuneration, consisting
and composed of the following organizations and
individuals:*

BIG 10 ALUMNI	Represented by	A. B. NICHOLAS
B. P. O. E.	" "	DR. F. J. WOLFE
CITIZENS COMMITTEE	" "	J. M. COUSINS
COLONIAL COUNTRY CLUB	" "	H. A. BENSON
CO-OPERATIVE CLUB	" "	WARREN V. MILLER
KNIGHTS OF COLUMBUS	" "	B. J. GRENROOD
LIONS CLUB	" "	A. GOLDBERG
N. O. ASSOCIATION OF COMMERCE	" "	C. ZATARAIN
N. O. ATHLETIC CLUB	" "	IRWIN POCHÉ
N. O. GOLF ASSOCIATION	" "	HARRY FLETCHER
N. O. INSURANCE EXCHANGE	" "	J. H. BODENHEIMER
N. O. ITEM	" "	F. J. DIGBY
ORLEANS PARISH MEDICAL ASSN.	" "	DR. M. P. BOEBINGER
PASSENGER CLUB	" "	W. J. ROVIRA
PREP-SCHOOL ATHLETIC LEAGUE	" "	HERVE RACIVITCH
PUBLIC SCHOOL ATHLETIC LEAGUE	" "	J. R. CONNIFF
RADIO STATION WDSU	" "	P. K. EWING
RETAIL MERCHANTS BUREAU	" "	A. WACHENHEIM, JR.
ROTARY CLUB	" "	GEORGE BUTLER
SOUTHERN A. A. U.	" "	L. de BENEDETTO
TRAFFIC CLUB	" "	RALEIGH SCHWARZ
Y. M. B. C.	" "	DR. LEO J. SCHOENY
Y. M. C. A.	" "	GEORGE SCHNEIDER
Y. M. H. A.	" "	HERBERT PAILET

SAM CORENSWET, JOS. B. DAVID, PAUL DeBLANC, R. A. FLEMING,
H. JUMONVILLE, F. D. REILLY, ALLAN SMUCK,
WALTER SNIDER, CLARENCE STRAUSS,
P. B. WILLIAMSON.



1934 — EXECUTIVE COMMITTEE — 1935

No. 1—Warren V. Miller, President; No. 2—Harry W. Fletcher, Treasurer; No. 3—Jos. M. Cousins, Vice-President; No. 4—Dr. M. P. Boebinger, Chairman of Executive Committee; No. 5—Walter Snider, Secretary; No. 6—Abe Goldberg; No. 7—J. H. Bodenheimer; No. 8—Irwin F. Poche; No. 9—Dr. Fred Wolfe; No. 10—George E. Butler; No. 11—Albert Wachenheim; No. 12—Herbert A. Benson.

LOANS

made
on

ENDORSEMENTS or COLLATERAL

—ALSO ON DIAMONDS AND JEWELRY—

Installment Plan—See Us For Your Financial Needs

Remedial Loan Society

309-312 MARITIME BLDG.

TELEPHONE MAin 1383

OUR SINCERE APPRECIATION TO:

CO-OPERATIVE CLUB OF NEW ORLEANS,

who first accepted the plans looking forward to this Great Game; agreed to sponsor same; called all other civic bodies into consultation and then, unselfishly, for the good of the whole, assisted in forming the New Orleans Mid-Winter Sports Association, with itself as a member thereof, instead of sole sponsor.

CITIZENS COMMITTEE,

who, forming for consideration of similar purposes, agreed to the movement by the Co-Operative Club and joined the New Orleans Mid-Winter Sports Association.

Continued on Page Five

Mildness,
Smoothness,
and
Enjoyment
you won't
forget!

Using the finest of long filler tobacco possible is not alone responsible for the El Cubo's finer fragrance. All our tobacco is also double-cured to remove any trace of harshness or gums that might detract from its delightful havana aroma.



For over 35 years
known as the
"Cream of
Quality"

5c Cigar
+

**PHIL. D.
MAYER &
SON, Ltd.**

— Manufacturers —

NEW ORLEANS,
LA.



To the New Orleans Mid-Winter Sports Association, which has made this great civic enterprise a success, and to the teams of Temple University and Tulane University, which will inaugurate this great annual football classic, the City of New Orleans extends its congratulations and its sincere thanks.

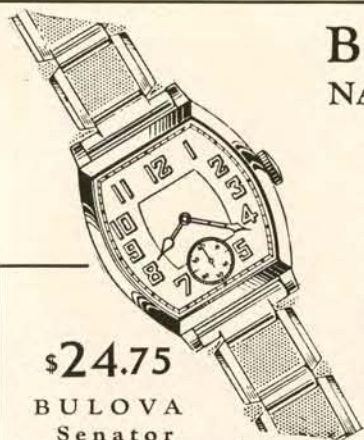
T. SEMMES WALMSLEY,
Mayor

A. MILES PRATT,
Commissioner Public Finance

FRED A. EARHART,
Commissioner Public Utilities

DR. FRANK R. GOMILA,
Commissioner Public Safety

JOS. P. SKELLY,
Commissioner Public Property



\$24.75

**BULOVA
Senator**

A smart Man's Watch,
accurate and dependable
at a low price. Link
band to match.

\$1.00 WEEKLY

Buy on CREDIT at NATIONALLY ADVERTISED CASH PRICES

No Interest No Extras

\$1.00 weekly pays for any article
costing \$100.00 or less

\$2.00 weekly pays for any article
costing \$100.00 or more

Here are our special terms to make
paying easy.



\$25.00

\$1.00 WEEKLY

Distinctly different!
Gorgeous Solitaire Ring. Set in
a mounting of
18Kt. white gold.

WHITE BROS., CO.

CREDIT JEWELERS AND OPTICIANS
624 CANAL ST. NEAR ST. CHARLES

OUR SINCERE APPRECIATION TO:

Continued from Page Three

THE TWENTY-ONE ORGANIZATIONS, THEIR REPRESENTATIVES
AND THE NINE INDIVIDUAL MEMBERS,

who so loyally, patiently and effectively carried on the plan and
brought to culmination and success the long cherished hope of the
citizenry of our City that New Orleans might and would present to
the world each year a calendar of sports, including the great game
which you are seeing today—THE SUGAR BOWL CLASSIC!

THE THREE HUNDRED GENEROUS CITIZENS,

who, for the love of their city, furnished the guarantee funds necessary
to the accomplishment of the Association's plans, taking upon them-
selves the chance of loss with no hope of financial reward or per-
sonal benefit: they are nameless here, in conformity with our agree-
ment that a list should not be published which might be used for other
solicitations.

Continued on Page Nine

EARLE J. CHRISTENBERRY

COURT AND CONVENTION STENOGRAPHERS
MULTIGRAPH—MIMEOGRAPH CIRCULARS

822 PERDIDO STREET

RAYMOND 2791



COACH TED COX, Greenie mentor, as he is in everyday life, genial, likeable, friendly. Cox, who produced one of Tulane's best teams this year, concludes the season New Year's Day in the Sugar Bowl game with Temple University, coached by Glenn "Pop" Warner, dean of grid strategists.

Trophy For Sugar Bowl Winner



New interest has been added to the Sugar Bowl football classic by donation of the beautiful solid silver trophy illustrated above which is to be suitably engraved and presented to the winning team.

The Bowl was made in London, England, in the year 1830 during the reign of King George IV and bears the hall mark of the period.

The gift of this genuine antique to the New Orleans Mid-Winter Sports Association was made by the Waldhorn Company, Inc.

The trophy, a perpetual one, will be retained by the winning team for one year and then put into competition again. A replica of the bowl will be the permanent possession of each winning team.



Let us fill your
SUGAR BOWL

with

Godchaux's

PURE CANE SUGAR

sweet

pure

clean

free

If you'll send in this coupon, we'll send, postpaid and posthaste, a full pound of the Godchaux Sugar of your choice, together with a recipe book for making 85 of the best things you ever tasted. ❖

MAIL THIS COUPON

Godchaux Sugars, Inc.,
Masonic Temple Bldg.,
New Orleans, La.

Please send me the free pound of Godchaux Sugar (the kind I have checked) and your recipe book for good things to eat.

My name is _____

Address _____

City _____

Godchaux's Super-
Fine Granulated
Sugar



—Sparkling and
Pure for your
table.

Godchaux's XXXX
Confectioner's
Sugar



—For cakes and
deliciously
smooth icing.

Godchaux's
Brown Sugar



—For gingerbread
and Christmas
Candies.

Another Winner for New Orleans—

Watch for Opening of New

MASTER TIRE STORE

Canal at Villere Complete One-Stop Service

GOODYEAR SERVICE

"More People Ride on Goodyear Tires Than Any Other Kind"

OUR SINCERE APPRECIATION TO:

Continued from Page Five

TULANE UNIVERSITY OF LOUISIANA,

who, at a time when the choice of teams to play therein could not be possibly known, for civic pride, tendered the use of her magnificent stadium without charge.

A. B. PATERSON and J. C. BARNES,

for outstanding assistance in advertising, both locally and nationally.

DONALD and STANLEY SNIDER,

for premier art-work contributions used in our advertisements.

In grateful appreciation of their services, loyalty and civic mindedness, of all the above, it is my pleasure to dedicate this, the Inaugural Sugar Bowl Game.

WARREN V. MILLER.

McDaniels, Inc.

**COMMERCIAL
PHOTOGRAPHS**

537 Carondelet Street

RAYmond 2062

CLIMATIC PAINTS

*"Dixie Made for
Dixie Trade"*

The
American Paint Works
New Orleans

Brooklyn, N. Y. New Orleans, La. Boston, Mass.

COLONIAL MOLASSES CO., Inc.



The True Flavor of Fully Ripened Cane
Delicious — Healthful — Economical
CANE BREAK BRAND CANE SYRUP
COLONIAL BRAND MOLASSES
ORCHARD BRAND MAPLE SYRUP

+ + LET A & P FILL YOUR SUGAR BOWL + +

From Generation to Generation

The other day, when five-year-old Nancy reached up over the counter and lisped to the clerk: "A pound of coffee for Mummy, and a lollypop, pleathe, for me!" she had no idea that she was carrying out an old family tradition. Nor had we, until her great-grandmother came in and told us that one of her own earliest childhood memories was a visit to an early A & P store.

In the course of conversation, this lady said that both her daughter and herself, all through their married lives, had found A & P a useful ally in the business of home-making. And that her grand-daughter during the early years of her married life would have found it impossible to maintain a standard of healthful living in her home if it had not been for the good food supplied at low prices by A & P.

Since she represents the fourth successive generation of A & P shoppers in her family, no wonder Nancy loves to run on errands to A & P. From generation to generation, A & P has catered to the food needs of many old American families. We think we've learned to do it a little better through the years, and we'd be glad to extend our service to you.



The GREAT

ATLANTIC & PACIFIC

TEA CO.

DRINK—

Coca-Cola
TRADE MARK
REGISTERED

—Every Bottle Sterilized

THE NATIONAL SUGAR BOWL

Where Audubon Park now is, including the site of this Stadium, once was the plantation of Étienne de Boré, a colonial planter, who turned from the cultivation of chicory and indigo, the then current crops, to the raising of SUGAR CANE, despite warning of others that Cane Juice would not crystalize.

Success crowned his effort in accomplishing the supposedly impossible when his sugar boiler exclaimed "it crystalizes! !" and he became the founder of a National Industry that has flourished to this day.

Louisiana is the Nation's Sugar-Bowl, and it is fitting that this game, played upon ground where the Sugar Industry was born, should pay tribute, in its small way, by adopting such a symbolic name.

Continued on Page Thirteen

BEST FOOD

+

+

+

+

POPULAR PRICES

123 Royal Street

ST. REGIS

123 Royal Street

Restaurant—Cafeteria—Bar Service

SEA FOODS AND STEAKS A SPECIALTY



Serving More Meals Daily Than Any Other
Restaurant in New Orleans



The Proof of
GOOD ICE CREAM

Is in the Eating



+ Sold Everywhere +

USE
UTLEY
PAINT

"Weth-R-Mune"

Ready Mixed Paint

"Wabrut"

Semi-Paste

"Wal-Dres"

Flat Wall Finish

"Udo"

Enamel

"WEATHER OUR WEATHER"

UTLEY PAINT CO., Inc.

MANUFACTURERS

NEW ORLEANS, LA.

LINE-UP FOR SUGAR BOWL CLASSIC

TULANE SHIRTS

U	A Local Product of Merit	H
L	ALL AMERICAN	I
A	TOUCHDOWN	R
N	GREEN WAVE	T
E	COLLEGIATE	S
+		
+ Consistent Winners +		

MANUFACTURED BY

J. H. BONCK CO., Inc.

309 N. Rampart
Street

RAMELLI COAL COMPANY

Distributors of

High-Grade Coal—Coke—Anthracite



Raymond 6188

THE NATIONAL SUGAR BOWL

Continued from Page Eleven

Thru vicissitudes of tariff tinkering, crop-pests, wars and depressions, this industry, so vital to the well being of a multitude of Louisianians and so necessary to our nation, has survived, and again flourishes so that waving fields of the green cane, just before harvest time, stretch unbroken for miles and miles.

At the finish of "grinding", which is just about this season, it was the custom upon the old plantations to hold their greatest merriment of the year. So it is further fitting that a game played at this time of the year should in memory of these great festivities couple its name with that of the sugar industry.

LOUISIANA—The Nation's Sugar-Bowl! ! !

RUDOLPH RAMELLI

I N C O R P O R A T E D



LAUNDRY and DRY CLEANERS' SUPPLIES

—DISTRIBUTORS—

**PROCTER & GAMBLE SOAP POWDERS
CHEMICALS and ALKALIS**

RALPH R. ALEXIS

INSURANCE



AMERICAN BANK BUILDING

NEW ORLEANS

NEW ORLEANS
PAPER BOX FACTORY, Inc.

Designers and Manufacturers of

**Paper Boxes and
Folding Cartons**
of Every Description

**PRICE—QUALITY
SERVICE**



526 Bienville St. RAYmond 3554



WHEN you get ready to buy new furniture for service anywhere in the warm, humid area of Louisiana, Mississippi, Alabama, Florida, or Southeast Texas—whether it be only an occasional piece, or to completely furnish a roomy country home, a town house, a suburban bungalow, or a compact city apartment—be sure that you get furniture which bears the Sunny-Clime Metal Label. This is your best guaranty of freedom from swelling, warping, breaking of glue joints, loosening and peeling of veneers, and other climatic ills.

Sunny-Clime Furniture is attractively designed, durably constructed, beautifully finished—and, yet is economical. It sets a standard and an ideal.

**NEW ORLEANS FURNITURE
MANUFACTURING COMPANY**

Welcome to the Sugar Bowl!

TULANE AND TEMPLE

A. BALDWIN & CO., Inc.

130 Camp Street Phone RAymond 7281

NEW ORLEANS

TULANE UNIVERSITY OF LOUISIANA

Now One Hundred Years Old, Tulane University commenced as the Medical College of Louisiana, and later became the University of Louisiana. In younger days it suffered from meagerness of funds derived from State appropriations; closed entirely during part of the Civil War, but opening thereafter made such headway as to attract the attention of Paul Tulane.

In 1884, to accept the bequest of this present donor, Tulane surrendered State rights, adopted its present name, and moved to the present location in uptown residential New Orleans, opposite spacious and beautiful Audubon Park.

Tulane is a Metropolitan School, non-sectarian, and with Newcomb College for women as its affiliate, has nearly four thousand students.

Continued on Page Seventeen

In New Orleans, We Drink

CRYSTAL COFFEE

Take Home a package of Southern Hospitality

Phone RAymond 4625 ANYTIME FOR SPECIAL DELIVERY

COLONIAL COFFEE CORP. 632 Tchoupitoulas
Street

..KODAK.. FINISHING



Eastman Kodak Stores, Inc.
213 Baronne Street

WHILE IN
NEW ORLEANS

Visit

Henry Lazarus' Theatres

● Newcomb Theatre

Canal at Baronne Streets

+ + +

● Wonderland Theatre

Canal at Baronne Streets

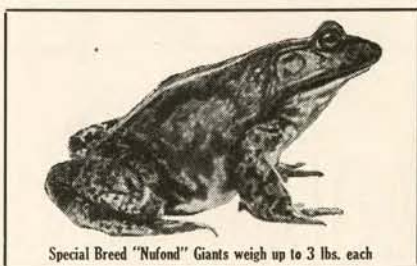
+ + +

● Coliseum Theatre

Coliseum cor. Thalia Streets

RAISE GIANT FROGS

—A NEW, UNCROWDED INDUSTRY—



Special Breed "Nufond" Giants weigh up to 3 lbs. each

Big Profits! — No Competition!

Make Big Money raising giant frogs. Breeder lays 10,000 eggs each year. Bullfrogs sell \$1 to \$3 per dozen. Biggest money-maker you can raise.

Unlimited Market Waiting

Canned Frog Legs opens up a New Giant Market. Wild frogs almost gone. Demand exceeds supply. Be a frog raiser.

START BACK YARD—ANY CLIMATE

Small pond starts big business. No experience necessary. No equipment except fence.

American Frog Canning Co.

Dept. C. New Orleans, La.
Originators of CANNED Frog Legs and
Frog a la Queen

Largest Frog Market in the World

Get the facts
on this new
industry.

Our big
FREE
book explains
everything.

A
Fortune
in
Frogs

Send
for
FREE
BOOK

AMERICAN CREOSOTE WORKS

INCORPORATED

CREOSOTED MATERIALS

NEW ORLEANS, LA.

TULANE UNIVERSITY OF LOUISIANA

Continued from Page Fifteen

Tulane, while having a fine Arts and Science College, and Law and Engineering Schools is especially noted for its School of Administration and its Medical College which bears the highest class rating.

Football has been played since the Eighteen-Nineties, but prominence was gained during the last ten years or so, until in 1931 Tulane represented the South in the Rose Bowl at Pasadena, and now again as co-champion of Southeastern Conference is representing the South in the Sugar Bowl.

With colors of Olive and Blue, the recognized "nick-name" of her team is "The Green Wave" but sometimes they individually are known as "Green-backs" or the "Greenies".

Welcome Temple—

WE are only sorry that our own deep rooted loyalty to the Green Wave makes it impossible to wish for you anything more than your courageously fine game, characteristic of your truly great team.

And to you, GREEN WAVE, ROLL ON!

Sabiche & Graff

311 BARONNE STREET

UNIVERSITY CLOTHES FOR MEN AND WOMEN

TULANE



DOCTOR
WILBUR C.
SMITH

DIRECTOR OF
ATHLETICS



"LITTLE
MONK"
SIMON

HALFBACK



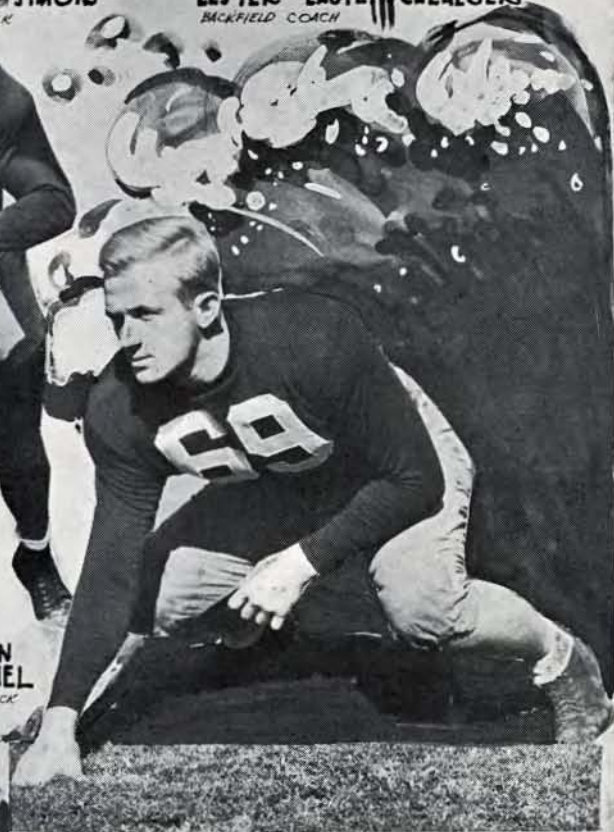
LESTER LAUTENSCHLAEGE
BACKFIELD COACH



JOHN
McDANIEL
QUARTERBACK



GEORGE
TESTIER
GUARD



BOB TESTIER
TACKLE

**HONEST
FOLKS!**

"When Others Wouldn't"

DAVIS-WOOD

**AT
GOOD
PRICES**

Deliver Better Lumber

GA. 3188

400 N. OLYMPIA ST.

TEMPLE UNIVERSITY

In 1884 Dr. Russell H. Conwell founded this as a Theological School at Philadelphia. With personal funds derived from lecturing he gave it life and brought it into prominence.

It is now an endowed, non-sectarian, co-educational school with a total registration of nearly 12,000 students, of which 8,000 are men.

Temple is truly a "big-city" school, having several separate "plants" or campi, housing academic, professional and business schools, and athletic plant, but operating no men's dormitories.

Temple's largest growth has naturally been in later years until now it has departments in Law, Commerce, Arts and Sciences, Dentistry, Theology,

Continued on Page Twenty-one

BRANCH OF SLIDELL'S FAMOUS

"WHITE KITCHEN"



— OPEN DAY and NIGHT —
... CURB SERVICE ...

SERVING TASTY

Indian Style Barbecue

and other

Toasted Sandwiches

with their fine flavored sauce

+++

PLENTY OF PARKING SPACE

+++

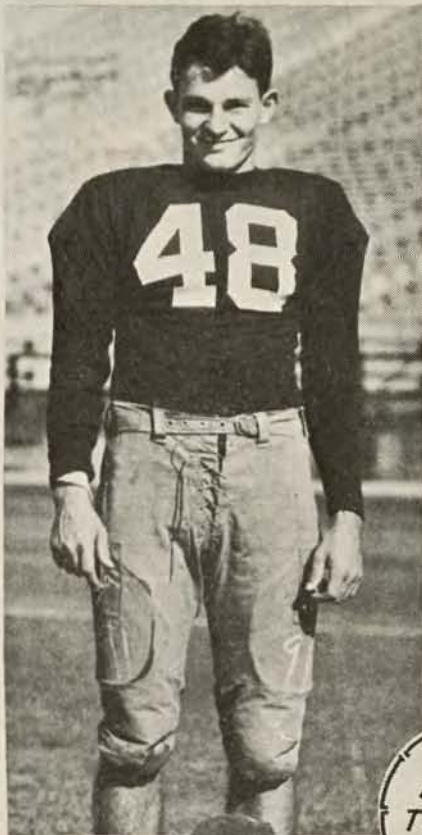
No. 1—SLIDELL, LA.

+++

No. 2—NEW ORLEANS, LA.

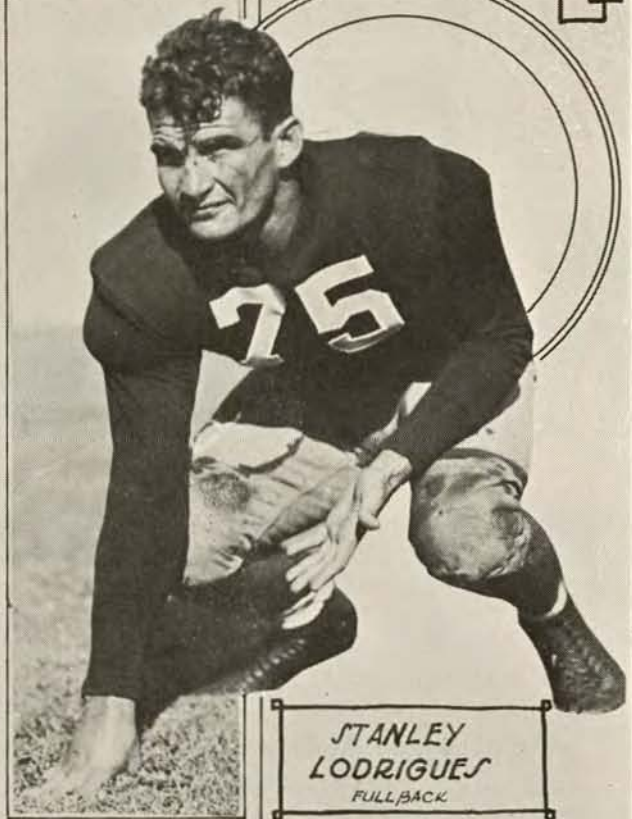
S. Claiborne and Poydras

TULANE



**JOE
LOFTIN**

FULL BACK

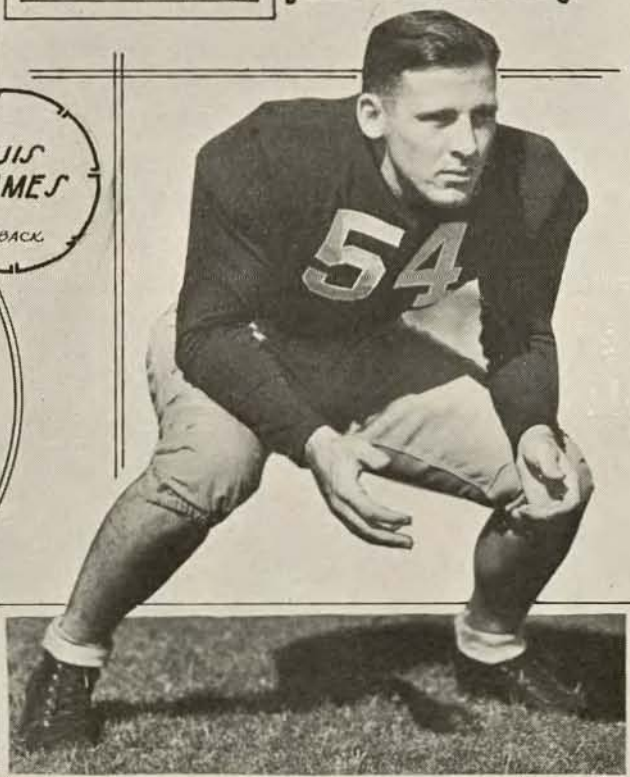


**STANLEY
LODRIGUES**
FULL BACK



**LOUIS
THAMES**

HALF BACK



LEFTY BROWNSON
QUARTERBACK

SAFES OPENED—COMBINATIONS CHANGED

MAin 1824

Auto
Locks



Auto
Keys

"YOU'LL BE PLEASED"

Expert Gun Repairing

306 CAMP STREET

+

CORNER
GRAVIER

Member:
CO-OPERATIVE CLUB

TEMPLE UNIVERSITY

Continued from Page Nineteen

Teaching, Graduate School and Medicine; the last named is amongst the highest accredited group.

Football has been played for only a decade, but Temple being fortunate in securing so outstanding a coach as Glenn "Pop" Warner, has come to the front with a rush, and during the past season was undefeated, ranking as the only one of that class in the East and as one of the only three in the Nation amongst the larger colleges.

Temple's colors are cherry and white, leading her team to be sometimes called the "Red Devils", but more often the "Owls" or the "Templars".

WELCOME TEMPLE

SUHREN, Incorporated

Co-Operator A. C. SUHREN, Sr.

AUTOMOBILE ELECTRICIANS
ORIGINAL HOME OF GENUINE PARTS
Starting... Lighting... Ignition... Carburetors
Repairs — Parts — Complete Units

Representing the original equipment manufacturers for official sales and service. SEE US FIRST!

SUHREN, Incorporated

1319 St. Charles Ave. - RAYmond 4294-4295

HAIL TULANE

Tulane



LOUIS THAMES
HALFBACK



CAPT. JOE LOFTIN
FULLBACK



DOUGIE JOHNSON
HALFBACK

GREEN WAVE



BARNEY MINTZ
HALFBACK



STANLEY LODRIGUES
FULLBACK



HOMER ROBINSON
CENTER

TULANE ROSTER

No.	PLAYER—	HOME—	POS.	WT.
15	Tull, Porter	New Orleans	C	175
19	Saint, Archie	New Orleans	E	168
20	Hall, Thos. (Whitey)	New Orleans	E	178
24	Flettrich, Albert	New Orleans	FB	194
25	McIlhenny, Paul	New Orleans	G	185
26	Daly, William	New Orleans	T	190
28	Dombourian, Azad	New Orleans	G	205
32	Giovanni, Milton	Lake Charles, La.	QB	187
34	Cooley, David	Slidell, La.	G	190
35	Dalovisio, Pete	Lake Charles, La.	E	180
36	Hillyer, H. H.	New Orleans	E	160
37	Eddy, Chas.	New Orleans	T	183
38	Henderson, James	Clarksdale, Miss.	HB	154
39	Nichols, William	Orlando, Fla.	HB	170
40	Kyle, Charles	New Orleans	E	170
41	Andrews, John	New Orleans	FB	191
42	Thomas, Farrel	Ft. Smith, Ark.	HB	171
43	Johnson, Douglas	New Orleans	HB	172
44	Schneidau, Hughes	New Orleans	E	185
45	Clark, Gus	Macon, Ga.	E	180
46	Loftin, Capt. Jos.	Baton Rouge, La.	FB	198
47	Simons, Claude, Jr.	New Orleans	HB	190
48	Robinson, Homer	Lake Charles, La.	C	186
49	Page, Richard	New Orleans	HB	170
50	Odom, Troy	Oakdale, La.	HB	172
51	Preisser, Frederick	New Orleans	E	170
52	Stroble, Bunny	Covington, La.	T	184
53	Evans, Bernard	Memphis, Tenn.	G	191
54	Brownson, Bradley	New Orleans	QB	176
55	Smither, Charles	New Orleans	G	196
56	Mintz, Barney	New Orleans	HB	176
57	McDaniel, John	Camden, Ark.	QB	194
58	Ott, Wiltz	Osyka, Miss.	QB	176
59	Memtsas, Harold	New Orleans	E	170
60	Gould, Ernest	New Orleans	C	180
61	Bryan, Howard (Bucky)	Shreveport, La.	HB	167
62	Tessier, George	New Orleans	G	193
63	Monk, Marion	New Orleans	G	180
64	Bruno, John	New Orleans	FB	173
65	Hardy, Dick	Hattiesburg, Miss.	E	191
66	Loftin, Noel	Baton Rouge, La.	C	193
67	Freese, Sam	Wheeling, W. Va.	C	190
68	Armstrong, Woodrow	Big Springs, Texas	G	210
69	Tessier, Robt.	New Orleans	T	228
70	Simon, Robt.	New Orleans	G	186
71	Linam, Albert (Tex)	Bay St. Louis, Miss.	FB	180
72	Poitevent, Ed.	New Orleans	G	201
73	Ary, Roy	Stigler, Okla.	T	200
74	Moss, William	Montgomery, Ala.	T	198
75	Lodrigues, Stanley	New Orleans	FB	178
76	Pace, David	Monroe, La.	T	185
77	Rau, Howard	Covington, La.	QB	171
78	Sanders, Hadley	Memphis, Tenn.	G	170
79	Sinnott, Chas.	Springfield, Ill.	T	192
80	Thames, Louis	Natalbany, La.	HB	167

FRERET SERVICE STATIONS

AUTO REPAIR
CARS HANDWASHED



FIRE-CHIEF GASOLINE

FERN AND MAPLE - WALNUT 6447



4938
FRERET
AT
ROBERT
TELEPHONE
UPTOWN 5060

BATTERY SERVICE

YOUR CHARGE ACCOUNT IS SOLICITED.

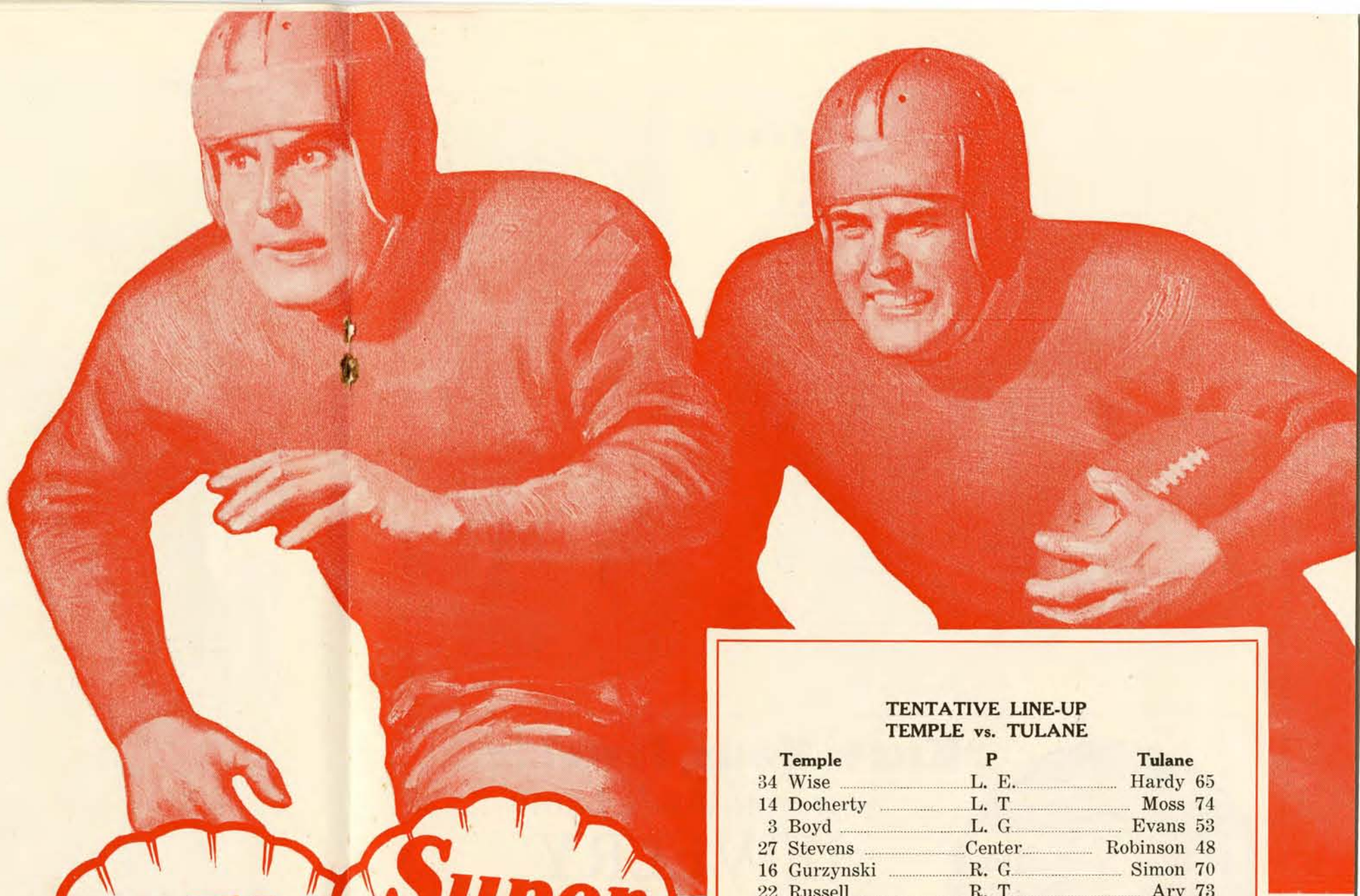


TEXACO LUBRICATION

BROADWAY AND PRITCHARD - WALNUT 2400

YOUR CAR WILL BE CALLED FOR AND SERVICED IN ANY WAY DESIRED

FOR PERFECT TEAMWORK!



ROSTER

TEMPLE vs. TULANE

TEMPLE

1 Anderson, e	22 Russell, t
2 Baker, e	23 Schaefer, g
3 Boyd, g	24 Miller, g
4 Frey, b	25 M'gomery, c
6 Kem'erer, t	26 Mowrey, b
7 Davidson, b	27 Stevens, c
8 Kon'pkha, b	28 Stonik, b
9 Landis, c	29 Smukler, b
10 Bongsd'ff, b	30 Testa, b
11 Lorenz, e	31 Walker, e
12 Martin, g	32 Young, t
14 Docherty, t	33 Watts, b
15 Egan, b	34 Wise, e
16 Gurz'nski, g	35 Zanin, e
17 Paul, b	36 Zastrow, t
18 Ippolito, e	37 Zukas, t
19 Kusco, b	38 Hartman, g
20 Liston, g	42 Smith, b
21 Mes'rvey, c	43 Demas, t

TULANE

15 Tull, c	54 Br'wnson, b
19 Saint, e	55 Smither, g
20 Hall, e	56 Mintz, b
24 Flettrich, b	57 McDaniel, b
25 McIlh'ny, g	58 Ott, b
26 Daly, t	59 Memtsas, e
28 D'bourian, g	60 Gould, c
32 Giovanni, b	61 Bryan, b
34 Cooley, g	62 Tessier, g
35 Dalovisio, e	63 Monk, g
36 Hillyer, e	64 Bruno, b
37 Eddy, t	65 Hardy, e
38 Hend'son, b	66 Loftin, c
39 Nichols, b	67 Freese, c
40 Kyle, e	68 Armst'g, g
41 Andrews, b	69 Tessier, t
42 Thomas, b	70 Simon, g
43 Johnson, b	71 Linam, b
44 Schn'dau, e	72 Poitevent, g
45 Clark, e	73 Ary, t
46 Loftin, J., b	74 Moss, t
47 Simons, b	75 Lod'gues, b
48 Robinson, c	76 Pace, t
49 Page, b	77 Rau, b
50 Odom, b	78 Sanders, g
51 Preisser, e	79 Sinnott, t
52 Stroble, t	80 Thames, b
53 Evans, g	



TENTATIVE LINE-UP TEMPLE vs. TULANE

Temple	P	Tulane
34 Wise	L. E.	Hardy 65
14 Docherty	L. T.	Moss 74
3 Boyd	L. G.	Evans 53
27 Stevens	Center	Robinson 48
16 Gurzynski	R. G.	Simon 70
22 Russell	R. T.	Ary 73
1 Anderson	R. E.	Kyle 40
4 Frey	Q. B.	Brownson 54
26 Mowrey	L. H.	Mintz 56
30 Testa	R. H.	Simons 47
29 Smukler	F. B.	Loftin, J. 46

OFFICIALS

Referee, Everett Strupper (Georgia Tech)
Umpire, Tom Thorpe (Columbia)
Head Linesman, W. M. Hollenback (Pennsylvania)
Field Judge, Walter Powell (Wisconsin)

THE SCORE -- 1st. Q. 2nd Q. 3rd Q. 4th Q. TOTAL

TEMPLE					
TULANE					

TEMPLE ROSTER

No.	PLAYER—	HOME—	POS.	WT.
1	Anderson, Elmer	Greensburg, Pa.	E	163
2	Baker, James	Wilkinsburg, Pa.	E	172
3	*Boyd, John	Philadelphia	G	192
4	*Frey, Glenn	Tunkhannock, Pa.	QB	169
6	*Kemmerer, Chas.	Allentown, Pa.	T	202
7	Davidson, William	Mt. Lebanon, Pa.	HB	161
8	Konopkha, John	Shamokin, Pa.	FB	181
9	Landis, Richard	Allentown, Pa.	C	185
10	Bongsderrf, Wilfred	Pine Grove, Pa.	HB	176
11	Lorenz, Roy	Marshalltown, Del.	E	174
12	Martin, Ellis	Lock Haven, Pa.	G	195
14	Docherty, William	Long Branch, N. J.	T	190
15	Egan, Joseph	Stapleton, L. I.	QB	176
16	Gurzynski, Stanley	Catasauqua, Pa.	G	186
17	*Paul, George	Mahanoy City, Pa.	QB	158
18	Ippolito, Amedeo	Nutley, N. J.	E	180
19	Kusco, Edward	Nesquehoning, Pa.	FB	184
20	Liston, Maurice	Fort Worth, Tex.	G	172
21	Messervy, Chester	Marblehead, Mass.	C	185
22	*Russell, James	Sinnemahoning, Pa.	T	182
23	*Schaefer, Frank	Philadelphia	G	173
24	Miller, Thomas	Elizabeth, N. J.	G	181
25	Montgomery, Edward	Monessen, Pa.	HB	186
26	Mowrey, Horace	Spring City, Pa.	HB	167
27	*Stevens, Peter	Plymouth, Pa.	C	199
28	*Stonik, John	Plymouth, Pa.	HB	178
29	Smukler, David	Gloversville, N. Y.	FB	197
30	*Testa, Daniel	Vineland, N. J.	HB	182
31	Walker, Edwin	Wyatt, La.	E	161
32	Young, Robert	Buffalo, N. Y.	T	193
33	*Watts, Don	Lancaster, Pa.	HB	155
34	Wise, Lloyd	Lebanon, Pa.	E	183
35	*Zanin, Joseph	Tamaqua, Pa.	E	179
36	Zastrow, Harry	Tonawanda, N. Y.	T	193
37	*Zukas, John	Coaldale, Pa.	T	201
38	Hartman, John	Shamokin, Pa.	G	194
42	Smith, Gordon	Lebanon, Pa.	HB	171
43	Demas, Zachary	Valencia, Pa.	T	184

*Indicates number of letters won.



“Know Your Jeweler” ---if you don't know JEWELRY

Miller Bros. cherishes the confidence of thousands of Orleanians. For 26 YEARS our values have been the standard in New Orleans. Ask anyone who traded here.

“Just as much for your dollars as we expect for ours”

America's Finest Watches!

ELGIN
GRUEN

BULOVA
TAVANNES

GOTHAM
WALTHAM

Every Nationally Advertised Watch—is sold at the lowest published prices. No extra charge for credit.

PAY WEEKLY - - SEMI-MONTHLY - - or MONTHLY

On Our “Dignified Credit” Plan—No Carrying Charges

PERFECT DIAMONDS

\$15.00 to \$1500.00

See our selection of perfect diamonds in the newest settings of platinum — yellow and white gold.

Miller Bros.
“SQUARE DEAL JEWELERS”

OUR ONLY
STORE
930 CANAL



CHARLES G. EDNY

TEMPLE

GLENN S.
(POP)
WARNER
HEAD
COACH.



EARL R.
YEOMANS
DIRECTOR OF ATHLETICS

The
Veteran Coach

"Pop" Warner

of forty years experience

*will help inaugurate
the*

**"SUGAR BOWL"
SERIES**

New Year's Day

1935



FRED SWAN - LINE COACH



CHARLES WINTERBURN
BACKFIELD COACH



NEWCOMB COLLEGE—Administration Building

O'QUIN STUDIO

+++

PORTRAITS
That Live

+++

724 Canal St. Phone RA. 5027

FELDMAN'S Antique Emporium

ANTIQUES and
REPRODUCTIONS

- See Our Collection of Old Firearms -

325 ROYAL STREET

225 ROYAL ST.—Branches—437 ROYAL ST.

Sunshine Cleaners, Inc.

CASH AND CARRY

20 STORES—"A branch in your neighborhood"

+++

Men's Suits Cleaned and Pressed

+++

Dresses or Coats Cleaned and Pressed

+++

Felt Hats Cleaned and Blocked

+++

Lowest Prices on Shoe Repairing

+++

Main Office—1168 Camp Street

- - PHONE MAIn 5000 - -

Congratulations

... on the ...

Great Success

... of the ...

"SUGAR BOWL"
Inaugural

+++

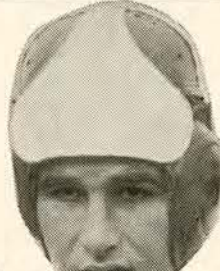
Rice Milling Corp.



**JIM
BAKER**
END



**MAURICE
LISTON**
GUARD



**BILL
DOCHERTY**
TACKLE



**ED
MONTGOMERY**
CENTER



**BOB
YOUNG**
TACKLE



**CHET
MESSERVEY**
CENTER



**STAN
GURZYNSKI**
GUARD



**GORDON
SMITH**
HALFBACK



JOHN KUSKO
FULLBACK



JOE EGAN
QUARTERBACK



**JOHN
HARTMAN**
GUARD



**HARRY
ZASTROW**
TACKLE



**BILL
DAVIDSON**
HALFBACK



**HORACE
MOWREY**
HALFBACK



**AMEDIO
IPPOLITO**
END



TOM MILLER
GUARD



**DAVE
SMUKLER**
FULLBACK



**JOHNNY
STONIK**
HALFBACK



**BILL
PEACOCK**
FULLBACK

Congratulations
to the
**Mid-Winter Sports
Association**
on the success
of the
**INAUGURAL SUGAR BOWL
CLASSIC**
+
Frank J. Clancy
SHERIFF and
TAX COLLECTOR
JEFFERSON PARISH

B. Manheim Galleries

●
Displaying twenty-six show rooms of
ENGLISH and FRENCH
PERIOD FURNITURE

●
Specializing in
GEORGIAN SILVER

●
Your Inspection Invited
403-409 ROYAL STREET
NEW ORLEANS

The Loubat Glassware & Cork Co.

Cooking and Serving
Equipment and Supplies

+ for +

HOTELS, RESTAURANTS,
CAFETERIAS, CLUBS, HOSPI-
TALS, INSTITUTIONS
AND BARS

New Orleans

Telephone RA 3751

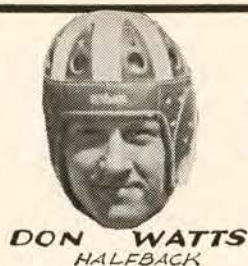
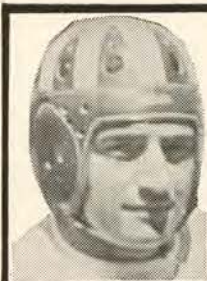
Brandao Printing Company
Incorporated

PRINTERS



524 NATCHEZ STREET
NEW ORLEANS

SERVING BUYERS OF GOOD PRINTING
MORE THAN 50 YEARS



DON WATTS
HALFBACK



DANNY TESTA
HALFBACK

CHARLEY KEMMERER
TACKLE



BILL LONGSDERFF
HALFBACK

JOE ZANIN
END

JOHNNY BOYD
GUARD



JOHN ZUKAS
TACKLE



FRANK SCHAEFER
GUARD



GEORGE PAUL
QUARTERBACK



ELMER ANDERSON
END



ELLIS MARTIN
GUARD



LLOYD WISE
END



JIM RUSSELL
TACKLE



GLENN FREY
QUARTERBACK



DICK LANDIS
CENTER



JOE GALLIA
GUARD



ROY LORENZ
END

PETE STEVENS
CENTER



The Williamson National Rating System, Inc.

has the following to say re Temple: "Temple had a harder schedule than either Minnesota or Alabama, but averaged five standard scoring points less than the one and four less than the other."

+ + +

And regarding comparison of conferences, of which a few are shown:

- | | |
|--|---|
| 1—All Solid South, a rating of.....95.1 | 4—All Middle West, a rating of.....90.6 |
| 2—All East, a rating of.....94.5 | 5—All Southwest, a rating of.....90.1 |
| 3—S. E. Conference, a rating of.....92.5 | 7—Big Ten Conference, a rating of 84.7 |

These figures are arrived at from a study of the **complete** schedule of each of the five leading teams in each group, not merely the games played within some conference.

+ + +

THERE IS MUCH MORE TO PUTTING OUT FAIR AND IMPARTIAL NATIONAL FOOTBALL RATINGS THAN MERELY HAVING FIGURED OUT SOME MATHEMATICAL FORMULA WHICH SEEMS TO MEET THE ISSUE IN THE MIND OF THE ORIGINATOR OF THE FORMULA. The proper sort of office methods and a scientific selection of a calculating and clerical staff, an efficient and unique filing system using specially printed cards and forms, careful football news gathering methods, review of key newspapers from all over the nation, and many other items must be worked out by experience, as well as by theory.

Need a Car?

Rent a New
Car and
Drive it
Yourself—
Low Rates



DIXIE SYSTEM

1000 COMMON ST.

RAYmond 3446

Gardner & Jacob Co.

— INCORPORATED —

Packing House and
Dairy Products



KEEP CLEAN IN SPORTS
KEEP CLEAN IN BODY..



867 MAGAZINE ST. NEW ORLEANS, LA.

Quality---Sells

Cloverland Grade A Pasteurized Milk

of Superior Flavor

and

Cloverland Supreme Ice Cream

"Deliciously Different"

CLOVERLAND DAIRY PRODUCTS CO., Inc.

PHONE GAlvez 4133



THE NEW ORLEANS MUNICIPAL AUDITORIUM

Largest and finest in the
South. Adaptable for either
Grand Opera, Mardi Gras Re-
ceptions and Balls, or National
Conventions.



Gene A. Ratelle, General Manager

Coast Transportation Co., Inc.

(A LOUISIANA CORPORATION)

Operating Motorships "ALTHIA" and "SEMINOLE"

Between New Orleans, Mobile, Pensacola

"Most Frequent Coastwise Sailings"

—MAIN OFFICE—

303 Board of Trade Annex - New Orleans, La.

GROWING with NEW ORLEANS

*More Power to
the Winner ---*

Best-Southern LAUNDRIES

CALL THE
FOR THE **BEST**

Jackson 4646-4648

THIRTY TRUCKS TO SERVE YOU

The New Orleans Mid-Winter Sports Association

This civic, non-profit, organization was formed in January, 1934, at a meeting called by the Co-Operative Club of New Orleans, who having agreed to sponsor the plans for a Mid-Winter Sports Carnival, including the Sugar-Bowl Football Game, as formulated by Warren Miller, called all other civic, fraternal, educational and publicity organizations of New Orleans into council.

The proposed plans meeting with the approval of all those answering the call, a permanent organization under the present style was formed with a membership divided into two classes; representative and individual. Representative membership consisted of those sent to the Association by other bodies, the main body being the member and the individual sent being their representative.

The Constitution of the Association provides that no officer or member should be paid or receive any remuneration or financial advantage because of his membership; also that profits, if any, after sufficient surplus accrued to insure one further annual game, should be devoted to charity or civic projects thru recognized charitable, educational, religious or governmental agencies.

The plans adopted called for sponsoring amateur sports only, with a football game as the major activity; sub-committees were formed to handle other events and to encourage other clubs, etc., to join in the general program.

Other activities this first year have been the tennis tournament and the yachting regatta; the former under auspices of the Mid-Winter Sports Association, the latter by the Southern Yacht Club in co-operation with the general plan.

Both of these events have been concluded prior to the Sugar-Bowl Game. Other events to follow are the banquet for the teams and the Jackson Day Run, January 8th, 1935, under sponsorship of the local Y. M. C. A.

Plans for the next Sports Carnival, to be held from December 27th, 1935, until January 8th, 1936, have been formulated and if the first year has been even a modest success, it is believed that the next Sugar-Bowl Classic and surrounding sports events will be bigger and better, and will increase from year to year until this season in New Orleans will not only be Nationally, but Internationally, known and attended.

Certainly the results obtained in inaugurating the program, in the civic interest aroused, and in the National publicity and prominence obtained, has been very gratifying.

Broadway Pharmacy

H. C. RICHARDS, Prop.

800 Broadway

Compliments of

J. K. BYRNE & CO.

Certified Public Accountants

2315-16 American Bank Bldg.
New Orleans

Phone RAYmond 2960

New Orleans Stamp and Stencil Co., Inc.

Rubber Stamps, Stencils, Badges
Marking Devices

330 Camp St. New Orleans

Motor Repairing Auto Painting

The Poydras Garage, Inc.

A. J. GUMINA, Pres.

RAYmond 1179 - 510 Poydras St.
New Orleans, La.



We Control Insect Pests

Guaranteed Service

BARBER LABORATORIES,
Incorporated

1200 S. Broad St. JACKSON 4753
New Orleans

Rent—Why Buy Towels and Linen?

New Orleans Linen Supply, Inc.

Broad and Erato Streets

JA. 1188-1189 - New Orleans, La.

ED. SMITH'S STENCIL WORKS
RA. 2129
RUBBER STAMPS, STENCILS, SEALS
426 CAMP NEAR POYDRAS

Chapman Gift Shop

Former Home of Adelina Patti
Largest Courtyard in the
Vieux Carre

631 ROYAL STREET

R. F. MESTAYER LUMBER CO., Inc.

1533 LAFITTE AVE.

RAYmond 6285

We Cater to Bridge Parties,
Banquets, Etc.

ALAMO TEA ROOM

MISS JENNIE CATALANELLO
MANAGER

914 Union St. MAin 6529

Compliments of

Schiro Shoe Store

1020 Canal Street

Bagille's Seafood Co.

INCORPORATED

+

5 French Fish Market

MAin 1301-1302

Ask your grocer for Vories Products



Marie J. Fabacher Gilbert V. DeGruy

ELM PHARMACY

Prescriptions—Quality
Service

Elm at Hillary Walnut 7171

Williamson's Ratings are issued from New Orleans by P. B. Williamson, an engineer, who knows his figures. Ye Editor has studied sines and co-sines, calculus, and what-not, but when presented with the mathematical formulae by which Mr. Williamson arrives at his conclusions, was as helpless to use same as a baby would be with a book written in Sanskrit.

But the worth of Mr. Williamson's system is undoubted. The accuracy of advanced predictions for the 1934 season is shown to be 89%, and the Williamson System bats 94% consistently on its 1934 rating table given below, showing the record of the first fifty teams. We regret that space forbids a more complete table for the nearly four hundred teams shown in the list.

Team	Wmson. Rating R
0 Perfect Team	100.0
1 Minnesota	99.7
1 Alabama	99.7
2 Temple	98.1
3 Rice	97.2
4 Ohio State	96.1
5 Pittsburgh	95.4
6 Tennessee	95.3
7 Navy	94.9
8 Colgate	94.0
9 Stanford	93.1
10 Texas U.	92.8
11 St. Mary's, Calif.	91.5
12 Notre Dame	90.9
13 Tulane	90.7
14 Sou. Methodist	90.4
15 La. State U.	90.3
16 Columbia U.	90.2
17 Tulsa U.	87.6
18 Centenary	87.2
19 North Carolina U.	86.9
20 Georgia U.	86.7
21 Yale	86.4
22 Princeton	86.1
23 Illinois U.	84.2
24 Army	84.1
25 Syracuse	83.6
26 Duke	83.4
27 Texas Christian	83.1
28 Santa Clara	82.9
29 Michigan State	82.2
30 Duquesne	82.1
31 Western Maryland	82.0
32 Bucknell	81.3
33 Fordham	79.0
34 Washington U. (Cst)	77.9
35 Kansas State	77.8
36 Birmingham Sou.	76.3
37 Arkansas U.	76.3
38 Nebraska U.	76.1
39 Penn. U.	75.1
40 Vanderbilt	74.7
41 San Francisco	74.5
42 Geo. Washington U.	74.2
43 Oklahoma U.	73.7
44 Kansas U.	73.6
45 West Virginia U.	73.5
46 Washington & Lee	73.2
47 Chicago	72.3
48 Holy Cross	72.1
49 Indiana U.	71.2

Peytral Flower Shoppe

Flowers and Designs
for all Occasions

5060 CANAL STREET

Adjoining Firemen's Cemetery

Telephone
GAlvez 9380

Evenings
GAlvez 5267

Bienville Warehouses Corporation, Inc.

Storage : Drayage : Mixing
Fumigation : Weighing

Iberville, Clay, Bienville, N. Peters, Conti Sts.
NEW ORLEANS

MADAME BEGUE'S FAMOUS BREAKFAST HOUSE

FRENCH COOKING

504 MADISON STREET
Opposite French Market

"DIXIE CUPS"

Distributed
by

C. H. BOEHMER
Godchaux Building

Have Your
SHOES REPAIRED
at

Kenton Shoe Hospital
922 Canal St. MAin 3356

College Pharmacy

ERNEST A. COONS, Prop.

Freret at State New Orleans

Telephone: WALnut 3709-3710

The PATIO ROYAL

417 ROYAL STREET
(OLD NUMBER 80 RUE ROYALE)

Occupying the building in which was located the first Bank in the Mississippi Valley, established in 1804 by Thomas Jefferson—and the Court of the home of Paul Morphy, Chess Champion.

These two sites are among the finest expressions of the architectural charm of Old New Orleans; broad arches, curving stairs, hand-wrought ironwork, high-beamed ceilings, fan windows, balconies, flagstones, water jars and other illustrations of a period when designers and artisans combined in creating enduring examples of the builder's art.

In these settings, the Patio Royal, one of the fashionable restaurants in the French Quarter, patrons are served an unsurpassed cuisine as artistic as the romantic surroundings.

VISITORS CORDIALLY WELCOMED



Hové
PARFUMEUR
INC.

529 ROYAL STREET
NEW ORLEANS

*Maker and Originator of Rare Perfumes
At Moderate Prices*

HOVÉ'S EXCLUSIVE ODEURS
CANNOT BE PURCHASED
AT DRUG OR DEPARTMENT
STORES

*Visitors to New Orleans are cordially
invited to visit Hové's beautiful mansion
and old-world courtyard at 529 Rue
Royale. This house was built by the Span-
ish Governor, Don Estaban Miro, in 1785.*

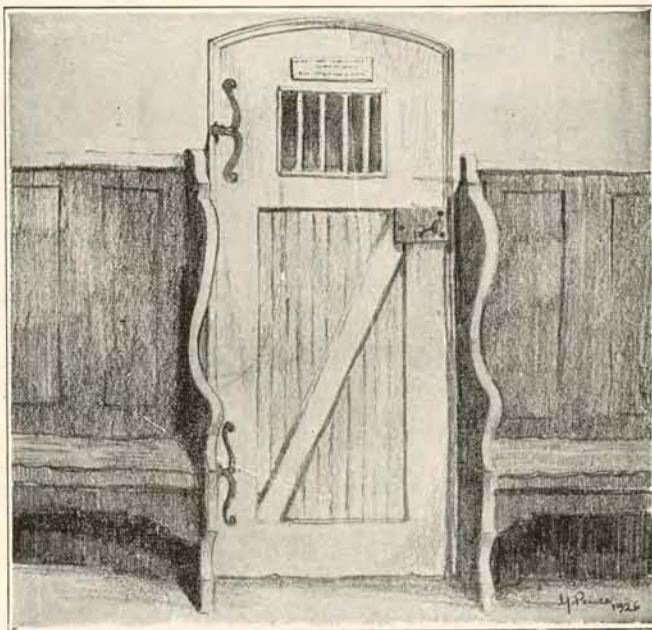
ANTOINE'S RESTAURANT

Since 1840

*Antoine's is the place "par excellence" for the
gourmet, because there is always something new
for the refined senses.*

*When you go to Antoine's, it is to give your
palate an undisturbed treat.*

ROY L. ALCIATORE, *Prop.*
713 ST. LOUIS STREET



Doorway to the Vault in the First Bank in the Mississippi Valley,
Established 1804



Stairway into the Paul Morphy home from the courtyard

+ +

THE COURTYARD OF ADELINA PATTI

at 631 ROYAL STREET is one of the largest in the OLD FRENCH QUARTER. As a girl of seventeen she came to New Orleans on a visit to her brother, and her personal charm and glorious voice brought immediate recognition. During the FRENCH GRAND OPERA season two of the soloists were taken ill and Adelina Patti was asked to sing their roles, giving her the opportunity to make a first operatic appearance in America, here, opening in Flotow's "Martha." The Vieux Carre Association has restored this and a number of interesting and historical locations which attract many visitors who are cordially welcomed.

SINCE 1893

SCHMIDT'S ANTIQUES



305 ROYAL STREET

JOS. T. OWIN

Manufacturer of
Plate, Wire and Solder for Jewelers
and Dentists

Highest Prices Paid for Old Gold
Silver and Platinum

309 Bourbon St. RAYmond 2624

Compliments of

Eugene Dietzgen Co.

318 CAMP STREET
NEW ORLEANS

Art Metal Craft Works

Silversmiths—Platers—Polishers

*Silverware, Bronzes, Etc.
Repaired and Replated*

+

419 Dauphine St. MAin 3518

NEW ORLEANS TENT and AWNING CO., Ltd.

AWNINGS and PAINT

514 CAMP ST. RAYmond 2328
NEW ORLEANS

DISINFECTANTS
DEODORANTS

INSECTICIDES
CLEANSERS

Pine Oil Sales Co., Inc.

142 Chartres St. New Orleans
RAYmond 6841

EXCELLENT CUISINE

DELMONICO RESTAURANT

WESTERN MEATS — SEA FOODS

1300 ST. CHARLES AVENUE

RAP! *The Umpire—*

RAP! *The Referee—*

*but for your packages, let us furnish
the WRAPS!*

SOUTHERN PAPER COMPANY, LTD.
SERVICE — RICE — CO-OPERATION

New Orleans, U.S.A.

Manufacturers

Waxed Papers

Folding Boxes

Paper Bags

Specialties

Two Winners!

The Greenies and
Mrs. Drake's Sandwiches



Mrs. Drake's Sandwiches
For All Occasions
Teas--Parties--Picnics



"Eat Mrs. Drake's Sandwiches
Sold Most Everywhere"

Smoke

El Trelles

Keep Moving

Great Southern
Cigars



M. Trelles & Co.

"Largest Fixture Manufacturer South"

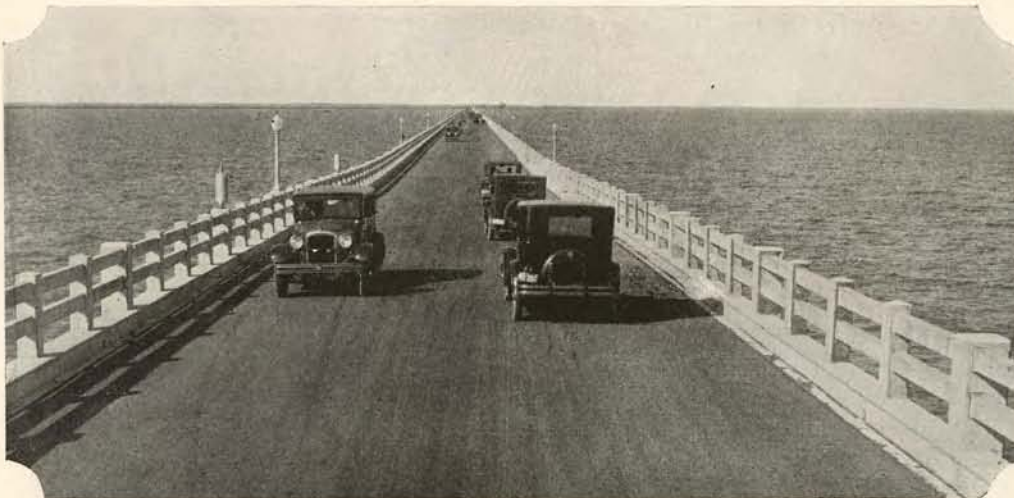
RIECKE CABINET WORKS

MASTER CABINET MAKERS
MODERN BAR FIXTURES

GAvez 4101-4102

4201-13 Tulane Avenue

New Orleans, Louisiana



Pontchar-
train
Bridge

+

Longest
Continuous
Concrete
Bridge in the
World.
A Five-Mile
Drive Across
the Waters
of Lake
Pontchartrain.

Compliments of

New Orleans
Corrugated Box Co.
INCORPORATED



Telephone RAYmond 4258

Hausmann Inc.

New Orleans Leading
Jewelers — Serving the
people of the Southland
with distinctive jewelry
at fair prices for over
60 years

HAUSMANN INC.

MANUFACTURING JEWELERS

730 CANAL ST.

NEW ORLEANS

Specializing in "Sports" Trophies for all occasions

"The Coffee New Orleans Likes"



"Unexcelled for 45 Years"

SAVE THE COUPONS
And Receive Your Choice of
MORE THAN 100 GIFTS

Coupons Also Packed With

ST. CHARLES	MORNING JOY
FRENCH OPERA	HONEYMOON
COFFEES and TEAS	

American Coffee Co., Inc.
New Orleans, La.

STATIONERY ...

*Complete stock of Loose Leaf,
Blank Books, and all supplies
used in the office.*

FURNITURE

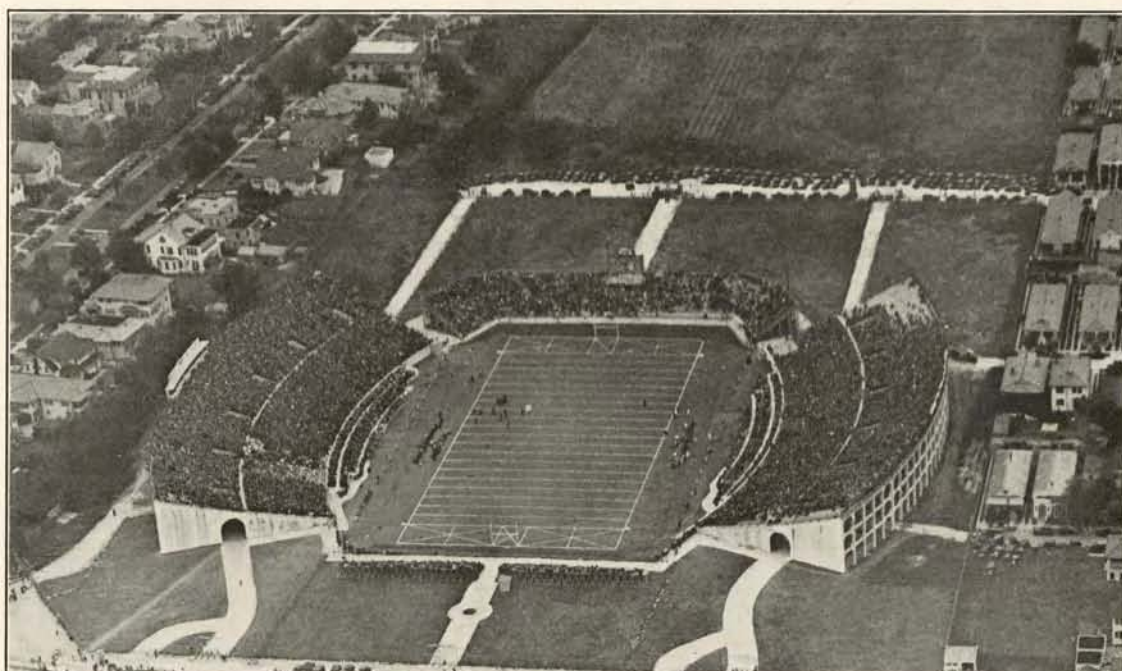
*Exclusive Agents for many
of the largest manufacturers
of Business Furniture and
Equipment. Large stocks on
hand for prompt deliveries.*

PRINTING

*A modern plant, well equipped
to handle commercial and
advertising printing.*

"A Complete Service"

Baudéan
INCORPORATED
Office Outfitters
NEW ORLEANS, LA.



TULANE STADIUM

The designers of this beautiful concrete structure planned for the addition of sections at both ends, completing the bowl at a future date. For this occasion portable stands have been added.

Johns-Manville Sales Corporation

RIGID ASBESTOS SHINGLES
(Made in New Orleans)

Asbestos B/U Roofing—Packing—Insulation

1010 MARITIME BUILDING

RAYmond 6200-6209

"It takes a real man to play this game
—my compliments to both teams"

DAVE SCHLESINGER

Wrestling Matchmaker
Coliseum Arena
Every Thursday Night

UP-TO-DATE
SHOE REPAIRING CO.
PHONE MAIN 2264
622 COMMERCIAL PL.
TRADE MARK

SOUTHERN SPECIALTY SALES CO., Inc.

Complete Lawn, Garden and Golf
Course Maintenance Equipment
All Types of Lawn Mowers
Sharpened and Repaired

821-823 St. Charles St. RAYmond 3694

Chetta's Restaurant

(FORMERLY BERTUCCI'S)

CHEROKEE AND MAPLE



After the Game!—Beer and Sandwiches

MR. AND MRS. N. CHETTA

Quaint and Romantic Old New Orleans

will be the mecca for thousands of visitors during the Christmas holidays—here on a holiday and to see the inaugural Sugar Bowl football classic between the Temple Owls and the Tulane Green Wave.

The setting for this football game could not coincide more perfectly with the plans for a gay vacation for Southerners and snow-bound Northerners alike.

For more than one hundred years, New Orleans has been to the citizens of the United States the most picturesque, the most romantic and the most interesting of American cities. Its romance starts with the fact that it is the only city that has been a part and parcel of three great governments of the world, and today the romance still exists in its combined picturesqueness of the old world and new. Within it are to be found a flavor of the love of France, the romance of Spain and the hustle and bustle of modern American business activity in industry, commerce and finance.

No end of scenes reminiscent of antiquity, of the culture of a by-gone age are to be found in the Vieux Carre, or old city. But modern New Orleans—a throbbing metropolis that is one of America's most prosperous and the greatest in the South, offers remarkable contrast which throws into bold relief the old city and its relics of life a century ago.

So numerous and varied are the phases of interest here that brevity permits only their presentation in kaleidoscopic array—the interesting Creoles, their habits and customs; the patios, the wrought-iron lace work and the balconies of the old architecture; the Mississippi river, the great plantations with massive moss-draped oaks and antebellum negroes, the bayous penetrating deep cypress brakes, Lake Pontchartrain and the Gulf; the score of scenes important in history; the oldest building in the Mississippi Valley; beautiful Canal Street; St. Charles Avenue and other beautiful boulevards lined with palms and poinsettias and other ever-green, semi-tropical foliage; the unique water purification plant and countless other attractions.

The visitor to New Orleans finds the world's greatest restaurants where cooking is yet an art that few have ever equaled.

The climate is an out-door climate the year 'round. Winter sports are always in session out-doors. Fishermen find a veritable paradise in the salt water bayous and the gulf.

WOOLWORTH'S

(OLD KIRBY STORE)

737 Canal Street

ROBERT LEE PARR, Manager

Welcomes all "Sugar Bowl" Visitors

See our Souvenirs and Decorations for
Dances, Parties and all Occasions

Phone MAIN 3172

Grand Central Meat Market, Inc.

Peter Ciccio and P. J. Ciccio, Props.

CHOICE HOME AND WESTERN MEATS

Hotels - Restaurants - Steamboats
Supplied

1058 Camp Street New Orleans, La.

Congratulations on the
Success
of the

Inaugural
"Sugar Bowl"
Classic
R. T. F.

Jose Escalante & Co.

"CORINA" CIGARS

PLANT No. 2

Manufacturers for the Trade Only
Magazine and Poeyfare Streets

Anthony Casamento

DELICATESSEN AND
RESTAURANT

Phones WALnut 1952-9237 - 7130 Freret St.

Phone UPTown 5577-8

McKENZIE'S PASTRY SHOPPE

Rolls, Cakes, Pies and Pastries
Best of Everything in Bakery Line
4902 PRYTANIA STREET

Gallagher Transfer and Storage Co.,

INCORPORATED



LONG DISTANCE MOVING

STORING—MOVING—PACKING

Shipping Household and Office Effects

Fire-Proof and Non-Fire-Proof Buildings

927-45 MAGAZINE STREET

Cor. Howard Ave.

Phone RA 4268



THE GREEN SHUTTER COFFEE HOUSE—Luncheon and Tea

Cason's Garage, Inc.

F. Herman Ahrens, Vice-President and Gen. Manager

Official Garage for Hotels

ROOSEVELT and DeSOTO

Entrances: Perdido, Union and Dryades Sts.

Phones RAYmond 4159-4150

New Orleans, La.

Royal Company, Inc.

Antiques - Works of Art - Jewelry
Furniture - Diamonds - Silverware
Bric-a-Brac - Sheffield

"Treasure House of Antiques"

MOST BEAUTIFUL ANTIQUES OF
OLD NEW ORLEANS

—VISITORS WELCOME—

217-219-307-309 Royal St.—New Orleans, La.

P. B. WILLIAMSON

Consulting Engineer and Geologist

Suite 204—Main 5236

608 COMMON STREET

New Orleans, Louisiana

+ + +

Geological and geophysical research and reports. Oil, gas, sulphur, appraisals. Efficient leasing and development.

+ + +

Specializing since 1917 on the geology (and since 1923 on the geophysics) of the Gulf Coastal Plain from Texas to Florida; and since 1929 particularly of LOUISIANA and MISSISSIPPI.

+ + +

One of the most complete engineering, scientific, and geological private libraries anywhere. Valuable array of maps, well logs, special reports, etc.

Advanced equipment for gravimetric, magnetic, and electrical surveys.

Protection Service for Homes
and Business Firms

Licensed and
Bonded



S. C. GURVICH

Formerly Special Agent U. S. Dept. of Justice
RAYmond 7111

Superintendent

New Orleans Private 309 Pan-American Bldg.
Patrol Service, Inc. New Orleans, La.

— Ship Thru The Port of New Orleans —

+ LET +

SERVICE DRAYAGE

BE YOUR AGENT

+ + +

*Forwarders—Warehousing Accomodations—Drayage
Freight Handling Contractors*

+ + +

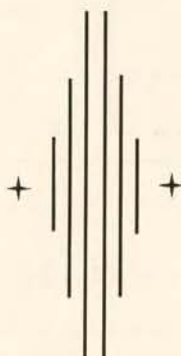
SERVICE DRAYAGE CO., Inc.

— Established 1920 —

619 St. James Street - - - Long Distance Phone RAYmond 4367

1934 SEASON RECORDS OF TULANE AND TEMPLE

TULANE		
41	CHATTANOOGA	0
13	AUBURN	0
28	FLORIDA	12
7	GEORGIA	6
20	GEORGIA TECH	12
15	OLE MISS.	0
6	COLGATE	20
20	KENTUCKY	7
32	SEWANEE	0
13	L. S. U.	12
<hr/>		<hr/>
195		69



TEMPLE		
34	V. P. I.	0
40	TEXAS A. & M.	6
6	INDIANA	6
28	W. VIRGINIA	13
28	MARQUETTE	6
14	HOLY CROSS	0
34	CARNEGIE TECH	0
22	VILLANOVA	0
0	BUCKNELL	0
<hr/>		<hr/>
216		31

ARNAUD'S

:: :: CUISINE DELICIEUSE :: ::

Many Specialties, Foreign and Creole,
With the Supreme Flavor Distinctive
of New Orleans

811-813-819 BIENVILLE STREET :: NEAR BOURBON

B. F. Trappey's Sons, Inc.

(NEW IBERIA, LA.)

... Packers of ...

QUALITY FOOD PRODUCTS

Ask Your Grocer For ---

Trappey's Sauce

Mexi-Pep

Cut Stringless Beans

Cut Okra

Red Kidney Beans with Chili

Lima Beans

Candied Yams

Pickles, Mustards

Chows, Catsup and

Gumbo File

"Try any of these, we know you will enjoy them"

New Orleans Sales Office:

420 CHARTRES ST. - Tel. MAin 4776

GARCIA

Stationery Co., Ltd.

(T. FITZWILLIAM & CO., LTD.)

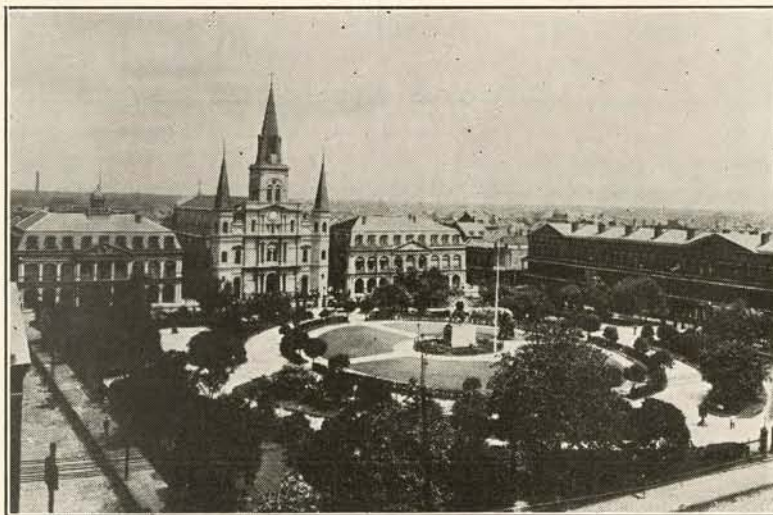
PRINTERS-STATIONERS

OFFICE OUTFITTERS

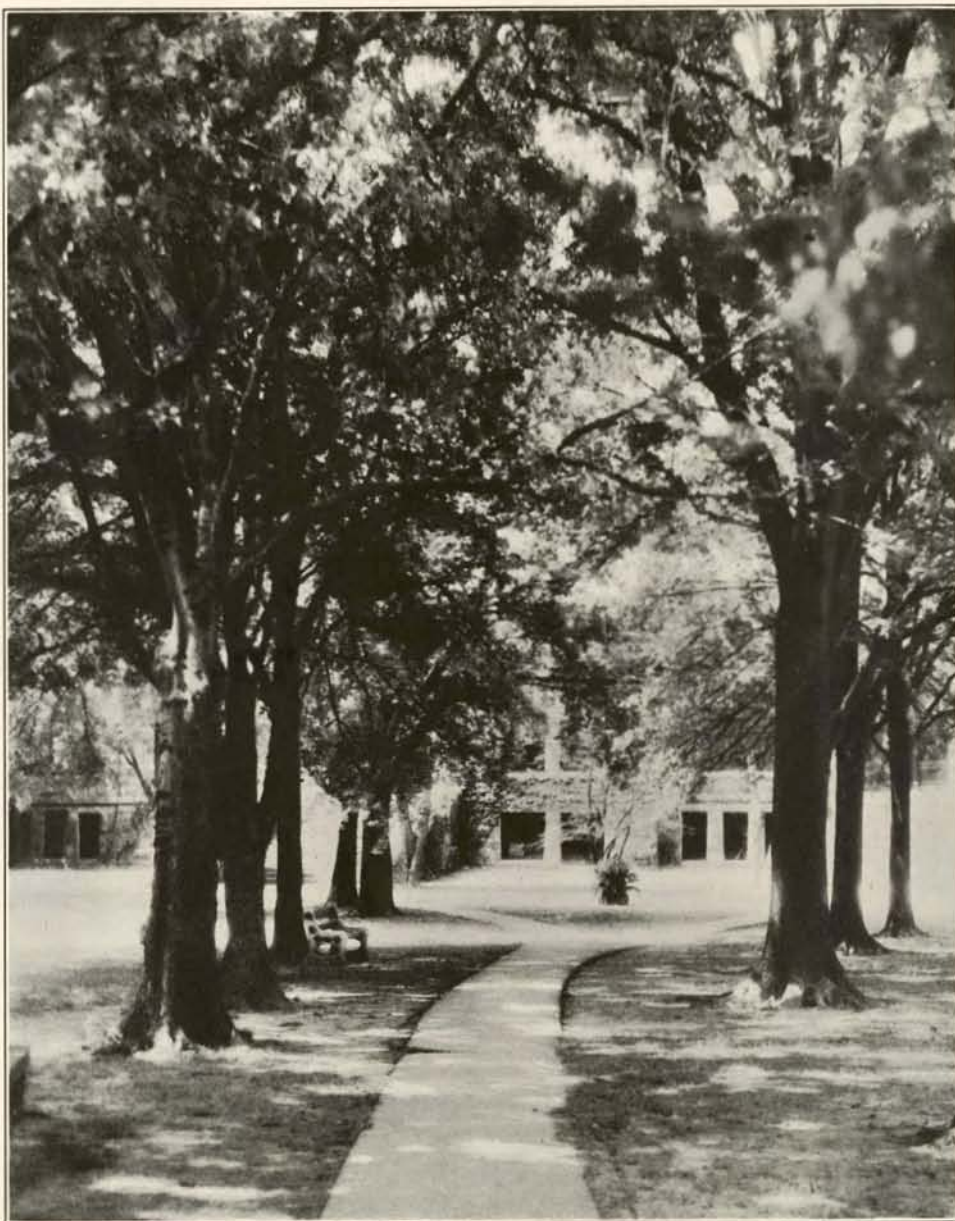
414-418 Camp Street Phone RAYmond 6121

NEW ORLEANS

The Heart of Old New Orleans



The Cabildo; The St. Louis Cathedral; The Presbytere and one of the Pontalba Buildings, "The Oldest Apartment Buildings in America."



A Glimpse of Gibson Hall from the Center of the
Tulane Campus



of GREEN WAVE



• KYLE • ARY • GEO. TESSIER • ROBINSON • SIMON • BOB TESSIER • HARDY •



One of the many delightful patios in a setting of tropical flowers and shrubs.



A fine example of the wrought iron lace work done by artisans of the last century.



This is Pirate's Alley, the most sketched and photographed spot in the Old City.

HORSE SHOE PICKLE WORKS, Ltd.

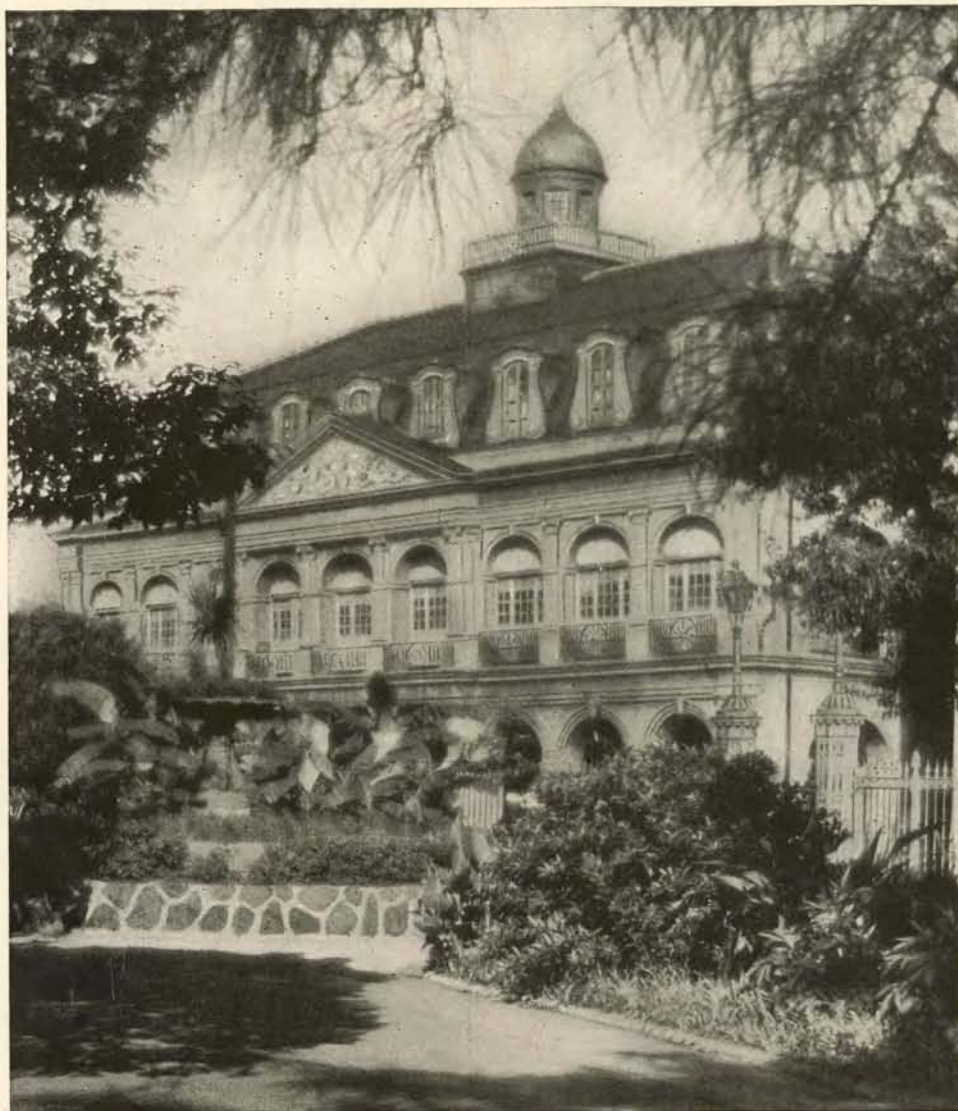
Manufacturers and Packers of
CONDIMENTS

710 ST. MARY STREET
NEW ORLEANS, LA.

Compliments
of
A Well Wisher

Compliments of
General Box Company
New Orleans, La.

Compliments of
Dodt Realty Co., Inc.
1409 Whitney Building
▼
NEW ORLEANS, LA.



The Famous Cabildo (1718) Photographed from Jackson Square

CONGRATULATIONS

*May this be the first of a long
sequence of New Year's Day
"SUGAR BOWL" CLASSICS*

MANUFACTURER

Freret Hardware Store

HARDWARE, PAINTS, PLUMBING
and ELECTRICAL SUPPLIES

Tennis Racquets Restrung

Authorized Agent for Dupont's Duco—Our Specialty

Phone Us—We Deliver Promptly

5108 FRERET STREET - - Phone Uptown 2973

DISTINCTIVE
PRINTING

Worthy of the Name Franklin



FRANKLIN PRINTING CO.

JOS. B. DAVID, President

INCORPORATED

Printers of Souvenir Program
for the
SUGAR BOWL CLASSIC

Telephones: RAymond 3255-3256
627-629 POYDRAS ST.
NEW ORLEANS

Congratulations - - -

New Orleans Mid-Winter Sports Association

Co-Operative Club of New Orleans

CLARENCE H. STRAUSS, President

As thousands cheer

-They Satisfy

