



The Greenie

AUBURN vs. TULANE

OCTOBER 3, 1942

Price 25¢

THESE ARE THE OFFICIAL 1942 Signals



OFF-SIDE
Hands on and off hips—repeat several times.



ILLEGAL POSITION OR PROCEDURE
Hands revolving in front of chest.



ILLEGAL MOTION OR SHIFT
Horizontal arm with either hand.



ILLEGAL DELAY OR EXTRA TIME OUT
Folded arms.



ILLEGAL USE OF HANDS OR ARMS
Grasping one wrist.



UNSPORTSMANLIKE CONDUCT
Arms outstretched, palms down.



SAFETY
Palms together overhead.



INCOMPLETE FORWARD PASS; PENALTY DECLINED; NO PLAY OR NO SCORE
Hands rapidly criss-crossed in horizontal plane.



BALL ILLEGALLY TOUCHED, KICKED OR BATTED
Tapping both shoulders with finger tips.



FORWARD PASS OR FAIR CATCH INTERFERENCE
Pushing arms forward, palm vertical.



INTENTIONAL GROUNDING
Both hands over right shoulder, then down hard and forward.



TIME-OUT
Hands rapidly criss-crossed overhead.



CRAWLING; HELPING THE RUNNER OR INTERLOCKED INTERFERENCE
Pushing movement with hands below waist.



BALL DEAD
One arm aloft, open hand. If hand is closed, TOUCHBACK.



UNNECESSARY ROUGHNESS
Military salute. CLIPPING: Salute followed by slapping back of knee with hand. RUNNING INTO OR ROUGHING KICKER: Salute followed by swinging leg to simulate a punt.



TOUCHDOWN OR FIELD GOAL
Both arms aloft and held rigid.



ILLEGAL FORWARD PASS
Waving hand behind back.



FIRST DOWN
Vigorous throwing motion concluded with outstretched arm pointing toward offensive goal.



START THE CLOCK OR NO MORE TIME-OUTS ALLOWED
Full arm circles to simulate winding a clock.



Listen to
"Time Out"
WITH
JOHNNY LYNCH

WSMB MONDAYS
9:30-9:45 P.M.

And for Your
Time Out



JACKSON BREWING COMPANY
NEW ORLEANS, LA.

DRINK
JAX
BEST BEER IN TOWN

THE GREENIE

Vol. 12

OCTOBER 3, 1942

No. 1

Official Souvenir Football Program of Tulane University, Published for Each Home Game.

National Advertising Representative, Football Publications, 370 Lexington, New York City.

After playing its opening game away from home for the first time in the history of Tulane football, the Green Wave with its new coach, Claude "Little Monk" Simons, Jr., faces the tough Auburn Tigers.

* * *

Tulane and Auburn meet for the 23rd time today. The Wave holds the upper hand with nine triumphs and seven defeats. There have been six ties, four of them scoreless.

* * *

Auburn plays an eleven game schedule this fall and does not play a home game until the last day of the season when the Tigers entertain Clemson.

* * *

Tulane and Auburn first played in 1902 and the game ended, 0-0. Other scoreless ties were played in 1936, 1937 and 1938.

* * *

Members of the Southeastern Conference, Tulane and Auburn, can use freshmen in today's tussle. The rule which allowed freshmen to play in the SEC was passed two weeks ago.

* * *

Tulane led the nation's intercollegiate parade last year in running back op-

ponents' kick-offs. The Greenies ran 19 kick-offs back for 610 yards, an average of 32.11 a return.

* * *

The estimated 45,000 that saw Tulane and Southern Cal last Saturday at Los Angeles was the largest turnout in the country on the opening Saturday of the season.

* * *

All of the 31 Tulane players who made the Southern Cal trip participated in the game.

* * *

Jess Neely brings his Rice Owls here next Saturday to oppose the Greenies.

Compare YOUR BRAND WITH OLD GOLD

- ★ lowest in Nicotine
- ★ lowest in Irritating Tars and Resins

AS SHOWN BY READER'S DIGEST TESTS



THE smoke of Old Gold *lowest* in nicotine! Old Gold *lowest* in throat-irritating tars and resins. That's what impartial, scientific Reader's Digest tests showed. But no laboratory can show you how delightful today's Old Golds *taste!* Get New Old Golds!

P. Lorillard Company, Established 1760

Tickets for
Tulane-Rice Game
Tulane Stadium
Next Saturday

Now on Sale

221 Baronne Street

\$1.50 and \$2.85 for Reserved Seats

W S M B

1350 Kilocycles

New Orleans' outlet for
the NBC Red
Network



If you can't attend the
Tulane games, turn to
W S M B for them.



Next to a Uniform,
the Best Suit for
these times is a . . .

KUPPENHEIMER

Make long-range plans for your
clothes, to get a good suit that
will last a long time — get a
KUPPENHEIMER.

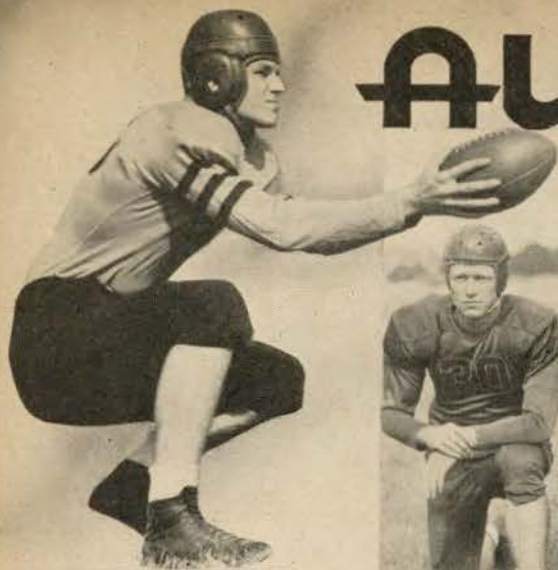
\$55 to \$65

Buy War Bonds

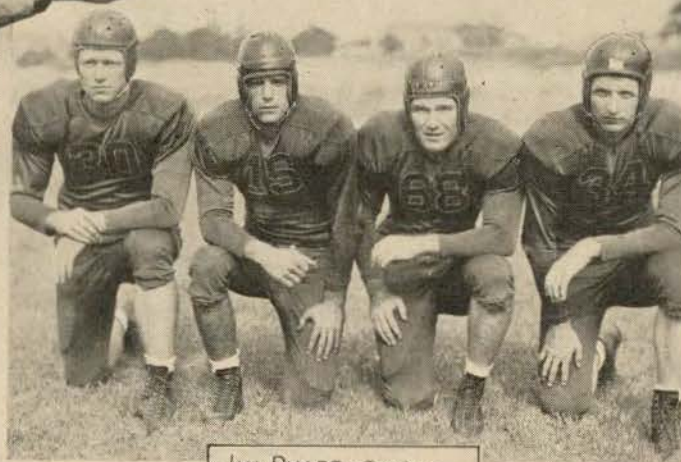
Mayer Israel's

Men's Clothing—2nd Floor

Auburn



AUBREY CLAYTON
Quarterback



JIM PHARR - *Center*
BUCK JENKINS - *Halfback*
CLARENCE HARKINS
Halfback
CHARLIE FINNEY
Halfback



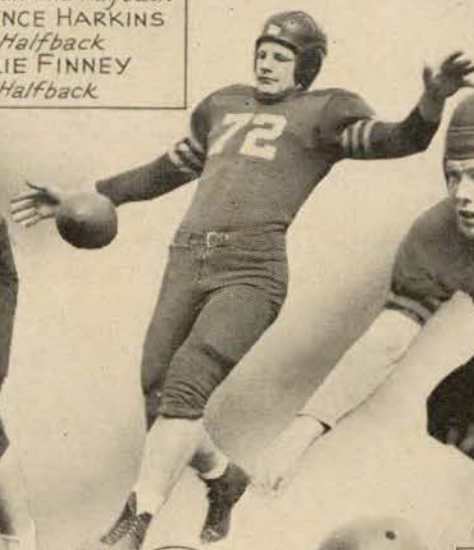
MONK GAFFORD
Halfback



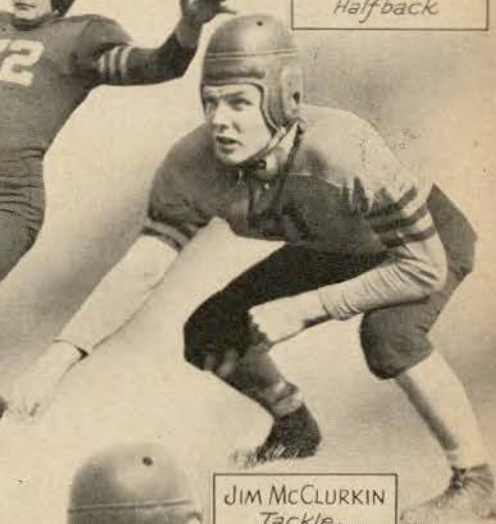
CLARENCE GRIMMETT
End



JIM REYNOLDS
Fullback



TY IRBY
Fullback



JIM McCLURKIN
Tackle



JACK CORNELIUS
Guard



LOUIS CHATEAU
Tackle



JOE EDDINS
Tackle

... the Fourth Quarter ends the Game. but *Play Continues* at The ROOSEVELT !



HOTEL ROOSEVELT is New Orleans' finest and largest. The center of Social and Business Activities . . . After each game, football fans gather here to enjoy themselves and score another touchdown.

BLUE ROOM

Frankie Masters and his orchestra. Nightly with these stars direct from Broadway—Chandra-Kaly and his dancers—Doc Marcus—Marlyn Stewart—Edith Lambot—Phylis Myles—Billy Lowe. Shows, 7:30, 12:15.

FOUNTAIN LOUNGE

Continuous music and entertainment from 5 p. m. until 2 a. m. featuring Herb Sherry and his Society Band. Manuel Ovando and his Rhumba Band. Paul Sutton and his Musical Scrap Book.

COFFEE SHOP

DINNER in a quiet, comfortable atmosphere from six until ten o'clock . . . Prices begin at eighty-five cents. The Coffee Shop is also open for Breakfast and Luncheon . . .

THE ROOSEVELT

TULANE



AL
STOLEN
Center

BERNARD
PRACKO
Fullback

WALT
McDONALD
Quarterback

JULIAN
BRIGNAC
Fullback

BOB GRUSH
Quarterback

DICK
FAUST
Tackle

"BUBBER"
ELY
Halfback

JAMES
CARTER
Guard

LEONARD
FINLEY
Quarterback

MARTY
COMER
End

ROMAN
BENTZ
Tackle

JAY
ROWLAND
End



THE MAN ON A STRAP

Were sorry you were crowded but these days you know there are more people than ever before who depend on the street cars and buses to take them where they want to go.

Staggered working hours will help a lot to spread rush hour travel. Other changes, too, may be necessary as more people turn to public transportation.

Transit is a war industry . . . to keep it rolling is everyone's concern.

Here's how you can help:

Have the exact fare ready.

Move away from the entrance of street cars or buses to avoid congestion or delay.

Don't overcrowd vehicles — wait for the next one.

Avoid rush hours whenever possible. Try to arrange shopping, recreation and social calls at other than peak periods.

NEW ORLEANS PUBLIC SERVICE INC.

1942 Tulane Football Schedule



Sept. 26—Southern California at Los Angeles
Oct. 3—Auburn at New Orleans
Oct. 10—Rice at New Orleans
Oct. 17—Georgia at Athens, Ga.
Oct. 24—North Carolina at New Orleans
Oct. 31—Vanderbilt at New Orleans
Nov. 7—Mississippi State at N.O. (Homecoming)
Nov. 14—Georgia Naval Aviators at New Orleans
Nov. 26—L. S. U. at Baton Rouge

HAUSMANN
INCORPORATED

NEW ORLEANS'
LEADING JEWELERS



*Special Department for College
and
Fraternal Jewelry*

*The Thinking Fellow
Calls a Yellow*



Phone RAYmond 3311



TOYE BROS.
YELLOW CABS

PIGSKIN ROUNDUP

By ED BALDINGER

ALABAMA-Mississippi State—Two conference giants tangle, a vote for the Tide.

Arkansas-T. C. U.—The Frogs came from behind to beat U. C. L. A., and are too strong for the Razorbacks.

ARMY-Lafayette — The Cadets should have little trouble here.

CALIFORNIA-Oregon State—The Coast favorite gets a shaky nod over the Rose Bowl Champs.

CORNELL-Colgate—The Big Red is too strong for Andy Kerr's boys.

DARTMOUTH-Miami (Ohio) — An easy win for the Indians of Hanover.

DUKE-Davidson—Not as strong as in the past, but good enough to win this one.

FORDHAM-Tennessee — Fordham is always good and the Vols are not as strong as in the past. The Rams to Ramble.

GEORGIA-Furnam—After being held to two touchdowns a game by its first two opponents, Sinkwich and company will run wild.

Ga. Tech-NOTRE DAME—The Rambling Wreck pulled a surprise last week, but the Irish will be back with fire in their eyes after a disappointing opener.

Ohio State-INDIANA — Bill Hilderbrand and a strong Hoosier team will be too much for the Buckeyes.

L. S. U.-Rice — The Bengals are going strong and the Owls are not as strong as last year. The Owls are in for a rough afternoon.

Camp Lee-MARYLAND — A vote for the master of the T—Clark Shaughnessy.

JACKSONVILLE NAV. CADETS-Miami —The Cadets are too strong to lose to Miami.

MICHIGAN-Mich. State — The usually strong Wolverines are strong again and should win with ease.

Minn.-IOWA CADETS — Picking anyone over the Gophers seems odd. It's a case of the teacher outsmarting the student. A shaky vote for Bernie Bierman's Cadets over his former team.

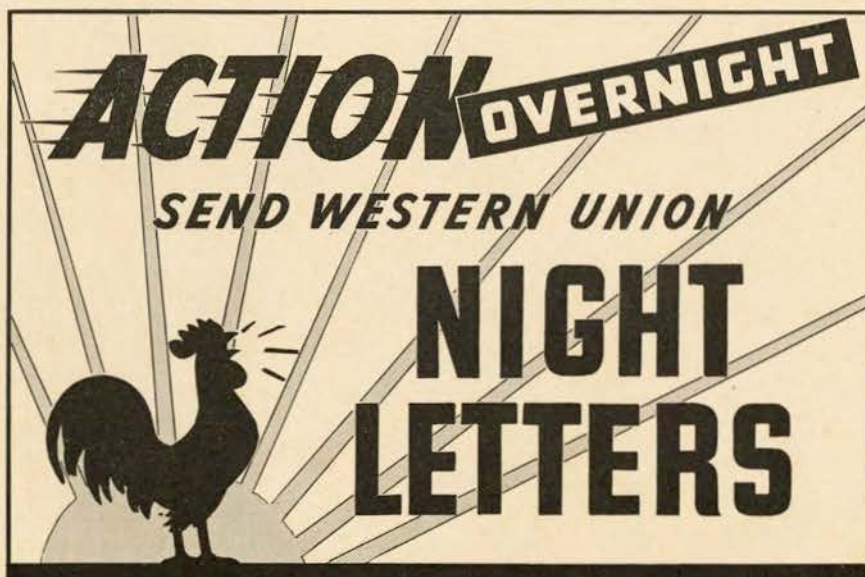
Northwestern-TEXAS — The Longhorns are rolling along and will win in a wild scoring affair.

PENN-Harvard—The Quakers are set for another Ivy league championship and Harvard can't stop them.

Pitt-S. M. U.—The Panthers were badly beaten last week and are in for another licking.

So. CAROLINA-No. Carolina—The Gamecocks held the Tennessee to a tie and might upset the Tarheels.

VANDERBILT-Purdue — An impressive win for Jack Jenkins and his Commodores.



AT THE GAME
and
AFTER THE GAME
ENJOY



D Equipment for all sports...

U *Specialists in all types of*
N *school athletic*
L *supplies*

A
P

Sporting Goods Co., Inc.

138 Carondelet Street
MAGNOLIA 5891

Stop!
Look!
Listen!

There's a 7-Up Boy right
down in front of you! Call
him now and Fresh-Up


With



Cam-pic

a medley of
**CAMPUS
PICTURES**

© 1942 BY HORACE KENEGAS



Signs of the times: Newcomb students take to bicycles to solve the transportation problem.



The typical Tulane freshman looks like Albert A. Lang, shown with Marjorie Leefe, according to statistics kept by Forrest E. Oakes of the physical education faculty.



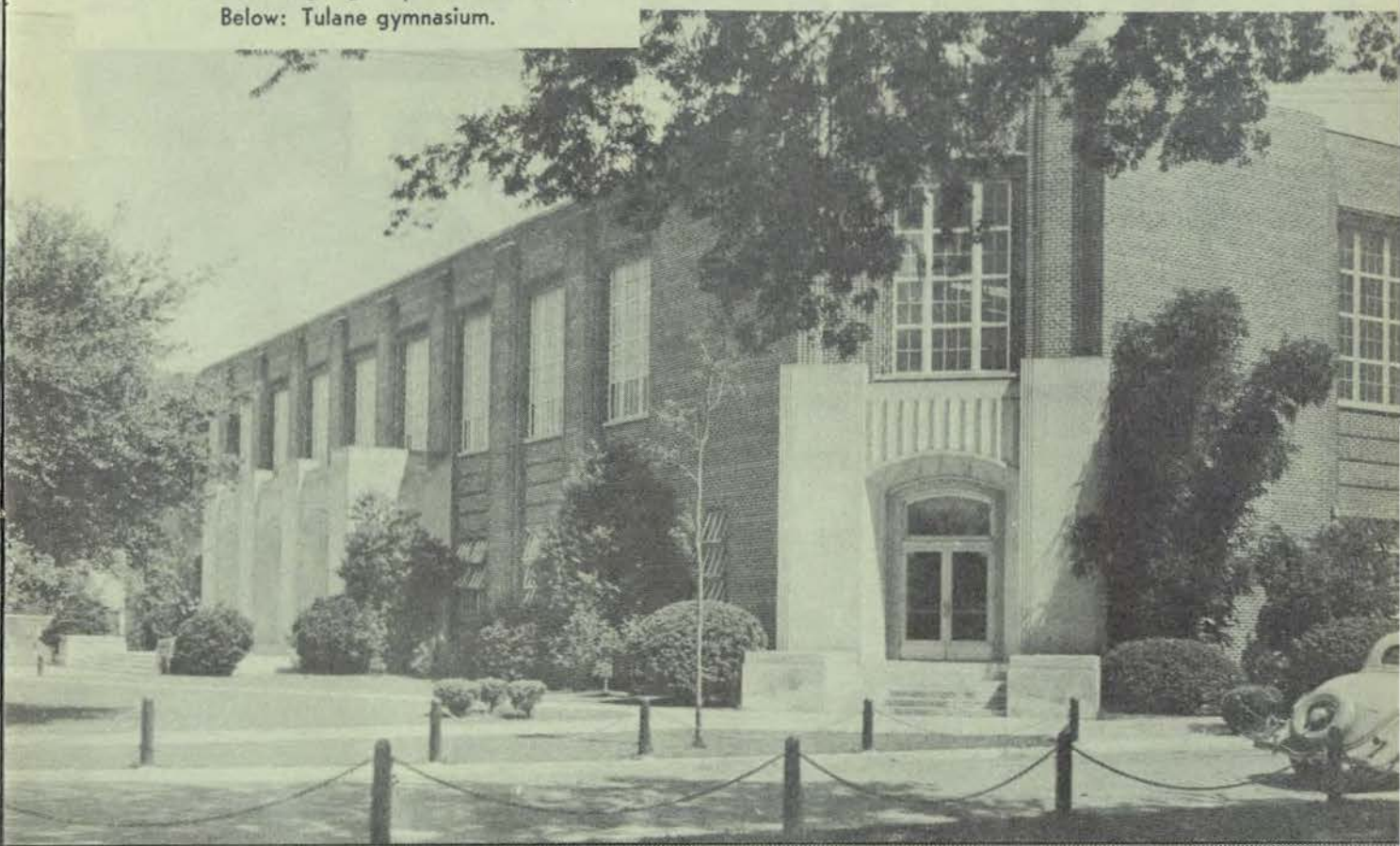
STYLEPARK HATS

*be HEADED right
with a STYLEPARK HAT from*

Porter's



Newcomb college girls practice archery.
Below: Tulane gymnasium.



You pay no more  for **Porter's**
DEPENDABILITY!

Famous for



CUISINE and



CELLARS

TONIGHT—enjoy specialties of these noted restaurants:

ANTOINE'S

713 St. Louis St.

ARNAUD'S

813 Bienville St.

BROUSSARD'S

819 Conti St.

KOLB'S

125 St. Charles St.

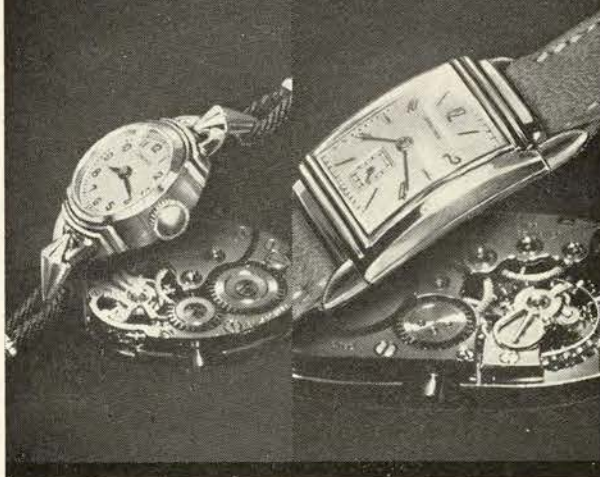
**The official football
timing watch for
TULANE - AUBURN**

Longines
THE WORLD'S MOST HONORED WATCH

Longines, official football timing watch for this game, is the sports world's most honored watch. For many years Longines Watches have timed the principal championship football, track, basketball, swimming, auto racing, aviation, ski, bobsledding, rodeo, and other sports events. For the 1940 Olympics Longines was selected as exclusive official watch; an honor which was repeated by the Organization Committee for the first Pan-American Sporting Games.

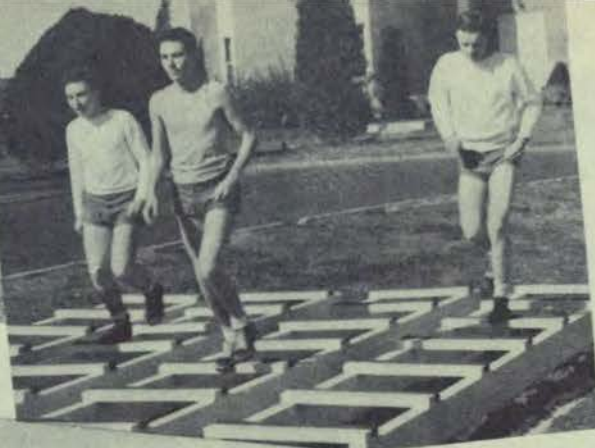
Other Longines honors include 10 world's fair grand prizes, 28 gold medals, and more acknowledgments of accuracy than have been won by any other timepiece. Throughout the world, no other name on a watch means so much as Longines, *the world's most honored watch.*

*The beating heart of every Longines Watch
the Longines "Observatory Movement"*



The skill, experience, and workmanship necessary for the construction of Longines Watches for precision timing, aviation, and navigation, are reflected in the greater accuracy of every Longines Watch at any price. And every Longines Watch contains the Longines "Observatory Movement" world-honored for greater accuracy and long life. Longines jewelers also sell the Wittnauer Watch, a companion line of moderate price, product of—Longines-Wittnauer Watch Company, 580 Fifth Avenue, New York, N. Y.

*REG. U. S. PAT. OFF.



Tulane students take an all-out workout on the university obstacle course, first of its kind to be constructed at an American university.



Nunn Bush
SHOES

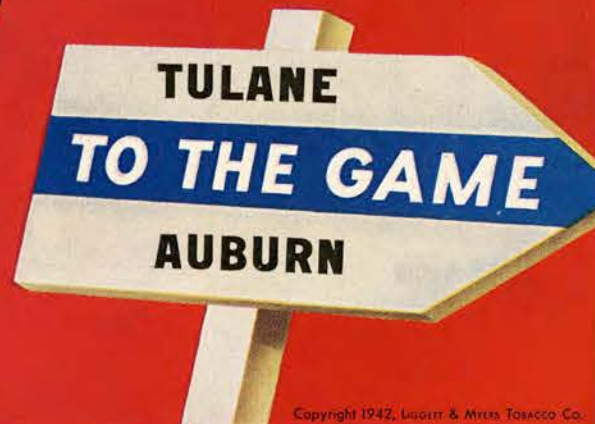


2 FEET
OF COMFORT
AND STYLE

Porter's
from..

It's all the GO CHESTERFIELD

Smokers cheer for the cigarette
that really performs... gives them a
MILDER smoke... cheers them with
its Cooler, Better Taste—
— that's **CHESTERFIELD**



TULANE

F Pracko 32							LH Thomas 42						
RH Ely 11							Q McDonald 20						
RE Comer 82	RT Bentz 72	RG Holm 64	C Stolen 52	LG Faust 74	LT Tessier 62	LE Cies 85							
SQUAD LIST													
10 Brignac, f	45 Fortier, hb	71 Lennox, t											
11 Ely, h	46 Campora, hb	72 Bentz, t											
12 Renfro, h	50 Young, c	73 Balen, t											
20 McDonald, q	51 Rice, c	74 Faust, g											
21 Grush, q	52 Stolen, c	75 McAfee, t											
22 Finley, q	54 Herbert, c	80 Jones, e											
29 Maginnis, g	60 Tetek, g	81 Rowland, e											
30 Porter, e	61 Green, g	82 Comer, e											
31 Jackson, c-q	62 Tessier, t	83 Jahncke, e											
32 Pracko, f	64 Holm, g	84 White, e											
37 McFaul, h	65 Carter, g	85 Cies, e											
38 Pittman, f	66 Rhea, t	86 Holland, e											
40 Key, h	68 Garbark, t	88 O'Brien, e											
41 Fischer, h	69 Deramee, g	96 Eyrich, g											
42 Thomas, h	70 Heintz, t												
OFFICIALS													
Referee													
Buck Cheves (Georgia)													
Umpire													
J. E. Burghard (Miss. College)													

AUBURN

FB Reynolds 46				LH Gafford 25			
RH Finney 34				QB Clayton 69			
RE Grimmett 38	RT McClurkin 31	RG Costellos 51	C Pharr 30	LG Cornelius 60	LT Eddins 18	LE Barton 54	

SQUAD LIST

10 Kirsch, c	32 Bridgers, F., g	53 Canzoneri, e
11 Jenkins, Z., fb	33 Harwell, e	54 Barton, e
12 Giradeau, g	34 Finney, hb	55 Bradshaw, c
14 Strickland, fb	35 Wilkes, hb	57 Goodwin, t
15 Jenkins, B., hb	36 Ferrell, g	59 Hewlett, qb
18 Eddins, t	38 Grimmett, e	60 Cornelius, g
20 Fletcher, e	40 Burton, e	61 Kennell, hb
21 Hinton, t	41 Gendusa, qb	63 Salsiccia, c
22 Stephens, e	42 Kuykendall, hb	65 Lyon, hb
24 Bridgers, J., g	45 Willoughby, t	66 Trapani, e
25 Gafford, hb	46 Reynolds, fb	67 Rose, g
27 Barrineau, qb	47 Crenshaw, g	68 Harkins, hb
28 Rainer, fb	48 White, hb	69 Clayton, qb
29 Boucher, g	49 Donahue, hb	70 Chateau, t
30 Pharr, c	50 Gaines, qb	71 Thompson, g
31 McClurkin, t	51 Costellos, g	72 Irby, fb

OFFICIALS

Field Judge
Harry G. Mouat (Armour)

Linesman
M. M. O'Sullivan (A. A. C.)

JOHNNIE "Calls" THE SIGNALS!

 Crawling or pushing. 5 yards; helping ball carrier, 15 yards.	 Holding. (Penalty—by offense, 15 yards; by defense, 5 yards.)	 Delay of game or extra time-outs. (Penalty, 5 yards.)	 Player illegally in motion. (Penalty, 5 yards. If from shift or huddle, 15 yards.)	 Interference with forward pass, or pass touching ineligible player. (Penalty, if interference by offense, 15 yards; otherwise, ball goes to opponents at point of foul.)	 Illegal forward pass.
 Safety.	 Penalty refused, incomplete pass, missed field goal or conversion, both sides offside, etc.	 Unnecessary roughness, illegal defensive use of the hands, clipping, running into or roughing the kicker. (Penalty, 15 yards.)	 Score—touchdown, field goal, or conversion.	 Offside or violation of kick-off formation. (Penalty, 5 yards.)	 Time out.

 **FOR TRUE SMOKING PLEASURE**
Call for **PHILIP MORRIS**

Penalties

LOSS OF FIVE YARDS

- | | | |
|---|--|---|
| 1 Taking more than three times out during either half | 5 Failure to maintain proper alignment of offensive team before ball is snapped. Also, backfield man illegally in motion | 8 Taking more than two steps with ball after signaling for fair catch |
| 2 Illegal delay of game | 6 Offside by either team, or encroachment on neutral zone. | 9 Illegal use of hands and arms by defensive players |
| 3 Failure of substitute to report to umpire | 7 Attempt to draw opponents offside | 10 Flying block or flying tackle |
| 4 Violation of kick-off formation | | 11 Running into kicker |
| | | 12 Crawling by the runner |

LOSS OF FIFTEEN YARDS

- | | | |
|---|---|---|
| 13 Team not ready to play at scheduled time | 18 Forward pass touched by ineligible player | 22 Illegal use of hands and arms by offensive players |
| 14 Substitute communicating with teammates before ball is put in play | 19 Intentional grounding of forward pass | 23 Defensive player striking opponent above shoulders |
| 15 Illegal substitution (player also suspended from game) | 20 Interference by member of passing team with defensive player eligible for pass | 24 Roughing the kicker |
| 16 Failure to stop at least one second on shift play | 21 Interference with fair-catch or tackling player before ball is caught | 25 Piling up, hurdling, clipping |
| 17 Forward pass by member of team which did not put ball in play | | 26 Tackling player out of bounds |
| | | 27 Coaching from the sidelines |
| | | 28 Illegal interference with defense by passing team |

OTHER PENALTIES

- | | | |
|---|---|--|
| 29 Striking, kneeling, or kicking opponent—half the distance to the goal and disqualification of offending player | 31 Interference by defensive team on forward pass—first down for passing team at spot or foul | 33 Flagrant unsportsmanlike conduct—disqualification, plus fifteen yards |
| 30 Foul within one yard line—half the distance to the goal | 32 Flagrant roughing of kicker—disqualification, plus fifteen yards | 34 Forward pass touched by ineligible player on or behind line of scrimmage—loss of down |



Miss Moonyeen Marion, president of Newcomb college, confers with Miss Anna Many, counsellor of women.

DURABLE
for the duration



Suits
\$25^{UP}

Porter's



Army and Navy men study diseases of the tropics under Dr. Ernest Carroll Faust of the Tulane medical school.



Tulane's newest building—Norman Mayer hall, home of the college of commerce and business administration.

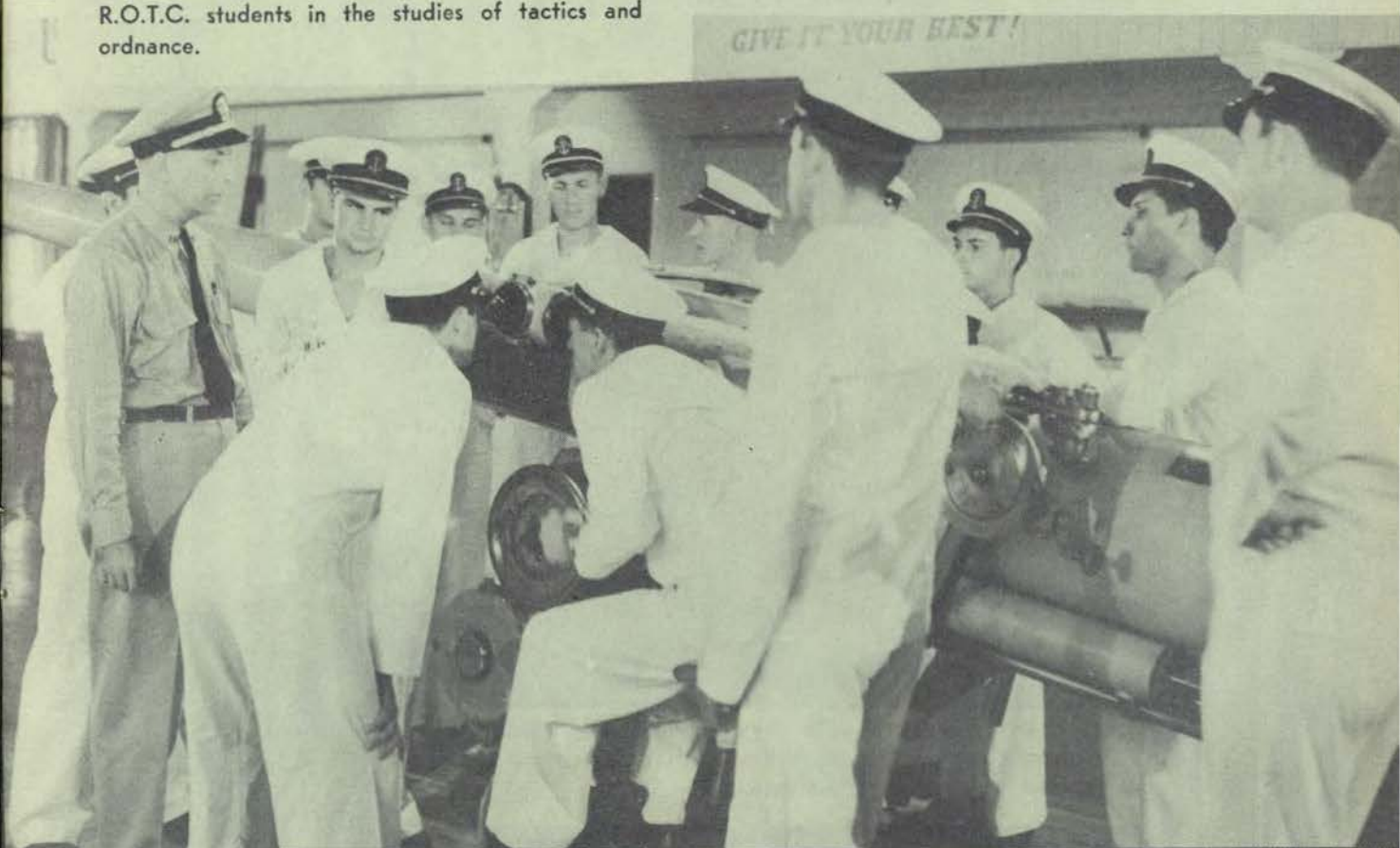
RAINFALL
STORM COATS
take the weather...



give the style . . . from
Porter's



Toy battleships and real guns are used by Tulane R.O.T.C. students in the studies of tactics and ordnance.



*tackle the
AXIS*



Buy WAR BONDS and STAMPS!
Porter's



"The girl I'd like most to be caught in an air raid with" Tulane students dubbed Miss Ruth Rosen, after she scored a lone perfect score on a first aid examination.

WHERE IS PORTER'S?

ACROSS THE
STREET FROM
THE COTTON
EXCHANGE

AROUND THE
CORNER
FROM THE
ST. CHARLES
HOTEL

OPPOSITE THE HIBERNIA
NATIONAL BANK AND
IN THE SAME BLOCK
WITH THE AMERICAN
BANK- ASK ANYBODY!

Porter's

CARONDELET COR. GRAVIER

Roll On to Greater Gridiron History

TULANE Green Wave

In a war torn world, we need football as much as ever to remind us of some of the things we're fighting for—fair competition . . . sportsmanship . . . a country where the guy on the bench gets a break . . . We're glad to see Tulane carrying on—and so ably, with that same old Tulane spirit.

Good luck—team of '42 and to the new Coach!

A tailored wool sports suit is an essential feature of your wardrobe, whether you're sitting in the Student-Body section under a green cap, or whether your sheepskin's been collecting dust for years. You'll find just the style you need for football "fanning" as well as for town wear at Maison Blanche.

Sportswear, Second Floor

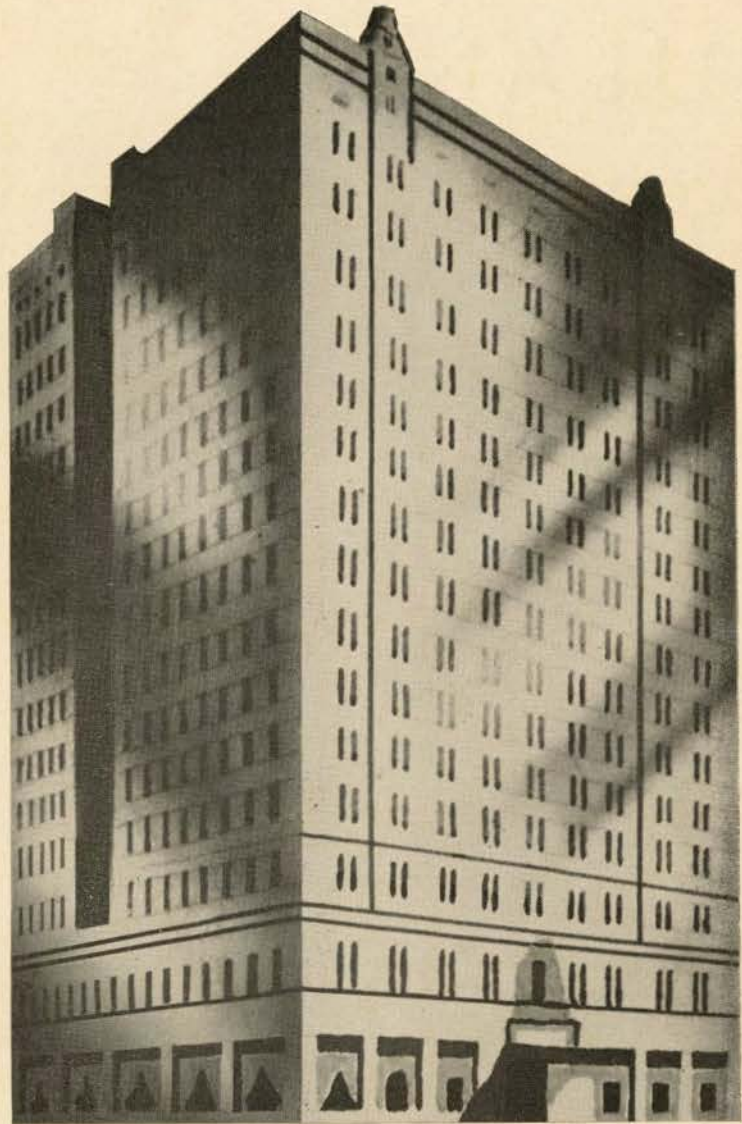


Maison Blanche

New Orleans' Finest

In America's Most Interesting City

HOTEL ROOSEVELT is located in the heart of Romantic old New Orleans. It is the center of business and social activities and is close to the Theatre, Shopping, French Quarter, and Business Districts . . . You will like the tasteful luxury and home-like atmosphere of this modern hotel where the traditions of Southern Hospitality are maintained the year 'round.



"Pride of the South"

THE ROOSEVELT

SHORT PUNTS

Tulane's Green Wave meets teams from three conferences in addition to five Southeastern Conference opponents and a Service team this fall.

Southern Cal, of the Pacific Conference, was No. 1. Next Saturday, the Rice Owls of the Southwest Conference come to the Wave stadium.

This series between the Wave and Owls has been a spirited one. Tulane upset the dope to win in 1940, lost in a reversal last season at Houston, 9 to 10.

Coached by Jess Neely, the former Clemson coach who made the going rough for Tulane in a three game series, the Wave won two of them, is at the helm in his second year with the Owls.

Coach "Little Monk" will be opposing Jess for the first time Saturday.

* * *

The Greenies close their inter-conference competition for the season here on October 24 with North Carolina's Tar Heels of the Southern Conference.

In the past years Coach "Bear" Wolf has led the Tar Heels in this series with Tulane. This year "Bear" is the coach of the Georgia Pre-flight team of Athens, Ga., which plays here on November 14. His team now boasts several Greenies who opposed his Carolinians including Ernie Blandin, Johnny Sims and Gordon English.

Jim Tatum, a Wolf assistant at Chapel Hill, now heads the Carolina coaching staff.

* * *

NOTICE

Physicians who are expecting telephone calls during the game should register at the special table under the West side stands before each game. In case of an emergency call, they will be paged by number over the public address system rather than by name.

"Funny thing,
freedom
ain't free.
But whatever
you pay for it—
it's WORTH it!"

—Bing Crosby

We've been in business more
than a hundred years, and we
have never offered our friends a
finer investment than

U. S. WAR BONDS and STAMPS

Buy Them Regularly

at

GODCHAUX'S

SONGS AND YELLS

ROLL ON, TULANE

ten Hoor and Goldstein

Roll, Green Wave,
Roll them down the field.
Hold, Green Wave,
That line must never yield.
When those Greenbacks charge through the line
They're bound for victory.
Hail, Green Wave, for you
We have no fear.
Hail, Green Wave, for you we give a cheer
And ev'ry man in ev'ry play
And then we'll win that game today.
Hurrah for Old Tulane!

Hullabaloo

Hullabaloo! Ray! Ray!
Hullabaloo! Ray! Ray!
Hooray! Hooray!
Vars, Vars, T.A.A.
T.A.A.! T.A.A.!!
Vars, Vars, T.A.A.!!
TULANE!!!

ALMA MATER

*Sing these words as Tulane's Alma Mater
is played*

I.

We praise thee for thy past, O Alma Mater!
Thy hand hath done its work full faithfully!
The incense of thy spirit hath ascended
And filled America from sea to sea

II.

We praise thee for thy present, Alma Mater!
Today thy Children look to thee for bread!
Thou leadest them to dreams and actions splendid!
The hunger of their souls is richly fed!

III.

We praise thee for thy future, Alma Mater!
The vista of its glory gleameth far!
We ever shall be part of thee, great Mother!
There thou wilt be where e'er thy children are!

CHORUS:

Olive Green and Blue, we love thee!
Pledge we now our fealty true
Where the trees are ever greenest,
Where the skies are purest blue!
Hear us now, O Tulane, hear us!
As we proudly sing to thee!
Take from us our hearts' devotion!
Thine we are, and thine shall be!

"Time Out"

DRINK—



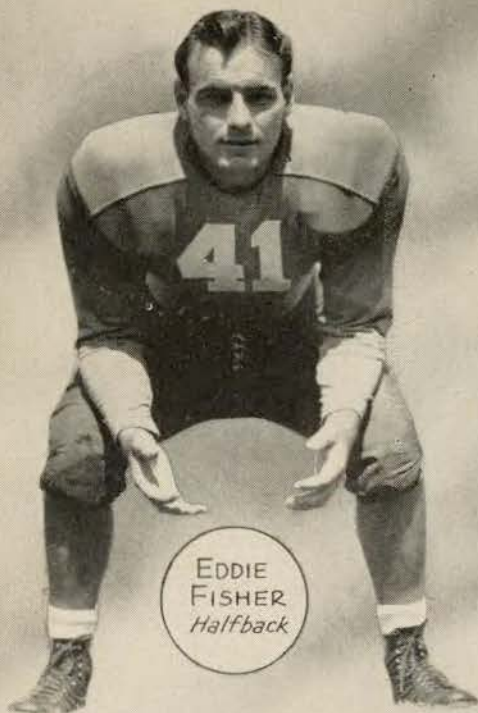
TRADE MARK
REG. U.S. PAT. OFF.

PAUSE—

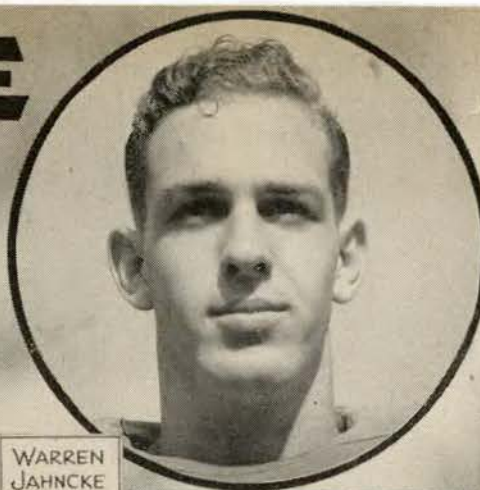
RELAX—

REFRESH YOURSELF

TULANE



EDDIE FISHER
Halfback



WARREN JAHNCKE
End



MILT PITTMAN
Fullback



BERNARD TETEK
Guard



MILTON HOLLAND
End



DARWOOD HOLM
Guard



HOWARD MCAFEE
Tackle



CURTIS JONES
End



OLTON HEBERT
Center



MIKE BALEN
End



TOM HEINTZ
Tackle



ARTHUR PORTER
End



Always a Winning Line-Up
IN
HOLMES MEN'S STORE

40						40
50						50
40	MANHATTAN SHIRTS	MANSO UNDERWEAR	PHOENIX SOCKS	WESTMINISTER SOCKS	PIONEER BELTS	40
30	WORSTED-TEX SUITS		KNIT-TEX TOPCOATS			30
20	MALLORY HATS					20
10	BOSTONIANS SHOES				MANHATTAN PAJAMAS	10
G	ALLIGATOR RAINCOATS					G

⊗ [LUNCH AND DINE IN
HOLMES RESTAURANT] ⊗

D. H. HOLMES CO.
LIMITED

New Orleans Quality Department Store—Old in Traditions—Young in Ideas

TULANE



JOE RENFROE
Halfback



TOM
LENNOX
Tackle



LOU
THOMAS
Halfback



ED DERAMEE
Guard



CLAYRENCE EYRICH
Guard



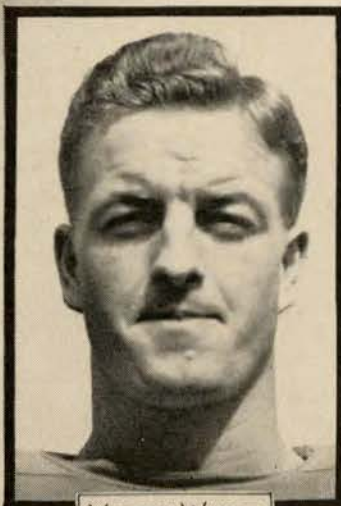
LOUIS
MCAUL
Halfback



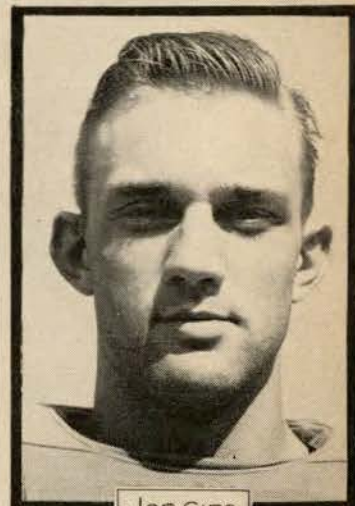
BILL
MAGINNIS
Guard



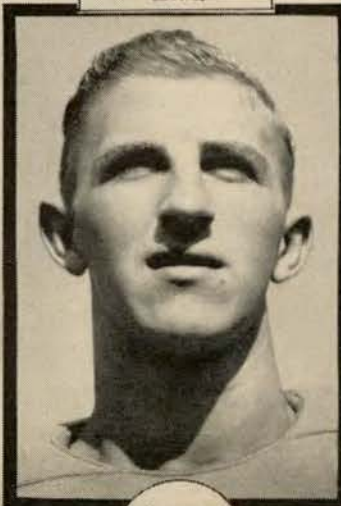
THOMAS
GARBARK
Tackle



VESTIE WHITE
End



JOE CIES
End



JOHN
TESSIER
Tackle



O.J. KEY
Halfback

TULANE ROSTER

No.	PLAYER	HOME TOWN	Position	Wgt.	Yrs. on Varsity
10	Brignac, Julian	Lutcher, La.	FB	178	2
11	Ely, James	Shaw, Miss.	HB	194	3
12	Renfro, Joe	Ft. Myers, Fla.	HB	205	1
20	McDonald, Walter	Struthers, Ohio	QB	203	3
21	Grush, Robert	New Orleans, La.	QB	185	3
22	Finley, Leonard	New Orleans, La.	QB	170	1
29	Maginnis, William	New Orleans, La.	G	197	3
30	Porter, Arthur	New Orleans, La.	E	205	1
31	Jackson, Jack	Monroe, La.	C-Q	180	0
32	Pracko, Bernard	Tarentum, Pa.	FB	180	3
37	McFaul, Louis	New Orleans, La.	HB	170	1
38	Pittman, Milton	Plain Dealing, La.	FB	185	1
40	Key, O. J.	New Orleans, La.	HB	195	1
41	Fischer, Ed	New Orleans, La.	HB	170	1
42	Thomas, Lou	New Orleans, La.	HB	186	3
45	Fortier, Don	New Orleans, La.	HB	168	0
46	Campora, John	New Orleans, La.	HB	170	0
50	Young, Don	North Little Rock, Ark.	C	185	0
51	Rice, Lawrence	Gulfport, Miss.	C	204	2
52	Stolen, Al	Eau Claire, Wis.	C	194	2
54	Hebert, Olton	New Iberia, La.	C	185	1
60	Tetek, Bernard	Gary, Indiana	G	175	1
61	Green, Jack	Shelbyville, Kan.	G	185	0
62	Tessier, John	New Orleans, La.	T	195	1
64	Holm, Darwood	Eau Claire, Wis.	G	205	1
65	Carter, James	Shreveport, La.	G	205	1
66	Rhea, Creighton	Jonesboro, Ark.	T	210	3
68	Garbark, Thomas	Edgewood, Pa.	T	199	3
69	Deramee, Ed	Thibodaux, La.	G	203	1
70	Heintz, Tom	Hartford, Wis.	T	235	1
71	Lennox, Thomas	New Orleans, La.	T	220	1
72	Bentz, Roman	Horicon, Wis.	T	214	3
73	Balen, Mike	Sawyer, Ill.	T	205	1
74	Faust, Richard	New Orleans, La.	G	206	3
75	McAfee, Howard	New Orleans, La.	T	228	2
80	Jones, Curtis	Benton, Ark.	E	187	1
81	Rowland, Jay	Hot Springs, Ark.	E	205	2
82	Comer, Martin	Gary, Indiana	E	201	3
83	Jahncke, Warren	New Orleans, La.	E	175	1
84	White, Vestie	Arkansas City, Kansas	E	180	1
85	Cies, Joseph	Carlinville, Ill.	E	195	2
86	Holland, Milton	Shreveport, La.	E	187	2
88	O'Brien, Emile	New Orleans, La.	E	180	0
96	Eyrich, Clarence	Natchez, Miss.	G	230	2

AUBURN ROSTER

No.	PLAYER	HOME TOWN	Position	Wgt.	Yrs. on Varsity
10	Kirsch, Cyril	New Orleans, La.	C	175	
11	Jenkins, Zac	West Point, Ga.	FB	175	
12	Girardeau, Merrill	Montgomery, Ala.	G	175	
14	Strickland, Herbert	LaGrange, Ga.	FB	165	
15	Jenkins, Buck	Birmingham, Ala.	HB	165	
18	Eddins, Joe	Birmingham, Ala.	T	190	
20	Fletcher, R.	Gadsden, Ala.	E	177	
21	Hinton, Elton	Jasper, Ala.	T	195	
22	Stephens, Dan	Montgomery, Ala.	E	172	
24	Bridgers, John	Birmingham, Ala.	G	171	
25	Gafford, Monk	Fort Deposit, Ala.	HB	170	
27	Barrineau, Gene	Cairo, Ga.	QB	180	
28	Rainer, Mark	Livingston, Ala.	FB	190	
29	Boucher, Marcel	New Orleans, La.	G	185	
30	Pharr, Jim	Ft. Payne, Ala.	C	185	
31	McClurkin, Jim	Birmingham, Ala.	T	190	
32	Bridgers, Frank	Birmingham, Ala.	G	171	
33	Harwell, Everett	Birmingham, Ala.	E	171	
34	Finney, Charles	Buffalo, Ala.	HB	168	
35	Wilkes, Donald	Ocala, Fla.	HB	160	
36	Ferrell, Jack	Birmingham, Ala.	G	186	
38	Grimmett, Clarence	Birmingham, Ala.	E	188	
40	Burton, Herbert	Jasper, Ala.	E	175	
41	Gendusa, Angelo	New Orleans, La.	QB	180	
42	Kuykendall, Curtis	Sallis, Miss.	HB	170	
45	Willoughby, George	Dadeville, Ala.	T	205	
46	Reynolds, Jim	LaGrange, Ga.	FB	185	
47	Crenshaw, Roy	Lanett, Ala.	G	165	
48	White, John	New Orleans, La.	HB	165	
49	Donahue, Billy	Montgomery, Ala.	HB	155	
50	Gaines, Stuart	Birmingham, Ala.	QB	160	
51	Costellos, Vic	Birmingham, Ala.	G	173	
53	Canzoneri, Fagan	Bessemer, Ala.	E	175	
54	Barton, Billy	Birmingham, Ala.	E	184	
55	Bradshaw, Jim	Montgomery, Ala.	C	190	
57	Goodwin, Herman	New Orleans, La.	T	200	
59	Hewlett, McCoy	Birmingham, Ala.	QB	160	
60	Cornelius, Jack	Jasper, Ala.	G	185	
61	Kennell, Tommy	Elgin, Ill.	HB	165	
63	Salsiccia, Joe	New Orleans, La.	C	170	
65	Lyon, David	Hayneville, Ala.	HB	174	
66	Trapani, Bert	Savannah, Ga.	E	180	
67	Rose, Jimmy	Florence, Ala.	G	180	
68	Harkins, Clarence	Gadsden, Ala.	HB	171	
69	Clayton, Aubrey	Colliersville, Tenn.	QB	191	
70	Chateau, Louis	New Orleans, La.	T	205	
71	Thompson, Jack	Birmingham, Ala.	G	180	
72	Irby, Ty	Eufaula, Ala.	FB	185	

The Official Watch for Timing All Tulane Games is a Longines—"The World's Most Honored Watch"

only a few yards to go . . .



(Other Pan-Am Stations conveniently located
in all parts of the City.)

THEY'RE Milder
ALL WAYS —

THEY DON'T TIRE
MY TASTE —

**THERE'S NOTHING LIKE
A CAMEL!**



FOR
STEADY
PLEASURE

Camel

the cigarette of Costlier Tobaccos



R. J. Reynolds Tobacco Company
Winston-Salem, North Carolina