

*The Greenie*

# NORTH CAROLINA vs. TULANE

OCTOBER 24, 1942

Price 25¢





# THESE ARE THE OFFICIAL 1942 Signals



**OFF-SIDE**  
Hands on and off hips—repeat several times.



**ILLEGAL POSITION OR PROCEDURE**  
Hands revolving in front of chest.



**ILLEGAL MOTION OR SHIFT**  
Horizontal arc with either hand.



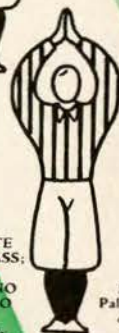
**ILLEGAL DELAY OR EXTRA TIME OUT**  
Folded arms.



**ILLEGAL USE OF HANDS OR ARMS**  
Grasping one wrist.



**UNSPORTS-MANLIKE CONDUCT**  
Arms outstretched, palms down.



**SAFETY**  
Palms together overhead.



**INCOMPLETE FORWARD PASS; PENALTY DECLINED; NO PLAY OR NO SCORE**  
Hands rapidly criss-crossed in horizontal plane.



**BALL ILLEGALLY TOUCHED, KICKED OR BATTED**  
Tapping both shoulders with finger tips.



**FORWARD PASS OR FAIR CATCH INTERFERENCE**  
Pushing arms forward, palm vertical.



**INTENTIONAL GROUNDING**  
Both hands over right shoulder then down hard and forward.



**TIME-OUT**  
Hands rapidly criss-crossed overhead.



**CRAWLING: HELPING THE RUNNER OR INTERLOCKED INTERFERENCE**  
Pushing movement with hands below waist.



**BALL DEAD**  
One arm aloft, open hand. If hand is closed, TOUCHBACK.



**UNNECESSARY ROUGHNESS**  
Military salute. CLIPPING: Salute followed by slapping back of knee with hand. RUNNING INTO OR ROUGHING KICKER: Salute followed by swinging leg to simulate a punt.



**TOUCHDOWN OR FIELD GOAL**  
Both arms aloft and held rigid.



**ILLEGAL FORWARD PASS**  
Waving hand behind back.



**FIRST DOWN**  
Vigorous throwing motion concluded with outstretched arm pointing toward offensive goal.



**START THE CLOCK OR NO MORE TIME-OUTS ALLOWED**  
Full arm circles to simulate winding a clock.



Listen to  
**"Time Out"**  
WITH  
**JOHNNY LYNCH**

**WMB** MONDAYS  
9:30-9:45 P.M.

And for Your  
**Time Out**



JACKSON BREWING COMPANY  
NEW ORLEANS, LA.

DRINK

**JAX**

BEST BEER IN TOWN



# THE GREENIE

Vol. 12

OCTOBER 24, 1942

No. 3

Official Souvenir Football Program of Tulane University, Published for Each Home Game.

National Advertising Representative, Football Publications, 370 Lexington, New York City.

Tulane welcomes North Carolina and its new coach, Jim Tatum, to New Orleans for the eight renewal of the Tar Heel-Greenie series.

The Tar Heels are undefeated this year. They have scored triumphs over Wake Forest, South Carolina and Duquesne. The Fordham-Carolina game ended in a scoreless tie.

Tulane leads the Tar Heels four games to two. The 1939 game ended in a 14-14 tie when All-America Jim Lalanne connected with two touchdown passes in the last quarter to tie the Wave's Sugar Bowl team.

Both the Carolina victories were scored at Chapel Hill. The 1922 game, which was the first between the two teams, was won by the host team, 19-12, and the 1937 clash was won by the Tar Heels, 13-0.

When Carolina met Duquesne last week, the contract for the game was made only two days before the two teams met. Rice was scheduled to play the Tar Heels but the game was called off on account of transportation difficulties.

The Carolinans have only one home game remaining on their 1942 schedule. They meet Duke at Chapel Hill on November 14.

Next week the Green Wave plays host to the Vanderbilt Commodores. Vandy has lost only one game this fall. This will mark the Commodores first visit to the Crescent City since 1932 when the two teams played a 6-6 tie.

The Mississippi State game on November 7 will be the Homecoming Game for the Green Wave.

Tulane has only one more road game this year. On Thanksgiving Day, Thursday Nov. 26, the Wave travels to Baton Rouge to meet Louisiana State.

## Compare YOUR BRAND WITH **OLD GOLD**

- ★ lowest in Nicotine
- ★ lowest in Irritating Tars and Resins

AS SHOWN BY READER'S DIGEST TESTS



THE smoke of Old Gold *lowest* in nicotine! Old Gold *lowest* in throat-irritating tars and resins. That's what impartial, scientific Reader's Digest tests showed. But no laboratory can show you how delightful today's Old Golds *taste!* Get New Old Golds!

P. Lorillard Company, Established 1760



*Tickets for*  
**Tulane-Vanderbilt  
Game**

Tulane Stadium  
October 31

*Now on Sale*

221 Baronne Street

\$1.50 and \$2.85 for Reserved Seats

**W S M B**

1350 Kilocycles

New Orleans' outlet for  
the NBC Red  
Network

●  
If you can't attend the  
Tulane games, turn to  
W S M B for them.

Join the Navy NOW



Next to a Uniform,  
the Best Suit for  
these times is a . . .

**KUPPENHEIMER**

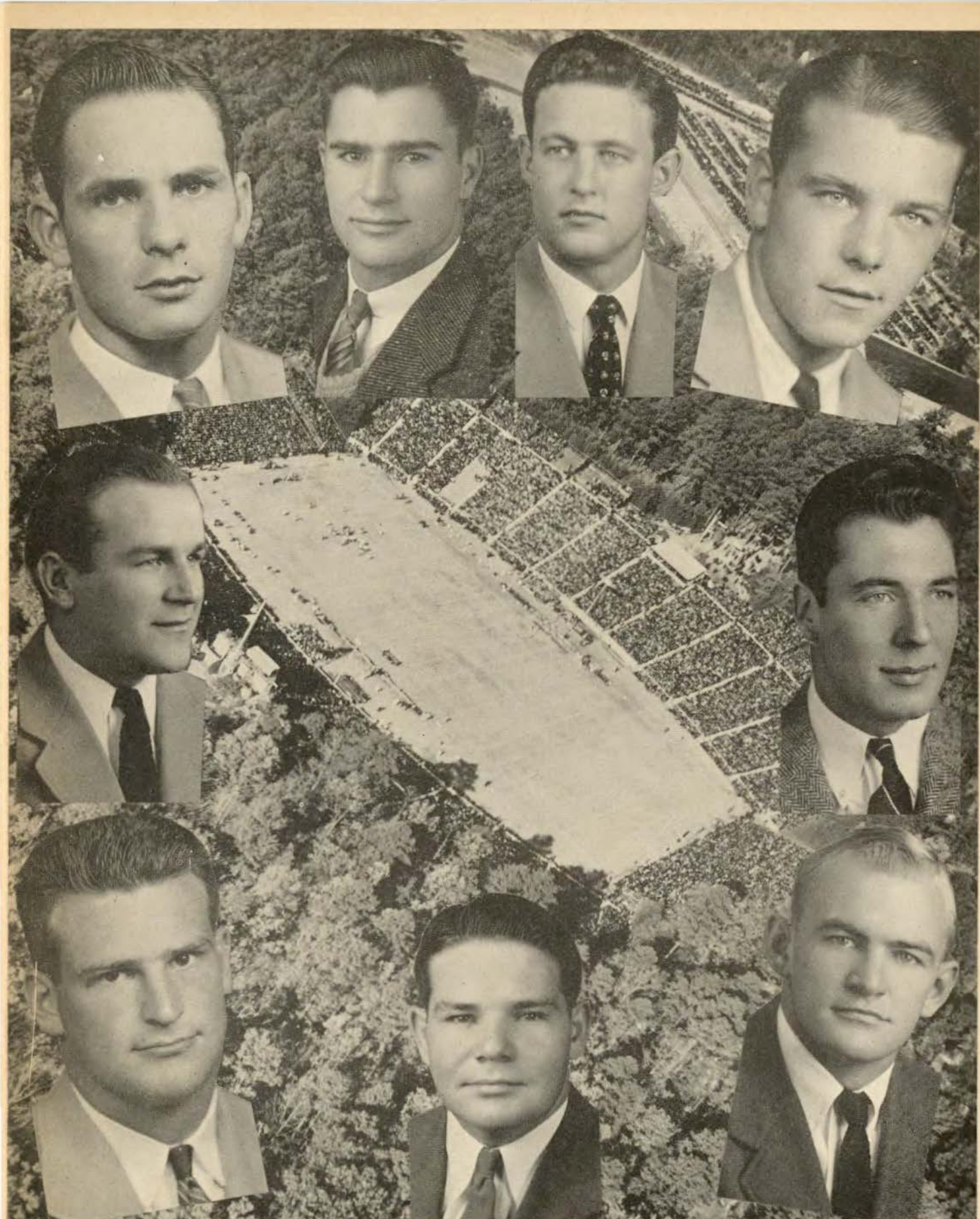
You need the best to see you  
through the days ahead . . .  
Kuppenheimer Suits are  
here in the same fine all  
wool fabrics tempered for  
greater wear-resistance—

**\$55 to \$65**

*Buy More War Bonds*

**Mayer Israel's**





Joe Austin  
Tank Marshall  
Ed Michaels

**KENAN STADIUM AND CAROLINA SENIORS**

Johnny Peeora      Bill Sigler  
Page Graham

Mike Cooke  
Joe Wolf  
Toby Webb



# ... the Fourth Quarter ends the Game. but Play Continues at The ROOSEVELT !



THE ROOSEVELT is New Orleans' finest and largest Hotel. The center of Social and Business Activities . . . After each game, football fans gather here to enjoy themselves and score another touchdown.

## BLUE ROOM

TED WEEMS and his orchestra. Nightly with these stars direct from Broadway—LOPER and BARRAT, ROSITA RIOS, MARGERY DAYE, ELMO TANNER and PERRY COMO . . . . . Shows each evening at 7:30 and 12:15.

## FOUNTAIN LOUNGE

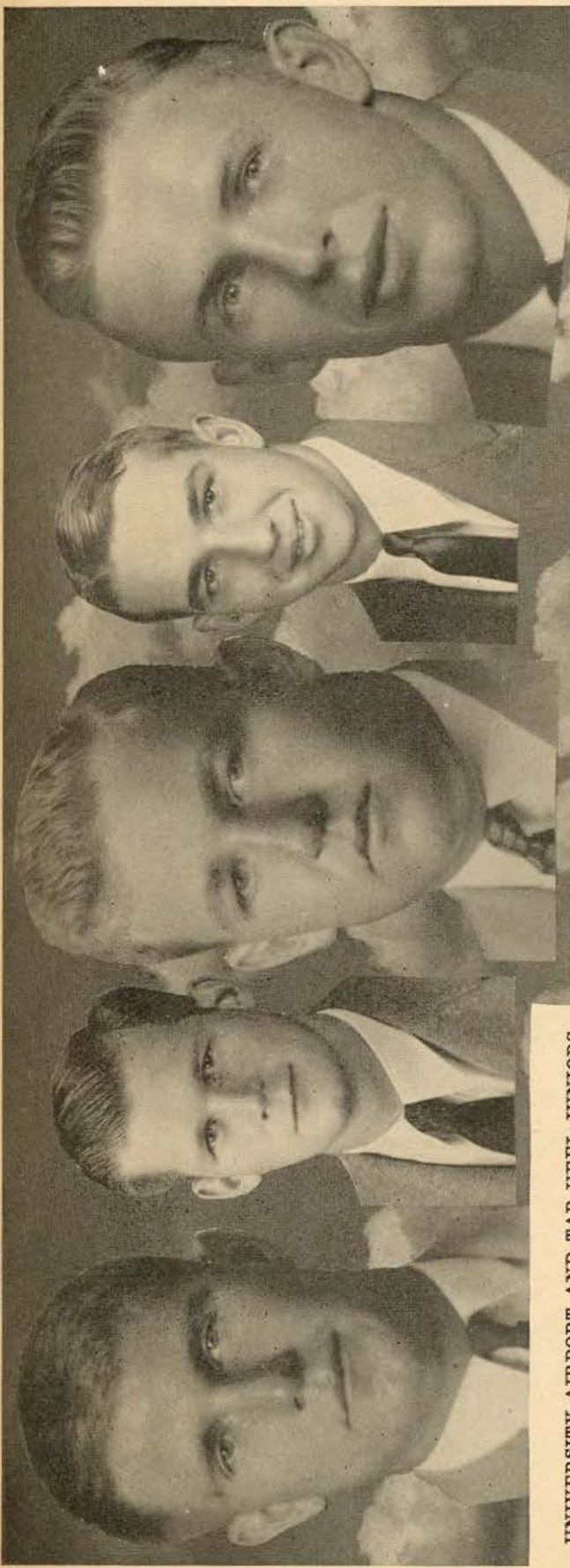
Continuous music and entertainment from 5 p. m. until 2 a. m. featuring Herb Sherry and his Society Band. Manuel Ovando and his Rhumba Band. Paul Sutton and his Musical Scrap Book.

## COFFEE SHOP

DINNER in a quiet, comfortable atmosphere from six until ten o'clock . . . Prices begin at eighty-five cents. The Coffee Shop is also open for Breakfast and Luncheon . . .

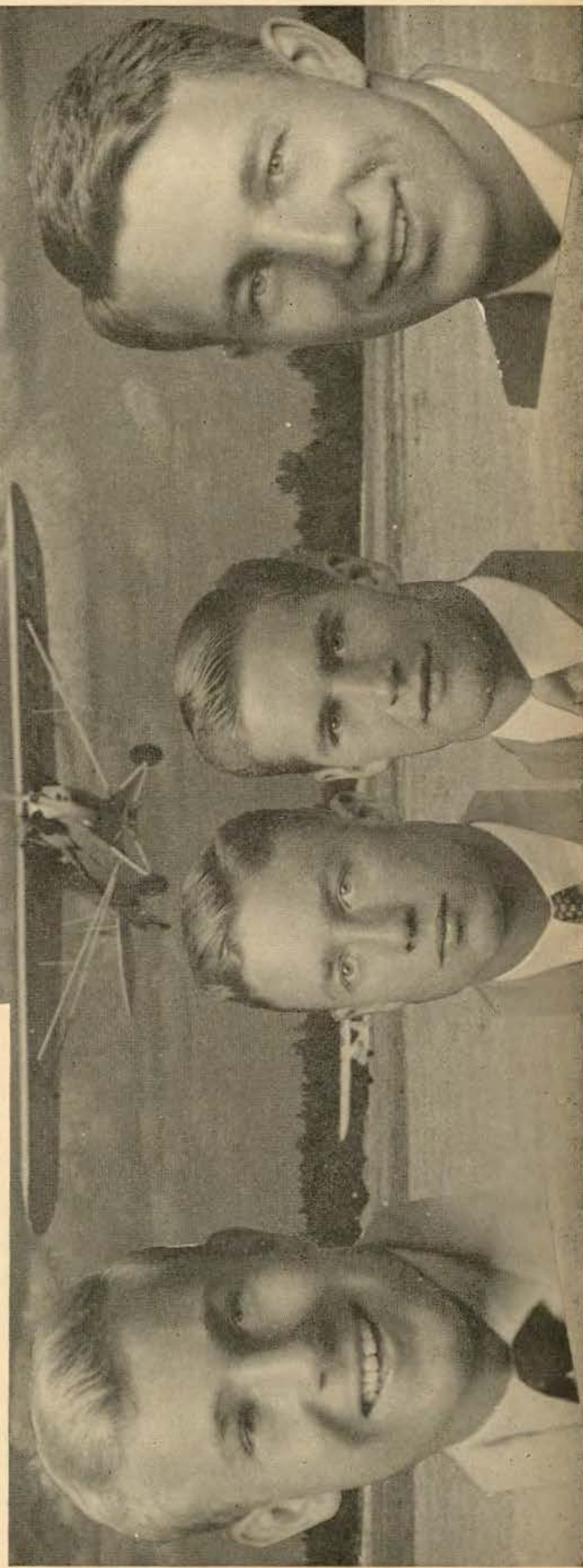
## THE ROOSEVELT





**UNIVERSITY AIRPORT AND TAR HEEL JUNIORS**

Top: Jack Hussey, Marshall Parker, Tom Byrum, Charlie Gordon, Craven Turner. Below: Shot Cox, Ray Jordan, Lovick Corn, and Clay Croom.







## **THE MAN ON A STRAP**

Were sorry you were crowded but these days you know there are more people than ever before who depend on the street cars and buses to take them where they want to go.

Staggered working hours will help a lot to spread rush hour travel. Other changes, too, may be necessary as more people turn to public transportation.

Transit is a war industry . . . to keep it rolling is everyone's concern.

Here's how you can help:

Have the exact fare ready.

Move away from the entrance of street cars or buses to avoid congestion or delay.

Don't overcrowd vehicles — wait for the next one.

Avoid rush hours whenever possible. Try to arrange shopping, recreation and social calls at other than peak periods.

**NEW ORLEANS PUBLIC SERVICE INC.**

## 1942 Tulane Football Schedule



Sept. 26—Southern California at Los Angeles  
Oct. 3—Auburn at New Orleans  
Oct. 10—Rice at New Orleans  
Oct. 17—Georgia at Athens, Ga.  
Oct. 24—North Carolina at New Orleans  
Oct. 31—Vanderbilt at New Orleans  
Nov. 7—Mississippi State at N.O. (Homecoming)  
Nov. 14—Georgia Naval Aviators at New Orleans  
Nov. 26—L. S. U. at Baton Rouge

**HAUSMANN**  
INCORPORATED

NEW ORLEANS'  
LEADING JEWELERS



*Special Department for College  
and  
Fraternal Jewelry*

*The Thinking Fellow  
Calls a Yellow*



Phone RAYmond 3311



TOYE BROS.  
**YELLOW CABS**



# PIGSKIN ROUNDUP

By ED BALDINGER

ALABAMA-Kentucky—The Crimson Tide to keep rolling along.

ARMY-Harvard—The Cadets are surprisingly strong.

Cincinnati-GEORGIA—The Bulldogs by plenty.

Columbia-PENN — The Quakers are stronger than the Lions.

DUKE-Pitt—The Blue Devils to uphold the South's intersectional record in a close tilt.

Florida-MISS. STATE—The State team has found itself.

GEORGETOWN-Detroit — The Hoyas to preserve an unblemished record.

Furman-TENN.—The Vols will bounce back for an easy win.

GA. TECH-Navy—The Engineers get a vote of confidence.

Illinois-N. DAME—A very trembling nod to the Fighting Irish.

L. S. U.-GA. CADETS—The Tigers are good, but the Cadets are better.

MICHIGAN-Minnesota — The Wolverines are a shade stronger this time.

MISSOURI-Iowa State—The boys from old Mizzou' to win.

Northwestern-OHIO STATE — The Buckeyes to remain undefeated, but to receive a good scare.

Purdue-WISCONSIN—The Badgers to remain undefeated.

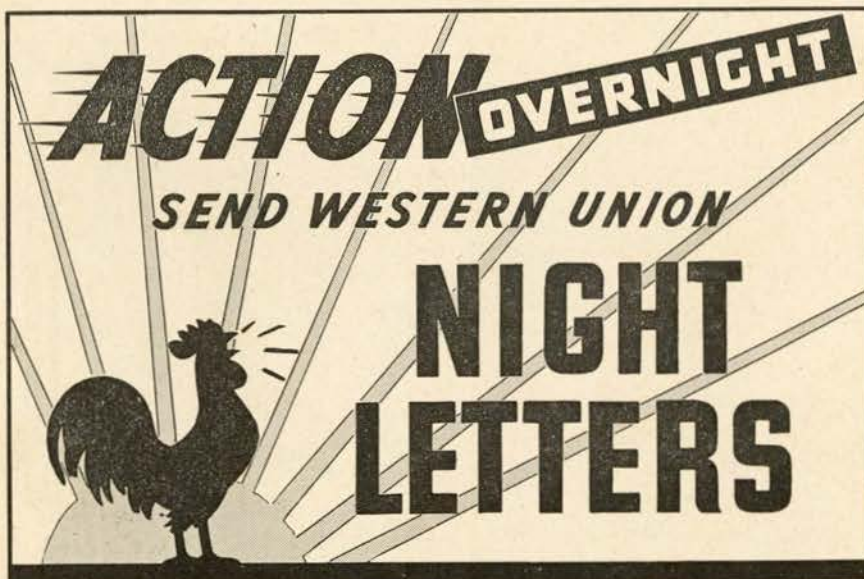
T. C. U.-Pensacola—The Frogs to win with a strong attack.

Villanova-AUBURN—The Tigers are hard to beat in an intersectional affair.

VANDERBILT-Centre—The Commodores will bounce back after last week's disaster.

OLE MISS-Arkansas — The Rebels have scored more points thus far.

WASH. STATE-Oregon State. — The Cougars in a close one.





AT THE GAME  
and  
AFTER THE GAME  
ENJOY



**D** Equipment for all sports...

**U** *Specialists in all types of*  
*school athletic*  
*supplies*

**N**

**L**

**A**

**P**

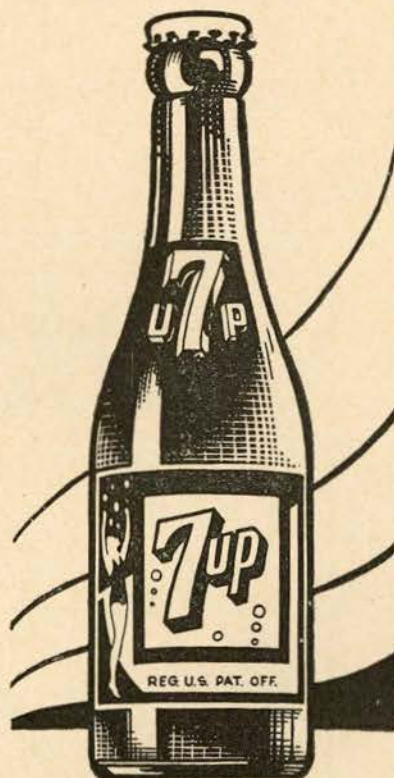
**Sporting Goods Co., Inc.**

138 Carondelet Street  
MAgnolia 5891

Stop!  
Look!  
Listen!

There's a 7-Up Boy right  
down in front of you! Call  
him now and Fresh-Up

With



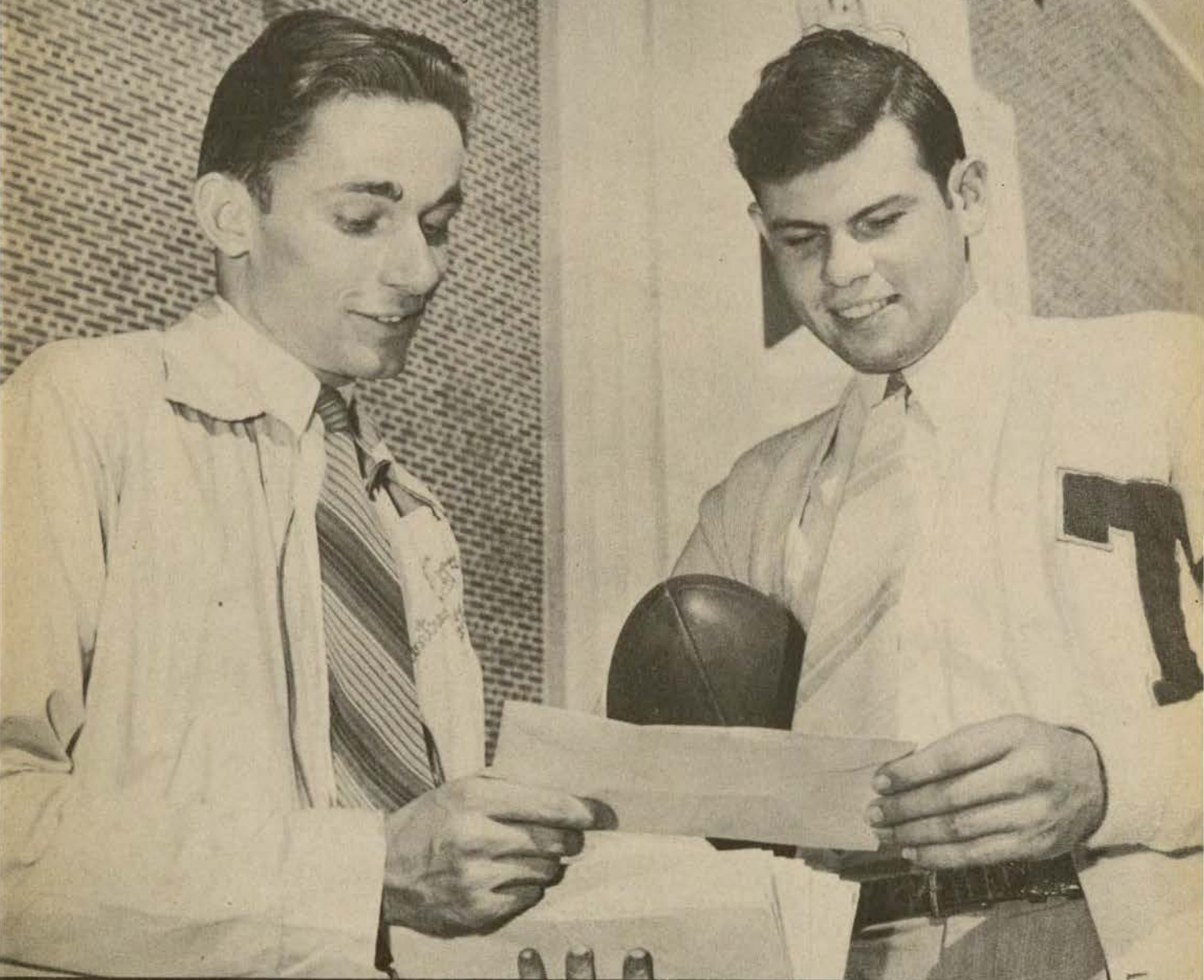


# Cam-pic

a medley of  
CAMPUS  
PICTURES

CLIP BY HIRSH KINER

MULANE STADIUM



Ed Baldinger and Ken McWilliams,  
managers of the 1942 Green Wave.





Men may go down to the sea in ships, sketched by women in Tulane night war courses . . . Astronomy is a basic course at Tulane for air-minded students.



**STYLEPARK HATS**

be HEADED right  
with a STYLEPARK HAT from

**Porter's**





Sleepin' in the sun is recommended at Newcomb college . . .  
Audubon park is a favorite rendezvous of Tulanians.



You pay no more  for **Porter's**  
DEPENDABILITY!





Unfinished scaffolding and head scarfs vie  
at rehearsals of Tulane choral organizations.

*Nunn Bush*  
SHOES



2 FEET  
OF COMFORT  
AND STYLE

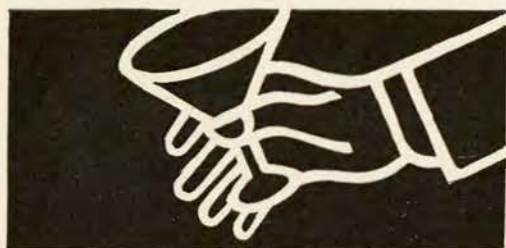
*Porter's*  
from ..



*Famous for*



**CUISINE** and



**CELLARS**

TONIGHT—enjoy specialties of these noted restaurants:

**ANTOINE'S**

713 St. Louis St.

**ARNAUD'S**

813 Bienville St.

**BROUSSARD'S**

819 Conti St.

**KOLB'S**

125 St. Charles St.

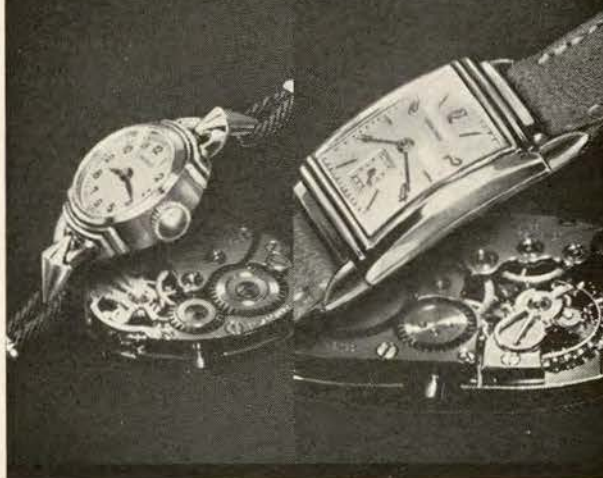
**The official football  
timing watch for  
TULANE - N. CAROLINA**

*Longines*  
**THE WORLD'S MOST HONORED WATCH**

Longines, official football timing watch for this game, is the sports world's most honored watch. For many years Longines Watches have timed the principal championship football, track, basketball, swimming, auto racing, aviation, ski, bobsledding, rodeo, and other sports events. For the 1940 Olympics Longines was selected as exclusive official watch; an honor which was repeated by the Organization Committee for the first Pan-American Sporting Games.

Other Longines honors include 10 world's fair grand prizes, 28 gold medals, and more acknowledgments of accuracy than have been won by any other timepiece. Throughout the world, no other name on a watch means so much as Longines, *the world's most honored watch.*

*The beating heart of every Longines Watch  
the Longines Observatory Movement\**



The skill, experience, and workmanship necessary for the construction of Longines Watches for precision timing, aviation, and navigation, are reflected in the greater accuracy of every Longines Watch at any price. And every Longines Watch contains the Longines "Observatory Movement" world-honored for greater accuracy and long life. Longines jewelers also sell the Wittnauer Watch, a companion line of moderate price, product of—Longines-Wittnauer Watch Company, 580 Fifth Avenue, New York, N. Y.

\*REG. U. S. PAT. OFF.



# It's all the GO CHESTERFIELD

Smokers cheer for the cigarette  
that really performs... gives them a  
MILDER smoke... cheers them with  
its Cooler, Better Taste—  
—that's CHESTERFIELD



## TULANE

		RH	FB			
		Ely	Pracko			
		11	32		LH	
			QB		Thomas	
			McDonald		42	
			20			
RE	RT	RG	C	LG	LT	LE
Comer	Balen	Holm	Stolen	Maginnis	Tessier	Cies
82	73	64	52	29	62	85

### SQUAD LIST

10 Brignac, f	45 Fortier, hb	71 Lennox, t
11 Ely, h	46 Campora, hb	72 Bentz, t
12 Renfro, h	50 Young, c	73 Balen, t
20 McDonald, q	51 Rice, c	74 Faust, g
21 Grush, q	52 Stolen, c	75 McAfee, t
22 Finley, q	54 Herbert, c	80 Jones, e
29 Maginnis, g	60 Tetek, g	81 Rowland, e
30 Porter, e	61 Green, g	82 Comer, e
31 Jackson, c-q	62 Tessier, t	83 Jahncke, e
32 Pracko, f	64 Holm, g	84 White, e
37 McFaul, h	65 Carter, g	85 Cies, e
38 Pittman, f	66 Rhea, t	86 Holland, e
40 Key, h	68 Garbark, t	88 O'Brien, e
41 Fischer, h	69 Deramee, g	96 Eyrich, g
42 Thomas, h	70 Heintz, t	

### OFFICIALS

Referee  
T. G. Kain (Georgia)  
Umpire  
S. H. Sanders (Texas A. & M.)

## NORTH CAROLINA

		FB					
		Croom				LH	
		31				Myers	
		QB				42	
		Cooke					
		51					
RE	RT	RG	C	LG	LT	LE	
Turner	Wolf	Marshall	Highsmith	Strayhorn	Michaels	Hussey	
86	72	66	70	62	73	83	

### SQUAD LIST

10 Austin, b	50 O'Shea, c	73 Michaels, t
13 Thomason, b	51 Cooke, c	74 Ellis, t
14 Johnson, b	54 Simpson, c	75 Parker, t
15 Corn, b	55 Jordan, c	76 Jones, t
20 Pupa, b	61 Karres, g	77 Graham, t
21 Wright, b	62 Strayhorn, g	78 Heimovitch, g, c
23 Thorburn, b	63 Byrum, g	79 Stringfield, t
24 Webb, b	64 Gordon, g	80 Tandy, e
30 Sigler, b	66 Marshall, g	81 Hewett, e
31 Croom, b	65 Davis, g	82 Sparger, e
32 Lee, b	67 Faircloth, g	83 Hussey, e
33 Arbes, b	68 Bruton, g	85 Bigham, e
41 Cox, b	70 Highsmith, t, c	86 Turner, e
42 Myers, b	71 Heymann, t	87 Smith, e
43 Pecora, b	72 Wolf, t	89 Smith, e
44 Gregory, b		



### OFFICIALS

Field Judge  
T. J. Johnson (Georgia Tech)  
Head Linesman  
George C. Gardner (Georgia Tech)





# JOHNNIE "Calls" THE SIGNALS!

					
Crawling or pushing. 5 yards; helping ball carrier, 15 yards.	Holding. (Penalty—by offense, 15 yards; by defense, 5 yards.)	Delay of game or extra time-outs. (Penalty, 5 yards.)	Player illegally in motion. (Penalty, 5 yards. If from shift or huddle, 15 yards.)	Interference with forward pass, or pass touching ineligible player. (Penalty, if interference by offense, 15 yards; otherwise, ball goes to opponents at point of foul.)	Illegal forward pass.
					
Safety.	Penalty refused, incomplete pass, missed field goal or conversion, both sides offside, etc.	Unnecessary roughness, illegal defensive use of the hands, clipping, running into or roughing the kicker. (Penalty, 15 yards.)	Score—touchdown, field goal, or conversion.	Offside or violation of kick-off formation. (Penalty, 5 yards.)	Time out.



ESTABLISHED OVER 50 YEARS  
**PHILIP MORRIS & CO. LTD.**  
 LONDON, ENGLAND

FOR TRUE SMOKING PLEASURE  
*Call for* **PHILIP MORRIS**

## Penalties

### LOSS OF FIVE YARDS

- |                                                       |                                                                                                                          |                                                                       |
|-------------------------------------------------------|--------------------------------------------------------------------------------------------------------------------------|-----------------------------------------------------------------------|
| 1 Taking more than three times out during either half | 5 Failure to maintain proper alignment of offensive team before ball is snapped. Also, backfield man illegally in motion | 8 Taking more than two steps with ball after signaling for fair catch |
| 2 Illegal delay of game                               | 6 Offside by either team, or encroachment on neutral zone.                                                               | 9 Illegal use of hands and arms by defensive players                  |
| 3 Failure of substitute to report to umpire           | 7 Attempt to draw opponents offside                                                                                      | 10 Flying block or flying tackle                                      |
| 4 Violation of kick-off formation                     |                                                                                                                          | 11 Running into kicker                                                |
|                                                       |                                                                                                                          | 12 Crawling by the runner                                             |

### LOSS OF FIFTEEN YARDS

- |                                                                       |                                                                                   |                                                       |
|-----------------------------------------------------------------------|-----------------------------------------------------------------------------------|-------------------------------------------------------|
| 13 Team not ready to play at scheduled time                           | 18 Forward pass touched by ineligible player                                      | 22 Illegal use of hands and arms by offensive players |
| 14 Substitute communicating with teammates before ball is put in play | 19 Intentional grounding of forward pass                                          | 23 Defensive player striking opponent above shoulders |
| 15 Illegal substitution (player also suspended from game)             | 20 Interference by member of passing team with defensive player eligible for pass | 24 Roughing the kicker                                |
| 16 Failure to stop at least one second on shift play                  | 21 Interference with fair-catch or tackling player before ball is caught          | 25 Piling up, hurdling, clipping                      |
| 17 Forward pass by member of team which did not put ball in play      |                                                                                   | 26 Tackling player out of bounds                      |
|                                                                       |                                                                                   | 27 Coaching from the sidelines                        |
|                                                                       |                                                                                   | 28 Illegal interference with defense by passing team  |

### OTHER PENALTIES

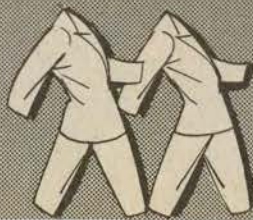
- |                                                                                                                   |                                                                                               |                                                                                          |
|-------------------------------------------------------------------------------------------------------------------|-----------------------------------------------------------------------------------------------|------------------------------------------------------------------------------------------|
| 29 Striking, kneeling, or kicking opponent—half the distance to the goal and disqualification of offending player | 31 Interference by defensive team on forward pass—first down for passing team at spot or foul | 33 Flagrant unsportsmanlike conduct—disqualification, plus fifteen yards                 |
| 30 Foul within one yard line—half the distance to the goal                                                        | 32 Flagrant roughing of kicker—disqualification, plus fifteen yards                           | 34 Forward pass touched by ineligible player on or behind line of scrimmage—loss of down |





Mrs. Alfred Richard Loeblich, Jr., became the first woman instructor in the Tulane college of arts and sciences when her husband (right) went to war.

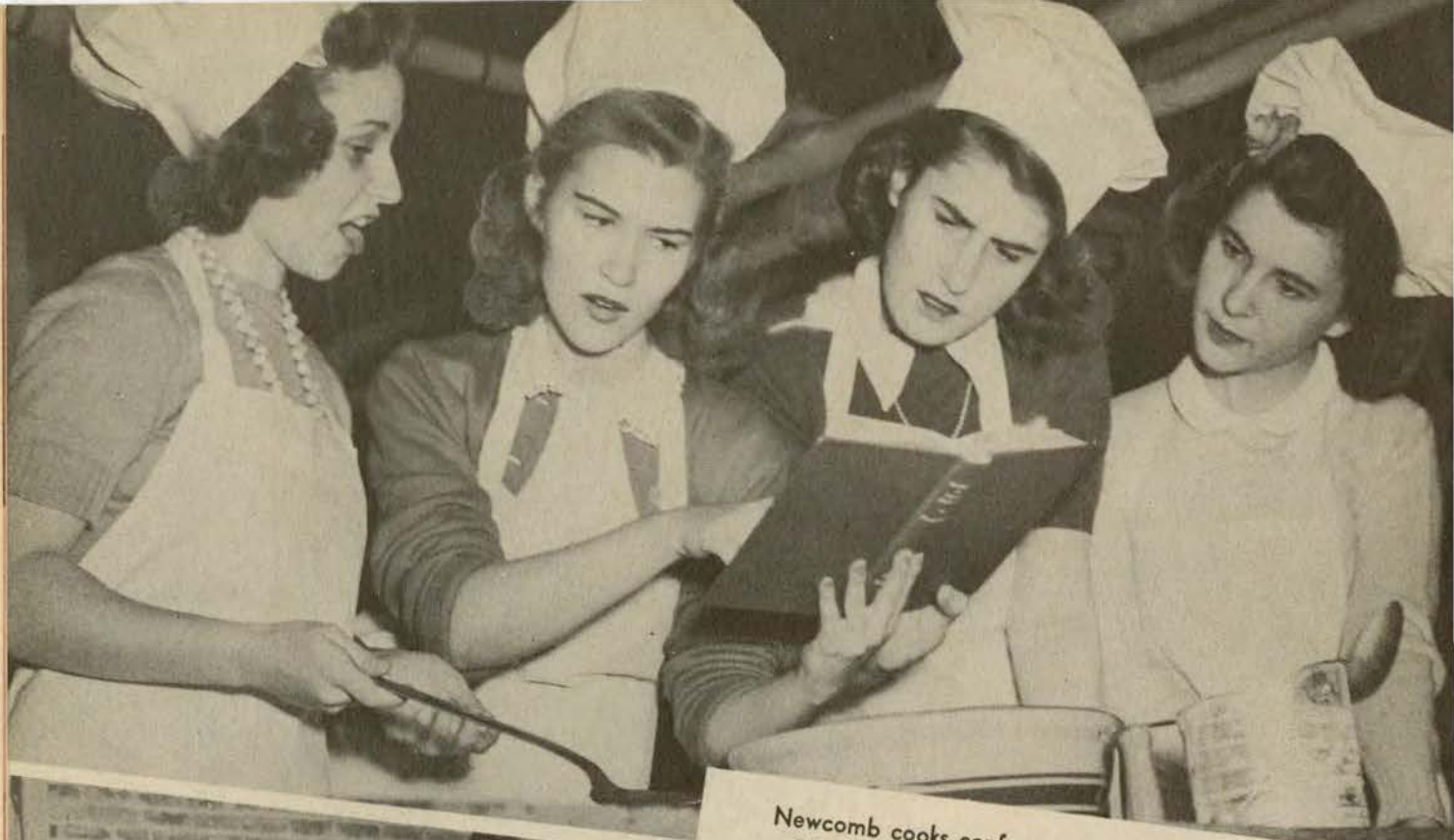
**DURABLE**  
*for the duration*



**Suits**  
**\$25<sup>UP</sup>**

**Porter's**





Newcomb cooks confer over cake-baking contests . . .  
Soldiers and coeds relax at service entertainments.



RAINFAIR  
**STORM** COATS  
take the weather...

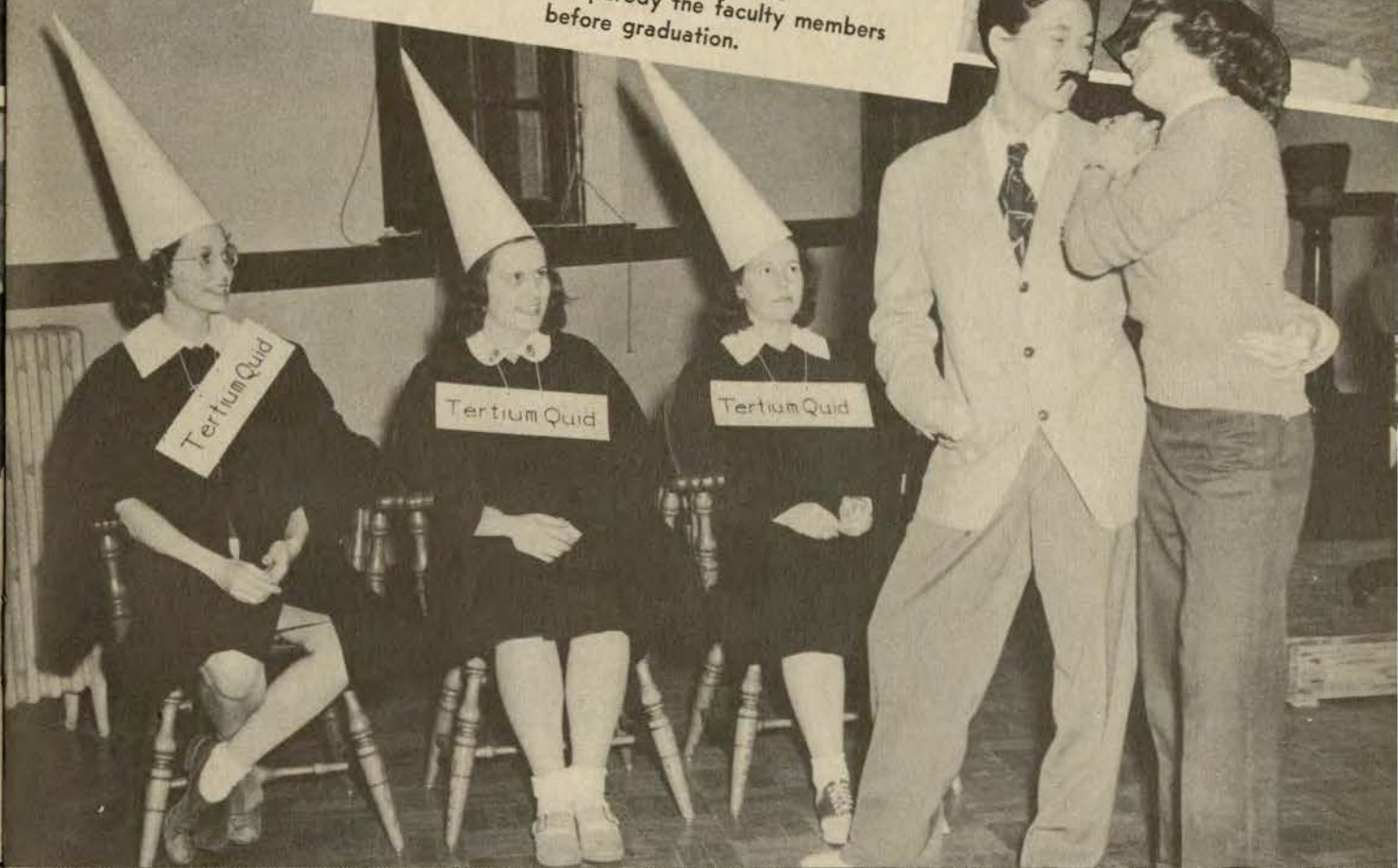


give the style . . . from  
**Porter's**





High jinks at Newcomb college—  
when the seniors parody the faculty members  
before graduation.



tackle the  
**AXIS**

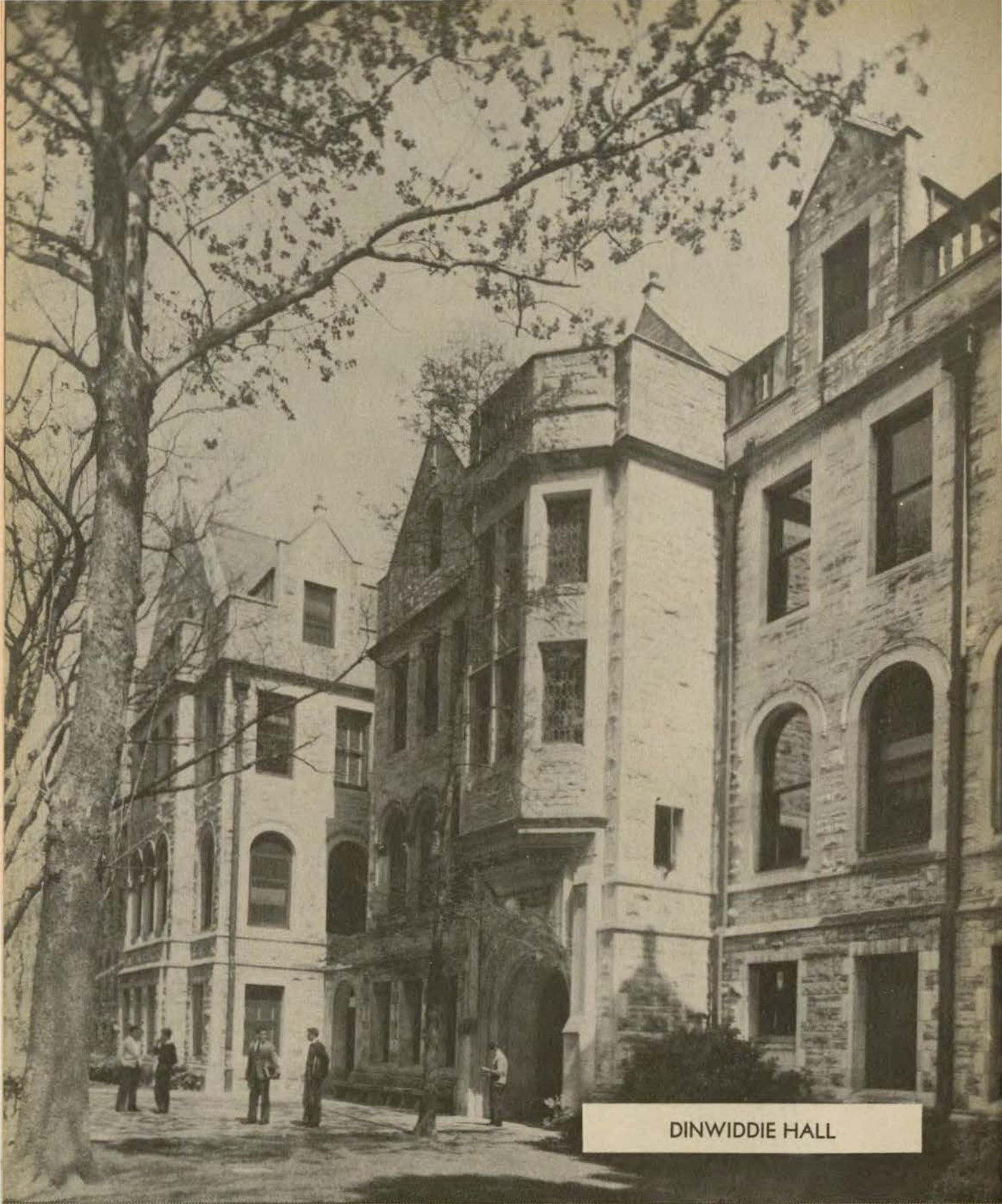


Buy

WAR BONDS and STAMPS!

*Porter's*





DINWIDDIE HALL

WHERE IS PORTER'S?

ACROSS THE  
STREET FROM  
THE COTTON  
EXCHANGE

AROUND THE  
CORNER  
FROM THE  
ST. CHARLES  
HOTEL

OPPOSITE THE HIBERNIA  
NATIONAL BANK AND  
IN THE SAME BLOCK  
WITH THE AMERICAN  
BANK- ASK ANYBODY!

*Porter's*

CARONDELET COR. GRAVIER



*Keep Warm in a  
Patricienne Fur  
While You Root  
for the WAVE*

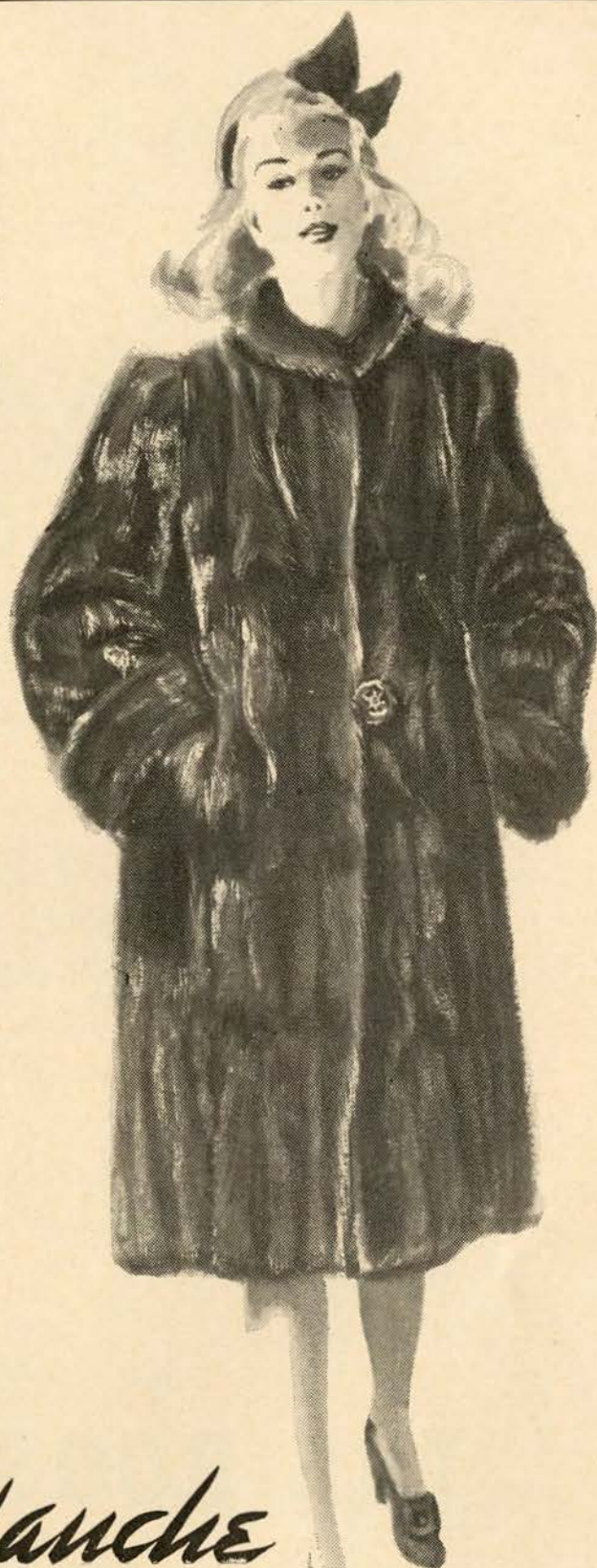


It's the kind of coat that will keep you well insulated from those chill winds that howl down from the North End . . . yet look like a cool million at cocktails after the game. It's the kind of coat you'll find goes everywhere, with everything because it's a Patricienne—beautifully styled, master-crafted with deep, thick-furred pelts. Select your duration coat in the

Salon Patricienne



*Maison Blanche*





# *New Orleans' Finest*

In America's Most Interesting City



THE ROOSEVELT HOTEL is located in the heart of Romantic old New Orleans. It is the center of business and social activities and is close to the Theatre, Shopping, French Quarter, and Business Districts . . . You will like the tasteful luxury and home-like atmosphere of this modern hotel where the traditions of Southern Hospitality are maintained the year 'round.

"Pride of the South"

## **THE ROOSEVELT**



---

## TAR HEEL COACH

Young Jim Tatum, who is making a big name in his first year as Head Coach at North Carolina, modestly gives the major share of credit to "our boys," and the rest to the breaks and luck.

The 28-year old head man's record speaks for itself. The Tar Heels beat Wake Forest, which upset Duke's Rose Bowlers the next Saturday. They won 18-6 over South Carolina, which tied Tennessee. They tied Fordham, the 1942 Sugar Bowl winner. And last week they beat Duquesne, which had won 16 straight games and which ranked No. 6 in the nation last year.

That's quite an about-face from last season. The 1941 squad won only three games and lost seven. Tatum has the same squad, minus the graduates and draftees, plus the men up from his 1941 Frosh squad.

Tatum was an All-Southern tackle under Coach Carl Snavelly at Carolina in 1934. When Snavelly moved on to Cornell, Tatum accompanied him as football assistant and head baseball coach 1936-39. He returned to Carolina as Freshman Athletic Director, and when Ray Wolf joined the Navy this year, he stepped in as Head Football Coach.

\* \* \*

### NOTICE

Physicians who are expecting telephone calls during the game should register at the special table under the West side stands before each game. In case of an emergency call, they will be paged by number of the public address system rather than by name.

---

"Funny thing,  
freedom  
ain't free.  
But whatever  
you pay for it—  
it's WORTH it!"

—Bing Crosby

We've been in business more than a hundred years, and we have never offered our friends a finer investment than

## U. S. WAR BONDS and STAMPS

Buy Them Regularly

at

**GODCHAUX'S**



## SONGS AND YELLS

### ROLL ON, TULANE

ten Hoor and Goldstein

Roll, Green Wave,  
Roll them down the field.  
Hold, Green Wave,  
That line must never yield.  
When those Greenbacks charge through the line  
They're bound for victory.  
Hail, Green Wave, for you  
We have no fear.  
Hail, Green Wave, for you we give a cheer  
And ev'ry man in ev'ry play  
And then we'll win that game today.  
Hurrah for Old Tulane!

### Hullabaloo

Hullabaloo! Ray! Ray!  
Hullabaloo! Ray! Ray!  
Hooray! Hooray!  
Vars, Vars, T.A.A.  
T.A.A.! T.A.A.!!  
Vars, Vars, T.A.A.!!  
TULANE!!!

## ALMA MATER

*Sing these words as Tulane's Alma Mater  
is played*

### I.

We praise thee for thy past, O Alma Mater!  
Thy hand hath done its work full faithfully!  
The incense of thy spirit hath ascended  
And filled America from sea to sea

### II.

We praise thee for thy present, Alma Mater!  
Today thy Children look to thee for bread!  
Thou leadest them to dreams and actions splendid!  
The hunger of their souls is richly fed!

### III.

We praise thee for thy future, Alma Mater!  
The vista of its glory gleameth far!  
We ever shall be part of thee, great Mother!  
There thou wilt be where e'er thy children are!

### CHORUS:

Olive Green and Blue, we love thee!  
Pledge we now our fealty true  
Where the trees are ever greenest,  
Where the skies are purest blue!  
Hear us now, O Tulane, hear us!  
As we proudly sing to thee!  
Take from us our hearts' devotion!  
Thine we are, and thine shall be!

# "Time Out"

DRINK—



PAUSE—

RELAX—

REFRESH YOURSELF



# T ULANE



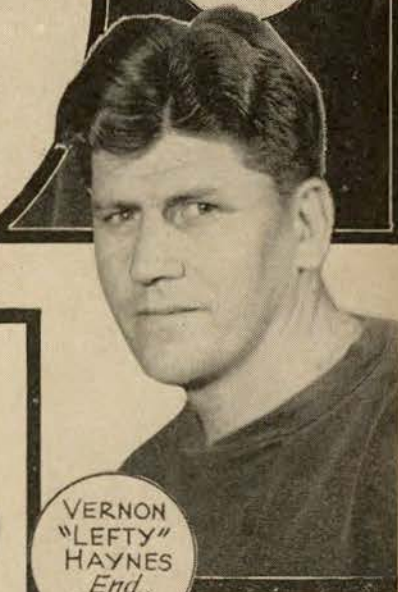
"LITTLE  
MONK"  
SIMONS, JR  
Head  
Coach



DR.  
WILBUR  
C.  
SMITH  
Athletic  
Director



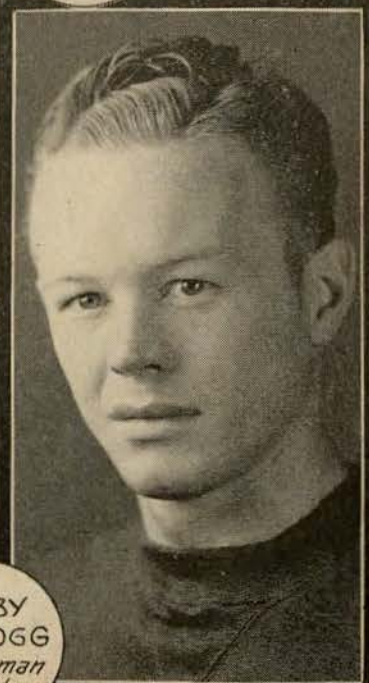
CLAUDE  
"MONK"  
SIMONS  
TRAINER



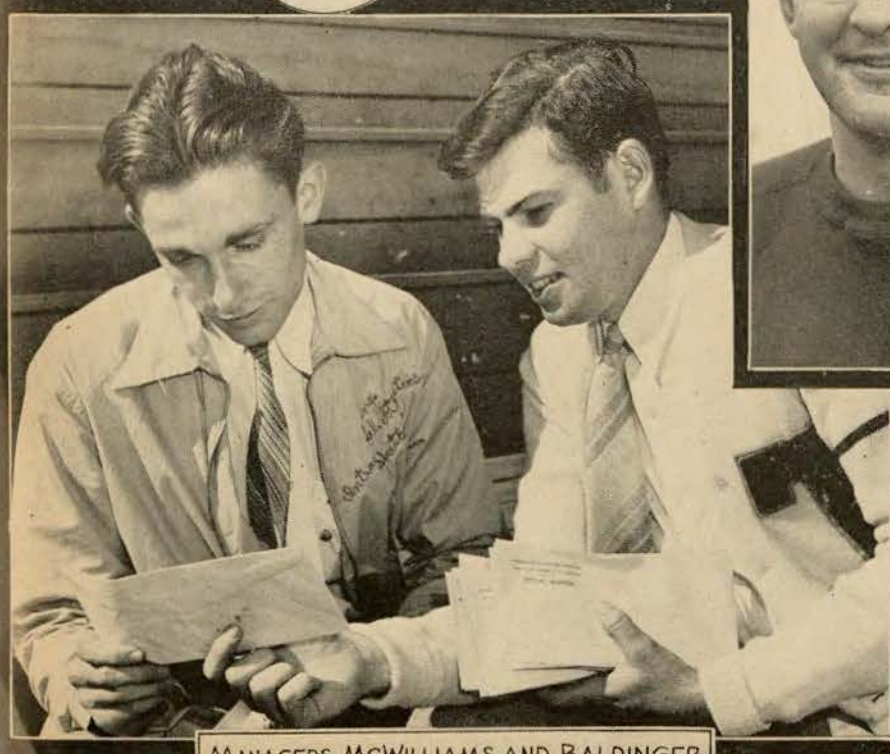
VERNON  
"LEFTY"  
HAYNES  
End  
Coach



CHARLIE  
RUCKER  
Chief  
Assistant  
Coach



BOBBY  
KELLOGG  
Freshman  
Coach



MANAGERS MCWILLIAMS AND BALDINGER



*Always a Winning Line-Up*  
IN  
**HOLMES MEN'S STORE**

40						40
50						50
40	MANHATTAN SHIRTS	MANSO UNDERWEAR	PHOENIX SOCKS	WESTMINISTER SOCKS	PIONEER BELTS	40
30	WORSTED-TEX SUITS				KNIT-TEX TOPCOATS	30
20	MALLORY HATS					20
10	BOSTONIANS SHOES				MANHATTAN PAJAMAS	10
G	ALLIGATOR RAINCOATS					G

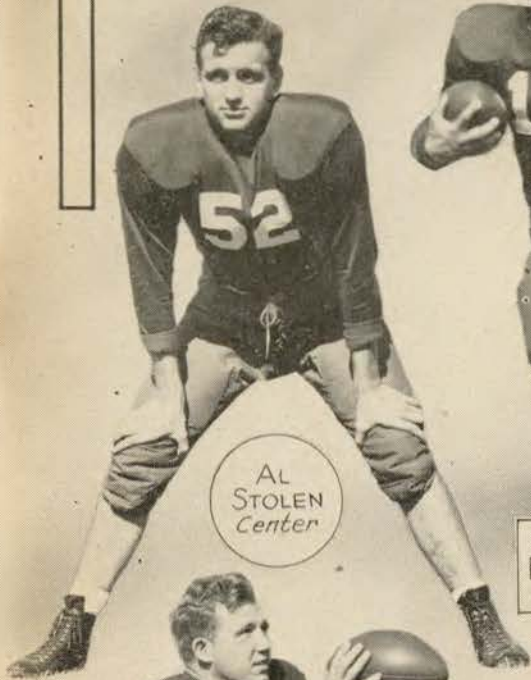
⊗ [ LUNCH AND DINE IN  
HOLMES RESTAURANT ] ⊗

**D. H. HOLMES CO.**  
LIMITED

*New Orleans Quality Department Store—Old in Traditions—Young in Ideas*



# TULANE

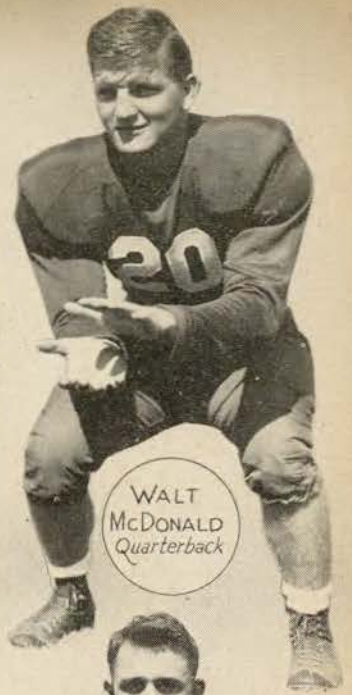


AL  
STOLEN  
*Center*

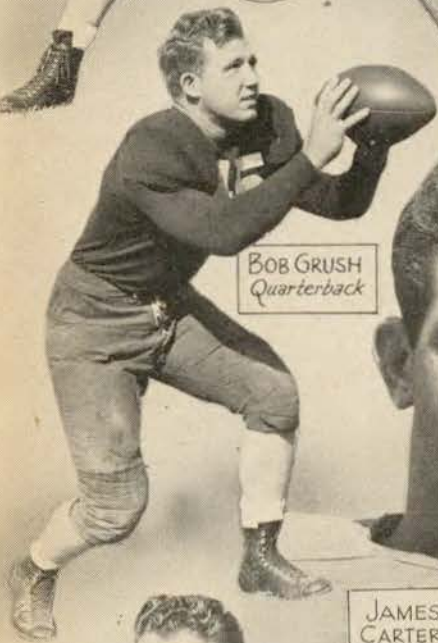


JULIAN  
BRIGNAC  
*Fullback*

BERNARD  
PRACKO  
*Fullback*



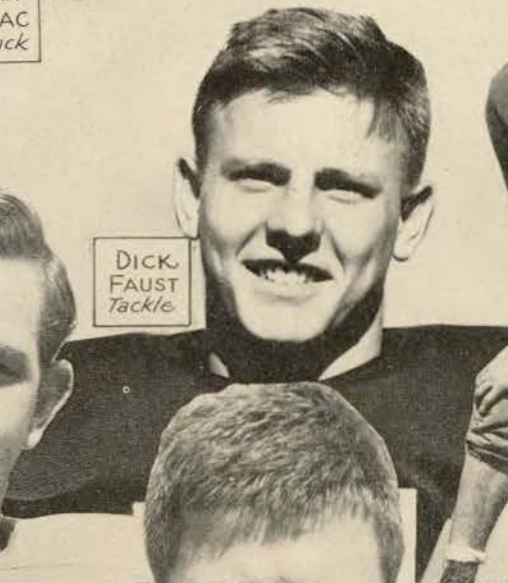
WALT  
MCDONALD  
*Quarterback*



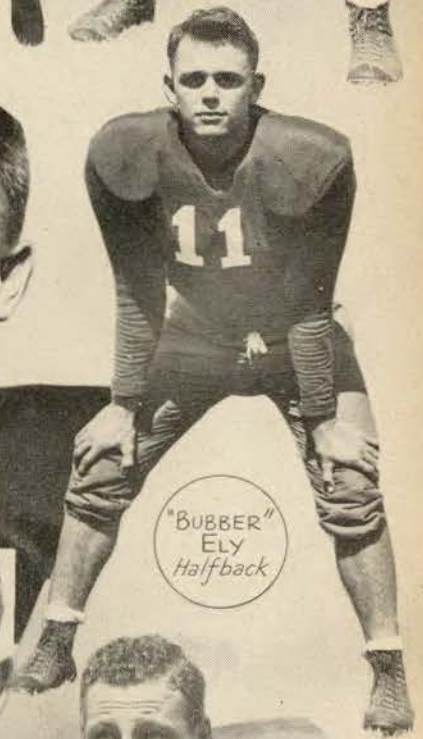
BOB GRUSH  
*Quarterback*



JAMES  
CARTER  
*Guard*



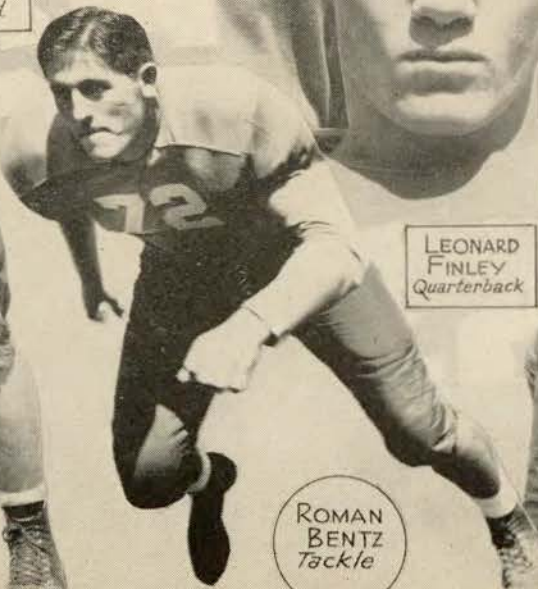
DICK  
FAUST  
*Tackle*



"BUBBER"  
ELY  
*Halfback*

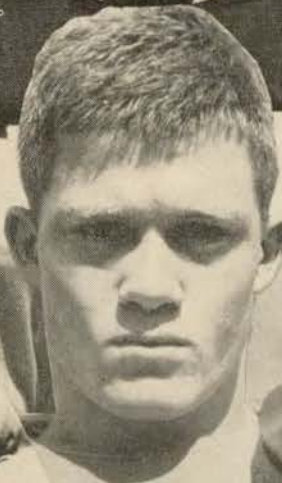


MARTY  
COMER  
*End*



ROMAN  
BENTZ  
*Tackle*

LEONARD  
FINLEY  
*Quarterback*



JAY  
ROWLAND  
*End*



# TULANE ROSTER

No.	PLAYER	HOME TOWN	Position	Wgt.	Yrs. on Varsity
10	Brignac, Julian	Lutcher, La.	FB	178	2
11	Ely, James	Shaw, Miss.	HB	194	3
12	Renfro, Joe	Ft. Myers, Fla.	HB	205	1
20	McDonald, Walter	Struthers, Ohio	QB	203	3
21	Grush, Robert	New Orleans, La.	QB	185	3
22	Finley, Leonard	New Orleans, La.	QB	170	1
29	Maginnis, William	New Orleans, La.	G	197	3
30	Porter, Arthur	New Orleans, La.	E	205	1
31	Jackson, Jack	Monroe, La.	C-Q	180	0
32	Pracko, Bernard	Tarentum, Pa.	FB	180	3
37	McFaul, Louis	New Orleans, La.	HB	170	1
38	Pittman, Milton	Plain Dealing, La.	FB	185	1
40	Key, O. J.	New Orleans, La.	HB	195	1
41	Fischer, Ed.	New Orleans, La.	HB	170	1
42	Thomas, Lou	New Orleans, La.	HB	186	3
45	Fortier, Don	New Orleans, La.	HB	168	0
46	Campora, John	New Orleans, La.	HB	170	0
50	Young, Don	North Little Rock, Ark.	C	185	0
51	Rice, Lawrence	Gulfport, Miss.	C	204	2
52	Stolen, Al	Eau Claire, Wis.	C	194	2
54	Hebert, Olton	New Iberia, La.	C	185	1
60	Tetek, Bernard	Gary, Indiana	G	175	1
61	Green, Jack	Shelbyville, Kan.	G	185	0
62	Tessier, John	New Orleans, La.	T	195	1
64	Holm, Darwood	Eau Claire, Wis.	G	205	1
65	Carter, James	Shreveport, La.	G	205	1
66	Rhea, Creighton	Jonesboro, Ark.	T	210	3
68	Garbark, Thomas	Edgewood, Pa.	T	199	3
69	Deramee, Ed.	Thibodaux, La.	G	203	1
70	Heintz, Tom	Hartford, Wis.	T	235	1
71	Lennox, Thomas	New Orleans, La.	T	220	1
72	Bentz, Roman	Horicon, Wis.	T	214	3
73	Balen, Mike	Sawyer, Ill.	T	205	1
74	Faust, Richard	New Orleans, La.	G	206	3
75	McAfee, Howard	New Orleans, La.	T	228	2
80	Jones, Curtis	Benton, Ark.	E	187	1
81	Rowland, Jay	Hot Springs, Ark.	E	205	2
82	Comer, Martin	Gary, Indiana	E	201	3
83	Jahncke, Warren	New Orleans, La.	E	175	1
84	White, Vestie	Arkansas City, Kansas	E	180	1
85	Cies, Joseph	Carlinville, Ill.	E	195	2
86	Holland, Milton	Shreveport, La.	E	187	2
88	O'Brien, Emile	New Orleans, La.	E	180	0
96	Eyrich, Clarence	Natchez, Miss.	G	230	2

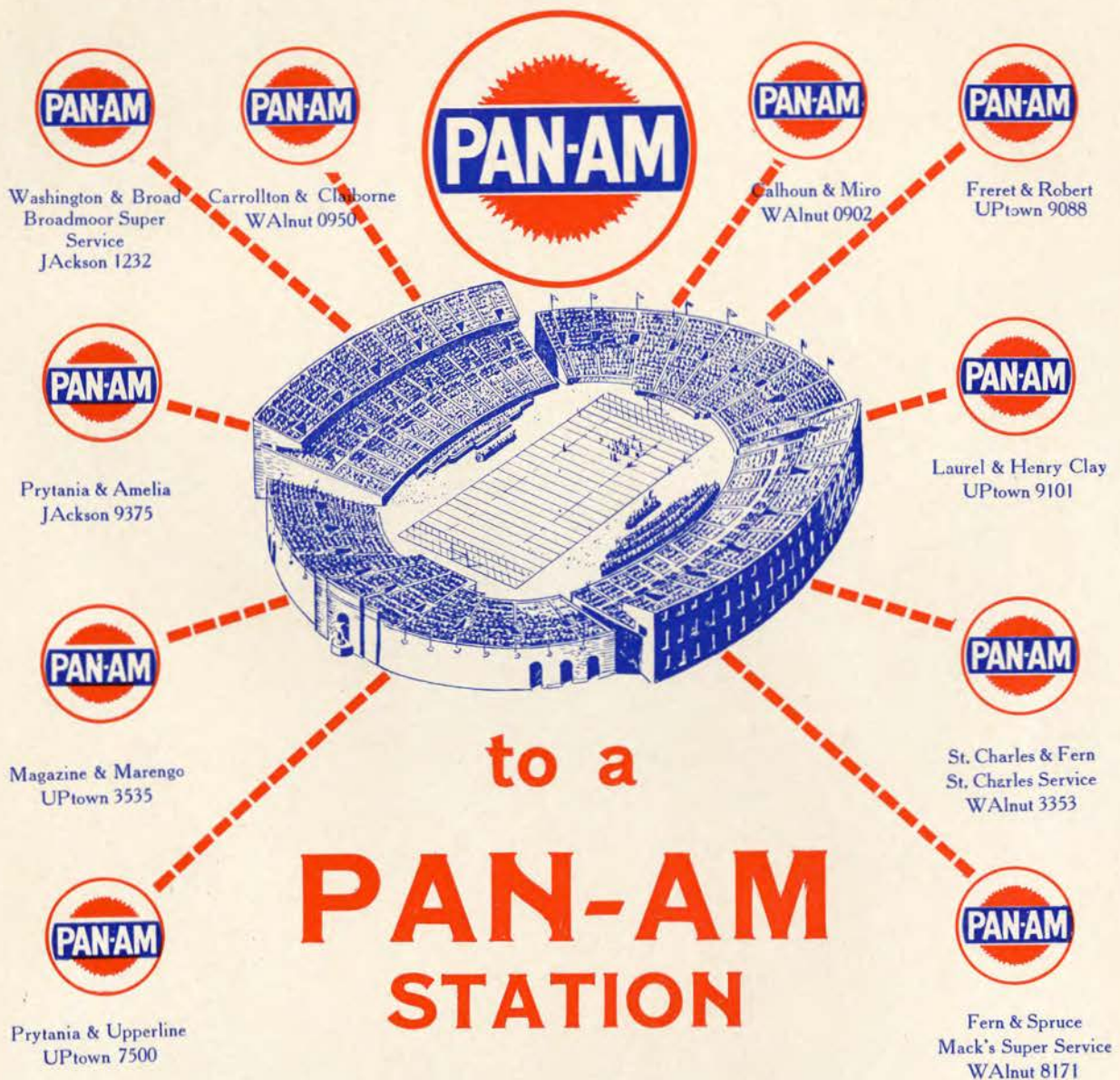
# NORTH CAROLINA ROSTER

No.	PLAYER	HOME TOWN	Position	Wgt.	Yrs. on Varsity
10	Austin, Joe	Badin, N. Car.	HB	183	3
13	Thomason, Vernon	Lexington, N. Car.	HB	155	1
14	Johnson, Rivers	Warsaw, N. Car.	HB	172	1
15	Corn, Lovick	Macon, Ga.	HB	180	2
20	Pupa, Walter	Inwood, L. I.	QB	190	1
21	Wright, Joe	Asheville, N. Car.	QB	185	1
23	Thorburn, Walter	High Point, N. Car.	QB	175	1
24	Webb, "Toby"	Tarboro, N. Car.	QB or HB	175	3
30	Sigler, Bill	Milwaukee, Wis.	FB or HB	198	3
31	Croom, Clay	Kinston, N. Car.	FB	183	2
32	Lee, Bill	Willow Springs, N. Car.	FB	168	1
33	Arbes, Sammy	Westfield, N. J.	FB	188	1
41	Cox, Hugh	Camden, S. Car.	HB	183	2
42	Myers, Billy	Lexington, N. Car.	HB	176	1
43	Pecora, Johnny	Warsaw, N. Car.	HB	170	3
44	Gregory, Ed.	Halifax, N. Car.	HB	184	1
50	O'Shea, Ed.	New York City	C	200	1
51	Cooke, Mike	Childs, Pa.	C	195	3
54	Simpson, Bill	Winston-Salem, N. Car.	C	183	1
55	Jordan, Ray	Gastonia, N. Car.	C	188	2
61	Karres, Andy	Charlotte, N. Car.	G	186	1
62	Strayhorn, Ralph	Durham, N. Car.	G	203	1
63	Byrum, Tom	Edenton, N. Car.	G	202	2
64	Gordon, Charles	Spencer, N. Car.	G	194	2
66	Marshall, "Tank"	Beaver Falls, Pa.	G	200	3
65	Davis, John	Toledo, Ohio	G	172	1
67	Faircloth, Haywood	Clinton, N. Car.	G	188	1
68	Bruton, Burt	Candor, N. Car.	G	197	1
70	Highsmith, Chan	Brunswick, Ga.	RT & C	200	1
71	Hermann, Bob	Highland Park, Ill.	T	200	3
72	Wolf, Joe	Philadelphia, Penna.	T	190	3
73	Michaels, Ed.	Far Rockaway, N. Y.	T	215	3
74	Ellis, Thad	Silver City, N. Car.	T	206	1
75	Parker, Marshall	Seaboard, N. Car.	T	205	2
76	Jones, Meredith	Edenton, N. Car.	T	196	1
77	Graham, Page	Cleveland, N. Car.	T	200	3
78	Heimovitch, Sid	West Hartford, Conn.	G & C	196	1
79	Stringfield, Jim	Waynesville, N. Car.	T	205	1
80	Tandy, John	Westfield, N. J.	E	180	1
81	Hewett, Bob	Asheville, N. Car.	E	160	1
82	Sparger, George	Mt. Airy, N. Car.	E	193	1
83	Hussey, Jack	High Point, N. Car.	E	202	2
85	Bigham, Hugh	Morganton, N. Car.	E	184	1
86	Turner, Craven	Raleigh, N. Car.	E	183	2
87	Smith, Andy	Goldsboro, N. Car.	E	200	1
89	Smith, Aubrey	Concord, N. Car.	E	168	1

The Official Watch for Timing All Tulane Games is a Longines—"The World's Most Honored Watch"



only a few yards to go . . .



(Other Pan-Am Stations conveniently located  
in all parts of the City.)



THEY'RE Milder  
ALL WAYS—

THEY DON'T TIRE  
MY TASTE—

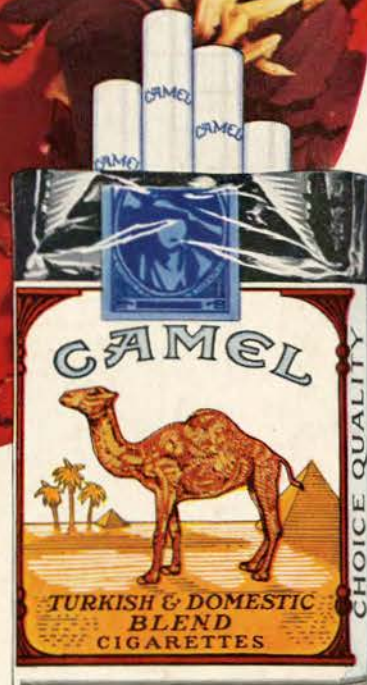
**THERE'S NOTHING LIKE  
A CAMEL!**



FOR  
STEADY  
PLEASURE

# Camel

*the cigarette of Costlier Tobaccos*



R. J. Reynolds Tobacco Company  
Winston-Salem, North Carolina