

Vol. 1, No. 5

SOUVENIR PROGRAM

TULANE vs. MISSISSIPPI A. & M.



price
25¢

Saturday, October 31, 1931

2:30 P. M.

TULANE STADIUM

The Tulane University of Louisiana

NEW ORLEANS

The University embraces the following departments:

The College of Arts and Sciences
The H. Sophie Newcomb College for Women
The College of Engineering
The Graduate School
The College of Law
The School of Medicine
The Graduate School of Medicine
The School of Pharmacy
The Dental Clinic
The College of Commerce and Business Administration
The Courses for Teachers
The Department of Middle American Research
The School of Social Work
The Summer Schools

For Catalogue Address:

Registrar of the Tulane University
of Louisiana

Gibson Hall, New Orleans

TEXACO AND THE GREEN WAVE BOTH
HAVE SPEED!

* * *

FRERET SERVICE STATION

Combines This With Courteous Service

Road Service, Greasing, Washing, Tire Repairing

Freret at Robert

UPtown 6236

GOOD MEATS

BUILD MUSCLE

Tulane Gets The Best Selected Western Meats

Personal Service

Pete & Mike Mailhes

MAILHES BROS.

Jefferson Market

Gen. Pershing & Magazine

Phones: UPtown 1143-1144



It's Unanimous!

Freshies
Sophs
Juniors
Seniors

Choose and Cheer

Mayer Israel's

Where Tulane Goes for Clothes



Spalding

Scores

Again

with Athletic Equipment that is both authentic and correct. Over half a century's experience has served as a background for Spalding's recognized leadership in sports.

A. G. Spalding & Bros.

130 Carondelet Street

A New Line-Up for Every Man

SAXON-WEAVE SUIT

*A New Type Fabric
at a New Low Price*

\$25

KNIT-TEX OVERCOAT

*Was Always \$30
..... Now*

\$25

STETSON HATS

Now at Holmes

\$7

Lined \$7.50

*Before and After the
Game You'll Enjoy
Dining in Holmes
Restaurant*

*Now at Holmes —
Sporting Equipment
for Teams or
Individuals*

Holmes

New Orleans

CANAL STREET MAin 1000



The New 1931 Football Stickers in Olive and Blue Colors Are Now Ready at Holmes.
(Ask for yours in Holmes Men's Store or in Holmes Sporting Goods Department.)



Nine RAHS

for Godchaux Clothes

We're cheering these new suits from Braeburn and Charter House. If you're college minded and style conscious you won't be able to resist them. New Blues, Greys and Browns. All With Two Trousers

\$38

Charter House

\$40

Braeburn

Godchaux's
Canal near Baronne



COLLEGE MEN WHO WEAR HART
SCHAFFNER & MARX CLOTHES CAN
BE SURE OF CORRECT STYLES

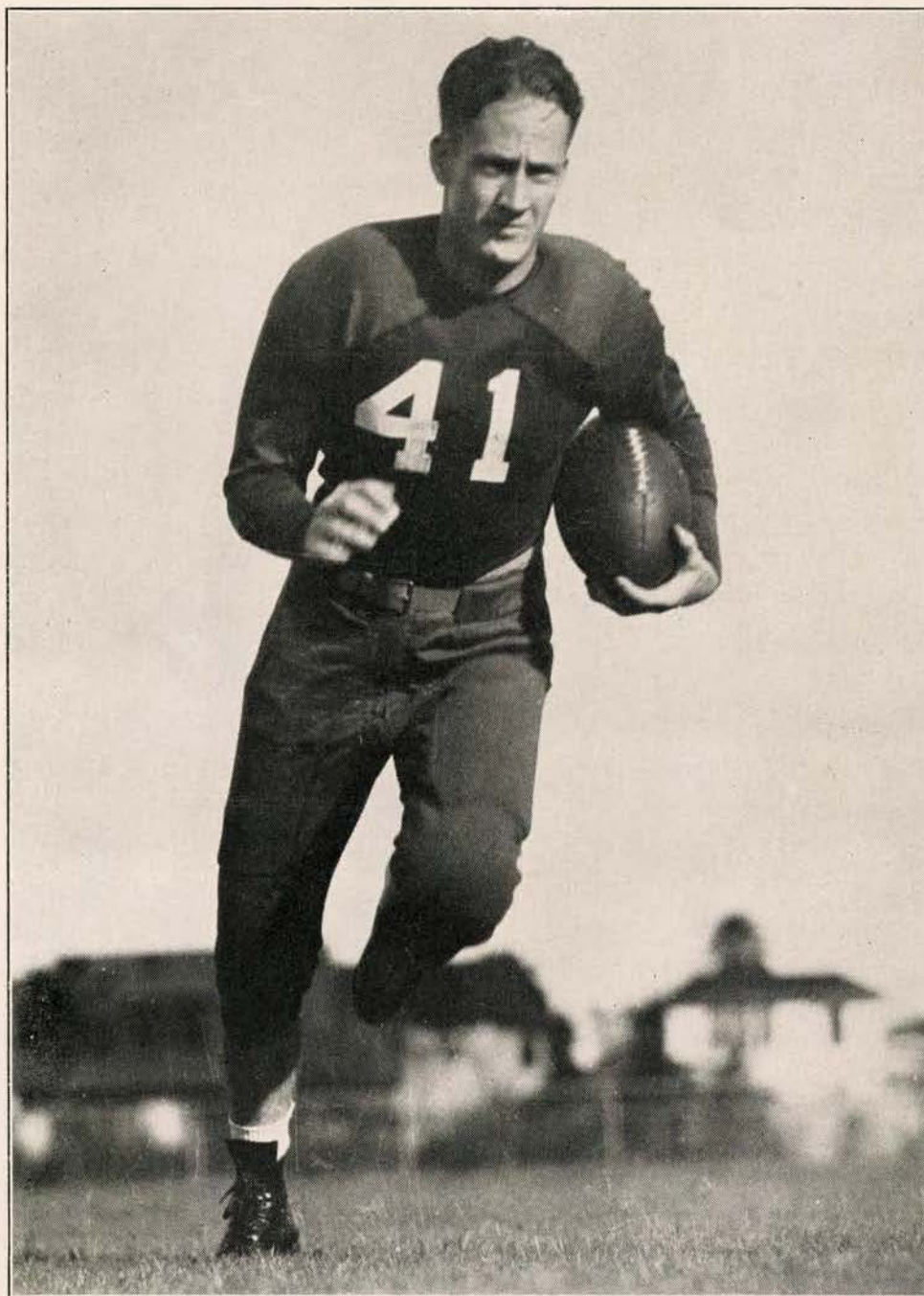
STEVENS

710 Canal Street

Detailed Mississippi A. & M. Roster

(For Fans Who Want All The Facts)

| | Name | Wt. | Pos. | Home |
|-----|------------------|-----|------------|----------------------|
| 1. | Herrington | 147 | QB | Rolling Fork, Miss. |
| 2. | Brown | 160 | QB | Houston, Miss. |
| 3. | Baker | 160 | HB | Columbus, Miss. |
| 4. | Sy kes | 160 | FB | Starkville, Miss. |
| 5. | Thompson | 160 | QB | Winona, Miss. |
| 6. | Graves | 150 | FB | Vaiden, Miss. |
| 7. | Tutor | 155 | HB | Water Valley, Miss. |
| 8. | Wichman | 165 | HB | McComb, Miss. |
| 9. | Davis | 150 | HB | Kosciusko, Miss. |
| 10. | Clar ke | 170 | End | Louisville, Miss. |
| 11. | Page | 165 | End | Fulton, Miss. |
| 12. | Wright | 165 | Center | Raymond, Miss. |
| 13. | Price | 160 | End | Norfield, Miss. |
| 14. | Ward | 178 | Guard | Hattiesburg, Miss. |
| 15. | Goussett (Capt.) | 176 | Center | Macon, Miss. |
| 16. | McCoy | 180 | Guard | Meridian, Miss. |
| 17. | Cannon | 180 | Guard | Vaiden, Miss. |
| 18. | Byrne | 200 | Guard | Prentiss, Miss. |
| 19. | Taylor | 185 | Tac kle | Senatobia, Miss. |
| 20. | Cox | 185 | Tac kle | Smithville, Miss. |
| 21. | Lundy | 190 | Tac kle | Philadelphia, Miss. |
| 22. | Nash | 190 | Guard | West Point, Miss. |
| 23. | Summerour | 180 | Guard | Lucedale, Miss. |
| 24. | Caperton | 170 | Tackle | Noxapater, Miss. |
| 25. | Maxwell | 185 | Halfback | Starkville, Miss. |
| 26. | Pennington | 175 | Guard | Vossburg, Miss. |
| 27. | Ogden | 170 | End | Macon, Miss. |
| 28. | Scales | 170 | End | Starkville, Miss. |
| 29. | Marble | 182 | Guard | Lucedale, Miss. |
| 30. | Sylvester | 165 | End | Bay St. Louis, Miss. |
| 31. | Elliott | 190 | FB | Blytheville, Ark. |
| 32. | Webb | 180 | Tackle | Florence, Miss. |
| 33. | Buntyn | 170 | HB-End | Laurel, Miss. |
| 34. | Harmond | 180 | FB-Tac kle | Columbus, Miss. |



Jim Hodgins, one of Tulane's triple threat reserve backs, who may be expected to star any day. Hodgins is elusive and speedy and also punts well.

JULIE TEA ROOM

1037 Audubon Street

HAUSMANN, INC.

* * * *

NEW ORLEANS' LEADING JEWELERS

* * * *

Special Department for College and Fraternal
Jewelry

FLOWERS Carrollton Florist GRUNEWALD CHOPIN

Walnut 3333

1332 South Carrollton Avenue

AS LIVE AS THE GREEN WAVE!

TULANE Co-Operative Book Store

"FILLING EVERY STUDENT NEED"

Basement, Gibson Hall

Surgical Supply Co., Inc.

1531 Tulane Avenue Opposite Charity Hospital

EVERYTHING FOR THE INVALID'S COMFORT

SUPPLIES FOR THE DOCTOR'S OFFICE

Abdominal Supporters, Elastic Hosiery, Trusses

JERSILD KNITTING CO.

Neenah, Wis.

Manufacturers of

FINEST KNITTED OUTERWEAR

Athletic Sweaters Worn The Nation Over

CLOVERLAND DAIRY PRODUCTS CO., INC.

—
The Best and Safest Milk

—
Phone AUdubon 1101

For Economical Heating

NEOLA COALS

Gulf Coal & Coke Co., Inc.

FRANK D. COSTLEY, President

A. BALDWIN & CO.

SPORTING GOODS OF ALL DISCRPTION

132 Camp Street

LOUISIANA PRINTING CO.RELIABLE AND EXPERIENCED PLUS
REASONABLE PRICES

921 La fayette Street

Smoke**EL TRELLES****Cigars**

"As Dependable as Your Druggist"

Means

CIRE'S PHARMACY

Hurst and Webster

UPtown 0106

JAHNCKE SERVICE, INC.

CONCRETE AND BUILDING MATERIALS

814 Howard Avenue

RAYmond 2261

Ten Football Tickets Given Away Weekly to Tulane
and Loyola Games!**Call by College Pharmacy**

For Details

5944 Freret Street

THE HOSPITAL DRUG STORE

PAUL A. O'DONELL, Proprietor

Formerly Druggist of Charity Hospital
HOT LUNCHES AND TOASTED SANDWICHES
SERVED AT ALL TIMES

SPECIAL ATTENTION TO TULANE STUDENTS

Tulane Avenue

Phone RAYmond 1400

THE O'SHEA FOOTBALL JERSEY

Has Been Used by the Following Schools:

U. S. Naval Academy
U. S. Military Academy
Princeton
Tulane
Syracuse
Rutgers
Carnegie Tech
Penn State
Georgia TechChicago
Northwestern
Notre Dame
Kansas Sta te
Fbrida
Wisconsin
Minnesota
Illinois
MichiganIndiana
Iowa
Texas
Missouri
Kansas
Pennsylvania
Ohio State
Virginia
Georgia

and many others!

What Greater Recommendation Could You Find?

O'SHEA KNITTING MILLS

2414 N. Sacramento Avenue, Chicago, Illinois



TULANE CAMPUS VIEW



TIME OUT



Teacher: "Where was Captain Kidd's chest buried?"

Bright Pupil: "In the coffin with the rest of his body."

* * * *

Little Boy: "Father, Father, what's that man doing running up and down the car with his mouth open?"

Father: "My boy, that's a Scotchman getting a free smoke."

* * * *

The bird that makes
My ire swell
Calls his wife
The shot and shell.

—Bill Wiley.

* * * *

FAMOUS LAST WORDS

"It's different in my home—I go out whenever I please."

* * * *

CLASSIFIED AD

College widow with six children would like to marry Old Grad with five and a football.

* * * *

A car that moves sidewise as easily as it does ahead has been devised. Such a car ought to set new records when it is turned loose among the pedestrians.—The Roanoke, Va. Times.

* * * *

A proposal that presidential electors committed to no candidate shall be chosen comes out of the west. And the hot weather is almost over.—The Springfield, Mass., Republican.

* * * *

The modern girl's clothes are like a barbed wire fence. They protect the property without obstructing the view.

A concentrated cracker made of milk and wheat has been concocted which contains all of the food elements necessary for man; but, who wants to live on crackers?

* * * *

The Prince of Wales has gone in for morning bicycle riding because it makes him feel better. Besides it is not so far to fall.

* * * *

Men don't go ga-ga
Over gals who tell mama.
—Ted Cook, King Features.

* * * *

QUOTATIONS—

"Why I'd just as soon leave my rifle at home as my compact."—Mrs. Martin Johnson, famous woman explorer.

* * * *

The new head of Scotland Yard is a hard boiled World War airman. Henceforth, law-breakers will do less tale spinning.

* * * *

It isn't necessary for women to be voters in order to become rulers.

* * * *

Pedestrians are people who can take a walk without swatting a little ball at intervals.
—Robert Quillen.

* * * *

Another definition of a pedestrian: "A married man who has one automobile."

* * * *

This will be remembered as the year when sad stories replaced dirty ones.
—Robert Quillen.

ABBOTT'S

148 BARONNE STREET



Snappy, stylish, furnishings for men with a wise regard for fashion's demands. The price tags tell a story of economy.

J. S. VOORHIES
President

A. C. OLDENDORF
Vice-President

C. J. LA BAUVE
Vice-President

RAYmond 1607

Walk-Over

SHOES

for MEN

ROSE McCaffrey

409-10 Masonic Temple

* * * *

Multigraphing, Mimeographing
Addressing Envelopes and
General Circular Work

"A Friendly Hotel"

MARBERC HOTEL

Canal Streets' Tallest Bldg.
300 Rooms—300 Baths—Fireproof
Circulating Ice Water and
Ceiling Fans In Every Room
RATES \$2.50 AND UP

SCHARFF'S BILLIARD PARLOR

620 Canal Street

We Cater To Your Comfort

Albert O. Schwartz, Inc.

601 Carondelet Street
1422 Cleveland Avenue
Storage, Washing, Greasing
Tires and Tire Repairs
Phone MAin 3942 Phone RA. 5580

Woodward, Wight & Co., Limited

MILL SUPPLIES

451 Howard Avenue

TRAVIA'S

A Good Restaurant

In the Heart of Collegetown

6314 Hurst

UPtown 2736

Southern Specialty Sales Co., Incorporated

Complete Lawn, Garden and Golf
Course Maintenance Equipment
and Repairs

1726-28 Carondelet St. RA. 3694

Madison Lumber Company

LUMBER—MILLWORK

BUILDING MATERIAL

721 So. Claiborne Ave. RA. 1363

Phone RAYmond 2771

THE AMERICAN PRINTING CO., Ltd.

PUBLICATIONS, CATALOGS,
SCHOOL ANNUALS, BRIEFS,
COMMERCIAL PRINTERS

535-7 Poydras St. New Orleans

At

ATHENS

— The —

Georgian Hotel

"Headquarters for the

Tulane Football Team"

Make It Your Hotel Also!

For

BETTER

PAINT

—

Call

UTLEY

Olive and Blue in Flowers and

Ribbons for Sponsors and

Rooters from the Avenue Florists



Eichling's

Avenue Floral Co.

Phone JACKson 3170

Here they come HATS OFF TO 'EM!



In the thrilling moments
when you're smoking with half-
back speed be sure it's a milder,
better tasting Chesterfield.



They Satisfy
Chesterfield

YOU CAN SMOKE THEM ALL DAY LONG

REMINISCING



DEDICATION OF NEW STADIUM 1926



PIZZANO



MENVILLE



BANKER

THE GREENIE

Vol. 1

OCTOBER 31, 1931

No. 5

The Greenie, Official Souvenir Football Program of Tulane University and Gridiron Magazine, published for each home game of the Green Wave

Price Per Copy—25c

(Mail order requests should be addressed to The Greenie, Tulane Athletic Department, P. O. Station 20, New Orleans, and should be accompanied by 30c in stamps to cover cost of the Magazine and mailing.)
For advertising rates call WALnut 0232 or write The Greenie, Advertising Dept., Tulane University.

WHAT HO!

Ladees and Gentulmen! On next Saturday afternoon on the ramparts of historic Montgomery the gallant Auburn Plainsmen will go Gertrude Ederle one—they'll try to swim the Green Wave.

The Wave, collectively a tidal wash from the Gulf region, but individually 35 or 36 young men dressed in green jerseys with head-gear to match, will be all churned up to storm proportions.

The tidal Wave will be transported to Montgomery by rail Thursday night and will be kept bottled until Saturday afternoon early when the arch enemy of football levee construction, Bernie Bierman, will open the flood gates.

Now ain't that metaphor? Mixed—

Well, we could go on and tell you that on the following Saturday, the Green Wave will lock horns with the Georgia Bulldogs but we are afraid you would shoot before you saw the white of the enemy eyes.

Just imagine a Wave and Bulldog locking horns.

Anyway, the eyes of the South will be on Montgomery next Saturday afternoon where

two fine football teams will be battling with everything they posses and with the greatest crowd in the football history of the Old Alabama capital whooping it up.

It may be pointed out that Auburn played Florida last Saturday without two of the three leading Plainsmen backs getting into the game. The two missing were Hatfield and Brown. Hitchcock, the other ace, was in the game only at intervals but he led two touchdown marches.

Moreover, in comparison, let it be remembered that Auburn gained as much ground against Georgia Tech as Tulane accumulate against the same Tornado.

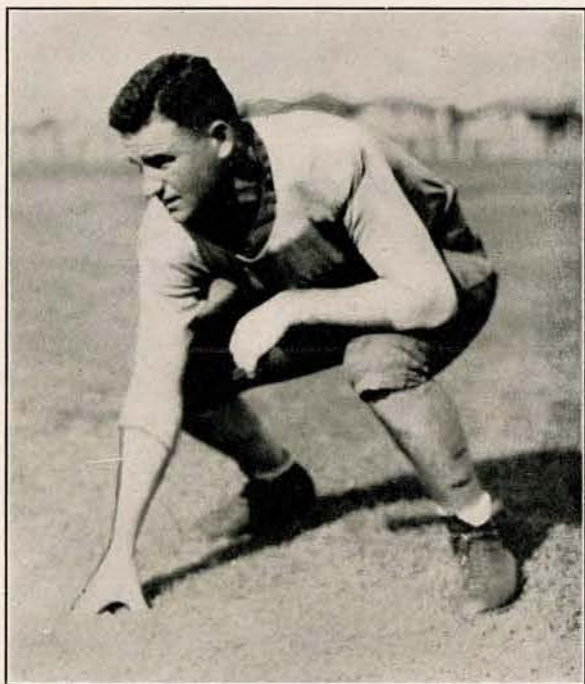
So, before the talk of the Georgia game being the "key" battle, the Greenies must not overlook Auburn.

And they can't overlook those Louisiana State Tigers.

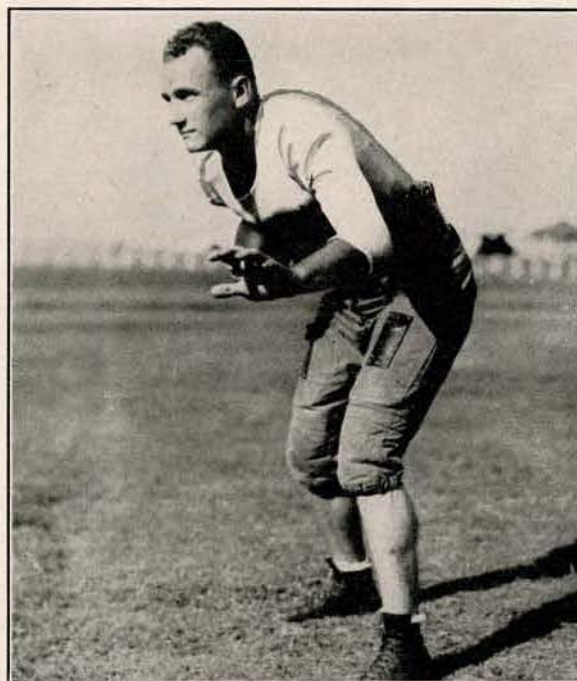
Or Sewanee Tigers.

Or Washington State Cougars.

Mates, it is a deep, dark forest—a jungle, that the Wave must beware. . . Pardon us but were we talking about a Wave?



Upper left, Dick Bankston, big tackle, who has come forward this season as one of the mainstays of the big Green line. Lower right, Doyle Magee, another Greenie, who may be expected to go well today—or any day.



Tulane vs. Miss. A. & M.

TULANE'S ROSTER

| Name | No. |
|-------------|-----|
| Glover | 15 |
| Zimmerman | 18 |
| Dawson | 26 |
| Dalrymple | 33 |
| Haik | 39 |
| Drawe | 40 |
| Hodgins | 41 |
| O'Neill | 42 |
| DeBuys | 43 |
| Brownson | 44 |
| Warriner | 45 |
| Magee | 46 |
| Penney | 47 |
| Dawkins | 48 |
| Richardson | 49 |
| Roberts | 50 |
| Schroeder | 51 |
| Payne | 52 |
| McCormick | 53 |
| Lodrigues | 54 |
| Hill | 55 |
| Delaune | 56 |
| DeColigny | 57 |
| Boasberg | 58 |
| Read | 59 |
| Lemmon | 60 |
| Paddock | 61 |
| Haynes | 62 |
| Felts | 63 |
| Zemurray | 64 |
| Henriques | 65 |
| Upton | 66 |
| Bankston | 68 |
| Kammer | 69 |
| Feathemgill | 70 |
| Calhoun | 71 |
| Scafide | 72 |
| Cunningham | 73 |
| Gill | 76 |

For Complete Tulane Roster
See page 28



TULANE'S PROBABLE STARTING LINE-UP

L. E.—HAYNES (62)
L. T.—BANKSTON (68)
L. G.—SCAFIDE (72)
C.—LODRIGUES (54)
R. G.—CALHOUN (71)
R. T.—UPTON (66)
R. E.—DALRYMPLE (33)
Q. B.—RICHARDSON (49)
L. H.—ROBERTS (50)
R. H.—HODGINS (41)
F. B.—LEMMON (60)

MISS. A. & M. PROBABLE STARTING LINE-UP

L. E.—PAGE
L. T.—LUNDY
L. G.—NASH
C.—WRIGHT
R. G.—WARD
R. T.—CAPERTON
R. E.—PRICE
Q. B.—HERRINGTON
L. H.—THOMPSON
R. H.—TUTOR
F. B.—MAXWELL

OFFICIALS FOR TODAY'S GAME

REFEREE—Cheeves (Georgia)
UMPIRE—Dahlene (Miss. A. & M.)
HEAD LINESMAN—Howell (Wis.)
FIELD JUDGE—Moriarty (St. Marys)

MISS. AGGIE ROSTER

| No. | Name |
|-----|------------|
| 1. | Herrington |
| 2. | Brown |
| 3. | Ba ker |
| 4. | Sy kes |
| 5. | Thompson |
| 6. | Graves |
| 7. | Tutor |
| 8. | Wichman |
| 9. | Davis |
| 10. | Clarke |
| 11. | Page |
| 12. | Wright |
| 13. | Price |
| 14. | Ward |
| 15. | Goussett |
| 16. | McCoy |
| 17. | Cannon |
| 18. | Byrne |
| 19. | Taylor |
| 20. | Cox |
| 21. | Lundy |
| 22. | Nash |
| 23. | Summerour |
| 24. | Caperton |
| 25. | Maxwell |
| 26. | Pennington |
| 27. | Ogden |
| 28. | Scales |
| 29. | Marble |
| 30. | Sylvester |
| 31. | Elliott |
| 32. | Webb |
| 33. | Buntyn |
| 34. | Harmond |

For complete Miss. A. & M.
Roster, see page 5

WITH THE SPORTS WRITERS

"Dalrymple Has Only One Fault"

"Jerry Dalrymple, Tulane's All-American end, has only one fault. It is not his lack of speed in getting down the field under punts. Neither is it poor technique in blocking or catching forward passes.

"The simple truth is that Jerry snores something terrible, and except for a couple of annoyed young co-eds, his one weakness might never have been revealed.

"These young ladies occupied a lower on Tulane's special train, returning to New Orleans from Nashville last week. They were disturbed by a rasping sound from the upper berth. They pounded on it with their shoes, but the snoring continued.

"Next morning they investigated and intended bawling out the snorer who had so rudely disturbed their sleep. When they discovered he was none other than Mr. Dalrymple they quite readily forgave him."

—Jimmy Burns, The Atlanta Georgian.

DILLON GRAHAM SAYS'

"Tulane University, with three conference victories, is well on the way to a third successive Southern Conference football championship.

"The Green Wave from New Orleans, gathering momentum each week, swept over Georgia Tech 33 to 0, Saturday, as the other co-favorites, Tennessee and Georgia, were winning close games from North Carolina and Vanderbilt."

—Dillon Graham, Southern Sports Editor, The Associated Press.

BLINKEY HORN—

"If Georgia isn't pondering over the turbulent task ahead when it battles the Greenbacks the Bulldogs are making a serious blunder. I'm sure these Athens skippers are right perplexed about Tulane.

"Night before the Georgia—Vandy warfare, I buzzed with Harry Mehre, the Bulldog boss.

"After we get over Vanderbilt, we'll take New York University in 'our stride' and then go after those fellows at Tulane," said Mehre. 'We won't bear down so much for N. Y. U., but will for Tulane'."

—Blinkey Horn, Sports Editor, The Nashville Tennessean.

NOVEMBER 14, 1931

I'll go where you want me to go, dear love,
I'll be what you want me to be,
I'll do what you want me to do, dear love,
I'll see what you want me to see;
But listen, dear love, get this in your bean,
And don't forget to remember,
I'll be in old Athens, and nowhere else but
On the fourteenth of this November.

I don't care what's scheduled to happen elsewhere
Or whether there's sunshine or rain,
Or snow storm or hurricane, I will be where
Old Georgia is meeting Tulane;
In vain you may urge me to go somewhere else,
To some other setting or scene,
But Papa's old eyes will be glued to the spot
Where the Bulldogs are battling the Green.

—Morgan Blake, Sports Editor, The Atlanta Journal.



AIR VIEW, TULANE UNIVERSITY



Coach Fritz Oakes', Whose Track Team Won
Southern Conference Championship Last Spring

Storm Warning Out for Green Wave---Burns

By JIMMY BURNS

Associate Sports Editor Atlanta Georgian

It is an old fashioned custom for sport writers to climax each football season by picking an all-star eleven from the players they have seen in action. It is a hard task, and after seeing Tulane rout Georgia Tech the afternoon of October 24, I am confident the selection of all-stars could be simplified by merely picking Coach Bernie Beirman's first team.

Of course, that is impossible, but when the final check is made I am sure you will find several of those Greenies adorning all-star teams. No mythical eleven would be complete without Jerry Dalrymple at one end position, nor minus Don Zimmerman at a halfback post. They are two of the greatest football players I have seen in twelve seasons of reporting football games.

Dalrymple is a wizard. He is as sterling a performer in football, as Bobby Jones was in competitive golf. I have heard numerous, and conflicting explanations of how he figures out plays in advance, but I have never heard any one dispute the rather obvious fact that he is one of the greatest ends in the country.

It would have warmed the hearts of Tulane fans to have overheard the conversation in Coach Bill Alexander's drawing room, on the return trip to Atlanta after the Tech-Tulane game. Jack Cannon, former Notre Dame star,

was lavish in his praise of the Green line. He compared it favorably with some of Notre Dame's famous rush sections.

Captain Robinson, Tech end coach, openly declared Dalrymple was the greatest flankmen he ever saw; "Chick" Shiver, Georgia coach who scouted Tulane for the Bulldogs, expressed his opinion of the Greenies, with the simple declaration he feared they would be too strong for Georgia.

Then Coach Alex climaxed the discussion with the frank admission he believes Tulane is stronger than in 1930. The Atlanta sport writers, who covered the game agreed with the Tech coach.

Another tribute to Tulane is the fact storm warnings are flying at Athens. They herald the approach of the mighty Green Wave, and more than 30,000 are expected to be in Sanford Stadium the afternoon of November 14 to see if Georgia can withstand the mighty surges of that powerful football team.

Naturally I hope for a Georgia victory, but I fear the worst. Yet there is always the consolation of knowing there is no shame, nor humiliation, in losing to a team as powerful, fast, and resourceful as the one that Coach Bernie Bierman now has blazing its fame across the National gridiron horizon.



**NEW HOTEL
MONTELEONE**

NEW ORLEANS, LA.

600 Rooms — 500 Baths

The Original
**David Bernhardt Paint Co.,
Limited**

317-321-323 Camp St., New Orleans
Phones: RAYmond 5279-5270
The Largest Paint and Window Glass
House In The South
WE HAVE NO BRANCHES

**TULANE FRESHMEN
FOOTBALL SCHEDULE**

October 30—Alabama at Tulane
November 14—Tulane at Auburn
November 26—L. S. U. at Baton Rouge

"SAY IT WITH FLOWERS"

For the Game, for the Reception, Formal and Informal Luncheons, Teas, and Dinners, Flowers are always so necessary. Flowers from Scheinuk assure you beauty, quality, and distinctive arrangement at no added cost. Be sure to come to Scheinuk for your Flowers.



Let Scheinuk be your Florist

JACKSON 2600-2601-2602

2600 St. Charles Avenue

New Orleans, Louisiana

**LET US
HELP
YOU LOOK
YOUR BEST!**

LOOK for the
GREEN and GOLD
TRUCKS



DRY CLEANING SERVICE

Carl
THE CLEANER

Craftsmen in Keeping Things
New

7219-7221 PANOLA STREET

Phones: WALnut 35 35-3536

After the Game

A Tasty Indian Style Barbecue at

SLIDELL'S FAMOUS WHITE KITCHEN

Branch No. 2



NOW IN NEW ORLEANS

South Claiborne Avenue and Poydras Street

Open Day and Night From Now On

What An Unbeatable Combination!

Tulane's All-American Team
Wears The

Tulane All-American Shirt

BOTH NEW ORLEANS PRODUCTS

Smart = Stylish = Dressy

ASK FOR

TULANE ALL-AMERICAN SHIRT

ON SALE AT THE BEST STORES!

GETTING THE NEWS



The True Story of the Affair

TULANE SCORE

| | FIRST HALF | | SECOND HALF | |
|------------------------|-------------|-------------|-------------|-------------|
| | 1st QUARTER | 2nd QUARTER | 3rd QUARTER | 4th QUARTER |
| TOUCHDOWN..... | | | | |
| GOAL..... | | | | |
| GOAL (from field)..... | | | | |
| SAFETY..... | | | | |
| TOTAL..... | | | | |

MISS. A. & M. SCORE

| | FIRST HALF | | SECOND HALF | |
|------------------------|-------------|-------------|-------------|-------------|
| | 1st QUARTER | 2nd QUARTER | 3rd QUARTER | 4th QUARTER |
| TOUCHDOWN..... | | | | |
| GOAL..... | | | | |
| GOAL (from field)..... | | | | |
| SAFETY..... | | | | |
| TOTAL..... | | | | |

FINAL SCORE

TULANE..... MISS. A. & M.....

SCORING

Touchdown 6 points Goal (from field) 3 points
 Goal (after touchdown) 1 point Safety 2 points

COACHES YOU SHOULD KNOW



TULANE YELLS

Yea Rah! Yea Rah!
 Hullabaloo Rah! Rah!
 Yea Rah! Yea Rah!
 Hullabaloo Rah! Rah!
 Tulane Greenbacks!
 Rah—Rah—Rah—Rah Team
 Rah—Rah—Rah—Rah Team
 Rah—Rah—Rah—Rah Team

Locomotive
 Rah! Rah! Rah; Rah! (slow)
 Tulane! Tulane!
 Rah! Rah! Rah! Rah! (fast)
 Tulane! Tulane!
 Rah! Rah! Rah! Rah! (faster)
 Tulane! Tulane!
 Rah! Rah! Rah!

Tulane Hullabaloo
 Hullabaloo! Ray! Ray!
 Hullabaloo! Ray! Ray!
 'Vars, 'Vars! T. A.! T. A.! T. A.!!
 'Vars, 'Vars! T. A.!!
 Tulane!

FOSTER

AWNINGS AND WINDOW SHADES
ARE DISTINCTIVE

Foster Mfg. Co.

430 Notre Dame Street RAYmond 1321

SHOES FOR SPORTS—

Day and Evening

IMPERIAL SHOE STORE

Canal and Bourbon Largest South

BREEN'S DRUG STORE

We carry the most complete line of Sheaffer Pens
and Pencils in New Orleans.

Also Looseleaf Fillers, Binders of all kinds, and
Physicians' Bags at most reasonable prices.

Opposite Charity Hospital

Phone MAin 9177 Tulane Ave. at Villere

PORTER'S



New Orleans' leading store for men
... the choice of Tulanians ...
invites your patronage and your
good will

You are assured
more quality and
more style
at less cost.

Porter's

Carondelet and Gravier

Dunlap Sporting Goods Co.

Incorporated

Golf, Tennis, Athletic Supplies, Guns, Ammunition,

Fishing Tackle, Sport Clothing

Distributors—A. J. REACH, WRIGHT & DITSON CO.

138 Carondelet Street

MAin 6660

Champion Knitwear Products

FOR THE CHAMPIONS
THE GREEN WAVE WEARS CHAMPION
KNITTED WEAR

Champion Knitwear Mills

Rochester, New York
Claiborne Andrews, Phone RAYmond 2455,
Louisiana Representative

And

COCA-COLA

was

at

Tulane Stadium!

Let us **TACKLE**
ALL YOUR
ORDERS FOR **CUTS**

PHONE RA.4164

PHONE RA.4165

GRELLE-EGERTON
ENGRAVING Co.
628-630 POYDRAS St.
NEW ORLEANS

ARTISTS
ENGRAVERS
COLORISTS

64 YEARS YOUNG

For 64 years The Hyatt's have maintained their leadership as printers.

A record of achievement of which we are proud, but, more important to you, a wonderful foundation of experience on which to build present progress.

Our organization is not worn with age. But its 64 years of experience are at your service to supply you the right kind of printing and stationery.

**A. W. Hyatt Staty. Mfg.
Co., Ltd.**

64
Years



In
Printing

Printers—Stationers

407 Camp Street

New Orleans, La.

After the game—

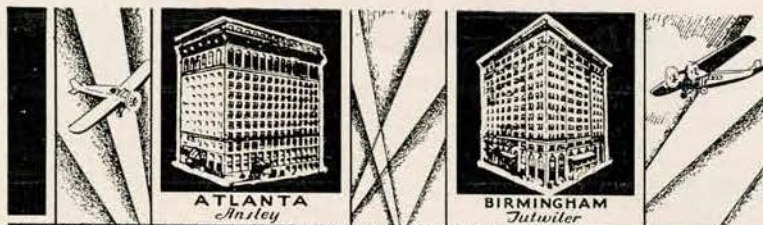
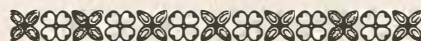
Follow the crowd to

**BROADWAY
PHARMACY**

Broadway and Maple

H. C. RICHARDS,

Proprietor



HOTELS of the Dinkler Chain

From the tradition of the Old South, glows the flame of fellowship and hospitality that takes worldly praise and an envious place in the hearts of all who visit this section.

The upbuilding of superlative hotel accommodations is a natural consequence, having taken its ideals from the famous Wayside Inn, and the comfortable hostelry of the Colonial Days.

Even in this field of Southern Leadership, Dinkler Hotels mark four places of outstanding predominance. They are established with the aim of convenience to travelers, and are located in the leading commercial, industrial and railway centers of the South.

And in Atlanta, Birmingham, Nashville and Montgomery can be found the outstanding features which experienced travelers recognize as being distinctly Dinkler organization. Private bath and radio in all rooms, convenient garage connections, excellent cuisine in dining rooms and coffee shoppes at each hotel.

Make Dinkler Hotels your home.

DINKLER HOTELS CO.



Carling L. Dinkler, Pres.
**DISPENSERS OF TRUE
SOUTHERN HOSPITALITY**



NASHVILLE
Andrew Jackson



MONTGOMERY
Jefferson Davis



**RADIO
IN EVERY ROOM**



Today's Games In Southern Conference

Vanderbilt vs. Georgia Tech at Atlanta
 Georgia vs. Florida at Gainesville
 Alabama vs. Kentucky at Tuscaloosa
 Tennessee vs. Duke at Knoxville
 Clemson vs. Oglethorpe at Clemson
 North Carolina vs. North Carolina State at Raleigh
 Tulane vs. Miss. A. & M., at New Orleans

Washington and Lee vs. William and Mary at Norfolk
 Maryland vs. V. P. I., at Blacksburg
 V. M. I. vs. Davidson at Davidson
 Auburn vs. Spring Hill at Auburn
 Louisiana State vs. Sewanee at Baton Rouge
 Virginia vs. Harvard at Cambridge

TULANE'S 1931 SCHEDULE

* * * *

Sept. 26—Ole Miss at New Orleans (31-0)
 Oct. 3—Texas A. & M., at New Orleans (7-0)
 Oct. 10—Spring Hill at New Orleans (40-0)
 Oct. 17—Vanderbilt at Nashville (19-0)
 Oct. 24—Georgia Tech at New Orleans (33-0)
 Oct. 31—Miss. A. & M., at New Orleans

Nov. 7—Auburn at Montgomery
 Nov. 14—Georgia at Athens
 Nov. 21—Sewanee at New Orleans
 Nov. 28—Louisiana State at New Orleans
 Dec. 5—Washington State at New Orleans

AUBURN'S 1931 SCHEDULE

* * * *

Sept. 25—B'ham-Southern at Montgomery
 Oct. 10—Wisconsin at Madison
 Oct. 17—Georgia Tech at Atlanta
 Oct. 24—Florida at Jacksonville
 Oct. 31—Spring Hill at Auburn

Nov. 7—Tulane at Montgomery
 Nov. 14—Sewanee at Birmingham
 Nov. 21—Georgia at Columbus
 Nov. 26—South Carolina at Montgomery

The Shortest Long Run on Record!



For Hot Chocolate or a Malted Milk and
 Sandwich for 25c

Katz & Besthoff, Ltd.

GOOD DRUG STORES-ONLY THE BEST

DETAILED TULANE ROSTER

| Name | Position | Weight | Year | Home |
|----------------------|-------------|--------|------|-----------------------|
| Jerry Dalrymple | end | 178 | 3rd | Little Rock, Ark. |
| John McCormick | guard | 171 | 3rd | Monroe, La. |
| Claggett Upton | tackle | 206 | 3rd | New Orleans, La. |
| Calvert DeColigny | end | 185 | 3rd | New Orleans, La. |
| Harold Lemmon | fullback | 186 | 2nd | Patterson, La. |
| Don Zimmerman | halfback | 176 | 2nd | Lake Charles, La. |
| Lowell Dawson | quarterback | 165 | 3rd | River Falls, Wis. |
| Harry Glover | halfback | 165 | 3rd | Bay St. Louis, Miss. |
| John Scaife | guard | 210 | 2nd | Bay St. Louis, Miss. |
| W. P. Lodrigues | center | 180 | 2nd | Patterson, La. |
| Thomas Cunningham | tackle | 220 | 2nd | Pine Bluff, Ark. |
| Doyle Magee | end | 175 | 2nd | Franklinton, La. |
| Vernon Haynes | end | 170 | 2nd | Lake Village, Ark. |
| Will Pat Richardson | quarterback | 165 | 2nd | Ponchatoula, La. |
| Nollie Felts | fullback | 185 | 2nd | Hattiesburg, Miss. |
| Francis Payne | fullback | 175 | 2nd | Winterville, Miss. |
| James Hodgins | halfback | 165 | 2nd | Shreveport, La. |
| George Haik | halfback | 165 | 3rd | Bogalusa, La. |
| Sam Zemurray | tackle | 195 | 2nd | New Orleans, La. |
| Doyless Hill | center | 200 | 2nd | Sand Springs, Okla. |
| William Featherngill | tackle | 200 | 2nd | Independence, Kansas |
| Edward Tschirn | halfback | 165 | 2nd | New Orleans, La. |
| William Penney | guard | 180 | 3rd | Guatemala City, C. A. |
| William Drawe | end | 170 | 3rd | New Orleans, La. |
| John Read | center | 195 | 2nd | Picayune, Miss. |
| Elson Delaune | end | 173 | | Lockport, La. |
| William Schroeder | tackle | 180 | | Donaldsonville, La. |
| Doug Warriner | quarterback | 165 | | Minerva, La. |
| Nolan Kammer | center | 175 | | New Orleans, La. |
| Louis Boasberg | tackle | 180 | | New Orleans, La. |
| Alfred Paddock | guard | 170 | | Fort Smith, Ark. |
| Charlie Calhoun | guard | 210 | | Monroe, La. |
| Adrian Maught | halfback | 170 | | New Orleans, La. |
| Floyd Roberts | halfback | 165 | | Stigler, Okla. |
| Ed. Henriques | guard | 175 | | New Orleans, La. |
| Ben Dawkins, Jr. | guard | 175 | | Monroe, La. |
| Bradley Brownson | fullback | 180 | | New Orleans, La. |
| Richard Bankston | tackle | 190 | | Hammond, La. |
| Charles O'Neill | End | 170 | | Slidell, La. |



This name on athletic equipment stands for high quality, exclusive merchandise, and definite value.

Whatever your favorite sport—you will find Ken-Wel equipment designed to help you play a better game—and a more reliable one. Ken-Wel athletic equipment is designed by experts made by experts, and chosen by experts.

Distributed by

D. H. Holmes Company

New Orleans, Louisiana

KEN-WEL SPORTING GOODS CO., INC.

UTICA, NEW YORK

Creators and Manufacturers of Athletic Goods of an Exclusive Character

**A DENPENDABLE COMPANY
EDWARDS-LASKER
MOTOR CO.**

4631 Carrollton Ave. GALvez 3112
"Ford Dealers"

**Certified CREMO
5c**

THE GOOD 5c CIGAR THAT
AMERICA NEEDED
Sold by All Dealers

Tulane Gymnasium
Purified by Products of
**PARAMOUNT CHEMICAL
COMPANY**

1036 Carondelet Street

Follow Captain Jerry Dalrymple
to

APFFEL BARBER SHOP
4620 Freret Street

**"TOUCHDOWN
TULANE"**

Celebrate With

BROWN'S

VELVET

ICE CREAM

Made by

New Orleans Ice Cream Co.

1320-1322 Baronne Street

New Orleans

**ANTHONY CASAMENTO
DELICATESSEN and RESTAURANT**

Phone WALnut 1952
7130 Freret Street

**CLIFFORD F. FAVROT
SUPPLY CO.**

Office & Yard: 2530 Perdido Street
Specialty Department: 730 Gravier St.
GALvez 3158

Reasonable Prices—

Fine Food—

LUNCHEONETTE

Camp at Common Street

COLEMAN E. ADLER

For

DISTINCTIVE JEWELRY

ALMA MATER

Sing these words as Tulane's Alma Mater is played

I

We praise thee for thy past, O Alma Mater!

Thy hand hath done its work full faithfully!

The incense of thy spirit hath ascended

And filled America from sea to sea!

II

We praise thee for thy present, Alma Mater!

Today thy Children look to thee for bread!

Thou leadest them to dreams and actions splendid!

The hunger of their soul is richly fed!

III

We praise thee for thy future, Alma Mater!

The vista of its glory gleameth far!

We ever shall be part of thee, great Mother!

There thou wilt be where e'er thy children are!

CHORUS

Olive Green and Blue, we love thee!

Pledge we now our fealty true

Where the trees are ever greenest,

Where the skies are purest blue!

Hear us now, O Tulane, hear us!

As we proudly sing to thee!

Take from us our hearts' devotion!

Thine we are, and thine shall be!



"Hot air" roasting preserves its distinctive aroma and brings out its fresh, full flavor. Ask your grocer for the yellow tin.

HONEYMOON
COFFEE & CHICORY

TULANE-LOUISIANA STATE FOOTBALL TICKETS

ON SALE AT

205 ST. CHARLES STREET

\$2, \$3, \$3.50

LAUNDRY & DRY CLEANERS SUPPLIES

RUDOLPH RAMELLI, Inc.

1722 Poydras Street

New Orleans, La.

NEW ORLEANS' NEW ST. CHARLES



ALFRED S. AMER & CO., LTD.

ONE OF AMERICA'S LEADING HOTELS

Much favored by Ladies traveling alone

Rates \$1.50 per Day and Up

Excellent Convention Facilities

ALFRED S. AMER,
Vice-Pres. and Gen'l Mgr.

JAS. "PAT" O'SCHAUGHNESSY,
Manager