

# CLEMSON vs. TULANE

Nov. 2, 1940

Price 25¢

*Greenie*



# WELCOME TO NEW ORLEANS



*We Are Happy to Have so Many Visitors  
In Our Midst*

There is one way that your stay here will  
be pleasant: Stop at The Roosevelt. A  
hotel that exemplifies Southern Hospitality.  
The type of hospitality that matches perfectly  
the demand and moods of every guest.

800 MODERN ROOMS WITH BATH

Reasonable Rates

Garage in Connection

GEORGE V. RILEY, *Vice-President and General Manager*

*The Roosevelt*  
HOTEL  
*"Pride of the South"*



# The Greenie

Vol. 10

NOVEMBER 2, 1940

No. 4

HORACE RENEGAR - - - - - EDITOR  
Official Souvenir Football Program of Tulane University,  
Published for Each Home Game.

National Advertising Representative, Football Publications,  
370 Lexington, New York City.

Tulane's Greenies have run into unseasonably hot weather only twice this season (up to this date anyway) and both experiences were on road games. The temperature for the Fordham game in New York was in the middle 80's and for the North Carolina game at Chapel Hill it was in the high 80's.

\* \* \*

Today's meeting with Clemson is the fourth of the Wave-Tiger rivalry. Past games:

1937—Tulane 7, Clemson 0.  
1938—Tulane 10, Clemson 13.  
1939—Tulane 7, Clemson 6.

\* \* \*

The triumph of Tulane last year marks the last time Clemson has bowed. Since then the Tigers have won 13 consecutive games.

\* \* \*

That 1938 opener was the big jolt of the series though. The Wave led at the half, 10 to 0, but found an inspired Tiger team too hot to handle in the last quarter.

\* \* \*

Frank Howard, Clemson's head coach, now in his first season as head man, is only 31 years of age. He played his football at Alabama. He prepped at Murphy High, Mobile.

\* \* \*

Howard was line coach at Clemson during the successful regime of Jess Neely, which ended this year when Jess went to Rice as head man.

\* \* \*

Clemson is a non-coed, all R. O. T. C. land grant college. Its enrollment of 2300

men makes it the largest R. O. T. C. infantry unit in the United States.

\* \* \*

Clemson was founded in 1889. It is named in honor of Thomas Green Clemson, the man whose foresight and bequest to the State of South Carolina made the college possible.

## 1940 Schedule

Sept. 28—Boston College at New Orleans  
Oct. 5—Auburn at New Orleans  
Oct. 12—Fordham at New York  
Oct. 19—Rice at New Orleans  
Oct. 26—North Carolina at Chapel Hill  
Nov. 2—Clemson at New Orleans  
Nov. 9—Alabama at Birmingham  
Nov. 16—Georgia at New Orleans  
Nov. 23—Louisiana Normal at New Orleans  
Nov. 30—Louisiana State at Baton Rouge

## A Double Sweetheart



Copyright, 1938, by  
P. Lorillard Co., Inc.

Flavor-Rich OLD GOLDS' blue-ribbon tobaccos are enriched by a special imported tobacco noted for pleasing aroma and lasting flavor.

The new Flavor-Rich OLD GOLDS  
NOW ON SALE EVERYWHERE



## Wear a "Stylton"

Swing along in a Mayer Israel "Stylton" --- Suits that live up to their name and have plenty of quality and good tailoring too—

*Double-Breasted  
and 3-Button Drapes*

29.75

Mayer Israel's

## La Louisiane

FAMOUS FRENCH  
RESTAURANT

Established 1881

La Louisiane is the most enjoyable place to dine in New Orleans; it is the center of social and business activity. La Louisiane has been famous for fifty-seven years for its many special dishes which are truly representative of the best French and Creole cooking.

*Available for*

Feature and Sorority Dances, Banquets  
and other Social Functions.

725 IBERVILLE ST.  
Between Royal and Bourbon  
Telephone MAgnolia 4664

# "Pep them up"

by

## TELEGRAPH



Send

## PEP MESSAGES

by

## WESTERN UNION

20¢ LOCALLY 25¢ TO ANY WESTERN  
UNION POINT IN U. S.





SID  
TINSLEY  
Tailback



ED  
"CHIPPY"  
MANESS  
Tailback



HUGH  
WEBB  
Right End



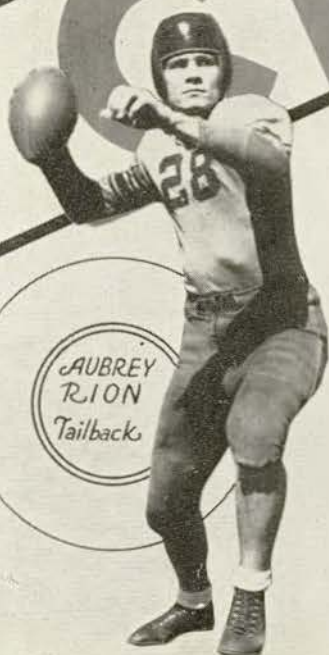
DAN  
COLEMAN  
Fullback



CHARLES  
TISDALE  
Right Guard



FRANK  
DEITZ  
Right Guard



AUBREY  
RION  
Tailback



MARION  
CRAIG  
Blocking Back

CLEWSON

— T O N I G H T —

IN THE NEW  
BLUE ROOM  
**ART JARRETT**

With His Famous Dance Band  
And a Sensational Show

DINNER FROM \$1.50

Two Shows Nightly—7:30 and 12:15  
Matinee Show Saturday and Sunday 4:15



in the

FOUNTAIN LOUNGE

*Dance to the Music of*  
**HAROLD NAGEL**  
AND HIS ORCHESTRA

See the Famous Conga-Line at the Champagne Hour  
Presented by the Arthur Murray Dance Instructors  
Nightly at 11 O'clock

NO COVER—NO MINIMUM



GEORGE V. RILEY, *Vice-Pres. and Gen. Manager*

*The* **Roosevelt**  
HOTEL  
*"Pride of the South"*





GEORGE  
FRITTS  
Left Tackle



Captain  
BOB  
SHARPE  
Center



GEORGE  
FLOYD  
Flankback



JOE  
BLALOCK  
Left End



RAY  
HAMER  
Left Guard



HUGH  
JAMESON  
Center



Alternate  
Captain  
BILL HALL  
Right Tackle

# TIGERS



Eleven men will receive this emblem for outstanding football this year. Every year--- Jarman leads the field in style, comfort and wear!



New wing tip in "Dixie Tan," for either semi-sport or business.



Be sure to see this full straight tip brogue in Jarman's "Cortez Brown."



Dressy, comfortable semi-sport moccasin in the popular "American Tan."

\$5 TO \$6<sup>85</sup>  
MOST STYLES

**Jarman**  
SHOES FOR MEN

EXCLUSIVELY IN NEW ORLEANS AT

**LABICHE'S**

311 BARONNE STREET

## ALMA MATER

*Sing these words as Tulane's Alma Mater is played*

### I.

We praise thee for thy past, O Alma Mater!  
Thy hand hath done its work full faithfully!  
The incense of thy spirit hath ascended  
And filled America from sea to sea!

### II.

We praise thee for thy present, Alma Mater!  
Today thy Children look to thee for bread!  
Thou leadest them to dreams and actions  
splendid!  
The hunger of their souls is richly fed!

### III.

We praise thee for thy future, Alma Mater!  
The vista of its glory gleameth far!  
We ever shall be part of thee, great Mother!  
There thou wilt be where e'er thy children  
are!

### CHORUS:

Olive Green and Blue, we love thee!  
Pledge we now our fealty true  
Where the trees are ever greenest,  
Where the skies are purest blue!  
Hear us now, O Tulane, hear us!  
As we proudly sing to thee!  
Take from us our hearts' devotion!  
Thine we are, and thine shall be!

*The Thinking Fellow  
Calls a Yellow*

Phone RAYmond 3311

TOYE BROS.  
**YELLOW CABS**



# *The Pigskin Roundup*

VANDERBILT-MISSISSIPPI—The Rebels may be down hearted but Harry Mehre will have them on the rebound. Ole Miss in a close one.

UCLA-STANFORD—Those Indians to follow Big Chief Shaughnessy another leg on the journey to Pasadena.

NOTRE DAME - ARMY—The Irish will give Army a big dose of bad medicine today and let Navy take a repeat from the same spoon next week.

TEXAS A. & M.-ARKANSAS—The Razorbacks may bother the Aggies but they're not likely to score an upset. A vote for Kimbrough & Co.

TEXAS-SOUTHERN METHODIST—That Rice trimming didn't help Texas. The Mustangs.

PENN - NAVY—A Quaker celebration.

NORTHWESTERN - MINNESOTA—The big game of the day. Minnesota gets the nod.

KENTUCKY - ALABAMA—Those Kaintucks all but turned the trick last year. The Wildcats haven't beaten 'Bama since 1921. They may do it today. Yet, off Kentucky's form sheet and the absence of an Alabama one, we'll string with the Crimson.

HOLY CROSS - COLGATE — The Red Raiders.

HARVARD - PRINCETON — Nassau.

GEORGIA-AUBURN—A keen contest but the Plainsmen have the edge. Auburn by two.

FORDHAM - NORTH CAROLINA—It's a question of who can get off the floor faster. St. Mary's ruined Ram "bowl" hopes. Tulane hurt Carolina's pride by winning after the Tar Heels had already begun a "homecoming" victory celebration. On a hunch, North Carolina.

DUKE - GEORGIA TECH — The Blue Devils always seem to manage to nose the Engineers out. It's always that type of finish with Duke on the big end. So, who are we to defy tradition.

CORNELL - COLUMBIA—With or without the wig-wag, Cornell.

CALIFORNIA-OREGON STATE—A toss-up. If we have to pick, Cal.

DARTMOUTH-SEWANEE—Dartmouth but the Purple may prove troublesome.

BOSTON COLLEGE - MANHATTAN—The Eagles fly higher.

OKLAHOMA - NEBRASKA—The Cornhuskers.

---

---

# W S M B

occupies a 50-yard line seat at all Tulane football games to bring you Bill Brengel and his colorful play-by-play account of every happening

For those unfortunate enough to miss the game, W S M B invites you to tune in for quick, accurate details.

•

# W S M B

(1320 KC)

*The Red Network  
of the National Broadcasting Company*

---

---

**DON'T JUST  
STAND THERE!**

GO ON DOWN AND  
OPEN US A CHARGE  
ACCOUNT AT  
**GODCHAUX'S**





# CAM-PIX

## A MEDLEY OF CAMPUS PICTURES



© 1940 BY HORACE RENEGAR



Newcomb Administration Building  
(Tulane University)





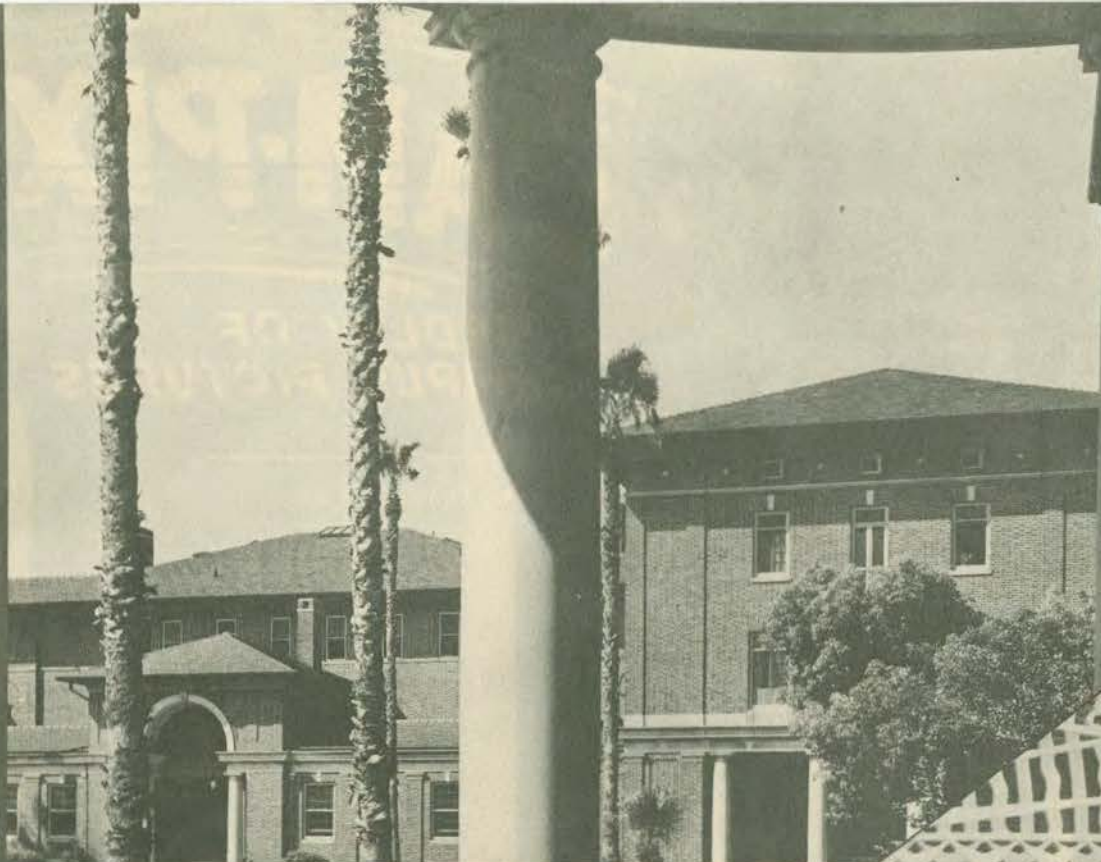
The Lady Awaits (her  
date) Without. Below,  
Campus Nighters score  
direct hit.



**STYLEPARK HATS**  
Have the Tulane Schedule  
on the inside!

**Porter's**





Newcomb in the Spring. Below, the A capella choir.



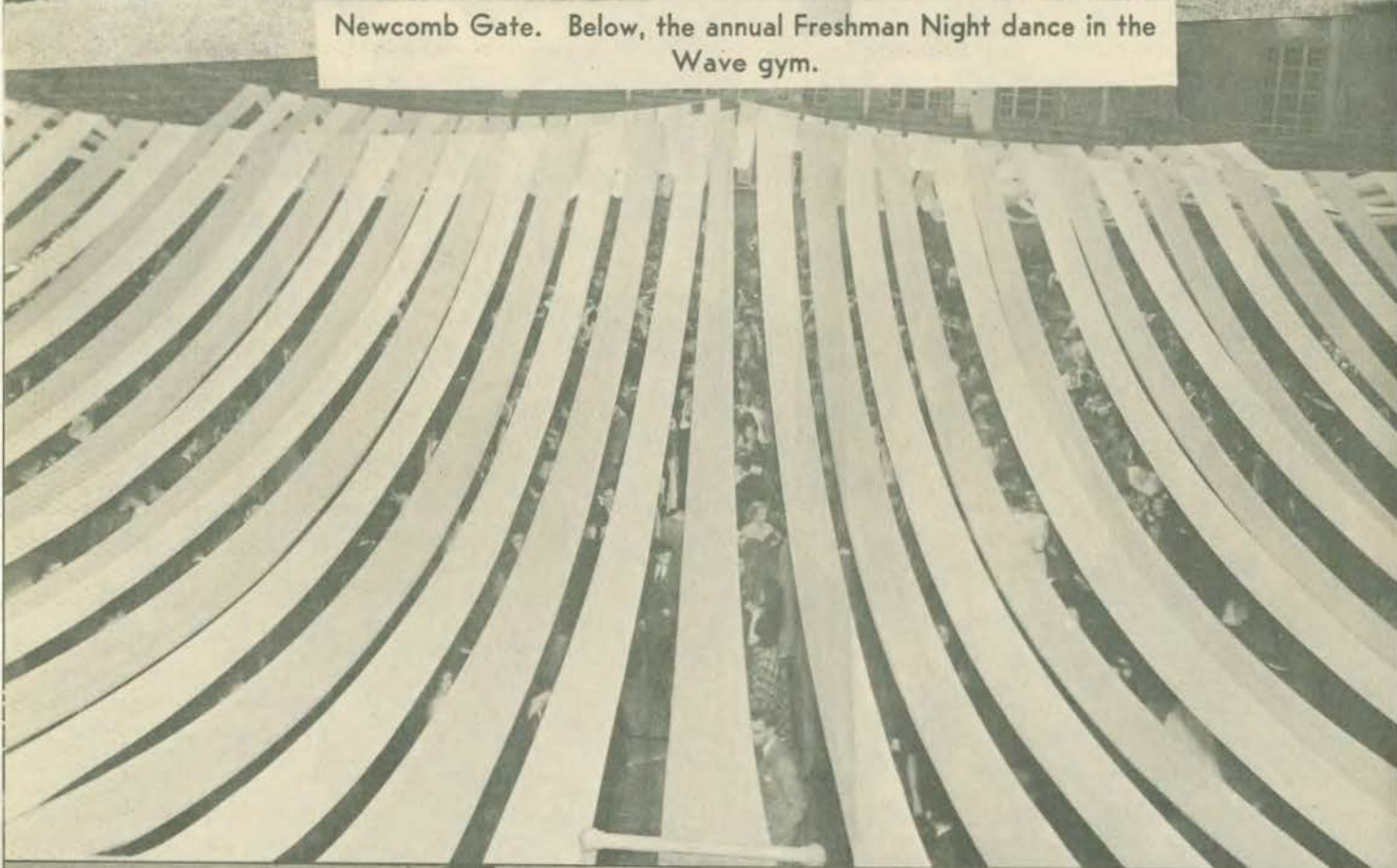
Tie-Master

**TIES** Have that Touchdown Look at *Porter's*





Newcomb Gate. Below, the annual Freshman Night dance in the Wave gym.



*Westminister*  
*Hosiery* JUST LIKE  
COLLEGE MEN  
WANT AT..

*Porter's*



AT THE GAME  
and  
AFTER THE GAME  
ENJOY



**D** Equipment for all sports...

**U** Specialists in all types of  
school athletic  
supplies

**N**

**A**

**P** Sporting Goods Co., Inc.

138 Carondelet Street  
MAGnolia 5891

The official watch  
for timing all  
**TULANE**  
**FOOTBALL GAMES IS**

*Longines*

**THE WORLD'S MOST HONORED WATCH**

Longines Watches, selected as official watch by the 1940 Olympic Committee, is also official watch for timing the football games for more than 100 leading colleges; timed 20 of the leading track meets of 1940 and the major intercollegiate basketball games. Longines is also official watch for the National Professional Football League and was worn by all umpires officiating at American and National League baseball games of 1940 including the World Series. Among the 104 national and international sports and contest bodies for which Longines is official watch are National Aeronautic Association, American Automobile Association, National Power Boat Association, International Federation du Skii, American Lawn Tennis Association, and U. S. Polo Association.

The world-leadership of Longines Watches is further attested by 10 world's fair grand prizes, 28 gold medals and more honors for accuracy than any other timepiece. Truly Longines is . . . the world's most honored watch.

*Watches of accuracy  
and elegance by Longines*



The skill, experience and workmanship necessary for the construction of Longines Watches for precision timing, aviation, and navigation is reflected in the greater accuracy of every Longines Watch at any price. Longines-Wittnauer jewelers show Longines personal watches of distinction priced \$40 upward; Wittnauer watches from \$24.75.

**LONGINES-WITTNAUER WATCH CO., Inc.**  
580 FIFTH AVENUE, NEW YORK, N. Y.



Do you SMOKE THE CIGARETTE THAT

Satisfies

THAT'S COOLER... BETTER-TASTING  
DEFINITELY Milder

## CLEMSON

LE	LT	LG	C	RG	RT	RE
Blalock	Fritts	Padgett	Sharpe	Deitz	Hall	Webb
24	61	67	48	40	54	26

QB  
Maness  
32

LHB  
Pearce  
59

RHB  
Floyd  
36

FB  
Timmons  
22

### SQUAD LIST

Frank Howard, Coach

20 Tinsley, b	35 Cargill, b	51 Sweatte, b
21 Coleman, f b	36 Pearce, b	53 Pierce, e
22 Timmons, f b	38 Wood, t	54 Hall, t
23 Sandifer, e	40 Deitz, g	55 Abee, b
24 Blalock, e	41 Blessing, e	57 Tisdale, g
25 Wright, C., c	42 Locklair, e	58 Pasley, e
26 Webb, e	43 Wright, T., t	59 Floyd, b
27 Parker, b	44 Edwards, e	60 Jameson, c
28 Rion, b	45 Richardson, g	61 Fritts, t
30 Yarid, g	46 McElveen, b	63 Stanford, f b
31 Cagle, t	47 Craig, M., b	64 Hambright, t
32 Maness, b	48 Sharpe, c	65 Rothell, b
33 Hamer, g	49 Cogswell, b	66 Chipley, e
34 Payne, b	50 Reynolds, g	67 Padgett, g

### OFFICIALS

Linesman.....George Gardner (Ga. Tech)  
Field Judge.....H. G. Mouat (Armour)

## TULANE

LE	LT	LG	C	RG	RT	RE
Bodney	Blandin	Tittle	Flower	O'Boyle	Dufour	Hornick
52	79	85	66	77	35	75

QB  
McDonald  
70

LHB  
L. Thomas  
18

RHB  
R. Glass  
82

FB  
Thibaut  
46

### SQUAD LIST

Lowell Dawson, Coach

15 Bittman, g	44 Allemandi, h b	65 Gentling, g
16 Rhea, C., t	45 Grush, q b	66 Flower, c
17 Walker, h b	46 Thibaut, f b	67 Brekke, t
18 Thomas, L., h b	47 Hays, h b	68 English, e
22 Masur, g	48 Turchin, h b	69 Groves, g
24 Sims, h b	49 Gloden, f b	70 McDonald, q b
25 Glass, T., q b	50 Garbark, c	72 Bentz, t
27 Krobert, c	51 Sauer, f b	73 DeFraitas, e
29 Wolbrette, g	52 Bodney, e	74 Duncelman, c
30 Block, c	53 Maginnis, q b	75 Hornick, e
32 Burwick, g	54 Cuyler, e	76 Gordon, t
34 Owens, g	55 Ibert, e	77 O'Boyle, g
35 Dufour, t	56 Mullin, e	78 Golomb, e
36 Stern, f b	57 Smith, h b	79 Blandin, t
37 Vanzant, e	58 Eason, q b	80 Johnson, c
38 Abrams, g	59 Rhea, K., g	82 Glass, R., h b
39 Thomas, M., g	60 Brignac, f b	84 Mandich, c
40 Ely, h b	61 Cassibry, h b	85 Tittle, q b
41 Collins, c	62 Mollere, g	87 Comer, e
42 Faust, t	63 Brinkman, e	96 Maccall, t
43 Pracko, f b		

### OFFICIALS

Referee.....Buck Cheves (Georgia)  
Umpire.....Walter Powell (Wisconsin)





## ENJOY A FAMOUS NEW ORLEANS DISH TONIGHT!

*Prepared by these world famous  
New Orleans Restaurants*

ANTOINE'S  
713 St. Louis St.

ARNAUD'S  
813 Bienville St.

BROUSSARD'S  
819 Conti St.

KOLB'S  
125 St. Charles St.

GOOD FOOD, well cooked and faultlessly served by trained help are the standards that have won and kept world-wide fame for these fine New Orleans Restaurants.

# "Time Out"

DRINK—

# Coca-Cola

TRADE MARK  
REG. U.S. PAT. OFF.

PAUSE—

RELAX—

REFRESH YOURSELF



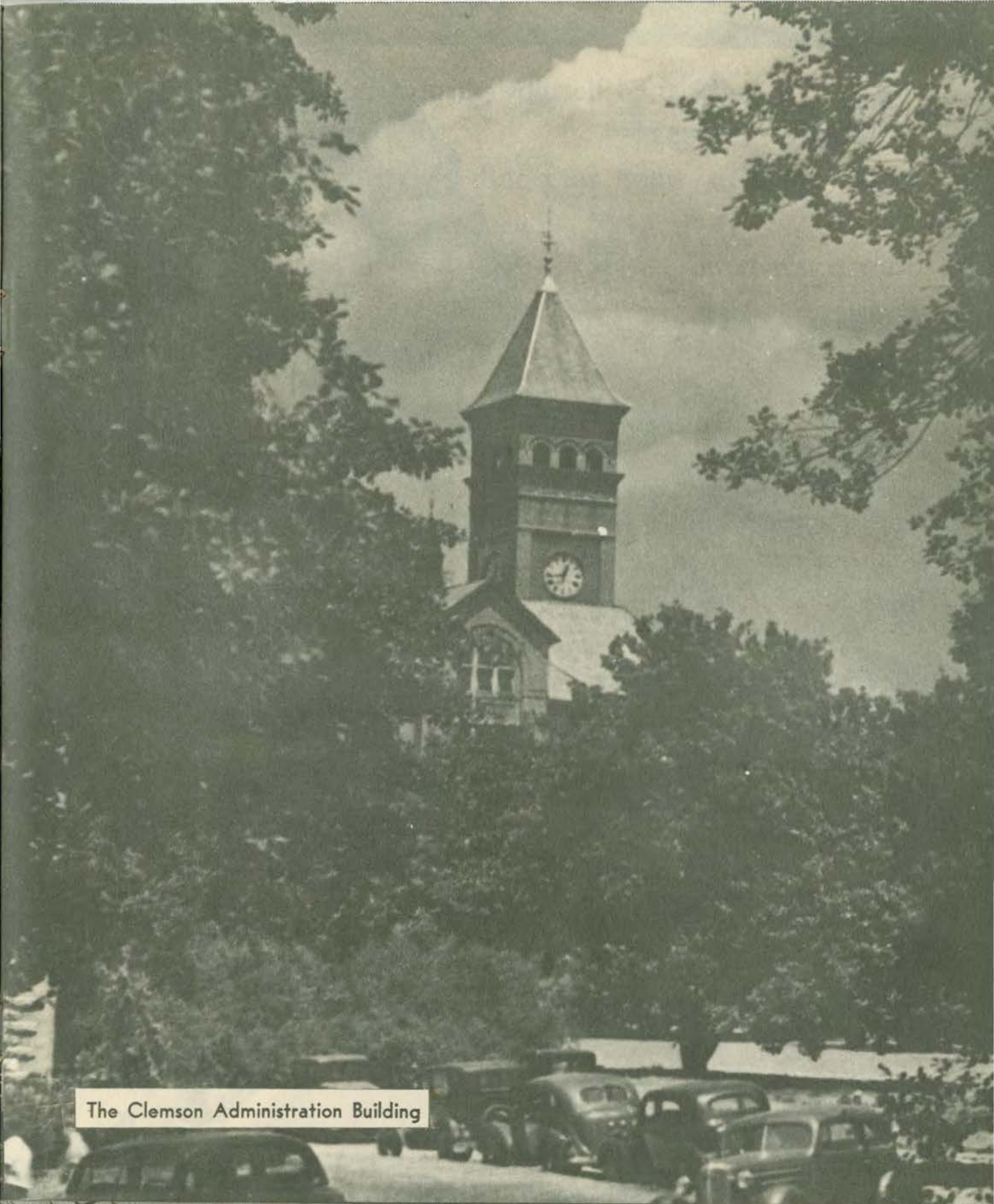
Clemson College Third Bar-  
racks. Below, Fort Hill, home  
of John C. Calhoun which is  
preserved in the center of  
the Clemson campus.



**Swank** THE COLLEGIATE  
JEWELRY AT..

**Porter's**



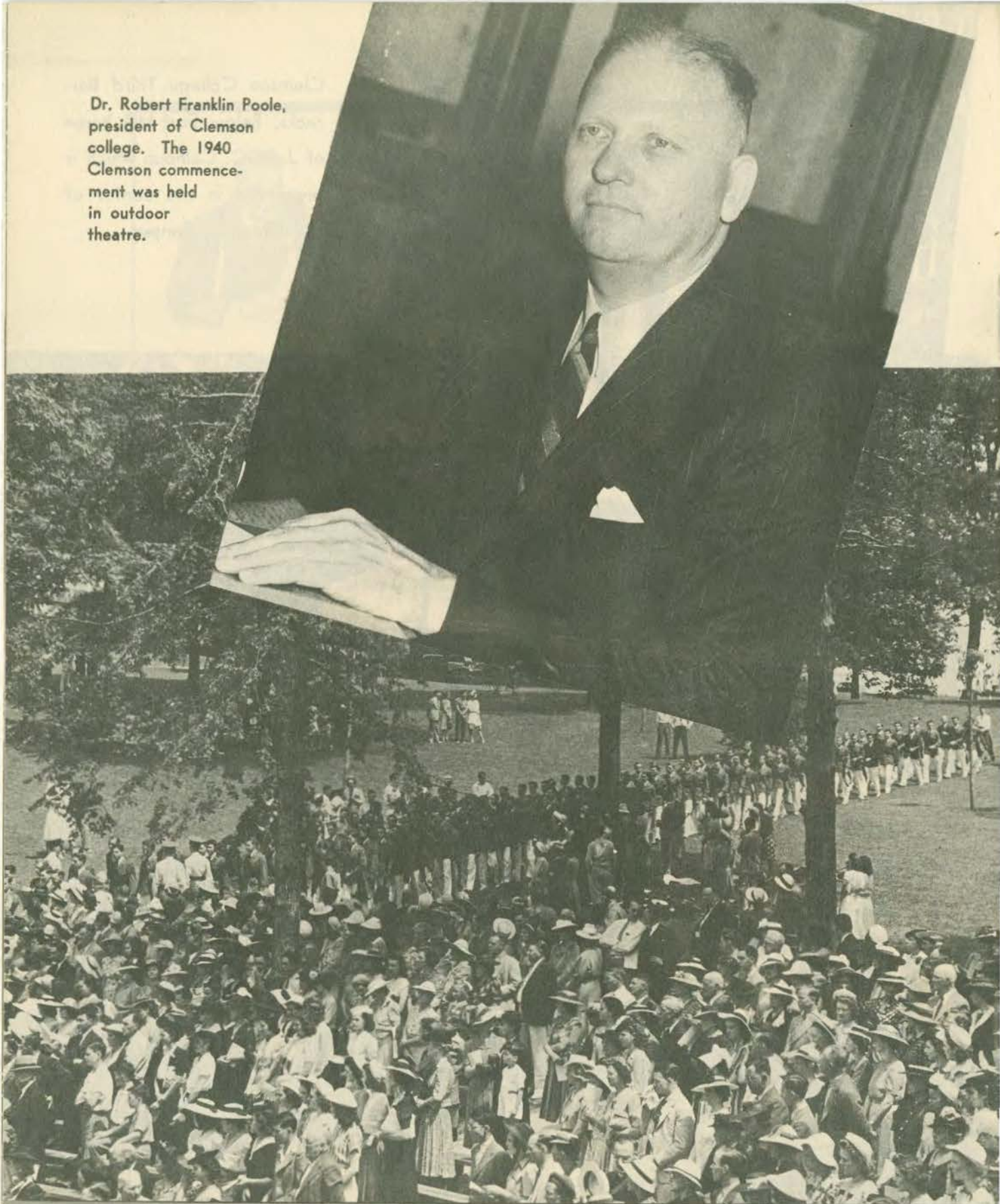


The Clemson Administration Building

 **Alligator Raincoats** THE COACHER COAT  
PERFECT FOR  
STADIUM WEAR at.. **Porter's**



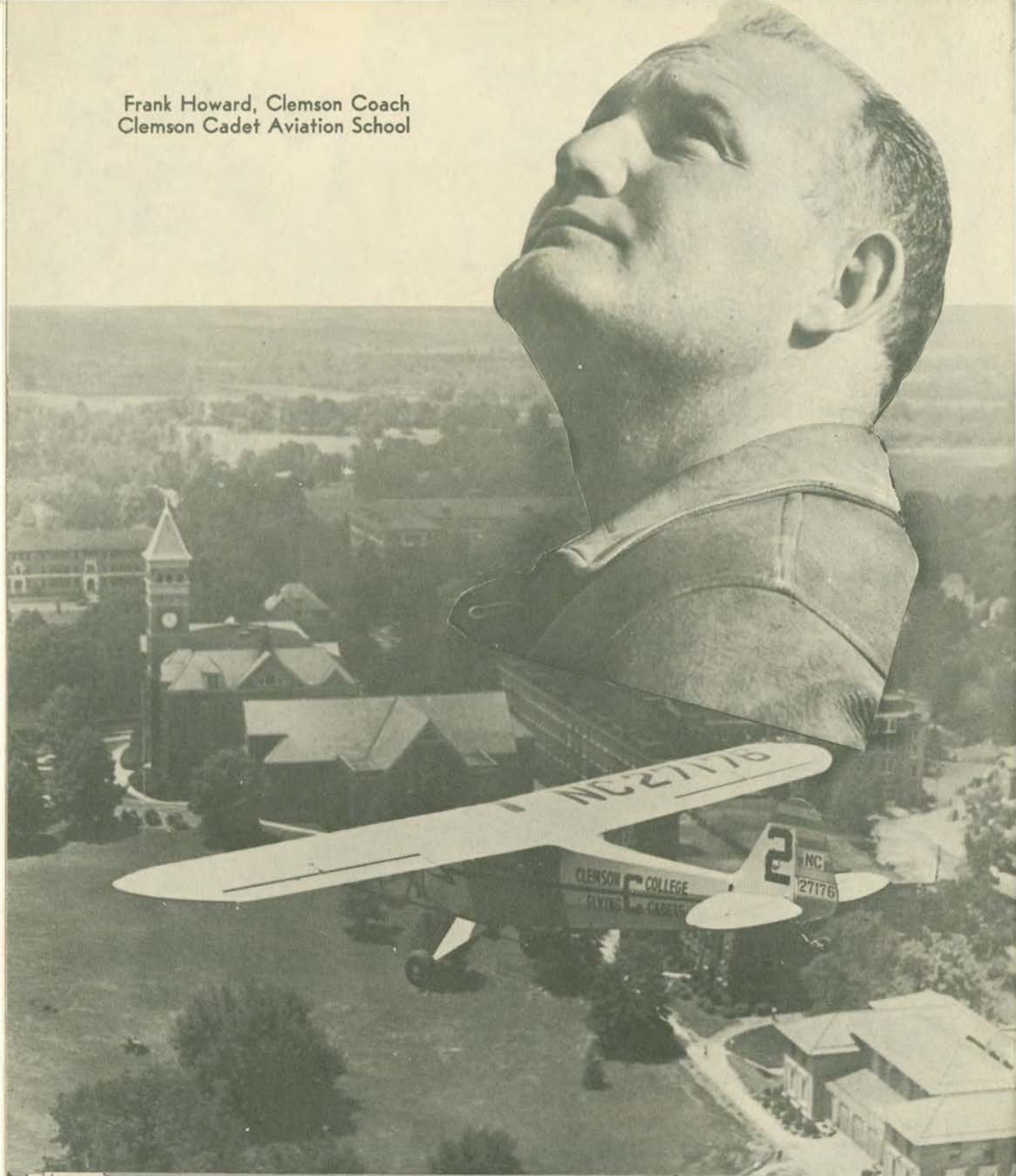
Dr. Robert Franklin Poole,  
president of Clemson  
college. The 1940  
Clemson commence-  
ment was held  
in outdoor  
theatre.



*Nunn-Bush*  **SHOES Give**  
*Foot Comfort and*  
*Style Rightness..* *Porter's*



Frank Howard, Clemson Coach  
Clemson Cadet Aviation School



*Porter's*

CALLING ALL



**TULANIAN**

TO SEE THE

**NEWEST IN CORRECT  
APPAREL...**

CARONDELT CORNER GRAVIER



There's no need of penalizing yourself by tackling



the tedious task of having dinner at home after the game.



Sidestep this real



interference with

your day's pleasure. Make the enjoyment of dinner tonight

your



goal by



passing the responsibility to

Holmes Restaurant.

Here, within the reach of all, is the



com-

plete dining service that makes every meal a snap!



You'll get a real



kick out of having dinner after

the game in the quiet surrounding of this famous Vieux Carré

restaurant. And you'll discover a pleasure that's something to

cheer about!

Holmes Restaurant . . . Separate  
Entrance on Bourbon Street in the  
Vieux Carré, Just off Canal



# HOLMES

New Orleans' Quality Department Store

Dinners  
60c 75c 1.00

*Special*  
*Wednesday*  
*Night Dinner*  
50c

Open from  
8 A. M. to 9 P. M.



# EVOLUTION OF THE FORWARD PASS

Today's football fan sees the forward pass as an integral part of the offensive strategy of every coach in the land, but it wasn't always that way.

There was a time in football history when the pass was distrusted by coaches. In the early 1900's, the pass was a new-fangled idea which most coaches thought would ruin the "push-and-pull" brand of football then in vogue.

The forward pass was finally accepted in 1906, but the restrictions governing its use would make the modern coach turn grey headed over night. For one thing an incomplete pass was lost at the spot from which it was thrown. In the early days also, the pass was required to cross the line of scrimmage at least five yards from where the center put the ball in play.

In 1908, Yale defeated Princeton chiefly by the use of passes which were used to open up or spread the defense. Coaches began to sense the possibility of its use as a threat and began to experiment more with the pass after that Yale-Princeton game.

In 1909, the rules were revised allowing the passer more latitude. The pass no longer had to cross the scrimmage line five yards from the point where the ball was put in play. The new rule required the passer to be five yards behind the line of scrimmage and this rule is still in force. The 1909 rules also declared the ball dead if it trav-

eled more than 20 yards in the air without being touched by a player.

Another restriction during this early period made a ball caught behind the goal line a touchback rather than a touchdown. In 1912, the field was shortened to 100 yards and end zones provided. The rules were changed so that a pass caught in the end zone meant six points and the 20-yard pass limit was also abolished.

Since 1912, the rules governing passing have been modified from time to time to meet changing conditions of the game. In 1924, the "screen pass" was legislated against to protect defensive players. In recent years, the rule calling any incomplete pass over the goal line a touchback was amended to apply only to fourth down passes.

In regard to receivers eligible to catch a pass, here are the latest rules:

"A forward pass may be touched or caught only by an eligible player. All the opponents are eligible. The players on the ends of the line and players who are at least one yard back of the line of scrimmage of the passing team when the ball is snapped are eligible (provided they do not go out of bounds) unless and until one of them touches the ball, when he only of his team remains eligible. If, however, an opponent touches the ball then all players become and remain eligible."



# Play Badminton

KEEP FIT!

It's everybody's game---men, women, boys, girls---year round. Your Spalding dealer will help you get started right. Spalding Badminton equipment is popularly priced.

Play the Spalding J5-V---the football that's tops on the gridiron!



*A.G. Spalding & Bros.*  
DIVISION OF SPALDING SALES CORPORATION

*Athletic Equipment*

HAUSMANN  
INCORPORATED

NEW ORLEANS'  
LEADING JEWELERS

• ■ •

*Special Department for College  
and  
Fraternal Jewelry*

*Corsages for To-night---*

FLOWERS

For Next Week's Game



2600 St. Charles Avenue  
Jackson 2600

# Stop!

# Look!

# Listen!

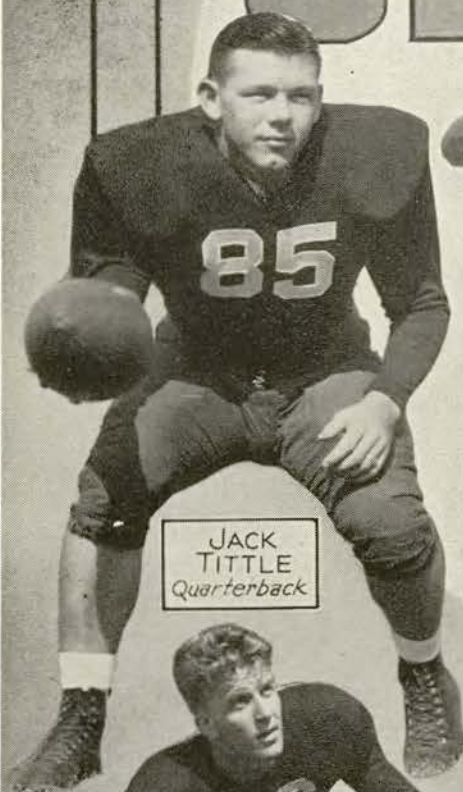
There's a 7-Up Boy right down in front of you! Call him now and Fresh-Up

With





# TULANE



JACK  
TITTLE  
*Quarterback*



BOB GLASS  
*Halfback*



ERNIE  
BLANDIN  
*Tackle*



JIMMY THIBAUT  
*Fullback*



HAROLD MULLIN  
*End*



PETE  
MANDICH  
*Center*



CHARLIE  
DUFOUR  
*Tackle*



BILLY  
BRINKMAN  
*End*



ST. JOHN  
SMITH  
*Halfback*



"RIP" COLLINS  
*Center*





*You CAN'T beat*

**CLIPPER  
CRAFT**

*for value at . . . \$25*

Clipper Craft suits are *actually* worth \$35! Sounds like a tall one? Well, here's the reason you get them for \$25. 500 stores all over the nation (we're the only one in New Orleans) buy together, assuring the manufacturer in advance of orders. Thus he's able to make suits from finer fabrics with superlative styling . . . . . and *you* get 'em for \$25!

### Clipper Craft Overcoats

—feature the *same* extra features, finer tailoring and better fabrics of Clipper Craft suits. Like the suits, they're real values at . . . . .

**\$25**

—Store for Men, street floor

*Maison Blanche*

GREATEST STORE SOUTH



*Buy on  
convenient  
Timepay Plan  
terms.*



# TULANE



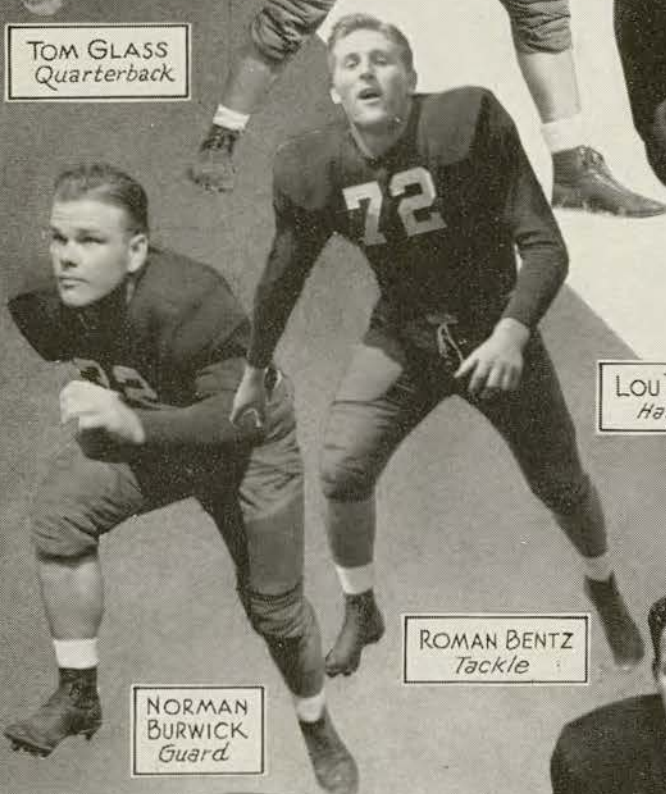
TOM GLASS  
Quarterback



"BUBBER" ELY  
Halfback



WALTER McDONALD  
Quarterback



LOU THOMAS  
Halfback



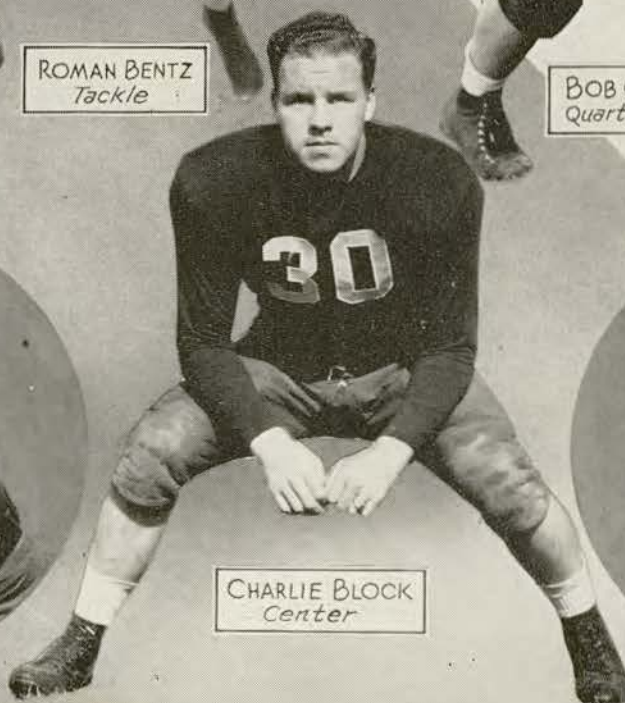
BOB GRUSH  
Quarterback



JOHNNY SIMS  
Halfback



JERRY OWENS  
Guard



CHARLIE BLOCK  
Center



PHIL GENTLING  
Guard



# GREENWAVE



CO-CAPTAIN  
CLAUDE GROVES  
*Guard*



HARRY  
HAYS  
*Halfback*



CO-CAPTAIN  
TOMMY O'BOYLE  
*Guard*



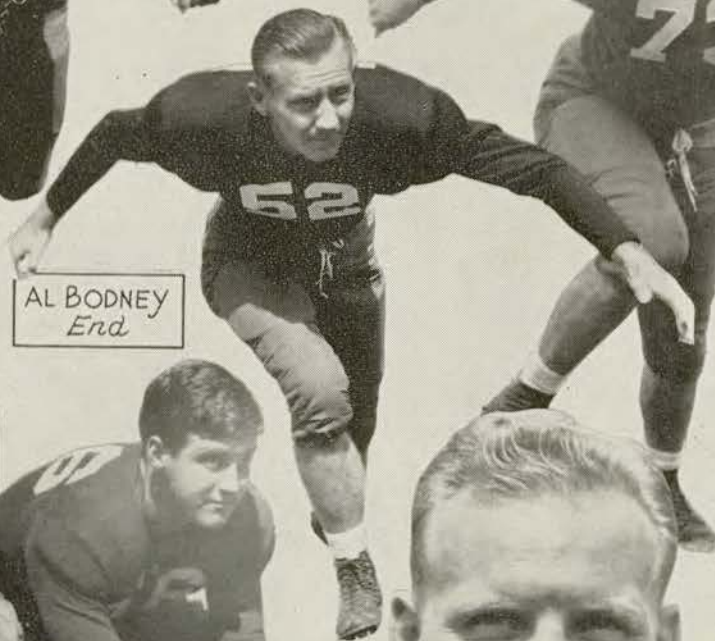
FRED  
CASSIBRY  
*Halfback*



"FRENCHY"  
DEFRAITES  
*End*



AL BODNEY  
*End*



PETE GOLOMB  
*End*



HENRY FLOWER  
*Center*



LEONARD SAUER  
*Halfback*



FRED BREKKE  
*Tackle*

FRED GLODEN  
*Fullback*



# TULANE ROSTER

No.	PLAYER	HOME TOWN	Position	Wt.	Yrs. on Varsity
15	Bittman, Rudolph	New Orleans	G	185	1
16	Rhea, Creighton	Jonesboro, Ark.	T	210	1
17	Walker, Raymond	New Orleans	HB	155	1
18	Thomas, Lou	New Orleans	HB	185	1
22	Masur, Louis	Monroe, La.	G	180	1
24	Sims, John	Delhi, La.	HB	188	1
25	Glass, Thos.	New Orleans	QB	193	2
27	Krobert, Bernard	Beaver Dam, Wisc.	C	190	2
29	Wolbrette, Henri	Shreveport, La.	G	207	1
30	Block, Charles	Gary, Ind.	C	197	1
32	Burwick, Norman	Port Arthur, Texas	G	205	1
34	Owens, John	New Orleans	G	203	1
35	Dufour, Charles	Shreveport, La.	T	206	2
36	Stern, Leonard	Camden, Ark.	FB	193	1
37	Vanzant, Joseph	Houston, Texas	E	173	1
38	Abrams, John	New Orleans	G	177	1
39	Thomas, Manuel	Wheeling, W. Va.	G	188	1
40	Ely, James	Shaw, Miss.	HB	187	1
41	Collins, Reynolds	Baton Rouge, La.	C	223	2
42	Faust, Richard	New Orleans	T	190	1
43	Pracko, Ben	Tarentum, Pa.	FB	175	1
44	Allemandi, Paul	New Orleans	HB	175	1
45	Grush, Robert	New Orleans	QB	185	1
46	Thibaut, James	New Orleans	FB	195	2
47	Hays, Harry	San Angelo, Texas	HB	166	3
48	Turchin, Robert	Miami, Florida	HB	150	1
49	Gloden, Fred	Dubuque, Iowa	FB	186	3
50	Garbark, Thomas	Edgewood, Pa.	C	195	1
51	Sauer, Leonard	Kildare, Okla.	FB	187	3
52	Bodney, Albert	Gary, Ind.	E	186	3
53	Maginnis, William	New Orleans	QB	185	1
54	Cuyler, Sherwood	Algiers, La.	E	180	1
55	Ibert, John	New Orleans	E	185	1
56	Mullin, Harold	Bogalusa, La.	E	195	2
57	Smith, St. John	New Orleans	HB	167	2
58	Eason, Henry	New Orleans	QB	170	2
59	Rhea, Kermit	Jonesboro, Ark.	G	200	1
60	Brignac, Julian	Lutcher, La.	FB	165	1
61	Cassibry, Fred	Gulfport, Miss.	HB	191	3
62	Mollere, Jules	Ponchatoula, La.	G	190	1
63	Brinkman, William	New Orleans	E	191	2
65	Gentling, Phillip	Rochester, Minn.	G	177	2
66	Flower, Henry	New Orleans	C	193	3
67	Brekke, Fred	New Richmond, Wisc.	T	211	3
68	English, Gordon	Midland, Texas	E	200	1
69	Groves, Claude	Ft. Smith, Ark.	G	217	3
70	McDonald, Walter	Struthers, Ohio	QB	200	1
72	Bentz, Roman	Horicon, Wisc.	T	230	1
73	DeFraitte, Emanuel	New Orleans	E	180	3
74	Dunckelman, Lonnie	Natchitoches, La.	C	205	1
75	Hornick, William	LaBelle, Pa.	E	200	1
76	Gordon, Preston	Magee, Miss.	T	210	1
77	O'Boyle, Thos.	Gary, Ind.	G	209	3
78	Golomb, Clarence	Oshkosh, Wisc.	E	207	3
79	Blandin, Ernest	Keighley, Kas.	T	215	2
80	Johnson, Owen	Peru, Ind.	C	205	1
82	Glass, Robert	Massillon, Ohio	HB	193	2
84	Mandich, Peter	Gary, Ind.	C	193	2
85	Tittle, Jack	Marshall, Texas	QB	200	2
87	Comer, Martin	Gary, Ind.	E	197	1
96	Maccall, Alexander	New Orleans	T	210	1

# CLEMSON ROSTER

No.	PLAYER	HOME TOWN	Position	Wt.	Yrs. on Varsity
20	Tinsley, Sid	Spartanburg, S. Car.	B	160	1
21	Coleman, Dan	Saluda, S. Car.	FB	187	3
22	Timmons, Charles "Tuffy"	Abbeville, S. Car.	FB	195	3
23	Sandifer, L. M. "Red"	Denmark, S. Car.	E	185	1
24	Blalock, Joe	Charleston, S. Car.	E	180	2
25	Wright, Charlie	Columbia, S. Car.	E	175	1
26	Webb, Hugh	Saluda, S. Car.	E	173	3
27	Parker, James	Hartsville, S. Car.	B	178	3
28	Rion, Aubrey	Columbia, S. Car.	B	165	3
30	Yarid, Slyman	Seneca, S. Car.	G	180	1
31	Cagle, John	Andrews, S. Car.	T	200	1
32	Maness, Ed "Chippy"	Georgetown, S. Car.	B	160	3
33	Hamer, Ray	Clio, S. Car.	G	210	3
34	Payne, Walter "Booty"	Greenville, S. Car.	B	180	1
35	Cargill, Clayton	Columbia, S. Car.	B	166	3
36	Pearce, Roy	Columbia, S. Car.	B	175	3
38	Wood, Marion	Greenville, S. Car.	T	185	1
40	Deitz, Frank	Hickory, N. Car.	G	190	3
41	Blessing, Jim	Kingsport, Tenn.	E	183	3
42	Locklair, Ed	Great Falls, S. Car.	E	190	1
43	Wright, Tom	Ward, S. Car.	T	205	2
44	Edwards, Ernest	Columbia, S. Car.	E	195	2
45	Richardson, Joe	Georgetown, S. Car.	G	170	3
46	McElveen, Norwood	Columbia, S. Car.	B	180	2
47	Craig, Marion	Greenville, S. Car.	B	180	1
48	Sharpe, Bob	Abbeville, S. Car.	C	190	3
49	Cogswell, George	Charleston, S. Car.	B	170	2
50	Reynolds, Chuck	Statesville, N. Car.	G	195	1
51	Sweatte, Johnny	Sumter, S. Car.	B	190	1
53	Pierce, Harold	Decatur, Georgia	E	180	1
54	Hall, Bill	Charleston, S. Car.	T	210	3
55	Abee, Russell	Hickory, N. Car.	E	165	3
57	Tisdale, Charles	Bryson City, N. Car.	G	195	3
58	Pasley, Jim	Alexander City, Ala.	E	195	3
59	Floyd, George	Conway, S. Car.	B	180	3
60	Jameson, Hugh	Easley, S. Car.	C	205	2
61	Fritts, George	Lenoir City, Tenn.	T	190	2
63	Stanford, Calloway	Atlanta, Georgia	FB	180	3
64	Hambright, Carroll	Greenville, S. Car.	T	200	2
65	Rothell, Claude	Saluda, S. Car.	B	170	1
66	Chipley, Bill	Lynchburg, Va.	E	175	1
67	Padgett, Wade	Columbia, S. Car.	G	190	2

OFFICIAL WATCH FOR TIMING ALL TULANE GAMES IS A LONGINES—"THE WORLD'S MOST HONORED WATCH."



only a few yards to go...



(Other Pan-Am Stations conveniently located  
in all parts of the City.)



# EXTRA MILDNESS



# EXTRA COOLNESS



# EXTRA FLAVOR



Copyright, 1940, R. J. Reynolds Tobacco Co., Winston-Salem, N. C.

WITH

SLOWER-BURNING

# Camels



● In recent laboratory tests, CAMELS burned 25% *slower* than the average of the 15 other of the largest-selling brands tested—*slower* than *any* of them. That means, on the average, a smoking *plus* equal to

**5 EXTRA SMOKES PER PACK!**

**FAST BURNING**  
— creates hot flat taste in smoke... ruins delicate flavor, aroma...

**SLOW BURNING**—protects natural qualities that mean *mildness, thrilling taste, fragrance*... a cooler smoke...

