

*The Greenie*

# NORTH CAROLINA vs. TULANE

OCTOBER 21, 1939

• Price 25c





# HOME LOANS

to

## BUY...BUILD...REPAIR...

### Your Home

**Liberal Terms**

**Low Interest Rates**

#### OFFICERS

J. D. Byrne, President  
A. E. Thouron, Vice-President  
J. E. McMahon, Vice-President  
Chas. A. Nehlig, Vice-President  
Jacob Schaaf, Secretary-Treasurer  
J. Zach Spearing, Attorney  
Chas. F. Buck, Jr., Attorney  
Bernard Titche, Jr., Notary  
Frank W. Magne, Notary  
Roger P. Sharp, Bldg. Expert

#### DIRECTORS

Herman T. Bartels	Frank W. Hart
Chas. B. Bernius	Hunter C. Leake
H. C. Bernius	Frank W. Magne
H. V. Boubede	J. E. McMahon
Chas. F. Buck, Jr.	Chas. A. Nehlig
J. D. Byrne	R. Olivier
Frank G. Costley	Henry P. Pfeffer
E. J. Engelbracht	Jacob Schaaf
A. Percy Generes	J. Zach Spearing
W. W. Sutcliffe, Jr.	
H. L. Swift	
George P. Thompson	
A. E. Thouron	
Bernard Titche, Jr.	
B. Werner	



# EQUITABLE MUTUAL

## HOMESTEAD ASSOCIATION

"Home Financing Since 1885"

**511 Carondelet Street**

**Phone Raymond 3405**

# THE GREENIE

Vol. 9 OCTOBER 21, 1939 No. 4

HORACE RENEGAR.....EDITOR  
Official Souvenir Football Program of Tulane University, Published for Each Home Game.

## CONTENTS

Facts about North Carolina .....	4
North Carolina Pictures .....	5
"Hall of Fame" .....	7
Homecoming Announcement .....	9
Campus Camera (16 page section) .....	11-34
Tulane Pictures .....	20
The Lineups.....	Center
Pigskin Roundup.....	25
Tulane Pictures.....	26
Tulane Pictures.....	36
Alma Mater.....	38
Tulane Squad Picture.....	41
The Rosters.....	42

## RUBBER

Tulane and North Carolina, two of the nation's major unbeaten and untied football teams, meet today in the fifth game of a rivalry which started in 1922. Each institution has won two games. The Tar Heels won in 1922, 19 to 12; lost in 1936, 7 to 21; won in 1937, 13 to 0; lost a year ago, 14 to 17.

## ACE of the GRIDIRON

It's the Spalding Official Intercollegiate J5-V Football. The ball unequalled on any field.



... Help your coach with the Athletic Round Table's Annual Moan Contest—prize \$1,000 in SPALDING equipment.

*A. G. Spalding & Bros.*  
DIVISION OF SPALDING SALES CORPORATION  
517 Canal Street

"THEY STARTED THAT WHEN THEY FOUND OUT *Sears* HAD SUCH GOOD HUNTING EQUIPMENT FOR SALE!"

HUNTING EQUIPMENT

UNFAIR TO DUCKS

UNFAIR TO US!

**Sears FEIBLEMAN'S**

The Sears, Roebuck & Co. Store in New Orleans  
"WHERE THE YOUNG CROWD SHOPS"



# Some Facts About North Carolina

BY ROBERT W. MADRY,  
*U. N. C. Publicist.*

Today's game matches teams representing the first state university in America to open its doors to students and the oldest privately endowed university in the Deep South.

The University of North Carolina is a member of that exclusive organization known as the Association of American Universities, made up of some colleges and universities that are usually regarded as the foremost in America.

You are doubtless well acquainted with the history of Tulane. So I'll try to tell you a few things about North Carolina. It was chartered 150 years ago, and a celebration in commemoration of the event is to be held at Fayetteville, N. C., next month. During the next several years appropriate celebrations also are to be held in observance of the 150th anniversary of the cornerstone laying (1793) and the formal opening for the admission of students (1795).

In the early years of the University the rest of the South had few institutions of higher learning, and this condition brought to Chapel Hill a large number of students from other states. At the time the Civil War broke out more than half of the students enrolled at Carolina were from other states.

The story of the University in those early years, and for a long time thereafter, is a record of incessant struggle, not for a luxurious or even comfortable existence, but for the barest necessities.

Although many of its students left the campus to fight in the Army of the Confederacy, the University managed to continue to function during the Civil War. But the days of Reconstruction dealt it a severe blow from which it was not to recover until five years later, in 1875, when it was reopened.

The greatest development in the life of the University has come in the last 25 years, but the stimulus for this growth came in the nineties. At the turn of the century the institution was recognized as a leader among educational institutions of the South. It was

overflowing with students taught by an able and enthusiastic faculty.

Beginning with the post-war period in 1920, the enrollment has grown rapidly until today there are more than 3800 resident students, an increase of some 300 over last fall. The Summer School enrollment this year was approximately 2500. And there are several thousand students enrolled for correspondence courses and extension classes.

The University is now in the midst of a three million dollar building program which is adding several new dormitories for both men and women students, a new home for the Medical School and Division of Public Health; a new gymnasium named for the late Controller, Charles T. Woollen; a new dining hall, and an extension to the Carolina Inn. In addition a number of the older buildings are being renovated. This long-needed expansion was made possible largely through PWA grants and self-liquidating bonds.

Today the University at Chapel Hill, which is presided over by Dr. Robert Burton House, Administrative Dean, is made up of the College of Arts and Sciences, the Division of Humanities, Natural Sciences, and Social Sciences; and the School of Commerce, the Graduate School, the School of Law, the School of Medicine, the School of Pharmacy, the School of Library Science, the Extension Division, and the Summer School.

In 1931 the State Legislature consolidated the University at Chapel Hill, the State College of Agriculture and Engineering at Raleigh, and the Woman's College in Greensboro.

It has been President Frank P. Graham's task—one of the most difficult jobs that ever faced any college president—to translate into actuality the terms of this consolidation. That he has been able to make so much progress in this program at such a minimum of friction has been the marvel of educators everywhere.



# NORTHERN CALIFORNIA



JIM  
"SWEET"  
LALANNE  
QUARTERBACK



SID SADOFF  
FULLBACK  
AND  
MIKE  
BOBITT  
HALFBACK



GEORGE  
STIRNWEISS  
QUARTERBACK



GEORGE  
RADMAN  
HALFBACK



ABERNATHY  
RIGHT GUARD



BOB  
SMITH  
CENTER



CO-CAPTAIN  
WOODSON  
GUARD



JIM  
MALLORY  
END



PAUL  
SEVERIN  
END



WHITE  
AND  
KIMBALL  
TACKLES







## Setting a standard in HOTEL ACCOMMODATIONS

Leadership always carries with it the obligation to be more, to do more and give more.

As applied to The Roosevelt, New Orleans, leadership means a completely equipped hotel where the traveler finds refinements and luxuries that add so much to the comfort and pleasure of his stay. It means better accommodations and service, and finer food for the dollars you spend. 800 rooms with bath. Moderate rates.

Write or Wire Reservations  
JAS. PAT O'SHAUGHNESSY, V.-P. & Gen. Mgr.

## Order Pralines by Mail

Full halves of selected Louisiana Pecans in a luscious layer of pure Louisiana Cane Sugar. New Orleans' famous Candy, made from the recipe of the Old Plantation Mammy. Two attractive gift boxes.



Souvenir Cotton Bala Package, 10 Pralines for \$1.75. Postage paid. Plantation Mammy Package, 12 Pralines, \$1.50. Postage paid. Send Money Order or personal check with order to The Roosevelt Hotel, New Orleans.



*The Roosevelt*  
HOTEL  
"Pride of the South"

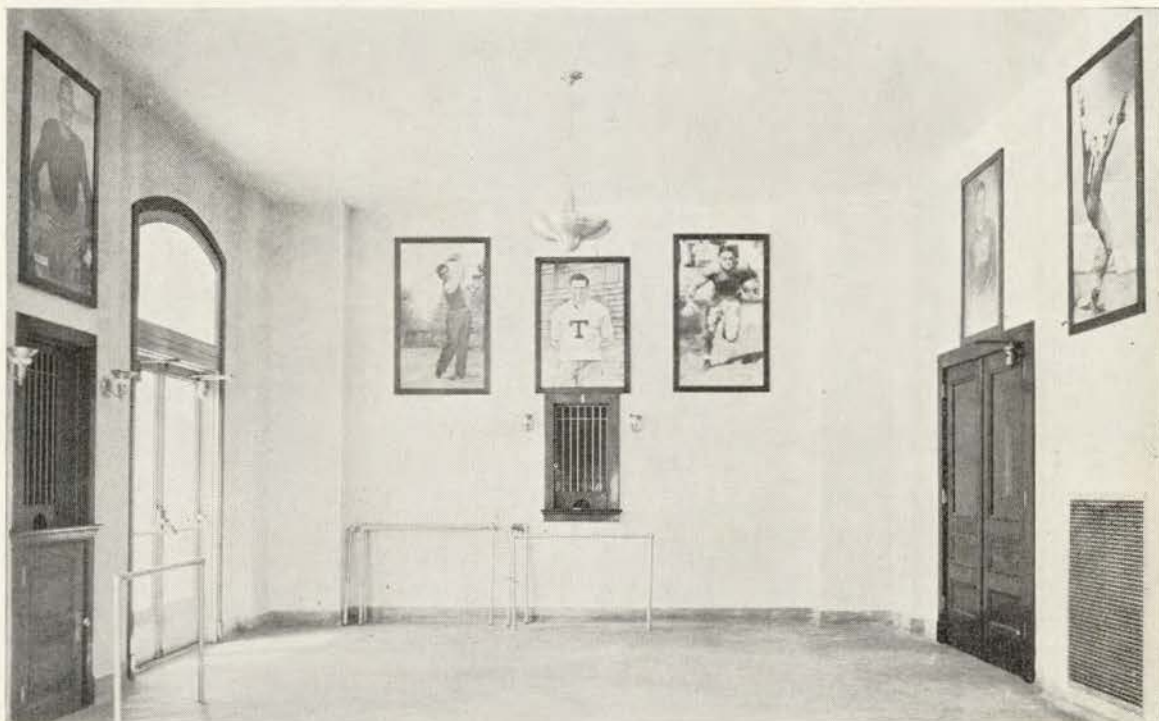
## ALSO OPERATING HOTEL NEW ORLEANS

Just two blocks from the Shopping, Theatre, Business and Financial Districts

275 Outside Rooms with Bath

Air conditioned guest rooms—Lobby—Dining room

GEORGE DAWSON, Manager



#### TULANE'S ATHLETIC HALL OF FAME

Life size pictures of eleven great Tulane athletes of the past have been placed in the vestibule of the gymnasium, forming an athletic hall of fame. Those honored are shown in the pictures above and below. Top, left to right, Charles P. Flournoy, football; Vincent D'Antoni, golf; Alfred W. Brown, football; Donald G. Zimmerman, football; Gerald Dalrymple, football; Willis Banker, football. Below, Claude Simons, Jr., football; Clifford Sutter, tennis; Doyle Hill, boxing; Ernest Sutter, tennis; and Fred Lamprecht, golf. D'Antoni, the Sutter brothers, Hill and Lamprecht are all former national intercollegiate champions, while the football men listed all were all-Americans on some selection. Pictures of other great athletes of the past are to be placed in the corridors of the gymnasium.





# Hawaiian Blue Room

Dance — Dine — Romance

Under Authentic Hawaiian Settings

FEATURING

**Buddy  
ROGERS**

*And His Orchestra*

IN THE NEW SHOW

★ **Lillian Carmen**

*"Glamour Girl of Songs"*

★ **Marc Bolero**

*"Renowned Mimic"*

★ **Ruth Daye**

*"Dancer"*

DINNER

6 to 9 — Show 7:30

SUPPER

10 to 2 — Show 12:15

Phone Buttons MA 2371 — For Reservations

NO COVER CHARGE

*The Roosevelt*  
HOTEL  
*"Pride of the South"*



# HOMECOMING

Plans are now nearing completion for a gathering of 1500 alumni and former students of the University at the second annual Homecoming supper scheduled for October 27, at 7 p. m., in the Tulane Gymnasium. In 1938 more than 1400 alumni gathered for the first supper, at which President Rufus C. Harris made his initial New Orleans alumni address.

## MAKE RESERVATIONS NOW

Due to the very large attendance, some alumni were unable to obtain seats at the 1938 Homecoming supper in the Tulane Gymnasium. Alumni are urged to make reservations now for the 1939 supper by calling their respective class agents or the alumni office in Gibson Hall, WA. 4242. The supper, at which President Rufus C. Harris will be the principal speaker, will be held at 7 p. m., on Friday, October 27, in the Gymnasium.

The supper will be the high light of the Homecoming celebration, which will open on October 23 with the annual medical clinics and lectures sponsored by the Department of Graduate Studies of the School of Medicine under the direction of Dr. W. H. Kostmayer.

A Homecoming queen and court will be named to preside over the festivities, which will include the supper, open-house at all fraternities, student bonfires and parades, the student dance in the Gymnasium on the night of October 28, and the ceremonies at the half during the Ole Miss-Tulane Homecoming game.

The annual meeting of the Alumni Association will be held at the Roosevelt Hotel at 4:30 p. m. on October 27. New officers will be elected at this time. As usual, all fraternity houses will be decorated, the best to receive an Alumni Association prize.

The feature of the entire program will be the Homecoming supper. The gathering will be welcomed by Esmond Phelps, president of the Board of Administrators. The only address will be delivered by President Harris, who will report on the progress of the University during the past year.

As was done in 1938, the supper is under the direction of class agents, one from each class of each college of the University. Hale Boggs, general manager of the Alumni Association, is chairman of all class agents. College chairmen include

William West, Jr., Arts and Sciences; Clifford Favrot, Engineering; Joseph McCloskey, Jr., Law; Dr. Ambrose Storck, Medicine; Mrs. E. H. Fremaux, Newcomb Alumnae Association, and Marvin S. Mingledorff, Jr., Commerce Alumni Club.

The general Homecoming committee is headed by Dr. John Menville, chairman, and Harry S. Kaufman, Jr., E. C. Upton, Jr., and Richard O. Baumbach.

## 1939 TULANE FOOTBALL SCHEDULE

Sept.	30—Tulane 7, Clemson 6.
Oct.	7—Tulane 12, Auburn 0.
Oct.	14—Tulane 7, Fordham 0.
Oct.	21—North Carolina at New Orleans.
Oct.	28—Ole Miss at New Orleans (Homecoming).
Nov.	11—Alabama at New Orleans.
Nov.	18—Columbia at New York.
Nov.	25—Jewanee at New Orleans.
Dec.	2—L. S. U. at New Orleans.

**ZIP!**  
*and it's open!*

Old Gold's amazing  
New "ZIP-TOP" Pack  
Opens quick as a wink!  
You get fresh  
Double-Mellow Old Golds  
In a flash! Try  
The "ZIP-TOP" Pack today!

**O.G.'s new "ZIP-TOP" pack**  
**FRESH Cigarettes in a FLASH!**



Copyright, 1939, by P. Lorillard Co.

Now . . . **DOUBLE "CELLOPHANE"**  
opens **DOUBLE QUICK . . . 2 Jackets sliced in 1 ZIP!**





Hats, Gloves, and Accessories Cleaned  
to Your Complete Satisfaction.

*Sample Color Dyeing*

**UPtown 5486** 4112 S. Claiborne

3437 Prytania St. **UPtown 0598**

*The Thinking Fellow Calls a Yellow*  
TO AND FROM GAMES

**40c**

ANYWHERE WITHIN CITY  
(Outlying Points Excepted)

FIVE can ride for the price of ONE—  
Club together!

Phone RAYmond 3311

TOYE BROS.

**YELLOW CABS**

**HAUSMANN**  
INCORPORATED

NEW ORLEANS'  
LEADING JEWELERS

• ■ •

*Special Department for College  
and  
Fraternal Jewelry*

**Stop!**  
**Look!**  
**Listen!**

There's a 7-Up Boy right  
down in front of you! Call  
him now and Fresh-Up

With

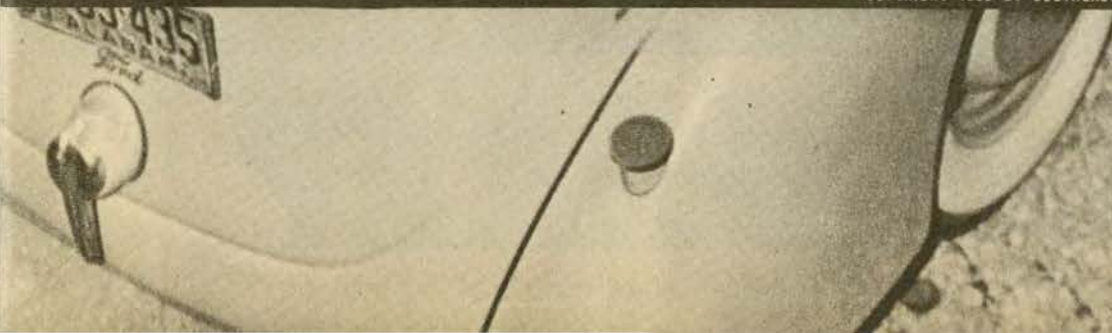






# CAMPUS CAMERA

COPYRIGHT 1939 BY SOUTHEASTERN FOOTBALL PROGRAM ASSOCIATION

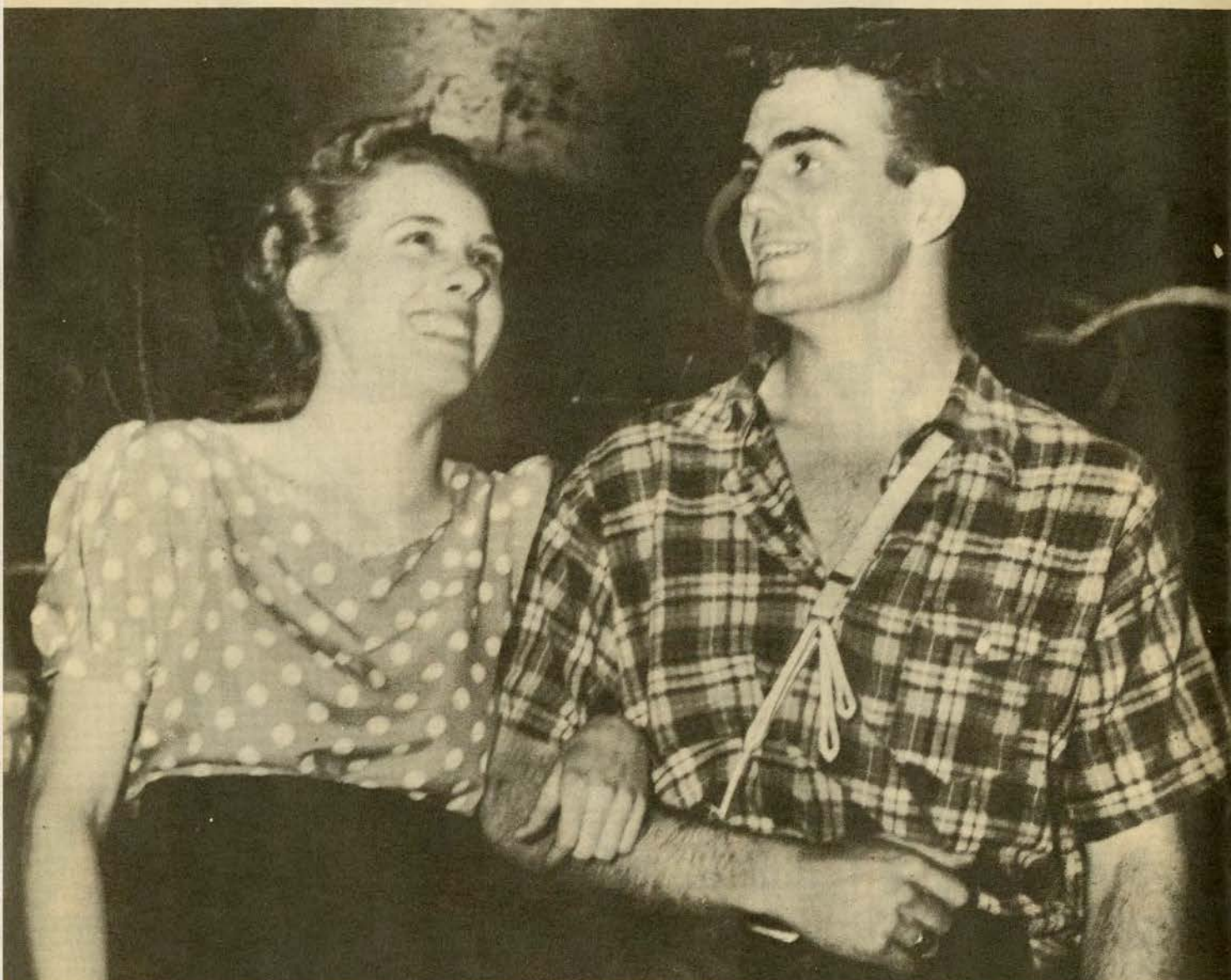




Yeah! We are collegiate!

From the Smokies to the Everglades, from the bayous to the bluegrass . . . nothin' intermedjiate! . . .

Tennessee's Nahheeyali formals along with the Barnwarmin' and Carnicuss make the Vol lads and lassies step lively . . . the minuet and swing take their turns at proud Ole Miss, Tulane's cotillions, and the gala dance festivals at L. S. U., Florida, Alabama, Kentucky and Mississippi State are big moments to be remembered.



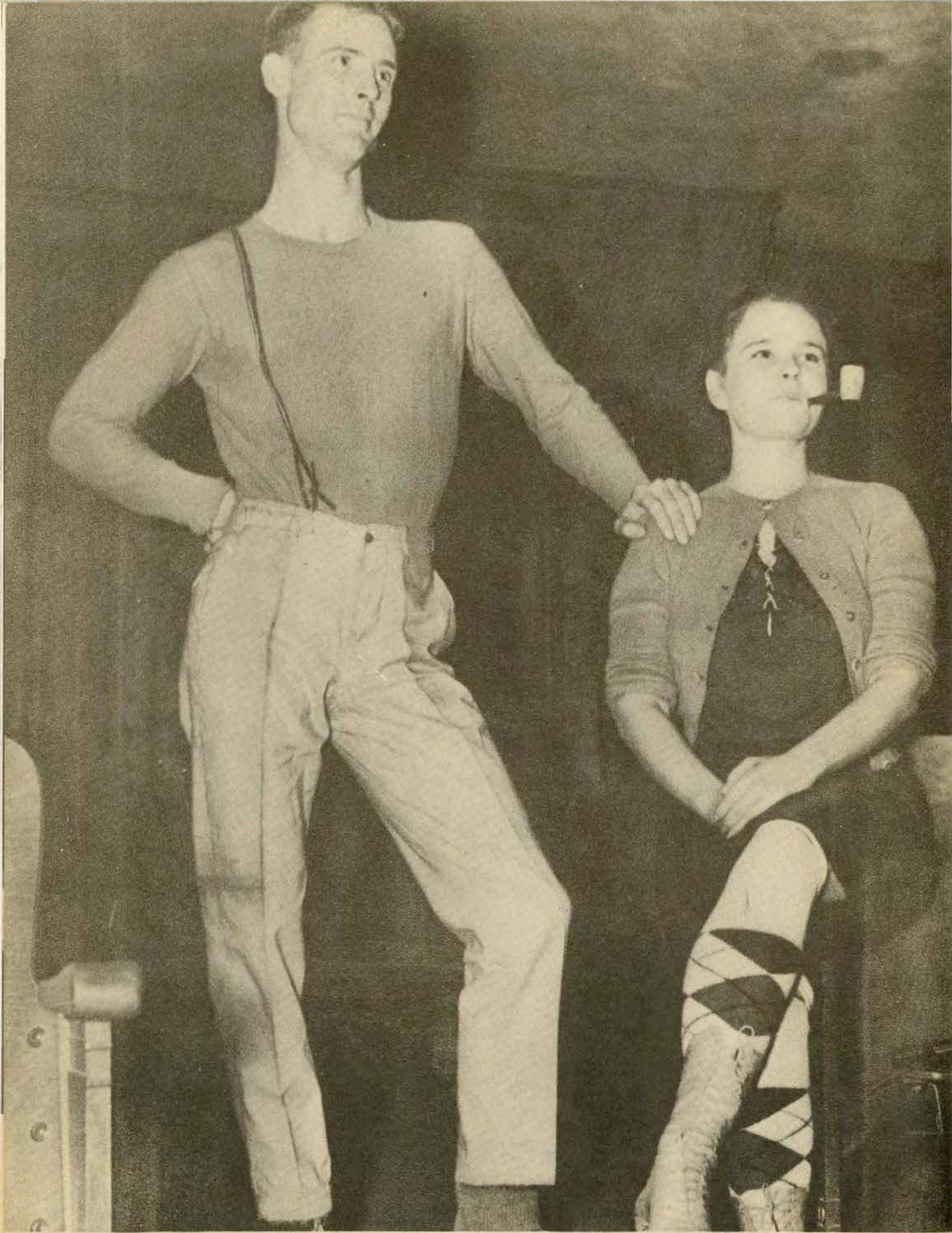
'Well, suh, if it isn't Miss Natalie Key and Mr. Bowden Wyatt of Tennessee . . . steppin' out, suh?'





The artillery's not permitted on the floor at Vol-town . . .





"Pap" & "Mimey" Yokum are there!





Lawdy, it looks like 'em Knoxville folks are getting mad . . .





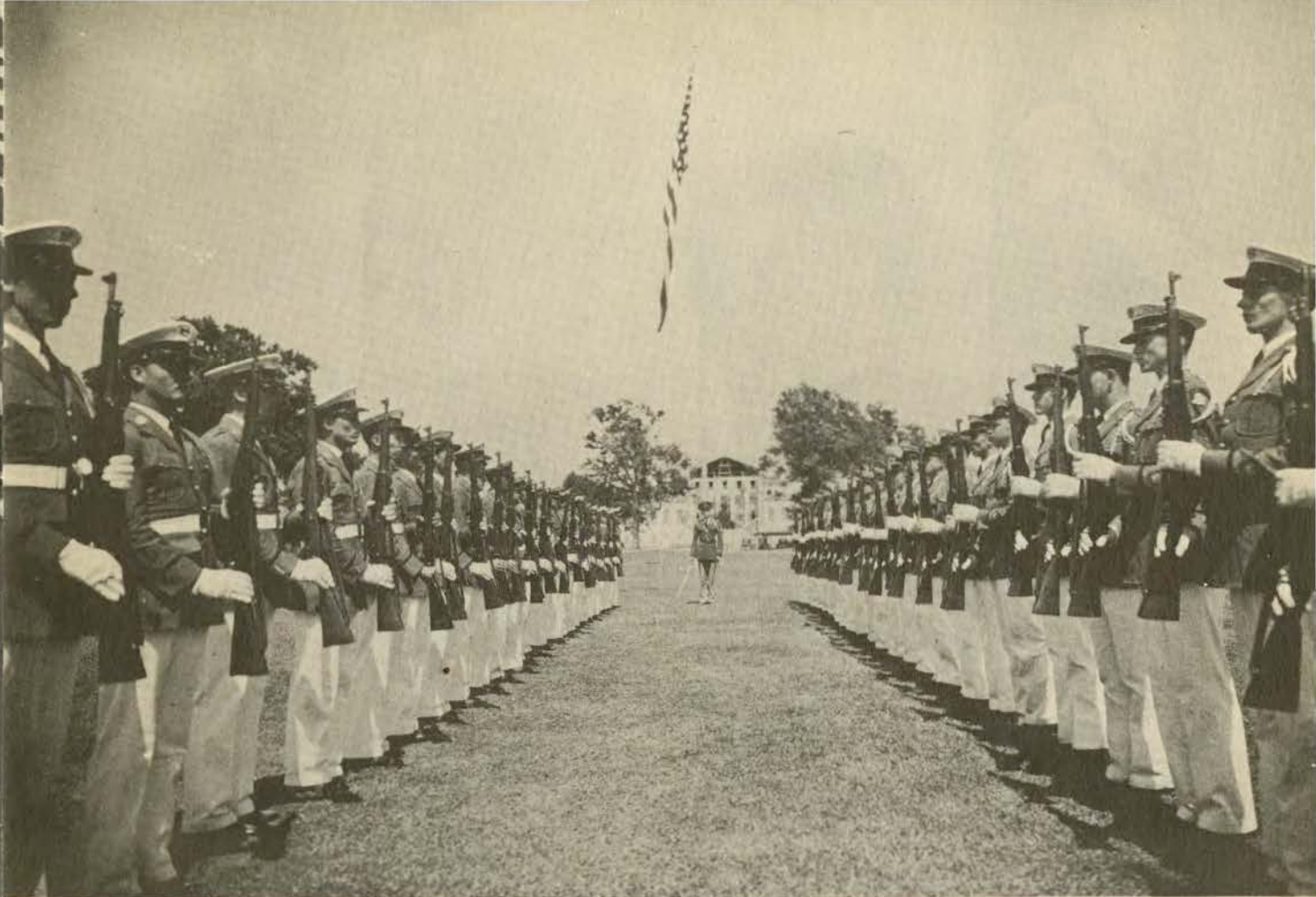


Harriett Post seems to be getting a satisfactory answer from Joe Geiger during the University of Florida summer school. Geiger, graduating with an A. B. degree this year, made the highest scholastic record attained by any University of Florida student in the past seven years and entered the University Law College this fall.



NO REASON TO GET HOT says this quartet of bridge players in the University of Florida summer session who relax during an afternoon swim in the pool with this unique game of bridge. Left to right, next year's university student body president, Ed. Rood, Bradenton, Eleanor Merrill, Marilyn Perry and Dave Russell, Gainesville.





"Present Arms!" L. S. U. Cadet Corps



L. S. U.'s law building presents impressive view





The Queen at Tulane's 1938 Homecoming, Miss Carolyn Robbert. Next week, the Green Wave alumni honor another beautiful coed.





**"SNAP!"**  
you've got it



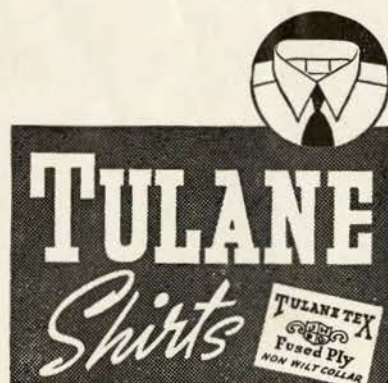
\$1.00  
1.25 - 1.50 - 1.65

Top favorites with men for years, Tulane Shirts set the pace in style, comfort and value. They are unusually durable, and are suited for sports, business, or campus wear . . . . .

**Candidly**—Tulane Shirts "Click" with men who want a better fit, greater comfort and longer wear... These popular shirts are made of Sanforized and pre-shrunk fabrics. They have the famous, perfectly-pointed Tulane-Tex, non-wilt collar, and correct sleeve lengths. . . . .

Specify Tulane Shirts.

A local product of merit made in New Orleans by J. H. Bonck Co.







GROVES, guard



CLAY, guard



McCOLLUM, tackle



DeFRAITES, end



BANKER, half



KRUEGER, quarter  
CAPTAIN



DAILEY, guard  
ALT. CAPTAIN



BUTLER, full



WHITE, tackle



HAYS, half



GLODEN, full



BODNEY, end

# FRONT



Mayer Israel's

## YOUR Goal *for* Fall!

### Suits

3-button Coats  
5-button Vests  
Drape Styles  
Tweeds are GOOD  
Cheviots are back

### Overcoats

Fleecy Topcoatings  
Rich Colorings  
Lighter Weight  
Raglans GOOD  
Box-backs GOOD

The line-up above leads right to YOUR goal—correct clothing to wear comfortably the winter through at moderate prices—

\$25

\$35

\$45

Mayer Israel's



## “Time Out”

DRINK—

**Coca-Cola**

TRADE MARK  
REG. U.S. PAT. OFF.

PAUSE—

RELAX—

REFRESH YOURSELF



## TULANE

LE	LT	LG	C	RG	RT	RE
Bodney	White	Dailey	Flower	O'Boyle	McCollum	Wenzel
52	76	75	66	77	71	74

QB  
Nyhan  
50

LHB  
Kellogg  
60

RHB  
Banker  
18

FB  
Gloden  
49

### SQUAD LIST

Lowell Dawson, Coach

No.	No.	No.
18 Banker, h b	45 Grush, q b	67 Brekke, t
24 Sims, h b	46 Thibaut, f b	68 English, e
25 Glass, T., q b	47 Hays, h b	69 Groves, g
27 Krobert, c	48 Marmillion, h b	70 Clay, g
28 Dwyer, g	49 Gloden, f b	71 McCollum, t
29 Wolbrette, g	50 Nyhan, q b	72 Bentz, t
30 Block, c	51 Sauer, f b	73 DeFraithe, e
31 Owens, g	52 Bodney, e	74 Wenzel, e
32 Burwick, g	53 Jaubert, t	75 Dailey, g
34 Rexer, e	54 Micelle, e	76 White, t
35 Dufour, t	55 Hickey, g	77 O'Boyle, g
36 Stern, f b	56 Mullin, e	78 Golomb, e
37 Vanzant, e	57 Smith, h b	79 Blandin, t
38 Abrams, g	58 Eason, q b	80 Johnson, c
39 Thomas, g	59 Slayton, h b	82 Glass, R., h b
40 Ely, h b	60 Kellogg, h b	84 Mandich, c
41 Collins, c	61 Cassibry, h b	85 Tittle, q b
42 McCarron, e	63 Brinkman, e	87 Comer, e
43 Butler, f b	65 Gentling, g	96 Kirchem, t
44 Krueger, q b	66 Flower, c	

### OFFICIALS

Linesman... M. M. "Scrappy" O'Sullivan, Atlanta  
Field Judge... G. Hill (Wofford)

## NORTH CAROLINA

LE	LT	LG	C	RG	RT	RE
Severin	White	Woodson	Smith	Abernethy	Kimball	Kline
87	90	53	60	52	65	58

QB  
Stirnweiss  
92

LHB  
Radman  
67

RHB  
Bobbitt  
57

FB  
Sadoff  
49

### SQUAD LIST

Raymond Wolf, Coach

No.	No.	No.
30 Myers, g	55 Slotnick, h b	78 Hermson, t
31 Jones, t	57 Bobbitt, h b	80 Slagle, g
32 Saylor, g	58 Kline, e	81 Sheek, t
33 Sieck, t	60 Smith, c	82 Stallings, e
36 Amoss, h b	61 Patterson, h b	83 Crone, c
39 Baker, D., h b	62 Thompson, h b	86 Richardson, c
41 Benton, c	63 Baker, E., h b	87 Severin, e
43 Jones, c	65 Kimball, t	88 Nowell, t
44 Megson, g	67 Radman, h b	89 Stoinoff, g
46 Faircloth, g	68 Siewers, t	90 White, t
47 Doty, e	71 Idol, f b	91 Mallory, e
48 Blalock, g	72 Little, h b	92 Stirnweiss, q b
49 Sadoff, f b	73 Moynihan, t	93 Lalanne, q b
50 Forrest, e	74 Ralston, c	94 Brantley, g
51 Spransy, t	75 Suntheimer, c	95 Connor, h b
52 Abernethy, g	76 Elliot, e	97 Dunkle, f b
53 Woodson, g	77 O'Hare, q b	

### OFFICIALS

Referee... W. E. "Ted" Arnold, Auburn  
Umpire... Julius E. Burghard (Miss. College)

*Time Out...*

light up with



Chesterfield  
*They Satisfy*



# Enjoy

A Famous  
New Orleans  
Dish Tonight!

*Prepared by these world famous  
New Orleans Restaurants*

•  
ANTOINE'S  
713 St. Louis St.

•  
ARNAUD'S  
813 Bienville St.

•  
BROUSSARD'S  
819 Conti St.

•  
KOLB'S  
125 St. Charles St.

•  
GOOD FOOD, well cooked and faultlessly served  
by trained help are the standards that have  
won and kept world-wide fame for these  
fine New Orleans Restaurants.

# "Pep them up" by TELEGRAPH



Send  
**PEP MESSAGES**  
by  
**WESTERN UNION**  
**20¢** LOCALLY **25¢** TO ANY WESTERN  
UNION POINT IN U. S.

THE PROOF OF

## GOOD ICE CREAM

IS IN THE EATING

BROWN'S

**Velvet**  
**ICE CREAM**  
MADE BY NEW ORLEANS ICE CREAM CO.

SOLD EVERYWHERE



# Pigskin Roundup

ALABAMA-TENNESSEE—High in the Great Smoky chain of mountains awaits a carefully planned ambush, ready to massacre Frank Thomas and his mighty band of Alabamans. High Chief Bob Neyland of the Orangemen is directing the off-stage preparations for the big kill. All games to date by both teams have been merely dress rehearsals for this day. Despite the fact Tennessee rules the favorite, here's a flyer on 'Bama to upset 'em.

\* \* \*

CAL-WASH. STATE—The Cougars of the North to add a new brand to the hide of the Berkeley Bear.

\* \* \*

MICHIGAN - CHICAGO — Never dodging an issue, the old handicapper takes Michigan.

\* \* \*

PRINCETON - COLUMBIA—Long on ivy but a bit short on football this year, Columbia.

\* \* \*

DUKE - SYRACUSE — On the rebound, Duke.

\* \* \*

GEORGIA TECH - VANDY—One of the traditional Southern classics. Georgia Tech.

HARVARD - PENN — The big Ivy game of the day in the East. Close but Harvard gets the nod.

\* \* \*

INDIANA-ILLINOIS—The Hoosiers to continue their march.

\* \* \*

KENTUCKY - GEORGIA — The Longrifles of the Bluegrass.

\* \* \*

MANHATTAN - AUBURN — The South to add another Eastern victim.

\* \* \*

N. Y. U.-CARNEGIE TECH—The Plaids.

\* \* \*

PURDUE - MICHIGAN STATE—The Boilermakers to take 'em apart.

\* \* \*

OLE MISS. - ST. LOUIS — Johnny Reb.

\* \* \*

L. S. U.-LOYOLA—The Bayou Bengals.

\* \* \*

TEXAS A. & M. - T. C. U. — The Aggies.

\* \* \*

MINNESOTA - OHIO STATE—Even. The coin. Gophers.



# FOOTBALL



KELLOGG, half



CASSIBRY, half



FLOWER, center



BREKKE, tackle



O'BOYLE, guard



COLOMB, end



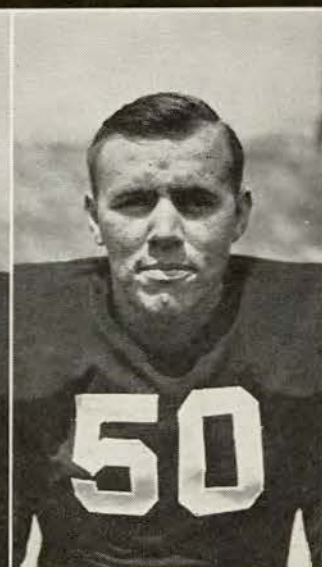
HICKEY, guard



BRINKMAN, end



KIRCHEM, tackle



NYHAN, quarter



SAUER, full

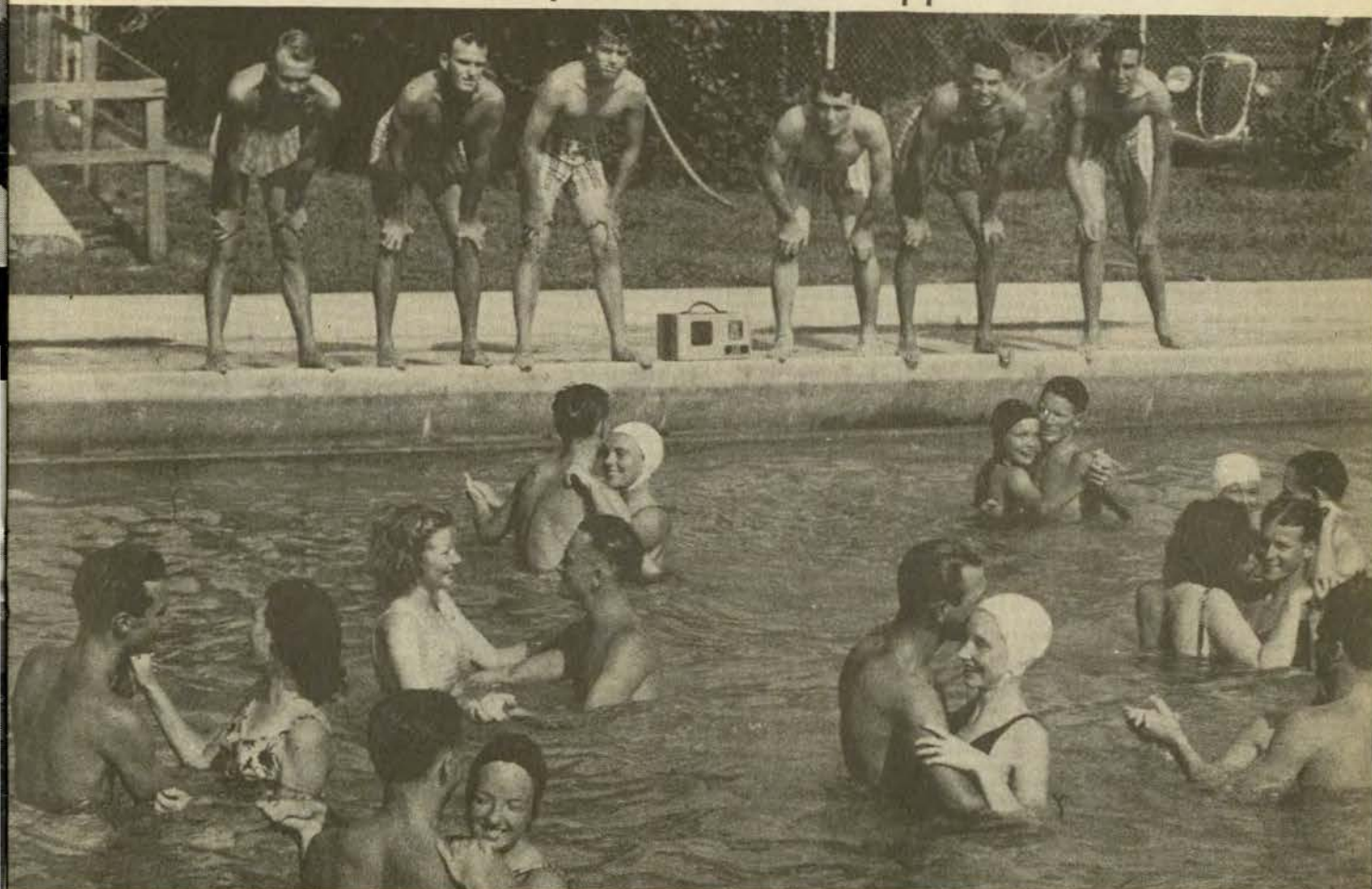


WENZEL, end





A fraternity dance at Mississippi State



Summer school students at the University of Florida enjoy a water waltz to the tune of a portable radio, flanked by the stag line.





The Rebels and their ladies make merry at Oxford.



"You're too late for the weddin', gals, the shootin's over."





Scenes from Ole Miss' coronation ball







Some students sit and think and some just sit on Kentucky's Student Union steps



High school students in a massed chorus at University of Kentucky





A University of Kentucky coed  
 earns college expenses  
 by operating x-ray machine  
 while another  
 gets her heart tested  
 on electro-cardiography

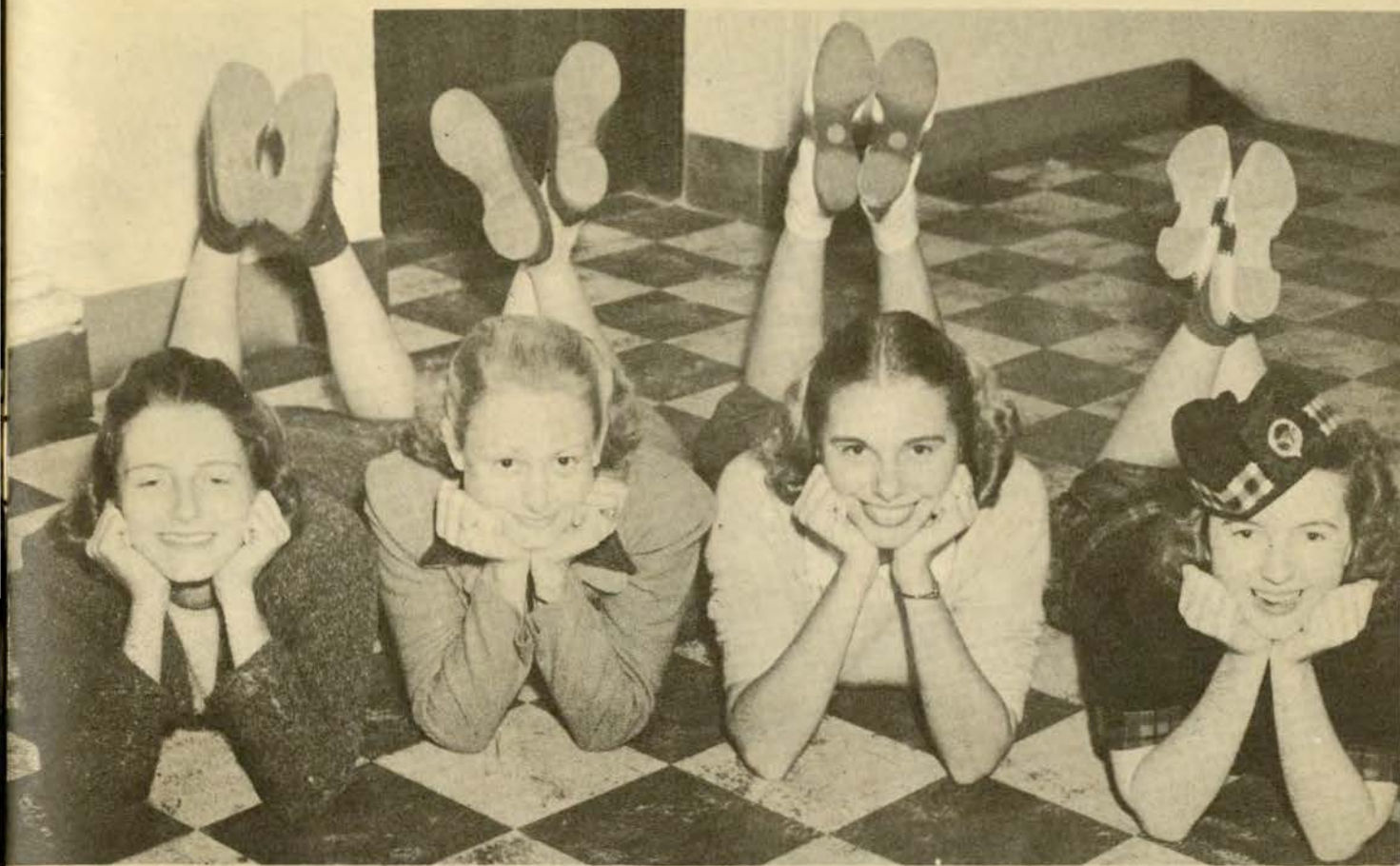






Three pretty  
L. S. U. coeds  
watch the world  
go by . . .

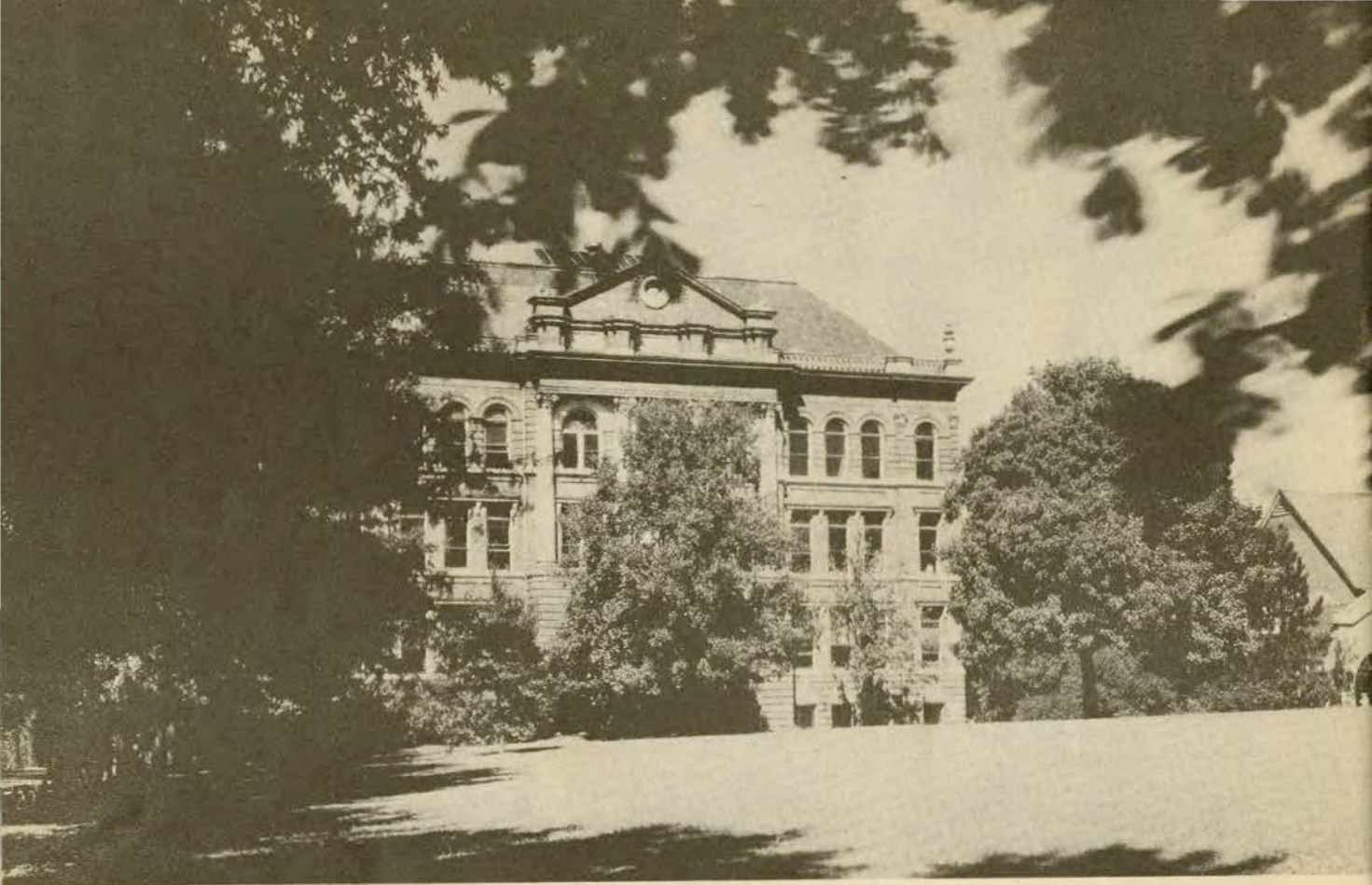




Tulane's pretty Newcombites cheerily greet you!







Beauty at Mississippi State





*Secluded Comfort in Our New*

•

# STORE for MEN

•

We've just been remodeled, repainted and given the works! Can we help it if we're pretty proud of ourselves now? We have the most modern, most convenient shop in the South . . . we think! . . . but visit us and judge for yourself!

•

STREET FLOOR

*Maison Blanche*

GREATEST STORE SOUTH



# FOOTBALL



CLAUDE "MONK" SIMONS  
TRAINER



DR. WILBUR  
C.  
SMITH  
ATHLETIC  
DIRECTOR



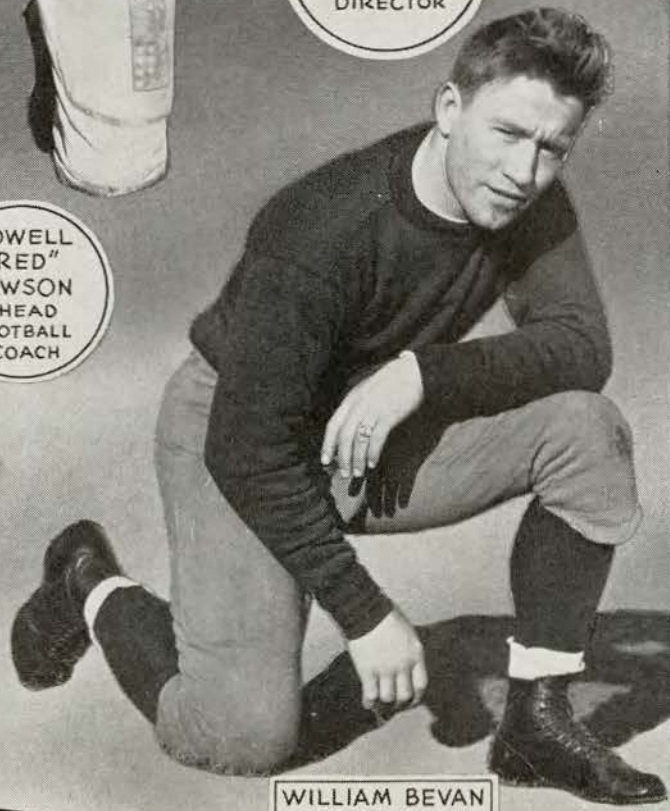
LOWELL  
"RED"  
DAWSON  
HEAD  
FOOTBALL  
COACH



PETER  
MAILHES  
ASSISTANT  
COACH



GLENN  
E.  
SEIDEL  
ASSISTANT  
COACH



WILLIAM BEVAN  
ASSISTANT COACH



ON TO NEW YORK!

*For The*

TULANE-COLUMBIA  
FOOTBALL GAME

Saturday, November 18, 1939

PERSONALLY CONDUCTED TOUR

\$49.<sup>90</sup>

Leaving New Orleans Thursday, November 16, at 6:30 P. M.

*Price of 49.90 Includes:*

- Round trip Railroad Transportation!
- Hotel accommodations at McAlpin Hotel in New York!
- Reserved seat at the game!
- Complete sightseeing tour of New York!
- Transportation from the hotel to the game and return!
- Complete handling of your baggage!

*Make Your Reservations Now!*

D. H. HOLMES TRAVEL BUREAU

Second Floor  
819 Canal Street

RAYmond 7711

Magnolia 4533  
New Orleans, La.





## A Campus Favorite

look them over.

**Jarman**  
SHOES FOR MEN

Most Styles

**\$5 to \$750**

Whether it's a Dutch Boy Klomp or an Antique Finish calfskin, you'll find them "tops" with upper classmen . . . and you'll find them only at Labiche's. They're campus favorites from September until June.

## Get Your FREE Football Map—at Labiche's

Get your Jarman Football Map (in colors). It gives you the who, where and why of American football—at a glance. No obligation . . . just call at the store for yours.

# LABICHE'S

THREE ELEVEN BARONNE STREET

## ALMA MATER

*Sing these words as Tulane's Alma Mater is played*

I.

We praise thee for thy past, O Alma Mater!  
Thy hand hath done its work full faithfully!  
The incense of thy spirit hath ascended  
And filled America from sea to sea!

II.

We praise thee for thy present, Alma Mater!  
Today thy Children look to thee for bread!  
Thou leadest them to dreams and actions  
splendid!  
The hunger of their souls is richly fed!

III.

We praise thee for thy future, Alma Mater!  
The vista of its glory gleameth far!  
We ever shall be part of thee, great Mother!  
There thou wilt be where e'er thy children  
are!

CHORUS:

Olive Green and Blue, we love thee!  
Pledge we now our fealty true  
Where the trees are ever greenest,  
Where the skies are purest blue!  
Hear us now, O Tulane, hear us!  
As we proudly sing to thee!  
Take from us our hearts' devotion!  
Thine we are, and thine shall be!



## *La Louisiane*

FAMOUS FRENCH  
RESTAURANT

•  
*Established 1881*  
•

La Louisiane is the most enjoyable place to dine in New Orleans; it is the center of social and business activity. La Louisiane has been famous for fifty-seven years for its many special dishes which are truly representative of the best French and Creole cooking.

*Available for*

Feature and Sorority Dances, Banquets  
and other Social Functions.

725 IBERVILLE ST.  
Between Royal and Bourbon  
Telephone MAGNOLIA 4664

**D** Equipment for all sports...

**U** *Specialists in all types of*  
**N** *school athletic*  
**L** *supplies*  
**A**

**P** Sporting Goods Co., Inc.  
138 Carondelet Street  
MAGNOLIA 5891

---

---

# W S M B

occupies a 50-yard line seat at all Tulane football games to bring you Bill Brengel and his colorful play-by-play account of every happening.

For those unfortunate enough to miss the game, W S M B invites you to tune in for quick, accurate details.

•

# W S M B

(1320 KC)

*The Red Network  
of the National Broadcasting Company*

---

---





*"Lissen, Pilschultzki—I don't care HOW much your girl friend admires your new Godchaux Hickey-Freeman suit . . . the university expects you to play football in a uniform!"*

★ Pilschultzki's girl friend, like thousands of smart women you'll see in Tulane Stadium today, wears EVERYTHING FROM GODCHAUX'S.



# TULANE



UNIVERSITY  
SQUAD





# TULANE ROSTER

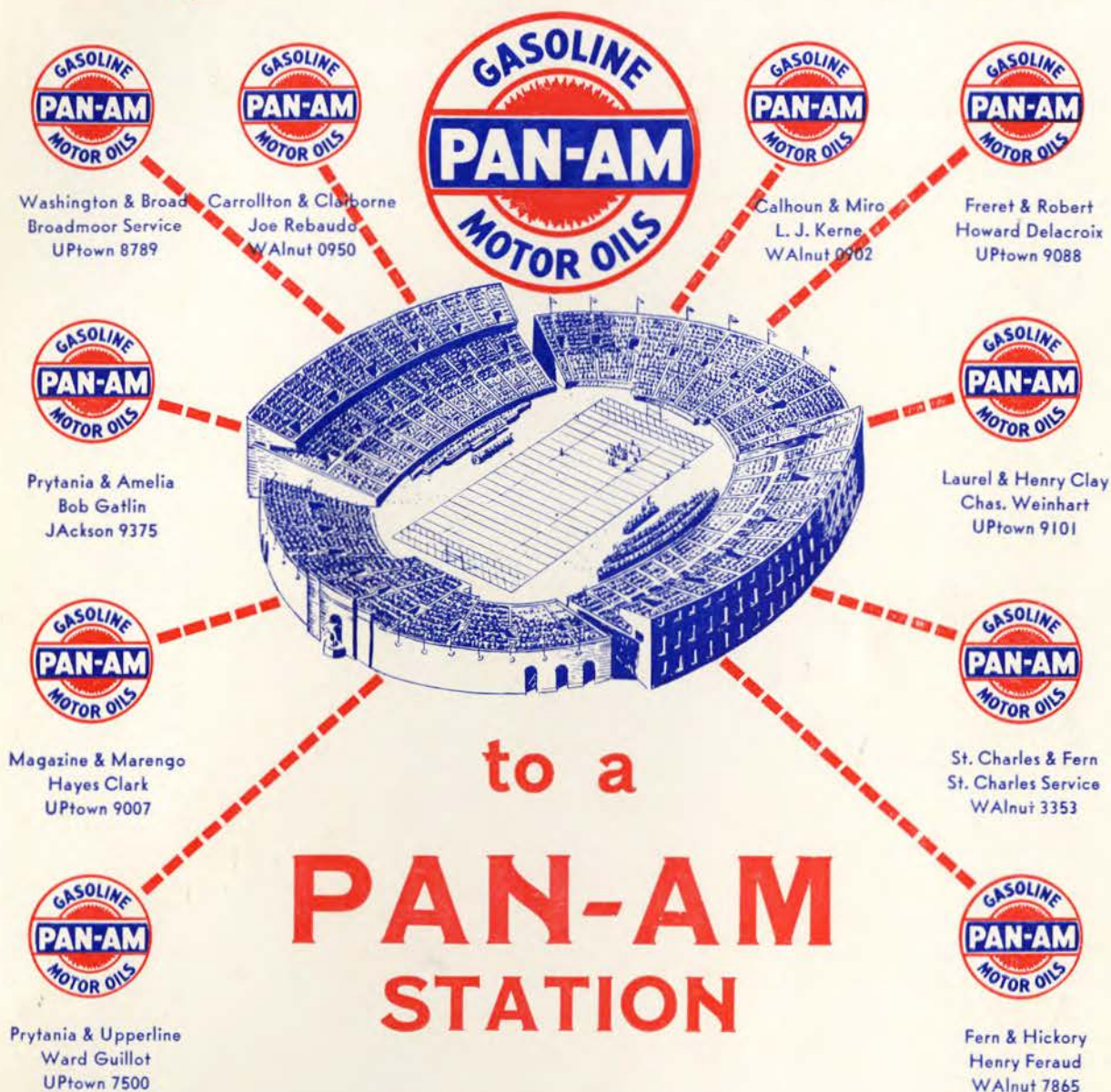
18—Banker, Burton "Buddy"	Lake Charles, La.	HB	187	3
24—Sims, John	Delhi, La.	HB	188	1
25—Glass, Tom	New Orleans, La.	QB	193	1
27—Krobert, Bernard	Beaver Dam, Wisc.	C	190	1
28—Dwyer, James	New Orleans, La.	G	190	1
29—Wolbrette, Henri	Shreveport, La.	G	207	1
30—Block, Charles	Gary, Ind.	C	197	1
31—Owens, John	New Orleans, La.	G	203	1
32—Burwick, Norman	Port Arthur, Texas	G	200	1
34—Rexer, Freeman	Houston, Texas	E	185	1
35—Dufour, Charles	Shreveport, La.	T	206	1
36—Stern, Leonard	Camden, Ark.	FB	193	1
37—Vanzant, Joseph	Houston, Texas	E	173	1
38—Abrams, John	New Orleans, La.	G	177	1
39—Thomas, Manuel	Wheeling, W. Va.	G	188	1
40—Ely, James	Shaw, Miss.	HB	187	1
41—Collins, Reynolds "Rip"	Baton Rouge, La.	C	223	1
42—McCarron, Joseph	New Orleans, La.	E	188	1
43—Butler, Monette	Oak Grove, La.	FB	173	3
44—Krueger, Paul (Capt.)	Gary, Ind.	QB	169	3
45—Grush, Robert	New Orleans, La.	QB	185	1
46—Thibaut, James	New Orleans, La.	FB	195	1
47—Hays, Harry	San Angelo, Texas	HB	166	2
48—Marmillion, Norman	Ponchatoula, La.	HB	170	2
49—Gloden, Fred	Dubuque, Iowa	FB	186	2
50—Nyhan, Stan	Waterloo, Iowa	QB	183	3
51—Sauer, Leonard	Kildare, Okla.	FB	183	3
52—Bodney, Albert "Al"	Gary, Ind.	E	186	2
53—Jaubert, Warren	New Orleans, La.	T	200	3
54—Micelle, John	Lake Charles, La.	E	180	1
55—Hickey, W. "Cy"	New Orleans, La.	E	175	2
56—Mullin, Harold "Moon"	Bogalusa, La.	E	195	1
57—Smith, St. John	New Orleans, La.	HB	167	1
58—Eason, Henry	New Orleans, La.	QB	170	1
59—Slayton, Nelson	Memphis, Tenn.	HB	176	1
60—Kellogg, Bob	Wynne, Ark.	HB	165	2
61—Cassibry, Fred	Gulfport, Miss.	HB	191	2
63—Brinkman, William	New Orleans, La.	E	191	2
65—Gentling, Phil	Rochester, Minn.	G	177	1
66—Flower, Henry	New Orleans, La.	C	193	2
67—Brekke, Fred	New Richmond, Wisc.	T	211	2
68—English, Gordon	Midland, Texas	E	200	1
69—Groves, Claude	Ft. Smith, Ark.	G	217	2
70—Clay, George	Meridian, Miss.	G	208	2
71—McCollum, Harley	Stillwell, Okla.	T	235	2
72—Bentz, Roman	Horicon, Wisc.	T	230	1
73—DeFraites, Emanuel	New Orleans, La.	E	180	2
74—Wenzel, Ralph	Tucker, Ark.	E	212	3
75—Dailey, Carl (Alt. Capt.)	Balboa, C. Z.	G	185	3
76—White, Millard	Arkansas City, Kans.	T	212	3
77—O'Boyle, Tom	Gary, Ind.	G	209	2
78—Golomb, C. "Pete"	Oshkosh, Wisc.	E	207	2
79—Blandin, E. "Ernie"	Keighley, Kas.	T	235	1
80—Johnson, Owen	Peru, Ind.	C	205	1
82—Glass, Bob	Massillon, Ohio	HB	193	1
84—Mandich, Peter	Gary, Ind.	C	193	1
85—Tittle, Jack	Marshall, Texas	QB	200	1
87—Comer, Martin	Gary, Ind.	E	197	1
96—Kirchem, W. "Bill"	New Orleans, La.	T	215	3

# NORTH CAROLINA ROSTER

30—Myers, Claude	Danville, Va.	G	178	1
31—Jones, Jimmy	Norwalk, Conn.	T	195	1
32—Saylor, Frank	Winston-Salem, N. C.	G	175	1
33—Sieck, Dick	New York City	T	198	2
36—Amoss, Harold	Greenwich, Conn.	HB	150	2
39—Baker, Don	Westbury, N. Y.	HB	170	2
41—Benton, Horace (Red)	Wilson, N. C.	C	170	1
43—Jones, Jack	Asheville, N. C.	C	165	1
44—Megson, Ed	Glastonburg, Conn.	G	182	3
46—Faircloth, Bill	Clinton, N. C.	G	190	1
47—Doty, Frank	West Orange, N. Y.	E	186	2
48—Blalock, Bill	Charlotte, N. C.	G	160	3
49—Sadoff, Sid	Brooklyn, N. Y.	FB	195	2
50—Forrest, Ernest (Red)	Winston-Salem, N. C.	E	170	3
51—Spransy, George	Durham, N. C.	T	200	1
52—Abernethy, LeRoy	Asheville, N. C.	G	190	3
53—Woodson, Jim	Salisbury, N. C.	G	180	3
55—Slotnick, Leo	Chelsea, Mass.	HB	162	3
57—Bobbitt, Mike	Greensboro, N. C.	HB	180	2
58—Kline, Chas. (Chuck)	Carthage, N. C.	E	180	3
60—Smith, Bob	Chapel Hill, N. C.	C	185	2
61—Patterson, Allen	Charlotte, N. C.	HB	170	1
62—Thompson, Paul	Wadesboro, N. C.	HB	175	3
63—Baker, Charles	Greensboro, N. C.	HB	180	1
65—Kimball, Gates	Winston-Salem, N. C.	T	200	2
67—Radman, George	Lorain, Ohio	HB	175	2
68—Siewers, Christian	Winston-Salem, N. C.	T	215	1
71—Idol, Charles	High Point, N. C.	FB	175	2
72—Little, Bill	Asheville, N. C.	HB	170	2
73—Moynihan, Ed	New York City	T	220	1
74—Ralston, George	Harrisburg, Pa.	C	165	3
75—Suntheimer, Carl	Hatboro, Pa.	C	185	1
76—Elliot, John (Pinky)	Charlotte, N. C.	E	170	1
77—O'Hare, Frank	New York City	QB	173	1
78—Hermson, Bob	Brooklyn, N. Y.	T	205	2
80—Slagle, Chas. (Chuck)	Springfield, Ohio	G	200	3
81—Sheek, Jim	Mocksville, N. C.	T	240	1
82—Stallings, Fred	Reidsville, N. C.	E	180	1
83—Crone, Jimmy	Goldsboro, N. C.	C	165	1
86—Richardson, Stewart	Macon, Ga.	E	185	1
87—Severin, Paul	Natrona, Pa.	E	187	2
88—Nowell, Gwynn	Raleigh, N. C.	T	190	1
89—Stoinoff, Bob	Sanford, Fla.	G	200	1
90—White, Dick	Shaker Hts., Ohio	T	195	1
91—Mallory, Jim	Lawrenceville, Va.	E	175	2
92—Stirnweiss, George	New York City	QB	177	3
93—Lalanne, Jim (Sweet)	Lafayette, La.	QB	165	2
94—Brantley, Julian	Greensboro, N. C.	G	200	2
95—Connor, Roy Lee	Shelby, N. C.	HB	190	1
97—Dunkle, Harry	Lock Haven, Pa.	FB	198	1



only a few yards to go...



to a

**PAN-AM  
STATION**



(Other Pan-Am Stations conveniently located  
in all parts of the City.)



# Camel

**— MORE PLEASURE  
PER PUFF — MORE PUFFS PER PACK**

**PENNY  
FOR PENNY  
YOUR BEST  
CIGARETTE  
BUY**



Copyright, 1939, R. J. Reynolds Tobacco Company, Winston-Salem, N. C.



**Long-Burning  
Costlier Tobaccos**

**By burning 25% slower than the average  
of the 15 other of the largest-selling  
brands tested—slower than any of them—  
CAMELS give a smoking *plus* equal to**

**5 EXTRA SMOKES  
PER PACK**