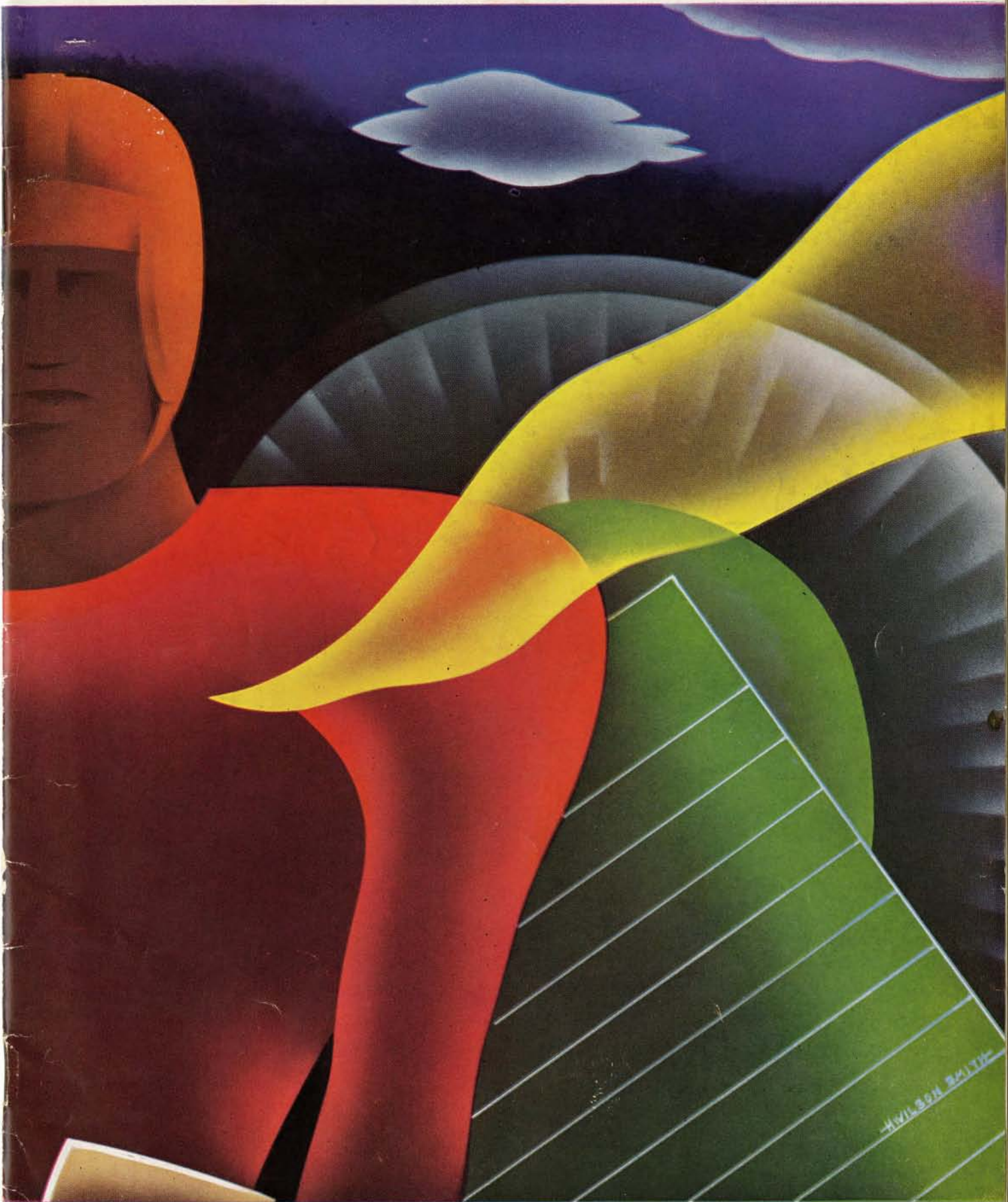


T U L A N E



HILSON SMITH

G E O R G I A T E C H

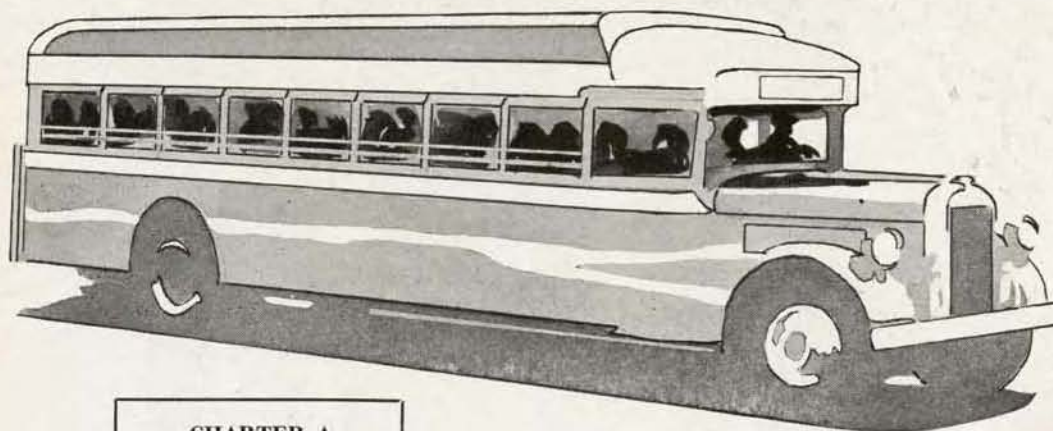
PRICE 25c

10-21-33

FOLLOW THE TEAM



BY MODERN MOTOR COACH . . IT COSTS LESS . . IT'S MORE FUN



CHARTER A SPECIAL COACH

Charter a special, private bus, just like your team does. Divide the cost among your passengers and save over one-half. Make your own schedules, name your own routes, leave from the frat house and drive right into the stadium, or to the prom. It's loads of fun—and ridiculously cheap. Just phone for rates.

A LUMNUS, senior, junior, frosh . . . and all the rest, are going to the games this year in the luxurious comfort

of a modern motor coach. Deeply cushioned reclining chairs, clean linen seat covers, porter service, ice water—even radio—help make your trip more enjoyable. And you save enough through low, every day fares to buy your stadium tickets.

Winning teams travel to most of their games over the lines listed below. Frequent departures from centrally located terminals take you over the shortest routes to almost everywhere . . . veteran drivers take you through those heavy traffic lines during football season in speed and safety.

**SOUTHEASTERN GREYHOUND LINES ♦ COLONIAL LINES, Inc.
QUEEN CITY LINES ♦ SERVICE STAGES
SOUTHEASTERN STAGES**



For a **CLEAN, FAST GAME-** *Fulton* **Gridiron Covers**



PALMER STADIUM
View of Princeton University Gridiron protected by FULTON Waterproofed Gridiron Cover.

University of **NORTH CAROLINA** **To Use Fulton Gridiron Cover**

Well up among the leaders in giving grid followers their money's worth in good games and keeping gate receipts high, the University of North Carolina has arranged this season for a Fulton field cover as insurance against wet grounds.

Whatever the weather during the whole week before the game the Fulton grid cover assures a dry field for play.

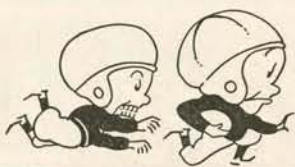
The field can be kept covered until a few minutes before the game. Fulton covers . . . easy to handle . . . easy to store.

*Investigate Fulton Gridiron Covers
for your Alma Mater this season*

Fulton Bag & Cotton Mills

Manufacturers Since 1870

Atlanta St. Louis Dallas
Minneapolis Brooklyn New Orleans Kansas City, Kan.



The TUTWILER Birmingham



The ANSLEY Atlanta



The JEFFERSON DAVIS Montgomery

The
Dinkler
Hotels

In ATLANTA - The ANSLEY

IS THE SMART COLLEGE HEADQUARTERS

The ANSLEY, one of Atlanta's newest and finest hotels, admirably located in the heart of the city's shopping and theatre districts, is truly an address of distinction.

Over four hundred rooms, each with bath. Splendid coffee shop featuring popular priced foods. Garages less than one block from hotel and numerous features designed to make your stay at the Ansley more comfortable.

CARLING DINKLER, *President*
HENRY C. HEINZ, *Treasurer*

"Dispensers of True Southern Hospitality"

Radio in Every Room

COFFEE SHOPS
Reasonable Prices
Good Food and Best
of Service



The ANDREW JACKSON, Nashville



EDDIE LAWS
Co-Captain

Football Coaching Staff, Athletic Association.....	5
Welcome Tulane by Sonny Kuniansky.....	7
All Time Football Records.....	8
Tech Songs.....	9
In Memoriam.....	11
Photos of Tech Team.....	13
Information on Members of Tech Team.....	15
Officials for Today's Game.....	17
Tech Line-up.....	18
Tulane Line-up.....	19
Tech Schedule and Team Photos.....	21
Information on Members of Tulane Team.....	23
Photos of Tech Team.....	25
Photos of Tulane Team.....	27
Tech Football Records of All Time.....	28
Tech Photos.....	29
Alumni Page.....	31
Summary of Principal Penalties.....	32
Principal Rule Changes for 1932 and 1933.....	33
Illustrations of Referees' Signals.....	35



BOB THARPE
Co-Captain

NINETEENTH ANNUAL FOOTBALL PROGRAM

Issued by
GEORGIA TECH ATHLETIC ASSOCIATION

Copyright 1933

"PUP" PHILLIPS

EVERETT STRUPPER



MASSACHUSETTS MUTUAL LIFE INSURANCE CO.

HARRY I. DAVIS, *General Agent*



1406 CITIZENS & SOUTHERN BANK BUILDING
PHONE WALNUT 3865 ATLANTA, GEORGIA

Hotel Georgian Terrace

PEACHTREE AND PONCE DE LEON

Four blocks from Grant Field



Atlanta's Most Exclusive Hotel



Rooms with bath \$2.50 to \$4.00
Rooms with bath for 2 persons \$4.00 to \$6.00

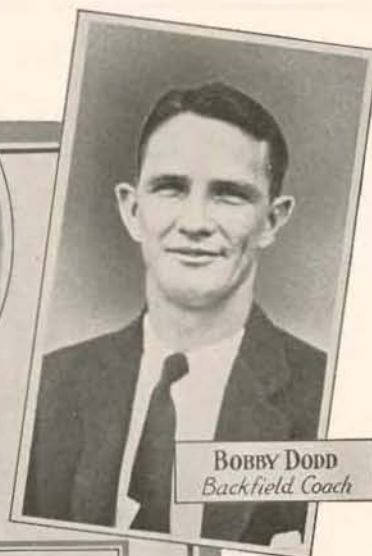
Special rates offered on weekly, monthly and yearly arrangements



JACK CANNON
Line Coach



MIKE CHAMBERS
Trainer



BOBBY DODD
Backfield Coach

Football Staff



MAC THARPE
Freshman Coach

W.A. ALEXANDER
Head Coach



H.W. ROBINSON
End Coach

Kenneth Thrash

Assistant Coaches

Roy McArthur

GEORGIA TECH ATHLETIC ASSOCIATION

FACULTY MEMBERS

DR. M. L. BRITTAIN, *Chairman*
PROF. FLOYD FIELD, *Secretary and Treasurer*
DEAN W. V. SKILES
DR. J. B. CRENSHAW

PROF. A. H. ARMSTRONG, *Faculty Chm. Athletics*
DR. G. H. BOGGS
PROF. T. W. NOEL
W. A. ALEXANDER, *Advisory Member*

ALUMNI MEMBERS

OSCAR DAVIS

R. T. JONES, JR.

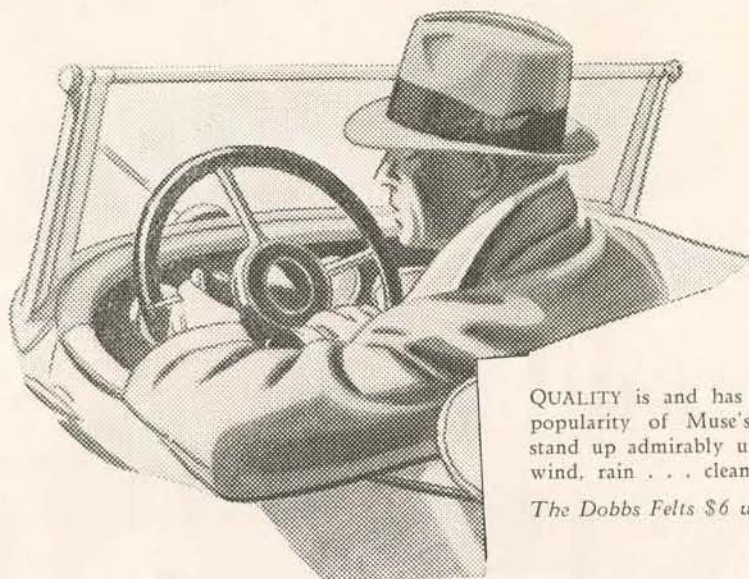
GEORGE W. MCCARTY, JR.

STUDENT MEMBERS

President Student Council

Editor of The Technique

Captain of Football Team



QUALITY is and has always been the reason for the popularity of Muse's Dobbs Hats. These fine hats stand up admirably under the everyday strain of sun, wind, rain . . . cleaning and blocking.

The Dobbs Felts \$6 up New Berg Felts at \$3.50

The Whole World is Hurrying to Return to Quality
Muse's never left it!

GEORGE MUSE CLOTHING CO.

"The Style Center of the South"

Peachtree : Walton : Broad

"The Green Wave"

BY SONNY KUNIANSKY

The noise, folks, is Tulane's Big Green Wave that is splashing and splurging around before they meet the Jackets out here on Grant Field this afternoon. It seems that the Tech game has always caused that Big Wave to froth and foam with all its fury and today's game promises to be no exception.

The rivalry between the Jackets and the Greenies has, indeed, been a colorful one. First one school would win a streak of games and then the other, but every game has always been spectacular, filled with thrills and hard fought. The past few years have found the Green Wave dominating the field, but it seems that the passing of the great Don Zimmerman who, incidentally, about this time last year pulled this same game right out of the fire for Tulane, has left a gap that Coach Ted Cox has been unable to fill. The Flying Dutchman's shoes were mighty big and as yet no one has materialized to fill them quite completely. There is no doubt, however, that we'll see a good machine out there in green this afternoon.

Of course you'll miss the spectacular play of the Don, his bullet-like submarine passes, the tenseness as he stood poised with the ball, for one could never tell just what he would do. There will be no Nollie Felts to charge bull-like through the Tornado forward wall, nor will there be that great individual player and all-american, Jerry Dalrymple, to cavort in the Jacket backfield, but there will be that same spirit of rivalry, the same eagerness on the part of the players and in addition there will be the Jackets' determination to avenge the defeats of the past few years.

The Greenies have fared badly this fall, but yet we find among their players some of the best in the South. Lodrigues, Robinson, Westfeldt, the Tessier brothers the brilliant Menge, and the rest

of their coterie of players with their quick shifting formations and deceptive plays will give the Tornado a full afternoon of entertainment, and despite all the pre-game predictions, it might be too much entertainment for our boys.

As for you Tornado fans, well—it appears that your day has come. The Jackets at last look like a real football team. The Kentucky defeat did not break the team's morale as was predicted, but inspired them to play a spectacular, brilliant and courageous game to down a wrought up Auburn team last week. In other words the boys have faced the test and have marched right through the flames.

Tech has been fortunate. The squad is in splendid shape considering the tough opposition they have already faced. Skippy Roberts, Scarface Phillips, Wink Davis and Sun-Dial Martin will, in all probability, be the starting line-up for the backfield. These boys have shown the goods and their play last week was right at the top of the heap. It's a real pleasure to watch the "big and little of it," Phillips and Roberts, do their ball totin' act out there. These two boys are getting to be a real jam-up backfield combination and a dangerous threat to any team as a pass attack team.

Tech's forward wall will be well fortified. The Jackets are blessed with a host of men who have all passed their first stages of line play and can now present an experienced front. Pee-wee Williams, Eddie Laws, Jimmie Slocum and Bob Tharpe have had their praises sung far and wide and there has been a reason for all the singing. There is no doubt about it—the line is plenty good.

The gamblers will favor the Jackets, but those who know say that you just can't tell and—what's more—you can't, not about a Tech-Tulane game!

**Dickey-Mangham
Company, Inc.**
*Insurance
Mortgage Loans*
Grant Building

**YELLOW
JACKET**
NORTH AVENUE and
SPRING STREET

Standard Pharmacy
(Cox & White)
**Most Convenient
Drug Store for Men**
Corner North Avenue
and Luckie Street

VARSIITY
DOG AND SANDWICH
SHOP



55 North Ave. N. W.

**C. D. LEBEY
& CO.**

Loan Representative
Metropolitan Life
Insurance Co.



Trust Co. of Georgia
Building

T. L. JOHNSON
ATLANTA BLUE PRINT
& SUPPLY CO.

*Drawing Material, Engineering
Equipment, Reproduction
Work of All Kinds*

112 Spring St., N. W. Second Floor

Good Food
at
Tech Commissary
on
Cherry Street

**IN THE GAME OF
BUYING**

You'll always be the
winner if you follow
the signals which lead
you to

THE TECH SHOP
NORTH AVENUE

DUNLAP & Co.
Established 1895



**General Insurance
and
Mortgage Loans**



CANDLER BUILDING

Record Scoring Plays and Players In Foot Ball of All Time

LONGEST—

COMPILATIONS OF PARKE H. DAVIS

	Yards
Run from Scrimmage	
Wyllys Terry (Yale) v. Wesleyan, 1884.....	*115
Run-back of a Kick-off	
Edmund Jack Burke (Miss.) v. Alabama.....	109
Run-back of a Punt	
Benj. Boynton (Williams) v. Hamilton, 1920.....	101
Scoring Forward Pass	
Bradbury Robinson to John Schneider (St. Louis) v. Kansas, 1906.....	87
Run with a Complete Pass	
Rupert O'Keefe from Joseph Leary (Marquette) v. Alabama Poly, 1929.....	†88
Run with an Intercepted Pass	
B. H. Hutchinson (Chicago) v. Wisconsin, 1916.....	105
Run with Captured Fumbles	
H. M. Coleman (Wisconsin) v. Minnesota, 1891.....	105
Sanford B. Hunt (Cornell) v. Carlisle, 1901.....	105
Run Following a Blocked Kick	
Sanford B. White (Princeton) v. Harvard, 1911.....	95
Field Goal from Placement	
James T. Haxall (Princeton) v. Yale, 1882.....	65
Field Goal by Drop-kick	
Mark Payne (Dakota Wesleyan) v. North- west Normal.....	63
Punt	
Robert Parnham (Georgia Tech) v. Georgia, 1927.....	80

PLAYER SCORING MOST—

Points in One Season	
James Thorpe (Carlisle Indians), 1912.....	198
Touchdowns in One Season	
Robert Leach (Virginia Military Institute), 1920.....	26
Field Goals in One Season (Drop-kicks)	
Forest Peters (Montana Freshmen) v. Billings Poly, 1924.....	†17
Charles E. Brickley (Harvard), 1913.....	13
Goals Following Touchdowns (One Game)	
J. Preas (Georgia Tech) v. Cumberland, 1921.....	16
Field Goals from Place-kicks (One Game)	
E. C. Robertson (Purdue) v. Rose Poly, 1900.....	7
Field Goals by Drop-kicks (One Game)	
B. W. Trafford (Harvard) v. Cornell, 1890.....	5
Charles Brickley (Harvard) v. Yale, 1913.....	5
Walter Eckersall (Chicago) v. Illinois, 1905.....	5
Walter Eckersall (Chicago) v. Nebraska, 1906.....	5

* From 5 yards behind goal line, kick formation.

† Won the game.

‡ Also record for one game.

A FRIEND

TECH SONGS



GEORGIA TECH ALMA MATER SONG

Music by FRANK ROMAN
Words by I. H. GRANATH

Oh Sons of Tech arise, behold!
The banner as it reigns supreme,
For from on high the White and Gold
Waves in its triumphant gleam.
The spirit of the cheering throng
Resounds with joy revealing
A brotherhood in praise and song,
In the memory of the days gone by.
Oh Scion of the Southland
In our hearts you shall forever fly.

We cherish thoughts so dear for thee,
Oh! Alma Mater in our prayer,
We plead for you in victory,
And then in victory we share!
But when the battle seems in vain
Our spirit never falters,
We're ever one in joy or pain
And our union is a lasting bond,
Oh! may we be united
Till the victory of life is won.

RAMBLING WRECK SONG

Oh! If I had a daughter, Sir,
I'd dress her in White and Gold,
And put her on the Campus
To cheer the Brave and Bold.
But if I had a son, Sir,
I'll tell you what he'd do
He would yell to hell with (Georgia)
Like his Daddy used to do.

CHORUS

I'm a rambling wreck from Georgia Tech
And a helluva engineer,
A helluva, helluva, helluva, helluva,
helluva engineer.
Like all jolly good fellows
I'll drink my whiskey clear;
I'm a rambling wreck from Georgia Tech
And a helluva engineer.

UP WITH THE WHITE AND GOLD

By FRANK ROMAN

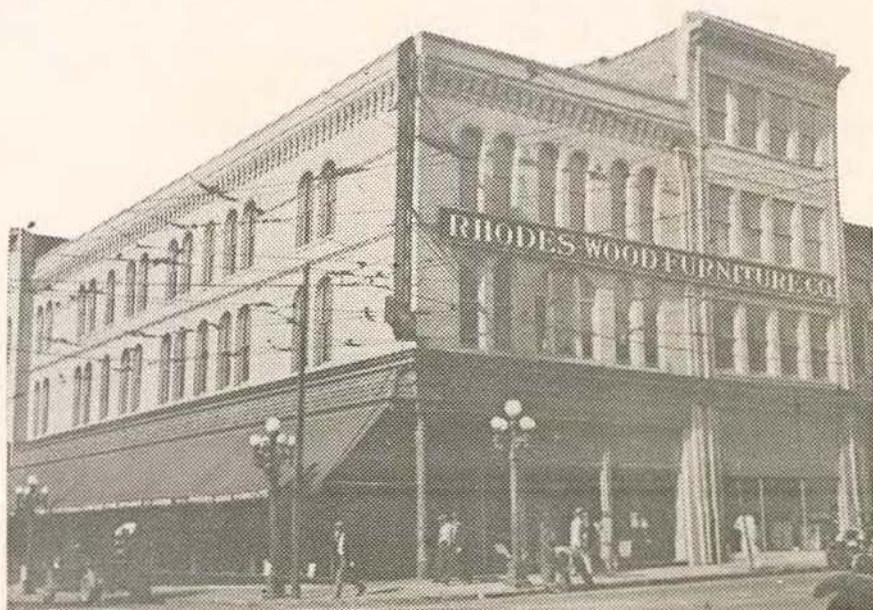
Just one big yell for White and Gold,
And then we'll raise that banner bold,
A battle flag that can't be beat.
For—(Georgia's)—team it means defeat.
We'll fight like h—— for victory;
Pull me down the (red)—and (black)—you see.
For Georgia Tech will win today;
We are all glad to say:

CHORUS

Oh well it's up with the White and Gold,
Down with the—(red)—and—(black)
Georgia Tech is out for a victory.
We'll drop our battle axe on—(Georgia's)—head,
When we meet her our team is sure to beat her,
Down on the old farm there'll be no sound
Till our bow-wows rip through the air;
When the battle is over—(Georgia's)—team will
be found
With the Yellow Jackets swarming round.

IT IS FITTING . . .

That one of Tech's star athletes, when deciding on his business career, should cast his lot with a store that has faithfully served the Atlanta public for the past thirty years. The Rhodes-Wood Furniture Company has endeavored at all times to present the highest quality furniture, and to offer it to their customers at the lowest possible prices.



"Monk" Neblett NOW WITH RHODES-WOOD FURNITURE CO.

Entering Tech in the Fall of 1929, "Monk" began his four years of football as center on the Freshman Team. He played this position for the Varsity during the seasons of 1930-1931-1932, and was captain of the Yellow Jackets' 1931-1932 Teams. He is the first man to have the honor of captaincy bestowed upon him by his team-mates of Georgia Tech for two successive years. He is a member of the Sigma Nu Fraternity, Anak Society, Bulldog Club, Skull and Key, and Inter-Fraternity Council—and now he is a member of the sales force at Rhodes-Wood.

YOU WILL LIKE TO BUY AT THIS STORE

"Monk" extends you an invitation to visit him at his new location, and tells you why you will like to buy at this store.

WE always try to present the right thing at the right time—always in pleasing variety—always in the season for which it was purchased. OUR reputation for quality makes you come again and again. WE try to delight our customers with the enthusiasm and friendliness we put into this absorbing game of business. WE select furniture of quality, and sell it at the lowest possible prices. WE extend easiest of credit terms, whereby you may completely furnish your home for just a small amount of Cash. SHOPPING SAFELY, DEPENDABLY, and FASHIONABLY DOESN'T COST YOU A PENNY EXTRA AT



WHITEHALL AT MITCHELL



H. C. NEBLETT
Captain 1931-1932



In Memoriam
J. D. Rhodes

THE HOTEL WINECOFF WELCOMES YOU

Located nearer than anything to everything
on Atlanta's most famous thoroughfare
PEACHTREE STREET

Dine With Us

In one of the most popular Coffee Shoppes
in the South
Ventilated by Purified Air
OPEN DAY AND NIGHT

"A Robert R. Meyer Hotel"

JOHN A. DUNWODY, MANAGER



"SPALDING football equipment
certainly is popular, eh Joe?"*

*Stores in all large cities.

EXPERT LAUNDRY SERVICE FOR TECH STUDENTS



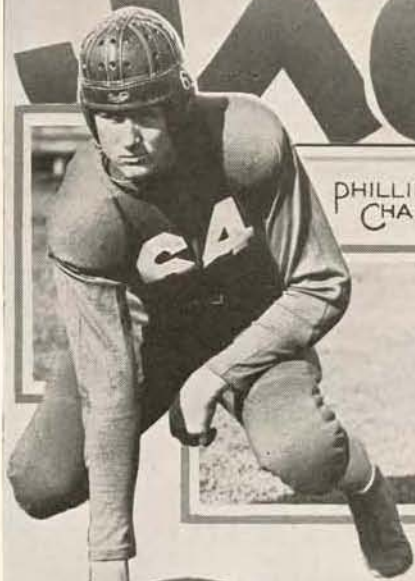
Prompt Service . . . Low Cost
Excellent Work



WHITE AND GOLD LAUNDRY

Located in Basement of Y. M. C. A. Building

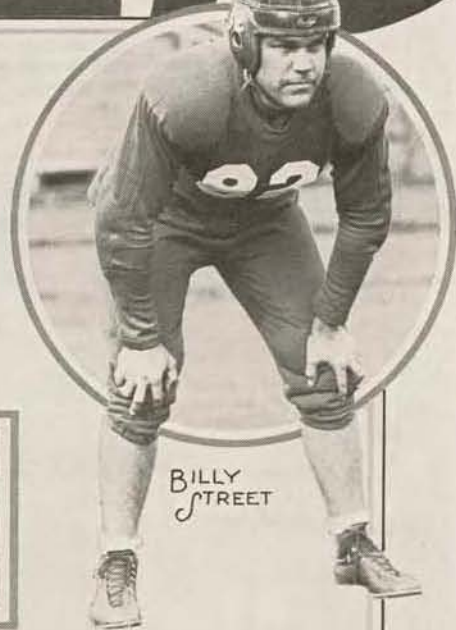
JACKETS



PHILLIP
CHANCE



"PEE WEE" WILLIAMS



BILLY
STREET



HOOT
GIBSON



OSCAR
THOMPSON



LEFTY
EUBANKS



SHORTY
ROBERTS

Remember Syd Williams?

...Tech's '29-'31-'32 end
who thrilled thousands...



Syd's now starring in our
clothing department and he
knows his style stuff, too

ZACHRY

87 PEACHTER ST., N. E.

ATLANTA'S STYLE STORE FOR YOUNG MEN


Information on Members of the Tech Team

NO.	NAME	CLASS	POS.	WT.	HT.	HOME ADDRESS
51	Pool, J. M.	Sr	C	163	6	Byron, Ga.
52	Stacy, Gilbert	So	E	175	6	Atlanta, Ga.
53	Williams, C. W.	Jr	T	207	6-1	Little Rock, Ark.
54	Laws, E. E.	Sr	G	213	5-8	Columbus, Miss.
55	Wilcox, E. D.	Jr	G	183	5-10	Tyler, Texas
56	Tharpe, R. H.	Se	E	183	6	Moultrie, Ga.
57	Wilcox, J. R.	So	G	184	5-10	Tyler, Texas
58	Gibson, E. H.	So	E	170	6	Atlanta, Ga.
60	Morris, Mutt	Jr	G	198	5-11	Atlanta, Ga.
61	Phillips, D. J.	Jr	F	189	5-11	Statesville, N. C.
62	Eubanks, R. W.	So	T	201	5-11	Macon, Ga.
63	Chance, P. M.	So	T	199	6-4	Floral, Ala.
64	Brady, C. C.	Se	T	198	6	Leesburg, Fla.
66	Brittain, J. F.	So	T	172	5-11	Birmingham, Ala.
67	Lackey, J. D.	Se	G	184	6	Statesville, N. C.
68	Spradling, T. L.	Se	E	151	5-7	Atlanta, Ga.
69	Warner, R. J.	Jr	G	179	5-11	Hickory, N. C.
70	Thompson, O. H.	So	E	170	5-11	Atlanta, Ga.
71	Slocum, J. R.	Se	E	172	5-11	Macon, Ga.
73	McKinley, J. E.	So	H	150	6	Decatur, Ga.
74	Petersen, W. B.	Sr	Q	161	5-11	Chattanooga, Tenn.
75	Roberts, C. H.	Jr	Q	129	5-2	Atlanta, Ga.
76	Ferguson, J.	Sr	H	159	5-10	Albany, Ga.
77	Galloway, C. M.	Se	H	166	5-10	Greenville, S. C.
78	Martin, W. S.	So	H	172	6	Chester, S. C.
79	Davis, W. A.	Se	H	162	5-8	Atlanta, Ga.
80	Boyd, A. M.	So	H	160	5-9	Atlanta, Ga.
81	Perkerson, J. G.	Jr	H	155	5-10	Atlanta, Ga.
82	Street, W. O.	So	F	165	5-8	Atlanta, Ga.
83	Katz, Morris	So	E	165	5-10	Atlanta, Ga.
84	Dean, N. C.	Jr	F	192	6-1	Meridian, Miss.
85	Shaw, C. F.	Jr	C	190	6-1	Memphis, Tenn.
86	Lindsey, Bud	So	T	200	6	Macon, Ga.



INSURANCE

**ADAMS--
HOLMES & THARPE
INC.**



*Trust Company of Georgia Bldg.
Atlanta, Ga.*

FOX

The
**LAST
WORD**

THE SHOWPLACE of the SOUTH!

Now— **MAURICE CHEVALIER**
—IN—
"The Way to Love"

With
ANN DVORAK
EDWARD EVERETT HORTON
New Songs New Romance
And a New Girl Friend!



**THE PICK OF THE BEST PICTURES FROM
FIVE OF THE SEVEN MAJOR PRODUCERS!**

OFFICIALS FOR TODAY'S GAME

BLACK, JACK	REFEREE	Davidson
KALKMAN, G. W.	UMPIRE	Sh. Louis Univ.
CHADWICK, W. T.	LINESMAN	
DONAHUE, M. J.	JUDGE	Auburn
TICHENOR, W. R.	ASST. LINESMAN	Auburn

METRO-GOLDWYN-MAYER'S
6 STAR SKY ROMANCE
JOHN BARRYMORE HELEN HAYES
CLARK GABLE LIONEL BARRYMORE
MYRNA LOY ROBERT MONTGOMERY
NOW LOEW'S GRAND NOW

"NIGHT FLIGHT"

TECH LINE-UP

NO.	NAME	POSITION	NO.	NAME	POSITION
51	Pool	Center	70	Thompson	End
52	Stacy	End	71	Slocum	End
53	Williams	Tackle	73	McKinley	H'back
54	Laws	Guard	74	Petersen	Q'back
55	Wilcox, E. D.,	Guard	75	Roberts	Q'back
56	Tharpe	End	76	Ferguson	H'back
57	Wilcox, J. R.,	Guard	77	Galloway	H'back
58	Gibson	End	78	Martin	H'back
60	Morris	Guard	79	Davis	H'back
61	Phillips	F'back	80	Boyd	H'back
62	Eubanks	Tackle	81	Perkerson	H'back
63	Chance	Tackle	82	Street	F'back
64	Brady	Tackle	83	Katz	End
66	Brittain	Tackle	84	Dean	F'back
67	Lackey	Guard	85	Shaw	Center
68	Spradling	End	86	Lindsey	Tackle
69	Warner	Guard			

Chesterfield signal

TULANE LINE-UP

NO.	NAME	POSITION	NO.	NAME	POSITION
15	Born	H'back	56	Mintz	H'back
19	Hillyer	End	57	McDaniel	Q'back
20	Allain	Tackle	58	Boasberg	Tackle
32	Sundbery	End	59	Memtsas	End
36	Rea	Guard	60	Gould	Center
37	Nichols	H'back	61	Bryan	H'back
38	Henderson	H'back	62	Tessier	Guard
39	Menge	H'back	63	Paddock	Guard
40	Kyle	End	64	Bruno	F'back
41	Featherngill	Tackle	65	Hardy	End
42	Thomas	H'back	66	McIlhenny	Guard
43	Phillips	End	67	Page	Tackle
44	Westfeldt	End	69	Tessier	Tackle
45	Clark	End	70	Simon	Tackle
46	Loftin	F'back	71	Linam	F'back
47	Simons	H'back	72	Poitevent	Center
48	Robinson	Center	73	Ary	Tackle
49	Page	Q'back	74	Calhoun	Tackle
50	Roberts	H'back	75	Lodrigues	F'back
51	Henriques	Guard	76	Hall	End
52	Stroble	End	77	Sample	Guard
53	Schroeder	Guard	78	Lawson	Guard
54	Brownson	Q'back	79	Sproles	Tackle
55	Smither	Center	80	Thames	H'back



ROBERT AND COMPANY

INCORPORATED

Architects and Engineers

ATLANTA

ARCHITECTS
ENGINEERS
APPRAISERS
CONSULTANTS

TEXTILE
INDUSTRIAL
MUNICIPAL
POWER PLANTS

The G. T. A. A. and the Program Managers wish to thank our advertisers in and the purchasers of these programs for their generous co-operation. By way of rendering an account of their stewardship they take pleasure in stating that one hundred and forty-six different boys received grants from this fund.

G. T. A. A.

ATLANTA'S FINEST ENTERTAINMENT!

AT
ATLANTA'S MOST
CORDIAL THEATRE

After the Game Be Sure to See

"Walls of Gold"

KATHLEEN NORRIS' Sensational Novel

With

SALLY EILERS
NORMAN FOSTER
RALPH MORGAN

Also Selected Short Features

NOW PLAYING

Paramount
THEATRE
Balcony Seats Anytime, 25c



JACKETS



DAVE WILCOX

GEORGIA TECH'S

Home Schedule

Sept. 30—Clemson

Oct. 14—Auburn

Oct. 21—Tulane

Nov. 11—Florida

Nov. 18—Alabama

Nov. 25—Georgia

Dec. 2—Duke



EDDIE
LAWS



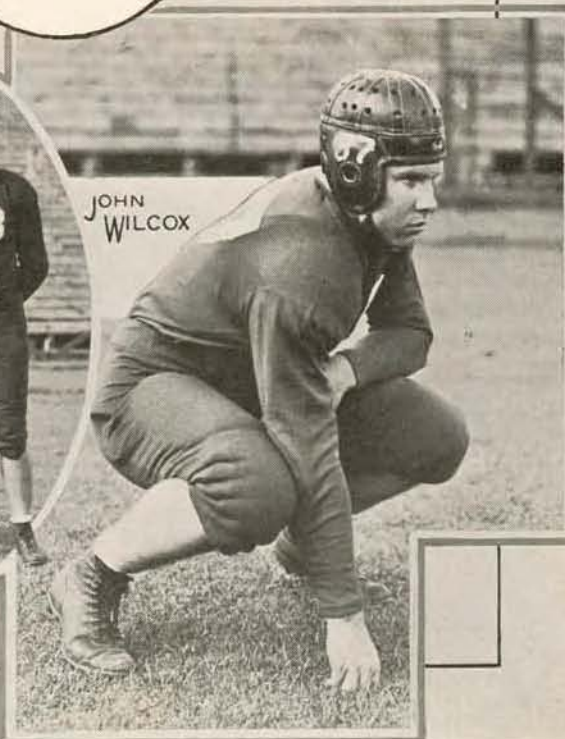
TARZAN
LACKEY



JOHN
POOL

CARL
SHAW

JOHN
WILCOX



1933

Swagger Style

Sports Wear
and
Equipment

You'll enjoy a visit to our exclusive Sports Wear and Sports Equipment Dept. Everything to play your favorite game with and in.

In CAMPUS WEAR

Some things are just right for Campus wear ---the things you see worn with a swagger of style that befits the

College Man . . . sweaters . . . knickers . . . jackets. These things, and your other clothing needs, will be found in attractive variety at Parks-Chambers.

PARKS-CHAMBERS, Inc.

37 - 39 PEACHTREE

The Choice
of All
College
Students!

ALL
SEATS
25c

**GEORGIA
THEATRE**



Hey Hey---TECH!

WELCOME VISITORS---TO ATLANTA AND
ATLANTA'S FAVORITE (*Oh Yes*
By Far) DRUG STORES



16 IN ATLANTA

"You Have to Pass Our
House to Get to
Your House"

CURB SERVICE

Lane
DRUG STORES

Elsewhere in the South:

AUGUSTA
GRIFFIN
JACKSONVILLE
KNOXVILLE
CHATTANOOGA

Information on Members of the Tulane Team

NO.	PLAYER	POS.	WT.	HT.	HOME
15	Born, Thos.	HB	160	5-8	New Orleans, La.
19	Hillyer, H. H.	E	158	5-10	New Orleans, La.
20	Allain, Daniel	T	180	6-	Patterson, La.
32	Sundbery, Frederick	E	165	5-10	Houma, La.
36	Rea, Edgar (Ike)	G	173	5-9	New Orleans, La.
37	Nichols, William	HB	168	5-8	Orlando, Fla.
38	Henderson, James	HB	152	5-7	Clarksdale, Miss.
39	Menge, Francis (Pete)	HB	165	5-8	New Orleans, La.
40	Kyle, Charles	E	166	5-11	New Orleans, La.
41	Featherngill, Wm.	T	199	6-2	Independence, Kas.
42	Thomas, Farrell	HB	170	5-10	Ft. Smith, Ark.
43	Phillips, Milto	E	174	5-10	New Orleans, La.
44	Westfeldt, Geo. (Sonny)	E	180	5-11	New Orleans, La.
45	Clark, Augustus (Gus)	E	181	6-	Macon, Ga.
46	Loftin, Joseph	FB	188	5-10	Baton Rouge, La.
47	Simons, Claude, Jr. (Monk)	HB	187	5-10	New Orleans, La.
48	Robinson, Homer	C	180	5-9	Lake Charles, La.
49	Page, Richard	QB	165	5-7	New Orleans, La.
50	Roberts, Floyd (Preacher)	HB	176	5-9	Stigler, Okla.
51	Henriques, Edouard	G	168	5-10	New Orleans, La.
52	Stroble, Chas. (Bunnie)	E	182	6-1	Covington, La.
53	Schroeder, William	G	185	5-11	Donaldsonville, La.
54	Brownson, B. C. (Lefty)	QB	172	5-10	New Orleans, La.
55	Smither, Chas.	C	182	5-11	New Orleans, La.
56	Mintz, Barney	HB	172	5-10	New Orleans, La.
57	McDaniel, John	QB	190	5-10	Camden, Ark.
58	Boasberg, Louis	T	179	5-11	New Orleans, La.
59	Memtsas, Harold	E	167	5-10	New Orleans, La.
60	Gould, Ernest	C	180	5-9	New Orleans, La.
61	Bryan, Howard (Bucky)	HB	170	5-10	Shreveport, La.
62	Tessier, George	G	191	5-10	New Orleans, La.
63	Paddock, Alfred	G	170	5-9	Ft. Smith, Ark.
64	Bruno, John	FB	172	5-7	New Orleans, La.
65	Hardy, Richard	E	188	6-	Hattiesburg, Miss.
66	McIlhenny, Paul	G	189	5-11	New Orleans, La.
67	Page, Cromwell (Piney)	T	187	5-11	Dover, Ark.
69	Tessier, Robert	T	208	6-	New Orleans, La.
70	Simon, Robert	T	184	6-2	New Orleans, La.
71	Linam, Albert (Tex)	FB	188	6-	Bay St. Louis, Miss.
72	Poitevent, Edward	C	200	6-1	New Orleans, La.
73	Ary, Roy	T	201	6-	Stigler, Okla.
74	Calhoun, Chas.	T	198	5-11	Bastrop, La.
75	Lodrigues, Stanley	FB	175	5-9	New Orleans, La.
76	Hall, Thos. (Whitey)	E	178	5-11	New Orleans, La.
77	Sample, William	G	205	6-	Shreveport, La.
78	Lawson, Thos.	G	230	6-1	New Orleans, La.
79	Sproles, Arthur	T	216	6-2	New Orleans, La.
80	Thames, Louis	HB	162	5-9	Natalbany, La.

FOLDERS — BOOKLETS — CATALOGS — NEWSPAPER CIRCULARS



General Printing of Highest Quality

To maintain the highest efficiency in the production of general printing the Lyon-Young Company is equipped with a most capable organization of men backed by modern mechanical equipment.

Whether it be the printing of the most simple one-color subject or a super-fine catalog in full color this organization may be depended upon to render the most expert workmanship.

Your Inquiry Is Invited

LYON-YOUNG PRINTING COMPANY

226-232 Luckie Street

Jackson 3428

ATLANTA

OFFICE FORMS — STATIONERY — CARDS — WINDOW SIGNS

JACKETS



CHICK
GALLOWAY



CHARLIE
BRADY



"WINK"
DAVIS



JIMMY
SLOCUM




TOM
SPRADLING

BOB
THARPE



"ROMANCE"
PETERSON



From the
SPEEDWAY
comes their *Stamina*
From the
SKYWAY
comes their *Style*

Startling New
STUDEBAKERS
OF 1934

YARBROUGH MOTOR COMPANY

STATE DISTRIBUTORS

560-568 W. Peachtree St., N. W.

Phones, Hemlock 4076-4077

ATLANTA, GEORGIA

TULANE



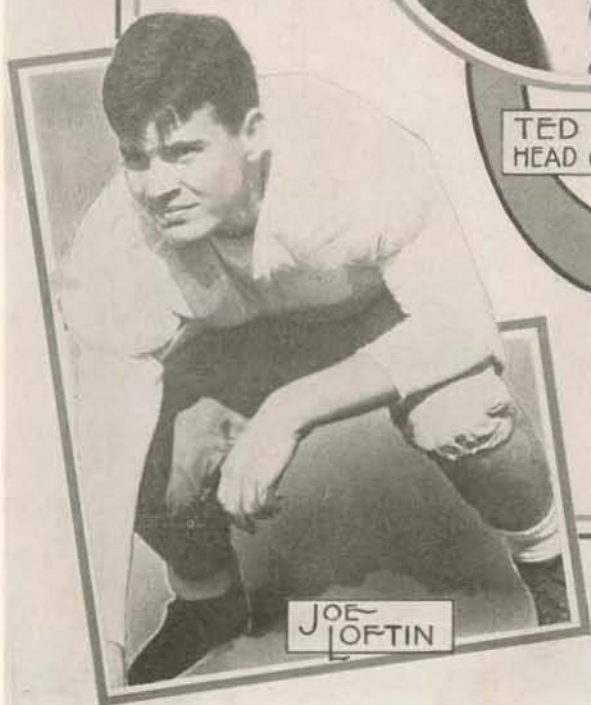
"LITTLE PREACHER"
ROBERTS



JOHN
McDANIELS



TED COX
HEAD COACH



JOE
LOFTIN



GEORGE
TESSIER

JACKETS



NORRIS
DEAN



BOB
WARNER



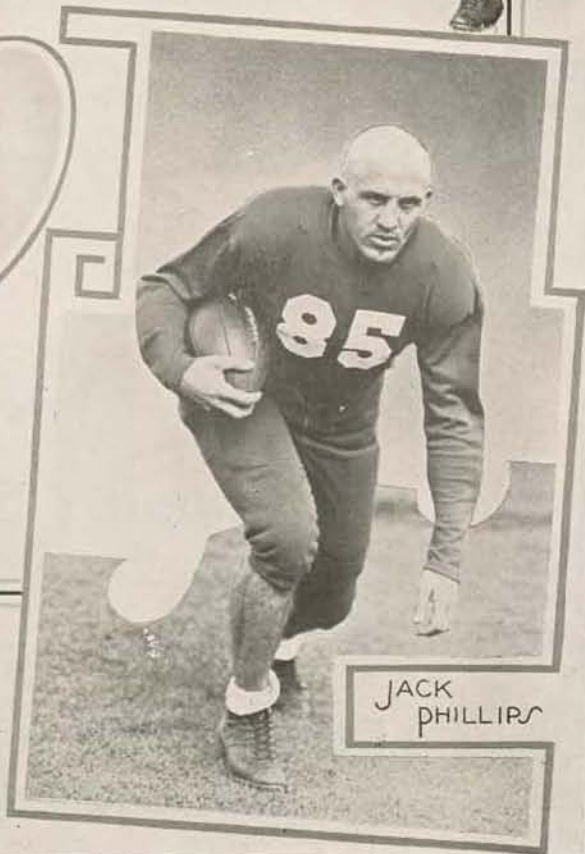
BOYD



FULTON
BRITAIN



"SUN DIAL"
MARTIN



JACK
PHILLIPS

Meet Your Friends at the
**ATLANTA
 BILTMORE HOTEL**

The South's Supreme Hotel

FOUR BLOCKS FROM GRANT FIELD

Rates: \$3 \$4 \$5
 One person in a room
 Two persons in a room
 \$1 to \$2 additional

Coffee Shop: Club Breakfasts 40c, 50c, 60c
 Luncheons 50c and 75c
 Dinners \$1.00

Main Dining Room: Club Breakfasts 65c, 85c
 Luncheons \$1.00
 Dinners \$1.50

"REPEAT SIGNALS"

Maybe not too good
 on the gridiron but
 often heard in the
 Tech Cafeteria when it
 comes to more bread.
 And little wonder for
 a second and third
 slice of tasty, full-bodied
 Silverman's Bread
 is enjoyed by everyone.

**SILVERMAN'S
 OLD-FASHIONED
 BREAD**

Official Bakers
 to the
 Georgia Tech
 Cafeteria



PRESSING

BAND BOX CLEANING



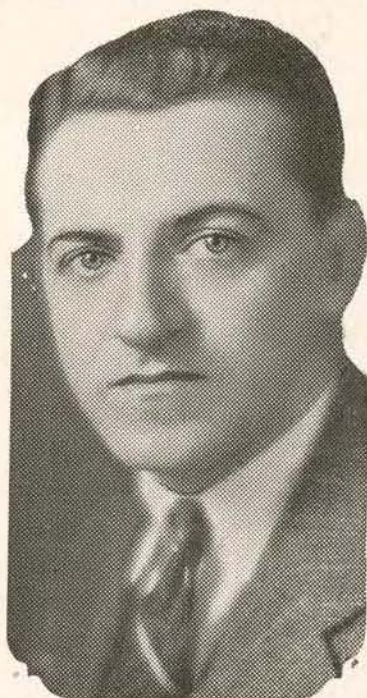
"Bundles of Satisfaction"



THE SUPERIOR LAUNDRY

664-70 W. PEACHTREE ST., N. W.

President Perdue Announces Board



*Rhodes Perdue
President
National
Georgia Tech
Alumni
Association
1933-'34*

As previously announced, the following alumni were chosen as officers of the National Georgia Tech Alumni Association for the term that begins with the present scholastic year:

President—Rhodes Perdue, 1921.

Vice-President—A. L. Loeb, 1913.

Vice-President—(Out of State)

John G. Chapman, 1909.

Treasurer—Edw. C. Liddell, 1922.

Executive Secretary—R. J. Thiesen, 1910.

The foregoing officers will constitute the Executive Board together with the alumni appointees as follows: Robt. T. Jones, Jr., '22; Fred Kaufman, '94; G. T. Marchmont, '07; F. M. Spratlin, '06.

Rhodes Building Fund

It will be recalled that Tech was named as one of the beneficiaries of the will of Mr. Joseph D. Rhodes, and that the bequest was to come from the income of the Rhodes Building and Annex, corner Marietta and Fairlie Streets, Atlanta. One-third of the income to be expended for the education of deserving students at Georgia Tech.

The trustees of the fund are: A. Rhodes Perdue, '21; L. W. "Chip" Robert, Jr., and Y. F. Freeman, '10.

In view of the location of this modern building in the postoffice district, and its reasonable rentals, all of the Georgia Tech alumni and their friends might well give the Rhodes Building a first consideration for such office space and warehouse facilities that they may need or anticipate needing in Atlanta.

A. G. Rhodes Building and Annex



CENTRALLY LOCATED

78 MARIETTA STREET

Convenient to Banks and Postoffice

LARGE, WELL LIGHTED OFFICES IN
SINGLE UNITS OR IN SUITES

*Annex loft space for warehouse and light
manufacturing with office building
convenience at a very
reasonable rate*

CONSTRUCTION:

Modern—Fireproof.

SERVICE:

Elevator service 24 hours per day.

Separate freight elevators.

Janitor service.

Water and steam heat furnished in
Offices and Annex.

***For Rates, Information and
Special Arrangements***

SEE OR CALL

A. G. Rhodes & Son
203 Rhodes Bldg. WAlnut 6024

Sigmund Eisner Co.

Red Bank, N. J.



Manufacturers of

Uniforms



Outfitters for Georgia Tech

You Can Depend on

**OXFORD
PAPERS**

For Best Results



Distributed by
Knight Bros. Paper Co.
Atlanta

SUMMARY OF PRINCIPAL PENALTIES

LOSS OF A DOWN

- Incompleted forward pass
- Forward pass made from less than five yards back of the line of scrimmage

LOSS OF FIVE YARDS

- Illegal delay of the game
- Failure of substitute to report
- Off side or beating the ball
- Second, third or fourth incomplete forward pass
- Using flying block or flying tackle
- Unfair play not provided for in rules

LOSS OF FIFTEEN YARDS

- Failure to come to a stop in a shift play
- Intentionally grounding a forward pass
- Throwing to the ground a player who has made a fair catch
- Pushing or pulling the runner with the ball
- Illegal use of the hands and arms by offensive players
- Illegal use of the hands by defensive players in striking an opponent on head
- Roughing the kicker
- Piling on

LOSS OF TWENTY-FIVE YARDS

- Team not ready to play at scheduled time
- Clipping

LOSS OF HALF THE DISTANCE TO THE GOAL LINE

- Slugging
- Kneeing
- Kicking

PRINCIPAL RULE CHANGES

1933

The only radical change made in the rules for this year is that relating to a ball which becomes dead within 10 yards of a side line. When this occurs, or when the ball goes out of bounds between the side lines, it shall be put in play at a spot 10 yards in from that side line and on a line drawn through the point where the ball became dead.

This is covered by Rule 7, Section 3, Article 7.

The definition of clipping has been broadened and now includes blocking by running or diving into the back of a player not carrying the ball, in addition to throwing or dropping the body across the back of the leg or legs below the knees of such a player.

1932

A. SUBSTITUTION

The rule now permits a player withdrawn from the game to return at any time except in the quarter in which he is withdrawn. The old rule required that a player wait for a new half instead of a quarter.

B. PROTECTIVE PADDING

The rules now require all head, knee, elbow and thigh pads to be covered on the outside with some soft substance at least five-eighths of an inch in thickness. This will tend to reduce injuries.

C. THE KICK OFF

Five players of the team receiving the kick off will be required to line up in advance of their own forty-five-yard line. This will prevent the flying wedge that resulted in a number of injuries last season.

D. DEAD BALL RULE

The referee is instructed to blow the ball dead when any portion of the ball carrier except his hands or feet touches the ground. This will prevent piling on and will save many injuries.

E. FLYING BLOCK AND FLYING TACKLE

Players are no longer permitted to dive through the air in blocking and tackling. They will be allowed to leave their feet at the instant of contact, but the long, wild dive is prohibited.

F. USE OF HANDS

Players on defense are no longer allowed to strike an opponent on the head, neck or face with the hands or forearm. This will prevent much of the ill feeling that formerly developed between opposing linesmen.

JERSEY ICE CREAM CO. INCORPORATED

◆
Ice Creams
and Ices

◆
*Party Orders
a Specialty*

◆
784 N. Highland Avenue, N.E.
Hemlock 0379

TECH FOOTBALL PLAYERS

are wearing

O'SHEA ATHLETIC KNITTED WEAR

because it meets the most
exacting requirements
in every respect

◆
Perfect Fitting Popular-Lasting

O'SHEA KNITTING MILLS

◆
214 North Sacramento Avenue
Chicago, Ill.

Athletic Knitted Wear for Every Sport



The name Creo-pine on Creosoted Southern Pine is more than a trade mark. It is a pledge of honest, accurate manufacture and rigid inspection from standing tree to finished product. Back of it are 25 years of wood preserving experience. Specify Creo-pine products for long life and lowest cost per year of service.

Creo-pine Products Include:

Poles
Piling
Conduit
Cross Ties
Cross Arms

Floor Blocks
Sub-Flooring
Bridge Timbers
Structural Timbers
Guard Rail, etc.

SOUTHERN WOOD PRESERVING CO.
ATLANTA, GA.

Sales Offices:
NEW YORK
10 East 42nd St.
BUFFALO
Lawrence Bldg.
PHILADELPHIA
Chestnut Street Bldg.
TOLEDO

Treating Plants:
EAST POINT, GA.
CHATTANOOGA, TENN.

Sales Offices:
PITTSBURGH
Industrial Savings & Trust Bldg.
DETROIT
Bank Bldg.
CHARLOTTE
CHATTANOOGA

THE BEST EQUIPMENT

for

Field, Stream and Gymnasium

We Feature

**Winchester and Peters
Ammunition**

**Browning, Remington,
Winchester, L. C. Smith
and Lefever Guns**

**Wilson Golf and Athletic
Supplies**

Sting 'Em Jackets

**BECK & GREGG HARDWARE
COMPANY**

**64-68 MARIETTA STREET
ATLANTA, GA.**



**Graduates
In Value**

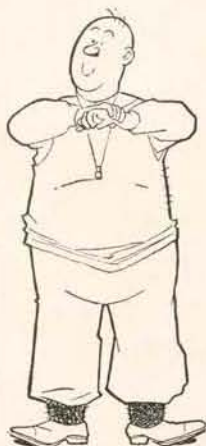
Two products of graduate quality which offer motorists better motoring performance coupled with real economy. Woco-Pep, the *Improved Motor Fuel* with Top-Cylinder Lubrication and Higher Anti-Knock. Tiolene the 100% Super-Pennsylvania Motor Oil. Sold at all Woco-Pep Blue and White Courtesy Stations.

WOFFORD OIL CO.

ATLANTA, GEORGIA

WILEY L. MOORE, President

RIGHT — Horizontal arc of either hand: **PLAYER ILLEGALLY IN MOTION.** (Penalty, 5 yards. If from shift or huddle, 15 yards.)



ABOVE — Holding one wrist: **HOLDING.** (Penalty — by offense, 15 yards; by defense, 5 yards.)



BELOW — Arms folded: **FLYING BLOCK OR TACKLE.** (Penalty, 5 yards.)



BELOW — Waving hand behind back: **ILLEGAL FORWARD PASS.**



With no intention of committing lese-majesty, we herewith present a graphic presentation of the series of signals which the officials have devised to tell the stands the nature of any penalty imposed



LEFT — Hands above head: **SCORE.** (Used after touchdown, field goal, or convert. Palms of hands together indicates a safety.)



ABOVE — Pushing movement of hands to front with arms in a vertical position: **CRAWLING, PUSHING, OR HELPING BALL-CARRIER.** (Penalty, helping ball-carrier, 15 yards; otherwise, 5 yards.)



ABOVE — Swinging arms horizontally: **USED TO INDICATE INCOMPLETE PASS, MISSED FIELD GOAL OR CONVERT, ETC.**



ABOVE — Military salute: **UNNECESSARY ROUGHNESS, ILLEGAL DEFENSIVE USE OF HANDS.** (Penalty, 15 yards.) **ALSO USED FOR FLAGRANT ROUGHING.** (Penalty, half distance to goal line and disqualification.)



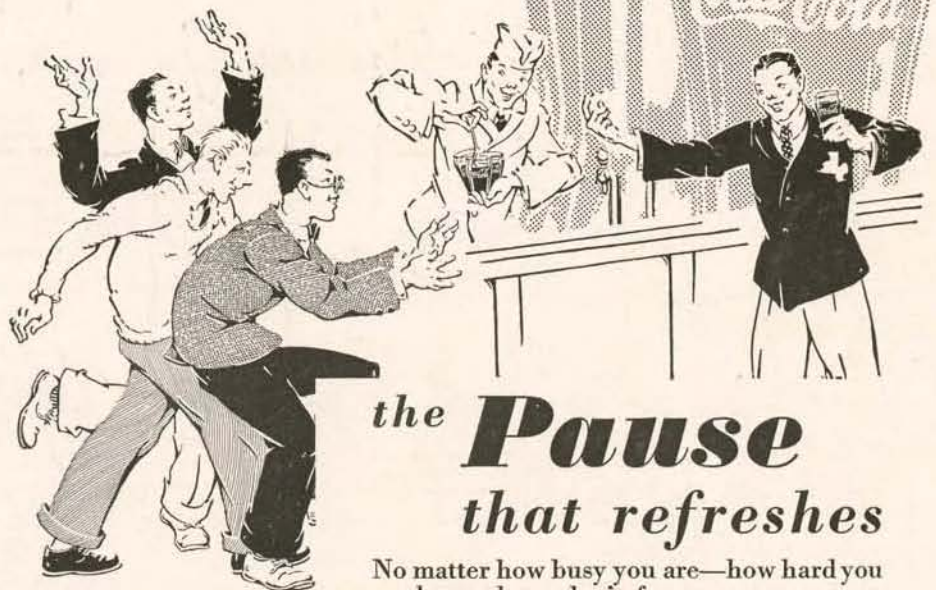
ABOVE — Hands on hips: **OFFSIDE.** (Penalty, 5 yards.)



ABOVE — Pushing hands forward from shoulders: **INTERFERENCE WITH FORWARD PASS, OR PASS TOUCHING INELIGIBLE PLAYER.** (Penalty, if interference by offense, 15 yards; otherwise, ball to opponents at point of foul.)



Your good deed
for today



the **Pause**
that refreshes

No matter how busy you are—how hard you work or play—don't forget you owe yourself that refreshing pause with Coca-Cola.

You can always find a minute, here and there, and you don't have to look far or wait long for Coca-Cola. A pure drink of natural flavors—always ready for you—ice-cold—around the corner from anywhere. Along with millions of people every day, you'll find in Coca-Cola's wholesome refreshment a delightful way to well-being.

9
MILLION
a day

THE COCA-COLA COMPANY

IT HAD TO BE GOOD TO GET WHERE IT IS

TAKE A LEAF FROM THE OLD GRAD'S BOOK



A FULL LENGTH MIRROR IN EVERY ROOM.

Women are equally decided in their preference for The Piedmont—which isn't strange, when you consider the attentive, unobtrusive service accorded them, the special pains that have been taken to please them—

Full length dressing mirrors, for example—the luxury of a famous Beauty-Rest mattress on every bed—large, artistically decorated rooms—laundry and maid service. Meals served in rooms without extra charge.

Central location on fashionable Peachtree Street, in heart of shopping and theatre district. The last word in appointments and service, and the Atlanta home of hundreds of discriminating Southern women.

RATES

Single Rooms:

\$2.00, \$2.50, \$3.00, \$3.50, \$4.50

Rooms for Two, with Double Bed:

\$3.00, \$4.00, \$5.00, \$6.50

With Twin Beds:

\$4.00, \$5.00, \$6.00, \$9.00

Suites:

\$8.50 to \$17.50

When in Atlanta for the Games
... stay at **THE PIEDMONT!**

Watch that old grad with the experienced-traveler-look when he leaves the stands after the game. No hesitation for him. He goes straight to the Piedmont Hotel.

Why? It's an old custom of his when he's in Atlanta, either on business or pleasure bent. He likes the extra touches he finds at this newest and most modern of Atlanta's downtown hotels—the ready abundance of running ice water in every room at the turn of a faucet, day or night; the combination tub and shower bath—radio in every room—everything, in short, that thoughtful modern hotel management can provide for its guests' comfort and satisfaction.

And he knows, too, that the Piedmont's always in the center of whatever's going on—the place where he can find his friends, and they can find him.

Give yourself a break. Take a leaf from the old grad's book. Stay at the Piedmont.



THE **PIEDMONT** HOTEL

—on famous Peachtree Street
ATLANTA



IT TAKES HEALTHY NERVES TO FLY THE MAIL AT NIGHT

● A. M. WILKINS has flown the night air mail over 150,000 miles for TWA. It takes healthy nerves to hang up a record like that!



● WILKINS joins a fellow pilot, W. Niedernhofer, at Newark Airport, for a chat and a smoke. "Camels never ruffle or jangle my nerves," Wilkins says.

IT IS MORE FUN TO KNOW

Camels are made from finer, **MORE EXPENSIVE** tobaccos than any other popular brand. They are milder, richer in flavor. They never tire your taste or get on your nerves.

A
MATCHLESS
BLEND



STEADY SMOKERS TURN TO CAMELS

A. M. WILKINS, air-mail ace, says: "It's a steady grind, all right, living up to our tradition that *the mail must go through!* That's why I smoke Camels. And I smoke plenty! Camels never ruffle or jangle my nerves, and I like their mild, rich flavor."

Camels never tire the taste—never get on the nerves. *Your* taste and *your* nerves will confirm this. Start smoking Camels today and prove it for yourself.

Copyright, 1933.
R. J. Reynolds
Tobacco Company

Camel's Costlier Tobaccos
**NEVER GET ON YOUR NERVES
NEVER TIRE YOUR TASTE**